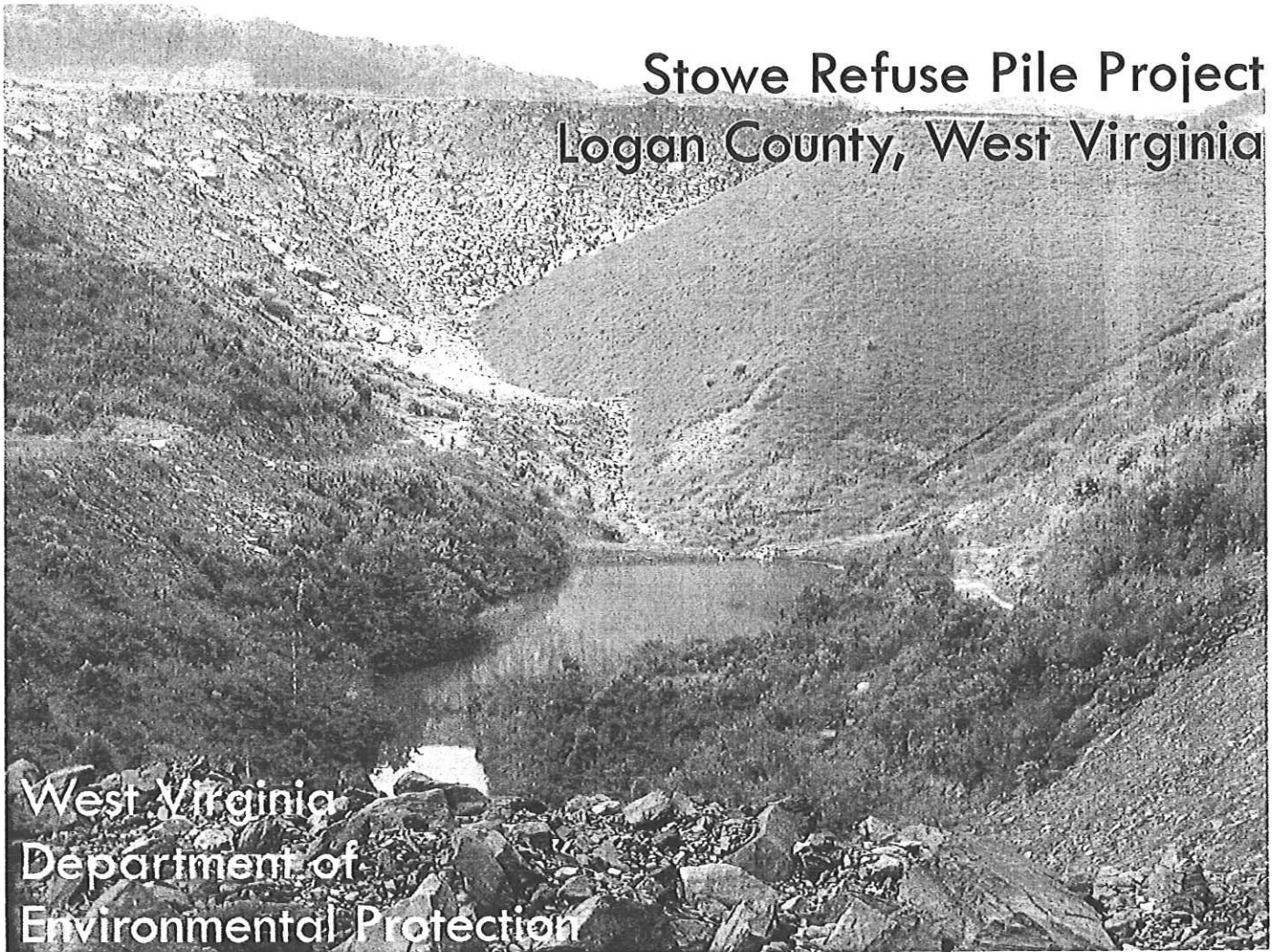


Expression of Interest
Engineering, Design Services and Construction Monitoring

Stowe Refuse Pile Project Logan County, West Virginia



West Virginia
Department of
Environmental Protection

Office of Abandoned Mine Lands
and Reclamation



Consulting Engineers

1428 Main Street
P.O. Box 1309
Princeton, WV
24740
304-431-7800
304-425-0445 (f)

RECEIVED

OCT 26 A 8:07

ENGINEERING DIVISION
STATE OF WV

October 26, 2011



1428 Main Street
P.O. Box 1309
Princeton, WV
24740
304-431-7800
304-425-0445 (f)

October 25, 2011

Mr. Chuck Bowman
West Virginia Department of Environmental Protection
Office of Abandoned Mine Lands and Reclamation
c/o State of West Virginia Department of Administration
Purchasing Division
2019 Washington Street, East
Charleston, WV 25305-0130

**RE: Expression of Interest – Stowe Refuse Pile
DEP15586**

Dear Mr. Bowman:

Pentree, Inc. is pleased to have the opportunity to provide the West Virginia Department of Environmental Protection with our high standard of professional engineering design services on the Stowe Refuse Pile design project in Logan County.

Along with the knowledge of AML procedures gained from the completed construction of the Itman / Bud Mountain Water Project for Eastern Wyoming County P.S.D. (Wyoming County) we offer our extensive experience with access roads, drainage, demolition, stream bank protection and re-vegetation. We will also utilize the experience of H.C. Nutting a Terracon Company to provide geotechnical expertise. With our long history as a West Virginia full service civil engineering firm, we will provide the AML & R with quality professional engineering service in a timely and cost efficient manner.

Following the instructions outlined in the RFQ, this proposal contains information regarding Pentree, Incorporated's history, experience and professional qualifications along with the required DEP/AML Consultant's Confidential Qualifications Questionnaire, and an affidavit stating Pentree, Incorporated has no debt owed to the State of West Virginia.

We thank you for your consideration of our qualifications and look forward to the opportunity to present our qualifications and project methodology to you in person.

Sincerely,
PENTREE, INCORPORATED

A handwritten signature in black ink, appearing to read 'John W. Tuggle', is written over a faint circular stamp.

JOHN W. TUGGLE, P.E., P.S.
President/ Principal-In-Charge

JWT/jhv
enclosures

Stowe Refuse Pile Project

for the West Virginia Department of Environmental Protection
Office of Abandoned Mines and Reclamation



October 26, 2011

1428 Main Street
P.O. Box 1309
Princeton, West Virginia 24740

Phone: 304-431-7800
Fax: 304-425-0445
E-mail: engineer@pentree.com

Table of Contents

HISTORY OF FIRM	1
EXPERIENCE	2
PROFESSIONAL QUALIFICATIONS	8
CONSULTANT QUALIFICATION QUESTIONNAIRE	16
RELATED PROJECT EXPERIENCE MATRIX	38
PURCHASING AFFIDAVIT	39

History of the Firm



King Coal Highway
McDowell County

- SINCE 1971
PENTREE, INCORPORATED HAS
OFFERED THE ONLY IN-HOUSE
PHOTOGRAMMETRY SERVICE
IN THE STATE OF WEST VIRGINIA

Pentree, Incorporated began providing utility-based engineering services in 1965 when the Pentree Division of Bennet-Nave-Thomas incorporated. Originally based in Oak Hill, in 1973 a branch office was opened in Princeton.

Since then our firm has worked to maintain state of the art engineering means and methods as well as provide traditional oversight and technical assistance. We strive to provide the most efficient and accurate

design for site development, construction monitoring, mapping, transportation, wastewater, water and surveying services. Additionally, Pentree offers the only in-house mapping and photogrammetry service in the State of West Virginia.

For over forty six years, we have provided our technical expertise in all aspects of engineering and field services.

*E*xperience

Over the past century, Pentree, Incorporated has provided design and construction monitoring services for utility, site development, highway, bridge, airport and community enhancement projects throughout Southern West Virginia.

On the following pages are examples of specific recent projects that represent our abilities with drainage and stabilization projects that are comparable in scope of services similar to the needs of the WVDEP for the Stowe Refuse Pile design project.





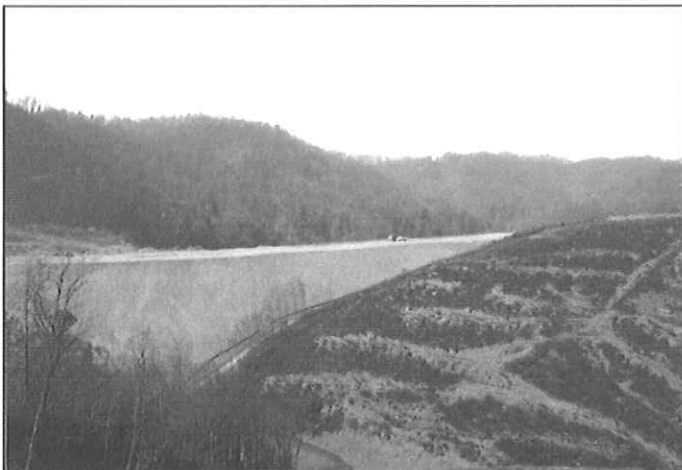
**King Coal and
Coalfields Expressway
Interchange**

**McDowell and
Wyoming Counties**

**Owner/Contact:
West Virginia
DOH**

**Ali Sadeghian, Project
Manager
Division of Highways
Bldg 05 Room A-317
State Capital Complex
Charleston, WV
25305
304-558-9745**

Study and complete design of final plans for a major new interchange. Study involved four alternative configuration schemes for the interchange. Final plans included two additional interchanges, five miles of interstate, expressway - roadway and eleven (11) bridges and required over 6 ½ million cubic yards of excavation.





**City of Oak Hill
Phased Drainage
Projects**

Fayette County

**Owner/Contact:
Bill Hannabass,
City Manager
City of Oak Hill
P.O. Box 1245
Oak Hill, WV 25901
304-469-9541**

Pentree, Incorporated provided the City of Oak Hill with a study, preliminary and final design plans, and specifications for management of approximately 2,200 acre watershed which created flooding along the path of Arbuckle Creek and throughout the city limits. The first phase of the project consisted of replacement of eleven culverts totalling 1,252 lineal feet. The new culverts were designed to carry a 50-year flood and alleviate consistent

annual flooding along the banks of Arbuckle Creek. Pentree, Incorporated has worked closely with the West Virginia DEP to satisfy Soil Conservation and wetlands concerns. Phase II of the project is in the Virginia Street/ Trump Avenue area of the City as shown in the construction pictures below.

Phase I and II of the construction project are complete, Phase III is currently in the construction stage.

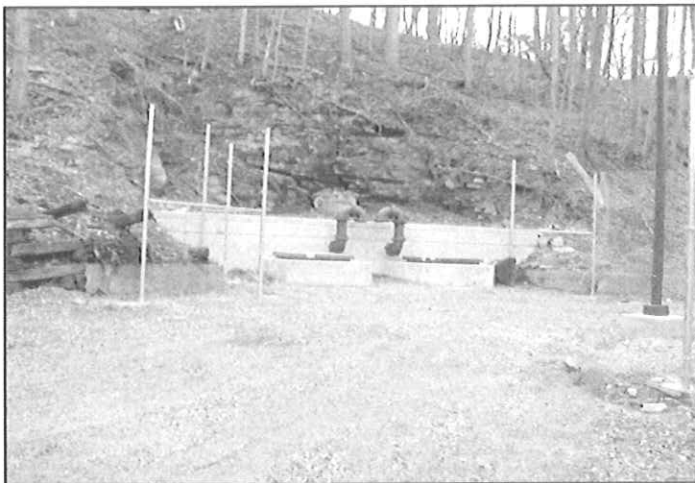


**Eastern Wyoming
Public Service District**

**Itman Bud Mountain
Water Project**

**William Baisden Chair
EWPSD
P.O. Box 506
Logan, WV 25601
304-946-2641**

Project consists of five contracts to improve and upgrade the Eastern Wyoming Public Service District's water system. This project includes a Water Treatment Plant, Water Storage Tanks, an upgrade of the Lower Gulf Water System and an upgrade of the Upper Gulf Water System. The design called for the closure of four mine portals, one of which was sealed with the capacity to continue to provide a raw water source for the District. The other three portals were wet sealed with allowance for controlled overflow. This project was partially AML Funded



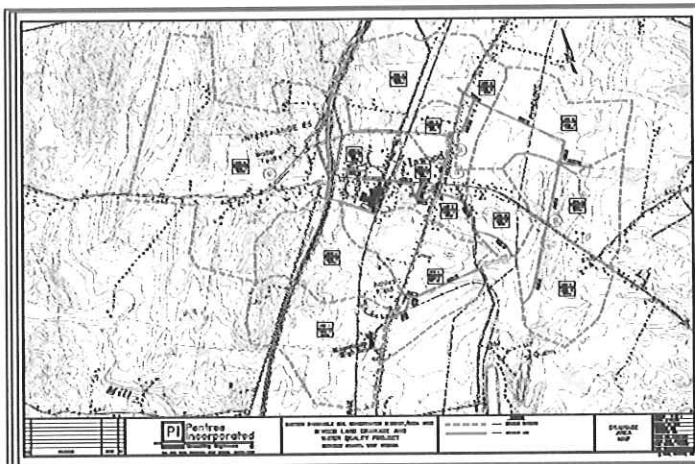


Inwood Watershed Project

**USDA/NRCS
Eastern Panhandle
Soil Conservation
Service**

**Donald Dirting
Conservation Project
Specialist
State of West Virginia
Soil Conservation
Agency
1450-1 Edwin Miller
Blvd.
Martinsburg, WV**

The Study involved an 827acre area just south of the Youth Fairgrounds in Berkeley County, WV. The project was divided into three phases to allow for staged funding. The project includes the construction of drainage piping, drop inlets, headwalls and open channel ditch lines to carry the storm water away from the area during and after a storm event. Professional services for this project are closely aligned with the goals of the Commission for the proposed project.



US Gypsum

George Rolan
US Gypsum
6072 Main Street
Saltville , VA 24370
276-496-7733

Washington County,
VA

Pentree, Incorporated, provided engineering and design services for the relocation of Routes 91 and 745 in Washington County due to subsidence associated with mine abandonment. In conjunction with the roadway relocation project, design for the relocation of approximately 5,000 feet of waterline for the Town of Saltville and 6,000 feet of waterline for the Washington County P.S.A.. Additional design provided for an upgrade to one of Saltville's raw water sources and associated water treatment processes.





Professional Qualifications

Pentree, Incorporated will assign a team of talented and experienced engineers and firm principals to this project. Each member of this team brings a specific area of expertise that is essential for a successful project.

John Tuggle, P.E., P.S., President of Pentree, Inc. is the **Principal-In-Charge** and will serve as **Project Manager**. He is actively involved in the daily management of the firm. Mr. Tuggle's expertise and knowledge of project management and civil engineering will assure you of a quality project that meets your specifications.

Bob Hazelwood, P.E., P.S. will serve as **Chief Engineer** for the project. Mr. Hazelwood will be responsible for overseeing all technical aspects of the project. Mr. Hazelwood has over 25 years of experience in the evaluation and design of AML funded projects.

Mr. Hazelwood will be assisted by, **Zane Summerfield**, who will provide analysis and mining expertise for the design. **Gregg Inman** will provide technical and design assistance for the project.

Providing Geotechnical support is Mr. Yogesh Re-

ge, P.E. of H.C. Nutting a Terracon Company.

Resumes to follow.



City of Oak Hill Drainage Project



John W. Tuggle, PE, PS - Principal-In-Charge

Mr. Tuggle joined Pentree, Incorporated in 1985 and serves as President and Principal-In-Charge for the firm. His primary responsibility is the oversight of all firm projects.

Mr. Tuggle has extensive experience working with various regulatory and funding agencies, and is extremely knowledgeable of contract preparation, analysis and interpretation. He has also recommended and assisted numerous clients in securing the best source of funding to suit their needs.

Mr. Tuggle has been involved with various types of projects including:

- Water Treatment Plants
- Water System Upgrades
- Water Line Extensions
- Wastewater Treatment Plants
- Wastewater System Upgrades
- Wastewater Collection Extensions
- Storm Water Management
- Industrial Park Site Development
- Subdivision Development
- Highways and Roads
- Access Roads

Education:

B.S. Civil Engineering
Technology 1982
Bluefield State College

Active Registrations:

Professional Engineer, 1988
#011845
State of West Virginia
Professional Surveyor, 1995
#1176
State of West Virginia

Project Experience:

**King Coal Highway/
Coalfield Expressway**
Project Oversight, Principal-In-Charge

Gauley River Public Service District Twentymile and Route 39 / Peters Creek Water Line Extension Project – Project Manager, Contract and Construction Administration

Ravenclyff-McGraws-Saulsville Public Service District - R.D. Bailey Regional Water System - Principal-In-Charge Regional Water System

Cowen Public Service District Camden Water Treatment Plant Upgrade and Water Line Extension Project; Sanitary Sewer Line Extension Projects – Project Manager, Contract and Construction Administration

Berkeley County Public Service Sewer District Baker Heights Wastewater Treatment Plant, Inwood Wastewater Treatment Plant, Ecolab and Apache Pump Station – Principal-In-Charge

Jefferson County Public Service District Breckenridge Pump Station, NPDES Permit Renewal and District Plan Review; Mountain Water Project - Principal-In-Charge

City of Mount Hope Kilsyth Utility Extension; Wastewater Treatment Plant Upgrade - Principal-In-Charge

Green Valley-Glenwood County Public Service District Various Wastewater Projects – Project Oversight, Contract and Construction Administration

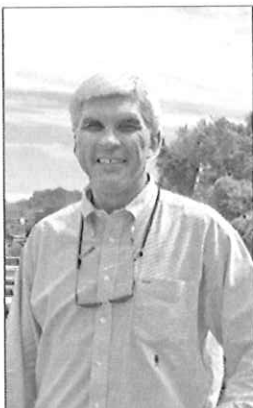
McDowell County Prison Site Development - Principal-In-Charge

Webster County Industrial Park – Project Manager, Contract and Construction Administration

City of Oak Hill Sanitary Board Wolf Creek Park Sanitary Sewer Service, Fayette Plateau Package Plant and Potential Sanitary Sewer Plant Upgrade; Principal-In-Charge

Town of Fayetteville Nickelville Sewer Project – Principal-In-Charge

Gauley River Public Service District Water Extensions for Mt. Olive, Jodie & Smith Branch Emergency - Project Manager



John Tuggle PE, PS
Principal-In-Charge



Robert D. Hazelwood, PE, PS - Chief Engineer

Mr. Hazelwood joined Pentree, Incorporated in 1979 and serves as Executive Vice President for the firm. In this capacity, his primary responsibility is to provide Project Management for projects.

Mr. Hazelwood's experience includes preliminary and final design, preparation of contract documents and specifications and project management.

Additionally, Mr. Hazelwood has extensive knowledge working with the WVDEP AML for funding assistance with several large projects in the southern part of the State.

- Water Treatment Plants
- Water System Upgrades
- Water Line Extensions
- Wastewater Treatment Plants
- Wastewater System Upgrades
- Wastewater Collection Extensions
- Storm Water Management
- Industrial Park Site Development
- Subdivision Development
- Highways and Roads
- Access Roads



Cut and Fill
King Coal Highway
McDowell County

Education:

M.S. Sanitary Engineering, 1976, VPI and State University
B.S. Civil Engineering, 1975
West Virginia Institute of Technology

Active Registrations:

Professional Engineer, 1980
#008452, State of West Virginia

Professional Surveyor, #1179
State of West Virginia

Project Experience:

- **Greenbrier County Public Service District #2** Sanitary Sewer Collection System And Wastewater Treatment Plant – Design Engineer And Quality Control
- **Red Sulphur Springs Public Service District** Various Sanitary Sewer And Water Projects – Design Engineer And Quality Control
- **Ravencliff-Mcgraws-Saulsville Public Service District** Water Projects – Design Engineer And Quality Control multiple AML Funded Water Projects
- **Green Valley-Glenwood Public Service District** Sanitary Sewer Projects Including A 1.5 MGD Wastewater Treatment Plant, Sewer Line Extensions And Upgrades – Design Engineer And Quality Control
- **Edray Technical Park**, Pocahontas County, West Virginia – Design Engineer And Quality Control
- **Fountain Springs Industrial Park**, Monroe County, West Virginia – Design Engineer And Quality Control
- **Peterstown Satellite Medical Clinic Addition**, Monroe County, West Virginia – Design Engineer And Quality Control
- **Deer Run Subdivision**; 13 Lots On 14 Acres – Design Engineer And Quality Control
- **Pleasant Valley Estates**; 23 Lots On 17 Acres - Design Engineer And Quality Control
- **Twin Oaks Subdivision**; 18 Lots On 12 Acres - Design Engineer And Quality Control
- **Eastern Wyoming PSD**; Mullens Wyco Water Project - Water Treatment Plant, Water Storage Tanks, An Upgrade Of The Lower Gulf Water System And An Upgrade Of The Upper Gulf Water System, Itman Bud Mountain Water Project (AML Funded Water Projects)



Gregg Inman, EIT - Design Engineer/Chief Technician

Mr. Inman joined Pentree, Incorporated in 2005 and serves as Staff Engineer and Chief Technician for the firm. In this capacity he has a variety of responsibilities including, but not limited to:

- Drafting
- Utility Design
- Site Design
- Permitting
- Specifications
- Technical Writing

Education:

B.S. Civil Engineering
Technology – 2005
Bluefield State College

Active Registration:

Registered EIT – State of
West Virginia

Project Experience:

- **Fort Chiswell**
Wastewater Treatment Plant – CADD Design
- **Eastern Wyoming PSD** Mullens-Wyco Water Treatment Plant – Drafting, De-

sign for New
"Smaller" Plant System

- **Town of Davy Big Sandy-Asco** Water Line Extension – Design
- **City of Oak Hill** – Sanitary Sewer Relocation - Design
- **Gauley River Public Service District** Smith Branch Water Line Relocation Project – Design
- **Town of North Fork** – Water Line Extension Project – Design
- **Page-Kincaid PSD** Sanitary Sewer Extension – Package Plant design
- **Glen White / Trap Hill PSD** – Water Line Extension Project - Design

American Electric Power –
McGraw Substation –
Site Development and
Grading – Design

Pump Station Design – Eastern Panhandle

- Tilhance Development
- JC Butler Development
- Barnhart Development
- Crest Creek Subdivision
- BC McLaughlin Development

Berkeley County Public Service Sewer District –
Opequon and Baker
Heights Pump Stations -
Design



Oak Hill Drainage



J. Zane Summerfield - Senior Civil Analyst

Mr. Summerfield joined Pentree, Incorporated in 1998 and serves as Senior Civil Analyst for the firm. He is responsible for the analysis of clients' existing data to determine their current situation. Mr. Summerfield also prepares facility plans, engineering reports, and specifications and plan sets. Additionally, Mr. Summerfield provides general design assistance, permit preparation and environmental reporting. Prior to his current position with the firm, Mr. Summerfield served as permit specialist for a mining engineering firm, having a total work experience of thirty years.

Education

B.S. Mining Engineering
1982
West Virginia Institute of
Technology

A.S. Mining Engineering
1976
West Virginia Institute of
Technology

AUTOCAD 1992
Carver Career Center

Project Experience:

➤ **Elkhorn PSD Facility Plan** – Facility Plan detailing options for com-

pliance with existing rules and regulations, research, analysis, preliminary design, cost estimate, engineering reports, funding applications

➤ **City of Mount Hope**– Review and analysis of water treatment plant and engineering report.

➤ **Ecolab Pretreatment WWTP Upgrade** - Analysis of WWTP performance, engineering reports and preliminary design for the upgrade of the existing 0.05 MGD to 0.1 MGD pretreatment facility, assisting client with budgeting documents

➤ **City of Mount Hope**– Analysis of WWTP performance, facility plan for the upgrade of the existing oxidation ditch wastewater treatment plant and collection systems for outlying communities, funding applications, preparation of construction drawings and contract documents, permit applications. Engineering liaison with funding agencies and City Council, construction project management

➤ **Jefferson County PSD**– Alternative Treatment Facility Plan – Review of current alternative waste water treatment

methods including Membrane Bio-Reactors, Sequential Batch Reactors, Vertical Loop Reactors, Free Water Surface and Subsurface Flow Wetlands, Facultative (aerobic-anaerobic) and Aerated lagoons, Recirculating Sand Filters, Mound Systems, Reed Beds and other onsite treatment systems

Experience with other firms:

- **Mine Permitting** – Design and permitting of mountaintop and contour surface and deep mine sites including high wall miner and deep mines in known acid producing seams. Geological mapping and reports, reserve analysis, economic modeling
- **Oil and Gas Well Permitting** – Plat preparation, reclamation plans, review with Oil and Gas inspectors and permit documents for wells in West Virginia
- **Oil and Gas Well Drilling Pit Treatment** – Develop and run a Oil and Gas well pit treatment program for treatment and discharging drilling waste pits in remote locations



Survey Services

YOGESH S. REGE, P.E.
SENIOR ASSOCIATE
GEOTECHNICAL DEPARTMENT MANAGER

PROFESSIONAL EXPERIENCE

Mr. Rege has over 14 years of experience in the geotechnical engineering discipline. He manages the geotechnical engineering department in Charleston, West Virginia office. Mr. Rege performs geotechnical engineering work to include: Soil test borings, description and laboratory testing of soil and rock samples, correlation, development and analysis of geotechnical engineering data in accordance with established professional standards; preparation of detailed reports based on geotechnical engineering principles and laboratory test results incorporating one or more of these principles into the design and analysis of shallow and deep foundations; slope stability and settlement analysis; landslide evaluation and correction measures; design of temporary and permanent earth retention wall systems and design of flexible and rigid pavement systems; performance of finite element modeling of long-term behavior of culvert-soil system considering soil-structure interaction; analysis of groundwater and seepage related problems; geotechnical applications with geosynthetics; and design of landfills and wastewater lagoons using clay and synthetic liners.

Also performs coordination and management of both geotechnical subsurface investigation projects and construction testing and inspection projects.

PROJECT EXPERIENCE

Representative projects on which Mr. Rege has performed geotechnical subsurface investigation include the following:

- Project manager and engineer for an Abandoned Mine Lands (AML) project in McComas, West Virginia. Project involved borings, analyses, laboratory testing and report preparation for remediation of the mine spoils.
- Assisted in mine subsidence assessment of the proposed Melody Mountain commercial development project in Ashland, Kentucky.
- Project manager for a project involving underground mine subsidence mitigation for a bank site in Beckley, WV. Project involved pre and post mine grouting test borings, preparation of mine grouting specifications, preparation of bid package, solicitation of bids and assistance in selection of mine grouting contractor and inspection and support during the grouting process.
- Project manager for a project in Inez, KY consisting of deep strip mine fill material. Remediation involved dynamic compaction of the fill to create a site suitable for

EDUCATION

*M.S., Geotechnical Engineering,
University of Cincinnati,
Cincinnati, Ohio, 1997*

*B.S., Civil Engineering /
Geotechnical Major, University
of Bombay, India, 1994*

REGISTRATIONS

*Professional Engineer:
West Virginia, Ohio & Virginia*

CERTIFICATIONS

*Nuclear Density/Moisture Gauge
Operation*

*OSHA 10-Hour Occupational
Safety and Health Training*

ODOT Bridge Inspection (Level 1)

development.

- Project manager and engineer for a substation project in northern West Virginia consisting of deep strip mine fill material. Remediation involved dynamic compaction of the fill to create a site suitable for development.
- Project manager for a switchyard, substation and transmission line project in southern Pennsylvania northern West Virginia consisting of deep strip mine fill material. Remediation involved dynamic compaction of the fill to create a site suitable for development.
- Responsible for the analysis of the deep foundation (auger cast piles) for the OSU Stadium renovations exterior buildout project.
- Provided deep foundation analyses, recommendations and reports for several Ohio Department of Transportation (ODOT) projects including single and multi-span bridges.
- Responsible for foundation analysis, design and geotechnical report preparation of several above ground storage tanks at refinery in Canton, Ohio.
- Responsible for foundation analysis, design and geotechnical report preparation of several waste water treatment plants and sanitary sewer lines in the state of Ohio.
- Responsible for analysis, design and geotechnical report preparation of several projects for the West Virginia Department of Highways (WVDOH).
- Responsible for foundation analysis, design and geotechnical report preparation of several new schools for the Ohio School Facility Commission.

Representative projects on which Mr. Rege has provided materials testing and inspection services include the following:

Auger Cast Pile Inspection

- Ford Motor Company, 7 Bay Expansion- Sharonville, Ohio
- Cincinnati Enquirer Production Facility Expansion-Cincinnati, Ohio
- OSU Stadium exterior buildout, Columbus, Ohio

Drilled Pier Inspection

- OSU Fisher College of Business-Columbus, Ohio
- International Paper-Cincinnati, Ohio

- University of Cincinnati Pedestrian Bridge-Cincinnati, Ohio

Load Test Inspection

- Canaan Valley Lodge Addition, Davis, WV
- OSU Stadium exterior buildout, Columbus, Ohio
- Science and Technology Building, Ohio University, Athens, Ohio
- U.S. 33 Realignment project, Bridge over Hocking River, Lancaster, Ohio

**WEST VIRGINIA DEPARTMENT OF ENVIRONMENTAL PROTECTION
AML CONSULTANT CONFIDENTIAL QUALIFICATION QUESTIONNAIRE Attachment "B"**

PROJECT NAME: RFQ# DEP15586
Stowe Refuse File Design
Logan County

DATE (DAY, MONTH, YEAR)
October 23, 2011

FEIN
55-0483692

1. FIRM NAME
Pentree, Inc.

2. HOME OFFICE BUSINESS ADDRESS
1428 Main St./P.O. Box 1309
Princeton, WV 24740

3. FORMER FIRM NAME
Bennett-Nave-Thomas

4. HOME OFFICE TELEPHONE
(304) 431-7800

5. ESTABLISHED (YEAR)
1904

6. TYPE OWNERSHIP
Individual Corporation X
Partnership Joint-Venture
YES NO X

6a. WV REGISTERED DBE
(Disadvantaged Business Enterprise)
YES NO X

7. PRIMARY AML DESIGN OFFICE: ADDRESS/ TELEPHONE/ PERSON IN CHARGE/ NO. AML DESIGN PERSONNEL EACH OFFICE
1428 Main St/P.O. Box 1309/Princeton, WV 24740/304-431-7800/John Tuggle/3

8. NAMES OF PRINCIPAL OFFICERS OR MEMBERS OF FIRM
John W. Tuggle, P.E., P.S. Principal in Charge
Robert D. Hazelwood, P.E., P.S. Vice President

8a. NAME, TITLE, & TELEPHONE NUMBER - OTHER PRINCIPALS

9. PERSONNEL BY DISCIPLINE

3 ADMINISTRATIVE	—	ECOLOGISTS	—	LANDSCAPE ARCHITECTS	—	STRUCTURAL ENGINEERS
— ARCHITECTS	—	ECONOMISTS	—	MECHANICAL ENGINEERS	4	SURVEYORS
— BIOLOGIST	—	ELECTRICAL ENGINEERS	—	MINING ENGINEERS	—	TRAFFIC ENGINEERS
7 CADD OPERATORS	—	ENVIRONMENTALISTS	2	PHOTOGRAMMETRISTS	—	OTHER
— CHEMICAL ENGINEERS	—	ESTIMATORS	—	PLANNERS: URBAN/REGIONAL	—	
4 CIVIL ENGINEERS	—	GEOLOGISTS	1	SANITARY ENGINEERS	—	
7 CONSTRUCTION INSPECTORS	—	HISTORIANS	—	SOILS ENGINEERS	—	
— DESIGNERS	—	HYDROLOGISTS	—	SPECIFICATION WRITERS	—	
— DRAFTSMEN	—				28	TOTAL PERSONNEL

TOTAL NUMBER OF WV REGISTERED PROFESSIONAL ENGINEERS IN PRIMARY OFFICE: 3
*RPEs other than Civil and Mining must provide supporting documentation that qualifies them to supervise and perform this type of work.

10. HAS THIS JOINT-VENTURE WORKED TOGETHER BEFORE? YES NO **NOT APPLICABLE**

11. OUTSIDE KEY CONSULTANTS/SUB-CONSULTANTS ANTICIPATED TO BE USED. Attach "AML Consultant Confidential Qualification Questionnaire".

<p>NAME AND ADDRESS: HC Nutting/Terracon</p>	<p>SPECIALTY: Geotechnical Engineering</p>	<p>WORKED WITH BEFORE ___X___ Yes ___ ___ No</p>
<p>NAME AND ADDRESS:</p>	<p>SPECIALTY:</p>	<p>WORKED WITH BEFORE ___ ___ Yes ___ ___ No</p>
<p>NAME AND ADDRESS:</p>	<p>SPECIALTY:</p>	<p>WORKED WITH BEFORE ___ ___ Yes ___ ___ No</p>
<p>NAME AND ADDRESS:</p>	<p>SPECIALTY:</p>	<p>WORKED WITH BEFORE ___ ___ Yes ___ ___ No</p>
<p>NAME AND ADDRESS:</p>	<p>SPECIALTY:</p>	<p>WORKED WITH BEFORE ___ ___ Yes ___ ___ No</p>
<p>NAME AND ADDRESS:</p>	<p>SPECIALTY:</p>	<p>WORKED WITH BEFORE ___ ___ Yes ___ ___ No</p>
<p>NAME AND ADDRESS:</p>	<p>SPECIALTY:</p>	<p>WORKED WITH BEFORE ___ ___ Yes ___ ___ No</p>
<p>NAME AND ADDRESS:</p>	<p>SPECIALTY:</p>	<p>WORKED WITH BEFORE ___ ___ Yes ___ ___ No</p>

12. A. Is your firm experienced in Abandoned Mine Lands Remediation/Mine Reclamation Engineering?

YES Description and Number of Projects: Pentree Incorporated has completed design for 13 partially impacted AML water projects: among these include the Keyrock Water Extension Project for Ravenc Cliff-Mcgraws-Saulsville PSD in Wyoming County and Mullens-Wyco Water Project for the Eastern Wyoming PSD also in Wyoming County. The EWPSD project was the 2006 EPA Region 9 Award winning project for sustainable public health protection encompassing seven failing, flooded and abandoned water systems. Additionally, we provided engineering services for the first in the state of West Virginia partially impacted AML project for Gauley River PSD with the Jodie Waterline Extension Project in 1998.

B. Is your firm experienced in Soil Analysis?

YES Description and Number of Projects: Pentree, Incorporated will utilize the materials and testing labs of our sub-consultant HC Nutting/Terracon.
NO

C. Is your firm experienced in hydrology and hydraulics?

YES Description and Number of Projects: Through our work on water system projects for various PSD's and Municipalities, we have developed hydraulic modeling of systems, and use Kentucky Pipe 2010 for our AML design team analyses.
NO

D. Does your firm produce its own Aerial Photography and Develop Contour Mapping?

YES Description and Number of Projects: Every water and wastewater project Pentree has designed in the last 35 years has been photogrammetrically produced by our in-house photogrammetry department.
NO

E. Is your firm experienced in domestic waterline design? (Include any experience your firm has in Evaluation of aquifer degradation as a result of mining.) -

YES Pentree, Incorporated has designed over 58 water line extension and replacement projects in the past 46 years of business. Projects include lines, booster stations, water treatment plants and storage facilities.

Is your firm experienced in Acid Mine Drainage Evaluation and Abatement Design? NO

13. PERSONAL HISTORY STATEMENT OF PRINCIPALS AND ASSOCIATES RESPONSIBLE FOR AML PROJECT DESIGN (Furnish complete data but keep to essentials)

NAME & TITLE (Last, First, Middle Int.)		YEARS OF EXPERIENCE	
Tuggle, John W. P.E., P.S. President		YEARS OF AML DESIGN EXPERIENCE: 10	YEARS OF AML RELATED DESIGN EXPERIENCE: 25 YEARS OF DOMESTIC WATERLINE DESIGN EXPERIENCE: 25
<p>Brief Explanation of Responsibilities Mr. Tuggle serves as President of Pentree, Incorporated. Mr. Tuggle is Principal in Charge for public utility projects including sanitary sewer, water and storm water management. His primary responsibility is the oversight of all firm projects. In this capacity he is responsible for feasibility studies and design, regulatory and funding assistance for state, federal and private clients. Additionally, he has extensive experience working with funding and regulatory agencies in conjunction with projects. In the capacity of Principal-In-Charge, for this AML design project, he will work closely with the Project Manager to ensure timeliness of the projects, client satisfaction and oversee budgetary aspects.</p>			
<p>EDUCATION (Degree, Year, Specialization) B.S., Bluefield State College, 1985 - Civil Engineering Technology</p>			
<p>MEMBERSHIP IN PROFESSIONAL ORGANIZATIONS West Virginia Rural Water Association</p>			
<p>REGISTRATION (Type, Year, State) P.E. 1993 - West Virginia #11845 P.S. 1995 - West Virginia #1176</p>			
13. PERSONAL HISTORY STATEMENT OF PRINCIPALS AND ASSOCIATES RESPONSIBLE FOR AML PROJECT DESIGN (Furnish complete data but keep to essentials)			
NAME & TITLE (Last, First, Middle Int.)		YEARS OF EXPERIENCE	
Hazelwood, Robert D. P.E., P.S. Vice President		YEARS OF AML DESIGN EXPERIENCE: 9	YEARS OF AML RELATED DESIGN EXPERIENCE: 31 YEARS OF DOMESTIC WATERLINE DESIGN EXPERIENCE: 31
<p>Brief Explanation of Responsibilities Robert D. Hazelwood, P.E., P.S. Vice President of Pentree, Inc. will serve as Project Manager / Project Engineer. His major responsibility will be for project oversight of all design and construction aspects. Mr. Hazelwood has extensive experience in water line extension projects throughout West Virginia, particularly Southern West Virginia. Additionally, Mr. Hazelwood was/is Project Manager/Project Engineer for the Mullens/Wyco Water System Upgrade, the Keyrock Water Project, Itmann/Bud Mountain Water Project, Glen Fork-Sabine Water Project and the R.D. Bailey Regional Water System and Extension Project - all of which have extensive funding with the WVDEP AML. As such, Mr. Hazelwood is well versed in AML reporting and deadline requirements.</p>			
<p>EDUCATION (Degree, Year, Specialization) M.S., Sanitary Engineering, 1976 - Virginia Polytechnic Institute B.S., Civil Engineering, 1975 - West Virginia Technical Institute</p>			
<p>MEMBERSHIP IN PROFESSIONAL ORGANIZATIONS WEST VIRGINIA RURAL WATER ASSOCIATION</p>			
<p>REGISTRATION (Type, Year, State) P.E. 1980 - WEST VIRGINIA #008452 P.S. 1995 - WEST VIRGINIA #1179</p>			

13. PERSONAL HISTORY STATEMENT OF PRINCIPALS AND ASSOCIATES RESPONSIBLE FOR AML PROJECT DESIGN (Furnish complete data but keep to essentials)			
NAME & TITLE (Last, First, Middle Int.) Shields, Robert G. (Gary) P.E., P.S.	YEARS OF AML DESIGN EXPERIENCE: 0	YEARS OF AML RELATED DESIGN EXPERIENCE: 0	YEARS OF DOMESTIC WATERLINE DESIGN EXPERIENCE: 7
<p>Brief Explanation of Responsibilities: Mr. Shields joined Pentree, Incorporated in 2003 and serves as Survey Manager for the firm. Prior to his employment with Pentree, Mr. Shields worked as an Independent Licensed Land Surveyor. Currently, he supervises, assigns and reviews all of Pentree, Incorporated's survey activities. In addition to being a Professional Surveyor, Mr. Shields is also a registered Professional Engineer.</p> <p>EDUCATION (Degree, Year, Specialization) B.S., 1982, Civil Engineering Technology, Bluefield State College</p> <p>MEMBERSHIP IN PROFESSIONAL ORGANIZATIONS West Virginia Society of Professional Surveyors American Society of Civil Engineers</p> <p>REGISTRATION (Type, Year, State) Professional Engineer, 1990, State of West Virginia #10786 Professional Surveyor, 1982 State of West Virginia #766 Professional Surveyor, 1986 State of Virginia #1545</p>			
13. PERSONAL HISTORY STATEMENT OF PRINCIPALS AND ASSOCIATES RESPONSIBLE FOR AML PROJECT DESIGN (Furnish complete data but keep to essentials)			
NAME & TITLE (Last, First, Middle Int.) Inman, Gregg E., E.I.T.	YEARS OF AML DESIGN EXPERIENCE: 4	YEARS OF AML RELATED DESIGN EXPERIENCE: 4	YEARS OF DOMESTIC WATERLINE DESIGN EXPERIENCE: 6
<p>Brief Explanation of Responsibilities: Mr. Inman joined Pentree in 2005 and serves as Staff Design Engineer and Chief Technician for the firm. In this capacity he has a variety of responsibilities including drafting, utility design, site design, permitting, specifications and technical writing.</p> <p>EDUCATION (Degree, Year, Specialization) B.S., 2005, Civil Engineering Technology, Bluefield State College</p> <p>MEMBERSHIP IN PROFESSIONAL ORGANIZATIONS Registered E.I.T. - State of West Virginia</p>			

13. PERSONAL HISTORY STATEMENT OF PRINCIPALS AND ASSOCIATES RESPONSIBLE FOR AML PROJECT DESIGN (Furnish complete data but keep to essentials)

NAME & TITLE (Last, First, Middle Int.) Summerfield, J. Zane	YEARS OF EXPERIENCE		YEARS OF DOMESTIC WATERLINE DESIGN EXPERIENCE: 12
	YEARS OF AML DESIGN EXPERIENCE: 15	YEARS OF AML RELATED DESIGN EXPERIENCE: 15	

Brief Explanation of Responsibilities:
Mr. Summerfield will provide expertise and analysis for the drainage and re-vegetation aspect of this project. Having worked with for the mining industry as a permit specialist and hydrology analyst, his combination of technical and design capabilities will enhance the overall depth of the design team.

EDUCATION (Degree, Year, Specialization)
A.S., 1976 West Virginia Institute of Technology, Mining Engineering
B.S., 1982 West Virginia Institute of Technology, Mining Engineering

MEMBERSHIP IN PROFESSIONAL ORGANIZATIONS

REGISTRATION (Type, Year, State)

13. PERSONAL HISTORY STATEMENT OF PRINCIPALS AND ASSOCIATES RESPONSIBLE FOR AML PROJECT DESIGN (Furnish complete data but keep to essentials)

NAME & TITLE (Last, First, Middle Int.)	YEARS OF EXPERIENCE		YEARS OF DOMESTIC WATERLINE DESIGN EXPERIENCE:
	YEARS OF AML DESIGN EXPERIENCE:	YEARS OF AML RELATED DESIGN EXPERIENCE:	

Brief Explanation of Responsibilities:

EDUCATION (Degree, Year, Specialization)

MEMBERSHIP IN PROFESSIONAL ORGANIZATIONS

REGISTRATION (Type, Year, State)

We perform our work utilizing the most current methods and equipment available.

SURVEY

Our survey work is accomplished with global positioning systems (GPS) and electronic distance measuring (EDM) survey stations with data gathering capabilities. This equipment includes:

- Total Station Nikon DTM-420
- Total Station Nikon DTM-522
- Auto Level Topcon AT-53
- Auto Level Topcon AT-F2
- Magnetic Locator Schonstedt GA-52-Cx
- Magnetic Locator Dunham&Morrow DML 2000
- Data Collector XYZ Works Fieldbook
- Data Collector Trimble TSC2
- Data Collector SMI Allegro CX
- GPS Ashtech Pro-Mark 2
- GPS Single Frequency
- GPS w/ three receivers
- Transit 1' K&E
- Theodolite Wild T-2
- GPS R8 Trimble Dual Frequency
- GPS Base
- GPS Rover
- GPS Trimble Nomad
- GIS Data Collector
- Tripods (5)
- Prisms (16)
- Fiberglass Tape 200' (3)
- Fiberglass Tape 100' (2)
- Bipods (2)
- GPS Pole (2)
- Level Rods 25' (2)
- Radio (2)
- Tri-Brach (3)
- Survey Compass (2)
- Kenwood TK-2200 Protalk

DESIGN CAD CAPABILITIES

AutoCAD Civil 3D Land Desktop Companion 2008 and Microstation V8 software is utilized. Additionally, equipment includes a large format (size E) plotter and scanner.

15. CURRENT ACTIVITIES ON WHICH YOUR FIRM IS THE DESIGNATED ENGINEER OF RECORD - WATER DISTRIBUTION PROJECTS

PROJECT NAME, TYPE AND LOCATION	NAME AND ADDRESS OF OWNER	NATURE OF YOUR FIRM'S RESPONSIBILITY	ESTIMATED CONSTRUCTION COST	PERCENT COMPLETE
Keyrock Water Project Wyoming County	Ravenclyff-McGraws-Saulsville PSD PO Box 217 McGraws, WV 25875	Preliminary Engineering Reports Review, Environmental Studies And Permitting, Preparation Of Plans And Specifications, Survey, Design, Bid Documentation, Review And Recommendation, Construction Management And Inspection	\$4,300,000	100%
Mullens-Wyco Water Project Wyoming County	Eastern Wyoming PSD PO Box 506 Logan, WV 25601	Preliminary Engineering Reports, Environmental Studies And Permitting, Preparation Of Plans And Specifications, Survey, Design, Bid Documentation, Review And Recommendation, Construction Management And Inspection	\$14,587,000	100%
Asco Water Project McDowell County	Town Of Davy PO Box 243 Davy, WV 24928	Preliminary Engineering Reports, Environmental Studies And Permitting, Preparation Of Plans And Specifications, Survey, Design, Bid Documentation, Review And Recommendation, Construction Management And Inspection	\$10,000,000	100%
Spanishburg Water Extension Phase 2B Project Mercer County	Lashmeet PSD PO Box 189 Lashmeet, WV 24733	Preliminary Engineering Reports, Environmental Studies And Permitting, Preparation Of Plans And Specifications, Survey, Design, Bid Documentation, Review And Recommendation, Construction Management And Inspection	\$1,898,200	100%

15. CURRENT ACTIVITIES ON WHICH YOUR FIRM IS THE DESIGNATED ENGINEER OF RECORD - WATER DISTRIBUTION PROJECTS

PROJECT NAME, TYPE AND LOCATION	NAME AND ADDRESS OF OWNER	NATURE OF YOUR FIRM'S RESPONSIBILITY	ESTIMATED CONSTRUCTION COST	PERCENT COMPLETE
Jesse Matheny Water Project* Wyoming County	Ravenclyff-McGraws-Saulsville PSD PO Box 217 McGraws, WV 25875	Preliminary Engineering Reports, Environmental Studies And Permitting, Preparation Of Plans And Specifications, Survey, Design, Bid Documentation, Review And Recommendation, Construction Management And Inspection	\$6,164,000	100%
Glen White Trap Hill Water Phase I Raleigh County	Glen White Trap Hill PSD PO Box 100 Fairdale, WV 25839	Preliminary Engineering Reports, Environmental Studies And Permitting, Preparation Of Plans And Specifications, Survey, Design, Bid Documentation, Review And Recommendation, Construction Management And Inspection	\$5,315,000	100%
Itmann/Bud Mountain Water Project Wyoming County	Eastern Wyoming PSD PO Box 506 Logan, WV 25601	Preliminary Engineering Reports, Environmental Studies And Permitting, Preparation Of Plans And Specifications, Survey, Design, Bid Documentation, Review And Recommendation, Construction Management And Inspection	\$3,064,000	100%
Jesse Matheny Water Ph II Project * Wyoming County	Ravenclyff-McGraws-Saulsville PSD PO Box 217 McGraws, WV 25875	Preliminary Engineering Reports, Environmental Studies And Permitting, Preparation Of Plans And Specifications, Survey, Design, Bid Documentation, Review And Recommendation, Construction Management And Inspection	\$2,027,000	100% Design

15. CURRENT ACTIVITIES ON WHICH YOUR FIRM IS THE DESIGNATED ENGINEER OF RECORD - WATER DISTRIBUTION PROJECTS

PROJECT NAME, TYPE AND LOCATION	NAME AND ADDRESS OF OWNER	NATURE OF YOUR FIRM'S RESPONSIBILITY	ESTIMATED CONSTRUCTION COST	PERCENT COMPLETE
Page-Kincaid Water Project Fayette County	Page-Kincaid PSD PO Box 165, Hwy 61 Kincaid, WV 25119	Preliminary Engineering Reports, Environmental Studies And Permitting, Preparation Of Plans And Specifications, Survey, Design, Bid Documentation, Review And Recommendation, Construction Management And Inspection	\$2,400,000	100%
Greenville Water Project Monroe County	Red Sulphur PSD PO Box 697 Peterstown, WV 24963	Preliminary Engineering Reports, Environmental Studies And Permitting, Preparation Of Plans And Specifications, Survey, Design, Bid Documentation, Review And Recommendation, Construction Management And Inspection	\$2,728,000	75%
Summersville Water Line Extension Nicholas County	Gauley River PSD PO Box 47 Swiss, WV 26690	Preliminary Engineering Reports, Environmental Studies And Permitting, Preparation Of Plans And Specifications, Survey, Design, Bid Documentation, Review And Recommendation, Construction Management And Inspection	Phase I \$4,649,702 Phase II \$2,322,890 Phase III \$2,341,622	Phase I is under construction Phase II is 100% design Phase III is 100% design
Big Sandy Water Project* McDowell County	McDowell County PSD HC 31, Box 436 Welch, WV 24801	Preliminary Engineering Reports, Environmental Studies And Permitting, Preparation Of Plans And Specifications	\$8,714,120	100% Design
Glen White Trap Hill Water Phase II * Raleigh County	Glen White Trap Hill PSD PO Box 100 Fairdale, WV 25839	Preliminary Engineering Reports, Environmental Studies And Permitting, Preparation Of Plans And Specifications, Survey, Design, Bid Documentation, Review And Recommendation, Construction Management And Inspection	\$5,376,000	100% Design
*Represents partially AML funded projects				

17. COMPLETED WORK WITHIN LAST 5 YEARS ON WHICH YOUR FIRM WAS THE DESIGNATED ENGINEER OF RECORD

PROJECT NAME, TYPE AND LOCATION	NAME AND ADDRESS OF OWNER	ESTIMATED CONSTRUCTION COST	YEAR	CONSTRUCTED (YES OR NO)
Twentymile Water Project Fayette County	Gauley River PSD PO Box 47 Swiss, WV 26690	\$4,600,000	2005	YES
Virginia Street Sidewalks Fayette County	City Of Oak Hill PO Box 1245 Oak Hill, WV 25901	\$242,311	2006	YES
Fort Chiswell Wastewater Treatment Plant Upgrade Ph I&II Wyth County, VA	Wythe County Board Of Supervisors 340 South 6 th St Wytheville, VA 24382	Phase I - \$376,000 Phase II - \$4,140,655	2006 2008	YES
Upper Glade Sewer Project Webster County	Cowen PSD PO Box 465 Cowen, WV 26026	\$5,085,876	2007	YES
City Of Oak Hill Sidewalk Repairs Fayette County	City Of Oak Hill PO Box 1245 Oak Hill, WV 25901	\$269,482	2008	YES
Oak Hill Drainage Phase Ii Fayette County	City Of Oak Hill PO Box 1245 Oak Hill, WV 25901	\$736,870	2008	YES
Gap Mills Water Project Monroe County	Gap Mills PSD PO Box 117 Gap Mills, WV 24941	\$1,898,000	2008	YES
Asco Water Project McDowell County	Town Of Davy PO Box 246 Davy, WV 24828	\$1,500,000	2009	YES
Inwood Wastewater Treatment Plant Upgrade Berkeley County	Berkeley County PSSD PO Box 944 Martinsburg, WV 25401	\$7,600,000	2009	YES
Baker Heights Wastewater Treatment Plant Upgrade Berkeley County	Berkeley County PSSD PO Box 944 Martinsburg, WV 25401	\$8,730,919	2009	YES
Ecolab Waterwater Treatment Plant Upgrade Berkeley County	Ecolab 942 Baker Road Martinsburg, Wv 25405	\$1,778,000	2009	YES
Kilsyth Wastewater Extension And Plant Upgrade Fayette County	City Of Mount Hope PO Box 151 Mount Hope, WV 25880	\$4,061,000	2009	YES
Page Kincaid Sewer Project Fayette County	Page-Kincaid PSD Po Box 165, Hwy 61 Kincaid, WV 25119	\$10,800,000	2010	YES

**WEST VIRGINIA DEPARTMENT OF ENVIRONMENTAL PROTECTION
AML CONSULTANT QUALIFICATION QUESTIONNAIRE Attachment "B"**

PROJECT NAME		DATE (DAY, MONTH, YEAR)	FEIN
1. FIRM NAME H. C. Nutting A Terracon Company		3/17/2010	31-0394550
4. HOME OFFICE TELEPHONE 513.321.5816		2. HOME OFFICE BUSINESS ADDRESS 611 Lunken Park Drive, Cincinnati, OH 45226	3. FORMER FIRM NAME
5. ESTABLISHED (YEAR) 1921	6. TYPE OWNERSHIP Individual Partnership Corporation Joint-Venture	6a. WV REGISTERED DBE (Disadvantaged Business Enterprise) YES <input type="checkbox"/> NO <input checked="" type="checkbox"/>	
7. PRIMARY AML DESIGN OFFICE: ADDRESS / TELEPHONE / PERSON IN CHARGE / NO. AML DESIGN PERSONNEL EACH OFFICE PRIMARY AML DESIGN OFFICE: 912 Morris Street, Charleston, WV 25301 / 304.344.8021 / John Blair / 38 ALL OTHER H.C. NUTTING/TERRACON OFFICES: 611 Lunken Park Drive, Cincinnati, OH 45226 / 513.321.5816 / Jess A. Schroeder / 101 790 Morrison Road, Columbus, OH 43230 / 614.863.3113 / Prasad Rege / 32 349 Walnut Street, Suite 8, Lawrenceburg, IN 47025 / 812.539.4300 / Fred Erdmann / 1 470-B Conway Court, Suite B-8, Lexington, KY 40511 / 859.455.8530 / Jess A. Schroeder / 9 1414 E Schaeff Rd, Brooklyn Heights, OH 44131 / 216.459.8378 / Jim Princi / 20			
8. NAMES OF PRINCIPAL OFFICERS OR MEMBERS OF FIRM R. Jackson Scott, James P. Cahill, Jess A. Schroeder, George C. Webb, Ronald J. Ebelhar, Swaminathan Srinivasan, Terry Stransky, Jason Sander, Ron Lech		8a. NAME, TITLE, & TELEPHONE NUMBER - OTHER PRINCIPALS	
9. PERSONNEL BY DISCIPLINE			
12 ADMINISTRATIVE	— ECOLOGISTS	— LANDSCAPE ARCHITECTS	— STRUCTURAL ENGINEERS
— ARCHITECTS	— ECONOMISTS	— MECHANICAL ENGINEERS	— SURVEYORS
— BIOLOGIST	— ELECTRICAL ENGINEERS	1 MINING ENGINEERS	— TRAFFIC ENGINEERS
2 CADD OPERATORS	6 ENVIRONMENTALISTS	— PHOTOGRAMMETRISTS	17 OTHER
— CHEMICAL ENGINEERS	— ESTIMATORS	— PLANNERS: URBAN/REGIONAL	
8 CIVIL ENGINEERS	3 GEOLOGISTS	— SANITARY ENGINEERS	
107 CONSTRUCTION INSPECTORS	— HISTORIANS	41 SOILS ENGINEERS	
— DESIGNERS	4 HYDROLOGISTS	— SPECIFICATION WRITERS	201 TOTAL PERSONNEL
1 DRAFTSMEN			
TOTAL NUMBER OF WV REGISTERED PROFESSIONAL ENGINEERS IN PRIMARY OFFICE: <u>3</u>			
*RPES other than Civil and Mining must provide supporting documentation that qualifies them to supervise and perform this type of work.			
10. HAS THIS JOINT-VENTURE WORKED TOGETHER BEFORE? <input type="checkbox"/> YES <input type="checkbox"/> NO			

12.	Is your firm experienced in Abandoned Mine Land Remediation/Mine Reclamation Engineering?
X	YES Description and Number of Projects: HCN has extensive experience on site grading and landslide repair projects, many of them associated with AML projects. HCN routinely performs mine subsidence investigations for the Ohio Mine Subsidence Insurance Underwriting Association, and has designed several mine grouting programs to mitigate the effects of future mine subsidence in Kentucky, Ohio and West Virginia.
B.	Is your firm experienced in Soil Analysis?
X	YES Description and Number of Projects: Over 80 years experience on thousands of projects in Geotechnical, Environmental and Materials Engineering.
	NO
C.	Is your firm experienced in hydrology and hydraulics?
X	YES Description and Number of Projects: Commercial, industrial, and residential storm water drainage projects for landfill development and closure, dam/lake spillway structures, site development drainage design, erosion and sediment control, stormwater pollution prevention plans. Dam spillway structures.
	NO
D.	Does your firm produce its own Aerial Photography and Develop Contour Mapping?
	YES Description and Number of Projects: _____
	NO
X	Is your firm experienced in domestic waterline design? (Include any experience your firm has in evaluation of aquifer degradation as a result of mining.)
	YES Description and Number of Projects: _____
	NO
X	Is your firm experienced in Acid Mine Drainage Evaluation and Abatement Design?
	YES Description and Number of Projects: _____
	NO

13. PERSONAL HISTORY STATEMENT OF PRINCIPALS AND ASSOCIATES RESPONSIBLE FOR AML PROJECT DESIGN (Furnish complete data but keep to essentials)

NAME & TITLE (Last, First, Middle Int.) Bruce, Rome E.	YEARS OF AML DESIGN EXPERIENCE: 0	YEARS OF EXPERIENCE YEARS OF AML RELATED DESIGN EXPERIENCE: 30	YEARS OF DOMESTIC WATERLINE DESIGN EXPERIENCE: 0
--	--------------------------------------	---	--

Brief Explanation of Responsibilities
Responsibilities include conceptual and final design, report and drawing preparation, development of

construction specifications, construction bidding and contract documents, coordination and management of

construction observation, volume and cost estimate calculations, hydrologic analysis, and hydraulic

analysis of drainage channels, spillways, and detention ponds.

EDUCATION (Degree, Year, Specialization)
Bachelor of Science, CEE, University of Wisconsin-Madison 1979
A.A.S., Civil, Gateway Technical Institute, Racine, WI 1974

MEMBERSHIP IN PROFESSIONAL ORGANIZATIONS
American Society of Civil Engineers
Solid Waste Assoc. of North America

REGISTRATION (Type, Year, State)
Professional Engineer in Indiana 1991, Kentucky 1995, Michigan 1988, Ohio 1988, and Wisconsin 1982

13. PERSONAL HISTORY STATEMENT OF PRINCIPALS AND ASSOCIATES RESPONSIBLE FOR AML PROJECT DESIGN (Furnish complete data but keep to essentials)

NAME & TITLE (Last, First, Middle Int.) Erdmann, Fred W.	YEARS OF AML DESIGN EXPERIENCE: 1	YEARS OF EXPERIENCE YEARS OF AML RELATED DESIGN EXPERIENCE: 42	YEARS OF DOMESTIC WATERLINE DESIGN EXPERIENCE: 0
--	--------------------------------------	---	--

Brief Explanation of Responsibilities

Senior Consultant

West Virginia Experience in Mining Engineering, Geotechnical Engineering, Groundwater Engineering, and Waste Management.

EDUCATION (Degree, Year, Specialization)
B.S., 1967, Geological Engineering
M.S., 1971, Geological Engineering

MEMBERSHIP IN PROFESSIONAL ORGANIZATIONS
Association of Engineering Geologists

REGISTRATION (Type, Year, State) P.E., 1982, West Virginia/P.E., 1982, Ohio/P.E., 1989, Florida/P.E., 1982, Kentucky/P.E., 1990, Pennsylvania/P.E., 1990, Indiana/P.G., 1993, Kentucky/ P.E., 1982, Missouri/ P.G., 1988, Tennessee

American Institute of Professional Geologists

14. PROVIDE A LIST OF SOFTWARE AND EQUIPMENT AVAILABLE IN THE PRIMARY OFFICE WHICH WILL BE USED TO COMPLETE AML DESIGN SERVICES

AutoCAD 2007 / Land Development Desktop

Microstation Version 8

Microsoft 2003 Office Suite – (Word, Excel, Access, PowerPoint, Publisher)

Slope Stability Analyses (Visual Slope, STABL, ReSLOPE, etc.)

SHAKE2000 – Seismic Site Response Analyses

PLAXIS – Finite Element Analysis Software

AutoCAD Workstations (4)

Desktop Computers (100+)

Laptop Computers (200+)

Laser Printers (50)

Plotters – HP750C (Color) (3) OCE TDS450 Plotter – Large Format Flat Bed Scanner (1 ea.)

FLAC 3D Finite Difference Analysis Software

16. CURRENT ACTIVITIES ON WHICH YOUR FIRM IS SERVING AS A SUB-CONSULTANT TO OTHERS

PROJECT NAME, TYPE AND LOCATION	NATURE OF FIRMS RESPONSIBILITY	NAME AND ADDRESS OF OWNER	ESTIMATED COMPLETION DATE	ESTIMATED CONSTRUCTION COST	
				ENTIRE PROJECT	YOUR FIRMS RESPONSIBILITY
Coalfields Expressway, Helen, WV	Geotechnical Engineering Analysis and Design	WVDOH, M. C. S & T		Unknown	\$29,000
Appalachian Corridor H - Section 6, Moorefield, WV	Geotechnical Engineering Analysis and Design	WVDOH c/o Michael Baker, Jr., Inc.		Unknown	\$14,000
Corridor H - Bismarck to Forman Section, Bismarck, WV	Geotechnical Engineering Analysis and Design	WVDOH c/o Chapman Technical Group		Unknown	\$14,000
Corridor H Bismarck RTO Form, Grant County, WV	Geotechnical Engineering Analysis and Design	WVDOH C/O Burchart Horn, Inc.		Unknown	\$150,000
Six Proposed Design Build Bridges, Charleston, WV	Geotechnical Engineering Analysis and Design	WVDOH c/o Wilbur Smith Associates		Unknown	\$30,000
WV 10 - Dabney to Stollings, Dabney, WV	Geotechnical Engineering Analysis and Design	WVDOH C/O Chapman Technical Group		Unknown	\$97,000
South Branch Bridge Abutment 1 Slope Protection, Moorefield, WV	Geotechnical Engineering Analysis and Design	WVDOH C/O Michael Baker, Jr., Inc.		Unknown	\$23,000

17. COMPLETED WORK WITHIN LAST 5 YEARS ON WHICH YOUR FIRM WAS THE DESIGNATED ENGINEER OF RECORD

PROJECT NAME, TYPE AND LOCATION	NAME AND ADDRESS OF OWNER	ESTIMATED CONSTRUCTION COST	YEAR	CONSTRUCTED (YES OR NO)
Proposed New Dormitories, Mine Subsidence Assessment and Grouting Specifications	Hocking College, Nelsonville, Ohio	\$110K	2006	Yes
Mine Grouting Specifications for the Proposed Marion County 911 Building, Fairmont, WV	WVDOH C/O Burgess & Niple 4424 Emerson Avenue Parkersburg, West Virginia 26104	Unknown	2006	No
Ventilation Tunnel Remediation and Sealing, Marathon Fuel Terminal, Covington, KY	Marathon Petroleum, LLC Finlay, Ohio	Unknown	2006	Yes
Mine Subsidence Assessment, Melody Mountain Development Project, Ashland, KY	R.G. Properties 8163 Old Yankee Road Suite B Dayton, Ohio 45458	\$200K	2006	No
Peoples Bank of Mullens, Mine Subsidence Assessment and Preparation of Grouting Specifications	Peoples Bank of Mullens P.O. Box 817 Mullens, WV 25882	Unknown	2007	No
James Rumsey Potomac River Bridge Shepherdstown, West Virginia and Sharpsburg, Maryland	West Virginia DOT	\$600K	2006	Yes
St. Anthony Falls I-35W Bridge St. Anthony Falls, Minnesota	Minnesota DOT	\$40,000	2007	Yes

18. COMPLETED WORK WITHIN LAST 5 YEARS ON WHICH YOUR FIRM HAS BEEN A SUB-CONSULTANT TO OTHER FIRMS (INDICATE PHASE OF WORK FOR WHICH YOUR FIRM WAS RESPONSIBLE)

PROJECT NAME, TYPE AND LOCATION	NAME AND ADDRESS OF OWNER	ESTIMATED CONSTRUCTION COST OF YOUR FIRM'S PORTION	YEAR	CONSTRUCTED (YES OR NO)	FIRM ASSOCIATED WITH
McComas AML Coal Mine Refuse Pile Mercer County, West VA	West Virginia Office of Abandoned Mined Lands and Reclamation.	\$28,000	2008	Yes	Stafford Consultants Incorporated, Princeton, WV
Mine Subsidence Assessment, Mountain View High School Addition, Welch, WV	Mountain View High School	Unknown	2006	Yes	ZMM, Inc.
Highwall Stability Assessment and Rock Fall Protection Design, Welch, WV	U.S. Bureau of Prisons	\$172K	2006	Yes	DMJM Harris
Stabilization of Mine Spoil by Dynamic Compaction for Substations and Transmission Towers.	GenPower Longview Power Project Maidville, WV and Dunkard, PA	Unknown	2006	Not Yet	Beta Engineering
Marmet Locks and Dam Construction Belle, West Virginia	USACE	\$100K	2008	Yes	Kokosing Fru-Con

19. Use this space to provide any additional information or description of resources supporting your firm's qualifications to perform work for the West Virginia Abandoned Mine Lands Program.

20. The foregoing is a statement of facts.

Signature: John T. Blair Title: Office Manager-Charleston, WV

Printed Name: John T. Blair

Date: 3/17/2010

STATE OF WEST VIRGINIA
Purchasing Division

PURCHASING AFFIDAVIT

West Virginia Code §5A-3-10a states: No contract or renewal of any contract may be awarded by the state or any of its political subdivisions to any vendor or prospective vendor when the vendor or prospective vendor or a related party to the vendor or prospective vendor is a debtor and the debt owed is an amount greater than one thousand dollars in the aggregate

DEFINITIONS:

"Debt" means any assessment, premium, penalty, fine, tax or other amount of money owed to the state or any of its political subdivisions because of a judgment, fine, permit violation, license assessment, defaulted workers' compensation premium, penalty or other assessment presently delinquent or due and required to be paid to the state or any of its political subdivisions, including any interest or additional penalties accrued thereon.

"Debtor" means any individual, corporation, partnership, association, limited liability company or any other form or business association owing a debt to the state or any of its political subdivisions. "Political subdivision" means any county commission; municipality; county board of education; any instrumentality established by a county or municipality; any separate corporation or instrumentality established by one or more counties or municipalities, as permitted by law; or any public body charged by law with the performance of a government function or whose jurisdiction is coextensive with one or more counties or municipalities. "Related party" means a party, whether an individual, corporation, partnership, association, limited liability company or any other form or business association or other entity whatsoever, related to any vendor by blood, marriage, ownership or contract through which the party has a relationship of ownership or other interest with the vendor so that the party will actually or by effect receive or control a portion of the benefit, profit or other consideration from performance of a vendor contract with the party receiving an amount that meets or exceeds five percent of the total contract amount.

EXCEPTION: The prohibition of this section does not apply where a vendor has contested any tax administered pursuant to chapter eleven of this code, workers' compensation premium, permit fee or environmental fee or assessment and the matter has not become final or where the vendor has entered into a payment plan or agreement and the vendor is not in default of any of the provisions of such plan or agreement.

LICENSING: Vendors must be licensed and in good standing in accordance with any and all state and local laws and requirements by any state or local agency of West Virginia, including, but not limited to, the West Virginia Secretary of State's Office, the West Virginia Tax Department, West Virginia Insurance Commission, or any other state agencies or political subdivision. Furthermore, the vendor must provide all necessary releases to obtain information to enable the Director or spending unit to verify that the vendor is licensed and in good standing with the above entities.

CONFIDENTIALITY: The vendor agrees that he or she will not disclose to anyone, directly or indirectly, any such personally identifiable information or other confidential information gained from the agency, unless the individual who is the subject of the information consents to the disclosure in writing or the disclosure is made pursuant to the agency's policies, procedures and rules. Vendors should visit www.state.wv.us/admin/purchase/privacy for the Notice of Agency Confidentiality Policies.

Under penalty of law for false swearing (West Virginia Code, §61-5-3), it is hereby certified that the vendor acknowledges the information in this said affidavit and are in compliance with the requirements as stated.

Vendor's Name: Pentree, Incorporated

Authorized Signature: _____

Date: October 25, 2011