



THE Louis Berger Group, INC.

June 14, 2011

Ms. Krista Ferrell
Department of Administrations
Purchasing Division
Building 15
2019 Washington Street, East
P.O. Box 50130
Charleston, WV 25305-0130

Subject: RFQ Number GSD116469 – Archaeological Services for New Logan Site

Dear Ms. Ferrell:

The Louis Berger Group, Inc. (LBG) is pleased to respond to the State of West Virginia, Department of Administration, General Services Division (Agency), Architecture Engineering Section's request for an Expression of Interest (GSD 116469) to provide architectural/engineering and archaeological services for the skeletal remains and artifacts found at the Logan Building Project Site. LBG is a licensed engineering firm in West Virginia.

LBG understands that archaeological services are needed to conduct laboratory analysis and preparation of a report that will detail the archaeological artifacts. LBG will provide paper and electronic copies of the report. By submitting this expression of interest (EOI), LBG affirms that it will abide by all conditions set forth in the Procurement Specifications.

LBG is one of the world's foremost consulting engineering firms, consistently ranked in the top ten design firms by Engineering News-Record in its annual industry rating. Founded in 1953, LBG has grown to more than 5,000 employees and maintains 80 international offices, with over 25 domestic offices in the United States. LBG's current and projected future workload and project schedules are such that personnel are available to be immediately assigned to a project upon notice to proceed. This project will have the full corporate support of LBG. Since the development of our specialized Cultural Resource Division in 1981, we have completed over 5,100 cultural resource projects for a variety of federal, state, and private clients in all 50 states, the District of Columbia, and internationally. LBG has 85 full-time cultural resource staff including a permanent staff of 27 archaeologists, 9 architectural historians/historians, 7 field supervisors/crew chiefs, and approximately 50 field archaeologists on call at any one time.

All artifact processing, analysis, and cataloging will be conducted in LBG's Charleston, West Virginia office located at 1205 Quarrier Street. This location offers access to the Agency and the West Virginia Division of Culture and History. The project manager, principal investigator, and physical anthropologist have extensive experience in working on large prehistoric artifact assemblages. The project manager has completed several projects in West Virginia for the West Virginia Division of Highways as well as for Alleghany Power and Transco/Williams Gas. He also served as compliance archaeologist with the West Virginia State Historic Preservation Office.

The experience of LBG's Project Team represents many years of working together on complex projects. This background will facilitate the early anticipation of problem areas. LBG assures the Agency that our key staff will be available throughout the life of the contract to perform their respective responsibilities in the most efficient manner without conflict from other assignments.

801 East Main Street, Suite 500 | Richmond, VA 23219 USA
Tel 804.225.0348 | Fax 804.225.0311 | www.louisberger.com

RECEIVED

2011 JUN 14 A 10:09

ARCHITECTURE DIVISION
STATE OF WV

The assurance that the Agency's schedule for this assignment can be met is directly related to the following:

- Availability of experienced support personnel
- The Project Team's background
- LBG's reputation for meeting schedules
- Experience on similar projects

LBG looks forward to working with the State of West Virginia on this project. If you have any questions, please do not hesitate to contact the project manager, Eric Voigt at (804) 228-4317 or evoigt@louisberger.com.

Sincerely yours,

The **Louis Berger Group**, Inc.

A handwritten signature in black ink, appearing to read "Jess Commerford".

Jess Commerford, AICP
Senior Vice President

SECTION I - CONCEPT

A. PROJECT

Archaeological artifacts were found during the construction of the New State Office Building in downtown Logan, West Virginia. The mission or purpose of the project is to provide Architectural/Engineering services to perform laboratory analysis and reporting and other related services. Additional archaeological services are required to catalog artifacts, research, and analysis of field work and preparation of a final report. The scope of services is estimated to require 900 to 1,000 hours to complete.

All work conducted under this contract will comply with the National Historic Preservation Act of 1966 as amended; procedures for the Protection of Historic and Cultural Properties (36 CFR 800); the Secretary of the Interior's Standards and Guidelines (48 FR:44716-44742); Executive Order 11593, Protection and Enhancement of the Cultural Environment; the Historical and Archaeological Data Act of 1974; statutes of the State of West Virginia; and the West Virginia State Historic Preservation Office (SHPO) Guidelines for Phase I, II, and III Archaeological Investigations and Technical Report Preparation (*Guidelines*). All artifacts and associated documents will be prepared in a manner consistent with 36CFR79 and the West Virginia SHPO Guidelines for Submitting a Collection to the Archaeological Collections Facility of West Virginia (*Curation Guidelines*) and submitted to an appropriate repository as directed by the Agency.

The work will be recorded and reported in keeping with the requirements of 36 CFR 66, Recovery of Scientific, Prehistoric, Historic, and Archaeological Data: Methods, Standards and Reporting Requirements for Data Recovery, and the Scopes of Work for individual delivery orders. Technical services will be provided by staff who meet or exceed the professional specifications set forth in the Secretary of the Interior's Professional Qualifications Standards (48 FR 44738-44739).

B. PROJECT DESIGN AND SEQUENCE

1. Project Overview

Within five (5) days of receipt of award, LBG will arrange a project kick-off meeting with the Agency to discuss the issues and concerns relative to the project that were not resolved during the oral interview including the development of a project work plan; preparation of a work schedule; and establishing a due date for all deliverables. LBG will submit weekly progress reports to the Agency, which may be in the form of an email or a letter.

Once LBG is in receipt of the artifacts, human remains, and associated documents, a complete inventory will be made and returned to the Agency. During this process, all associated documents will be copied in preparation for curation. Notes and maps will be photocopied onto archival paper and photographs will be scanned or copied onto gold CDs and printed as necessary.

We anticipate that there may be concerns among the public and the SHPO about the care and treatment of the human remains recovered at the site. Therefore, LBG proposes to prioritize the analysis of human remains and associated burial goods. If necessary, LBG is prepared to meet with the SHPO and discuss a plan for this stage of the project. This will be done on site at the LBG Quarrier Street office. This work will be directed in person by Drs. Cliff and Donna Boyd of Radford University and will follow standard protocols.

LBG has conducted processing, analysis, and relatively large artifact collections; has prepared detailed technical reports on the results of such projects; and prepared the artifacts and associated documents for curation to specific federal or state standards. The artifact collections will be processed for eventual storage and curation by the West Virginia SHPO or a repository identified by the Agency. The cultural and temporal affiliation, material of manufacture, style, function, form, etc. of recovered artifacts will be identified to the fullest extent possible. General methods and techniques used in the analysis of prehistoric artifacts are included below.

2. Laboratory Analyses

Provenience. Variables or fields of provenience information included in the provenience file will be derived from field excavation records and will include entries such as: Northing/Easting, Elevation, Catalog Number, Site, Area, Unit, Unit Level, Stratum, Feature/Burial, Feature Level, and Quadrant. Prior to the actual coding of artifacts, a numeric sequence of Catalog Numbers will be assigned to the field provenience list – if this has not been done, so that each unique provenience can be identified by a single number.

Prehistoric Artifacts - Lithics. Three levels of analysis will be used on lithic artifacts: morphological, technological, and functional (use-wear). The goals of these analyses are to: (1) delimit the spatial patterning of tool-manufacturing loci; (2) discern spatial and temporal patterns in the use of expedient and formal tools; (3) document differences and diachronic changes in lithic technologies among the



cultural components represented at the site; (4) model raw material procurement and use; (5) assign formed hafted bifaces to established culturally or temporally diagnostic types for relative dating purposes; and (6) establishing tool function for use in the interpretation of feature and site function and using this information to determine how activities may have been organized across the site.

LBG's database system includes separate data files for prehistoric lithics and ceramics. The prehistoric data file for lithic analysis contains fields for recordation of formal characteristics, measurements, comments, etc., according to a series of standardized codes. One additional field permits the analyst to record additional notes, comments or description as free-form text. Additional fields can be added to the database. The lithic analysis can include Morphological Analysis; Technological Analysis; Raw Material Analysis; and Functional Analysis.

Prehistoric Artifacts - Ceramics. Ceramics will be cataloged according to temper, temper size, surface treatment, and surface decoration and will be assigned to a formally defined ware, if possible. If sufficiently complete vessels are recovered, mending may facilitate making calculations of vessel orifice diameter, vessel volume, and minimum number of vessels. When appropriate, attributes recorded will include: vessel portion; temper; surface treatment; interior finish; color; decorative elements on the lip, neck, and shoulder; and rim morphology. Metric measurements (e.g., sherd thickness and lip thickness) also will be taken when appropriate. In general, attributes will be recorded for sherds greater than 0.63 centimeters in size. LBG and its subconsultants are prepared to perform a variety of specialized analyses if they are included in the scope of work. These can include the petrographic analysis of sherds and Instrument Neutron Activation Analysis (INAA).

Information was not available to LBG at the time of the proposal as to the character of the collection recovered at the site. LBG and its subconsultants, however, are prepared to conduct Faunal Studies; Paleoethnobotanical Studies including the analyses of micro- and macrobotanical materials, pollen, and phytoliths; and Sediment Analysis - Particle-Size and Soil Chemistry.

Absolute Dating. Chronometric dating (standard radiometric and AMS) techniques will be used at the site. Samples for dating will be collected from secure cultural contexts, important stratigraphic units, and artifacts.

Human Remains. Human remains recovered as a result of site excavations will be cleaned, inventoried, and analyzed to determine ethnicity, age, sex, health, and pathologies for each individual (as preservation permits). Other physical attributes, such as stature, dentition, evidence for infections or other diseases, and markers of occupational stress will also be identified, using standard osteological manuals as well as specimens and casts at the Radford University Archaeology and Physical Anthropology Laboratory. If human bone is well preserved, the Agency may determine, in consultation with the SHPO, whether additional analyses may be recommended. As always, the individuals examined will be treated with the utmost respect and will be stored in a secure, climate-controlled facility.

The report based on the osteological analysis will identify the research objectives, method of analysis, and results. Specific data (e.g., measurements, discrete trait observations) supplementing those traits comprising the main body of the report will be provided in a separate file including, for example, tables, graphs, and copies of original data collection forms. Unique pathological specimens will be photographed as part of basic documentation.

3. Report Preparation

The report will include the synthesis of the excavation results, laboratory processing, ancillary studies, and production of the technical study report. Some tasks related to Report Preparation will be initiated shortly after receipt of the award.

The written report will minimally consist of a description of the site area and the results of the relevant background research, and will include, but will not be limited to: geology, hydrology, geomorphology, soils, environmental reconstruction, and a regional cultural context that includes a review of previous archaeological work in the vicinity of the site. The report also will include a description of the field studies implemented; all field observations; laboratory analyses and results; evaluation of the investigation in terms of its goals, objectives, and research topics; and information concerning the location of the associated documents, i.e., the field notes, photographs and other materials produced during the excavation. The report will be illustrated with appropriate maps, charts, and tables to document the excavations and analyses. The report will include appendices consisting of the results of ancillary analyses in their entirety.

The report will be prepared in accordance with the Department of the Interior draft regulations "Recovery of Scientific, Prehistoric and Archaeological Data: Methods, Standards and Reporting Requirements" (36CFR 66) and the Department of Interior's Format Standards for Final Reports of Data Recovery Programs (42FR 5377-79). American Antiquity format will be used for the report text. The requisite number of electronic and paper copies will be provided to the Agency.



4. Curation

All materials will be cared for according to standards outlined in 36 CFR 79 and the West Virginia SHPO *Curation Guidelines* during artifact processing. At the conclusion of the project, all artifacts, archeological data, field notes, and project reports will be curated at a repository designated by the Agency.

5. Schedule

A schedule will be developed in consultation with the Agency.

C. SIMILAR PROJECTS

LBG's Richmond and Raleigh offices have conducted dozens of data recovery excavations that required the level of analysis and reporting set forth in the RFQ (see Table 1). The LBG cultural resource division also has excavated and analyzed thousands of human remains (see Table 2). A brief description of recent projects is provided below, while more detailed information is provided in Appendix B.

At Brook Run Jasper Quarry. LBG completed archaeological investigations at the 10,000-year-old Brook Run Jasper Quarry (Site 44CU122) located in the proposed right-of-way (ROW) for improvements to Route 3 in Culpeper County, Virginia. This award-winning project was initially identified and evaluated by LBG, and subsequently studied through a data recovery program (DRP) developed and implemented by LBG on behalf of Virginia Department of Transportation (VDOT). Massive quantities of jasper waste flakes and pieces (approximately 700,000) and large nodules of jasper were encountered at the site. The **Weaver Collection** was recovered during the excavation of a late prehistoric Oneota village conducted by another firm and then assigned to LBG by the Iowa DOT for final reporting and curation of artifacts. LBG was tasked to create a curation database/inventory, labeling, stabilization, and preparing 300,000 artifacts for curation. LBG consolidated all of the shell, and some of the bone, artifacts. Diagnostic artifacts were matched to a diagnostics list started by the previous company. For the non-diagnostics, and any diagnostics not on the "diagnostics list," LBG created a basic artifact inventory acceptable to the curation facility. LBG analyzed and discarded all FCR, unmodified cobbles, and unmodified pebbles. The entire collection had to be labeled and re-bagged/re-boxed to the repository's (University of Iowa – Office of State Archaeology) standards. Due to the large size and significance of the collection, LBG negotiated with UI-OSA for a flat curation fee, rather than a per cubic-foot fee. For the **Route 30, Site 44CE0010 project**, LBG conducted excavations at this prehistoric site, dating to the Early Archaic through Middle Woodland periods, where a major activity was production of chipped-stone tools using locally available cobbles. It is part of a group of sites in the area, and was probably a campsite occupied intermittently and rather briefly throughout prehistory. The location was chosen, in part, because deposits of workable quartzite cobbles were available nearby. During the course of data recovery, 41 cultural features were identified and documented, and 27,724 prehistoric artifacts were recovered.

At Potter's Field. LBG was awarded a \$5.8 million contract with the New Jersey Turnpike Authority to perform disinterment and reinterment activities at the Potter's Field Cemetery in Secaucus, Hudson County, New Jersey. On this award-winning project, LBG's team exhumed the last of 4,571 sets of human remains from Potter's Field during nine months of fieldwork. As part of the disinterment activities, more than 20,000 cubic yards of soil were excavated and graded to allow for the identification of 2,686 grave shafts distributed over a 3.0-acre parcel. A total of 113,532 artifacts were recovered, including coffin nails, dentures, glass eyes, coins, smoking pipes, embalming fluid bottles, whiskey bottles, combs, buttons, ceramics, clothing, shoes, hats, jewelry, military medals, religious items, and prosthetics. All artifacts were processed, analyzed, and catalogued. After thorough osteological analysis of the remains, the 4,570 individuals exhumed from Potter's Field together with their personal effects were reinterred by LBG's archaeologists in the town of Hackensack, Bergen County, New Jersey. For the **Guinea Road Cemetery project**, LBG conducted Phase I, II, and III archaeological investigations at the Guinea Road Cemetery (Site 44FX1664) for the VDOT in association with proposed project which will widen an existing Little River Turnpike in Fairfax, Virginia. LBG developed a DRP and conducted data recovery excavations pursuant to a Memorandum of Agreement prepared in consultation with the descendant families. The excavations recovered 3,348 artifacts from 42 burials; funerary items account for nearly the entire assemblage. Coffin hardware and garment buttons recovered from the individual graves suggest that the cemetery was actively used during the period circa 1850 to 1875. Based on historical research conducted by LBG, it appears that the Guinea Road Cemetery may contain the remains of may contain the remains of enslaved Africans and African Americans owned by the Fitzhugh and Gooding families dating as early as the eighteenth century, as well as the remains of free Blacks from before, and after, the Civil War.



Table 1. Recent Prehistoric Data Recovery Projects in the Southeast and Middle Atlantic

| Project Name | Value | Client |
|--|-----------|---|
| Archaeological Data Recovery at the Tuckasegee Site (31JK12) | \$760,000 | North Carolina Department of Transportation |
| Archaeological Data Recovery at the Crabtree Creek Site (31WA1539) | \$180,000 | North Carolina Department of Transportation |
| Archaeological Data Recovery at the Maple Branch Site (31BF340) | \$248,431 | North Carolina Department of Transportation |
| Archaeological Data Recovery at the Jens Rise Site (31CD882) | \$317,382 | North Carolina Department of Transportation |
| Archaeological Data Recovery at the Neal Shoals Site (38CS112) | \$94,183 | South Carolina Electric and Gas |
| Archaeological Data Recovery at the State Fair Sites 44CE453, 44CE457, and 44CE459 | \$364,380 | State Fair of Virginia |
| Archaeological Data Recovery at the Brook Run Site (44CU122) | \$530,000 | Virginia Department of Transportation |
| Archaeological Data Recovery at Site 44WR0329 | \$167,151 | Virginia Department of Transportation |
| Archaeological Data Recovery at Sites 44SN243 and 44SN245 | \$221,000 | Virginia Department of Transportation |
| Archaeological Data Recovery at Sites 44LE211, 44LE214, and 44LE217 | \$280,000 | Virginia Department of Transportation |
| Archaeological Data Recovery at Route 30 Site (44CE10) | \$176,538 | Virginia Department of Transportation |

Table 2. Selected Cemetery Projects of the Louis Berger Group, Inc.

| Project Name | Dates of Cemetery | Scope of Work | Number of Exhumations | Reinterment | Monuments & Grave Markers Restored, Relocated, Installed; Other Aspects of Project |
|---|---|---|-----------------------|---|---|
| Northeast U.S. | | | | | |
| Potter's Field, Secaucus, Hudson, Co., NJ | 1880-1962 | Archival research, geophysical survey, trenching, soil stripping, exhumation | 4,571 | Yes | No markers present. Design and installation of new Memorial monument and new marker at site of former cemetery. |
| First Presbyterian Church, Essex Co., Newark, NJ | 1810-1950 | Archival research, soil stripping, exhumation | 510 | Remains released to Funeral Director for reburial | All recovered remains placed in new caskets. |
| Martin Luther King School; Passaic, NJ | Unknown (Historic) | Emergency exhumation plus archival research, informant interviews, soil stripping | 2 | Yes | Burials encountered during construction. Archaeological fieldwork found no evidence for additional burials. |
| Historic Burial Ground Restoration; Franklin Township, NJ | 1797-1850 | Site clearing, survey and mapping, photodocumentation, restoration | N/A | All graves left undisturbed | Identified, reset, and/or replaced 40 gravestone markers. Designed memorial marker for restored burial ground. |
| U.S. Coast Guard Support Center; Governors Island, NY | Unknown (Historic) | Emergency exhumation and archaeological investigations | 2 | By client | -- |
| Site 75-F-68; Sussex Co., DE | Late 18 th century | Exhumation and archaeological investigations of family cemetery | 9 | By client | Two dog burials also discovered. |
| Byberry Meeting African American Cemetery; Philadelphia Co., PA | Late 18 th century | Archival research and archaeological testing to fully define cemetery | N/A | All graves left undisturbed | Buffer zone recommended to ensure protection of cemetery. |
| Middle Atlantic U.S. | | | | | |
| Guinea Road Cemetery; Fairfax Co., VA | 1840-1870 | Archival research, soil stripping, exhumation | 33 | By client | Osteological analysis confirmed presence of African Americans in cemetery. |
| Pennington Gap; Lee Co., VA | Unknown (Historic) | Identify cemetery boundaries and positions of 34 graves | N/A | All graves left undisturbed | Prepared preservation plan for construction avoidance. |
| Ladysmith Land LLC Cemetery, Caroline Co., VA | Late 19 th to Early 20 th century | Boundary delineation of unmarked cemetery, 18 graves identified | N/A | All graves left undisturbed | Buffer zone established to protect graves during development. |



Table 2. Selected Cemetery Projects of the Louis Berger Group, Inc.

| Project Name | Dates of Cemetery | Scope of Work | Number of Exhumations | Reinterment | Monuments & Grave Markers Restored, Relocated, Installed; Other Aspects of Project |
|---|---|---|------------------------------|--|---|
| Wrenn-Hutchison Family Cemetery, Fairfax Co., VA | Early 19 th century, 1930s | Surface survey and ground penetrating radar survey to delineate cemetery; historical research | N/A | Pending development of disinterment/reinterment plan | Pending development of disinterment/reinterment plan. |
| Longdale Iron Co. Cemetery; Botetourt Co, VA | 1891-1902 | Archival research and identification of reported convict labor cemetery | N/A | N/A | 5 graveshafts located |
| Hall Cemetery; Chesterfield Co, VA | 1823-1977 | Archival research and soil stripping | N/A | N/A | No graves identified in the right-of-way |
| Berrey Cemetery; Madison Co, VA | Post 1850- 1915 | Archival research, soil stripping, and grave delineation | N/A | All Graves left undisturbed | 7 graveshafts located |
| Monroe Family Cemetery, Prince William Co, VA | | Delineate and map the boundaries of the cemetery | N/A | All Graves left undisturbed | 4 graves located and marked |
| Lackey Cemetery, Rockbridge Co, VA | 1829-1865 | Archival research, excavation and osteological investigation of enslaved African-Americans | 30 | TBD | Ongoing project |
| Midwest U.S. | | | | | |
| Wyandotte Cemetery; Wyandotte Co., KS | 1870-1973 | Geophysical survey and archaeological stripping to define limits of cemetery | N/A | All graves left undisturbed | Sample survey defined the limits of cemetery and identified some grave shafts. |
| Marshall County Poor Farm; Marshall Co., IA | 1870-1930s | Soil stripping to determine limits of cemetery | N/A | All graves left undisturbed | 77 unmarked grave shafts identified within ROW. |
| Lambert-St. Louis Int'l Airport; St. Louis Co., MO | 1842-1954 | Archival research to determine history of Village à Robert cemetery | N/A | N/A | -- |
| Morehouse Cemetery; Muscatine Co., IA | 1841-1876 | Archival research and soil stripping | N/A | All graves left undisturbed | Eight grave shafts identified. |
| Holliday Cemetery; Scott Co., IA | 1848-1851 | Archival research and soil stripping | N/A | N/A | Archival evidence for cemetery, but no physical evidence. |
| Southwest U.S. | | | | | |
| Besh-Ba-Gowah Archaeological Project; Globe, AZ | Prehistoric | Excavation and osteological analysis | 294 | No reinterment, remains in custody of client | Investigations conducted as part of LBG's ruin stabilization project in a county park. |
| Casa Malpais Archaeological Program; Apache Co., AZ | Prehistoric (late 13 th century) | Discovery, exploration, interpretation, and Native American consultation | N/A | N/A | Site is a massive underground catacomb complex with more than 200 interments. |
| Old Las Vega Mormon Fort Project; Clark Co., NV | Late 19 th century | Excavation and osteological analysis of human remains encountered during construction | 4 | By client | Human remains were those of historic-period Native Americans. |
| Q Ranch Project; Gila Co., AZ | Prehistoric (AD 1265-1380) and historic (1894-1919) | Excavation, reinterment, and historic research on unmarked graves in a ranch cemetery | 24 prehistoric 9 historic | Prehistoric burials left undisturbed; historic burials reinterred, | Research and analysis led to determination of the names, ages, and causes of death for most historic burials. |



SECTION II - FIRM/TEAM QUALIFICATIONS

A. LBG CONTACT

Mr. Eric Voigt, RPA, assistant director, will serve as project manager. Mr. Voigt's contact information is as follows:

Eric Voigt, RPA

The Louis Berger Group, Inc.
801 East Main Street, Suite 500
Richmond, Virginia 23219
evoigt@louisberger.com



B. KEY LBG PERSONNEL

A description of the key personnel is provided below. Complete resumes are included in Appendix A.

ERIC VOIGT, RPA – PROJECT MANAGER (LBG)

(MA, Anthropology, University of Missouri, 1991; BA, Anthropology, University of Missouri, 1984)

Mr. Voigt currently serves as assistant director and manager of LBG's Raleigh, North Carolina and Richmond, Virginia, cultural resource offices. He will serve as **project manager** for this project and the work conducted in LBG's Charleston, WV office. He has worked on numerous projects in West Virginia including several in the vicinity of Charleston.

He directs and manages cultural resource projects involving historic and prehistoric resources; develops plans and research designs; and prepares technical reports, cultural resource management plans, predictive models, and proposals for projects in the Southeast, Middle Atlantic, and Midwest. He assists clients in consultation with State Historic Preservation Offices (SHPOs), Tribes, and representatives of state and federal agencies. Previously Mr. Voigt served as review and compliance archaeologist for the West Virginia SHPO and as deputy state historic preservation officer for the American Samoa Territorial Historic Preservation Office. He has directed and managed projects in West Virginia for the West Virginia Division of Highways, for Transco/Williams Gas, Entrix, and Alleghany Energy. He currently manages the following contracts: **North Carolina DOT** - Statewide archaeological services contract; 3 years - \$800,000; **Virginia DOT** - Statewide cultural resource services contract; 3 years - \$3,000,000; **Tennessee DOT** - Statewide archaeological services contract; 3 years - \$600,000; and **U.S. Army Environmental Command (USAEC) Cooperative Agreement** - Worldwide cultural resource services; 5 years - \$25,000,000.

JOSEPH LEE TIPPETT, RPA – PRINCIPAL INVESTIGATOR (LBG)

(MA, Anthropology, University of Tennessee, 1992; BA, Anthropology, University of North Carolina, 1978)

Mr. Tippet is a senior archaeologist in LBG's Raleigh, North Carolina, office and will serve as **principal investigator**. Mr. Tippet has conducted numerous data recovery investigations for DOT clients. He has over 29 years of experience in southeastern archaeology and regulatory review from his previous work with the North Carolina and South Carolina DOTs, the South Carolina SHPO, and the Virginia Department of Historic Resources. Mr. Tippet has served on the U.S. Army Corps of Engineers' Wetlands Mitigation Banking Committee and the Federal Highway Administration's Cultural Resource Management Issues Task Force.

He will be the primary point-of-contact with the Agency for the project. His responsibilities will include: agency coordination; technical oversight; staffing and scheduling; assisting in preparation of the project work plan; ensuring that all aspects of the work is conducted in a professional manner; ensuring the accuracy, quality, and completeness of the work provided by LBG staff and subconsultants; assisting in the preparation of the final report. With his extensive experience in western North Carolina and eastern Tennessee, Mr. Tippet is familiar with the artifact types common to Logan County.



GREGORY LABUDDE, ARCHAEOLOGIST/PROJECT DIRECTOR

(MA, Anthropology, Texas State University-San Marcos, 2008; BS, Sociology and Anthropology, magna cum laude, Virginia Commonwealth University, 1994)

Mr. LaBudde is an archaeologist in LBG's Richmond, Virginia, office. He has over 14 years of professional archaeological experience, with expertise in lithic analysis and the organization of prehistoric technology. He will direct the analysis of diagnostic artifacts and report to Mr. Tippet. He also will assist in the preparation of the technical report. Mr. LaBudde has worked for a wide variety of public and private organizations, and has participated in the identification, evaluation, excavation, and reporting of prehistoric and historic sites throughout the Middle Atlantic, Southeast, and Texas.

C. SUBCONSULTANTS

LBG has assembled a highly qualified research team for this contract. The staff and subconsultants have the background to provide effective project management, analytical skills, and resource management experience required for this contract. **Each member of the project team has experience working with LBG on similar projects.** Because of the importance of the human remains, a brief biographical sketch is provided of the project physical anthropologists, Dr. Cliff Boyd. The resume of Dr. Boyd is included in Appendix A. The other possible subconsultants are listed in Table 3.

Dr. Cliff Boyd, **physical anthropologist**, graduated with a Bachelors of Science degree from East Tennessee State University in 1974. After serving in the U. S. Peace Corps in Colombia, South America, he entered the graduate program in Anthropology at the University of Tennessee-Knoxville, receiving his M A in 1982 and PhD in 1986. Since 1986, he has taught at Radford University and is currently a professor of anthropology and co-director of the RU Forensic Science Institute. He has conducted archaeological and skeletal analyses of both prehistoric and historic sites in Tennessee and Virginia for 31 years, and has nearly 120 published papers and technical reports and has given over 90 papers at professional meetings. In 2008 he was given an Outstanding Faculty Award by the State Council of Higher Education in Virginia, the highest award bestowed on university professors in the Commonwealth. His research interests include prehistoric and historic archaeology of the southeastern U.S., forensic archaeology, and anthropological theory.

Table 3. Consultants for Specialized Services or Products

| Name of Concern | Specialty Service Area | Type of Business* |
|---|---|---------------------------------|
| Paul Storch | Conservator | SB |
| Hayes & Monaghan, Geoarchaeologists | Geomorphology and Geology | SB |
| Thacker, Seramur & Associates | Geomorphology and Geology, Remote Sensing | Service Disabled, Veteran Owned |
| Joanne Bowen, PhD | Faunal Analyst | DBE |
| Lithic Analysts, Inc. – Jeffery Flenniken, PhD | Technological Analysis of Lithics | SB |
| Robert Hunter | Colonial Ceramic Analyst | SB |
| James Huber, PhD | Palynology | SB |
| Susan Mulholland, PhD | Phytolith Analysis | DBE |
| Justine McKnight | Macrobotanical | DBE |
| Illinois State Museum | Faunal Analysts and Malocologist | Non-profit institution |
| Radford University – Cliff and Donna Boyd, PhD | Human Osteologist | Non-profit institution |
| Western Carolina University – Jane Eastman, PhD | Ceramic Analyst | Non-profit institution |
| University of North Carolina – Wilmington – Michael Smith, PhD | Ceramic Petrography and Mineralogy | Non-profit institution |
| University of Missouri Research Reactor – Michael Glascock, PhD | Neutron Activation Analysis | Non-profit institution |



D. LBG ABILITY

LBG can handle all aspects of the project in their entirety.

E. ACCEPTANCE OF AGENCY OWNERSHIP

LBG accepts and has a full understanding that any and all work produced as a result of the contract will become the property of the Agency and can be used or shared by the Agency as deemed appropriate. LBG will not use or disclose any information on the project without the express written permission of the Agency.

F. LITIGATION, ARBITRATION, DISPUTE DISCLAIMER

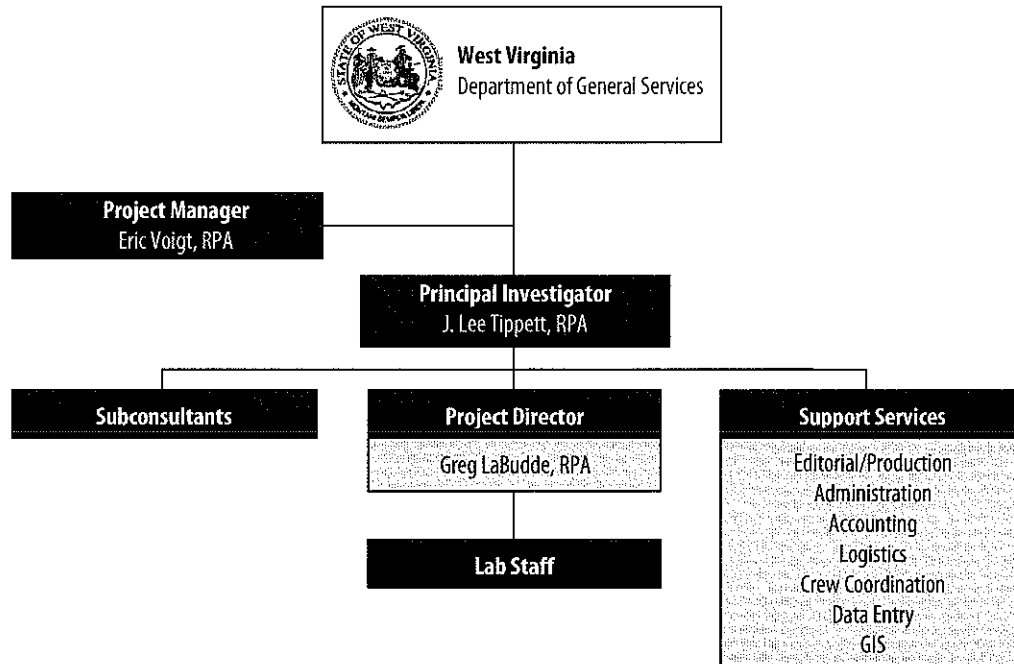
LBG is not party to any litigation or arbitration proceedings including vendor complaints filed with the State's purchasing Division, disputes with other Agencies of the State of West Virginia that involved legal representation by either party relating to the firm's delivery of design services. LBG also is not engaged in any disputes with other Agencies of the State of West Virginia that involved legal representation by either party.



SECTION III – PROJECT ORGANIZATION

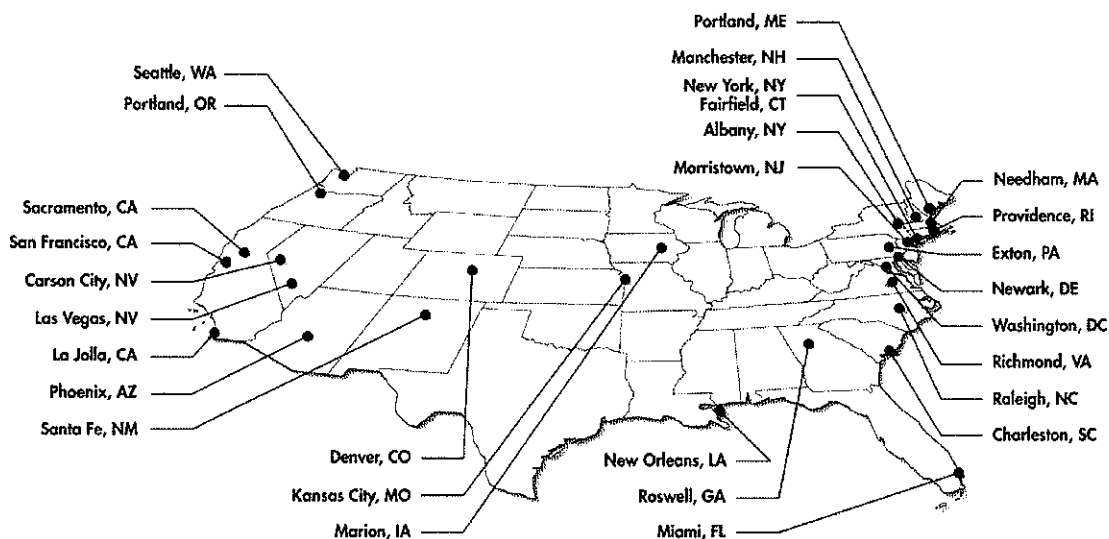
A. PROJECT PERSONNEL

The project manager will be Mr. Eric Voigt and the principal investigator will be Mr. Lee Tippet. Mr. Greg LaBudde will direct the analysis (see organization chart below). Mr. Voigt will manage contract issues with the Agency, but Mr. Tippet will be the day-to-day point of contact between LBG and the Agency.



D. OFFICE LOCATIONS

Mr. Voigt will manage the project from LBG's Richmond, Virginia office. Mr. Tippet works in LBG's Raleigh, North Carolina office. Mr. Tippet will spend approximately 10 percent of his time directly managing the day-to-day operations of the project. Mr. LaBudde works in the Richmond office.



B. ABILITY TO PROVIDE SERVICES

Since the development of our specialized Cultural Resource Division in 1981, we have completed over 5,100 cultural resource projects for a variety of federal, state, and private clients in all 50 states, the District of Columbia, and internationally. LBG has 85 full-time cultural resource staff including a permanent staff of 27 archaeologists, 9 architectural historians/historians, 7 field supervisors/crew chiefs, and approximately 50 field archaeologists on call at any one time (Table 4).

Table 4. LBG Team Personnel Available to Support this Contract

| | | |
|-----------------------------|---------------------------|-----------------------|
| ✓ Project Manager | ✓ Historic Architect | ✓ Lithic Analyst |
| ✓ Principal Investigator | ✓ Structural Engineer | ✓ GIS Analysts |
| ✓ Geomorphologist | ✓ Civil Engineer | ✓ GIS Technicians |
| ✓ Archaeological Technician | ✓ Physical Anthropologist | ✓ Illustrator/Drafter |
| ✓ Architectural Historian | ✓ Crew Chief | ✓ Photographer |
| ✓ Historian | ✓ Laboratory Supervisor | ✓ Administrator |
| ✓ Landscape Architect | ✓ Laboratory Technician | ✓ Editor |

Table 5 shows the number of cultural resource projects completed by LBG within each of the last five fiscal years. **LBG has the capability to complete this project on time and on budget.**

Table 5. Number of LBG Cultural Resource Projects By Fiscal Year

| FY 2007 | FY 2008 | FY 2009 | FY 2010 | FY 2011 |
|----------------|----------------|----------------|----------------|----------------|
| 212 | 285 | 204 | 215 | 231 |



SECTION IV – DEMONSTRATED EXPERIENCE

A. TYPE AND LOCATION OF SIMILAR WORK PERFORMED WITHIN LAST TEN YEARS

While the information provided above demonstrates the depth of LBG's experience, detailed information on 10 similar projects – as set forth in the RFQ (Section 4.2.4.a) – are presented in Appendix B.

B. RECENT/RELEVANT CLIENT REFERENCES

A list of six client references is provided in Table 6, below.

Table 6. LBG Client References

| Organization | Contact | Services |
|--|--|---|
| National Park Service | Dr. Stephen R Potter Smithsonian Institute Department of Anthropology 1100 Ohio Drive SW Washington, DC 20242 (202)619-7280 stephen_potter@nps.gov | IDQ Contract For Cultural Resource Services |
| Tennessee Department of Transportation | Mr. Gerald W. Kline, Archaeology Program Manager TN Department of Transportation Environmental Planning and Permits Division 505 Deadrick Street, Suite 900 Nashville, TN 37243 (615) 741-5257 gerald.kline@tn.gov | IDQ Contract For Cultural Resource Services |
| North Carolina Department of Transportation | Matthew T. Wilkerson, Archaeology Group Leader NC Department of Transportation Human Environment Unit 1598 Mail Service Center Raleigh, NC 27699 (919) 707-6089 mtwilkerson@dot.state.nc.us | IDQ Contract For Cultural Resource Services |
| Virginia Department of Transportation | Mr. Antony F Opperman, Preservation Program Manager VA Department of Transportation 1401 E Broad Street Richmond, VA 23219 (804) 371-6749 a.opperman@vdot.virginia.gov | IDQ Contract For Cultural Resource Services |
| New Jersey Turnpike Authority | Mr. John Keller New Jersey Turnpike Authority Post Office Box 11211 New Brunswick, NJ 08903 (732) 247-0900 | Potter's Field Cemetery |
| International Capital and Management Company | Mr. Michael Alietta International Capital and Management Company 9800 Buccaneer Mall #2B Box 35 St. Thomas, USVI 00802 (302) 715-5816 | Greenwood Cemetery |



APPENDIX A – RESUMES

A. RESUMES OF KEY PERSONNEL

LBG has assembled a highly qualified research team for this contract. The staff and subconsultants have the background to provide effective project management, analytical skills, and resource management experience required for this contract. Each member of the project team has experience working with LBG on similar projects.



ERIC VOIGT, RPA - CONTRACT MANAGER (LBG)**EDUCATION**

MA, Anthropology (Archaeology/Physical Anthropology)
BA, Anthropology

PROFESSIONAL REGISTRATION

Accredited by the Register of Professional Archaeologists (RPA)

PROFESSIONAL TRAINING

American Indian Communications, Department of Defense, Orlando, Florida, 2007
Excavation Safety for Designated Competent Persons (Circle Safety & Health Consultants), Richmond, Virginia, 2001.
Section 106 in the New Regulatory Environment, Richmond, Virginia (Lynn Sebastian, Ph.D.), 1999.
Federal Energy Regulatory Commission Industry Outreach Training, Minneapolis, Minnesota, 1995.
Advanced Preparing Agreement Documents, Anchorage, Alaska (University of Nevada-Reno), 1994.
Introduction to Federal Projects and Historic Preservation Law, Denver, Colorado (U.S. General Services Administration), 1993.
National Park Service Regional Planning Conference, Reno, Nevada (National Park Service/Western Regional Office), 1992.

PROFESSIONAL AFFILIATIONS

Society for American Archaeology
Southeastern Archaeology Conference
Middle Atlantic Archaeology Conference

AWARDS

- American Council of Engineering Companies - Virginia Chapter, Engineering Excellence Competition, Grand Award for "Archaeological Data Recovery - Brook Run Jasper Quarry," 2003.
- American Council of Engineering Companies, Engineering Excellence Competition, National Recognition for "The Brook Run Jasper Quarry," 2003.
- American Cultural Resource Association, Quality Product Award for "The Brook Run Jasper Quarry," 2003.

PROFESSIONAL EXPERIENCE

Total Years of Experience: 33

Years with The Louis Berger Group, Inc.: 13

Mr. Voigt currently serves as assistant director and manager of LBG's Richmond, Virginia, and Raleigh, North Carolina, cultural resource offices. He directs and manages cultural resource projects involving historic and prehistoric resources; develops plans and research designs; and prepares technical reports, cultural resource management plans, predictive models, and proposals for projects in the Southeast, Middle Atlantic, and Midwest. He assists clients in consultation with State Historic Preservation Offices (SHPOs), Tribes, and representatives of state and federal agencies. Previously Mr. Voigt served as review and compliance archaeologist for the West Virginia SHPO and as deputy state historic preservation officer for the American Samoa Territorial Historic Preservation Office.

SELECTED PROJECTS

Dominion Power, Pre-Application Analysis 551 Line, Virginia and West Virginia. Project manager. Managed development of pre-application analysis for the Virginia SCC including viewshed analysis and photo-simulations, prepared ARPA permits for geo-technical investigations, and assisted in inter-agency consultation for 26-mile 500 kV line.

American Electric Power and Allegheny Power, PATH Cultural Resources Investigations, Virginia and West Virginia. Principal investigator. Permitting of 250-mile, 765 kV transmission line. Included archaeological and architectural surveys.

Allegheny Power, Whitley-Osage Cultural Resources Investigations, Pennsylvania and West Virginia. Principal investigator. Routing and permitting of 16-mile, 138 kV transmission line. Included archaeological and architectural surveys.



American Electric and Allegheny Power, PATH Cultural Resources Investigations, West Virginia. Project manager. Siting project for 260-mile 765kV transmission line. Preparation of Line Evaluation Report and Pre-Application Analysis report.

Allegheny Power, TrAIL 500kV Power Line Corridor, Pennsylvania, Maryland, West Virginia, and Virginia. Project manager. Cultural resource assessment and line siting for 210-mile transmission-line corridor.

Tennessee Valley Authority, Data Analysis-Reservoir Operations Study. Project manager. Analysis of archaeological site data for Tennessee Valley Authority's multi-state reservoir operations study, development of predictive model for the occurrence of archaeological sites using ArcView GIS.

West Virginia Division of Highways, Archaeological Evaluation, Rabid Fox Site (46MA43), Marion County, West Virginia. Principal investigator. Archaeological evaluation of a site with historic and Monongahela Culture components as part of the I-79 Rivesville Connector.

West Virginia Department of Transportation, I-79 Rivesville Connector, Marion County, West Virginia. Principal investigator. Cultural resource survey of 4.7-mile project corridor and bridge.

West Virginia Division of Highways, Route 60, Kanawha County, West Virginia. Principal investigator. Cultural resource survey for proposed improvements to Route 60.

BOP, Federal Correctional Institution Petersburg, Virginia. Principal investigator. Archaeological survey of 300 acres.

Wendel Duchscherer, Inc., GRTC Multimodal Transportation Center, Richmond, Virginia. Project manager. Conversion of Main Street Station Train Shed, a National Historic Landmark, into a multimodal transportation hub in downtown Richmond.

Gannett-Fleming, Architectural Evaluation GRTC Headquarters and Garage, Richmond, Virginia. Project manager. Architectural evaluation of GRTC trolley and bus garages as contributing elements to a National Register Historic District.

Ammann & Whitney, Mayo Bridge Feasibility Study, Richmond, Virginia. Project manager. Feasibility study to determine actions needed to repair or replace early 20th-century bridge across the James River in downtown Richmond. Architectural and archaeological assessments, background research, coordination with City of Richmond and structural engineers.

Wendel Duchscherer, Inc., GRTC Multimodal Transportation Center, Richmond, Virginia. Project manager. Conversion of Main Street Station Train Shed, a National Historic Landmark, into a multimodal transportation hub in downtown Richmond. Interagency consultation, architectural survey with viewshed analysis, archaeological assessment, preparation of a 4f document, public meetings.

Kimley-Horne Associates, Inc., Taming the Traffic and Burying the Wires, Waterford, Virginia. Project manager. Ensured that the implementation of a federally funded project to bury above-ground utilities and implement traffic-calming measures within this National Historic Landmark had a context-sensitive design. Scoping meetings with stakeholders, conducting background research, supervising archaeologists and architectural historians, and attending public meetings.

City of Petersburg, Petersburg Multimodal Transportation Center, City of Petersburg, Virginia. Project manager. Archaeological survey and evaluations of proposed alternative for a downtown transportation center.

Malcolm-Pirnie for the Country of Stafford, Proposed Water Intake Facility, Rocky Pen Run Reservoir Project, Stafford County, Virginia. Project manager. Phase I survey and Phase II archaeological evaluation.

Malcolm-Pirnie for the Country of Stafford, Data Recovery, Site 44ST0160, Rocky Pen Run Reservoir Project, Stafford County, Virginia. Project manager. Phase III data recovery of a nineteenth-century miller's house and a late nineteenth-/early twentieth-century farmstead.



J. LEE TIPPETT, RPA - PRINCIPAL INVESTIGATOR (LBG)**EDUCATION**

MA, Anthropology
BA, Anthropology

PROFESSIONAL REGISTRATION

Accredited by the Register of Professional Archaeologists (RPA)

PROFESSIONAL AFFILIATIONS

Register of Professional Archaeologists
Society for American Archaeology
SCIAA Research Affiliate
South Carolina Archaeological Society
North Carolina Archaeological Society

PROFESSIONAL EXPERIENCE

Total Years of Experience: 29

Years with The Louis Berger Group, Inc.: 9

Mr. Tippet's duties as senior archaeologist with The Louis Berger Group, Inc., include the supervision of archaeological research projects involving prehistoric and historic resources. As principal investigator or co-principal investigator, he plans and conducts surveys, evaluations, and excavations of historic and prehistoric sites. His experience includes investigations in Georgia, Kentucky, Maine, North Carolina, South Carolina, Tennessee, and Virginia.

SELECTED PROJECTS

American Electric Power Company and Allegheny Power Company, PATH Transmission Line, Multiple Counties, West Virginia and Virginia. Principal investigator, Phase I survey of 240-mile proposed transmission line corridor.

Appalachian Power Company, Leesville Lake, Bedford, Campbell, and Pittsylvania Counties, Virginia. Co-principal investigator, Phase II evaluations of 20 archaeological sites within and along a reservoir.

Fort Eustis Directorate of Public Works, Fort Eustis Task Order 0007, City of Newport News, Virginia. Principal investigator, Phase II National Register evaluation of three historic archaeological sites (44NN0030, 44NN0229, and 44NN0230).

For City of Petersburg Department of Public Works and Fitzgerald and Halliday, Inc., Multimodal Transportation Center, City of Petersburg, Virginia. Principal investigator, Phase II archaeological testing and evaluation of Sites 44PG442, 44PG443, and 44PG446.

EEE Consulting, Inc., Water Treatment Facility and Water Line Project, Strasburg, Virginia. Principal investigator, Phase I archaeological survey of a 3-acre parcel and water line, and identification of previously recorded prehistoric archaeological Sites 44SH0081 and 44SH0088.

Virginia Department of Transportation, I-81 North Bound Truck Climbing Lane Project, Rockbridge County, Virginia. Principal investigator, Phase III archaeological data recovery of a small African-American cemetery containing 30 graves.

Virginia Department of Transportation, Route 640 Straightstone Creek Crossing Project, Pittsylvania County, Virginia. Principal investigator, Phase I archaeological survey of a 21-acre stream mitigation project and evaluation of one archaeological site.

Virginia Department of Transportation, Route 460 Location Study, Sussex, Southampton, and Isle of Wight Counties, and City of Suffolk, Virginia. Principal investigator, Phase I archaeological survey of a 26-mile location corridor and evaluation of 36 archaeological sites.

Virginia Department of Transportation, Burke Area Headquarters, Fairfax County, Virginia. Principal Investigator, Phase I



archaeological survey and evaluation of one historic archaeological site.

Virginia Department of Transportation, Site 44JC1123, Judith Stewart Dresser Memorial Bridge Replacement, James City County, Virginia. Principal Investigator, Phase III archaeological data recovery at Site 44JC1123.

Virginia Department of Transportation, I-95/Route 207 Interchange Project, Caroline County, Virginia. Principal Investigator, Phase I archaeological survey of a 2,000-foot-long new alignment corridor, and identification of one historic archaeological site.

Virginia Department of Transportation, US 11, Widening Project, City of Lexington, Virginia. Principal Investigator, Phase I archaeological survey, and identification of historic archaeological Sites 44RB0482, 44RB0483, and 44RB0484.

North Department of Transportation, Rails Division, Southeast High Speed Rail Project, Petersburg, Virginia, to the North Carolina State Line. Principal Investigator, Phase I archaeological survey of a 67-mile rail corridor and evaluation of 23 historic archaeological sites, four cemeteries, and portions of three Civil War battlefields.

Virginia Department of Transportation, US 58, Widening Project, Halifax County, Virginia. Principal Investigator, Phase II archaeological evaluation of prehistoric archaeological Sites 44HA0244 and 44HA0245.

Virginia Department of Transportation, Route 165, Widening Project, City of Virginia Beach, Virginia. Principal Investigator, Phase I archaeological survey of 1-mile road corridor, stormwater management facilities, and temporary construction easements.

Virginia Department of Transportation, Route 50, Loudoun County, Virginia. Principal Investigator, Phase I archaeological survey of the proposed new alignment of new road connecting Route 15 and Route 50.

MSA, P.C., Virginia Department of Transportation Residency, Rockbridge County, Virginia. Principal Investigator, Phase I cultural resource survey in association with the proposed construction of a Virginia Department of Transportation Residency in Lexington, Virginia.



GREGORY LABUDDE, RPA - PROJECT DIRECTOR (LBG)**EDUCATION**

MA, Anthropology
BS, Sociology and Anthropology

PROFESSIONAL REGISTRATION

Accredited by the Register of Professional Archaeologists (RPA)

PROFESSIONAL TRAINING

First Aid/CPR Certifications, American Red Cross, 2010
Excavation Safety for Designated Competent Persons, 360 Training, 2010
Historic Preservation in Transportation Development, National Highway Institute, 2009
Section 106 Essentials, Advisory Council on Historic Preservation, 2008
Introduction to GPS, Trimble Certified Training Class, 2002

PROFESSIONAL AFFILIATIONS

Society for American Archaeology

Professional Experience

Total Years of Experience: 16
Years with The Louis Berger Group, Inc.: 4

Mr. LaBudde is responsible for the supervision of archaeological research projects involving historic and prehistoric resources. He plans and conducts surveys and excavations of archaeological sites, coordinates investigations with clients, subcontractors, and subconsultants, and prepares management summaries and technical reports. He has also worked for LBG as a crew chief, with responsibilities including site mapping and photography, archival research and map analysis, preparation of state site forms, writing management summaries, writing and assisting in technical report preparation, and the use of GPS survey equipment. He has worked on projects in Virginia, West Virginia, Tennessee, Kentucky, Delaware, North Carolina, South Carolina, Florida, and Texas.

SELECTED PROJECTS

Dominion Resources, Large Component Transport Route, King William, Hanover, and Louisa Counties, Virginia. Principal investigator. Phase I cultural resource survey of proposed 66-mile transportation route.

Allegheny Energy, Osage-Whiteley Transmission Line, West Virginia and Pennsylvania. Principal investigator. Phase I cultural resource survey of proposed 16-mile 138kV transmission line.

Appalachian Power, Leesville Lake, Smith Mountain Lake Project, Virginia. Principal investigator. Phase II archaeological evaluations of 20 archaeological sites dating from Clovis to Historic periods.

Dominion Resources, Ladysmith Transmission Line, Spotsylvania, Caroline, and Louisa Counties, Virginia. Principal investigator. Phase I cultural resource survey of proposed 14.5-mile 500kV transmission line.

Dominion Virginia Power, North Anna Power Station ESP Site, Louisa, Hanover, Caroline, and King William Counties, Virginia. Principal investigator. Cultural resource assessment of 66 miles of proposed heavy haul route.

Dominion Virginia Power, Bristers to Loudoun Transmission Line, Fauquier, Loudoun, and Prince William Counties, Virginia. Principal investigator. Phase I cultural resource survey of 23.6 miles of proposed 500kV transmission line.

United States Army Environmental Command, Ft. Campbell, Christian County, Kentucky, and Montgomery County, Tennessee. Field director. Phase I archaeological survey of 690 acres on military installation.



United States Army Environmental Command, Ft. Campbell, Christian County, Kentucky, and Montgomery County, Tennessee. Field director. Phase I archaeological survey of 860 acres on military installation.

Virginia Department of Transportation, Route 460 Access Management, City of Lynchburg, Virginia. Principal investigator. Phase I archaeological survey in association with proposed widening of Route 460.

Virginia Department of Transportation, Route 726 Reconstruction, Pittsylvania County, Virginia. Principal investigator. Phase I archaeological survey in association with proposed reconstruction of Route 726.

Virginia Department of Transportation, Frying Pan Spring Meeting House, Fairfax County, Virginia. Principal investigator. Archaeological evaluation of cemetery in association with proposed widening of Route 657.

Virginia Department of Transportation, Narrows Bridge, Giles County, Virginia. Principal investigator. Cultural resource survey and archaeological evaluation in association with proposed replacement bridge over the New River.

Virginia Department of Transportation, Route 123, Fairfax County, Virginia. Crew chief. Phase III archaeological data recovery of historic homestead at Site 44FX2107.

Virginia Department of Transportation, George Town Site, Culpeper County, Virginia. Crew chief. Phase III archaeological data recovery of Site 44CU120.

Virginia Department of Transportation, Route 709, Accomack County, Virginia. Crew chief. Phase I archaeological identification survey of proposed road improvements.



CLIFFORD BOYD, JR. - PHYSICAL ANTHROPOLOGIST**EDUCATION**

PhD, Anthropology
 MA, Anthropology
 BS, Sociology and Art

FOREIGN LANGUAGE

Spanish

PROFESSIONAL AFFILIATIONS

Society for American Archaeology
 Southeastern Archaeological Conference
 Tennessee Anthropological Association
 Council of Virginia Archaeologists
 Archeological Society of Virginia
 Sigma Xi
 American Academy of Forensic Sciences (Associate Member – Physical Anthropology Section)

Professional Experience

Total Years of Experience: 37

Dr. Clifford Boyd, physical anthropologist, graduated with a Bachelors of Science degree from East Tennessee State University in 1974. After serving in the U. S. Peace Corps in Colombia, South America, he entered the graduate program in Anthropology at the University of Tennessee-Knoxville, receiving his MA in 1982 and PhD in 1986. Since 1986, he has taught at Radford University and is currently a professor of anthropology and co-director of the RU Forensic Science Institute. He has conducted archaeological and skeletal analyses of both prehistoric and historic sites in Tennessee and Virginia for 31 years, and has nearly 120 published papers and technical reports and has given over 90 papers at professional meetings. In 2008 he was given an Outstanding Faculty Award by the State Council of Higher Education in Virginia, the highest award bestowed on university professors in the Commonwealth. His research interests include prehistoric and historic archaeology of the southeastern U.S., forensic archaeology, and anthropological theory.

SELECTED PROJECTS

Various Projects: Radford University. Co-principal investigator. Analysis and report preparation on several small projects, including Phase I archaeological surveys of Smithfield Plantation, Arnheim House, and a trail location in Dickenson County, as well as skeletal analyses of 44CE10 and 44CE453, 44FX1664 and a historic cemetery in Hanover County, Virginia (Spring-Summer, part-time).

National Park Service/American Battlefield Protection Program - Saltville, Virginia: Radford University. Co-principal investigator. Supervision of preparation of Preservation Plan and National Register Nomination (part-time).

Lackey Cemetery, Rockbridge County, Virginia: Radford University. Skeletal biologist (co-investigator). Analysis of and report preparation on human remains from the 19th Century African-American Lackey Cemetery (44RB509) (part-time).

Wrenn-Hutcheson Cemetery, Fairfax County, Virginia: Radford University. Skeletal biologist (co-investigator). Analysis of and report preparation on human remains from the 19th Century Anglo-American family cemetery (part-time).

Brizendine Family Cemetery, Tappahannock, Virginia: Radford University. Skeletal biologist (co-investigator). Analysis and report preparation of historic Anglo- American remains uncovered during construction (Fall, part-time).

Saltville Walking and Biking Trail, Phase I, Saltville, Virginia: Radford University. Principal investigator. Monitoring of trail construction and report preparation for the Virginia Department of Historic Resources and the Town of Saltville (Winter, part-time).

VMI Skeletal Collection: Radford University. Skeletal biologist (co-investigator). Analysis and report preparation of prehistoric Native American skeletal remains from a collection from the Virginia Military Institute (Spring, part-time).



DHR Skeletal Collection: Radford University. Skeletal biologist (co-investigator.) Analysis and report preparation of prehistoric Native American skeletal remains from several sites at the Virginia Department of Historic Resources, Richmond (Fall-Summer, part-time).

Fredericksburg Market Square, (44SP204) Radford University. Skeletal biologist (co-investigator.) Analysis and report preparation on human skeletal remains from an Anglo-American cemetery in Spotsylvania County, Virginia (Summer, part-time).

VIMS (44GL419): Radford University. Skeletal biologist (co-investigator). Analysis and report preparation on an historic burial from Gloucester County, Virginia (Fall, part-time).

Terre Haute Cemetery (44PO126), Radford University. Skeletal biologist (co-investigator). Analysis and report preparation of human skeletal remains from an African-American cemetery in Powhatan County, Virginia (Summers).



LBG currently provides cultural resource services to nine other DOTs and has on-call contracts with several local, state, federal, and private clients. All projects conducted within the last seven years for NCDOT are shown in the table below. More detailed project experience follows the table.

CULTURAL RESOURCES SURVEY OF THE PROPOSED IMPROVEMENTS TO ROUTE 60 Kanawha County, West Virginia

FIRM LBG (100%)

COST \$43,000

OWNER CONTACT

West Virginia Department of Transportation
Division of Highways
Gregory L. Bailey
Building 5, Capitol Complex
Charleston, WV 25305
Ph: (304) 558-2885

PROJECT FEATURES

SHPO Consultation
Archaeological Survey and Evaluation
Cemetery Delineation
Architectural Survey and Evaluation
Historical Research
Criteria of Effects Document



PROJECT DESCRIPTION

On behalf of the West Virginia Department of Transportation, Division of Highways, LBG conducted a cultural resources survey along the proposed improvements to Route 60 in Kanawha County, West Virginia, just east of Charleston. The project corridor was 5.15 kilometers (3.2 miles) in length and had an average width of 60 meters (200 feet), although its maximum width was 366 meters (1,200 feet). The total project area was 571 hectares (1,410 acres).

The archaeological survey consisted of a pedestrian survey and the excavation of shovel tests at 15-meter (49-foot) intervals. An architectural survey was undertaken within 305 meters (1,000 feet) of the centerline of the roadway, which included the entire area between the highway and the Kanawha River as well as the town of Shrewsbury.

The investigation identified three previously unrecorded archaeological sites, isolated artifacts in nine shovel tests, 98 architectural resources, and three historic cemeteries. West Virginia Archaeological Site Forms, Isolated Find Site Forms, and Historic Property Forms were completed for all the resources identified and were submitted to the West Virginia State Historic Preservation Office.

Only one of the cultural resources identified in the survey, the Kanawha and Michigan Railroad (K&M), was recommended as eligible for inclusion in the National Register of Historic Places. The railroad was determined to be significant under Criterion A for its association with the economic development brought about by coal mining in the late nineteenth and early twentieth centuries. LBG prepared a Criteria of Effects document for this historic property.



CULTURAL RESOURCES SURVEY AND EVALUATIONS OF THE PROPOSED RIVESVILLE BRIDGE AND I-79 CONNECTOR
Marion County, West Virginia

FIRM LBG (100%)

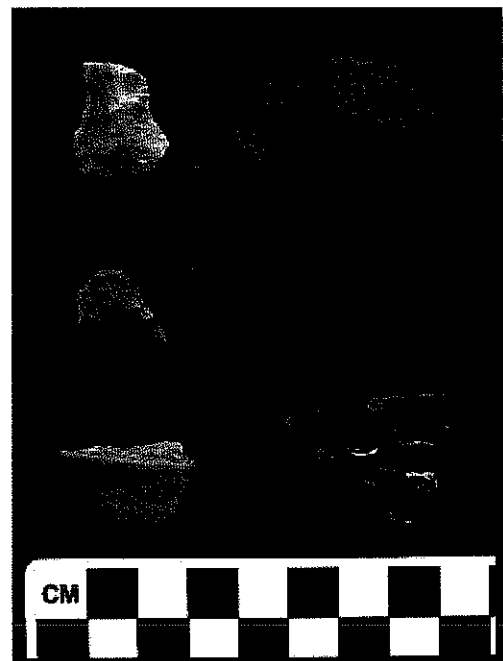
COST \$217,000

OWNER CONTACT

West Virginia Department of Transportation
Division of Highways
Gregory L. Bailey
Building 5, Capitol Complex
Charleston, WV 25305
Ph: (304) 558-2885

PROJECT FEATURES

SHPO Consultation
Archaeological Survey and Evaluation
Ancillary Analyses
Architectural Survey and Evaluation
Historical Research
Technical Report



PROJECT DESCRIPTION

On behalf of the West Virginia Department of Transportation, Division of Highways, LBG completed a cultural resources survey along three alignments for the proposed construction of a new bridge over the Monongahela River in the vicinity of Rivesville, and a partially controlled-access, four-lane connector to Interstate 79. The undertaking also involved the construction of new intersections with secondary roads and cut and fill areas. The study corridor was approximately 6.03 kilometers (3.75 miles) in length and 1,220 to 1,830 meters (4,000 to 6,000 feet) in width. During this investigation LBG identified four archaeological sites and 164 architectural resources including five historic cemeteries and three railroads.

The archaeological survey consisted of a pedestrian reconnaissance and the excavation of shovel tests along the three alignments and the proposed bridge location. In addition, deep testing was performed on terraces along the Monongahela River, which were determined to have a high probability for archaeological sites. The testing centered on the excavation of six deep test trenches using heavy equipment and geoarchaeological analysis of the terrace deposits.

LBG conducted a Phase II National Register evaluation of archaeological Site 46MA43 (Rabid Fox Site), to determine its eligibility for inclusion in the National Register of Historic Places (National Register). Additional fieldwork involved hand excavation of 10 1x1- meter units. Archaeological evaluation of the site identified a historic occupation associated with a mid-nineteenth to early twentieth-century historic farmstead as well as pit features associated with the prehistoric Monongahela culture.

Monongahela Plain and Cordmarked sherds, faunal remains, and carbonized plant remains were recovered in two features radiometrically dated to AD 1035 and 1413. Based on the site's potential to yield significant new information on the Monongahela culture in this part of West Virginia, LBG recommended the site as eligible for inclusion in the National Register.

Of the 164 architectural resources recorded, 13 were evaluated with regard to National Register Criteria. As a result, one historic district, the Dakota Mine Historic District, was determined to be eligible for inclusion in the National Register under Criterion A. Two railroads (under Criterion A) and three 18th-19th century historic cemeteries (under Criterion D) were also determined to be eligible for inclusion in the National Register.

ARCHAEOLOGICAL DATA RECOVERY AT THE BROOK RUN JASPER QUARRY (SITE 44CU122) Culpeper County, Virginia

FIRM LBG (100%)

DATE 2002-2004

COST \$441,000

OWNER CONTACT

Earl T. Robb
Virginia Department of Transportation
Environmental Division
1401 East Broad Street
Richmond, Virginia 23219
Ph. (804) 371-6753

PROJECT DESCRIPTION

In March 2001, LBG completed Phase III archaeological data recovery investigations for the Virginia Department of Transportation (VDOT) at the 10,000-year-old Brook Run Jasper Quarry (Site 44CU122). The site is located in the proposed right-of-way for improvements to Route 3 in Culpeper County, Virginia.

From May 2000 to March 2001, LBG conducted Phase I, II, and III investigations at the site. Its teams hand-excavated numerous shovel tests and 85 1x1-meter test units, and supervised the backhoe excavation of four trenches to facilitate geoarchaeological evaluation and mechanical stripping of the surface layers overlying the cultural deposits. Excavations recovered enormous quantities of lithic jasper chipping debris, including over 700,000 flakes, fragments, and nodules. Such artifacts result during quarrying and the removal of the weathered exterior layers and flawed portions in the early processing stages of this raw material. The excavations exposed a seam of jasper, 30-40 meters long, less than 1 meter wide, and up to 3.5 meters deep. The jasper represents the remains of a fossilized hydrothermal vent within an ancient geological fault.

The seam had been mined by the earliest prehistoric inhabitants of Virginia, people of the Paleoindian and Early Archaic periods, who dug pits down from the surface to expose the bedrock, and used bifaces and hammerstones to remove pieces of jasper, which were then prepared for transport to other locations where chipped-stone tools were manufactured.

As the unique nature of the site became apparent, LBG worked closely with VDOT and the Virginia Department of Historic Resources to tailor a program of research, redesign, and preservation to properly manage the resource and to keep the highway project on time and within budget.

During the investigations, LBG coordinated specialized analyses, including use-wear analysis, petrographic analysis, X-ray diffraction, Neutron Activation Analysis (to develop a chemical fingerprint of the jasper), and the use of GIS to document the distribution of jasper artifacts in the Rappahannock River drainage. Such analyses will provide a basis for further research into the dispersal of Brook Run Jasper across the region. In addition, seven Early Holocene radiometric AMS dates were obtained, and analysis of pollen and wood charcoal samples from the site provided the first evidence of Late Pleistocene/Early Holocene environments in the Virginia Piedmont.

LBG also worked with VDOT in unprecedented public outreach efforts, including television and newspaper interviews, a public open house of the excavations, and development of a museum display and an educational video of the project. This provided VDOT and LBG a unique opportunity to inform the public about the research and VDOT's stewardship role in protecting cultural resources.



ARCHAEOLOGICAL INVESTIGATIONS AT THE GUINEA ROAD CEMETERY (SITE 44FX1664) Fairfax County, Virginia

FIRM LBG (100%)

DATE 2004 - 2009

COST \$249,575

OWNER CONTACT

Jeff Rodgers
Virginia Department of Transportation
1401 E. Broad St.
Richmond, VA 23219
Ph. 804-371-6785
Jeff.Rodgers@VDOT.Virginia.gov

PROJECT DESCRIPTION

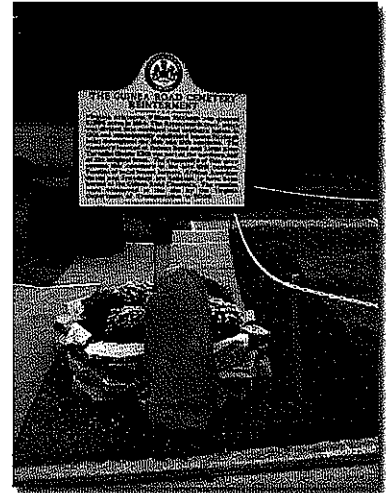
LBG conducted Phase I, II, and III archaeological investigations at the Guinea Road Cemetery (Site 44FX1664) for the Virginia Department of Transportation (VDOT) in association with proposed project which will widen an existing Little River Turnpike in Fairfax, Virginia. The site was previously known as the Gibson/Parker Cemetery, and lies within a proposed permanent utility easement and an area of lane widening.

Initial investigations consisted of surface clearing, the excavation of shovel tests, and the mechanical stripping of topsoil from the project area to expose and identify any grave shafts present at the site. Twenty-nine graves shafts were identified during this phase, as well as a headstone dated 1851 and bearing the name S. A. Williams. The site was determined to be eligible for inclusion in the National Register of Historic Places.

LBG developed a data recovery plan and conducted data recovery excavations pursuant to a Memorandum of Agreement prepared in consultation with the descendant families. The excavations recovered 3,348 artifacts from 42 burials; funerary items account for nearly the entire assemblage. Coffin hardware and garment buttons recovered from the individual graves suggest that the cemetery was actively used during the period circa 1850 to 1875. Based on historical research conducted by LBG, it appears that the Guinea Road Cemetery may contain the remains of enslaved Africans and African Americans owned by the Fitzhugh and Gooding families dating as early as the eighteenth century, as well as the remains of free Blacks from before, and after, the Civil War.

Working with human remains required LBG to interact with a variety of stakeholders, e.g., family members, the community in which the cemetery is located, and the community at large. LBG also consulted and worked closely with local and regional historic societies, genealogists, and other researchers to ensure that we collected information that can be used to develop a context for understanding the place in history of the individuals interred in the cemetery.

Following completion of artifact analysis, osteological analysis, and historic research, LBG delivered a public presentation as part of a Gibson-Parker family reunion on September 30, 2006. This presentation provided details on each step of the process of archaeological and historic investigations. The reunion was a weekend celebration of descendant family members and a reinterment ceremony at Pleasant Valley Memorial Park in Annandale, Virginia.



ARCHAEOLOGICAL DATA RECOVERY EXCAVATIONS AT SITE 44CE0010 Caroline County, Virginia

FIRM LBG (100%)

DATE 2005 - 2008

COST \$430,218

OWNER CONTACT

Jeff Rodgers
Virginia Department of Transportation
1401 E. Broad St.
Richmond, VA 23219
804-371-6785
Jeff.Rodgers@VDOT.Virginia.gov

PROJECT FEATURES

Deep trenching
Excavation of test units
Excavation of block units
Mechanical excavation
Lithic analysis
Archaeobotanical analysis
Sediment analysis
Data recovery
Artifact and sample analysis

PROJECT DESCRIPTION

LBG undertook archaeological data recovery excavations at Site 44CE0010 in Caroline County, Virginia, on behalf of the Virginia Department of Transportation. The site is located in the right-of-way for proposed improvements to Route 30.

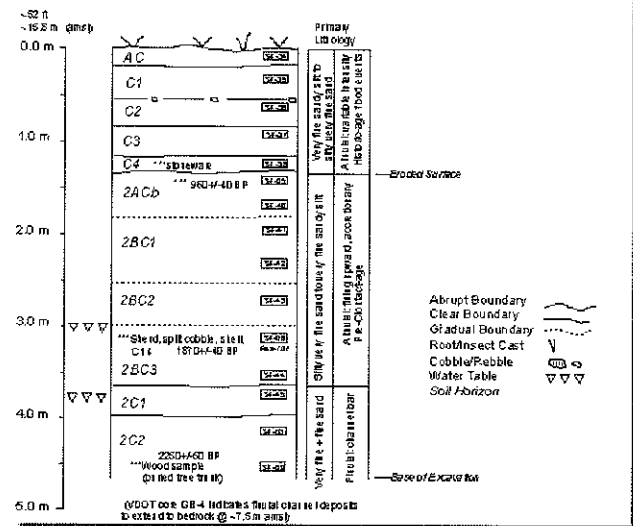
The data recovery included the hand excavation of 140 1x1-meter units, cultural features, and block units, and mechanical stripping of approximately 1,120 square meters. In addition, a paleoethnobotanical analysis, a palynological analysis, sediment analysis, and radiocarbon dating were conducted to aid in analyzing the archaeological findings.

Despite prior disturbance by plowing, a layer of intact soils, containing in situ cultural material and features, lay below the plowzone. A minor field scatter of historic artifacts was also present.

Site 44CE0010 is a residential site, dating to the Early Archaic through Middle Woodland periods, where a major activity was production of chipped-stone tools using locally available cobbles. It is part of a group of sites in the area, and was probably a campsite occupied intermittently and rather briefly throughout prehistory. The location was chosen, in part, because deposits of workable quartzite cobbles were available nearby. The cobbles were collected in the adjacent drainages and probably reduced there to rough biface form, then brought back to the camp for the later stages of bifacial thinning. The tools made at the camp replaced worn-out dart tips and knives, which were removed from their hafts and discarded there. It is possible that the site was used in the Middle and Late Woodland periods in the fall, in association with deer hunting season, when women would have brought heavy equipment (possibly dating to earlier periods) to base camps connected to hunting forays. This area along the Fall Line may also have been a contested buffer zone, possibly accounting for the low density of later period artifacts.

During the course of data recovery, 41 cultural features were identified and documented, and 27,724 prehistoric artifacts were recovered. The information gained from data recovery at Site 44CE0010, interpreted within a framework of similar nearby sites as well as other sites in analogous settings near the Fall Line, has increased our knowledge of the prehistory of the Piedmont in central Virginia. In particular, Site 44CE0010 has shed information on the role of Late Holocene environmental dynamics on site formation processes, ceramic typology, continuity and change in lithic technologies, and prehistoric cultural systems, including chronology, community organization, and settlement and subsistence strategies.

Figure GEO-2
Geoarchaeological Profile
SR 30: North Anna Crossing
Low Terrace (Floodplain)-East
Trench DT-3/9
Column Profile: South Wall
(v.8/07/07)



**ARCHAEOLOGICAL DATA RECOVERY EXCAVATIONS AT THE MAPLE BRANCH SITE (31BF340) US 17
WASHINGTON BYPASS
Beaufort County, North Carolina**

FIRM LBG (100%)

DATE 2006 - 2009

OWNER CONTACT

Matthew Wilkerson
North Carolina Department of Transportation
Human Environment Unit
4701 Atlantic Ave, Suite 116
Raleigh, NC 27604
Ph. (919) 715-1561

PROJECT FEATURES

Data Recovery Plan
Phase III Excavations
Geochemical analysis
INAA Study of Prehistoric Pottery
Petrographic Analysis of Prehistoric Pottery
Faunal Analysis
Technical Report



PROJECT DESCRIPTION

At the request of the North Carolina Department of Transportation (NCDOT), LBG completed archaeological data recovery of a multi-component site located within the proposed right-of-way (ROW) for the improvements to US 17 in Beaufort County, North Carolina. The work was conducted subsequent to a request by NCDOT to develop a data recovery plan that would result in recover information important to the prehistory of the Outer Coastal Plain of North Carolina.

Site 31BF340 is a multi-component site with Middle and Late Archaic and Early, Middle, and Late Woodland period occupations. Utilizing 50 x 50cm test units, nine 1x1m control units, and seventy-two 1x1meter excavation units, LBG recovered 8,839 prehistoric artifacts including a variety of ceramic types, lithic tools, debitage, and faunal remains. Archaeological investigation at this site generated a large volume of data pertaining to subsistence strategies, settlement patterns, community structure, and the history of the landform on which the site is located.

The diagnostic hafted bifaces include Middle Archaic Morrow Mountain and Halifax types, Late Archaic Savannah River types, Woodland Roanoke triangular forms, contracting and rudimentary Woodland stemmed types, and Late Woodland Clarksville-like triangular forms. Evidence of multiple Woodland period occupations was also recovered in the form of net-impressed, cordmarked, fabric impressed, and simple stamped sherds of Early Woodland Deep Creek; Middle Woodland Hanover, Mockley, and Mount Pleasant; and Late Woodland Cashie.

During the investigations, LBG coordinated specialized analyses including geochemical analysis of soil samples from the site, ceramic analysis that included INAA and petrographic studies, morphological analysis of lithics, and analysis of the faunal assemblage. The results of these studies indicate the site was episodically occupied by small group during its long occupational history.



ARCHAEOLOGICAL DATA RECOVERY AT THE LACKEY CEMETERY (SITE 44RB0509) Rockbridge County, Virginia

FIRM LBG (100%)

DATE 2008 - 2009

COST \$250,879

OWNER CONTACT

Jeff Rodgers
Virginia Department of Transportation
1401 E. Broad St.
Richmond, VA 23219
Ph. (804) 371-6785
Jeff.Rodgers@VDOT.Virginia.gov



PROJECT DESCRIPTION

LBG has conducted archaeological data recovery at the site of Lackey Cemetery (44RB0509), a small African-American cemetery within the proposed right-of-way of the north-bound I-81 truck-climbing lanes project in Rockbridge County, Virginia. The archaeological data recovery was conducted subsequent to a request by VDOT to develop a data recovery strategy that would result in recovering information important to our understanding of African-American burial practices, mortality, health, and nutrition from non-plantation contexts outside the tobacco-growing regions of Piedmont Virginia.

The site was identified by map projection based on historic research and informant interviews conducted during an archaeological survey of the project area for the expansion of I-81. The current property owner noted that a previous landowner had "mentioned a slave cemetery" on the property and its purported location appears to match that of a cemetery that appears on VDOT plans. LBG's cemetery investigation included archival research and fieldwork. Above-ground evidence of a cemetery at this location was extremely limited given the nature of the terrain, which has been under cultivation throughout much of the 20th-century. Accordingly, shovel testing and mechanical stripping were deemed necessary to sample the plowzone for artifacts, re-locate the 14 probable burials identified during an evaluation completed in 2006-2007, and identify any additional potential grave shafts located at the site.

A total of 30 burials were excavated. The clustering of adult and infant burials suggests that individual family plots existed within the boundaries of the cemetery. Also recovered were a variety of casket hardware, buttons and snaps, woven cloth and yarn, and bottle glass.

A variety of analyses were performed on samples taken from the Lackey Cemetery. Soil samples were analyzed for ethnobotanical remains, and osteological samples provided definitive proof that the individuals buried in this cemetery are African Americans. LBG's work at the Lackey Cemetery offers answers to a variety of questions regarding African-American burial practices, revealed the poor diet, poor dental care, and high occupational stress of those buried at the cemetery, and offers a comparison with other African-American cemeteries within Virginia and the mid-Atlantic region.



**CULTURAL RESOURCE ASSESSMENT FOR THE ROUTING OF A 765 KV TRANSMISSION LINE
Various Counties, West Virginia****FIRM** LBG (100%)**DATE** 2008 - ongoing**COST** \$126,150**OWNER CONTACT**

Alan Fleissner
Allegheny Power and American Electric Power
800 Cabin Hill Rd
Greensburg, PA 15601
Ph. (724) 838-6817

PROJECT DESCRIPTION

LBG has conducted a siting study of alternative routes for a proposed 240-mile-long 765 kV transmission line in West Virginia and Virginia. LBG staff has also prepared sections of the Line Route Evaluation (LRE) report, discussing the role of cultural resources, especially historic properties, in the route selection process. Following this work, LBG also conducted a Cultural Resources Survey of the proposed route, which stretches 277 miles through 14 counties in West Virginia and three counties in Virginia.

As part of the siting study, LBG's Cultural Resources Division performed consultations with the West Virginia and Virginia State Historic Preservation Offices (SHPO), background research, development of GIS shapefiles, field reviews of the proposed locations, viewshed analyses, prepared photosimulations, attended meetings with county officials and the public, and assisted in the preparation of a LRE for submission to the Public Service Commission. Information was gathered on approximately 10,000 previously identified cultural resources. Locational information on each resource was incorporated into a GIS shapefile. Field reviews were conducted for each of the proposed alternatives to identify any potential cultural resources or landscapes not previously identified that could impact route selection. Proposed route locations and tower sites took into account possible impacts to viewsheds and protected lands, and photosimulations were created to illustrate the visible impact of the proposed transmission corridors.

The objective of both the archaeological and architectural surveys was to document previously recorded cultural resources, identify any previously unrecorded resources within the Area of Potential Effects of PATH, and evaluate the possible eligibility of any such resources for listing in the National Register of Historic Places.

The archaeological survey resulted in the identification of 19 previously unrecorded sites in West Virginia, and three sites in Virginia. The architectural survey identified and recorded approximately 1,200 historic resources in West Virginia.



POTTER'S FIELD CEMETERY SECAUCUS, HUDSON COUNTY, NEW JERSEY

FIRM LBG (80%)

COST \$5,329,060

OWNER CONTACT

John M. Keller
New Jersey Turnpike Authority
Ph. (732) 442-8600 ext. 2263

PROJECT FEATURES

Archaeological Methodology
Background Research
SHPO Consultation
Rapid Response to Client Schedule
In-Field Laboratory
Public Involvement

PROJECT DESCRIPTION

LBG completed an archaeological recovery effort for the New Jersey Turnpike Authority at the Potter's Field Cemetery, Secaucus, New Jersey. Between 1880 and 1962, the Potter's Field Cemetery was used to bury indigents and unknown souls from the nearby county hospitals, almshouse, and prison. The project was one of the largest archaeological efforts ever undertaken to disinter and reinter human remains in the United States. The disinterment plan was developed in consultation with the NH State Historic Preservation Office.

Between February and November 2003, through extremes of weather that included winter blizzards, spring rains, and humid summer heat, LBG exhumed 4,571 sets of human remains from the cemetery. The work was accomplished by a team of archaeologists, osteologists, and field technicians, numbering about 100 in all. Fieldwork required the use of personal HAZMAT gear in some instances due to soil contamination. Using excavation machines and hand methods, the team excavated, moved, and graded more than 78,000 cubic yards of soil to identify 2,693 grave shafts over a 4-acre parcel. The Potter's Field Project is a prime example of LBG's ability to conduct multiple projects simultaneously. LBG had sufficient resources to conduct an additional 107 cultural resource investigations while this project was in the field, as other LBG cultural resource offices maintained normal workloads and staffing.

The project included an on-site laboratory for the documentation and analysis of recovered remains and artifacts and for their temporary storage pending re-burial. A total of 113,532 artifacts were recovered, identified, and cataloged, including coffin nails, dentures, glass eyes, coins, smoking pipes, embalming fluid bottles, whiskey bottles, combs, buttons, ceramics, clothing, shoes, hats, jewelry, military medals, religious items, and prosthetics. The on-site osteological analyses indicate that the causes of death ranged from infectious diseases such as small pox, tuberculosis, cholera, and influenza; to pathologies including lesions, vertebral fusion, untreated fractures, and developmental defects; and to blunt force traumas. There also was evidence of autopsies and amputations.

Using historical maps, original handwritten burial ledgers, osteological examination, background research, and artifact analysis, LBG's team was able to determine possible identities for about 825 of the disinterred remains. Two individuals were positively identified with the assistance of living linear descendants and were returned to their respective families for private ceremonies and reburial, ending the families' search for their long-lost grandparents. LBG assisted the Turnpike Authority in reintering the other remains at a local cemetery and in developing a monument there to these once-forgotten souls.

LBG was involved in a wide-range of activities associated with the investigation including: approval of final bronze plaques designs and the 7,767 names for casting; signed off on final design for center tablet of monument consisting of dedication text and engraved tree; preparing and finalizing the reinterment cemetery including overseeing cemetery workers, masons, setters, and monument company in the preparatory work for the memorial; coordinating with cemetery overseer and adjacent property owners for the logistics of getting the granite truck and oversized crane as close to the site as possible to assist with the installation of the tablets and minimize roadway and tree damage within the cemetery.



The planned removal of graves from a cemetery had the potential to affect many people in the community and region. As the project commenced and eventually expanded, so did the public outreach and coordination efforts. Initially, members of the media, potential relatives of the deceased and interested constituencies voiced concern over the project. However, as the days turned into weeks and the weeks into months, progress at the Potter's Field site led to discoveries that attracted even more media attention. As news of this extraordinary project spread, so did the requests for site visitations. Newspaper reporters, photographers, television crews and radio announcers frequently visited the site, often producing live on-site broadcasts that captured heart-warming human interest stories instead of images of desecration. During these tours, interviews and discussions with LBG's key staff, Turnpike Authority administrators, family descendants and others, were also conducted. In total, more than 60 newspaper stories, two magazine articles and numerous television broadcasts were produced in the metropolitan/tri-state area. Given the sensitive nature of the project together with the unique application of archaeological methods and results of specialized analyses, LBG also was responsible for preparing information necessary for legal briefs, court hearings and certifications throughout the duration of the project.



EXCEPTIONS TO GENERAL TERMS & CONDITIONS

LBG requests the section of the general terms and conditions entitled “3.2.5 Indemnification” have the following sentence added to the end:

- But only to the proportional extent of consultants negligence.

LBG requests the section of the general terms and conditions entitled “3.2.16 Record Retention (Access & Confidentiality)” have the following sentence added to the end:

- Neither party shall be liable for any indirect, special, exemplary, multiple, or consequential damages, interest or attorney fees costs or expenses.



RECEIPT OF ADDENDUM

A signed receipt of addendum form is attached to the end of this document.

PURCHASING AFFIDAVIT

A signed Purchasing Affidavit form is attached to the end of this document.

WEST VIRGINIA REGISTRATION

The Louis Berger Group's Certificate of Authority and Certificate of Authorization are attached to the end of this document.





State of West Virginia
Department of Administration
Purchasing Division
2019 Washington Street East
Post Office Box 50130
Charleston, WV 25305-0130

Request for Quotation

RFQ NUMBER
GSD116469

PAGE
1

ADDRESS CORRESPONDENCE TO ATTENTION OF
KRISTA FERRELL
304-558-2596

RFQ COPY
TYPE NAME/ADDRESS HERE

DEPARTMENT OF ADMINISTRATION
GENERAL SERVICES DIVISION
JOBSITE
SEE SPECIFICATIONS

304-558-2317

| DATE PRINTED | TERMS OF SALE | SHIP VIA | FOB | FREIGHT TERMS | | |
|--|---------------|---------------------------|----------|---------------|------------|--------|
| 05/26/2011 | | | | | | |
| BID OPENING DATE: 06/14/2011 | | BID OPENING TIME: 01:30PM | | | | |
| LINE | QUANTITY | UOP | CAT. NO. | ITEM NUMBER | UNIT PRICE | AMOUNT |
| 0001 | 1 | LS | | 906-29 | | |
| ARCHAEOLOGICAL SERVICES FOR NEW LOGAN SITE | | | | | | |
| EXPRESSION OF INTEREST (EOI) | | | | | | |
| THE WEST VIRGINIA STATE PURCHASING DIVISION FOR THE AGENCY, THE WEST VIRGINIA DIVISION OF GENERAL SERVICES, IS SOLICITING EXPRESSIONS OF INTEREST FROM QUALIFIED ARCHITECTURAL AND ENGINEERING FIRMS TO PERFORM ARCHEOLOGICAL SERVICES, ANALYSIS, AND REPORTING FOR ARTIFACTS DISCOVERED AT NEW LOGAN BUILDING SITE IN LOGAN, WEST VIRGINIA PER THE ATTACHED SPECIFICATIONS. | | | | | | |
| TECHNICAL QUESTIONS CONCERNING THIS SOLICITATION MUST BE SUBMITTED IN WRITING TO KRISTA FERRELL IN THE WEST VIRGINIA STATE PURCHASING DIVISION VIA FAX AT 304-558-4115 OR VIA EMAIL AT KRISTA.S.FERRELL@WV.GOV. | | | | | | |
| DEADLINE FOR ALL TECHNICAL QUESTIONS IS 06/06/2011 AT THE CLOSE OF BUSINESS. | | | | | | |
| DIVISION AFTER THE DEADLINE HAS LAPSED. | | | | | | |
| EXHIBIT 10 | | | | | | |
| REQUISITION NO.: GSD116469 | | | | | | |
| ADDENDUM ACKNOWLEDGEMENT | | | | | | |

SEE REVERSE SIDE FOR TERMS AND CONDITIONS

| TITLE | TELEPHONE | DATE |
|-------|-----------|------|
| | | |

ADDRESS CHANGES TO BE NOTED ABOVE

WHEN RESPONDING TO RFQ, INSERT NAME AND ADDRESS IN SPACE ABOVE LABELED 'VENDOR'



State of West Virginia
Department of Administration
Purchasing Division
2019 Washington Street East
Post Office Box 50130
Charleston, WV 25305-0130

Request for Quotation

RFQ NUMBER
GSD116469

PAGE
2

ADDRESS CORRESPONDENCE TO ATTENTION OF
KRISTA FERRELL
304-558-2596

RFQ COPY
TYPE NAME/ADDRESS HERE

DEPARTMENT OF ADMINISTRATION
GENERAL SERVICES DIVISION
JOBSITE
SEE SPECIFICATIONS

304-558-2317

| | | | | | | |
|-------------------|---------------|------------|--------------------------|---------------|------------|--------|
| DATE PRINTED | TERMS OF SALE | SHIP VIA | FOB: | FREIGHT TERMS | | |
| 05/26/2011 | | | | | | |
| BID OPENING DATE: | | 06/14/2011 | BID OPENING TIME 01:30PM | | | |
| LINE | QUANTITY | UOP | QTY NO. | ITEM NUMBER | UNIT PRICE | AMOUNT |

I HEREBY ACKNOWLEDGE RECEIPT OF THE FOLLOWING CHECKED
ADDENDUM(S) AND HAVE MADE THE NECESSARY REVISIONS TO
MY PROPOSAL, PLANS AND/OR SPECIFICATION, ETC.

ADDENDUM NO.'S:

NO. 1

NO. 2

NO. 3

NO. 4

NO. 5

I UNDERSTAND THAT FAILURE TO CONFIRM THE RECEIPT OF
THE ADDENDUM(S) MAY BE CAUSE FOR REJECTION OF BIDS.

VENDOR MUST CLEARLY UNDERSTAND THAT ANY VERBAL
REPRESENTATION MADE OR ASSUMED TO BE MADE DURING ANY
ORAL DISCUSSION HELD BETWEEN VENDOR'S REPRESENTATIVES
AND ANY STATE PERSONNEL IS NOT BINDING. ONLY THE
INFORMATION ISSUED IN WRITING AND ADDED TO THE
SPECIFICATIONS BY AN OFFICIAL ADDENDUM IS BINDING.

.....
SIGNATURE Jess Commerford, AICP

.....
COMPANY The Louis Berger Group, Inc.

.....
DATE 06/13/2011

SEE REVERSE SIDE FOR TERMS AND CONDITIONS

TITLE

TELEPHONE

DATE

TITLE

FEIN

ADDRESS CHANGES TO BE NOTED ABOVE

WHEN RESPONDING TO RFQ, INSERT NAME AND ADDRESS IN SPACE ABOVE LABELED 'VENDOR'



State of West Virginia
Department of Administration
Purchasing Division
2019 Washington Street East
Post Office Box 50130
Charleston, WV 25305-0130

Request for Quotation

| |
|------------|
| RFQ NUMBER |
| GSD116469 |

| |
|------|
| PAGE |
| 3 |

| |
|--|
| ADDRESS CORRESPONDENCE TO ATTENTION OF |
| KRISTA FERRELL 304-558-2596 |

RFQ COPY
TYPE NAME/ADDRESS HERE

DEPARTMENT OF ADMINISTRATION
GENERAL SERVICES DIVISION
JOBSITE
SEE SPECIFICATIONS

304-558-2317

| DATE PRINTED | TERMS OF SALE | SHIP VIA | FOB | FREIGHT TERMS |
|--------------|---------------|----------|-----|---------------|
| 05/26/2011 | | | | |

BID OPENING DATE: 06/14/2011 BID OPENING TIME 01:30PM

| LINE | QUANTITY | UOM | DAY NO. | ITEM NUMBER | UNIT PRICE | AMOUNT |
|------|----------|-----|------------|-------------|------------|--------|
|------|----------|-----|------------|-------------|------------|--------|

NOTE: THIS ADDENDUM ACKNOWLEDGEMENT SHOULD BE SUBMITTED
WITH THE BID.

REV. 09/21/2009

BANKRUPTCY: IN THE EVENT THE VENDOR/CONTRACTOR FILES
FOR BANKRUPTCY PROTECTION, THE STATE MAY DEEM THE
CONTRACT NULL AND VOID, AND TERMINATE SUCH CONTRACT
WITHOUT FURTHER ORDER.

NOTICE

A SIGNED BID MUST BE SUBMITTED TO:

DEPARTMENT OF ADMINISTRATION
PURCHASING DIVISION
BUILDING 15
2019 WASHINGTON STREET, EAST
CHARLESTON, WV 25305-0130

THE BID SHOULD CONTAIN THIS INFORMATION ON THE FACE OF
THE ENVELOPE OR THE BID MAY NOT BE CONSIDERED:

SEALED BID

BUYER:

KRISTA FERRELL-FILE 21

RFQ. NO.:

GSD116469

BID OPENING DATE:

06/14/2011

SEE REVERSE SIDE FOR TERMS AND CONDITIONS

| | | |
|-----------|-----------|-----------------------------------|
| SIGNATURE | TELEPHONE | DATE |
| TITLE | FAX | ADDRESS CHANGES TO BE NOTED ABOVE |

WHEN RESPONDING TO RFQ, INSERT NAME AND ADDRESS IN SPACE ABOVE LABELED 'VENDOR'



State of West Virginia
Department of Administration
Purchasing Division
2019 Washington Street East
Post Office Box 50130
Charleston, WV 25305-0130

Request for Quotation

RFQ NUMBER

GSD116469

PAGE

4

ADDRESS CORRESPONDENCE TO ATTENTION OF

KRISTA FERRELL
304-558-2596

RFQ COPY
TYPE NAME/ADDRESS HERE

DEPARTMENT OF ADMINISTRATION
GENERAL SERVICES DIVISION
JOBSITE
SEE SPECIFICATIONS

304-558-2317

| DATE PRINTED | TERMS OF SALE | SHIP VIA | FOB | FREIGHT TERMS | | |
|---|---------------|--------------------------|--------|-----------------------------------|------------|--------|
| 05/26/2011 | | | | | | |
| BID OPENING DATE: 06/14/2011 | | BID OPENING TIME 01:30PM | | | | |
| LINE | QUANTITY | UOM | CAT NO | ITEM NUMBER | UNIT PRICE | AMOUNT |
| BID OPENING TIME: 1:30 PM | | | | | | |
| PLEASE PROVIDE A FAX NUMBER IN CASE IT IS NECESSARY TO CONTACT YOU REGARDING YOUR BID: (816) 561-1666 | | | | | | |
| CONTACT PERSON (PLEASE PRINT CLEARLY): Jess Commerford, AICP, Sr. Vice President | | | | | | |
| ***** THIS IS THE END OF RFQ GSD116469 ***** TOTAL: | | | | | | |
| SEE REVERSE SIDE FOR TERMS AND CONDITIONS | | | | | | |
| SIGNATURE | | TELEPHONE | | DATE | | |
| TITLE | | FAX | | ADDRESS CHANGES TO BE NOTED ABOVE | | |

WHEN RESPONDING TO RFQ, INSERT NAME AND ADDRESS IN SPACE ABOVE LABELED 'VENDOR'

RFQ No. GSD116469STATE OF WEST VIRGINIA
Purchasing Division**PURCHASING AFFIDAVIT**

West Virginia Code §5A-3-10a states: No contract or renewal of any contract may be awarded by the state or any of its political subdivisions to any vendor or prospective vendor when the vendor or prospective vendor or a related party to the vendor or prospective vendor is a debtor and the debt owed is an amount greater than one thousand dollars in the aggregate.

DEFINITIONS:

"Debt" means any assessment, premium, penalty, fine, tax or other amount of money owed to the state or any of its political subdivisions because of a judgment, fine, permit violation, license assessment, defaulted workers' compensation premium, penalty or other assessment presently delinquent or due and required to be paid to the state or any of its political subdivisions, including any interest or additional penalties accrued thereon.

"Debtor" means any individual, corporation, partnership, association, limited liability company or any other form or business association owing a debt to the state or any of its political subdivisions. "Political subdivision" means any county commission; municipality; county board of education; any instrumentality established by a county or municipality; any separate corporation or instrumentality established by one or more counties or municipalities, as permitted by law; or any public body charged by law with the performance of a government function or whose jurisdiction is coextensive with one or more counties or municipalities. "Related party" means a party, whether an individual, corporation, partnership, association, limited liability company or any other form or business association or other entity whatsoever, related to any vendor by blood, marriage, ownership or contract through which the party has a relationship of ownership or other interest with the vendor so that the party will actually or by effect receive or control a portion of the benefit, profit or other consideration from performance of a vendor contract with the party receiving an amount that meets or exceeds five percent of the total contract amount.

EXCEPTION: The prohibition of this section does not apply where a vendor has contested any tax administered pursuant to chapter eleven of this code, workers' compensation premium, permit fee or environmental fee or assessment and the matter has not become final or where the vendor has entered into a payment plan or agreement and the vendor is not in default of any of the provisions of such plan or agreement.

Under penalty of law for false swearing (*West Virginia Code §61-5-3*), it is hereby certified that the vendor affirms and acknowledges the information in this affidavit and is in compliance with the requirements as stated.

WITNESS THE FOLLOWING SIGNATUREVendor's Name: The Louis Berger Group, Inc. (LBG)Authorized Signature: *[Signature]* Date: 06/10/2011
Jess Commerford, AICP. Sr. Vice PresidentState of KansasCounty of Johnson, to-wit:Taken, subscribed, and sworn to before me this 10th day of June, 2011.My Commission expires 2/2/14, 2014.

AFFIX SEAL HERE

NOTARY PUBLIC *[Signature]*

**GENERAL TERMS & CONDITIONS
REQUEST FOR QUOTATION (RFQ) AND REQUEST FOR PROPOSAL (RFP)**

1. Awards will be made in the best interest of the State of West Virginia.
 2. The State may accept or reject in part, or in whole, any bid.
 3. Prior to any award, the apparent successful vendor must be properly registered with the Purchasing Division and have paid the required \$125 fee.
 4. All services performed or goods delivered under State Purchase Order/Contracts are to be continued for the term of the Purchase Order/Contracts, contingent upon funds being appropriated by the Legislature or otherwise being made available. In the event funds are not appropriated or otherwise available for these services or goods this Purchase Order/Contract becomes void and of no effect after June 30.
 5. Payment may only be made after the delivery and acceptance of goods or services.
 6. Interest may be paid for late payment in accordance with the *West Virginia Code*.
 7. Vendor preference will be granted upon written request in accordance with the *West Virginia Code*.
 8. The State of West Virginia is exempt from federal and state taxes and will not pay or reimburse such taxes.
 9. The Director of Purchasing may cancel any Purchase Order/Contract upon 30 days written notice to the seller.
 10. The laws of the State of West Virginia and the *Legislative Rules* of the Purchasing Division shall govern the purchasing process.
 11. Any reference to automatic renewal is hereby deleted. The Contract may be renewed only upon mutual written agreement of the parties.
 12. **BANKRUPTCY:** In the event the vendor/contractor files for bankruptcy protection, the State may deem this contract null and void, and terminate such contract without further order.
 13. **HIPAA BUSINESS ASSOCIATE ADDENDUM:** The West Virginia State Government HIPAA Business Associate Addendum (BAA), approved by the Attorney General, is available online at www.state.wv.us/admin/purchase/vrc/hipaa.htm and is hereby made part of the agreement. Provided that the Agency meets the definition of a Cover Entity (45 CFR §160.103) and will be disclosing Protected Health Information (45 CFR §160.103) to the vendor.
 14. **CONFIDENTIALITY:** The vendor agrees that he or she will not disclose to anyone, directly or indirectly, any such personally identifiable information or other confidential information gained from the agency, unless the individual who is the subject of the information consents to the disclosure in writing or the disclosure is made pursuant to the agency's policies, procedures, and rules. Vendor further agrees to comply with the Confidentiality Policies and Information Security Accountability Requirements, set forth in <http://www.state.wv.us/admin/purchase/privacy/noticeConfidentiality.pdf>.
 15. **LICENSING:** Vendors must be licensed and in good standing in accordance with any and all state and local laws and requirements by any state or local agency of West Virginia, including, but not limited to, the West Virginia Secretary of State's Office, the West Virginia Tax Department, and the West Virginia Insurance Commission. The vendor must provide all necessary releases to obtain information to enable the director or spending unit to verify that the vendor is licensed and in good standing with the above entities.
 16. **ANTITRUST:** In submitting a bid to any agency for the State of West Virginia, the bidder offers and agrees that if the bid is accepted the bidder will convey, sell, assign or transfer to the State of West Virginia all rights, title and interest in and to all causes of action it may now or hereafter acquire under the antitrust laws of the United States and the State of West Virginia for price fixing and/or unreasonable restraints of trade relating to the particular commodities or services purchased or acquired by the State of West Virginia. Such assignment shall be made and become effective at the time the purchasing agency tenders the initial payment to the bidder.
- I certify that this bid is made without prior understanding, agreement, or connection with any corporation, firm, limited liability company, partnership, or person or entity submitting a bid for the same material, supplies, equipment or services and is in all respects fair and without collusion or fraud. I further certify that I am authorized to sign the certification on behalf of the bidder or this bid.

INSTRUCTIONS TO BIDDERS

1. Use the quotation forms provided by the Purchasing Division. Complete all sections of the quotation form.
2. Items offered must be in compliance with the specifications. Any deviation from the specifications must be clearly indicated by the bidder. Alternates offered by the bidder as **EQUAL** to the specifications must be clearly defined. A bidder offering an alternate should attach complete specifications and literature to the bid. The Purchasing Division may waive minor deviations to specifications.
3. Unit prices shall prevail in case of discrepancy. All quotations are considered F.O.B. destination unless alternate shipping terms are clearly identified in the quotation.
4. All quotations must be delivered by the bidder to the office listed below prior to the date and time of the bid opening. Failure of the bidder to deliver the quotations on time will result in bid disqualifications: Department of Administration, Purchasing Division, 2019 Washington Street East, P.O. Box 50130, Charleston, WV 25305-0130
5. Communication during the solicitation, bid, evaluation or award periods, except through the Purchasing Division, is strictly prohibited (W.Va. C.S.R. §148-1-6.6).

State of West Virginia



Certificate

*I, Ken Hechler, Secretary of State of the
State of West Virginia, hereby certify that*

THE LOUIS BERGER GROUP, INC.

a corporation formed under the laws of NEW JERSEY
has applied for a Certificate of Authority to transact business in West Virginia as
required by the provisions of Chapter 31, Article 1, Sections 53 and 54 of the West
Virginia Code. I further certify that the application conforms to law and is filed in my
office:

Therefore, I issue this

CERTIFICATE OF AUTHORITY

to the corporation authorizing it to transact business in West Virginia under the name of
THE LOUIS BERGER GROUP, INC.
and I attach to this certificate a duplicate original of the application.



*Given under my hand and the
Great Seal of the State of
West Virginia on this*

Eighth _____ *day of*
September 19 99

Ken Hechler

Secretary of State

RETURN TO:
MARTIN
KANAWHA BLVD E
CHARLESTON WV 25311

Recorded In CORP BK 542 Pg 927, 09/09/1999 12:28:34 PM Deed Tax 0.00, Recording Fee 5.00, TOTAL 5.00
Alma V. Kins, County Clerk, Kanawha County, WV

CERTIFICATE OF *Authorization*

STATE BOARD OF REGISTRATION FOR PROFESSIONAL ENGINEERS

*The West Virginia State Board of Registration for Professional Engineers
having verified the person in responsible charge is registered in
West Virginia as a professional engineer for the noted firm, hereby certifies*

THE LOUIS BERGER GROUP, INC.

C01030-00

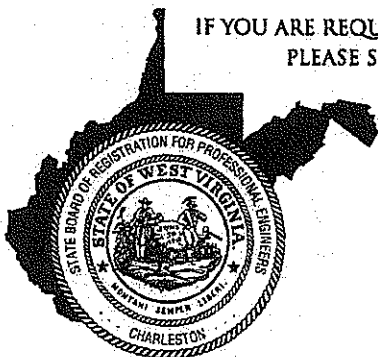
Engineer in Responsible Charge: DEAN HATFIELD - WV PE 009929

*has complied with section §30-13-17 of the West Virginia Code governing
the issuance of a Certificate of Authorization. The Board hereby notifies you of its
certification with issuance of this Certification of Authorization for the period of:*

July 1, 2010 – June 30, 2011

providing for the practice of engineering services in the State of West Virginia.

IF YOU ARE REQUIRED TO REGISTER WITH THE SECRETARY OF STATE'S OFFICE,
PLEASE SUBMIT THIS CERTIFICATE WITH YOUR APPLICATION.



IN TESTIMONY WHEREOF, THE WEST VIRGINIA STATE BOARD OF
REGISTRATION FOR PROFESSIONAL ENGINEERS HAS ISSUED THIS COA
UNDER ITS SEAL AND SIGNED BY THE PRESIDENT OF SAID BOARD.

BOARD PRESIDENT