



A · R · C · H · I · T · E · C · T · S

September 14, 2010

Division of Rehabilitation Services  
West Virginia Rehabilitation Center  
Institute, West Virginia

**Re: Architectural/Engineering Services  
Space Planning and Renovation Services  
West Virginia Rehabilitation Center  
Institute, West Virginia**

Dear Selection Committee:

N Visions is pleased to submit our qualifications for your review. We are confident that the history and experience of our firm, coupled with the expertise of our consultants, will provide the West Virginia Rehabilitation Center with facility evaluations and design services to meet the Center's specific needs.

We have an extensive background and successful track records of providing facility evaluations and design in the public and private sector of commercial renovation projects. From local developers to the United State Postal Services and State government we have diverse experience with all types of buildings, project types, and uses.

We look forward to personally meeting with you to discuss this worthwhile project.

Very truly yours,

*N Visions, Inc.*

George M. Soltis, AIA  
Architect

GMS:bc

RECEIVED

2010 SEP 15 AM 10:19

WV PURCHASING  
DIVISION

**Expression of Interest  
to provide  
Professional Architectural and  
Engineering Services**

**to the**

**West Virginia  
Division of Rehabilitation  
Services**

**for**

**Renovation of the  
WVDRS Complex  
Institute, West Virginia**

**September 15, 2010**



CMA Engineering, Mechanical/Electrical  
Ham Engineering, Structural

## PROJECT TEAM



**GEORGE M. SOLTIS, AIA, NCARB**  
Principal/ President

### **Academic Experience**

Bachelor of Architecture with Distinction  
University of Kentucky – 1977  
Conservation USA – 2007

### **Registration**

NCARB No. 55,660  
Active: West Virginia, Ohio, Virginia, Kentucky  
Inactive: Tennessee

### **Professional Associations**

AIA/WV West Virginia  
AIA American Institute of Architects

### **Civic Organizations**

Boy Scouts of America,  
Committee Member,  
South Charleston  
Boy Scouts of America, Order of the Arrow,  
Central Region C4B,  
Associate Advisor  
Health Appeals Board,  
City of South Charleston

### **Responsibility**

Principal-in-Charge, Administration/Design  
Principal and Owner of N Visions

### **Project Experience**

#### **Educational**

New Sissonville Middle School  
Herbert Hoover High School  
Addition/Renovations  
Sissonville Branch, Kanawha County Library  
George Washington High School  
Addition/Renovations  
South Charleston High School  
Additions/Renovations  
Elkview Middle School Additions/Renovations  
South Charleston Public Library  
Addition/Renovation  
Kanawha County Schools Football Fields  
Bleachers and Renovations



**N VISIONS**  
A · R · C · H · I · T · E · C · T · S

## PROJECT TEAM



### **Commercial**

Ream Interests Office Building  
Tri-State Racetrack & Gaming Center  
Summers Square Office Building –  
One Kenton Drive/Northgate Office Building  
Capitol City Building/Renovation/Restoration

### **Health Care –**

#### **Over 25 years Health Care Experience**

IRC Rehabilitation Clinic – South Charleston, WV  
Stickler Medical Office Building – Charleston, WV  
St. Mary's Hospital – Huntington, WV  
Montgomery General Hospital – Montgomery,  
WV  
St. Joseph's Hospital – Buchannon, WV

### **Public/Government**

New United States Postal Facilities—  
Hurricane, WV  
Martinsburg, WV  
Bluefield, WV  
Princeton, WV  
Beckley, WV

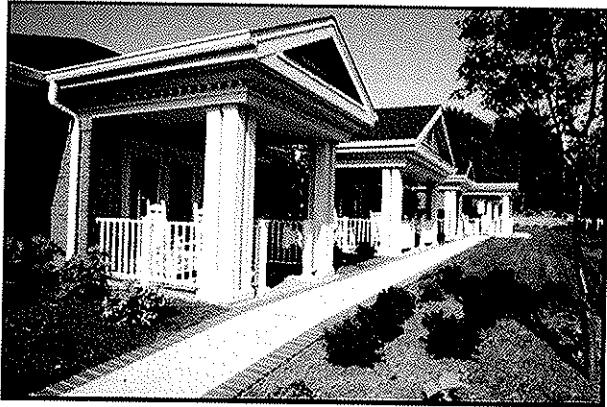
### **Historic Architecture**

Historic Architect,  
Meeting NPS 36CFR61.9 WV

Restoration of West Virginia  
Governor's Mansion Porch  
Criel Mound Park Master Plan  
Restoration/Renovation of  
Criel Mound  
Locomotive Shelter,  
Chief Logan State Park  
Gates Building, Charleston, WV  
Renaissance Tower, Charleston, WV  
USPS Point Pleasant, WV  
USPS Bluefield, WV



## PROJECT TEAM



**HOLLY R. HARPER, AIA, NCARB**  
Principal

**Academic Experience**  
Bachelor of Architecture  
Virginia Tech, Blacksburg, VA – 2001

**Registration**  
N.C.A.R.B. No. 68343  
Active: West Virginia

**Professional Associations**  
AIA/WV West Virginia  
AIA American Institute of Architects

**Responsibility**  
Principal, Project Manager

### **Project Experience**

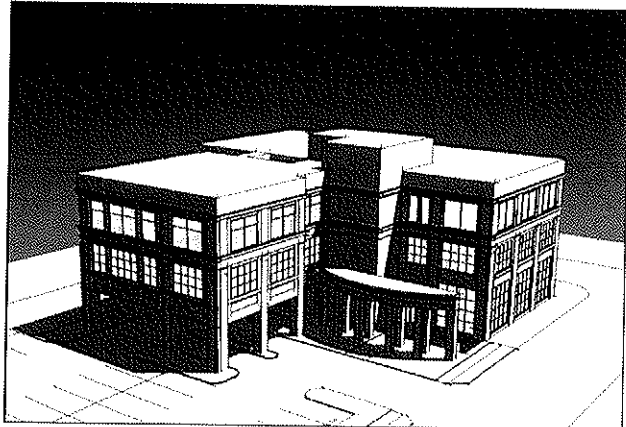
#### **Educational**

Hickory Knoll School, Delaware, OH  
Hickory Knoll School Bus  
Maintenance Facility, Delaware, OH  
Longfellow Elementary School,  
Westerville, OH

#### **Commercial**

RTI Foundation Office Suite Renovation –  
Ceredo Kenova, WV  
Atomic Distributing Warehouse Addition –  
Huntington, WV  
Taft, Stettinius & Hollister Law Offices,  
Columbus, OH  
Blayde's Apartment and Garage Addition  
Beckley, WV





**Health Care**

Saint Mary's Medical Center –  
Huntington, WV

- Operating Room Renovation
- Lab Renovation
- Medical Affairs' Office Suite
- Administration Conference Room Renovation
- Home Health Renovation
- Cath Lab #4 Renovation
- Infusion Renovation
- Intensive Care Units' Expansion & Renovation
- Conference Center & Outpatient Rehab Renovation
- Pharmacy Expansion Renovation
- Tri-State Neuro Renovation
- Psychiatric Unit Renovation
- Hyperbaric Chamber Renovation

Marshall University Medical Center –  
Huntington, WV

OB-GYN Medical Suite Renovation

Hospice House of Huntington –  
Huntington, WV

Hubbard Hospice House Addition –  
Charleston, WV

St. Francis Hospital –  
Charleston, WV

Medical Office Building HVAC Replacement

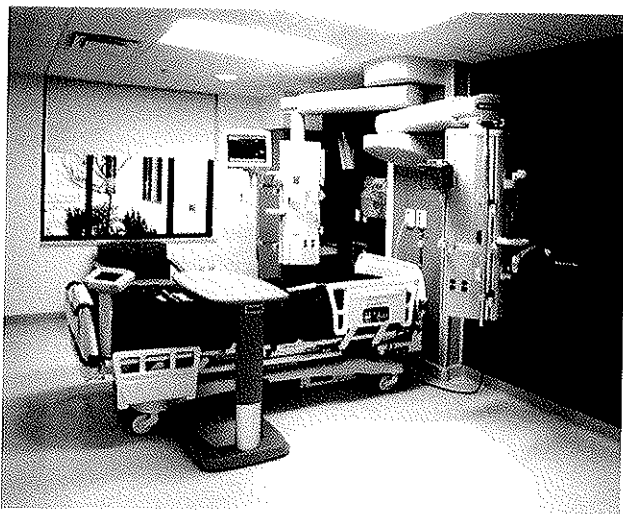
Thomas Memorial Hospital -  
South Charleston, WV

Physician's Office Build-out  
Orthopedics Renovation  
Psychiatric Unit Renovation

Wound Care Facility  
Columbus, OH

OSU Family Medicine, N. High Street  
Columbus, OH

OSU Family Practice, S. High Street  
Columbus, OH





**ELISSA VECELLIO MOSBY**  
Interior Designer

Academic Experience  
Bachelor of Fine Arts in Interior Design  
Layton School of Art - 1970  
Milwaukee, Wisconsin

**Professional Associations**

AIA Associate Member

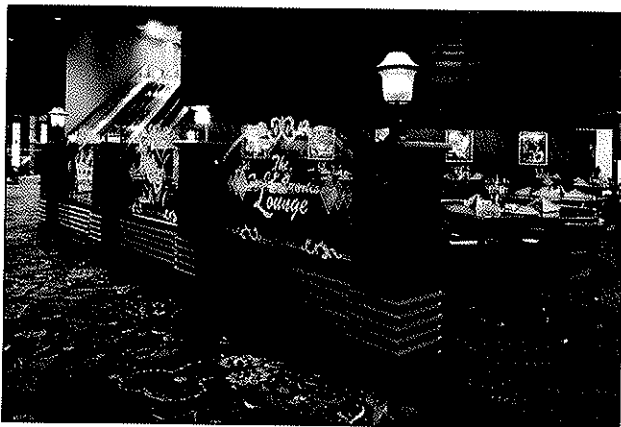
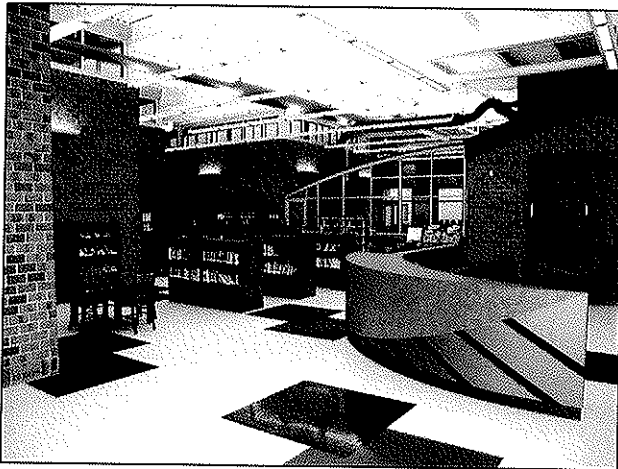
Ms. Mosby has design experience with architectural firms covering a wide scope of projects, with a strong emphasis on education, government, and health care related facilities. As the lead interior designer and space planner she matches client requirements with creative and functional solutions, to develop pleasing interior environments, which incorporate the client's long-range planning and maintenance requirements. Ms. Mosby's experience includes the following:

**Institutional**

WV School of Osteopathic Medicine:  
Admissions Building, Renovation of  
Administrative and Academic Offices  
Complex, Ronald Sharp Alumni Center –  
Lewisburg, WV

**Educational**

New Sissonville Middle School  
Kanawha County Library Main Branch  
Piedmont Elementary School  
South Charleston Public Library  
Sissonville Branch,  
Kanawha County Library  
George Washington High School  
Addition/Renovations  
South Charleston High School  
Addition/Renovation  
Greenbrier County Library – Lewisburg, WV  
WV School of Osteopathic  
Medicine Technology Building –  
Lewisburg, WV



**PROJECT TEAM**



**Commercial**

A.G. Edwards Offices – Charleston, WV  
Ream Interests Office Building –  
Lewisburg, WV  
Tri-State Gaming Center Addition – Nitro, WV  
McCabe Henley Properties – Charleston, WV

**Health Care**

**Over 30 years Health Care Experience**  
Thomas Memorial Hospital; Office Pavilion,  
Out Patient Clinic, Patient Tower –  
South Charleston, WV  
Robert C. Byrd Clinic – Lewisburg, WV  
St. Francis Hospital – Charleston, WV

**Public/Government**

Robert C. Byrd Federal Courthouse –  
Charleston, WV  
Veterans Administration Medical Center –  
Huntington, WV



# P R O F I L E

Timothy Cox, P.E.,  
NCEES.  
President  
Mechanical Engineer

(304) 598-2558  
tcox@cma.wv.com

## EDUCATION

University of Colorado  
Boulder, Colorado  
Degree: Mechanical Engineering B.S.

## REGISTRATIONS/PROFESSIONAL AFFILIATIONS

Association of Energy Engineers-CBCP

Registered Professional Engineer in WV, CO, TN, VA,  
MD, KY

CPD (Certified in Plumbing Engineering)

Member of ASHRAE

American Society of Plumbing Engineers

National Association of Fire Protection Engineers

WV Society of Healthcare Engineers

## EXPERIENCE

Mr. Timothy Cox, President and Senior Mechanical Engineer of CMA Engineering brings 24 years of mechanical design experience to our clients. Mr. Cox has been project manager and project engineer for a variety of projects.

## PROJECTS

**West Virginia University**-Open End Contract since 1999  
Mountain Lair Plaza Renovations  
Boreman HVAC/Plumbing/Fire Sprinkler Upgrades  
Soccer Stadium  
Coliseum Life/Safety Renovations  
Coliseum Locker Room Suites  
Engineering Science Building Addition/Renovations  
Arnold Hall Fire Alarm/ Fire Sprinkler Upgrades  
Wrestling Training Facility

### WVU Health Sciences Center

Electrical and Mechanical Utility Extensions for  
BioMedical Research Facility

### West Virginia University Hospitals

WV Eye Institute-MEP systems design for new  
facility  
Cheat Clinic-MEP design for new clinical addition  
WVUH Emergency Department-HVAC, electrical,  
fire and communication systems design for new  
addition  
Chestnut Ridge Hospital-various MEP renovations  
Healthworks Rehab and Fitness -MEP systems  
design for new facility

### Mylan Pharmaceuticals, Morgantown, WV

Various projects including HVAC, plumbing, fire  
Sprinkler and controls for new office building, fluid  
bed addition, north plant expansion, parking garage  
and weighing and packaging.

**CMA**  
ENGINEERING

Clingenpeel/McBrayer & Associates, Inc.

824 Cross Lanes Drive  
Charleston, West Virginia 25313

(304) 343-0316 tel  
(304) 343-5146 fax

5 Riddle Court  
Morgantown, West Virginia

(304) 598-2558 tel  
(304) 598-2472

www.cma.wv.com

# P R O F I L E

Daniel Lee Ellars, P.E.

Principal  
(304) 343-0316  
dellars@cmawv.com

## EDUCATION

West Virginia University Institute of Technology  
Montgomery, West Virginia.  
Bachelors of Science in Electrical Engineering

West Virginia State University  
Institute, West Virginia  
Bachelors of Science in Business Administration

## REGISTRATIONS/PROFESSIONAL AFFILIATIONS

Registered Professional Engineer in West Virginia  
National Fire Protection Association (NFPA)  
Institute of Electrical and Electronics Engineers (IEEE)  
American Society of Heating, Refrigerating and Air-  
Conditioning Engineers (ASHRAE)

## EXPERIENCE

Mr. Daniel L. Ellars, Electrical Engineer for Clingenpeel/McBrayer & Associates, Inc. brings 19 years of electrical design experience to our clients. Mr. Ellars has been a project manager and project engineer for a variety of projects including commercial and industrial facilities as well as for both power and tele-communications utilities.

## PROJECTS

### Educational Experience

**Sissonville Middle School**-Electrical systems design for new educational facility  
Jackson County (WV) Schools—Electrical Upgrades & Expansions.

### Hospital Experience

West Virginia University / Ruby Memorial Hospitals  
West Virginia Eye Institute—Electrical systems design for new facility.  
Thomas Memorial Hospital—Electrical systems survey, upgrades and documentation. Standby emergency power engine/generator replacement.

### Military Experience

West Virginia Army National Guard  
Elkins Readiness Center-Electrical systems design for new facility  
Eleanor (WV) Maintenance Center—Electrical systems design for new facility.

### Correctional Experience

St. Mary's Correctional Center—Multiple emergency power engine/generator systems with combined control and monitoring.

### Industrial Experience

Mylan Pharmaceuticals  
Mylan Office & Lab Buildings—various electrical systems designs for new, existing and expanded facilities including new 23kV/12kV switchyard and grounding plain layout.



Clingenpeel/McBrayer & Associates, Inc.

824 Cross Lanes Drive  
Charleston, West Virginia 25313

(304) 343-0316 tel  
(304) 343-5146 fax

5 Riddle Court  
Morgantown, West Virginia

(304) 598-2558 tel  
(304) 598-2472

www.cmawv.com

# P R O F I L E

## James A. Kerns Mechanical/Electrical Designer

(304) 343-0316  
jkerns@cmawv.com

### EDUCATION

West Virginia State College  
Institute, West Virginia  
Degree: Bachelor of Science in Industrial Technology/  
Building Construction

### REGISTRATIONS/PROFESSIONAL AFFILIATIONS

Member of ASHRAE

### EXPERIENCE

Mr. James A. Kerns has over 32 years experience in Mechanical and Electrical engineering design. He has been responsible for design projects in the educational, commercial, and health care fields.

Mr. Kerns has been a great asset to Clingenpeel/McBrayer & Associates. His knowledge and experience enables him to complete project designs in a clear and concise manner and in a timely fashion.

### PROJECTS

#### Kanawha County Schools

George Washington High School-HVAC Renovations  
George Washington High School-Classroom Additions  
Horace Mann Middle School-HVAC Renovations  
Elkview Middle School-Classroom Additions  
Elkview Middle School-Fire Alarm System  
Ruffner Elementary School-Classroom Additions  
Point Harmony Elementary School-Activity Building

#### Concord College

Athens, West Virginia — various renovation projects throughout the campus, which include Twin Towers Fire Alarm, Twin Towers Elevator Renovation, and Alexander Arts Center Chiller Replacement.

#### U.S. Postal Service

Open End Contract Since 1993, which encompasses numerous Post Office Renovations, new Post Offices, and new Postal Maintenance Facilities. Mr. Kerns has been Project Manager for over 65 projects for the U.S. Postal Service.

#### Yeager Airport

New Parking Garage  
New Emergency Generator  
Electrical Upgrades  
Fire Alarm System Upgrade  
Security Upgrade  
Fire Sprinkler Renovations



Clingenpeel/McBrayer & Associates, Inc.

824 Cross Lanes Drive  
Charleston, West Virginia 25313

5 Riddle Court  
Morgantown, West Virginia

(304) 343-0316 tel  
(304) 343-5146 fax

(304) 598-2558 tel  
(304) 598-2472

www.cmawv.com

# P R O F I L E

**Matt Corathers, E.I.**  
Mechanical Designer

(304) 598-2558  
mcorathers@cma.wv.com

## EDUCATION

West Virginia University  
Bachelor of Science -Mechanical Engineering

## PROFESSIONAL DEVELOPMENT

Successfully passed Fundamentals of Engineering Exam

## EXPERIENCE

Matt is a recent addition to CMA Engineering having previously worked for Whitman, Requardt and Associates in Baltimore, MD.

## PROJECTS

### West Virginia University

Mechanical design for new two-story child care facility

### University High School, Morgantown, WV

Mechanical design for renovations/ upgrades to the HVAC systems

### Randolph County Building

- Mechanical design for completion of two story addition and modifications of the existing second floor to be used by the Family Court

### Monongalia County Family Court

Mechanical design for renovations to 4,850sf in existing court facility

### University of Maryland Field House

Mechanical design for the replacement of two heat exchangers and a domestic use-hot water generator

### Vilotteville Elementary School, Maryland

Mechanical design for the addition of 24 new classrooms



Clingenpeel/McBrayer & Associates, Inc.

824 Cross Lanes Drive  
Charleston, West Virginia 25313

(304) 343-0316 tel  
(304) 343-5146 fax

5 Riddle Court  
Morgantown, West Virginia

(304) 598-2558 tel  
(304) 598-2472

www.cma.wv.com

# P R O F I L E

**Jerry F. Betarie**  
Electrical Designer  
(304) 598-2558  
jbetarie@cmawv.com

## EDUCATION

Penn State, University Park, PA  
Degree: B.S. Electrical Engineering.

## PROJECTS

**University High School, Morgantown, WV**  
Electrical design services for the  
renovations to the electrical system

**Ridgedale Elementary School**  
Electrical design for renovations/  
upgrades to electrical system

**Fairfield Inn, Morgantown, WV**  
Electrical design for new 50,000sf hotel

**Barbour County Bank, Philippi, WV**  
Electrical design for renovations of  
existing facility and the addition of  
A two-story, 3,500sf, building

**Fairmont Federal Credit Union**  
Electrical design for tenant fit-out of the  
second floor space

**Rainelle Elementary School**-Electrical design for  
new educational facility

## EXPERIENCE

Mr. Betarie has 19 years experience in Project  
Management, Electrical Design and Project  
Estimating.



Clingenpeel/McBrayer & Associates, Inc.

824 Cross Lanes Drive  
Charleston, WV 25313  
(304) 343-0316 tel  
(304) 343-5146 fax

5 Riddle Court  
Morgantown, WV 26505  
(304) 598-2558 tel  
(304) 598-2472

w w w . c m a w v . c o m

# P R O F I L E

**Jeremy R. Perry, E.I.**

**Mechanical Designer**

(304) 343-0316

[jperry@cmawv.com](mailto:jperry@cmawv.com)

## EDUCATION

San Jose University  
San Jose, CA  
Degree: Mechanical Engineering B.S.

## PROFESSIONAL DEVELOPMENT

Successfully passed Fundamentals of Engineering Exam  
WV Society of Healthcare Engineers

Various ASHRAE, HVAC and LEED design courses

## EXPERIENCE

Jeremy joined CMA Engineering in 2008 having previously worked for MKK Consulting Engineers, Billings, Mt.

## PROJECTS

**WVANG Elkins Readiness Center**-HVAC design, load calculations, LEED Analysis

**Gassaway Armory**- HVAC Design, load calculations

**Pikeview Middle School**-HVAC Design, load calculations, LEED analysis, comparative cost analysis, hydronic layout

**Holley Grove Mansion**- HVAC design, hydronic design, load calculations

**Sissonville Middle School**- HVAC design and load calculation

**Amos-Caravelli Funeral Home**-HVAC design and load calculations

**St. Albans Armory**- HVAC Design, load calculations and LEED analysis,

**Lewisburg Elementary School**-HVAC Design for new Facility



**Clingenpeel/McBrayer & Associates, Inc.**

824 Cross Lanes Drive  
Charleston, West Virginia 25313

(304) 343-0316 tel  
(304) 343-5146 fax

5 Riddle Court  
Morgantown, West Virginia

(304) 598-2558 tel  
(304) 598-2472

[www.cmawv.com](http://www.cmawv.com)

# P R O F I L E

## Larry Weese Mechanical/Plumbing Designer

(304) 343-0316  
lweese@cmawv.com

### EDUCATION

West Virginia University  
Morgantown, West Virginia  
Degree: Division of Forestry BS,MS

### PROJECTS

#### Emergency Response Facilities

Randolph County 911-New Facility  
Mason County 911-New Facility  
Raleigh County 911-New Facility  
Orchard Manor Fire Station-New Facility

#### Military Facilities

Elkins Readiness Center-New Facility  
Gassaway Armory-Renovations and Addition

#### Medical Facilities Experience

##### Charleston Area Medical Center

Women & Children's Hospital- Renovations to  
Emergency Room

##### Hess Medical Office Building-New Facility

##### Pinewood Medical Office Building-Renovations

##### Southern West Virginia Hospice-New Facility

##### NorthGate Doctor's Office Building-New Facility

#### WV Department of Health and Human Resources

Office of Chief Medical Examiner, Charleston  
New Facility Mingo County

### PROFESSIONAL DEVELOPMENT

Various seminars and technical sessions

### EXPERIENCE

Mr. Larry Weese, Mechanical Designer for Clingenpeel/McBrayer & Associates, Inc. brings 18 years of mechanical design and project management experience to our clients.

#### Industrial Experience

Standard Laboratories-Laboratory Addition  
Dow Process Control-New Facility  
Diamond Electric-Expansion

#### Commercial Experience

Bobcat of Advantage Valley-New Facility  
Allegheny Springs Restaurant

The logo for Clingenpeel/McBrayer & Associates, Inc. features the letters 'CMA' in a large, stylized, serif font. The letters are interconnected, with the 'C' and 'M' sharing a vertical stroke on the left, and the 'A' sharing a vertical stroke on the right. The 'M' has a distinctive shape with a small gap at the top.

ENGINEERING

Clingenpeel/McBrayer & Associates, Inc.

824 Cross Lanes Drive  
Charleston, West Virginia 25313

5 Riddle Court  
Morgantown, West Virginia

(304) 343-0316 tel  
(304) 343-5146 fax

(304) 598-2558 tel  
(304) 598-2472

www.cmawv.com

# **Ham Engineering**

Structural Engineering

South Charleston, WV

---

## **Ronald L. Manning**

Senior Structural Designer

### **Education**

One year college, Kansas City, MO - Machine Drafting and Tool Design

John Brown Quality Training Program

AutoCad R-11 through R-13 John Brown Training

### **Professional Experience**

Mr. Manning has over thirty years experience with industrial, chemical, commercial and residential projects. His responsibilities include design, drafting both manually and using AutoCad, shop fabrication detailing, fieldwork and full support for construction and steel erection.



# **Ham Engineering**

Structural Engineering  
South Charleston, WV

---

## **Judson C. Ham, Jr., PE**

President/Principal Engineer

### **Education**

West Virginia Institute of Technology  
Bachelor of Science in Civil Engineering - May 1974

West Virginia College of Graduate Studies  
Master of Science in Engineering - December 1978

### **Registered Professional Engineer**

West Virginia  
Ohio  
Pennsylvania  
Tennessee  
Georgia  
North Carolina  
Virginia

### **Professional Associations**

American Society of Civil Engineers  
American Concrete Institute  
The Masonry Society  
Structural Engineering Institute

### **Professional Experience**

Mr. Ham has over thirty years experience in the practice of structural engineering and is currently the President and Principal Engineer of Ham Engineering, an engineering firm specializing in providing consulting structural engineering, design, drafting, inspection and evaluation of commercial, industrial, and residential projects for architects, contractors, and corporations in the West Virginia region. Previously, as Civil/Structural Department Manager, he was responsible for all civil and structural engineering, design, and drafting done by a major international engineering firm servicing the West Virginia, Ohio, and Kentucky region. Also, he has extensive experience with plant engineering for major manufacturers and local structural steel fabrication companies.

## UPPER KANAWHA VALLEY TECHNOLOGY BUILDING



Upper Kanawha Valley  
Technology Community Building  
Montgomery, West Virginia

Basement build out for the  
National Publishing Innovation  
Center, ink research labs.

Cost:	\$275,000
Completion:	2008

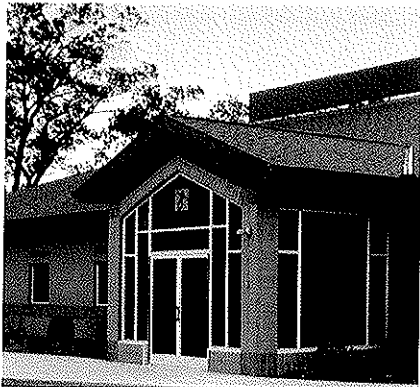


A G Edwards & Sons, Inc.  
500 Lee Street East  
Charleston, West Virginia 25301

Partial Fourth Floor renovation of  
Laidley Tower, Charleston,  
West Virginia to provide office space

Size:	6,639 sf
Construction Cost:	\$ 450,000
Completion:	2007

# STICKLER MEDICAL OFFICE

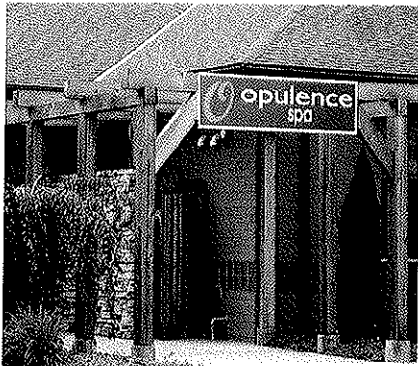


Medical Office and Spa  
Northgate Office Park  
Charleston, West Virginia

Medical office building and health  
spa facility consisting of:

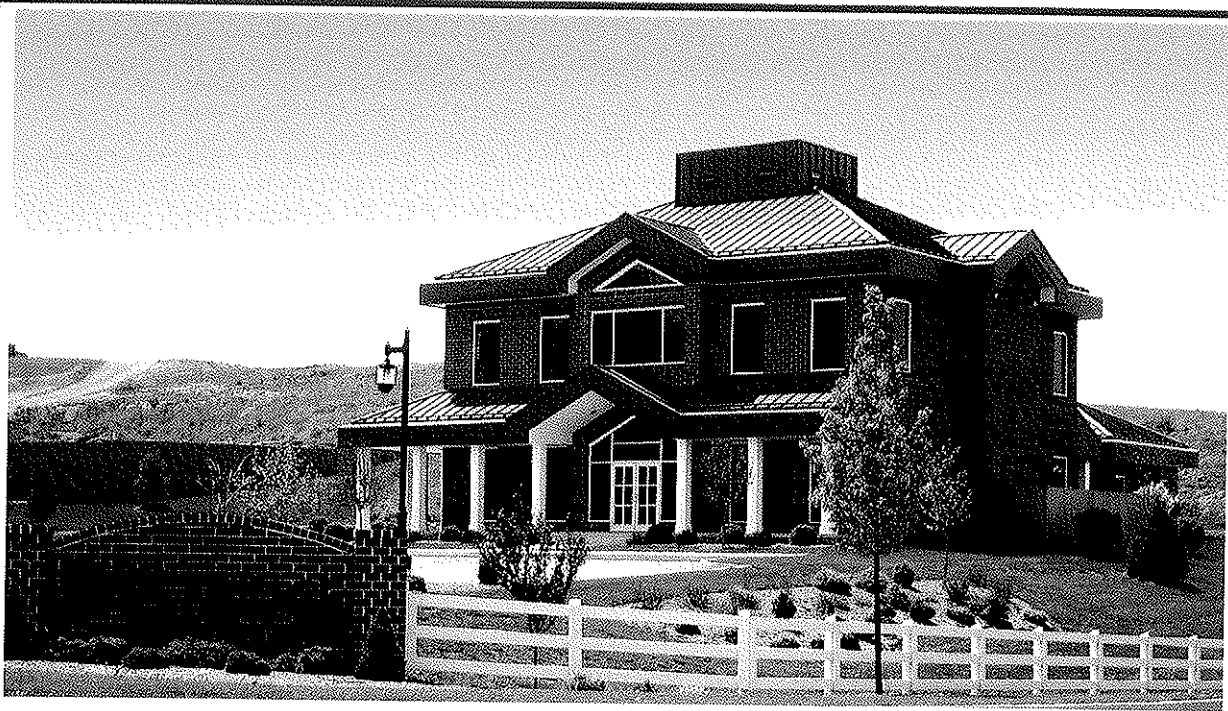
Administrative area  
Exam Rooms  
Doctors Offices  
Education/Classroom Center  
Exercise Area/Gym  
Spa Area

Size: 13,000 sf  
Cost: \$ 2,000,000  
Completion: 2004



# VISIONS

A · R · C · H · I · T · E · C · T · S

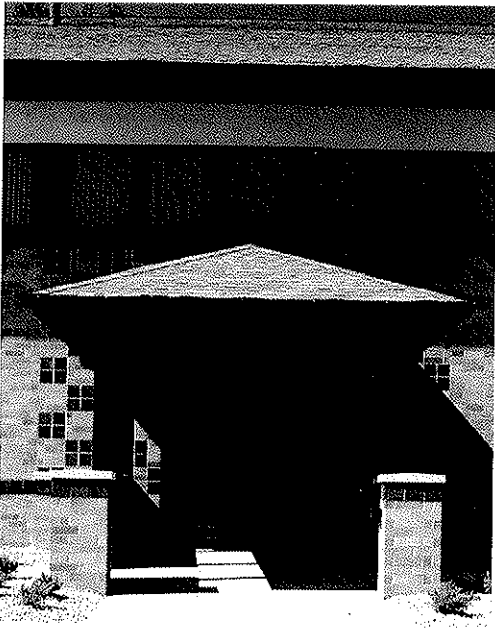


Ream Office Building  
Lewisburg, West Virginia

Two-story, 5,000 sf office building and associated site development with 20 parking spaces, and formal entrance design for office and adjacent residential development.

Size: 5,000 sf  
Construction Cost: \$ 1,036,000  
Completion: 2005

## NORTHGATE



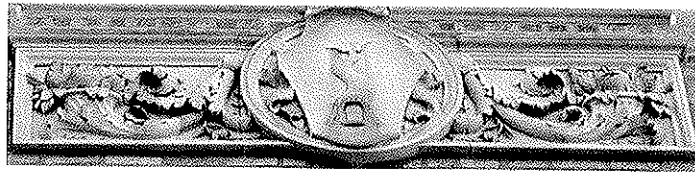
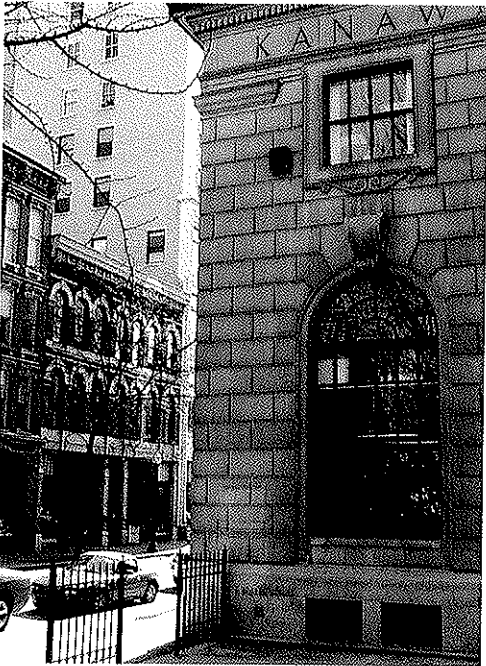
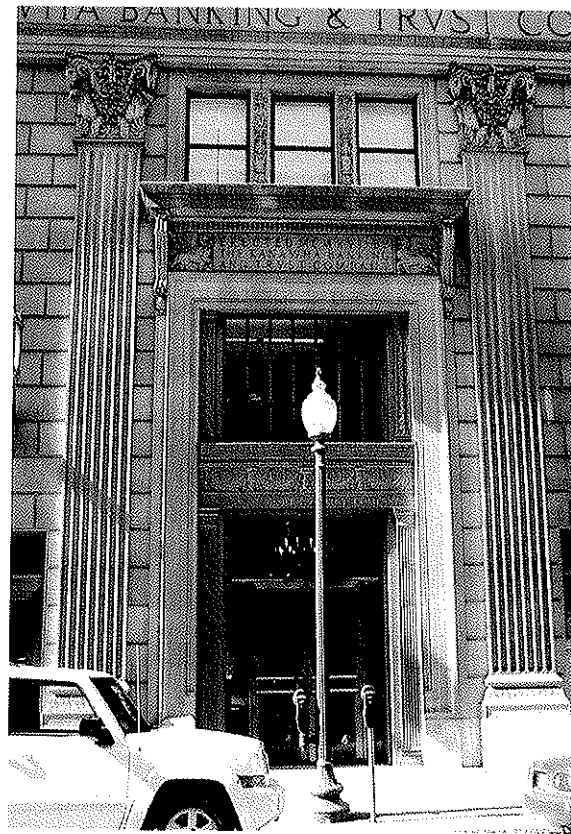
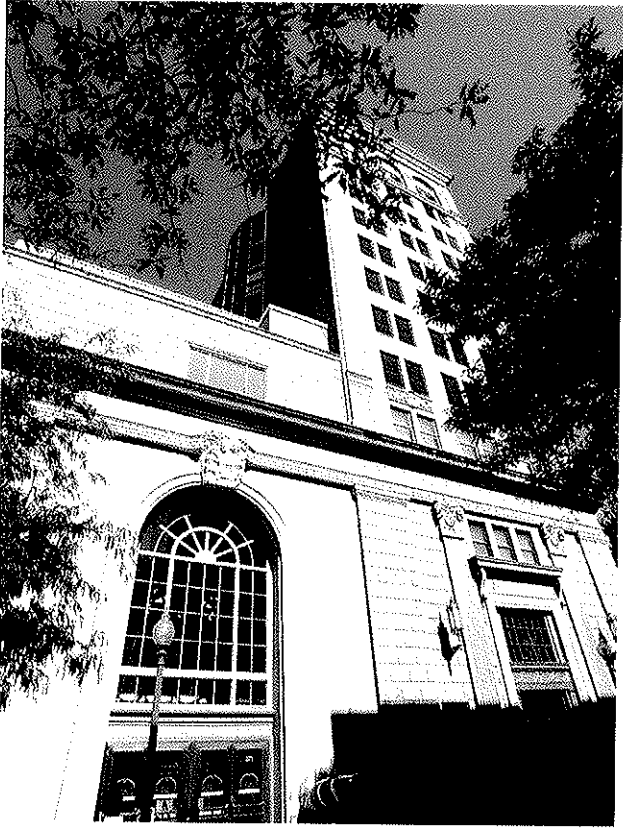
One Kenton Drive  
Northgate Office Park  
Charleston, West Virginia

Two stories with individual on grade entries for each floor, building designed to blend with the mountaintop location and to attract local and national tenants.

Size:	14,000 sf
Cost:	\$ 860,000
Completion:	1994



## KB&T RENAISSANCE TOWER



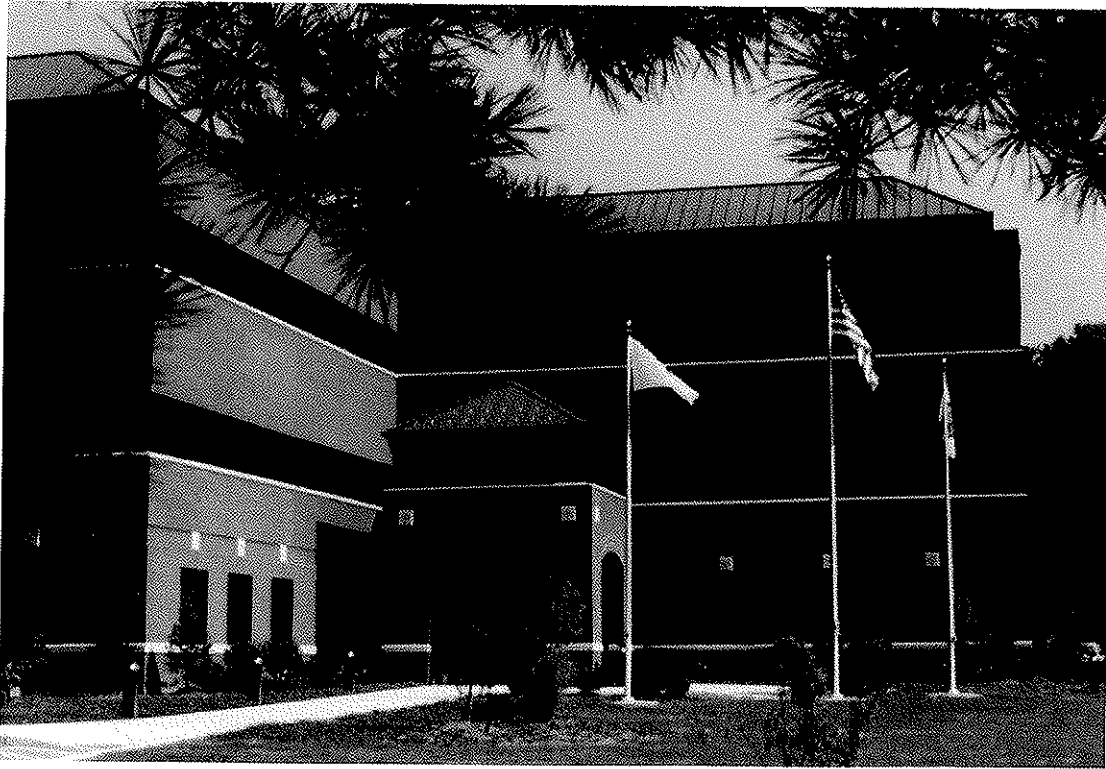
KB&T Renaissance Tower  
Charleston, WV

Existing eleven story landmark bank and office building restored and converted into Class A office space and condominiums. Restoration/renovation designed to make the tower completely ADA accessible.

Completion

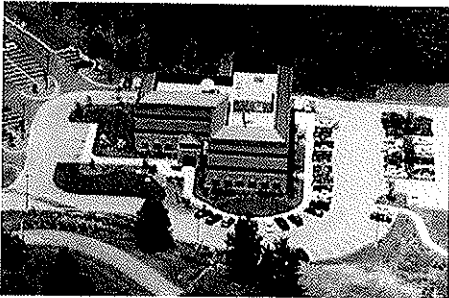
1999

# MARSHALL UNIVERSITY GRADUATE COLLEGE



Marshall University  
Graduate College  
Administration Building  
South Charleston, West Virginia

Size: 40,000 sf  
Construction Cost: \$ 3,440,000  
Completion: 1995



VISIONS

A · R · C · H · I · T · E · C · T · S



## McCABE-HENLEY AND ALLEGHENY BOOKS



**Allegheny Books Interior**



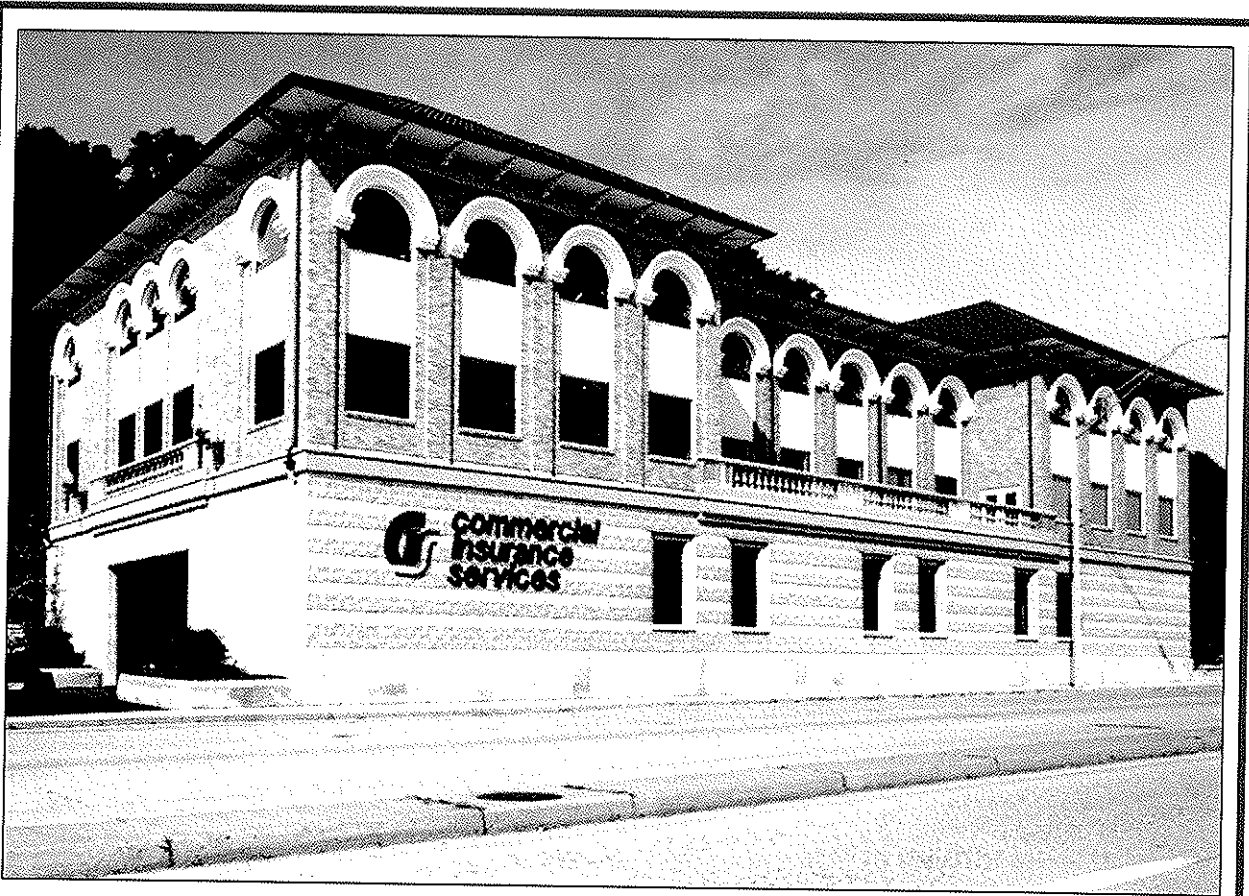
McCabe-Henley Office  
Capitol Street  
Charleston, West Virginia  
Renovation/restoration of a 19<sup>th</sup> century building  
Into class A office space  
Cost: \$ 200,000

Trans Allegheny Books  
Capitol Street  
Charleston, West Virginia  
Renovation/restoration of a 19<sup>th</sup> century building  
Into a upscale book store reading room  
Cost: \$ 850,000  
Completion: 1993

**VISIONS**

A · R · C · H · I · T · E · C · T · S

## COMMERCIAL INSURANCE

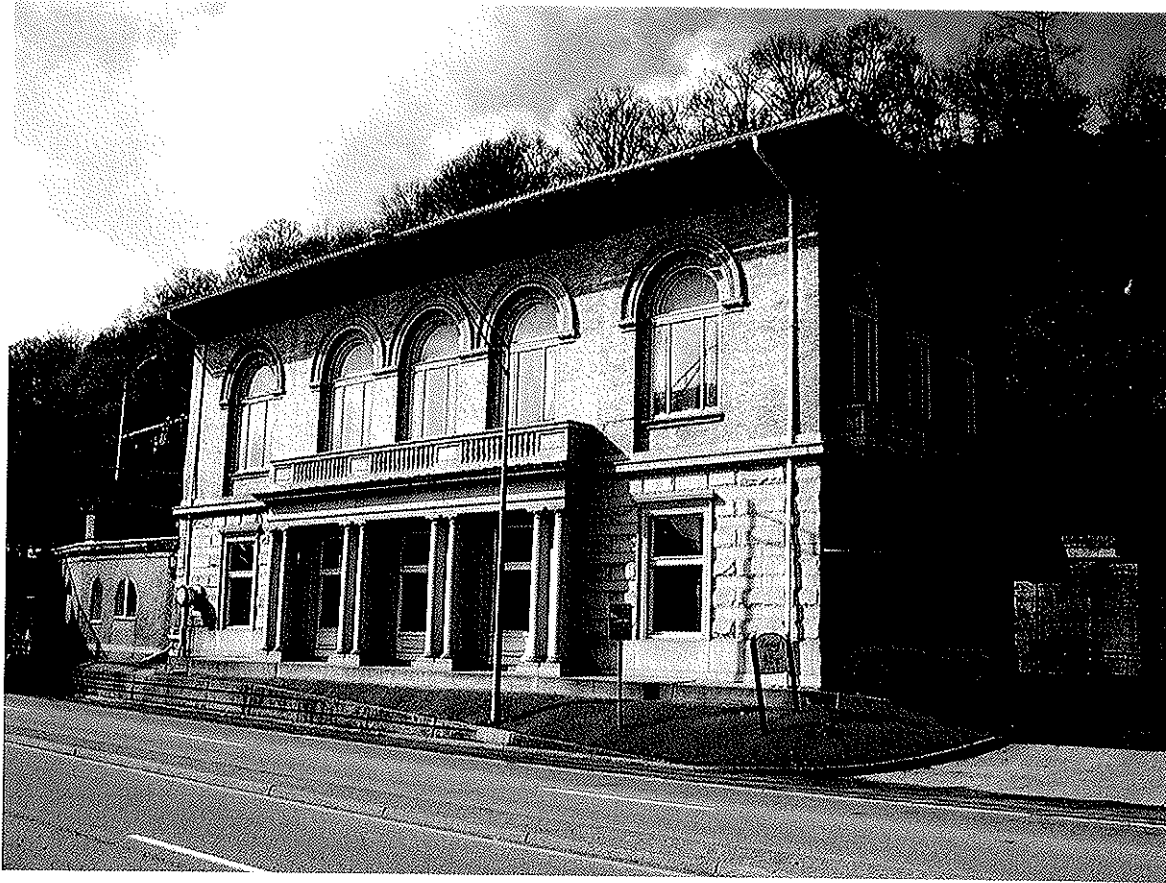


Commercial Insurance Services  
340 MacCorkle Avenue S.E.  
Charleston, West Virginia

New commercial office building with ground floor parking. Building designed to Complement a 19<sup>th</sup> century Railroad Station on the same property

Size:	29,305 sf
Construction Cost:	\$ 1,010,000
Completion:	1991

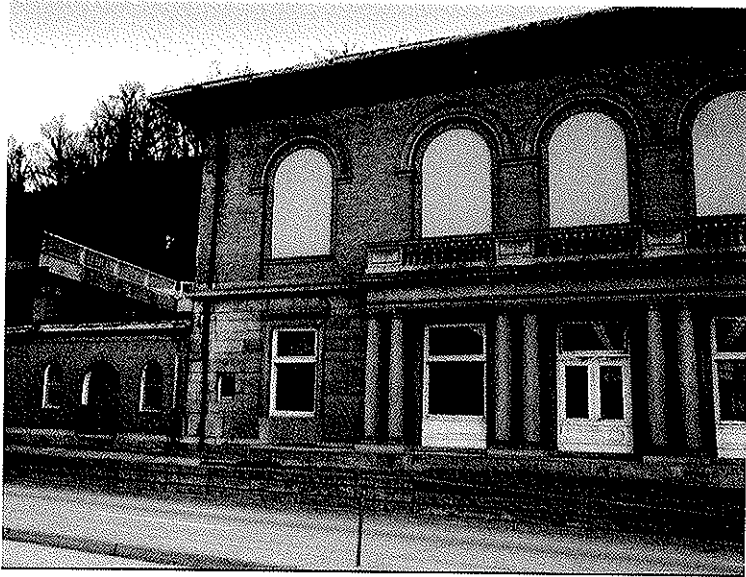
## C & O TRAIN STATION



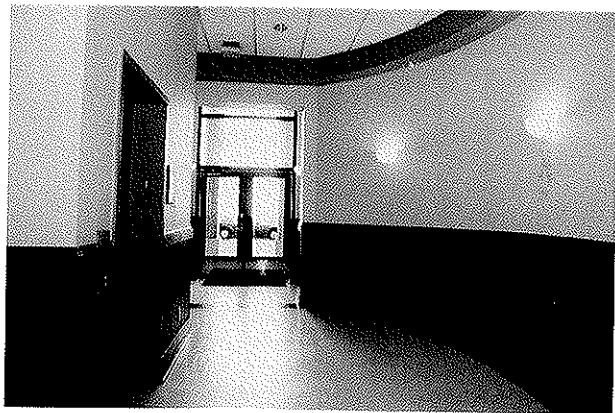
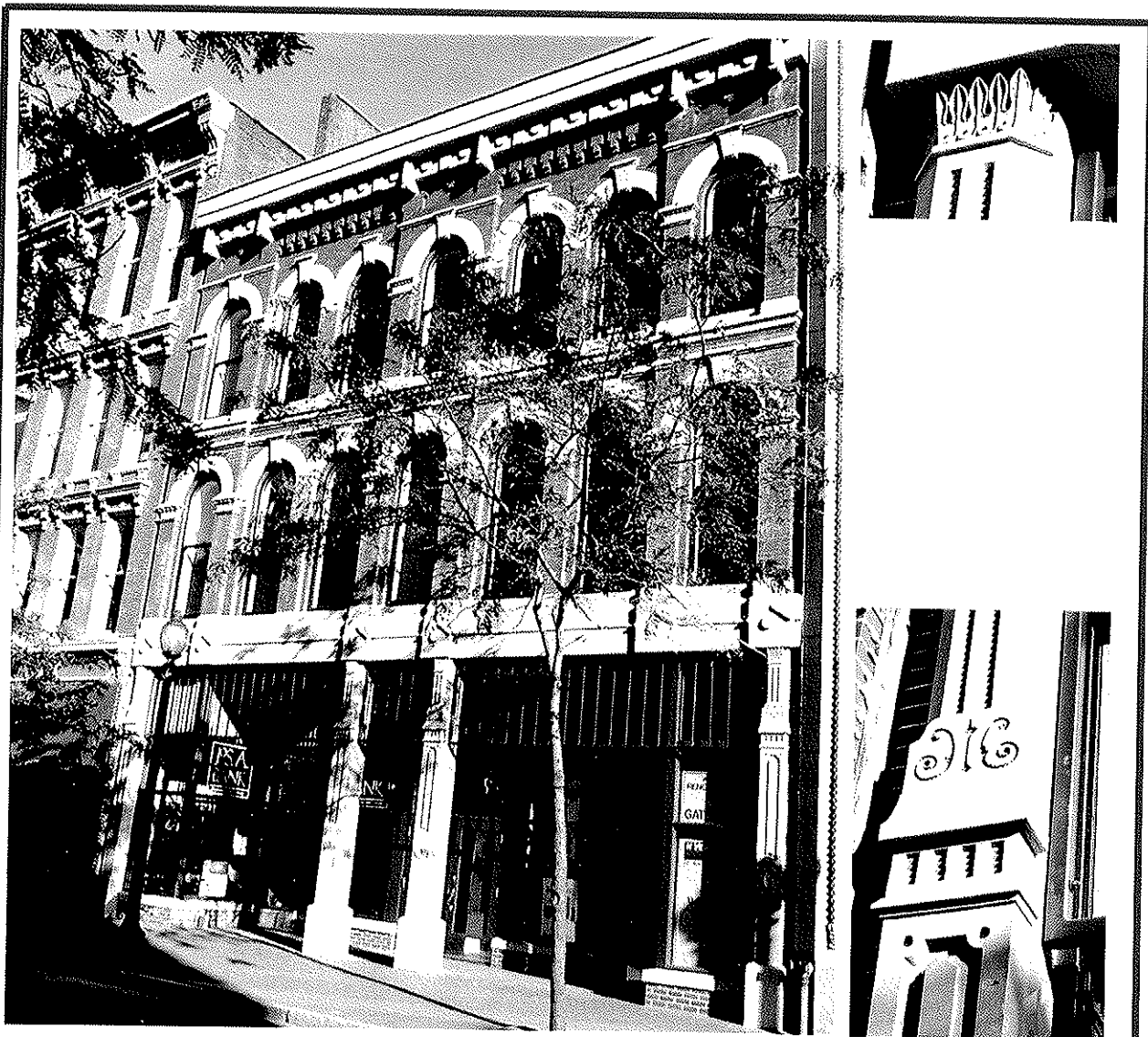
C & O Train Station  
Restoration/Renovation  
Charleston, WV

Multiple use  
redevelopment including  
Amtrak Station  
Commercial Office Space  
Restaurant

Completion                      1990



## THE GATES BUILDING



The Gates Building  
108 ½ Capitol Street

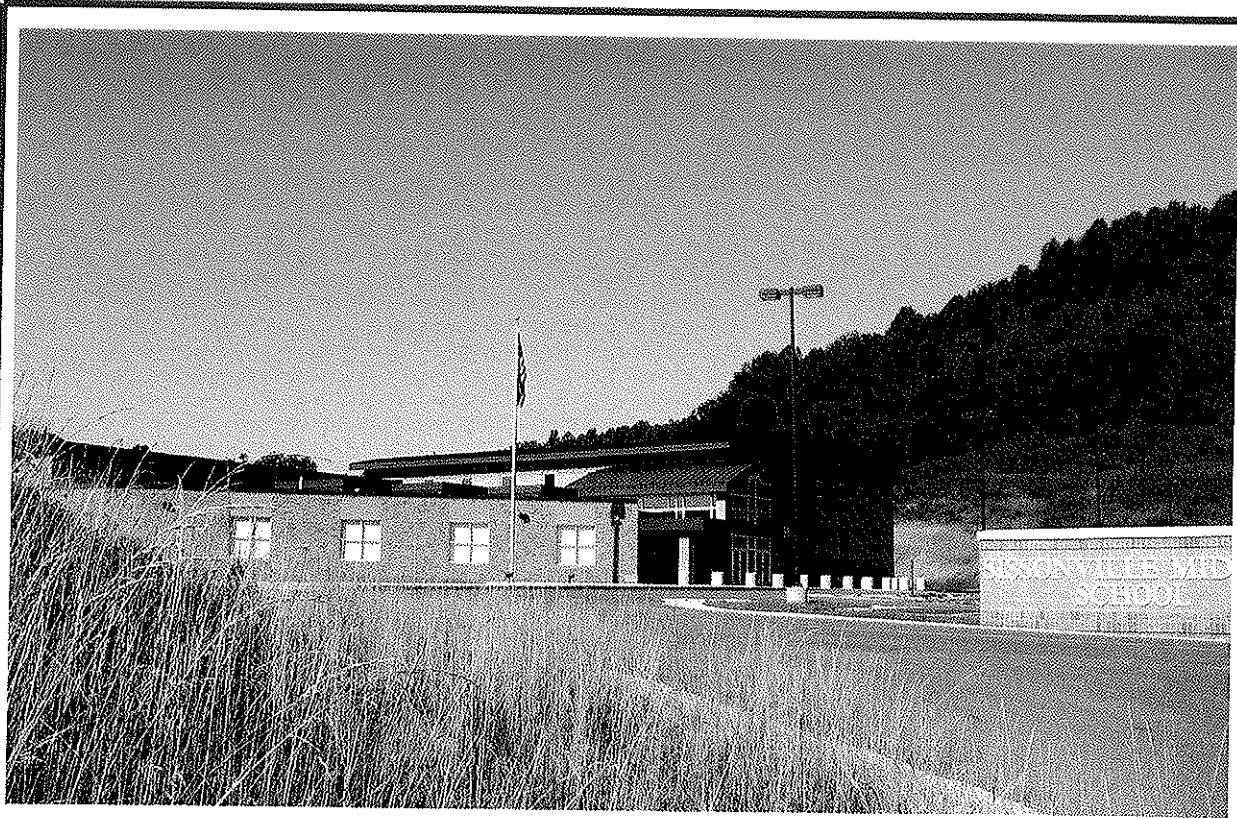
Charleston, West Virginia

Renovation and restoration of a  
dilapidated 19<sup>th</sup> century retail  
and office building

Cost: \$ 550,000

Completion: 1993

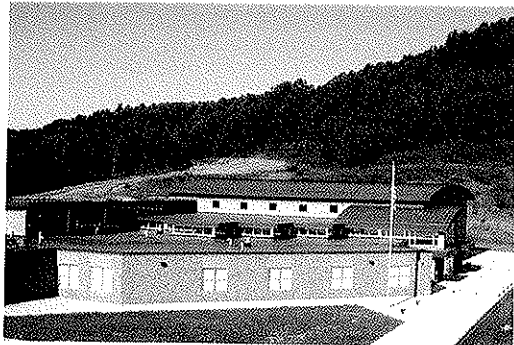
# SISSONVILLE MIDDLE SCHOOL



**Sissonville Middle School  
5950 Sissonville Road  
Sissonville, West Virginia**

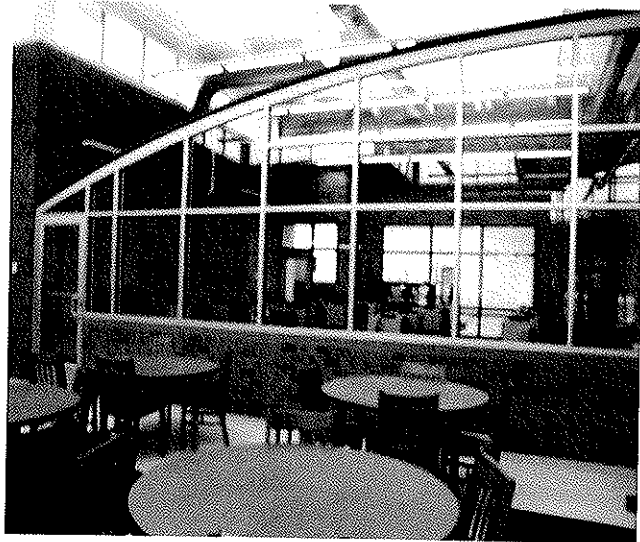
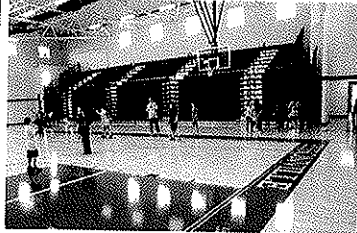
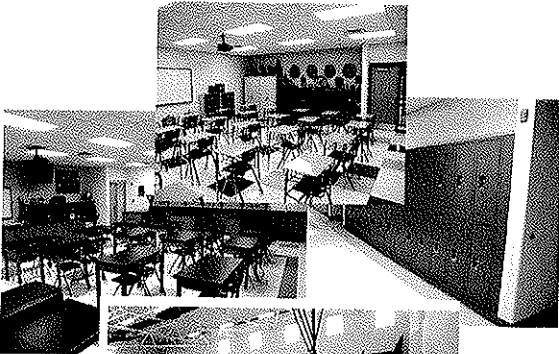
**New construction  
consisting of classrooms,  
gymnasium,  
commons/cafeteria,  
kitchen, media center,  
administrative offices,  
band/choir room, toilets,  
and related site work**

**Size: 70,000 sf  
Cost: \$ 17,000,000  
Completion: 2007**

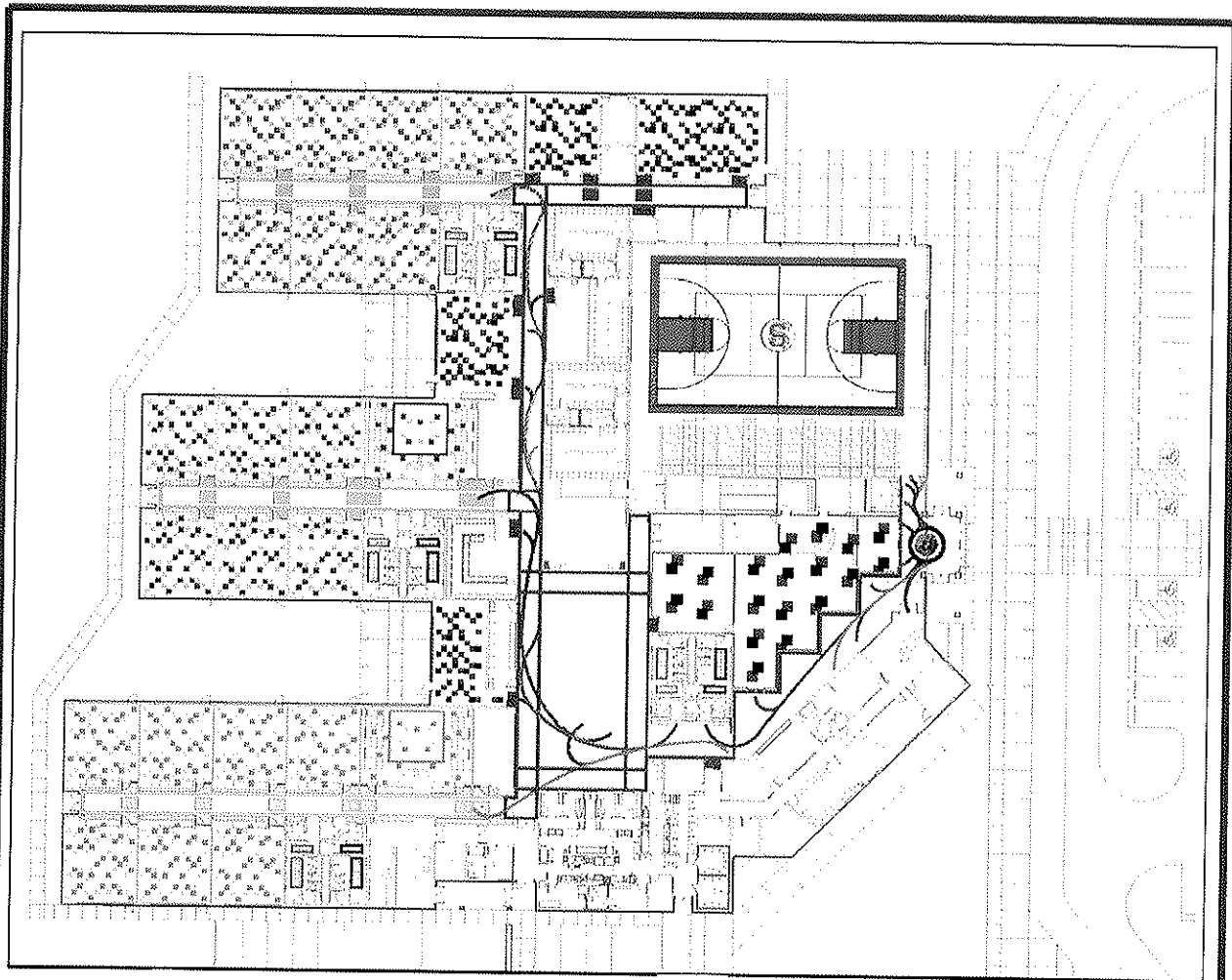




SISSONVILLE MIDDLE SCHOOL



# SISSONVILLE MIDDLE SCHOOL



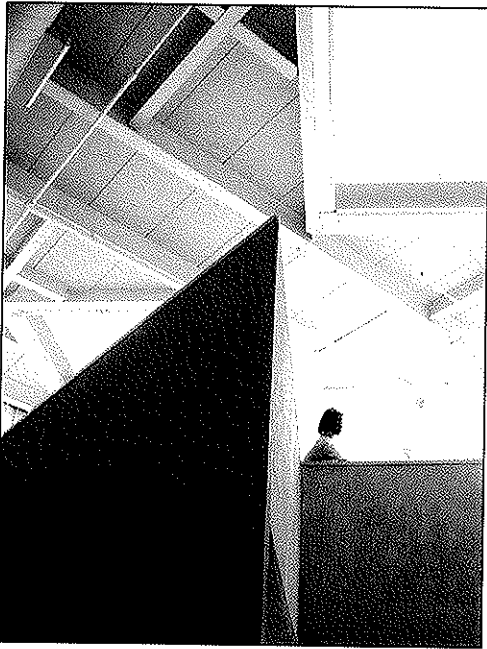
# GEORGE WASHINGTON HIGH SCHOOL



George Washington High School  
1522 Tennis Club Drive  
Charleston, West Virginia

New classroom wing with 15 classrooms, two gang toilets, additional commons area with a new entry, an auxiliary gym, and renovations to existing office area, lower level classrooms, library, and miscellaneous area for teacher offices.

Size: Addition /renovation	35,462 sf
	9,000 sf
Construction Cost:	\$ 3,400,000
Completion:	2002





# SOUTH CHARLESTON PUBLIC LIBRARY



South Charleston Public Library  
South Charleston, West Virginia

New main accessible entry, complete interior renovation and reconstruction along with and including new ADA staff and public toilets, stack areas, circulation desk and reading areas, with three small additions to an existing library facility.

Library remained open during all phases of construction.

Renovations	15,455 sf
Addition	2,396 sf
Construction Cost	\$ 1,200,000
Completion	2003



Before

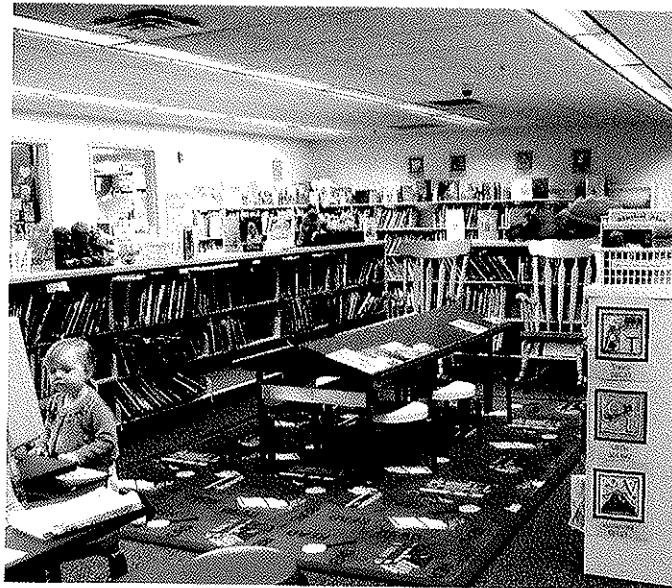
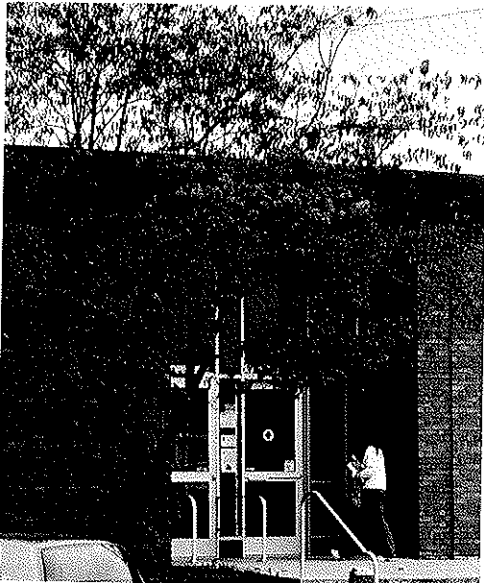


After

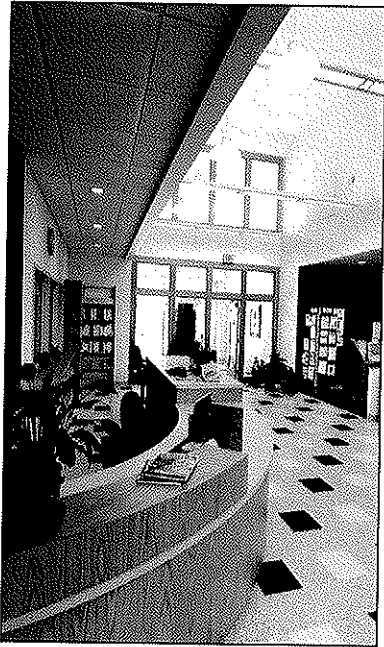
**VISIONS**

A · R · C · H · I · T · E · C · T · S

SOUTH CHARLESTON PUBLIC LIBRARY



# SISSONVILLE PUBLIC LIBRARY

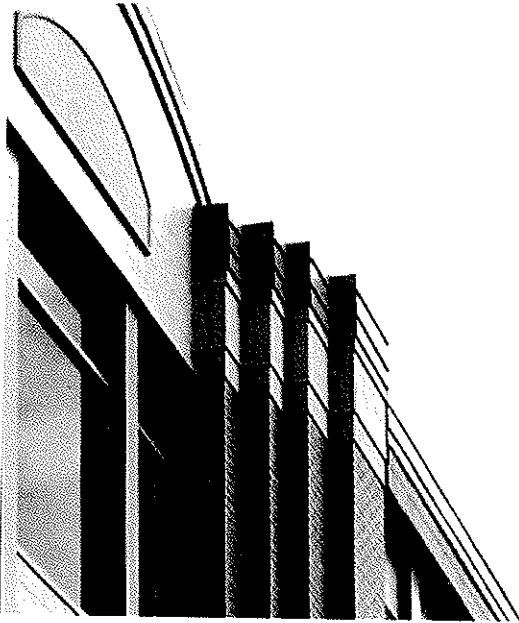


Sissonville Branch Library  
One Tinney Lane  
Sissonville, West Virginia

Sissonville Branch Library a new prototype,  
6,700 square foot one-story branch library for  
the Kanawha County Public Library system,  
located in Sissonville, West Virginia.

Size:	6,700 sf
Cost:	\$ 850,000
Completion:	2001

## COMPANY PROFILE



N Visions has designed and administered the construction of over 200 million dollars of projects in West Virginia since 1985.

N Visions has experience in a wide range of architectural projects including educational, institutional, healthcare, housing, public and private facilities for developers and non-profits, historic preservation, and residential properties.

Design is the heart of a successful project. It is important to provide the proper aesthetics, functional relationships, space planning, and to be a good neighbor in the community and meet the project budget. N Visions will make certain that your project is successful for both the owner and the community.

### FACILITIES PLANNING AND PROGRAMMING

Determining the actual needs of the client and how to adapt them to the available environment is essential for a successful project. N Visions will assist in defining the needs and desires of the client/user prior to the design of the project.

### SITE EVALUATION

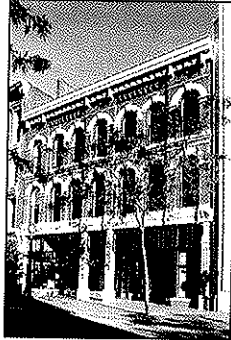
N Visions Architects can provide studies of potential project sites for evaluation by the Owner. Geotechnical, utility, environmental, and property utilization will be evaluated, to allow the Owner to make a site selection decision.

### EXISTING FACILITIES EVALUATION

Use of existing facilities requires an educated understanding of potential opportunities and risks that may be encountered. N Visions will assist the Owner in determining how to best enhance the use and reduce the risks to reach a solution.

### CODE COMPLIANCE

The State Fire Marshal, School Building Authority, U.S. Army Corps of Engineers, State Historic Preservation Office, and other agencies have specific requirements that must be addressed in all building projects. N Visions has worked with these agencies, and others, on numerous projects, and is familiar with their personnel and regulations. N Visions has a positive working relationship with these agencies, and in many cases involves them early in the design process, which translates into benefits to the Owner.



**WVSA Awards**

- Trans Allegheny Books, Charleston, WV

**WVSA - Honorable Mention**

- McCabe-Henley Properties, Inc.  
Charleston, WV

**Charleston Renaissance Corporation  
Best Development**

- Capitol City Building, Charleston, WV
- Trans Allegheny Books, Charleston, WV
- 200 Hale Street, Charleston, WV
- The Gates Building, Charleston, WV
- 210 Hale Street, Charleston, WV



**WV Home Building Association  
Best Multi-Family Developer**

- Governor's Court Apartments,  
Charleston, WV
- Woodbridge Condominiums,  
Teays Valley, WV



**City of Charleston  
Distinguished Design Development**

- Summers Square, Charleston, WV



**HUD – Project of the Year 2000**

- YWCA Transitional Housing  
Charleston, WV

**Associate Builders and Contractors, Inc.  
2005 Excellence in Construction**

- YWCA Senior Housing  
Charleston, WV



**AIA West Virginia 2008 Craftsmanship  
Award for Excellence in Craftsmanship**

- Sissonville Middle School

## REFERENCES

Chuck Wilson, Kanawha County Board of Education  
3300 Pennsylvania Avenue, Charleston, WV 25302, 304-348-6148

New Sissonville Middle School, Sissonville, WV  
South Charleston Middle School Elevator, Windows, Toilet Renovation  
Montrose Elementary HVAC and Window Replacement  
Nitro High School HVAC and Toilets Renovation  
Herbert Hoover High School Addition and Renovation  
Elkview Middle School Addition and Renovation  
South Charleston High School Addition and Renovation  
George Washington High School Addition and Renovation  
Auxiliary Gyms – Four County high schools  
Piedmont Elementary Addition and Renovation

Brooks McCabe, McCabe • Henley  
P. O. Box 11108, Charleston, WV 25339, 304-342-4415

Summers Square, Summers and Quarrier streets, Charleston, WV  
Capitol City Building, Capitol and Quarrier streets, Charleston, WV  
One Kenton Drive, Northgate Office Park, Charleston, WV  
KB & T Building, Capitol Street, Charleston, WV  
The Strand, Hale Street, Charleston, WV

Rick Atkinson, Central West Virginia Regional Airport Authority,  
100 Airport Road, Suite 175, Charleston, WV, 304-344-8033

Yeager Airport Parking Facility  
Yeager Airport, John D. Rockefeller IV Terminal  
Passenger Access Control and ADA Accessibility

**VISIONS**

A · R · C · H · I · T · E · C · T · S



# C O R P O R A T E P R O F I L E



Clingenpeel/McBrayer & Associates, Inc.



## Services

Clingenpeel/McBrayer & Associates is a West Virginia based small business firm, providing services in the areas of HVAC, plumbing, fire protection and electrical engineering. CMA's founders have long believed in the philosophy that a successful project requires a comprehensive approach. This includes all traditional facets of project planning, starting with master planning, working closely with the client, developing the completed construction documents, bidding the project and contract administration. However, our depth of expertise goes far beyond the traditional services. From developing design criteria for owners to designing the mechanical and electrical systems for the West Virginia DEP Consolidated Office Building, the first LEED certified building in the state, CMA is a proven leader in providing engineering services in the design-build delivery method.

## History

Since 1986, Clingenpeel/McBrayer & Associates has provided services on numerous projects of varying size and complexity. Clients include architects, industrial companies, governmental agencies, contractors, engineers, developers and private organizations. Project locations include West Virginia, Virginia, Ohio, Kentucky, Maryland, Pennsylvania, California and Connecticut.

## Commitment

Clingenpeel/McBrayer & Associates' submittal is based on your needs and our experience. Our firm has the experience, service and quality work to create a successful project. We are committing senior design professionals in order to assure you receive top priority. We have extensive experience with projects of this nature. Examples of projects for which we were the Engineer are listed in this proposal.

From an initial staff of five employees in 1986, the company has steadily grown and now has two offices with a staff of fourteen which includes two professional engineers and two engineers-in-training. Facilities and equipment have grown to support CMA's staff and client's needs.

In 1987, computer aided drafting stations were added to provide the best quality and engineering services for our clients. We are currently operating AutoCad 2009. Our firm is constantly monitoring the latest technology, the cost effects and the end results to the final project.

Present staffing allows CMA to complete work in a timely manner without limiting our ability to perform our ongoing work. The staff of CMA is large enough to handle any size project, yet small enough for direct input and supervision by key personnel.

## EXPERIENCE

### Previous Five Years

Projects:	492
Construction Costs	
MEP Costs:	\$156,039,689.
Total Costs:	\$472,847,542.



Clingenpeel/McBrayer & Associates, Inc.

824 Cross Lanes Drive  
Charleston, WV 25313  
(304) 343-0316 tel  
(304) 343-5146 fax

5 Riddle Court  
Morgantown, WV 26505  
(304) 598-2558 tel  
(304) 598-2472 fax

www.cma.wv.com



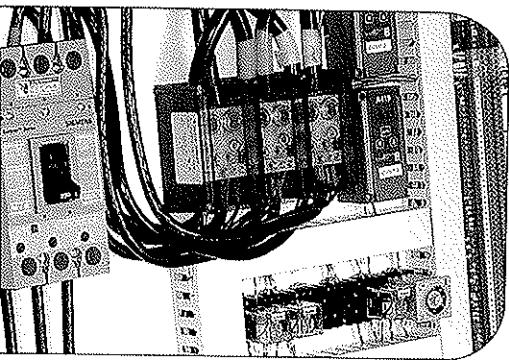
# E L E C T R I C A L

CMA Engineering experience includes:

Underground Ducts and Utility Structures  
Intrusion Detection  
Closed Circuit Television  
Cable and Master Antenna Television  
Medium Voltage Distribution and Substations  
Secondary Voltage Distribution  
Engine Generators and Battery Inverters  
Transient Voltage Suppression  
Interior Lighting  
Exterior Lighting  
Sports Lighting  
Theatrical Lighting  
Lighting Control  
Uninterruptible Power Supply Systems  
Lightning Protection  
Intercommunications Systems  
Nurse Call  
Voice and Data Systems  
Fire Detection Systems



(above) Split Rock Pools—Snowshoe, WV  
Indirect Lighting System



(below) Memorial Ice Rink—South Charleston, WV  
Chiller Power and Control Panel

**CMA**  
ENGINEERING

Clingenpeel/McBrayer & Associates, Inc.

824 Cross Lanes Drive  
Charleston, West Virginia 25313  
(304) 343-0316 tel  
(304) 343-5146 fax

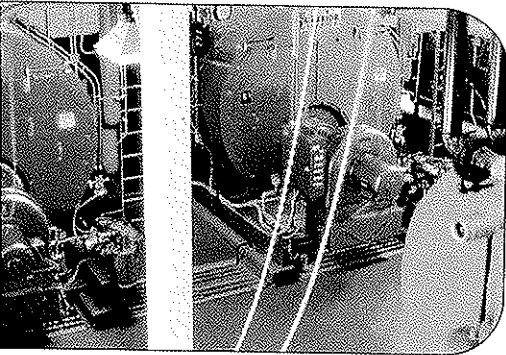
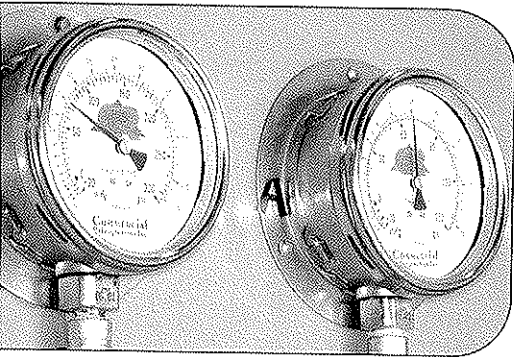
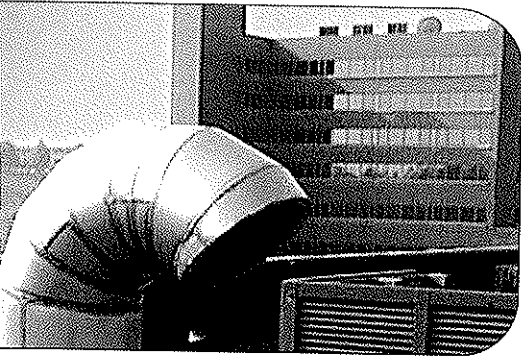
5 Riddle Court  
Morgantown, West Virginia 26505  
(304) 598-2558 tel  
(304) 598-2472 fax

[www.cma.wv.com](http://www.cma.wv.com)

# M E C H A N I C A L

CMA Engineering experience includes:

Constant Volume Air Handling Systems  
Variable Volume Air Handling Systems  
Demand Control Ventilation Systems  
Natorium Dehumidification Systems  
Building Energy and Management Control Systems  
Industrial Ventilation and Exhaust Systems  
Steam and Condensate Systems  
Cooling Plants and Distribution  
Heating Plants and Distribution  
Energy Recovery Systems  
Water Source Heat Pump Systems  
Low, Medium and High Pressure Air Distribution Systems  
Direct Digital, Pneumatic and Hybrid Control Systems  
Kitchen Ventilation and Exhaust Systems



*(top)* Ruby Memorial Hospital—Morgantown, WV  
HVAC Exhaust System

*(middle)* Memorial Ice Rink—South Charleston, WV  
Refrigerant Pressure Gages

*(bottom)* Alderson Federal Correctional Facility—Alderson, WV  
Steam Plant

**CMA**  
ENGINEERING

Clingenpeel/McBrayer & Associates, Inc.

824 Cross Lanes Drive  
Charleston, West Virginia 25313  
(304) 343-0316 tel  
(304) 343-5146 fax

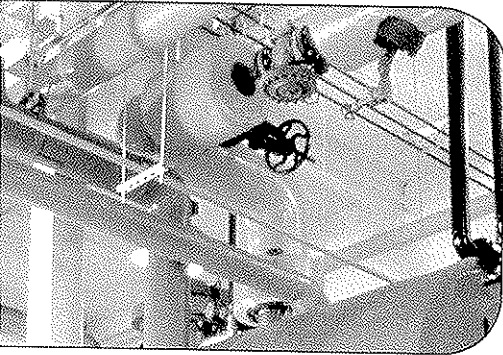
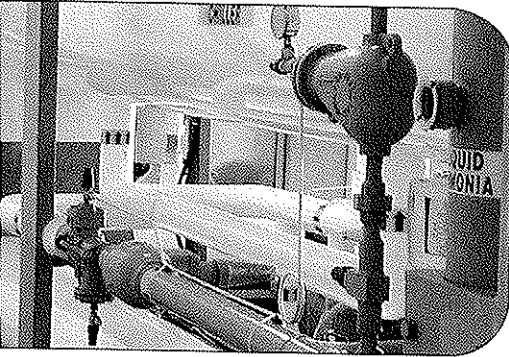
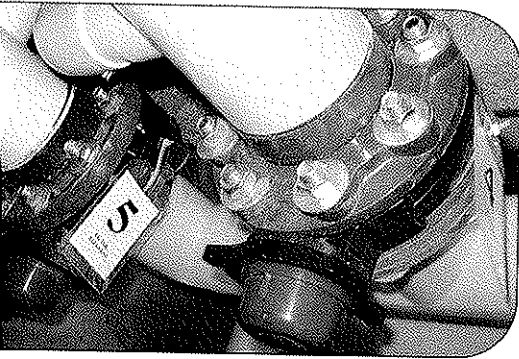
5 Riddle Court  
Morgantown, West Virginia 26505  
(304) 598-2558 tel  
(304) 598-2472 fax

[www.cma.wv.com](http://www.cma.wv.com)

# PLUMBING & PIPING

CMA Engineering experience includes:

Sanitary Sewer Systems  
Storm Sewer Systems  
Natural Gas Distribution  
LP Gas Distribution  
Fuel-Oil Distribution  
Compressed Air Systems  
Vacuum Systems  
Chemical Waste Systems  
Process Water Systems  
Deionized Water Systems  
Domestic Water Systems  
Helium Distribution Systems  
Domestic Water Pumping Systems  
Sewage Pumping Systems  
Water Heating  
Automatic Fire Sprinkler Systems  
Standpipe Systems  
Fire Pumps, Storage Tanks, Service Mains  
Medical Gas Systems



*(top)* Split Rock Pools—Snowshoe, WV  
Piping & Pump Room

*(middle)* Memorial Ice Rink—South Charleston, WV  
Piping & Chilling

*(bottom)* Alderson Federal Correctional Facility—Alderson, WV  
Steam Piping

**CMA**  
ENGINEERING

Clingenpeel/McBrayer & Associates, Inc.

824 Cross Lanes Drive  
Charleston, West Virginia 25313  
(304) 343-0316 tel  
(304) 343-5146 fax

5 Riddle Court  
Morgantown, West Virginia 26505  
(304) 598-2558 tel  
(304) 598-2472 fax

[www.cmawv.com](http://www.cmawv.com)

## Project Profiles

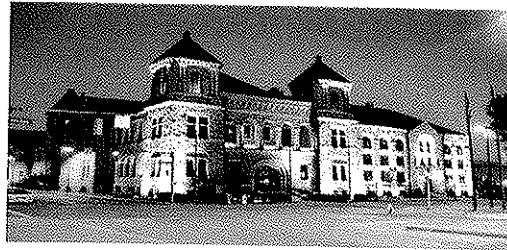
### **State of West Virginia House and Senate Offices**

CMA is currently providing mechanical, and electrical design services for renovations to the first and second floors' HVAC systems at Building #1 at the State Capitol Complex.



### **Kanawha County Courthouse**

CMA has provided mechanical, electrical and plumbing engineering design services for Kanawha County since 1983. Projects include MEP renovations to main courthouse, toilet renovations, new parking garage, MEP renovations to the judicial annex, renovations to the Law Master offices, and design of exterior lighting.



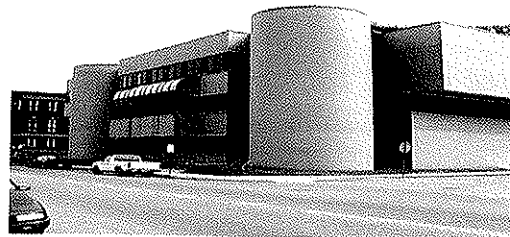
### **George Washington High School, Kanawha County**

CMA provided mechanical, electrical, plumbing and fire protection design services for the addition of a new classroom wing housing 15 classrooms, two gang toilets, additional commons area, an auxiliary gymnasium (total addition 35,462sf) and renovations to the existing office area, lower level classrooms, library and miscellaneous areas for teacher offices.



### **Orndorff Hall, WVU Institute of Technology**

CMA provided mechanical, electrical and plumbing engineering services for the upgrade of the HVAC system at Orndorff Hall in Montgomery, WV.

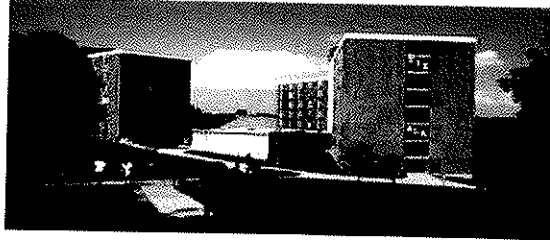


## Renovations

## Project Profiles

### **Concord University, Athens, WV**

CMA Engineering is currently providing mechanical, electrical and plumbing design services for renovations to fire sprinkler systems at North Tower, South Tower, Wilson and Woodell dormitories.



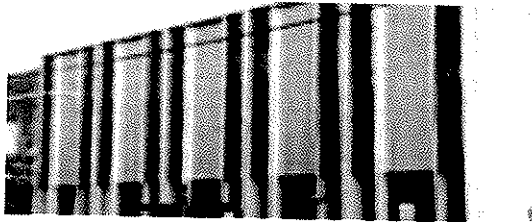
### **Boreman Dormitory-West Virginia University**

CMA Engineering provided mechanical, electrical and plumbing design services for upgrades to the automatic sprinkler and fire alarm systems and the HVAC systems in North and South Hall.



### **Davis Hall, WVU Institute of Technology**

CMA provided mechanical, electrical and plumbing design services for renovations to the lighting, air handler units and duct distribution system in the auditorium and elimination of water infiltration at east and west ends of building and the south wall of the auditorium.



### **Kimball War Memorial**

CMA Engineering provided mechanical, electrical and plumbing design services for the restoration of the historic memorial which was destroyed by fire in 1991. Facility includes industrial kitchen and eating area, meeting rooms, and a large conference area with stage.



## Renovations

## Project Profiles

## New Construction

Design of mechanical, electrical, plumbing, fire protection and communication systems.

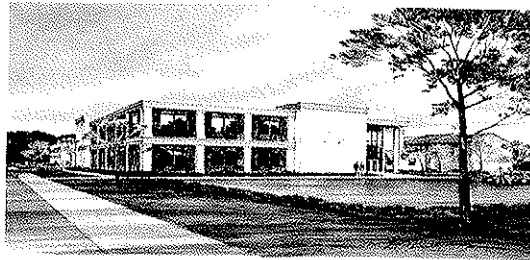
### Sissonville Middle School, Kanawha County

CMA Engineering provided mechanical, electrical, plumbing, sprinkler, and data/communication/alarm/control engineering design services for the new, approximately 80,000sf facility, consisting of administrative areas, commons, auditorium, media/technology, sixth, seventh and eighth grade educational areas, laboratories, special education, food services and physical education areas.



### Ayash Community Center

CMA Engineering provided design for HVAC, plumbing, fire sprinkler, fire alarm systems, communication systems, lighting and electrical power for new 26,900sf community center which included gymnasium, wrestling room, fitness room, locker rooms and an open area for aerobics, dance and gymnastics.



### Student Union-Fairmont University

CMA Engineering provided mechanical, electrical, plumbing, fire protection and communication systems for new 115,000sf student center. Facility includes 2 court gymnasium, indoor track, training & aerobics area, indoor pool, kitchen, lounge, information center, pro-shop, multi-purpose & meeting room space and administration area.



### Go-Mart Office Building

CMA provided mechanical, electrical and plumbing design services for the new 13,000sf corporate office building in Gassaway, WV.



CMA  
ENGINEERING

## Project Profiles

## New Construction

Design of mechanical, electrical, plumbing, fire protection and communication systems.

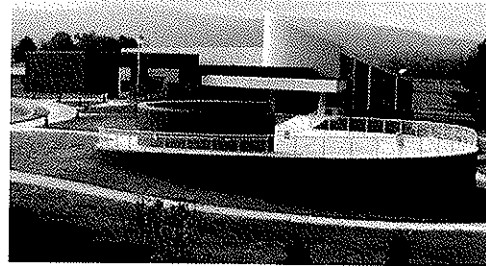
### **Mylan Pharmaceuticals**

CMA Engineering provided mechanical, electrical, plumbing and fire protection systems design for new corporate office in Morgantown, WV. CMA Engineering also provided engineering services for the 425,000sf addition to the plant facility, the new hangar and parking facility.



### **NRAO Greenbank Observatory Visitor's Center**

CMA Engineering provided mechanical, electrical, plumbing, fire protection and communication systems design for new visitor's science center.



### **Jefferson Place, Charleston, WV**

CMA Engineering provided mechanical, electrical, plumbing and fire protection design services for new medical apartment complex consisting of 24 units of one, two and three bedroom apartments.



### **WV Department of Environmental Protection**

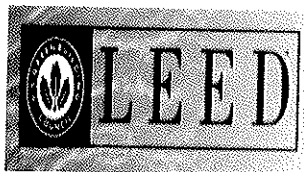
CMA Engineering provided mechanical, electrical, plumbing and fire protection design services for new consolidated DEP office in Charleston, WV. Building is a three-story facility of approximately 180,000sf with a 650 car parking area. This facility is registered as a **LEEDS construction project**.



**CMA**  
ENGINEERING



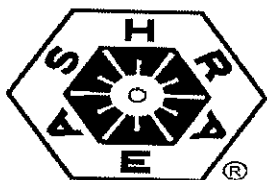
## Professional Affiliations



Leadership in Energy &  
Environmental Design  
(LEED)



U.S. Green Building  
Council  
(USGBC)



American Society of  
Heating, Refrigerating and  
Air Conditioning Engineers,  
Inc.,  
(ASHRAE)



American Institute of  
Architects— WV Chapter  
Affiliate Member  
(WVAIA)



National Fire  
Protection Association  
(NFPA)

ASPE

American Society Of  
Plumbing Engineers  
(ASPE)



MasterSpec  
Specifications  
(ARCOM)



The  
LIGHTING  
AUTHORITY

Illuminating  
Engineering Society  
(IES)



WV Society of  
Healthcare Engineers  
(WVSHE)



International Code Council (ICC)



Business Partner

CMA  
ENGINEERING

## References

### Mechanical/Electrical/Plumbing



West Virginia University  
P.O. Box 0877  
Morgantown, WV 26505  
Contact: Mr. John Thompson  
(304) 293-3625



Kanawha County Schools  
3300 Pennsylvania Avenue  
Charleston, WV 25302  
Contact: Mr. Charles Wilson  
(304) 348-6148



State of West Virginia  
1900 Kanawha Blvd, East  
Bldg. 1, Room MB-60  
Charleston, WV 25305  
Contact: Mr. Robert Kilpatrick  
(304)558-0250



Mylan Pharmaceuticals, Inc.  
P.O. Box 4310  
Morgantown, WV 26504  
Contact: Mr. J. J. Dotson  
(304) 599-2595

## Project Profiles

### Monongalia County Schools

The CEFP (Comprehensive Educational Facilities Plan) Review was a project involving a series of site visits to each of 20 schools with the goal of reporting on the facility conditions of each school and providing feedback on the areas which would need updates, upgrades, or both. CMA's responsibilities on this project entailed aspects such as Lighting, Fire Alarm, HVAC, Power, Water Mains inside the building,



### Upper Kanawha Valley Technological Community

CMA Engineering provided mechanical, electrical and plumbing design services for the tenant fit-out of the first floor space, including reconfiguration of the toilet rooms, reception area, auditorium, laboratory space, administrative offices, executive conference room and directors office for use by the Printing Innovation Center.



### Coliseum, West Virginia University

CMA provided mechanical and electrical design services for renovations to the HVAC system serving the court level and the construction of two new club level spaces, renovations to the restrooms, concession area and walkway. CMA also provided MEP engineering services for upgrades to the Life Safety Systems to meet current code requirements.



### Legal Numbers, LLC

CMA provided mechanical and electrical design services for upgrades to the HVAC and electrical systems of the 32,000sf IBM building in Charleston, WV to be used as an accounting/legal firm.



## Renovations

# **Ham Engineering**

Structural Engineers  
South Charleston, WV

---

## **Project Experience**

**Ham Engineering** is normally retained as the structural consultant for the Owner, the Architect or the General Contractor on a project. The majority of the structural engineering performed by our firm involves projects in the commercial, retail, educational, industrial, and residential areas. The following is a partial list of commercial projects completed within the last five years. A list of other projects in the educational, industrial, and residential areas can be provided.

### **Sissonville Middle School Sissonville, WV**

New Educational Facility with three wings of classroom space and including a student commons area, administration offices, media center/library, dining area, and a gymnasium. One story steel frame and load bearing masonry walls. Due to soils concerns at the site, the foundation design included a stiffened mat type foundation to resist settlement and cracking.

### **Elkview Middle School Elkview, WV**

Additions to an Existing Educational Facility. Included additional classroom space, relocated stair towers, and expansion of both the dining area and the mediacenter/library area.

### **Piedmont Elementary Addition Charleston, WV**

Classroom and multi purpose room addition to existing building. Two story steel and masonry structure with concrete floors.

## **Ham Engineering Project Experience, Cont'd**

### **WOWK Television Building 13 Kanawha Boulevard Charleston, WV**

Television Studio and offices. Three story steel frame with concrete floors on joists. Spread foundations. Unusual floor plan with 45 degree corners. Project was done as Design Build with General Contractor as prime.

### **Tri State Racetrack and Gaming Addition Cross Lanes, WV**

Video Gaming Facility and Offices. One story steel frame addition with concrete slab on grade that included prefabricated electrical and data duct ways. Project also include several elevated performance areas, overhead access ways, and a shop fabricated steel tube truss pedestrian bridge with escalator from elevated parking area.

### **Holiday Inn Civic Center Huntington, WV**

Hotel and related facilities. Five story masonry building with prestressed precast concrete plank floors. Steel framed entry canopy.

### **USPS Post Office Beckley, WV**

Post Office. One-story steel frame supporting built-up roof with exterior brick veneer walls. Exterior loading docks for variable size trucks.

### **USPS Post Office Princeton, WV**

Renovation of Existing Building for New Post Office. Existing one-story steel frame supporting built-up roof with exterior brick veneer walls. Modified to include two new exterior loading dock areas for variable size trucks and roof modifications for new HVAC systems.

## **Ham Engineering Project Experience, Cont'd**

### **Charleston Fire Station Corridor G Charleston, WV**

Fire Station. One story wood framed building with wood floor joists. Partial second floor.

### **BIDCO Shell Building Southridge Center Charleston, WV**

Shell building for future business relocations to Charleston. One-story industrial/warehouse space with an office wing and a future office mezzanine level. Structural steel frame supporting a built up roof on joists with masonry exterior walls.

### **City Holding, Inc. Cross Lanes, WV**

General offices for bank processing. Three story with partial basement. Structural steel frame with concrete floors on joists. Caission foundations due to extremely poor soil conditions.

### **Caperton Center WVU Parkersburg Parkersburg, WV**

Classrooms, labs, and office space. Two story steel framed with concrete floor on joists. Extensive use of curved and intersecting exterior walls.

### **Buckingham Square Grand Cayman, BWI**

Bank with general office space on second floor. Two story structural steel moment frame with concrete floors on steel joists. Designed for hurricane force winds.

## **Ham Engineering Project Experience, Cont'd**

### **Medical Office Building Division Street South Charleston, WV**

Medical offices located across from Thomas Memorial Hospital. Three story steel frame with concrete floors on joists.

### **FOG Building MacCorkle Avenue South Charleston, WV**

Medical and General offices located near Thomas Memorial Hospital. Four story steel frame with concrete floors on joists.

### **G&G Building Scott Depot, WV**

Office Building. Four story steel moment frame with concrete floor on joists. Set backs at each corner complicated the structural design.

### **Skaff Medical Building Charleston, WV**

Medical Office Building. One story masonry building supporting a built up roof on steel joists.

### **Capital State Bank Southridge Center, Charleston, WV**

Building houses a bank on the lower floor and office space on the second floor. Two story wood structure with wood and gypcrete floors.



## **Ham Engineering Project Experience, Cont'd**

### **Estes Medical Building Scott Depot, WV**

Medical office building near the Putnam County General Hospital. Three story steel framed with concrete floors on joists.

### **Charter Communications Building Scott Depot, WV**

General Office Building. Three story steel moment frame supporting concrete floors on steel joists. Building designed for a future fourth floor.

### **Musselman Middle School Berkley County, WV**

Classrooms, labs, and other related educational facilities. Two story steel and masonry structure with concrete floors on joists.

### **American Freightways Terminal Nitro, WV**

Truck terminal. One story steel moment frame on concrete slab.

### **Family Enrichment Center Patrick Street Charleston, WV**

Community space and related offices. Renovations and additions at the former West Virginia Tractor Building. One story steel frame with built up roof on steel joists. Partial second floor.