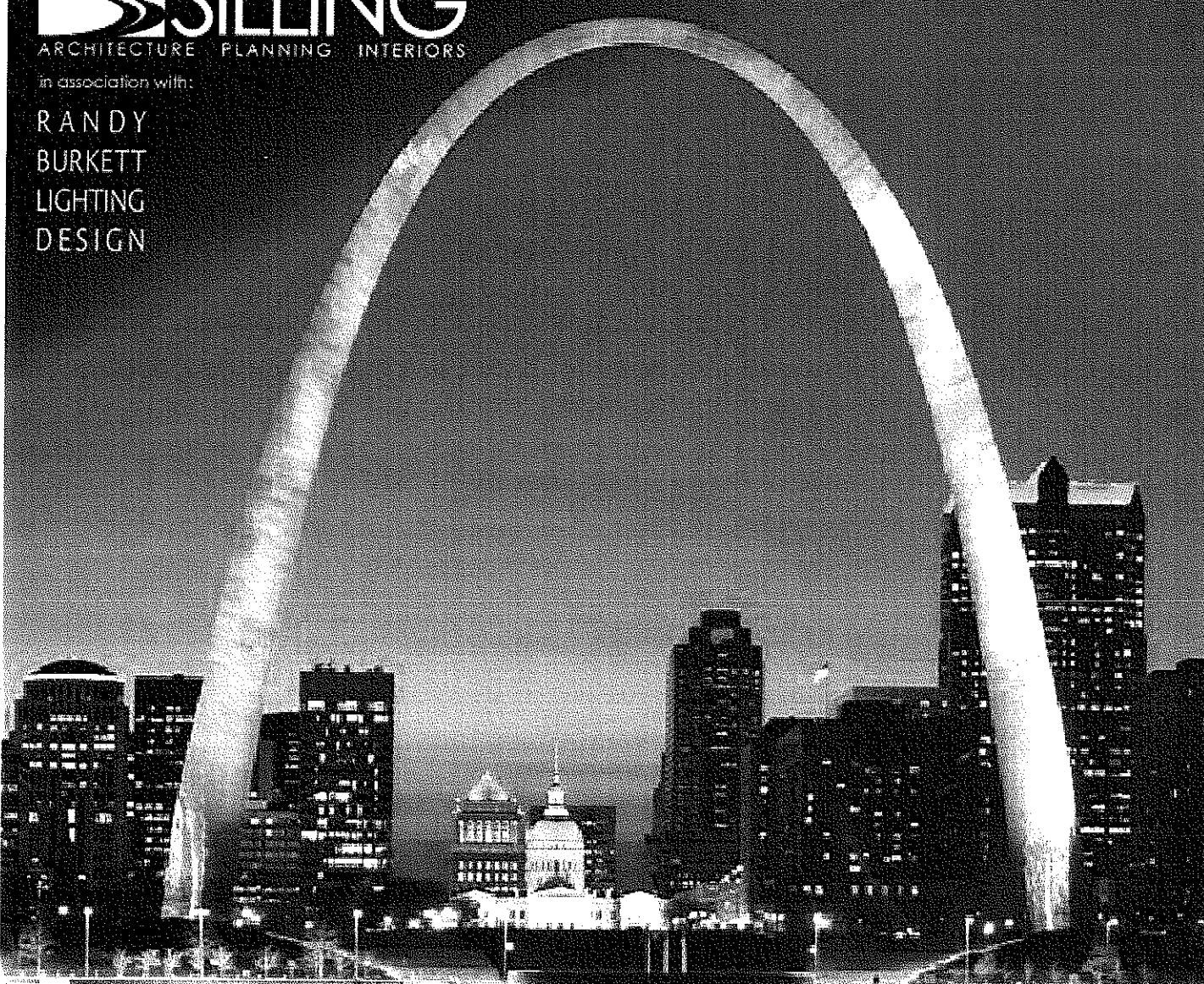


**SILLING**  
ARCHITECTURE PLANNING INTERIORS

in association with:

RANDY  
BURKETT  
LIGHTING  
DESIGN



RECEIVED  
2010 SEP -8 PM 1:10  
WW PURCHASING  
DIVISION

Expression of Interest  
Capitol Complex Exterior Lighting  
GSD106430

## Introductions

Architectural success is measured by vision and an unwavering dedication to excellence. This axiom was the philosophical birth of **Silling Associates**

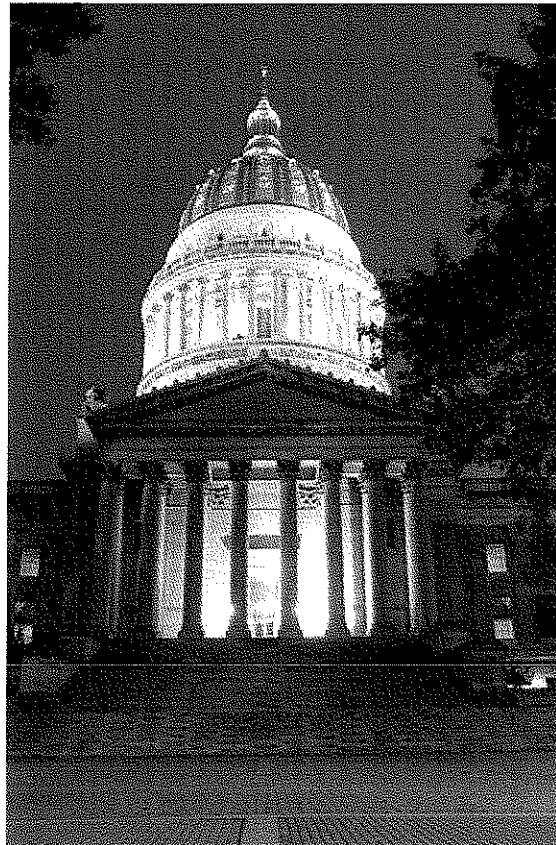
**Incorporated** by H. Rus Warne in 1902. Following the lead of partners like Warne and its namesake, Cy Silling, the firm today has the proud distinction of being the oldest continuing architectural firm in West Virginia and one of the oldest in the eastern United States. Throughout, Silling Associates has woven itself into the very fabric of West Virginia, providing planning and architectural services that have touched the lives of virtually every citizen and delivering landmark projects collectively defining its built environment.

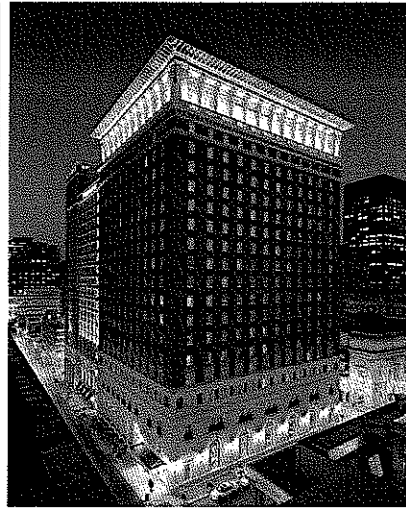
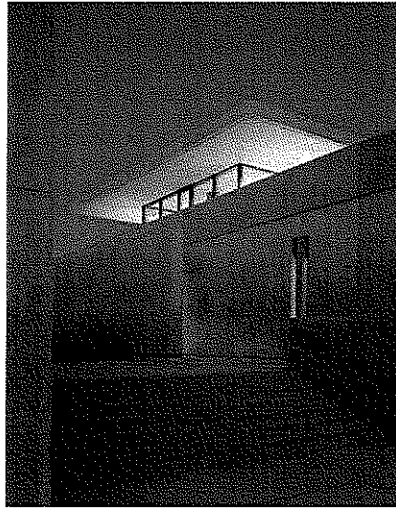
Whether through its early century beaux arts and neo-classical collection, its mid-century modern and post-modern portfolio, or its current contextual vocabulary, Silling has always been renowned as one of the premier architectural firms in the state. Today, Silling Associates continues to have a powerful impact on the region's architectural landscape through fresh, yet solid design and responsible project management.

**Scheeser Buckley Mayfield LLC** is an Ohio-based Consulting Engineering firm that serves clients throughout Ohio and West Virginia. The firm was established in 1959 by Walter L. Scheeser and Edwin J. Buckley, specializing in the design of mechanical systems for the construction industry. The firm has enjoyed a steady growth in clients and geographical area served throughout its history, and its services now include electrical, civil, and telecommunication design. Entering its 50<sup>th</sup> year of operation, Scheeser Buckley Mayfield routinely serves Silling Associates and the State of West Virginia on a diverse mix of project types, sizes, and complexities.

**Randy Burkeff Lighting Design, Inc.** is a nationally-recognized full service architectural lighting design and consulting practice. Founded in 1988, they offer a complete range of lighting design related services from initial conceptual development through final construction administration. Their team's wealth of professional experience includes: skills in complete design formulation and development, equipment layout and specification, architectural detailing, custom luminaire design, solar and daylighting analysis, lighting control concepts and lighting energy analysis.

Their highly diversified firm specializes in both interior and exterior project types including: civic and governmental buildings, corporate, retail, shopping malls, museum/exhibit, conferencing facilities, hotels, restaurants, religious structures, themed environments, monuments, bridges and private residences.





#### 4.2.1 Concept

The project's lighting development will involve two primary phases – a review and summary of existing conditions; and development and implementation of a new, holistic exterior lighting design concept. Each phase must address a set of important tasks, fundamental to the ultimate realization of a new or updated lighting design revelation for the West Virginia State Capitol Complex and its site.

##### Review and Assessment Phase

- Documentation of the existing lighting design concept and the equipment used to sustain it.
- Assessment of the strengths and weaknesses of the current design.
- Assessment of the viability of the existing lighting system for incorporation, in part and if appropriate, with new lighting design concepts.
- Review of existing electrical infrastructure supporting the current lighting schemes and analysis of its capabilities to support new systems and technologies.
- Preparation of full written and oral report of survey results.

##### Design Concept Formulation and Documentation Phase

- Assessment lessons learned from detailed review of existing lighting conditions report.
- Clear identification of lighting design intent, goals and client expectations for the project.
- Establishment of lighting design concepts.
- Explanation of impact of each concept on sustainability related issues.
- Development of lighting design concepts.
- Preparation of cost scope for each concept.
- Client presentation and workshop to select desired lighting design concept(s).
- Following selection and approvals, development of concept details and formulation of implementation program.
- Concept documentation and drawing preparation.

This basic outline has formed the backbone to numerous successful lighting design efforts for this team. Once on board, the team will develop more detailed task identification and proposed milestones/schedules.

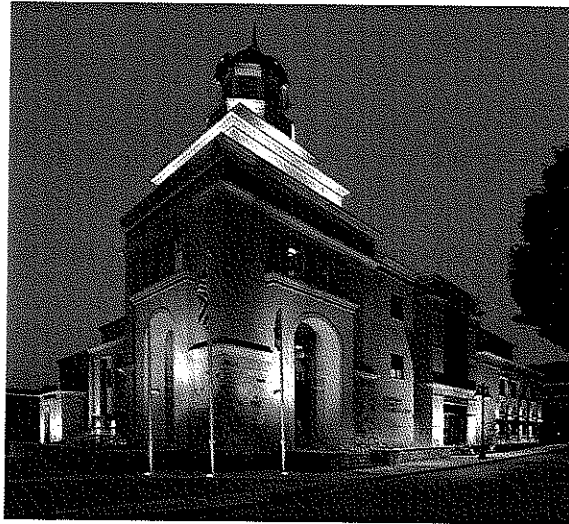
Our team is very cognizant of the ongoing and upcoming capital improvement projects at the State Capitol Complex, and would ensure that the exterior lighting solutions are developed with the appropriate level of compatibility, efficiency, and flexibility.

## 4.2.2 Firm/Team Qualifications

### A. Primary Contact

**Edward Weber, AIA, LEED AP**

Silling Associates, Incorporated  
405 Capitol Street, Upper Atrium  
Charleston, West Virginia 25301  
Phone: 304.346.0565  
Email: eweber@silling.com



### B. Key Personnel from Silling Associates

**Edward Weber, AIA, LEED AP**

Project Executive & Lead Architect

Ed has seventeen years' experience as a practicing architect with significant work in all phases of architectural programming, schematic design, design production and construction contract administration. After graduating with a Master of Architecture and Urban Design from Notre Dame in 1992, Ed joined the Chicago office of Richard Gibbons and Associates. There he managed high-end custom residential projects of renovation and new construction work with construction budgets between \$500,000 and \$20,000,000. In 1999, Ed was offered partnership and the firm of Gibbons, Fortman & Weber was created in January of 2000. Under GFW, the office work expanded and projects became more diverse with commissions for hospitality design of restaurants and lounges, as well as residential and commercial developments throughout the city. Having joined Silling Associates in 2006, Ed brings his extensive project management experience and design talent to the firm's major commissions. His involvement is specifically appropriate in those projects pertaining to campuses and master plans, urban settings, historic contexts, and residential scale.

With Professional Accreditation by the U.S. Green Building Council (USGBC) in coordination with the Green Building Certification Institution (GBCI), Ed holds the title of LEED AP for New Construction and Major Renovations. As a LEED AP (Leadership in Energy and Environmental Design), Ed has distinguished himself as having the knowledge and skills necessary to participate in the design process, to support and encourage integrated design, and to streamline a building's LEED application and certification process.

Ed has also recently served as the Project Executive for several prominent renovation and historic restoration projects for the West Virginia Supreme Court, specifically involving the 3rd and 4th floors of the East Wing of the State Capitol Building.

**Sean Simon, AIA**

Construction Period Service Manager

Mr. Simon has sixteen years' experience involving all phases of architectural programming, design, construction document production, and construction contract administration. Sean joined Silling in 2008 as a Construction Period Service Manager, working closely with the firm's production staff throughout the construction document phase and providing construction contract administration services. Mr. Simon will lead the detailing of the project, prepare and align specifications with drawings, perform interdisciplinary design coordination reviews to assure compatibility of all major building systems, as well as provide building code analysis and review. He will also be responsible for facilitating pre-construction meetings providing clear definition of project goals and owner expectations, reviewing contractor

submittals, product samples, and shop drawings for conformance to the contract drawings and specifications, attending progress meetings to maintain clear communication with builders, observing installation of materials and systems to verify their conformance with the design intent, and monitoring the project schedule.

Sean earned a Bachelor of Architecture from the University of Tennessee in 1992 and is a member of the West Virginia Chapter of the American Institute of Architects.



**Carmen Wong, Associate AIA, LEED AP**

Designer

Carmen Wong, is a graduate architect who graduated first in her class from the Ricardo Palma University in Lima, Peru. In May of 2007, Wong received her Masters of Architecture from the University of Illinois at Urbana-Champaign. Her educational honors include being selected to participate in the honored Design Studio directed by Dr. Ken Yeang, an internationally renowned Malaysian-British architect specializing in sustainable green architecture, bio-climatic skyscrapers, and ecologically-responsive design; the Earl Prize in Design and Graduate Student Design Award; and the Coriwasi Award given to the top student in the 5-year undergraduate program.

In addition to her dynamic design talents, Wong utilizes a variety of three-dimensional computer modeling programs and rendering techniques, providing Silling's clients the ability to "see" and better visualize their proposed building throughout the entire design process.

**Jeremy Jones, Associate AIA**

Designer

Jeremy is a graduate architect with nine years' experience in the architectural industry, including all phases of project design, development, production, presentation, and coordination of contract documents. He has completed all IDP training requirements and is currently testing for licensure through the National Council of Architectural Registration Boards. Jeremy's educational experience included a study abroad of European Architecture at the Polytechnic institute of Krakow, Poland, spring semester of 2002. Travel included Austria, Germany, the Netherlands, Italy, England, France, the Czech Republic, and Spain. He possesses advanced skills using three-dimensional computer modeling programs and rendering techniques.

**C. Design Team Consultants**

**Randy Burkett, FIALD, IESNA, LC**

President & Design Principal , Randy Burkett Lighting Design, Inc.

Randy Burkett is the President and Design Principal of Randy Burkett Lighting Design, Inc. As Principal he establishes design direction and oversees the management of the firm's projects. Since he began professional practice in 1978, he has been responsible for the lighting of numerous national and international projects. He has designed the lighting for a diverse collection of environments including convention centers, museums, retail malls and stores, corporate offices, government facilities, health care and laboratory facilities, site developments and building exteriors. Before establishing his own firm, he spent eight years with the Lighting Design Group of Hellmuth, Obata and Kassabaum as its Director, and as a Vice-President of the company.



Randy is an active member of the International Association of Lighting Designers and is both a former board member and president. He is involved in IESNA Technical and Design committees including "Quality of the Visual Environment", and "Office Lighting". He has authored a wide variety of design and technical articles appearing in publications in over 40 countries. He is a frequent speaker to professional organizations on a variety of lighting design subjects and has served as an instructor at the University of Colorado in Boulder and Maryville University in St. Louis. He is currently a member of the Adjunct Faculty of Washington University's Graduate School of Architecture.

**Ronald D. Kurtz, IALD, IESNA, LEED AP**

Randy Burkett Lighting Design, Inc.  
Associate and Senior Lighting Designer

Ron Kurtz has been with Randy Burkett Lighting Design since 1990. Ron's responsibilities as a Lighting Designer and Project Manager include the development of conceptual design which involves the determination of both aesthetic and technical requirements, the preparation of contract documents and specifications, as well as construction phase coordination and field observation. His lighting design experience includes three years with Grenald Associates, Ltd. in Philadelphia and Washington, D.C. Ron has been responsible for the design of large public spaces and lobbies, hospitality and conference facilities, office environments, exterior landscape and building floodlighting, themed entertainment parks and exhibits.



Ron is an active member of the International Association of Lighting Designers and currently serves on the Sustainability Committee and is a LEED Accredited Professional. He is also involved in the IESNA on both a local and national level, participating on the Energy Management Committee and is a member of ASHRAE's 90.1 Energy Standards Committee. He has been a speaker on a number of lighting topics at professional and educational conferences.

**Jim Eckman, P.E., LEED AP, LC, CBCP**

President, Scheeser Buckley Mayfield  
Principal Electrical Engineer

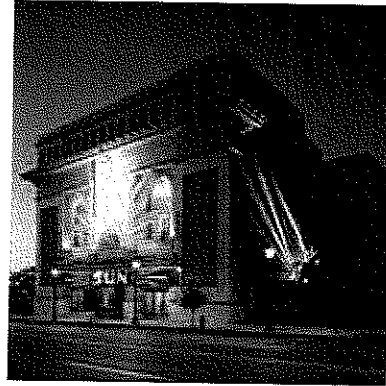
Mr. Eckman attended The University of Akron where he received his Bachelor of Science Degree in Electrical Engineering in 1984. After graduation, Mr. Eckman began his career as a consulting engineer by accepting a position as junior engineer with Kucheman, Peters and Tschantz, Inc., an electrical consulting firm in Akron, Ohio. During this engagement, he gained experience in the electrical design of commercial, industrial and healthcare facilities. Mr. Eckman also served as project manager for many of the projects he designed. Concurrently, Mr. Eckman taught an electrical engineering course called "Illumination" at The University of Akron.

After leaving KPT, Inc. in 1987, Mr. Eckman gained additional experience in the construction industry by accepting the position of Engineer/Estimator for Thompson Electric, Inc. in Munroe Falls, Ohio. During this engagement, he designed and acted as project manager for several large industrial projects. He also earned electrical contractor licenses in several area communities.

Desiring to further his career as a consulting engineer, Mr. Eckman accepted a position of Senior Engineer with Scheeser Buckley Mayfield, Inc. in 1989. Mr. Eckman was promoted to the position of Associate in 1990, became a Principal in the firm in 1991 and Vice President of Electrical Engineering in 1992, and President in 2003. Mr. Eckman was a member of the Institute of Electrical and Electronics Engineers for eight years and is currently an active member of the Electrical League of Northeastern Ohio and the Illuminating Engineering Society (IES). Mr. Eckman has served as Treasurer and President of the Cleveland/Akron IES section and a member of the Executive Committee for the

Electrical League.

Additionally, Mr. Eckman is registered with the EPA as a Greenlights Surveyor Ally and has completed and passed the Technical Knowledge Exam (TKE) administered by the IES on a national basis to gauge individuals expertise in lighting concepts, fundamentals and design. Mr. Eckman served on the College of Engineering Advancement Council for The University of Akron from 2002 to 2004 and is currently serving on The University of Akron Electrical Engineering and Computer Engineering Advisory Council.



Jim is a LEED v2 Accredited Professional and is registered in the State of Ohio, West Virginia, Pennsylvania and Indiana.

**David Holbrook, LC**

Lighting Consultant, Scheeser Buckley Mayfield

Mr. Holbrook attended Youngstown State University where he received his Bachelor of Science in Electrical Engineering. He began his engineering career working for an Electrical Contractor in Girard, Ohio. While employed there, he designed electrical systems for commercial, industrial, and retail sectors. His responsibilities included all aspects of electrical design, preliminary design calculations, site visits, feasibility studies, and architectural coordination meetings. Design experience at this level included lighting and power systems, energy management systems, conveying systems, and retail fire alarm systems. His other responsibilities included estimating, time-and-material project managing, infrared thermography, and PLC troubleshooting.

Mr. Holbrook joined Scheeser Buckley Mayfield LLC in October of 2001. Since joining the electrical department, he has completed a wide variety of projects. He has worked on a variety of Healthcare projects including major hospital additions, Heart Centers, Outpatient Medical Imaging Centers, Minor renovation projects. Other projects he has been involved with included University, correctional, Medical Office, Utility, Library, and Hospice facilities. He has been actively involved in the design of Essential Power Systems from the most basic to Tier 4 redundant power systems, Medium and Low Voltage Switchgear Design, Generator Plant design including Low and Medium Voltage Paralleling systems, CCTV, Fire Alarm Systems, and also advanced lighting design. Mr. Holbrook has become a registered LC by passing the "Lighting Certified" examination from the National Council for the Qualifications of Lighting Professionals (NCQLP). Recently, two of his projects were published by Healthcare Design magazine, Focal Point Lighting, and Kirlin Lighting.

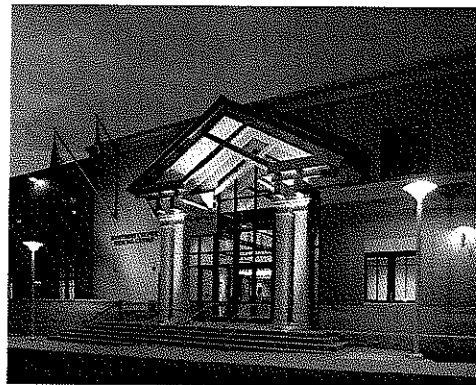
**Kevin Noble, P.E., LEED AP**

Principal Civil Engineer, Scheeser Buckley Mayfield

Mr. Noble attended the University of Akron where he received his Bachelor of Science degree in Civil Engineering in 1987 and continued his education through night school to receive his Masters of Business Administration from Averett College in 1991.

After graduating with a Civil Engineer degree, Mr. Noble accepted a position as a Water Resource Engineer at Dewberry & Davis, Inc., a top fifty engineering firm located in Washington, D.C. Mr. Noble was assigned to work on the firm's contract with the Federal Emergency Management Agency. His responsibilities included hydrologic and hydraulic analyses, flood plain delineations and storm water management facilities. Design of storm water management facilities, both underground and above ground, and wetland. Prior to leaving the company, he was promoted to project manager where he obtained valuable experiences in hydraulics and storm water control from projects involving the U.S. Army Corp of Engineers and Tennessee Valley Authority from Washington, D.C., Mr. Noble joined the staff of Elewski & Associates, Inc., a municipal civil engineering firm located in Independence, Ohio. There, he engineered a wide range of residential, commercial and industrial development projects and provided field support to facilitate timely

completion of construction. Projects included public and private schools, athletic facilities, planned residential developments, multi-phased office parks, municipal building and retail centers. The site engineering involved design of water mains and pumps, sanitary sewers, force mains, pump stations and storm sewer and stormwater management systems. Prior to leaving, he was promoted to Village Engineer, in charge of plan review, infrastructure design, public work projects and construction inspection.



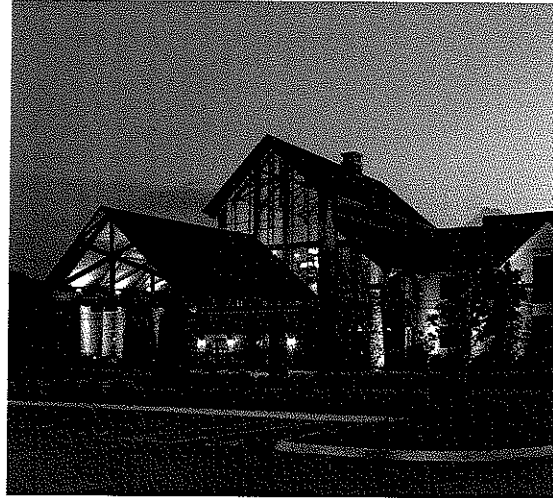
Mr. Noble joined Scheeser Buckley Mayfield LLC in early 1995 as a department head for a new civil engineering department. Since that time he has participated and managed the design of numerous residential and commercial site developments; stormwater management facilities; roadway extension and widening; water, storm, sanitary, gas, steam and chilled water lines extensions, and commercial and residential septic systems for public and private clients.

Kevin is a LEED™ Accredited Professional and is registered as a Professional Engineer in the State of Ohio, the State of West Virginia, the State of Florida, the State of South Carolina, the State of Pennsylvania, the Commonwealth of Virginia and the Commonwealth of Kentucky and is a member of the American Society of Civil Engineers, American Society of Plumbing Engineers, and the National Fire Protection Association.



**D. Ability to Handle the Project**

With a team of fifteen architects, designers, production staff, and administrative support, Silling Associates has consistently proven itself capable of delivering a large volume of work annually, both in terms of numbers of projects as well as individual project size, scope, and complexity. Silling ensures principal involvement in all projects which is fostered within a studio environment, allowing our firm to build multiple-person teams within the office to focus on a variety of projects simultaneously. Likewise, open sharing of project information, project status, and large picture scheduling of our workload allow architects, designers, and technicians to be informed on a number of current project needs and deadlines and



cross-pollinate from job to job and task to task. It is this efficiency and teamwork that is fundamental to our ability to service the number of very satisfied clients that we are fortunate to have.

However, it is primarily a culture of service that permeates everything that Silling does and leads to very satisfied clients. Aggressive communication is an axiom of our firm, and the heart-felt desire to be highly responsive to client needs and demands has proven to be one of the many reasons that owners select Silling Associates. This is most obvious in the number and references of our many repeat clients across the state, particularly with the state correctional system.

Scheeser Buckley Mayfield, consulting engineers, and Randy Burkett Lighting Design offer extensive staff resources to compliment the Silling team and have routinely executed successful project collaborations regionally, as well as nationally.

In summary, we offer the General Services Division extensive professional resources, immediate availability, and the ability to expedite the project's development, approval, and completion.

**E. State of Acceptance and Understanding**

Silling Associates understands and accepts that any and all work produced as a result of the contract will become property of the Agency and can be used or shared by the Agency as deemed appropriate.

**F. Conformance with local, State, and Federal Regulations**

Silling Associates and its Design Team members have proven record of conformance with all local, State, and Federal codes, regulations, and requirements, including building exterior lighting and related life safety code requirements.

**G. Litigation or Arbitration Proceedings**

Silling Associates maintains a record of superior performance and service to the State of West Virginia.

### 4.2.3 Project Organization

The lighting design team assembled for the West Virginia State Capitol Exterior Lighting project has worked together on a number of similar, significant commissions. Teamwork is essential to ensure not only high quality lighting design and execution, but to realize a full, multi-disciplinary coordination effort.



**Silling Associates**, serving as your Project Executive and Architect of Record, is a Charleston-based design practice with over 100 years serving the state of West Virginia. Over the year, Silling has served the State Capitol Complex through several master planning commissions and the original design of the WV Science & Culture Center, and most recently with ongoing renovations to the East Wing of the State Capitol Complex. Within the last ten years alone, Silling has served as the Architect and Designer of Record for numerous civic/governmental centers, including the East Wing Renovations at the WV State Capitol Building, Morgan County Courthouse, Raleigh County Judicial Center, Hampshire County Judicial Center, Putnam County Judicial Building, Medina County (OH) Courthouse, and the Franklin County (PA) Courthouse and Justice Center.

**Randy Burkett Lighting Design** is a full service architectural lighting design and consulting practice. Founded in 1988, we offer a complete range of lighting design related services from initial conceptual development through final construction administration. Our team's wealth of professional experience includes: skill in complete design formulation and development, equipment layout and specification, architectural lighting detailing, custom luminaire design, solar and daylighting assessment, lighting control concepts and lighting energy analysis.

Recent large scale projects with similar demands include the Utah State Capitol Restoration; Missouri State Capitol Restoration; Illinois State Capitol Building Legislative Chambers Restoration; Saint Louis Art Museum Restoration; Pulitzer Foundation for the Arts; Renaissance Grand Hotel - Saint Louis; and the Jefferson National Expansion Memorial Gateway Arch permanent illumination.

**Scheeser Buckley Mayfield**, consulting mechanical/electrical/plumbing/civil engineers, will coordinate the overall site civil, lighting and electrical infrastructure design with Silling and Randy Burkett Lighting Design. SBM will perform the verification of the existing electrical infrastructure for the review and assessment phase and all of the new electrical infrastructure design for the design concept formulation and documentation phase of this project.

This project will be given the highest priority in the offices of Silling Associates, Scheeser Buckley Mayfield, and Randy Burkett Lighting Design, with the assembled team deployed to address both design and production milestones.

#### **Roles and Responsibilities**

We have prepared a team structure for the project, which involves five professional lighting designers. The principal duties of those involved in the project are as follows:

#### **Edward Weber, AIA, LEED AP**

Project Executive, Silling Associates  
Charleston, WV

Mr. Weber will serve as your Project Executive with overall responsibility for overall project development, management and coordination of the Design Team consultants, project budget and schedule management, bidding and negotiating; document production.

**Sean Simon, AIA**

Construction Period Service Manager, Silling Associates  
Charleston, WV

Mr. Simon will provide locally-based leadership during the Construction Contract Administration phase of the project. This is Sean's primary role at Silling and offers hands-on approach to administering the construction contract.

**Randy Burkett, FIALD, IESNA**

President and Design Principal, Randy Burkett Lighting Design  
St. Louis, MO

Mr. Burkett will have the leadership role in the development of lighting designs for the project. His experiences in notable museum and historic restoration projects over a 30 year career will be a principal resource for the team. He will be the Principal-in-Charge for Randy Burkett Lighting Design.



**Ronald Kurtz, IALD, IESNA**

Senior Designer and Project Manager, Randy Burkett Lighting Design  
St. Louis, MO

As a senior designer for the Project, Mr. Kurtz will work closely with Randy Burkett in the formulation and development of lighting designs. His extensive knowledge in the area of exterior lighting design and historic lighting restoration will be a critical resource for the team. He will also serve as the lighting design project manager, overseeing day-to-day activities and handling issues of scheduling and project oversight.

**Jim Eckman, P.E., LEED AP, LC, CBCP**

Principal Electrical Engineer, Scheeser Buckley Mayfield  
Akron, Ohio

The roles of the various SBM team members will be to coordinate the overall site civil, lighting and electrical infrastructure design with Silling and Randy Burkett Lighting Design. SBM will perform the verification of the existing electrical infrastructure for the review and assessment phase and all of the new electrical infrastructure design for the design concept formulation and documentation phase of this project. Jim Eckman will be the Principal in Charge for SBM. He will be involved in the assessment phase and every major electrical design decision under the documentation phase of this project.

**David Holbrook, LC**

Lighting Consultant, Scheeser Buckley Mayfield  
Akron, Ohio

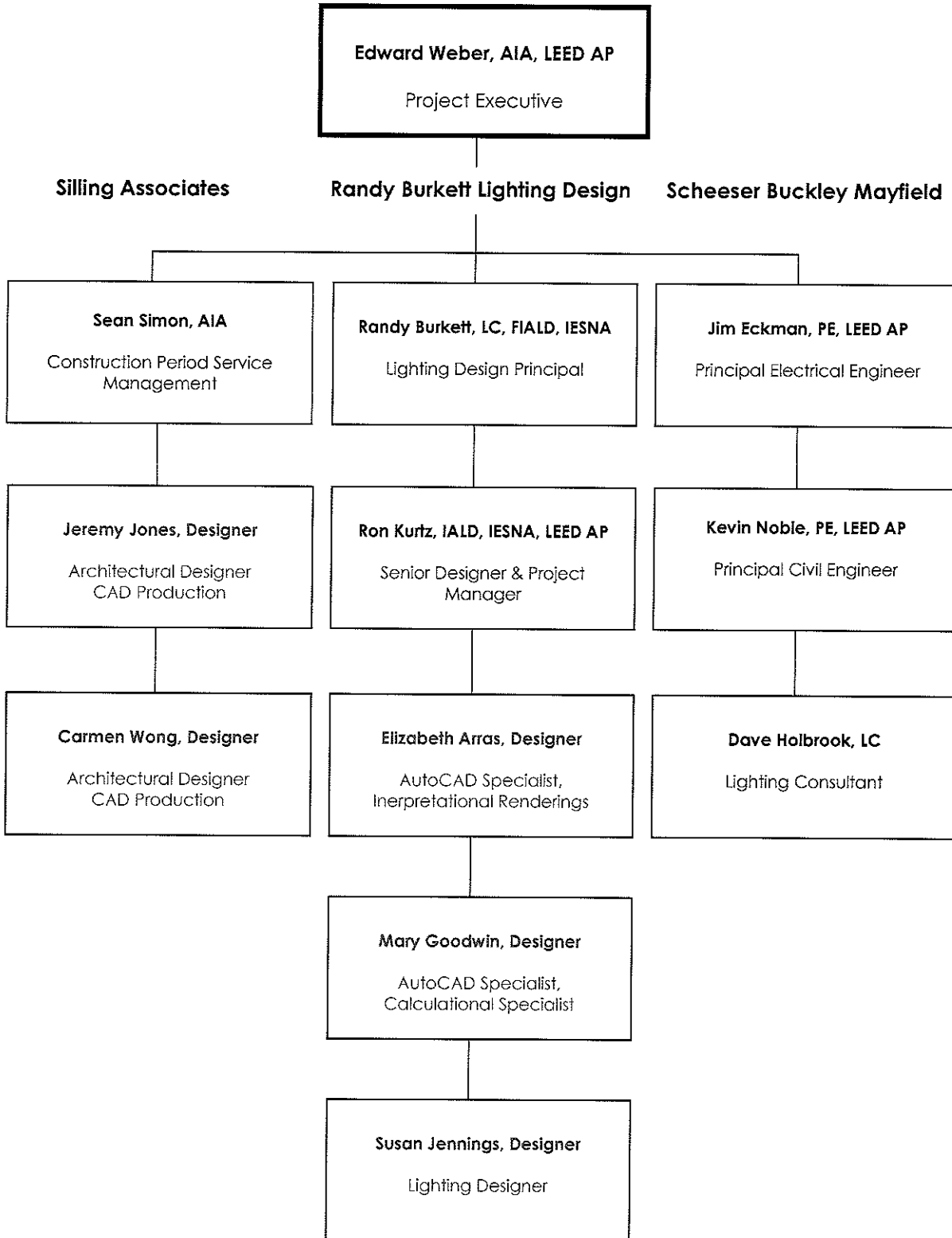
Dave Holbrook will also be involved in the assessment phase and will perform the majority of the electrical infrastructure design in close coordination with Silling and Randy Burkett Lighting Design. Electrical wiring and control design is completely dependant on the lighting design so close coordination is essential.

**Kevin Noble, P.E., LEED AP**

Principal Civil Engineer, Scheeser Buckley Mayfield  
Akron, Ohio

Kevin Noble will provide any site civil design and coordination required on this project. Kevin will provide the required drawings and specifications for this work as well as the coordination with other existing site utilities should any new underground services be required.

**Design Team Organizational Chart—Key Personnel**





4.2.4

Demonstrated Experience



### **Morgan County Courthouse (Berkeley Springs, West Virginia)**

August 8, 2006 marked the second time tragedy destroyed a Courthouse in Morgan County at the corner of Washington and Fairfax Streets in downtown Berkeley Springs. The new 47,000 square foot Courthouse will house all of the County's courts and administrative departments under one roof. A creative approach to the placement of security screening allows for convenient first floor access to the county administrative services, while providing appropriate queuing of court visitors as they make their way to the upper level court departments. The architecture of the new courthouse, which required great sensitivity to the downtown fabric of downtown Berkeley Springs, recalls some of the more prominent features of the historic courthouse, including the cupola, exterior materials, and cornice detail.

Construction Cost:  
\$11 million (Full A/E Services)

Project Size:  
47,000 square feet

Owner:  
Morgan County Commission  
Brenda Hutchinson  
Commission President  
PO Box 28  
Berkeley Springs, WV 25411  
Phone: 1.304.258.8540

Date of Completion:  
July 2010

MEP Engineering:  
Scheeser Buckley Mayfield







### **Saint Timothy Lutheran Church (Charleston, West Virginia)**

Begun in the spring of 2002, Silling Associates provided complete design services for the new worship center for St. Timothy Lutheran Church located on Lawndale Lane in Charleston, West Virginia. Design services involved programming for a congregation who had occupied the same sanctuary since the late 1940s. Silling Associates worked with the parish council and building committee comprised of thirty-five members, over a six-week period to define the spatial requirements of what would be a 27,800 square foot facility. The arrived upon architectural language and character of the project is a portrait of the congregation and comes from the design teams' personal understanding and ownership of the Church mission. Traditional imagery reflective of a deep appreciation of the Lutheran liturgy is combined with a fresh and delicate articulation of interior and exterior spaces, creating something both familiar and new for this diversely mixed family.

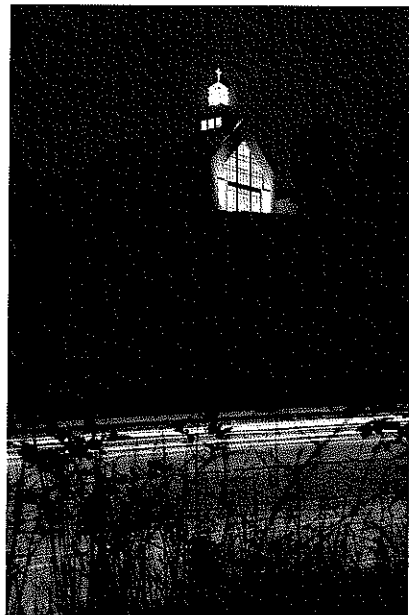
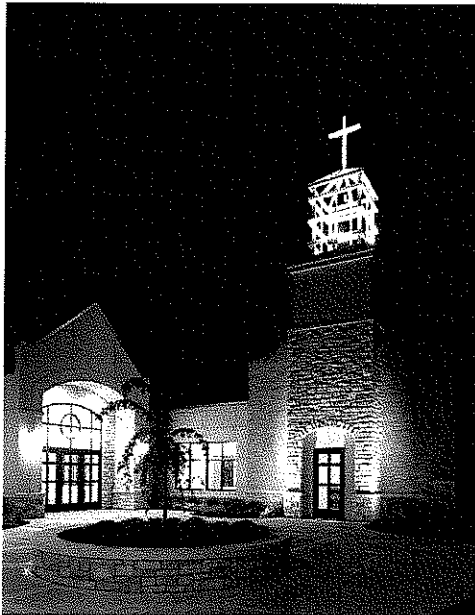
Construction Cost:  
\$4.5 million (Full A/E Services)

Project Size:  
27,800 square feet

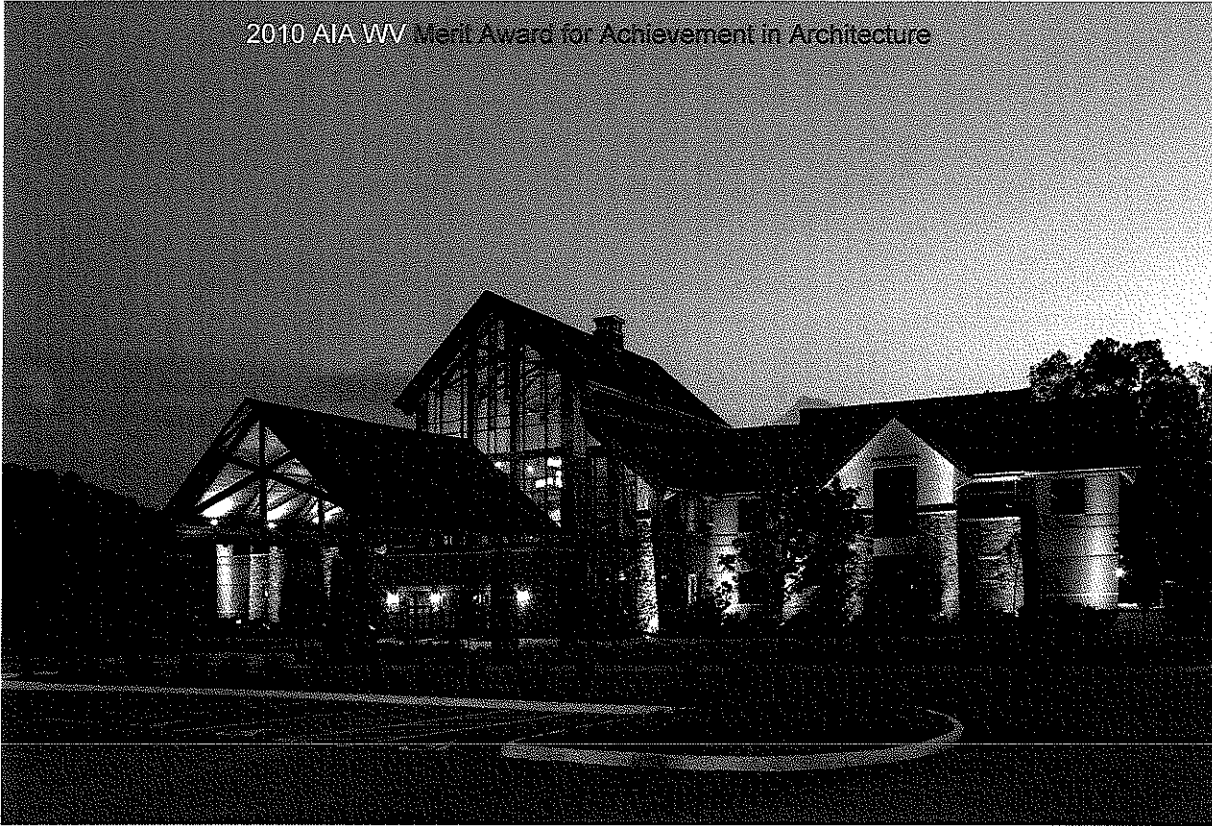
Owner:  
Mr. Richard Mahan, Pastor  
900 Lawndale Lane  
Charleston, WV 25304  
Phone: 1.304.343.0424

Date of Completion:  
2005

MEP Engineering:  
Scheeser Buckley Mayfield



2010 AIA WV Merit Award for Achievement in Architecture



### Bible Center Church (Charleston, West Virginia)

This 67,000 square foot worship center is situated on large, wooded site along Corridor G just outside of Charleston. Completed in April of 2008, the first phase of master plan development carried a total construction budget of \$17,000,000 and utilizes heavy timber wood trusses, convention steel framing, dry-stack stone veneer, brick, EIFS, and high performance glazing in curtain and storefront window systems. In embracing a non-traditional solution to meet the complex needs of this vibrant congregation, the church and design team pursued an architecturally and culturally relevant design to speak to the hearts of past, present, and future members of the church and the Charleston community. It is the first step in a bold venture for the thriving ministries of Bible Center Church.

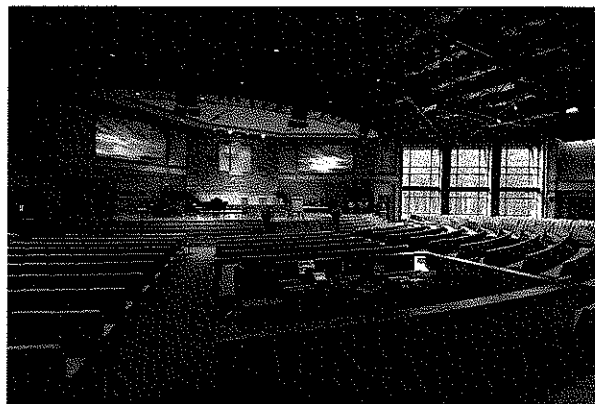
Construction Cost:  
\$17 million (Full A/E Services)

Project Size:  
67,000 square feet

Owner:  
Mr. Lee Walker Church Administrator  
Bible Center Church  
1111 Oakhurst Drive  
Charleston, WV 25314  
Phone: 1.304.346.0431

Date of Completion:  
2008

MEP Engineering:  
Scheeser Buckley Mayfield



609 E. Lockwood Ave.  
Suite 201  
St. Louis, MO 63119  
Tel: 314.961.6650  
Fax: 314.961.7640

**RANDY  
BURKETT  
LIGHTING  
DESIGN**



### **Utah State Capitol Restoration Salt Lake City, Utah**

A true testament to the process of collaboration, the restoration of the Utah State Capitol – exterior and interior – would not be the success that it is had it not been for the team's dedicated efforts from the project's earliest planning stages. The Beaux Arts-influence building is home to one of the finest collections of early 20<sup>th</sup> century architectural lighting.

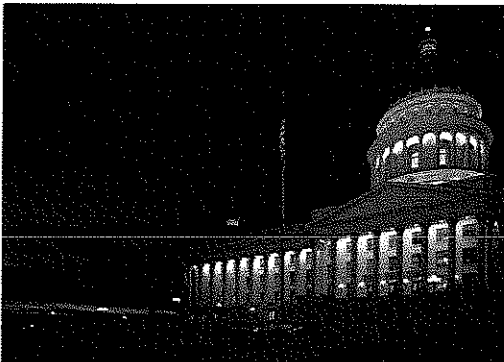


The 300-foot-tall dome is softly, but precisely, lit from the rooftop corners with 400W metal halide floodlights. Additional layers of illumination highlight the lower portion of the dome's drum and portico of Corinthian capitals on the façade.

For the interior, luminaires were recreated using archival photographs as reference and working from the extant decorative castings. The team always gave thought to both the look of the fixture as well as the quality of light emanating from it. To address the vast array of luminaires and variable conditions, eight interchangeable, multilamp reflector assemblies were designed.

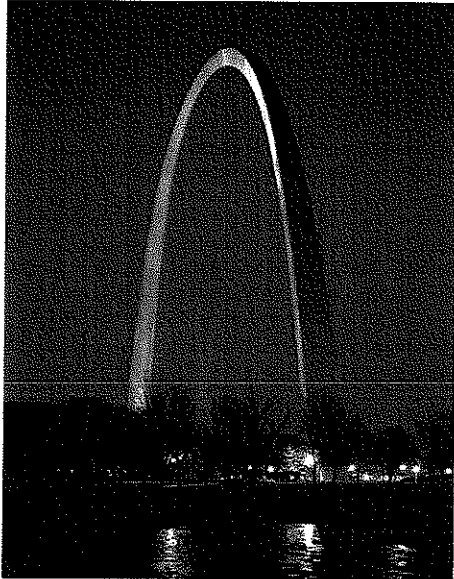
**Construction Cost:** \$260 million  
**Scope of Service:** Full service lighting design from initial conceptual formulation to final installation and focusing; working as a part of a complete architectural and engineering team.

**Project Size:** 320,000 square feet interior  
20 acre site  
**Owner/Client:** David Hart, FAIA  
Architect of the Capitol  
c/o MOCA Systems, Inc.  
341 South Main Street  
Salt Lake City, Utah 84111  
(801) 532-3390



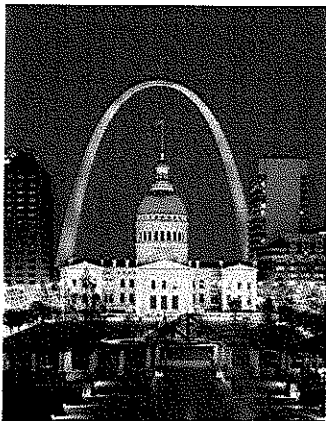
609 E. Lockwood Ave.  
Suite 201  
St. Louis, MO 63119  
Tel: 314.961.6650  
Fax: 314.961.7640

**RANDY  
BURKETT  
LIGHTING  
DESIGN**



**Jefferson National Expansion Memorial  
Gateway Arch  
Saint Louis, Missouri**

Eero Saarinen's Gateway Arch had stood unlighted for 30 years. It was decreed that this design illuminate the 205m high stainless steel monument with a system virtually invisible by day, responsive to the site's archeological concerns, absent of reflected glare to surrounding highways and sensitive to one of the Nation's busiest bird migratory flyways. The solution, formulated by Randy Burkett Lighting Design, from 3 ½ years of mockups and computer analysis, was an innovative short-arc xenon computer controlled lighting system and laser detecting atmospheric monitor to realize the project goals.

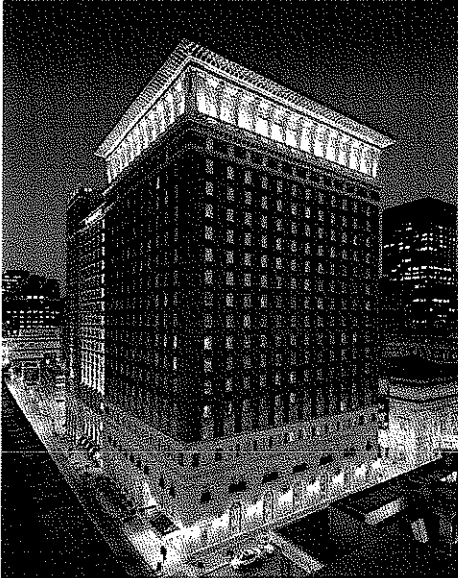


Construction Cost: Undisclosed  
Scope of Service: Full service lighting design from initial conceptual formulation to final installation and focusing.  
Project Size: 205 meter high structure with 30 acre site  
Owner/Client: Christy Fox  
Gateway Foundation  
720 Olive Street  
Suite 1977  
St. Louis, Missouri 63101  
(314) 241-3337  
AND  
The National Park Service  
Washington, D.C.



609 E. Lockwood Ave.  
Suite 201  
St. Louis, MO 63119  
Tel: 314.961.6650  
Fax: 314.961.7640

**RANDY  
BURKETT  
LIGHTING  
DESIGN**



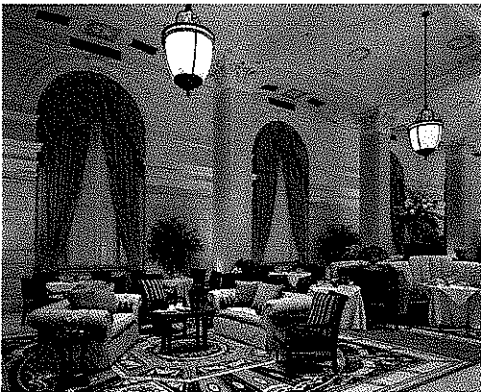
**Renaissance Grand Hotel  
Saint Louis, Missouri**

Designing architectural environments to meet historic requirements offers unique challenges. The exterior light celebrated the building's splendid cornice detailing, while tying it visually to the street with dramatic façade accent uplighting at the ground floor. The lighting of the Renaissance Grand Hotel interiors required historical accuracy in the restored 1917 portion of the hotel, sympathetic but distinctive design in an attached contemporary tower addition, and compliance with all Marriott Hotel lighting requirements. Energy constraints dictated current ASHRAE 90 as a target model. Creative maintenance and operational strategies had to be employed to satisfy both historic and pragmatic concerns.



Construction Cost: \$270 million  
Scope of Service: Full service lighting design from initial conceptual formulation to final installation and focusing; working as part of a complete architectural and engineering team.

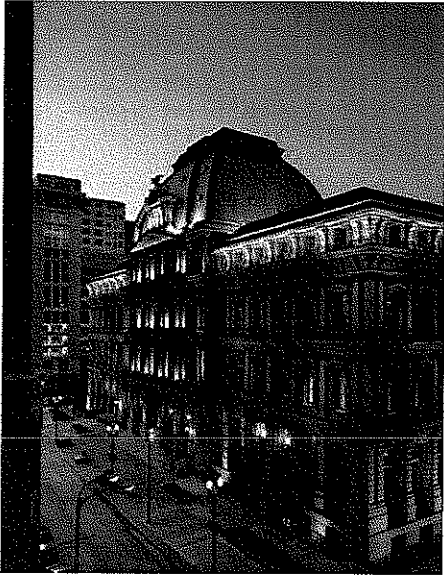
Project Size: 900,000 square feet  
Owner/Client: Ron Silverman  
Senior Vice President -  
Regional Manager  
HRI Properties  
415 North 10<sup>th</sup> Street  
Suite 203  
Saint Louis, Missouri 63101  
314.436.8161



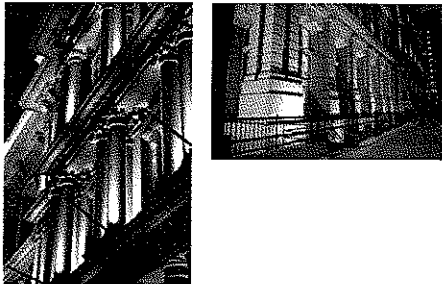
609 E. Lockwood Ave.  
Suite 201  
St. Louis, MO 63119  
Tel: 314.961.6650  
Fax: 314.961.7640

**RANDY  
BURKETT  
LIGHTING  
DESIGN**

**United States Old Post Office and Customs House  
Saint Louis, Missouri**



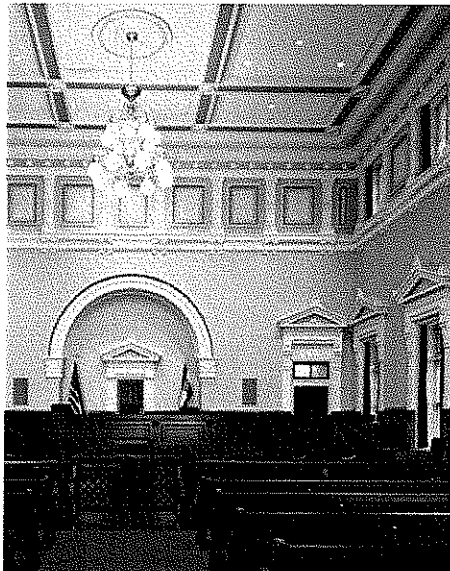
Working closely with a myriad of historic reviewing agencies, including the U.S. General Services Administration, the National Advisory Council, the Department of Interior, and the State of Missouri, the Old Post Office was redeveloped as a multi-use structure. The National Historic Landmark, built in 1872, is the sixth most historic building in GSA's inventory and one of the few second empire buildings still in existence. The building is now occupied by the Missouri Court of Appeals, Webster University, the Saint Louis Business Journal, Saint Louis Public Library, the Attorney General and the Missouri Secretary of State.



Randy Burkett Lighting Design was responsible for complete exterior and interior lighting design, as well as providing full consultation services for historic lighting fixture restoration/recreation. Federal energy and sustainability requirements/initiatives made the lighting development extremely challenging.

Construction Cost: \$35 million  
Scope of Service: Full service lighting design from initial conceptual formulation to final installation and focusing; working as part of a complete architectural and engineering team.

Project Size: 245,000 square feet  
Owner/Client: U.S. General Services Administration  
Washington, D.C.  
AND  
Michael Goellner  
The Desco Group  
25 North Brentwood  
Saint Louis, Missouri 63105  
(314) 994-4811





609 E. Lockwood Ave.  
Suite 201  
St. Louis, MO 63119  
Tel: 314.961.6650  
Fax: 314.961.7640

**RANDY  
BURKETT  
LIGHTING  
DESIGN**

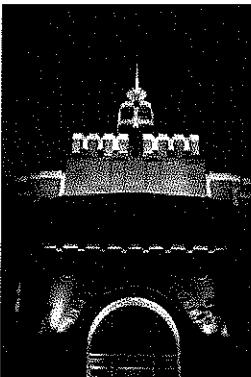
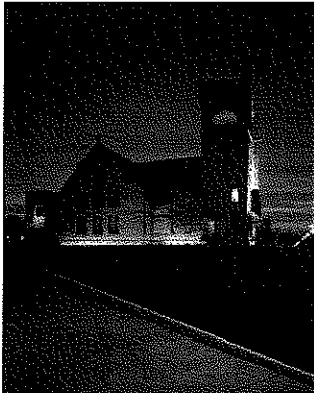


### **Grand Center Cultural District Saint Louis, Missouri**

As the cultural heart of the performing arts in Saint Louis, Grand Center's nighttime appearance is of special importance to the District's persona. Randy Burkett Lighting Design used a variety of creative lighting techniques to reinforce both the architecture and experience, for those who attend events. The after-dark revelation of the streetscape and its buildings is key to the success of this vibrant urban setting.

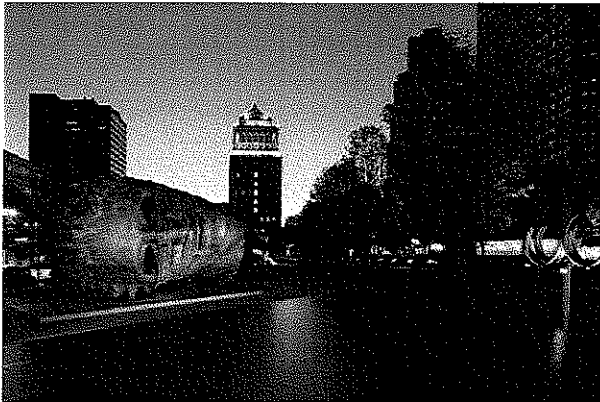
Construction Cost: \$4 million  
Scope of Service: Full service lighting design from initial conceptual formulation to final installation and focusing.

Project Size: 8 city blocks  
Owner/Client: Merrell Weigraffe  
Director of Facilities  
Grand Center, Inc.  
3526 Washington Avenue  
2<sup>nd</sup> Floor  
Saint Louis, Missouri 63103  
(314) 289-1500



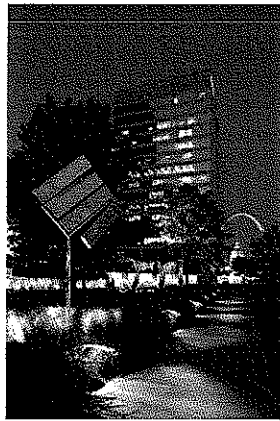
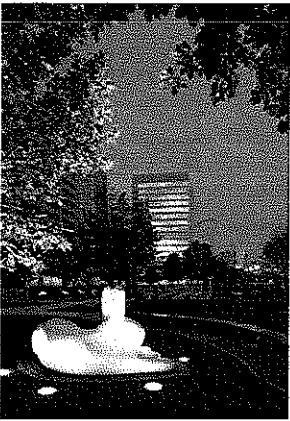
609 E. Lockwood Ave.  
Suite 201  
St. Louis, MO 63119  
Tel: 314.961.6650  
Fax: 314.961.7640

**RANDY  
BURKETT  
LIGHTING  
DESIGN**



**CityGarden  
Saint Louis, Missouri**

Randy Burkett Lighting Design is proud to have been involved in the recently completed CityGarden, one of the most exciting urban projects in downtown Saint Louis in over forty years. It opened to critical and public raves in 2009, with lighting design playing a particularly critical role in its nighttime success.



Framed by office towers, two formerly vacant blocks have been transformed into a vibrant and serene blending of lush plantings and internationally renowned sculpture, with delights of water, stone, architecture and design.

Randy Burkett Lighting Design's role was the design of illumination for all of the Gardens artwork and sculptural pieces, as well as the site's only public building, the Terrace Café.



**Construction Cost:** \$30 million  
**Scope of Service:** Full service lighting design from initial conceptual formulation to final installation and focusing; working as part of a complete architectural and engineering team.

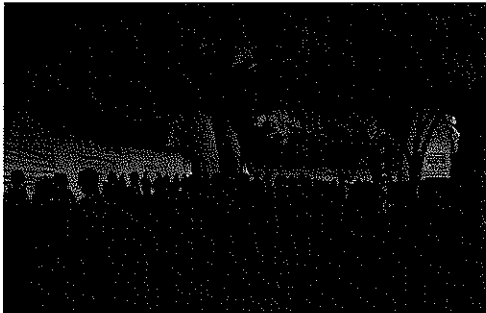
**Project Size:** 4 acres – Urban Sculpture Garden

**Owner/Client:** Sara Myhre  
Nelson Byrd Woltz  
Landscape Architects  
408 Park Street  
Charlottesville, VA 22902  
(434) 984-1358



609 E. Lockwood Ave.  
Suite 201  
St. Louis, MO 63119  
Tel: 314.961.6650  
Fax: 314.961.7640

**RANDY  
BURKETT  
LIGHTING  
DESIGN**



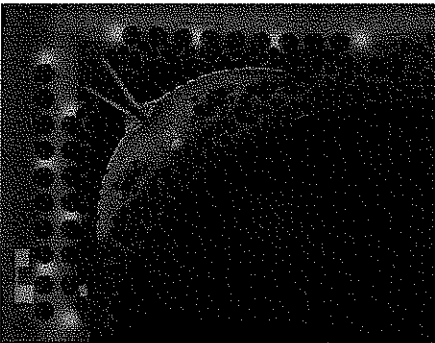
**Martin Luther King, Jr. Memorial  
Washington, D.C.**

A commemoration of the life and work of Dr. Martin Luther King, Jr. with the creation of a memorial to honor his national and international contributions to world peace through non-violent social change. The memorial and park will be located on the Tidal Basin in Washington, DC, midpoint between the Jefferson Memorial and Washington Monument. Randy Burkett Lighting Design is responsible for complete memorial and site lighting, and all lighting controls.



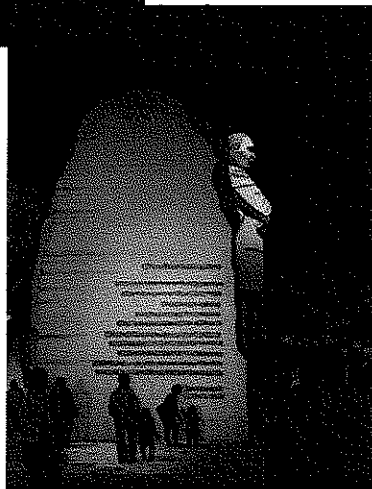
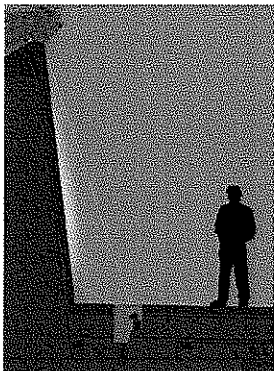
Construction Cost:  
Scope of Service:

\$100 million  
Full service lighting design from initial conceptual formulation to final installation and focusing; working as part of a complete architectural and engineering team.



Project Size:  
Owner/Client:

4 acres  
Ron Kessler  
McKissack & McKissack  
1401 New York Ave, NW  
Suite 900  
Washington, DC 20005  
202.347.1446  
AND  
The Martin Luther King Jr. Foundation  
Washington, D.C.



**Client References—Silling Associates, Inc.**

Mr. Steve Canterbury, Administrative Director for the West Virginia Supreme Court  
State Capitol Complex  
Building 1, Room E-100  
Charleston, WV 25305-0830  
304.558.0145

Mr. Jim Rubenstein, Commissioner  
West Virginia Division of Corrections  
112 California Avenue, Room 300  
Charleston, WV 25305  
304.558.2036

**Client References—Randy Burkett Lighting Design, Inc.**

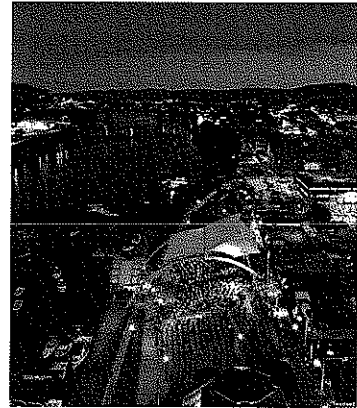
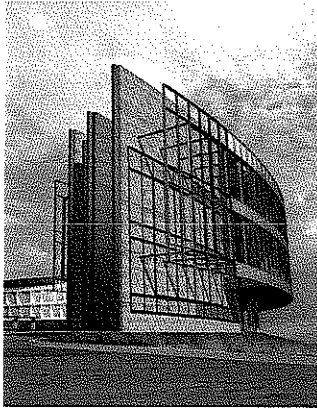
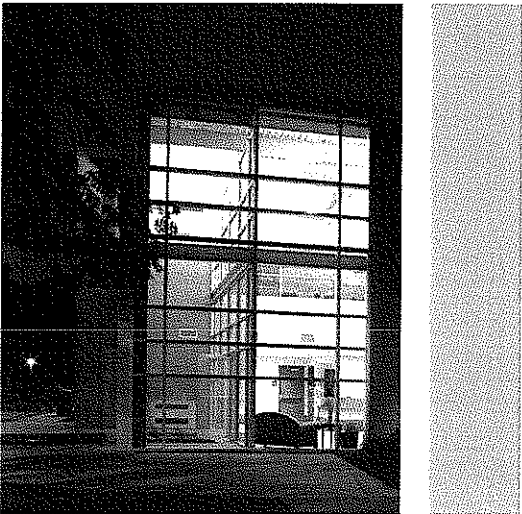
Robert Loversidge, Jr., FAIA  
Schooley Caldwell Associates  
300 Marconi Boulevard  
Suite 100  
Columbus, Ohio 42215  
614.628.0300  
*Architect for the Utah State Capitol Restoration*

Robert Pett, AIA  
Capitol Restoration Group  
524 South 600 East  
Salt Lake City, Utah 84102  
801.364.5161  
*Architect for the Utah State Capitol Restoration*

Philip Hamp, FAIA  
Vinci Hamp Architects  
1147 West Ohio Street  
Chicago, Illinois 60622  
312.733.7744  
*Architect for the Illinois State Capitol Restoration*

Christy Fox  
Executive Director  
The Gateway Foundation  
720 Olive Street  
Suite 1977  
St. Louis, Missouri 63101  
314.241.3337  
*Client for the Jefferson National Expansion Memorial Gateway Arch and CityGarden*

Ted Spaid, ASLA, CLARB  
SWT Associates  
7722 Big Bend Boulevard  
St. Louis, Missouri 63119  
314.644.5700  
*Architect for the Saint Louis Art Museum Art Hill Restoration*

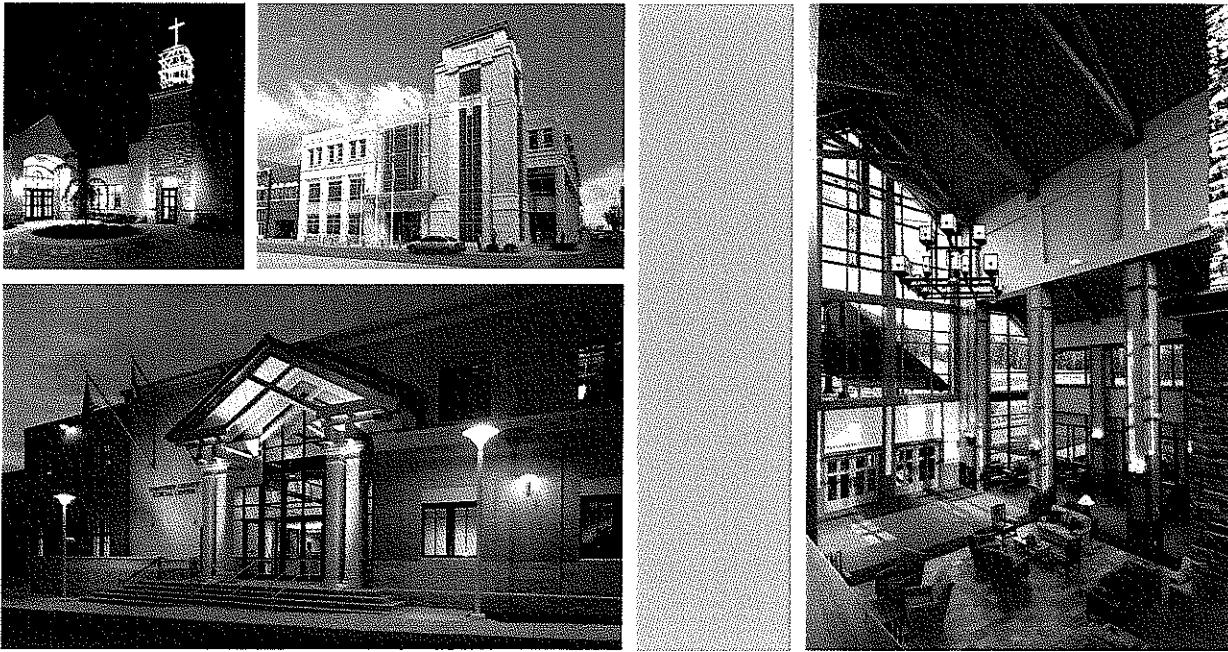


## About **SILLING**ASSOCIATES, Inc.

Architectural success is measured by vision and an unwavering dedication to excellence. This axiom was the philosophical birth of Silling Associates Incorporated by H. Rus Warne in 1902. Following the lead of partners like Warne and its namesake, Cy Silling, the firm today has the proud distinction of being the oldest continuing architectural firm in West Virginia and one of the oldest in the eastern United States. Throughout, Silling Associates has woven itself into the very fabric of West Virginia, providing planning and architectural services that have touched the lives of virtually every citizen and delivering landmark projects collectively defining its built environment.

Whether through its early century beaux arts and neo-classical collection, its mid-century modern and post-modern portfolio, or its current contextual vocabulary, Silling has always been renowned as one of the premier architectural firms in the state. Today, Silling Associates continues to have a powerful impact on the region's architectural landscape through fresh, yet solid design and responsible project management.





## ORGANIZATIONAL Structure

Silling Associates is a principal-led design practice, and the organizational structure of our firm is very much studio-oriented. The principals of our practice are actively engaged in all projects and routinely serve as daily project managers for all major design commissions. This structure ensures that first-hand project criteria, relayed directly from clients in programming and design review meetings, is directly applied to all work within the office; from conceptual design through construction detailing, specification writing, and construction observations services. Likewise, through this studio environment structure, all the talents and perspectives of the entire design and production staff at Silling are brought to each design task, allowing our firm to build multiple-person teams within the office to focus on a variety of projects simultaneously. Likewise, open sharing of project information, project status, and large picture scheduling of our workload allow architects, designers, and technicians to be informed on a number of current project needs and deadlines and cross-pollinate from job to job and task to task. This highly interactive and collaborative structure yield compelling design solutions, maintains client expectations throughout the process, and most importantly ensures quality through principal leadership.

However, it is primarily a culture of service that permeates everything that Silling does and leads to very satisfied clients. Aggressive communication is an axiom of our firm, and the heart-felt desire to be highly responsive to client needs and demands has proven to be one of the many reasons that owners select Silling Associates. This is most obvious in the number and references of our many repeat clients across the state.

## AWARDS & Recognition

Consistent leadership, creative vision and service has always been a distinguishing characteristic of Silling Associates. Since our founding in 1902, the firm has consistently been recognized by leading industry organizations, publications, and professional groups. Recent awards through the WV Chapter of American Institute of Architects include a **2004 Honor Award for Excellence in Architecture** (Star USA Federal Credit Union), **2006 Merit Award for Achievement in Architecture** (James C. Wilson Union), **2008 Honor Award for Excellence in Architecture** (Chesapeake Energy Eastern Regional Headquarters), and **2009 Merit Award for Achievement in Architecture** (Bible Center Church).







## Edward Weber, AIA, LEED AP™

Senior Associate

### Professional Bio

Ed has over twenty years' experience as a practicing architect with significant work in all phases of architectural programming, schematic design, design production and construction contract administration. After graduating from Notre Dame in 1992, Ed joined the Chicago office of Richard Gibbons and Associates. There he managed high-end custom residential projects of renovation and new construction work with construction budgets between \$500,000 and \$20,000,000. In 1999, Ed was offered partnership and the firm of Gibbons, Fortman & Weber was created in January of 2000. Under GFW, the office work expanded and projects became more diverse with commissions for hospitality design of restaurants and lounges, as well as residential and commercial developments throughout the city. Having joined Silling Associates in 2006, Ed brings his extensive project management experience and design talent to the firm's major commissions. His involvement is specifically appropriate in those projects pertaining to campuses and master plans, urban settings, historic contexts, and residential scale.

With Professional Accreditation by the U.S. Green Building Council (USGBC) in coordination with the Green Building Certification Institution (GBCI), Ed holds the title of LEED AP for New Construction and Major Renovations. As a LEED AP (Leadership in Energy and Environmental Design), Ed has distinguished himself as having the knowledge and skills necessary to participate in the design process, to support and encourage integrated design, and to streamline a building's LEED application and certification process. Ed was most recently elected to the Board of Directors for the West Virginia Chapter of the USGBC.

### Education

Bachelor of Architecture  
University of Illinois, Chicago 1986

Master of Architecture and Urban Design  
University of Notre Dame 1992

### Licenses & Certifications

Licensed Architect in West Virginia & Illinois  
LEED AP

### Professional Affiliations

Self-Certified Architect, City of Chicago, DCAP; Registered Energy Professional, City of Chicago, DCAP; Former Board of Directors, Habitat for Humanity, Windy City Affiliate Former Construction Committee Chair, Habitat for Humanity, Windy City Affiliate; Board of Directors, WV Chapter of the United States Green Building Council

### Awards & Recognition

2010 AIA WV Honor Award for Excellence in Architecture, Chesapeake Energy Eastern Regional Headquarters

### Notable Project Experience

*Charleston House Holiday Inn  
for Plaza Management  
Charleston, WV*

*Chesapeake Energy Eastern  
Regional Headquarters  
Charleston, WV*

*Chesapeake Energy Regional  
Field Offices  
WV, KY, PA, NY*

*Haddad Riverfront Park Stage,  
Amphitheatre, & Canopy  
Charleston, WV*

*WV Supreme Court of Appeals  
East Wing of the State Capital  
Complex*

*Moses Residence  
Barboursville, WV*

*McJunkin Residences  
Charleston, WV*

*4100 Kanawha Avenue Residence  
Charleston, WV*

*Pray Residence  
Charleston, WV*

*Weintraub Residence  
Charleston, WV*

*Charleston Mixed-Use  
Development Study, CADCO  
Charleston, WV*

*St. Matthews Episcopal Church  
Charleston, WV*

*SideTrack Rooftop Bar  
Chicago, IL*

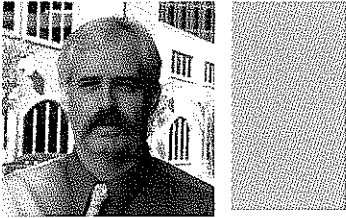
*Substation North Lofts  
Chicago, IL*

*Gold Coast Residence  
Chicago, IL*

*Winnetka Residence  
Winnetka, IL*

*Chicago Loft Residence  
Chicago, IL*





## Sean Simon, AIA

Architect & Construction Period Service Manager

### Professional Bio

Sean has sixteen years' experience involving all phases of architectural programming, design, construction document production, and construction contract administration. From 1998 through 2007, he operated his own architectural practice providing comprehensive design and project management services for a variety of project types including banking, commercial, government, education, health care, religious, and residential.

Sean joined Silling in 2008 as a Construction Period Service Manager, working closely with the firm's production staff throughout the construction document phase and providing construction contract administration services. He is responsible for facilitating pre-construction meetings providing clear definition of project goals and owner expectations, reviewing contractor submittals, product samples, and shop drawings for conformance to the contract drawings and specifications, attending progress meetings to maintain clear communication with builders, observing installation of materials and systems to verify their conformance with the design intent, and monitoring the project schedule.

Sean earned a Bachelor of Architecture from the University of Tennessee in 1992 and is a member of the West Virginia Chapter of the American Institute of Architects.

### Education

Bachelor of Architecture  
The University of Tennessee, 1992

### Licenses & Certifications

Licensed to practice architecture in West Virginia, Maryland, Ohio, Virginia, and Pennsylvania.

### Professional Affiliations

American Institute of Architects, West Virginia Chapter (AIAWV)

### Civic Involvement

Cub Scoutmaster for Pack 434—Serves as Unit Commissioner for Little Kanawha District, Allohak Council; Little Kanawha District Roundtable

### Notable Project Experience

Morgan County Courthouse  
Berkeley Springs, WV

Raleigh County Judicial Center  
Beckley, WV

Hampshire County WPA Annex  
Romney, WV

Hampshire County Sheriff's Building  
Romney, WV

Tri-State Casino Resort Hotel  
Cross Lanes, WV

Anthony Correctional Center

Huttonsville Correctional Work Camp  
Huttonsville, WV

Martinsburg Correctional Center  
Martinsburg, WV

Puinnam County Courthouse  
Winfield, WV

Hamblin Hall Boiler Replacement  
West Virginia State University

Ferrell Hall Chiller Replacement  
West Virginia State University

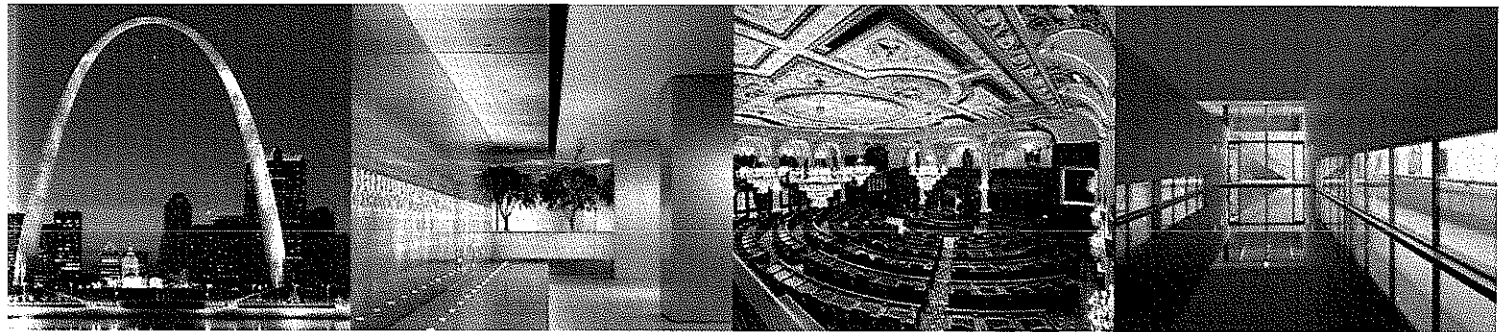
Sullivan Hall Elevator Replacement  
West Virginia State University

Wyoming County Courthouse Annex  
Pineville, WV



---

# Randy Burkett Lighting Design, Inc.

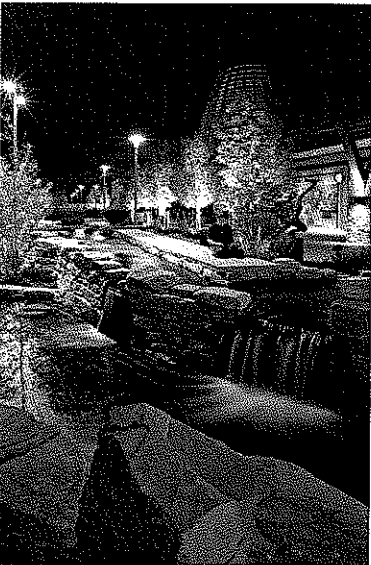
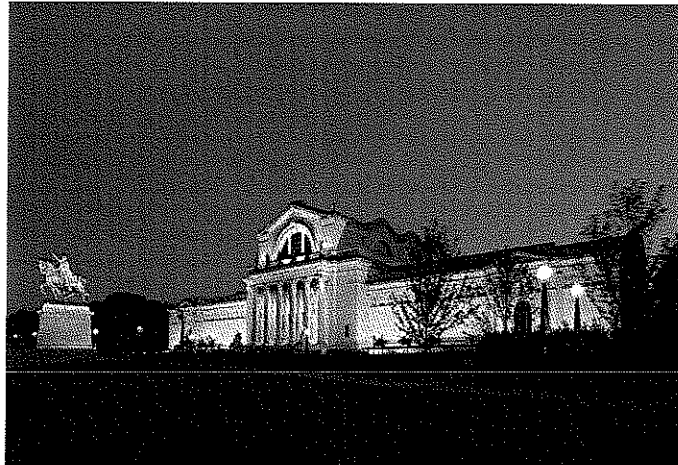
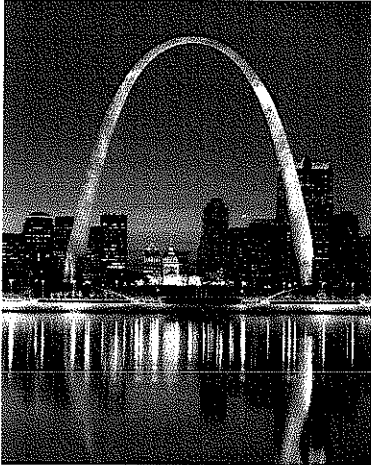


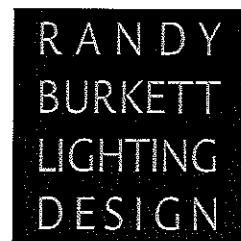
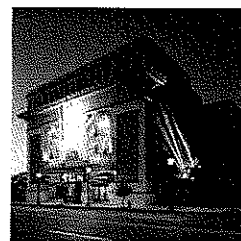
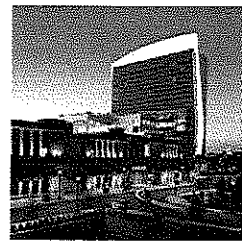
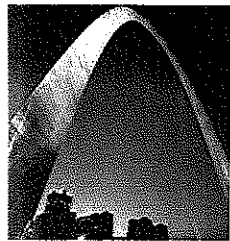
609 East Lockwood Avenue  
Suite 201  
Saint Louis, Missouri 63119  
314.961.6650  
314.961.7640 (Fax)  
[www.rbldi.com](http://www.rbldi.com)

---

RANDY  
BURKETT  
LIGHTING  
DESIGN

Exterior Building and Façade Lighting





# Exterior

Light can be a powerful force in a project's success, when insightful, creative design is brought to bear during the development of its exterior identity. From the excitement of a bustling theme park to the majesty of one of the world's greatest monuments, Randy Burkett Lighting Design has been responsible for the illumination of a diverse collection of outdoor structures and spaces throughout the world.

**Jefferson National Expansion Memorial Gateway Arch**  
St. Louis, Missouri

**Grand Center**  
St. Louis, Missouri

**Empress River Casino**  
Joliet, Illinois

**1999 K Street**  
Washington, DC

**Lesner Bridge Replacement (2011)**  
Virginia Beach, Virginia

**St. Louis Art Museum**  
St. Louis, Missouri

**Underwater Lighting at the Red Sea**  
Saudi Arabia

**Zhe Jiang Fortune Finance Center**  
Hangzhou, China

**Moscow Administration Building**  
Moscow, Russia

**Renaissance Place**  
Highland Park, Illinois

**Corridors Office Building**  
Chicago, Illinois

**Bannockburn Office Building**  
Bannockburn, Illinois

**Chain of Rocks Bridge**  
St. Louis, Missouri

**Shaw Park Plaza**  
Clayton, Missouri

**The Plaza in Clayton**  
Clayton, Missouri

**Old Post Office and Customs House**  
St. Louis, Missouri

**Packard Lofts**  
St. Louis, Missouri

**Martin Luther King, Jr. Memorial (2010)**  
Washington, DC

**Petronas Towers Lighting Enhancements**  
Kuala Lumpur, Malaysia

**Gateway Center**  
Chicago, Illinois

**Blessed Sacrament**  
Springfield, Illinois

**City Place**  
St. Louis, Missouri

**Sigma Aldrich**  
St. Louis, Missouri

**Citimortgage**  
St. Louis, Missouri

**Riverwalk of San Antonio Master Plan**  
San Antonio, Texas

**Old Post Office Renovation/Restoration**  
San Antonio, Texas

**Missouri State Capitol**  
Jefferson City, Missouri

**Utah State Capitol**  
Salt Lake City, Utah

**20 West Kinzie**  
Chicago, Illinois

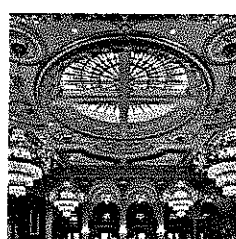
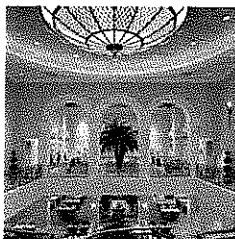
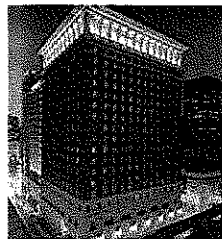
**The Renaissance Grand Hotel**  
St. Louis, Missouri

**Packard Lofts**  
St. Louis, Missouri

**Goethels Bridge (2012)**  
New York, New York

**Ely Walker Building**  
St. Louis, Missouri

**Gateway Sculpture Garden**  
St. Louis, Missouri



# Historic Restoration

The respect for, and preservation of, man's achievements in art and architecture are among his noblest pursuits. As a part of that work, the understanding of lighting's role is of paramount importance. Lighting design within the context of historic restoration or renovation must be sensitive to maintaining the integrity of the original lighting intent, while taking advantage of potential opportunities to further enhance the visual revelation of the historic surrounding. Randy Burkett Lighting Design has been selected to be a part of historic restoration teams by many firms and features several notable projects in their portfolio.

**St. Louis Gateway Renaissance Hotel**  
St. Louis, Missouri

**Graham Chapel at Washington University**  
St. Louis, Missouri

**Utah State Capitol**  
Salt Lake City, Utah

**Chain of Rocks Bridge**  
St. Louis, Missouri

**U.S. Post Office Renovation/Restoration**  
San Antonio, Texas

**Lennox Hotel**  
St. Louis, Missouri

**Missouri State Capitol Rotunda**  
Jefferson City, Missouri

**Missouri State Capitol – Senate Chamber**  
Jefferson City, Missouri

**Illinois State Capitol – Senate and House Chambers**  
Springfield, Illinois

**Westin – Cupples Station**  
St. Louis, Missouri

**Washington University Holmes Hall**  
St. Louis, Missouri

**The Piper Plant House at Tower Grove Park**  
St. Louis, Missouri

**Delta Queen Steamboat**  
New Orleans, Louisiana

**Washington University Brookings Hall**  
St. Louis, Missouri

**United States Custom House and Post Office**  
St. Louis, Missouri

**Renaissance Grand Hotel**  
St. Louis, Missouri



RANDY  
BURKETT  
LIGHTING  
DESIGN

**Randy Burkett, FIALD, IESNA, LC**  
**President and Design Principal**

Randy Burkett is the President and Design Principal of Randy Burkett Lighting Design, Inc. As Principal he establishes design direction and oversees the management of the firm's projects. Since he began professional practice in 1978, he has been responsible for the lighting of numerous national and international projects. He has designed the lighting for a diverse collection of environments including convention centers, museums, retail malls and stores, corporate offices, government facilities, health care and laboratory facilities, site developments and building exteriors. Before establishing his own firm, he spent eight years with the Lighting Design Group of Hellmuth, Obata and Kassabaum as its Director, and as a Vice-President of the company.

Randy is an active member of the International Association of Lighting Designers and is both a former board member and president. He is involved in IESNA Technical and Design committees including "Quality of the Visual Environment", and "Office Lighting". He has authored a wide variety of design and technical articles appearing in publications in over 40 countries. He is a frequent speaker to professional organizations on a variety of lighting design subjects and has served as an instructor at the University of Colorado in Boulder and Maryville University in St. Louis. He is currently a member of the Adjunct Faculty of Washington University's Graduate School of Architecture.

**Education:**

The Pennsylvania State University  
Bachelor of Architectural Engineering 1978  
Institute of Advanced Architectural Studies; York, England 1977  
University of Leeds; Leeds, England 1977

**Professional Affiliations:**

International Association of Lighting Designers (IALD) Fellow  
Illuminating Engineering Society of North America (IESNA)  
International Commission on Illumination (CIE)

**Awards:**

International Illumination Design Awards  
Award of Distinction 1993  
Award of Excellence 1988, 1996, 2000, 2002, 2004  
Special Citation 1987  
Edwin F. Guth Award of Merit 1986, 1988, 1990 thru 2002, 2004 thru 2007,  
2008, 2009  
The Edison Award – First Place, 1992  
The Edison Award of Excellence 1991, 1996, 2003, 2005, 2008  
International Association of Lighting Designers  
Award of Excellence 1993  
Award of Merit 2002  
Citation 1993

RANDY  
BURKETT  
LIGHTING  
DESIGN

**Ronald D. Kurtz, IALD, IESNA, LEED AP**  
**Associate and Senior Lighting Designer**

Ron Kurtz has been with Randy Burkett Lighting Design since 1990. Ron's responsibilities as a Lighting Designer and Project Manager include the development of conceptual design which involves the determination of both aesthetic and technical requirements, the preparation of contract documents and specifications, as well as construction phase coordination and field observation. His lighting design experience includes three years with Grenald Associates, Ltd. in Philadelphia and Washington, D.C. Ron has been responsible for the design of large public spaces and lobbies, hospitality and conference facilities, office environments, exterior landscape and building floodlighting, themed entertainment parks and exhibits.

Ron is an active member of the International Association of Lighting Designers and currently serves on the Sustainability Committee and is a LEED Accredited Professional. He is also involved in the IESNA on both a local and national level, participating on the Energy Management Committee and is a member of ASHRAE's 90.1 Energy Standards Committee. He has been a speaker on a number of lighting topics at professional and educational conferences.

**Education:**

The Pennsylvania State University  
Bachelor of Architectural Engineering 1987

**Professional Affiliations:**

International Association of Lighting Designers (IALD)  
Illuminating Engineering Society of North America (IESNA)  
U.S. Green Building Council LEED Accredited Professional (LEED AP)

**Awards:**

International Illumination Design Awards  
Award of Excellence 1996, 2000, 2002  
Edwin F. Guth Award of Merit 1992, 1993, 1997, 1999, 2000, 2001, 2002, 2004,  
2005, 2007, 2008, 2009  
Edison Awards  
Award of Excellence 2006, 2008  
Award of Merit 1995, 2003  
International Association of Lighting Designers  
Award of Merit 2002

CONCEPTS BY ARCHITECTURE

## Utah State Capitol Restoration

RANDY BURKETT  
LIGHTING DESIGN

Category: Whole Building

**Jury Comments:**

The scope of the project and the project delivery is unique. - There is an extraordinary attention to detail in creating a lighting strategy that is sensitive to the historic architectural context. - A true collaborative effort.

**Details**

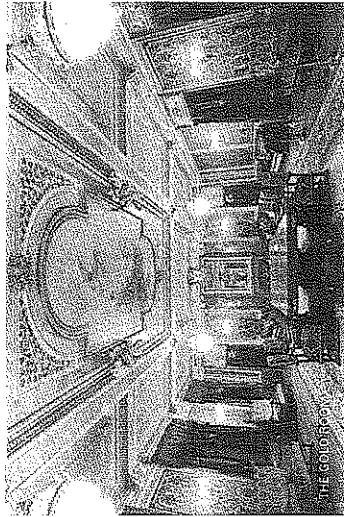
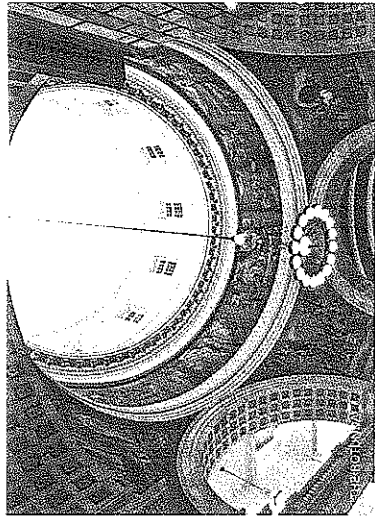
**Client:** State of Utah, Salt Lake City  
**Architect for the Utah State Capitol and Executive Director of the Capitol Preservation Board (duration of project):** David Hart, FAIA  
**Consortium of Architects (assembled specifically and only for the duration of the project):** Capitol Restoration Group, Salt Lake City  
**Restoration Architect:** Schooley Caldwell Associates, Columbus, Ohio

**Lighting Designer:** Randy Burkett  
 Lighting Design: St. Louis  
**Electrical Engineer:** Spectrum Engineers, Salt Lake City  
**Design Assist Consultant:** Rambusch Lighting, Jersey City, N.J.  
**Photographers:** Durrn Communications, Salt Lake City; Capitolshots Photography, Corona, Calif.

**Project Size:** 320,000 square feet  
**Project Cost:** \$260 million  
**Lighting Installation Cost:** \$5 million  
**Watts per Square Foot:** 1.25

**Manufacturers**

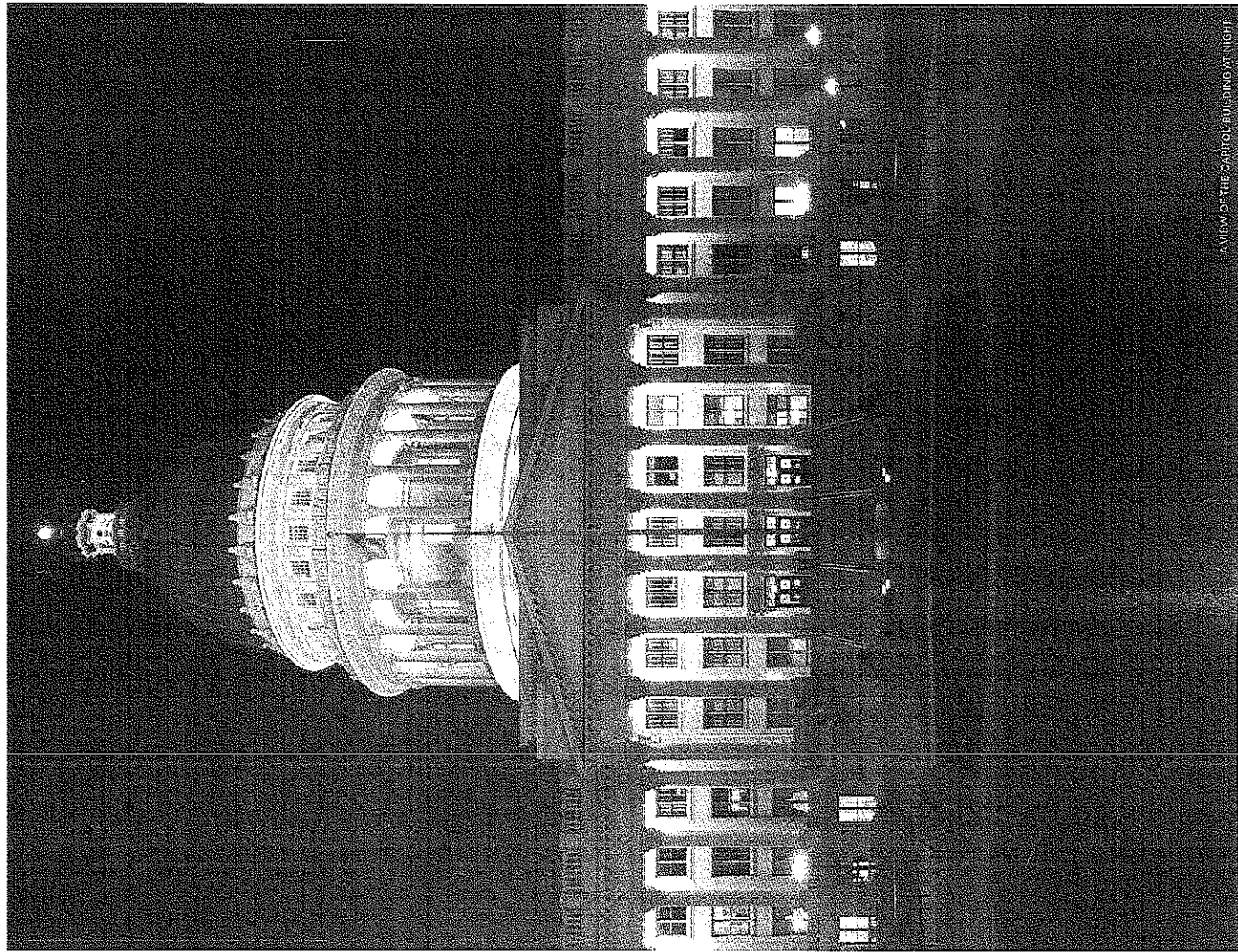
Columbia Lighting, Elliptipar, Litecontrol, Rambusch Lighting, Sterner Lighting, Winona Lighting



**A true testament** to the process of collaboration, the restoration of the Utah State Capitol - exterior and interior - would not be the success that it is had it not been for the team's dedicated efforts from the project's earliest planning stages. The Peaux Arts-influenced building is home to one of the finest collections of early 20th-century architectural lighting. But before the team, including lighting designer Randy Burkett, could embark on the restoration, they had to evaluate the range of historic light fixtures and determine how they would both restore original luminaires and upgrade the lighting to meet 21st-century standards. To that end, Burkett enlisted Edwin Rambusch of Rambusch Lighting as a design assist consultant so that the lighting restoration work and the recreation of historic fixtures could be properly assessed for scope of work and budget.

The first order of business was to illuminate the exterior. The 300-foot-tall dome is solid, but precisely lit from the rooftop corners with 400W metal halide floodlights. Additional layers of illumination highlight the lower portion of the dome's drum and portico of Corinthian capitals on the facade.

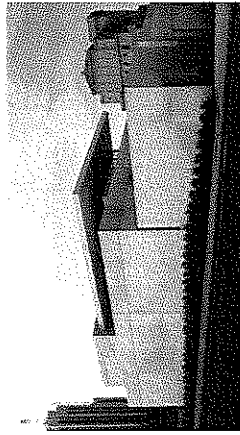
For the interior, luminaires were recreated using archival photographs as references and working from the exact decorative casings. The team always gave the client the look of the future as well as the quality of a fixture that can be replaced. In addition, the vast array of luminaires and variable casings were upgraded to include multi-bay reflector assemblies were designed to work with vintage fluorescent, incandescent metal halide discharge, and halogen sources. More than 10 years in the making, the restoration of the Utah State Capitol celebrates light across the ages. **ELIZABETH DONOFF**



AVIEW OF THE CAPITOL BUILDING AT NIGHT

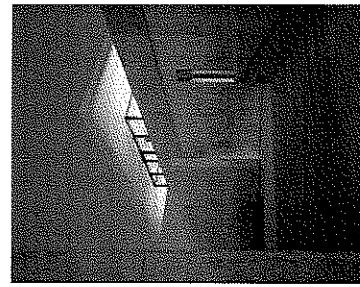
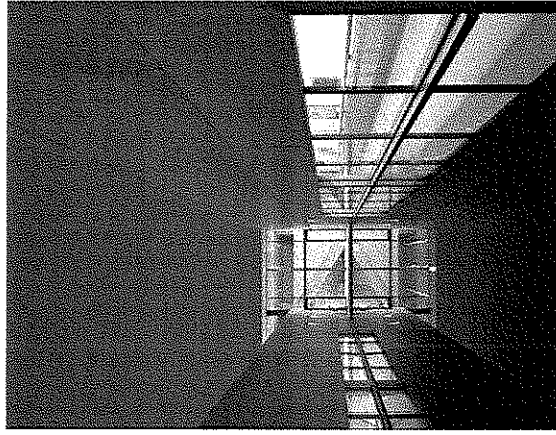
## Randy Burkett Lighting Design, Inc.

Pulitzer Foundation for the Arts  
St. Louis, Missouri



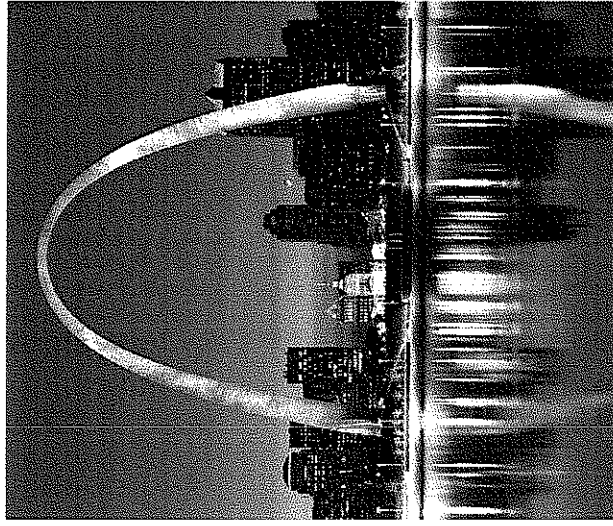
Lighting the first U.S. public commission for Pulitzer laureate Tadao Ando, the three-floor, 43,000-square-foot Pulitzer Foundation for the Arts, in St. Louis, offered a rare design opportunity for Randy Burkett Lighting Design. Since the Foundation's major permanent works of art—Ellsworth Kelly's wall sculpture, Blue Black, and Richard Serra's torqued spiral sculpture, Ice—were commissioned specifically for the building, they were created at the same time as the architecture and lighting. This rare concurrence helped inspire a lighting design that treats architecture and art as a seamless environment. During the day, light entering through narrow skylights, clerestories and low glass sidelights is filtered by inter-reflections off interior walls and a centrally located exterior reflecting pool. The baffling provides a softer view of the art while dramatizing the architecture's concrete planes. Electric lighting in daylighted galleries plays a minimal role before twilight, when dimmable, mostly halogen source wallwashing and accenting are required. By contrast, other galleries use flexible recessed track lighting, controlled by dimming and neutral density filters, while public spaces are lit with "quietly" with recessed PAR halogen point sources and spread lenses that softly bathe planes and provide visual cues for orientation. The visitor's experience of art and architecture is made more memorable by a lighting design that celebrates it through respectful revelation.

1 - 5: Pulitzer Foundation for the Arts, St. Louis, Missouri; Tadao Ando, architect; Robert Pettus, photographer.



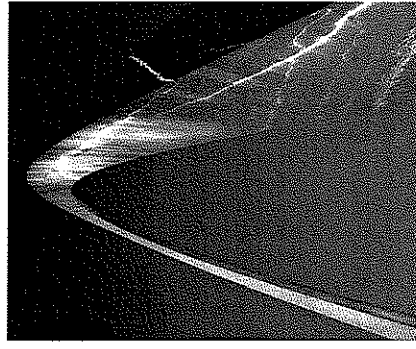
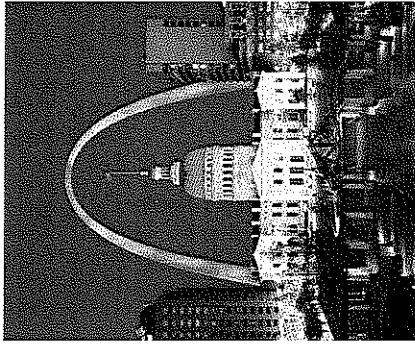
## Randy Burkett Lighting Design, Inc.

Jefferson National Expansion Memorial Gateway Arch  
St. Louis, Missouri



Although St. Louisans had longed for nighttime displays of their iconic Jefferson National Expansion Memorial Gateway Arch, designed by Eero Saarinen, no lighting design proposed for the 630-foot-high stainless steel structure since its 1965 opening proved acceptable. The technical challenges, bureaucratic hurdles, resistance from historians, and risks to waterfowl seemed insurmountable. Now, following three and 172 years of design, computer analysis and full-scale mockups, an award-winning lighting installation by Randy Burkett Lighting Design successfully honors Saarinen's vision and meets a variety of special requirements. Because the National Park Service insisted the lighting be invisible by day, 44 custom-designed, 3000-watt, short-arc xenon luminaires were mounted within four subterranean concrete vaults on the Arch's east and west sides. The vaults' excavation received detailed archaeological reviews to ensure that buried artifacts were undisturbed or relocated. To permit precise beam shaping and nuanced intensity, each luminaire employs a computer adjustable reflector system, along with a special lens that elongates and softens distribution, while minimizing spill light. Because the Mississippi River is a major migratory corridor for waterfowl, luminaires are automatically extinguished by a central computer in bad weather to protect birds from harm. Of course, on clear nights the Arch is the "must-see" it is in daylight.

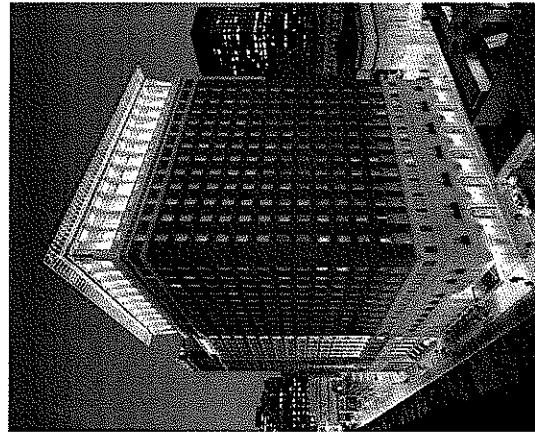
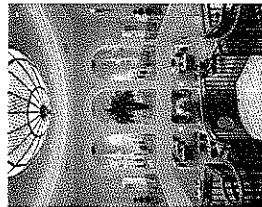
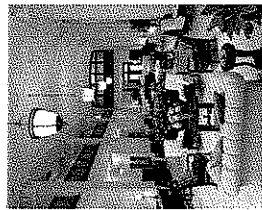
1 - 4: Jefferson National Expansion Memorial Gateway Arch, St. Louis, Missouri; Eero Saarinen, architect; Debbie Franke, photographer; IES, IIDA-Award of Excellence, IALD Award of Merit.





**Randy Burkett Lighting Design, Inc.**

Renaissance Grand Hotel  
St. Louis, Missouri



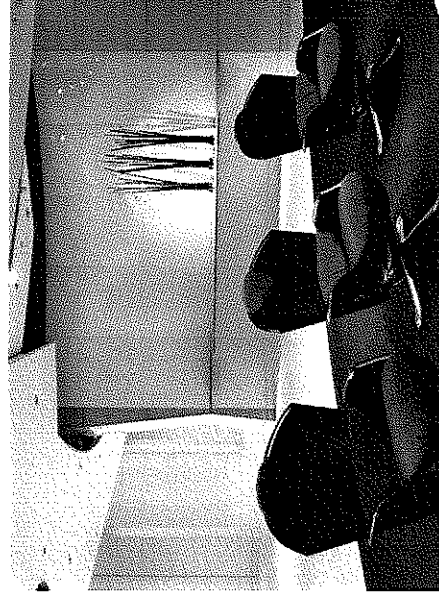
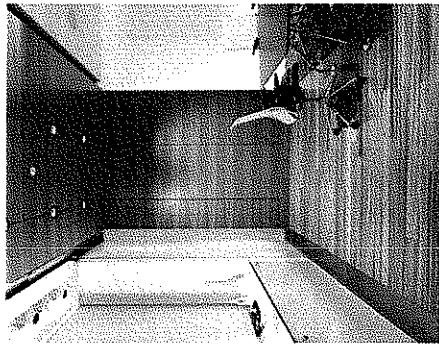
The rebirth of the former Stairer Hotel, the standard for hospitality in early 20th century St. Louis, as the new Renaissance Grand Hotel challenged RTKL Associates, architect, Forest Perkins, interior designer, and Randy Burkett Lighting Design, lighting designer, to devise a new architectural environment that met historic requirements—while providing all the expected hotel amenities. The award-winning lighting design demanded historical accuracy in the restored 1917 section, sympathetic yet distinctive design in the contemporary tower addition, compliance with Marriott's lighting standards, all while meeting a project cap based on a \$9-million design-build bid. With ASHRAE 90 as the target model, the lighting in such spaces as the historic hotel lobby, atrium, and 22nd-floor ballroom was restored to its original splendor, while new facilities received their own opulent identity. The Renaissance Grand's premier dining facility, for example, now occupies the Stairer's lobby, highlighted by replicated pendants that glow with long-life A-lamp halogen warmth while 100-watt quartz halogen uplights dramatize resplendent vaulted ceilings. Not to be outdone, the new lobby sparkles beneath an expository ornamental chandelier, an intricate glass structure incorporating a "catwalk" for servicing its compact fluorescent sources. Such careful detailing explains why the hotel met the client's expectations while coming in \$1 million under the bid price.



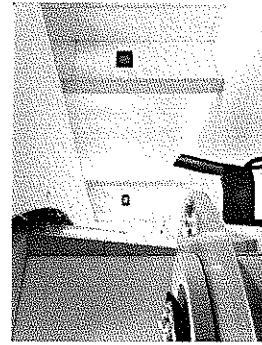
1-4: Renaissance Grand Hotel, St. Louis, Missouri, RTKL Associates, architect; Forest Perkins, interior designer; Alice O'Brien Architectural Photography, photographer; IES IDA Award of Merit; Edison Award of Merit.

**Randy Burkett Lighting Design, Inc.**

i2 Technologies, Inc.  
Center of Excellence  
Dallas, Texas



i2 Technologies' 20,000-square-foot Center of Excellence, in Dallas, Texas, designed by Lauck Group, architect, is a tour de force presentation space where everything expresses the power of products from this publisher of supply chain management software. Lighting created by Randy Burkett Lighting Design is integral to the environment, making vertical and horizontal planes glow while layering accent light with color in a kinetic way that suggests constant movement. Under the command of a centralized dimming and AV control system, lighting is orchestrated to produce a unique solution in every space. Entering visitors immediately catch glimpses of high-tech conferencing, breakout and presentation areas in the lobby, with small-aperture MR16 halogen downlights, within copolymer ceilings, providing ambient light, and filtered PAR halogen accents backlighting luminous planes in surrounding spaces. Small presentations are held within intimate theaters where ceiling surfaces are highlighted by MR16 halogen track lighting. In the main theater, hosting large presentations, MR16 halogen downlights supply task light, while 4500°K white neon concealed between ceiling planes delineates the structure. Lighting isn't the sole reason why customers find presentations at the Center of Excellence hard to forget, but it certainly keeps everything visible, clear and compelling.



1-5: i2 Technologies, Center of Excellence, Dallas, Texas, Lauck Group, architect; Auer/Contestart Photography, photographer; IES IDA Award of Merit.

**Randy Burkett Lighting Design, Inc.**

Saint Louis Zoological Park  
Penguin & Puffin Coast  
St. Louis, Missouri

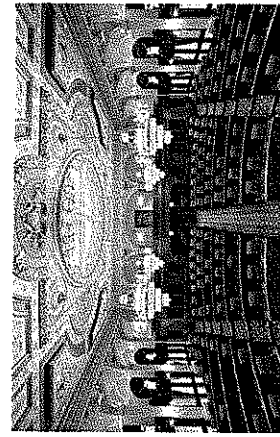
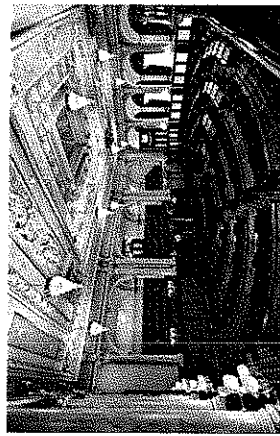


1 - St. Saint Louis Zoological Park, Penguin & Puffin Coast, St. Louis, Missouri, PCAY Architects, architect; Debbie Franke, photographer. IES, IDA, Award of Excellence

Brrr! Inside the Saint Louis Zoological Park's Penguin & Puffin Coast, the public is enjoying a delightful experience with these popular creatures. The 30,000-square-foot building, designed by PCAY Architects with Randy Burkett Lighting Design, arranges animal habitats, support spaces, gallery and gift shop so visitors can explore the indoor exhibition area along a pathway carved through synthetic rock formations. (Penguins are found in Antarctica while puffins spend their lives in subarctic regions, so there are actually two unique "daylighting" conditions within the 7,000-square-foot interior exhibition area.) The lighting is discreetly hidden, while the matte white co-polymer ceiling that envelops the three-story exhibit volume is transformed into a cool blue polar sky by a color-filtered T-5HO dimmable lighting system concealed by rockwork, just below the horizon. Direct sunlight is simulated by ceramic metal halide and halogen adjustable accents integrated into the habitats, and deep rock pools are revealed by marine-grade ceramic metal halide accents concealed in rockwork just above the water. The hourly, daily, and seasonal lighting changes for both habitats, essential to the birds' molting and reproductive cycles, are choreographed by a centralized dimming system. Such attention to the habitat's detail may not be readily appreciated by visitors, but it is most certainly an essential ingredient to the environment's success.

**Randy Burkett Lighting Design, Inc.**

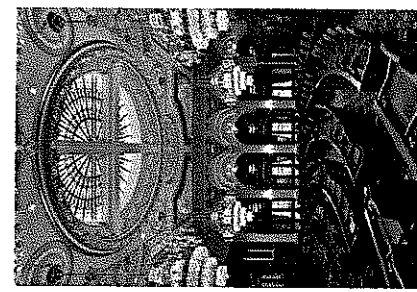
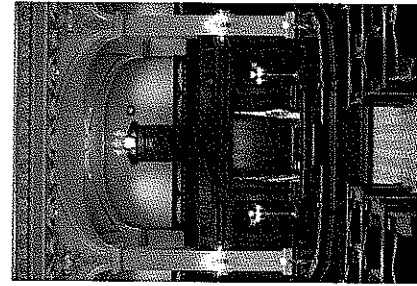
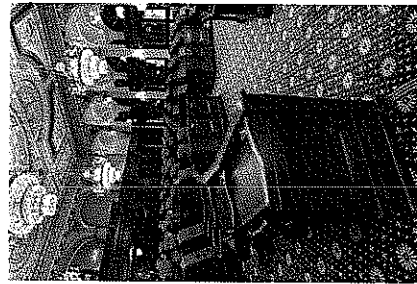
Illinois State Capitol  
Legislative Chambers Renovation  
Springfield, Illinois



From the highest point in Springfield, Illinois, the sixth and current Illinois State Capitol has been serving the Prairie State since 1877, occupying land first chosen as the burial grounds of Abraham Lincoln. The Neoclassical building, designed by Alfred Piquenard, looks better than ever thanks to a recent renovation of the two-story, 22,200-square-foot Senate and House Chambers, designed by Vinco Hamp Architects with Randy Burkett Lighting Design. The makeover corrects questionable earlier modernizations by restoring the spaces to their original Second Empire style. Since it raises illumination levels and reduces energy consumption to meet today's standards, the new lighting doesn't duplicate 19th-century conditions. However, the chambers now incorporate restored original fixtures as well as recreations of chandeliers, scones and torchieres documented in historic photographs, blending historic styles with modern technologies. Crystal chandeliers are equipped with low-voltage, 130-volt exposed filament lamps, dimmed to 1880's gaslight intensities, independently dimmed 150W halogen uplights that wash the radiantly restored cell-

ings, and lowering devices for relamping. The House's long darkened art-glass skylight simulates daylight using an enclosure above the oculus concealing dimmable T5HOs. Existing 300W incandescent downlights and accents have been refurbished with precision reflectors using 100W halogen lights. The past faces a bright future at the Capitol.

1 - St. Illinois State Capitol, Legislative Chambers Renovation, Springfield, Illinois, Vinco Hamp Architects, architect; Saint Louis Antique Lighting, Historic Lighting Fixture Restoration and Fabrication; Eric Hausman, photographer. AAA National Honor Award, IES, IDA Award of Merit.





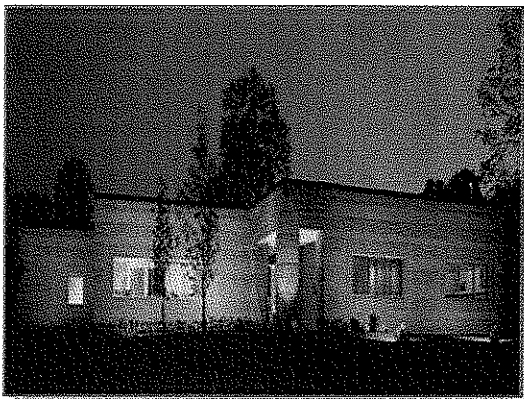


## ABOUT THE FIRM

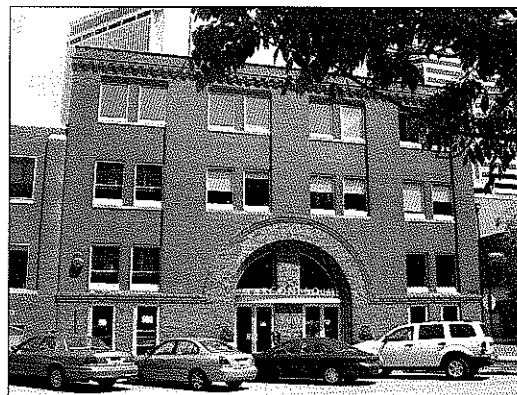
**Scheeser Buckley Mayfield LLC** is an Ohio-based Consulting Engineering firm that serves clients throughout Ohio and the surrounding states. The firm was established in 1959 by Walter L. Scheeser and Edwin J. Buckley, specializing in the design of mechanical systems for the construction industry. The firm has enjoyed a steady growth in clients and geographical area served throughout its history, and its services now include electrical, civil, and telecommunication design. Scheeser Buckley Mayfield is entering its 50<sup>th</sup> year of operation and has opened a downtown Columbus based branch office (January, 2009).

Scheeser Buckley Mayfield LLC has developed an outstanding reputation for both its accessibility to its clients and the clarity and completeness of its documents. The firm has been a leader in the application of new technology. It has extensive experience in the design and analysis of projects of all sizes, which it can draw upon for future projects. Each project requires an analysis of the most cost effective system available based on the client's design parameters. It is also the responsibility of the design team to determine if other options exist which may be beyond the scope of the current budget and which need to be considered on the current project to allow for future growth. Scheeser Buckley Mayfield LLC gives this personal attention to each project by determining the project design which can be implemented within the client's budget while applying innovative design concepts.

Many of Scheeser Buckley Mayfield's projects originate from clients who have used its services previously and wish to continue a professional association. Scheeser Buckley Mayfield LLC strives to provide very professional and competent engineering services to all of our clients and to develop a personal relationship with these clients. This on-going association with clients provides an opportunity for them to better understand design concepts as well as the logic behind the decisions which may affect their systems for many years after the project's completion.



1540 Corporate Woods Parkway  
Uniontown, Ohio 44685



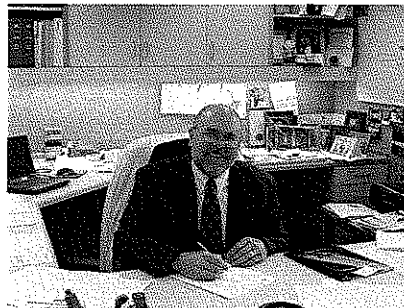
300 Marconi Blvd., Suite 306  
Columbus, Ohio 43215

# **SCHEESER\*BUCKLEY\*MAYFIELD, INC.**

## **PERSONAL RESUME**

### **JAMES E. ECKMAN, P.E., LEED AP, CBCP PRESIDENT**

Mr. Eckman attended The University of Akron where he received his Bachelor of Science Degree in Electrical Engineering in 1984.



After graduation, Mr. Eckman began his career as a consulting engineer by accepting a position as junior engineer with Kucheman, Peters and Tschantz, Inc., an electrical consulting firm in Akron, Ohio. During this engagement, he gained experience in the electrical design of commercial, industrial and healthcare facilities. Mr. Eckman also served as project manager for many of the projects he designed.

Concurrently, Mr. Eckman taught an electrical engineering course called "Illumination" at The University of Akron.

After leaving KPT, Inc. in 1987, Mr. Eckman gained additional experience in the construction industry by accepting the position of Engineer/Estimator for Thompson Electric, Inc. in Munroe Falls, Ohio. During this engagement, he designed and acted as project manager for several large industrial projects. He also earned electrical contractor licenses in several area communities.

Desiring to further his career as a consulting engineer, Mr. Eckman accepted a position of Senior Engineer with Scheeser\*Buckley\*Mayfield, Inc. in 1989. Mr. Eckman was promoted to the position of Associate in 1990, became a Principal in the firm in 1991 and Vice President of Electrical Engineering in 1992, and President in 2003.

Mr. Eckman was a member of the Institute of Electrical and Electronics Engineers for eight years and is currently an active member of the Electrical League of Northeastern Ohio and the Illuminating Engineering Society (IES). Mr. Eckman has served as Treasurer and President of the Cleveland/Akron IES section and a member of the Executive Committee for the Electrical League. Additionally, Mr. Eckman is registered with the EPA as a Greenlights Surveyor Ally and has completed and passed the Technical Knowledge Exam (TKE) administered by the IES on a national basis to gauge individuals expertise in lighting concepts, fundamentals and design. Mr. Eckman served on the College of Engineering Advancement Council for The University of Akron from 2002 to 2004 and is currently serving on The University of Akron Electrical Engineering and Computer Engineering Advisory Council.

Jim is a LEED v2 Accredited Professional and is registered in the State of Ohio, West Virginia, Pennsylvania and Indiana.

## DAVID HOLBROOK, LC ELECTRICAL ENGINEER

---

### PERSONAL RESUME

Mr. Holbrook attended Youngstown State University where he received his Bachelor of Science in Electrical Engineering.

He began his engineering career working for an Electrical Contractor in Girard, Ohio. While employed there, he designed electrical systems for commercial, industrial, and retail sectors. His responsibilities included all aspects of electrical design, preliminary design calculations, site visits, feasibility studies, and architectural coordination meetings. Design experience at this level included lighting and power systems, energy management systems, conveying systems, and retail fire alarm systems. His other responsibilities included estimating, time-and-material project managing, infrared thermography, and PLC troubleshooting.



Mr. Holbrook joined Scheeser Buckley Mayfield LLC in October of 2001. Since joining the electrical department, he has completed a wide variety of projects. He has worked on a variety of Healthcare projects including major hospital additions, Heart Centers, Outpatient Medical Imaging Centers, Minor renovation projects. Other projects he has been involved with included University, correctional, Medical Office, Utility, Library, and Hospice facilities. He has been actively involved in the design of Essential Power Systems from the most basic to Tier 4 redundant power systems, Medium and Low Voltage Switchgear Design, Generator Plant design including Low and Medium Voltage Paralleling systems, CCTV, Fire Alarm Systems, and also advanced lighting design. Mr. Holbrook has become a registered LC by passing the "Lighting Certified" examination from the National Council for the Qualifications of Lighting Professionals (NCQLP). Recently, two of his projects were published by Healthcare Design magazine, Focal Point Lighting, and Kirlin Lighting.

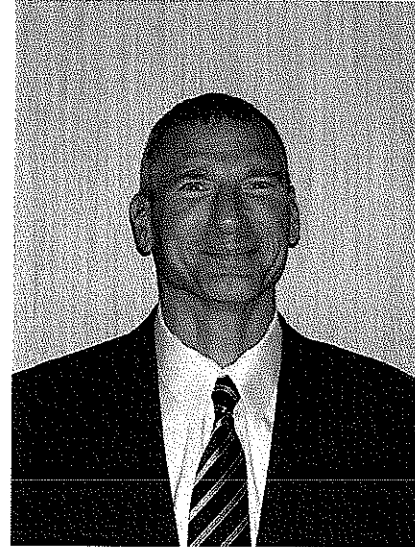
## **KEVIN M. NOBLE, P.E., LEED AP PRINCIPAL – CIVIL / PLUMBING ENGINEERING**

---

### **PERSONAL RESUME**

Mr. Noble attended the University of Akron where he received his Bachelor of Science degree in Civil Engineering in 1987 and continued his education through night school to receive his Masters of Business Administration from Averett College in 1991.

After graduating with a Civil Engineer degree, Mr. Noble accepted a position as a Water Resource Engineer at Dewberry & Davis, Inc., a top fifty engineering firm located in Washington, D.C. Mr. Noble was assigned to work on the firm's contract with the Federal Emergency Management Agency. His responsibilities included hydrologic and hydraulic analyses, flood plain delineations and storm water management facilities. Design of storm water management facilities, both underground and above ground, and wetland. Prior to leaving the company, he was promoted to project manager where he obtained valuable experiences in hydraulics and storm water control from projects involving the U.S. Army Corp of Engineers and Tennessee Valley Authority.



From Washington, D.C., Mr. Noble joined the staff of Elewski & Associates, Inc., a municipal civil engineering firm located in Independence, Ohio. There, he engineered a wide range of residential, commercial and industrial development projects and provided field support to facilitate timely completion of construction. Projects included public and private schools, athletic facilities, planned residential developments, multi-phased office parks, municipal building and retail centers. The site engineering involved design of water mains and pumps, sanitary sewers, force mains, pump stations and storm sewer and stormwater management systems. Prior to leaving, he was promoted to Village Engineer, in charge of plan review, infrastructure design, public work projects and construction inspection.

Mr. Noble joined Scheeser Buckley Mayfield LLC in early 1995 as a department head for a new civil engineering department. Since that time he has participated and managed the design of numerous residential and commercial site developments; stormwater management facilities; roadway extension and widening; water, storm, sanitary, gas, steam and chilled water lines extensions, and commercial and residential septic systems for public and private clients.

Kevin is a LEED™ Accredited Professional and is registered as a Professional Engineer in the State of Ohio, the State of West Virginia, the State of Florida, the State of South Carolina, the State of Pennsylvania, the Commonwealth of Virginia and the Commonwealth of Kentucky and is a member of the American Society of Civil Engineers, American Society of Plumbing Engineers, and the National Fire Protection Association.