



December 15, 2010

Mr. Chuck Bowman
Purchasing Division
P.O. Box 50130
2019 Washington Street East
Charleston, West Virginia 25305-0130

**Reference: Expression of Interest
EOI – John’s Branch Coal Refuse Pile
DEP 15214**

Dear Mr. Bowman:

Please accept this letter and the enclosed Statement of Qualifications as Randolph Engineering’s expression of interest to provide professional consulting engineering services for the John’s Branch Coal Refuse Pile in Wyoming County, West Virginia.

Randolph Engineering has successfully completed numerous projects for the WVDOT, U.S. General Services Administration as well as our private and municipal clients with a focus on quality, cost and schedule. We have extensive experience in earthmoving, storm water analysis, site development and construction administration projects throughout West Virginia. This experience gives us a unique insight into a project of this scope and complexity.

We have developed a reputation for providing our clients with innovative solutions for unique and challenging projects. From fast track schedules and restrictive budgets to complex engineering problems we strive to deliver the project in a manner that exceeds our clients’ expectations.

Currently our overall workload is light thus providing us a tremendous opportunity to provide professional services to successfully complete this project.

We appreciate your consideration of our qualifications as a candidate for selection to provide consulting engineering services and look forward further outlining our qualifications during the interview process.

Respectfully,

A handwritten signature in black ink, appearing to read 'Denise Springer'.

Denise Springer
Randolph Engineering
4414 Teays Valley Road
Scott Depot, WV 25560

RECEIVED

200 DEC 14 P 12: 53

PURCHASING DIVISION
STATE OF WV

EXPRESSION OF INTEREST

**To Provide Professional Engineering Services for
RFQ No. DEP 15214**

**John's Branch Coal Refuse Pile
Wyoming County, West Virginia**

Prepared for:

WV Department of Environmental Protection

Department of Administration, Purchasing Division
2019 Washington Street East, P.O. Box 50130
Charleston, WV 25305-0130

Prepared by:

Randolph Engineering Company, Inc.

4414 Teays Valley Road
Scott Depot, WV 25560

December 15, 2010



TITLE PAGE

RFP SUBJECT: The design and contract administration for John's Branch coal Refuse Pile in Wyoming County, WV

BIDDER NAME: Randolph Engineering Co., Inc.

BIDDER ADDRESS: 4414 Teays Valley Road
Post Office Box 346
Scott Depot, WV 25560

BIDDER PHONE NO.: (304) 757-9217

BIDDER CONTACT: Roger K. Randolph, P.E.


Signature

DATE: December 15, 2010

RANDOLPH ENGINEERING CONTACT INDIVIDUALS*

Roger K. Randolph, P.E., President
P. O. Box 346
Scott Depot, WV 25560
(304) 757-9217

Aaron C. Randolph, P.E.
P. O. Box 346
Scott Depot, WV 25560
(304) 757-9217

Vendor Registration No. 55-058-8736

*Persons authorized to conduct negotiations and contractually sign for Randolph Engineering Co., Inc.



State of West Virginia
 Department of Administration
 Purchasing Division
 2019 Washington Street East
 Post Office Box 50130
 Charleston, WV 25305-0130

Request for Quotation

RFQ NUMBER
DEP15214

PAGE
1

ADDRESS CORRESPONDENCE TO ATTENTION OF
**CHUCK BOWMAN
 304-558-2157**

VENDOR

RFQ COPY
 TYPE NAME/ADDRESS HERE

SHIP TO

ENVIRONMENTAL PROTECTION
 DEPARTMENT OF
 OFFICE OF AML&R
 601 57TH STREET SE
 CHARLESTON, WV
 25304 304-926-0499

DATE PRINTED	TERMS OF SALE	SHIP VIA	F.O.B.	FREIGHT TERMS
11/10/2010				

BID OPENING DATE: **12/15/2010** BID OPENING TIME **01:30PM**

LINE	QUANTITY	UCP	CAT NO	ITEM NUMBER	UNIT PRICE	AMOUNT
0001	1	JB		906-29		
<p>JOHN'S BRANCH COAL REFUSE DAM DESIGN</p> <p>EXPRESSION OF INTEREST</p> <p>THE WEST VIRGINIA PURCHASING DIVISION, FOR THE AGENCY, THE WEST VIRGINIA DEPARTMENT OF ENVIRONMENTAL PROTECTION, IS SOLICITING EXPRESSIONS OF INTEREST FOR PROFESSIONAL ENGINEERING DESIGN SERVICES AND CONSTRUCTION MONITORING SERVICES AT THE JOHN'S BRANCH COAL REFUSE DAM (KOPPERSTON) PROJECT IN WYOMING COUNTY, WEST VIRGINIA PER THE FOLLOWING BID REQUIREMENTS AND ATTACHED SPECIFICATIONS.</p> <p>BANKRUPTCY: IN THE EVENT THE VENDOR/CONTRACTOR FILES FOR BANKRUPTCY PROTECTION, THE STATE MAY DEEM THIS CONTRACT NULL AND VOID, AND TERMINATE SUCH CONTRACT WITHOUT FURTHER ORDER.</p>						

SEE REVERSE SIDE FOR TERMS AND CONDITIONS

SIGNATURE <i>Regis Krandolph</i>	TELEPHONE 304 757 9217	DATE 12/15/2010
TITLE President	FERN 55-058-8736	ADDRESS CHANGES TO BE NOTED ABOVE

WHEN RESPONDING TO RFQ, INSERT NAME AND ADDRESS IN SPACE ABOVE LABELED 'VENDOR'

INTRODUCTION TO RANDOLPH ENGINEERING

Randolph Engineering is a multi-disciplined consulting engineering firm in Teays Valley, West Virginia. The company recently celebrated 30 years of providing innovative engineering solutions to a variety of clients ranging from municipalities and government agencies to private land developers.

Randolph's success is the result of outstanding client service and satisfaction.

Our history

The company was founded by Roger Randolph in 1976, and from a modest beginning has grown into an award-winning regional engineering firm. Our attention to detail and commitment to client satisfaction have generated repeat and referral clients, some of whom have been with us since our inception.

Roger Randolph is an experienced Project Manager and lead engineer for a variety of municipal, storm water, structural and land development projects. His wealth of knowledge and experience is a valuable asset to the company's next generation of engineers and designers.

Building on success

Randolph Engineering is situated in one of West Virginia's fastest-growing areas – a location that has afforded the opportunity to diversify into a full-service engineering firm. We offer an array of services including transportation engineering; municipal engineering; land development and surveying; structural engineering; building engineering; and construction engineering.

One of our keys to success is the reliability and stability provided by our employees' loyalty and longevity. Many of our staff members have been with Randolph for more than 25 years, with a number of others approaching that milestone.

Our projects

Our variety of clients and engineering projects creates interesting and unique challenges for the engineers and designers at Randolph Engineering. Some of our notable projects include the award-winning Jackson's Mill Bridge for the West Virginia Division of Highways; site improvements and plant expansions for Toyota Motor Manufacturing; complete renovation and expansion of the City of Hurricane wastewater treatment plant; land development for some of the largest retailers in the United States; and site designs for large, single- and multi-family residential subdivisions, townhouses and apartment complexes, including a 250-unit gated community near Charleston, W.Va.

Looking to the future

Successful projects such as these and an unending commitment to client satisfaction paint a bright picture for our future. We look forward to more engineering challenges and continued growth while working with you and the AML Program.

GENERAL EXPERIENCE, CAPABILITIES AND SERVICES

We have successfully completed numerous projects for local municipalities as well as private clients that encompass most of the tasks required for this work. Two of our most recent projects include the Storm Water Analysis for Toyota Motor Manufacturing and the Town of Buffalo Storm Water Outfall project. Both of these projects posed significant challenges for the design team including flat terrain, archaeological sites, erosion control and restrictive right-of-way.

In addition to these two notable storm water projects, we have more than 30 years of experience in various engineering disciplines.

Randolph Engineering offers the following services:

- Civil and Site Engineering
- Hydrologic and Hydraulic Engineering
- Storm Water Management
- Construction Administration
- Construction Monitoring
- Construction Engineering
- Water Distribution & Treatment Engineering
- Wastewater Collection & Treatment Engineering
- Land Use Planning
- Regulatory Permit Preparation
- CADD Services
- Sediment & Erosion Control Plans
- Feasibility Studies
- Foundation Design
- Structural Engineering
- Surveying & Mapping
- Cost Estimating
- Construction Documents
- Residential/Commercial and Industrial Site Engineering
- Wetland Investigation and Delineation
- Retaining Wall Design
- Highway and Bridge Engineering
- Bridge and Structural Inspection

NOTABLE CLIENTS

We have partnered with a wide range of clients including national and international companies, local and state agencies as well as other engineering companies. Some of our more notable clients include:

- West Virginia Department of Highways
- West Virginia Division of Natural Resources
- West Virginia Housing Development Fund
- Toyota Motor Manufacturing of WV
- Town of Buffalo, WV
- Town of Winfield, WV
- The Fergus Companies
- AB Contracting and Development Company
- Ahern Associates, Inc.
- Woolpert, Inc.
- Rite Aid Corporation
- Triad Engineering, Inc.
- Clark Truck Parts, Inc.
- Hobet Mining Company
- Edward Tucker Architects
- J. Dan Snead and Associates
- Peerless Brick and Block Company
- Foster Supply Company
- Putnam County Commission
- Central Distributing Company
- Dow Chemical Company
- Parkline, Inc.
- Teays River Construction Company
- Town of Bancroft
- Wiseman Construction Company
- Balanced Care Assisted Living Center
- Tri-State Hotels, Inc.
- Elkhorn Field Services, Inc.
- G&G Builders, Inc.
- Picerne Development Company
- Putnam P.S.D.
- City of Hurricane, WV
- Wiseman Construction Company

NOTABLE PROJECT EXPERIENCE

We have provided engineering services for various engineering disciplines on a range of project sizes and complexity. Some of the notable projects designed by Randolph Engineering include:

- Town of Buffalo Storm Water Outfall Project
- Toyota Motor Manufacturing Storm Water Analysis
- Poplar Fork Flood Mitigation Project
- Finney Branch Spillway Project
- Tackett's Branch Water Line Extension
- Morrison Hollow/Ranch Lake Estates Water Line Extension
- G&G/Massey Headquarters Sewer System
- Town of Bancroft Storm Water Improvements
- Hobet Mining Company Site and Warehouse Design
- City of Hurricane Raw Water Impoundment
- The Ridges Water & Sewer System Design
- Sahley Retaining Wall Replacement
- Red House Water Line Extension
- Eleanor Industrial Park Water Line Extension
- City of Hurricane Water Line Extension and Storage Tank
- Babcock State Park Wastewater Treatment Plant
- Pipestem State Park Wastewater Treatment Plant
- Sycamore Leachate Forcemain Line Project
- Sovine Road Water Line Extension Feasibility Study
- Tackett's Branch Sanitary Sewer Line Extension Feasibility Study
- Peach Ridge Sanitary Sewer Line Extension Feasibility Study
- Old Orchard Sanitary Sewer Line Extension Feasibility Study
- Castlenock Subdivision Sanitary Sewer & Water System Extension
- Milton Apartments Sanitary Sewer & Water System Extension
- Milton Nursing Home Sanitary Sewer & Water System Extension
- ZDS Design/Consulting – WV Capitol Survey
- Star Title Company – ALTA Surveys
- AEP/John Amos Flyash Waste Site Quality Control Survey
- Jackson's Mill Bridge over West Fork River
- Jodie Bridge over Gauley River
- West Pea Ridge Bridge over I-64
- Castlenock Subdivision
- Bloomingdale Subdivision
- Structural and Site Design for WVANG Readiness Center
- Navigation Light Tower Retrofit for Yeager Airport
- Parkline, Inc. Warehouse and Office Facility
- FedEx Production and Office Facility – Beckley, WV

Detailed descriptions for many of these projects can be found in Section 3 of this prospectus.

TECHNICAL APPROACH

Preliminary Plan Phase

During this phase Randolph Engineering will survey the sites for the development of topographic mapping and the establishment of project control. An on-site meeting with WVDEP personnel will be coordinated and RE will provide a preliminary layout and design for review and approval by WVDEP personnel.

Final Design Phase

Once the preliminary plan is approved by WVDEP personnel, Randolph will proceed to final detailed construction plans and specifications. This will consist of a detailed plan view of the site, drainage system and mine seal details, sediment and erosion control plans as well as final seeding and mulching information.

Bidding Phase

During this phase, if needed, Randolph will prepare and issue any Addenda and, as necessary, assist in the Bid Opening, tabulate and distribute the Bid Tabulation, provide a recommendation for Award of Contract and complete the Notice of Award for the WVDEP.

Construction Phase

During this phase, if needed, Randolph will provide Construction Administration services as required. This may include processing requests for payment, requests for information, conducting construction and/or progress meetings, construction monitoring, shop drawing review and project closeout.

RESOURCE ALLOCATION

Randolph Engineering, as with all of our clients, is committed to providing professional engineering services to the state of West Virginia. We will commit the required staff, equipment and materials to accomplish the goals set forth for this project in a timely and cost effective manner.

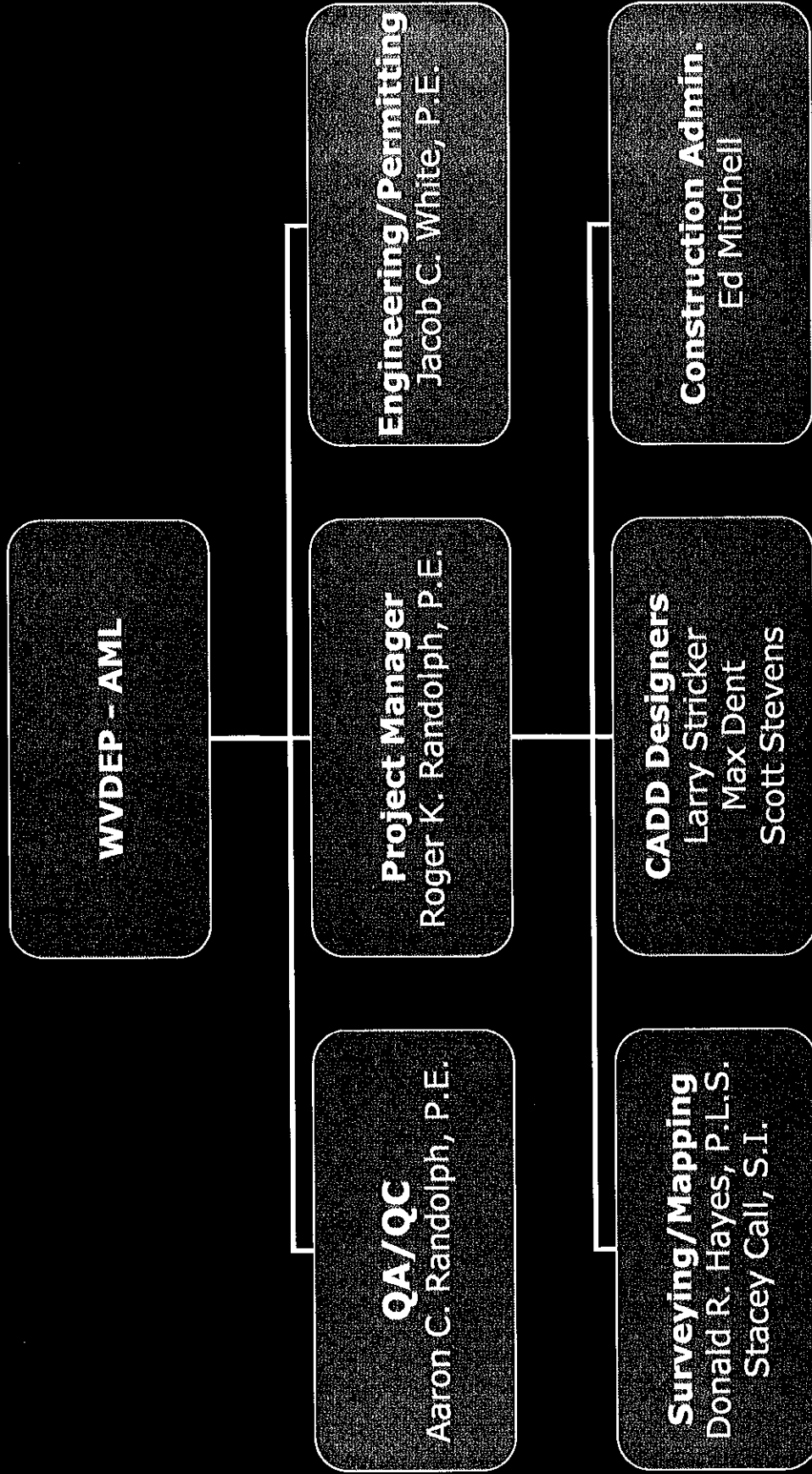
SCHEDULE AND BUDGET CONTROL

We have a long history of completing projects within budget and time constraints. With a large client base of private and public clients, schedules, budgets and fees can quickly become make-or-break issues with regard to the feasibility of a project. Our project managers are experienced and well versed in meeting project schedules with budget constraints in mind. Additionally, Randolph Engineering is a West Virginia licensed contractor. This gives us a unique insight into potential economies within a project that may benefit our clients.

CLOSING

We look forward to establishing a long term relationship with the WVDEP/AML beginning with the John's Branch Coal Refuse Dam Design in Wyoming County, WV. Our commitment is to provide quality service, client satisfaction, and quick response to your needs and to exceed your expectations with regard to project delivery. We look forward to further discussing our qualifications during the interview process.

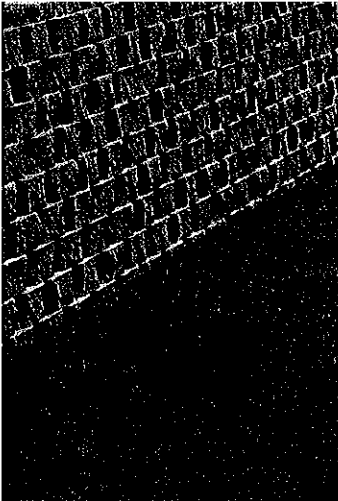
PROJECT TEAM



project

I-64 Dunbar-South Charleston Bridge Retaining Wall

Kanawha County, West Virginia



Client

Peerless Brick & Block Company
400 Oliver Street
St. Albans, West Virginia 25177

Contact

Mr. Kevin Roberts
800.642.3054

Nature of Work

Project included structural design of a modular block retaining wall as part of a value engineering plan to replace the Mechanically Stabilized Earth retaining wall that was designed to minimize the grading footprint and to support the east abutment for the new Interstate 64 Dunbar-South Charleston Bridge spanning the Kanawha River. This signature bridge is an 8 span, concrete box girder bridge with a national record 760' center span that was constructed utilizing the balanced cantilever method.

Working closely with the contractor and the wall supplier we developed a wall design that met aesthetic requirements, was cost effective and easily constructible. The wall was 200 feet in length and totaled more than 2300 square feet.

Key Personnel

Project Manager – Aaron C. Randolph, P.E.
Design Engineer – Aaron C. Randolph, P.E

Estimated Construction Cost

\$127,000.00

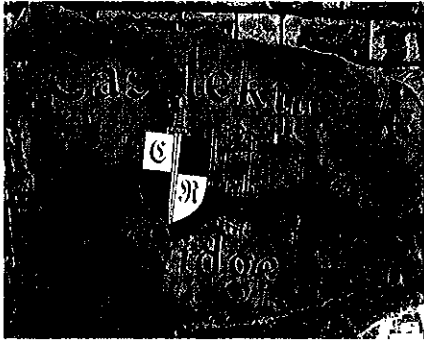


4414 Teays Valley Rd.
Scott Depot, WV 25560
p. 304.757.9217 f. 304.757.1029

project

Castlenock Ridge Subdivision

Putnam County, West Virginia



Client

DARR Incorporated
4414 Teays Valley Road
Scott Depot, West Virginia, 25560

Contact

Mr. Ron Hayes
304.768.8450

Nature of Work

This Design-Build project involved the study, design and preparation of contract documents for a 214 lot subdivision to be constructed on a 142 acre parcel located in Teays Valley, West Virginia.

Site design responsibilities included subdivision lot layout, grading, interior roadway design, pavement design, as well as the design of the storm water system including detention. Utility design included water distribution, sanitary sewer design and coordination with local electric, telephone and gas companies.

Additional design responsibilities included obtaining all permits including N.P.D.E.S. permitting for the site work as well U.S. Army Corp of Engineer permits and WV Health Department and Putnam County Planning Commission permits.

Surveying services included topographic mapping for design purposes, survey plat development and construction stakeout.

Key Personnel

Project Manager – Roger K. Randolph, P.E.
Designer – Donald R. Hayes, P.L.S.

project

AEP Flyash Waste Disposal Site

Putnam County, West Virginia



Client

Headwaters Resources
10653 S. River Front Parkway
Suite 300
South Jordan, UT 84095

Contact

Mr. Charles Roberts
304.557.0112

Nature of Work

As part of AEP's on-going operations at their flyash waste disposal site, Headwaters Resources contracted with Randolph Engineering to provide quality control surveying and stakeout at this facility located in Putnam County, West Virginia.

Our scope of work included control and boundary mapping for this 1000 acre disposal site. Additional responsibilities included tracking fill quantities, quality assurance and construction stakeout.

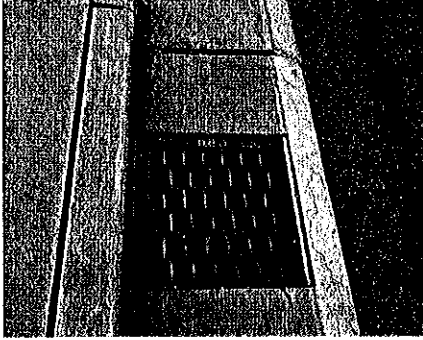
Key Personnel

Project Manager – Donald R. Hayes, P.L.S.
Coordinator – Stacey Call, S.I.

project

Town of Bancroft – Storm Water Management

Putnam County, West Virginia



Client

Town of Bancroft
P.O. Box 58
Bancroft, West Virginia 25011

Contact

Ms. Joyce Abbott, Mayor
304.586.3559

Nature of Work

Project included hydraulic analysis, culvert design, permitting as well as construction administration and inspection for an urban storm water management project that was designed utilizing an enclosed system of inlets and pipe culverts.

The project consisted of a system of pipe culverts and concrete inlets that were placed in and around various residence and business properties. The project was undertaken due to the health and safety hazards associated with standing water that, due to very flat terrain, would not drain naturally. Regulatory agencies designated to oversee this project included the West Virginia Department of Health and the West Virginia Department of Environmental Protection.

Surveying services included topographic field mapping for design purposes and construction layout.

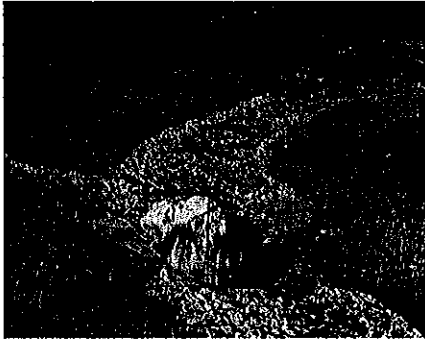
Key Personnel

Project Manager – Roger K. Randolph, P.E.
Designer – Donald R. Hayes, P.L.S.

project

Finney Branch Spillway

Kanawha County, West Virginia



Client

Hatfield Enterprises, Inc.
400 North Poplar Fork Road
Hurricane, West Virginia 25526

Contact

Mr. Robert Hatfield
304.552.1782

Nature of Work

Project included hydraulic analysis, channel design, spillway design, and permitting for an emergency spillway along Finney Branch in Dunbar, WV.

The project consisted of over 800' of channel design using the Army Corps of Engineers HEC-RAS stream modeling program. Scour and erosion countermeasures, designed and incorporated into the plans included rock rip-rap and various matting and vegetative linings. Regulatory agencies designated to oversee this project included the US Army Corp of Engineers and the West Virginia Department of Environmental Protection.

Surveying services included topographic field mapping for design purposes and construction layout.

Key Personnel

Project Manager – Roger K. Randolph, P.E.
Design Engineer – Jacob C. White, P.E.

project

West Virginia Department of Natural Resources

Summers County, West Virginia



Client
WVDNR
1900 Kanawha Boulevard East
Building 3
Charleston, West Virginia 25305

Contact
Mr. Brian Carney, P.E.
304.558.9125

Nature of Work

As part of their plans to upgrade the facilities at Bluestone State Park, the State contracted with Randolph Engineering to provide topographical surveying services for two areas of the park.

Our scope of work included topographic base mapping for the campground as well as the swimming pool / recreational complex. The scope of the mapping included all utilities and storm water structures and features as well as existing planimetric features such as roads, buildings, parking, landscaping and above ground utilities such as electric and telephone pole and lines.

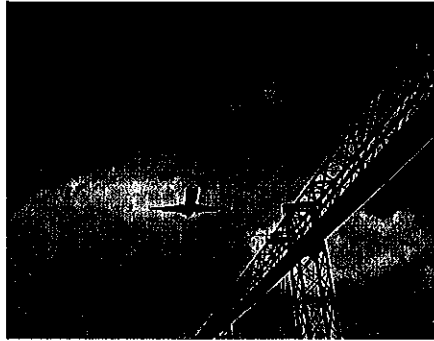
Key Personnel

Project Manager – Donald R. Hayes, P.L.S.
Coordinator – Stacey Call, S.I.

project

Yeager Airport Expansion

Kanawha County, West Virginia



Client

Triad Engineering, Inc.
4980 Teays Valley Road
Scot Depot, West Virginia, 25560

Contact

Mr. Dane Ryan
304.755.0721

Nature of Work

Triad Engineering, Inc., the construction manager for a 25 million dollar runway expansion project, contracted with Randolph Engineering to analyze a portion of the navigational lighting system after an impact from construction equipment.

The project required a large embankment fill that encompassed portions of several towers that support the navigational lighting system. Upon completion of the impact analysis it was noted that two of the support towers were showing signs of distress. Further analysis determined that these two towers would require a challenging retrofit to allow for settlement of the embankment fill. We designed the retrofit and developed a method of installing a new base connection that was to be constructed in-place at the new base elevation prior to removing the existing vertical legs of the tower.

This unique situation presented a challenge to the design team and was critical to the success of the overall expansion project.

Key Personnel

Project Manager – Jacob C. White, P.E.
Design Engineer – Aaron C. Randolph, P.E.

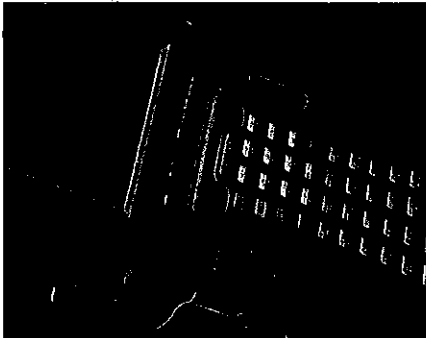


4414 Teays Valley Rd.
Scott Depot, WV 25560
p. 304.757.9217 f. 304.757.1029

project

Capitol Complex As-Built Survey

Kanawha County, West Virginia



Client

ZDS Design/Consulting Services, Inc
91 Smiley Drive
St. Albans, West Virginia 25177

Contact

Mr. Todd A. Zachwieja, P.E.
304.755.0075

Nature of Work

ZDS contracted with Randolph Engineering to provide as-built field surveys, verify contour mapping, provide finished floor elevations for the basements and first floors and develop detailed maps for a storm water improvement project within the Capitol Complex campus in Charleston.

Our scope of work included locating all improvements in the vicinity of Buildings 1, 3, 4, 5, and 7 including building footprints, sidewalks, utilities as well as trees, architectural features and monuments.

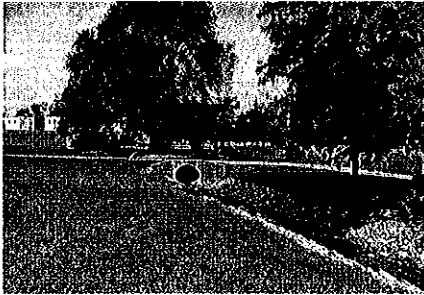
Key Personnel

Project Manager – Donald R. Hayes, P.L.S.

project

Poplar Fork Storm Water Management

Putnam County, West Virginia



Client

Putnam County Commission
400 North Poplar Fork Road
Hurricane, West Virginia 25526

Contact

Mr. Gary Tillis
304.586.0201

Nature of Work

Project included hydraulic analysis, culvert design, channel design, permitting as well as construction administration and inspection for a storm water management project that focused on alleviating flooding along Poplar Fork and tributaries.

The project consisted of over 3300' of channel design, placement of numerous culverts under local roads as well as residential driveways. Scour and erosion countermeasures, designed and incorporated into the plans included rock rip-rap and grouted rip-rap. Regulatory agencies designated to oversee this project included the US Army Corp of Engineers and the West Virginia Department of Environmental Protection.

Surveying services included topographic field mapping for design purposes and construction layout.

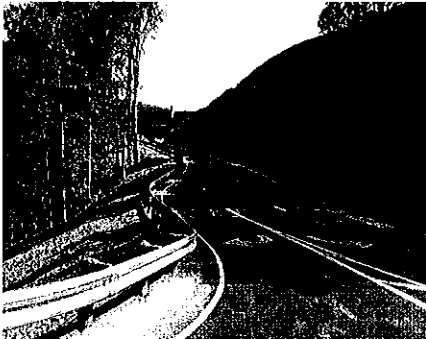
Key Personnel

Project Manager – Roger K. Randolph, P.E.
Designer – Donald R. Hayes, P.L.S.

project

G&G Builders, Inc. – Massey Headquarters Site

Boone County, West Virginia



Client

G&G Builders, Inc.
500 Corporate Centre Drive
Scott Depot, West Virginia 25560

Contact

Mr. Gary Young
President
304.757.9196

Nature of Work

This project involved the study, design and preparation of contract plans and related documents for the construction of a new corporate headquarter office complex located along US Route 119 in Boone County, West Virginia.

The project scope included the design of an approximately 4 acre site that overlooks US Route 119 in Boone County and included preliminary and final grading plans, storm water design including detention, utility design within the site as well as a package treatment plant and forcemain effluent discharge line. Additional responsibilities included the design of a new entrance and turn lane on US Route 119 and an access road into and through the site. The site design included final paving and parking design, a helipad, decorative pond with fountain, security bollard system, walking track and secondary service road design.

Surveying services included additional mapping control and construction layout.

Key Personnel

Project Manager – Jacob C. White, P.E.

project

City of Hurricane Emergency Raw Water Storage

Putnam County, West Virginia



Client

City of Hurricane
3255 Teays Valley Road
Hurricane, West Virginia 25526

Contact

Mr. Ben Newhouse, City Manager
304.562.5896

Nature of Work

In an effort to keep up with the current and anticipated future growth, the City of Hurricane contracted with Randolph Engineering to study and recommend solutions to provide emergency raw water storage.

This project involved cost analysis, feasibility studies, preliminary design and regulatory agency coordination for alternatives to provide secondary raw water storage. Preliminary responsibilities included the study of multiple alternatives including buying water from another utility, utilizing storage tanks and the analysis of various sites for the development of a storage impoundment. The selected site required an archaeological evaluation as well as a wetland delineation study for the US Army Corp of Engineers. Final design will begin upon completion of the regulatory reviews.

Surveying services for these projects have included topographic field mapping for preliminary design purposes as well as horizontal and vertical control.

Key Personnel

Project Manager – Roger K. Randolph, P.E.
Design Engineer – Jacob C. White, P.E.

project

ALTA Survey – Buckeye Hope Foundation

Various Locations, West Virginia



Client

Star Title Agency, LLC
229 Huber Village Blvd., Suite 130
Westerville, Ohio 43081

Contact

Mr. Jim Saad
614.396.3296

Nature of Work

Star Title Agency contracted with Randolph Engineering to provide property research, field surveying and the development of detailed property maps and as-built drawings for ten specific apartment complex sites located in various counties in central West Virginia. These multi-family residential housing complexes ranged from 2 acres to 9 acres.

Our scope of work included locating all improvements to the site including buildings, parking areas, sidewalks, utilities and recreational facilities.

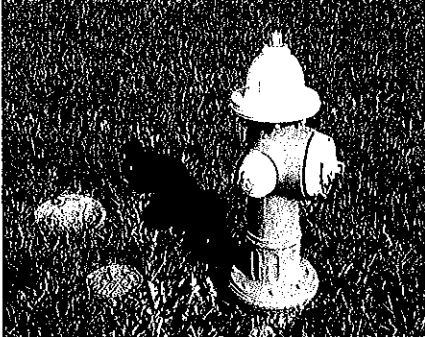
Key Personnel

Project Manager – Donald R. Hayes, P.L.S.

project

Town of Buffalo Water Improvements

Putnam County, West Virginia



Client

Town of Buffalo
P.O. Box 307
Buffalo, West Virginia 25033

Contact

Mayor Kenneth Tucker
304.937.2041

Nature of Work

Randolph Engineering has a long standing relationship with the Town of Buffalo and has been responsible for various water distribution, tank design and rehabilitation as well as plant upgrade projects.

Some of the expansion and renovation design projects include the following:

- Design of a 250,000 gallon water storage tank.
- Design of clearwell tank and various building modifications.
- Design of miscellaneous piping renovations.
- Design of existing water storage tank repairs.
- Design of a 10,000 gallon backwash basin.

Responsibilities for these projects included design, surveying, development of contract drawings and construction specifications, bid evaluation, construction administration and construction inspection.

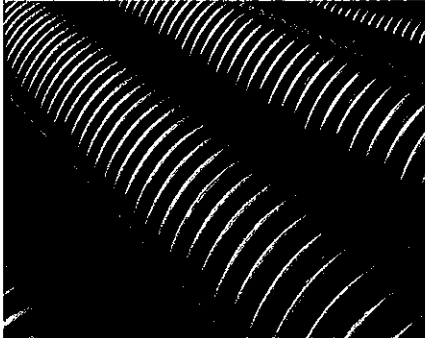
Key Personnel

Project Manager – Roger K. Randolph, P.E.
Designer – Max Dent

project

Town of Buffalo 60" Storm Water Outfall

Putnam County, West Virginia



Client

Town of Buffalo
Buffalo, West Virginia

Contact

Mr. Kenneth Tucker, Mayor
304.937.2041

Nature of Work

The goal of this project was to develop a storm water outfall to the Kanawha River required by an expansion project for the Toyota Motor Manufacturing Plant.

Project included designing a 1600 L.F. storm water outfall consisting of 60" HDPE smooth wall pipe. The outfall included seven 8' diameter manhole junction boxes as well as a 60" diameter reinforced concrete pipe bored and jacked under WV Route 62. Additional features included a pre-cast headwall founded on helical anchors and 1400 S.F. of articulated concrete block erosion matting.

We performed a topographical survey to be used for design and provided construction stakeout and construction inspection services. Permitting requirements included an Archeological Study, WV DEP NPDES permit, and WVDOH Highway Encroachment permit.

Key Personnel

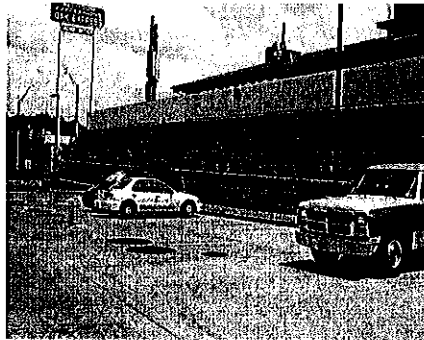
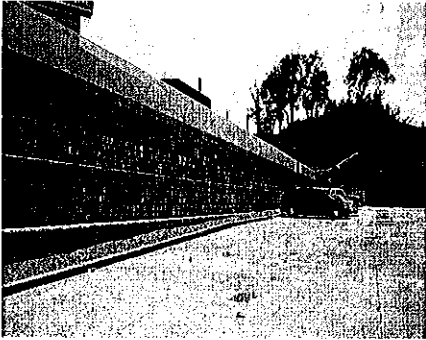
Project Manager – Roger K. Randolph, P.E.

Design Engineer – Jacob C. White, P.E.

project

Sheetz, Inc. Convenience Store Retaining Wall

Cabell County, West Virginia



Client

Sheetz, Inc
351 Sheetz Way
Claysburg, PA 16625

Contact

Mr. Max Rodland
814.239.6017

Nature of Work

Project included structural design of a modular block retaining wall utilizing the "Redi-Rock" Wall System. The wall was required to maximize the footprint of a new store location with restrictive property boundaries located along Interstate 64 in Cabell County, WV. The wall has a maximum height of 15' and is 196' in length with a total square footage of 2200 SF. An adjacent building posed a unique challenge for this project in that there was limited space for geo-grid reinforcement behind the wall. We designed the wall as an un-reinforced gravity wall using a terraced set back along the entire length to meet this requirement.

Working closely with the contractor and the wall supplier we developed a wall design that met aesthetic requirements, property boundary limitations and was cost effective and easily constructible.

Key Personnel

Project Manager – Aaron C. Randolph, P.E.

Estimated Construction Cost

\$121,000.00

project

The Ridges at Rabel Subdivision

Kanawha County, West Virginia



Client

AB Contracting, Inc.
5521 Ohio River Road
Point Pleasant, West Virginia, 25550

Contact

Mr. Allen Bell
304.546.5955

Nature of Work

This Design-Build project involved the study, design and preparation of contract documents for a 194 unit gated community to be constructed on a 152 acre parcel.

Site design responsibilities included subdivision lot layout, grading, interior roadway design, pavement design, well as the design of the storm water system and approximately one-half mile of two-lane access road. Included in the access road design included the design of a prefabricated two-lane arch structure to span Alum Creek.

Utility design included 3 miles of sanitary force main and 2.3 miles of gravity sewer lines as well as twin 45,000 GPD packaged treatment plants. The water system consisted of 2.4 miles of 8", 6" and 2" water lines including a pump station and a 110,000 gal storage tank.

Additional design responsibilities included obtaining all permits including N.P.D.E.S. permitting for the site work as well U.S. Army Corp of Engineer permitting of the creek crossing and WV Health Department and Kanawha County Planning Commission permits.

Surveying services included horizontal and vertical control, topographic mapping for design purposes, survey plat development and construction stakeout.

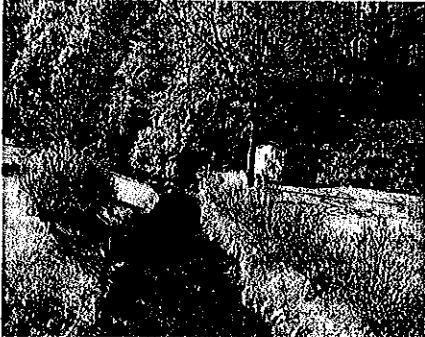
Key Personnel

Project Manager – Roger K. Randolph, P.E.
Design Engineer – Jacob C. White, P.E.
Designer – Donald R. Hayes, P.L.S.

project

Hydraulic Analysis – Dog Creek

Roane County, West Virginia



Client

West Virginia Self Storage
1677 Grannies Creek Road
Newton, West Virginia 25266

Contact

Mr. Rusty Reed
304.746.2168

Nature of Work

WV Self Storage Company contracted with Randolph Engineering to perform a hydraulic analysis of Dog Creek to determine the 100-year base flood elevation referenced as Zone A in the FEMA Flood Insurance Rate Map (FIRM).

Additionally, Randolph Engineering determined the effects of placing earth fill in the flood plain. Using the software program "HEC-RAS" (Hydraulic Engineering Center - River Analysis System) and traditional survey information, we were able to evaluate the stream and determine the water surface elevation of the stream. This information was then used to determine the impact of proposed site improvements on the flow characteristics of the stream.

Surveying services included topographic field mapping and hydraulic cross sections for analysis purposes.

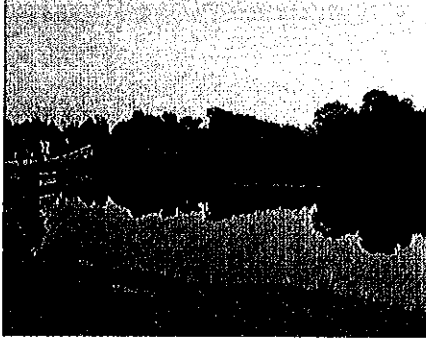
Key Personnel

Project Manager – Roger K. Randolph, P.E.
Design Engineer – Jacob C. White, P.E.

project

City of Hurricane Water Impoundment

Putnam County, West Virginia



Client

City of Hurricane
3255 Teays Valley Road
Hurricane, West Virginia 25526

Contact

Mr. Ben Newhouse, City Manager
304.562.5896

Nature of Work

In an effort to keep up with the current and anticipated future growth, the City of Hurricane contracted with Randolph Engineering to study and recommend a solution to the extreme silt build-up at their water storage reservoir.

This project involved the study, design and contract drawings for dredging and disposing of approximately 110,000 cubic yards of sediment from the City's water reservoir. Preliminary responsibilities included the study of multiple alternatives for the disposal of the waste sediment as well as coordinating with various regulatory agencies. Close coordination with agencies including US Army Corp of Engineers, US Fish and Wildlife, WVDEP and WVDNR was critical to the success of this project. Requirements for stream and wetland mitigation, property acquisition, leasing versus buying the dredge equipment and impacts to the surrounding city park were all factors that were studied during the preliminary phase of this project.

The plan that was chosen and developed for construction involved buying the dredge equipment to be used by city personnel and the construction of a two phase detention pond that allowed for the sediment to dry before being trucked off site. This plan had the advantages of allowing maintenance operations to continue at intervals that best serve the city's long term plan for the reservoir.

Surveying services for these projects have included topographic field mapping for design purposes and construction layout.

Key Personnel

Project Manager – Roger K. Randolph, P.E.
Designer – Max Dent



4414 Teays Valley Rd.
Scott Depot, WV 25560
p. 304.757.9217 f. 304.757.1029

project

Fayette Landing

Fayette County, West Virginia



Client

Steve Louisos Development Co.
1808 Main Street East
Oak Hill, WV 25901

Contact

Mr. Steve Louisos
304.465.5689

Nature of Work

As part of his plan to develop an approximately 22 acre commercial development along US Route 119 in Fayette County, West Virginia, Steve Louisos contracted with Randolph Engineering to provide topographical and boundary surveying services for this high profile project.

Our scope of work included topographic surveying, property research, coordination with WVDOT on right-of-way issues, preliminary and final lot layout as well as final lot stakeout for Phase 1 and Phase 2 of the development. Additional responsibilities included preliminary and final access road design, stormwater management and design as well as preliminary and final site grading.

Under separate contracts we provided additional site, civil and municipal design services as well as construction stakeout for several tenants of the development including:

- CVS Pharmacy
- KFC
- Sheetz, Inc.

Key Personnel

Project Manager – Donald R. Hayes, P.L.S.

Design Engineer – Jacob C. White, P.E.

Coordinator – Stacey Call, S.I.

project

Equitable Gathering, Inc. – Dwale Compressor Station

Floyd County, Kentucky



Client

Augusta Engineering & Design, Inc.
318-24 Fourth Avenue
Plaza IV Building
South Charleston, West Virginia 25303

Contact

Mr. Nile L. Fisher, Jr., P.E.
304.744.9000

Nature of Work

Project included analysis of the Levisa Fork River in Floyd County, Kentucky to determine the impact of a construction project at the Dwale Compressor Station for Equitable Gathering, Inc on the Base Flood Elevation as determined by FEMA.

The project consisted of a river survey at specified cross section locations, analysis of proposed project plans, incorporation of all data into a hydraulic river modeling program, determination of impact to the flood plain, preparation of permit applications for FEMA and the State of Kentucky, and review of final project plans for compliance with modeling results.

Surveying services included topographic stream mapping for design purposes.

Key Personnel

Project Manager – Jacob C. White, P.E.

project

Miscellaneous Treatment Plants

Putnam County, West Virginia

Nature of Work

Clover Patch Subdivision

Putnam County, West Virginia

The developer of the Clover Patch Subdivision contracted with Randolph Engineering to provide design services for an 1100 LF extension of 6" sanitary lines and the expansion of an existing re-circulating packaged treatment plant - sand filter system from 4500 G.P.D. to 8400 G.P.D. to accommodate an 11 lot expansion of the residential subdivision.

City Holding Company

Putnam County, West Virginia

City Holding Company contracted with Randolph Engineering to provide design services for a 400 LF extension of 6" sanitary sewer line and the design of a 3000 G.P.D. extended aeration package treatment plant with 600 LF of 1 ½" force main to serve a renovated office building with 150 employees.

Smithfield Apartments

Wetzel County, West Virginia

The developers of the Smithfield Apartment Complex contracted with Randolph Engineering to provide design services for an additional 6000 G.P.D. duplex sand filter system to compliment the existing extended air packaged system and to provide tertiary treatment to meet Category III treatment requirements for their apartment complex in Wetzel County, WV.

Key Personnel

Project Manager – Roger K. Randolph, P.E.

Designers – Donald R. Hayes, P.L.S., Max Dent

résumé



Roger K. Randolph, P.E., P.L.S.

Design Engineer/Project Manager

Experience and Qualifications:

Roger is an accomplished design engineer with more than 40 years of experience for a variety of civil, municipal, land development, structural and construction projects. His versatility, experience and wealth of knowledge provide valuable insight into possible pitfalls that may affect the success of any project. He is responsible for project management and design as well as leadership and mentoring of younger engineers on many projects in a range of disciplines.

His primary responsibilities include:

- Project Management
- Recreational Facilities
- Building Engineering
- Land Development Engineering
- Municipal Engineering

Representative Project Experience:

- Parkline Manufacturing/Eleanor Industrial Complex
- The Ridges at Rabel Subdivision
- Valley Park Expansion
- Foxfire Campground
- Central Distributing Warehouse and Office Facility Complex
- City of Eleanor, WV - Industrial Park Site Design
- WV Housing Fund - Emergency Housing Mobile Home Parks (2)
- Castlenock Ridge Subdivision Design
- Foxfire Campground Site Design
- Standard Foods Industrial Complex
- Balanced Care Assisted Living Facility Site Design
- Sable Point Subdivision
- Quality Hardwoods Industrial Complex
- PM Enterprise, Inc. Industrial Complex
- Rite Aid Corporation Site Designs (40)
- Tasty Blend Foods Industrial Complex Site Design

Education:

B.S.C.E., Ohio University, 1967

Registration:

P.E. – West Virginia, OH, KY, IN & IL

P.L.S. – West Virginia

Professional Societies:

American Society of Civil Engineers

National Society of Professional Engineers

résumé



Aaron C. Randolph, P.E.

Design Engineer/Project Manager

Experience and Qualifications:

Aaron is an experienced civil engineer with a focus on structural and construction engineering projects for private developers as well as local construction companies. His experience has encompassed various retaining wall solutions, stormwater drainage structures, foundation design and construction value engineering. He is responsible for all structure and construction projects for Randolph Engineering.

His primary responsibilities include:

- Project Management
- Structural Engineering and Inspection
- Construction Engineering

Representative Project Experience:

- Teays River Construction Company – Construction Engineering/Value Engineering
- Ahern and Associates – Construction/Value Engineering
- Marshall University Retaining Walls
- Peerless Brick and Block Company – Retaining Walls
- Tri-State Hotels – Holiday Inn Express Retaining Walls
- Sheetz, Inc. Retaining Wall
- Sahley Retaining Wall
- Jodie Bridge Retaining Wall
- Massey Energy Headquarters Retaining Walls
- Martha Bridge Pile and Lagging Retaining Wall
- Culloden Bridge Retaining Walls
- US Route 119 Reinforced Concrete Box Culvert Designs
- US Route 60 – Reinforced Concrete Box Culvert Design
- US 35/Winfield Road Reinforced Concrete Box Culvert Extension
- WVDOT District 2 Maintenance Facility Structural and Foundations
- Pathways Office Building Structural and Foundations – KY
- Toyota Motor Manufacturing of WV – Building and Foundations
- FedEx Distribution Facility Structural and Foundations
- Berkeley County P.S.D. Wastewater Treatment Plant Structural Design
- Vinton Ohio Wastewater Treatment Plant Structural Design

Education:

B.S.C.E., West Virginia Institute of Technology, 1992

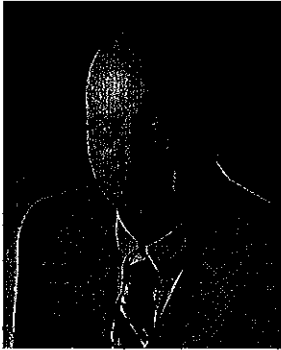
Registration:

P.E. – West Virginia

Professional Societies:

American Society of Civil Engineers

résumé



Donald R. Hayes, P.L.S

Surveyor/Project Manager

Experience and Qualifications:

Don is an experienced land surveyor with a focus on land development and municipal projects with local communities as well as private developers in West Virginia. His experience ranges from property surveys to residential, commercial and industrial site and utility design. He is responsible for the management of our surveying department as well as various development projects.

His primary responsibilities include:

- Project Management
- Surveying
- Land Development
- Construction Administration

Representative Project Experience:

- Castlenock Ridge Subdivision Design
- The Ridges Gated Community Design
- Putnam County Parks & Recreation – Valley Park Expansion
- Bloomingdale Subdivision Design
- Pray Construction – McJunkin Warehouse Expansion Site Design
- Massey Coal Services Headquarters Site Surveying
- Sable Point Townhouse Complex Site Design
- Rite Aid Corporation Site Designs (40)
- Westover Estates Subdivision Site Design
- Deer Valley Town House Development Site Design
- Standard Foods Industrial Complex
- Liberty Square Site Surveys and Permitting
- Cartee Land Development Company Site Design
- Dismas Charities, Inc Site Design
- Parkline, Inc./Eleanor Industrial Complex
- Eagleview Subdivision Design
- Glen Oaks Subdivision Design
- Tri-State Hotels – Holiday Inn Express Site Design
- Tasty Blend Foods Industrial Complex

Education:

A.S. West Virginia Institute of Technology, 1971

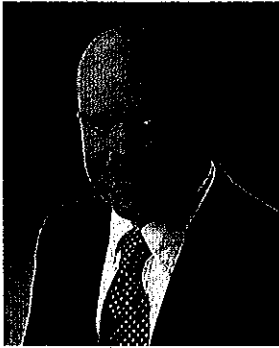
Registration:

P.L.S. – West Virginia

Professional Societies:

West Virginia Society of Land Surveyors

résumé



Jacob C. White, P.E.

Design Engineer/Project Manager

Experience and Qualifications:

Jacob is an experienced civil engineer with a focus on land development and highway projects with state and local municipalities as well as private developers in West Virginia and Virginia. His experience ranges from residential, commercial and industrial site development projects to large highway design projects. He is responsible for engineering, hydraulic analysis and permitting for all land development and highway projects.

His primary responsibilities include:

- Project Management
- Land Development Engineering
- Land Use Planning
- Hydraulic Analysis - Permitting

Representative Project Experience:

- Massey Coal Services Headquarters Site Design
- The Ridges at Rabel Subdivision Site and Permitting Design
- S&P Harley Davidson Dealership Site and Permitting Design
- Tractor Supply Store Site Design (2)
- Advance Auto Store Site Design
- Castlenock Ridge Subdivision Storm Water Management
- Copart, Inc. Hurricane Facility Site and Permitting Design
- FedEx Distribution Center Site Design & Storm Water Management
- Toyota Motor Manufacturing of WV - Storm Water Analysis
- Abingdon, VA Federal Courthouse Perimeter Security Site Design
- Kanawha Valley Fine Jewelry Site Design
- Upon Construction Company - Mobile Home Park Site Design
- Eagleview Subdivision Storm Water Management
- Cartee Land Development Company - Taco Bell Restaurant Site Design
- Cartee Land Development Company - Arby's Restaurant Site Design
- B.W. Painter Company - KFC Restaurant Site Design
- Martinsburg, WV - ATF Facility Parking Expansion

Education:

B.S.C.E., West Virginia Institute of Technology, 1997

Registration:

P.E. - West Virginia, Virginia

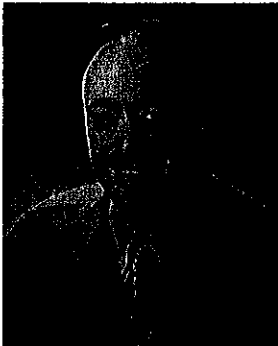
Certification:

N.H.I. - Bridge Inspection Team Leader

Professional Societies:

American Society of Civil Engineers
Society of American Military Engineers

résumé



Larry A. Stricker
Sr. Design Technician

Experience and Qualifications:

Larry is a versatile designer with extensive experience in a range of engineering disciplines. His experience has encompassed highways, bridges, site development, buildings and structures. He is responsible for detailed plan development for a variety of civil and structural design projects using various CADD platforms.

His primary responsibilities include:

- Highways/Bridges
- Site/Civil
- CADD Design
- Buildings

Representative Project Experience:

- Robert C. Byrd Federal Courthouse Roof Analysis and Structural Design
- US Route 119/Massey Office Turn Lanes and Access Road Relocation
- Massey Coal Services Headquarters Site Development
- BASF Corporation Building Assessment
- Martinsburg – ATF Building Site Assessment and Parking Expansion
- Town of Buffalo Sidewalk Planning and Expansion
- Ghiz Corporation Office Building Site Assessment and Design
- Peerless Brick & Block Company Retaining Wall Design
- Atomic Distributing Building Assessment and Design
- Mountain State University Health Building Structural Framing and Foundation
- Little General Store Headquarters Structural Framing and Foundation
- Toyota Motor Manufacturing of WV - Auditorium Building Expansion
- CAMC/Putnam – Site Assessment and Expansion Design
- LabCorp – Roof Assessment and Inspection
- WVU Institute of Technology – Martin Field Assessment and Expansion Feasibility Study
- AB Contracting - City of Milton Apartment Complex Utilities
- Russell Kentucky City Building Structural Assessment
- Clark Truck Parts Company Headquarters Site Assessment and Design
- Ashland, KY – Shopping Center Site Assessment and Planning

Education:

A.S., West Virginia Institute of Technology, 1987

Certification:

N.H.I. – Bridge Inspection Team Leader

résumé



Stacey H. Call, S.I.T.

Sr. Survey Technician

Experience and Qualifications:

Stacey is an experienced survey technician and designer for various civil engineering projects. His experience has encompassed site development and municipal design as well as boundary surveys and construction stakeout. He is responsible for site layout, coordinating field crews, data reduction and mapping generation for all design projects.

His primary responsibilities include:

- Survey Coordination
- Topographic Mapping
- Site Development
- Construction Stakeout

Representative Project Experience:

- Eagleview Subdivision Design
- S&P Harley Davidson Dealership Site Design
- Emerald Fields Subdivision Design
- Buckeye Community Hope Foundation ALTA Surveys (10)
- Friendship Way Subdivision Design
- Massey Coal Services Headquarters Construction Stakeout
- Wood Ridge Estates Subdivision Design
- Woods & Irons Subdivision Design
- Mill Creek Subdivision Design
- Autozone Store Site Designs (2)
- Yeager Airport Surveys and Site Layout
- Wendy's Restaurant Site Design
- WVDOH - Coalfields Expressway Construction Stakeout
- WVDOH - Corridor D Highway Construction Stakeout
- WVDOH - WV Route 10 Construction Stakeout
- Tri-State Hotels - Holiday Inn Express Site Design
- Leslie Place Subdivision Design
- South Brooke Subdivision Design
- Moss Creek Subdivision Design
- Teays Meadows (North) Subdivision Design
- Candlewyck Subdivision Design
- Mariner's Landing Subdivision Design

Education:

Hurricane High School, 1987

Registration:

S.I.T. - West Virginia

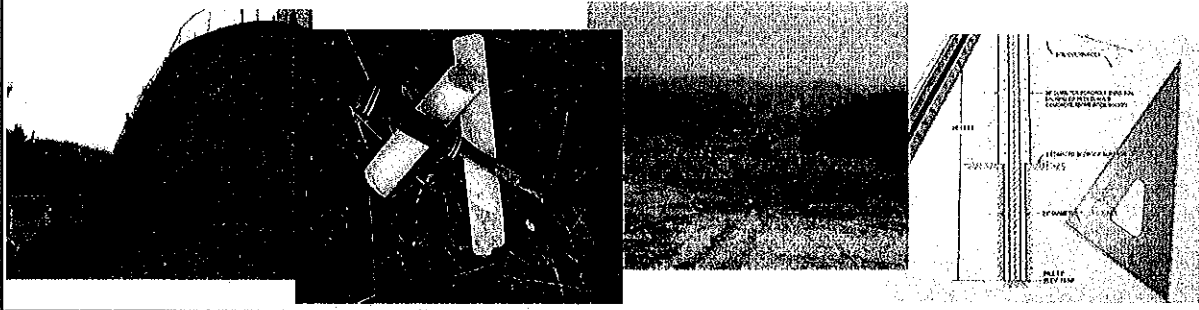


Novel Geo-Environmental, PLLC
St. Albans, West Virginia

Exceptional staff.

Exceptional results.

Allow us to show what we can do for you.



Company Overview

Novel Geo-Environmental, PLLC (NGE) is a full-service geotechnical and environmental engineering firm with offices located in St. Albans, West Virginia, and Pittsburgh, Pennsylvania. Led by an experienced management team, NGE provides quality geotechnical services to a variety of clients in both the private industry and government sectors.

In business since 2002, NGE is one of the fastest growing engineering consulting firms in the country.

Who is NGE?

Our staff includes professional engineers, geologists, scientists, construction managers, and foremen with experience in a broad range of technical disciplines. Our management team averages 15+ years of experience per person.

Why NGE?

NGE is large enough to fulfill the needs of our client in-house, yet small enough to provide the personal focus each client deserves. With smaller overhead than larger companies, NGE can provide exceptional services at lower cost.

NGE is a Certified Disadvantaged Business Enterprise (DBE) in West Virginia, Pennsylvania, Ohio, Maryland, and New Jersey and is certified by the Small Business Administration as an 8(a) Small Disadvantaged Business.

West Virginia Office

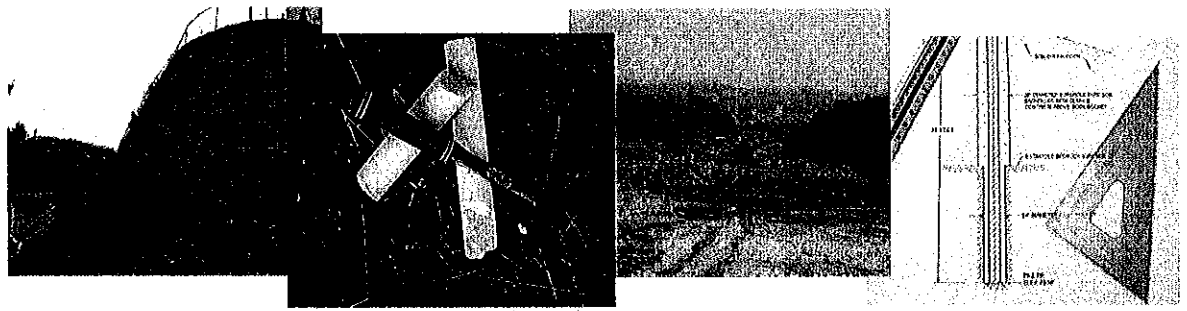
806 B Street
St. Albans, WV 25177
(304) 201-5180
(304) 201-5182 (fax)

Contact: John E. Nottingham, P.E.
jnottingham@novel-ge.com

Pennsylvania Office

100 Commercial Street, Suite 101
Bridgeville, PA 15017
(412) 838-0115
(412) 838-0120 (fax)

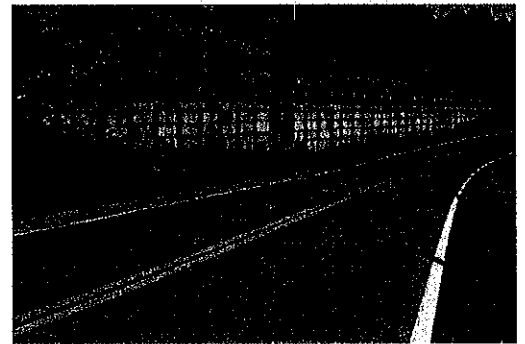
Contact: Amy L. Veltri, P.E.
aveltri@novel-ge.com

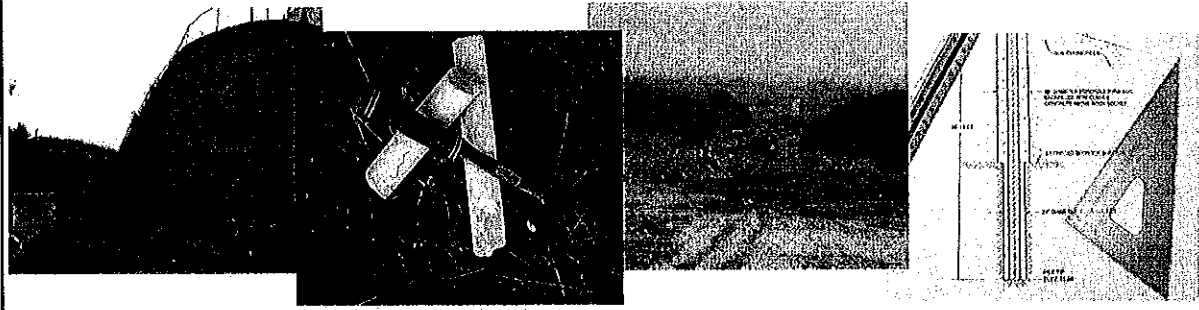


Geotechnical Engineering

The natural complexity and variability present in the subsurface requires a specialized expertise to ensure reliable results. NGE investigates and evaluates subsurface soil, rock, and groundwater conditions to analyze their response to the needs of a given project, whether they be foundation loads, site grading operations/slope configuration, or retaining wall design. A sampling of the geotechnical services NGE provides includes the following:

- Foundation investigations - commercial/residential construction, WVDOH bridge and roadway, airport geotechnical design, public and private utilities (water storage tanks, communications towers, etc.)
- Landslide investigations/remediation - slope design, retaining wall design
- Forensic Engineering/Insurance investigations
- Mine subsidence investigations/ground stabilization
- Dam design/rehabilitation
- Pavement analysis and design
- Groundwater seepage analysis and design



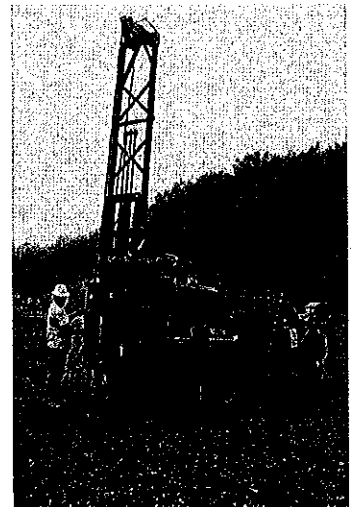


Drilling Services

NGE is equipped with a variety of versatile drilling equipment to meet the demands of our clients even in the most demanding of environments.

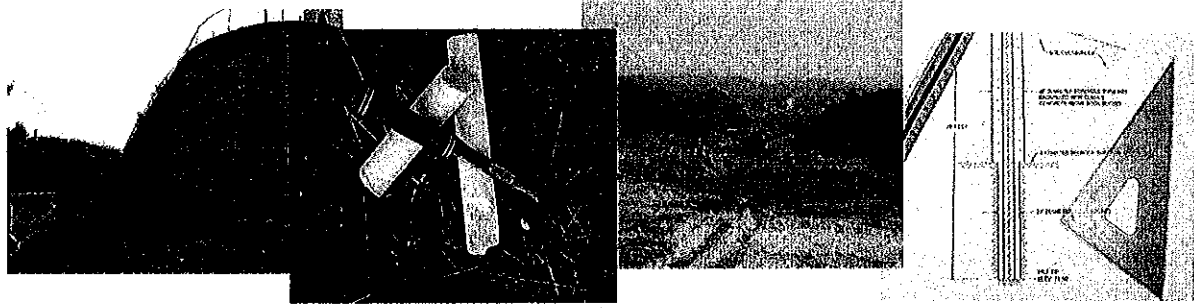
This includes:

- Truck-mounted rotary drill rig equipped with hollow stem augers used primarily for Standard Penetration Testing (SPT). It can also be used for conventional rock coring.
- Custom manufactured state-of-the-art track-mounted rotary drill rig, also equipped with hollow stem augers for SPT sampling. This machine is also equipped for wire-line coring and is uniquely designed to access hard-to-reach areas (such as rugged terrain or limited access) with a minimum of disturbance.
- Portable Tri-Pod drill able to perform SPT sampling in areas that are inaccessible to conventional drilling equipment.
- Dynamic Cone Penetrometer - portable device designed to provide comparable SPT "N-values" in areas with very limited access



NGE also provides monitoring well installation services that meet the requirements for the State of West Virginia Certified Monitoring Well Driller program.

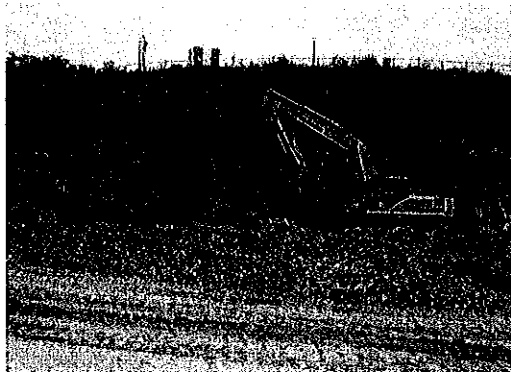


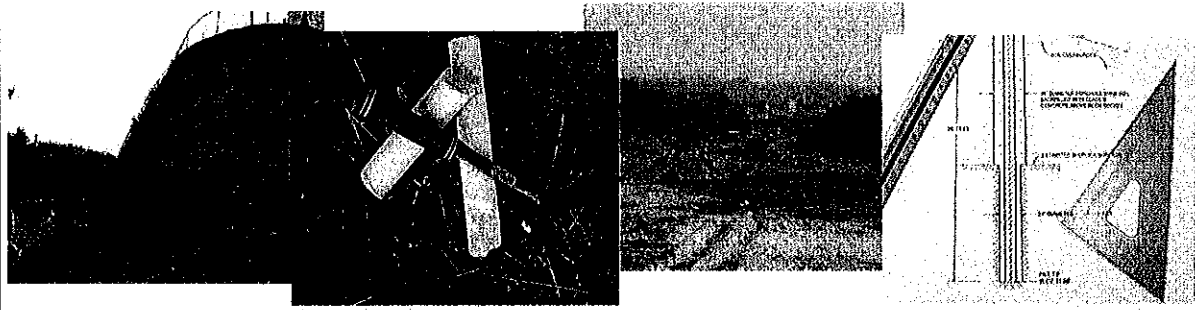


Construction Monitoring and Inspection Services

NGE offers inspection services to support a wide variety of construction projects, including highway, building, and airport. Our technicians are qualified and certified in a variety of services and will meet the specific needs of the client in an efficient and competent manner. NGE is also a West Virginia certified DBE firm as well as a federal Disadvantaged Business (8[a]). NGE can provide and manage the following services:

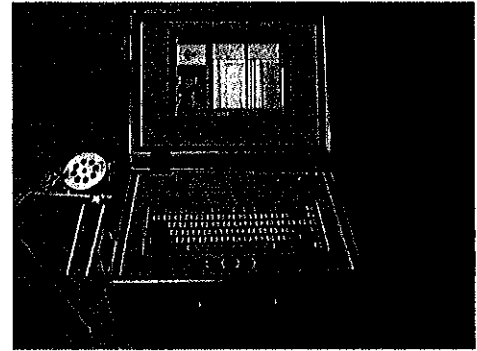
- Materials Testing and Analysis (concrete, asphalt, fill placement)
- Independent Construction Inspection
- Contractor Submittal and Shop Drawing Review
- Documentation and Process Verification
- Bidding Assistance and Analysis
- Cost Estimating and Cost Control Monitoring
- Design Review
- Value Engineering
- Project Partnering
- Quality Assurance Monitoring





Laboratory Testing Services

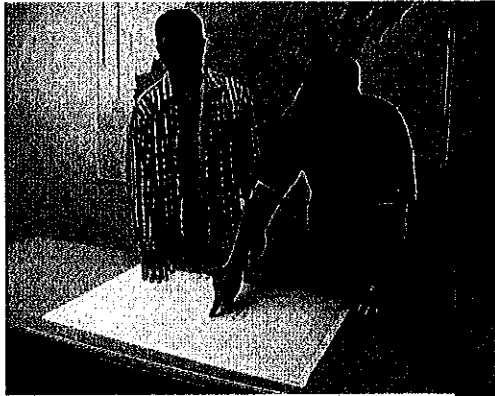
NGE can provide laboratory geotechnical testing in accordance with ASTM standards under controlled conditions to further estimate the engineering properties of soil and rock materials. Typical laboratory testing includes soil classification, compaction, compressibility, swell potential, and permeability.



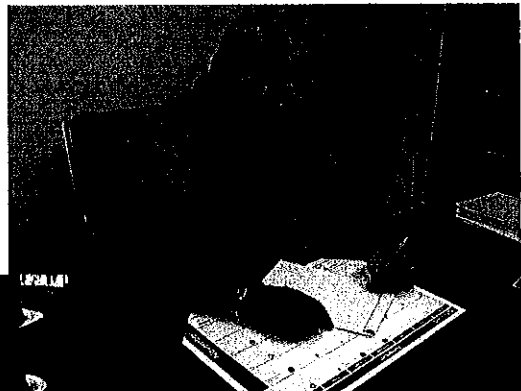
Crosshole Sonic Logging (CSL)

NGE provides Crosshole Sonic Logging (CSL) to test the integrity of drilled concrete shafts. CSL testing is a non-destructive method that checks the homogeneity and integrity of concrete in a deep foundation by sending ultrasonic pulses through the concrete from one probe to another. The test measures the propagation time and relative energy of the ultrasonic pulse between parallel access tubes (access tubes typically consist of 2-inch diameter steel tubes attached to the drilled shaft reinforcement cage). The pulse arrival time (a.k.a. first arrival time (FAT)) and energy are affected by the concrete. Uniform concrete yields consistent arrival times with reasonable wave speed and energy. Non-uniformities such as zones of poor quality concrete, honeycombing, voids, and soil inclusions exhibit delayed arrival times with corresponding reduced signal energy.

NGE's broad range of experience in each of the previously listed services enables us to provide our clients with high-quality geotechnical engineering, remediation and construction services while meeting budgets and deadlines.



Personnel



Amy L. Veltri, P.E., DEE



Over eleven years of experience as an environmental and civil engineer in consulting and industry. Currently serving as president of a geotechnical and environmental engineering consulting firm. Experience includes extensive management of personnel and large projects, including management of project schedules, scope of work, and budgets. Personnel management includes selection of project staffing, staff reviews, and mentoring. Significant experience in air quality for various industrial clients including Title V permitting and compliance, emissions inventories and control technology assessments. Completed numerous multimedia regulatory compliance audits and Phase I site assessments. Assisted clients with ISO 14001 registration process. Assisted industrial clients with NPDES permit compliance including completion of DMR's and permit renewal and negotiation. Completed general construction monitoring services including density testing and concrete testing.

Fields of Competence

- Personnel Management
- Project Management (schedule and budget)
- Air Quality Regulations/Compliance
- Wastewater Treatment/Permitting
- Environmental Management Systems (ISO 14001)
- Process Safety Management/Risk Management Planning
- Multimedia Compliance Audits
- Hazardous Waste Training
- Stormwater Permitting/Pollution Prevention Plans
- Spill Prevention Control and Countermeasure Plans
- Construction Monitoring and General Geotechnical Engineering

Education

- M.S., Civil Engineer, West Virginia University, 1996
- B.S., Civil Engineer, West Virginia Institute of Technology, 1989
- OSHA 1910.120 40-hour HAZWOPER Training, 1991

Registration/Certifications

- Registered Professional Engineer in Pennsylvania. Registration No.: PE-050393-E, Registration Date: 08/96
- Registered Professional Engineer in West Virginia. Registration No.: 14241, Registration Date: 09/99
- Diplomat Environmental Engineer, American Academy of Environmental Engineers, 07/02
- Certified Wastewater Treatment Plant Operator, Class A in Pennsylvania. Certificate No.: T3770, Registration Date: 06/01
- Certified ISO 14001 Lead Assessor, 04/02

Employment History

- August 2002 - Present
President, Novel Geo-Environmental, LLC
- August 1998 - August 2002
Senior Project Manager, ERM
- November 1995 - August 1998
Regional Environmental Coordinator, US Airways
- March 1992 - November 1995
Project Engineer, ERM
- January 1990-September 1990
Staff Engineer, ERM

John E. Nottingham, P.E., P.S.



Mr. Nottingham has served as lead Geotechnical Engineer on numerous government and commercial design and construction projects. His responsibilities on these projects include direction and coordination of all geotechnical engineering activities. Duties on these projects have included foundation investigation report production, foundation and retaining wall design, fill embankment and cut slope design, dam design and analysis, slope stability analysis, pavement design, design of drainage systems, supervision of subsurface drilling programs, field activity coordination, laboratory data computation and processing, performance of field work, client relations, and supervision of staff and project level geotechnical engineers.

Fields of Competence

- Highway & Airport Geotechnical Design
- Foundation Investigations
- Pavement Analysis and Design
- Landslide Analysis & Remedial Design
- Ground Water and Seepage Analysis & Design
- Retaining Wall Design
- Mine Subsidence Investigations
- Forensic & Insurance Investigations
- Construction Monitoring
- Personnel Management
- Project Management (schedule and budget)
- Project Estimating

Education

- B.S., Civil Engineering, West Virginia University - 1987
- M.S., Civil Engineering, West Virginia University - 1995

Registration/Certifications

- Registered Professional Engineer in West Virginia. Registration No. 12357 (since 1994)
- Registered Professional Surveyor in West Virginia. Registration No. 1495 (since 1995)

Employment History

- November 2002 - Present
Branch Manager, Novel Geo-Environmental, LLC
- 1997 - November 2002
Geotechnical Services Manager, Triad Engineering, Inc.
- 1996 - November 2002
Senior Engineer, Triad Engineering, Inc.
- 1993 - 1996
Project Engineer, Triad Engineering, Inc.
- 1988 - 1993
Staff Engineer, Triad Engineering, Inc.

Larry C. Nottingham, PhD, PE



Mr. Nottingham served as a Principal Engineer at Triad Engineering, Inc. for over 25 years before joining the professional staff at NGE. During that time he has accumulated a broad range of experience in the numerous disciplines of geotechnical engineering. Mr. Nottingham also served as a professor and department chair of the Civil Engineering Department at the West Virginia University Institute of Technology in Montgomery, West Virginia. Mr. Nottingham was involved with consultation and review of many subsidence related projects performed for BRIM as well as the WVDEP.

Fields of Competence

- Foundation Investigations
- Landslide Analysis & Remedial Design
- Mine Subsidence Investigations
- Highway & Airport Geotechnical Design
- Pavement Analysis & Design
- Retaining Wall Design
- Forensic & Insurance Investigations
- Expert Witness Consultation
- Ground Water and Seepage Analysis & Design
- Dam Analysis & Design
- Personnel Management
- Project Management
- Project Estimating

Education

- B.S.C.E., Civil Engineering, West Virginia Institute of Technology, 1965
- M.S.C.E., Civil Engineering, University of Pittsburgh, 1966
- Ph.D., Civil Engineering, University of Florida, 1975

Registration/Certifications

Registered Professional Engineer in West Virginia, Kentucky, and Ohio

Employment History

- May 2005 - Present
Senior Engineer, Novel Geo-Environmental, PLLC
- 1979 - May, 2005
Principal Engineer, Triad Engineering, Inc.
- 1989 - 1994
Professor and Department of Civil Engineering Chair, West Virginia Institute of Technology
- 1975 - 1979
Senior Engineer, Fugro Gulf, Inc., Houston, Texas
- 1970 - 1974
Project Engineer, Florida Department of Transportation
- 1967 - 1970
Project Engineer - Ackenheil & Associates, Inc.

Chuck Montgomery, P.G



Mr. Montgomery has served as Project Geologist on numerous projects for clients in private industry as well as for state and federal agencies. He has performed a variety of roles in various projects from office management activities to coordination of field activities. Duties on these projects have included foundation investigation report production, mine subsidence evaluation and assessment, supervision of subsurface drilling programs, field activity coordination, laboratory data computation and processing, performance of fieldwork, client relations, and supervision of staff.

Fields of Competence

- Foundation Investigations
- Landslide Analysis
- Mine Subsidence Investigations
- Seismic Site Class evaluation, per International Building Code (IBC) 2000 edition.
- Forensic & Insurance Investigations
- Personnel Management
- Project Management (schedule and budget)
- Project Estimating

Education

- B.S., Geology, Marshall University - 1991
- OSHA 1910.120 40-hour HAZWOPER Training, 1992

Registration/Certifications

- Registered Professional Geologist in Kentucky. Registration No. KY-2258 (since 1999)
- Certified Monitoring Well Driller in West Virginia
- OSHA 1910.120 40-hour HAZWOPER Training, 1992

Employment History

- February 2004 - Present
Project Manager, Novel Geo-Environmental, LLC
- 1996 - February 2004
Project Geologist, Triad Engineering, Inc.
- 1992 -1996
Staff Geologist, Triad Engineering, Inc.

Gene Brown, E.I.



Mr. Brown has served as Staff Engineer on numerous projects for clients in private industry as well as for state and federal agencies. He has performed a variety of roles in various projects from office management activities to coordination of field activities. Duties on these projects have included foundation investigation report production, slope stability analysis, dam analysis, AutoCAD drafting, supervision of subsurface drilling programs, field activity coordination, field portion of environmental site assessments, structural inspections, GPS and conventional surveys, laboratory data computation and processing, performance of fieldwork, client relations, and supervision of staff.

Fields of Competence

- Foundation Investigations
- Landslide Analysis & Remedial Design
- Seismic Site Class evaluation, per International Building Code (IBC) 2000 edition.
- Construction Monitoring
- Personnel Management
- Project Management (schedule and budget)
- Project Estimating

Education

- BS, Civil Engineering Technology, Bluefield State College, 2000
- BS, Architectural Engineering Technology, Bluefield State College, 2000

Registration/Certifications

- Engineer Intern, West Virginia
- OSHA 1910.120 40-hour HAZWOPER Training, 2005

Employment History

- October 2006 – Present
Staff Engineer, Novel Geo-Environmental, LLC
- 2001 – 2006
Staff Engineer, Terradon Corporation
- 2000 – 2001
Survey Technician, John E. Chance & Associates, Inc
- 1999
Engineer Intern, Burgess & Niple, Ltd.

Christopher T. Dunlap



Mr. Dunlap has served as an engineering technician/field inspector on numerous government and commercial construction projects. His duties on these projects have included quality assurance/quality control (QA/QC), construction oversight and testing, coordination of field activities, liaison between general contractor and engineer, and project reporting. Mr. Dunlap also has experience with drilling inspection and computation of laboratory data.

Fields of Competence

- Fill placement monitoring/compaction
- Concrete testing and sampling
- Asphalt testing/compaction
- Project Management
- Drilling Inspection
- Project Documentation/Reporting

Education

- A.S., Mechanical Engineering Technology, WVU Institute of Technology, 2000

Registration/Certifications

- Certification for WV DOH Compaction Technician.
- Certification for WV DOH Concrete Technician/Inspector.
- Certification for WV DOH Asphalt Inspector.
- American Concrete Institute (ACI) Certified

Employment History

- July 2004 -Present
Staff Engineer, Novel Geo-Environmental, LLC
- August 2000 -July 2004
Field Technician, Triad Engineering, Inc.

Larry E. Easter



Mr. Easter has approximately 39 years experience as quality control technician/inspector and environmental technician. As a geotechnical technician, he has provided quality control overnight and testing services on numerous commercial and industrial projects. His duties have included compaction and concrete testing and observations, liaison between the general contractor and Engineer/Owner, and project reporting. He also has experience as a soils and concrete laboratory technician and as an engineering draftsman.

Fields of Competence

- Compaction testing and fill placement monitoring
- Concrete testing and sampling
- Drilling inspection
- Project documentation/reporting
- Geotechnical laboratory testing
- Concrete laboratory testing
- AutoCAD drafting and design

Education

- Certificate - Computer Aided Drafting and Design; Ben Franklin Career Center, 2005
- Troxler Nuclear Moisture-Density Gauge Certification, 2005

Employment History

- 1970 - 2004
Flexsys America
Environmental Technician
Laboratory Analyst
Operating Technician
Master Mechanic
- 1966 - 1970
A. C. Ackenheil & Associates, Inc.
Compaction Technician
Concrete Technician
Soils & Concrete Laboratory Technician
Engineering Draftsman

11. OUTSIDE CONSULTANTS/SUB-CONSULTANTS ANTICIPATED TO BE ED. Attach "AML Consultant Confidential Qualification Questionnaire" for each if copy is not on file with AML.

NAME AND ADDRESS:	SPECIALTY:	WORKED WITH BEFORE ____ Yes ____ No
NAME AND ADDRESS:	SPECIALTY:	WORKED WITH BEFORE ____ Yes ____ No
NAME AND ADDRESS:	SPECIALTY:	WORKED WITH BEFORE ____ Yes ____ No
NAME AND ADDRESS:	SPECIALTY:	WORKED WITH BEFORE ____ Yes ____ No
NAME AND ADDRESS:	SPECIALTY:	WORKED WITH BEFORE ____ Yes ____ No
NAME AND ADDRESS:	SPECIALTY:	WORKED WITH BEFORE ____ Yes ____ No
NAME AND ADDRESS:	SPECIALTY:	WORKED WITH BEFORE ____ Yes ____ No
NAME AND ADDRESS:	SPECIALTY:	WORKED WITH BEFORE ____ Yes ____ No
NAME AND ADDRESS:	SPECIALTY:	WORKED WITH BEFORE ____ Yes ____ No

12. A. _____ s your firm experienced in Abandoned Mine Lands _____ mediation/Mine Reclamation Engineering?

NO: Note that Novel Geo-Environmental (NGE) has not performed any AML design work to date, but our WV Office Manager (John E. Nottingham) and project geologist (Chuck Montgomery) have extensive AML experience with their former firm. Additionally, NGE currently holds a contract with WVDEP-AML for geotechnical drilling for the northern district of WV and has completed several drilling projects under this contract.

B. Is your firm experienced in Soil Analysis?

YES: NGE specializes in Geotechnical Engineering including foundation investigations, subsurface investigations, cut slope design, fill embankment analysis and design, slope stability analysis, landslide analysis and corrective design, mine subsidence investigations, geologic studies, groundwater seepage analysis, foundation design, retaining wall design, pavement design, subsurface drilling and monitoring well installation. NGE has performed a total of several hundred geotechnical engineering related projects since the company was formed in 2002.

C. Is your firm experienced in hydrology and hydraulics?

NO: While our firm has not performed any hydrology/hydraulics projects to date, our personnel have experience with former employers.

D. Does your firm produce its own Aerial Photography and Develop Contour Mapping?

NO

E. Is your firm experienced in domestic waterline design? (Include any experience your firm has in evaluation of aquifer degradation as a result of mining.)

NO

F. Is your firm experienced in Acid Mine Drainage Evaluation and Abatement Design?

NO

13. PERSONAL HISTORY STATEMENT OF PRINCIPALS AND ASSOCIATES RESPONSIBLE FOR AML PROJECT DESIGN (Furnish complete data but keep to essentials)

NAME & TITLE (Last, First, Middle Int.) Nottingham, John, E. Principal Engineer, Vice President	YEARS OF AML DESIGN EXPERIENCE: 14	YEARS OF AML RELATED DESIGN EXPERIENCE: 6	YEARS OF DOMESTIC WATERLINE DESIGN EXPERIENCE: 0
---	---------------------------------------	--	---

Brief Explanation of Responsibilities

Mr. Nottingham was responsible for supervising field and design work for numerous AML related landslide abatement projects for the WVDEP while under the employment of Triad Engineering, Inc. In addition to landslide abatement projects, Mr. Nottingham was involved in subsidence determination investigations and subsidence abatement projects. Mr. Nottingham worked extensively on "emergency" projects which required quick field investigations and corrective designs.

EDUCATION (Degree, Year, Specialization)
Bachelor of Science in Civil Engineering, 1987, WVU, Specialization - Civil and Geotechnical Engineering
Masters of Science in Civil Engineering, 1995, WVU, Specialization - Geotechnical Engineering

MEMBERSHIP IN PROFESSIONAL ORGANIZATIONS
American Society of Civil Engineering (ASCE)
West Virginia Chapter of AIA

REGISTRATION (Type, Year, State)
Professional Engineering, 1994, WV
Professional Engineering, 2007, VA
Professional Surveyor, 1996, WV

13. PERSONAL HISTORY STATEMENT OF PRINCIPALS AND ASSOCIATES RESPONSIBLE FOR AML PROJECT DESIGN (Furnish complete data but keep to essentials)

NAME & TITLE (Last, First, Middle Int.) Montgomery, Charles, E. Project Manager	YEARS OF AML DESIGN EXPERIENCE: 12	YEARS OF AML RELATED DESIGN EXPERIENCE: 6	YEARS OF DOMESTIC WATERLINE DESIGN EXPERIENCE: 0
---	---------------------------------------	--	---

Brief Explanation of Responsibilities

Mr. Montgomery was responsible for coordinating field activities for AML landslide abatement projects for the WVDEP while employed with Triad Engineering, Inc. Mr. Montgomery has also participated in all project phases for other AML work involving subsidence determinations/abatement and impounded mine pools.

EDUCATION (Degree, Year, Specialization)
Bachelor of Science, Geology, 1991, Marshall University

MEMBERSHIP IN PROFESSIONAL ORGANIZATIONS
Association of Engineering Geologists
Geological Society of America

REGISTRATION (Type, Year, State)
Professional Geologist, 1999, Kentucky

13. PERSON: HISTORY STATEMENT OF PRINCIPALS AND ASSOCIATES RESPONSIBLE FOR AML PROJECT DESIGN (Furnish complete data but keep to essentials)			
NAME & TITLE (Last, First, Middle Int.) Nottingham, Larry C. Senior Engineer	YEARS OF AML DESIGN EXPERIENCE: 17	YEARS OF AML RELATED DESIGN EXPERIENCE: 7	YEARS OF DOMESTIC WATERLINE DESIGN EXPERIENCE: 0
Brief Explanation of Responsibilities Dr. Nottingham planned and supervised several AML investigation and reclamation projects for WVDEP while employed by Triad Engineering. Projects included burning refuse pile investigations, unstable refuse pile investigations and remedial designs, landslide investigations and remedial designs, subsidence investigations, and underground mine fire investigations.			
EDUCATION (Degree, Year, Specialization) Bachelor of Science in Civil Engineering, 1965, Civil Engineering, West Virginia Institute of Technology Master of Science in Civil Engineering, 1966, Geotechnical Engineering, University of Pittsburgh Doctor of Philosophy, 1975, Geotechnical Engineering, University of Florida			
MEMBERSHIP IN PROFESSIONAL ORGANIZATIONS Member, American Society of Civil Engineers Member, National Society of Professional Engineers			
13. PERSONAL HISTORY STATEMENT OF PRINCIPALS AND ASSOCIATES RESPONSIBLE FOR AML PROJECT DESIGN (Furnish complete data but keep to essentials)			
NAME & TITLE (Last, First, Middle Int.) Christopher Dunlap Engineering Technician	YEARS OF AML DESIGN EXPERIENCE: 0	YEARS OF AML RELATED DESIGN EXPERIENCE: 0	YEARS OF DOMESTIC WATERLINE DESIGN EXPERIENCE: 0
Brief Explanation of Responsibilities Mr. Dunlap has served as an engineering technician/field inspector on numerous government and commercial construction projects. His duties on these projects have included quality assurance/quality control (QA/QC), construction oversight and testing, coordination of field activities, liaison between general contractor and engineer, and project reporting.			
EDUCATION (Degree, Year, Specialization): A.S., Mechanical Engineering Technology, WVUIT; American Concrete Institute (ACI) Certified; WVDOH Certification for Fill Compaction Technician; WVDOH Certification for Concrete Technician; WVDOH Certification for Asphalt Inspector.			
MEMBERSHIP IN PROFESSIONAL ORGANIZATIONS: NA			REGISTRATION (Type, Year, State): NA

14. PROVIDE A LIST OF SOFTWARE AND EQUIPMENT AVAILABLE IN THE PRIMARY OFFICE WHICH WILL BE USED TO COMPLETE AML DESIGN SERVICES

Three rotary drill rigs, one mounted on a four wheel drive one-ton truck, and two track-mounted rigs. Drills are equipped with hollow stem augers, split-spoon soil sampling equipment, and rock coring tools.

Portable dynamic cone penetrometer.

Electric concrete coring drill.

Two equipment hauling trailers.

Software includes: Word processing, PCSTABL - Slope Stability Analysis, LPILE Plus 4.0 - Pile Foundation Analysis, PYWALL 2.0 - Retaining Wall Analysis, ReSSA 2.0 - Reinforced Soil Slope Analysis, Reslope 3.0 - Reinforced Soil Slope Design

Soil Laboratory Equipment: Soil Oven, Scales, Sieves, Liquid and Plastic Limits Machine

15. CURRENT ACTIVITIES ON WHICH YOUR FIRM IS THE DESIGNATED ENGINEER OF RECORD

PROJECT NAME, TYPE AND LOCATION	NAME AND ADDRESS OF OWNER	NATURE OF YOUR FIRM'S RESPONSIBILITY	ESTIMATED CONSTRUCTION COST	PERCENT COMPLETE
Flatwoods Retaining Wall - Pile retaining wall design Flatwoods, WV	Go-Mart, Inc.	Perform subsurface investigation, develop design for retaining wall construction.	\$1,300,000.00	90
Annual Geotechnical Drilling Contract, Northern West Virginia	West Virginia Department of Environmental Protection	Perform geotechnical (drilling) investigations of abandoned mine land sites as directed by WVDEP/AML personnel.	Unknown	30
TOTAL NUMBER OF PROJECTS: 2			TOTAL ESTIMATED CONSTRUCTION COSTS: \$ Unknown	

16. CURRENT ACTIVITIES ON WHICH YOUR FIRM IS SERVING AS A SUBCONSULTANT TO OTHERS

PROJECT NAME, TYPE AND LOCATION	NATURE OF FIRMS RESPONSIBILITY	NAME AND ADDRESS OF OWNER	ESTIMATED COMPLETION DATE	ESTIMATED CONSTRUCTION COST	
				ENTIRE PROJECT	YOUR FIRMS RESPONSIBILITY
Edwight Truss Bridge Geotechnical Investigation Raleigh County, WV	Perform subsurface investigation, provide foundation design recommendations.	West Virginia Dept. of Highways, Charleston, WV	Unknown	Unknown	Fee \$17,000
Turkey Creek Bridge, CSL Testing Wayne County, WV	Perform Cross-Hole Sonic Logging of New Foundation Drilled Piers	West Virginia Dept. of Highways, Charleston, WV	March, 2010	Unknown	Fee \$3,800
Steel of West Virginia Subsurface Investigation Huntington, WV	Advance test borings	Toyota Corp. Buffalo, WV	March, 2008	Unknown	Fee \$3,100
Marlowe Overpass Bridge, Geotechnical Investigation Marlowe, WV	Perform subsurface investigation, provide foundation design recommendations.	West Virginia Dept. of Highways, Charleston, WV	Unknown	Unknown	Fee \$20,000
Cabell Co. EMS Station, Geotechnical Investigation, Milton, WV	Determine Site Subsurface Conditions, Provide Foundation Design Recommendations	Cabell Co. EMS Clarksburg, WV	February, 2008	Unknown	Fee \$3,500
Thomas Cell Tower Site, Foundation Investigation Thomas, WV	Perform subsurface investigation, provide foundation design recommendations.	U.S. Cellular	Unknown	Unknown	Fee \$3,000
Patel Residence Foundation Investigation Charleston, WV	Perform subsurface investigation, provide foundation design recommendations.	Thakor Patel Charleston, WV	Unknown	Unknown	Fee \$2,000

18. COMPLETED WORK WITHIN LAST 5 YEARS ON WHICH YOUR FIRM HAS BEEN A SUB-CONSULTANT TO OTHER FIRMS (INDICATE FIRM OF WORK FOR WHICH YOUR FIRM WAS RESPONSIBLE)

PROJECT NAME, TYPE AND LOCATION	NAME AND ADDRESS OF OWNER	ESTIMATED CONSTRUCTION COST OF YOUR FIRM'S PORTION	YEAR	CONSTRUCTED (YES OR NO)	FIRM ASSOCIATED WITH
S. Mineral Wells Interchange, Geotechnical Study, Mineral Wells, WV	WV Department of Highways Charleston, WV	\$5,000,000	2007	In Process	L. A. Gates Co.
Scary Creek Bridge Replacement Geotechnical Investigation St. Albans, WV	WV Department of Highways Charleston, WV	\$2,000,000	2009	No	HNTB Corporation
Performing Arts Center. Geotechnical Investigation, Buckhannon, WV	West Virginia Wesleyan College, Buckhannon, WV	\$500,000	2007	Yes	R. D. Zande & Associates, Inc.
Fishers Ford Bridge Geotechnical Investigation Morgan County, WV	WV Department of Highways Charleston, WV	\$2,000,000	2009	No	Qk4
Water Tanks, Geotechnical Investigation, Iaeger, WV	Iaeger PSD Iaeger, WV	\$100,000	2006	Yes	Stafford Consultants
Leon Thru Girder Bridge Geotechnical Investigation Leon, WV	WV Department of Highways Charleston, WV	\$2,500,000	2009	NO	Buchart Horn, Inc.

19. Use this space to provide any additional information or description of resources supporting your firm's qualifications to perform work for the West Virginia Abandoned Mine Lands Program.

20. The foregoing is a statement of facts.

Signature: John E. Nottingham Title: Vice President

Printed Name: John E. Nottingham

Date: February 23, 2010

**WEST VIRGINIA DEPARTMENT OF ENVIRONMENTAL PROTECTION
AML CONSULTANT CONFIDENTIAL QUALIFICATION QUESTIONNAIRE Attachment "B"**

PROJECT NAME John's Branch Coal	DATE (DAY, MONTH, YEAR) January 1, 2010	FEDIN 550588736	
1. FIRM NAME RANDOLPH ENGINEERING CO., INC.	3. FORMER FIRM NAME		
2. HOME OFFICE BUSINESS ADDRESS P.O. BOX 346 - 4414 TEAYS VALLEY ROAD SCOTT DEPOT, WV 25560	6a. WV REGISTERED DBE (Disadvantaged Business Enterprise) YES <input type="checkbox"/> NO <input checked="" type="checkbox"/>		
4. HOME OFFICE TELEPHONE 304.757.9217	5. ESTABLISHED (YEAR) 1976	6. TYPE OWNERSHIP CORPORATION	
7. PRIMARY AML DESIGN OFFICE: ADDRESS/ TELEPHONE/ PERSON IN CHARGE/ NO. AML DESIGN PERSONNEL EACH OFFICE 4414 TEAYS VALLEY ROAD, SCOTT DEPOT, WV 25560/304.757.9217/AARON C. RANDOLPH, P.E./10			

8. NAMES OF PRINCIPAL OFFICERS OR MEMBERS OF FIRM ROGER K. RANDOLPH, P.E. - PRESIDENT	8a. NAME, TITLE, & TELEPHONE NUMBER - OTHER PRINCIPALS
---	---

9. PERSONNEL BY DISCIPLINE	
<ul style="list-style-type: none"> — ADMINISTRATIVE — ARCHITECTS — BIOLOGIST 1 — CADD OPERATORS — CHEMICAL ENGINEERS 3 — CIVIL ENGINEERS — CONSTRUCTION INSPECTORS 3 — DESIGNERS — DRAFTSMEN 	<ul style="list-style-type: none"> — ECOLOGISTS — ECONOMISTS — ELECTRICAL ENGINEERS — ENVIRONMENTALISTS — ESTIMATORS — GEOLOGISTS — HISTORIANS — HYDROLOGISTS
<ul style="list-style-type: none"> — LANDSCAPE ARCHITECTS — MECHANICAL ENGINEERS — MINING ENGINEERS — PHOTOGRAMMETRISTS — PLANNERS: URBAN/REGIONAL — SANITARY ENGINEERS — SOILS ENGINEERS — SPECIFICATION WRITERS 	<ul style="list-style-type: none"> — STRUCTURAL ENGINEERS 1 — SURVEYORS — TRAFFIC ENGINEERS 2 — OTHER (Survey Personnel) 1 — OTHER (Construct. Admin.)
15 TOTAL PERSONNEL	

TOTAL NUMBER OF WV REGISTERED PROFESSIONAL ENGINEERS IN PRIMARY OFFICE: 3
 *RPEs other than Civil and Mining must provide supporting documentation that qualifies them to supervise and perform this type of work.

10. HAS THIS JOINT-VENTURE WORKED TOGETHER BEFORE?	<input type="checkbox"/> YES <input checked="" type="checkbox"/> NO
---	---

11. OUTSIDE COMPANY CONSULTANTS/SUB-CONSULTANTS ANTICIPATED TO BE Hired. Attach "AML Consultant Confidential Qualification Questionnaire".

NAME AND ADDRESS: NOVEL GEO-ENVIRONMENTAL, PLLC 806 B STREET ST. ALBANS, WV 25177	SPECIALTY: SOILS/ENVIRONMENTAL	WORKED WITH BEFORE Yes <input checked="" type="checkbox"/> No <input type="checkbox"/>
NAME AND ADDRESS:	SPECIALTY:	WORKED WITH BEFORE Yes <input type="checkbox"/> No <input type="checkbox"/>
NAME AND ADDRESS:	SPECIALTY:	WORKED WITH BEFORE Yes <input type="checkbox"/> No <input type="checkbox"/>
NAME AND ADDRESS:	SPECIALTY:	WORKED WITH BEFORE Yes <input type="checkbox"/> No <input type="checkbox"/>
NAME AND ADDRESS:	SPECIALTY:	WORKED WITH BEFORE Yes <input type="checkbox"/> No <input type="checkbox"/>
NAME AND ADDRESS:	SPECIALTY:	WORKED WITH BEFORE Yes <input type="checkbox"/> No <input type="checkbox"/>
NAME AND ADDRESS:	SPECIALTY:	WORKED WITH BEFORE Yes <input type="checkbox"/> No <input type="checkbox"/>
NAME AND ADDRESS:	SPECIALTY:	WORKED WITH BEFORE Yes <input type="checkbox"/> No <input type="checkbox"/>
NAME AND ADDRESS:	SPECIALTY:	WORKED WITH BEFORE Yes <input type="checkbox"/> No <input type="checkbox"/>

12. A. s your firm experienced in Abandoned Mine Lands mediation/Mine Reclamation Engineering?

Yes Description and Number of Projects: _____

NO. However, we have successfully completed numerous projects that have included storm water analysis, detention and collection as well as projects requiring extensive grading and earthwork.

B. Is your firm experienced in Soil Analysis? _____

YES Description and Number of Projects: _____

NO. We have a commitment from Novel Geo-Environmental for this work if required.

C. Is your firm experienced in hydrology and hydraulics? **YES**

YES Description and Number of Projects: **We have performed more than 50 land development projects as well as stand alone storm water projects that have required hydraulic analysis, storm water management, storm water detention, sediment & erosion control, WVDEP and US Army COE permitting and involvement.**

NO

D. Does your firm produce its own Aerial Photography and Develop Contour Mapping? **NO/YES**

YES Description and Number of Projects: **We do not produce Aerial Photography. We do develop our own contour and topographic mapping from GPS and/or traditional surveying. We develop topographic mapping for more than 75 projects per year.**

NO

E. Is your firm experienced in domestic waterline design? (Include any experience your firm has in evaluation of aquifer degradation as a result of mining.) **YES**

YES Description and Number of Projects: **We have extensive experience in domestic water distribution design. We have designed projects for Putnam PSD, City of Hurricane as well as the Putnam County Commission. These projects have ranged from plant upgrades, line extensions and water storage tanks and impoundments.**

NO

F. Is your firm experienced in Acid Mine Drainage Evaluation and Abatement Design? _____

YES Description and Number of Projects: _____

NO

13. PERSON'S HISTORY STATEMENT OF PRINCIPALS AND ASSOCIATES RESPONSIBLE FOR AML PROJECT DESIGN (Furnish complete data but keep to essentials)			
NAME & TITLE (Last, First, Middle Int.) Randolph, Roger K. Project Manager/Design Engineer	YEARS OF AML DESIGN EXPERIENCE: 32	YEARS OF AML RELATED DESIGN EXPERIENCE: 32	YEARS OF DOMESTIC WATERLINE DESIGN EXPERIENCE: 32
Brief Explanation of Responsibilities Project Manager and design engineer for numerous land development, domestic water distribution, storm water, earth moving projects.			
EDUCATION (Degree, Year, Specialization) B.S. / 1967 / Civil Engineering – Ohio University			
MEMBERSHIP IN PROFESSIONAL ORGANIZATIONS American Society of Civil Engineers National Society of Professional Engineers			
13. PERSONAL HISTORY STATEMENT OF PRINCIPALS AND ASSOCIATES RESPONSIBLE FOR AML PROJECT DESIGN (Furnish complete data but keep to essentials)			
NAME & TITLE (Last, First, Middle Int.) Randolph, Aaron C. Project Manager/Design Engineer	YEARS OF AML DESIGN EXPERIENCE: 13	YEARS OF AML RELATED DESIGN EXPERIENCE: 13	YEARS OF DOMESTIC WATERLINE DESIGN EXPERIENCE: 13
Brief Explanation of Responsibilities Project Manager and design engineer for numerous structural and civil projects including storm water drainage structures, retaining walls, earthmoving/site grading and construction engineering services.			
EDUCATION (Degree, Year, Specialization) B.S. / 1992 / Civil Engineering – WV Institute of Technology M.S. / Pending Thesis – WV University			
MEMBERSHIP IN PROFESSIONAL ORGANIZATIONS American Society of Civil Engineers			

13. PERSONAL HISTORY STATEMENT OF PRINCIPALS AND ASSOCIATES RESPONSIBLE FOR AML PROJECT DESIGN (Furnish complete data but keep to essentials)			
NAME & TITLE (Last, First, Middle Int.) White, Jacob C. Project Manager/Design Engineer	YEARS OF AML DESIGN EXPERIENCE: EXPERIENCE: 10	YEARS OF EXPERIENCE YEARS OF AML RELATED DESIGN EXPERIENCE:	YEARS OF DOMESTIC WATERLINE DESIGN EXPERIENCE:
Brief Explanation of Responsibilities Project Manager and design engineer for numerous land development, roadway, storm water and permitting projects. Also, responsible for wetland and stream delineation.			
EDUCATION (Degree, Year, Specialization) B.S. / 1997 / Civil - WV Institute of Technology			
MEMBERSHIP IN PROFESSIONAL ORGANIZATIONS American Society of Civil Engineers			
13. PERSONAL HISTORY STATEMENT OF PRINCIPALS AND ASSOCIATES RESPONSIBLE FOR AML PROJECT DESIGN (Furnish complete data but keep to essentials)			
NAME & TITLE (Last, First, Middle Int.) Hayes, Donald R. Survey Manager/Project Manager	YEARS OF AML DESIGN EXPERIENCE:	YEARS OF EXPERIENCE YEARS OF AML RELATED DESIGN EXPERIENCE:	YEARS OF DOMESTIC WATERLINE DESIGN EXPERIENCE:
Brief Explanation of Responsibilities Manager responsible for all surveying and various land development, storm water and utility design projects.			
EDUCATION (Degree, Year, Specialization) A.S. / 1970 / Civil Engineering			
MEMBERSHIP IN PROFESSIONAL ORGANIZATIONS WV Land Surveyors Association			

REGISTRATION (Type, Year, State)
Civil / 2001 / WV
Civil / 2005 / VA

REGISTRATION (Type, Year, State)
P.L.S. / 1991 / WV

YEARS OF EXPERIENCE
 YEARS OF AML RELATED DESIGN EXPERIENCE: **29**

YEARS OF EXPERIENCE
 YEARS OF AML RELATED DESIGN EXPERIENCE: **29**

REGISTRATION (Type, Year, State)
P.L.S. / 1991 / WV

13. PERSONAL HISTORY STATEMENT OF PRINCIPALS AND ASSOCIATES RESPONSIBLE FOR AML PROJECT DESIGN (Furnish complete data but keep to essentials)			
NAME & TITLE (Last, First, Middle Int.) Call, Stacey Sr. Survey Designer	YEARS OF AML DESIGN EXPERIENCE: EXPERIENCE: 20	YEARS OF AML RELATED DESIGN EXPERIENCE: EXPERIENCE: 20	YEARS OF DOMESTIC WATERLINE DESIGN EXPERIENCE: 20
Brief Explanation of Responsibilities Coordinator for all surveys and mapping for numerous land development, roadway, storm water and permitting projects. Also, responsible for site and water line design.			
EDUCATION (Degree, Year, Specialization) Hurricane High School, 1987			
MEMBERSHIP IN PROFESSIONAL ORGANIZATIONS S.I.T. /2003/WV			
13. PERSONAL HISTORY STATEMENT OF PRINCIPALS AND ASSOCIATES RESPONSIBLE FOR AML PROJECT DESIGN (Furnish complete data but keep to essentials)			
NAME & TITLE (Last, First, Middle Int.) Mitchell, Edward Sr. Construction Administrator	YEARS OF AML DESIGN EXPERIENCE:	YEARS OF AML RELATED DESIGN EXPERIENCE:	YEARS OF DOMESTIC WATERLINE DESIGN EXPERIENCE:
Brief Explanation of Responsibilities Construction Manager responsible for all construction administration and inspection portions of design projects.			
EDUCATION (Degree, Year, Specialization) B.S./1980/Business Administration			
MEMBERSHIP IN PROFESSIONAL ORGANIZATIONS REGISTRATION (Type, Year, State)			

14. PROVIDE A LIST OF SOFTWARE AND EQUIPMENT AVAILABLE IN THE PRIMARY OFFICE WHICH WILL BE USED TO COMPLETE AML DESIGN SERVICES
SOFTWARE: Autocad 2008, Land Development Desk Top 2008, MS Word, Excel, Wordperfect, Quattro Pro, Microstation V8, In-Roads, V8, HEC-RAS Software, HydroFlow – Hydrographs, HydraFlow – Storm Sewer, VTPSU-HM

HARDWARE: 12-Pentium Desktop Computers w/21" Monitors, HP Laptop Computer, Konica BizHub Color Printer/Copier, OCE 300 Large Format Plotter/Scanner, Sharp Office Copier, HP large Format Color Plotter

SURVEY EQUIPMENT: Leica Total Stations, Topcon Hyper Plus RTK GPS System

15. CURRENT ACTIVITIES ON WHICH YOUR FIRM IS THE DESIGNATED ENGINEER OF RECORD

PROJECT NAME, TYPE AND LOCATION	NAME AND ADDRESS OF OWNER	NATURE OF YOUR FIRM'S RESPONSIBILITY	ESTIMATED CONSTRUCTION COST	PERCENT COMPLETE
City of Hurricane Raw Water Impoundment Analysis and Permitting (Phase 2)	The City of Hurricane 3255 Teays Valley Road Hurricane, WV 25526	Design, Analysis and Permitting	\$2,000,000	50%
Sycamore Landfill Leachate Line	The City of Hurricane 3255 Teays Valley Road Hurricane, WV 25526	Design, Analysis, Permitting and R/W	\$1,000,000	100%
WV Self Storage Stream Analysis	Mr. Rusty Reed 1677 Grannies Creek Rd Newton, WV 25266	Hydraulic Analysis	N/A	100%
Tri-State Hotels Site Design	Junior Patel	Site, Stormwater, Retaining Wall Design and Permitting	1,200,000	95%
Augusta Engineering Flood Plain Analysis	Tom Putney	Hydraulic Analysis	N/A	100%
Massey HQ Site Design and Access Road	Massey Energy Services 315 70 th Street S.E. Charleston, WV 25304	Site, Stormwater, Pond Design, Access Road, Water and Sewer Design and Permitting	\$3,000,000	100%
Advocat Care Nursing Home Site Design	AB Contracting 5521 Ohio River Road Pt. Pleasant, WV 25550	Site, Stormwater, Pond Design, Access Road, Water and Sewer Design and Permitting	\$500,000	95%
TOTAL NUMBER OF PROJECTS:			TOTAL ESTIMATED CONSTRUCTION COSTS: \$	

15. CURRENT ACTIVITIES ON WHICH YOUR FIRM IS THE DESIGNATED ENGINEER OF RECORD

PROJECT NAME, TYPE AND LOCATION	NAME AND ADDRESS OF OWNER	NATURE OF YOUR FIRM'S RESPONSIBILITY	ESTIMATED CONSTRUCTION COST	PERCENT COMPLETE
WVDNR - Babcock and Pipestem State Park WWTP Replacements	WVDNR 1900 Kanawha Blvd. E Charleston, WV 25305	Design, Analysis and Permitting	\$750,000	90%
Castlenock Ridge Subdivision	DARR Inc. 4414 Teays Valley Road Scott Depot, WV 25560	Design, Analysis, Permitting	\$500,000	Phase 1 - 100% Phase 2 - 25%
Hobet Mining Bridge Inspections	Hobet Mining Co. P.O. Box 305 Madison, WV 25130	Structure Inspection	N/A	90%
Hobet Mining Conveyor Truss Inspections	Hobet Mining Co. P.O. Box 305 Madison, WV 25130	Structure Inspection	N/A	90%
Armed Forces Reserve Center - Kenova National Guard Armory Expansion	WV National Guard	Structural & Site Engineering	2,200,000	90%
Dollar General Stores, Inc.	LandVest USA, LLC	Site, Stormwater, Permitting and Structural Design	\$1,250,000	80%
Clark Trucking Expansion Project	Clark Trucking, Inc. Bancroft, WV	Site, Stormwater, Water and Sewer Design and Permitting	\$500,000	95%
TOTAL NUMBER OF PROJECTS: 14			TOTAL ESTIMATED CONSTRUCTION COSTS: \$12,400,000.00	

17. COMPLETED WORK WITHIN LAST 5 YEARS ON WHICH YOUR FIRM WAS THE DESIGNATED ENGINEER OF RECORD

PROJECT NAME, TYPE AND LOCATION	NAME AND ADDRESS OF OWNER	ESTIMATED CONSTRUCTION COST	YEAR	CONSTRUCTED (YES OR NO)
Toyota Stormwater Analysis Buffalo, WV	Toyota Motor Manufacturing of WV, 1 Sugar Maple Lane, Buffalo, WV 25033	N/A	2003	N/A
The Ridges Site Development Alum Creek, WV	AB Contracting Company 5521 Ohio River Road Pt. Pleasant, WV 25550	\$5,000,000	2003	Yes
Castlenock Ridge Site Development Teays Valley, WV	DARR, Inc. P.O. Box 346 Scott Depot, WV 25560	\$1,500,000	2005	Yes
City of Hurricane Raw Water Storage Impoundment Alternative Study and Permitting	City of Hurricane 3255 Teays Valley Road Hurricane, WV 25526	N/A	2006	N/A
Finney Branch Spillway Hydraulic Analysis	Hatfield Enterprises, Inc. 400 North Poplar Fork Road Hurricane, WV 25526	\$500,000	2006	Yes
Buffalo Stormwater Outfall	Town of Buffalo P.O. Box 307 Buffalo, WV 25033	\$300,000	2006	Yes
US Route 35/Winfield Road Center Turn Lane Project	WVDOF 1900 Kanawha Blvd. East Charleston, WV 25301	\$4,500,000	2003	No
Teays Church of God Access Road and Site Survey	Teays Church of God Scott Depot, WV 25560	\$250,000	2006	Yes

17. COMPLETED WORK WITHIN LAST 5 YEARS ON WHICH YOUR FIRM WAS THE DESIGNATED ENGINEER OF RECORD

PROJECT NAME, TYPE AND LOCATION	NAME AND ADDRESS OF OWNER	ESTIMATED CONSTRUCTION COST	YEAR	CONSTRUCTED (YES OR NO)
Martha Bridge	WVDOT 1900 Kanawha Blvd., East Charleston, WV 25305	\$1,500,000	2006	Yes
Montcalm Arch Bridge	WVDOT 1900 Kanawha Blvd., East Charleston, WV 25305	\$1,700,000	2006	Yes
Strange Creek Bridge	WVDOT 1900 Kanawha Blvd., East Charleston, WV 25305	\$1,200,000	2009	Under Construction
Toyota Auditorium	Toyota Motor Manufacturing, WV Buffalo, WV	\$750,000	2007	No
Putnam PSD - Morrison Hollow Water Line Extension	Putnam PSD Hurricane, WV	\$400,000	2006	Yes
I-64/South Charleston/Dunbar Bridge Retaining Wall	WVDOT 1900 Kanawha Blvd., East Charleston, WV 25305	\$125,000	2009	Yes
Sheetz, Inc. Retaining Wall	Sheetz, Inc. 351 Sheetz Way Claysburg, PA 16625	\$121,000	2009	Yes
City of Hurricane W.W.T.P. Expansion	City of Hurricane 3255 Teays Valley Road Hurricane, WV 25526	\$10,500,000	2004	Yes

18. COMPLETED WORK WITHIN LAST 5 YEARS ON WHICH YOUR FIRM HAS BEEN A SUB-CONSULTANT TO OTHER FIRMS (INDICATE PHASE OF WORK FOR WHICH YOUR FIRM WAS RESPONSIBLE)

PROJECT NAME, TYPE AND LOCATION	NAME AND ADDRESS OF OWNER	ESTIMATED CONSTRUCTION COST OF YOUR FIRM'S PORTION	YEAR	CONSTRUCTED (YES OR NO)	FIRM ASSOCIATED WITH
Little General Store HQ Building Design Beckley, WV	Cox Oil Company 623 Perkins Street Union City, TN 38261	\$200,000	2006	Yes	J. Dan Snead & Associates, Architect
Mt. State University Health Building Design	Mt. State University Beckley, WV	\$700,000	2005	Yes	J. Dan Snead & Associates, Architect

19. Use this space to provide any additional information or description of resources supporting your firm's qualifications to perform work for the West Virginia Abandoned Mine Lands Program. **We have extensive experience with projects of similar scope and tasks including site design, earthmoving, hydraulic analysis, stormwater management, permitting, surveying and construction management.**

20. The foregoing is a statement of facts.

Signature: _____

Title: President

Date: 03/9/10

Printed Name: Roger K. Randolph

AML and RELATED PROJECT EXPERIENCE MATRIX

PROJECT	Exp. Basis C=Corp. P=Personal	Additional Info Provided in Section (s) ***	PROJECT EXPERIENCE REQUIREMENTS													PARTICIPATION/CAPACITY M=Management P=Professional				
			Abandoned Surface Mine Reclamation	Abandoned Deep Mine Reclamation	Portal/Shaft Closure	Hydrologic/Hydraulic Design/Eval.	Remining Evaluation	Mine/Refuse Fine Abatement	Subsidence Investigation Mitigation	Hazardous Waste Disposal	Project Specifications	Water Quality Evaluation/Mitigation/ Replacement	Construction Inspection/Managem ent	Water Treatment	Equipment/Structure Removal	Stream Restoration	Geotechnical/Stability	Roger K. Randolph	Jacob C. White	Donald R. Hayes
Hurricane Water Impound.	C	3				X											M	P	P	
Sycamore Landfill	C	3										X					M,P		P	
WV Storage Stream Analysis	C	3				X													M,P	
Augusta Eng. Flood Plain Anal.	C	3				X													M,P	
Poplar Fork Flood Mitigation	C	3				X								X			M,P		P	
Putnam PSD Water Extension	C	3										X					M,P		P	
Massey HQ Site Design	C	3				X						X					M	P	P	P
Finney Branch Spillway	C	3				X											M		P	
Beaver Creek Bridges	C	3				X								X	X		M		P	M,P
Toyota Storm Water Analysis	C	3				X													M,P	P
Buffalo Storm Water Outfall	C	3				X									X		M		P	P
Bancroft Storm Water Anal.	C	3				X											M,P		P	
The Ridges Site Development	C	3				X											M		P	P

* List whether project experience is corporate or personnel based or both.

** Use this area to provide specific sections or pages if needed for reference.

*** List Primary Design personnel and their functional capacity for the projects listed.

RFQ No. DEP15214

STATE OF WEST VIRGINIA
Purchasing Division

PURCHASING AFFIDAVIT

West Virginia Code §5A-3-10a states: No contract or renewal of any contract may be awarded by the state or any of its political subdivisions to any vendor or prospective vendor when the vendor or prospective vendor or a related party to the vendor or prospective vendor is a debtor and the debt owned is an amount greater than one thousand dollars in the aggregate

DEFINITIONS:

"Debt" means any assessment, premium, penalty, fine, tax or other amount of money owed to the state or any of its political subdivisions because of a judgment, fine, permit violation, license assessment, defaulted workers' compensation premium, penalty or other assessment presently delinquent or due and required to be paid to the state or any of its political subdivisions, including any interest or additional penalties accrued thereon.

"Debtor" means any individual, corporation, partnership, association, Limited Liability Company or any other form or business association owing a debt to the state or any of its political subdivisions. "Political subdivision" means any county commission; municipality; county board of education; any instrumentality established by a county or municipality; any separate corporation or instrumentality established by one or more counties or municipalities, as permitted by law; or any public body charged by law with the performance of a government function or whose jurisdiction is coextensive with one or more counties or municipalities. "Related party" means a party, whether an individual, corporation, partnership, association, limited liability company or any other form or business association or other entity whatsoever, related to any vendor by blood, marriage, ownership or contract through which the party has a relationship of ownership or other interest with the vendor so that the party will actually or by effect receive or control a portion of the benefit, profit or other consideration from performance of a vendor contract with the party receiving an amount that meets or exceeds five percent of the total contract amount.

EXCEPTION: The prohibition of this section does not apply where a vendor has contested any tax administered pursuant to chapter eleven of this code, workers' compensation premium, permit fee or environmental fee or assessment and the matter has not become final or where the vendor has entered into a payment plan or agreement and the vendor is not in default of any of the provisions of such plan or agreement.

Under penalty of law for false swearing (*West Virginia Code §61-5-3*), it is hereby certified that the vendor affirms and acknowledges the information in this affidavit and is in compliance with the requirements as stated.

WITNESS THE FOLLOWING SIGNATURE

Vendor's Name: Randolph Engineering Co., Inc.

Authorized Signature: *[Signature]* Date: December 13, 2010

State of WV

County of Putnam, to-wit:

Taken, subscribed, and sworn to before me this 13 day of December, 2010.

My Commission expires August 24, 2016

AFFIX SEAL HERE

NOTARY PUBLIC *[Signature]*

