

**Expression of Interest
To provide
Engineering Services to the
West Virginia Department of
Environmental Protection**

Office of AML&R

***Thorpe Refuse Pile
REQ # DEP 15212***

November 30, 2010

Submitted by:

 **Pentree
Incorporated**
Consulting Engineers

1428 Main Street
Princeton, WV
304-431-7800
304-425-0445

RECEIVED

2010 NOV 30 PM 1:02

WV PURCHASING
DIVISION

November 29, 2010

Mr. Chuck Bowman
West Virginia Department of Environmental Protection
Office of Abandoned Mine Lands and Reclamation
c/o State of West Virginia Department of Administration
Purchasing Division
2019 Washington Street, East
Charleston, WV 25305-0130

**RE: Expression of Interest – Thorpe Refuse Pile
DEP15212**

Dear Mr. Bowman:

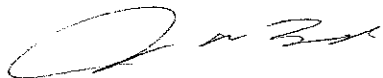
Pentree, Inc. is pleased to have the opportunity to provide the West Virginia Department of Environmental Protection with our high standard of professional engineering design services on the Thorpe Refuse Pile design project in McDowell County.

Along with the knowledge of AML procedures gained from the completed construction of the Mullens/Wyco Water Project for Eastern Wyoming County P.S.D. (Wyoming County) we offer our extensive experience with access roads, drainage, demolition, stream bank protection and re-vegetation. We will also utilize the experience of our affiliate company, Thrasher Engineering, Inc. who is currently working on and has successfully completed similar WV DEP's Office of Abandoned Mine Lands and Reclamation (AML & R) projects. With our long history as a West Virginia full service civil engineering firm, we will provide the AML & R with quality professional engineering service in a timely and cost efficient manner.

Following the instructions outlined in the RFQ, this proposal contains information regarding Pentree, Incorporated history, qualifications and management and staffing capabilities along with the required DEP/AML Consultant's Confidential Qualifications Questionnaire, and an affidavit stating Pentree, Incorporated has no debt owed to the State of West Virginia.

We thank you for your consideration of our qualifications and look forward to the opportunity to present our qualifications and project methodology to you in person.

Sincerely,
PENTREE, INCORPORATED



JOHN W. TUGGLE, P.E., P.S.
President/ Principal-In-Charge

*STATEMENT OF QUALIFICATIONS
FOR
ENGINEERING SERVICES
TO THE*

**WEST VIRGINIA
DEPARTMENT OF ENVIRONMENTAL PROTECTION**

Thorpe Refuse Pile Project

TABLE OF CONTENTS

SELECTION CRITERIA	3
STATEMENT OF QUALIFICATIONS	4
MANAGEMENT AND STAFFING	7
REPRESENTATIVE PROJECTS	16
PROJECT APPROACH	24
DEP/AML CQQ	Tab 6
AML PROJECT MATRIX	Tab 7
AFFADAVIT	Tab 8

SELECTION CRITERIA

- A. West Virginia Professional Engineers (Civil or Mining) in the Primary Office.

Pentree, Incorporated. has **4 West Virginia registered Professional Engineers** in our Primary Office located in Princeton, WV.

John Tuggle, PE
Robert Hazelwood, PE
Matthew Anderson, PE
Robert Shields, PE

- B. Reclamation engineering design experience of the Primary Office's WV RPE as it relates to the specific project problem areas.

John Tuggle, PE, will serve as Project Manager and Principal-in-Charge. He has over 28 years of civil engineering experience on a wide variety of projects. Many of these projects included design elements that are common with AML & R projects.

Chadwick Biller, PE, is with our affiliate company, Thrasher Engineering, Inc., and will serve as peer reviewer and provide QA/QC services for this project. He has over **18 years** of civil engineering experience. He has served as Project Manager on a number of successful WV DEP Office of Abandoned Mine Lands & Reclamation projects.

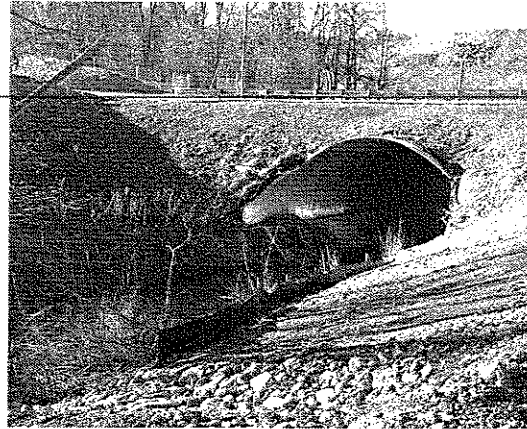
Larry Nottingham, PE, with NGE will serve as our Geotechnical sub-consultant. He has over **30 years** of AML design experience.

- C. Available WV-AML Design Teams within the Primary office (A design team should consist of one Project Engineer (Civil or Mining),, one CAD person and available support personnel as required by the particular project)

Pentree has the equivalent of **4 WV-AML Design Teams** within the Primary Office; however, we have identified our primary WV-AML team that will be responsible for this project in the pages that follow.

FIRM OVERVIEW

Pentree, Incorporated is uniquely qualified to provide the West Virginia Department of Environmental Protection with the engineering design services necessary for this Project. We have provided these services with the highest level of technical expertise and client satisfaction for numerous clients throughout the state of West Virginia.



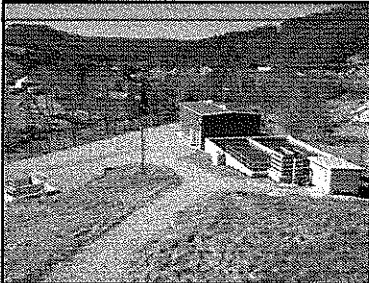
Pentree, Incorporated can offer its clients services above and beyond those of most engineering firms. In addition to civil engineering, survey and construction management, we now offer environmental assessment and permitting, pipeline inspection, hydraulic pipe modeling and GIS mapping services, all of which are of benefit to our client's infrastructure growth and improvements.

Pentree, Incorporated is guided by the mission statement of: *To establish and maintain on-going relationships by providing the highest level of performance possible toward attaining the goals of the organizations we serve as we strive to enhance the communities in which we live.*

Our staff is actively involved in all aspects of the engineering process from consulting and planning through funding and preparation of documentation needed throughout the construction process to meet the requirements of funding agencies.

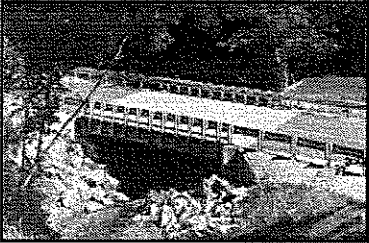
SERVICES

Pentree, Incorporated provides a wide variety of engineering and consulting services:



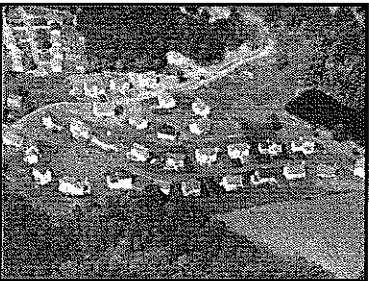
Civil / Environmental Engineering

- Public Utilities Comprehensive Studies and Feasibility/ Preliminary Engineering Reports
- Wastewater Collection & Treatment Systems
- Water Treatment & Distribution Systems
- Storm Water Management
- Land Planning and Development
- Structural Design

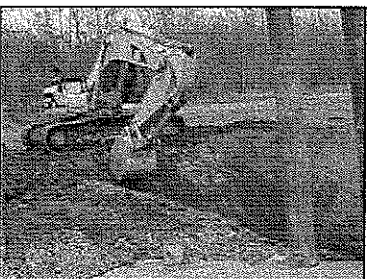


Transportation Engineering

- Highway/Roadways
- Parking Lots
- Bridges
- Airports



- **Photogrammetry**
- Digital Aerial Photography & Mapping
- 3D Terrain Modeling
- 2-D and 3-D Digital Documentation



➤ **Field Services**

- Owner's
- Survey
- Construction Management
- Owner's Representative Services

TECHNICAL EXPERTISE

Pentree's roots are firmly planted in the engineering of publicly funded water and wastewater projects throughout the state of West Virginia and in western Virginia. For over a century, we have provided our technical expertise in all aspects of engineering and field services. The proven methods of approach we apply assure our clients of a successful project that meets their needs for the present and future. From the beginning phases of investigation and evaluation through design, funding and construction management,



Drainage Culvert - King Coal Highway

Pentree, Incorporated provides the highest standards of performance.

DESIGN

Pentree's Project Engineers utilize the most current technology available for design of your project, providing accuracy, flexibility for modifications and clear, concise and understandable drawings.

SURVEY

Pentree's survey department provides survey services and mapping utilizing top of the line equipment, operated by several full-time survey crews. In addition to stakeout and mapping, the department prepares plats and performs courthouse searches. We are also available to assist our clients in the acquisition of easements, right-of-ways and other property to enable the project to move forward efficiently and effectively. ***Pentree, Incorporated provides the experienced and knowledgeable survey personnel essential to expediting your project.***

MANAGEMENT AND STAFFING

Pentree, Incorporated has dedicated personnel committed to providing superior service throughout all aspects of the engineering process, from consulting and planning through funding and preparation of documentation needed throughout the construction process to meet and exceed the requirements of the funding agencies.

Pentree, Incorporated offers a highly qualified and experienced staff to the WV DEP for this project. The Pentree, Inc. staff includes:

- 3 CIVIL ENGINEERS**
- 1 SANITARY ENGINEER**
- 1 STRUCTURAL ENGINEER**
- 1 TRANSPORTATION ENGINEER**
- 4 SPECIFICATION WRITERS**
- 3 CADD OPERATORS**
- 3 SURVEYORS**
- 5 CONSTRUCTION INSPECTORS**
- 3 PHOTOGRAMMETRISTS**
- 2 ADMINISTRATIVE SUPPORT PERSONNEL**

Pentree, Inc. is staffed with four registered professional engineers, three of whom are also licensed professional surveyors. Additionally, the staff of five construction inspectors and sixteen diversely skilled technicians and support personnel provides the resources and support necessary to provide our clients with the thorough and efficient services they desire and deserve.

PROJECT TEAM

**West Virginia Department of
Environmental Protection**

John Tuggle, P.E., P.S.
Principal-In-Charge / Project Manager

Chadwick Biller, P.E.
QA/QC
Affiliate: Thrasher Engineering

Robert Hazelwood, P.E., P.S.
Vice President

Larry Nottingham, P.E.
Geotechnical Engineer
NGE

Zane Summerfield
Engineering Analyst

Gregg Inman
Design Engineer

THE WV DEP THORPE REFUSE PILE PROJECT TEAM

Pentree, Incorporated will assign a team of talented and experienced engineers and firm principals to this project. Each member of this team brings a specific area of expertise that is essential for a successful project

John Tuggle, P.E., P.S., President of Pentree, Inc. is the **Principal-In-Charge** and will serve as **Project Manager**. He is actively involved in the daily management of the firm. Mr. Tuggle's expertise and knowledge of project management and civil engineering will assure you of a quality project that meets your specifications.

Bob Hazelwood, P.E., P.S. will serve as **Chief Engineer** for the project. Mr. Hazelwood will be responsible for overseeing all technical aspects of the project. Mr. Hazelwood has over 25 years of experience in the evaluation and design of AML funded projects.

Mr. Hazelwood will be assisted by, **Zane Summerfield**, who will provide analysis and mining expertise for the design. **Gregg Inman** will provide technical and design assistance for the project.

Chadwick Biller, PE, is with our affiliate company, Thrasher Engineering, Inc., and will serve as peer reviewer and provide QA/QC services for this project. He has over **18 years** of civil engineering experience. He has served as Project Manager on a number of successful WV DEP Office of Abandoned Mine Lands & Reclamation projects.

Larry Nottingham, PE, with NGE will serve as our Geotechnical sub-consultant. He has over **30 years** of AML design experience.

Resumes for the team members follow.

JOHN TUGGLE, P.E., P.S.
PRESIDENT / PRINCIPAL-IN-CHARGE



PROJECT EXPERIENCE:

- **TOWN OF NORTHFORK WATER LINE EXTENSION** – Principal-In-Charge
- **BERKELEY COUNTY PUBLIC SERVICE SEWER DISTRICT BAKER HEIGHTS WASTEWATER TREATMENT PLANT, INWOOD WASTEWATER TREATMENT PLANT, ECOLAB AND APACHE PUMP STATION** – Principal-In-Charge
- **JEFFERSON COUNTY PUBLIC SERVICE DISTRICT BRECKENRIDGE PUMP STATION, NPDES PERMIT RENEWAL AND DISTRICT PLAN REVIEW**; Principal-In-Charge
- **CITY OF MOUNT HOPE KILSYTH UTILITY EXTENSION**; Principal-In-Charge
- **ELKHORN PUBLIC SERVICE DISTRICT SANITARY SEWER PROJECT** - Principal-In-Charge
- **GREEN VALLEY-GLENWOOD COUNTY PUBLIC SERVICE DISTRICT VARIOUS WASTEWATER PROJECTS** – Project Oversight, Contract and Construction Administration
- **COWEN PUBLIC SERVICE DISTRICT CAMDEN WATER TREATMENT PLANT UPGRADE AND WATER LINE EXTENSION PROJECT; SANITARY SEWER LINE EXTENSION PROJECTS** – Project Manager, Contract and Construction Administration
- **MCDOWELL COUNTY PRISON SITE DEVELOPMENT** - Principal-In-Charge
- **WEBSTER COUNTY INDUSTRIAL PARK** – Project Manager, Contract and Construction Administration
- **WEST VIRGINIA DEPARTMENT OF TRANSPORTATION DISTRICT 10 HEADQUARTERS COMPLEX** – Project Manager, Contract and Construction Administration
- **GAULEY RIVER PUBLIC SERVICE DISTRICT TWENTYMILE AND ROUTE 39 / PETERS CREEK WATER LINE EXTENSION PROJECT** – Project Manager, Contract and Construction Administration
- **CITY OF OAK HILL SANITARY BOARD WOLF CREEK PARK SANITARY SEWER SERVICE, FAYETTE PLATEAU PACKAGE PLANT AND POTENTIAL SANITARY SEWER PLANT UPGRADE**; Principal-In-Charge
- **TOWN OF FAYETTEVILLE NICKLEFILLE SEWER PROJECT** – Principal-In-Charge
- **WYTHE COUNTY FORT CHISWELL PLANT UPGRADE** - Principal-In-Charge

PROFESSIONAL RESPONSIBILITIES:

Mr. Tuggle joined Pentree, Incorporated in 1985 and serves as President and Principal-In-Charge for the firm. His primary responsibility is the oversight of all firm projects.

Mr. Tuggle has extensive experience working with various regulatory and funding agencies, and is extremely knowledgeable of contract preparation, analysis and interpretation. He has also recommended and assisted numerous clients in securing the best source of funding to suit their needs.

Mr. Tuggle has been involved with various types of projects including:

- Water Treatment Plants
- Water System Upgrades
- Water Line Extensions
- Wastewater Treatment Plants
- Sanitary Sewer System Upgrades
- Sewer Line Extensions
- Storm Water Management
- Industrial Park Site Development
- Subdivision Development
- Highways and Roads
- Access Roads
- Bridges
- Airports

EDUCATION:

B.S. Civil Engineering Technology, 1982
Bluefield State College

ACTIVE REGISTRATIONS:

Professional Engineer, 1988	#011845
State of West Virginia	
Professional Surveyor, 1995	#1176
State of West Virginia	
Class II Operator's License	Water
Class II Operator's License	Waste Water

ROBERT HAZELWOOD, P.E., P.S. EXECUTIVE VICE-PRESIDENT



PROJECT EXPERIENCE:

- **GREENBRIER COUNTY PUBLIC SERVICE DISTRICT #2** SANITARY SEWER COLLECTION SYSTEM AND WASTEWATER TREATMENT PLANT – Design Engineer and Quality Control
- **RED SULPHUR SPRINGS PUBLIC SERVICE DISTRICT** VARIOUS SANITARY SEWER AND WATER PROJECTS – Design Engineer and Quality Control
- **RAVENSCLIFF-MCGRAWS-SAULSVILLE PUBLIC SERVICE DISTRICT** WATER PROJECTS – Design Engineer and Quality Control
- **GREEN VALLEY-GLENWOOD PUBLIC SERVICE DISTRICT** SANITARY SEWER PROJECTS INCLUDING A 1.5 MGD WASTEWATER TREATMENT PLANT, SEWER LINE EXTENSIONS AND UPGRADES – Design Engineer and Quality Control
- **EDRAY TECHNICAL PARK**, POCAHONTAS COUNTY, WEST VIRGINIA – Design Engineer and Quality Control
- **FOUNTAIN SPRINGS INDUSTRIAL PARK**, MONROE COUNTY, WEST VIRGINIA – Design Engineer and Quality Control
- **PETERSTOWN SATELLITE MEDICAL CLINIC ADDITION**, MONROE COUNTY, WEST VIRGINIA – Design Engineer and Quality Control
- **DEER RUN SUBDIVISION**; 13 LOTS ON 14 ACRES – Design Engineer and Quality Control
- **PLEASANT VALLEY ESTATES**; 23 LOTS ON 17 ACRES - Design Engineer and Quality Control
- **TWIN OAKS SUBDIVISION**; 18 LOTS ON 12 ACRES - Design Engineer and Quality Control
- **EASTERN WYOMING PSD**; MULLENS WYCO WATER PROJECT - WATER TREATMENT PLANT, WATER STORAGE TANKS, AN UPGRADE OF THE LOWER GULF WATER SYSTEM AND AN UPGRADE OF THE UPPER GULF WATER SYSTEM.

PROFESSIONAL RESPONSIBILITIES:

Mr. Hazelwood joined Pentree, Incorporated in 1979 and serves as Executive Vice President for the firm. In this capacity, his primary responsibility is to provide Quality Control and Quality Assurance for projects.

Mr. Hazelwood's experience includes preliminary and final design, preparation of contract documents and specifications and project management.

Additionally, Mr. Hazelwood has extensive knowledge working with regulatory agencies and in recommending and assisting clients in securing cost effective funding for their projects.

- Water Treatment Plants
- Wastewater Treatment Plants
- Storm Water Management
- Industrial Parks
- Airports
- Subdivisions
- Shopping Centers
- Access Roads

EDUCATION:

- M.S. Sanitary Engineering, 1976
VPI and State University
- B.S. Civil Engineering, 1975
West Virginia Institute of Technology

ACTIVE REGISTRATIONS:

- Professional Engineer, 1980 #008452
State of West Virginia
- Professional Surveyor #1179
State of West Virginia

J. ZANE SUMMERFIELD

SENIOR CIVIL ANALYST



PROJECT EXPERIENCE:

- **JEFFERSON COUNTY PSD**– Reviewed plans and specifications to assure compliance with WVBPH and WVDEP rules and regulations and with the District’s construction specifications.
- **CHANDLERS GLEN SUBDIVISION PUMP STATION AND FORCE MAIN** – Preparation of design and construction drawings and documents, permit applications, and calculations for and writing of the engineering report.
- **MCLAUGHLIN FARM SUBDIVISION PUMP STATION AND FORCE MAIN** – Preparation of design and construction drawings and documents, permit applications, and calculations for and writing of the engineering report.
- **CITY OF MOUNT HOPE KILSYTH SEWER UPGRADE PROJECT** – Analysis of WWTP performance, preparation of facility plan and engineering report and assistance with construction drawings and documents and permit applications.
- **JEFFERSON COUNTY PSD FLOWING SPRINGS FACILITY PLAN** – Research, analysis, preliminary design, document writing and presentation of proposed project to the District and the public.
- **BERKELEY COUNTY PUBLIC SEWER SERVICE DISTRICT BAKER HEIGHTS & INWOOD WWTP UPGRADES** - Analysis of the 0.90 MGD and 0.75 MGD WWTP’s, projection of growth, documentation of existing performance, analysis of impact of the Chesapeake Bay Agreement, recommendation of upgrades to triple the capacity of both plants.
- **JEFFERSON COUNTY PSD 2005 WASTEWATER FACILITY PLAN** – Research, analysis, preliminary design, document writing, and presentation to the District and the public.
- **BERKELEY COUNTY PUBLIC SEWER SERVICE DISTRICT SPRING MILLS WWTP UPGRADE** – Analysis of existing plant performance, preparation of design and construction drawings and documents and the engineering report and permit applications.

PROFESSIONAL RESPONSIBILITIES:

Mr. Summerfield joined Pentree, Incorporated in 1998 and serves as Senior Civil Analyst for the firm. He is responsible for the analysis of clients’ existing data to determine their current situation. Mr. Summerfield also prepares facility plans, engineering reports, and specifications and plan sets. Additionally, Mr. Summerfield provides general design assistance, permit preparation and environmental reporting. Prior to his current position with the firm, Mr. Summerfield served as Photogrammetry manager and Aerial Photographer.

SCOPE OF EXPERIENCE:

- **SITE PLANNING** – Site planning, design and contract documents for a variety of motel/hotel sites, restaurants, fire stations, subdivisions, golf courses and convenient stores.
- **MINE PERMITTING** – Design and permitting of surface and deep mine sites including high wall miner and known acid producing seams.
- **SOLID WASTE** – Design and permitting of solid waste transfer stations, participation in public hearings and construction specifications.
- **SANITARY SEWER & WATER SYSTEMS** – Design and permitting of sanitary sewer collection and water distribution systems for various subdivisions.

EDUCATION:

- | | | |
|---------|---------------------------------------|------|
| B.S. | Mining Engineering | 1982 |
| | West Virginia Institute of Technology | |
| A.S. | Mining Engineering | 1976 |
| | West Virginia Institute of Technology | |
| AUTOCAD | | 1992 |
| | Carver Career Center | |

GREGG INMAN, E.I.T.
DESIGN ENGINEER/CHIEF TECHNICIAN



PROJECT EXPERIENCE:

- **FORT CHISWELL WASTEWATER TREATMENT PLANT – CADD DESIGN**
- **EASTERN WYOMING PSD MULLENS-WYCO WATER TREATMENT PLANT – Drafting, Design for New “Smaller” Plant System**
- **TOWN OF DAVY BIG SANDY-ASCO WATER LINE EXTENSION – Design**
- **CITY OF OAK HILL – SANITARY SEWER RELOCATION – DESIGN**
- **GAULEY RIVER PUBLIC SERVICE DISTRICT SMITH BRANCH WATER LINE RELOCATION PROJECT – DESIGN**
- **TOWN OF NORTH FORK – WATER LINE EXTENSION PROJECT – DESIGN**
- **PAGE-KINCAID PSD SANITARY SEWER EXTENSION – PACKAGE PLANT DESIGN**
- **GLEN WHITE / TRAP HILL PSD – WATER LINE EXTENSION PROJECT - DESIGN**
- **ALLEGHENY ELECTRIC POWER – MCGRAW SUBSTATION – SITE DEVELOPMENT AND GRADING – DESIGN**
- **PUMP STATION DESIGN – EASTERN PANHANDLE (JEFFERSON / BERKELEY COUNTIES)**
- - TILHANCE DEVELOPMENT
 - JC BUTLER DEVELOPMENT
 - BARNHART DEVELOPMENT
 - CREST CREEK SUBDIVISION
 - BC MCLAUGHLIN DEVELOPMENT
- **BERKELEY COUNTY PUBLIC SERVICE SEWER DISTRICT – OPEQUON AND BAKER HEIGHTS PUMP STATIONS - DESIGN**

PROFESSIONAL RESPONSIBILITIES:

Mr. Inman joined Pentree, Incorporated in 2005 and serves as Staff Engineer and Chief Technician for the firm. In this capacity he has a variety of responsibilities including, but not limited to:

- Drafting
- Utility Design
- Site Design
- Permitting
- Specifications
- Technical Writing

EDUCATION:

B.S. Civil Engineering Technology –
2005 Bluefield State College

ACTIVE REGISTRATIONS/AFFILIATIONS:

Registered EIT – State of West Virginia

CHADWICK D. BILLER, P.E.
Partner / Project Manager



SUMMARY OF EXPERIENCE

Mr. Biller has experience in all aspects of civil engineering with specific emphasis on mine reclamation, site development, highways, roads, bridges, and airports. Mr. Biller joined Thrasher Engineering in 1999 and is a partner in the firm. He serves as Project Manager for all WV DEP AML projects. As Project Manager for all of the firm's WVDOT/DOH projects, he has extensive knowledge of state and federal building standards.

EDUCATION

- B.S., Civil Engineering, 1992 – West Virginia University*

CERTIFICATIONS

- Registered Professional Engineer (PE), State of West Virginia #13620*
- Registered Professional Engineer (PE), State of Pennsylvania #PE056012E*
- Registered Professional Engineer (PE), State of Ohio #64594*

REPRESENTATIVE PROJECT EXPERIENCE

Site Development Projects

- WV DEP AML&R Anglin's Run*
- WV DEP AML&R Roaring Creek*
- WV DEP AML&R Squires Creek*
- WV DEP AML&R Overdale (Lafferty)*
- Fairmont State University Aerospace Center*
- Raleigh County Memorial Airport Industrial Park*
- Putnam Business Park*
- Wood Products Business Park*
- Aurora Flight Sciences*
- Various Subdivision in Berkeley County Ranging From 12 to 420 Lots*
- Site Plan for Hi-Tech Consortium Expansion, Fairmont, WV*
- Site Plans for Nippon Thermostat, Green Metals and Schwans, Putnam County*
- Pendleton County Courthouse Annex*
- Wingate Hotel, Charles Pointe, Bridgeport, WV*
- Daycare Center and USDA Parking Lot, Hardy County*
- Snowshoe Mountain Resort / Intrawest – The Seneca*
- Wetland Replacement Project, Putnam County*
- Hurricane Business Park*
- Shinnston City Park, Including Pool and Bathhouse*
- City of Bridgeport, Walking Trail and Bridge*

Airports

- Harrison Marion Regional Airport – Improvement Master Plan*
- Raleigh County Airport – Business Park and Master Plan*
- Grafton Hospital, Helipad Relocation*

Highway/Road/Bridge Projects (partial list)

- Old Bridgeport Hill New Storm Drainage System*
- Snowshoe Drive Upgrade*
- King Coal Highway*
- Terra Alta Curve*
- Lodgeville Road*
- North Bridgeport Bypass*
- Corridor H*
- Upgrade of US Route 19*
- East Street and US Route 50, Parkersburg*

John E. Nottingham, P.E., P.S.

Mr. Nottingham has served as lead Geotechnical Engineer on numerous government and commercial design and construction projects. His responsibilities on these projects include direction and coordination of all geotechnical engineering activities. Duties on



~~these projects have included foundation investigation report production,~~ foundation and retaining wall design, fill embankment and cut slope design, dam design and analysis, slope stability analysis, pavement design, design of drainage systems, supervision of subsurface drilling programs, field activity coordination, laboratory data computation and processing, performance of field work, client relations, and supervision of staff and project level geotechnical engineers.

Fields of Competence

- Highway & Airport Geotechnical Design
- Foundation Investigations
- Pavement Analysis and Design
- Landslide Analysis & Remedial Design
- Ground Water and Seepage Analysis & Design
- Retaining Wall Design
- Mine Subsidence Investigations
- Forensic & Insurance Investigations
- Construction Monitoring
- Personnel Management
- Project Management (schedule and budget)
- Project Estimating

Education

B.S., Civil Engineering, West Virginia University - 1987
M.S., Civil Engineering, West Virginia University - 1995

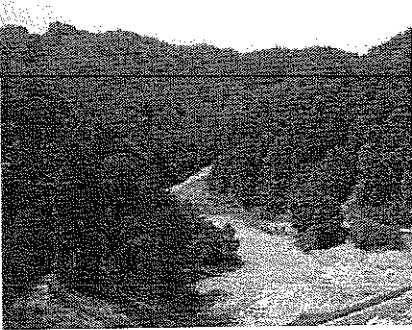
Registration/Certifications

- Registered Professional Engineer in West Virginia. Registration No. 12357 (since 1994)
- Registered Professional Surveyor in West Virginia. Registration No. 1495 (since 1995)

Employment History

- November 2002 – Present
Branch Manager, Novel Geo-Environmental, LLC
- 1997 – November 2002
Geotechnical Services Manager, Triad Engineering, Inc.
- 1996 – November 2002
Senior Engineer, Triad Engineering, Inc.
- 1993 – 1996
Project Engineer, Triad Engineering, Inc.
- 1988 – 1993
Staff Engineer, Triad Engineering, Inc.

RELATED EXPERIENCE



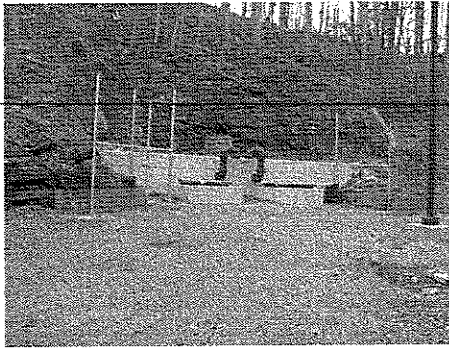
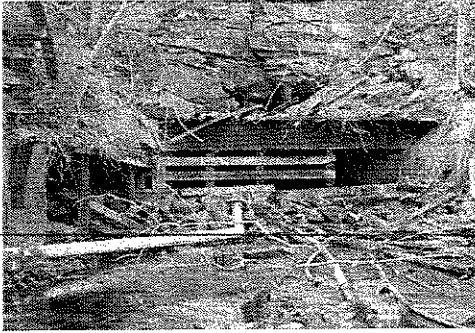
Over the past century, Pentree, Incorporated has surveyed, planned, designed and managed construction for numerous utility projects.

On the following pages are examples of specific recent projects that represent our abilities with drainage and stabilization projects that are comparable in scope of services similar to the needs of the WV DEP for the Thorpe Refuse Pile Project.

The representative projects are as follows:

- Eastern Wyoming Public Service District
- City of Oak Hill
- US Gypsum
- King Coal Highway
- Inwood Watershed Study
- Anglins Run (Thrasher)
- Roaring Creek (Thrasher)
- Squires Creek (Thrasher)
- Overfield (Thrasher)
- Amhersdale (Thrasher)
- Ragland (Thrasher)

References for each of these projects are included and we welcome you to contact them, most of whom are repeat clients.



EASTERN WYOMING PUBLIC SERVICE DISTRICT

Owner/Contact:

William Baisden
Eastern Wyoming Public Service District
P.O. Box 506
Logan, WV 25601
304-946-2641

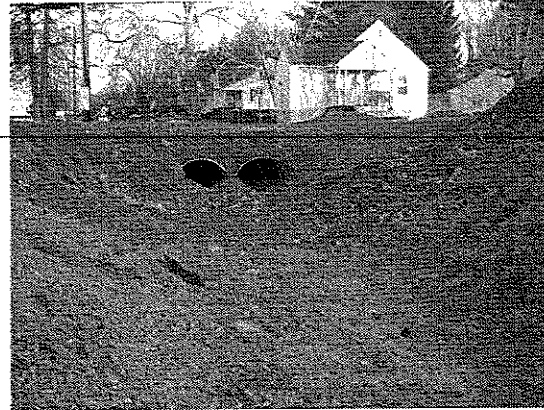
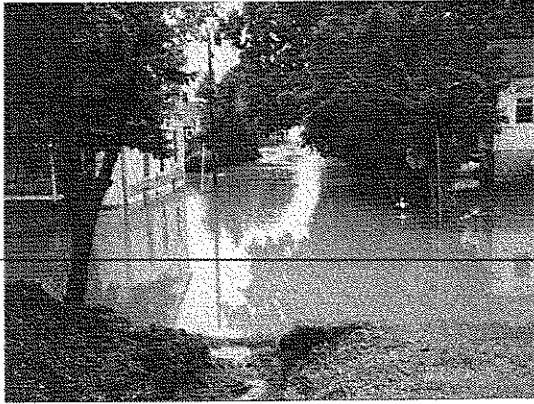
Mullens-Wyco Water Project

Project consists of five contracts to improve and upgrade the Eastern Wyoming Public Service District's water system. This project includes a Water Treatment Plant, Water Storage Tanks, an upgrade of the Lower Gulf Water System and an upgrade of the Upper Gulf Water System. The design called for the closure of four mine portals, one of which was sealed with the capacity to continue to provide a raw water source for the District. The other three portals were wet sealed with allowance for controlled overflow.

Project Location:
Wyoming Co., WV

Professional Engineering Services Provided:

- Preparation of preliminary engineering reports
- Assisting Owner with applications for State and Federal funding
- Design in accordance with all applicable State and Federal regulations
- Assisting Owner with permits required
- Preparation of bidding and contracting documents
- Participation in the evaluation of bids received
- Monitor and inspect construction activities
- Assisting Owner with construction administration



City of Oak Hill Drainage Phased Projects

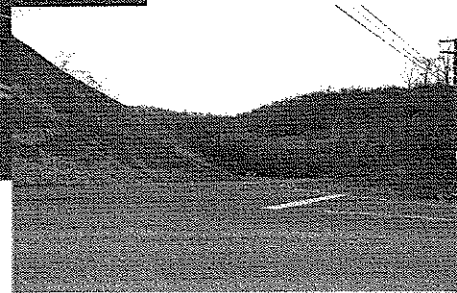
Owner/Contact:
Bill Hannabass, City Manager
City of Oak Hill
P.O. Box 1245
Oak Hill, WV 25901
304-469-9541

Pentree, Incorporated provided the City of Oak Hill with a study, preliminary and final design plans, and specifications for management of approximately 2,200 acre watershed which created flooding along the path of Arbuckle Creek and throughout the city limits. The first phase of the project consisted of replacement of eleven culverts totalling 1,252 lineal feet. The new culverts were designed to carry a 50-year flood and alleviate consistent annual flooding along the banks of Arbuckle Creek. Pentree, Incorporated has worked closely with the West Virginia DEP to satisfy Soil Conservation and wetlands concerns. Phase II of the project is in the Virginia Street/ Trump Avenue area of the City as shown in the flood and construction pictures above.

Project Location:
Fayette Co., WV

Professional Engineering Services Provided:

- Preparation of preliminary engineering reports
- Assisting Owner with applications for State and Federal funding
- Design in accordance with all applicable State and Federal regulations
- Assisting Owner with permits required
- Preparation of bidding and contracting documents
- Participation in the evaluation of bids received
- Monitor and inspect construction activities
- Assisting Owner with construction administration



US GYPSUM

Owner/Contact
George Rolen
U.S. Gypsum
6072 Main Street
Saltville, VA 24370
276-496-7733

Project Location:
Washington Co., VA

Pentree, Incorporated, provided engineering and design services for the relocation of Routes 91 and 745 in Washington County due to subsidence associated with mine abandonment. In conjunction with the roadway relocation project, design for the relocation of approximately 5,000 feet of waterline for the Town of Saltville and 6,000 feet of waterline for the Washington County P.S.A.. Additional design provided for an upgrade to one of Saltville's raw water sources and associated water treatment processes.



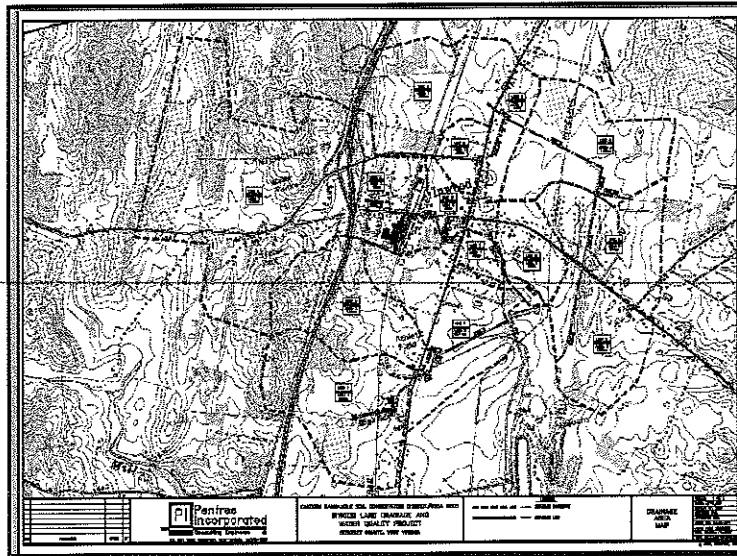
KING COAL/COALFIELDS EXPRESSWAY

Owner/Contact:
West Virginia
Department of Highways
Ali Sadeghian, Project Manager
Division of Highways
Bldg 05 Room A-317
State Capital Complex
Charleston, WV 25305
304-558-9745

Project Location:
McDowell and Wyoming Counties, West Virginia

KING COAL (Interstate 73/74) and
COALFIELDS EXPRESSWAY
(U.S. Route 121)
INTERCHANGE, McDOWELL and WYOMING COUNTIES

Study and complete design of final plans for a major new interchange. Study involved four alternative configuration schemes for the interchange. Final plans included two additional interchanges, five miles of interstate, expressway - roadway and eleven (11) bridges and required over 6 ½ million cubic yards of excavation.



USDA/Natural Resource and Conservation Services Eastern Panhandle Soil Conservation Service Inwood Watershed Project

Owner/Contact
Donald L. Dirting
Conservation Project Specialist
State of West Virginia
Soil Conservation Agency
1450-1 Edwin Miller Boulevard
Martinsburg, WV 25401

Project Location: Berkeley County, West Virginia

The Study involved an 827acre area just south of the Youth Fairgrounds in Berkeley County, WV. The project was divided into three phases to allow for staged funding. The project includes the construction of drainage piping, drop inlets, headwalls and open channel ditch lines to carry the storm water away from the area during and after a storm event. Professional services for this project are closely aligned with the goals of the Commission for the proposed project.

THRASHER ENGINEERING ABANDONED MINE LAND PROJECTS

ANGLIN'S RUN #1, BARBOUR COUNTY

Client: WV DEP Office of Abandoned Mine Lands and Reclamation

Greg Smith 304-457-3219

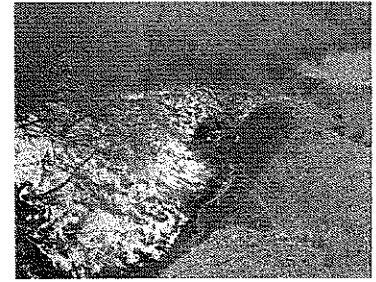
This area included a total of eight (8) collapsed mine portals with at least 5 of them having discharges ranging from 1 to 10 gpm. Total flows were estimated to be between 25 and 30 gpm. Thrasher Engineering designed an access road into the site, excavation and wet seal of eight (8) deep mine portals. To carry water safely off site, drainage control channels, conveyance pipe and under drain were also constructed. All areas disturbed by construction were soil covered, conditioned and re-vegetated. The project has been designed, bid, and constructed.

ROARING CREEK, RANDOLPH COUNTY

Client: WV DEP Office of Abandoned Mine Lands and Reclamation

Greg Smith 304-457-3219

This project involved the elimination of subsidence depressions, the closure of four portals. The Roaring Creek Watershed was heavily deep mined and surfaced mined prior to 1977. The project area consists of 3 open and 1 closed portals discharging AMD. This project also involved regarding of an area with dozens of subsidence depressions. Some of the depressions were so large that the mine shafts were excavated out and backfilled with rock. Surface water had to be rerouted through the site into an existing farm pond. In order to handle the additional flow an emergency spillway had to be designed for the existing pond. This project has been designed, bid, and constructed.



SQUIRES CREEK, PRESTON COUNTY

Client: WV DEP Office of Abandoned Mine Lands and Reclamation

Greg Smith 304-457-3219

Thrasher Engineering has just begun the preliminary engineering on this project for the WV Office of AML&R. The project involves sealing five closed portals and one open portal, reclaiming 200 linear feet of high wall and three acres of refuse piles. Adjacent to this project is a stockpile of fly ash that was used by ICG on another AML project. This fly ash will be moved to this project to help neutralize the existing refuse piles.

OVERFIELD (LAFFERTY) CS & P PROJECT, BARBOUR COUNTY
Client: WV DEP Office of Abandoned Mine Lands and Reclamation
Greg Smith 304-457-3219

Thrasher Engineering has just begun the preliminary engineering on this project for the WV Office of AML&R. The project involves reclaiming a strip pit, determine portal location if any and install a wet seal. Safely convey 50 gallons per minute discharge through the Lafferty property and into a road ditch. The water will then be transferred into a new storm drain system located in a subdivision that empties into an existing valley. A two acre gob pile on the South side of CR 57 will also be reclaimed with soil and vegetated.

AMHERSTDALE PRE-SETTLING BASIN AND PRE-TREATMENT FACILITY PROJECT, LOGAN COUNTY
Client: WV DEP Office of Abandoned Mine Lands and Reclamation

The AML affected area is located in Logan County on CR 16, west of the city limits of Man, a distance of approximately 12.6 Miles. The scope of the project is the design and construction of a pre-settling basin and pre-treatment system to remove metals and turbidity from the existing water sources, allowing the water existing treatment facility to utilize the surface and groundwater. Thrasher Engineering provided for this project included: Survey, supervision of subsurface investigation, environmental review, preparation of design, drawings, development of construction documents.

RAGLAND WATER LINE EXTENSION PROJECT, MINGO COUNTY
Client: WV DEP Office of Abandoned Mine Lands and Reclamation

The AML affected area is located in the Midwestern portion of Mingo County. The area is approximately 2.6 square miles. Services Thrasher Engineering provided for this project included: survey, supervision of subsurface investigation, environmental review, design, and development of construction documents.

PROJECT APPROACH

In order to develop an understanding of the WV DEP's needs for this project, Pentree Incorporated studied the information provided in the RFQ. Based upon our findings, we have developed the following project approach to demonstrate our technical abilities and straight forward method of design and construction.

This project approach is a general approach that will be used on any WVDEP reclamation project and may need to be modified depending on the existing information that is available for the specific project. Also, some steps may not be needed on every project.

Step #1 Obtain adequate mapping. The limits of construction will be flown and digitally mapped or, if the area is small enough, survey crews will field survey the area. Pentree will then provide 1"=50' scale mapping with 2' contours. Spot elevations and critical cross sections may be completed in the field if necessary to make tie-ins.

Step #2 Design the project. Pentree will work closely with the WVDEP in designing the project. A scope meeting and preliminary field review will be conducted to determine the most cost effective method to be used to reclaim the area. A preliminary design based on these meetings will be submitted to the WVDEP. After receiving comments or corrections, Pentree will submit the final plans, specifications and design report. The design report will consist of the bore logs, piezometer elevations, quantity calculations, right of entry forms and any other assumptions that were made during the design. A final field review will all be conducted.

Step #3 Prepare for construction. Pentree will also set up reference points, benchmarks and control points outside of the construction limits so the contractor will be able to construct the project in the future. Pentree will obtain a NPDES permit and any other permits that are required for the project. Also, any right of ways, and easements that is necessary to construct the project. The project manager and engineer will attend the pre-bid meetings to answer any questions that contractors may have about the design.

Step # 4 Construct the project. The project manager will be available during construction to answer any questions the contractor or inspector may have.

Pentree will provide the highest level of customer service and responsiveness throughout the project to the WV DEP Office of Abandoned Mine Lands & Reclamation representatives.

**WEST VIRGINIA DEPARTMENT OF ENVIRONMENTAL PROTECTION
AML CONSULTANT CONFIDENTIAL QUALIFICATION QUESTIONNAIRE**

Attachment "B"

PROJECT NAME: RFQ# DEP15212
Thorpe Refuse Pile Project
McDowell County

FEIN
55-0483692

DATE (DAY, MONTH, YEAR)
23-November-2010

1. FIRM NAME
Pentree, Inc.

3. FORMER FIRM NAME
Bennett-Nave-Thomas

4. HOME OFFICE TELEPHONE
(304) 431-7800

6. TYPE OWNERSHIP
Individual Partnership Joint-Venture
Corporation X

5. ESTABLISHED (YEAR)
1904

6a. WV REGISTERED DBE
(Disadvantaged Business Enterprise)
YES
NO **X**

7. PRIMARY AML DESIGN OFFICE: ADDRESS/ TELEPHONE/ PERSON IN CHARGE/ NO. AML DESIGN PERSONNEL EACH OFFICE
1428 Main St/P.O. Box 1309/Princeton, WV 24740/John Tuggle/5

8. NAMES OF PRINCIPAL OFFICERS OR MEMBERS OF FIRM
John W. Tuggle, P.E., P.S. Principle in Charge
Robert D. Hazelwood, P.E., P.S. Vice President

8a. NAME, TITLE, & TELEPHONE NUMBER - OTHER PRINCIPALS

9. PERSONNEL BY DISCIPLINE

3 ADMINISTRATIVE	—	ECOLOGISTS	—	LANDSCAPE ARCHITECTS	—	STRUCTURAL ENGINEERS
— ARCHITECTS	—	ECONOMISTS	—	MECHANICAL ENGINEERS	4	SURVEYORS
— BIOLOGIST	—	ELECTRICAL ENGINEERS	—	MINING ENGINEERS	—	TRAFFIC ENGINEERS
7 CADD OPERATORS	—	ENVIRONMENTALISTS	2	PHOTOGRAMMETRISTS	—	OTHER
— CHEMICAL ENGINEERS	—	ESTIMATORS	—	PLANNERS: URBAN/REGIONAL	—	
4 CIVIL ENGINEERS	—	GEOLOGISTS	1	SANITARY ENGINEERS	—	
7 CONSTRUCTION INSPECTORS	—	HISTORIANS	—	SOILS ENGINEERS	—	
— DESIGNERS	—	HYDROLOGISTS	—	SPECIFICATION WRITERS	—	28 TOTAL PERSONNEL
— DRAFTSMEN	—					

TOTAL NUMBER OF WV REGISTERED PROFESSIONAL ENGINEERS IN PRIMARY OFFICE: 4
*RPEs other than Civil and Mining must provide supporting documentation that qualifies them to supervise and perform this type of work.

10. HAS THIS JOINT-VENTURE WORKED TOGETHER BEFORE? YES NO **NOT APPLICABLE**

11. OUTSIDE KEY CONSULTANTS/SUB-CONSULTANTS ANTICIPATED TO BE USED. Attach "AML Consultant Confidential Qualification Questionnaire".

NAME AND ADDRESS:	SPECIALTY:	WORKED WITH BEFORE
Thrasher Engineering, Inc. (Affiliate Company) 30 Columbia Blvd., Clarksburg, WV	Current WV DEP AML&R Consultant	Yes <input checked="" type="checkbox"/> No <input type="checkbox"/>
NAME AND ADDRESS: NGE	SPECIALTY: Geotechnical Engineering	WORKED WITH BEFORE Yes <input type="checkbox"/> No <input type="checkbox"/>
NAME AND ADDRESS:	SPECIALTY:	WORKED WITH BEFORE Yes <input type="checkbox"/> No <input type="checkbox"/>
NAME AND ADDRESS:	SPECIALTY:	WORKED WITH BEFORE Yes <input type="checkbox"/> No <input type="checkbox"/>
NAME AND ADDRESS:	SPECIALTY:	WORKED WITH BEFORE Yes <input type="checkbox"/> No <input type="checkbox"/>
NAME AND ADDRESS:	SPECIALTY:	WORKED WITH BEFORE Yes <input type="checkbox"/> No <input type="checkbox"/>
NAME AND ADDRESS:	SPECIALTY:	WORKED WITH BEFORE Yes <input type="checkbox"/> No <input type="checkbox"/>
NAME AND ADDRESS:	SPECIALTY:	WORKED WITH BEFORE Yes <input type="checkbox"/> No <input type="checkbox"/>
NAME AND ADDRESS:	SPECIALTY:	WORKED WITH BEFORE Yes <input type="checkbox"/> No <input type="checkbox"/>

12. A. Is your firm experienced in Abandoned Mine Lands Remediation/Mine Reclamation Engineering?

YES Description and Number of Projects: PENTREE INCORPORATED HAS COMPLETED DESIGN FOR 13 PARTIALLY IMPACTED AML WATER PROJECTS: AMONG THESE INCLUDE THE KEYROCK WATER EXTENSION PROJECT FOR RAVENCLIFF-McGRAW-SAULSVILLE PSD IN WYOMING COUNTY AND MULLENS/WYCO WATER PROJECT FOR THE EASTERN WYOMING PSD ALSO IN WYOMING COUNTY. THE EWPSD PROJECT WAS THE 2006 EPA REGION 9 AWARD WINNING PROJECT FOR SUSTAINABLE PUBLIC HEALTH PROTECTION ENCOMPASSING SEVEN FAILING, FLOODED AND ABANDONED WATER SYSTEMS. ADDITIONALLY, WE PROVIDED ENGINEERING SERVICES FOR THE FIRST IN THE STATE OF WEST VIRGINIA PARTIALLY IMPACTED AML PROJECT FOR GAULEY RIVER PSD WITH THE JODIE WATER LINE EXTENSION PROJECT IN 1998.

B. Is your firm experienced in Soil Analysis?

YES Description and Number of Projects: PENTREE, INCORPORATED HAS ACCESS TO A MATERIALS TESTING AND ANALYSIS LAB AT OUR AFFILIATE OFFICE (THRASHER ENGINEERING) IN BECKLEY, WV. SOIL ANALYSIS EXPERIENCE IS SPECIFICALLY IN GRADATIONS AND CLASSIFICATIONS

NO

C. Is your firm experienced in hydrology and hydraulics?

YES Description and Number of Projects: THROUGH OUR WORK ON WATER SYSTEM PROJECTS FOR VARIOUS PSDS AND MUNICIPALITIES, WE HAVE DEVELOPED HYDRAULIC MODELLING OF SYSTEMS, AND USE KENTUCKY PIPE 2010 FOR OUR AML DESIGN TEAM ANALYSIS.

NO

D. Does your firm produce its own Aerial Photography and Develop Contour Mapping?

YES Description and Number of Projects: EVERY WATER AND WASTEWATER PROJECT PENTREE HAS DESIGNED IN THE LAST 35 YEARS HAS BEEN PHOTOGRAMMETRICALLY PRODUCED BY OUR IN-HOUSE PHOTOGRAMMETRY DEPARTMENT.

E. Is your firm experienced in domestic waterline design? (Include any experience your firm has in Evaluation of aquifer degradation as a result of mining.) -

YES DESCRIPTION AND NUMBER OF PROJECTS: PENTREE, INCORPORATED HAS DESIGNED OVER 54 WATER LINE EXTENSION AND REPLACEMENT PROJECTS IN THE PAST 39 YEARS OF BUSINESS. PROJECTS INCLUDE LINES, BOOSTER STATIONS, WATER TREATMENT PLANTS AND STORAGE FACILITIES.

Is your firm experienced in Acid Mine Drainage Evaluation and Abatement Design? NO

13. PERSONAL HISTORY STATEMENT OF PRINCIPALS AND ASSOCIATES RESPONSIBLE FOR AML PROJECT DESIGN (Furnish complete data but keep to essentials)	
NAME & TITLE (Last, First, Middle Int.)	YEARS OF EXPERIENCE
Tuggle, John W. P.E., P.S. President	YEARS OF AML DESIGN EXPERIENCE: 10 YEARS OF AML RELATED DESIGN EXPERIENCE: 25
Brief Explanation of Responsibilities Mr. Tuggle serves as President of Pentree, Incorporated. Mr. Tuggle is Principal in Charge for public utility projects including sanitary sewer, water and storm water management. His primary responsibility is the oversight of all firm projects. In this capacity he is responsible for feasibility studies and design, regulatory and funding assistance for state, federal and private clients. Additionally, he has extensive experience working with funding and regulatory agencies in conjunction with projects. In the capacity of Principal-In-Charge, for this AML design project, he will work closely with the Project Manager to ensure timeliness of the projects, client satisfaction and oversee budgetary aspects.	YEARS OF DOMESTIC WATERLINE DESIGN EXPERIENCE: 25
EDUCATION (Degree, Year, Specialization) BACHELOR OF SCIENCE, 1985, BLUEFIELD STATE COLLEGE - CIVIL ENGINEERING TECHNOLOGY	
MEMBERSHIP IN PROFESSIONAL ORGANIZATIONS WEST VIRGINIA RURAL WATER ASSOCIATION	
13. PERSONAL HISTORY STATEMENT OF PRINCIPALS AND ASSOCIATES RESPONSIBLE FOR AML PROJECT DESIGN (Furnish complete data but keep to essentials)	
NAME & TITLE (Last, First, Middle Int.)	YEARS OF EXPERIENCE
Hazelwood, Robert D. P.E., P.S. Vice President	YEARS OF AML DESIGN EXPERIENCE: 9 YEARS OF AML RELATED DESIGN EXPERIENCE: 31
Brief Explanation of Responsibilities Robert D. Hazelwood, P.E., P.S. Vice President of Pentree, Inc. will serve as Project Manager / Project Engineer. His major responsibility will be for project oversight of all design and construction aspects. Mr. Hazelwood has extensive experience in water line extension projects throughout West Virginia, particularly Southern West Virginia. Additionally, Mr. Hazelwood was/is Project Manager/Project Engineer for the Mullens/Wyco Water System Upgrade, the Keyrock Water Project, Itmann/Bud Mountain Water Project, Glen Fork-Sabine Water Project and the R.D. Bailey Regional Water System and Extension Project - all of which have extensive funding with the WVDEP AML. As such, Mr. Hazelwood is well versed in AML reporting and deadline requirements.	YEARS OF DOMESTIC WATERLINE DESIGN EXPERIENCE: 31
EDUCATION (Degree, Year, Specialization) ■ M.S., Sanitary Engineering, 1976 - Virginia Polytechnical Institute ■ B.S., Civil Engineering, 1975 - West Virginia Technical Institute	
MEMBERSHIP IN PROFESSIONAL ORGANIZATIONS WEST VIRGINIA RURAL WATER ASSOCIATION	
REGISTRATION (Type, Year, State) P.E. 1993 - WEST VIRGINIA #11845 P.S. 1995 - WEST VIRGINIA #1176	
REGISTRATION (Type, Year, State) P.E. 1980 - WEST VIRGINIA #008452 P.S. 1995 - WEST VIRGINIA #1179	

13. PERSONAL HISTORY STATEMENT OF PRINCIPALS AND ASSOCIATES RESPONSIBLE FOR AML PROJECT DESIGN (Furnish complete data but keep to essentials)	
NAME & TITLE (Last, First, Middle Int.)	YEARS OF EXPERIENCE
Anderson, Matthew P.E.	YEARS OF AML DESIGN EXPERIENCE: 3 YEARS OF AML RELATED DESIGN EXPERIENCE: 3 YEARS OF DOMESTIC WATERLINE DESIGN EXPERIENCE: 8
Brief Explanation of Responsibilities As Design Engineer for Pentree, Mr. Anderson will provided his expertise in permitting, preliminary and final engineering reports, site design, technical writing and hydraulic analysis. Having worked on multiple AML projects in the past, Mr. Anderson is adept at working within the guidelines of the agency.	
EDUCATION (Degree, Year, Specialization) B.S. 1998, CIVIL ENGINEERING TECHNOLOGY, BLUEFIELD STATE COLLEGE B.S. 1999, ARCHITECTURAL ENGINEERING TECHNOLOGY, BLUEFIELD STATE COLLEGE	
MEMBERSHIP IN PROFESSIONAL ORGANIZATIONS West Virginia Rural Water Association	
13. PERSONAL HISTORY STATEMENT OF PRINCIPALS AND ASSOCIATES RESPONSIBLE FOR AML PROJECT DESIGN (Furnish complete data but keep to essentials)	
NAME & TITLE (Last, First, Middle Int.)	YEARS OF EXPERIENCE
Shields, Robert G. (Gary) P.E., P.S.	YEARS OF AML DESIGN EXPERIENCE: 0 YEARS OF AML RELATED DESIGN EXPERIENCE: 0 YEARS OF DOMESTIC WATERLINE DESIGN EXPERIENCE: 7
Brief Explanation of Responsibilities: Mr. Shields joined Pentree, Incorporated in 2003 and serves as Survey Manager for the firm. Prior to his employment with Pentree, Mr. Shields worked as an Independent Licensed Land Surveyor. Currently, he supervises, assigns and reviews all of Pentree, Incorporated's survey activities. In addition to being a Professional Surveyor, Mr. Shields is also a registered Professional Engineer.	
EDUCATION (Degree, Year, Specialization) B.S., 1982, Civil Engineering Technology, Bluefield State College	
MEMBERSHIP IN PROFESSIONAL ORGANIZATIONS West Virginia Society of Professional Surveyors American Society of Civil Engineers	
REGISTRATION (Type, Year, State) Professional Engineer, 1990, State of West Virginia #10786 Professional Surveyor, 1982 State of West Virginia #766 Professional Surveyor, 1986 State of Virginia #1545	

13. PERSONAL HISTORY STATEMENT OF PRINCIPALS AND ASSOCIATES RESPONSIBLE FOR AML PROJECT DESIGN (Furnish complete data but keep to essentials)			
NAME & TITLE (Last, First, Middle Int.)	YEARS OF AML DESIGN EXPERIENCE: 4	YEARS OF AML RELATED DESIGN EXPERIENCE: 4	YEARS OF DOMESTIC WATERLINE DESIGN EXPERIENCE: 5
Inman, Gregg E., E.I.T.			
Brief Explanation of Responsibilities: Mr. Inman joined Pentree in 2005 and serves as Staff Design Engineer and Chief Technician for the firm. In this capacity he has a variety of responsibilities including drafting, utility design, site design, permitting, specifications and technical writing.			
EDUCATION (Degree, Year, Specialization) B.S., 2005, Civil Engineering Technology, Bluefield State College			
MEMBERSHIP IN PROFESSIONAL ORGANIZATIONS REGISTRATION (Type, Year, State) Registered E.I.T. - State of West Virginia			
13. PERSONAL HISTORY STATEMENT OF PRINCIPALS AND ASSOCIATES RESPONSIBLE FOR AML PROJECT DESIGN (Furnish complete data but keep to essentials)			
NAME & TITLE (Last, First, Middle Int.)	YEARS OF AML DESIGN EXPERIENCE: 15	YEARS OF AML RELATED DESIGN EXPERIENCE: 15	YEARS OF DOMESTIC WATERLINE DESIGN EXPERIENCE: 12
Summerfield, J. Zane			
Brief Explanation of Responsibilities: Mr. Summerfield will provide expertise and analysis for the drainage and re-vegetation aspect of this project. Having worked with for the mining industry as a permit specialist and hydrology analyst, his combination of technical and design capabilities will enhance the overall depth of the design team.			
EDUCATION (Degree, Year, Specialization) A.S., 1976 West Virginia Institute of Technology, Mining Engineering B.S., 1982 West Virginia Institute of Technology, Mining Engineering			
MEMBERSHIP IN PROFESSIONAL ORGANIZATIONS REGISTRATION (Type, Year, State)			

We perform our work utilizing the most current methods and equipment available.

SURVEY

Our survey work is accomplished with global positioning systems (GPS) and electronic distance measuring (EDM) survey stations with data gathering capabilities. This equipment includes:

- Leica Geosystem System 500 GPS
- Leica Ski Post Processing Software
- Topcon G600 Total Station Instrument
- Leica 303 Total Station Instrument
- Leica 307 Total Station Instrument
- Leica 403 Total Station Instrument
- Leica 405 Total Station Instrument
- Leica 407 Total Station Instrument
- Leica 703 Total Station Instrument
- Prograde 3 Gas Detector
- Flow Meter
- Forney FT-40 Compression Testing Machine
- Troxler 3440 Nuclear Density Gauge
- Troxler 3411 Nuclear Density Gauge
- Rainhart Proctor Machine
- Modified Protractor with Hammer
- Gilson Shaker
- GTS-605 Laser Plummel EDM
- Model 920 Flow Meter
- Submerged Depth Velocity Probe
- Propane Tank
- Daiagator Sewer Flow Monitoring System
- TSP-514 Transport XT Mobility Mailer with Office Laptop
- System 500 Real-Time Processed Bundle
- Multiquip Pump
- System 500 RTK & Post Processing Bundle with Accessories
- Aries Township Pan & Tilt with 1000' & 400' Lateral System

DESIGN

CAD CAPABILITIES

Pentree, Inc., Incorporated provides one of the largest networks of computer aided design (CAD) equipment, software and trained personnel in the State of West Virginia.

AutoCAD Civil 3D Land Desktop Companion 2008 and Microstation V8 software is utilized. Additionally, equipment includes 10 large format (size E) plotters and 5 large format plotter / scanners.

CAD plans are prepared by both dedicated CAD employees and by staff engineers and engineering technicians.

15. CURRENT ACTIVITIES ON WHICH YOUR FIRM IS THE DESIGNATED ENGINEER OF RECORD - WATER DISTRIBUTION PROJECTS

PROJECT NAME, TYPE AND LOCATION	NAME AND ADDRESS OF OWNER	NATURE OF YOUR FIRM'S RESPONSIBILITY	ESTIMATED CONSTRUCTION COST	PERCENT COMPLETE
KEYROCK WATER PROJECT WYOMING COUNTY	RAVENCLIFF-MCGRAWS- SAULSVILLE PSD PO BOX 217 MCGRAWS, WV 25875	PRELIMINARY ENGINEERING REPORTS REVIEW, ENVIRONMENTAL STUDIES AND PERMITTING, PREPARATION OF PLANS AND SPECIFICATIONS, SURVEY, DESIGN, BID DOCUMENTATION,	\$4,300,000	100%
MULLENS/WYCO WATER PROJECT WYOMING COUNTY	EASTERN WYOMING PSD PO BOX 506 LOGAN, WV 25601	PRELIMINARY ENGINEERING REPORTS, ENVIRONMENTAL STUDIES AND PERMITTING, PREPARATION OF PLANS AND SPECIFICATIONS, SURVEY, DESIGN, BID DOCUMENTATION, REVIEW AND RECOMMENDATION, CONSTRUCTION MANAGEMENT AND INSPECTION	\$14,587,000	100%
ASCO WATER PROJECT MCDOWELL COUNTY	TOWN OF DAVY PO BOX 243 DAVY, WV 24828	PRELIMINARY ENGINEERING REPORTS, ENVIRONMENTAL STUDIES AND PERMITTING, PREPARATION OF PLANS AND SPECIFICATIONS, SURVEY, DESIGN, BID DOCUMENTATION, REVIEW AND RECOMMENDATION, CONSTRUCTION MANAGEMENT AND INSPECTION	\$10,000,000	100%
SPANISHBURG WATER EXTENSION PHASE 2B PROJECT MERCER COUNTY	LASHMEET P.S.D. PO BOX 189 LASHMEET, WV 24733	PRELIMINARY ENGINEERING REPORTS, ENVIRONMENTAL STUDIES AND PERMITTING, PREPARATION OF PLANS AND SPECIFICATIONS, SURVEY, DESIGN, BID DOCUMENTATION, REVIEW AND RECOMMENDATION, CONSTRUCTION MANAGEMENT AND INSPECTION	\$1,898,200	100%

15. CURRENT ACTIVITIES ON WHICH YOUR FIRM IS THE DESIGNATED ENGINEER OF RECORD - WATER DISTRIBUTION PROJECTS

PROJECT NAME, TYPE AND LOCATION	NAME AND ADDRESS OF OWNER	NATURE OF YOUR FIRM'S RESPONSIBILITY	ESTIMATED CONSTRUCTION COST	PERCENT COMPLETE
PAGE-KINCAID WATER PROJECT FAYETTE COUNTY	PAGE-KINCAID PSD PO BOX 165, HWY 61 KINCAID, WV 25119	PRELIMINARY ENGINEERING REPORTS, ENVIRONMENTAL STUDIES AND PERMITTING, PREPARATION OF PLANS AND SPECIFICATIONS, SURVEY, DESIGN, BID DOCUMENTATION, REVIEW AND RECOMMENDATION, CONSTRUCTION MANAGEMENT AND INSPECTION	\$2,400,000	100%
GREENVILLE WATER PROJECT MONROE COUNTY	RED SULPHUR PSD PO BOX 697 PETERSTOWN, WV 24963	PRELIMINARY ENGINEERING REPORTS, ENVIRONMENTAL STUDIES AND PERMITTING, PREPARATION OF PLANS AND SPECIFICATIONS, SURVEY, DESIGN, BID DOCUMENTATION, REVIEW AND RECOMMENDATION, CONSTRUCTION MANAGEMENT AND INSPECTION	\$2,728,000	100% Design - bid opening in January
SUMMERSVILLE WATER LINE EXTENSION NICHOLAS COUNTY	GAULEY RIVER PSD PO BOX 47 SWISS, WV 26690	PRELIMINARY ENGINEERING REPORTS, ENVIRONMENTAL STUDIES AND PERMITTING, PREPARATION OF PLANS AND SPECIFICATIONS, SURVEY, DESIGN, BID DOCUMENTATION, REVIEW AND RECOMMENDATION, CONSTRUCTION MANAGEMENT AND INSPECTION	Phase I \$4,649,702 Phase II \$2,322,890 Phase III \$2,341,622	Phase I is under construction Phase II is 100% design Phase III is 100% design
BIG SANDY WATER PROJECT* McDowell County	McDowell County PSD HC 31, Box 436 Welch, WV 24801	PRELIMINARY ENGINEERING REPORTS, ENVIRONMENTAL STUDIES AND PERMITTING, PREPARATION OF PLANS AND SPECIFICATIONS	\$8,714,120	50% Design
GLEN WHITE TRAP HILL WATER PHASE II * RALEIGH COUNTY	GLEN WHITE TRAP HILL PSD POBOX 100 FAIRDALE, WV 25839	PRELIMINARY ENGINEERING REPORTS, ENVIRONMENTAL STUDIES AND PERMITTING, PREPARATION OF PLANS AND SPECIFICATIONS, SURVEY, DESIGN, BID DOCUMENTATION, REVIEW AND RECOMMENDATION, CONSTRUCTION MANAGEMENT AND INSPECTION	\$5,376,000	95%

15. CURRENT ACTIVITIES ON WHICH YOUR FIRM IS THE DESIGNATED ENGINEER OF RECORD - WATER DISTRIBUTION PROJECTS

PROJECT NAME, TYPE AND LOCATION	NAME AND ADDRESS OF OWNER	NATURE OF YOUR FIRM'S RESPONSIBILITY	ESTIMATED CONSTRUCTION COST	PERCENT COMPLETE
JESSEE MATHENY WATER PROJECT* WYOMING COUNTY	RAVENCLIFF-MCGRAWS- SAULSVILLE PSD PO BOX 217 MCGRAWS, WV 25875	PRELIMINARY ENGINEERING REPORTS, ENVIRONMENTAL STUDIES AND PERMITTING, PREPARATION OF PLANS AND SPECIFICATIONS, SURVEY, DESIGN, BID DOCUMENTATION, REVIEW AND RECOMMENDATION, CONSTRUCTION MANAGEMENT AND INSPECTION	\$6,164,000	100%
GLEN WHITE TRAP HILL WATER PHASE I RALEIGH COUNTY	GLEN WHITE TRAP HILL PSD POBOX 100 FAIRDALE, WV 25839	PRELIMINARY ENGINEERING REPORTS, ENVIRONMENTAL STUDIES AND PERMITTING, PREPARATION OF PLANS AND SPECIFICATIONS, SURVEY, DESIGN, BID DOCUMENTATION, REVIEW AND RECOMMENDATION, CONSTRUCTION MANAGEMENT AND INSPECTION	\$5,315,000	100%
ITMANN/BUD MOUNTAIN WATER PROJECT WYOMING COUNTY	EASTERN WYOMING PSD PO BOX 506 LOGAN, WV 25601	PRELIMINARY ENGINEERING REPORTS, ENVIRONMENTAL STUDIES AND PERMITTING, PREPARATION OF PLANS AND SPECIFICATIONS, SURVEY, DESIGN, BID DOCUMENTATION, REVIEW AND RECOMMENDATION, CONSTRUCTION MANAGEMENT AND INSPECTION	\$3,064,000	100%
JESSE MATHENY WATER PROJECT *	RAVENCLIFF-MCGRAWS- SAULSVILLE PSD PO BOX 217 MCGRAWS, WV 25875	PRELIMINARY ENGINEERING REPORTS, ENVIRONMENTAL STUDIES AND PERMITTING, PREPARATION OF PLANS AND SPECIFICATIONS, SURVEY, DESIGN, BID DOCUMENTATION, REVIEW AND RECOMMENDATION, CONSTRUCTION MANAGEMENT AND INSPECTION	\$2,027,000	95%
*Represents partially AML funded projects				

17. COMPLETED WORK WITHIN LAST 5 YEARS ON WHICH YOUR FIRM WAS THE DESIGNATED ENGINEER OF RECORD				
PROJECT NAME, TYPE AND LOCATION	NAME AND ADDRESS OF OWNER	ESTIMATED CONSTRUCTION COST	YEAR	CONSTRUCTED (YES OR NO)
TWENTYMILE WATER PROJECT FAYETTE COUNTY	GAULEY RIVER PSD PO BOX 47 SWISS, WV 26690	\$4,600,000	2005	YES
VIRGINIA STREET SIDEWALKS FAYETTE COUNTY	CITY OF OAK HILL P.O. BOX 1245 OAK HILL, WV 25901	\$242,311	2006	YES
FORT CHISWELL WASTEWATER TREATMENT PLANT UPGRADE PH I&II WYTEH COUNTY, VA	WYTEH COUNTY BOARD OF SUPERVISORS 340 SOUTH 6 TH ST WYTHEVILLE, VA 24382	PHASE I - \$376,000 PHASE II - \$4,140,655	2006 2008	YES
UPPER GLADE SEWER PROJECT WEBSTER COUNTY	COWEN PSD P.O. BOX 465 COWEN, WV 26026	\$5,085,876	2007	YES
CITY OF OAK HILL SIDEWALK REPAIRS FAYETTE COUNTY	CITY OF OAK HILL P.O. BOX 1245 OAK HILL, WV 25901	\$269,482	2008	YES
OAK HILL DRAINAGE PHASE II FAYETTE COUNTY	CITY OF OAK HILL P.O. BOX 1245 OAK HILL, WV 25901	\$736,870	2008	YES
GAP MILLS WATER PROJECT MONROE COUNTY	GAP MILLS PSD P.O. BOX 117 GAP MILLS, WV 24941	\$1,898,000	2008	YES
ASCO WATER PROJECT MCDOWELL COUNTY	TOWN OF DAVY P.O. BOX 246 DAVY, WV 24828	\$1,500,000	2009	YES
INWOOD WASTEWATER TREATMENT PLANT UPGRADE BERKELEY COUNTY	BERKELEY COUNTY PSSD PO BOX 944 MARTINSBURG, WV 25401	\$7,600,000	2009	YES
BAKER HEIGHTS WASTEWATER TREATMENT PLANT UPGRADE BERKELEY COUNTY	BERKELEY COUNTY PSSD PO BOX 944 MARTINSBURG, WV 25401	\$8,730,919	2009	YES
ECOLAB WATERWATER TREATMENT PLANT UPGRADE BERKELEY COUNTY	ECOLAB 942 BAKER ROAD MARTINSBURG, WV 25405	\$1,778,000	2009	YES
KILSYTH WASTEWATER EXTENSION AND PLANT UPGRADE FAYETTE COUNTY	CITY OF MOUNT HOPE P.O. BOX 151 MOUNT HOPE, WV 25880	\$4,061,000	2009	YES
PAGE KINCAID SEWER PROJECT FAYETTE COUNTY	PAGE-KINCAID PSD PO BOX 165, HWY 61 KINCAID, WV 25119	\$10,800,000	2010	YES

**WEST VIRGINIA DEPARTMENT OF ENVIRONMENTAL PROTECTION
AML CONSULTANT QUALIFICATION QUESTIONNAIRE Attachment "B"**

PROJECT NAME AML Sub-consultant to Affiliate Firm: Pentree	DATE (DAY, MONTH, YEAR) November 1, 2010	FEIN 55-0633596-6
1. FIRM NAME THRASHER ENGINEERING, INC.	2. HOME OFFICE BUSINESS ADDRESS 30 COLUMBIA BLVD., CLARKSBURG, WV 26301	3. FORMER FIRM NAME NOT APPLICABLE
4. HOME OFFICE TELEPHONE 304-624-4108	5. ESTABLISHED (YEAR) 1983	6a. WV REGISTERED DBE (Disadvantaged Business Enterprise) YES <input type="checkbox"/> NO <input checked="" type="checkbox"/>
7. PRIMARY AML DESIGN OFFICE: ADDRESS/ TELEPHONE/ PERSON IN CHARGE/ NO. AML DESIGN PERSONNEL EACH OFFICE 30 COLUMBIA BLVD, CLARKSBURG, WV / 304-624-4108 / KENNETH P. MORAN, P.E., VICE PRESIDENT / 12 300 ASSOCIATION DRIVE, CHARLESTON, WV / 304-343-7601 / JONATHAN CARPENTER, MANAGING PARTNER / 2		
8. NAMES OF PRINCIPAL OFFICERS OR MEMBERS OF FIRM H. Wood Thrasher, P.E. - President Kenneth P. Moran, P.E. - Vice President		
9. PERSONNEL BY DISCIPLINE		
24 ADMINISTRATIVE 3 ARCHITECTS — BIOLOGIST 18 CADD OPERATORS — CHEMICAL ENGINEERS 27 CIVIL ENGINEERS 41 CONSTRUCTION INSPECTORS 2 DESIGNERS — DRAFTSMEN	— ECOLOGISTS — ECONOMISTS — ELECTRICAL ENGINEERS 2 ENVIRONMENTALISTS — ESTIMATORS 1 GEOLOGISTS — HISTORIANS — HYDROLOGISTS	— LANDSCAPE ARCHITECTS — MECHANICAL ENGINEERS — MINING ENGINEERS 3 PHOTOGRAMMETRISTS — PLANNERS: URBAN/REGIONAL — SANITARY ENGINEERS — SOILS ENGINEERS 2 SPECIFICATION WRITERS
10. HAS THIS JOINT-VENTURE WORKED TOGETHER BEFORE? <input type="checkbox"/> YES <input type="checkbox"/> NO <input type="checkbox"/> NO NOT APPLICABLE		

TOTAL NUMBER OF WV REGISTERED PROFESSIONAL ENGINEERS IN PRIMARY OFFICE: 12
 *RPEs other than Civil and Mining must provide supporting documentation that qualifies them to supervise and perform this type of work.

STRUCTURAL ENGINEERS **38** SURVEYORS
 — TRAFFIC ENGINEERS
 10 OTHER
171 TOTAL PERSONNEL

11. OUTSIDE KEY CONSULTANTS/SUB-CONSULTANTS ANTICIPATED TO BE USED. Attach "AML Consultant Confidential Qualification Questionnaire".

NAME AND ADDRESS:	SPECIALTY:	WORKED WITH BEFORE
NGE St. Albans, WV	GEOTECHNICAL SERVICES	WORKED WITH BEFORE Yes <input checked="" type="checkbox"/> No <input type="checkbox"/>
NAME AND ADDRESS:	SPECIALTY:	WORKED WITH BEFORE Yes <input type="checkbox"/> No <input type="checkbox"/>
NAME AND ADDRESS:	SPECIALTY:	WORKED WITH BEFORE Yes <input type="checkbox"/> No <input type="checkbox"/>
NAME AND ADDRESS:	SPECIALTY:	WORKED WITH BEFORE Yes <input type="checkbox"/> No <input type="checkbox"/>
NAME AND ADDRESS:	SPECIALTY:	WORKED WITH BEFORE Yes <input type="checkbox"/> No <input type="checkbox"/>
NAME AND ADDRESS:	SPECIALTY:	WORKED WITH BEFORE Yes <input type="checkbox"/> No <input type="checkbox"/>
NAME AND ADDRESS:	SPECIALTY:	WORKED WITH BEFORE Yes <input type="checkbox"/> No <input type="checkbox"/>
NAME AND ADDRESS:	SPECIALTY:	WORKED WITH BEFORE Yes <input type="checkbox"/> No <input type="checkbox"/>

12. A. Is your firm experienced in Abandoned Mine Lands, Remediation/Mine Reclamation Engineering?
YES Description and Number of Project: THRASHER ENGINEERING HAS PERFORMED ENGINEERING DESIGN SERVICES TO THE WV DEP FOR BOTH DRAINAGE AND PORTAL AML PROJECTS AS WELL AS FOR WATER LINE AND WATER TREATMENT PLANT PROJECTS RELATED TO AML. NUMEROUS PROJECTS INVOLVING LAND REMEDIATION, STORM WATER DRAINAGE, SLIP REPAIR, MASS GRADING IN RELATION TO SITE DEVELOPMENT AND HIGHWAY PROJECTS.

B. Is your firm experienced in Soil Analysis?

YES Description and Number of Projects: THRASHER ENGINEERING MAINTAINS AN AASHTO CERTIFIED MATERIALS TESTING AND ANALYSIS LAB AT ITS CLARKSBURG AND BECKLEY OFFICES. SOIL ANALYSIS EXPERIENCE IS SPECIFICALLY IN GRADATIONS AND CLASSIFICATION.

C. Is your firm experienced in hydrology and hydraulics?

YES Description and Number of Projects: THROUGH OUR WORK IN THE PLANNING AND DESIGN OF BRIDGES FOR THE WEST VIRGINIA DEPARTMENT OF HIGHWAYS AND WATER LINE EXTENSION PROJECTS, THRASHER ENGINEERING HAS EXTENSIVE EXPERIENCE IN HYDROLOGY. WE ALSO HAVE EXTENSION EXPERIENCE IN HYDRAULIC MODELING FOR WATER AND WASTEWATER PROJECTS THROUGHOUT WEST VIRGINIA.

D. Does your firm produce its own Aerial Photography and Develop Contour Mapping?

YES Description and Number of Projects:

NO WE UTILIZE THE SERVICES OF NUMEROUS FIRMS, INCLUDING PENTREE, INC. WHICH IS AN AFFILIATE COMPANY OF THRASHER ENGINEERING INC.

E. Is your firm experienced in domestic waterline design? (Include any experience your firm has in evaluation of aquifer degradation as a result of mining.)

YES Description and Number of Projects: THRASHER ENGINEERING HAS DESIGNED OVER 100 WATER LINE EXTENSION PROJECTS IN THE PAST 20 YEARS OF BUSINESS. PROJECTS INCLUDE LINES, BOOSTER STATIONS, WATER TREATMENT PLANTS, AND STORAGE FACILITIES. MANY OF THESE PROJECTS ARE IN AREAS WITH AML AFFECTED WATER

F. Is your firm experienced in Acid Mine Drainage Evaluation and Abatement Design?

YES Description and Number of Projects: TEI RECENTLY DESIGNED TWO RECLAMATION PROJECTS FOR WVDEP RELATED SPECIFICALLY TO ACID MINE DRAINAGE AND ABATEMENT, BOTH OF WHICH ARE LOCATED IN BARBOUR COUNTY, WEST VIRGINIA. THE CHARLESTON WV BRANCH OF OUR COMPANY DESIGNED AN AWARD WINNING WATER TREATMENT PLANT FOR MARTINKA MINES IN MARION COUNTY, WEST VIRGINIA TO TREAT DRAINAGE.

13. PERSONAL HISTORY STATEMENT OF PRINCIPALS AND ASSOCIATES RESPONSIBLE FOR AML PROJECT DESIGN (Furnish complete data but keep to essentials)

NAME & TITLE (Last, First, Middle Int.)		YEARS OF EXPERIENCE	
MORAN, KENNETH P., PE		YEARS OF AML DESIGN EXPERIENCE: 7	YEARS OF AML RELATED DESIGN EXPERIENCE: 17
Mr. Moran joined Thrasher Engineering in 1991 and currently serves as Vice President and Chief Operations Officer and Chief Engineer.		YEARS OF DOMESTIC WATERLINE DESIGN EXPERIENCE: 24	
Mr. Moran is responsible for management feasibility studies and design of public utility and site development projects for local state, federal and private clients. Additionally, Mr. Moran has extensive experience in all aspects of engineering and with funding and regulatory agencies in conjunction with projects.			
EDUCATION (Degree, Year, Specialization)		B.S., Civil Engineering Technology, 1983 - Fairmont State University	
MEMBERSHIP IN PROFESSIONAL ORGANIZATIONS			
<input type="checkbox"/> Friendship Lodge No.56 A.F. & A.M. <input type="checkbox"/> WV Society of Professional Engineers <input type="checkbox"/> Member of American Society of Civil Engineers		REGISTRATION (Type, Year, State) <input type="checkbox"/> Registered Professional Engineer (PE), State of West Virginia #11309 <input type="checkbox"/> Registered Professional Engineer (PE), State of Virginia #0102021855 <input type="checkbox"/> Registered Professional Engineer (PE), State of Ohio #64412 <input type="checkbox"/> Professional Land Surveyor (PS), State of West Virginia #1333	

13. PERSONAL HISTORY STATEMENT OF PRINCIPALS AND ASSOCIATES RESPONSIBLE FOR AML PROJECT DESIGN (Furnish complete data but keep to essentials)

NAME & TITLE (Last, First, Middle Int.)		YEARS OF EXPERIENCE	
BILLER, CHADWICK D., P.E.		YEARS OF AML DESIGN EXPERIENCE: 3	YEARS OF AML RELATED DESIGN EXPERIENCE: 16
Brief Explanation of Responsibilities: Mr. Biller has experience in all aspects of engineering with specific emphasis on site development, highways, roads, bridges, and airports. Mr. Biller joined Thrasher Engineering in 1999 and is a partner of Thrasher Engineering. For Thrasher Engineering, Mr. Biller is responsible for WV DEP AML projects and public and private site development projects, specializing in airports, highways, roads and bridges. As Project Manager for all of the firm's WVDOT/DOH projects, he has extensive knowledge of state and federal building standards.		YEARS OF DOMESTIC WATERLINE DESIGN EXPERIENCE: 16	
EDUCATION (Degree, Year, Specialization): <input checked="" type="checkbox"/> B.S., Civil Engineering, 1992 - West Virginia University			
MEMBERSHIP IN PROFESSIONAL ORGANIZATIONS			
<input type="checkbox"/> American Society of Civil Engineers <input type="checkbox"/> Society of American Military Engineers <input type="checkbox"/> National Society of Professional Engineers		REGISTRATION (Type, Year, State) <input type="checkbox"/> Registered Professional Engineer (PE), State of West Virginia #13620 <input type="checkbox"/> Registered Professional Engineer (PE), State of Pennsylvania #PE056012E <input type="checkbox"/> Registered Professional Engineer (PE), State of Ohio #64594	

13. PERSONAL HISTORY STATEMENT OF PRINCIPALS AND ASSOCIATES RESPONSIBLE FOR AML PROJECT DESIGN (Furnish complete data but keep to essentials)

NAME & TITLE (Last, First, Middle Int.)		YEARS OF EXPERIENCE	
NESTOR, MICHAEL, P. E.		YEARS OF AML DESIGN EXPERIENCE: 2	YEARS OF AML RELATED DESIGN EXPERIENCE: 7
		YEARS OF DOMESTIC WATERLINE DESIGN EXPERIENCE: 7	

Brief Explanation of Responsibilities Mr. Nestor joined Thrasher Engineering in 2005 and serves as Project Manager and Engineer. Mr. Nestor has a wide range of experience in residential and commercial site development projects, utilizing all aspects of infrastructure design including street and lot layout, street profiles, extensions of public sewer and water systems, storm water drainage, storm water management, erosion and sediment control plans, and NPDES permitting. In addition, Mr. Nestor oversees all general operations within The Berkeley Associates, directing administrative staff, CAD technicians, and staff engineers to ensure successful completion of projects covering site development, surveying, material testing, and environmental services.

EDUCATION (Degree, Year, Specialization)
 B.S. Civil Engineering Technology - Fairmont State University, 2003

MEMBERSHIP IN PROFESSIONAL ORGANIZATIONS
 American Society of Civil Engineers
 Eastern Panhandle Home Builders Association

REGISTRATION (Type, Year, State)
 ENGINEERING INTERN (EIT), State of West Virginia

NAME & TITLE (Last, First, Middle Int.)		YEARS OF EXPERIENCE	
ROHRBAUGH, APRIL		YEARS OF AML DESIGN EXPERIENCE: 1	YEARS OF AML RELATED DESIGN EXPERIENCE: 6
		YEARS OF DOMESTIC WATERLINE DESIGN EXPERIENCE: -	

Brief Explanation of Responsibilities
 Mrs. Rohrbaugh joined Thrasher Engineering in January of 2006 and serves as a Staff Engineer on site development projects. Mrs. Rohrbaugh has experience in all aspects of site engineering, taking projects from survey to concept to construction. Specialties include geometric layout of sites, subdivisions, and roads, grading, drainage, storm water management, erosion and sediment control, environmentally sensitive design and various regulatory permitting requirements.

EDUCATION (Degree, Year, Specialization)
 B.S., Civil Engineering, West Virginia University

MEMBERSHIP IN PROFESSIONAL ORGANIZATIONS

REGISTRATION (Type, Year, State)

13. PERSONAL HISTORY STATEMENT OF PRINCIPALS AND ASSOCIATES RESPONSIBLE FOR AML PROJECT DESIGN (Furnish complete data - it keep to essentials)

NAME & TITLE (Last, First, Middle Int.)		YEARS OF EXPERIENCE	
Clevenger, Cliff - CADD TECHNICIAN		YEARS OF AML DESIGN EXPERIENCE: 1	YEARS OF AML RELATED DESIGN EXPERIENCE: 20
		YEARS OF DOMESTIC WATERLINE DESIGN EXPERIENCE: 20	

Brief Explanation of Responsibilities Mr. Clevenger joined Thrasher Engineering in 1991 and serves as CADD Operator for the firm. His duties entail all aspects of infrastructure design including street and log layout, street profiles, extension of the public sewer and water systems including utility plans and profiles, storm water drainage, storm water management, erosion and sediment control plans and NPDES permitting

EDUCATION (Degree, Year, Specialization)

MEMBERSHIP IN PROFESSIONAL ORGANIZATIONS

REGISTRATION (Type, Year, State)

13. PERSONAL HISTORY STATEMENT OF PRINCIPALS AND ASSOCIATES RESPONSIBLE FOR AML PROJECT DESIGN (Furnish complete data but keep to essentials)

NAME & TITLE (Last, First, Middle Int.)		YEARS OF EXPERIENCE	
NEWBROUGH, KURT		YEARS OF AML DESIGN EXPERIENCE:	YEARS OF AML RELATED DESIGN EXPERIENCE: 24
		YEARS OF DOMESTIC WATERLINE DESIGN EXPERIENCE: 24	

Brief Explanation of Responsibilities Mr. Newbrough joined Thrasher Engineering in 1990 Mr. Newbrough has extensive experience in all aspects of surveys, including but not limited to boundary and easement surveys and the preparation of plats and legal descriptions. Mr. Newbrough also performs courthouse research, computes field data for construction layout, and processes GPS raw data for both public and private clientele in conjunction with Thrasher Engineering projects as well as separate contracts. He also serves in the elected position of Harrison County (WV) Surveyor.

EDUCATION (Degree, Year, Specialization)

- Surveying - John Tyler Community College, Chester, VA
- United Career Center, Clarksburg, WV

MEMBERSHIP IN PROFESSIONAL ORGANIZATIONS

- West Virginia Association of Land Surveyors
- American Congress on Surveying and Mapping
- Member Strathmore's Who's Who

REGISTRATION (Type, Year, State)

- Professional Land Surveyor (PS), West Virginia #1618 - 1995
- OSHA Hazardous Waste Operations and Emergency Response Center 29 CFR 1910.120
- US Department of Labor/Mine Safety and Health Administration

14. PROVIDE A LIST OF SOFTWARE AND EQUIPMENT AVAILABLE IN THE PRIMARY OFFICE WHICH WILL BE USED TO COMPLETE AML DESIGN SERVICES

Thrasher Engineering, Inc. will design work for AML utilizing one of the largest networks of computer aided design (CAD) equipment, software and trained personnel in the State of West Virginia.

Connected through a Virtual Private Network, our CAD staff has the ability to share necessary plans among our locations. This will allow work designed for AML to be prepared and updated at the office location that best meets the needs of the scope of services. AutoCAD Landesktp 2008 and Microstation V8 software is utilized at 48 CAD stations throughout our locations. Additionally, equipment includes 10 large format (size E) plotters and 5 large format plotter / scanners. CAD plans are prepared by both dedicated CAD employees and by staff engineers and engineering technicians in each of the firm's offices.

Thrasher Engineering, Inc. also utilized top-of-the line survey equipment. Our survey work is accomplished with global positioning systems (GPS) and electronic distance measuring (EDM) survey stations with data gathering capabilities. This equipment includes: The equipment used to complete survey services for AML projects includes:

- Leica Geosystem System 500 GPS
- Leica Ski Post Processing Software
- Topcon G600 Total Station Instrument
- Leica 303 Total Station Instrument
- Leica 307 Total Station Instrument
- Leica 403 Total Station Instrument
- Leica 405 Total Station Instrument
- Leica 407 Total Station Instrument
- Leica 703 Total Station Instrument

15. CURRENT ACTIVITIES ON WHICH YOUR FIRM IS THE DESIGNATE ENGINEER OF RECORD: SITE DEVELOPMENT PROJECTS

PROJECT NAME, TYPE AND LOCATION	NAME AND ADDRESS OF OWNER	NATURE OF YOUR FIRM'S RESPONSIBILITY	ESTIMATED CONSTRUCTION COST	PERCENT COMPLETE
SQUIRES CREEK AML RECLAMATION PRESTON COUNTY, WV	WV DEP- OFFICE OF AML&R 601 57TH STREET, SE CHARLESTON, WV 25304	ENGINEERING DESIGN FOR ACCESS ROAD, REMOVE BUILDING REMAINS, RECLAIM REFUSE PILES & HIGHWALLS, PORTAL SEALING, BAT GATES, DRAINAGE	\$500,000	5%
OVERFIELD (LAFFERTY) AML RECLAMATION BARBOUR COUNTY	WV DEP- OFFICE OF AML&R 601 57TH STREET, SE CHARLESTON, WV 25304	ENGINEERING DESIGN FOR ABANDONED MINE RECLAMATION	\$303,000	5%
McHENRY BUSINESS PARK SITE DEVELOPMENT AND UTILITIES GARRETT COUNTY, MD	GARRETT COUNTY EDA 203 SOUTH 4TH STREET COURTHOUSE ROOM 208 OAKLAND, MD 21550 301-334-1921	SITE DEVELOPMENT DESIGN (LAND PLANNING, GRADING, UTILITIES) SURVEY, CONST. MGT, MATERIALS TESTING	\$3,500,000	65%
RITCHIE COUNTY BUSINESS PARK SITE DEVELOPMENT RITCHIE COUNTY	RITCHIE COUNTY ECONOMIC DEVELOPMENT AUTHORITY 217 WEST MAIN STREET HARRISVILLE, WV 26362	SITE DEVELOPMENT DESIGN (LAND PLANNING, GRADING, UTILITIES) SURVEY, CONST. MGT, MATERIALS TESTING	\$2,000,000	50%
CITY OF PLEASANT VALLEY SIDEWALKS PROJECT MARION COUNTY, WV	CITY OF PLEASANT VALLEY, 2340 KINGMONT ROAD PLEASANT VALLEY, WV 26554	DESIGN, SURVEY, CONSTRUCTION MGT, INSP AND TESTING - SIDEWALKS PHASE III	\$250,000	60%
NORTH CENTRAL WV AIRPORT HARRISON COUNTY, WV VARIOUS - HANGERS /STORM WATER	BENEDUM AIRPORT AUTHORITY JAMES R. GRIFFITH, AIRPORT MGR. 2000 AVIATION WAY BRIDGEPORT, WV	SITE DEVELOPMENT DESIGN (LAND PLANNING, GRADING, UTILITIES) SURVEY, CONST. MGT, MATERIALS TESTING	\$500,000 to \$1,000,000	ON-GOING

TOTAL NUMBER OF PROJECTS:
6 (TOTAL IN FULL APPROXIMATELY 30 SITE DEVELOPMENT - APPROXIMATELY 40 MILLION)

TOTAL ESTIMATED CONSTRUCTION COSTS:
\$4,500,000 +

15. CURRENT ACTIVITIES ON WHICH YOUR FIRM IS THE DESIGNATED ENGINEER OF RECORD: WATER TREATMENT AND DISTRIBUTION PROJECTS

PROJECT NAME, TYPE AND LOCATION	NAME AND ADDRESS OF OWNER	NATURE OF YOUR FIRM'S RESPONSIBILITY	ESTIMATED CONSTRUCTION COST	PERCENT COMPLETE
CHESTNUT RIDGE PSD BARBOUR/PRESTON EXTENSION BARBOUR COUNTY, WV	CHESTNUT RIDGE PSD 209 S MAIN STREET P.O. BOX 386 PHILIPPI, WV 26416	FEASIBILITY STUDY, DESIGN, FUNDING AND PERMIT APPLICATIONS, CONTRACT DOCUMENTS, FIELD SERVICES OF SURVEY AND INSPECTION.	\$9,500,000	30%
JESSICA LYNCH WATER LINE EXTENSION WIRT COUNTY, WV	TOWN OF ELIZABETH 200 BEVERLY STREET P.O. BOX 478 ELIZABETH, WV 26143	FEASIBILITY STUDY, DESIGN, FUNDING AND PERMIT APPLICATIONS, CONTRACT DOCUMENTS, FIELD SERVICES OF SURVEY AND INSPECTION	\$3,600,000	80%
SOUTHWESTERN PSD WATER LINE EXTENSION / REPLACEMENT	SOUTHWESTERN WATER PUBLIC SERVICE DISTRICT P. O. BOX 98 FLEMINGTON, WV 26347	FEASIBILITY STUDY, DESIGN, FUNDING AND PERMIT APPLICATIONS, CONTRACT DOCUMENTS, FIELD SERVICES OF SURVEY AND INSPECTION	\$10,430,000.	30%
HAMRICK PSD MOORE/PORTERWOOD EXTENSION TUCKER COUNTY, WV	HAMRICK PSD PO BOX 228 HENDRICKS, WV 26271	FEASIBILITY STUDY, DESIGN, FUNDING AND PERMIT APPLICATIONS, CONTRACT DOCUMENTS, FIELD SERVICES OF SURVEY AND INSPECTION	\$1,100,000.	25%
LINCOLN COUNTY PSD WATER LINE EXTENSION PROJECTS	LINCOLN PSD P.O. BOX 38 240 LITTLE COAL RIVER RD. ALUM CREEK, WV 25003	FEASIBILITY STUDY, DESIGN, FUNDING AND PERMIT APPLICATIONS, CONTRACT DOCUMENTS, FIELD SERVICES OF SURVEY AND INSPECTION	\$6,920,000.	25%
POCAHONTAS COUNTY PSD WATER LINE REPLACEMENT DURBIN / BARTOW/FRANK	POCAHONTAS COUNTY PSD HC 63 BOX 122 FRANK, WV 24920	FEASIBILITY STUDY, DESIGN, FUNDING AND PERMIT APPLICATIONS, CONTRACT DOCUMENTS, FIELD SERVICES OF SURVEY AND INSPECTION	\$10,456,000.	25%
CITY OF SALEM, WEST VIRGINIA WATER LINE REPLACEMENT	SALEM, CITY OF P.O. BOX 352 229 W. MAIN SALEM, WV 26426	FEASIBILITY STUDY, DESIGN, FUNDING AND PERMIT APPLICATIONS, CONTRACT DOCUMENTS, FIELD SERVICES OF SURVEY AND INSPECTION	\$1,500,000.	80%

TOTAL NUMBER OF PROJECTS: 7 REPRESENTED (APPROXIMATELY 20 ADDITIONAL CURRENTLY IN PRELIMINARY / DESIGN OR CONSTRUCTION PHASES)

TOTAL ESTIMATED CONSTRUCTION COSTS:
\$32,830,000.00 REPRESENTED
ESTIMATED COST OF ALL JOBS APPROXIMATELY \$150,000,000.00

15. CURRENT ACTIVITIES ON WHICH YOUR FIRM IS THE DESIGNATED ENGINEER OF RECORD: SANITARY SEWER PROJECTS

PROJECT NAME, TYPE AND LOCATION	NAME AND ADDRESS OF OWNER	NATURE OF YOUR FIRM'S RESPONSIBILITY	ESTIMATED CONSTRUCTION COST	PERCENT COMPLETE
KINGWOOD SEWER REPLACEMENT AND SERVICE EXTENSIONS KINGWOOD, WV	CITY OF KINGWOOD 313 TUNNELTON STREET KINGWOOD, WV 26537	FEASIBILITY STUDY, DESIGN, FUNDING AND PERMIT APPLICATIONS, CONTRACT DOCUMENTS, FIELD SERVICES OF SURVEY AND INSPECTION	\$10,000,000	40%
GREATER HARRISON COUNTY PSD PHASE II-B HARRISON COUNTY, WV	GREATER HARRISON COUNTY PSD P.O. BOX 190 WEST MILFORD, WV 26451	FEASIBILITY STUDY, DESIGN, FUNDING AND PERMIT APPLICATIONS, CONTRACT DOCUMENTS, FIELD SERVICES OF SURVEY AND INSPECTION	\$6,000,000	65%
TENNERTON PSD PHASE III SANITARY SEWER EXTENSION UPSHUR COUNTY, WV	TENNERTON PSD 188 FAYETTE ST. BUCKHANNON, WV 26201	FEASIBILITY STUDY, DESIGN, FUNDING AND PERMIT APPLICATIONS, CONTRACT DOCUMENTS, FIELD SERVICES OF SURVEY AND INSPECTION	\$6,800,000	5%
POCAHONTAS COUNTY PSD WWTP AND COLLECTION SYSTEM POCAHONTAS COUNTY, WV	POCAHONTAS COUNTY PSD HC 63 BOX 122 FRANK, WV 24920	FEASIBILITY STUDY, DESIGN, FUNDING AND PERMIT APPLICATIONS, CONTRACT DOCUMENTS, FIELD SERVICES OF SURVEY AND INSPECTION	\$11,600,000	95%
HEPZIBAH PSD SANITARY SEWER EXTENSION HARRISON COUNTY, WV	ENLARGED HEPZIBAH DRAWER H HEPZIBAH, WV 26369	FEASIBILITY STUDY, DESIGN, FUNDING AND PERMIT APPLICATIONS, CONTRACT DOCUMENTS, FIELD SERVICES OF SURVEY AND INSPECTION	\$3,400,000	95%
MALDEN PUBLIC SERVICE DISTRICT SANITARY SEWER REHABILITATION KANAWHA COUNTY, WV	MALDEN PUBLIC SERVICE DISTRICT P.O. BOX 350 TAD, WV 25201-0350	FEASIBILITY STUDY, DESIGN, FUNDING AND PERMIT APPLICATIONS, CONTRACT DOCUMENTS, FIELD SERVICES OF SURVEY AND INSPECTION	\$13,600,000.	89%
CANYON PUBLIC SERVICE DISTRICT SANITARY SEWER UPGRADE AND EXT MONONGALIA COUNTY, WV	CANYON PSD 12 WICHITA STREET MORGANTOWN, WV 26508	FEASIBILITY STUDY, DESIGN, FUNDING AND PERMIT APPLICATIONS, CONTRACT DOCUMENTS, FIELD SERVICES OF SURVEY AND INSPECTION	\$6,500,000.	95%
TOTAL NUMBER OF PROJECTS: 7 REPRESENTED		TOTAL ESTIMATED CONSTRUCTION COSTS: \$70,300,000.00		
TOTAL ACTIVE SANITARY SEWER PROJECTS APPROXIMATELY 32		TOTAL FOR ALL PROJECTS APPROXIMATELY \$150,000,000		

15. CURRENT ACTIVITIES ON WHICH YOUR FIRM IS THE DESIGNATED ENGINEER OF RECORD: HIGHWAY, BRIDGE, SIDEWALKS

PROJECT NAME, TYPE AND LOCATION	NAME AND ADDRESS OF OWNER	NATURE OF YOUR FIRM'S RESPONSIBILITY	ESTIMATED CONSTRUCTION COST	PERCENT COMPLETE
MINERAL WELLS ROUTE 2 WOOD COUNTY	WVDOH 1900 KANAWHA BLVD EAST CHARLESTON, WV 25305	PRELIMINARY ENGINEERING, DESIGN, SURVEY	\$6,000,000	50%
COUNTY LINE BRIDGE, MARSHALL COUNTY	WVDOH 1900 KANAWHA BLVD EAST CHARLESTON, WV 25305	PRELIMINARY ENGINEERING, DESIGN, SURVEY	\$1,800,000.	50%

TOTAL NUMBER OF PROJECTS:
6 (TOTAL IN FULL APPROXIMATELY 30 SITE DEVELOPMENT - APPROXIMATELY 40 MILLION)

TOTAL ESTIMATED CONSTRUCTION COSTS:
\$7,800,000

17. COMPLETED WORK WITHIN LAST 5 YEARS ON WHICH YOUR FIRM WAS THE DESIGNATED ENGINEER OF RECORD

PROJECT NAME, TYPE AND LOCATION	NAME AND ADDRESS OF OWNER	ESTIMATED CONSTRUCTION COST	YEAR	COMPLETED (YES OR NO)
ANGLIN'S RUN AML REMEDIATION PROJECT, BARBOUR COUNTY, WV	WV DEP OFFICE OF AML&R 601 57TH STREET, SE CHARLESTON, WV 25304	\$70,000	2010	YES
ROARING CREEK AML REMEDIATION PROJECT RANDOLPH COUNTY, WV	WV DEP OFFICE OF AML&R 601 57TH STREET, SE CHARLESTON, WV 25304	\$70,000	2010	YES
PINECREST DEVELOPMENT RALEIGH COUNTY, WV	PINECREST DEV AUTHORITY 200 MAIN STREET BECKLEY, WV 25801-4613	\$1,500,000.00	2007	YES
CITY OF PARSONS SANITARY SEWER LINE EXTENSION TUCKER COUNTY, WV	PARSONS, CITY OF 341 2ND ST. PARSONS, WV 26287	\$ 900,000	2007	YES
TOWN OF FARMINGTON WATER LINE REPLACEMENT PROJECT MARION COUNTY, WV	TOWN OF FARMINGTON 1314 MILL STREET FARMINGTON, WV 26571	\$1,300,000.	2007	YES
CITY OF KINGWOOD WHEATSELL SETTLEMENT WATER LINE EXTENSION PRESTON COUNTY, WV	KINGWOOD, CITY OF 313 TUNNELTON ST. KINGWOOD, WV 26537-1462	\$ 420,000.	2007	YES
NORTON-HARDING-JIMTOWN PSD WATER LINE EXTENSION RANDOLPH COUNTY, WV	NORTON-HARDING-JIMTOWN PSD P.O. BOX 87 SCOTT ROAD NORTON, WV 26285	\$1,000,000	2007	YES
TOWN OF BATH - BERKELEY SPRINGS WATER WORKS MORGAN COUNTY, WV	TOWN OF BATH 271 WILKES STREET BERKELEY SPRINGS, WV 25411	\$2,000,000	2007	YES

17. COMPLETED WORK WITHIN LAST 5 YEARS ON WHICH YOU WERE THE DESIGNATED ENGINEER OF RECORD

PROJECT NAME, TYPE AND LOCATION	NAME AND ADDRESS OF OWNER	ESTIMATED CONSTRUCTION COST	YEAR	CONSTRUCTED (YES OR NO)
NICHOLAS COUNTY BUSINESS PARK, NICHOLAS COUNTY, WV SITE DEVELOPMENT	NICHOLAS CO BLDG COMMISSION 700 MAIN STREET, SUITE 1 SUMMERSVILLE, WV 26651	\$2,500,000.00	2008	YES
RALEIGH COUNTY PUBLIC SERVICE DISTRICT 2 WATER LINE EXTENSIONS	RALEIGH COUNTY PSD 224 EAST MAIN PO BOX 1286 SOPHIA, WV	\$3,700,000.	2006	YES
GILMER COUNTY PSD DUSK CAMP WATER LINE EXTENSION GILMER COUNTY, WV	GILMER COUNTY PSD 232 W. MAIN STREET GLENVILLE, WV 26351	\$2,500,000	2008	YES
HODGESVILLE PUBLIC SERVICE DISTRICT; DESIGN AND CONSTRUCTION OF WATER LINE EXTENSION, BOOSTER STATIONS, AND WATER STORAGE TANK	HODGESVILLE PUBLIC SERVICE DISTRICT 188 FAYETTE STREET P.O. BOX 758 BUCKHANNON, WV 26201	\$3,100,000	2004	YES
CITY OF CAMERON WATER STORAGE TANK MARSHALL COUNTY, WV	CITY OF CAMERON 44 MAIN STREET CAMERON, WV 26033	\$2,000,000.00	2008	YES
HAMRICK PUBLIC SERVICE DISTRICT, TUCKER COUNTY, WEST VIRGINIA; DESIGN, PREPARATION AND CONSTRUCTION MANAGEMENT TO UPGRADE THE WATER TREATMENT PLANT	HAMRICK PUBLIC SERVICE DISTRICT P.O. BOX 228 HENDRICKS, WV 26271	\$2,461,000	2004	YES
PUTNAM COUNTY BUSINESS PARK; MITIGATION OF 13 ACRES OF IMPACTED WETLAND	PUTNAM COUNTY DEVELOPMENT AUTHORITY P.O. BOX 167 SCOTT DEPOT, WV 25560	\$1,500,000	2004	YES
TOWN OF ROWLESBURG WATER TREATMENT PLANT/ EXT. PRESTON COUNTY, WV	TOWN OF ROWLESBURG PO BOX 458 42 POPLAR STREET ROWLESBURG, WV 26425	\$4,500,000.	2008	YES

17. COMPLETED WORK WITHIN LAST 5 YEARS ON WHICH YOU WERE THE DESIGNATED ENGINEER OF RECORD

PROJECT NAME, TYPE AND LOCATION	NAME AND ADDRESS OF OWNER	ESTIMATED CONSTRUCTION COST	YEAR	CONSTRUCTED (YES OR NO)
<p>JAKES RUN BRIDGE MONONGALIA COUNTY, WV</p>	<p>WVDOH/DOH 1900 KANAWHA BLVD EAST CHARLESTON, WV 25305</p>	<p>\$1,300,000.</p>	<p>2008</p>	<p>YES</p>
<p>ICG - THREE FORKS BRIDGE TAYLOR COUNTY</p>	<p>INTERNATIONAL COAL GROUP, INC. 2000 ASHLAND DRIVE ASHLAND, KY 41101</p>	<p>\$1,119,000.00</p>	<p>2008</p>	<p>YES</p>
<p>CITY OF RIPLEY - MAIN STREET REVITALIZATION - JACKSON CO.</p>	<p>CITY OF RIPLEY TIM KING, CITY SUPERINTENDENT 203 SOUTH CHURCH ST. RIPLEY, WV 25271</p>	<p>\$1,200,000.</p>	<p>2008</p>	<p>YES</p>

18. COMPLETED WORK WITHIN LAST 5 YEARS ON WHICH YOU WERE ASSOCIATED WITH OTHER FIRMS (INDICATE PHASE OF WORK FOR WHICH YOUR FIRM WAS RESPONSIBLE)

PROJECT NAME, TYPE AND LOCATION	NAME AND ADDRESS OF OWNER	ESTIMATED CONSTRUCTION COST OF YOUR FIRM'S PORTION	YEAR	CONSTRUCTED (YES OR NO)	FIRM ASSOCIATED WITH
GLENNVILLE FEDERAL CORRECTIONAL INST. SITE DEVELOPMENT GILMER COUNTY, WV	FEDERAL BUREAU OF PRISONS 320 1 ST STREET NW 500-6 WASHINGTON, DC 20534	\$96,000,000	2003	YES	BELL JUSTICE FACILITIES
FEDERAL BUREAU OF PRISONS -CANAAN FACILITY - SITE DEVELOPMENT - SCRANTON, PA	FEDERAL BUREAU OF PRISONS 320 1 ST STREET NW 500-6 WASHINGTON, DC 20534	\$120,000,000	2002	YES	BELL JUSTICE FACILITIES
FAIRMONT STATE COLLEGE - STUDENT DORMITORY - SITE DEVELOPMENT- FAIRMONT, WV	FAIRMONT STATE UNIVERSITY 1201 LOCUST AVENUE FAIRMONT, WV 26554-2491	\$6,000,000	2004	YES	VOA ARCHITECTS
FAIRMONT STATE COLLEGE - PARKING GARAGE- SITE DEVELOPMENT -FAIRMONT, WV	FAIRMONT STATE UNIVERSITY 1201 LOCUST AVENUE FAIRMONT, WV 26554-2491	\$4,000,000	2003	YES	MARCH-WESTIN
FAIRMONT STATE UNIVERSITY FEASTER CENTER SITE DEVELOPMENT - FAIRMONT, WV	FAIRMONT STATE UNIVERSITY 1201 LOCUST AVENUE FAIRMONT, WV 26554-2491	\$400,000.	2005	YES	VOA ARCHITECTS
FAIRMONT STATE UNIVERSITY CREATIVE ARTS AND ENGINEERING TECH BUILDING SITE DEVELOPMENT FAIRMONT, WV	FAIRMONT STATE UNIVERSITY 1201 LOCUST AVENUE FAIRMONT, WV 26554-2491	\$100,000.	2007	YES	DESIGN ALLIANCE OMNI ASSOCIATES

19. USE THIS SPACE TO PROVIDE ANY ADDITIONAL INFORMATION OR DESCRIPTION OF RESOURCES SUPPORTING YOUR FIRM'S QUALIFICATIONS TO PERFORM WORK FOR THE WV ABANDONED MINE LANDS PROGRAM

SEE ATTACHMENT - STATEMENT OF QUALIFICATIONS

20. THE FOREGOING IS A STATEMENT OF FACTS.

SIGNATURE: _____ TITLE: DIRECTOR OF BUSINESS DEVELOPMENT DATE: JUNE 23, 2010

PRINTED NAME: STEVEN T. ENGELHARDT

STATE OF WEST VIRGINIA
Purchasing Division**PURCHASING AFFIDAVIT**

West Virginia Code §5A-3-10a states: No contract or renewal of any contract may be awarded by the state or any of its political subdivisions to any vendor or prospective vendor when the vendor or prospective vendor or a related party to the vendor or prospective vendor is a debtor and the debt owed is an amount greater than one thousand dollars in the aggregate

DEFINITIONS:

"Debt" means any assessment, premium, penalty, fine, tax or other amount of money owed to the state or any of its political subdivisions because of a judgment, fine, permit violation, license assessment, defaulted workers' compensation premium, penalty or other assessment presently delinquent or due and required to be paid to the state or any of its political subdivisions, including any interest or additional penalties accrued thereon.

"Debtor" means any individual, corporation, partnership, association, limited liability company or any other form or business association owing a debt to the state or any of its political subdivisions. "Political subdivision" means any county commission; municipality; county board of education; any instrumentality established by a county or municipality; any separate corporation or instrumentality established by one or more counties or municipalities, as permitted by law; or any public body charged by law with the performance of a government function or whose jurisdiction is coextensive with one or more counties or municipalities. "Related party" means a party, whether an individual, corporation, partnership, association, limited liability company or any other form or business association or other entity whatsoever, related to any vendor by blood, marriage, ownership or contract through which the party has a relationship of ownership or other interest with the vendor so that the party will actually or by effect receive or control a portion of the benefit, profit or other consideration from performance of a vendor contract with the party receiving an amount that meets or exceed five percent of the total contract amount.

EXCEPTION: The prohibition of this section does not apply where a vendor has contested any tax administered pursuant to chapter eleven of this code, workers' compensation premium, permit fee or environmental fee or assessment and the matter has not become final or where the vendor has entered into a payment plan or agreement and the vendor is not in default of any of the provisions of such plan or agreement.

LICENSING: Vendors must be licensed and in good standing in accordance with any and all state and local laws and requirements by any state or local agency of West Virginia, including, but not limited to, the West Virginia Secretary of State's Office, the West Virginia Tax Department, West Virginia Insurance Commission, or any other state agencies or political subdivision. Furthermore, the vendor must provide all necessary releases to obtain information to enable the Director or spending unit to verify that the vendor is licensed and in good standing with the above entities.

CONFIDENTIALITY: The vendor agrees that he or she will not disclose to anyone, directly or indirectly, any such personally identifiable information or other confidential information gained from the agency, unless the individual who is the subject of the information consents to the disclosure in writing or the disclosure is made pursuant to the agency's policies, procedures and rules. Vendors should visit www.state.wv.us/admin/purchase/privacy for the Notice of Agency Confidentiality Policies.

Under penalty of law for false swearing (West Virginia Code, §61-5-3), it is hereby certified that the vendor acknowledges the information in this said affidavit and are in compliance with the requirements as stated.

Vendor's Name: Pentree, Incorporated

Authorized Signature: _____

Date: November 30, 2010