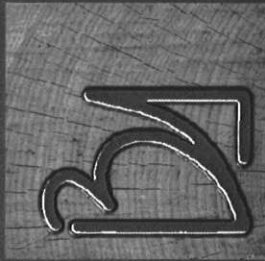
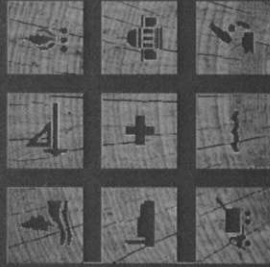


RECEIVED
2010 AUG 19 A 9:58
PURCHASING DIVISION
STATE OF WV



blackwood associates, inc.
architects & planners

mses consultants, inc.
engineers & environmental



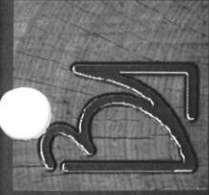
Architectural/Engineering Services

For

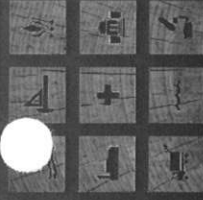
West Virginia Army National Guard

Glen Jean AFRC Emergency Power Generator
Glen Jean, West Virginia

Expression of Interest
RFQ: DEFK11007



blackwood associates, inc.
architects & planners
m ses consultants, inc.
engineers & environmental



August 16, 2010

WV Purchasing Division
Mr. Chuck Bowman – Buyer
2019 Washington Street, East
P.O. Box 50130
Charleston, WV 25305-0130

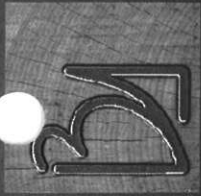
Re: Architectural/Engineering Services for RFQ: DEFK11007
West Virginia Army National Guard
Glen Jean AFRC Emergency Generator

Dear Mr. Bowman:

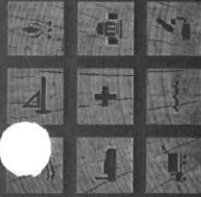
Blackwood Associates, Inc. (BAI) and **MSES Consultants, Inc. (MSES)** are pleased to submit this expression of interest in providing professional services for the design of an Emergency Generator for the West Virginia Army National Guard's Glen Jean AFRC located in Glen Jean, West Virginia.

Blackwood Associates, Inc. is an Architectural and Planning firm located in Fairmont, WV and would provide all project planning and design. **MSES Consultants, Inc.**, is an Engineering firm located in Clarksburg and Huntington, West Virginia, providing all engineering disciplines. The two firms have merged operations to become the largest full service architectural/engineering provider in West Virginia.

The **BAI/MSES** firm offers a combined professional staff of over 80 people, with registered architects, engineers, LEED accredited professionals, scientists, technicians and support personnel. **BAI/MSES** is a single source that can provide the professional disciplines required for projects of this nature. Professional services will be managed and performed by full-time, in-house personnel out of the Fairmont, Clarksburg and Huntington offices.



blackwood associates, inc.
architects & planners
m ses consultants, inc.
engineers & environmental



BAI and **MSES** are West Virginia firms with a combined 81 years of providing architecture and engineering services to agencies throughout West Virginia. Our 18 years of successful practice as a team is the direct result of our ability to provide all professional disciplines necessary for any governmental project.

We can assure a work force of sufficient size to provide immediate and comprehensive involvement on this project. We look forward to having the opportunity to present our qualifications and approach on a personal basis. Thank you for your consideration.

Sincerely,

BLACKWOOD ASSOCIATES, INC.
ARCHITECTS AND PLANNERS

JAMES K. BLACKWOOD, AIA
PRINCIPAL

Blackwood Associates, Inc.

Architects and Planners

611 East Park Avenue

Fairmont, WV 26554

304-366-1580 304-366-1537 fax

jim@wwarchitects.com

<http://www.wwarchitects.com>

MSES Consultants, Inc.

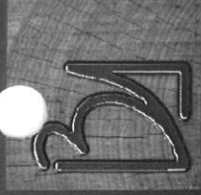
Engineers and Environmental

609 West Main Street

Clarksburg, WV 26302

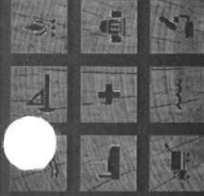
304-624-9700 304-622-0981 fax

<http://www.msesinc.com>



blackwood associates, inc.
architects & planners

mSES consultants, inc.
engineers & environmental



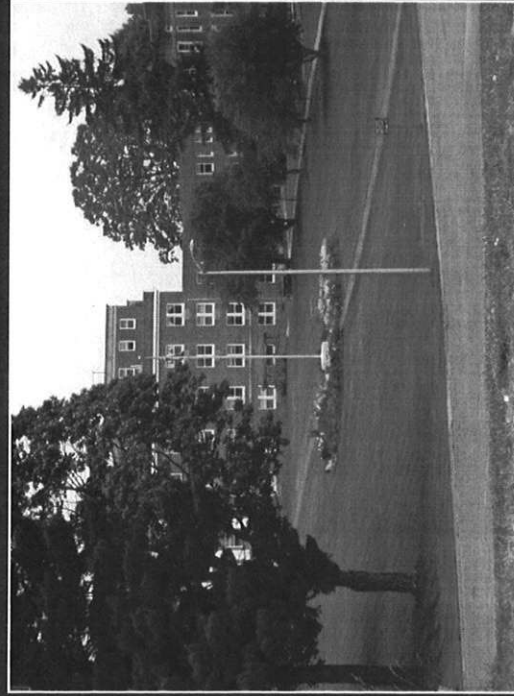
About the Firm

The **Blackwood Associates, Inc. (BAI)** and **MSES Consultants, Inc. (MSES)** mission is to provide full professional service necessary to assure successful completion of a project. Our practice is based upon the philosophy of comprehensive service, providing our clients with a single point of responsibility. By bringing architecture, interior design and engineering together into a single firm, we ensure efficient and effective service.

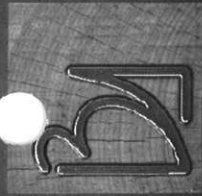
The firm maintains a staff of highly trained, educated and experienced personnel, including all of the technical disciplines necessary for this project. We can accommodate any timetable for programming through completion of construction documents and our combined force of specialized professionals would allow **BAI/MSES** to begin a full range of services immediately for this project. **BAI/MSES** have extensive experience in the design of government facilities of every type.

Blackwood Associates, Inc.

Blackwood Associates, Inc. was originally established as a West Virginia Corporation in 1959. The firm was incorporated as L.D. Schmidt & Son, Architects and Engineers, under the direction of the late Louis D. Schmidt. In 1967, James Blackwood joined the firm as an intern architect and project designer. In 1972, James Blackwood became vice-president of L.D. Schmidt & Son and then assumed the presidency of the Corporation in 1975. In 1981, the Corporate name was changed to Blackwood Associates, Inc. Architects and Planners, to reflect the practice ownership.

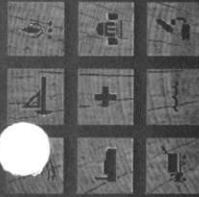


Jackie Withrow Hospital (formerly Pinecrest Hospital)
Beckley, WV



blackwood associates, inc.
architects & planners

mSES consultants, inc.
engineers & environmental



Blackwood Associates, Inc.

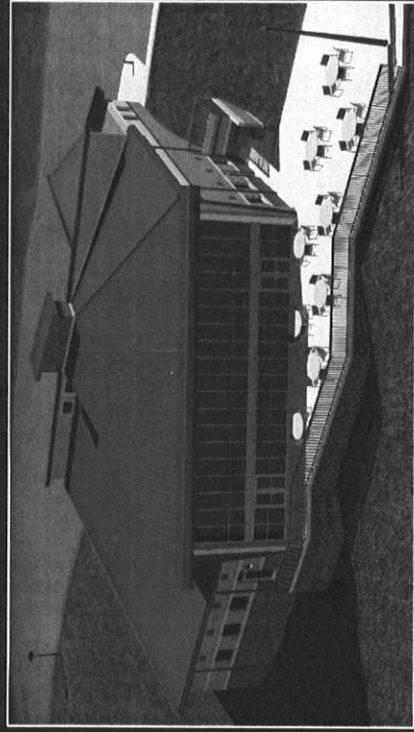
Since that time, the firm has maintained leadership in the design of state-of-the-art governmental, educational, medical, residential, recreational, commercial and historical adaptive reuse facilities. **BAI** has successfully completed over 600 projects with a construction value in excess of \$600 million in the last 20 years.

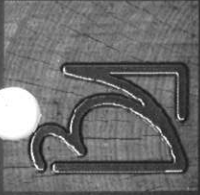
BAI/MSES is familiar with all aspects of new construction, renovation, build-out design, life safety codes, BOCA codes, and Federal and State codes and ordinances applicable for the proposed project. In addition, we maintain LEED accredited professionals in multiple disciplines to meet quality and performance standards. The benefits of this experience and diligence are perhaps most effectively demonstrated by our large number of long term clients and continued successful practice in West Virginia.

BAI/MSES maintains an in-house staff of professionals whose expertise covers all aspects of architecture, planning and engineering practice. We recognize the importance of computers for complete and efficient project organization, communication and document management. All word processing, design, drafting, building analysis, virtual reality, and websites are developed by the firm using cutting edge technology. This same technology allows **BAI/MSES** to provide an Owner with project work product in a usable format at project completion.

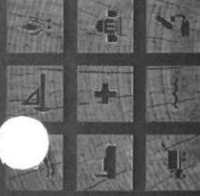
We strongly adhere to the American Institute of Architects Code of Professional Conduct. We serve our clients competently and in a professional manner, and exercise unprejudicial and unbiased judgment on their behalf.

BAI/MSES have never had a project go uncompleted as a result of inadequate staffing, inability to meet Owner requirements or failure to meet established time frames. This commitment of professionalism applies to every project and client.





blackwood associates, inc.
architects & planners

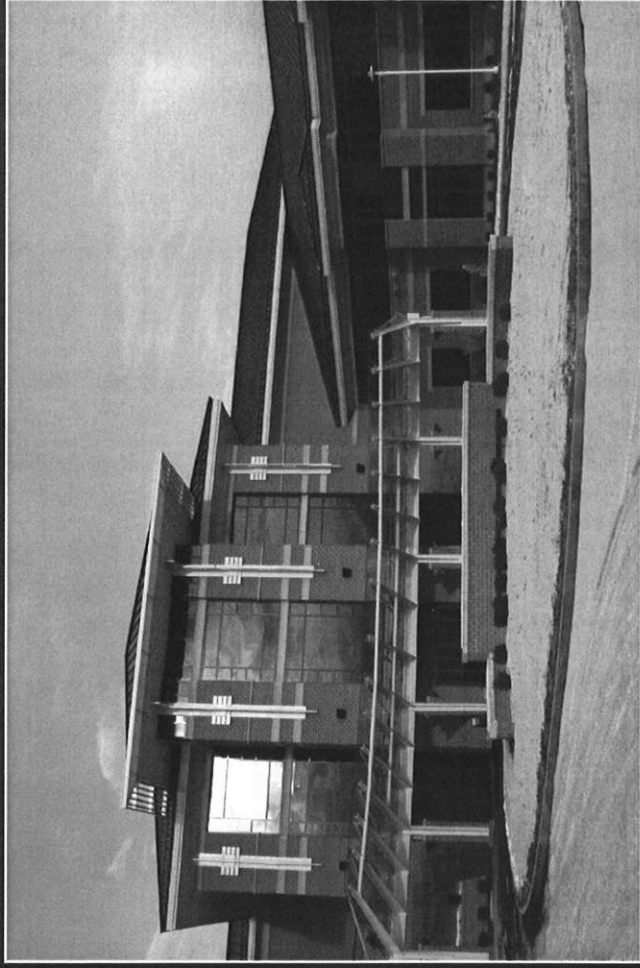


mSES consultants, inc.
engineers & environmental

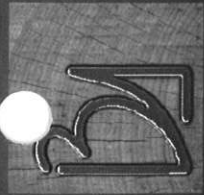
MSES Consultants, Inc.

MSES Consultants, Inc. is a multi-disciplinary engineering, architectural support, environmental, planning, and project management firm, headquartered in Clarksburg, West Virginia. We have amassed 33 years of successful project experience, serving private and public clients since our initial founding as a small, 3-person environmental consulting firm in 1976. MSES expanded rapidly to become a provider of total engineering and environmental services by the year 1978, and we have seen our ranks swell, with a current professional staff of 70, including 12 registered engineers, 2 Certified Industrial Hygienists, 4 asbestos inspectors, 4 asbestos air clearance monitors, 1 lead based paint risk assessor, 6 professional land surveyors, and a diverse roster of professionals, scientists, and support personnel.

MSES personnel have completed more than 10,000 assignments to date. We have been heavily focused on building construction, renovations, and project management since our founding in 1976. Many of our projects have involved site selection studies, designs (HVAC, plumbing, electrical, civil, structural, mechanical, lighting, fire systems, security, and telecommunications), inspections, geotechnical investigations, assessments and reviews, environmental sampling and analysis, property evaluations and appraisals, and project management services throughout West Virginia and surrounding states. MSES also has the ability to address environmental issues that may occur during construction.

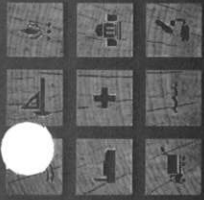


WV Veterans 120 Bed Nursing Facility
Clarksburg, WV



blackwood associates, inc.
architects & planners

mSES consultants, inc.
engineers & environmental



LEED Accredited Professionals

BAI/MSES is proud to be a member of the United States Green Building Council and for many years has incorporated a broadening spectrum of sustainable design strategies as part of our standard operations. Green building practices can greatly reduce the negative environmental impact of the construction process, and green design can provide more "livable" buildings with healthier, more productive environments and lower building maintenance and operating costs. Achieving a LEED certification for a structure is an involved process that requires professional assistance, and proper planning is essential from the very beginning of a project. With two LEED Accredited Professionals on staff consideration of the Leadership in Energy and Environmental Design philosophy is integral to our design and planning process. Our LEED APs are experienced in architectural and mechanical design and construction and are proponents of incorporating the green design philosophy into real world building projects.



THINK GREEN

BAI/MSES LEED Capabilities

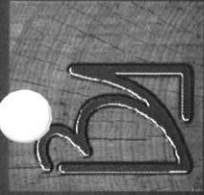


Project Design & Planning
Kenton Blackwood, LEED_{AP}, Associate AIA



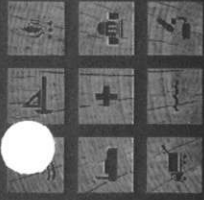
Mechanical Engineering/HVAC
Dave Skeen, PE, LEED_{AP}

Blackwood Associates, Inc./MSES Consultants, Inc.
The Largest Full Service Professional Architectural/Engineering Firm in West Virginia



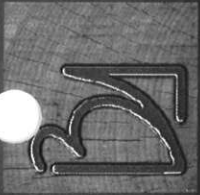
blackwood associates, inc.
architects & planners

m ses consultants, inc.
engineers & environmental



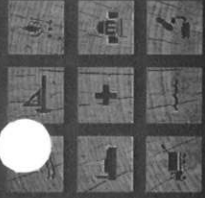
Disciplines

- Architectural
- Civil Engineering
- Structural Engineering
- Electrical Engineering
- Mechanical Engineering
- Chemical Engineering
- Urban/Regional Planning
- Mining Engineering
- Landscape Architecture
- Geologists
- Sanitary Engineering
- LEED Professionals
- Soils Engineering
- Surveyors
- Transportation Engineering
- NACE Corrosion Engineering
- Environmental Science Engineering
- Hydrologists
- Ecologists
- Economists
- Construction Inspectors
- CAD Technicians
- Certified Safety Professionals
- Virtual Reality & Web Designers



blackwood associates, inc.
architects & planners

mse consultants, inc.
engineers & environmental



Professional Education

BAI/MSES employ a professional staff of full-time professionals with experience in numerous disciplines.

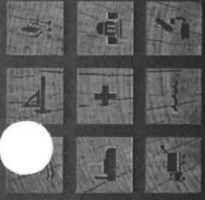
BAI/MSES professionals are supported by the latest computers and computer software, electronic and satellite survey, computer-aided drafting and design, in field data collectors, and our in-house graphic, web development and reproduction center.

Category	Number of Employees	Education		
		Associate Degrees	Bachelor Degrees	Advanced Degrees
Administrative	6	2	3	--
Architect	2	--	2	--
Architect-In-Training	2	--	2	--
Chemical Engineer	1	--	1	1
Chemist	1	--	1	--
Civil Engineer	3	--	3	--
Resident Construction Engineer	2	1	1	--
CAD/Design Draftsman	2	--	2	--
CAD/Drafter	5	3	1	--
Environmental Geographer (GIS)	1	--	1	--
Ecologist	1	--	1	1
Meteorologist	1	--	1	--
Electrical Engineer	3	--	3	--
Geologist	1	--	1	--
Hydrologist	1	--	1	1
Landscape Architect	1	--	1	--
Environmental Engineer	2	--	2	1
Mechanical Engineer	2	--	2	--
Mining Engineer	2	--	2	1
Industrial Engineer	1	--	1	--
Sanitary Engineer	2	--	2	--
Soil Engineer	2	--	2	--
Transportation Engineer	1	--	1	--
Certified Industrial Hygienist	2	--	2	--
Certified Safety Professionals	2	--	2	--
Safety Engineer	1	--	1	1
Land and Right-Of-Way Agents	3	--	3	--
Paralegal	2	--	2	--
Surveyors	6	4	2	--
Economist	1	--	1	1
Biologist	2	--	2	2
Botanist	1	--	1	1
Engineering Technicians	4	3	1	--
Survey Support	11	4	1	--
Certified Web Designer	1	--	1	--



blackwood associates, inc.
architects & planners

mse consultants, inc.
engineers & environmental



Professional Registrations

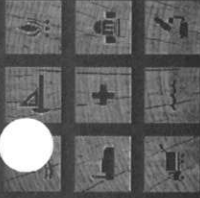
Provided is a listing, by state, of the professional disciplines and type of registration per each state or national registry:

Discipline	BAI/MSES Staff Members Per State											National	
	WV	NY	PA	MD	VA	TN	KY	OH					
Architects	2	0	1	1	1	0	0	0	2				1-NCARB
Engineers	3	1	2	1	3	0	3	3	3				
Civil	1	0	1	0	1	0	1	1	1				
Chemical	3	1	2	1	2	1	1	2	2				
Electrical	2	1	2	1	2	1	1	2	2				
Mechanical	2	1	1	1	1	1	1	1	1				
Environmental	1	0	1	0	1	0	1	0	0				
Structural	1	0	1	1	1	0	1	1	1				
Safety	1	0	1	1	1	0	1	1	1				
Mining	1	0	1	1	1	0	1	1	1				
Surveyor	8	3	3	3	0	2	3	3	3				2
LEED Accredited Professional	2	--	--	--	--	--	--	--	--				
Geologist	--	--	--	--	1	--	--	--	--				
Asbestos	4	--	0	0	1	0	0	1	1				
Inspectors	4	--	0	0	1	0	0	1	1				
Samplers	4	--	0	0	1	0	0	1	1				
Planner	4	--	0	0	1	0	0	1	1				
Manager	4	--	0	0	1	0	0	1	1				
Lead Risk Assessor	1	--	--	--	--	--	--	--	--				
Licensed Remediation Specialist	1	2	--	--	--	--	--	--	4				
Underground Storage Tank Inspector	4	0	0	0	0	0	0	0	0				
Designer/Installer	2	0	0	0	0	0	0	0	0				
Catholic Protection Class D/E	4	0	0	0	0	0	0	0	0				
Certified Monitor Well Designer/Driller	4	--	2	0	--	--	--	--	--				
Certified Safety Professional	--	--	--	--	--	--	--	--	--				2
Certified Industrial Hygienist	--	--	--	--	--	--	--	--	--				2
Certified Landfill Operator (SWANA)	--	--	--	--	--	--	--	--	--				3
NACE Certified	--	--	--	--	--	--	--	--	--				3
Corrosion Technician	--	--	--	--	--	--	--	--	--				3
Sr. Corrosion Technologist	--	--	--	--	--	--	--	--	--				1
Licensed Real Estate Agent	2	--	--	--	--	--	--	--	--				



blackwood associates, inc.
architects & planners

mse consultants, inc.
engineers & environmental



Key Personnel

All of the following key professional staff members will be assigned to work on the project. Their specific percentage of time devoted to the contract will vary according to specific project needs.

ARCHITECTURAL

Administrative • Architectural Design

- James K. Blackwood, AIA, NCARB – Project Principal
- Pamela J. Wean, AIA – Project Architect

Architectural Team • Code Compliance • LEED

- Kenton Q. Blackwood, LEEDAP, Assoc. AIA – Vice President
- Stacey L. Bower, Assoc. AIA – Designer

ENGINEERING

Administrative

- Lawrence M. Rine – Principal and Quality Assurance
- Jeffrey T. Wise – Managing Director

Environmental

- John J. Keeling, PE, WV, CIH, CSP, QEP

Civil • Site Engineering

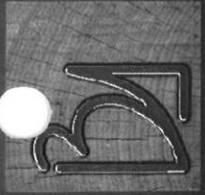
- Rod D. Kidd, BSCE

Mechanical Engineering • HVAC

- David L. Skeen, PE, LEEDAP

Electrical Engineering

- Jeffrey K. Pauley, PE, PS



blackwood associates, inc.
architects & planners

m ses consultants, inc.
engineers & environmental

References

*William R. Sharpe, Jr. Hospital
Planning of Multiple Projects*
Contact: Mr. Kevin Stalnak
1-304-269-1210 ext. 280 or kevin.p.stalnak@wv.gov

*Marion County Board of Education
Planning of Multiple Projects*
Contact: Mr. Tom Deadrick, Superintendent
1-304-367-2107 or tleadrick@access.k12.wv.us

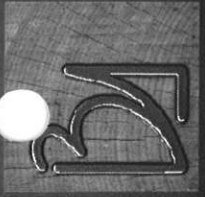
*WV Division of Veterans Affairs
West Virginia State Veterans Cemetery, Institute, WV*
Contact: Mr. Keith Gwinn, Director
1321 Plaza East – Suite 109 - Charleston, WV
1-304-558-3661 or wvvetaff@aol.com

*State of West Virginia
Division of Veterans Affairs
West Virginia Veterans Nursing Facility, Clarksburg, WV (VA)*
Contact: Mr. Kevin Crickard, Director
1-304-626-1600 or kevin.b.crickard@wv.gov

*Harrison County Parks and Recreation
Harrison County 4-H Facility*
Contact: Mr. Mike Book, Director
1-304-624-8619 or mbook@harrisoncountywv.com

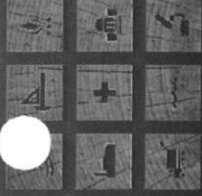
*Mineral County Board of Education
Planning of Multiple Projects*
Contact: Mr. Skip Hackworth, Superintendent
1-304-788-4200 or thackwor@access.k12.wv.us

*Human Resource Development Foundation, Inc.
Planning of Multiple Projects including major renovations*
Contact: Mr. Kenny Purdue, President - WV AFL-CIO
1-304-344-3557 or kperdue@wvaficio.org



blackwood associates, inc.
architects & planners

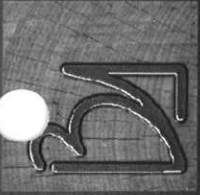
mse consultants, inc.
engineers & environmental



Relevant Experience

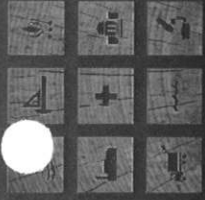
Emergency Generator Projects

- Jones Building
- Johnston Building
- VA Nursing Home
- Huntington City Mission (3 generators)
- Jackie Withrow Hospital
- Mildred Mitchell-Bateman Hospital
- Sharpe Transitional Facility
- Harrison County 911
- Tucker County 911
- Hopemont Hospital (Terra Alta)
- American Oil Producers Brine Water Processing Plant
- Hampshire County High School
- Fayette Unity Apartments
- Potomac Valley Hospital
- Provided preliminary generator design for Eleanor Maintenance Facility (National Guard) for Master Service Mid-Atlantic
- Providing consulting services to AECOM and Master Service Mid-Atlantic for Camp Dawson generators and high voltage distribution system.

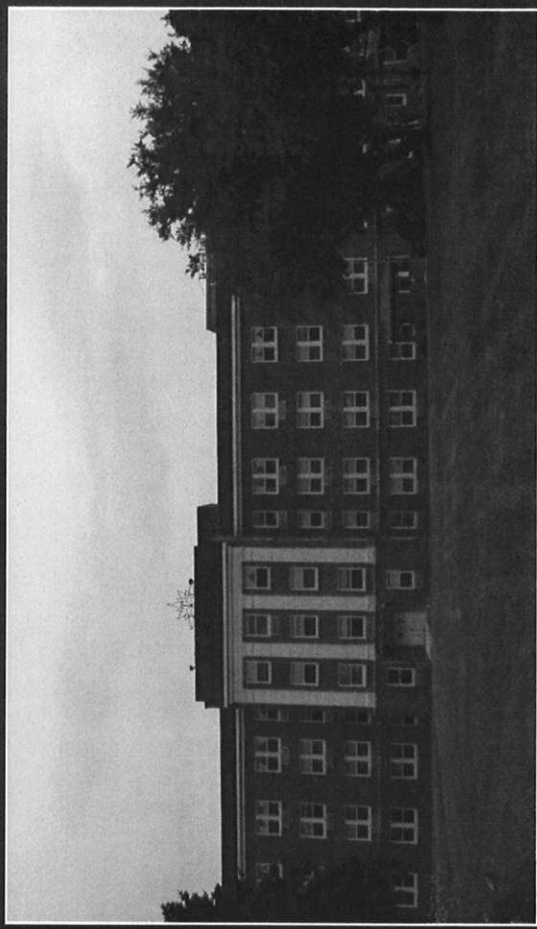


blackwood associates, inc.
architects & planners

m ses consultants, inc.
engineers & environmental



Additional Experience



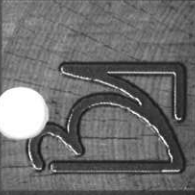
Department of Health and Human Resources Three Year Agreement for A/E Services

Blackwood Associates, Inc./ MSES Consultants, Inc. is working with the State of West Virginia Department of Health and Human Resources to provide architectural/ engineering services for seven hospital facilities throughout West Virginia. Project basic services are determined after facility assessments.

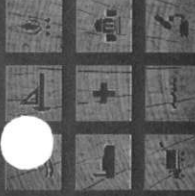
Some projects require review by the State Fire Marshal, OHFLAC and WWHCA.

TYPICAL PROJECTS INCLUDE:

- Construction of a 5 Bed TB Unit at **Pinecrest Hospital** in Beckley (completed)
- Major Exterior Upgrades at **Hopemont Hospital** in Preston County (completed)
- Chiller Replacement at Mildred Mitchell-Bateman Hospital in Huntington (completed)
- Fire Alarm and Nurse Call Replacement at **Pinecrest Hospital** (completed)
- Water Tank investigation at William R. Sharpe Hospital in Weston (completed)



blackwood associates, inc.
architects & planners



mSES consultants, inc.
engineers & environmental

Additional Experience

Renovations to Mildred Mitchell-Bateman Hospital Huntington, WV

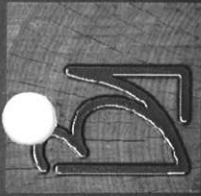
Blackwood Associates, Inc./MSES Consultants, Inc. was selected by the State of West Virginia Department of Health and Human Resources to provide architectural/ engineering services for Renovations to the Mildred Mitchell-Bateman Hospital in Huntington, West Virginia. BAI assisted the Hospital in preparation of a Certificate of Need in accordance with State of West Virginia Health Care Authority requirements.



WORK WILL INCLUDE:

Renovations for a new 35 Bed Patient Unit to Building 2 cost \$4,579,500.00. This new unit is being constructed in existing space that was previously gutted.

Work includes renovation of approx. 20,000 sq. ft., window replacement, elevator replacement, & health/safety upgrades. Office of Health Facility Licensure and Certification review and approval was required.



blackwood associates, inc.
architects & planners

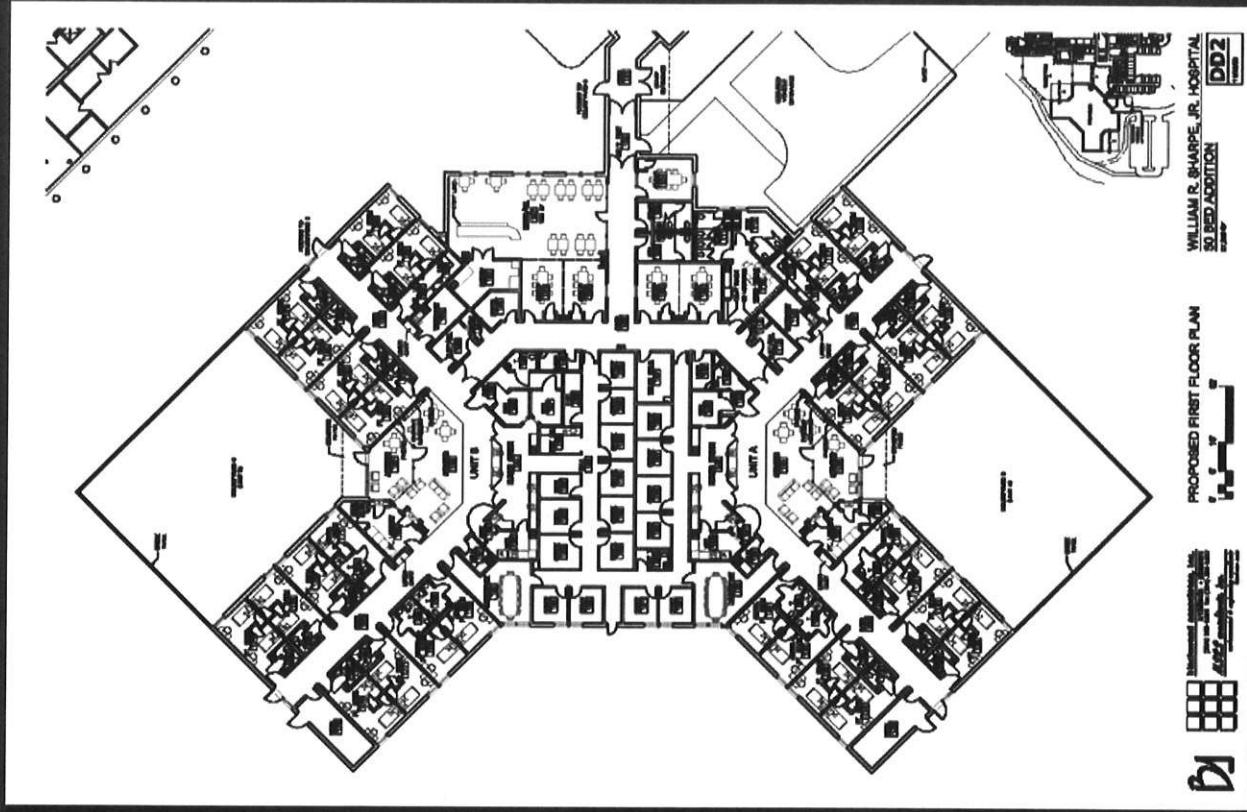
mSES consultants, inc.
engineers & environmental

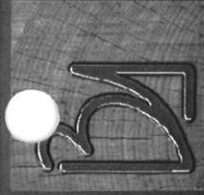
William R. Sharpe, Jr. Hospital **New 50 Bed Patient Unit** Weston, West Virginia

Blackwood Associates, Inc./MSES Consultants, Inc. were selected by the State of West Virginia Department of Health and Human Resources to provide architectural/ engineering services for the new 50 Bed Forensic Patient Unit at William R. Sharpe, Jr. Hospital in Weston, WV. The Facility has been designed with separate pods and outdoor spaces to allow the Owner complete flexibility. The on-grade addition will provide a secure entrance for receiving adjudicated patients. The ± 25,000 SF project has been designed and is ready for development of construction documents.

This project would connect into the present emergency power generator system.

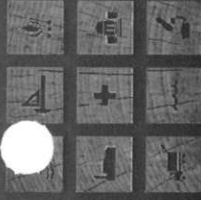
Additional Experience





blackwood associates, inc.
architects & planners

m ses consultants, inc.
engineers & environmental



Additional Experience

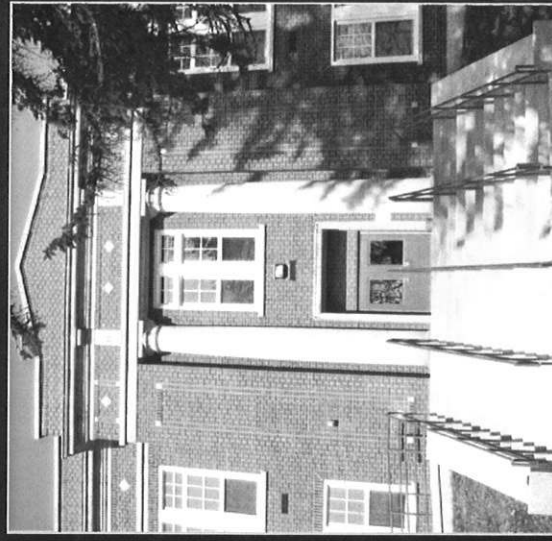
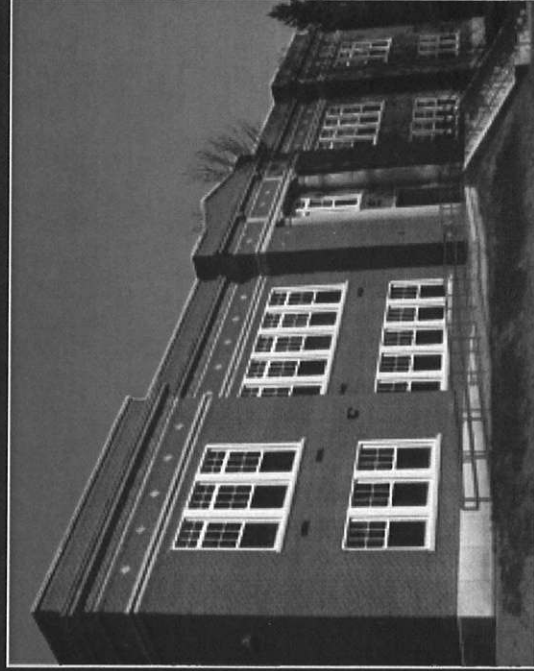
Johnston School Renovations Industrial, West Virginia State of West Virginia

Blackwood Associates, Inc./MSES Consultants, Inc. were selected by the WV Division of Juvenile Services to evaluate and develop construction documents for renovations to an old school building located on the grounds of the WV Industrial Home for Youth in Industrial, WV. The purpose of the study was to determine the feasibility of renovating the structure to again serve as an educational facility.

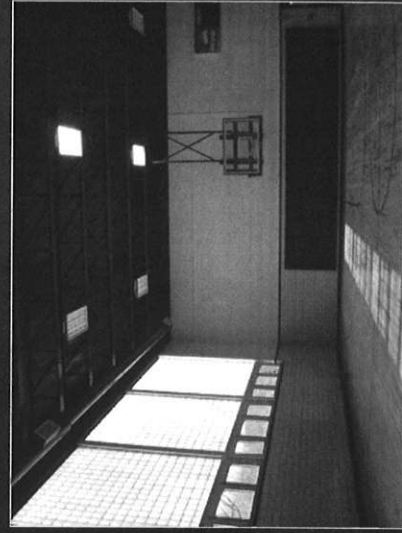
The final BAI/MSES report and cost estimates led to a recommendation to renovate the present building in lieu of constructing a new facility.

BAI/MSES completed construction documents, bidding and the \$2,568,000 project started construction in April 2006. Construction is complete and the building is now occupied by the educational staff.

The project included emergency generators, HVAC replacement and energy upgrades.

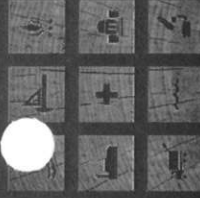


WV Division of Juvenile Services
Contact: Joe Merendino, Superintendent
1-304-782-2371





blackwood associates, inc.
architects & planners
m ses consultants, inc.
engineers & environmental

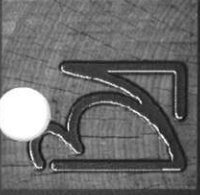


Value Added Services
Environmental

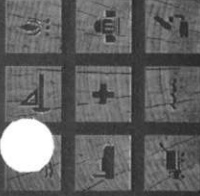
MSES Consultants, Inc. (MSES) was originally founded in 1976 as an Environmental Consulting Company. Over the years, MSES expanded its Environmental Services, as well as adding Civil, Electrical, Mechanical and Safety Engineering Services with Drafting and Survey provided to supplement the various Engineering expertise.

MSES' environmental capabilities are listed below:

- Environmental Permitting (Air, Wastewater, and Stormwater Discharges); Environmental Plan Preparation
Groundwater Protection, Stormwater Pollution Prevention, Facility Response Plans, Waste Management Plans, etc.)
- Environmental Inspections/Audits
- ISO 14001 Registration Assistance
- Environmental Regulation Compliance/Interpretation (Local, West Virginia and Federal)
- Indoor Air Quality Studies (Ventilation, Air Contaminants, Identification and Quantification, Microorganism Assessments)
- Asbestos (Inspections, Management Plans, Abatement Specifications, Abatement Monitoring, Clearance Air Monitoring)
- Lead Based Paint (Inspections, Abatement Specifications, Abatement Monitoring, Clearance Air Monitoring)
- Landfill (Design, Construction Specifications, Construction Monitoring)
- Contaminated Soil/Groundwater (Assessment, Clean-up Specifications, Clean-up Monitoring, Clearance Sampling, Voluntary Remediation Plan Preparation/Implementation)
- ASTM Phase I, II, and III (Environmental Site Assessments);
- Water System Design;
- Wastewater System Design



blackwood associates, inc.
architects & planners
m ses consultants, inc.
engineers & environmental



**Value Added Services
Environmental**

The MSES Staff includes the following environmental specialists:

- Civil Engineers;
- Environmental Chemists;
- Biologists;
- Meteorologist; and
- Industrial Hygienist.

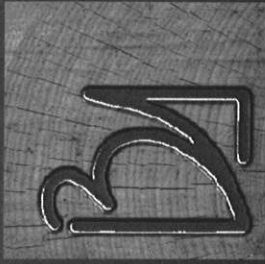
MSES personnel maintain a wide variety of professional licenses/certifications. A list of licenses/certification maintained by one or more of the MSES staff is listed below:

- Registered Professional Engineer (PE);
- Certified Industrial Hygienist (CIH);
- Qualified Environmental Professional (QEP);
- Licensed Remediation Specialist (LRS);
- Licensed Asbestos Inspector;
- Licensed Asbestos Management Planner;
- Licensed Asbestos Clearance Air Monitor;
- Licensed Lead Inspector;
- Licensed Groundwater Monitoring Well Installer; and
- Licensed Underground Storage Tank Closure Specialist.

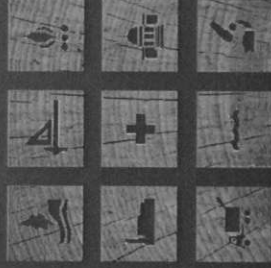
APPROACH TO ENVIRONMENTAL SURVEYS

MSES typically utilizes the following approach to environmental survey:

- Project Initiation in which Project Objectives are Defined;
- Field Work Performed;
- Analysis of Samples (if required);
- Review of Information (Data Obtained and Identification of Regulatory/Best Management Practices);
- Report Preparation; and
- Review of Findings with Client.



blackwood associates, inc.
architects & planners



m ses consultants, inc.
engineers & environmental

Blackwood Associates, Inc.
Architects and Planners
611 East Park Avenue
Fairmont, WV 26554
304-366-1580 304-366-1537 fax
jim@wvarchitects.com
<http://www.wvarchitects.com>

MSES Consultants, Inc.
Engineers and Environmental
609 West Main Street
Clarksburg, WV 26302
304-624-9700 304-622-0981 fax
<http://www.msesinc.com>

STATE OF WEST VIRGINIA
Purchasing Division

PURCHASING AFFIDAVIT

West Virginia Code §5A-3-10a states: No contract or renewal of any contract may be awarded by the state or any of its political subdivisions to any vendor or prospective vendor when the vendor or prospective vendor or a related party to the vendor or prospective vendor is a debtor and the debt owed is an amount greater than one thousand dollars in the aggregate.

DEFINITIONS:

"Debt" means any assessment, premium, penalty, fine, tax or other amount of money owed to the state or any of its political subdivisions because of a judgment, fine, permit violation, license assessment, defaulted workers' compensation premium, penalty or other assessment presently delinquent or due and required to be paid to the state or any of its political subdivisions, including any interest or additional penalties accrued thereon.

"Debtor" means any individual, corporation, partnership, association, limited liability company or any other form or business association owing a debt to the state or any of its political subdivisions. "Political subdivision" means any county commission; municipality; county board of education; any instrumentality established by a county or municipality; any separate corporation or instrumentality established by one or more counties or municipalities, as permitted by law; or any public body charged by law with the performance of a government function or whose jurisdiction is coextensive with one or more counties or municipalities. "Related party" means a party, whether an individual, corporation, partnership, association, limited liability company or any other form or business association or other entity whatsoever, related to any vendor by blood, marriage, ownership or contract through which the party has a relationship of ownership or other interest with the vendor so that the party will actually or by effect receive or control a portion of the benefit, profit or other consideration from performance of a vendor contract with the party receiving an amount that meets or exceed five percent of the total contract amount.

EXCEPTION: The prohibition of this section does not apply where a vendor has contested any tax administered pursuant to chapter eleven of this code, workers' compensation premium, permit fee or environmental fee or assessment and the matter has not become final or where the vendor has entered into a payment plan or agreement and the vendor is not in default of any of the provisions of such plan or agreement.

Under penalty of law for false swearing (**West Virginia Code §61-5-3**), it is hereby certified that the vendor affirms and acknowledges the information in this affidavit and is in compliance with the requirements as stated.

WITNESS THE FOLLOWING SIGNATURE

Vendor's Name: BLACKWOOD ASSOCIATES, INC.

Authorized Signature: [Signature] Date: 8/10/10

State of WEST VIRGINIA

County of MARION, to-wit:

Taken, subscribed, and sworn to before me this 10 day of AUGUST, 2010.

My Commission expires SEPT. 5, 2011, 2011.

AFFIX SEAL HERE

NOTARY PUBLIC Pamela J Wean

