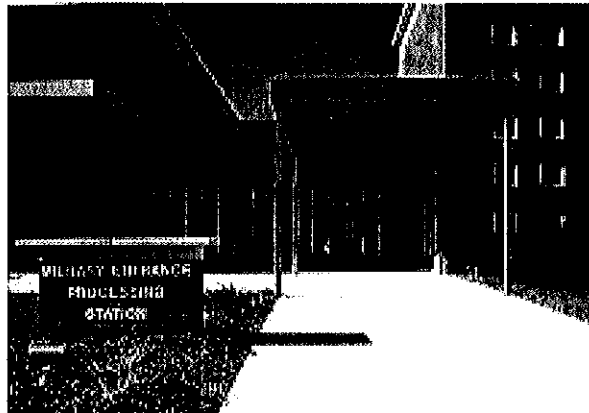


Expression of Interest
to Provide
Professional Architectural/ Engineering Services
for
Design of Emergency Power Generation
At Glen Jean AFRC, Glen Jean, WV

RFQ# DEFK11007



August 19, 2010

RECEIVED

2010 AUG 19 AM 8:14

WV PURCHASING
DIVISION

CMA

ENGINEERING

Clingenpeel/McBrayer & Associates, Inc.

Mr. Daniel L. Ellars, P.E.
824 Cross Lanes Drive (304) 343-0316 tel
Charleston, West Virginia 25313 (304) 343-5146 fax

Mr. Timothy L. Cox, P.E.
5 Riddle Court (304) 598-2558 tel
Morgantown, WV 26505 (304) 598-2472 fax
www.cma.wv.com



August 19, 2010

Mr. Chuck Bowman
Purchasing Division
2019 Washington Street, East
Charleston, WV 25305-0130

Re: Expression of Interest for the Design of Emergency Power Generator
At Glen Jean Readiness Center
#DEFK11007

Dear Mr. Bowman:

CMA Engineering is pleased to submit, for your consideration, our qualifications and experience in providing engineering services for the design of an emergency power generator and associated supporting facilities at Glen Jean AFRC.

CMA has provided engineering design services for numerous projects for the WV Army National Guard, which has included emergency power. Projects include the Elkins Readiness Center, the Summersville Readiness Center, the Lewisburg Readiness Center, the Eleanor Readiness Center and the Eleanor Maintenance Facility. CMA is familiar with the WVANG guidelines and procedures and our professional staff is educated in the latest technological, industrial and governmental standards.

J. Dan Snead & Associates, Inc., of Beckley, WV, will be our architectural consultant for this project. Our firms have successfully collaborated on numerous projects including the new Talcott Elementary School, the new Fairdale Elementary School and the new Raleigh County 911 Facility.

Thank you for your consideration of our firms. We look forward to presenting a more comprehensive statement of our qualifications in a personal interview.

Sincerely,
CMA Engineering

A handwritten signature in black ink that reads "Daniel L. Ellars".

Daniel L. Ellars, P.E.
Principal

Enclosures

| | |
|----------|--|
| 1 | CMA Engineering Firm Profile |
| 2 | CMA Engineering Resumes |
| 3 | CMA Engineering Project Experience |
| 4 | J. Dan Snead & Associates, Inc. Firm Overview |
| 5 | Purchasing Affidavit |

C O R P O R A T E P R O F I L E



Clingenpeel/McBrayer & Associates, Inc.

Services

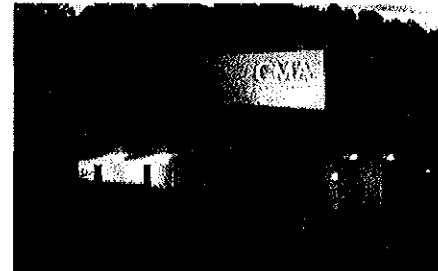
Clingenpeel/McBrayer & Associates is a West Virginia based small business firm, providing services in the areas of HVAC, plumbing, fire protection and electrical engineering. CMA's founders have long believed in the philosophy that a successful project requires a comprehensive approach. This includes all traditional facets of project planning, starting with master planning, working closely with the client, developing the completed construction documents, bidding the project and contract administration. However, our depth of expertise goes far beyond the traditional services. From developing design criteria for owners to designing the mechanical and electrical systems for the West Virginia DEP Consolidated Office Building, the first LEED certified building in the state, CMA is a proven leader in providing engineering services in the design-build delivery method.

History

Since 1986, Clingenpeel/McBrayer & Associates has provided services on numerous projects of varying size and complexity. Clients include architects, industrial companies, governmental agencies, contractors, engineers, developers and private organizations. Project locations include West Virginia, Virginia, Ohio, Kentucky, Maryland, Pennsylvania, California and Connecticut.

Commitment

Clingenpeel/McBrayer & Associates' submittal is based on your needs and our experience. Our firm has the experience, service and quality work to create a successful project. We are committing senior design professionals in order to assure you receive top priority. We have extensive experience with projects of this nature. Examples of projects for which we were the Engineer are listed in this proposal.



From an initial staff of five employees in 1986, the company has steadily grown and now has two offices with a staff of fourteen which includes two professional engineers and two engineers-in-training. Facilities and equipment have grown to support CMA's staff and client's needs.

In 1987, computer aided drafting stations were added to provide the best quality and engineering services for our clients. We are currently operating AutoCad 2009. Our firm is constantly monitoring the latest technology, the cost effects and the end results to the final project.

Present staffing allows CMA to complete work in a timely manner without limiting our ability to perform our ongoing work. The staff of CMA is large enough to handle any size project, yet small enough for direct input and supervision by key personnel.

EXPERIENCE

Previous Five Years

Projects: 492

Construction Costs

MEP Costs: \$156,039,689.

Total Costs: \$472,847,542.



Clingenpeel/McBrayer & Associates, Inc.

824 Cross Lanes Drive
Charleston, WV 25313
(304) 343-0316 tel
(304) 343-5146 fax

5 Riddle Court
Morgantown, WV 26505
(304) 598-2558 tel
(304) 598-2472 fax

www.cma.wv.com

M E C H A N I C A L

CMA Engineering experience includes:

Constant Volume Air Handling Systems

Variable Volume Air Handling Systems

Demand Control Ventilation Systems

Natatorium Dehumidification Systems

Building Energy and Management Control Systems

Industrial Ventilation and Exhaust Systems

Steam and Condensate Systems

Cooling Plants and Distribution

Heating Plants and Distribution

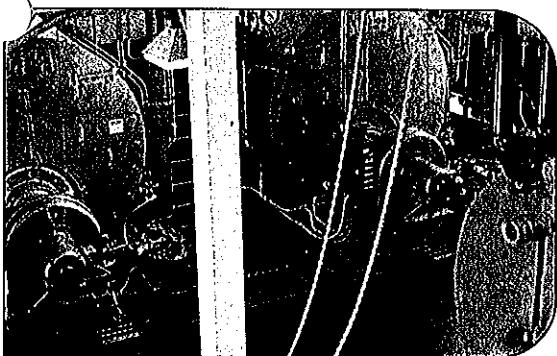
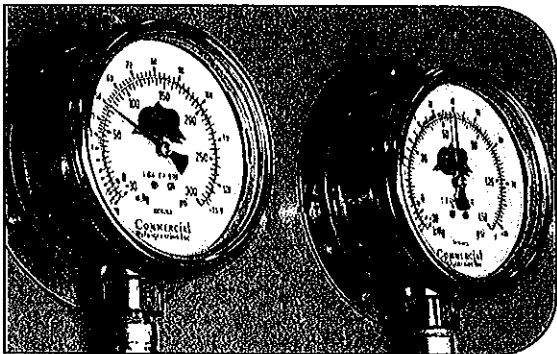
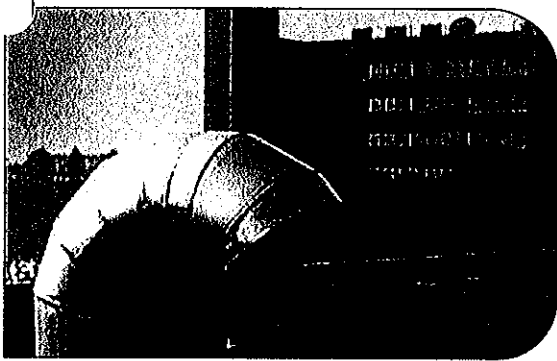
Energy Recovery Systems

Water Source Heat Pump Systems

Low, Medium and High Pressure Air Distribution Systems

Direct Digital, Pneumatic and Hybrid Control Systems

Kitchen Ventilation and Exhaust Systems



(top) Ruby Memorial Hospital—Morgantown, WV
HVAC Exhaust System

(middle) Memorial Ice Rink—South Charleston, WV
Refrigerant Pressure Gages

(bottom) Alderson Federal Correctional Facility—Alderson, WV
Steam Plant

CMA
ENGINEERING

Clingenpeel/McBrayer & Associates, Inc.

824 Cross Lanes Drive
Charleston, West Virginia 25313
(304) 343-0316 tel
(304) 343-5146 fax

5 Riddle Court
Morgantown, West Virginia 26505
(304) 598-2558 tel
(304) 598-2472 fax

www.cma.wv.com

E L E C T R I C A L

CMA Engineering experience includes:

Underground Ducts and Utility Structures

Intrusion Detection

Closed Circuit Television

Cable and Master Antenna Television

Medium Voltage Distribution and Substations

Secondary Voltage Distribution

Engine Generators and Battery Inverters

Transient Voltage Suppression

Interior Lighting

Exterior Lighting

Sports Lighting

Theatrical Lighting

Lighting Control

Uninterruptible Power Supply Systems

Lightning Protection

Intercommunications Systems

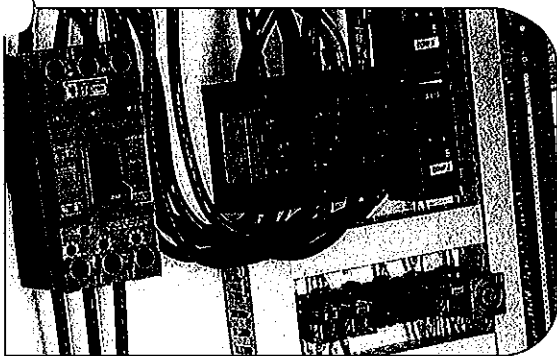
Nurse Call

Voice and Data Systems

Fire Detection Systems



(above) Split Rock Pools—Snowshoe, WV
Indirect Lighting System



(below) Memorial Ice Rink—South Charleston, WV
Chiller Power and Control Panel

CMA
ENGINEERING

Clingenpeel/McBrayer & Associates, Inc.

824 Cross Lanes Drive
Charleston, West Virginia 25313
(304) 343-0316 tel
(304) 343-5146 fax

5 Riddle Court
Morgantown, West Virginia 26505
(304) 598-2558 tel
(304) 598-2472 fax

www.cma.wv.com

PLUMBING & PIPING

CMA Engineering experience includes:

Sanitary Sewer Systems

Storm Sewer Systems

Natural Gas Distribution

LP Gas Distribution

Fuel-Oil Distribution

Compressed Air Systems

Vacuum Systems

Chemical Waste Systems

Process Water Systems

Deionized Water Systems

Domestic Water Systems

Helium Distribution Systems

Domestic Water Pumping Systems

Sewage Pumping Systems

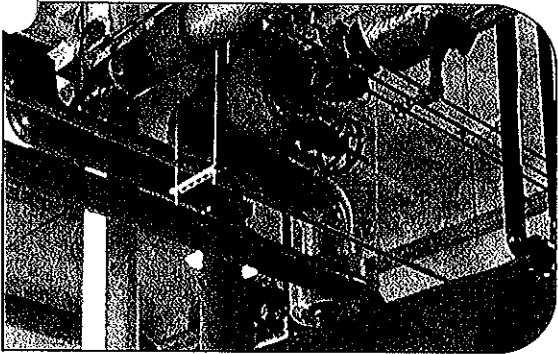
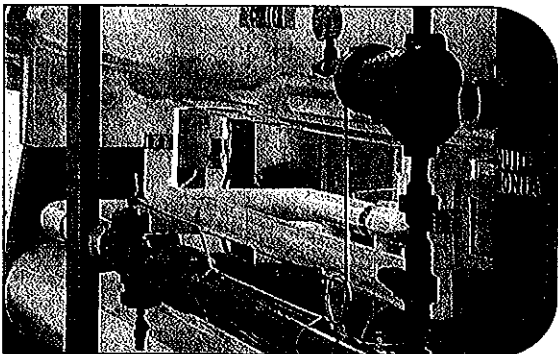
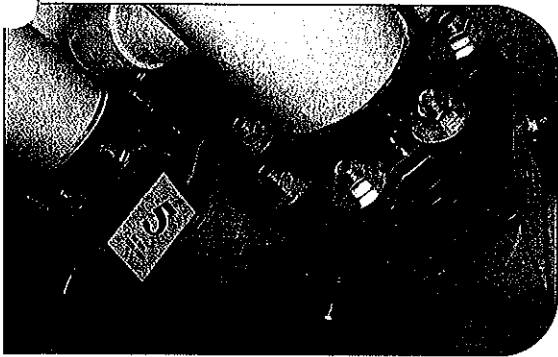
Water Heating

Automatic Fire Sprinkler Systems

Standpipe Systems

Fire Pumps, Storage Tanks, Service Mains

Medical Gas Systems



(top) Split Rock Pools—Snowshoe, WV
Piping & Pump Room

(middle) Memorial Ice Rink—South Charleston, WV
Piping & Chilling

(bottom) Alderson Federal Correctional Facility—Alderson, WV
Steam Piping

CMA
ENGINEERING

Clingenpeel/McBrayer & Associates, Inc.

824 Cross Lanes Drive
Charleston, West Virginia 25313
(304) 343-0316 tel
(304) 343-5146 fax

5 Riddle Court
Morgantown, West Virginia 26505
(304) 598-2558 tel
(304) 598-2472 fax

www.cma.wv.com

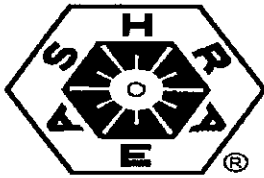
Professional Affiliations



Leadership in Energy & Environmental Design (LEED)



U.S. Green Building Council (USGBC)



American Society of Heating, Refrigerating and Air Conditioning Engineers, Inc., (ASHRAE)



American Institute of Architects— WV Chapter Affiliate Member (WVAIA)



National Fire Protection Association (NFPA)

ASPE

American Society Of Plumbing Engineers (ASPE)



MasterSpec Specifications (ARCOM)



The LIGHTING AUTHORITY

Illuminating Engineering Society (IES)



WV Society of Healthcare Engineers (WVSHE)



International Code Council (ICC)



Business Partner

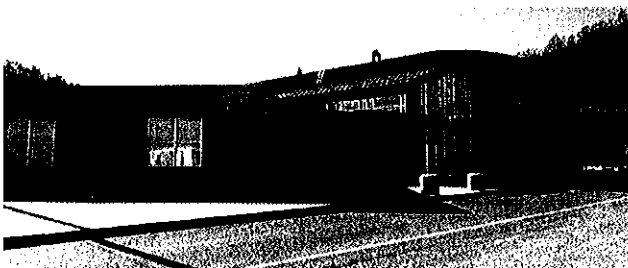
CMA
ENGINEERING

References

Mechanical/Electrical/Plumbing



West Virginia University
P.O. Box 0877
Morgantown, WV 26505
Contact: Mr. John Thompson
(304) 293-3625



Kanawha County Schools
3300 Pennsylvania Avenue
Charleston, WV 25302
Contact: Mr. Charles Wilson
(304) 348-6148



State of West Virginia
1900 Kanawha Blvd, East
Bldg. 1, Room MB-60
Charleston, WV 25305
Contact: Mr. Robert Kilpatrick
(304)558-0250



Mylan Pharmaceuticals, Inc.
P.O. Box 4310
Morgantown, WV 26504
Contact: Mr. J. J. Dotson
(304) 599-2595

P R O F I L E

Timothy Cox, P.E.,
NCEES.
President
Mechanical Engineer

(304) 598-2558
tcox@cmawv.com

EDUCATION

University of Colorado
Boulder, Colorado
Degree: Mechanical Engineering B.S.

REGISTRATIONS/PROFESSIONAL AFFILIATIONS

Association of Energy Engineers-CBCP

Registered Professional Engineer in WV, CO, TN, VA,
MD, KY

CPD (Certified in Plumbing Engineering)

Member of ASHRAE

American Society of Plumbing Engineers

National Association of Fire Protection Engineers

WV Society of Healthcare Engineers

EXPERIENCE

Mr. Timothy Cox, President and Senior Mechanical Engineer of CMA Engineering brings 24 years of mechanical design experience to our clients. Mr. Cox has been project manager and project engineer for a variety of projects.

PROJECTS

West Virginia University-Open End Contract since 1999
Mountain Lair Plaza Renovations
Boreman HVAC/Plumbing/Fire Sprinkler Upgrades
Soccer Stadium
Coliseum Life/Safety Renovations
Coliseum Locker Room Suites
Engineering Science Building Addition/Renovations
Arnold Hall Fire Alarm/ Fire Sprinkler Upgrades
Wrestling Training Facility

WVU Health Sciences Center

Electrical and Mechanical Utility Extensions for
BioMedical Research Facility

West Virginia University Hospitals

WV Eye Institute-MEP systems design for new
facility
Cheat Clinic-MEP design for new clinical addition
WVUH Emergency Department-HVAC, electrical,
fire and communication systems design for new
addition
Chestnut Ridge Hospital-various MEP renovations
Healthworks Rehab and Fitness -MEP systems
design for new facility

Mylan Pharmaceuticals, Morgantown, WV

Various projects including HVAC, plumbing, fire
Sprinkler and controls for new office building, fluid
bed addition, north plant expansion, parking garage
and weighing and packaging.



Clingenpeel/McBrayer & Associates, Inc.

824 Cross Lanes Drive
Charleston, West Virginia 25313

(304) 343-0316 tel
(304) 343-5146 fax

5 Riddle Court
Morgantown, West Virginia

(304) 598-2558 tel
(304) 598-2472

www.cmawv.com

P R O F I L E

Daniel Lee Ellars, P.E.

Principal
(304) 343-0316
dellars@cmawv.com

EDUCATION

West Virginia University Institute of Technology
Montgomery, West Virginia.
Bachelors of Science in Electrical Engineering

West Virginia State University
Institute, West Virginia
Bachelors of Science in Business Administration

REGISTRATIONS/PROFESSIONAL AFFILIATIONS

Registered Professional Engineer in West Virginia
National Fire Protection Association (NFPA)
Institute of Electrical and Electronics Engineers (IEEE)

American Society of Heating, Refrigerating and Air-
Conditioning Engineers (ASHRAE)

EXPERIENCE

Mr. Daniel L. Ellars, Electrical Engineer for Clingenpeel/McBrayer & Associates, Inc. brings 19 years of electrical design experience to our clients. Mr. Ellars has been a project manager and project engineer for a variety of projects including commercial and industrial facilities as well as for both power and tele-communications utilities.

PROJECTS

Educational Experience

Sissonville Middle School—Electrical systems design for new educational facility
Jackson County (WV) Schools—Electrical Upgrades & Expansions.

Hospital Experience

West Virginia University / Ruby Memorial Hospitals
West Virginia Eye Institute—Electrical systems design for new facility.
Thomas Memorial Hospital—Electrical systems survey, upgrades and documentation. Standby emergency power engine/generator replacement.

Military Experience

West Virginia Army National Guard
Elkins Readiness Center—Electrical systems design for new facility
Eleanor (WV) Maintenance Center—Electrical systems design for new facility.

Correctional Experience

St. Mary's Correctional Center—Multiple emergency power engine/generator systems with combined control and monitoring.

Industrial Experience

Mylan Pharmaceuticals
Mylan Office & Lab Buildings—various electrical systems designs for new, existing and expanded facilities including new 23kV/12kV switchyard and grounding plain layout.

CMA
ENGINEERING

Clingenpeel/McBrayer & Associates, Inc.

824 Cross Lanes Drive
Charleston, West Virginia 25313

(304) 343-0316 tel
(304) 343-5146 fax

5 Riddle Court
Morgantown, West Virginia .

(304) 598-2558 tel
(304) 598-2472

www.cmawv.com

P R O F I L E

James A. Kerns
Mechanical/Electrical Designer

(304) 343-0316
jkerns@cmawv.com

EDUCATION

West Virginia State College
Institute, West Virginia
Degree: Bachelor of Science in Industrial Technology/
Building Construction

REGISTRATIONS/PROFESSIONAL AFFILIATIONS

Member of ASHRAE

EXPERIENCE

Mr. James A. Kerns has over 32 years experience in Mechanical and Electrical engineering design. He has been responsible for design projects in the educational, commercial, and health care fields.

Mr. Kerns has been a great asset to Clingenpeel/McBrayer & Associates. His knowledge and experience enables him to complete project designs in a clear and concise manner and in a timely fashion.

PROJECTS

Kanawha County Schools

George Washington High School-HVAC Renovations
George Washington High School-Classroom Additions
Horace Mann Middle School-HVAC Renovations
Elkview Middle School-Classroom Additions
Elkview Middle School-Fire Alarm System
Ruffner Elementary School-Classroom Additions
Point Harmony Elementary School-Activity Building

Concord College

Athens, West Virginia — various renovation projects throughout the campus, which include Twin Towers Fire Alarm, Twin Towers Elevator Renovation, and Alexander Arts Center Chiller Replacement.

U.S. Postal Service

Open End Contract Since 1993, which encompasses numerous Post Office Renovations, new Post Offices, and new Postal Maintenance Facilities. Mr. Kerns has been Project Manager for over 65 projects for the U.S. Postal Service.

Yeager Airport

New Parking Garage
New Emergency Generator
Electrical Upgrades
Fire Alarm System Upgrade
Security Upgrade
Fire Sprinkler Renovations



Clingenpeel/McBrayer & Associates, Inc.

824 Cross Lanes Drive
Charleston, West Virginia 25313

5 Riddle Court
Morgantown, West Virginia

(304) 343-0316 tel
(304) 343-5146 fax

(304) 598-2558 tel
(304) 598-2472

www.cmawv.com

P R O F I L E

Matt Corathers, E.I.
Mechanical Designer

(304) 598-2558
mcorathers@cmawv.com

EDUCATION

West Virginia University
Bachelor of Science -Mechanical Engineering

PROFESSIONAL DEVELOPMENT

Successfully passed Fundamentals of Engineering Exam

EXPERIENCE

Matt is a recent addition to CMA Engineering having previously worked for Whitman, Requardt and Associates in Baltimore, MD.

PROJECTS

West Virginia University

Mechanical design for new two-story child care facility

University High School, Morgantown, WV

Mechanical design for renovations/ upgrades to the HVAC systems

Randolph County Building

Mechanical design for completion of two story addition and modifications of the existing second floor to be used by the Family Court

Monongalia County Family Court

Mechanical design for renovations to 4,850sf in existing court facility

University of Maryland Field House

Mechanical design for the replacement of two heat exchangers and a domestic use-hot water generator

Villetteville Elementary School, Maryland

Mechanical design for the addition of 24 new classrooms



Clingenpeel/McBrayer & Associates, Inc.

824 Cross Lanes Drive
Charleston, West Virginia 25313

(304) 343-0316 tel
(304) 343-5146 fax

5 Riddle Court
Morgantown, West Virginia

(304) 598-2558 tel
(304) 598-2472

www.cmawv.com

P R O F I L E

Jerry F. Betarie

Electrical Designer

(304) 598-2558

jbetarie@cmawv.com

EDUCATION

Penn State, University Park, PA
Degree: B.S. Electrical Engineering.

PROJECTS

University High School, Morgantown, WV

Electrical design services for the renovations to the electrical system

Ridgedale Elementary School

Electrical design for renovations/ upgrades to electrical system

Fairfield Inn, Morgantown, WV

Electrical design for new 50,000sf hotel

Barbour County Bank, Philippi, WV

Electrical design for renovations of existing facility and the addition of A two-story, 3,500sf, building

Fairmont Federal Credit Union

Electrical design for tenant fit-out of the second floor space

Rainelle Elementary School-Electrical design for new educational facility

EXPERIENCE

Mr. Betarie has 19 years experience in Project Management, Electrical Design and Project Estimating.



Clingenpeel/McBrayer & Associates, Inc.

824 Cross Lanes Drive
Charleston, WV 25313
(304) 343-0316 tel
(304) 343-5146 fax

5 Riddle Court
Morgantown, WV 26505
(304) 598-2558 tel
(304) 598-2472

www.cmawv.com

P R O F I L E

Jeremy R. Perry, E.I.
Mechanical Designer
(304) 343-0316
jperry@cmawv.com

EDUCATION

San Jose University
San Jose, CA
Degree: Mechanical Engineering B.S.

PROFESSIONAL DEVELOPMENT

Successfully passed Fundamentals of Engineering Exam
WV Society of Healthcare Engineers

Various ASHRAE, HVAC and LEED design courses

EXPERIENCE

Jeremy joined CMA Engineering in 2008 having previously worked for MKK Consulting Engineers, Billings, Mt.

PROJECTS

WVANG Elkins Readiness Center-HVAC design, load calculations, LEED Analysis

Gassaway Armory- HVAC Design, load calculations

Pikeview Middle School-HVAC Design, load calculations, LEED analysis, comparative cost analysis, hydronic layout

Holley Grove Mansion- HVAC design, hydronic design, load calculations

Sissonville Middle School- HVAC design and load calculation

Amos-Caravelli Funeral Home-HVAC design and load calculations

St. Albans Armory- HVAC Design, load calculations and LEED analysis,

Lewisburg Elementary School-HVAC Design for new Facility



Clingenpeel/McBrayer & Associates, Inc.

824 Cross Lanes Drive
Charleston, West Virginia 25313

(304) 343-0316 tel
(304) 343-5146 fax

5 Riddle Court
Morgantown, West Virginia

(304) 598-2558 tel
(304) 598-2472

www.cmawv.com

P R O F I L E

Larry Weese Mechanical/Plumbing Designer

(304) 343-0316
lweese@cmawv.com

EDUCATION

West Virginia University
Morgantown, West Virginia
Degree: Division of Forestry BS,MS

PROJECTS

Emergency Response Facilities

Randolph County 911-New Facility
Mason County 911-New Facility
Raleigh County 911-New Facility
Orchard Manor Fire Station-New Facility

Military Facilities

Elkins Readiness Center-New Facility
Gassaway Armory-Renovations and Addition

Medical Facilities Experience

Charleston Area Medical Center

Women & Children's Hospital- Renovations to
Emergency Room

Hess Medical Office Building-New Facility

Pinewood Medical Office Building-Renovations

Southern West Virginia Hospice-New Facility

NorthGate Doctor's Office Building-New Facility

WV Department of Health and Human Resources

Office of Chief Medical Examiner, Charleston
New Facility Mingo County

Industrial Experience

Standard Laboratories-Laboratory Addition
Dow Process Control-New Facility
Diamond Electric-Expansion

Commercial Experience

Bobcat of Advantage Valley-New Facility
Allegheny Springs Restaurant

PROFESSIONAL DEVELOPMENT

Various seminars and technical sessions

EXPERIENCE

Mr. Larry Weese, Mechanical Designer for Clingenpeel/McBrayer & Associates, Inc. brings 18 years of mechanical design and project management experience to our clients.

CMA
ENGINEERING

Clingenpeel/McBrayer & Associates, Inc.

824 Cross Lanes Drive
Charleston, West Virginia 25313

(304) 343-0316 tel
(304) 343-5146 fax

5 Riddle Court
Morgantown, West Virginia

(304) 598-2558 tel
(304) 598-2472

www.cmawv.com

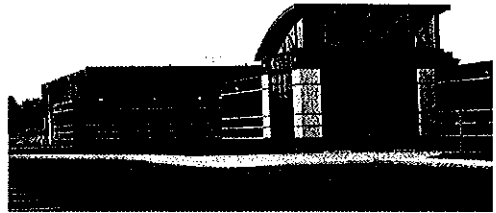
Project Profiles

New Construction

Design of mechanical, electrical, plumbing, fire protection and communication systems, including emergency power generators.

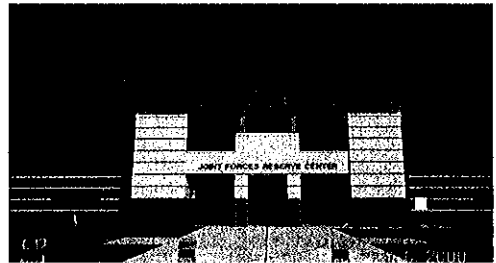
WVANG Eleanor Maintenance Center

CMA Engineering provided mechanical, electrical and plumbing, design services for a 132,000sf maintenance facility to house combined support maintenance shop and Class IX USPFO warehouse. CMA has continued to provide engineering services for the addition of the paint booth, entrance guard house, MCOFT pad, and covered storage.



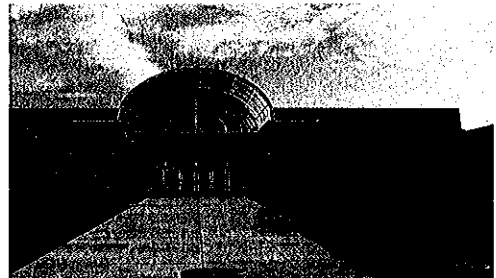
WVANG Eleanor Readiness Center

CMA Engineering provided engineering services for the design of mechanical, electrical and plumbing systems for the new 80,000sf readiness center, including a 16,000sf section that is utilized by the United States Navy.



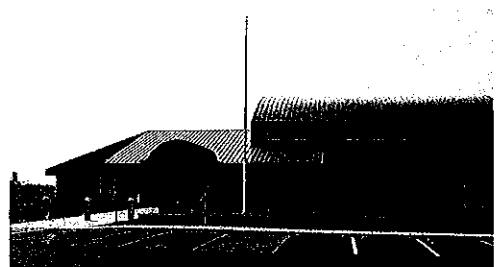
WVANG Summersville Readiness Center

CMA Engineering provided engineering services for the design of mechanical, electrical and plumbing systems for the 42,000sf readiness center. This facility also features areas for use by the City of Summersville for events throughout the year.



WVANG Lewisburg Readiness Center

CMA Engineering provided mechanical, electrical and plumbing design services for a 37,000sf readiness center that includes a vehicle maintenance bay.



WVANG Eikins Readiness Center

CMA Engineering is currently providing design of HVAC, plumbing, fire sprinkler and fire alarm systems, and electrical systems for new 54,500sf readiness center.



Project Profiles

New Construction

Design of mechanical, electrical, plumbing, fire protection and communication systems, including emergency power generators.

WVANG-Fire Station

CMA Engineering is currently providing design services for the HVAC, plumbing, fire alarm, fire sprinkler, communications systems, lighting and electrical power for the design/build of the new approximately 21,000sf fire/crash/ rescue station in Charleston, WV.



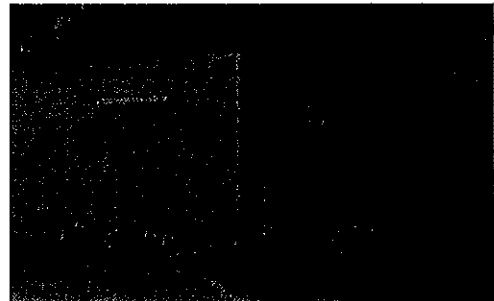
New Randolph County 911 Center

CMA has just completed design services for HVAC, plumbing, fire alarm, fire sprinkler, electrical and communications systems for the new 12,000sf facility.



Harrison County 911 Center

CMA Engineering provided mechanical, electrical, plumbing, fire alarm, fire sprinkler and communication systems design services.



New Raleigh County 911 Center

CMA is currently providing design services for HVAC, plumbing, fire sprinkler/alarm systems, data and communication and electrical power for the new Emergency Operation Center in Raleigh County.



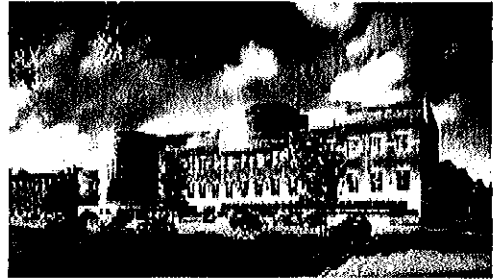
Project Profiles

New Construction

Design of mechanical, electrical, plumbing, fire protection and communication systems.

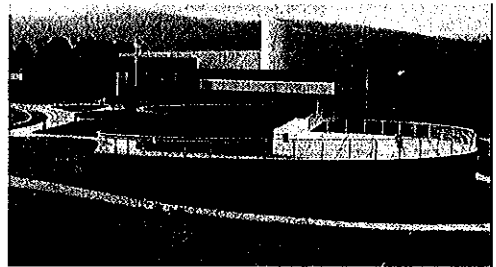
Mylan Pharmaceuticals

CMA Engineering provided mechanical, electrical, plumbing and fire protection systems design for new corporate office in Morgantown, WV. CMA Engineering also provided engineering services for the 425,000sf addition to the plant facility, the new hangar and parking facility.



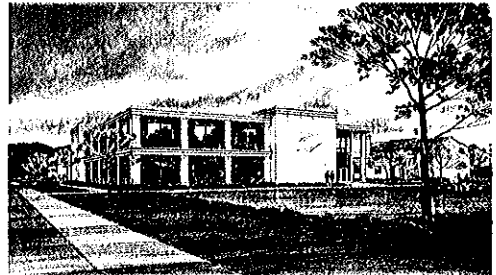
NRAO Greenbank Observatory Visitor's Center

CMA Engineering provided mechanical, electrical, plumbing, fire protection and communication systems design for new visitor's science center.



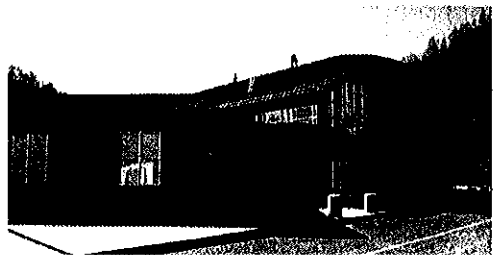
Ayash Community Center, St. Albans, WV

CMA Engineering provided design for HVAC, plumbing, fire sprinkler, fire alarm systems, communication systems, lighting and electrical power for new 26,900sf community center which included gymnasium, wrestling room, fitness room, locker rooms and an open area for aerobics, dance and gymnastics.



Sissonville Middle School, Kanawha County

CMA Engineering provided mechanical, electrical, plumbing, sprinkler, and data/communication/alarm/control engineering design services for the new, approximately 80,000sf facility, consisting of administrative areas, commons, auditorium, media/technology, sixth, seventh and eighth grade educational areas, laboratories, special education, food services and physical education areas. CMA is currently providing design for the addition of the fifth grade wing.



Go-Mart Office Building

CMA provided mechanical, electrical and plumbing design services for the new 13,000sf corporate office building in Gassaway, WV.





CORPORATE BACKGROUND

J. Dan Snead & Associates, Inc. is an Architectural firm founded on February 2, 1998, with the formation of a partnership including J. Dan Snead, AIA, Raymond E. Fink, Jr. and Steven D. Stone.

Dan Snead has thirty-five years of experience in architectural practice and was a principal and partner in a previous practice for ten years prior to organizing the firm.

Mr. Snead has a broad background in architectural design experience including educational and healthcare facilities, public housing, judicial, residential and general commercial design.

Dan is currently a licensed architect in West Virginia and in response to the growing practice is seeking certification in other states. He is a member of the AIA and the West Virginia Society of Architects and is certified by the National Council of Architectural Registration Boards. Dan has become recognized as one of the leading architects in the state of West Virginia.

J. Dan Snead & Associates, Inc. has vast experience with a variety of projects and fully believes that each project requires a completely coordinated development from concept through design and construction. We focus our expertise on designing projects that are sensitive to our client's needs and projects that utilize the client's investment dollars to the greatest advantage. Our entire organization is dedicated to the achievement of project designs that are aesthetically pleasing, functional, and consistent with available funds.

The strengths of our firm lie in our talented staff, experience, and the ability to perform architectural services efficiently from inception to completion. We have but one simple goal - provide each client with the project they envisioned in an attentive, professional manner and to bring each project to a positive and successful conclusion.



EVALUATIVE CRITERIA


J. Dan Snead & Associates, Inc. has extensive experience in the design of educational, commercial and governmental facilities. Our staff has designed new educational facilities in Nicholas, Raleigh, Summers and Hardy counties. Some of our other projects involve renovations to existing educational institutions including: Southern West Virginia Community College, Concord College, Bluefield State College, West Virginia Schools for the Deaf and Blind, and various facilities in Wyoming, Marion and Raleigh counties. Our designs were also incorporated in the Valley One Office Building and the West Virginia State Office Building. Locally, some of our recent projects include the design of the new Shady Spring Junior High, a new administrative office complex for the Raleigh County Solid Waste Authority and the new Pioneer Community Bank, Sophia Branch, a new EOC/911 facility in Raleigh County, a new Health Sciences Building for Mountain State University in Beckley and miscellaneous public facilities in Fayette County, West Virginia.

The firm's principals, J. Dan Snead, AIA, and Raymond E. Fink, Jr. actively participate and supervise all aspects of design and construction administration employing a wealth of knowledge amassed through many dedicated years of experience.

Our firm is committed to the team concept of design and production. We recognize the value of establishing quality communications with the design committee as a means of thoroughly understanding the design objectives, program requirements and project budget. Through utilization of this concept, project owners are valued as a member of our team from the schematic phase through the completion of the project.

Dan Snead, AIA, has a history of providing aesthetically pleasing designs within budget limitations by avoiding trendy design issues and by steadfastly adhering to the "elegance of simplicity." His projects are applauded for their design and for their high value/cost ratio.

Through many years of experience, the firm's principals have refined the ability to evaluate the probable construction costs in the project programming stage to allow us to assess the appropriateness of the proposed budget related to the proposed scope of work.



J. Dan Snead & Associates uses the latest computer and software technology, ARRIS Version 9.0 and AutoCAD 2007, to produce all of our design documents. Combined with the gifted architectural designers in our firm, our computers provide precise, accurate drawings, which translate into lower bid costs from contractors and fewer change orders. Our record regarding change orders is one of the industry's best and our goal is to have few, if any, change orders on all projects.

J. Dan Snead & Associates is enthusiastic about the prospect of working with you. We pledge sensitivity to your needs, attention to detail, and the relentless pursuit of excellence.

J. DAN SNEAD, AIA

EDUCATIONAL BACKGROUND

West Virginia Institute of Technology, 1965

REGISTRATIONS & MEMBERSHIPS

National Council of Architectural Registration Boards
The Board of Architects, State of West Virginia, 1608
American Institute of Architects
West Virginia Society of Architects

PROFESSIONAL EXPERIENCE

J. Dan Snead & Associates, Inc., Beckley, West Virginia
1998 - Present

Computects, Inc. - Beckley, West Virginia
1988 - 1998

Donald H. Stark Architects, Inc.
1973 - 1988

SUMMARY

Mr. Snead is a licensed architect in West Virginia and a member of the American Institute of Architects; the West Virginia Society of Architects; and is certified by the National Council of Architectural Registration Boards.

With over thirty-four years of experience in Architectural design and construction administration, Dan has developed a well known, excellent reputation within West Virginia for providing functional, aesthetically pleasing designs within budget limitations. His innovative designs and understanding of design objectives have rewarded him with a long list of satisfied, repeat clients.

His experience is extensive and varied and includes primary, secondary and higher education facilities; municipal and government facilities; administrative offices; industrial and commercial projects; as well as numerous renovation, rehabilitation and adaptive reuse projects. Many of the designs Dan has developed require significant sensitivity to historic issues, local codes, life safety and current ADA thinking.

Dan is dedicated to maintaining the highest levels of both professional and ethical standards and to the coordination of teamwork both with the Owner and construction professionals to bring to each project a positive and successful conclusion.

RAYMOND E. FINK, JR.

EDUCATIONAL BACKGROUND

Bluefield State College - A.S. Civil Engineering Technology, 1972 - 1974

Mercer County Vocational Technical School - Civil Engineering Technology, 1971 - 1972

REGISTRATIONS

Licensed Land Surveyor, West Virginia, 1989
Certified Surface Mine Foreman, West Virginia, 1977

PROFESSIONAL EXPERIENCE

J. Dan Snead & Associates, Inc., Beckley, West Virginia
1998 - Present

Almes & Associates, Inc., Beaver, West Virginia
1997 - 1998

Compufacts, Inc., Beckley, West Virginia
1984 - 1997

Oscar Vecellio, Inc., Beckley, West Virginia
1976 - 1983

SUMMARY

Raymond has more than thirty three years of experience in the fields of Civil Engineering and Architecture. He has worked as Party Chief and Chief of Surveys directing boundary and topographic field surveys as well as construction layout. He has also served as foreman and cost estimator for various site construction projects spanning a period of nine years.

For more than twenty years, Raymond has worked in construction administration for various architectural projects including site inspections and review of submittals. He has been responsible for the preparation of all architectural drawings for residential, educational and commercial facilities.

As well as his unique surveying, engineering and architectural background, Raymond commands a wealth of computer knowledge. He has served as the Systems Administrator for computer operations and is proficient in the use of AutoCAD 2007 and ARRIS Version 9.0.

DONALD H. NORMAN, II

EDUCATIONAL BACKGROUND

Bluefield State College - B.S. Mining Engineering
Technology, 1986

PROFESSIONAL EXPERIENCE

J. Dan Snead & Associates, Inc., Beckley, West Virginia
2001 - Present

Pentree, Inc., Princeton, West Virginia
1994 - 2001

Computects, Inc., Beckley, West Virginia
1987 - 1993

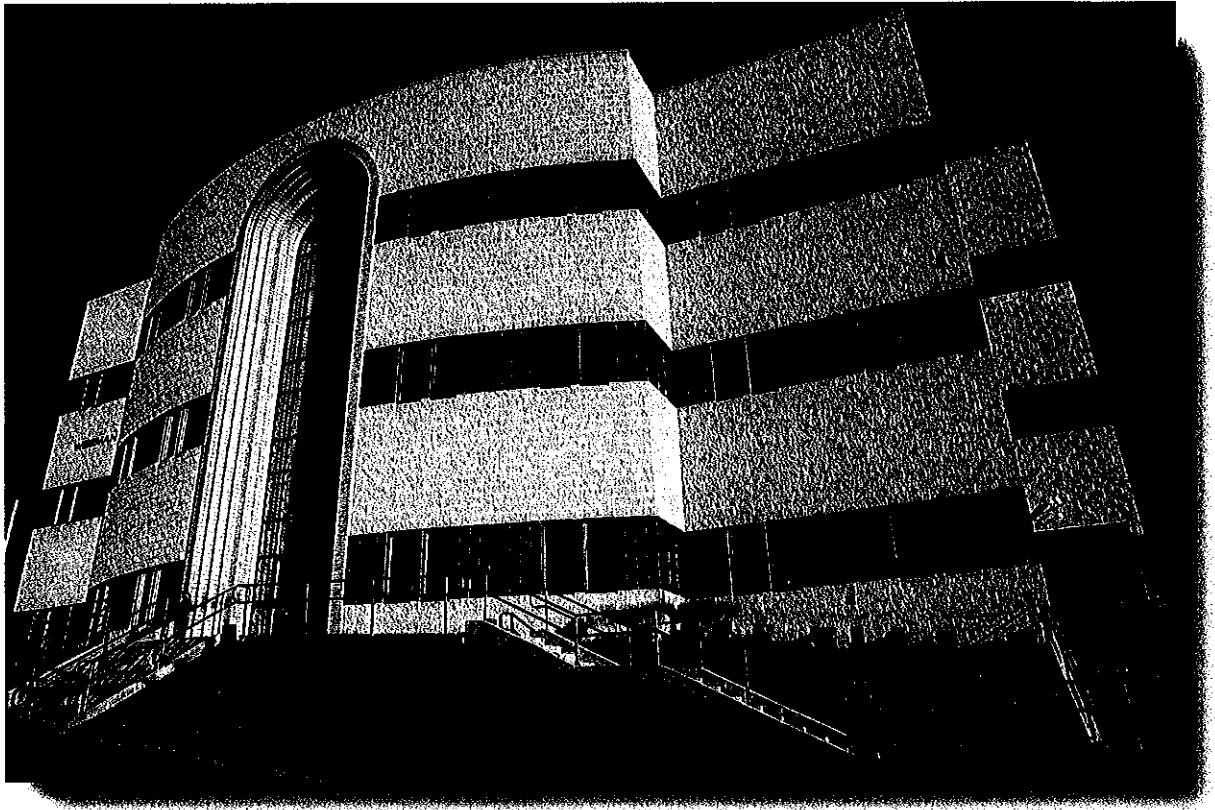
SUMMARY

Don has more than nineteen years of experience in the fields of Architecture and Civil Engineering. This experience is primarily in the design and detailing of bidding documents and project administration with some civil engineering experience in the field as well.

Don has served as an architectural designer for various construction projects during the last six years and has served as an engineering technician for construction projects spanning a period of seven years.

He has been responsible for the preparation of architectural drawings for residential, educational and commercial facilities. He has also been responsible for the preparation of engineering drawings for water and sanitary sewer projects as well as West Virginia Department of Transportation projects.

Mountain State University Health Science Building



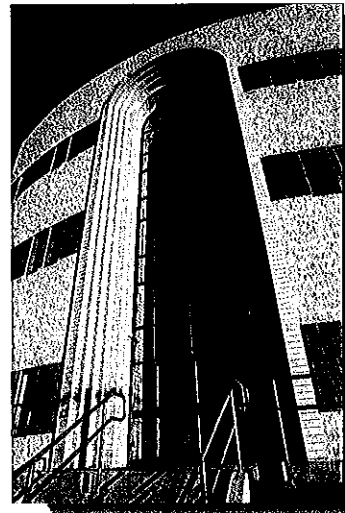
The recently completed Health Science Building on the campus of Mountain State University was constructed with a grant from the U.S. Government

The building contains five science laboratories, a nursing education center, two elevated lecture rooms, a large testing center, administrative offices and various support facilities. Total building area is 26,000 sf.

The budget of \$4,300,000 included construction costs and A/E fees, produced a unit cost of \$165.00 per square foot.

A unique feature of construction includes a three story tinted glass entry with concentric brick arches.

The new science facility includes the latest information technology.

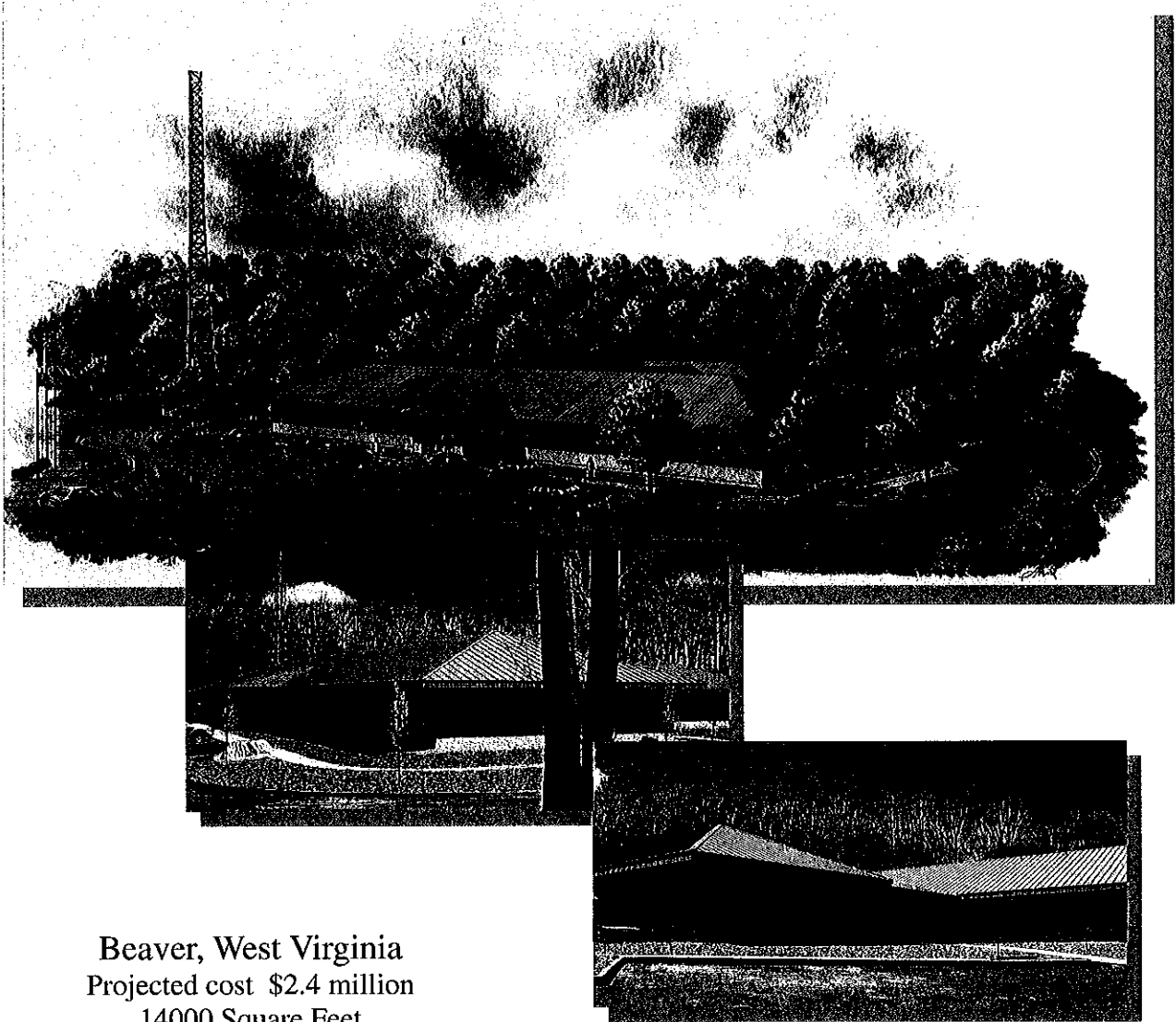


*Beckley,
West Virginia*

Total Project Budget: \$4,300,000

J. Dan Snead & Associates, Inc.

RALEIGH COUNTY EOC/911 CENTER

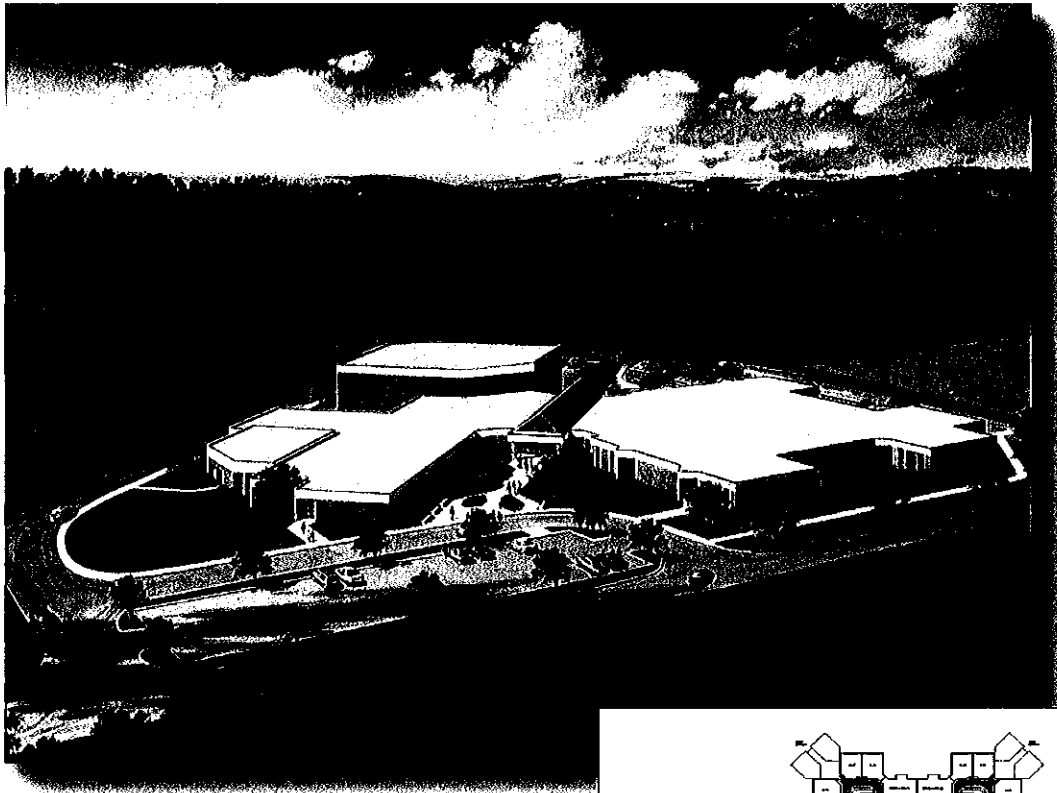


Beaver, West Virginia
Projected cost \$2.4 million
14000 Square Feet
\$172 per sq. ft.

The new Raleigh County EOC/911 Center is located on a wooded four-acre site in an industrial park near Beckley, West Virginia. The new facility is designed to accommodate normal 911 activity and is intended to act as a regional command center for emergency services during times of need. The new center features a secure, internal dispatch area, state-of-the-art communication and data systems, a large command center/board room, administrative wing, 3,000 square feet of emergency equipment storage and overnight accommodations for emergency staff. Additional features include masonry structure and a standing seam metal roof for low maintenance.

J. Dan Snead & Associates, Inc.

SHADY SPRING MIDDLE SCHOOL

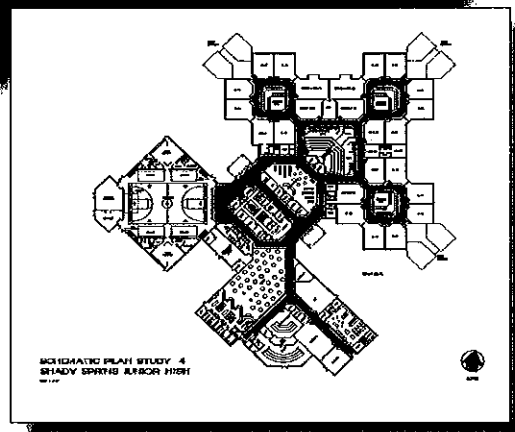


The recently completed Shady Spring Middle School project is part of a \$20,000,000 construction program undertaken by Raleigh County.

The new Shady Spring Middle School had a budget of over nine million dollars and was partially funded by a School Building Authority grant.

The new facility houses 600 students in three academic pods. It contains 78,000 square feet and features a unique design facilitating the middle school concept. Incorporated into the design is a centrally located administrative suite, media center, and commons area.

Additional features include three computer labs and an isolated, but easily accessible gymnasium.

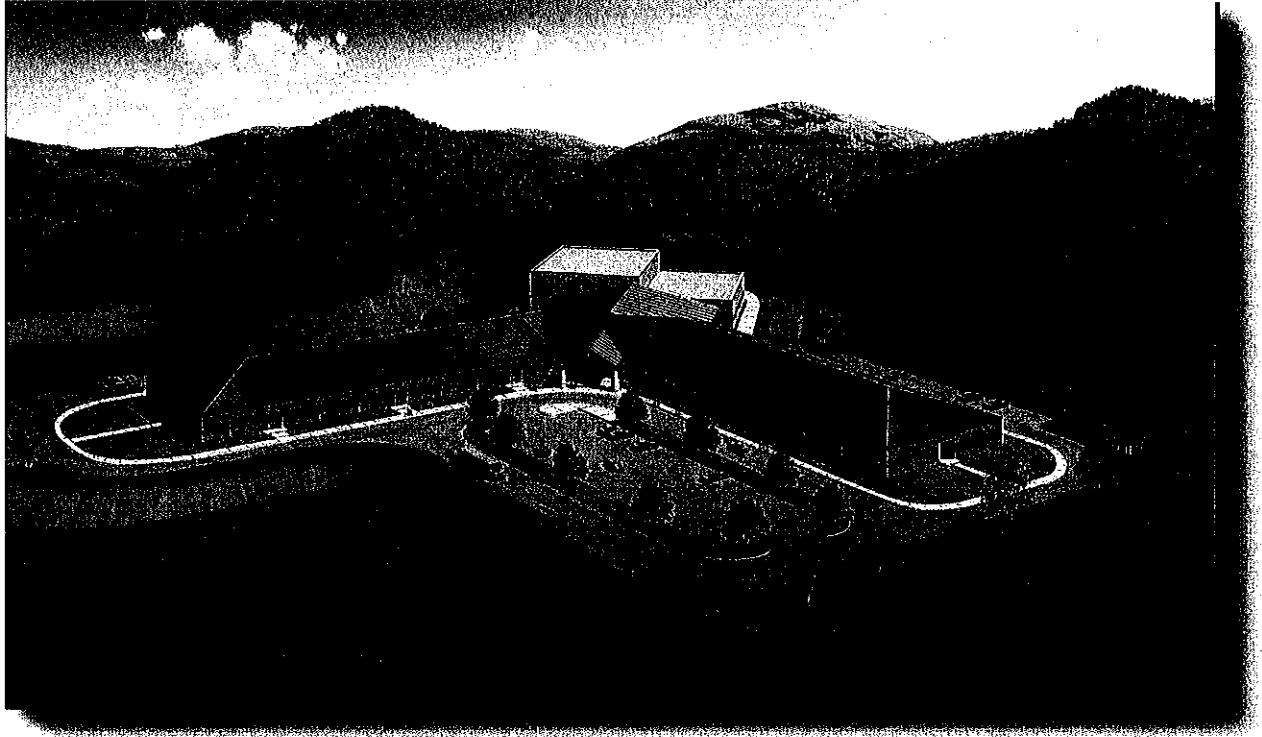


***Shady Spring, WV
Raleigh County***

Total Project Budget: \$9,500,000

J. Dan Snead & Associates, Inc.

Fairdale Elementary School



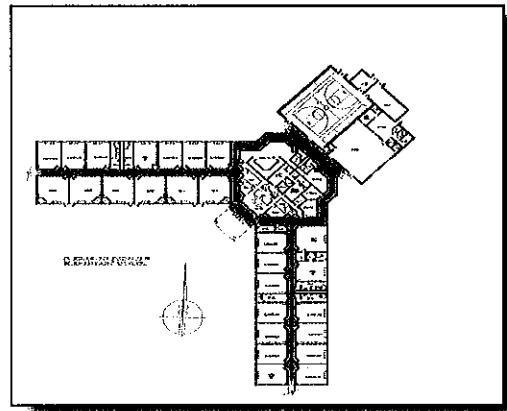
The currently under construction Fairdale Elementary School is funded in part by a School Building Authority Grant.

The school population is approximately 500 and the building footprint contains 52,000 square feet.

The budget of \$8,422,000 which includes construction costs and A/E fees, produces a unit cost of \$162.00 per square foot.

Unique features of construction include a gymnasium, sloping roof, ceramic tile in all corridors and a media center with a two tier computer lab.

The new Fairdale Elementary includes the latest technology in classroom security.

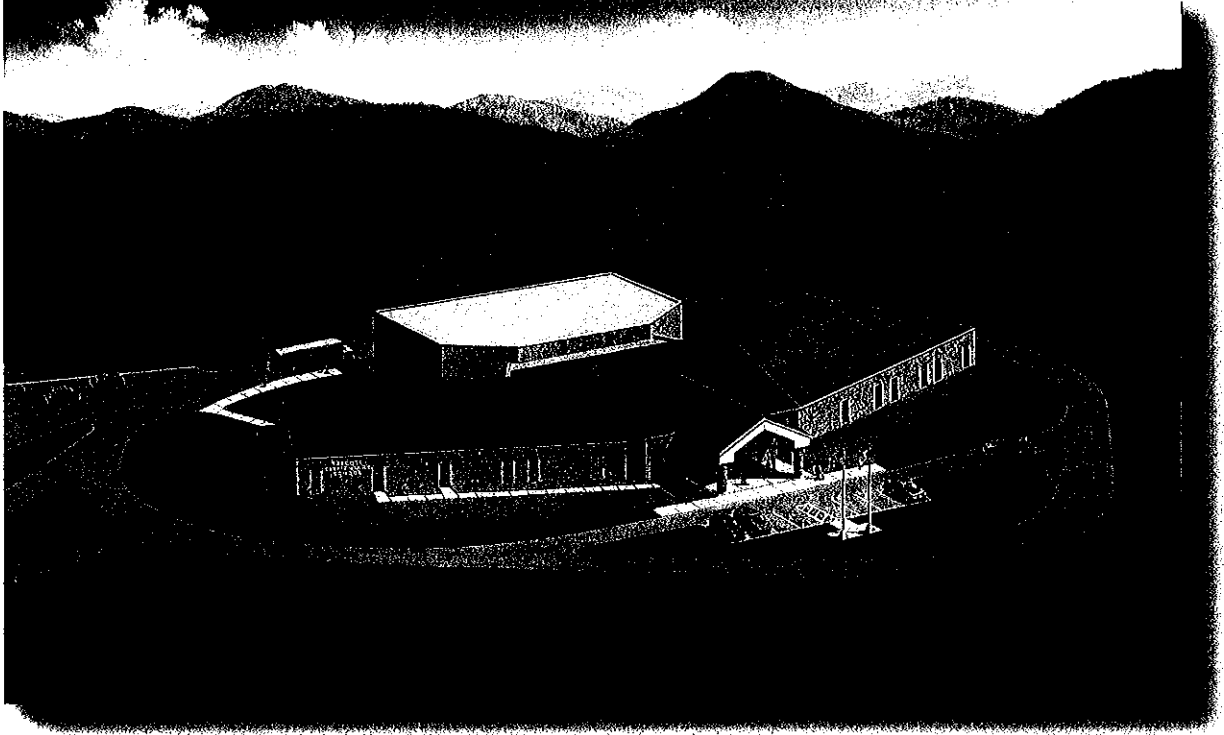


*Fairdale, WV
Raleigh County*

Total Project Budget: \$8,422,000

J. Dan Snead & Associates, Inc.

Talcott Elementary School

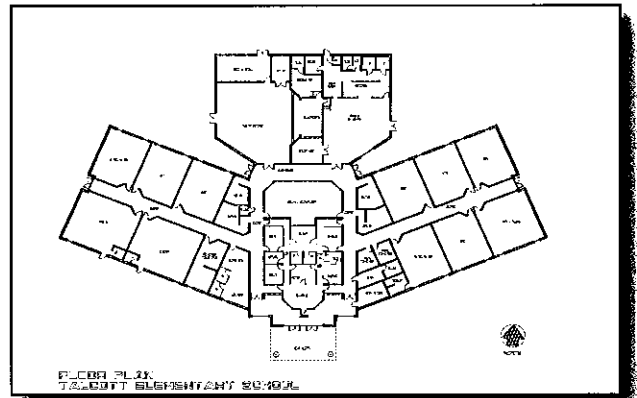


The currently under construction Talcott Elementary School completes the construction programs of Summers County Schools by replacing the 72 year old existing building.

The new elementary school had a five million, three hundred thirty thousand dollar budget and was funded by a School Building Authority Grant. The student population is approximately 200 and the building area is 26,000 square feet.

The plan features a central Administration Area, Media Center, Multipurpose Room and Dining Hall flanked on both sides by classroom wings.

Additional features include an isolated bus loop and the latest technology in school security.



***Talcott, WV
Summers County***

Total Project Budget: \$5,330,000

J. Dan Snead & Associates, Inc.

STATE OF WEST VIRGINIA
Purchasing Division

PURCHASING AFFIDAVIT

West Virginia Code §5A-3-10a states: No contract or renewal of any contract may be awarded by the state or any of its political subdivisions to any vendor or prospective vendor when the vendor or prospective vendor or a related party to the vendor or prospective vendor is a debtor and the debt owed is an amount greater than one thousand dollars in the aggregate.

DEFINITIONS:

"Debt" means any assessment, premium, penalty, fine, tax or other amount of money owed to the state or any of its political subdivisions because of a judgment, fine, permit violation, license assessment, defaulted workers' compensation premium, penalty or other assessment presently delinquent or due and required to be paid to the state or any of its political subdivisions, including any interest or additional penalties accrued thereon.

"Debtor" means any individual, corporation, partnership, association, limited liability company or any other form or business association owing a debt to the state or any of its political subdivisions. "Political subdivision" means any county commission; municipality; county board of education; any instrumentality established by a county or municipality; any separate corporation or instrumentality established by one or more counties or municipalities, as permitted by law; or any public body charged by law with the performance of a government function or whose jurisdiction is coextensive with one or more counties or municipalities. "Related party" means a party, whether an individual, corporation, partnership, association, limited liability company or any other form or business association or other entity whatsoever, related to any vendor by blood, marriage, ownership or contract through which the party has a relationship of ownership or other interest with the vendor so that the party will actually or by effect receive or control a portion of the benefit, profit or other consideration from performance of a vendor contract with the party receiving an amount that meets or exceed five percent of the total contract amount.

EXCEPTION: The prohibition of this section does not apply where a vendor has contested any tax administered pursuant to chapter eleven of this code, workers' compensation premium, permit fee or environmental fee or assessment and the matter has not become final or where the vendor has entered into a payment plan or agreement and the vendor is not in default of any of the provisions of such plan or agreement.

Under penalty of law for false swearing (*West Virginia Code §61-5-3*), it is hereby certified that the vendor affirms and acknowledges the information in this affidavit and is in compliance with the requirements as stated.

WITNESS THE FOLLOWING SIGNATURE

Vendor's Name: CMA Engineering

Authorized Signature: *Daniel Lee Ellam* Date: 08-17-2010

State of West Virginia

County of Kanawha, to-wit:

Taken, subscribed, and sworn to before me this 17th day of August, 2010

My Commission expires May 18, 2014.

AFFIX SEAL HERE

NOTARY PUBLIC *Karen Humphrey*

