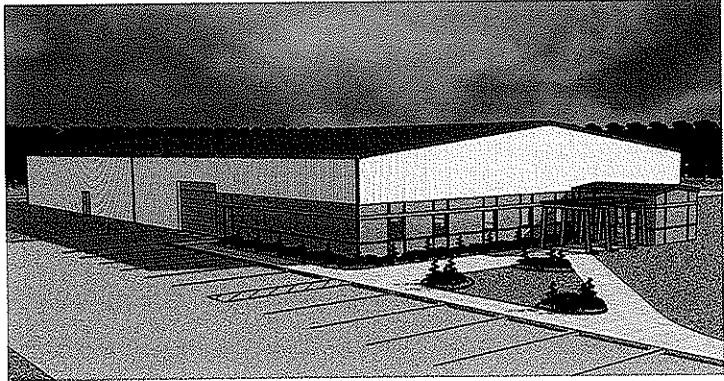


West Virginia Office of
Miners' Health, Safety & Training



Requisition #HST1012
Mine Safety and Training Facility
September 15, 2009

RECEIVED

2009 SEP 15 A 10: 24

PROCURING DIVISION
STATE OF WV





State of West Virginia
 Department of Administration
 Purchasing Division
 2019 Washington Street East
 Post Office Box 50130
 Charleston, WV 25305-0130

Request for Quotation

RFQ NUMBER
HST1012

PAGE
1

ADDRESS CORRESPONDENCE TO ATTENTION OF
FRANK WHITTAKER 304-558-2316

RFQ COPY
 TYPE NAME/ADDRESS HERE

McKinley & Associates
 1116 Smith Street
 Suite 406
 Charleston, WV 25301

SHIP TO

HEALTH, SAFETY AND TRAINING
 OFFICE OF MINERS'
 1615 WASHINGTON STREET EAST
 CHARLESTON, WV
 25311

DATE PRINTED	TERMS OF SALE	SHIP VIA	FOB	FREIGHT TERMS
08/19/2009				

BID OPENING DATE: **09/15/2009** BID OPENING TIME **01:30PM**

LINE	QUANTITY	UOP	CAT NO	ITEM NUMBER	UNIT PRICE	AMOUNT
0001	1	LS		906-00-00-001		
ARCHITECT/ENGINEERING SERVICES, PROFESSIONAL EXPRESSION OF INTEREST (EOI) THE WEST VIRGINIA PURCHASING DIVISION, FOR THE AGENCY, THE WEST VIRGINIA OFFICE OF MINERS' HEALTH SAFETY & TRAINING, IS SOLICITING EXPRESSIONS OF INTEREST FOR ARCHETURAL AND ENGINEERING SERVICES FOR A MINE SAFETY AND TRAINING FACILITY. EXHIBIT 10 REQUISITION NO.: HST1012 ADDENDUM ACKNOWLEDGEMENT I HEREBY ACKNOWLEDGE RECEIPT OF THE FOLLOWING CHECKED ADDENDUM(S) AND HAVE MADE THE NECESSARY REVISIONS TO MY PROPOSAL, PLANS AND/OR SPECIFICATION, ETC. ADDENDUM NO.'S: NO. 1 BANKRUPTCY: IN THE EVENT THE VENDOR/CONTRACTOR FILES FOR BANKRUPTCY PROTECTION, THE STATE MAY DEEM THE CONTRACT NULL AND VOID, AND TERMINATE SUCH CONTRACT WITHOUT FURTHER ORDER. NO. 2						

SEE REVERSE SIDE FOR TERMS AND CONDITIONS			
SIGNATURE	TELEPHONE	DATE	
<i>[Signature]</i>	(304) 233-0140	9/11/09	
TITLE	FEIN	ADDRESS CHANGES TO BE NOTED ABOVE	
Business Development	55-0696478		

WHEN RESPONDING TO RFQ, INSERT NAME AND ADDRESS IN SPACE ABOVE LABELED 'VENDOR'



State of West Virginia
 Department of Administration
 Purchasing Division
 2019 Washington Street East
 Post Office Box 50130
 Charleston, WV 25305-0130

Request for Quotation

RFQ NUMBER
HST1012

PAGE
2

ADDRESS CORRESPONDENCE TO ATTENTION OF
FRANK WHITTAKER
304-558-2316

RFQ COPY
TYPE NAME/ADDRESS HERE

McKinley & Associates
 1116 Smith Street
 Suite 406
 Charleston, WV 25301

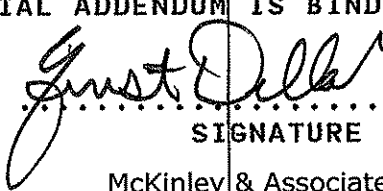
SHIP TO

HEALTH, SAFETY AND TRAINING
OFFICE OF MINERS'
1615 WASHINGTON STREET EAST

CHARLESTON, WV
25311

DATE PRINTED	TERMS OF SALE	SHIP VIA	F.O.B.	FREIGHT TERMS
08/19/2009				

BID OPENING DATE: 09/15/2009 BID OPENING TIME 01:30PM

LINE	QUANTITY	UOP	CAT NO	ITEM NUMBER	UNIT PRICE	AMOUNT
	NO. 3					
	NO. 4					
	NO. 5					
<p>I UNDERSTAND THAT FAILURE TO CONFIRM THE RECEIPT OF THE ADDENDUM(S) MAY BE CAUSE FOR REJECTION OF BIDS.</p> <p>VENDOR MUST CLEARLY UNDERSTAND THAT ANY VERBAL REPRESENTATION MADE OR ASSUMED TO BE MADE DURING ANY ORAL DISCUSSION HELD BETWEEN VENDOR'S REPRESENTATIVES AND ANY STATE PERSONNEL IS NOT BINDING. ONLY THE INFORMATION ISSUED IN WRITING AND ADDED TO THE SPECIFICATIONS BY AN OFFICIAL ADDENDUM IS BINDING.</p> <p style="text-align: center;">  SIGNATURE McKinley & Associates COMPANY 9/11/09 DATE </p> <p>REV. 11/96</p> <p style="text-align: center;">NOTICE</p> <p>A SIGNED BID MUST BE SUBMITTED TO:</p> <p style="text-align: center;">DEPARTMENT OF ADMINISTRATION PURCHASING DIVISION BUILDING 15</p>						

SEE REVERSE SIDE FOR TERMS AND CONDITIONS

SIGNATURE 	TELEPHONE (304) 233-0140	DATE 9/11/09
TITLE Business Development	FEIN 55-0696478	ADDRESS CHANGES TO BE NOTED ABOVE

WHEN RESPONDING TO RFQ, INSERT NAME AND ADDRESS IN SPACE ABOVE LABELED 'VENDOR'



State of West Virginia
 Department of Administration
 Purchasing Division
 2019 Washington Street East
 Post Office Box 50130
 Charleston, WV 25305-0130

Request for Quotation

RFQ NUMBER:
HST1012

PAGE:
3

ADDRESS CORRESPONDENCE TO ATTENTION OF:
**FRANK WHITTAKER
 304-558-2316**

**RFQ COPY
 TYPE NAME/ADDRESS HERE**

POSTAL

McKinley & Associates
 1116 Smith Street
 Suite 406
 Charleston, WV 25301

SHIP TO

HEALTH, SAFETY AND TRAINING
 OFFICE OF MINERS'
 1615 WASHINGTON STREET EAST
 CHARLESTON, WV
 25311

DATE PRINTED	TERMS OF SALE	SHIP VIA	F.O.B.	FREIGHT TERMS
08/19/2009				

BID OPENING DATE: **09/15/2009** BID OPENING TIME **01:30PM**

LINE	QUANTITY	UOP	CAT NO.	ITEM NUMBER	UNIT PRICE	AMOUNT
				2019 WASHINGTON STREET, EAST CHARLESTON, WV 25305-0130		
<p>THE BID SHOULD CONTAIN THIS INFORMATION ON THE FACE OF THE ENVELOPE OR THE BID MAY NOT BE CONSIDERED:</p> <p>SEALED BID</p> <p>BUYER: 44</p> <p>RFQ. NO.: HST1012</p> <p>BID OPENING DATE: 09/15/09</p> <p>BID OPENING TIME: 1:30</p> <p>PLEASE PROVIDE A FAX NUMBER IN CASE IT IS NECESSARY TO CONTACT YOU REGARDING YOUR BID: (304) 233-0140</p> <p>-----</p> <p>CONTACT PERSON (PLEASE PRINT CLEARLY): Ernest Dellatorre</p> <p>-----</p>						

SEE REVERSE SIDE FOR TERMS AND CONDITIONS

SIGNATURE <i>Ernest Dellatorre</i>	TELEPHONE (304) 233-0140	DATE 9/11/09
TITLE Business Development	FERN 55-0696478	ADDRESS CHANGES TO BE NOTED ABOVE

WHEN RESPONDING TO RFQ, INSERT NAME AND ADDRESS IN SPACE ABOVE LABELED 'VENDOR'



State of West Virginia
 Department of Administration
 Purchasing Division
 2019 Washington Street East
 Post Office Box 50130
 Charleston, WV 25305-0130

Request for Quotation

RFQ NUMBER
HST1012

PAGE
4

ADDRESS CORRESPONDENCE TO ATTENTION OF
FRANK WHITTAKER 304-558-2316

VENDOR

RFQ COPY
 TYPE NAME/ADDRESS HERE

McKinley & Associates
 1116 Smith Street
 Suite 406
 Charleston, WV 25301

SHIP TO

HEALTH, SAFETY AND TRAINING
 OFFICE OF MINERS'
 1615 WASHINGTON STREET EAST
 CHARLESTON, WV
 25311

DATE PRINTED	TERMS OF SALE	SHIP VIA	F.O.B.	FREIGHT TERMS
08/19/2009				

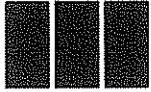
BID OPENING DATE: 09/15/2009 BID OPENING TIME 01:30PM

LINE	QUANTITY	UOP	CAT NO	ITEM NUMBER	UNIT PRICE	AMOUNT
***** THIS IS THE END OF RFQ HST1012 ***** TOTAL:						_____

SEE REVERSE SIDE FOR TERMS AND CONDITIONS

SIGNATURE	TELEPHONE	DATE
<i>[Signature]</i>	(304) 233-0140	9/11/09
TITLE	FEIN	ADDRESS CHANGES TO BE NOTED ABOVE
Business Development	55-0696478	

WHEN RESPONDING TO RFQ, INSERT NAME AND ADDRESS IN SPACE ABOVE LABELED 'VENDOR'



September 11, 2009

Mr. Frank Whitaker
Department of Administration
Purchasing Division
Building 15
2019 Washington Street, East
Charleston, WV 25305-0130

Re: MHS&T-Mine Rescue & Training Facility HST1012

Dear Mr. Whitaker and Members of the Selection Committee;

What a great opportunity for the West Virginia Office of Miners' Health, Safety & Training! McKinley & Associates, Inc. and Eggemeyer Associates Architects, Inc. (McKinley/Eggemeyer) are pleased and honored to submit our qualifications and design approach for the architectural and engineering services for a Mine Safety and Training Facility.

We know that this is a specialized project, and that is why we brought in Eggemeyer Associates Architects, who have expertise in this type of facility design. They recently completed the 20,000 square-foot Rend Lake College Coal Mine Training Center, which houses a large open shop area, simulated coal mine and large classrooms, in addition to faculty and staff offices.

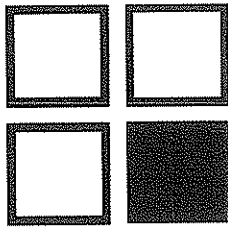
McKinley & Associates has been providing design services since 1981. With offices in Charleston and Wheeling, WV and Washington, PA, we support a professional staff of 40+ that includes: architects, mechanical, electrical, plumbing/life safety engineers (MEP engineers) as well as a certified interior design department. Our experience includes various projects which deal with educational and training facilities, including a new State Fire Training Academy for West Virginia University, a Training Center for Wheeling Pittsburgh Steel, an MIS Training and Office Complex for Wheeling Hospital, and a Multi-purpose Training Facility for the Ormet Corporation..

Eggemeyer Associates Architects, Inc. was established on September 1, 1960 in Carbondale, Illinois. During its more than forty-year existence, the firm has designed projects encompassing both new construction and renovation/restoration work, including schools, libraries, correctional facilities, residences, nursing homes, hospitals, office buildings, laboratories, dormitories, supermarkets, stores, shopping centers, churches, jails, courthouses, multi-family Housing units, financial institutions, fire and police stations, industrial plants and warehouses, restaurants and college and university buildings.

We love what we do, so we care about the results you get. Thank you for reviewing our submission and considering McKinley/Eggemeyer for your proposed project.

Sincerely,


Ernest Dellatorre
McKinley & Associates



Eggemeyer Associates
Architects, Inc.

P.O. Box 1447/Westown Centre
Carbondale, Illinois 62903
618.549.3361 Fax:618.549.3363

NARRATIVE FIRM HISTORY

The architectural practice known today as Eggemeyer Associates Architects, Inc. (EAA) was initially established September 1, 1960 in Carbondale, Illinois as Fischer-Hermeling, Architects and Designers. On January 1, 2000, the corporate name was changed to the current Eggemeyer Associates Architects, Inc. In October of 2004, Architect Mark Dillon became a Principal and in February 2009 he was named Corporate President/CEO.

EAA has been responsible for the design of more than \$380 million in building projects in Illinois, Indiana, Kentucky, Missouri and Florida during its more than 48 year existence. Projects, encompassing both new construction and renovation/restoration work, including schools, libraries, correctional facilities, residences, nursing homes, hospitals, office buildings, laboratories, dormitories, supermarkets, stores, shopping centers, churches, jails, courthouses, multi-family Housing units, financial institutions, fire and police stations, industrial plants and warehouses, restaurants and college and university buildings. Clients have included individuals, local, state and federal governmental agencies and institutions as well as private industrial and commercial interests.

With a staff of eleven full-time and two part-time professionals, the firm today has broad capabilities in (1) programming and design of single buildings and of complex, multi-building projects, (2) design development of building structural, architectural and environmental systems and (3) administration of construction. Areas of special expertise include rehabilitation, remodeling and site improvements. Through a program of continuing education of its staff members, EAA continues to expand its capabilities and upgrade its qualifications in a number of technical areas.

PROFESSIONAL EXPERIENCE AND QUALIFICATIONS

We are pleased to offer the professional credentials of Eggemeyer Associates Architects, Inc. (EAA) for consideration to undertake your projects. EAA, qualifies as a small business per U.S. Government regulations.

We believe our firm is qualified for work on these projects for the following reasons:

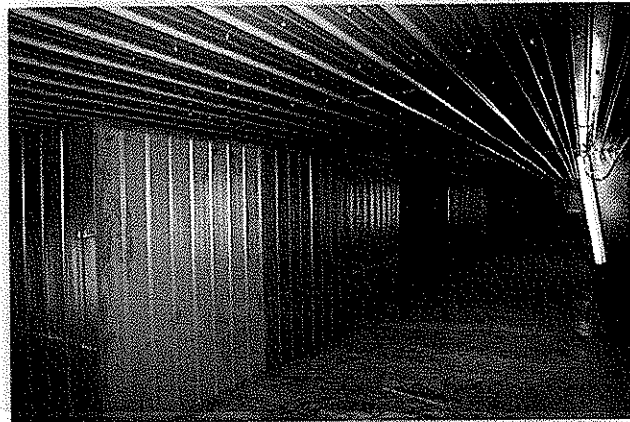
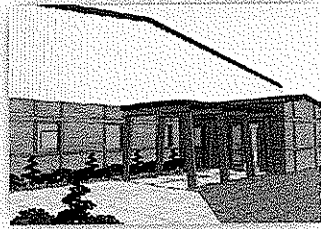
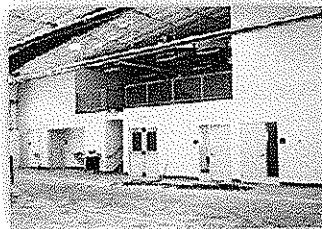
Project Team: Our staff, working together as a project team, has been structured to include the required disciplines and expertise by incorporating well-qualified, experienced professionals in all aspects of architecture. Our firm has the necessary personnel to provide backup at the management, as well as at the professional/technical levels. Key project team members understand each other and the working methodology of projects of this type and scope.

Design Ability: Over the years, our firm has developed a reputation for providing solutions to client problems. After project requirements are established, confirmed and analyzed, several alternative solutions are developed. Such exploration of alternative approaches often results in further clarification of programmatic requirements, as well as variations (not readily apparent) in design solutions.

Construction Period Services: Our experienced personnel have earned us an excellent reputation for providing competent construction services for more than 48 years in the region.

Performance: EAA's extensive experience in construction cost estimating provides a realistic approach and control to keep projects within budget parameters. Our Estimator has worked for construction companies as an Estimator and Superintendent giving him estimating experience and understanding of bidding procedures. We review cost data for each project to provide current, accurate price information, and we are proud of our solid record of bringing projects in within budget. With respect to performance on similar projects, we welcome communications with past clients.

New Coal Mine Training Facility Rend Lake College



Rend Lake College, located in Ina, Illinois, recently completed its latest expansion with the construction of a 20,000 sq. ft. facility to be used for the training of the next generation of miners and mine rescuers in Southern Illinois and throughout the Midwest.

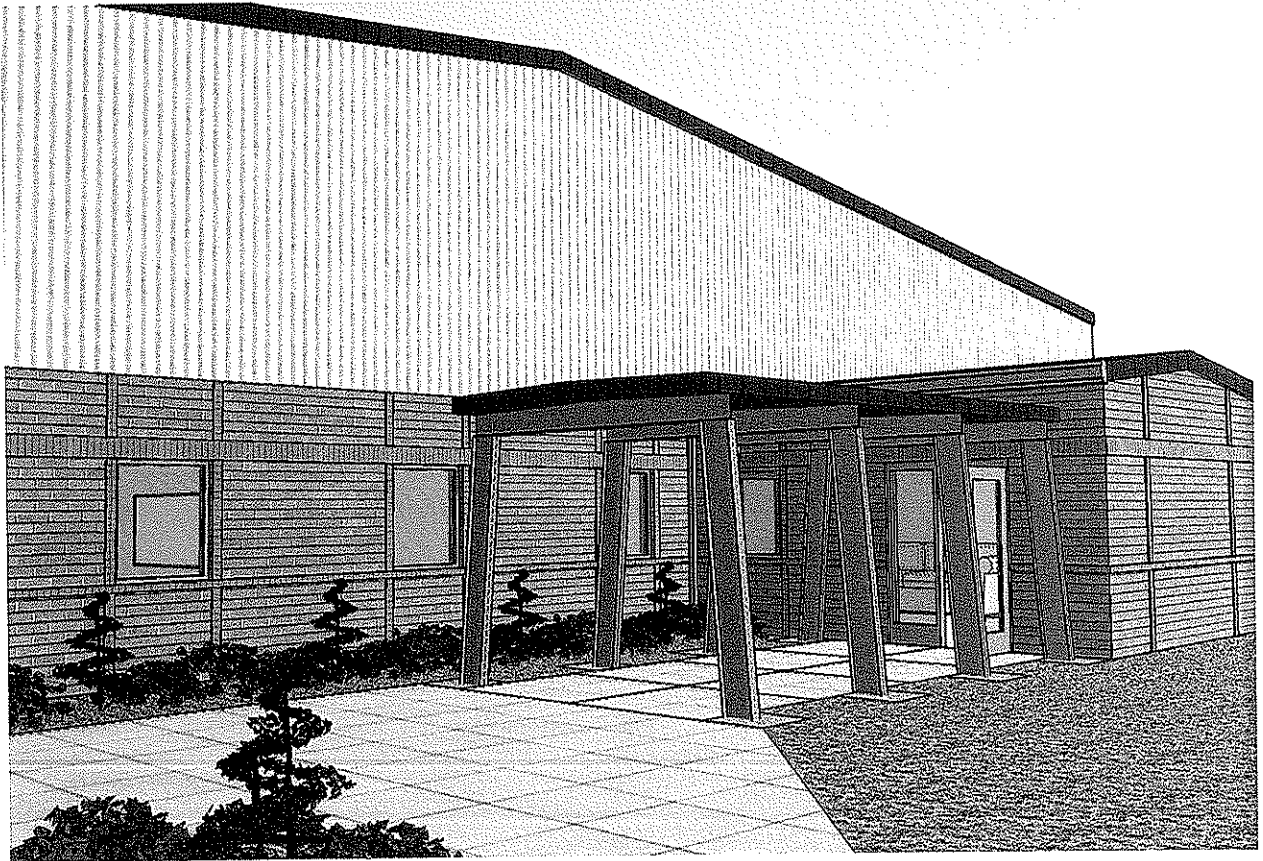
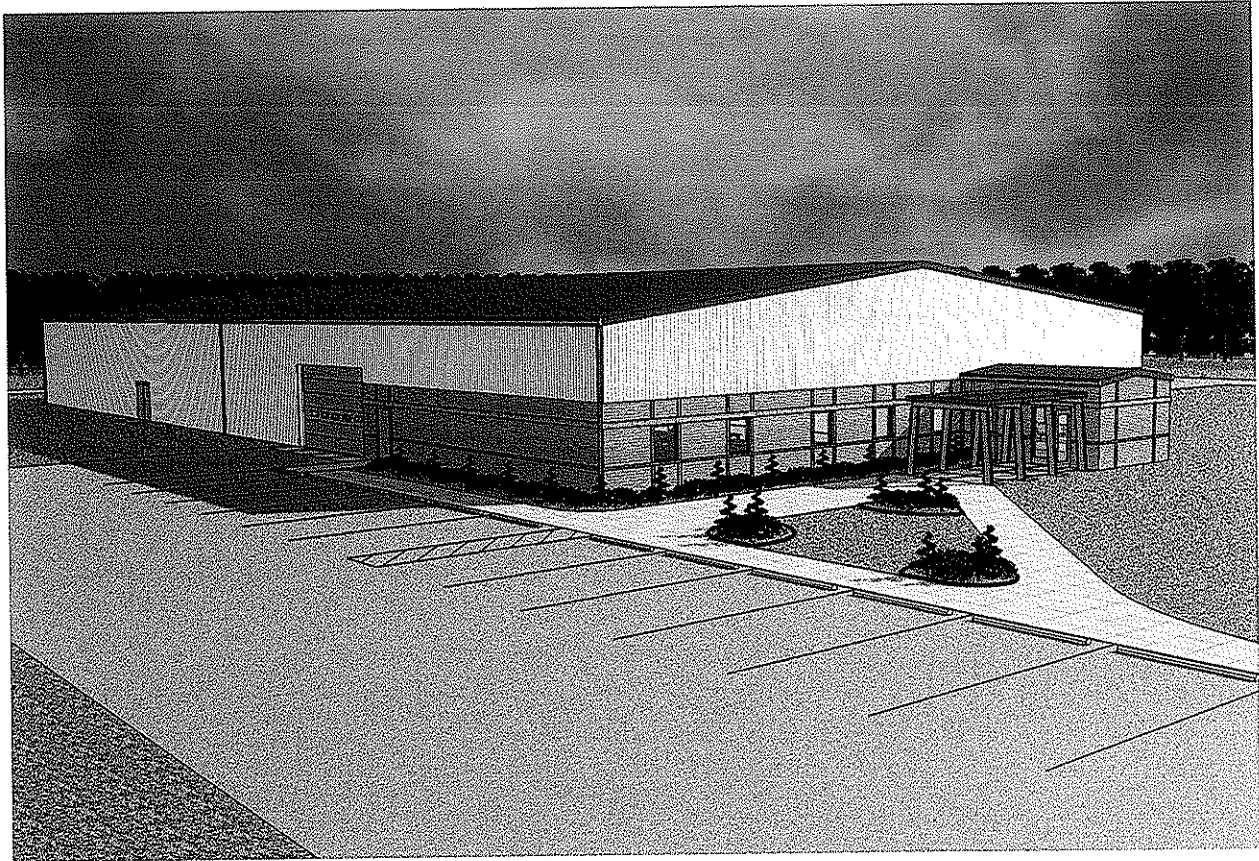
The new facility includes Classrooms and office space for instructional education and a 5,000 s.f. open shop for hands-on education of mining equipment, including a continuous miner. The facility also includes a 10,000 s.f. Mock Mine for training of new miners and mine rescuers.

The Mock Mine is constructed of lightweight, portable partitions used to create unlimited options in the configuration of the "mine". A reconfigurable ventilation system can be utilized to control the flow of air during exercises and to clear the "mine" after each event. The facility was designed and constructed for the future expansion for a second floor Mock Mine.

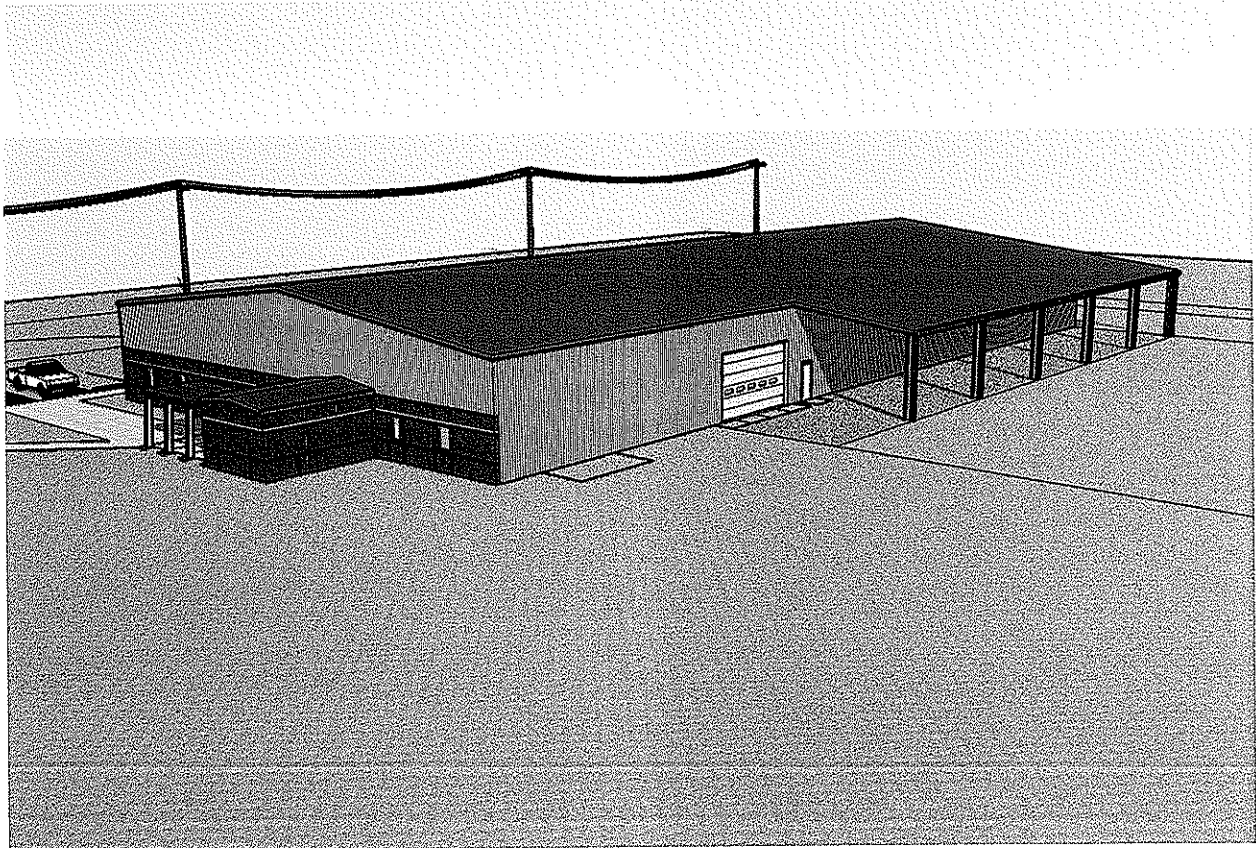
The College is currently underway in expanding the facility to include an outdoor Mine Rescue training facility.

This facility was complete in July of this year at a cost of \$63.33 per SF.

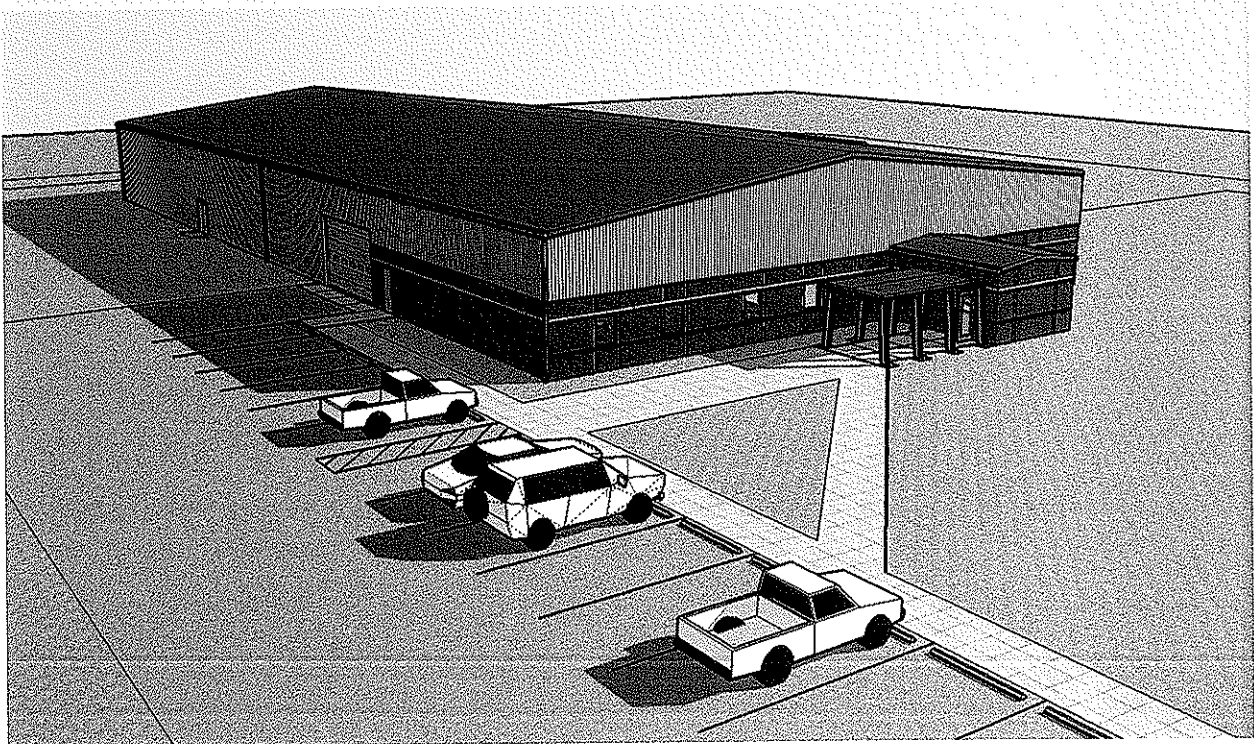
New Coal Mine Training Facility Rend Lake College



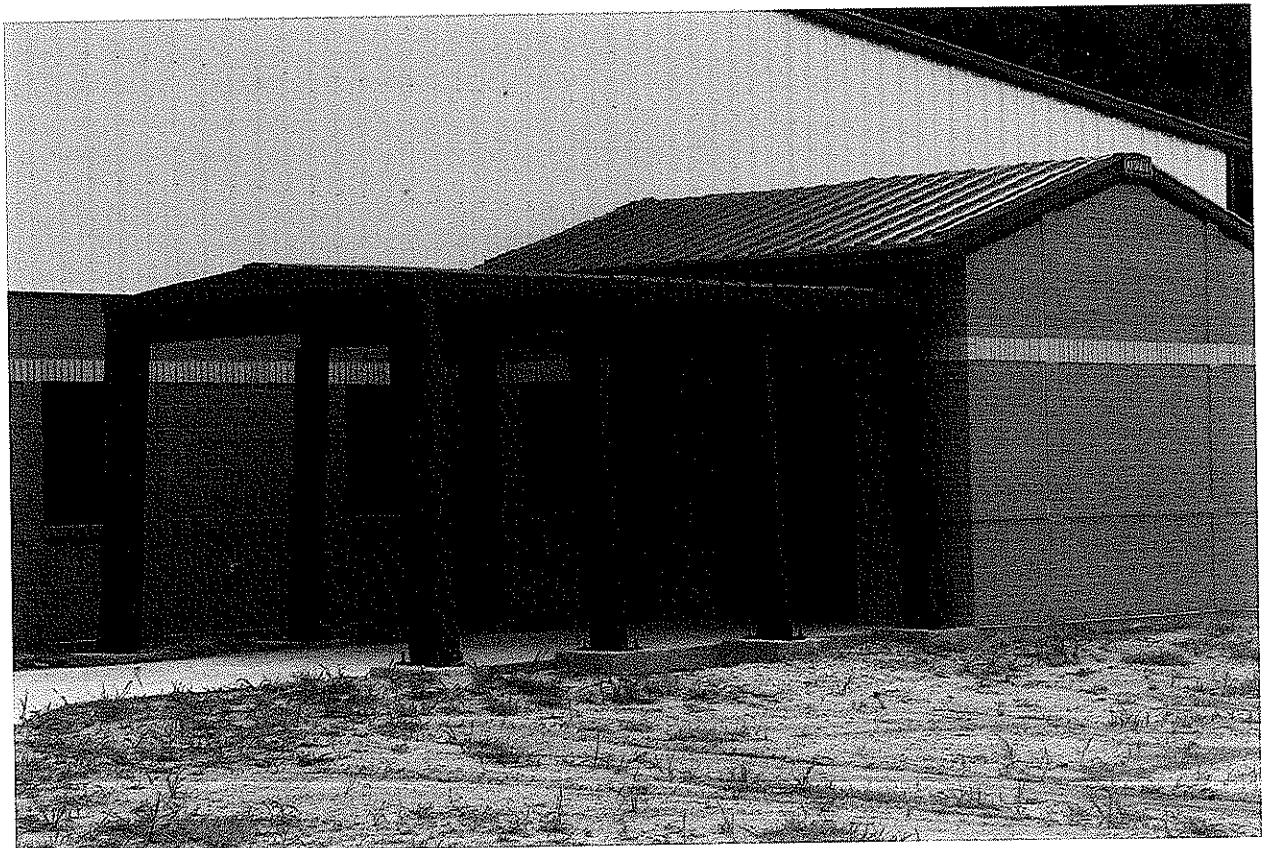
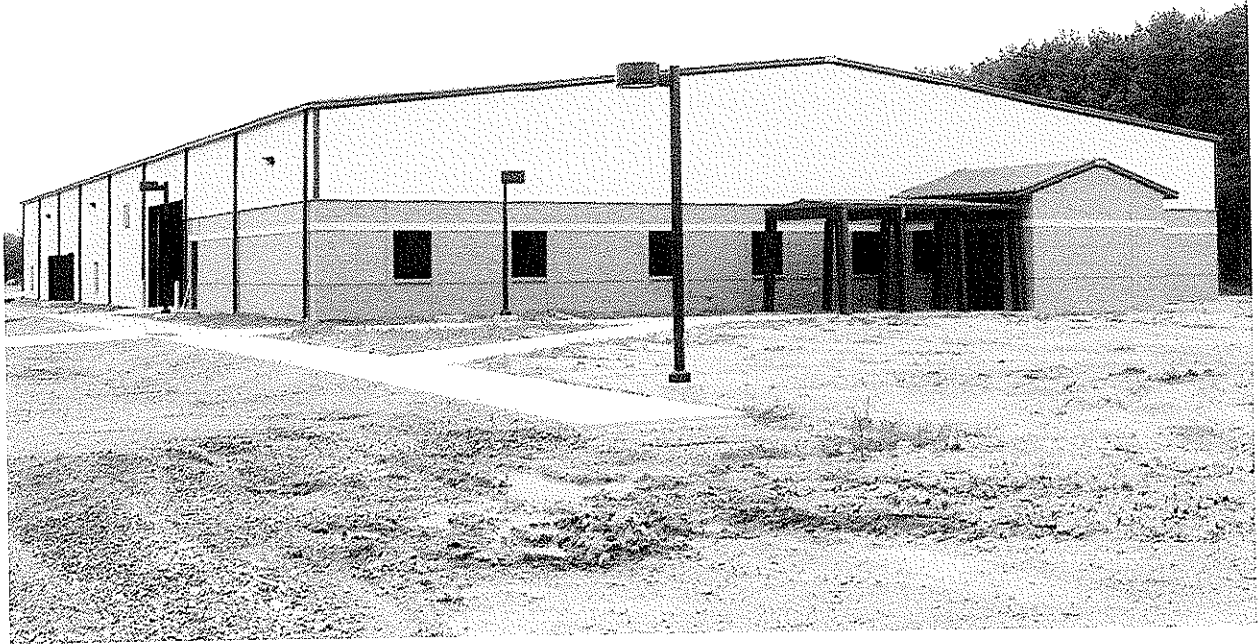
New Coal Mine Training Facility Rend Lake College



New Coal Mine Training Facility Rend Lake College



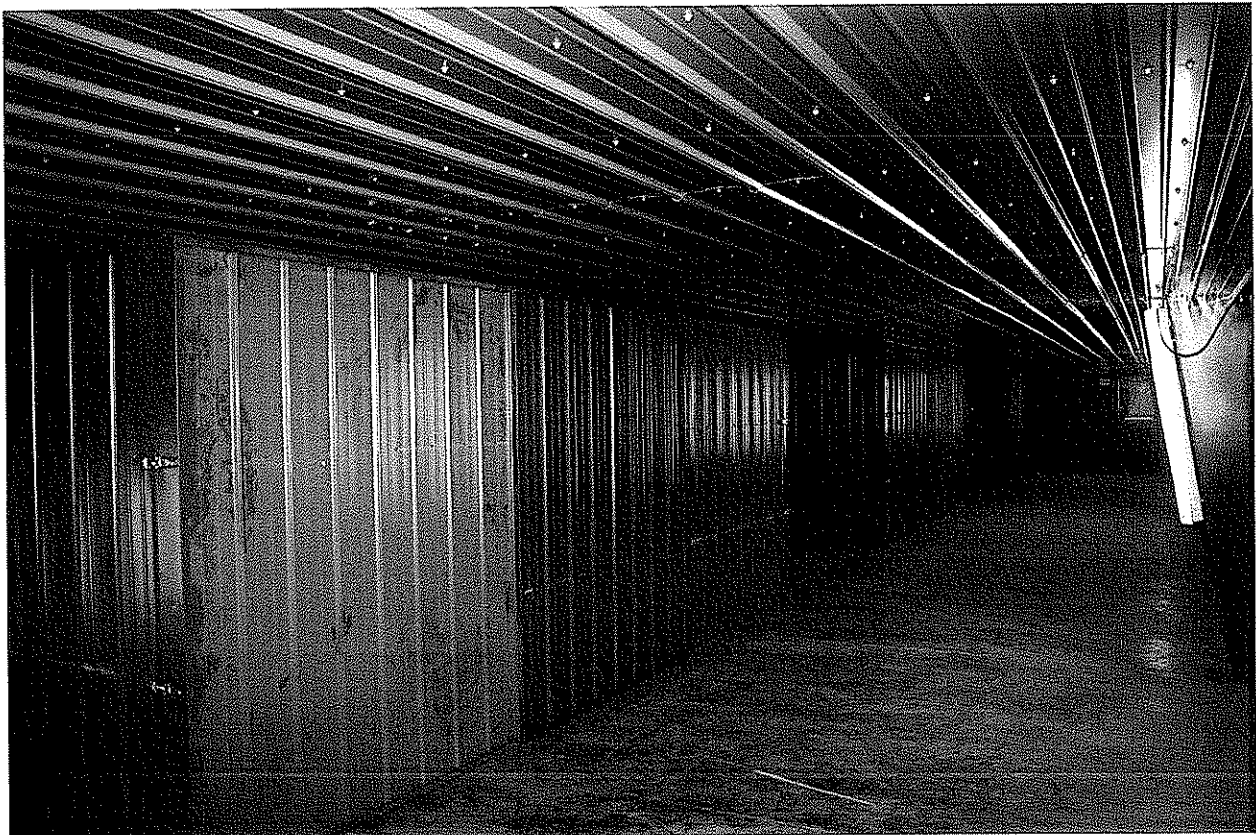
New Coal Mine Training Facility Rend Lake College



New Coal Mine Training Facility Rend Lake College



New Coal Mine Training Facility Rend Lake College





McKINLEY & ASSOCIATES
ARCHITECTS • ENGINEERS • INTERIOR DESIGN

Corporate Information

Firm History

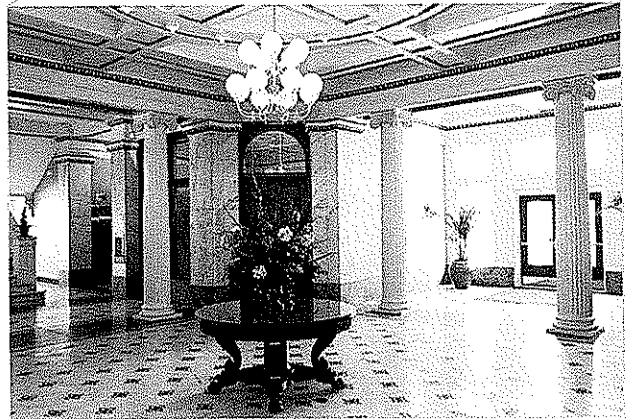
Founded in 1981, McKinley & Associates is a multi-discipline full service Architectural & Engineering firm, offering comprehensive professional services in architecture, engineering, interior design and construction administration. We have a broad range of skill and experience for projects involving educational, governmental, medical, commercial, religious and recreational operations. In January 2007, our firm established a partial Employee Stock Ownership Plan (ESOP), which is a benefit plan that gives our employees ownership of stock in our company. This is a contribution to the employee, not an employee purchase.

Number of Professionals

Total Size	40+
Architects & Interns	12
Engineers	6
Project Coordinators	4
Quality Control	2
Arch./Eng. Designers	11
Interior Designers	1
MIS	1
LEED APs	4

Date of Incorporation

1981 Wheeling, West Virginia



Locations



Headquarters

The Maxwell Centre
32 Twentieth Street - Suite 100
Wheeling, WV 26003
P: 304-233-0140
F: 304-233-4613

Satellite Office

Charleston Area Alliance Bldg
1116 Smith Street - Suite 406
Charleston, WV 25301
P: 304-340-4267
F: 304-340-4269

Satellite Office

Washington Trust Building
6 S. Main Street - Suite 1028
Washington, PA 15301
P: 724-223-8250
F: 724-223-8252

Firm Information

David McKinley, PE
Principal

Tim Mizer, PE, RA
Director of Operations

Gregg Dorfner, AIA, REFP
Director of Architecture

Brad Crow, PE
Director of Engineering

Credentials

McKinley & Associates is a member of the following organizations:
CEFPI, AWI, WVEDC, AIA, NFPA, NCARB, ASCE, ASPE, BOCA, ASHRAE, ACI International

Qualifications

○ Founded in 1981, McKinley & Associates has become generally accepted as the largest A/E firm in West Virginia. We provided design services for projects representing more than \$100,000,000 annually in construction value.

○ We have a broad range of skills and experience for projects involving medical, religious, educational, government agencies, manufacturers, commercial and recreational operations, as well as developers. In the past 10 years our firm has been awarded 4 prestigious AIA Honor and Merit Awards for our works.



○ McKinley & Associates has had extensive experience using team approach of bringing multiple firms together to collaborate by utilizing various skills in order to execute a successful project.

We understand that the success of training facility architecture is measured not just by architectural design alone, but also by the added considerations of all members of the design and development team. We also focus on the multi-purpose nature of these facilities. Often the occupants require living quarters and truck storage, private spaces and community outreach spaces, administrative and training spaces. Sometimes these facilities are designed and built in a manner that provides for maximum flexibility enabling a variety of program delivery options; versatile enough to offer various training and classes (like the MERD, NIMS, CPR, etc. classes that you request); and adaptable enough to react to world's ever-advancing technologies.



State Fire Training Academy



○ As West Virginia's largest A/E firm, our 40+ person Professional staff includes: Architects; Civil, Electrical, Plumbing & Fire/Life Safety, Mechanical and Structural Engineers; Interior Designers and Recognized Educational Facilities Planners. We have provided professional services in all 55 counties of West Virginia.

Sustainable "Green" Design

Buildings designed today will need to meet the demands of the future; McKinley & Associates identifies the changes necessary in the design of today and to meet these demands. This approach helps to retain the buildings' long-term profitability and value, which achieves the buildings' sustainability.

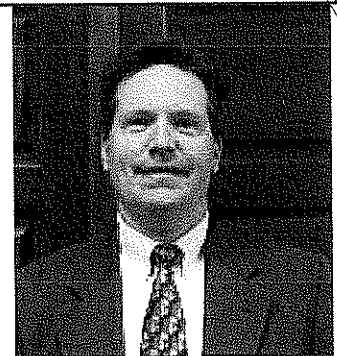
McKinley approaches ecological design from a business perspective, offering proactive solutions to complex problems such as indoor air quality, energy efficiency, resource depletion, and water quality. With commercial and institutional project experience, the McKinley Team can work alongside local designers to provide sustainable design and construction guidance. We also offer full architectural design services and guided design workshops on sustainable design issues.



McKinley and Associates has been honored to have won some very notable awards and to have received some very prestigious nominations over the years. We recently won a **West Virginia Chapter of the American Institute of Architects 2009 Merit Award for Sustainable Design** for our newly renovated Charleston Office; a project led by Thom Worlledge.



Thomas R. Worlledge, AIA, LEED AP, REFP has been a member of the USGBC since 2001. He was the first LEED Accredited professional in the state of West Virginia and has served on the committee that sets the standards for the international energy code.



LEED® (Leadership in Energy and Environmental Design) Green Building Rating System™ developed by the U.S. Green Building Council (USGBC) is the nationally accepted standard for the design, construction, and operation of high performance green buildings. LEED recognizes that sustainable design requires a team approach to achieve the desired goals. McKinley has LEED Accredited Professionals on staff along with our skilled architectural/engineering team to efficiently and cost effectively achieve certification under this standard or we can guide you through the process in order to develop sustainability goals specific to your project.

LEED and Net-Zero Energy

○ We have 4 LEED Accredited Professionals on staff (including the Project Manager for your proposed project) in both the architectural and engineering fields:

Michael S. Betsch, LEED AP

Bradley A. Crow, PE, LEED AP

Christina Schessler, AIA, LEED AP (Project Manager)

Thomas R. Worlledge, AIA, LEED AP, REFP

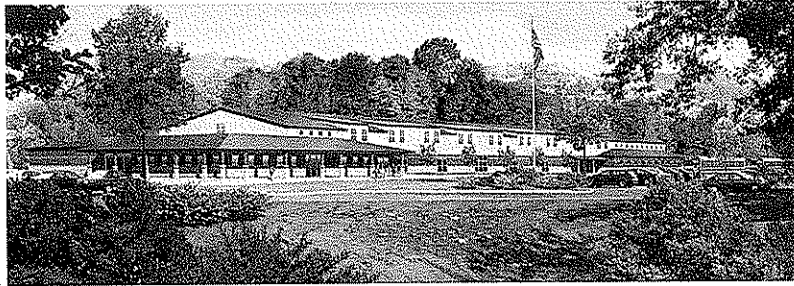
Our LEED Registered Projects are (LEED Rating System in parentheses):

Bellann in Oakhill, WV (LEED EB O&M)

Cameron Middle School/High School in Cameron, WV (LEED for Schools 2.0)

Hilltop Elementary School in Sherrard, WV (LEED for Schools 2.0)

West Virginia State Office Building in Logan, WV (LEED NC 2.2)



Hilltop Elementary School
in Sherrard, WV



West Virginia State Office Building in Logan, WV

All 4 of our LEED Registered Projects are either under construction or under design with potential LEED Certification (Bellann) or potential LEED Silver Certification (Cameron Middle School/High School, Hilltop Elementary School, and the West Virginia State Office Building).

○ Furthermore, besides our LEED experience, we are also currently designing H3 LLC's new office facility in Milton, WV as a **Net-Zero Energy Building**. If we achieve the goal, it will be **one of only 7 Net-Zero energy projects in the country!** Here is a summary on Net-Zero Energy Buildings:

"In general, a net-zero energy building produces as much energy as it uses over the course of a year. Net-zero energy buildings are very energy efficient. The remaining low energy needs are typically met with on-site renewable energy."

- source: U.S. Department of Energy website

McKinley & Associates' Charleston Office

Besides the paint, what makes this office "green"?

McKinley & Associates has been practicing "green" for years and has won awards for converting unused warehouse space into striking modern office buildings. One of the best ways to build green is to adapt an existing building; twenty percent of a building's energy consumption is embodied in the building's physical structure itself.

We recently won a **West Virginia Chapter of the American Institute of Architects 2009 Merit Award for Sustainable Design** for our newly renovated Charleston Office. The first thing you will notice is we left most of the existing structure exposed; this minimizes the amount of new materials required to define the space and allowed us to utilize some special features. For example, our centrally located conference room "Lantern" glows all day long from natural sunlight from above. This room's ceiling acts as a reflector, bouncing natural light throughout the space.

In addition to reusing the space, we also reused doors to make all of the desks, workstations and conference table. The top of the dividers is made from "Homosote", a board made from 100% recycled newspapers and covered with a fabric made from 100% recycled polyester. An office full of unique, durable office furniture for less than 1/10th of the cost of standard modular furniture is another advantage.

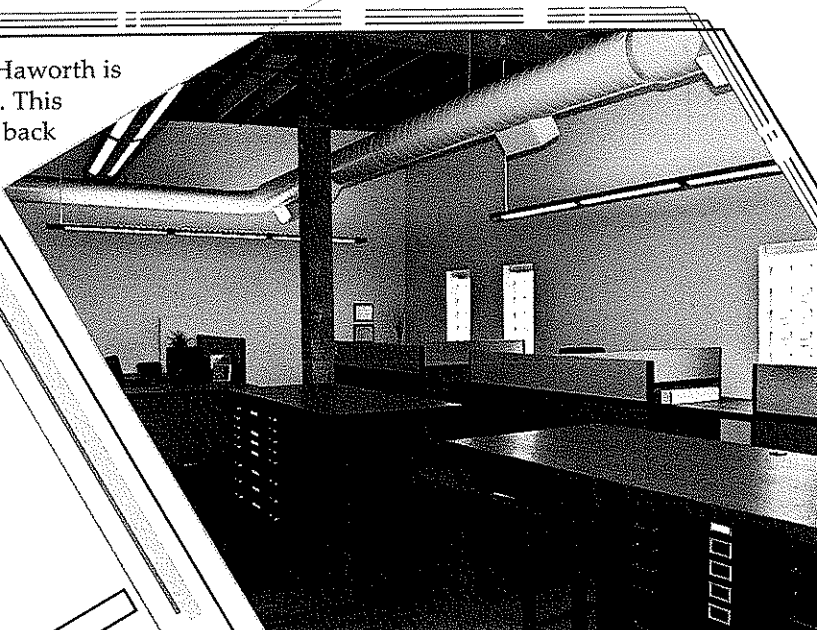


The office chairs are new, but the "Zody" chair by Haworth is the first chair to be Cradle to Cradle Gold Certified. This certification means that the manufacturer will take back the chair at the end of its useful life to disassemble and make a new chair, completing the cycle.

Yes, the paint on the walls is green, but it also has very low volatile organic compounds (VOC's) which keeps the air we breathe cleaner, and contains an anti-microbial which inhibits the growth of mold and mildew.



Conference Room Table



View showing workstations made from used doors

Most of the floor we chose to clean and seal with water based polyurethane, leaving the natural distressed state of the floor. The remainder of the space, we used a carpet tile by LEES which minimizes waste, has 35% recycled content and is Green Label Certified, meaning it meets stringent indoor air quality requirements.

The window blinds allow the control of glare while maintaining the view and minimizing heat gain. The direct/indirect lights are controllable so we can adjust the amount of electric lighting dependant on the amount of natural light coming in from the windows and the skylight. Even the bowl on the conference room table is recycled from the original fire bell that used to be on the exterior of the building.

Interior Design

Basic interior services begin with a strategy session designed to determine the owner's project requirements, timetable and budget.

The interviews will include analyzing space requirements, operating procedures, communication relationships and future needs. Inventory of existing conditions are used to develop accurate drawings and plans.

Application of current ADA and building codes will be applied to the developed plans for way finding (signage, directories, fire escape plan), furnishings and finishes. Attention to budget and maintenance is given in relationship to owner needs.

Construction documents required to detail the project include schedules, elevations, plans, presentation boards and specifications.

To maintain coordination, the follow up contract administration consists of submittal review, post construction evaluation and coordination of FF&E contracts when applicable.

Deb Blakeman, NCIDQ #015070, is knowledgeable and has experience with application of ADA regulations, ergonomic standards, state building code and industrial standards as they apply to interior furnishings, space planning and finishes. Improving comfort through lighting and ergonomically sound furnishings will increase employee performance. Efficient spaces aid in organization, and work flow, by decreasing communication barriers.



National Council for
Interior Design Qualification

West Virginia University State Fire Training Academy

○ Jackson's Mill, West Virginia

○ **Owner**

○ West Virginia University

○ **Size**

○ 25,752 square feet including
the 8,300 sq. ft of the Arena

○ **Construction Cost**

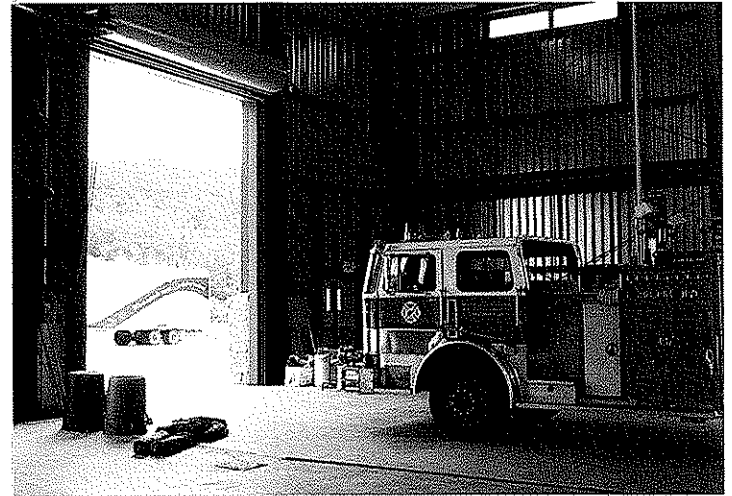
○ \$4.5 million

○ **Project Architects-Engineers**

○ McKinley & Associates

○ **Project Architect**

○ Christina Schessler, AIA



The West Virginia State Fire Training Academy is located near the Jackson's Mill 4-H Campus in Lewis County, WV. Because of the proximity to this state historic site, the design directive given by the Owner was to blend into the rural community. The exterior brings to mind a barn set into the sloping terrain in an agricultural setting.

There are two major components to the building; the first of these is the Classroom Wing. It contains a distance learning facility, a conference room, plus two other connected instructional spaces that allow for a range of

class sizes. The administrative area is private but easily accessible from all classrooms.

The second component, the Arena, is an all-weather interior training facility. The scale of this structure, having a clear interior height greater than 30', allows the full extension of authentic fire training apparatus for various types of hands-on programs. A custom metal building skeleton with a board & batten metal skin was designed. The siding is representative of rural, vertical barn siding and serves as an integrating element throughout the large complex.



WV Army National Guard Mountaineer Challenge Academy

Kingwood, West Virginia

Owner

WV Army National Guard

Size

54,800 SF approx.

Construction Cost

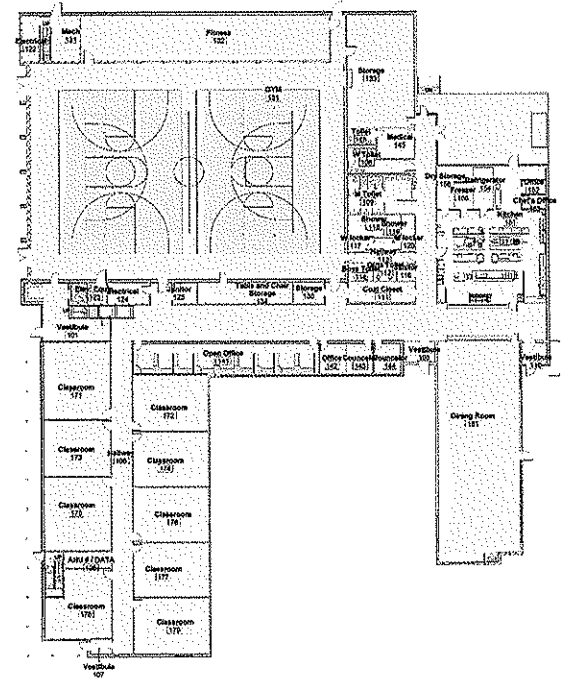
\$12.7 million

Project Architect

Hamid Noughani

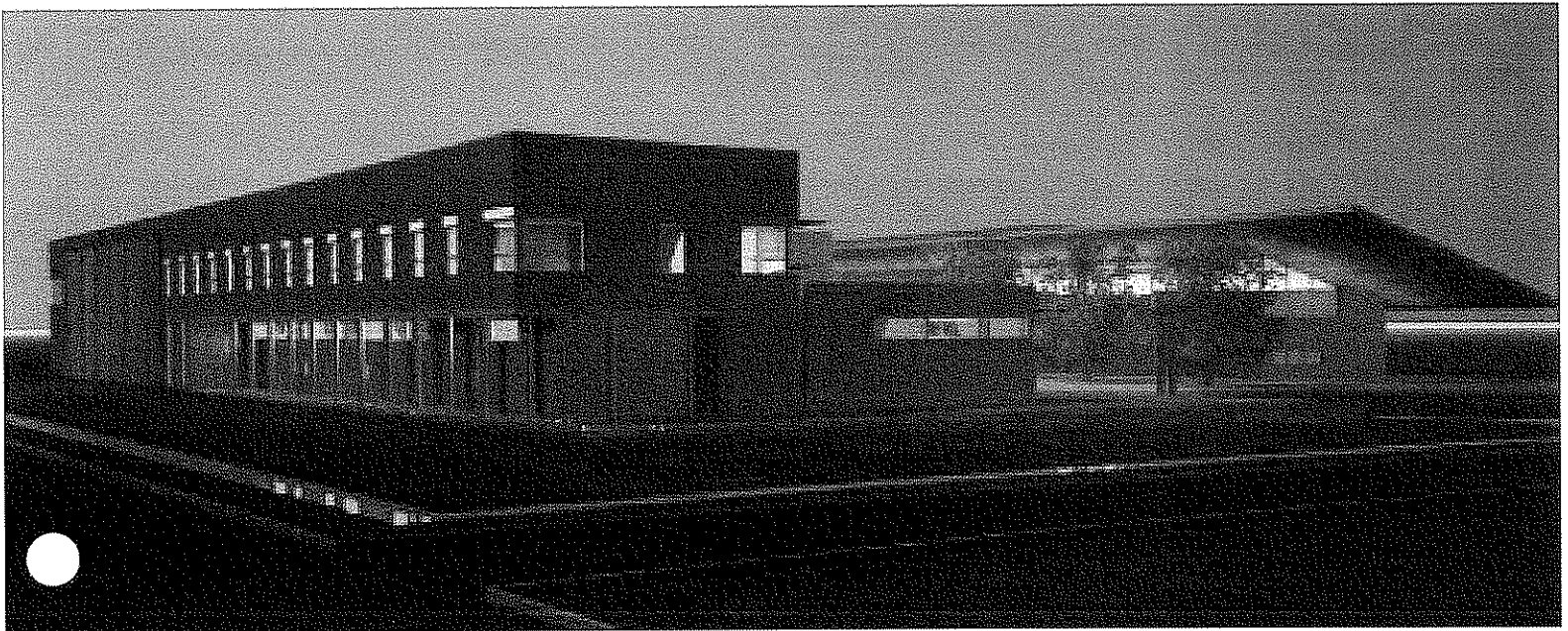
Project Engineers

McKinley & Associates



Currently under construction is the Mountaineer Challenge Academy, located at Camp Dawson in Kingwood, WV. Our involvement in this project includes MEP engineering and contract administration. The building program includes staff offices, counselors offices, support staff areas and a medical assistance space to accommodate the needs of the student residents.

The residents require classrooms, an exercise area and a full service kitchen with dining facility; these spaces will house 160 young adults living at Camp Dawson as part of the Challenge Academy. The gymnasium will accommodate physical activity, weight training and serves as the central hub of the complex. Drill exercises and formations as well as graduation ceremonies will be held here.



WV Army National Guard Multi-Purpose Building

Kingwood, West Virginia

Owner

WV Army National Guard

Size

55,000 SF approx.

Project Architect

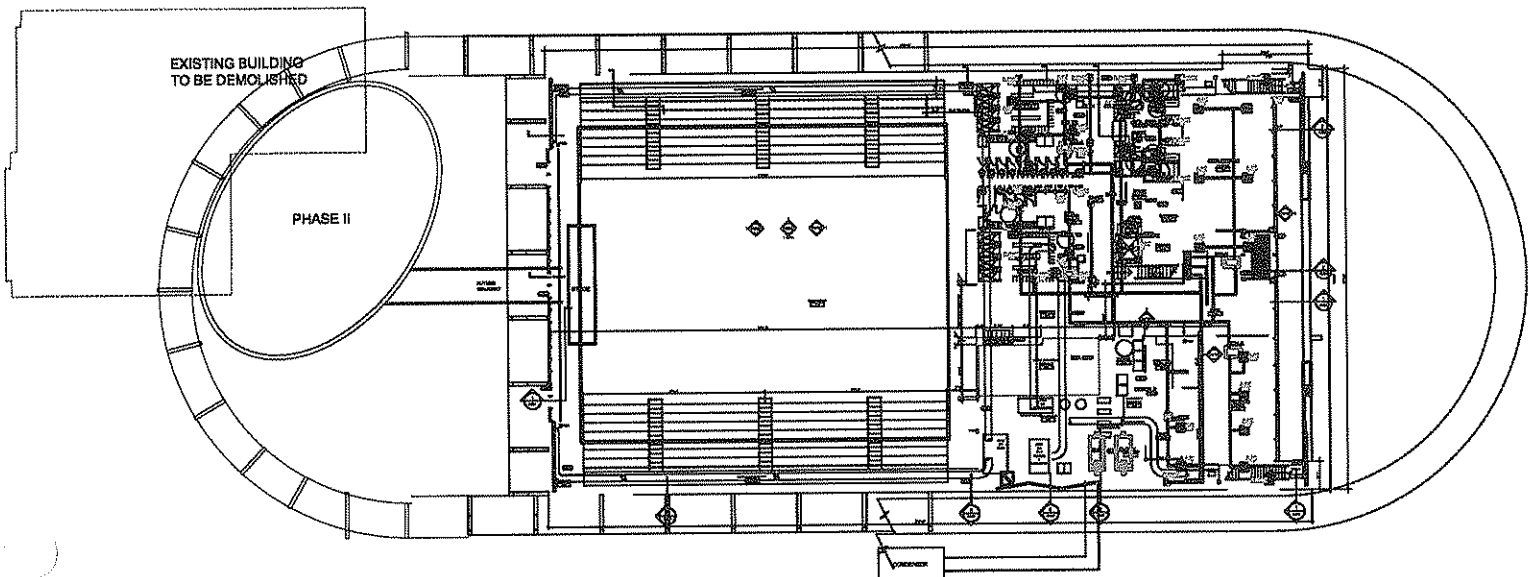
Hamid Noughani

Project Engineers

McKinley & Associates

The mission of the Multi-Purpose Building at Camp Dawson is a permanent multi-use masonry steel-framed structure with supporting facilities for military units of the West Virginia Army National Guard. The facility is located in Kingwood, Preston County, WV. The building's design was completed in 2009.

The facility houses offices, a conference room, a locker room, shower facilities, a physical fitness area, and a large open space (gymnasium). The facility and grounds include parking, attached and detached storage, landscaping, security lighting and fencing, and a unique entry. This project was designed with energy recovery systems.



Wheeling Jesuit University NASA's Classroom of the Future

Wheeling, West Virginia

The Classroom of the Future in the Erma Ora Byrd Center for Educational Technologies serves as NASA's principal research and development center for education technologies. The building includes a museum, space control room for students to interact, classrooms, as well as offices. For this project, McKinley & Associates teamed up with BCJ out of Pittsburgh, Pennsylvania.

Owner

Wheeling Jesuit University

Size

48,000 SF approx.

Construction Cost

\$9 million

Project Architects-Engineers

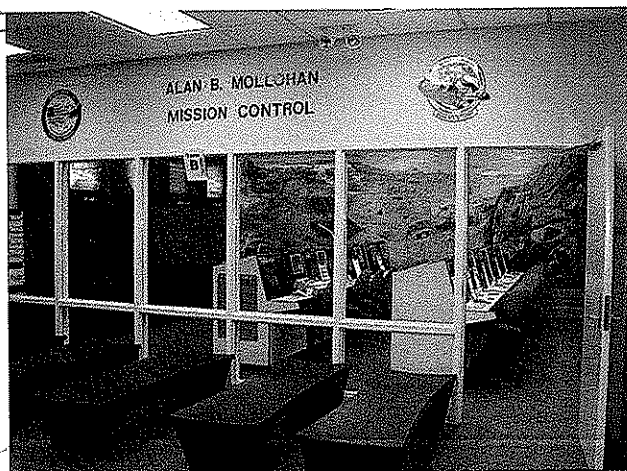
Bohlin, Cywinski, Jackson (Pittsburgh, PA)

Project Architect

Charlie Moore, AIA

Contractor

Colaianni Construction



Logan County Schools

Chapmanville Regional High School

◦ Chapmanville, West Virginia

◦ Owner

◦ Logan County Schools

◦ Size

◦ 138,500 SF approx.

◦ Construction Cost

◦ \$21 million

◦ Architects-Engineers

◦ McKinley & Associates

◦ Project Architect

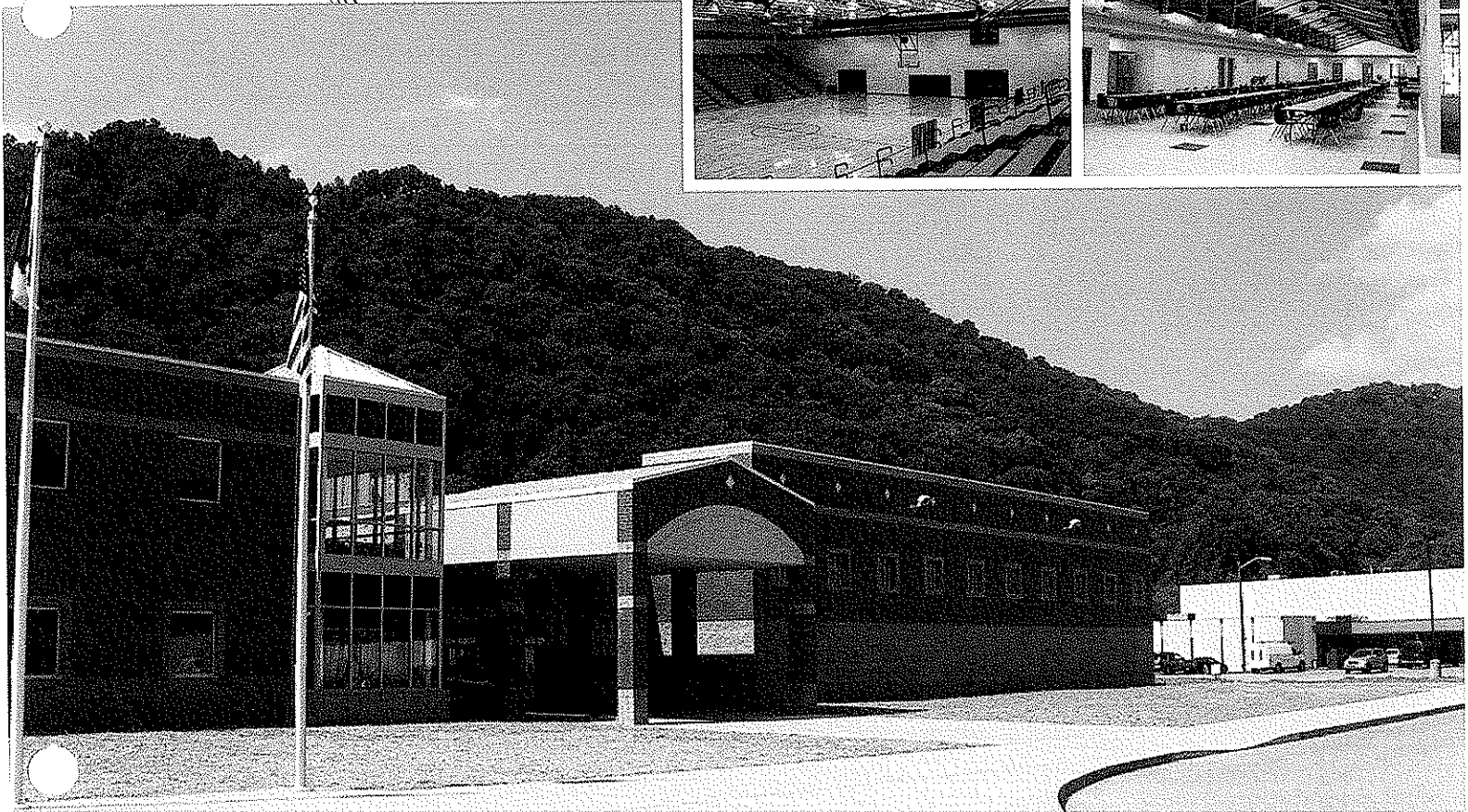
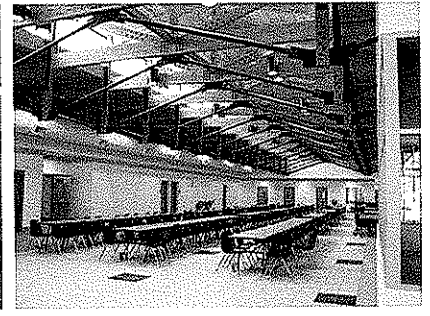
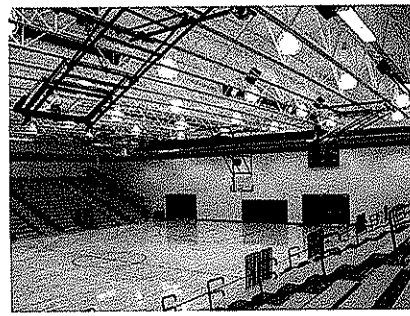
◦ Gregg Dorfner, AIA

◦ Contractors

◦ City-Window & Construction Co.

Recently completed construction of a state of the art new high school that houses the latest technology to provide students with excellent education. The school just opened for the 2007-2008 school year, and it accommodates over 700 students that attend from all over Logan County.

We were honored to have found out that this was the most cost efficient new school design in the past four years in West Virginia, according to the SBA! The final cost of this project was only \$158.41 per square foot.



West Virginia University Institute of Technology: Maclin Hall

◦ Montgomery, West Virginia

◦ **Owner**

◦ WV Institute of Technology
West Virginia University

◦ **Size**

◦ 53,900 SF approx.

◦ **Construction Cost**

◦ \$6 million

◦ **Project Architects-Engineers**

◦ McKinley & Associates

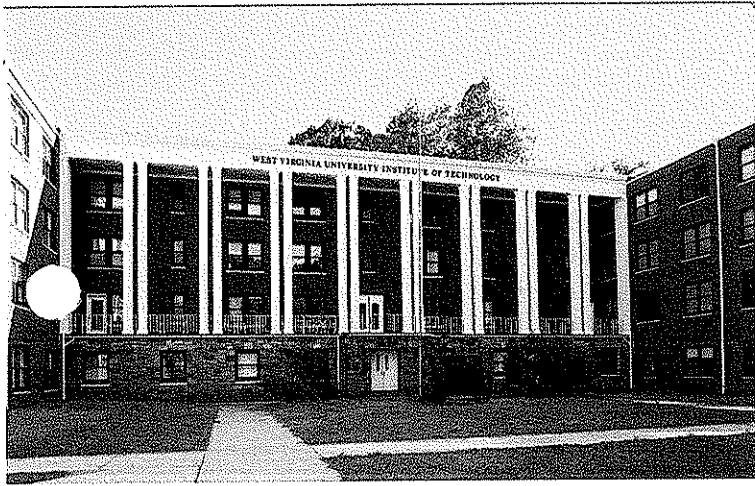
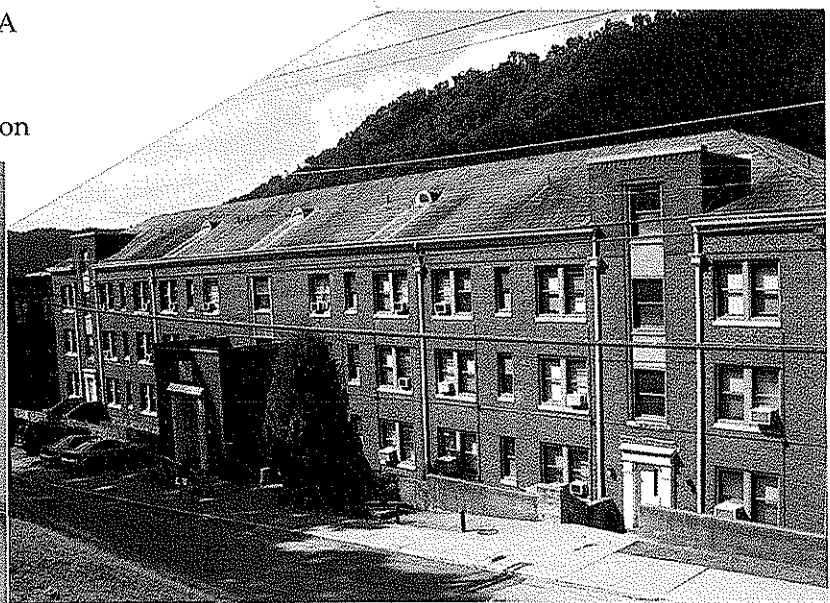
◦ **Project Architect**

◦ Thomas R. Worledge, AIA

◦ **Contractors**

◦ Wiseman Construction

A comprehensive renovation to the historic Maclin Hall dormitory on the campus of WV Tech in Montgomery, WV. The project was designed in less than a month, and included redesigning the shared areas, new finishes, new roof, and restoration of the exterior. We also replaced the entire HVAC, lighting, fire protection, data systems and renovated the shared restrooms.



This project was fast-tracked throughout the summer of 2007, so the building could be occupied by students for the start of the 2007-2008 school year.

Management & Staffing Capabilities

In the past 29 years we have extensive experience with similar projects. The technical depth of our professional staff indicates that this project can be accomplished without overloading our group or computer graphics systems. Our project team has been chosen for this project and they are available to dedicate the necessary time to this effort. We are available to start immediately upon our being selected. We can and will perform for you on time.

This team is an "In-House" team that works together everyday and has done most of the projects here as a group. These team members have been working up to fourteen years together at McKinley & Associates.

The resumes are found in this 'Staff and Resources' tab, and a Flow Chart of how we structured our team is included on the following page.

The areas of expertise for each member coincides with his/her Role in this Contract. With our large staff we have the ability to have registered architects and engineers designing within their area of expertise. HVAC design by a Mechanical Engineer, electrical/lighting design by an Electrical Engineer, fire and life safety design by a Fire Protection Engineer. The Professional Engineers (PE) are not only "In-House," we also have depth in numbers of each discipline in our firm. Our Architectural staff provides you with an exceptionally talented group that will walk you through your project to completion. Day by day, side-by-side, our architects and engineers provide a daily cohesiveness to your project.

We hold weekly meetings to discuss your project, the budget, schedule and quality assurance. We provide Documented Minutes of all of our meetings and encourage the Owner to participate in these meetings.

Our Project Coordinators have an extra responsibility than what most firms' Construction Administrators have; our Project Coordinators are a part of the design process from Day 1 (they are not thrown into the project only when construction starts; they are here from the beginning), so they know the ins-and-outs of the project. Our Project Coordinators have an important role as being the liaison between the Owner, Contractor, and Architect. The primary objective of the Project Coordination services is to ensure completion of work the way the client wants it - as scheduled and as budgeted. Our Project Coordinators evaluate the quality of the work to verify that it meets the level required by clients; in addition, they monitor the contractor's progress to ensure that they are following the Construction Documents. They observe the construction progress, are responsible for all construction meetings and minutes, and they verify pay application and change orders. The Project Coordinator is typically on-site once every two weeks, but we can provide additional on-site representation if requested.

Our Eleven Month Walk-Through is a process where our professionals return to your facility eleven months after the project is completed. At that time they review all the work that was completed and check all warranties. We are making sure all of the covered work is in order and that the warranties do not expire with equipment or product not working properly. We have been doing this for 12 years which has now been adopted as an AIA 101 Standard. We also conduct Post Occupancy Evaluations with the Owner to find out how well we matched the Owners' needs.

We also have an Interior Design department. Basic interior design services include determining the owner's project requirements, timetable and budget; analyzing space requirements; operating procedures; communication relationships; way finding (signage, directories, fire escape plan); furnishings and finishes; creating an inventory of existing conditions and determining future needs.

Resources

Our firm utilizes a state of the art computer system, which allows all professionals to access the central computer server based in the Wheeling office. This system is operated by a full time MIS Director, who is responsible for daily backups and maintains the system integrity as to security and working efficiency. We are always connected to the internet.

Here is a partial list of our software we use:

ACT! 2000
Adobe Acrobat 9.0 Professional
Adobe Creative Suite 3 Design Premium
AIA Contract Documents Electronic Format
Architectural Graphic Standards V 3.0
ASCE Standard
Autodesk Autocad Architecture 2010
Autodesk Autocad MEP 2010
Autodesk Autocad Civil 3D 2010
Carmel Design Build 4.0
Climate Consultant 3
COMcheck 3.2.1
Corel Draw 12
Cummins Power Suite
Deltak Vision
Dreamweaver
EELabs 3.1
Enercalc 5.6
eQUEST 2.02
HAP 4.34
Lite Pro
Macromedia Freehand 8
Masterspec
Microsoft Office 2007
Ram Advantage 6.0
Storm Water detention/Retention Design Tool
Sweet's
USPS Building Design Standards

The technical depth of our professional staff indicates that this project can be accomplished without overloading our group or computer graphics systems. If our project team is chosen for this project; they are available to dedicate the necessary time to this effort. We are available to start immediately upon our being selected, and will provide the necessary hours to complete your project on time.

Throughout the years we have worked on many "fast-track" projects, achieving success by maintaining time and cost management, quality control and excellent communication amongst the client and contractors.

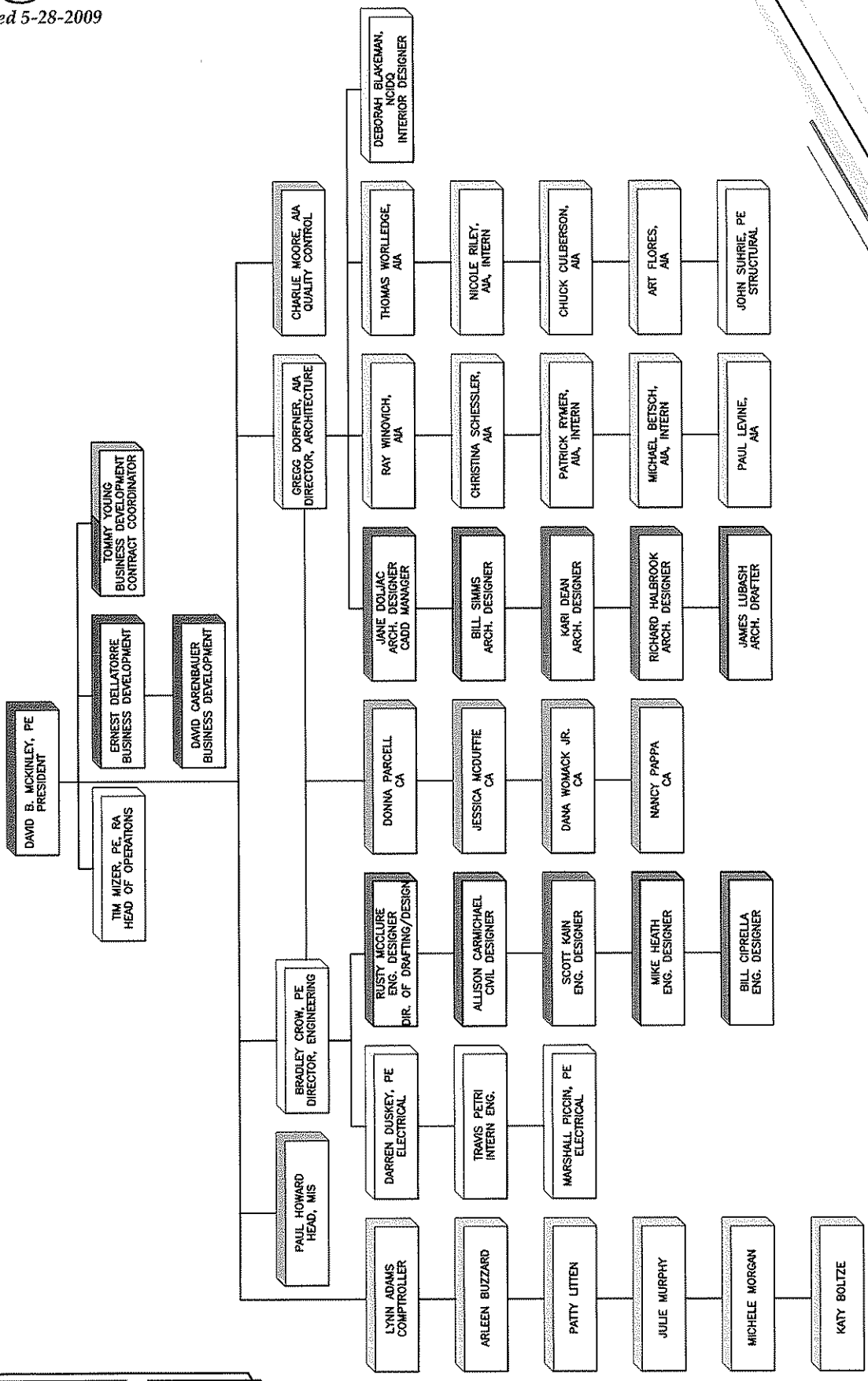
In 2006, we designed an extensive (\$5M) renovation of Maclin Hall, a historic 53,900 SF dormitory building on the campus of WV Tech, in less than a month. The project included redesigning the shared areas, new finishes, new roof, and restoration of the exterior. We also replaced the entire HVAC, lighting, fire protection, data systems and renovated the shared restrooms. WVU was very pleased with the results.

When TeleTech needed to move into a new call center in six months; McKinley & Associates got the call. We completed the design in record time and the building was completed on schedule and on budget. Our design is now the model the company uses for other new call centers.

We are confident that our design team can meet your budget and schedule.

Organization Chart

Revised 5-28-2009



Design Team

○ HST1012 - Mine Rescue & Training Facility

○ Project Managers:

Christina Schessler, AIA, LEED AP ■■■

Mark B. Dillon, AIA ■■

○ Architectural Team

○ Christina Schessler, AIA, LEED AP ■■■

○ Thomas R. Worledge, AIA, LEED AP, REFP ■■■

○ Michael S. Betsch, LEED AP ■■■

○ Mark B. Dillon, AIA ■■

○ Engineering Team

○ Tim E. Mizer, PE, RA ■■■

Architectural Engineer

○ Bradley A. Crow, PE, LEED AP ■■■

Mechanical Engineer

○ Darren S. Duskey, PE ■■■

Electrical Engineer

○ Mine Training Facility Consultant

○ Eggemeyer Associates Architects, Inc. ■■

○ "Green" (LEED) Design

○ Christina Schessler, AIA, LEED AP ■■■

Architectural Attributes

○ Thomas R. Worledge, AIA, LEED AP, REFP ■■■

Architectural Attributes

○ Michael S. Betsch, LEED AP ■■■

Architectural Attributes

○ Bradley A. Crow, PE, LEED AP ■■■

Engineering Attributes

○ Interior Designer

○ Deb Blakeman, NCIDQ #015070 ■■■

○ Project Coordinator

○ Dana E. Womack, Jr. ■■■

Christina Schessler, AIA, LEED AP

Architect / LEED Accredited Professional



Education:

- The Pennsylvania State University
Bachelor of Architecture - 1986

Professional Affiliations and Registrations:

- Registered Architect in:
West Virginia
Pennsylvania
Ohio
- NCARB Certificate - 2005
- LEED® Accredited Professional
- Member:
American Institute of Architects
City of Wheeling - Building Codes
Board of Appeals
- Former Member, Board of Director,
& Treasurer:
The Midwife Center for Birth &
Women's Health / Pittsburgh, PA

Professional Employment:

- McKinley & Associates
Wheeling, WV (2004 to present)
- MacLachlan, Cornelius & Filoni
Architects
Pittsburgh, PA (1999-2004)
- Perfido Weiskopf Architects
Pittsburgh, PA (1996-1999)
- T.L. Cox & Associates
Beaver, PA (1990-1996)
- Valentour English Bodnar Architects
Mt. Lebanon, PA (1989-1990)
- Kenny Williams & Williams Building
Diagnostics
Maple Glen, PA (1988)

Summary of Experience:

- Ms. Schessler has 20 years of experience working one on one with a wide range of educational, professional, liturgical, medical and commercial clients. She is adept at developing space and utilization programs with clients who are unfamiliar with the architectural design process. Christina can provide direction to Clients who wish to develop a design and document program that is intended to achieve LEED Certification. Her skills include construction document preparation, consultant coordination and construction administration experience. As a volunteer and as a professional, Ms. Schessler has developed several projects for non-profit agencies on limited budgets.

Notable Professional Experiences:

- Project Architect**
 - WVU State Fire Training Academy / Jackson's Mill, WV
 - Wheeling Island Fire Station
 - Bethany College Health and Wellness Center, renovation
 - University of the South, Gaylor Hall Additions and Renovation
 - University of Pittsburgh, Blaisdell Hall, New Theater and Arts Building
 - Braxton County Senior Citizen Center
 - New Hope Youth Home addition / Beaver, PA
 - City Theatre, Storefront Restoration / Pittsburgh, PA
 - The Beaver County Medical Center, Women's Health Center
 - The Beaver County Medical Center, Rheumatology Expansion
 - Passavant Memorial Homes, Kohler Hall Renovation
 - Grant County Schools / Multiple Projects
- Project Designer**
 - United Cerebral Palsy Center, renovations and additions / Washington, PA (*Non-Profit*)
 - Children's Home of Pittsburgh, interior renovations (*Non-Profit*)
 - St. Clair Hospital, Woman's Breast Cancer Health Clinic
- Architect**
 - Master Plan study for DePaul Institute for the hearing impaired
 - Indiana University of PA, Uhler Hall Additions and Renovations
 - The Midwife Center for Birth & Women's Health, Birthing Suites / Pittsburgh, PA (*Non-Profit*)

Mark B. Dillon, AIA

President/CEO

EDUCATION:

Southern Illinois University at Carbondale
Associate/1991/Architectural Technology
B.S./1993/Advanced Technical Studies

PROFESSIONAL REGISTRATIONS

ARCHITECT:

Illinois 001-017877

ASBESTOS:

Illinois Dept. of Public Health; Asbestos Project Designer 100-11375

EXPERTISE/SPECIAL SKILLS:

Skilled and knowledgeable in all aspects of construction details. Experienced in Project Management from design phase to close out phase. Has excellent communication skills, and ability to resolve any issue that may arise during a project.

RELEVANT EXPERIENCE:

Mark has more than fifteen years experience and has served on projects at Carbondale Community High School, Vienna Correctional Center, the DuQuoin Correctional Boot Camp, Southern Illinois University at Carbondale, Rend Lake College and numerous other State facilities. He has served as Project Architect for projects at Southern Illinois University at Carbondale, Rend Lake College, the Illinois Masonic Children's Home in Murphysboro, construction of Anna City Hall and the Anna Public Works Facility, the New Coal Mine Training Facility at Rend Lake College, the Plumbers and Pipefitters Training Facility in Murphysboro, Illinois, & numerous HUD & State of Illinois projects involving numerous types of construction. He served as Project Manager/Project Architect on several projects involving historical buildings such as the Metropolis City Hall, the Johnson County Courthouse, a feasibility study for the Laclede Hotel in Murphysboro, Illinois, renovations at the Fort De Chartres Historic Site in Prairie Du Rocher, Illinois, Our Lady of Mt. Carmel Catholic Church in Herrin, Illinois and an addition to the Murphysboro Event Center in Murphysboro, Illinois. He is involved in every project at EAA and oversees the quality control of documentation and projects.

PROFESSIONAL AFFILIATIONS:

Associate Member, NAHRO
Member, American Institute of Architects
Member, AIA Illinois
Member, AIA Southern Illinois - President 2003/Past President 2004
Member, Association of Licensed Architects

GOVERNMENTAL AND COMMUNITY SERVICE AFFILIATIONS:

Board Member, Our Lady of Mt. Carmel Catholic School, Herrin, IL

Thomas R. Worledge, AIA, LEED AP, REFP

Architect / LEED Accredited Professional
Charleston Office Area Manager



Education:

- Virginia Polytechnic Inst. & State University
Master of Architecture - 1992
- Fairmont State College, School of Technology
B.S. Architectural Eng. Tech. - 1983

Professional Affiliations and Registrations:

- Registered Architect in:
West Virginia
Virginia
Pennsylvania
Ohio
- NCARB Certificate #48600
- President:
West Virginia Society of Architects
- Member:
The American Institute of Architects
US Green Building Council
Sustainable Building Industries Council
Recognized Educational Facility Professional (REFP)
- Former voting member:
ASHRAE 90.1 International Energy Code Committee

Professional Employment:

- McKinley & Associates
Manager, Charleston Office
Charleston, WV (2005 to present)
- Proactive Architecture Inc.
President
Charleston, WV (1999-2005)
- Silling Associates Inc.
Vice President
Charleston, WV (1992-1999)
- TAG Architects
Charleston, WV (1985-1990)
- Alpha Associates Inc.
Morgantown, WV (1983-1985)

Summary of Experience:

Thomas R. Worledge is a skilled Architect with over 20 years experience who has received state wide design awards (including a West Virginia Chapter of the American Institute of Architects 2009 Merit Award in Sustainable Design) and placed in national design competitions. As a recognized sustainable design expert, he has had articles published in state and national trade publications, spoken before architectural students, ASHRAE chapters, and business groups on sustainable design issues and was also a featured speaker at the 2001 Governor's Conference on the Environment and the 2001 Sustainable fair. He also teaches other design professionals in the art of High Performance School design, as a professional trainer for the Sustainable Building Industries Council. Mr. Worledge has been involved in design of projects ranging in from a small home additions (one of which was featured on HGTV's New Spaces Show) to multimillion dollar projects such as Capitol High School, Mount Olive Correctional Center and Major Additions to three of the States VA Hospitals. Mr. Worledge is a former voting member of the ASHRAE 90.1 Standards committee that forms the basis of the International Energy Code and is the president of the state chapter of the AIA.

Notable Professional Achievements:

- High Performance Design for High Performance Companies
Published in *Executive Source*, Fall 2002
- Watt's Next? The Coming Energy Revolution
Published in *West Virginia Executive*, Winter 2004
- The Design of Sustainable Environments
Featured Speaker, 1994 National Convention of Architectural Students
- Daylighting and HVAC Design
Featured Speaker, ASHRAE West Virginia Chapter
- Rebuilding the Future: Recycling and Reuse of Building Materials
Featured Speaker, 2001 Governor's Conference on the environment

Michael S. Betsch, LEED AP

LEED Accredited Professional / Architectural Designer



Education:

- Drexel University (Philadelphia, PA)
Bachelor of Architecture - 2007
- Delaware Technical and
Community College - 2000
Associate, Architectural Engineering

Professional Affiliations and Registrations:

- U.S. Green Building Council
- LEED® Accredited Professional

Professional Employment:

- McKinley & Associates
Wheeling, WV (2008 to present)
- Stantec Architecture
Wilmington, DE; New York; and
Vancouver (2007-2008)
- The Breckstone Group
Wilmington, DE (2006-2007)
- Staikos Associates Architects
Wilmington, DE (2000-2006)

Summary of Experience:

Mr. Betsch's project experience includes new construction as well as renovation of existing structures. Projects types include government, liturgical, private high security, educational, office, retail, institutional, residential, and historic preservation. Mr. Betsch has proven success working with highly intricate project delivery scenarios such as phased renovations to active mission critical command and control centers, and modernization of highly publicized actively used government historical centers such as New York City's City Hall. With over 8 years of experience Mr. Betsch has had the opportunity to work for a varied group of clients in the US, Canada, and the Middle East. These clients have included Foreign Governments, Integrated Defense Providers, State and local governments, Historic Societies, Educational Providers, Public and Private Corporations, Condo Associations, and Private Home owners. As a LEED® Accredited Professional Mr. Betsch works to bring sustainable design solutions to work for the benefit of his clients and the community.

Notable Professional Experiences:

- **Burnaby Mountain Sports and Medicine Center** / *Simon Fraser University in Vancouver, British Columbia*
Design charette for a new facility which includes a roof top soccer field, clinics, offices, a field house, retail, grocery store, and aquatic center with an Olympic sized swimming pool
- **Pelleport Wellness Center** / *Wilmington, DE*
Schematic and design development for adaptive use of a historic carriage house for use as a wellness center with aquatic therapy suite
- **Montgomery County Emergency Operations Center** / *Montgomery County, MD*
Programming, planning, design and contract documents for a 10,500 SF multimedia operations theater for 45 responders with support spaces, media briefing, etc.
- **Montgomery County Emergency Communications Center**
Programming, master planning, design and preparation of contract documents for a 57,000 SF emergency communications facility
- **Arkansas Emergency Operations Center** / *Little Rock, AR*
Programming, master planning, and design development documentation for this statewide emergency operations center
- **New York City Hall** / *New York, NY*
General restoration and architectural coordination for extensive mechanical renovations
- **Beth Shalom** / *Wilmington, DE*
Major renovation and expansion of synagogue



Tim E. Mizer, PE, RA

Director of Operations
Architectural Engineer / Architect

Education:

- Kansas State University
B.S. Architectural Engineering - 1983
- University of Cincinnati
Architecture

Professional Affiliations and Registrations:

- Registered Engineering in:
West Virginia
Ohio
- Registered Architect in:
Ohio

Professional Employment:

- McKinley & Associates
Director of Operations
and Architect / Engineer
Wheeling, WV (1995 to present)
- M.C.C. Engineering
Director of Design
Columbus, Ohio (1988-1995)
- Schooley Caldwell and Associates
Electrical & Mechanical Design
Columbus, Ohio (1986-1988)
- Mizer Design
Free Lance Architectural
Engineering Design
Columbus, Ohio (1985-1986)
- Envirotek, Inc.
Electrical & Mechanical Design
and Drafting
Raleigh, NC (1984-1985)

Summary of Experience:

○ A very talented and unique professional who is registered both in engineering and architecture. Tim's background as an Architectural Engineer has provided him with a total understanding of the engineering components which provides a cohesiveness on all of his projects. Being also a Registered Architect, he understands designing to allow for the engineering disciplines, including his responsibility of project management and design. Mr. Mizer is the Head of Operations for the company.

Notable Professional Experiences:

- **Site Engineer**
WVU State Fire Training Academy-new building & site
- **Design Engineer**
WV Army Nat'l Guard - Mountaineer Challenge Academy
- **Site Engineer**
Hancock County Middle School-new building/site
- **Design Engineer**
West Virginia State Police - new detachments in Morgantown, Wheeling and Berkeley.
Also surveyed, reviewed, projected, budgeted, and documented 72 police facilities statewide
- **Design Engineer**
Barnesville (OH) Schools - new buildings
- **Project Architect / Engineer**
Hope VI Phase II-new building development
- **Design Engineer**
Union Local Schools
- **Project Coordinator**
Marshall County Schools (38+ mil.)
- **Design Architect / Engineer**
USPS - designed over 100 Post Offices throughout West Virginia for ADA compliance
USPS Clarksburg MPO Renovation to historic bldg.
Work also included HVAC and cooling tower
- **Design Engineer**
Wheeling Island Casino - various projects

Bradley A. Crow, PE, LEED AP

Director of Engineering Services

Mechanical Engineer / LEED Accredited Professional



Education:

- West Virginia Institute of Technology
B.S. Mechanical Engineering

Professional Affiliations and Registrations:

- Registered Engineering in:
West Virginia
Pennsylvania
- LEED® Accredited Professional

Professional Employment:

- McKinley & Associates
Mechanical Engineer
Wheeling, WV (2005 to present)
- BDA Engineering
Design Engineer
Pittsburgh, PA (2001–2005)
- Tri-State Roofing
Sales Engineer
Davisville, WV (2000–2001)
- Ravenswood Polymers
Site Engineer
Ravenswood, WV (1997–2000)

Summary of Experience:

- Mr. Crow is an exciting and innovative Engineer who is on the cutting edge of his profession, being both a Professional Engineer as well as a LEED® Accredited Professional. His passion for his work translates into incredible design for his clients. His broad experience includes design for HVAC and plumbing for educational facilities, office buildings, shopping centers, apartment buildings, and other commercial and institutional facilities. Brad also has experience as a Site Engineer and Sales Engineer, which provides a unique understanding for problem solving.

Notable Professional Experiences:

Mechanical Engineer:

- WVU State Fire Training Academy / Jackson's Mill
- West Virginia Army National Guard (WVARNG) - Multi-Purpose Building at Camp Dawson
- WVARNG Mountaineer Challenge Academy
- Wood County Schools (\$63+ million renovations)
- WVU Colson Hall Renovations
- Wheeling Island Fire Station
- United States Postal Service (USPS) - Charleston P&DC HVAC Renovation
- USPS - Clarksburg Chiller Replacement
- Independence Hall HVAC
- Southwest Cancer Institute Treatment Center (50,000 SF)
- Mt. Lebanon Municipal Building renovation (70,000 SF)
- Marshall County Schools - Sherrard HVAC
- Summers County Middle School HVAC
- Wetzel County Schools - New Martinsville HVAC

Darren S. Duskey, PE

Electrical Engineer

Education:

- The Ohio State University
B.S. Electrical Engineer - 1993
- Marshall University
Graduate courses in Engineering

Professional Affiliations and Registrations:

- Registered Engineer in:
West Virginia
Ohio

Professional Employment:

- McKinley & Associates
Wheeling, WV
(2002 - present)
- Pickering Associates
Parkersburg, WV
(1997-2002)
- Magnetic Specialty, Inc.
Marietta, OH
(1995-1997)
- Inland Products, Inc.
Columbus, OH
(1993-1995)

Summary of Experience:

Mr. Duskey has 10 years of experience in the industrial, commercial, institutional, and educational markets with projects ranging from State Police detachment offices, electrical design of schools, health care facilities, large and small industrial projects, and commercial properties. He has extensive knowledge and experience with the National Electrical Code, state building codes, building industry standards and practices, and has demonstrated the ability to design qualitative and economic solutions to a myriad of challenges.

Notable Professional Experiences:

Design Electrical Engineer:

- WVU State Fire Training Academy in Jackson's Mill, WV
- WV Army National Guard - Mountaineer Challenge Academy at Camp Dawson in Kingwood, WV
- Wetzel County Hospital (*Addition and renovation*)
- Marietta Memorial Hospital (*Addition and renovation*)
- WVSP Headquarters (*Upgrade electrical service*)
- WVSP detachment in Berkeley County (*Upgrade electrical service, renovations*)
- United States Postal Service - statewide post offices
- West Virginia State Building in Weirton, WV
- West Virginia University - Colson Hall (*Upgrade electrical service, incldg. medium voltage distribution, renovations*)
- WVU Institute of Technology - Maclin Hall (*Upgrade electrical service, renovations*)
- Chapmanville Regional High School - Logan County Schools (*New school service, electrical design*)
- Cabela's Eastern Distribution Center [*New large (1.2 million SF) distribution center services, electrical design*]
- Weir High School - Hancock Co. Schools (*Upgrade electrical service*)
- West Virginia Northern Community College - The Education Center (*Upgrade electrical service, renovations*)
- Parkersburg High School - Wood County Schools (*Upgrade electrical service, including medium voltage distribution, and renovation work*)
- Parkersburg South High School - Wood county Schools (*Upgrade electrical service, renovations*)

Deb Blakeman, NCIDQ #015070

Interior Designer

Education and Specialized Training:

- University of Charleston
Bachelor of Arts, Interior Design - 1992

Professional Affiliations and Registrations:

- National Council for Interior Design Qualification:
NCIDQ #015070
- Associate Member:
The American Institute of Architects

Professional Employment:

- McKinley & Associates
Charleston, WV (2004 to present)
- HDMR Group Inc
Charleston, WV (2000-2004)
- Custom Office Furniture
Charleston, WV (1994-2000)
- University of Charleston
Teacher
Charleston, WV (1997-2000)
- Interior Design
Charleston, WV (1992-1994)
- Freeland Furniture Company
Charleston, WV (1981-1987)
- Interior Reflections
Logan, WV (1980-1981)



Summary of Experience:

Deb Blakeman has 25 combined years of experience in the interior design field including residential, corporate facilities, banks, education and health care projects. She has knowledge and experience with application of ADA regulations, ergonomic standards, state building code and industrial standards as they apply to interior furnishings, space planning and finishes. As a professional designer, Deb Blakeman believes it is important to find the right balance between organizational and individual needs to increase productivity. Improving comforts through lighting and ergonomically sound furnishings will increase employer performance, and efficient spaces will organize work flow, decreasing communication barriers.

Notable Professional Experiences:

- Interior Designer
West Virginia University - Colson Hall
WVU - State Fire Training Academy
WVU's Institute of Technology - Maclin Hall
- Interior Designer
Marshall University / Robert C. Byrd Biotechnology Center (Interior Furnishing and Finishes)
- Interior Designer
Governor Wise, Governor Underwood, and Governor Caperton / Staff Offices (Furnishings, Finishes, and Space Planning)
- Interior Designer
Treasurer John D. Perdue / Unclaimed Properties Division (Space Planning and Furnishings) / Treasurer's Office & Staff Office (Window Treatments, Furnishings, Finishes, and Space Planning)
- Interior Designer / Sales
WV Graduate College (Furnishings)
- Interior Designer / Sales
WV Credit Union (Space Planning, Furnishings and Finishes)
- Adjunct Professor
University of Charleston

Dana E. Womack, Jr.

Project Coordinator

Education:

- Marshall University - 2005
A.A.S. Occupational Development

Professional Employment:

- McKinley & Associates
Project Coordinator
Charleston, WV (2009 to present)
- RBS Construction Inc.
Project Manager
Nitro, WV (2007-2009)
- Providence Construction
Superintendent
Teays Valley, WV (2007)
- G&G Builders
Superintendent-in-Training (2005-2006)
Cement Finisher (2002-2005)
Scott Depot, WV
- United Parcel Service
Preloader
South Charleston, WV (1999-2002)
- United States Air Force
Security Forces (Sr. Airman)
Tinker Air Force Base, OK (1996-1999)

Summary of Experience:

Mr. Womack brings various knowledge to the Project Coordinator role; skills which included a cross-trained background of project management / coordination, on-site supervisor, administering contracts from start up to project close out, as well as field work as a cement finisher, preloader, and law enforcement officer. With credentials spanning across all aspects of construction, Dana has a unique ability to work with owner and contractor alike and get the project completed on time and within budget.

Notable Professional Experiences:

Project Coordination for:

- West Virginia State Police Academy Renovations*
- WVSP Logan Detachment*
- West Virginia State Building in Logan, WV*
- H3 LLC - New office facility building*
- Brookview Elementary, Madison Middle, & Scott High - Boone County Schools*
- Summers County High - Summers County Schools*

Project Manager

Manage projects from Preconstruction meeting to project close out. Develop construction schedules, manage on-site personnel, coordinate with subcontractors and work with suppliers to ensure materials are delivered to the jobsite on time. Work closely with the architects and engineers to complete the projects on time, within budget and to the owner's satisfaction.

- Mine Health Safety Academy Bathroom Renovations*
- Montrose Elementary Elevator Addition*
- 900 Christopher Street Structural Renovations*
- Putnam PSD New Maintenance Garage*
- Southern and Southwestern Regional Jails*

Superintendent

Role during projects was on-site supervisor for all aspects of job completion. Managed job site personnel, maintained a safe work place environment, and led the team toward job completion with proper time management.

Security Forces (Sr. Airman) - Tinker Air Force Base, OK

Assistant Non Commission Officer In Charge of the Security Police Armory. Security Police Officer, duties included guarding priority A, B, and C aircraft and patrolling base as law enforcement officer.

Project Approach and Performance Data

First and foremost we can state that our staff of 40+ professionals will devote whatever time is necessary to provide the West Virginia Office of Miners' Health, Safety & Training with a successful project. With over 15 registered professional architects and engineers we have the ability to make difficult schedules work. Our project team has been chosen for this project and they are available to dedicate the necessary time to this effort. We are available to start immediately upon our being selected.

The work to be performed by your design team is very clear. To evaluate, prioritize and design within budget and schedule to meet the needs of the West Virginia Office of Miners' Health, Safety & Training.

The most important element of the entire process becomes communication from you to our designers. We use and welcome your input throughout the project.

The services we provide are different than most others. With our 40+ member staff we have the ability to have registered architects and engineers designing within their area of expertise. Electrical design by an Electrical Engineer, HVAC design by a Mechanical Engineer, Fire and Life Safety design by a Fire Protection Engineer. The Professional Engineers (PE) are not only "In-House," we also have depth in numbers of each discipline in our firm. Our Architectural staff provides you with an exceptionally talented group that will walk you through your project to completion. Day by day, side-by-side, our architects and engineers provide a daily cohesiveness to your project.

Our Quality Assurance Program starts with our peer review where a registered professional not involved in the design becomes reviewer of the project before going to bid. Additionally, at our regularly scheduled project meetings the entire design team is constantly reviewing the process.

The firm uses a number of different cost estimating procedures depending on the type and size of project. Our ability to design within budget is shown in the following, which represent some of our recently bid projects:

<u>PROJECT</u>	<u>BUDGET</u>	<u>ACTUAL</u>	<u>DIFFERENCE</u>
Wood Co. - Williamstown HS	\$11,635,000	\$11,253,000	-3.39%
Ohio Co. Schools	\$2,800,000	\$2,675,000	-4.67%
Weirton State Building	\$4,291,000	\$4,083,000	-5.09%
Hancock Co. Schools	\$11,000,000	\$11,260,000	+2.36%
WV Northern Annex	\$7,900,000	\$6,850,000	-15.33%
WV Northern Phase II	\$1,200,000	\$1,194,000	-0.50%
Wheeling YMCA	\$2,200,000	\$2,100,000	-4.76%
Maxwell Centre	\$1,800,000	\$1,734,000	-3.81%
WVU Colson Hall	\$5,400,000	\$5,500,000	+1.85%
Central Elementary	\$3,037,000	\$3,017,000	-0.66%
John Marshall Fieldhouse	\$3,755,000	\$3,518,000	-6.73%

Work Plan

PROGRAMMING

100% Architectural Team

This is the first stage of a project, the effort here is to define the scope of work. Interviews will take place to learn *exactly* what you want in the mine rescue station and training facility, which will house the rescue vehicles and other related equipment used to respond to mine emergencies in the State of West Virginia and provide a training environment for the employees of the Office of Miners' Health, Safety and Training. This is a very important step as it sets up the remainder of the project.

SCHEMATIC DRAWINGS

95% Architectural Team 5% Engineering Team

This is the first time thoughts and dreams are put on paper. Armed with the programming information, our professionals start the process of rough drawings which now include hallways, restrooms and other common space. At the end of this phase the product is a first look at what the floorplan might look like, as well as a preliminary cost estimate.

DESIGN DEVELOPMENT DRAWINGS

60% Architectural Team 40% Engineering Team

Plans start to take shape and changes are made. Elevations start to give you an idea of what your project will look like. This is a very exciting time in the project as you are finalizing concepts and ideas, but also a very important time as this is the last chance to easily make changes.

CONSTRUCTION DOCUMENTS

50% Architectural Team 50% Engineering Team

Now is the time that our professionals take all of the information gained from the meetings and the design development drawings and produce the drawings and specifications for the project. The construction drawings provide the tool needed for the contractors to bid the project and information and details necessary to construct the building. Changes become difficult at this point.

BIDDING

100% Architectural Team

This phase involves the actual bidding of the project. We will conduct a pre-bid meeting to handle all bidding information as well as conduct the bid opening and reporting.

CONSTRUCTION ADMINISTRATION

25% Architectural Team 25% Engineering Team 50% Project Coordinator

This phase involves the construction of the project. Our professionals now act as your agent and watch over the project. We will be on site approximately once every two weeks and work with the contractors to make sure they are building what we designed and specified and are doing it correctly. We handle all paperwork from the contractor and provide the owner with approved pay requests. This phase is very important to ensure that you get what you are paying for.

INTERIOR DESIGN*

100% Deb Blakeman

* Please see the *Interior Design* page.

SUSTAINABLE DESIGN*

100% Christina Schessler / Thomas Worlledge / Michael Betsch / Bradley Crow

* Please see the *Sustainable "Green" Design, LEED and Net-Zero Energy*, and *McKinley & Associates' Charleston Office* pages.

Quality Control

Quality control at McKinley & Associates, Inc. is a constant process which begins with the initial project activity and continues through document submissions, construction and owner occupancy. The longevity and size of the firm and our history of success completing complex and innovative projects is founded upon our commitment to this process.

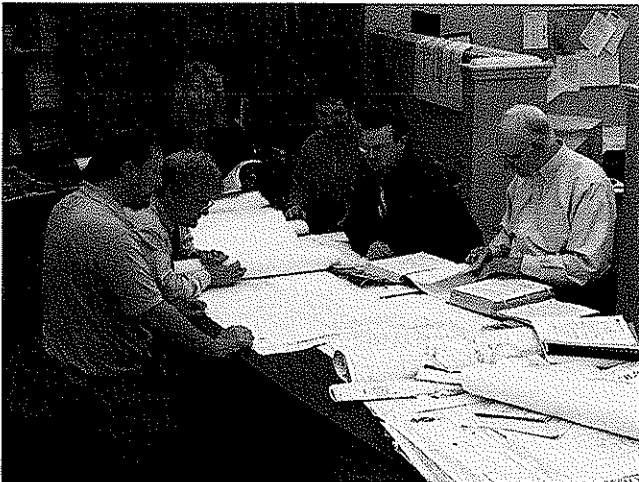
During the design phases all personnel become fully versed in the client's program, project requirements and design standards. The design team is responsible for identifying for the client any potential conflicts between program criteria and design standards and resolving those conflicts to the client's satisfaction.

As the schematic/concept plans are developed, the Project Manager typically presents the plans for review and comments to a plan group depending on the nature of the work; e.g. engineers commenting on the engineering and architects critiquing the architecture. Once a consensus is reached, the plans advance in the process.

Prior to the completion of each phase, a set of project documents is issued to each discipline and consultant for coordination, cross-checking and review. The following items are checked at that time:

- Drawings and specifications for program compliance.
- Drawings and specifications for internal coordination.
- Cost effectiveness of the design.
- Drawing accuracy.
- Compliance with appropriate codes and client standards.

After coordination check corrections are completed, the project architect reviews the documents and compares the completed documents with check prints to verify that corrections have been made in accordance with the project design criteria. A final review is made by the principal-in-charge.



During the subsequent phases of design, all items are checked by persons other than those performing the daily design work in order to provide fresh insight. Prior to the final release of the documents, revisions are checked by the project manager and appropriately referenced on the drawings. Copies of the final documents are distributed to the client and consultants for final review and approval. Comments are incorporated into the documents prior to issuance for bidding and construction.

Bid documents are issued after a final check to verify that all bid packages have current revisions included and are appropriately identified. Bid sets are numbered and registered to bidders so that each bidder may be kept informed of clarifications and addenda.

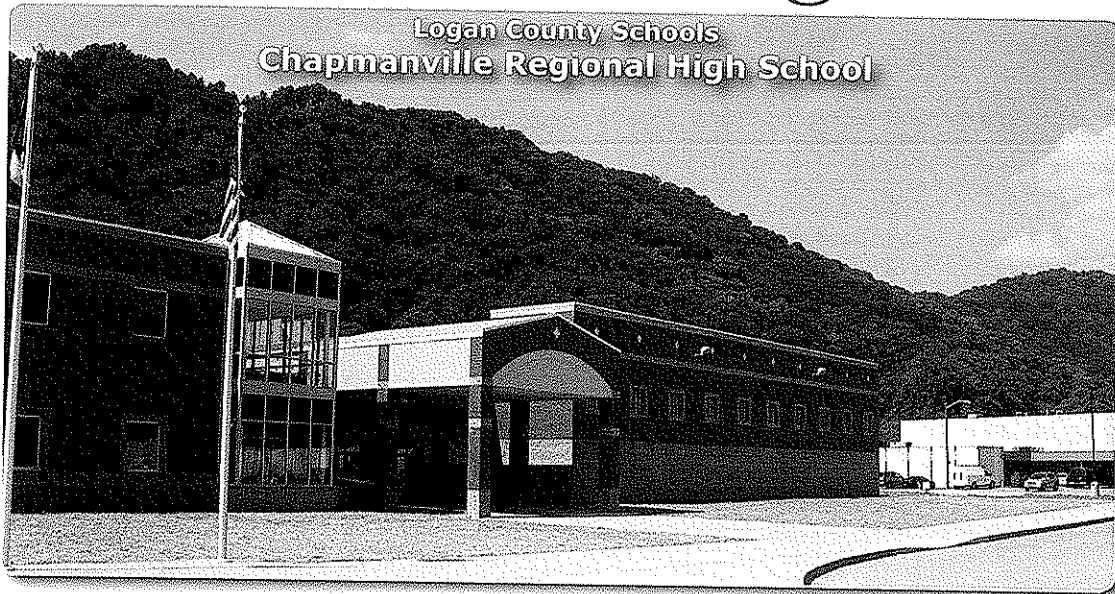
During the construction, the processing of shop drawings and submittals is controlled and monitored by the project manager. The standard turnaround for the receipt, logging, review and return of submittals is 10 working days. Complicated or specialized submittals may require additional time. Urgent items can often be expedited to satisfy the construction schedule.

Contract Administration On-Site Representation

- Observe the Construction Progress
- Liaison between the Owner, Contractor, and Architect
- Responsible for All Construction Meetings and Minutes
- Monitor the Construction Schedule
- Ensure that the Contractor is Following the Construction Documents
- Verify Pay Application and Change Orders
- Typically On-Site Once Every Two Weeks
(Provide Additional On-Site Representation if Requested)



Cost Effective Design



- **Most Cost Effective New Design in the Past 4 Years**
- **\$158.41/SF – source: SBAWV (includes site development, building construction, and all FF&E)**
- **138,500 Square Feet**
- **Total Non-Owner Change Orders – 0.65%**
- **Official Dedication – June 1, 2007**



- **SBA's Limit on New Elementary School Design ~ \$217/SF**
- **Hilltop Elementary's final price ~ \$167/SF (includes site development, building construction, and all FF&E)**
- **49,700 Square Feet**
- **Total Non-Owner Change Orders – 0.83%**
- **Under Construction with potential LEED Silver Certification**

References

◦ **Mr. Robert Moyer**

◦ West Virginia University
Physical Plant
979 Rawley Lane
P.O. Box 6572
Morgantown, WV 26506
304/293-2873

◦ **Major General Allen E. Tackett**

◦ West Virginia Army National Guard
1703 Coonskin Drive
Charleston, WV 25311
304/561-6316

◦ **First Sergeant Rick Pursley**

◦ West Virginia State Police
4124 Kanawha Turnpike
South Charleston, WV 25309
304/746-2253

◦ **Mr. Robert Herron**

◦ Wheeling Island Fire Station
City of Wheeling
1508 Chapline Street
Wheeling, WV 26003
304/234-3617

◦ **Mr. Don Mackey**

◦ United States Postal Service
Facilities Service Office
Post Office Box 27497
Greensboro, NC 27495-1103
336/665-2894

Client Testimonials

○ **Bill Niday** Superintendent

○ **Wood County Schools**

"The way they have serviced our County has been unmatched, they have been here so many times for face to face meetings with our staff as well as the Contractors. I would highly recommend this firm to anyone."

○ **David Sneed** Architectural Director

○ **School Building Authority**

"Their projects continually come in on time, under budget, and the quality of their documentation is greatly appreciated."

○ **Rick Pursley** First Sergeant
○ **West Virginia State Police**

"McKinley & Associates listens well to our staff's programming needs, and develops cost efficient design for us throughout the state."