



State of West Virginia
 Department of Administration
 Purchasing Division
 2019 Washington Street East
 Post Office Box 50130
 Charleston, WV 25305-0130

Request for Quotation

RFQ NUMBER:
HHR10103

PAGE:
1

ADDRESS CORRESPONDENCE TO ATTENTION OF:
**ROBERTA WAGNER
 304-558-0067**

RFQ COPY
TYPE NAME/ADDRESS HERE
CMA Engineering
824 Cross Lanes Drive
Charleston, WV 25313

HEALTH AND HUMAN RESOURCES
OFFICE OF PROPERTY MANAGEMENT
VARIOUS LOCALES AS INDICATED

DATE PRINTED	TERMS OF SALE	SHIP VIA	FOB	FREIGHT TERMS
05/26/2010				

BID OPENING DATE: 06/15/2010 BID OPENING TIME 01:30PM

LINE	QUANTITY	LOP	CAT NO	ITEM NUMBER	UNIT PRICE	AMOUNT
------	----------	-----	--------	-------------	------------	--------

ADDENDUM NO. 1

1. TO ADD AN ADDITIONAL LOCATION, HOPEMONT HOSPITAL, TO THIS EOI, AS AN ADD ALTERNATE, PENDING RECEIPT OF FUNDING APPROVAL FOR ARRA REVIEW COMMITTEE.

2. ADDENDUM ACKNOWLEDGEMENT IS ATTACHED. THIS DOCUMENT SHOULD BE SIGNED AND RETURNED WITH YOUR BID. FAILURE TO SIGN AND RETURN MAY RESULT IN DISQUALIFICATION OF YOUR BID.

EXHIBIT 10

REQUISITION NO.: HHR10103

ADDENDUM ACKNOWLEDGEMENT

I HEREBY ACKNOWLEDGE RECEIPT OF THE FOLLOWING CHECKED ADDENDUM(S) AND HAVE MADE THE NECESSARY REVISIONS TO MY PROPOSAL, PLANS AND/OR SPECIFICATION, ETC.

ADDENDUM NO. S:

- NO. 1 *D.R.E.*
- NO. 2 *D.R.E.*
- NO. 3 *D.R.E.*
- NO. 4
- NO. 5

I UNDERSTAND THAT FAILURE TO CONFIRM THE RECEIPT OF TH

SEE REVERSE SIDE FOR TERMS AND CONDITIONS

SIGNATURE	TELEPHONE	DATE
Principal	(304) 343-0316	6/15/2010

FEIN	ADDRESS CHANGES TO BE NOTED ABOVE
55-0659239	

WHEN RESPONDING TO RFQ, INSERT NAME AND ADDRESS IN SPACE ABOVE LABELED 'VENDOR'

GENERAL TERMS & CONDITIONS
REQUEST FOR QUOTATION (RFQ) AND REQUEST FOR PROPOSAL (RFP)

1. Awards will be made in the best interest of the State of West Virginia.
2. The State may accept or reject in part, or in whole, any bid.
3. Prior to any award, the apparent successful vendor must be properly registered with the Purchasing Division and have paid the required \$125 fee.
4. All services performed or goods delivered under State Purchase Order/Contracts are to be continued for the term of the Purchase Order/Contracts, contingent upon funds being appropriated by the Legislature or otherwise being made available. In the event funds are not appropriated or otherwise available for these services or goods this Purchase Order/Contract becomes void and of no effect after June 30.
5. Payment may only be made after the delivery and acceptance of goods or services.
6. Interest may be paid for late payment in accordance with the *West Virginia Code*.
7. Vendor preference will be granted upon written request in accordance with the *West Virginia Code*.
8. The State of West Virginia is exempt from federal and state taxes and will not pay or reimburse such taxes.
9. The Director of Purchasing may cancel any Purchase Order/Contract upon 30 days written notice to the seller.
10. The laws of the State of West Virginia and the *Legislative Rules* of the Purchasing Division shall govern the purchasing process.
11. Any reference to automatic renewal is hereby deleted. The Contract may be renewed only upon mutual written agreement of the parties.
12. **BANKRUPTCY:** In the event the vendor/contractor files for bankruptcy protection, the State may deem this contract null and void, and terminate such contract without further order.
13. **HIPAA BUSINESS ASSOCIATE ADDENDUM:** The West Virginia State Government HIPAA Business Associate Addendum (BAA), approved by the Attorney General, is available online at www.state.wv.us/admin/purchase/vrc/hipaa.htm and is hereby made part of the agreement. Provided that the Agency meets the definition of a Cover Entity (45 CFR §160.103) and will be disclosing Protected Health Information (45 CFR §160.103) to the vendor.
14. **CONFIDENTIALITY:** The vendor agrees that he or she will not disclose to anyone, directly or indirectly, any such personally identifiable information or other confidential information gained from the agency, unless the individual who is the subject of the information consents to the disclosure in writing or the disclosure is made pursuant to the agency's policies, procedures, and rules. Vendor further agrees to comply with the Confidentiality Policies and Information Security Accountability Requirements, set forth in <http://www.state.wv.us/admin/purchase/privacy/noticeConfidentiality.pdf>.
15. **LICENSING:** Vendors must be licensed and in good standing in accordance with any and all state and local laws and requirements by any state or local agency of West Virginia, including, but not limited to, the West Virginia Secretary of State's Office, the West Virginia Tax Department, and the West Virginia Insurance Commission. The vendor must provide all necessary releases to obtain information to enable the director or spending unit to verify that the vendor is licensed and in good standing with the above entities.
16. **ANTITRUST:** In submitting a bid to any agency for the State of West Virginia, the bidder offers and agrees that if the bid is accepted the bidder will convey, sell, assign or transfer to the State of West Virginia all rights, title and interest in and to all causes of action it may now or hereafter acquire under the antitrust laws of the United States and the State of West Virginia for price fixing and/or unreasonable restraints of trade relating to the particular commodities or services purchased or acquired by the State of West Virginia. Such assignment shall be made and become effective at the time the purchasing agency tenders the initial payment to the bidder.

I certify that this bid is made without prior understanding, agreement, or connection with any corporation, firm, limited liability company, partnership, or person or entity submitting a bid for the same material, supplies, equipment or services and is in all respects fair and without collusion or fraud. I further certify that I am authorized to sign the certification on behalf of the bidder or this bid.

INSTRUCTIONS TO BIDDERS

1. Use the quotation forms provided by the Purchasing Division. Complete all sections of the quotation form.
2. Items offered must be in compliance with the specifications. Any deviation from the specifications must be clearly indicated by the bidder. Alternates offered by the bidder as **EQUAL** to the specifications must be clearly defined. A bidder offering an alternate should attach complete specifications and literature to the bid. The Purchasing Division may waive minor deviations to specifications.
3. Unit prices shall prevail in case of discrepancy. All quotations are considered F.O.B. destination unless alternate shipping terms are clearly identified in the quotation.
4. All quotations must be delivered by the bidder to the office listed below prior to the date and time of the bid opening. Failure of the bidder to deliver the quotations on time will result in bid disqualifications: Department of Administration, Purchasing Division, 2019 Washington Street East, P.O. Box 50130, Charleston, WV 25305-0130
5. Communication during the solicitation, bid, evaluation or award periods, except through the Purchasing Division, is strictly prohibited (W.Va. C.S.R. §148-1-6.6).



State of West Virginia
 Department of Administration
 Purchasing Division
 2019 Washington Street East
 Post Office Box 50130
 Charleston, WV 25305-0130

Request for Quotation

RFQ NUMBER:
 HHR10103

PAGE:
 2

ADDRESS CORRESPONDENCE TO ATTENTION OF:
 ROBERTA WAGNER
 304-558-0067

RFQ COPY
 TYPE NAME/ADDRESS HERE

CMA Engineering
 824 Cross Lanes Drive
 Charleston, WV 25313

HEALTH AND HUMAN RESOURCES
 OFFICE OF PROPERTY MANAGEMENT
 VARIOUS LOCALES AS INDICATED

DATE PRINTED	TERMS OF SALE	SHIP VIA	F.O.B.	FREIGHT TERMS
05/26/2010				

BID OPENING DATE: 06/15/2010 BID OPENING TIME 01:30PM

LINE	QUANTITY	UOP	CAT NO	ITEM NUMBER	UNIT PRICE	AMOUNT
------	----------	-----	--------	-------------	------------	--------

ADDENDUM(S) MAY BE CAUSE FOR REJECTION OF BIDS.
 VENDOR MUST CLEARLY UNDERSTAND THAT ANY VERBAL REPRESENTATION MADE OR ASSUMED TO BE MADE DURING ANY ORAL DISCUSSION HELD BETWEEN VENDOR'S REPRESENTATIVES AND ANY STATE PERSONNEL IS NOT BINDING. ONLY THE INFORMATION ISSUED IN WRITING AND ADDED TO THE SPECIFICATIONS BY AN OFFICIAL ADDENDUM IS BINDING.

Daniel L. Elias
 SIGNATURE
 COMPANY
 06-15-2010
 DATE

NOTE: THIS ADDENDUM ACKNOWLEDGEMENT SHOULD BE SUBMITTED WITH THE BID.

REV. 09/21/2009

END OF ADDENDUM NO. 1

SEE REVERSE SIDE FOR TERMS AND CONDITIONS

SIGNATURE TELEPHONE DATE

TITLE FEIN ADDRESS CHANGES TO BE NOTED ABOVE

WHEN RESPONDING TO RFQ, INSERT NAME AND ADDRESS IN SPACE ABOVE LABELED 'VENDOR'



June 15, 2010

Ms. Roberta Wagner
Purchasing Division
2019 Washington Street East
Charleston, WV 25305-0130

Re: RFQ-HHR10103
Jackie Withrow Hospital Capital Improvements

Dear Ms. Wagner:

CMA Engineering is pleased to submit, for your consideration, our qualifications and experience in providing engineering services for the analyzing, designing, prioritizing and budgeting of capital improvements needed at Jackie Withrow Hospital for compliance with federal, state and local governmental requirements. CMA has provided these services for numerous projects and our design professionals are kept informed of the latest technological and industrial standards, codes and design criteria through its association with such professional affiliations as the International Code Council, National Fire Protection Association, American Society of Heating, Refrigerating and Air Conditioning Engineers, and U.S. Green Building Council.

CMA is aware of The American Recovery and Reinvestment Act of 2009 and its emphasis on energy consumption reduction. Our firm offers the expertise of a LEED Accredited Design Professional. It is our standard practice to use the most efficient energy conservation design principles on all of our projects in order to provide the best engineering solutions to our clients.

CMA realizes the importance of preserving the historic integrity of the building as the capital improvements are implemented. CMA has provided engineering services for such historic facilities as Building #1 on the West Virginia Capitol Complex, the Kimball War Memorial, the Kanawha County Courthouse and the General Lewis Inn.

We appreciate your consideration of our firm and look forward to presenting a more comprehensive statement of our qualifications in a personal interview. If architectural services are needed on this project, CMA will utilize the experienced J. Dan Snead & Associates, Inc. of Beckley, WV. An overview of their firm's experience is included in this proposal.

Sincerely,
CMA Engineering

Daniel L. Ellars, P.E.
Principal

1	CMA Engineering Firm Profile
----------	---------------------------------

2	CMA Engineering Resumes
----------	----------------------------

3	CMA Engineering Project Experience
----------	---------------------------------------

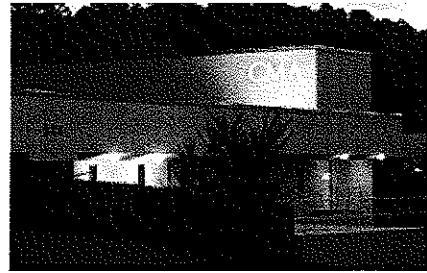
4	J. Dan Snead & Associates, Inc. Firm Overview
----------	--

5	Purchasing Affidavit
----------	----------------------

C O R P O R A T E P R O F I L E



Clingenpeel/McBrayer & Associates, Inc



From an initial staff of five employees in 1986, CMA Engineering has steadily grown, with offices in Charleston and Morgantown. The staff of CMA is large enough to handle any size project, yet small enough for direct input and supervision by all key personnel. CMA Engineering has provided engineering services for over two hundred and fifty healthcare facility projects within West Virginia. Through our strong experience in hospital design, we have a solid understanding of Code requirements and healthcare facility design standards.

At CMA, we understand that Healthcare Engineering requires specific knowledge and focus regarding the special needs and conditions of each facility. Our MEP (Mechanical, Electrical, Plumbing) experience in the hospital industry is what sets our firm apart. Our familiarity with important documents such as NFPA 2010, the NEC, the Life Safety Code, ASHRAE Handbooks, and the AIA Design Guidelines for Healthcare Facilities, provide the designer with the necessary information to devise the essential systems for Healthcare Facilities.

Special needs call for specialized expertise. At CMA we understand the nuances involved in the hospital electrical environment. As time and technology push for continuous change, we know that the electrical systems must be designed to accommodate both current and future loads. Harmonics must be addressed to avoid unwanted electrical interference with data processing, laboratory and critical medical equipment. In the case of commercial power loss, it is important that essential and critical power load distributions require careful review and design to assure a seamless transition to emergency power.

Communications systems, including paging, sound, call and fire alarm systems must be designed to meet new design standards and codes while often interfacing with older existing systems. From alarm systems to lighting levels—CMA is experienced in electrical systems throughout the hospital facility

Many areas of a Healthcare Facility require specific ventilation, pressurization, filtration systems to deliver air for comfort and indoor air quality. Specific temperatures and humidity ratios must be maintained while minimizing the energy consumption of mechanical equipment. It is our understanding of these requirements, along with our experience with the direct digital controls of the mechanical equipment, that help us adhere to strict temperature and humidity requirements, while minimizing energy costs.

Plumbing and fire protection systems must not only meet the current facility, but must also consider future facility expansion, as well. Planning and expertise is crucial—design of domestic hot and cold water systems must consider delivery temperature to avoid development of bacteria. Connection of medical wastes must be designed per EPA requirements, and fire protection systems must be applicable for the specific hazard and coverage. At CMA, our designers believe that excellent design brings excellent results.

From ambulatory care to emergency rooms, from MRI scan areas to linear accelerators, from outpatient facilities to surgery space, CMA Engineering has diverse experience to meet your needs.



Clingenpeel/McBrayer & Associates, Inc.

824 Cross Lanes Drive
Charleston, West Virginia 25313
(304) 343-0316 tel
(304) 343-5146 fax

5 Riddle Court
Morgantown, West Virginia
(304) 598-2558 tel
(304) 598-2472 fax

Healthcare Facilities Design Experience

Alderson Broaddus Hospital

Allen Medical Center

Appalachian Regional Hospital

Beckley Hospital

Boone Memorial Hospital

Cabell Huntington Hospital

Camden Clark Hospital

CAMC Women & Children's Hospital

Charleston Gardens

Chestnut Ridge Hospital

Clay Primary Health Care

Davis Memorial Hospital

Fairmont General Hospital

Hampshire Co. Care Center

Health Science Center-Morgantown

Jackson County Hospital

Lakin State Hospital

Lakeside Physical Therapy

Logan General Hospital

Marion Health Center

Medbrook Medical Center

Mercer County Nursing Home

Morgantown Physical Therapy

Montgomery General Hospital

Physicians Office Center

Pinecrest Hospital

Pinewood Medical Center

Preston County Memorial Hospital

Princeton Community Hospital

Point Pleasant Hospital

Putnam General Hospital

Richwood Community Hospital

Roane General Hospital

Ruby Memorial Hospital

Shinnston Medical Facility

St. Francis Hospital

Summersville Hospital

Sundale Hospice

United Hospital

Valley Health Center

VA Hospital-Clarksburg, WV

VA Hospital-Huntington, WV

WVU Eye Institute

WVU Hospital

WV School of Osteopathic Medicine



M E C H A N I C A L

CMA Engineering experience includes:

Constant Volume Air Handling Systems

Variable Volume Air Handling Systems

Demand Control Ventilation Systems

Natorium Dehumidification Systems

Building Energy and Management Control Systems

Industrial Ventilation and Exhaust Systems

Steam and Condensate Systems

Cooling Plants and Distribution

Heating Plants and Distribution

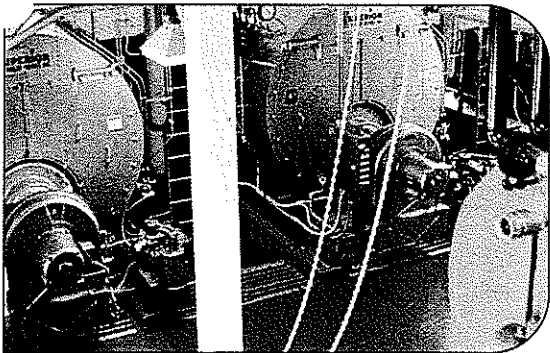
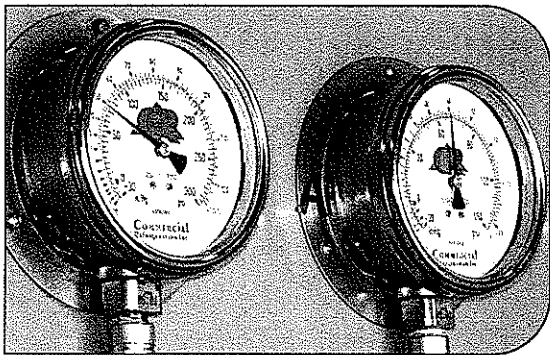
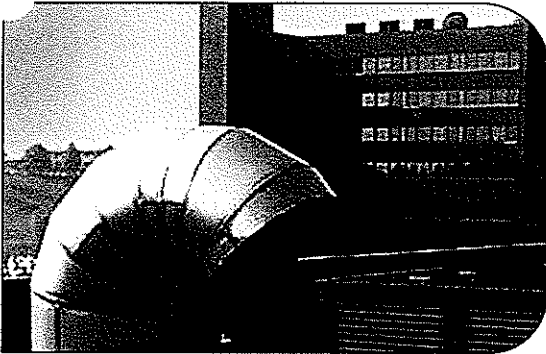
Energy Recovery Systems

Water Source Heat Pump Systems

Low, Medium and High Pressure Air Distribution Systems

Direct Digital, Pneumatic and Hybrid Control Systems

Kitchen Ventilation and Exhaust Systems



(top) Ruby Memorial Hospital—Morgantown, WV
HVAC Exhaust System

(middle) Memorial Ice Rink—South Charleston, WV
Refrigerant Pressure Gages

(bottom) Alderson Federal Correctional Facility—Alderson, WV
Steam Plant

CMA
ENGINEERING

Clingenpeel/McBrayer & Associates, Inc.

824 Cross Lanes Drive
Charleston, West Virginia 25313
(304) 343-0316 tel
(304) 343-5146 fax

5 Riddle Court
Morgantown, West Virginia 26505
(304) 598-2558 tel
(304) 598-2472 fax

www.cma.wv.com

ELECTRICAL

CMA Engineering experience includes:

Underground Ducts and Utility Structures

Intrusion Detection

Closed Circuit Television

Cable and Master Antenna Television

Medium Voltage Distribution and Substations

Secondary Voltage Distribution

Engine Generators and Battery Inverters

Transient Voltage Suppression

Interior Lighting

Exterior Lighting

Sports Lighting

Theatrical Lighting

Lighting Control

Uninterruptible Power Supply Systems

Lightning Protection

Intercommunications Systems

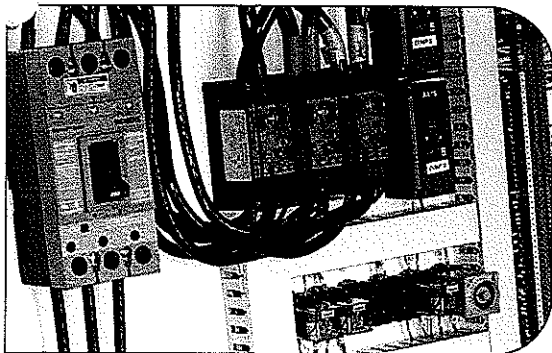
Nurse Call

Voice and Data Systems

Fire Detection Systems



(above) Split Rock Pools—Snowshoe, WV
Indirect Lighting System



(below) Memorial Ice Rink—South Charleston, WV
Chiller Power and Control Panel

CMA
ENGINEERING

Clingenpeel/McBrayer & Associates, Inc.

824 Cross Lanes Drive
Charleston, West Virginia 25313
(304) 343-0316 tel
(304) 343-5146 fax

5 Riddle Court
Morgantown, West Virginia 26505
(304) 598-2558 tel
(304) 598-2472 fax

www.cma.wv.com

PLUMBING & PIPING

CMA Engineering experience includes:

Sanitary Sewer Systems

Storm Sewer Systems

Natural Gas Distribution

LP Gas Distribution

Fuel-Oil Distribution

Compressed Air Systems

Vacuum Systems

Chemical Waste Systems

Process Water Systems

Deionized Water Systems

Domestic Water Systems

Helium Distribution Systems

Domestic Water Pumping Systems

Sewage Pumping Systems

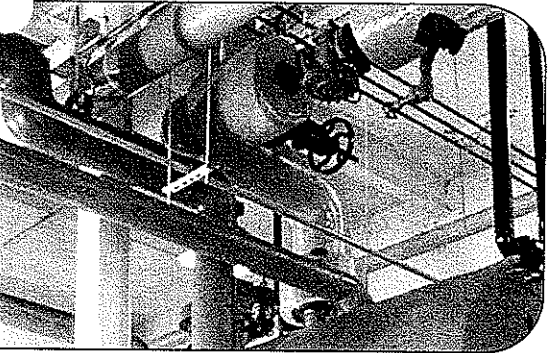
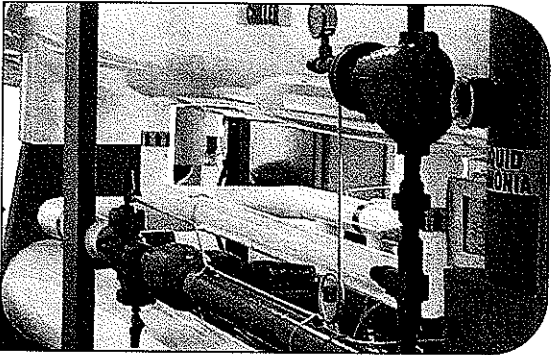
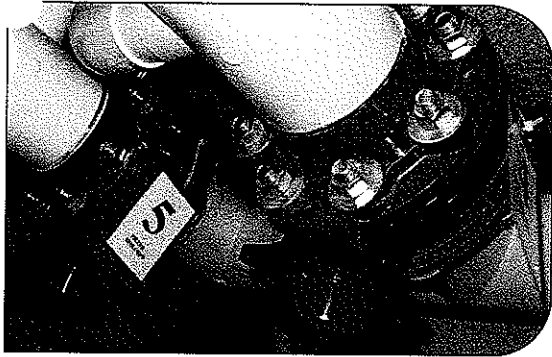
Water Heating

Automatic Fire Sprinkler Systems

Standpipe Systems

Fire Pumps, Storage Tanks, Service Mains

Medical Gas Systems



(top) Split Rock Pools—Snowshoe, WV
Piping & Pump Room

(middle) Memorial Ice Rink—South Charleston, WV
Piping & Chilling

(bottom) Alderson Federal Correctional Facility—Alderson, WV
Steam Piping

CMA
ENGINEERING

Clingenpeel/McBrayer & Associates, Inc.

824 Cross Lanes Drive
Charleston, West Virginia 25313
(304) 343-0316 tel
(304) 343-5146 fax

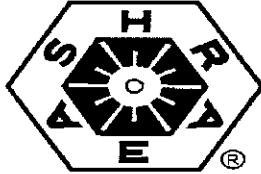
5 Riddle Court
Morgantown, West Virginia 26505
(304) 598-2558 tel
(304) 598-2472 fax

www.cma.wv.com

Professional Affiliations



International Code Council (ICC)



American Society of Heating, Refrigerating and Air Conditioning Engineers, Inc., (ASHRAE)



U.S. Green Building Council (USGBC)



American Institute of Architects— WV Chapter Affiliate Member (WVAIA)



National Fire Protection Association (NFPA)

ASPE

American Society Of Plumbing Engineers (ASPE)



MasterSpec Specifications (ARCOM)



The LIGHTING AUTHORITY

Illuminating Engineering Society (IES)



WV Society of Healthcare Engineers (WVSHE)



Business Partner



Leadership in Energy & Environmental Design (LEED)

CMA
ENGINEERING

P R O F I L E

Timothy Cox, P.E., NCEES
President
Mechanical Engineer

(304) 598-2558
tcox@cmawv.com

EDUCATION

University of Colorado
Boulder, Colorado
Degree: Mechanical Engineering B.S.

REGISTRATIONS/PROFESSIONAL AFFILIATIONS

Association of Energy Engineers-CBCP

Registered Professional Engineer in WV, VA, KY

CPD (Certified in Plumbing Engineering)

Member of ASHRAE

American Society of Plumbing Engineers

National Association of Fire Protection Engineers

WV Society of Healthcare Engineers

EXPERIENCE

Mr. Timothy Cox, President and Senior Mechanical Engineer of CMA Engineering brings 24 years of mechanical design experience to our clients. Mr. Cox has been project manager and project engineer for a variety of projects.

PROJECTS

West Virginia University

Open End Contract since 1999

Boreman HVAC/Plumbing/Fire Sprinkler
Upgrades

Soccer Stadium

Coliseum Life/Safety Renovations

Coliseum Locker Room Suites

Engineering Science Building Addition/
Renovations

Arnold Hall Fire Alarm/ Fire Sprinkler
Upgrades

West Virginia University Hospitals

WV Eye Institute-MEP systems design for
new facility

Cheat Clinic-MEP design for new clinical
addition

WVUH Emergency Department-HVAC,
electrical, fire and communication
systems design for new addition

Chestnut Ridge Hospital-various MEP
renovations

Healthworks Rehab and Fitness -MEP
systems design for new facility

Davis Memorial Hospital

Endoscopy Relocation

New Operating Suites

Pharmacy IV Laboratory Clean Room

New Linear Accelerator

Mylan Pharmaceuticals, Morgantown, WV

Various projects including HVAC, plumbing,
fire sprinkler and controls for new office
building, fluid bed addition, north plant
expansion, parking garage and weighing
and packaging.

CMA
ENGINEERING

P R O F I L E

Daniel Lee Ellars, P.E.
LEED AP

Principal
(304) 343-0316
dellars@cmawv.com

EDUCATION

West Virginia University Institute of Technology
Montgomery, West Virginia
Bachelors of Science in Electrical Engineering

West Virginia State University
Institute, West Virginia
Bachelors of Science in Business Administration

REGISTRATIONS/PROFESSIONAL AFFILIATIONS

Registered Professional Engineer in West Virginia

National Fire Protection Association (NFPA)

Institute of Electrical and Electronics Engineers (IEEE)

American Society of Heating, Refrigerating and
Air-Conditioning Engineers (ASHRAE)

EXPERIENCE

Mr. Daniel L. Ellars, Electrical Engineer for Clingenpeel/
McBrayer & Associates, Inc. brings 19 years of
electrical design experience to our clients. Mr. Ellars has
been a project manager and project engineer for a variety
of projects including commercial and industrial facilities
as well as for both power and tele-communications
utilities.

PROJECTS

Educational Experience

Talcott Elementary-Design of electrical systems for
new facility
Fairdale Middle School-Design of electrical systems
for new facility

Healthcare Experience

West Virginia University / Ruby Memorial Hospital
West Virginia Eye Institute—Electrical systems
design for new facility.
Thomas Memorial Hospital—Electrical systems
survey, upgrades and documentation.
Standby emergency power engine generator
replacement.
Roane General Hospital-Electrical design for
renovations to reception area and office
spaces and for emergency generator
Appalachian Regional Hospital-Electrical design for
renovations
VA Hospital Clarksburg, WV-Electrical design for
renovations to the second floor laboratory
space, Northwest Entrance and Southwest
Entrance

Industrial Experience

Mylan Pharmaceuticals
Mylan Office & Lab Buildings—various electrical
systems designs for new, existing and expanded
facilities including new 23kV/12kV switchyard and
grounding plain layout.

CMA
ENGINEERING

P R O F I L E

James A. Kerns
Mechanical/Electrical Designer

(304) 343-0316
jakerns@cmawv.com

EDUCATION

West Virginia State College
Institute, West Virginia
Degree: Bachelor of Science in Industrial
Technology/Building Construction

REGISTRATIONS/PROFESSIONAL AFFILIATIONS

Member of ASHRAE

EXPERIENCE

Mr. James A. Kerns has over 32 years experience in Mechanical and Electrical engineering design. He has been responsible for design projects in the educational, commercial, and health care fields.

Mr. Kerns has been a great asset to Clingenpeel/McBrayer & Associates. His knowledge and experience enables him to complete project designs in a clear and concise manner and in a timely fashion.

PROJECTS

Thomas Memorial Hospital, South Charleston, WV

MRI Facility, Ashton Place-New Facility
MRI Facility Additions, Ashton Place
Oncology Facility, Teays Valley, New Facility
Medical Office Building South-New Facility
Rashid Office Building-New Facility
Main Lobby Renovation
Emergency Room Renovations
Nursery Department Renovations
Intensive Care Unit Renovations

VA Medical Center, Clarksburg, WV

Elevator Installation

United Hospital, Clarksburg, WV

Elevator Renovation
Medical Office Building-Variou MEP renovations

Charleston Area Medical Center

Roadway Lighting-Memorial Division

Concord University

New Chapel/Alumni Facility
Fire Sprinkler Renovation of Dormitories

P R O F I L E

Matt Corathers, E.I.
Mechanical Designer

(304) 598-2558
mcorathers@cmawv.com

EDUCATION

West Virginia University
Bachelor of Science -Mechanical Engineering

PROFESSIONAL DEVELOPMENT

Successfully passed Fundamentals of Engineering Exam

EXPERIENCE

Matt joined CMA's professional staff in 2008 having previously worked for Whitman, Requardt and Associates in Baltimore, MD.

PROJECTS

VA Hospital, Clarksburg, WV

Mechanical design for renovations to Dental Lab

Monongalia General Hospital

Evaluation of kitchen gas system
Mechanical design for renovations to IT Workroom Cooling

Mercer County Nursing Home Addition

Mechanical design for HVAC systems

United Hospital Center

Mechanical design for MRI facility

West Virginia University

Mechanical design for new two-story child care facility

University High School, Morgantown, WV

Mechanical design for renovations/ upgrades to the HVAC systems

Randolph County Building

Mechanical design for completion of two-story addition and modifications of the existing second floor to be used by the Family Court

Monongalia County Family Court

Mechanical design for renovations to 4,850sf in existing court facility

CMA
ENGINEERING

P R O F I L E

Jeremy R. Perry, E.I.
Mechanical Designer
(304) 343-0316
jperry@cmawv.com

EDUCATION

San Jose University
San Jose, CA
Degree: Mechanical Engineering B.S.

PROFESSIONAL DEVELOPMENT

Successfully passed Fundamentals of
Engineering Exam
WV Society of Healthcare Engineers
ASHRAE

EXPERIENCE

Jeremy Perry brings three years of
professional design experience to CMA
Engineering with emphasis on energy
Conservation.

PROJECTS

WVANG Elkins Readiness Center-HVAC design, load
calculations, LEED Analysis for new facility

Gassaway Armory- HVAC Design, load calculations

Pikeview Middle School-HVAC Design, load
calculations, LEED analysis, comparative cost analysis,
hydronic layout for new facility

Lewisburg Elementary School-HVAC design, load
calculations, LEED analysis, comparative cost analysis,
hydronic layout for new facility

Holley Grove Mansion- HVAC design, hydronic design,
load calculations for renovations to Historic facility

Sissonville Middle School- HVAC design and load
calculation

Amos-Caravelli Funeral Home-HVAC design and load
calculations

Rainelle Elementary School-HVAC design for new
facility

P R O F I L E

Jerry F. Betarie
Electrical Designer

(304) 598-2558
jbetarie@cmawv.com

EDUCATION

Penn State
University Park, PA
Degree: B.S., Electrical Engineering

PROJECTS

Wyoming County Continuous Care
Electrical design for addition to Nursing Home

Physicians Office Center, Morgantown, WV
Electrical design for MRI Facility

University High School, Morgantown, WV
Electrical design services for the Renovations to the electrical system

Ridgedale Elementary School, Morgantown, WV
Electrical design for renovations/ upgrades to the electrical system

Fairfield Inn, Morgantown, WV
Electrical design for new 50,000sf hotel

Barbour County Bank, Philippi, WV
Electrical design for renovations of existing facility and the addition of a two-story, 3,500sf annex

Federal Credit Union, Fairmont, WV
Electrical design for tenant fit-out of the second floor space

Monongalia County Office Building, Morgantown
Electrical design for new office building

PROFESSIONAL DEVELOPMENT

Various seminars and technical sessions

EXPERIENCE

Mr. Jerry Betarie has 20 years of experience in Project Management, Electrical Design and Project Estimating.

CMA
ENGINEERING

P R O F I L E

Larry Weese
Mechanical/Plumbing Designer

(304) 343-0316
lweese@cmawv.com

EDUCATION

West Virginia University
Morgantown, West Virginia
Degree: Division of Forestry BS,MS

PROJECTS

Medical Facilities Experience

Charleston Area Medical Center
Women & Children's Hospital- Renovations to
Emergency Room
Hess Medical Office Building-New Facility
Pinewood Medical Office Building-Renovations
Southern West Virginia Hospice-New Facility
NorthGate Doctor's Office Building-New Facility

WV Department of Health and Human Resources

Office of Chief Medical Examiner, Charleston
DHHR New Facility Mingo County

Emergency Response Facilities

Randolph County 911-New Facility
Mason County 911-New Facility
Raleigh County 911-New Facility
Orchard Manor Fire Station-New Facility

Industrial Experience

Standard Laboratories-Laboratory Addition
Dow Process Control-New Facility
Diamond Electric-Expansion

Commercial Experience

Bobcat of Advantage Valley-New Facility
Allegheny Springs Restaurant

PROFESSIONAL DEVELOPMENT

Various seminars and technical sessions

EXPERIENCE

Mr. Larry Weese, Mechanical Designer for Clingenpeel/McBrayer & Associates, Inc brings 18 years of mechanical design and project management experience to our clients.

CMA
ENGINEERING

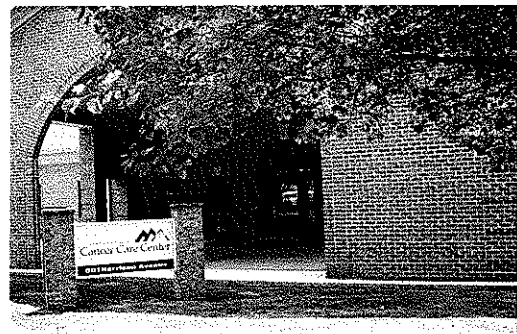
Project Profiles

Healthcare Facilities



CMA Engineering has provided mechanical, electrical and plumbing engineering for numerous projects at **Davis Memorial Hospital in Elkins, WV**. Projects include:

- New Cancer Center
- New Operating Suites
- Pharmacy IV Laboratory Clean Room
- New Linear Accelerator
- Boiler Replacement
- Fire Suppression Renovations
- Kitchen and Dining Room Renovations
- AHU Cool Freeze Protection
- Emergency Generator Upgrade
- Laundry Exhaust Air Handler
- Kitchen Make-Up Air Unit
- Cooling Tower
- Energy Audit
- Storm Pump



Project Profiles

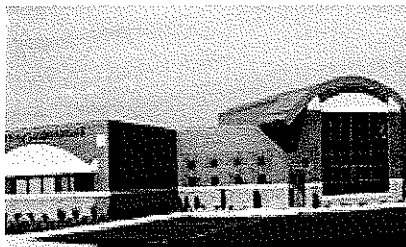
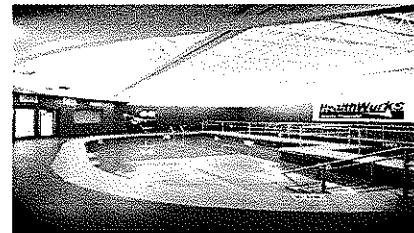


Healthcare Facilities



CMA Engineering has provided mechanical, electrical, plumbing and fire protection design services for over fifty projects of varying scope and size at **West Virginia University Hospitals**. Projects have included:

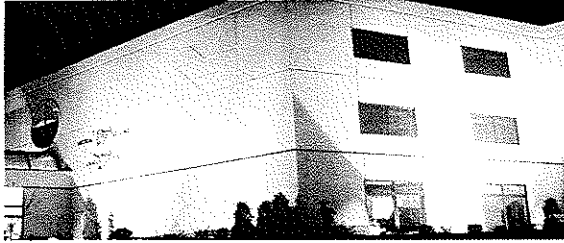
- New West Virginia University Eye Institute
- Chestnut Ridge Center –HVAC upgrades to First and Second Floors
- Ruby Memorial Hospital-Addition to Emergency Room
- Ruby Memorial Fire Alarm Upgrade
- Cheat Lake Clinic– 21,000sf Addition that include examination rooms and x-rays facilities
- Physicians Office Center-Renovations and Upgrades to the First Floor for conversion to a MRI Facility
- Healthworks-new 37,000sf Physical Therapy Facility
- WVU Biomedical Research Facility-Bidding Documents for the following site utilities—chilled water supply and return steam condensate, 23kv and 480kv distribution with associated duct banks, and telephone and communication duct banks.
- WVUH-Emergency Room Expansion
- WVUH-Gamma Knife Installation
- Health Science Center-Tunnel Air Flow Study
- Health Science Center Smoke Evaluation
- WVU School of Medicine Charleston– HVAC Renovations



CMA
ENGINEERING

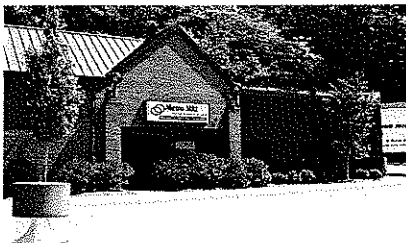
Project Profiles

Healthcare Facilities



CMA Engineering has provided engineering design services for over 80 projects at **Thomas Memorial Hospital in South Charleston, WV.** The projects have varied in scope and complexity and have included:

- Electrical Schedules
- HVAC Renovations in various departments
- Chiller Replacements
- Air Handler Replacements
- Renovations to the Lobby
- Renovations to the Nursery
- Renovations to the Operating Rooms
- Renovations to the Emergency Room
- Renovations to the Intensive Care Unit
- Design of Exterior Lighting
- Emergency Generator Upgrades
- New Medical Office Buildings North
- New Medical Office Building South
- New MRI Facility at Ashton Place
- New Oncology Facility in Teays Valley

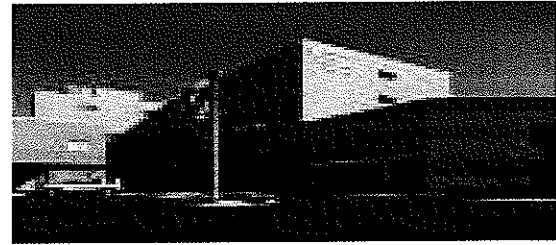


CMA
ENGINEERING

Project Profiles

CAMC-Women & Children's Division

CMA Engineering provided mechanical, electrical, plumbing, fire sprinkler, fire alarm and communication system design for renovations to the emergency room facility.



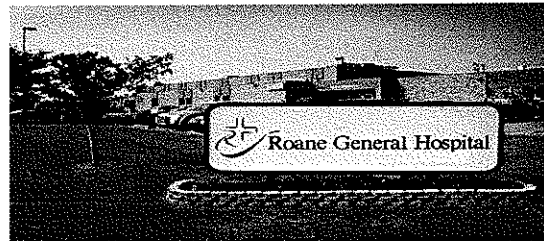
Princeton Community Hospital

CMA Engineering provided mechanical, electrical and plumbing engineering services for the renovation of 3,000sf into a MRI facility with associated spaces.



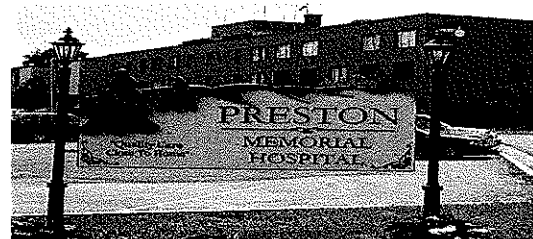
Roane General Hospital, Spencer, WV

CMA Engineering is currently providing mechanical and electrical engineering services for the renovation of approximately 4,300sf of reception area and associated office space. CMA is also providing engineering design services for the installation of a second emergency power system and electrical infrastructure documentation.

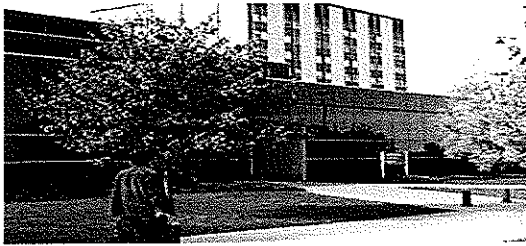


Preston Memorial Hospital, Kingwood, WV

CMA Engineering provided mechanical, electrical and plumbing engineering services for two new emergency isolation rooms and corresponding adjacent ante rooms.



Project Profiles



Engineering Science Building , WVU

CMA Engineering provided design of new HVAC, plumbing, electrical, fire protection systems within existing space to provide three distinct clean room space (4,500sf) for WVU Engineering Department for conducting experiments on new technology. Project also include design of 2,000sf new mechanical roof top penthouse

WV DHHR-Office of Chief Medical Examiner

CMA Engineering provided mechanical, plumbing, standard and emergency electrical power, lighting, communications and fire alarm systems design services for the renovation of 619 Virginia Street, West into the State Medical Examiners facility. Project encompassed the renovation of the first floor area (11,800sf) into storage rooms, offices, laboratory space and autopsy space.

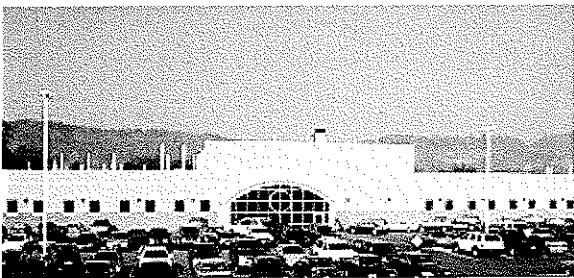


Standard Laboratories

CMA Engineering provided design services for the HVAC, plumbing and electrical systems for the addition of a 3,300sf laboratory and testing facility and a 2,000sf prep facility.

WV DHHR-Williamson

CMA Engineering provided mechanical, electrical and plumbing design services for the new 20,500sf facility, consisting of administrative areas, private offices, lounges, conferences rooms and laboratory space.



Mylan Pharmaceuticals

CMA Engineering has provided mechanical, electrical, plumbing, fire protection and communications design services for various new construction at Mylan Pharmaceuticals in Morgantown, WV. Projects include the North Plant expansion, the Quality Control Laboratory at Chestnut Ridge, the Robotics Laboratory and the new laboratory facility at Collins Ferry Road.

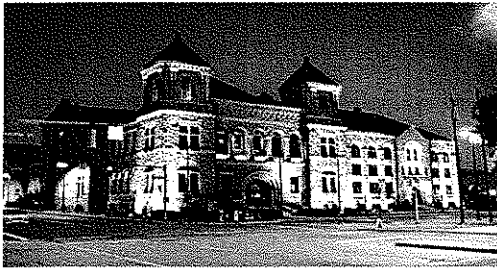
Laboratories

Project Profiles



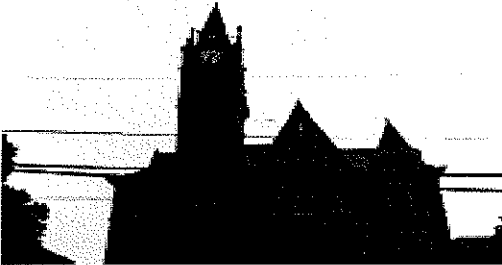
State of West Virginia House and Senate Offices

CMA recently completed mechanical, and electrical design services for renovations to the first and second floors' HVAC systems at Building #1 at the State Capitol Complex. Construction will be phased to accommodate the working sessions of these offices.



Kanawha County Courthouse

CMA has provided mechanical, electrical and plumbing engineering design services for Kanawha County since 1983. Projects include MEP renovations to main courthouse, toilet renovations, parking garage, MEP renovations to the judicial annex, renovations to the Law Master offices, and design of exterior lighting.



Doddridge County Courthouse

CMA provided design services for the upgrades of the mechanical, electrical, plumbing, fire sprinkler /fire alarm and communication systems for the second and third floors of the facility.



Kimball War Memorial, Kimball, WV

CMA Engineering provided mechanical, electrical and plumbing design services for the restoration of the historic memorial which was destroyed by fire in 1991.

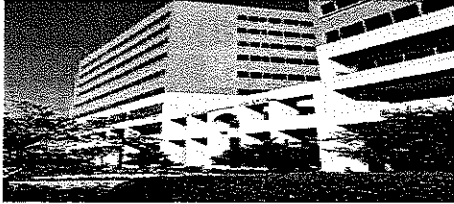


Davis Memorial Presbyterian Church, Elkins, WV

CMA Engineering provided mechanical and electrical design services for the renovation of the HVAC system.

References

Mechanical/Electrical/Plumbing



West Virginia University Hospitals
Medical Center Drive
Morgantown, WV 26505

Contact: Mr. Allen Neptune
(304) 598-4125



Princeton Community Hospital
P.O. Box 1369
Princeton, WV 24742

Contact: Kevin Graham
(304) 487-7000



Thomas Memorial Hospital
4605 MacCorkle Avenue SW
South Charleston, WV 25309

Contact: Tim Lee
(304) 766-3680



Mylan Pharmaceuticals
P.O. Box 4310
Morgantown, WV 26504

Contact: J. J. Dotson
(304) 599-2595



Davis Memorial Hospital
P.O. Box 1484
Elkins, WV

Contact: Steve Johnson
(304) 636-3300



CORPORATE BACKGROUND

J. Dan Snead & Associates, Inc. is an Architectural firm founded on February 2, 1998, with the formation of a partnership including J. Dan Snead, AIA, Raymond E. Fink, Jr. and Steven D. Stone.

Dan Snead has thirty-five years of experience in architectural practice and was a principal and partner in a previous practice for ten years prior to organizing the firm.

Mr. Snead has a broad background in architectural design experience including educational and healthcare facilities, public housing, judicial, residential and general commercial design.

Dan is currently a licensed architect in West Virginia and in response to the growing practice is seeking certification in other states. He is a member of the AIA and the West Virginia Society of Architects and is certified by the National Council of Architectural Registration Boards. Dan has become recognized as one of the leading architects in the state of West Virginia.

J. Dan Snead & Associates, Inc. has vast experience with a variety of projects and fully believes that each project requires a completely coordinated development from concept through design and construction. We focus our expertise on designing projects that are sensitive to our client's needs and projects that utilize the client's investment dollars to the greatest advantage. Our entire organization is dedicated to the achievement of project designs that are aesthetically pleasing, functional, and consistent with available funds.

The strengths of our firm lie in our talented staff, experience, and the ability to perform architectural services efficiently from inception to completion. We have but one simple goal - provide each client with the project they envisioned in an attentive, professional manner and to bring each project to a positive and successful conclusion.



EVALUATIVE CRITERIA

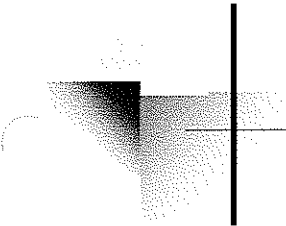
J. Dan Snead & Associates, Inc. has extensive experience in the design of educational, commercial and governmental facilities. Our staff has designed new educational facilities in Nicholas, Raleigh, Summers and Hardy counties. Some of our other projects involve renovations to existing educational institutions including: Southern West Virginia Community College, Concord College, Bluefield State College, West Virginia Schools for the Deaf and Blind, and various facilities in Wyoming, Marion and Raleigh counties. Our designs were also incorporated in the Valley One Office Building and the West Virginia State Office Building. Locally, some of our recent projects include the design of the new Shady Spring Junior High, a new administrative office complex for the Raleigh County Solid Waste Authority and the new Pioneer Community Bank, Sophia Branch, a new EOC/911 facility in Raleigh County, a new Health Sciences Building for Mountain State University in Beckley and miscellaneous public facilities in Fayette County, West Virginia.

The firm's principals, J. Dan Snead, AIA, and Raymond E. Fink, Jr. actively participate and supervise all aspects of design and construction administration employing a wealth of knowledge amassed through many dedicated years of experience.

Our firm is committed to the team concept of design and production. We recognize the value of establishing quality communications with the design committee as a means of thoroughly understanding the design objectives, program requirements and project budget. Through utilization of this concept, project owners are valued as a member of our team from the schematic phase through the completion of the project.

Dan Snead, AIA, has a history of providing aesthetically pleasing designs within budget limitations by avoiding trendy design issues and by steadfastly adhering to the "elegance of simplicity." His projects are applauded for their design and for their high value/cost ratio.

Through many years of experience, the firm's principals have refined the ability to evaluate the probable construction costs in the project programming stage to allow us to assess the appropriateness of the proposed budget related to the proposed scope of work.



J. Dan Snead & Associates uses the latest computer and software technology, ARRIS Version 9.0 and AutoCAD 2007, to produce all of our design documents. Combined with the gifted architectural designers in our firm, our computers provide precise, accurate drawings, which translate into lower bid costs from contractors and fewer change orders. Our record regarding change orders is one of the industry's best and our goal is to have few, if any, change orders on all projects.

J. Dan Snead & Associates is enthusiastic about the prospect of working with you. We pledge sensitivity to your needs, attention to detail, and the relentless pursuit of excellence.

J. DAN SNEAD, AIA

EDUCATIONAL BACKGROUND

West Virginia Institute of Technology, 1965

REGISTRATIONS & MEMBERSHIPS

National Council of Architectural Registration Boards
The Board of Architects, State of West Virginia, 1608
American Institute of Architects
West Virginia Society of Architects

PROFESSIONAL EXPERIENCE

J. Dan Snead & Associates, Inc., Beckley, West Virginia
1998 - Present

Computects, Inc. - Beckley, West Virginia
1988 - 1998

Donald H. Stark Architects, Inc.
1973 - 1988

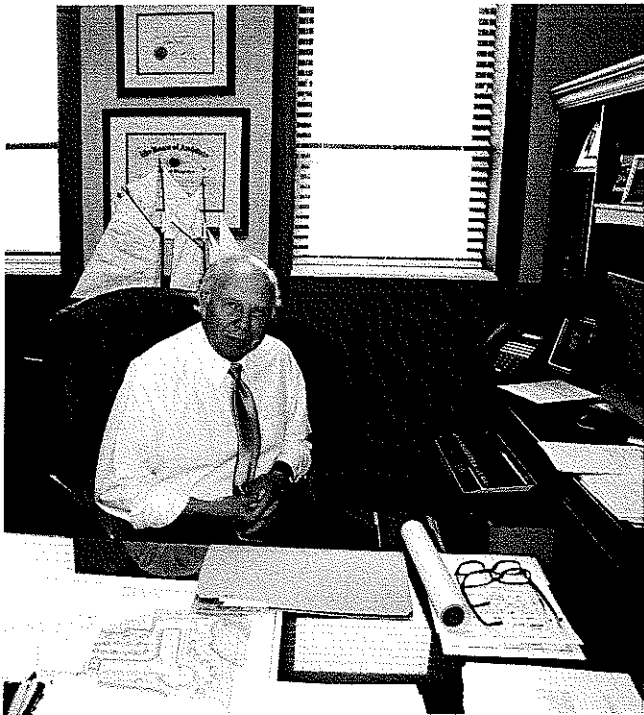
SUMMARY

Mr. Snead is a licensed architect in West Virginia and a member of the American Institute of Architects, the West Virginia Society of Architects, and is certified by the National Council of Architectural Registration Boards.

With over thirty-four years of experience in Architectural design and construction administration, Dan has developed a well known, excellent reputation within West Virginia for providing functional, aesthetically pleasing designs within budget limitations. His innovative designs and understanding of design objectives have rewarded him with a long list of satisfied, repeat clients.

His experience is extensive and varied and includes primary, secondary and higher education facilities; municipal and government facilities; administrative offices; industrial and commercial projects; as well as numerous renovation, rehabilitation and adaptive reuse projects. Many of the designs Dan has developed require significant sensitivity to historic issues, local codes, life safety and current ADA thinking.

Dan is dedicated to maintaining the highest levels of both professional and ethical standards and to the coordination of teamwork both with the Owner and construction professionals to bring to each project a positive and successful conclusion.



RAYMOND E. FINK, JR.

EDUCATIONAL BACKGROUND

Bluefield State College - A.S. Civil Engineering Technology, 1972 - 1974

Mercer County Vocational Technical School - Civil Engineering Technology, 1971 - 1972

REGISTRATIONS

Licensed Land Surveyor, West Virginia, 1989
Certified Surface Mine Foreman, West Virginia, 1977

PROFESSIONAL EXPERIENCE

J. Dan Snead & Associates, Inc., Beckley, West Virginia
1998 - Present

Almes & Associates, Inc., Beaver, West Virginia
1997 - 1998

Computects, Inc., Beckley, West Virginia
1984 - 1997

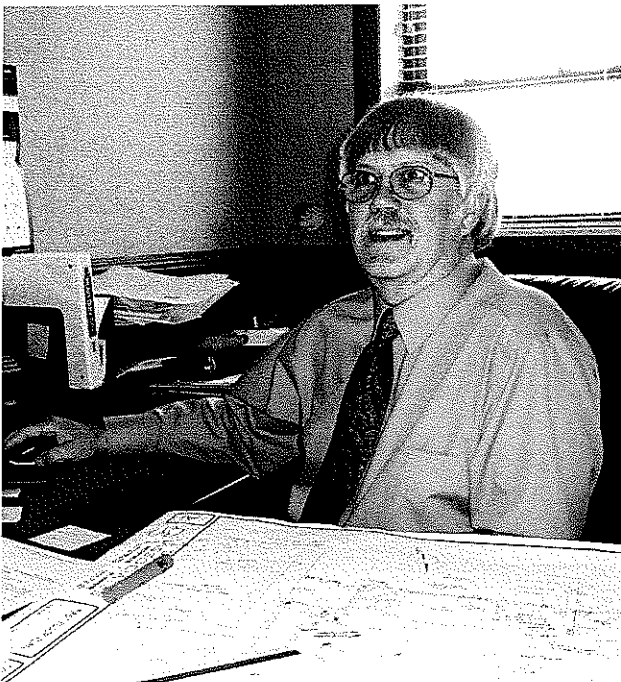
Oscar Vecellio, Inc., Beckley, West Virginia
1976 - 1983

SUMMARY

Raymond has more than thirty-three years of experience in the fields of Civil Engineering and Architecture. He has worked as Party Chief and Chief of Surveys directing boundary and topographic field surveys as well as construction layout. He has also served as foreman and cost estimator for various site construction projects spanning a period of nine years.

For more than twenty years, Raymond has worked in construction administration for various architectural projects including site inspections and review of submittals. He has been responsible for the preparation of all architectural drawings for residential, educational and commercial facilities.

As well as his unique surveying, engineering and architectural background, Raymond commands a wealth of computer knowledge. He has served as the Systems Administrator for computer operations and is proficient in the use of AutoCAD 2007 and ARRIS Version 9.0.



DONALD H. NORMAN, II

EDUCATIONAL BACKGROUND

Bluefield State College - B.S. Mining Engineering
Technology, 1986

PROFESSIONAL EXPERIENCE

J. Dan Snead & Associates, Inc., Beckley, West Virginia
2001 - Present

Pentree, Inc., Princeton, West Virginia
1994 - 2001

Computects, Inc., Beckley, West Virginia
1987 - 1993

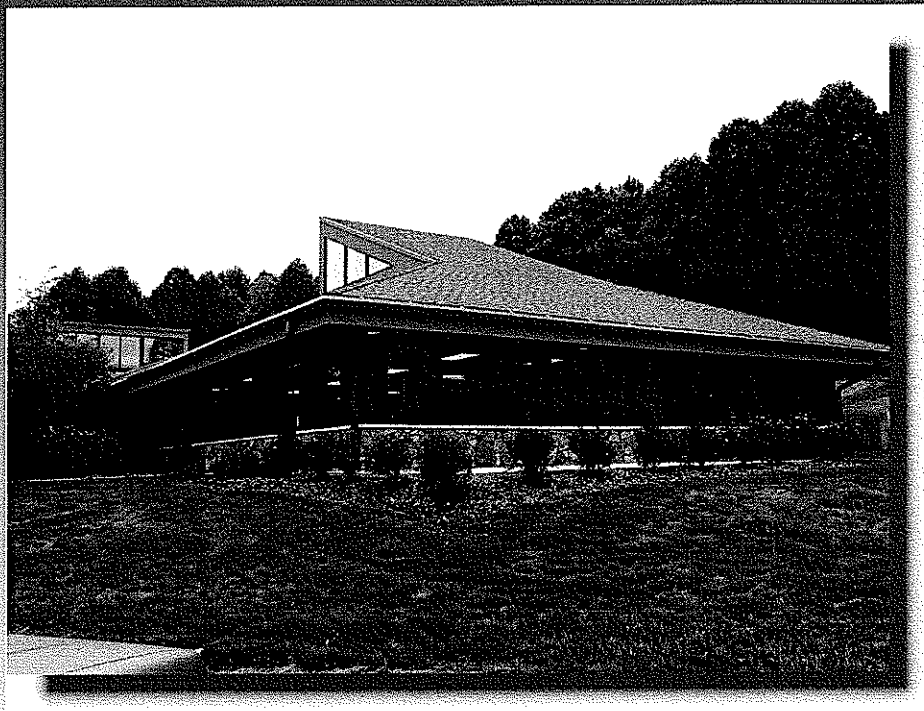
SUMMARY

Don has more than nineteen years of experience in the fields of Architecture and Civil Engineering. This experience is primarily in the design and detailing of bidding documents and project administration with some civil engineering experience in the field as well.

Don has served as an architectural designer for various construction projects during the last six years and has served as an engineering technician for construction projects spanning a period of seven years.

He has been responsible for the preparation of architectural drawings for residential, educational and commercial facilities. He has also been responsible for the preparation of engineering drawings for water and sanitary sewer projects as well as West Virginia Department of Transportation projects.

Raleigh Regional Cancer Treatment Center



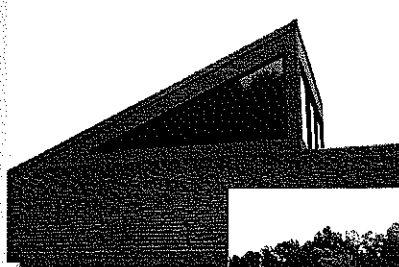
Chemotherapy Outpatient Addition

The new addition was designed to harmonize with the original building design and to significantly increase patient capacity.

The 2,600 square feet addition includes a large treatment room with vaulted ceiling and clerestory, doctor's offices, exam rooms, nurse's station and laboratory.

Design and construction problems included matching original building materials and maintaining patient caseload during normal construction activities.

The project was completed on time and under budget.



Beckley, WV

Total Project Cost: \$360,000

J. Dan Snead & Associates, Inc.

Mountain State University Health Science Building



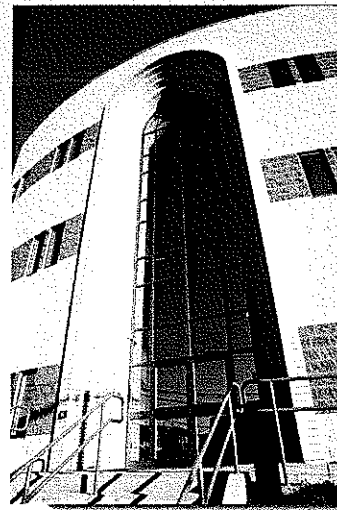
The recently completed Health Science Building on the campus of Mountain State University was constructed with a grant from the U.S. Government

The building contains five science laboratories, a nursing education center, two elevated lecture rooms, a large testing center, administrative offices and various support facilities. Total building area is 26,000 sf

The budget of \$4,300,000 included construction costs and A/E fees, produced a unit cost of \$165.00 per square foot

A unique feature of construction includes a three story tinted glass entry with concentric brick arches

The new science facility includes the latest information technology

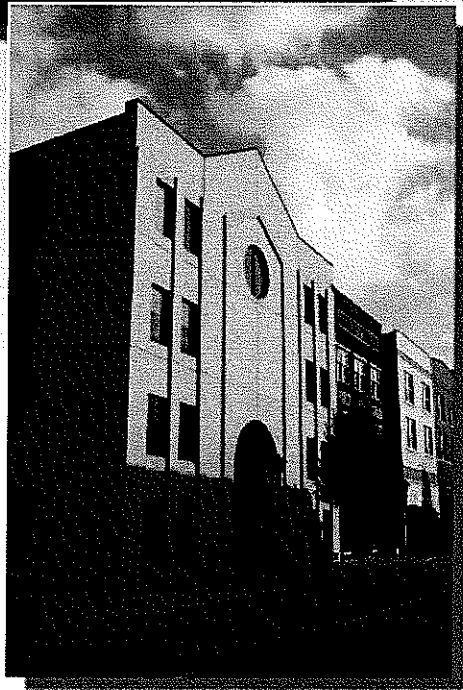
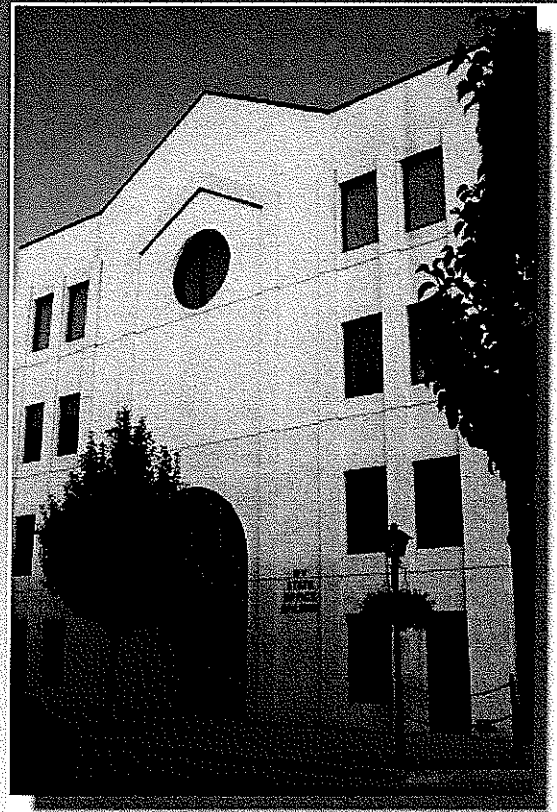
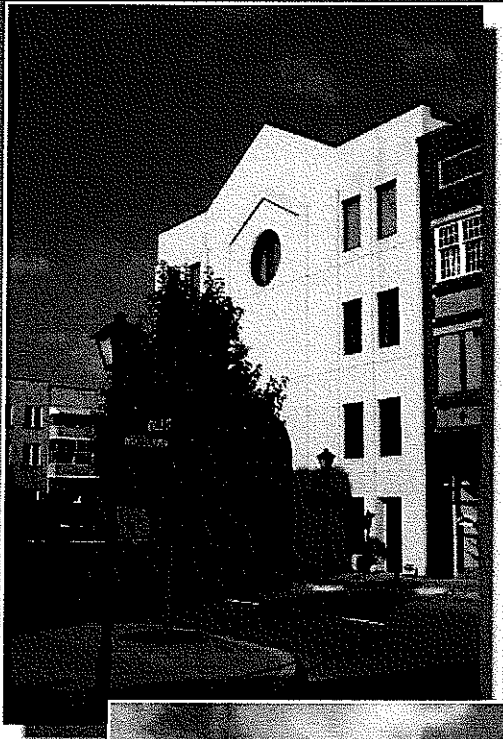


*Beckley,
West Virginia*

Total Project Budget: \$4,300,000

J. Dan Snead & Associates, Inc.

WV State Office Building



Beckley, WV

Total Project Cost: \$3.2 Million

J. Dan Snead & Associates, Inc.

The State Office Building, located in Beckley, West Virginia, was developed as a downtown revitalization project.

The original building was abandoned and previously housed a J.C. Penney retail store. The five story facility was completely renovated to contain various state agencies.

A five story addition containing 20,000 square feet was added to the back of the building bringing the total developed space to 46,000 square feet.

Design challenges included giving the original building a totally new look, while maintaining existing openings and struc-

Raleigh County EOC/911 Center



Beaver, West Virginia
Projected cost \$2.4 million
14,000 Square Feet
\$172 per sq. ft.

The new Raleigh County EOC/911 Center is located on a wooded four-acre site in an industrial park near Beckley, West Virginia. The new facility is designed to accommodate normal 911 activity and is intended to act as a regional command center for emergency services during times of need. The new center features a secure, internal dispatch area, state-of-the-art communication and data systems, a large command center/board room, administrative wing, 3,000 square feet of emergency equipment storage and overnight accommodations for emergency staff. Additional features include masonry structure and a standing seam metal roof for low maintenance.

J. Dan Snead & Associates, Inc.

Pioneer Community Bank



The Pioneer Community Bank is a new branch facility located at the Lester Square Shopping Center. The facility is constructed with wood frame, EIFS exterior, metal roof, aluminum entry and clad windows providing a maintenance free exterior.

The exterior design is somewhat monumental and employs fluted, oversized columns to produce a sense of solidity and tradition.

Interior finishes are of high quality and were selected for durability and quiet elegance.

Design features include a vaulted entry canopy, which extends from the exterior through the lobby and terminates at the teller stations. A partial second floor allows a Board Room with dormer windows and a large storage space.



Sophia, WV

Total Project Cost: \$420,400

J. Dan Snead & Associates, Inc.

Raleigh County Solid Waste Authority



Lanark, WV

New Construction
Total Project Cost: \$357,525

The Raleigh County Solid Waste Authority requested that their new administrative office be designed to reflect the progressive and highly professional philosophies of the Authority and its staff

The design accommodates anticipated future space needs of the Authority as well as a technology infrastructure which insures the efficient operation of the facility.

Exterior and interior materials were selected for durability and to be low maintenance over an extended period of time.

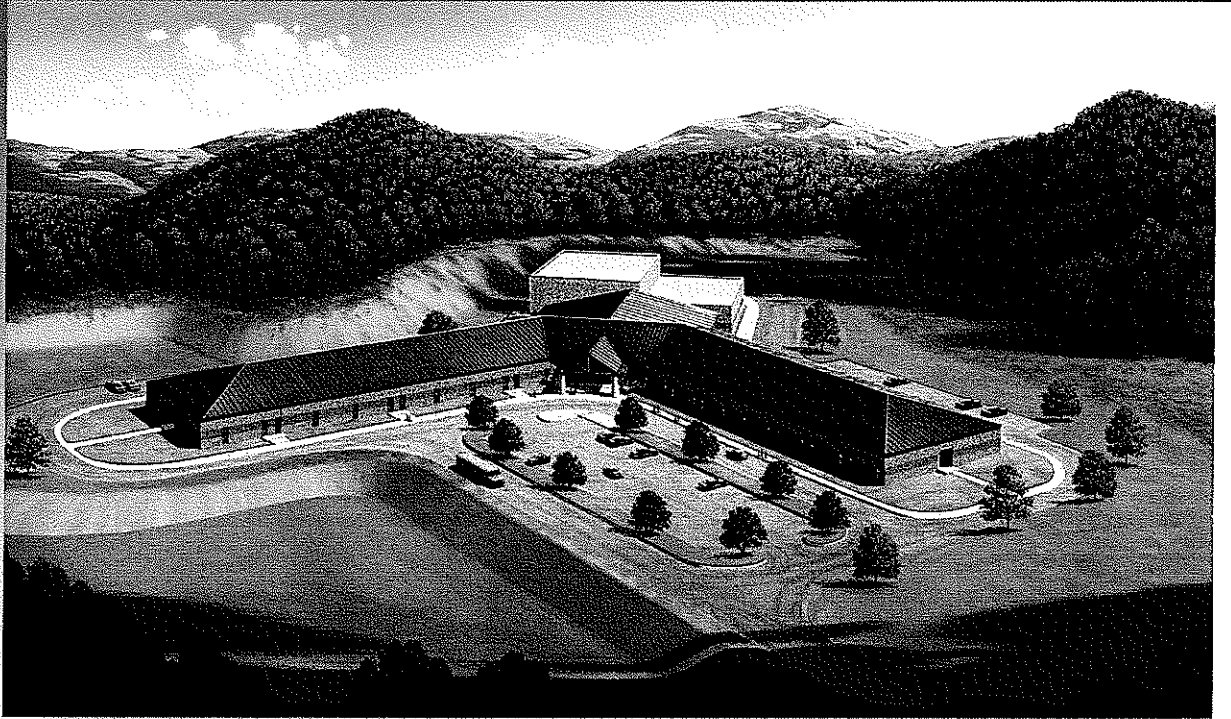
The location of the building on the site considered ease of public access and a very attractive view from the Board Room overlooking active and completed landfill cells.

Building features include a hexagonal vaulted center section divided into a Board Room and Entry Lobby. The vaulted ceiling is formed by laminated wood beams and decking. Large windows with curved overpanels provide abundant visual access to the view beyond.



J. Dan Snead & Associates, Inc.

Fairdale Elementary School



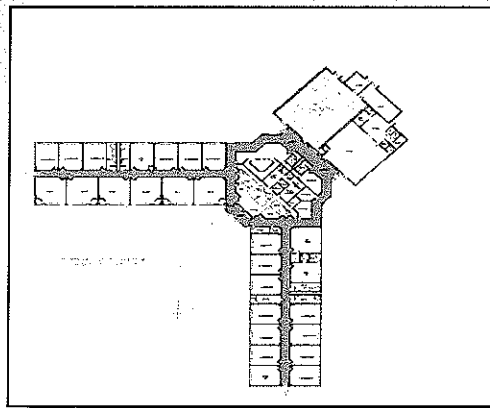
The currently under construction Fairdale Elementary School is funded in part by a School Building Authority Grant.

The school population is approximately 500 and the building footprint contains 52,000 square feet

The budget of \$8,422,000 which includes construction costs and A/E fees, produces a unit cost of \$162.00 per square foot

Unique features of construction include a gymnasium, sloping roof, ceramic tile in all corridors and a media center with a two tier computer lab.

The new Fairdale Elementary includes the latest technology in classroom security.



*Fairdale, WV
Raleigh County*

Total Project Budget: \$8,422,000

J. Dan Snead & Associates, Inc.

Shady Spring Middle School

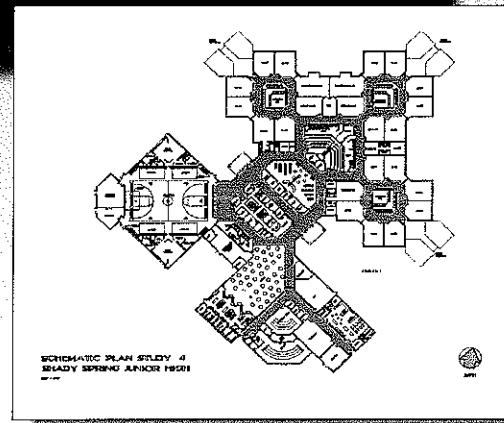


The recently completed Shady Spring Middle School project is part of a \$20,000,000 construction program undertaken by Raleigh County.

The new Shady Spring Middle School had a budget of over nine million dollars and was partially funded by a School Building Authority grant.

The new facility houses 600 students in three academic pods. It contains 78,000 square feet and features a unique design facilitating the middle school concept. Incorporated into the design is a centrally located administrative suite, media center, and commons area.

Additional features include three computer labs and an isolated, but easily accessible gymnasium.

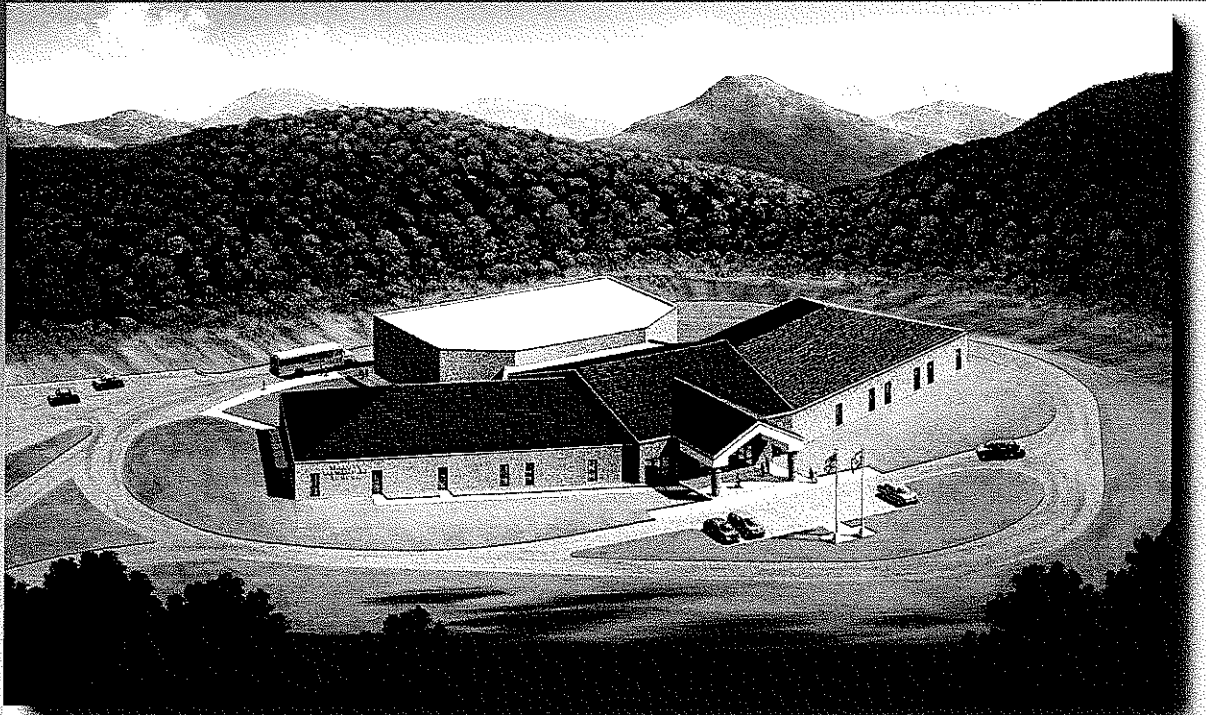


*Shady Spring, WV
Raleigh County*

Total Project Budget: \$9,500,000

J. Dan Snead & Associates, Inc.

Talcott Elementary School

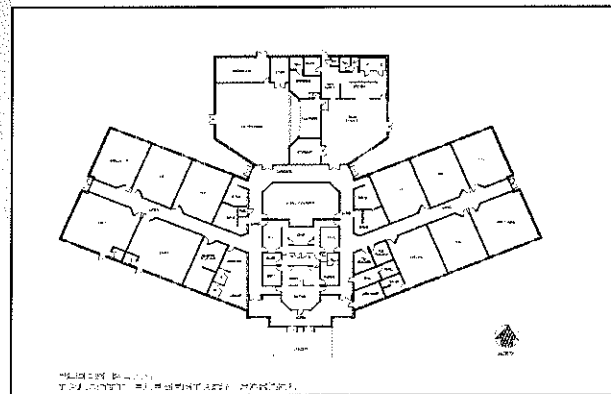


The recently completed Talcott Elementary School completes the construction programs of Summers County Schools by replacing the 72 year old existing building

The new elementary school had a five million, three hundred thirty thousand dollar budget and was funded by a School Building Authority Grant. The student population is approximately 200 and the building area is 26,000 square feet.

The plan features a central Administration Area, Media Center, Multipurpose Room and Dining Hall flanked on both sides by classroom wings.

Additional features include an isolated bus loop and the latest technology in school security.



*Talcott, WV
Summers County*

Total Project Budget: \$5,330,000

J. Dan Snead & Associates, Inc.

STATE OF WEST VIRGINIA
Purchasing Division

PURCHASING AFFIDAVIT

West Virginia Code §5A-3-10a states: No contract or renewal of any contract may be awarded by the state or any of its political subdivisions to any vendor or prospective vendor when the vendor or prospective vendor or a related party to the vendor or prospective vendor is a debtor and the debt owed is an amount greater than one thousand dollars in the aggregate

DEFINITIONS:

"Debt" means any assessment, premium, penalty, fine, tax or other amount of money owed to the state or any of its political subdivisions because of a judgment, fine, permit violation, license assessment, defaulted workers' compensation premium, penalty or other assessment presently delinquent or due and required to be paid to the state or any of its political subdivisions, including any interest or additional penalties accrued thereon

"Debtor" means any individual, corporation, partnership, association, limited liability company or any other form or business association owing a debt to the state or any of its political subdivisions. "Political subdivision" means any county commission; municipality; county board of education; any instrumentality established by a county or municipality; any separate corporation or instrumentality established by one or more counties or municipalities, as permitted by law; or any public body charged by law with the performance of a government function or whose jurisdiction is coextensive with one or more counties or municipalities "Related party" means a party, whether an individual, corporation, partnership, association, limited liability company or any other form or business association or other entity whatsoever, related to any vendor by blood, marriage, ownership or contract through which the party has a relationship of ownership or other interest with the vendor so that the party will actually or by effect receive or control a portion of the benefit, profit or other consideration from performance of a vendor contract with the party receiving an amount that meets or exceed five percent of the total contract amount

EXCEPTION: The prohibition of this section does not apply where a vendor has contested any tax administered pursuant to chapter eleven of this code, workers' compensation premium, permit fee or environmental fee or assessment and the matter has not become final or where the vendor has entered into a payment plan or agreement and the vendor is not in default of any of the provisions of such plan or agreement

Under penalty of law for false swearing (*West Virginia Code §61-5-3*), it is hereby certified that the vendor affirms and acknowledges the information in this affidavit and is in compliance with the requirements as stated

WITNESS THE FOLLOWING SIGNATURE

Vendor's Name: CMA ENGINEERING, INC.

Authorized Signature: Daniel L. Egan Date: 06-15-2010

State of West Virginia

County of Kanawha, to-wit:

Taken, subscribed, and sworn to before me this 15th day of June, 2010

My Commission expires May 18, 2010

AFFIX SEAL HERE

NOTARY PUBLIC Karen Humphrey

