



WYK ASSOCIATES, INC.
ARCHITECTURE · PLANNING

EXPRESSION OF INTEREST

WYK Associates, Inc.



**Architectural/
Engineering
Services**

for

**Group Camp
Dining Hall at
Cabwaylingo
State Park,
Dunlow, WV**

Requested by:

**WV Dept. of Natural
Resources
Procurement Office
DNR 210145**

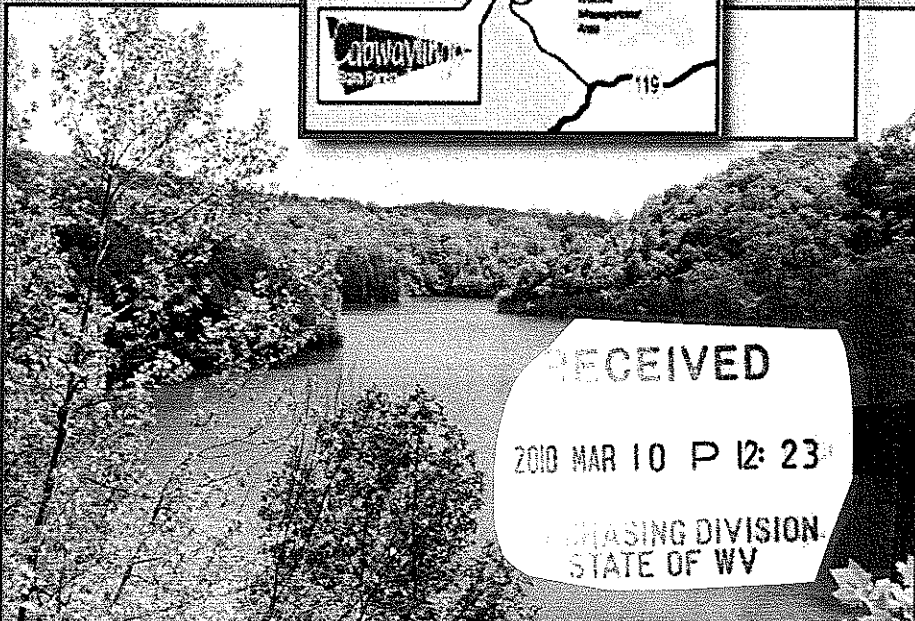
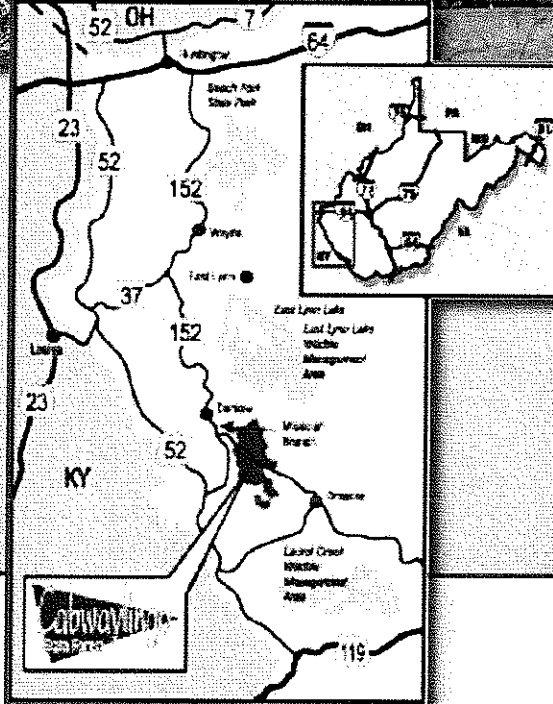
**Frank Whittaker
Purchasing Division
2019 Washington St.
East, Bldg. 15
Charleston, WV 25305**

March 11, 2010

**WYK Associates, Inc.
PO Box 1484
205 Washington
Avenue
Clarksburg, WV 26301**

**p. 304.624.6326
f. 304.623.9858**

wyk@wykarchitects.com



RECEIVED
2010 MAR 10 P 12: 23
PURCHASING DIVISION
STATE OF WV



WYK ASSOCIATES, INC.
ARCHITECTURE • PLANNING

Table of Contents
Dining Hall at Cabwaylingo State Park

- I. LETTER OF INTEREST**
- II. COMPANY OVERVIEW**
- III. PROJECT TEAM**
- IV. WYK's APPROACH TO YOUR PROJECT**
- V. PROJECTS**
- VI. RESUMES**
- VII. CONSULTANTS**
 - i. CIVIL ENGINEERING**
KCI Technologies, Inc.
 - ii. STRUCTURAL ENGINEERING**
Allegheny Design Services
 - iii. HVAC / ELECTRICAL / PLUMBING**
ZDS Design / Consulting Services
- VIII. WYK'S REPEAT CLIENTS**
- IX. REFERENCES**
- X. PURCHASING AFFIDAVIT**



WYK ASSOCIATES, INC.
ARCHITECTURE • PLANNING

March 8, 2010

Frank Whittaker, Senior Buyer
Purchasing Division
2019 Washington St., East
Charleston, WV 25305

Re: DNR 210145 - A/E Services for a New Group Camp Dining Hall; Cabwaylingo State Park

Dear Mr. Whittaker:

WYK Associates, Inc. wishes to express our interest in providing Architectural/Engineering services for the proposed Dining Hall Project at Cabwaylingo State Park. We have an experienced team which can provide all of the services required for this project in a timely and professional manner. As you can see from this response, we have provided services for a variety of food service facilities in both the public and private sectors. These include:

- Kitchens and cafeterias for elementary and high schools
- Kitchens and dining facilities for churches including both warming and full service facilities
- Restaurants
- College cafeterias with multiple point of service options
- Food service/dining facilities for group homes and special needs schools

Our team understands the rural park nature of this facility, and we are confident that we can provide a design which meets functional needs of the staff and users, as well as, contributing to the character and ambience of the park.

We look forward to hearing from you, and will gladly provide any additional information or answer any question that you or the Division of Natural Resources may have.

Sincerely,

William E. Yoke, Jr., AIA
President



WYK ASSOCIATES, INC.
ARCHITECTURE · PLANNING

Company Overview
WYK Associates, Inc.



WYK ASSOCIATES, INC.
ARCHITECTURE • PLANNING

William E. Yoke, Jr., AIA – President
James B. Swiger, AIA – Vice President



Who We Are:

- WYK Associates, Inc. is a full service architectural and planning firm serving a wide variety of commercial, religious, educational, civic and industrial clientele. Carleton Wood, Jr. was a third generation architect. His grandfather's firm had roots in North Central West Virginia dating back to the early twentieth century. William Yoke, Jr. and Howard Kelley partnered with Mr. Wood in 1974 to form WYK Associates, Inc. Our archives are filled with a century's worth of historic work.
- Mr. William Yoke, president of the firm, assumed that role in 1996. He has been a partner with the company since 1974.
- Mr. James Swiger joined the firm in 2005 and became a principal and vice president in 2008.



Our Project Philosophy:

- **COMMUNICATION** and **TEAMWORK** are our guide words for each project. Our client's requirements for quality, service and value are the driving force behind each decision.
- Through collaboration with engineering consultants we address the needs and schedule requirements of each client.
- We provide thorough planning in all areas of each project to fit the individual requirements for a positive impact on both the natural and built environments. Energy conservation and product safety are very important concerns.



Project Management:

- We carefully evaluate the client's program, design concerns, budget, funding sources, and other available data to assure a clear understanding of each project.
- We incorporate input from our client and consultants to establish the budget and schedule. These facets are updated during each stage of project development to insure our client's parameters are met.
- WYK's principals engage and manage the entire project team, from concept through occupancy. WYK Associates, Inc. has an outstanding reputation for providing construction administration services along with maintaining an excellent rapport with contractors.





WYK ASSOCIATES, INC.
ARCHITECTURE · PLANNING

Project Team
Dining Hall at Cabwaylingo State Park



WYK ASSOCIATES, INC.
ARCHITECTURE • PLANNING

Project Team
Dining Hall at Cabwaylingo State Park

ARCHITECTURE

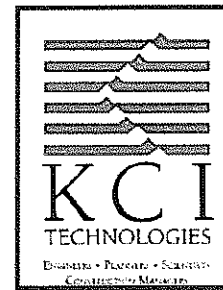
WYK Associates, Inc.
205 Washington Avenue
Clarksburg, WV 26301
(304) 624-6326
(304) 623-9858 fax
bill@wykarchitects.com



WYK ASSOCIATES, INC.
ARCHITECTURE • PLANNING

CIVIL ENGINEERING

KCI Technologies Inc.
48 Donley Street, Suite 502
Morgantown, WV 26501
(304) 296-3611
(304) 296-8046
robert.milne@kci.com



STRUCTURAL ENGINEER

Allegheny Design Services, Inc.
102 Leeway Street
Morgantown, WV 26505
(304) 599-0771
(304) 599-0772 fax
dave@alleghenydesign.com



HVAC / ELECTRICAL / PLUMBING ENGINEER

ZDS Design / Consulting Services
91 Smiley Drive
St. Albans, WV 25177
(304) 755-0075
(304) 755-0076 fax
ZDSDesign@aol.com





WYK ASSOCIATES, INC.
ARCHITECTURE • PLANNING

Team Organization Chart
Dining Hall at Cabwaylingo State Park

West Virginia Department of Natural Resources
Project Director



Principal-In-Charge
William E. Yoke, Jr., AIA

WYK Associates, Inc.

Consultants

Project Architect
Design/Construction Administration
James B. Swiger, AIA, LEED AP

Civil / Geotechnical Engineer
Robert R. Milne, P.E.
KCI Technologies, Inc.

Construction Documents
Stephen M. Kelley, Associate AIA
William R. Righter

Structural Engineer
David R. Simpson, P.E.
Allegheny Design Services

Construction Period Services
Staff as Required

HVAC / Electrical / Plumbing Engineer
Todd A. Zachwieja, P.E., LEED AP
ZDS Design / Consulting Services



WYK ASSOCIATES, INC.
ARCHITECTURE • PLANNING

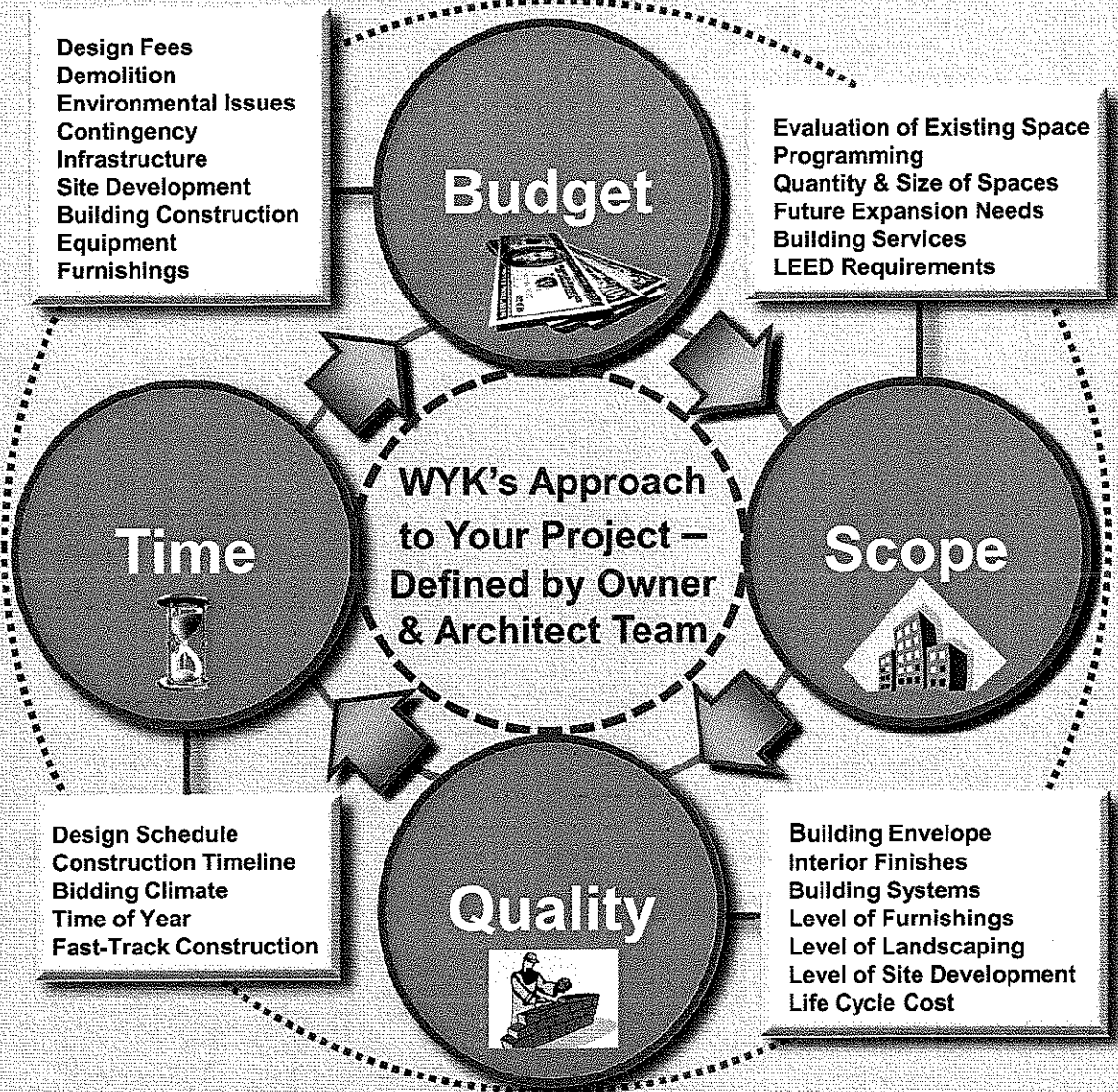
WYK's Approach to Your Project
Dining Hall at Cabwaylingo State Park



WYK ASSOCIATES, INC.
ARCHITECTURE • PLANNING

WYK's Approach to Your Project
WYK Associates, Inc.

Construction is a Continuous Cycle.....



.....A Change In One Affects the Others



WYK ASSOCIATES, INC.
ARCHITECTURE · PLANNING

Projects
WYK Associates, Inc.



WYK ASSOCIATES, INC.
ARCHITECTURE · PLANNING

Projects
WYK Associates, Inc.

A Sampling of WYK's Kitchen / Cafeteria Renovation Experience:

Fellowship Hall and Kitchen Renovation

First United Methodist Church
Clarksburg, WV

Complete renovation of existing church kitchen including use of new and existing equipment, revised layout to improve flow and function.

Jayenne and Whitehall Elementary Schools Kitchens

Marion County Board of Education
Fairmont, WV

Design and furnishings for renovated kitchens/cafeterias including the use of both new and reused equipment

WV ARNG C&FMO

Camp Dawson, Kingwood, WV
Evaluation and coordination of roof renovations with new Kitchen Renovation

Clarksburg Baptist Church Kitchen Renovation

Clarksburg, WV

Complete renovation of existing church kitchen including new and reused equipment, revised layout to improve flow and function, new finishes and asbestos removal

South Harrison Middle & High Schools Renovations/Addition

Harrison County Board of Education
Lost Creek, WV

Additions included an auditorium. Renovated kitchen with expanded cafeteria in high school, serving kitchen and dining room in Middle School; commons, classrooms, labs, library, gymnasium. 18,000 sf addition to create total school of 49,200 sf – totally sprinklered

Davis Correctional Center

Davis, WV

Classroom addition and new shop building for Youth Corrections Facility Davis Hall Cafeteria

Potomac State College

Keyser, WV

Reconfiguration of serving and dishwashing lines and new finishes; Asbestos abatement



WYK ASSOCIATES, INC.
ARCHITECTURE · PLANNING

Pressley Ridge Dormitories Clarksburg, West Virginia

Pressley Ridge Dormitories for Kappa Sigma Pi of WV, Inc.

Size: 31,800 S.F.
(total for three structures)

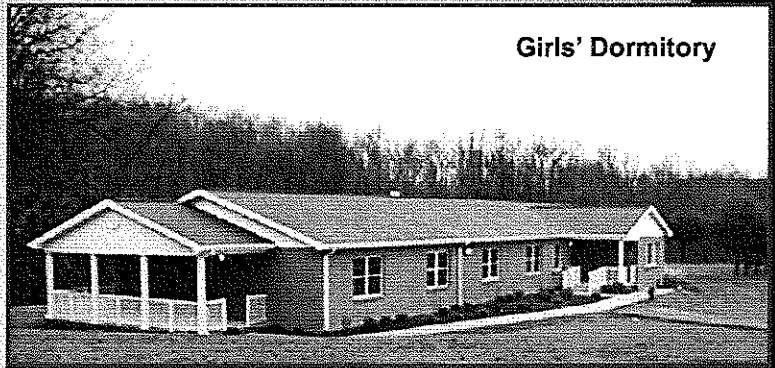
These two housing facilities were designed for Kappa Sigma Pi of WV, who leases these properties to Pressley Ridge Schools of Northern West Virginia. One building houses male, and the other houses female, special needs students for long term residential care.

Each unit accommodates 10 to 12 students with 6 double bedrooms and a communal bathroom. A day room and training kitchen greet those entering the buildings. Additionally each unit provides office space and storage, three bedrooms and a separate bathroom for staff/counselors.

WYK also designed the two story kitchen / cafeteria / dormitory building in the heart of the campus. This new structure was needed due to overcrowding of the existing dining facility. It offers a state-of-the-art kitchen and an abundance of natural daylight which floods the dining hall. Construction was just completed in the Summer of 2009.

The design intent was to keep the buildings to a residential scale to help the residents have a "sense of home" in lieu of an institutional type structure. This was accomplished by the use of brick, pitched roofs, standard double hung windows and a covered porch placed at each end of the structures.

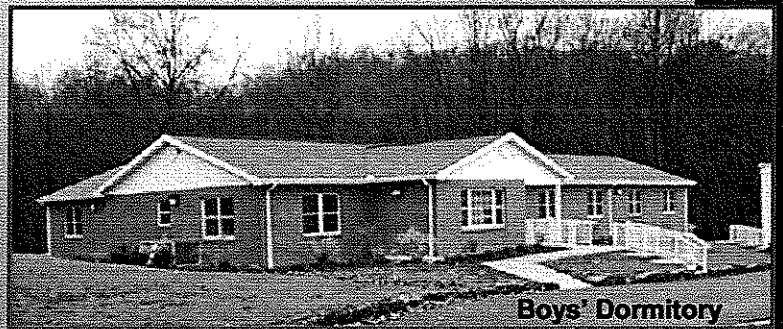
Girls' Dormitory



New Boys' Dormitory
and Food Service Facility
for the Entire Campus



Boys' Dormitory





WYK ASSOCIATES, INC.
ARCHITECTURE • PLANNING

Peterson - Central Elementary School Weston, West Virginia

Peterson-Central Elementary School

Size: 43,000 S.F.

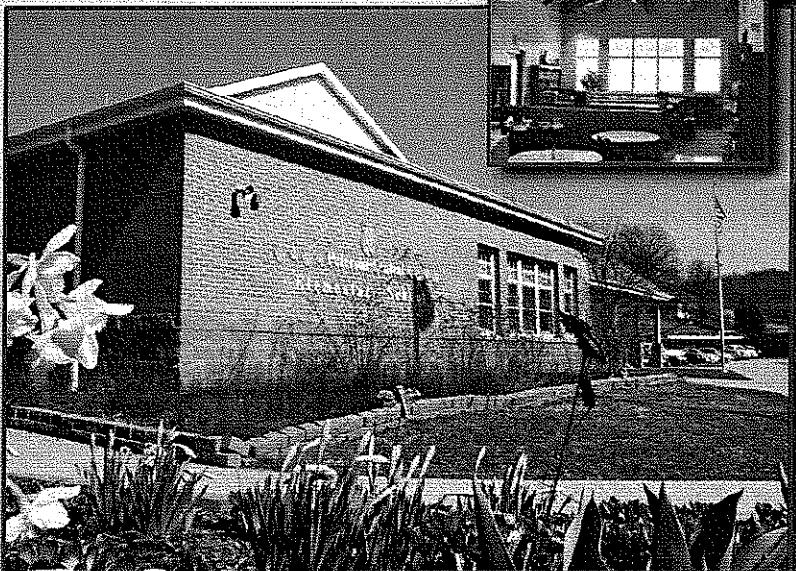
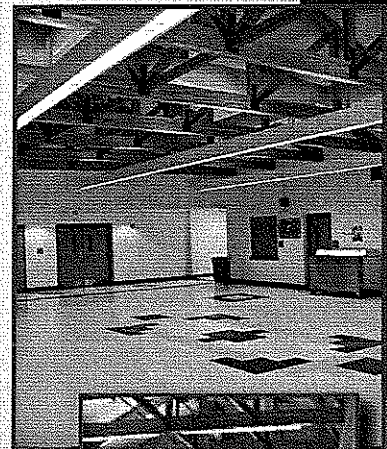
This Elementary School consolidated the greatly over crowded Peterson Elementary and Central Elementary Schools, housing students from Kindergarten through Fourth Grade.

Primary design objectives include:

- A. Design for Architectural Context regarding the established residential neighborhood.
- B. Allow the facility to double as a community center.
- C. Provide the capacity for expansion.

These goals are achieved through the implementation of brick masonry, hip roof elements and a scale for the primary facade consistent with the quaint existing neighborhood's contextual fabric. Compartmentalizing the building, allows the community public access to recreational areas as well as the media center, while maintaining security and privacy in the instructional spaces.

The interior environment employs a contemporary application of vibrant colors, exposed structural elements and naturally lighted spaces. The materials and their placement provide for ease of maintenance and can be readily updated as the educational and community needs adapt and expand.





WYK ASSOCIATES, INC.
ARCHITECTURE · PLANNING

Various School Additions & Renovations North Central West Virginia

Additions & Renovations

Washington Irving Middle School

Gymnasium/Cafeteria Addition

Interior Elevator Addition

Systems, Finishes, and Fire Code Compliance

Window Replacement

Door & Hardware Upgrades

Classroom Flooring Upgrades

Lumberport Middle School

Addition of Classroom, Band Room, and Kitchen

Interior Elevator Installation

Conceptual Expansion
Feasibility Study for Middle School with new Proposed Connecting Elementary School.

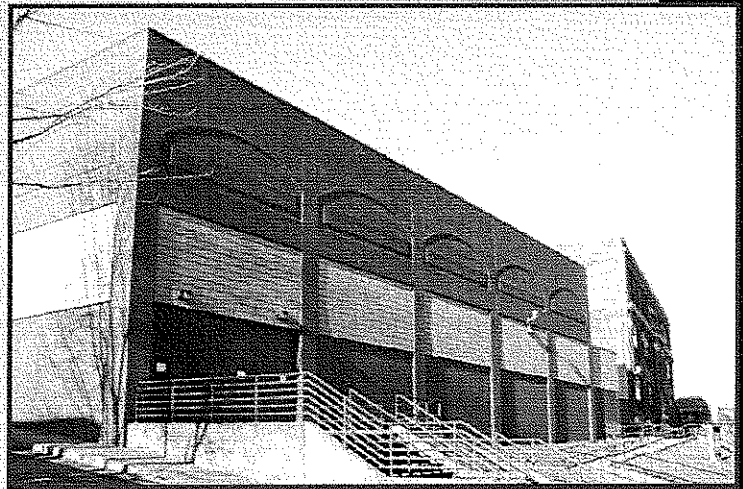
South Harrison Middle & High Schools

Addition that includes:

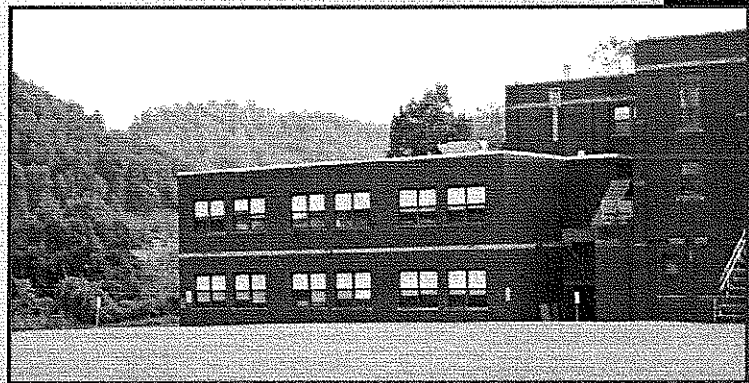
Auditorium, Large Cafeteria, Kitchen, Commons, Music Rooms, Art Suites, Classrooms and Media Center

Parking and Bus Circle Upgrades

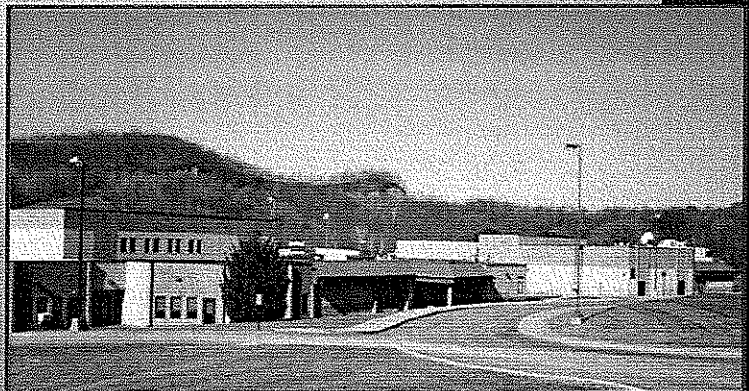
Window Replacement



Washington Irving Middle School



Lumberport Middle School



South Harrison Middle & High Schools





WYK ASSOCIATES, INC.
ARCHITECTURE · PLANNING

West Union Bank Branch Office Harrisville, West Virginia

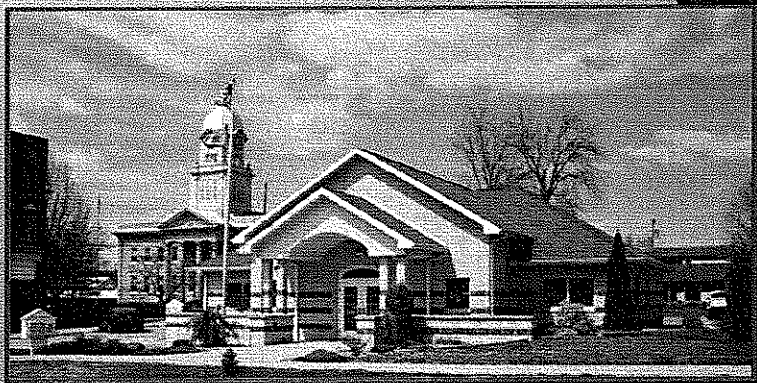
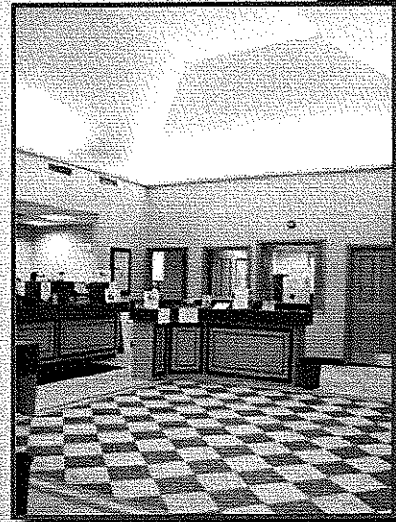
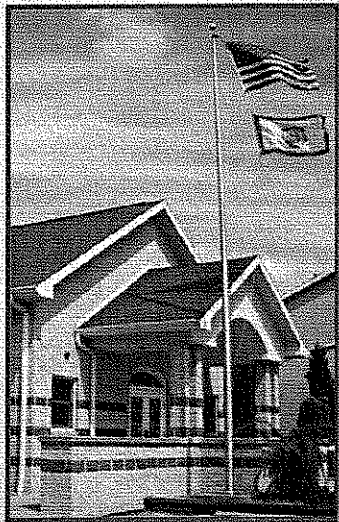
West Union Bank Branch Office

Size: 3,500 S.F.

The Harrisville branch of the West Union Bank completed in 2002 is a state of the art, full service banking facility containing a welcoming lobby, office spaces, a conference room, staff support spaces, a biometric access controlled safety deposit box vault, multi-lane drive-thru, and a drive-up ATM.

The facility occupies a prominent location on Harrisville's Main Street, where the front facade provides the bank with a strong public presence. The front facade is defined by the strength of the entry element which is initiated by a pair of low walls and the covered portico. It continues into the building's lobby where a vaulted, up-lighted ceiling accentuates the central interior space.

The building's materials and scale are harmonious with its immediate context. The formal symmetry of the building's massing, and the brick masonry's colors develop a subtle dialogue with Ritchie County's historic courthouse, and are instrumental in shaping the character of this small town bank building.





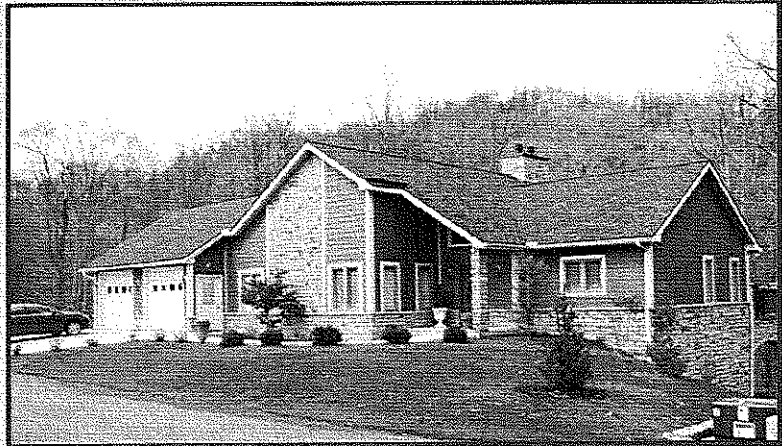
WYK ASSOCIATES, INC.
ARCHITECTURE · PLANNING

Residential Structures North Central West Virginia

Don Baldini Residence

Size: 4,500 S.F.

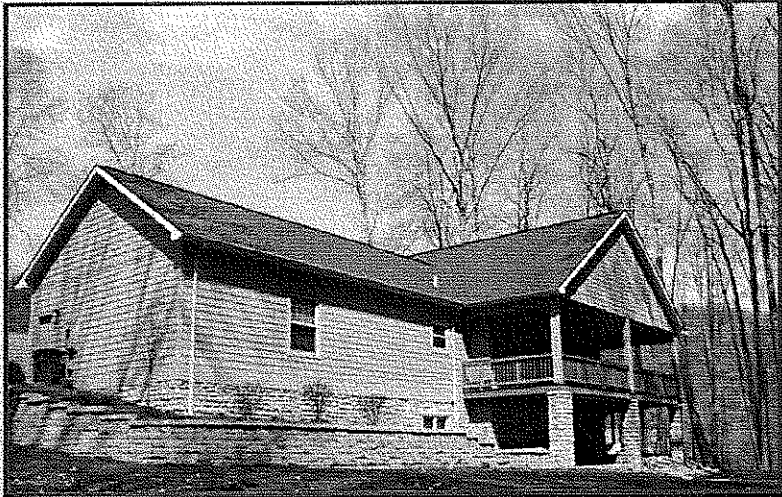
This home is built within a sloping site to maximize dual level grade access and allows much daylight to enter the lower level. This house features two large patios as outdoor living space at each level. A large fireplace is the focal point in the grand living room which features exposed woodwork and a vaulted ceiling.



Tom Mace Residence

Size: 4,100 S.F.

This two story home features a stone façade with 500 S.F. of outdoor living space nestled on a gentle slope. This structure has three bedrooms and three and one half baths and a very spacious open kitchen. This siting of this house allows for beautiful views of the wooded lot from both a the lower and upper rear patios.

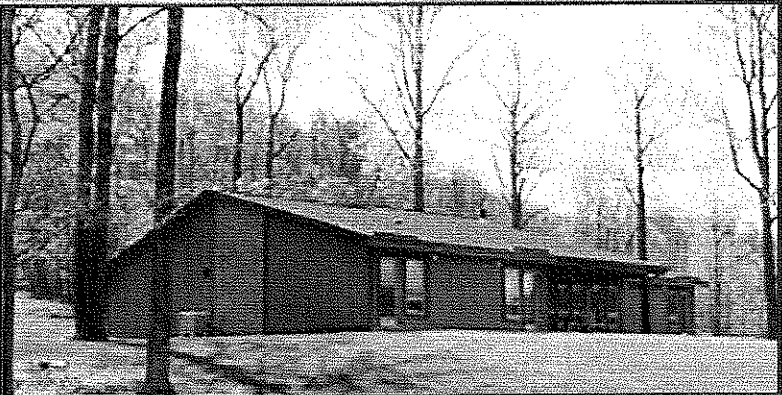


Sergeant Major's Billeting Facility

Size: 2,000 S.F.

ADA Compliant senior enlisted personnel housing facility with living and dining areas located at Camp Dawson, Kingwood

This structure houses seven private accommodations with separate entrances.





WYK ASSOCIATES, INC.
ARCHITECTURE · PLANNING

Clarksburg Harrison Regional Housing Authority Office Building Clarksburg, West Virginia

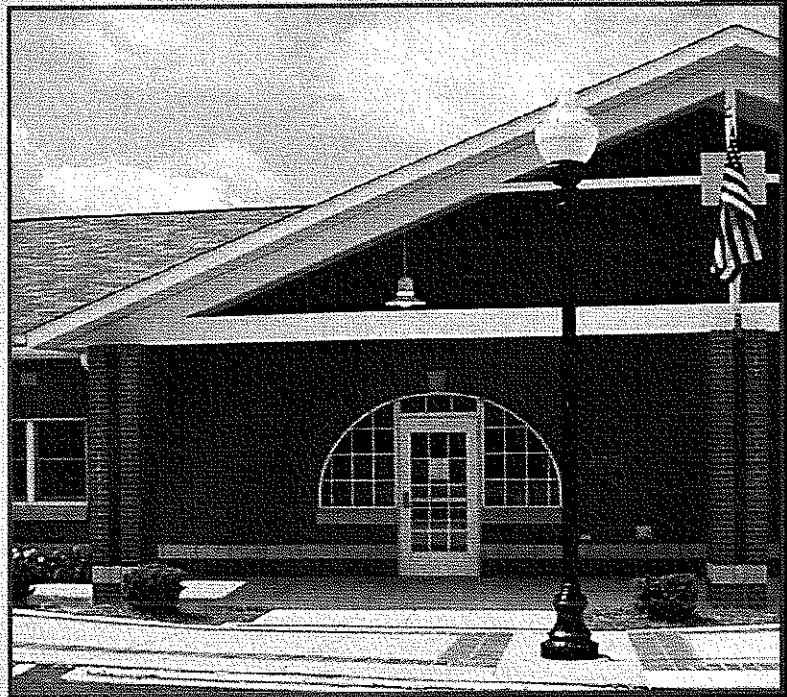
Clarksburg Harrison Regional Housing Authority Office Building

Size: 10,000 S.F.

This facility for Clarksburg's Housing Authority houses their corporate and program offices, as well as, providing meeting and conference facilities. In 2006 the successful combination of the city and county housing authorities was accomplished in part due to the flexibility of this building's design.

As one of the first new facilities to be built in the historic Glen Elk section of Clarksburg as part of the area's recent revitalization program, it is serving as a catalyst for more development.

Special attention was given to the building's massing, composition, and detailing of materials to define a character harmonious with the architectural context of the neighborhood. It reflects design elements of the historic railroad station it faces across the street.





WYK ASSOCIATES, INC.
ARCHITECTURE • PLANNING

Harrison County Bank Branch Office Nutter Fort, West Virginia

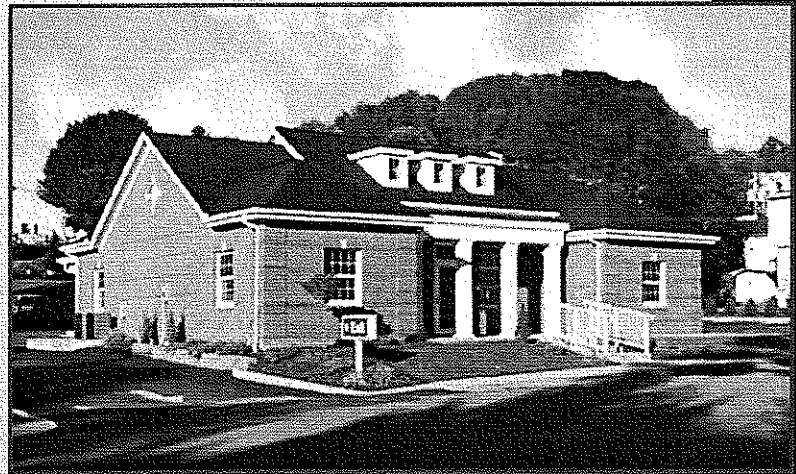
Harrison County Branch Bank

Size: 2,100 S.F.

The Harrison County Bank in Nutter Fort is the fourth branch bank of this well established local banking institution. Since it serves their image and needs so well, they are building the same plan in Clarksburg.

The character of the building housing this full-service branch bank emphasizes a familiar form composed of traditional elements and materials fused with contemporary technology and focus.

The scale of the building is appropriate to the town's main street. The vaulted interior lobby, intended to evoke the feel of a grand traditional bank lobby, is defined by its proportion and ample light from the building's three dormers. While the facility embraces imagery, it also houses complete state-of-the-art security and system's infrastructure.



◆ This building is featured on the Belden Brick's website. www.beldenbrick.com



WYK ASSOCIATES, INC.
ARCHITECTURE · PLANNING

Bridgeport Public Safety Substation Bridgeport, West Virginia

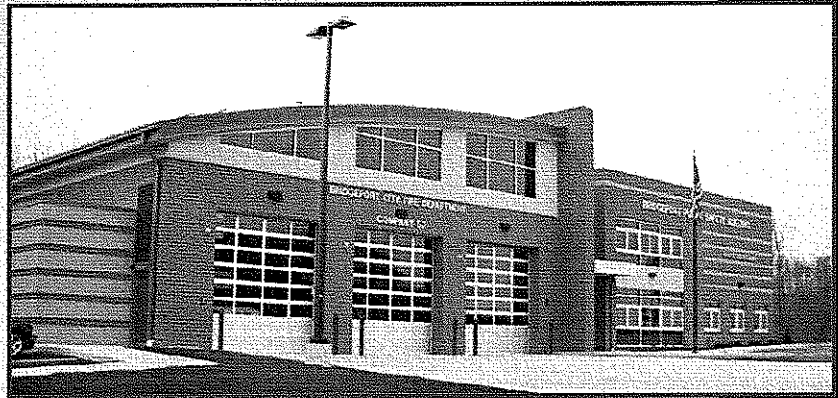
Bridgeport Public Safety Substation

Size: 15,000 S.F.

This facility is located directly adjacent to the new United Hospital Center at Jerry Dove Drive.

The building is a substation for the Fire and Police Departments of the City of Bridgeport. The structure is a combination of load bearing masonry and structural steel frame with a decorative brick veneer. The Apparatus Bay and supporting facilities are one story, slab-on-grade with an abundance of natural daylight. The radiant gas heating, vehicle exhaust and high efficient lighting systems are integrated nicely into the exposed roof structure above. The administrative offices along with each of the department's support facilities are in a connected, two story masonry and steel frame structure.

This facility was designed as a 75-100 year structure to serve the needs of this ever growing area region. The building's power is completely backed up by an emergency generator which will allow it to double as an emergency shelter in times of need.





WYK ASSOCIATES, INC.
ARCHITECTURE • PLANNING

Recent Architectural Awards American Institute of Architects – West Virginia

Information Manufacturing Corporation (I.M.C.) Cowen, West Virginia

Size: 18,000 S.F.

With Sponsorship from Senator Robert C. Byrd, the Webster County Development Authority commissioned this "state of the art" facility to house Information Manufacturing Corporation's regional operations. The important notion of sustainability is addressed through use of recycled steel, regional materials, and an innovative geothermal heat pump heating and cooling system.

West Union Bank- Newpointe Clarksburg, West Virginia

Size: 9,000 S.F.

The design uses a combination of glass curtain wall with brick and monumental masonry units to present a very contemporary image. Because of the building orientation, the glass elevations require the use of solar glazing and a brise soleil system to reduce heat gain and glare in the offices.

West Pike Street Parking Facility Clarksburg, West Virginia

Size: 57,000 S.F.

The facility's design compliments all the adjacent properties, both historic and modern. A variety of outdoor activities are easily held here, enhancing the city's economy and livability. Designed by Associated Architectural Consultants, PLLC, which is a combination of Ralph Pedersen Architect & WYK Associates, Inc.



2007 AIA-West Virginia -
Merit Award for Design Excellence and
Sustainable Design



2007 AIA West Virginia
Merit Award for Design Excellence



2008 AIA West Virginia -
Merit Award for Design Excellence





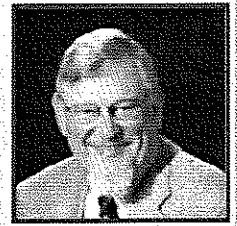
WYK ASSOCIATES, INC.
ARCHITECTURE · PLANNING

Resumes
WYK Associates, Inc.



WYK ASSOCIATES, INC.
ARCHITECTURE • PLANNING

William E. Yoke, Jr., AIA, NCARB
President & Principal In-Charge



EMPLOYMENT SUMMARY

WYK Associates, Inc.	1978 - Present
WYK Architects	1974 - 1978
Whalen L. King, Architect	1973 - 1974
United States Navy	1969 - 1973
Giese Engineering	1968 - 1969

EDUCATION

Bachelor of Science – Pre-Architecture - 1968
Clemson University
Clemson, South Carolina

ARCHITECTURAL REGISTRATION

West Virginia	(Registration # 1566)
Virginia	(Registration #401-009314)
Maryland	(Registration #10172)
Pennsylvania	(Registration #RA-014502)
National Council of Architects	(Registration #23448)

PROFESSIONAL AFFILIATIONS

American Institute of Architects
National Council of Architectural Registration Boards (NCARB)
NCARB – Licensing Examination Committee
AIA-West Virginia – Two Term Past President
Past Chairman of Region II of NCARB
AIA-West Virginia Scholarship Committee
Fairmont State University – Architectural Technology Program – Advisory Committee
West Virginia Board of Architects – Three Term Past President (Current Member)

CIVIC AFFILIATIONS

Harrison County Chamber of Commerce – Past Board Member
Long Time Member of the Madrigal Singers of Clarksburg
Vice President of Civil War Roundtable – Local Chapter
Long Time Leadership Contributor to the United Way of Harrison County, Inc.

HONORS & AWARDS

2008 Chairman’s Award– Harrison County Chamber of Commerce
2008 Merit Award in Architecture from AIA-West Virginia for the West Pike Street Parking Facility in Clarksburg, WV (Co-Design Architect)
2007 Merit Awards in Architecture from AIA-West Virginia for the following:
West Union Bank at Newpointe, Clarksburg, WV
Information Manufacturing Corporation in Cowen, WV

Selected Projects

Peterson-Central School
Weston, WV

West Milford Elementary School Addition
West Milford, WV

Salem Elementary School Addition
Salem, WV

Vienna Public Library Addition/Renovation
Vienna, WV

South Harrison Middle School
Lost Creek, WV

West Union Branch Bank
Clarksburg, WV

Information Manufacturing Corporation
Cowen, WV



WYK ASSOCIATES, INC.
ARCHITECTURE • PLANNING

**James B. Swiger, AIA, NCARB,
LEED AP**
Vice President & Principal



EMPLOYMENT SUMMARY

WYK Associates, Inc.	2005 - Present
Blackwood Associates, Inc.	2000 - 2005
Gegner Architects	1997 - 2000
WYK Associates, Inc.	1996 - 1997

EDUCATION

Bachelor of Architecture -1996
University of Tennessee
Knoxville, Tennessee

ARCHITECTURAL REGISTRATION

West Virginia	(Registration # 3640)
National Council of Architects	(Registration #58982)

PROFESSIONAL AFFILIATIONS

American Institute of Architects
AIA-West Virginia – Director 2010 – Board of Directors
Leadership in Energy and Environmental Design (LEED) -
Accredited Professional – U.S. Green Building Council
National Council of Architectural Registration Boards
National Trust for Historic Preservation

CIVIC AFFILIATIONS

United Way of Harrison County, Inc. – Board of Directors
Clarksburg Elks Lodge - Member
West Virginia Kiwanis District – Division 3 – Lieutenant Governor 2009/2010
Immediate Past President Kiwanis Club of Clarksburg - Board of Directors
Harrison County Chamber of Commerce - Education Committee
Salem Elementary School Nature/Fitness Trail – Project Manager
Salem International University Auxiliary
Upper Ten Mile Watershed Association – Board of Directors

HONORS & AWARDS

2009 West Virginia Kiwanis District Governor's Award: "Promoting Membership Growth"
2008 Volunteer of the Year – Harrison County Chamber of Commerce
2008 Selected "Generation Next: 40 Under 40" by the West Virginia State Journal.
2008 Strathmore's Who's Who Worldwide Recipient for Exemplified Leadership & Achievement in the Profession of Architecture.
2008 Merit Award in Architecture from AIA-West Virginia for the West Pike Street Parking Facility in Clarksburg, WV (Co-Design Architect)

Selected Projects

*City of Ripley
Municipal Building
Ripley, WV

Bridgeport Public
Safety Building
Bridgeport, WV

Christie-Cutlip Office
Complex
Charles Pointe, Bridgeport, WV

West Pike Street Parking
Facility
Clarksburg, WV

Philippi Elementary School
Addition
Philippi, WV

*Stonewall Resort Lodge
Roanoke, WV

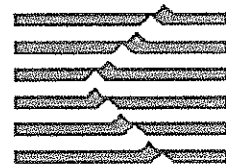
Bank of Gassaway
Flatwoods, WV

* Denotes prior experience



WYK ASSOCIATES, INC.
ARCHITECTURE · PLANNING

Consultants
WYK Associates, Inc.



KCI
TECHNOLOGIES

ENGINEERS · PLANNERS · SCIENTISTS
CONSTRUCTION MANAGERS



WYK ASSOCIATES, INC.
ARCHITECTURE · PLANNING



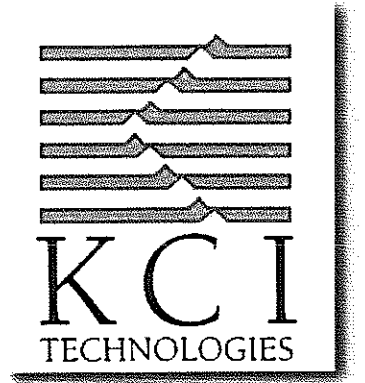
Allegheny
Design Services
Structural Engineering



ZDS
Design/Consulting Services

MECHANICAL · ELECTRICAL · INDOOR AIR QUALITY · ENERGY · COMMISSIONING

KCI Technologies, Inc.



KCI Technologies, Inc.

As one of the nation's leading multi-discipline, full-service engineering firms, KCI Technologies, Inc. (KCI) is consistently ranked among the top 100 consulting engineering firms in the country by Engineering News Record.

With a professional staff of engineers, planners, scientists, surveyors, and construction managers, we offer a broad range of engineering services, including civil, structural, transportation, environmental, hazardous waste, mechanical, electrical, telecommunications, and soils. We also provide cultural and environmental resource management services, land planning and landscape architecture, geology, hydrology, ecology, surveying, and construction management and inspection.

The professional staff is supported by CADD (Computer-Aided Drafting and Design) designers, BIM (Building Information Modeling) designers, GIS (Geographic Information Systems) experts, and database analysts, programmers, and technicians; as well as state-of-the-art computer, field, and lab equipment. KCI's computer network supports the firm's core production systems, including BIM, CADD, GIS, three-dimensional visualization/animation tools, document processing and desktop publishing, and project management. The firm's integrated approach to automating design, drafting, documentation, and presentation minimizes costs, facilitates coordination among engineering disciplines, and expedites the production of high-quality products.

At KCI, we believe that our broad technical expertise, combined with our unique commitment as employee owners, has enabled us to emerge as industry leaders whose customers can count on excellent service time and again.

History

KCI traces its corporate history to a Baltimore firm founded in 1955. In the early 1970s, the firm - along with a number of other privately held engineering companies - joined Kidde, Inc., and became known in 1978 as Kidde Consultants, Inc. In August, 1987, Hanson Trust, PLC, of Great Britain (a manufacturing company with diversified holdings, worldwide) purchased Kidde, Inc. In 1988, an employee buyout was completed, creating Maryland's largest employee-owned company. The firm officially changed its name to KCI Technologies, Inc., in 1991 and relocated its headquarters to Hunt Valley, Maryland in 1993.

Location

KCI has been working throughout the state of West Virginia for more than 10 years and is familiar with conditions and infrastructure of West Virginia. Our local office has a wide range of experience working with various state agencies, as well as private developers and contactors. Our backgrounds range from WVDOH to USDA Rural Development. We have engineers who understand and advocate for the needs of rural communities and public service districts. KCI has the knowledge to aid our clients in all aspects of this project including but not limited to preliminary study, preliminary design, funding assistance, final design, bidding services, construction administration, construction inspection, or any other service needed to complete these types of projects.

Experience with Parks and Recreational Facilities

KCI has experience designing new construction projects parks and recreation facilities. Currently, KCI is a subconsultant to Paradigm Architecture for the Cacapon Resort State Park Improvement Project. KCI is providing engineering services for the golf course. The improvements are to be commensurate with a Robert Trent Jones style course. KCI is also providing design services to upgrade the parks waste water collection system, and improve the potable water distribution throughout the park. KCI will also be providing site/civil engineering and landscape architecture services to accommodate the addition to the resort that is currently being designed by Paradigm Architecture.

KCI Technologies has provided multi-discipline services for numerous parks and recreational facilities, including:

- Chesterwood Park, Dundalk, MD
- Western Regional Park, Cooksville, MD
- Dundee/Saltpeters Creek Park, Middle River, MD
- Cowenton Park, Baltimore County, MD
- Carriage Hill Park, Baltimore County, MD
- Watkins Regional Park, Upper Marlboro, MD
- Historic Hagerstown Fairgrounds, Hagerstown, MD

WV Division of Natural Resources

New Group Camp Dining Hall

Robert Milne, PE

Regional Practice Leader, Land Development

Education

MS / Civil Engineering
BS / Civil Engineering

Leadership

Foundation of Leadership /
National Leadership Institute /
September 2008

Leadership/ Monongalia
County, WV / Class of 2009

Registration

PE / WV / 014177
Also PE in PA

Total Years with KCI: 8

Total Years of Experience:

Mr. Milne is the Regional Practice Leader in KCI's Morgantown, West Virginia office and is responsible for the office's daily operation, supervision of staff, and management of large projects. Mr. Milne is also experienced in civil/site design, utilities, and buildings as well as roadway and storm sewer design; highways, bridges, traffic studies; and construction administration and inspection. Relevant project experience includes:

Cacapon Resort State Park Lodge Expansion and Park Improvement, Capacon, WV. Project Manager. KCI is a subconsultant to Paradigm Architecture for the Cacapon Resort State Park Improvement Projects. KCI is currently providing engineering services for the golf course. The improvements are to be commensurate with a Robert Trent Jones style course. KCI is also providing design services to upgrade the park's waste water collection system, and improve the potable water distribution throughout the park. KCI will also be providing site/civil engineering and landscape architecture services to accommodate the addition to the resort that is currently being designed by Paradigm Architecture.

West Virginia University Architectural and Engineering Open End, Morgantown, WV. Project Manager. KCI was awarded an open end contract to provide multi-disciplinary engineering services to the West Virginia University. Responsibilities include the review of existing plans, structural assessment, bridge design, report preparation, and construction documents. Tasks include a structural assessment of the Summit Hall Parking Garage, a structural assessment of the Evansdale Library, and rehabilitation of the Percival Hall Pedestrian Bridge, repair of east wall of Coliseum Tunnel, and structural and electrical repairs to the Downtown Steam Tunnel.

Downtown Student Housing, Morgantown, WV. Project Manager. KCI was a subconsultant to Paradigm Architecture for the New Honors Dormitory located on West Virginia University's downtown campus. KCI was responsible for overall site design, plaza, utility lines, sidewalks, drainage, storm water quality and retention, grading plans, erosion and sedimentation control plans, and the site/civil permitting. This plaza will also serve as a thoroughway from the new dormitory to the existing Summit Hall, where the residents of the new dorm will go for dinners. KCI also provided an innovative storm-water management design to capture all water within the plaza.

Event Center and Garage, Morgantown, WV. Project Manager. KCI is a subconsultant for the new Morgantown Event Center and Parking Garage, located in the Wharf District of Morgantown, WV. KCI is providing site/civil engineering and landscape architecture services for this design-build project. Services included access roads and parking lot, utility lines, sidewalks, drainage, stormwater retention, grading plans, landscaping, erosion and sedimentation control, permitting, and project specifications.

New Northside Fire Station, Morgantown, WV. Division Chief/Project Manager. KCI was a subconsultant to Bignell Watkins Hasser for the new Northside Fire Station for the City of Morgantown. KCI was responsible for overall site design, access roads, utility lines, sidewalks, drainage, stormwater quality and retention, grading plans, erosion and sedimentation control plans, and the site/civil permitting. Client is pursuing LEED certification.

WV Division of Natural Resources

New Group Camp Dining Hall

John Rudmann, PE, RLA, LEED AP

Project Manager

Education

BS / Civil Engineering
BS / Landscape Architecture

Registration

PE / WV / 14779
Also PE in MD, PA
PLA / WV / 341
Also RLA in MD, OH, PA
LEED AP

Total Years with KCI: 3

Total Years of Experience:

15

Mr. Rudmann is a licensed civil engineer, a licensed landscape architect, and a LEED Accredited Professional. His responsibilities have included being a Project Manager, a Senior Civil Engineer, and a Senior Landscape Architect for many site design projects. As a designer, his design tasks have included site master planning, stormwater design, utility design, grading, access road design, erosion and sediment control design, pedestrian plaza design, site permitting, golf course design, and completing project specifications. He has designed several different methods of bio-filtration and has completed all the necessary credit paper work to achieve LEED Certification. Relevant project experience includes:

Cacapon Resort State Park Lodge Expansion and Park Improvement, Capacon, WV. Civil/Site Engineer. As a subconsultant to Paradigm Architecture, KCI managed and performed tasks for water and wastewater system improvements as part of state park upgrades and expansion project. Mr. Rudmann is responsible for completing the design for golf course pond renovations, including pond bank stabilization and lowering the water surface elevation; complete sand bunker renovation, including new drainage system design, adding liners, re-shaping, re-edging, and re-contouring; and the replacement of most existing site drainage structures.

Downtown Student Housing Project, Morgantown, WV. Senior Design Engineer. KCI was a subconsultant to Paradigm Architecture for the New Honors Dormitory located on West Virginia University's downtown campus. KCI was responsible for overall site design, courtyard, utility lines, sidewalks, drainage, stormwater retention, grading plans, erosion and sedimentation control plans, and all the site/civil permitting. Mr. Rudmann was responsible for the overall design of all site/civil services which included an extensive landscaping plan, access roads, and courtyard pedestrian design. Due to severe space limitations, Mr. Rudmann utilized oversized piping and developed a gravel layer to be used for water detention to meet environmental standards.

New Northside Fire Station, Morgantown, WV. Senior Design Engineer. KCI was a subconsultant to Bignell Watkins Hasser for the new Northside Fire Station for the City of Morgantown. KCI was responsible for overall site design, access roads, utility lines, sidewalks, drainage, stormwater quality and retention, grading plans, erosion and sedimentation control plans, and the site/civil permitting. Mr. Rudmann was responsible for the overall design of all site/civil services, utilizing cost-efficient design principles to keep the project under budget, while still meeting strict environmental standards. Mr. Rudmann completed the necessary LEED submittal paperwork for sustainable site and water efficiency credits. Client is pursuing LEED certification.

USDA Building Design/Build, Sabraton, WV. Project Manager. KCI was a subconsultant to Paradigm Architecture for the USDA Building located in the Sabraton Area of Morgantown. KCI provided site/civil engineering and landscape architecture design services for this design/build project. This project is pursuing LEED certification. Mr. Rudmann was responsible for the overall design of all site/civil services which included site design, access roads, utility lines, sidewalks, drainage, stormwater quality and retention, grading plans, erosion and sedimentation control plans, and the permitting. Most of the stormwater filtration was achieved through the use of bio-filtration cells within the parking lot areas and swales located closer to the building. Mr. Rudmann also completed all the necessary LEED submittal paperwork for sustainable site and water efficiency credits. This building has been certified Silver.

WV Division of Natural Resources

New Group Camp Dining Hall

Cacapon Resort State Park Lodge

Berkeley Springs, WV

Client

WV DNR Division of Parks
and Recreation

Contact

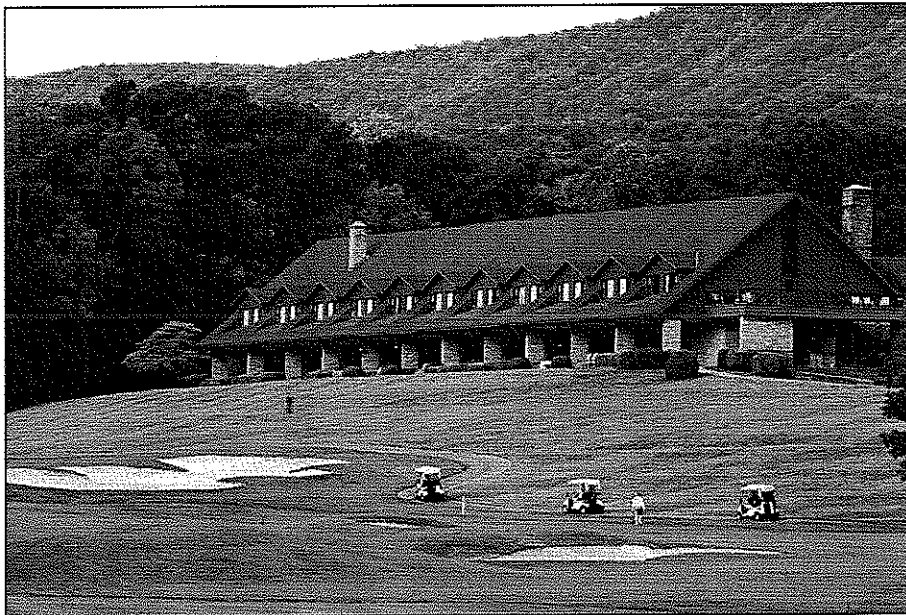
Jonathan Perry,
(304) 284-5015
Paradigm Architecture

Year Complete: In Progress

KCI is a subconsultant to Paradigm Architecture for the Cacapon Resort State Park Improvement Projects. This project involves engineering services for the golf course. The improvements are to be commensurate with a Robert Trent Jones style course.

KCI is providing design services to upgrade the parks waste water collection system, and improve the potable water distribution throughout the park. Specifically, KCI performed water supply, treatment, and distribution studies and made recommendations for system improvements. The water supply study included field evaluation and documentation survey of water wells and using conclusions to plan water treatment plant upgrade, improvements to existing wells, and possible new wells. Water distribution system studies included domestic demand and pressure measurements and hydrant flow testing for fire flow and carrying capacity evaluation.

KCI will also provide site/civil engineering and landscape architecture services to accommodate the addition to the resort that is currently being designed by Paradigm Architecture.



WV Division of Natural Resources

New Group Camp Dining Hall

West Virginia University A/E Open-End

Morgantown, WV

Client

West Virginia University

Contact

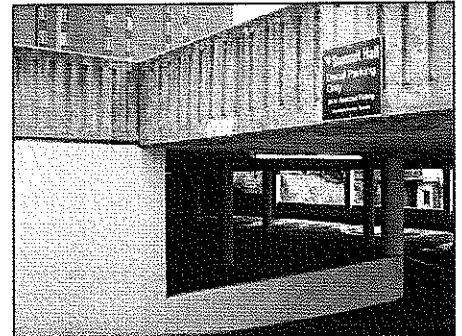
Paul Hanko, (304) 293-2854
West Virginia University

Year Complete: In Progress

KCI was awarded an open end contract to provide West Virginia University with a variety of services including site/civil, structural, mechanical, electrical, plumbing, fire protection, geotechnical, and environmental engineering as well as landscape architecture and surveying. KCI's engineering staff has provided the University with a high level of expertise and prompt service on the tasks assigned to date as outlined below.

Summit Hall Parking Garage

WVU requested that KCI investigate the structural integrity of the parking garage after becoming aware of water leaking from the upper level to the lower level through cracks in the deck. KCI reviewed the existing plans for the garage and performed a preliminary site visit to provide a visual structural assessment. Based on the initial visual inspection, KCI developed a scope that included a chain drag to check the deck and hammers to check the underside of the deck. KCI provided the University with a report of findings, recommendations for repairs, and cost estimates for each recommendation. WVU reviewed KCI's reports and asked our structural engineers to provide construction documents for the recommended repairs.



Evansdale Library

WVU requested that KCI perform a structural analysis for the potential expansion of the Evansdale Library. The University hopes to add an additional floor to the building to support its expanding collection. KCI reviewed the existing plans for the building and developed a report for the University of the building's structural adequacy.

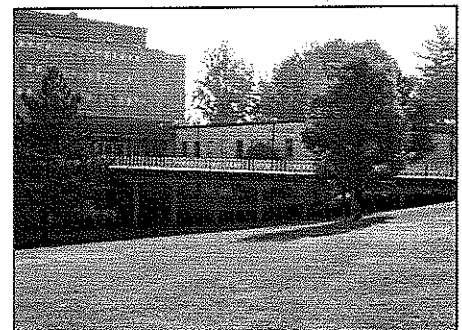


Percival Hall Pedestrian Bridge

WVU requested that KCI design a replacement wood bridge deck for the existing pedestrian bridge connecting Percival Hall to the parking lot. KCI provided site surveying services, structural design of the new bridge deck, and inspection of the existing concrete piers.

WVU Coliseum Tunnel

KCI provided the University with complete design services for the reconstruction of the East Wall of the Coliseum Tunnel.



Steam Tunnel Rehabilitation

KCI provided the University with structural and electrical engineering services required to examine the existing conditions of steam tunnel A and prepare construction documents and project specific specifications to repair deficiencies in steam tunnel A.

Downtown Student Housing Project

Morgantown, WV

Client

West Virginia University

Contact

John Sommers,
(304) 296-2856
West Virginia University

Year Complete: 2009

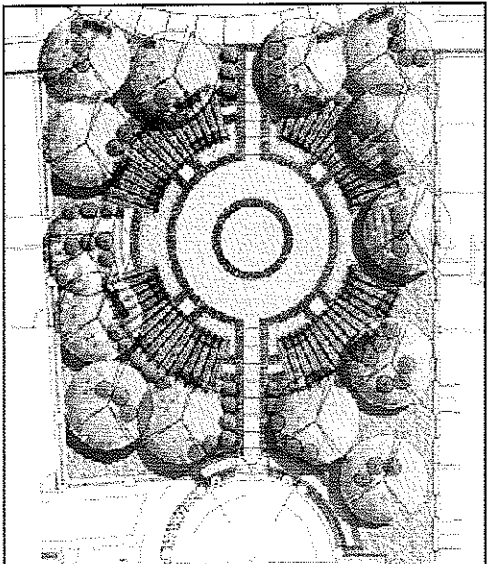
West Virginia University has been experiencing a constant and steady growth in enrollment over several years. With this increased enrollment comes an increased demand for on-campus housing. After reviewing the residential units available, the University determined that capacity in the downtown residential halls needed to be increased in order to comfortably house the student population.

KCI was a subconsultant to Paradigm Architecture for the New Honors Dormitory located on West Virginia University's downtown campus. This project was completed in August, 2009. KCI was responsible for overall site design, plaza, utility lines, sidewalks, drainage, storm water quality and retention, grading plans, erosion and sedimentation control plans, and the site/civil permitting.

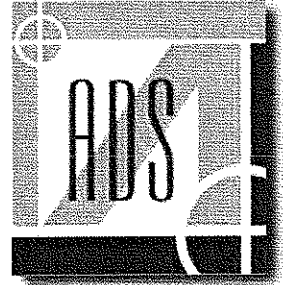
The landscape architectural design team was charged with the task of creating an inviting gathering space as a forecourt to the new dormitory building. The design team utilized the architectural design of the new dormitory as a launching point for the organization of the space. The circular plan reinforces the main entry of the building while the center organizing space reflects the dimensions of the building rotunda space. Radiating out from the central organizing circle are seating areas appropriate for small student gatherings or outdoor study. The open and encompassing nature of the design reinforces the function of the space as a gathering space not only for the residents of the building, but for other users as well. The space created reflects the inviting and inclusive nature of the building architectural design and provides an appropriate space for group interaction and individual study.

Drainage issues were critical in the design of the courtyard, as were soil considerations. The stringent city storm water requirements were achieved through innovative design. The ordinance requires a 10% quantity reduction in offsite runoff between the existing runoff rate and the final rate. There is also a requirement to filter out 80% of the total suspended solids. Since the project programming utilized 100% of the site area, these requirements were a challenge to meet. The courtyard itself is situated in a low point in the site topography and the storm water pipe ties into deteriorating substandard existing pipe. The soil in the courtyard was amended to provide percolation and filtration to the underground drains. The quantity reduction was met through underground storage by providing oversized pipe and constricting the size of the outlet and providing a gravel blanket under the courtyard. The quality standard was met through providing a dual vortex separator storm water filter and through bio filtration within the courtyard.

The natural lighting of the space was also a critical design issue. The design team examined the sun/shadow relationships of the space in light of plant material selection. Plant materials were also selected based on suitability for the campus. Requiring both technical innovation as well as creative landscape architectural design, the courtyard presented a challenging problem of combining functional storm water management requirements with the creation of an attractive, inviting outdoor space.

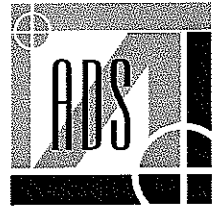


Allegheny Design Services





102 Leeway Street
Morgantown, WV 26505
Phone: (304)599-0771
Fax: (304)599-0772
www.alleghenydesign.com



**CONSULTING ENGINEERING FIRM SPECIALIZING
IN STRUCTURAL BUILDING DESIGN
AND BUILDING ANALYSIS**

Allegheny Design Services is a consulting engineering firm specializing in structural building design and building analysis.

Dedicated to serving West Virginia and the surrounding region, ADS recognizes the need for reliable and full service structural engineering support. ADS provides all phases necessary for the successful completion of a building project including schematic design studies, design development, construction documents and specifications, and construction administration.

Over 20 years in Design and Project Management of:

- Commercial
- Industrial
- Institutional
- Educational Facilities



MIXED USE



**HOTEL
CONFERENCE CENTERS**



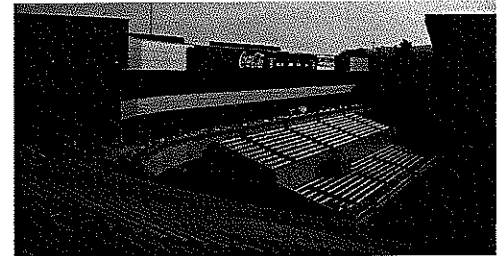
SECONDARY EDUCATION



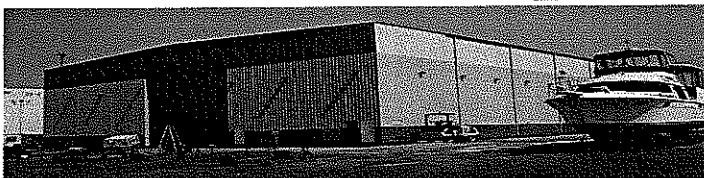
OFFICE BUILDINGS



PARKING GARAGES



ATHLETIC FACILITIES



METAL BUILDING SYSTEMS



HEALTH CARE



AllegHENY Design Services

Structural Engineering

102 Leeway Street

Morgantown, WV 26505

Phone: (304)599-0771

Fax: (304)599-0772

E-mail: Dave@AllegHENYDesign.com

Web: www.AllegHENYDesign.com

FIRM PROFILE

AllegHENY Design Services is a consulting engineering firm specializing in structural building design and building analysis.

Dedicated to serving West Virginia and the surrounding region, ADS recognizes the need for reliable and full service structural engineering support. ADS provides all phases necessary for the successful completion of a building project including schematic design studies, design development, construction documents and specifications, and construction administration. We currently hold licenses in West Virginia, Virginia, Maryland, Pennsylvania, and District of Columbia.

ADS's experience exceeds twenty-five years in the Design and Project Management of:

Commercial Facilities

Industrial Facilities

Institutional Facilities

Educational Facilities

ADS was established by David Simpson, P.E., MBA, in 2002 as a result of a need in North Central West Virginia for reliable structural engineering services. ADS utilizes a combination of office technology and a motivated staff to deliver projects typically up to \$25 million in construction value. We have completed design work for over \$150 million in construction since our inception. Our clients include architects, contractors, developers, attorneys, and insurance companies.

Building systems delivered by ADS include structural steel, reinforced concrete, precast concrete, and structural timber. ADS currently utilizes the latest engineering design and drafting software for the development of project work.

ADS is covered under a \$1 million liability policy for errors and omissions through Beazley Insurance Company.



Allegheny
Design Services
Structural Engineering

102 Leeway Street
Morgantown, WV 26505
Phone: (304)599-0771
Fax: (304)599-0772
E-mail: Dave@AlleghenyDesign.com
Web: www.AlleghenyDesign.com

KEY PERSONNEL

David R. Simpson, P.E., SECB, MBA, President

West Virginia Institute of Technology, BSCE

West Virginia University, MBA

Structural Engineering Certification Board

P.E. Licenses in the following States:

West Virginia

Pennsylvania

Maryland

Virginia

District of Columbia

National Council of Examiners for Engineering and Surveying

Michael L. Sipe, E.I., Engineering Intern

West Virginia Institute of Technology, BS Mechanical Engineering

West Virginia University

Structural Analysis

Steel Design

Reinforced Concrete Design

Jason D. Robinson, E.I., Engineering Intern

West Virginia University, BS Civil Engineering



Allegheny

Design Services

Structural Engineering

102 Leeway Street
Morgantown, WV 26505
Phone: (304)599-0771
Fax: (304)599-0772

E-Mail: Dave@AlleghenyDesign.com
Web: www.AlleghenyDesign.com

David R. Simpson, P.E., SECB, MBA

President

Education:

West Virginia Institute of Technology
B.S. Civil Engineering

West Virginia University
Masters Business Administration

West Virginia State College
Architectural Technology

Professional Registrations:

Year first registered: 1983
Structural Engineering Certification Board
West Virginia
Pennsylvania
Maryland
Virginia
District of Columbia
National Council of Examiners for Engineering and Surveying

Professional Memberships:

American Society of Civil Engineers
Structural Engineering Institute, Charter Member
American Concrete Institute
American Institute of Architects – West Virginia Chapter
American Institute of Steel Construction, Inc.
American Iron and Steel Institute Member

Continuing Education:

2005 AISC Specification for Structural Steel Buildings – September 27, 2006 – Pittsburgh, PA
ASCE Testifying Skills for Engineers – February 16, 2007 – Orlando, FL

Professional Experience:

Responsible for project management and design at Allegheny Design Services. Experience includes over 24 years in structural design and project management for industrial, commercial, institutional, and nuclear/chemical facilities utilizing steel, concrete, masonry, and wood. Past accomplishments include design and construction administration of health care facilities, hotels, schools, shopping centers, aircraft hangars, numerous retail facilities, and numerous forensic engineering assignments. Experience has been obtained from the following assignments:

Experience Record:

Allegheny Design Services, LLC, President,	May 2002 to Present
R.M. Gensert and Associates, Vice President,	August 1998 to May 2002
West Virginia University, Assoc. Director Construction	August 1988 to August 1998
Simpson Engineering, Owner	August 1988 to August 1998
CECO Buildings Division, Senior Structural Engineer	April 1985 to August 1988
Rockwell International, Facility Structural Engineer	March 1982 to April 1985
Bellard Ladner & Assoc., Staff Structural Engineer	Sept. 1981 to March 1982
PPG Industries, Facility Structural Engineer	January 1980 to Sept. 1981

Additional Professional Experience:

Experience encompasses design, project management, and construction administration for reinforced concrete, structural steel, precast concrete, masonry, and wood structures.

Project experience includes:

Fairmont Senior High School, Fairmont, WV
Belmont Community Center, St. Clairsville, OH
Monongalia General Hospital Operating Room Addition, Morgantown, WV
Chestnut Ridge Church, Morgantown, WV
West Virginia University Business and Economics Building, Morgantown, WV
West Virginia University High Density Book Storage Facility, Morgantown, WV
West Virginia University Life Sciences Building, Morgantown, WV
West Virginia University Student Recreation Center, Morgantown, WV
West Virginia University Wise Library Addition, Morgantown, WV
West Virginia University White Hall Computer Center, Morgantown, WV
UPMC Hillman Cancer Center, Pittsburgh, PA
Carnegie Museum of Natural History Addition, Pittsburgh, PA
Cultural Trust District Parking Garage, Pittsburgh, PA
Delaware Valley Veterans' Home, Philadelphia, PA
Fairmont State University Parking Garage, Fairmont, WV
First Avenue Parking Garage, Pittsburgh, PA
Hillman Cancer Center (UPMC), Pittsburgh, PA
New Enterprise Precast Corporate Headquarters, New Enterprise, PA
Respironics Corporate Office Facility, Pittsburgh, PA
International Brotherhood of Electrical Workers Headquarters Training Center, Pittsburgh, PA
Laurel Highlands Middle School Addition, Uniontown, PA
Trinity High School, Morgantown, WV
Mylan Pharmaceuticals Parking Garage, Morgantown, WV
Phipps Conservatory Addition, Pittsburgh, PA
Radisson Hotel and Conference Center, Morgantown, WV
Western Pennsylvania School for Blind Children, Pittsburgh, PA
In-Situ Vitrification Nuclear Waste Encapsulation Project, Richland, WA
Dominion Transmission Office Building, Clarksburg, WV
Multiple structural evaluations and expert witness for structural damage due to subsurface mining subsidence, floods, ice, wind, and construction errors
Over 400 low-rise metal building projects from Maine to South Carolina, including warehouses, aircraft hangar facilities, shopping centers, industrial facilities, and office facilities.



Allegheny Design Services

Structural Engineering

102 Leeway Street
Morgantown, WV 26505
Phone: (304)599-0771
Fax: (304)599-0772
E-mail: Mike@AlleghenyDesign.com
Web: www.AlleghenyDesign.com

Michael L. Sipe, E.I. Engineering Intern

Education:

West Virginia University Institute of Technology
B.S. Mechanical Engineering
Minor: Mathematics

Awards/Achievements/Organizations:

Deans List, last 4 completed semesters
Member of Pi Tau Sigma
Member of AISC
Associate Member of ASCE

Professional Registrations:

West Virginia, Engineering Intern License # 8519

Professional Experience:

Responsibilities include structural engineering design, construction documents, quality control, field engineering and project engineering.

Experience record:

Avery Court Apartments, Parkersburg, WV
Cutlip Christie Office Complex, Clarksburg, WV
Dominion Exploration Addition, Jane Lew, WV
Fairmont State University Smoke Vents, Fairmont, WV
Finite Element Analysis of Various Material Handling Structures
Gassaway Bank, Flatwoods, WV
Glenmark Office Building, Morgantown, WV
Greer Limestone Conveyor Structure Renovations, Morgantown, WV
Morgantown Event Center, Morgantown, WV
Pressley Ridge School Residence Hall & Dining Facilities, Clarksburg, WV
Proplex Athletic Training Facility, Morgantown, WV
Waterfront Marina, Morgantown, WV
West Milford Elementary School Classroom Addition, West Milford, WV
WVU Downtown Student Housing, Morgantown, WV
WVU Puskar Academic Center, Morgantown, WV

Courses and Continuing Education:

WVU Structural Analysis I, Spring 2006
WVU Steel Design, Fall 2006
WVU Reinforced Concrete Design, Spring 2007
AISC Design Steel Your Way with the 2005 AISC Specification, September 2006
ASCE Steel Framed Buildings, May 2007
AISC Façade Attachments to Steel Frames, September 2007
ASCE Reinforced Masonry: Design and Construction, November 2007



Allegheny
Design Services
Structural Engineering

102 Leeway Street
Morgantown, WV 26505
Phone: (304)599-0771
Fax: (304)599-0772
E-mail: Jason@AlleghenyDesign.com
Web: www.AlleghenyDesign.com

Jason D. Robinson, E.I.
Engineering Intern

Education:

West Virginia University
B.S. Civil Engineering

Awards/Achievements/Organizations:

Dean's List
Member of AISC
Associate Member of ASCE

Professional Registrations:

West Virginia, Engineering Intern License #8699

Professional Experience:

Responsibilities include structural engineering design, construction documents, quality control and field engineering.

Experience record:

Gabriel Brothers Renovation, Clarksburg, WV
Goshen Baptist Church, Morgantown, WV
Mylan Upper Warehouse to Labs, Morgantown, WV
The Dayton, Morgantown, WV
The View at the Park Phase 2, Morgantown, WV

Courses and Continuing Education:

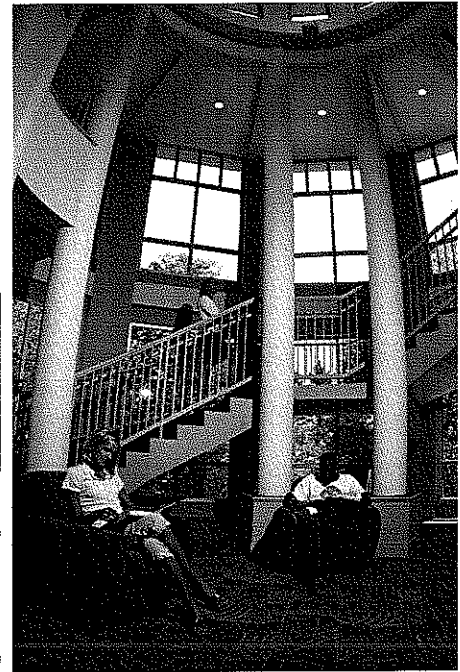
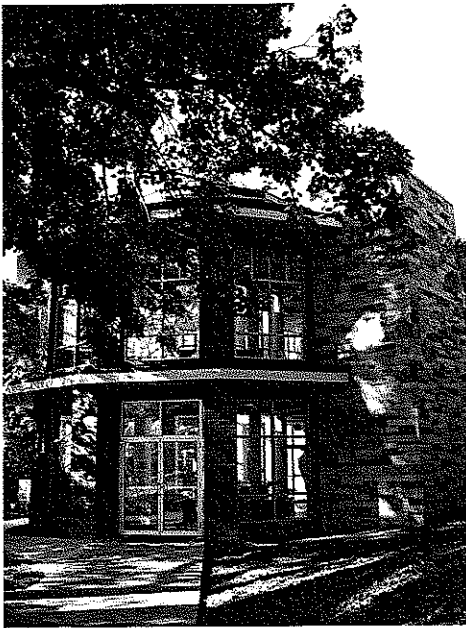
WVU Steel Design – Fall 2007
AISC Façade Attachments to Steel Frames, September 2007
ASCE Reinforced Masonry: Design and Construction, November 2007



Allegheny
Design Services
Structural Engineering

PROJECT PROFILE

Davis & Elkins College Benedum Hall Renovation Elkins, WV



PROJECT ARCHITECT:
STRUCTURAL ENGINEER:
CONTRACTOR:

Paradigm Architecture, Morgantown, WV
Allegheny Design Services, Morgantown, WV
March-Westin Company, Inc., Morgantown, WV

PROJECT SCOPE:

A 16,000 sq. ft. renovation of the existing Benedum Hall which included the addition of a rotunda as a vertical transition element.

PROJECT VALUE:

\$1.5 Million

PROJECT COMPLETION:

Summer 2003



Allegheny
Design Services
Structural Engineering

PROJECT PROFILE

Fairmont Senior High School Cafeteria Addition Fairmont, WV



PROJECT ARCHITECT: Omni Associates, Fairmont, WV
STRUCTURAL ENGINEER: David Simpson of Allegheny Design Services, Morgantown, WV
GENERAL CONTRACTOR: Davis and Sons General Contracting, Inc.

PROJECT FEATURES:

The Fairmont Senior High School Cafeteria Addition will be located on the campus of Fairmont Senior High School (FSHS) between Eighth Street and Park Drive in Fairmont, WV. The addition will consist of a single story structure approximately 80 feet by 90 feet in plan dimension, which is to be utilized as a cafeteria. A retaining wall along the southern portion of the building so that access to existing buildings is not impeded. The structure will be of masonry wall construction, with steel column support system.

PROJECT VALUE: \$2.5 Million

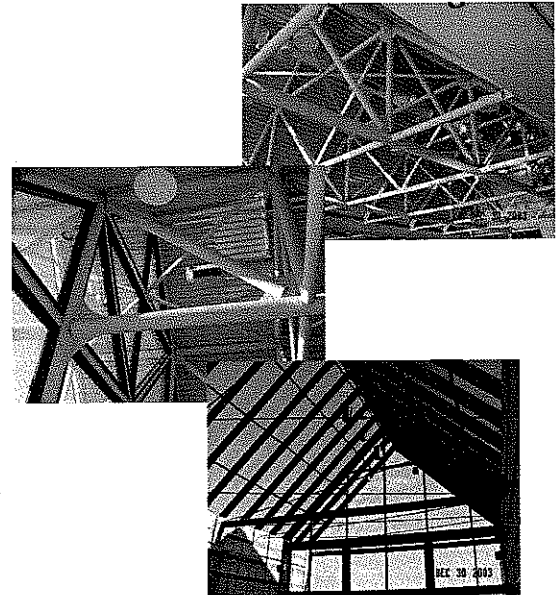
PROJECT COMPLETION: 2000



Allegheny
Design Services
Structural Engineering

PROJECT PROFILE

Carnes Community Center St. Clairsville, OH



PROJECT ARCHITECT: William Hooker, AIA, Wheeling, WV
STRUCTURAL ENGINEER: Allegheny Design Services, Morgantown, WV
OWNER: Belmont County Park Commission

PROJECT SCOPE:

The Project is a 22,000 sq. ft. community conference center located over an old strip mine site. Built on a dynamically compacted site, the project features a pipe trusses structural system clear spanning 80 feet across the commons areas. The prefabricated glass roof is restrained with an adjustable tension rod system. Foundations are reinforced to mitigate any future damage due to mine subsidence.

PROJECT VALUE: \$3 million

PROJECT COMPLETION: 2003



Allegheny Design Services

Structural & MEP Engineering

ALLEGHENY DESIGN SERVICES' EXPERIENCE TEAMING WITH WYK ASSOCIATES, INC.

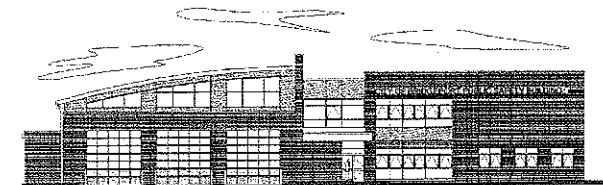
Bank of Gassaway Flatwoods, WV

ADS was a sub-consultant to WYK Associates, Inc. for the Bank of Gassaway. Building consisted of steel framing with an open skylight and canopy center lobby. It was completed in 2008 at a cost of \$2 Million.



Bridgeport Public Safety Substation Bridgeport, WV

ADS was a sub-consultant to WYK Associates, Inc. for the Bridgeport Public Safety Substation. The 2 story 15,000 square foot structure houses the Bridgeport Fire and Police Departments. It was completed in 2009 at a cost of \$3.2 Million.



Charles Point Exxon Travel Center Bridgeport, WV

ADS was a sub-consultant to WYK Associates, Inc. for the Charles Point Exxon Travel Center. The building houses a restaurant, convenience mart, and a fuel station. It was completed in 2007 at a cost of \$750,000.





Allegheny Design Services

Structural & MEP Engineering

Cutlip Christie Office Complex Clarksburg, WV

ADS was a sub-consultant to WYK Associates, Inc. for the Cutlip Christie Office Complex. The 12,000 square foot office building was completed in 2007 for \$1.5 Million.



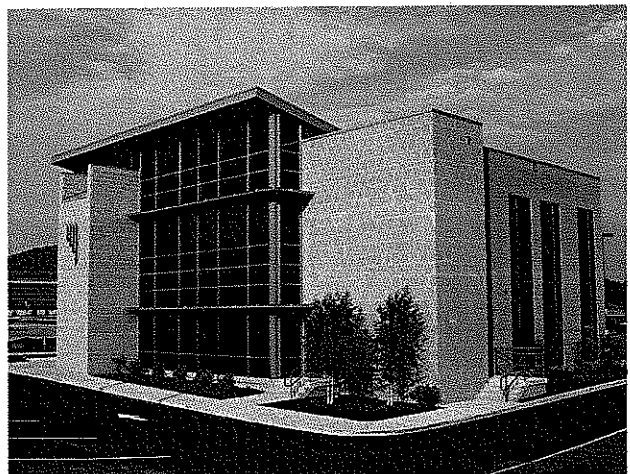
Dominion Exploration Building Addition Jane Lew, WV

ADS was a sub-consultant to WYK Associates, Inc. for the Dominion Exploration Building Addition. The addition is a 10,500 square foot addition completed in 2008 for \$1.5 Million.



West Union Bank Clarksburg, WV

ADS was a sub-consultant to WYK Associates, Inc. for the West Union Bank. The bank branch is a 9,000 square foot facility completed in 2005 for \$1.5 Million. It received a Merit Award from AIA West Virginia.



ZDS Design/Consulting Service



Primary MEP Contact: Todd Zachwieja, Principal, mobile phone (304) 545-4550

Secondary MEP Contact: Ted T. Zachwieja, Principal, mobile phone (304) 552-5724

ZDS was formed to provide quality engineering and consulting services specializing in:

- Design of mechanical systems and electrical systems.
- Building indoor air quality survey and analysis.
- Energy management and conservation services.
- Commissioning for new and renovated systems in commercial, educational, industrial and health care facilities.

ZDS approaches engineered systems improvements from the building owner operator's perspective, focusing on practicality, cost effectiveness, energy efficiency, reliability, operability, maintainability of the systems and timely implementation of projects to minimize disruption on existing facilities. We concentrate on optimizing and utilizing the existing systems prior to recommending the purchase of new equipment when upgrading a facility. Actual requirements of existing systems are analyzed and considered in addition to the "design" requirements. Our staff listens to their clients needs through their extensive interaction with the facility operators and the key decision-makers. We believe this approach enhances the design of new systems and ensures that the systems will be practical and functional.

ZDS is a team of professionals capable of meeting a diverse range of needs of facility professionals in the building design, construction and operations. The principals each have specialties in certain aspects that relate to meeting the needs of the building owners and operators. Mr. Ted T. Zachwieja's over 40 years of experience in mechanical and electrical design bring the depth of skills necessary to make the construction and design process operate effectively. Mr. Todd A. Zachwieja's project management skills with his extensive technical strengths in mechanical/electrical engineering and experience in indoor air quality, energy management and commissioning complement the traditional design needs. Mr. Daniel H. Kim's extensive management experience with some of the nation's largest companies provides us with important conceptual planning and organizational understanding. Ms. Lori Zachwieja's accounting and financial management skills provide the in house experience to operate an efficient and effective company to better serve our clients.

ZDS continues to grow and is in the process of opening a Morgantown Office with a Professional Engineer heading that office. Our current project team includes the following to meet the challenges of our client's building design and operating needs.

TODD (TED) A. ZACHWIEJA, PE, C.E.M., LEED AP

**Chief Executive Officer
Principal-in-Charge, M/E/P Design Project Manager**

Education Bachelor of Science in Mechanical Engineering from West Virginia Institute of Technology in 1982.
Masters of Science in Engineering Management from the University of West Virginia College of Graduate Studies in 1989.

Registrations Professional Engineer, West Virginia, No. 10,127
Certified Energy Manager (C.E.M.), National Certification
LEED® Accredited Professional, National Certification through USGBC
Professional Engineer, Pennsylvania, No. PE-040929-R
Professional Engineer, Virginia, No. 0402 025427
Professional Engineer, Ohio, No. E-53587
Professional Engineer, North Carolina, No. PE-017445
Professional Engineer, Kentucky, No. PE-17961
Professional Engineer, Georgia, No. 18253
Professional Engineer, South Carolina, No. 25985

Qualifications Todd has more than 27 years of experience; in the design, construction management, and specifications for mechanical engineering, heating, ventilating, air conditioning, plumbing, electrical, and lighting; indoor air quality analysis and building system commissioning for educational, commercial, industrial and health care facilities. His specialties include mechanical engineering, HVAC systems master planning, conceptual design, energy conservation program development, commissioning and IAQ analysis relating to HVAC systems. He has extensive experience in industrial, commercial facilities, hospitals and educational design including preparation of construction documents for millions in renovations and additions to facilities. Some of his project experience includes projects new Mercer County Courthouse, Princeton, WV, Kanawha County Commission – 120,000 sf additions/renovations for the Judicial Annex/Kanawha County Courthouse Charleston WV, Laidley Towers – Charleston WV, Renovations to Buildings #1, #3, #4, #5, #5, #7, #8, #9, #10 at the WV State Capitol complex, Cultural Center HVAC Renovation, Union Carbide, United Center - Charleston WV, Phillip Morris USA, Rhone-Poulenc, Toyota, Olin Corporation, Walker Machinery, WV Air & Army National Guard, Bank One, WV; Kohl's, Sears, WV Public Service Commission Headquarters, and Yeager Airport. He also designed one of the largest geothermal heat pump applications in the mid Atlantic region, commissioned HVAC systems and mechanical engineering at many General Motors facilities in North America.

Some of his health care experience includes millions in renovation and new construction design for Charleston Area Medical Center including commissioning of Charleston Area Medical Center's \$41 million Surgery Replacement center and many projects at General Division, Memorial Division, and Women & Children's Hospital. Other health care experience includes Bluefield Regional Medical Center, Hopemont Hospital, Monongalia General Hospital, Montgomery General Hospital, United

Hospital Center, St. Mary's Hospital, Summersville Memorial Hospital, Thomas Memorial Hospital, Webster Memorial Hospital, Cabell Huntington Hospital, Welch Emergency Hospital, Surgicare Center, VA Hospital - Clarksburg, Mercy Medical Center, Wayne Memorial and Webster Memorial Hospital.

He also has experience in providing M/E design for the following College and Universities including: Alderson Broadus College, Bluefield State College, Concord University, Fairmont State College, Marshall University, Ohio University's Athens & Chillicothe campuses, Southern WV Community & Technical College, University of California-Davis, University of Charleston, Washington & Lee University, WV Wesleyan College, and West Virginia University. He was recognized nationally for his work with Ohio University in development of a performance contracting program that is anticipated to save \$2.5 million annually in energy and operating costs.

He also has experience in providing M/E design for the following schools: Clay, Grant, Hardy, Harrison, Jackson, Kanawha, Logan, Marion, McDowell, Mercer, Monroe, Ohio, Pocahontas, Putnam, Raleigh, Randolph, Ritchie, Summers, Taylor, Tucker, Upshur, Webster, and Wyoming County Schools. Some of his project experience includes the development and design of a pilot geothermal heat pump HVAC with variable speed pumping system at Webster County High School which reduced electric bills by more than 40% while meeting IAQ requirements.

Prior to joining ZDS, Todd Zachwieja coordinated millions in comprehensive energy conservation programs resulting in annual energy saving millions per year and managed a profitable regional office for one of the countries largest energy service companies. He also developed computer programs for building energy analysis and monitoring and presented technical papers at regional and national conferences.

Professional Affiliations

Charter member Mountaineer chapter of American Society of Heating Refrigeration and Air conditioning Engineers (ASHRAE)
Served as ASHRAE's Energy and Technical Affairs Chairman for 6 years.
Recognized by the International Who's Who of Professionals.
Recognized nationally as West Virginia's Business Man of the Year
Recognized nationally in 2007 as a "Legend in Energy"
Charter life member of the Association of Energy Engineers
Professional Affiliate Member of the American Institute of Architecture
Member of the American Association of Hospital Engineers
Member of the National Society of Professional Engineers
Member of National Society of Plumbing Engineers
Member of the International Code Council
Contributing editor and served on the Editorial Review Panel for "The Handbook of Building Management and Indoor Air Quality", "Ventilation for a Quality Dining Experience", INvironment Professional, Power Prescriptions and other publications and articles dealing with Indoor Air Quality (IAQ) and MEP engineering systems.
Presented at regional and national conferences including the National System Commissioning Conference

TED T. ZACHWIEJA

Principal-in-Charge Construction Administration

Education Bachelor of Science in Mechanical Engineering, West Virginia Institute of Technology, 1958.

Qualifications Ted's responsibilities include over 40 years of experience in mechanical and electrical systems design and construction administration. His specialties include the design and development of mechanical and electrical systems, master planning and budgeting for mechanical and electrical systems, and management of complex design and construction projects. He is also a Codes and Standards Specialist.

He has been involved in West Virginia since 1958 in all aspects of mechanical and electrical design and construction, including machine design, structural design and design of heating, ventilating, air conditioning, plumbing, fire protection and electrical systems. His experience includes work for U. S. Steel, Union Carbide, Rhone-Poulenc, Bluefield Regional Medical Center, Charleston Area Medical Center, United Hospital Center, Kanawha County Schools, Marshall University, most buildings on the West Virginia Capitol Complex, West Virginia Institute of Technology, West Virginia University, Bank One and many others in the private sector.

Ted's Design regarding Chase Towers, Charleston, formerly Charleston National Bank, including conducting a comprehensive energy audit, design of a Building Automation Energy Management System, HVAC renovations of floors LM and LM1, design of flat plate heat exchanger system for the perimeter fan coil units and design of the boiler replacement.

Ted has been involved in the planning, design and construction administration of Concord University's Technology Center and Concord's campus medium voltage upgrades, Marshall University's Harris Hall renovations, Southern WV Community & Technical College's renovations, West Virginia University's White Hall and Armstrong Hall, WVU's Wise Library Sprinkler System, WVU's Chilled Water Loop Interconnect, Morgantown, WV; Charleston Area Medical Center (CAMC), Memorial Division Chiller Replacement; CAMC's General Division Chiller Replacement, Variable Pumping System and Chillers Interconnect, Charleston, WV; and many others. He has worked on new and renovation projects such as West Virginia University Stadium and Forestry Building, Morgantown, WV; Addition and Renovation of the Air Conditioning System for the West Virginia State Capitol Building, Charleston, WV; Conley Hall and Science Building HVAC Renovations and Additions, West Virginia Institute of Technology, Montgomery, WV; Indoor air quality (IAQ) and HVAC Renovations of Andrew Jackson Junior High School for Kanawha County School Systems; Fume Hood

Design and HVAC Additions and Renovations for Union Carbide, Charleston, WV; and Rhone Poulenc, Institute, WV; HVAC renovation for the Benedum Student Center at West Virginia Wesleyan College, Buchannon, WV; Greenbrier East and Greenbrier West Schools; Mingo County Schools; Raleigh County Schools including Shady Springs Middle School, Trap Hill Junior High School, Academy of Career and Technology Center, Marsh Fork Elementary, Park Middle School, Woodrow Wilson High School and others, Pocahontas County High School (Geothermal), Wyoming County Schools; Tucker County Schools; Webster County High School & Webster Springs Elementary School HVAC Renovations (Geothermal) and Exterior Renovations, and various other secondary schools throughout the years.

Ted was involved with the mechanical and electrical renovations for the State of West Virginia Library Commission Cultural Center as part of a total \$4.5 million HVAC and Electrical Renovations, Charleston, WV. The indoor air quality, temperature and humidity each were not in accordance with good design practices for this type of structure. ZDS is commissioned to correct these deficiencies while conserving energy.

Ted was selected as one of three engineers to train and teach a course designed by the Department of Energy and American Society of Heating, Refrigeration and Air Conditioning Engineers for emergency building temperature restrictions.

Prior to forming ZDS, Ted was regional manager for a hospital design firm and responsible for designing, construction management and project management for over \$200 million in hospital and health care facilities. The facilities were located over eastern United States. Some of his health care experience includes millions in renovation and new construction design for Charleston Area Medical Center's Special Care Facility. Other local health care experience includes Bluefield Regional Medical Center, Hopemont Hospital, Monongalia General Hospital, Montgomery General Hospital, United Hospital Center, St. Mary's Hospital, Summersville Memorial Hospital, Thomas Memorial Hospital, Webster Memorial Hospital, Cabell Huntington Hospital, Welch Emergency Hospital, Surgicare Center, VA Hospital - Clarksburg, Mercy Medical Center, and Webster Memorial Hospital

**Professional
Affiliations**

Construction Specifications Institute (Charter Member)
American Society of Mechanical Engineers
American Society of Heating, Refrigeration & Air Conditioning Engineers
WV Mountaineer Chapter ASHRAE Past President and Charter Member
Association of Energy Engineers
Association of Hospital Engineers
WV Society of Hospital Engineers
Professional Affiliate Member of AIA
WV Association of Physical Plant Administrators

DAVID G. DIAL, P.E.

Senior MEP Engineer

Education Bachelor of Science Mechanical Engineering, WV University, 1978
Masters of Science Environmental Engineering, WV University, 1980

Registration Professional Engineer, West Virginia, No. 11692

Qualifications David has over twenty-seven years of experience in the design and commissioning of Mechanical and Electrical systems. He provides HVAC, electrical and plumbing design services for a variety of clients in West Virginia. His background also includes managing operating and maintenance repair and construction services for HVAC, plumbing, electric, and maintenance. David has managed grounds maintenance, security staff, information technology, IT NASA network, video surveillance and telephone systems. These areas provide inherent coordination expertise.

David has experience in Maintenance Engineering in plumbing, HVAC, clean room design, dust collector selections, steam and condensate flow measurement, transfer of steam production from in-house to private contractor, athletic field lighting design, farm pump water design, and even completed a successful energy grant application from the US Department of Energy.

Environmental Design experience includes PCB remediation, Air Pollution Control Commission annual reporting, removal of underground fuel storage tanks/pumps, installation & testing for radioactive material, conversion of a fleet of vehicles to operated dual fuel (gasoline and natural gas) including training, designing a filling station, custom built compressor station, cylinder operations area, filling post and monitoring of natural gas usage.

He has been involved in the design, document development, contract administration and recommissioning of the structural, mechanical, and electrical disciplines of several WVU projects including: Downtown Steam Tunnel Assessment, Coliseum Tunnel Redesign, Towers exercise room, Brooks Clean Room, lighting retrofits at Brooks Hall, exterior lighting for Mountainlair Parking Garage, cooling towers replacement at the Chemistry Annex, replacement of electric hot water boilers with natural gas pulse steam boilers, HVAC controls for Allen Hall, measure flow for sub metering/billing for campus steam/condensate systems, PCB removal from electrical equipment on campus, and power/cooling for a data Center at the WVU/NASA facility.

Other project experience includes design for Trinity High School's HVAC, plumbing and electric system, industrial dust collector system for the Percival Dust Collector, replacement of rigging of a 2500 seat Auditorium. As a production engineer, David optimized design of medical quality cryogenic freezers, incubator and shaker including scheduling the freight trucks, quality assurance of sheet metal shipments, writing repair manuals and set up insulation.



ZDS

Design/Consulting Services

MECHANICAL . ELECTRICAL . INDOOR AIR QUALITY . ENERGY . COMMISSIONING

91 Smiley Drive

St. Albans, WV 25177

Phone: 304-755-0075

Fax: 304-755-0076

web: www.ZDSEngineering.com

ZDS Personnel Experience

Relevant Experience

ZDS staff have relevant experience while working at ZDS and with previous firms. Some of that combined experience includes involvement in the design or renovation of many commercial restaurants, K-12 schools and higher education dining facility projects. Todd Zachwieja, ZDS's Principal was contributing editor for a nationally published book title "*Ventilation for a Quality Dining Experience*" and invited to speak at the following:

- Mid-Atlantic Foodservice, Lodging & Beverage Expo - Timonium, Maryland
- National Restaurant Association Opryland Convention Center - Nashville Tennessee
- Florida Restaurant Association Orange County Convention Center - Orlando Florida
- United States Conference of Mayors - Washington DC

This represents a partial list of over 100 projects involving dining facilities.

Project	Location
Charleston Area Medical Center Dining Facility	Charleston, WV
Carolina Mall Food Court	Concord, NC
Circa Tabac Restaurant/Bar	New York, NY
Reno Roadhouse Restaurant Facilities	Multiple locations in KY
Winfield High School kitchen/dining facility renovations	Winfield, WV
West Pan Restaurant	New York, NY
Greenbrier West High School Cafeteria/Dining facility renovations	Charmco, WV
Southside K-8 new school including kitchen/dining facility	War, WV
Webster County High School Cafeteria/Dining facility renovations	Upper Glade, WV
WV Army National Guard Barracks/Mess Hall Renovations	Kingwood, WV
WVU Tech High Rise Dormitory and Cafeteria	Montgomery, WV
WVU Mountainlair Student Center Renovations	Morgantown, WV
Woodrow Wilson High School dining facility	Beckley, WV
Tucker County High School dining facility	Hambleton, WV
West Virginia Wesleyan - Benedum Student Center	Huntington, WV
Many dining facilities for educational systems in West Virginia and other states	

Dining Facilities

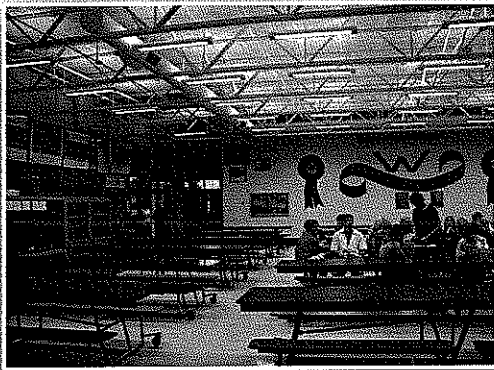
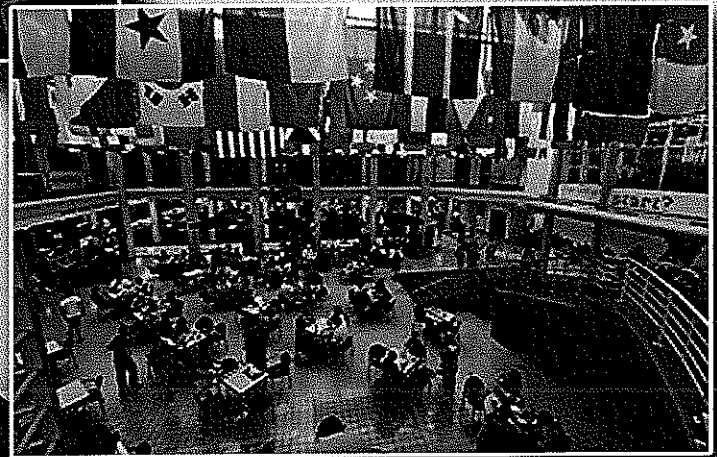


Carolina Mall Food Court



WVU Tech High Rise Dormitory and Cafeteria

WVU Mountainlair Student Center Food Court



Winfield High School Cafeteria



Circa Tabac Restaurant Lounge



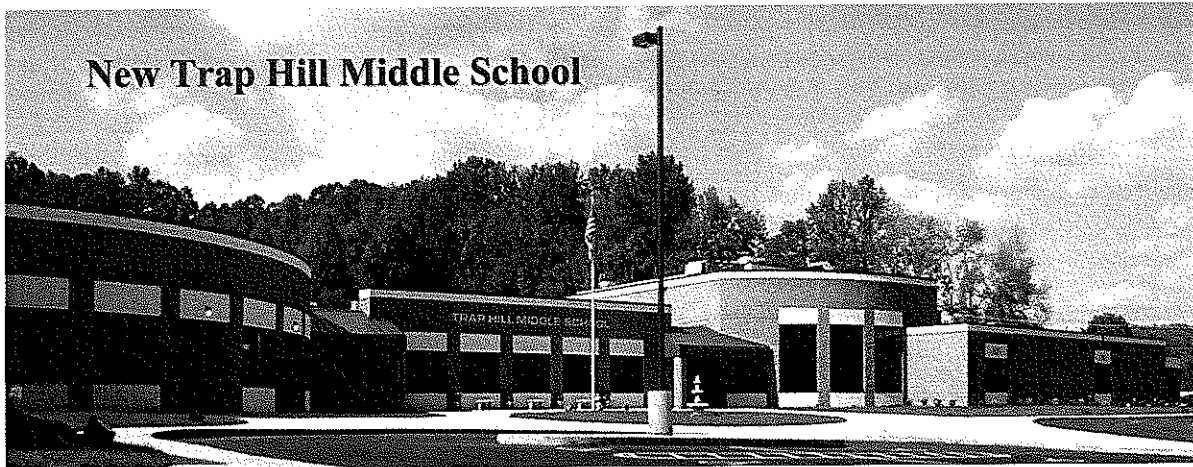
Raleigh County Schools—
Trap Hill Middle School Cafetorium

PROJECT EXPERIENCE

ZDS Design/Consulting Services

Client: *Raleigh County Schools, West Virginia*
Project: *New Trap Hill Middle School*

Client Contact: Mr. Racine Thompson, Assistant Superintendent.
Phone (304) 256-4500,
Raleigh County Schools
Beckley, WV 25801-3791



Project Description

ZDS provided the HVAC, plumbing, fire protection and electrical engineering design for the new Trap Hill Middle School that was completed in 2002. The school was funded from a bond levy that passed in 1999. Raleigh County voters have been very supportive of the county school system which showed when they passed another bond levy in 2004.

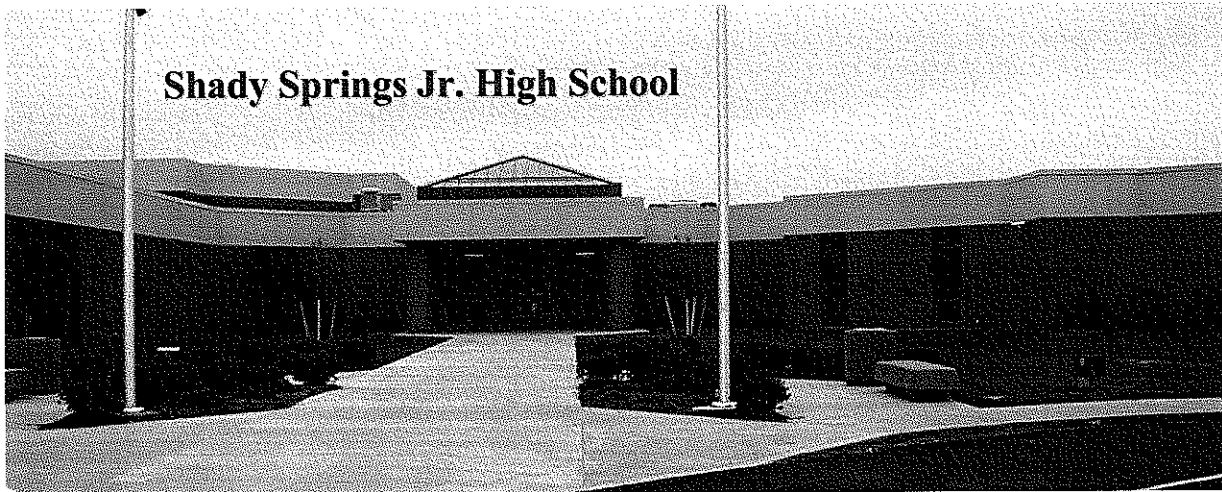
Raleigh County Schools have been successful because they include the Maintenance staff in a key role as part of the design team. The facility was design around equipment that Raleigh County schools could obtain service and support locally. The energy efficient design included Direct Digital Controls for remote monitoring and control of the facility's HVAC systems. Energy efficient lighting, motors and equipment were also incorporated into the facility's systems. Raleigh County Schools elected to be proactive in addressing Indoor Air Quality (IAQ) by incorporating many of the recommended practices even before they are required by codes. Improving filtration, fully ducting the return air systems, considering the condensate removal system and providing adequate outside ventilation air were included in the HVAC systems.

PROJECT EXPERIENCE

ZDS Design/Consulting Services

Client: *Raleigh County Schools, West Virginia*
Project: *New Shady Springs Junior High School*

Client Contact: Mr. Racine Thompson, Assistant Superintendent.
Phone (304) 256-4500,
Raleigh County Schools
Beckley, WV 25801-3791



Project Description

ZDS provided the HVAC, plumbing and electrical engineering design for the new Shady Springs Junior High School that was completed in 2002. The Maintenance staff played an important role as part of the design team. The facility was design around equipment that Raleigh County schools could obtain local service and support. The energy efficient design included Direct Digital Controls for remote monitoring and control of the facilities HVAC systems. Energy efficient lighting, motors and equipment were also incorporated into the facilities systems. Raleigh County Schools elected to be proactive in addressing Indoor Air Quality but incorporating many of the recommended practices even before they are required by codes. Improved filtration, ducted return air system, special consideration into the condensate removal system and providing adequate outside air were included in the HVAC systems.

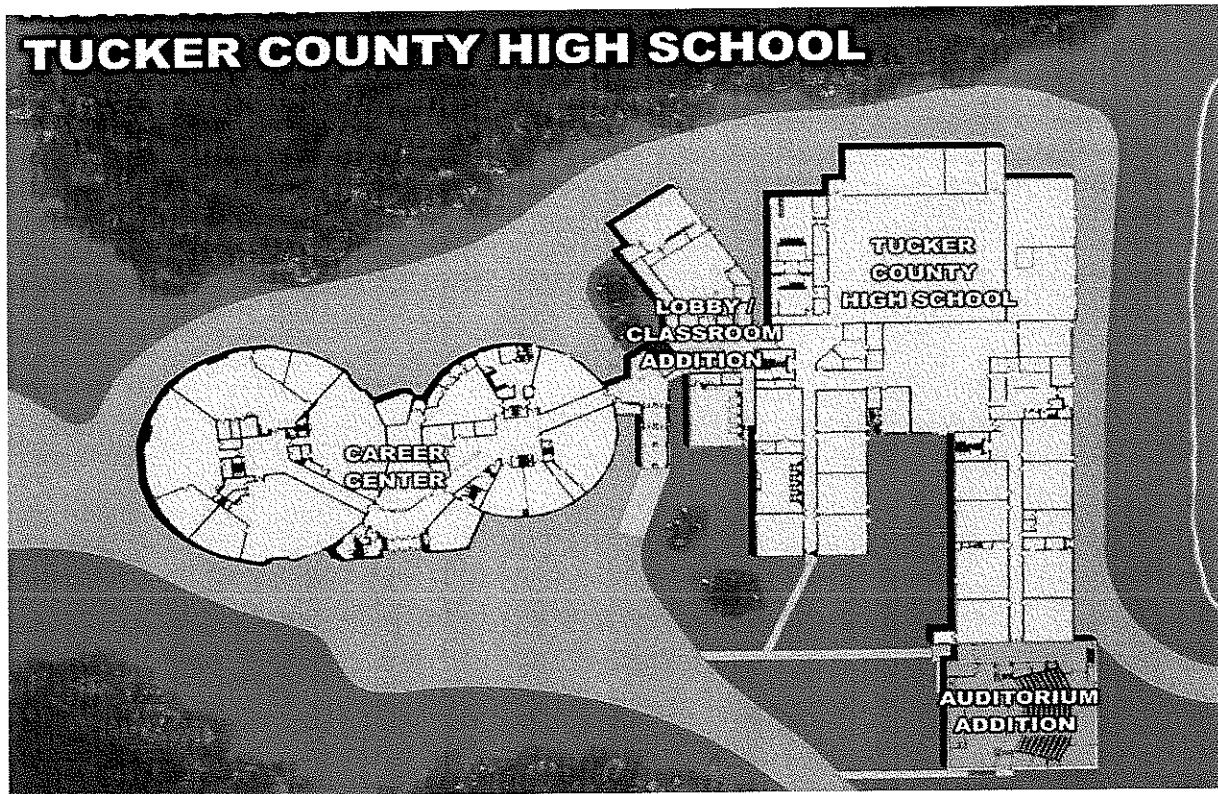
<i>Total Project Cost:</i>	\$9,116,384
<i>School Building Authority Funds</i>	\$1,833,800
<i>School Size:</i>	77,543 Square-Feet

PROJECT EXPERIENCE

ZDS Design/Consulting Services

Client: Tucker High Schools, Tucker County, WV

Client Contact: Tucker County BOE.
Rick Hicks - Superintendent
Phone (304) 478-2771,
Tucker County Schools
Parsons, WV 26287-1005



Project Description

Tucker County High School and Career Center were originally two separate structures. Two additions were made to the campus including an interconnecting lobby/classroom addition that tied the two buildings together and a new Auditorium addition. The HVAC, lighting and plumbing systems in the high school were also renovated. ZDS provided all of the HVAC, plumbing, fire protection and electrical engineering design for this multi-phased project.

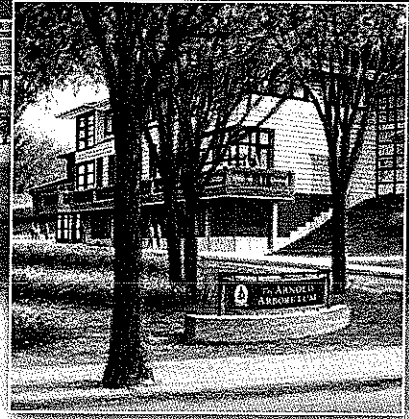
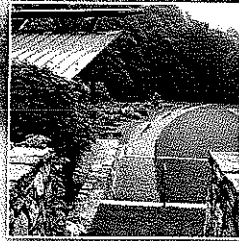
Total Project Cost: \$7,578,000
School Building Authority Funds \$7,323,000



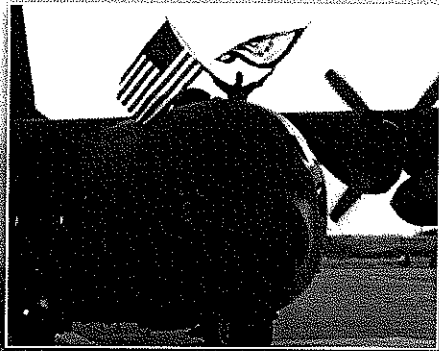
ZDS Project Experience — LEED



Harvard University
The Arnold Arboretum, Weld Hill
Research and Administration Building
LEED Gold Candidate



Air National Guard
130th Airlift Wing, Aircraft Maintenance
Fuel Systems Hangars, Yeager Airport
Registered for LEED Air Force Silver Certification



Air National Guard
130th Airlift Wing,
Aircraft Maintenance Hangars
and Shops, Yeager Airport
*Registered for LEED
Air Force Silver
Certification*



ZDS Project Experience — LEED



West Virginia Capitol Complex Project

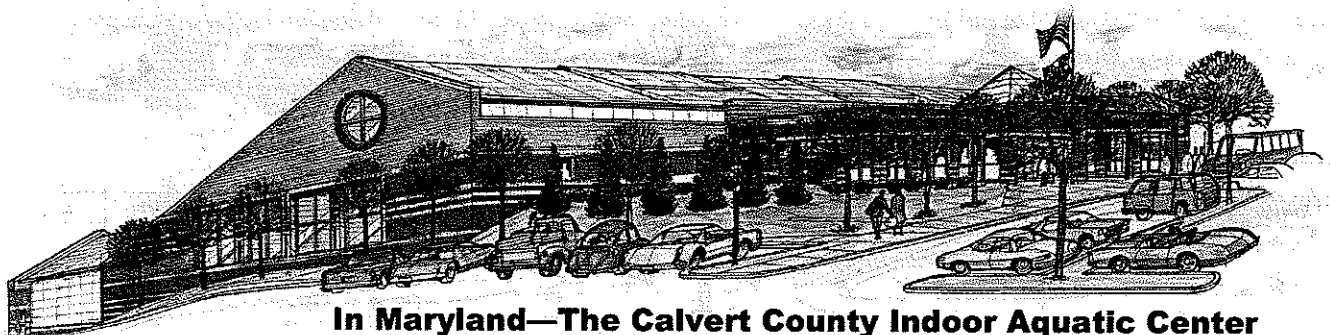
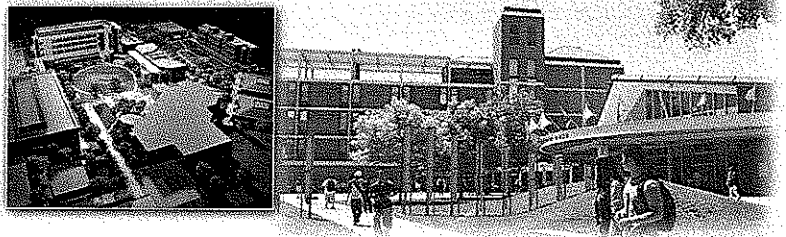
An integration of nine buildings involving over 1.6 million square feet including the Capitol, Governor's Mansion, The Center for Culture and History, plus six other administration facilities.

LEED Certified Candidate



ZDS Projects with Adapted LEED Principles including Commissioning

University of California Davis Campus Veterinarian Facility



In Maryland—The Calvert County Indoor Aquatic Center
The largest capital project facility the county has ever undertaken

The design team at **ZDS Design/Consulting Services** is the best to provide engineering services for **your** project. Satisfying *our Client's* individual needs and distinct requirements is the foremost concern of ZDS.

The most important member of the design team is the client. We make every effort to involve our clients throughout the entire process, from the planning through the construction and beyond.

The ZDS design staff continuously provides engineering design services value well into the millions of dollars on a variety of project types. Designing expertise goes as far back as 1958. Through the efforts of our staff, project locations include:

West Virginia	Virginia	North Carolina	Georgia
Kentucky	Ohio	Pennsylvania	Florida
Illinois	Connecticut	Texas	Michigan
New York	Wisconsin	Massachusetts	Indiana
Colorado	Tennessee	Maryland	Washington DC
California	Hawaii	South Carolina	

Our clients can rest assured that the design team will be available. Not just for the year or two that we are involved in the initial design and construction, but also for years that follow as questions arise about your facility. A good-engineered system and its equipment should last 15 to 40 years. Why not select a design firm with experienced staff committed to their projects with a comparable track record.

Our design team will provide comprehensive services utilizing experienced staff through planning; cost estimating, engineering, coordination of bidding, regular site visitation during construction and specifications for equipment. You, *our Client*, will greatly benefit from a *single point of responsibility* for every need your project may have.

Our staff has the expertise with codes and standards. We have extensive experience in conducting engineering code surveys of existing facilities. Our staff has excellent working relationships with the West Virginia Fire Marshal's Office and the West Virginia Department of Health.

In addition to comprehensive Engineering services from an experienced design team, another major consideration in the selection of your engineer and design staff should be their track record. ZDS organization has an unbeatable, long running, and well-known track record for meeting *our Client's* needs, on time and within budget with outstanding quality.

We view these characteristics as the foundation of Quality. We look forward to the opportunity to discuss our ideas with you and assist you by providing solutions for your needs with a full range of services from Planning to Commissioning.



WYK ASSOCIATES, INC.
ARCHITECTURE • PLANNING

WYK's Repeat Clients
WYK Associates, Inc.



WYK ASSOCIATES, INC.
ARCHITECTURE • PLANNING

WYK's List of Repeat Clients West Virginia

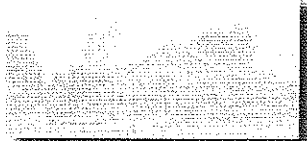
Harrison County Bank

Davis Memorial Hospital

Kappa Sigma Pi

Citizens' National Bank of Elkins

Barbour County Courthouse Renovations



United Hospital Center

Harrison County Commission

City of Clarksburg

United Summit Center

V.A. Medical Center - Clarksburg



Toothman & Rice

Harrison County Senior Citizens

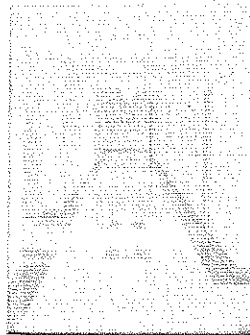
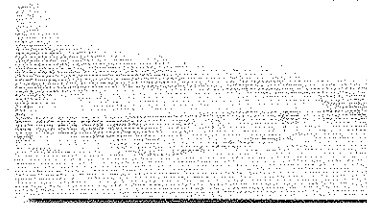
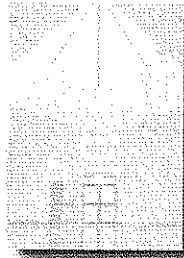
Harrison County Development Authority

Barbour County Board of Education

Greathouse Funeral Home

Quiet Dell United Methodist Church

Harrison County Courthouse Renovations



World Vision

Dominion Exploration and Production

Harrison County Board of Education

North Central West Virginia Airport

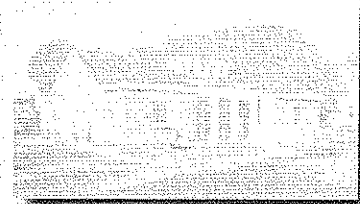
Lewis County Board of Education

Fairmont State University

Corhart Refractories

West Union Bank

Harrison County YMCA



City of Salem

Daisy Development

ARC of Harrison County

City of Bridgeport

Webster County EDA

City Neon

Stockmeier Urethanes



WYK's Emphasis is on Client Satisfaction; We Feel Our Strong Repeat Client Base is a Testament to That Fact



WYK ASSOCIATES, INC.
ARCHITECTURE • PLANNING

References
WYK Associates, Inc.

WYK....turning YOUR vision into reality....

WYK's Computer Rendering
March 2006



Actual Photo – May 2007
Christie-Cutlip Office Complex
Charles Pointe, Bridgeport, WV



WYK ASSOCIATES, INC.
ARCHITECTURE • PLANNING

References
WYK Associates, Inc.

We Urge You to Contact the Following:

Jim McQuain

Bank of Gassaway
700 Elk Street
Gassaway, WV 26624
(304) 364-5138

David Leach, Manager

World Vision Storehouse
420 Chestnut Street
Philippi, WV 26416
(304) 457-6612 ext.: 222

Michael A. Robinson, Vice President

Stockmeier Urethanes USA
P.O. Box 1456
Clarksburg, WV 26301
(304) 624-7002

Dr. Joseph Mace, Superintendent

Lewis County Schools
239 Court Street
Weston, WV 26452
(304) 269-8333

Geary Weir, Director

Webster County EDA
139 Baker Street
Webster Springs, WV 26288
(304) 847-2145

Mike Hines, Supply Chain Specialist

Dominion Exploration & Production
1 Dominion Drive
Jane Lew, WV 26378
(304) 269-8333



WYK ASSOCIATES, INC.
ARCHITECTURE • PLANNING

Purchasing Affidavit
WYK Associates, Inc.

STATE OF WEST VIRGINIA
Purchasing Division

PURCHASING AFFIDAVIT

West Virginia Code §5A-3-10a states: No contract or renewal of any contract may be awarded by the state or any of its political subdivisions to any vendor or prospective vendor when the vendor or prospective vendor or a related party to the vendor or prospective vendor is a debtor and the debt owed is an amount greater than one thousand dollars in the aggregate.

DEFINITIONS:

"Debt" means any assessment, premium, penalty, fine, tax or other amount of money owed to the state or any of its political subdivisions because of a judgment, fine, permit violation, license assessment, defaulted workers' compensation premium, penalty or other assessment presently delinquent or due and required to be paid to the state or any of its political subdivisions, including any interest or additional penalties accrued thereon.

"Debtor" means any individual, corporation, partnership, association, limited liability company or any other form or business association owing a debt to the state or any of its political subdivisions. "Political subdivision" means any county commission; municipality; county board of education; any instrumentality established by a county or municipality; any separate corporation or instrumentality established by one or more counties or municipalities, as permitted by law; or any public body charged by law with the performance of a government function or whose jurisdiction is coextensive with one or more counties or municipalities. "Related party" means a party, whether an individual, corporation, partnership, association, limited liability company or any other form or business association or other entity whatsoever, related to any vendor by blood, marriage, ownership or contract through which the party has a relationship of ownership or other interest with the vendor so that the party will actually or by effect receive or control a portion of the benefit, profit or other consideration from performance of a vendor contract with the party receiving an amount that meets or exceed five percent of the total contract amount.

EXCEPTION: The prohibition of this section does not apply where a vendor has contested any tax administered pursuant to chapter eleven of this code, workers' compensation premium, permit fee or environmental fee or assessment and the matter has not become final or where the vendor has entered into a payment plan or agreement and the vendor is not in default of any of the provisions of such plan or agreement.

Under penalty of law for false swearing (*West Virginia Code §61-5-3*), it is hereby certified that the vendor affirms and acknowledges the information in this affidavit and is in compliance with the requirements as stated

WITNESS THE FOLLOWING SIGNATURE

Vendor's Name: WYK Associates, Inc.

Authorized Signature: *[Signature]* Date: March 8, 2010

State of West Virginia

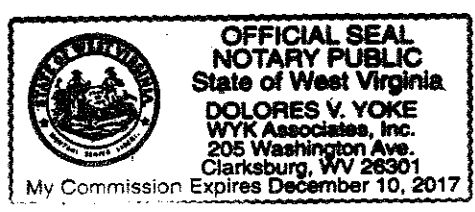
County of Harrison, to-wit:

Taken, subscribed, and sworn to before me this 8th day of March, 2010.

My Commission expires December 10, 2017.

AFFIX SEAL HERE

NOTARY PUBLIC *[Signature]*





State of West Virginia
 Department of Administration
 Purchasing Division
 2019 Washington Street East
 Post Office Box 50130
 Charleston, WV 25305-0130

Request for Quotation

RFQ NUMBER
DNR210145

PAGE
2

ADDRESS CORRESPONDENCE TO ATTENTION OF
FRANK WHITTAKER
304-558-2316

RFQ COPY
 TYPE NAME/ADDRESS HERE

VENDOR

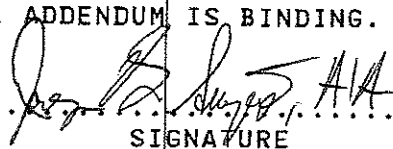
SHIP TO

**DIVISION OF NATURAL RESOURCES
 PROCUREMENT OFFICE**

**324 4TH AVENUE
 SOUTH CHARLESTON, WV
 25303-1228 304-558-3397**

DATE PRINTED	TERMS OF SALE	SHIP VIA	F.O.B.	FREIGHT TERMS
02/10/2010				

BID OPENING DATE: **03/11/2010** BID OPENING TIME **01:30PM**

LINE	QUANTITY	UOP	CAT NO	ITEM NUMBER	UNIT PRICE	AMOUNT
				REQUISITION NO.: DNR210145		
				ADDENDUM ACKNOWLEDGEMENT		
				I HEREBY ACKNOWLEDGE RECEIPT OF THE FOLLOWING CHECKED ADDENDUM(S) AND HAVE MADE THE NECESSARY REVISIONS TO MY PROPOSAL, PLANS AND/OR SPECIFICATION, ETC.		
				ADDENDUM NO.'S:		
			NA	NO. 1		
				NO. 2		
				NO. 3		
				NO. 4		
				NO. 5		
				I UNDERSTAND THAT FAILURE TO CONFIRM THE RECEIPT OF THE ADDENDUM(S) MAY BE CAUSE FOR REJECTION OF PROPOASLS.		
				VENDOR MUST CLEARLY UNDERSTAND THAT ANY VERBAL REPRESENTATION MADE OR ASSUMED TO BE MADE DURING ANY ORAL DISCUSSION HELD BETWEEN VENDOR'S REPRESENTATIVES AND ANY STATE PERSONNEL IS NOT BINDING. ONLY THE INFORMATION ISSUED IN WRITING AND ADDED TO THE SPECIFICATIONS BY AN OFFICIAL ADDENDUM IS BINDING.		
				 SIGNATURE		
				WYK Associates, Inc.		March 8, 2010

SEE REVERSE SIDE FOR TERMS AND CONDITIONS

SIGNATURE	TELEPHONE	DATE
TITLE	FEIN	ADDRESS CHANGES TO BE NOTED ABOVE

WHEN RESPONDING TO RFQ, INSERT NAME AND ADDRESS IN SPACE ABOVE LABELED 'VENDOR'