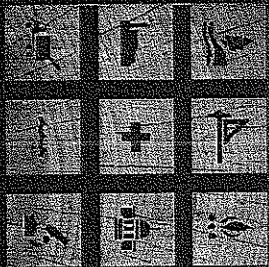


blackwood associates, inc.
architects & planners

mSES consultants, inc.
engineers & environmental



Architectural/Engineering Services

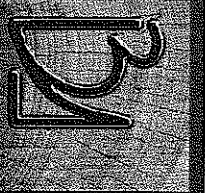
For

Division of Juvenile Services

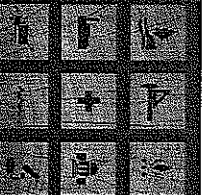
Davis Center Renovations
Davis, West Virginia

RECEIVED
MAY 12 P 12:22
PURCHASING DIVISION
STATE OF WV

Expression of Interest
RFQ: DJS010291



blackwood associates, inc.
architects & planners
mSES consultants, inc.
engineers & environmental



May 11, 2010

Ms. Krista Ferrell-File 21
Department of Administration
Purchasing Division
2019 Washington Street East - Building 15
Charleston, WV 25305-0130

Re: Architectural/Engineering Services for RFQ: DJS010291
Division of Juvenile Services - Davis Center Renovations

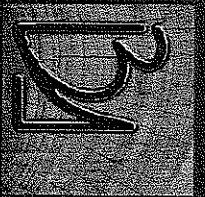
Dear Ms. Ferrell:

Blackwood Associates, Inc. (BAI) and **MSES Consultants, Inc. (MSES)** are pleased to submit this expression of interest in providing professional services for the renovations of the Davis Center located in Davis, West Virginia.

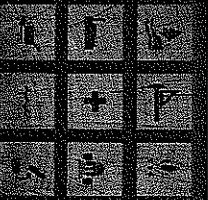
Blackwood Associates, Inc. is an Architectural and Planning firm located in Fairmont, WV and would provide all project planning and design. **MSES Consultants, Inc.**, is an Engineering firm located in Clarksburg and Huntington, West Virginia, providing all engineering disciplines. The two firms have merged operations to become the largest full service architectural/engineering provider in West Virginia.

The **BAI/MSES** firm offers a combined professional staff of over 80 people, with registered architects, engineers, LEED accredited professionals, scientists, technicians and support personnel. **BAI/MSES** is a single source that can provide the professional disciplines required for projects of this nature. Professional services will be managed and performed by full-time, in-house personnel out of the Fairmont, Clarksburg and Huntington offices.

The **BAI/MSES** firm practice is based upon the philosophy of comprehensive service, providing our clients with a single point of responsibility. We believe that the building sciences of architecture and engineering cannot be separated. By bringing architecture, interior design, engineering, environmental, and management services together in a single firm, we ensure efficient and effective service. Another advantage to an Owner is **BAI/MSES**'s extensive experience in site selection and evaluation of existing buildings, especially where environmental issues may be a potential concern.



blackwood associates, inc.
architects & planners
mSES consultants, inc.
engineers & environmental



BA/MSES is your provider of the total array of professional services including LEED, environmental and hygienist services where needed. Another advantage to our firm, **BA/MSES** develops websites for every project as a part of basic services. Websites are used during various phases of project development, making Owner document review much more efficient. This technology has also been proven to increase the interest of contractors and suppliers during bidding. During construction we add site progress photographs and panoramas for Owner access and review from their offices.

BAI and **MSES** are West Virginia firms with a combined 81 years of providing architecture and engineering services to agencies throughout West Virginia. Our 18 years of successful practice as a team is the direct result of our ability to provide all professional disciplines necessary for any governmental project.

We can assure a work force of sufficient size to provide immediate and comprehensive involvement on this project. We look forward to having the opportunity to present our qualifications and approach on a personal basis. Thank you for your consideration.

Sincerely,

BLACKWOOD ASSOCIATES, INC.
ARCHITECTS AND PLANNERS

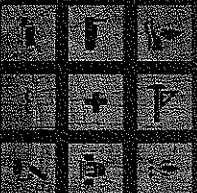
JAMES K. BLACKWOOD, AIA
PRINCIPAL

Blackwood Associates, Inc.
Architects and Planners
611 East Park Avenue
Fairmont, WV 26554
304-366-1580 304-366-1537 fax
jim@wwarchitects.com
<http://www.wwarchitects.com>

MSES Consultants, Inc.
Engineers and Environmental
609 West Main Street
Clarksburg, WV 26302
304-624-9700 304-622-0981 fax
<http://www.msesinc.com>



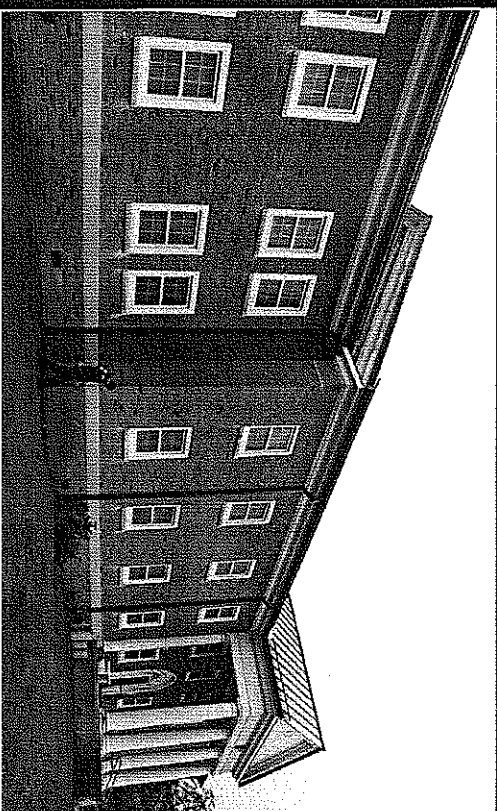
blackwood associates, inc.
architects & planners
mSES consultants, inc.
engineers & environmental



About the Firm

The **Blackwood Associates, Inc. (BAI)** and **MSES Consultants, Inc. (MSES)** mission is to provide full professional service necessary to assure successful completion of a project. Our practice is based upon the philosophy of comprehensive service, providing our clients with a single point of responsibility. By bringing architecture, interior design and engineering together into a single firm, we ensure efficient and effective service.

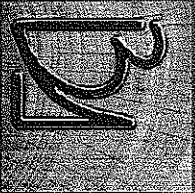
The firm maintains a staff of highly trained and experienced personnel, including all of the technical disciplines necessary for the Davis Center Renovation project. Our personnel demonstrate the education and experience required for this project. We can accommodate any timetable for programming through completion of construction documents and our combined force of specialized professionals would allow **BAI/MSES** to begin a full range of services immediately for this project. **BAI/MSES** have extensive experience in the design of government facilities of every type.



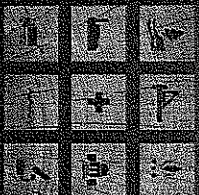
Jones Building Renovators
Industrial, WV

Blackwood Associates, Inc.

Blackwood Associates, Inc. was originally established as a West Virginia Corporation in 1959. The firm was incorporated as L.D. Schmidt & Son, Architects and Engineers, under the direction of the late Louis D. Schmidt. In 1967, James Blackwood joined the firm as an Intern architect and project designer. In 1972, James Blackwood became vice-president of L.D. Schmidt & Son and then assumed the presidency of the Corporation in 1975. In 1981, the Corporate name was changed to Blackwood Associates, Inc. Architects and Planners, to reflect the practice ownership.



blackwood associates, inc.
architects & planners
m ses consultants, inc.
engineers & environmental



Blackwood Associates, Inc.

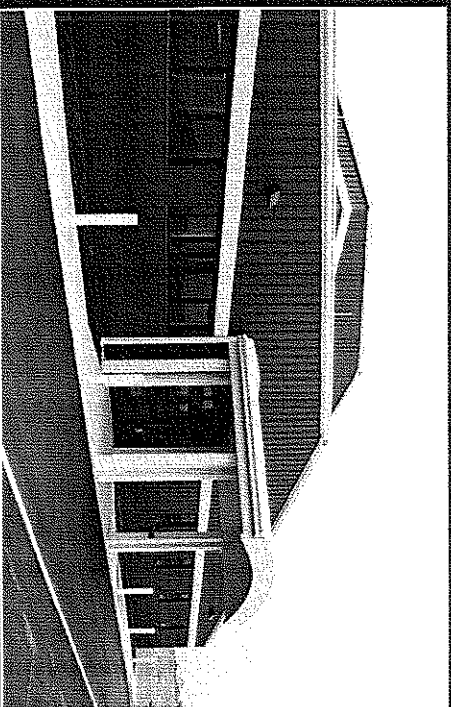
Since that time, the firm has maintained leadership in the design of state-of-the-art governmental, educational, medical, residential, recreational, commercial and historical adaptive reuse facilities. **BAI** has successfully completed over 600 projects with a construction value in excess of \$600 million in the last 20 years.

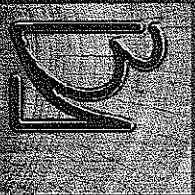
BAI/MSES is familiar with all aspects of new construction, renovation, build-out design, life safety codes, BOCA codes, and Federal and State codes and ordinances applicable for the proposed project. In addition, we maintain LEED accredited professionals in multiple disciplines to meet quality and performance standards. The benefits of this experience and diligence are perhaps most effectively demonstrated by our large number of long term clients and continued successful practice in West Virginia.

BAI/MSES maintains an in-house staff of professionals whose expertise covers all aspects of architecture, planning and engineering practice. We recognize the importance of computers for complete and efficient project organization, communication and document management. All word processing, design, drafting, building analysis, virtual reality, and websites are developed by the firm using cutting edge technology. This same technology allows **BAI/MSES** to provide an Owner with project work product in a usable format at project completion.

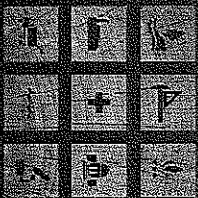
We strongly adhere to the American Institute of Architects Code of Professional Conduct. We serve our clients competently and in a professional manner, and exercise unprejudicial and unbiased judgment on their behalf.

BAI/MSES have never had a project go uncompleted as a result of inadequate staffing, inability to meet Owner requirements or failure to meet established time frames. This commitment of professionalism applies to every project and client.





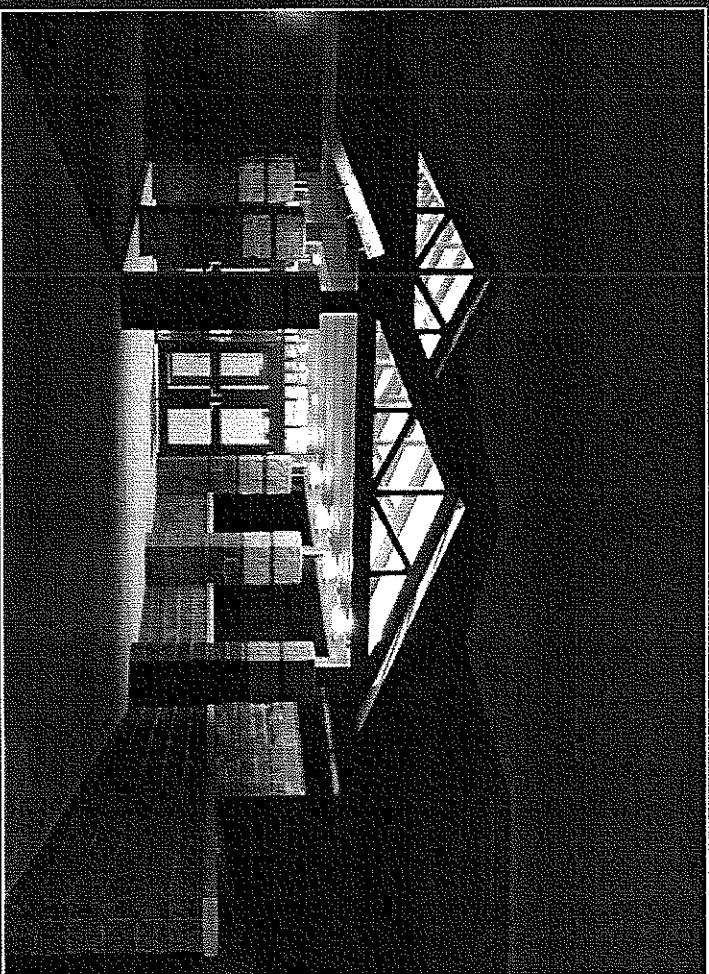
blackwood associates, inc.
architects & planners
mSES consultants, inc.
engineers & environmental



MSES Consultants, Inc.

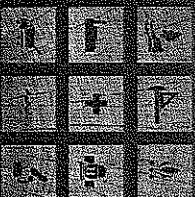
MSES Consultants, Inc. is a multi-disciplinary engineering, architectural support, environmental, planning, and project management firm, headquartered in Clarksburg, West Virginia. We have amassed 33 years of successful project experience, serving private and public clients since our initial founding as a small, 3-person environmental consulting firm in 1976. MSES expanded rapidly to become a provider of total engineering and environmental services by the year 1978, and we have seen our ranks swell, with a current professional staff of 70, including 12 registered engineers, 2 Certified Industrial Hygienists, 4 asbestos inspectors, 4 asbestos air clearance monitors, 1 lead based paint risk assessor, 6 professional land surveyors, and a diverse roster of professionals, scientists, and support personnel.

MSES personnel have completed more than 10,000 assignments to date. We have been heavily focused on building construction, renovations, and project management since our founding in 1976. Many of our projects have involved site selection studies, designs (HVAC, plumbing, electrical, civil, structural, mechanical, lighting, fire systems, security, and telecommunications), inspections, geotechnical investigations, assessments and reviews, environmental sampling and analysis, property evaluations and appraisals, and project management services throughout West Virginia and surrounding states. MSES also has the ability to address environmental issues that may occur during construction.



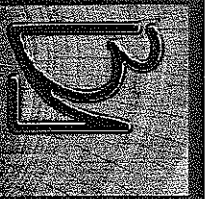


blackwood associates, inc.
architects & planners
m ses consultants, inc.
engineers & environmental

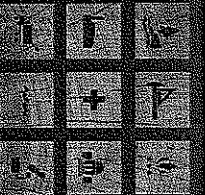


Disciplines

- Architectural
- Civil Engineering
- Structural Engineering
- Electrical Engineering
- Mechanical Engineering
- Chemical Engineering
- Urban/Regional Planning
- Mining Engineering
- Landscape Architecture
- Geologists
- Sanitary Engineering
- LEED Professionals
- Soils Engineering
- Surveyors
- Transportation Engineering
- NACE Corrosion Engineering
- Environmental Science Engineering
- Hydrologists
- Ecologists
- Economists
- Construction Inspectors
- CAD Technicians
- Certified Safety Professionals
- Virtual Reality & Web Designers



blackwood associates, inc.
 architects & planners
mses consultants, inc.
 engineers & environmental



Professional

Education

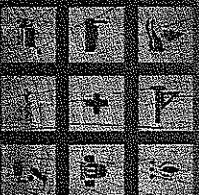
BA/MSES employ a professional staff of full-time professionals with experience in numerous disciplines.

BA/MSES professionals are supported by the latest computers and computer software, electronic and satellite survey, computer-aided drafting and design, in field data collectors, and our in-house graphic, web development and reproduction center.

Category	Number of Employees	Education		
		Associate Degrees	Bachelor Degrees	Advanced Degrees
Administrative	6	2	3	—
Architect	2	—	2	—
Architect-In-Training	2	—	2	—
Chemical Engineer	1	—	1	1
Chemist	1	—	1	—
Civil Engineer	3	—	3	—
Resident Construction Engineer	2	1	1	—
CAD/Design Draftsman	2	—	2	—
CAD/Drafter	5	3	1	—
Environmental Geographer (GIS)	1	—	1	—
Ecologist	1	—	1	1
Meteorologist	1	—	1	—
Electrical Engineer	3	—	3	—
Geologist	1	—	1	—
Hydrologist	1	—	1	1
Landscape Architect	1	—	1	—
Environmental Engineer	2	—	2	1
Mechanical Engineer	2	—	2	—
Mining Engineer	2	—	2	—
Industrial Engineer	1	—	1	—
Sanitary Engineer	2	—	2	—
Soil Engineer	2	—	2	—
Transportation Engineer	1	—	1	—
Certified Industrial Hygienist	2	—	2	—
Certified Safety Professionals	2	—	2	—
Safety Engineer	1	—	1	1
Land and Right-Of-Way Agents	3	—	3	—
Paralegal	2	—	2	—
Surveyors	6	4	2	—
Economist	1	—	1	1
Biologist	2	—	2	—
Botanist	1	—	1	—
Engineering Technicians	4	3	1	—
Survey Support	11	4	—	—
Certified Web Designer	1	—	1	—



blackwood associates, inc.
architects & planners
m ses consultants, inc.
engineers & environmental



References

William R. Sharpe, Jr. Hospital

Planning of Multiple Projects

Contact: Mr. Kevin Stalnaker, CEO

1-304-269-1210 ext. 280 or kevin.p.stalnaker@wv.gov

Marion County Board of Education

Planning of Multiple Projects

Contact: Mr. Tom Deadrick, Superintendent

1-304-367-2107 or ideadric@access.k12.wv.us

WV Division of Veterans Affairs

West Virginia State Veterans Cemetery, Institute, WV

Contact: Mr. Keith Gwinn, Director

1321 Plaza East - Suite 109 - Charleston, WV

1-304-558-3661 or wvvetaff@aol.com

State of West Virginia

Division of Veterans Affairs

West Virginia Veterans Nursing Facility, Clarksburg, WV (VA)

Contact: Mr. Kevin Crickard, Director

1-304-626-1600 or kevin.b.crickard@wv.gov

Harrison County Parks and Recreation

Harrison County 4-H Facility

Contact: Mr. Mike Book, Director

1-304-624-8619 or sicoll@access.k12.wv.us

Mineral County Board of Education

Planning of Multiple Projects

Contact: Mr. Skip Hockworth, Superintendent

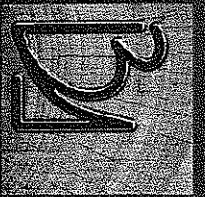
1-304-788-4200 or thackwor@access.k12.wv.us

Human Resource Development Foundation, Inc.

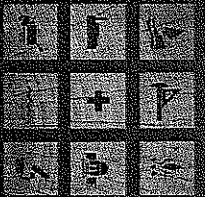
Planning of Multiple Projects including major renovations

Contact: Mr. Kenny Purdue, President - WV AFL-CIO

1-304-344-3557 or kperdue@wvofcio.org



blackwood associates, inc.
architects & planners
m ses consultants, inc.
engineers & environmental



Key Personnel

All of the following key professional staff members will be assigned to work on the project. Their specific percentage of time devoted to the contract will vary according to specific project needs.

ARCHITECTURAL

Administrative • Architectural Design

- James K. Blackwood, AIA, NCARB – Project Principal
- Pamela J. Wean, AIA – Project Architect

Architectural Team • Code Compliance • LEED

- Kenton Q. Blackwood, LEEDAP, Assoc. AIA – Const. Administration
- Stacey L. Bower, Assoc. AIA – Designer

ENGINEERING

Administrative

- Lawrence M. Rine – Principal and Quality Assurance
- Jeffrey T. Wise – Managing Director

Environmental

- John J. Keeling, PE, WV, CIH, CSP, QEP

Civil • Site Engineering

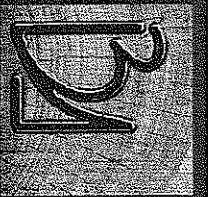
- Rod D. Kidd, BSCE

Mechanical Engineering • HVAC

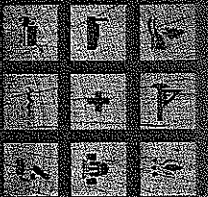
- David L. Skeen, PE, LEEDAP

Electrical Engineering

- Jeffrey K. Pouley, PE, PS



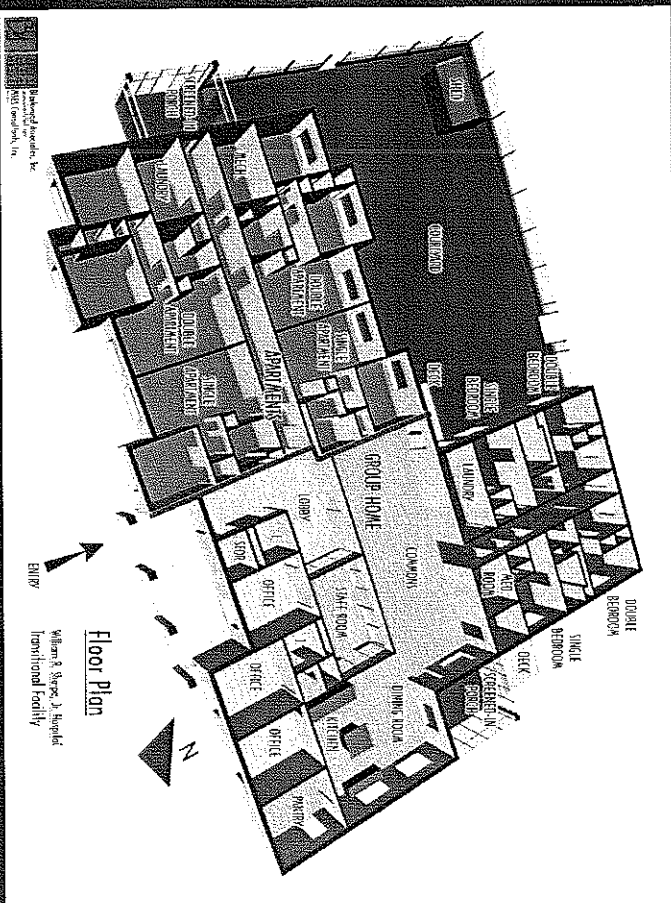
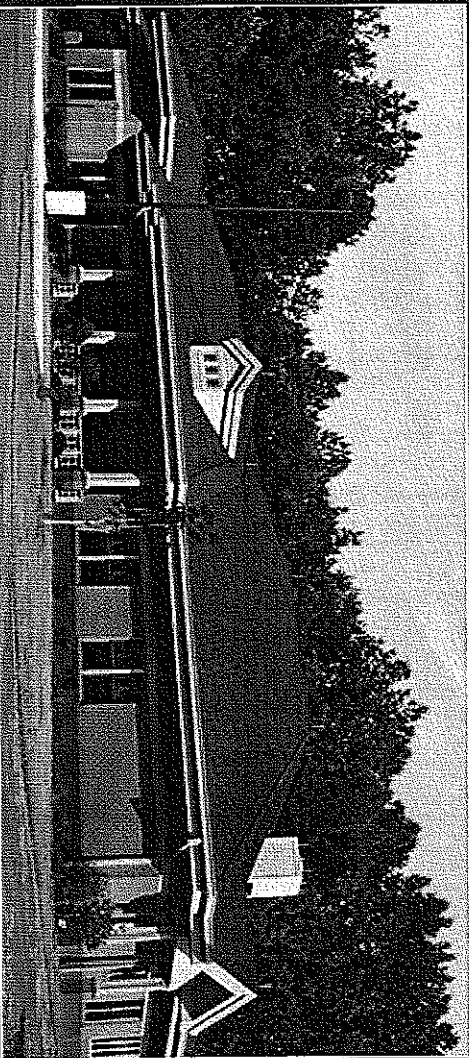
blackwood associates, inc.
 architects & planners
m ses consultants, inc.
 engineers & environmental

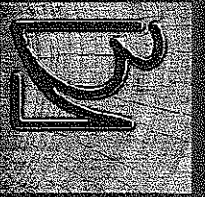


**William R. Sharpe, Jr. Hospital
 Transitional Facility**
 Weston, West Virginia

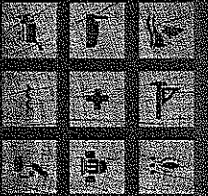
Blackwood Associates, Inc./MSES Consultants, Inc. were selected by the State of West Virginia Department of Health and Human Resources to provide architectural/engineering services for the new William R. Sharpe, Jr. Hospital Transitional Facility. The step-down unit is on the Sharpe Hospital campus and provides a facility where residents can transition to return to a normal life.

The project consisted of construction of a 7,850 sq. ft. single-story structure located away from the main Hospital. The project included two single-story accessory storage structures. DHR Office of Health Facility Licensure and Certification oversight was required.



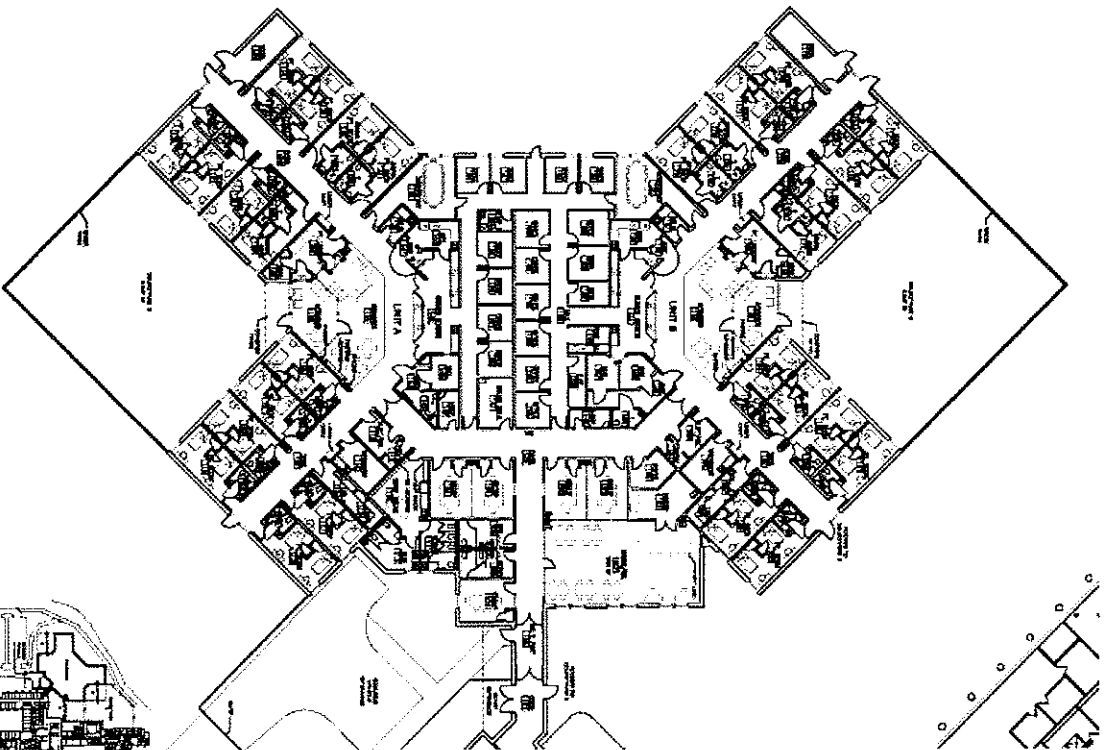


blackwood associates, inc.
 architects & planners
mSES consultants, inc.
 engineers & environmental



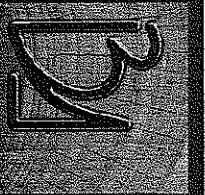
**William R. Sharpe, Jr. Hospital
 New 50 Bed Patient Unit
 Weston, West Virginia**

Blackwood Associates, Inc./MSES Consultants, Inc. were selected by the State of West Virginia Department of Health and Human Resources to provide architectural/engineering services for the new 50 Bed Forensic Patient Unit at William R. Sharpe, Jr. Hospital in Weston, WV. The Facility has been designed with separate pods and outdoor spaces to allow the Owner complete flexibility. The on-grade addition will provide a secure entrance for receiving adjudicated patients. The ± 25,000 SF project has been designed and is ready for development of construction documents.

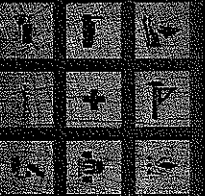


PROPOSED FIRST FLOOR PLAN
 1" = 10' - 0"

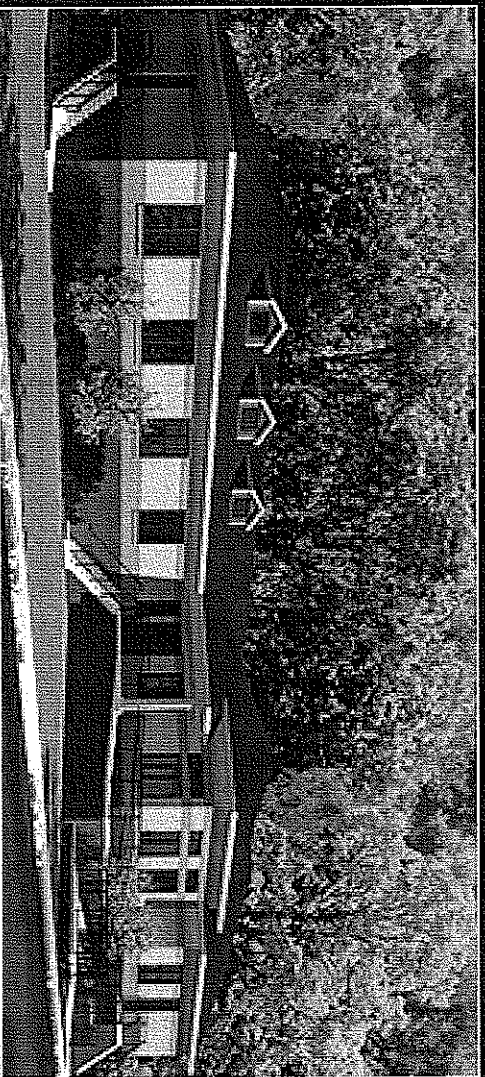
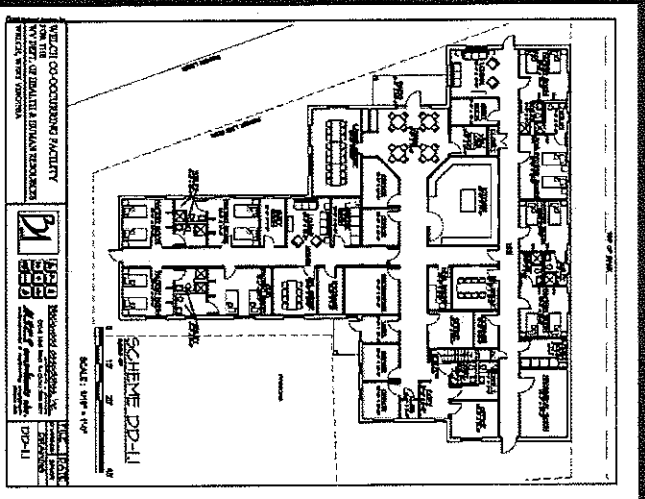
WILLIAM R. SHARPE, JR. HOSPITAL
 50 BED ADDITION
 0102



blackwood associates, inc.
architects & planners
mSES consultants, inc.
engineers & environmental

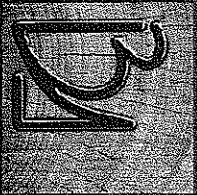


New Co-Occurring Facility at Jackie Withrow Hospital Beckley, West Virginia

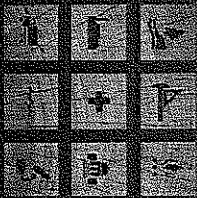


Blackwood Associates, Inc./MSES Consultants, Inc. were selected by the State of West Virginia Department of Health and Human Resources to provide architectural/engineering services for the new Co-Occurring Facility at Jackie Withrow Hospital to be located in Beckley, WV.

Work includes site preparation and construction of a 8,300 SF 16-bed group home with slab on grade, wood stud and brick walls and wood truss roof. The project is scheduled to bid in early 2010.



blackwood associates, inc.
architects & planners
m ses consultants, inc.
engineers & environmental

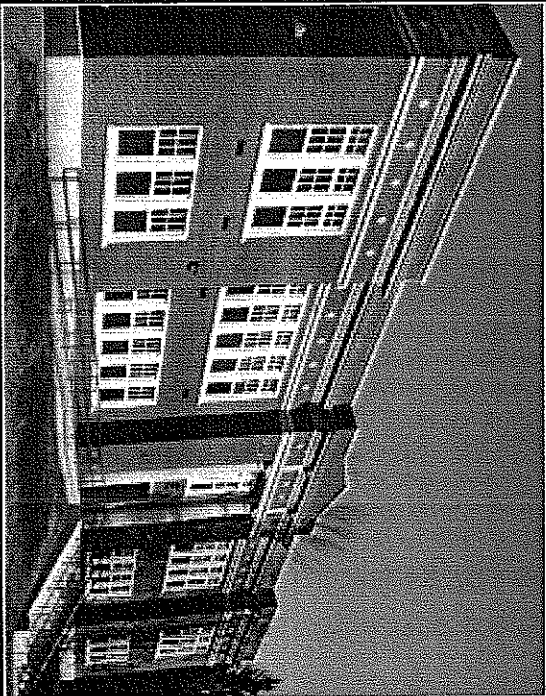


Johnson School Renovations Industrial, West Virginia State of West Virginia

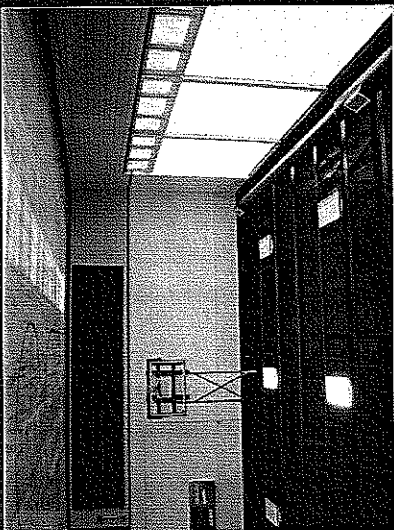
Blackwood Associates, Inc./MSES Consultants, Inc. were selected by the WV Division of Juvenile Services to evaluate and develop construction documents for renovations to an old school building located on the grounds of the WV Industrial Home for Youth in Industrial, WV. The purpose of the study was to determine the feasibility of renovating the structure to again serve as an educational facility.

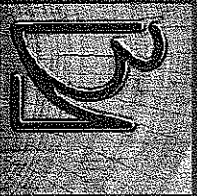
The final BA/MSES report and cost estimates led to a recommendation to renovate the present building in lieu of constructing a new facility.

BA/MSES completed construction documents, bidding and the \$2,568,000 project started construction in April 2006. Construction is complete and the building is now occupied by the educational staff.

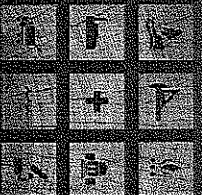


WV Division of Juvenile Services
Contact: Joe Merendino, Superintendent
1-304-782-2371





blackwood associates, inc.
architects & planners
mases consultants, inc.
engineers & environmental



SteppingStones - A Recreation Center for People with Disabilities

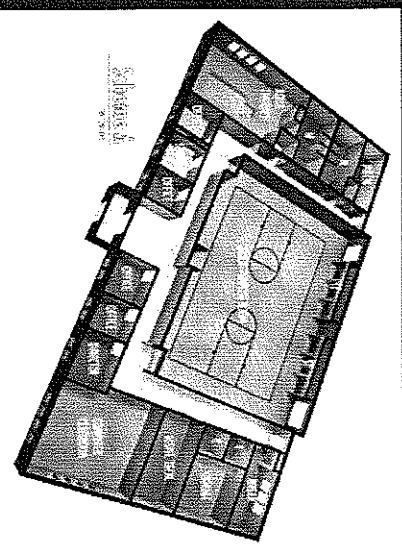
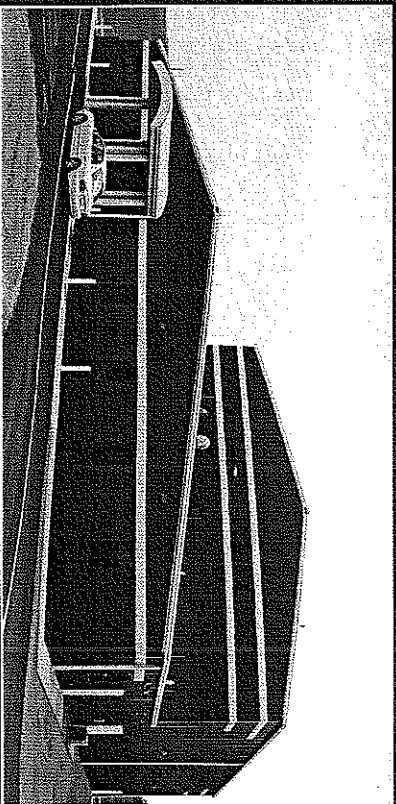
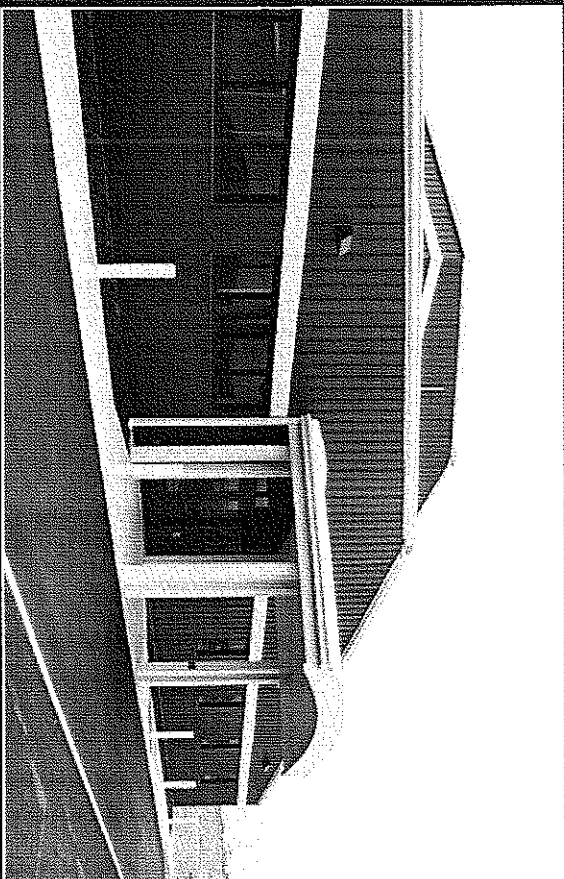
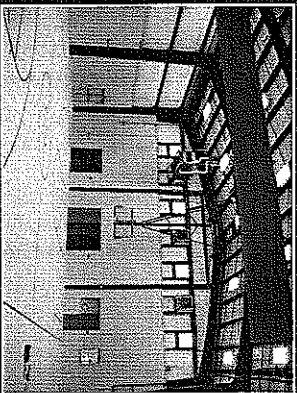
Monongalia County, WV

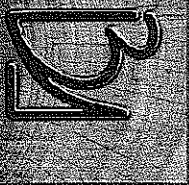
The new facility is located at Mylan Park, near the Star City exit of I-79. This project with an approximate building area of 11,500 square feet and the construction cost of \$1,100,000.00, completed construction.

The New Facility includes:

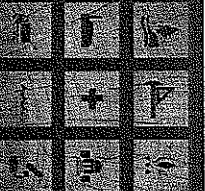
- Multi-Purpose Gymnasium
- Computer Lab
- Speech Therapy
- Administration Suite
- Assistive Technology Center
- Future Aqua Therapy

The focus of SteppingStones is to provide social, educational and recreational activities for people of all ages with various disabilities. The new Recreation Center is designed with the special needs of these participants in mind.





blackwood associates, inc.
architects & planners
mases consultants, inc.
engineers & environmental

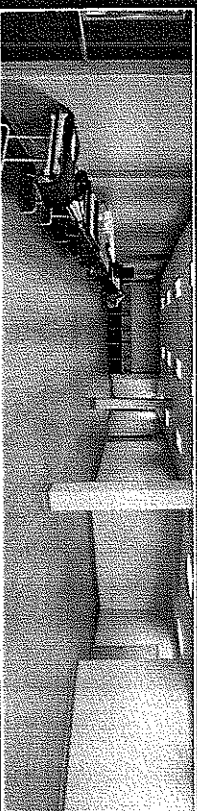
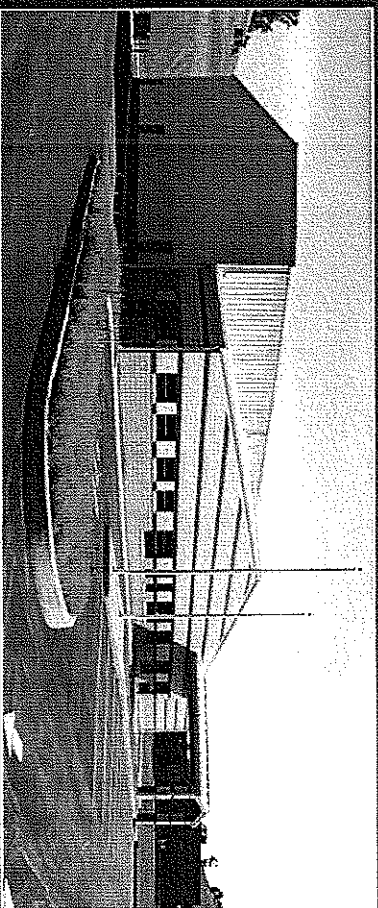
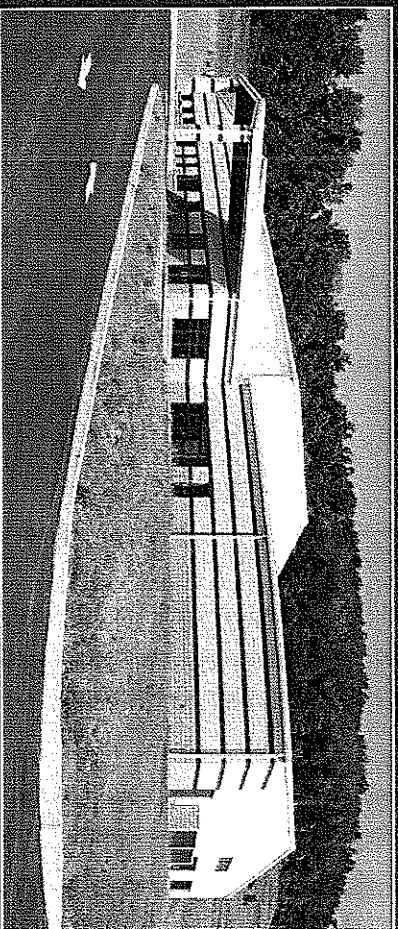


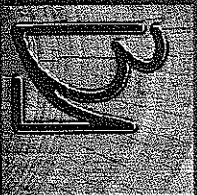
PACE TEC Training & Evaluation Center Morgantown, WV

PACE TEC provides habilitation, vocational training and employment opportunities for people with disabilities. The organization had outgrown their existing building and selected BAI/MSES to design a new building to reflect a more corporate appearance and allow for more flexibility for future growth.

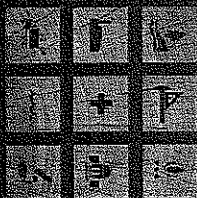
The new 16,600 SF facility is a pre-engineered metal building with decorative ground face and glazed block veneer.

The high-bay production area will be used to train clients in assembly and manufacturing of various products. Other clients will be instructed in food service preparation and serving in the new commercial kitchen. The large administration suite will be used for computer and clerical training. To provide for future expansion, the high-bay area has been designed to accommodate an entire 2nd floor addition.





blackwood associates, inc.
architects & planners
m ses consultants, inc.
engineers & environmental

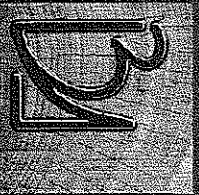


Value Added Services
Environmental

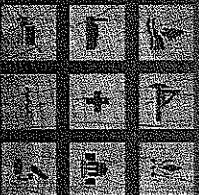
MSES Consultants, Inc. (MSES) was originally founded in 1976 as an Environmental Consulting Company. Over the years, MSES expanded its Environmental Services, as well as adding Civil, Electrical, Mechanical and Safety Engineering Services with Drafting and Survey provided to supplement the various Engineering expertise.

MSES' environmental capabilities are listed below:

- Environmental Permitting (Air, Wastewater, and Stormwater Discharges); Environmental Plan Preparation
- Groundwater Protection, Stormwater Pollution Prevention, Facility Response Plans, Waste Management Plans, etc.)
- Environmental Inspections/Audits
- ISO 14001 Registration Assistance
- Environmental Regulation Compliance/Interpretation (Local, West Virginia and Federal)
- Indoor Air Quality Studies (Ventilation, Air Contaminants, Identification and Quantification, Microorganism Assessments)
- Asbestos (Inspections, Management Plans, Abatement Specifications, Abatement Monitoring, Clearance Air Monitoring)
- Lead Based Paint (Inspections, Abatement Specifications, Abatement Monitoring, Clearance Air Monitoring)
- Landfill (Design, Construction Specifications, Construction Monitoring)
- Contaminated Soil/Groundwater (Assessment, Clean-up Specifications, Clean-up Monitoring, Clearance Sampling, Voluntary Remediation Plan Preparation/Implementation)
- ASTM Phase I, II, and III (Environmental Site Assessments);
- Water System Design;
- Wastewater System Design



blackwood associates, inc.
architects & planners
mSES consultants, inc.
engineers & environmental



Value Added Services
Environmental

The MSES Staff includes the following environmental specialists:

- Civil Engineers;
- Environmental Chemists;
- Biologists;
- Meteorologist; and
- Industrial Hygienist.

MSES personnel maintain a wide variety of professional licenses/certifications. A list of licenses/certification maintained by one or more of the MSES staff is listed below:

- Registered Professional Engineer (PE);
- Certified Industrial Hygienist (CIH);
- Qualified Environmental Professional (QEP);
- Licensed Remediation Specialist (LRS);
- Licensed Asbestos Inspector;
- Licensed Asbestos Management Planner;
- Licensed Asbestos Clearance Air Monitor;
- Licensed Lead Inspector;
- Licensed Groundwater Monitoring Well Installer; and
- Licensed Underground Storage Tank Closure Specialist.

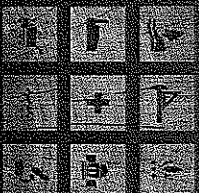
APPROACH TO ENVIRONMENTAL SURVEYS

MSES typically utilizes the following approach to environmental survey:

- Project Initiation in which Project Objectives are Defined;
- Field Work Performed;
- Analysis of Samples (if required);
- Review of Information (Data Obtained and Identification of Regulatory/Best Management Practices);
- Report Preparation; and
- Review of Findings with Client.



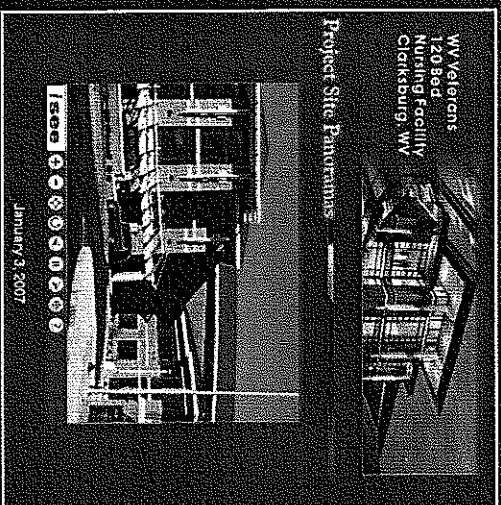
blackwood associates, inc.
architects & planners
mses consultants, inc.
engineers & environmental



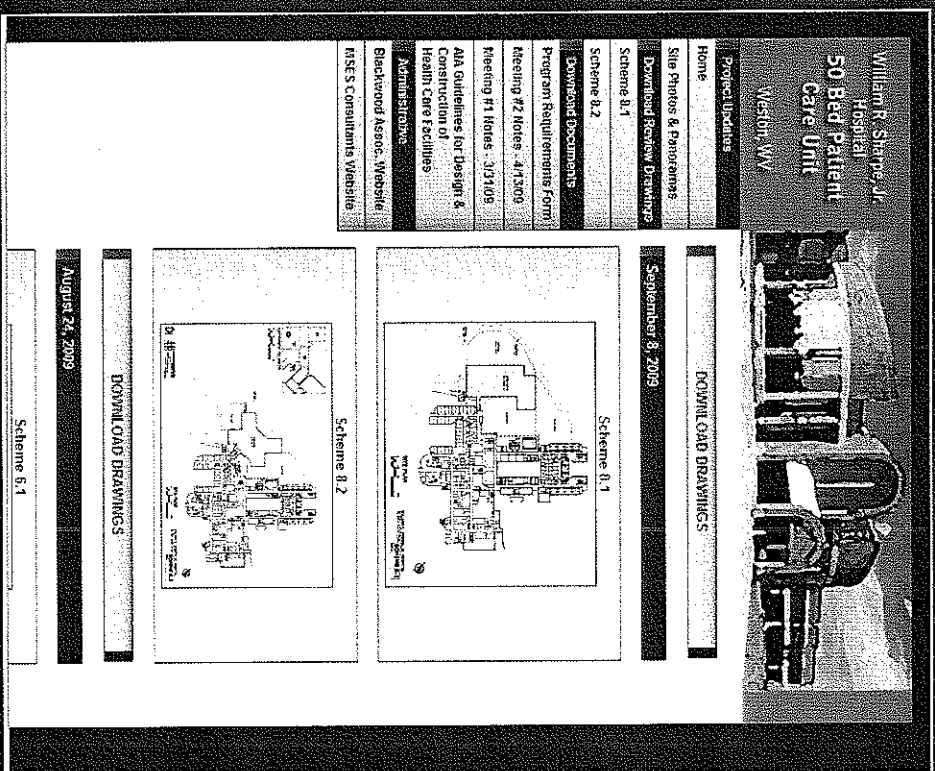
Value Added Services
Design & Construction Websites

Blackwood Associates, Inc. features its own Web Design Division. BA has been developing project design websites for over 12 years and this has significantly improved project communication. During design development, our websites are used to feature project updates, renderings and floor plans for review, as well as preconstruction site photography and site plans. Construction website information is updated during the building process on a regular basis.

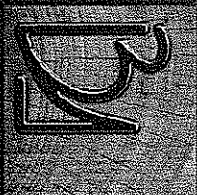
Project Design Websites
are used for:
Conceptual Designs
Design Document Reviews
Site Panoramas
Floor plan & Rendering
Analysis



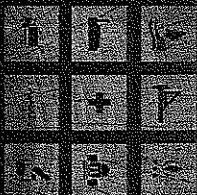
January 23, 2007



Project Construction
Websites are used for:
Progress Reports
Progress Photos &
Panoramas
Construction Record



blackwood associates, inc.
architects & planners
mSES consultants, inc.
engineers & environmental



LEED Accredited Professionals

BAI/MSES is proud to be a member of the United States Green Building Council and for many years has incorporated a broadening spectrum of sustainable design strategies as part of our standard operations. Green building practices can greatly reduce the negative environmental impact of the construction process, and green design can provide more "livable" buildings with healthier, more productive environments and lower building maintenance and operating costs. Achieving a LEED certification for a structure is an involved process that requires professional assistance, and proper planning is essential from the very beginning of a project. With two LEED Accredited Professionals on staff consideration of the Leadership in Energy and Environmental Design philosophy is integral to our design and planning process. Our LEED APs are experienced in architectural and mechanical design and construction and are proponents of incorporating the green design philosophy into real world building projects.



THINK GREEN
BAI/MSES LEED Capabilities



Project Design & Planning
Kanton Blackwood, LEED^{AP}, Associate AIA



Mechanical Engineering/HVAC
Dave Skeen, PE, LEED^{AP}

Blackwood Associates, Inc./MSES Consultants, Inc.
The Largest Full Service Professional Architectural/Engineering Firm in West Virginia