

West Virginia Department of Environmental Protection
Abandoned Mine Lands and Reclamation

RFQ #DEP14800

BID OPENING DATE: 11 / 05 / 2009

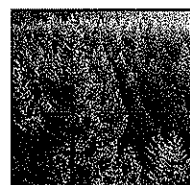
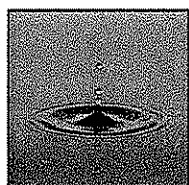
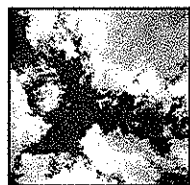
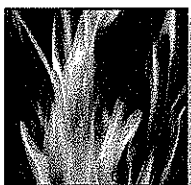
EXPRESSION OF INTEREST
FOR
PROFESSIONAL ENGINEERING DESIGN SERVICES
AND CONSTRUCTION MONITORING SERVICES
AT THE
FAIRMONT FIVE SUBSIDENCE PROJECT
IN
MARION COUNTY, WEST VIRGINIA

SUBMITTED BY:
Qk4
802 B Street
Suite 200
St. Albans, WV 25177
Ph: (304) 201-8980
Fx: (304) 201-8983

RECEIVED

2009 NOV -2 A 9:32

PURCHASING DIVISION
STATE OF WV



Architecture Engineering Planning

Groundbreaking by Design.



State of West Virginia
 Department of Administration
 Purchasing Division
 2019 Washington Street East
 Post Office Box 50130
 Charleston, WV 25305-0130

Request for Quotation

RFQ NUMBER
 DEP14800

PAGE
 1

ADDRESS CORRESPONDENCE TO ATTENTION OF
 CHUCK BOWMAN
 304-558-2157

RFQ COPY
 TYPE NAME/ADDRESS HERE

VENDOR

SHIP TO

ENVIRONMENTAL PROTECTION
 DEPARTMENT OF
 OFFICE OF AML&R
 601 57TH STREET SE
 CHARLESTON, WV
 25304 304-926-0499

| DATE PRINTED | TERMS OF SALE | SHIP VIA | F.O.B. | FREIGHT TERMS |
|--------------|---------------|----------|--------|---------------|
| 10/06/2009 | | | | |

BID OPENING DATE: 11/05/2009 BID OPENING TIME 01:30PM

| LINE | QUANTITY | UOP | CAT. NO. | ITEM NUMBER | UNIT PRICE | AMOUNT |
|---|----------|-----|----------|-------------|------------|--------|
| 0001 | 1 | JB | | 906-29 | | |
| FAIRMONT FIVE SUBSIDENCE DESIGN EXPRESSION OF INTEREST THE WEST VIRGINIA PURCHASING DIVISION, FOR THE AGENCY, THE WEST VIRGINIA DEPARTMENT OF ENVIRONMENTAL PROTECTION, IS SOLICITING EXPRESSIONS OF INTEREST FOR PROFESSIONAL ENGINEERING DESIGN SERVICES AND CONSTRUCTION MONITORING SERVICES AT THE FAIRMONT FIVE SUBSIDENCE PROJECT IN MARION COUNTY, WEST VIRGINIA, PER THE FOLLOWING BID REQUIREMENTS AND ATTACHED SPECIFICATIONS. BANKRUPTCY: IN THE EVENT THE VENDOR/CONTRACTOR FILES FOR BANKRUPTCY PROTECTION, THIS CONTRACT IS AUTOMATICALLY NULL AND VOID AND IS TERMINATED WITHOUT FURTHER ORDER. | | | | | | |

SEE REVERSE SIDE FOR TERMS AND CONDITIONS

| | | |
|-----------|-----------|-----------------------------------|
| SIGNATURE | TELEPHONE | DATE |
| TITLE | FEIN | ADDRESS CHANGES TO BE NOTED ABOVE |

WHEN RESPONDING TO RFQ, INSERT NAME AND ADDRESS IN SPACE ABOVE LABELED 'VENDOR'



802 B Street, Suite 200
St. Albans, West Virginia 25177
Ph. 304-201-8980
Fx. 304-201-8983
www.qk4.com

November 5, 2009

Chuck Bowman, Buyer Supervisor
West Virginia Department of Administration
Purchasing Division
2019 Washington Street, East
P O Box 50130
Charleston, WV 25305-0130

**Expression of Interest
Engineering Design Services and Construction Monitoring Services at the
Fairmont Five Subsidence Project
Marion County, WV
RFQ # DEP14800**

Dear Mr. Bowman:

Qk4 is pleased to submit this Expression of Interest to provide professional engineering services to the West Virginia Department of Environmental Protection (WVDEP), Office of Abandoned Mine Lands and Reclamation (AML), for the Fairmont Five Subsidence Project in Marion County, West Virginia.

Qk4 is a multi-disciplinary firm with a staff of 97 professionals, consisting of civil and structural engineers, planners, architects, landscape architects, environmental specialists and right-of-way acquisition specialists. The firm is headquartered in Louisville, Kentucky and maintains offices in St. Albans, West Virginia; Frankfort, Kentucky; New Albany, Indiana; Atlanta, Georgia; and Bristol, Tennessee.

Qk4 has staff with previous AML experience. In fact, our most recent project, Glen White Air Shafts (DEP #14270), is under construction. Two sub-consultants will be utilized on the Fairmont Five Subsidence Project, NGE, LLC for geotechnical services, and Terradon Corporation for surveying services. Both firms have staff with extensive experience on AML projects.

We look forward to an opportunity to interview for this project. Should you have any questions regarding this submittal or Qk4, please contact me at (304) 201-8980 or at mnewton@qk4.com.

Sincerely yours,

Steven M. Newton, PE, PS
Regional Office Manager



TABLE OF CONTENTS

- ✦ Evaluation Criteria
 - ✦ Project Team
 - ✦ Resume
 - ✦ Steven M. Newton, PE, PS
 - ✦ Firm Experience
- ✦ AML Consultant Qualification Questionnaire (CQQ) - Attachment "B"
- ✦ AML and Related Project Experience Matrix (RPEM) - Attachment "C"
- ✦ Sub-consultants
 - ✦ NGE CCQQ
 - ✦ Terradon CCQQ
- ✦ Purchase Affidavit



EVALUATION CRITERIA

A. WV Registered Professional Engineers (Civil or Mining) in the Primary Office:

The primary office for the performance of this work will be our office in St. Albans, WV. There is one West Virginia registered professional in this office, Steven M. Newton, PE, PS.

Our geotechnical sub-consultant on this project will be NGE, LLC. There are two West Virginia registered professional engineers in their primary office in St. Albans, WV, John Nottingham, PE and Larry Nottingham, PE.

B. Reclamation Engineering design experience of the Primary office's WVRPE as it relates to the specific project problem areas:

Mr. Steven M. Newton, PE, PS is the Office Manager and principal engineer in the St. Albans, WV office. He has 32 years of general civil engineering experience including AML Reclamation projects and other types of projects such as site development, drainage, structural, etc., that include the same common design elements as AML projects such as grading, drainage design, erosion and sediment control, permits, etc.

C. Available WV-AML Design Teams within the Primary Office:

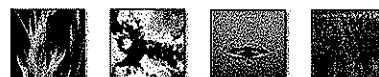
There is one available WV-AML team within the primary office in St. Albans, WV. It will consist of:

Steven M. Newton, PE, PS
Mat McDougal
Tammy Garner
Kristen Lilly

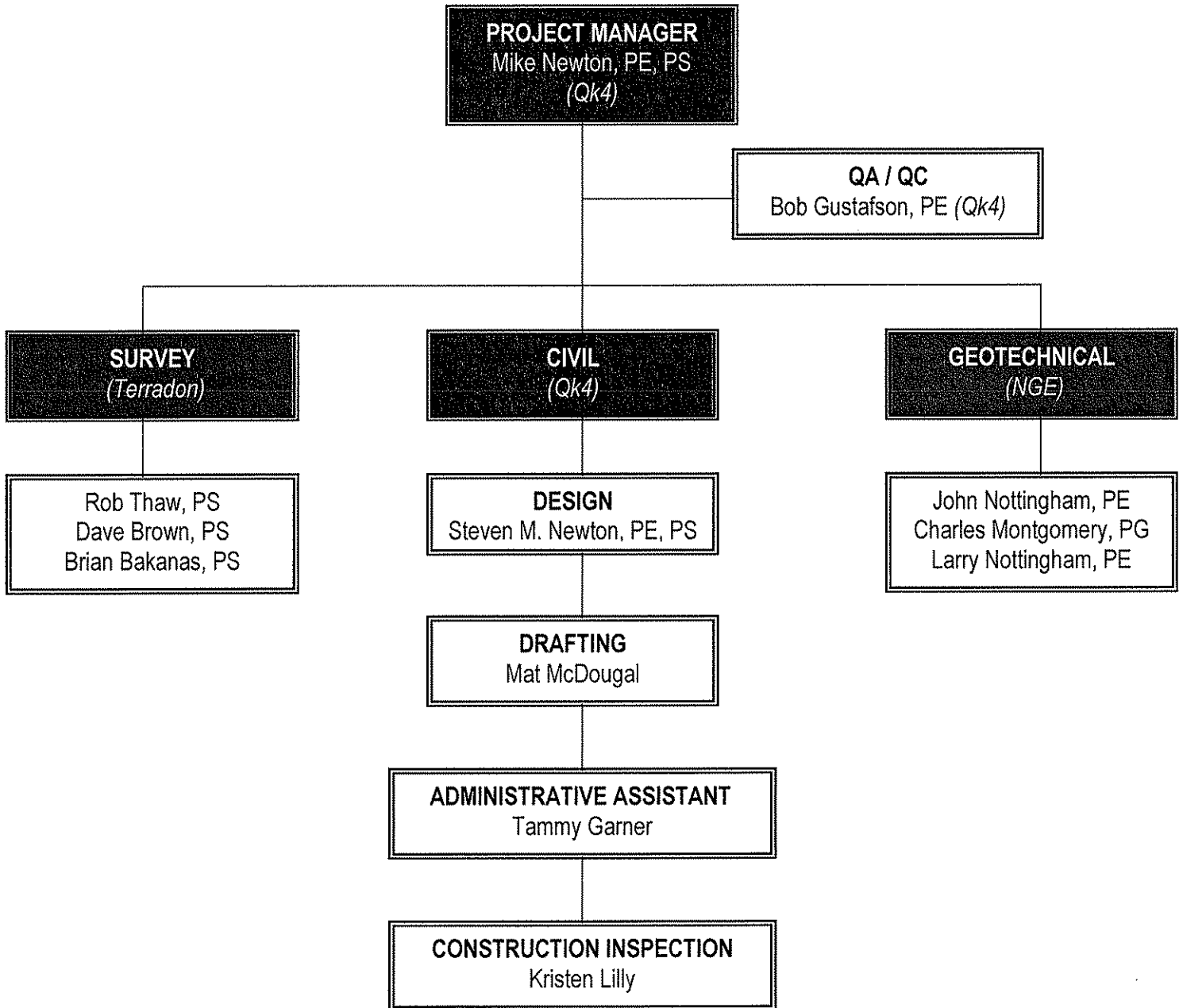
Project Manager / Project Engineer
Engineering Technician / CAD Designer
Administrative Assistant
Construction Inspector

D. The Oral Interview:

If we are chosen for an interview, it will be attended by Steven M. Newton, Mat McDougal and representatives from our sub-consultants.



PROJECT TEAM



STEVEN M. NEWTON, PE, PS

Regional Office Manager, West Virginia / Project Manager

**32 YEARS EXPERIENCE
22 YEARS WITH QK4**

EDUCATION

Speed Scientific School
University of Louisville

REGISTRATIONS

PE / 1984 / KY / 13967
PE / 1985 / IN / PE21204
PE / 1995 / NC / 20940
PE / 1995 / PA / 048599R
PE / 2000 / WV / 14389
PLS / 1983 / KY / 2664
PLS / 1990 / TN / 1593
PLS / 1990 / IL / 035-0029481
PLS / 2000 / WV / 2023

AFFILIATIONS

American Council of Engineering Companies
American Society of Civil Engineers
National Society of Professional Engineers
West Virginia Rural Water Association

ADDITIONAL EDUCATION

Introduction to Stream Functions and Processes
Methods for Stream Channel Assessment and
Analysis
Natural Stream Channel Design
Advanced Natural Stream Design and Monitoring
State & Federal Legislative Issues
WV Infrastructure Forum; ACEC
Copyright Protection of Engineering, Architectural
and Construction Documents
Basics of Project Financing
Trenchless Technology Pipeline Rehabilitation
Methodologies
Work Zone Traffic Control; WVDOT
Dendrology (Tree Identification) - KY

Mr. Newton has experience in a wide array of civil engineering projects for both public and private clients, including commercial developments, drainage improvement projects, landfills, residential developments, transportation, wastewater, and water projects. His project experience includes scheduling, planning, preliminary design, final design, cost estimates, easements / right-of-way acquisition, bidding, and construction management. He has also managed the surveying tasks associated with all of the above, including alta surveys, boundary surveys, condominium plats, descriptions, easement plats, major and minor subdivision plats, right-of-way plats, topographic surveys, etc.

Mr. Newton's AML design experience includes:

Delbarton (Dardi) Portals DEP #14524
Mingo County, West Virginia

Glen White Air Shafts DEP #14270
Raleigh County, West Virginia

Mr. Newton's Site design experience includes:

Cobblestone Subdivision
Putnam County, West Virginia

Teays Valley Cinemas
Putnam County, West Virginia

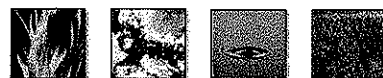
International Coal Group (ICG)
Putnam County, West Virginia

Mr. Newton's Drainage design experience includes:

Ivywood Street Drainage
Putnam County, West Virginia

Marble Drive Drainage Improvements
Putnam County, West Virginia

Beech and Fir Streets Drainage Improvements
Putnam County, West Virginia



DELBARTON (DARDI) PORTALS DEP#14524

Mingo County, West Virginia

CLIENT

WVDEP
Office of Abandoned Mine Lands and
Reclamation
116 Industrial Drive
Oak Hill, West Virginia 25901
Dean Stiltner
304.465.1911

DATES

September 2009 - Current

PROJECT TYPE

Mine Reclamation

PROJECT LENGTH / SIZE

12 Mine Portals

KEY PERSONNEL

Steven M. Newton, PE, PS
Mat McDougal

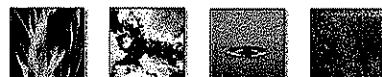
SERVICES PROVIDED

Surveying
Reclamation Plans

CONSTRUCTION COST

This project includes a Preliminary Site Visit, Research of mine maps, railroad plans, utilities, etc., Surveying, Conceptual Design Meeting, Preliminary Design, Final Design, Quantities, a Cost Estimate, Construction Specifications, Site Visits, a Pre-Bid Meeting and a Pre-Construction Meeting.

This project includes the preparation of Reclamation Plans to seal 12 existing mine portals with either bat gates or wet seals, and rip-rapped swales to convey drainage to an existing natural drain or railroad ditch. This project also includes demolition of existing buildings and other miscellaneous mine related structures. The plan set will include a cover sheet, plan sheets, swale profiles, bat gate, wet seal and swale details, a temporary creek crossing and erosion and sediment control.



Groundbreaking by Design.

GLEN WHITE AIR SHAFTS DEP #14270

Raleigh County, West Virginia

CLIENT

WVDEP
Office of Abandoned Mine Lands and
Reclamation
116 Industrial Drive
Oak Hill, West Virginia 25901
Mark Proctor
304.465.1911

DATES

July 2008 – Current

PROJECT TYPE

Mine Reclamation

PROJECT LENGTH / SIZE

Two Air Shafts
18 feet x 39 feet
250 and 265 feet Deep

KEY PERSONNEL

Steven M. Newton, PE, PS
Mat McDougal

SERVICES PROVIDED

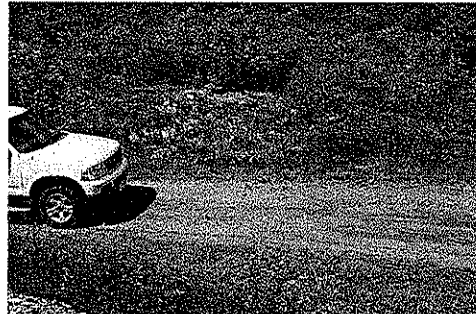
Surveying
Reclamation Plans

CONSTRUCTION COST

\$228,500

This project included a Preliminary Site Visit, Research of mine maps, highway plans, utilities, etc., Field Research, Excavation, Surveying, Conceptual Design Meeting, Preliminary Design, Final Design, Quantities, a Cost Estimate, Construction Specifications, Site Visits, a Pre-Bid Meeting and a Pre-Construction Meeting.

Reclamation plans were prepared to seal two existing air shafts. Each air shaft was 18 feet x 39 feet and approximately 250 feet and 265 feet deep. Each was backfilled with stone to a depth near the surface, capped with concrete and covered with a minimum of two feet of soil, and re-vegetated. Sites were re-graded to divert surface away from the area. Plans consisted of a site plan, cross-sections and details for each site. Exploratory excavations of each site were required to determine accurate dimensions of each shaft.



Site 1 – Exposed Concrete Cap



Site 1 – Hatch, Vent



COBBLESTONE SUBDIVISION

Putnam County, West Virginia

CLIENT

Cobblestone Subdivision, LLC
500 Corporate Centre Drive
Suite 550
Scott Depot, West Virginia 25560
Mr. Blake Stevens
304.757.9196

DATES

January 2003 - Present

PROJECT TYPE

Site Development

SERVICES PROVIDED

Surveying & Mapping
Construction plans
Permits
Construction Staking

AMOUNT OF CONTRACT

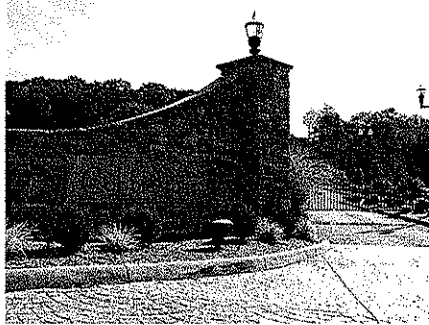
Engineering - \$100,000
Construction - 3.8 Million

PROJECT LENGTH / SIZE

268 acres

KEY PERSONNEL

Steven M. Newton, PE, PS



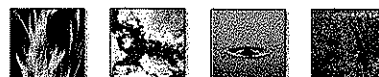
Cobblestone Subdivision is an ongoing residential subdivision of approximately 435 acres. This premier subdivision, with beautiful ridge top views, is located in Putnam County, West Virginia. This community includes the natural surroundings of nature trails, as well as the security of a gated neighborhood.

Section One consisted of approximately 103 acres and 57 lots. Construction was completed in January of 2003, at a cost of approximately 1.5 million dollars.

Section Two - Phase One of consisted of 75 acres and 38 lots. Construction was completed in December of 2005, at a cost of approximately \$900,000 dollars.

Section Two - Phase Two of consisted of 50 acres and 23 lots. Construction started in April 2007, and was completed in September, at an approximate cost of \$500,000 dollars.

Section Three will consist of 40 acres and 27 lots. Construction was started in October of 2007, at an approximate cost of \$900,000 dollars.



TEAYS VALLEY CINEMAS

Putnam County, West Virginia

CLIENT

GDY, LLC
500 Corporate Centre Drive
Suite 550
Scott Depot, West Virginia 25560
Mr. Gary Young
304.757.9196

DATES

February, 2004 – March, 2005

PROJECT TYPE

Site Development

PROJECT LENGTH / SIZE

6 acre
35,000 square feet
10-plex Cinema

KEY PERSONNEL

Steven M. Newton, PE, PS
Project Manager

SERVICES PROVIDED

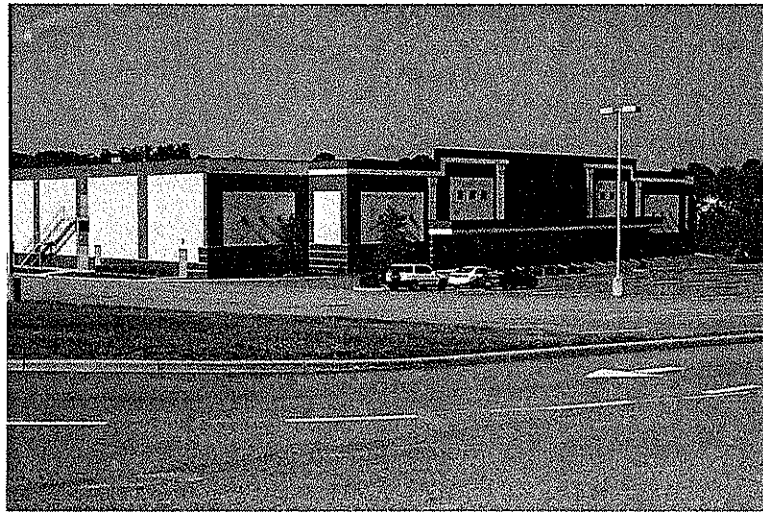
Surveying & Mapping
Site Design
Permits
Construction Staking

CONSTRUCTION COST

\$ 3.5 million

This project included boundary and topographic surveys, and site plans, for a six (6) acre site. The plans included layout, striping, utilities, grading, drainage, landscaping, lighting and erosion control. The plans also included the widening of Erskine Lane. All permits were obtained including a Special Permit through the Putnam County Office of Planning and Infrastructure. Construction staking for the site and offsite utilities was also done.

This project led to associate projects, which included a Traffic Impact Study at the intersection of Erskine Lane and Teays Valley Road (County Route 33) and widening plans for Teays Valley Road to accommodate an additional left turn lane into the site. The construction was completed in March of 2005 at a cost of approximately \$ 3.5 million.



INTERNATIONAL COAL GROUP HEADQUARTERS

Scott Depot, West Virginia

CLIENT

GDY, LLC
500 Corporate Centre Drive
Suite 550
Scott Depot, West Virginia 25560
Mr. Gary Young
304.757.9196

DATES

June 2005 – February 2007

PROJECT TYPE

Site Development

PROJECT LENGTH / SIZE

2.5 acres
51,000 square feet

KEY PERSONNEL

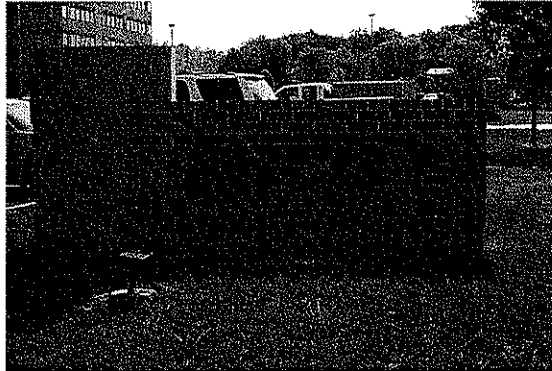
Steven M. Newton, PE, PS

SERVICES PROVIDED

Surveying & Mapping
Site Design
Permits
Construction Staking

AMOUNT OF CONTRACT

Engineering - \$29,300
Construction – \$7.1 million



This project included boundary and topographic surveys and site plans for a 2.5 acre site with a 51,000 square foot building. The site plans included geometric layout, striping, utilities, grading, drainage, landscaping, lighting and erosion control. All permits were obtained. The construction was completed in February of 2007 at a cost of approximately \$7,100,000.



TOWN OF ELEANOR IVYWOOD STREET DRAINAGE

Putnam County, West Virginia

CLIENT

Town of Eleanor
401 Roosevelt Boulevard
P.O. Box 185
Eleanor, West Virginia 25070 - 0185
Fred Halstead, Mayor
304.586.2319

DATES

2006 - 2007

PROJECT TYPE

Storm Drainage System Improvements

PROJECT LENGTH / SIZE

Approximately: 850 L.F. of 12" CMP
150 L.F. of 15" CMP
200 L.F. of 18" CMP
150 L.F. of 24" CMP

KEY PERSONNEL

Steven M. Newton, PE, PS
Project Manager

Mathew T. McDougal
Junior Engineer

SERVICES PROVIDED

Storm Sewer Design
Preparation of Required Permits
Preparation of Construction Specifications and Bidding Documents
Bidding Assistance
Construction Contract Administration

This project included all of the planning, engineering and management services necessary to redesign the existing drainage along Ivywood Street located in the Town of Eleanor. The project incorporated existing drainage structures along with the addition of new structures and upgraded drainage pipes. The project design included the re-grading of ditch lines and approximately 850 L.F. of 12" CMP pipe, 150 L.F. of 15" CMP pipe, 200 L.F. of 18" CMP pipe, and 150 L.F. of 24" CMP pipe.

TOWN OF ELEANOR IVYWOOD STREET DRAINAGE IMPROVEMENTS ELEANOR, WV 25070

SHEET INDEX

- 1 PROJECT LOCATION & CONTACTS
- 2 GENERAL NOTES & DETAILS
- 3 PLAN & PROFILE SHEET
- 4 PLAN & PROFILE SHEET
- 5 PLAN & PROFILE SHEET
- 6 PLAN & PROFILE SHEET
- 7 PLAN & PROFILE SHEET
- 8 PLAN & PROFILE SHEET

CONTACT INFORMATION:

ENGINEER/SUPERVISOR:
STEVEN M. NEWTON, PE, PS
QK4
PHONE: (304) 201-6900
FAX: (304) 201-6900

UTILITIES INFORMATION:

SEWERAGE SERVICE:
TOWN OF ELEANOR
ELEANOR, WV 25070
PHONE: (304) 586-2319
CONTACT: FRED HALSTEAD, MAYOR

WATER:
WEST VIRGINIA AMERICAN WATER CO.
P.O. BOX 1908
CHARLESTON, WV 25307
PHONE: (304) 340-0074

GAS:
UNION OIL & GAS COMPANY
PHONE: (304) 206-2554
12 PERRY STREET
WHEELING, WV 26061
CONTACT: STEVE YOUNG

ELECTRIC:
AMERICAN ELECTRIC POWER
1000 US ROUTE 40
MILTON, WV 25141
PHONE: 1-877-527-2200
CONTACT: MATH STANLEY (304) 743-7604

TELEPHONE:
YELLOW
PHONE: (304) 248-3723
1800 MACCORMICK AVENUE
CHARLOTTE, WV 25314
CONTACT: DONNA CARRIST

CABLE:
CHARLES COMMUNICATIONS
4228 BEARS VALLEY ROAD
SCOTT DEPOT, WV 25560
PHONE: (304) 207-8000 EXT. 27008
CONTACT: TERRY BAUMGARDNER

SCALE: 1" = 40' HORIZ.
SCALE: 1" = 10' VERT.

SCALE: 1" = 40' HORIZ.
SCALE: 1" = 10' VERT.

SCALE: 1" = 40' HORIZ.
SCALE: 1" = 10' VERT.

IVYWOOD STREET DRAINAGE IMPROVEMENTS PROJECT LOCATION AND CONTACTS

TOWN OF ELEANOR

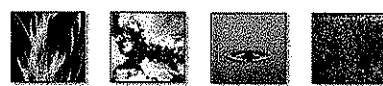
QK4

STEVEN M. NEWTON, PE, PS

PROJECT MANAGER

MATH T. MCDUGAL

JUNIOR ENGINEER



TOWN OF ELEANOR MARBLE DRIVE DRAINAGE

Putnam County, West Virginia

CLIENT

Town of Eleanor
401 Roosevelt Boulevard
P.O. Box 185
Eleanor, West Virginia 25070 - 0185
Fred Halstead, Mayor
304.586.2319

This project included all of the planning, engineering and management services necessary to develop a new drainage system along Marble Drive in the Town of Eleanor. This project relieved ponding water from the road, and routed it to a parallel creek. The project included approximately 144 linear feet of 12" HDPE pipe, 2 drainage inlets, and a 12" headwall. At a construction cost of approximately \$12,700.

DATES

2008-2009

PROJECT TYPE

Storm Drainage System Improvements

PROJECT LENGTH / SIZE

Approximately 150 linear feet of 12" HDPE pipe,
2 drainage inlets, 12" Headwall

KEY PERSONNEL

Steven M. Newton, PE, PS
Project Manager

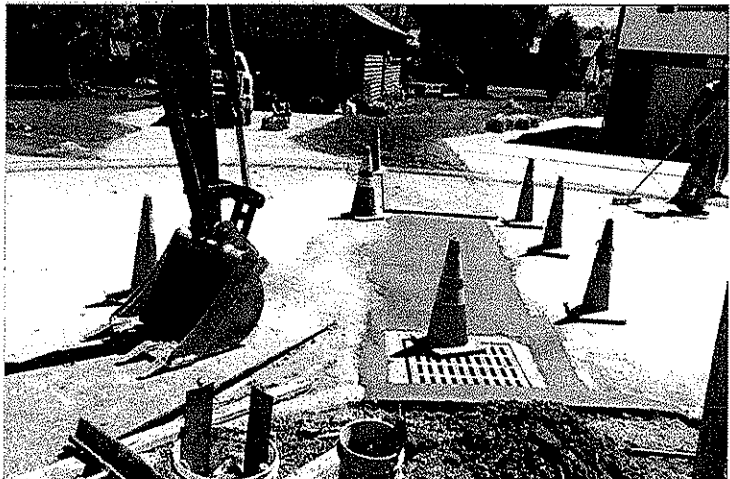
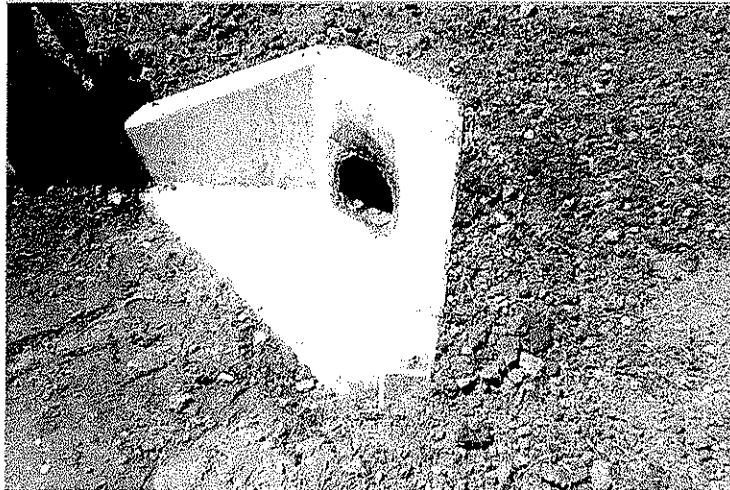
Mathew T. McDougal
Junior Engineer

SERVICES PROVIDED

Storm Sewer Design
Preparation of Required Permits
Preparation of Construction Specifications and Bidding
Documents
Bidding Assistance
Construction Contract Administration

AMOUNT OF CONTRACT

Construction Cost - \$12,700



TOWN OF ELEANOR BEECH AND FIR STREETS DRAINAGE IMPROVEMENTS

Putnam County, West Virginia

CLIENT

Town of Eleanor
401 Roosevelt Boulevard
P.O. Box 185
Eleanor, West Virginia 25070 - 0185
Fred Halstead, Mayor
304.586.2319

DATES

2002-2003

PROJECT TYPE

Storm Drainage System Improvements

PROJECT LENGTH / SIZE

Approximately 1,200 linear feet of storm drains
ranging from 36 inch to 42 inch

KEY PERSONNEL

Steven M. Newton, PE, PS
Project Manager

SERVICES PROVIDED

Storm Sewer Design
Preparation of Required Permits
Preparation of Construction Specifications and Bidding
Documents
Bidding Assistance
Construction Contract Administration

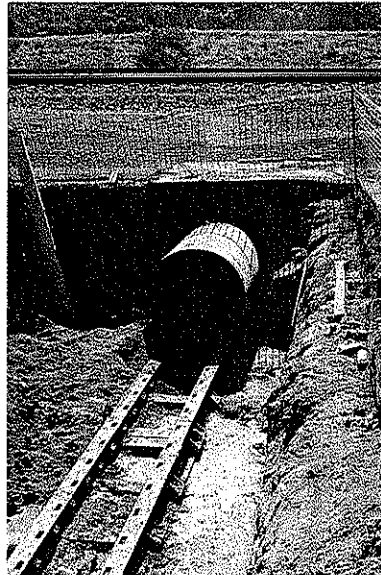
AMOUNT OF CONTRACT

Engineering - \$17,772
Construction Cost - \$66,295

This project included all of the planning, engineering and management services necessary to develop a new routing for storm water flow of a major drainage area in the Town of Eleanor where serious residential flooding was occurring due to the inadequacy of the old system. The Fir and Beech Streets project was the first phase of an overall Master Plan (also developed by Qk4) to identify and find solutions for flooding problems in numerous areas of the town.

The rerouting of this storm water flow required a new crossing of W. Va. Route 62, the major arterial highway in the area, and a new crossing of CSX Railroad mainline track.

The new system discharges to a major drainage structure of the U.S. Army Corps of Engineers, who reviewed and approved the plan.



**WEST VIRGINIA DEPARTMENT OF ENVIRONMENTAL PROTECTION
AML CONSULTANT CONFIDENTIAL QUALIFICATION QUESTIONNAIRE Attachment "B"**

| | | | |
|---|---|---|---|
| PROJECT NAME Design Services and Construction Monitoring Services at the: Fairmont Five Subsidence Project | | DATE (DAY, MONTH, YEAR) November 5, 2009 | FEIN 61-0865261 |
| 1. FIRM NAME Presnell Associates, Inc. dba Qk4 | | 3. FORMER FIRM NAME Presnell Associates, Inc. | |
| 4. HOME OFFICE TELEPHONE (502)585-2222 | 5. ESTABLISHED (YEAR) 1974 - Company 2000 - WV Office | 6. TYPE OWNERSHIP Corporation | 6a. WV REGISTERED DBE (Disadvantaged Business Enterprise) YES <input type="checkbox"/> NO <input checked="" type="checkbox"/> |
| 7. PRIMARY AML DESIGN OFFICE: ADDRESS/ TELEPHONE/ PERSON IN CHARGE/ NO. AML DESIGN PERSONNEL EACH OFFICE 802 B Street, Suite 200, St. Albans, WV 25177, (304)201-8980, S. Michael Newton, PE, PS, AML Personnel - 3 | | | |
| 8. NAMES OF PRINCIPAL OFFICERS OR MEMBERS OF FIRM Robert E. Gustafson, PE; Senior VP Roger J. Wade, PE, PLS; Senior VP Albert H. Zimmerman, PE; VP Thomas Springer, AICP, CEP; Asst. VP | | | |
| 9. PERSONNEL BY DISCIPLINE | | | |
| 1 ADMINISTRATIVE | — | LANDSCAPE ARCHITECTS | — |
| — ARCHITECTS | — | MECHANICAL ENGINEERS | — |
| — BIOLOGIST | — | MINING ENGINEERS | 1 SURVEYORS |
| 1 CADD OPERATORS | — | PHOTOGRAMMETRISTS | — |
| — CHEMICAL ENGINEERS | — | PLANNERS: URBAN/REGIONAL | — |
| 1 CIVIL ENGINEERS | — | SANITARY ENGINEERS | — |
| — CONSTRUCTION INSPECTORS | — | SOILS ENGINEERS | — |
| — DESIGNERS | — | SPECIFICATION WRITERS | — |
| — DRAFTSMEN | — | TOTAL PERSONNEL | — |
| TOTAL NUMBER OF WV REGISTERED PROFESSIONAL ENGINEERS IN PRIMARY OFFICE: <u>1</u> | | | |
| *RPEs other than Civil and Mining must provide supporting documentation that qualifies them to supervise and perform this type of work. | | | |
| 10. HAS THIS JOINT-VENTURE WORKED TOGETHER BEFORE? X YES € NO | | | |

11. OUTSIDE KEY CONSULTANTS/SUB-CONSULTANTS ANTICIPATED TO BE USED. Attach "AML Consultant Confidential Qualification Questionnaire".

| | | |
|--|---|--|
| <p>NAME AND ADDRESS: Novel Geo-Environmental, PLLC 806 B Street St. Albans, WV 25177</p> | <p>SPECIALTY: Soils Analysis / Geotechnical Engineering</p> | <p>WORKED WITH BEFORE X Yes No</p> |
| <p>NAME AND ADDRESS: Terradon Corporation 401 Jacobson Drive Poca, WV 25159</p> | <p>SPECIALTY: Surveying</p> | <p>WORKED WITH BEFORE X Yes No</p> |
| <p>NAME AND ADDRESS:</p> | <p>SPECIALTY:</p> | <p>WORKED WITH BEFORE Yes No</p> |
| <p>NAME AND ADDRESS:</p> | <p>SPECIALTY:</p> | <p>WORKED WITH BEFORE Yes No</p> |
| <p>NAME AND ADDRESS:</p> | <p>SPECIALTY:</p> | <p>WORKED WITH BEFORE Yes No</p> |
| <p>NAME AND ADDRESS:</p> | <p>SPECIALTY:</p> | <p>WORKED WITH BEFORE Yes No</p> |
| <p>NAME AND ADDRESS:</p> | <p>SPECIALTY:</p> | <p>WORKED WITH BEFORE Yes No</p> |
| <p>NAME AND ADDRESS:</p> | <p>SPECIALTY:</p> | <p>WORKED WITH BEFORE Yes No</p> |
| <p>NAME AND ADDRESS:</p> | <p>SPECIALTY:</p> | <p>WORKED WITH BEFORE Yes No</p> |

12. A. Is your firm experienced in Abandoned Mine Lands Remediation/Mine Reclamation Engineering?

YES Description and Number of Projects: Glen White Air Shafts, DEP14270; Delbarton (Dardi) Portals DEP14524

NO

B. Is your firm experienced in Soil Analysis?

YES Description and Number of Projects: _____

NO

C. Is your firm experienced in hydrology and hydraulics?

YES Description and Number of Projects: The company has practiced civil engineering since 1974. Transportation and Site Development are primary areas of practice, all of which involve hydrology and hydraulics. Approximately 150-200 projects.

NO

D. Does your firm produce its own Aerial Photography and Develop Contour Mapping?

YES Description and Number of Projects: We use outside consultants for aerial photography, however we are able to develop contour mapping from digitized data.

NO

E. Is your firm experienced in domestic waterline design? (Include any experience your firm has in evaluation of aquifer degradation as a result of mining.)

YES Description and Number of Projects: Water system engineering is a primary area of practice involving source development, treatment, pumping, distribution and storage. Approximately 100 projects.

NO

F. Is your firm experienced in Acid Mine Drainage Evaluation and Abatement Design?

YES Description and Number of Projects: _____

NO

| | | | |
|---|--|---|--|
| <p>13. PERSONAL HISTORY STATEMENT OF PRINCIPALS AND ASSOCIATES RESPONSIBLE FOR AML PROJECT DESIGN (Furnish complete data but keep to essentials)</p> | | | |
| <p>NAME & TITLE (Last, First, Middle Int.) Newton, Steven M., PE, PS Regional Office Manager - WV Assistant Vice President</p> | <p>YEARS OF AML DESIGN EXPERIENCE: 1</p> | <p>YEARS OF AML RELATED DESIGN EXPERIENCE: 32</p> | <p>YEARS OF DOMESTIC WATERLINE DESIGN EXPERIENCE: 32</p> |
| <p>Brief Explanation of Responsibilities</p> <p><u>Overall project management and design, budget maintenance, QA/QC, and preparation of easement acquisition documents.</u></p> | | | |
| <p>EDUCATION (Degree, Year, Specialization) Speed Scientific School University of Louisville, 1975-1980 Civil Engineering</p> | | | |
| <p>MEMBERSHIP IN PROFESSIONAL ORGANIZATIONS ASCE, NSPE, WVACE, WVRWA</p> | | | |
| <p>13. PERSONAL HISTORY STATEMENT OF PRINCIPALS AND ASSOCIATES RESPONSIBLE FOR AML PROJECT DESIGN (Furnish complete data but keep to essentials)</p> | | | |
| <p>NAME & TITLE (Last, First, Middle Int.)</p> | <p>YEARS OF AML DESIGN EXPERIENCE:</p> | <p>YEARS OF AML RELATED DESIGN EXPERIENCE:</p> | <p>YEARS OF DOMESTIC WATERLINE DESIGN EXPERIENCE:</p> |
| <p>Brief Explanation of Responsibilities</p> | | | |
| <p>EDUCATION (Degree, Year, Specialization)</p> | | | |
| <p>MEMBERSHIP IN PROFESSIONAL ORGANIZATIONS</p> | | | |

14. PROVIDE A LIST OF SOFTWARE AND EQUIPMENT AVAILABLE IN THE PRIMARY OFFICE WHICH WILL BE USED TO COMPLETE AML DESIGN SERVICES

Software - AutoCAD Civil 3D - 2008

Equipment - 7 - Dell Desktop PC Computers

HP Designjet 1055 CM Plotter

HP Laserjet 500N

HP Officejet 7110

Sharp AR-BC260 Digital Imager

Bentley MicroStation 8

Haestad Methods - Flowmaster

Wild NA20 Level

MS - Word (2003)

MS - Excel (2003)

Adobe Writer and Reader 7.0

MS - Power Point (2003)

Photoshop

MS - Access (2003)

15. CURRENT ACTIVITIES ON WHICH YOUR FIRM IS THE DESIGNATED ENGINEER OF RECORD

| PROJECT NAME, TYPE AND LOCATION | NAME AND ADDRESS OF OWNER | NATURE OF YOUR FIRM'S RESPONSIBILITY | ESTIMATED CONSTRUCTION COST | PERCENT COMPLETE |
|---|---|---|--|---------------------------------|
| Glen White Air Shafts Abandoned Mine Raleigh Co., WV | WVDEP Office of Abandoned Mine Lands and Reclamation 116 Industrial Drive Oak Hill, WV 25901 | Design Bidding Assistance Construction Administration Construction Inspection | \$228,500 | Design 100% Construction 0% |
| Green Valley Extension Wastewater Extension Logan Co., WV | Buffalo Creek PSD P O Box 209 Amherstdale, WV 25607 | Design Bidding Assistance Construction Administration Construction Inspection Post Construction | \$1,000,000 | Preliminary 100% Design 0% |
| Cobblestone Subdivision Numerous Site Plans (12) Putnam Co., WV | Various Clients | Preparation of Site Plans | \$6,000,000 | 0-100% |
| Jim/Bee Ridge Waterline Extension Putnam Co., WV | Putnam County Commission 3389 Winfield Road Winfield, WV 25213 | Design Bidding Assistance Construction Administration Construction Inspection Post Construction | \$1,600,000 | Design 100% Construction 60% |
| 4-H Camp Site Plans Putnam Co., WV | Putnam County 4-H Foundation Rosalee Juba-Plumly, President P O Box 380 Eleanor, WV 25070 | Preparation of Site Plans | -- | Design 50% |
| Paden City Wastewater Collection System - Rehab Project Tyler & Wetzel Counties, WV | City of Paden City P O Box 211 Paden City, WV 26159 | Design Bidding Assistance Construction Administration Construction Inspection Post Construction | \$1,800,000 | Design 100% Construction 0% |
| Waverly Wastewater Upgrade Wood & Pleasants Counties, WV | Union Williams PSD P O Box 243 Waverly, WV 26161 | Design Bidding Assistance Construction Administration Construction Inspection Post Construction | \$730,000 | Design 100% Construction 0% |
| Pleasants County Waterline Extension Pleasants Co., WV | Union Williams PSD P O Box 243 Waverly, WV 26161 | Design Bidding Assistance Construction Administration Construction Inspection Post Construction | \$943,000 | Design 100% Construction 0% |
| TOTAL NUMBER OF PROJECTS: 19 (this page) | | | TOTAL ESTIMATED CONSTRUCTION COSTS: \$ 8,073,000 (this page) | |

15. CURRENT ACTIVITIES ON WHICH YOUR FIRM IS THE DESIGNATED ENGINEER OF RECORD

| PROJECT NAME, TYPE AND LOCATION | NAME AND ADDRESS OF OWNER | NATURE OF YOUR FIRM'S RESPONSIBILITY | ESTIMATED CONSTRUCTION COST | PERCENT COMPLETE |
|---|--|---|--|---------------------------------|
| US Route 35 Relocate / Upgrade Mason Co., WV | WV DOT 1900 Kanawha Blvd. E Charleston, WV 25305 | Preliminary Report Preliminary Design Final Design Construction Administration | \$28,900,000 | 36% |
| Alum Creek Facilities Planning Report Lincoln Co., WV | Lincoln PSD P O Box 38 Alum Creek, WV 25003 | Preparation of Facilities Plan with Assistance with funding | \$27.6 Million | Facilities Plan 99% |
| Fisher's Ford Bridge Renovation Morgan Co., WV | WV DOT 1900 Kanawha Blvd., E. Charleston, WV 25305 | Preliminary Report Preliminary Design Final Design Construction Administration | \$1.7 Million | Preliminary Design 30% |
| WV Route 9 Relocate/Upgrade Jefferson & Berkeley Counties, WV | WV DOT 1900 Kanawha Blvd., E. Charleston, WV 25305 | Preliminary Report Preliminary Design Final Design Construction Administration | \$60.8 Million | Design 100% Construction 75% |
| Jim / Bee Ridge Extensions Putnam Co., WV | Putnam County Commission 3389 Winfield Road Winfield, WV 25213 | Design Bidding Assistance Construction Administration Construction Inspection Post Construction | \$340,000 | Design 100% Construction 0% |
| Delbarton (Dardi) Portals Design Mingo Co., WV | WVDEP - AML 601 57 th Street, SE Charleston, WV 25304 | Design Bidding Assistance Construction Administration Construction Inspection Post Construction | -- | Design 0% |
| Eleanor Sewer Reconstruction Putnam Co., WV | Town of Eleanor P O Box 185 401 Roosevelt Blvd. Eleanor, WV 25070 | Design Bidding Assistance Construction Administration Construction Inspection Post Construction | \$109,000 | Design 100% Construction 0% |
| TOTAL NUMBER OF PROJECTS: 7 (this page) | | | TOTAL ESTIMATED CONSTRUCTION COSTS: \$ 119,449,000 (this page) | |

17. COMPLETED WORK WITHIN LAST 5 YEARS ON WHICH YOUR FIRM WAS THE DESIGNATED ENGINEER OF RECORD

| PROJECT NAME, TYPE AND LOCATION | NAME AND ADDRESS OF OWNER | ESTIMATED CONSTRUCTION COST | YEAR | CONSTRUCTED (YES OR NO) |
|---|--|-----------------------------|------|-------------------------|
| Marble Drive Drainage Improvements Putnam Co., WV | Town of Eleanor P O Box 185 401 Roosevelt Blvd. Eleanor, WV 25070 | \$13,000 | 2009 | YES |
| Cobblestone Subdivision Section 3 Putnam Co., WV | Cobblestone Subdivision, LLC 500 Corporate Centre Drive Suite 550 Scott Depot, WV 25560 | \$900,000 | 2009 | NO |
| Vintrox Road/US Route 35 Sanitary Sewer System Extension Putnam Co., WV | Putnam PSD P O Box 860 Scott Depot, WV 25560 | \$2.1 Million | 2009 | YES |
| Eleanor Plaza Sidewalk Extension Putnam Co., WV | Town of Eleanor P O Box 185 401 Roosevelt Blvd. Eleanor, WV 25070 | \$35,000 | 2008 | YES |
| Vintrox Waterline Replacement Putnam Co., WV | Putnam PSD P O Box 860 Scott Depot, WV 25560 | \$420,000 | 2007 | YES |
| Northfork Waterline AML Study ID #308 McDowell Co., WV | WVDEP - AML 601 57th Street, SE Charleston, WV 25304 | N/A Study | 2007 | NO |
| Ivywood Street Drainage Plans Putnam Co., WV | Town of Eleanor P O Box 185 401 Roosevelt Blvd. Eleanor, WV 25070 | -- | 2007 | NO |
| Dr. Herman Site Plan Putnam Co., WV | Dr. Herman eye Center 3709 Teays Valley Rd. Hurricane, WV 25526 | \$630,000 | 2007 | YES |
| ICG Site Plan Putnam Co., WV | G & G Builders 500 Corporate Centre Drive Suite 550 Scott Depot, WV 25560 | \$7,100,000 | 2006 | YES |

17. COMPLETED WORK WITHIN LAST 5 YEARS ON WHICH YOUR FIRM WAS THE DESIGNATED ENGINEER OF RECORD

| PROJECT NAME, TYPE AND LOCATION | NAME AND ADDRESS OF OWNER | ESTIMATED CONSTRUCTION COST | YEAR | CONSTRUCTED (YES OR NO) |
|--|--|-----------------------------|-----------|-------------------------|
| Eleanor Sidewalk Plans Putnam Co., WV | Town of Eleanor P O Box 185 401 Roosevelt Blvd. Eleanor, WV 25070 | \$158,000 | 2006 | YES |
| Cobblestone Subdivision Phases 1 and 2 Putnam Co., WV | Cobblestone Subdivision, LLC 500 Corporate Centre Drive Suite 550 Scott Depot, WV 25560 | \$1,200,000 | 2005-2006 | YES |
| Fruth Pharmacy Site Plan Kanawha Co., WV | G & G Builders 500 Corporate Centre Drive Suite 550 Scott Depot, WV 25560 | \$900,000 | 2005 | YES |
| Teays Valley Road (WV 33) Road Widening Putnam Co., WV | Putnam County Development Authority P O box 167 Scott Depot, WV 25560 | \$150,000 | 2005 | YES |
| Teays Valley Cinemas Site Plan Putnam Co., WV | G & G Builders 500 Corporate Centre Drive Suite 550 Scott Depot, WV 25560 | \$3,500,000 | 2005 | YES |
| I-68 Underpass Closure Bridge Design Preston Co., WV | WVDOT 1900 Kanawha Blvd., E Charleston, WV 25305 | \$1,200,000 | 2005 | YES |
| Midway Sewer System Phases 1 and 2 Putnam Co., WV | Putnam PSD P O Box 860 Scott Depot, WV 25560 | \$650,000 | 2005 | YES |
| | | | | |
| | | | | |

18. COMPLETED WORK WITHIN LAST 5 YEARS ON WHICH YOUR FIRM HAS BEEN A SUB-CONSULTANT TO OTHER FIRMS (INDICATE PHASE OF WORK FOR WHICH YOUR FIRM WAS RESPONSIBLE)

| PROJECT NAME, TYPE AND LOCATION | NAME AND ADDRESS OF OWNER | ESTIMATED CONSTRUCTION COST OF YOUR FIRM'S PORTION | YEAR | CONSTRUCTED (YES OR NO) | FIRM ASSOCIATED WITH |
|---|---------------------------|--|------|-------------------------|---|
| Gassaway Armory Addition & Renovations Braxton Co., WV | WVARNG | \$100,000 | 2009 | NO | Jerry Goff Architecture 100 1st Ave. St. Albans, WV 25177 |
| | | | | | |
| | | | | | |
| | | | | | |
| | | | | | |
| | | | | | |

19. Use this space to provide any additional information or description of resources supporting your firm's qualifications to perform work for the West Virginia Abandoned Mine Lands Program.

20. The foregoing is a statement of facts.

Signature: 

Printed Name: Steven M. Newton

Title: Regional Office Manager

Date: 11-5-09

| AML and RELATED PROJECT EXPERIENCE MATRIX | | | | | | | | | | | | | | Pg 1 | | | | | | | | | | |
|--|-------------------------------------|--|---------------------------------------|------------------------------------|----------------------|--------------------------------------|---------------------|-------------------------------|---|-----------------------------|------------------------|--|--|---|--------------------------------|--------------------|------------------------|-----------|--|-------|--|--|--|--|
| PROJECT | Exp. Basis C=Corp. P=Personal | Additional Info Provided in Section (s) | PROJECT EXPERIENCE REQUIREMENTS | | | | | | | | | | | PRIMARY STAFF PARTICIPATION/CAPACITY *** M=Management P=Professional | | | | | | | | | | |
| | | | Abandoned Surface Mine Reclamation | Abandoned Deep Mine Reclamation | Portal/Shaft Closure | Hydrologic/Hydraulic Design/Eval. | Remining Evaluation | Mine/Refuse Fire Abatement | Subsidence Investigation Mitigation | Hazardous Waste Disposal | Project Specifications | Water Quality Evaluation/Mitigation/ Replacement | Construction/ Inspection/Managem ent | Water Treatment | Equipment/Structure Removal | Stream Restoration | Geotechnical/Stability | M. Newton | | | | | | |
| Glen White Air Shafts DEP#14270 | C & P | | X | X | | X | | | | | | | | X | | | | | | M & P | | | | |
| Delbarton (Dard) Portals DEP #14524 | C & P | X | | X | | | | | | | | | | X | | | | | | M & P | | | | |
| Green Valley Extension Wastewater Extension | C & P | | | | | | | | | | | | | X | | | | | | M & P | | | | |
| Cobblestone Subdivision Site Plans | C & P | | | | | X | | | | | | | | | | | | | | M & P | | | | |
| Jim/Bee Ridge Waterline Extension(s) | C & P | | | | | | | | | | | | | X | | | | | | M & P | | | | |
| 4-H Camp Site Plans | C & P | | | | | | | | | | | | | | | | | | | M & P | | | | |
| Paden City Wastewater Collection System | C & P | | | | | | | | | | | | | X | | | | | | M & P | | | | |
| Waverly Wastewater Upgrade | C & P | | | | | | | | | | | | | X | | | | | | M & P | | | | |
| Pleasants County Waterline Extension | C & P | | | | | | | | | | | | | X | | | | | | M & P | | | | |
| US Route 35 | C & P | | | | | | | | | | | | | X | | | | | | M & P | | | | |
| Alum Creek Facilities Planning Report | C & P | | | | | | | | | | | | | | | | | | | M & P | | | | |
| Fisher's Ford Bridge Reno | C & P | | | | | | | | | | | | | X | | | | | | M & P | | | | |
| WV Route 9 | C & P | | | | | | | | | | | | | X | | | | | | M & P | | | | |
| Eleanor Sewer Reconstruction | C & P | | | | | | | | | | | | | | | | | | | X | | | | |

* List whether project experience is corporate or personnel based or both.

** Use this area to provide specific sections or pages if needed for reference.

*** List Primary Design personnel and their functional capacity for the projects listed.

| AML and RELATED PROJECT EXPERIENCE MATRIX | | | | PROJECT EXPERIENCE REQUIREMENTS | | | | | | | | | | | | | | | | PRIMARY STAFF PARTICIPATION/CAPACITY *** M=Management P=Professional | | | | | | | | | | | | | | | | | | |
|---|-------|--|--|---------------------------------|-------------------------------------|--|---------------------------------------|------------------------------------|----------------------|--------------------------------------|---------------------|-------------------------------|---|-----------------------------|------------------------|--|-----------------------------|-----------------|--------------------------------|---|------------------------|-----------|--|-------|--|--|--|--|--|--|--|--|--|--|--|--|--|--|
| | | | | PROJECT | Exp. Basis C=Corp. P=Personal | Additional Info Provided in Section (e) 44 | Abandoned Surface Mine Reclamation | Abandoned Deep Mine Reclamation | Portal/Shaft Closure | Hydrologic/Hydraulic Design/Eval. | Remining Evaluation | Mine/Refuse Fire Abatement | Subsidence Investigation Mitigation | Hazardous Waste Disposal | Project Specifications | Water Quality Evaluation/Mitigation/ Replacement | Construction/Managem ent | Water Treatment | Equipment/Structure Removal | Stream Restoration | Geotechnical/Stability | M. Newton | | | | | | | | | | | | | | | | |
| Marble Drive Drainage Improvements | C & P | | | | | | | | | X | | | | | X | | X | | | | | | | M & P | | | | | | | | | | | | | | |
| Vintroux Road/US Rte 35 Sanitary Sewer Sys Ext | C & P | | | | | | | | | | | X | | X | | | | | | | | M & P | | | | | | | | | | | | | | | | |
| Eleanor Plaza Sidewalk Extension | C & P | | | | | | | | | | | | | X | | | | | | | | M & P | | | | | | | | | | | | | | | | |
| Vintroux Waterline Replacement | C & P | | | | | | | | | | | | | X | | | | | | | | M & P | | | | | | | | | | | | | | | | |
| Ivywood Street Drainage Plans | C & P | | | | | | X | | | | | X | | | | | | | | | | M & P | | | | | | | | | | | | | | | | |
| Dr. Herman Site Plans | C & P | | | | | | X | | | | | X | | X | | | | | | | | M & P | | | | | | | | | | | | | | | | |
| ICG Site Plans | C & P | | | | | | X | | | | | X | | X | | | | | | | | M & P | | | | | | | | | | | | | | | | |
| Eleanor Sidewalk Plans | C & P | | | | | | | | | | | | | X | | | | | | | | M & P | | | | | | | | | | | | | | | | |
| Cobblestone Subdivision Phase 1 and 2 | C & P | | | | | | X | | | | | X | | X | | | | | | | | M & P | | | | | | | | | | | | | | | | |
| Fruith Pharmacy Site Plan | C & P | | | | | | X | | | | | X | | X | | | | | | | | M & P | | | | | | | | | | | | | | | | |
| Teays Valley Cinemas Site Plan | C & P | | | | | | X | | | | | X | | X | | | | | | | | M & P | | | | | | | | | | | | | | | | |
| I-68 Underpass Closure | C & P | | | | | | X | | | | | X | | X | | | | | | | | M & P | | | | | | | | | | | | | | | | |
| Cobblestone Subdivision Section 3 | C & P | | | | | | X | | | | | X | | X | | | | | | | | M & P | | | | | | | | | | | | | | | | |

* List whether project experience is corporate or personnel based or both.

** Use this area to provide specific sections or pages if needed for reference.

*** List Primary Design personnel and their functional capacity for the projects listed.

WEST VIRGINIA DIVISION OF HIGHWAYS
CONSULTANT CONFIDENTIAL QUALIFICATION QUESTIONNAIRE

| | | | |
|--|---|--|------------------------------|
| EXPERIENCE DATA | DATE (DAY, MONTH, YEAR) 17 September 2009 | FEIN 52-2365940 | |
| 1. FIRM NAME Novel Geo-Environmental, PLLC | 2. HOME OFFICE BUSINESS ADDRESS 171 Montour Run Road Pittsburgh, PA 15108 | 3. FORMER FIRM NAME NA | |
| 4. HOME OFFICE TELEPHONE (412) 722 - 1970 | 5. ESTABLISHED (YEAR) 2002 | 6. TYPE OWNERSHIP LLC | 6a. WV REGISTERED DBE YES |
| 7. PRESENT OFFICES: ADDRESS/ TELEPHONE/ PERSON IN CHARGE/ NO. PERSONNEL EACH OFFICE 171 Montour Run Road, Pittsburgh, PA 15108 / (412) 722-1970 / Office Manager: Amy Veltri / 12 personnel 806 B Street, St. Albans, WV 25177 / (304) 201-5180 / Office Manager: John Nottingham / 11 personnel | | | |
| 8. NAMES OF PRINCIPAL OFFICIALS OR MEMBERS OF FIRM Amy L. Veltri, President John E. Nottingham, Vice President | | 8a. NAME, TITLE, & TELEPHONE NUMBER - OTHER PRINCIPALS | |
| 9. PERSONNEL BY DISCIPLINE | | | |
| 3 ADMINISTRATIVE | — ECOLOGISTS | — LANDSCAPE ARCHITECTS | — STRUCTURAL ENGINEERS |
| — ARCHITECTS | — ECONOMISTS | — MECHANICAL ENGINEERS | — SURVEYORS |
| — CADD OPERATORS | — ELECTRICAL ENGINEERS | — MINING ENGINEERS | — TRAFFIC ENGINEERS |
| — CHEMICAL ENGINEERS | 4 ENVIRONMENTALISTS | — PHOTOGRAMMETRISTS | — TRANSPORTATION ENGINEERS |
| — CIVIL ENGINEERS | — ESTIMATORS | — PLANNERS: URBAN/REGIONAL | 2 ENVIRONMENTAL ENGINEERS |
| 5 CONSTRUCTION INSPECTORS | 3 GEOLOGISTS | — SANITARY ENGINEERS | 3 OTHER |
| — DESIGNERS, HIGHWAY | — HISTORIANS | 3 SOILS ENGINEERS | |
| — DRAFTSMEN | — HYDROLOGISTS | — SPECIFICATION | WRITERS |
| | | | 25 TOTAL PERSONNEL |

10. IF SUBMITTAL IS BY JOINT-VENTURE, LIST PARTICIPATING FIRMS & OUTLINE SPECIFIC AREAS OF RESPONSIBILITY (INCLUDING ADMINISTRATIVE, TECHNICAL & FINANCIAL) FOR EACH FIRM. (Each participating Firm Must Complete a "Consultant Confidential Qualification Questionnaire" if a copy is Not On File With The Division).

N/A

10a. HAS THIS JOINT-VENTURE WORKED TOGETHER BEFORE? € YES € NO

11. OUTSIDE KEY CONSULTANTS/ASSOCIATES ANTICIPATED TO BE USED. Attach "Consultant Confidential Qualification Questionnaire" for each if copy is not on with the Division.

| NAME AND ADDRESS | SPECIALITY | WORKED WITH BEFORE |
|---|--|----------------------------|
| | | <p>-- YES</p> <p>-- NO</p> |
| <p>12. A. Are you experienced in Traffic Engineering?</p> <p>NO</p> | <p>13. Indicate in order of precedence using "1", "2", "3", etc., the types of work your firm is particularly qualified to perform by virtue of experience and training of members and associates. (Note: Work specialties not sufficiently identified by general categories are to be listed separately below.)</p> | |
| <p>B. Are you experienced in Soil Analysis?</p> <p>YES Geotechnical -- Design of test boring programs, inspection of drilling activities, boring log preparation, soil physical properties laboratory testing, provide recommendations for foundation designs, cut slope design, fill embankment design, pavement design, slope stability analysis, geotechnical investigation reports with detailed recommendations for bridge and roadway design.</p> <p>Environmental - Phase I and II ESAs identification and delineation of impacted soils, development of remediation plan for impacted soils both in-situ and off-site, determination of risk-based corrective action levels for soil remediation, risk assessment of impacted soils, field identification of Hydric soils for wetland assessments and delineations.</p> | <p>() AERIAL PHOTOGRAPHY () ACOUSTICS-NOISE ABATEMENT () ARCHEOLOGICAL-CULTURAL RESOURCE () BRIDGES-STRUCTURAL () COMMERCIAL BUILDINGS () CONSTRUCTION MANAGEMENT () DAM-IRRIGATION () ELECTRICAL FACILITIES (7) ENVIRONMENTAL-EIS/EIA () FLOOD CONTROL-WATER RESOURCES (1) GEOTECHNICAL () HIGHWAYS-STREETS () HOUSING () HVAC (6) LABORATORIES-SOILS & MATERIALS PHYSICAL TEST () LIGHTING-EXTERIOR () MANUALS () MASTER PLNG.-SITE DEVELOPMENT () PHOTOGRAMMETRY () POWER-HEATING PLANTS () PUBLIC BUILDINGS () RAILROAD-RAPID TRANSIT () RECREATION FACILITIES () SURVEYING () UTILITIES () VALUE ANALYSIS () WATER-SEWAGE</p> <p>(2) ENVIRONMENTAL-COMPLIANCE & PERMITTING (4) ENVIRONMENTAL-PHASE I/II ESA (5) ENVIRONMENTAL REMEDIATION-SOIL & GROUNDWATER (3) DRILLING-GEOTECHNICAL & ENVIRONMENTAL</p> | |
| <p>C. Do you produce your own Aerial Photography and Develop Contour Mapping?</p> <p>NO</p> | | |
| <p>D. Do you perform your own bridge and/or structural design?</p> <p>NO</p> | | |

14. PERSONAL HISTORY STATEMENT OF PRINCIPALS AND ASSOCIATES (Furnish complete data but keep to essentials)

| NAME (Last, First, Middle Initial) | YEARS OF EXPERIENCE | | |
|------------------------------------|---------------------------|-----------------------------|----------------------|
| | AS PRINCIPAL IN THIS FIRM | AS PRINCIPAL IN OTHER FIRMS | OTHER THAN PRINCIPAL |
| Veltri, Amy L. | 7 | 0 | 16 |

EDUCATION (Degree, Year, Specialization)
 Bachelor of Science in Civil Engineering, 1989, Environmental and Geotechnical Engineering
 Master of Science in Civil Engineering, 1996, Environmental Engineering

MEMBERSHIP IN PROFESSIONAL ORGANIZATIONS
 AWWA (Air and Waste Management Association)
 AAEE (American Academy of Environmental Engineers)
 The Society of American Military Engineers

REGISTRATION (Type, Year, State)
 Professional Engineer, 1996, Pennsylvania
 Professional Engineer, 1999, West Virginia
 Certified ISO 14001 Lead Assessor, 2002
 Diplomate Environmental Engineer, 2002

14. PERSONAL HISTORY STATEMENT OF PRINCIPALS AND ASSOCIATES (Furnish complete data but keep to essentials)

| NAME (Last, First, Middle Initial) | YEARS OF EXPERIENCE | | |
|------------------------------------|---------------------------|-----------------------------|----------------------|
| | AS PRINCIPAL IN THIS FIRM | AS PRINCIPAL IN OTHER FIRMS | OTHER THAN PRINCIPAL |
| Nottingham, John E. | 7 | 4 | 18 |

EDUCATION (Degree, Year, Specialization)
 Bachelor of Science in Civil Engineering, 1987, Geotechnical Engineering
 Master of Science in Civil Engineering, 1995, Geotechnical Engineering

MEMBERSHIP IN PROFESSIONAL ORGANIZATIONS
 ASCE (American Society of Civil Engineers)
 WV Chapter of AIA
 The Society of American Military Engineers

REGISTRATION (Type, Year, State)
 Professional Engineer, 1994, West Virginia
 Professional Surveyor, 1995, West Virginia
 Professional Engineer, 2007, Virginia

14. PERSONAL HISTORY STATEMENT OF PRINCIPALS AND ASSOCIATES (Furnish complete data but keep to essentials)

| NAME (Last, First, Middle Initial) | YEARS OF EXPERIENCE | | |
|------------------------------------|---------------------------|-----------------------------|----------------------|
| | AS PRINCIPAL IN THIS FIRM | AS PRINCIPAL IN OTHER FIRMS | OTHER THAN PRINCIPAL |
| | | | |

EDUCATION (Degree, Year, Specialization)

MEMBERSHIP IN PROFESSIONAL ORGANIZATIONS

REGISTRATION (Type, Year, State)

15. PRESENT ACTIVITIES ON WHICH YOU ARE THE DESIGNATED ENGINEER OF RECORD

| PROJECT NAME, TYPE AND LOCATION | NAME AND ADDRESS OF OWNER | ESTIMATED CONSTRUCTION COST | PERCENT COMPLETE |
|---------------------------------|---------------------------|-----------------------------|------------------|
| None | | | |
| | | | |

TOTAL NUMBER OF PROJECTS: 0

TOTAL ESTIMATED CONSTRUCTION COSTS: \$

16. PRESENT ACTIVITIES ON WHICH YOU ARE ASSOCIATED WITH OTHERS

| PROJECT NAME, TYPE AND LOCATION | NATURE OF FIRMS RESPONSIBILITY | NAME AND ADDRESS OF OWNER | ESTIMATED COMPLETION DATE | ESTIMATED CONSTRUCTION COST |
|---------------------------------|--------------------------------|---------------------------|---------------------------|-----------------------------|
| | | | | ENTIRE PROJECT |
| | | | | YOUR FIRMS RESPONSIBILITY |

NGE Environmental Consulting Services

16. PRESENT ACTIVITIES ON WHICH YOU ARE ASSOCIATED WITH OTHERS

| PROJECT NAME, TYPE AND LOCATION | NATURE OF FIRMS RESPONSIBILITY | NAME AND ADDRESS OF OWNER | ESTIMATED COMPLETION DATE | ESTIMATED CONSTRUCTION COST | |
|--|--|--|---------------------------|-----------------------------|---------------------------|
| | | | | ENTIRE PROJECT | YOUR FIRMS RESPONSIBILITY |
| RPM Engineers Greenbrier County 911 Tower Quinwood, WV | Phase I ESA and NEPA Screening for FCC | Greenbrier County Commission Lewisburg, WV | 2009 | Unknown | \$3,450.00 |
| Ohio River Terminals Voluntary Remediation Kenova, WV | LRS implementing and overseeing soil and groundwater remediation | Ingram Barge Co. 4400 Harding Road Nashville, TN 37205 | 2010 | \$350,000.00 | \$185,000.00 |
| Former WV Ordnance Works, Groundwater Extraction & Treatment System O&M, Point Pleasant, WV | LRS implementing and overseeing groundwater remediation | US Army Corps of Engineers, Huntington District Huntington, WV | 2012 | \$2,475,000.00 | \$2,475,000.00 |
| Storm Water Impress USA Weirton, WV | Preparation of Storm Water Pollution Prevention Plan | Impress USA 3030 Birch Drive Half Moon Industrial Park Weirton, WV 26062 | 2009 | \$4,750.00 | \$4,750.00 |
| Tier II Reporting Precision Sistersville, WV | EPA Tier II Chemical Reporting Preparation and Submittal | Precision, LLC 435 Burt St Sistersville, WV, 26175-1607 | 2009 | \$4,200.00 | \$4,200.00 |
| Phase I ESA Proposed Hotel Cross Lanes, WV | Phase I ESA | Cross Lanes Hospitality, LLC Cross Lanes, WV | 2008 | \$4,000.00 | \$4,000.00 |
| Phase II ESA Randolph Engineering Charleston, WV | Phase II ESA Soil and Groundwater Sampling | Randolph Engineering Charleston, WV | 2008 | \$13,500.00 | \$13,500.00 |

16. PRESENT ACTIVITIES ON WHICH YOU ARE ASSOCIATED WITH OTHERS

| PROJECT NAME, TYPE AND LOCATION | NATURE OF FIRMS RESPONSIBILITY | NAME AND ADDRESS OF OWNER | ESTIMATED COMPLETION DATE | ESTIMATED CONSTRUCTION COST | |
|---------------------------------|--------------------------------|---------------------------|---------------------------|-----------------------------|---------------------------|
| | | | | ENTIRE PROJECT | YOUR FIRMS RESPONSIBILITY |

NGE Geotechnical Consulting Services

16. PRESENT ACTIVITIES ON WHICH YOU ARE ASSOCIATED WITH OTHERS

| PROJECT NAME, TYPE AND LOCATION | NATURE OF FIRMS RESPONSIBILITY | NAME AND ADDRESS OF OWNER | ESTIMATED COMPLETION DATE | ESTIMATED CONSTRUCTION COST | |
|---|--------------------------------|---------------------------|---------------------------|-----------------------------|---------------------------|
| | | | | ENTIRE PROJECT | YOUR FIRMS RESPONSIBILITY |
| Lucille Stalnaker Bridge Gilmer County, WV | Geotechnical Engineer | WVDOH Charleston, WV | Unknown | Unknown | \$22,000.00 |
| I-64 Over Twelvepole Creek Wayne County, WV | Geotechnical Engineer | WVDOH Charleston, WV | Unknown | Unknown | \$10,000.00 |
| Yeager & Wintz Bridges Kanawha County, WV | Geotechnical Engineer | WVDOH Charleston, WV | Unknown | Unknown | \$5,000.00 |
| Beech Fork Bridge, Wayne County WV | Geotechnical Engineer | WVDOH Charleston, WV | Unknown | Unknown | \$16,000.00 |
| Mickliff Truss Bridge Lincoln County, WV | Geotechnical Engineer | WVDOH Charleston, WV | Unknown | Unknown | \$21,000.00 |
| Orlando Bridge Braxton County, WV | Geotechnical Engineer | WVDOH Charleston, WV | Unknown | Unknown | \$23,000.00 |
| Pennsylvania Ave. Tunnel Extension, Kanawha County, WV | Geotechnical Engineer | WVDOH Charleston, WV | 2008 | Unknown | \$15,000.00 |

16. PRESENT ACTIVITIES ON WHICH YOU ARE ASSOCIATED WITH OTHERS

| PROJECT NAME, TYPE AND LOCATION | NATURE OF FIRMS RESPONSIBILITY | NAME AND ADDRESS OF OWNER | ESTIMATED COMPLETION DATE | ESTIMATED CONSTRUCTION COST | |
|---------------------------------|--------------------------------|---------------------------|---------------------------|-----------------------------|---------------------------|
| | | | | ENTIRE PROJECT | YOUR FIRMS RESPONSIBILITY |

NGE Drilling Services

16. PRESENT ACTIVITIES ON WHICH YOU ARE ASSOCIATED WITH OTHERS

| PROJECT NAME, TYPE AND LOCATION | NATURE OF FIRMS RESPONSIBILITY | NAME AND ADDRESS OF OWNER | ESTIMATED COMPLETION DATE | ESTIMATED CONSTRUCTION COST | |
|--|--------------------------------|---------------------------|---------------------------|-----------------------------|---------------------------|
| | | | | ENTIRE PROJECT | YOUR FIRMS RESPONSIBILITY |
| Dundon Bridge Core Drilling Clay County, WV | Core Drilling | WVDOH Charleston, WV | 2006 | Unknown | \$3,500.00 |
| Chesapeake Bridge Replacement Kanawha County, WV | Core Drilling | WVDOH Charleston, WV | 2006 | Unknown | \$20,000.00 |
| U.S. Route 35 Mason County, WV | Core Drilling | WVDOH Charleston, WV | Unknown | Unknown | \$12,000.00 |
| WV Route 10 Logan County, WV | Core Drilling | WVDOH Charleston, WV | Unknown | Unknown | \$8,000.00 |
| South Mineral Wells Interchange Wood County, WV | Core Drilling | WVDOH Charleston, WV | Unknown | Unknown | \$5,000.00 |
| Pennsylvania Ave. Tunnel Extension Kanawha County, WV | Geotechnical Engineer | WVDOH Charleston, WV | 2008 | Unknown | \$15,000.00 |
| | | | | | |

| 17. COMPLETED WORK WITHIN LAST 10 YEARS ON WHICH YOU WERE THE DESIGNATED ENGINEER OF RECORD | PROJECT NAME, TYPE AND LOCATION | NAME AND ADDRESS OF OWNER | ESTIMATED CONSTRUCTION COST | YEAR | CONSTRUCTED (YES OR NO) |
|---|---------------------------------|---------------------------|-----------------------------|------|-------------------------|
| <p>NGE Environmental Consulting Services</p> | | | | | |
| | | | | | |

17. COMPLETED WORK WITHIN LAST 10 YEARS ON WHICH YOU WERE THE DESIGNATED ENGINEER OF RECORD

| PROJECT NAME, TYPE AND LOCATION | NAME AND ADDRESS OF OWNER | ESTIMATED CONSTRUCTION COST | YEAR | CONSTRUCTED (YES OR NO) |
|---------------------------------|---------------------------|-----------------------------|------|-------------------------|
|---------------------------------|---------------------------|-----------------------------|------|-------------------------|

NGE Geotechnical Consulting Services

| | | | | |
|--------------------------|--|--|--|--|
| Empty table body content | | | | |
|--------------------------|--|--|--|--|

| | | | | |
|--|--|--|--|--|
| | | | | |
|--|--|--|--|--|

17. COMPLETED WORK WITHIN LAST 10 YEARS ON WHICH YOU WERE THE DESIGNATED ENGINEER OF RECORD

| PROJECT NAME, TYPE AND LOCATION | NAME AND ADDRESS OF OWNER | ESTIMATED CONSTRUCTION COST | YEAR | CONSTRUCTED (YES OR NO) |
|---|---|-----------------------------|------|-------------------------|
| White Sulphur Hill Lot 68 Pile Retaining Wall White Sulphur Springs, WV | The Greenbrier Sporting Club 300 West Main Street White Sulphur Springs, WV | \$40,000.00 | 2004 | YES |
| Reed Landslide Cross Lanes, WV | Brian Reed 115 Carter Street Ripley, WV 25271 | \$50,000.00 | 2006 | YES |
| Hinton Housing Development Retaining Wall Design Hinton, WV | J. Dan Snead & Associates, Inc. 3049 Robert C. Byrd Dr. Suite 200 Beckley, WV | \$50,000.00 | 2007 | YES |
| Mancuso Access Road Roadway Design Glen Lyn, VA | Jerry Mancuso Route 1 Box 163 Lindsay, WV 24951 | \$10,000.00 | 2007 | No |
| | | | | |
| | | | | |
| | | | | |
| | | | | |

17. COMPLETED WORK WITHIN LAST 10 YEARS ON WHICH YOU WERE THE DESIGNATED ENGINEER OF RECORD

| PROJECT NAME, TYPE AND LOCATION | NAME AND ADDRESS OF OWNER | ESTIMATED CONSTRUCTION COST | YEAR | CONSTRUCTED (YES OR NO) |
|---------------------------------|---------------------------|-----------------------------|------|-------------------------|
| <p>NGE Drilling Services</p> | | | | |
| | | | | |

17. COMPLETED WORK WITHIN LAST 10 YEARS ON WHICH YOU WERE THE DESIGNATED ENGINEER OF RECORD

| PROJECT NAME, TYPE AND LOCATION | NAME AND ADDRESS OF OWNER | ESTIMATED CONSTRUCTION COST | YEAR | CONSTRUCTED (YES OR NO) |
|---------------------------------|---------------------------|-----------------------------|------|-------------------------|
| None | | | | |
| | | | | |
| | | | | |
| | | | | |
| | | | | |
| | | | | |
| | | | | |
| | | | | |

18. COMPLETED WORK WITHIN LAST 10 YEARS ON WHICH YOU WERE ASSOCIATED WITH OTHER FIRMS (INDICATE PHASE OF WORK FOR WHICH YOUR FIRM WAS RESPONSIBLE)

| PROJECT NAME, TYPE AND LOCATION | NAME AND ADDRESS OF OWNER | ESTIMATED CONSTRUCTION COST OF YOUR FIRM'S PORTION | YEAR | CONSTRUCTED (YES OR NO) | FIRM ASSOCIATED WITH |
|---------------------------------|---------------------------|--|------|-------------------------|----------------------|
|---------------------------------|---------------------------|--|------|-------------------------|----------------------|

NGE Environmental Consulting Services

19. Use this space to provide any additional information or description of resources supporting your firm's qualifications to perform work for the West Virginia Division of Highways.

20. The foregoing is a statement of facts.

Signature: John E. Nottingham Title: Vice President Date: September 17, 2009

Printed Name: John E. Nottingham

NOTE: THIS DOCUMENT WILL BECOME VOID AFTER DECEMBER 31 IN CALENDAR YEAR OF DATE HEREON.

18. COMPLETED WORK WITHIN LAST 10 YEARS ON WHICH YOU WERE ASSOCIATED WITH OTHER FIRMS (INDICATE PHASE OF WORK FOR WHICH YOUR FIRM WAS RESPONSIBLE)

| PROJECT NAME, TYPE AND LOCATION | NAME AND ADDRESS OF OWNER | ESTIMATED CONSTRUCTION COST OF YOUR FIRM'S PORTION | YEAR | CONSTRUCTED (YES OR NO) | FIRM ASSOCIATED WITH |
|--|--|--|----------|-------------------------|----------------------|
| Soil Remediation Buckhannon, WV site | Various locations West Virginia | \$26,500.00 | 2003 | | ERM - Pittsburgh, PA |
| FAA Radar Site Investigations Soil Assessment | FAA Pittsburgh, PA | \$35,945.00 | 2004 | | |
| Hazardous Material Survey for Randolph Engineering | Martinsburg, WV | \$1,650.00 | 2004 | | Randolph Engineering |
| Ergon Total Annual Benzene Evaluation | 9995 Ohio River Blvd Newell, WV, 26050-1195 | \$15,000.00 | 2004 | | |
| Compliance Assistance Precision Sistersville, WV | 435 Burt St Sistersville, WV, 26175-1607 | \$2,500.00 | 2006 | | |
| Phase I ESA Prestera | Prestera Center Charleston, WV | \$2,750.00 | 2007 | | |
| Environmental Compliance Assistance Impress USA | Impress USA 3030 Birch Drive Half Moon Industrial Park Weirton, WV 26062 | \$22,000.00 | On-going | | |

19. Use this space to provide any additional information or description of resources supporting your firm's qualifications to perform work for the West Virginia Division of Highways.

20. The foregoing is a statement of facts.

Signature: John E. Nottingham

Printed Name: John E. Nottingham

Title: Vice President

Date: September 17, 2009

18. COMPLETED WORK WITHIN LAST 10 YEARS ON WHICH YOU WERE ASSOCIATED WITH OTHER FIRMS (INDICATE PHASE OF WORK FOR WHICH YOUR FIRM WAS RESPONSIBLE)

| PROJECT NAME, TYPE AND LOCATION | NAME AND ADDRESS OF OWNER | ESTIMATED CONSTRUCTION COST OF YOUR FIRM'S PORTION | YEAR | CONSTRUCTED (YES OR NO) | FIRM ASSOCIATED WITH |
|---------------------------------|---------------------------|--|------|-------------------------|----------------------|
|---------------------------------|---------------------------|--|------|-------------------------|----------------------|

NGE Geotechnical Services

19. Use this space to provide any additional information or description of resources supporting your firm's qualifications to perform work for the West Virginia Division of Highways.

20. The foregoing is a statement of facts.

Signature: John E. Nottingham

Title: Vice President

Date: September 17, 2009

Printed Name: John E. Nottingham

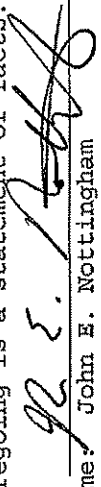
NOTE: THIS DOCUMENT WILL BECOME VOID AFTER DECEMBER 31 IN CALENDAR YEAR OF DATE HEREON.

18. COMPLETED WORK WITHIN LAST 10 YEARS ON WHICH YOU WERE ASSOCIATED WITH OTHER FIRMS (INDICATE PHASE OF WORK FOR WHICH YOUR FIRM WAS RESPONSIBLE)

| PROJECT NAME, TYPE AND LOCATION | NAME AND ADDRESS OF OWNER | ESTIMATED CONSTRUCTION COST OF YOUR FIRM'S PORTION | YEAR | CONSTRUCTED (YES OR NO) | FIRM ASSOCIATED WITH |
|--|---|--|------|-------------------------|--|
| Ravenswood Eyecare Geotechnical Investigation Ravenswood, WV | Dr. Ben Mize 2020 Professional Circle Ravenswood, WV 25302 | \$3,000.00 | 2008 | | |
| Kentucky Fried Chicken Restaurant Geotechnical Investigation Hurricane, WV | BW Painter, Inc. 1508 Bigley Avenue Charleston, WV 25302 | \$3,000.00 | 2008 | | |
| Greif Brothers Warehouse Geotechnical Investigation Huntington, WV | | \$7,000.00 | 2008 | | Edward Tucker Architects 916 5th Ave, Suite 208, Huntington, WV 25701 |
| Grafton Walgreens Geotechnical Investigation Grafton, WV | ML Grafton, LLC 8869 Brecksville Rd., Suite A Brecksville, OH 44141 | \$4,000.00 | 2008 | | |
| Target Drilling Office Building, Geotechnical Investigation Smithton, PA | Target Drilling, Inc. 5134 Oak Road Jefferson Hills, PA 15205 | \$4,000.00 | 2008 | | |
| I-64 Bridge over Hal Greer Blvd CSL Testing Huntington, WV | West Virginia Department of Highways Charleston, WV | \$17,000.00 | 2008 | | |
| Corridor H Highway QC Testing Soil Compaction & Concrete Grant County, WV | West Virginia Department of Highways Charleston, WV | \$75,000.00 | 2008 | | |

19. Use this space to provide any additional information or description of resources supporting your firm's qualifications to perform work for the West Virginia Division of Highways.

20. The foregoing is a statement of facts.

Signature: 

Printed Name: John E. Nottingham

Title: Vice President

Date: September 17, 2009

NOTE: THIS DOCUMENT WILL BECOME VOID AFTER DECEMBER 31 IN CALENDAR YEAR OF DATE HEREON.

18. COMPLETED WORK WITHIN LAST 10 YEARS ON WHICH YOU WERE ASSOCIATED WITH OTHER FIRMS (INDICATE PHASE OF WORK FOR WHICH YOUR FIRM WAS RESPONSIBLE)

| PROJECT NAME, TYPE AND LOCATION | NAME AND ADDRESS OF OWNER | ESTIMATED CONSTRUCTION COST OF YOUR FIRM'S PORTION | YEAR | CONSTRUCTED (YES OR NO) | FIRM ASSOCIATED WITH |
|---------------------------------|---------------------------|--|------|-------------------------|----------------------|
|---------------------------------|---------------------------|--|------|-------------------------|----------------------|

NGE Drilling Services

| |
|--|
| |
|--|

19. Use this space to provide any additional information or description of resources supporting your firm's qualifications to perform work for the West Virginia Division of Highways.

20. The foregoing is a statement of facts.

Signature: John E. Nottingham

Printed Name: John E. Nottingham

Title: Vice President

Date: September 17, 2009

NOTE: THIS DOCUMENT WILL BECOME VOID AFTER DECEMBER 31 IN CALENDAR YEAR OF DATE HEREON.

18. COMPLETED WORK WITHIN LAST 10 YEARS ON WHICH YOU WERE ASSOCIATED WITH OTHER FIRMS (INDICATE PHASE OF WORK FOR WHICH YOUR FIRM WAS RESPONSIBLE)

| PROJECT NAME, TYPE AND LOCATION | NAME AND ADDRESS OF OWNER | ESTIMATED CONSTRUCTION COST OF YOUR FIRM'S PORTION | YEAR | CONSTRUCTED (YES OR NO) | FIRM ASSOCIATED WITH |
|---|---|--|------|-------------------------|---|
| Tank Foundation Jane Lew, WV | Chesapeake Energy Charleston, WV | \$2,005.00 | 2007 | Yes | Pray Construction Scott Depot, WV |
| Fairmont Water Park Fairmont, WV | American Resort Management, LLC | \$4,500.00 | 2007 | Under Construction | Ahern & Associates |
| Air National Guard Charleston, WV | Air National Guard Charleston, WV | \$1,050.00 | 2007 | Yes | Terradon Nitro, WV |
| Harrison Marion Regional Airport Clarksburg, WV | Harrison Marion Regional Airport Clarksburg, WV | \$5,197.50 | 2007 | Yes | Thrasher Engineering Clarksburg, WV |
| Foster Supply Wall Scott Depot, WV | Foster Supply Co. 4847 Teays Valley Road St. Albans, WV | \$1,215.00 | 2007 | Yes | Foster Supply Scott Depot, WV |
| Foundation Coal Wayne County, WV | Foundation Coal Co. Wayne County, WV | \$4,500.00 | 2006 | Yes | DLZ Columbus, OH |
| Tri-State Dog Track Nitro, WV | Racing Corporation Of West Virginia 1 Greyhound Dr, Charleston, WV 25313 | \$616.00 | 2006 | Yes | Terradon Nitro, WV |

19. Use this space to provide any additional information or description of resources supporting your firm's qualifications to perform work for the West Virginia Division of Highways.

20. The foregoing is a statement of facts.

Signature: John E. Nottingham
Printed Name: John E. Nottingham

Title: Vice President

Date: September 17, 2009

NOTE: THIS DOCUMENT WILL BECOME VOID AFTER DECEMBER 31 IN CALENDAR YEAR OF DATE HEREON.

**WEST VIRGINIA DEPARTMENT OF ENVIRONMENTAL PROTECTION
AML CONSULTANT QUALIFICATION QUESTIONNAIRE Attachment "B"**

| | | | |
|---|-------------------------------|---|---|
| PROJECT NAME WVDEP Various Projects | | DATE (DAY, MONTH, YEAR) 01/14/2009 | FEIN 55-0687626 |
| 1. FIRM NAME TERRADON Corporation | | 3. FORMER FIRM NAME | |
| 4. HOME OFFICE TELEPHONE (304) 755-8291 | 5. ESTABLISHED (YEAR) 1989 | 6. TYPE OWNERSHIP Individual <input checked="" type="checkbox"/> Corporation Partnership <input type="checkbox"/> Joint-Venture | 6a. WV REGISTERED DBE (Disadvantaged Business Enterprise) YES <input type="checkbox"/> NO <input checked="" type="checkbox"/> |
| 7. PRIMARY AML DESIGN OFFICE: ADDRESS/ TELEPHONE/ PERSON IN CHARGE/ NO. AML DESIGN PERSONNEL EACH OFFICE 401 Jacobson Drive, Poca, WV 25159 / (304)-755-8291 / Thomas Y. Kittredge, President / 48 persons | | | |

| | |
|---|--|
| 8. NAMES OF PRINCIPAL OFFICERS OR MEMBERS OF FIRM Thomas Y Kittredge, President Virginia L. King, CFO | 8a. NAME, TITLE, & TELEPHONE NUMBER - OTHER PRINCIPALS Timothy T White, P.E. , Principal Engineer |
|---|--|

| | |
|---|---|
| 9. PERSONNEL BY DISCIPLINE | |
| 5 ADMINISTRATIVE — ARCHITECTS 1 BIOLOGIST 9 CADD OPERATORS — CHEMICAL ENGINEERS 5 CIVIL ENGINEERS 8 CONSTRUCTION INSPECTORS 1 DESIGNERS — DRAFTSMEN | 4 LANDSCAPE ARCHITECTS — MECHANICAL ENGINEERS — MINING ENGINEERS — PHOTOGRAMMETRISTS — PLANNERS: URBAN/REGIONAL — SANITARY ENGINEERS 1 SOILS ENGINEERS — SPECIFICATION WRITERS |
| | 1 STRUCTURAL ENGINEERS 10 SURVEYORS — TRAFFIC ENGINEERS — OTHER |
| TOTAL NUMBER OF WV REGISTERED PROFESSIONAL ENGINEERS IN PRIMARY OFFICE: 5 | |
| *RPEs other than Civil and Mining must provide supporting documentation that qualifies them to supervise and perform this type of work. | |

| | | |
|--|------------------------------|-----------------------------|
| 10. HAS THIS JOINT-VENTURE WORKED TOGETHER BEFORE? | <input type="checkbox"/> YES | <input type="checkbox"/> NO |
|--|------------------------------|-----------------------------|

11. OUTSIDE KEY CONSULTANTS/SUB-CONSULTANTS ANTICIPATED TO BE USED. Attach "AML Consultant Qualification Questionnaire".

| | | |
|--|-----------------------------------|---|
| <p>NAME AND ADDRESS: Triad Engineering 4980 Teays Valley Road Scott Depot WV 25560</p> | <p>Drilling, Soils Lab</p> | <p>WORKED WITH BEFORE <input checked="" type="checkbox"/> Yes <input type="checkbox"/> No</p> |
| <p>NAME AND ADDRESS: Bio-Chem Testing, Inc. PO Box 634 Teays WV 25569</p> | <p>Water Lab</p> | <p>WORKED WITH BEFORE <input checked="" type="checkbox"/> Yes <input type="checkbox"/> No</p> |
| <p>NAME AND ADDRESS:</p> | <p></p> | <p>WORKED WITH BEFORE <input type="checkbox"/> Yes <input type="checkbox"/> No</p> |
| <p>NAME AND ADDRESS:</p> | <p>SPECIALTY:</p> | <p>WORKED WITH BEFORE <input type="checkbox"/> Yes <input type="checkbox"/> No</p> |
| <p>NAME AND ADDRESS:</p> | <p>SPECIALTY:</p> | <p>WORKED WITH BEFORE <input type="checkbox"/> Yes <input type="checkbox"/> No</p> |
| <p>NAME AND ADDRESS:</p> | <p>SPECIALTY:</p> | <p>WORKED WITH BEFORE <input type="checkbox"/> Yes <input type="checkbox"/> No</p> |
| <p>NAME AND ADDRESS:</p> | <p>SPECIALTY:</p> | <p>WORKED WITH BEFORE <input type="checkbox"/> Yes <input type="checkbox"/> No</p> |
| <p>NAME AND ADDRESS:</p> | <p>SPECIALTY:</p> | <p>WORKED WITH BEFORE <input type="checkbox"/> Yes <input type="checkbox"/> No</p> |
| <p>NAME AND ADDRESS:</p> | <p>SPECIALTY:</p> | <p>WORKED WITH BEFORE <input type="checkbox"/> Yes <input type="checkbox"/> No</p> |

12. A. Is your firm experienced in Abandoned Mine Lands Remediation/Mine Reclamation Engineering?

YES Description and Number of Projects: **35 Projects for WVDEP/AML&R**

NO

B. Is your firm experienced in Soil Analysis?

YES Description and Number of Projects: **24 WVDEP/AML&R projects included some soil analysis.**

TERRADON provides geotechnical engineering on a wide variety of projects including dams, highways, bridges, etc.

NO

C. Is your firm experienced in hydrology and hydraulics?

YES Description and Number of Projects: **24 WVDEP/AML&R projects included hydrology and hydraulics.**

NO

D. Does your firm produce its own Aerial Photography and Develop Contour Mapping?

YES Description and Number of Projects:

NO **We routinely provide photo control surveys and field edit the mapping provided.**

E. Is your firm experienced in domestic waterline design? (Include any experience your firm has in evaluation of aquifer degradation as a result of mining.)

YES Description and Number of Projects: **9 WVDEP/AML&R projects included the evaluation of aquifer degradation as a result of mining. Four of those projects have been designed and constructed. TERRADON has also designed hundreds of miles of waterline in the last 5 years.**

NO

F. Is your firm experienced in Acid Mine Drainage Evaluation and Abatement Design?

YES Description and Number of Projects: **5 WVDEP/AML&R projects included acid mine drainage evaluation and abatement. In addition, TERRADON was 1 of only 2 firms evaluating and designing AMD abatement of special reclamation projects in 1992, 1993 and 1994.**

NO

13. PERSONAL HISTORY STATEMENT OF PRINCIPALS AND ASSOCIATES RESPONSIBLE FOR AML PROJECT DESIGN (Furnish complete data but keep to essentials)

NAME & TITLE (Last, First, Middle Int.)
James, John W., P.E.
Senior Geotechnical Engineer

YEARS OF AML DESIGN EXPERIENCE: **8**

YEARS OF RELATED DESIGN EXPERIENCE: **30**

YEARS OF DOMESTIC WATERLINE DESIGN EXPERIENCE: **8**

Brief Explanation of Responsibilities

Geotechnical Project Manager for TERRADON Corporation. Responsible for contract administration and project management; peer review of design, construction drawings and specifications; constructability review and construction cost estimate.

EDUCATION (Degree, Year, Specialization)
B.S., 1968, Civil Engineering

MEMBERSHIP IN PROFESSIONAL ORGANIZATIONS
American Society of Civil Engineers (Past President, WV Section)

REGISTRATION (Type, Year, State)
P.E., 1973, WV

13. PERSONAL HISTORY STATEMENT OF PRINCIPALS AND ASSOCIATES RESPONSIBLE FOR AML PROJECT DESIGN (Furnish complete data but keep to essentials)

NAME & TITLE (Last, First, Middle Int.)
White, Timothy T., P.E.
Project Manager, Civil Engineer

YEARS OF AML DESIGN EXPERIENCE: **3**

YEARS OF RELATED DESIGN EXPERIENCE: **16**

YEARS OF DOMESTIC WATERLINE DESIGN EXPERIENCE: **0**

Brief Explanation of Responsibilities

Project Manager responsible for resource management to assure project schedule and cost. Engineer responsible for grading, hydraulic design, erosion and sediment control, natural stream channel assessment and design.

EDUCATION (Degree, Year, Specialization)
B.S., 1992, Civil Engineering

MEMBERSHIP IN PROFESSIONAL ORGANIZATIONS
American Society of Civil Engineers
American Council of Engineering Companies

REGISTRATION (Type, Year, State)
P.E., 1990, MO; P.E., 1992, WV; P.E., 2007, VA

13. PERSONAL HISTORY STATEMENT OF PRINCIPALS AND ASSOCIATES RESPONSIBLE FOR AML PROJECT DESIGN (Furnish complete data but keep to essentials)

| | | | |
|---|--|---|---|
| NAME & TITLE (Last, First, Middle Int.) White, William, P.E. Senior Structural Engineer | YEARS OF EXPERIENCE | | YEARS OF DOMESTIC WATERLINE DESIGN EXPERIENCE: 0 |
| | YEARS OF AML DESIGN EXPERIENCE: 3 | YEARS OF AML RELATED DESIGN EXPERIENCE: 19 | |

Brief Explanation of Responsibilities
Senior engineer responsible for structural analysis, design engineering, field investigation, specification writing, engineer's cost estimate, prebid and preconstruction meetings. Experienced in retaining wall design.

EDUCATION (Degree, Year, Specialization)
B.S., 1987, Civil Engineering

MEMBERSHIP IN PROFESSIONAL ORGANIZATIONS
American Society of Civil Engineers
American Council of Engineering Companies

REGISTRATION (Type, Year, State)
P.E., 1997,WV; P.E., 1996, OH; P.E., 1999, VA; P.E., 2000, FL; P.E., 2000, NC; P.E., 2000, AR; P.E., 2001, KY

13. PERSONAL HISTORY STATEMENT OF PRINCIPALS AND ASSOCIATES RESPONSIBLE FOR AML PROJECT DESIGN (Furnish complete data but keep to essentials)

| | | | |
|---|--|---|---|
| NAME & TITLE (Last, First, Middle Int.) Brown, David A., P.S. Professional Surveyor | YEARS OF EXPERIENCE | | YEARS OF DOMESTIC WATERLINE DESIGN EXPERIENCE: 6 |
| | YEARS OF AML DESIGN EXPERIENCE: 6 | YEARS OF AML RELATED DESIGN EXPERIENCE: 13 | |

Brief Explanation of Responsibilities
Responsible for all aspects of surveying including photogrammetry control, if required, field editing of mapping, topographic mapping, establishment of survey control monuments and establishing base lines for construction layout and quantity measurement. Also, tax map overlays and detailed property clarifications.

EDUCATION (Degree, Year, Specialization)
B.S., 1996, Engineering Technology

MEMBERSHIP IN PROFESSIONAL ORGANIZATIONS
West Virginia Association of Land Surveyors

REGISTRATION (Type, Year, State)
P.S. 2003, WV

14. PROVIDE A LIST OF SOFTWARE AND EQUIPMENT AVAILABLE IN THE PRIMARY OFFICE WHICH WILL BE USED TO COMPLETE AML
DESIGN SERVICES

Software

Autodesk 2007 Land Development Desktop with Civil and Survey Design Modules

SedCad 4 - Erosion Control and Hydrology Software

Haested Method Flowmaster Software for Channel Design

Haested Methods - Water CADD (Pipe Network Analysis)

Slope Stability -

PC Stable

REAME

SBSLOPE

WinStable and WinStable 2003

Piling Walls, Anchors and Reinforced Earth Walls -

Lpile

HeliCAP

Anchor 400

KeyWall 2004

TR 55, TR 20, TR 66 (Sites) - Hydrology

Hec-1, Hec HMS 2.22, Hec R As 3.1.2 - Hydrology

LC 58 + RP 61 - Structural (wall)

Microstation V8

Surveying Equipment

Trimble 4700 modular, RTK Global Positioning Total Station

Trimble Geomatics Office Software

Topcon Total Stations (3)

SMI Data Collectors (3)

Printing/Plotting/Reproduction

HP DesignJet 1050C Plotter

HP DesignJet 759C Plotter

HP LaserJet 8000 Printer (2)

HP Color LaserJet 3700

Sharp AR-550 Copier/Printer (2)

Sharp AR-C150 Full Color Copier/Printer

Océ 7056 Engineering Size Copier

15. PRESENT ACTIVITIES ON WHICH YOU ARE THE DESIGNATED ENGINEER OF RECORD

| PROJECT NAME, TYPE AND LOCATION | NAME AND ADDRESS OF OWNER | ESTIMATED CONSTRUCTION COST | PERCENT COMPLETE |
|---|---|-----------------------------|------------------|
| Sawmill Village Development Site/civil Design, Snowshoe, West Virginia | Summit III, LLC 295 Seven Farms Drive Charleston, WV 29492 | \$100,000,000 | 50% |
| WV Route 2 Water Line Extensions Huntington, West Virginia | West Virginia American Water PO Box 1906 Charleston WV 25327 | \$450,000 | 0% |
| New Hope 1 MG Water Storage Tank New Hope, West Virginia | West Virginia American Water PO Box 1906 Charleston WV 25327 | \$600,000 | 99% |
| Salt Rock PSD Water Main Extensions Salt Rock, West Virginia | Salt Rock PSD & Cabell County Commission Huntington, West Virginia | \$2,000,000 | 50% |
| Derrick Creek Water Line Extensions Sissonville, West Virginia | West Virginia American Water PO Box 1906 Charleston WV 25327 | \$1,500,000 | 0% |
| Charleston Replacement Housing Site/Civil for CRH 1-5 Charleston, West Virginia | Alan Ives Construction 10 South La Salle Street, Suite 3440 Chicago, Illinois 60603 | \$20,000,000 | 50% |
| Putnam County 2006 Water Main Extensions, Putnam County, West Virginia | Putnam County Commission 3389 Winfield Road Winfield, WV 25213 | \$3,300,000 | 98% |

Continued on next page

15. PRESENT ACTIVITIES ON WHICH YOU ARE THE DESIGNATED ENGINEER OF RECORD

| PROJECT NAME, TYPE AND LOCATION | NAME AND ADDRESS OF OWNER | ESTIMATED CONSTRUCTION COST | PERCENT COMPLETE |
|---|---|---|------------------|
| Fort Lee Hydraulic Study, Water Line Extensions, and New Fuel Tanks Hope Well, Virginia | Virginia American Water Company 900 Industrial Street Hopewell, VA 23860 | \$450,000 | 99% |
| Fairmont Water Park Fairmont, West Virginia | City Fairmont 200 Jackson Street Fairmont, West Virginia 26554 | \$3,000,000 | 90% |
| Yeager Airport Parking Deck Charleston, West Virginia | BBL Carlton PO Box 1153 Charleston, WV 25324 | \$3,000,000 | 15% |
| Relocate CR 18, Eccles, Raleigh County, West Virginia | WVDOT Building 5, Room A-110 1900 Kanawha Blvd. East Charleston WV 25305 | \$2,000,000 | 80% |
| Sleeths Run Bridge CR119/1 Lewis County West, Virginia | WVDOT Building 5, Room A-110 1900 Kanawha Blvd. East Charleston WV 25305 | \$2,000,000 | 20% |
| 44 Various Cell Tower Sites Throughout West Virginia | NTelos 1150 Shenandoah Village Drive Waynesboro, VA 22980 | \$3,000,000 | 25% |
| TOTAL NUMBER OF PROJECTS: 13 | | TOTAL ESTIMATED CONSTRUCTION COSTS: \$141,300,000 | |

16. CURRENT ACTIVITIES ON WHICH YOUR FIRM IS SERVING AS A SUB-CONSULTANT TO OTHERS

| PROJECT NAME, TYPE AND LOCATION | NATURE OF FIRMS RESPONSIBILITY | NAME AND ADDRESS OF OWNER | ESTIMATED COMPLETION DATE | ESTIMATED CONSTRUCTION COST | |
|--|--------------------------------|---|---------------------------|-----------------------------|---------------------------|
| | | | | ENTIRE PROJECT | YOUR FIRMS RESPONSIBILITY |
| Mingo Central High Sch Mingo County, West Virginia | Civil, Site Design, Surveying | Mingo County BOE Sycamore Street Williamson, WV 25661 | 2008 | \$20,000,000 | 15% |
| Marshall Community & Technical College Huntington, West Virginia | Civil, Site Design, Surveying | Marshall University Facilities Planning & Management, Huntington, WV | 2009 | \$20,000,000 | 15% |
| New Teays Elementary Scott Depot, West Virginia | Civil, Site Design, Surveying | Putnam County BOE Winfield, WV 25213 | 2008 | \$12,000,000 | 15% |
| Moorefield Intermediate School Moorefield, West Virginia | Civil, Site Design, Surveying, | Hardy County BOE 510 Ashby Street Moorefield, WV 26836 | 2009 | \$12,000,000 | 15% |
| Marshall University, Health & Wellness Center, Dormitories Huntington, WV | Civil, Site Design, Hardscape | Marshall University Facilities Planning & Management, Huntington, WV | 2008 | \$27,000,000 | 10% |
| Twin Falls State Park Lodge Expansion McDowell County, WV | Civil, Site Design | WV Division of Natural Resources, Capitol Building 3, R663 Charleston, WV 25305 | 2008 | \$5,500,000 | 15% |
| University High School Monongalia County, WV | Civil, Site Design | Monongalia County Schools, 668 River Rd Morgantown, WV 26507 | 2008 | \$12,000,000.00 | 20% |

17. COMPLETED WORK WITHIN LAST 5 YEARS ON WHICH YOUR FIRM WAS THE DESIGNATED ENGINEER OF RECORD

| PROJECT NAME, TYPE AND LOCATION | NAME AND ADDRESS OF OWNER | ESTIMATED CONSTRUCTION COST | YEAR | CONSTRUCTED (YES OR NO) |
|--|--|-----------------------------|------|-------------------------|
| US 35 Value Engineering, Ramp 1, WV 34 Interchange Putnam County, West Virginia | WVDOT Building 5, Room A-110 1900 Kanawha Blvd. East Charleston WV 25305 | Saving \$3,000,000 | 2007 | Yes |
| Gypsy Bridge S317-19-23.25 00 Erection Plans Harrison County, West Virginia | Bilco Construction Company, Inc. 805 Wisteria Drive South Charleston, WV 25309 | \$ 20,000 fee | 2008 | Under Construction |
| South Branch Potomac River Bridge, X316-H-100.40 04 Erection Plans Hardy County, West Virginia | Vecellio & Grogan, Inc. P.O. Box 2438 Beckley, WV 25902 | \$31,000,000 | 2008 | Under Construction |
| WV 75 Turning Lanes Fountain Place Development Logan County, West Virginia | WVDOT Building 5, Room A-110 1900 Kanawha Blvd. East Charleston WV 25305 | \$ 600,000 | 2005 | Yes |
| Sedalia Arch Bridge, Bridge Replacement Sedalia, West Virginia | WVDOT Building 5, Room A-110 1900 Kanawha Blvd. East Charleston WV 25305 | \$890,000 | 2006 | Yes |
| Fairmont Coke Works Redevelopment Traffic Study, Fairmont, West Virginia | City Fairmont 200 Jackson Street Fairmont, West Virginia 26554 | \$20,000 fee | 2006 | No |
| St. Mary's (WV 16) Bypass Route Study Pleasants County, WV | WVDOT Building 5, Room A-110 1900 Kanawha Blvd. East Charleston WV 25305 | \$120,000 fee | 2004 | Study |
| Hinton Landslide, Landslide Reclamation Hinton, West Virginia | WVDOT, Division of Highways Building 5, Room A-110 1900 Kanawha Boulevard East Charleston, WV 25305 | \$1,000,000 | 2006 | Yes |

Continued on next page

| 17. COMPLETED WORK WITHIN LAST 5 YEARS ON WHICH YOUR FIRM WAS THE DESIGNATED ENGINEER OF RECORD | | | | | |
|---|---|-----------------------------|------|-------------------------|--|
| PROJECT NAME, TYPE AND LOCATION | NAME AND ADDRESS OF OWNER | ESTIMATED CONSTRUCTION COST | YEAR | CONSTRUCTED (YES OR NO) | |
| Corridor L Widening Design US Route 19 Summersville, West Virginia | WV DOT, Division of Highways Building 5, Room A-110 1900 Kanawha Boulevard East Charleston, WV 25305 | \$12,100,000 | 2005 | No | |
| Upper Fishers Branch/Guthrie Water Main Extension Kanawha County, West Virginia | West Virginia American Water PO Box 1906 Charleston WV 25327 | \$2,800,000 | 2008 | Under Const. | |
| Upper Frame Phase 2 Water Main Extension Kanawha County, West Virginia | Kanawha County RDA & West Virginia American Water PO Box 1906 Charleston WV 25327 | \$2,100,000 | 2008 | Under Const. | |
| Tucker County Landfill Expansion Design of Cell 6 Thomas, West Virginia | Tucker County Solid Waste Authority PO Box 58 Thomas WV 26292 | \$2,500,000 | 2007 | Yes | |
| Montgomery Wastewater Treatment Plant Upgrade, Design Montgomery, West Virginia | City of Montgomery 706 3 rd Avenue Montgomery WV 25136 | \$2,800,000 | 2009 | Under Const. | |
| Back Fork Water Main Extension Webster County, West Virginia | West Virginia American Water PO Box 1906 Charleston WV 25327 | \$800,000 | 2008 | Under Const. | |
| Rabel Mountain Water Main Extensions Kanawha County, West Virginia | WV American Water PO Box 1906 Charleston WV 25327 | \$600,000 | 2007 | Yes | |
| Fort Lee Water Distribution System Upgrade Fort Lee, Virginia | WV American Water PO Box 1906 Charleston WV 25327 | \$1,000,000 | 2006 | Yes | |

Continued on next page

17. COMPLETED WORK WITHIN LAST 5 YEARS ON WHICH YOUR FIRM WAS THE DESIGNATED ENGINEER OF RECORD

| PROJECT NAME, TYPE AND LOCATION | NAME AND ADDRESS OF OWNER | ESTIMATED CONSTRUCTION COST | YEAR | CONSTRUCTED (YES OR NO) |
|--|--|-----------------------------|------|-------------------------|
| Prince Williams 1 Million Gallon Elevated Water Storage Tank Prince Williams County, Virginia | WV American Water PO Box 1906 Charleston WV 25327 | \$1,500,000 | 2006 | Yes |
| Hickory Ridge Water Storage Tank Relocation, County, West Virginia | WV American Water PO Box 1906 Charleston WV 25327 | \$1,000,000 | 2006 | Yes |
| Winfield High School Expansion Winfield, West Virginia | Putnam County BOE Winfield, WV 25213 | \$2,000,000 | 2006 | Yes |
| Fountain Place Mall Phase 2 Site/Civil Design Logan, West Virginia | Fountain Place Mall PO Box 794 Logan, WV 25601 | \$10,000,000 | 2005 | Yes |
| Jenkin Jones Refuse Piles Mine Reclamation McDowell County, West Virginia | WVDEP/AML&R 601 57 TH Street SE Charleston WV 25304 | \$4,000,000 | 2005 | Yes |
| Bendale Dam Repair Design Lewis County, West Virginia | WV American Water PO Box 1906 Charleston WV 25327 | \$100,000 | 2005 | Yes |
| RDA of Charleston Olcott Water Study Kanawha County | WVDEP/AML&R 601 57 TH Street SE Charleston WV 25304 | \$50,000 | 2004 | Study |
| Stonecoal Creek Complex Refuse AML&R Raleigh County | WVDEP/AML&R 601 57 TH Street SE Charleston WV 25304 | \$4,000,000 | 2004 | Yes |
| Pond Gap Waterline Extension Kanawha County | WV American Water/RDA of Charleston-Kanawha Co. | \$2,000,000 | 2004 | Yes |
| Tri-State Gaming Parking Expansion Commercial Site Development Kanawha County | Tri-State Gaming Center PO Box 7118 Cross Lanes WV 25356 | \$1,500,000 | 2004 | Yes |
| Union Ridge Waterline Extension Cabell County | WV American Water/RDA of Charleston-Kanawha Co. | \$2,000,000 | 2004 | Yes |

Continued on next page

17. COMPLETED WORK WITHIN LAST 5 YEARS ON WHICH YOUR FIRM WAS THE DESIGNATED ENGINEER OF RECORD

| PROJECT NAME, TYPE AND LOCATION | NAME AND ADDRESS OF OWNER | ESTIMATED CONSTRUCTION COST | YEAR | CONSTRUCTED (YES OR NO) |
|--|--|-----------------------------|------|-------------------------|
| Witcher Creek Water Line Design | WV American Water PO Box 1906 Charleston WV 25327 | \$550,000 | 2004 | Yes |
| Southridge Expansion Commercial Site Development Kanawha County | RidgeLine, Inc. 400 Second Avenue So. Charleston, WV 25303 | \$8,000,000 | 2003 | Yes |
| Home Depot Commercial Site Development Kanawha County | Ridge Line, Inc. 400 Second Avenue So. Charleston, WV 25303 | \$2,000,000 | 2003 | Yes |
| WV Osteopathic Medical School, Site Development, Greenbrier County | WV School of Osteopathic Medicine 400 North Lee Street Lewisburg, WV 24901 | \$50,000 | 2003 | Yes |
| Toyota Wetland Wetland Mitigation Putnam County | Toyota Motor Corporation of WV, Inc. 1 Sugar Maple Lane Buffalo, WV 25033 | \$120,000 | 2003 | Yes |
| | | | | |
| | | | | |
| | | | | |

| 18. COMPLETED WORK WITHIN LAST 5 YEARS ON WHICH YOUR FIRM HAS BEEN A SUB-CONSULTANT TO OTHER FIRMS (INDICATE PHASE OF WORK FOR WHICH YOUR FIRM AS RESPONSIBLE) | | | | | | |
|--|--|--|------|-------------------------|-------------------------------|--|
| PROJECT NAME, TYPE AND LOCATION | NAME AND ADDRESS OF OWNER | ESTIMATED CONSTRUCTION COST OF YOUR FIRM'S PORTION | YEAR | CONSTRUCTED (YES OR NO) | FIRM ASSOCIATED WITH | |
| Fairmont State University Campus Improvements Fairmont, West Virginia | Fairmont State University 1201 Locust Avenue Fairmont, WV 26554 | \$1,000,000 | 2007 | Yes | Omni Associates | |
| New Teays Elementary Civil, Site Design, Surveying Scott Depot, West Virginia | Putnam County BOE Winfield, WV 25213 | \$1,000,000 | 2008 | Yes | Williamson Shriver Architects | |
| Mountain State University Health Science Building Civil/Site/Surveying Beckley, WV | Mountain State University PO Box 9003 Beckley, WV 25802-9003 | \$1,500,000 | 2007 | Yes | Dan Sneed Architects | |
| WVU Recreation Center Master Plan Morgantown, WV | West Virginia University | \$2,000,000 | 2006 | No | Omni Associates | |
| Doddridge County High School Doddridge County, West Virginia | Doddridge County BOE 104 Sistersville Pike West Union, WV 26456 | \$1,500,000 | 2006 | Yes | Williamson Shriver Architects | |
| Capon Bridge Intermediate School Hampshire County, West Virginia | Hampshire County BOE 46 South High Street Romney, WV 26757 | \$1,000,000 | 2006 | Yes | Williamson Shriver Architects | |
| Fairmont Public Safety Building, Fairmont, West Virginia | City Fairmont 200 Jackson Street Fairmont, West Virginia 26554 | \$4,000,000 | 2005 | Yes | Omni Associates | |
| Jefferson High School Jefferson County, West Virginia | Jefferson County Schools 110 Mordington Ave. Charles Town, WV 25414 | \$2,000,000 | 2005 | No | Helbing Lipp, Ltd. | |
| Lincoln County 911 Center Civil, Site Design Lincoln County, WV | Lincoln County Commission Courthouse Offices Hamlin, West Virginia 25523 | \$400,000 | 2004 | Yes | Omni Associates | |

18. COMPLETED WORK WITHIN LAST 5 YEARS ON WHICH YOUR FIRM HAS BEEN A SUB-CONSULTANT TO OTHER FIRMS (INDICATE PHASE OF WORK FOR WHICH YOUR FIRM AS RESPONSIBLE)

| PROJECT NAME, TYPE AND LOCATION | NAME AND ADDRESS OF OWNER | ESTIMATED CONSTRUCTION COST OF YOUR FIRM'S PORTION | YEAR | CONSTRUCTED (YES OR NO) | FIRM ASSOCIATED WITH |
|--|---|--|------|-------------------------|-------------------------------------|
| WVDEP Headquarters Building, Site/Civil, Survey Kanawha County, WV | WVDEP 601 57 th Street SE Charleston WV 25304 | \$30,000,00.00 | 2004 | Yes | BBL-Carlton |
| Grafton High School Civil, Site Design Grafton, WV | Taylor Co. BOE 1 Prospect Street Grafton WV 26354 | \$1,000,000 | 2004 | Yes | Williamson Shriver Architects, Inc. |
| Fairmont Middle School Civil, Site Design Fairmont, WV | Marion Co. BOE 200 Gaston Avenue Fairmont WV 26554 | \$1,600,000 | 2004 | Yes | Omni Associates |
| Kanawha Co. 911 Civil, Site Design Kanawha Co., WV | Kanawha County Commission 407 Virginia Street E Charleston WV 25301 | \$800,000 | 2004 | Yes | Kreps & Kreps |
| WV Parking Garage, Site Plan, Geotech Charleston, WV | WV Public Service Commission 201 Brooks Street Charleston, WV 25301 | \$500,000.00 | 2003 | Yes | Associated Architects |

19. Use this space to provide any additional information or description of resources supporting your firm's qualifications to perform work for the West Virginia Abandoned Mine Lands Program.

TERRADON has extensive experience in both wet and dry mine seals, with or without bat gates. Our recent experience with Stonecoal creek had over two dozen mine seals. In addition, we have done regrading on numerous other refuse piles and highwalls including Jenkin Jones, Micajah, Linger, Camp Mahonegan, Cedar Creek, and Tappers Creek and Gerath Landslides. Also, we have designed the regrading for numerous other private projects, with great emphasis on providing balanced projects.

20. The foregoing is a statement of facts.



Signature:

Printed Name: Ryan Wheeler

Title: Marketing Director

Date: January 14, 2009

NOTE: THIS DOCUMENT WILL BECOME VOID AFTER DECEMBER 31 IN CALENDAR YEAR OF DATE HEREON.

RFQ No. DEP14800STATE OF WEST VIRGINIA
Purchasing Division**PURCHASING AFFIDAVIT****VENDOR OWING A DEBT TO THE STATE:**

West Virginia Code §5A-3-10a provides that: No contract or renewal of any contract may be awarded by the state or any of its political subdivisions to any vendor or prospective vendor when the vendor or prospective vendor or a related party to the vendor or prospective vendor is a debtor and the debt owed is an amount greater than one thousand dollars in the aggregate.

PUBLIC IMPROVEMENT CONTRACTS & DRUG-FREE WORKPLACE ACT:

West Virginia Code §21-1D-5 provides that: Any solicitation for a public improvement construction contract shall require each vendor that submits a bid for the work to submit at the same time an affidavit that the vendor has a written plan for a drug-free workplace policy in compliance with Article 1D, Chapter 21 of the West Virginia Code. A public improvement construction contract may not be awarded to a vendor who does not have a written plan for a drug-free workplace policy in compliance with Article 1D, Chapter 21 of the West Virginia Code and who has not submitted that plan to the appropriate contracting authority in timely fashion. For a vendor who is a subcontractor, compliance with Section 5, Article 1D, Chapter 21 of the West Virginia Code may take place before their work on the public improvement is begun.

ANTITRUST:

In submitting a bid to any agency for the state of West Virginia, the bidder offers and agrees that if the bid is accepted the bidder will convey, sell, assign or transfer to the state of West Virginia all rights, title and interest in and to all causes of action it may now or hereafter acquire under the antitrust laws of the United States and the state of West Virginia for price fixing and/or unreasonable restraints of trade relating to the particular commodities or services purchased or acquired by the state of West Virginia. Such assignment shall be made and become effective at the time the purchasing agency tenders the initial payment to the bidder.

I certify that this bid is made without prior understanding, agreement, or connection with any corporation, firm, limited liability company, partnership or person or entity submitting a bid for the same materials, supplies, equipment or services and is in all respects fair and without collusion or fraud. I further certify that I am authorized to sign the certification on behalf of the bidder or this bid.

LICENSING:

Vendors must be licensed and in good standing in accordance with any and all state and local laws and requirements by any state or local agency of West Virginia, including, but not limited to, the West Virginia Secretary of State's Office, the West Virginia Tax Department, West Virginia Insurance Commission, or any other state agencies or political subdivision. Furthermore, the vendor must provide all necessary releases to obtain information to enable the Director or spending unit to verify that the vendor is licensed and in good standing with the above entities.

CONFIDENTIALITY:

The vendor agrees that he or she will not disclose to anyone, directly or indirectly, any such personally identifiable information or other confidential information gained from the agency, unless the individual who is the subject of the information consents to the disclosure in writing or the disclosure is made pursuant to the agency's policies, procedures and rules. Vendors should visit www.state.wv.us/admin/purchase/privacy for the Notice of Agency Confidentiality Policies.

Under penalty of law for false swearing (West Virginia Code §61-5-3), it is hereby certified that the vendor acknowledges the information in this said affidavit and is in compliance with the requirements as stated.

Vendor's Name: Qk4Authorized Signature: Date: 11-5-09