



Expression of Interest to Provide:

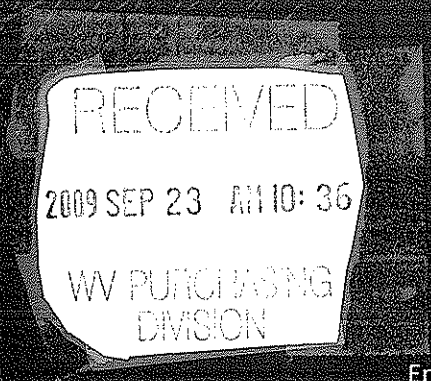
**Engineering Design Services & Construction  
Monitoring Services at the Birds Creek  
#4 Project**

*Requisition # DEP14794*

Submitted to:

**West Virginia Department  
of Environmental Protection**

September 23, 2009



Engineers, Architects and Planners

© 2009 Buchart Horn, Inc.

September 23, 2009

West Virginia Department of Environmental Protection  
 Abandoned Mine Lands & Reclamation  
 c/o State of West Virginia Department of Administration  
 Purchasing Division  
 2019 Washington Street, East  
 Charleston, WV 25305-0130  
 Attn: Chuck Bowman, Buyer

RE: Expression of Interest--Engineering Services for Birds Creek #4

Dear Mr. Bowman:

Buchart Horn Inc. (BH) is pleased to present our Expression of Interest for engineering and construction phase services related to the Birds Creek #4 project in Preston County. We have reviewed your project announcement and reviewed the project requirements. Based on our understanding of this information and a preliminary assessment of potential project solutions, we are very confident in our team's ability to provide you quality, cost efficient service for this assignment.

BH is a full-service engineering and architectural firm with offices in Charleston, Pittsburgh and 14 other locations in the eastern United States and Germany. We have strong experience in site stabilization and remediation design. Our local staff includes registered Professional Engineers and individuals with experience in the AML program. Our team also includes Novel GeoEnvironmental Services, a subconsultant firm that specializes in soils engineering and site characterization. G. Joseph Crittenden will serve as our Project Manager. Mr. Crittenden brings over 26 years of site design experience, including highwall, portal closure and remediation projects. He is currently serving as Project Manager for the Terry Branch Portals and Refuse project in Wyoming County. At his disposal are over 300 professionals including specialists in site and civil engineering, structural, geological, and hydrological engineering, planning, mapping, and site surveying.

In accordance with the instructions outlined in your Request for Expressions of Interest, this package contains a completed copy of the DEP AML Consultant Confidential Qualification Questionnaire. We have also provided additional details on our firm, recent relevant projects, and our proposed project team.

Should you have any questions concerning the information presented herein, please do not hesitate to contact me. We look forward to your favorable review of our Expression of Interest and the opportunity to serve the West Virginia Department of Environmental Protection.

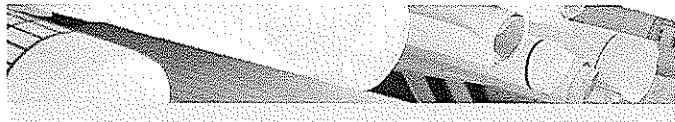
Very truly yours,

BUCHART HORN, INC.



Robert T. Zulick, PE  
 Regional Manager





Project Overview	Section 1
Corporate Overview	Section 2
Project Management & Design Team	Section 3
Relevant Experience	Section 4
Required Forms	Section 5

## Project Overview

The Birds Creek #4 site is located near Preston County Route 58 (Irish Ridge Road). The site is located on a gravel road approximately 300 feet from County Route 58.

The Birds Creek #4 site consists of deep mine portals, acid mine drainage, coal refuse, a highwall, mining debris, and household debris. The portals are either completely or partially open. The highwall is approximately 3,500 feet long with an estimated height of 30 feet. The refuse pile is estimated to be 1/8 acre and is partially vegetated. Several piles of household garbage and mining debris are on-site. WVDEP field measurements of the mine drainage indicate a pH of 2.9 and Fe > 10 mg/l.

## Scope of Work

The Scope of Work for the Birds Creek #4 design project includes the following:

- Design an access road into the site.
- Install bat gate mine seals or wet mine seals as appropriate.
- Design drainage control channels to collect and convey the mine drainage and/or surface runoff safely off-site.
- Utilize on-site refuse to eliminate the highwall.
- Regrade and soil cover all disturbed areas.
- Remove and properly dispose of the mine and household debris.

## General Approach

The approach will follow, but not necessarily be limited to the following items.

- The Project Team will meet on-site with the WVDEP-AML&R personnel. The site visit will set the project boundaries and locate the mine portals. The Project Team will identify the need for geotechnical and surveying services. The surveying/mapping services will create a product that has sufficient accuracy to develop grading, drainage, wet seal mine closures or bat gate mine closures, and erosion control plans with quantities. If aerial mapping is used to develop the plans, field check sections will verify the accuracy of the mapping.

In addition, the team will establish sufficient referenced control points that will allow the contractor to reestablish any disturbed monuments.

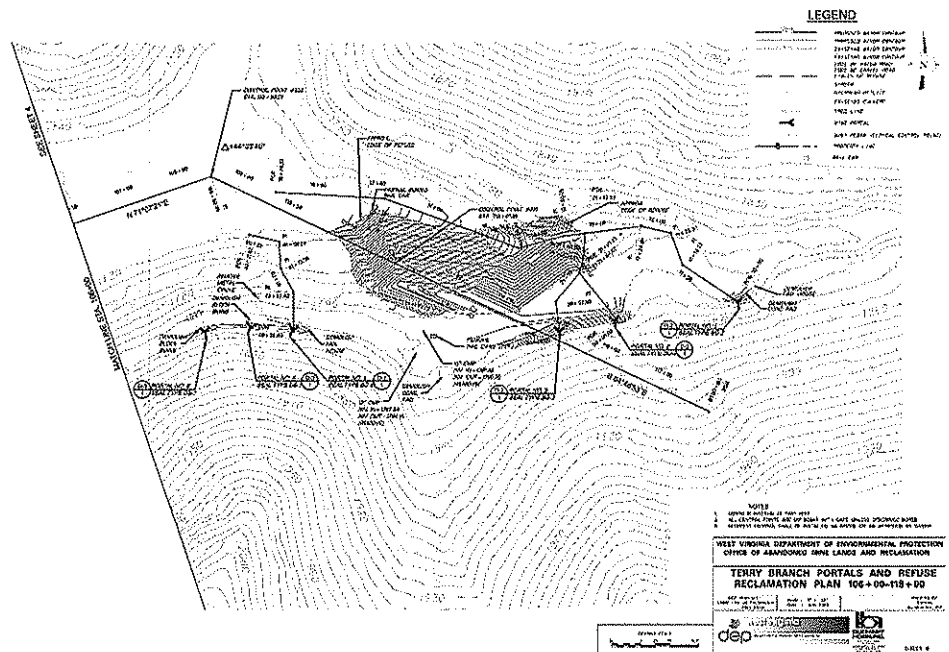
Buchart Horn, Inc. will record comments from any meetings and distribute them in a memorandum format to the Department for review and approval.

- If required, the Project Team will begin subsurface investigation layout, water sampling/testing locations, refuse sampling/testing locations, and if deemed appropriate locations to install piezometer(s).
- Buchart Horn, Inc. will schedule a conceptual design meeting with Department personnel. The meeting will assure that the Project Team is in agreement with the Scope of Work, project limits, and direction of the reclamation design.

Buchart Horn will assemble any project test data and present it to Department personnel at the conceptual design meeting.

Buchart Horn, Inc. will record comments from any meetings and distribute them in a memorandum format to the Department for review and approval.

- Buchart Horn will incorporate comments from the conceptual design meeting into the plans and contract documents.
- The design team will finalize the design and prepare the contract documents for bidding purposes.



For more than 64 years, **Buchart Horn, Inc. Engineers, Architects and Planners** has managed and successfully completed multi-disciplinary design projects throughout the eastern United States. As a full-service architectural and engineering firm that serves our clients through 16 operating offices, we are well positioned to assist our clients with any project.

*Engineering News Record* ranks Buchart Horn among the top 200 environmental firms and the top 200 international design firms. With more than 300 professional and support personnel, we have the ability to meet the most aggressive schedule.

**Locations**

Our firm serves public and private clients around the world from these locations:

Pennsylvania: York, Harrisburg, Hershey, New Cumberland, Pittsburgh, State College, Stroudsburg

Louisiana: Baton Rouge  
Maryland: Baltimore  
Mississippi: Batesville

West Virginia: Charleston

New Jersey: Marlton

Germany: Frankfurt/Main, Kaiserslautern

Tennessee: Memphis, Nashville

**Services**

We specialize in designing, improving, and solving infrastructure and structure problems and in helping our clients comply with environmental, life safety, and other codes and regulations. We provide:

- Civil/Site development
- Architecture
- Landscape architecture design
- Environmental planning, engineering, compliance
- Surveys/mapping
- HVAC, plumbing, energy conservation
- Construction Management
- Electrical systems and computer wiring
- Structural design
- Geographic Information Systems (GIS)
- Hazardous and toxic substances
- Highways, roads, streets
- Bridges
- Traffic and traffic management
- Recreation parks and trails
- Schools
- Telecommunications
- Telemetry and SCADA control systems
- Vulnerability assessments
- Wastewater treatment and systems
- Water treatment and systems

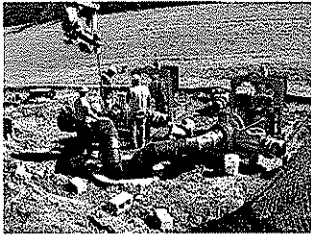


Professional Services

With complete in-house capabilities, we can assemble a team from our full-service staff to match each client's particular needs.

Environmental Engineering

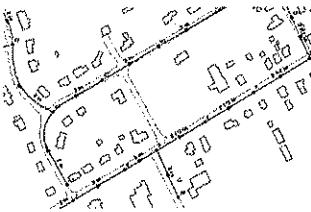
Our environmental engineering services range from water treatment to sludge management and disposal. Our staff is familiar with code regulations. Services available include:



- Comprehensive planning
- Environmental assessments/impact studies
- Environmental auditing
- Environmental compliance: CAA, CWA, RCRA, UST, CERCLA/SARA, PCB, Asbestos, HMTA
- Environmental site assessments (Phases I-IV)
- Financial analysis/funding assistance
- Geological engineering
- Geophysical investigations
- Groundwater contamination investigation
- Highway noise analysis
- Hydrogeological studies
- Industrial and hazardous waste management
- Infiltration/inflow studies
- Instrumentation, telemetering, and controls
- Permitting and government regulations
- Pollution prevention plans
- Remedial action design and implementation
- Soil contamination studies
- Solid waste/air quality management
- Stormwater management/NPDES permitting
- Underground storage tank investigation
- Water and wastewater collection/treatment systems
- Water and sewage facilities planning
- Water distribution/storage systems
- Wetlands delineation and permit applications

Planning

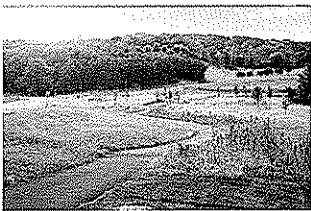
In our firm, planning is not a separate discipline. It is an important component in assisting our clients in making knowledgeable project and programming decisions. We provide planning for the following types of projects:



- Comprehensive planning
- Economic feasibility
- Environmental planning
- Facilities planning
- GIS/mapping
- Land planning
- Landscape architecture
- Master planning
- Public meetings
- Recreational planning
- Space planning
- Zoning and subdivision ordinances

Civil Engineering

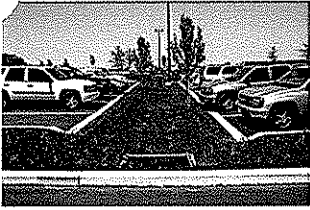
Buchart Horn's civil engineering group matches sophistication and execution to complex, project-specific, and regulatory requirements to leverage the latest technological and computer advances.



- Flood studies
- Grading and drainage design
- Parking studies and design
- Right-of-way services
- Sediment and erosion control
- Signalization
- Site development
- Stormwater management
- Traffic studies and analyses
- Utilities design

### Transportation

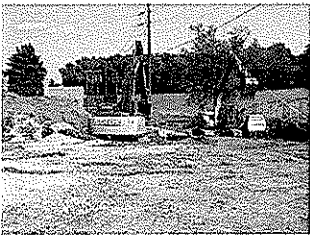
Our Transportation Division offers a full range of transportation-related experience including:



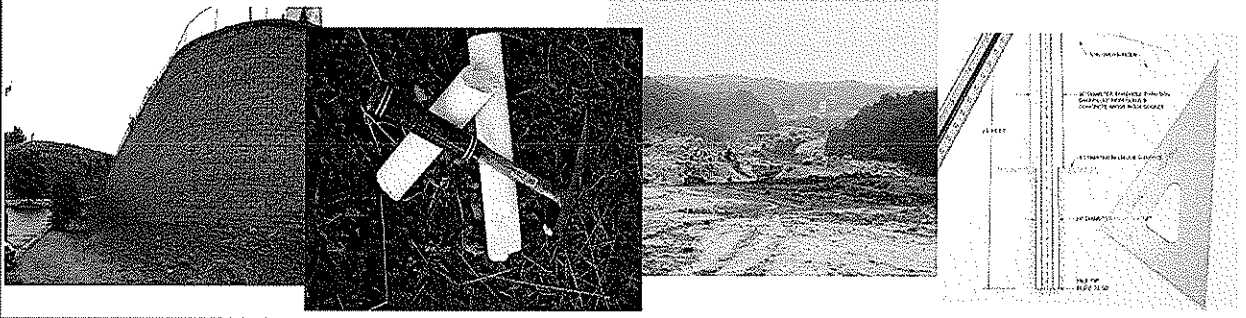
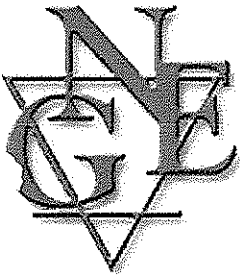
- Airport design
- Bridge design and inspection
- Dam design and inspection
- Flood studies and hydrological analyses
- General structural design
- Highway design
- Railroad and railroad bridge design
- Site grading, drainage, and stormwater design
- Traffic studies

### Construction Management

Our construction management engineers and inspectors serve as representatives of the client/owner, providing liaison with contractors so that construction complies with contract documents. We provide the full spectrum of construction phase services for all types of architectural and engineering projects including:



- Construction inspection
- CPM scheduling and evaluation
- Claims/change order management
- Constructability analysis
- Construction audits
- Construction management
- Contract administration
- Design/build
- Equipment start-up
- Grants administration
- Materials/equipment procurement
- Material sampling and testing
- Permit processing
- Specialized testing
- Videotaping



## Company Overview

Novel Geo-Environmental, PLLC (NGE) is a full-service geotechnical and environmental engineering firm with offices located in St. Albans, West Virginia, and Pittsburgh, Pennsylvania. Led by an experienced management team, NGE provides quality geotechnical services to a variety of clients in both the private industry and government sectors.

In business since 2002, NGE is one of the fastest growing engineering consulting firms in the country.

### **Who is NGE?**

Our staff includes professional engineers, geologists, scientists, construction managers, and foremen with experience in a broad range of technical disciplines. Our management team averages 15+ years of experience per person.

### **Why NGE?**

NGE is large enough to fulfill the needs of our client in-house, yet small enough to provide the personal focus each client deserves. With smaller overhead than larger companies, NGE can provide exceptional services at lower cost.

NGE is a Certified Disadvantaged Business Enterprise (DBE) in West Virginia, Pennsylvania, Ohio, Maryland, and New Jersey and is certified by the Small Business Administration as an 8(a) Small Disadvantaged Business.

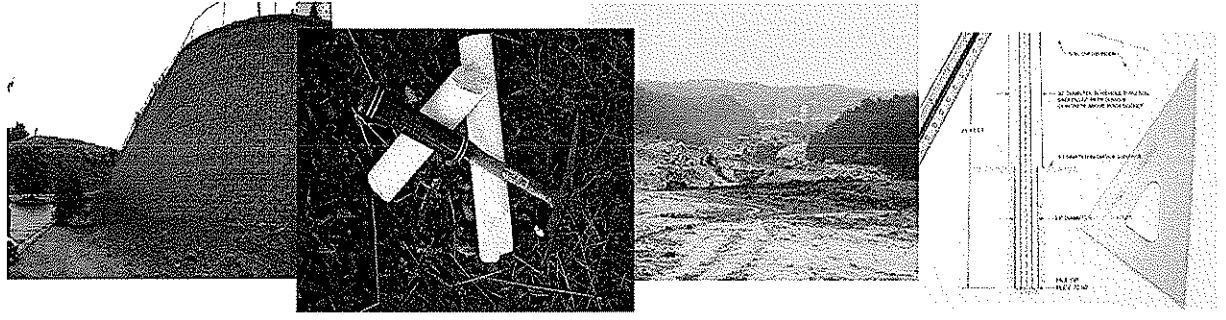
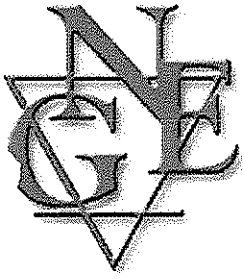
### West Virginia Office

806 B Street  
St. Albans, WV 25177  
(304) 201-5180  
(304) 201-5182 (fax)  
Contact: John E. Nottingham, P.E.  
[jnottingham@novel-ge.com](mailto:jnottingham@novel-ge.com)

### Pennsylvania Office

100 Commercial Street, Suite 101  
Bridgeville, PA 15017  
(412) 838-0115  
(412) 838-0120 (fax)  
Contact: Amy L. Veltri, P.E.  
[aveltri@novel-ge.com](mailto:aveltri@novel-ge.com)

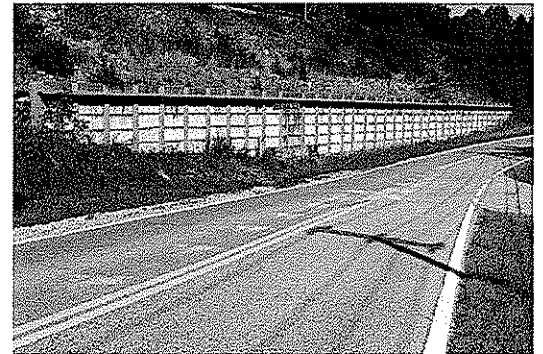


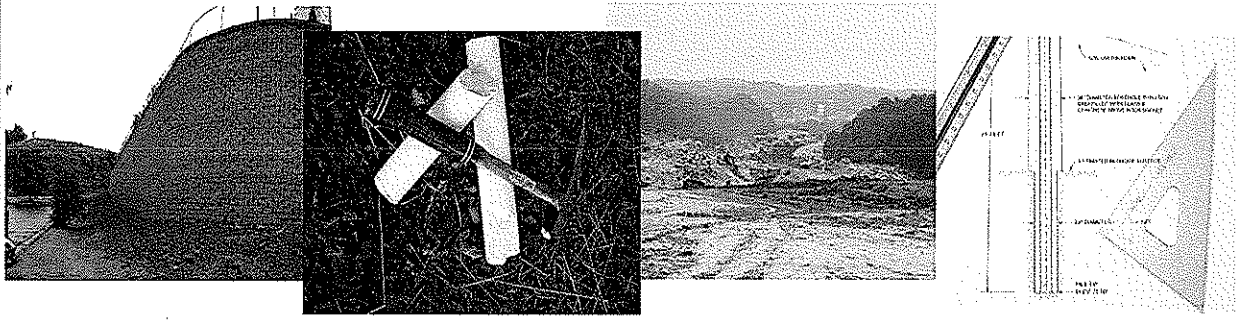
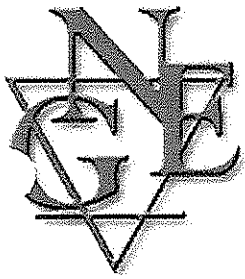


## *Geotechnical Engineering*

The natural complexity and variability present in the subsurface requires a specialized expertise to ensure reliable results. NGE investigates and evaluates subsurface soil, rock, and groundwater conditions to analyze their response to the needs of a given project, whether they be foundation loads, site grading operations/slope configuration, or retaining wall design. A sampling of the geotechnical services NGE provides includes the following:

- Foundation investigations - commercial/residential construction, WVDOH bridge and roadway, airport geotechnical design, public and private utilities (water storage tanks, communications towers, etc.)
- Landslide investigations/remediation - slope design, retaining wall design
- Forensic Engineering/Insurance investigations
- Mine subsidence investigations/ground stabilization
- Dam design/rehabilitation
- Pavement analysis and design
- Groundwater seepage analysis and design

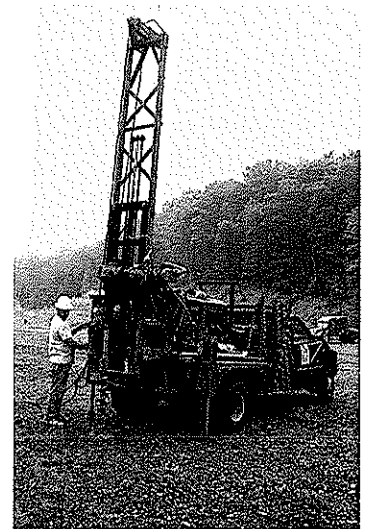




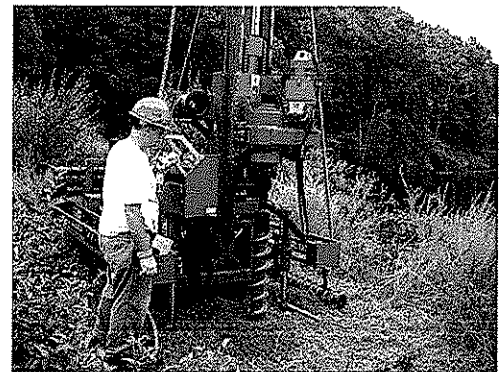
## Drilling Services

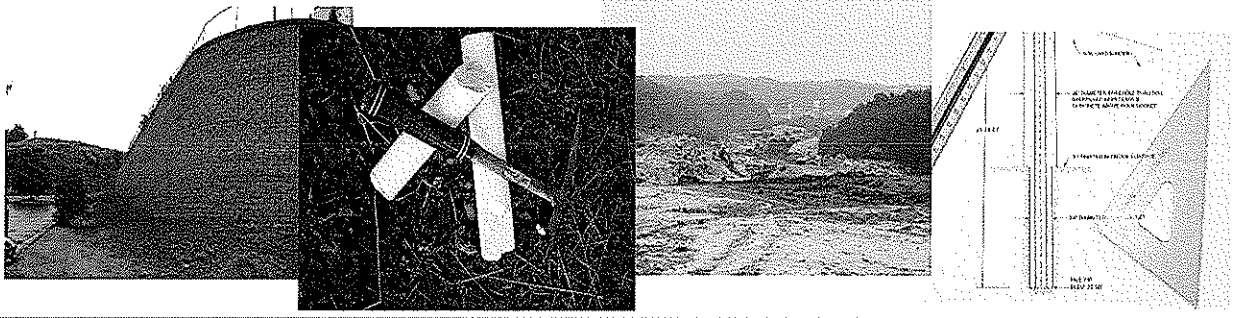
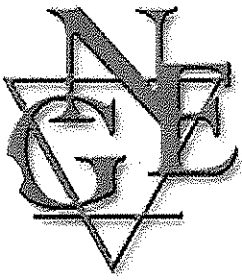
NGE is equipped with a variety of versatile drilling equipment to meet the demands of our clients even in the most demanding of environments. This includes:

- Truck-mounted rotary drill rig equipped with hollow stem augers used primarily for Standard Penetration Testing (SPT). It can also be used for conventional rock coring.
- Custom manufactured state-of-the-art track-mounted rotary drill rig, also equipped with hollow stem augers for SPT sampling. This machine is also equipped for wire-line coring and is uniquely designed to access hard-to-reach areas (such as rugged terrain or limited access) with a minimum of disturbance.
- Portable Tri-Pod drill able to perform SPT sampling in areas that are inaccessible to conventional drilling equipment.
- Dynamic Cone Penetrometer - portable device designed to provide comparable SPT "N-values" in areas with very limited access



NGE also provides monitoring well installation services that meet the requirements for the State of West Virginia Certified Monitoring Well Driller program.



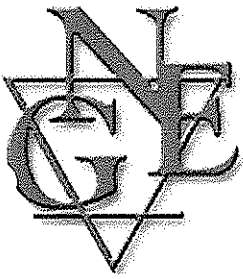


## Construction Monitoring and Inspection Services

NGE offers inspection services to support a wide variety of construction projects, including highway, building, and airport. Our technicians are qualified and certified in a variety of services and will meet the specific needs of the client in an efficient and competent manner. NGE is also a West Virginia certified DBE firm as well as a federal Disadvantaged Business (8[a]). NGE can provide and manage the following services:

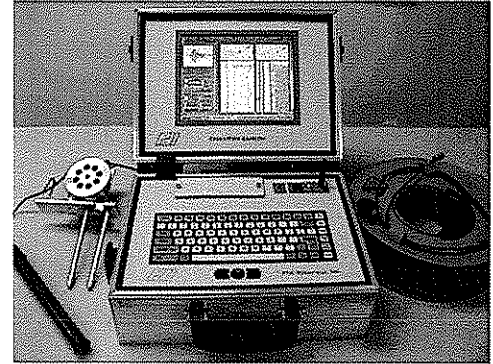
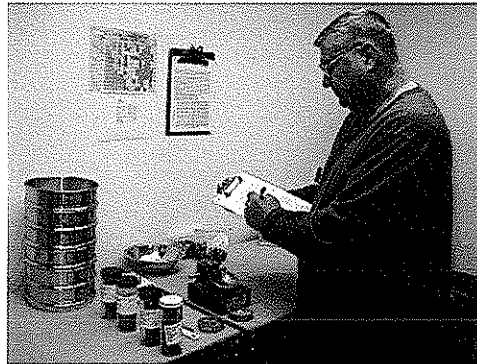
- Materials Testing and Analysis (concrete, asphalt, fill placement)
- Independent Construction Inspection
- Contractor Submittal and Shop Drawing Review
- Documentation and Process Verification
- Bidding Assistance and Analysis
- Cost Estimating and Cost Control Monitoring
- Design Review
- Value Engineering
- Project Partnering
- Quality Assurance Monitoring





## Laboratory Testing Services

NGE can provide laboratory geotechnical testing in accordance with ASTM standards under controlled conditions to further estimate the engineering properties of soil and rock materials. Typical laboratory testing includes soil classification, compaction, compressibility, swell potential, and permeability.



## Crosshole Sonic Logging (CSL)

NGE provides Crosshole Sonic Logging (CSL) to test the integrity of drilled concrete shafts. CSL testing is a non-destructive method that checks the homogeneity and integrity of concrete in a deep foundation by sending ultrasonic pulses through the concrete from one probe to another. The test measures the propagation time and relative energy of the ultrasonic pulse between parallel access tubes (access tubes typically consist of 2-inch diameter steel tubes attached to the drilled shaft reinforcement cage). The pulse arrival time (a.k.a. first arrival time (FAT)) and energy are affected by the concrete. Uniform concrete yields consistent arrival times with reasonable wave speed and energy. Non-uniformities such as zones of poor quality concrete, honeycombing, voids, and soil inclusions exhibit delayed arrival times with corresponding reduced signal energy.

NGE's broad range of experience in each of the previously listed services enables us to provide our clients with high-quality geotechnical engineering, remediation and construction services while meeting budgets and deadlines.

## Project Management & Staffing

We believe that the goal of every successful project is a fully satisfied client and workable, cost effective solutions to problems. The element that enables a successful project is the people – skilled and experienced technical personnel committed to a successful project and supported by the management and owners of the firms. We have assembled an exceptional group of professionals to work on the design of the Birds Creek #4 project.

**George J. Crittenden** will serve as Project Manager and Technical Lead. Joe brings more than 31 years of civil and site design experience, including 7 years of experience with the AML program. He is currently serving as Project Manager and Technical Lead for the Terry Branch Portals and Refuse Project detailed in Section 3. His specific project experience includes obtaining 404/401 permitting from the U.S. Army Corps of Engineers as well as technical and design work on the Marrowbone Waterline Extension in Mingo County, the Ragland-Delbarton Water Supply project in Mingo County, and the Glen Fork / Sabine AML Feasibility and Waterline Extension Study in Wyoming County.

His project responsibilities for this assignment will include:

- Formulating the Project Work Plan.
- Establishing the Project Schedule.
- Ensuring that all project milestones are met through the coordination and monitoring of the project schedule and budget for the entire project team.
- Conducting meetings with WV DEP to document decisions or open items (project issues) and to publish meeting minutes that document those decisions/open items.
- Identifying and monitoring all open items/project issues so that all key project information is acted upon/ responded to in a timely and professional manner.
- Participating with the team in site visits in order to assess existing conditions and to collect and verify all appropriate program needs and requirements.
- Confirming that all work is being performed in accordance with the project scope and guidelines.
- Coordinating and monitoring of project engineers/ architects to ensure consistency and quality of work via regular meetings.
- Communicating among all members of the project team to ensure the consistent application of all project standards, schedules and date decisions.

Other key members of our project team include:

**Robert T. Zulick, PE** will serve as QA/QC Manager for this assignment. Bob brings more than 26 years of experience in civil, site, and water systems engineering. He is a registered Professional Engineer and currently oversees all our work in West Virginia, including both environmental and engineering projects. He is serving as Project Manager on a current water system assignment for the Oakland Public Service District in Weirton, and as QA/QC Manager on two current West Virginia DEP projects.

**Tony B. Kitzmiller, PE** brings over 38 years of experience in the design of water distribution systems, drainage systems, mine engineering, and civil engineering. He has experience with the supervision of design and construction for coal mining in Northern West Virginia, including water discharges, slurry, and refuse construction. He is intimately familiar with mining conditions and construction, including the design of portal closures and seals. He has experience in managing and construction of methane drainage wells.

**Donald Newman, PE** brings over 26 years of environmental and site design experience. He has been involved with several AML projects for the Pennsylvania DEP, including work at the 75 acre McIntyre Mine site and the 55 acre Sherwood Drive site. He has also performed hydrologic and hydraulic analysis for a stream relocation due to potential AMD impacts at a generating station in Homer City, PA.

**Jason M Boyd, PE, MBA** brings over nine years of civil engineering experience. This includes drainage design, culverts, storm drains, and stormwater management for multiple WVDOT projects.

**Thomas T Dancsecs, PE** has over 20 years of experience in all aspects of hydrology and hydraulics, including the design of drainage and stormwater management systems. This experience includes work with WVDOT.

**Teresa Blanch, PG** has over 20 years of varied experience in geology and hydrogeology. She has applied her knowledge of these two areas to soil investigations, groundwater studies, remedial investigations, underground storage tanks and environmental site assessments in both the private and public sectors in Maryland, New Jersey, Pennsylvania, Virginia and West Virginia.

**Matthew J Leisses** has extensive field experience, and has worked on a variety of environmental documentation including, but not limited to PA Department of Environmental Protection Permits and various NEPA documents. He routinely submits permits to PADEP for various clients. He has also been involved in meetings with USACE, USFWS, PADEP, PennDOT, and NJDOT. Mr. Leisses has established relationships with several governmental agencies along with numerous non-profit environmental groups.

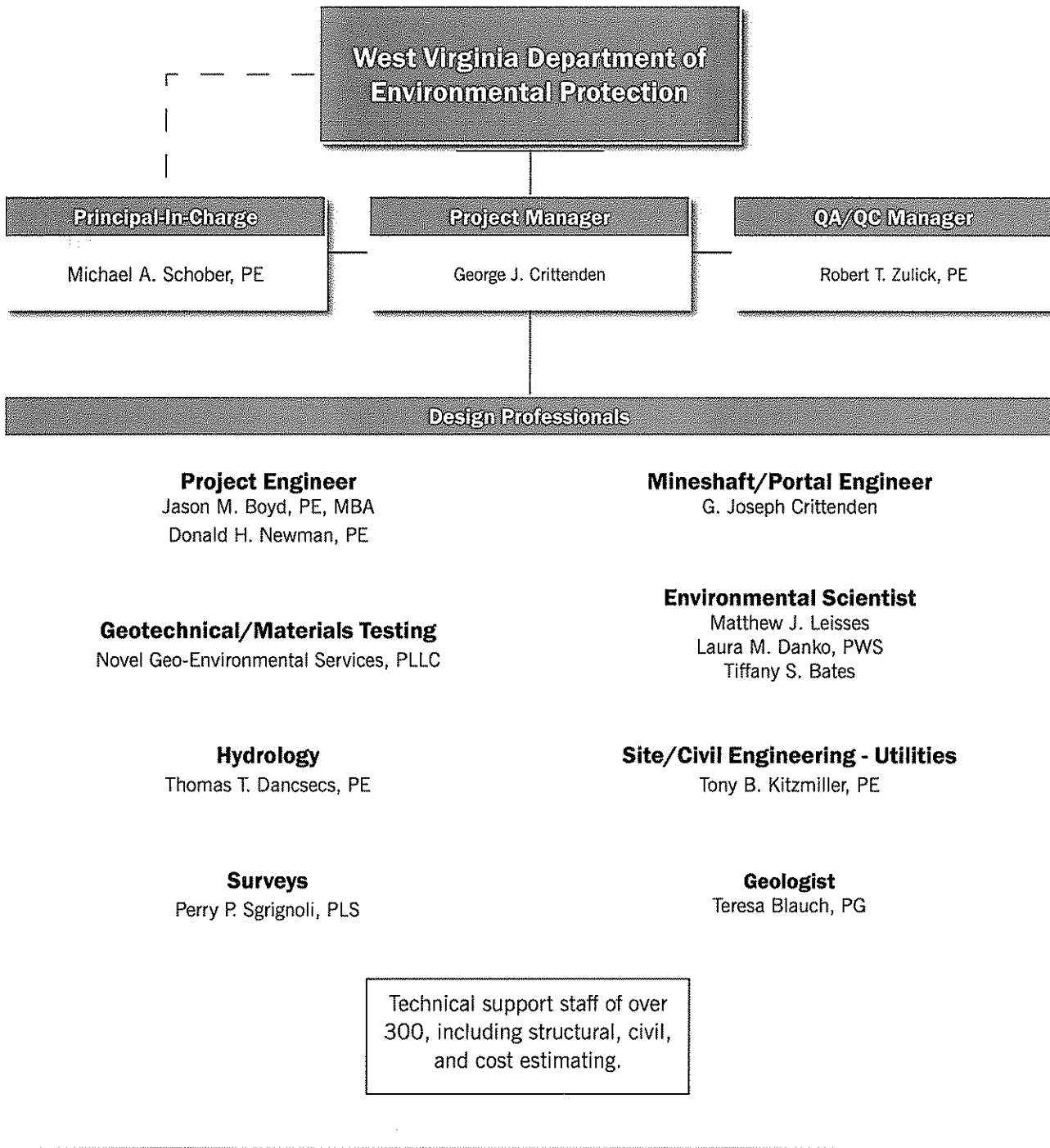
**Laura M Danko, PWS** is certified as a Professional Wetland Scientist with 15 years of experience providing technical and managerial environmental and ecological consulting for both public and private sector clients on a wide range of natural resources planning, conservation, and design projects.

**Tiffany S Bates** has experience in abandoned mine lands drainage and other facets of environmental engineering and pollution control. Her experience includes undergraduate research specializing in water resources.

**Novel Geo-Environmental Services, PLLC, (NGE)** is a full-service geotechnical and environmental engineering firm with offices in St. Albans, WV and Bridgeville, PA. Led by an experienced management team, NGE provides quality geotechnical services to a variety of private sector and government clients. In business since 2002, NGE is one of the fastest growing engineering consulting firms in the country.

NGE is a Certified Disadvantaged Business Enterprise (DBE) in West Virginia, Pennsylvania, Ohio, Maryland, and New Jersey and is certified by the Small Business Administration as an 8 (a) Small Disadvantaged Business.

**Perry P. Sgrignoli**, Chief of Surveys, directs, coordinates and supervises field and office support personnel in GPS surveys, ground control for aerial mapping, property, topographical, and right-of-way surveys, construction stakeout, legal descriptions, cost estimates, street and drainage designs, right-of-way plats, and stormwater management.



# George J Crittenden

Project Manager

## Education:

Coursework/Tennessee State University

Coursework/Kentucky State University

## Registrations/Certifications:

NICET Level I

## Years of Experience:

32

Mr. Crittenden has 32 years of experience in providing design, technical services, and surveying for mine land reclamation projects, airports, residential subdivisions, and highways.

**Water Line Feasibility Studies, West Virginia Department of Environmental Protection, Boone, Mercer, and Raleigh Counties, WV.** Project Manager responsible for studies of the water supplies of three areas in southern West Virginia to verify if the areas have been affected by mining activities.

**Terry Branch Portals and Refuse Remediation, WVDEP, Wyoming County, WV.** Project Manager responsible for construction of access road into site, demolition and disposal of fan and fan house, reclamation of refuse pile, design of three wet seal mine closures. Addressed on-site drainage concerns, and re-vegetated all areas disturbed by construction.

**I-81 Tabler Station Interchange, West Virginia DOT, Martinsburg, WV.** Study, design, and preparation of construction contract plans and related documents for the new Tabler Station Connector Road including modification of ramps, replacement of an overpass bridge, and design of an industrial access road.

**Corridor H Final Design, WVDOT, Grant County, WV.** Design and development of construction documents for a four-lane divided highway with two major structures and a minor third structure including drainage and specialized erosion and sediment control due to the project location and ecological sensitivity of Greenland Gap.

**Route 206/Crusers Brook Final Scope Development, New Jersey DOT, Montgomery Township, NJ.** Final scope development for replacement of a deteriorating three-span structure with a new bridge. Work includes bridge design, highway design, geotechnical engineering, right-of-way engineering, utility engineering, maintenance and protection of traffic, and environmental permitting.

**Section 404 Permit, Rowlesburg Railroad Truss S339-51-0.74, Preston County, WV.** Temporary crossing of Saltlick Creek. Work included project narrative; hydraulic models of before, during, and after; determination of the ordinary high water elevation; determining excavation and embankment quantities (permanent and temporary) below OHW; determining drainage structure openings that would allow normal operation of Saltlick Creek. Produced location map, plan view, profiles, cross sections, and required quantities; and produced stream restoration drawings for the crossing removal.

**Glen Fork/Sabine Area Phase II Abandoned Mine Lands Water Feasibility Study and Water Line Extension, Wyoming County, WV.** Senior Design Technician responsible for interviewing all residents about the quantity/quality of their water source and updating maps to show houses/businesses to support an AML&R grant request to OSM to extend or install water systems in these impacted areas.

**Red Star Refuse and Coke Ovens, Fayette County, WV.** Senior Design Technician responsible for layout of survey work, layout of subsurface investigation, requesting and analyzing laboratory test results, and production of grading plans with details, project specifications and bid documents for backfilling, soil covering and re-vegetation of over 60 abandoned coke ovens and three refuse piles.



**Minden Mine Dump, Fayette County, WV.** Senior Design Technician responsible for layout of survey work, layout of subsurface investigation, requesting and analyzing laboratory test results, and production of grading plans with details, project specifications and bid documents to install wet seals to permanently lower the water level in the mine workings, to establish positive drainage to a nearby stream, to excavate and regrade the refuse piles, and to provide soil cover and re-vegetate the refuse and all disturbed areas.

**Little Slate Creek Refuse Pike, McDowell County, WV.** Senior Design Technician responsible for layout of survey work, layout of subsurface investigation, requesting and analyzing laboratory test results, and production of grading plans with details, project specifications and bid documents to regrade the refuse pile to establish stable slopes and establish drainage to a nearby stream.

**Scott Tipple, Barbour County, WV.** Senior Design Technician responsible for layout of survey work, layout of subsurface investigation, requesting and analyzing laboratory test results, and production of grading plans with details, project specifications and bid documents to correct two areas impounding water and coal refuse.

**Marrowbone Water Line Extension, Mingo County, WV.** Senior Design Technician responsible for layout of survey work, layout of subsurface investigation, requesting and analyzing laboratory test results, and production of grading plans with details, project specifications and bid documents to extend a water line into the Marrowbone area where the groundwater was found to be contaminated by mining activities.

**Ragland-Delbarton Water Supply, Mingo County, WV.** Senior Design Technician responsible for layout of survey work, layout of subsurface investigation, requesting and analyzing laboratory test results, and production of grading plans with details, project specifications and bid documents to extend a Ragland Public Service District water line to serve approximately 150 potential customers due to the degradation of their water supply by coal mines abandoned prior to August 3, 1977.

# Robert T Zulick, PE

Quality Assurance/Quality Control

## Education:

Bachelor of Science/Civil  
Engineering

MS/Civil Engineering

## Registrations/Certifications:

Professional Engineer

## Years of Experience:

36

## Professional Affiliations:

American Society of Highway  
Engineers

American Water Works Association

Society of American Military  
Engineers

As Regional Manager of the firm's Pittsburgh office with significant experience in administration and coordination of municipal and industrial water and wastewater projects from initial planning phase through design to project construction and facility start-up, Mr. Zulick has the authority to commit the full resources of the firm as necessary to successfully complete any project. He will secure additional resources your project requires when the Project Manager requests those resources, or if you should request those additional resources to meet agreed upon performance goals.

**Water Line Feasibility Studies, West Virginia Department of Environmental Protection, Boone, Mercer, and Raleigh Counties, WV.** QA/QC Manager responsible for studies of the water supplies of three areas in southern West Virginia to verify if the areas have been affected by mining activities.

**Terry Branch Portals and Refuse Remediation, WVDEP, Wyoming County, WV.** QA/QC Manager responsible for construction of access road into site, demolition and disposal of fan and fan house, reclamation of refuse pile, design of three wet seal mine closures. Addressed on-site drainage concerns, and re-vegetated all areas disturbed by construction.

**Oakland Public Service District, Water System Improvements, Weirton, WV.** Project Manager responsible for preparation of an engineering report to assist the Client in securing funding for water system improvements including water storage tank rehabilitation or replacement, removal of iron and manganese from water, and water line extension along Chapman Road.

**Oakland Public Service District, Water System Improvements, Weirton, WV.** Project Manager responsible for design, bidding and construction phase services for Oakland Water System improvements including new water storage tank, treatment facilities to remove iron and manganese, Bell Hill to Ballantyne Road Water Line extension, and Golden Keys Water Storage Tank rehabilitation.

**Backwash Water Holding Tank Replacement, Kittanning Filter Plant, Pennsylvania American Water, Armstrong County, PA.** Project Manager responsible for design, bidding and construction administration services for a 175,000-gallon backwash water holding tank and related piping.

**Hays Mine Chemical Feed Building Evaluation, Pennsylvania American Water, Pittsburgh, PA.** Project Manager responsible for engineering/architectural review of deteriorating building and systems at the Hays Mine Treatment Plant to examine the feasibility of rehabilitation/replacement; our services included recommendations regarding chemical feed systems.

**Systemwide Water Treatment and Distribution Vulnerability Assessment, Pittsburgh Water and Sewer Authority, PA.** Project Manager responsible for this EPA-mandated security project that included a systemwide vulnerability assessment and review/recommendations for revisions/upgrades to the Authority's existing emergency response plan.

**Lowries Run Engineering Services, McCandless Township Sanitary Authority, Pittsburgh, PA.** Regional Manager responsible for overview of capacity evaluation of the Lowries Run Interceptor and preparation of existing conditions report for an interceptor serving seven contributing municipalities and a customer base near 25,000 persons. Work included flow monitoring and data analysis.

**ALCOSAN, Inspection and Hydraulic Analysis of Diversion Structures and Manhole Inspection Program, Pittsburgh, PA.** QA/QC Manager responsible for overview and quality control regarding project scope of service, schedule and budget that involved inspection, analysis and database development of manholes and diversion structures in the Eastern Basin of the ALCOSAN Service Area.

**ALCOSAN, Interceptor System Instrumentation Improvements, Pittsburgh, PA.** QA/QC Manager responsible for overview and quality control regarding project scope of service, schedule and budget that involved studies, design, and construction phase services for replacement of equipment associated with overflow monitoring at five interceptor pumping stations and level monitoring at nine access shaft structures.

**Pine Creek Flood Mitigation, Etna Borough, Pittsburgh, PA.** As the Consultant Engineer for Etna Borough near the City of Pittsburgh, Buchart Horn has been involved in a number of projects related to the mitigation of flooding from Pine Creek. In September of 2004, Etna Borough experienced catastrophic flooding of Pine Creek due to Tropical Storm Ivan. Buchart Horn provided continual on-site support following this event, including infrastructure assessments, debris removal, emergency funding applications, and engineering services required to restore normal infrastructure operations. Subsequently, we have supported a program of long term improvements to Pine Creek featuring over \$1.2 million in DCED/PADEP funded projects.

**PennDOT District 11-0, SR 19 Bridge Over SR 910, Allegheny County, PA.** Regional Manager responsible for overview of preliminary and final design of 146-foot, steel multi-girder bridge replacement, including structure configurations, review and coordination of geotechnical investigations, and reviews and determinations of roadway alignments.

**Group B Bridge Design, Allegheny County, Pittsburgh, PA.** Regional Manager responsible for overview oriented toward project staffing, quality of product, project schedule and budget for the replacement of Davis Run Bridge, Jack's Run Bridge and Homeville Creek Bridge including environmental studies, preliminary engineering, final design, additional structural design, right-of-way and deed research.

# Michael A Schober, PE

Principal-in-Charge

## Education:

Bachelor of Science/Civil  
Engineering

## Registrations/Certifications:

Professional Engineer

## Years of Experience:

24

## Professional Affiliations:

American Society of Civil Engineers

Chesapeake Water Environment  
Association

Water Environment Federation/  
Public Education Committee

Mr. Schober has 24 years of experience in the field of municipal engineering, water and wastewater treatment, distribution and collection. He is responsible for coordinating the activities of professional staff as well as managing design projects and coordinating design teams. Mr. Schober's experience includes water distribution and storage design, filtration, and well development.

**Water Line Feasibility Studies, West Virginia Department of Environmental Protection, Boone, Mercer, and Raleigh Counties, WV.** Principal-in-Charge responsible for studies of the water supplies of three areas in southern West Virginia to verify if the areas have been affected by mining activities.

**Terry Branch Portals and Refuse Remediation, WVDEP, Wyoming County, WV.** Principal-in-Charge responsible for construction of access road into site, demolition and disposal of fan and fan house, reclamation of refuse pile, design of three wet seal mine closures. Addressed on-site drainage concerns, and re-vegetated all areas disturbed by construction.

**Oakland Public Service District, Water System Improvements, Weirton, WV.** Principal-in-Charge responsible for design, bidding and construction phase services for Oakland Water System improvements including new water storage tank, treatment facilities to remove iron and manganese, Bell Hill to Ballantyne Road Water Line extension, and Golden Keys Water Storage Tank rehabilitation.

**Conewago Creek Watershed Conservation Plan, Pennsylvania Environmental Council, York County, PA.** Principal-in-Charge responsible for completion of a River Conservation Plan (RCP) and subsequent development of an interactive GIS Watershed Toolbox that includes recommendations for preservation, conservation, and restoration of the resources of the Conewago Creek Watershed.

**Watershed Conservation Plan, Muddy Creek Trout Unlimited, York County, PA.** Principal-in-Charge responsible for background research, basic data collection, analysis of issues and development of recommendations needed to prepare a long-term management plan for the entire Muddy Creek Watershed.

**Hartman Run Stream Stabilization, New York Wire, Mt. Wolf, PA.** Principal-in-Charge responsible for obtaining an emergency permit to fix and stabilize the Hartman Run stream due to significant damage to the gabions during a storm event, and proposed improvements consisting of re-alignment of the stream and installation of rock vanes to redirect the flow to reduce near bank shear stress along the outside bend (previous location of gabion baskets).

**Flood Protection Levee Federal Code Compliance Certification, City of Lock Haven, PA.** Principal-in-Charge responsible for engineering services leading to certification by the Federal Emergency Management Agency (FEMA) that the City of Lock Haven flood protection levee meets or exceeds the Code of Federal Regulations, including field surveys, hydrologic and hydraulic analysis, geotechnical evaluations, and operations and maintenance.

# Jason M Boyd, PE, MBA

Project Designer

## Education:

Bachelor of Science/Civil Engineering

Master of Business Administration/  
Business Administration

## Registrations/Certifications:

Professional Engineer

## Years of Experience:

10

## Professional Affiliations:

Society of American Military Engineers/Pittsburgh Post/Young Member

Mr. Boyd's civil engineering experience includes roadway design, right-of-way, geometric layouts, utility relocation design, maintenance of traffic, signing and marking, plan preparation/presentation, quantity/cost estimates, drainage design, hydrologic procedures, pavement/deck drainage, inlet spacing computations, channels, culverts, storm drains, and stormwater management.

**Terry Branch Portals and Refuse Remediation, WVDEP, Wyoming County, WV.** Construction of access road into site, demolition and disposal of fan and fan house, reclamation of refuse pile, design of three wet seal mine closures, addressed on-site drainage concerns, and re-vegetated all areas disturbed by construction.

**Oakland Public Service District, Water System Improvements, Weirton, WV.** Design, bidding and construction phase services for Oakland Water System improvements including new water storage tank, treatment facilities to remove iron and manganese, Bell Hill to Ballantyne Road Water Line extension, and Golden Keys Water Storage Tank rehabilitation.

**I-81 Tabler Station Interchange, West Virginia DOT, Martinsburg, WV.** Project Manager responsible for study, design, and preparation of construction contract plans and related documents for the new Tabler Station Connector Road including modification of ramps, replacement of an overpass bridge, and design of an industrial access road.

**Corridor H Final Design, WVDOT, Grant County, WV.** Project Manager responsible for design and development of construction documents for a four-lane divided highway with two major structures and a minor third structure including drainage and specialized erosion and sediment control due to the project location and ecological sensitivity of Greenland Gap.

**Dunlow Through-Truss Bridge, WVDOT, Wayne County, WV.** Study, design, and preparation of contract plans and related documents for replacement of the Dunlow Thru Truss Bridge, which carries Route 44 over West Fork of Twelvepole Creek approximately 0.1 mile west of WV 152 in Wayne County.

**WV Route 10, Logan County, WV.** Design Team Member responsible for preliminary and final design of a 4.2-mile section of divided arterial through mountainous terrain. This project was comprised of nine construction projects and one right-of-way project. With a total project construction cost estimate over \$100M, this project included major grading, paving, major and minor drainage, water and sewer line relocations for Logan PSD, and many other aspects of roadway design.

**Allensville Low Water Crossing Design Study, Berkeley County, WV.** Lead Design Engineer responsible for the roadway portion of the design study of the rural low water crossing replacement of County Route 312. The compilation of the design study entailed roadway design, major drainage, right-of-way, preliminary cost estimates, and plan preparation.

**Patterson's Mill Bridge and Avelia Bridge Replacements, PennDOT District 12, Uniontown, PA.** Preliminary and final design services for the replacement of Patterson's Mill Bridge (SR 4029) over the North Fork of Cross Creek and the replacement of Avelia Bridge (SR 4029) over the Middle Fork of Cross Creek.

# Donald H Newman, PE

Project Designer

## Education:

AB/Environmental Engineering  
MS/Water Pollution Control/Water  
Quality Mgmt./Env. Health Plan

## Registrations/Certifications:

Professional Engineer  
Certified Municipal Compost  
Operator

## Years of Experience:

32

## Professional Affiliations:

Air and Waste Management  
Association  
American Association for the  
Advancement of Science  
American Society of Civil Engineers  
American Water Resources  
Association  
American Water Works Association  
National Ground Water Association  
National Trust for Historic  
Preservation

Mr. Newman has management responsibilities for the activities of professional and technical personnel for work on environmental engineering projects in the areas of water supply, sewage, stormwater, solid waste and industrial waste management. During his 32-year career, he has successfully executed over 350 engineering projects. Mr. Newman is also experienced in the siting and engineering of conveyance, treatment and disposal facilities, as well as related areas of comprehensive planning, sediment control, stormwater management, route and option assessment, occupancy/easement/regulatory permits, facility closure, geotechnical engineering, and cost estimating. In addition, he has extensive experience in complex environmental/natural resource/cultural resource assessments and transportation related environmental activities.

**Central West Virginia Regional Airport Authority, Yeager Airport Deicing Study, Charleston, WV.** Senior Staff Engineer responsible for Control/Treatment Alternatives under the second phase of the Deicing Fluid Runoff Study. The focus of this phase was to evaluate and give opinions of cost associated with options intended to abate nuisance conditions in an area downstream of a point of discharge from the airport stormwater drainage system. The abatement study examined collection of the deicer runoff and ultimate treatment and disposal. Estimated volume and concentrations from facility operations and use records in tandem with estimated runoff events: direct connection to the Charleston Sanitary Board (CSB) system, or construction of holding facilities - either a tank or pond - with removal to a remote site for treatment and disposal via six distinct conceptual alternatives.

**PADEP Abandoned Mines Lands (AML) Program for 75-acre McIntyre and 55-acre Sherwood Drive Refuse Sites.** Directed preparation of site grading and reclamation plans, facility design, construction documents, and permitting. Directed periodic site inspections and monitored progress during construction phase. Sherwood Drive design incorporated design and compaction requirements for the construction of a new interchange for the Pennsylvania Turnpike on part of the site.

**Closure of Five Ash Disposal Sites Located throughout Western PA for Pennsylvania Electric Company.** Directed engineering, regulatory applications, and participated in negotiations in successful closure and reclamation of Homer City Station Emergency Ash Site, Williamsburg Ash Site, Seward Station Ash Sites Nos. 1 & 2, and Shawville Station Ash Disposal Site. The closure engineering consisted of interim and final site grading plans, hydrologic and hydraulic assessment for seepage and stormwater runoff, erosion and sediment control plans, groundwater monitoring plans and monitoring system installation, design of drainage and other related support facilities, construction cost estimates, preparation of construction drawings/specifications, construction inspection (with the exception of Williamsburg). As lead professional, provided post closure monitoring, compliance evaluation, certifications and review of as-built drawings. More complex project sites required assessment of subsurface conditions, evaluation of critical materials, stability & settlement analysis, liner design, flood routing, air emissions controls, and cover/re-vegetation plans.

**ALCOSAN, Inspection and Hydraulic Analysis of Diversion Structures and Manhole Inspection Program, Pittsburgh, PA.** Project Manager responsible for inspection, analysis and database development for manholes and diversion structures in the Eastern Basin of the ALCOSAN Service Area.

**ALCOSAN, Interceptor System Instrumentation Improvements, Pittsburgh, PA.** Project Manager responsible for studies, design, and construction phase services for replacement of equipment associated with overflow monitoring at five interceptor pumping stations and level monitoring at nine access shaft structures.

**Lowries Run Engineering Services, McCandless Township Sanitary Authority, Pittsburgh, PA.** Project Manager responsible for evaluation of the capacity of the Lowries Run Interceptor and preparation of an existing conditions report. The Lowries Run Interceptor currently serves seven contributing municipalities and a customer base over 20,000 persons. Prior work had supported management initiatives by the Owner, documented the location and number of connections, and established both base (dry) flow and peak (wet) flow through flow monitoring, data analysis results, areas of infiltration and/or inflow, and problem areas were identified preparatory to corrective actions in an existing conditions report. Directed modeling of the Lowries Run Interceptor using standard flow models SANSYS and SWMM. Incorporated the GPS based survey data and other specific physical details into models for interceptor management and corrective action purposes. Performed initial model calibration study from GIS data, water use records, and subbasin flow monitoring.

**Lowries Run Stormwater Capacity Analysis, McCandless Township Sanitary Authority, Pittsburgh, PA.** Project Manager responsible for an engineering assessment of the impact of a proposed MTSA treatment plant in the upper Lowries Run sewershed. The XP-SWMM Model analysis assumed that sewer flows presently contributed at MH 74 and MH 70 will no longer be conveyed by the Lowries Run Interceptor. The engineering evaluation provided information to MTSA on the projected downstream effects on conveyance capacity (i.e. surcharges, flooding, etc.) during wet weather conditions with updated hydraulic factors from a recently completed evaluation of the CAP metering data.

**Lowries Run Sewershed Wet Weather Management Program, McCandless Township Sanitary Authority, Pittsburgh, PA.** Project Manager responsible for engineering services for Lowries Run Sewershed to address longstanding concerns over the amount of extraneous water conveyed by the Lowries Run Interceptor.

**Ross Township, Hodil Road Overflow Data Analysis, Pittsburgh, PA.** Project Manager responsible for analysis of flow monitoring data to determine quality, installation information, and profile of hydrologic conditions of past overflow events.

**Pine Creek Flood Mitigation, Etna Borough, Pittsburgh, PA.** As the Consultant Engineer for Etna Borough near the City of Pittsburgh, Buchart Horn has been involved in a number of projects related to the mitigation of flooding from Pine Creek. In September of 2004, Etna Borough experienced catastrophic flooding of Pine Creek due to Tropical Storm Ivan. Buchart Horn provided continual on-site support following this event, including infrastructure assessments, debris removal, emergency funding applications, and engineering services required to restore normal infrastructure operations. Subsequently, we have supported a program of long term improvements to Pine Creek featuring over \$1.2 million in DCED/PADEP funded projects.

**Farmerie Alley Flood Drainage Improvements, Etna Borough, PA.** Design of drainage facilities and package pump station for stormwater conveyance.

**Poplar Street Slope Stabilization, Etna Borough, PA.** Design of a retaining wall along Poplar Street to correct slope failure due to undercutting of Pine Creek streambank during flood events.

# Tony B Kitzmiller, PE

Mine Shaft/Portal Engineer

## Education:

Bachelor of Science/Civil  
Engineering

## Registrations/Certifications:

Professional Engineer

## Years of Experience:

28

Mr. Kitzmiller has more than 10 years of coal mining experience as both a Superintendent and a Project Engineer.

### Coal Mining Experience, 10+ years

*Chief Engineer at the Blacksville Division.*

*Supervisor of Design and Construction of Northern West Virginia Region.*

- Duties: Supervised 13 surveyors and resident engineers.
- Permits - Pa mine subsidence, well permits for longwall mining thru oil and gas wells, water discharges, slurry and refuse construction. New shaft permits for drilling and conventional sinking.
- Designed bridges, roads, etc, and helped resolve underground mining problems.
- Managed methane drainage wells including construction of same.
- Project manager for outside construction. Annual budget varied from 10 to 17 million annually.

### Williamson Shaft Contracting, 2+ years

*Project Engineer and Superintendent*

#### As Superintendent:

- Batched concrete on site at mine shafts under construction.
- Planned daily work schedule. Procured materials and equipment for shaft construction.
- Worked three shifts per day. Directed the work force.

#### As Project Engineer:

- Calculated excavation, concrete, and reinforcing quantities for new shaft construction.
- Prepared drawings for underground rotary dump and shaft building.
- Prepared monthly invoices for numerous projects.
- Inspected the various projects on a biweekly schedule.

### Additional Experience

*To Date:* Performed design of water distribution systems and some sewer design. Assembled specifications, bid projects, secured permits and awarded contracts. Project manager for numerous water and sewage systems.

*Airport RPR, two years.* Repaired and renovated existing runways and taxiways plus airport drainage and lighting systems. Also inspected placement of P401 asphalt.

*Owner/Operator of Hydro Engineering and Contracting, 10 years.* Performed sandblasting and painting of chemical tanks, water towers, heat baked linings specialties, and installed special floor coatings to meet certain lab and shop requirements.

*Project Manager for Comsat Corporation of Washington D.C., 3.5 years.* Installation of microwave transmission towers to a second earthstation, managed 50,000 sq ft new construction expansion to the existing Edam Earthstation. Construction facility included new power switching yard, internal switch gear, UPS system, new A/C and Turbine engine emergency power. Numerous other items related to new construction.



# Thomas T Dancsecs, PE

Hydrology

## Education:

Bachelor of Science/Civil  
Engineering

## Registrations/Certifications:

Professional Engineer

## Years of Experience:

20

## Professional Affiliations:

American Society of Highway  
Engineers

Mr. Dancsecs has 20 years of experience in the field of hydraulics and drainage design. His background includes design of drainage and stormwater management systems for a variety of transportation projects, as well as experience in hydraulic modeling and permitting. He is familiar with the drainage design standards for numerous state transportation departments and agencies. In addition to drainage design for roadways, Mr. Dancsecs' abilities include hydraulic modeling for bridge projects over waterways, floodplain analysis, design of detention/retention ponds, scour analysis, design of underground detention systems, culvert design and analysis, stream encroachment permitting, and NPDES permitting.

**Preliminary Design, Route 168/Benigno Boulevard Intersection, New Jersey DOT, Borough of Bellmawr, Camden County, NJ.** Design of safety and traffic flow improvements to intersection of NJ 168 and Benigno Boulevard, including widening for turn lanes, consolidation of driveways on east side of NJ 168 to align with realigned Benigno Boulevard, new coordinated signals, lighting, stormwater management.

**Southard Street Bridge Replacement, Initial/Final Design, New Jersey DOT, Trenton, NJ.** Highway Engineer responsible for roadway drainage design. Also assisted with utility relocation issues.

**Route 206/Crusers Brook, Final Scope Development for Bridge Replacement, New Jersey DOT, Montgomery Township, NJ.** Highway Designer responsible for oversight/coordination with subconsultant performing hydraulic modeling for sizing of bridge opening as well as stormwater management design.

**United States Avenue Bridge Replacement, New Jersey DOT, Lindenwold, NJ.** Highway Designer responsible for utility relocation efforts, including identifying conflicts, developing schemes of accommodation, developing utility checklists, preparing utility agreement plans and specifications. Performed oversight of roadway drainage design and stormwater management. Also assisted with intersection grading, maintenance and protection of traffic, environmental permitting, and public involvement.

**Route 9 Sidewalk Improvements, NJDOT, City of Northfield, Atlantic County, NJ.** Task Manager responsible for performing a complete analysis of the existing roadway drainage system within the Route 9 project limits, including spread calculations, inlet capacity, and storm pipe capacity. Developed a preliminary design for an improved roadway drainage system that would also collect runoff from proposed sidewalks. Investigated stormwater management facility locations to comply with NJDEP regulations.

**Marlton Circle Elimination, Evesham Township, NJ.** Task Manager responsible for identifying all properties impacted by the circle elimination project, and checking impacted properties for compliance with the State Highway Access Management Code. Classified all access changes as Adjustments, Modifications, or Revocations and prepared access cutouts per NJDOT criteria. Used Autoturn program to establish design vehicle turn paths and site circulation. Also performed oversight of drainage design and utility relocation.

**Patterson's Mill Bridge and Avella Bridge Replacements, PennDOT District 12, Uniontown, PA.** Preliminary and final design services for the replacement of Patterson's Mill Bridge (SR 4029) over the North Fork of Cross Creek and the replacement of Avella Bridge (SR 4029) over the Middle Fork of Cross Creek.

# Teresa Blauch, PG

Geologist

## Education:

Bachelor of Science/Geology  
 Coursework/MODFLOW Computer Modeling  
 Coursework/Natural Attenuation of Chlorinated Solvents in Groundwater

## Registrations/Certifications:

Professional Geologist  
 OSHA 40-Hour Hazardous Waste Operations & Emergency Response  
 Underground Storage Tank Closure

## Years of Experience:

20

## Professional Affiliations:

Society of Women Environmental Professionals

Ms. Blauch has had varied experience in geology and hydrogeology. She has applied her knowledge of these two areas to soil investigations, groundwater studies, remedial investigations, underground storage tanks and environmental site assessments in both the private and public sectors in West Virginia, Virginia, Maryland, New Jersey and Pennsylvania. Some of her responsibilities have included direct drive soil collections and soil gas surveys. Groundwater studies have involved supervising well installation and development, selecting potential water supply well sites, water feasibility studies, and determining hydraulic gradient and direction. She has aided in implementation of vacuum extraction systems and air stripping towers and supervised excavation of contaminated material. Underground storage tanks included delineation of contaminated areas, registration, removal and closure of tanks according to state regulations. Some closures have proceeded to a groundwater characterization study and eventual remediation. With the advent of Pennsylvania's Act 2 "Land Recycling Program" and updates in New Jersey's "Technical Requirements for Site Investigations", she has kept up-to-date on both the academic requirements and the regulatory changes. Environmental site assessments according to ASTM Guidelines have been conducted on agricultural areas, commercial areas, and industrial areas. The assessments involved assessing past and present activities as to their potential negative impact on the surrounding environment.

**Clock Towers Site Groundwater Remediation, General Dynamics, Lancaster, PA.** Professional services for monthly site visits, monitoring via modem every other day, system troubleshooting, minor repairs and maintenance of equipment, carbon change-out (if necessary), semi-annual PADEP well search, monthly effluents sampling and analysis, semi-annual groundwater sampling and analysis, annual groundwater sampling and analysis, quarterly water level monitoring, and biennial residential well sampling.

**Water Supply Test Well, New Freedom Borough, PA.** Coordination with PADEP, preparation of pre-drilling plan and installation of a test well.

**Buchart Horn "Brownfields" Headquarters Preliminary Environmental Site Assessment, York, PA.** Engineering Geologist responsible for conducting environmental borings and cores for analysis of volatile organic compounds and heavy metals. Provided technical support on how to properly close storage tank located within a concrete vault.

**General Machine Act 2 Special Industrial Site Closure, York, PA.** Senior Geologist who conducted a fate and transport analysis of an abandoned manufacturing facility to comply with requirements of Act 2 "Land Recycling Program", Special Industrial Sites. Using data generated from slug tests, determined hydraulic conductivity of underlying unconfined aquifer. Determined groundwater flow rate and direction from water levels in monitoring wells.

**Loucks Mill Road Plant Remediation, Northrop Grumman Corporation, York, PA.** Site had been used for manufacturing metal furniture. It was abandoned in the late 1980's. A Phase I environmental site assessment was conducted on this 10.4-acre site according to ASTM guidelines. The Phase I and resultant follow-up resulted in 45 Areas of Concern (AOC). Each AOC was investigated using appropriate field techniques. Soil samples were collected to characterize the subsurface. Groundwater monitoring wells were advanced to determine groundwater flow direction and the influence of an on-site stream on the water table. Slug tests were performed on select wells, and the data was used to generate

aquifer characteristics from computer-aided programs. The technical requirements for obtaining a release of liability under Act 2 "Land Recycling Program" Site-Specific and Statewide Health Standards for soil, groundwater and surface water were ascertained. Coordination with PADEP personnel was maintained. Physical properties of the on-site contaminants (including heavy metals and chlorinated solvents) were reviewed and incorporated into the site conceptual model.

**Kennedy Van Saun Health Risk Assessment, Danville, PA.** Engineering Geologist responsible for the installation of monitoring wells for industrial site in response to a release of petroleum products. Collected groundwater and surface water samples to determine impact on the water quality.

**Keystone/Adco Landfill, Adams County, PA.** Engineering Geologist who conducted azimuthal resistivity survey to characterize fracture orientations. Collected groundwater samples quarterly as per PADEP requirements.

**Knox Gelatin Supplemental Remedial Investigation Work Plan Preparation, Camden Redevelopment Agency, NJ.** Development of a Remedial Investigation Work Plan involving field investigation to collect and analyze soil and/or groundwater samples for presence of hazardous materials.

**Southard Street Bridge Replacement, Initial/Final Design, New Jersey DOT, Trenton, NJ.** Development of plans for three-span over steel structure over US Route 1 and Conrail, including bridge design, highway design, utility engineering, right-of-way, geotechnical engineering, drainage, traffic detour, lighting, permitting, hazardous waste investigations and context sensitive design.

**Hazardous Waste Investigations Indefinite Delivery Contract, New Jersey DOT, Statewide, NJ.** Engineering Geologist responsible for geophysical surveys, borings, Geo-Probe sampling, monitoring well installation, and groundwater and surface water testing to determine impact on future road improvements.

**NJDOT-owned Maintenance Yards, Trenton, NJ.** Senior Geologist who comprised and implemented NJDEP-approved remedial action work plans at five maintenance yards. Performance of activities adhered to NJDEP regulations and guidance. Supervised the removal of dry wells at two of the maintenance yards. Collected requisite confirmatory soil samples. Conducted groundwater investigations at all five maintenance yards. Supervised monitoring well installation and groundwater sample collection. Compared analytical results with groundwater quality criteria. Determined contaminant trends based upon historic data. Provided remedial action progress reports to NJDEP.

**Agway Energy Products, Washington Plant Remediation, NJ.** Senior Geologist responsible for conducting site characterization and remedial investigation in a glacial till environment. Tasks included monitoring well installation, groundwater sampling, Geo-probe soil sampling, and a receptor study. The vertical and horizontal delineation of both soil and groundwater contamination was investigated. Discussed remedial options with NJDEP, and agreed upon possible reclassification of aquifer. Provided necessary NJDEP documentation.

**Washington County Water & Sewer, Water Intake Rehabilitation/Relocation Study, Sharpsburg, MD.** Engineering Geologist responsible for regional groundwater study via published data, area reconnaissance, and fracture trace analysis to determine if an economical supply of groundwater could be obtained from the underlying aquifer and where the optimal location of the wells would be.

# Matthew J Leisses

Environmental Scientist

## Education:

Coursework/Biology  
 Coursework/Rosgen Applied  
 Geofluvial Morphology Level 1  
 Coursework/38-Hour Wetland  
 Delineation Program  
 Coursework/Pennsylvania  
 Stormwater Symposium  
 Coursework/Native Plants  
 Coursework/Wetland Identification  
 Coursework/EPA Mid-Atlantic  
 Region 3 Macroinvertebrate  
 Training

Mr. Leisses has worked in and around streams and wetlands and has extensive knowledge of aquatic monitoring; native and invasive plant species; riparian buffers; streambed restoration; workshop/lesson plan research, development, and implementation; grant writing; and community relations. In his prior work for the Codorus Creek Improvement Partnership, he has experience in identifying wetlands, stream restoration, in teaching watershed education, and has frequently attended workshops on varying wetland and watershed topics. His field experience includes habitat assessment; chemical, physical, and biological water quality monitoring; and coordination and execution of watershed restoration.

In addition to his extensive field experience, Mr. Leisses has worked on a variety of environmental documentation including, but not limited to PA Department of Environmental Protection Permits and various NEPA documents. He routinely submits permits to PADEP for various clients. He has also been involved in meetings with USACE, USFWS, PADEP, PennDOT, and NJDOT. Mr. Leisses has established relationships with several governmental agencies along with numerous non-profit environmental groups.

## Years of Experience:

4

**Hartman Run Stream Stabilization, New York Wire, Mt. Wolf, PA.** Buchar Horn obtained an emergency permit to fix and stabilize the Hartman Run stream due to significant damage to the gabions during a storm event, and proposed improvements consisting of realignment of the stream and installation of rock vanes to redirect the flow to reduce near bank shear stress along the outside bend (previous location of gabion baskets).

**Water Supply Test Well, New Freedom Borough, PA.** Coordination with PADEP, preparation of pre-drilling plan and installation of a test well.

**Conewago Creek Watershed Conservation Plan, Pennsylvania Environmental Council, York County, PA.** Completion of a River Conservation Plan (RCP) and subsequent development of an interactive GIS Watershed Toolbox that includes recommendations for preservation, conservation, and restoration of the resources of the Conewago Creek Watershed.

**Watershed Conservation Plan, Muddy Creek Trout Unlimited, York County, PA.** Project Manager responsible for background research, basic data collection, analysis of issues and development of recommendations needed to prepare a long-term management plan for the entire Muddy Creek Watershed.

**Retainer Services for Water Projects, West Manchester Township Authority, York, PA.** Retainer services for design of small scale water projects, including water main replacements, permitting, and review of proposed designs, as well as several larger projects of note, including the design of a groundwater well for public supply, a vulnerability assessment, and a security upgrade study.

**Riverfront Park: Riverbank Stabilization and Flood Control Design and Construction Management, City of Sunbury, PA.** Preliminary assessments and studies, schematic and final engineering designs, and bidding and construction phase services for the riverfront park and associated facilities, including design of appropriate stabilization and restoration measures for the riverbank and preserving the structural integrity of the existing levee/floodwall system.

**Packers Island Water Main Replacement, PA American Water, White Deer District, Northumberland Borough, PA.** Design of a water main replacement using HDD with multiple river crossings.

## Professional Affiliations:

Codorus Creek Improvement  
 Partnership/Chair  
 Codorus Creek Watershed  
 Association  
 Watershed Alliance of York/Board  
 Member

**West Manheim Water Main Extension Wetland Determination, York Water Company, Adams County, PA.** Project Manager responsible for on-site determination as to presence or absence of wetlands in vicinity of five proposed water line stream crossings and approximately 4,000 feet of proposed alignment between Hostetter Road and Sell's Station Road in Oxford, Mount Pleasant, and Union Townships.

**Bullfrog Valley Run PADEP Permits, Township of Derry Board of Supervisors, Hershey, PA.** Preparation and obtaining of PADEP permits GP 5 and GP 11 for construction of a footbridge.

**Broad Creek Basin Sewer Rehabilitation, Washington Suburban Sanitary Commission, Laurel, MD.** Final engineering design, field investigations and constructability reviews, preparing bid packages, and conducting a community outreach program for pipe rehabilitation and stream restoration in Broad Creek basin.

# Laura M Danko, PWS

Environmental Scientist

## Education:

AAS/Horticulture and Landscape Design

Bachelor of Science/Environmental Science

Graduate Coursework/Master's Program, Environmental Resource Management

## Registrations/Certifications:

Professional Wetlands Scientist

## Years of Experience:

15

## Professional Affiliations:

York County Master Gardener Program, MAEScapes Educational Series, Curriculum Educator for rain-gardening initiatives use of native plant species, and identification and replacement of invasive plant species

Cumberland County Master Gardener Program, Education Symposia Committee Chairperson dedicated to developing and facilitating horticultural and ecological educational programs for the benefit of our local communities

Ms. Danko is certified as a Professional Wetlands Scientist with 15 years of experience providing technical and managerial environmental and ecological consulting on a wide range of natural resources planning, conservation, and design projects. Her experience includes conducting wetland/environmental delineations and function/value assessments; wetland, stream, and wildlife habitat restoration and mitigation design; regulatory permitting services; environmental monitoring services; wetland and stream construction management and inspection; natural resource inventories; wildlife species, habitat, and biodiversity survey and analysis; technical document and open-end contract proposal development; project committee and advisory board liaison services; coordination and facilitation of project meetings, public events, and presentations; development of technical project documents and specifications; quality control review of technical reports; preparation of construction specifications, bid documents, and cost estimates; and technical and impact analysis documents including feasibility studies, hydrology determinations, habitat studies, species studies, and NEPA documents.

**Packers Island Water Main Replacement, PA American Water, White Deer District, Northumberland Borough, PA.** Design of a water main replacement using HDD with multiple river crossings.

**Riverfront Park: Riverbank Stabilization and Flood Control Design and Construction Management, City of Sunbury, PA.** Preliminary assessments and studies, schematic and final engineering designs, and bidding and construction phase services for the riverfront park and associated facilities, including design of appropriate stabilization and restoration measures for the riverbank and preserving the structural integrity of the existing levee/floodwall system.

**Water Supply Test Well, New Freedom Borough, PA.** Coordination with PADEP, preparation of pre-drilling plan and installation of a test well.

**Watershed Conservation Plan, Muddy Creek Trout Unlimited, York County, PA.** Background research, basic data collection, analysis of issues and development of recommendations to prepare a long-term management plan for the Muddy Creek Watershed.

**Conewago Creek Watershed Conservation Plan, Pennsylvania Environmental Council, York County, PA.** Environmental Scientist responsible for development/compilation of natural resource data and development and assessment for watershed protection, conservation, and restoration strategies.

**Sewage Facilities Expansion Design, Bonneauville Borough Municipal Authority, PA.** Environmental Scientist responsible for wetland/stream and site investigation for construction plan and permit application, development and submittal of State General Permit application for environmental impact, and initial concept development/recommended strategy for stream stabilization efforts.

**Watershed Study, St. Mary's County, MD.** Project Manager responsible for the study of two watersheds to determine areas considered suitable for development. Project involved both GIS analysis and ground-truthing to determine sensitive areas throughout each watershed that were in need of protection. Study included consideration of numerous rare, threatened or endangered species, including the dwarf wedge mussel, a federal endangered species. Final product consisted of a Sensitive Area Protection Report and Mapping.

**County Park Wetland/Area 6 Stream Restoration, Department of Planning, Bureau of Environmental Services, Carroll County, MD.** Project Manager responsible for a complex design project to restore proper channel dimensions to an urban stream and to create viable wetlands. The project involved stream bank stability restoration, stream geometry restoration, re-vegetation, wildlife habitat creation, creation of stormwater management and water quality improvement/Best Management Practices (BMPs), creation of a wetland to provide wildlife habitat, and detainment of high storm flows.

**Winters Run Wetland Delineation, Department of Environmental Protection and Resource Management (DEPRM), Baltimore County, MD.** Performed wetland and stream delineation on an approximately 25-acre tract of land as part of the Baltimore County Winters Run Stream Restoration Project. Responsibilities included performing initial site assessment, wetland/stream field-delineation, and preparation of wetland/stream delineation report.

**Potee Street Bridge Replacement, City of Baltimore and Maryland State Highway Administration.** Environmental Manager responsible for the preparation of a Joint Federal/State Permit application including pertinent graphic plates depicting wetland and stream impacts, review of roadway design for determination of impacts, wetland avoidance and minimization efforts and alternative analyses, selection and design of the wetland mitigation site, regulatory agency coordination, development of Categorical Exclusion document to fulfill NEPA requirements, coordination with Chesapeake Bay Critical Area Commission (CBCA) for impacts within the Critical Area and associated 100-foot buffer, development of CBCA mitigation plans totaling more than three acres, presentation to the CBCA Commission for request of project and mitigation approval.

**Rock Creek, Woodrow Wilson Bridge, Maryland State Highway Administration and Virginia Department of Transportation.** Developed vegetative restoration plans, landscaping plans, construction specifications, and quantity and cost estimates for fish passage improvements and bank stability measures for Rock Creek in Rock Creek National Park, Washington D.C., as part of the compensatory stream mitigation for the Woodrow Wilson Bridge Replacement project.

# Tiffany S Bates

Environmental Scientist

**Education:**

Bachelor of Science/Environmental  
Biology

**Years of Experience:**

2

Ms. Bates is an Environmental Specialist in Buchart Horn's Environmental Planning Group. Her background includes an internship with the PADEP Bureau of Mine Reclamation. Her experience includes environmental permitting for transportation projects, including stream and structure assessments, air quality assessments and wetlands delineations, Phase I Environmental Site Assessments, and identification of acid mine drainage sites.

**Broad Creek Basin Sewer Rehabilitation, Washington Suburban Sanitary Commission, Laurel, MD.** Final engineering design, field investigations and constructability reviews, preparing bid packages, and conducting a community outreach program for pipe rehabilitation and stream restoration in Broad Creek basin.

**Knox Gelatin Supplemental Remedial Investigation Work Plan Preparation, Camden Redevelopment Agency, NJ.** Development of a Remedial Investigation Work Plan involving field investigation to collect and analyze soil and/or groundwater samples for presence of hazardous materials.

**Sandford Avenue Bridge Replacement, Union County, Plainfield, NJ.** Design, construction administration, and inspection for the replacement of Sandford Avenue Bridge (PI14) over the Green Brook.

**Site Grading/Drainage Plans for Aircraft Parking Aprons and Ramps, St. Tammany Regional Airport, Covington, LA.** Preparation of site grading and drainage plans for construction of new aircraft parking aprons and ramps for T-hangars and fixed-base operator/commercial hangars, a connector taxiway, and a 1000' runway extension including detention ponds, piping, and box bridges.

**Modern Landfill, NPDES Permit Renewal, York, PA.** Preparation of application for renewal of the National Pollutant Discharge Elimination System Permit for existing wastewater treatment plant and sediment pond discharges.

**Assessment of Underperforming Water Supply Well, New Freedom Borough, PA.** Assessment of a poorly performing water supply well that included review of documentation for all Borough wells, a site visit, and a summary report.

**Community Park, East Berlin Borough, PA.** Re-design of community park layout in East Berlin that involved revising master plan in accordance with DCNR requirements, delineation of Phase I construction limits, preliminary design, final design and construction documents. Elements include a bike path, parking areas, playgrounds, ball fields, and landscaping with a variety of plantings.

**River Park Improvements, Borough of Columbia, PA.** Preliminary and final design, land development submittal, bidding and construction phase assistance, resident representation, and other related services for park improvements including roads, parking, and river access.

**Orphan Mine Pool Action Plan, PADEP Bureau of Mine Reclamation, Statewide, PA.** As an Engineering, Scientific, and Technical Intern with the Mining and Reclamation Advisory Board, assisted in the accurate location of 400 high-volume Acid Mine Drainage discharges located on abandoned mine sites throughout the bituminous and anthracite coalfields in PA, including flow measurements, GPS locations, and collection of chemical samples.



# Perry P Sgrignoli, PLS

Surveying

## Education:

Coursework/Architectural Drawing and Engineering Studies

Coursework/Mechanical Engineering Studies

## Registrations/Certifications:

Professional Land Surveyor

## Years of Experience:

27

As Chief of Surveys, Mr. Sgrignoli directs, coordinates, and supervises field survey crews, designers, and CADD operators on GPS surveys, ground control for aerial mapping, property surveys, topographical surveys, construction stakeout, right-of-way surveys, legal descriptions, cost estimates, street and drainage designs, right-of-way plats, stormwater management, recreational and industrial park designs, office building site plans, and parking lots.

**Corridor H Final Design, WVDOT, Grant County, WV.** Design and development of construction documents for a four-lane divided highway with two major structures and a minor third structure including drainage and specialized erosion and sediment control due to the project location and ecological sensitivity of Greenland Gap.

**SARAA, Franklin County Regional Airport Runway Safety Area Improvement, Chambersburg, PA.** Design of excavation and grading required to bring the RSA into compliance with FAA requirements including the elimination of a ridge to the north of the runway that penetrates the FAR Part 77 transition surface. Design improvements for runway safety area using borrow from an "obstruction to air travel"; excess borrow from obstruction removal used as initial fill placement for future taxiway, apron, and other improvements.

**SARAA, Capital City Airport, Drainage System Improvement, Phase III, New Cumberland, PA.** Design of an oil/water separator system for the northeast drainage area and repair the break in the 24" diameter PVC stormwater pipe.

**Design of Silver Spring Clearwell, Pennsylvania American Water, Mechanicsburg, PA.** Engineering, design, bidding, and construction services for a 500,000-gallon baffled clearwell storage tank and related piping in Cumberland and York Counties.

**Reservoir Upgrades and Cover Replacement, Hellertown Borough Authority, PA.** Design, permitting, bid phase, and construction oversight for upgrades to the Borough's main reservoir and replacement of the floating cover.

**Wastewater Collection and Treatment System Evaluation, USPFO for PA, Fort Indiantown Gap, Annville, PA.** Wastewater collection and treatment system evaluation and development of capacity assurance plan to eliminate all overflows by 2010 as required by NPDES permit.

**Wastewater Treatment Plant Upgrade and Expansion, Gettysburg Municipal Authority, PA.** Design of improvements to upgrade treatment to meet effluent requirements of the Chesapeake Bay Tributary Strategy and to expand capacity to 3.45 MGD as described in the Act 537 Sewage Facilities Plan.

**Wastewater Treatment Plant Upgrade, Dover Township Sewer Authority, PA.** Professional engineering services for the design of improvements to the facilities to upgrade treatment to meet the effluent requirements of the Commonwealth of Pennsylvania's Chesapeake Bay Tributary Strategy. Included inspection and construction phase services.

**BNR Improvements, Springettsbury Township Wastewater Treatment Plant, York, PA.** Design of a Biological Nutrient Removal (BNR) upgrade of the existing treatment plant in order to comply with the proposed effluent nutrient limits required by the Chesapeake Bay Strategy.

# John E. Nottingham, P.E., P.S.



Mr. Nottingham has served as lead Geotechnical Engineer on numerous government and commercial design and construction projects. His responsibilities on these projects include direction and coordination of all geotechnical engineering activities. Duties on these projects have included foundation investigation report production, foundation and retaining wall design, fill embankment and cut slope design, dam design and analysis, slope stability analysis, pavement design, design of drainage systems, supervision of subsurface drilling programs, field activity coordination, laboratory data computation and processing, performance of field work, client relations, and supervision of staff and project level geotechnical engineers.

## Fields of Competence

- Highway & Airport Geotechnical Design
- Foundation Investigations
- Pavement Analysis and Design
- Landslide Analysis & Remedial Design
- Ground Water and Seepage Analysis & Design
- Retaining Wall Design
- Mine Subsidence Investigations
- Forensic & Insurance Investigations
- Construction Monitoring
- Personnel Management
- Project Management (schedule and budget)
- Project Estimating

## Education

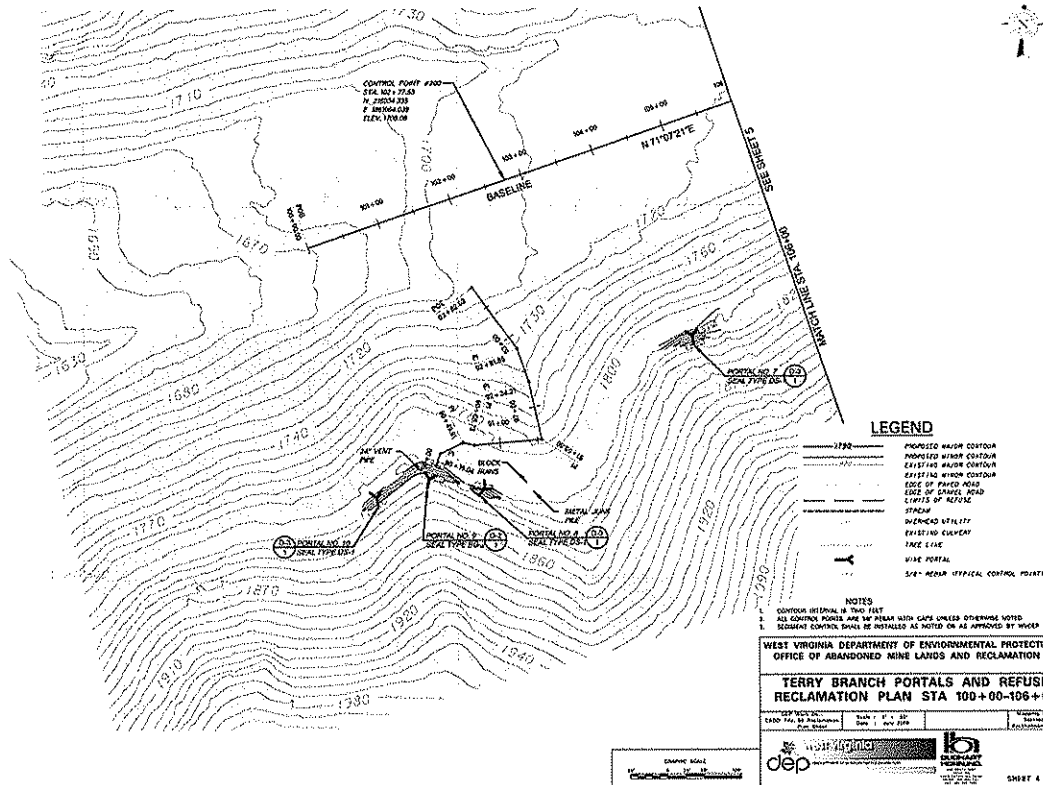
- B.S., Civil Engineering, West Virginia University - 1987
- M.S., Civil Engineering, West Virginia University - 1995

## Registration/Certifications

- Registered Professional Engineer in West Virginia. Registration No. 12357 (since 1994)
- Registered Professional Surveyor in West Virginia. Registration No. 1495 (since 1995)

## Employment History

- November 2002 – Present  
Branch Manager, Novel Geo-Environmental, LLC
- 1997 – November 2002  
Geotechnical Services Manager, Triad Engineering, Inc.
- 1996 – November 2002  
Senior Engineer, Triad Engineering, Inc.
- 1993 – 1996  
Project Engineer, Triad Engineering, Inc.
- 1988 – 1993  
Staff Engineer, Triad Engineering, Inc.



**Client:**

WV DEP  
 Office Abandoned Mine Lands &  
 Reclam  
 116 Industrial Dr  
 Oak Hill, WV 25901

## WVDEP, Terry Branch Portals & Refuse Remediation Design

Buchart Horn is providing design services in support of the West Virginia Department of Environmental Protection Office of Abandoned Mine Lands and Reclamation for the reclamation of the Terry Branch Portals and Refuse in Wyoming County. Services include site surveys, development of preliminary and final plans, preparation of cost estimates, specifications, and potentially construction inspection services. Buchart Horn is also coordinating/overseeing the work of geotechnical consultants.

The project location is near the Town of Mullens, and is situated within the Guyandotte River watershed. Site features include five mine portals, five collapsed portals, one fan house, and a coal refuse pile that has steep slopes and is eroding into the creek. The area is used extensively for recreational purposes by a local sportsman's club, and is also accessible by ATVs. The existing site poses several threats to area residents and users of the area. Five of the portals are open and evidence of visitors, household garbage and other debris can be seen inside of the openings. The fan house is deteriorating and the large metal fan is still present. The refuse pile has steep and unstable slopes. The slopes have the potential to slip and create a dam across the creek. This situation could pose a flooding hazard to the downstream residents.

Buchart Horn's remediation design includes the following features:

- Regrade and install underdrain to establish positive drainage around all mine portals
- Provide dry seals for the collapsed portals and bat gate mine seals for the open portals
- Provide removal of all structures and equipment including fan house and mine cars
- Delineate areas to obtain necessary soil cover
- Reestablish vegetation on all disturbed areas

- AML Remediation Project
- Wet Mine Seals
- Bat Gate Installation
- Site Stabilization
- COE Permitting

**Client:**

WV DEP  
601 57th Street SE  
Charleston, WV 25311-1250

# WV DEP Water Line Feasibility Studies

Studies of water supplies for three communities in southern West Virginia: Bone County Rts. 28, 28/1, and 28/1, served by the Boone County PSD; Fairdale, Raleigh County Rtes. 1/12 and 2/4, served by Glen White—Trap Hill PSD; and Mercer County Rts. 71/11 and 71/20 served by Lashmeet PSD. The studies are intended to verify whether the areas have been affected by pre-law (prior to August 3, 1977) mining activities and would be valid candidates for funding for improvements. The scope of services for each area includes field reconnaissance of the study area to define affected residences and business to be evaluated, review of historical data for the areas, field sampling and analysis of water supplies, interviews with local residents, development of mapping showing pre- and post- mining characteristics for the areas, and development of a report summarizing the findings of the studies.

AML Program Study

Water System Impact Evaluation

**Client:**

Pennsylvania Department of  
Environmental Protection

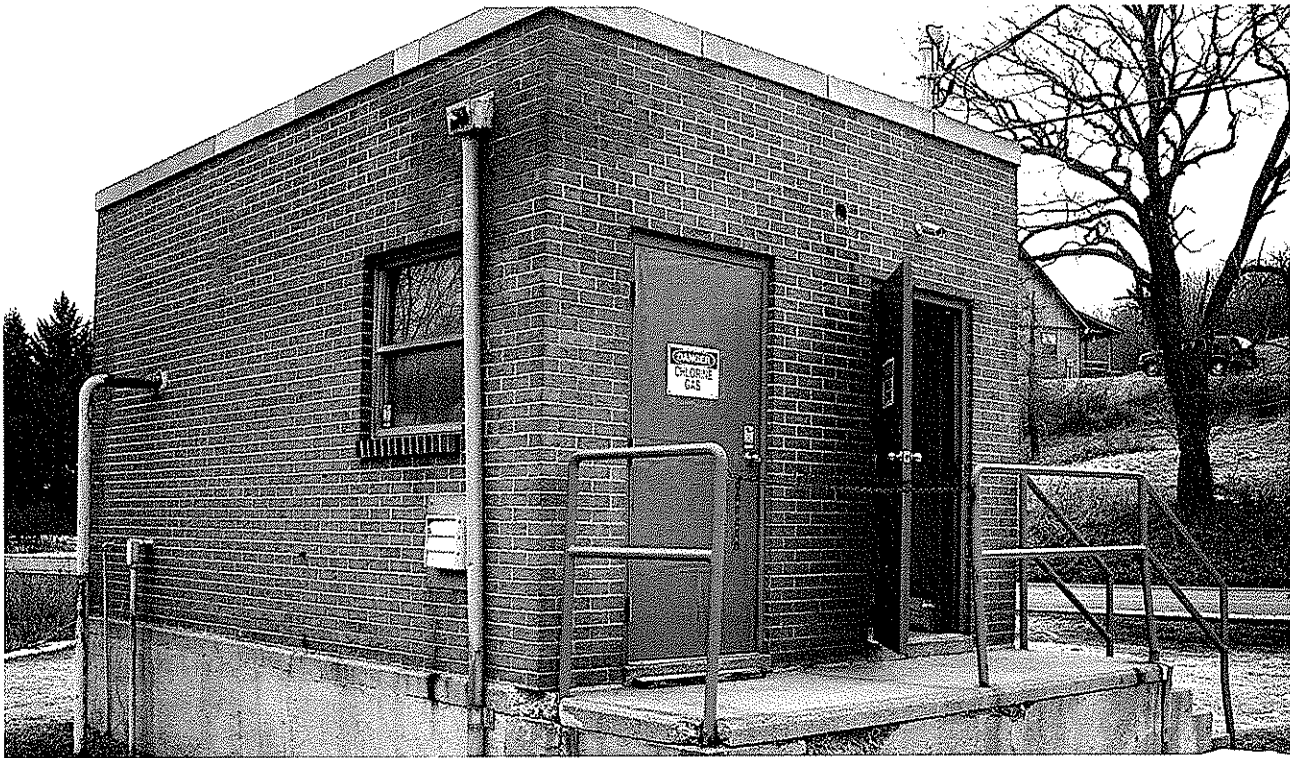
# Site Grading Plan, Acid Drainage Mitigation, Abandoned Strip Mine, Buckeye Run

As part of a U.S. Office of Surface Mining site restoration, Buchart Horn, Inc. designed a site grading plan for the surface mined, 67-acre Buckeye Run area in southwestern Clearfield County, PA. The area had been abandoned for over 40 years.

The runoff discharged from the mined area contained high levels of dissolved iron and aluminum sulfates in conjunction with pH values less than 4.5 (acidic). It is produced when oxygen dissolved in water reacts with pyritic (iron sulfide) materials found in association with most coal deposits. Acid mine drainage (AMD) degrades the water quality of streams and water supplies, often to the point of eliminating all biological activity within the AMD-contaminated stream.

In addition to the pollutants, there were also several dangerous highwalls and spoil piles remaining from the final cut of the surface mining operation. Buchart Horn developed regrading/erosion and sediment control plans to eliminate the highwalls, the low points, and various spoil piles. Stormwater and normal surface water were conveyed in vegetated swales to tributaries of Buckeye Run. The vegetated swales prevent erosion and further assist in keeping runoff away from potentially acidic materials.

Abandoned Mine Reclamation  
Established Positive Drainage  
Regrade/Reclaim Site



**Client:**

Oakland Public Service District  
 768 Carothers Rd  
 Weirton, WV 26062

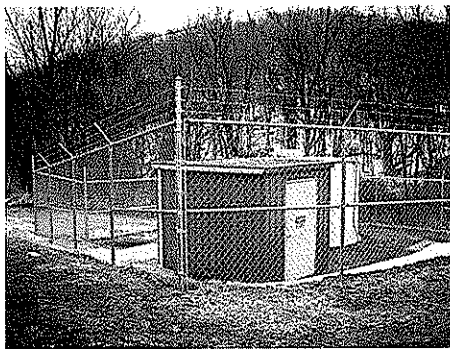
## Oakland Public Service District, Water System Improvements

The Oakland Public Service District (PSD), located in Hancock County, West Virginia, is operated under the West Virginia Department of Health and Human Resources Bureau for Public Health, Permit Number WV3301517. This PSD operates two separate water distribution systems: the Golden Keys System and the Oakland System. Buchart Horn prepared a Preliminary Engineering Report and assisted with a funding application submitted to the West Virginia Infrastructure and Jobs Development Council for water system improvements to the Oakland System.

The area involved is located northeast of the City of Weirton and southeast of the City of New Cumberland, generally around Wylie Ridge Road and Hardins Run Road. The system is comprised of three main parts: the four active wells and treatment facility, the distribution mains, and the 200,000-gallon water standpipe.

The current raw water sources contain high concentrations of iron and manganese, and the PSD had received water quality complaints from its customers. The Public Service Commission of West Virginia ordered the PSD to develop alternatives for the removal of iron and manganese, including the construction of a treatment facility or the purchase of water from an adjacent utility. Buchart Horn recommended in the Preliminary Engineering Report the installation of filters to remove these high concentrations of iron and manganese.

The Wheeling Office of Environmental Health Services District Office's November 10, 2005 Sanitary Survey recommended an evaluation of the inside and outside coating of the existing water storage tank. The coating has reached the end of its life expectancy. In addition, the existing available water volume is not sufficient during peak day demands and fire demands. Buchart Horn recommended both the construction of a new tank in addition to the rehabilitation of the existing water tank.

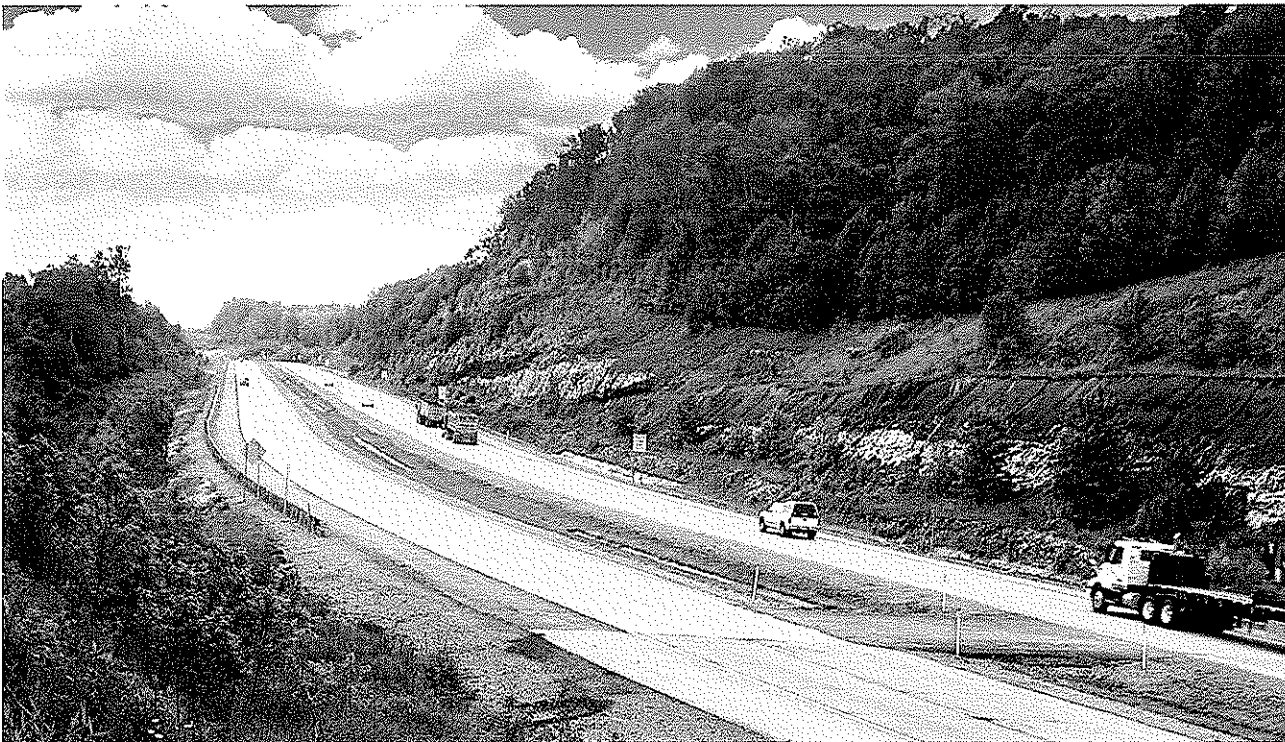


Water Quality Studies and Treatment



At the request of potential customers, new distribution mains are recommended to be extended east of Wylie Ridge Road. The new water mains are to be installed in portions of Chapman Road, Gibson Road, Tope Road, and Cameron Hollow Road.

Upon consideration of the preliminary funding application, the Infrastructure and Jobs Development Council determined that the District should utilize an available Hancock County grant, a local contribution, pursue a Bureau of Public Health (BPH) design grant and a Rural Utilities Service loan to fund the recommended water system improvements.



**Client:**

WVDOT  
 Building Five  
 1900 Kanawha Boulevard East  
 Charleston, WV 25305-0430

## WVDOT, Corridor H, Section 4, Final Design

Buchart Horn provided preliminary and final design services for an approximately two-mile segment of Corridor H near Greenland Gap in Grant County, WV. The project also included two major bridges and one minor stream crossing.

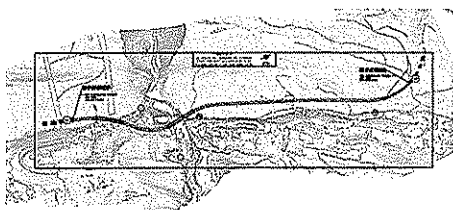
Initially, we were responsible for a watershed-based study of the effects of several alignment alternatives on a major four-lane highway on new alignment. The project site was in a naturally sensitive area surrounded by historic rural residential villages, dense old growth forests, vast agricultural lands, pristine high quality streams, habitat for rare and endangered species, and a unique geological feature - the Greenland Gap.

Buchart Horn evaluated the existing preferred alternative and compared it to two options on an environmental basis. This study not only looked at the direct impact to the immediate surroundings but also looked at the impacts each alternative would have on the entire watershed and sub-watersheds. The technical report generated from this study was an in-depth evaluation of each watershed and sub-watershed and how it would respond to various alignment options. The results were recommendations on how to avoid environmentally and culturally damaging impacts associated with the project.

Subsequent to the initial study, Buchart Horn advanced the project through the preliminary engineering phase and performed final design.

**Award**

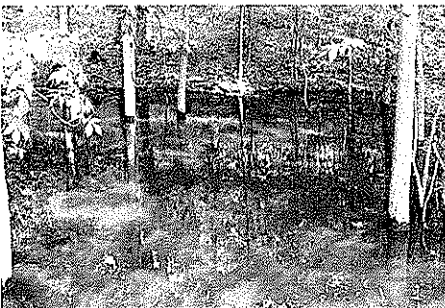
Buchart Horn was awarded an *Engineering Excellence Award* for the 2008 "Large Bridge Category" from the West Virginia Division of Highways for the Dual Bridges on US48 (Corridor H) over Grant County Bridge Route 1, North Fork Patterson Creek and Grant County Route 42/3 through Greenland Gap near Scherr, West Virginia.



COE Permitting

Open Channel Drainage

Site Stabilization





**Client:**

US Army Corps of Engineers  
City Crescent Building  
10 South Howard Street  
Baltimore, MD 21203-1715

COE Permitting

Drainage System Design

## Olyphant Local Flood Protection Program

Buchart Horn, Inc. proposed the installation of a system of inlets and closed pipe to intercept runoff that would pond behind the levee structures being considered as flood protection for the Borough of Olyphant. The U.S. Army Corps of Engineers originally suggested a large concrete channel to collect the runoff, but the inlets and closed pipe would achieve the same result with a greater degree of safety and at lower cost.

The Stormwater Transport System as presently designed will collect the runoff from storm events up to and including a 100-year storm for a drainage area of approximately 80 acres. The system includes 238 feet of 72-inch-diameter concrete pipe; 154 feet of 60-inch pipe; 406 feet of 54-inch pipe; 417 feet of 48-inch pipe; 200 feet of 36-inch pipe; and 33 concrete inlets.

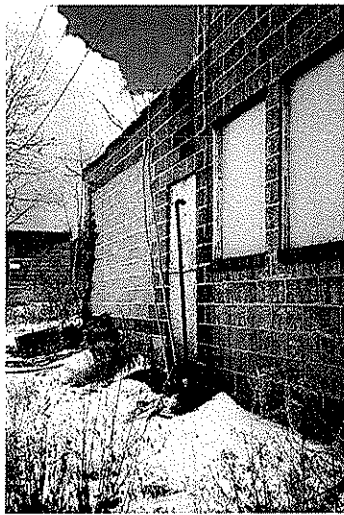


**Client:**

US Army Corps of Engineers  
City Crescent Building  
10 South Howard Street  
Baltimore, MD 21203-1715

## Scranton Flood Protection Project

Using preliminary plans prepared by the Corps of Engineers, Buchart Horn, Inc. finalized design and prepared plans and specifications to produce complete and biddable construction contract documents for a one mile flood control project along the Lackawanna River in Scranton, Pennsylvania. Significant major project features are levees, mechanically stabilized earth (MSE) walls, concrete floodwall, closure structures, interior drainage structures, and removal of the Pocono Northeast Railroad Bridge.



Site Stabilization  
Earth Wall Design  
Drainage Structures

**Client:**

Harley Davidson Motor Company  
Operations, Inc.  
1425 Eden Road  
York, PA 17402

Water Quality Improvements

Permit Acquisition

## Environmental Consulting, Harley Davidson Motor Company

Since 1998, Buchart Horn, Inc. has been the environmental and regulatory consultant for the York, Pennsylvania facility of Harley Davidson Motor Company Operations, Inc. We address any issues that arise related to solid waste (residual and hazardous), air quality, and water quality.

Specific reporting requirements and services provided include the following:

- Preparation of Pennsylvania Department of Environmental Protection (PADEP) annual and biennial residual waste reports
- Preparation of Environmental Protection Agency (EPA) biennial hazardous waste report
- Preparation of EPA Toxic Chemical Release Inventory Form R Report
- Preparation of Pennsylvania Department of Labor & Industry Bureau of Pennsafe Tier II Report
- Preparation of EPA Air Information Management System (AIMS) Report
- Preparation of Pennsylvania Department of Labor & Industry Bureau of Pennsafe Hazardous Substance Survey Form (HSSF)
- Aboveground and underground storage tank monitoring
- Annual update of Preparedness Prevention and Contingency (PPC) Plan, Spill Prevention Control and Countermeasure (SPCC) Plan, and Off-site Response (OSR) Plan
- Preparation of PADEP 25R Source Reduction Strategies
- Monthly Audits of facility's air, waste management, and storage tank provisions to ensure environmental compliance
- Preparation of Discharge Monitoring Reports (PADEP) and Self-Monitoring Reports (Springettsbury Township)
- Preparation of Quarterly volatile organic compounds (VOC) emission reports for PADEP submittal
- Management of projects relating to environmental compliance and awareness
- Preparation of Title V Air Quality permit and management of the associated monitoring program
- Review of environmental regulations to determine the potential impacts to the facility
- Assistance with efforts to obtain ISO 14001 certification

**Client:**

City of Germantown  
1930 Germantown Road South  
Germantown, TN 38138-2815

Stormwater Engineering  
Permit Acquisition  
Open Channel Drainage

## Howard Road Outfall Stormwater Planning & Facility Design

This project consisted of a stormwater management plan and design of retention and detention facilities to protect a downstream residential area from flooding. Protection was for rainfall events up to the 100-year return interval.

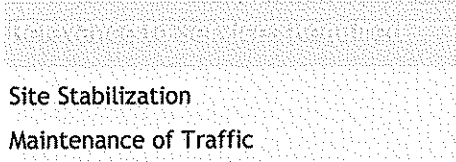
This project resulted in the design and construction of the Howard-McVay Detention Basin, as well as other needed drainage improvements within the Howard Road Outfall drainage basin. The Stout Road Detention Alternative Study, a part of the Howard Road Outfall Alternate Detention Basin Study, involved development of alternatives to stop flooding in a residential area currently drained by a concrete-lined channel that was sized for a storm event expected to arrive approximately every four years. This area experiences frequent flooding due to the under-capacity channel. Alternatives studied included rebuilding and enlarging the existing channel, bypassing the existing channel with a box culvert, and building a detention basin upstream of this area in order to slow the drainage entering into the existing undersized channel. All of the alternatives would require a Stormwater Pollutant Prevention Plan (SWPPP) for construction.

**Client:**

City of Charleston  
P.O. Box 1026  
Charleston, WV 25324

# City of Charleston, Design of Bridge Road Retaining Wall

Buchart Horn, Inc. was responsible for the design of a new retaining wall on Bridge Street. Our responsibilities included not only the design of the wall, but roadway replacement, new sidewalk and curb, drainage calculations, and removal/replacement of drainage inlets to intercept roadway surface drainage from the new contours. We used two types of retaining wall: modular block and pile and lagging.





**Client:**

WVDOT  
Building Five  
1900 Kanawha Boulevard East  
Charleston, WV 25305-0430

## WVDOT, I-81 Tabler Station Interchange

Buchart Horn is providing services for the study, design, and preparation of construction contract plans and related documents for the new Tabler Station Connector Road including modification of ramps, replacement of overpass bridge and design of an industrial access road. The project includes expansion of the existing Tabler Station Interchange on I-81 just south of Martinsburg, replacement of the structure carrying Route 32 over I-81, widening of Route 32 between I-81 and Route 11, and service and access roads.

COE Permitting Support

Drainage Design

Site Stabilization

WEST VIRGINIA DEPARTMENT OF ENVIRONMENTAL PROTECTION  
 AML CONSULTANT CONFIDENTIAL QUALIFICATION QUESTIONNAIRE Attach it "B"

PROJECT NAME  
**Birds Creek #4**  
**DEP14794**

1. FIRM NAME  
 Buchart Horn, Inc.

2. HOME OFFICE BUSINESS ADDRESS  
 445 W. Philadelphia St., York, PA 17401

3. FORMER FIRM NAME

4. HOME OFFICE TELEPHONE  
 (717) 852-1400

5. ESTABLISHED (YEAR)  
 1946

6. TYPE OWNERSHIP  
 Corporation

6a. WV REGISTERED DBE  
 (Disadvantaged Business Enterprise) XX NO

7. PRIMARY AML DESIGN OFFICE: ADDRESS/ TELEPHONE/ PERSON IN CHARGE/ NO. AML DESIGN PERSONNEL EACH OFFICE  
 400 Tracy Way, Suite 110, Charleston, WV, 25311, (304) 346-1127, Robert T. Zulick, PE, 7

8. NAMES OF PRINCIPAL OFFICERS OR MEMBERS OF FIRM  
 Brian S. Funkhouser, P.E., President  
 Charles L. Kinney, PG, Vice President, Finance & Administration

9. PERSONNEL BY DISCIPLINE

52 ADMINISTRATIVE	0 ECOLOGISTS	2 LANDSCAPE ARCHITECTS	14 STRUCTURAL ENGINEERS
23 ARCHITECTS	0 ECONOMISTS	8 MECHANICAL ENGINEERS	5 SURVEYORS
4 CADD OPERATORS	10 ELECTRICAL ENGINEERS	0 MINING ENGINEERS	1 TRAFFIC ENGINEERS
0 CHEMICAL ENGINEERS	12 ENVIRONMENTALISTS	1 PHOTOGRAMMETRISTS	7 TRANSPORTATION ENGINEERS
47 CIVIL ENGINEERS	0 ESTIMATORS	0 PLANNERS: URBAN/REGIONAL	30 OTHER
28 CONSTRUCTION INSPECTORS	6 GEOLOGISTS	12 SANITARY ENGINEERS	
22 DESIGNERS	0 HISTORIANS	0 SOILS ENGINEERS	
17 DRAFTSMEN	1 HYDROLOGISTS	3 SPECIFICATION WRITERS	
			305 TOTAL PERSONNEL

10. HAS THIS JOINT-VENTURE WORKED TOGETHER BEFORE?  YES  NO  N/A

TOTAL NUMBER OF WV REGISTERED PROFESSIONAL ENGINEERS IN PRIMARY OFFICE: 5  
 \*RPEs other than Civil and Mining must provide supporting documentation that qualifies them to supervise and perform this type of work.

**8a. NAME, TITLE, & TELEPHONE NUMBER - OTHER PRINCIPALS**  
(continued)

Diane C. Vesely, PE  
(901) 363-6355, 3150 Lenox Park Blvd., Suite 300, Memphis, TN 38115  
(662) 563-1299, 103-4 Woodland Road, Batesville, MS 38606  
(225) 293-1111, 9100 Bluebonnet Centre Blvd., Suite 502, Baton Rouge, LA 70809  
(615) 256-3991, 209 10<sup>th</sup> Avenue South, Suite 345, Nashville, TN 37203

Anthony J. Shinsky, R.A., AIA, LEED<sup>®</sup> AP, Vice President of Facilities (717) 852-1400, 445 West Philadelphia St., York, PA 17401  
(610) 380-7036, 237 Harmony Street, Coatesville, PA 19320  
(717) 232-5140, 112 Market Street, Harrisburg, PA 17101  
(717) 533-0935, 431 East Chocolate Avenue, Hershey, PA 17033-1324

R. Scott Sternberger, Vice President Transportation Division, (717) 852-1400, 445 West Philadelphia St., York, PA 17401  
Ulrike Page, A.K.H., Prokuristin, 011-49-0631-3037254, Flickerstal 5, 67657 Kaiserslautern, Germany  
11-49-6196-9312300, Frankfurter Strasse 21-25, D-65760, Eschborn, Germany

Glen R. DeWillie, P.E., Executive Vice President (717) 852-1400, 445 West Philadelphia St., York, PA 17401  
Michael A. Schober, P.E., Vice President (717) 852-1400, 445 West Philadelphia St., York, PA 17401  
(304) 296-1127 235 High Street Room 714, Morgantown, WV 26505  
(410) 247-3501, 3700 Koppers Street, Suite 305, Baltimore, MD 21211,  
(717) 533-0935, 431 East Chocolate Avenue, Hershey, PA 17033-1324

Christopher D. Dwyer, P.E. (856) 797-4300, 4A Eves Drive, Suite 114, Marlton, NJ 08053-3127

Robert T. Zulick, P.E. (412) 261-5059, 2200 Liberty Avenue, Suite 300, Pittsburgh, PA 15222-4502

David J. Polatnick, AIA (570) 213-0082, 600 Main Street, Suite 110, Stroudsburg, PA 18360

Scott E. Russell, P.E. (814) 237-7111, 1200 West College Avenue, State College, PA 16801-2824



11. OUTSIDE KEY CONSULTANTS/SUB-CONSULTANTS ANTICIPATED TO BE USED. Attach "AML Consultant Confidential Qualification Questionnaire".

<p>NAME AND ADDRESS:                  Novel Geo-Environmental, PLLC                  806 B Street                  St. Albans, WV 25177</p>	<p>SPECIALTY:                  Geotechnical Services and Materials Testing</p>	<p>WORKED WITH BEFORE                  X Yes                  No</p>
<p>NAME AND ADDRESS:</p>	<p>SPECIALTY:</p>	<p>WORKED WITH BEFORE                  Yes                  No</p>
<p>NAME AND ADDRESS:</p>	<p>SPECIALTY:</p>	<p>WORKED WITH BEFORE                  Yes                  No</p>
<p>NAME AND ADDRESS:</p>	<p>SPECIALTY:</p>	<p>WORKED WITH BEFORE                  Yes                  No</p>
<p>NAME AND ADDRESS:</p>	<p>SPECIALTY:</p>	<p>WORKED WITH BEFORE                  Yes                  No</p>
<p>NAME AND ADDRESS:</p>	<p>SPECIALTY:</p>	<p>WORKED WITH BEFORE                  Yes                  No</p>
<p>NAME AND ADDRESS:</p>	<p>SPECIALTY:</p>	<p>WORKED WITH BEFORE                  Yes                  No</p>
<p>NAME AND ADDRESS:</p>	<p>SPECIALTY:</p>	<p>WORKED WITH BEFORE                  Yes                  No</p>
<p>NAME AND ADDRESS:</p>	<p>SPECIALTY:</p>	<p>WORKED WITH BEFORE                  Yes                  No</p>

12. A. Is your firm experienced in Abandoned Mine Lands Remediation/Mine Reclamation Engineering?

XXX YES Description and Number of Projects: Buchart Horn has performed complete design for the Reclamation of the Buckeye Run Abandoned Surface Mine in Clearfield County, PA. BWe are currently completing design for the Terry Branch Portals and Refuse project in Wyoming County. In addition, we offer extensive experience in water distribution and storage, stormwater and drainage, land remediation, slip repair and grading.

NO

B. Is your firm experienced in Soil Analysis?

XXX YES Description and Number of Projects: Buchart Horn's Earth Sciences group brings experience in the soils evaluations and analysis. We have existing relationships with a number of qualified soils testing laboratories who provide our professional engineers and geologists with quantitative data from which we can provide analysis and recommendations.

NO

C. Is your firm experienced in hydrology and hydraulics?

XXX YES Description and Number of Projects: Through our work in providing bridge and roadway design for the West Virginia Department of Transportation Division of Highways, we have extensive experience in the development of Hydrologic and Hydraulic Plans and Reports.

NO

D. Does your firm produce its own Aerial Photography and Develop Contour Mapping?

XXX YES Description and Number of Projects: Buchart Horn has an in-house aerial mapping group. We have performed developed contour mapping from aerial photography for hundreds of water line, sewer line, roadway, and bridge projects, in support of our in-house design efforts and as a subconsultant to other firms.

NO

E. Are your firm's personnel experienced in domestic waterline design? (Include any experience your firm has in evaluation of aquifer degradation as a result of mining.)

XXX YES Description and Number of Projects: Buchart Horn has performed the design of hundreds of waterline projects, including distribution systems, booster stations, storage facilities, and treatment plants.

NO

F. Is your firm experienced in Acid Mine Drainage Evaluation and Abatement Design?

YES Description and Number of Projects: \_\_\_\_\_

XXX NO Buchart Horn has not performed abatement design for acid mine drainage. We have provided designs for related groundwater treatment systems related to industrial runoff, airport runway deicing facilities, underground storage tanks and contaminated soils cleanup.

13. PERSONAL HISTORY STATEMENT OF PRINCIPALS AND ASSOCIATES RESPONSIBLE FOR AML PROJECT DESIGN (Furnish complete data but keep to essentials)

NAME & TITLE (Last, First, Middle Int.) Michael A. Schober, PE Principal-in-Charge	YEARS OF EXPERIENCE		YEARS OF DOMESTIC WATERLINE DESIGN EXPERIENCE: 20
	YEARS OF AML DESIGN EXPERIENCE: 0	YEARS OF AML RELATED DESIGN EXPERIENCE: 5	

Brief Explanation of Responsibilities  
As the Principal-in-Charge on this project, Mr. Schober will meet regularly with the Project Manager to monitor schedules and budgets. He will also periodically contact you to confirm that you are satisfied with the progress being made and with our performance throughout the course of this project. Mr. Schober is available to discuss any aspect of this project with you at your request.

EDUCATION (Degree, Year, Specialization)  
Bachelor of Science/1984/Civil Engineering

MEMBERSHIP IN PROFESSIONAL ORGANIZATIONS  
American Society of Civil Engineers  
Chesapeake Water Environment Association  
Water Environment Federation/ Public Education Committee

13. PERSONAL HISTORY STATEMENT OF PRINCIPALS AND ASSOCIATES RESPONSIBLE FOR AML PROJECT DESIGN (Furnish complete data but keep to essentials)

NAME & TITLE (Last, First, Middle Int.) Robert T. Zulick, PE Quality Assurance/Quality Control	YEARS OF EXPERIENCE		YEARS OF DOMESTIC WATERLINE DESIGN EXPERIENCE: 15
	YEARS OF AML DESIGN EXPERIENCE: 1	YEARS OF AML RELATED DESIGN EXPERIENCE: 5	

Brief Explanation of Responsibilities  
As Regional Manager of the firm's Pittsburgh office with significant experience in administration and coordination of municipal and industrial water and wastewater projects from initial planning phase through design to project construction and facility start-up, Mr. Zulick has the authority to commit the full resources of the firm as necessary to successfully complete any project. As QA/QC Manager, he will coordinate with the Project Manager to verify that the project plan is followed and that all work meets local, state, and federal codes as well as Buchart Horn policy.

EDUCATION (Degree, Year, Specialization)  
Bachelor of Science/1972/Civil Engineering  
MS/1979/Civil Engineering

MEMBERSHIP IN PROFESSIONAL ORGANIZATIONS  
American Society of Highway Engineers  
American Water Works Association  
Society of American Military Engineers

REGISTRATION (Type, Year, State)  
1977/PE/PA  
1997/PE/OH  
1997/PE/VA

13. PERSONAL HISTORY STATEMENT OF PRINCIPALS AND ASSOCIATES RESPONSIBLE FOR AML PROJECT DESIGN (Furnish complete data but keep to essentials)

NAME & TITLE (Last, First, Middle Int.) George J Crittenden; Project Designer	YEARS OF AML DESIGN EXPERIENCE: 8	YEARS OF AML RELATED DESIGN EXPERIENCE: 9	YEARS OF DOMESTIC WATERLINE DESIGN EXPERIENCE: 5
--	--------------------------------------	--	---

Brief Explanation of Responsibilities

Mr. Crittenden has 30 years of experience in providing design, technical services, and surveying for mine land reclamation projects, water and wastewater lines, airports, residential subdivisions, and highways.

His experience includes extending a water line into the marrowbone area; producing designs and plans to extend a Ragland Public Service District water line to approximately 150 customers; Senior Design Technician responsible for mitigating problems in two impoundments containing water and coal refuse at Scott Tipple; and Senior Design Technician responsible for design and contract documents for grading, installation of wet seals, establish positive drainage, refuse pile regarding, and soil cover and seeding at Minden Mine Dump.

EDUCATION (Degree, Year, Specialization)

- Drainage Workshop, WVDOT/2005
- PSMJ Marketing Workshop/2005
- PSMJ Project Manager's Boot Camp/2004
- Sediment Control Design, WVDOT/2004
- Right of Way Plan Development/2001, 2002 and 2003
- Development of Signing, Marking and Maintenance of Traffic Plans, WVDOT/2001

MEMBERSHIP IN PROFESSIONAL ORGANIZATION

REGISTRATION (Type, Year, State)  
National Institute for Certification in Engineering Technologies (NICET), 1993

13. PERSONAL HISTORY STATEMENT OF PRINCIPALS AND ASSOCIATES RESPONSIBLE FOR AML PROJECT DESIGN (Furnish complete data but keep to essentials)

NAME & TITLE (Last, First, Middle Int.) Jason M Boyd, PE, MBA, Project Designer	YEARS OF AML DESIGN EXPERIENCE: 1	YEARS OF AML RELATED DESIGN EXPERIENCE: 6	YEARS OF DOMESTIC WATERLINE DESIGN EXPERIENCE: 0
--	--------------------------------------	--	---

Brief Explanation of Responsibilities

Mr. Boyd's civil engineering experience includes roadway design, right of way, geometric layouts, utility relocation design, maintenance of traffic, signing and marking, plan preparation/presentation, quantity/cost estimates, drainage design, hydrologic procedures, pavement/deck drainage, inlet spacing computations, channels, culverts, storm drains, and stormwater management.

EDUCATION (Degree, Year, Specialization)

- MBA/2003/Business Administration/Marshall University
- BS/1999/Civil Engineering/West Virginia University

MEMBERSHIP IN PROFESSIONAL ORGANIZATIONS

REGISTRATION (Type, Year, State)  
PE/WV/2004/15984

13. PERSONAL HISTORY STATEMENT OF PRINCIPALS AND ASSOCIATES RESPONSIBLE FOR AML PROJECT DESIGN (Furnish complete data but keep to essentials)

NAME & TITLE (Last, First, Middle Int.) Donald H Newman, PE, Project Designer	YEARS OF AML DESIGN EXPERIENCE: 3	YEARS OF AML RELATED DESIGN EXPERIENCE: 16	YEARS OF DOMESTIC WATERLINE DESIGN EXPERIENCE: 11
--	--------------------------------------	---	--

Brief Explanation of Responsibilities

Mr. Newman has management responsibilities for the activities of professional and technical personnel for work on environmental engineering projects in the areas of water supply, sewage, stormwater, solid waste and industrial waste management. During his 24-year career, he has successfully executed over 350 engineering projects. Additional responsibilities include technical input, quality control and the planning/scheduling of engineering services. He is also experienced in the siting and engineering of conveyance, treatment and disposal facilities, as well as related areas of comprehensive planning, sediment control, stormwater management, route and option assessment, occupancy/easement/regulatory permits, facility closure, geotechnical engineering, and cost estimating. In addition, he has extensive experience in complex environmental/natural resource assessments and transportation related environmental activities.

EDUCATION (Degree, Year, Specialization)

MS/1977/Water Pollution Control/Water Quality Mgmt./Env. Health Pla/University of Pittsburgh  
AB/1975/Environmental Engineering/The Johns Hopkins University

MEMBERSHIP IN PROFESSIONAL ORGANIZATIONS

Air & Waste Management Association; American Association of Advancement of Science; American Society of Civil Engineers; American Water Resources Association; American Water Works Association; National Ground Water Association; National Trust for Historic Preservation

REGISTRATION (Type, Year, State)

1983/PE/PA/32785E

13. PERSONAL HISTORY STATEMENT OF PRINCIPALS AND ASSOCIATES RESPONSIBLE FOR AML PROJECT DESIGN (Furnish complete data but keep to essentials)

NAME & TITLE (Last, First, Middle Int.) Thomas T Dancsecs, PE Hydrology	YEARS OF AML DESIGN EXPERIENCE: 0	YEARS OF AML RELATED DESIGN EXPERIENCE: 20	YEARS OF DOMESTIC WATERLINE DESIGN EXPERIENCE: 0
---	--------------------------------------	---	---

Brief Explanation of Responsibilities

Mr. Dancsecs has more than 19 years of experience in the field of hydraulics and drainage design. His background includes design of drainage and stormwater management systems for a variety of transportation projects, as well as experience in hydraulic modeling and permitting. He is familiar with the drainage design standards for numerous state transportation departments and agencies. In addition to drainage design for roadways, Mr. Dancsecs' abilities include hydraulic modeling for bridge projects over waterways, floodplain analysis, design of detention/retention ponds, scour analysis, design of underground detention systems, culvert design and analysis, stream encroachment permitting, and NPDES permitting.

EDUCATION (Degree, Year, Specialization)

BS, 1989, Civil Engineering, Pennsylvania State University

MEMBERSHIP IN PROFESSIONAL ORGANIZATIONS

American Society of Highway Engineers

REGISTRATION (Type, Year, State)

PE, 1994, Pennsylvania  
PE, 2001, Maryland  
PE, 2003, New Jersey

13. PERSONAL HISTORY STATEMENT OF PRINCIPALS AND ASSOCIATES RESPONSIBLE FOR AML PROJECT DESIGN (Furnish complete data but keep to essentials)			
NAME & TITLE (Last, First, Middle Int.)	YEARS OF DESIGN EXPERIENCE:	YEARS OF AML RELATED DESIGN EXPERIENCE:	YEARS OF DOMESTIC WATERLINE DESIGN EXPERIENCE:
Mr. Tony B Kitzmiller, PE Mineshaft/Portal Engineer	38	38	0
Brief Explanation of Responsibilities Mr. Kitzmiller has over 37 years of experience in the design of water distribution systems, drainage systems, mine engineering, and civil engineering. He has experience with the supervision of design and construction for coal mining in Northern West Virginia, including water discharges, slurry, and refuse construction. He is intimately familiar with mining conditions and construction, including the design of bridges and roadways near mines. He has experience in managing and construction of methane drainage wells.			
EDUCATION (Degree, Year, Specialization) BS, Civil Engineering			
MEMBERSHIP IN PROFESSIONAL ORGANIZATIONS			
REGISTRATION (Type, Year, State) PE, WV PE, PA			
13. PERSONAL HISTORY STATEMENT OF PRINCIPALS AND ASSOCIATES RESPONSIBLE FOR AML PROJECT DESIGN (Furnish complete data but keep to essentials)			
NAME & TITLE (Last, First, Middle Int.)	YEARS OF DESIGN EXPERIENCE:	YEARS OF AML RELATED DESIGN EXPERIENCE:	YEARS OF DOMESTIC WATERLINE DESIGN EXPERIENCE:
Perry P. Sgrignoli, PLS Surveying	0	21	16
Brief Explanation of Responsibilities As Chief of Surveys for Buchar Horn, Mr. Sgrignoli directs, coordinates and supervises field survey crews, office designers and CADD operators for the following types of work: stormwater management, street, roadway, and other drains, GPS surveys, ground control for aerial mapping, property surveys, topographical surveys, construction stakeout, right-of-way surveys, legal descriptions, cost estimates, right-of-way plats, recreational and industrial park designs, office building site plans, parking lots.			
EDUCATION (Degree, Year, Specialization) Coursework, Architectural Drawing and Engineering Studies, Harrisburg Area Community College Coursework, Mechanical Engineering Studies, University of Pittsburgh at Titusville			
MEMBERSHIP IN PROFESSIONAL ORGANIZATIONS Pennsylvania Society of Land Surveyors			
REGISTRATION (Type, Year, State) PLS, 2004, Pennsylvania SU053114			

13. PERSONAL HISTORY STATEMENT OF PRINCIPALS AND ASSOCIATES RESPONSIBLE FOR AML PROJECT DESIGN (Furnish complete data but keep to essentials)			
NAME & TITLE (Last, First, Middle Int.) Teresa Blauch, PG Geologist	YEARS OF AML DESIGN EXPERIENCE: 1	YEARS OF AML RELATED DESIGN EXPERIENCE: 20	YEARS OF DOMESTIC WATERLINE DESIGN EXPERIENCE: 0
	<p>Brief Explanation of Responsibilities</p> <p>Ms. Blauch has varied experience in geology and hydrogeology. She has applied her knowledge of these two areas to soil investigations, groundwater studies, remedial investigations, underground storage tanks and environmental site assessments in both the private and public sectors in Maryland, New Jersey, Pennsylvania, Virginia and West Virginia. Some of her responsibilities have included direct drive soil collections and soil gas surveys. Groundwater studies have involved supervising well installation and development, selecting potential water supply well sites, water feasibility studies, and determining hydraulic gradient and direction. She has aided in implementation of vacuum extraction systems and air stripping towers and supervised excavation of contaminated material.</p> <p>EDUCATION (Degree, Year, Specialization) BS, Geology</p>		
MEMBERSHIP IN PROFESSIONAL ORGANIZATIONS Society of Women Environmental Professionals Toastmasters International			
13. PERSONAL HISTORY STATEMENT OF PRINCIPALS AND ASSOCIATES RESPONSIBLE FOR AML PROJECT DESIGN (Furnish complete data but keep to essentials)			
NAME & TITLE (Last, First, Middle Int.) Mathew J. Leisses Environmental Scientist	YEARS OF AML DESIGN EXPERIENCE: 0	YEARS OF AML RELATED DESIGN EXPERIENCE: 8	YEARS OF DOMESTIC WATERLINE DESIGN EXPERIENCE: 0
	<p>Brief Explanation of Responsibilities</p> <p>Mr. Leisses has worked in and around streams and wetlands since 2002 and has extensive knowledge of aquatic monitoring; native and invasive plant species; riparian buffers; streambed restoration; workshop/lesson plan research, development, and implementation; grant writing; and community relations. His experience includes acquisition of environmental permits, project documentation, and environmental related design support for a variety of projects.</p> <p>EDUCATION (Degree, Year, Specialization) Coursework/Biology</p>		
MEMBERSHIP IN PROFESSIONAL ORGANIZATIONS Codorus Creek Watershed Association Susquehanna Wild Ones Stewards of the Lower Susquehanna River			

13. PERSONAL HISTORY STATEMENT OF PRINCIPALS AND ASSOCIATES RESPONSIBLE FOR AML PROJECT DESIGN (Furnish complete data but keep to essentials)

NAME & TITLE (Last, First, Middle Int.)		YEARS OF EXPERIENCE	
Laura M. Danko, PWS Environmental Scientist		YEARS OF AML DESIGN EXPERIENCE: 0	YEARS OF AML RELATED DESIGN EXPERIENCE: 15
		YEARS OF DOMESTIC WATERLINE DESIGN EXPERIENCE:	0

Brief Explanation of Responsibilities

Ms. Danko is certified as a Professional Wetland Scientist with 14 years of experience providing technical and managerial environmental and ecological consulting for both public and private sector clients on a wide range of natural resources planning, conservation, and design projects. Her detailed experience includes conducting wetland/environmental delineations and function/value assessments; wetland, stream, and wildlife habitat restoration and mitigation design; regulatory permitting services; environmental monitoring services; wetland and stream construction management and inspection; natural resource inventories; wildlife species, habitat, and biodiversity survey and analysis; technical document and open-end contract proposal development; project committee and advisory board liaison services; coordination and facilitation of project meetings, presentations, and project-related public events; development of technical project documents, specifications, and related publications; quality control review of technical reports and related documents; preparation of construction specifications, bid documents, and cost estimates; and technical and impact analysis documents including feasibility studies, hydrology determinations, habitat studies, species studies, and NEPA documents.

EDUCATION (Degree, Year, Specialization)

AAS/Horticulture and Landscape Design/Baltimore County Community College  
 Graduate Coursework/Master's Program, Environmental Resource Management/East Stroudsburg University  
 BS/Environmental Science/East Stroudsburg University

MEMBERSHIP IN PROFESSIONAL ORGANIZATIONS

PWS  
 REGISTRATION (Type, Year, State)

13. PERSONAL HISTORY STATEMENT OF PRINCIPALS AND ASSOCIATES RESPONSIBLE FOR AML PROJECT DESIGN (Furnish complete data but keep to essentials)

NAME & TITLE (Last, First, Middle Int.)		YEARS OF EXPERIENCE	
Tiffany S. Bates Environmental Scientist		YEARS OF AML DESIGN EXPERIENCE: 1	YEARS OF AML RELATED DESIGN EXPERIENCE: 2
		YEARS OF DOMESTIC WATERLINE DESIGN EXPERIENCE:	0

Brief Explanation of Responsibilities

Ms. Bates has experience in abandoned mine lands drainage and other facets of environmental engineering and pollution control. Her experience includes undergraduate research specializing in water resources.

EDUCATION (Degree, Year, Specialization)

BS, Environmental Biology

MEMBERSHIP IN PROFESSIONAL ORGANIZATIONS

REGISTRATION (Type, Year, State)





15. CUR T ACTIVITIES ON WHICH YOUR FIRM IS THE DESIGNATE ENGINEER OF RECORD

PROJECT NAME, TYPE AND LOCATION	NAME AND ADDRESS OF OWNER	NATURE OF YOUR FIRM'S RESPONSIBILITY	ESTIMATED CONSTRUCTION COST	PERCENT COMPLETE
Tabler Station Connector, Berkeley County, WV	West Virginia DOT 1900 Kanawha Blvd. East Building Five Charleston, WV 25305	design & engineering services	\$9,600,000	95
Linden Water Line Replacement, Linden, NJ	New Jersey American Water 1025 Laurel Oak Road P.O. Box 1770 Voorhees, NJ	design & engineering services	\$2,600,000	80
Blue Ball PRV Project, Abandoned Mine Lands, Clearfield County, PA	PA American Water 4 Wellington Boulevard Wyomissing Hills, PA	design & engineering services	\$10,000 fee	36
Drane Area Extension of Water Distribution System Abandoned Mine Lands, Clearfield County, PA	PA American Water 4 Wellington Boulevard Wyomissing Hills, PA	design & engineering services	\$94,100 fee	84
Point Township Tank and Main, Point Township, PA	PA American Water 4 Wellington Boulevard Wyomissing Hills, PA	design & engineering services	\$1,000,000	86
Route 24 Corridor Intersection Improvements, York County, PA	Pennsylvania DOT Engineering District 8-0 2140 Herr Street Harrisburg, PA 17103	design & engineering services	\$4,500,000	20
Open end Contract for Roadway, Bridge and Environmental Services	Pennsylvania DOT Engineering District 5-0 1713 Lehigh Street Allentown, PA 18103	design & engineering services	\$1,500,000 fee	40
WVDOT, Corridor H, Grant County, WV	West Virginia DOT 1900 Kanawha Blvd. East Building Five Charleston, WV 25305	design & engineering services	\$40,800,000 fee	99
PA Turnpike, Final Design for Full-Depth Turnpike Reconstruction, MP 213.9 to MP 227, Cumberland County, PA	Pennsylvania Turnpike Commission P.O. Box 67676 Harrisburg, PA 17106-7676	design & engineering services	\$2,700,000 fee	95
Oakland Public Service District, Water System Improvements	Oakland Public Service District 768 Carothers Rd Weirton, WV 26062	design & engineering services	\$75,000 fee	50
Open End Contract Airport Planning and Design Services, Harrisburg, PA	Susquehanna Area Regional Airport Authority One Terminal Drive, Suite 300 Middletown, PA 17057	design & engineering services	varies by assignment	on-going

15. CURRENT ACTIVITIES ON WHICH YOUR FIRM IS THE DESIGNATED ENGINEER OF RECORD

PROJECT NAME, TYPE AND LOCATION	NAME AND ADDRESS OF OWNER	NATURE OF YOUR FIRM'S RESPONSIBILITY	ESTIMATED CONSTRUCTION COST	PERCENT COMPLETE
US Postal Service Facilities Renovations and Additions Open End various locations	U.S. Postal Service 10500 Little Patuxent Parkway Columbia, MD 21044-3515	design & engineering services	\$1,500,000 fee to date	60
Open End Contract for Bridge, Roadway and Environmental Services Northwestern PA	Pennsylvania DOT Engineering District 1-0 255 Elm St., P.O. Box 398 Oil City, PA 16301	design & engineering services	\$1,000,000 fee	80
Heth's Run Bridge Replacement, Pittsburgh, PA	Pennsylvania DOT Engineering District 11-0 45 Thoms Run Road Bridgeville, PA 15017	design & engineering services	\$4,200,000	60
Group C Bridge Designs Allegheny County, PA	Allegheny County Department of Public Works 542 Forbes Avenue, Room 501 Pittsburgh, PA 15219	design & engineering services	\$6,000,000	75
Etna Borough Water and Sewer System GIS Development, Pittsburgh, PA	Borough of Etna 437 Butler Street Etna, PA 15223	Sewer system GIS & mapping	\$100,000 fee to date	on-going
Sewer System GIS Development and Mapping Pittsburgh, PA	McCandless Township Sewer Authority 416 Arcadia Drive Pittsburgh, PA 15237	Sewer system GIS & mapping	\$150,000 fee to date	on-going
Groundwater Treatment Alternatives Assessment, Chambersburg, PA	Guilford Water Authority 115 Spring Valley Road Chambersburg, PA 17201	engineering study	\$25,500 fee	85
Wastewater Treatment Expansion & Upgrade, Coatesville, PA	PA American Water Company 4 Wellington Blvd. Wyomissing Hills, PA 19610	design & engineering services	\$10,000,000 estimated	35

TOTAL NUMBER OF PROJECTS: The above projects are merely a representation, as we are currently working on over 1,000 projects.

TOTAL ESTIMATED CONSTRUCTION COSTS:  
Over \$150,000,000 all projects.

16. CUF T ACTIVITIES ON WHICH YOUR FIRM IS SERVING AS A

-CONSULTANT TO OTHERS

PROJECT NAME, TYPE AND LOCATION	NATURE OF FIRMS RESPONSIBILITY	NAME AND ADDRESS OF OWNER	ESTIMATED COMPLETION DATE	ESTIMATED CONSTRUCTION COST	
				ENTIRE PROJECT	YOUR FIRMS RESPONSIBILITY
Taxiway B&D Improvement Design Shreveport Airport Shreveport, LA	Site Layout and Design	Purtle and Associates 701 Texas Street Shreveport, PA 71101	5-2006	\$500,000	\$50,000
Route 9 Hazardous Waste Investigation Ocean County, NJ	Environmental Impact Studies and Assessments	Edwards & Kelcey, Inc. 299 Madison Avenue P.O. Box 1936 Morristown, NJ 07962-1936	On Hold	\$30,000 fee to date	\$30,021
Route U.S. 206, Section 15N Site Investigation, NJ	Site investigation and associated services to determine presence of contaminants in soil	Harold E. Pellow & Assoc. 17 Plains Road Augusta, NJ 07822	On Hold	\$133,303 fee to date	\$133,323
Route 18 Noise Walls New Brunswick, NJ	Design	Gannett Fleming 1001 S. Durham Ave Plainfield, NJ 07080-2305	7-2008	\$6,000,000	\$310,668
Marlton Circle Elimination Marlton, NJ	Utility & Drainage Eng. Oversight, Hazardous Waste Investigation, Retaining Walls, and Highway Access	Urban Engineers, Inc. Kevon Office Ctr. 2500 McClellan Ave Suite 200 Pennsauken, NJ 08109-4698	12-2010	\$25,000,000	\$364,125 to date
Marshall/The Plains Wastewater Treatment Plant Fauquier County, VA	Electrical and control instrumentation design	O'Brien & Gere Engineers, Inc. 8201 Corporate Dr. Suite 1000 Landover, MD 20785		Not known at this time	\$100,924
CN Johnson Rail Yard Relocation Memphis, TN	Site Design	HDR, Inc. 8550 West Byrn Mawr Avenue Suite 900 Chicago, IL 60631		Unavailable	\$750,000
Creek Restoration Memphis, TN	Design Support	Fuller, Mossbarger, Scott & May 1901 Nelson Miller Parkway Louisville, KY 402223		\$2,500,000	\$50,000 fee

17. C LETTED WORK WITHIN LAST 5 YEARS ON WHICH YOUR FIF		AS THE DESIGNATED ENGINEER OF RECORD		
PROJECT NAME, TYPE AND LOCATION	NAME AND ADDRESS OF OWNER	ESTIMATED CONSTRUCTION COST	YEAR	CONSTRUCTED (YES OR NO)
Howell Demand Center, Howell Township, New Jersey	New Jersey American Water 1025 Laurel Oak Road P.O. Box 1770 Voorhees, NJ	\$2,500,000	2006	YES
New Pikesville Reservoir Tanks, Pikesville, MD	Baltimore County Bureau of Engineering 111 West Chesapeake Avenue Towson, MD 21204	\$18,300,000	2008	under construction
Five Forks Water Treatment Facility, Williamsburg, VA	James City Service Authority PO Box 8784 Williamsburg, VA 23187	\$12,500,000	2005	YES
Arkansas State Highway & Transportation Department, Task Order #2, AR	Arkansas State Highway & Transportation Department 10324 Interstate 30 Little Rock, AR 72203-2261	\$840,193 (Fee)	2004	YES
Arkansas State Highway & Transportation Department, Task Order #1, AR	Arkansas State Highway & Transportation Department 10324 Interstate 30 Little Rock, AR 72203-2261	\$291,511 (Fee)	2005	YES
PennDOT District 8-0, Route 30 Widening, Lancaster, PA	PennDOT District 8-0 2140 Herr Street Harrisburg, PA 17103-1699	\$64,000,000	2004	YES
Derry Township, Route 743 Corridor Study, Hershey, PA	Township of Derry Board of Supervisors 235 Hockersville Road Hershey, PA 17033-2057	\$495,000 (Fee)	2005	NO
Derry Township, Route 422 and Lingle Avenue Improvement Project Dauphin County, PA	Township of Derry Board of Supervisors 235 Hockersville Road Hershey, PA 17033-2057	\$624,000 (Fee)	2005	YES
City of Harrisburg, Seventh Street Widening Harrisburg, PA	City of Harrisburg 123 Walnut Street, Suite 212 Harrisburg, PA 17101	\$471,820 (Fee)	2006	YES
Whitehaven Street Improvements, Memphis, TN	City of Memphis Div. Engineering Suite 644 125 North Main Street Memphis, TN 38103	\$1,500,000	2004	YES

17. COMPLETED WORK WITHIN LAST 5 YEARS ON WHICH YOUR FIRM WAS THE DESIGNATED ENGINEER OF RECORD

PROJECT NAME, TYPE AND LOCATION	NAME AND ADDRESS OF OWNER	ESTIMATED CONSTRUCTION COST	YEAR	CC (YES OR NO)	COMPLETED (YES OR NO)
Winchester/Perkins Interchange, Memphis, TN	City of Memphis Div. Engineering Suite 644 125 North Main Street Memphis, TN 38103	\$5,600,000	2004		YES
Southern Avenue Study and Design, Memphis, TN	City of Memphis Div. Engineering Suite 644 125 North Main Street Memphis, TN 38103	\$1,900,000	2005		YES
Tennessee DOT, Design of Five Miles of SR-385 Shelby County, TN	Tennessee DOT James K. Polk Building 505 Deaderick Street Nashville, TN 37243-0348	\$20,000,000	2004		YES
Perry Street, Lincoln Avenue and North Clinton Avenue Intersection Design Trenton, NJ	City of Trenton Div. Traffic/Plan. City Hall Annex 319 East State Street Trenton, NJ 08608	\$89,350 (Fee)	2004		YES
New Jersey DOT, Route 40/322, Section 2F Egg Harbor Township, NJ	New Jersey DOT 1035 Parkway Avenue P.O. Box 600 Trenton, NJ 08625-0600	\$523,179 (Fee)	2004		YES
Yeager Airport, Transportation Security Administration Offices, Charleston, WV	Central West Virginia Regional Airport Authority 100 Airport Road Suite 175 Charleston, WV 25311-1080	\$1,250,000	2004		YES
Reading Regional Airport, Design of Taxiway C and Reconstruction of North Apron, Reading, PA	Reading Regional Airport Authority 2501 Bernville Road Reading, PA 19605-9611	\$4,500,000	2004		YES
Taxiway Yankee Extension Memphis Shelby County Airport, Memphis, TN	Memphis/Shelby County Airport Authority 2491 Winchester Road Suite 113 Memphis, TN 38116	\$60,000,000	2006		YES
Yield Analysis Tool Scoping, Statewide, PA	Susquehanna River Basin Commission 1721 North Front Street Harrisburg, PA	\$210,000	2009		N/A

17. COMPLETED WORK WITHIN LAST 5 YEARS ON WHICH YOUR FIRM WAS THE DESIGNATED ENGINEER OF RECORD

PROJECT NAME, TYPE AND LOCATION	NAME AND ADDRESS OF OWNER	ESTIMATED CONSTRUCTION COST	YEAR	COMPLETED (YES OR NO)
Interconnection between Elizabethtown and Jamesburg Water Systems	New Jersey American Water 1025 Laurel Oak Road P.O. Box 1770 Voorhees, NJ	\$2,200,000	2009	YES
Bolivar-Hardeman County Airport Design and Construction Services	Hardeman County Hardeman County Courthouse Bolivar, TN 38008	\$35,000 fee	2009	YES
Taxiway Widening Nashville International Airport, Nashville, TN	Metro Nashville Airport Authority One Terminal Drive Nashville, TN 37214	\$1,400,000	2009	YES
New LEED Certified CVI Maintenance Facility, Davis, WV	Canaan Valley Institute P.O. Box 673 Davis, WV 26260	\$800,000	2009	YES
Bus Garage and Maintenance Facility Expansion Huntington, WV	Tri-State Transit Authority 1120 Virginia Avenue Huntington, WV 25704	\$2,000,000	2009	YES
Jones and Laughlin Bridge Berkeley County, WV	West Virginia DOT 1900 Kanawha Blvd. East Building Five Charleston, WV 25305	\$1,700,000	2009	YES
Longvue Wastewater Treatment Plant Expansion Pittsburgh, PA	McCandless Township Sewer Authority 416 Arcadia Drive Pittsburgh, PA 15237	\$6,000,000	2009	YES
Treatment Plant Capacity Evaluation, Marietta, PA	Marietta-Donnegal Joint Authority P.O. Box 167 Marietta, PA 17547	\$50,000 fee	2009	YES
Oakland Public Service District, Water Treatment Systems Studies	Oakland Public Service District 768 Carothers Rd Weirton, WV 26062	\$47,000 fee	2009	YES
Kanawha County Courthouse Renovation Charleston, WV	Kanawha County Commission P.O. Box 3627 Charleston, WV 25336	\$9,000,000	2005	YES

17. COMPLETED WORK WITHIN LAST 5 YEARS ON WHICH YOUR FIRM WAS THE DESIGNATED ENGINEER OF RECORD

PROJECT NAME, TYPE AND LOCATION	NAME AND ADDRESS OF OWNER	ESTIMATED CONSTRUCTION COST	YEAR	CC (YES OR NO)	DUCTED (YES OR NO)
West Virginia DOT, Star City-Osage Road Project, Monongalia County, WV	West Virginia DOT 1900 Kanawha Boulevard East Building Five Charleston, WV 25305-0430	\$42,000,000 \$1,824,595 fee	2005		YES
Virginia DOT, Route 58 Bridge Replacement, Gate City, VA	Virginia DOT 870 Bonham Road Bristol, VA 24201	\$20,500,000 \$763,452 fee	2004		YES
City of Scranton Bridge Reinspection, Scranton, PA	City of Scranton, City Hall 314 North Washington Avenue Scranton, PA 18503	\$85,964	2004		N/A
New Jersey DOT Inspection of 39 Conrail Orphan Bridges, Trenton, NJ	New Jersey DOT 1035 Parkway Avenue P.O. Box 600 Trenton, NJ 08625-0600	\$320,571	2005		N/A
New Jersey DOT Inspection of 36 Off-system NJ DEP Bridges, Various Parks in NJ	New Jersey DOT 1035 Parkway Avenue P.O. Box 600 Trenton, NJ 08625-0600	\$166,885	2005		N/A
New Jersey DOT, Inspection of 47 On-System State Owned Bridges, Group M01S, Central NJ	New Jersey DOT 1035 Parkway Avenue P.O. Box 600 Trenton, NJ 08625-0600	\$329,084	2005		N/A
Tennessee DOT Five Bundled Bridges, TN	Tennessee DOT James K. Polk Building 505 Deaderick Street Nashville, TN 37243-0348	\$350,000	2004		YES
Special Inspection of 30 Fracture-Critical Member Welded Bridges New Jersey DOT	New Jersey DOT 1035 Parkway Avenue P.O. Box 600 Trenton, NJ 08625-0600	\$446,685	2004		N/A
Derry Township Safety and Mobility Initiative, Dauphin County, PA	Township of Derry 235 Hockersville Road Hershey, PA 17033	\$245,127	2004		N/A
McAlevy's Fort Corridor Improvement Study Pennsylvania DOT District 9-0 Huntingdon County, PA	PennDOT - District 9-0 1620 North Juniata Street Hollidaysburg, PA 16648	\$406,840	2005		NO



1.7. COMPLETED WORK WITHIN LAST 5 YEARS ON WHICH YOUR FIRM WAS THE DESIGNATED ENGINEER OF RECORD

PROJECT NAME, TYPE AND LOCATION	NAME AND ADDRESS OF OWNER	ESTIMATED CONSTRUCTION COST	YEAR	CC (YES OR NO)	RUCTED (YES OR NO)
Twin Boroughs Sanitary Authority GIS Needs Assessment, Phase 3, Mifflin, PA	Twin Boroughs Sanitary Authority One River Drive P.O. Box 118 Mifflin, PA 17058	\$15,000	2004		N/A
Bolivar-Hardeman County Airport Design and Construction Services	Hardeman County Hardeman County Courthouse Bolivar, TN 38008	\$35,000 fee	2007		YES
Valley Forge Service Plaza Improve Stormwater Management Using a Swale to Divert Stormwater into a Culvert.	Pennsylvania Turnpike Commission Harrisburg East Interchange P.O. Box 67676 Harrisburg, PA 17106-7676	\$79,705 fee	2005		YES
Streambank Restoration, Stabilization and Erosion Prevention, New York Wire, Mount Wolf, PA	New York Wire 152 Main St. P.O. Box 0866 Mt. Wolf, PA 17347	\$8,900 fee	2007		YES
Stormwater BMPs and Design of Demonstration Project on Harrisburg Area Community College Campus, Gettysburg, PA	Adams County Office of Planning and Development Suite 101 19 Baltimore St. Gettysburg, PA 17325	\$15,000 fee	2008		YES
Stream/Wetland Assessment, Mitigation, Restoration, Planned Residential Development, Cumberland County, PA	Delta Development Group, Inc. Wuite 200 2000 Technology Parkway Mechanicsburg, PA 17050	\$31,416 fee	2007		YES
Codorus Creek River Conservation Plan, York, PA	Codorus Creek Watershed Association P.O. Box 2881 York, PA 17405	\$35,588 fee	2005		YES
Conewago Creek Watershed Conservation Plan, York County, PA	PA Environmental Council Central PA Regional Office Suite 200 130 Locust Street Harrisburg, PA 17101	\$96,000 fee	2007		YES
Open-End Quality Assurance/Control, Stormwater Pollution Prevention Plan Preparation, Erosion Prevention and Sedimentation Control Services, Tennessee statewide.	TDOT James K. Polk Building 505 Deaderick Street Nashville, TN 37243	\$2,000,000 fee	2007		YES

17. COMPLETED WORK WITHIN LAST 5 YEARS ON WHICH YOUR FIRM WAS THE DESIGNATED ENGINEER OF RECORD

PROJECT NAME, TYPE AND LOCATION	NAME AND ADDRESS OF OWNER	ESTIMATED CONSTRUCTION COST	YEAR	CC (YEARS OR NO)	RUCTED (YEARS OR NO)
Incorporation of Stormwater BMP Measures in Intersection Improvements to Facilitate Safe Traffic Flow, New High School. York, PA	Central York School District 775 Marion Rd. York, PA 17402	\$2,000,000 \$449,700 fee	2007		YES

**\*NOTE: The above projects are a representation, as we have completed over 10,000 projects in the last ten years**

18. C	LETTED WORK WITHIN LAST 5 YEARS ON WHICH YOUR FIRM WAS RESPONSIBLE)	AS BEEN A SUB-CONSULTANT TO OTHER FIRMS (INDICATE)	HASE		
PROJECT NAME, TYPE AND LOCATION	NAME AND ADDRESS OF OWNER	ESTIMATED CONSTRUCTION COST OF YOUR FIRM'S PORTION	YEAR	CONSTRUCTED (YES OR NO)	FIRM ASSOCIATED WITH
Lisburn Road SR0015 A12 Southcentral PA	Michael Baker, Jr., Inc., 4431 N. Front St. 2nd Floor Harrisburg, PA 17110	\$21,000,000 \$769,876 fee	2005	YES	Michael Baker, Jr., Inc.
Lanier Middle School Renovations Fairfax, VA	Architecture, Inc. 1801 Alexander Bell Dr. Reston, VA 20191	\$13,300,000 \$410,900 fee	2005	YES	Architecture, Inc.
University Park Airport T-Hangers Design State College, PA	Poole Anderson Construction 2121 Old Gatesburg Road State College, PA 16801	\$2,104,800 \$49,800 fee	2006	YES	Poole Anderson Construction
Route 18 Noise Walls New Brunswick, NJ	Gannett Fleming 1001 S. Durham Ave Plainfield, NJ 07080-2305	\$6,000,000 \$310,668 fee	2008	YES	Gannett Fleming
Marlton Circle Elimination Marlton, NJ	Urban Engineers, Inc. Kevon Office Ctr. 2500 McClellan Ave Suite 200 Pennsauken, NJ 08109-4698	\$25,000,000	2004	YES	Urban Engineers, Inc.
Taxiways B and D Improvements Design Shreveport Airport Shreveport, LA	Purtle and Associates 701 Texas Street Shreveport, LA 71101	\$500,000 \$50,000 fee	2006	YES	Purtle and Associates
Susquehanna Township High School Additions Harrisburg, PA	Hayes Large Architects LLP 75 South Houcks Road Suite 300 Harrisburg, PA 17109	\$5,300,000 \$158,000 fee	2006	YES	Hayes Large Architects LLP
Susquehanna Township Middle School Additions Harrisburg, PA	Hayes Large Architects LLP 75 South Houcks Road Suite 300 Harrisburg, PA 17109	\$3,900,000 \$136,000 fee	2006	YES	Hayes Large Architects LLP

19. Use this space to provide any additional information or description of resources supporting your firm's qualifications to perform work for the West Virginia Abandoned Mine Lands Program.

Buchart Horn, Inc. is a multi-disciplinary organization that provides architectural, engineering, environmental, planning, project management, construction services, and administrative services. Our experience and resources facilitate cost effective solutions. Our "strong Project Manager" approach clarifies project responsibilities and promotes project communication.


Established in 1946, Buchart Engineering Corporation evolved into Buchart Horn, Inc., Consulting Engineers, Architects, and Planners. Today, *Engineering News Record* ranks us among the top consulting firms.

We specialize in designing, improving, and solving the problems of infrastructure and structures, and in helping our clients comply with environmental, life safety, and other codes and regulations. Our work includes: Airports; Architecture; Bridges; Civil/Site development; Construction services; Electrical systems and computer wiring; Energy conservation; Environmental planning, engineering, compliance; Geographic Information Systems (GIS); Hazardous and toxic substances; Highways, roads, streets; Landscape architecture design; Mechanical systems-HVAC, plumbing, energy conservation; Recreation parks and trails; Schools; Structural design; Surveys/mapping; Telecommunications; Telemetry and SCADA control systems; Traffic and traffic management; Wastewater treatment and systems; and Water treatment and systems.

Given our corporate experience, our people, and our company-wide voice and data network, we are able to quickly identify the in-house experts best suited to assist you. And because we can send CAD, text, data, or voice across our network, we can mobilize and focus this expertise on your challenge without the delay and expense of travel. We thus have the flexibility to meet the most aggressive schedules, and are able to quickly marshal skilled professionals to meet your needs.

20. The foregoing is a statement of facts.

Signature: \_\_\_\_\_



Title: Regional Manager

Date: September 23 2009

Printed Name: Robert T. Zulick, PE



## BUCHART HORN, INC. STANDARD EQUIPMENT

The following lists equipment typically used by Buchart Horn that will be made available as needed for this project.

### ITEM JOB TITLE

#### NO.

#### Sampling & Testing Equipment

- 1 American Sigma Tipping Bucket Rain Gage
- 2 American Sigma Depth/Velocity Flow Meter
- 3 American Sigma 800SL discrete/composite sampler
- 4 American Sigma Stormwater discrete/composite sampler  
Minimum 1 week rental
- 5 Electronic well probe
- 6 Dissolved oxygen meter and field probe
- 7 Portable pH meter
- 8 Portable conductivity meter
- 9 Geo Pump Peristaltic Pump
- 10 Field filtration filters (disposable)
- 11 Field decontamination equipment
- 12 Deionized Water
- 13 COLIWISSA, composite liquid waste sampler (disposable)
- 14 Bailers (disposable)
- 15 Soil Gas Sampling Equipment
- 16 Soil Gas (expendable) tip & tubing
- 17 Soil scoops (disposable)
- 18 Stainless steel soil scoops
- 19 Bucket auger
- 20 Split spoon sampler
- 21 Up-Z-Dazy Submersible Pump Puller
- 22 4" Submersible pump
- 23 2" Submersible pump
- 24 Electric Generator
- 25 Infiltrometer System
- 26 Hermit Environmental Data Logger
- 27 Transducer (each)
- 28 ISCO Flow Poke
- 29 6" V-Notch Weir
- 30 8" V-Notch Weir
- 31 10" V-Notch Weir
- 32 12" V-Notch Weir
- 33 15" V-Notch Weir
- 34 6" Cherne Muni-Ball Plug
- 35 8" Cherne Muni-Ball Plug
- 36 10" Cherne Muni-Ball Plug
- 37 12" Cherne Muni-Ball Plug
- 38 15" Cherne Muni-Ball Plug



**ITEM JOB TITLE**  
**NO.**

**Sampling & Testing Equipment** (contd)

- 39 Solinst Interface probe
- 40 Balmac Model 216D Vibration Analyzer and Chart Recorder  
(4 hour min. charge)
- 41 Terrameter & leads
- 42 Stream Velocity Meter
- 43 Slump Cone
- 44 Electronic Paint Dry Film (DFM) Gauge
- 45 Troxler 3440 Surface Moisture-Density Gauge
- 46 NJDEP VOC Soil Sampling Kit

**Field Safety Equipment**

- 47 Photolionization detector
- 48 Facepiece assembly respirator
- 49 Organic vapor cartridges (max. 1 day use - disposable)
- 50 Vinyl gloves - pair (disposable)
- 51 Coveralls - set (disposable) (Tyvek)
- 52 Sensidyne Pump
- 53 Drager Tubes
- 54 Homelite Blower - 3 HP Gasoline with 20' hose
- 55 Tripod
- 56 LEL/O<sub>2</sub> Monitor
- 57 Confined Space Entry Equipment, Complete
- 58 Air Sampler, Personal

**Video Equipment**

- 59 Video Camera and Records (Tapes not included)

**Field Vehicles**

- 60 Four-wheel drive field vehicles



## BUCHART HORN, INC. STANDARD SOFTWARE

Fiscal Year 2010

The following water-related software is licensed to Buchart Horn and available for use.

<b><u>SOFTWARE</u></b>	<b><u>DESCRIPTION</u></b>
ABSCOUR	CALCULATES BRIDGE ABUTMENT SCOUR
AIRVAC	CALCULATES HEADS IN VACUUM SEWER NETWORK
CULVERTMASTER	CULVERT DESIGN & ANALYSIS
EC-DESIGN	STORM WATER MGNT & EROSION CONTROL
ECMDS	EROSION CONTROL MATERIAL DESIGN
FIRE HYDRANT RATING	FIRE HYDRANT RATING
FLOWMASTER	HYDRAULIC TOOLBOX
HEAD LOSS	PIPE SYSTEM HEAD COMPUTATIONS
HEC-1	FLOODPLAIN AND HYDROGRAPH ANALYSIS
HEC-2	WATER SURFACE PROFILES
HEC-6	SEDIMENT TRANSPORT MODEL
HEC-FDA	FLOOD DAMAGE ANALYSIS
HEC-HMS	HYDROLOGIC MODELING SYSTEM
HEC-RAS	RIVER ANALYSIS SYSTEM
HMR52	PROBABLE MAX STORM
HY22 VURBAN	URBAN DRAINAGE DESIGN
HY-8	CULVERT DESIGN & ANALYSIS
HYDRAFLOW HYDRAGRAPH	ANALYSIS OF DRAINAGE BASINS
HYDRAFLOW STORM SEWERS	HYDRAULIC GRADE LINE
HYDRAIN	HIGHWAY DRAINAGE
HYDROCAD	STORMWATER MODELING
HYDRO-CD	CONTAINS 60 PUBLIC DOMAIN STORMWATER PROGRAMS
IRRACALC	IRRIGATION SCEHDULE
KENTUCKY MODEL (KYPIPE)	MODELING OF PIPE DISTRIBUTION NETWORK
LA DOT HYDRAULIC PROGRAMS	HYDRAULIC DESIGN PROGRAMS FOR LA DOT
NETWK	PIPE NETWORK ANALYSIS
PCSWMM	SUPPORT PROGRAM FOR EPA SWMM4 MODEL
RAINCAD	IRRIGATION/LANDSCAPE
SANITARY SEWER MODEL	SANITARY SEWER ANALYSIS
SANSYS	SEWER SYSTEM MODELING
SCOUR AT BRIDGES HY-9	SCOURING ANALYSIS
STORMCAD	STORM SEWER DESIGN
TR-20	HYDROLOGIC ANALYSIS OF A WATERSHED
TR-55	URBAN HYDROLOGY FOR SMALL WATERSHEDS
VISUAL MODFLOW PRO	GROUNDWATER & CONATMINANT MODELING
VTPSUHM	VA TECH/PENN STATE URBAN HYDOLOGY MODEL
WATERCAD	WATER NETWORK MODELING
WATERGEMS FOR GIS	WATER NETWORK MODELING
XP-SWMM	STORMWATER AND WASTEWATER MGNT MODEL



State of West Virginia  
 Department of Administration  
 Purchasing Division  
 2019 Washington Street East  
 Post Office Box 50130  
 Charleston, WV 25305-0130

# Request for Quotation

RFQ NUMBER:  
**DEP14794**

PAGE:  
**1**

ADDRESS CORRESPONDENCE TO ATTENTION OF:  
**CHUCK BOWMAN  
 304-558-2157**

**RFQ COPY**  
 TYPE NAME/ADDRESS HERE

**VENDOR**

Buchart Horn, Inc.  
 400 Tracy Way, Suite 110  
 Charleston, WV 25311

**SHIP TO**

ENVIRONMENTAL PROTECTION  
 DEPARTMENT OF  
 OFFICE OF AML&R  
 601 57TH STREET SE  
 CHARLESTON, WV  
 25304 304-926-0499

DATE PRINTED	TERMS OF SALE	SHIP VIA	FOB	FREIGHT TERMS
09/03/2009				

BID OPENING DATE: **09/23/2009** BID OPENING TIME **01:30PM**

LINE	QUANTITY	UOP	CAT NO.	ITEM NUMBER	UNIT PRICE	AMOUNT
0001	1	JB		906-29		
<p><b>BIRDS CREEK #4 DESIGN</b></p> <p><b>EXPRESSION OF INTEREST</b></p> <p>THE WEST VIRGINIA PURCHASING DIVISION, FOR THE AGENCY, THE WEST VIRGINIA DEPARTMENT OF ENVIRONMENTAL PROTECTION, IS SOLICITING EXPRESSIONS OF INTEREST FOR PROFESSIONAL ENGINEERING DESIGN SERVICES AND CONSTRUCTION MONITORING SERVICES AT THE BIRDS CREEK #4 PROJECT IN PRESTON COUNTY, WEST VIRGINIA, PER THE FOLLOWING BID REQUIREMENTS AND ATTACHED SPECIFICATIONS.</p> <p><b>BANKRUPTCY: IN THE EVENT THE VENDOR/CONTRACTOR FILES FOR BANKRUPTCY PROTECTION, THE STATE MAY DEEM THIS CONTRACT NULL AND VOID AND TERMINATE SUCH CONTRACT WITHOUT FURTHER ORDER.</b></p>						

SEE REVERSE SIDE FOR TERMS AND CONDITIONS

SIGNATURE <i>George J. Catterden</i>	TELEPHONE (304) 346-1127	DATE September 23, 2009
TITLE Project Manager	FEIN 23-1498326	ADDRESS CHANGES TO BE NOTED ABOVE

WHEN RESPONDING TO RFQ, INSERT NAME AND ADDRESS IN SPACE ABOVE LABELED 'VENDOR'



STATE OF WEST VIRGINIA  
Purchasing Division

## PURCHASING AFFIDAVIT

### VENDOR OWING A DEBT TO THE STATE:

*West Virginia Code* §5A-3-10a provides that: No contract or renewal of any contract may be awarded by the state or any of its political subdivisions to any vendor or prospective vendor when the vendor or prospective vendor or a related party to the vendor or prospective vendor is a debtor and the debt owed is an amount greater than one thousand dollars in the aggregate.

### PUBLIC IMPROVEMENT CONTRACTS & DRUG-FREE WORKPLACE ACT:

*West Virginia Code* §21-1D-5 provides that: Any solicitation for a public improvement construction contract shall require each vendor that submits a bid for the work to submit at the same time an affidavit that the vendor has a written plan for a drug-free workplace policy in compliance with Article 1D, Chapter 21 of the West Virginia Code. A public improvement construction contract may not be awarded to a vendor who does not have a written plan for a drug-free workplace policy in compliance with Article 1D, Chapter 21 of the West Virginia Code and who has not submitted that plan to the appropriate contracting authority in timely fashion. For a vendor who is a subcontractor, compliance with Section 5, Article 1D, Chapter 21 of the West Virginia Code may take place before their work on the public improvement is begun.

### ANTITRUST:

In submitting a bid to any agency for the state of West Virginia, the bidder offers and agrees that if the bid is accepted the bidder will convey, sell, assign or transfer to the state of West Virginia all rights, title and interest in and to all causes of action it may now or hereafter acquire under the antitrust laws of the United States and the state of West Virginia for price fixing and/or unreasonable restraints of trade relating to the particular commodities or services purchased or acquired by the state of West Virginia. Such assignment shall be made and become effective at the time the purchasing agency tenders the initial payment to the bidder.

I certify that this bid is made without prior understanding, agreement, or connection with any corporation, firm, limited liability company, partnership or person or entity submitting a bid for the same materials, supplies, equipment or services and is in all respects fair and without collusion or fraud. I further certify that I am authorized to sign the certification on behalf of the bidder or this bid.

### LICENSING:

Vendors must be licensed and in good standing in accordance with any and all state and local laws and requirements by any state or local agency of West Virginia, including, but not limited to, the West Virginia Secretary of State's Office, the West Virginia Tax Department, West Virginia Insurance Commission, or any other state agencies or political subdivision. Furthermore, the vendor must provide all necessary releases to obtain information to enable the Director or spending unit to verify that the vendor is licensed and in good standing with the above entities.

### CONFIDENTIALITY:

The vendor agrees that he or she will not disclose to anyone, directly or indirectly, any such personally identifiable information or other confidential information gained from the agency, unless the individual who is the subject of the information consents to the disclosure in writing or the disclosure is made pursuant to the agency's policies, procedures and rules. Vendors should visit [www.state.wv.us/admin/purchase/privacy](http://www.state.wv.us/admin/purchase/privacy) for the Notice of Agency Confidentiality Policies.

Under penalty of law for false swearing (West Virginia Code §61-5-3), it is hereby certified that the vendor acknowledges the information in this said affidavit and is in compliance with the requirements as stated.

Vendor's Name: Buchart Horn, Inc.

Authorized Signature: *George J. Cattenden*

Date: September 23, 2009