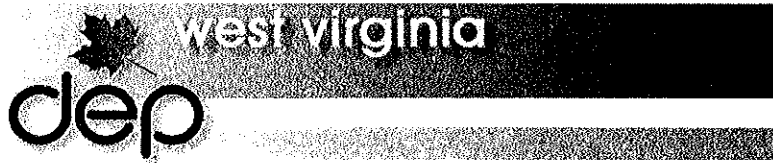


EXPRESSION OF INTEREST TO:



West Virginia Department of Environmental Protection
Abandoned Mine Lands and Reclamation

FOR:

**DESIGN SERVICES AND
CONSTRUCTION MONITORING SERVICES
GORDON 'C' REFUSE PILE DESIGN PROJECT**

BOONE COUNTY, WV

RFQ #DEP14764

AML CONSULTANT CONFIDENTIAL QUALIFICATION QUESTIONNAIRE

COPY

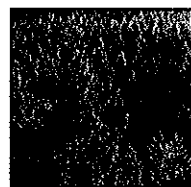
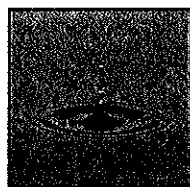
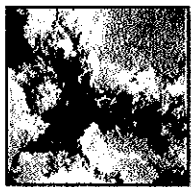
SUBMITTED BY:

Qk4
802 B Street
Suite 200
St. Albans, WV 25177
Ph: (304) 201-8980
Fx: (304) 201-8983

RECEIVED

2009 SEP 24 PM 1:07

WV PURCHASING
DIVISION



Architecture Engineering Planning

Groundbreaking by Design.



State of West Virginia
 Department of Administration
 Purchasing Division
 2019 Washington Street East
 Post Office Box 50130
 Charleston, WV 25305-0130

Request for Quotation

RFQ NUMBER
 DEP14764

PAGE
 1

ADDRESS CORRESPONDENCE TO ATTENTION OF
 CHUCK BOWMAN
 304-558-2157

RFQ COPY
 TYPE NAME/ADDRESS HERE

ENVIRONMENTAL PROTECTION
 DEPARTMENT OF
 OFFICE OF AML&R
 601 57TH STREET SE
 CHARLESTON, WV
 25304 304-926-0499

DATE PRINTED	TERMS OF SALE	SHIP VIA	FOB	FREIGHT TERMS
09/03/2009				

BID OPENING DATE: 09/24/2009 BID OPENING TIME 01:30PM

LINE	QUANTITY	UOP	CAT NO	ITEM NUMBER	UNIT PRICE	AMOUNT
0001	1	JB		906-29		
GORDON "C" REFUSE PILE DESIGN EXPRESSION OF INTEREST THE WEST VIRGINIA PURCHASING DIVISION, FOR THE AGENCY, THE WEST VIRGINIA DEPARTMENT OF ENVIRONMENTAL PROTECTION, IS SOLICITING EXPRESSIONS OF INTEREST FOR PROFESSIONAL ENGINEERING DESIGN SERVICES AND CONSTRUCTION MONITORING SERVICES AT THE GORDON "C" REFUSE PILE PROJECT IN BOONE COUNTY, WEST VIRGINIA, PER THE FOLLOWING BID REQUIREMENTS AND ATTACHED SPECIFICATIONS. BANKRUPTCY: IN THE EVENT THE VENDOR/CONTRACTOR FILES FOR BANKRUPTCY PROTECTION, THE STATE MAY DEEM THIS CONTRACT NULL AND VOID AND TERMINATE SUCH CONTRACT WITHOUT FURTHER ORDER.						

SEE REVERSE SIDE FOR TERMS AND CONDITIONS

SIGNATURE	TELEPHONE	DATE
TITLE	FEIN	ADDRESS CHANGES TO BE NOTED ABOVE

WHEN RESPONDING TO RFQ, INSERT NAME AND ADDRESS IN SPACE ABOVE LABELED 'VENDOR'



Architecture
Engineering
Planning

802 B Street, Suite 200
St. Albans, West Virginia 25177
Ph. 304-201-8980
Fx. 304-201-8983
www.qk4.com

September 24, 2009

Chuck Bowman, Buyer Supervisor
West Virginia Department of Administration
Purchasing Division
2019 Washington Street, East
P O Box 50130
Charleston, WV 25305-0130

**Expression of Interest
Engineering Design Services and Construction Monitoring Services at the
Gordon "C" Refuse Pile Design Project
Boone County, WV
RFQ # DEP14764**

Dear Mr. Bowman:

Qk4 is pleased to submit this Expression of Interest to provide professional engineering services to the West Virginia Department of Environmental Protection (WVDEP), Office of Abandoned Mine Lands and Reclamation (AML), for the Gordon "C" Refuse Pile Design project in Boone County, West Virginia.

Qk4 is a multi-disciplinary firm with a staff of 97 professionals, consisting of civil and structural engineers, planners, architects, landscape architects, environmental specialists and right-of-way acquisition specialists. The firm is headquartered in Louisville, Kentucky and maintains offices in St. Albans, West Virginia; Frankfort, Kentucky; New Albany, Indiana; Atlanta, Georgia; and Bristol, Tennessee.

Qk4 has staff with previous AML experience. In fact our most recent project, Glen White Air Shafts (DEP #14270), will soon be under construction. Two sub-consultants will be utilized on this project, NGE, LLC for geotechnical services, and Terradon Corporation for surveying services. Both firms have staff with extensive experience on AML projects.

We look forward to an opportunity to interview for this project. Should you have any questions regarding this submittal or Qk4, please contact me at (304) 201-8980 or at mnewton@qk4.com.

Sincerely yours,

Steven M. Newton, PE, PS
Regional Office Manager

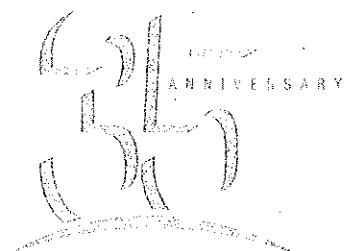


TABLE OF CONTENTS

- Evaluation Criteria
- Project Team
- Resume
 - Steven M. Newton, PE, PS
- Firm Experience
- Consultant Confidential Qualification Questionnaire - Attachment "B"
- Project Experience Matrix - Attachment "C"
- Sub-consultants
 - NGE CCQQ
 - Terradon CCQQ
- Purchase Affidavit



EVALUATION CRITERIA

A. WV Registered Professional Engineers (Civil or Mining) in the Primary Office:

The primary office for the performance of this work will be our office in St. Albans, WV. There is one West Virginia registered professional in this office, Steven M. Newton, PE, PS.

Our geotechnical sub-consultant on this project will be NGE, LLC. There are two West Virginia registered professional engineers in their primary office in St. Albans, WV, John Nottingham, PE and Larry Nottingham, PE.

B. Reclamation Engineering design experience of the Primary office's WVRPE as it relates to the specific project problem areas:

Mr. Steven M. Newton, PE, PS is the Office Manager and principal engineer in the St. Albans, WV office. He has 32 years of general civil engineering experience including AML Reclamation projects and other types of projects such as site development, drainage, structural, etc., that include the same common design elements as AML projects such as grading, drainage design, erosion and sediment control, permits, etc.

C. Available WV-AML Design Teams within the Primary Office:

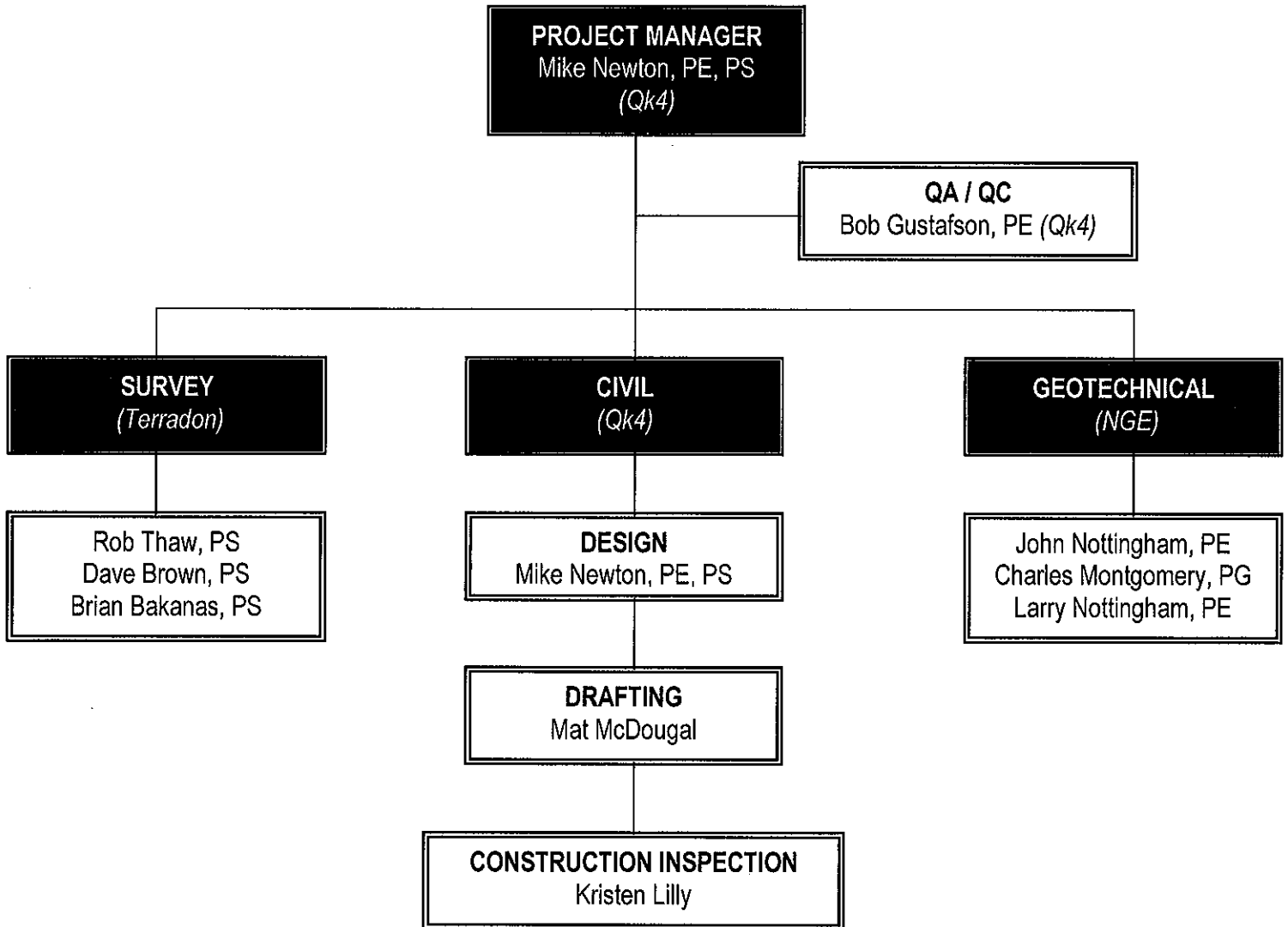
There is one available WV-AML team within the primary office in St. Albans, WV. It will consist of:

Steven M. Newton, PE, PS
Mat McDougal
Tammy Garner
Kristen Lilly

Project Manager / Project Engineer
Engineering Technician / CAD Designer
Administrative Assistant
Construction Inspector



PROJECT TEAM



**ENGINEERING DESIGN SERVICES AND
CONSTRUCTION MONITORING SERVICES AT THE
GORDON 'C' REFUSE PILE DESIGN PROJECT
BOONE COUNTY, WV**

Qk4 Expression
of Interest
Staff
Experience

S. MICHAEL NEWTON, PE, PS

Regional Office Manager, West Virginia / Project Manager

**32 YEARS EXPERIENCE
22 YEARS WITH Qk4**

EDUCATION

Speed Scientific School
University of Louisville

REGISTRATIONS

PE / 1984 / KY / 13967
PE / 1985 / IN / PE21204
PE / 1995 / NC / 20940
PE / 1995 / PA / 048599R
PE / 2000 / WV / 14389
PLS / 1983 / KY / 2664
PLS / 1990 / TN / 1593
PLS / 1990 / IL / 035-0029481
PLS / 2000 / WV / 2023

AFFILIATIONS

American Council of Engineering Companies
American Society of Civil Engineers
National Society of Professional Engineers
West Virginia Rural Water Association

ADDITIONAL EDUCATION

Introduction to Stream Functions and Processes
Methods for Stream Channel Assessment and
Analysis
Natural Stream Channel Design
Advanced Natural Stream Design and Monitoring
State & Federal Legislative Issues
WV Infrastructure Forum; ACEC
Copyright Protection of Engineering, Architectural
and Construction Documents
Basics of Project Financing
Trenchless Technology Pipeline Rehabilitation
Methodologies
Work Zone Traffic Control; WVDOH
Dendrology (Tree Identification) - KY

Mr. Newton has experience in a wide array of civil engineering projects for both public and private clients, including commercial developments, drainage improvement projects, landfills, residential developments, transportation, wastewater, and water projects. His project experience includes scheduling, planning, preliminary design, final design, cost estimates, easements / right-of-way acquisition, bidding, and construction management. He has also managed the surveying tasks associated with all of the above, including alta surveys, boundary surveys, condominium plats, descriptions, easement plats, major and minor subdivision plats, right-of-way plats, topographic surveys, etc.

Mr. Newton's AML design experience includes:

Delbarton (Dardi) Portals DEP #14524
Mingo County, West Virginia

Glen White Air Shafts DEP #14270
Raleigh County, West Virginia

Mr. Newton's Site design experience includes:

Cobblestone Subdivision
Putnam County, West Virginia

Teays Valley Cinemas
Putnam County, West Virginia

International Coal Group (ICG)
Putnam County, West Virginia

Mr. Newton's Drainage design experience includes:

Ivywood Street Drainage
Putnam County, West Virginia

Marble Drive Drainage Improvements
Putnam County, West Virginia

Beach / Fir Streets Drainage Improvements
Putnam County, West Virginia



Architecture Engineering Planning

Groundbreaking by Design.

**ENGINEERING DESIGN SERVICES AND
CONSTRUCTION MONITORING SERVICES AT THE
GORDON 'C' REFUSE PILE DESIGN PROJECT
BOONE COUNTY, WV**

Qk4 Expression
of Interest
Firm
Experience

DELBARTON (DARDI) PORTALS DEP#14524

Mingo County, West Virginia

CLIENT

WVDEP
Office of Abandoned Mine Lands and
Reclamation
116 Industrial Drive
Oak Hill, West Virginia 25901
Dean Stiltner
304.465.1911

DATES

September 2009 - Current

PROJECT TYPE

Mine Reclamation

PROJECT LENGTH / SIZE

12 Mine Portals

KEY PERSONNEL

S. Michael Newton, PE, PS
Mat McDougal

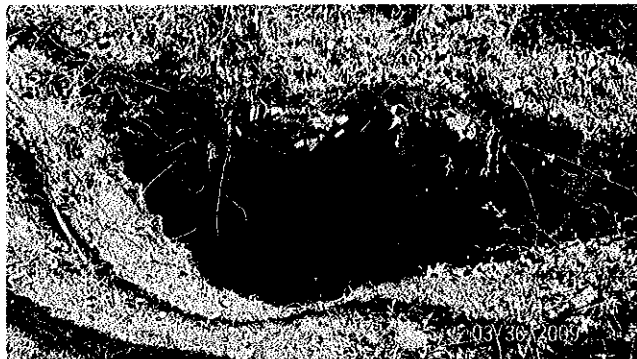
SERVICES PROVIDED

Surveying
Reclamation Plans

CONSTRUCTION COST

This project includes a Preliminary Site Visit, Research of mine maps, railroad plans, utilities, etc., Surveying, Conceptual Design Meeting, Preliminary Design, Final Design, Quantities, a Cost Estimate, Construction Specifications, Site Visits, a Pre-Bid Meeting and a Pre-Construction Meeting.

This project includes the preparation of Reclamation Plans to seal 12 existing mine portals with either bat gates or wet seals, and rip-rapped swales to convey drainage to an existing natural drain or railroad ditch. This project also includes demolition of existing buildings and other miscellaneous mine related structures. The plan set will include a cover sheet, plan sheets, swale profiles, bat gate, wet seal and swale details, a temporary creek crossing and erosion and sediment control.



Architecture Engineering Planning

Groundbreaking by Design.

GLEN WHITE AIR SHAFTS DEP #14270

Raleigh County, West Virginia

CLIENT

WVDEP
Office of Abandoned Mine Lands and
Reclamation
116 Industrial Drive
Oak Hill, West Virginia 25901
Mark Proctor
304.465.1911

DATES

July 2008 – Current

PROJECT TYPE

Mine Reclamation

PROJECT LENGTH / SIZE

Two Air Shafts
18 feet x 39 feet
250 and 265 feet Deep

KEY PERSONNEL

S. Michael Newton, PE, PS
Mat McDougal

SERVICES PROVIDED

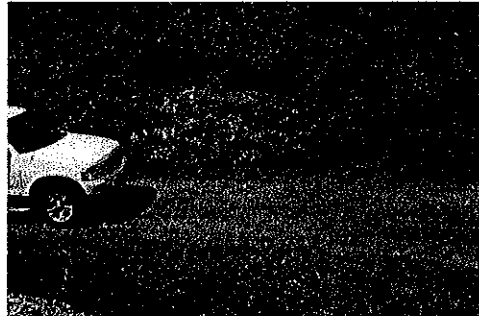
Surveying
Reclamation Plans

CONSTRUCTION COST

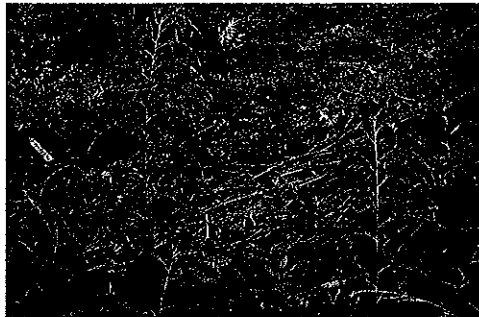
\$228,500

This project included a Preliminary Site Visit, Research of mine maps, highway plans, utilities, etc., Field Research, Excavation, Surveying, Conceptual Design Meeting, Preliminary Design, Final Design, Quantities, a Cost Estimate, Construction Specifications, Site Visits, a Pre-Bid Meeting and a Pre-Construction Meeting.

Reclamation plans were prepared to seal two existing air shafts. Each air shaft was 18 feet x 39 feet and approximately 250 feet and 265 feet deep. Each was backfilled with stone to a depth near the surface, capped with concrete and covered with a minimum of two feet of soil, and re-vegetated. Sites were re-graded to divert surface away from the area. Plans consisted of a site plan, cross-sections and details for each site. Exploratory excavations of each site were required to determine accurate dimensions of each shaft.



Site 1 – Exposed Concrete Cap

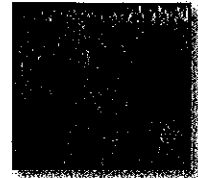
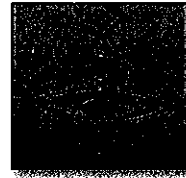
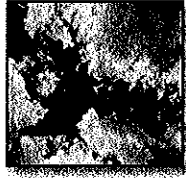


Site 1 – Hatch, Vent





Architecture Engineering Planning



Groundbreaking by Design.

Firm Experience

COBBLESTONE SUBDIVISION

Putnam County, West Virginia

CLIENT

Cobblestone Subdivision, LLC
500 Corporate Centre Drive
Suite 550
Scott Depot, West Virginia 25560
Mr. Blake Stevens
304.757.9196

DATES

January 2003 - Present

PROJECT TYPE

Site Development

PROJECT LENGTH / SIZE

268 acres

KEY PERSONNEL

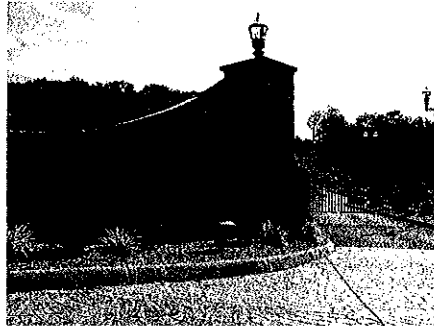
Mike Newton, PE, PS

SERVICES PROVIDED

Surveying & Mapping
Construction plans
Permits
Construction Staking

AMOUNT OF CONTRACT

Engineering - \$100,000
Construction - 3.8 Million



Cobblestone Subdivision is an ongoing residential subdivision of approximately 435 acres. This premier subdivision, with beautiful ridge top views, is located in Putnam County, West Virginia. This community includes the natural surroundings of nature trails, as well as the security of a gated neighborhood.

Section One consisted of approximately 103 acres and 57 lots. Construction was completed in January of 2003, at a cost of approximately 1.5 million dollars.

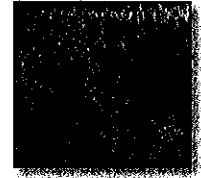
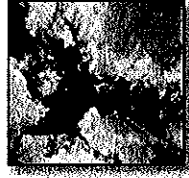
Section Two - Phase One of consisted of 75 acres and 38 lots. Construction was completed in December of 2005, at a cost of approximately \$900,000 dollars.

Section Two - Phase Two of consisted of 50 acres and 23 lots. Construction started in April 2007, and was completed in September, at an approximate cost of \$500,000 dollars.

Section Three will consist of 40 acres and 27 lots. Construction was started in October of 2007, at an approximate cost of \$900,000 dollars.



Architecture Engineering Planning



Groundbreaking by Design.

Firm Experience

TEAYS VALLEY CINEMAS

Putnam County, West Virginia

CLIENT
GDY, LLC
500 Corporate Centre Drive
Suite 550
Scott Depot, West Virginia 25560
Mr. Gary Young
304.757.9196

DATES
February, 2004 – March, 2005

PROJECT TYPE
Site Development

PROJECT LENGTH / SIZE
6 acre
35,000 square feet
10-plex Cinema

KEY PERSONNEL
Mike Newton, PE, PS
Project Manager

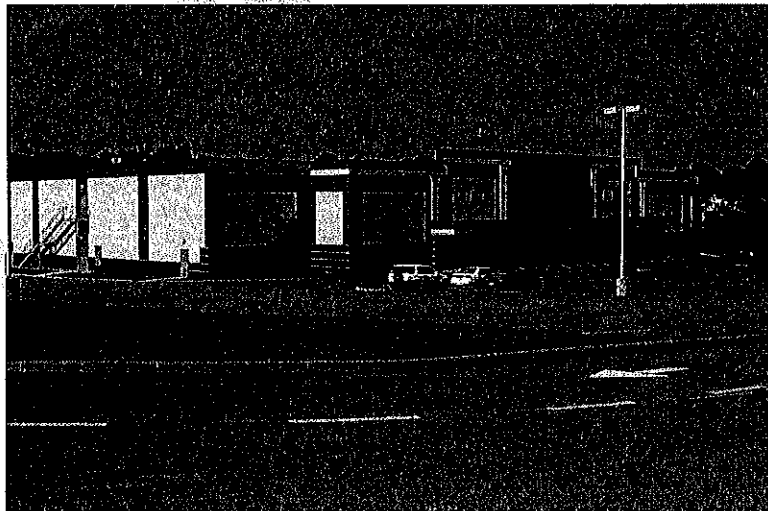
Pat Rawlings
Utilities

SERVICES PROVIDED
Surveying & Mapping
Site Design
Permits
Construction Staking

CONSTRUCTION COST
\$ 3.5 million

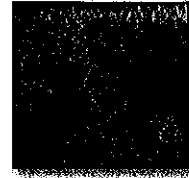
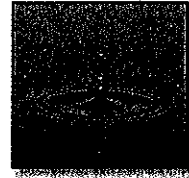
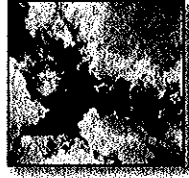
This project included boundary and topographic surveys, and site plans, for a six (6) acre site. The plans included layout, striping, utilities, grading, drainage, landscaping, lighting and erosion control. The plans also included the widening of Erskine Lane. All permits were obtained including a Special Permit through the Putnam County Office of Planning and Infrastructure. Construction staking for the site and offsite utilities was also done.

This project led to associate projects, which included a Traffic Impact Study at the intersection of Erskine Lane and Teays Valley Road (County Route 33) and widening plans for Teays Valley Road to accommodate an additional left turn lane into the site. The construction was completed in March of 2005 at a cost of approximately \$ 3.5 million.





Architecture Engineering Planning



Groundbreaking by Design.

Firm Experience

INTERNATIONAL COAL GROUP HEADQUARTERS

Scott Depot, West Virginia

CLIENT
GDY, LLC
500 Corporate Centre Drive
Suite 550
Scott Depot, West Virginia 25560
Mr. Gary Young
304.757.9196

DATES
June 2005 – February 2007

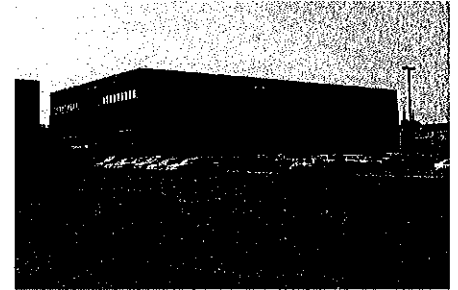
PROJECT TYPE
Site Development

PROJECT LENGTH / SIZE
2.5 acres
51,000 square feet

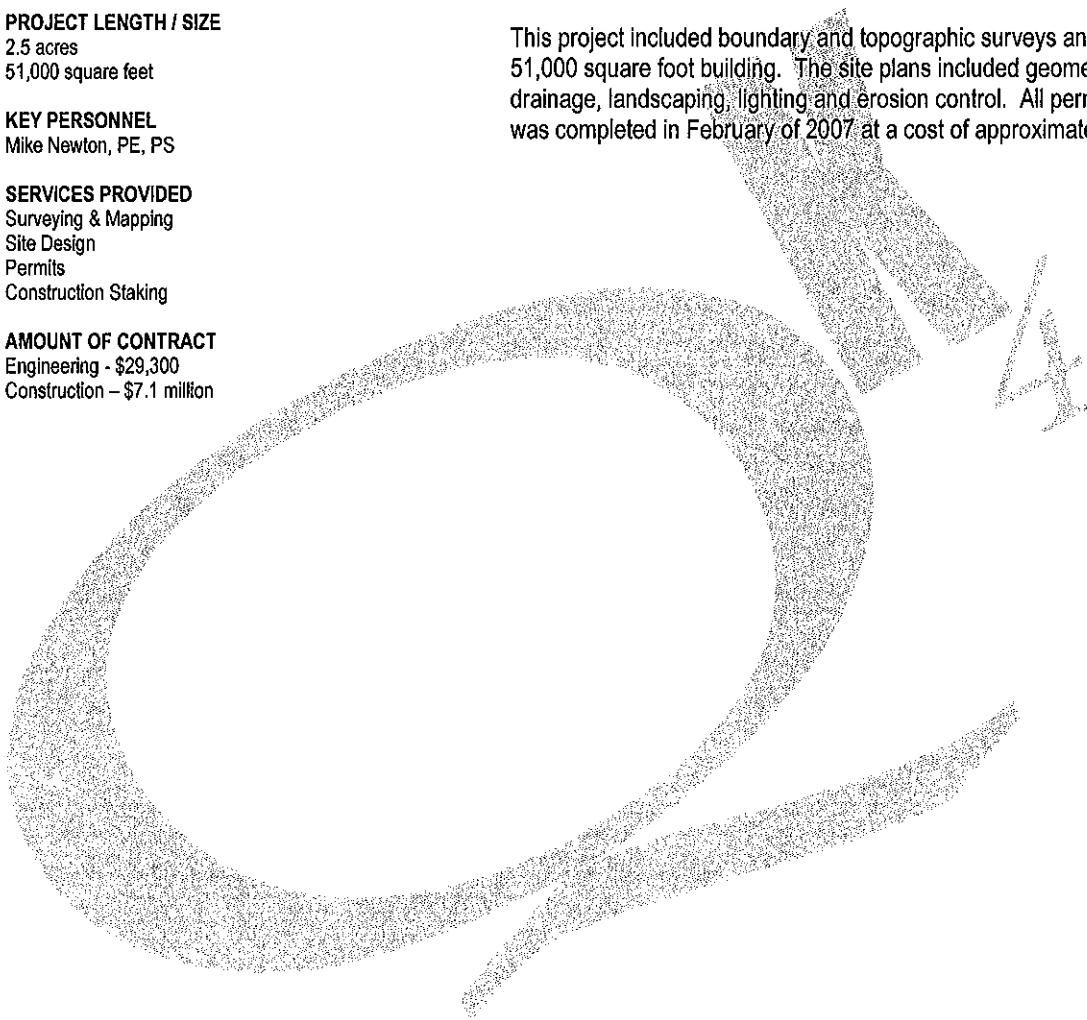
KEY PERSONNEL
Mike Newton, PE, PS

SERVICES PROVIDED
Surveying & Mapping
Site Design
Permits
Construction Staking

AMOUNT OF CONTRACT
Engineering - \$29,300
Construction - \$7.1 million

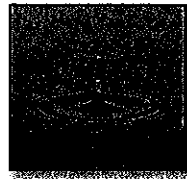
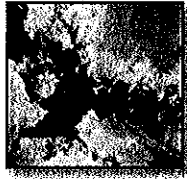


This project included boundary and topographic surveys and site plans for a 2.5 acre site with a 51,000 square foot building. The site plans included geometric layout, striping, utilities, grading, drainage, landscaping, lighting and erosion control. All permits were obtained. The construction was completed in February of 2007 at a cost of approximately \$7,100,000.





Architecture Engineering Planning



Groundbreaking by Design.

Firm Experience

TOWN OF ELEANOR IVYWOOD STREET DRAINAGE

Putnam County, West Virginia

CLIENT

Town of Eleanor
401 Roosevelt Boulevard
P.O. Box 185
Eleanor, West Virginia 25070 - 0185
Fred Halstead, Mayor
304.586.2319

DATES

2006 - 2007

PROJECT TYPE

Storm Drainage System Improvements

PROJECT LENGTH / SIZE

Approximately: 850 L.F. of 12" CMP
150 L.F. of 15" CMP
200 L.F. of 18" CMP
150 L.F. of 24" CMP

KEY PERSONNEL

Mike Newton, PE, PS
Project Manager

Mathew T. McDougal
Junior Engineer

SERVICES PROVIDED

Storm Sewer Design
Preparation of Required Permits
Preparation of Construction Specifications and Bidding Documents
Bidding Assistance
Construction Contract Administration

This project included all of the planning, engineering and management services necessary to redesign the existing drainage along Ivywood Street located in the Town of Eleanor. The project incorporated existing drainage structures along with the addition of new structures and upgraded drainage pipes. The project design included the re-grading of ditch lines and approximately 850 L.F. of 12" CMP pipe, 150 L.F. of 15" CMP pipe, 200 L.F. of 18" CMP pipe, and 150 L.F. of 24" CMP pipe.

TOWN OF ELEANOR

IVYWOOD STREET DRAINAGE IMPROVEMENTS

ELEANOR, WV 25070

SHEET INDEX

- 1 PROJECT LOCATION & CONTACTS
- 2 GENERAL NOTES & DETAILS
- 3 PLAN & PROFILE SHEET
- 4 PLAN & PROFILE SHEET
- 5 PLAN & PROFILE SHEET
- 6 PLAN & PROFILE SHEET
- 7 PLAN & PROFILE SHEET
- 8 PLAN & PROFILE SHEET
- 9 PLAN & PROFILE SHEET

UTILITIES INFORMATION:

SANITARY SEWER
TOWN OF ELEANOR
ELEANOR, WV 25070
PHONE: (304) 586-2319
CONTACT: FRED HALSTEAD, MAYOR

WATER
WEST VIRGINIA AMERICAN WATER CO.
P.O. BOX 1908
CHARLESTON, WV 25307
PHONE: (304) 249-8974

GAS
UNION OIL & GAS COMPANY
PHONE: (304) 586-2541
13 PERRY STREET
HUNTSVILLE, TN 35893
CONTACT: STEVE YOUNG

ELECTRIC
WYOMING ELECTRIC POWER
1000 US ROUTE 60
MILTON, WV 25841
PHONE: 1-877-877-2386
CONTACT: KEITH STANLEY (304) 745-1804

TELEPHONE
TERRISON
PHONE: (304) 243-8789
1500 WOODBERRY AVENUE
CHARLESTON, WV 25314
CONTACT: DONNA CASKEY

CABLE
CHARTER COMMUNICATIONS
4048 TRAVIS VALLEY BLVD
SCOTT DEWITT, WV, 26050
PHONE: (304) 397-8001 EXT. 70008
CONTACT: TERRY BLANKENHORN

SCALE: 1" = 100' FEET
SOURCE: AERIAL PHOTOGRAPHIC SURVEY
DATE: 05/11/06
PROJECT: IVYWOOD STREET DRAINAGE IMPROVEMENTS

SCALE: 1" = 100' FEET
SOURCE: AERIAL PHOTOGRAPHIC SURVEY
DATE: 05/11/06
PROJECT: IVYWOOD STREET DRAINAGE IMPROVEMENTS

SCALE: 1" = 100' FEET
SOURCE: AERIAL PHOTOGRAPHIC SURVEY
DATE: 05/11/06
PROJECT: IVYWOOD STREET DRAINAGE IMPROVEMENTS

PROJECT LOCATION AND CONTACTS

TOWN OF ELEANOR

IVYWOOD STREET

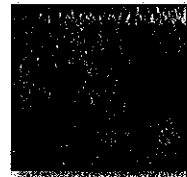
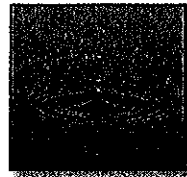
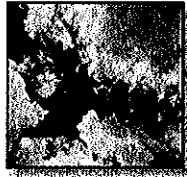
ELEANOR, WV 25070

CONTACT: FRED HALSTEAD, MAYOR

PHONE: (304) 586-2319



Architecture Engineering Planning



Groundbreaking by Design.

Firm Experience

TOWN OF ELEANOR MARBLE DRIVE DRAINAGE

Putnam County, West Virginia

CLIENT

Town of Eleanor
401 Roosevelt Boulevard
P.O. Box 185
Eleanor, West Virginia 25070 - 0185
Fred Halstead, Mayor
304.586.2319

This project included all of the planning, engineering and management services necessary to develop a new drainage system along Marble Drive in the Town of Eleanor. This project relieved ponding water from the road, and routed it to a parallel creek. The project included approximately 144 linear feet of 12" HDPE pipe, 2 drainage inlets, and a 12" headwall. At a construction cost of approximately \$12,700.

DATES

2008-2009

PROJECT TYPE

Storm Drainage System Improvements

PROJECT LENGTH / SIZE

Approximately 150 linear feet of 12" HDPE pipe,
2 drainage inlets, 12" Headwall

KEY PERSONNEL

Mike Newton, PE, PS
Project Manager

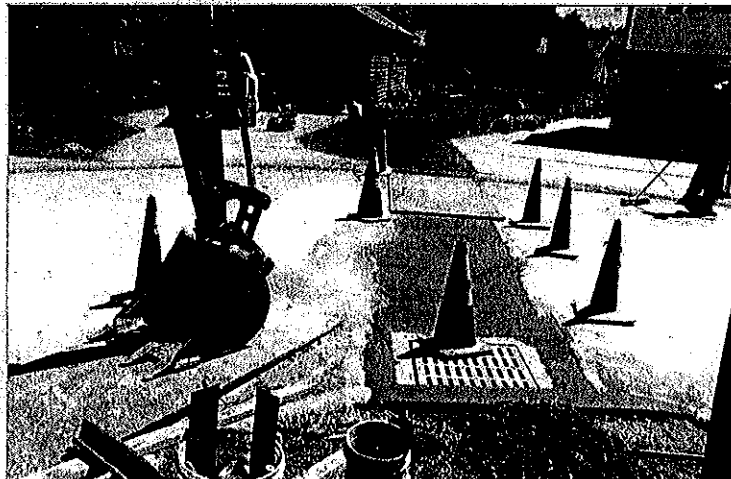
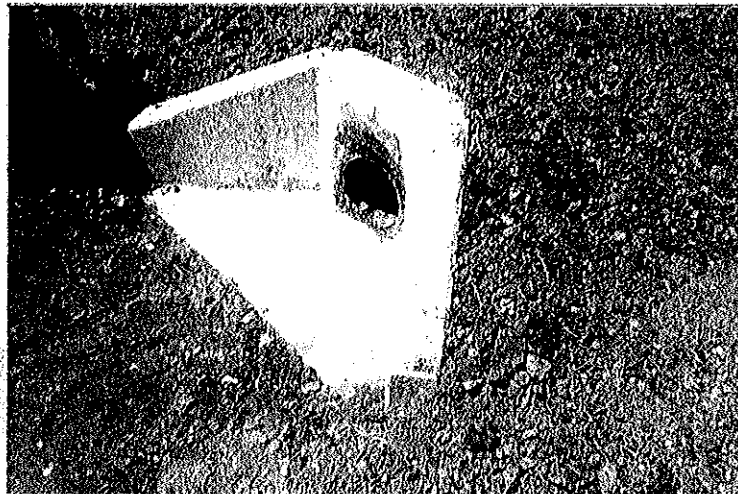
Mathew T. McDougal
Junior Engineer

SERVICES PROVIDED

Storm Sewer Design
Preparation of Required Permits
Preparation of Construction Specifications and Bidding Documents
Bidding Assistance
Construction Contract Administration

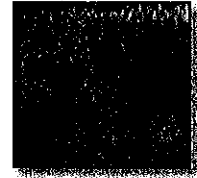
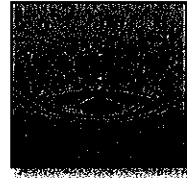
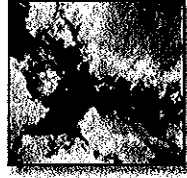
AMOUNT OF CONTRACT

Construction Cost - \$12,700





Architecture Engineering Planning



Groundbreaking by Design.

Firm Experience

TOWN OF ELEANOR FIR AND BEECH STREET DRAINAGE IMPROVEMENTS

Putnam County, West Virginia

CLIENT

Town of Eleanor
401 Roosevelt Boulevard
P.O. Box 185
Eleanor, West Virginia 25070 - 0185
Fred Halstead, Mayor
304.586.2319

This project included all of the planning, engineering and management services necessary to develop a new routing for storm water flow of a major drainage area in the Town of Eleanor where serious residential flooding was occurring due to the inadequacy of the old system. The Fir and Beech Streets project was the first phase of an overall Master Plan (also developed by Qk4) to identify and find solutions for flooding problems in numerous areas of the town.

DATES

2002-2003

The rerouting of this storm water flow required a new crossing of W. Va. Route 62, the major arterial highway in the area, and a new crossing of CSX Railroad mainline track.

PROJECT TYPE

Storm Drainage System Improvements

The new system discharges to a major drainage structure of the U.S. Army Corps of Engineers, who reviewed and approved the plan.

PROJECT LENGTH / SIZE

Approximately 1,200 linear feet of storm drains ranging from 36 inch to 42 inch

KEY PERSONNEL

Mike Newton, P.E.
Project Manager

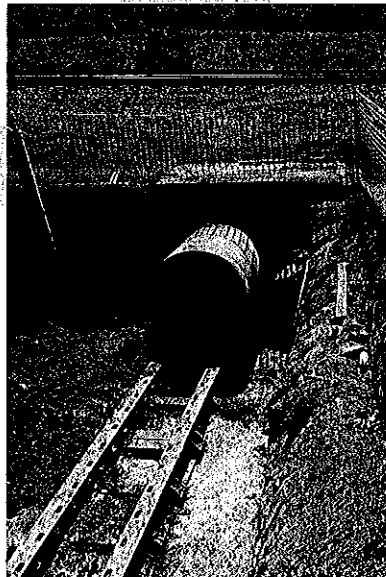
Patrick Rawlings
Senior Designer

SERVICES PROVIDED

Storm Sewer Design
Preparation of Required Permits
Preparation of Construction Specifications and Bidding Documents
Bidding Assistance
Construction Contract Administration

AMOUNT OF CONTRACT

Engineering - \$17,772
Construction Cost - \$66,295



**WEST VIRGINIA DEPARTMENT OF ENVIRONMENTAL PROTECTION
AML CONSULTANT CONFIDENTIAL QUALIFICATION QUESTIONNAIRE**

Attachment "B"

PROJECT NAME Design Services and Construction Monitoring Services at the: Gordon "C" Refuse Pile Design project	DATE (DAY, MONTH, YEAR) September 24, 2009	FEIN 61-0865261
1. FIRM NAME Presnell Associates, Inc. dba Qk4	3. FORMER FIRM NAME Presnell Associates, Inc.	
4. HOME OFFICE TELEPHONE (502)585-2222	5. ESTABLISHED (YEAR) 1974 - Company 2000 - WV Office	6. TYPE OWNERSHIP Corporation
7. PRIMARY AML DESIGN OFFICE: ADDRESS/ TELEPHONE/ PERSON IN CHARGE/ NO. AML DESIGN PERSONNEL EACH OFFICE 802 B Street, Suite 200, St. Albans, WV 25177, (304)201-8980, S. Michael Newton, PE, PS, AML Personnel - 3	8a. NAME, TITLE, & TELEPHONE NUMBER - OTHER PRINCIPALS S. Michael Newton, PE, PLS; Regional Manager WV, Assistant VP Sherrill Smith, PE, PLS; Vice President David Heyne, AIA; Assistant Vice President	
8. NAMES OF PRINCIPAL OFFICERS OR MEMBERS OF FIRM Robert E. Gustafson, PE; Senior VP Roger J. Wade, PE, PLS; Senior VP Albert H. Zimmerman, PE; VP Thomas Springer, AICP, CEP; Asst. VP		
9. PERSONNEL BY DISCIPLINE		
1 ADMINISTRATIVE — ARCHITECTS — BIOLOGIST 1 CADD OPERATORS — CHEMICAL ENGINEERS 1 CIVIL ENGINEERS — CONSTRUCTION INSPECTORS — DESIGNERS — DRAFTSMEN	— ECOLOGISTS — ECONOMISTS — ELECTRICAL ENGINEERS — ENVIRONMENTALISTS — ESTIMATORS — GEOLOGISTS — HISTORIANS — HYDROLOGISTS	— LANDSCAPE ARCHITECTS — MECHANICAL ENGINEERS — MINING ENGINEERS — PHOTOGRAMMETRISTS — PLANNERS: URBAN/REGIONAL — SANITARY ENGINEERS — SOILS ENGINEERS — SPECIFICATION WRITERS — STRUCTURAL ENGINEERS 1 SURVEYORS — TRAFFIC ENGINEERS — OTHER

TOTAL NUMBER OF WV REGISTERED PROFESSIONAL ENGINEERS IN PRIMARY OFFICE: 1
 *RPEs other than Civil and Mining must provide supporting documentation that qualifies them to supervise and perform this type of work.

10. HAS THIS JOINT-VENTURE WORKED TOGETHER BEFORE? X YES € NO

11. OUTSIDE KEY CONSULTANTS/SUB-CONSULTANTS ANTICIPATED TO BE USED. Attach "AML Consultant Confidential Qualification Questionnaire".

<p>NAME AND ADDRESS: Novel Geo-Environmental, PLLC 806 B Street St. Albans, WV 25177</p>	<p>SPECIALTY: Soils Analysis / Geotechnical Engineering</p>	<p>WORKED WITH BEFORE X Yes No</p>
<p>NAME AND ADDRESS: Terradon Corporation 401 Jacobson Drive Poca, WV 25159</p>	<p>SPECIALTY: Surveying</p>	<p>WORKED WITH BEFORE X Yes No</p>
<p>NAME AND ADDRESS:</p>	<p>SPECIALTY:</p>	<p>WORKED WITH BEFORE Yes No</p>
<p>NAME AND ADDRESS:</p>	<p>SPECIALTY:</p>	<p>WORKED WITH BEFORE Yes No</p>
<p>NAME AND ADDRESS:</p>	<p>SPECIALTY:</p>	<p>WORKED WITH BEFORE Yes No</p>
<p>NAME AND ADDRESS:</p>	<p>SPECIALTY:</p>	<p>WORKED WITH BEFORE Yes No</p>
<p>NAME AND ADDRESS:</p>	<p>SPECIALTY:</p>	<p>WORKED WITH BEFORE Yes No</p>
<p>NAME AND ADDRESS:</p>	<p>SPECIALTY:</p>	<p>WORKED WITH BEFORE Yes No</p>
<p>NAME AND ADDRESS:</p>	<p>SPECIALTY:</p>	<p>WORKED WITH BEFORE Yes No</p>

12. A. Is your firm experienced in Abandoned Mine Lands Remediation/Mine Reclamation Engineering?

YES Description and Number of Projects: Glen White Air Shafts, DEP14270; Delbarton (Dardi) Portals DEP14524

NO

B. Is your firm experienced in Soil Analysis?

YES Description and Number of Projects: _____

NO

C. Is your firm experienced in hydrology and hydraulics?

YES Description and Number of Projects: The company has practiced civil engineering since 1974. Transportation and Site Development are primary areas of practice, all of which involve hydrology and hydraulics. Approximately 150-200 projects.

NO

D. Does your firm produce its own Aerial Photography and Develop Contour Mapping?

YES Description and Number of Projects: We use outside consultants for aerial photography, however we are able to develop contour mapping from digitized data.

NO

E. Is your firm experienced in domestic waterline design? (Include any experience your firm has in evaluation of aquifer degradation as a result of mining.)

YES Description and Number of Projects: Water system engineering is a primary area of practice involving source development, treatment, pumping, distribution and storage. Approximately 100 projects.

NO

F. Is your firm experienced in Acid Mine Drainage Evaluation and Abatement Design?

YES Description and Number of Projects: _____

NO

13. PERSONAL HISTORY STATEMENT OF PRINCIPALS AND ASSOCIATES RESPONSIBLE FOR AML PROJECT DESIGN (Furnish complete data but keep to essentials)

NAME & TITLE (Last, First, Middle Int.) Newton, Steven M., PE, PS Regional Office Manager - WV Assistant Vice President	YEARS OF AML DESIGN EXPERIENCE: 1	YEARS OF EXPERIENCE YEARS OF AML RELATED DESIGN EXPERIENCE: 32	YEARS OF DOMESTIC WATERLINE DESIGN EXPERIENCE: 32
	Brief Explanation of Responsibilities		

Overall project management and design, budget maintenance, QA/QC, and preparation of easement acquisition documents.

EDUCATION (Degree, Year, Specialization)
Speed Scientific School
University of Louisville, 1975-1980
Civil Engineering

MEMBERSHIP IN PROFESSIONAL ORGANIZATIONS
ASCE, NSPE, WVACE, WVRWA

REGISTRATION (Type, Year, State)
PE/1984/KY; PE/1985/IN; PE/1995/NC; PE/1995/PA; PE/2000/WV; PS/1983/KY; PS/1990/TN; PS/1990/IL; PS/2000/WV

13. PERSONAL HISTORY STATEMENT OF PRINCIPALS AND ASSOCIATES RESPONSIBLE FOR AML PROJECT DESIGN (Furnish complete data but keep to essentials)

NAME & TITLE (Last, First, Middle Int.)	YEARS OF AML DESIGN EXPERIENCE:	YEARS OF EXPERIENCE YEARS OF AML RELATED DESIGN EXPERIENCE:	YEARS OF DOMESTIC WATERLINE DESIGN EXPERIENCE:
	Brief Explanation of Responsibilities		

EDUCATION (Degree, Year, Specialization)

MEMBERSHIP IN PROFESSIONAL ORGANIZATIONS

REGISTRATION (Type, Year, State)

14. PROVIDE A LIST OF SOFTWARE AND EQUIPMENT AVAILABLE IN THE PRIMARY OFFICE WHICH WILL BE USED TO COMPLETE AML DESIGN SERVICES

Software - AutoCAD Civil 3D - 2008

Equipment - 7 - Dell Desktop PC Computers

HP Designjet 1055 CM Plotter

HP Laserjet 500N

HP Officejet 7110

Sharp AR-BC260 Digital Imager

Bentley MicroStation 8

Haesfad Methods - Flowmaster

Wild NA20 Level

MS - Word (2003)

MS - Excel (2003)

Adobe Writer and Reader 7.0

MS - Power Point (2003)

Photoshop

MS - Access (2003)

PROJECT NAME, TYPE AND LOCATION	NAME AND ADDRESS OF OWNER	NATURE OF YOUR FIRM'S RESPONSIBILITY	ESTIMATED CONSTRUCTION COST	PERCENT COMPLETE
Glen White Air Shafts DEP#14270 Abandoned Mine Raleigh Co., WV	WVDEP Office of Abandoned Mine Lands and Reclamation 116 Industrial Drive Oak Hill, WV 25901	Design Bidding Assistance Construction Administration Construction Inspection	\$228,500	Design 100% Construction 0%
Delbarton (Dardj) Portals Design DEP #14524 Mingo Co., WV	WVDEP - AML 601 57 th Street, SE Charleston, WV 25304	Design Bidding Assistance Construction Administration Construction Inspection Post Construction	--	Design 0%
Green Valley Extension Wastewater Extension Logan Co., WV	Buffalo Creek PSD P O Box 209 Amherstdale, WV 25607	Design Bidding Assistance Construction Administration Construction Inspection Post Construction	\$1,000,000	Preliminary 100% Design 0%
Cobblestone Subdivision Numerous Site Plans (12) Putnam Co., WV	Various Clients	Preparation of Site Plans	\$6,000,000	0-100%
Jim/Bee Ridge Waterline Extension Putnam Co., WV	Putnam County Commission 3389 Winfield Road Winfield, WV 25213	Design Bidding Assistance Construction Administration Construction Inspection Post Construction	\$1,600,000	Design 100% Construction 60%
4-H Camp Site Plans Putnam Co., WV	Putnam County 4-H Foundation Rosalee Juba-Plumly, President P O Box 380 Eleanor, WV 25070	Preparation of Site Plans	--	Design 50%
Paden City Wastewater Collection System - Rehab Project Tyler & Wetzel Counties, WV	City of Paden City P O Box 211 Paden City, WV 26159	Design Bidding Assistance Construction Administration Construction Inspection Post Construction	\$1,800,000	Design 100% Construction 0%
Waverly Wastewater Upgrade Wood & Pleasants Counties, WV	Union Williams PSD P O Box 243 Waverly, WV 26161	Design Bidding Assistance Construction Administration Construction Inspection Post Construction	\$730,000	Design 100% Construction 0%
TOTAL NUMBER OF PROJECTS: 19 (this page)			TOTAL ESTIMATED CONSTRUCTION COSTS: \$ 11,358,500 (this page)	

15. CURRENT ACTIVITIES ON WHICH YOUR FIRM IS THE DESIGNATED ENGINEER OF RECORD

PROJECT NAME, TYPE AND LOCATION	NAME AND ADDRESS OF OWNER	NATURE OF YOUR FIRM'S RESPONSIBILITY	ESTIMATED CONSTRUCTION COST	PERCENT COMPLETE
Pleasants County Waterline Extension Pleasants Co., WV	Union Williams PSD P O Box 243 Waverly, WV 26161	Design Bidding Assistance Construction Administration Construction Inspection Post Construction	\$943,000	Design 100% Construction 0%
US Route 35 Relocate / Upgrade Mason Co., WV	WVDOT 1900 Kanawha Blvd. E Charleston, WV 25305	Preliminary Report Preliminary Design Final Design Construction Administration	\$28,900,000	36%
Alum Creek Facilities Planning Report Lincoln Co., WV	Lincoln PSD P O Box 38 Alum Creek, WV 25003	Preparation of Facilities Plan with Assistance with funding	\$27,600,000	Facilities Plan 99%
Fisher's Ford Bridge Renovation Morgan Co., WV	WVDOT 1900 Kanawha Blvd., E. Charleston, WV 25305	Preliminary Report Preliminary Design Final Design Construction Administration	\$1,700,000	Preliminary 100% Design 30%
WV Route 9 Relocate/Upgrade Jefferson & Berkeley Counties, WV	WVDOT 1900 Kanawha Blvd., E. Charleston, WV 25305	Preliminary Report Preliminary Design Final Design Construction Administration	\$60,800,000	Design 100% Construction 75%
Jim / Bee Ridge Extensions Putnam Co., WV	Putnam County Commission 3389 Winfield Road Winfield, WV 25213	Design Bidding Assistance Construction Administration Construction Inspection Post Construction	\$340,000	Design 100% Construction 0%
Eleanor Sewer Reconstruction Putnam Co., WV	Town of Eleanor P O Box 185 401 Roosevelt Blvd. Eleanor, WV 25070	Design Bidding Assistance Construction Administration Construction Inspection Post Construction	\$109,000	Design 100% Construction 0%

TOTAL NUMBER OF PROJECTS: 7 (this page) TOTAL ESTIMATED CONSTRUCTION COSTS: \$ 120,392,000 (this page)

17. COMPLETED WORK WITHIN LAST 5 YEARS ON WHICH YOUR FIRM WAS THE DESIGNATED ENGINEER OF RECORD				Pg 1
PROJECT NAME, TYPE AND LOCATION	NAME AND ADDRESS OF OWNER	ESTIMATED CONSTRUCTION COST	YEAR	CONSTRUCTED (YES OR NO)
Marble Drive Drainage Improvements Putnam Co., WV	Town of Eleanor P O Box 185 401 Roosevelt Blvd. Eleanor, WV 25070	\$13,000	2009	YES
Cobblestone Subdivision Section 3 Putnam Co., WV	Cobblestone Subdivision, LLC 500 Corporate Centre Drive Suite 550 Scott Depot, WV 25560	\$900,000	2009	NO
Vintroux Road/US Route 35 Sanitary Sewer System Extension Putnam Co., WV	Putnam PSD P O Box 860 Scott Depot, WV 25560	\$2.1 Million	2009	YES
Eleanor Plaza Sidewalk Extension Putnam Co., WV	Town of Eleanor P O Box 185 401 Roosevelt Blvd. Eleanor, WV 25070	\$35,000	2008	YES
Vintroux Waterline Replacement Putnam Co., WV	Putnam PSD P O Box 860 Scott Depot, WV 25560	\$420,000	2007	YES
Northfork Waterline AML Study ID #308 McDowell Co., WV	WVDEP - AML 601 57th Street, SE Charleston, WV 25304	N/A Study	2007	NO
Ivywood Street Drainage Plans Putnam Co., WV	Town of Eleanor P O Box 185 401 Roosevelt Blvd. Eleanor, WV 25070	--	2007	NO
Dr. Herman Site Plan Putnam Co., WV	Dr. Herman eye Center 3709 Teays Valley Rd. Hurricane, WV 25526	\$630,000	2007	YES
ICG Site Plan Putnam Co., WV	G & G Builders 500 Corporate Centre Drive Suite 550 Scott Depot, WV 25560	\$7,100,000	2006	YES

17. COMPLETED WORK WITHIN LAST 5 YEARS ON WHICH YOUR FIRM WAS THE DESIGNATED ENGINEER OF RECORD

PROJECT NAME, TYPE AND LOCATION	NAME AND ADDRESS OF OWNER	ESTIMATED CONSTRUCTION COST	YEAR	CONSTRUCTED (YES OR NO)
Eleanor Sidewalk Plans Putnam Co., WV	Town of Eleanor P O Box 185 401 Roosevelt Blvd. Eleanor, WV 25070	\$158,000	2006	YES
Cobblestone Subdivision Phases 1 and 2 Putnam Co., WV	Cobblestone Subdivision, LLC 500 Corporate Centre Drive Suite 550 Scott Depot, WV 25560	\$1,200,000	2005-2006	YES
Fruth Pharmacy Site Plan Kanawha Co., WV	G & G Builders 500 Corporate Centre Drive Suite 550 Scott Depot, WV 25560	\$900,000	2005	YES
Teays Valley Road (WV 33) Road Widening Putnam Co., WV	Putnam County Development Authority P O box 167 Scott Depot, WV 25560	\$150,000	2005	YES
Teays Valley Cinemas Site Plan Putnam Co., WV	G & G Builders 500 Corporate Centre Drive Suite 550 Scott Depot, WV 25560	\$3,500,000	2005	YES
I-68 Underpass Closure Bridge Design Preston Co., WV	WVDOT 1900 Kanawha Blvd., E Charleston, WV 25305	\$1,200,000	2005	YES
Midway Sewer System Phases 1 and 2 Putnam Co., WV	Putnam PSD P O Box 860 Scott Depot, WV 25560	\$650,000	2005	YES

18. COMPLETED WORK WITHIN LAST 5 YEARS ON WHICH YOUR FIRM HAS BEEN A SUB-CONSULTANT TO OTHER FIRMS (INDICATE PHASE OF WORK FOR WHICH YOUR FIRM WAS RESPONSIBLE)

PROJECT NAME, TYPE AND LOCATION	NAME AND ADDRESS OF OWNER	ESTIMATED CONSTRUCTION COST OF YOUR FIRM'S PORTION	YEAR	CONSTRUCTED (YES OR NO)	FIRM ASSOCIATED WITH
Gassaway Armory Addition & Renovations Braxton Co., WV	WVARNG	\$100,000	2009	NO	Jerry Goff Architecture 100 1st Ave. St. Albans, WV 25177

19. Use this space to provide any additional information or description of resources supporting your firm's qualifications to perform work for the West Virginia Abandoned Mine Lands Program.

20. The foregoing is a statement of facts.

Signature:  _____ Title: **Office Manager**

Printed Name: **Steven M. Newton**

Date: 9-24-09

AML and RELATED PROJECT EXPERIENCE MATRIX

PROJECT	Exp. Basis C=Corp. P=Personnel	Additional Info Provided in Section (s) **	PROJECT EXPERIENCE REQUIREMENTS														PRIMARY STAFF PARTICIPATION/CAPACITY *** M=Management P=Professional																							
			Mine Reclamation	Abandoned Deep Mine Reclamation	Portal/Shaft Closure	Hydrologic/Hydraulic Design/Eval.	Remining Evaluation	Mine/Refuse Fire Abatement	Subsidence Investigation	Investigation Mitigation	Hazardous Waste Disposal	Project Specifications	Water Quality Evaluation/Mitigation/ Replacement	Construction Inspection/Managem ent	Water Treatment	Equipment/Structure Removal	Stream Restoration	Geotechnical/Stability	M. Newton																					
Glen White Air Shafts DEP#14270	C & P		X	X		X									X										M & P															
Delbarton (Dardi) Portals DEP #14524	C & P		X	X		X									X											M & P														
Green Valley Extension Wastewater Extension	C & P														X											M & P														
Cobblestone Subdivision Site Plans	C & P					X																				M & P														
Jim/Bee Ridge Waterline Extension(s)	C & P														X											M & P														
4-H Camp Site Plans	C & P					X																				M & P														
Paden City Wastewater Collection System	C & P														X											M & P														
Waverly Wastewater Upgrade	C & P														X											M & P														
Pleasants County Waterline Extension	C & P														X											M & P														
US Route 35	C & P										X				X											M & P														
Alum Creek Facilities Planning Report	C & P																									M & P														
Fisher's Ford Bridge Reno	C & P										X				X											M & P														
WV Route 9	C & P										X				X											M & P														
Eleanor Sewer Reconstruction	C & P																									M & P														
Marble Drive Drainage Improvements	C & P										X															M & P														

* List whether project experience is corporate or personnel based or both.

** Use this area to provide specific sections or pages if needed for reference.

*** List Primary Design personnel and their functional capacity for the projects listed.

WEST VIRGINIA DIVISION OF HIGHWAYS

CONSULTANT CONFIDENTIAL QUALIFICATION QUESTIONNAIRE

EXPERIENCE DATA

DATE (DAY, MONTH, YEAR)
17 September 2009

FEIN
52-2365940

1. FIRM NAME

Novel Geo-Environmental, PLLC

2. HOME OFFICE BUSINESS ADDRESS

171 Montour Run Road
Pittsburgh, PA 15108

3. FORMER FIRM NAME

NA

4. HOME OFFICE TELEPHONE

(412) 722 - 1970

5. ESTABLISHED (YEAR)

2002

6. TYPE OWNERSHIP

LLC

6a. WV REGISTERED DBE

YES

7. PRESENT OFFICES: ADDRESS/ TELEPHONE/ PERSON IN CHARGE/ NO. PERSONNEL EACH OFFICE

171 Montour Run Road, Pittsburgh, PA 15108 / (412) 722-1970 / Office Manager: Amy Veltri / 12 personnel
806 B Street, St. Albans, WV 25177 / (304) 201-5180 / Office Manager: John Nottingham / 11 personnel

8. NAMES OF PRINCIPAL OFFICIALS OR MEMBERS OF FIRM

Amy L. Veltri, President
John E. Nottingham, Vice President

8a. NAME, TITLE, & TELEPHONE NUMBER - OTHER PRINCIPALS

9. PERSONNEL BY DISCIPLINE

3	ADMINISTRATIVE	—	ECOLOGISTS	—	LANDSCAPE ARCHITECTS	—	STRUCTURAL ENGINEERS
—	ARCHITECTS	—	ECONOMISTS	—	MECHANICAL ENGINEERS	—	SURVEYORS
—	CADD OPERATORS	—	ELECTRICAL ENGINEERS	—	MINING ENGINEERS	—	TRAFFIC ENGINEERS
—	CHEMICAL ENGINEERS	4	ENVIRONMENTALISTS	—	PHOTOGRAMMETRISTS	—	TRANSPORTATION ENGINEERS
—	CIVIL ENGINEERS	—	ESTIMATORS	—	PLANNERS: URBAN/REGIONAL	2	ENVIRONMENTAL ENGINEERS
5	CONSTRUCTION INSPECTORS	3	GEOLOGISTS	—	SANITARY ENGINEERS	3	OTHER
—	DESIGNERS, HIGHWAY	—	HISTORIANS	3	SOILS ENGINEERS	—	
—	DRAFTSMEN	—	HYDROLOGISTS	—	SPECIFICATION	—	WRITERS

25 TOTAL PERSONNEL

10. IF SUBMITTAL IS BY JOINT-VENTURE, LIST PARTICIPATING FIRMS & OUTLINE SPECIFIC AREAS OF RESPONSIBILITY (INCLUDING ADMINISTRATIVE, TECHNICAL & FINANCIAL) FOR EACH FIRM. (Each participating Firm Must Complete a "Consultant Confidential Qualification Questionnaire" If a copy is Not On File With The Division).

N/A

10a. HAS THIS JOINT-VENTURE WORKED TOGETHER BEFORE? € YES € NO

11. OUTSIDE KEY CONSULTANTS/ASSOCIATES ANTICIPATED TO BE USED. Attach "Consultant Confidential Qualification Questionnaire" for each if copy is not on with the Division.

NAME AND ADDRESS	SPECIALTY	WORKED WITH BEFORE
		<p>— YES</p> <p>— NO</p>

13. Indicate in order of precedence using "1", "2", "3", etc., the types of work your firm is particularly qualified to perform by virtue of experience and training of members and associates. (Note: work specialties not sufficiently identified by general categories are to be listed separately below.)

- () AERIAL PHOTOGRAPHY
- () ACOUSTICS-NOISE ABATEMENT
- () ARCHEOLOGICAL-CULTURAL RESOURCE
- () BRIDGES-STRUCTURAL
- () COMMERCIAL BUILDINGS
- () CONSTRUCTION MANAGEMENT
- () DAM-IRRIGATION
- () ELECTRICAL FACILITIES
- (7) ENVIRONMENTAL-EIS/EIA
- () FLOOD CONTROL-WATER RESOURCES
- (1) GEOTECHNICAL
- () HIGHWAYS-STREETS
- () HOUSING
- () HVAC
- (6) LABORATORIES-SOILS & MATERIALS PHYSICAL TEST
- () LIGHTING-EXTERIOR
- () MANUALS
- () MASTER PLNG.-SITE DEVELOPMENT
- () PHOTOGRAMMETRY
- () POWER-HEATING PLANTS
- () PUBLIC BUILDINGS
- () RAILROAD-RAPID TRANSIT
- () RECREATION FACILITIES
- () SURVEYING
- () UTILITIES
- () VALUE ANALYSIS
- () WATER-SEWAGE
- (2) ENVIRONMENTAL-COMPLIANCE & PERMITTING
- (4) ENVIRONMENTAL-PHASE I/II ESA
- (5) ENVIRONMENTAL REMEDIATION-SOIL & GROUNDWATER
- (3) DRILLING-GEOTECHNICAL & ENVIRONMENTAL

A. Are you experienced in Traffic Engineering?
NO

B. Are you experienced in Soil Analysis?
YES Geotechnical -- Design of test boring programs, inspection of drilling activities, boring log preparation, soil physical properties laboratory testing, provide recommendations for foundation designs, cut slope design, fill embankment design, pavement design, slope stability analysis, geotechnical investigation reports with detailed recommendations for bridge and roadway design.
Environmental - Phase I and II ESAs identification and delineation of impacted soils, development of remediation plan for impacted soils both in-situ and off-site, determination of risk-based corrective action levels for soil remediation, risk assessment of impacted soils, field identification of Hydric soils for wetland assessments and delineations.

C. Do you produce your own Aerial Photography and Develop Contour Mapping?
NO

D. Do you perform your own bridge and/or structural design?
NO

14. PERSONAL HISTORY STATEMENT OF PRINCIPALS AND ASSOCIATES (Furnish complete data but keep to essentials)

NAME (Last, First, Middle Initial)	YEARS OF EXPERIENCE		
	AS PRINCIPAL IN THIS FIRM	AS PRINCIPAL IN OTHER FIRMS	OTHER THAN PRINCIPAL
Veltri, Amy L.	7	0	16
EDUCATION (Degree, Year, Specialization) Bachelor of Science in Civil Engineering, 1989, Environmental and Geotechnical Engineering Master of Science in Civil Engineering, 1996, Environmental Engineering MEMBERSHIP IN PROFESSIONAL ORGANIZATIONS AWWA (Air and Waste Management Association) AAEE (American Academy of Environmental Engineers) The Society of American Military Engineers			
REGISTRATION (Type, Year, State) Professional Engineer, 1996, Pennsylvania Professional Engineer, 1999, West Virginia Certified ISO 14001 Lead Assessor, 2002 Diplomate Environmental Engineer, 2002			

14. PERSONAL HISTORY STATEMENT OF PRINCIPALS AND ASSOCIATES (Furnish complete data but keep to essentials)

NAME (Last, First, Middle Initial)	YEARS OF EXPERIENCE		
	AS PRINCIPAL IN THIS FIRM	AS PRINCIPAL IN OTHER FIRMS	OTHER THAN PRINCIPAL
Nottingham, John E.	7	4	18
EDUCATION (Degree, Year, Specialization) Bachelor of Science in Civil Engineering, 1987, Geotechnical Engineering Master of Science in Civil Engineering, 1995, Geotechnical Engineering MEMBERSHIP IN PROFESSIONAL ORGANIZATIONS ASCE (American Society of Civil Engineers) WV Chapter of AIA The Society of American Military Engineers			
REGISTRATION (Type, Year, State) Professional Engineer, 1994, West Virginia Professional Surveyor, 1995, West Virginia Professional Engineer, 2007, Virginia			

14. PERSONAL HISTORY STATEMENT OF PRINCIPALS AND ASSOCIATES (Furnish complete data but keep to essentials)

NAME (Last, First, Middle Initial)	YEARS OF EXPERIENCE		
	AS PRINCIPAL IN THIS FIRM	AS PRINCIPAL IN OTHER FIRMS	OTHER THAN PRINCIPAL
EDUCATION (Degree, Year, Specialization)			
MEMBERSHIP IN PROFESSIONAL ORGANIZATIONS			
REGISTRATION (Type, Year, State)			

15. PRESENT ACTIVITIES ON WHICH YOU ARE THE DESIGNATED ENGINEER OF RECORD

PROJECT NAME, TYPE AND LOCATION	NAME AND ADDRESS OF OWNER	ESTIMATED CONSTRUCTION COST	PERCENT COMPLETE
None			

TOTAL NUMBER OF PROJECTS: 0

TOTAL ESTIMATED CONSTRUCTION COSTS: \$

16. PRESENT ACTIVITIES ON WHICH YOU ARE ASSOCIATED WITH OTHERS

PROJECT NAME, TYPE AND LOCATION	NATURE OF FIRMS RESPONSIBILITY	NAME AND ADDRESS OF OWNER	ESTIMATED COMPLETION DATE	ESTIMATED CONSTRUCTION COST	
				ENTIRE PROJECT	YOUR FIRMS RESPONSIBILITY

NGE Environmental Consulting Services

16. PRESENT ACTIVITIES ON WHICH YOU ARE ASSOCIATED WITH OTHERS

PROJECT NAME, TYPE AND LOCATION	NATURE OF FIRMS RESPONSIBILITY	NAME AND ADDRESS OF OWNER	ESTIMATED COMPLETION DATE	ESTIMATED CONSTRUCTION COST	
				ENTIRE PROJECT	YOUR FIRMS RESPONSIBILITY
RPM Engineers Greenbrier County 911 Tower Quinwood, WV	Phase I ESA and NEPA Screening for FCC	Greenbrier County Commission Lewisburg, WV	2009	Unknown	\$3,450.00
Ohio River Terminals Voluntary Remediation Kenova, WV	LRS implementing and overseeing soil and groundwater remediation	Ingram Barge Co. 4400 Harding Road Nashville, TN 37205	2010	\$350,000.00	\$185,000.00
Former WV Ordnance Works, Groundwater Extraction & Treatment System O&M, Point Pleasant, WV	LRS implementing and overseeing groundwater remediation	US Army Corps of Engineers, Huntington District Huntington, WV	2012	\$2,475,000.00	\$2,475,000.00
Storm Water Impress USA Weirton, WV	Preparation of Storm Water Pollution Prevention Plan	Impress USA 3030 Birch Drive Half Moon Industrial Park Weirton, WV 26062	2009	\$4,750.00	\$4,750.00
Tier II Reporting Precision Sistersville, WV	EPA Tier II Chemical Reporting Preparation and Submittal	Precision, LLC 435 Burt St Sistersville, WV, 26175-1607	2009	\$4,200.00	\$4,200.00
Phase I ESA Proposed Hotel Cross Lanes, WV	Phase I ESA	Cross Lanes Hospitality, LLC Cross Lanes, WV	2008	\$4,000.00	\$4,000.00
Phase II ESA Randolph Engineering Charleston, WV	Phase II ESA Soil and Groundwater Sampling	Randolph Engineering Charleston, WV	2008	\$13,500.00	\$13,500.00

16. PRESENT ACTIVITIES ON WHICH YOU ARE ASSOCIATED WITH OTHERS

PROJECT NAME, TYPE AND LOCATION	NATURE OF FIRMS RESPONSIBILITY	NAME AND ADDRESS OF OWNER	ESTIMATED COMPLETION DATE	ESTIMATED CONSTRUCTION COST	ENTIRE PROJECT	YOUR FIRMS RESPONSIBILITY
---------------------------------	--------------------------------	---------------------------	---------------------------	-----------------------------	----------------	---------------------------

NGE Geotechnical Consulting Services

16. PRESENT ACTIVITIES ON WHICH YOU ARE ASSOCIATED WITH OTHERS

PROJECT NAME, TYPE AND LOCATION	NATURE OF FIRMS RESPONSIBILITY	NAME AND ADDRESS OF OWNER	ESTIMATED COMPLETION DATE	ESTIMATED CONSTRUCTION COST	
				ENTIRE PROJECT	YOUR FIRMS RESPONSIBILITY
Lucille Stalnaker Bridge Gilmer County, WV	Geotechnical Engineer	WVDOH Charleston, WV	Unknown	Unknown	\$22,000.00
I-64 Over Twelvepole Creek Wayne County, WV	Geotechnical Engineer	WVDOH Charleston, WV	Unknown	Unknown	\$10,000.00
Yeager & Wintz Bridges Kanawha County, WV	Geotechnical Engineer	WVDOH Charleston, WV	Unknown	Unknown	\$5,000.00
Beech Fork Bridge, Wayne County WV	Geotechnical Engineer	WVDOH Charleston, WV	Unknown	Unknown	\$16,000.00
Midkiff Truss Bridge Lincoln County, WV	Geotechnical Engineer	WVDOH Charleston, WV	Unknown	Unknown	\$21,000.00
Orlando Bridge Braxton County, WV	Geotechnical Engineer	WVDOH Charleston, WV	Unknown	Unknown	\$23,000.00
Pennsylvania Ave. Tunnel Extension, Kanawha County, WV	Geotechnical Engineer	WVDOH Charleston, WV	2008	Unknown	\$15,000.00

16. PRESENT ACTIVITIES ON WHICH YOU ARE ASSOCIATED WITH OTHERS

PROJECT NAME, TYPE AND LOCATION	NATURE OF FIRMS RESPONSIBILITY	NAME AND ADDRESS OF OWNER	ESTIMATED COMPLETION DATE	ESTIMATED CONSTRUCTION COST	
				ENTIRE PROJECT	YOUR FIRMS RESPONSIBILITY

NGE Drilling Services

16. PRESENT ACTIVITIES ON WHICH YOU ARE ASSOCIATED WITH OTHERS

PROJECT NAME, TYPE AND LOCATION	NATURE OF FIRMS RESPONSIBILITY	NAME AND ADDRESS OF OWNER	ESTIMATED COMPLETION DATE	ESTIMATED CONSTRUCTION COST	
				ENTIRE PROJECT	YOUR FIRMS RESPONSIBILITY
Dundon Bridge Core Drilling Clay County, WV	Core Drilling	WVDOH Charleston, WV	2006	Unknown	\$3,500.00
Chesapeake Bridge Replacement Kanawha County, WV	Core Drilling	WVDOH Charleston, WV	2006	Unknown	\$20,000.00
U.S. Route 35 Mason County, WV	Core Drilling	WVDOH Charleston, WV	Unknown	Unknown	\$12,000.00
WV Route 10 Logan County, WV	Core Drilling	WVDOH Charleston, WV	Unknown	Unknown	\$8,000.00
South Mineral Wells Interchange Wood County, WV	Core Drilling	WVDOH Charleston, WV	Unknown	Unknown	\$5,000.00
Pennsylvania Ave. Tunnel Extension Kanawha County, WV	Geotechnical Engineer	WVDOH Charleston, WV	2008	Unknown	\$15,000.00

17. COMPLETED WORK WITHIN LAST 10 YEARS ON WHICH YOU WERE THE DESIGNATED ENGINEER OF RECORD

PROJECT NAME, TYPE AND LOCATION	NAME AND ADDRESS OF OWNER	ESTIMATED CONSTRUCTION COST	YEAR	CONSTRUCTED (YES OR NO)
---------------------------------	---------------------------	-----------------------------	------	-------------------------

NGE Environmental Consulting Services

17. COMPLETED WORK WITHIN LAST 10 YEARS ON WHICH YOU WERE THE DESIGNATED ENGINEER OF RECORD

PROJECT NAME, TYPE AND LOCATION	NAME AND ADDRESS OF OWNER	ESTIMATED CONSTRUCTION COST	YEAR	CONSTRUCTED (YES OR NO)
None				

17. COMPLETED WORK WITHIN LAST 10 YEARS ON WHICH YOU WERE THE DESIGNATED ENGINEER OF RECORD

PROJECT NAME, TYPE AND LOCATION	NAME AND ADDRESS OF OWNER	ESTIMATED CONSTRUCTION COST	YEAR	CONSTRUCTED (YES OR NO)
<p>NGE Geotechnical Consulting Services</p>				

17. COMPLETED WORK WITHIN LAST 10 YEARS ON WHICH YOU WERE THE DESIGNATED ENGINEER OF RECORD

PROJECT NAME, TYPE AND LOCATION	NAME AND ADDRESS OF OWNER	ESTIMATED CONSTRUCTION COST	YEAR	CONSTRUCTED (YES OR NO)
White Sulphur Hill Lot 68 Pile Retaining Wall White Sulphur Springs, WV	The Greenbrier Sporting Club 300 West Main Street White Sulphur Springs, WV	\$40,000.00	2004	YES
Reed Landslide Cross Lanes, WV	Brian Reed 115 Carter Street Ripley, WV 25271	\$50,000.00	2006	YES
Hinton Housing Development Retaining Wall Design Hinton, WV	J. Dan Snead & Associates, Inc. 3049 Robert C. Byrd Dr. Suite 200 Beckley, WV	\$50,000.00	2007	YES
Mancuso Access Road Roadway Design Glen Lyn, VA	Jerry Mancuso Route 1 Box 163 Lindsay, WV 24951	\$10,000.00	2007	No

17. COMPLETED WORK WITHIN LAST 10 YEARS ON WHICH YOU WERE THE DESIGNATED ENGINEER OF RECORD

PROJECT NAME, TYPE AND LOCATION	NAME AND ADDRESS OF OWNER	ESTIMATED CONSTRUCTION COST	YEAR	CONSTRUCTED (YES OR NO)
---------------------------------	---------------------------	-----------------------------	------	-------------------------

NGE Drilling Services

17. COMPLETED WORK WITHIN LAST 10 YEARS ON WHICH YOU WERE THE DESIGNATED ENGINEER OF RECORD

PROJECT NAME, TYPE AND LOCATION	NAME AND ADDRESS OF OWNER	ESTIMATED CONSTRUCTION COST	YEAR	CONSTRUCTED (YES OR NO)
None				

18. COMPLETED WORK WITHIN LAST 10 YEARS ON WHICH YOU WERE ASSOCIATED WITH OTHER FIRMS (INDICATE PHASE OF WORK FOR WHICH YOUR FIRM WAS RESPONSIBLE)

PROJECT NAME, TYPE AND LOCATION	NAME AND ADDRESS OF OWNER	ESTIMATED CONSTRUCTION COST OF YOUR FIRM'S PORTION	YEAR	CONSTRUCTED (YES OR NO)	FIRM ASSOCIATED WITH
---------------------------------	---------------------------	--	------	-------------------------	----------------------

NGE Environmental Consulting Services

19. Use this space to provide any additional information or description of resources supporting your firm's qualifications to perform work for the West Virginia Division of Highways.

20. The foregoing is a statement of facts.

Signature: 

Printed Name: John E. Nottingham

Title: Vice President

Date: September 17, 2009

18. COMPLETED WORK WITHIN LAST 10 YEARS ON WHICH YOU WERE ASSOCIATED WITH OTHER FIRMS (INDICATE PHASE OF WORK FOR WHICH YOUR FIRM WAS RESPONSIBLE)

PROJECT NAME, TYPE AND LOCATION	NAME AND ADDRESS OF OWNER	ESTIMATED CONSTRUCTION COST OF YOUR FIRM'S PORTION	YEAR	CONSTRUCTED (YES OR NO)	FIRM ASSOCIATED WITH
Soil Remediation Buckhannon, WV site	Various locations West Virginia	\$26,500.00	2003		ERM - Pittsburgh, PA
FAA Radar Site Investigations Soil Assessment	FAA Pittsburgh, PA	\$35,945.00	2004		
Hazardous Material Survey for Randolph Engineering	Martinsburg, WV	\$1,650.00	2004		Randolph Engineering
Ergon Total Annual Benzene Evaluation	9995 Ohio River Blvd Newell, WV, 26050-1195	\$15,000.00	2004		
Compliance Assistance Precision Sistersville, WV	435 Burt St Sistersville, WV, 26175-1607	\$2,500.00	2006		
Phase I ESA Prestera	Prestera Center Charleston, WV	\$2,750.00	2007		
Environmental Compliance Assistance Impress USA	Impress USA 3030 Birch Drive Half Moon Industrial Park Weirton, WV 26062	\$22,000.00	On-going		

19. Use this space to provide any additional information or description of resources supporting your firm's qualifications to perform work for the West Virginia Division of Highways.

20. The foregoing is a statement of facts.

Signature: *John E. Notttingham* Title: Vice President Date: September 17, 2009

Printed Name: John E. Notttingham

18. COMPLETED WORK WITHIN LAST 10 YEARS ON WHICH YOU WERE ASSOCIATED WITH OTHER FIRMS (INDICATE PHASE OF WORK FOR WHICH YOUR FIRM WAS RESPONSIBLE)

PROJECT NAME, TYPE AND LOCATION	NAME AND ADDRESS OF OWNER	ESTIMATED CONSTRUCTION COST OF YOUR FIRM'S PORTION	YEAR	CONSTRUCTED (YES OR NO)	FIRM ASSOCIATED WITH
---------------------------------	---------------------------	--	------	-------------------------	----------------------

NGE Geotechnical Services

19. Use this space to provide any additional information or description of resources supporting your firm's qualifications to perform work for the West Virginia Division of Highways.

20. The foregoing is a statement of facts.

Signature: John E. Nottingham Title: Vice President Date: September 17, 2009

Printed Name: John E. Nottingham

NOTE: THIS DOCUMENT WILL BECOME VOID AFTER DECEMBER 31 IN CALENDAR YEAR OF DATE HEREON.

18. COMPLETED WORK WITHIN LAST 10 YEARS ON WHICH YOU WERE ASSOCIATED WITH OTHER FIRMS (INDICATE PHASE OF WORK FOR WHICH YOUR FIRM WAS RESPONSIBLE)

PROJECT NAME, TYPE AND LOCATION	NAME AND ADDRESS OF OWNER	ESTIMATED CONSTRUCTION COST OF YOUR FIRM'S PORTION	YEAR	CONSTRUCTED (YES OR NO)	FIRM ASSOCIATED WITH
Ravenswood Eyecare Geotechnical Investigation Ravenswood, WV	Dr. Ben Mize 2020 Professional Circle Ravenswood, WV 25302	\$3,000.00	2008		
Kentucky Fried Chicken Restaurant Geotechnical Investigation Hurricane, WV	BW Painter, Inc. 1508 Bigley Avenue Charleston, WV 25302	\$3,000.00	2008		
Greif Brothers Warehouse Geotechnical Investigation Huntington, WV		\$7,000.00	2008		Edward Tucker Architects 916 5 th Ave, Suite 208, Huntington, WV 25701
Grafton Walgreens Geotechnical Investigation Grafton, WV	ML Grafton, LLC 8869 Brecksville Rd., Suite A Brecksville, OH 44141	\$4,000.00	2008		
Target Drilling Office Building, Geotechnical Investigation Smithton, PA	Target Drilling, Inc. 5134 Oak Road Jefferson Hills, PA 15205	\$4,000.00	2008		
I-64 Bridge over Hal Greer Blvd CSL Testing Huntington, WV	West Virginia Department of Highways Charleston, WV	\$17,000.0	2008		
Corridor H Highway QC Testing Soil Compaction & Concrete Grant County, WV	West Virginia Department of Highways Charleston, WV	\$75,000.00	2008		

19. Use this space to provide any additional information or description of resources supporting your firm's qualifications to perform work for the West Virginia Division of Highways.

20. The foregoing is a statement of facts.

Signature: John E. Nottingham
Printed Name: John E. Nottingham Title: Vice President

Date: September 17, 2009

18. COMPLETED WORK WITHIN LAST 10 YEARS ON WHICH YOU WERE ASSOCIATED WITH OTHER FIRMS (INDICATE PHASE OF WORK FOR WHICH YOUR FIRM WAS RESPONSIBLE)

PROJECT NAME, TYPE AND LOCATION	NAME AND ADDRESS OF OWNER	ESTIMATED CONSTRUCTION COST OF YOUR FIRM'S PORTION	YEAR	CONSTRUCTED (YES OR NO)	FIRM ASSOCIATED WITH
---------------------------------	---------------------------	--	------	-------------------------	----------------------

NGE Drilling Services

(This area is blank in the original document)

19. Use this space to provide any additional information or description of resources supporting your firm's qualifications to perform work for the West Virginia Division of Highways.

20. The foregoing is a statement of facts.

Signature: John E. Nottingham

Title: Vice President

Date: September 17, 2009

Printed Name: John E. Nottingham

NOTE: THIS DOCUMENT WILL BECOME VOID AFTER DECEMBER 31 IN CALENDAR YEAR OF DATE HEREON.

18. COMPLETED WORK WITHIN LAST 10 YEARS ON WHICH YOU WERE ASSOCIATED WITH OTHER FIRMS (INDICATE PHASE OF WORK FOR WHICH YOUR FIRM WAS RESPONSIBLE)

PROJECT NAME, TYPE AND LOCATION	NAME AND ADDRESS OF OWNER	ESTIMATED CONSTRUCTION COST OF YOUR FIRM'S PORTION	YEAR	CONSTRUCTED (YES OR NO)	FIRM ASSOCIATED WITH
Tank Foundation Jane Lew, WV	Chesapeake Energy Charleston, WV	\$2,005.00	2007	Yes	Pray Construction Scott Depot, WV
Fairmont Water Park Fairmont, WV	American Resort Management, LLC	\$4,500.00	2007	Under Construction	Ahern & Associates
Air National Guard Charleston, WV	Air National Guard Charleston, WV	\$1,050.00	2007	Yes	Terradon Nitro, WV
Harrison Marion Regional Airport Clarksburg, WV	Harrison Marion Regional Airport Clarksburg, WV	\$5,197.50	2007	Yes	Thrasher Engineering Clarksburg, WV
Foster Supply Wall Scott Depot, WV	Foster Supply Co. 4847 Teays Valley Road St. Albans, WV	\$1,215.00	2007	Yes	Foster Supply Scott Depot, WV
Foundation Coal Wayne County, WV	Foundation Coal Co. Wayne County, WV	\$4,500.00	2006	Yes	DLZ Columbus, OH
Tri-State Dog Track Nitro, WV	Racing Corporation Of West Virginia 1 Greyhound Dr, Charleston, WV 25313	\$616.00	2006	Yes	Terradon Nitro, WV

19. Use this space to provide any additional information or description of resources supporting your firm's qualifications to perform work for the West Virginia Division of Highways.

20. The foregoing is a statement of facts.

Signature: John E. Nottingham Title: Vice President

Printed Name: John E. Nottingham

Date: September 17, 2009

**WEST VIRGINIA DEPARTMENT OF ENVIRONMENTAL PROTECTION
AML CONSULTANT QUALIFICATION QUESTIONNAIRE Attachment "B"**

PROJECT NAME WVDEP Various Projects	DATE (DAY, MONTH, YEAR) 01/14/2009	FEIN 55-0687626	3. FORMER FIRM NAME
1. FIRM NAME TERRADON Corporation	2. HOME OFFICE BUSINESS ADDRESS 401 Jacobson Drive, Poca, WV, 25159	6a. WV REGISTERED DBE (Disadvantaged Business Enterprise) YES <input type="checkbox"/> NO <input checked="" type="checkbox"/>	
4. HOME OFFICE TELEPHONE (304) 755-8291	5. ESTABLISHED (YEAR) 1989	6. TYPE OWNERSHIP Individual <input checked="" type="checkbox"/> Corporation Partnership <input type="checkbox"/> Joint-Venture <input type="checkbox"/>	
7. PRIMARY AML DESIGN OFFICE: ADDRESS/ TELEPHONE/ PERSON IN CHARGE/ NO. AML DESIGN PERSONNEL EACH OFFICE 401 Jacobson Drive, Poca, WV 25159 / (304)-755-8291 / Thomas Y. Kittredge, President / 48 persons			
8. NAMES OF PRINCIPAL OFFICERS OR MEMBERS OF FIRM Thomas Y Kittredge, President Virginia L. King, CFO Timothy T White, P.E., Principal Engineer			
9. PERSONNEL BY DISCIPLINE			
5 ADMINSTRATIVE — ARCHITECTS 1 BIOLOGIST 9 CADD OPERATORS — CHEMICAL ENGINEERS 5 CIVIL ENGINEERS 8 CONSTRUCTION INSPECTORS 1 DESIGNERS — DRAFTSMEN	— ECOLOGISTS — ECONOMISTS ELECTRICAL ENGINEERS 2 ENVIRONMENTALISTS — ESTIMATORS 1 GEOLOGISTS — HISTORIANS — HYDROLOGISTS	4 LANDSCAPE ARCHITECTS — MECHANICAL ENGINEERS MINING ENGINEERS — PHOTOGRAMMETRISTS — PLANNERS: URBAN/REGIONAL — SANITARY ENGINEERS 1 SOILS ENGINEERS — SPECIFICATION WRITERS	1 STRUCTURAL ENGINEERS 10 SURVEYORS — TRAFFIC ENGINEERS — OTHER
TOTAL NUMBER OF WV REGISTERED PROFESSIONAL ENGINEERS IN PRIMARY OFFICE: <u>5</u> *PEs other than Civil and Mining must provide supporting documentation that qualifies them to supervise and perform this type of work.			
10. HAS THIS JOINT-VENTURE WORKED TOGETHER BEFORE? <input type="checkbox"/> YES <input type="checkbox"/> NO			

11. OUTSIDE KEY CONSULTANTS/SUB-CONSULTANTS ANTICIPATED TO BE USED. Attach "AML Consultant Qualification Questionnaire".

<p>NAME AND ADDRESS: Triad Engineering 4980 Teays Valley Road Scott Depot WV 25560</p>	<p>Drilling, Soils Lab</p>	<p>WORKED WITH BEFORE <input checked="" type="checkbox"/> Yes <input type="checkbox"/> No</p>
<p>NAME AND ADDRESS: Bio-Chem Testing, Inc. PO Box 634 Teays WV 25569</p>	<p>Water Lab</p>	<p>WORKED WITH BEFORE <input checked="" type="checkbox"/> Yes <input type="checkbox"/> No</p>
<p>NAME AND ADDRESS:</p>	<p>SPECIALTY:</p>	<p>WORKED WITH BEFORE <input type="checkbox"/> Yes <input type="checkbox"/> No</p>
<p>NAME AND ADDRESS:</p>	<p>SPECIALTY:</p>	<p>WORKED WITH BEFORE <input type="checkbox"/> Yes <input type="checkbox"/> No</p>
<p>NAME AND ADDRESS:</p>	<p>SPECIALTY:</p>	<p>WORKED WITH BEFORE <input type="checkbox"/> Yes <input type="checkbox"/> No</p>
<p>NAME AND ADDRESS:</p>	<p>SPECIALTY:</p>	<p>WORKED WITH BEFORE <input type="checkbox"/> Yes <input type="checkbox"/> No</p>
<p>NAME AND ADDRESS:</p>	<p>SPECIALTY:</p>	<p>WORKED WITH BEFORE <input type="checkbox"/> Yes <input type="checkbox"/> No</p>
<p>NAME AND ADDRESS:</p>	<p>SPECIALTY:</p>	<p>WORKED WITH BEFORE <input type="checkbox"/> Yes <input type="checkbox"/> No</p>
<p>NAME AND ADDRESS:</p>	<p>SPECIALTY:</p>	<p>WORKED WITH BEFORE <input type="checkbox"/> Yes <input type="checkbox"/> No</p>

12. A. Is your firm experienced in Abandoned Mine Lands Remediation/Mine Reclamation Engineering?

YES Description and Number of Projects: **35 Projects for WVDEP/AML&R**

NO

B. Is your firm experienced in Soil Analysis?

YES Description and Number of Projects: **24 WVDEP/AML&R projects included some soil analysis. TERRADON provides geotechnical engineering on a wide variety of projects including dams, highways, bridges, etc.**

NO

C. Is your firm experienced in hydrology and hydraulics?

YES Description and Number of Projects: **24 WVDEP/AML&R projects included hydrology and hydraulics.**

NO

D. Does your firm produce its own Aerial Photography and Develop Contour Mapping?

YES Description and Number of Projects:

NO **We routinely provide photo control surveys and field edit the mapping provided.**

E. Is your firm experienced in domestic waterline design? (Include any experience your firm has in evaluation of aquifer degradation as a result of mining.)

YES Description and Number of Projects: **9 WVDEP/AML&R projects included the evaluation of aquifer degradation as a result of mining. Four of those projects have been designed and constructed. TERRADON has also designed hundreds of miles of waterline in the last 5 years.**

NO

F. Is your firm experienced in Acid Mine Drainage Evaluation and Abatement Design?

YES Description and Number of Projects: **5 WVDEP/AML&R projects included acid mine drainage evaluation and abatement. In addition, TERRADON was 1 of only 2 firms evaluating and designing AMD abatement of special reclamation projects in 1992, 1993 and 1994.**

NO

13. PERSONAL HISTORY STATEMENT OF PRINCIPALS AND ASSOCIATES RESPONSIBLE FOR AML PROJECT DESIGN (Furnish complete data but keep to essentials)

NAME & TITLE (Last, First, Middle Int.)		YEARS OF EXPERIENCE	
James, John W., P.E.	YEARS OF AML DESIGN EXPERIENCE: 8	YEARS OF AML RELATED DESIGN EXPERIENCE: 30	YEARS OF DOMESTIC WATERLINE DESIGN EXPERIENCE: 8

Brief Explanation of Responsibilities

Geotechnical Project Manager for TERRADON Corporation. Responsible for contract administration and project management; peer review of design, construction drawings and specifications; constructability review and construction cost estimate.

EDUCATION (Degree, Year, Specialization)

B.S., 1968, Civil Engineering

MEMBERSHIP IN PROFESSIONAL ORGANIZATIONS

American Society of Civil Engineers (Past President, WV Section)

REGISTRATION (Type, Year, State)

P.E., 1973, WV

13. PERSONAL HISTORY STATEMENT OF PRINCIPALS AND ASSOCIATES RESPONSIBLE FOR AML PROJECT DESIGN (Furnish complete data but keep to essentials)

NAME & TITLE (Last, First, Middle Int.)		YEARS OF EXPERIENCE	
White, Timothy T., P.E.	YEARS OF AML DESIGN EXPERIENCE: 3	YEARS OF AML RELATED DESIGN EXPERIENCE: 16	YEARS OF DOMESTIC WATERLINE DESIGN EXPERIENCE: 0

Brief Explanation of Responsibilities

Project Manager responsible for resource management to assure project schedule and cost. Engineer responsible for grading, hydraulic design, erosion and sediment control, natural stream channel assessment and design.

EDUCATION (Degree, Year, Specialization)

B.S., 1992, Civil Engineering

MEMBERSHIP IN PROFESSIONAL ORGANIZATIONS

**American Society of Civil Engineers
American Council of Engineering Companies**

REGISTRATION (Type, Year, State)

P.E., 1990, MO; P.E., 1992, WV; P.E., 2007, VA

13. PERSONAL HISTORY STATEMENT OF PRINCIPALS AND ASSOCIATES RESPONSIBLE FOR AML PROJECT DESIGN (furnish complete data but keep to essentials)

NAME & TITLE (Last, First, Middle Int.) White, William, P.E. Senior Structural Engineer	YEARS OF AML DESIGN EXPERIENCE: 3	YEARS OF AML RELATED DESIGN EXPERIENCE: 19	YEARS OF DOMESTIC WATERLINE DESIGN EXPERIENCE: 0
---	---	--	--

Brief Explanation of Responsibilities

Senior engineer responsible for structural analysis, design engineering, field investigation, specification writing, engineer's cost estimate, prebid and preconstruction meetings. Experienced in retaining wall design.

EDUCATION (Degree, Year, Specialization)

B.S., 1987, Civil Engineering

MEMBERSHIP IN PROFESSIONAL ORGANIZATIONS

**American Society of Civil Engineers
American Council of Engineering Companies**

REGISTRATION (Type, Year, State)

P.E., 1997,WV; P.E., 1996, OH; P.E., 1999, VA; P.E., 2000, FL; P.E., 2000, NC; P.E., 2000, AR; P.E., 2001, KY

13. PERSONAL HISTORY STATEMENT OF PRINCIPALS AND ASSOCIATES RESPONSIBLE FOR AML PROJECT DESIGN (Furnish complete data but keep to essentials)

NAME & TITLE (Last, First, Middle Int.) Brown, David A., P.S. Professional Surveyor	YEARS OF AML DESIGN EXPERIENCE: 6	YEARS OF AML RELATED DESIGN EXPERIENCE: 13	YEARS OF DOMESTIC WATERLINE DESIGN EXPERIENCE: 6
---	---	--	--

Brief Explanation of Responsibilities

Responsible for all aspects of surveying including photogrammetry control, if required, field editing of mapping, topographic mapping, establishment of survey control monuments and establishing base lines for construction layout and quantity measurement. Also, tax map overlays and detailed property clarifications.

EDUCATION (Degree, Year, Specialization)

B.S., 1996, Engineering Technology

MEMBERSHIP IN PROFESSIONAL ORGANIZATIONS

West Virginia Association of Land Surveyors

REGISTRATION (Type, Year, State)

P.S. 2003, WV

Software

Autodesk 2007 Land Development Desktop with Civil and Survey Design Modules

SedCad 4 - Erosion Control and Hydrology Software

Haested Method Flowmaster Software for Channel Design

Haested Methods -- Water CADD (Pipe Network Analysis)

Slope Stability -

PC Stable

REAME

SBSLOPE

WinStable and WinStable 2003

Piling Walls, Anchors and Reinforced Earth Walls -

L-pile

HeliCAP

Anchor 400

KeyWall 2004

TR 55, TR 20, TR 66 (Sites) - Hydrology

Hec-1, Hec HMS 2.22, Hec R As 3.1.2 -- Hydrology

LC 58 + RP 61 -- Structural (wall)

Microstation V8

Surveying Equipment

Trimble 4700 modular, RTK Global Positioning Total Station

Trimble Geomatics Office Software

Topcon Total Stations (3)

SMI Data Collectors (3)

Printing/Plotting/Reproduction

HP DesignJet 1050C Plotter

HP DesignJet 759C Plotter

HP LaserJet 8000 Printer (2)

HP Color LaserJet 3700

Sharp AR-550 Copier/Printer (2)

Sharp AR-C150 Full Color Copier/Printer

Océ 7056 Engineering Size Copier

15. PRESENT ACTIVITIES ON WHICH YOU ARE THE DESIGNATED ENGINEER OF RECORD

PROJECT NAME, TYPE AND LOCATION	NAME AND ADDRESS OF OWNER	ESTIMATED CONSTRUCTION COST	PERCENT COMPLETE
Sawmill Village Development Site/civil Design, Snowshoe, West Virginia	Summit III, LLC 295 Seven Farms Drive Charleston, WV 29492	\$100,000,000	50%
WV Route 2 Water Line Extensions Huntington, West Virginia	West Virginia American Water PO Box 1906 Charleston WV 25327	\$450,000	0%
New Hope 1 MG Water Storage Tank New Hope, West Virginia	West Virginia American Water PO Box 1906 Charleston WV 25327	\$600,000	99%
Salt Rock PSD Water Main Extensions Salt Rock, West Virginia	Salt Rock PSD & Cabell County Commission Huntington, West Virginia	\$2,000,000	50%
Derrick Creek Water Line Extensions Sissonville, West Virginia	West Virginia American Water PO Box 1906 Charleston WV 25327	\$1,500,000	0%
Charleston Replacement Housing Site/Civil for CRH 1-5 Charleston, West Virginia	Alan Ives Construction 10 South La Salle Street, Suite 3440 Chicago, Illinois 60603	\$20,000,000	50%
Putnam County 2006 Water Main Extensions, Putnam County, West Virginia	Putnam County Commission 3389 Winfield Road Winfield, WV 25213	\$3,300,000	98%

Continued on next page

15. PRESENT ACTIVITIES ON WHICH YOU ARE THE DESIGNATED ENGINEER OF RECORD

PROJECT NAME, TYPE AND LOCATION	NAME AND ADDRESS OF OWNER	ESTIMATED CONSTRUCTION COST	PERCENT COMPLETE
Fort Lee Hydraulic Study, Water Line Extensions, and New Fuel Tanks Hope Well, Virginia	Virginia American Water Company 900 Industrial Street Hopewell, VA 23860	\$450,000	99%
Fairmont Water Park Fairmont, West Virginia	City Fairmont 200 Jackson Street Fairmont, West Virginia 26554	\$3,000,000	90%
Yeager Airport Parking Deck Charleston, West Virginia	BBL Carlton PO Box 1153 Charleston, WV 25324	\$3,000,000	15%
Relocate CR 18, Eccles, Raleigh County, West Virginia	WVDOT Building 5, Room A-110 1900 Kanawha Blvd. East Charleston WV 25305	\$2,000,000	80%
Sleeths Run Bridge CR119/1 Lewis County West, Virginia	WVDOT Building 5, Room A-110 1900 Kanawha Blvd. East Charleston WV 25305	\$2,000,000	20%
44 Various Cell Tower Sites Throughout West Virginia	NTelos 1150 Shenandoah Village Drive Waynesboro, VA 22980	\$3,000,000	25%

TOTAL NUMBER OF PROJECTS: 13

TOTAL ESTIMATED CONSTRUCTION COSTS: \$141,300,000

16. CURRENT ACTIVITIES ON WHICH YOUR FIRM IS SERVING AS A SUB-CONSULTANT TO OTHERS

PROJECT NAME, TYPE AND LOCATION	NATURE OF FIRMS RESPONSIBILITY	NAME AND ADDRESS OF OWNER	ESTIMATED COMPLETION DATE	ESTIMATED CONSTRUCTION COST	
				ENTIRE PROJECT	YOUR FIRMS RESPONSIBILITY
Mingo Central High Sch Mingo County, West Virginia	Civil, Site Design, Surveying	Mingo County BOE Sycamore Street Williamson, WV 25661	2008	\$20,000,000	15%
Marshall Community & Technical College Huntington, West Virginia	Civil, Site Design, Surveying	Marshall University Facilities Planning & Management, Huntington, WV	2009	\$20,000,000	15%
New Teays Elementary Scott Depot, West Virginia	Civil, Site Design, Surveying	Putnam County BOE Winfield, WV 25213	2008	\$12,000,000	15%
Moorefield Intermediate School Moorefield, West Virginia	Civil, Site Design, Surveying,	Hardy County BOE 510 Ashby Street Moorefield, WV 26836	2009	\$12,000,000	15%
Marshall University, Health & Wellness Center, Dormitories Huntington, WV	Civil, Site Design, Hardscape	Marshall University Facilities Planning & Management, Huntington, WV	2008	\$27,000,000	10%
Twin Falls State Park Lodge Expansion McDowell County, WV	Civil, Site Design	WV Division of Natural Resources, Capitol Building 3, R663 Charleston, WV 25305	2008	\$5,500,000	15%
University High School Monongalia County, WV	Civil, Site Design	Monongalia County Schools, 668 River Rd Morgantown, WV 26507	2008	\$12,000,000.00	20%

17. COMPLETED WORK WITHIN LAST 5 YEARS ON WHICH YOUR FIRM WAS THE DESIGNATED ENGINEER OF RECORD

PROJECT NAME, TYPE AND LOCATION	NAME AND ADDRESS OF OWNER	ESTIMATED CONSTRUCTION COST	YEAR	CONSTRUCTED (YES OR NO)
US 35 Value Engineering, Ramp 1, WV 34 Interchange Putnam County, West Virginia	WVDDOT Building 5, Room A-110 1900 Kanawha Blvd. East Charleston WV 25305	Saving \$3,000,000	2007	Yes
Gypsy Bridge S317-19-23.25 00 Erection Plans Harrison County, West Virginia	Bilco Construction Company, Inc. 805 Wisteria Drive South Charleston, WV 25309	\$ 20,000 fee	2008	Under Construction
South Branch Potomac River Bridge, X316-H-100.40 04 Erection Plans Hardy County, West Virginia	Vecellio & Grogan, Inc. P.O. Box 2438 Beckley, WV 25902	\$31,000,000	2008	Under Construction
WV 73 Turning Lanes Fountain Place Development Logan County, West Virginia	WVDDOT Building 5, Room A-110 1900 Kanawha Blvd. East Charleston WV 25305	\$ 600,000	2005	Yes
Sedalia Arch Bridge, Bridge Replacement Sedalia, West Virginia	WVDDOT Building 5, Room A-110 1900 Kanawha Blvd. East Charleston WV 25305	\$890,000	2006	Yes
Fairmont Coke Works Redevelopment Traffic Study, Fairmont, West Virginia	City Fairmont 200 Jackson Street Fairmont, West Virginia 26554	\$20,000 fee	2006	No
St. Mary's (WV 16) Bypass Route Study Pleasants County, WV	WVDDOT Building 5, Room A-110 1900 Kanawha Blvd. East Charleston WV 25305	\$120,000 fee	2004	Study
Hinton Landslide, Landslide Reclamation Hinton, West Virginia	WVDDOT, Division of Highways Building 5, Room A-110 1900 Kanawha Boulevard East Charleston, WV 25305	\$1,000,000	2006	Yes

Continued on next page

17. COMPLETED WORK WITHIN LAST 5 YEARS ON WHICH YOUR FIRM WAS THE DESIGNATED ENGINEER OF RECORD

PROJECT NAME, TYPE AND LOCATION	NAME AND ADDRESS OF OWNER	ESTIMATED CONSTRUCTION COST	YEAR	CONSTRUCTED (YES OR NO)
Corridor L Widening Design US Route 19 Summersville, West Virginia	WV DOT, Division of Highways Building 5, Room A-110 1900 Kanawha Boulevard East Charleston, WV 25305	\$12,100,000	2005	No
Upper Fishers Branch/Guthrie Water Main Extension Kanawha County, West Virginia	West Virginia American Water PO Box 1906 Charleston WV 25327	\$2,800,000	2008	Under Const.
Upper Frame Phase 2 Water Main Extension Kanawha County, West Virginia	Kanawha County RDA & West Virginia American Water PO Box 1906 Charleston WV 25327	\$2,100,000	2008	Under Const.
Tucker County Landfill Expansion Design of Cell 6 Thomas, West Virginia	Tucker County Solid Waste Authority PO Box 58 Thomas WV 26292	\$2,500,000	2007	Yes
Montgomery Wastewater Treatment Plant Upgrade, Design Montgomery, West Virginia	City of Montgomery 706 3 rd Avenue Montgomery WV 25136	\$2,800,000	2009	Under Const.
Back Fork Water Main Extension Webster County, West Virginia	West Virginia American Water PO Box 1906 Charleston WV 25327	\$800,000	2008	Under Const.
Rabel Mountain Water Main Extensions Kanawha County, West Virginia	WV American Water PO Box 1906 Charleston WV 25327	\$600,000	2007	Yes
Fort Lee Water Distribution System Upgrade Fort Lee, Virginia	WV American Water PO Box 1906 Charleston WV 25327	\$1,000,000	2006	Yes

17. COMPLETED WORK WITHIN LAST 5 YEARS ON WHICH YOUR FIRM WAS THE DESIGNATED ENGINEER OF RECORD

PROJECT NAME, TYPE AND LOCATION	NAME AND ADDRESS OF OWNER	ESTIMATED CONSTRUCTION COST	YEAR	CONSTRUCTED (YES OR NO)
Prince Williams 1 Million Gallon Elevated Water Storage Tank Prince Williams County, Virginia	WV American Water PO Box 1906 Charleston WV 25327	\$1,500,000	2006	Yes
Hickory Ridge Water Storage Tank Relocation, County, West Virginia	WV American Water PO Box 1906 Charleston WV 25327	\$1,000,000	2006	Yes
Winfield High School Expansion Winfield, West Virginia	Putnam County BOE Winfield, WV 25213	\$2,000,000	2006	Yes
Fountain Place Mall Phase 2 Site/Civil Design Logan, West Virginia	Fountain Place Mall PO Box 794 Logan, WV 25601	\$10,000,000	2005	Yes
Jenkin Jones Refuse Piles Mine Reclamation McDowell County, West Virginia	WVDEP/AML&R 601 57 TH Street SE Charleston WV 25304	\$4,000,000	2005	Yes
Bendale Dam Repair Design Lewis County, West Virginia	WV American Water PO Box 1906 Charleston WV 25327	\$100,000	2005	Yes
RDA of Charleston Olcott Water Study Kanawha County	WVDEP/AML&R 601 57 TH Street SE Charleston WV 25304	\$50,000	2004	Study
Stonecoal Creek Complex Refuse AML&R Raleigh County	WVDEP/AML&R 601 57 TH Street SE Charleston WV 25304	\$4,000,000	2004	Yes
Pond Gap Waterline Extension Kanawha County	WV American Water/RDA of Charleston-Kanawha Co.	\$2,000,000	2004	Yes
Tri-State Gaming Parking Expansion Commercial Site Development Kanawha County	Tri-State Gaming Center PO Box 7118 Cross Lanes WV 25356	\$1,500,000	2004	Yes
Union Ridge Waterline Extension Cabell County	WV American Water/RDA of Charleston-Kanawha Co.	\$2,000,000	2004	Yes

Continued on next page

17. COMPLETED WORK WITHIN LAST 5 YEARS ON WHICH YOUR FIRM WAS THE DESIGNATED ENGINEER OF RECORD

PROJECT NAME, TYPE AND LOCATION	NAME AND ADDRESS OF OWNER	ESTIMATED CONSTRUCTION COST	YEAR	CONSTRUCTED (YES OR NO)
Witcher Creek Water Line Design	WV American Water PO Box 1906 Charleston WV 25327	\$550,000	2004	Yes
Southridge Expansion Commercial Site Development Kanawha County	RidgeLine, Inc. 400 Second Avenue So. Charleston, WV 25303	\$8,000,000	2003	Yes
Home Depot Commercial Site Development Kanawha County	Ridge Line, Inc. 400 Second Avenue So. Charleston, WV 25303	\$2,000,000	2003	Yes
WV Osteopathic Medical School, Site Development, Greenbrier County	WV School of Osteopathic Medicine 400 North Lee Street Lewisburg, WV 24901	\$50,000	2003	Yes
Toyota Wetland Wetland Mitigation Putnam County	Toyota Motor Corporation of WV, Inc. 1 Sugar Maple Lane Buffalo, WV 25033	\$120,000	2003	Yes

18. COMPLETED WORK WITHIN LAST 5 YEARS ON WHICH YOUR FIRM HAS BEEN A SUB-CONSULTANT TO OTHER FIRMS (INDICATE PHASE OF WORK FOR WHICH YOUR FIRM IS RESPONSIBLE)

PROJECT NAME, TYPE AND LOCATION	NAME AND ADDRESS OF OWNER	ESTIMATED CONSTRUCTION COST OF YOUR FIRM'S PORTION	YEAR	CONSTRUCTED (YES OR NO)	FIRM ASSOCIATED WITH
Fairmont State University Campus Improvements Fairmont, West Virginia	Fairmont State University 1201 Locust Avenue Fairmont, WV 26554	\$1,000,000	2007	Yes	Omni Associates
New Teays Elementary Civil, Site Design, Surveying Scott Depot, West Virginia	Putnam County BOE Winfield, WV 25213	\$1,000,000	2008	Yes	Williamson Shriver Architects
Mountain State University Health Science Building Civil/Site/Surveying Beckley, WV	Mountain State University PO Box 9003 Beckley, WV 25802-9003	\$1,500,000	2007	Yes	Dan Sneed Architects
WVU Recreation Center Master Plan Morgantown, WV	West Virginia University	\$2,000,000	2006	No	Omni Associates
Doddridge County High School Doddridge County, West Virginia	Doddridge County BOE 104 Sistersville Pike West Union, WV 26456	\$1,500,000	2006	Yes	Williamson Shriver Architects
Capon Bridge Intermediate School Hampshire County, West Virginia	Hampshire County BOE 46 South High Street Romney, WV 26757	\$1,000,000	2006	Yes	Williamson Shriver Architects
Fairmont Public Safety Building, Fairmont, West Virginia	City Fairmont 200 Jackson Street Fairmont, West Virginia 26554	\$4,000,000	2005	Yes	Omai Associates
Jefferson High School Jefferson County, West Virginia	Jefferson County Schools 110 Mordington Ave. Charles Town, WV 25414	\$2,000,000	2005	No	Helbing Lipp, Ltd.
Lincoln County 911 Center Civil, Site Design Lincoln County, WV	Lincoln County Commission Courthouse Offices Hamlin, West Virginia 25523	\$400,000	2004	Yes	Omni Associates


18. COMPLETED WORK WITHIN LAST 5 YEARS ON WHICH YOUR FIRM HAS BEEN A SUB-CONSULTANT TO OTHER FIRMS (INDICATE PHASE OF WORK FOR WHICH YOUR FIRM IS RESPONSIBLE)

PROJECT NAME, TYPE AND LOCATION	NAME AND ADDRESS OF OWNER	ESTIMATED CONSTRUCTION COST OF YOUR FIRM'S PORTION	YEAR	CONSTRUCTED (YES OR NO)	FIRM ASSOCIATED WITH
WVDEP Headquarters Building, Site/Civil, Survey Kanawha County, WV	WVDEP 601 57 th Street SE Charleston WV 25304	\$30,000,00.00	2004	Yes	BBL-Carlton
Grafton High School Civil, Site Design Grafton, WV	Taylor Co. BOE 1 Prospect Street Grafton WV 26354	\$1,000,000	2004	Yes	Williamson Shriver Architects, Inc.
Fairmont Middle School Civil, Site Design Fairmont, WV	Marion Co. BOE 200 Gaston Avenue Fairmont WV 26554	\$1,600,000	2004	Yes	Omni Associates
Kanawha Co. 911 Civil, Site Design Kanawha Co., WV	Kanawha County Commission 407 Virginia Street E Charleston WV 25301	\$800,000	2004	Yes	Kreps & Kreps
WV Parking Garage, Site Plan, Geotech Charleston, WV	WV Public Service Commission 201 Brooks Street Charleston, WV 25301	\$500,000.00	2003	Yes	Associated Architects

19. Use this space to provide any additional information or description of resources supporting your firm's qualifications to perform work for the West Virginia Abandoned Mine Lands Program.

TERRADON has extensive experience in both wet and dry mine seals, with or without bat gates. Our recent experience with Stonecoal creek had over two dozen mine seals. In addition, we have done regrading on numerous other refuse piles and highwalls including Jenkin Jones, Micajah, Linger, Camp Mahonegan, Cedar Creek, and Tappers Creek and Gerath Landslides. Also, we have designed the regrading for numerous other private projects, with great emphasis on providing balanced projects.

20. The foregoing is a statement of facts.

Signature: 

Printed Name: **Ryan Wheeler**

Title: **Marketing Director**

Date: **January 14, 2009**

RFQ No. DEP14764STATE OF WEST VIRGINIA
Purchasing Division**PURCHASING AFFIDAVIT****VENDOR OWING A DEBT TO THE STATE:**

West Virginia Code §5A-3-10a provides that: No contract or renewal of any contract may be awarded by the state or any of its political subdivisions to any vendor or prospective vendor when the vendor or prospective vendor or a related party to the vendor or prospective vendor is a debtor and the debt owed is an amount greater than one thousand dollars in the aggregate.

PUBLIC IMPROVEMENT CONTRACTS & DRUG-FREE WORKPLACE ACT:

West Virginia Code §21-1D-5 provides that: Any solicitation for a public improvement construction contract shall require each vendor that submits a bid for the work to submit at the same time an affidavit that the vendor has a written plan for a drug-free workplace policy in compliance with Article 1D, Chapter 21 of the West Virginia Code. A public improvement construction contract may not be awarded to a vendor who does not have a written plan for a drug-free workplace policy in compliance with Article 1D, Chapter 21 of the West Virginia Code and who has not submitted that plan to the appropriate contracting authority in timely fashion. For a vendor who is a subcontractor, compliance with Section 5, Article 1D, Chapter 21 of the West Virginia Code may take place before their work on the public improvement is begun.

ANTITRUST:

In submitting a bid to any agency for the state of West Virginia, the bidder offers and agrees that if the bid is accepted the bidder will convey, sell, assign or transfer to the state of West Virginia all rights, title and interest in and to all causes of action it may now or hereafter acquire under the antitrust laws of the United States and the state of West Virginia for price fixing and/or unreasonable restraints of trade relating to the particular commodities or services purchased or acquired by the state of West Virginia. Such assignment shall be made and become effective at the time the purchasing agency tenders the initial payment to the bidder.

I certify that this bid is made without prior understanding, agreement, or connection with any corporation, firm, limited liability company, partnership or person or entity submitting a bid for the same materials, supplies, equipment or services and is in all respects fair and without collusion or fraud. I further certify that I am authorized to sign the certification on behalf of the bidder or this bid.


LICENSING:

Vendors must be licensed and in good standing in accordance with any and all state and local laws and requirements by any state or local agency of West Virginia, including, but not limited to, the West Virginia Secretary of State's Office, the West Virginia Tax Department, West Virginia Insurance Commission, or any other state agencies or political subdivision. Furthermore, the vendor must provide all necessary releases to obtain information to enable the Director or spending unit to verify that the vendor is licensed and in good standing with the above entities.

CONFIDENTIALITY:

The vendor agrees that he or she will not disclose to anyone, directly or indirectly, any such personally identifiable information or other confidential information gained from the agency, unless the individual who is the subject of the information consents to the disclosure in writing or the disclosure is made pursuant to the agency's policies, procedures and rules. Vendors should visit www.state.wv.us/admin/purchase/privacy for the Notice of Agency Confidentiality Policies.

Under penalty of law for false swearing (West Virginia Code §61-5-3), it is hereby certified that the vendor acknowledges the information in this said affidavit and is in compliance with the requirements as stated.

Vendor's Name: Ok4Authorized Signature: Date: 9-24-09