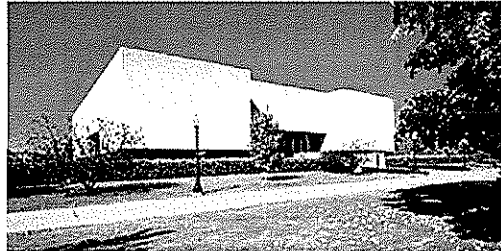


**Expression of Interest**  
**to Provide**  
**Professional Engineering Services**  
**for**  
**Great Hall Lighting Wiring System**  
**At The Cultural Center in Charleston, WV**  
**RFQ# DCH10030**



**January 5, 2010**

RECEIVED

2009 DEC 31 PM 12:19

WV PURCHASING  
DIVISION

**CMA**

ENGINEERING  
Clingenpeel/McBrayer & Associates, Inc.

Mr. Daniel L. Ellars, P.E.  
824 Cross Lanes Drive (304) 343-0316 tel  
Charleston, West Virginia 25313 (304) 343-5146 fax

Mr. Timothy L. Cox, P.E..  
5 Riddle Court (304) 598-2558 tel  
Morgantown, WV 26505 (304) 598-2472  
www.cma.wv.com



State of West Virginia  
 Department of Administration  
 Purchasing Division  
 2019 Washington Street East  
 Post Office Box 50130  
 Charleston, WV 25305-0130

# Request for Quotation

RFQ NUMBER  
**DCH10030**

PAGE  
**2**

ADDRESS CORRESPONDENCE TO ATTENTION OF  
**SHELLY MURRAY  
 304-558-8801**

VENDOR

**RFQ COPY  
 TYPE NAME/ADDRESS HERE**

CMA Engineering  
 824 Cross Lanes Drive  
 Charleston, WV 25313

SHIP TO

**DIVISION OF CULTURE & HISTORY  
 CULTURAL CENTER  
 1900 KANAWHA BOULEVARD, EAST  
 CHARLESTON, WV  
 25305-0300 558-0220**

| DATE PRINTED | TERMS OF SALE | SHIP VIA | FOB | FREIGHT TERMS |
|--------------|---------------|----------|-----|---------------|
| 12/03/2009   |               |          |     |               |

BID OPENING DATE: **01/05/2010** BID OPENING TIME **01:30PM**

| LINE   | QUANTITY | UOP | CAT NO | ITEM NUMBER | UNIT PRICE | AMOUNT |
|--|----------|-----|--------|-------------|------------|--------|
| <p>2019 WASHINGTON STREET, EAST<br/>           CHARLESTON, WV 25305-0130</p> <p>THE BID SHOULD CONTAIN THIS INFORMATION ON THE FACE OF<br/>           THE ENVELOPE OR THE BID MAY NOT BE CONSIDERED:</p> <p>SEALED BID</p> <p>BUYER: SHELLY MURRAY</p> <p>RFQ. NO.: DCH10030</p> <p>BID OPENING DATE: 01/05/2010</p> <p>BID OPENING TIME: 1:30 PM</p> <p>PLEASE PROVIDE A FAX NUMBER IN CASE IT IS NECESSARY<br/>           TO CONTACT YOU REGARDING YOUR BID:<br/>           (304) 343-5146</p> <p>CONTACT PERSON (PLEASE PRINT CLEARLY):<br/>           Daniel L. Ellars, P.E.</p> |          |     |        |             |            |        |

SEE REVERSE SIDE FOR TERMS AND CONDITIONS

|           |           |                                   |
|-----------|-----------|-----------------------------------|
| SIGNATURE | TELEPHONE | DATE                              |
| TITLE     | FEIN      | ADDRESS CHANGES TO BE NOTED ABOVE |

WHEN RESPONDING TO RFQ, INSERT NAME AND ADDRESS IN SPACE ABOVE LABELED 'VENDOR'



January 5, 2010

Ms. Shelly Murray  
Purchasing Division  
2019 Washington Street East  
Charleston, WV 25305-0130

Re: Expression of Interest – DCH10030  
West Virginia Cultural Center Great Hall Lighting & Wiring System

Dear Ms. Murray:

CMA Engineering is pleased to submit, for your consideration, our qualifications and experience in providing engineering services for the proposed renovation project for the electrical and lighting systems at the West Virginia Cultural Center.

CMA Engineering has provided engineering services for this type of project in West Virginia over the past twenty-three years, and we feel this is an excellent opportunity for our firm to assist you in successfully completing this project. Our design professionals are educated in the latest technological and industrial standards and work closely with the owner and contractor from start to finish, so that all of your needs are met and you are delivered a project that is “on time” and “within budget”.

We appreciate your consideration of our firm and look forward to presenting a more comprehensive statement of our qualifications in a personal interview. CMA has provided engineering services throughout the State since 1986 and we look forward to working with you on this exciting project.

Sincerely,  
CMA Engineering

Daniel L. Ellars, P.E.  
Principal

enclosures

# C O R P O R A T E P R O F I L E



Clingenpeel/McBrayer & Associates, Inc.



## Services

Clingenpeel/McBrayer & Associates is a West Virginia based small business firm, providing services in the areas of HVAC, plumbing, fire protection and electrical engineering. CMA's founders have long believed in the philosophy that a successful project requires a comprehensive approach. This includes all traditional facets of project planning, starting with master planning, working closely with the client, developing the completed construction documents, bidding the project and contract administration. However, our depth of expertise goes far beyond the traditional services. From developing design criteria for owners to designing the mechanical and electrical systems for the West Virginia DEP Consolidated Office Building, the first LEED certified building in the state, CMA is a proven leader in providing engineering services in the design-build delivery method.

## History

Since 1986, Clingenpeel/McBrayer & Associates has provided services on Numerous projects of varying size and complexity. Clients include architects, industrial companies, governmental agencies, contractors, engineers, developers and private organizations. Project locations include West Virginia, Virginia, Ohio, Kentucky, Maryland, Pennsylvania, California and Connecticut.

## Commitment

Clingenpeel/McBrayer & Associates' submittal is based on your needs and our experience. Our firm has the experience, service and quality work to create a successful project. We are committing senior design professionals in order to assure you receive top priority. We have extensive experience with projects of this nature. Examples of projects for which we were the Engineer are listed in this proposal.

From an initial staff of five employees in 1986, the company has steadily grown and now has two offices with a staff of eleven- which includes two professional engineers and two engineers-in- training. Facilities and equipment have grown to support CMA's staff and client's needs.

In 1987, computer aided drafting stations were added to provide the best quality and engineering services for our clients. We are currently operating AutoCad 2009. Our firm is constantly monitoring the latest technology, the cost effects and the end results to the final project.

Present staffing allows CMA to complete work in a timely manner without limiting our ability to perform our ongoing work. The staff of CMA is large enough to handle any size project, yet small enough for direct input and supervision by key personnel.

## EXPERIENCE

### Previous Five Years

Projects: 492

### Construction Costs

MEP Costs: \$156,039,689.

Total Costs: \$472,847,542.



Clingenpeel/McBrayer & Associates, Inc.

824 Cross Lanes Drive  
Charleston, WV 25313  
(304) 343-0316 tel  
(304) 343-5146 fax

5 Riddle Court  
Morgantown, WV 26505  
(304) 598-2558 tel  
(304) 598-2472 fax

w w w . c m a w v . c o m

# M E C H A N I C A L

CMA Engineering experience includes:

Constant Volume Air Handling Systems

Variable Volume Air Handling Systems

Demand Control Ventilation Systems

Natatorium Dehumidification Systems

Building Energy and Management Control Systems

Industrial Ventilation and Exhaust Systems

Steam and Condensate Systems

Cooling Plants and Distribution

Heating Plants and Distribution

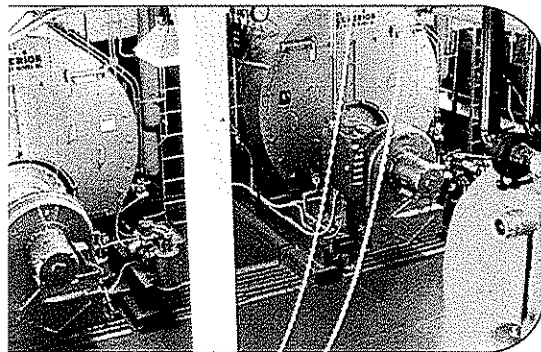
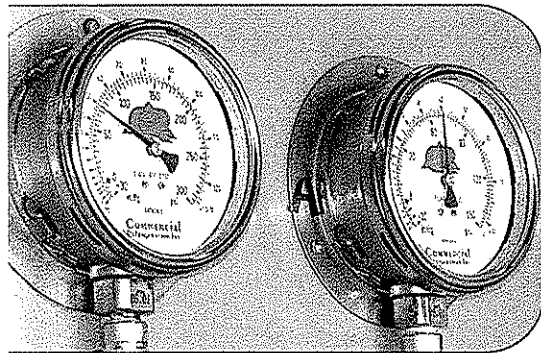
Energy Recovery Systems

Water Source Heat Pump Systems

Low, Medium and High Pressure Air Distribution Systems

Direct Digital, Pneumatic and Hybrid Control Systems

Kitchen Ventilation and Exhaust Systems



*(top)* Ruby Memorial Hospital—Morgantown, WV  
HVAC Exhaust System

*(middle)* Memorial Ice Rink—South Charleston, WV  
Refrigerant Pressure Gages

*(bottom)* Alderson Federal Correctional Facility—Alderson, WV  
Steam Plant

**CMA**  
ENGINEERING

Clingenpeel/McBrayer & Associates, Inc.

824 Cross Lanes Drive  
Charleston, West Virginia 25313  
(304) 343-0316 tel  
(304) 343-5146 fax

5 Riddle Court  
Morgantown, West Virginia 26505  
(304) 598-2558 tel  
(304) 598-2472 fax

[www.cma.wv.com](http://www.cma.wv.com)

# ELECTRICAL

CMA Engineering experience includes:

Underground Ducts and Utility Structures

Intrusion Detection

Closed Circuit Television

Cable and Master Antenna Television

Medium Voltage Distribution and Substations

Secondary Voltage Distribution

Engine Generators and Battery Inverters

Transient Voltage Suppression

Interior Lighting

Exterior Lighting

Sports Lighting

Theatrical Lighting

Lighting Control

Uninterruptible Power Supply Systems

Lightning Protection

Intercommunications Systems

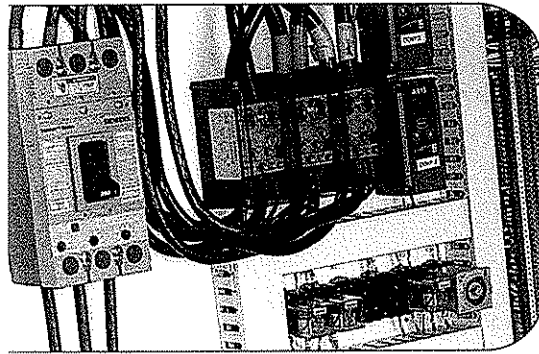
Nurse Call

Voice and Data Systems

Fire Detection Systems



(above) Split Rock Pools—Snowshoe, WV  
Indirect Lighting System



(below) Memorial Ice Rink—South Charleston, WV  
Chiller Power and Control Panel



Clingenpeel/McBrayer & Associates, Inc.

824 Cross Lanes Drive  
Charleston, West Virginia 25313  
(304) 343-0316 tel  
(304) 343-5146 fax

5 Riddle Court  
Morgantown, West Virginia 26505  
(304) 598-2558 tel  
(304) 598-2472 fax

[www.cma.wv.com](http://www.cma.wv.com)

# PLUMBING & PIPING

CMA Engineering experience includes:

Sanitary Sewer Systems

Storm Sewer Systems

Natural Gas Distribution

LP Gas Distribution

Fuel-Oil Distribution

Compressed Air Systems

Vacuum Systems

Chemical Waste Systems

Process Water Systems

Deionized Water Systems

Domestic Water Systems

Helium Distribution Systems

Domestic Water Pumping Systems

Sewage Pumping Systems

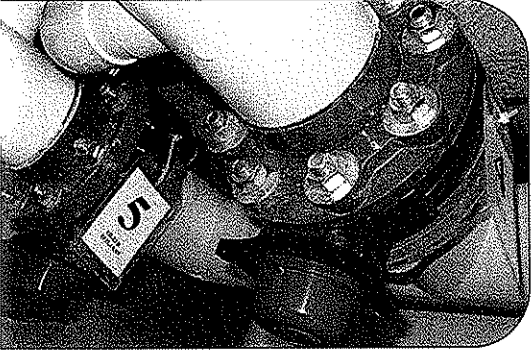
Water Heating

Automatic Fire Sprinkler Systems

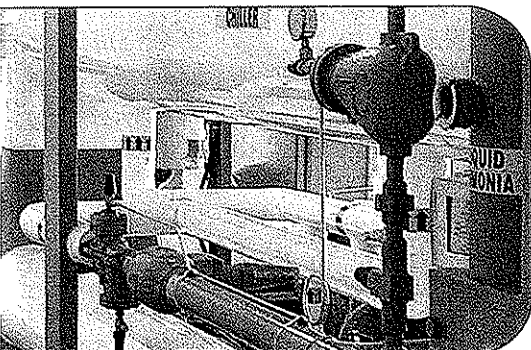
Standpipe Systems

Fire Pumps, Storage Tanks, Service Mains

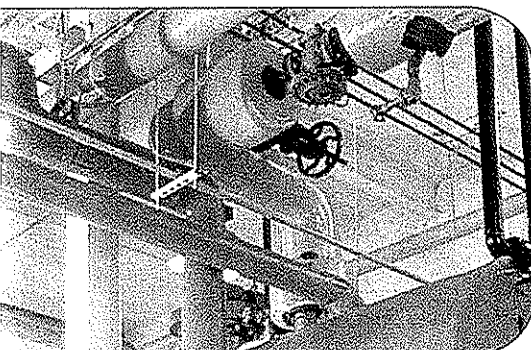
Medical Gas Systems



(top) Split Rock Pools—Snowshoe, WV  
Piping & Pump Room



(middle) Memorial Ice Rink—South Charleston, WV  
Piping & Chilling



(bottom) Alderson Federal Correctional Facility—Alderson, WV  
Steam Piping

**CMA**  
ENGINEERING

Clingenpeel/McBrayer & Associates, Inc.

824 Cross Lanes Drive  
Charleston, West Virginia 25313  
(304) 343-0316 tel  
(304) 343-5146 fax

5 Riddle Court  
Morgantown, West Virginia 26505  
(304) 598-2558 tel  
(304) 598-2472 fax

[www.cma.wv.com](http://www.cma.wv.com)

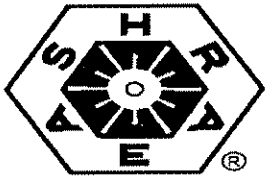
## Professional Affiliations



Leadership in Energy &  
Environmental Design  
(LEED)



U.S. Green Building  
Council  
(USGBC)



American Society of  
Heating, Refrigerating and  
Air Conditioning Engineers,  
Inc.,  
(ASHRAE)



American Institute of  
Architects— WV Chapter  
Affiliate Member  
(WVAIA)



National Fire  
Protection Association  
(NFPA)

ASPE

American Society Of  
Plumbing Engineers  
(ASPE)



MasterSpec  
Specifications  
(ARCOM)



ILLUMINATING  
ENGINEERING SOCIETY  
The  
LIGHTING  
AUTHORITY (IES)



WV Society of  
Healthcare Engineers  
(WVSHE)



Business Partner



International Code Council (ICC)

CMA  
ENGINEERING



# P R O F I L E

Timothy Cox, P.E., NCEES

President  
Mechanical Engineer

(304) 598-2558  
tcox@cmawv.com

## EDUCATION

University of Colorado  
Boulder, Colorado  
Degree: Mechanical Engineering B.S.

## REGISTRATIONS/PROFESSIONAL AFFILIATIONS

Association of Energy Engineers-CBCP  
  
Registered Professional Engineer in WV, VA, KY  
  
CPD (Certified in Plumbing Engineering)  
  
Member of ASHRAE  
  
American Society of Plumbing Engineers  
  
National Association of Fire Protection Engineers  
  
WV Society of Healthcare Engineers

## EXPERIENCE

Mr. Timothy Cox, President and Senior Mechanical Engineer of CMA Engineering brings 24 years of mechanical design experience to our clients. Mr. Cox has been project manager and project engineer for a variety of projects.

## PROJECTS

### West Virginia University

Open End Contract since 1999  
Mountain Lair Plaza Renovations  
Boreman HVAC/Plumbing/Fire Sprinkler  
Upgrades  
Soccer Stadium  
Coliseum Life/Safety Renovations  
Coliseum Locker Room Suites  
Engineering Science Building Addition/  
Renovations  
Arnold Hall Fire Alarm/ Fire Sprinkler  
Upgrades  
Wrestling Training Facility

### West Virginia University Hospitals

WV Eye Institute-MEP systems design for  
new facility  
Cheat Clinic-MEP design for new clinical  
addition  
WVUH Emergency Department-HVAC,  
electrical, fire and communication  
systems design for new addition  
Chestnut Ridge Hospital-various MEP  
renovations  
Healthworks Rehab and Fitness -MEP  
systems design for new facility

### Mylan Pharmaceuticals, Morgantown, WV

Various projects including HVAC,  
plumbing, fire sprinkler and controls for  
new office building, fluid bed addition,  
north plant expansion, parking garage and  
weighing and packaging.



Clingenpeel/McBrayer & Associates, Inc.

824 Cross Lanes Drive  
Charleston, WV 25313  
(304) 343-0316 tel  
(304) 343-5146 fax

5 Riddle Court  
Morgantown, WV 26505  
(304) 598-2558 tel  
(304) 598-2472

w w w . c m a w v . c o m

# P R O F I L E

Daniel Lee Ellars, P.E.  
LEED AP

Principal  
(304) 343-0316  
dellars@cmawv.com

## EDUCATION

West Virginia University Institute of Technology  
Montgomery, West Virginia.  
Bachelors of Science in Electrical Engineering

West Virginia State University  
Institute, West Virginia  
Bachelors of Science in Business Administration

## REGISTRATIONS/PROFESSIONAL AFFILIATIONS

Registered Professional Engineer in West Virginia

National Fire Protection Association (NFPA)

Institute of Electrical and Electronics Engineers (IEEE)

American Society of Heating, Refrigerating and Air-  
Conditioning Engineers (ASHRAE)

## EXPERIENCE

Mr. Daniel L. Ellars, Electrical Engineer for Clingenpeel/  
McBrayer & Associates, Inc. brings 19 years of  
electrical design experience to our clients. Mr. Ellars  
has been a project manager and project engineer for a  
variety of projects including commercial and industrial  
facilities as well as for both power and  
tele-communications utilities.

## PROJECTS

**Educational Experience**  
Jackson County (WV) Schools—Electrical  
Upgrades & Expansions.

**Hospital Experience**  
West Virginia University / Ruby Memorial Hospital  
West Virginia Eye Institute—Electrical systems  
design for new facility.  
Thomas Memorial Hospital—Electrical systems  
survey, upgrades and documentation.  
Standby emergency power engine  
generator replacement.

**Military Experience**  
West Virginia Army National Guard  
Eleanor (WV) Maintenance Center—Electrical  
systems design for new facility.

**Correctional Experience**  
St. Mary's Correctional Center—Multiple  
emergency power engine/generator systems with  
combined control and monitoring.

**Industrial Experience**  
Mylan Pharmaceuticals  
Mylan Office & Lab Buildings—various electrical  
systems designs for new, existing and expanded  
facilities including new 23kV/12kV switchyard  
and grounding plain layout.



Clingenpeel/McBrayer & Associates, Inc.

824 Cross Lanes Drive  
Charleston, WV 25313  
(304) 343-0316 tel  
(304) 343-5146 fax

5 Riddle Court  
Morgantown, WV 265  
(304) 598-2558 tel  
(304) 598-2472

# P R O F I L E

## James A. Kerns Mechanical/Electrical Designer

(304) 343-0316  
jakerns@cmawv.com

### EDUCATION

West Virginia State College  
Institute, West Virginia  
Degree: Bachelor of Science in Industrial  
Technology/Building Construction

### REGISTRATIONS/PROFESSIONAL AFFILIATIONS

Member of ASHRAE

### EXPERIENCE

Mr. James A. Kerns has over 32 years experience in Mechanical and Electrical engineering design. He has been responsible for design projects in the educational, commercial, and health care fields.

Mr. Kerns has been a great asset to Clingenpeel/McBrayer & Associates. His knowledge and experience enables him to complete project designs in a clear and concise manner and in a timely fashion.

### PROJECTS

#### Medical Facilities Experience

##### Thomas Memorial Hospital, South Charleston, WV

MRI Facility, Ashton Place-New Facility  
MRI Facility Additions, Ashton Place  
Oncology Facility, Teays Valley, New Facility  
Medical Office Building South-New Facility  
Rashid Office Building-New Facility  
Main Lobby Renovation  
Emergency Room Renovations  
Nursery Department Renovations  
Intensive Care Unit Renovations

##### VA Medical Center, Clarksburg, WV

Elevator Installation

##### United Hospital, Clarksburg, WV

Elevator Renovation  
Medical Office Building-Variou MEP Renovations  
and Tennant Fit-Out

##### Charleston Area Medical Center

Roadway Lighting-Memorial Division



### Clingenpeel/McBrayer & Associates, Inc.

824 Cross Lanes Drive  
Charleston, WV 25313  
(304) 343-0316 tel  
(304) 343-5146 fax

5 Riddle Court  
Morgantown, WV 26505  
(304) 598-2558 tel  
(304) 598-2472

www.cmawv.com

# P R O F I L E

## Matt Corathers, E.I. Mechanical Designer

(304) 598-2558  
mcorathers@cmawv.com

### EDUCATION

West Virginia University  
Bachelor of Science -Mechanical Engineering

### PROFESSIONAL DEVELOPMENT

Successfully passed Fundamentals of Engineering Exam

### EXPERIENCE

Matt is a recent addition to CMA Engineering having previously worked for Whitman, Requardt and Associates in Baltimore, MD.

### PROJECTS

#### West Virginia University

Mechanical design for new two-story child care facility

#### University High School, Morgantown, WV

Mechanical design for renovations/ upgrades to the HVAC systems

#### Randolph County Building

- Mechanical design for completion of two story addition and modifications of the existing second floor to be used by the Family Court

#### Monongalia County Family Court

Mechanical design for renovations to 4,850sf in existing court facility

#### University of Maryland Field House

Mechanical design for the replacement of two heat exchangers and a domestic use-hot water generator

#### Vilotteville Elementary School, Maryland

Mechanical design for the addition of 24 new classrooms

# CMA

ENGINEERING

Clingenpeel/McBrayer & Associates, Inc.

824 Cross Lanes Drive  
Charleston, WV 25313  
(304) 343-0316 tel  
(304) 343-5146 fax

5 Riddle Court  
Morgantown, WV 26505  
(304) 598-2558 tel  
(304) 598-2472

www.cmawv.com

# P R O F I L E

**Jeremy R. Perry, E.I.**  
Mechanical Designer  
(304) 343-0316  
jperry@cmawv.com

## EDUCATION

San Jose University  
San Jose, CA  
Degree: Mechanical Engineering B.S.

## PROFESSIONAL DEVELOPMENT

Successfully passed Fundamentals of Engineering Exam  
WV Society of Healthcare Engineers  
Various ASHRAE, HVAC and LEED design courses

## EXPERIENCE

Mr. Perry joined CMA Engineering in 2008. He previously worked for MKK Consulting Engineers in Billings, MT.

## PROJECTS

WVANG Elkins Readiness Center-HVAC design, load calculations, LEED Analysis  
Gassaway Armory- HVAC Design, load calculations  
Pikeview Middle School-HVAC Design, load calculations, LEED analysis, comparative cost analysis, hydronic layout  
Holley Grove Mansion- HVAC design, hydronic design, load calculations  
Sissonville Middle School- HVAC design and load calculation  
Amos-Caravelli Funeral Home-HVAC design and load calculations  
Grey Bull Elementary, Wyoming- LEED analysis, Warren Miller Lodge, Big Sky, MT  
Sheridan Bank, Sheridan, WY  
Bighorn County Historical Museum, Hardin, MT



Clingenpeel/McBrayer & Associates, Inc.

824 Cross Lanes Drive  
Charleston, WV 25313  
(304) 343-0316 tel  
(304) 343-5146 fax

5 Riddle Court  
Morgantown, WV 26505  
(304) 598-2558 tel  
(304) 598-2472

w w w . c m a w v . c o m

# P R O F I L E

**Jerry F. Betarie**

Electrical Designer

(304) 598-2558

[jbetarie@cmawv.com](mailto:jbetarie@cmawv.com)

## EDUCATION

Penn State, University Park, PA  
Degree: B.S. Electrical Engineering.

## EXPERIENCE

Mr. Betarie has 19 years experience in Project Management, Electrical Design and Project Estimating.

## PROJECTS

University High School, Morgantown, WV  
Electrical design services for the renovations to the electrical system

Ridgedale Elementary School  
Electrical design for renovations/  
upgrades to electrical system

Fairfield Inn, Morgantown, WV  
Electrical design for new 50,000sf hotel

Barbour County Bank, Philippi, WV  
Electrical design for renovations of  
existing facility and the addition of  
A two-story, 3,500sf, building

Fairmont Federal Credit Union  
Electrical design for tenant fit-out of the  
second floor space



Clingenpeel/McBrayer & Associates, Inc.

824 Cross Lanes Drive  
Charleston, WV 25313  
(304) 343-0316 tel  
(304) 343-5146 fax

5 Riddle Court  
Morgantown, WV 26505  
(304) 598-2558 tel  
(304) 598-2472

[www.cmawv.com](http://www.cmawv.com)

# P R O F I L E

## Larry Weese Mechanical/Plumbing Designer

(304) 343-0316  
lweese@cmawv.com

### EDUCATION

West Virginia University  
Morgantown, West Virginia  
Degree: Division of Forestry BS,MS

### PROFESSIONAL DEVELOPMENT

Various seminars and technical sessions

### EXPERIENCE

Mr. Larry Weese, Mechanical Designer for Clingenpeel/McBrayer & Associates, Inc. brings 18 years of mechanical design and project management experience to our clients.

### PROJECTS

#### Medical Facilities Experience

##### Charleston Area Medical Center

Women & Children's Hospital- Renovations to  
Emergency Room

##### Hess Medical Office Building-New Facility

##### Pinewood Medical Office Building-Renovations

##### Southern West Virginia Hospice-New Facility

##### NorthGate Doctor's Office Building-New Facility

#### WV Department of Health and Human Resources

Office of Chief Medical Examiner, Charleston  
New Facility Mingo County

#### Emergency Response Facilities

Randolph County 911-New Facility

Mason County 911-New Facility

Raleigh County 911-New Facility

Orchard Manor Fire Station-New Facility

#### Industrial Experience

Standard Laboratories-Laboratory Addition

Dow Process Control-New Facility

Diamond Electric-Expansion

#### Commercial Experience

Bobcat of Advantage Valley-New Facility

Allegheny Springs Restaurant



Clingenpeel/McBrayer & Associates, Inc.

824 Cross Lanes Drive  
Charleston, WV 25313  
(304) 343-0316 tel  
(304) 343-5146 fax

5 Riddle Court  
Morgantown, WV 26505  
(304) 598-2558 tel  
(304) 598-2472

w w w . c m a w v . c o m

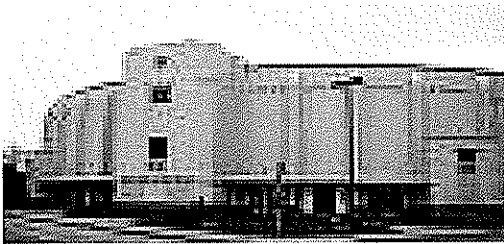
## Project Profiles

## Renovations



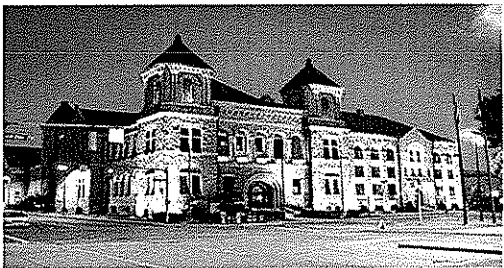
### **State of West Virginia House and Senate Offices**

CMA is currently providing mechanical, and electrical design services for renovations to the first and second floors' HVAC systems at Building #1 at the State Capitol Complex.



### **Charleston Municipal Auditorium**

CMA Engineering provided electrical engineering services for replacement of the dimmer rack and renovations to the stage and front-house lighting systems.



### **Kanawha County Courthouse**

CMA recently completed design of an exterior lighting renovation project for the Virginia side of the Courthouse which is listed on the National Historic Register. This project while adding lighting for security, highlights the architectural



### **Kimball War Memorial**

CMA Engineering provided mechanical, electrical and plumbing design services for the restoration of the historic memorial which was destroyed by fire in 1991. Facility includes industrial kitchen and eating area, meeting rooms, and a large conference area with stage .



## Project Profiles

## Renovations



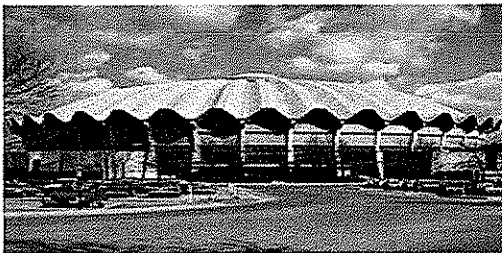
### **Legal Numbers, LLC**

CMA provided mechanical and electrical design services for upgrades to the HVAC and electrical systems of the 32,000sf IBM building in Charleston, WV.



### **Kanawha Boulevard Lighting**

CMA provided engineering services for the re-lighting of Kanawha Boulevard from the Patrick Street Bridge to the 35th Street Bridge in Kanawha City. This project included specifying of new light poles, arms and light fixtures.



### **Coliseum, West Virginia University**

CMA provided mechanical and electrical design services for renovations to the HVAC system serving the court level and the construction of two new club level spaces, renovations to the restrooms, concession area and walkway.



### **George Washington High School, Kanawha County**

CMA provided mechanical, electrical, plumbing and fire protection design services for the addition of a new classroom wing housing 15 classrooms, two gang toilets, additional commons area, an auxiliary gymnasium (total addition 35,462sf) and renovations to the existing office area, lower level classrooms, library and miscellaneous areas for teacher offices (total renovation 9,000sf).

## Project Profiles

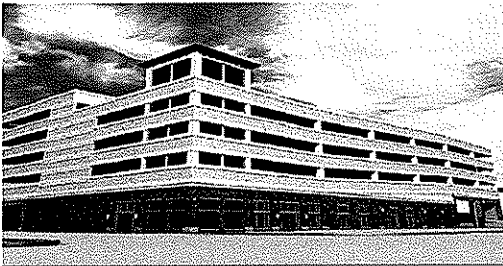
## New Construction

Design of mechanical, electrical, plumbing, fire protection and communication systems.



### **Sissonville Middle School, Kanawha County**

CMA Engineering provided mechanical, electrical, plumbing, sprinkler, and data/communication/alarm/control engineering design services for the new, approximately 80,000sf facility, consisting of administrative areas, commons, auditorium, media/technology, sixth, seventh and eighth grade educational areas, laboratories, special education, food services and physical education areas. CMA is currently providing design for the addition of the fifth grade wing.



### **Parkersburg Transit Authority**

CMA Engineering provided mechanical, electrical and plumbing design services for developing the design criteria for the new 5 floor Transit Authority Facility which includes 378 space parking garage, office areas, transit station, and passenger waiting area.



### **Fairmont State College Student Union**

CMA provided mechanical, electrical, plumbing, fire protection and communication systems for new 115,000sf student center. Facility includes gymnasium, indoor track, training & aerobics area, indoor pool, kitchen, lounge, information center, pro-shop, multi-purpose & meeting room space and administration area.



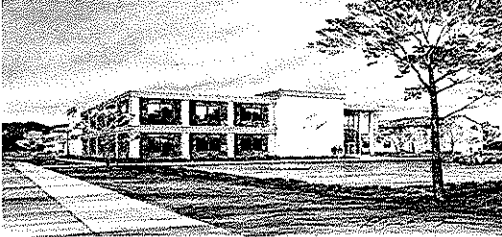
### **Jefferson County Community Center**

CMA Engineering provided mechanical, electrical and plumbing design for new 18,900sf community center which included gymnasium with bleacher seating, lobby area, activity rooms, office space, a full service kitchen, storage and comfort facilities.

## Project Profiles

## New Construction

Design of mechanical, electrical, plumbing, fire protection and communication systems.



### **St. Albans Community Center**

CMA Engineering provided design for HVAC, plumbing, fire sprinkler, fire alarm systems, communication systems, lighting and electrical power for new 26,900sf community center which included gymnasium, wrestling room, fitness room, locker rooms and an open area for aerobics, dance and gymnastics.



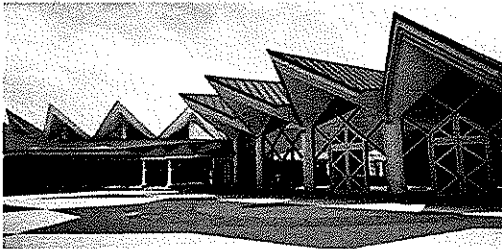
### **WV Department of Environmental Protection**

CMA Engineering provided mechanical, electrical, plumbing and fire protection design services for new consolidated DEP office in Charleston, WV. Building is a three-story facility of approximately 180,000sf with a 650 car parking area. This facility is registered as a LEEDS construction project.



### **Mylan Pharmaceuticals**

CMA Engineering provided mechanical, electrical, plumbing and fire protection systems design for new corporate office in Morgantown, WV. CMA Engineering is currently providing engineering services for the 500,000sf addition to the plant facility.



### **Tamarack Caperton Conference Center**

CMA Engineering provided mechanical, electrical, plumbing, fire protection and communication systems design for the 22,450sf addition to the Caperton Center. CMA provided engineering services for the original construction of the Tamarack facility.



### **Go-Mart Office Building**

CMA provided mechanical, electrical and plumbing design services for the new 13,000sf corporate office building in Gassaway, WV.

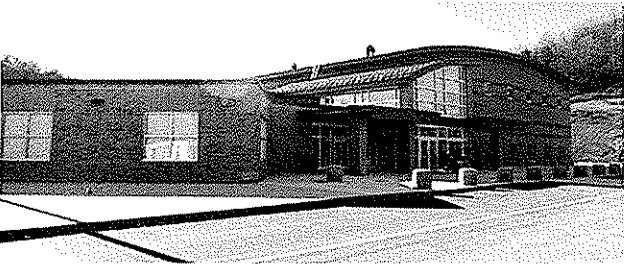
**CMA**  
ENGINEERING

## References

### Mechanical/Electrical/Plumbing



West Virginia University  
P.O. Box 0877  
Morgantown, WV 26505  
Contact: Mr. John Thompson  
(304) 293-3625



Kanawha County Schools  
3300 Pennsylvania Avenue  
Charleston, WV 25302  
Contact: Mr. Charles Wilson  
(304) 348-6148



State of West Virginia  
1900 Kanawha Blvd, East  
Bldg. 1, Room MB-60  
Charleston, WV 25305  
Contact: Mr. Robert Kilpatrick  
(304)558-0250



Mylan Pharmaceuticals, Inc.  
P.O. Box 4310  
Morgantown, WV 26504  
Contact: Mr. J. J. Dotson  
(304) 599-2595

STATE OF WEST VIRGINIA  
Purchasing Division  
**PURCHASING AFFIDAVIT**

**VENDOR OWING A DEBT TO THE STATE:**

*West Virginia Code* §5A-3-10a provides that: No contract or renewal of any contract may be awarded by the state or any of its political subdivisions to any vendor or prospective vendor when the vendor or prospective vendor or a related party to the vendor or prospective vendor is a debtor and the debt owed is an amount greater than one thousand dollars in the aggregate.

**PUBLIC IMPROVEMENT CONTRACTS & DRUG-FREE WORKPLACE ACT:**

If this is a solicitation for a public improvement construction contract, the vendor, by its signature below, affirms that it has a written plan for a drug-free workplace policy in compliance with Article 1D, Chapter 21 of the *West Virginia Code*. The vendor **must** make said affirmation with its bid submission. Further, public improvement construction contract may not be awarded to a vendor who does not have a written plan for a drug-free workplace policy in compliance with Article 1D, Chapter 21 of the *West Virginia Code* and who has not submitted that plan to the appropriate contracting authority in timely fashion. For a vendor who is a subcontractor, compliance with Section 5, Article 1D, Chapter 21 of the *West Virginia Code* may take place before their work on the public improvement is begun.

**ANTITRUST:**

In submitting a bid to any agency for the state of West Virginia, the bidder offers and agrees that if the bid is accepted the bidder will convey, sell, assign or transfer to the state of West Virginia all rights, title and interest in and to all causes of action it may now or hereafter acquire under the antitrust laws of the United States and the state of West Virginia for price fixing and/or unreasonable restraints of trade relating to the particular commodities or services purchased or acquired by the state of West Virginia. Such assignment shall be made and become effective at the time the purchasing agency tenders the initial payment to the bidder.

I certify that this bid is made without prior understanding, agreement, or connection with any corporation, firm, limited liability company, partnership or person or entity submitting a bid for the same materials, supplies, equipment or services and is in all respects fair and without collusion or fraud. I further certify that I am authorized to sign the certification on behalf of the bidder or this bid.

**LICENSING:**

Vendors must be licensed and in good standing in accordance with any and all state and local laws and requirements by any state or local agency of West Virginia, including, but not limited to, the West Virginia Secretary of State's Office, the West Virginia Tax Department, West Virginia Insurance Commission, or any other state agencies or political subdivision. Furthermore, the vendor must provide all necessary releases to obtain information to enable the Director or spending unit to verify that the vendor is licensed and in good standing with the above entities.

**CONFIDENTIALITY:**

The vendor agrees that he or she will not disclose to anyone, directly or indirectly, any such personally identifiable information or other confidential information gained from the agency, unless the individual who is the subject of the information consents to the disclosure in writing or the disclosure is made pursuant to the agency's policies, procedures and rules. Vendor further agrees to comply with the Confidentiality Policies and Information Security Accountability Requirements, set forth in <http://www.state.wv.us/admin/purchase/privacy/noticeConfidentiality.pdf>.

Under penalty of law for false swearing (*West Virginia Code* §61-5-3), it is hereby certified that the vendor affirms and acknowledges the information in this affidavit and is in compliance with the requirements as stated.

Vendor's Name: CMA Engineering

Authorized Signature:  Date: 01/04/10