



**Statement of Qualifications to Provide
Architectural/Engineering Services
for the Design of Fairmont Building #21 Demolition**

RECEIVED

**Department of Administration
General Services Division
RFQ# GSD096445**

2009 APR 21 AM 11:12

WV PURCHASING
DIVISION

April 21, 2009





**Chapman
Technical
Group**

April 21, 2009

Ms. Krista Ferrell, Buyer Supervisor
Department of Administration
Purchasing Division
Building 15
2019 Washington Street, East
Charleston, West Virginia 25305-0130

**Re: A/E Services for the Design of
Fairmont Building #21 Demolition
RFQ #: GSD096445**

Dear Ms. Ferrell and the Selection Committee:

Chapman Technical Group can knock down buildings as well as anyone. The difference is that we will do it with minimum risk to the public, surrounding buildings, and the owner.

Chapman Technical Group has an established history of bringing projects on time and in budget. With our team of architects, structural engineers, civil engineers, landscape architects, construction analysts, and Haz-Mat specialists, you can be assured that our design and demolition documents will convey the intentions of the demolition and recapture of the site accurately, and with due diligence and care to maximize the accuracy and competitiveness of the bids to accomplish the work in a safe manner.

Mr. Joseph Bird, Vice President, will be the Project Officer for this project and along with our owner, Sharon L. Chapman, will affect the binding agreement for this project. I will be the Project Manager and be the contact person for all aspects of the various disciplines required for this project. My information is as follows:

Dale E. Withrow, Project Manager
Chapman Technical Group, Ltd.
200 Sixth Avenue
St. Albans, West Virginia 25177
304-727-5501 office
304-550-1193 mobile

Our design team's experience can be measured in hundreds of years. Included in this submittal are the resumes' of this team which should serve to demonstrate our expertise for this type of project. Also, this team will work together with your representatives to fulfill the needs of this project in its entirety.

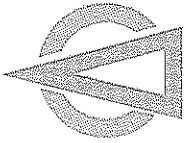
We understand that the work products of this project will become the property of the Agency (owner).

200 Sixth Avenue
St. Albans, WV 25177

304.727.5501
FAX 304.727.5580

Buckhannon, WV
Martinsburg, WV

www.chaptech.com



Ms. Krista Ferrell, Buyer Supervisor
April 21, 2009
Page Two

Our team is well versed in and totally capable of utilizing and interpreting all applicable State and Federal Regulations, Life Safety and other Fire Codes, applicable Building Codes, as well as the Americans with Disabilities Act, and NIOSH and Environmental, Health, and Safety regulations.

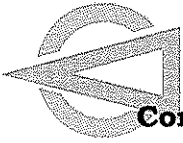
We have included in this proposal, similar projects with pertinent information as to size, cost, and contact information.

We invite an opportunity to present our design team to you for further evaluation and information. In the meantime, if you need additional information, please call or contact me at dwithrow@chapttech.com. We also invite you to visit our website at www.chapttech.com.

Sincerely,

CHAPMAN TECHNICAL GROUP

Dale E. Withrow
Manager Architecture

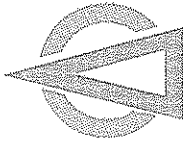


Contact Person/Responsible Party

Joseph E. Bird, Vice President, will be responsible for the binding agreement and will be assisted by Dale E. Withrow, Manager of Architecture, pertaining to the administrative duties of the project.

Joseph E. Bird, Vice President
Chapman Technical Group, Ltd.
200 Sixth Avenue
St. Albans, West Virginia 25177
304-727-5501
jbird@chaptech.com

_____, Vice President
Joseph E. Bird



DESCRIPTION OF LITIGATION AND ARBITRATION PROCEEDINGS

A. City of Fairmont v. Chapman Technical Group

City of Fairmont alleges defects in the design of their water treatment plant.

Claim filed March 13, 2009.

Action pending.

B. [General Contractor] v. Mingo County Airport Authority and Chapman Technical Group

General Contractor sought additional compensation to cover costs of 3 landslides that occurred during construction of runway safety area.

Circuit Court found in favor of defendants and ordered General Contractor to pay \$246,000 in liquidated damages to the owner and perform final cleanup.



Chapman
Technical
Group

1

Company Overview

2

Project Team

3

Outline of General Approach

4

Proejct Experience

5

References

Company Overview



Chapman Technical Group's St. Albans Office

Chapman Technical Group is a full-service consulting firm with offices in St. Albans, Buckhannon, and Martinsburg, West Virginia offering an extensive range of professional architectural, engineering, interior design and landscape architectural services. Established in 1984, Chapman Technical Group has steadily grown to a diverse firm of professionals, many of whom were educated in West Virginia colleges and universities. We have achieved an outstanding reputation for providing high-quality design projects, while meeting client schedules and budgets and have received numerous awards for our work.

Our facilities are both state-of-the-art and architecturally significant. Our St. Albans office is a former post office and is now on the National Register of Historic Places. We also have a corporate airplane to better access our project sites.

Chapman Technical Group offers a broad range of professional services.

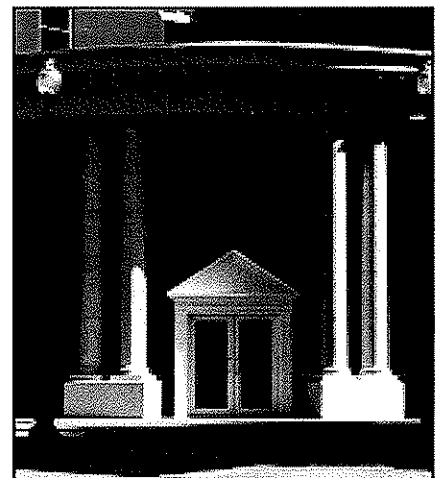
- Airport Design
- Architecture
- Civil Engineering
- Fire Pumping & Protection
- Interior Design
- Landscape Architecture
- Recreational Facilities
- Roads, Highways, & Bridges
- Site Development
- Space Planning
- Surveying
- Water & Wastewater Systems

Architecture

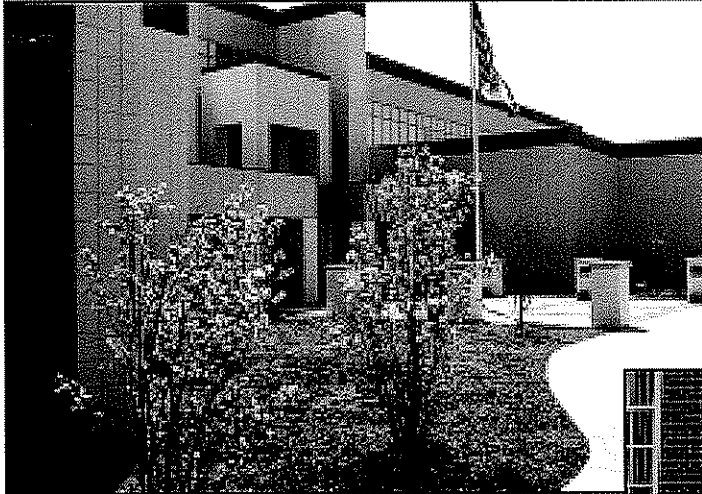


Chapman Technical is opening doors for its clients. Since its addition to the many services available, architectural services continue to provide innovative design solutions to projects ranging from renovations to new facilities.

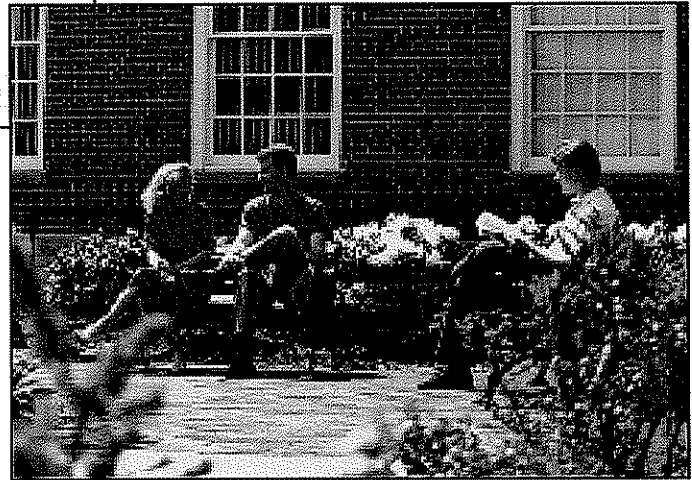
- Public Facilities
- Community Centers
- Industrial Facilities
- Child Care Centers
- Public Housing Renovations
- Airport Equipment Storage
- Utility Facilities
- Historic Renovations



Landscape Architecture

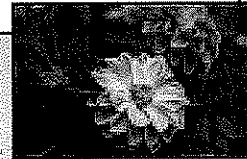
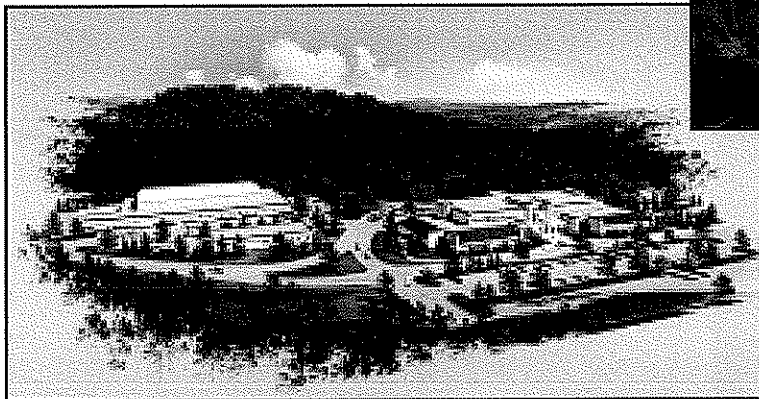
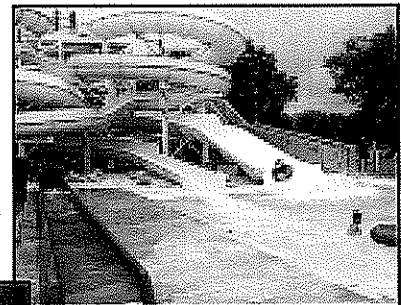


Landscape architecture integrates technical & aesthetic design to bring the client a functional & attractive design solution.



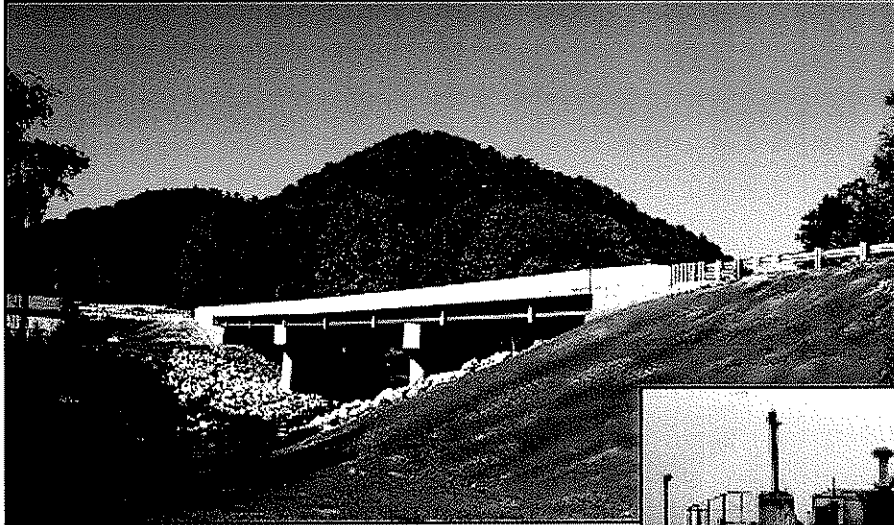
- Site Master Planning
- Grading and Drainage Plans
- Recreational Facilities
- Urban Design
- Landscaping Plans
- Erosion Control Design
- Graphic Illustrations and Renderings
- Interior Landscape Design

The integration of structures or facilities and the land is often overlooked when beginning a project. Chapman Technical Group can ensure all of their clients the benefit of a strong landscape architectural department to develop a design solution that will maximize their



site and reduce development costs. Our award winning staff can develop functional design solutions for any site development need.

Civil Engineering



- Highway Design
- Airport Master Planning
- Road Design
- Airport Pavement Rehabilitation
- Bridge Design
- Airport Equipment Facility Design

The development of new and advanced transportation opportunities in West Virginia is vital to the growth and progress of this state. Chapman Technical Group is a leader in transportation engineering services and can bring clients a wealth of experience and knowledge to the project. Past projects have proven Chapman Technical Group's ability to produce a cost effective design on schedule and our relationships with state and federal agencies are excellent.



Environmental Engineering

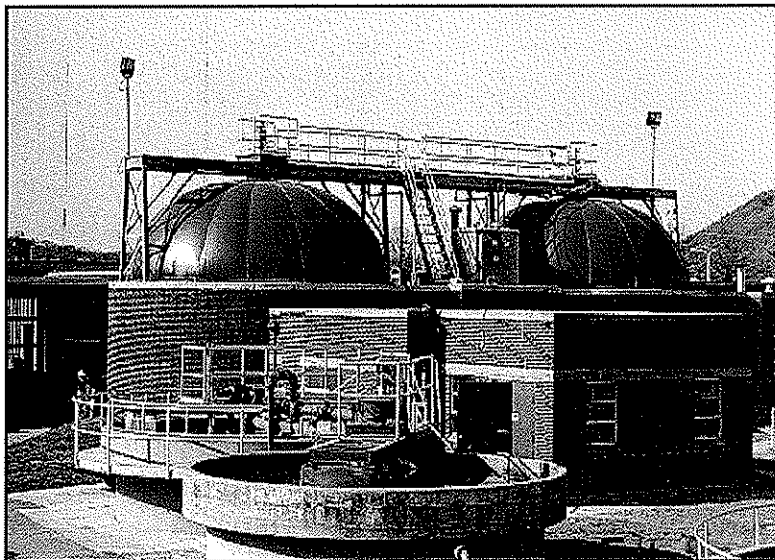
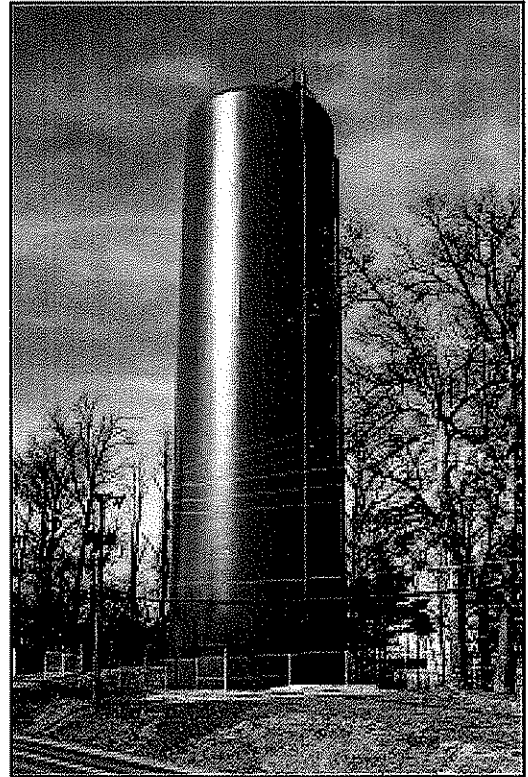


Environmental engineering at Chapman Technical Group primarily involves water and wastewater system analysis, planning, design, construction administration, and construction observation services for all aspects of municipal and commercial/industrial projects. Our vast experience in these areas has enabled our firm to become one of the clear leaders in the fields of water, wastewater, and stormwater engineering. This enables the development and betterment of our communities by improving our environment and providing for the public's health, safety, welfare, and convenience.

- Feasibility Studies/Facility Plans
- Water and Wastewater Treatment Design
- Water Distribution and Storage
- Wastewater Collection and Pumping
- Computerized Hydraulic Network Analysis
- I/I Analysis/SSES Studies/CSO Plans
- Stormwater Management Programs

Water Engineering

Chapman Technical Group's experience with water system projects has encompassed new construction as well as renovations and rehabilitation of existing treatment, storage, pumping, and distribution facilities ranging in size from small on-site systems supplying only a handful of people to larger systems supplying approximately 100,000 people. Our firm also provides in-depth comprehensive planning studies, including source of supply studies relating specifically to record and recurring droughts, as well as detailed computerized hydraulic analyses of entire systems in order to identify and eliminate any significant flow and pressure constraints within those systems.

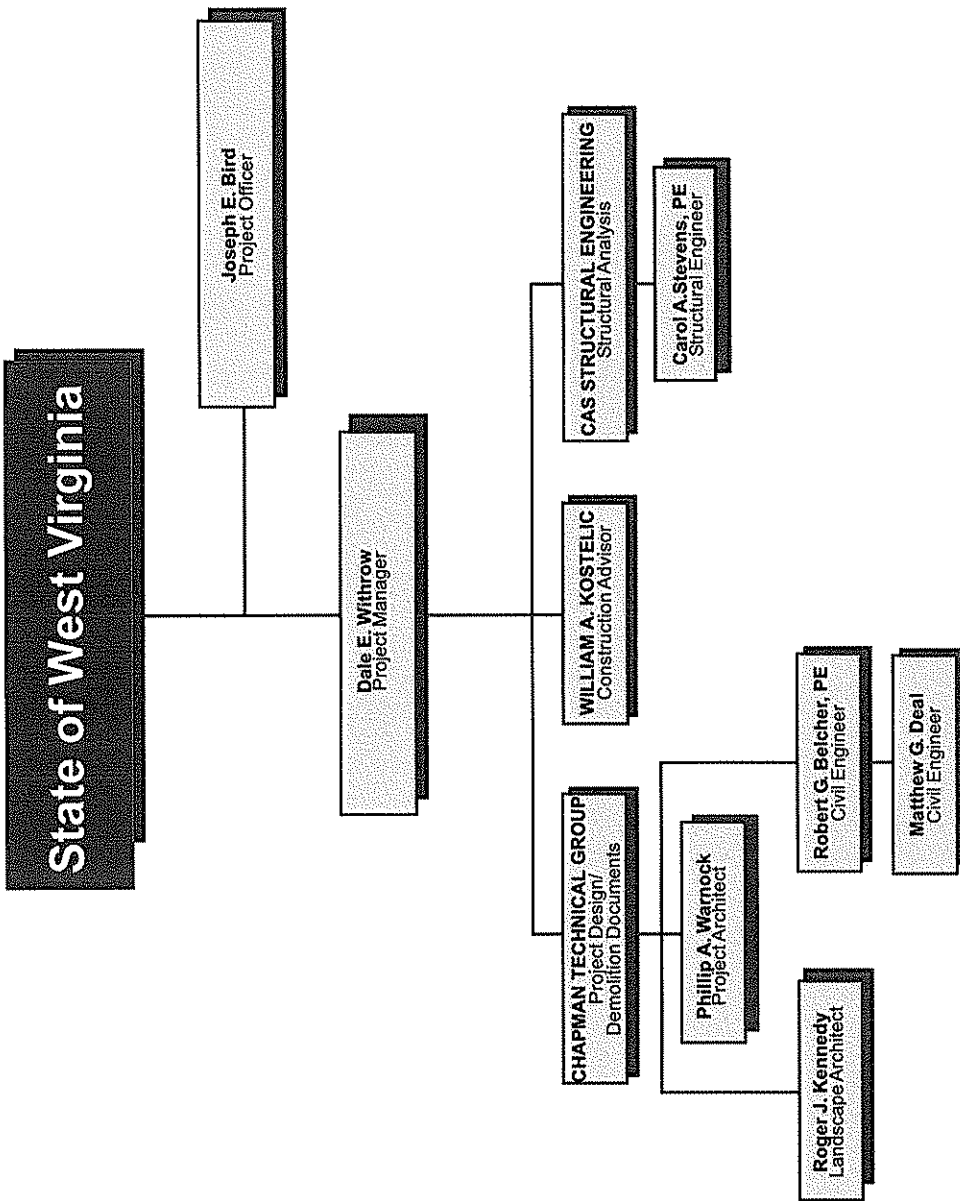


Wastewater Engineering

Chapman Technical Group's experience with wastewater system projects has encompassed new construction as well as renovations and rehabilitation of existing treatment, pumping, and collection facilities ranging in sizes from small on-site systems to larger systems supplying approximately 100,000 people. Our firm also provides in-depth comprehensive facility planning studies, including extensive field investigations for performing detailed infiltration/inflow analysis and subsequent sanitary sewer system evaluation surveys.



Project Team





JOSEPH E. BIRD, ASLA
Senior Vice President
Project Manager

EDUCATION

West Virginia University, BSLA, 1978

REGISTRATION

Landscape Architect, West Virginia, 1981

**PROFESSIONAL
HISTORY**

August 1985 to Present: Chapman Technical Group
Senior Vice President and Project Manager.

May 1978 to August 1985: Kelley, Gidley, Blair & Wolfe, Inc.
Landscape Architect and Project Manager.

Mr. Bird is a project manager and registered landscape architect. His experience ranges from large site development projects to the management of multi-discipline and architectural projects.

31 years professional experience.

**PROJECT
EXPERIENCE**

Site Development: Site planning and project management for numerous projects throughout West Virginia ranging from small campus sites to large sites for commercial, government, industrial, and institutional development. Projects include military complexes, campuses, public housing developments and other public facilities.

Parks and Recreation: Projects include swimming pools, bathhouses, cabins and support facilities for the West Virginia Division of Natural Resources and similar facilities for county and municipal park systems. Also involved in the design of facilities such as softball fields, fishing access facilities, recreation facilities for prisons, as well as passive recreation areas for public and private clients.

Miscellaneous: Other project experience includes the urban planning and development, streetscape design, roadway and storm drainage projects, as well as the project management of numerous major architectural projects throughout West Virginia.

AFFILIATIONS

West Virginia Chapter of the American Society of Landscape Architects
Board of Trustees, Huntington Museum of Art

AWARDS

Honor Award for Shrewsbury St. Redevelopment Plan
West Virginia Chapter of American Society of Landscape Architects



DALE E. WITHROW, AIT
Project Coordinator, Department Manager
Architecture

EDUCATION

West Virginia Institute of Technology, AS, Drafting and Design, 1975.

PROFESSIONAL HISTORY

November 2000 to Present: Chapman Technical Group
Project Coordinator/Department Manager.

March 1993 to August 2000: The HDMR Group, Inc.
Project Coordinator.

February 1990 to March 1993: AFAB Services
Owner - Designer/Drafter.

Prior to 1990 Mr. Withrow worked with several architectural and engineering firms as an employee and independent consultant.

From 1978 to 1987 he was a Facilities Planner for the Kanawha County Board of Education.

Mr. Withrow is a Project Coordinator involved in all aspects of a wide variety of architectural projects. He is also Manager of the Architecture Group.

34 years professional experience.

PROJECT EXPERIENCE

Project Design and Management: Experience ranges from drafting, detailing and design through construction observation and project management of numerous building projects in West Virginia, Kentucky and North Carolina including:

- Residential/Housing
- Governmental Facilities
- Hospital/Healthcare Facilities
- Public School Facilities
- College Athletic Facilities
- Hotel/Hospitality Facilities
- Airport Support Facilities
- Historic Preservation
- Military Support Facilities/Armories
- Grocery and Drug Chain Stores
- Industrial Plant/Laboratory Facilities
- Office Buildings
- Banking Facilities
- Americans with Disabilities Act Assessment and Implementation
- Public Safety Facilities

AFFILIATIONS

Certified Architect-in-Training, State of Arizona
Read Aloud WV of Kanawha County
St. Albans Community & Business Development
Friends of the Alban - Arts/Conference Center



PHILLIP A. WARNOCK, NCARB, AIA
Project Architect

EDUCATION

The University of Tennessee, BArch, 1995

REGISTRATION

Architect, West Virginia, 2003
Architect, Tennessee, 2002

**PROFESSIONAL
HISTORY**

September 2003 to Present: Chapman Technical Group
Project Architect.

June 2002 to July 2003: ZMM
Architect.

June 1995 to May 2002: Lockwood Greene
Intern Architect.

August 1991 to July 1993: Omni Associates
Architectural Draftsman.

16 years professional experience with additional experience in construction, interior design and developing.

AIA Honor Award for Excellence in Architecture for the historic preservation of the Upshur County Courthouse.

**PROJECT
EXPERIENCE**

Project Participation and Design: Experience ranges from design, detailing and drafting through project management and construction administration of building projects in various states, including West Virginia, Tennessee, Kentucky and South Carolina. Project experience includes:

- Public School Facilities
- Community Centers
- Recreational Facilities
- Aviation Facilities
- Health Care/Hospice Facilities
- Medical and Psychiatric Clinics
- Pharmaceutical Facilities
- Research and Development Labs
- Office Buildings
- Rest Areas and Welcome Centers
- Historic Preservation
- Historic Renovation/Additions
- Adaptive Reuse
- Governmental Facilities
- Military Support Facilities/Armories
- Multi-Family Housing
- ADA Assessments
- HUD 811, 202 and ECHO Facilities
- Small Cities Block Grant Developments
- Public Safety Facilities

AFFILIATIONS

National Council of Architectural Registration Boards (NCARB)
American Institute of Architects (AIA)



ROBERT G. BELCHER, P.E.
**Senior Vice President, Engineering
and Project Officer**

EDUCATION

West Virginia Institute of Technology, BSCE, 1983

REGISTRATION

Civil Engineering, West Virginia, 1996
Civil Engineering, Ohio, 2006

**PROFESSIONAL
HISTORY**

January 1987 to Present: Chapman Technical Group
Senior Vice President and Project Officer.

June 1984 to January 1987: Regional Intergovernmental Council
Planning and Development Council for West Virginia Region III - Metropolitan
Planning Organization for Charleston, WV, MSA.

25 years professional experience.

**PROJECT
EXPERIENCE**

Water Systems: Design and project management for numerous water systems for both public and private water companies. Projects include new water treatment plants as large as 10 MGD, improvements to existing plants, water mains and distribution systems. Water storage projects include glass-lined steel tanks, welded high-strength steel tanks, and elevated pedestal tanks.

Wastewater Systems: Design and project management for numerous wastewater systems throughout West Virginia. Projects include new tertiary wastewater treatment plants as large as 4.5 MGD, improvements to existing plants, small-flow treatment plants, extensive wastewater collection systems, and facility plan updates.

Miscellaneous: Design and project management for large highway and bridge projects, airport improvements projects, large stormwater management projects, as well as potable water and wastewater system design for many site development projects throughout West Virginia.

AFFILIATIONS

Water Environment Association - WV Section
Contractor's Association of West Virginia - Associate Member
American Water Works Association - WV Section
WV Society of Professional Engineers
American Council of Engineering Companies - ACEC/WV
WVUIT Civil Engineering Advisory Board

AWARDS

George Warren Fuller Award, 2001



ROGER J. KENNEDY, ASLA
Landscape Architect

EDUCATION

West Virginia University, BSLA, 1990
Natural Stream Training Courses I - III, West Virginia University, 2000-2002.

REGISTRATION

Landscape Architect, West Virginia, 1993
Landscape Architect, Pennsylvania, 2006

**PROFESSIONAL
HISTORY**

June 1990 to Present: Chapman Technical Group

Landscape Architect, Project Manager and Computer Network Manager.

May 1989 to May 1990: WVU and the National Park Service

Inventoried and analyzed abandoned mine sites along the New River Gorge National River utilizing PC ArcInfo.

20 years professional experience.

**PROJECT
EXPERIENCE**

Site Development: Responsibilities include grading design, site planning and layout, analysis of existing features and services, storm water design and management, erosion control, as well as project management. Projects include prisons, landfills, military complexes, banks, airports, subdivisions, gas stations and other public facilities.

Bridge and Highway: Responsibilities include the design of horizontal and vertical road alignments, superelevation design, intersection layout, slope design and quality control review. Projects include several multi-lane highways and bridges throughout West Virginia.

Miscellaneous: Other experience includes the use of various civil design software packages for use in site development and road design, digital terrain modeling, hydraulic analysis and related computer aided design tools. Additional responsibilities include the development and management of the computing resources of the company. This includes the management of software and hardware inventories, as well as the development and management of all local area networks in each office and the wide area network which links them.

AFFILIATIONS

Chairman of the West Virginia State Board of Landscape Architects
Member of the Sigma Lambda Alpha Honor Society of Landscape Architects
Vice-President of the St. Albans Riverfest Board



MATTHEW G. DEAL
Civil Engineer

EDUCATION

West Virginia University Institute of Technology, BS, Civil Engineering Technology, 2007

EXPERIENCE

December 2007 to Present: Chapman Technical Group
Civil Engineer

May 2007 to December 2007: William H. Gordon & Associates, Inc.,
Civil Engineer

January 2007 to May 2007: West Virginia Department of Highways, Inspector

Summers (2006, 2005): West Virginia Department of Highways, Designer Technician

2 years professional experience.

PROJECT EXPERIENCE

Civil Engineer: Design of highways and highway drainage throughout West Virginia. Experience in civil site design on subdivisions, strip malls, and industrial parks throughout West Virginia and North Virginia, including storm drainage, stormwater management, utilities, parking lot layout and grading.

AFFILIATIONS

American Society of Civil Engineers

BUILDING RESTORATION & PRESERVATION

WILLIAM S. KOSTELIC
Construction Analyst

BACKGROUND SUMMARY

2008-Present U. S. Department of Homeland Security/FEMA
DAE Disaster Generalist
2006-2008 US Small Business Administration
Office of Disaster Assistance
Construction Analyst
2006-Present Building Restoration & Preservation
Principal
2006-Present Concrete Preservation Systems, Inc.
Representative
2006-Present Joseph Painting and Contractors, Inc.
Representative
1994-2006 Western Construction Group, Inc.
Branch Manager

PROFESSIONAL ASSOCIATIONS

West Virginia Society of Healthcare Engineers
International Concrete Repair Institute

CIVIC INVOLVMENT

West Virginia Expo-Featured Speaker
Pittsburgh Landmarks Association-Church Preservation Strategy Workshop

EXPERIENCE

Butler Institute of American Art

Recommended and performed poultice and non-caustic cleaning of carrera marble steps and portico inlaid marble floor to remove copper and ferrous metal stains. Most recently advised the Board of Directors on the gravity of the thermal hysteresis situation now affecting the flowering of the Museum's carrera marble building panels. The Museum is listed on the Historic Register. Project cost: \$3,000, with repairs estimated above \$100,000.

BUILDING RESTORATION & PRESERVATION

Upshur County Courthouse-West Virginia

Served as historic restoration consultant to the Chapman Technical Group of St. Albans, WV. Developed repair recommendations for materials and processes utilized to restore exterior stone elements of this historic structure. Supervised tradesmen performing highly specialized stone Dutchmen repairs, stainless steel pinning, epoxy injection and Jahn/Cathedral stone repair mortars. The Building is listed on the Historic Register. In 2008 this project was recognized by the AIA for Excellence in Architecture, receiving the coveted Honor Award for Historic Preservation. Project cost: \$220,000.

Mahoning County Courthouse-Ohio

Orchestrated a continuing structural investigation and phased restoration and repair program of this 100 year old granite and terra cotta public facility. The building is listed on the State Historic Register. Project cost: \$72,500.

National Shrine of Our Lady of Lebanon-Ohio

Recommended and supervised masonry repair procedures undertaken on a national religious landmark. Repairs included structural concrete replacement, masonry stabilization, hidden electrical enhancements, interior finishes and protective sealers and sealants. Project cost: \$110,000.

National Shrine of Our Lady of Lebanon-Ohio

Contracted to conceptually design and install sixteen (16) ten foot high Stations of the Cross, fabricated from Core Ten steel, to replace failed masonry Stations no longer in service. Project cost: \$127,500.

City of Elkins Water Treatment Facility-West Virginia

Co-designed and presented the negotiated repair strategy for the emergency structural repair to this eighty (80) year-old facility. Structural repairs were undertaken while the plant maintained operational capabilities. Project cost: \$240,000.

Huntington Bank Building-Ohio

Performed Terra Cotta repair above the main entrance of this century old building accessing the displaced units from a 125' aerial lift. Project cost: \$6,500.

PREVIOUS EXPERIENCE

West Virginia State Capitol Building-North Portico Rehabilitation

This project involved replacing the structural slab, as well as limestone and granite elements, before the installation of a waterproof brick paving system originally envisioned by the architect Cass Gilbert. Project cost: \$310,000.

BUILDING RESTORATION & PRESERVATION

West Virginia State Capitol Parking Garage

As a consultant to the General Services Division, performed an extensive survey of this relatively new pre-cast structure exhibiting signs of premature deterioration. The repair recommendations made within this study have been incorporated into the comprehensive rehabilitation program of the garage scheduled to be performed in 2008. Project cost: \$5,500.

West Virginia State Capitol Building-Stairwell Stabilization

In consort with CAS Structural Engineers Inc., recommended and installed through-the-wall stabilization devices into four stairwell walls buckling due to terra cotta block fracture and dislocation. Project cost: \$27,500.

West Virginia State Capitol Building-Limestone Cleaning Test

Demonstrated the repose water soak method of building cleaning on the Handicapped Entrance cheek wall area of the North Portico. Subsequently presented to the General Services Division a budgetary estimate to perform the non-chemical cleaning method on the entire exterior of Building #1, including the East and West wings. Project cost: \$950.

Watt Powell Field Structural Stabilization-West Virginia

Installed orthopedic structural steel elements onto major support columns deteriorating within poured in place concrete treads and risers. Lead based paint removal and structural concrete repairs were also performed to permit the operation of the ball park for additional seasons before the construction of the new stadium could be completed. Project cost: \$185,000.

Farrell Law Building-West Virginia

This elegant terra cotta structure once housed the publishing facilities of the local newspaper. Later converted into a legal facility, the waterproofed vaulted sidewalk is now properly supported after removal and replacement of all concrete elements. Galvanized window lintels were also installed with other masonry and sealant repairs. Project cost: \$135,000.

Erie Maritime Museum-Pennsylvania

Over 1,000 lineal feet of foundation wall cracks were epoxy injected during the extensive rehabilitation of this public exhibition facility along the Lake Erie Waterfront. Project cost: \$12,500.

Poland Seminary Stadium Restoration-Ohio

Constructed in 1936 by the WPA, the cast in place facility required substantial structural and water proofing repairs to extend the life of this locally significant facility. Project cost: \$110,000.

BUILDING RESTORATION & PRESERVATION

St. Mary's Hospital Post Tensioned Parking Garage-West Virginia

Deteriorated post tensioned strand cable repairs, traffic bearing membrane installation, full depth and shallow concrete repair and expansion joint assembly installation maintained the serviceability of this critical four supported level visitor's parking garage. Project cost: \$ 110,000.

Altoona Transportation Center Parking Garage-Pennsylvania

Complex full depth slab and post tensioned strand cable repairs required shoring above occupied space while Amtrak and Greyhound offices and waiting rooms maintained full operational status. Project cost: \$ 875,000.

University of Kentucky-Post Tensioned Parking Garage-Kentucky

Paper sheathed, button head wire type post tensioned repairs required the temporary closure of the 1,100 car garage until concrete and waterproofing repairs could be safely completed. Full length deck slab and beam shoring necessitated the relocation of University Facility Management offices. Project cost: \$920,000.

Holiday Inn-Hollow Core Plank Re-Construction-Pennsylvania

Failing pre cast slab members and deflecting beams commanded the in situ full depth rebuilding of the pre stressed hollow core plank units. Using pneumatically placed (Gunitite) concrete repair methods, the hollow core planks were rebuilt without delay at a fraction of the cost of plank replacement. Project cost: \$465,000.

Slippery Rock University-Pennsylvania

Commissioned to perform the forensic study and repair recommendation regarding the condition of the McKay Education Building. Coping stone resetting, roof modifications, window lintels with end dam terminations and ornamental limestone repairs were recommended and are being performed during the spring of 2008. Project cost: \$12,500.

Smithfield Street Bridge-Pennsylvania

This Landmark Bridge crosses the headwaters of the Ohio River in downtown Pittsburgh and required overlay repair due to heavy commercial vehicle traffic. Using an epoxy and sand matrix, phased repairs with limited traffic impact returned the steel grid deck surface to a protected state ready for continued extreme use conditions. Project cost: \$21,000.

Alvin E. Evans Law Library-University of Kentucky

Thermal hysteresis of flowering carrera marble building panels were identified and probed to assist engineers in their efforts to stabilize distressed areas. All panels were eventually replaced for the safety of the occupants. Project cost: \$135,000.

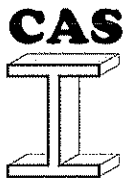
BUILDING RESTORATION & PRESERVATION

TRAINING

- International Masonry Institute Restoration Seminar
- SBA Disaster Services-IDC/MS (Computer) Estimating and Documentation
- SBA Disaster Services-Preliminary Damage Assessment
- OSHA 10-hour Course
- Testing Instrument Usage-KITA Factor
- Cathedral Stone Restoration Seminar
- Confined Space Entry-TWG/Mac Osborne
- Tubular and Swing Stage Scaffold Training & Certification-TWG/Mac Osborne
- Job Estimation Technical Training-Desman and Associates
- Protecting Concrete and Masonry Structures-Simpson Gumpertz & Hager
- Construction Contract Risks-FMI Workshop
- Technical Data for Repair Materials-ICRI
- Contract Administration-FMI Workshop

EDUCATION

Youngstown State University
Youngstown, Ohio



Structural Engineering, Inc.

Firm Profile

CAS Structural Engineering, Inc. – CAS Structural Engineering, Inc. is a West Virginia Certified Disadvantaged Business Enterprise structural engineering firm located in the Charleston, West Virginia area.

Providing structural engineering design and/or analysis on a variety of projects throughout the state of West Virginia, CAS Structural Engineering has experience in excess of 20 years on the following types of building structures:

- Governmental Facilities (including Institutional and Educational Facilities)
- Industrial Facilities
- Commercial Facilities

Projects range from new design and construction, additions, renovation, adaptive reuse and historic preservation (including use of The Secretary of the Interior's Standards for Rehabilitation) to evaluation studies/reports and analysis.

CAS Structural Engineering utilizes AutoCAD for drawing production and Enercalc and RISA 3D engineering software programs for design and analysis. Structural systems designed and analyzed have included reinforced concrete, masonry, structural steel, light gauge steel and timber.

Carol A. Stevens, PE is the firm President and will be the individual responsible for, as well as reviewing, the structural engineering design work on this project. While CAS Structural Engineering, Inc. has only been in business for seven years, Carol has over 20 years of experience in the building structures field, working both here in West Virginia and in the York, Pennsylvania vicinity. Her experience has included a number of building structures evaluation and repair projects, in West Virginia, Pennsylvania and Ohio.

CAS Structural Engineering, Inc. is covered by a \$1 million errors and omissions liability policy.

P.O. Box 469

Alum Creek, WV 25003-0469

(304) 756-2564 (voice)

(304) 756-2565 (fax)

A West Virginia Certified DBE Consultant
Certified in the Practice of Structural Engineering



Structural Engineering, Inc.

Carol A. Stevens, P.E.
Structural Engineer

EDUCATION

West Virginia University, BSCE, 1984
Chi Epsilon National Civil Engineering Honorary
The Pennsylvania State University, ME Eng Sci, 1989

PROFESSIONAL REGISTRATION

P.E. 1990 Pennsylvania
P.E. 1991 West Virginia
P.E. 1994 Maryland

BACKGROUND SUMMARY

2001 – Present President, Structural Engineer
CAS Structural Engineering, Inc.

1999 – 2001 Structural Engineer
Clingenpeel/McBrayer & Assoc, Inc.

1996 – 1999 Transportation Department Manager
Structural Engineer
Chapman Technical Group, Inc.

1995 – 1996 Structural Engineer
Alpha Associates, Inc.

1988 – 1995 Structural Department Manager
Structural Engineer
NuTec Design Associates, Inc.

1982 – 1988 Engineer
AAI Corporation, Inc.

PROFESSIONAL ASSOCIATIONS

American Society of Civil Engineers, WV Section
Past President

National Society of Professional Engineers

American Concrete Institute

American Institute of Steel Construction

West Virginia University Department of Civil and
Environmental Engineering Advisory Committee

West Virginia University Institute of Technology
Department of Civil Engineering Advisory Comm

CIVIC INVOLVEMENT

ASCE Christmas in April Project
Engineer's Week Speaker

EXPERIENCE

West Virginia, State Capitol Complex, Capitol Cafeteria: Investigated problems with support of structure above glass window walls and developed repair solution.

West Virginia, State Capitol Complex, Dome Structure: Exploratory investigation, preparation of construction documents for repairs to structural steel in Capitol Dome.

West Virginia, State Capitol Complex, Building 3: Structural design and construction administration of repairs and renovations to limestone canopy.

West Virginia, State Capitol Complex, Main Capitol Building Parapet: Exploratory investigation of limestone/brick parapet/balustrade of Main Capitol Building to determine cause of movement/cracking/leaks. Project also included preparation of construction documents for repairs.

West Virginia, State Capitol Complex, Governors' Mansion: Structural investigation to determine feasibility of enlarging openings and introducing skylights in existing historic residence.

West Virginia, Westmoreland Apartments: Designed structural additions and renovations to existing closed multi-story school for use as elderly apartments. Work included restoration of exterior masonry components.

West Virginia, Upshur County Courthouse Main Entrance: Designed repairs to failing entrance structure in 1899 structure.

West Virginia, Kanawha County Schools: Structural design of additions and renovations to George Washington, Sissonville, Herbert Hoover, South Charleston and Nitro High Schools.

West Virginia, Eastern West Virginia Regional Airport Authority: Designed foundations, floor and roof framing for new two-story airport terminal building.

West Virginia, Mercer County Airport: Designed foundations, floor and roof framing for additions and renovations to existing airport terminal building.

P.O. Box 469

Alum Creek, WV 25003-0469

(304) 756-2564 (voice)

(304) 756-2565 (fax)

A West Virginia Certified DBE Consultant
Structural Engineering Certification Board

PREVIOUS EXPERIENCE

West Virginia, State Capitol Building: Designed structural system to replace deteriorated reinforced concrete slab at landing on north side of Capitol steps.

West Virginia, Upshur County Courthouse Annex: Performed structural evaluation and design for repairs to existing multi-story Annex addition.

West Virginia, Sissonville Library: Structural design of new 7,000 SF branch library. Structure consisted of wood framing.

West Virginia, Cabell Huntington Hospital Boiler Mezzanine: Structural analysis and testing of existing reinforced concrete mezzanine with significant degradation from brine tank leakage. Developed new structural system to replace existing concrete mezzanine utilizing steel framing and steel grating.

West Virginia, Farrell Law Building: Performed analysis of existing deteriorated structural sidewalk over parking area. Recommended repair solutions for reinforced concrete and aged terra cotta façade of 1920's building.

West Virginia, Beckley Wastewater Treatment Plant: Designed reinforced concrete tanks and masonry support structures for new wastewater treatment plant.

West Virginia, Morgantown High School Additions: Designed steel framing and foundations for science classroom, cafeteria and gymnasium additions to existing education complex.

West Virginia, Grafton High School Addition: Designed steel framing and foundations for new science classroom addition to existing high school.

Pennsylvania, York County Government Center: Structural analysis and design of 1898 former department store converted to county government offices. Interior renovations included adding floor framing at mezzanine level, analyzing and redesigning deficient floor framing, and adding new elevators. Exterior renovations included complete façade rework to recreate original appearance.

Pennsylvania, Metropolitan Edison Company, Headquarters: Structural design of new 80,000 SF two-story office addition and cafeteria addition to existing complex. Cafeteria addition was semi-circular in shape.

Pennsylvania, Defense Distribution Region East: Structural engineering and design for a 33,000 SF Hazardous Materials Storage Warehouse.

Maryland, U.S. Army Corps of Engineers, Baltimore District, Administration Building: Seismic design of new 10,000 SF masonry building.

Pennsylvania, Carlisle Syntec: Design of foundation supports for 800,000 lb rubber vulcanizing machine; enlargement of foreman's office including new framing to support mechanical equipment on roof; new monorail installation; extension of existing gantry rail.

Pennsylvania, Engel Worldwide: Steel framing and foundations for new 12,000 SF two-story office building; design of crane beams and columns for adjacent 60,000 SF crane building.

Pennsylvania, AMP IMF: Structural design for the renovation and conversion of a stamping facility into an integrated manufacturing facility (IMF) housing operations for stamping as well as blow molding processes.

Texas, York International: Structural survey of existing building structure for modifications to incorporate large testing and manufacturing areas for mechanical equipment.

Maryland, Columbia 100: Design of structural steel framing for new two-story 43,000 SF office building.

Pennsylvania, York Federal Savings and Loan Association/New Service Corporation: Design of steel framing, reinforced concrete retaining wall and foundations for new 14,400 SF two-story office building.

Pennsylvania, Yorktowne Parking Garage: Study of reinforced concrete/steel framed parking garage.

Pennsylvania, Blakey Yost Bupp & Schaumann: Reconstruction of a 3-story 10,200 SF, fire damaged urban building and conversion into law offices.

Pennsylvania, College Misericordia: Structural design of new 50,000 SF student resident hall utilizing precast concrete planks and masonry bearing walls.

Pennsylvania, Homewood Suites: Structural and foundation design for new two-story hotel.

Pennsylvania, Comfort Inn: Structural and foundation design of new 5-story hotel.

Pennsylvania, Glatfelter Insurance: Design of steel framing and foundations for new 30,200 SF building.

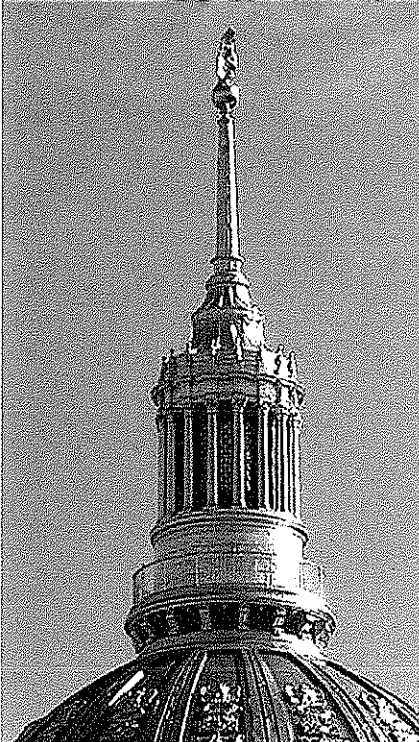
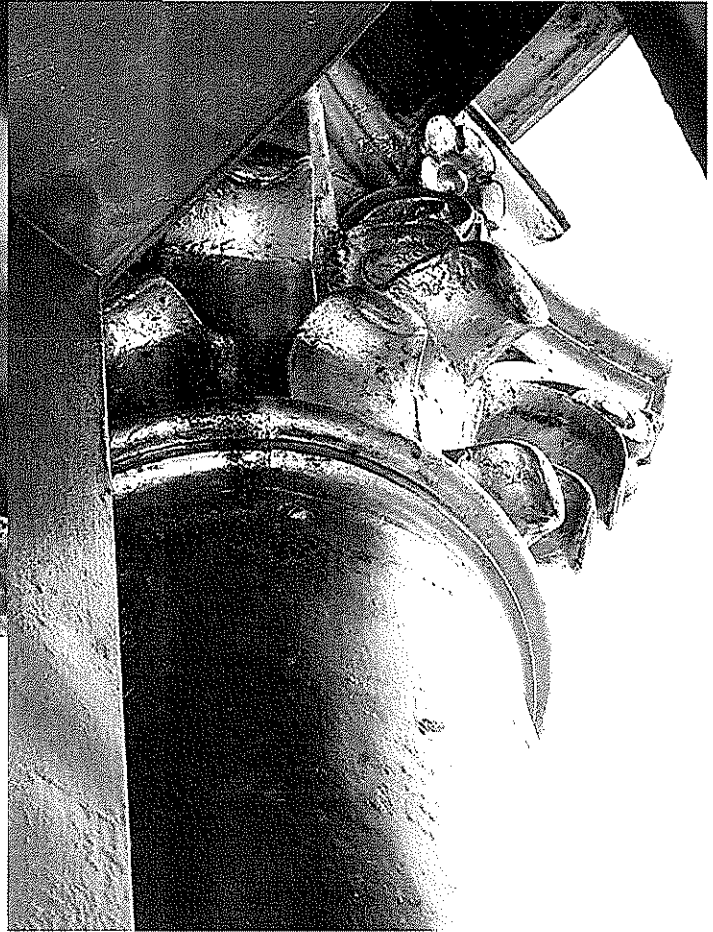
Pennsylvania, M&M Mars: Multi-level steel structure to support dust collectors positioned over existing building, steel framing for motor control center within existing silo building, design of 4-story Alkalizing and Roasting Addition with accommodations for existing functioning railroad siding which remained operations beneath new building.

STRUCTURAL INVESTIGATION MAIN CAPITOL BUILDING DOME

Charleston, West Virginia



The structural steel in the lantern level shows evidence of deterioration. Project included probing to determine extent of deterioration and preparation of plans and specifications for repairs.



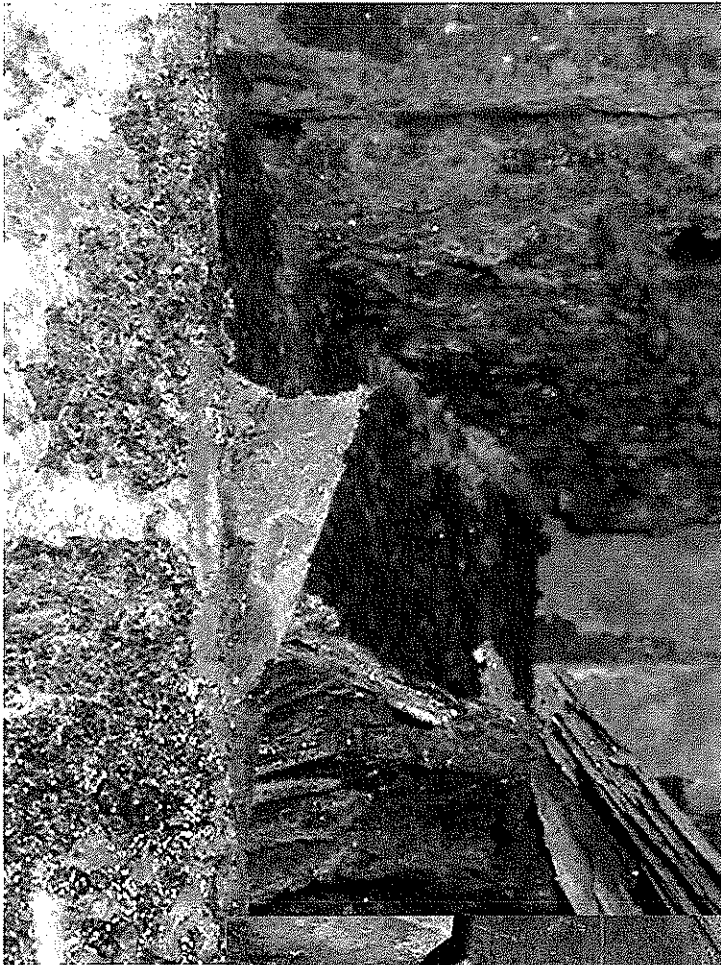
The structural steel after being repaired and the regilding complete.

CAS
 **Structural Engineering, Inc.**



Removal of decorative column wrap indicated that back-up structure was severely deteriorated.





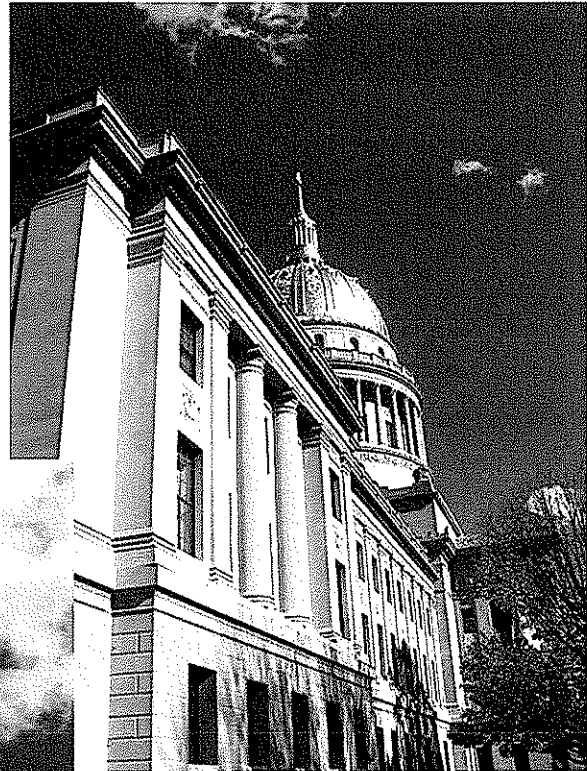
Deterioration of steel supporting sheet metal exhibited such deterioration that portions of the steel have disintegrated. Main wind bracing in Lantern Level (not shown here) also severely deteriorated.



PARAPET/BALUSTRADE INVESTIGATION MAIN CAPITOL BUILDING

Charleston, West Virginia

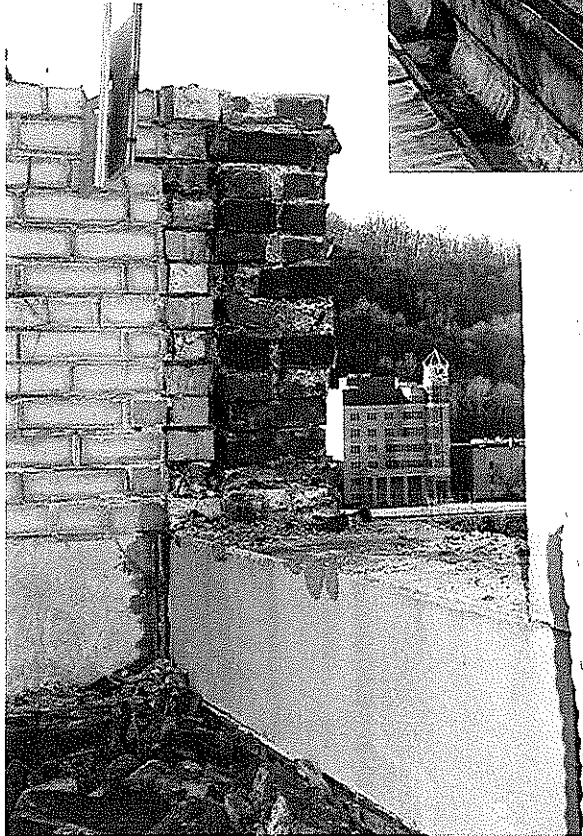
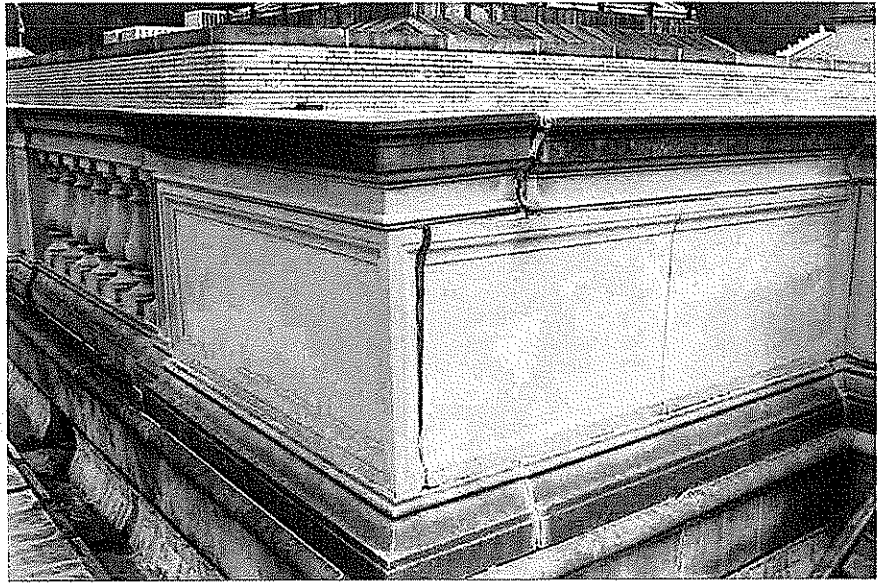
This project was recently completed and involved an exploratory investigation of the Main Capitol Building parapet and balustrade in an effort to determine the source of movement in the limestone panels. In addition, the leaking that is currently occurring in the upper floor ceilings was addressed.



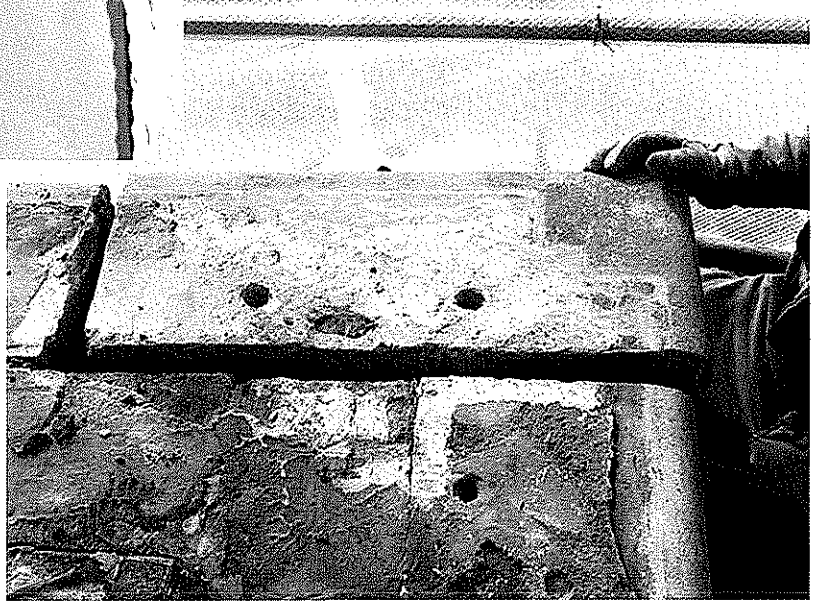
There are a number of locations around the parapet where limestone panels or joints exhibit cracks and significant movement.

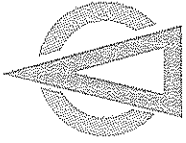
There is evidence of minor efflorescence within the ceiling space as well.





The exploratory investigation involved removing limestone and brick at several locations, documenting the findings, and developing a budget estimate for repairs to the parapet.





**OUTLINE OF GENERAL APPROACH FOR THE DESIGN AND
CONSTRUCTION ADMINISTRATION APPROACH FOR THE
DEMOLITION OF BUILDING 21 IN FAIRMONT**

1. Meet with WV Division of General Services (Agency) representatives
 - a. Review, verify and finalize the Scope of Work
 - b. Document the Scope of Work and return to Agency for verification
2. Document Existing Conditions
 - a. Research and review any As-Built documentation
 - b. Visit the sites with a representative of Agency to photograph, inventory and otherwise document existing conditions
3. Illustrate existing conditions as a basis for Schematic Design
 - a. A combination of CADD drawings and photo-documentation will be used to depict typical situations and detail unique situations
4. Begin Design Phase
 - a. Draft (CADD) and document the proposed design solutions
 - b. Prepare specifications
 - c. Work with Construction Analyst to prepare preliminary Opinion of Probable Cost
5. Affect final Construction Documents
 - a. Meet with Agency and other authorities having jurisdiction at approximately the 50% and 95% completion points for review, comment and acceptance of the Construction Documents
 - b. Incorporate comments into Construction Documents and final design
6. Assist the Agency in Advertising for Bids.
7. Conduct Pre-bid meeting with the Agency 10 days prior to accepting bids.
 - a. Issue Addenda as required
8. Receive and review bids with the Agency.
9. Conduct Pre-Construction Meeting with the successful contractor
 - a. Review construction documents and visit site
 - b. Record minutes of the meetings and distribute to all parties



**OUTLINE OF GENERAL APPROACH FOR THE DESIGN AND
CONSTRUCTION ADMINISTRATION APPROACH FOR THE
DEMOLITION OF BUILDING 21 IN FAIRMONT**

10. Conduct biweekly site visits to observe the construction
 - a. Record the observations and issues resolved and distribute to all parties

11. Conduct periodic job meetings at the time interval to be determined and appropriate to the progress of the construction
 - a. Document all discussions, issues and resolutions
 - b. Issue decisions and answers not resolved on site
 - c. Monitor progress and make adjustments to accommodate and maintain schedules
 - d. Review Pay Applications for appropriate time periods and certify to the Agency
 - e. Comment on reviewed submittals of abatement plans and systems where necessary

12. Conduct Substantial and Final Inspections
 - a. Generate "punch lists" and review with the owner, contractor and appropriate authorities
 - b. Assist the owner and contractor in all Closeout Procedures

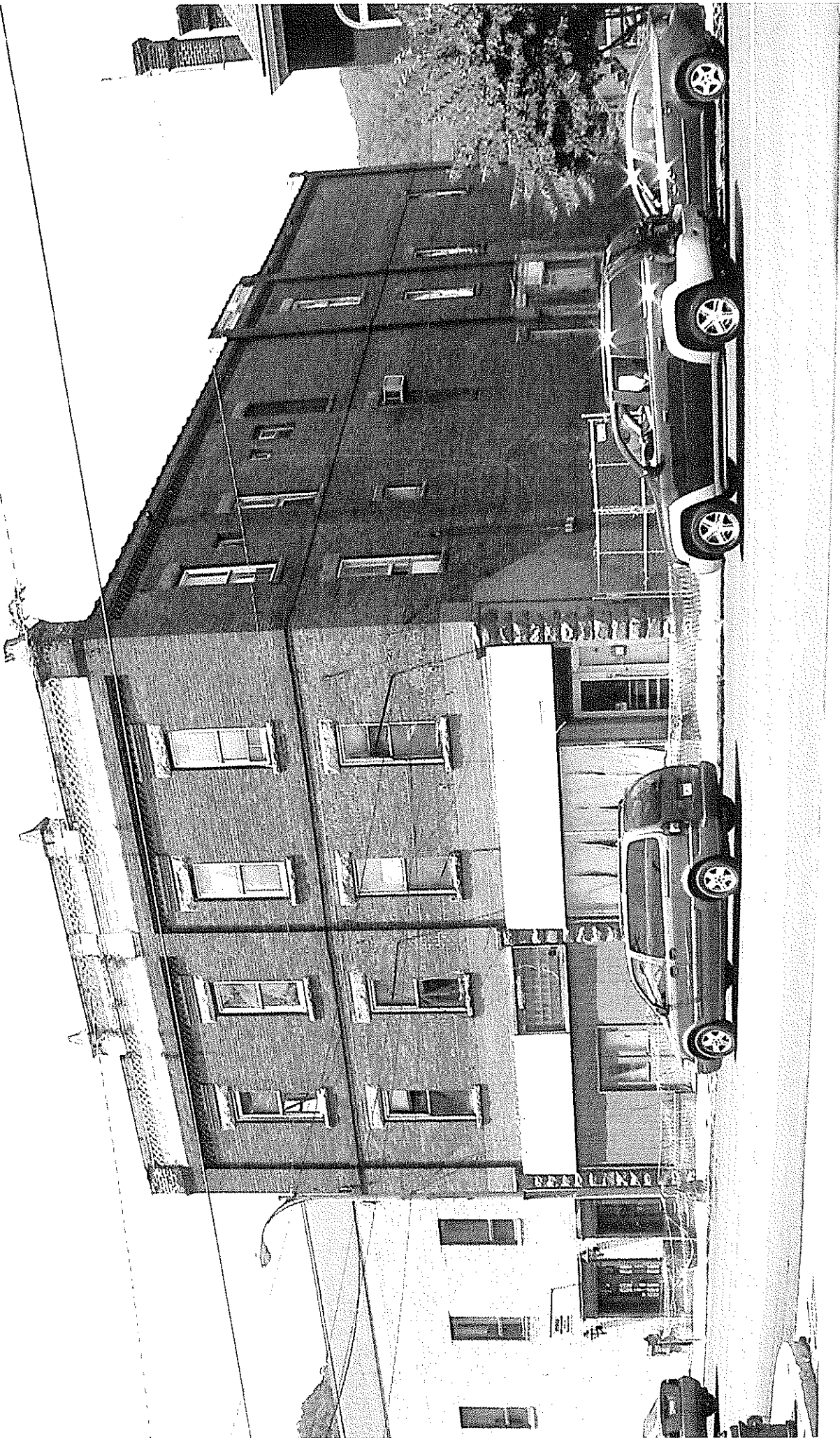
FORMER NAPA BUILDING DEMOLITION
FOR THE TUCKER COUNTY COMMISSION

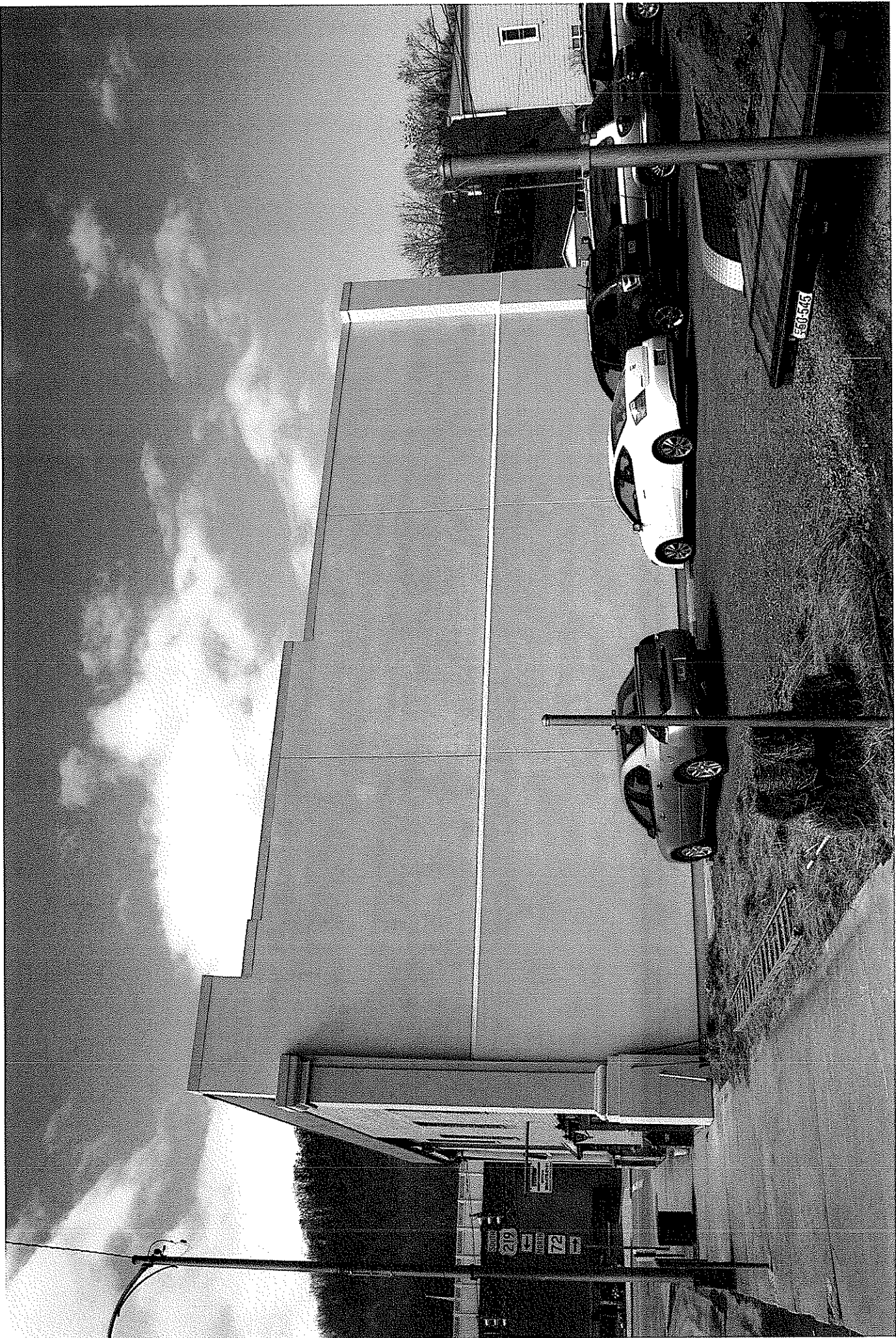
Project Size - Three Stories, 13,664 square feet.

Project Cost – \$214,500.00

Mr. Tom Carr, Commissioner
Tucker County Commission
213 First Street
Parsons, West Virginia 26287
304 478 2866 ext. 207

Chapman Technical Group utilized the services of Pinnacle Environmental to determine the amount of asbestos for the demolition of the old NAPA Building, which also housed a former bowling alley and apartments. The building was originally constructed as car sales and service facility and was constructed of reinforced concrete floor and brick bearing walls. The adjacent attached building was to remain and was occupied during demolition. The remaining demising wall was repaired, covered with an exterior insulating and finishing system (EIFS) and the site was graded and prepared for use as a parking lot for the County Commission offices.





OLD TERMINAL BUILDING AND RESTAURANT
EASTERN WEST VIRGINIA REGIONAL
AIRPORT

Project Size – One story with full Basement,
4,000 square feet.

Project Cost – \$98,652

Mr. William Walkup, Manager
Eastern West Virginia Regional Airport
170 Aviation Way, Room 105
Martinsburg, West Virginia 25405
304 263 2106

Chapman Technical Group utilized the services of Pinnacle Environmental to determine the amount of asbestos for the demolition of the old terminal building at the Eastern West Virginia Regional Airport. The 4,000 square foot structure includes a basement which was removed, and restored with compacted fill, providing additional parking for the airport, and potentially for airplanes in the future.







01/28/2008 2:24 pm

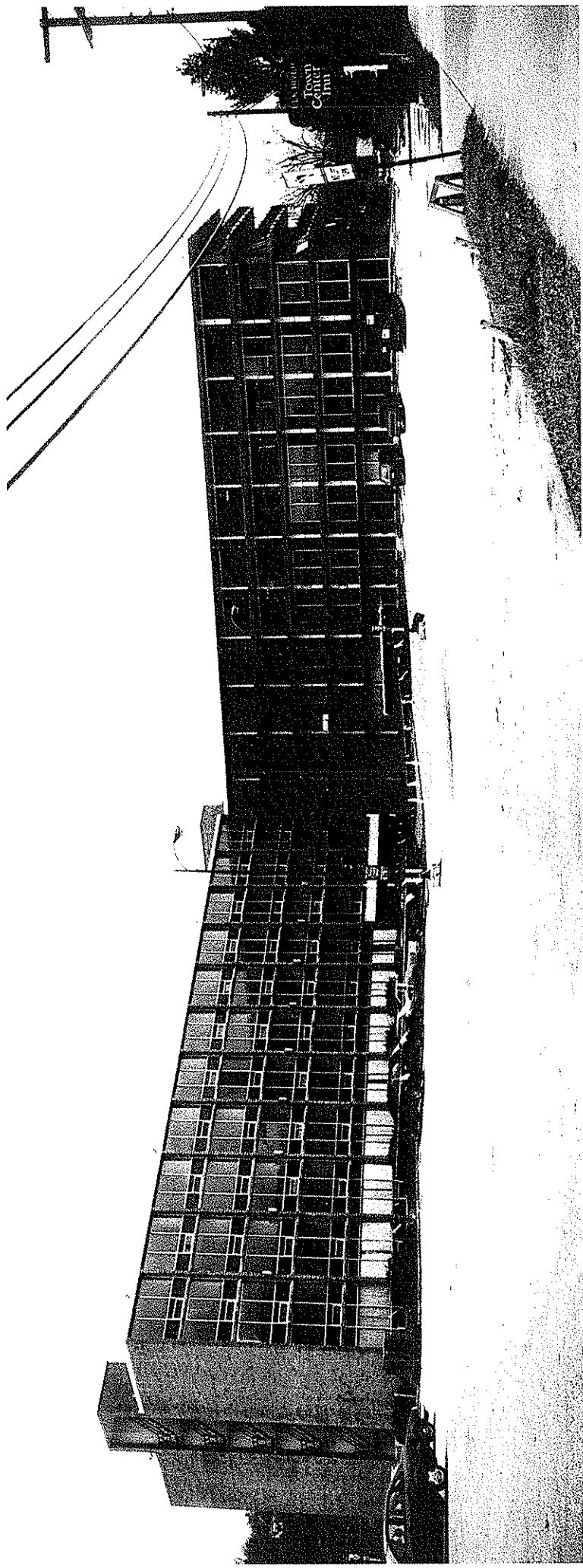
ELK RIVER TOWN CENTER INN

Project Size – Five Stories, 125,000 Square Feet

Project Cost - \$359,997.00

Mr. Eddie Workman, Chief Engineer
Southern Land Company
300 Capitol Street
Charleston, WV 25301
304 346 3661

Southern Land Group had Pinnacle Environmental and Chapman Technical Group design and observe the demolition of the Elk River Town Center Inn. The five story structure and auxiliary buildings housed 125,000 square feet in downtown Charleston. The site was restored to buildable conditions, with filled areas being compacted and tested to meet specification requirements. The project was completed with no change orders.





HANDLEY, WV YMCA

Project Size - Two Stories - 22, 200 square feet.

Project Cost - \$151,500.00

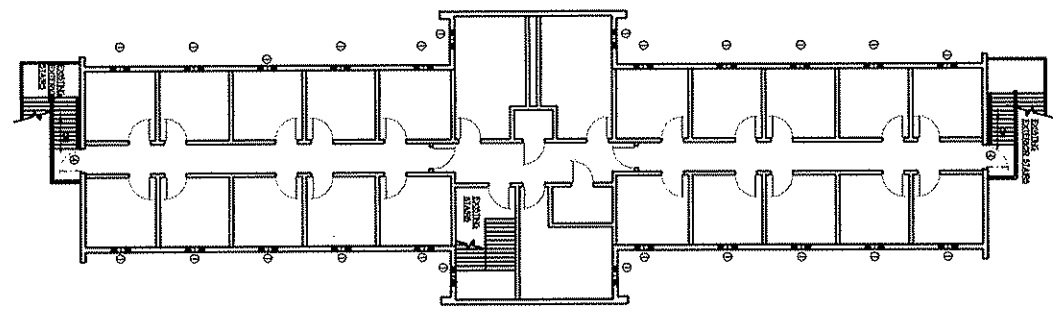
Honorable Essie Ford, Jr. Mayor
Town of Handley
56 Second Avenue
Handley, West Virginia 25102
304 442 5100

Chapman Technical Group worked with the Town of Handley to demolish the old YMCA building to make way for a new Town Hall and playground facility. The building was constructed of reinforced concrete, including the accordion style roof system. Pinnacle Environmental assisted with the asbestos survey and removal plan for this building. The site was repaired and prepared suitable for construction of the new Town Hall and playground building.

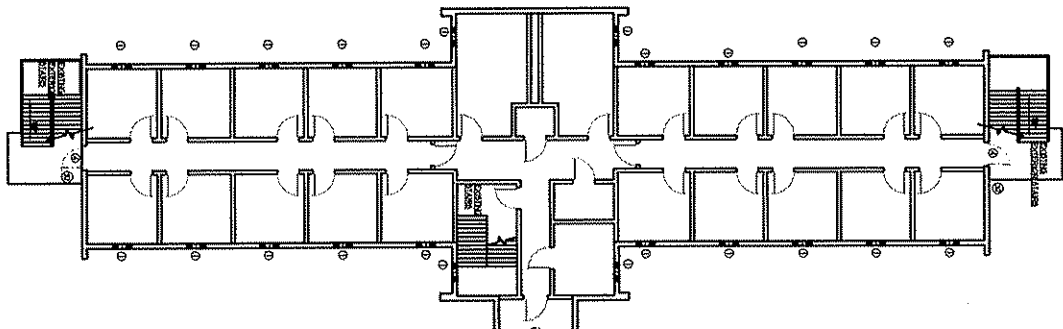
GENERAL NOTES

ALL OF THE EXISTING WORK SHALL BE DEMOLISHED UNLESS OTHERWISE NOTED. THE CONTRACTOR SHALL BE RESPONSIBLE FOR THE PROTECTION AND PRESERVATION OF ALL EXISTING UTILITIES AND STRUCTURES NOT TO BE DEMOLISHED. THE CONTRACTOR SHALL VERIFY EXISTING CONDITIONS, ALL DIMENSIONS AND LOCATIONS OF ALL EXISTING WORK AND SHALL BE RESPONSIBLE FOR THE PROTECTION AND PRESERVATION OF ALL EXISTING UTILITIES AND STRUCTURES NOT TO BE DEMOLISHED. THE CONTRACTOR SHALL VERIFY EXISTING CONDITIONS, ALL DIMENSIONS AND LOCATIONS OF ALL EXISTING WORK AND SHALL BE RESPONSIBLE FOR THE PROTECTION AND PRESERVATION OF ALL EXISTING UTILITIES AND STRUCTURES NOT TO BE DEMOLISHED.

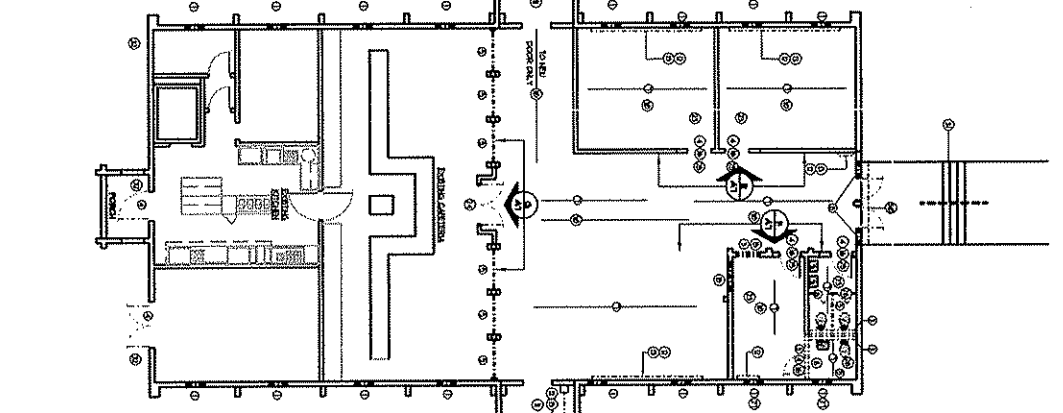
WEST WING SECOND FLOOR



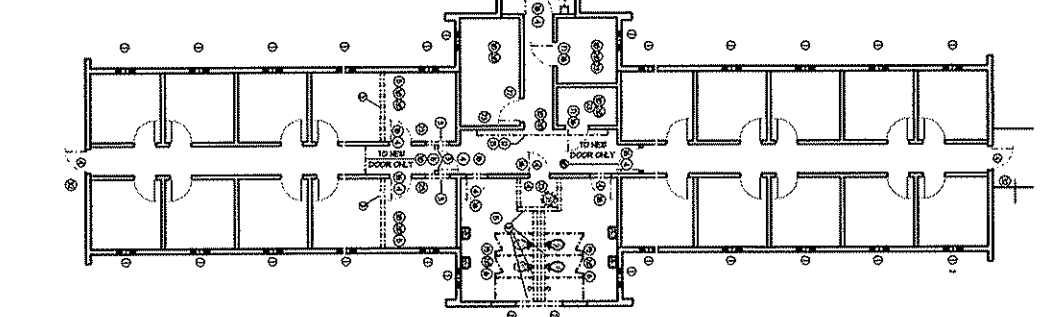
WEST WING



MAIN BUILDING



EAST WING



DEMOLITION LEGEND

TO BE DEMOLISHED

TO BE REBUILT

DEMOLITION PLAN

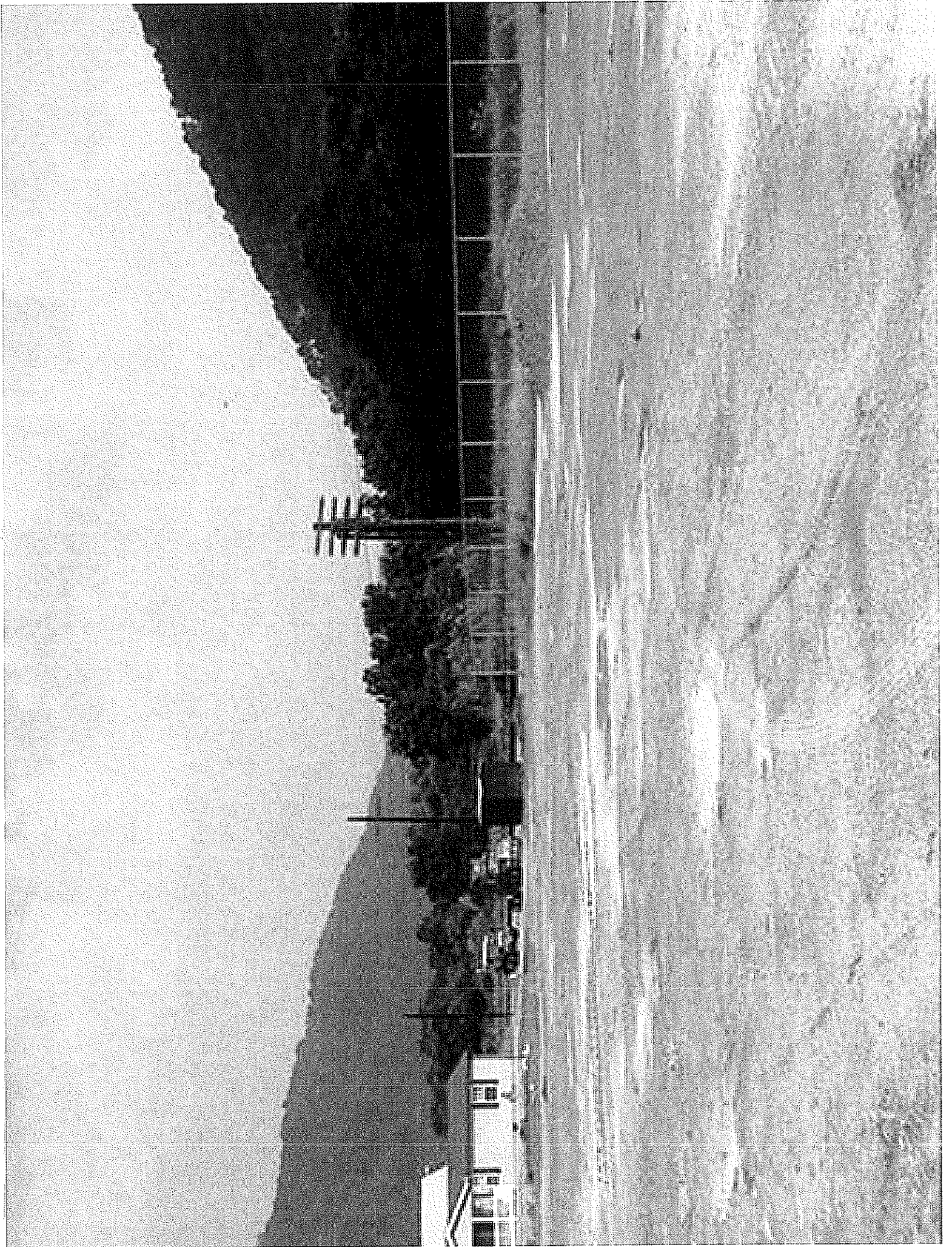
1. REMOVE EXISTING INTERIOR WALLS
2. REMOVE EXISTING EXTERIOR VENTS
3. REMOVE EXISTING CHIMNEY
4. REMOVE EXISTING WINDOW DOORS
5. REMOVE EXISTING CONCRETE FLOOR AS REQUIRED FOR NEW FLOORING
6. REMOVE EXISTING CONCRETE FLOOR AT HALLS AND FLOORS
7. REMOVE EXISTING CONCRETE FLOOR AT HALLS AND FLOORS
8. REMOVE EXISTING INTERIOR WALLS, DOORS, WINDOWS AND PARTITIONS
9. REMOVE EXISTING INTERIOR WALLS, DOORS, WINDOWS AND PARTITIONS
10. REMOVE EXISTING INTERIOR WALLS, DOORS, WINDOWS AND PARTITIONS
11. REMOVE EXISTING INTERIOR WALLS
12. REMOVE EXISTING INTERIOR WALLS
13. REMOVE EXISTING INTERIOR WALLS
14. REMOVE EXISTING INTERIOR WALLS
15. REMOVE EXISTING INTERIOR WALLS
16. REMOVE EXISTING INTERIOR WALLS
17. REMOVE EXISTING INTERIOR WALLS
18. REMOVE EXISTING INTERIOR WALLS
19. REMOVE EXISTING INTERIOR WALLS
20. REMOVE EXISTING INTERIOR WALLS
21. REMOVE EXISTING INTERIOR WALLS
22. REMOVE EXISTING INTERIOR WALLS
23. REMOVE EXISTING INTERIOR WALLS
24. REMOVE EXISTING INTERIOR WALLS
25. REMOVE EXISTING INTERIOR WALLS
26. REMOVE EXISTING INTERIOR WALLS
27. REMOVE EXISTING INTERIOR WALLS
28. REMOVE EXISTING INTERIOR WALLS
29. REMOVE EXISTING INTERIOR WALLS
30. REMOVE EXISTING INTERIOR WALLS
31. REMOVE EXISTING INTERIOR WALLS
32. REMOVE EXISTING INTERIOR WALLS

Demolition Plan

A1

Chapman Technical Group
 ENGINEERS • ARCHITECTS • INTERIOR DESIGNERS • LANDSCAPE ARCHITECTS
 P. O. Box 1922, St. Albans, West Virginia 25159-0922
 P. O. Box 229, Beckmans, West Virginia 25004-0229

PROJECT NUMBER
Handley Community Center
 Town of Handley
 Handley, West Virginia





REFERENCES

NAPA BUILDING DEMOLITION

Mr. Tom Carr, Commissioner
Tucker County Commission
213 First Street
Parsons, West Virginia 26287
304-478-2866 ext. 207

TERMINAL BUILDING DEMOLITION

Mr. William Walkup, Airport Manager
Eastern West Virginia Regional Airport
170 Aviation Way, Room 105
Martinsburg, West Virginia 25405
304-263-2106

ELK RIVER TOWN CENTER INN DEMOLITION

Mr. Eddie Workman, Chief Engineer
Southern Land Company
300 Capitol Street
Charleston, West Virginia 25301
304-346-3661

HANDLEY YMCA DEMOLITION

Honorable Essie Ford, Jr. Mayor
Town of Handley
56 Second Avenue
Handley, West Virginia 25102
304-442-5100



Eastern West Virginia
Regional Airport Authority

304-263-2106
FAX: 304-267-6350

January 4, 2007

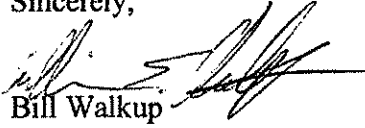
Mr. Jeffrey D. Bubar
Chapman Technical Group
200 Sixth Avenue
St. Albans, WV 25177

Dear Mr. Bubar:

I would like to take this opportunity to personally express my appreciation for the services Chapman Technical Group has provided over the years to the Eastern WV Regional Airport Authority. It has been a very positive experience and a pleasure working with the dedicated staff of your company. Your professionalism has been appreciated in every phase of the project, but in particular, your attention to detail and responsiveness during construction has been outstanding.

Again, we appreciate your services and look forward to continuing our professional relationship.

Sincerely,



Bill Walkup
Airport Manager



RECEIVED DEC 21 2006

DIVISION OF NATURAL RESOURCES

Wildlife Resources Section

Operations Center

P.O. Box 67

Elkins, West Virginia 26241-3235

Telephone (304) 637-0245

Fax (304) 637-0250

Joe Manchin III
Governor

Frank Jezioro
Director

December 18, 2006

Mr. Joe Byrd, Vice President
Chapman Technical Group
200 Sixth Avenue
St. Albans, WV 25177

Dear Mr. Byrd:

I wish to take this opportunity to thank Chapman Technical Group for their services and expertise with the design, contracting and supervision of our recent roof, soffit and fascia replacement project at the Elkins Operations Center.

Your design work has resulted in the renovation of our 32,000 square-foot research and office complex, which has enhanced the facilities appearance and increased the building's energy efficiency. Your attention to detail and the guidance of the contractor, made the renovation process painless.

In addition, construction modifications were made to correct problems found during the renovation process. These change orders were handled fast and effectively, preventing project delays.

I really appreciate your attention to my post-construction issues. On several occasions, I have had to call you regarding minor repairs or adjustment to the renovations. Chapman promptly returned my calls, responded to my concerns and addressed those concerns with the contractor, resulting in necessary adjustments.

Chapman's professional services were and are appreciated.

Sincerely,

A handwritten signature in black ink, appearing to read "Roger J. Anderson".

Roger J. Anderson
Environmental Resource Program Manager

RJA/skj



Office of the Mayor David C. Nohe

Gentleman:

The City of Vienna would like to express its appreciation to Chapman Technical Group for their service in providing design and construction administration for the Vienna Senior Center.

Chapman Technical Group was very mindful of our budget requirements and worked diligently to renovate the existing structure into a safe, open and well functioning plan. The Senior Center now provides accessible restrooms, a gathering hall, lounge and commercial kitchen on the ground floor, with consideration of how future accessibility of the second floor will be attained.

We were well informed of the project progress and were well pleased with the responsiveness and care demonstrated throughout the project.

Further, the seniors are thrilled with their new facility, and the City of Vienna strongly recommends Chapman Technical Group. I sincerely feel whoever is fortunate enough to utilize this company will be rewarded with work well done. We look forward to working with them again in the future!

Sincerely,

David C. Nohe,
Mayor

DCN/cjs



JAMES E. MORROW LIBRARY
400 Hal Greer Boulevard
Huntington, West Virginia 25755-2060
304/696-3120

RECEIVED DEC 19 2006

December 15, 2006

Dale E. Withrow
Chapman Technical Group
200 Sixth Avenue
St. Albans WV 25177

Dear Mr. Withrow,

I wish to express the appreciation of my department for your work in renovating the third floor of the Morrow Library.

We had a thoroughly pleasant experience while you were working on this project. You and the contractors were generous with your time in keeping us informed, allowing us to attend your meetings and asking for our input, and extending us every courtesy.

The workmen were friendly and generous in their interaction with us. We were also very satisfied with the workmanship done on the third floor of the library.

Overall we enjoyed having you work on this project.

Sincerely,

A handwritten signature in black ink, appearing to read 'Lisle G Brown', written over a horizontal line.

Lisle G Brown, Curator
Special Collections
Marshall University



State of West Virginia
 Department of Administration
 Purchasing Division
 2019 Washington Street East
 Post Office Box 50130
 Charleston, WV 25305-0130

Request for Quotation

RFQ NUMBER
GSD096445

PAGE
1

ADDRESS CORRESPONDENCE TO ATTENTION OF
**KRISTA FERRELL
 304-558-2596**

**RFQ COPY
 TYPE NAME/ADDRESS HERE**

**Chapman Technical Group
 P.O. Box 1355
 St. Albans, WV 25177**

**DEPARTMENT OF ADMINISTRATION
 GENERAL SERVICES DIVISION
 BLDG 21 - ARCH MOORE COMPLEX
 109 ADAMS STREET
 FAIRMONT WV.
 26554 304-558-2317**

DATE PRINTED	TERMS OF SALE	SHIP VIA	F.O.B.	FREIGHT TERMS
03/18/2009				

BID OPENING DATE: **04/14/2009** BID OPENING TIME **01:30PM**

LINE	QUANTITY	UOP	CAT NO	ITEM NUMBER	UNIT PRICE	AMOUNT
0001	1	LS		906-07		
<p>A&E SERVICES: DESIGN OF FAIRMONT BLDG DEMOLITION</p> <p>EXPRESSION OF INTEREST</p> <p>(EOI)</p> <p>PROFESSIONAL ARCHITECTURAL/ENGINEERING SERVICES</p> <p>THE WEST VIRGINIA STATE PURCHASING DIVISION FOR THE AGENCY, THE WEST VIRGINIA DIVISION OF GENERAL SERVICES, IS SOLICITING BIDS TO PROVIDE THE AGENCY WITH ARCHITECTURAL AND ENGINEERING SERVICES FOR THE DEMOLITION OF BUILDING #21 LOCATED IN FAIRMONT, WEST VIRGINIA PER THE ATTACHED SPECIFICATIONS.</p> <p>TECHNICAL QUESTIONS CONCERNING THIS PROJECT MUST BE SUBMITTED IN WRITING TO KRISTA FERRELL IN THE WEST VIRGINIA STATE PURCHASING DIVISION VIA FAX AT 304-558-4115 OR VIA EMAIL AT KRISTA.S.FERRELL@WV.GOV. DEADLINE FOR ALL TECHNICAL QUESTIONS IS MARCH 31, 2009 AT THE CLOSE OF BUSINESS. ALL TECHNICAL QUESTIONS RECEIVED, IF ANY, WILL BE ANSWERED BY ADDENDUM AFTER THE DEADLINE HAS LAPSED.</p> <p>QUESTIONS CONCERNING THE ACTUAL PROCESS BY WHICH A FIRM MAY SUBMIT AN EXPRESSION OF INTEREST TO THE STATE OF WEST VIRGINIA ARE NOT CONSIDERED TO BE TECHNICAL QUESTION AND MAY BE SUBMITTED AT ANY TIME PRIOR TO THE BID OPENING AND IN ANY FORMAT.</p> <p>EXHIBIT 10</p>						

SEE REVERSE SIDE FOR TERMS AND CONDITIONS

SIGNATURE	TELEPHONE	DATE
-----------	-----------	------

TITLE	FEIN	ADDRESS CHANGES TO BE NOTED ABOVE
-------	------	-----------------------------------

WHEN RESPONDING TO RFQ, INSERT NAME AND ADDRESS IN SPACE ABOVE LABELED 'VENDOR'



State of West Virginia
 Department of Administration
 Purchasing Division
 2019 Washington Street East
 Post Office Box 50130
 Charleston, WV 25305-0130

Request for Quotation

RFQ NUMBER
GSD096445

PAGE
2

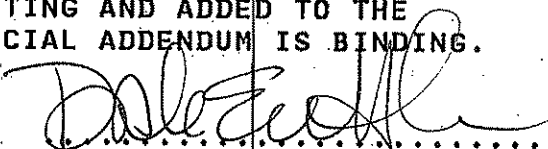
ADDRESS CORRESPONDENCE TO ATTENTION OF
**KRISTA FERRELL
 304-558-2596**

VENDOR
 RFQ COPY
 TYPE NAME/ADDRESS HERE
 Chapman Technical Group
 P.O. Box 1355
 St. Albans, WV 25177

SHIP TO
 DEPARTMENT OF ADMINISTRATION
 GENERAL SERVICES DIVISION
 BLDG 21 - ARCH MOORE COMPLEX
 109 ADAMS STREET
 FAIRMONT WV
 26554 304-558-2317

DATE PRINTED	TERMS OF SALE	SHIP VIA	F.O.B.	FREIGHT TERMS
03/18/2009				

BID OPENING DATE: **04/14/2009** BID OPENING TIME **01:30PM**

LINE	QUANTITY	UOP	CAT NO	ITEM NUMBER	UNIT PRICE	AMOUNT
REQUISITION NO.: GSD096445.....						
ADDENDUM ACKNOWLEDGEMENT						
I HEREBY ACKNOWLEDGE RECEIPT OF THE FOLLOWING CHECKED ADDENDUM(S) AND HAVE MADE THE NECESSARY REVISIONS TO M PROPOSAL, PLANS AND/OR SPECIFICATION, ETC.						
ADDENDUM NO.'S:						
NO. 1 ..X.....						
NO. 2						
NO. 3						
NO. 4						
NO. 5						
I UNDERSTAND THAT FAILURE TO CONFIRM THE RECEIPT OF THE ADDENDUM(S) MAY BE CAUSE FOR REJECTION OF BIDS.						
VENDOR MUST CLEARLY UNDERSTAND THAT ANY VERBAL REPRESENTATION MADE OR ASSUMED TO BE MADE DURING ANY ORAL DISCUSSION HELD BETWEEN VENDOR'S REPRESENTATIVES AND ANY STATE PERSONNEL IS NOT BINDING. ONLY THE INFORMATION ISSUED IN WRITING AND ADDED TO THE SPECIFICATIONS BY AN OFFICIAL ADDENDUM IS BINDING.						
 SIGNATURE Chapman Technical Group COMPANY						

SEE REVERSE SIDE FOR TERMS AND CONDITIONS						
SIGNATURE		TELEPHONE		DATE		
TITLE		FEIN		ADDRESS CHANGES TO BE NOTED ABOVE		

WHEN RESPONDING TO RFQ, INSERT NAME AND ADDRESS IN SPACE ABOVE LABELED 'VENDOR'



State of West Virginia
 Department of Administration
 Purchasing Division
 2019 Washington Street East
 Post Office Box 50130
 Charleston, WV 25305-0130

Request for Quotation

RFQ NUMBER
GSD096445

PAGE
3

ADDRESS CORRESPONDENCE TO ATTENTION OF
**KRISTA FERRELL
 304-558-2596**

**RFQ COPY
 TYPE NAME/ADDRESS HERE**

VENDOR

**Chapman Technical Group
 P.O. Box 1355
 St. Albans, WV 25177**

SHIP TO

**DEPARTMENT OF ADMINISTRATION
 GENERAL SERVICES DIVISION
 BLDG 21 - ARCH MOORE COMPLEX
 109 ADAMS STREET
 FAIRMONT WV
 26554 304-558-2317**

DATE PRINTED 03/18/2009	TERMS OF SALE	SHIP VIA	FOB	FREIGHT TERMS
-----------------------------------	---------------	----------	-----	---------------

BID OPENING DATE: **04/14/2009** BID OPENING TIME **01:30PM**

LINE	QUANTITY	UOP	CAT NO	ITEM NUMBER	UNIT PRICE	AMOUNT
<p>... 4/21/2009 ... DATE</p>						
<p>REV. 11/96</p> <p style="text-align: center;">NOTICE</p> <p>A SIGNED EOI MUST BE SUBMITTED TO:</p> <p style="text-align: center;"> DEPARTMENT OF ADMINISTRATION PURCHASING DIVISION BUILDING 15 2019 WASHINGTON STREET, EAST CHARLESTON, WV 25305-0130 </p> <p>THE EOI SHOULD CONTAIN THIS INFORMATION ON THE FACE OF THE ENVELOPE OR THE EOI MAY NOT BE CONSIDERED:</p> <p>SEALED EOI</p> <p>BUYER: KRISTA FERRELL-FILE 21</p> <p>EOI. NO.: GSD096445</p> <p>EOI OPENING DATE: 04/14/2009</p> <p>EOI OPENING TIME: 1:30 PM</p>						

SEE REVERSE SIDE FOR TERMS AND CONDITIONS

SIGNATURE _____ TELEPHONE _____ DATE _____

TITLE _____ FEIN _____ ADDRESS CHANGES TO BE NOTED ABOVE

WHEN RESPONDING TO RFQ, INSERT NAME AND ADDRESS IN SPACE ABOVE LABELED 'VENDOR'



State of West Virginia
 Department of Administration
 Purchasing Division
 2019 Washington Street East
 Post Office Box 50130
 Charleston, WV 25305-0130

Request for Quotation

RFQ NUMBER
GSD096445

PAGE
4

ADDRESS CORRESPONDENCE TO ATTENTION OF
**KRISTA FERRELL
 304-558-2596**

VENDOR

RFQ COPY
 TYPE NAME/ADDRESS HERE

Chapman Technical Group
 P.O. Box 1355
 St. Albans, WV 25177

SHIP TO

DEPARTMENT OF ADMINISTRATION
 GENERAL SERVICES DIVISION
 BLDG 21 - ARCH MOORE COMPLEX
 109 ADAMS STREET
 FAIRMONT WV
 26554
 304-558-2317

DATE PRINTED	TERMS OF SALE	SHIP VIA	FOB	FREIGHT TERMS
03/18/2009				

BID OPENING DATE: **04/14/2009** BID OPENING TIME **01:30PM**

LINE	QUANTITY	UOP	CAT NO	ITEM NUMBER	UNIT PRICE	AMOUNT
PLEASE PROVIDE A FAX NUMBER IN CASE IT IS NECESSARY TO CONTACT YOU REGARDING YOUR EO1: <p style="text-align: center;">----- 304-727-5580 -----</p> CONTACT PERSON (PLEASE PRINT CLEARLY): <p style="text-align: center;">----- Dale E. Withrow, Manager Architecture -----</p>						
***** THIS IS THE END OF RFQ GSD096445 ***** TOTAL: _____						

SEE REVERSE SIDE FOR TERMS AND CONDITIONS

SIGNATURE	TELEPHONE	DATE
TITLE	FEIN	ADDRESS CHANGES TO BE NOTED ABOVE

WHEN RESPONDING TO RFQ, INSERT NAME AND ADDRESS IN SPACE ABOVE LABELED 'VENDOR'