

EXPRESSION OF INTEREST

SOURCE WATER PROTECTION TECHNICAL HELP PROGRAM S W P T H P

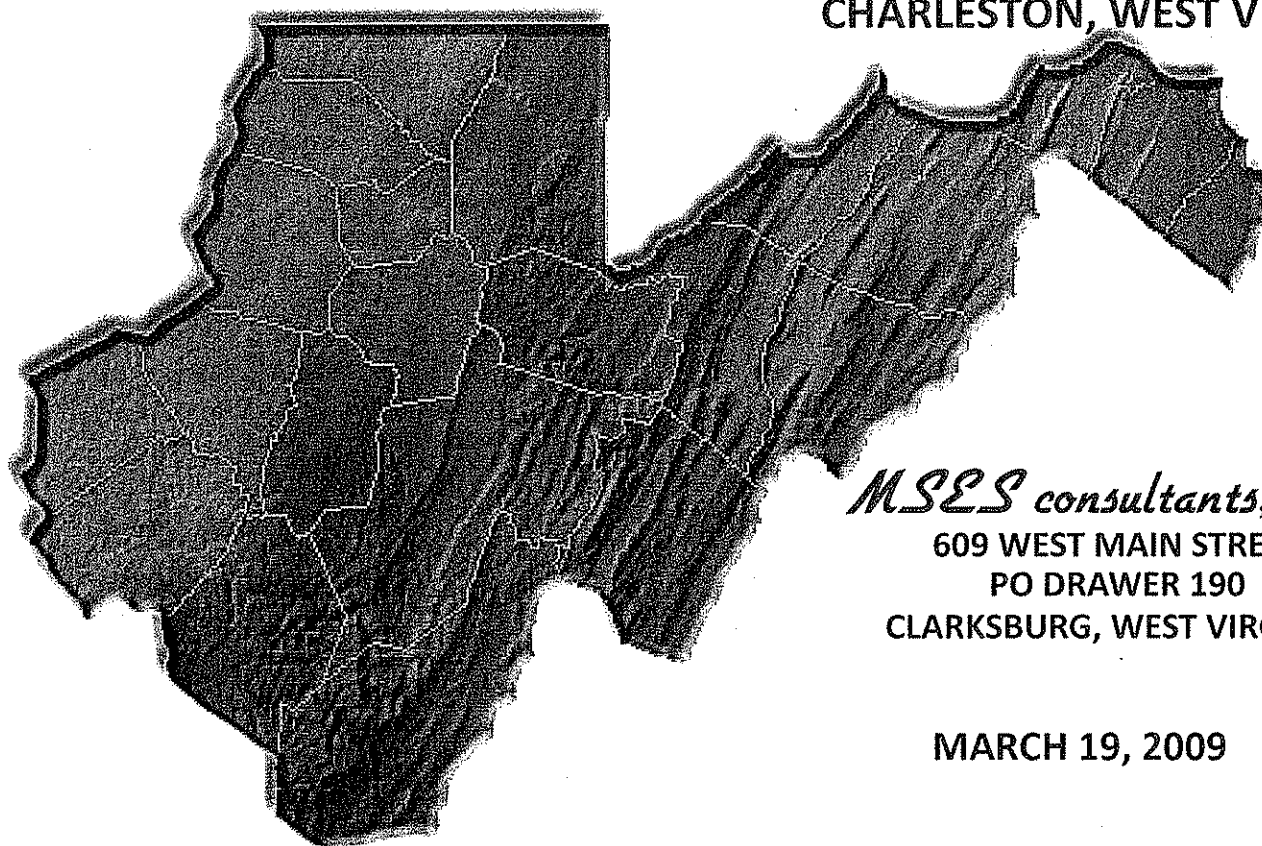
RECEIVED

2009 MAR 17 P 3: 39

PURCHASING DIVISION
STATE OF WV

HEALTH AND HUMAN RESOURCES BUREAU FOR PUBLIC HEALTH OFFICE OF ENVIRONMENTAL HEALTH SERVICES

ONE DAVIS SQUARE, SUITE 200
CHARLESTON, WEST VIRGINIA

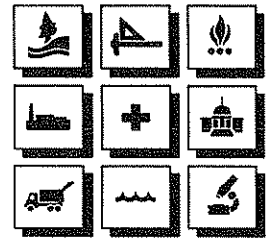


MSES consultants, inc.

609 WEST MAIN STREET
PO DRAWER 190
CLARKSBURG, WEST VIRGINIA

MARCH 19, 2009

BUYER: ROBERTA WAGNER	RFQ No.: EHS90111
OPENING DATE MARCH 19, 2009	OPENING TIME: 1:30 PM



609 W. Main Street, Bldg. 2 • P.O. Drawer 190 • Clarksburg, WV 26302-0190
304/624-9700 • 304/622-0981 • 304/842-3325 • <http://www.msesinc.com>
Office Fax 24 Hour World Wide Web

March 19, 2009
Project No.: PR-09-031

Ms. Roberta Wagner
WV Purchasing Division
2019 Washington Street, East
P. O. Box 50130
Charleston, West Virginia 25305-0130

EXPRESSION OF INTEREST
HEALTH AND HUMAN RESOURCES
BUREAU OF PUBLIC HEALTH
OFFICE OF ENVIRONMENTAL HEALTH SERVICES
for
SOURCE WATER PROTECTION TECHNICAL HELP PROGRAM
PHILIPPI AND KEARNEYSVILLE DISTRICTS, WEST VIRGINIA

Dear Ms. Wagner:

MSES Consultants, Inc. (MSES) is pleased to submit this Expression of Interest for the Professional Engineering and Environmental Services needed by the Source Water Protection Technical Help Program. This submittal includes an overview of MSES, with information describing our qualifications, experience, management and staffing capabilities, project approach, and related prior experience.

The MSES Project Team's extensive experience in environmental projects, including site and subsurface investigations, hydrogeologic characterizations, site inventories, Phase I, II, and III environmental transaction screens, assessments, and remediation, closures of site environmental issues under various regulatory programs, and site adaptation for reuse, will facilitate the successful, economical, and efficient cost for the Source Water Protection Technical Help Program updates for the various public water systems' source water. The MSES Team is prepared to work closely with the DHHR, BPH, Office of Environmental Health Services, and the various public water systems to provide the project and the water systems with a knowledgeable and uniquely-qualified Project Team.

This submittal demonstrates MSES is well-qualified to provide project environmental, engineering, technical support, and project management services of the highest quality for the various water systems in a technically-sound, highly-professional, and cost-effective manner. In summary, the MSES Team provides:

- (1) substantial experience on similar projects, many for countywide water resource projects
- (2) strong performance record on similar projects
- (3) comprehensive in-house expertise
- (4) regional presence, knowledge and experience
- (5) fully-qualified and experienced project personnel
- (6) clear understanding of goals and requirements of the DHHR, BPH, and the Office of Environmental Health Services
- (7) familiarity with applicable SDWA regulations and other federal, state, and local codes and policies
- (8) absence of any potential conflict of interest
- (9) knowledgeable, experienced professional staff, all of whom are full-time, in-house MSES employees, whose time will be committed to the project needs
- (10) sincere interest in serving the DHHR, BPH, and Office of Environmental Health Services in the successful completion of the SWPTHP project.

Thank you for the opportunity to submit this Expression of Interest for this important upcoming assignment. Should you or other reviewers have questions, please feel free to contact Mr. John J. Keeling or Mr. Lawrence M. Rine of MSES. We look forward to an interview with the DHHR, BPH, and OEHS to further present our qualifications and answer any questions you may have regarding our firm, our personnel, and our expertise, based on our various related projects.

Respectfully submitted,


John J. Keeling, P.E., C.I.H., C.S.P., Q.E.P., L.R.S.
Vice President and Senior Project Manager

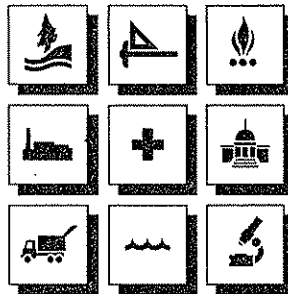


EXPRESSION OF INTEREST

PREPARED EXPRESSLY FOR

HEALTH AND HUMAN RESOURCES
BUREAU OF PUBLIC HEALTH
OFFICE OF ENVIRONMENTAL HEALTH SERVICES

SOURCE WATER PROTECTION TECHNICAL HELP PROGRAM



MSES consultants, inc.

Clarksburg, West Virginia

CONTENTS

- 1 STATEMENT OF QUALIFICATION
- 2 KEY PERSONNEL
- 3 PAST PERFORMANCE
- 4 TECHNICAL APPROACH
- 5 CONFIRMATIONS
- 6 RFQ and PURCHASING AFFIDAVIT

1.0 Statement of Qualifications

MSES CONSULTANTS, INC. - THE FIRM

MSES Consultants, Inc. is a multi-disciplinary environmental, engineering, planning, and management firm, headquartered in Clarksburg, West Virginia. We have amassed 33 years of successful project experience, serving private and public clients since our initial founding as an environmental consulting firm in 1976. MSES expanded rapidly to become a provider of total engineering and environmental services by the year 1978, and we have since seen our ranks swell. Today MSES' combined total professional staffing, which includes the consulting services provided by MSES, our Architectural Division, Corrosion Products Division, and Laboratory Division, totals 130 skilled professionals. Services provided include environmental, engineering, energy, air, safety, land and title, solid waste, water, wastewater, survey and mapping, database compilation, Geographic Information Systems (GIS) mapping and data management, industrial hygiene, architectural design, and training, among many other diverse capabilities offered by our talented staff of multidisciplinary in-house professionals. The professionals who support the services provided by MSES include fourteen (14) engineers, twelve (12) of whom are registered professionals, Certified Safety Professionals, Licensed Remediation Specialist, Certified Industrial Hygienists, geologist and hydrogeologist, biologists, meteorologist, GIS database and mapping specialists, asbestos air clearance monitors, asbestos inspectors, lead based paint risk assessor, six (6) professional land surveyors, and a diverse roster of professionals, scientists, technicians, technical writers, architects, and support personnel, all of whom are full time, in-house personnel.

MSES has completed more than 10,601 assignments to date. We have been heavily focused on environmental, engineering, safety, resource assessment and planning, brownfields, and project management since our founding in 1976. Many of our projects have involved surface and groundwater/hydrogeologic assessments, programs, and modeling; GIS database reviews and compilations, mapping, and data management projects; source water assessments, data compilations, mapping, and planning; contaminant source database compilations and mapping; environmental sampling and analysis; site evaluations, studies, designs, and inspections; hazardous and toxic materials removal and abatement; geotechnical investigations, assessments and reviews; brownfields assessments, planning, and cleanups; closures of environmental issues under various regulatory programs; and resource assessments, database compilations, mapping, planning, and public awareness / community involvement activities for water systems throughout West Virginia and surrounding states.

MSES CONSULTANTS, INC. AND THE ENVIRONMENT

Since its inception in 1976, MSES Consultants, Inc. has developed and maintained an intimate connection with many private and public entities requiring environmental services within West Virginia. One of the unique factors that has prompted our knowledge of and responsiveness to their needs is the presence of former manufacturing facility process and environmental personnel, State and Federal agency representatives, Public Service District, City Engineer, West Virginia and Kentucky Department of Transportation, electric company, and natural gas company employees among our ranks of seasoned professionals. In addition to our familiarity

Statement of Qualifications

with environmental and engineering needs, MSES has benefited from the national and international expertise of various professionals among our ranks whom have worked for such diverse entities as CH2M Hill, Union Carbide Corporation, the U. S. Army, G. E. Specialty Chemicals, West Virginia University, the Veterans Administration, and the USEPA. These key employees contribute a wealth of knowledge and a breadth of experience that is difficult to match.

In addition to employee experience, another factor for MSES' continued success is the unusual degree of longevity and company loyalty among our personnel. Our firm was founded in 1976, and is celebrating our thirty-three (33) year milestone in 2009 of operating under the same name, with the same management personnel, and same management philosophy. Our many long-term and repeat clients are appreciative of the continuity that this affords, and are refreshed with the degree of familiarity and prior knowledge with which each subsequent project is met. It is this unique combination of knowledgeable, experienced, talented, and devoted principals and employees that has brought MSES Consultants to the forefront as a provider of total environmental, engineering, planning, and management services for the environmental industry.

DEPTH OF PERSONNEL

MSES maintains a staff of highly trained and experienced personnel, including all the technical disciplines necessary to fully staff projects of all sizes and types. Our personnel demonstrate the education, certifications, and experience qualifications required to accommodate all the needs for the State of West Virginia, Department of Health and Human Resources (DHHR), Bureau for Public Health (BPH), Office of Environmental Health Services (OEHS)' Source Water Protection Technical Help Program (SWPTHP).

Our staff's stable employment record enables the firm to assemble project teams that have worked together before, and that possess a good knowledge of how individual strengths fit together to form an effective team. The firm is able to assemble teams composed of individuals whose capabilities are tested and well known to our establishment. We assign senior staff to management roles on all our projects. The multi-disciplinary depth of our staff is reflected by the Professional Staff Chart, found on Page 1-3, while a listing of current and pending professional registrations is provided by the chart located on Page 1-4. The depth of our staff in each category permits performance of large assignments, as well as simultaneous performance of many jobs that do not require full-time commitment of individuals. Our experience and diverse staffing capabilities allow us to draw upon specialized personnel to facilitate unique project requirements. The wide variety of services that MSES Consultants, Inc. provides makes it possible for clients to establish a working relationship with us as a single source consultant. We are organized to ensure that all clients are provided with a high level of personal and professional attention.

Statement of Qualifications

MSES CONSULTANTS AND THE SWPTHP

MSES believes that we are a firm which offers a broad range of resources and expertise, whose location within the City of Clarksburg and intimate knowledge of the State of West Virginia and its challenges will be of particular value in accomplishing the DHHR's goals and objectives. We are confident that MSES will prove to be an extension of the DHHR's efforts, enhancing its vision on a long term basis. As many of our clients have found - we are their best kept secret.

PROFESSIONAL STAFF

MSES Consultants, Inc. employs a professional staff of multi-educated, full-time professionals with experience in numerous disciplines. The MSES (non-Architectural, Corrosion Products, and Laboratory Divisions) staff consists of:

Category	Number of Employees	Education		
		Associate Degrees	Bachelor Degrees	Advanced Degrees
Administrative	4	2	2	--
Chemical Engineer	1	--	1	1
Chemist	1	--	1	--
Civil Engineer	3	--	3	--
Resident Construction Engineer	2	1	1	--
CAD/Design Draftsman	2	--	2	--
CAD/Drafter	4	3	1	--
Environmental Geographer (GIS)	1	--	1	--
Ecologist	1	--	1	1
Meteorologist	1	--	1	--
Electrical Engineer	3	--	3	--
Geologist	1	--	1	--
Hydrologist	1	--	1	1
Landscape Architect	1	--	1	--
Environmental Engineer	2	--	2	1
Mechanical Engineer	2	--	2	--
Mining Engineer	2	--	2	1
Industrial Engineer	1	--	1	--
Sanitary Engineer	2	--	2	--
Soil Engineer	2	--	2	--
Transportation Engineer	1	--	1	--
Certified Industrial Hygienist	2	--	2	--
Certified Safety Professionals	2	--	2	--
Safety Engineer	1	--	1	1
Land and Right-Of-Way Agents	3	--	3	--
Paralegal	2	--	2	--
Surveyors	6	4	2	--
Economist	1	--	1	1
Biologist	3	--	2	2
Botanist	1	--	1	1
Engineering Technicians	4	3	1	--
Survey Support	11	4	--	--

MSES' professionals are supported by the latest in field data collectors, computers and computer software, electronic and satellite survey, computer-aided drafting and design, and our in-house graphic and reproduction center.

Statement of Qualifications

PROFESSIONAL REGISTRATIONS

MSES has, since 1976, provided its professional services throughout West Virginia and in the seven eastern states surrounding West Virginia. Provided is a listing, by state, of the professional disciplines and type of registration per each state or national registry (excludes Architectural Division):

Discipline	MSES Staff Members Per State								National
	WV	NY	PA	MD	VA	TN	KY	OH	
Surveyor	8	3	3	3	0	2	3	3	
Engineers									
Civil	3	1	2	1	3	0	3	3	
Chemical	1	0	1	0	1	0	1	1	
Electrical	3	1	2	1	2	1	1	2	
Mechanical	2	1	2	1	2	1	1	2	
Environmental	2	1	1	1	1	1	1	1	
Structural	1	0	1	0	1	0	1	0	
Safety	1	0	1	1	1	0	1	1	
Mining	1	0	1	1	1	0	1	1	
Geologist	--	--	--	--	1	--	--	--	
Asbestos									
Inspectors	4	--	0	0	1	0	0	1	
Samplers	4	--	0	0	1	0	0	1	
Planner	4	--	0	0	1	0	0	1	
Manager	4	--	0	0	1	0	0	1	
Lead Risk Assessor	1	--	--	--	--	--	--	--	
Licensed Remediation Specialist	1	2	--	--	--	--	--	4	
Underground Storage Tank									
Inspector	4	0	0	0	0	0	0	0	
Designer/Installer	2	0	0	0	0	0	0	0	
Cathodic Protection Class D/E	4	0	0	0	0	0	0	0	
Certified Monitor Well Designer/Driller	4	--	2	0	--	--	0	--	
Certified Safety Professional	--	--	--	--	--	--	--	--	2
Certified Industrial Hygienist	--	--	--	--	--	--	--	--	2
Certified Landfill Operator (SWANA)	--	--	--	--	--	--	--	--	3
NACE Certified									
Corrosion Technician	--	--	--	--	--	--	--	--	3
Sr. Corrosion Technologist	--	--	--	--	--	--	--	--	1
Internal Corrosion Technician	--	--	--	--	--	--	--	--	5
Licensed Real Estate Agent	2	--	--	--	--	--	--	--	
LEED_{ap} Certified	--	--	--	--	--	--	--	--	3

The term "pending" displayed under a given state indicates that members of MSES' staff have tested for the particular registration but results are not known. The symbol "--" displayed under a given state indicates that state has no registration program for the particular discipline.

Statement of Qualifications

OVERALL CAPABILITIES

MSES Consultants, Inc. is one of the largest West Virginia-owned and diversified consulting environmental, engineering, planning, and management firms in the State. For 33 years we have provided quality services to a wide range of public and private clients, with environmental projects representing a significant portion of our past and present assignments.

Due to the many factors discussed previously, MSES is intimate with all aspects of environmental projects, ranging from site and subsurface investigations, surface water and hydrogeologic characterizations, and Phase I, II, and III environmental transaction screens, assessments and remediation, to assessments and permitting of site environmental issues under various regulatory programs (RCRA, CERCLA, WV Voluntary Remediation and Redevelopment Act, etc.). Our past project work with water treatment plants, including plant upgrades, risk management plan development, and vulnerability training, enables us to have a good understanding of water system challenges. In addition, we are keenly aware of the many challenges and problems that may be inherent to these processes throughout the planning and performing of our project activities. The benefits of our experience and diligence are perhaps most effectively demonstrated by our large number of long term clients. For many, we have provided continuing services for multiple projects for more than 26 years.

The MSES Project Team's extensive experience in environmental projects will facilitate the successful, economical, and efficient completion of the BPH SWPTHP project.

SUPPORT FACILITIES

In order for a team to be effective, it must be supported by modern and extensive equipment and data processing resources. As a full service organization, MSES possesses the facilities necessary to support all aspects of its projects, from the collection of field and survey data to the reduction, analysis, and final presentation of project data. State-of-the-art software is also used for complex modeling and data presentation, and the development of site-specific community visual productions.

Field Equipment and Support Facilities

The firm maintains a large fleet of vehicles, and an extensive inventory of equipment for field sampling and other activities. These facilities are unique among consulting engineers and are integral to MSES, as our personnel perform the field activities for all our projects.

Surveying/Global Positioning Equipment

We utilize the most modern electronic devices for surveying activities, with an accuracy up to the first and second order. Survey data are logged in the field via state-of-the-art electronic equipment and downloaded into office computers and data plotters. In addition, we utilize global

Statement of Qualifications

positioning equipment for certain categories of surveying. These devices are also electronically linked through special software to our plotting and design equipment. MSES' GIS equipment is Wide Area Augmentation System (WAAS) capable.

Data Processing/Automated Drafting

MSES has a large number of Computer-Aided Design and Drafting (CADD) systems. We now have over 26 CADD units of various types and configurations in use daily on our projects. We utilize both AutoCADD and the more powerful Intergraph CADD units for design and data reduction and presentation. In addition, we have an in-house networked system of computers and processing equipment, with a fully networked array of programs to assemble and download data, and manage tables, databases and spreadsheets. We are versed in Geographic Information Systems (GIS) methods, with expertise in ARC/Info and Small Worlds. MSES utilizes ESRI ARC GIS 9.2, 3.D Analyst, Spatial Analyst, and 3-D Analyst Survey. MSES also utilizes MS Access 2008.

MSES and GIS

MSES boasts an experienced staff that is knowledgeable in the data collection, survey, map development, and Geographic Information System (GIS) skills required for the development of databases (including Access database platform) and mapping for the assessment of water resources and systems. MSES' professional staff includes experienced GIS personnel who have completed four (4) year college degrees in GIS technology, as well as having many years of professional experience in mapping and data management. Complementing these GIS personnel are record research individuals, Global Position System (GPS) surveyors, database developers, trainers, IT specialists, webmasters, GIS compilers, GIS technicians, and GIS mappers. These individuals will comprise the GIS team to be assigned to the SWPTHP project.

This experienced project team utilizes the latest published software and related tools to develop GIS mapping systems. Among these software packages are:

- ESRI Arc View (latest edition)
- ESRI Arc Info (latest edition)
- Blue Marble Geographics Geographic Transformer (latest edition)
- AutoCAD 2009
- Microsoft Access (latest edition)
- dBase IV
- DeLorme XMap (latest edition)

Statement of Qualifications

- Trimble GPS Pathfinder (latest edition)
- Trimble GeoXT (latest edition)
- Microsoft Visual Basic.net Standard

MSES utilizes these GIS services for specialized analyses and geographically-oriented database construction and depictions.

Computers/CADD

MSES has successfully integrated the disciplines of engineering, surveying, mapping, and data processing into a very efficient blend of talent. Computer services at MSES began in 1984; since then the firm has continuously augmented the equipment capabilities and system support staff.

MSES maintains a computer-aided design and drafting (CADD) system, which increases the efficiency of planners, designers, and engineers, and allows greater design flexibility.

MSES has more than twenty-five (25) years of direct CADD experience with its own in-house CADD system, consisting of both AutoCAD and InterGraph CADD work stations. Our survey equipment, GPS instruments, and hand-held computerized data collectors are integrated to download field information directly into our in-house network system.

In addition to engineering software, MSES uses the latest PC-based support tools to manage and enhance its assignments, including project management, spreadsheet, database management, graphic, word processing, and desktop publishing.

INFORMATION EXCHANGE

MSES finds that an integral component of any successful project is communication with our client. We routinely establish a secure, password and firewall protected, internet-based file transfer protocol (FTP) site that allows our client to review on a real-time basis information such as text documents, database files, mapping, laboratory results, scheduling, drawings, and other project-related information. The project FTP sites are generally updated once daily during the work week, allowing the client to access and review project data at his/her convenience. MSES finds this additional communication tool to be extremely valuable in our interaction with our clients, and have found that this serves as an effective avenue for the exchange of project information.

Statement of Qualifications

COMMUNICATIONS

The MSES office telephones are answered by a human voice 8:00 A. M. to 5:00 P. M. Monday through Friday, with after hours, weekends, and holidays voice mail. In addition, MSES maintains a 24-hour telephone answering 365 days a year.

For those individuals that share their time in and out of the office, a company Blackberry™ is provided that includes all of the voice, data, internet, and data management functions. All of MSES personnel have internet access and individual e-mail accounts.

All MSES field personnel are assigned a laptop computer; office personnel are provided a desktop computer. Each person at MSES can send and receive e-mail in or out of the office.

MSES, on a daily basis, transfers and receives large electronic files consisting of aerial photography, GIS files, database files, GPS files, and more. These file transfers are accomplished by MSES' T-1 data connection line, VPN Host and our client FTP sites.

DATA PRESENTATION

To assist the MSES professionals, MSES operates an in-house copy center that consists of four (4) Minolta Bizhub C451 color and black & white copiers, one (1) HP Design Jet 1040C plus large format plotter, one (1) HP Design Jet 4000 large format plotter, and one (1) OCE Model 450 total copy center (color, black & white, large format scanner; color and black & white plotter, with drawing stacker; and archive file manager). All of MSES' staff have access to the copy center by desktop computer or remote site access by VPN.

COST ACCOUNTING SYSTEM

MSES utilizes computer-based software to track the labor and expenses associated with each of our projects. Each member of MSES' staff and any subcontractors must provide a weekly accounting of hours expended on each project and any expenses incurred. This information is entered into MSES' in-house job tracking and accounting software, which allows a real-time analysis of labor and expenses expended versus budgeted amounts. The tracking of labor and expenses and other administrative controls allow for an accurate accounting of project costs. This accounting system and its resulting reporting as summaries by task for MSES' costs and any subcontractors' costs was accepted by the USEPA and, on many occasions, MSES received praise from the agency for our cost tracking and accountability systems as used for various USEPA Brownfields grants.

Statement of Qualifications

PROJECT TEAM CLIENT REFERENCES

United States Environmental Protection Agency, Region III
1650 Arch Street
Philadelphia, PA 19103-2029
Mr. Tom Stolle
Region III Brownfields Program Manager
215/814-3129

United States Environmental Protection Agency, Region III
1650 Arch Street
Philadelphia, PA 19103-2029
Mr. Andrew Kreider
Region III Brownfields Project Manager
215/814-3301

United States Environmental Protection Agency, Region III
1650 Arch Street
Philadelphia, PA 19103-2029
Ms. Felicia Fred
Region III Brownfields Coordinator
215/814-5524

United States Environmental Protection Agency, Region III
Removal Enforcement and Oil Section
1060 Chapline Street, Suite 303
Wheeling, WV 26003
Mr. Dennis Matlock
On-Scene Coordinator
304/234-0284

United States Department of Agriculture Natural Resources Conservation Services
75 High Street
Morgantown, WV 26505
Mr. William A. Doerr
Contracting Officer
304/284-7557

U. S. District Court Northern District of WV
P. O. Box 791
Wheeling, WV 26003
The Honorable Frederick P. Stamp, Jr.
Federal District Judge
304/233-110

United States Environmental Protection Agency, Region III
Safe Drinking Water Branch
1650 Arch Street
Philadelphia, PA 19103-2029
Ms. Karen D. Johnson
Chief Safe Drinking Water Act Branch
295/814-5460

United States Environmental Protection Agency, Region III
Groundwater and Enforcement Branch
1650 Arch Street
Philadelphia, PA 19103-2029
Mr. S. Stephen Platt
Senior Hydrogeologist
215/814-5464

Statement of Qualifications

**West Virginia Department of
Environmental Protection**

Division of Water and Waste Management
Solid Waste Management Section
601 57th Street SE
Charleston, WV 25304-2345
Mr. Sudhir Patel
Engineering Supervisor
304/926-0499 ext. 1295

**West Virginia Department of
Environmental Protection**

Division of Land Restoration
Office of Environmental Remediation
601 57th Street SE
Charleston, WV 25304-2345
Mr. Ken Ellison
Director
304/926-0499 ext. 1263

**West Virginia Department of
Environmental Protection**

Division of Land Restoration
Office of Environmental Remediation
2031 Pleasant Valley Road, Suite 1
Fairmont, WV 26554
Mr. Jim Maurin
VRP Project Manager
304/368-3950

**West Virginia Department of
Environmental Protection**

Division of Land Restoration
Office of Environmental Remediation
2031 Pleasant Valley Road, Suite 1
Fairmont, WV 26554
Dr. Pasupathy Ramanan, Ph. D.
VRP Project Manager
304/368-3950

**West Virginia Department of
Environmental Protection**

Division of Water and Waste Management
Solid Waste Management Section
601 57th Street SE
Charleston, WV 25304-2345
Mr. Richard L. Pino
Technical Analyst
304/926-0499 ext. 1323

**West Virginia Department of
Environmental Protection**

Division of Land Restoration
Office of Environmental Remediation
601 57th Street SE
Charleston, WV 25304-2345
Mr. Don Martin
Assistant Director
304/926-0499

**West Virginia Department of
Environmental Protection**

Division of Land Restoration
Office of Environmental Remediation
2311 Ohio Avenue
Parkersburg, WV 26101
Mr. Andrew Robinson, C.P.G.
VRP Project Manager
304/420-4550

**West Virginia Department of
Environmental Protection**

Office of Air Quality
601 57th Street SE
Charleston, WV 25304-2345
Ms. Lucy Pontiveros
Assistant Chief, Hazardous and
Solid Waste Management Section
304/926-0499 ext. 1243

Statement of Qualifications

City of Clarksburg

222 West Main Street
Clarksburg, WV 26301
Mr. Martin Howe
City Manager
304/624-1677

Novelis Corporation

Fairmont, WV 26554
Mr. Paul Zanussi
Safety & Environmental Manager
304/367-5200

Robinson & McElwee

400 Fifth Third Center
700 Virginia Street, East
Charleston, WV 25301
Mr. David Yaussy
Senior Environmental Attorney
304/347-8358

Cytec Industries, Inc.

1 Heilman Avenue
Belmont, WV 26134
Mr. John Pitner
Special Projects Engineer
304/665-2422

Dominion Resources

445 West Main Street
Clarksburg, WV 26301
Mr. Mark Reaser
Manager, Environmental Transmission Services
304/623-8000

City of Clarksburg

222 West Main Street
Clarksburg, WV 26301
Mr. Frank Scarcelli
Superintendent of Public Works
304/624-1611

Steptoe and Johnson

Chase Tower, Eighth Floor
P. O. Box 1588
Charleston, WV 25326-1588
Mr. Robert Pollitt
Senior Environmental Attorney
304/353-8137

Jackson & Kelly

1600 Laidley Tower
Charleston, WV 25322
Mr. David Flannery
Environmental Department Chairman
304/340-1017

The Fenton Art Glass Company

700 Elizabeth Avenue
Williamstown, WV 26187
Mr. George Fenton
President
304/375-6122

Steptoe and Johnson

P. O. Box 2190
Clarksburg, WV 26302
Mr. W. Henry Lawrence
Senior Environmental Attorney
304/624-8186

Statement of Qualifications

Mylan Pharmaceuticals

P. O. Box 4310
Morgantown, WV 26505
Mr. Scott Marshall
Associate Director
800/826-9526

Kroger Food Stores, Inc.

P. O. Box 14002
Roanoke, VA 24038
Mr. Fenton Childers
Manager
Mid-Atlantic Director of Real Estate
540/563-3634

Waste Management, Inc.

7 Spring Street
Charleston, WV 25302
Mr. Craig Arnold
Manager, Engineering and Environmental
Protection, West Virginia Market Area
304/720-7616

Morgantown Industrial Park

Associates, L.L.C.
1000 Dupont Road
Morgantown, WV 26505
Mr. Don Kuhns
Manager
304/292-9453

Allied Waste, Inc.

2 12th Street
P. O. Box 2828
Fairmont, WV 26554
Mr. Ron Levine
Manager
304/366-8076

West Virginia Department of

Environmental Protection
Division of Water and Waste Management
601 57th Street, SE
Charleston, WV 25304
Ms. Leslie Oaks
Permit Engineer
304/926-0499, Ext. 1266

2.0 Key Personnel

KEY PERSONNEL

The MSES Consultants Inc. (MSES) professional staff for this project is described below. These individuals have all had long term employment with MSES. All personnel assigned will be full time MSES employees. No sub-consultants will be required for this project. The professional resumes for all Key Project Personnel are presented at the end of this section.

Program Manager

John Keeling, PE, CIH, who is a Civil Engineer by education, is the Vice President of MSES and has been involved with a variety of environmental and engineering projects with MSES since 1990. Keeling is a Registered Professional Engineer (PE) in West Virginia, Kentucky, and Maryland. He is a Certified Industrial Hygienist (CIH) through the American Board of Industrial Hygienists (ABIH).

Keeling has sixteen (16) years of engineering, occupation, health and environmental protection experience with Union Carbide Corporation and nineteen (19) years of engineering and environmental experience with MSES Consultants. He was one of the MSES team who provided water system counter-terrorism training to West Virginia water plant operators in 2004 for the West Virginia DHHR, Bureau for Public Health. In addition to the Project Manager position for the project, he will be the lead MSES presenter at the community communications meetings. Keeling has extensive experience presenting technical information to community groups.

SWAP Project Manager

Charles Muncy, Jr., PE, LS, who is a Civil Engineer by education, is a Project Manager for MSES and has been involved with a variety of engineering and environmental projects with MSES since 1990. Mr. Muncy is a Registered Professional Engineer (PE) in West Virginia, Ohio, Virginia, and North Carolina. He is a Licensed Surveyor (LS) in West Virginia.

Muncy has fourteen (14) years of experience with other engineering and consulting companies in the area of engineering and environmental protection. He has extensive knowledge of water systems and groundwater / surface water protection. Muncy has managed multiple projects since 2000 which involved Geographic Information System (GIS) tools. These included mapping, disposal cell design, and environmental compliance for Waste Management, Inc. landfills in Harrison and Wood Counties, environmental site assessments for large property tracts, and natural gas pipeline / well location mapping projects.

Key Personnel

GIS Coordinator

Echols Hylton is the MSES GIS Department Coordinator. He has degrees in GeoSciences and Geography. Hylton coordinates all the MSES GIS projects for a variety of government and public companies. His knowledge of ARC GIS 9.2 and Access databases will allow for efficient flow of information between MSES and BPH.

Quality Control / Quality Assurance

Lawrence Rine, who is both a Mechanical and Mining Engineer by education, is the President of MSES and has been involved with a variety of engineering and environmental projects since the creation of MSES in 1976.

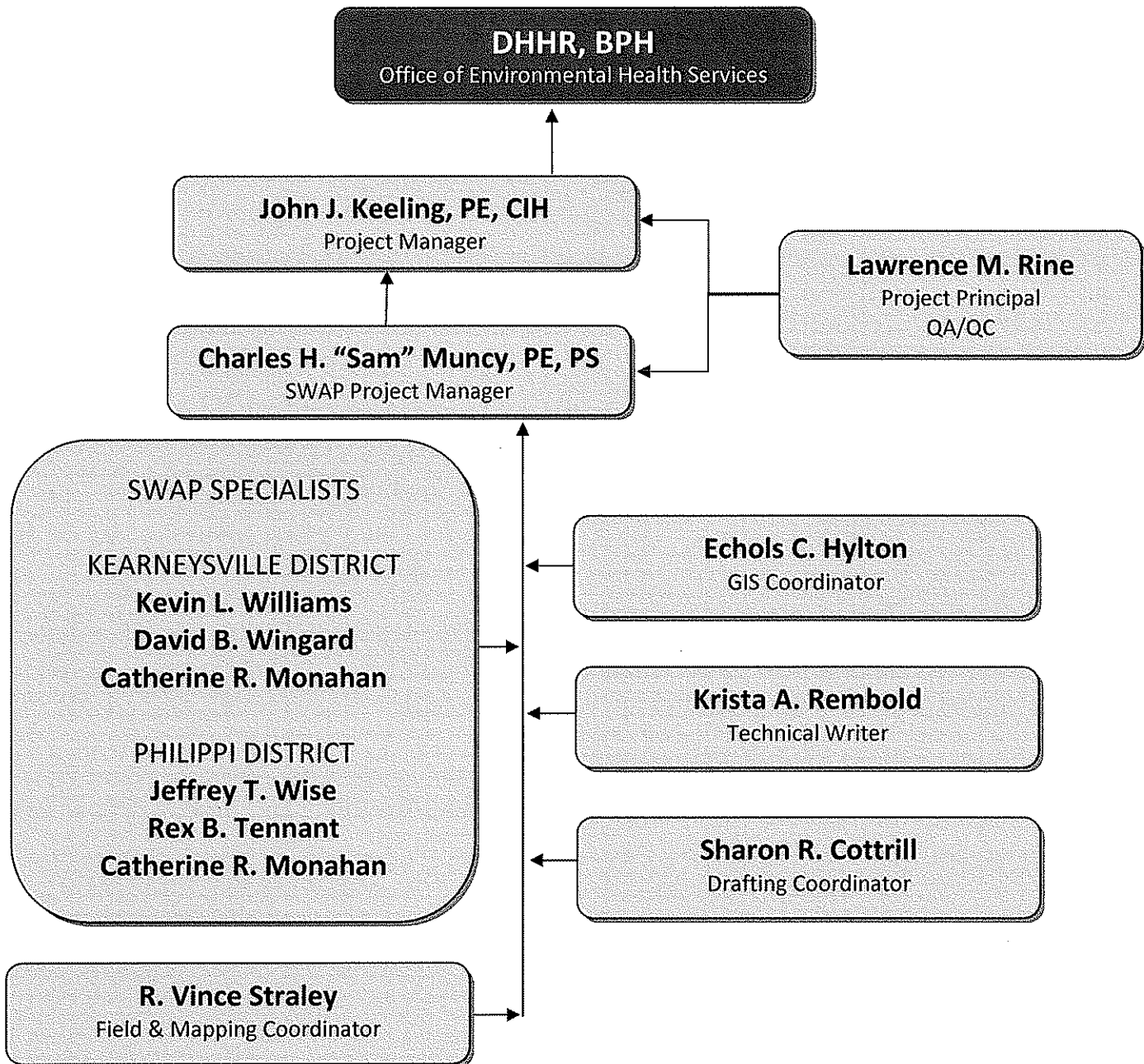
Rine will perform the Quality Control / Quality Assurance reviews of information generated for reports.

Other Key Personnel

The professional resumes for the SWAP specialists and other key personnel not discussed above are located at the end of this section. A SWPTHP Organization Chart is provided by Page 2-3.

ORGANIZATIONAL CHART

SOURCE WATER TECHNICAL HELP PROGRAM



PROFESSIONAL VITAE

John J. Keeling, P.E., C.I.H., C.S.P., Q.E.P., L.R.S.
Principal and Project Manager

Years of Experience with MSES: 20 Years of Experience with Other Firms: 15

Education

B. S. Civil Engineering, University of Kentucky, 1974

Professional Registrations/Certifications

Registered Professional Engineer - West Virginia, Kentucky, and Pennsylvania
Certified Industrial Hygienist - American Board of Industrial Hygiene
Certified Safety Professional - Board of Certified Safety Professionals
Qualified Environmental Professional - Institute of Professional Environmental Practice
Licensed Remediation Specialist - West Virginia, New York, and Ohio
Certified Visible Emissions Observer - USEPA
Licensed Asbestos Inspector/Management Planner/Clearance Air Monitor - WVBOH and Ohio BOH
Underground Storage Tank Closure Specialist/Installer - WVDEP
Certified Monitoring Well Designer and Installer - WVDEP

Professional Organizations

American Society of Safety Engineers
American Industrial Hygiene Association
Air and Waste Management Association
Harrison County SARA Title III Local Emergency Planning Committee - Chairman
West Virginia Chapter of Air and Waste Management Association - Vice Chairperson

Past Work History

Union Carbide Corporation
Kentucky Department of Transportation

Experience Summary

- | | |
|--|--|
| <input type="checkbox"/> Job Costing | <input type="checkbox"/> Air Emission Regulatory Compliance |
| <input type="checkbox"/> Management | <input type="checkbox"/> NPDES Permitting |
| <input type="checkbox"/> Earth Sciences | <input type="checkbox"/> Waste Management/Minimization |
| <input type="checkbox"/> Risk Assessment/Analysis | <input type="checkbox"/> Hazardous Waste Management |
| <input type="checkbox"/> Regulatory Interaction | <input type="checkbox"/> Air Emission Modeling |
| <input type="checkbox"/> Economic Feasibility | <input type="checkbox"/> Asbestos Assessment |
| <input type="checkbox"/> Phase I/II Investigation | <input type="checkbox"/> Lead Base Paint Assessment |
| <input type="checkbox"/> Remediation (Design and Permitting) | <input type="checkbox"/> NORM Assessment |
| <input type="checkbox"/> RCRA Waste Units | <input type="checkbox"/> Brownfields Specialist |
| <input type="checkbox"/> Drilling Programs | <input type="checkbox"/> Health & Safety |
| <input type="checkbox"/> Bioremediation | <input type="checkbox"/> Noise Assessment |
| <input type="checkbox"/> Geographic and Hydrologic Studies | <input type="checkbox"/> Hydrologic and Hydraulic Analysis |
| <input type="checkbox"/> Sampling/Laboratory Programs | <input type="checkbox"/> SARA Title III |
| <input type="checkbox"/> Air Permitting | <input type="checkbox"/> Specification Development |
| <input type="checkbox"/> Indoor Air Quality | <input type="checkbox"/> Earth Sciences |
| <input type="checkbox"/> Code Compliance | <input type="checkbox"/> Environmental/Architectural Support |
| <input type="checkbox"/> E-911 Systems | <input type="checkbox"/> GIS Systems |

Charles H. "Sam" Muncy, Jr., P.S., P.E.
Senior Project Engineer

Years of Experience with MSES: 19 Years of Experience with Other Firms: 16

Education

B. S. Civil Engineering, West Virginia University, 1974
M.S. Civil Engineering, West Virginia University, 1983

Professional Registrations/Certifications

Registered Professional Engineer - West Virginia, Pennsylvania, Florida, North Carolina, Ohio, and Virginia
Professional Surveyor - West Virginia
Certified Compaction Technician - West Virginia Department of Highways
Radiation Safety Officer - NRC
Licensed Remediation Specialist - New York, Ohio, West Virginia
Certified Monitoring Well Designer and Installer - WVDEP
Certified Landfill Manager - SWANA
Geosynthetic Accreditation Institute - Clay & Geo Synthetic Liners

Professional Organizations

American Society of Civil Engineers
Solid Waste Association of North America
Barbour County, WV Solid Waste Authority - Member
Gundle Liner Seminars and Workshops

Past Work History

Joyce Engineering
Harman Construction, Inc.
Southern Ohio Coal Company
American Electric Power Service Corporation
Mountain State Surveying

Experience Summary

- | | |
|---|---|
| <input type="checkbox"/> Project Management | <input type="checkbox"/> Risk Assessment/Analysis |
| <input type="checkbox"/> Regulatory Interaction | <input type="checkbox"/> Phase I & II Investigation |
| <input type="checkbox"/> Remediation (Design & Permitting) | <input type="checkbox"/> RCRA Waste Units |
| <input type="checkbox"/> Sampling/Laboratory Programs | <input type="checkbox"/> Data Base Systems |
| <input type="checkbox"/> Computer Modeling (H&H Studies) | <input type="checkbox"/> Life Safety Codes |
| <input type="checkbox"/> Specification Development | <input type="checkbox"/> Job Costing |
| <input type="checkbox"/> Property Evaluation | <input type="checkbox"/> Site Surveys |
| <input type="checkbox"/> Mapping | <input type="checkbox"/> QA/QC Inspection & Compliance |
| <input type="checkbox"/> Economic Feasibility Investigation | <input type="checkbox"/> Structural |
| <input type="checkbox"/> Soils Engineering | <input type="checkbox"/> Earth Sciences |
| <input type="checkbox"/> Storm Routing Studies | <input type="checkbox"/> Geographic and Hydrologic Analysis |
| <input type="checkbox"/> Land Planning | <input type="checkbox"/> Site Development |
| <input type="checkbox"/> Roadway/Highway | <input type="checkbox"/> Subsurface Investigation |
| <input type="checkbox"/> Bioremediation | <input type="checkbox"/> NPDES Permitting |
| <input type="checkbox"/> Erosion & Sediment Planning | <input type="checkbox"/> Stormwater |
| <input type="checkbox"/> Waste Management/Minimization | <input type="checkbox"/> Civil/Architectural Support |
| <input type="checkbox"/> Code Compliance | <input type="checkbox"/> Structural/Architectural Support |

Lawrence M. Rine

Principal and Quality Assurance/Quality Control Manager

Years of Experience with MSES: 33 Years of Experience with Other Firms: 14

Education

- B. S. Mechanical Engineering, West Virginia Institute of Technology 1969
- B. S. Mining Engineering, West Virginia Institute of Technology 1970
- Masters Study, Environmental Engineering, Cornell University 1973

Professional Registrations/Certifications

- Certified Monitoring Well Designer and Installer - WVDEP
- Licensed West Virginia Underground Storage Tank Closure/Installation Specialist
- Class I Certified Public Water Supply Operator, West Virginia
- Class II Certified Wastewater Treatment Plant Operator, West Virginia
- Certified Commercial Applicator, West Virginia and Pennsylvania
- Radiation Safety Officer - NRC
- Certified Asbestos Inspector/Manager/Planner/Clearance Air Monitor - WVBOH
- Licensed Remediation Specialist - WVDEP
- Certified Mineral Appraiser - U. S. Army Corps of Engineers
- Member State School Building Authority - Indoor Air Quality Committee
- Geosynthetic Accreditation Institute - Clay & Geo Synthetic Liners

Professional Organizations

- West Virginia Independent Oil and Gas Association (Environmental Committee Member)
- Virginia Independent Oil and Gas Association (Association's Outstanding Member, 1990)
- Pennsylvania Independent Oil and Gas Association
- National Society of Professional Engineers
- West Virginia Society of Professional Engineers, T. Moore Jackson Chapter
- West Virginia Surface Mine and Reclamation Association

Past Work History

- CNG Transmission Corporation

Experience Summary

- | | |
|--|--|
| <input type="checkbox"/> Job Costing | <input type="checkbox"/> Waste Management/Minimization |
| <input type="checkbox"/> Management | <input type="checkbox"/> Hazardous Waste Management |
| <input type="checkbox"/> Groundwater Modeling/Monitoring | <input type="checkbox"/> Asbestos Assessment |
| <input type="checkbox"/> Earth Sciences | <input type="checkbox"/> Lead Base Paint Assessment |
| <input type="checkbox"/> Risk Assessment/Analysis | <input type="checkbox"/> NORM Assessment |
| <input type="checkbox"/> Regulatory Interaction | <input type="checkbox"/> Brownfields Specialist |
| <input type="checkbox"/> Economic Feasibility | <input type="checkbox"/> Mapping |
| <input type="checkbox"/> Phase I/II Investigation | <input type="checkbox"/> Noise Assessment |
| <input type="checkbox"/> Remediation (Design and Permitting) | <input type="checkbox"/> SARA Title III |
| <input type="checkbox"/> RCRA Waste Units | <input type="checkbox"/> Specification Development |
| <input type="checkbox"/> Drilling Programs | <input type="checkbox"/> Environmental Impact Statements |
| <input type="checkbox"/> Bioremediation | <input type="checkbox"/> Data Processing |
| <input type="checkbox"/> Sampling/Laboratory Programs | <input type="checkbox"/> Public Mtg. & Proj. Explanation |
| <input type="checkbox"/> Property Evaluations | <input type="checkbox"/> QA/QC Inspection & Compliance |
| <input type="checkbox"/> NPDES Permitting | <input type="checkbox"/> Architectural Support |
| <input type="checkbox"/> Municipal Engineering | <input type="checkbox"/> Radon |
| <input type="checkbox"/> Code Compliance | <input type="checkbox"/> Water/Wastewater Systems |
| <input type="checkbox"/> E-911 Systems | <input type="checkbox"/> GIS Systems/Data Management |

PROFESSIONAL VITAE

Echols C. Hylton

GIS/Mapping Specialist / GIS Coordinator

Years of Experience with MSES: 6

Years of Experience with Other Firms: 2

Education

B. A., Geography, Concord College, 2002

B. S., Interdisciplinary Studies/Environmental Geosciences, Concord College, 2002

Past Work History

Mercer County 911

Concord College Foundation

Dee Shoring Company

Experience Summary

- | | |
|--|--|
| <input type="checkbox"/> Project Management | <input type="checkbox"/> Regulatory Interaction |
| <input type="checkbox"/> Data Base Systems | <input type="checkbox"/> Computer Modeling |
| <input type="checkbox"/> GIS Surveys/Mapping | <input type="checkbox"/> Resource Assessments |
| <input type="checkbox"/> Site Surveys | <input type="checkbox"/> Species Identification |
| <input type="checkbox"/> Surface Water Assessments | <input type="checkbox"/> QA/QC Inspection & Compliance |
| <input type="checkbox"/> Sampling and Data Collection | <input type="checkbox"/> Wetlands |
| <input type="checkbox"/> Boundary and Zoning Mapping | <input type="checkbox"/> Surface Water Assessments |
| <input type="checkbox"/> Project Support | <input type="checkbox"/> Flood Plain |
| <input type="checkbox"/> GPS Surveys/Mapping/Data Management | <input type="checkbox"/> E-911 Surveys/Mapping |
| <input type="checkbox"/> Data Processing | <input type="checkbox"/> 911 Re-addressing |
| <input type="checkbox"/> ArcInfo | <input type="checkbox"/> ArcView |
| <input type="checkbox"/> CAD/Intergraph/CAM | <input type="checkbox"/> Code Compliance |

Krista A. Rembold

Biologist/Environmental Scientist

Years of Experience with MSES: 1

Years of Experience with Other Firms: 3

Education

- B. S., Forensic Science, Waynesburg College, 2007
- B. S. (Minor) Biology, Waynesburg College, 2007
- B. S. (Minor) Chemistry, Waynesburg College, 2007

Professional Organizations

- Member, Gamma Sigma Epsilon (Chemistry Honor Society)
- Member, Xi Chi Epsilon (Honorary Society)

Past Work History

Sturm Environmental Services - Laboratory Technician, Chemist, Microbiologist

Experience Summary

- | | |
|--|---|
| <input type="checkbox"/> Aquatic Sampling/Identification | <input type="checkbox"/> Benthic - Sampling, Processing, Identification |
| <input type="checkbox"/> NPDES Permitting | <input type="checkbox"/> Risk Assessment/Analysis |
| <input type="checkbox"/> Microbiological | <input type="checkbox"/> Regulatory Interaction |
| <input type="checkbox"/> Phase I/II Investigations | <input type="checkbox"/> Database Systems |
| <input type="checkbox"/> Bioassays | <input type="checkbox"/> Data Processing |
| <input type="checkbox"/> Species/Habitat Identification | <input type="checkbox"/> Computer Modeling |
| <input type="checkbox"/> Bioremediation | <input type="checkbox"/> Waste Impacts |
| <input type="checkbox"/> Natural Sciences | <input type="checkbox"/> Information/Aquatic Surveys |
| <input type="checkbox"/> Sampling/Laboratory Programs | <input type="checkbox"/> QA/QC Programs |
| <input type="checkbox"/> Brownfields | <input type="checkbox"/> Modeling |
| <input type="checkbox"/> NACE Internal Corrosion | <input type="checkbox"/> Mold and Fungi |

Sharon Reeves Cottrill
Land Planner

Years of Experience with MSES: 29 Years of Experience with Other Firms: 4

Education

B. S. Landscape Architecture, West Virginia University (Cum Laude), 1976

Professional Organizations

West Virginia Society of Landscape Architects

Past Work History

CNG Transmission Corporation

Experience Summary

- | | |
|--|---|
| <input type="checkbox"/> Project Management | <input type="checkbox"/> Species Identification |
| <input type="checkbox"/> Data Base Systems | <input type="checkbox"/> Computer Modeling |
| <input type="checkbox"/> CAD/Intergraph/CAM | <input type="checkbox"/> Illustrations |
| <input type="checkbox"/> Regulatory Interaction | <input type="checkbox"/> Job Costing |
| <input type="checkbox"/> Specification Development | <input type="checkbox"/> Mapping |
| <input type="checkbox"/> Land Planning | <input type="checkbox"/> Site Development |
| <input type="checkbox"/> Code Compliance | <input type="checkbox"/> Architectural Support |
| <input type="checkbox"/> Civil Support | <input type="checkbox"/> E-911 Mapping |
| <input type="checkbox"/> GIS Mapping | <input type="checkbox"/> GPS Data Management |
| <input type="checkbox"/> Data Processing | <input type="checkbox"/> 911 Re-addressing |
| <input type="checkbox"/> ArcInfo | <input type="checkbox"/> ArcView |

PROFESSIONAL VITAE

Kevin L. Williams

Project Engineer

Years of Experience with MSES: 5

Years of Experience with Other Firms: 15

Education

B. S., Civil Engineering, West Virginia Institute of Technology, 1986

Professional Registrations/Certifications

Certified Landfill Manager – Solid Waste Association of North America

Licensed Contractor – State of West Virginia

Operator Qualification - USDOT

Geosynthetic Accreditation Institute - Clay & GeoSynthetic Liners

Professional Organizations

West Virginia Society of Professional Engineers - T. Moore Jackson Chapter

West Virginia Institute of Technology (WVU Tech) - Chairman Alumni Committee

Past Work History

West Virginia Department of Highways

Hope Gas, Inc.

Dominion Hope

Experience Summary

- | | |
|---|---|
| <input type="checkbox"/> Construction Inspection/Management | <input type="checkbox"/> Pipeline Design/Construction |
| <input type="checkbox"/> Project Management | <input type="checkbox"/> Regulatory Interaction |
| <input type="checkbox"/> Sampling Programs | <input type="checkbox"/> Database Systems |
| <input type="checkbox"/> Job Costing | <input type="checkbox"/> Specification Development |
| <input type="checkbox"/> QA/QC Inspection & Compliance | <input type="checkbox"/> Property Evaluation |
| <input type="checkbox"/> Soils Engineering | <input type="checkbox"/> Stormwater Routing |
| <input type="checkbox"/> Flood Routing | <input type="checkbox"/> Foundations |
| <input type="checkbox"/> Geographic and Hydrologic Studies | <input type="checkbox"/> Site Development |
| <input type="checkbox"/> Land Planning | <input type="checkbox"/> Hydrologic & Hydraulic Analysis |
| <input type="checkbox"/> Municipal Engineering | <input type="checkbox"/> Plumbing System Design |
| <input type="checkbox"/> Site Utilities | <input type="checkbox"/> Roadway/Highway |
| <input type="checkbox"/> Subsurface Investigation | <input type="checkbox"/> Water/Wastewater Systems |
| <input type="checkbox"/> Stormwater Management | <input type="checkbox"/> Erosion and Sediment Planning |
| <input type="checkbox"/> Code Compliance | <input type="checkbox"/> Landfill Construction/Inspection |
| <input type="checkbox"/> Civil/Architectural Support | <input type="checkbox"/> Building Inspection |
| <input type="checkbox"/> USDOT Jurisdictional Pipelines | <input type="checkbox"/> USDOT Class Determination |
| <input type="checkbox"/> DOT O&M Manuals | <input type="checkbox"/> DOT Procedures Manuals |

PROFESSIONAL VITAE

David B. Wingard
Senior Project Engineer

Years of Experience with MSES: 5 Years of Experience with Other Firms: 17

Education

B. S. Chemical Engineering - University of South Carolina, 1986
M. S. Chemical Engineering - Georgia Institute of Technology, 1988

Professional Registrations/Certifications

Registered Professional Engineer - West Virginia, Pennsylvania, Ohio, Virginia, and
Louisiana
Certified Steam Systems Specialist - USDOE
Certified Energy Manager - USDOE

Professional Organizations

Association of Energy Engineers - Member
American Institute of Chemical Engineers - Member

Past Work History

Taheda Chemicals Products, Inc.
AKZO - Nobel Chemicals
Washington Group, International
Middough Consulting, Inc.

Experience Summary

- | | |
|---|--|
| <input type="checkbox"/> Job Costing | <input type="checkbox"/> Waste Management/Minimization |
| <input type="checkbox"/> Management | <input type="checkbox"/> Hazardous Waste Management |
| <input type="checkbox"/> Risk Assessment/Analysis | <input type="checkbox"/> Brownfields Specialist |
| <input type="checkbox"/> Regulatory Interaction | <input type="checkbox"/> SARA Title III |
| <input type="checkbox"/> Economic Feasibility | <input type="checkbox"/> Specifications Development |
| <input type="checkbox"/> RCRA Waste Units | <input type="checkbox"/> Process Engineering |
| <input type="checkbox"/> Sampling/Laboratory Programs | <input type="checkbox"/> Process Health & Safety |
| <input type="checkbox"/> Code Compliance | <input type="checkbox"/> Steam Utilization |
| <input type="checkbox"/> Energy Audits/Industrial | <input type="checkbox"/> Steam System Economics |
| <input type="checkbox"/> Remediation (Existing Systems) | <input type="checkbox"/> Process Economics |

Catherine R. Monahan
Geologist/Hydrogeologist

Years of Experience with MSES: 16 Years of Experience with Other Firms: 3

Education

B. S. Geology, Stockton State College, 1988
M. S. Geology, University of Massachusetts at Amherst, 1991

Professional Registrations/Certifications

Certified Monitoring Well Designer and Installer - WVDEP
Wetland Identification - U. S. Army Corps of Engineers Training

Professional Organizations

American Geophysical Union
National Ground Water Association
Association of Ground Water Scientists and Engineers

Past Work History

University of Massachusetts at Amherst - Research Assistant

Experience Summary

- | | |
|--|--|
| <input type="checkbox"/> Project Management | <input type="checkbox"/> Risk Assessment/Analysis |
| <input type="checkbox"/> Regulatory Interaction | <input type="checkbox"/> Phase I & II Investigation |
| <input type="checkbox"/> Remediation (Design & Permitting) | <input type="checkbox"/> RCRA Waste Units |
| <input type="checkbox"/> Sampling/Laboratory Programs | <input type="checkbox"/> Data Base Systems |
| <input type="checkbox"/> Computer Modeling | <input type="checkbox"/> Specification Development |
| <input type="checkbox"/> Species Identification | <input type="checkbox"/> Job Costing |
| <input type="checkbox"/> Property Evaluation | <input type="checkbox"/> Site Surveys |
| <input type="checkbox"/> Mapping | <input type="checkbox"/> Wetlands |
| <input type="checkbox"/> Economic Feasibility | <input type="checkbox"/> Soils Engineering |
| <input type="checkbox"/> Earth Sciences | <input type="checkbox"/> Site Development |
| <input type="checkbox"/> Computer Programming | <input type="checkbox"/> Brownfields Specialist |
| <input type="checkbox"/> Stormwater Modeling | <input type="checkbox"/> Evapotranspiration Modeling |
| <input type="checkbox"/> Groundwater Modeling/Monitoring | <input type="checkbox"/> Subsurface Investigation |
| <input type="checkbox"/> Bioremediation | <input type="checkbox"/> NPDES Permitting |
| <input type="checkbox"/> Foundations | <input type="checkbox"/> Code Compliance |

PROFESSIONAL VITAE

Jeffrey T. Wise
Project Manager

Years of Experience with MSES: 13 Years of Experience with Other Firms: 15

Education

B. S. Mining Engineering, West Virginia University, 1981

Professional Registrations/Certifications

West Virginia Real Estate License

Past Work History

Hope Gas, Inc.
CNG Transmission Corporation
U. S. Steel Corporation - Mining Division

Experience Summary

- | | |
|--|--|
| <input type="checkbox"/> Project Management | <input type="checkbox"/> Risk Assessment/Analysis |
| <input type="checkbox"/> Regulatory Interaction | <input type="checkbox"/> Phase I & II Investigation |
| <input type="checkbox"/> Sampling/Laboratory Programs | <input type="checkbox"/> Data Base Systems |
| <input type="checkbox"/> Life Safety Codes | <input type="checkbox"/> Health & Safety Programs |
| <input type="checkbox"/> Specification Development | <input type="checkbox"/> Job Costing |
| <input type="checkbox"/> Property Evaluation | <input type="checkbox"/> Site Surveys |
| <input type="checkbox"/> Mapping | <input type="checkbox"/> QA/QC Inspection & Compliance |
| <input type="checkbox"/> Economic Feasibility | <input type="checkbox"/> Land Planning |
| <input type="checkbox"/> Site Development | <input type="checkbox"/> Brownfields Specialist |
| <input type="checkbox"/> Site Utilities | <input type="checkbox"/> Water/Wastewater Systems |
| <input type="checkbox"/> Erosion and Sediment Planning | <input type="checkbox"/> Stormwater |
| <input type="checkbox"/> Code Compliance | <input type="checkbox"/> Appraisals |
| <input type="checkbox"/> Market Analysis | <input type="checkbox"/> Commercial/Retail Development |

PROFESSIONAL VITAE

Rex B. Tennant, II

Environmental Chemist/Programmer

Years of Experience with MSES: 13 Years of Experience with Other Firms: 24

Education

B. S., Chemistry, West Virginia University, 1972

B. S., Computer Science, Salem College (now Salem-Teikyo University), 1986

Professional Organizations

American Chemical Society

Past Work History

Sturm Environmental Services - Chemist, Lab Manager, Lab Director, Vice President

U. S. Army Environmental Hygiene Agency - Chemist

Southern Ohio Coal Company - Environmental Technician

U. S. Army Environmental Hygiene Agency - Lab Technician

Experience Summary

- | | |
|--|---|
| <input type="checkbox"/> Management | <input type="checkbox"/> Computer Modeling |
| <input type="checkbox"/> Regulatory Interaction | <input type="checkbox"/> Computer Programming |
| <input type="checkbox"/> Phase I/II Investigation | <input type="checkbox"/> NPDES Permitting |
| <input type="checkbox"/> Remediation (Design and Permitting) | <input type="checkbox"/> Hazardous Waste Management |
| <input type="checkbox"/> RCRA Waste Units | <input type="checkbox"/> Air Emission Modeling |
| <input type="checkbox"/> Sampling/Laboratory Programs | <input type="checkbox"/> Brownfields Specialist |
| <input type="checkbox"/> Data Base Systems | <input type="checkbox"/> CAD/Intergraph/CAM |
| <input type="checkbox"/> Stormwater | <input type="checkbox"/> Indoor Air Quality |
| <input type="checkbox"/> Risk Assessment/Analysis | <input type="checkbox"/> SARA Title III |
| <input type="checkbox"/> Water/Wastewater Treatment | <input type="checkbox"/> Lead Base Paint Assessment |
| <input type="checkbox"/> Data Processing | <input type="checkbox"/> Data Management |
| <input type="checkbox"/> Training | <input type="checkbox"/> GIS Support |
| <input type="checkbox"/> Mold and Fungi | <input type="checkbox"/> NACE Internal Corrosion |

3.0 Past Performance

PAST PERFORMANCE

MSES has conducted numerous projects associated with both public and private water systems, as well as numerous environmental site assessment / remediation projects. MSES has selected four (4) projects to present for this Expression of Interest.

West Virginia Public Water System Operator Training for Counter-Terrorism Preparation, West Virginia DHHR, Bureau for Public Health.

The DHHR Project Manager for this project was Mr. Robert Hart. MSES was selected for this project by BPH as the most qualified firm to prepare and provide this training. The training project required a thorough understanding of water plant operations and measures necessary to protect the integrity of the water supply. MSES prepared the presentation, which also included tabletop exercises, and presented the one (1) day class to water treatment plant operators throughout the State of West Virginia. All aspects of the project were completed on time and within budget.

USEPA Brownfield Assessment/Clean-up Grant Projects for the City of Clarksburg

The City of Clarksburg retained MSES as the most qualified firm to conduct the USEPA Brownfields assessments and clean-up projects for the City of Clarksburg. The Brownfield Program Coordinator for the City of Clarksburg is Mr. Anthony Bellotte (304-624-1681).

The community wide hazardous materials assessment grant began in 2000 and has resulted in the awarding of three (3) clean-up grants. The assessment grant was successfully completed in 2004 and two of the clean-up grants that began in 2005 are nearing completion. This project involved Phase I Environmental Site Assessments to identify past and present contamination / historic practices at five (5) former industrial sites. Four (4) Phase II Environmental Site Assessments, which involved sample collection and delineation of extent of contamination, reporting, and conducting of public meetings with residents were performed as part of that project. The clean-up projects require additional public meetings, cost estimation for remediation, preparation of clean-up specifications for bidding, oversight of selected contractors, participation in the West Virginia Voluntary Remediation Program, and reporting.

The funding for these grants exceeded \$500,000.00, with all reporting meeting the USEPA timeline requirements. These projects will be completed during the first quarter of 2009.

Past Performance

Former Cullet Disposal Area Closure, Fenton Art Glass Company, Williamstown, West Virginia

MSES has served as Fenton's consulting engineer since 1991 in the characterization and closure of an on-site former disposal area of glass waste materials, now deemed by changing State and Federal regulations as hazardous waste. MSES' remediation design for this area addressed not only environmental concerns, but resulted in the creation of additional usable space for this successful, ever-growing business venture. MSES performed extensive Phase I, II, and III environmental activities at the site, including detailed subsurface investigations, site mapping, and sampling/analysis programs to define the character and extent of the waste; and extensive hydrogeologic investigations, including area water well inventories, groundwater monitoring well installation, development, sampling, and analysis, aquifer studies and pump test analyses. These data were utilized to develop a detailed site characterization and treatment and closure plan for the 1.2 acre hazardous waste disposal area, calling for its innovative in-place closure, a detailed groundwater monitoring plan, re-sloping and compaction of existing materials in the disposal area, and installation of synthetic and soil liners to cap this area. MSES coordinated all regulatory agency interactions for the Plan's approval, negotiated the Closure Consent Order with WVDEP, secured its acceptance by Region III of the U. S. Environmental Protection Agency, and then incorporated the remedial design and Fenton's vision for much needed additional usable space into a design for the expansion of the manufacturing buildings and associated parking lot and storage facilities. MSES developed the design and all contractual and bidding documents, conducted public information meetings, directed the soliciting and contracting of the successful contracting/subcontracting firms, and provided the construction management, field supervision, quality assurance/quality control of closure activities and materials used, and compliance documentation. The project has been re-defined under the auspices of the West Virginia Brownfields program, and is in the closure monitoring phase to ensure continued efficacy of the remedial design. It is now presented by the WVDEP as a model for successful closure, by combining environmental remediation with the additional benefit of the creation and utilization of valuable space for business expansion.

U. S. D. A. Natural Resources Conservation Service and the West Virginia Soil Conservation Agency, County-Wide Water Resources Assessments and Master Plans for McDowell, Wetzel, Randolph, Fayette, and Hardy Counties, West Virginia

MSES was awarded a five year indefinite delivery contract to provide comprehensive planning for water resources (groundwater and surface water supplies, water reservoirs, water treatment and distribution systems, and wastewater collection and treatment systems) within a given county or geographic area, which included establishing present

Past Performance

water system resources and conditions and providing comprehensive plans to upgrade the raw water, water treatment, water distribution, and wastewater treatment and collection systems and allow for their future expansion, as necessary. Six (6) studies (McDowell, Fayette, Randolph, Wetzel, Grant- Pendleton, and Hardy Counties) were completed.

MSES performed a comprehensive study of each of the subject counties/regions, which entailed extensive review of existing information obtained from file searches and interviews with local, County, State, and Federal agencies, research of publicly-available documents and electronic database searches regarding groundwater and surface water sources, water quality, quantity and quality of wastewater discharges, current and projected demographics and socioeconomic characteristics, cultural resources, and information regarding the geology, hydrogeology, topography, soils, surface waters, etc. Emphasis was also placed on the quality of surface and groundwaters, and the identification of cultural resources, contaminant sources, and environmentally sensitive areas. Treatment plants were identified and their service areas delineated, with physical inspections of facilities and detailed review of existing documentation and interviews with operators performed. The data gathering phase of each study permitted the characterization of all aspects of water resources within each county, with the identification of existing system capabilities, the problems and needs of each system, and their specific impediments to improvements. This compilation of background information was then utilized as a basis for the development of alternative solutions to the identified problems and needs, established within the constraints of the physical, economic, and environmental conditions of each individual system. The data and suggested solutions were reviewed by various federal, state, county, and local agencies, and presented to the citizenry via a series of public meetings, with input solicited regarding the desirability and feasibility of each suggested alternative. This feedback prompted the selection of desirable alternative(s) for the systems within each county, from which the resulting County-Wide Implementation Plan was developed. The plans provide long range strategies for upgrades in the form of components, where each component can be utilized as a basis for future improvements. This phasing of the design components prompts the ease of procuring funding, and the accomplishment of the long range planning for each county by providing for a series of independent, yet cumulative, solutions to the problems and needs of each water or wastewater system.

4.0 Technical Approach

TECHNICAL APPROACH

Task 1 – Project Initiation

If selected for this project, MSES will utilize a total of five (5) environmental department staff members to serve as Source Water Assessment and Protection (SWAP) Specialists. Each MSES SWAP Specialist will be assigned multiple community public water supply (CPWS) systems.

The MSES Program and SWAP Project Managers will schedule a meeting with the BPH Project Manager to obtain data and to establish the project schedule.

Task 2 – CPWS System Area Site Visits to Obtain PCS Information

Once the existing BPH SWAP Program and existing inventory documents are available to MSES, the MSES Program Manager and MSES SWAP Project Manager will review them to determine specific assignments for the SWAP Specialists and to insure that the Zone of Critical Concern (ZCC) is understood by the SWAP Specialists for each of their assigned CPWS.

An Access database will be prepared for the project using existing data from BPH's GIS Coordinator. The Access database will include for each CPWS surface or groundwater source potential contamination sources. The specific locations for these potential contamination sources will be determined through site visits by the MSES SWAP Specialist assigned to that location.

Task 3 – Draft Management and Contingency Plan Format Preparation

Formats will be prepared for the Management and Contingency Plans. Example plans will also be prepared (one for surface water CPWS and one for groundwater CPWS) for use in the CPWS project initiation meetings.

Task 4 – CPWS System Project Initiation Meeting Preparation

A base Powerpoint presentation will be prepared to utilize as the presentation format for each meeting. The Powerpoint presentation will describe the SWAP Programs, provide the explanation of why they are being conducted, and the goals anticipated to be achieved for each CPWS System. The example management and contingency plans will also be included in the Powerpoint presentation, as well as specific potential contamination source (PCS) listings.

This information will be provided to the BPH Project Manager for review and comment prior to scheduling the CPWS Meetings.

Once BPH approval is received, a proposed schedule for the meetings and target list of crucial attendees will be prepared and submitted to the BPH Project Manager for review and comment prior to scheduling.

Task 5 – CPWS System Project Initiation Meetings

The MSES SWAP Specialists for the CPWS systems and the MSES Program Manager or Project Manager will initiate, coordinate, and conduct a project initiation meeting for each CPWS system.

The Powerpoint presentation prepared in Task 4 will be used to insure that all CPWS Systems receive consistent information about the programs. The meeting will become interactive to review and discuss the PCSs. Anticipated program outcomes will be reviewed for the specific PCSs and questions will be answered.

Task 6 – PCS Survey for PCSs within the Well Head and ZCC Areas

All newly identified regulated and unregulated PCSs within each CPWS System wellhead and ZCC areas will be located by GPS and photographed. This information will be added to the database and included in the report. The database and report for each CPWS System will be provided to the BPH Project Manager for review and content.

Task 7 – Management Plans Prepared

Using the approved format from Task 3, MSES will prepare a complete Management Plan for each CPWS System. Each Management Plan will be provided to the BPH Project Manager for review and comment. Once all comments are received, each Management Plan will be finalized.

Task 8 – Contingency Plans Prepared

Using the approved format from Task 3, MSES will prepare a Complete Contingency Plan for each CPWS System. Each Contingency Plan will be provided to the BPH Project Manager for review and comment. Once all comments are received, each Contingency Plan will be finalized.

Task 9 – Follow-up CPWS System Meetings

Following completion of Task 8, MSES and the BPH Project Manager will schedule a follow-up meeting with each CPWS System. The completed database, Management Plan, and Contingency Plan will be reviewed for comment from the CPWS System meeting attendees.

Task 10 – Site Specific Reports

MSES will prepare the site specific reports for each CPWS System, which will include all community meeting summaries, the PCS inventory, Management Plan (including BMPs), Contingency Plan, BMP implementation recommendations (including funding sources), estimated implementation costs, and other BPH required content.

The reports will also include mapping, updated Access database, photographs, and other elements, as identified by MSES and BPH as the project proceeds.

Task 11 – Project Closure Meetings

Once the final reports are approved by the BPH Project Manager, MSES and the BPH Project Manager will schedule and invite attendees to a Project Closure Meeting for each CPWS System.

The purpose of this meeting will be to explain the results, conclusions, and recommendations.

Technical Approach

ANTICIPATED PROJECT TIME LINE

The anticipated project time line for the Source Water Technical Help Program is developed to be completed within one year from the date the notice-to-proceed is issued. The following time line is by task and weeks needed to complete the task. The technical approach will be undertaken in a manner and, with MSES' staff depth, many of the tasks will be underway at the same time.

Project Time Line

<u>Technical Approach Task</u>	<u>Time in Weeks</u>
Task 1 - Project Initiation	6
Task 2 - SPWS System Area Site Visits To Obtain PCS Information	8
Task 3 - Draft Management and Contingency Plan Format Preparation	8
Task 4 - CPWS System Project Initiation Meeting Preparation	8
Task 5 - CPWS System Project Initiation Meetings	10
Task 6 - PCS Survey for PCSs within Well Head And ZCC Areas	34
Task 7 - Management Plans Prepared	6
Task 8 - Contingency Plans Prepared	6
Task 9 - Follow-Up CPWS System Meetings	6
Task 10 - Site Specific Reports	16
Task 11 - Project Closure Meetings	6

5.0 Confirmations

General

MSES Consultants, Inc. confirms the Team's intention and willingness to:

1. Abide by applicable provisions of codes and regulations of the State of West Virginia, DHHR, BPH, and Office of Environmental Health Services.
2. Employ registered professional engineers, earth scientists, and other pertinent personnel (surveyors, environmental specialists, etc., as applicable) licensed to practice in the State of West Virginia.
3. Prepare detailed proposals/work plans, with estimated fees, and to execute agreements for services based thereon, including fixed fees for well identified scopes of work, or other mutually agreeable forms of compensation.
4. Comply with all other civil rights, conflict of interest, records access, or other laws, regulations or requirements that may be referenced in conjunction with each project.

Quality Commitment

MSES Consultants, Inc. is committed to providing high quality engineering, architectural, and environmental services to its customers through its continuous quality improvement program that involves all personnel in a systematic, logical process to continually improve the firm's work practices and procedures. MSES' approach to quality is composed of four elements: the individual, procedures for project execution, procedures for controlling and assuring the quality of our services, and the continuous quality improvement process.

The Individual

Since 1976, we have relied on the care, diligence, imagination, intelligence, and commitment of our personnel to provide quality designs and quality services. Recent policies and procedures emphasize the importance and contribution of each individual in achieving our quality goals.

Procedures for Project Execution

Standard procedures for project execution are adopted by MSES, providing for project management with current guidelines and procedures for managing projects and assuring quality in our technical performance, from the proposal stage through the close-out state.

QA/QC Procedures

The quality assurance/quality control procedures are incorporated into the technical quality control of services provided to our clients. A set of guidelines and procedures is established for each type of service provided by the firm: planning reports and studies, design services, construction phase services, and facility inspection services. These procedures are used in conjunction with project technical and management controls, which set forth the following criteria on which to base successful completion of a project: project schedule, project budget, scope requirements, project objectives, and client satisfaction.

Continuous Quality Improvement

Continuous Quality Improvement, or CQI, MSES' adaption of Total Quality Management, is a systematic, firm-wide process of improving services we perform for our clients by improving the way we work and the services we provide. CQI is concerned with identifying barriers and removing those barriers. CQI achieves this by making quality a part of everyone's job description. We train each person in CQI and assign him or her to a Quality Improvement Meeting Unit (QIMU). These QIMU's hold one-hour weekly meetings to identify barriers and to propose improvements or changes in the way we work. In this way, CQI provides a vehicle for the recognition and re-involvement of all employees in improving the firm's methods, procedures, and operations.

6.0 RFQ and Purchasing Affidavit

RFQ AND PURCHASING AFFIDAVIT

The signed and dated RFQ and Purchasing Affidavit follow this page.



State of West Virginia
 Department of Administration
 Purchasing Division
 2019 Washington Street East
 Post Office Box 50130
 Charleston, WV 25305-0130

Request for Quotation

RFQ NUMBER
EHS90111

PAGE
1

ADDRESS CORRESPONDENCE TO ATTENTION OF
ROBERTA WAGNER 304-558-0067

PROBID

*709052706 304-624-9700
 MSES CONSULTANTS INC
 PO BOX 190
 CLARKSBURG WV 26302-0190

SHIP TO

HEALTH AND HUMAN RESOURCES
 BPH ENVIRO HLTH SERVICES
 CAPITOL AND WASHINGTON STREETS
 1 DAVIS SQUARE, SUITE 200
 CHARLESTON, WV
 25301-1798 304-558-2981

DATE PRINTED	TERMS OF SALE	SHIP VIA	F.O.B.	FREIGHT TERMS
02/13/2009				

BID OPENING DATE: 03/19/2009 BID OPENING TIME 01:30PM

LINE	QUANTITY	UOP	CAT NO	ITEM NUMBER	UNIT PRICE	AMOUNT
001	1	JB		906-00-00-001		
<p>ARCHITECT/ENGINEERING SERVICES, PROFESSIONAL</p> <p>EXPRESSION OF INTEREST (EOI) FROM QUALIFIED FIRMS TO PROVIDE ARCHITECTURAL/ENGINEERING SERVICES FOR THE SOURCE WATER PROTECTION TECHNICAL HELP PROGRAM (SWPTHP) AS DESCRIBED IN THE ATTACHED SPECIFICATIONS.</p> <p>CANCELLATION: THE DIRECTOR OF PURCHASING RESERVES THE RIGHT TO CANCEL THIS CONTRACT IMMEDIATELY UPON WRITTEN NOTICE TO THE VENDOR IF THE COMMODITIES AND/OR SERVICES SUPPLIED ARE OF AN INFERIOR QUALITY OR DO NOT CONFORM TO THE SPECIFICATIONS OF THE BID AND CONTRACT HEREIN.</p> <p>BANKRUPTCY: IN THE EVENT THE VENDOR/CONTRACTOR FILES FOR BANKRUPTCY PROTECTION, THIS CONTRACT MAY BE DEEMED NULL AND VOID, AND TERMINATED WITHOUT FURTHER ORDER.</p>						

SEE REVERSE SIDE FOR TERMS AND CONDITIONS

SIGNATURE 	TELEPHONE 304-624-9700	DATE March 19, 2009
TITLE PRESIDENT	FEN 55-0637279	ADDRESS CHANGES TO BE NOTED ABOVE

WHEN RESPONDING TO RFQ, INSERT NAME AND ADDRESS IN SPACE ABOVE LABELED 'VENDOR'



State of West Virginia
 Department of Administration
 Purchasing Division
 2019 Washington Street East
 Post Office Box 50130
 Charleston, WV 25305-0130

Request for Quotation

RFQ NUMBER
EHS90111

PAGE
2

ADDRESS CORRESPONDENCE TO ATTENTION OF
ROBERTA WAGNER 304-558-0067

*709052706 304-624-9700
 MSES CONSULTANTS INC
 PO BOX 190
 CLARKSBURG WV 26302-0190

HEALTH AND HUMAN RESOURCES
 BPH ENVIRO HLTH SERVICES
 CAPITOL AND WASHINGTON STREETS
 1 DAVIS SQUARE, SUITE 200
 CHARLESTON, WV
 25301-1798 304-558-2981

DATE PRINTED	TERMS OF SALE	SHIP VIA	F.O.B.	FREIGHT TERMS
02/13/2009				

BID OPENING DATE: 03/19/2009 BID OPENING TIME 01:30PM

LINE	QUANTITY	UOP	CAT NO.	ITEM NUMBER	UNIT PRICE	AMOUNT
***** THIS IS THE END OF RFQ EHS90111 ***** TOTAL:						

SIGNATURE			SEE REVERSE SIDE FOR TERMS AND CONDITIONS		
TITLE PRESIDENT	PHONE 55-0637279	TELEPHONE 304-624-9700	DATE March 19, 2009		
ADDRESS CHANGES TO BE NOTED ABOVE					

WHEN RESPONDING TO RFQ, INSERT NAME AND ADDRESS IN SPACE ABOVE LABELED 'VENDOR'

STATE OF WEST VIRGINIA
Purchasing Division

PURCHASING AFFIDAVIT

VENDOR OWING A DEBT TO THE STATE:

West Virginia Code §5A-3-10a provides that: No contract or renewal of any contract may be awarded by the state or any of its political subdivisions to any vendor or prospective vendor when the vendor or prospective vendor or a related party to the vendor or prospective vendor is a debtor and the debt owed is an amount greater than one thousand dollars in the aggregate.

PUBLIC IMPROVEMENT CONTRACTS & DRUG-FREE WORKPLACE ACT:

If this is a solicitation for a public improvement construction contract, the vendor, by its signature below, affirms that it has a written plan for a drug-free workplace policy in compliance with Article 1D, Chapter 21 of the *West Virginia Code*. The vendor **must** make said affirmation with its bid submission. Further, public improvement construction contract may not be awarded to a vendor who does not have a written plan for a drug-free workplace policy in compliance with Article 1D, Chapter 21 of the *West Virginia Code* and who has not submitted that plan to the appropriate contracting authority in timely fashion. For a vendor who is a subcontractor, compliance with Section 5, Article 1D, Chapter 21 of the *West Virginia Code* may take place before their work on the public improvement is begun.

ANTITRUST:

In submitting a bid to any agency for the state of West Virginia, the bidder offers and agrees that if the bid is accepted the bidder will convey, sell, assign or transfer to the state of West Virginia all rights, title and interest in and to all causes of action it may now or hereafter acquire under the antitrust laws of the United States and the state of West Virginia for price fixing and/or unreasonable restraints of trade relating to the particular commodities or services purchased or acquired by the state of West Virginia. Such assignment shall be made and become effective at the time the purchasing agency tenders the initial payment to the bidder.

I certify that this bid is made without prior understanding, agreement, or connection with any corporation, firm, limited liability company, partnership or person or entity submitting a bid for the same materials, supplies, equipment or services and is in all respects fair and without collusion or fraud. I further certify that I am authorized to sign the certification on behalf of the bidder or this bid.

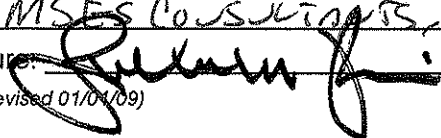
LICENSING:

Vendors must be licensed and in good standing in accordance with any and all state and local laws and requirements by any state or local agency of West Virginia, including, but not limited to, the West Virginia Secretary of State's Office, the West Virginia Tax Department, West Virginia Insurance Commission, or any other state agencies or political subdivision. Furthermore, the vendor must provide all necessary releases to obtain information to enable the Director or spending unit to verify that the vendor is licensed and in good standing with the above entities.

CONFIDENTIALITY:

The vendor agrees that he or she will not disclose to anyone, directly or indirectly, any such personally identifiable information or other confidential information gained from the agency, unless the individual who is the subject of the information consents to the disclosure in writing or the disclosure is made pursuant to the agency's policies, procedures and rules. Vendor further agrees to comply with the Confidentiality Policies and Information Security Accountability Requirements, set forth in <http://www.state.wv.us/admin/purchase/privacy/noticeConfidentiality.pdf>.

Under penalty of law for false swearing (*West Virginia Code* §61-5-3), it is hereby certified that the vendor affirms and acknowledges the information in this affidavit and is in compliance with the requirements as stated.

Vendor's Name: MSES CONSULTANTS, LLC.
Authorized Signature:  Date: MARCH 19, 2009
Purchasing Affidavit (Revised 01/01/09)