



December 9, 2008

Mr. Frank Whittaker, Senior Buyer  
Department of Administration  
Purchasing Division  
Building 15  
2019 Washington Street, East  
Charleston, West Virginia 25305-0130

Re: Architectural/Engineering Services for  
Lodge Expansion and Park Improvements at  
Cacapon Resort State Park

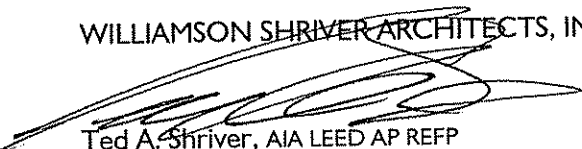
Dear Mr. Whittaker:

Williamson Shriver Architects is pleased to submit our firm's qualifications and experience to provide architectural and engineering services for the proposed scope of work as set forth in your Request for Quotation RFQ Number DNR209057. We are confident that our firm and the project team will provide you the best experience, talent and commitment to successfully complete your project and meet your expectations as demonstrated in our past experience with the Division of Natural Resources.

Attached is our resume that includes a firm brochure, introductions of our proposed project team, and staff roster. We appreciate the opportunity to submit our qualifications and look forward to an interview. Please give us a call if you have any questions concerning any part of our qualifications and experience.

Sincerely,

WILLIAMSON SHRIVER ARCHITECTS, INC.



Ted A. Shriver, AIA LEED AP REFP  
Architect / Vice President

/lap

Enclosures – 1 original and 2 copies

RECEIVED

08 DEC -9 AM 10: 52

PURCHASING DIVISION  
STATE OF WV

# Cacapon Resort State Park Lodge Expansion & Park Improvements

## contents

### Williamson Shriver Architects

**Firm Profile**

**Tab 1**

**Staff and Resumes**

**Tab 2**

**Representative Projects**

**Tab 3**

**Terradon Corporation**

**Tab 4**

**Harper Engineering**

**Tab 5**

# Cacapon Resort State Park Lodge Expansion & Park Improvements

## heritage & experience

### Overview

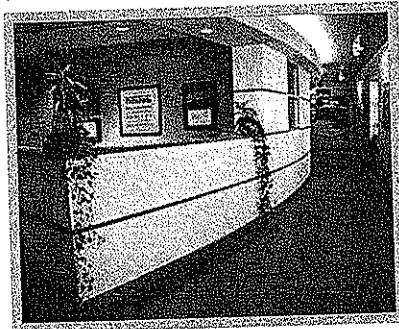
#### Williamson Shriver Architects

is an award-winning, multi-disciplinary design firm that has been in business since 1967. While specializing in educational planning and design, we provide design services to a diverse client base throughout West Virginia. With construction values exceeding one billion dollars over our history, the size and scale of our projects have ranged from detailed designs for small interior renovations to large multi-million dollar new new facilities. Large or small, simple or complex, every project has our commitment to diligent, well thought-out design. Our functional and distinctive buildings reflect the vision of our clients and the spirit of our communities.

The Office of Williamson Shriver Architects



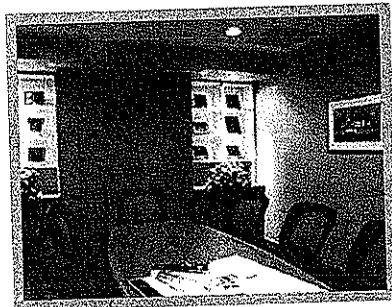
*The vision of our clients and the spirit of our communities.*  
Experienced, capable, and responsive, we have a long tradition of excellence and client



commitment. Simply put ... we listen ... and combine what we learn from listening with a clear understanding of technology and a wealth of experience. Every Williamson Shriver Architects design is a collaboration with the end user. Our finished projects work for people because they start with people. Through focus groups, individual interviews, and public meetings, we ask our clients to stretch their imagination and anticipate how they will use each space. The result of this process ...

flexible design solutions that respond to people and make the most of budgets.

*Experienced ... Capable ... Responsive*  
Commitment to quality, dedication to project and client, and a 40+ year tradition



of innovation and architectural excellence... that's Williamson Shriver Architects. No matter what the program, site, or budget, we've been there and we have the experience and vision to shape your project into a success. At Williamson Shriver Architects, we're listening.

  
WILLIAMSON  
SHRIVER  
ARCHITECT

# Cacapon Resort State Park Lodge Expansion & Park Improvements

## scope of available services

Williamson Shriver Architects offers our clients the design services listed here as either basic or additional services. Services offered by outside consultants are indicated as such.

### Pre-Design Services

- Existing Facilities Surveys
- Feasibility Studies
- Programmatic Specifications
- Site Analysis and Selection
- Zoning Processing Assistance
- Bond Issue Planning Assistance
- Educational Facility Planning

### Architectural Design

- Building and Site Design
- Structural Design
- Renovation / Restoration Design
- Materials Research and Specifications
- ADA / Life Safety Research
- Budget Analysis
- Value Analysis
- Scheduling

### Interior Design

- Space Planning
- Tenant Fit-up
- Furniture and Equipment Procurement
- Selection of Interior Finishes
- Color Coordination

### Construction Procurement / Administration

- Preparation of Contract Documents
- Bidding / Negotiation
- Construction Observation
- Contract Administration
- Post-Occupancy Services

### Other Services

- Facilities Documentation utilizing Autodesk Autocad
- 3D Visualization
- Promotional Materials
- Graphic Design

The following services are provided through the assistance of outside consulting firms:

- Mechanical/Electrical Engineering
- Fire Protection Design
- Landscape Design
- Civil Engineering
- Stormwater Management
- Acoustical Design

## management approach & quality control

### Management Approach

Overall management responsibility for the project will be with Ted Shriver. He will function as the point of contact with the representative for the Division of Natural Resources, Parks & Recreation, and will serve as liaison between the design team and the Division of Natural Resources. In addition, Mr. Shriver will be responsible for project coordination among the consulting team during the design phases of the project. Under this leadership, we will utilize the services of Harper Engineering, a consulting engineering firm providing designs for HVAC, electrical, plumbing and fire protection, and Terradon Corporation will provide site and civil engineering.

The approach taken to manage this project will incorporate proven procedures used on previous highly successful projects. We will utilize cost control techniques which we have developed and which have served clients successfully on past projects, and we will implement quality control procedures consistent with similar building programs of this nature and size.

#### 1. Scheduling

A master project schedule will be prepared to reflect all of the work tasks for the project organized by design phase and showing timelines and milestone dates for all tasks. We will also show the organization/individual responsible for the task. It will be organized as a horizontal bar chart with the critical path shown as highlighted vertical lines. The schedule will be tested at critical intervals and measures taken to assure the schedule is maintained. Work efforts are tested against progress so that potential conflicts and delays can be detected quickly and appropriate action taken immediately to preserve scheduled milestones.

#### 2. Cost Control

It is vitally important that the project budget and the project program and expectations are compatible from the outset. Once the initial project budget and concept document review scope is established and agreed upon, all future cost estimates and design decisions will be measured against that budget and program. Typically, further cost testing will be performed at the completion of schematic and design development drawings, and at 75% completion of contract drawings. Between formal estimates, the design team is constantly evaluating design and specification alternatives in an on-going effort to achieve the project goals in a cost effective manner and to maximize the value of the funds available for the project.

## management approach & quality control

### 3. Quality Management

The Williamson Shriver Architects, Inc. design team subscribes to a Total Quality Management Plan (TQM) by using established TQM practices to avoid delays, overruns and losses through anticipation, cooperation, communication, and prevention. Quality consciousness is a top priority at every level of performance, from administrative services to project management to corporate management.

With respect to the design profession, the important issues of production control, quality control, cost control and loss control are addressed early in the project when they will have the greatest effect on the design decision-making process. Our consultants will participate in a continuous process of improvement. To fully engage in organizational policies that will further the long term strategy and technique of TQM, the following strategies are followed:

- Top management support
- Long term strategic planning
- Client focus
- Employee training and recognition
- Performance measurement
- Balance of project manager and quality advisor roles

Quality assurance reviews for this School Building Authority of West Virginia project will be scheduled and performed to include the following important design and construction concerns:

- Concept document
- Value engineering and life-cycle costing
- Budget/cost compliance
- Code and Jurisdictional Compliance
- Design quality and Program Compliance
- Energy analysis
- ADA accessibility

### 4. CADD Capability

All of the major disciplines on this project have the capacity for CADD. Autodesk Revit, a building information modeling (BIM) software, and Architectural Desktop 2005 will be utilized throughout the design process. This is not only a valuable production tool for the design team, it also offers better technical control of the coordination between disciplines, enhanced clarity of contract documents, and it provides a potential facilities management benefit for clients. Williamson Shriver Architects was among the first architectural firms in West Virginia to utilize computer aided drafting and BIM software.

# Cacapon Resort State Park Lodge Expansion & Park Improvements

## staff and experience

Name	Position	Years This Firm (Total Experience)
<b>Gregory A. Williamson AIA LEED AP REFP</b>	Architect / President	24 (27)
<b>Ted A. Shriver AIA LEED AP REFP</b>	Architect / Vice-President	23 (5)
<b>Lori A. Phillips</b>	Administrative Assistant	9 (17)
<b>Amber Lovejoy</b>	Reception / Clerical Assistant	4 (5)
<b>George E. Bumpus AIA</b>	Architect	6 (30)
<b>Donald W. Beyer P. E.</b>	Structural Engineer	18 (28)
<b>Dana K. Scarberry</b>	Project Manager	18 (23)
<b>Michael L. Spencer</b>	Project Manager	11 (16)
<b>Mike Nichols</b>	Project Manager	4 (9)
<b>George Kayurapun</b>	Project Manager	3 (35)
<b>Greg Martin</b>	Intern Architect	0 (2)
<b>Steven W. Gibson</b>	Contract Administration	22 (28)
<b>Craig Gobel</b>	Contract Administration	4 (29)
<b>Micah R. Whitlow</b>	Graphic Designer	8 (9)
<b>Bill Ratcliffe REFP</b>	Educational Planning	3 (35)
<b>Joe Evans REFP</b>	Educational Planning	10 (42)

11/08

## Cacapon Resort State Park Lodge Expansion & Park Improvements

### Gregory A. Williamson AIA LEED AP REEP (Architect/President)

Mr. Williamson attended the University of Tennessee, where he received his bachelor of architecture degree in 1981. His professional career began at Sverdrup and Parcel and later with Donald L. Moses Associates, both in Charleston. In 1983 he joined Gandee Thomas and Sprouse / GTS Partners as an architect and project designer and obtained his West Virginia registration as an architect in 1985.

In 1994, along with Ted Shriver, Mr. Williamson acquired the firm from founder Kent Gandee, and together they have continued the tradition of quality, client-focused architectural design for which the firm has been recognized. As a design partner, Mr. Williamson has designed such prominent and well-received projects as Cabell Midland High School, Caperton Center for Applied Technology at WVU-Parkersburg, and the Lodge and Conference Center at Chief Logan State Park. Additionally, he represented Williamson Shriver Architects in their role as associated architect on two prominent commissions in Charleston, the United States Federal Courthouse with architect SOM of New York, and the Clay Center for the Arts and Sciences with Kise Straw Kolodner Architects of Philadelphia.

Mr. Williamson is a member of the WV Board of Architects, appointed by Governor Underwood in 1999. He has active registrations in West Virginia, Virginia, Maryland, and Kentucky, and is a holder of an NCARB certificate. He is a past president of the West Virginia Society of Architects, has served as a part time instructor at the University of Charleston, and has also served as a juror on several local or regional design award programs.

#### Education:

University of Tennessee, 1981  
B. Architecture  
West Virginia State College, 1978  
Winfield (WV) High School 1976

#### Registration:

Architect, West Virginia No. 2101  
Architect, Kentucky No. 4062  
Architect, Maryland No. 9945  
Architect, Virginia No.0401 011183  
NCARB Cert. No. 33662

#### Affiliations:

West Virginia Board of Architects 1999-Present  
American Institute of Architects  
WV Society of Architects  
President 1994 & 1995  
Council of Educational Facility  
Planners International  
Recognized Educational Facility Professional  
Putnam County Board of Zoning Appeals  
Member - 1997 to 2001  
NCARB Committee on Education 2006-2007

#### Related Experience:

Part-time Instructor, University of  
Charleston Carlton Varney School of  
Art & Design, 1987-1988  
Part-time Instructor, West Virginia State  
College, Industrial Technology, 1988

#### Project Experience:

Partner-in Charge for:  
Shepherd College Stadium Addition  
Caperton Center for Applied Technology  
Cabell Midland High School  
Huntington High School  
Romney Middle School  
Mountain Ridge Elementary School (Berkeley)  
Brooke High School Wellness Center  
Capon Bridge Middle School  
Keyser High School  
International Coal Group Headquarters



## Cacapon Resort State Park Lodge Expansion & Park Improvements

**Ted A. Shriver** AIA LEED AP REFP (Architect/Vice-President)

Mr. Shriver is an architect and Vice President of Williamson Shriver Architects and is responsible for the office-wide coordination and production of contract documents. He brings to the firm 25 years of architectural experience, and his primary responsibility is to ensure that appropriate production and support resources are applied to each project. Mr. Shriver's career began in 1979 with other local firms, but he has been with the firm since 1984 with partner Greg Williamson.

Ted and Greg provide client focused services, specializing in educational facilities. We are pleased to be a part of Monongalia County Schools 50 million dollar bond passage. This is the largest bond passed by the voters in the State of West Virginia, and it is matched with an additional 15 million dollars by the State School Building Authority.

Office management, marketing and construction administration on smaller scope projects add to his daily responsibilities. He also oversees the firm's computer system, including evaluation and installation of new technology. He has extended this computer expertise to an understanding of the utilization and implementation of technology in school facilities and attends the Council of Educational Facility Planners' Technology Conferences. Since 2005, Mr. Shriver has focused on establishing guidelines for our designs on implementing safe schools and monitoring systems.

Mr. Shriver is active in the Council of Educational Facility Planners International especially in the Southeast Region. In 2003, he was one of the founding members of the West Virginia Chapter and served as their President from 2004-2007. He has also served as the Southeast Director since 2002.

### Education:

Fairmont State College; 1979  
A.S. Architectural Technology  
South Charleston High School 1977

### Registration:

Architect, West Virginia No. 2811  
Architect, Ohio No. 11173  
Architect, Maryland No. 10948

### Affiliations:

American Institute of Architects  
WV Society of Architects

Council of Educational Facility  
Planners International (CEFPI)  
CEFPI Southeast Region Alternate Director 2002-2003  
CEFPI Southeast Region Director 2003-Present  
CEFPI Recognized Educational Facility Professional (REFP)

South Charleston Board of Health  
National Fire Protection Association  
Building Officials and Code Administrators International  
Contractors Association of WV

### Experience:

Doddridge County High School Bond Planning  
Monongalia County Schools Bond Planning  
Taylor County Schools Bond Planning  
Chief Logan Conference Center  
Moundsville Junior High School  
University of Charleston -  
Master Planning, Health Sciences Division  
Musselman Middle School  
Calhoun County Middle / High School  
South Charleston Community Center  
South Charleston Ice Arena  
Tygart Lake State Park Lodge - Renovations  
Robert C. Byrd High School  
Ritchie County Middle / High School  
Doddridge County Middle School  
Bridgeport Middle School  
Cagney's Restaurant / Office Building

## Cacapon Resort State Park Lodge Expansion & Park Improvements

### Bill Ratcliffe REFP (Educational Planning / Contract Administration)

Mr. Ratcliffe has over 20 years experience in Educational Facilities Planning on the county level working in the Kanawha County School system and on the state level working for the School Building Authority of WV (SBA).

Mr. Ratcliffe, through the Council of Educational Facilities Planners International (CEFPI), has obtained the designation as Recognized Educational Facilities Planner (REFP) and is the Secretary/Treasurer of the WV Chapter of CEFPI.

During his tenure with the SBA, Mr. Ratcliffe worked with twenty-five county Boards of Educations on over 100 projects.

#### Education:

WV State University 2005  
B.A. Regents Degree Business/Construction  
St. Albans High School 1970

#### Affiliations:

Council of Educational Facilities Planners  
International (CEFPI) (REFP)  
WV Chapter CEFPI Secretary/Treasurer  
American Institute of Architects  
Associate Member of the WV Chapter  
Chairman of the WV Legislative Committee to  
Develop Guidelines for Radon/IAQ Prevention  
in New School Construction  
WV Legislative Committee to Develop Guidelines  
for School Major Improvement/Preventive  
Maintenance Programs  
Kanawha County Schools Energy Conservation  
Project Team

#### Previous Employment:

School Building Authority of WV  
1991 to 2005  
AH&M Carolina Environmental Consulting Eng.  
1990  
Kanawha County Board of Education  
1977 - 1989  
City of South Charleston  
1977  
Kelley, Gidley, Blair, & Wolfe Consulting Eng.  
1975 - 1977  
Wilkinson Surveying & Engineering Company  
1974 - 1975  
Southeastern Environmental Engineering Co.  
1973 - 1974

## Cacapon Resort State Park Lodge Expansion & Park Improvements

### George E. Bumpus AIA (Architect)

Mr. Bumpus is an Architect with Williamson Shriver Architects and is responsible for project development and production of construction documents. His project activities include lighting design, preparation of construction documents including technical specifications for furnishings and equipment, and coordination with project consultants. He has served as lead designer and project manager on a variety of projects that include new construction, renovations and additions, with budgets from \$500,000 to \$23,000,000. Mr. Bumpus has 30 years total experience in architectural, mechanical and electrical design.

#### Education:

West Virginia State College  
A. A. S. - Construction Mgmt. - 1989  
B. S. - Architectural Technology - 1993

#### Registration:

Architect, West Virginia No. 4047  
Architect, Arizona No. 38723

#### Previous Employment:

The HDMR Group, Inc.  
1993 - 2002  
John Brown, Inc.  
1989 - 1993  
Holderby Engineering, Inc.  
1978 - 1981  
1983 - 1989

#### Affiliations:

American Institute of Architects  
WV Society of Architects  
Illuminating Engineering Society of North America  
(IESNA) Associate Member

#### Project Experience

North Berkeley Intermediate School  
Point Harmony Elem. School - Add/Renov  
Warm Springs M. S. - Add/Renov  
Bunker Hill Elementary Addition  
Mountain Ridge Elementary  
Monroe Technical Center - Renov  
Buckhannon Upshur H.S. - Renov  
Ravenswood H.S. - Renov  
University of Charleston - Renov  
Mill Creek Intermediate School - Renov  
War Pre K-8 School  
Back Creek Valley Elem. School - Add/Renov  
International Coal Group, Inc. - Office Bldg.  
Pleasants County M.S. - Renov  
Rosemont Elem. School - Renov

## Cacapon Resort State Park Lodge Expansion & Park Improvements

### Donald W. Beyer P.E. (Structural Engineer)

Mr. Beyer is responsible for the structural design of the firm's various projects. He participates in all phases of design, from the review of site characteristics to the design of economical as well as attractive structural systems. He is involved with the production of details and specifications for a project's structural materials.

Mr. Beyer's close involvement with the project architect provides for the smooth integration of the structural system into the project while maintaining the aesthetics of the architect's design. His availability for consultation is an asset to the design team.

Mr. Beyer draws from his years of experience as a structural steel detailer, a structural draftsman, and engineering technician.

#### Education:

WV Institute of Technology 1997  
B. S. Civil Engineering  
WV Institute of Technology 1978  
A. S. Drafting & Design Eng. Technology

#### Registration:

Professional Engineer, WV No. 15054

#### Previous Employment:

Kelley, Gidley, Blair and Wolfe Engineers  
1986 - 1990  
W. C. Haworth, Structural Engineers  
1984 - 1986  
Union Carbide Corporation  
1979 - 1983  
West Virginia Steel Corporation  
1978 - 1979

#### Affiliations:

American Society of Civil Engineers  
American Institute of Architects  
WV Society of Architects  
Professional Affiliate Member

#### Project Experience:

Romney Middle School  
Jefferson County Middle School  
Spring Mills Area Middle School  
Huntington Summit High School  
Teay's Corporate Center - Teays Valley  
Charter Communications Office Building  
Keyser High School  
South Charleston Ice Skating Arena  
Brooke County High School Wellness Center  
Chief Logan State Park Conference Center  
South Charleston Area Development  
Office Building

Cacapon Resort State Park Lodge Expansion & Park Improvements

design for entertainment & recreation

Williamson Shriver Architects has gained our experience in facilities for entertainment and recreation in part through the projects listed here:

**South Charleston Ice Arena**  
South Charleston, West Virginia

**Earl Ray Tomblin Conference Center**  
Logan, West Virginia

**Chief Logan State Park Lodge**  
Logan, West Virginia

**Earl Ray Tomblin Recreational Facility**  
Logan, West Virginia

**North Bend State Park**  
Cairo, West Virginia

**Tygart Lake State Park**  
Grafton, West Virginia

**Clay Center for the Arts and Sciences of WV**  
Charleston, West Virginia

**Cagneys Restaurant / Office Building**  
Charleston, West Virginia

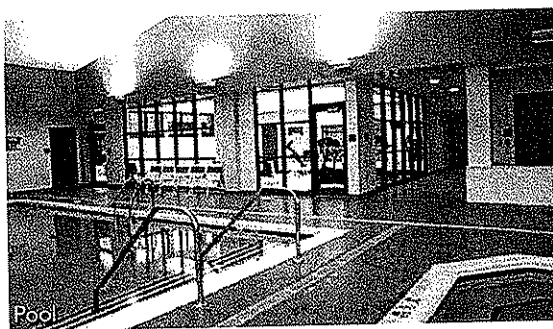
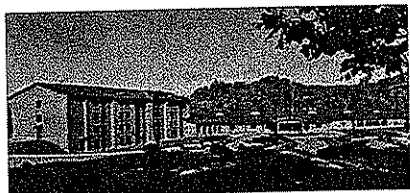
**South Charleston Community Center Addition**  
South Charleston, West Virginia

**2001 Nightclub**  
Myrtle Beach, South Carolina

**Celebrations Nightclub**  
Broadway@The Beach  
Myrtle Beach, South Carolina

Cacapon Resort State Park Lodge Expansion & Park Improvements

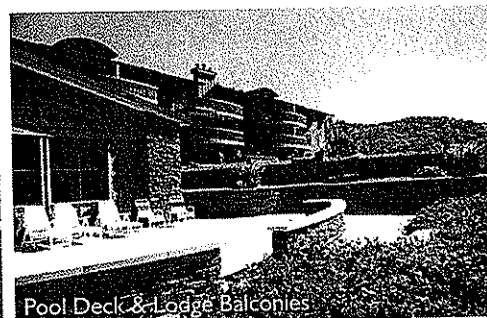
Earl Ray Tomblin Convention Center Lodge Chief Logan State Park  
Logan, West Virginia



Pool



Lobby



Pool Deck & Lodge Balconies

**Owner:** WV Division of Natural Resources  
Parks and Recreation - PEM Section

**Project Team:** Williamson Shriver Architects  
**Responsible Partner:** Ted. A. Shriver, AIA  
**Project Manager:** Michael L. Spencer  
**Structural Design:** Donald W. Beyer  
**Const. Admin.** Steve W. Gibson

**Project Data:**  
**Square Footage:** 50,000  
**Project Cost:** \$6 Million  
**Year Occupied:** 2006  
**Project Scope:** Addition

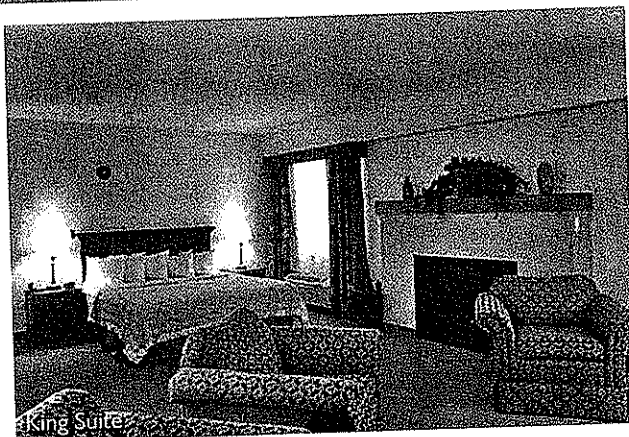


Cacapon Resort State Park Lodge Expansion & Park Improvements

Earl Ray Tomblin Convention Center Lodge Chief Logan State Park  
Logan, West Virginia



King Suite with Hot Tub



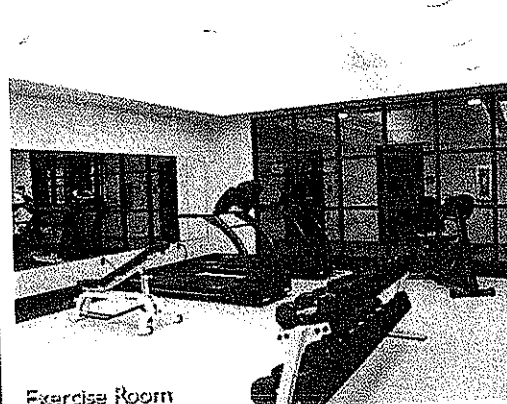
King Suite



King Studio



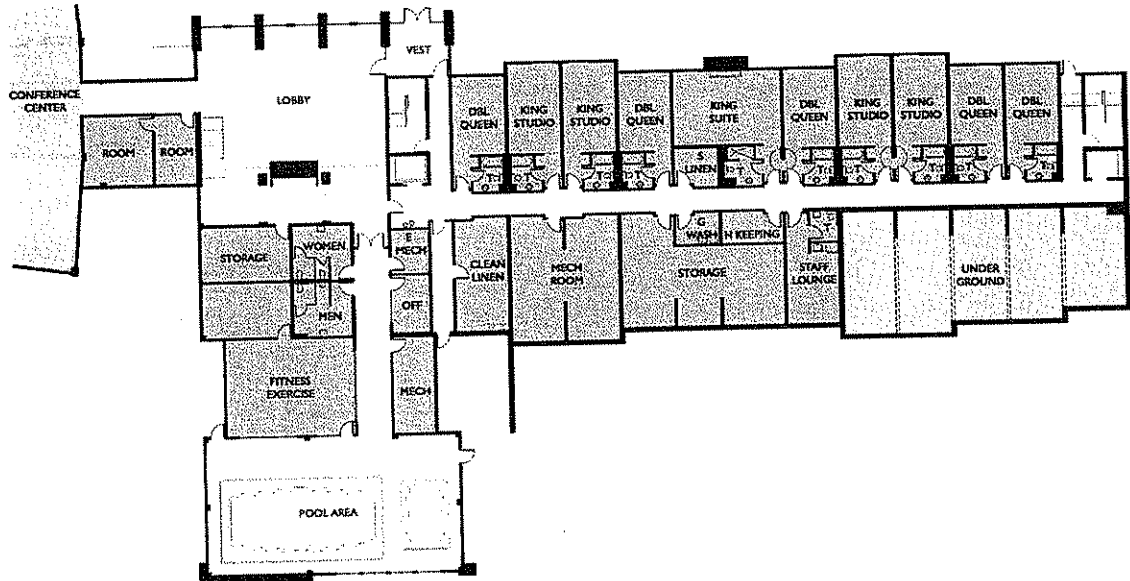
Corridor



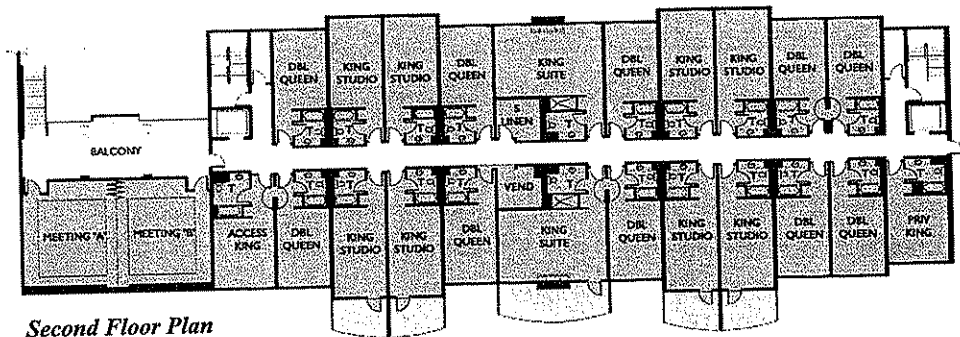
Exercise Room

# Cacapon Resort State Park Lodge Expansion & Park Improvements

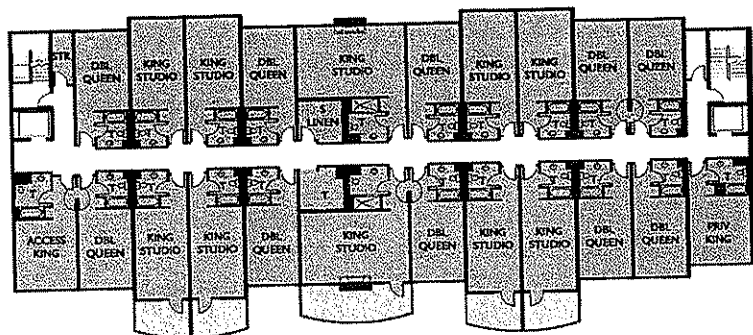
## Earl Ray Tomblin Convention Center Lodge Chief Logan State Park Logan, West Virginia



First Floor Plan



Second Floor Plan

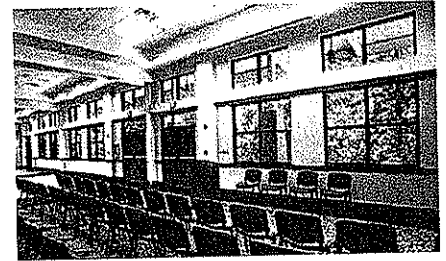
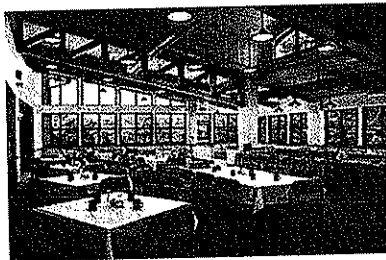
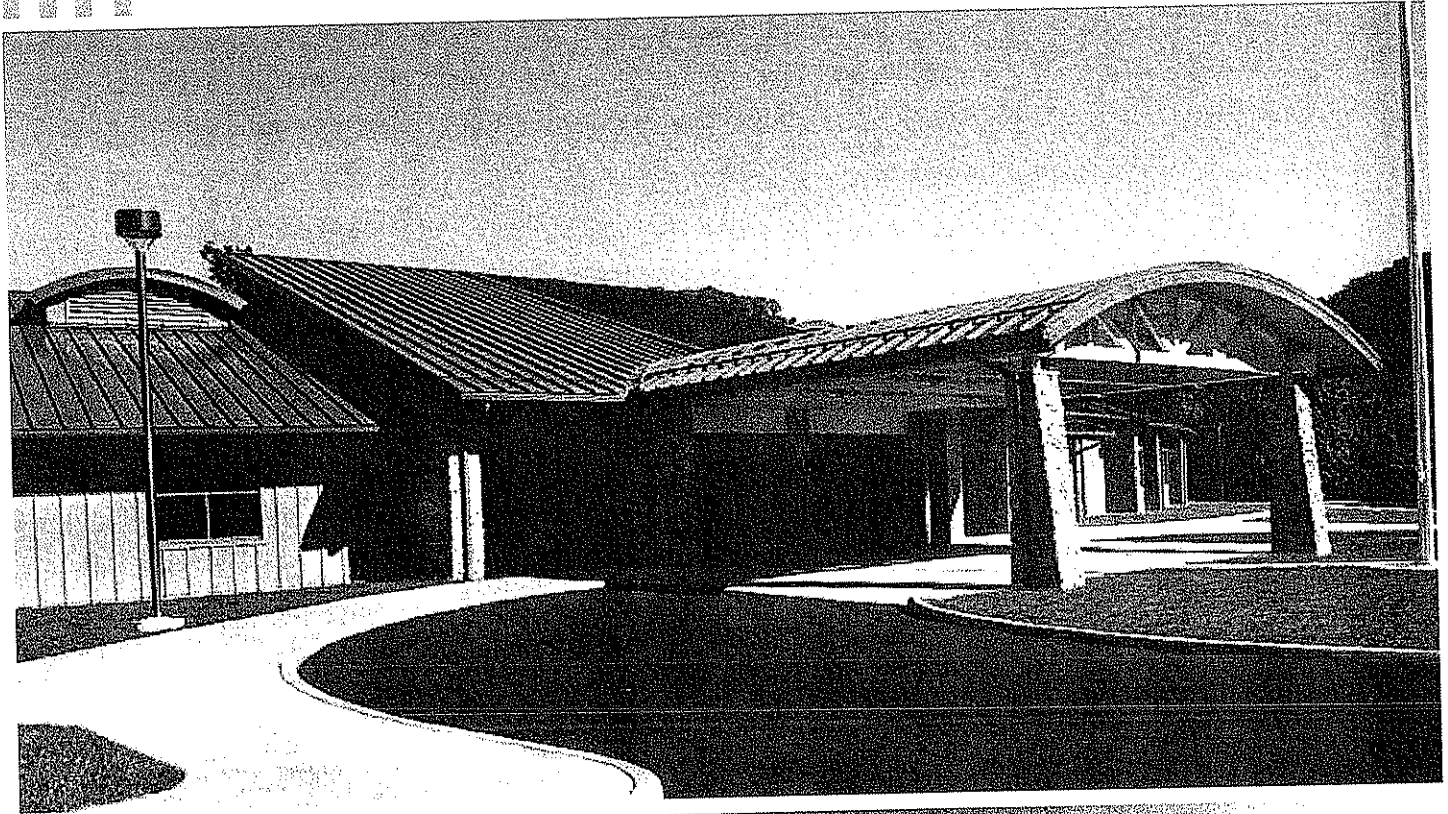


Third Floor Plan



Cacapon Resort State Park Lodge Expansion & Park Improvements

Earl Ray Tomblin Convention Center Chief Logan State Park  
Logan, West Virginia



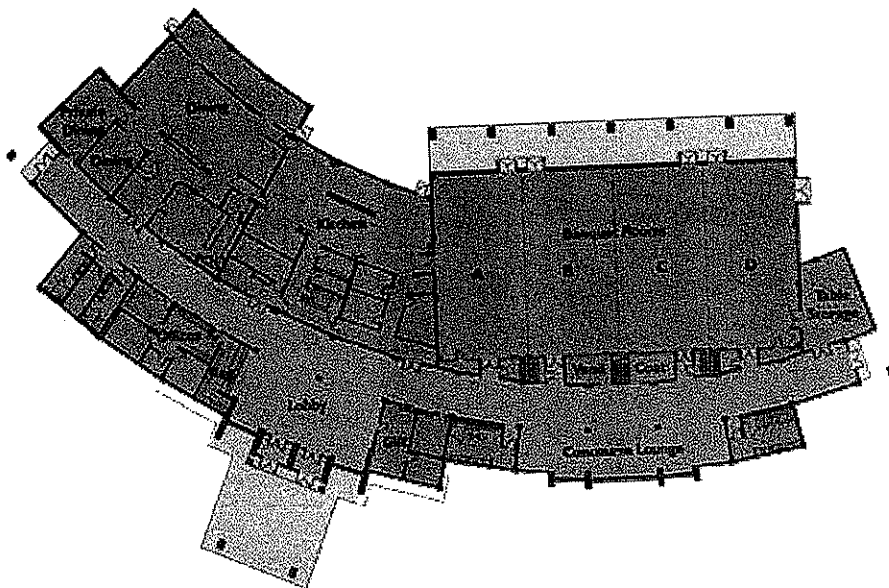
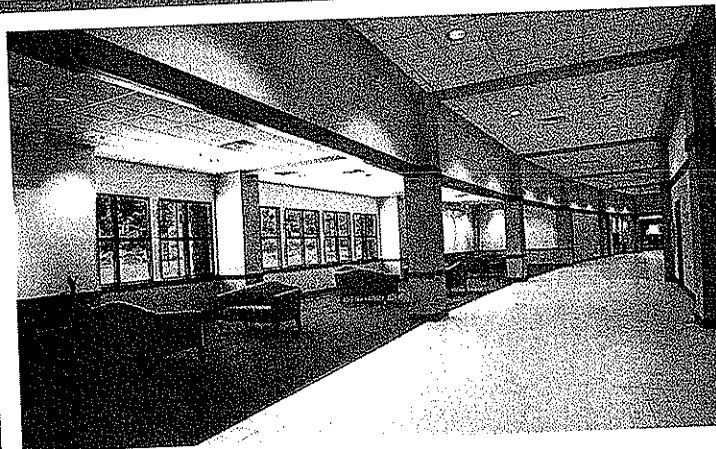
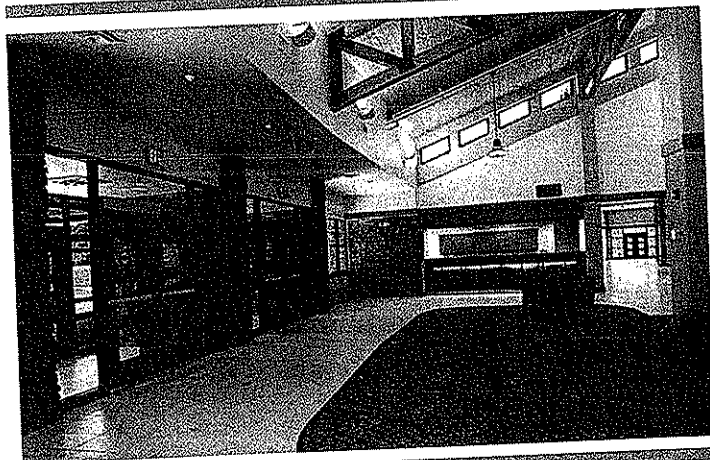
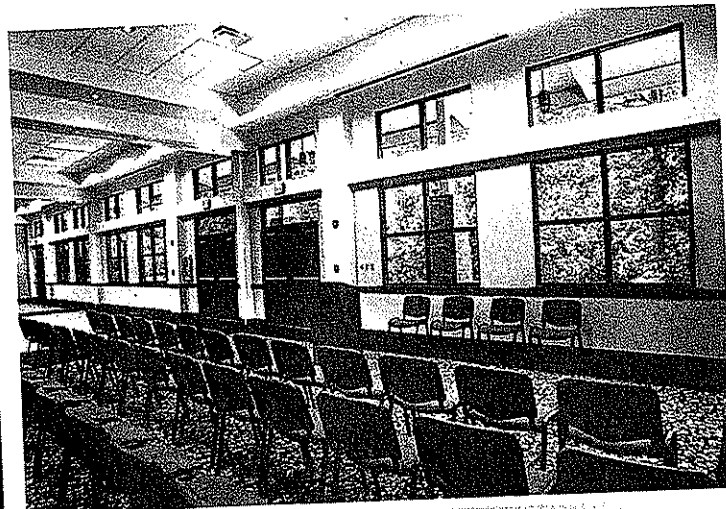
**Owner:** WV Division of Natural Resources  
Parks and Recreation - PEM Section

**Project Team:** Williamson Shriver Architects  
**Responsible Partner:** Ted. A. Shriver, AIA  
**Project Manager:** Michael L. Spencer  
**Structural Design:** Donald W. Beyer  
**Const. Admin.** Steve W. Gibson

**Project Data:**  
**Square Footage:** 28,000  
**Project Cost:** 4.5 Million  
**Year Occupied:** 2001  
**Project Scope:** New Construction

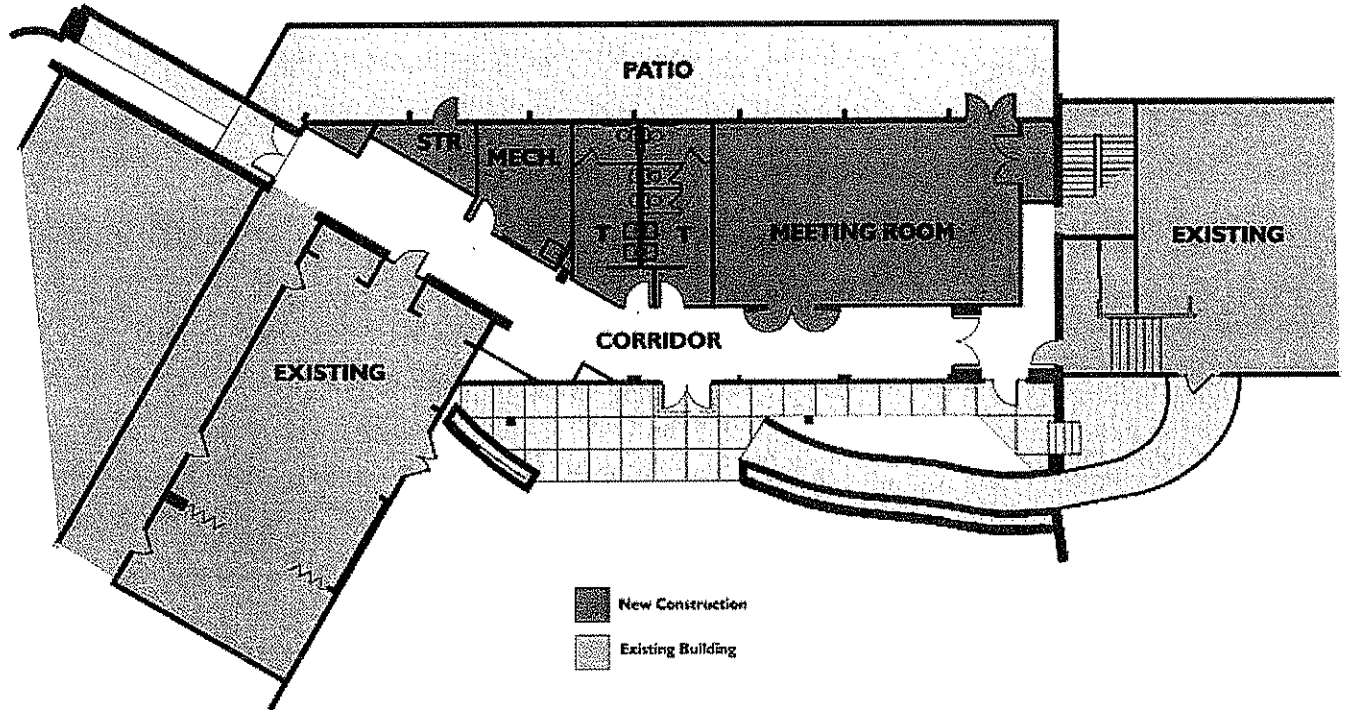
Cacapon Resort State Park Lodge Expansion & Park Improvements

Earl Ray Tomblin Convention Center Chief Logan State Park  
Logan, West Virginia



# North Bend State Park Renovations

Cairo, West Virginia



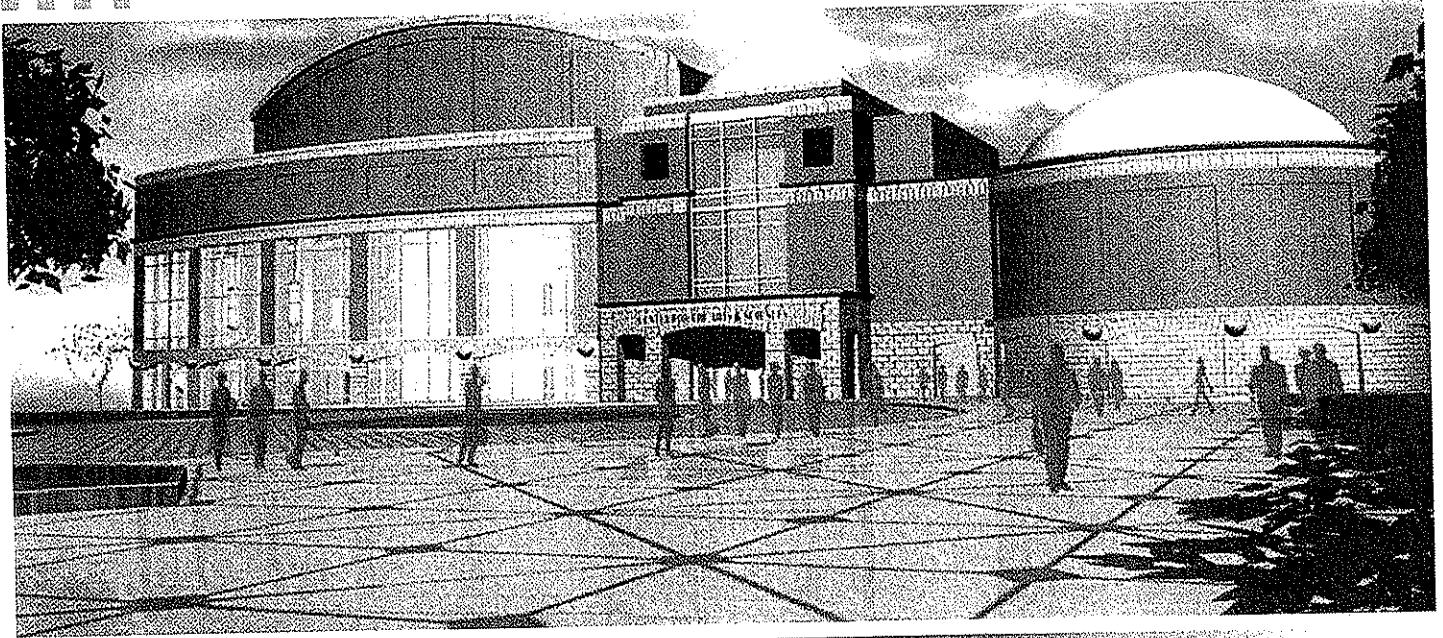
**Owner:** WV Division of Natural Resources  
Parks and Recreation - PEM Section

**Project Team:** Williamson Shriver Architects  
**Responsible Partner:** Ted. A. Shriver, AIA  
**Project Manager:** Dana K. Scarberry

**Project Data:**  
**Square Footage:** 2,700  
**Year Occupied:** 2000  
**Project Scope:** Addition & Renovation

Cacapon Resort State Park Lodge Expansion & Park Improvements

## Clay Center for the Arts and Sciences Charleston, West Virginia



**Owner:** The Clay Foundation

**Architect:** Kise Straw and Kolodner, Philadelphia, Pennsylvania

**Consult. Architect:** Williamson Shriver Architects

**Responsible Partner:** Gregory A. Williamson, AIA

**Project Data:**

**Square Footage:** 210,000

**Project Cost:** 61 Million

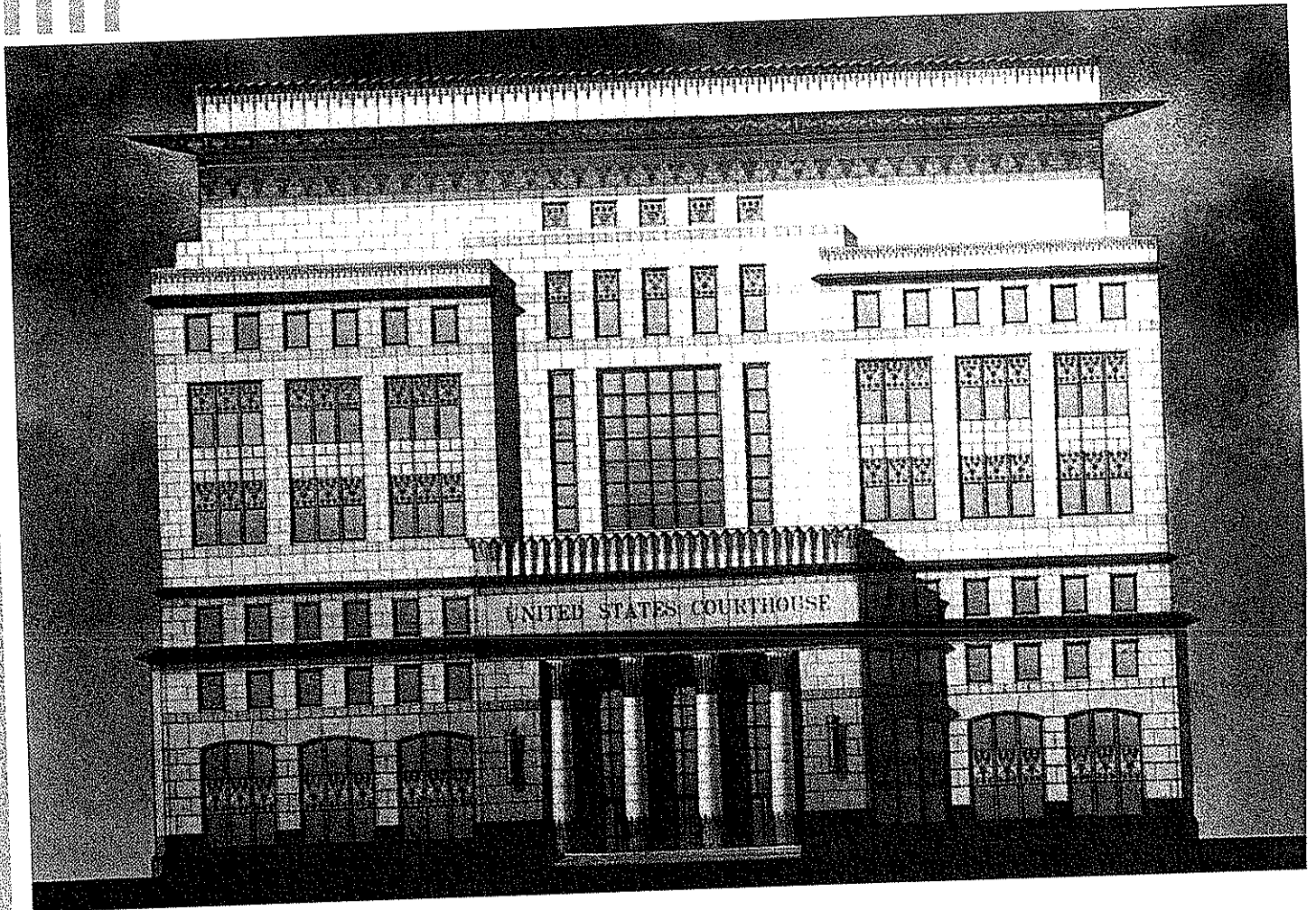
**Year Occupied:** 2001

**Funding Source:** Public and Private

**Project Scope:** New Construction

Cacapon Resort State Park Lodge Expansion & Park Improvements

## United States Federal Courthouse Charleston, West Virginia



**Owner:** General Services Administration

**Architect:** Skidmore Owings and Merrill, New York, New York

**Consult. Architect:** Williamson Shriver Architects

**Responsible Partner:** Gregory A. Williamson, AIA

**Project Manager:** Dana K. Scarberry

**Project Data:**

**Square Footage:** 300,000

**Project Cost:** 75 Million

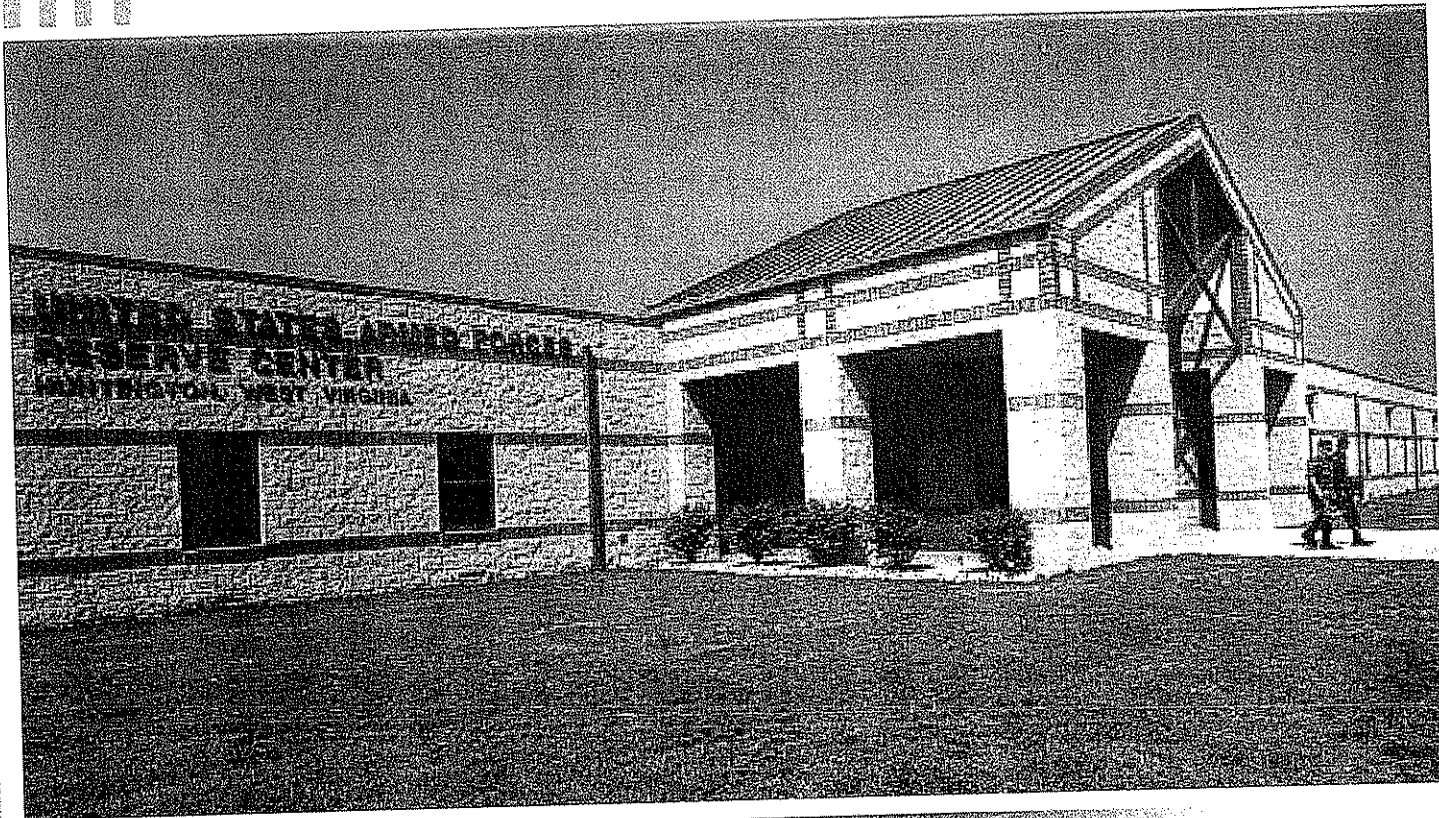
**Year Occupied:** 1997

**Funding Source:** Federal

**Project Scope:** New Construction

Cacapon Resort State Park Lodge Expansion & Park Improvements

## Armed Forces Reserve Center Huntington, West Virginia



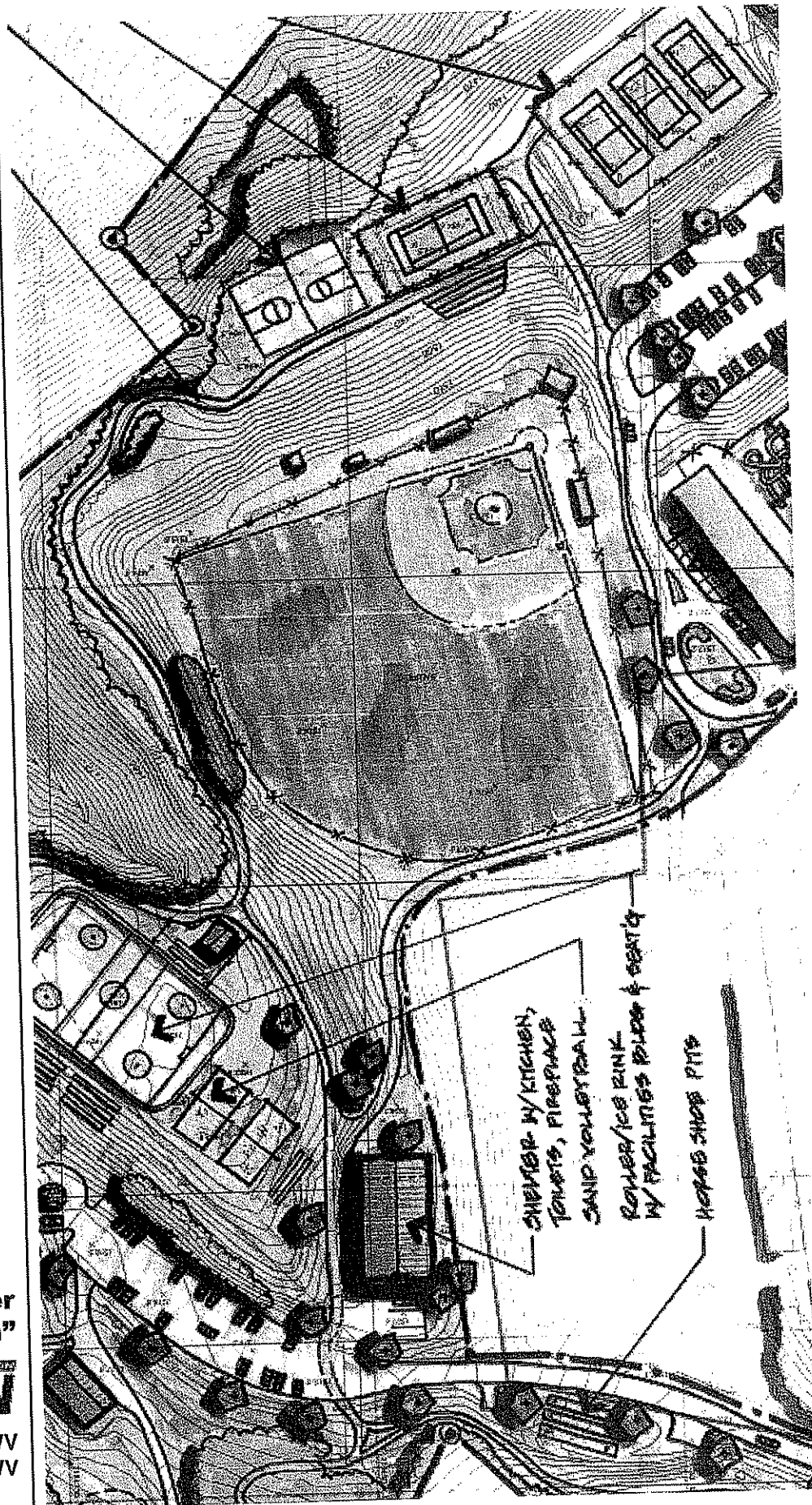
**Owner:** United States Army Reserve National Guard

**Project Team:** Williamson Shriver Architects  
**Responsible Partner:** Ted. A. Shriver, AIA  
**Structural Design:** Donald W. Beyer

**Project Data:**  
**Square Footage:** 86,896  
**Project Cost:** \$8.4 Million  
**Year Occupied:** 1995  
**Project Scope:** New Construction

CORPORATION  
**TERRADON**

**Land Planning**  
**Landscape Architecture**  
**Civil Engineering**  
**Environmental**  
**Surveying**



**"The Region's Premier  
Site Development Firm"**

CORPORATION  
**TERRADON**

Poca, WV  
Lewisburg, WV

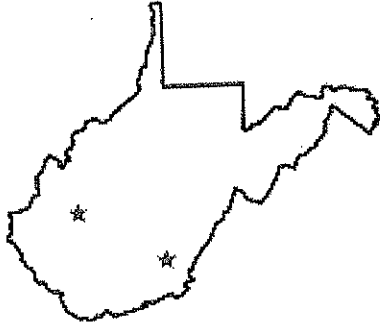
# Contents

Overview .....	1
Landscape Architecture, Greg Fox, ASLA .....	2
Pete Williams, ASLA Dan Bock, ASLA	
Landscape Architecture/Planning - Park & Rec. Projects ...	4
Civil Design .....	10
Surveying .....	10
Roadway Design .....	10
Geotechnical Engineering .....	10
Construction Monitoring .....	10
Company Brief Resumes .....	11
References .....	13



# Overview

**TERRADON**  
CORPORATION



**"Enhancing the  
Environment one  
Project at a time"**

TERRADON Corporation is a locally owned consulting firm working exclusively within the State of West Virginia. This allows the firm to focus on the single objective of providing quality consulting services to our only clients – the citizens of West Virginia and their respective State and local governments and public service agencies.

TERRADON's staff of 60 persons provides a unique combination of professional experience coupled with extensive knowledge of the State of West Virginia and its challenging terrain. The firm has offices in Poca and Lewisburg, West Virginia and active projects throughout the state. Professional services include LANDSCAPE ARCHITECTURE, highway, civil, geotechnical, and environmental engineering; geology, surveying, safety, and construction inspection.

LANDSCAPE ARCHITECTURE services are provided for a wide range of project types including:

- Recreation facilities • Education institution • Commercial Development
- Government entities • Residential Development • Environmental elements
- Medical facilities • Vehicular/Pedestrian circulation & storage facilities
- Greenway/greenspace projects • Riverfront enhancement

Some services provided are:

- Master Planning • Site Feasibility Studies • Schematic Design
- Layout Plans • Grading Plans • Stormwater Management Plans
- Erosion Control Plans • Planting Plans • Construction Details
- Specifications • Presentation Drawings • Full Color Renderings
- Project Graphic Design • Construction Observation/testing

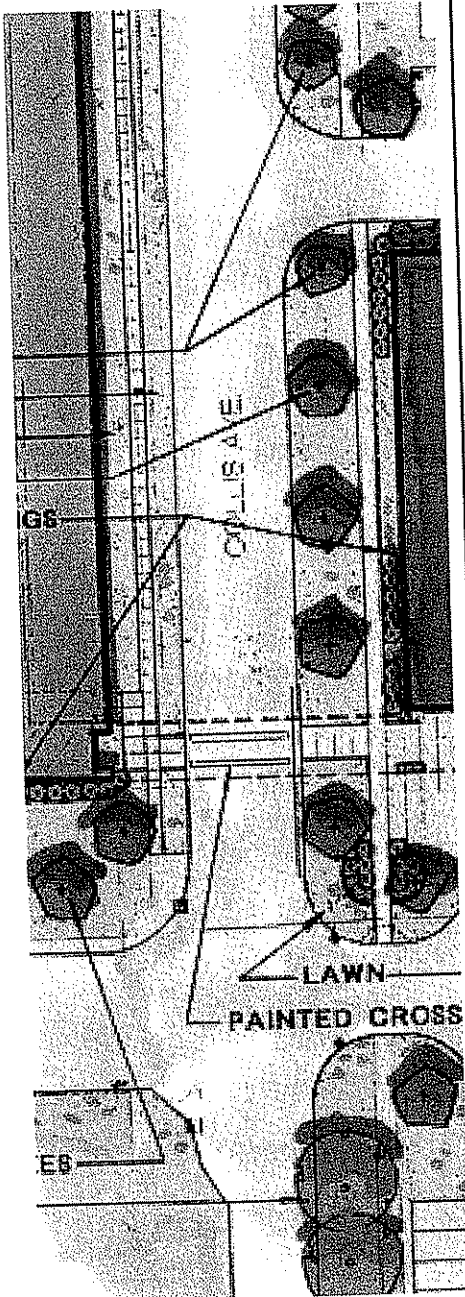
TERRADON is experienced in providing a wide variety of engineering and environmental services that may be required for your project. These related services enhance and integrate with Landscape Architecture providing the highest level of quality site design to our clients.

TERRADON's vast experience includes over 35 park and recreation projects in the past four years. The firm has also completed numerous highway design and environmental projects for the West Virginia Department of Transportation, Division of Highways. TERRADON is providing design and inspection services for West Virginia-American Water Company for new facilities in Kanawha, Boone, Cabell, Putnam, and Lincoln counties. The firm also enjoys working its ninth consecutive year on design contracts for the West Virginia Department of Environmental Protection, Abandoned Mine Lands program.

**TERRADON**  
CORPORATION

# Landscape Architecture

**GREGORY D. FOX, ASLA**  
Landscape Architect



TERRADON's Landscape Architecture services are managed by Gregory D. Fox, ASLA. Mr. Fox, a native of West Virginia and a graduate of West Virginia University with a Bachelor of Science in Landscape Architecture and a Bachelor of Arts in Geography (Planning) has gained a wide range of experience with a variety of project types. Mr. Fox is registered as a professional Landscape Architect in the following jurisdictions;

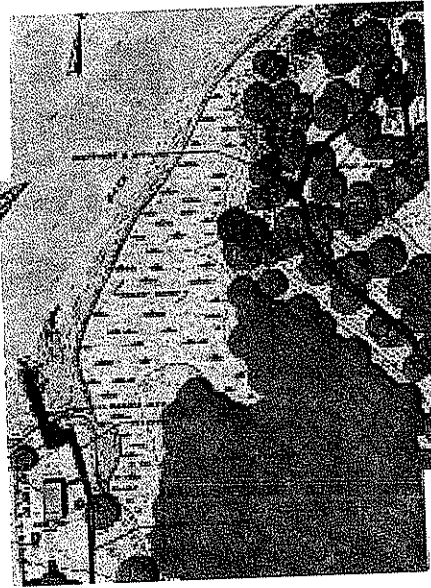
- West Virginia #226
- Ohio #720
- Pennsylvania #1669
- Virginia #1006
- National Council on Landscape Architectural Registration Boards #522
- Member: American Society of Landscape Architects

Over the course of his career, Mr. Fox has been involved in a number of notable projects:

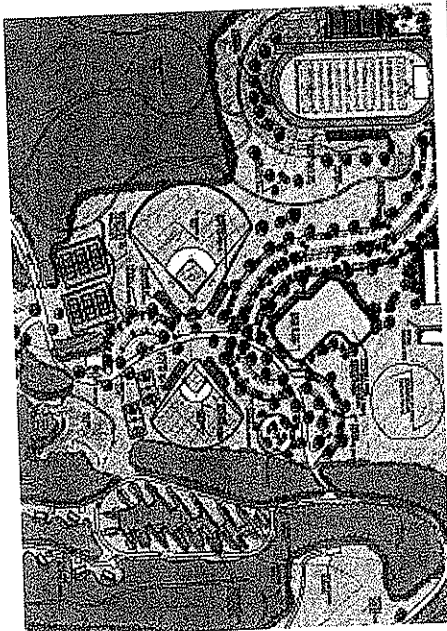
- Tri-State Transit Authority Renovations - Huntington, WV
- Marshall University ADA renovations - Huntington, WV
- Ohio University, Belmont Campus - St. Clairsville, OH
- Marshall University Soccer Field - Huntington, WV
- Lake Norman High School - Lake Norman, NC
- Hunt Road Elementary School - Anderson, SC
- West Stokes High School - Winston-Salem, NC
- Western Branch NC Police Academy - Hendersonville, NC
- Brawley Middle School - Mooresville, NC
- Cloves Combination School - York, SC
- G. C. Marlow Elementary School - Hendersonville, NC
- Tri-State Airport renovations - Huntington, WV
- Twin Falls State Park, Golf Driving Range - Mullens, WV
- Multi-Use Land Development Projects - Ashland, KY
- Medical Office Development - Teay Valley, WV
- Bluefield Housing Authority - Bluefield, WV
- Ice Creek Development Co. - Ironton, OH
- New Downtown Holiday Inn - Huntington, WV
- Superior Cadillac Olds, Inc. - Barboursville, WV
- Jackson Family Apartments - Jackson, OH
- Monsanto Chemical - Nitro, WV
- KYOVA Bicycle Corridor - Huntington, WV
- Wayne Adult Treatment Center - Wayne, WV
- Ceredo Municipal Building - Ceredo, WV
- Assisted Living Care Facility - East Bank, WV
- Cabletron Systems, Inc. - Ironton, OH
- FMC Control Center - Nitro, WV
- Fort Island Park - Fairlawn, OH
- Shawnee State University - Portsmouth, OH
- Back Creek Nature Park - Annapolis, MD
- Pro Football Hall of Fame - Canton, OH
- Big Bass Lake Recreation Center - Gouldsboro, PA
- Metzger Park - Louisville, OH
- Orrville Municipal Building - Orrville, OH
- Wooster Municipal Parking Facility - Wooster, OH
- Hilltop Golf Course - Coshocton, OH
- Surry County Courthouse - Dobson, NC
- Lancaster Post Office - Lancaster, SC

# Landscape Architecture Department

**PETE WILLIAMS, ASLA**  
Landscape Architect



**DAN BOCK, ASLA**  
Landscape Architect



**TERRADON**

Pete Williams, ASLA, brings over nine years of experience, and has worked on a variety of projects located throughout West Virginia. He has worked on a number of state park and highway projects as well as schools.

Mr. Williams graduated from West Virginia University with a Bachelor of Science in Landscape Architecture. He has served as State Chapter President of the American Society of Landscape Architects and is an active member.

Over the course of his career, Mr. Williams has been involved in a number of notable projects:

- WVUIT Extreme Sports Park Master Plan - Montgomery, WV
- Woodchopper's Village, Webster Springs, WV
- VA Hospital - Huntington, WV
- Beckley Federal Courthouse - Beckley, WV
- Upshur County Courthouse - Buckhannon, WV
- Charleston Job Corps, Charleston - WV
- Huntington Housing Authority - Huntington, WV
- Bluefield Army Reserve Center - Bluefield, WV
- Lewisburg Army Reserve Center - Lewisburg, WV
- Seneca Rocks Visitor Center - Seneca Rocks, WV
- Beech Fork State Park, Barboursville, WV
- Moncove Lake State Park, Gap Mills, WV
- Marshall University Softball Field, Huntington, WV

Dan Bock has over 11 years of experience in site planning for a wide variety of projects including park and recreational facilities, college campuses, streetscape improvements, environmental enhancements, and residential, commercial and institutional developments. He is involved in client coordination, preparation of construction documents, permitting process, sketches, and renderings.

Mr. Bock graduated from Virginia Polytechnic Institute and State University with a Bachelor of Science in Landscape Architecture.

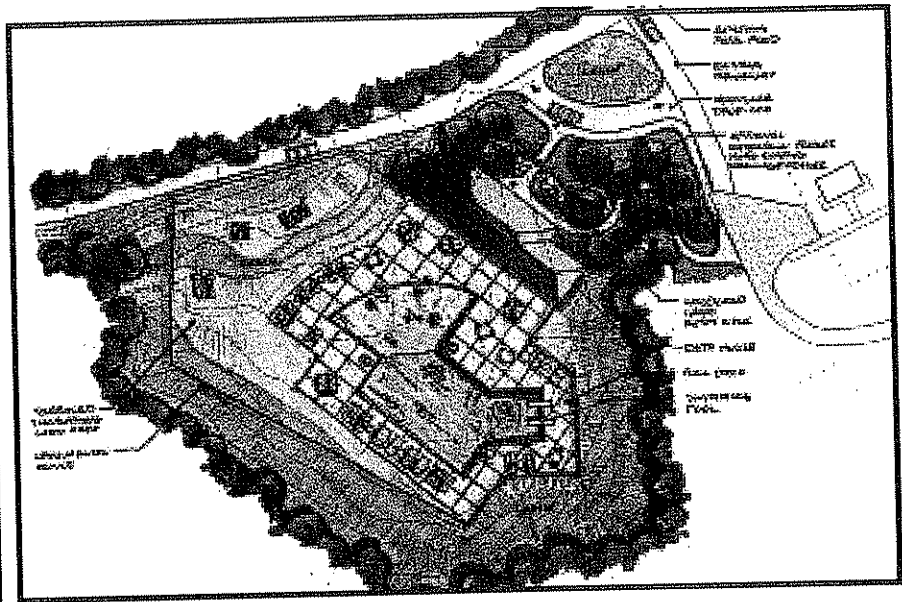
His project experience includes:

- Cathcart Residential Development, Scott Depot, WV
- April Dawn Park, Milton, WV
- Altizer Park, Huntington, WV
- Rotary Park, Huntington, WV
- Buxton & Landstreet Building, Thomas, WV
- Pocahontas County Wastewater Treatment Plant, Pocahontas County, WV
- Florida Street Streetscape, Charleston, WV
- Washington Street Streetscape, Charleston, WV
- Aspen Village, Canaan Valley, WV
- NRAO Visitor Center & Dormitory
- Governor's Mansion, Charleston, WV
- New Judicial Annex for Greenbrier County, Lewisburg, WV

# Recent Park Projects

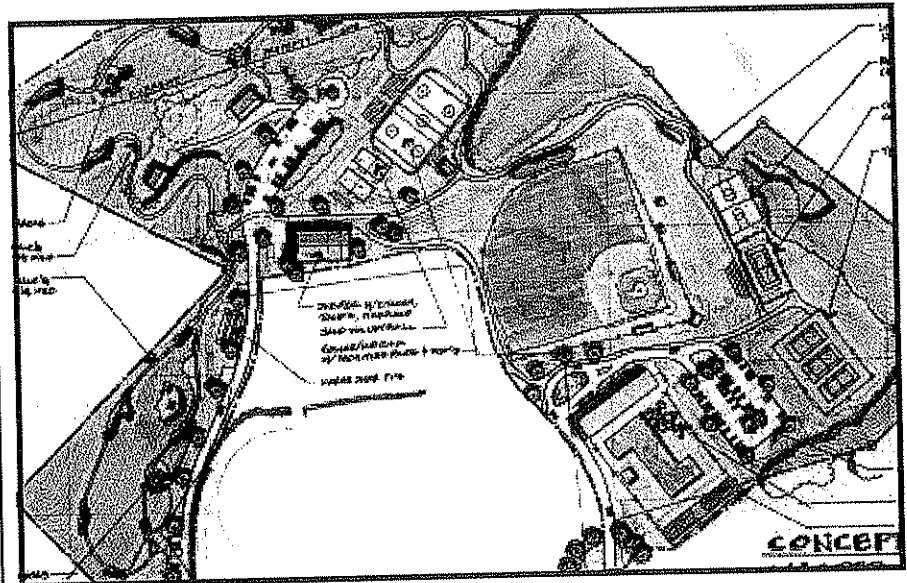
## BLUESTONE STATE PARK

TERRADON was responsible for site master planning through construction documents for a new swimming pool at Bluestone State Park in Summers County, West Virginia.



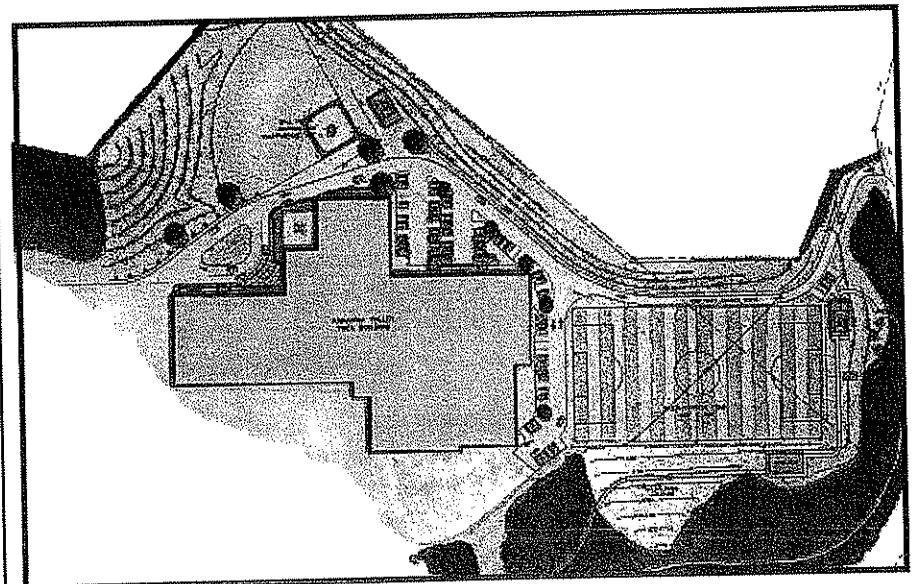
## UPSHUR COUNTY PARK

TERRADON prepared a recreational land use and site master plan to expand and upgrade the existing Upshur County Park. The site is located adjacent to Buchannon Upshur High School.



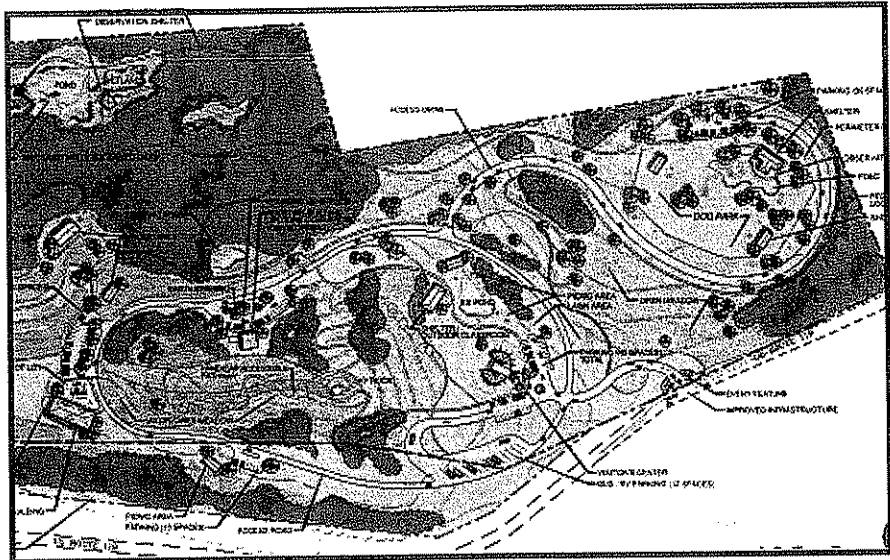
## YMCA OF KANAWHA VALLEY - ATHLETIC FIELDS

TERRADON provided master planning through construction documents for the addition of athletic fields at the YMCA facility located on Hillcrest Drive in Charleston, West Virginia.

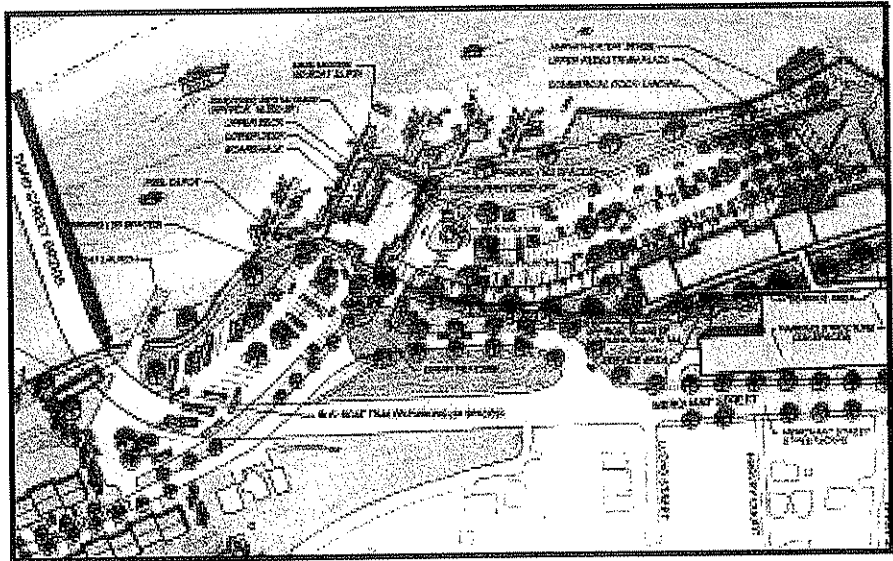


# Recent Park Projects

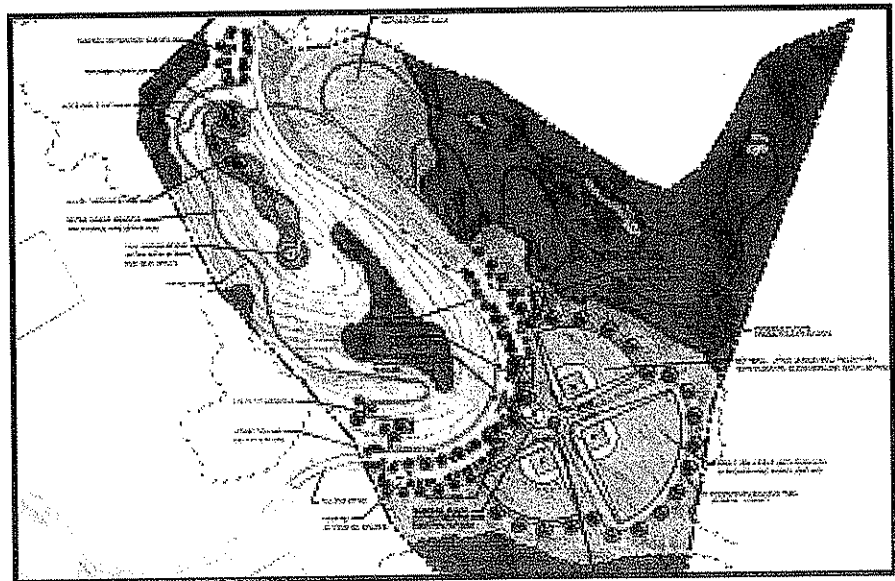
► **Dorsey's Knob Park and Visitors Center - Morgantown, West Virginia**  
 Terradon provided a site master plan for this multi-user facility. When completed the facility will provide recreation as well as a one-stop visitor center for the city, county, and West Virginia University visitors.



► **City of Fairmont Riverfront Development Master Plan - Fairmont, West Virginia**  
 Terradon provided a land use study and proposed land use master plan for this 30 acre development located on the Monongahela river in Fairmont, West Virginia. TERRADON was awarded an Engineering Excellence Award for this project by the West Virginia Association of Consulting Engineers in October 2002.



► **Roane County Park - Spencer, West Virginia**  
 TERRADON provided master planning for this county park that includes a Civil War memorial, little league baseball complex, picnic areas, walking trails and public green space.



# Engineering Services

## Civil Design



TERRADON provides a broad range of civil design services for local municipalities, public service districts, and private owners. Capabilities include site planning and design, paving, grading, and drainage plans, water and wastewater systems, utility design, and environmental permitting.

## Surveying

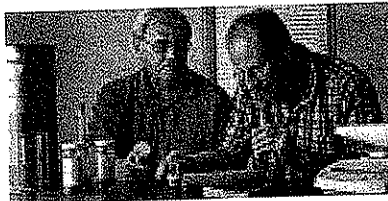


TERRADON is equipped with the newest surveying instruments available for efficient data processing and accurate gathering of field information. Total stations equipped with data collectors are utilized for complete field-to-office automation, thus achieving the highest productivity possible. The latest versions of software are then used to process the data and achieve the desired end product.

## Roadway Design

TERRADON provides a staff of professionals capable of providing Roadway Design related services including Alignment Studies, Traffic Control Plans, Signing & Pavement Marking Plans, Bridge Hydraulics & Scour Analysis, Drainage Design & Stormwater Management, Erosion and Sediment Control Plans, and Utility Relocation Plans.

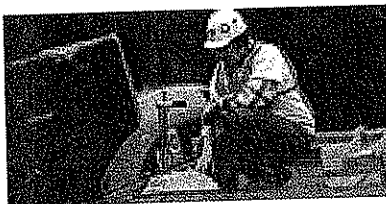
## Geotechnical Engineering



Our staff has been involved in a variety of geotechnical-related projects associated with mining, waste disposal, construction of new buildings and environmental remediation. We have the capability to perform both the subsurface investigation and the geotechnical design described as follows:

- Drilling
- Test pit excavations
- Soil and rock logging, sampling and testing
- Monitoring well and piezometer installation
- Foundation design
- Retaining structure design
- Stability analysis

## Construction Monitoring



TERRADON offers full-time and part-time construction monitoring and related services and has routinely provided these services to document regulatory compliance.

- Surveying for construction layout.
- Compaction testing using nuclear densimeter to verify that target compactive levels are being achieved.
- Sampling and geotechnical environmental laboratory analysis.
- Preparation of certification forms and construction reports

# Brief Resumes

**JENNIFER MILLER, P.E.**  
Civil Engineer

Ms. Miller has over 17 years of experience in many types of Civil Engineering projects including water, wastewater, highway design, regulatory compliance, and permitting. Most recently, she has provided engineering consulting services for water and wastewater systems. She is also responsible for providing preliminary engineering to support funding applications for: the WV Infrastructure and Jobs Development Council, HUD/Small Cities Program, and USDA/Rural Utilities Service.

Ms. Miller has a Bachelor of Science in Civil Engineering from the University of Missouri-Rolla. She is a Professional Engineer with registration in West Virginia and Missouri.

**JOHN JAMES, P.E.**  
Geotechnical Engineering  
Manager

Senior engineer for various geotechnical, environmental, and mining projects. Mr. James specializes in innovative and cost saving concepts for his projects. Typical projects include foundation investigations, studies and designs for landfills and environmental facilities, surface and ground water studies and remediation, foundation investigations and designs ranging in size from houses to major industrial complexes, roads, highways and bridges, earth and rockfill dams, storm drainage facilities, airport facilities, landslide analysis and correction, and forensic engineering.

Mr. James has a Bachelor of Science in Civil Engineering from West Virginia Institute of Technology. He is a Professional Civil Engineer with registration in West Virginia.

**ROBERT F. THAW, P.S.**  
Professional Surveyor

Among his duties at TERRADON, Mr. Thaw organizes and supervises survey crews; designs commercial sites for drainage, building site locations, parking and utility easements; reviews project plans; uses Global Positioning Systems to create base mapping; and develops programs to provide oil and gas well operators with mapping of mineral leases, existing gas wells, and gas line locations.

Mr. Thaw has more than 17 years of experience in a wide range of land surveying applications. Mr. Thaw has a Bachelor of Science in Land Surveying from West Virginia Institute of Technology.

# Brief Resumes

**TIMOTHY T. WHITE,**  
P.E.  
Highway Group Manager

Mr. White has eleven years experience in the design and project management of various transportation projects. His extensive project experience ranges from small urban intersections and streets to major interchanges, free-ways and interstate highways. His capabilities include all aspects of highway design, including alignment studies, traffic control plans, and signing and pavement marking plans. He also has extensive experience in stormwater management, and environmental permitting. Before joining Terradon, Mr. White worked as a Senior Roadway Engineer for a large international firm.

Mr. White graduated from the West Virginia University with a Bachelor of Science in Civil Engineering, and is a registered professional engineer in the states of West Virginia, Ohio, Kentucky and Arkansas.

**WILLIAM G. WHITE,**  
P.E.  
Senior Structural Engineer

Mr. White has more than fifteen years experience as a structural engineer. He has a strong background in structural analysis and design of bridge structures. Mr. White has experience designing various superstructure and substructure types. Superstructure design experience includes post-tensioned concrete box girders, curved plate girders, plate girders, rolled beams, pre-stressed concrete beams and timber. Substructure design experience includes integral abutments, semi-integral abutments, pile supported footings, spread footings, piers and drilled shafts.

Mr. White graduated from West Virginia Institute of Technology with a Bachelor of Science in Civil Engineering and is a registered Professional Engineer in the states of West Virginia, Virginia, Ohio, Kentucky, North Carolina, Florida and Arkansas.

**TERESA A. SCHULLER**  
Environmental Manager

Mrs. Schuller has over seventeen years of experience in diverse risk assessment, due diligence, management consulting, and strategic environmental management. She has regulatory compliance experience in CERCLA, RCRA, CAA, and CWA environmental programs. She served seven years as Program Director for a leading international environmental consulting firm with responsibilities for strategic planning, marketing/sales, project management, and staff development.

Mrs. Schuller graduated from Eastern Illinois University in 1979 with a Bachelor of Science degree in Chemistry. She completed a Masters of Science degree from West Chester University in 1983. She has completed additional courses in project management and persuasive communications.

**JOHN B. FRAME**  
Construction Inspection  
Materials Testing Manager

Mr. Frame is TERRADON'S Manager of Construction Inspection and Materials Testing. He has 34 years of experience in materials testing in the Materials Section of WVDOH, District I. Mr. Frame has held a NICET Level 3 Engineering Technician certification. He is DOH certified for sampling and testing aggregate, Portland cement concrete, bituminous concrete, compaction testing and possesses nuclear certification in the State of West Virginia.



## References

Jim McClelland, CPRP, Director  
Greater Huntington Parks & Recreation District, Harveytown Park  
(304) 696-5954

John E. Gibson, Braxton County Commission  
Braxton County Park  
(304) 765-2833 or (304) 765-5923

Jay Roberts, City Planner  
Fairmont Riverfront Park  
(304) 366-6211, Ext. 308

Thomas Flynn, Planner  
Fairmont Riverfront Park  
(410) 267-7220

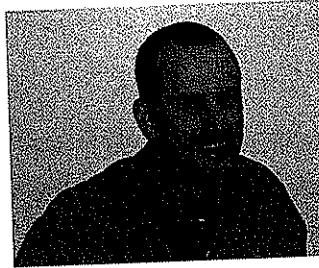
Anne Cavalier, Vice President - Purchasing  
West Virginia University - Institute of Technology, Extreme Sports  
Park and Marina Study (Project received an Engineering Excellence  
Award)  
(304) 442-3049

David Cramer, PE, Assistant Deputy Commissioner  
WVDOT-DOH  
(304) 558-2804

Larry Lawrence, Director Physical Plant  
Fairmont State College Inter Campus Masterplan  
(304) 367-4295

# **HE** Harper Engineering

Office: 304.722.3602  
PO Box 874  
St. Albans, WV 25177  
Fax: 304.722.3603



Jason E. Harper, PE  
(304)-541-1390  
jason@harperengwv.com

## **Education**

West Virginia University Institute of Technology  
Montgomery, WV  
Bachelor of Science-Mechanical Engineering

## **Registrations/Professional Affiliations**

WV licensed Professional Engineer  
ASHRAE

## **Experience**

Jason E. Harper, PE brings 6 years design experience to our firm. He has experience with HVAC and piping design. His projects include educational facilities (including colleges and universities), health care facilities, office buildings, banks, emergency services facilities, postal facilities, and government buildings.

## **Projects**

Stonewall Jackson Hospital Endoscopy Renovations  
Lewisburg Readiness Center  
Dominion Gas Office Building  
Mylan Pharmaceuticals Expansion  
Oak Hill Police Station

Independence High School HVAC  
Liberty High School HVAC  
Renovations to Glenville ES  
Moses Factory Outlet-Teays Valley  
ARH-CT Scan Renovations

# **HE** H a r p e r E n g i n e e r i n g

---

P O B o x 8 7 4  
S t. A l b a n s, W V 2 5 1 7 7  
O f f i c e : 3 0 4 . 7 2 2 . 3 6 0 2 F a x : 3 0 4 . 7 2 2 . 3 6 0 3



Scott D. Phillips  
(304)-722-3602  
Scott@harperengwv.com

## **Education**

Ben Franklin Career and Technical Center  
Dunbar, West Virginia  
Certificate: Mechanical Drafting

## **Registrations/Professional Affiliations**

American Society of Plumbing Engineers

## **Experience**

Scott D. Phillips brings 25 years design experience to our firm. He has experience with plumbing and fire suppression system design. His projects include educational facilities (including colleges and universities), health care facilities, office buildings, banks, emergency services facilities, postal facilities, and government buildings.

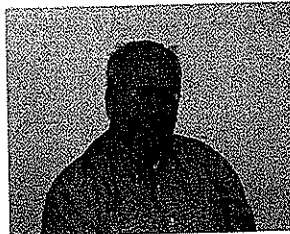
## **Projects**

Renovations to Glenville ES  
Capital High School  
Brooke County High School  
Oak Hill Police Station  
Mylan Pharmaceuticals Expansion  
Dominion Gas Office Building

Salem Industrial Home for Youth  
Martinsburg Correctional Facility  
Charleston Gardens Assisted Living  
Moses Factory Outlet- Teays Valley  
WVU- Boreman Hall Sprinkler

# **HE** Harper Engineering

P O B o x 8 7 4  
S t. A l b a n s , W V 2 5 1 7 7  
O f f i c e : 3 0 4 . 7 2 2 . 3 6 0 2 F a x : 3 0 4 . 7 2 2 . 3 6 0 3



Richard M. Standish  
(304)-722-3206  
Rick@harperengwv.com

## **Registrations/Professional Affiliations**

ASHRAE

## **Experience**

Richard M. Standish brings 36 years design experience to our firm. He has experience with HVAC, plumbing, and electrical design. His specialty is the electrical design of water treatment and wastewater treatment plants. Rick's projects include treatment plants, educational facilities (including colleges and universities), health care facilities, office buildings, banks, emergency services facilities, postal facilities, and government buildings.

## **Projects**

Brooke County High School  
University of Charleston Dorm  
Tri-State Gaming Center  
Mylan Pharmaceuticals Expansion  
Mason Co. 911 Center  
Oak Hill Police Station  
Kenova WTP  
Boone County WWTP  
Salt Rock PSD  
Eleanor Maintenance Facility

Wyoming West High School  
WVU- Boreman Hall  
Greenbank Observatory  
Robert Byrd Health Science Center  
WV DEP Consolidated Offices  
Flatwoods-Canoe Run PSD  
Union PSD  
City of St Mary's WWTP  
St. Albans WTP  
Dominion Gas Office Building

STATE OF WEST VIRGINIA  
Purchasing Division

## PURCHASING AFFIDAVIT

### VENDOR OWING A DEBT TO THE STATE:

*West Virginia Code §5A-3-10a* provides that: No contract or renewal of any contract may be awarded by the state or any of its political subdivisions to any vendor or prospective vendor when the vendor or prospective vendor or a related party to the vendor or prospective vendor is a debtor and the debt owed is an amount greater than one thousand dollars in the aggregate.

### PUBLIC IMPROVEMENT CONTRACTS & DRUG-FREE WORKPLACE ACT:

*West Virginia Code §21-1D-5* provides that: Any solicitation for a public improvement construction contract shall require each vendor that submits a bid for the work to submit at the same time an affidavit that the vendor has a written plan for a drug-free workplace policy in compliance with Article 1D, Chapter 21 of the West Virginia Code. A public improvement construction contract may not be awarded to a vendor who does not have a written plan for a drug-free workplace policy in compliance with Article 1D, Chapter 21 of the West Virginia Code and who has not submitted that plan to the appropriate contracting authority in timely fashion. For a vendor who is a subcontractor, compliance with Section 5, Article 1D, Chapter 21 of the West Virginia Code may take place before their work on the public improvement is begun.

### ANTITRUST:

In submitting a bid to any agency for the state of West Virginia, the bidder offers and agrees that if the bid is accepted the bidder will convey, sell, assign or transfer to the state of West Virginia all rights, title and interest in and to all causes of action it may now or hereafter acquire under the antitrust laws of the United States and the state of West Virginia for price fixing and/or unreasonable restraints of trade relating to the particular commodities or services purchased or acquired by the state of West Virginia. Such assignment shall be made and become effective at the time the purchasing agency tenders the initial payment to the bidder.

I certify that this bid is made without prior understanding, agreement, or connection with any corporation, firm, limited liability company, partnership or person or entity submitting a bid for the same materials, supplies, equipment or services and is in all respects fair and without collusion or fraud. I further certify that I am authorized to sign the certification on behalf of the bidder or this bid.

### LICENSING:

Vendors must be licensed and in good standing in accordance with any and all state and local laws and requirements by any state or local agency of West Virginia, including, but not limited to, the West Virginia Secretary of State's Office, the West Virginia Tax Department, West Virginia Insurance Commission, or any other state agencies or political subdivision. Furthermore, the vendor must provide all necessary releases to obtain information to enable the Director or spending unit to verify that the vendor is licensed and in good standing with the above entities.

### CONFIDENTIALITY:

The vendor agrees that he or she will not disclose to anyone, directly or indirectly, any such personally identifiable information or other confidential information gained from the agency, unless the individual who is the subject of the information consents to the disclosure in writing or the disclosure is made pursuant to the agency's policies, procedures and rules. Vendors should visit [www.state.wv.us/admin/purchase/privacy](http://www.state.wv.us/admin/purchase/privacy) for the Notice of Agency Confidentiality Policies.

Under penalty of law for false swearing (West Virginia Code §61-5-3), it is hereby certified that the vendor acknowledges the information in this said affidavit and is in compliance with the requirements as stated.

Vendor's Name: Williamson Shriver Architects, Inc.

Authorized Signature: \_\_\_\_\_

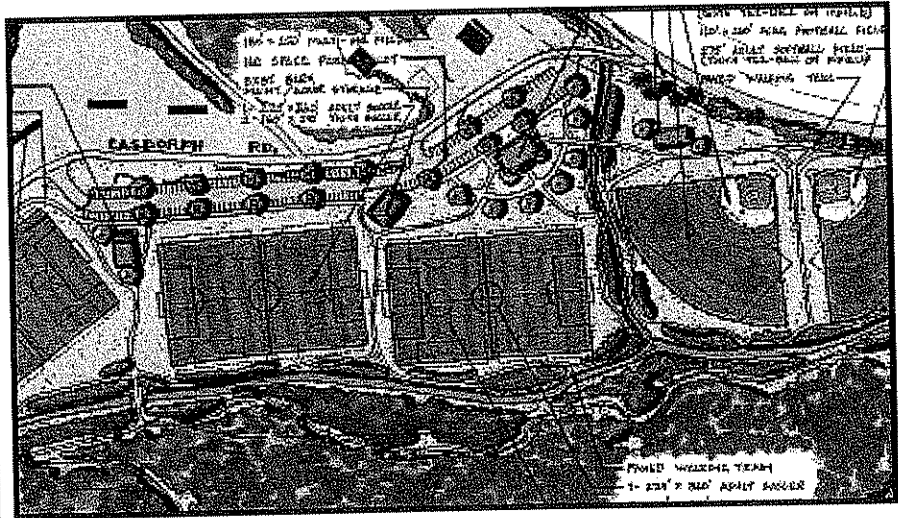
Date: December 9, 2008

# Recent Park Projects



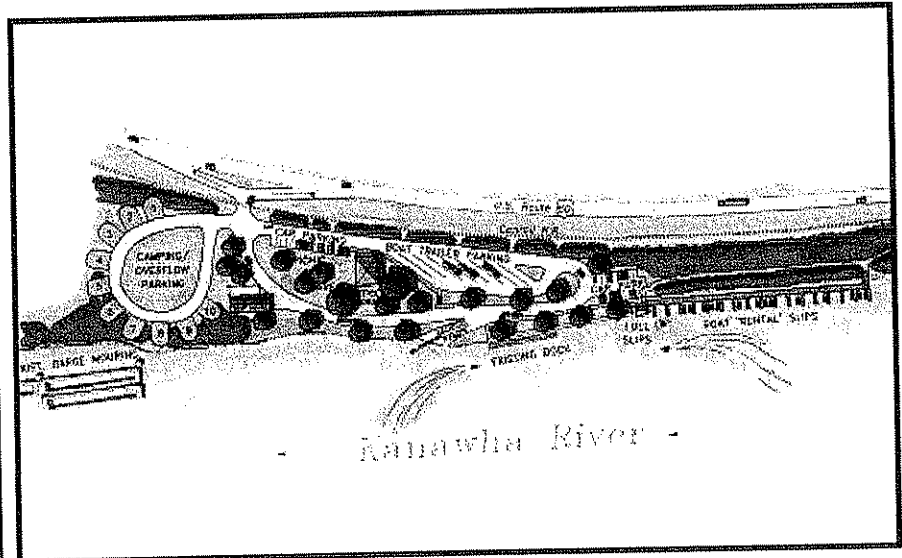
## KANAWHA VALLEY YMCA

TERRADON provided master planning for an outdoor recreation center which included such amenities as softball, t-ball, soccer fields, nature study center, picnicking and hiking trails.



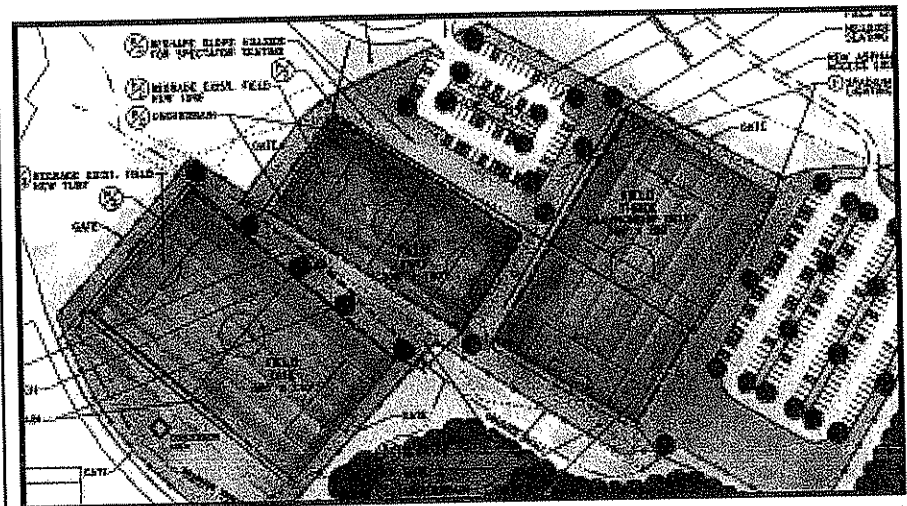
## WEST VIRGINIA UNIVERSITY, INSTITUTE OF TECHNOLOGY

TERRADON provided master planning for an extreme sports park for WVUIT in Montgomery, West Virginia. The plan includes a marina/water sports facility, a trail network, and land use plan.



## FAYETTE COUNTY YOUTH SOCCER COMPLEX

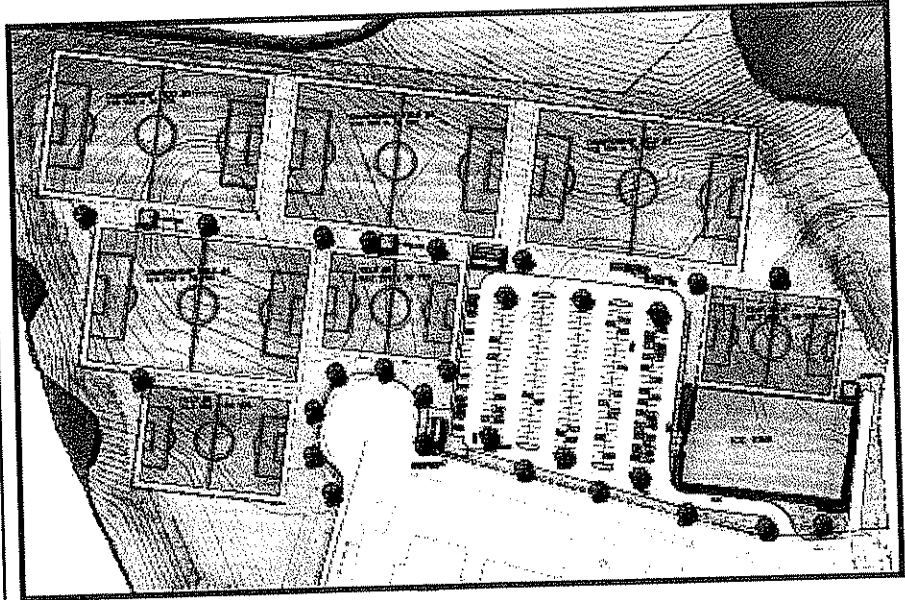
TERRADON provided full service master planning, design and construction document preparation for a three-field soccer complex adjacent to Oak Hill High School for the Fayette County Youth Soccer Association.



# Recent Park Projects

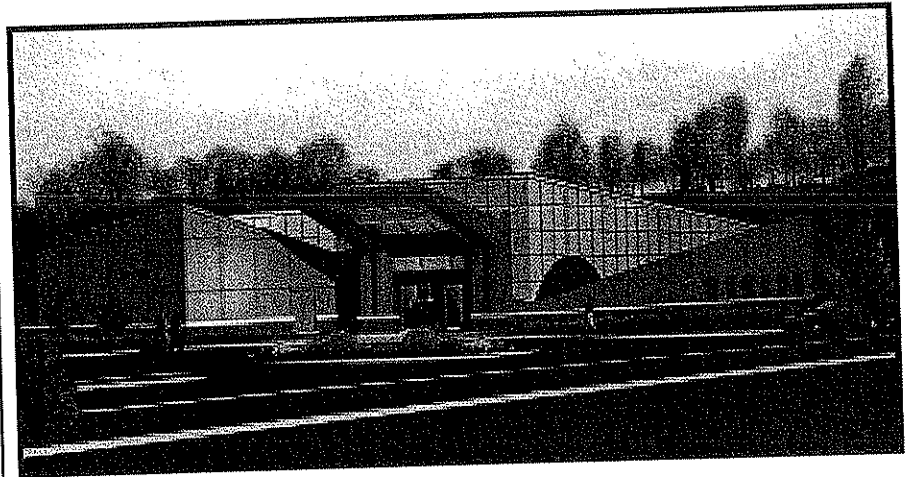
## THE FIELDS AT TRACE FORK

TERRADON provided schematic design, master planning and construction document preparation for a six-field soccer complex in South Charleston for the Kanawha Charleston Soccer Association. The facility will be located adjacent to the Memorial Ice Arena in the Trace Fork Development.



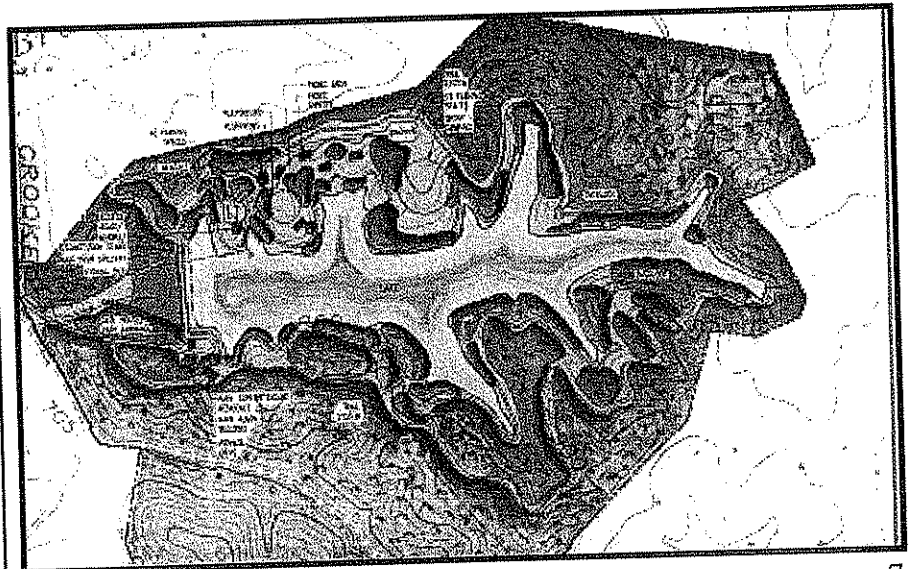
## MEMORIAL ICE ARENA

TERRADON provided site/civil planning and design to WSG Architects for this facility located in the Trace Fork Development in South Charleston, West Virginia.



## JONATHAN LARCH RESERVOIR PARK

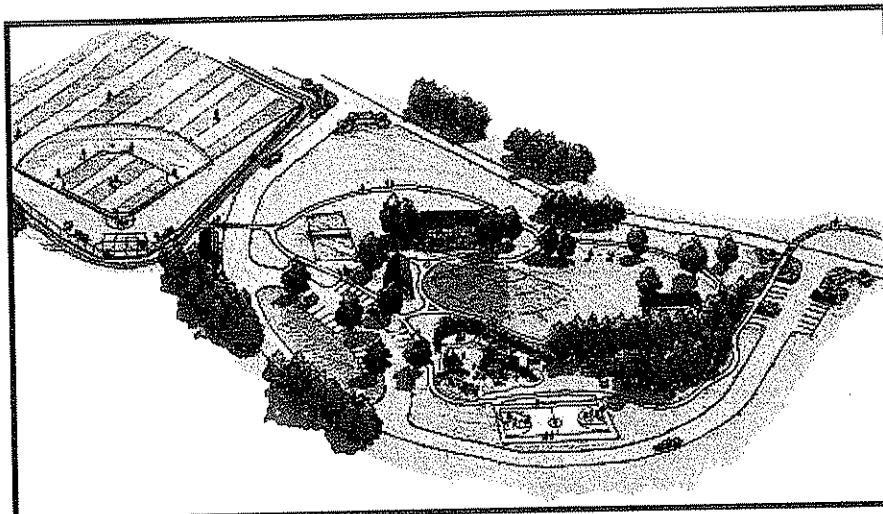
TERRADON provided site master planning for this proposed park in Putnam County, West Virginia. The project is pending available funding



# Recent Park Projects

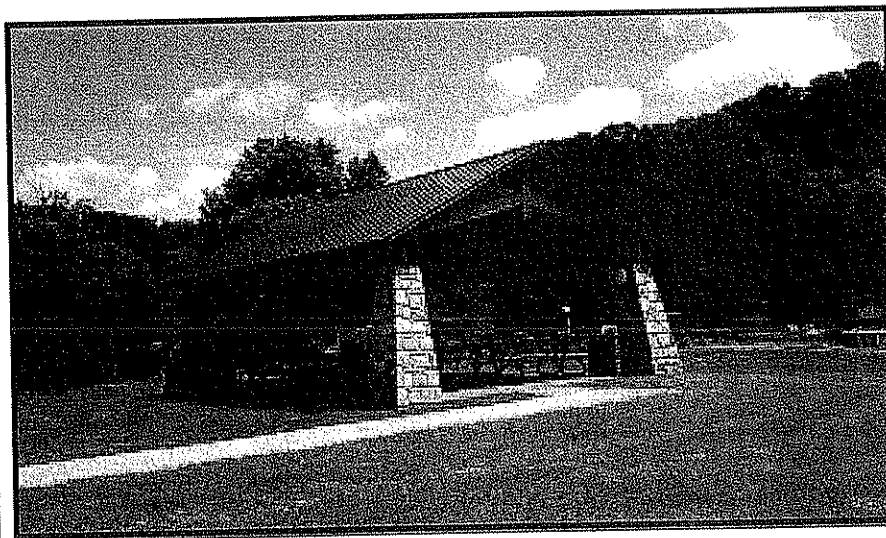
## CURRY PARK

TERRADON prepared a master plan and recreational land use plan for 220 acres of undeveloped land. The site is located in Upshur County, West Virginia.



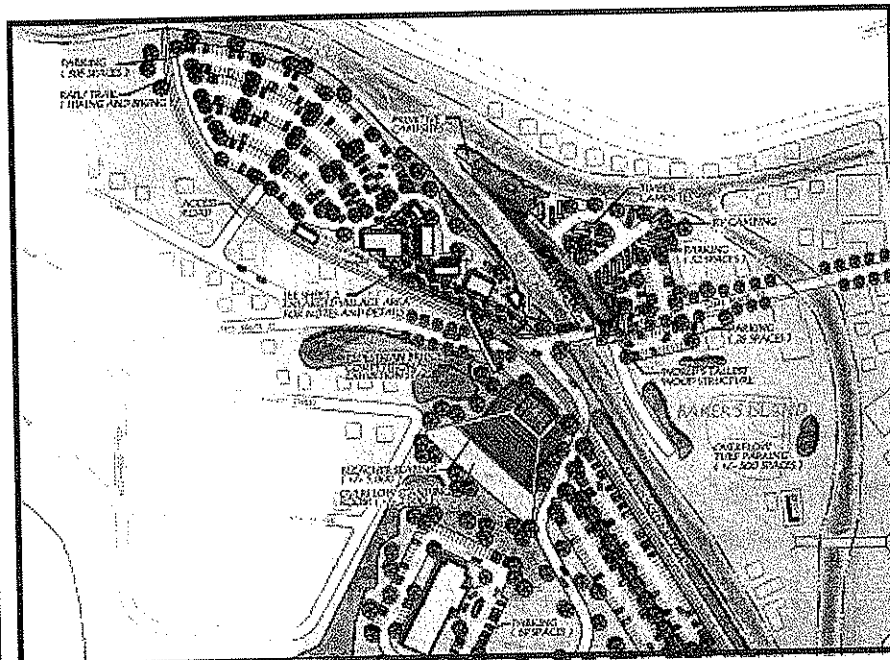
## HARVEYTOWN PARK

TERRADON provided site analysis, inventory mapping, master planning, and construction documents for a neighborhood park to the Greater Huntington Park and Recreation District. Phase I construction which includes a Picnic Shelter was recently completed.



## WOODCHOPPER'S VILLAGE

TERRADON developed a master plan and recreation feasibility study for the development of this lumberjack/woodchopper's themed recreation destination park. Project amenities include a woodchopping/lumberjack arena to be used for world championship chopping contests, timber industry educational exhibits, arts & crafts village, cultural and history museum, railroad attractions, rail trails, and fishing amenities.

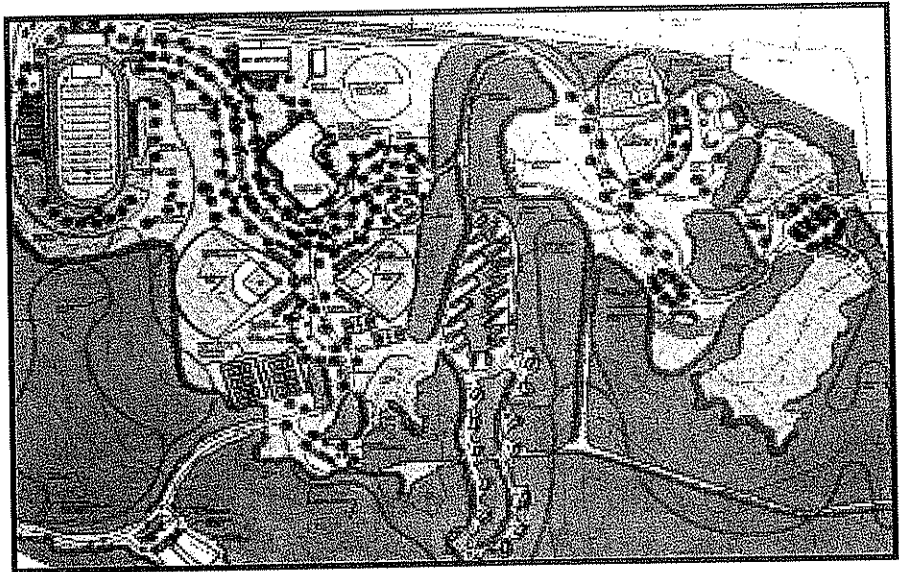




# Recent Park Projects

## Braxton County Park Master Plan

TERRADON provided master planning for an outdoor recreation center which included such amenities as softball, t-ball, soccer fields, picnicking, camping, and hiking trails.



## Sacred Heart Cathedral - Charleston, West Virginia.

Terradon provided masterplanning through construction documents for the courtyard including two water fountains and a lush natural planting plan for the greenspace located between the Cathedral and the new parking lot.



## Wetlands of Winfield - Winfield, West Virginia

TERRADON provided master planning through construction for this wetland education facility which includes such amenities as environmentally sensitive boardwalks and hiking trails, educational signage, and meeting platforms. TERRADON provided design-build services for the facility to Toyota Manufacturing and AEP who sponsored the project.

