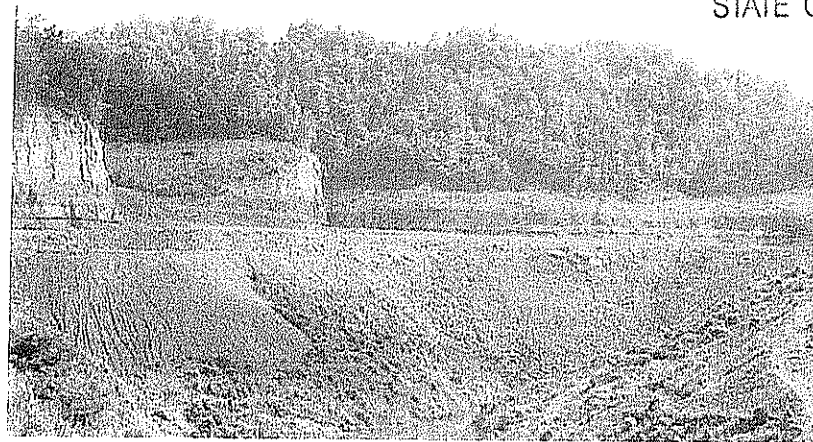


**Expression of Interest  
For  
Engineering Services to the  
West Virginia Department of  
Environmental Protection**

RECEIVED

08 NOV 12 AM 9:22

PURCHASING DIVISION  
STATE OF WV



**REQ # DEP 14459**

***Riffe Branch Burning Refuse/Helen (Summe) Drainage  
Projects***

***November 13, 2008***

**Submitted by:**



1428 Main Street  
Princeton WV 24740  
304-431 7800  
304-425-0445 (f)

*Conserving Environments*



A Resource Engineering Group Company

1428 Main Street  
P.O. Box 1309  
Princeton, WV 24740  
304-431-7800 Phone  
304-425-0445 Fax

November 10, 2008

West Virginia Department of Environmental Protection  
Office of Abandoned Mine Lands and Reclamation  
c/o State of West Virginia Department of Administration  
Purchasing Division  
2019 Washington Street, East  
Charleston, WV 25305-0130

**RE: Expression of Interest –Riffe Branch Burning Refuse / Helen (Summe)  
Drainage Projects  
#DEP14459**

To Whom It May Concern:

Pentree, Inc. is pleased to have the opportunity to provide the West Virginia Department of Environmental Protection with our high standard of professional engineering design services on the Riffe Branch Burning Refuse and Helen (Summe) Drainage Project.

Along with the knowledge of AML procedure gained from the recently completed construction of the Mullens/Wyco Water Project for Eastern Wyoming County P.S.D.(Wyoming County) we offer our extensive experience with access roads, drainage, demolition, stream bank protection and re-vegetation. Along with our qualifications as a full service civil engineering firm will provide the DEP's Office of Abandoned Mine Lands and Reclamation with quality professional engineering service in a timely and cost efficient manner.

Following the instructions outlined in the RFQ, this proposal contains information regarding Pentree, Incorporated's history, qualifications and management and staffing capabilities along with the required DEP/AML Consultant's Confidential Qualifications Questionnaire, and an affidavit stating Pentree, Incorporated has no debt owed to the State of West Virginia.

We thank you for your consideration of our qualifications and look forward to the opportunity to present our qualifications and project methodology to you in person.

Sincerely,  
PENTREE, INCORPORATED

A handwritten signature in black ink, appearing to read 'John W. Tuggle', is written over the printed name.

JOHN W. TUGGLE, P.E., P.S.  
President/ Principal-In-Charge

*STATEMENT OF QUALIFICATIONS  
FOR  
ENGINEERING SERVICES  
TO THE*

WEST VIRGINIA  
DEPARTMENT OF ENVIRONMENTAL PROTECTION

Riffe Branch Burning Refuse/  
Helen (Summe) Drainage Projects

<b>TABLE OF CONTENTS</b>
--------------------------

STATEMENT OF QUALIFICATIONS	1
MANAGEMENT AND STAFFING	5
REPRESENTATIVE PROJECTS	11
DEP CCQQ	18
RPEM Attachment C	30
AFFADAVIT	31

# STATEMENT OF QUALIFICATIONS

**Pentree, Incorporated is uniquely qualified to provide the West Virginia Department of Environmental Protection with the engineering design services for the Riffe Branch Burning Refuse/Helen (Summe) Drainage Project.** We have provided these services with the highest level of technical expertise and client satisfaction for numerous clients throughout the state of West Virginia.



Additionally, our staff of six construction inspectors, thirteen diversely skilled technicians and support personnel provide the resources and support necessary to provide our clients with the thorough and efficient services they desire and deserve.

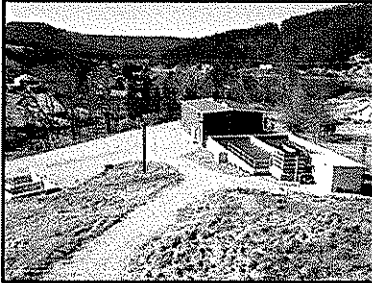
As a part of Resource Engineering Group, Inc., Pentree, Incorporated can offer its clients services above and beyond those of most engineering firms. In addition to civil engineering, survey and construction management, we now offer environmental assessment and permitting, pipeline inspection, hydraulic pipe modeling and GIS mapping services, all of which are of benefit to our client's infrastructure growth and improvements.

**Pentree, Incorporated** is guided by the mission statement of: ***To establish and maintain on-going relationships by providing the highest level of performance possible toward attaining the goals of the organizations we serve as we strive to enhance the communities in which we live.***

Our staff is actively involved in all aspects of the engineering process from consulting and planning through funding and preparation of documentation needed throughout the construction process to meet the requirements of funding agencies.

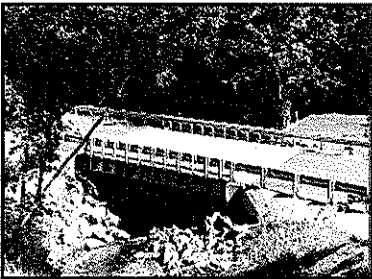
# SERVICES

**Pentree, Incorporated** provides a wide variety of engineering and consulting services:



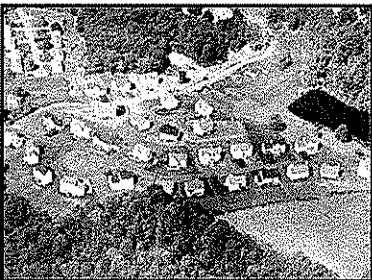
## **Civil / Environmental Engineering**

- Public Utilities Comprehensive Studies and Feasibility/ Preliminary Engineering Reports
- Wastewater Collection & Treatment Systems
- Water Treatment & Distribution Systems
- Storm Water Management
- Land Planning and Development
- Structural Design



## **Transportation Engineering**

- Highway/Roadways
- Parking Lots
- Bridges
- Airports



- **Photogrammetry**
- Digital Aerial Photography & Mapping
- 3D Terrain Modeling
- 2-D and 3-D Digital Documentation

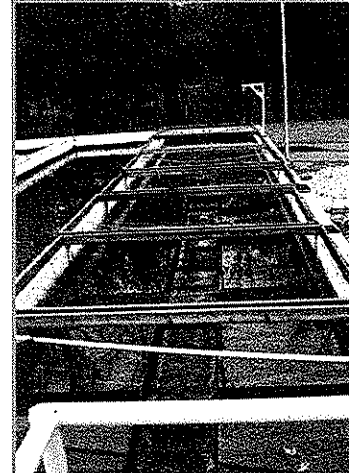


## ➤ **Field Services**

- Owner's
- Survey
- Construction Management
- Owner's Representative Services

## TECHNICAL EXPERTISE

Pentree's roots are firmly planted in the engineering of publicly funded water and wastewater projects throughout the state of West Virginia and in western Virginia. For over a century, we have provided our technical expertise in all aspects of engineering and field services. The proven methods of approach we apply assure our clients of a successful project that meets their needs for the present and future. From the beginning phases of investigation and evaluation through design, funding and construction management, ***Pentree, Incorporated provides the highest standards of performance.***



***Settling Basins – Green Valley  
Glenwood Public Service District***

## DESIGN

Pentree's Project Engineers utilize the most current technology available for design of your project, providing accuracy, flexibility for modifications and clear, concise and understandable drawings.

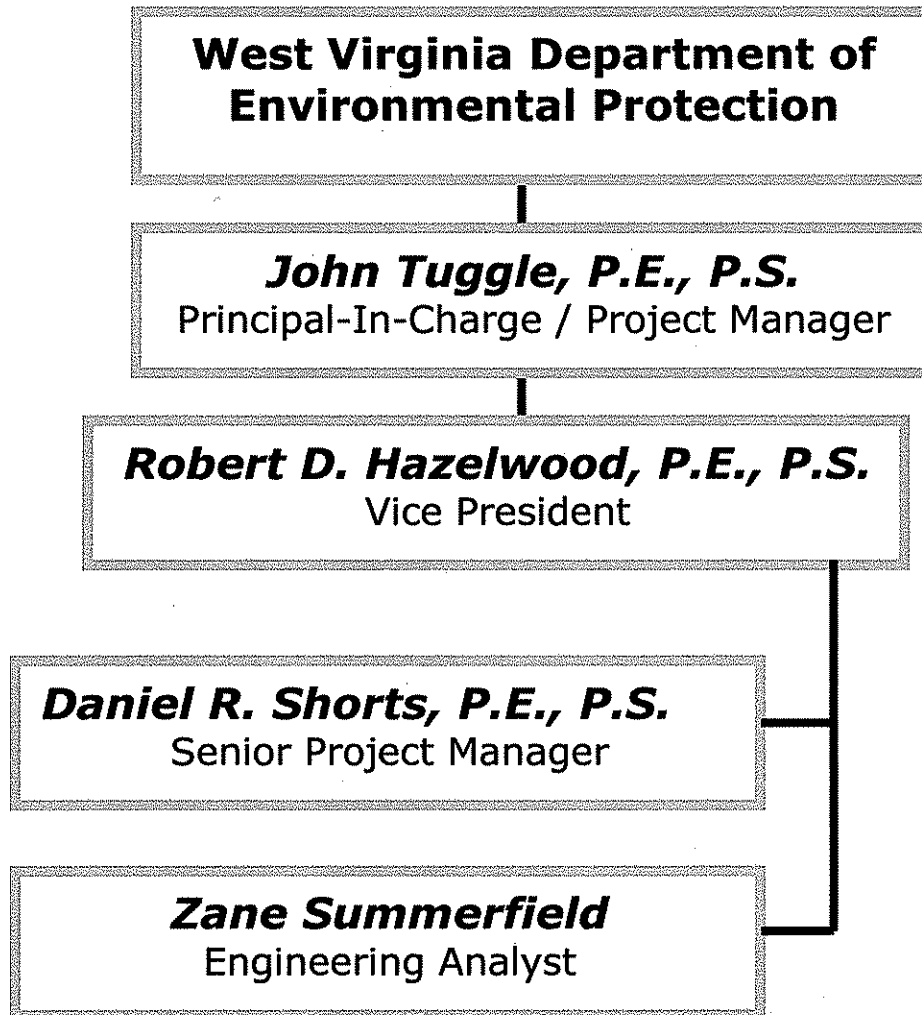
## SURVEY

Pentree's survey department provides survey services and mapping utilizing top of the line equipment, operated by several full-time survey crews. In addition to stakeout and mapping, the department prepares plats and performs courthouse searches. We are also available to assist our clients in the acquisition of easements, right-of-ways and other property to enable the project to move forward efficiently and effectively. ***Pentree, Incorporated provides the experienced and knowledgeable survey personnel essential to expediting your project.***

## CONSTRUCTION MANAGEMENT AND INSPECTION

Over the past century, Pentree, Incorporated has developed and employed methods in our construction management and inspection process that have been proven effective and efficient. Our measures include daily logs and inspection sheets, cut sheets, quantity tracking and field drawings. Our approach to a successful construction project includes good interaction between the Engineer, Construction Manager and Owner, along with the use of Experienced Surveyors, Inspectors and Technicians. We strive for positive dealings with Contractors, Funding Agencies, Regulatory Agencies and we believe in teamwork with all parties involved with a project. ***Pentree, Incorporated's team provides the communication needed and the documentation necessary to meet the client's needs and those of funding and regulatory agencies.***

## PROJECT TEAM



## **MANAGEMENT AND STAFFING**

**Pentree, Incorporated** has dedicated personnel committed to providing superior service throughout all aspects of the engineering process, from consulting and planning through funding and preparation of documentation needed throughout the construction process to meet and exceed the requirements of the funding agencies.

Pentree, Incorporated offers a highly qualified and experienced staff to the WV DEP for the Riffe Branch Burning Refuse/Helen (Summe) Drainage Projects Project. The Pentree, Inc. staff includes:

**3 CIVIL ENGINEERS**  
**1 SANITARY ENGINEER**  
**1 STRUCTURAL ENGINEER**  
**1 TRANSPORTATION ENGINEER**  
**4 SPECIFICATION WRITERS**  
**3 CADD OPERATORS**  
**3 SURVEYORS**  
**5 CONSTRUCTION INSPECTORS**  
**3 PHOTOGRAMMETRISTS**  
**2 ADMINISTRATIVE SUPPORT PERSONNEL**

Pentree, Inc. is staffed with five registered professional engineers, four of whom are also licensed professional surveyors. Additionally, the staff of five construction inspectors and sixteen diversely skilled technicians and support personnel provides the resources and support necessary to provide our clients with the thorough and efficient services they desire and deserve.

### **THE WV DEP Riffe Branch Burning Refuse/Helen (Summe) Drainage Projects LANDSLIDE PROJECT TEAM**

Pentree, Incorporated will assign a team of talented and experienced engineers and firm principals to the water line extension project. Each member of this team brings a specific area of expertise that is essential for a successful project

**John Tuggle, P.E., P.S.**, President of Pentree, Inc. is the **Principal-In-Charge** and will serve as **Project Manager**. He is actively involved in the daily management of the firm. Mr. Tuggle's experience working with our clients during the funding process of infrastructure projects, including determining eligibility and feasibility, will be a strong asset to your project. Additionally, Mr. Tuggle's expertise and knowledge of the regulatory and permitting processes of the DEP will assure you of a quality project that meets your specifications.



**Bob Hazelwood, P.E., P.S.** will serve as **Chief Engineer** for the project. Mr. Hazelwood will be responsible for overseeing all technical aspects of the project. Mr. Hazelwood has over 25 years of experience in the evaluation and design of water and wastewater projects, specifically AML funded projects.

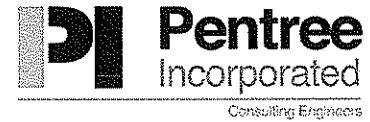
**Daniel R. Shorts, P.E., P.S.** will serve as **Senior Project Manager**. Mr. Shorts has extensive experience with the design and construction highway and site plans. He also is well versed in all administrative aspects of projects.

Mr. Shorts will be assisted by, **Zane Summerfield**, who will provide analysis for the design. **Gary Shields, P.E., P.S.** provides supervision of the survey department at Pentree, Incorporated. He will assign, review and take ultimate responsibility for any survey work necessary for your project.

Construction Management and Inspection personnel will be under the direction of **Michael Hurd** who is highly qualified and experienced in construction management and inspection of water system projects.

Resumes for the team members follow.

**JOHN TUGGLE, P.E., P.S.**  
**PRESIDENT / PRINCIPAL-IN-CHARGE**



**PROJECT EXPERIENCE:**

- **TOWN OF NORTHFORK WATER LINE EXTENSION** – Principal-In-Charge
- **BERKELEY COUNTY PUBLIC SERVICE SEWER DISTRICT BAKER HEIGHTS WASTEWATER TREATMENT PLANT, INWOOD WASTEWATER TREATMENT PLANT, ECOLAB AND APACHE PUMP STATION** – Principal-In-Charge
- **JEFFERSON COUNTY PUBLIC SERVICE DISTRICT BRECKENRIDGE PUMP STATION, NPDES PERMIT RENEWAL AND DISTRICT PLAN REVIEW;** Principal-In-Charge
- **CITY OF MOUNT HOPE KILSYTH UTILITY EXTENSION;** Principal-In-Charge
- **ELKHORN PUBLIC SERVICE DISTRICT SANITARY SEWER PROJECT** - Principal-In-Charge
- **GREEN VALLEY-GLENWOOD COUNTY PUBLIC SERVICE DISTRICT VARIOUS WASTEWATER PROJECTS** – Project Oversight, Contract and Construction Administration
- **COWEN PUBLIC SERVICE DISTRICT CAMDEN WATER TREATMENT PLANT UPGRADE AND WATER LINE EXTENSION PROJECT; SANITARY SEWER LINE EXTENSION PROJECTS** – Project Manager, Contract and Construction Administration
- **MCDOWELL COUNTY PRISON SITE DEVELOPMENT** - Principal-In-Charge
- **WEBSTER COUNTY INDUSTRIAL PARK** – Project Manager, Contract and Construction Administration
- **WEST VIRGINIA DEPARTMENT OF TRANSPORTATION DISTRICT 10 HEADQUARTERS COMPLEX** – Project Manager, Contract and Construction Administration
- **GAULEY RIVER PUBLIC SERVICE DISTRICT TWENTYMILE AND ROUTE 39 / PETERS CREEK WATER LINE EXTENSION PROJECT** – Project Manager, Contract and Construction Administration
- **CITY OF OAK HILL SANITARY BOARD WOLF CREEK PARK SANITARY SEWER SERVICE, FAYETTE PLATEAU PACKAGE PLANT AND POTENTIAL SANITARY SEWER PLANT UPGRADE;** Principal-In-Charge
- **TOWN OF FAYETTEVILLE NICKLEFILLE SEWER PROJECT** – Principal-In-Charge
- **WYTHE COUNTY FORT CHISWELL PLANT UPGRADE** - Principal-In-Charge

**PROFESSIONAL RESPONSIBILITIES:**

Mr. Tuggle joined Pentree, Incorporated in 1985 and serves as President and Principal-In-Charge for the firm. His primary responsibility is the oversight of all firm projects.

Mr. Tuggle has extensive experience working with various regulatory and funding agencies, and is extremely knowledgeable of contract preparation, analysis and interpretation. He has also recommended and assisted numerous clients in securing the best source of funding to suit their needs.

Mr. Tuggle has been involved with various types of projects including:

- Water Treatment Plants
- Water System Upgrades
- Water Line Extensions
- Wastewater Treatment Plants
- Sanitary Sewer System Upgrades
- Sewer Line Extensions
- Storm Water Management
- Industrial Park Site Development
- Subdivision Development
- Highways and Roads
- Access Roads
- Bridges
- Airports

**EDUCATION:**

B.S. Civil Engineering Technology 1982  
Bluefield State College

**ACTIVE REGISTRATIONS:**

Professional Engineer, 1988 #011845  
State of West Virginia  
Professional Surveyor  
State of West Virginia  
Class II Operator's License Water  
Class II Operator's License Waste Water

**ROBERT HAZELWOOD, P.E., P.S.**  
**EXECUTIVE VICE-PRESIDENT**



**PROJECT EXPERIENCE:**

- **GREENBRIER COUNTY PUBLIC SERVICE DISTRICT #2** SANITARY SEWER COLLECTION SYSTEM AND WASTEWATER TREATMENT PLANT – Design Engineer and Quality Control
- **RED SULPHUR SPRINGS PUBLIC SERVICE DISTRICT** VARIOUS SANITARY SEWER AND WATER PROJECTS – Design Engineer and Quality Control
- **RAVENSCLIFF-MCGRAWS-SAULSVILLE PUBLIC SERVICE DISTRICT** WATER PROJECTS – Design Engineer and Quality Control
- **GREEN VALLEY-GLENWOOD PUBLIC SERVICE DISTRICT** SANITARY SEWER PROJECTS INCLUDING A 1.5 MGD WASTEWATER TREATMENT PLANT, SEWER LINE EXTENSIONS AND UPGRADES – Design Engineer and Quality Control
- **EDRAY TECHNICAL PARK**, POCAHONTAS COUNTY, WEST VIRGINIA – Design Engineer and Quality Control
- **FOUNTAIN SPRINGS INDUSTRIAL PARK**, MONROE COUNTY, WEST VIRGINIA – Design Engineer and Quality Control
- **PETERSTOWN SATELLITE MEDICAL CLINIC ADDITION**, MONROE COUNTY, WEST VIRGINIA – Design Engineer and Quality Control
- **DEER RUN SUBDIVISION**; 13 LOTS ON 14 ACRES – Design Engineer and Quality Control
- **PLEASANT VALLEY ESTATES**; 23 LOTS ON 17 ACRES - Design Engineer and Quality Control
- **TWIN OAKS SUBDIVISION**; 18 LOTS ON 12 ACRES - Design Engineer and Quality Control
- **EASTERN WYOMING PSD**; MULLENS WYCO WATER PROJECT - WATER TREATMENT PLANT, WATER STORAGE TANKS, AN UPGRADE OF THE LOWER GULF WATER SYSTEM AND AN UPGRADE OF THE UPPER GULF WATER SYSTEM.

**PROFESSIONAL RESPONSIBILITIES:**

Mr. Hazelwood joined Pentree, Incorporated in 1979 and serves as Executive Vice President for the firm. In this capacity, his primary responsibility is to provide Quality Control and Quality Assurance for projects.

Mr. Hazelwood's experience includes preliminary and final design, preparation of contract documents and specifications and project management.

Additionally, Mr. Hazelwood has extensive knowledge working with regulatory agencies and in recommending and assisting clients in securing cost effective funding for their projects.

- Water Treatment Plants
- Wastewater Treatment Plants
- Storm Water Management
- Industrial Parks
- Airports
- Subdivisions
- Shopping Centers
- Access Roads

**EDUCATION:**

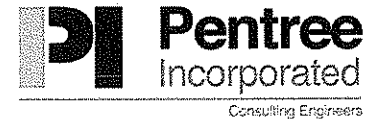
- M.S. Sanitary Engineering 1976  
VPI and State University
- B.S. Civil Engineering 1975  
West Virginia Institute of Technology

**ACTIVE REGISTRATIONS:**

- Professional Engineer, 1980 #008452  
State of West Virginia
- Professional Surveyor #1179  
State of West Virginia

# DANIEL R. SHORTS, P.E., P.S.

## SENIOR PROJECT MANAGER



### PROJECT EXPERIENCE:

- **AMERICAN ELECTRIC POWER** JARROLD, MILAM AND CARETTA SUBSTATIONS – Project Manager for the Site Development of the Electrical Substations
- **BLUERIDGE WOOD PRODUCTS** CYCLONE TOWER AND BUILDING RECONSTRUCTION – Project Manager and Structural Design
- **LOCHGELLY ROAD** – Project Manager for Sanitary Sewer Rehabilitation
- **JASON'S TRUCK WASH** – Project Manager for Site Development of the Facility
- **FORT CHISWELL WWTP UPGRADE** FROM .5 TO 1.25 MGD – Project Manager for Upgrade Design and Facilities Plan
- **OYLER AVENUE SIDEWALK PROJECT** – Project Manager for TEA-21 Project
- **WEST VIRGINIA DEPARTMENT OF TRANSPORTATION DISTRICT 10 COMPLEX**, MERCER COUNTY, WEST VIRGINIA – Project Manager and Structural Engineer for Multiple Buildings, Access Road and Utility Plans
- **BERKELEY COUNTY PUBLIC SERVICE SEWER DISTRICT** INWOOD AND BAKER HEIGHTS WASTEWATER TREATMENT PLANTS – Structural Design of the Wastewater Treatment Plants and Other Associated Structures
- **WYCO-MULLENS REGIONAL WATER**, WYOMING COUNTY, WEST VIRGINIA – Structural Design of the Water Treatment Plant and Other Associated Structures
- **WISE COUNTY VIRGINIA PUBLIC SERVICE DISTRICT LOWER BIRCHFIELD WATER PROJECT** – Structural Design and Project Management for the 7-Mile Water Line Extension and an In-Pressure Reducing Station
- **COALFIELD EXPRESSWAY**, WYOMING AND MCDOWELL COUNTIES OF WEST VIRGINIA – Project Manager and Structural Engineering for the Study, Design and Construction Plans of this 4-Lane Interstate
- **CITY OF OAK HILL**, FAYETTE COUNTY, WEST VIRGINIA – Project Manager and Structural Engineer for the 5-Street Sanitary Sewer Project

### PROFESSIONAL RESPONSIBILITIES:

Mr. Shorts has been a member of Pentree, Incorporated for over sixteen years. Throughout his employment Mr. Shorts has provided project management for over fifty projects. The scope of services he provides to projects includes design, site planning, access road development, utilities layout, survey, construction management and inspection.

His project experience extends to:

- Multi-Story Buildings
- Water Treatment Plants
- Water Distribution Systems
- Wastewater Treatment Plants
- Access Roads
- Highways
- Bridges

Mr. Shorts is a structural engineer and provides project management, design and construction inspection for all of the firm's bridge and highway projects, and other projects as needed.

### EDUCATION:

- M.S. Civil Engineering, 2001  
Virginia Tech University
- B.S. Civil Engineering, 1983  
West Virginia Institute of Technology

### ACTIVE REGISTRATIONS:

- Professional Engineer, 1995 #011840  
State of West Virginia
- Professional Engineer, 1999 #034253  
State of Virginia
- Professional Engineer, 2001 #27290  
State of North Carolina
- Professional Surveyor, 1995  
State of West Virginia

# J. ZANE SUMMERFIELD

## SENIOR CIVIL ANALYST



### PROJECT EXPERIENCE:

- **JEFFERSON COUNTY PSD**– Reviewed plans and specifications to assure compliance with WVBPH and WVDEP rules and regulations and with the District’s construction specifications.
- **CHANDLERS GLEN SUBDIVISION PUMP STATION AND FORCE MAIN** – Preparation of design and construction drawings and documents, permit applications, and calculations for and writing of the engineering report.
- **MCLAUGHLIN FARM SUBDIVISION PUMP STATION AND FORCE MAIN** – Preparation of design and construction drawings and documents, permit applications, and calculations for and writing of the engineering report.
- **CITY OF MOUNT HOPE KILSYTH SEWER UPGRADE PROJECT** – Analysis of WWTP performance, preparation of facility plan and engineering report and assistance with construction drawings and documents and permit applications.
- **JEFFERSON COUNTY PSD FLOWING SPRINGS FACILITY PLAN** – Research, analysis, preliminary design, document writing and presentation of proposed project to the District and the public.
- **BERKELEY COUNTY PUBLIC SEWER SERVICE DISTRICT BAKER HEIGHTS & INWOOD WWTP UPGRADES** - Analysis of the 0.90 MGD and 0.75 MGD WWTP’s, projection of growth, documentation of existing performance, analysis of impact of the Chesapeake Bay Agreement, recommendation of upgrades to triple the capacity of both plants.
- **JEFFERSON COUNTY PSD 2005 WASTEWATER FACILITY PLAN** – Research, analysis, preliminary design, document writing, and presentation to the District and the public.
- **BERKELEY COUNTY PUBLIC SEWER SERVICE DISTRICT SPRING MILLS WWTP UPGRADE** – Analysis of existing plant performance, preparation of design and construction drawings and documents and the engineering report and permit applications.

### PROFESSIONAL RESPONSIBILITIES:

Mr. Summerfield joined Pentree, Incorporated in 1998 and serves as Senior Civil Analyst for the firm. He is responsible for the analysis of clients’ existing data to determine their current situation. Mr. Summerfield also prepares facility plans, engineering reports, and specifications and plan sets. Additionally, Mr. Summerfield provides general design assistance, permit preparation and environmental reporting. Prior to his current position with the firm, Mr. Summerfield served as Photogrammetry manager and Aerial Photographer.

### SCOPE OF EXPERIENCE:

- **SITE PLANNING** – Site planning, design and contract documents for a variety of motel/hotel sites, restaurants, fire stations, subdivisions, golf courses and convenient stores.
- **MINE PERMITTING** – Design and permitting of surface and deep mine sites including high wall miner and known acid producing seams.
- **SOLID WASTE** – Design and permitting of solid waste transfer stations, participation in public hearings and construction specifications.
- **SANITARY SEWER & WATER SYSTEMS** – Design and permitting of sanitary sewer collection and water distribution systems for various subdivisions.

### EDUCATION:

B.S.	Mining Engineering	1982
	West Virginia Institute of Technology	
A.S.	Mining Engineering	1976
	West Virginia Institute of Technology	
AUTOCAD		1992
	Carver Career Center	

## PREVIOUS EXPERIENCE



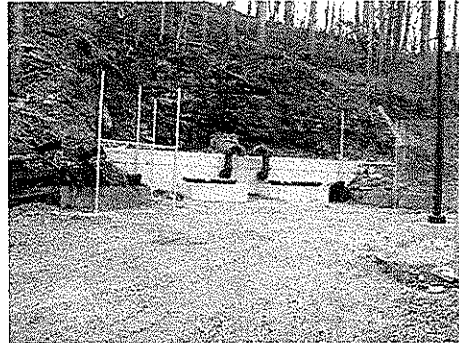
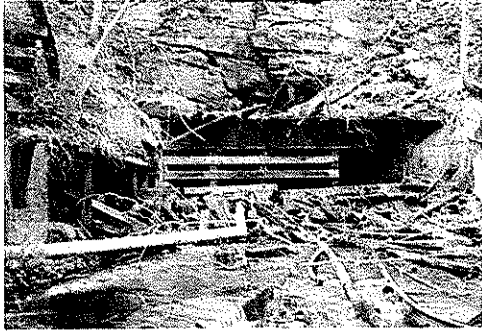
Over the past century, Pentree, Incorporated has surveyed, planned, designed and managed construction for numerous utility projects.

On the following pages are examples of specific recent projects that represent our abilities with drainage and stabilization projects that are comparable in scope of services similar to the needs of the WV DEP for the Riffe Branch Burning Refuse/Helen (Summe) Drainage Projects.

The representative projects are as follows:

- Eastern Wyoming Public Service District
- City of Oak Hill
- US Gypsum
- King Coal Highway
- Inwood Watershed Study

References for each of these projects are included and we welcome you to contact them, most of whom are repeat clients.



---

## **EASTERN WYOMING PUBLIC SERVICE DISTRICT**

---

**Owner/Contact:**

Rick Roberts  
Eastern Wyoming Public Service District  
P.O. Box 506  
Logan, WV 25601  
304-946-2641

---

**Mullens-Wyco Water Project**

Project consists of five contracts to improve and upgrade the Eastern Wyoming Public Service District's water system. This project includes a Water Treatment Plant, Water Storage Tanks, an upgrade of the Lower Gulf Water System and an upgrade of the Upper Gulf Water System. The design called for the closure of four mine portals, one of which was sealed with the capacity to continue to provide a raw water source for the District. The other three portals were wet sealed with allowance for controlled over-flow.

**Project Location:**

Wyoming Co., WV

**Professional Engineering Services Provided:**

- Preparation of preliminary engineering reports
- Assisting Owner with applications for State and Federal funding
- Design in accordance with all applicable State and Federal regulations
- Assisting Owner with permits required
- Preparation of bidding and contracting documents
- Participation in the evaluation of bids received
- Monitor and inspect construction activities
- Assisting Owner with construction administration



## City of Oak Hill Drainage Phased Projects

---

Owner/Contact:  
Tom Oxley, City Manager  
City of Oak Hill  
P.O. Box 1245  
Oak Hill, WV 25901  
304-469-9541

---

**Pentree, Incorporated** provided the City of Oak Hill with a study, preliminary and final design plans, and specifications for management of approximately 2,200 acre watershed which created flooding along the path of Arbuckle Creek and throughout the city limits. The first phase of the project consisted of replacement of eleven culverts totalling 1,252 lineal feet. The new culverts were designed to carry a 50-year flood and alleviate consistent annual flooding along the banks of Arbuckle Creek. Pentree, Incorporated has worked closely with the West Virginia DEP to satisfy Soil Conservation and wetlands concerns. Phase II of the project is in the Virginia Street/ Trump Avenue area of the City as shown in the flood and construction pictures above.

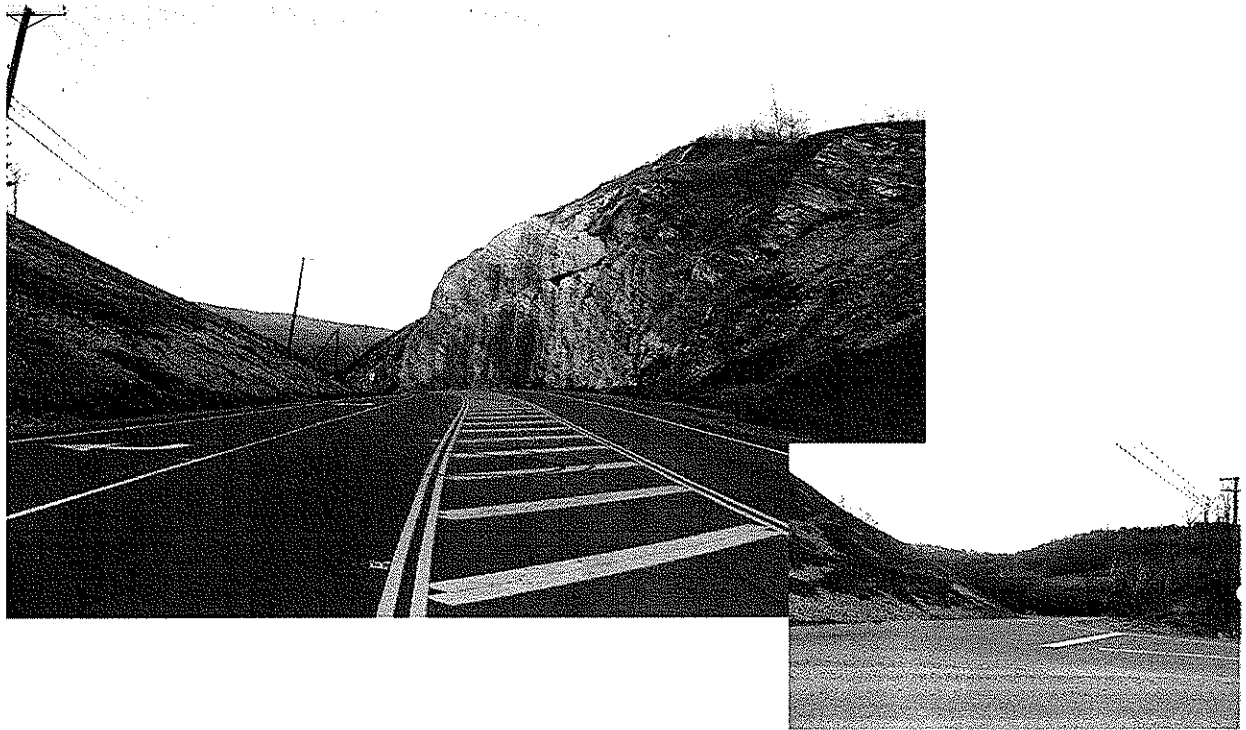
Phase I construction project was completed in 2004. Phase II of the project is currently in the construction stage.

**Project Location:**  
Fayette Co., WV

### **Professional Engineering Services Provided:**

- Preparation of preliminary engineering reports
- Assisting Owner with applications for State and Federal funding
- Design in accordance with all applicable State and Federal regulations
- Assisting Owner with permits required
- Preparation of bidding and contracting documents
- Participation in the evaluation of bids received
- Monitor and inspect construction activities
- Assisting Owner with construction administration





## **US GYPSUM**

---

Owner/Contact  
George Rolan  
U.S. Gypsum  
6072 Main Street  
Saltville, VA 24370  
276-496-7733

---

Pentree, Incorporated, provided engineering and design services for the relocation of Routes 91 and 745 in Washington County due to subsidence associated with mine abandonment. In conjunction with the roadway relocation project, design for the relocation of approximately 5,000 feet of waterline for the Town of Saltville and 6,000 feet of waterline for the Washington County P.S.A.. Additional design provided for an upgrade to one of Saltville's raw water sources and associated water treatment processes.

**Project Location:**  
Washington Co., VA



## **KING COAL/COALFIELDS EXPRESSWAY**

---

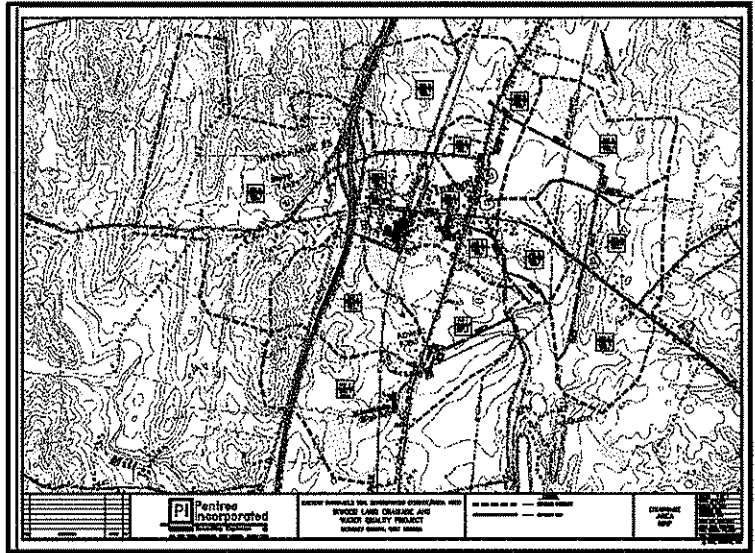
Owner/Contact:  
West Virginia  
Department of Highways  
Ali Sadeghian, Project Manager  
Division of Highways  
Bldg 05 Room A-317  
State Capital Complex  
Charleston, WV 25305  
304-558-9745

---

**Project Location:**  
McDowell and Wyoming Counties, West Virginia

KING COAL (Interstate 73/74) and  
COALFIELDS EXPRESSWAY  
(U.S. Route 121)  
INTERCHANGE, McDOWELL and WYOMING COUNTIES

Study and complete design of final plans for a major new interchange. Study involved four alternative configuration schemes for the interchange. Final plans included two additional interchanges, five miles of interstate, expressway - roadway and eleven (11) bridges and required over 6 ½ million cubic yards of excavation.



## **USDA/Natural Resource and Conservation Services Eastern Panhandle Soil Conservation Service Inwood Watershed Project**

---

Owner/Contact  
Donald L. Dirting  
Conservation Project Specialist  
State of West Virginia  
Soil Conservation Agency  
1450-1 Edwin Miller Boulevard  
Martinsburg, WV 25401

---

### **Project Location: Berkeley County, West Virginia**

The Study involved an 827acre area just south of the Youth Fairgrounds in Berkeley County, WV. The project was divided into three phases to allow for staged funding. The project includes the construction of drainage piping, drop inlets, headwalls and open channel ditch lines to carry the storm water away from the area during and after a storm event. Professional services for this project are closely aligned with the goals of the Commission for the proposed project.

## **REFERENCES**

**Gauley River Public Service District**

Russell Deering, Chairman  
304-753-4003

**Greenbrier Valley Economic Development Authority**

Dick Nevi, Executive Director  
304-645-7155

**Red Sulphur Public Service District**

Porter Robertson  
304-753-4003

**Greenbrier County Public Service District No. 2**

James Estep, Chairman / Rodney Knapp, Manager  
304-438-9283

**Jefferson County Public Service District**

Suzanne Lawton, Manager  
304-725-4647

**City of Oak Hill**

Tom Oxley, City Manager  
304-469-9541

WEST VIRGINIA DEPARTMENT OF ENVIRONMENTAL PROTECTION  
 AML CONSULTANT CONFIDENTIAL QUALIFICATION QUESTIONNAIRE Attach. nt "B"

PROJECT NAME: RFQ# DEPI4439  
 Riffe Branch Burning Refuse/Helen  
 (Summe) Drainage Projects

1. FIRM NAME  
 Pentree, Inc.

4. HOME OFFICE TELEPHONE  
 (304) 431-7800

5. ESTABLISHED (YEAR)  
 1904

6. TYPE OWNERSHIP  
 Individual Corporation X  
 Partnership Joint-Venture YES NO X

2. HOME OFFICE BUSINESS ADDRESS  
 1248 Main St./P.O. Box 1309  
 Princeton, WV 24740

3. FORMER FIRM NAME  
 Bennett-Nave-Thomas

FEIN  
 55-0483692

7. PRIMARY AML DESIGN OFFICE: ADDRESS/ TELEPHONE/ PERSON IN CHARGE/ NO. AML DESIGN PERSONNEL EACH OFFICE  
 1428 Main St./P.O. Box 1309/Princeton, WV 24740/304-431-7800/John Tuggle/30

8. NAMES OF PRINCIPAL OFFICERS OR MEMBERS OF FIRM  
 John W. Tuggle, P.E., P.S. Principle in Charge  
 Robert D. Hazelwood, P.E., P.S. Vice President

9. PERSONNEL BY DISCIPLINE

- |                           |   |                      |   |                          |   |                      |
|---------------------------|---|----------------------|---|--------------------------|---|----------------------|
| 4 ADMINISTRATIVE          | — | ECOLOGISTS           | — | LANDSCAPE ARCHITECTS     | — | STRUCTURAL ENGINEERS |
| — ARCHITECTS              | — | ECONOMISTS           | — | MECHANICAL ENGINEERS     | — | 4 SURVEYORS          |
| 9 BIOLOGIST               | — | ELECTRICAL ENGINEERS | — | MINING ENGINEERS         | — | TRAFFIC ENGINEERS    |
| — CADD OPERATORS          | — | ENVIRONMENTALISTS    | 2 | 2 PHOTOGRAMMETRISTS      | — | OTHER                |
| — CHEMICAL ENGINEERS      | — | ESTIMATORS           | — | PLANNERS: URBAN/REGIONAL | — |                      |
| 5 CIVIL ENGINEERS         | — | GEOLOGISTS           | 1 | 1 SANITARY ENGINEERS     | — |                      |
| 5 CONSTRUCTION INSPECTORS | — | HISTORIANS           | — | SOILS ENGINEERS          | — |                      |
| — DESIGNERS               | — | HYDROLOGISTS         | — | SPECIFICATION WRITERS    | — | 30 TOTAL PERSONNEL   |
| — DRAFTSMEN               | — |                      |   |                          |   |                      |

TOTAL NUMBER OF WV REGISTERED PROFESSIONAL ENGINEERS IN PRIMARY OFFICE: 5  
 \*RPES other than Civil and Mining must provide supporting documentation that qualifies them to supervise and perform this type of work.

10. HAS THIS JOINT-VENTURE WORKED TOGETHER BEFORE?  YES  NO NOT APPLICABLE

11. OUTSTANDING KEY CONSULTANTS/SUB-CONSULTANTS ANTICIPATED TO BE USED. Attach "AML Consultant Confidential Qualification Questionnaire". NOT APPLICABLE

NAME AND ADDRESS:	SPECIALTY:	WORKED WITH BEFORE _____ No
NAME AND ADDRESS:	SPECIALTY:	WORKED WITH BEFORE _____ Yes _____ No
NAME AND ADDRESS:	SPECIALTY:	WORKED WITH BEFORE _____ Yes _____ No
NAME AND ADDRESS:	SPECIALTY:	WORKED WITH BEFORE _____ Yes _____ No
NAME AND ADDRESS:	SPECIALTY:	WORKED WITH BEFORE _____ Yes _____ No
NAME AND ADDRESS:	SPECIALTY:	WORKED WITH BEFORE _____ Yes _____ No
NAME AND ADDRESS:	SPECIALTY:	WORKED WITH BEFORE _____ Yes _____ No
NAME AND ADDRESS:	SPECIALTY:	WORKED WITH BEFORE _____ Yes _____ No
NAME AND ADDRESS:	SPECIALTY:	WORKED WITH BEFORE _____ Yes _____ No

12. A Is your firm experienced in Abandoned Mine Land<sup>2</sup> Remediation/Mine Reclamation Engineering?

YES Description and Number of Projects: PENTREE INCORPORATED HAS RECENTLY COMPLETED DESIGN FOR TWO PARTIALLY IMPACTED AML WATER PROJECTS: KEYROCK WATER EXTENSION PROJECT FOR RAVENCLIFF-MCGRAWS-SAULSVILLE PSD IN WYOMING COUNTY AND MULLENS/WYCO WATER PROJECT FOR THE EASTERN WYOMING PSD ALSO IN WYOMING COUNTY. THE EWPSD PROJECT WAS THE 2006 EPA REGION 9 AWARD WINNING PROJECT FOR SUSTAINABLE PUBLIC HEALTH PROTECTION ENCOMPASSING ELEVEN FAILING, FLOODED AND ABANDONED WATER SYSTEMS. ADDITIONALLY, WE PROVIDED ENGINEERING SERVICES FOR THE FIRST PARTIALLY IMPACTED AML PROJECT FOR GAULEY RIVER PSD WITH THE JODIE WATER LINE EXTENSION PROJECT IN 1998.

B. Is your firm experienced in Soil Analysis?

YES Description and Number of Projects: PENTREE, INCORPORATED HAS ACCESS TO A MATERIALS TESTING AND ANALYSIS LAB AT OUR AFFILIATE OFFICE (THRASHER ENGINEERING) IN CLARKSBURG, WV. SOIL ANALYSIS EXPERIENCE IS SPECIFICALLY IN GRADATIONS AND CLASSIFICATIONS

NO

C. Is your firm experienced in hydrology and hydraulics?

YES Description and Number of Projects: THROUGH OUR WORK ON WATER SYSTEM PROJECTS FOR VARIOUS PSDS AND MUNICIPALITIES, WE HAVE DEVELOPED HYDRAULIC MODELING OF SYSTEMS, AND HAVE A HAESTED METHOD MASTER MODELER ON OUR AML TEAM STAFF.

NO

D. Does your firm produce its own Aerial Photography and Develop Contour Mapping?

YES Description and Number of Projects: EVERY WATER AND WASTEWATER PROJECT PENTREE HAS DESIGNED IN THE LAST 25 YEARS HAS BEEN PHOTOGRAMMETRICALLY PRODUCED BY OUR IN-HOUSE PHOTOGRAMMETRY DEPARTMENT.

E. Is your firm experienced in domestic waterline design? (Include any experience your firm has in Evaluation of aquifer degradation as a result of mining.) -

YES DESCRIPTION AND NUMBER OF PROJECTS: PENTREE, INCORPORATED HAS DESIGNED OVER 50 WATER LINE EXTENSION AND REPLACEMENT PROJECTS IN THE PAST 30 YEARS OF BUSINESS. PROJECTS INCLUDE LINES, BOOSTER STATIONS, WATER TREATMENT PLANTS, AND STORAGE FACILITIES.

NO

F. Is your firm experienced in Acid Mine Drainage Evaluation and Abatement Design?

<p>13. PERSONAL HISTORY STATEMENT OF PRINCIPALS AND ASSOCIATES RESPONSIBLE FOR AML PROJECT DESIGN (Furnish complete data but keep to essentials)</p>		
<p>NAME &amp; TITLE (Last, First, Middle Int.)</p> <p><b>Tuggle, John W. P.E., P.E.</b> President</p>	<p>YEARS OF AML DESIGN EXPERIENCE: 10</p>	<p>YEARS OF EXPERIENCE YEARS OF AML RELATED DESIGN EXPERIENCE: 24</p> <p>YEARS OF DOMESTIC WATERLINE DESIGN EXPERIENCE: 24</p>
<p>Brief Explanation of Responsibilities</p> <p>Mr. Tuggle serves as President of Pentree, Inc. Mr. Tuggle is Principal in Charge for public utility projects including sanitary sewer, water and storm water management. In this capacity he is responsible for feasibility studies and design, regulatory and funding assistance for state, federal and private clients. Additionally, he has extensive experience working with funding and regulatory agencies in conjunction with projects. In the capacity of Principal-In-Charge, for this AML design project, he will work closely with the Project Manager to ensure timeliness of the projects, client satisfaction and oversee budgetary aspects</p>		
<p>EDUCATION (Degree, Year, Specialization)</p> <p>BACHELOR OF SCIENCE, 1982, BLEUFIELD STATE COLLEGE - CIVIL ENGINEERING TECHNOLOGY</p>		
<p>MEMBERSHIP IN PROFESSIONAL ORGANIZATIONS</p> <p>WEST VIRGINIA RURAL WATER ASSOCIATION</p> <p>VIRGINIA RURAL WATER ASSOCIATION</p>		
<p>REGISTRATION (Type, Year, State)</p> <p>P.E. 1993 - WEST VIRGINIA #11845</p> <p>P.S. 1995 - WEST VIRGINIA #1176</p>		
<p>13. PERSONAL HISTORY STATEMENT OF PRINCIPALS AND ASSOCIATES RESPONSIBLE FOR AML PROJECT DESIGN (Furnish complete data but keep to essentials)</p>		
<p>NAME &amp; TITLE (Last, First, Middle Int.)</p> <p><b>Hazelwood, Robert D. P.E., P.S.</b> Vice President</p>	<p>YEARS OF AML DESIGN EXPERIENCE: 7</p>	<p>YEARS OF EXPERIENCE YEARS OF AML RELATED DESIGN EXPERIENCE: 29</p> <p>YEARS OF DOMESTIC WATERLINE DESIGN EXPERIENCE: 29</p>
<p>Brief Explanation of Responsibilities</p> <p>Robert D. Hazelwood, P.E., P.S. Vice President of Pentree, Inc. will serve as Project Manager / Project Engineer. His major responsibility will be for project oversight of all design and construction aspects. Mr. Hazelwood has extensive experience in water line extension projects throughout West Virginia and in particular - Wyoming County. Additionally, Mr. Hazelwood was Project Manager/Project Engineer for both the Mullens/Wyco Water System Upgrade and the Keyrock Water Project which has extensive funding with the WVDEP AML. As such, Mr. Hazelwood is well versed in AML reporting and deadline requirements.</p>		
<p>EDUCATION (Degree, Year, Specialization)</p> <p>■ M.S., Sanitary Engineering, 1976 - Virginia Polytechnical Institute</p> <p>■ B.S., Civil Engineering, 1975 - West Virginia Technical Institute</p>		
<p>MEMBERSHIP IN PROFESSIONAL ORGANIZATIONS</p> <p>WEST VIRGINIA RURAL WATER ASSOCIATION</p>		
<p>REGISTRATION (Type, Year, State)</p> <p>P.E 1980 - WEST VIRGINIA #008452</p> <p>P.S.1980 - WEST VIRGINIA #1179</p>		



13. PERSONAL HISTORY STATEMENT OF PRINCIPALS AND ASSOCIATES RESPONSIBLE FOR AML PROJECT DESIGN (Furnish complete data but keep to essentials)			
NAME & TITLE (Last, First, Middle Int.)		YEARS OF EXPERIENCE	
SHORTS, DANIEL R. P.E., P.S.		YEARS OF AML DESIGN EXPERIENCE: 4	YEARS OF AML RELATED DESIGN EXPERIENCE: 16
YEARS OF DOMESTIC WATERLINE DESIGN EXPERIENCE: 16			
Brief Explanation of Responsibilities Mr. Shorts will be in charge of scheduling of design sequence and project milestones. Mr. Shorts will also be responsible for Quality Control for the Windmill Gap Water Project.			
EDUCATION (Degree, Year, Specialization) M.S. Civil Engineering - 2001 - Virginia Polytechnical Institute B.S. Civil Engineering - 1988 - West Virginia Institute of Technology			
MEMBERSHIP IN PROFESSIONAL ORGANIZATIONS West Virginia Rural Water Association			
REGISTRATION (Type, Year, State) P.E. WEST VIRGINIA #011840 P.S. WEST VIRGINIA # 1178 P.E. NORTH CAROLINA #27290 P.E. VIRGINIA #034253			
13. PERSONAL HISTORY STATEMENT OF PRINCIPALS AND ASSOCIATES RESPONSIBLE FOR AML PROJECT DESIGN (Furnish complete data but keep to essentials)			
NAME & TITLE (Last, First, Middle Int.)		YEARS OF EXPERIENCE	
Summerfield, J. Zane		YEARS OF AML DESIGN EXPERIENCE: 15	YEARS OF AML RELATED DESIGN EXPERIENCE: 15
YEARS OF DOMESTIC WATERLINE DESIGN EXPERIENCE: 9			
Brief Explanation of Responsibilities: Mr. Summerfield will provide expertise and analysis for the drainage and re-vegetation aspect of this project. Having worked with for the mining industry as a permit specialist and hydrology analyst, his combination of technical and design capabilities will enhance the overall depth of experience to the design team.			
EDUCATION (Degree, Year, Specialization) A.S., 1976 West Virginia Institute of Technology B.S., 1982 West Virginia Institute of Technology			
MEMBERSHIP IN PROFESSIONAL ORGANIZATIONS			
REGISTRATION (Type, Year, State)			

14. PROVIDE A LIST OF SOFTWARE AND EQUIPMENT AVAILABLE IN THE PRIMARY OFFICE WHICH WILL BE USED TO COMPLETE AML DESIGN SERVICES

We perform our work utilizing the most current methods and equipment available.

SURVEY

Our survey work is accomplished with global positioning systems (GPS) and electronic distance measuring (EDM) survey stations with data gathering capabilities. This equipment includes:

- Leica Geosystem System 500 GPS
- Leica Ski Post Processing Software
- Topcon G600 Total Station Instrument
- Leica 303 Total Station Instrument
- Leica 307 Total Station Instrument
- Leica 403 Total Station Instrument
- Leica 405 Total Station Instrument
- Leica 407 Total Station Instrument
- Leica 703 Total Station Instrument
- Prograde 3 Gas Detector
- Flow Meter
- Forney FT-40 Compression Testing Machine
- Troxler 3440 Nuclear Density Gauge
- Troxler 3411 Nuclear Density Gauge
- Rainhart Proctor Machine
- Modified Protractor with Hammer
- Gilson Shaker
- GTS-605 Laser Plummel EDM
- Model 920 Flow Meter
- Submerged Depth Velocity Probe
- Propane Tank
- Daagator Sewer Flow Monitoring System
- TSP-514 Transport XT Mobility Mailer with Office Laptop
- System 500 Real-Time Processed Bundle
- Multiquip Pump
- System 500 RTK & Post Processing Bundle with Accessories
- Aries Township Pan & Tilt with 1000' & 400' Lateral System

DESIGN

CAD CAPABILITIES

Pentree, Inc., Incorporated provides one of the largest networks of computer aided design (CAD) equipment, software and trained personnel in the State of West Virginia.

AutoCAD Landdesktop 2007 and Microstation V8 software is utilized at 23 CAD stations. Upon its upcoming release, Landdesktop 2008 will be added to the corporate system. Additionally, equipment includes 10 large format (size E) plotters and 5 large format plotter / scanners.

CAD plans are prepared by both dedicated CAD employees and by staff engineers and engineering technicians.

15. CUR. I ACTIVITIES ON WHICH YOUR FIRM IS THE DESIGNATE ENGINEER OF RECORD - WATER DISTRIBUTION PROJECTS

PROJECT NAME, TYPE AND LOCATION	NAME AND ADDRESS OF OWNER	NATURE OF YOUR FIRM'S RESPONSIBILITY	ESTIMATED CONSTRUCTION COST	PERCENT COMPLETE
KEYROCK WATER PROJECT WYOMING COUNTY	RAVENCLIFF-MCGRAW'S - SAULSVILLE PSD PO BOX 217 MCGRAW'S, WV 25875	PRELIMINARY ENGINEERING REPORTS REVIEW, ENVIRONMENTAL STUDIES AND PERMITTING, PREPARATION OF PLANS AND SPECIFICATIONS, SURVEY, DESIGN, BID DOCUMENTATION.	\$4,300,000	95%
MULLENS/WYCO WATER PROJECT WYOMING COUNTY	EASTERN WYOMING PSD PO BOX 506 LOGAN, WV 25601	PRELIMINARY ENGINEERING REPORTS, ENVIRONMENTAL STUDIES AND PERMITTING, PREPARATION OF PLANS AND SPECIFICATIONS, SURVEY, DESIGN, BID DOCUMENTATION, REVIEW AND RECOMMENDATION, CONSTRUCTION MANAGEMENT AND INSPECTION	\$14,587,000	98%
ASCO WATER PROJECT MCDOWELL COUNTY	TOWN OF DAVY PO BOX 243 DAVY, WV 24828	PRELIMINARY ENGINEERING REPORTS, ENVIRONMENTAL STUDIES AND PERMITTING, PREPARATION OF PLANS AND SPECIFICATIONS, SURVEY, DESIGN, BID DOCUMENTATION, REVIEW AND RECOMMENDATION, CONSTRUCTION MANAGEMENT AND INSPECTION	\$10,000,000	5%
SPANISHBURG WATER EXTENSION PHASE 2B PROJECT MERCER COUNTY	LASHMEET P.S.D. PO BOX 189 LASHMEET, WV 24733	PRELIMINARY ENGINEERING REPORTS, ENVIRONMENTAL STUDIES AND PERMITTING, PREPARATION OF PLANS AND SPECIFICATIONS, SURVEY, DESIGN, BID DOCUMENTATION, REVIEW AND RECOMMENDATION, CONSTRUCTION MANAGEMENT AND INSPECTION	\$1,898,200	75% Design

15. CURRENT ACTIVITIES ON WHICH YOUR FIRM IS THE DESIGNATE ENGINEER OF RECORD - WATER DISTRIBUTION PROJECTS

PROJECT NAME, TYPE AND LOCATION	NAME AND ADDRESS OF OWNER	NATURE OF YOUR FIRM'S RESPONSIBILITY	ESTIMATED CONSTRUCTION COST	PERCENT COMPLETE
PAGE-KINCAID WATER PROJECT FAYETTE COUNTY	PAGE-KINCAID PSD PO BOX 165, HWY 61 KINCAID, WV 25119	PRELIMINARY ENGINEERING REPORTS, ENVIRONMENTAL STUDIES AND PERMITTING, PREPARATION OF PLANS AND SPECIFICATIONS, SURVEY, DESIGN, BID DOCUMENTATION, REVIEW AND RECOMMENDATION, CONSTRUCTION MANAGEMENT AND INSPECTION	\$2,400,000	85% Design
GREENVILLE WATER PROJECT MONROE COUNTY	RED SULPHUR PSD PO BOX 697 PETERSTOWN, WV 24963	PRELIMINARY ENGINEERING REPORTS, ENVIRONMENTAL STUDIES AND PERMITTING, PREPARATION OF PLANS AND SPECIFICATIONS, SURVEY, DESIGN, BID DOCUMENTATION, REVIEW AND RECOMMENDATION, CONSTRUCTION MANAGEMENT AND INSPECTION	\$2,728,000	30% Design
SUMMERSVILLE WATER LINE EXTENSION NICHOLAS COUNTY	GAULEY RIVER PSD PO BOX 47 SWISS, WV 26690	PRELIMINARY ENGINEERING REPORTS, ENVIRONMENTAL STUDIES AND PERMITTING, PREPARATION OF PLANS AND SPECIFICATIONS, SURVEY, DESIGN, BID DOCUMENTATION, REVIEW AND RECOMMENDATION, CONSTRUCTION MANAGEMENT AND INSPECTION	Phase I \$4,649,702 Phase II \$2,322,890 Phase III \$2,341,622	45% Design
BIG SANDY WATER PROJECT McDowell County	McDowell County PSD HC 31, Box 436 Welch, WV 24801	PRELIMINARY ENGINEERING REPORTS, ENVIRONMENTAL STUDIES AND PERMITTING, PREPARATION OF PLANS AND SPECIFICATIONS	\$8,714,120	25% Design
RUSSELLVILLE ROAD WATER PROJECT GREENBRIER COUNTY	GREENBRIER COUNTY PSD #2 PO BOX 673 RAINELLE, WV 25962	PRELIMINARY ENGINEERING REPORTS, ENVIRONMENTAL STUDIES AND PERMITTING, PREPARATION OF PLANS AND SPECIFICATIONS, SURVEY, DESIGN, BID DOCUMENTATION, REVIEW AND RECOMMENDATION, CONSTRUCTION MANAGEMENT AND INSPECTION	\$865,000	25%

15. CURRENT ACTIVITIES ON WHICH YOUR FIRM IS THE DESIGNATED ENGINEER OF RECORD - WATER DISTRIBUTION PROJECTS

PROJECT NAME, TYPE AND LOCATION	NAME AND ADDRESS OF OWNER	NATURE OF YOUR FIRM'S RESPONSIBILITY	ESTIMATED CONSTRUCTION COST	PERCENT COMPLETE
JESSEE MATHENY WATER PROJECT WYOMING COUNTY	RAVENCLIFF-MCGRAW'S- SAULSVILLE PSD PO BOX 217 MCGRAW'S, WV 25875	PRELIMINARY ENGINEERING REPORTS, ENVIRONMENTAL STUDIES AND PERMITTING, PREPARATION OF PLANS AND SPECIFICATIONS, SURVEY, DESIGN, BID DOCUMENTATION, REVIEW AND RECOMMENDATION, CONSTRUCTION MANAGEMENT AND INSPECTION	\$6,164,000	60%
GLEN WHITE TRAP HILL WATER PHASE I RALEIGH COUNTY	GLEN WHITE TRAP HILL PSD PO BOX 100 FAIRDALE, WV 25839	PRELIMINARY ENGINEERING REPORTS, ENVIRONMENTAL STUDIES AND PERMITTING, PREPARATION OF PLANS AND SPECIFICATIONS, SURVEY, DESIGN, BID DOCUMENTATION, REVIEW AND RECOMMENDATION, CONSTRUCTION MANAGEMENT AND INSPECTION	\$5,315,000	95%
ITMANN/BUD MOUNTAIN WATER PROJECT WYOMING COUNTY	EASTERN WYOMING PSD PO BOX 506 LOGAN, WV 25601	PRELIMINARY ENGINEERING REPORTS, ENVIRONMENTAL STUDIES AND PERMITTING, PREPARATION OF PLANS AND SPECIFICATIONS, SURVEY, DESIGN, BID DOCUMENTATION, REVIEW AND RECOMMENDATION, CONSTRUCTION MANAGEMENT AND INSPECTION	\$3,064,000	100% DESIGN



17. C. COMPLETED WORK WITHIN LAST 5 YEARS ON WHICH YOUR FIR

AS THE DESIGNATED ENGINEER OF RECORD

PROJECT NAME, TYPE AND LOCATION	NAME AND ADDRESS OF OWNER	ESTIMATED CONSTRUCTION COST	YEAR	CONSTRUCTED (YES OR NO)
INWOOD SEWER EXTENSION BERKELEY COUNTY	BERKELEY COUNTY PSSD PO BOX 944 MARTINSBURG, WV 25401	\$27,000,000	2003	YES
TWENTYMILE WATER PROJECT FAYETTE COUNTY	GAULEY RIVER PSD PO BOX 47 SWISS, WV 26690	\$4,600,000	2005	YES
BOZOO-ROCK CAMP WATER EXTENSION MONROE COUNTY	RED SULPHUR PSD PO BOX 697 PETERSTOWN, WV 24963	\$3,100,000	2004	YES
BAKER HEIGHTS WASTEWATER TREATMENT PLANT UPGRADE BERKELEY COUNTY	BERKELEY COUNTY PSSD PO BOX 944 MARTINSBURG, WV 25401	\$8,730,919	SEPT. 2008	95% COMPLETE
OAK HILL DRAINAGE PHASE I FAYETTE COUNTY	CITY OF OAK HILL PO BOX 1245 OAK HILL, WV 25901	\$1,285,000	2004	YES
PAGE KINCAID SEWER PROJECT FAYETTE COUNTY	PAGE-KINCAID PSD PO BOX 165, HWY 61 KINCAID, WV 25119	\$10,800,000	2006	YES
CITY OF OAK HILL OYLER AVENUE SIDEWALKS FAYETTE COUNTY	CITY OF OAK HILL PO BOX 1245 OAK HILL, WV 25901	\$70,000	2003	YES
FOUNTAIN SPRINGS INDUSTRIAL PARK MONROE COUNTY	GREENBRIER VALLEY EDC 810 JEFFERSON ST, STE 103 LEWISBURG, WV 24901	\$2,400,000	2004	YES
LOWER BIRCHFIELD/ ROUTE 72 WATER LINE EXTENSION WISE COUNTY, VA	WISE COUNTY PUBLIC SRV AUTH PO BOX 1940 COEBURN, VA 24230	\$1,100,000	2004	YES
FORT CHISWELL WASTEWATER TREATMENT PLANT UPGRADE PH I&II WYTHE COUNTY, VA	WYTHE COUNTY BOARD OF SUPERVISORS 340 SOUTH 6 <sup>TH</sup> ST WYTHEVILLE, VA 24382	PHASE I - \$376,000 PHASE II - \$4,140,655	2006 2008	YES
ECOLAB WATERWATER TREATMENT PLANT UPGRADE BERKELEY COUNTY	ECOLAB 942 BAKER ROAD MARTINSBURG, WV 25405	\$1,778,000	DECEMBER 2008	YES

PHASE

(INDICA

TO OTHER FIRMS

IAS BEEN A SUB-CONSULTANT

TO OTHER FIRMS

(NON APPLICABLE)

OF WORK FOR WHICH YOUR FIRM WAS RESPONSIBLE)

- NON APPLICABLE

LETED WORK WITHIN LAST 5 YEARS ON WHICH YOUR FIRM

OF WORK FOR WHICH YOUR FIRM WAS RESPONSIBLE)

- NON APPLICABLE

LETED WORK WITHIN LAST 5 YEARS ON WHICH YOUR FIRM

OF WORK FOR WHICH YOUR FIRM WAS RESPONSIBLE)

19. Use this space to provide any additional information or description of resources supporting your firm's qualifications to perform work for the West Virginia Abandoned Mine Lands Program.

PLEASE SEE ATTACHED STATEMENT OF QUALIFICATIONS AND SCOPE OF SERVICES

20. The foregoing is a statement of facts.

Signature: 

Title: PRESIDENT

Date: November 10, 2008

Printed Name: John W. Tuggle, P.E., P.S.



STATE OF WEST VIRGINIA  
Purchasing Division**PURCHASING AFFIDAVIT****VENDOR OWING A DEBT TO THE STATE:**

*West Virginia Code* §5A-3-10a provides that: No contract or renewal of any contract may be awarded by the state or any of its political subdivisions to any vendor or prospective vendor when the vendor or prospective vendor or a related party to the vendor or prospective vendor is a debtor and the debt owed is an amount greater than one thousand dollars in the aggregate.

**PUBLIC IMPROVEMENT CONTRACTS & DRUG-FREE WORKPLACE ACT:**

*West Virginia Code* §21-1D-5 provides that: Any solicitation for a public improvement construction contract shall require each vendor that submits a bid for the work to submit at the same time an affidavit that the vendor has a written plan for a drug-free workplace policy in compliance with Article 1D, Chapter 21 of the West Virginia Code. A public improvement construction contract may not be awarded to a vendor who does not have a written plan for a drug-free workplace policy in compliance with Article 1D, Chapter 21 of the West Virginia Code and who has not submitted that plan to the appropriate contracting authority in timely fashion. For a vendor who is a subcontractor, compliance with Section 5, Article 1D, Chapter 21 of the West Virginia Code may take place before their work on the public improvement is begun.

**ANTITRUST:**

In submitting a bid to any agency for the state of West Virginia, the bidder offers and agrees that if the bid is accepted the bidder will convey, sell, assign or transfer to the state of West Virginia all rights, title and interest in and to all causes of action it may now or hereafter acquire under the antitrust laws of the United States and the state of West Virginia for price fixing and/or unreasonable restraints of trade relating to the particular commodities or services purchased or acquired by the state of West Virginia. Such assignment shall be made and become effective at the time the purchasing agency tenders the initial payment to the bidder.

I certify that this bid is made without prior understanding, agreement, or connection with any corporation, firm, limited liability company, partnership or person or entity submitting a bid for the same materials, supplies, equipment or services and is in all respects fair and without collusion or fraud. I further certify that I am authorized to sign the certification on behalf of the bidder or this bid.

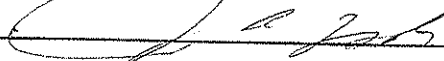
**LICENSING:**

Vendors must be licensed and in good standing in accordance with any and all state and local laws and requirements by any state or local agency of West Virginia, including, but not limited to, the West Virginia Secretary of State's Office, the West Virginia Tax Department, West Virginia Insurance Commission, or any other state agencies or political subdivision. Furthermore, the vendor must provide all necessary releases to obtain information to enable the Director or spending unit to verify that the vendor is licensed and in good standing with the above entities.

**CONFIDENTIALITY:**

The vendor agrees that he or she will not disclose to anyone, directly or indirectly, any such personally identifiable information or other confidential information gained from the agency, unless the individual who is the subject of the information consents to the disclosure in writing or the disclosure is made pursuant to the agency's policies, procedures and rules. Vendors should visit [www.state.wv.us/admin/purchase/privacy](http://www.state.wv.us/admin/purchase/privacy) for the Notice of Agency Confidentiality Policies.

Under penalty of law for false swearing (West Virginia Code §61-5-3), it is hereby certified that the vendor acknowledges the information in this said affidavit and is in compliance with the requirements as stated.

Vendor's Name:  Pentree, Inc.

Authorized Signature: \_\_\_\_\_ Date: Nov. 11, 2008

AML and RELATED PROJECT EXPERIENCE MATRIX		PROJECT EXPERIENCE REQUIREMENTS												PRIMARY STAFF PARTICIPATION/CAPACITY *** M=Management P=Professional								
PROJECT	Exp. Basis C=corp. P=Personal	Additional Info Provided in Section (s) **	Abandoned Surface Mine Reclamation	Abandoned Deep Mine Reclamation	Porta/Shaft Closure	Hydrologic/Hydraulic Design/Eval.	Reming Evaluation	Mine/Refuse Fire Abatement	Subsidence Investigation Mitigation	Hazardous Waste Disposal	Project Specifications	Water Quality Evaluation/Mitigation/Replacement	Construction Inspection/Management	Water Treatment	Equipment/Structure Removal	Stream Restoration	Geotechnical/Stability	John W. Tuggle, President P.E., P.S.	Robert D. Hazelwood, Vice President P.E., P.S.	Daniel R. Shorts, Senior Project Manager, P.E., P.S.	J. Zane Summerfield Senior Civil Analyst	
Eastern Wyoming County P.S.D. Water Project	C	S3			X	X					X	X		X				M/P	P	P	P	
King Coal Highway	C	S3								X	X					X		M/P	P	P		
City of Oak Hill Drainage	C	S3				X				X	X		X		X			M	P	P		
US Gypsum	C	S3				X				X	X		X					M	P	P		
Inwood Watershed Project	C	S3				X				X	X											

\* List whether project experience is corporate or personnel based or both.

\*\* Use this area to provide specific sections or pages if needed for reference.

\*\*\* List Primary Design personnel and their functional capacity for the projects listed.