

Expression of Interest

West Virginia

**Department of Environmental Protection
Division of Abandoned Mine Lands**

**DEP Request for Quotation
Riffe Branch Burning Refuse/
Helen Drainage Design RFP
#DEP14459**

November 13, 2008

Prepared For:

**State of West Virginia
Department of Administration
Purchasing Division
2019 Washington Street East
Charleston, WV 25305**

Submitted By:



SUMMIT ENGINEERING, INC.

Serving West Virginia with offices in
Chapmanville, Charleston and Bridgeport.

RECEIVED

2008 NOV 13 A 10:49

PURCHASING DIVISION
STATE OF WV

**West Virginia
Department for Environmental Protection
Division of Abandoned Mine Lands
RFP #DEP 14459**

TABLE OF CONTENTS

**LETTER OF INTRODUCTION
PURCHASING AFFIDAVIT**

SECTION I

**Executive Summary
General Statement of Qualifications
Additional Company Information:**

- Experience with AML Projects
- Qualifications of Personnel
- Management & Work Plan
- Office Locations
- Project Team Chart

SECTION II

Project Discussion

SECTION III

Attachments

- Consultant Confidential Qualification Questionnaire
- Related Project Experience Matrix (Attachment "C")



State of West Virginia
 Department of Administration
 Purchasing Division
 2019 Washington Street East
 Post Office Box 50130
 Charleston, WV 25305-0130

Request for Quotation

RFQ NUMBER
DEP14459

PAGE
1

ADDRESS CORRESPONDENCE TO ATTENTION OF
CHUCK BOWMAN
304-558-2157

RFQ COPY
 TYPE NAME/ADDRESS HERE

ENVIRONMENTAL PROTECTION
 DEPARTMENT OF
 OFFICE OF AML&R
 601 57TH STREET SE
 CHARLESTON, WV
 25304 304-926-0499

DATE PRINTED 10/08/2008	TERMS OF SALE	SHIP VIA	FOB	FREIGHT TERMS
-----------------------------------	---------------	----------	-----	---------------

BID OPENING DATE: **11/13/2008** BID OPENING TIME **01:30PM**

LINE	QUANTITY	UOP	CAT NO	ITEM NUMBER	UNIT PRICE	AMOUNT
0001	1	JB		906-29		
<p>RIFFE BR. BURNING REFUSE/HELEN (SUMME) DRNG. DESIGN</p> <p>EXPRESSION OF INTEREST</p> <p>THE WEST VIRGINIA PURCHASING DIVISION, FOR THE AGENCY, THE WEST VIRGINIA DEPARTMENT OF ENVIRONMENTAL PROTECTION, IS SOLICITING EXPRESSIONS OF INTEREST FOR PROFESSIONAL ENGINEERING DESIGN SERVICES AND CONSTRUCTION MONITORING SERVICES AT THE RIFFE BRANCH BURNING REFUSE/HELEN (SUMME) DRNG. PROJECTS, RALEIGH COUNTY, WEST VIRGINIA, PER THE FOLLOWING BID REQUIREMENTS AND ATTACHED SPECIFICATIONS.</p> <p>BANKRUPTCY: IN THE EVENT THE VENDOR/CONTRACTOR FILES FOR BANKRUPTCY PROTECTION, THIS CONTRACT IS AUTOMATICALLY NULL AND VOID AND IS TERMINATED WITHOUT FURTHER ORDER.</p>						

SEE REVERSE SIDE FOR TERMS AND CONDITIONS

SIGNATURE <i>James J. Anteburny</i>	TELEPHONE (304) 342-1342	DATE 11/13/08
TITLE <i>Vice President</i>	FEN 61-0991104	ADDRESS CHANGES TO BE NOTED ABOVE

WHEN RESPONDING TO RFQ, INSERT NAME AND ADDRESS IN SPACE ABOVE LABELED 'VENDOR'

STATE OF WEST VIRGINIA
Purchasing Division**PURCHASING AFFIDAVIT**

West Virginia Code §5A-3-10a states: No contract or renewal of any contract may be awarded by the state or any of its political subdivisions to any vendor or prospective vendor when the vendor or prospective vendor or a related party to the vendor or prospective vendor is a debtor and the debt owed is an amount greater than one thousand dollars in the aggregate

DEFINITIONS:

"Debt" means any assessment, premium, penalty, fine, tax or other amount of money owed to the state or any of its political subdivisions because of a judgment, fine, permit violation, license assessment, defaulted workers' compensation premium, penalty or other assessment presently delinquent or due and required to be paid to the state or any of its political subdivisions, including any interest or additional penalties accrued thereon.

"Debtor" means any individual, corporation, partnership, association, limited liability company or any other form or business association owing a debt to the state or any of its political subdivisions. "Political subdivision" means any county commission; municipality; county board of education; any instrumentality established by a county or municipality; any separate corporation or instrumentality established by one or more counties or municipalities, as permitted by law; or any public body charged by law with the performance of a government function or whose jurisdiction is coextensive with one or more counties or municipalities. "Related party" means a party, whether an individual, corporation, partnership, association, limited liability company or any other form or business association or other entity whatsoever, related to any vendor by blood, marriage, ownership or contract through which the party has a relationship of ownership or other interest with the vendor so that the party will actually or by effect receive or control a portion of the benefit, profit or other consideration from performance of a vendor contract with the party receiving an amount that meets or exceeds five percent of the total contract amount.

EXCEPTION: The prohibition of this section does not apply where a vendor has contested any tax administered pursuant to chapter eleven of this code, workers' compensation, premium, permit fee or environmental fee or assessment and the matter has not become final or where the vendor has entered into a payment plan or agreement and the vendor is not in default of any of the provisions of such plan or agreement.

LICENSING: Vendors must be licensed and in good standing in accordance with any and all state and local laws and requirements by any state or local agency of West Virginia, including, but not limited to, the West Virginia Secretary of State's Office, the West Virginia Tax Department, West Virginia Insurance Commission, or any other state agencies or political subdivision. Furthermore, the vendor must provide all necessary releases to obtain information to enable the Director or spending unit to verify that the vendor is licensed and in good standing with the above entities.

CONFIDENTIALITY: The vendor agrees that he or she will not disclose to anyone, directly or indirectly, any such personally identifiable information or other confidential information gained from the agency, unless the individual who is the subject of the information consents to the disclosure in writing or the disclosure is made pursuant to the agency's policies, procedures and rules. Vendors should visit www.state.wv.us/admin/purchase/privacy for the Notice of Agency Confidentiality Policies.

Under penalty of law for false swearing (West Virginia Code, §61-5-3), it is hereby certified that the vendor acknowledges the information in this said affidavit and are in compliance with the requirements as stated.

Vendor's Name: Summit Engineering, Inc.

Authorized Signature: _____

Date: 11/13/2008

EXECUTIVE SUMMARY

Summit Engineering, Inc. proposes to provide design and specification services, surveying and mapping, and any required laboratory or subsurface investigation, in support of the Department of Environmental Protection's (DEP) effort to reclaim lands and water affected by coal mining which occurred prior to the promulgation of the Surface Mining Control and Reclamation Act of 1977. We also propose to offer the service of construction contract document preparation and contract administration to these projects.

Summit Engineering, Inc. is a large, diverse mining and civil engineering firm with seven regional offices strategically located in the Appalachian Coalfields and in close proximity to the anticipated projects requested by the Department for the required scope of work. Our three West Virginia offices are located in Charleston, Chapmanville and Bridgeport, West Virginia. We have combined our individual talents and expertise to benefit many post mining projects in the region. Being a mining *and* civil engineering firm, we have many corporate attributes that uniquely qualify our firm to provide services for abandoned mine lands reclamation projects in the state of West Virginia.

These attributes include:

- Strategically located offices in West Virginia coalfields (Charleston, Chapmanville and Bridgeport)
- Successful working relationship with West Virginia DEP
- Award-winning post mining land use projects
- Extensive background in coal mine design
- Experienced and available professional staff
- Vast amount of existing data in areas of potential projects

Summit has taken the opportunity to conduct field investigations of this project and has an understanding of the project scope.



SUMMIT ENGINEERING, INC.

Summit Engineering, Inc.
400 Allen Drive, Ste 100
Charleston, WV 25302
(304) 342-1342

Principal Contact: Jim Canterbury, PE
jcanterbury@summit-engr.com



Charleston, West Virginia
Office

FIRM DESCRIPTION

- Founded in 1977
- Over 29 years experience in engineering and architectural services
- Combined experience of more than 110 highly trained employees
- Professionals registered to provide professional services in multiple states
WV • KY • VA • TN • IN • OH • AK
- Eight Regional Offices
 - Charleston, WV
 - Bridgeport, WV
 - Lexington, KY
 - Big Rock, VA
 - Chapmanville, WV
 - Pikeville, KY
 - Hazard, KY
 - Wise, VA

HISTORY

Summit Engineering, Inc. is an Appalachian Coalfields-based mining engineering, civil and environmental engineering and architectural firm. Summit opened its first office in West Virginia in 1985 in Logan, West Virginia. That office has since relocated to Chapmanville and additional offices have been opened in Charleston and Bridgeport, West Virginia. In August 2008, Summit opened its second Virginia office in Wise County.

Summit's experience and expertise offers a wide range of civil & mining engineering, surveying, architecture and environmental assessment consultation and design services.

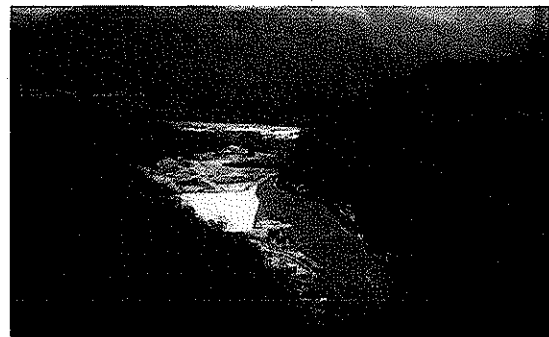
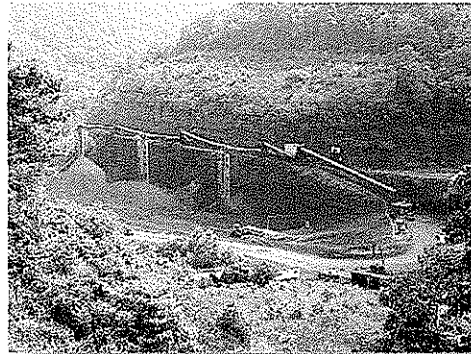


MINING ENGINEERING

Our firm has decades of combined experience in the mining and reclamation projects. Summit is proud to have accumulated an enormous amount of experience, which ensures our clients of high quality services at very competitive fees. Projects include:

- ▶ Plan Design
- ▶ Surveying and Mapping
- ▶ Hydrologic Investigation
- ▶ Geologic Investigation
- ▶ Permitting
- ▶ Environmental Monitoring and Testing
- ▶ Technical Report Preparation

Summit's most valuable asset is the experience of our staff. Our staff has over of 100 years of cumulative experience in the mining industry. The experience, knowledge, and skills of our staff enable us to assist with the planning and permitting needs of the coal industry in order to overcome the obstacles faced in today's market. Summit has also been instrumental in the development of unique post mining land uses. We have been involved in developing golf courses, residential subdivisions, commercial developments and recreational facilities on previously mined sites, thus illustrating our capacity to combine different disciplines of engineering for the benefit of industry, community, and the environment.



CIVIL ENGINEERING

Our civil engineering division has experience with all aspects of development projects.

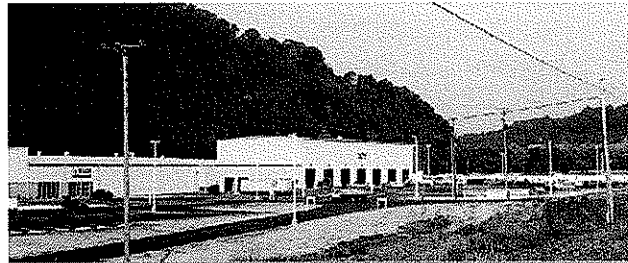
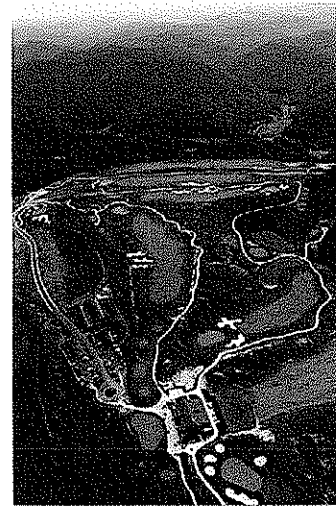
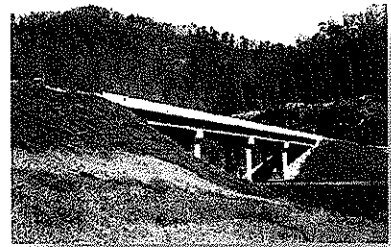
Our past projects have included:

- ▶ **AML Projects**
- ▶ **Sanitary and storm sewer systems**
- ▶ **Water supply systems**
- ▶ **Utilities/Infrastructure Needs Studies**
- ▶ **Regional Facilities Planning**
- ▶ **Industrial & Commercial site development**
- ▶ **Sanitary landfills**
- ▶ **Urban planning**
- ▶ **Roadways and Bridges**
- ▶ **Residential communities**

Serving as municipal engineers for various communities and projects, Summit has worked with the local, state and federal regulations that could be encountered during project development.

Additional services available include:

- ▶ **Project Administration**
- ▶ **Construction Inspection**
- ▶ **Funding Assistance**



SURVEYING

Summit Engineering's field staff offers more than 100 years of combined experience in both conventional and global positioning (GPS) survey methods.

Our survey staff is comprised of six qualified field personnel who have accumulated an impressive depth of experience on jobs, both large and small, the majority of which are in challenging terrain.

These projects are held to the highest standards of accuracy by utilizing state of the art equipment, software and support vehicles.

Summit's experience has been gained on a wide array of survey projects including:

- ▶ Planimetric
- ▶ Reconnaissance
- ▶ Terrain
- ▶ Boundary
- ▶ Property and subdivision
- ▶ Roadway surveys
- ▶ Cross-sections
- ▶ Construction staking
- ▶ Control surveys for aerial photography
- ▶ Mine Surveys
- ▶ Underground
- ▶ Quarries
- ▶ Stockpiles
- ▶ GPS Capability
- ▶ ALTA Plat Standards



Summit's organization combines fieldwork experience with superior project management.



ENVIRONMENTAL

Summit has developed an in-depth understanding of environmental situations, investigations, and mitigation plans. Our staff of highly trained and experienced personnel enables Summit to provide quality, efficient results on projects ranging in size and sensitivity. Project owners have utilized Summit's services for both mining and civil engineering projects requiring:

- ▶ Environmental site assessments
- ▶ Reclamation liability studies
- ▶ Aquatic biologic surveys
- ▶ Stream and wetland mitigation
- ▶ Wetland delineation
- ▶ Corps of Engineers permits
- ▶ Toxic release inventory reporting
- ▶ Water quality studies
- ▶ Land reclamation cost analysis
- ▶ Stream benthic surveys
- ▶ KPDES permit applications
- ▶ Air quality permits and reporting
- ▶ Spill prevention control and countermeasures plans
- ▶ EPA underground injection permits



CORPORATE EXPERIENCE WITH ABANDONED MINE LAND PROJECTS

Summit Engineering has been involved in AML reclamation projects since 1983. We have provided services to the West Virginia Department of Environmental Protection – Division of Abandoned Mine Lands, the Virginia Division of Mined Land Reclamation, the Kentucky Division of Abandoned Mine Lands and directly to the Office of Surface Mining. Projects in all three states have included some or all of the following: study, planning, permitting, design and construction oversight on varied types of projects including landslide and other soil and rock stability problems, mine and refuse fire abatement, sealing of hazardous shafts and other portals, mine subsidence problems, channel restoration, acid mine drainage mitigation and facility demolition, water studies and infrastructure projects. Our projects completed for West Virginia's Division of Abandoned Mine Lands include the Godby Branch Project and the Twin Branch Portal Closings Project.

The following exhibit of Abandoned Mine Lands and Reclamation Experience, which briefly describes prior and on-going AML&R projects by Summit, is a quick reference guide to our experience and expertise with AML projects. You will note that most of these projects have been successfully built and have dealt with a variety of issues that might be encountered when dealing with a reclamation project.

Our most recent experience has been obtained in the area of ground water contamination studies. Consequently, many of our studies have resulted in the funding of multiple water supply projects. As an illustration of this success, Summit is proud to have several water supply projects in the region fully funded and in various stages of final design and construction

Summit maintains the experienced staff and other in-house and/or sub-contracted capabilities for all phases of Abandoned Mine Land projects which require services in surveying and mapping, geotechnical investigation, design engineering, contract drawings and specifications, contract document preparation and administration. Thus we are expertly qualified to provide these services for the abatement of problems resulting from abandoned mine lands.

QUALIFICATIONS OF PERSONNEL

Today, Summit Engineering employs approximately 125 highly-trained staff members representing a diverse range of professional backgrounds and technical expertise. Our employees include engineers, geologists, environmental scientists, hydrologists, surveyors and resident inspectors who are complemented by a dedicated support staff.

These individuals have worked on many projects that have addressed both mining and civil engineering concerns. Many of those projects have dealt with post-mining land use or abandoned mine lands. Several of these projects have uniquely integrated all of our engineering disciplines. One similar project is the Stone Crest Golf Course, where previously mined lands

were developed into and 18-hole championship golf course in Prestonsburg, Kentucky. Another of these projects is the Grant's Branch Park, where a community facility along with a fishing lake was developed on post-mining lands.

PROJECT TEAM ORGANIZATION

Summit Engineering utilizes an interdisciplinary team approach to develop realistic, cost-effective solutions to the environmental issues associated with abandoned mine lands. This approach allows for the collective input of ideas and expertise and gives the client and the project the "best of both worlds" utilizing our mining and civil engineering departments.

The Principal-in-Charge will ultimately be responsible for the entire scope of the project. Jim Canterbury, PE, who will serve as the Principal-in-Charge and is a legally authorized official of our firm, is authorized to sign all contractual documents related to AML work. Mr. Canterbury serves as the Office Manager of our Charleston office where he will have direct, hands-on control of any awarded project. Mr. Canterbury has worked for years as an advocate of the coal mining industry and continues to serve on many panels and in industry organizations.

The Project Manager will be responsible for the overall management of each project assigned. Michael Akers, PE, LS will serve as project manager on all WV DEP AML projects. Mr. Akers is a professional engineer with an intimate familiarity with the DEP on many levels. A portion of his responsibilities as project manager will be as the official project liaison with the DEP. Mr. Akers and/or key members of his staff will review the work directive, visit the site(s) and develop and execute a work plan.

Additional project engineers may be assigned by the project manager. Summit has dedicated multiple Registered Professional Engineers to the project team in order to offer broader perspective and expertise. The majority of the Project Engineer's work will involve the technical aspects of the project (i.e., design of engineering plans, detailed review of calculations and drawings, preparation of technical reports and construction documents), however he will also assume some managerial duties. Particularly, he will coordinate the technical efforts and field work of the team members and will be responsible for any subcontractors regarding their specific assignments as well as regular monitoring of the design process.

Summit Engineering's survey team is led by Steve Haywood, LS (WV). Topographic and control surveying are integral parts of the services we provide. Our survey staff offers specialized expertise in various types of field surveys including boundary surveys, topographic surveys, control surveys for aerial mapping, construction surveys and spad setting in underground mine works. We have performed surveying and mapping on projects ranging from mine reclamation projects to water and wastewater lines and from underground mine layouts to construction layout for major projects including roadways, golf courses and industrial sites. Our survey staff is equipped with the latest technology including the use of GPS Systems and other precision

instruments for making extremely accurate measurements in the rugged terrain of the Appalachian coalfields.

CAD Technicians dedicated to this project include staff from the Charleston office as well as the Bridgeport and Chapmanville offices, based on the office most readily available to the project site and DEP personnel. Utilizing state of the art equipment and software, we are able to offer a spectacular product of mapping, exhibits and illustrations in a clear and concise format.

PROJECT MANAGEMENT PLAN

Project management is focused on the commitment of resources – physical, fiscal, and personnel – to ensure completion of assigned projects within the specified time and budgetary constraints. The management function encompasses the basic tasks of organizing, staffing, deciding, directing, monitoring, controlling and evaluating all aspects of project formulation and implementation. Summit's West Virginia offices have both the technical capabilities and qualified staff, to efficiently and effectively implement a work plan that has been proven successful on previous AML projects in West Virginia, Kentucky and Virginia.

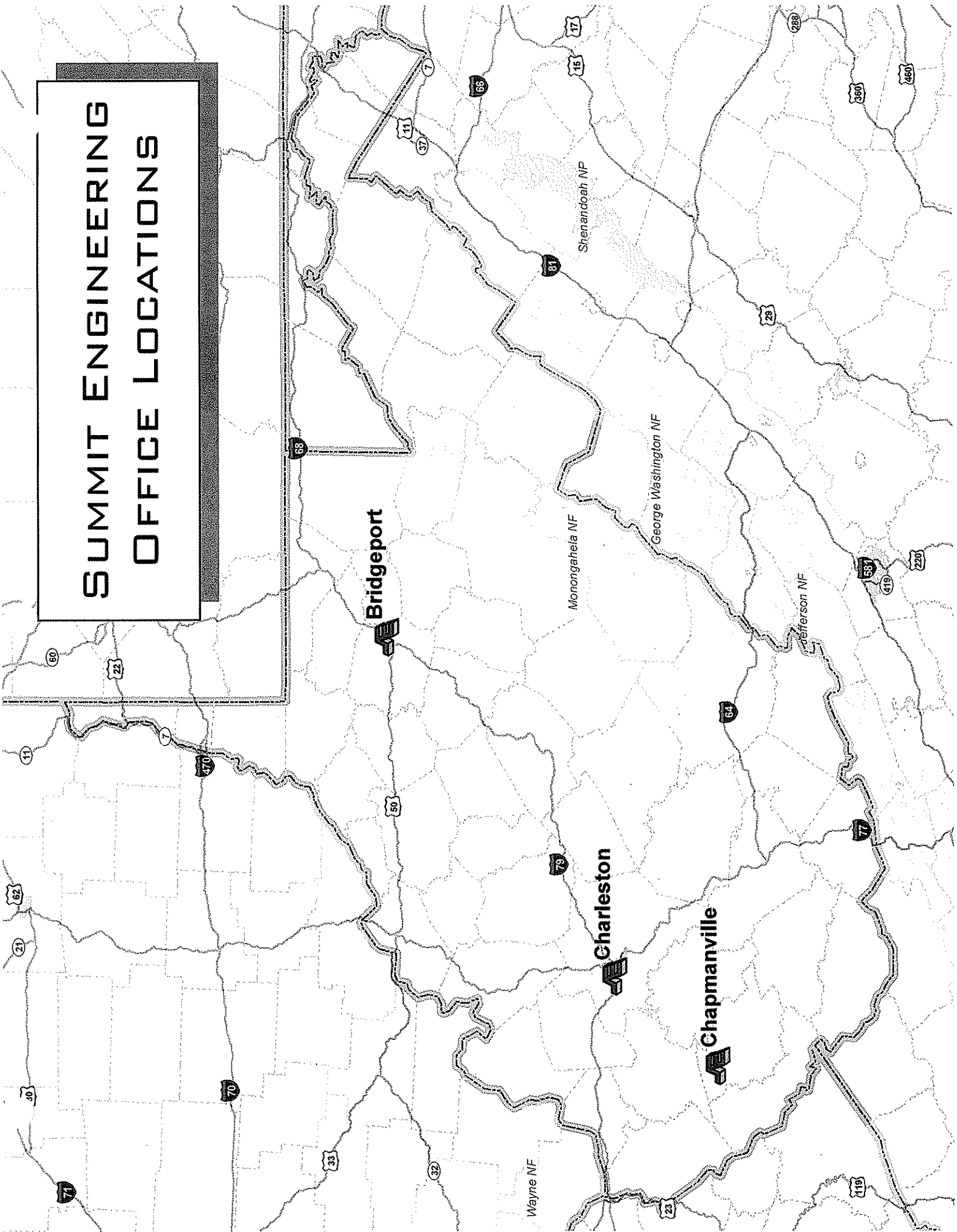
The team assigned to your projects has worked together on previous occasions, many of which are similar in scope to the upcoming DEP projects. Summit is committed to the allocation of additional personnel and any other required resources that may be necessary to successfully complete your projects in an efficient, timely, professional and cost effective manner.

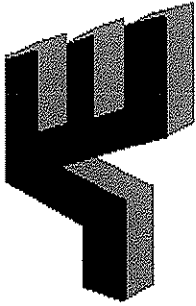
OFFICE LOCATIONS & RESOURCES

Summit's Charleston office will be the primary provider of services required for this project. Our Chapmanville and Bridgeport offices will also be utilized for field reconnaissance and other services when one of those offices is within closer proximity to the project. Additionally, Summit's multiple office locations will make it possible to add additional team members as the project necessitates. The work will be performed as a tightly coordinated effort between Summit and sub-consultants. As a result, DEP will not only receive quality service but will be utilizing the highest level of expertise within the individual disciplines within our firm.

You will note that our three West Virginia offices are located in manageable proximity to the project locations, affording us quick response time to project location. Our Charleston office particularly will allow our staff direct and immediate service to the Department of Environmental Protection.

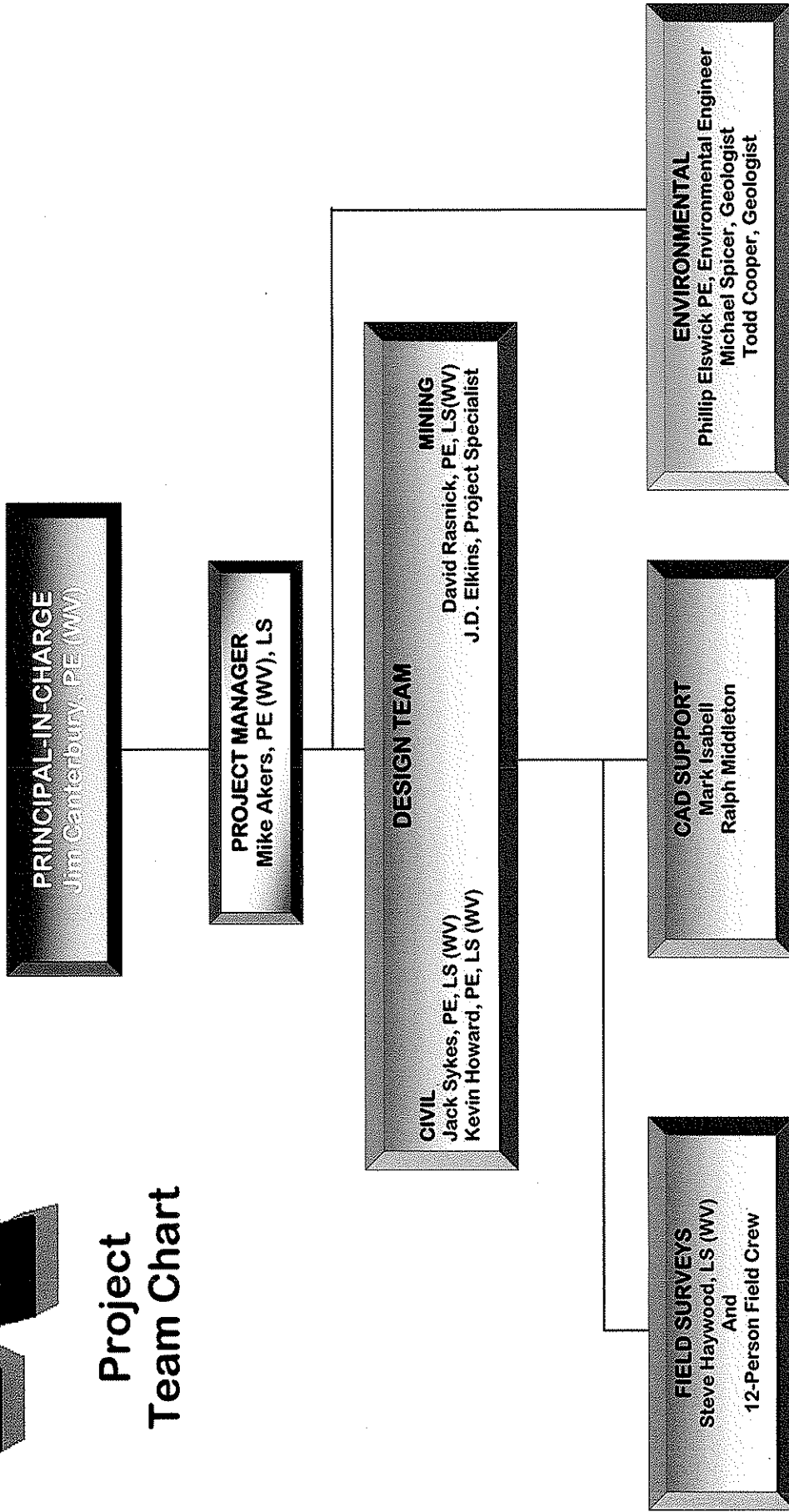
SUMMIT ENGINEERING OFFICE LOCATIONS





RIFFE BR. REFUSE/HELEN DRAINAGE DESIGN RFP

Project Team Chart

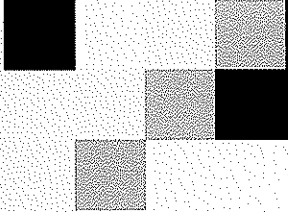


PROJECT DISCUSSION

The Riffe Branch Burning Refuse/Helen (Summe) Drainage project is two (2) separate project sites located near Helen in Raleigh County. The projects are approximately one and one-half (1 ½) hours from Summit's Charleston Office. The project sites are located near several coal mining operations for which Summit provides engineering services.

After reviewing the "Expression of Interest" package Summit understands the major components of engineering this project is to: 1.) to provide design plans and specifications for the project area, 2.) to investigate and design for the regarding, stability and extinguishing (if burning) of the refuse area, 3.) to design drainage channels, ditches and/or underdrains to divert surface water and mine drainage safely off the sites; 4.) to investigate drainage source and develop drainage plan; 5.) provide revegetation standards for all disturbed areas, 6.) to provide estimated quantities, 7.) to prepare a cost estimate and 8.) to have the preliminary design documents ready within 90 days from issuance of a Purchase Order.

Summit has successfully completed two (2) WVAML projects, but at the present time does not have any WVAML project they are designing. The Twin Branch Portals project that Summit designed is very similar in scope as this project. Therefore, Summit will be able to commit its resources to completing this project within the required time frame



**CONFIDENTIAL CONSULTANT
QUALIFICATION QUESTIONNAIRE**

**WEST VIRGINIA DEPARTMENT OF ENVIRONMENTAL PROTECTION
AML CONSULTANT CONFIDENTIAL QUALIFICATION QUESTIONNAIRE**

PROJECT NAME #DEP14459 Riffe Br. Burning Refuse/Helen Drainage	DATE (DAY, MONTH, YEAR) 13 Nov 2008	FEIN 61-0991104	
1. FIRM NAME Summit Engineering, Inc.	2. HOME OFFICE BUSINESS ADDRESS 400 Allen Drive, Suite 100 Charleston, WV 25302	3. FORMER FIRM NAME N/A	
4. HOME OFFICE TELEPHONE (304) 342-1342	5. ESTABLISHED(YEAR) 1977	6. TYPE OWNERSHIP Individual <input checked="" type="checkbox"/> Corporation Partnership <input type="checkbox"/> Joint-Venture	6a. WV REGISTERED DBE (Disadvantaged Business Enterprise) YES <input type="checkbox"/> NO <input checked="" type="checkbox"/>
7. PRIMARY AML DESIGN OFFICE: ADDRESS/ TELEPHONE/ PERSON IN CHARGE/ NO. AML DESIGN PERSONNEL EACH OFFICE 400 Allen Drive, Suite 100, Charleston, WV 25302/(304) 342-1342/ James Canterbury, PE/10 Personnel			
8. NAMES OF PRINCIPAL OFFICERS OR MEMBERS OF FIRM Jack C. Sykes, P.E., L.S. Phillip Lucas, P.E., L.S. Steve Tackett, PE David Rasnick, P.E., L.S. Kevin M. Howard, P.E., L.S. David Sanders, P.E., L.S. Tracy Goff, P.E. Mike Hill, P.E., L.S.I.T. James Canterbury, PE			
9. PERSONNEL BY DISCIPLINE			
5. ADMINISTRATIVE 2. ARCHITECTS 3. BIOLOGIST 14. CADD OPERATORS 1. CHEMICAL ENGINEERS 11. CIVIL ENGINEERS 1. CONSTRUCTION INSPECTORS 7. DESIGNERS DRAFTSMEN	ECOLOGISTS ECONOMISTS ELECTRICAL ENGINEERS ENVIRONMENTALISTS ESTIMATORS 5. GEOLOGISTS HISTORIANS HYDROLOGISTS	LANDSCAPE ARCHITECTS MECHANICAL ENGINEERS 20. MINING ENGINEERS PHOTOGRAMMETRISTS PLANNERS: URBAN/REGIONAL SANITARY ENGINEERS SOILS ENGINEERS SPECIFICATION WRITERS	STRUCTURAL ENGINEERS 9. SURVEYORS TRAFFIC ENGINEERS 47. OTHER 111. TOTAL PERSONNEL
TOTAL NUMBER OF WV REGISTERED PROFESSIONAL ENGINEERS IN PRIMARY OFFICE: 2 *RPEs other than Civil and Mining must provide supporting documentation that qualifies them to supervise and perform this type of work.			
Not Applicable			
10. HAS THIS JOINT-VENTURE WORKED TOGETHER BEFORE? <input type="checkbox"/> YES <input checked="" type="checkbox"/> NO			

11. OUTSIDE KEY CONSULTANTS/SUB-CONSULTANTS ANTICIPATED TO BE USED Attach "AML Consultant Confidential Qualification Questionnaire".

NAME AND ADDRESS:	SPECIALTY:	WORKED WITH BEFORE ____ Yes ____ No
NAME AND ADDRESS:	SPECIALTY:	WORKED WITH BEFORE ____ Yes ____ No
NAME AND ADDRESS:	SPECIALTY:	WORKED WITH BEFORE ____ Yes ____ No
NAME AND ADDRESS:	SPECIALTY:	WORKED WITH BEFORE ____ Yes ____ No
NAME AND ADDRESS:	SPECIALTY:	WORKED WITH BEFORE ____ Yes ____ No
NAME AND ADDRESS:	SPECIALTY:	WORKED WITH BEFORE ____ Yes ____ No
NAME AND ADDRESS:	SPECIALTY:	WORKED WITH BEFORE ____ Yes ____ No
NAME AND ADDRESS:	SPECIALTY:	WORKED WITH BEFORE ____ Yes ____ No
NAME AND ADDRESS:	SPECIALTY:	WORKED WITH BEFORE ____ Yes ____ No

A. Is your firm experienced in Abandoned Mine Lands Remediation/Mine Reclamation Engineering?

YES Description and Number of Projects:

Our services include mining permits, reclamation projects and AML water line projects through our civil, mining, surveying and environmental divisions. The number of projects is well over 100 due to our 29 years of service to the various industries, public and private clients we serve.

NO

B. Is your firm experienced in Soil Analysis?

YES Description and Number of Projects:

We perform routine services such as slope stability analyses and small retaining wall design. We utilize sub-consultants for exploration and detailed analysis such as consolidation, liquefaction, etc. Number of Projects is well over 100 as we do soil analysis for many of our mining clients as well as for stream bank stabilization and environmental projects.

NO

C. Is your firm experienced in hydrology and hydraulics?

YES Description and Number of Projects:

Summit designs have primarily addressed the control, treatment, and diversion of surface and ground water. Summit has designed well over 100 projects involving hydrology and hydraulics.

NO

D. Does your firm produce its own Aerial Photography and Develop Contour Mapping?

YES Description and Number of Projects:

We develop contour maps by field survey for sites up to 50 acres. We utilize sub-consultants for mapping by aerial photogrammetry for sites larger than 50 acres. Number of projects is well over 100 as we do mapping for all mining and civil engineering and surveying clients.

NO

E. Is your firm experienced in domestic waterline design? (Include any experience your firm has in evaluation of aquifer degradation as a result of mining.)

YES Description and Number of Projects:

Summit's civil engineering division has over 30 years of experience with domestic waterline design.

NO

F. Is your firm experienced in Acid Mine Drainage Evaluation and Abatement Design?

YES Description and Number of Projects:

Summit Engineering has been doing mining permits for 30 years and has addressed acid mine drainage in each of those. As a firm we have only completed one project that directly mitigated acid mine drainage.

NO

13. PERSONAL HISTORY STATEMENT OF PRINCIPALS AND ASSOCIATES RESPONSIBLE FOR AML PROJECT DESIGN (Furnish complete data but keep to essentials)

NAME & TITLE (Last, First, Middle Int.)	YEARS OF EXPERIENCE	
	YEARS OF AML DESIGN EXPERIENCE:	YEARS OF AML RELATED DESIGN EXPERIENCE:
James S. Canterbury, Partner/Office Manager	20	20
<p>Brief Explanation of Responsibilities Partner, Branch Office Manager Mr. Canterbury's responsibilities include managing day-to-day activities of the office and staff. Responsibilities also include obtaining and assisting in the preparation of coal-mining permits, invoicing, performing accounts receivable, assisting clients, and working with regulatory agencies.</p>		
<p>EDUCATION (Degree, Year, Specialization) B.S. - (1975) Civil Engineering - West Virginia Institute of Technology M.S. - (1979) Business Administration - Marshall University</p>		
<p>MEMBERSHIP IN PROFESSIONAL ORGANIZATIONS REGISTRATION (Type, Year, State) P.E.: WV (1977), KY (1979), PA (1998)</p>		

13. PERSONAL HISTORY STATEMENT OF PRINCIPALS AND ASSOCIATES RESPONSIBLE FOR AML PROJECT DESIGN (Furnish complete data but keep to essentials)

NAME & TITLE (Last, First, Middle Int.)	YEARS OF EXPERIENCE	
	YEARS OF AML DESIGN EXPERIENCE:	YEARS OF AML RELATED DESIGN EXPERIENCE:
Phillip Lucas, Vice President	17	17
<p>Brief Explanation of Responsibilities Mr. Lucas joined Summit Engineering in 1992 and presently serves as Vice-President and Partner in the firm. Mr. Lucas has oversight responsibility in the Pikeville, KY, Hazard, KY, and Charleston, WV Offices. He is presently responsible for design and design supervision of deep mines, surface mines, refuse impoundments, and construction related projects.</p>		
<p>EDUCATION (Degree, Year, Specialization) B.S. - (1976)- Civil Engineering, Mining Option - University of Kentucky M.S. - (1997) - Mining Engineering - University of Kentucky</p>		
<p>MEMBERSHIP IN PROFESSIONAL ORGANIZATIONS Kentucky Society of Professional Engineers National Society of Professional Engineers American Institute of Mining Engineers</p>		
<p>REGISTRATION (Type, Year, State) P.E. (1991) KY, (1991) VA, (1991) WV L.S. (1993) KY, (1996) VA, (1996) WV</p>		

13. PERSONAL HISTORY STATEMENT OF PRINCIPALS AND ASSOCIATES RESPONSIBLE FOR AML PROJECT DESIGN (Furnish complete data but keep to essentials)

NAME & TITLE (Last, First, Middle Int.)	YEARS OF EXPERIENCE	
	YEARS OF AML DESIGN EXPERIENCE:	YEARS OF DOMESTIC WATERLINE DESIGN EXPERIENCE:
J.D. Elkins, Partner/Office Manager	2	2
<p>Brief Explanation of Responsibilities Mr. Elkins has over ten years experience in the layout, design, and implementation of surface and underground mining and reclamation projects. Experience includes mine planning, reserve/depletion studies; design of dams, roadways, and fill areas; reclamation plans; re-vegetation/reforestation schedules; feasibility/forecast studies; construction and reclamation supervision; and property management. Mr. Elkins' duties include supervision of a complete office staff of project engineers, technicians, draftsmen, and clerical personnel.</p>		
<p>EDUCATION (Degree, Year, Specialization) B.S. (1990) Industrial Engineering Technology Undergraduate Courses (1986/1987) Mining Engineering</p>		
<p>MEMBERSHIP IN PROFESSIONAL ORGANIZATIONS REGISTRATION (Type, Year, State)</p>		

13. PERSONAL HISTORY STATEMENT OF PRINCIPALS AND ASSOCIATES RESPONSIBLE FOR AML PROJECT DESIGN (Furnish complete data but keep to essentials)

NAME & TITLE (Last, First, Middle Int.)	YEARS OF EXPERIENCE	
	YEARS OF AML DESIGN EXPERIENCE:	YEARS OF DOMESTIC WATERLINE DESIGN EXPERIENCE:
David F. Rasnick, Vice President/Partner	20	0
<p>Brief Explanation of Responsibilities Mr. Rasnick joined Summit Engineering after graduation from the University of Kentucky in 1978. He is currently Vice-President of the firm and oversees projects in West Virginia, Kentucky and Virginia. He has been responsible for the design of surface mine operations, deep mine layouts, mineral reserve studies, mine reclamation projects, railroad design and layout, refuse fill design, property surveys, the layout of water monitoring programs, topographic mapping projects, construction supervision and Geotechnical exploration projects.</p>		
<p>EDUCATION (Degree, Year, Specialization) B.S.- (1977)- Civil Engineering - University of Kentucky</p>		
<p>MEMBERSHIP IN PROFESSIONAL ORGANIZATIONS National Society of Professional Engineers American Institute of Mining Engineers Kentucky Society of Professional Engineers</p> <p>REGISTRATION (Type, Year, State) P.E.: (1981) KY, (1982) VA, (1985) WV, (1986) OH, (1985) IN L.S. (1983) KY, (1995) WV</p>		

13. PERSONAL HISTORY STATEMENT OF PRINCIPALS AND ASSOCIATES RESPONSIBLE FOR AML PROJECT DESIGN (Furnish complete data but keep to essentials)

NAME & TITLE (Last, First, Middle Int.)	YEARS OF EXPERIENCE		
	YEARS OF AML DESIGN EXPERIENCE:	YEARS OF AML RELATED DESIGN EXPERIENCE:	YEARS OF DOMESTIC WATERLINE DESIGN EXPERIENCE:
Michael Akers, PE	3	3	0
Brief Explanation of Responsibilities Mr. Akers responsibilities include interacting with mining clients, the WVDEP and Summit staff to prepare and obtain approval of all types of Article 3 and NPDES permits.			
EDUCATION (Degree, Year, Specialization) B.S. Mathematics, West Virginia Institute of Technology M.S. Petroleum Engineering, West Virginia University M.B.A., West Virginia College of Graduate Studies			
MEMBERSHIP IN PROFESSIONAL ORGANIZATIONS Society of Petroleum Engineers Virginia Oil and Gas Association Kentucky Oil and Gas Association			
REGISTRATION (Type, Year, State) P.E.: KY, WV			

13. PERSONAL HISTORY STATEMENT OF PRINCIPALS AND ASSOCIATES RESPONSIBLE FOR AML PROJECT DESIGN (Furnish complete data but keep to essentials)

NAME & TITLE (Last, First, Middle Int.)	YEARS OF EXPERIENCE		
	YEARS OF AML DESIGN EXPERIENCE:	YEARS OF AML RELATED DESIGN EXPERIENCE:	YEARS OF DOMESTIC WATERLINE DESIGN EXPERIENCE:
Bryan Gray, Project Manager	5	5	0
Brief Explanation of Responsibilities Mr. Gray's work duties include but are not limited to the compiling and translating of the information necessary to obtain permits from the Department of Environmental Protection in order to mine/process coal. Bryan prepares geologic and hydrogeologic portions of underground permits.			
EDUCATION (Degree, Year, Specialization) B.S. Environmental Geosciences, Concord College (emphasis on geology)			
MEMBERSHIP IN PROFESSIONAL ORGANIZATIONS REGISTRATION (Type, Year, State)			

13. PERSONAL HISTORY STATEMENT OF PRINCIPALS AND ASSOCIATES RESPONSIBLE FOR AML PROJECT DESIGN (Furnish complete data but keep to essentials)

NAME & TITLE (Last, First, Middle Int.)	YEARS OF EXPERIENCE		YEARS OF DOMESTIC WATERLINE DESIGN EXPERIENCE:
	YEARS OF AML DESIGN EXPERIENCE:	YEARS OF AML RELATED DESIGN EXPERIENCE:	
Kevin M. Howard, Vice President/Partner	10	10	25
<p>Brief Explanation of Responsibilities Mr. Howard is responsible for most of Summit's civil engineering related design projects. Mr. Howard's projects have included roadways, shopping centers, hydrologic impact statements, sanitary and storm sewers, lift stations, municipal water system and channel change designs.</p>			
<p>EDUCATION (Degree, Year, Specialization) B.S. - (1979)- Civil Engineering - University of Kentucky M.S. - (1982)- Civil Engineering - University of Kentucky</p>			
<p>MEMBERSHIP IN PROFESSIONAL ORGANIZATIONS National Society of Professional Engineers American Society of Professional Engineers Kentucky Society of Professional Engineers</p>			
<p>REGISTRATION (Type, Year, State) P.E. (1992) WV, (1983) KY L.S. (1985) KY</p>			

13. PERSONAL HISTORY STATEMENT OF PRINCIPALS AND ASSOCIATES RESPONSIBLE FOR AML PROJECT DESIGN (Furnish complete data but keep to essentials)

NAME & TITLE (Last, First, Middle Int.)	YEARS OF EXPERIENCE		YEARS OF DOMESTIC WATERLINE DESIGN EXPERIENCE:
	YEARS OF AML DESIGN EXPERIENCE:	YEARS OF AML RELATED DESIGN EXPERIENCE:	
Jack C. Sykes, P.E., L.S.	12	12	30
<p>Brief Explanation of Responsibilities Mr. Sykes has been a principal and President of Summit Engineering, Inc. since its establishment in October 1977. He has performed technical review and been in the position of responsible person in charge for many projects handled by the firm. Some of the projects Mr. Sykes has been associated with have included forecasts and feasibility studies, residential and commercial development, construction supervision, roadway design, design of water and wastewater handling and treatment facilities, control surveying and mapping, earth fill designs, mineral reserve evaluation, preparation of mine plans, design of coal handling facilities, mine permitting, mine land reclamation, land surveying, and golf course design.</p>			
<p>EDUCATION (Degree, Year, Specialization) B.S. (1973) Civil Engineering, University of Kentucky M.S. (1975) Civil Engineering, University of Kentucky</p>			
<p>MEMBERSHIP IN PROFESSIONAL ORGANIZATIONS Kentucky Society of Professional Engineers National Society Professional Engineers Institute of Transportation Engineers Coal Operators and Associates</p>			
<p>REGISTRATION (Type, Year, State) P.E.: WV (1978), KY (1977), VA (1977), TN(1979), IN (1985), OH (1986) L.S.: WV (1995), KY (1980)</p>			

14. PROVIDE A LIST OF SOFTWARE AND EQUIPMENT AVAILABLE IN THE PRIMARY OFFICE WHICH WILL BE USED TO COMPLETE AML DESIGN SERVICES

Computers

Dell Optiplex GX280 with Dell 19" fp monitor
Dell Optiplex GX620 with Dell 19" monitor
Dell Optiplex GX620 with HannG 19" fp monitor
Dell Optiplex GX620 with HannG 19" fp monitor
Dell Precision 490 Workstation with 1907 fp monitor
Dell Optiplex PC with HannG 19" fp monitor
Dell Precision 490 Workstation with 1907 fp monitor
Dell Optiplex 320 with e197 fp monitor
Gateway e-series pc with HannG 19" fp monitor
Dell Dimension 4100
Dell Dimension 4100

Printers / Peripherals

Canon Network/Workgroup Printer/Copier/Fax
HP LaserJet 4050N Network Printer
HP DeskJet 855 Cse Printer
HP DesignJet 1050C Network Plotter
CalComp Digitizer
HP Scanjet 4470 Scanner
HP LaserJet 2200 S Printer
HP LaserJet 1200 Printer
Xerox Phaser 3160 Color Network Printer

Engineering Software:

Reame 2004
Sedcad
Autodesk Map2007
Autodesk AutoCad 2007

15. CURRENT ACTIVITIES ON WHICH YOUR FIRM IS THE DESIGNATED ENGINEER OF RECORD (BE SURE TO LIST ALL WVDEP PROJECTS)

PROJECT NAME, TYPE AND LOCATION	NAME AND ADDRESS OF OWNER	NATURE OF YOUR FIRM'S RESPONSIBILITY	ESTIMATED CONSTRUCTION COST	PERCENT COMPLETE
Antietam Mine Article 3 & NPDES Permits USACOE 404 IP Webster County, WV	Brooks Run Mining Company, LLC 25 Little Birch Road Sutton, WV 26601	Design, submit, make corrections to and obtain approval of all the permit applications.	Design and Permitting Only	2%
Boone North No. 5 Surface Mine Article 3 & NPDES Permits USACOE 404 IP Boone County, WV	Raven Crest Contracting, LLC P. O. Box 1200 Robinson Creek, KY 41560	Design, submit, make corrections to and obtain approval of all the permit applications.	Design and Permitting Only	40%
Ramp Run Haul Road Article 3 & NPDES Permits Nicholas County, WV	Terry Eagle Coal Company P. O. Box 180 Bickmore, WV 25019	Design, submit, make corrections to and obtain approval of all the permit applications.	Design and Permitting Only	30%
Beartown Surface Mine Article 3 & NPDES Permits USACOE 404 IP McDowell County, WV	Bluestone Coal Company P. O. Box 1085 Beckley, WV 25801	Design, submit, make corrections to and obtain approval of all the permit applications.	Design and Permitting Only	25%
Jackson Bridge Deep Mine Article 3 & NPDES Permits Webster County, WV	Brooks Run Mining Company, LLC 25 Little Birch Road Sutton, WV 26601	Design, submit, make corrections to and obtain approval of all the permit applications.	Design and Permitting Only	15%
Rich Fork Surface Mine Article 3 & NPDES Permits USACOE NWP 21 Boone County, WV	Raven Crest Contracting, LLC P. O. Box 1200 Robinson Creek, KY 41560	Design, submit, make corrections to and obtain approval of all the permit applications.	Design and Permitting Only	90%
Clear Fork NO. 1 Surface Mine Article 3 & NPDES Permits Nicholas County, WV	King Coal Group 702 Professional Park Drive, Suite D Summersville, WV 26651	Design, submit, make corrections to and obtain approval of all the permit applications.	Design and Permitting Only	50%
TOTAL NUMBER OF PROJECTS:			TOTAL ESTIMATED CONSTRUCTION COSTS:	
7 (this page)			N/A	

15. CURRENT ACTIVITIES ON WHICH YOUR FIRM IS THE DESIGNATED ENGINEER OF RECORD (BE SURE TO LIST ALL WVDEP PROJECTS)

PROJECT NAME, TYPE AND LOCATION	NAME AND ADDRESS OF OWNER	NATURE OF YOUR FIRM'S RESPONSIBILITY	ESTIMATED CONSTRUCTION COST	PERCENT COMPLETE
Falling Rock Deep Mine Article 3 & NPDES Permits Boone County, WV	Raven Crest Contracting, LLC P. O. Box 1200 Robinson Creek, KY 41560	Design, submit, make corrections to and obtain approval of all the permit applications.	Design and Permitting Only	85%
Seven Pines Amendment Article 3 & NPDES Permits Webster County, WV	Brooks Run Mining Company, LLC 25 Little Birch Road Sutton, WV 26601	Design, submit, make corrections to and obtain approval of all the permit applications.	Design and Permitting Only	85%
Ramp Run No. 2 Amendment Article 3 & NPDES Permits Nicholas County, WV	Terry Eagle Coal Company P. O. Box 180 Bickmore, WV 25019	Design, submit, make corrections to and obtain approval of all the permit applications.	Design and Permitting Only	15%
Beartown Surface Mine US Army Corps of Engineers 404 Individual Permit Wyoming County, WV.	Bluestone Coal Company P. O. Box 1085 Beckley, WV 25801	Design, submit, make corrections to and obtain approval of USACE 404 IP Permit and Stream Mitigation Plan	Design and Permitting Only	10%
Antietam Mine US Army Corps of Engineers 404 Individual Permit Webster County, WV	Brooks Run Mining Company, LLC 25 Little Birch Road Sutton, WV 26601	Design, submit, make corrections to and obtain approval of USACE 404 IP Permit and Stream Mitigation Plan	Design and Permitting Only	2%
Boone North No. 5 Surface Mine US Army Corps of Engineers 404 Individual Permit Boone County, WV	Raven Crest Contracting, LLC P. O. Box 1200 Robinson Creek, KY 41560	Design, submit, make corrections to and obtain approval of USACE 404 IP Permit and Stream Mitigation Plan	Design and Permitting Only	25%

TOTAL NUMBER OF PROJECTS: 6 (this page)	TOTAL ESTIMATED CONSTRUCTION COSTS: N/A
---	---

15. CURRENT ACTIVITIES ON WHICH YOUR FIRM IS THE DESIGNATED ENGINEER OF RECORD

PROJECT NAME, TYPE AND LOCATION	NAME AND ADDRESS OF OWNER	NATURE OF YOUR FIRM'S RESPONSIBILITY	ESTIMATED CONSTRUCTION COST	PERCENT COMPLETE
Casey Creek No. 1 Surface Mine US Army Corps of Engineers 404 Individual Permit Boone County, WV	Hillside Mining Company P. O. Box 1189 Charleston, WV 25324	Design, submit, make corrections to and obtain approval of USACE 404 IP Permit and Stream Mitigation Plan	Design and Permitting Only	80%
Rich Fork Surface Mine US Army Corps of Engineers 404 Individual Permit Boone County, WV	Raven Crest Contracting, LLC P. O. Box 1200 Robinson Creek, KY 41560	Design, submit, make corrections to and obtain approval of USACE 404 IP Permit and Stream Mitigation Plan	Design and Permitting Only	70%
TOTAL NUMBER OF PROJECTS: 2 (this page)/15 Total Projects			TOTAL ESTIMATED CONSTRUCTION COSTS: \$ N/A	

17. COMPLETED WORK WITHIN LAST 5 YEARS ON WHICH YOUR FIRM WAS THE DESIGNATED ENGINEER OF RECORD

PROJECT NAME, TYPE AND LOCATION	NAME AND ADDRESS OF OWNER	ESTIMATED CONSTRUCTION COST	YEAR	CONSTRUCTED (YES OR NO)
Twin Branch Portal – AML Project Mingo County, WV	WV DEP 601 57 th Street, S.E. Charleston, WV 25304	\$512,000	2005	Yes
Godby Branch Portal AML Project Drainage Phase II Logan, WV	WV DEP 601 57 th Street, S.E. Charleston, WV 25304	\$75,000	2005	Yes
Dent's Run Bridge Monongalia County, WV	William Henrich, ROW Division WV Dept. of Trans., Bldg. 5 Charleston, WV 25305	\$56,000	2004	Yes
Moccasin Hollow Deep Mine Article 3 and NPDES Permits Boone County, WV	Catenary Coal Company, LLC 5914 Cabin Creek Rd Eskdale, WV 25075	Design and Permitting Only	2007	No
Tennile Fork Deep Mine Article 3 and NPDES Permits Kanawha County, WV	Catenary Coal Company, LLC 5914 Cabin Creek Rd Eskdale, WV 25075	Design and Permitting Only	2007	No
O'Brien No. 1 Surface Mine Article 3 and NPDES Permits Webster County, WV	ICG Eastern, LLC P. O. Box 1019, Rt. 82 West Cowen, WV 26206	Design and Permitting Only	2003	Yes
O'Brien No. 2 Surface Mine Article 3 and NPDES Permits Webster County, WV	ICG Eastern, LLC P. O. Box 1019, Rt. 82 West Cowen, WV 26206	Design and Permitting Only	2005	Yes
Casey Creek No. 1 Surface Mine Article 3 and NPDES Permits USACOE 404 IP Boone County, WV	Hillside Mining Company P. O. Box 1189 Charleston, WV 25324	Design and Permitting Only	2006	No

17. COMPLETED WORK WITHIN LAST 5 YEARS ON WHICH YOUR FIRM WAS THE DESIGNATED ENGINEER OF RECORD					
PROJECT NAME, TYPE AND LOCATION	NAME AND ADDRESS OF OWNER	ESTIMATED CONSTRUCTION COST	YEAR	CONSTRUCTED (YES OR NO)	
Brandy Station Mine Article 3 and NPDES Permits USACOE 404 IP Webster County, WV	Brooks Run Mining Company, LLC 25 Little Birch Road Sutton, WV 26601	Design and Permitting Only	2005	No	
Cove Mountain Deep Mine Article 3 and NPDES Permits USACOE 404 IP Webster County, WV	Brooks Run Mining Company, LLC 25 Little Birch Road Sutton, WV 26601	Design and Permitting Only	2005	No	
Big Creek No. 2 Amendment Article 3 and NPDES Permits Fayette County, WV	Appalachian Fuels, LLC 1500 N. Big Run Rd. Ashland, KY 41102	Design and Permitting Only	2005	Yes	
Slabcamp Stockton Deep Mine Article 3 and NPDES Permits Kanawha County, WV	Kanawha Energy Company P. O. Box 11174 Charleston, WV 25339	Design and Permitting Only	2003	Yes	
Saylors A & B Deep Mines Article 3 and NPDES Permits Webster County, WV	Brooks Run Mining Company, LLC 25 Little Birch Road Sutton, WV 26601	Design and Permitting Only	2006	Yes	
Boone North No. 3 Surface Mine Article 3 and NPDES Permits Boone County, WV	Raven Crest Contracting, LLC P. O. Box 1200 Robinson Creek, KY 41560	Design and Permitting Only	2006	Yes	
Bridge Fork West Amendment Article 3 and NPDES Permits Fayette County, WV	Powellton Coal Company P. O. Box 158 Bickmore, WV 25019	Design and Permitting Only	2007	No	
"E" Deep Mine Article 3 and NPDES Permits Tucker County, WV	Mettki Coal (WV), LLC 771 Corporate Drive, Suite 1000 Lexington, KY 40503	Design and Permitting Only	2004	Yes	

17. COMPLETED WORK WITHIN LAST 5 YEARS ON WHICH YOUR FIRM WAS THE DESIGNATED ENGINEER OF RECORD

PROJECT NAME, TYPE AND LOCATION	NAME AND ADDRESS OF OWNER	ESTIMATED CONSTRUCTION COST	YEAR	CONSTRUCTED (YES OR NO)
Bridge Fork West Surface Mine Article 3 and NPDES Permits Fayette County, WV	Powellton Coal Company P. O. Box 158 Bickmore, WV 25019	Design and Permitting Only	2004	Yes
McDonald's Parking Lot Condemnation Wood County, WV	WV Dept. of Transportation Bldg. 5, Room 603 1900 Kanawha Blvd., E Charleston, WV 25305-0430	N/A	2003-2004	N/A
Dominion App./Cabot Gas Wells Appraisal Wyoming Co., WV	WV Dept. of Transportation Bldg. 5, Room 603 1900 Kanawha Blvd., E Charleston, WV 25305-0430	N/A	2003	N/A
Coalfield Expressway Coal Reserve Study Slab Fork, WV	WV Dept. of Transportation Bldg. 5, Room 603 1900 Kanawha Blvd., E Charleston, WV 25305-0430	Design Only	2003	No
Beaver Coal/Gas Wells Appraisal Raleigh Co., WV	WV Dept. of Transportation Bldg. 5, Room 603 1900 Kanawha Blvd., E Charleston, WV 25305-0430	N/A	2003	N/A
Mineral Wells Access Road Road Design Wood Co., WV	WV Dept. of Transportation Bldg. 5, Room 603 1900 Kanawha Blvd., E Charleston, WV 25305-0430	Design Only	2003	Unknown
KFC Parking Lot Condemnation Logan, WV	WV Dept. of Transportation Bldg. 5, Room 603 1900 Kanawha Blvd., E Charleston, WV 25305-0430	N/A	2003	N/A
Dominion App./Cabot Gas Wells Appraisal Wyoming Co., WV	WV Dept. of Transportation Bldg. 5, Room 603 1900 Kanawha Blvd., E Charleston, WV 25305-0430	N/A	2004	N/A

17. COMPLETED WORK WITHIN LAST 5 YEARS ON WHICH YOUR FIRM WAS THE DESIGNATED ENGINEER OF RECORD

PROJECT NAME, TYPE AND LOCATION	NAME AND ADDRESS OF OWNER	ESTIMATED CONSTRUCTION COST	YEAR	CONSTRUCTED (YES OR NO)
Bever Coal Parcel 10-3/Gas Wells Appraisal Logan Co., WV	WV Dept. of Transportation Bldg. 5, Room 603 1900 Kanawha Blvd., E Charleston, WV 25305-0430	N/A	2004	N/A
Bever Coal Parcels 1-8 Coal Reserve Study Logan Co., WV	WV Dept. of Transportation Bldg. 5, Room 603 1900 Kanawha Blvd., E Charleston, WV 25305-0430	N/A	2004	N/A
Bever Coal Parcels/Western Pocahontas Coal Reserve Study Raleigh Co., WV	WV Dept. of Transportation Bldg. 5, Room 603 1900 Kanawha Blvd., E Charleston, WV 25305-0430	N/A	2004	N/A
Fed Ex Entrance and Parking Alternatives Road Design Wood County, WV	WV Dept. of Transportation Bldg. 5, Room 603 1900 Kanawha Blvd., E Charleston, WV 25305-0430	Design Only	2003	Yes
Dollar General Parking and Entrance Alternatives Road Design Tucker County, WV	WV Dept. of Transportation Bldg. 5, Room 603 1900 Kanawha Blvd., E Charleston, WV 25305-0430	Design Only	2004	Yes
Berkeley County Industrial Park Access Road Road Design Berkeley County, WV	WV Dept. of Transportation Bldg. 5, Room 603 1900 Kanawha Blvd., E Charleston, WV 25305-0430	Design Only	2005	Yes
Retaining Walls Alternates Design Wood County, WV	WV Dept. of Transportation Bldg. 5, Room 603 1900 Kanawha Blvd., E Charleston, WV 25305-0430	Design Only	2004	Yes
Seven Pines Mine US Army Corps of Engineers 404 Individual Permit Webster County, WV	Brooks Run Mining Company, LLC 25 Little Birch Road Sutton, WV 26601	Design and Permitting Only	2002	Yes

17. COMPLETED WORK WITHIN LAST 5 YEARS ON WHICH YOUR FIRM WAS THE DESIGNATED ENGINEER OF RECORD

PROJECT NAME, TYPE AND LOCATION	NAME AND ADDRESS OF OWNER	ESTIMATED CONSTRUCTION COST	YEAR	CONSTRUCTED (YES OR NO)
Wildcat Surface Mine US Army Corps of Engineers 404 Individual Permit Webster County, WV	Wildcat, LLC 106 Lockheed Drive Beaver, WV 25813	Design and Permitting Only	2004	Yes
Georges Creeks Surface Mine US Army Corps of Engineers 404 Individual Permit Logan County, WV	Highland Mining Company P. O. Box 1097 Holden, WV 25625	Design and Permitting Only	2005	Yes
Camp Branch Surface Mine US Army Corps of Engineers 404 Individual Permit Logan County, WV	Aracoma Coal Company P. O. Box 1120 Holden, WV 25625	Design and Permitting Only	2005	Yes
Mountain Laurel Complex US Army Corps of Engineers 404 Individual Permit Logan County, WV	Mingo Logan Coal Company 1000 Mingo Logan Avenue Wharmcliffe, WV 25657	Design and Permitting Only	2006	Yes
Whitman No. 2 Surface Mine US Army Corps of Engineers 404 Individual Permit Logan County, WV	Alex Energy, Inc. P. O. Box 877 Stollings, WV 25646	Design and Permitting Only	2004	Yes
Victory Deep Mine – SCP Article 3 and NPDES Permits	Spartan Mining Company	Design and Permitting Only	2001	Yes
Georges Creek Surface Mine Article 3 and NPDES Permits Logan County, WV	Highland Mining Company P. O. Box 1097 Holden, WV 25678	Design and Permitting Only	2002	Yes
Ruby Energy Complex Article 3 and NPDES Permits	Delbarton Mining Company P. O. Box 1097 Holden, WV 25678	Design and Permitting Only	2002	Yes

17. COMPLETED WORK WITHIN LAST 5 YEARS ON WHICH YOUR FIRM WAS THE DESIGNATED ENGINEER OF RECORD

PROJECT NAME, TYPE AND LOCATION	NAME AND ADDRESS OF OWNER	ESTIMATED CONSTRUCTION COST	YEAR	CONSTRUCTED (YES OR NO)
South Copperas Surface Mine Article 3 and NPDES Permits Logan County, WV	Alex Energy, Inc. P. O. Box 1097 Holden, WV 25625	Design and Permitting Only	2003	Yes
North Haulroad SMA Article 3 and NPDES Permits Logan County, WV	Alex Energy, Inc. P. O. Box 1097 Holden, WV 25625	Design and Permitting Only	2004	Yes
Horsepen Alma "C" Deep Mine Article 3 and NPDES Permits Logan County, WV	Mingo Logan Coal Company P. O. Box 40 L Wharncliffe, WV 25651	Design and Permitting Only	2005	Yes
Guyandotte Slope Mine Article 3 and NPDES Permits Wyoming County, WV	Road Fork Development Company, Inc. P. O. Box 565 Matewan, WV 25678	Design and Permitting Only	2005	Yes
Guyandotte Slope Mine - SCP Article 3 and NPDES Permits Wyoming County, WV	Road Fork Development Company, Inc. P. O. Box 565 Matewan, WV 25678	Design and Permitting Only	2006	Yes
Mountain Laurel Upper Coalburg Deep Mine Article 3 and NPDES Permits Boone & Logan Counties, WV	Mingo Logan Coal Company P. O. Box E Sharples, WV 25651	Design and Permitting Only	2006	No
Highland Middle Coalburg Deep Mine Article 3 and NPDES Permits Logan County, WV	Highland Mining Company P. O. Box 1097 Holden, WV 25625	Design and Permitting Only	2006	No
Calvin Branch Surface Mine Article 3 and NPDES Permits Logan County, WV	Apogee Coal Company, LLC HC61 Box 156 Yolyn, WV 25654	Design and Permitting Only	2006	Yes

18. COMPLETED WORK WITHIN LAST 5 YEARS ON WHICH YOUR FIRM HAS BEEN A SUB-CONSULTANT TO OTHER FIRMS (INDICATE PHASE OF WORK FOR WHICH YOUR FIRM WAS RESPONSIBLE)

PROJECT NAME, TYPE AND LOCATION	NAME AND ADDRESS OF OWNER	ESTIMATED CONSTRUCTION COST OF YOUR FIRM'S PORTION	YEAR	CONSTRUCTED (YES OR NO)	FIRM ASSOCIATED WITH
N/A					

19. Use this space to provide any additional information or description of resources supporting your firm's qualifications to perform work for the West Virginia Abandoned Mine Lands Program.

20. The foregoing is a statement of facts.

Signature: James D. Canterbury Title: Partner

Printed Name: James Canterbury, PE

Date: 11/13/08

AML and RELATED PROJECT EXPERIENCE MATRIX																																																		
PROJECT	Exp. Basis C=Corp. P=Personal	Additional Info Provided in Section (s) **	PROJECT EXPERIENCE REQUIREMENTS													PARTICIPATION/CAPACITY																																		
			Abandoned Surface Mine Reclamation	Abandoned Deep Mine Reclamation	Portal/Shaft Closure	Hydrologic/Hydraulic Design/Eval.	Remining Evaluation	Mine/Refuse Fire Abatement	Subsidence Investigation	Mitigation Hazardous Waste Disposal	Project Specifications	Water Quality Evaluation/Nitration/ Replacement Construction	Inspection/Managem ent	Water Treatment	Eq. upmen/Structure Removal	Stream Restoration	Geotechnical/Stability	Jim Canterbury	Mike Akers	Todd Cooper	Eva Melancon	J D Ekins	Bryan Gray																											
Page 1 Current Projects																																																		
Antietam Mine Article 3 & NPDES	Both															X								M, P	P	P																								
Boone North No. 5 Surface Mine	Both															X																																		
Ramp Run Haul Road	Both															X																																		
Beatown Surface Mine	Both															X																																		
Jackson Bridge Deep Mine	Both															X																																		
Rich Fork Surface Mine	Both															X																																		
Clear Fork No. 1 Surface Mine	Both															X																																		
Falling Rock Deep Mine	Both															X																																		
Seven Pines Amendment	Both															X																																		
Ramp Run No. 2 Amendment	Both															X																																		

** Use this area to provide specific sections or pages if needed for reference.
 *** List Primary Design personnel and their functional capacity for the projects listed.

AML and RELATED PROJECT EXPERIENCE MATRIX																	
PROJECT	Exp. Basis C-Corp. P-Personal	Additional Info Provided in Section (s) **	PROJECT EXPERIENCE REQUIREMENTS												PARTICIPATION/CAPACITY		
			Abandoned Surface Mine Reclamation	Abandoned Deep Mine Reclamation	Portal/Shaft Closure	Hydrologic/Hydraulic Design/Eval.	Remining Evaluation	Mine/Refuse Fire Abatement	Subsidence Investigation Mitigation	Hazardous Waste Disposal	Project Specifications	Water Quality Evaluation/Nitigation/Replacem ent	Construction Inspection/Management	Water Treatment	Equipment/Structure Removal	Stream Restoration	Geotechnical/Stability

Page 2 of 3 Previous 5 Years Projects

Boone North No. 3 Surface Mine	Both									X							X	M, P	P		Jim Canterbury	Mike Akers	Todd Cooper	Eva Melancon	J D Elkins	Bryan Gray	
Bridge Fork West Amendment	Both							X										X	M, P	P							
"E" Deep Mine	Both									X								X	M, P								
Bridge Fork West Surface Mine	Both																X	M, P									
Seven Pines Mine	Both																		M, P								
Wildcat Surface Mine	Both			X													X	M, P									
Camp Branch Surface Mine	Both																									M, P	
Mountain Laurel Complex	Both									X							X	M, P								M, P	
Whitman No. 2 Surface Mine	Both																									M, P	
Victory Deep mine - SCP	Both																									M, P	
Ruby Energy Complex	Both									X																M, P	
Use this area to provide specific.																											

*** List Primary Design personnel and their functional capacity for the projects listed. Attachment "C"