



A Resource Engineering Group Company

1428 Main Street
P.O. Box 1309
Princeton, WV 24740
304-431-7800 Phone
304-425-0445 Fax

October 6, 2008

West Virginia Department of Environmental Protection
Office of Abandoned Mine Lands and Reclamation
c/o State of West Virginia Department of Administration
Purchasing Division
2019 Washington Street, East
Charleston, WV 25305-0130

**RE: Expression of Interest – The Maybeury (Oakley) Landslide Design
Extension DEP#14439**

To Whom It May Concern:

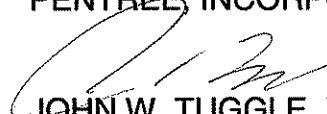
Pentree, Inc. is pleased to have the opportunity to provide the West Virginia Department of Environmental Protection with our high standard of professional engineering design services on the Maybeury (Oakley) Landslide project.

We have recently completed the construction of the Mullens/Wyco Water Project for Eastern Wyoming County P.S.D.(Wyoming County) and are nearing completion of the design of the Itmann/Bud Mountain Water Project (Wyoming County) both partially funded AML projects. Our experience with these projects along with our qualifications as a full service civil engineering firm will provide the DEP's Office of Abandoned Mine Lands and Reclamation with quality professional engineering service in a timely and cost efficient manner.

Following the instructions outlined in the RFQ, this proposal contains information regarding Pentree, Incorporated's history, qualifications and management and staffing capabilities along with the required DEP/AML Consultant's Confidential Qualifications Questionnaire, and an affidavit stating Pentree, Incorporated has no debt owed to the State of West Virginia.

We thank you for your consideration of our qualifications and look forward to the opportunity to present our qualifications and project methodology to you in person.

Sincerely,
PENTREE, INCORPORATED



JOHN W. TUGGLE, P.E., P.S.
President/ Principal-In-Charge

RECEIVED

2008 OCT 29 A 9: 54

PURCHASING DIVISION
STATE OF WV

*STATEMENT OF QUALIFICATIONS
FOR
ENGINEERING SERVICES
TO THE*

WEST VIRGINIA
DEPARTMENT OF ENVIRONMENTAL PROTECTION

MAYBEURY LANDSLIDE DESIGN PROJECT

TABLE OF CONTENTS

STATEMENT OF QUALIFICATIONS	1
MANAGEMENT AND STAFFING	5
REPRESENTATIVE PROJECTS	13
DEP CCQQ	19
RPEM Attachment C	31
AFFADAVIT	32

STATEMENT OF QUALIFICATIONS

Pentree, Incorporated is uniquely qualified to provide the West Virginia Department of Environmental Protection with the engineering design services and construction monitoring necessary for the Maybeury Landslide Project. We have provided these services with the highest level of technical expertise and client satisfaction for numerous clients throughout the state of West Virginia.



Additionally, our staff of six construction inspectors, thirteen diversely skilled technicians and support personnel provide the resources and support necessary to provide our clients with the thorough and efficient services they desire and deserve.

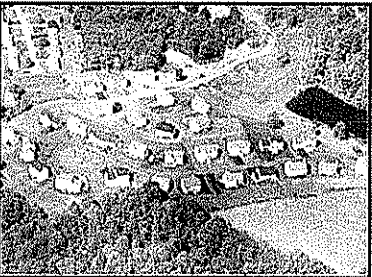
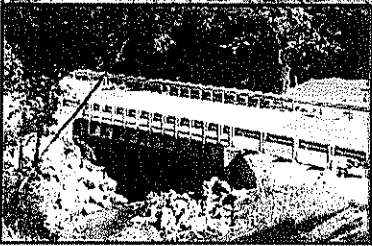
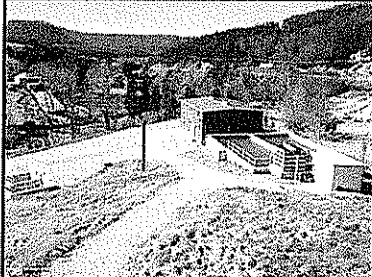
As a part of Resource Engineering Group, Inc., Pentree, Incorporated can offer its clients services above and beyond those of most engineering firms. In addition to civil engineering, survey and construction management, we now offer environmental assessment and permitting, pipeline inspection, hydraulic pipe modeling and GIS mapping services, all of which are of benefit to our client's infrastructure growth and improvements.

Pentree, Incorporated is guided by the mission statement of: *To establish and maintain on-going relationships by providing the highest level of performance possible toward attaining the goals of the organizations we serve as we strive to enhance the communities in which we live.*

Our staff is actively involved in all aspects of the engineering process from consulting and planning through funding and preparation of documentation needed throughout the construction process to meet the requirements of funding agencies.

SERVICES

Pentree, Incorporated provides a wide variety of engineering and consulting services:



Civil / Environmental Engineering

- Public Utilities Comprehensive Studies and Feasibility/ Preliminary Engineering Reports
- Wastewater Collection & Treatment Systems
- Water Treatment & Distribution Systems
- Storm Water Management
- Land Planning and Development
- Structural Design

Transportation Engineering

- Highway/Roadways
- Parking Lots
- Bridges
- Airports

➤ **Photogrammetry**

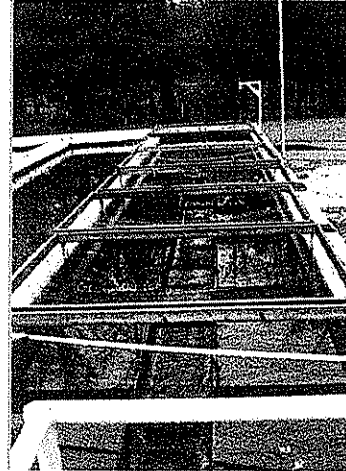
- Digital Aerial Photography & Mapping
- 3D Terrain Modeling
- 2-D and 3-D Digital Documentation

➤ **Field Services**

- Owner's
- Survey
- Construction Management
- Owner's Representative Services

TECHNICAL EXPERTISE

Pentree's roots are firmly planted in the engineering of publicly funded water and wastewater projects throughout the state of West Virginia and in western Virginia. For over a century, we have provided our technical expertise in all aspects of engineering and field services. The proven methods of approach we apply assure our clients of a successful project that meets their needs for the present and future. From the beginning phases of investigation and evaluation through design, funding and construction management, ***Pentree, Incorporated provides the highest standards of performance.***



***Settling Basins – Green Valley
Glenwood Public Service District***

DESIGN

Pentree's Project Engineers utilize the most current technology available for design of your project, providing accuracy, flexibility for modifications and clear, concise and understandable drawings.

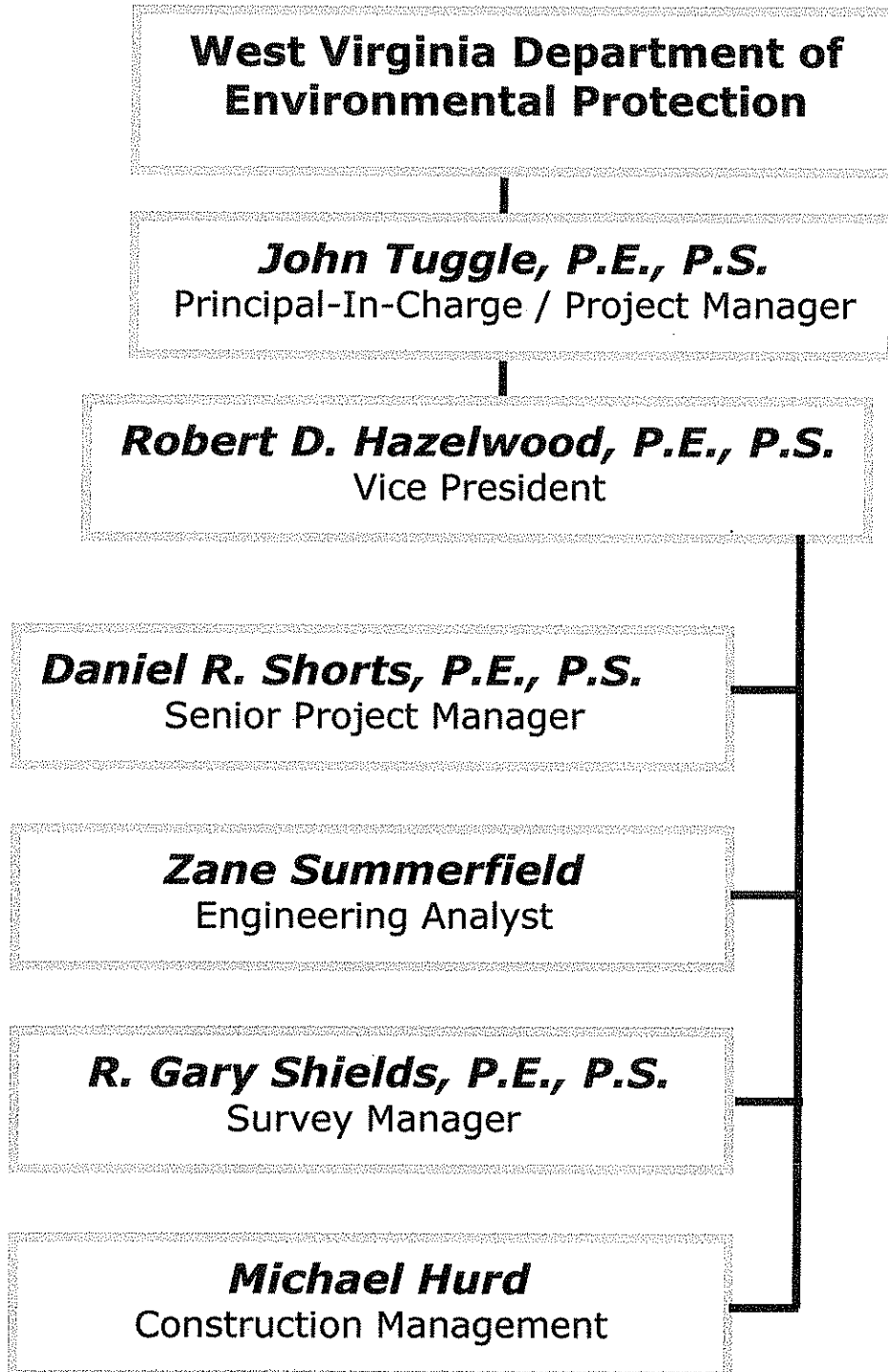
SURVEY

Pentree's survey department provides survey services and mapping utilizing top of the line equipment, operated by several full-time survey crews. In addition to stakeout and mapping, the department prepares plats and performs courthouse searches. We are also available to assist our clients in the acquisition of easements, right-of-ways and other property to enable the project to move forward efficiently and effectively. ***Pentree, Incorporated provides the experienced and knowledgeable survey personnel essential to expediting your project.***

CONSTRUCTION MANAGEMENT AND INSPECTION

Over the past century, Pentree, Incorporated has developed and employed methods in our construction management and inspection process that have been proven effective and efficient. Our measures include daily logs and inspection sheets, cut sheets, quantity tracking and field drawings. Our approach to a successful construction project includes good interaction between the Engineer, Construction Manager and Owner, along with the use of Experienced Surveyors, Inspectors and Technicians. We strive for positive dealings with Contractors, Funding Agencies, Regulatory Agencies and we believe in teamwork with all parties involved with a project. ***Pentree, Incorporated's team provides the communication needed and the documentation necessary to meet the client's needs and those of funding and regulatory agencies.***

PROJECT TEAM



MANAGEMENT AND STAFFING

Pentree, Incorporated has dedicated personnel committed to providing superior service throughout all aspects of the engineering process, from consulting and planning through funding and preparation of documentation needed throughout the construction process to meet and exceed the requirements of the funding agencies.

Pentree, Incorporated offers a highly qualified and experienced staff to the WV DEP for the Maybeury Landslide Project. The Pentree, Inc. staff includes:

3 CIVIL ENGINEERS
1 SANITARY ENGINEER
1 STRUCTURAL ENGINEER
1 TRANSPORTATION ENGINEER
4 SPECIFICATION WRITERS
3 CADD OPERATORS
3 SURVEYORS
5 CONSTRUCTION INSPECTORS
3 PHOTOGRAMMETRISTS
2 ADMINISTRATIVE SUPPORT PERSONNEL

Pentree, Inc. is staffed with five registered professional engineers, four of whom are also licensed professional surveyors. Additionally, the staff of five construction inspectors and sixteen diversely skilled technicians and support personnel provides the resources and support necessary to provide our clients with the thorough and efficient services they desire and deserve.

THE WV DEP MAYBEURY LANDSLIDE PROJECT TEAM

Pentree, Incorporated will assign a team of talented and experienced engineers and firm principals to the water line extension project. Each member of this team brings a specific area of expertise that is essential for a successful project

John Tuggle, P.E., P.S., President of Pentree, Inc. is the **Principal-In-Charge** and will serve as **Project Manager**. He is actively involved in the daily management of the firm. Mr. Tuggle's experience working with our clients during the funding process of infrastructure projects, including determining eligibility and feasibility, will be a strong asset to your project. Additionally, Mr. Tuggle's expertise and knowledge of the regulatory and permitting processes of the DEP will assure you of a quality project that meets your specifications.

Bob Hazelwood, P.E., P.S. will serve as **Chief Engineer** for the project. Mr. Hazelwood will be responsible for overseeing all technical aspects of the project. Mr. Hazelwood has over 25 years of experience in the evaluation and design of water and wastewater projects, specifically AML funded projects.

Daniel R. Shorts, P.E., P.S. will serve as **Senior Project Manager**. Mr. Shorts has extensive experience with the design and construction highway and site plans. He also is well versed in all administrative aspects of projects.

Mr. Shorts will be assisted by, **Zane Summerfield**, who will provide analysis for the design. **Gary Shields, P.E., P.S.** provides supervision of the survey department at Pentree, Incorporated. He will assign, review and take ultimate responsibility for any survey work necessary for your project.

Construction Management and Inspection personnel will be under the direction of **Michael Hurd** who is highly qualified and experienced in construction management and inspection of water system projects.

Resumes for the team members follow.

JOHN TUGGLE, P.E., P.S.
PRESIDENT / PRINCIPAL-IN-CHARGE



PROJECT EXPERIENCE:

- **TOWN OF NORTHFORK WATER LINE EXTENSION** – Principal-In-Charge
- **BERKELEY COUNTY PUBLIC SERVICE SEWER DISTRICT BAKER HEIGHTS WASTEWATER TREATMENT PLANT, INWOOD WASTEWATER TREATMENT PLANT, ECOLAB AND APACHE PUMP STATION** – Principal-In-Charge
- **JEFFERSON COUNTY PUBLIC SERVICE DISTRICT BRECKENRIDGE PUMP STATION, NPDES PERMIT RENEWAL AND DISTRICT PLAN REVIEW;** Principal-In-Charge
- **CITY OF MOUNT HOPE KILSYTH UTILITY EXTENSION;** Principal-In-Charge
- **ELKHORN PUBLIC SERVICE DISTRICT SANITARY SEWER PROJECT** - Principal-In-Charge
- **GREEN VALLEY-GLENWOOD COUNTY PUBLIC SERVICE DISTRICT VARIOUS WASTEWATER PROJECTS** – Project Oversight, Contract and Construction Administration
- **COWEN PUBLIC SERVICE DISTRICT CAMDEN WATER TREATMENT PLANT UPGRADE AND WATER LINE EXTENSION PROJECT; SANITARY SEWER LINE EXTENSION PROJECTS** – Project Manager, Contract and Construction Administration
- **MCDOWELL COUNTY PRISON SITE DEVELOPMENT** - Principal-In-Charge
- **WEBSTER COUNTY INDUSTRIAL PARK** – Project Manager, Contract and Construction Administration
- **WEST VIRGINIA DEPARTMENT OF TRANSPORTATION DISTRICT 10 HEADQUARTERS COMPLEX** – Project Manager, Contract and Construction Administration
- **GAULEY RIVER PUBLIC SERVICE DISTRICT TWENTYMILE AND ROUTE 39 / PETERS CREEK WATER LINE EXTENSION PROJECT** – Project Manager, Contract and Construction Administration
- **CITY OF OAK HILL SANITARY BOARD WOLF CREEK PARK SANITARY SEWER SERVICE, FAYETTE PLATEAU PACKAGE PLANT AND POTENTIAL SANITARY SEWER PLANT UPGRADE;** Principal-In-Charge
- **TOWN OF FAYETTEVILLE NICKLEFILLE SEWER PROJECT** – Principal-In-Charge
- **WYTHE COUNTY FORT CHISWELL PLANT UPGRADE** - Principal-In-Charge

PROFESSIONAL RESPONSIBILITIES:

Mr. Tuggle joined Pentree, Incorporated in 1985 and serves as President and Principal-In-Charge for the firm. His primary responsibility is the oversight of all firm projects.

Mr. Tuggle has extensive experience working with various regulatory and funding agencies, and is extremely knowledgeable of contract preparation, analysis and interpretation. He has also recommended and assisted numerous clients in securing the best source of funding to suit their needs.

Mr. Tuggle has been involved with various types of projects including:

- Water Treatment Plants
- Water System Upgrades
- Water Line Extensions
- Wastewater Treatment Plants
- Sanitary Sewer System Upgrades
- Sewer Line Extensions
- Storm Water Management
- Industrial Park Site Development
- Subdivision Development
- Highways and Roads
- Access Roads
- Bridges
- Airports

EDUCATION:

B.S. Civil Engineering Technology 1982
Bluefield State College

ACTIVE REGISTRATIONS:

Professional Engineer, 1988 #011845
State of West Virginia
Professional Surveyor
State of West Virginia
Class II Operator's License Water
Class II Operator's License Waste Water

ROBERT HAZELWOOD, P.E., P.S.
EXECUTIVE VICE-PRESIDENT



PROJECT EXPERIENCE:

- **GREENBRIER COUNTY PUBLIC SERVICE DISTRICT #2** SANITARY SEWER COLLECTION SYSTEM AND WASTEWATER TREATMENT PLANT – Design Engineer and Quality Control
- **RED SULPHUR SPRINGS PUBLIC SERVICE DISTRICT** VARIOUS SANITARY SEWER AND WATER PROJECTS – Design Engineer and Quality Control
- **RAVENSLIFF-MCGRAWS-SAULSVILLE PUBLIC SERVICE DISTRICT** WATER PROJECTS – Design Engineer and Quality Control
- **GREEN VALLEY-GLENWOOD PUBLIC SERVICE DISTRICT** SANITARY SEWER PROJECTS INCLUDING A 1.5 MGD WASTEWATER TREATMENT PLANT, SEWER LINE EXTENSIONS AND UPGRADES – Design Engineer and Quality Control
- **EDRAY TECHNICAL PARK**, POCAHONTAS COUNTY, WEST VIRGINIA – Design Engineer and Quality Control
- **FOUNTAIN SPRINGS INDUSTRIAL PARK**, MONROE COUNTY, WEST VIRGINIA – Design Engineer and Quality Control
- **PETERSTOWN SATELLITE MEDICAL CLINIC ADDITION**, MONROE COUNTY, WEST VIRGINIA – Design Engineer and Quality Control
- **DEER RUN SUBDIVISION**; 13 LOTS ON 14 ACRES – Design Engineer and Quality Control
- **PLEASANT VALLEY ESTATES**; 23 LOTS ON 17 ACRES - Design Engineer and Quality Control
- **TWIN OAKS SUBDIVISION**; 18 LOTS ON 12 ACRES - Design Engineer and Quality Control
- **EASTERN WYOMING PSD**; MULLENS WYCO WATER PROJECT - WATER TREATMENT PLANT, WATER STORAGE TANKS, AN UPGRADE OF THE LOWER GULF WATER SYSTEM AND AN UPGRADE OF THE UPPER GULF WATER SYSTEM.

PROFESSIONAL RESPONSIBILITIES:

Mr. Hazelwood joined Pentree, Incorporated in 1979 and serves as Executive Vice President for the firm. In this capacity, his primary responsibility is to provide Quality Control and Quality Assurance for projects.

Mr. Hazelwood's experience includes preliminary and final design, preparation of contract documents and specifications and project management.

Additionally, Mr. Hazelwood has extensive knowledge working with regulatory agencies and in recommending and assisting clients in securing cost effective funding for their projects.

- Water Treatment Plants
- Wastewater Treatment Plants
- Storm Water Management
- Industrial Parks
- Airports
- Subdivisions
- Shopping Centers
- Access Roads

EDUCATION:

- M.S. Sanitary Engineering 1976
VPI and State University
- B.S. Civil Engineering 1975
West Virginia Institute of Technology

ACTIVE REGISTRATIONS:

- Professional Engineer, 1980 #008452
State of West Virginia
- Professional Surveyor #1179
State of West Virginia

DANIEL R. SHORTS, P.E., P.S. SENIOR PROJECT MANAGER



PROJECT EXPERIENCE:

- **AMERICAN ELECTRIC POWER** JARROLD, MILAM AND CARETTA SUBSTATIONS – Project Manager for the Site Development of the Electrical Substations
- **BLUERIDGE WOOD PRODUCTS** CYCLONE TOWER AND BUILDING RECONSTRUCTION – Project Manager and Structural Design
- **LOCHGELLY ROAD** – Project Manager for Sanitary Sewer Rehabilitation
- **JASON'S TRUCK WASH** – Project Manager for Site Development of the Facility
- **FORT CHISWELL** WWTP UPGRADE FROM .5 TO 1.25 MGD – Project Manager for Upgrade Design and Facilities Plan
- **OYLER AVENUE SIDEWALK PROJECT** – Project Manager for TEA-21 Project
- **WEST VIRGINIA DEPARTMENT OF TRANSPORTATION DISTRICT 10 COMPLEX**, MERCER COUNTY, WEST VIRGINIA – Project Manager and Structural Engineer for Multiple Buildings, Access Road and Utility Plans
- **BERKELEY COUNTY PUBLIC SERVICE SEWER DISTRICT** INWOOD AND BAKER HEIGHTS WASTEWATER TREATMENT PLANTS – Structural Design of the Wastewater Treatment Plants and Other Associated Structures
- **WYCO-MULLENS REGIONAL WATER**, WYOMING COUNTY, WEST VIRGINIA – Structural Design of the Water Treatment Plant and Other Associated Structures
- **WISE COUNTY VIRGINIA PUBLIC SERVICE DISTRICT LOWER BIRCHFIELD WATER PROJECT** – Structural Design and Project Management for the 7-Mile Water Line Extension and an In-Pressure Reducing Station
- **COALFIELD EXPRESSWAY**, WYOMING AND McDOWELL COUNTIES OF WEST VIRGINIA – Project Manager and Structural Engineering for the Study, Design and Construction Plans of this 4-Lane Interstate
- **CITY OF OAK HILL**, FAYETTE COUNTY, WEST VIRGINIA – Project Manager and Structural Engineer for the 5-Street Sanitary Sewer Project

PROFESSIONAL RESPONSIBILITIES:

Mr. Shorts has been a member of Pentree, Incorporated for over sixteen years. Throughout his employment Mr. Shorts has provided project management for over fifty projects. The scope of services he provides to projects includes design, site planning, access road development, utilities layout, survey, construction management and inspection.

His project experience extends to:

- Multi-Story Buildings
- Water Treatment Plants
- Water Distribution Systems
- Wastewater Treatment Plants
- Access Roads
- Highways
- Bridges

Mr. Shorts is a structural engineer and provides project management, design and construction inspection for all of the firm's bridge and highway projects, and other projects as needed.

EDUCATION:

- M.S. Civil Engineering, 2001
Virginia Tech University
- B.S. Civil Engineering, 1983
West Virginia Institute of Technology

ACTIVE REGISTRATIONS:

- Professional Engineer, 1995 #011840
State of West Virginia
- Professional Engineer, 1999 #034253
State of Virginia
- Professional Engineer, 2001 #27290
State of North Carolina
- Professional Surveyor, 1995
State of West Virginia

J. ZANE SUMMERFIELD SENIOR CIVIL ANALYST



PROJECT EXPERIENCE:

- **JEFFERSON COUNTY PSD**– Reviewed plans and specifications to assure compliance with WVBPH and WVDEP rules and regulations and with the District’s construction specifications.
- **CHANDLERS GLEN SUBDIVISION PUMP STATION AND FORCE MAIN** – Preparation of design and construction drawings and documents, permit applications, and calculations for and writing of the engineering report.
- **MCLAUGHLIN FARM SUBDIVISION PUMP STATION AND FORCE MAIN** – Preparation of design and construction drawings and documents, permit applications, and calculations for and writing of the engineering report.
- **CITY OF MOUNT HOPE KILSYTH SEWER UPGRADE PROJECT** – Analysis of WWTP performance, preparation of facility plan and engineering report and assistance with construction drawings and documents and permit applications.
- **JEFFERSON COUNTY PSD FLOWING SPRINGS FACILITY PLAN** – Research, analysis, preliminary design, document writing and presentation of proposed project to the District and the public.
- **BERKELEY COUNTY PUBLIC SEWER SERVICE DISTRICT BAKER HEIGHTS & INWOOD WWTP UPGRADES** - Analysis of the 0.90 MGD and 0.75 MGD WWTP’s, projection of growth, documentation of existing performance, analysis of impact of the Chesapeake Bay Agreement, recommendation of upgrades to triple the capacity of both plants.
- **JEFFERSON COUNTY PSD 2005 WASTEWATER FACILITY PLAN** – Research, analysis, preliminary design, document writing, and presentation to the District and the public.
- **BERKELEY COUNTY PUBLIC SEWER SERVICE DISTRICT SPRING MILLS WWTP UPGRADE** – Analysis of existing plant performance, preparation of design and construction drawings and documents and the engineering report and permit applications.

PROFESSIONAL RESPONSIBILITIES:

Mr. Summerfield joined Pentree, Incorporated in 1998 and serves as Senior Civil Analyst for the firm. He is responsible for the analysis of clients’ existing data to determine their current situation. Mr. Summerfield also prepares facility plans, engineering reports, and specifications and plan sets. Additionally, Mr. Summerfield provides general design assistance, permit preparation and environmental reporting. Prior to his current position with the firm, Mr. Summerfield served as Photogrammetry manager and Aerial Photographer.

SCOPE OF EXPERIENCE:

- **SITE PLANNING** – Site planning, design and contract documents for a variety of motel/hotel sites, restaurants, fire stations, subdivisions, golf courses and convenient stores.
- **MINE PERMITTING** – Design and permitting of surface and deep mine sites including high wall miner and known acid producing seams.
- **SOLID WASTE** – Design and permitting of solid waste transfer stations, participation in public hearings and construction specifications.
- **SANITARY SEWER & WATER SYSTEMS** – Design and permitting of sanitary sewer collection and water distribution systems for various subdivisions.

EDUCATION:

B.S.	Mining Engineering	1982
	West Virginia Institute of Technology	
A.S.	Mining Engineering	1976
	West Virginia Institute of Technology	
AUTOCAD		1992
	Carver Career Center	

R. GARY SHIELDS, P.E., P.S. SURVEY MANAGER



PROJECT EXPERIENCE:

- **APPALACHIAN POWER COMPANY** – Survey Manager for Boundary and Topographical Survey and Control Stakeout
- **GLENFIELD SUBDIVISION**, MERCER COUNTY, WV – Survey Manager for Lot and Utility Design and Layout
- **RAHALL TECHNOLOGY CENTER**, GREENBRIER COUNTY, WV – Survey Manager for Elevation and Location Survey
- **MIDVOL**, MERCER AND McDOWELL COUNTIES, WV – Survey Manager for GPS Control Network for Aerial Mapping of 34,000 Acres of Coal Reserves
- **MCKENZIE COMPANY**, GREENBRIER COUNTY, WV – Project Oversight of Boring Operation into Abandoned Mine for AML Mine Reclamation
- **GAULEY RIVER PUBLIC SERVICE DISTRICT** ROUTE 39/TWENTYMILE WATER LINE EXTENSION PROJECT – Survey Manager for Tank Site Survey
- **CITY OF OAK HILL PHASES II AND III SIDEWALK PROJECT** – Survey manager for the Site Survey and Construction Layout
- **CITY OF OAK HILL SANITARY BOARD** – Lead Surveyor for Elevation and Location Survey of Existing Sewer Lines
- **DAVY-BIG SANDY WATER**, McDOWELL COUNTY, WV – Survey of Railroad Crossings and Plant Site Upgrade, Prepared Permits for Railroad Crossing
- **LOCUST HILLS SUBDIVISION**, JEFFERSON COUNTY, WEST VIRGINIA – Survey Manager for Property Survey
- **PAGE KINCAID PUBLIC SERVICE DISTRICT** WATER LINE EXTENSION PROJECT – Survey Manager for GPS Survey
- **TOWN OF UNION**, WEST VIRGINIA PHASE III SIDEWALK PROJECT – Survey Manager for Site Survey
- **MONROE COUNTY BOARD OF EDUCATION** – Survey Manager for Drainage and Site Development Plan
- **COWER PUBLIC SERVICE DISTRICT** INDUSTRIAL PARK UTILITIES EXTENSIONS – Survey Manager for Construction Stakeout
- **CITY OF PRINCETON RESCUE SQUAD** – Survey Manager for Elevation Certificate
- **TOWN OF FAYETTEVILLE** HUSE CEMETERY AND MAUSOLEUM SURVEY & BOUNDARY & ANNEXATION SURVEY – Project Manager
- **M TRIPLE J, LLC** RESIDENTIAL SUBDIVISION – MERCER COUNTY, WV – Project Manager
- **CITY OF OAK HILL** WHITE OAK SEWER EXTENSION – Project Manager

- **APPALACHIAN POWER COMPANY** – McGRAW & SUBSTATION – WYOMING COUNTY, WV - Lead Surveyor

PROFESSIONAL RESPONSIBILITIES:

Mr. Shields joined Pentree, Incorporated in 2003 and serves as Survey Manager for the firm. Prior to his employment with Pentree, Mr. Shields worked as an Independent Licensed Land Surveyor. Currently, he supervises, assigns and reviews all of Pentree, Incorporated's survey activities.

Mr. Shields is extremely skilled in various types of surveys including, but not limited to:

- Control Surveys
- Topographical Surveys
- Boundary Surveys
- Easement Surveys
- Construction Layout
- GPS

In addition to Mr. Shields's experience as a surveyor, he is a Licensed Professional Engineer. In this capacity he is knowledgeable in the planning and design of storm water management systems, potable water systems and sanitary sewer systems. Furthermore, his experience encompasses preparation of specifications, permits and plans, and providing construction inspection for subdivision developments.

EDUCATION:

B.S. Civil Engineering Technology 1980
Bluefield State College

ACTIVE REGISTRATIONS:

Professional Engineer , 1990	#10786
State of West Virginia	
Professional Surveyor, 1982	#766
State of West Virginia	
Professional Surveyor, 1986	#1545
State of Virginia	

MIKE HURD

LEAD INSPECTOR



PROJECT EXPERIENCE:

Mr. Hurd has performed inspection on waterline installation, water treatment plants, sewer collection lines, sewer treatment plants and sidewalk installation/rehabilitation for the following projects:

- **COWEN PUBLIC SERVICE DISTRICT**
CAMDEN WATER LINE EXTENSION – LEAD INSPECTOR
- **COWEN PUBLIC SERVICE DISTRICT**
WATER PLANT UPGRADE PROJECT – LEAD INSPECTOR
- **EASTERN WYOMING PUBLIC SERVICE DISTRICT** MULLENS-WYCO WATER SYSTEM EXTENSION PROJECT – INSPECTION AND CAD
- **GREEN VALLEY-GLENWOOD PUBLIC SERVICE DISTRICT** SANDLIKE WATER SYSTEM PROJECT – INSPECTION AND CAD
- **RED SULPHUR PUBLIC SERVICE DISTRICT** SANITARY SEWER UPGRADE PROJECT – INSPECTION AND CAD
- **RAVENCLIFF-MCGRAW-SAULSVILLE PSD** WATER PROJECT – LEAD INSPECTOR
- **COWEN P.S.D.** – SEWER SYSTEM TREATMENT PLANT INDUSTRIAL PARK - WATER AND SEWER
- **SUGAR CREEK P.S.D** - WATER SYSTEM
- **Gauley River P.S.D.**- Water System
- **Oak Hill Sanitary Board**
Treatment Plant
- **Berkeley County P.S.S.D.**
Inwood Sewer Project
Airport Communities Sewer
- **Jefferson County PSD**
-Sewer System

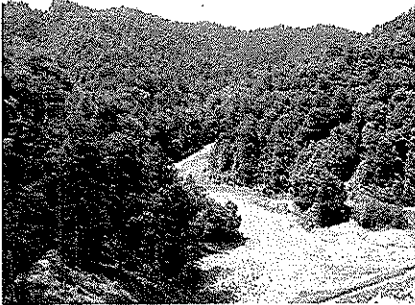
PROFESSIONAL RESPONSIBILITIES:

Mr. Hurd joined Pentree, Incorporated in 1991, following six years of experience in the construction industry. He serves as Lead Inspector for the firm. He is responsible for drafting, inspection, inspection team oversight, courthouse research, acquisition of rights of ways, notarizing documents and monthly estimates.

EDUCATION:

West Virginia Institute of Technology/
Electrical Engineering Technology

PREVIOUS EXPERIENCE



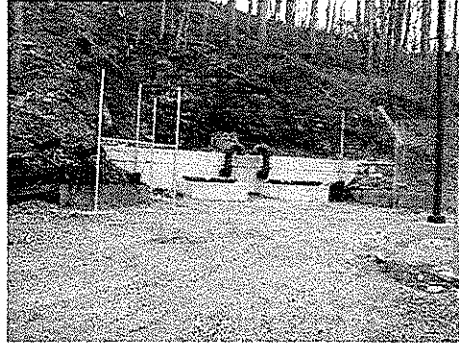
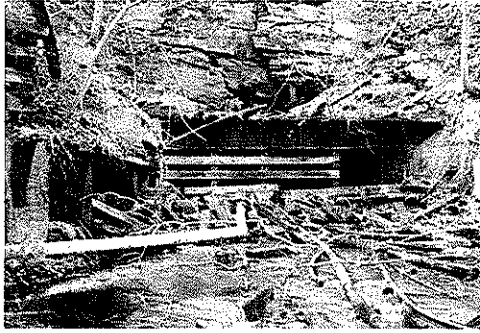
Over the past century, Pentree, Incorporated has surveyed, planned, designed and managed construction for numerous utility projects.

On the following pages are examples of specific recent projects that represent our abilities with drainage and stabilization projects that are comparable in scope of services similar to the needs of the WV DEP for the Maybeury Landslide Project.

The representative projects are as follows:

- Eastern Wyoming Public Service District
- King Coal Highway
- City of Oak Hill
- US Gypsum

References for each of these projects are included and we welcome you to contact them, most of whom are repeat clients.



EASTERN WYOMING PUBLIC SERVICE DISTRICT

Owner/Contact:

Rick Roberts
Eastern Wyoming Public Service District
P.O. Box 506
Logan, WV 25601
304-946-2641

Mullens-Wyco Water Project

Project consists of five contracts to improve and upgrade the Eastern Wyoming Public Service District's water system. This project includes a Water Treatment Plant, Water Storage Tanks, an upgrade of the Lower Gulf Water System and an upgrade of the Upper Gulf Water System.

Project Location:

Wyoming Co., WV

Professional Engineering Services Provided:

- Preparation of preliminary engineering reports
- Assisting Owner with applications for State and Federal funding
- Design in accordance with all applicable State and Federal regulations
- Assisting Owner with permits required
- Preparation of bidding and contracting documents
- Participation in the evaluation of bids received
- Monitor and inspect construction activities
- Assisting Owner with construction administration



City of Oak Hill Drainage Phased Projects

Owner/Contact:
Tom Oxley, City Manager
City of Oak Hill
P.O. Box 1245
Oak Hill, WV 25901
304-469-9541

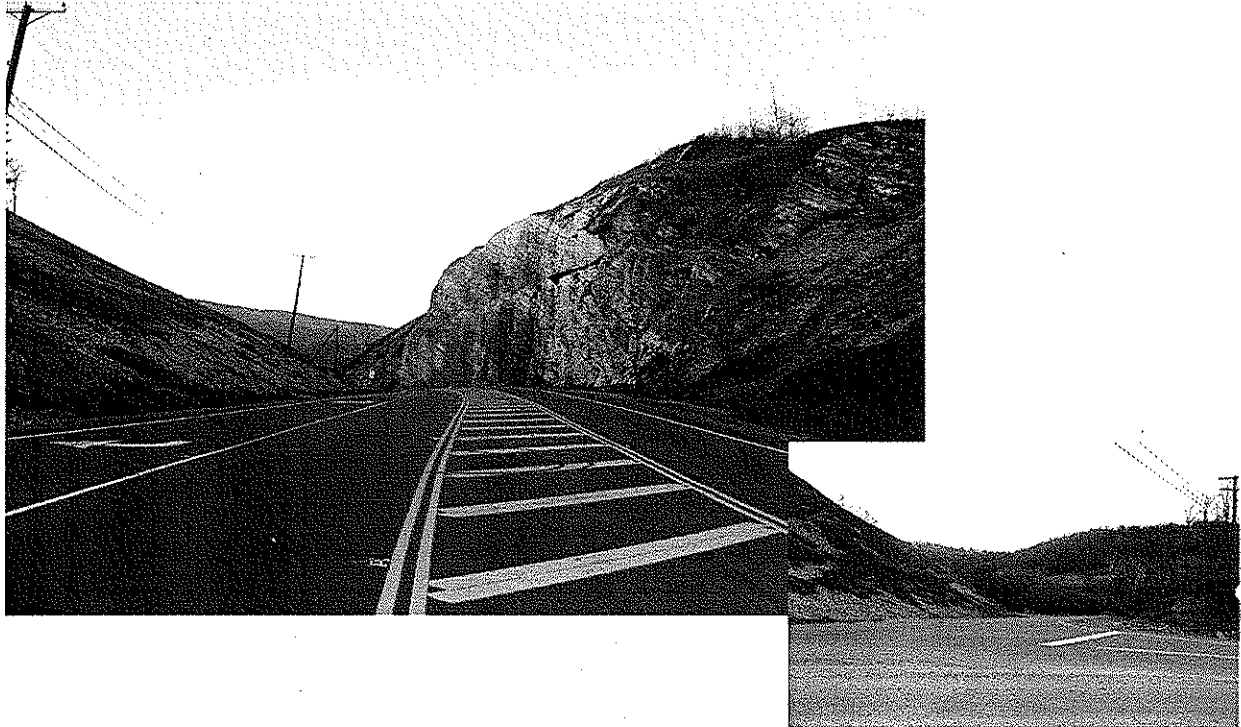
Pentree, Incorporated provided the City of Oak Hill with a study, preliminary and final design plans, and specifications for management of approximately 2,200 acre watershed which created flooding along the path of Arbuckle Creek and throughout the city limits. The first phase of the project consisted of replacement of eleven culverts totalling 1,252 lineal feet. The new culverts were designed to carry a 50-year flood and alleviate consistent annual flooding along the banks of Arbuckle Creek. Pentree, Incorporated has worked closely with the West Virginia DEP to satisfy Soil Conservation and wetlands concerns. Phase II of the project is in the Virginia Street/ Trump Avenue area of the City as shown in the flood and construction pictures above.

Phase I construction project was completed in 2004. Phase II of the project is currently in the construction stage.

Project Location:
Fayette Co., WV

Professional Engineering Services Provided:

- Preparation of preliminary engineering reports
- Assisting Owner with applications for State and Federal funding
- Design in accordance with all applicable State and Federal regulations
- Assisting Owner with permits required
- Preparation of bidding and contracting documents
- Participation in the evaluation of bids received
- Monitor and inspect construction activities
- Assisting Owner with construction administration



US GYPSUM

Owner/Contact
George Rolen
U.S. Gypsum
6072 Main Street
Saltville, VA 24370
276-496-7733

Pentree, Incorporated, provided engineering and design services for the relocation of Routes 91 and 745 in Washington County due to subsidence associated with mine abandonment. In conjunction with the roadway relocation project, design for the relocation of approximately 5,000 feet of waterline for the Town of Saltville and 6,000 feet of waterline for the Washington County P.S.A.. Additional design provided for an upgrade to one of Saltville's raw water sources and associated water treatment processes.

Project Location:
Washington Co., VA



KING COAL/COALFIELDS EXPRESSWAY

Client/Contact:

West Virginia

Department of Highways

Ali Sadeghian, Project Manager

Division of Highways

Bldg 05 Room A-317

State Capital Complex

Charleston, WV 25305

304-558-9745

Project Location:

McDowell and Wyoming Counties, West Virginia

KING COAL (Interstate 73/74) and

COALFIELDS EXPRESSWAY

(U.S. Route 121)

INTERCHANGE, McDOWELL and WYOMING COUNTIES

Study and complete design of final plans for a major new interchange. Study involved four alternative configuration schemes for the interchange. Final plans included two additional interchanges, five miles of interstate, expressway - roadway and eleven (11) bridges and required over 6 ½ million cubic yards of excavation.

REFERENCES

Gauley River Public Service District

Russell Deering, Chairman
304-753-4003

Greenbrier Valley Economic Development Authority

Dick Nevi, Executive Director
304-645-7155

Red Sulphur Public Service District

Porter Robertson
304-753-4003

Greenbrier County Public Service District No. 2

James Estep, Chairman / Rodney Knapp, Manager
304-438-9283

Jefferson County Public Service District

Suzanne Lawton, Manager
304-725-4647

City of Oak Hill

Tom Oxley, City Manager
304-469-9541

WEST VIRGINIA DEPARTMENT OF ENVIRONMENTAL PROTECTION
 AML CONSULTANT CONFIDENTIAL QUALIFICATION QUESTIONNAIRE Attachment "B"

PROJECT NAME: RFQ# DEP14439
 Maybeury (Oakley) Landslide Design

1. FIRM NAME
 Pentree, Inc.

4. HOME OFFICE TELEPHONE
 (304) 431-7800

5. ESTABLISHED (YEAR)
 1904

6. TYPE OWNERSHIP
 Individual Corporation X
 Partnership Joint-Venture YES NO X

7. PRIMARY AML DESIGN OFFICE: ADDRESS/ TELEPHONE/ PERSON IN CHARGE/ NO. AML DESIGN PERSONNEL EACH OFFICE
 1428 Main St./P.O. Box 1309/Princeton, WV 24740/304-431-7800/John Tuggle/30

8. NAMES OF PRINCIPAL OFFICERS OR MEMBERS OF FIRM
 John W. Tuggle, P.E., P.S. Principle in Charge
 Robert D. Hazelwood, P.E., P.S. Vice President

9. PERSONNEL BY DISCIPLINE

4 ADMINISTRATIVE	—	LANDSCAPE ARCHITECTS	—	STRUCTURAL ENGINEERS
— ARCHITECTS	—	MECHANICAL ENGINEERS	4 SURVEYORS	—
9 BIOLOGIST	—	MINING ENGINEERS	—	TRAFFIC ENGINEERS
— CADD OPERATORS	2	PHOTOGRAMMETRISTS	—	OTHER
— CHEMICAL ENGINEERS	—	PLANNERS: URBAN/REGIONAL	—	
5 CIVIL ENGINEERS	1	SANITARY ENGINEERS	—	
5 CONSTRUCTION INSPECTORS	—	SOILS ENGINEERS	—	
— DESIGNERS	—	SPECIFICATION WRITERS	—	
— DRAFTSMEN	—		—	30 TOTAL PERSONNEL

TOTAL NUMBER OF WV REGISTERED PROFESSIONAL ENGINEERS IN PRIMARY OFFICE: 5
 *RPEs other than Civil and Mining must provide supporting documentation that qualifies them to supervise and perform this type of work.

10. HAS THIS JOINT-VENTURE WORKED TOGETHER BEFORE? YES NO NOT APPLICABLE

11. OUTS KEY CONSULTANTS/SUB-CONSULTANTS ANTICIPATED TO BE USED. Attach "AML Consultant Confidential Qualification Questionnaire". NOT APPLICABLE

NAME AND ADDRESS:	SPECIALTY:	WORKED WITH BEFORE _____ No
NAME AND ADDRESS:	SPECIALTY:	WORKED WITH BEFORE _____ Yes _____ No
NAME AND ADDRESS:	SPECIALTY:	WORKED WITH BEFORE _____ Yes _____ No
NAME AND ADDRESS:	SPECIALTY:	WORKED WITH BEFORE _____ Yes _____ No
NAME AND ADDRESS:	SPECIALTY:	WORKED WITH BEFORE _____ Yes _____ No
NAME AND ADDRESS:	SPECIALTY:	WORKED WITH BEFORE _____ Yes _____ No
NAME AND ADDRESS:	SPECIALTY:	WORKED WITH BEFORE _____ Yes _____ No
NAME AND ADDRESS:	SPECIALTY:	WORKED WITH BEFORE _____ Yes _____ No
NAME AND ADDRESS:	SPECIALTY:	WORKED WITH BEFORE _____ Yes _____ No

12. A Is your firm experienced in Abandoned Mine Lan Remediation/Mine Reclamation Engineering?

YES Description and Number of Projects: PENTREE INCORPORATED HAS RECENTLY COMPLETED DESIGN FOR TWO PARTIALLY IMPACTED AML WATER PROJECTS: KEYROCK WATER EXTENSION PROJECT FOR RAVENCLIFF-MCGRAWS-SAULSVILLE PSD IN WYOMING COUNTY AND MULLENS/WYCO WATER PROJECT FOR THE EASTERN WYOMING PSD ALSO IN WYOMING COUNTY. THE EWPSD PROJECT WAS THE 2006 EPA REGION 9 AWARD WINNING PROJECT FOR SUSTAINABLE PUBLIC HEALTH PROTECTION ENCOMPASSING ELEVEN FAILING, FLOODED AND ABANDONED WATER SYSTEMS. ADDITIONALLY, WE PROVIDED ENGINEERING SERVICES FOR THE FIRST PARTIALLY IMPACTED AML PROJECT FOR GAULEY RIVER PSD WITH THE JODIE WATER LINE EXTENSION PROJECT IN 1998.

B. Is your firm experienced in Soil Analysis?

YES Description and Number of Projects: PENTREE, INCORPORATED HAS ACCESS TO A MATERIALS TESTING AND ANALYSIS LAB AT OUR AFFILIATE OFFICE (THRASHER ENGINEERING) IN CLARKSBURG, WV. SOIL ANALYSIS EXPERIENCE IS SPECIFICALLY IN GRADATIONS AND CLASSIFICATIONS

NO

C. Is your firm experienced in hydrology and hydraulics?

YES Description and Number of Projects: THROUGH OUR WORK ON WATER SYSTEM PROJECTS FOR VARIOUS PSDS AND MUNICIPALITIES, WE HAVE DEVELOPED HYDRAULIC MODELING OF SYSTEMS, AND HAVE A HAESTED METHOD MASTER MODELER ON OUR AML TEAM STAFF.

NO

D. Does your firm produce its own Aerial Photography and Develop Contour Mapping?

YES Description and Number of Projects: EVERY WATER AND WASTEWATER PROJECT PENTREE HAS DESIGNED IN THE LAST 25 YEARS HAS BEEN PHOTOGRAMMETRICALLY PRODUCED BY OUR IN-HOUSE PHOTOGRAMMETRY DEPARTMENT.

E. Is your firm experienced in domestic waterline design? (Include any experience your firm has in Evaluation of aquifer degradation as a result of mining.)-

YES DESCRIPTION AND NUMBER OF PROJECTS: PENTREE, INCORPORATED HAS DESIGNED OVER 50 WATER LINE EXTENSION AND REPLACEMENT PROJECTS IN THE PAST 30 YEARS OF BUSINESS. PROJECTS INCLUDE LINES, BOOSTER STATIONS, WATER TREATMENT PLANTS, AND STORAGE FACILITIES.

NO

F. Is your firm experienced in Acid Mine Drainage Evaluation and Abatement Design?

13. PERSONAL HISTORY STATEMENT OF PRINCIPALS AND ASSOCIATES RESPONSIBLE FOR AML PROJECT DESIGN (Furnish complete data, but keep to essentials)

NAME & TITLE (Last, First, Middle Int.)		YEARS OF EXPERIENCE	
YEARS OF AML DESIGN EXPERIENCE:	YEARS OF AML RELATED DESIGN EXPERIENCE:	YEARS OF DOMESTIC WATERLINE DESIGN EXPERIENCE:	YEARS OF DOMESTIC WATERLINE DESIGN EXPERIENCE:
10	24	24	24
<p>Tuggle, John W. P.E., P.E. President</p> <p>Brief Explanation of Responsibilities Mr. Tuggle serves as President of Pentree, Inc. Mr. Tuggle is Principal in Charge for public utility projects including sanitary sewer, water and storm water management. In this capacity he is responsible for feasibility studies and design, regulatory and funding assistance for state, federal and private clients. Additionally, he has extensive experience working with funding and regulatory agencies in conjunction with projects. In the capacity of Principal-In-Charge, for this AML design project, he will work closely with the Project Manager to ensure timeliness of the projects, client satisfaction and oversee budgetary aspects</p>			
<p>EDUCATION (Degree, Year, Specialization) BACHELOR OF SCIENCE, 1982, BLEUFIELD STATE COLLEGE - CIVIL ENGINEERING TECHNOLOGY</p>			
MEMBERSHIP IN PROFESSIONAL ORGANIZATIONS		REGISTRATION (Type, Year, State)	
WEST VIRGINIA RURAL WATER ASSOCIATION		P.E. 1993 - WEST VIRGINIA #11845	
VIRGINIA RURAL WATER ASSOCIATION		P.S. 1995 - WEST VIRGINIA #1176	
<p>13. PERSONAL HISTORY STATEMENT OF PRINCIPALS AND ASSOCIATES RESPONSIBLE FOR AML PROJECT DESIGN (Furnish complete data but keep to essentials)</p>			
NAME & TITLE (Last, First, Middle Int.)		YEARS OF EXPERIENCE	
YEARS OF AML DESIGN EXPERIENCE:	YEARS OF AML RELATED DESIGN EXPERIENCE:	YEARS OF DOMESTIC WATERLINE DESIGN EXPERIENCE:	YEARS OF DOMESTIC WATERLINE DESIGN EXPERIENCE:
7	29	29	29
<p>Hazelwood, Robert D. P.E., P.S. Vice President</p> <p>Brief Explanation of Responsibilities Robert D. Hazelwood, P.E., P.S. Vice President of Pentree, Inc. will serve as Project Manager / Project Engineer. His major responsibility will be for project oversight of all design and construction aspects. Mr. Hazelwood has extensive experience in water line extension projects throughout West Virginia and in particular - Wyoming County. Additionally, Mr. Hazelwood was Project Manager/Project Engineer for both the Mullens/Wyco Water System Upgrade and the Keyrock Water Project which has extensive funding with the WVDEP AML. As such, Mr. Hazelwood is well versed in AML reporting and deadline requirements.</p>			
<p>EDUCATION (Degree, Year, Specialization) ■ M.S., Sanitary Engineering, 1976 - Virginia Polytechnical Institute ■ B.S., Civil Engineering, 1975 - West Virginia Technical Institute</p>			
MEMBERSHIP IN PROFESSIONAL ORGANIZATIONS		REGISTRATION (Type, Year, State)	
WEST VIRGINIA RURAL WATER ASSOCIATION		P.E. 1980 - WEST VIRGINIA #008452	
		P.S. 1980 - WEST VIRGINIA #1179	

13. PERSONAL HISTORY STATEMENT OF PRINCIPALS AND ASSOCIATES RESPONSIBLE FOR AML PROJECT DESIGN (Furnish complete data but keep to essentials)

NAME & TITLE (Last, First, Middle Int.)	YEARS OF EXPERIENCE	
SHORTS, DANIEL R. P.E., P.S.	YEARS OF AML DESIGN EXPERIENCE:	YEARS OF AML RELATED DESIGN EXPERIENCE:
	4	16
YEARS OF DOMESTIC WATERLINE DESIGN EXPERIENCE:		16

Brief Explanation of Responsibilities
 Mr. Shorts will be in charge of scheduling of design sequence and project milestones. Mr. Shorts will also be responsible for Quality Control for the Windmill Gap Water Project.

EDUCATION (Degree, Year, Specialization)
 M.S. Civil Engineering - 2001 - Virginia Polytechnical Institute
 B.S. Civil Engineering - 1988 - West Virginia Institute of Technology

MEMBERSHIP IN PROFESSIONAL ORGANIZATIONS
 West Virginia Rural Water Association
 REGISTRATION (Type, Year, State)
 P.E. WEST VIRGINIA #011840
 P.S. WEST VIRGINIA # 1178
 P.E. NORTH CAROLINA #27290
 P.E. VIRGINIA #034253

13. PERSONAL HISTORY STATEMENT OF PRINCIPALS AND ASSOCIATES RESPONSIBLE FOR AML PROJECT DESIGN (Furnish complete data but keep to essentials)

NAME & TITLE (Last, First, Middle Int.)	YEARS OF EXPERIENCE	
SHIELDS, ROBERT G. (Gary) P.E., P.S.	YEARS OF AML DESIGN EXPERIENCE:	YEARS OF AML RELATED DESIGN EXPERIENCE:
	4	28
YEARS OF DOMESTIC WATERLINE DESIGN EXPERIENCE:		28

Brief Explanation of Responsibilities From 1980 until 2003, Mr. Shields was a self-employed Licensed Land Surveyor, performing various planning, design, control & topographical surveys, and construction layouts. He has also, designed storm water, sanitary sewer and potable water systems; prepared specifications, permits and plans, as well as construction inspection for primarily subdivision developments. Mr. Shields' responsibility will be to oversee any mapping and survey needs for the Windmill Gap Water Project.

EDUCATION (Degree, Year, Specialization)
 B.S., 1980, Civil Engineering Technology, Bluefield State College

MEMBERSHIP IN PROFESSIONAL ORGANIZATIONS
 REGISTRATION (Type, Year, State)
 P.E. 1990 - WEST VIRGINIA #10786
 P.S. 1982 - WEST VIRGINIA #766
 P.S. 1986 - VIRGINIA #1545

<p>13. PERSONAL HISTORY STATEMENT OF PRINCIPALS AND ASSOCIATES RESPONSIBLE FOR AML PROJECT DESIGN (Furnish complete data but keep to essentials)</p>			
<p>NAME & TITLE (Last, First, Middle Int.)</p> <p>Summerfield, J. Zane</p>		<p>YEARS OF AML DESIGN EXPERIENCE:</p> <p>15</p>	<p>YEARS OF AML RELATED DESIGN EXPERIENCE: 15</p>
<p>Brief Explanation of Responsibilities</p> <p>Mr. Summerfield will provide expertise and analysis for the drainage and re-vegetation aspect of this project. Having worked with for the mining industry as a permit specialist and hydrology analyst, his combination of technical and design capabilities will enhance the overall depth of experience to the design team.</p>		<p>YEARS OF DOMESTIC WATERLINE DESIGN EXPERIENCE: 9</p>	
<p>EDUCATION (Degree, Year, Specialization)</p> <p>A.S., 1976 West Virginia Institute of Technology</p> <p>B.S., 1982 West Virginia Institute of Technology</p>			
		<p>REGISTRATION (Type, Year, State)</p>	

14. PROVIDING A LIST OF SOFTWARE AND EQUIPMENT AVAILABLE IN THE PRIMARY OFFICE WHICH WILL BE USED TO COMPLETE A DESIGN SERVICES

We perform our work utilizing the most current methods and equipment available.

SURVEY

Our survey work is accomplished with global positioning systems (GPS) and electronic distance measuring (EDM) survey stations with data gathering capabilities. This equipment includes:

- Leica Geosystem System 500 GPS
- Leica Ski Post Processing Software
- Topcon G600 Total Station Instrument
- Leica 303 Total Station Instrument
- Leica 307 Total Station Instrument
- Leica 403 Total Station Instrument
- Leica 405 Total Station Instrument
- Leica 407 Total Station Instrument
- Leica 703 Total Station Instrument
- Prograde 3 Gas Detector
- Flow Meter
- Forney FT-40 Compression Testing Machine
- Troxler 3440 Nuclear Density Gauge
- Troxler 3411 Nuclear Density Gauge
- Rainhart Proctor Machine
- Modified Protractor with Hammer
- Gilson Shaker
- GTS-605 Laser Plummet EDM
- Model 920 Flow Meter
- Submerged Depth Velocity Probe
- Propane Tank
- Daiagator Sewer Flow Monitoring System
- TSP-514 Transport XT Mobility Mailer with Office Laptop
- System 500 Real-Time Processed Bundle
- Multiquip Pump
- System 500 RTK & Post Processing Bundle with Accessories
- Aries Township Pan & Tilt with 1000' & 400' Lateral System

DESIGN

CAD CAPABILITIES

Pentree, Inc., Incorporated provides one of the largest networks of computer aided design (CAD) equipment, software and trained personnel in the State of West Virginia.

AutoCAD Landdesktop 2007 and Microstation V8 software is utilized at 23 CAD stations. Upon its upcoming release, Landdesktop 2008 will be added to the corporate system. Additionally, equipment includes 10 large format (size E) plotters and 5 large format plotter / scanners.

CAD plans are prepared by both dedicated CAD employees and by staff engineers and engineering technicians.

15. CUR I ACTIVITIES ON WHICH YOUR FIRM IS THE DESIGNATE ENGINEER OF RECORD - WATER DISTRIBUTION PROJECTS

PROJECT NAME, TYPE AND LOCATION	NAME AND ADDRESS OF OWNER	NATURE OF YOUR FIRM'S RESPONSIBILITY	ESTIMATED CONSTRUCTION COST	PERCENT COMPLETE
KEYROCK WATER PROJECT WYOMING COUNTY	RAVENCLIFF-MCGRAWS- SAULSVILLE PSD PO BOX 217 MCGRAWS, WV 25875	PRELIMINARY ENGINEERING REPORTS REVIEW, ENVIRONMENTAL STUDIES AND PERMITTING, PREPARATION OF PLANS AND SPECIFICATIONS, SURVEY, DESIGN, BID DOCUMENTATION,	\$4,300,000	95%
MULLENS/WYCO WATER PROJECT WYOMING COUNTY	EASTERN WYOMING PSD PO BOX 506 LOGAN, WV 25601	PRELIMINARY ENGINEERING REPORTS, ENVIRONMENTAL STUDIES AND PERMITTING, PREPARATION OF PLANS AND SPECIFICATIONS, SURVEY, DESIGN, BID DOCUMENTATION, REVIEW AND RECOMMENDATION, PREPARATION CONSTRUCTION MANAGEMENT AND INSPECTION	\$14,587,000	98%
ASCO WATER PROJECT MCDOWELL COUNTY	TOWN OF DAVY PO BOX 243 DAVY, WV 24828	PRELIMINARY ENGINEERING REPORTS, ENVIRONMENTAL STUDIES AND PERMITTING, PREPARATION OF PLANS AND SPECIFICATIONS, SURVEY, DESIGN, BID DOCUMENTATION, REVIEW AND RECOMMENDATION, CONSTRUCTION MANAGEMENT AND INSPECTION	\$10,000,000	5%
SPANISHBURG WATER EXTENSION PHASE 2B PROJECT MERCER COUNTY	LASHMEET P.S.D. PO BOX 189 LASHMEET, WV 24733	PRELIMINARY ENGINEERING REPORTS, ENVIRONMENTAL STUDIES AND PERMITTING, PREPARATION OF PLANS AND SPECIFICATIONS, SURVEY, DESIGN, BID DOCUMENTATION, REVIEW AND RECOMMENDATION, CONSTRUCTION MANAGEMENT AND INSPECTION	\$1,898,200	75% Design

15. CUR T ACTIVITIES ON WHICH YOUR FIRM IS THE DESIGNATE ENGINEER OF RECORD - WATER DISTRIBUTION PROJECTS

PROJECT NAME, TYPE AND LOCATION	NAME AND ADDRESS OF OWNER	NATURE OF YOUR FIRM'S RESPONSIBILITY	ESTIMATED CONSTRUCTION COST	PERCENT COMPLETE
PAGE-KINCAID WATER PROJECT FAYETTE COUNTY	PAGE-KINCAID PSD PO BOX 165, HWY 61 KINCAID, WV 25119	PRELIMINARY ENGINEERING REPORTS, ENVIRONMENTAL STUDIES AND PERMITTING, PREPARATION OF PLANS AND SPECIFICATIONS, SURVEY, DESIGN, BID DOCUMENTATION, REVIEW AND RECOMMENDATION, CONSTRUCTION MANAGEMENT AND INSPECTION	\$2,400,000	85% Design
GREENVILLE WATER PROJECT MONROE COUNTY	RED SULPHUR PSD PO BOX 697 PETERSTOWN, WV 24963	PRELIMINARY ENGINEERING REPORTS, ENVIRONMENTAL STUDIES AND PERMITTING, PREPARATION OF PLANS AND SPECIFICATIONS, SURVEY, DESIGN, BID DOCUMENTATION, REVIEW AND RECOMMENDATION, CONSTRUCTION MANAGEMENT AND INSPECTION	\$2,728,000	30% Design
SUMMERSVILLE WATER LINE EXTENSION NICHOLAS COUNTY	GAULEY RIVER PSD PO BOX 47 SWISS, WV 26690	PRELIMINARY ENGINEERING REPORTS, ENVIRONMENTAL STUDIES AND PERMITTING, PREPARATION OF PLANS AND SPECIFICATIONS, SURVEY, DESIGN, BID DOCUMENTATION, REVIEW AND RECOMMENDATION, CONSTRUCTION MANAGEMENT AND INSPECTION	Phase I \$4,649,702 Phase II \$2,322,890 Phase III \$2,341,622	45% Design
BIG SANDY WATER PROJECT McDowell County	McDowell County PSD HC 31, Box 436 Welch, WV 24801	PRELIMINARY ENGINEERING REPORTS, ENVIRONMENTAL STUDIES AND PERMITTING, PREPARATION OF PLANS AND SPECIFICATIONS	\$8,714,120	25% Design
RUSSELLVILLE ROAD WATER PROJECT GREENBRIER COUNTY	GREENBRIER COUNTY PSD #2 PO BOX 673 RAINELLE, WV 25962	PRELIMINARY ENGINEERING REPORTS, ENVIRONMENTAL STUDIES AND PERMITTING, PREPARATION OF PLANS AND SPECIFICATIONS, SURVEY, DESIGN, BID DOCUMENTATION, REVIEW AND RECOMMENDATION, CONSTRUCTION MANAGEMENT AND INSPECTION	\$865,000	25%

15. CURRENT ACTIVITIES ON WHICH YOUR FIRM IS THE DESIGNATED ENGINEER OF RECORD - WATER DISTRIBUTION PROJECTS

PROJECT NAME, TYPE AND LOCATION	NAME AND ADDRESS OF OWNER	NATURE OF YOUR FIRM'S RESPONSIBILITY	ESTIMATED CONSTRUCTION COST	PERCENT COMPLETE
<p>JESSEE MATHENY WATER PROJECT WYOMING COUNTY</p>	<p>RAVENCLIFF-MCGRAW-S SAULSVILLE PSD PO BOX 217 MCGRAW, WV 25875</p>	<p>PRELIMINARY ENGINEERING REPORTS, ENVIRONMENTAL STUDIES AND PERMITTING, PREPARATION OF PLANS AND SPECIFICATIONS, SURVEY, DESIGN, BID DOCUMENTATION, REVIEW AND RECOMMENDATION, CONSTRUCTION MANAGEMENT AND INSPECTION</p>	<p>\$6,164,000</p>	<p>60%</p>
<p>GLEN WHITE TRAP HILL WATER PHASE I RALEIGH COUNTY</p>	<p>GLEN WHITE TRAP HILL PSD PO BOX 100 FAIRDALE, WV 25839</p>	<p>PRELIMINARY ENGINEERING REPORTS, ENVIRONMENTAL STUDIES AND PERMITTING, PREPARATION OF PLANS AND SPECIFICATIONS, SURVEY, DESIGN, BID DOCUMENTATION, REVIEW AND RECOMMENDATION, CONSTRUCTION MANAGEMENT AND INSPECTION</p>	<p>\$5,315,000</p>	<p>95%</p>
<p>ITMANN/BUD MOUNTAIN WATER PROJECT WYOMING COUNTY</p>	<p>EASTERN WYOMING PSD PO BOX 506 LOGAN, WV 25601</p>	<p>PRELIMINARY ENGINEERING REPORTS, ENVIRONMENTAL STUDIES AND PERMITTING, PREPARATION OF PLANS AND SPECIFICATIONS, SURVEY, DESIGN, BID DOCUMENTATION, REVIEW AND RECOMMENDATION, CONSTRUCTION MANAGEMENT AND INSPECTION</p>	<p>\$3,064,000</p>	<p>100% DESIGN</p>

17. COMPLETED WORK WITHIN LAST 5 YEARS ON WHICH YOUR FIRM AS THE DESIGNATED ENGINEER OF RECORD		AS THE DESIGNATED ENGINEER OF RECORD		
PROJECT NAME, TYPE AND LOCATION	NAME AND ADDRESS OF OWNER	ESTIMATED CONSTRUCTION COST	YEAR	CONSTRUCTED (YES OR NO)
INWOOD SEWER EXTENSION BERKELEY COUNTY	BERKELEY COUNTY PSSD PO BOX 944 MARTINSBURG, WV 25401	\$27,000,000	2003	YES
TWENTYMILE WATER PROJECT FAYETTE COUNTY	GAULEY RIVER PSD PO BOX 47 SWISS, WV 26690	\$4,600,000	2005	YES
BOZOO-ROCK CAMP WATER EXTENSION MONROE COUNTY	RED SULPHUR PSD PO BOX 697 PETERSTOWN, WV 24963	\$3,100,000	2004	YES
BAKER HEIGHTS WASTEWATER TREATMENT PLANT UPGRADE BERKELEY COUNTY	BERKELEY COUNTY PSSD PO BOX 944 MARTINSBURG, WV 25401	\$8,730,919	SEPT. 2008	95% COMPLETE
OAK HILL DRAINAGE PHASE I FAYETTE COUNTY	CITY OF OAK HILL PO BOX 1245 OAK HILL, WV 25901	\$1,285,000	2004	YES
PAGE KINCAID SEWER PROJECT FAYETTE COUNTY	PAGE-KINCAID PSD PO BOX 165, HWY 61 KINCAID, WV 25119	\$10,800,000	2006	YES
CITY OF OAK HILL OYLER AVENUE SIDEWALKS FAYETTE COUNTY	CITY OF OAK HILL PO BOX 1245 OAK HILL, WV 25901	\$70,000	2003	YES
FOUNTAIN SPRINGS INDUSTRIAL PARK MONROE COUNTY	GREENBRIER VALLEY EDC 810 JEFFERSON ST, STE 103 LEWISBURG, WV 24901	\$2,400,000	2004	YES
LOWER BIRCHFIELD/ ROUTE 72 WATER LINE EXTENSION WISE COUNTY, VA	WISE COUNTY PUBLIC SRV AUTH PO BOX 1940 COEBURN, VA 24230	\$1,100,000	2004	YES
FORT CHISWELL WASTEWATER TREATMENT PLANT UPGRADE PH I&II WYTHE COUNTY, VA	WYTHE COUNTY BOARD OF SUPERVISORS 340 SOUTH 6 TH ST WYTHEVILLE, VA 24382	PHASE I - \$376,000 PHASE II - \$4,140,655	2006 2008	YES
ECOLAB WATERWATER TREATMENT PLANT UPGRADE BERKELEY COUNTY	ECOLAB 942 BAKER ROAD MARTINSBURG, WV 25405	\$1,778,000	DECEMBER 2008	YES

18. COMPLETED WORK WITHIN LAST 5 YEARS ON WHICH YOUR FIRM HAS BEEN A SUB-CONSULTANT TO OTHER FIRMS (INDICATE PHASE OF WORK FOR WHICH YOUR FIRM WAS RESPONSIBLE) - NON APPLICABLE

19. Use this space to provide any additional information or description of resources supporting your firm's qualifications to perform work for the West Virginia Abandoned Mine Lands Program.

PLEASE SEE ATTACHED STATEMENT OF QUALIFICATIONS AND SCOPE OF SERVICES

20. The foregoing is a statement of facts.

Signature: 

Printed Name: **John W. Tuggle, P.E., P.S.**

Title: **PRESIDENT**

Date: **October 27, 2008**