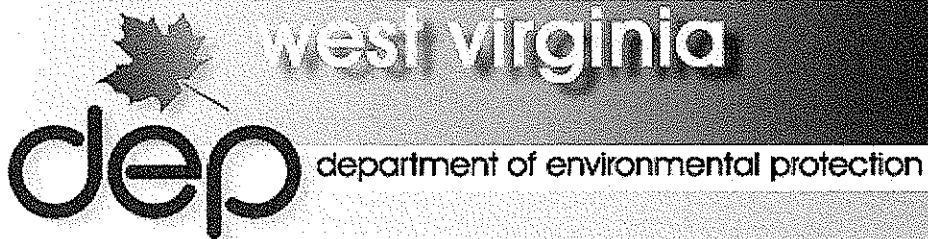


*Expression of Interest for Engineering Services
To the*



*OFFICE OF ABANDONED MINE LANDS
AND RECLAMATION*

MALLORY REFUSE PILE DESIGN

DEP# 14391

September 18, 2008



30 Columbia Boulevard
P.O. Box 1532
Clarksburg, WV 26301
304-624-4108
304-624-7831 Fax

Northgate Business Park
300 Association Drive
Charleston, WV 25311
304-343-7601
304-343-7604 Fax

thrasher@thrashereng.com
www.thrashereng.com

3000 Thayer Center
Oakland, MD 21550
301-334-3866
301-334-4020 Fax

RECEIVED

2008 SEP 18 A 9 51



State of West Virginia
 Department of Administration
 Purchasing Division
 2019 Washington Street East
 Post Office Box 50130
 Charleston, WV 25305-0130

Request for Quotation

BID NUMBER
 DEP14391

PAGE
 1

ADDRESS CORRESPONDENCE TO ATTENTION OF
 CHUCK BOWMAN
 304-558-2157

RFQ COPY
 TYPE NAME/ADDRESS HERE

ENVIRONMENTAL PROTECTION
 DEPARTMENT OF
 OFFICE OF AML&R
 601 57TH STREET SE
 CHARLESTON, WV
 25304 304-926-0499

| | | | | |
|--------------|---------------|----------|-----|---------------|
| DATE PRINTED | TERMS OF SALE | SHIP VIA | FOB | FREIGHT TERMS |
| 08/21/2008 | | | | |

BID OPENING DATE: 09/18/2008 BID OPENING TIME 01:30PM

| LINE | QUANTITY | UOP | CAT NO | ITEM NUMBER | UNIT PRICE | AMOUNT |
|---|----------|-----|--------|-------------|------------|--------|
| 0001 | 1 | JB | | 906-29 | | |
| MALLORY REFUSE PILE DESIGN | | | | | | |
| EXPRESSION OF INTEREST | | | | | | |
| <p>THE WEST VIRGINIA PURCHASING DIVISION, FOR THE AGENCY, THE WEST VIRGINIA DEPARTMENT OF ENVIRONMENTAL PROTECTION, IS SOLICITING EXPRESSIONS OF INTEREST FOR PROFESSIONAL ENGINEERING DESIGN SERVICES AND CONSTRUCTION MONITORING SERVICES AT THE MALLORY REFUSE PILE PROJECT IN LOGAN CO, WEST VIRGINIA, PER THE FOLLOWING BID REQUIREMENTS AND ATTACHED SPECIFICATIONS.</p> <p>BANKRUPTCY: IN THE EVENT THE VENDOR/CONTRACTOR FILES FOR BANKRUPTCY PROTECTION, THIS CONTRACT IS AUTOMATICALLY NULL AND VOID AND IS TERMINATED WITHOUT FURTHER ORDER.</p> | | | | | | |

SEE REVERSE SIDE FOR TERMS AND CONDITIONS

SIGNATURE *Charles Bowman* TELEPHONE 304-624-4108 DATE 9-17-08

TITLE Vice President FEIN 55 0633 5966 ADDRESS CHANGES TO BE NOTED ABOVE



30 Columbia Boulevard
P.O. Box 1532
Clarksburg, WV 26301

(304) 624•4108
Fax: 624•7831
thrasher@thrashereng.com
www.thrashereng.com

May 14, 2008

West Virginia Department of Environmental Protection
Office of Abandoned Mine Lands and Reclamation
c/o State of West Virginia Department of Administration
Purchasing Division
2019 Washington Street, East
Charleston, WV 25305

*RE: Expression of Interest – Mallory Refuse Pile Design Services
Requisition # DEP14391*

To Whom It May Concern:

Thrasher Engineering, Inc. is pleased to have the opportunity to submit this expression of interest and qualifications to provide engineering design services for the Mallory Refuse Pile Design project in Logan County. Our qualifications as West Virginia's largest full service civil engineering firm will provide the Department of Environmental Protection's Office of Abandoned Mine Lands and Reclamation with quality service in a timely and cost efficient manner.

Following our review of the project, we have developed a thorough understanding of the project needs. With that understanding, we offer the following qualifications that the selection of Thrasher Engineering for this project will bring to the DEP and the Office of Abandoned Mine Lands:

Experience to Meet the Scope of Services: Through our site development department, Thrasher Engineering has provided survey, design and construction management services for site development projects on land which included mine slips. These include the Robert C. Byrd Park in Hardy County and the Harrison County Business and Technology Center and White Oaks Business Park, also in Harrison County. Additionally, we have mapped and designed numerous open channel drainage systems, and provided stream bank protection. As demonstrated in our qualifications, Thrasher Engineering has surveyed, mapped, designed and provided construction management services for more site projects than any other West Virginia engineering firm.

Successful Project Experience with AML: In 2005, we were selected by the DEP to provide engineering design and mapping services for the Amherstdale and Ragland Road AML water line projects in Mingo and Logan Counties. As you are aware, each of these projects was completed on time and recently went to construction bid.

Project Team: The qualifications of professionals on the team we have assembled to provide design services for this project are unmatched for this type of work. We have 25 engineers on staff, 14 of who are Registered Professional Engineers. Our Environmental Manager, Sheirl Fletcher, has over 20 years of environmental experience with a major coal company, with specific experience in acid mine drainage reclamation. Additionally, Thrasher Engineering offers 15 fully staffed survey crews with experience in mining survey including pre and post subsidence and acid mine drainage.

With our experience with AML and drainage projects, our qualified personnel and our expertise, Thrasher Engineering is the right choice for this AML project.

Following the instructions outlined in the RFQ, this proposal contains information regarding Thrasher Engineering's history, qualifications and management and staffing capabilities along with the required DEP /AML Consultant's Confidential Qualifications Questionnaire, and an affidavit stating Thrasher Engineering has no debt owed to the State of West Virginia.

We thank you for your consideration of our qualifications and look forward to the opportunity to present our qualifications and project methodology to you in person.

Sincerely,

THRASHER ENGINEERING, INC.



CHADWICK D. BILLER, P.E.
Principal-In-Charge / Project Manager

FIRM OVERVIEW

THRASHER ENGINEERING, INC.

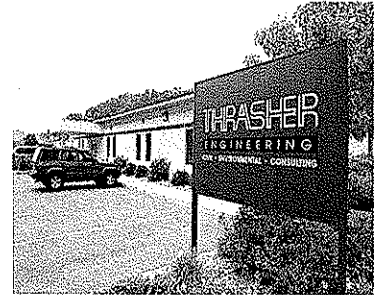
Established 1983

Officers

| | |
|------------------------------|-----------------------|
| H. Wood Thrasher, P.E. | President |
| Kenneth P. Moran, P.E., P.S. | Vice-President |
| Kurt L. Newbrough, P.S. | Secretary / Treasurer |

Partners

| | |
|-------------------------|--|
| Wm. Randy Watson | Public Utilities |
| Chadwick Biller, P.E. | Site Development / Highways / Airports |
| Chad Riley, P.E. | Site Development |
| Clay P. Riley, P.E. | Public Utilities |
| Daniel E. Ferrell, P.E. | Public Utilities |



Thrasher Engineering, Inc. Office – Clarksburg, WV

THRASHER ENVIRONMENTAL, INC.

Officers

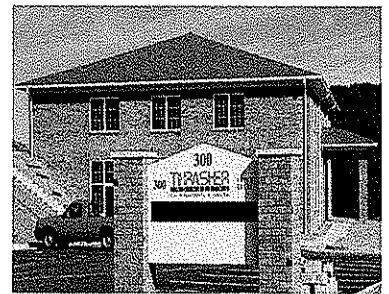
| | |
|------------------------------|-----------------------|
| H. Wood Thrasher, P.E. | President |
| Kenneth P. Moran, P.E., P.S. | Vice-President |
| Jonathan Carpenter, P.E. | Secretary / Treasurer |

Scope of Services

Public Work – Water / Sewer / Treatment Plants / Facility Plans/Business and Industrial Parks
Site Development – Industrial/ Business / Commercial / Residential
General Civil Engineering – Municipal Engineering / Subdivisions/ Paving
Highway/ Roadways / Recreational Trails Design
Environmental Engineering
Architecture
Landscape Architecture
Land Surveying, Platting, Legal Description Preparation
Construction Management / Materials Testing / Inspection
GIS Mapping and Software Development

Offices

30 Columbia Boulevard, Clarksburg, WV
300 Association Drive, Charleston, WV – Thrasher Environmental
3000 Thayer Center, Oakland, Maryland
Martinsburg, WV – The Berkeley Associates- Affiliate
Princeton, WV – Pentree, Incorporated – Affiliate



Thrasher Environmental, Inc. Office – Charleston, WV

STATEMENT OF QUALIFICATIONS

Thrasher Engineering, Inc. is a civil engineering consulting firm, specializing in public works projects. The majority of Thrasher Engineering's work involves publicly funded water treatment and distribution systems, sewage collection and treatment systems, and industrial and business parks. Over \$600 million in water, sewer, site development, survey and construction management projects have been designed and supervised by the firm.

H. Wood Thrasher and Henry A. Thrasher formed the company in 1983 with a commitment to excellence and professionalism in engineering. H. Wood Thrasher, P.E. remains principal of the company; also serving as principals are Kenneth P. Moran, P.E., and Kurt L. Newbrough, P.S.

Providing a full range of professional engineering services, Thrasher Engineering, Inc. currently maintains a staff of 170 full-time employees with. Our staff includes registered professional engineers, graduate engineers, registered professional surveyors, and support staffing of surveyors, design technicians, CADD technicians, construction managers, and secretarial/clerical personnel. This professional staff has a wealth of experience and is our greatest asset. This includes not only the principals but also the technicians, surveyors, construction managers, and office support staff. Combining education with experience, the qualified staff of Thrasher Engineering strives to provide service that is second to none and is committed to maintaining a strong reputation for quality work. The company's full and diverse staff has the resources to handle many projects, both large and small, simultaneously.

SERVICES

The expertise of our company is confirmed in the variety of projects successfully completed. Areas of expertise that we believe are most beneficial to the WV Department of Environmental Protection Office of Abandoned Mine Lands and Reclamation for the Mallory Refuse Design Project include:

SITE DEVELOPMENT

Thrasher Engineering has planned, surveyed, designed and provided construction management services for over 30 site development projects for both public and private clients. Projects ranging from sites for residential housing to business and industrial parks to multi purpose "live, work and play" communities are included in our range of site development projects.

Our objective in site development engineering is to go beyond just the engineering aspect of the project; we work as a team with our clients to understand their present and future needs. With that information, we work with them to evaluate site locations that best suit their short and long- term goals.

Storm water Pond, Canaan Federal Prison, Scranton, PA



Our Site Development Services Include:

Planning and Conceptual Design- evaluation of potential sites; recommendation of most functional, most cost-effective alternative; layout of site reflecting the best use of land available; design of off-site and on-site (underground) utilities including water service, sanitary sewer service, storm drainage facilities, telephone services, electrical service, and television cable service; obtaining all permits necessary to allow construction including State Health Department for extension of water and sewer lines, WV Division of Environmental Protection Sediment and Erosion Control Permit, WV Division of Highways entrance permits, as well as any local permits required; roadway design; layout of industrial lighting; and construction management services to assure compliance with design. Our site development experience includes the engineering design and construction management of three business and industrial parks on abandoned mine lands, which include: Robert C. Byrd Industrial Park in Hardy County and the Harrison County Business and Industry Park and White Oaks Business Park, both in Harrison County.

Grading Plans - which includes development of cut and fill quantities and construction plans (showing existing and proposed contours, structures, and facilities on site) to allow for the best use of available land.

Utility Layout/Mapping - includes design of utility extensions to serve existing and proposed facilities, as well as the complete mapping of existing utilities.

STORM WATER DRAINAGE / SEDIMENT AND EROSION CONTROL

Our experience includes development of Sediment and Erosion Control measures on all types of construction sites as required by the WV Division of Environmental Protection, design of drainage facilities including piping, intake structures, etc., for site stabilization and flood control.

Our staff members have considerable hydrologic and hydraulic design experience and have successfully obtained local, state, and federal erosion and sediment control permits and National Pollutant Discharge Elimination System (NPDES) permits for point source and storm water discharges.



Capabilities in the evaluation and design of storm water drainage include:

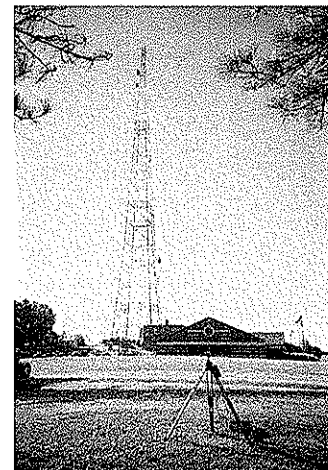
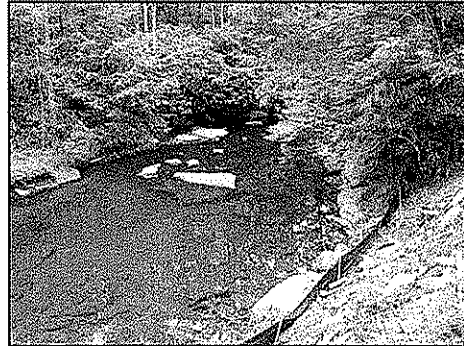
- Hydrology Studies / Hydrographic Mapping
- Storm Water Collection Systems
- Detention Ponds
- Injection Wells
- Underground Storage
- Combined Sewer Overload (CSO) separation

ENVIRONMENTAL REPORTING SERVICES

Thrasher Engineering provides full environmental assessment and clearance services. We have more than 18 years of experience conducting environmental/natural resource compliance consultation with West Virginia Division of Environmental Protection, (WVDEP), Federal Aviation Administration and Federal Highways Administration, US Department of Agriculture-Rural Development Utility Program, and the US Environmental Protection Agency (EPA).

Experience includes:

- Permitting Related Activities (401 and 404)
- NEPA Environmental Document Preparation
- Wetland Delineation and Mitigation
- Rare, Threatened and Endangered Species Section 7 Informal Consultation
- Rare, Threatened and Endangered Species Section 10 Habitat Conservation Plans
- Water Use and Water Quality
- Air and Noise Impacts, Assessments, and Controls
- Soils and Geological Resources
- Cultural Resources –(Sub contracted to a reputable and approved Cultural Resource Consultant)
- Hazardous Materials
- Sediment and Erosion Control
- Consent Orders
- Compliance Schedules
- Site investigations
- SPCC Plans, Contingency Plans, Ground Water Protection Plans and Storm Water Pollution Prevention Plans
- Waste Treatment and Site Remediation
- Waste Disposal
- Channel Restoration
- Stream Bank Stabilization
- Enforcement Actions



SURVEY

In addition to a full service professional engineering staff, Thrasher Engineering maintains a complete surveying department which includes four licensed professional land surveyors, ten full-time survey crews, CADD technicians, and office support staff.

We perform our work utilizing the most current methods and equipment available. Our survey work is accomplished using global positioning systems (GPS) and electronic distance measuring (EDM) survey stations with data gathering capabilities.

The type of surveys provided by Thrasher Engineering varies greatly as well and covers virtually all aspects of land surveying, such as:

Pre- and Post-Mining Surveys - vertical and horizontal control, inspector's report of protected structures, interior and exterior photographs, and videos. For Eastern Associated Coal Corporation, approximately 90 pre- and post-mining surveys were done in 1997. These surveys required photographs and videotaping of existing structures. Additional services performed for Eastern includes construction layout for impoundments, shaft site boundary and topographic surveys, map editing, and collection of well inventory data

Boundary Surveys - verification of land owners, traverse and location of existing monuments, computations of closure, establishment of property corners, actual field stakeout, and preparation of plats and legal descriptions for property owners.

Topographic Surveys - location of existing features and determination of contours used in engineering layout of water distribution systems, sewer collection systems, and industrial park layouts, etc.

Construction Layout - providing horizontal and vertical control for contractor's use and using this information to establish construction controls.

GPS Surveys - horizontal and vertical control networks

CONSTRUCTION MANAGEMENT AND INSPECTION

Thrasher Engineering knows how projects are built. We can provide the knowledgeable and experienced personnel necessary to manage the construction phase of your project. Our project managers and inspectors are experienced in all types of construction activities. From utilities, site development and storm water management to roads, bridges and airports, we apply our construction management and inspection expertise to ensure successful projects. Our construction managers and our inspectors have years of experience; many of our inspectors are certified by the West Virginia Department of Transportation / Division of Highways for roadwork and materials testing.



MATERIALS TESTING

Thrasher Engineering's Materials Testing Department is capable of performing a wide range of field and laboratory tests. Our laboratory at our Clarksburg, WV office is one of only three nationally certified facilities in the State of West Virginia.

Additionally, our engineers and technicians who perform tests both in the field and in the lab are also certified by the State. Services Include:

- Concrete Testing and Inspection
- Soil Testing and Inspection
- Aggregate Testing and Inspection
- Mortar and Grout
- Asphalt
- Paint Coatings
- Sprayed-on Fireproofing
- Subsidence Inspecting
- Caisson and Piling Inspection

GEO TECHNICAL SERVICES

For these projects, we will utilize Novell Geo-Environmental, a Certified Minority/ Women Business Enterprise (MBE/WBE).

EQUIPMENT AND SOFTWARE

Thrasher Engineering provides one of the largest networks of computer aided design (CAD) equipment, software and trained personnel in the State of West Virginia.

AutoCAD Land Desktop 2008 and Microstation V8 software is utilized at 48 CAD stations within the Group. Additionally, our equipment includes 10 large format (size E) plotters and 5 large format plotter / scanners.

CAD plans are prepared by both dedicated CAD employees and by staff engineers and engineering technicians in each of the firm's offices. This equipment allows our design department to perform accurate work quickly and efficiently. All departments have the capability to electronically transmit data to clients requesting this service. This blend of experienced personnel utilizing modern equipment results in successful projects and satisfied clients

FIRM MANAGEMENT AND STAFFING

Thrasher Engineering offers the largest engineering staff in the State of West Virginia. The expertise of the Thrasher Engineering staff is a combination of education and experience; it is reflected in all aspects of our services. The firm is led by a talented group of principals and partners who are dedicated to the success of our projects and the satisfaction of our clients.

FIRM OFFICERS AND PARTNERS

H. Wood Thrasher, P.E. - President
Kenneth P. Moran, P.E. - Vice-President
Kurt L. Newbrough, P.S.

Wm. Randy Watson
Chadwick Biller, P.E.

Chad Riley, P.E.
Clay P. Riley, P.E.
Daniel E. Ferrell, P.E.

Administration
Chief Engineer
Survey / Inspection /
Materials Testing
Public Utilities
Site Development /Highways
/Airports
Site Development
Public Utilities
Public Utilities

H. Wood "Woody" Thrasher, P.E. President of Thrasher Engineering, Inc. graduated from West Virginia University in 1977 with a degree in Civil Engineering. Since that time, he has utilized his engineering skills and entrepreneurial spirit to build Thrasher Engineering, Inc. into West Virginia's largest civil and consulting engineering firm. Mr. Thrasher has extensive experience in all aspects of the engineering process, with emphasis on management and administration of multi-million dollar projects including funding and regulatory issues. Mr. Thrasher forms and supervises multi-project design teams and conducts client needs assessments.

Kenneth P. Moran, P.E. is Vice-President and Chief Engineer. Mr. Moran has 24 years of experience in civil engineering. He provides project management and technical review for both site development and public utilities projects. A graduate of Fairmont State University, Mr. Moran is a registered Professional Engineer (P.E.) in addition to a registered Professional Land Surveyor (P.S).

Also a partner and principal of Thrasher Engineering is **Kurt L. Newbrough, P.S.** Mr. Newbrough provides supervision of all survey activities for the firm performed by ten full-time survey teams. Mr. Newbrough is a licensed Professional Surveyor and has specialized training in OSHA Hazardous Waste Operations and Emergency Response Center in addition to the US Department of Labor / Mine Safety and Health Administration. He also serves in the elected position as Harrison County (WV) Surveyor.

Public utilities system projects are the responsibility of **Wm. Randall Watson.** A graduate of Fairmont State University, Mr. Watson joined Thrasher Engineering in 1984 and is a firm partner. **Clay P. Riley, P.E.,** also a firm partner, is involved in both water

and sanitary sewer utilities projects. He is a graduate of the West Virginia University College of Engineering. **Daniel E. Ferrell, P.E.** is a graduate of West Virginia University and received his Master of Science Degree in Civil Engineering from Old Dominion University. He also is responsible for public utilities projects.

Chadwick Biller, P.E. and **Chad M. Riley P.E.**, round out the senior managers of the company. Mr. Riley is a graduate engineer from Fairmont State University and supervises site development projects. Mr. Biller received his engineering degree from West Virginia University. He is responsible for highways, roads, bridges and airport projects, in addition to site development.

PROJECT TEAM

Thrasher Engineering has assigned a team of experienced professionals to the Mallory project.

Ken Moran, P.E. will serve as **Principal-In-Charge and Chief Engineer** for the project. Mr. Moran is Vice-President of Thrasher Engineering, Inc. and oversees all engineering services provided by the firm.

Chadwick D. Biller, P.E. will be the **Project Manager**. His role in this project will be to oversee all design aspects of the project and work closely with the DEP/ AML office to ensure timeliness client satisfaction and oversee budgetary aspects. Mr. Biller is a Partner in Thrasher Engineering, Inc. and manages site development projects, many of which include remediation, soil and erosion control and drainage aspects.

Jeffrey L. Gola, P.E. as **Project Engineer** will be responsible for design of the project. Mr. Gola's experience includes drainage design projects for site development as well as numerous projects for the West Virginia Department of Highways. Additionally, Mr. Gola is trained and experienced in hydrology and hydraulics.

Environmental services will be managed by **Sheirl Fletcher**, Environmental Manager for Thrasher Engineering, Inc. Ms. Fletcher joined Thrasher Engineering, Inc. after serving 23 years as a geologist, hydrologist and environmental specialist with Consol Energy, Corporation. In that position, she participated in the engineering and final reclamation of five Consol Energy mines in Monongalia County.

The survey aspects of the project will be under the direction of **Kurt Newbrough, P.S.** Mr. Newbrough has over 20 years of experience in survey projects and significant project experience in pre and post mine subsidence surveys. These surveys have been conducted for numerous coal companies at sites throughout the state.

Resumes of the project team members follow as additions to the information included in the AML Consultant's Confidential Qualifications Questionnaire.

KENNETH P. MORAN, P.E., P.S.
Vice President / Chief Engineer

**23 YEARS
EXPERIENCE**

SUMMARY OF EXPERIENCE

Mr. Moran joined Thrasher Engineering in 1991 and currently serves as Vice President and Chief Engineer. Mr. Moran is responsible for feasibility studies and design of public utility projects (sanitary sewer, water and storm water) for state, federal and private clients. Additionally, Mr. Moran has extensive experience in all aspects of engineering and with funding and regulatory agencies in conjunction with projects.

PROJECT EXPERIENCE

Sanitary Sewer Projects

- Hamrick Public Service District Sanitary Sewer Project
- City of Parsons Wastewater Treatment Plant Upgrade
- City of Belmont, Chief Engineer for Sewer Project
- Brooke County PSD, Chief Engineer on Sewer Project
- Town of Junior, Chief Engineer on Sewer Project
- Greater Harrison County PSD, WWTP, Collection System, Extensions
- Huttonsville PSD, WWTP, Collection System, Extensions
- Pea Ridge PSD, WWTP, Collection System, Extensions
- Scott's Run PSD, WWTP, Collection System, Extensions
- Canaan Valley, Sewer collection and Wastewater Treatment Plant Planning Studies
- Pocahontas County PSD, WWTP, Collection System, Extensions
- City of Bridgeport, Lift Station Improvements, WWTP Upgrades
- City of Clarksburg, I&I, WWTP Upgrades, Colonial Village Line Replacement
- Town of Terra Alta, Sewer Collection Improvements and WWTP
- Hundred-Littleton PSD, New Collection and Treatment System

Site Development/Roadways

- Preston EDA, Chief Engineer for Water Extension to Prison
- Preston EDA, Chief Engineer for Park Utilities at Northpointe Industrial Park
- Food Lion, Clarksburg, Nutter Fort, Sabraton, Kingwood
- US Army Reserve Center, Clarksburg and Jane Lew
- Mineral Co High School

EDUCATION:

- B.S., Civil Engineering Technology, 1983 – Fairmont State University

REGISTRATIONS:

- Registered Professional Engineer (PE), State of West Virginia
- Registered Professional Engineer (PE), State of Virginia
- Registered Professional Engineer (PE), State of Ohio
- Professional Land Surveyor (PS), State of West Virginia

AFFILIATIONS:

- Friendship Lodge No.56 A.F. & A.M.
- WV Society of Professional Engineers
- Member of American Society of Civil Engineers

CHADWICK D. BILLER, P.E.
Project Engineer & Manager, Partner

**15 YEARS
EXPERIENCE**

SUMMARY OF EXPERIENCE

Mr. Biller joined Thrasher Engineering in 1999 and serves as Partner in the firm. Mr. Biller's paramount responsibility is supervision of design and construction of all Thrasher Engineering WVDOH projects and airport projects. Mr. Biller has experience in all aspects of engineering with specific emphasis on site development, highways, roads, bridges, and airports.

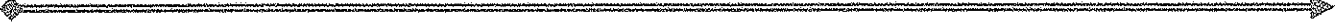
PROJECT EXPERIENCE

Site Development Projects

- Taylor County Commission, Re-roofing of Courthouse and Jail
- Fairmont State University Aerospace Center
- Raleigh County Memorial Airport Industrial Park
- Putnam Business Park
- Wood Products Business Park
- Aurora Flight Sciences
- Various Subdivision in Berkeley County Ranging From 12 to 420 Lots
- Site Plan for Hi-Tech Consortium Expansion, Fairmont, WV
- Site Plans for Nippon Thermostat, Green Metals and Schwans, Putnam County
- Pendleton County Courthouse Annex
- Wingate Hotel, Charles Pointe, Bridgeport, WV
- Daycare Center and USDA Parking Lot, Hardy County
- City of Pleasant Valley, Sidewalks
- Snowshoe Mountain Resort / Intrawest – The Seneca
- Wetland Replacement Project, Putnam County
- Hurricane Business Park
- Shinnston City Park, Including Pool and Bathhouse
- City of Bridgeport, Walking Trail and Bridge

Highway/Road/Bridge Projects

- Old Bridgeport Hill New Storm Drainage System
- Snowshoe Drive Upgrade
- King Coal Highway
- Terra Alta Curve
- Lodgeville Road
- North Bridgeport Bypass
- Corridor H
- Upgrade of US Route 19
- East Street and US Route 50, Parkersburg
- Merrick Creek Connector
- City of Bridgeport, Valley Drive, Chenoweth Drive, Village Drive and Meadowbrook Mall Road
- Lodgeville Bridge
- Indian Fork Bridge
- Jakes Run Bridge
- Littleton and Watersnake Bridges
- Verner Bridge
- Rehabilitation of the 5th Street Bridge, Parkersburg
- Rehabilitation of the 35th and 36th Street Bridges, Charleston
- Kittonsville Bridge Replacement, Lewis Co.

- 
- Water Street Bridge Replacement, Logan Co.
 - Wayne County High School Bridge Replacement
 - David Morgan Memorial Bridge, Marion County

Airports

- Harrison Marion Regional Airport – Improvement Master Plan
- Raleigh County Airport – Business Park and Master Plan
- Grafton Hospital, Helipad Relocation

EDUCATION:

- B.S., Civil Engineering, 1992 – West Virginia University

REGISTRATIONS:

- Registered Professional Engineer (PE), State of West Virginia
- Registered Professional Engineer (PE), State of Pennsylvania
- Registered Professional Engineer (PE), State of Ohio

AFFILIATIONS:

- American Society of Civil Engineers
- Society of American Military Engineers
- National Society of Professional Engineers

JEFFREY L. GOLA, P.E.
Project Engineer

**10 YEARS
EXPERIENCE**

SUMMARY OF EXPERIENCE

Mr. Gola joined Thrasher Engineering in 1998 and serves as Project Engineer for the firm. He is responsible for hydrology and hydraulic studies, structural design and erosion and sediment control aspects of highway, roads, bridges, airports, site development and community improvement projects. Additionally, Mr. Gola is experienced in directing the bidding process, drafting using both AutoCAD and Microstation and managing the overall budget of construction projects.

PROJECT EXPERIENCE

- WVDOH Indian Fork Bridge, Design of Roadway and Bridge, Hydraulic Analysis and Design
- Raleigh County Memorial & Industrial Park, Design of Roadway, Drainage and Erosion and Sediment Control Plan; Design
- City of Pleasant Valley 1000 foot Sidewalk, Project Engineer
- City of Ripley Sidewalks, Project Engineer
- Eight Rivers at Snowshoe Resorts; Project Engineer
- Fairmont State University Squibb Wilson and Locust Area Demolition and Parking Lots; Project Engineer
- Route 279 Bridgeport Bypass, Construction Phases and Temporary Pollution Control
- Buffalo Lake Dam Break Analysis; Hydraulic Analysis
- City of Clarksburg, Design for Staley Slip Repair
- Greystone Development, Emergency Design for Development
- WVDOH Corridor H Davis-Bismark, Design of Roadway and Bridges
- WVDOH Musselman High School, Assistance in Design of Turning Lanes
- WVDOH Lodgeville Road, Assisted in Design and Analysis of Roadway and Bridge
- WVDOH Old Bridgeport Hill, Design of Stormwater System
- WVDOH Verner Bridge Replacement, Assisting in Design and Analysis
- WVDOH Jakes Run Bridge Replacement; Preliminary Design and Draftsman
- Brookside Subdivision; Hydraulics for Bridge Crossing
- WV High Tech Consortium Site Preparation and Mine Stabilization; Assisted in Design
- City of Mannington Specifications, Bidding and Permitting for Demolition
- Harrison-Marion Regional Airport, Assisted on Design for Taxiway Widening and Deicing Pad

EDUCATION:

- B.S., Civil Engineering Technology – West Virginia University, Summa Cum Laude 1998

REGISTRATIONS:

- Registered Professional Engineer (PE), State of West Virginia
- Surveying, Transportation Technology
- Highway Engineering, Water Quality Management
- Hydrology, Fluid Mechanics, Soil Mechanics
- Material, Structural Analysis, Concrete Foundation, Steel Design

AFFILIATIONS:

- American Society of Civil Engineers
- City of Mannington Code Enforcement Appeal Board

SHEIRL L. FLETCHER
Environmental Manager

22 YEARS
EXPERIENCE

SUMMARY OF EXPERIENCE

Sheirl Fletcher joined Thrasher Engineering, Inc. in 2007 and serves as Environmental Manager for the firm. Prior to joining Thrasher, Sheirl served as Environmental Manager for a major coal firm. She has more than 20 years experience and brings comprehensive knowledge of environmental regulatory programs and reporting requirements in multiple states to our clients' projects, along with technical expertise in environmental engineering, geology and hydrology.

EXPERIENCE:

Environmental Management and Safety Compliance

- Preparations of applications for required operating permits and licenses regarding air quality, wastewater and construction projects ensuring compliance with all state and federal regulatory requirements.
- Responsible for compliance with all environmental regulations, including interface with environmental regulators, in a manner consistent with company's policies and procedures.
- Assure full compliance with OSHA (Occupational Safety and Health Administration) regulations
- Responsible for the preparation of NEPA documents including Environmental Impact Statements and Environmental Assessments.
- Developed Probable Hydrologic Impact Studies and provided technical report of findings.
- Prepare, organized, and maintained inspection reports and records, assuring on-time and accurate filings.
- Compiled and reported environmental statistics and remedial initiatives to Corporate Environmental Quality Control.
- Monitored projects to ensure that they were on task in reaching goals and objectives while staying within budgetary limits.
- Inspected construction sites, and waste water treatment and disposal facilities and systems for conformance with federal, state, or local regulations.
- Informed company personnel of inspection findings and explained how problems were prevented or corrected.
- Contributed to the development of company policies, goals, objectives, and procedures, with respect to compliance of environmental regulations.
- Oversaw activities of outside consultants providing necessary services.
- Managed staff, prepared work schedules and assigned specific duties.

Geology

- Analyzed and interpreted geological, geochemical, and geophysical information from
 - sources such as survey data, well logs, bore holes, and aerial photos.
- Planned and conducted geological field studies and surveys by: development of drilling pad sites, soils and subsurface drilling to collect data for interpretation
- Prepared geological maps, cross-sectional diagrams, charts, and reports concerning mineral extraction, land use, and resource management, using results of field work and laboratory research.

Hydrology

- Studied and documented quantities, distribution, disposition, and development of underground and surface waters.
- Designed and conducted scientific hydro-geologic investigations to ensure that accurate and appropriate information was available for use in water resource management decisions.
- Coordinated and supervised the work of professional and technical staff, including consultants, engineers, technologists, and technicians.
- Drafted final reports describing research results, including illustrations, appendices, maps, and other attachments.
- Studied wastewater and storm water issues, including flood and drought risks, water quality, wastewater, and impacts on wetland habitats.
- Assessed ground and surface water movement to provide advice regarding issues such as waste management, route and site selection, and the restoration of contaminated sites.
- Applied research findings to help minimize the environmental impacts of pollution, water-borne diseases, erosion, and sedimentation.
- Investigated complaints or conflicts related to the alteration of public waters, gathering information, recommending alternatives, informing participants of progress, and preparing draft orders.
- Determined sampling locations and methods, and collected water or wastewater samples for analysis, preserving samples with appropriate containers and preservation methods.

EDUCATION/TRAINING:

- West Virginia University, Morgantown, WV - Bachelor of Science- Geology

- **Additional Training**
- Contemporary Supervision
- Conflict Management
- Influence Management

KURT NEWBROUGH, P.S.
Survey Supervisor, Principal

23 YEARS
EXPERIENCE

SUMMARY OF EXPERIENCE

Mr. Newbrough joined Thrasher Engineering in 1990 and is Principal and Partner in the firm. Mr. Newbrough serves as Survey Supervisor and is responsible for assignment and review of all survey activities. Mr. Newbrough has extensive experience in all aspects of surveys, including but not limited to boundary and easement surveys and the preparation of plats and legal descriptions. Mr. Newbrough also performs courthouse research, computes field data for construction layout, and processes GPS raw data for both public and private clientele in conjunction with Thrasher Engineering projects as well as separate contracts. He also serves in the elected position of Harrison County (WV) Surveyor.

PROJECT EXPERIENCE

Boundary Surveys

- North and South Levee Areas for the Town of Moorefield
- Flood Control for the US Army Corps of Engineers
- FBI Fingerprint Identification Complex for the US Department of Justice
- Hardy County Rural Development Authority
- USARC sites for the US Army Corps of Engineers
- Private Surveys

GPS Surveys

- US Army Corps of Engineers, Baltimore Dist
- Benatech Associates
- IDG, Inc.
- Carter Van Dyke Associates

Topographic Surveys

- West Virginia Division of Transportation, Department of Highways
- Harrison County Board of Education
- Gandee and Partners for Huntington Summit High School
- William A. Bruce, AIA for Food Lion Stores
- Calvert Excavating and Paving, Inc.
- Howard Concrete
- Dodd Corporation
- Mid Atlantic Storage Systems, Inc.

EDUCATION

- Surveying – John Tyler Community College, Chester, VA
- United Career Center, Clarksburg, WV

REGISTRATIONS

- Professional Land Surveyor (PS), West Virginia #1618 - 1995
- OSHA Hazardous Waste Operations and Emergency Response Center 29 CFR 1910.120
- US Department of Labor/Mine Safety and Health Administration

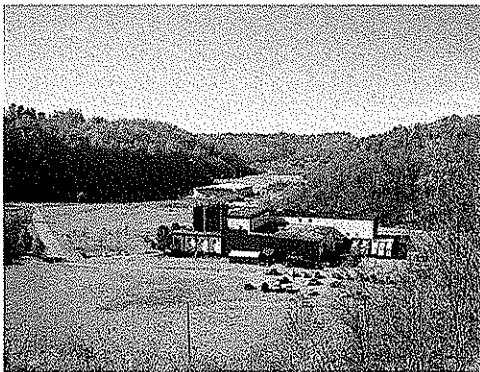
AFFILIATIONS

- West Virginia Association of Land Surveyors
- American Congress on Surveying and Mapping
- Member Strathmore's Who's Who

RELATED PRIOR EXPERIENCE

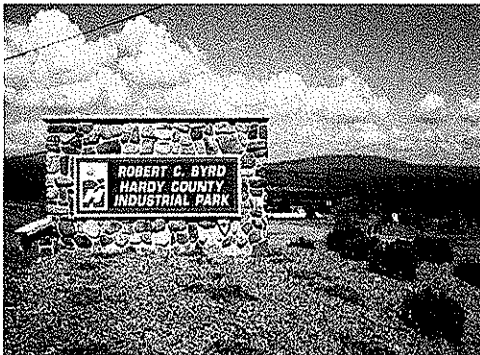
Thrasher Engineering offers significant experience in open drainage and sediment and erosion projects in addition to abandoned mine lands projects, covering a broad range of expertise. In the following section are examples of our experience in each of these areas related to the Mallory Refuse Pile project

SITE DEVELOPMENT PROJECTS – SEDIMENT AND EROSION MEASURES



Harrison County Business and Technology Park
Robert C. Byrd Industrial Park – Hardy County
White Oaks Business Park – Harrison County

Thrasher Engineering provided survey, site planning, and engineering design services for each of these business/industrial parks which were developed on abandoned mine lands. The design of each project included plans for landslide / erosion and sediment control within grading plans.



Mingo County Wood Products Industrial Park, Mingo County, West Virginia

Client: Mingo County Redevelopment Authority
Mike Whitt, Executive Director
304-235-0042

Project Description: This project consisted of the development of conceptual layout and final design drawings for the park. The work consisted of drainage, sediment, erosion measures, and on-site utilities including water and sanitary sewer, along with the design and permitting of a 12,000 gpd wastewater treatment plant. Also included in this project was a roadway design conforming to WV Department of Highways specifications and criteria. Construction management services were also provided.



Indian Ridge Industrial Park / McDowell County Prison

Client: Federal Bureau of Prisons
202-514-6461

McDowell County Commission
304-436-8548

Project Description: The objective of this project was to push back an existing highwall and enlarge the flat area on the McDowell County's Indian Ridge Industrial Park, a portion of which is being used to accommodate a Federal Prison. Thrasher Engineering is now providing the site development engineering services for that facility. This project consisted of the design, bidding, and construction management for the preparation of an industrial park/federal prison site. **The construction involved moving 20,000,000 CY of earth to create approximately 250 relatively flat acres for development. Inclusive in our scope of work was site grading, sediment and erosion control, stream relocations, and wetland mitigation.** This work involved laying back an existing highwall and placing the excavated material into a nearby valley to increase the developable acreage of the site. The valley fill serves as a buffer and will be used for non-structural uses.



Belington Industrial Park

Client: Barbour County
Office for Economic Development
304-456-1225

This project consisted of the development and conceptual layout and final design drawings for the park. The work consisted of on-site utilities including water and sanitary sewer.

Specifically, this project included:

- 8,000 LF of water line,
- 2,700 LF of gravity sewer line,
- Manholes, and Fire hydrants.

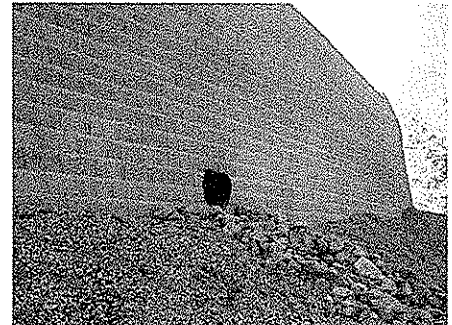
Additionally, this project included an access road conforming to WV DOT/Department of Highways specifications and criteria, earthwork for building site preparation and storm water detention. Construction management services were also provided.



West Virginia National Cemetery

Client: U.S. Department of Veterans Affairs
Peter Fernandez, National Cemetery
Administration
Carter VanDyke Associates
215-345-5053

Project Description: The project consisted of the planning, design and bidding for the expansion of the WV National Cemetery. The scope of the work included site utilities, storm sewers, roads, sidewalks, retaining walls, pre-cast concrete crypt burial areas, site grading and sediment and erosion control. Construction management and survey services were also provided.

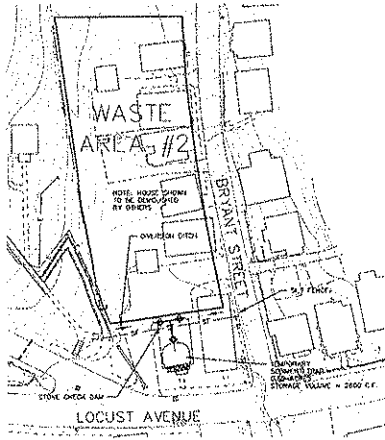


Fairmont State University

Client: Fairmont State University
Mr. Jim Decker, VP Facilities Management
304-367-4000

Thrasher Engineering is providing civil engineering services throughout the Fairmont State University campus within the scope of FSU's 10-year \$10 million master plan for infrastructure improvements. This portion of the project included storm water



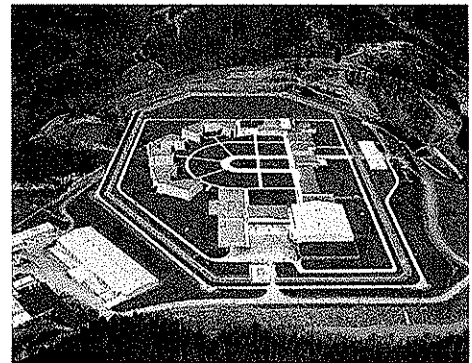


management during and after construction. During the construction phase erosion and sediment control was contained by installing silt fence, water barriers, temporary sediment traps, inlet protection, diversion ditches and utility matting. The final site improvements contain swales, ditches, vegetation, landscaping and culverts to control the storm water and limit the pollution from the site. Ditches are protected from erosion and all unpaved areas are stabilized with vegetation.

Glenville Correctional Institution, Gilmer County, West Virginia

Client: Federal Bureau of Prisons
202-514-6461

Project Description: This project consisted of the design/build of a U.S. Correctional Facility. Inclusive in our scope of work were the site utilities (sewer, water, stormwater management gas) site grading, sediment & erosion control, layout of facilities, on site roads and parking, various site elements and oversight during the construction phase.



Canaan Federal Prison, Scranton, Pennsylvania

Client: Federal Bureau of Prisons
202-514-6461.

Project Description: Thrasher Engineering served as a Team Member on this design-build project of US Penitentiary and Federal Prison Camp. The scope of services included sewer, water, storm water management and gas utilities, site grading, sediment and erosion control, relocation of a township road, layout of the facility and oversight during construction. The drainage on this project required the design of a storm water detention pond.



West Virginia Division of Highways, Harrison County, West Virginia

Client: West Virginia Division of Highways
304-558-2830

Total Project Cost: \$1,200,000

Project Description: This project consisted of developing construction drawings and right-of-way documents for a new storm drain system along Old Bridgeport Hill. The existing storm drain system was 25 to 30 feet deep and was collapsing in several areas; therefore, a new system of inlets and pipes were designed to collect surface water.

ABANDONED MINE LAND PROJECTS

WV DEP ABANDONED MINE LANDS – AMHERSTDALE (LOGAN COUNTY)

PRE-SETTLING BASIN AND PRE-TREATMENT FACILITY PROJECT

Client: WV DEP
Office of Abandoned Mine Lands and Reclamation
304-926-0485

Project Description: The AML affected area is located in Logan County on CR 16, west of the city limits of Man, a distance of approximately 12.6 Miles. The scope of the project is the design and construction of a pre-settling basin and pre-treatment system to remove metals and turbidity from the existing water sources, allowing the water existing treatment facility to utilize the surface and groundwater. The scope of services Thrasher Engineering provided for this project included: Survey, supervision of subsurface investigation, environmental review, preparation of design, drawings, development of construction documents. .

WV DEP ABANDONED MINE LANDS – RAGLAND (MINGO COUNTY) WATER LINE EXTENSION PROJECT

Client: WV DEP
Office of Abandoned Mine Lands and Reclamation
304-926-0485

Project Description: The AML affected area is located in the Midwestern portion of Mingo County. The area is approximately 2.6 square miles. The scope of services Thrasher Engineering provided for this project included: survey, supervision of subsurface investigation, environmental review, design, and development of construction documents. Upon construction, Thrasher will provide construction management services.

ACID MINE DRAINAGE / COAL COMPANY EXPERIENCE

Martinka Water Treatment Plant

Client: Martinka Coal
Mr. Gary Timms
Water Treatment Plant Supervisor
Fairmont, WV
304-366-5516

Project Cost: \$6.5 Million

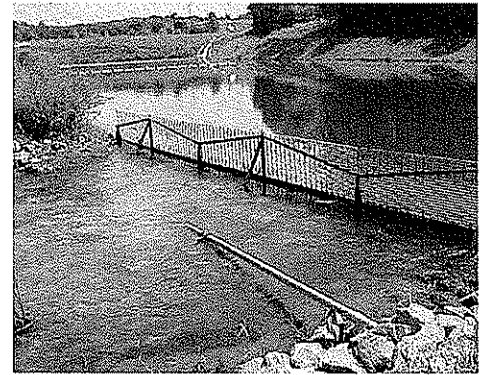
This project consisted of the design of a 17.3 MGD Water Treatment Plan to blend mine borehole water with acid mine drainage; the plan removes iron (1000 mg/l (ferric hydroxide) to less than 1 mg/l.

The plant design included:

- ❑ Aeration – Blending and Stripping Carbon Dioxide
- ❑ Feed Hydrogen Peroxide – Shifts chemical equilibrium for utilization of naturally calcium carbonate for neutralization
- ❑ Coagulation/Flocculation – Three (3) stage tapered flocculation with axial flow propeller mixers and variable frequency drives
- ❑ Sedimentation – Six (6) settling ponds with **ferric hydroxide** sludge removal and underground injection wells
- ❑ Polishing Pond – Sodium hexamataphosphate for calcium stabilization.

Dayton Carpenter, P.E., DEE, Project Engineer was rewarded the following for the project:

- ❑ **2002 WV ACEC Gold Award – Engineering Excellence**
- ❑ **2002 WV Manufacturer's Association Environmental Leadership Award for Innovative Technology**



EXPERIENCE OF SHEIRL FLETCHER, ENVIRONMENTAL MANAGER

Consol Coal Company: Abandoned Mine Lands Remediation / Mine Reclamation

The projects included engineering and final reclamation of the following Consol Energy mines in Monongalia County, West Virginia: Blacksville No. 1, Pursglove Mine, Arkwright Mine, Osage Mine and Humphrey Mine.

Final reclamation included AMD and site remediation of the following types of surface support facilities:

- Refuse / slurry impoundments
- AMD treatment plants including impoundments and sludge lagoons
- Preparation plants and coal stockpile areas
- Shaft and drift openings
- Boreholes.

Consol Coal Company – Hydrology and Hydraulics

During the final abandonment of the Morgantown operations of Consolidation Coal Company, performed geologic hydrologic study of the Arkwright, Osage, Pusglove and Humphrey Mine pools and their inter-relationship to one another and to adjacent mining operations.

MINING RELATED SURVEY PROJECT EXPERIENCE

Eastern Associated Coal Corporation

Client: Eastern Associated Coal Corporation
Allen Moore, Project Manager
304-449-1911

Project Description: This ongoing project consists of performing pre and post-mining subsidence surveys on structures and dwellings located within and surrounding the permit boundaries of the Federal No. 2 Mine.

A typical project of this nature consists of establishing horizontal and vertical control, preservation of control points, elevations on critical structure points, baseline establishment and profile, collection of water samples for springs and wells, inspectors report of protected structures, interior and exterior digital photography, and digital CADD mapping of the field survey.

Eastern Associated Coal Corporation

Client: Eastern Associated Coal Corporation
Allen Moore, Project Manager
304-449-1911

Project Description: Past and ongoing projects have been performed at the Federal No. 2 Mine which includes:

- Water line surveys and design for replacement of existing water sources
- Structure identification surveys, water well inventories, and stream monitoring surveys
- Ground control for aerial mapping
- Gas well locations for down-hole surveys
- Subsidence stream locations and profiles
- Permit boundary staking
- Construction layout for refuse impoundments
- Scott's Run Railroad Bypass project design survey, design, and construction layout
- Boundary surveys for fee purchase property acquisitions
- Construction layout for new shaft sites
- Power line profiles and construction layout
- Topographic design surveys and soundings for impoundment ponds
- Drainage control surveys and design for surface water runoff

Martinka Coal Company

Client: Martinka Coal Company
Gary Timms, Project Manager
304-366-5516

Project Description: This project consisted of the collection of data to be used in conjunction with the design of an acid mine drainage facility, designed by Thrasher Engineering, Located at the Tygart River Mine.

Critical land survey components consisted of the following:

- Topographic surveys and digital mapping of approximately 50 acres
- Dewatering borehole layout
- Downstream cross-section surveys for volume computations
- Protected structures identification and mapping
- Pre-blasting surveys on nearly 200 structures
- Construction layout of the entire facility

Martinka Coal Company – Fairmont, WV

Client: Martinka Coal Company
Gary Timms, Project Manager
304-366-5516

Project Description: Past and ongoing projects have been performed at the Tygart River Mine including:

- Dewatering borehole computations and layout
- Stockpile surveys
- Certification of drainage system, ponds 5, 6, and 7 Permit No. 1001-87
- Topographic survey and construction layout of the existing Guyses Run AMD Facility
- Boundary surveys for fee purchase property acquisitions
- Subsidence stream locations and profiles
- Construction layout for refuse impoundment
- Ground control for aerial mapping
- Scanned mapping digital overlays
- Conceptual site plan for recreational facilities

PROJECT APPROACH

To develop a full understanding of the WV DEP's needs for this project, Thrasher Engineering, Inc.'s representatives have developed the following project approach and mapping to demonstrate our technical abilities and straight forward method of design and construction.

This project approach is a general approach that will be used on any WVDEP reclamation project and may need to be modified depending on the existing information that is available for the specific project. Also, some steps may not be needed on every project.

Step #1 Obtain adequate mapping.

The limits of construction will be flown and digitally mapped or if the area is small enough field survey crews will field survey the area. Thrasher will then provide 1"=50' scale mapping with 2' contours. Spot elevations and critical cross sections may be completed in the field if necessary to make tie-ins.

Step #2 Install piezometers and/or core borings.

This is the only step in the design process that will be completed by Novel Geo-Environmental. Novel will be responsible to determine water and pavement elevations in mine portals. Novel is already providing this service to the WVDEP in a separate statewide contract.

Step #3 Design the project.

Thrasher will work closely with the WVDEP in designing the project. Field reviews will be conducted to determine the most cost effective method to be used to reclaim the area. A preliminary design based on the field reviews will be submitted to the WVDEP. After receiving comments or corrections, Thrasher will submit the final plans, specifications and design report. The design report will consist of the bore logs, piezometer elevations, quantity calculations, right of entry forms and any other assumptions that were made during the design.

Step #4 Prepare for construction.

Thrasher will also set up reference points, benchmarks and control points outside of the construction limits so the contractor will be able to construct the project in the future. Thrasher will complete any permits, right of ways, and easements that are necessary to construct the project. The project manager and engineer will attend the pre-bid meetings to answer any questions that contractors may have about the design.

Step #5 Construct the project.

The project manager will be available during construction to answer any questions the contractor or inspector may have. Thrasher inspectors that are certified by the State of WV are available to be used if the WVDEP requests this service.

WEST VIRGINIA DEPARTMENT OF ENVIRONMENTAL PROTECTION
 AML CONSULTANT CONFIDENTIAL QUALIFICATION QUESTIONNAIRE Attachment "B"

PROJECT NAME
 Mallery Refuse Design Services Project
 - DEP #14391

1. FIRM NAME
 THRASHER ENGINEERING, INC.

4. HOME OFFICE TELEPHONE
 304-624-4108

5. ESTABLISHED (YEAR)
 1983

6. TYPE OWNERSHIP
 Individual Corporation X
 Partnership Joint-Venture YES NO X

2. HOME OFFICE BUSINESS ADDRESS
 30 COLUMBIA BLVD., CLARKSBURG, WV
 26301

3. FORMER FIRM NAME
 NOT APPLICABLE

7. PRIMARY AML DESIGN OFFICE: ADDRESS/ TELEPHONE/ PERSON IN CHARGE/ NO. AML DESIGN PERSONNEL EACH OFFICE
 30 COLUMBIA BLVD, CLARKSBURG, WV / 304-624-4108 / KENNETH P. MORAN, P.E., VICE PRESIDENT / 12
 300 ASSOCIATION DRIVE, CHARLESTON, WV / 304-343-7601 / JONATHAN CARPENTER, MANAGING PARTNER / 2

8. NAMES OF PRINCIPAL OFFICERS OR MEMBERS OF FIRM
 H. Wood Thrasher, P.E. - President
 Kenneth P. Moran, P.E. - Vice President
 Kurt Newbrough, P.S. - Secretary

8a. NAME, TITLE, & TELEPHONE NUMBER - OTHER PRINCIPALS
 WM. RANDY WATSON -304-624-4108 - PARTNER
 CHAD BILLER, P.E.-304-624-4108 -PARTNER
 CHAD M. RILEY, P.E.-304-624-4108 - PARTNER
 CLAY P. RILEY, P.E.-304-624-4108-PARTNER
 DANIEL E. FERRELL, P.E. -304-324-4108 -PARTNER

9. PERSONNEL BY DISCIPLINE

| | | | | | | |
|----------------------------|---|----------------------|---|--------------------------|----|----------------------|
| 22 ADMINISTRATIVE | — | ECOLOGISTS | — | LANDSCAPE ARCHITECTS | 1 | STRUCTURAL ENGINEERS |
| 3 ARCHITECTS | — | ECONOMISTS | — | MECHANICAL ENGINEERS | 47 | SURVEYORS |
| — BIOLOGIST | — | ELECTRICAL ENGINEERS | — | MINING ENGINEERS | — | TRAFFIC ENGINEERS |
| 27 CADD OPERATORS | 3 | ENVIRONMENTALISTS | 2 | PHOTOGRAMMETRISTS | — | OTHER |
| — CHEMICAL ENGINEERS | — | ESTIMATORS | — | PLANNERS: URBAN/REGIONAL | — | |
| 26 CIVIL ENGINEERS | 1 | GEOLOGISTS | — | SANITARY ENGINEERS | — | |
| 36 CONSTRUCTION INSPECTORS | — | HISTORIANS | — | SOILS ENGINEERS | — | |
| — DESIGNERS | — | HYDROLOGISTS | 2 | SPECIFICATION WRITERS | — | 170 TOTAL PERSONNEL |
| — DRAFTSMEN | — | | | | | |

TOTAL NUMBER OF WV REGISTERED PROFESSIONAL ENGINEERS IN PRIMARY OFFICE: 14
 *RPES other than Civil and Mining must provide supporting documentation that qualifies them to supervise and perform this type of work.

10. HAS THIS JOINT-VENTURE WORKED TOGETHER BEFORE? YES NO NOT APPLICABLE

11. OUTSIDE KEY CONSULTANTS/SUB-CONSULTANTS ANTICIPATED TO BE USED. Attach "AML Consultant Confidential Qualification Questionnaire".

| | | |
|--|---|--|
| <p>NAME AND ADDRESS: NOVEL GEO-ENVIRONMENTAL 1116 Smith Street, Suite 312 Charleston, WV 25301 304-340-7050</p> | <p>SPECIALTY: GEO-TECHNICAL SERVICES</p> | <p>WORKED WITH BEFORE <input checked="" type="checkbox"/> Yes <input type="checkbox"/> No</p> |
| <p>NAME AND ADDRESS:</p> | <p>SPECIALTY:</p> | <p>WORKED WITH BEFORE <input type="checkbox"/> Yes <input type="checkbox"/> No</p> |
| <p>NAME AND ADDRESS:</p> | <p>SPECIALTY:</p> | <p>WORKED WITH BEFORE <input type="checkbox"/> Yes <input type="checkbox"/> No</p> |
| <p>NAME AND ADDRESS:</p> | <p>SPECIALTY:</p> | <p>WORKED WITH BEFORE <input type="checkbox"/> Yes <input type="checkbox"/> No</p> |
| <p>NAME AND ADDRESS:</p> | <p>SPECIALTY:</p> | <p>WORKED WITH BEFORE <input type="checkbox"/> Yes <input type="checkbox"/> No</p> |
| <p>NAME AND ADDRESS:</p> | <p>SPECIALTY:</p> | <p>WORKED WITH BEFORE <input type="checkbox"/> Yes <input type="checkbox"/> No</p> |
| <p>NAME AND ADDRESS:</p> | <p>SPECIALTY:</p> | <p>WORKED WITH BEFORE <input type="checkbox"/> Yes <input type="checkbox"/> No</p> |
| <p>NAME AND ADDRESS:</p> | <p>SPECIALTY:</p> | <p>WORKED WITH BEFORE <input type="checkbox"/> Yes <input type="checkbox"/> No</p> |
| <p>NAME AND ADDRESS:</p> | <p>SPECIALTY:</p> | <p>WORKED WITH BEFORE <input type="checkbox"/> Yes <input type="checkbox"/> No</p> |

12. A. Is your firm experienced in Abandoned Mine Land Remediation/Mine Reclamation Engineering?

YES Description and Number of Projects: THRASHER ENGINEERING HAS PERFORMED NUMEROUS PROJECTS INVOLVING LAND REMEDIATION, STORM WATER DRAINAGE, SLIP REPAIR AND MASS GRADING IN RELATION TO SITE DEVELOPMENT, WATER LINE AND SANITARY SEWER PROJECTS. OUR DESIGN TEAM ENVIRONMENTAL MANAGER HAS 23 YEARS OF EXPERIENCE AS GEOLOGIST, HYDROLOGIST AND ENVIRONMENTAL SPECIALIST WITH CONSOL ENERGY. PROJECTS INCLUDED THE ENGINEERING AND FINAL RECLAMATION OF THE BLACKSVILLE NO.1D, PURSGLOVE, ARKWRIGHT, OSAGE AND HUMPHREY MINES IN MONONGALIA COUNTY THE THRASHER ENGINEERING SURVEY DEPARTMENT HAS PERFORMED SERVICES FOR PRE AND POST MINE SUBSIDENCE FOR MAJOR COAL COMPANIES. ADDITIONALLY THRASHER ENGINEERING, INC.'S CHARLESTON, WEST VIRGINIA OFFICE WAS AWARDED TWO WATER LINE PROJECTS FOR AML AFFECTED AREAS IN 2005. THESE PROJECTS WERE THE AMHERSTDALE PROJECT AND THE RAGLAND PROJECT IN MINGO / LOGAN COUNTIES.

B. Is your firm experienced in Soil Analysis?

YES Description and Number of Projects: THRASHER ENGINEERING MAINTAINS A MATERIALS TESTING AND ANALYSIS LAB AT ITS CLARKSBURG, WV OFFICE. SOIL ANALYSIS EXPERIENCE IS SPECIFICALLY IN GRADATIONS AND CLASSIFICATION WE PERFORM THESE SOIL ANALYSES ON ALL OUR PRIVATELY FUNDED SITE DEVELOPMENT PROJECTS.

C. Is your firm experienced in hydrology and hydraulics?

YES Description and Number of Projects: OUR TEAM ENVIRONMENTAL MANAGER PARTICIPATED IN THE ENGINEERING AND ENVIRONMENTAL PERMITTING OF THE FINAL ABANDONMENT OF THE MORGANTOWN OPERATIONS OF CONSOL COAL COMPANY. THIS INCLUDED THE GEOLOGIC HYDROLOGY STUDY OF THE ARKWRIGHT, OSAGE PURSGLOVE AND HUMPHREY MINE POOLS AND THEIR INTER-RELATIONSHIP TO ONE ANOTHER AND TO ADJACENT MINING OPERATIONS. SHE ALSO WAS INVOLVED IN THE STRATEGIC PLACEMENT OF AACID MINE DRAINAGE TREATMENT FACILITIES AND PLANT DESIGN. THROUGH OUR WORK IN THE PLANNING AND DESIGN OF BRIDGES FOR THE WEST VIRGINIA DEPARTMENT OF HIGHWAYS AND WATER LINE EXTENSION PROJECTS, THRASHER ENGINEERING HAS EXTENSIVE EXPERIENCE IN HYDROLOGY. WE ALSO HAVE EXTENSION EXPERIENCE IN HYDRAULIC MODELING FOR WATER AND WASTEWATER PROJECTS THROUGHOUT WEST VIRGINIA.

D. Does your firm produce its own Aerial Photography and Develop Contour Mapping?

YES Description and Number of Projects NO WE UTILIZE THE SERVICES OF NUMEROUS FIRMS, INCLUDING PENTREE, INC. WHICH IS AN AFFILIATE COMPANY OF THRASHER ENGINEERING INC. THROUGH THE RESOURCE ENGINEERING GROUP HOLDING COMPANY.

E. Is your firm experienced in domestic waterline design? (Include any experience your firm has in evaluation of aquifer degradation as a result of mining.)

YES Description and Number of Projects: THRASHER ENGINEERING HAS DESIGNED OVER 100 WATER LINE EXTENSION PROJECTS IN THE PAST 20 YEARS OF BUSINESS. PROJECTS INCLUDE LINES, BOOSTER STATIONS, WATER TREATMENT PLANTS, AND STORAGE FACILITIES. MANY OF THESE PROJECTS ARE IN AREAS WITH AML AFFECTED WATER

F. Is your firm experienced in Acid Mine Drainage Evaluation and Abatement Design?

YES Description and Number of Projects: OUR TEAM ENVIRONMENTAL MANAGER PARTICIPATED IN THE ENGINEERING AND ENVIRONMENTAL PERMITTING OF THE FINAL ABANDONMENT OF THE MORGANTOWN OPERATIONS OF CONSOL COAL COMPANY. THIS INCLUDED THE GEOLOGIC HYDROLOGY STUDY OF THE ARKWRIGHT, OSAGE PURSGLOVE AND HUMPHREY MINE POOLS AND THEIR INTER-RELATIONSHIP TO ONE ANOTHER AND TO ADJACENT MINING OPERATIONS. SHE ALSO WAS INVOLVED IN THE STRATEGIC PLACEMENT OF AACID MINE DRAINAGE TREATMENT FACILITIES AND PLANT DESIGN. IN ADDITION, THRASHER ENVIRONMENTAL, THE CHARLESTON WV BRANCH OF OUR COMPANY DESIGNED AN AWARD WINNING WATER TREATMENT PLANT FOR MARTINKA MINES IN MARION COUNTY, WEST VIRGINIA TO TREAT DRAINAGE.

13. PERSONAL HISTORY STATEMENT OF PRINCIPALS AND ASSOCIATES RESPONSIBLE FOR AML PROJECT DESIGN (Furnish complete data but keep to essentials)

| NAME & TITLE (Last, First, Middle Int.) | YEARS OF EXPERIENCE | |
|--|---------------------------------|---|
| | YEARS OF AML DESIGN EXPERIENCE: | YEARS OF AML RELATED DESIGN EXPERIENCE: |
| MORAN, KENNETH P. | 5 | 15 |
| Brief Explanation of Responsibilities Mr. Moran joined Thrasher Engineering in 1991 and currently serves as Vice President and Chief Engineer. Mr. Moran is responsible for feasibility studies and design of public utility projects (sanitary sewer, water and storm water) for state, federal and private clients. Additionally, Mr. Moran has extensive experience in all aspects of engineering and with funding and regulatory agencies in conjunction with projects. | | |
| EDUCATION (Degree, Year, Specialization) B.S., Civil Engineering Technology, 1983 - Fairmont State University | | |
| MEMBERSHIP IN PROFESSIONAL ORGANIZATIONS | | |
| <ul style="list-style-type: none"> ■ Friendship Lodge No.56 A.F. & A.M. ■ WV Society of Professional Engineers ■ Member of American Society of Civil Engineers | | |
| REGISTRATION (Type, Year, State) | | |
| <ul style="list-style-type: none"> ■ Registered Professional Engineer (PE), State of West Virginia ■ Registered Professional Engineer (PE), State of Virginia ■ Registered Professional Engineer (PE), State of Ohio ■ Professional Land Surveyor (PS), State of West Virginia | | |

13. PERSONAL HISTORY STATEMENT OF PRINCIPALS AND ASSOCIATES RESPONSIBLE FOR AML PROJECT DESIGN (Furnish complete data but keep to essentials)

| NAME & TITLE (Last, First, Middle Int.) | YEARS OF EXPERIENCE | |
|--|---------------------------------|---|
| | YEARS OF AML DESIGN EXPERIENCE: | YEARS OF AML RELATED DESIGN EXPERIENCE: |
| BILLER CHADWICK D. P.E. | - | 15 |
| Brief Explanation of Responsibilities: Mr. Biller joined Thrasher Engineering in 1999 and serves as Partner in the firm. Mr. Biller's paramount responsibility is supervision of design and construction of Thrasher Engineering site development, highway and bridges and airport projects in the position of Principal In-Charge and Project Manager. As a Partner in Thrasher Engineering, Inc. he also serves as President of Berkeley Associates, Inc, an affiliate company of Thrasher Engineering within the Resource Engineering Group, Inc. Located in Martinsburg, West Virginia, Berkeley Associates is a civil engineering firm focusing on site development for commercial and residential developments | | |
| EDUCATION (Degree, Year, Specialization): | | |
| <ul style="list-style-type: none"> ■ B.S., Civil Engineering, 1992 - West Virginia University | | |
| MEMBERSHIP IN PROFESSIONAL ORGANIZATIONS | | |
| <ul style="list-style-type: none"> ■ American Society of Civil Engineers ■ Society of American Military Engineers ■ National Society of Professional Engineers | | |
| REGISTRATION (Type, Year, State) | | |
| <ul style="list-style-type: none"> ■ Registered Professional Engineer (PE), State of West Virginia ■ Registered Professional Engineer (PE), State of Pennsylvania ■ Registered Professional Engineer (PE), State of Ohio | | |

13. PERSONAL HISTORY STATEMENT OF PRINCIPALS AND ASSOCIATES RESPONSIBLE FOR AML PROJECT DESIGN (Furnish complete data but keep to essentials)

| | | | |
|---|---------------------------------|---|--|
| NAME & TITLE (Last, First, Middle Int.) | YEARS OF AML DESIGN EXPERIENCE: | YEARS OF AML RELATED DESIGN EXPERIENCE: | YEARS OF DOMESTIC WATERLINE DESIGN EXPERIENCE: |
| GOLA, JEFFREY L. | 10 | 10 | 10 |

Brief Explanation of Responsibilities Mr. Gola joined Thrasher Engineering in 1998 and serves as Project Engineer for the firm. He is responsible for hydrology and hydraulic studies, structural design and erosion and sediment control aspects of highway, roads, bridges, airports, site development and community improvement projects. Additionally, Mr. Gola is experienced directing the bidding process, drafting using both AutoCAD and Microstation and managing the overall budget of construction projects.

EDUCATION (Degree, Year, Specialization)

- B.S., Civil Engineering Technology - West Virginia University, Summa Cum Laude 1998

MEMBERSHIP IN PROFESSIONAL ORGANIZATIONS

- American Society of Civil Engineers
- City of Mannington Code Enforcement Appeal Board

REGISTRATION (Type, Year, State)

- Registered Professional Engineer (PE), State of West Virginia

13. PERSONAL HISTORY STATEMENT OF PRINCIPALS AND ASSOCIATES RESPONSIBLE FOR AML PROJECT DESIGN (Furnish complete data but keep to essentials)

| | | | |
|---|---------------------------------|---|--|
| NAME & TITLE (Last, First, Middle Int.) | YEARS OF AML DESIGN EXPERIENCE: | YEARS OF AML RELATED DESIGN EXPERIENCE: | YEARS OF DOMESTIC WATERLINE DESIGN EXPERIENCE: |
| FLETCHER, SHEIRL | -23 | 23 | - |

Brief Explanation of Responsibilities Sheirl Fletcher joined Thrasher Engineering, Inc. in 2007 and serves as Environmental Manager for the firm. Prior to joining Thrasher, Sheirl served as Environmental Manager for a major coal firm. She has more than 20 years experience and brings comprehensive knowledge of environmental regulatory programs and reporting requirements in multiple states to our clients' projects, along with technical expertise in environmental engineering, geology and hydrology

EDUCATION (Degree, Year, Specialization)

- B.S., West Virginia University, Morgantown, WV - Bachelor of Science- Geology

MEMBERSHIP IN PROFESSIONAL ORGANIZATIONS

REGISTRATION (Type, Year, State) NA

13. PERSONAL HISTORY STATEMENT OF PRINCIPALS AND ASSOCIATES RESPONSIBLE FOR AML PROJECT DESIGN (Furnish complete data but keep to essentials)

| NAME & TITLE (Last, First, Middle Int.) | YEARS OF EXPERIENCE | | |
|--|---------------------------------|--|---|
| | YEARS OF AML DESIGN EXPERIENCE: | YEARS OF AML RELATED DESIGN EXPERIENCE: 23 | YEARS OF DOMESTIC WATERLINE DESIGN EXPERIENCE: 23 |
| NEWBROUGH, KURT | | | |
| <p>Brief Explanation of Responsibilities Mr. Newbrough joined Thrasher Engineering in 1990 and is Principal and Partner in the firm. Mr. Newbrough serves as Survey Supervisor and is responsible for assignment and review of all survey activities. Mr. Newbrough has extensive experience in all aspects of surveys, including but not limited to boundary and easement surveys and the preparation of plats and legal descriptions. Mr. Newbrough also performs courthouse research, computes field data for construction layout, and processes GPS raw data for both public and private clientele in conjunction with Thrasher Engineering projects as well as separate contracts. He also serves in the elected position of Harrison County (WV) Surveyor.</p> | | | |
| <p>EDUCATION (Degree, Year, Specialization)</p> <ul style="list-style-type: none"> ■ Surveying - John Tyler Community College, Chester, VA ■ United Career Center, Clarksburg, WV | | | |
| <p>MEMBERSHIP IN PROFESSIONAL ORGANIZATIONS</p> <ul style="list-style-type: none"> ■ West Virginia Association of Land Surveyors ■ American Congress on Surveying and Mapping ■ Member Strathmore's Who's Who | | | |
| <p>REGISTRATION (Type, Year, State)</p> <ul style="list-style-type: none"> ■ Professional Land Surveyor (PS), West Virginia #1618 - 1995 ■ OSHA Hazardous Waste Operations and Emergency Response Center 29 CFR 1910.120 ■ US Department of Labor/Mine Safety and Health Administration | | | |

14. PROVIDE A LIST OF SOFTWARE AND EQUIPMENT AVAILABLE IN YOUR PRIMARY OFFICE WHICH WILL BE USED TO COMPLETE A DESIGN SERVICES

Thrasher Engineering, Inc. will design work for AML utilizing one of the largest networks of computer aided design (CAD) equipment, software and trained personnel in the State of West Virginia.

Connected through a Virtual Private Network, our CAD staff has the ability to share necessary plans among our locations. This will allow work designed for AML to be prepared and updated at the office location that best meets the needs of the scope of services.

AutoCAD Landdesktop 2008 and Microstation V8 software is utilized at 48 CAD stations throughout our locations. Additionally, equipment includes 10 large format (size E) plotters and 5 large format plotter / scanners. CAD plans are prepared by both dedicated CAD employees and by staff engineers and engineering technicians in each of the firm's offices.

Thrasher Engineering, Inc. also utilized top-of-the line survey equipment. Our survey work is accomplished with global positioning systems (GPS) and electronic distance measuring (EDM) survey stations with data gathering capabilities. This equipment includes: The equipment used to complete survey services for AML projects includes:

- Leica Geosystem System 500 GPS
- Leica Ski Post Processing Software
- Topcon G600 Total Station Instrument
- Leica 303 Total Station Instrument
- Leica 307 Total Station Instrument
- Leica 403 Total Station Instrument
- Leica 405 Total Station Instrument
- Leica 407 Total Station Instrument
- Leica 703 Total Station Instrument
-

15. CURRENT ACTIVITIES ON WHICH YOUR FIRM IS THE DESIGNATED ENGINEER OF RECORD: SITE DEVELOPMENT PROJECTS

| PROJECT NAME, TYPE AND LOCATION | NAME AND ADDRESS OF OWNER | NATURE OF YOUR FIRM'S RESPONSIBILITY | ESTIMATED CONSTRUCTION COST | PERCENT COMPLETE |
|--|--|---|-----------------------------------|------------------|
| NICHOLAS COUNTY BUSINESS PARK, NICHOLAS COUNTY, WV SITE DEVELOPMENT | NICHOLAS CO BLDG COMMISSION 700 MAIN STREET, SUITE 1 SUMMERSVILLE, WV 26651 | SITE DEVELOPMENT DESIGN (LAND PLANNING, GRADING, UTILITIES) SURVEY, CONST. MGT, MATERIALS TESTING | \$2,500,000.00 | 45% |
| MID ATLANTIC AEROSPACE COMPLEX STORMWATER PROJECT HARRISON COUNTY, WV | MID-ATLANTIC AEROSPACE COMPLEX, INC. (MAAC) NORTH CENTRAL WEST VIRGINIA AIRPORT CROSSWIND INDUSTRIAL PARK SAC BUILDING, 2ND FLOOR BRIDGEPORT, WV 26330 | ENGINEERING DESIGN FOR STORM WATER SYSTEM AT BENEDUM INDUSTRIAL PARK - DESIGN, SURVEY, CONSTRUCTION MANAGEMENT AND INSPECTION. MATERIALS TESTING | \$1,500,000.00 | 25% |
| RITCHIE COUNTY BUSINESS PARK SITE DEVELOPMENT RITCHIE COUNTY | RITCHIE COUNTY ECONOMIC DEVELOPMENT AUTHORITY 217 WEST MAIN STREET HARRISVILLE, WV 26362 | SITE DEVELOPMENT DESIGN (LAND PLANNING, GRADING, UTILITIES) SURVEY, CONST. MGT, MATERIALS TESTING | \$2,000,000.00 | 15% |
| WHITE OAKS BUSINESS PARK SITE DEVELOPMENT AND UTILITIES HARRISON COUNTY, WV | HIGH TECH CORRIDOR DEVELOPMENT, LLC MR. JACK KEELEY PO BOX 1532 CLARKSBURG, WV 26302 | SITE DEVELOPMENT DESIGN (LAND PLANNING, GRADING, UTILITIES) SURVEY, CONST. MGT, MATERIALS TESTING | \$12,100,000.00 | 40% |
| INTRAWEST CORPORATION SNOWSHOE MOUNTAIN RESORT POCAHONTAS COUNTY, WV SITE DEVELOPMENT | INTRAWEST RESORTS, INC. 301 E. PINE STREET, STE 450 ORLANDO, FL 32801 | SITE DEVELOPMENT DESIGN (LAND PLANNING, GRADING, UTILITIES) SURVEY, CONST. MGT, MATERIALS TESTING | \$1,000,000. to \$8,000,000.00 | ON-GOING |
| HARRISON MARION REGIONAL AIRPORT HARRISON COUNTY, WV VARIOUS - HANGERS /STLRM WATER | BENEDUM AIRPORT AUTHORITY JAMES R. GRIFFITHY, AIRPORT MGR. 2000 AVIATION WAY BRIDGEPORT, WV | SITE DEVELOPMENT DESIGN (LAND PLANNING, GRADING, UTILITIES) SURVEY, CONST. MGT, MATERIALS TESTING | \$500,000 to \$1,000,000.00 | ON-GOING |

TOTAL NUMBER OF PROJECTS: 6 (TOTAL IN FULL APPROXIMATELY 30 SITE DEVELOPMENT - APPROXIMATELY 40 MILLION)

TOTAL ESTIMATED CONSTRUCTION COSTS: \$18,600,000.00 +

15. CURRENT ACTIVITIES ON WHICH YOUR FIRM IS THE DESIGNATED ENGINEER OF RECORD: WATER TREATMENT AND DISTRIBUTION PROJECTS

| PROJECT NAME, TYPE AND LOCATION | NAME AND ADDRESS OF OWNER | NATURE OF YOUR FIRM'S RESPONSIBILITY | ESTIMATED CONSTRUCTION COST | PERCENT COMPLETE |
|--|---|---|-----------------------------|------------------|
| CHESTNUT RIDGE PSD BARBOUR/PRESTON EXTENSION BARBOUR COUNTY, WV | CHESTNUT RIDGE PSD 209 S MAIN STREET P.O. BOX 386 PHILLIPPI, WV 26416 | FEASIBILITY STUDY, DESIGN, FUNDING AND PERMIT APPLICATIONS, CONTRACT DOCUMENTS, FIELD SERVICES OF SURVEY AND INSPECTION. | \$9,500,000 | 40% |
| JESSICA LYNCH WATER LINE EXTENSION WIRT COUNTY, WV | TWN OF ELIZABETH 200 BEVERLY STREET P.O. BOX 478 ELIZABETH, WV 26143 | FEASIBILITY STUDY, DESIGN, FUNDING AND PERMIT APPLICATIONS, CONTRACT DOCUMENTS, FIELD SERVICES OF SURVEY AND INSPECTION | \$3,600,000 | 60% |
| GILMER COUNTY PSD DUSK CAMP WATER LINE EXTENSION GILMER COUNTY, WV | GILMER COUNTY PSD 232 W. MAIN STREET GLENVILLE, WV 26351 | FEASIBILITY STUDY, DESIGN, FUNDING AND PERMIT APPLICATIONS, CONTRACT DOCUMENTS, FIELD SERVICES OF SURVEY AND INSPECTION | \$2,500,000 | 60% |
| HAMRICK PSD MOORE/PORTERWOOD EXTENSION TUCKER COUNTY, WV | HAMRICK PSD PO BOX 228 HENDRICKS, WV 26271 | FEASIBILITY STUDY, DESIGN, FUNDING AND PERMIT APPLICATIONS, CONTRACT DOCUMENTS, FIELD SERVICES OF SURVEY AND INSPECTION | \$1,100,000. | 25% |
| CITY OF CAMERON WATER STORAGE TANK MARSHALL COUNTY, WV | CITY OF CAMERON 44 MAIN STREET CAMERON, WV 26033 | FEASIBILITY STUDY, DESIGN, FUNDING AND PERMIT APPLICATIONS, CONTRACT DOCUMENTS, FIELD SERVICES OF SURVEY AND INSPECTION | \$200,000.00 | 95% |
| TOWN OF ROWLESBURG WATER TREATMENT PLANT/ EXT. PRESTON COUNTY, WV | TOWN OF ROWLESBURG PO BOX 458 42 POPLAR STREET ROWLESBURG, WV 26425 | FEASIBILITY STUDY, DESIGN, FUNDING AND PERMIT APPLICATIONS, CONTRACT DOCUMENTS, FIELD SERVICES OF SURVEY AND INSPECTION | \$4,500,000. | 85% |
| SOUTHWESTERN PSD WATER LINE EXTENSION / REPLACEMENT | SOUTHWESTERN WATER PUBLIC SERVICE DISTRICT P. O. BOX 98 FLEMINGTON, WV 26347 | FEASIBILITY STUDY, DESIGN, FUNDING AND PERMIT APPLICATIONS, CONTRACT DOCUMENTS, FIELD SERVICES OF SURVEY AND INSPECTION | \$10,430,000.00 | 30% |
| TOTAL NUMBER OF PROJECTS: 7 REPRESENTED (APPROXIMATELY 20 ADDITIONAL CURRENTLY IN PRELIMINARY / DESIGN OR CONSTRUCTION PHASES) | | TOTAL ESTIMATED CONSTRUCTION COSTS: \$32,830,000.00 REPRESENTED ESTIMATED COST OF ALL JOBS APPROXIMATELY \$110,000,000.00 | | |

15. CURRENT ACTIVITIES ON WHICH YOUR FIRM IS THE DESIGNATED ENGINEER OF RECORD: SANITARY SEWER PROJECTS

| PROJECT NAME, TYPE AND LOCATION | NAME AND ADDRESS OF OWNER | NATURE OF YOUR FIRM'S RESPONSIBILITY | ESTIMATED CONSTRUCTION COST | PERCENT COMPLETE |
|---|---|---|-----------------------------|------------------|
| BROOKE COUNTY PSD REPLACEMENT AND EXTENSION BROOKE COUNTY, WV | BROOKE CO. PSD 711 CHARLES ST. P. O. BOX 150 WELLSBURG, WV 26070 | FEASIBILITY STUDY, DESIGN, FUNDING AND PERMIT APPLICATIONS, CONTRACT DOCUMENTS, FIELD SERVICES OF SURVEY AND INSPECTION | \$22,000,000 | 65% |
| GREATER HARRISON COUNTY PSD PHASE II HARRISON COUNTY, WV | GREATER HARRISON COUNTY PSD P.O. BOX 190 WEST MILFORD, WV 26451 | FEASIBILITY STUDY, DESIGN, FUNDING AND PERMIT APPLICATIONS, CONTRACT DOCUMENTS, FIELD SERVICES OF SURVEY AND INSPECTION | \$11,600,000 | 45% |
| TENNERTON PSD SANITARY SEWER EXTENSION UPSHUR COUNTY, WV | TENNERTON PSD 188 FAYETTE ST. BUCKHANNON, WV 26201 | FEASIBILITY STUDY, DESIGN, FUNDING AND PERMIT APPLICATIONS, CONTRACT DOCUMENTS, FIELD SERVICES OF SURVEY AND INSPECTION | \$1,675,000. | 75% |
| POCAHONTAS COUNTY PSD WWTP AND COLLECTION SYSTEM POCAHONTAS COUNTY, WV | POCAHONTAS COUNTY PSD HC 63 BOX 122 FRANK, WV 24920 | FEASIBILITY STUDY, DESIGN, FUNDING AND PERMIT APPLICATIONS, CONTRACT DOCUMENTS, FIELD SERVICES OF SURVEY AND INSPECTION | \$11,600,000 | 30% |
| HEPZIBAH PSD SANITARY SEWER EXTENSION HARRISON COUNTY, WV | ENLARGED HEPZIBAH DRAWER H HEPZIBAH, WV 26369 | FEASIBILITY STUDY, DESIGN, FUNDING AND PERMIT APPLICATIONS, CONTRACT DOCUMENTS, FIELD SERVICES OF SURVEY AND INSPECTION | \$3,400,000 | 20% |
| MALDEN PUBLIC SERVICE DISTRICT SANITARY SEWER REHABILITATION KANAWHA COUNTY, WV | MALDEN PUBLIC SERVICE DISTRICT P.O. BOX 350 TAD, WV 25201-0350 | FEASIBILITY STUDY, DESIGN, FUNDING AND PERMIT APPLICATIONS, CONTRACT DOCUMENTS, FIELD SERVICES OF SURVEY AND INSPECTION | \$13,600,000. | 25% |
| CANYON PUBLIC SERVICE DISTRICT SANITARY SEWER UPGRADE AND EXT MONONGALIA COUNTY, WV | CANYON PSD 12 WICHITA STREET MORGANTOWN, WV 26508 | FEASIBILITY STUDY, DESIGN, FUNDING AND PERMIT APPLICATIONS, CONTRACT DOCUMENTS, FIELD SERVICES OF SURVEY AND INSPECTION | \$6,500,000. | 50% |

TOTAL NUMBER OF PROJECTS: 7 REPRESENTED
 TOTAL ACTIVE SANITARY SEWER PROJECTS APPROXIMATELY \$2

TOTAL ESTIMATED CONSTRUCTION COSTS: \$70,300,000.00
 TOTAL FOR ALL PROJECTS APPROXIMATELY \$150,000,000

15. CURRENT ACTIVITIES ON WHICH YOUR FIRM IS THE DESIGNATE ENGINEER OF RECORD: HIGHWAY, BRIDGE, SIDEWALKS

| PROJECT NAME, TYPE AND LOCATION | NAME AND ADDRESS OF OWNER | NATURE OF YOUR FIRM'S RESPONSIBILITY | ESTIMATED CONSTRUCTION COST | PERCENT COMPLETE |
|--|--|--|--|--|
| KING COAL HIGHWAY MINGO COUNTY, WV | WVDOH 1900 KANAWHA BLVD EAST CHARLESTON, WV 25305 | PRELIMINARY ENGINEERING, DESIGN, SURVEY | \$22,000,000. | 2% PROPERTY AND DEED RESEARCH COMPLETE - PROJECT ON HOLD |
| CORRIDOR H GRANT COUNTY, WV | WVDOH 1900 KANAWHA BLVD EAST CHARLESTON, WV 25305 | PRELIMINARY ENGINEERING, DESIGN, SURVEY | \$22,000,000. | 75% - NEED FINAL COMMENTS / FINAL FIELD REVIEW |
| JAKES RUN BRIDGE MONONGALIA COUNTY, WV | WVDOH 1900 KANAWHA BLVD EAST CHARLESTON, WV 25305 | PRELIMINARY ENGINEERING, DESIGN, SURVEY | \$1,300,000. | 90% FINAL OFFICE REVIEW |
| MINERAL WELLS ROUTE 2 WOOD COUNTY | WVDOH 1900 KANAWHA BLVD EAST CHARLESTON, WV 25305 | PRELIMINARY ENGINEERING, DESIGN, SURVEY | TBD - JUST AWARDED | JUST AWARDED |
| CITY OF RIPLEY - MAIN STREET REVITALIZATION - JACKSON CO. | CITY OF RIPLEY TIM KING, CITY SUPERINTENDENT 203 SOUTH CHURCH ST. RIPLEY, WV 25271 | PRELIMINARY ENGINEERING, DESIGN, SURVEY, CONTRACT DOCUMENTS, BIDDING SERVICES, CONSTRUCTION INSPECTION, MATERIALS TESTING | \$1,200,000. | 90% |
| ICG - THREE FORKS BRIDGE TAYLOR COUNTY | INTERNATIONAL COAL GROUP, INC. 2000 ASHLAND DRIVE ASHLAND, KY 41101 | PRELIMINARY ENGINEERING, FINAL DESIGN, SURVEY, CONTRACT DOCUMENTS. | \$1,119,000.00 | 90% |
| TOTAL NUMBER OF PROJECTS: 6 (TOTAL IN FULL APPROXIMATELY 30 SITE DEVELOPMENT - APPROXIMATELY 40 MILLION) | | | TOTAL ESTIMATED CONSTRUCTION COSTS: \$46,300,000. + | |

16. CURRENT ACTIVITIES ON WHICH YOUR FIRM IS SERVING AS A SUB-CONSULTANT TO OTHERS

17. COMPLETED WORK WITHIN LAST 5 YEARS ON WHICH YOUR FIRM WAS THE DESIGNATED ENGINEER OF RECORD

| PROJECT NAME, TYPE AND LOCATION | NAME AND ADDRESS OF OWNER | ESTIMATED CONSTRUCTION COST | YEAR | CONSTRUCTED (YES OR NO) |
|---|--|-----------------------------|------|-------------------------|
| RALEIGH MEMORIAL AIRPORT RALEIGH COUNTY, WV | RALEIGH CO AIRPORT AUTHORITY 176 AIRPORT CIRCLE, ROOM 115 BEAVER, WV 25813-9475 | \$5,000,000.00 - PHASE I | 2007 | YES |
| WOLFE CREEK PARK FAYETTE COUNTY, WV | FAYETTE COUNTY COMMISSION FAYETTE COUNTY COURTHOUSE 100 COURT STREET FAYETTE, WV 25840-0307 | \$4,500,000. - PHASE 1 | 2007 | YES |
| PINECREST DEVELOPMENT RALEIGH COUNTY, WV | PINECREST DEV AUTHORITY 200 MAIN STREET BECKLEY, WV 25801-4613 | \$1,500,000.00 | 2007 | YES |
| CITY OF PARSONS SANITARY SEWER LINE EXTENSION TUCKER COUNTY, WV | PARSONS, CITY OF 341 2ND ST. PARSONS, WV 26287 | \$ 900,000 | 2007 | YES |
| TOWN OF FARMINGTON WATER LINE REPLACEMENT PROJECT MARION COUNTY, WV | TOWN OF FARMINGTON 1314 MILL STREET FARMINGTON, WV 26571 | \$1,300,000. | 2007 | YES |
| CITY OF KINGWOOD WHITSELL SETTLEMENT WATER LINE EXTENSION PRESTON COUNTY, WV | KINGWOOD, CITY OF 313 TUNNELTON ST. KINGWOOD, WV 26537-1462 | \$ 420,000. | 2007 | YES |
| NORTON-HARDING-JIMTOWN PSD WATER LINE EXTENSION RANDOLPH COUNTY, WV | NORTON-HARDING-JIMTOWN PSD P.O. BOX 87 SCOTT ROAD NORTON, WV 26285 | \$1,000,000 | 2007 | YES |
| TOWN OF BATH - BERKELEY SPRINGS WATER WORKS MORGAN COUNTY, WV | TOWN OF BATH 271 WILKES STREET BERKELEY SPRINGS, WV 25411 | \$2,000,000 | 2007 | YES |

17. COMPLETED WORK WITHIN LAST 5 YEARS ON WHICH YOU WERE THE DESIGNATED ENGINEER OF RECORD

| PROJECT NAME, TYPE AND LOCATION | NAME AND ADDRESS OF OWNER | ESTIMATED CONSTRUCTION COST | YEAR | CONSTRUCTED (YES OR NO) |
|---|--|-----------------------------|------|-------------------------|
| TOWN OF TUNNELTON, PRESTON COUNTY, WEST VIRGINIA; BUILDING COLLECTION SYSTEM AND AERATED LAGOON; SEWER LINES, MANHOLES, SANITARY LIFT STATIONS | TOWN OF TUNNELTON P.O. BOX 396 - BANK STREET TUNNELTON, WV 26444 | \$2,630,000 | 2003 | YES |
| RALEIGH COUNTY PUBLIC SERVICE DISTRICT 2 WATER LINE EXTENSIONS | RALEIGH COUNTY PSD 224 EAST MAIN PO BOX 1286 SOPHIA, WV | \$3,700,000. | 2006 | YES |
| TOWN OF TERRA ALTA, PRESTON COUNTY, WEST VIRGINIA; REPLACEMENT OF COLLECTION SYSTEM AND WASTEWATER FACILITY | TOWN OF TERRA ALTA 701-A STATE AVENUE TERRA ALTA, WV 26764 | \$5,750,000 | 2002 | YES |
| HODGESVILLE PUBLIC SERVICE DISTRICT; DESIGN AND CONSTRUCTION OF WATER LINE EXTENSION, BOOSTER STATIONS, AND WATER STORAGE TANK | HODGESVILLE PUBLIC SERVICE DISTRICT 188 FAYETTE STREET P.O. BOX 758 BUCKHANNON, WV 26201 | \$3,100,000 | 2004 | YES |
| CITY OF WEIRTON; RENOVATION OF SOLIDS CONTACT CLARIFIERS | CITY OF WEIRTON 200 MUNICIPAL PLAZA 3031 BIRCH DRIVE WEIRTON, WV 26062 | \$2,800,000 | 2003 | YES |
| HAMRICK PUBLIC SERVICE DISTRICT, TUCKER COUNTY, WEST VIRGINIA; DESIGN, PREPARATION AND CONSTRUCTION MANAGEMENT TO UPGRADE THE WATER TREATMENT PLANT | HAMRICK PUBLIC SERVICE DISTRICT P.O. BOX 228 HENDRICKS, WV 26271 | \$2,461,000 | 2004 | YES |
| PUTNAM COUNTY BUSINESS PARK; MITIGATION OF 13 ACRES OF IMPACTED WETLAND | PUTNAM COUNTY DEVELOPMENT AUTHORITY P.O. BOX 167 SCOTT DEPOT, WV 25560 | \$1,500,000 | 2004 | YES |
| WOOD PRODUCTS INDUSTRIAL PARK; DEVELOPMENT, CONCEPTUAL LAYOUT, AND FINAL DESIGN FOR INDUSTRIAL PARK | MINGO COUNTY REDEVELOPMENT AUTHORITY P.O. BOX 298 68 WEST 4 TH AVENUE WILLIAMSON, WV 25661 | \$2,000,000 | 2002 | YES |

17. COMPLETED WORK WITHIN LAST 5 YEARS ON WHICH YOU WERE THE DESIGNATED ENGINEER OF RECORD

| PROJECT NAME, TYPE AND LOCATION | NAME AND ADDRESS OF OWNER | ESTIMATED CONSTRUCTION COST | YEAR | CONSTRUCTED (YES OR NO) |
|--|---|-----------------------------|------|-------------------------|
| BELLINGTON INDUSTRIAL PARK; DEVELOPMENT, CONCEPTUAL LAYOUT, AND DESIGN FOR INDUSTRIAL PARK | BARBOUR CO DEVELOPMENT AUTHORITY 124 N. MAIN ST. PHILIPPI, WV 26416 | \$1,430,000 | 2003 | YES |
| FAIRMONT INDUSTRIAL & CREDIT CORP; SITE WORK, UTILITIES, ROADWAY FOR PHASE II DEVELOPMENT | FAIRMONT INDUSTRIAL & CREDIT CORP 110 ADAMS STREET FAIRMONT, WV 26554 | \$790,000 | 2004 | YES |
| TOWN OF LUMBERPORT; REPLACEMENT OF A PORTION OF THE DISTRIBUTION SYSTEM AND WATER TANK | TOWN OF LUMBERPORT PO BOX 519 LUMBERPORT, WV 26386 | \$2,200,000 | 2003 | YES |
| RIVER ROAD PUBLIC SERVICE DISTRICT; WATER LINE REPLACEMENT, EXTENSION AND STANDPIPE | RIVER ROAD PSD 179 OLD LOCK 13 ROAD MORGANTOWN, WV 26501 | \$1,068,000 | 2004 | YES |
| HUNDRED-LITTLETON PUBLIC SERVICE DISTRICT; WATER LINE RELOCATION | HUNDRED-LITTLETON PSD PO BOX 880 8 PENNSYLVANIA AVENUE HUNDRED, WV 26575 | \$40,000 | 2002 | YES |
| RT 16 WATER CORPORATION; WATER LINE EXTENSION | ROUTE 16 WATER CORP PO BOX 149 ST MARYS, WV 26170 | \$900,000 | 2003 | YES |
| | | | | |
| | | | | |

18. COMPLETED WORK WITHIN LAST 5 YEARS ON WHICH YOU WERE ASSOCIATED WITH OTHER FIRMS (INDICATE PHASE OF WORK FOR WHICH YOUR FIRM WAS RESPONSIBLE)

| PROJECT NAME, TYPE AND LOCATION | NAME AND ADDRESS OF OWNER | ESTIMATED CONSTRUCTION COST OF YOUR FIRM'S PORTION | YEAR | CONSTRUCTED (YES OR NO) | FIRM ASSOCIATED WITH |
|---|--|--|------|-------------------------|---------------------------------|
| GLENNVILLE FEDERAL CORRECTIONAL INST. SITE DEVELOPMENT GILMER COUNTY, WV | FEDERAL BUREAU OF PRISONS 320 1 ST STREET NW 500-6 WASHINGTON, DC 20534 | \$96,000,000 | 2003 | YES | BELL JUSTICE FACILITIES |
| FEDERAL BUREAU OF PRISONS - CANAAN FACILITY - SITE DEVELOPMENT - SCRANTON, PA | FEDERAL BUREAU OF PRISONS 320 1 ST STREET NW 500-6 WASHINGTON, DC 20534 | \$120,000,000 | 2002 | YES | BELL JUSTICE FACILITIES |
| FAIRMONT STATE COLLEGE - STUDENT DORMITORY - SITE DEVELOPMENT - FAIRMONT, WV | FAIRMONT STATE UNIVERSITY 1201 LOCUST AVENUE FAIRMONT, WV 26554-2491 | \$6,000,000 | 2004 | YES | VOA ARCHITECTS |
| FAIRMONT STATE COLLEGE - PARKING GARAGE - SITE DEVELOPMENT - FAIRMONT, WV | FAIRMONT STATE UNIVERSITY 1201 LOCUST AVENUE FAIRMONT, WV 26554-2491 | \$4,000,000 | 2003 | YES | MARCH-WESTIN |
| FAIRMONT STATE UNIVERSITY FEASTER CENTER SITE DEVELOPMENT - FAIRMONT, WV | FAIRMONT STATE UNIVERSITY 1201 LOCUST AVENUE FAIRMONT, WV 26554-2491 | \$400,000. | 2005 | YES | VOA ARCHITECTS |
| FAIRMONT STATE UNIVERSITY CREATIVE ARTS AND ENGINEERING TECH BUILDING SITE DEVELOPMENT FAIRMONT, WV | FAIRMONT STATE UNIVERSITY 1201 LOCUST AVENUE FAIRMONT, WV 26554-2491 | \$100,000. | 2007 | YES | DESIGN ALLIANCE OMNI ASSOCIATES |

19. USE THIS SPACE TO PROVIDE ANY ADDITIONAL INFORMATION OR DESCRIPTION OF RESOURCES SUPPORTING YOUR FIRM'S QUALIFICATIONS TO PERFORM WORK FOR THE WV ABANDONED MINE LANDS PROGRAM

SEE ATTACHMENT - STATEMENT OF QUALIFICATIONS

20. THE FOREGOING IS A STATEMENT OF FACTS.

SIGNATURE:  TITLE: VICE-PRESIDENT / CHIEF ENGINEER

PRINTED NAME: KENNETH P. MORAN, P.E. - VICE PRESIDENT

DATE: SEPTEMBER 17, 2008

AML and RELATED PROJECT EXPERIENCE MATRIX

| PROJECT | Exp. Basis C=Corp. P=Personal | Additional Info Provided In Section (e) ** | PROJECT EXPERIENCE REQUIREMENTS | | | | | | | | | | | | | | | PARTICIPATION/CAPACITY | | | | | | | |
|------------------------------|-------------------------------------|---|---------------------------------------|------------------------------------|----------------------|--------------------------------------|---------------------|-------------------------------|--|-----------------------------|------------------------|--|---|-----------------|--------------------------------|--------------------|------------------------|------------------------|----------------------|-----------------|----------------|-----------------------|--|---|---|
| | | | Abandoned Surface Mine Reclamation | Abandoned Deep Mine Reclamation | Portal/Shaft Closure | Hydrologic/Hydraulic Design/Eval. | Remining Evaluation | Mine/Refuse Fire Abatement | Subsidence Investigation Mitigation | Hazardous Waste Disposal | Project Specifications | Water Quality Evaluation/Nitigation/R eplacement | Construction Inspection/Managemen t | Water Treatment | Equipment/Structure Removal | Stream Restoration | Geotechnical/Stability | Ken Moran, P.E. | Chadwick Bller, P.E. | Sheirl Fletcher | Kurt Newbrough | Jeffrey L. Gola, P.E. | | | |
| WV NATIONAL CEMETERY | C | 3 | | | | X | | | | X | | | | | | | | | | M | P | | | M | P |
| FARMONT STATE UNIVERSITY | C | 3 | | | | X | | | | X | | | | | | | | | | M | P | | | M | P |
| GLENVILLE PRISON | C | 3 | | | | X | | | | X | | | | | | | | | | M | P | | | M | P |
| CANAAN PRISON | C | 3 | | | | X | | | | X | | | | | | | | | | M | P | | | M | P |
| INDIAN RIDGE INDUSTRIAL PARK | C | 3 | | | | X | | | | X | | | | | X | | | | | M | P | | | M | P |
| BELINGTON INDUSTRIAL PARK | C | 3 | | | | X | | | | X | | | | | | | | | | M | P | | | M | P |
| MINGO COUNTY INDUSTRIAL PARK | C | 3 | | | | X | | | | X | | | | | | | | | | M | P | | | M | P |
| MARTINKA COAL COMPANY | C | 3 | | | | X | | | | X | | | | | | | | | | M | | | | M | |
| CONSOL COAL COMPANY | P | 3 | | | | X | | | | X | | | | | | | | | | M | | | | M | |
| WV DEP AMHERSTDALE | C | 3 | | | | | | | | X | | | | | | | | | | M | | | | M | |
| ROBERT C. BYRD IND. PARK | C | 3 | X | | | X | | | | X | | | | | | | | | | M | P | | | M | P |
| HARRISON CO. BUS/IND. PARK | C | 3 | X | | | X | | | | X | | | | | | | | | | M | P | | | M | |
| WHITE OAKS BUSINESS PARK | C | 3 | X | | | X | | | | X | | | | | | | | | | | P | | | M | P |

* List whether project experience is corporate or personnel based or both.
 ** Use this area to provide specific sections or pages if needed for reference.
 *** List Primary Design personnel and their functional capacity for the projects listed.

STATE OF WEST VIRGINIA
Purchasing Division

PURCHASING AFFIDAVIT

West Virginia Code §5A-3-10a states: No contract or renewal of any contract may be awarded by the state or any of its political subdivisions to any vendor or prospective vendor when the vendor or prospective vendor or a related party to the vendor or prospective vendor is a debtor and the debt owed is an amount greater than one thousand dollars in the aggregate

DEFINITIONS:

"Debt" means any assessment, premium, penalty, fine, tax or other amount of money owed to the state or any of its political subdivisions because of a judgment, fine, permit violation, license assessment, defaulted workers' compensation premium, penalty or other assessment presently delinquent or due and required to be paid to the state or any of its political subdivisions, including any interest or additional penalties accrued thereon.

"Debtor" means any individual, corporation, partnership, association, limited liability company or any other form or business association owing a debt to the state or any of its political subdivisions. "Political subdivision" means any county commission; municipality; county board of education; any instrumentality established by a county or municipality; any separate corporation or instrumentality established by one or more counties or municipalities, as permitted by law; or any public body charged by law with the performance of a government function or whose jurisdiction is coextensive with one or more counties or municipalities. "Related party" means a party, whether an individual, corporation, partnership, association, limited liability company or any other form or business association or other entity whatsoever, related to any vendor by blood, marriage, ownership or contract through which the party has a relationship of ownership or other interest with the vendor so that the party will actually or by effect receive or control a portion of the benefit, profit or other consideration from performance of a vendor contract with the party receiving an amount that meets or exceed five percent of the total contract amount.

EXCEPTION: The prohibition of this section does not apply where a vendor has contested any tax administered pursuant to chapter eleven of this code, workers' compensation premium, permit fee or environmental fee or assessment and the matter has not become final or where the vendor has entered into a payment plan or agreement and the vendor is not in default of any of the provisions of such plan or agreement.

LICENSING: Vendors must be licensed and in good standing in accordance with any and all state and local laws and requirements by any state or local agency of West Virginia, including, but not limited to, the West Virginia Secretary of State's Office, the West Virginia Tax Department, West Virginia Insurance Commission, or any other state agencies or political subdivision. Furthermore, the vendor must provide all necessary releases to obtain information to enable the Director or spending unit to verify that the vendor is licensed and in good standing with the above entities.

CONFIDENTIALITY: The vendor agrees that he or she will not disclose to anyone, directly or indirectly, any such personally identifiable information or other confidential information gained from the agency, unless the individual who is the subject of the information consents to the disclosure in writing or the disclosure is made pursuant to the agency's policies, procedures and rules. Vendors should visit www.state.wv.us/admin/purchase/privacy for the Notice of Agency Confidentiality Policies.

Under penalty of law for false swearing (West Virginia Code, §61-5-3), it is hereby certified that the vendor acknowledges the information in this said affidavit and are in compliance with the requirements as stated.

Vendor's Name: THRASHER ENGINEERING, INC.

Authorized Signature:  Date: September 17, 2008