



GREENHORNE & O'MARA
CONSULTING ENGINEERS

September 25, 2008

Mr. Chuck Bowman, Buyer
State of West Virginia
Department of Administration
Purchasing Division
2019 Washington Street, East
Charleston, WV 25305

RECEIVED

08 SEP 25 AM 9:46

PURCHASING DIVISION
STATE OF WV

**Re: Church Creek/Manown HW Design
Requisition # DEP14388**

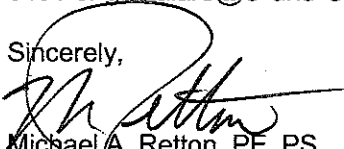
Dear Mr. Bowman:

Greenhorne & O'Mara (G&O) **accepts the terms of the WVDEP's request for quotations** as stated in the request released on August 21, 2008 and is pleased to respond to the same request for the Church Creek/Manown HW Design. Prepared in our expression of interest, you will find an abundance of information that describes in detail our qualifications and experience with respect to the Church Creek/Manown HW Design Project. The information includes a statement of our qualifications, personnel summaries and projects to reflect the broader scope of services identified in your EOI. Specifically, we have provided the following requested information:

1. A cover letter that includes a **statement accepting the specified terms** of the request for quotations (this document).
2. A section summarizing the G&O Team's technical qualifications, including the pertinent qualifications, experience, and location of key project team members; where each project team member will be physically located (all G&O key management staff members are located in our Fairmont office); a synopsis of each key project team member's assignments and responsibilities; and the percentage of his/her time each key project team member will devote to the project during the life of the project. This section also provides the percentage of work that will be done in our local office.
3. A section to describe the locality of the G&O team.
4. References who are familiar with G&O's work on similar projects.
5. A section for the Consultant Confidential Qualification Questionnaire and the Related Project Experience Matrix.
6. A signed Purchasing Affidavit from the State of West Virginia Purchasing Division, which indicates that G&O and our subconsultants are not in debt of any kind to the State of West Virginia.

If you have any questions or concerns regarding our submittal, please do not hesitate to contact me at (304) 367-9401 or mretton@G-and-O.com, or our proposed Project Manager, Mr. Gary Fazalare, at (304) 367-9401 or gfazalare@G-and-O.com.

Sincerely,


Michael A. Retton, PE, PS
Vice President, Mid-Atlantic Region

Enclosures

111 Elkins Street • Fairmont, WV 26554
Phone 304.367.9401 • Fax 304.367.9403
www.G-and-O.com

TABLE OF CONTENTS

Section 1 - Overall Capabilities	1
Projects.....	2
Section 2 - Technical Qualifications	10
Grasp of Project Requirements.....	10
Approach and Methodology.....	10
Section 3 - Key Project Team Members.....	13
Section 4 - Office Location	19
Section 5 - Subconsultants.....	20
Section 6 - References	21
Section 7 - Summary	26
Local Knowledge.....	26
Why Choose G&O?	26
Section 8 - Attachments.....	
<i>Attachment A.....Purchasing Affidavit</i>	
<i>Attachment B Consultant Confidential Qualification Questionnaire</i>	
<i>Attachment C.....Related Project Experience Matrix</i>	



OVERALL CAPABILITIES



GREENHORNE & O'MARA
CONSULTING ENGINEERS

(G&O) is a full-service, multidisciplinary consulting engineering firm with a culture of personalized client service, innovative problem solving, and on-time project delivery. With 16 offices, we serve clients in the private and public sectors on

projects located throughout the United States and overseas. Founded in 1950, G&O is an employee-owned firm that is consistently ranked by Engineering News Record among the top 25 percent of architectural/engineering design firms in the United States.

Our large and diversified staff of more than 600 knowledgeable and quality-oriented employees offers our clients a broad spectrum of engineering expertise in the areas of civil, structural, environmental, transportation, and water resources engineering; site, facility, and military master planning; hazards mitigation and security; surveying and mapping; environmental services; site infrastructure design; landscape architecture; computer sciences; cultural resources; and other related services.

G&O provides comprehensive consulting services to perform studies, prepare plans, and secure permits for erosion control and the installation of water mains, sewer, and appurtenances. G&O's professionals are experienced in the design of a broad range of engineering projects that include preparation of cost estimates, plans, and specifications, and the performance of soil and geologic studies to establish project feasibility. Our detailed design services include traffic studies, grading plans, water and sewer systems, earthwork analysis, stormwater management, site plans, sediment and erosion control, storm drainage and paving plans, roadway and railroad realignments/grade changes, feasibility studies and site analyses, and permit application assistance.

The quality of G&O's work is tied to its effective project management, its process of clearly identifying the client's goals and expectations, conducting the work using motivated, highly qualified professional staff, and implementing the firm's quality control plan. Inherent in this process is the fundamental effort to meet or exceed expectations every time, and also to identify process failures, mitigate the errors, and incorporate the lessons learned for continual improvement.

G&O has one of the largest civil engineering staffs in the Northeast Region of the United States. We have provided engineering services for thousands of industrial, commercial, educational, institutional, residential, and multi-use developments. Our engineers can provide the following relevant services:

- ◆ Utilities extension/relocation
- ◆ Water treatment design/replacement
- ◆ Site infrastructure design
- ◆ Sewage treatment and collection systems
- ◆ Water distribution
- ◆ Sediment and erosion control
- ◆ Storm drainage and paving plans
- ◆ Renovation/alterations
- ◆ Pavement analysis/resurfacing
- ◆ Structural modifications
- ◆ Structural analysis
- ◆ Roads and parking design/rehabilitation
- ◆ Surveying/mapping/GIS systems
- ◆ Grading plans
- ◆ Permit/waiver application
- ◆ Stormwater management
- ◆ Landscape plans

In addition to the above services, G&O also provides Land and Bathymetric Surveying, Land Ownership Research and Preparation of Plats/Easement/Right-of-Ways, Utility Coordination and Relocation Design, Transportation/Traffic, Engineering, Landscape Architecture and Public Outreach & Education.

G&O works with various governmental transportation agencies to implement projects such as road relocations and road widening. G&O's work on these projects includes, among other tasks, traffic impact studies, access studies, data collection and analysis, signal timing, traffic control plans, and concept plans for roadway improvements.

Over the years, G&O has worked for nearly all federal, state, county and local government agency within WVDEP's domain. We have worked in many communities in the State of West Virginia (examples to follow).

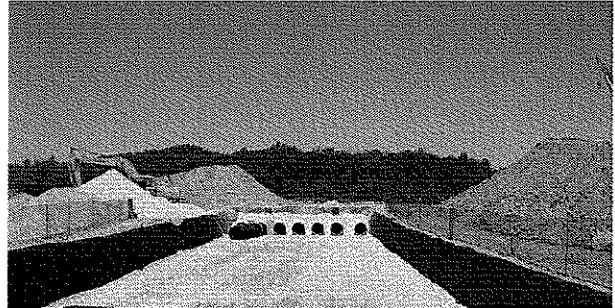


GREENHORNE & O'MARA
CONSULTING ENGINEERS

PROJECTS

FAIRMONT GENERAL HOSPITAL HEALTHPLEX Fairmont, WV

Fairmont General Hospital's Healthplex is a medical-fitness facility that will integrate physical therapy, cardiac rehabilitation, occupational medicine, and pulmonary rehabilitation. The focus of the project is to enhance the health status and improve the overall quality of life of the community.



Physician offices will be located at the facility to provide the community with an all-inclusive location for outpatient medical and rehabilitation services. The medical office area will house a variety of medical practices. The facility will serve the dual purpose of providing the necessary rehab for recovering patients and medically based fitness services for the community. In addition to rehabilitative medicine and medical offices, the Healthplex will include a therapy pool, heated lap pool and modern fitness area.

G&O was selected by Fairmont General Hospital and Browning Day Mullins Dierdorf Architects of Indianapolis, IN as the site design sub-consultant for the 6.3 acre parcel. Initially, G&O prepared the boundary and topographic survey for the site and coordinated the preliminary geotechnical investigations. The site design included, building location; parking lot layout; site access road; detailed utility design and location for water, sanitary sewer, storm drainage, gas and electric; stormwater management; erosion/sediment control; and finished grade elevations. As part of the site package G&O prepared NPDES application as required by the WVDEP.

The on-site stormwater management and drainage system was comprised of approximately six drop inlets/storm manholes, approximately 250 LF of storm sewer and an underground pipe gallery which provides approximately 10,000 cubic feet of on-site detention beneath the parking lot. The system consists of approximately 1350 linear feet of 36" diameter H.D.P.E. pipe with manifolds at each end. The outfall is a control structure utilizing an orifice/weir combination designed to limit stormwater discharges to pre-development levels.

Approximately 628 LF of PVC sanitary sewer was constructed on-site, with all necessary manholes and appurtenances. A small sanitary lift station was required to provide service to the bottom floor of the facility to drain a swimming pool.

Weatherford - Sand Silos and Siding Track Century, WV

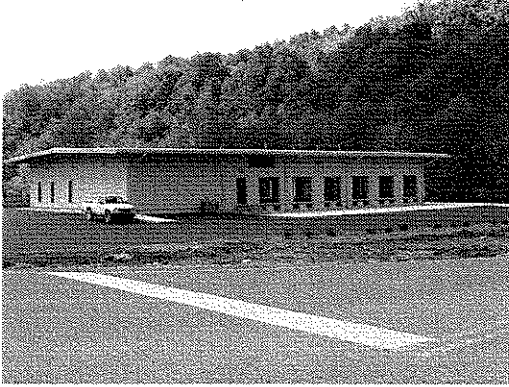
Weatherford International, Inc. is a Texas company which services the oil and gas industry for development of supply wells. The purpose of this project was to construct a railroad siding track and silos to store sand for their business.

G&O was selected as the site designer in charge of surveying, design and permitting for this project. G&O completed topographic surveying of the site as a support to the design initiative. The site design includes railroad siding track roads with two switches, parking, storm drainage, erosion/sediment control; and



finished grade elevations. As part of the site package G&O is preparing an NPDES application as required by the WVDEP.

Flowers Bakery Fairmont, WV



Flowers Bakery is a local distributor of baked goods which is relocating from an old location in Marion County to the new 6,600 SF distribution center. The center includes different truck dock heights for both the relay and delivery trucks as well as adequate drive areas to maneuver tractor trailer.

G&O was selected by Butler Properties, Inc. of Atlanta, GA as the site designer for a 1.75 acre parcel in the Marion Regional Business Park. Initially, G&O prepared the boundary and topographic survey for the site. The site design included, building location; parking lot layout; detailed utility design and location for water, sanitary sewer, storm drainage, gas and

electric; stormwater management; erosion/sediment control; and finished grade elevations. As part of the site package G&O prepared NPDES application as required by the WVDEP.

The on-site stormwater management and drainage system was comprised of approximately five drop inlets/storm manholes, approximately 460 LF of storm sewer pipe which empties into an on-site open detention pond located adjacent to the parking lot. The outfall is a control structure utilizing a multiple orifice's designed to limit stormwater discharges to pre-development levels.

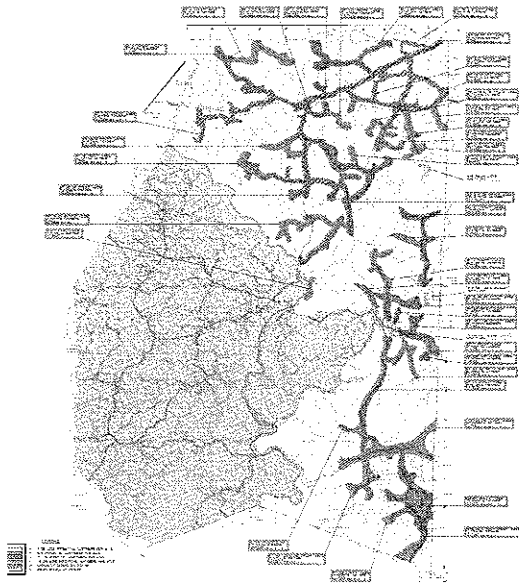
Winebrenner's Crossing Martinsburg, WV

Winebrenner's Crossing is a residential development near Martinsburg, WV where the developer is proposing to construct a MARC (Maryland Area Regional Commuter) train depot for the local area. MARC provides low cost transportation from Martinsburg, WV to Washington D.C and Baltimore, MD by allowing local resident to park near their home and use the mass transit facility in lieu of commuting via automobile.

G&O was selected as the site designer in charge of surveying, design and permitting for this project. G&O completed topographic surveying of the site as a support to the design department. The site design to this date includes conceptual design for loading platform along the existing rails, pedestrian crossings, shelter locations, warning lighting and signs and a 200 car parking lot.



Preston County PSD #4 Water System Planning Preston County, WV



G&O is responsible for performing feasibility studies for potential water main extensions, review of requests for service and/or main extensions, cost estimating, water rate evaluations, system troubleshooting, and engineering design and construction inspection services for water main extensions within the Preston County Public Service District No. 4 service area.

G&O analyzed the entire existing system and evaluated all potential extension areas. Each area had a cost estimate prepared and a count of potential customers; these areas were then ranked by parameters such as cost per customer, total cost, and potential for funding. Preston County Public Service District #4 has many unique aspects to its system that required this evaluation to develop the understanding of the entire system to ensure stability throughout the expansion process.

Jane Lew PSD - Proposed Potable Water System Improvements Lewis County, WV

Jane Lew PSD intends to replace approximately 11,500 lineal feet of 2" galvanized waterline including valves, removal and replacement of 25 existing gate valves, installation of 17 new gate valves in the existing distribution system, installation of 13 bypass meters, installation of an 8" diameter river crossing pipe to replace an existing crossing, install a SCADA controlled solenoid valve station and booster chlorination station, install 1,500 lineal feet of 2" PVC water line and a 37 gpm booster pump station to provide service to six new customers, and fence an existing 100,000 gallon water storage tank.

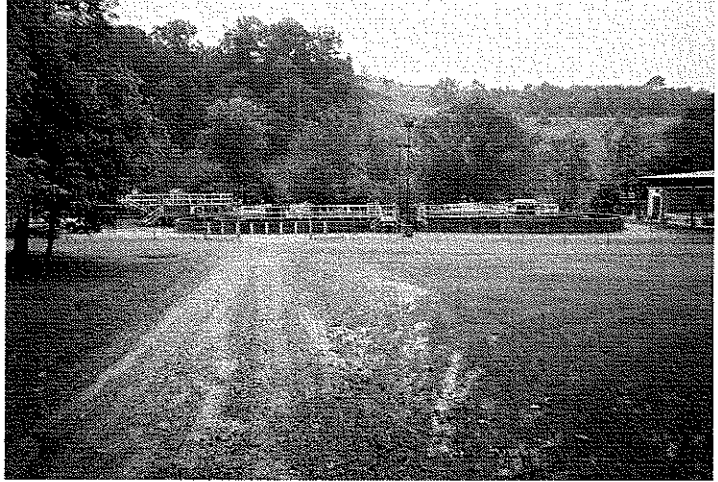
G&O is providing Jane Lew PSD with preliminary and final engineering design services for improvements to their original potable water distribution system and replacement of related components need to be undertaken. The proposed improvements presented will provide Jane Lew Public Service District the ability to provide a safe and adequate potable water supply for both its existing and future customers.

The Jane Lew PSD has recently agreed to work in cooperation with the GHC PSD to develop a plan that would evaluate alternatives for providing a proposed future potable water source adequately sized to meet the demands of the entire Jane Lew PSD. GHC PSD and their consultant are working to provide the necessary information to provide this anticipated potable water source.



***City of Shinnston Sanitary Sewer Collection and Treatment System
Improvement Project
Harrison County, WV***

G&O is currently providing preliminary and final engineering design services and construction management and inspection services for upgrades and improvements to the City of Shinnston's wastewater collection and treatment. The project consists of the rehabilitation of the City's existing 380,000 GPD wastewater treatment facility and existing wastewater collection system.



Preliminary engineering services include evaluations of existing wastewater treatment plant, and existing collection system. Extensive system evaluations were conducted to determine extent of Inflow and Infiltration rates being delivered to the treatment plant.

This work was conducted through the use of portable flow meters inserted throughout the collection system as well as smoke and dye testing. Preliminary engineering services also include the planning and preparation of proposed improvement drawings, technical feasibility studies, environmental reports, cost estimating, and assistance in obtaining approval and funding from state and federal agencies.

***Alpine Lake Public Utility Company Improvements to the Wastewater
Treatment Plant & Collection System
Preston County, WV***

G&O is currently providing preliminary and final engineering design services and construction management and inspection services for upgrades and improvements to the Alpine Lake Public Utilities Company wastewater treatment and collection system. The project consists of the construction of a new 150,000 GPD wastewater treatment facility complete with equalization basin, ultraviolet disinfection, effluent filters, mechanical head works and building, sludge process building, mechanical building, emergency generator and abandonment of existing treatment plant.

Preliminary engineering services include evaluations of existing wastewater treatment plant, and existing collection system. Extensive system evaluations were conducted to determine extent of Inflow and Infiltration rates being delivered to the treatment plant. This work was conducted through the use of portable flow meters inserted throughout the collection system as well as smoke and dye testing. Preliminary engineering services also include the planning and preparation of proposed improvement drawings, technical feasibility studies, environmental reports, cost estimating, and assistance in obtaining approval and funding from state and federal agencies.

Final engineering design services include the design of accepted and approved alternatives, preparation of specifications; bid package preparation, construction management and inspection services, and as-built drawing preparation.



Preston County PSD #4 CLIFTON MILLS EXTENSION

Preston County, WV

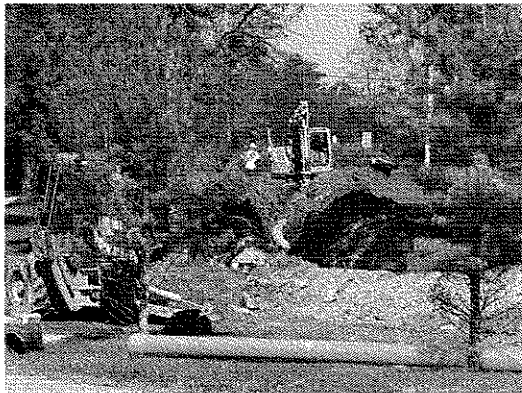
G&O is responsible for design of a project that includes service line extensions to four areas. These areas are Clifton Mills Extension, Glade Farms/Dennis Road Extension, Area South of Rt. 26 and North of I-68, and Pisgah area Extensions. These extensions can serve one hundred ninety-six (196) additional customers plus a proposed housing development along Rt. 8/2.

Approximately 1,016 total customers will be served at completion of the proposed project with an estimated population of 2,743. The service area is located on both the north and south sides of Interstate 68 with both residential and commercial development in progress. Preston County has a large amount of potential growth. The District has also been approached by several developers interested in residential and commercial development.



Alpine Lake Public Utility Company Improvements to the Alpine Lake Water Treatment & Distribution System

Preston County, WV



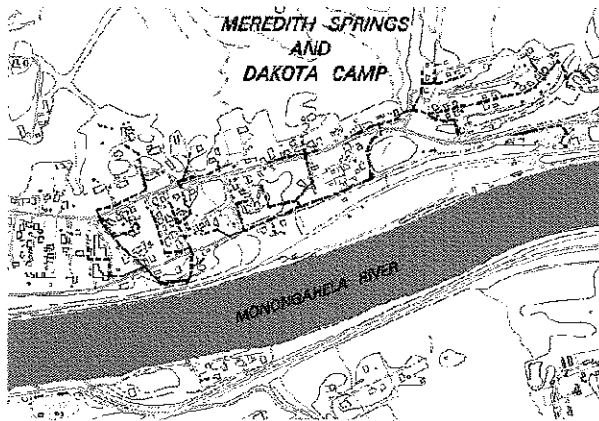
G&O is providing the study, plan, and design for various improvements to the Alpine Lake potable water treatment and distribution system. The project consists of the preparation of a Preliminary Engineering Report (PER) for submission to the West Virginia Infrastructure and Jobs Development Council (WVIJDC) and/or funding agencies for the purpose of securing funding. The PER evaluated the existing operation and condition of the water system, made recommendations for improvements and upgrades, identified project costs, and propose project funding scenarios. After the approval of the PER and receipt of funding, detailed construction drawings, project specifications, contract and bid documents were prepared. Upon review of bids received and award of a

construction contract, construction management and inspection services were required to insure compliance with approved plans and specifications.

System improvements include the installation of (3) new water booster pumping stations, complete with duplex alternating pumps, discharge meters and telemetry, abandoning existing booster stations, installation of 355 water meter settings to include meters, meter boxes and lids, copper setters, and taps to main lines as well as reconnection of existing customer service lines, replacement of 60 automatic air release valves, painting of (3) water storage tanks, fencing and misc. repairs at all water storage tanks sites, construction of a common treatment building, abandonment of existing Well #3 and Well #1, drilling of additional wells for use as backup raw water sources, purchase of additional safety equipment to be used both at the treatment building and within the distribution system, replacement of fire hydrants and installation of or removal and replacement of selected main line valves, replacement of 4500 LF of 10" SDR-26 water line with C-900 CL-200, construction of a new water billing office and other appurtenances necessary to complete the upgrades.



Sanitary Sewer Extension to the Meredith Springs/Dakota Camp Area Marion County, WV



G&O will provide design, preparation of contract drawings and specifications, cost estimating, construction review, and preparation of O&M manual. The project involves the planning and design of new sanitary sewer and lift stations to provide service to approximately 100 homes in the Meredith Springs/Dakota Camp areas of Marion County, just outside of the corporate limits of the City of Fairmont. The project includes the design of approximately 11,000 linear feet of gravity sanitary sewer, 500 linear feet of force main, four grinder pump stations and two main sewage lift stations, along with all necessary manholes and appurtenances.

The project is publicly funded by a grant/loan combination consisting of a Small Cities Block Grant and a low interest loan from the WV Department of Environmental Protection State Revolving Fund (SRF).

Kingmill Valley Sanitary Sewer Improvements Marion County, WV

G&O is studying, planning, and designing sanitary sewer improvements to Millersville and surrounding areas of the Kingmill Valley service area. The project will consist of the completion of a Preliminary Engineering Report (PER) for submission to the West Virginia Infrastructure and Jobs Development Council (WVIJDC) and/or funding agencies for the purpose of securing funding. The PER will evaluate proposed improvements to Millersville and surrounding areas, identify project costs, and propose project funding scenarios. Upon approval of the PER and receipt of the funding, detailed construction drawings, project specifications, contract and bid documents will be prepared. Upon review of bids received and award of a construction contract, construction management and inspection services will be provided to insure compliance with approved plans and specifications.

City of Fairmont Sanitary Sewer Improvements Marion County, WV

G&O is providing preliminary and final engineering design services and construction management and inspection services for improvements to the City's existing sanitary sewer collection system. The project consists of the study of the City's sanitary sewer collection system to identify and propose correction of areas of significant inflow and infiltration (I&I) entering the sanitary sewer system.

Preliminary engineering services include extensive sanitary sewer evaluation survey (SSES). The SSES includes the detailed field inspection of existing facilities, smoke and dye testing, flow monitoring, line videos, and hydraulic modeling. Preliminary engineering services also include the planning of proposed improvements, feasibility studies, and assistance in obtaining funding.

Final design of accepted alternative, bid package preparation, construction management and inspection services, and as-built drawing preparation are also part of this project.

City of Shinnston Water System Upgrades and Improvements Harrison County, WV

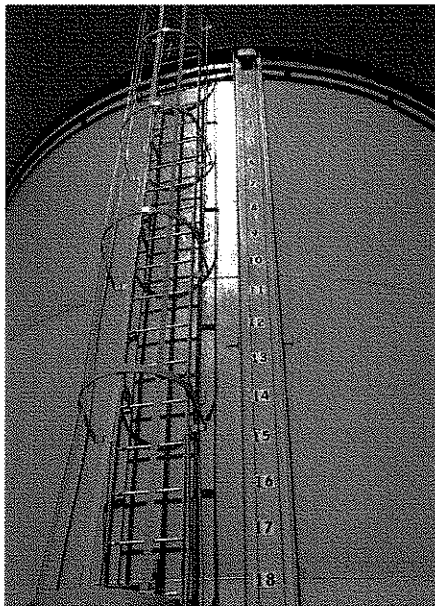
G&O provided preliminary engineering, detailed design, and construction management and inspection services for a major upgrade to the City of Shinnston's water distribution system. The project consisted of the study and evaluation of the City's water supply and distribution system to determine system deficiencies and areas needing repair.

Preliminary engineering services included extensive hydraulic modeling, water use forecasting, the preparation of a facilities plan for submission to the WVIJDC, and assistance in identifying and securing project funding.

Final engineering services included, bid package preparation, construction management and inspection services, and record drawing preparation.



Town of Grant Town Water System Improvements Marion County, WV



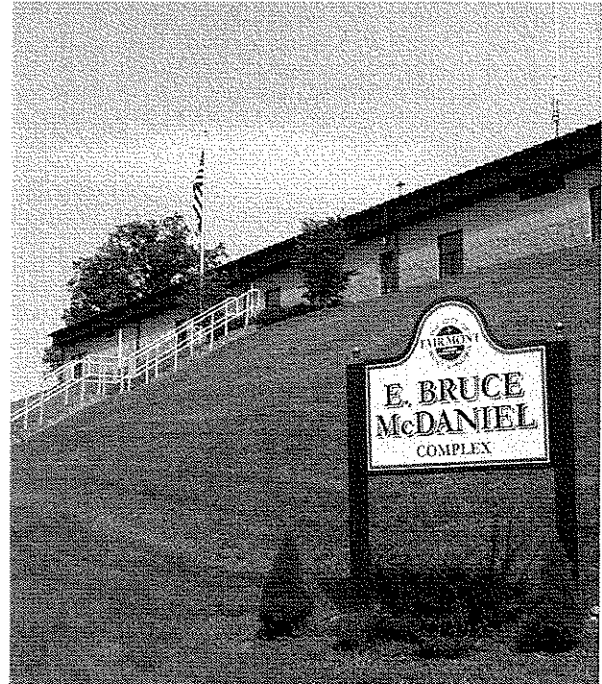
Grant Town is a small community serving approximately 545 customers. In Grant Town and surrounding areas water is purchased from the City of Fairmont and is pumped to two steel reservoirs containing 300,000 gallons of storage. The project entails the replacement of approximately 23,000 linear feet of water main and extensions to serve additional customers. The project also included the replacement of the town's booster station and the evaluation and refurbishment of the reservoirs.

G&O provided a detailed hydraulic study for the planning and design of a water system upgrade. Preliminary design services included the submission of a preliminary engineering report and preparation of funding applications to the WV Infrastructure and Jobs Development Council (WVIDJC). Upon receiving a funding commitment, detailed construction drawings, project specifications, bid and contract documents were prepared. G&O reviewed the bids received and recommended award of a construction contract. Construction management and inspection services were provided to ensure compliance with approved plans and specifications.

Fairmont to Mannington Waterline Extension Marion County, WV

G&O is responsible for design of a project that includes a major service line extended from Fairmont to serve Mannington. The City of Mannington originally had proposed to construct a new potable water treatment plant to replace their existing plant. However, due to escalating "proposed new plant" construction costs and the inadequacy in reliability of the raw water supply for the City of Mannington's potable water treatment plant, it was determined that an alternative solution for providing a potable water supply for the City of Mannington should be provided.

The proposed project consists of the installation of 67,000 lineal feet of 12" and 16" diameter water main, construction of a 1000 gpm booster pump station with booster chlorination, and a telemetry control system to provide potable water from the City of Fairmont to the City of Mannington.



West Fork Onsite Community Cooperative Demonstration Project Harrison County, WV



G&O was responsible for the overall design and bidding process of an alternative cluster sanitary sewer system to serve 6 customers along Jack Run and Daniels Road near Glen Falls, in Harrison County. The system utilizes and demonstrates the decentralized technology that will be used to design a system for all four communities of Arlington, Glen Falls, Dawmont, and Gore. This demonstration project has been funded by an EPA grant and administered by the National Environmental Services Center (NESC) at West Virginia University.

TECHNICAL QUALIFICATIONS

GRASP OF PROJECT REQUIREMENTS

G&O shall comply with the following WVDEP design guidelines, specifications and requirements to implement the project:

- ◆ WVDEP Design Guidelines
- ◆ In accordance with Federal, State & Local Regulations
- ◆ General Conditions and Standard Specifications

These standards cover a broad range of design and submittal requirements relating to topography, drainage design, grading plans, details for bat gates and wet seals, specifications, materials, etc.

G&O is experienced in complying with design requirements for the construction of mass grading, erosion control, site planning and appurtenances. In preparing the design plans for WVDEP G&O shall take into account such matters as:

- ◆ Constructability / cost effectiveness
- ◆ Impacts to surrounding property
- ◆ Serviceability to proposed customers
- ◆ System maintenance and overall cost-effectiveness
- ◆ Environmental and customer impacts

APPROACH / METHODOLOGY

This section describes our understanding of the restoration project and our approach to the tasks to be assigned under this contract. We have obtained this understanding from the expression of interest.

Project Kickoff Meeting

Prior to commencement of any project assessment or design, G&O will meet with WVDEP to clearly identify project goals, schedules, constraints and the design criteria. This step is useful in ensuring a quality project on the part of all parties and helps eliminate delays and cost overruns.

Pre-Design Feasibility Reports

G&O shall perform a detailed review of the Final Feasibility Study and, if requested, provide design alternatives and cost estimates to help select the optimum design option. This study would utilize G&O's design experience and existing relationship with subconsultants to best accomplish the WVDEP's goal. Pre-design feasibility studies facilitate evaluation of viable alternatives and will allow the WVDEP to select the preferred alternative.

WVDEP DESIGN GUIDELINES

G&O shall comply with the following WVDEP design guidelines, specifications and requirements:

- ◆ WVDEP Design Guidelines
- ◆ In accordance with Federal, State & Local Regulations
- ◆ General Conditions and Standard Specifications

In order to produce the overall most cost-effective design, G&O shall take the following into account when preparing water pipeline relocation design plans:

- ◆ Constructability / cost effectiveness
- ◆ Impacts to the existing system
- ◆ Serviceability to proposed customers
- ◆ System maintenance
- ◆ Environmental and customer impacts



Design Phase, Bid-Ready Contract Drawings & Specifications

G&O is highly experienced in the development of construction bid documents, including plans, specification, estimates, and bid forms. We have developed these documents for public agencies at all levels. We subscribe to many of the governmental specifications systems and Master Spec. We are also very familiar with standard specifications and details approved by the WVDEP. Our past project experience has enabled us to develop a thorough understanding of specific design requirements such as mapping reference styles, standard notes, bid forms, and details to best convey to our clients and ultimately contractors the intent of the design. This leads to better bid cost upfront and fewer change orders during construction.

The design phase includes the collection of aerial mapping to determine existing conditions and preparation of grading and erosion control plans. Plan packages will include details and specifications for excavation, backfill, wet seals, bat gates, and other required items pertaining to relevant areas.

In preparing reclamation design plans, G&O shall take into account **environmental impacts, maintenance of vehicular traffic, constructability, maintenance, impact to the surrounding area to produce the overall most cost-effective design.**

Geotechnical Investigation

The design of fill slopes and portal wet seals could require soil borings and geotechnical study for proper design. G&O's sub-consultant (HCN/Terracon) has geotechnical staff well experienced in field sub-surface studies, laboratory materials testing, data analyses, design recommendations, and construction methods for various projects in both private and public sectors.

Other Design Requirements

Other design considerations and information on the plans may include:

- ◆ Typical Details (drainage structures, ditches, wet seals and bat gates)
- ◆ Sediment and erosion control
- ◆ Soils boring and geotechnical considerations
- ◆ Access roads and site plans

Construction Cost Estimating

We believe that cost estimating must be an interactive part of the design process, providing budgetary feedback and value engineering on design alternatives. It is this participatory upfront input that allows the team to produce design concepts and drawing that are within the client's budget. Our cost control program builds value engineering into each design project. G&O will prepare, monitor, and finalize construction budgets and time estimates. Communication will occur at every phase of the project to ensure realistic costs. **G&O shall provide cost estimates with WVDEP approved unit items.**

Environmental Permitting

The G&O Team includes an environmental team experienced in minimizing and mitigating any impacts to environmentally sensitive areas associated with infrastructure projects. G&O shall assist WVDEP in identifying, avoiding if possible and/or minimizing impacts to environmental constraints e.g. forest cover, historical sensitive areas, wetlands and waters of the US. We shall also provide reports, impact sketches and supporting material to help WVDEP obtain a Nationwide Permit from the Army Corp of Engineers and clearance from Culture & History if necessary.



At the Federal level, we have in-depth familiarity with the following:

- ◆ National Environmental Policy Act regulations, issued by Council on Environmental Quality, 40 CFR 1500-1508
- ◆ Section 9/10 of the Rivers and Harbors Act
- ◆ Sections 404 and 401 of the Clean Water Act of 1977/Water Quality of 1987 (33 USC 125101376)
- ◆ Sections 10, 309, and 176 of the Clean Air Act of 1970, as amended (42 USC 7401 et seq.); and the Clean Air Act Amendments of 1987
- ◆ EPA Section 404(b)(1) Guideline
- ◆ Section 2, Fish & Wildlife Coordination Act (16 USC 1533)
- ◆ Executive Order, 11990, Protection of Wetlands
- ◆ Executive Order, 11988, Floodplain Management
- ◆ Federal Noise Control Act of 1972
- ◆ Section 106, National Historic Preservation Act of 1996, as amended (16 USC 470) regulations of the Advisory Council of Historic Preservation (36 CFR 800)

At the state and local levels, we have significant experience with the following:

- ◆ Sediment and Erosion Control Regulations
- ◆ Stormwater Management Regulations
- ◆ WV Culture and History
- ◆ Water Quality Certification (Section 401)
- ◆ Fish and Wildlife

Coordination

Coordination between G&O, WVDEP, subconsultants and current property owners where the project is located will be extremely important to the success of the project. G&O will initialize and maintain effective communication between all parties involved in the project.

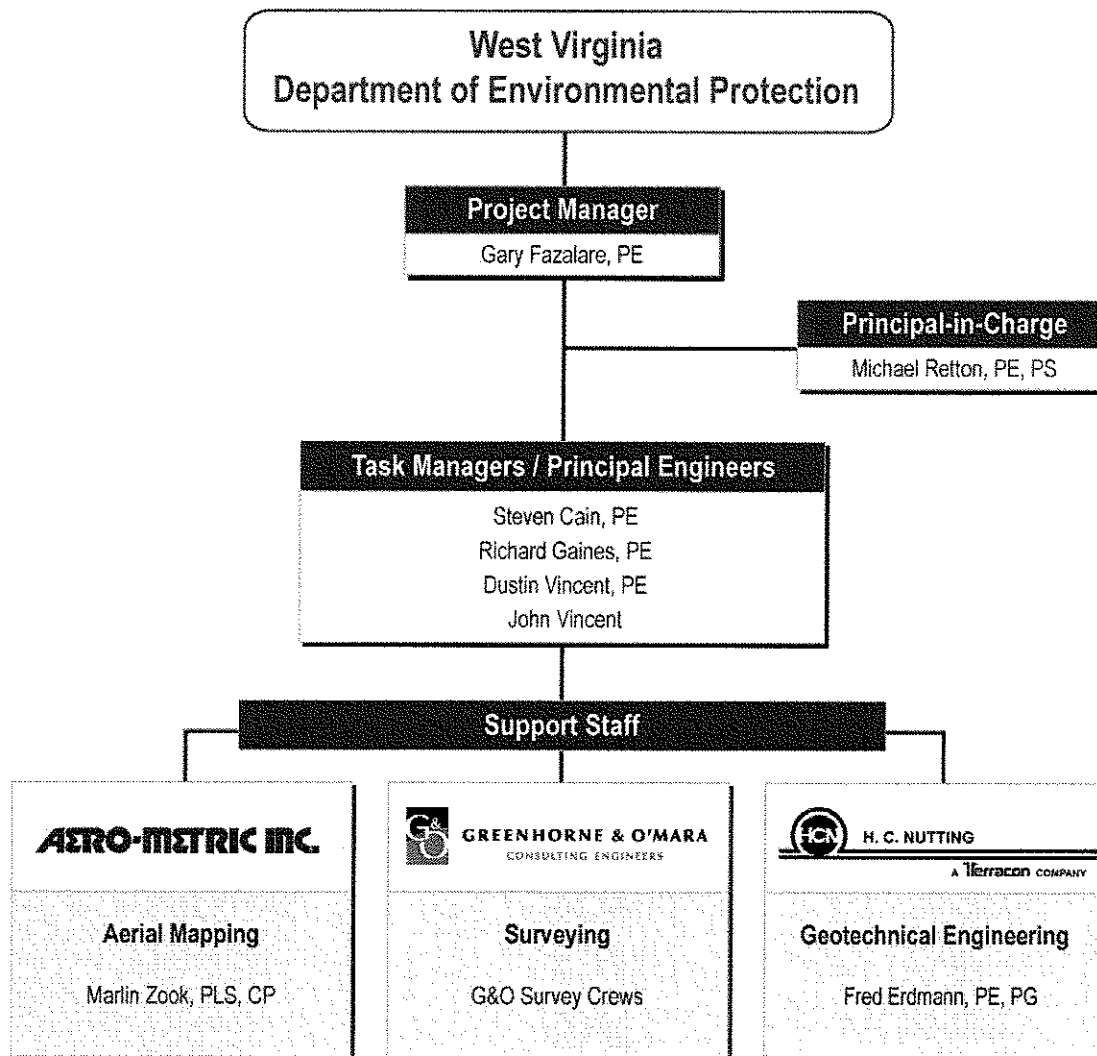


KEY PROJECT TEAM MEMBERS - QUALIFICATIONS AND EXPERIENCE

G&O's project organization for WVDEP has been carefully selected for this contract to offer top professionals from our Fairmont Office. Individuals offered in this proposal possess pertinent local experience in conducting studies and preparing plans for the installation of water distribution systems and appurtenances associated with projects of this nature. We have also included professionals from our subconsultant team to provide ancillary services if required by WVDEP, including geotechnical engineering and aerial mapping.

G&O's project organization for WVDEP has been carefully selected for this contract to offer high caliber professionals from our Fairmont office.

We present in this section our Team organization, followed by a summary of the pertinent **qualifications, experience, and location** of select **key project team members**, as well as the **percentage of time** each key team member will devote to the project during the life of the contract. **Additional staff information is included in our Expression of Interest.**



Gary Fazalare, PE

Project Manager

Percent of Time Devoted to this Contract: 25-30%

Firm: Greenhorne & O'Mara
Highest Degree: BS
Years of Experience: 15
Office Location: Fairmont, WV

Assignment / Responsibilities

- ◆ Serve as primary point-of-contact for WVDEP
- ◆ Handle all contract and technical matters
- ◆ Prepare task order proposals and negotiate task orders
- ◆ Designate task order managers and oversee task order execution
- ◆ Organize and apply personnel resources to meet contract commitments
- ◆ Monitor compliance with quality assurance and review processes
- ◆ Prepare progress reports and invoices
- ◆ Negotiate subcontracts
- ◆ Monitor MBE participation against the subcontracting plan
- ◆ Ensure that all activities are accomplished to advance the goals of WVDEP's programs and projects

Capabilities & Experience. Mr. Fazalare is the Department Head for G&O's Fairmont Construction Engineering & Inspection Department and Branch Manger for the entire G&O Fairmont Office. He has over 15 years of experience in project management and civil engineering design. His career has encompassed many aspects of civil engineering including water distribution system design, raw water intake design, raw and finished water transmission pipeline design, water treatment plant design, utility planning, computer aided drafting, construction engineering, site development, sanitary sewer collection system design, wastewater pumping systems and transmission design, wastewater treatment systems design, and inspection of all water and sewer facilities.

Relevant projects include:

- ◆ Preston County PSD #4 Water System Extensions
- ◆ Alpine Lake Water Distribution System Reconstruction, Preston County, WV
- ◆ Mannington Waterline Extension, Marion County, WV
- ◆ Shinnston Waterline Reconstruction, Harrison County, WV
- ◆ Grant Town Water System Improvements, Marion County, WV
- ◆ Hundred Littleton PSD Water System Improvements, Wetzel County, WV
- ◆ Jane Lew PSD Potable Water System Improvements, Lewis County, WV
- ◆ Shinnston Utility Relocation, Harrison County, WV



Michael Retton, PE, PS

Principal-in-Charge

Percent of Time Devoted to this Contract: 2%

Firm: Greenhorne & O'Mara
Highest Degree: BS
Years of Experience: 24
Office Location: Fairmont, WV

Assignment / Responsibilities

- ◆ Ensure availability of personnel and corporate financial resources
- ◆ Provide general guidance and advice to the Project Manager
- ◆ Solicit feedback on G&O contract performance from WVDEP

Capabilities & Experience. As Vice President of Engineering Services for the Mid-Atlantic Region, Mr. Retton is responsible for all civil/land development and general civil services projects performed in the Mid-Atlantic Region. He has more than 24 years of experience in land development planning, engineering, utility engineering and design, hydrologic/hydraulic analyses, design of sediment control ponds, and stormwater detention facilities.

Relevant projects include:

- ◆ Fairmont General Hospital Healthplex, Marion County, WV
- ◆ Mannington Waterline Extension, Marion County, WV
- ◆ Alpine Lake Sewer System Improvements, Preston County, WV
- ◆ Grant Town Water System Improvements, Marion County, WV
- ◆ Shinnston Utility Relocation, Harrison County, WV

Steven Cain, PE

Task Manager/Principal Engineer

Percent of Time Devoted to this Contract: 20%

Firm: Greenhorne & O'Mara
Highest Degree: BS
Years of Experience: 15
Office Location: Fairmont, WV

Assignment / Responsibilities

- ◆ Coordinate work with the G&O Project Manager
- ◆ Direct or execute work on individual task orders
- ◆ Report progress, expenditures, and results to the Project Manager
- ◆ Contract documents
- ◆ On-site takeover system services
- ◆ WVDEP permitting

Capabilities & Experience. Mr. Cain, Department Head for G&O's Fairmont Civil Engineering Department, has more than 15 years of experience. His career has encompassed many aspects of civil engineering including land surveying, site development, sanitary sewer condition assessment, capacity evaluation, data management, rehabilitation design, wastewater treatment system design, potable water system design, hydraulic modeling, utility planning, computer aided drafting, and construction engineering.

Relevant projects include:

- ◆ Kingmill Valley Sanitary Sewer Improvements, Marion County, WV
- ◆ Alpine Lake Water Distribution System Reconstruction, Preston County, WV
- ◆ Mannington Waterline Extension, Marion County, WV
- ◆ Shinnston Waterline Reconstruction, Harrison County, WV
- ◆ Fairmont Sanitary Sewer Improvements, Marion County, WV



Richard Gaines, PE

Task Manager/Principal Engineer

Percent of Time Devoted to this Contract: 20%

Firm: Greenhorne & O'Mara
Highest Degree: BS
Years of Experience: 20
Office Location: Fairmont, WV

Assignment / Responsibilities

- ◆ Prepare Work Plans for review by the Project Manager and WVDEP
- ◆ Coordinate work with the G&O Project Manager
- ◆ Direct or execute work on individual task orders
- ◆ Report progress, expenditures, and results to the Project Manager
- ◆ Contract documents

Capabilities & Experience. A project manager in G&O's Fairmont office, Mr. Gaines is experienced in design, plan preparation, and permit processing for land development projects. Design expertise includes storm drainage, water and sewer, sediment control, and land grading. He also is experienced in earthwork analysis, cost estimates, and feasibility studies.

Relevant projects include:

- ◆ Flowers Bakery - Commercial Site Plan, Marion County, WV
- ◆ Fairmont General Hospital Healthplex, Marion County, WV
- ◆ Preston County PSD #4 Water System Extensions
- ◆ Jane Lew PSD Potable Water System Improvements, Lewis County, WV
- ◆ Mannington Waterline Extension, Marion County, WV

Dustin Vincent, PE

Task Manager/Principal Engineer

Percent of Time Devoted to this Contract: 20%

Firm: Greenhorne & O'Mara
Highest Degree: BS
Years of Experience: 10
Office Location: Fairmont, WV

Assignment / Responsibilities

- ◆ Prepare Work Plans for review by the Project Manager and WVDEP
- ◆ Coordinate work with the G&O Project Manager
- ◆ Direct or execute work on individual task orders
- ◆ Report progress, expenditures, and results to the Project Manager

Capabilities & Experience. As a Project Engineer in G&O's Fairmont office, Mr. Vincent's work has included planning, design, permitting, construction administration, services site development, water distribution design, streetscape and revitalization, planning and design services for roadways, highways, stormwater management facilities, storm drainage, sanitary sewers, sewer lift stations, water systems, and water mains.

Relevant projects include:

- ◆ Preston County PSD #4 Water System Extensions
- ◆ Shinnston Waterline Reconstruction, Harrison County, WV
- ◆ Jane Lew PSD Potable Water System Improvements, Lewis County, WV
- ◆ West Fork On-Site Community Cooperative Demonstration, Harrison County, WV



John Vincent		Task Manager/Principal Engineer Percent of Time Devoted to this Contract: 20%	
Firm: Greenhorne & O'Mara Highest Degree: BS Years of Experience: 13 Office Location: Fairmont, WV	Mr. Vincent has over 13 years experience in civil engineering projects. His career has encompassed many aspects of civil engineering including highway design, site development, sanitary sewer and surveying. Most recently he performed surface mining reclamation plans in conjunction with a public/private highway project in Mingo County.		
Assignment / Responsibilities <ul style="list-style-type: none"> ◆ Prepare Work Plans for review by the Project Manager and WVDEP ◆ Coordinate work with the G&O Project Manager ◆ Direct or execute work on individual task orders Report progress, expenditures, and results to the Project Manager	Relevant projects include: <ul style="list-style-type: none"> ◆ Fairmont General Hospital Healthplex, Marion County, WV ◆ Kingmill Valley Sanitary Sewer Improvements, Marion County, WV ◆ Mannington Waterline Extension, Marion County, WV ◆ Shinnston Waterline Reconstruction, Harrison County, WV ◆ King Coal Highway (Red Jacket Section), Mingo County, WV ◆ King Coal Highway (Sharon Heights Section), Mingo County, WV 		

Marlin Zook, PLS, CP		Key Staff – Aerial Mapping Percent of Time Devoted to this Contract: 10%	
<ul style="list-style-type: none"> ◆ Firm: Aero-Metric, Inc. ◆ Highest Degree: AS ◆ Years of Experience: 30 ◆ Office Location: Dulles, VA 	Capabilities & Experience. Mr. Zook has over 30 years experience in all aspects of photogrammetry. His career at Aero-Metric began in photogrammetric compilation and extended to all other mapping related operations such as flight planning, ground control surveys, drafting, analytical triangulation, volume computations, Interactive graphics and data collection for input to a GIS. Current responsibilities include overseeing all phases of the photogrammetric process including aerial triangulation, compilation and digital edit. He is also responsible for directing the quality control and the survey team efforts. He has been in charge of all mapping projects from the planning phase to production for the past eighteen years at Aero-Metric.		
Assignment / Responsibilities <ul style="list-style-type: none"> ◆ Ground Surveying ◆ Digital Mapping ◆ Digital Orthophoto Production ◆ Review of Final Delivery Items to the WVDEP 	Relevant projects include: <ul style="list-style-type: none"> ◆ PSD #4 Waterline Project, Brandonville, Preston County, WV (with G&O) ◆ Racket/Newberne Compressor Station Bridge Site, Newberne, Ritchie County, WV ◆ Hanlin-Allied-Olin Plant Site, Moundsville, Marshall County, WV ◆ Lewisburg Sewer Extension, Lewisburg, Greenbrier County, WV 		



Fred Erdmann, PE, PG

Key Staff – Geotechnical Engineering

Percent of Time Devoted to this Contract: 10%

Firm: H.C. Nutting/A Terracon Co.

Highest Degree: MS

Years of Experience: 40

Office Location: Charleston, WV

Assignment / Responsibilities

- ◆ Coal Reserve Assessments
- ◆ Mining Feasibility Studies
- ◆ Coal Source Investigations
Studies for Utilities
- ◆ Roof Support Plans and Studies
- ◆ Ground Subsidence
Investigations
- ◆ Geotechnical Investigations
- ◆ Environmental Site
Assessments
- ◆ Litigation Support

Capabilities & Experience. Mr. Erdmann has over 40 years of experience in the areas of applied geological engineering. He provides project management and technical assistance to clients seeking solutions to tunnelling, mining engineering projects and mineral resource investigations.

Relevant projects include:

- ◆ Conversion of Former Limestone Mines in Olive Hill, KY
U.S. Army Corps of Engineers, Louisville District
- ◆ Marion County 911 Center near Fairmont, WV
- ◆ Liner Evaluation of the Elsinore Water Tunnel
- ◆ Geotechnical Study of a Deep Manhole
- ◆ Geotechnical Investigation for Proposed Access Shaft
- ◆ Tunnel Remediation and Test Pit Study for the Marathon
Fuel Terminal
- ◆ Mine Subsidence Investigations in Eastern Ohio
- ◆ Mine Subsidence Assessment



OFFICE LOCATION

G&O will coordinate and perform all of the work required under this contract from our Fairmont, WV office, located at 111 Elkins Street.

As illustrated by the graphic below, the G&O team is centrally located to the WVDEP and the project location, ensuring timely response to any situation.

G&O will coordinate and perform all of the work required under this contract from our Fairmont, WV office.



SUBCONSULTANTS



Greenhorne & O'Mara, Inc. (G&O) has put together an outstanding team to provide the consulting engineering services requested by the West Virginia Department of Environmental Protection (WVDEP) under this Expression of Interest. Together, G&O and its subconsultants, H.C. Nutting/A Terracon Company (HCN/Terracon) and Aero-Metric, Inc. blends discipline expertise and relevant experience with similar award-winning programs, local knowledge, and a solid background of working together. Team professionals possess the strong relevant experience, capability, and roll-up-your-sleeves know-how to get the job done right.



H. C. NUTTING

A Terracon COMPANY

H.C. Nutting/A Terracon Company (HCN/Terracon) will be providing individual and definitive tasks for the Geotechnical Engineering aspects of the work for this project. With more than 150 geotechnical engineers and one of the largest drilling fleets in the country, HCN/Terracon is well positioned to deliver quality, responsive and cost-effective geotechnical engineering services, regardless of project size. Design and construction of functional, cost-effective structures require a thorough understanding of local soil, rock and groundwater conditions. HCN/Terracon provides a wide range of services to support all phases of a project, from preliminary design through completion of the building process.

H.C. Nutting/Terracon is a dynamic and growing consulting firm providing multiple related service lines to clients at local, regional and national levels. Their services are delivered on a timely basis with consistently high value and attention to client needs.

AERO-METRIC INC.

Aero-Metric, Inc. is a leading provider of high-quality geospatial services to government and corporate clients. Geospatial services involve defining the earth's topographic shape, identifying and measuring its natural and man-made features and chronicling its condition using a variety of photogrammetric and image processing technologies.

Aero-Metric provides these services to clients in the form of planimetric mapping, topographic mapping, digital orthophoto imagery, digital elevation modeling, terrain mapping and other cartographic services. Aero-Metric's clients rely on these geospatial information services for feasibility studies, natural resource evaluation, engineering design and construction, temporal change detection and assessment, mapping, environmental monitoring, and numerous related applications. Aero-Metric has developed a blue-chip client base that includes some of the top domestic engineering and manufacturing firms, as well as a wide variety of federal, state and local government agencies.



REFERENCES

PRESTON COUNTY PUBLIC SERVICE DISTRICT #4

Point of Contact	Mr. Robert (Al) Bailey, Chairman
Address	Preston County Public Service District #4 PO Box 370 Bruceeton Mills, WV 26525
Phone number	(304) 379-3130
Project Name	Clifton Mills Waterline Extension
Location	Preston County PSD #4, WV

ALPINE LAKE PUBLIC UTILITY COMPANY

Point of Contact	Ms. Ann Nelson, President
Address	Alpine Lake Public Utility Company 700 W. Alpine Drive Terra Alta, WV 26764
Phone number	(304) 789-6996
Project Name	Alpine Lake Water & Sewer Treatment Plants and System Upgrades
Location	Preston County, WV

CITY OF SHINNSTON

Point of Contact	Ms. Debra Herndon, City Manager
Address	City of Shinnston 40 Main Street Shinnston, WV 26431
Phone number	(304) 592-3076
Project Name	Shinnston Water and Sewer System Improvements and Sewer Treatment Plant
Location	Harrison County, WV



CITY OF FAIRMONT

Point of Contact	Mr. David Sago, Utilities Manager
Address	City of Fairmont PO Box 1428 Fairmont, WV 26554
Phone number	(304) 366-0540
Project Name Location	Fairmont-Mannington Water Transmission Main Extension and Sanitary Sewer Improvements Marion County, WV

MARION COUNTY COMMISSION

Point of Contact	Mr. Richard Walton
Address	Marion County Commission 200 Jackson Street Fairmont, WV 26554
Phone number	(304) 367-5431
Project Name Location	Meredith Springs/Dakota Camp Area Sanitary Sewer Improvements and Extensions Project

JANE LEW PUBLIC SERVICE DISTRICT

Point of Contact	Ms. Nancy Gee, General Manager
Address	Jane Lew Public Service District PO Box 845 Jane Lew, WV 26378
Phone number	(304) 884-7111
Project Name Location	Jane Lew Water Improvements Lewis County, WV



TOWN OF GRANT TOWN

Point of Contact	Mr. Robert Riggs, Jr., Mayor
Address	Town of Grant Town PO Box 40 Grant Town, WV 26574
Phone number	(304) 278-7381
Project Name	Grant Town Water System Improvements
Location	Marion County, WV

KINGMILL VALLEY PUBLIC SERVICE DISTRICT

Point of Contact	Mr. Edd Abbadini, Chairman
Address	Kingmill Valley Public Service District 1707 Pleasant Valley Road Fairmont, WV 26554
Phone number	(304) 366-3928
Project Name	Kingmill Valley Sanitary Sewer Improvements
Location	Marion County, WV

WEST FORK ON-SITE COMMUNITY COOPERATIVE, INC.

Point of Contact	Mr. Paul Hamrick, Chairman
Address	West Fork On-Site Community Cooperative, Inc. Route 3 Box 352 Clarksburg, WV 26301
Phone number	(304) 622-5664
Project Name	West Fork On-Site Community Cooperative Demonstration Project
Location	Harrison County, WV

FAIRMONT GENERAL HOSPITAL, INC

Point of Contact	Mr. Albert Pilkington, III, CEO
Address	Fairmont General Hospital, Inc. 1325 Locust Avenue Fairmont, WV 26554
Phone number	(304) 367-7454
Project Name Location	Fairmont General Hospital Healthplex Marion County, WV

LGI LAND, INC.

Point of Contact	Mr. Butch Alanis, Executive Vice President
Address	LGI Land, Inc. 19221 I-45 South, Suite 200 Conroe, TX 77385
Phone number	(281) 362-8998
Project Name Location	Fisher Mountain Pendleton County, WV

BUTLER PROPERTIES, INC.

Point of Contact	Mr. Clarke Coole, Vice President
Address	Butler Properties, Inc. One Paces West 2727 Paces Ferry Road, Suite 255 Atlanta, GA 30339
Phone number	(770) 433-9500 ext. 13
Project Name Location	Flowers Bakery Marion County, WV



WEATHERFORD INTERNATIONAL, INC.

Point of Contact	Mr. Bryson VanNostrand, President
Address	VanNostrand Architects 29 East Main Street, Suite 4 Buckhannon, WV 26201
Phone number	(304) 473-0555
Project Name Location	Weatherford Sand Silos and Siding Century, WV

WINEBRENNER'S CROSSING

Point of Contact	Mr. Herb Jonkers, President
Address	Yoe Properties, LLC PO Box 341 Millwood, VA 22646
Phone number	(703) 627-0935
Project Name Location	Winebrenner's Crossing – MARC Train Martinsburg, WV



SUMMARY

LOCAL KNOWLEDGE

G&O has been in the Fairmont area since 1999. We have been in business at our headquarters in Laurel, MD since its inception in 1950. During this time, we have developed strong working relationships with nearly every state, county, and local government agency that operates within WVDEP boundaries, and are intimately familiar with all relevant codes, policy and procedures to successfully navigate jobs through to completion.

G&O's Key Project Team Members have worked on similar projects in West Virginia while employed with other firms. Our staff members have also worked on multiple mass grading, drainage and erosion control projects throughout West Virginia and surrounding states.

WHY CHOOSE G&O?

G&O provides comprehensive consulting services to perform studies, prepare plans and secure permits for the installation of water distribution systems, and appurtenances. G&O has put together an outstanding Team to provide the consulting engineering services WVDEP needs under this EOI.

Technical Competence. G&O has extensive experience with conceptual studies, designs, cost estimating, preparation of plans and specifications, and construction-related engineering and inspection services for sanitary engineering projects.

Firm's Experience. Founded in Prince George's County in 1950, our business revolves around surveying, planning, and engineering for transportation, land development, and sanitary engineering projects.

Individual Experience. The management and technical team is highly capable and experienced. G&O's project organization for WVDEP has been carefully selected for this project to offer top professionals mainly from our Fairmont office.

Responsiveness. WVDEP will find the G&O Team to be very responsive because G&O is committed to establishing our relationship with the WVDEP.

Resources. G&O and its Team members are committing over 590 professionals from our Mid-Atlantic offices.

Prime / Sub Working Relationship. G&O's working relationship with our Team members date back to the mid-1990s.

Quality of Work. G&O is committed to the assurance of quality deliverables, free of errors and omissions, and to meeting and exceeding our customer's expectations.

Timeliness. A comprehensive budget, schedule, and quality assurance culture using customized cost-control and project management tools will ensure timely response.

Cooperation. G&O is committed to maintaining reliable day-to-day communication, providing monthly progress reports, and following established procedures to facilitate prompt communication with WVDEP. We will also adjust resources and schedules as required to meet WVDEP's project requirements.

Location. G&O will coordinate and perform all of the work required under this contract from our Fairmont office, at 111 Elkins Street.

Principal Participation. Senior management staff from G&O's Fairmont office will provide the day-to-day management and quality assurance for task orders under this contract.

Bottom line. G&O wants to earn your business and will work hard to retain your trust. We look forward to solidifying our relationship with you.



STATE OF WEST VIRGINIA
Purchasing Division

030

PURCHASING AFFIDAVIT

West Virginia Code §5A-3-10a states: No contract or renewal of any contract may be awarded by the state or any of its political subdivisions to any vendor or prospective vendor when the vendor or prospective vendor or a related party to the vendor or prospective vendor is a debtor and the debt owed is an amount greater than one thousand dollars in the aggregate

DEFINITIONS:

"Debt" means any assessment, premium, penalty, fine, tax or other amount of money owed to the state or any of its political subdivisions because of a judgment, fine, permit violation, license assessment, defaulted workers' compensation premium, penalty or other assessment presently delinquent or due and required to be paid to the state or any of its political subdivisions, including any interest or additional penalties accrued thereon.

"Debtor" means any individual, corporation, partnership, association, limited liability company or any other form or business association owing a debt to the state or any of its political subdivisions. "Political subdivision" means any county commission; municipality; county board of education; any instrumentality established by a county or municipality; any separate corporation or instrumentality established by one or more counties or municipalities, as permitted by law; or any public body charged by law with the performance of a government function or whose jurisdiction is coextensive with one or more counties or municipalities. "Related party" means a party, whether an individual, corporation, partnership, association, limited liability company or any other form or business association or other entity whatsoever, related to any vendor by blood, marriage, ownership or contract through which the party has a relationship of ownership or other interest with the vendor so that the party will actually or by effect receive or control a portion of the benefit, profit or other consideration from performance of a vendor contract with the party receiving an amount that meets or exceeds five percent of the total contract amount.

EXCEPTION: The prohibition of this section does not apply where a vendor has contested any tax administered pursuant to chapter eleven of this code, workers' compensation premium, permit fee or environmental fee or assessment and the matter has not become final or where the vendor has entered into a payment plan or agreement and the vendor is not in default of any of the provisions of such plan or agreement.

LICENSING: Vendors must be licensed and in good standing in accordance with any and all state and local laws and requirements by any state or local agency of West Virginia, including, but not limited to, the West Virginia Secretary of State's Office, the West Virginia Tax Department, West Virginia Insurance Commission, or any other state agencies or political subdivision. Furthermore, the vendor must provide all necessary releases to obtain information to enable the Director or spending unit to verify that the vendor is licensed and in good standing with the above entities.

CONFIDENTIALITY: The vendor agrees that he or she will not disclose to anyone, directly or indirectly, any such personally identifiable information or other confidential information gained from the agency, unless the individual who is the subject of the information consents to the disclosure in writing or the disclosure is made pursuant to the agency's policies, procedures and rules. Vendors should visit www.state.wv.us/admin/purchase/privacy for the Notice of Agency Confidentiality Policies.

Under penalty of law for false swearing (West Virginia Code, §61-5-3), it is hereby certified that the vendor acknowledges the information in this said affidavit and are in compliance with the requirements as stated.

Vendor's Name: Greenhorne & O'Mara, Inc.

Authorized Signature:  Date: September 25, 2008

PROJECT NAME Church Creek/Manown HW Design		DATE (DAY, MONTH, YEAR) September 25, 2008	FEIN 04-476-0510
1. FIRM NAME Greenhorne & O'Mara, Inc.	2. HOME OFFICE BUSINESS ADDRESS 6110 Frost Place Laurel, Maryland 20707	3. FORMER FIRM NAME	
4. HOME OFFICE TELEPHONE 301-982-2800	5. ESTABLISHED (YEAR) 1950	6. TYPE OWNERSHIP Individual Corporation Partnership Joint-Venture	6a. WV REGISTERED DBE (Disadvantaged Business Enterprise) YES NO
7. PRIMARY AML DESIGN OFFICE: ADDRESS/ TELEPHONE/ PERSON IN CHARGE/ NO. AML DESIGN PERSONNEL EACH OFFICE 111 Elkins St., Fairmont, WV 26554 / 304-367-9401 / Michael A. Retton, PE, PS / 18 Fairmont Office / 687 Company-wide			
8. NAMES OF PRINCIPAL OFFICERS OR MEMBERS OF FIRM Michael A. Retton, PE, PS		8a. NAME, TITLE, & TELEPHONE NUMBER - OTHER PRINCIPALS Gary Fazalare, PE / Department Head/Branch Manager / 304-367-9401	
9. PERSONNEL BY DISCIPLINE			
115 ADMINISTRATIVE	— ECOLOGISTS	12 LANDSCAPE ARCHITECTS	17 STRUCTURAL ENGINEERS
— ARCHITECTS	— ECONOMISTS	— MECHANICAL ENGINEERS	120 SURVEYORS
— BIOLOGIST	— ELECTRICAL ENGINEERS	— MINING ENGINEERS	52 TRANSPORTATION ENGINEERS
44 CADD OPERATORS	47 ENVIRONMENTAL ENGINEER/SCIENTIST	— PHOTOGRAMMETRISTS	79 OTHER
— CHEMICAL ENGINEERS	— ESTIMATORS	15 PLANNERS: URBAN/REGIONAL	
87 CIVIL ENGINEERS	1 GEOLOGISTS	— SANITARY ENGINEERS	
86 CONSTRUCTION INSPECTORS	2 HISTORIANS	— SOILS ENGINEERS	
— DESIGNERS	— HYDROLOGISTS	10 TECHNICAL WRITERS	687* TOTAL PERSONNEL
— DRAFTSMEN			* Company wide
TOTAL NUMBER OF WV REGISTERED PROFESSIONAL ENGINEERS IN PRIMARY OFFICE: <u>6</u>			
*RPES other than Civil and Mining must provide supporting documentation that qualifies them to supervise and perform this type of work.			
10. HAS THIS JOINT-VENTURE WORKED TOGETHER BEFORE? YES NO N/A			

11. OUTSIDE KEY CONSULTANTS/SUB-CONSULTANTS ANTICIPATED TO BE USED. Attach "AML Consultant Confidential Qualification Questionnaire".

<p>NAME AND ADDRESS: HC Nutting, A Terracon Company 912 Morris Street Charleston, WV 25301</p>	<p>SPECIALTY: HCN has been one of the premier drilling firms in the eastern U.S. since the company's inception in 1921. HCN maintains a fleet of its own drilling rigs and support equipment, all operated by experienced personnel. The drill crews operate in compliance with numerous regulatory agencies, such as US DOT, EPA, IRP, CDL, US COE, OSHA, and MSHA. The National Drilling Contractor's Association has also awarded HCN the "Tough Job" award, in 1990.</p>	<p>WORKED WITH BEFORE ___ X ___ Yes ___ ___ No</p>
<p>NAME AND ADDRESS Aero-Metric, Inc. 45180 Business Court Dulles, VA 20166</p>	<p>SPECIALTY: At AERO-METRIC, professionals design and implement effective solutions to meet client requirements. Experienced pilots, aerial photographers, surveyors, photogrammetrists, cartographers, image processing experts, GIS analysts, and lab technicians blend their skills with sophisticated hardware and software systems to produce results our clients expect, using the latest technological innovations.</p>	<p>WORKED WITH BEFORE ___ X ___ Yes ___ ___ No</p>
<p>NAME AND ADDRESS:</p>	<p>SPECIALTY:</p>	<p>WORKED WITH BEFORE ___ ___ Yes ___ ___ No</p>
<p>NAME AND ADDRESS:</p>	<p>SPECIALTY:</p>	<p>WORKED WITH BEFORE ___ ___ Yes ___ ___ No</p>
<p>NAME AND ADDRESS:</p>	<p>SPECIALTY:</p>	<p>WORKED WITH BEFORE ___ ___ Yes ___ ___ No</p>
<p>NAME AND ADDRESS:</p>	<p>SPECIALTY:</p>	<p>WORKED WITH BEFORE ___ ___ Yes ___ ___ No</p>

12. A. Is your firm experienced in Abandoned Mine Lands Remediation/Mine Reclamation Engineering?

YES Description and Number of Projects:

NO

B. Is your firm experienced in Soil Analysis?

YES Description and Number of Projects:

G&O has completed more than 180 projects requiring soil analysis. However, the majority of this analysis has been done to detect potential soil contamination. G&O routinely inspects and tests soils during the excavation of project sites for the presence of petroleum and other contaminants, in order to characterize the excavated materials as clean fill, petroleum contaminated, or hazardous materials. G&O's standards for environmental site assessments meet and/or exceed the requirements outlined in the current American Society for Testing and Materials (ASTM) standards, and the protocols established by OSHA and the EPA for work at hazardous waste sites.

NO

C. Is your firm experienced in hydrology and hydraulics?

YES Description and Number of Projects:

G&O has completed more than 250 projects involving hydrology and hydraulics (H&H). Services include H&H analysis and design, automated H&H modeling, floodplain hydrology and hydraulics, floodplain/floodway analysis and delineation, highway hydraulic structures, stormwater management, and reservoir analysis.

Pipeline designs have included raw water supply, water distribution, and water transmission mains, repair and reconstruction and relocations. We are experienced in **pipeline sleeve and tunnel crossings, pipeline suspension on bridges and other structures**, and subaqueous stream and river crossings. G&O has developed computer models for water distribution systems, both for sizing new systems, and for analyzing existing systems for expansion and upgrading. These analyses have been performed both for peak normal demands and for fire flow conditions. We have the complete **Haestad, INFOWORKS, KYPIPE, and SURGE software systems** in-house, which we use routinely for hydraulic modeling.

NO

D. Does your firm produce its own Aerial Photography and Develop Contour Mapping?

YES Description and Number of Projects:

NO

E. Is your firm experienced in domestic waterline design? (Include any experience your firm has in evaluation of aquifer degradation as a result of mining.)

YES Description and Number of Projects:

G&O has provided **thousands of miles of domestic waterline design services** on nearly all of the residential development projects we've been involved with since 1950. **Projects number in the tens of thousands**, reaching from Pennsylvania to Florida. In addition to the domestic waterlines connecting directly to the water mains, we have also designed new service wells and evaluated existing wells as needed.

NO

F. Is your firm experienced in Acid Mine Drainage Evaluation and Abatement Design?

YES Description and Number of Projects:

NO

13. PERSONAL HISTORY STATEMENT OF PRINCIPALS AND ASSOCIATES RESPONSIBLE FOR AML PROJECT DESIGN (Furnish complete data but keep to essentials)			
NAME & TITLE (Last, First, Middle Int.)	YEARS OF AML DESIGN EXPERIENCE:	YEARS OF AML RELATED DESIGN EXPERIENCE:	YEARS OF DOMESTIC WATERLINE DESIGN EXPERIENCE:
Retton, Michael A. Vice President, Engineering Services Mid-Atlantic	0	24	24
Brief Explanation of Responsibilities Mr. Retton is a Professional Engineer and Professional Surveyor with more than 24 years of experience in engineering design and project management. Mr. Retton's transportation engineering experience includes the preparation of detailed design drawings for several roadway and bridge projects in West Virginia, Maryland, and Virginia. He also has a vast array of municipal engineering experience, from detailed utility planning, design, and construction, to detailed site design and stormwater management.			
EDUCATION (Degree, Year, Specialization) B.S./1984/Civil Engineering Coursework/1986/Land Planning/Land Development Coursework/1987/Geotechnical Engineering			
MEMBERSHIP IN PROFESSIONAL ORGANIZATIONS National Council of Examiners for Engineers and Surveyors, National Society of Professional Engineers, American Public Works Association, West Virginia Rural Water Association, National Public Works Association, American Society of Highway Engineers, American Council of Engineering Companies, West Virginia Contractors Association			
REGISTRATION (Type, Year, State) Professional Engineer / 1990 / WV Professional Surveyor / 1995 / WV Additional P.E. Registrations: VA, MD, PA, KY, NC, OH			
13. PERSONAL HISTORY STATEMENT OF PRINCIPALS AND ASSOCIATES RESPONSIBLE FOR AML PROJECT DESIGN (Furnish complete data but keep to essentials)			
NAME & TITLE (Last, First, Middle Int.)	YEARS OF AML DESIGN EXPERIENCE:	YEARS OF AML RELATED DESIGN EXPERIENCE:	YEARS OF DOMESTIC WATERLINE DESIGN EXPERIENCE:
Fazalare, Gary J. Department Head/Branch Manager	0	15	15
Brief Explanation of Responsibilities Mr. Fazalare has more than 15 years of experience in project management and civil engineering design. His career has encompassed many aspects of civil engineering including site development, sanitary sewer collection system design, wastewater pumping systems and transmission design, wastewater treatment systems design, water distribution system design, raw water intake design, raw and finished water transmission pipeline design, water treatment plant design, utility planning, computer aided drafting, and construction engineering.			
EDUCATION (Degree, Year, Specialization) B.S./1992/Engineering Technology Short Course/Design of Water Treatment Plants/Safe Drinking Water Act Short Course/Erosion and Sediment Control Short Course/KYPIPE Hydraulic Modeling			
MEMBERSHIP IN PROFESSIONAL ORGANIZATIONS West Virginia Association of Consulting Engineers, West Virginia Rural Water Association, West Virginia Contractors Association, American Council of Engineering Companies, American Society of Highway Engineers, American Water Works Associations, Fairmont State University Technology Advisory Board			
REGISTRATION (Type, Year, State) Professional Engineer / 2000 / WV Additional P.E. Registrations: PA			

<p>13. PERSONAL HISTORY STATEMENT OF PRINCIPALS AND ASSOCIATES RESPONSIBLE FOR AML PROJECT DESIGN (Furnish complete data but keep to essentials)</p>			
<p>NAME & TITLE (Last, First, Middle Int.)</p> <p>Cain, Steven A. Department Head</p>	<p>YEARS OF AML DESIGN EXPERIENCE:</p> <p>0</p>	<p>YEARS OF EXPERIENCE</p> <p>YEARS OF AML RELATED DESIGN EXPERIENCE:</p> <p>15</p>	<p>YEARS OF DOMESTIC WATERLINE DESIGN EXPERIENCE:</p> <p>15</p>
<p>Brief Explanation of Responsibilities</p> <p>Mr. Cain has more than 15 years experience in project management and civil engineering design. His career has encompassed many aspects of civil engineering including land surveying, site development, sanitary sewer network design, wastewater treatment system design, potable water system design, hydraulic modeling, utility planning, computer aided drafting, and construction engineering and inspection of all water and sewer facilities.</p>			
<p>EDUCATION (Degree, Year, Specialization)</p> <p>B.S./1992/Civil Engineering, Technology</p> <p>Short Course/Contemporary Wastewater Treatment Plant Design and Operation</p> <p>Short Course/Erosion and Sediment Control</p> <p>Short Course/Essential MicroStation</p>			
<p>MEMBERSHIP IN PROFESSIONAL ORGANIZATIONS</p> <p>American Council of Engineering Companies, West Virginia Chapter; American Society of Highway Engineers; Water Environment Federation, West Virginia Contractors Association, West Virginia Rural Water Association</p>			
<p>13. PERSONAL HISTORY STATEMENT OF PRINCIPALS AND ASSOCIATES RESPONSIBLE FOR AML PROJECT DESIGN (Furnish complete data but keep to essentials)</p>			
<p>NAME & TITLE (Last, First, Middle Int.)</p> <p>Gaines, Richard L. Senior Project Manager</p>	<p>YEARS OF AML DESIGN EXPERIENCE:</p> <p>0</p>	<p>YEARS OF EXPERIENCE</p> <p>YEARS OF AML RELATED DESIGN EXPERIENCE:</p> <p>20</p>	<p>YEARS OF DOMESTIC WATERLINE DESIGN EXPERIENCE:</p> <p>20</p>
<p>Brief Explanation of Responsibilities</p> <p>Mr. Gaines has 19 years of experience in project management and civil engineering related to land development projects. His design experience includes potable water distribution systems, sewer collection and pumping systems, drainage and grading plans and permitting.</p>			
<p>EDUCATION (Degree, Year, Specialization)</p> <p>B.S./1987/Civil Engineering Technology</p> <p>A.S./1987/Mechanical Engineering Technology</p>			
<p>MEMBERSHIP IN PROFESSIONAL ORGANIZATIONS</p> <p>Member of National Society of Professional Engineers, Member of the Florida Engineering Society-Chapter President 2005-2006, West Virginia Contractors Association, West Virginia Rural Water Association, American Council of Engineering Companies</p>			

<p>13. PERSONAL HISTORY STATEMENT OF PRINCIPALS AND ASSOCIATES RESPONSIBLE FOR AML PROJECT DESIGN (Furnish complete data but keep to essentials)</p>			
<p>NAME & TITLE (Last, First, Middle Int.)</p> <p>Vincent, Dustin B. Engineer II</p>	<p>YEARS OF AML DESIGN EXPERIENCE:</p> <p>0</p>	<p>YEARS OF EXPERIENCE</p> <p>YEARS OF AML RELATED DESIGN EXPERIENCE:</p> <p>10</p>	<p>YEARS OF DOMESTIC WATERLINE DESIGN EXPERIENCE:</p> <p>8</p>
<p>Brief Explanation of Responsibilities</p> <p>Mr. Vincent has more than 10 years experience in general civil engineering projects, and two years experience as an Industrial Engineer for Consol Energy. His career has encompassed many aspects of civil engineering including site development, water distribution design, streetscape and revitalization. His responsibilities included underground air quality testing, mine section foreman, state & federal inspector escort and general mining operations.</p>			
<p>EDUCATION (Degree, Year, Specialization)</p> <p>B.S./1997/Mechanical Engineering, Technology</p>			
<p>MEMBERSHIP IN PROFESSIONAL ORGANIZATIONS</p> <p>American Society of Highway Engineers, West Virginia Contractors Association, West Virginia Rural Water Association, American Council of Engineering Companies</p>			
<p>13. PERSONAL HISTORY STATEMENT OF PRINCIPALS AND ASSOCIATES RESPONSIBLE FOR AML PROJECT DESIGN (Furnish complete data but keep to essentials)</p>			
<p>NAME & TITLE (Last, First, Middle Int.)</p> <p>Vincent, John Engineer II</p>	<p>YEARS OF AML DESIGN EXPERIENCE:</p> <p>0</p>	<p>YEARS OF EXPERIENCE</p> <p>YEARS OF AML RELATED DESIGN EXPERIENCE:</p> <p>13</p>	<p>YEARS OF DOMESTIC WATERLINE DESIGN EXPERIENCE:</p> <p>13</p>
<p>Brief Explanation of Responsibilities</p> <p>Mr. Vincent has over 13 years experience in civil engineering projects. His career has encompassed many aspects of civil engineering including highway design, site development, sanitary sewer and surveying.</p>			
<p>EDUCATION (Degree, Year, Specialization)</p> <p>A.S./1994/Architectural Tech B.S./1994/Civil Engineering Tech</p>			
<p>MEMBERSHIP IN PROFESSIONAL ORGANIZATIONS</p> <p>American Society of Highway Engineers, West Virginia Contractors Association, West Virginia Rural Water Association, American Council of Engineering Companies</p>			

<p>13. PERSONAL HISTORY STATEMENT OF PRINCIPALS AND ASSOCIATES RESPONSIBLE FOR AML PROJECT DESIGN (Furnish complete data but keep to essentials)</p>			
<p>NAME & TITLE (Last, First, Middle Int.)</p>	<p>YEARS OF AML DESIGN EXPERIENCE:</p>	<p>YEARS OF AML RELATED DESIGN EXPERIENCE:</p>	<p>YEARS OF DOMESTIC WATERLINE DESIGN EXPERIENCE:</p>
<p>Zook, Marlin Production Manager</p>	<p>0</p>	<p>30</p>	<p>30</p>
<p>Brief Explanation of Responsibilities</p>			
<p>Mr. Zook has over 30 years experience in all aspects of photogrammetry. His career at Aero-Metric began in photogrammetric compilation and extended to all other mapping related operations such as flight planning, ground control surveys, drafting, analytical triangulation, volume computations, Interactive graphics and data collection for input to a GIS.</p>			
<p>EDUCATION (Degree, Year, Specialization)</p>			
<p>A.S./1976/Civil Engineering-Survey</p>			
<p>MEMBERSHIP IN PROFESSIONAL ORGANIZATIONS</p>			
<p>Registration (Type, Year, State) Certified Photogrammetrist / 1993 Professional Land Surveyor / 1999 / NC</p>			
<p>13. PERSONAL HISTORY STATEMENT OF PRINCIPALS AND ASSOCIATES RESPONSIBLE FOR AML PROJECT DESIGN (Furnish complete data but keep to essentials)</p>			
<p>NAME & TITLE (Last, First, Middle Int.)</p>	<p>YEARS OF AML DESIGN EXPERIENCE:</p>	<p>YEARS OF AML RELATED DESIGN EXPERIENCE:</p>	<p>YEARS OF DOMESTIC WATERLINE DESIGN EXPERIENCE:</p>
<p>Erdmann, Fred Geotechnical Services Senior Manager</p>	<p>0</p>	<p>40</p>	<p>40</p>
<p>Brief Explanation of Responsibilities</p>			
<p>Mr. Erdmann has over 40 years of experience in the areas of applied geological engineering. He provides project management and technical assistance to clients seeking solutions to Tunneling, Mining Engineering Projects and Mineral Resource Investigations.</p>			
<p>EDUCATION (Degree, Year, Specialization)</p>			
<p>M.S./1971/Geological Engineering B.S./1967/Geological Engineering</p>			
<p>MEMBERSHIP IN PROFESSIONAL ORGANIZATIONS</p>			
<p>Association of Environmental and Engineering Geologists, American Institute of Professional Geologists</p>			
<p>Registration (Type, Year, State) Professional Engineer / WV Additional P.E. Registrations: OH, KY, VA Professional Geologist / TN, KY</p>			

14. PROVIDE A LIST OF SOFTWARE AND EQUIPMENT AVAILABLE IN THE PRIMARY OFFICE WHICH WILL BE USED TO COMPLETE AML DESIGN SERVICES

Hardware

Network Servers: 1) 1-IBM X-Series, 226 3.2 GHz, 1 GB Ram, 40 GB Data Storage Capacity, Windows 2000; 2) 7- Pent IV Workstation, 2.8 – 3.4 GHz, 512MB - 1Gig Ram, 40 – 80 Gig Hard drive, Dual 17" or 19" SVGA Monitor, 48 – 52X CD Rom, 128 – 256 MB VGA Video Ram; 3) 2- Pentium III, 700 -733MHz, 700 - 733MHz Ram, 40GB hard drive, 17" SVGA Monitor

Portable Computers: 1) 5-Laptop Computer, 1.5 – 2GHz, 512MB – 2GB Ram, 40 - 60Gig Hard Drive, 13" or 15" SVGA Monitor, 24 – 48X CD Rom, 8 – 16 MB Video Ram; 2) 1- BlackBerry Devices

CADD Plotters and Printers: 1) 1- HP1050 Wide Format Color Plotter; 2) 1- HP 1050c Wide Format Color Plotter; 3) 1- HP 8000 Laser Printer; 4) 1- Lexmark C920 Wide Format Color Printer; 5) 1- Ricoh 3045 Multifunction System (Printer, Scanner & Copier)

Software - APPLICATION FOR CONTRACT

Geometric Design: 1) MicroStation V8-CADD Software for Highway Planning, Bridge Design and Drafting; 2) MicroStation J- CADD Software for Highway Planning, Bridge Design and Drafting; 3) InRoads SelectCAD- Highway Design and Bridge Package, Interactive with MicroStation; 4) AutoCAD 2002 – 2006- CADD Design and Drafting software; 5) Land Desktop 2006- Design application software with CAD drafting software provides a base level of land development functionality to streamline the completion of common land planning and analysis tasks.; 6) Civil 3D 2006- CADD Design, Drafting and management software; 7) KYPIPE- Hydraulic Modeling software; 8) Pondpack 10- Detention Pond Design & Urban Hydrology Modeling software

Project Management & Engineering Analysis & Documentation: 1) MS Project 98- Graphical Project Management; 2) MS Office Suite 2003 & 2007 - Word Processing, Spreadsheet, Database, Presentation

Presentation & Public Involvement: 1) Adobe Photoshop Element- Photo Enhancement; 2) MS Publisher 2003- Newsletter Publications; 3) MS PowerPoint 2003- Interactive Computer Presentations; 4) Adobe Acrobat 5, 7- PDF Creator

Operating Systems: 1) Win XP / Win2000 Pro- Operating System for Administrative Workstations; 2) Win XP / Win2000 Pro- Operating System for CADD Workstations; 3) Veritas BackupExec- Daily System Backup Software; 4) Outlook 2003 & 2007- eMail

15. CURRENT ACTIVITIES ON WHICH YOUR FIRM IS THE DESIGNATED ENGINEER OF RECORD

PROJECT NAME, TYPE AND LOCATION	NAME AND ADDRESS OF OWNER	NATURE OF YOUR FIRM'S RESPONSIBILITY	ESTIMATED CONSTRUCTION COST	PERCENT COMPLETE
Preston County PSD #4 Clifton Mills Waterline Extension	Preston County PSD #4 PO Box 370 Bruceton Mills, WV 26525	Preliminary engineering, design and construction engineering & inspection	\$4.1M	25%
Shinnston I&I & WWTP Improvements	City of Shinnston 40 Main Street Shinnston, WV 26431	Preliminary engineering, design and construction engineering & inspection	\$3.5M	50%
Alpine Lake WWTP & Collection System Improvements	Alpine Lake Public Utility Co. 700 W. Alpine Drive Terra Alta, WV 26764	Preliminary engineering, design and construction engineering & inspection	\$3M	75%
Jane Lew Water Improvements	Jane Lew PSD PO Box 845 Jane Lew, WV 26378	Preliminary engineering, design and construction engineering & inspection	\$750K	50%
Fairmont – Mannington Water Transmission Main Extension	City of Fairmont 200 Jackson Street Fairmont, WV 26554	Preliminary engineering, design and construction engineering & inspection	\$4M	75%
Rt. 250 Waterline Relocation	City of Shinnston 40 Main Street Shinnston, WV 26431	Design and construction engineering & inspection	\$185K	75%
Rt. 250 Sewer Relocation	City of Fairmont 200 Jackson Street Fairmont, WV 26554	Design and construction engineering & inspection	\$390K	75%
Kingmill Valley Sewer Improvements	Kingmill Valley PSD 1707 Pleasant Valley Road Pleasant Valley, WV 26554	Preliminary engineering, design and construction engineering & inspection	\$2M	10%

West Fork Coop – WW & Collection System Improvements	West Fork On-Site Community Cooperative, Inc. Rt. 3 Box 352 Clarksburg, WV 26301	Preliminary engineering, design and construction engineering & inspection	\$3.5M	25%	
Beincosa Sewer Extension	John Benincosa 36 Byers Lane Clarksburg, WV 26301	Design	\$20K	25%	
Walnut Streetscape Beautification	Paradigm Architecture 2223 Cheat Road, Suite 300 Morgantown, WV 26508	Design and construction engineering & inspection	\$325K	75%	
Waterline Extension for Alexander, Venturella & Alexander, LLC. Subdivision	Alexander, Venturella & Alexander, LLC. Subdivision PO Box 124 Brucecon Mills, 26525	Design and construction engineering & inspection	\$25K	75%	
Kingmont Pet Center Site Engineering Services	Gribben & Associates, LLC 326 Cole Street Fairmont, WV 26554	Design	\$50K	50%	
Grant Town Water Distribution Upgrade	Town of Grant Town PO Box 40 Grant Town, WV 26574	Design and construction engineering & inspection	\$105K	75%	
Distribution Facility at Kulseth Industrial Park Site Engineering and Surveying	Butler Properties, Inc. One Paces West 2727 Paces Ferry Road, Suite 255 Atlanta, GA 30339	Design	\$75K	95%	
Allegheny Wood Product Subdivision Water and Sewer Development	Allegheny Wood Products, Inc. Junction Route 7 & 72 Kingwood, WV 26537	Preliminary engineering, design and construction engineering & inspection	\$250K	20%	
TOTAL NUMBER OF PROJECTS:		TOTAL ESTIMATED CONSTRUCTION COSTS:			
16		\$22,275,000.00			

17. COMPLETED WORK WITHIN LAST 5 YEARS ON WHICH YOUR FIRM WAS THE DESIGNATED ENGINEER OF RECORD		ESTIMATED CONSTRUCTION COST	YEAR	CONSTRUCTED (YES OR NO)
PROJECT NAME, TYPE AND LOCATION	NAME AND ADDRESS OF OWNER			
PSD #4 Feasibility Study for Future Projects	Preston County PSD #4 PO Box 370 Bruceeton Mills, WV 26525	N/A	2004	N/A
Meredith Springs/Dakota Camp Area Sewer Extension	Marion County Commission 200 Jackson Street Fairmont, WV 26554	\$1.3M	2004	Yes
Saltwell Road Utility Relocation	City of Shinnston 40 Main Street Shinnston, WV 26431	\$30K	2002	Yes
Shinnston Water System Improvements Project	City of Shinnston 40 Main Street Shinnston, WV 26431	\$3.5M	2007	Yes
Fairmont Sanitary Sewer Improvements	City of Fairmont 200 Jackson Street Fairmont, WV 26554	\$4.7M	2008	No
Alpine Lake Water Treatment and Distribution System Upgrades	Alpine Lake Public Utility Co. 700 W. Alpine Drive Terra Alta, WV 26764	\$1.6M	2007	No
Rt. 19 & 20 Sewer Extension	City of Shinnston 40 Main Street Shinnston, WV 26431	\$50K	2005	Yes
Grant Town Water Tank	Town of Grant Town PO Box 40 Grant Town, WV 26574	\$35K	2003	Yes

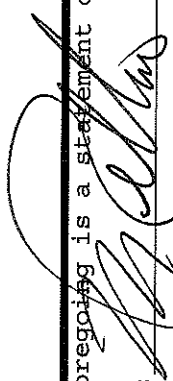
US Route 19 Sewer Line Extension	City of Clarksburg 222 West Main Street Clarksburg, WV 26301	\$235K	2006	Yes
Hundred-Littleton Waterline Project	Hundred-Littleton PSD PO Box 880 Hundred, WV 26575	\$2.5M	2005	Yes
Golf Estates Water Treatment Facility	Golf Estates PO Box 340 Franklin, WV 26807	\$500K	2006	No
Spruce Knob Mountain Center Water System Design	The Mountain Institute 906 Rawley Avenue Morgantown, WV 26505	\$130K	2006	No
Gypsy Bridge Waterline	City of Shinnston 40 Main Street Shinnston, WV 26431	\$26K	2006	Yes
Morgantown House Demolition	City of Morgantown 389 Spruce Street Morgantown, WV 26505	\$130K	2005	Yes
Fairview Sidewalk Improvements	Town of Fairview PO Box 119 Fairview, WV 26570	\$110K	2005	Yes
Patteson Drive Sidewalk Improvements	City of Morgantown 389 Spruce Street Morgantown, WV 26505	\$250K	2006	Yes
Street Lighting and Sidewalk Repair	Town of Lumberport PO Box 519 Lumberport, WV 26386	\$60K	2005	Yes

Clarksburg Building Demolition	City of Clarksburg 222 West Main Street Clarksburg, WV 26301	\$500K	2006	Yes
Shinnston Route 19 Sidewalk Improvements	City of Shinnston 40 Main Street Shinnston, WV 26431	\$90K	2007	Yes
James and Darst Streets Sidewalk Improvements	City of Morgantown 389 Spruce Street Morgantown, WV 26505	\$115K	2006	Yes
High Street Improvements Project Retaining Wall and Sidewalks	City of Shinnston 40 Main Street Shinnston, WV 26431	\$300K	2006	Yes
Ray Dental Office Site Plan	Linda Ray, DDS 100 Village Drive Suite 301 Fairmont, WV 26554	\$100K	2005	Yes
Morgantown Welcome Sign	City of Morgantown 389 Spruce Street Morgantown, WV 26505	\$25K	2007	Yes
Fairfield Inn Site Planning, Fairmont, WV	Fairmont Inn Group 10 Moran Circle Fairmont, WV 26554	\$100K	2003	Yes
Woodridge Utility Inspection	Appalachian Land Services 309 South Main Street Accident, MD 21520	\$100K	2003	Yes
Riverdale Estates Inspection	City of Shinnston 40 Main Street Shinnston, WV 26431	\$50K	2006	Yes

Maple Lane Estates	Craig Marple 3456 Sandflat Road Oakland, MD 21550	\$75K	2005	No
Morgantown Wayfinding Signs	City of Morgantown 389 Spruce Street Morgantown, WV 26505	\$90K	2007	Yes
City of Morgantown 4 Way Intersection Traffic Calming	City of Morgantown 389 Spruce Street Morgantown, WV 26505	\$50K	2007	Yes
Shinnston Park Paving	City of Shinnston 40 Main Street Shinnston, WV 26431	\$75K	2006	Yes
Boothsville T-Beam Bridge Replacement	West Virginia Division of Highways 1900 Kanawha Blvd, East Charleston, WV 25305	\$750K	2007	Yes

19. Use this space to provide any additional information or description of resources supporting your firm's qualifications to perform work for the West Virginia Abandoned Mine Lands Program.

20. The foregoing is a statement of facts.

Signature: 

Title: Vice President, Mid-Atlantic Transportation

Printed Name: Michael A. Retton, PE, PS

Date: September 25, 2008