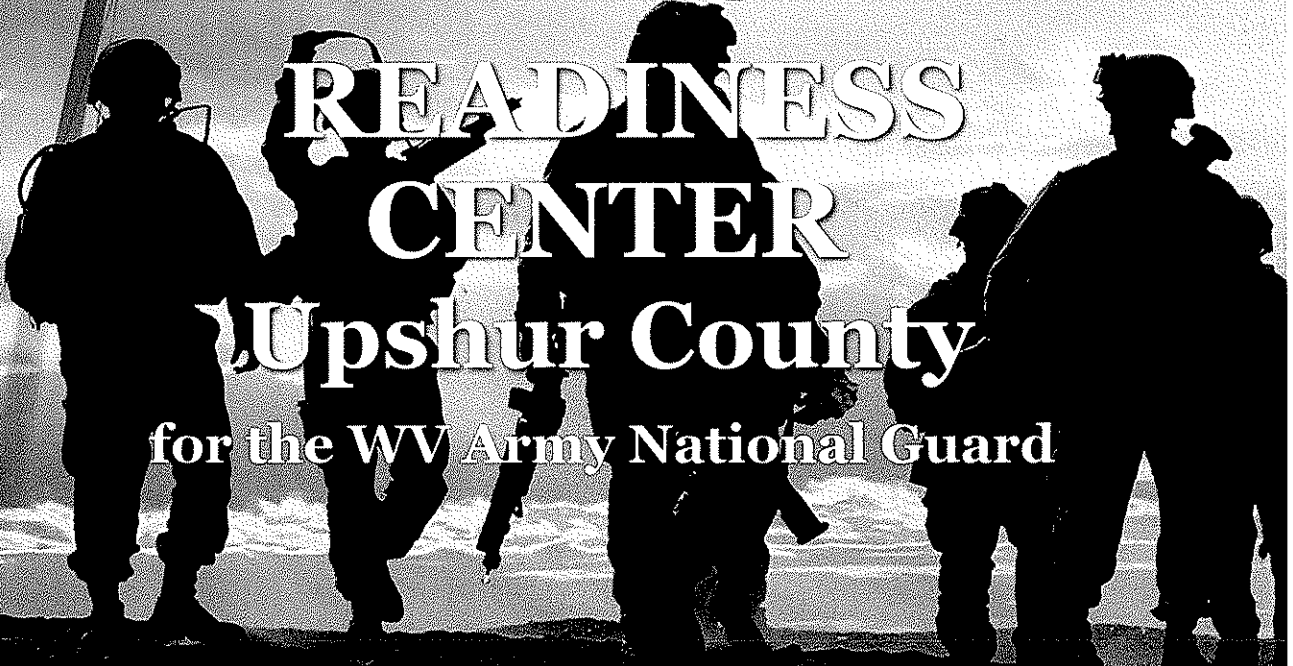
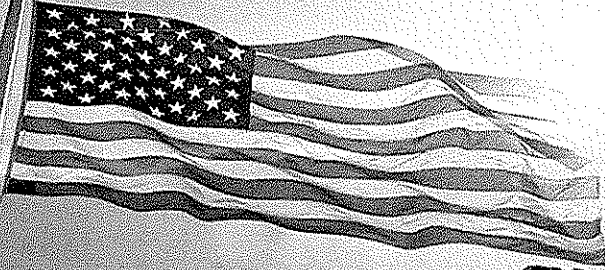
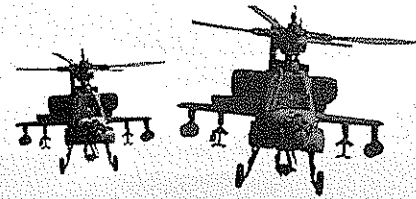


ARMY NATIONAL GUARD

Requisition

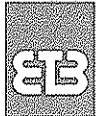


READINESS CENTER Upshur County for the WV Army National Guard

PROJECT TEAM

E.T. BOGGESS, ARCHITECT, INC.

PO Box 727 Princeton, WV 24740 304-425-4491



CAPITOL ENGINEERING, INC.

111 Wyoming St., Ste. 200 Charleston, WV 25302 304-344-0720



CMA ENGINEERING

824 Cross Lanes Drive Charleston, WV 25313 304-343-0316



MOMENT ENGINEERS, INC.

179 Summers Street Charleston, WV 25301 304-414-4000



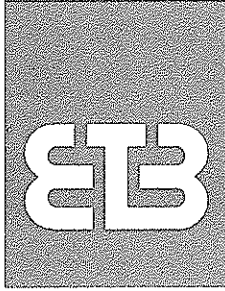
RECEIVED

WINFIELD H. STROCK

PO Box 4382 Marathon, FL 33050 304-550-2318 2009 FEB 26 A 9: 53



PROCUREMENT DIVISION
STATE OF WV



John Abbott
Purchasing Division
2019 Washington Street, East
PO Box 50130
Charleston, WV 25305-0130

February 26, 2009

RE: How the State of West Virginia will benefit by choosing the ETB Team

Dear Mr. Abbott:

The E.T. Boggess, Architect, Inc., team is ready to begin designing your new Readiness Center for the WV Army National Guard to be located in Buckhannon, WV (Upshur County). Our plan ensures that all the needs of the members of the Guard, the citizens of West Virginia, and administrative personnel will be met.

How we will meet your needs . . .

I will be your architect and will be responsible for all aspects of design of a fully functional Readiness Center specifically for the Army National Guard. ETB will be coordinating the activities of our team of professional consultants which includes:

- | | | |
|-----------------------------|---|--|
| ▪ Capitol Engineering, Inc. | – | Civil Engineering |
| ▪ CMA Engineering | – | Mechanical/Electrical/Plumbing Engineering |
| ▪ Moment Engineers, Inc. | – | Structural Engineering |
| ▪ Winfield H. Strock | – | Estimator |

What you will get from our team . . .

- You will receive our full attention, from start to finish.
- You will benefit from the experience we have with similar projects throughout our state over the past 43 years.
- You will appreciate our dedication to the success of your project.

Our team is here to offer you the best in service, knowledge, and experience. Thank you for your consideration and we look forward to meeting with you during the interview process.

Sincerely,

A handwritten signature in black ink, appearing to read 'Todd Boggess', written over a light grey background.

Todd Boggess, AIA, NCARB, Architect
President

P.S. You can reach me by cell phone at 304-920-6778, or by e-mail at etb@etbarchitects.com.

TABLE of CONTENTS

Cover letter

1 - WV Forms & Purchasing Affidavit

2 - Executive Summary

3 - Team and Organizational Chart

4 - Firm Profiles

5 - Projects

6 - Scope of Services and Approach

7 - Resumes

8 - References

SECTION ONE

WV Forms & Purchasing Affidavit



State of West Virginia
 Department of Administration
 Purchasing Division
 2019 Washington Street East
 Post Office Box 50130
 Charleston, WV 25305-0130

Request for Quotation

RFQ NUMBER:
 DEFK9015

PAGE:
 1

ADDRESS CORRESPONDENCE TO ATTENTION OF:
 JOHN ABBOTT
 304-558-2544

RFQ COPY
 TYPE NAME/ADDRESS HERE

E.T. Boggess, Architect, Inc.
 101 Rockledge Avenue
 Princeton, WV 24740

DIV ENGINEERING & FACILITIES
 ARMORY BOARD SECTION

 1707 COONSKIN DRIVE
 CHARLESTON, WV
 25311-1099 341-6368

DATE PRINTED	TERMS OF SALE	SHIP VIA	F.O.B.	FREIGHT TERMS
02/11/2009				

BID OPENING DATE: 02/26/2009 BID OPENING TIME 01:30PM

LINE	QUANTITY	UOP	CAT. NO.	ITEM NUMBER	UNIT PRICE	AMOUNT
0001	1	LS		906-00-00-001		
ARCHITECT/ENGINEERING SERVICES, PROFESSIONAL CONTRACT TO PROVIDE ARCHITECT & ENGINEERING SERVICES FOR THE WEST VIRGINIA ARMY NATIONAL GUARD, BUCKHANNON READINESS CENTER, UPSHUR COUNTY, WEST VIRGINIA, PER THE ATTACHED DOCUMENTATION. NOTICE A SIGNED BID MUST BE SUBMITTED TO: DEPARTMENT OF ADMINISTRATION PURCHASING DIVISION BUILDING 15 2019 WASHINGTON STREET, EAST CHARLESTON, WV 25305-0130 THE BID SHOULD CONTAIN THIS INFORMATION ON THE FACE OF THE ENVELOPE OR THE BID MAY NOT BE CONSIDERED: SEALED BID BUYER: JOHN ABBOTT----- RFQ. NO.: DEFK9015----- BID OPENING DATE: 02/26/2009-----						

SEE REVERSE SIDE FOR TERMS AND CONDITIONS

SIGNATURE: *E.T. Boggess* TELEPHONE: 304-425-4491 DATE: February 26, 2009

TITLE: President FEIN: 55-0515917 ADDRESS CHANGES TO BE NOTED ABOVE

WHEN RESPONDING TO RFQ, INSERT NAME AND ADDRESS IN SPACE ABOVE LABELED 'VENDOR'



State of West Virginia
 Department of Administration
 Purchasing Division
 2019 Washington Street East
 Post Office Box 50130
 Charleston, WV 25305-0130

Request for Quotation

RFQ NUMBER
DEFK9015

PAGE
2

ADDRESS CORRESPONDENCE TO ATTENTION OF:
JOHN ABBOTT
304-558-2544

RFQ COPY
 TYPE NAME/ADDRESS HERE

E.T. Boggess, Architect, Inc.
101 Rockledge Avenue
Princeton, WV 24740

DIV ENGINEERING & FACILITIES
ARMORY BOARD SECTION

1707 COONSKIN DRIVE
CHARLESTON, WV
25311-1099 341-6368

DATE PRINTED	TERMS OF SALE	SHIP VIA	F.O.B.	FREIGHT TERMS
02/11/2009				

BID OPENING DATE: **02/26/2009** BID OPENING TIME **01:30PM**

LINE	QUANTITY	UOP	CAT. NO.	ITEM NUMBER	UNIT PRICE	AMOUNT
BID OPENING TIME:				1:30 PM-----		
PLEASE PROVIDE A FAX NUMBER IN CASE IT IS NECESSARY TO CONTACT YOU REGARDING YOUR BID:				304-425-2028		
CONTACT PERSON (PLEASE PRINT CLEARLY):				Todd Boggess		
***** THIS IS THE END OF RFQ DEFK9015 ***** TOTAL:						_____

SEE REVERSE SIDE FOR TERMS AND CONDITIONS

SIGNATURE 	TELEPHONE 304-425-4491	DATE February 26, 2009
TITLE President	FEIN 55-0515917	ADDRESS CHANGES TO BE NOTED ABOVE

WHEN RESPONDING TO RFQ, INSERT NAME AND ADDRESS IN SPACE ABOVE LABELED 'VENDOR'

STATE OF WEST VIRGINIA
Purchasing Division

PURCHASING AFFIDAVIT

VENDOR OWING A DEBT TO THE STATE:

West Virginia Code §5A-3-10a provides that: No contract or renewal of any contract may be awarded by the state or any of its political subdivisions to any vendor or prospective vendor when the vendor or prospective vendor or a related party to the vendor or prospective vendor is a debtor and the debt owed is an amount greater than one thousand dollars in the aggregate.

PUBLIC IMPROVEMENT CONTRACTS & DRUG-FREE WORKPLACE ACT:

If this is a solicitation for a public improvement construction contract, the vendor, by its signature below, affirms that it has a written plan for a drug-free workplace policy in compliance with Article 1D, Chapter 21 of the *West Virginia Code*. The vendor **must** make said affirmation with its bid submission. Further, public improvement construction contract may not be awarded to a vendor who does not have a written plan for a drug-free workplace policy in compliance with Article 1D, Chapter 21 of the *West Virginia Code* and who has not submitted that plan to the appropriate contracting authority in timely fashion. For a vendor who is a subcontractor, compliance with Section 5, Article 1D, Chapter 21 of the *West Virginia Code* may take place before their work on the public improvement is begun.

ANTITRUST:

In submitting a bid to any agency for the state of West Virginia, the bidder offers and agrees that if the bid is accepted the bidder will convey, sell, assign or transfer to the state of West Virginia all rights, title and interest in and to all causes of action it may now or hereafter acquire under the antitrust laws of the United States and the state of West Virginia for price fixing and/or unreasonable restraints of trade relating to the particular commodities or services purchased or acquired by the state of West Virginia. Such assignment shall be made and become effective at the time the purchasing agency tenders the initial payment to the bidder.

I certify that this bid is made without prior understanding, agreement, or connection with any corporation, firm, limited liability company, partnership or person or entity submitting a bid for the same materials, supplies, equipment or services and is in all respects fair and without collusion or fraud. I further certify that I am authorized to sign the certification on behalf of the bidder or this bid.

LICENSING:

Vendors must be licensed and in good standing in accordance with any and all state and local laws and requirements by any state or local agency of West Virginia, including, but not limited to, the West Virginia Secretary of State's Office, the West Virginia Tax Department, West Virginia Insurance Commission, or any other state agencies or political subdivision. Furthermore, the vendor must provide all necessary releases to obtain information to enable the Director or spending unit to verify that the vendor is licensed and in good standing with the above entities.

CONFIDENTIALITY:

The vendor agrees that he or she will not disclose to anyone, directly or indirectly, any such personally identifiable information or other confidential information gained from the agency, unless the individual who is the subject of the information consents to the disclosure in writing or the disclosure is made pursuant to the agency's policies, procedures and rules. Vendor further agrees to comply with the Confidentiality Policies and Information Security Accountability Requirements, set forth in <http://www.state.wv.us/admin/purchase/privacy/noticeConfidentiality.pdf>.

Under penalty of law for false swearing (*West Virginia Code* §61-5-3), it is hereby certified that the vendor affirms and acknowledges the information in this affidavit and is in compliance with the requirements as stated.

Vendor's Name: E.T. Boggess, Architect, Inc.

Authorized Signature:  Date: February 26, 2009

SECTION TWO

Executive Summary

Executive Summary

E.T. Boggess, Architect Inc.

WV Army National Guard Readiness Center Upshur County

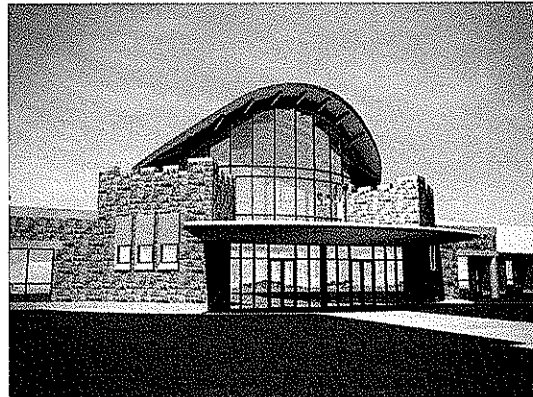
The E.T. Boggess, Architect, Inc. team understands the needs of the WVARNG. Our team is currently approaching 90% Construction Documentation Submission stage for a similar facility to be built near Elkins in Randolph County, WV. We believe our interactive design process has addressed the needs of the WVARNG and that we have proven our ability, dedication, and sincere desire to create multi-use facilities that satisfies the many needs of the Guard.

Our design for the Buckhannon Unit will have an updated appearance, be functionally efficient, and provide for the integration of various advance systems. The masonry steel-framed structure will be designed to contain:

- Offices
- Conference Room
- Garage
- Locker Rooms
- Shower Facilities
- Limited Sleeping Areas
- Large Open Space/Assembly Hall

The facilities grounds may include parking, attached or detached storage, fueling station, landscape, security lighting and fencing and a unique entry. The new 39,000 square foot, multi-use facility will be designed to create a more user-friendly environment for the unit's members, administration, and family members.

We understand that the WVARNG faces a number of challenges as they assist our citizens in the wake of natural disasters, as well as support our country's military efforts in foreign lands. The two units that are currently operating from separate facilities will have sufficient space and technological capabilities to more successfully serve our state and its citizens.



WVARNG Readiness Center, Elkins, WV

Our firm recognizes the importance of a major capital expenditure for the WVARNG and the necessity that all budgets and schedules are met. You will benefit from 43 years of experience designing within the confines of strict budgets and tight construction schedules. We understand the demands being placed on all government agencies as they strive to offer the necessary services to their citizens and their efforts to do so within limited budgets. The ETB team can fully satisfy all your needs for professional services.



Executive Summary

E.T. Boggess, Architect Inc.

Interactive Design

Communication, collaboration, and consensus are the three elements we feel are essential to the planning, design and building process. The architect is responsible for the finished product, but the design process must include guidance and review by you and representatives from the various agencies. Our goal is to develop a "partnership" with our clients – a relationship that includes a long-term commitment, trust, and shared vision.



*WVDOH District Six Office Building
Moundsville, WV*

ETB believes architectural design should be an interactive process. We work closely with you to identify and define all your project goals, objectives, functions, responsibilities, and relationships. This interactive approach enables us to develop facilities that meet your requirements, as well as being aesthetically distinctive. Design cannot be mass produced or provided in a "cookie cutter" fashion, it must be developed from scratch with the unique attributes of each individual project in mind.

Utilizing the interactive design approach will best serve the needs of the WVARNG by allowing us to better identify your objectives and produce long-term solutions. Your project will be completed by emphasizing the following activities:

- **Understanding goals.** We develop objectives, organization and explore the impact your project can have on Jackson County, its citizens, its government, and its members of the guard.
- **Brainstorming ideas.** We investigate opportunities for greater service through value engineering, strategic partnering, or an alternative delivery method.
- **Assuring timelines.** We generate a management plan to fulfill deliverables and meet milestones on schedule. All team members participate in and monitor this plan.
- **Maintaining client contact.** We are accessible, convenient, and committed to success from the beginning through the design process, and after completion.
- **Inviting performance feedback.** We involve all team members and clients in project evaluation at closeout and determine how well time, cost, and design goals were met.



Executive Summary

E.T. Boggess, Architect Inc.

Results

The consistent implementation of effective communication and an interactive design process throughout your project will result in a new readiness center that will . . .

- Better serve the members of the WV Army National Guard.
- Enable the Guard to better assist the citizens of West Virginia.
- Promote a more positive image of the WVARNG.
- Assist in the recruiting of new members to the Guard.

Your facility will comply with the International Building Code, Life Safety Codes, all local, state and federal regulations, as well as the Americans with Disability Act (ADA). The new facility will have these standards as a natural part of the over-all design, not just an add-on for a special group of people. We will also utilize the *Army National Guard Design Guide*.

During the construction phase, we will be at the site on a regular basis and will be available by phone to answer any of your contractor's questions. We review shop drawings/submittals, and pay requests from the contractor.

We want to ensure the construction is in compliance with the design intent. Once the doors open and you occupy the building, we will remain available to assist you with start-up questions, "fine tuning and balancing" of systems required to make sure the building works specifically for the WV Army National Guard.

Our team appreciates the opportunity you have given us thusfar, and we believe that you can feel confident in selecting us to design the Upshur County Readiness Center for the WVARNG.



SECTION THREE

Team and Organizational Chart

TEAM and ORGANIZATIONAL CHART

E.T. Boggess, Architect, Inc.

The ETB Team consists of the following:

Architectural Firm:

E.T. Boggess, Architect, Inc.
101 Rockledge Avenue
Princeton, WV 24740

Contact: Todd Boggess

304-425-4491 (phone)
304-425-2028 (fax)
etb@etbarchitects.com

Civil Engineering:

Capitol Engineering, Inc.
111 Wyoming Street
Suite 200
Charleston, WV 25302

304-344-0720 (phone)
304-344-0820 (fax)

Mechanical/Electrical/Plumbing Engineering:

CMA Engineering
824 Cross Lanes Drive
Charleston, WV 25313

304-343-0316 (phone)
304-343-5146 (fax)

Structural Engineer:

Moment Engineers, Inc.
603 Peoples Building
179 Summers Street
Charleston, WV 25301

304-414-4000 (phone)
304-414-4001 (fax)

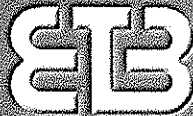
Estimator:

Winfield H. Strock
PO Box 4382
Marathon, FL 33050

304-550-2318 (phone)



West Virginia Army National Guard



Ted Boggess, Chairman of the Board
Todd Boggess, President - Principal In Charge
Roy Morum, Project Manager

ETB Architects

Steve Mackey
Chris Canterbury

Capitol Engineering

Robert
Fuller

CMA Engineering

Timothy Cox
Dan Ellers
James Kerns

Moment Engineers

Doug
Richardson

Strock Estimating

Winfield
H. Strock

SECTION FOUR

Firm Profiles

Firm Profile

E.T. Boggess, Architect Inc.

History

E. T. BOGCESS ARCHITECT, INC., was established by E. T. "Ted" Boggess in January, 1966, in Princeton, West Virginia. Mr. Boggess continues to serve as Chairman of the Board and is responsible for business development, marketing activities, and design document review.

In 1988, Ted's son Todd received his master's degree in architecture and joined the firm full time. Todd is now President and is responsible for design development, project management, supervising the office staff, and the overall management of the corporation.

Location

Our firm is located in Princeton. Although the majority of our current projects are located in WV, we have satisfied clients reaching all the way from Michigan to Florida. We have a reputation for service to our clients regardless of the project site. The location of our firm and knowledge of our county, its people, its construction materials, its contractors, as well as its regional climatological characteristics, are all important considerations for the success of your project.

During the administration phase, our proximity to the project site will allow us to observe the work in a very efficient and cost effective manner. We will be available at a moments notice if problems occur. This will help minimize problems and allow for timely solutions.

Reputation

Our firm lives or dies by its reputation. We work for "Pride in Product" and are confirmed by the amount of repeat business we can truthfully claim.

The architects at ETB are well-respected for their high ethical standards, as well as professional and civic activities. They are frequently asked to serve as expert witnesses and arbitrators in legal disputes. They have also been selected to serve on various local, state and national committees. These committees cover areas from determining local zoning ordinances to reviewing and developing educational requirements for future architects, to preserving West Virginia's historic architecture.

Attitude

Bigger is not always better. This corporation has purposely controlled size in order to maintain personal involvement and quality control. We feel that it is important to maintain close client contact and availability to answer any needs that may arise. Limiting the number of projects we undertake also increases the importance of each and every project. Your project will not get lost in the shuffle.

Experience

Over the past 43 years, ETB has accomplished many different types of buildings in 12 different states and 1 foreign country.



Firm Profile

E.T. Boggess, Architect Inc.

We have not limited ourselves by focusing on one particular type of project or a single location. Instead, we choose to maintain a diverse practice which will allow us to begin your project with renewed enthusiasm. Our strength is in the delivery of appropriate and analytical solutions for complex buildings and doing so within restricted budgets and time constraints.

ETB was one of the first architectural firms in the state to implement the use of computer-aided design and drafting into the everyday practice of architecture. Today we continue to lead the industry as we utilize photorealistic imagery through computer modeling and digital photography. The building 3-D model and associated imagery can be developed early in the design process. You can then use the imagery for design approval and community presentations. We are also experimenting with the vast opportunities associated with virtual reality which allows you to actually "walk-thru" your finished building long before the foundation is laid. The WVARNG will benefit from our experience, combined with ongoing technological research and innovations.



Pikeview Middle School (Schematic Design)
Gardner, WV



Four Seasons Wellness Center
Tazewell, VA



Mercer County Courthouse Annex
Princeton, WV



First Century Bank
Beckley, WV

Introduction

Capitol Engineering, Inc. (CEI) proposes to perform civil engineering and surveying services for the West Virginia National Guard to develop engineering plans and specifications for the Upshur County Readiness Center. We have experience planning, designing, specifying, preparing contract documents, bidding and performing contract administration on many types of military facilities including Readiness Centers, Airfields, Training Areas and Ranges. Our experience and resources give us the ability to handle both complex and routine projects.

Why CEI?

CEI offers the highly specialized experience, attention to minute detail, and the unparalleled level of personal client support provided by a small boutique firm. We are particularly attractive because:

- Our management, engineering and professional staff has a combined total of over 120 years of experience – much of it acquired while working on military facilities.
- Staff has participation and completion of 30 National Guard projects in West Virginia.
- Management team has 30+ years and over 50 projects total specialized experience providing timely, cost effective construction documents for military facilities.
- Experience to successfully handle all design situations and problem types anticipated to occur under this contract.
- Construction and Facilities Maintenance Office satisfaction with prior work/projects performed by key staff members.

CEI Overview

Capitol Engineering is a locally owned consulting engineering firm founded in 1999. CEI has steadily grown since its inception with three employees. CEI possesses in-house services in civil, environmental and mining engineering, contract administration, and surveying and mapping. Our staff is made up of two Professional Engineers, a Professional Surveyor, Project Engineers and Scientists, CAD Operators, Technicians, and administrative personnel. Our client base is comprised of contractors, architects, engineers, developers, private industry, and federal and state agencies. A complete list of services is as follows:

Civil Engineering

*Geotechnical Engineering
Project Management
Rail Siding Design
Roadway Design
Site Development & Grading Plans
Siting Studies
Slope Stability Analysis
Stormwater Systems
Wastewater Treatment Systems*

Environmental Engineering

*Environmental Due Diligence
Environmental Site Reviews
Erosion & Sedimentation Control
NPDES, GPCC, SPCC Plans
Solid Waste & Landfill Design
Stormwater Management Plans*

Construction Administration

*Bid Analysis & Management
Construction Observation
Damage Settlement
Submittal Review*

Surveying & Mapping

*Control Surveys
Floodplain Studies
GPS Surveys
Mineral Reserve Surveys
Planimetric Surveys
Quantity Determination Surveys
River & Lake Soundings
Topographic Survey*

Mining Engineering

*Abandoned Mine Land Reclamation
Acid Mine Drainage Passive Treatment
Geologic & Hydrologic Evaluations
Mine-Related Subsidence Investigations
Mining Permits, Modifications, & IBR's
Reclamation Liability Audits
Surface Mine Surveying & Mapping*

C O R P O R A T E P R O F I L E



Clingenpeel/McBrayer & Associates, Inc.



Services

Clingenpeel/McBrayer & Associates is a West Virginia based small business firm, providing services in the areas of HVAC, plumbing, fire protection and electrical engineering. CMA's founders have long believed in the philosophy that a successful project requires a comprehensive approach. This includes all traditional facets of project planning, starting with master planning, working closely with the client, developing the completed construction documents, bidding the project and contract administration. However, our depth of expertise goes far beyond the traditional services. From developing design criteria for owners to designing the mechanical and electrical systems for the West Virginia DEP Consolidated Office Building, the first LEED certified building in the state, CMA is a proven leader in providing engineering services in the design-build delivery method.

History

Since 1986, Clingenpeel/McBrayer & Associates has provided services on numerous projects of varying size and complexity. Clients include architects, industrial companies, governmental agencies, contractors, engineers, developers and private organizations. Project locations include West Virginia, Virginia, Ohio, Kentucky, Maryland, Pennsylvania, California and Connecticut.

Commitment

Clingenpeel/McBrayer & Associates' submittal is based on your needs and our experience. Our firm has the experience, service and quality work to create a successful project. We are committing senior design professionals in order to assure you receive top priority. We have extensive experience with projects of this nature. Examples of projects for which we were the Engineer are listed in this proposal.

From an initial staff of five employees in 1986, the company has steadily grown and now has two offices with a staff of fourteen which includes two professional engineers and two engineers-in-training. Facilities and equipment have grown to support CMA's staff and client's needs.

In 1987, computer aided drafting stations were added to provide the best quality and engineering services for our clients. We are currently operating AutoCad 2009. Our firm is constantly monitoring the latest technology, the cost effects and the end results to the final project.

Present staffing allows CMA to complete work in a timely manner without limiting our ability to perform our ongoing work. The staff of CMA is large enough to handle any size project, yet small enough for direct input and supervision by key personnel.

EXPERIENCE

Previous Five Years

Projects: 492

Construction Costs

MEP Costs: \$156,039,689.

Total Costs: \$472,847,542.



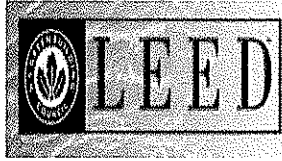
Clingenpeel/McBrayer & Associates, Inc.

824 Cross Lanes Drive
Charleston, WV 25313
(304) 343-0316 tel
(304) 343-5146 fax

5 Riddle Court
Morgantown, WV 26505
(304) 598-2558 tel
(304) 598-2472 fax

w w w . c m a w v . c o m

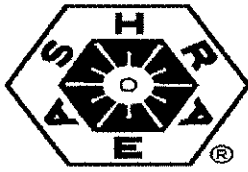
Professional Affiliations



Leadership in Energy & Environmental Design (LEED)



U.S. Green Building Council (USGBC)



American Society of Heating, Refrigerating and Air Conditioning Engineers, Inc., (ASHRAE)



American Institute of Architects— WV Chapter Affiliate Member (WVAIA)



National Fire Protection Association (NFPA)

ASPE

American Society Of Plumbing Engineers (ASPE)



MasterSpec Specifications (ARCOM)



The LIGHTING AUTHORITY

Illuminating Engineering Society (IES)



WV Society of Healthcare Engineers (WVSHE)



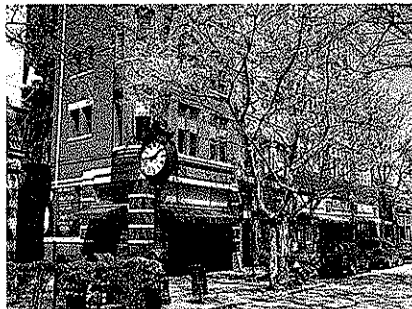
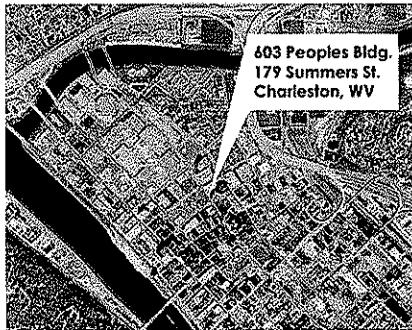
International Code Council (ICC)



Business Partner



Background



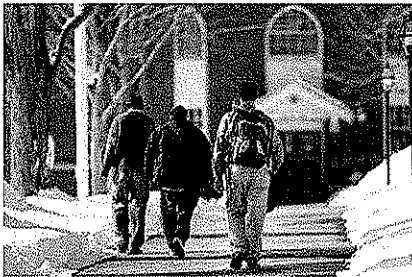
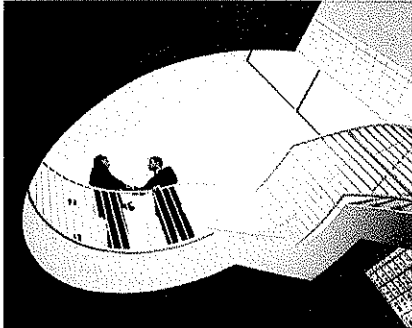
Moment Engineers, Inc. is a professional consulting firm specializing in structural engineering. We serve the architectural and building construction communities throughout West Virginia. Based in Charleston, West Virginia at 179 Summers Street, Moment Engineers was founded by Douglas Richardson in early 2005. Prior to that, Mr. Richardson was employed by ZMM, Inc., a WV architectural/engineering firm as their Senior Structural Engineer.

For more than a decade, Mr. Richardson has had sole responsibility for the structural engineering design of more than 5 million square feet of built space. The construction costs of these projects exceeded a half billion dollars. His experience, which ranges from small to very large multi-phase projects, is invaluable in providing the technical expertise and creative flexibility to deliver results in a prompt and reliable manner.

Our experience encompasses a wide variety of building types and sectors, and our expertise includes design analysis for steel, concrete, masonry, and wooden structures.



Approach



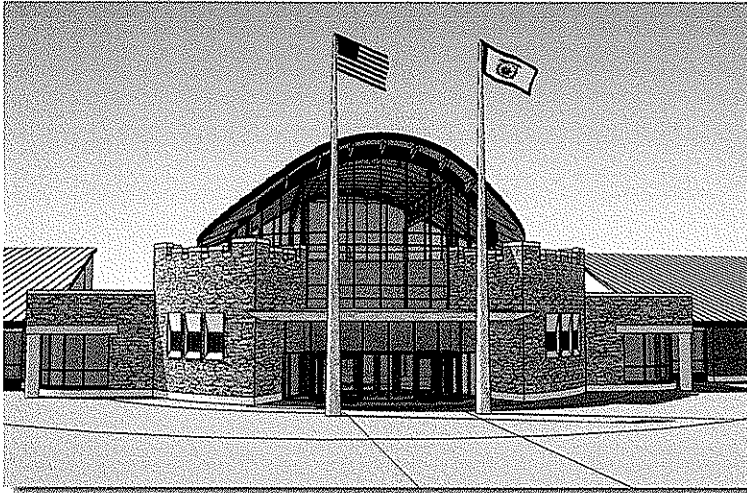
At Moment Engineers, we recognize that the architect is the primary contact for the building owner. Our role is to strengthen that relationship by producing high quality designs in a prompt and cost effective manner. To that end, we emphasize incorporating traditional and technical means of communication and data transfer to ensure a seamless integration of structural integrity and architectural creativity.

We believe that the practice of engineering is the point at which science and society meet. We also believe that the architects and builders we serve are essential in the development of the fundamental dignity of the community. Moment Engineers is strongly committed to developing structural solutions which bring permanence and strength to the expression of architectural thought.



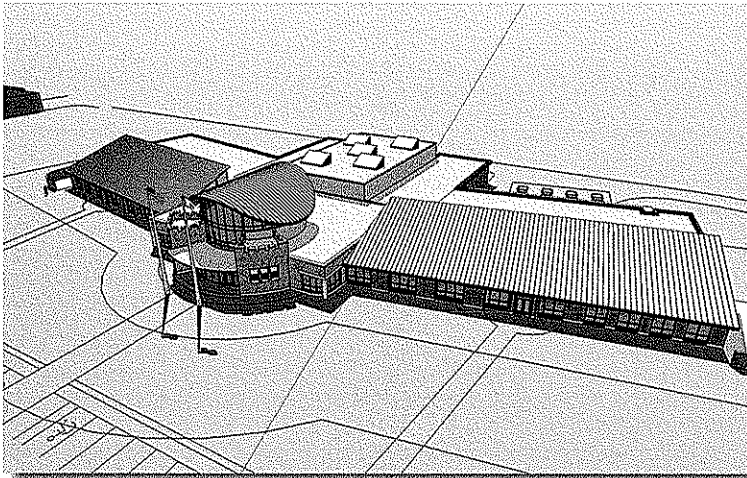
SECTION FIVE

Projects

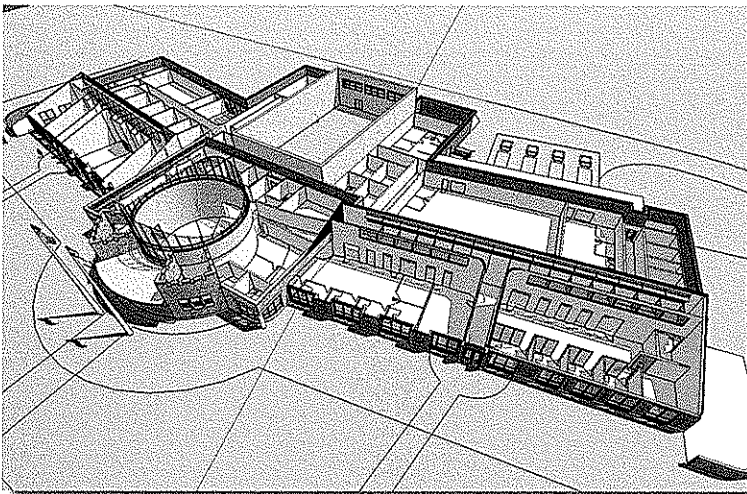


WV Army National Guard Readiness Center

The ETB team is currently designing the 50,000 sf, single-story facility to house the Elkins units of the Army Reserve and National Guard.



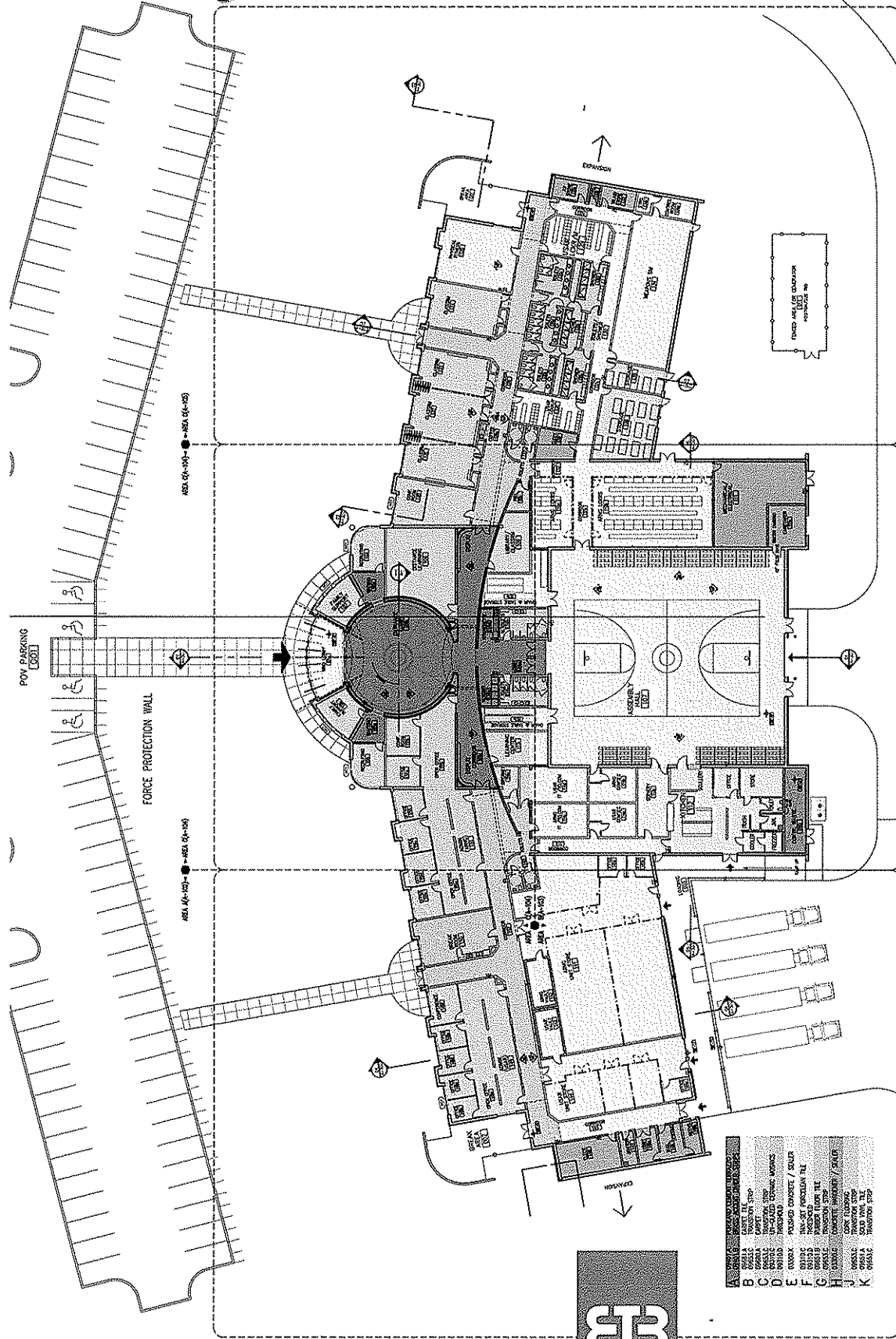
The Readiness Center will have two main entrances; the front into the lobby and the rear into the assembly hall. The circular central core of the entrance leads to the administrative wing (east) and classroom wing (west). The facility will also contain a learning center, library, storage areas, locker rooms, kitchen, break-room, and Telcon spaces. Areas within the lobby will be used for recruiting, family support and distance learning.



The project also includes the design and construction of a separate structure for secure storage and a maintenance/workshop/office structure.



WV Army National Guard Readiness Center



02
 SITE LAYOUT PLAN
 SCALE: 1" = 20'-0" (1" = 40'-0" on tabloid sh)

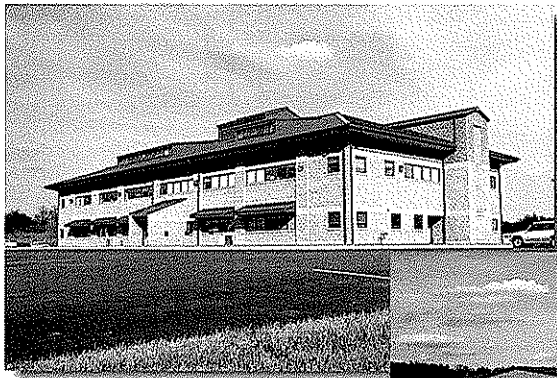
4-801
 (411 reads/4)

A	CONCRETE	CONCRETE
B	CEILING	CEILING
C	GLASS	GLASS
D	PAINT	PAINT
E	WOOD	WOOD
F	BRICK	BRICK
G	CONCRETE	CONCRETE
H	GLASS	GLASS
J	CONCRETE	CONCRETE
K	GLASS	GLASS

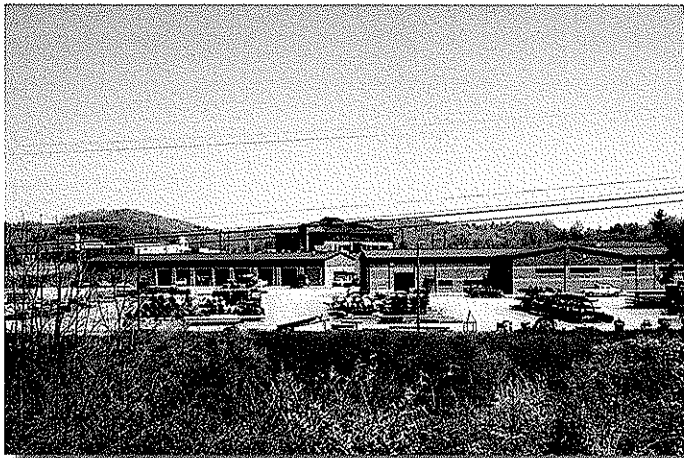
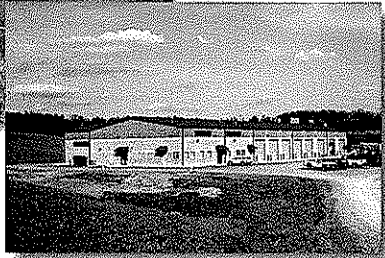


E.T. Boggess, Architect, Inc.

0 1/2" 1" 2"
 SCALE



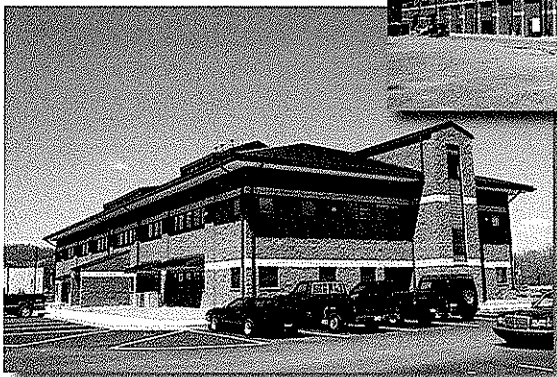
District 10



Total Complex at District Ten



District 6



West Virginia DOH Statewide District Complexes

E.T. Boggess, Architect, Inc., has a contract with the state to provide headquarters complexes for the DOH Districts. The complexes will bring together a variety of district functions that are scattered in several locations throughout the county, onto a single campus-like setting/site. Facilities that make up these complexes include the office building, the bridge & sign shop, the lab building, and the maintenance shop (including modern repair bays for trucks & equipment, weld, prep, wash & paint bays, office areas, parts and general storage).

District 10 (located off I-77 in Mercer County) has completed all four buildings.

District 6 (at Moundsville) has completed the Office, Maintenance Building, and Bridge/Sign Shop.

**Coming soon ...
District 9
Office Building
Lewisburg, WV**





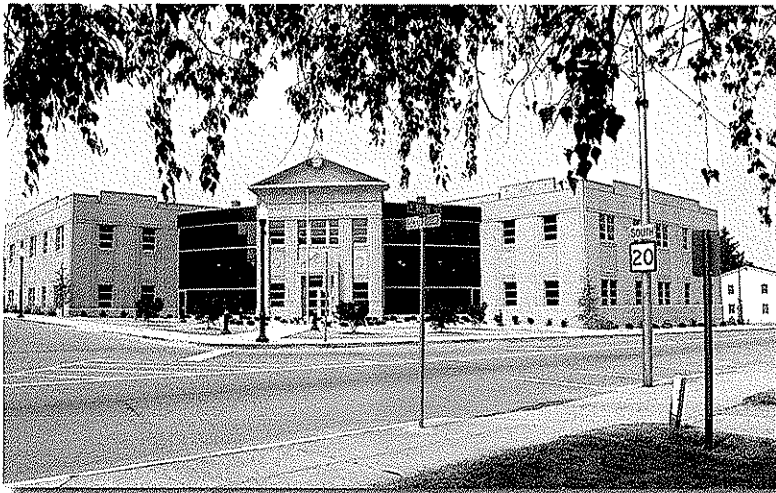
Mercer County Courthouse Annex

Princeton, WV

The Courthouse Annex designed by ETB for the Mercer County Commission was completed in July, 2005. The new facility houses the magistrate's offices, prosecuting attorney, family law master, and juvenile probation.



ETB contacted the WV Supreme Court's deputy director of technology, Kit Thornton, early on in order to ensure the equipment, wiring, and security will satisfy the demands of the court system. According to Mr. Thornton, the annex will be **"one of the nicest, most technically advanced judicial facilities in the state."**



The annex was designed to compliment the surrounding architecture of both the courthouse and the historic Memorial Building.

E. T. Boggess, Architect, Inc.

ETB

Size: 36,000 sf
Cost: \$5,190,480



Concord University Rahall Technology Center

Athens, WV

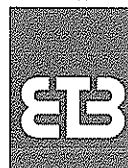


E.T. Boggess, Architect, Inc., designed the \$9.8 million dollar, state-of-the-art technology center for Concord University. The project reuses a small part of the remaining historic White Hall.



The addition/renovated facility offers tiered/multi-media classrooms, specialty computer labs, a traditional teaching darkroom with digital imagery lab, general technology-enhanced classrooms, and distance education technologies. Various campus offices have also been relocated to the technology center.

E.T. Boggess, Architect, Inc.



Size: 45,975 sf
Cost: \$9,794,000

Projects

E.T. Boggess, Architect Inc.

Governmental - New Construction:

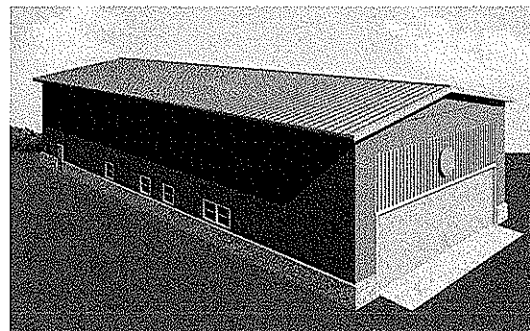
- WVARNG Readiness Center, Elkins, WV
- Mercer County Courthouse Annex, Princeton, WV
- U.S. Social Security Offices for the GSA
 - Welch, WV
 - Williamson, WV
 - Bluefield, WV
- West Virginia Tourist Information Center, Princeton, WV
- WVDOH District 10 Headquarters Complex
 - Office Building*
 - Maintenance Building*
 - Bridge/Sign Shop*
 - Lab Building*
 - Gardner, WV
- WVDOH District 6 Headquarters Complex
 - Office Building*
 - Maintenance Building*
 - Bridge/Sign Shop*
 - Moundsville, WV
- Mercer County Civil Air Patrol Hanger and Headquarters, Bluefield, WV

Governmental - Historical Re-creations - New Construction:

- Princeton Railroad Museum, Princeton, WV
- Coal Interpretive Museum, Bramwell, WV

Governmental - Renovations:

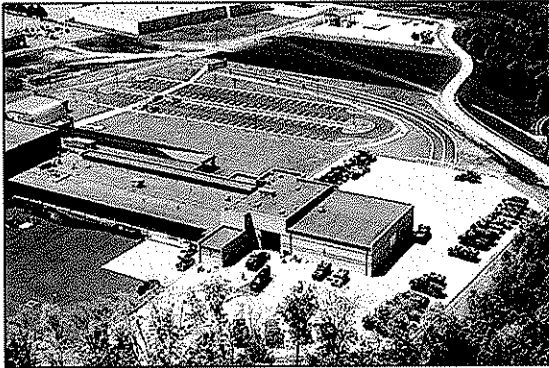
- Princeton Public Library (*Historical Renovations*), Princeton, WV
- Nicholas County Judicial Annex, Summersville, WV
- Pipestem State Park Conference Center (Addition), Pipestem, WV
- Beckley Financial Center - IRS Offices for the GSA, Beckley, WV



Mercer County Civil Air Patrol Hanger



PROJECT EXPERIENCE



Project Title

Summersville Readiness Center
Site and Civil Design

Site Location

Summersville
Nicholas County, WV

Owner

West Virginia Army National Guard
Construction and Facilities Management Office

Project Description

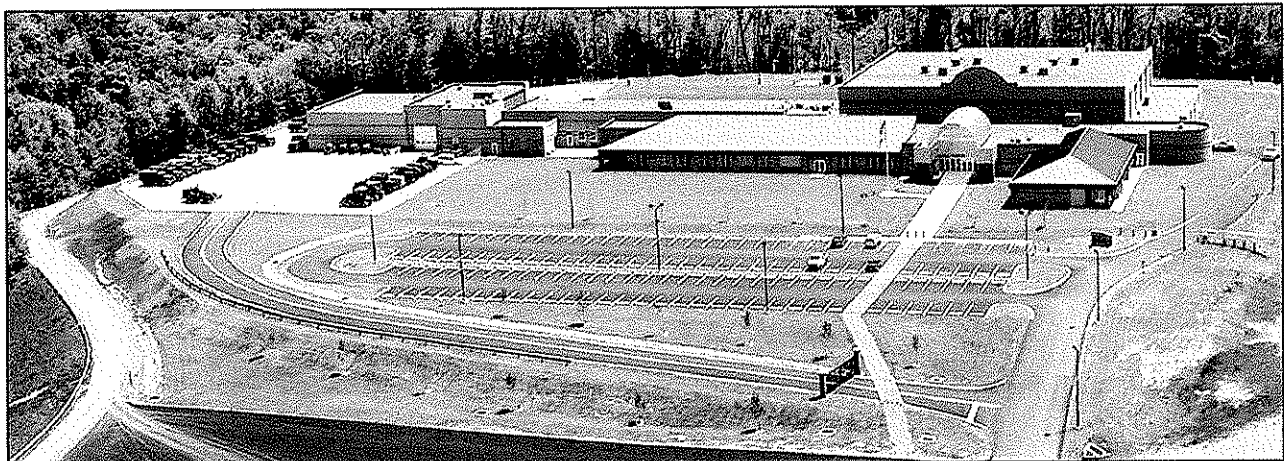
The Summersville Readiness Center Project included a Readiness Center, a Civic Arena and Conference Center, and a unit maintenance shop. The complex consists of over 70,000 square feet of heated space, additional unheated storage and approximately 21,000 square yards of rigid and flexible paving. The facility occupies a 35-acre tract behind the Northside Center in Summersville, Nicholas County. Capitol Engineering, Inc. (CEI) was selected to perform all aspects of the site investigation. Capitol Engineering, Inc. (CEI) performed all of the site investigation and site/civil design aspects of the project. Total project cost was \$15,000,000.

The project included the following major design elements:

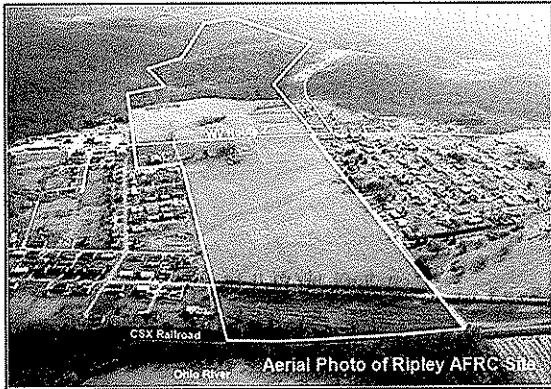
1. Utilities and general site features
2. Military equipment parking, vehicle wash and fueling facilities, and loading ramp
3. Access roads and civilian parking lots

The project included the following site investigation elements:

1. Preliminary engineering, planning, and field reconnaissance
2. Surveying and mapping
3. Geotechnical investigation and laboratory testing
4. Easement and right-of-way acquisition



PROJECT EXPERIENCE



Project Title

Ripley Armed Forces Reserve Center
Site and Civil Design

Site Location

Millwood
Jackson County, WV

Owner

West Virginia Army National Guard
Construction and Facilities Management Office

Project Description

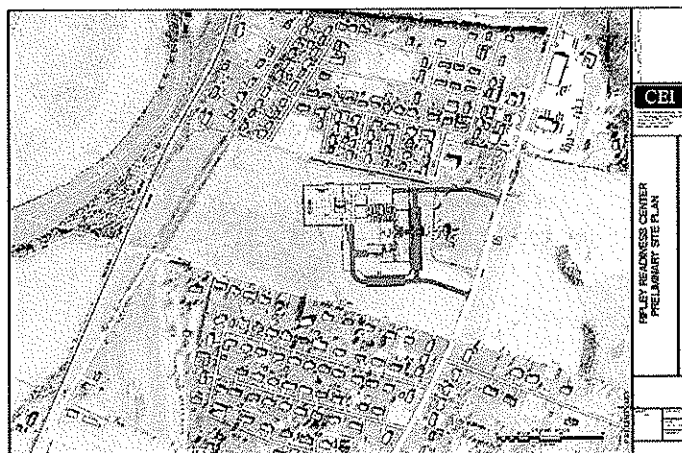
The Ripley Armed Forces Reserve Center Project includes a Readiness Center, a maintenance shop and an equipment storage building. The complex consists of over 50,000 square feet of heated space, additional unheated storage and approximately 22,000 square yards of rigid and flexible paving. The new facility occupies a 335 acre tract on the former Eastern Star property near Millwood in Jackson County. Capitol Engineering, Inc. (CEI) is performing all of the site investigation and site/civil design aspects of the project. This project has an estimated cost of \$20,000,000.

The project includes the following major design elements:

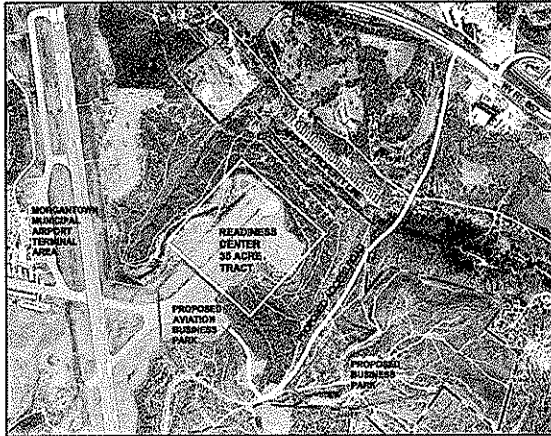
1. Utilities and general site features
2. Military equipment parking, vehicle wash and fueling facilities, and loading ramp
3. Access roads and civilian parking lots

The project included the following site investigation elements:

1. Preliminary engineering, planning, and field reconnaissance
2. Surveying and mapping
3. Geotechnical investigation and laboratory testing
4. Drainage and construction easements



PROJECT EXPERIENCE



Project Title

Morgantown Readiness Center
Site and Civil Design

Site Location

Morgantown Municipal Airport
Monongalia County, WV

Owner

West Virginia Army National Guard
Construction and Facilities Management Office

Project Description

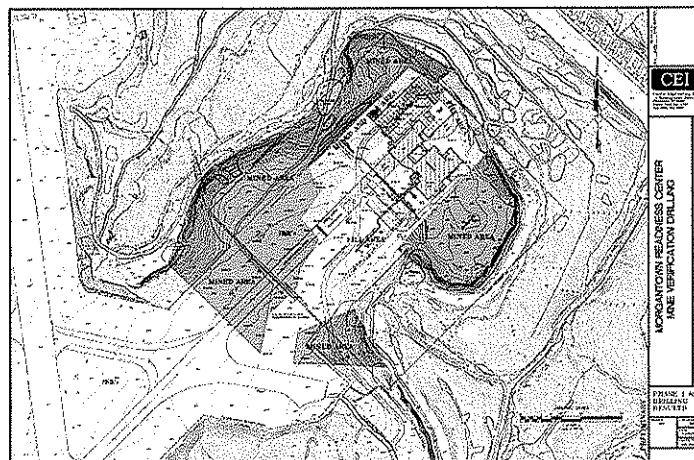
The Morgantown Readiness Center complex consists of over 50,000 square feet of heated space, additional unheated storage and approximately 32,000 square yards of rigid and flexible paving. The new facility will occupy a 35 acre tract on a former runway at the Morgantown Municipal Airport in Monongalia County. Capitol Engineering, Inc. (CEI) is performing all of the site investigation and site/civil design aspects of the project. Total project cost is estimated to be \$20,000,000.

The project includes the following major design elements:

1. Utilities and general site features
2. Military equipment parking, vehicle wash and fueling facilities, and loading ramp
3. Access roads and civilian parking lots

The project included the following site investigation elements:

1. Preliminary engineering, planning, and field reconnaissance
2. Surveying and mapping
3. Geotechnical investigation and laboratory testing
4. Mine subsidence investigation
5. Utility and construction easements



PROJECT EXPERIENCE



Project Title

Kingwood Readiness Center
Site and Civil Design

Site Location

Camp Dawson Collective Training Center
Preston County, WV

Owner

West Virginia Army National Guard
Construction and Facilities Management Office

Project Description

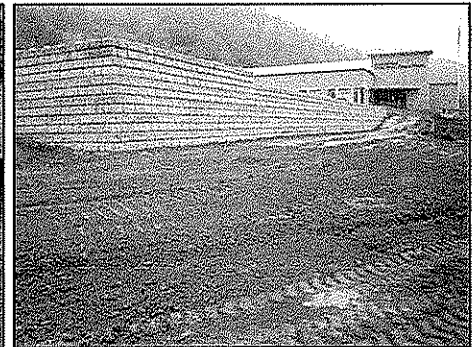
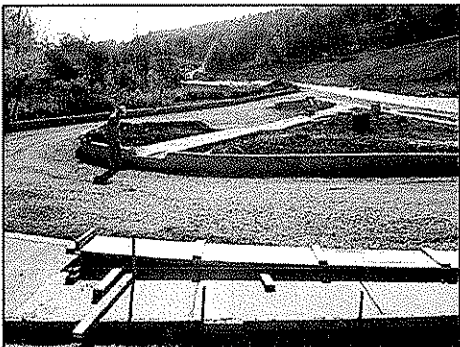
The Kingwood Readiness Center consists of a 20,000 square foot building adjacent and connected to the existing Camp Dawson Armed Forces Reserve Center in Preston County. The new facility occupies the site of the AFRC parking lot, this required design of a new access road and parking lots for both buildings. Capitol Engineering, Inc. (CEI) is performing all of the site investigation and site/civil design aspects of the project. Total project cost is \$6,500,000.

The project includes the following major design elements:

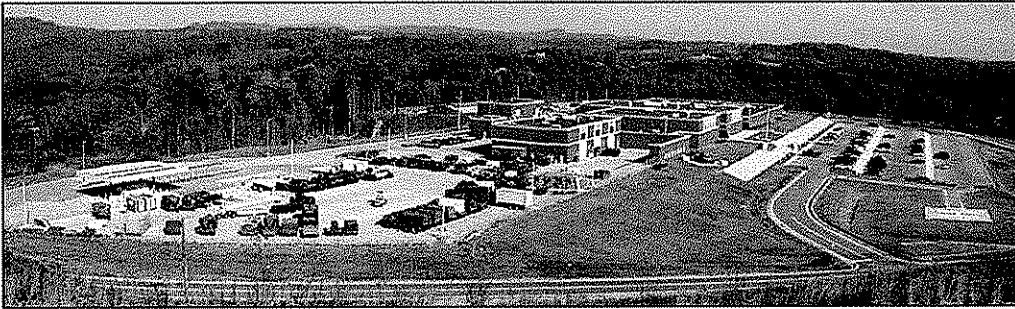
1. Utilities and general site features
2. Military equipment parking
3. Access roads and civilian parking lots

The project included the following site investigation elements:

1. Preliminary engineering, planning, and field reconnaissance
2. Surveying and mapping
3. Geotechnical investigation and laboratory testing
4. Utility and construction easements



PROJECT EXPERIENCE



Project Title
Glen Jean AFRC
Site and Civil Design

Site Location
Glen Jean
Fayette County, WV

Owner
West Virginia Army National Guard
Construction and Facilities Management Office

Project Description

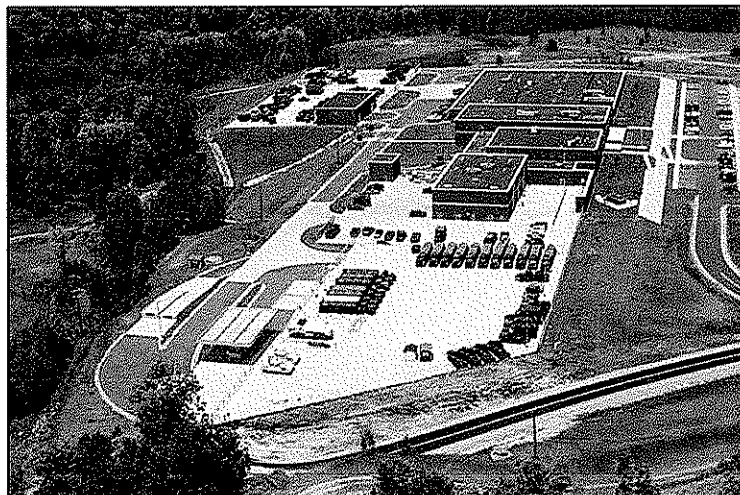
The Glen Jean Armed Forces Reserve Center Project included a Readiness Center, a Military Entrance and Processing Station (MEPS), and an Organizational Maintenance Shop (OMS). The complex consists of over 100,000 square feet of heated space, additional unheated storage and approximately 32,000 square yards of rigid and flexible paving. The new facility occupies a 35 acre tract on a former strip mine near Glen Jean in Fayette County. Capitol Engineering, Inc. (CEI) performed all of the site investigation and site/civil design aspects of the project, as well as construction administration for the sitework. Total project cost was \$19,000,000.

The project included the following major design elements:

1. Utilities and general site features
2. Military equipment parking, vehicle wash and fueling facilities, and loading ramp
3. Access roads and civilian parking lots

The project included the following site investigation elements:

1. Preliminary engineering, planning, and field reconnaissance
2. Surveying and mapping
3. Geotechnical investigation and laboratory testing
4. Mine subsidence investigation
5. Utility and construction easements



PROJECT EXPERIENCE



Project Title

Elkins Armed Forces Reserve Center
Site and Civil Design

Site Location

U.S. Route 33, near Elkins
Randolph County, WV

Owner

West Virginia Army National Guard
Construction and Facilities Management Office

Project Description

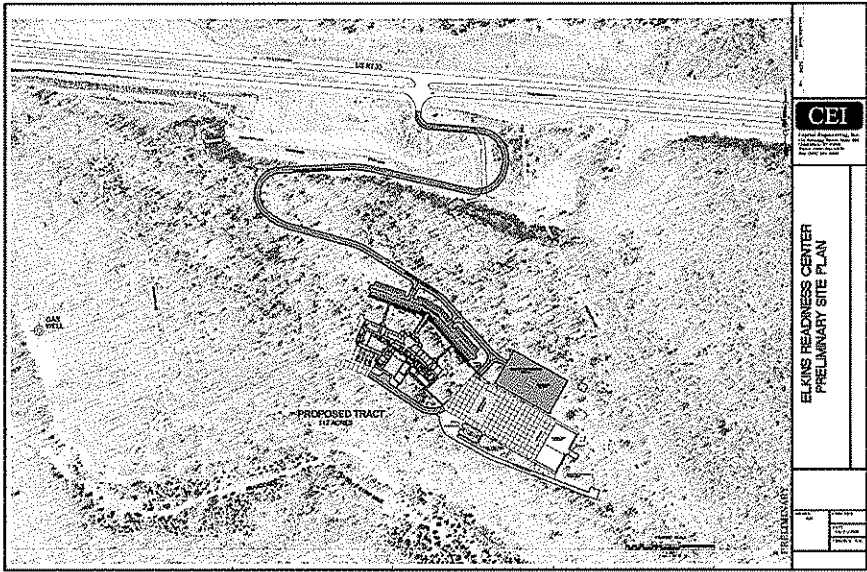
The Elkins Armed Forces Reserve Center Project includes a Readiness Center, maintenance shop and equipment storage building. The complex consists of over 50,000 square feet of heated space, additional unheated storage and approximately 32,000 square yards of rigid and flexible paving. The new facility occupies a 135 acre tract on an undeveloped mountain near Harding in Randolph County. Capitol Engineering, Inc. (CEI) is performing all of the site investigation and site/civil design aspects of the project. Total project cost is estimated to be \$21,000,000.

The project includes the following major design elements:

1. Utilities and general site features
2. Military equipment parking, vehicle wash and fueling facilities, and loading ramp
3. Access roads and civilian parking lots

The project included the following site investigation elements:

1. Preliminary engineering, planning, and field reconnaissance
2. Surveying and mapping
3. Geotechnical investigation and laboratory testing
4. Utility, drainage, and construction easements



PROJECT EXPERIENCE



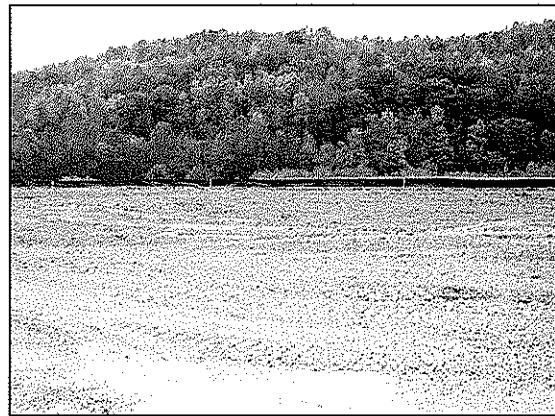
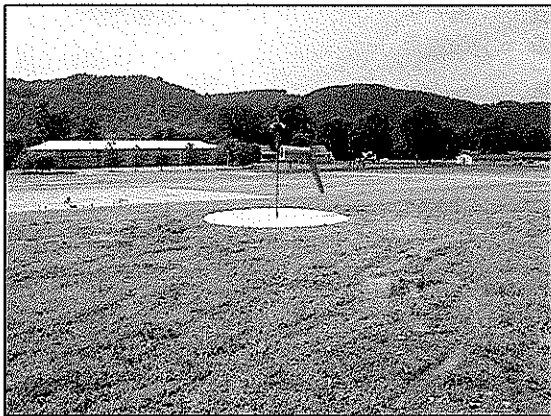
Project Title
Camp Dawson
Runway Extensions

Site Location
Camp Dawson Collective Training Center
Preston County, WV

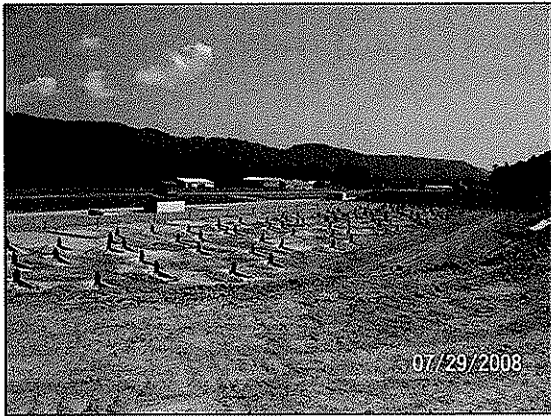
Owner
West Virginia Army National Guard
Construction and Facilities Management Office

Project Description

Capitol Engineering, Inc. was selected by the WVARNG/C&FMO for two runway renovation/upgrade projects. The projects involved a 350' paved extension for take offs, a 650' paved extension for emergency runout, lighting and marking replacement, and the installation of a Precision Approach Path Indicator (PAPI) system. The site investigation involved evaluation of the existing lighting system, a geotechnical investigation, and surveying and mapping. CEI prepared construction documents and provided full construction administration of the project. Total project cost was \$1,300,000.



PROJECT EXPERIENCE



Project Title

Camp Dawson
Lower Range Renovations

Site Location

Kingwood, Preston County, WV

Owner

West Virginia Army National Guard
Construction and Facilities Management Office

Project Description

CEI prepared the plans for renovations to the Small Arms Range Complex at Camp Dawson Army Training Site. The project required the development of a comprehensive Range Master Plan. CEI facilitated the plan development and served on the Master Planning Committee along with personnel from the WVARNG Facilities Management Office, Camp Dawson Operations, and the Post Engineer.

CEI performed site investigation services which included surveying and mapping, inspection of existing facilities, and a limited geotechnical investigation. CEI developed design and construction documents for this project. The most significant upgrades to the facility included a new Combat Pistol Qualification Course and a new 25-meter rifle range. The project also included the design of range support facilities including observation towers, storage buildings, a classroom/latrine building and the extension of utilities from main post. Total project cost was \$1,250,000.



PROJECT EXPERIENCE



Project Title

C&FMO Office Expansion
Site and Civil Design

Site Location

WV National Guard Complex
Charleston
Kanawha County, WV

Owner

West Virginia Army National Guard
Construction and Facilities Management Office

Project Description

The Construction and Facilities Management Office Expansion consisted of the construction of a 12,000 square foot office building, 6,000 square foot maintenance area, and renovations to the existing Armory Board office at the Coonskin Drive National Guard Complex. Capitol Engineering, Inc. performed the site investigation and site/civil design portions of the project. Total project cost was \$2,600,000.

The project included the following design elements:

1. Parking area, walkways, stairs and general site features
2. Utilities and an oil/water separator for the maintenance facility.

The project included the following site investigation elements:

1. Preliminary engineering, planning, and field reconnaissance
2. Surveying and mapping
3. Geotechnical investigation and laboratory testing
4. Utility and construction easements



PROJECT EXPERIENCE



Project Title

Army Aviation Support Facility #1
Apron Expansion/Rehabilitation
and Taxiway Replacement

Site Location

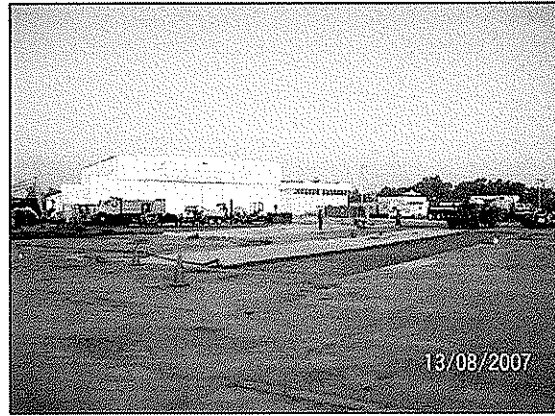
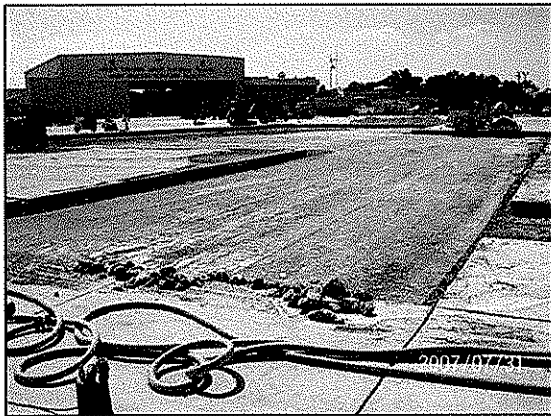
Wood County Airport
Parkersburg, West Virginia

Owner

West Virginia Army National Guard
Construction and Facilities Management Office

Project Description

Capitol Engineering, Inc. (CEI) was selected by the West Virginia Army National Guard to perform upgrades and renovation of the Army Aviation Support Facility #1. The project involved replacement of the existing taxiway, rehabilitation of the existing concrete apron, and expansion of the apron. Site investigation services included surveying and mapping, inspection of existing facilities, and a limited geotechnical investigation to support pavement design for the taxiway. CEI prepared design and construction documents for this project and performed Site Observation and Contract Administration for the client. Total project cost was \$2,500,000.



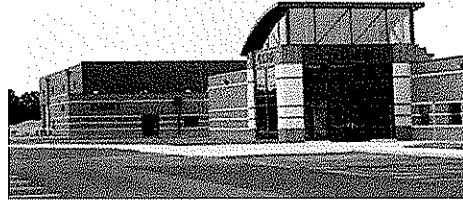
Project Profiles

New Construction

Design of mechanical, electrical, plumbing, fire protection and communication systems

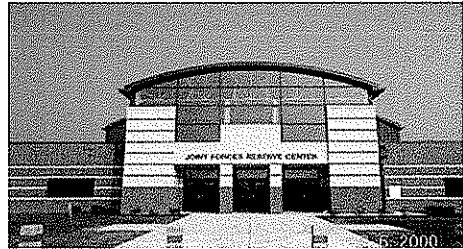
WVANG Eleanor Maintenance Center

CMA Engineering provided mechanical, electrical and plumbing, design services for a 132,000sf maintenance facility to house combined support maintenance shop and Class IX USPFO warehouse. CMA has continued to provide engineering services for the addition of the paint booth, entrance guard house, MCOFT pad, and covered storage.



WVANG Eleanor Readiness Center

CMA Engineering provided engineering services for the design of mechanical, electrical and plumbing systems for the new 80,000sf readiness center, including a 16,000sf section that is utilized by the United States Navy.



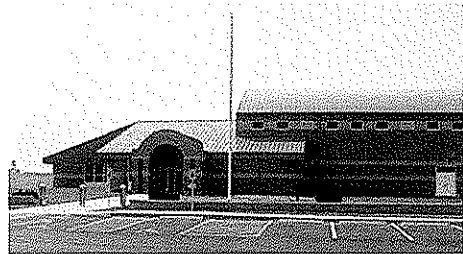
WVANG Summersville Readiness Center

CMA Engineering provided engineering services for the design of mechanical, electrical and plumbing systems for the 42,000sf readiness center. This facility also features areas for use by the City of Summersville for events throughout the year.



WVANG Lewisburg Readiness Center

CMA Engineering provided mechanical, electrical and plumbing design services for a 37,000sf readiness center that includes a vehicle maintenance bay.



WVANG Elkins Readiness Center

CMA Engineering is currently providing design of HVAC, plumbing, fire sprinkler and fire alarm systems, and electrical systems for new 54,500sf readiness center.

No Photo Available

In Design Phase

CMA
ENGINEERING

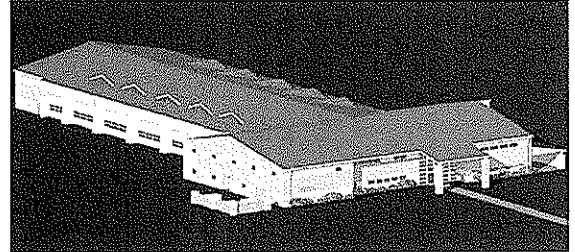
Project Profiles

New Construction

Design of mechanical, electrical, plumbing, fire protection and communication systems.

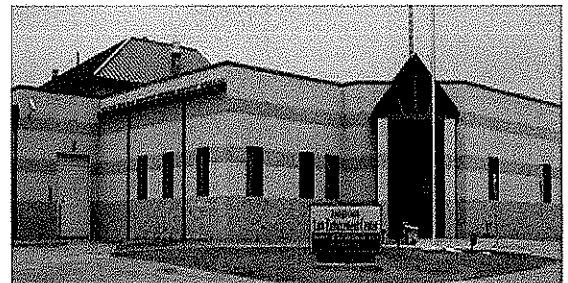
WVANG-Fire Station

CMA Engineering is currently providing design services for the HVAC, plumbing, fire alarm, fire sprinkler, communications systems, lighting and electrical power for the design/build of the new approximately 21,000sf fire/crash/ rescue station in Charleston, WV.



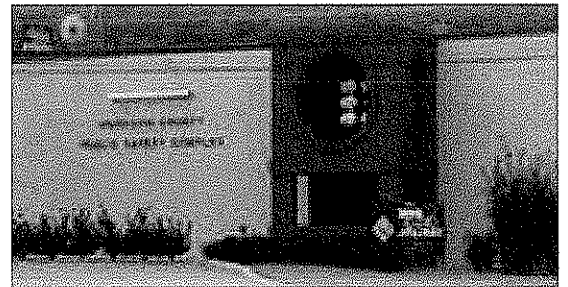
New Randolph County 911 Center

CMA has just completed design services for HVAC, plumbing, fire alarm, fire sprinkler, electrical and communications systems for the new 12,000sf facility.



Harrison County 911 Center

CMA Engineering provided mechanical, electrical, plumbing, fire alarm, fire sprinkler and communication systems design services.



New Raleigh County 911 Center

CMA is currently providing design services for HVAC, plumbing, fire sprinkler/alarm systems, data and communication and electrical power for the new Emergency Operation Center in Raleigh County.



Project Profiles

New Construction

Design of mechanical, electrical, plumbing, fire protection and communication systems.

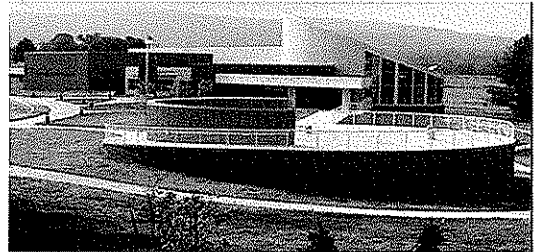
Mylan Pharmaceuticals

CMA Engineering provided mechanical, electrical, plumbing and fire protection systems design for new corporate office in Morgantown, WV. CMA Engineering is currently providing engineering services for the 425,000sf addition to the plant facility.



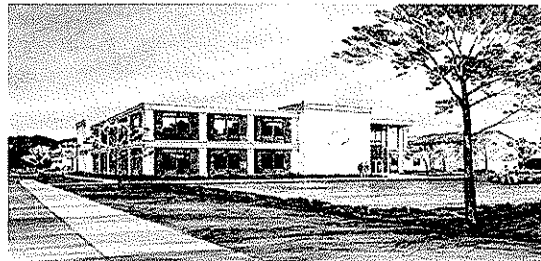
NRAO Greenbank Observatory Visitor's Center

CMA Engineering provided mechanical, electrical, plumbing, fire protection and communication systems design for new visitor's science center.



St. Albans Community Center

CMA Engineering provided design for HVAC, plumbing, fire sprinkler, fire alarm systems, communication systems, lighting and electrical power for new 26,900sf community center which included gymnasium, wrestling room, fitness room, locker rooms and an open area for aerobics, dance and gymnastics.



Go-Mart Office Building

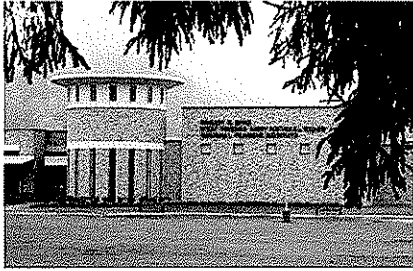
CMA provided mechanical, electrical and plumbing design services for the new 13,000sf corporate office building in Gassaway, WV.



Residence Halls-University of Charleston

CMA Engineering provided mechanical, electrical, plumbing and fire protection design services for the design/build of two new four-story Dormitories, constructed during the summers of 2004 and 2005. In 2006, CMA provided design for the addition of a wing to the second dormitory. dormitory to be built during the summer break.





West Virginia Army National Guard Project Experience

Douglas Richardson has provided the structural engineering and design for the following projects:

Robert C. Byrd Regional Training Institute -
Camp Dawson, WV

Armed Forces Reserve Center - Camp Dawson, WV

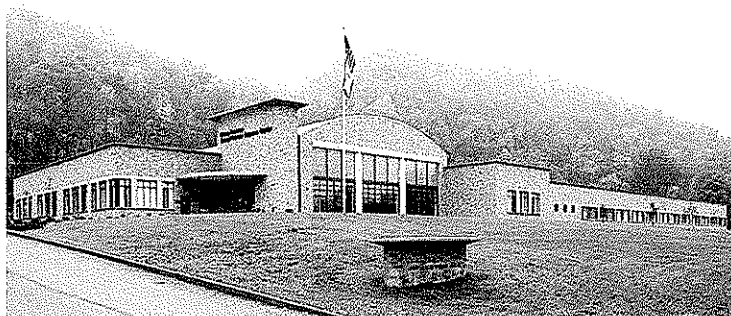
Armed Forces Reserve Center - Glen Jean, WV

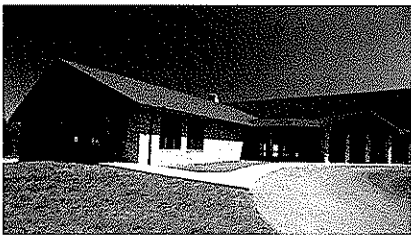
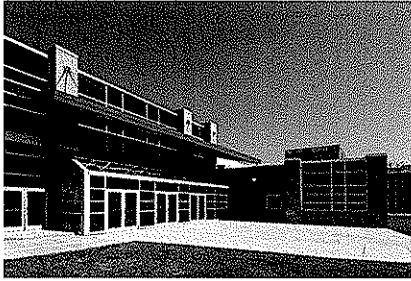
Construction & Facilities Management Office -
Charleston, WV

Mountaineer Challenge Academy - Camp Dawson, WV

Armed Forces Reserve Center - Elkins, WV

These six facilities total over 422,000 square feet of built space, and each serves as a outstanding example of how a military structure can enhance the readiness of the units they support while also contributing to the local, state and national communities in which they are located. The structural systems utilized include steel frames, reinforced concrete and masonry, load bearing cold-formed steel studs, and long span steel joists.





Additional Project List

In addition to these WVARNG projects, Mr. Richardson's experience includes a wide variety of new building design and existing building analysis. The list below is a small sample of the projects for which Douglas Richardson has had responsible charge of the structural engineering, design and contract document production. A more extensive list is available upon request.

<u>Project</u>	<u>Sq. Ft.</u>
Barboursville Elementary School	63,947
Greenbrier East H.S. Renovations & Additions	205,057
Lincoln Co. High School	216,500
Wayne Co. Spring Valley High School	175,000
St. Albans High School	172,600
Dunbar Primary Center School	14,100
Judge Donald F. Black Courthouse Annex	37,000
WV Hospital Association Office Building	29,710
Cabell West Elementary School	55,788
Capital State Bank	4,088
Kappa Alpha Fraternity House, WVU	14,000
Sears, Chesterfield Mall, Richmond VA	146,980
Sears, Loudon VA	132,600
Alderson Federal Prison Dormitory	60,625
Western Juvenile Detention Center	29,015
Cacapon State Park Addition	9,842
Lewisburg United Methodist Church	12,800
Kroger Store Renovation, Kanawha City	15,427
Goodwill Industries Renovation and Addition	15,460

SECTION SIX

Scope of Services & Approach

Scope of Services and Approach

E.T. Boggess, Architect Inc.

SCOPE OF SERVICES

The ETB team of professional consultants can provide the WV Army National Guard with the following services:

- Architectural Design
- Civil Design
- Structural Design
- Mechanical Design
- Electrical Design
- Landscaping Design
- Interior Design
- Computer Visualization

APPROACH

The services listed above will be accomplished in steps or phases beginning with Pre-Design/Planning, then Schematic Design Phase, followed by Design Development Phase. Once you approve the final design, we start the Construction Documents Phase, then proceed to the Bidding Phase, and, finally, the Construction Administration Phase. The information that follows will help you understand each phase.

Pre-Design/Planning

Our team's services in this first critical phase will lay the groundwork to clarify project goals and design issues. We have no preconceptions and will work to answer your project needs as we define them together. We want to ensure that the project reflects the values of the WVARNG.

Services/tasks include . . .

- Determine project goals and design objectives.
- Identify project constraints and opportunities.
- Gather and analyze data – space program/staffing.
- Evaluate site – arrange for geo-tech analysis

Schematic Design Phase

The schematic design documents will establish the general scope and conceptual design of your projects, and the scale and relationships of the building components. The main goal of this phase is to arrive at a clearly defined, feasible concept and to present it in a form that results in your understanding and acceptance.

You will have the following items to review at the end of this phase:

- Conceptual Site Plan
- Preliminary Building Plan with elevations or space adjacency studies
- Perspective Sketches
- Preliminary Cost Estimates

Design Development Phase

Services in the design development phase strive to achieve the refinement and coordination necessary for a polished work of architecture.



Scope of Services and Approach

E.T. Boggess, Architect Inc.

Here decisions made in schematic design are worked out at a more detailed level to minimize the possibility of major modifications being needed during the development of construction documents.

It would be at this stage that we would submit, for the approval of the WVARNG, a set of documents for the 10% evaluation stage. We would submit a clear, coordinated description of all aspects of the design, including . . .

- Architectural
- Mechanical
- Electrical
- Plumbing
- Fire Protection Systems

Final Design Phase / Construction Document Phase

Construction documentation is the bridge between building design and physical building form. A key element of documentation services, construction drawings provide the instructions for transforming the design solution into brick, mortar, landscapes, access, etc. The purpose of providing construction document drawings is to provide graphic documentation for bidding and execution of construction services.

Working closely with your representatives, we would program the work to promptly produce a 30% documentation set for approval. We are aware that such a set probably comprises 65% of the work, but this set should have sufficient information for the client to make informed decisions.

After submission of this 30% set, we would proceed towards a 90% completion set. All feedback from your representatives would be processed and incorporated into this set. The final comments would then be incorporated into the bid set.

Please note, we are flexible to accommodate any submittal requirements as directed.

Services/tasks include . . .

- Prepare construction drawings based on approved design development drawings.
- Coordinate and incorporate drawings from all team members.
- Prepare specifications to accompany drawings to establish a desired level of performance.
- Submit documents to building code officials.
- Prepare bid packages.

Bidding Phase

Construction procurement activities assist the client in obtaining competent construction services. Our team will prepare bid packages or request for proposals/qualifications, and we will support the selection, negotiation, and contract award processes.

Services/tasks include . . .

- Assist client in selection of project delivery method.
- Identify prospective bidders.



Scope of Services and Approach

E.T. Boggess, Architect Inc.

- Organize or participate in pre-bid conference.
- Distribute bidding documents.
- Address questions submitted by bidders.
- Review and evaluate competitive bids.
- Assist client in contractor interviews for obtaining negotiated proposals.
- Award contract for construction.

- Prepare field reports and records.
- Supervise completion and closeout.
- Assist with any post-occupancy issues.

Construction Phase / Contract Administration Services

Administration services are important in order to ensure construction conforms to construction documents; to support the design intent; to lessen project risks; to identify and resolve construction problems early; and assist you in understanding the construction process.

The architect, serving as a construction administrator, observes construction for conformity to construction drawings and specifications.

Services/tasks included . . .

- Establish lines of communication.
- Maintain and distribute paperwork/records.
- Respond to contractor's requests for information.
- Track changes in construction documents.
- Review contractor's requests for payment.
- Review shop drawings and product information.



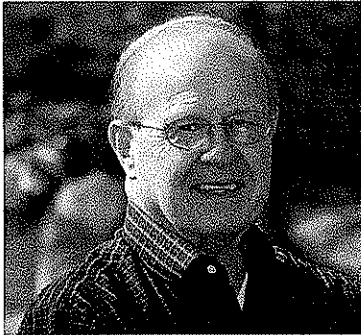
SECTION SEVEN

Resumes

E. Ted Boggess, AIA, NCARB, Architect

Chairman of the Board

E.T. Boggess, Architect Inc.



EDUCATION:

Bachelor of Architecture
The Ohio State University
School of Architecture

RESPONSIBILITIES:

Ted founded E. T. Boggess, Architect, Inc., in 1966. Prior to Todd joining the firm, Ted was solely responsible for all design and managerial aspects of the corporation. After serving 35 years as president, Ted decided to hold only the position of Chairman of the Board.

Ted is responsible for . . .

- business development
- document review
- construction observation
- application for payment review
- contract negotiations
- administration

Your project will benefit from his 40+ years of architectural excellence. Ted's understanding of code requirements ensures that your project will satisfy all building, ADA, and life-safety regulations

PROFESSIONAL:

Over the years, Ted has been very active on state and national architectural boards and committees. West Virginia Governors have appointed him to five consecutive, five-year terms on the WV Board of Architects. In addition, he has served on the following national committees:

- National Council of Architectural Registration Boards (NCARB)
- Past Region II Coordinator for NCARB IDP Program
- Past Chairman – NCARB, National Education Committee
- Past Member – NCARB, Procedures and Documents Committee
- Past Member – NCARB, Professional Development Committee
- Past NAAB Accreditation Team Member

These committees are responsible for establishing educational requirements for new architects, and evaluating architectural programs at colleges and universities throughout the country. Even if you don't select our firm, you will still benefit from Ted's years of work improving the educational requirements of today's architects.



PROJECTS:

Ted's extensive work on a variety of projects has prepared him for almost any problem your project may encounter. A few years ago, the parking lot for a new pharmacy that our firm was designing proved to be smaller than the owner wanted. The site was restricted by a creek that ran between the property and the highway. Ted suggested covering the creek with a special system that allowed for increased parking directly over the waterway and provided access directly to the highway at two locations.

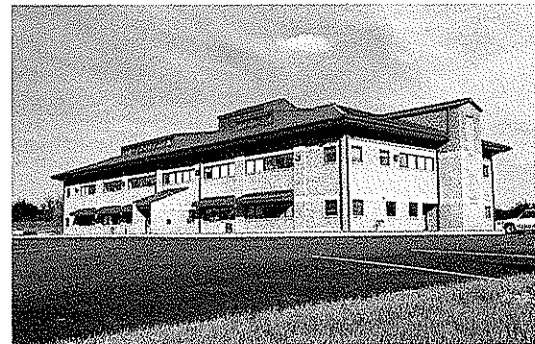
Ted will be available to develop the same kind of innovative solutions for your project as well.

PROJECTS

Governmental & Office Buildings:

- Mercer County Courthouse Annex, Princeton, WV
- Concord University Rahall Technology Center, Athens, WV
- WVDOH District 10 Headquarters Office Complex, Gardner, WV
- WVDOH District 6 Headquarters Office Complex, Moundsville, WV
- US Social Security offices for the GSA in Bluefield, Welch and Williamson, WV

- Mercer County Civil Air Patrol Hanger & Headquarters, Bluefield, WV
- First Community Banks in Princeton, WV; Athens, WV; Bluefield, VA; Emporia, VA
- First Century Bank, Beckley, WV
- MCNB Bank, Princeton, WV
- First Sentry Bank, Huntington, WV



WVDOH D-10 Office Building, Gardner, WV



WVDOH D-6 Office Building, Moundsville, WV



Todd Boggess, AIA, NCARB, Architect

President

E.T. Boggess, Architect Inc.



EDUCATION:

- Master of Architecture, Clemson University School of Architecture
- International Studies, Clemson University Daniel Center for Urban Design & Building Studies, Genoa, Italy
- Bachelor of Arts Degree in Design, Clemson University School of Architecture

RESPONSIBILITIES:

Todd joined ETB as a project architect and office manager in 1988 after graduating from Clemson University. In January, 2001, he assumed the office of President.

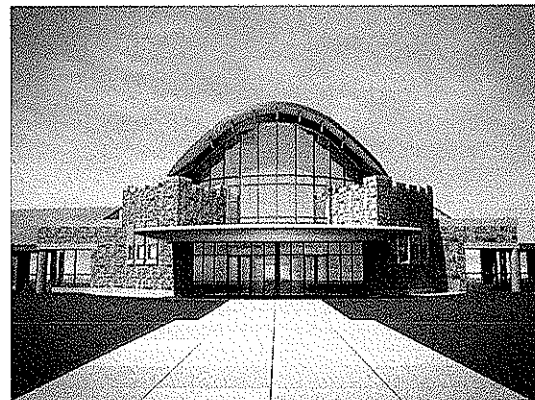
Todd is responsible for . . .

- architectural design and development
- project management and coordination
- computer aided design and visualization
- interior design
- site planning
- submittal reviews/shop drawings

Your project will receive his complete attention, from the interview and project meetings, through the construction process. As the president of the firm, you are putting your trust in him and he takes that commitment very seriously. He wants to make sure you are satisfied with our service, performance, and design.

PROJECTS:

As the documents are being finalized for the WVARNG Readiness Center for Elkins, the project has been progressing on schedule and should satisfy a variety of needs. Since this was the first project Todd has designed for the Guard, he conducted a great deal of research regarding the way existing facilities function. His research and discussion with Guard representatives has led to a design that will address the many needs of the WVARNG, Randolph County Unit.



WVARNG Readiness Center, Elkins, WV



Todd's design for the Mercer County Courthouse Annex involved a great deal of preliminary research. He met with each one of the agencies several times to ensure that their new spaces would satisfy all their requirements. The initial meeting was to examine their existing offices and determine how well they functioned. He obtained input not only from the department heads, but also the staff. Once he generated a preliminary design, he again met with the agencies to obtain their approval. Todd will again use this interactive design approach to design the Readiness Center for Buckhannon County.



Mercer County Courthouse Annex, Princeton

Todd is also experimenting with the vast opportunities associated with virtual reality which allows you to actually "walk-thru" your finished building long before the foundation is laid. Both computer renderings and a virtual reality presentation are being used by Tazewell Community Hospital as they promote the Four Seasons Wellness Center.

PROJECTS

Governmental Buildings:

- WVARNG Readiness Center, Elkins, WV
- Mercer County Courthouse Annex, Princeton, WV
- Concord University Rahall Technology Center, Athens, WV
- WVDOH District 10 Headquarters Office Complex, Gardner, WV
- WVDOH District 6 Headquarters Office Complex, Moundsville, WV
- US Social Security Offices for the GSA in Welch and Williamson, WV
- Pipestem Conference Center (*Addition*), Pipestem State Park
- Nicholas County Judicial Annex (*Renovation*), Summersville, WV

AWARDS:

In the fall of 2003, Todd was selected as one of *West Virginia Executive Magazine's* "Young Guns". He was also selected as "Citizen of the Year - 2000" by both the Princeton/Mercer County Chamber of Commerce and the Princeton Elks Club for his efforts in creating opportunities for new business and improving our overall community.



Stephen E. Mackey

VP - Planning & Design

E.T. Boggess, Architect, Inc.

EDUCATION:

Bachelor of Science Design
Clemson University

Master of Architecture
Clemson University

RESPONSIBILITIES:

With over 25 years of experience in all phases of design and construction, Mr. Mackey brings strong design, management and leadership skills to the firm. His significant experience has enabled him to successfully oversee the design and construction of a number of large government projects. Specific project responsibilities include:

- Code Review and Analysis
- Program Development
- Master Plan Development
- Conceptual Design
- Design Visualization
- Project Management
- Project Coordination
- Construction Specifications
- Construction Administration
And Supervision

PROJECTS:

Mr. Mackey recently rejoined ETB Architects after serving as Executive Vice President for two Florida Architectural firms. During his absence, Mr. Mackey served as project manager on several large projects for the Savannah District Corps of Engineers including the 72,000 sf Truscott Air

Terminal at Hunter Army Airfield in Savannah, Georgia which serves as the platform for deploying and redeploying US Army, Reserve Component Army National Guard and Army Reserve units and soldiers. In addition to his design and project management responsibilities, Mr Mackey also directed the day to day operations and management of the firm.

PROJECTS - Government

Buildings:

- Truscott Air Terminal, Hunter AAF, Savannah, GA
- Florida Air National Guard Drug Interdiction Laboratory, Jacksonville, FL
- Chapel for Kings Bay Naval Submarine Base, Kings Bay, GA
- Concord HH-60 Operations/Para rescue Facility, Moody Air Force Base, GA
- Base Supply Support Centre, Robins Air Force Base, GA
- Automated Skyway Express, Eight Public Stations, Jacksonville, FL
- Florida Dept. of Law Enforcement Crime Laboratory & Office Building, Jacksonville, FL
- Florida Dept. of Health Office Building, Tallahassee, FL



EDUCATION:

Bachelor of Architecture
University of the Orange Free
State, South Africa

Master of Design Management
UNITEC
Auckland, New Zealand

RESPONSIBILITIES:

Roy joined ETB in 2004 as a project architect. His area of expertise is in design, documentation, and information management. He will be responsible for the ftp site that we will create to share project information. Most of his work before joining ETB was completed in South Africa and New Zealand. His work in the USA includes government facilities for the West Virginia Army National Guard and other public buildings.

Roy is responsible for . . .

- planning/programming
- construction documentation
- coordination of other disciplines
- ftp site design
- responding to contractor's requests for information
- reviewing submittals and shop drawings
- site visits/construction administration
- overall project management

PROJECTS:

Roy's expertise in project management and communication is reflected in his use of technology to enhance the delivery process via the internet and FTP. His mastery of information management systems will ensure that team members, contractors, and your representatives will be able to share ideas efficiently and cost effectively.

PROJECTS - Public Buildings:

- WVARNG Readiness Center, Elkins, WV
- First Century Bank, Beckley, WV
- Four Seasons Wellness Center, Tazewell, VA
- Mathena Cultural Arts Center, Princeton, WV

Prior to joining ETB, Roy worked on the following similar projects:

- Lewisburg Readiness Center for the National Guard, Lewisburg, WV
- Summersville Readiness Center for the National Guard, Summersville, WV



Chris Canterbury, Associate AIA

Project Manager

E.T. Boggess, Architect Inc.

EDUCATION:

Bachelor of Science Engineering
Technology/Architecture
Fairmont State University

RESPONSIBILITIES:

Chris joined ETB in 2000 as a CADD Technician. His focus since joining ETB has been construction administration and his current position of Project Manager reflects that area of expertise. Your project will benefit from his superb organizational skills. He attends meetings and keeps track of your needs and wishes through notes and minutes. His timely response to submittals will ensure that your project stays on its construction schedule.

Chris is responsible for . . .

- construction documentation
- organizing and attending meetings
- distribution of minutes and progress reports
- contacting material suppliers
- responding to contractor's requests for information
- reviewing submittals and shop drawings
- construction administration
- site involvement
- contractor jobsite meetings – proactive approach

PROJECTS:

During the construction of the Mercer County Courthouse Annex, Chris monitored the budget very closely. He distributed updated amounts at the monthly meetings with the building commission and was instrumental in keeping the project under-budget. He will be just a diligent with the budget for your project as well.

PROJECTS – Public Buildings:

- Mercer County Courthouse Annex, Princeton, WV
- Concord University Rahall Technology Building, Athens, WV
- Beckley Financial Center/IRS Center for the GSA, Beckley, WV
- US Social Security Offices for the GSA in Welch and Williamson, WV
- Mercer County Civil Air Patrol Hanger & Headquarters, Bluefield, WV
- DHHR Office (Remodeling), Welch, WV



ROBERT M. FULLER, P.E.
Principal, Capitol Engineering, Inc.

QUALIFICATIONS

Project Manager with fifteen (15) years of experience with site investigation, planning, design and contract administration services on military, site development and mine reclamation projects. Mr. Fuller has been fully responsible technically, managerially and administratively for the planning, investigation, design and contract document preparation for over fifty (50) projects in the State of West Virginia. Mr. Fuller has served as Associate Professor of Civil Engineering Technology at West Virginia University Institute of Technology on a full-time, part-time and adjunct basis.

CERTIFICATIONS

Registered Professional Engineer – WV, PA, OH
OSHA 40-Hour Health and Safety Training
OSHA Supervisor Training

EDUCATIONAL BACKGROUND

M.S. Engineering, Marshall University Graduate College, 1997
B.S. Engineering Technology, West Virginia Institute of Technology, 1989

PROFESSIONAL EXPERIENCE

Mr. Fuller was principal or project manager for the following West Virginia Army National Guard Projects completed by Capitol Engineering, Inc..

- Joint Interagency Training and Education Center
- Ripley Armed Forces Reserve Center
- Elkins Armed Forces Reserve Center
- Fairmont Armed Forces Reserve Center
- Morgantown Readiness Center
- Kingwood Readiness Center
- Glen Jean Armed Forces Reserve Center
- Summersville Readiness Center
- Lewisburg Readiness Center
- AASF #1 Apron Expansion/Rehabilitation and Taxiway Replacement
- Camp Dawson Runway Extension
- AASF #1 Taxiway Repair
- Camp Dawson Range Renovations
- Williamson Armory Wash Pad and Military Parking
- Camp Dawson Fuel Canopies
- Engineering consultant for the Center for National Response
- Logan County Feasibility Study
- Mingo-Logan Siting Study
- Camp Dawson Chalets Evaluation
- Camp Dawson Rappelling Tower Evaluation
- Ross Property Conceptual Site Layout
- Eleanor AFRC & CSMS Utility Location and Property Staking
- Camp Dawson Qualification Training Range Preliminary Design Drawings
- AASF #1 Lease Boundary Determination and Marking
- Eleanor CHP Rail Spur Layout
- JISOTF Initial Planning Study

PROFESSIONAL AFFILIATIONS

Society of American Military Engineers
American Society of Civil Engineers
American Institute of Architects
Construction Specifications Institute

P R O F I L E

Timothy Cox, P.E.,
NCEES.
President
Mechanical Engineer

(304) 598-2558
tcox@cmawv.com

EDUCATION

University of Colorado
Boulder, Colorado
Degree: Mechanical Engineering B.S.

REGISTRATIONS/PROFESSIONAL AFFILIATIONS

Association of Energy Engineers-CBCP

Registered Professional Engineer in WV, CO, TN, VA,
MD, KY

CPD (Certified in Plumbing Engineering)

Member of ASHRAE

American Society of Plumbing Engineers

National Association of Fire Protection Engineers

WV Society of Healthcare Engineers

EXPERIENCE

Mr. Timothy Cox, President and Senior Mechanical Engineer of CMA Engineering brings 24 years of mechanical design experience to our clients. Mr. Cox has been project manager and project engineer for a variety of

PROJECTS

West Virginia University-Open End Contract since 1999
Mountain Lair Plaza Renovations
Boreman HVAC/Plumbing/Fire Sprinkler Upgrades
Soccer Stadium
Coliseum Life/Safety Renovations
Coliseum Locker Room Suites
Engineering Science Building Addition/Renovations
Arnold Hall Fire Alarm/ Fire Sprinkler Upgrades
Wrestling Training Facility

WVU Health Sciences Center

Electrical and Mechanical Utility Extensions for
BioMedical Research Facility

West Virginia University Hospitals

WV Eye Institute-MEP systems design for new facility
Cheat Clinic-MEP design for new clinical addition
WVUH Emergency Department-HVAC, electrical, fire and communication systems design for new addition
Chestnut Ridge Hospital-various MEP renovations
Healthworks Rehab and Fitness -MEP systems design for new facility

Mylan Pharmaceuticals, Morgantown, WV

Various projects including HVAC, plumbing, fire Sprinkler and controls for new office building, fluid bed addition, north plant expansion, parking garage and weighing and packaging.

CMA
ENGINEERING

Clingenpeel/McBrayer & Associates, Inc.

824 Cross Lanes Drive
Charleston, West Virginia 25313

(304) 343-0316 tel
(304) 343-5146 fax

5 Riddle Court
Morgantown, West Virginia

(304) 598-2558 tel
(304) 598-2472

www.cmawv.com

P R O F I L E

Daniel Lee Ellars, P.E.

Principal
(304) 343-0316
dellars@cmawv.com

EDUCATION

West Virginia University Institute of Technology
Montgomery, West Virginia.
Bachelors of Science in Electrical Engineering

West Virginia State University
Institute, West Virginia
Bachelors of Science in Business Administration

REGISTRATIONS/PROFESSIONAL AFFILIATIONS

Registered Professional Engineer in West Virginia

National Fire Protection Association (NFPA)

Institute of Electrical and Electronics Engineers (IEEE)

American Society of Heating, Refrigerating and Air-Conditioning Engineers (ASHRAE)

EXPERIENCE

Mr. Daniel L. Ellars, Electrical Engineer for Clingenpeel/McBrayer & Associates, Inc. brings 19 years of electrical design experience to our clients. Mr. Ellars has been a project manager and project engineer for a variety of projects including commercial and industrial facilities as well as for both power and tele-communications utilities.

PROJECTS

Educational Experience

Jackson County (WV) Schools—Electrical Upgrades & Expansions.

Hospital Experience

West Virginia University / Ruby Memorial Hospitals
West Virginia Eye Institute—Electrical systems design for new facility.

Thomas Memorial Hospital—Electrical systems survey, upgrades and documentation. Standby emergency power engine/generator replacement.

Military Experience

West Virginia Army National Guard
Eleanor (WV) Maintenance Center—Electrical systems design for new facility.

Correctional Experience

St. Mary's Correctional Center—Multiple emergency power engine/generator systems with combined control and monitoring.

Industrial Experience

Mylan Pharmaceuticals
Mylan Office & Lab Buildings—various electrical systems designs for new, existing and expanded facilities including new 23kV/12kV switchyard and grounding plain layout.



Clingenpeel/McBrayer & Associates, Inc.

824 Cross Lanes Drive
Charleston, West Virginia 25313

(304) 343-0316 tel
(304) 343-5146 fax

5 Riddle Court
Morgantown, West Virginia

(304) 598-2558 tel
(304) 598-2472

www.cmawv.com

P R O F I L E

James A. Kerns
Mechanical/Electrical Designer

(304) 343-0316
jkerns@cmawv.com

EDUCATION

West Virginia State College
Institute, West Virginia
Degree: Bachelor of Science in Industrial Technology/
Building Construction

REGISTRATIONS/PROFESSIONAL AFFILIATIONS

Member of ASHRAE

EXPERIENCE

Mr. James A. Kerns has over 32 years experience in Mechanical and Electrical engineering design. He has been responsible for design projects in the educational, commercial, and health care fields.

Mr. Kerns has been a great asset to Clingenpeel/McBrayer & Associates. His knowledge and experience enables him to complete project designs in a clear and concise manner and in a timely fashion.

PROJECTS

Kanawha County Schools

George Washington High School-HVAC Renovations
George Washington High School-Classroom Additions
Horace Mann Middle School-HVAC Renovations
Elkview Middle School-Classroom Additions
Elkview Middle School-Fire Alarm System
Ruffner Elementary School-Classroom Additions
Point Harmony Elementary School-Activity Building

Concord College

Athens, West Virginia — various renovation projects throughout the campus, which include Twin Towers Fire Alarm, Twin Towers Elevator Renovation, and Alexander Arts Center Chiller Replacement.

U.S. Postal Service

Open End Contract Since 1993, which encompasses numerous Post Office Renovations, new Post Offices, and new Postal Maintenance Facilities. Mr. Kerns has been Project Manager for over 65 projects for the U.S. Postal Service.

Yeager Airport

New Parking Garage
New Emergency Generator
Electrical Upgrades
Fire Alarm System Upgrade
Security Upgrade
Fire Sprinkler Renovations



Clingenpeel/McBrayer & Associates, Inc.

824 Cross Lanes Drive
Charleston, West Virginia 25313

5 Riddle Court
Morgantown, West Virginia

(304) 343-0316 tel
(304) 343-5146 fax

(304) 598-2558 tel
(304) 598-2472

www.cmawv.com

P R O F I L E

Matt Corathers, E.I. Mechanical Designer

(304) 598-2558
mcorathers@cmawv.com

EDUCATION

West Virginia University
Bachelor of Science -Mechanical Engineering

PROFESSIONAL DEVELOPMENT

Successfully passed Fundamentals of Engineering Exam

EXPERIENCE

Matt is a recent addition to CMA Engineering having previously worked for Whitman, Requardt and Associates in Baltimore, MD.

PROJECTS

West Virginia University

Mechanical design for new two-story child care facility

University High School, Morgantown, WV

Mechanical design for renovations/ upgrades to the HVAC systems

Randolph County Building

- Mechanical design for completion of two story addition and modifications of the existing second floor to be used by the Family Court

Monongalia County Family Court

Mechanical design for renovations to 4,850sf in existing court facility

University of Maryland Field House

Mechanical design for the replacement of two heat exchangers and a domestic use-hot water generator

Vilotteville Elementary School, Maryland

Mechanical design for the addition of 24 new classrooms



Clingenpeel/McBrayer & Associates, Inc.

824 Cross Lanes Drive
Charleston, West Virginia 25313

(304) 343-0316 tel
(304) 343-5146 fax

5 Riddle Court
Morgantown, West Virginia

(304) 598-2558 tel
(304) 598-2472

www.cmawv.com

P R O F I L E

Jeremy R. Perry, E.I.
Mechanical Designer
(304) 343-0316
jperry@cmawv.com

EDUCATION

San Jose University
San Jose, CA
Degree: Mechanical Engineering B.S.

PROFESSIONAL DEVELOPMENT

Successfully passed Fundamentals of Engineering Exam
WV Society of Healthcare Engineers

Various ASHRAE, HVAC and LEED design courses

EXPERIENCE

Jeremy is a recent addition to CMA Engineering having previously worked for MKK Consulting Engineers, Billings, Mt.

PROJECTS

Educational Experience

Bighorn County School District #1, Wyoming
Grey Bull Elementary-LEED Analysis
New Rocky Mountain Junior/Senior High
Cowley High School

Sheridan County School District#1, Wyoming
Big Horn High School Campus
Tongue River High School

Powell High School Kitchen Renovation
Shoshoni High School Gym Renovation

Hospitality Experience

Warren Miller Lodge, Big Sky, MT

Religious Facilities

King of Glory Church, Billings, MT

Commercial Experience

Sheridan Bank, Sheridan, WY
Bighorn County Historical Museum, Hardin, MT



Clingenpeel/McBrayer & Associates, Inc.

824 Cross Lanes Drive
Charleston, West Virginia 25313

(304) 343-0316 tel
(304) 343-5146 fax

5 Riddle Court
Morgantown, West Virginia

(304) 598-2558 tel
(304) 598-2472

w w w . c m a w v . c o m

P R O F I L E

Samuel Aaron Ward Electrical Designer

(304) 343-0316
award@cmawv.com

EDUCATION

West Virginia University Institute of Technology
Montgomery, West Virginia.
Bachelors of Science in Electrical Engineering

REGISTRATIONS/PROFESSIONAL AFFILIATIONS

Institute of Electrical Engineers (IEEE)
West Virginia Society of Healthcare Engineers

EXPERIENCE

Mr. Samuel Aaron Ward, Electrical Designer, for CMA Engineering brings two years of electrical design experience to our clients. Mr. Ward has been a project engineer for a variety of projects in the petroleum industry as well as for power utilities.

PROJECTS

Educational Experience

Clendenin Elementary School-Elevator/fire alarm upgrades

Emergency Center Experience

Bridgeport Fire/Police Station-Lighting and electrical design for new facility
Wetzel County 911 Center-Lighting and electrical systems design for new facility

Military Experience

Elkins Armed Forces Readiness Center-Lighting and electrical systems design for new facility
Gassaway Armory-Electrical design for addition and renovation to existing facility

Waste Water Treatment Experience

Mingo County Racetrack-Lift Station, lagoon aerator, and sprinkler electrical system design

Industrial Experience

Marathon Petroleum, LLC-Various industrial automation projects using PLCs.

CMA

ENGINEERING

Clingenpeel/McBrayer & Associates, Inc.

824 Cross Lanes Drive
Charleston, West Virginia 25313

(304) 343-0316 tel
(304) 343-5146 fax

5 Riddle Court
Morgantown, West Virginia

(304) 598-2558 tel
(304) 598-2472

www.cmawv.com

P R O F I L E

Larry Weese Mechanical/Plumbing Designer

(304) 343-0316
lweese@cmawv.com

EDUCATION

West Virginia University
Morgantown, West Virginia
Degree: Division of Forestry BS,MS

PROFESSIONAL DEVELOPMENT

Various seminars and technical sessions

EXPERIENCE

Mr. Larry Weese, Mechanical Designer for Clingenpeel/McBrayer & Associates, Inc. brings 18 years of mechanical design and project management experience to our clients.

PROJECTS

Medical Facilities Experience

Charleston Area Medical Center

Women & Children's Hospital-- Renovations to
Emergency Room

Hess Medical Office Building-New Facility

Pinewood Medical Office Building-Renovations

Southern West Virginia Hospice-New Facility

NorthGate Doctor's Office Building-New Facility

WV Department of Health and Human Resources

Office of Chief Medical Examiner, Charleston
New Facility Mingo County

Emergency Response Facilities

Randolph County 911-New Facility

Mason County 911-New Facility

Raleigh County 911-New Facility

Orchard Manor Fire Station-New Facility

Industrial Experience

Standard Laboratories-Laboratory Addition

Dow Process Control-New Facility

Diamond Electric-Expansion

Commercial Experience

Bobcat of Advantage Valley-New Facility

Allegheny Springs Restaurant



Clingenpeel/McBrayer & Associates, Inc.

824 Cross Lanes Drive
Charleston, West Virginia 25313

(304) 343-0316 tel
(304) 343-5146 fax

5 Riddle Court
Morgantown, West Virginia

(304) 598-2558 tel
(304) 598-2472

w w w . c m a w v . c o m

Resume



Douglas R. Richardson, P.E.

President/Structural Engineer

Education

North Carolina State University, (8/87-5/89).

Masters of Science in Civil Engineering, major in structures and minor in construction.

GPA 4.0/4.0.

West Virginia University, (8/83-8/87)

Bachelors of Science in Civil Engineering.

Ranking: 1st out of approximately 450 College of Engineering graduates. GPA 3.98/4.0.

Professional Registration

Professional Engineer - WV #11699, MS #12349

Maintains active record with NCEES to facilitate prompt registration in additional states as required.

Professional Affiliations

American Society of Civil Engineers

American Concrete Institute

American Institute of Architects, Professional Affiliate

Structural Engineering Institute

Timber Framers Guild

US Green Building Council



Resume



FaLena R. Perry, E.I.T.

Project Manager/Structural Engineer

Education

University of Kentucky, (8/03-12/05).

Masters of Science in Civil Engineering,
Structural emphasis.

University of Kentucky, (8/98-8/03).

Bachelors of Science in Civil Engineering,
Structural emphasis.

Professional Registration

Engineer In Training

Professional Affiliations

Structural Engineers Association of Kentucky

American Concrete Institute

American Institute of Steel Construction

Experience

500's on Main, Lexington, KY. 167,000 s.f. Mixed

Use Development spanning a city block.

Kentucky Outdoor Arena and Hospitality Building.

10,000 seat equestrian arena with hospitality
suites.

MacAdam Student Observatory. Modularly con-
structed steel frame observatory.

New Science Building, Eastern Kentucky University.

180,000 SF Classroom and laboratory facility.



WINFIELD H. STROCK

PO Box 4382
Marathon, FL 33050

304.550.2318
win@moongold.com

PERSONAL INFORMATION

Birth date: August 17, 1941
Height: 6'4"
Weight: 215
Marital Status: Married – two children

EDUCATION

1959 – 1963 King College
➤ BA - Business

MILITARY EXPERIENCE

1963 – 1964 U.S Army - Medical Corps
➤ Honorable Discharge

WORK EXPERIENCE

1964 – 1966 Thomas B. Punshon Engineering Company
Cincinnati, Ohio

Instrument man- survey crew

➤ Operated transit, theodolite and level for survey crew. Types of work included boundary surveys, infrastructure layout and building layout.

1966 – 1978 Frank Messer & Sons Construction Corporation
Cincinnati, Ohio

Field Engineer – 2 years

➤ Provided layout for all phases of building construction, assisted superintendent with coordination of subcontractors and ordering materials. Maintained on-site cost reporting data.

Estimator – 2 years

➤ Quantity survey of site work, excavation, concrete, masonry, carpentry, millwork, roofing, doors, hardware, windows, drywall, plaster, carpet, cabinetry, specialties. Received bids from subcontractors. Maintained recap (bid) sheet on day of bid or proposal.

Chief Estimator – 3 years

➤ Responsible for all functions of seven person staff estimating 50 – 60 projects per year in three to twenty five million dollar range. Projects included commercial, industrial, institutional, multi-family residential, and parking structures. Personally estimated ten to fifteen projects per year. Responsible for pricing of quantity surveys and submitting estimate or proposal. Established cost codes and cost reporting system for project managers.

Project Manager – 5 years

- Responsible for all administrative and managerial duties from date of bid or proposal to project closeout. Duties included contract negotiation, purchasing, scheduling, personnel placement, conducting project meetings, monthly cost reporting and owner/architect liaison. Workload was two to four projects with aggregate value of fifteen to thirty million dollars annually.

1978 – 1995 Kenhill Construction Company
Charleston, West Virginia

Owner/President/Consultant – 17 years

- Owned and managed commercial and institutional construction company with annual volume of fifteen to twenty million dollars. Specialized in construction management with guaranteed maximum price (GMP) and design/build contracts. Personally estimated and managed all major contracts. Sold business to Danis Industries, Dayton Ohio in 1991. Remained as President until 1993 and was retained as consultant for a major hospital project until 1995.

1995 – Present W.H. Strock Consulting
Marathon, Florida

Principal

- Provide estimating, scheduling and value engineering services to architects, engineers, owners and developers. On-site project analysis and scheduling. Expert witness and consultant in construction litigation. Business, estimating and cost accounting plans for construction related companies. Operates and maintains latest in conceptual estimating and scheduling technology systems.

SUMMARY OF QUALIFICATIONS

- Experienced in all phases of construction estimating, scheduling, purchasing and project management.
- When the West Virginia Contractor Licensing Act was passed in 1990, Mr. Strock was selected as Chairman of the Contractor Licensing Board and served in that capacity until his resignation in 1995.
- Mr. Strock has lectured (in conjunction with the Cambridge Institute) on the use of arbitration in construction contract disputes.
- Mr. Strock is a licensed West Virginia Contractor – WV 000010

INDUSTRY MEMBERSHIPS

Associated General Contractors of America

Past Director

Contractors Association of West Virginia

Past President, Director

Kanawha Valley Builders Association

Past President

American Arbitration Association
Panel of Arbitrators
Association of Contractor Licensing Boards

REFERENCES

Developers

Dudley Webb
The Webb Corporation
Lexington, Kentucky
859.253.0000

Brooks McCabe
McCabe • Henley, LLC
Charleston, West Virginia
304.347.7500

Owners

Karen Seim
Charleston Area Medical Center
Charleston, West Virginia
304.348.9740

Thomas E. Potter, Esq.
Jackson & Kelly
Charleston, West Virginia
304.340.1324

Architects

Donald Altemeyer
BSA Design
Indianapolis, Indiana
317.819.7878

Charles Barnhart
Sherman • Carter • Barnhart
Lexington, Kentucky
859.224.1351

SIGNIFICANT CONSTRUCTION MANAGEMENT PROJECTS

<u>Project</u>	<u>Const. Cost</u>	<u>Architect</u>
Laidley Tower Charleston, WV	\$18,500,000	Charles Barnhart Sherman • Carter • Barnhart Lexington, Kentucky 859.224.1351
Summers Square Office Bldg. Charleston, WV	\$4,000,000	Lloyd Miller N Visions Architects Charleston, WV 304.744.3654
WV High Tech Consortium Incubator & Innovation Bldgs. Fairmont, WV	\$8,300,000	Richard Forren The Omni Associates Fairmont, WV 304.367.1417
CASCI (Blue Cross) Bldg. Kanawha Boulevard Charleston, WV	\$6,750,000	Steve Branner ZMM, Inc. Charleston, WV 304.342.0159

CONSTRUCTION ANALYST PROJECTS

<u>Project</u>	<u>Const. Cost</u>	<u>Architect</u>
Mineral County High School	\$13,000,000	Greg Williamson Williamson • Shriver Charleston, WV 304.345.1060
Lenore K-8 School	\$7,600,000	Ted Shriver Williamson • Shriver Charleston, WV 304.345.1060
Morgan County Middle School	\$5,500,000	Ted Shriver Williamson • Shriver Charleston, WV 304.345.1060
Musselman High School	\$13,200,000	Greg Williamson Williamson • Shriver Charleston, WV 304.345.1060

FEASIBILITY STUDIES

<u>Project</u>	<u>Est. Cost</u>	<u>Owner</u>
Sears department store – Parkersburg conversion to office space	\$5,320,000	Larry Morehead
Sears department store – Charleston conversion to Blue Cross headquarters	\$6,750,000	Blue Cross of West Virginia
Kanawha Hotel upgrade and additions to first-class hotel	\$13,670,000	McCabe – Henley, LLC
Key West Steam Plant conversion to condominiums	\$12,200,000	Historic Tours of America
Stone & Thomas Building conversion to office space	\$8,100,000	State of West Virginia

CURRENT CONSULTING PROJECTS

<u>Project</u>	<u>Project Cost</u>	<u>Owner</u>
McDowell County school replacement and flood mitigation	\$62,300,000	McDowell County Board of Education
Robert C. Byrd Clinical Teaching Center	\$56,300,000	Charleston Area Medical Center
West Virginia University Biotech Research Park – Phase I	\$12,680,000	WVU Research Foundation

SECTION EIGHT

References

References

E.T. Boggess, Architect Inc.

***Mercer County Courthouse Annex
Princeton, WV***

Jack Stafford
Mercer County Commission
1501 West Main Street
Princeton, WV 24740
304-487-8309

***Princeton Railroad Museum
Princeton Streetscape Project
Princeton Library Renovations
Princeton, WV***

Mr. Wayne Shumate
Princeton City Manager
100 Courthouse Road
Princeton, WV 24740
304-487-5020

***Mercer County Courthouse Annex
MCNB Bank
Princeton, WV
Concord University Rahall Technology
Center
Athens, WV
First Century Bank
Beckley, WV***

Mr. Chandler Swope
Swope Construction Company
1325 Bluefield Avenue
Bluefield, WV 24701
304-325-8146

. . . Mr. Stafford will be able to confirm the amount of preliminary planning that went into our design, as well as our dedication to addressing the needs of the four separate agencies that now call the annex home.

. . . Mr. Shumate will be able to confirm how efficiently we work with our clients, how well we can "stretch a dollar," and how committed we are to the historic preservation of our buildings.

. . . Mr. Swope will be able to confirm the excellent relationship we develop with our contractors, and our willingness to work with them to ensure the success of the project.

