



State of West Virginia
 Department of Administration
 Purchasing Division
 2019 Washington Street East
 Post Office Box 50130
 Charleston, WV 25305-0130

Request for Quotation

RFQ NUMBER:
06800095

PAGE:
1

ADDRESS CORRESPONDENCE TO ATTENTION OF:
**MICHAEL AUSTIN
 304-558-2402**

VENDOR
 *709042451 304-425-8955
 EASTERN VAULT COMPANY INC
 PO BOX 1134
 PRINCETON WV 24740

SHIP TO
 DIVISION OF HIGHWAYS
 JOBSITE
 SEE SPECIFICATIONS

DATE PRINTED 01/23/2008	TERMS OF SALE NET 30	SHIP VIA OUR TRUCK	FOB JOBSITE	FREIGHT TERMS NET 30
BID OPENING DATE: 02/06/2008		BID OPENING TIME 01:30PM		

LINE	QUANTITY	UOP	CAT. NO.	ITEM NUMBER	UNIT PRICE	AMOUNT
ADDENDUM NO. 2						
ADD: DRAWINGS ATTACHED						
BID OPENING DATE AND TIME CHANGED						
FROM: POSTPONE UNTIL FURTHER NOTICE						
TO: 02/06/08 AT 1:30 P.M.						
NO OTHER CHANGES						
0001	8	LS		570-68	\$ 3172.50	\$ 25,380.00
PRESTRESSED REINFORCED CONCRETE BOX BEAMS						
***** THIS IS THE END OF RFQ 06800095 ***** TOTAL:						\$ 25,380.00

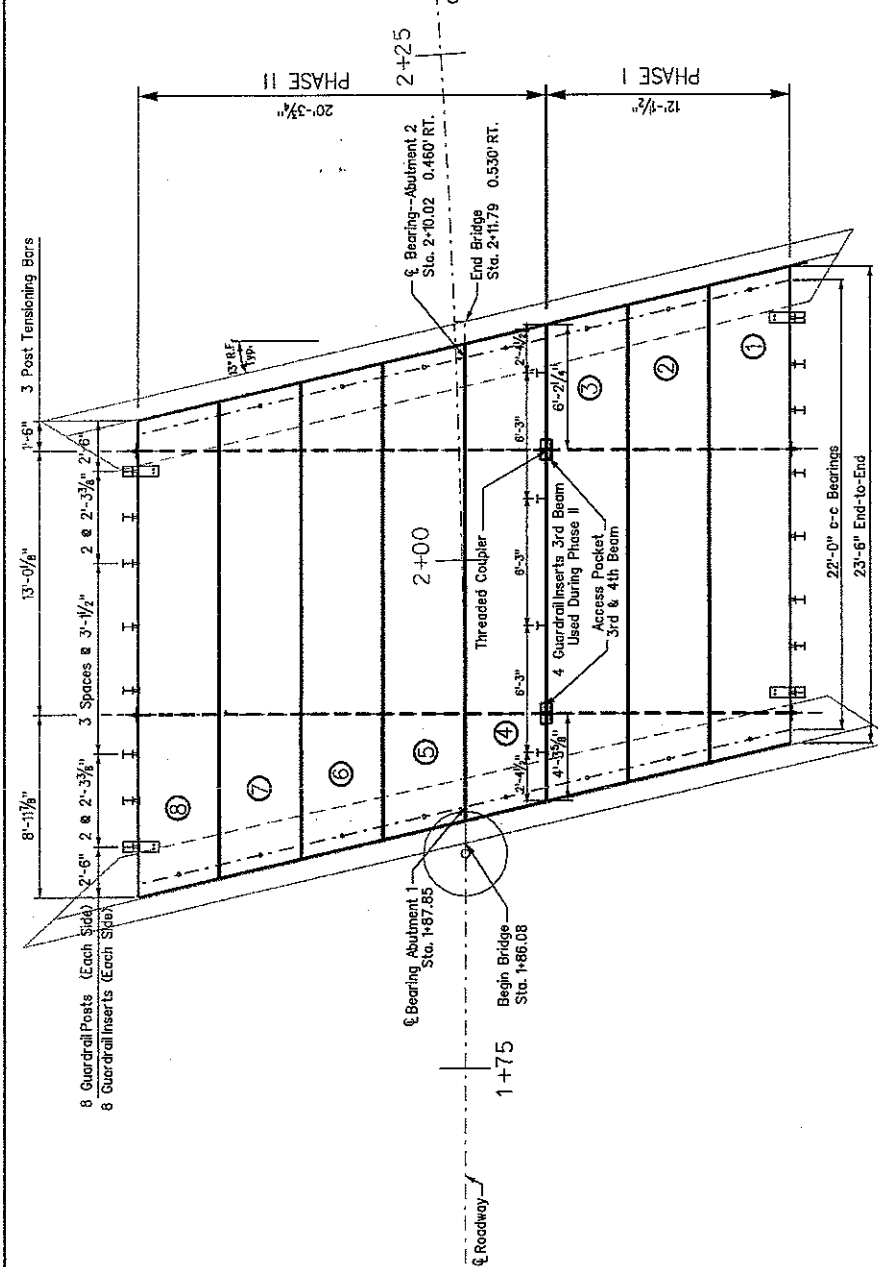
SEE REVERSE SIDE FOR TERMS AND CONDITIONS

SIGNATURE **BRIAN P. STRUBLE** TELEPHONE **304-425-8955** DATE **1-29-08**

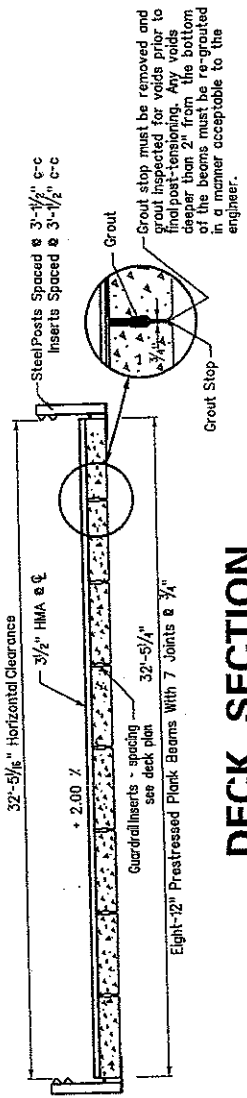
TITLE **GENERAL MANAGER** FEIN **55-0520255** ADDRESS CHANGES TO BE NOTED ABOVE

WHEN RESPONDING TO RFQ, INSERT NAME AND ADDRESS IN SPACE ABOVE LABELED 'VENDOR'

STATE	FEDERAL	COUNTY	SHEET	TOTAL SHEETS
VA	DOT	WETZEL	10	18
PROJECT NUMBER	PROJECT NUMBER			
555-10-15A	N/A			



DECK PLAN



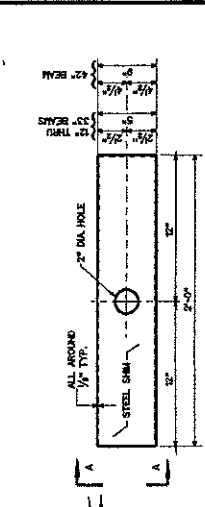
DECK SECTION

DATE	BY	REVISION
08-07		
08-07		
08-07		

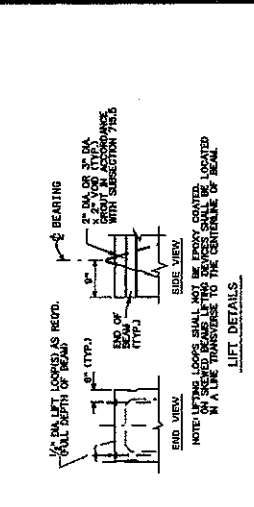
PROJECT NUMBER	PROJECT NUMBER
555-10-15A	N/A
COUNTY	COUNTY
WETZEL	WETZEL
SHEET NO. OF 18	SHEET NO. OF 18
10	10

THE WEST VIRGINIA DEPARTMENT OF TRANSPORTATION
DIVISION OF HIGHWAYS
SUPERSTRUCTURE
DETAILS
TRUCKER PARK ROAD

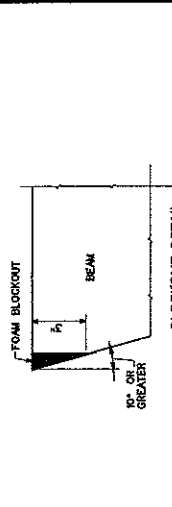
STATE	PROJECT NUMBER	DISTRICT	SHEET/TOTAL
VA	5352-20-1-58	WETZEL	22 / 23



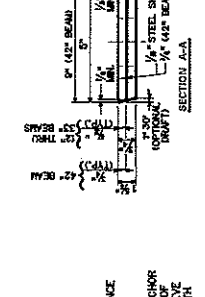
ELASTOMERIC BEARING PAD DETAIL
 NOTES: THE BEARING PAD SHALL CONFORM TO ASHTO SPECIFICATIONS FOR HIGHWAY BRIDGES, SECTION 302, PARAGRAPH 1, WITH A DIMETER TOLERANCE OF .01.



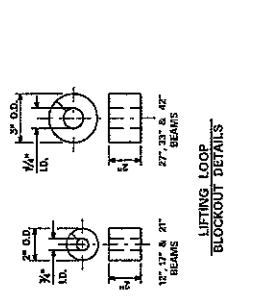
LIFT DETAILS
 END VIEW
 NOTE: LIFTING LOOPS SHALL NOT BE EXPOSED COATED OR SEPARABLE TO THE SURFACE OF BEAM.
 SIDE VIEW



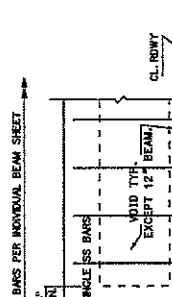
BLOCKOUT DETAIL
 NOTES:
 1) FABRICATOR SHALL PROVIDE BLOCKOUT OF ACUTE CORNERS ON ALL BEAMS WITH SLOWS OF 10 DEGREES OR GREATER.
 2) AFTER REINFORCING AND FILLING BLOCKOUT ACCORDING TO SECTION 715.5 OF THE STANDARD SPECIFICATIONS.



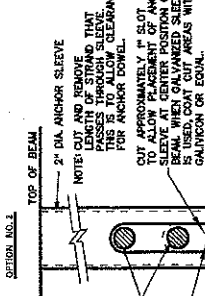
ANCHOR SLEEVE DETAILS
 USE WHEN CENTER STRAND IS SPECIFIED



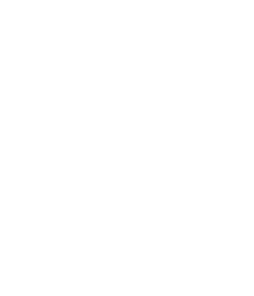
LIFTING LOOP DETAILS
 BLOCKOUT DETAILS



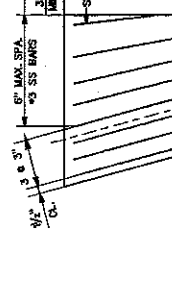
SHEAR REINFORCEMENT DETAIL
 SKEWED BEAMS



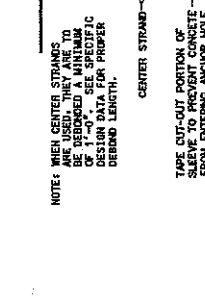
CENTER STRAND
 NOTE: WHEN CENTER STRANDS ARE USED, THEY ARE TO BE 2x4 BEAMS WITH A LENGTH OF 1'-0\"/>



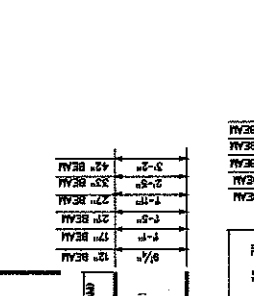
TOP OF BEAM
 NOTE: CUT AND REMOVE LENGTH OF STRAND THAT PASSES THROUGH SLEEVE FOR ANCHOR DOWEL.



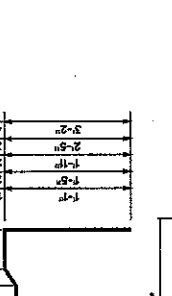
BOTTOM OF BEAM
 NOTE: CUT AND REMOVE LENGTH OF STRAND THAT PASSES THROUGH SLEEVE FOR ANCHOR DOWEL.



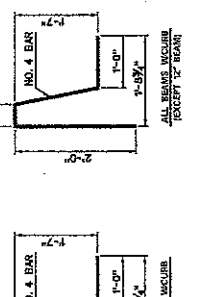
REINFORCING BAR DETAIL
 1. MINIMUM BAR BENDING DIAMETER SHALL BE 6 BAR DIAMETERS, EXCEPT THAT NO. 3 AND NO. 4 BARS SHALL BE 4 BAR DIAMETERS. ALL DIMENSIONS ARE OUT TO OUT.



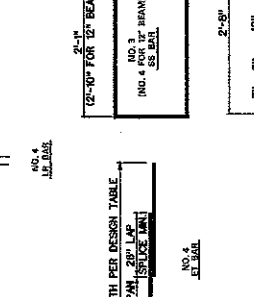
LAP SPLICE TABLE



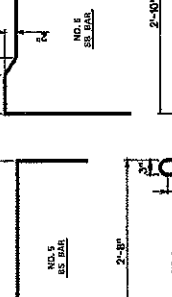
LENGTH PER DESIGN TABLE



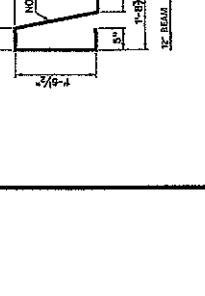
LENGTH PER DESIGN TABLE



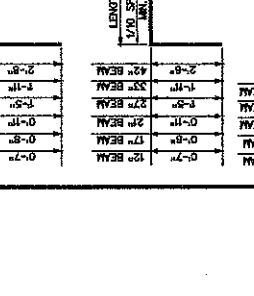
LENGTH PER DESIGN TABLE



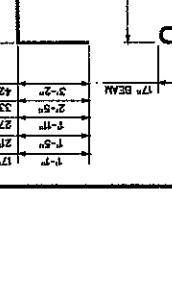
LENGTH PER DESIGN TABLE



LENGTH PER DESIGN TABLE



LENGTH PER DESIGN TABLE



LENGTH PER DESIGN TABLE

THE WEST VIRGINIA DEPARTMENT OF TRANSPORTATION
 DIVISION OF HIGHWAYS-STRUCTURES

TRADER FORK ROAD
 OVER TRADER FORK RUN

WV 20 WETZEL CO.
 PRESTRESSED CONCRETE BEAM
 DESIGN & ASSEMBLY DETAILS

BRIDGE NUMBER
 N / A

WEST VIRGINIA DEPARTMENT OF TRANSPORTATION
 DIVISION OF HIGHWAYS-STRUCTURES
 DESIGN & ASSEMBLY DETAILS

STANDARD SHEET BR-3101

WEST VIRGINIA DEPARTMENT OF TRANSPORTATION
 DIVISION OF HIGHWAYS-STRUCTURES
 DESIGN & ASSEMBLY DETAILS

STANDARD SHEET BR-3101

WEST VIRGINIA DEPARTMENT OF TRANSPORTATION
 DIVISION OF HIGHWAYS-STRUCTURES
 DESIGN & ASSEMBLY DETAILS

STANDARD SHEET BR-3101

WEST VIRGINIA DEPARTMENT OF TRANSPORTATION
 DIVISION OF HIGHWAYS-STRUCTURES
 DESIGN & ASSEMBLY DETAILS

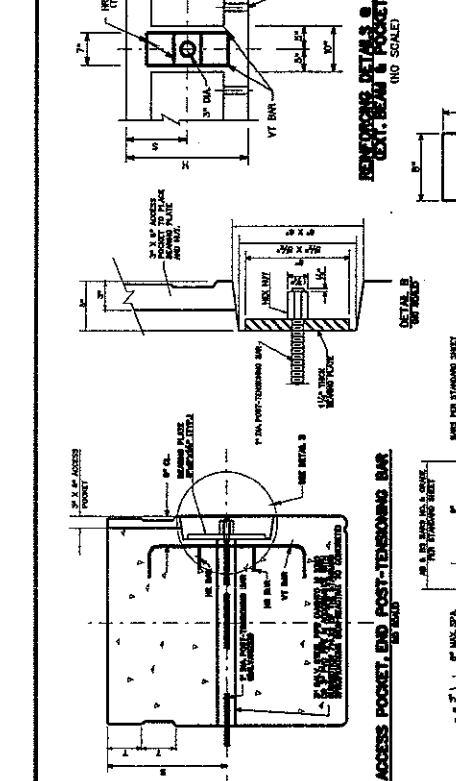
STANDARD SHEET BR-3101

WEST VIRGINIA DEPARTMENT OF TRANSPORTATION
 DIVISION OF HIGHWAYS-STRUCTURES
 DESIGN & ASSEMBLY DETAILS

STANDARD SHEET BR-3101

PROJECT NO.	PROJECT NUMBER	COUNTY	SHEET TOTAL
6	6382-1-1-58	WEITZEL	29

WVA.	6	6382-1-1-58	WEITZEL	29
------	---	-------------	---------	----

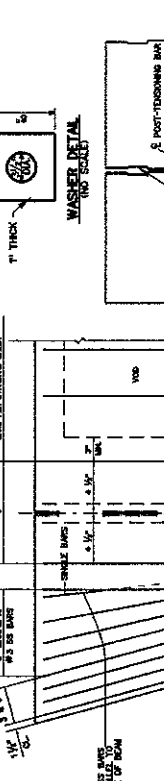


GENERAL NOTES

- POST-TENSIONING ANCHORAGE SHALL BE STRESSED AS STATIONING. THE END OF THE BEAM SHALL BE STRESSED TO THEORETICAL ELONGATION PER PERCENT INCREASE AND THE BEAM SHALL BE STRESSED TO THEORETICAL ELONGATION PER PERCENT INCREASE AND THE BEAM SHALL BE STRESSED TO THEORETICAL ELONGATION PER PERCENT INCREASE.
- ALL POST-TENSIONING ANCHORAGE SHALL BE STRESSED TO THEORETICAL ELONGATION PER PERCENT INCREASE AND THE BEAM SHALL BE STRESSED TO THEORETICAL ELONGATION PER PERCENT INCREASE.
- ALL POST-TENSIONING ANCHORAGE SHALL BE STRESSED TO THEORETICAL ELONGATION PER PERCENT INCREASE AND THE BEAM SHALL BE STRESSED TO THEORETICAL ELONGATION PER PERCENT INCREASE.
- ALL POST-TENSIONING ANCHORAGE SHALL BE STRESSED TO THEORETICAL ELONGATION PER PERCENT INCREASE AND THE BEAM SHALL BE STRESSED TO THEORETICAL ELONGATION PER PERCENT INCREASE.
- ALL POST-TENSIONING ANCHORAGE SHALL BE STRESSED TO THEORETICAL ELONGATION PER PERCENT INCREASE AND THE BEAM SHALL BE STRESSED TO THEORETICAL ELONGATION PER PERCENT INCREASE.
- ALL POST-TENSIONING ANCHORAGE SHALL BE STRESSED TO THEORETICAL ELONGATION PER PERCENT INCREASE AND THE BEAM SHALL BE STRESSED TO THEORETICAL ELONGATION PER PERCENT INCREASE.
- ALL POST-TENSIONING ANCHORAGE SHALL BE STRESSED TO THEORETICAL ELONGATION PER PERCENT INCREASE AND THE BEAM SHALL BE STRESSED TO THEORETICAL ELONGATION PER PERCENT INCREASE.
- ALL POST-TENSIONING ANCHORAGE SHALL BE STRESSED TO THEORETICAL ELONGATION PER PERCENT INCREASE AND THE BEAM SHALL BE STRESSED TO THEORETICAL ELONGATION PER PERCENT INCREASE.
- ALL POST-TENSIONING ANCHORAGE SHALL BE STRESSED TO THEORETICAL ELONGATION PER PERCENT INCREASE AND THE BEAM SHALL BE STRESSED TO THEORETICAL ELONGATION PER PERCENT INCREASE.
- ALL POST-TENSIONING ANCHORAGE SHALL BE STRESSED TO THEORETICAL ELONGATION PER PERCENT INCREASE AND THE BEAM SHALL BE STRESSED TO THEORETICAL ELONGATION PER PERCENT INCREASE.

POST-TENSIONING BAR DETAILS

BEAM	REINFORCEMENT BAR SIZE	VT BAR SIZE	VT BAR SCHED.
1	10	10	10
2	12	12	12
3	14	14	14
4	16	16	16
5	18	18	18
6	20	20	20
7	22	22	22
8	24	24	24
9	26	26	26
10	28	28	28
11	30	30	30



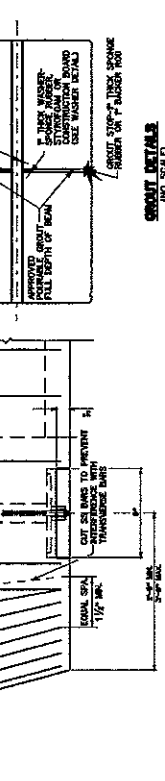
POST-TENSIONING BAR DETAILS

WASHER DETAIL
1" THICK

BEAM DETAIL
APPROVED FULL TOP OF BEAM
POST-TENSIONING BAR
APPROVED FULL TOP OF BEAM

POST-TENSIONING BAR LAYOUT SCHEDULE

SPAN	27'-0"
SEWER	15'-0"
L.	27'-0"
A.	1'-0"
B.	1'-0"
C.	1'-0"
D.	1'-0"
E.	1'-0"
F.	1'-0"
G.	1'-0"
H.	1'-0"
I.	1'-0"
J.	1'-0"
K.	1'-0"
L.	1'-0"
M.	1'-0"
N.	1'-0"
O.	1'-0"
P.	1'-0"
Q.	1'-0"
R.	1'-0"
S.	1'-0"
T.	1'-0"
U.	1'-0"
V.	1'-0"
W.	1'-0"
X.	1'-0"
Y.	1'-0"
Z.	1'-0"

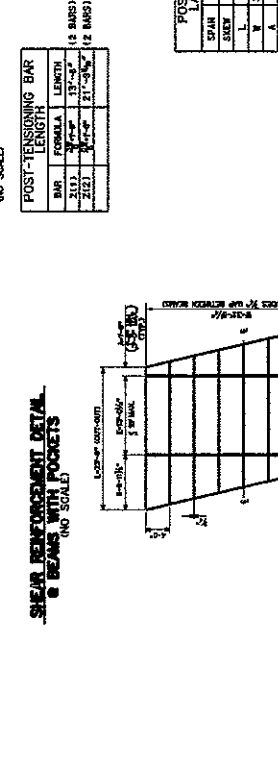


TEST PROCEDURE

THE TEST PROCEDURE SHALL BE TO SHEAR THE BEAM BY APPLYING A LOAD TO THE SLAB AT THE POINT OF SUPPORT. THE LOAD SHALL BE APPLIED TO THE SLAB AT THE POINT OF SUPPORT.

GENERAL NOTES

- SHEAR REINFORCEMENT DETAIL FOR BEAMS WITHOUT POCKETS ARE PER STD. SHEET.
- REINFORCEMENT IS PER STD. SHEET.
- POST-TENSIONING BARS SHOULD BE SPACED TO AVOID INTERFERENCE WITH CONCRETE REINFORCING.



TEST PROCEDURE

THE TEST PROCEDURE SHALL BE TO SHEAR THE BEAM BY APPLYING A LOAD TO THE SLAB AT THE POINT OF SUPPORT. THE LOAD SHALL BE APPLIED TO THE SLAB AT THE POINT OF SUPPORT.

GENERAL NOTES

- SHEAR REINFORCEMENT DETAIL FOR BEAMS WITHOUT POCKETS ARE PER STD. SHEET.
- REINFORCEMENT IS PER STD. SHEET.
- POST-TENSIONING BARS SHOULD BE SPACED TO AVOID INTERFERENCE WITH CONCRETE REINFORCING.

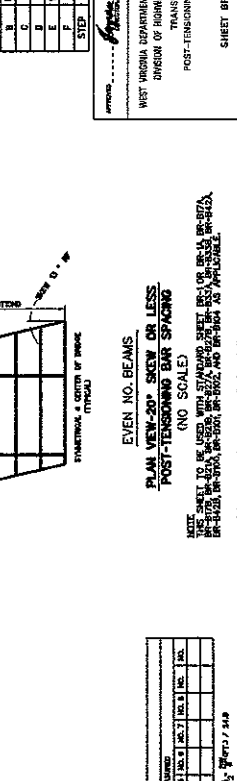
THE WEST VIRGINIA DEPARTMENT OF TRANSPORTATION
DIVISION OF HIGHWAYS-STRUCTURES

TRADER FORK ROAD
OVER TRADER FORK ROAD
TRANVERSE POST-TENSIONING DETAILS
WV 20 WEITZEL CO.
BRIDGE NUMBER N / A

DATE: 10/27/58
DRAWN BY: J.C.
CHECKED BY: J.C.
APPROVED BY: J.C.

POST-TENSIONING BAR LAYOUT SCHEDULE

SPAN	27'-0"
SEWER	15'-0"
L.	27'-0"
A.	1'-0"
B.	1'-0"
C.	1'-0"
D.	1'-0"
E.	1'-0"
F.	1'-0"
G.	1'-0"
H.	1'-0"
I.	1'-0"
J.	1'-0"
K.	1'-0"
L.	1'-0"
M.	1'-0"
N.	1'-0"
O.	1'-0"
P.	1'-0"
Q.	1'-0"
R.	1'-0"
S.	1'-0"
T.	1'-0"
U.	1'-0"
V.	1'-0"
W.	1'-0"
X.	1'-0"
Y.	1'-0"
Z.	1'-0"



TEST PROCEDURE

THE TEST PROCEDURE SHALL BE TO SHEAR THE BEAM BY APPLYING A LOAD TO THE SLAB AT THE POINT OF SUPPORT. THE LOAD SHALL BE APPLIED TO THE SLAB AT THE POINT OF SUPPORT.

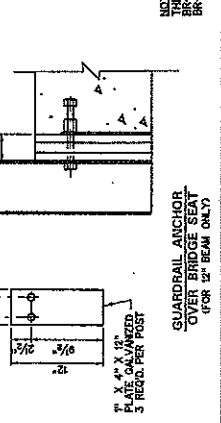
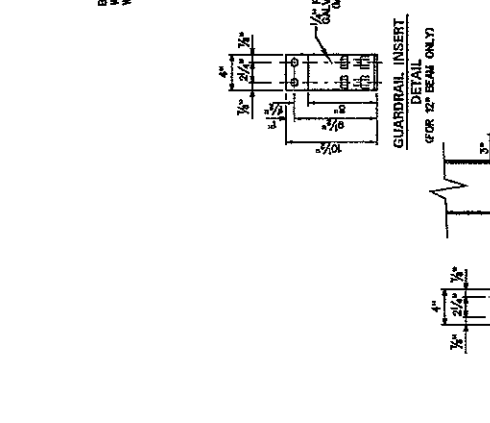
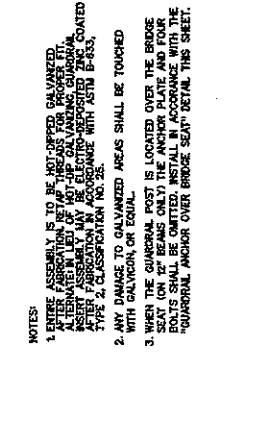
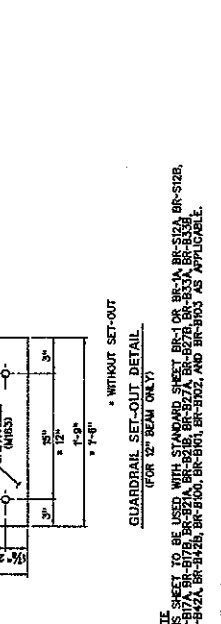
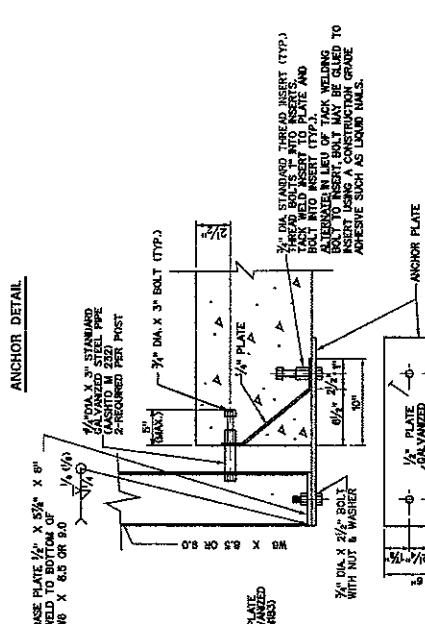
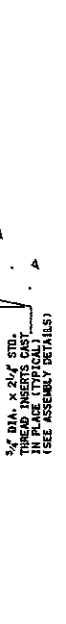
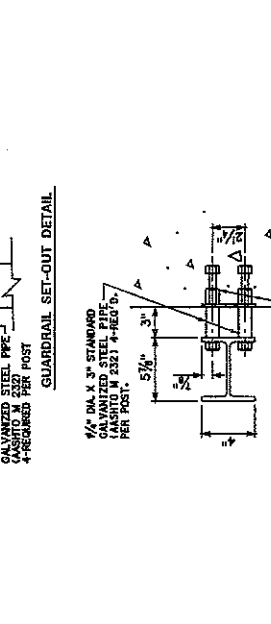
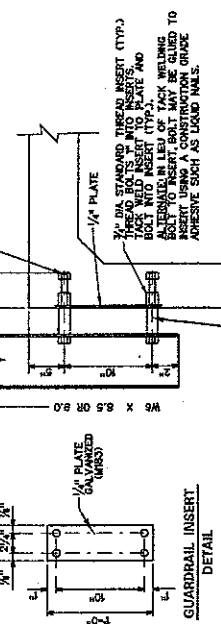
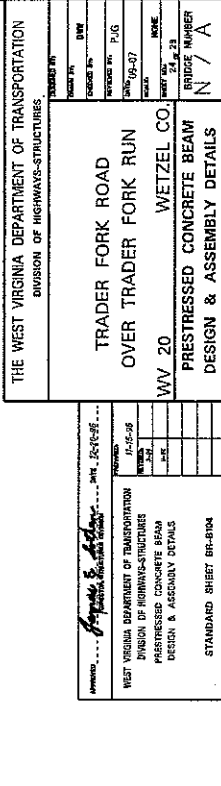
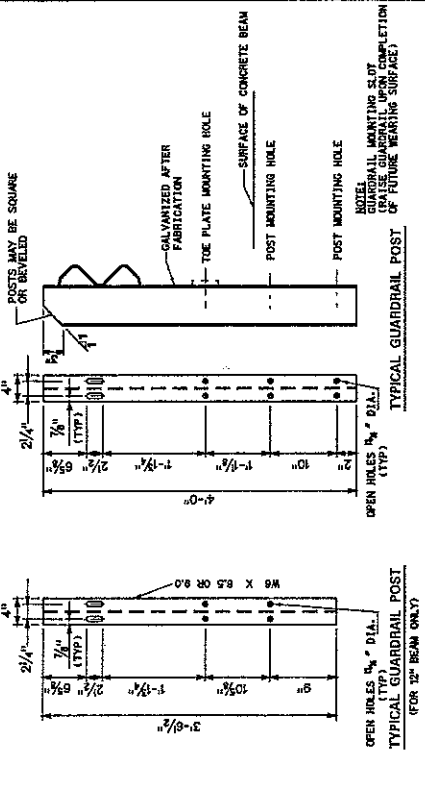
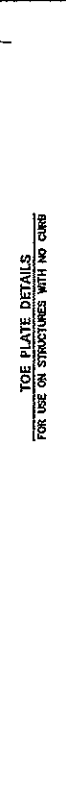
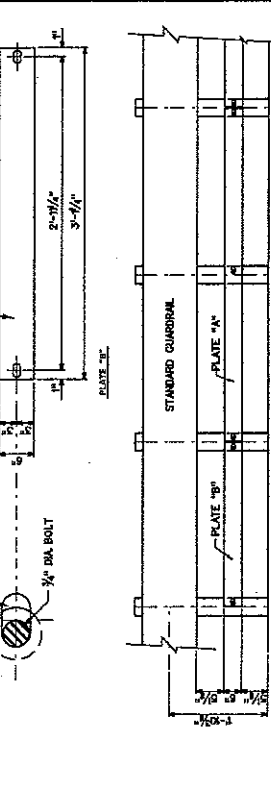
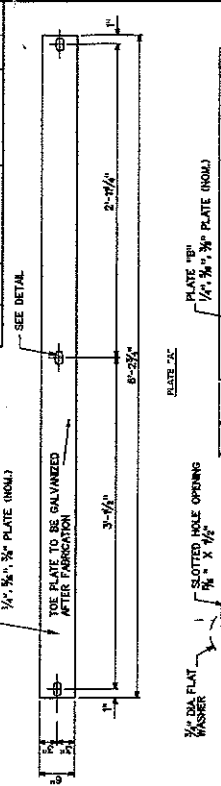
GENERAL NOTES

- SHEAR REINFORCEMENT DETAIL FOR BEAMS WITHOUT POCKETS ARE PER STD. SHEET.
- REINFORCEMENT IS PER STD. SHEET.
- POST-TENSIONING BARS SHOULD BE SPACED TO AVOID INTERFERENCE WITH CONCRETE REINFORCING.

PROJECT NUMBER	COUNTY	SHEET NUMBER	TOTAL SHEETS
5352-20-1-28	WETZEL	24	28
DATE	BY	CHECKED	DATE
8	MVA		

PROJECT NUMBER	COUNTY	SHEET NUMBER	TOTAL SHEETS
5352-20-1-28	WETZEL	24	28
DATE	BY	CHECKED	DATE
8	MVA		

PROJECT NUMBER	COUNTY	SHEET NUMBER	TOTAL SHEETS
5352-20-1-28	WETZEL	24	28
DATE	BY	CHECKED	DATE
8	MVA		



- NOTES:
- ENTIRE ASSEMBLY IS TO BE NOT OFFERED GALVANIZED. ALTERNATELY, IT MAY BE ELECTRO-DEPOSITED ZINC COATED ASSEMBLY, TYPE 2, CLASSIFICATION NO. 28.
 - ANY DAMAGE TO GALVANIZED AREAS SHALL BE TOUCHED UP WITH GALVANIC OR EQUAL.
 - WHEN THE GUARDRAIL POST IS LOCATED OVER THE BRIDGE SEAT (ON 12" BEAMS ONLY) THE ANCHOR PLATE AND FOUR BOLTS SHALL BE OMITTED. INSTALL IN ACCORDANCE WITH THE GUARDRAIL ANCHOR OVER BRIDGE SEAT DETAIL THIS SHEET.

THIS SHEET TO BE USED WITH STANDARD SHEET BR-1 OR BR-1A, BR-S12A, BR-S12B, BR-B17A, BR-B17B, BR-S21A, BR-S21B, BR-S27A, BR-S27B, BR-S33A, BR-S33B, BR-B42A, BR-B42B, BR-S50A, BR-S50B, BR-S52A, BR-S52B, AND BR-S50A AS APPLICABLE.

THE WEST VIRGINIA DEPARTMENT OF TRANSPORTATION
DIVISION OF HIGHWAYS-STRUCTURES

TRADER FORK ROAD
OVER TRADER FORK RUN
WV 20 WETZEL CO.
PRESTRESSED CONCRETE BEAM
DESIGN & ASSEMBLY DETAILS

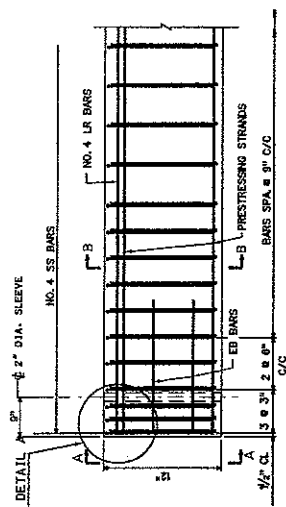
BRIDGE NUMBER
N / A

WEST VIRGINIA DEPARTMENT OF TRANSPORTATION
DIVISION OF HIGHWAYS-STRUCTURES
PRESTRESSED CONCRETE BEAM
DESIGN & ASSEMBLY DETAILS

STANDARD SHEET BR-80A

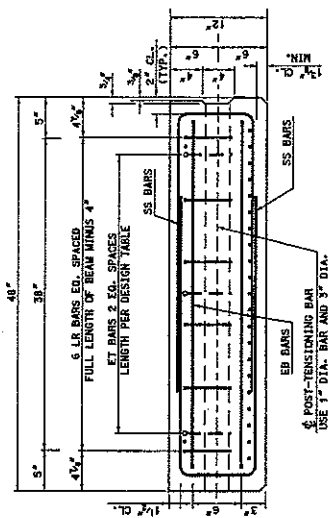
STATE	NO.	SHEET
W.V.	8	19
PROJECT NUMBER	COUNTY	DATE
532-50-1-38	WETZEL	

- NOTES:**
1. ALL NON-PRESTRESSING REINFORCING BARS SHALL BE GRADE 60.
 2. ALL 4" DIA. SLEEVES SHALL BE CAST IN PLACE WITH CONCRETE.
 3. ALL REINFORCING STEEL BARS SHALL BE EPOXY COATED.
 4. ALL STRANDS SHALL BE ENCLOSED INSIDE STRIP CASE ENTIRE LENGTH OF BEAM.
 5. REFER TO REINFORCING SHEET NUMBERS BR-103, BR-104, BR-105, BR-106, BR-107, AND BR-108.
 6. WHEN STRAND NO. 23 IS USED, SEE SHEET BR-103 FOR REINFORCING LAYOUT. OPTION NO. 2 IS NOT PERMITTED FOR THIS SECTION.



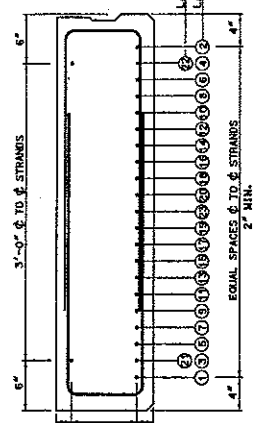
NOTE: SEE SHEET BR-101 FOR REINFORCING BAR DETAILS AND FOR REINFORCEMENT LAYOUT DETAILS FOR SKEWED BEAMS.

REINFORCING STEEL ELEV. VIEW



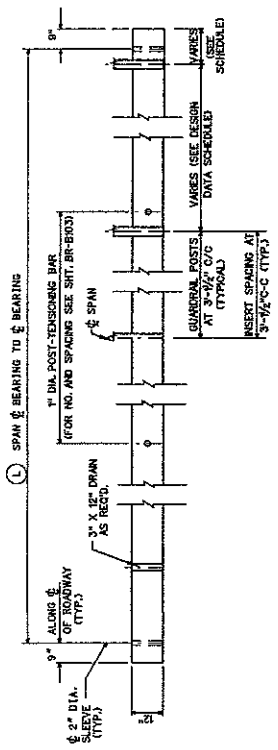
SECTION A-A

TYPICAL BEAM REINFORCEMENT



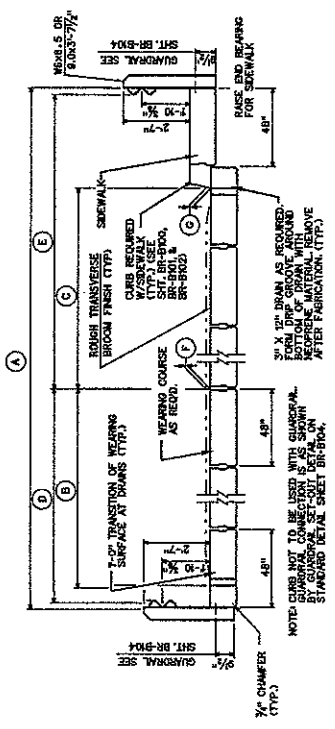
SECTION B-B

TYPICAL BEAM PRESTRESSING

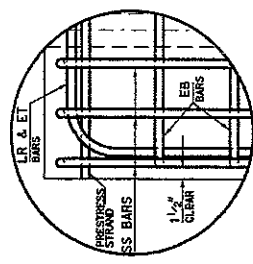


12 ELEVATION

12 LONGITUDINAL SECTION



TYPICAL CROSS-SECTION (AT MID-SPAN)



DETAIL A

CODE	DESCRIPTION	VALUE	DESCRIPTION	VALUE
A	DECK WIDTH OUT TO OUT	32'-5 1/4"	YES	YES
B	DISTANCE FROM FACE OF CURB (NO SIDEWALK)	N/A	YES	YES
C	DISTANCE FROM FACE OF CURB (WITH SIDEWALK)	N/A	NO	NO
D	DISTANCE FROM FACE OF GUARDRAIL (NO SIDEWALK)	16'-2 1/4"	YES	YES
E	DISTANCE FROM FACE OF GUARDRAIL (WITH SIDEWALK)	N/A	YES	NO
F	THICKNESS OF WEARING COURSE AT FACE OF CURB	3/4"	YES	YES
G	THICKNESS OF WEARING COURSE AT FACE OF BEARING	3/4"	YES	YES
H	SPIN LENGTH, Ø BEARING TO Ø BEARING	22'-0"	YES	YES
I	OPTIONAL 1" CURB TO BE INCLUDED (YES OR NO) (REQUIRES SPECIAL DESIGN)	NO	YES	YES
J	TOE PLATE REQUIRED (YES OR NO)	NO	NO	NO

CODE	DESCRIPTION	VALUE
A	HOT-LAD BITUMINOUS CONCRETE REQUIRED (YES OR NO)	YES
B	CURB REQUIRED (YES OR NO)	YES
C	DRAINS REQUIRED (YES OR NO)	NO
D	CURTAIN WALL REQUIRED (YES OR NO)	YES
E	GUARDRAIL SETOUT REQUIRED (YES OR NO)	YES
F	GUARDRAIL BLOCKOUT REQUIRED (YES OR NO)	NO

THE WEST VIRGINIA DEPARTMENT OF TRANSPORTATION
DIVISION OF HIGHWAYS-STRUCTURES

TRADER FORK ROAD
OVER TRADER FORK RUN
WETZEL COUNTY WV 20
12"x4'-0" PRESTRESSED PLANK BEAM
DESIGN & ASSEMBLY DETAILS

DESIGNER: J. H. ...
CHECKER: ...
DATE: ...

MIN CONCRETE STRENGTH @ DETENSION = 4,000 PSI.
 MIN CONCRETE STRENGTH @ 28 DAYS = 5,000 PSI.
 JACKING FORCE ALLOW RELAY STRAND = 30,000 LBS.

DESIGN DATA FOR 12" X 4'-0" PLANK BEAM

SPAN LENGTH & TO & BEARING	SPAN LENGTHS (ft)															
	10'	11'	12'	13'	14'	15'	16'	17'	18'	19'	20'	21'	22'	23'	24'	25'
OVERALL LENGTH ALONG & ROADWAY	17'-0"	18'-0"	19'-0"	20'-0"	21'-0"	22'-0"	23'-0"	24'-0"	25'-0"	26'-0"	27'-0"	28'-0"	29'-0"	30'-0"	31'-0"	32'-0"
NO. OF STRANDS 200 # 1/2 DIA. LOW-RELAX. STRANDS, AREA/STRAND = 0.163 SQ. IN.	7	8	9	10	11	12	13	14	15	16	17	18	19	20	21	22
STRAND POSITION NUMBER	1,2,11,12, 21,22 & 23	1,2,9,10, 17,18, 21 & 22	1,2,9,10, 17,18, 21 & 22	1,2,7,8, 15,16, 21,22 & 23	1,2,7,8, 13,14,19, 20,21, 22 & 23	1,2,7,8, 13,14,19, 20,21, 22 & 23	1,2,7,8, 13,14,19, 20,21, 22 & 23	1,2,7,8, 13,14,19, 20,21, 22 & 23	1,2,7,8, 13,14,19, 20,21, 22 & 23	1,2,7,8, 13,14,19, 20,21, 22 & 23	1,2,7,8, 13,14,19, 20,21, 22 & 23	1,2,7,8, 13,14,19, 20,21, 22 & 23	1,2,7,8, 13,14,19, 20,21, 22 & 23	1,2,7,8, 13,14,19, 20,21, 22 & 23	1,2,7,8, 13,14,19, 20,21, 22 & 23	1,2,7,8, 13,14,19, 20,21, 22 & 23
PRESSURING FORCE AT DETENSION (KIPS/BEAM)	212	241	241	241	241	271	271	271	300	300	329	358	386	386	386	386
FINAL PRESSURING FORCE (KIPS/BEAM)	197	223	223	223	223	249	249	249	274	274	300	324	349	349	349	349
ULTIMATE DESIGN MOMENT (FT-KIPS/BEAM)	123	135	147	160	173	186	199	213	227	241	255	270	285	285	285	285
ULTIMATE RESISTING MOMENT (FT-KIPS/BEAM)	162	188	188	188	188	215	215	215	240	240	264	288	310	310	310	310
TOTAL NUMBER OF DETENSIONED STRANDS	-	-	-	-	-	-	-	-	-	-	-	-	-	-	-	-
LAYER 1-DETONDED STRAND POSITION NUMBER AND LENGTH FROM EACH END	-	-	-	-	-	-	-	-	-	-	-	-	-	-	-	-
LAYER 2-DETONDED STRAND POSITION NUMBER AND LENGTH FROM EACH END	-	-	-	-	-	-	-	-	-	-	-	-	-	-	-	-
END TENSION STEEL EACH END (SIZE & LENGTH)	3-#4 X 3'-0"	3-#4 X 3'-0"	3-#4 X 3'-0"	3-#4 X 3'-0"	3-#4 X 3'-0"	3-#4 X 3'-0"	3-#4 X 3'-0"	3-#4 X 3'-0"	3-#4 X 4'-0"	3-#4 X 4'-0"	3-#4 X 4'-0"	3-#4 X 4'-0"	3-#4 X 4'-0"	3-#4 X 4'-0"	3-#4 X 4'-0"	3-#4 X 4'-0"
CAMBER (3)	UPPER, INCHES	0.02	0.04	0.04	0.05	0.07	0.08	0.08	0.08	0.12	0.13	0.18	0.18	0.24	0.31	0.40
	MIDDLE, INCHES	0.04	0.07	0.07	0.08	0.10	0.15	0.15	0.21	0.21	0.28	0.36	0.36	0.45	0.45	0.45
	FINAL, INCHES	0.05	0.08	0.08	0.09	0.10	0.15	0.15	0.21	0.21	0.28	0.36	0.36	0.45	0.45	0.45
WEIGHT OF TYPICAL BEAM (TONS) (10/25)	3.4	3.7	4.0	4.5	4.6	4.9	5.2	5.5	6.8	6.1	6.3	6.6	6.9	7	7	7
NUMBER AND SPACING OF DIAPHRAGM INSERTS	NO. OF INSERTS	4	4	5	5	6	6	6	7	7	7	8	8	8	8	8
	SPACING, FEET	7'-0"	7'-0"	7'-0"	7'-0"	7'-0"	7'-0"	7'-0"	7'-0"	7'-0"	7'-0"	7'-0"	7'-0"	7'-0"	7'-0"	7'-0"
NUMBER AND SPACING OF FIRST INSERT TO & SECOND INSERT EACH END	NO. OF FIRST INSERT	2	2	2	2	2	2	2	2	2	2	2	2	2	2	2
	SPACING, FEET	7'-0"	7'-0"	7'-0"	7'-0"	7'-0"	7'-0"	7'-0"	7'-0"	7'-0"	7'-0"	7'-0"	7'-0"	7'-0"	7'-0"	7'-0"

- NOTES:
1. BEAM WEIGHTS LISTED IN DESIGN TABLES IS APPROXIMATE AND IS BASED ON ZERO SKEW.
 2. FOR STANDARD CURBS, ADD 0.5 LBS. (0.05 TON) PER CURB, PER FOOT OF BEAM.
 3. CAMBER VALUES LISTED IN DESIGN TABLE ARE APPROXIMATE AND ARE FOR COMPARISON PURPOSES ONLY. INSPECTION PURPOSES UNLESS PERMITTED BY THE DIRECTOR OF STRUCTURES DIVISION.
 4. DATA LISTED IN THE DESIGN TABLE MAY NOT BE VALID FOR SPAN LENGTHS THAT FALL BETWEEN THE SPAN LENGTHS LISTED IN THE TABLE. TO CALCULATE BEAM WEIGHTS FOR SPAN LENGTHS BETWEEN THE SPAN LENGTHS LISTED IN THE TABLE, INTERPOLATE THE WEIGHTS FROM THE TABLE.
 5. THIS SHEET TO BE USED WITH STANDARD SHEET NUMBERS BR-1 OR BR-1A, BR-2 OR BR-2A, BR-3 OR BR-3A, BR-4 OR BR-4A, BR-5 OR BR-5A, BR-6 OR BR-6A, BR-7 OR BR-7A, BR-8 OR BR-8A, BR-9 OR BR-9A, BR-10 OR BR-10A, BR-11 OR BR-11A, BR-12 OR BR-12A, BR-13 OR BR-13A, BR-14 OR BR-14A, BR-15 OR BR-15A, BR-16 OR BR-16A, BR-17 OR BR-17A, BR-18 OR BR-18A, BR-19 OR BR-19A, BR-20 OR BR-20A, BR-21 OR BR-21A, BR-22 OR BR-22A, BR-23 OR BR-23A, BR-24 OR BR-24A, BR-25 OR BR-25A, BR-26 OR BR-26A, BR-27 OR BR-27A, BR-28 OR BR-28A, BR-29 OR BR-29A, BR-30 OR BR-30A, BR-31 OR BR-31A, BR-32 OR BR-32A, BR-33 OR BR-33A, BR-34 OR BR-34A, BR-35 OR BR-35A, BR-36 OR BR-36A, BR-37 OR BR-37A, BR-38 OR BR-38A, BR-39 OR BR-39A, BR-40 OR BR-40A, BR-41 OR BR-41A, BR-42 OR BR-42A, BR-43 OR BR-43A, BR-44 OR BR-44A, BR-45 OR BR-45A, BR-46 OR BR-46A, BR-47 OR BR-47A, BR-48 OR BR-48A, BR-49 OR BR-49A, BR-50 OR BR-50A, BR-51 OR BR-51A, BR-52 OR BR-52A, BR-53 OR BR-53A, BR-54 OR BR-54A, BR-55 OR BR-55A, BR-56 OR BR-56A, BR-57 OR BR-57A, BR-58 OR BR-58A, BR-59 OR BR-59A, BR-60 OR BR-60A, BR-61 OR BR-61A, BR-62 OR BR-62A, BR-63 OR BR-63A, BR-64 OR BR-64A, BR-65 OR BR-65A, BR-66 OR BR-66A, BR-67 OR BR-67A, BR-68 OR BR-68A, BR-69 OR BR-69A, BR-70 OR BR-70A, BR-71 OR BR-71A, BR-72 OR BR-72A, BR-73 OR BR-73A, BR-74 OR BR-74A, BR-75 OR BR-75A, BR-76 OR BR-76A, BR-77 OR BR-77A, BR-78 OR BR-78A, BR-79 OR BR-79A, BR-80 OR BR-80A, BR-81 OR BR-81A, BR-82 OR BR-82A, BR-83 OR BR-83A, BR-84 OR BR-84A, BR-85 OR BR-85A, BR-86 OR BR-86A, BR-87 OR BR-87A, BR-88 OR BR-88A, BR-89 OR BR-89A, BR-90 OR BR-90A, BR-91 OR BR-91A, BR-92 OR BR-92A, BR-93 OR BR-93A, BR-94 OR BR-94A, BR-95 OR BR-95A, BR-96 OR BR-96A, BR-97 OR BR-97A, BR-98 OR BR-98A, BR-99 OR BR-99A, BR-100 OR BR-100A.
 6. MAXIMUM BEAM SKEW SHALL BE 30 DEGREES.
 7. DESIGNER, FABRICATOR AND ERECTOR SHALL BE AWARE THAT SKEWED BEAM ENDS MAY TWIST OR WARP. TO PREVENT THIS, THE FABRICATOR SHALL PROVIDE A METHOD OF CORRECTING FOR THE TWIST OR WARP. THE METHOD OF CORRECTION SHALL BE APPROVED BY THE DIRECTOR OF STRUCTURES DIVISION.
 8. BEAM FABRICATOR SHALL NOTIFY CONTRACTOR THAT BEAM ENDS ARE TWISTED PRIOR TO SHIPPING OF BEAMS.
 9. DETENSIONING OF STRANDS IS NOT PERMITTED FOR THIS BEAM SECTION.

THE WEST VIRGINIA DEPARTMENT OF TRANSPORTATION
 DIVISION OF HIGHWAYS-STRUCTURES

TRADER FORK ROAD
 OVER TRADER FORK RUN

WETZEL COUNTY WV 20
 DESIGN TABLE FOR 12" X 4'-0"
 PRESTRESSED PLANK BEAM

STANDARD SHEET BR-52B

PURCHASING CONTINUATION SHEET

Item No.	Quantity	Description	Unit Price	Amount												
#1	470	SQ. FT. 12" INTERIOR BEAM, SPAN LENGTH: 22' NO OF BEAMS: 5 13 DEGREE RIGHT FORWARD SKEW	19.00	8930.00												
#2	282	SQ. FT. 12" EXTERIOR BEAM, SPAN LENGTH: 22' NO OF BEAMS: 3 13 DEGREE RIGHT FORWARD SKEW	19.00	5358.00												
#3	16	EA. ADDITIONAL COST FOR SKEWING ONE END OF BEAM	100.00	1600.00												
#4	16	EA. ELASTOMETRIC LAMINATED BEARING PADS (60 DURO HARDNESS) 3/4" X 5" X 24"	100.00	1600.00												
#5	16	EA. 1" DIAMETER X 2' SWEDGED ANCHOR BOLT OR #8 DEFORMED REINFORCING (GR. 60) BAR	10.00	160.00												
#6	40	SQ. FT. 3/4" THICK SPONGE RUBBER PREFORMED JOINT FILLER (16 PIECES @ 7 1/2" X 48")	10.00	400.00												
#7	54.44	SQ. FT., 1" THICK SPONGE RUBBER PREFORMED JOINT FILLER (16 PIECES @ 10" X 48")	10.00	544.40												
#8	20.00	EACH, GUARDRAIL ATTACHMENT ASSEMBLY FOR 12" PLANK BEAMS (INSTALLED INSERT AND MOUNTING HOLE) (PER ASSEMBLY)	254.90	5098.00												
#9	83.00	FT., 1" DIAMETER POST-TENSIONING THREAD-BAR WITH 2 HEAVY HEX NUTS, COUPLERS AS REQUIRED. (2 @ 13'-7 7/8" & 2 @ 21'-9 3/8")	15.75	1307.25												
#10	4.00	EACH, BEARING PLATE 9"x9"x1" THICK (POST TENSION BEAMS)	50.00	200.00												
#11	2.00	EACH, BEARING PLATE 5"x5"x1 1/4" THICK (POST TENSION BEAMS)	50.00	100.00												
#12	200.00	FT., 1" THICK GROUT STOP	13.175	2635												
#13	14.00	EACH, 1"x8"x8" WASHER SPONGE RUBBER OR EQUAL	4.00	56.00												
TOTAL				\$ 25,380.00												
<p>ALL ITEMS SHALL MEET THE REQUIREMENTS OF THE "WEST VIRGINIA DEPARTMENT OF TRANSPORTATION, DIVISION OF HIGHWAYS STANDARD SPECIFICATIONS ROADS AND BRIDGES, ADOPTED 2000, AS MODIFIED BY THE JANUARY 1, 2003 SUPPLEMENTAL SPECIFICATIONS.</p> <p>ALL PRESTRESSED CONCRETE BOX SHAPED BEAMS AND ACCESSORIES SHALL BE MANUFACTURED IN ACCORDANCE WITH THE WEST VIRGINIA DEPARTMENT OF TRANSPORTATION, DIVISION OF HIGHWAYS STANDARD BRIDGE PLAN SHEETS AS FOLLOWS:</p> <table border="1" style="width: 100%; border-collapse: collapse;"> <thead> <tr> <th style="text-align: left;"><u>ITEM DESCRIPTION</u></th> <th style="text-align: left;"><u>STANDARD SHEET #</u></th> <th style="text-align: left;"><u>REVISION DATE</u></th> </tr> </thead> <tbody> <tr> <td>12" BOX BEAM</td> <td>BRS12A & BR-S12B</td> <td>9/96</td> </tr> <tr> <td>BEAM DETAILS</td> <td>BR-B100, BR-B101, BR-B102 & BR-B104</td> <td>9/96</td> </tr> <tr> <td>POST TENSIONING DETAILS</td> <td>BR-B103</td> <td>9/96</td> </tr> </tbody> </table> <p>DELIVER TO WV DIVISION OF HIGHWAYS AT JOBSITE, TRADER FORK ROAD, WV 20 @ MP 1.58 WETZEL COUNTY, WV.</p> <p>PLEASE CALL 24 HOURS BEFORE ANY DELIVERY @ 304-238-1196.</p> <p>Requirements of WV Dept. of Trans. special provision 109.20, price adjust. For load limit viol. dtd 02/25/91 shall apply to all materials supplied by this contract, incl. those loaded by vendor into DOH owned and/or rented trucks. This provision may be obtained from: Dir. Of Construction, Bldg 5., Room A729, 1900 Kanawha Blvd E., Charleston, WV 25305-0430</p>					<u>ITEM DESCRIPTION</u>	<u>STANDARD SHEET #</u>	<u>REVISION DATE</u>	12" BOX BEAM	BRS12A & BR-S12B	9/96	BEAM DETAILS	BR-B100, BR-B101, BR-B102 & BR-B104	9/96	POST TENSIONING DETAILS	BR-B103	9/96
<u>ITEM DESCRIPTION</u>	<u>STANDARD SHEET #</u>	<u>REVISION DATE</u>														
12" BOX BEAM	BRS12A & BR-S12B	9/96														
BEAM DETAILS	BR-B100, BR-B101, BR-B102 & BR-B104	9/96														
POST TENSIONING DETAILS	BR-B103	9/96														

STATE OF WEST VIRGINIA
Purchasing Division

PURCHASING AFFIDAVIT

West Virginia Code §5A-3-10a states: No contract or renewal of any contract may be awarded by the state or any of its political subdivisions to any vendor or prospective vendor when the vendor or prospective vendor or a related party to the vendor or prospective vendor is a debtor and the debt owed is an amount greater than one thousand dollars in the aggregate

DEFINITIONS:

"Debt" means any assessment, premium, penalty, fine, tax or other amount of money owed to the state or any of its political subdivisions because of a judgment, fine, permit violation, license assessment, defaulted workers' compensation premium, penalty or other assessment presently delinquent or due and required to be paid to the state or any of its political subdivisions, including any interest or additional penalties accrued thereon.

"Debtor" means any individual, corporation, partnership, association, limited liability company or any other form or business association owing a debt to the state or any of its political subdivisions. "Political subdivision" means any county commission; municipality; county board of education; any instrumentality established by a county or municipality; any separate corporation or instrumentality established by one or more counties or municipalities, as permitted by law; or any public body charged by law with the performance of a government function or whose jurisdiction is coextensive with one or more counties or municipalities. "Related party" means a party, whether an individual, corporation, partnership, association, limited liability company or any other form or business association or other entity whatsoever, related to any vendor by blood, marriage, ownership or contract through which the party has a relationship of ownership or other interest with the vendor so that the party will actually or by effect receive or control a portion of the benefit, profit or other consideration from performance of a vendor contract with the party receiving an amount that meets or exceed five percent of the total contract amount.


EXCEPTION: The prohibition of this section does not apply where a vendor has contested any tax administered pursuant to chapter eleven of this code, workers' compensation premium, permit fee or environmental fee or assessment and the matter has not become final or where the vendor has entered into a payment plan or agreement and the vendor is not in default of any of the provisions of such plan or agreement.

LICENSING: Vendors must be licensed and in good standing in accordance with any and all state and local laws and requirements by any state or local agency of West Virginia, including, but not limited to, the West Virginia Secretary of State's Office, the West Virginia Tax Department, West Virginia Insurance Commission, or any other state agencies or political subdivision. Furthermore, the vendor must provide all necessary releases to obtain information to enable the Director or spending unit to verify that the vendor is licensed and in good standing with the above entities.

CONFIDENTIALITY: The vendor agrees that he or she will not disclose to anyone, directly or indirectly, any such personally identifiable information or other confidential information gained from the agency, unless the individual who is the subject of the information consents to the disclosure in writing or the disclosure is made pursuant to the agency's policies, procedures and rules. Vendors should visit www.state.wv.us/admin/purchase/privacy for the Notice of Agency Confidentiality Policies.

Under penalty of law for false swearing (West Virginia Code, §61-5-3), it is hereby certified that the vendor acknowledges the information in this said affidavit and are in compliance with the requirements as stated.

Vendor's Name: EASTERN VAULT Co., INC.

Authorized Signature:  Date: 1-1-08

BRIAN P. STRUBLE