



West Virginia Purchasing Division

2019 Washington Street, East
Charleston, WV 25305
Telephone: 304-558-2306
General Fax: 304-558-6026
Bid Fax: 304-558-3970

The following documentation is an electronically-submitted vendor response to an advertised solicitation from the *West Virginia Purchasing Bulletin* within the Vendor Self-Service portal at wvOASIS.gov. As part of the State of West Virginia's procurement process, and to maintain the transparency of the bid-opening process, this documentation submitted online is publicly posted by the West Virginia Purchasing Division at WVPurchasing.gov with any other vendor responses to this solicitation submitted to the Purchasing Division in hard copy format.

Header @ 3

List View

General Information | [Contact](#) | [Default Values](#) | [Discount](#) | [Document Information](#) | [Clarification Request](#)

Procurement Folder: 1962629

Procurement Type: Central Master Agreement

Vendor ID:

Legal Name: TOTAL EQUIPMENT COMPANY A DXP COMPANY

Alias/DBA:

Total Bid: \$0.00

Response Date:

Response Time:

Responded By User ID:

First Name:

Last Name:

Email:

Phone:

SO Doc Code: CRFQ

SO Dept: 0803

SO Doc ID: DOT2600000095

Published Date: 5/27/26

Close Date: 6/11/26

Close Time: 13:30

Status: Closed

Solicitation Description:

Total of Header Attachments: 3

Total of All Attachments: 3

Line	Comm Ln Desc	Qty	Unit Issue	Unit Price	Ln Total Or Contract Amount
1	Fuel / Refill	0.00000	EA		

Comm Code	Manufacturer	Specification	Model #
15100000			

Commodity Line Comments: We do not offer.

Extended Description:

REFILL OF FUEL WHEN RETURNED BY THE WVDOH LOW OR EMPTY

Line	Comm Ln Desc	Qty	Unit Issue	Unit Price	Ln Total Or Contract Amount
2	Service & Parts	0.00000	EA		

Comm Code	Manufacturer	Specification	Model #
25191700			

Commodity Line Comments: We do not offer.

Extended Description:

WVDOH DAMAGE TO EQUIPMENT (NON-ROUTINE, NOT WEAR AND TEAR).

Line	Comm Ln Desc	Qty	Unit Issue	Unit Price	Ln Total Or Contract Amount
3	Aerial Bucket Trucks Lease/Rental	0.00000	UNIT		

Comm Code	Manufacturer	Specification	Model #
22101800			

Commodity Line Comments: We do not offer.

Extended Description:

SEE ATTACHED PRICING PAGE - ATTACHMEN A, FOR ACTUAL COST

Line	Comm Ln Desc	Qty	Unit Issue	Unit Price	Ln Total Or Contract Amount
4	Aerial Bucket Trucks Delivery/ Mobilization	0.00000	MILE		

Comm Code	Manufacturer	Specification	Model #
22101800			

Commodity Line Comments: We do not offer.

Extended Description:

SEE ATTACHED PRICING PAGE - ATTACHMEN A, FOR ACTUAL COST

Line	Comm Ln Desc	Qty	Unit Issue	Unit Price	Ln Total Or Contract Amount
5	Aerial Platform Lifts Lease/Rental	0.00000	UNIT		

Comm Code	Manufacturer	Specification	Model #
22101802			

Commodity Line Comments: We do not offer.

Extended Description:

SEE ATTACHED PRICING PAGE - ATTACHMEN A, FOR ACTUAL COST

Line	Comm Ln Desc	Qty	Unit Issue	Unit Price	Ln Total Or Contract Amount
6	Aerial Platform Trucks Delivery/ Mobilization	0.00000	MILE		

Comm Code	Manufacturer	Specification	Model #
22101802			

Commodity Line Comments: We do not offer.

Extended Description:

SEE ATTACHED PRICING PAGE - ATTACHMEN A, FOR ACTUAL COST

Line	Comm Ln Desc	Qty	Unit Issue	Unit Price	Ln Total Or Contract Amount
7	Boom Lifts Towable Lease/Rental	0.00000	UNIT		

Comm Code	Manufacturer	Specification	Model #
22101803			

Commodity Line Comments: We do not offer.

Extended Description:

SEE ATTACHED PRICING PAGE - ATTACHMEN A, FOR ACTUAL COST

Line	Comm Ln Desc	Qty	Unit Issue	Unit Price	Ln Total Or Contract Amount
8	Boom Lifts Towable Delivery/Mobilization	0.00000	MILE		

Comm Code	Manufacturer	Specification	Model #
22101803			

Commodity Line Comments: We do not offer.

Extended Description:

SEE ATTACHED PRICING PAGE - ATTACHMEN A, FOR ACTUAL COST

Line	Comm Ln Desc	Qty	Unit Issue	Unit Price	Ln Total Or Contract Amount
9	Forklifts Lease/Rental	0.00000	UNIT		

Comm Code	Manufacturer	Specification	Model #
24101603			

Commodity Line Comments: We do not offer.

Extended Description:

SEE ATTACHED PRICING PAGE - ATTACHMEN A, FOR ACTUAL COST

Line	Comm Ln Desc	Qty	Unit Issue	Unit Price	Ln Total Or Contract Amount
10	Forklifts - Delivery/Mobilization	0.00000	MILE		

Comm Code	Manufacturer	Specification	Model #
24101603			

Commodity Line Comments: We do not offer.

Extended Description:

SEE ATTACHED PRICING PAGE - ATTACHMEN A, FOR ACTUAL COST

Line	Comm Ln Desc	Qty	Unit Issue	Unit Price	Ln Total Or Contract Amount
11	Scissor Lifts Lease/Rental	0.00000	UNIT		

Comm Code	Manufacturer	Specification	Model #
24101617			

Commodity Line Comments: We do not offer.

Extended Description:

SEE ATTACHED PRICING PAGE - ATTACHMEN A, FOR ACTUAL COST

Line	Comm Ln Desc	Qty	Unit Issue	Unit Price	Ln Total Or Contract Amount
12	Scissor Lifts Delivery/Mobilization	0.00000	MILE		

Comm Code	Manufacturer	Specification	Model #
24101617			

Commodity Line Comments: We do not offer.

Extended Description:

SEE ATTACHED PRICING PAGE - ATTACHMEN A, FOR ACTUAL COST

Line	Comm Ln Desc	Qty	Unit Issue	Unit Price	Ln Total Or Contract Amount
13	Not Listed Equipment / Ariel Platforms and lifts Lease	0.00000	UNIT		

Comm Code	Manufacturer	Specification	Model #
22101802			

Commodity Line Comments: We do not offer.

Extended Description:

SEE ATTACHED PRICING PAGE - ATTACHMEN A, FOR ACTUAL COST

Line	Comm Ln Desc	Qty	Unit Issue	Unit Price	Ln Total Or Contract Amount
14	Not Listed Equipment / Ariel Platforms and lifts mobilizat	0.00000	MILE		

Comm Code	Manufacturer	Specification	Model #
22101802			

Commodity Line Comments: We do not offer.

Extended Description:

SEE ATTACHED PRICING PAGE - ATTACHMEN A, FOR ACTUAL COST

Line	Comm Ln Desc	Qty	Unit Issue	Unit Price	Ln Total Or Contract Amount
15	Asphalt Distributers, Recyclers & Milling Equipment	0.00000	UNIT		

Comm Code	Manufacturer	Specification	Model #
22101600			

Commodity Line Comments: We do not offer.

Extended Description:

SEE ATTACHED PRICING PAGE - ATTACHMEN A, FOR ACTUAL COST

Line	Comm Ln Desc	Qty	Unit Issue	Unit Price	Ln Total Or Contract Amount
16	Asphalt Distributers, Recyclers & Milling Equipment Delivery	0.00000	MILE		

Comm Code	Manufacturer	Specification	Model #
22101600			

Commodity Line Comments: We do not offer.

Extended Description:

SEE ATTACHED PRICING PAGE - ATTACHMEN A, FOR ACTUAL COST

Line	Comm Ln Desc	Qty	Unit Issue	Unit Price	Ln Total Or Contract Amount
17	Asphalt Pavers Hot Mix Lease/Rental	0.00000	UNIT		

Comm Code	Manufacturer	Specification	Model #
22101600			

Commodity Line Comments: We do not offer.

Extended Description:

SEE ATTACHED PRICING PAGE - ATTACHMEN A, FOR ACTUAL COST

Line	Comm Ln Desc	Qty	Unit Issue	Unit Price	Ln Total Or Contract Amount
18	Asphalt Pavers Hot Mix Delivery/Mobilization	0.00000	MILE		

Comm Code	Manufacturer	Specification	Model #
22101600			

Commodity Line Comments: We do not offer.

Extended Description:

SEE ATTACHED PRICING PAGE - ATTACHMEN A, FOR ACTUAL COST

Line	Comm Ln Desc	Qty	Unit Issue	Unit Price	Ln Total Or Contract Amount
19	Crack Sealing Equipment Lease/Rental	0.00000	UNIT		

Comm Code	Manufacturer	Specification	Model #
22101600			

Commodity Line Comments: We do not offer.

Extended Description:

SEE ATTACHED PRICING PAGE - ATTACHMEN A, FOR ACTUAL COST

Line	Comm Ln Desc	Qty	Unit Issue	Unit Price	Ln Total Or Contract Amount
20	Crack Sealing Equipment Delivery/Mobilization	0.00000	MILE		

Comm Code	Manufacturer	Specification	Model #
22101600			

Commodity Line Comments: We do not offer.

Extended Description:

SEE ATTACHED PRICING PAGE - ATTACHMEN A, FOR ACTUAL COST

Line	Comm Ln Desc	Qty	Unit Issue	Unit Price	Ln Total Or Contract Amount
21	Mortar Mixers Lease/Rental	0.00000	UNIT		

Comm Code	Manufacturer	Specification	Model #
22101902			

Commodity Line Comments: We do not offer.

Extended Description:

SEE ATTACHED PRICING PAGE - ATTACHMEN A, FOR ACTUAL COST

Line	Comm Ln Desc	Qty	Unit Issue	Unit Price	Ln Total Or Contract Amount
22	Mortar Mixers Delivery/Mobilization	0.00000	MILE		

Comm Code	Manufacturer	Specification	Model #
22101902			

Commodity Line Comments: We do not offer.

Extended Description:

SEE ATTACHED PRICING PAGE - ATTACHMEN A, FOR ACTUAL COST

Line	Comm Ln Desc	Qty	Unit Issue	Unit Price	Ln Total Or Contract Amount
23	Pothole Patchers Lease/Rental	0.00000	UNIT		

Comm Code	Manufacturer	Specification	Model #
22101711			

Commodity Line Comments: We do not offer.

Extended Description:

SEE ATTACHED PRICING PAGE - ATTACHMEN A, FOR ACTUAL COST

Line	Comm Ln Desc	Qty	Unit Issue	Unit Price	Ln Total Or Contract Amount
24	Pothole Patchers Delivery/Mobilization	0.00000	MILE		

Comm Code	Manufacturer	Specification	Model #
22101711			

Commodity Line Comments: We do not offer.

Extended Description:

SEE ATTACHED PRICING PAGE - ATTACHMEN A, FOR ACTUAL COST

Line	Comm Ln Desc	Qty	Unit Issue	Unit Price	Ln Total Or Contract Amount
25	Rock Drills & Hammers Lease/Rental	0.00000	UNIT		

Comm Code	Manufacturer	Specification	Model #
22101615			

Commodity Line Comments: We do not offer.

Extended Description:

SEE ATTACHED PRICING PAGE - ATTACHMEN A, FOR ACTUAL COST

Line	Comm Ln Desc	Qty	Unit Issue	Unit Price	Ln Total Or Contract Amount
26	Rock Drills & Hammers Delivery/Mobilization	0.00000	MILE		

Comm Code	Manufacturer	Specification	Model #
22101615			

Commodity Line Comments: We do not offer.

Extended Description:

SEE ATTACHED PRICING PAGE - ATTACHMEN A, FOR ACTUAL COST

Line	Comm Ln Desc	Qty	Unit Issue	Unit Price	Ln Total Or Contract Amount
27	Rollers Lease/Rental	0.00000	UNIT		

Comm Code	Manufacturer	Specification	Model #
22101505			

Commodity Line Comments: We do not offer.

Extended Description:

SEE ATTACHED PRICING PAGE - ATTACHMEN A, FOR ACTUAL COST

Line	Comm Ln Desc	Qty	Unit Issue	Unit Price	Ln Total Or Contract Amount
28	Rollers Delivery/Mobilization	0.00000	MILE		

Comm Code	Manufacturer	Specification	Model #
22101505			

Commodity Line Comments: We do not offer.

Extended Description:

SEE ATTACHED PRICING PAGE - ATTACHMEN A, FOR ACTUAL COST

Line	Comm Ln Desc	Qty	Unit Issue	Unit Price	Ln Total Or Contract Amount
29	Not Listed Equipment Asphalt, Pavement & Concrete Lease	0.00000	UNIT		

Comm Code	Manufacturer	Specification	Model #
22101505			

Commodity Line Comments: We do not offer.

Extended Description:

SEE ATTACHED PRICING PAGE - ATTACHMEN A, FOR ACTUAL COST

Line	Comm Ln Desc	Qty	Unit Issue	Unit Price	Ln Total Or Contract Amount
30	Not Listed Equipment Asphalt, Pavement & Concrete Mobiliza	0.00000	MILE		

Comm Code	Manufacturer	Specification	Model #
22101505			

Commodity Line Comments: We do not offer.

Extended Description:

SEE ATTACHED PRICING PAGE - ATTACHMEN A, FOR ACTUAL COST

Line	Comm Ln Desc	Qty	Unit Issue	Unit Price	Ln Total Or Contract Amount
31	Augers Lease/Rental	0.00000	UNIT		

Comm Code	Manufacturer	Specification	Model #
20121600			

Commodity Line Comments: We do not offer.

Extended Description:

SEE ATTACHED PRICING PAGE - ATTACHMEN A, FOR ACTUAL COST

Line	Comm Ln Desc	Qty	Unit Issue	Unit Price	Ln Total Or Contract Amount
32	Augers Delivery/Mobilization	0.00000	MILE		

Comm Code	Manufacturer	Specification	Model #
20121600			

Commodity Line Comments: We do not offer.

Extended Description:

SEE ATTACHED PRICING PAGE - ATTACHMEN A, FOR ACTUAL COST

Line	Comm Ln Desc	Qty	Unit Issue	Unit Price	Ln Total Or Contract Amount
33	Backhoes Lease/Rental	0.00000	UNIT		

Comm Code	Manufacturer	Specification	Model #
22101509			

Commodity Line Comments: We do not offer.

Extended Description:

SEE ATTACHED PRICING PAGE - ATTACHMEN A, FOR ACTUAL COST

Line	Comm Ln Desc	Qty	Unit Issue	Unit Price	Ln Total Or Contract Amount
34	Backhoes Delivery/Mobilization	0.00000	MILE		

Comm Code	Manufacturer	Specification	Model #
22101509			

Commodity Line Comments: We do not offer.

Extended Description:

SEE ATTACHED PRICING PAGE - ATTACHMEN A, FOR ACTUAL COST

Line	Comm Ln Desc	Qty	Unit Issue	Unit Price	Ln Total Or Contract Amount
35	Loaders Lease/Rental	0.00000	UNIT		

Comm Code	Manufacturer	Specification	Model #
22101528			

Commodity Line Comments: We do not offer.

Extended Description:

SEE ATTACHED PRICING PAGE - ATTACHMEN A, FOR ACTUAL COST

Line	Comm Ln Desc	Qty	Unit Issue	Unit Price	Ln Total Or Contract Amount
36	Loaders Delivery/Mobilization	0.00000	MILE		

Comm Code	Manufacturer	Specification	Model #
22101528			

Commodity Line Comments: We do not offer.

Extended Description:

SEE ATTACHED PRICING PAGE - ATTACHMEN A, FOR ACTUAL COST

Line	Comm Ln Desc	Qty	Unit Issue	Unit Price	Ln Total Or Contract Amount
37	Bulldozers & Attachments Lease/Rental	0.00000	UNIT		

Comm Code	Manufacturer	Specification	Model #
22101500			

Commodity Line Comments: We do not offer.

Extended Description:

SEE ATTACHED PRICING PAGE - ATTACHMEN A, FOR ACTUAL COST

Line	Comm Ln Desc	Qty	Unit Issue	Unit Price	Ln Total Or Contract Amount
38	Bulldozers & Attachments Delivery/ Mobilization	0.00000	MILE		

Comm Code	Manufacturer	Specification	Model #
22101500			

Commodity Line Comments: We do not offer.

Extended Description:

SEE ATTACHED PRICING PAGE - ATTACHMEN A, FOR ACTUAL COST

Line	Comm Ln Desc	Qty	Unit Issue	Unit Price	Ln Total Or Contract Amount
39	Cranes Lease/Rental	0.00000	UNIT		

Comm Code	Manufacturer	Specification	Model #
24101600			

Commodity Line Comments: We do not offer.

Extended Description:

SEE ATTACHED PRICING PAGE - ATTACHMEN A, FOR ACTUAL COST

Line	Comm Ln Desc	Qty	Unit Issue	Unit Price	Ln Total Or Contract Amount
40	Cranes Delivery/Mobilization	0.00000	MILE		

Comm Code	Manufacturer	Specification	Model #
24101600			

Commodity Line Comments: We do not offer.

Extended Description:

SEE ATTACHED PRICING PAGE - ATTACHMEN A, FOR ACTUAL COST

Line	Comm Ln Desc	Qty	Unit Issue	Unit Price	Ln Total Or Contract Amount
41	Culvert Cleaners Lease/Rental	0.00000	UNIT		

Comm Code	Manufacturer	Specification	Model #
47000000			

Commodity Line Comments: We do not offer.

Extended Description:

SEE ATTACHED PRICING PAGE - ATTACHMEN A, FOR ACTUAL COST

Line	Comm Ln Desc	Qty	Unit Issue	Unit Price	Ln Total Or Contract Amount
42	Culvert Cleaners Delivery/Mobilization	0.00000	MILE		

Comm Code	Manufacturer	Specification	Model #
47000000			

Commodity Line Comments: We do not offer.

Extended Description:

SEE ATTACHED PRICING PAGE - ATTACHMEN A, FOR ACTUAL COST

Line	Comm Ln Desc	Qty	Unit Issue	Unit Price	Ln Total Or Contract Amount
43	Digger Derricks Lease/Rental	0.00000	UNIT		

Comm Code	Manufacturer	Specification	Model #
20111616			

Commodity Line Comments: We do not offer.

Extended Description:

SEE ATTACHED PRICING PAGE - ATTACHMEN A, FOR ACTUAL COST

Line	Comm Ln Desc	Qty	Unit Issue	Unit Price	Ln Total Or Contract Amount
44	Digger Derricks Delivery/Mobilization	0.00000	MILE		

Comm Code	Manufacturer	Specification	Model #
20111616			

Commodity Line Comments: We do not offer.

Extended Description:

SEE ATTACHED PRICING PAGE - ATTACHMEN A, FOR ACTUAL COST

Line	Comm Ln Desc	Qty	Unit Issue	Unit Price	Ln Total Or Contract Amount
45	Excavators & Attachments Lease/Rental	0.00000	UNIT		

Comm Code	Manufacturer	Specification	Model #
22100000			

Commodity Line Comments: We do not offer.

Extended Description:

SEE ATTACHED PRICING PAGE - ATTACHMEN A, FOR ACTUAL COST

Line	Comm Ln Desc	Qty	Unit Issue	Unit Price	Ln Total Or Contract Amount
46	Excavators & Attachments Delivery/ Mobilization	0.00000	MILE		

Comm Code	Manufacturer	Specification	Model #
22100000			

Commodity Line Comments: We do not offer.

Extended Description:

SEE ATTACHED PRICING PAGE - ATTACHMEN A, FOR ACTUAL COST

Line	Comm Ln Desc	Qty	Unit Issue	Unit Price	Ln Total Or Contract Amount
47	Force Feed Loader Lease/Rental	0.00000	UNIT		

Comm Code	Manufacturer	Specification	Model #
22101528			

Commodity Line Comments: We do not offer.

Extended Description:

SEE ATTACHED PRICING PAGE - ATTACHMEN A, FOR ACTUAL COST

Line	Comm Ln Desc	Qty	Unit Issue	Unit Price	Ln Total Or Contract Amount
48	Force Feed Loader Delivery/Mobilization	0.00000	MILE		

Comm Code	Manufacturer	Specification	Model #
22101528			

Commodity Line Comments: We do not offer.

Extended Description:

SEE ATTACHED PRICING PAGE - ATTACHMEN A, FOR ACTUAL COST

Line	Comm Ln Desc	Qty	Unit Issue	Unit Price	Ln Total Or Contract Amount
49	Hammer Pile Driver Lease/Rental	0.00000	UNIT		

Comm Code	Manufacturer	Specification	Model #
22101504			

Commodity Line Comments: We do not offer.

Extended Description:

SEE ATTACHED PRICING PAGE - ATTACHMEN A, FOR ACTUAL COST

Line	Comm Ln Desc	Qty	Unit Issue	Unit Price	Ln Total Or Contract Amount
50	Hammer Pile Driver Delivery/Mobilization	0.00000	MILE		

Comm Code	Manufacturer	Specification	Model #
22101504			

Commodity Line Comments: We do not offer.

Extended Description:

SEE ATTACHED PRICING PAGE - ATTACHMEN A, FOR ACTUAL COST

Line	Comm Ln Desc	Qty	Unit Issue	Unit Price	Ln Total Or Contract Amount
51	Skid Steers, Track Loaders & Attachments Lease/Rental	0.00000	UNIT		

Comm Code	Manufacturer	Specification	Model #
22000000			

Commodity Line Comments: We do not offer.

Extended Description:

SEE ATTACHED PRICING PAGE - ATTACHMEN A, FOR ACTUAL COST

Line	Comm Ln Desc	Qty	Unit Issue	Unit Price	Ln Total Or Contract Amount
52	Skid Steers, Track Loaders & Attachments Delivery/Mobilizati	0.00000	MILE		

Comm Code	Manufacturer	Specification	Model #
22000000			

Commodity Line Comments: We do not offer.

Extended Description:

SEE ATTACHED PRICING PAGE - ATTACHMEN A, FOR ACTUAL COST

Line	Comm Ln Desc	Qty	Unit Issue	Unit Price	Ln Total Or Contract Amount
53	Material Screener Lease/Rental	0.00000	UNIT		

Comm Code	Manufacturer	Specification	Model #
22000000			

Commodity Line Comments: We do not offer.

Extended Description:

SEE ATTACHED PRICING PAGE - ATTACHMEN A, FOR ACTUAL COST

Line	Comm Ln Desc	Qty	Unit Issue	Unit Price	Ln Total Or Contract Amount
54	Material Screener Delivery/Mobilization	0.00000	MILE		

Comm Code	Manufacturer	Specification	Model #
22000000			

Commodity Line Comments: We do not offer.

Extended Description:

SEE ATTACHED PRICING PAGE - ATTACHMEN A, FOR ACTUAL COST

Line	Comm Ln Desc	Qty	Unit Issue	Unit Price	Ln Total Or Contract Amount
55	Trenchers Lease/Rental	0.00000	UNIT		

Comm Code	Manufacturer	Specification	Model #
22101516			

Commodity Line Comments: We do not offer.

Extended Description:

SEE ATTACHED PRICING PAGE - ATTACHMEN A, FOR ACTUAL COST

Line	Comm Ln Desc	Qty	Unit Issue	Unit Price	Ln Total Or Contract Amount
56	Trenchers Delivery/Mobilization	0.00000	MILE		

Comm Code	Manufacturer	Specification	Model #
22101516			

Commodity Line Comments: We do not offer.

Extended Description:

SEE ATTACHED PRICING PAGE - ATTACHMEN A, FOR ACTUAL COST

Line	Comm Ln Desc	Qty	Unit Issue	Unit Price	Ln Total Or Contract Amount
57	Not Listed Equipment Earthmoving Lease/ Rental	0.00000	UNIT		

Comm Code	Manufacturer	Specification	Model #
22100000			

Commodity Line Comments: We do not offer.

Extended Description:

SEE ATTACHED PRICING PAGE - ATTACHMEN A, FOR ACTUAL COST

Line	Comm Ln Desc	Qty	Unit Issue	Unit Price	Ln Total Or Contract Amount
58	Not Listed Equipment Earthmoving Mobilization	0.00000	MILE		

Comm Code	Manufacturer	Specification	Model #
22100000			

Commodity Line Comments: We do not offer.

Extended Description:

SEE ATTACHED PRICING PAGE - ATTACHMEN A, FOR ACTUAL COST

Line	Comm Ln Desc	Qty	Unit Issue	Unit Price	Ln Total Or Contract Amount
59	Compressors Portable Lease/Rental	0.00000	UNIT	11350.000000	0.00

Comm Code	Manufacturer	Specification	Model #
40151600			

Commodity Line Comments: See attached pricing page for actual pricing on each compressor. We do not have an offering on every compressor requested. Note hoses and fittings are not supplied with compressors unless quoted as such. Delivery is 5-7 Business Days ARO.

Extended Description:

SEE ATTACHED PRICING PAGE - ATTACHMEN A, FOR ACTUAL COST

Line	Comm Ln Desc	Qty	Unit Issue	Unit Price	Ln Total Or Contract Amount
60	Compressors Portable Delivery/Mobilization	0.00000	MILE		

Comm Code	Manufacturer	Specification	Model #
40151600			

Commodity Line Comments: We do not offer.

Extended Description:

SEE ATTACHED PRICING PAGE - ATTACHMEN A, FOR ACTUAL COST

Line	Comm Ln Desc	Qty	Unit Issue	Unit Price	Ln Total Or Contract Amount
61	Generators Lease/Rental	0.00000	UNIT		

Comm Code	Manufacturer	Specification	Model #
26111600			

Commodity Line Comments: We do not offer.

Extended Description:

SEE ATTACHED PRICING PAGE - ATTACHMEN A, FOR ACTUAL COST

Line	Comm Ln Desc	Qty	Unit Issue	Unit Price	Ln Total Or Contract Amount
62	Generators Delivery/Mobilization	0.00000	MILE		

Comm Code	Manufacturer	Specification	Model #
26111600			

Commodity Line Comments: We do not offer.

Extended Description:

SEE ATTACHED PRICING PAGE - ATTACHMEN A, FOR ACTUAL COST

Line	Comm Ln Desc	Qty	Unit Issue	Unit Price	Ln Total Or Contract Amount
63	Air Conditioners Lease/Rental	0.00000	UNIT		

Comm Code	Manufacturer	Specification	Model #
40101701			

Commodity Line Comments: We do not offer.

Extended Description:

SEE ATTACHED PRICING PAGE - ATTACHMEN A, FOR ACTUAL COST

Line	Comm Ln Desc	Qty	Unit Issue	Unit Price	Ln Total Or Contract Amount
64	Air Conditioners Delivery/Mobilization	0.00000	MILE		

Comm Code	Manufacturer	Specification	Model #
40101701			

Commodity Line Comments: We do not offer.

Extended Description:

SEE ATTACHED PRICING PAGE - ATTACHMEN A, FOR ACTUAL COST

Line	Comm Ln Desc	Qty	Unit Issue	Unit Price	Ln Total Or Contract Amount
65	Heaters Lease/Rental	0.00000	UNIT		

Comm Code	Manufacturer	Specification	Model #
40101800			

Commodity Line Comments: We do not offer.

Extended Description:

SEE ATTACHED PRICING PAGE - ATTACHMEN A, FOR ACTUAL COST

Line	Comm Ln Desc	Qty	Unit Issue	Unit Price	Ln Total Or Contract Amount
66	Heaters Delivery/Mobilization	0.00000	MILE		

Comm Code	Manufacturer	Specification	Model #
40101800			

Commodity Line Comments: We do not offer.**Extended Description:**

SEE ATTACHED PRICING PAGE - ATTACHMEN A, FOR ACTUAL COST

Line	Comm Ln Desc	Qty	Unit Issue	Unit Price	Ln Total Or Contract Amount
67	Light Tower Lease/Rental	0.00000	UNIT		

Comm Code	Manufacturer	Specification	Model #
39112001			

Commodity Line Comments: We do not offer.**Extended Description:**

SEE ATTACHED PRICING PAGE - ATTACHMEN A, FOR ACTUAL COST

Line	Comm Ln Desc	Qty	Unit Issue	Unit Price	Ln Total Or Contract Amount
68	Light Tower Delivery/Mobilization	0.00000	MILE		

Comm Code	Manufacturer	Specification	Model #
39112001			

Commodity Line Comments: We do not offer.**Extended Description:**

SEE ATTACHED PRICING PAGE - ATTACHMEN A, FOR ACTUAL COST

Line	Comm Ln Desc	Qty	Unit Issue	Unit Price	Ln Total Or Contract Amount
69	Pumps Lease/Rental	0.00000	UNIT	8000.000000	0.00

Comm Code	Manufacturer	Specification	Model #
40151500			

Commodity Line Comments: See attached pricing page for actual pricing on each pump. We do not have an offering on every pump requested. Note hoses and fittings are not supplied with pumps unless quoted as such. Delivery is 5-7 Business Days ARO.**Extended Description:**

SEE ATTACHED PRICING PAGE - ATTACHMEN A, FOR ACTUAL COST

Line	Comm Ln Desc	Qty	Unit Issue	Unit Price	Ln Total Or Contract Amount
70	Pumps Delivery/Mobilization	0.00000	MILE		

Comm Code	Manufacturer	Specification	Model #
40151500			

Commodity Line Comments: We do not offer.

Extended Description:

SEE ATTACHED PRICING PAGE - ATTACHMEN A, FOR ACTUAL COST

Line	Comm Ln Desc	Qty	Unit Issue	Unit Price	Ln Total Or Contract Amount
71	Traffic Control Lease/Rental	0.00000	UNIT		

Comm Code	Manufacturer	Specification	Model #
46161500			

Commodity Line Comments: We do not offer.

Extended Description:

SEE ATTACHED PRICING PAGE - ATTACHMEN A, FOR ACTUAL COST

Line	Comm Ln Desc	Qty	Unit Issue	Unit Price	Ln Total Or Contract Amount
72	Traffic Control Delivery/Mobilization	0.00000	MILE		

Comm Code	Manufacturer	Specification	Model #
46161500			

Commodity Line Comments: We do not offer.

Extended Description:

SEE ATTACHED PRICING PAGE - ATTACHMEN A, FOR ACTUAL COST

Line	Comm Ln Desc	Qty	Unit Issue	Unit Price	Ln Total Or Contract Amount
73	Not Listed Equipment HVAC, Power, Air Tools Lease/Rental	0.00000	UNIT		

Comm Code	Manufacturer	Specification	Model #
46161500			

Commodity Line Comments: We do not offer.

Extended Description:

SEE ATTACHED PRICING PAGE - ATTACHMEN A, FOR ACTUAL COST

Line	Comm Ln Desc	Qty	Unit Issue	Unit Price	Ln Total Or Contract Amount
74	Not Listed Equipment HVAC, Power, Air Tools Mobilization.	0.00000	MILE		

Comm Code	Manufacturer	Specification	Model #
46161500			

Commodity Line Comments: We do not offer.

Extended Description:

SEE ATTACHED PRICING PAGE - ATTACHMEN A, FOR ACTUAL COST

Line	Comm Ln Desc	Qty	Unit Issue	Unit Price	Ln Total Or Contract Amount
75	Box & Flatbed Trucks Lease/Rental	0.00000	UNIT		

Comm Code	Manufacturer	Specification	Model #
25101600			

Commodity Line Comments: We do not offer.

Extended Description:

SEE ATTACHED PRICING PAGE - ATTACHMEN A, FOR ACTUAL COST

Line	Comm Ln Desc	Qty	Unit Issue	Unit Price	Ln Total Or Contract Amount
76	Box & Flatbed Trucks- Delivery/Mobilization	0.00000	MILE		

Comm Code	Manufacturer	Specification	Model #
25101600			

Commodity Line Comments: We do not offer.

Extended Description:

SEE ATTACHED PRICING PAGE - ATTACHMEN A, FOR ACTUAL COST

Line	Comm Ln Desc	Qty	Unit Issue	Unit Price	Ln Total Or Contract Amount
77	Dump Trucks Lease/Rental	0.00000	UNIT		

Comm Code	Manufacturer	Specification	Model #
25101601			

Commodity Line Comments: We do not offer.

Extended Description:

SEE ATTACHED PRICING PAGE - ATTACHMEN A, FOR ACTUAL COST

Line	Comm Ln Desc	Qty	Unit Issue	Unit Price	Ln Total Or Contract Amount
78	Dump Trucks Delivery/Mobilization	0.00000	MILE		

Comm Code	Manufacturer	Specification	Model #
25101601			

Commodity Line Comments: We do not offer.

Extended Description:

SEE ATTACHED PRICING PAGE - ATTACHMEN A, FOR ACTUAL COST

Line	Comm Ln Desc	Qty	Unit Issue	Unit Price	Ln Total Or Contract Amount
79	Pickup Trucks Lease/Rental	0.00000	UNIT		

Comm Code	Manufacturer	Specification	Model #
25101601			

Commodity Line Comments: We do not offer.

Extended Description:

SEE ATTACHED PRICING PAGE - ATTACHMEN A, FOR ACTUAL COST

Line	Comm Ln Desc	Qty	Unit Issue	Unit Price	Ln Total Or Contract Amount
80	Pickup Trucks Delivery/Mobilization	0.00000	MILE		

Comm Code	Manufacturer	Specification	Model #
25101601			

Commodity Line Comments: We do not offer.

Extended Description:

SEE ATTACHED PRICING PAGE - ATTACHMEN A, FOR ACTUAL COST

Line	Comm Ln Desc	Qty	Unit Issue	Unit Price	Ln Total Or Contract Amount
81	Trailers Lease/Rental	0.00000	UNIT		

Comm Code	Manufacturer	Specification	Model #
25181700			

Commodity Line Comments: We do not offer.

Extended Description:

SEE ATTACHED PRICING PAGE - ATTACHMEN A, FOR ACTUAL COST

Line	Comm Ln Desc	Qty	Unit Issue	Unit Price	Ln Total Or Contract Amount
82	Trailers Delivery/Mobilization	0.00000	MILE		

Comm Code	Manufacturer	Specification	Model #
25181700			

Commodity Line Comments: We do not offer.

Extended Description:

SEE ATTACHED PRICING PAGE - ATTACHMEN A, FOR ACTUAL COST

Line	Comm Ln Desc	Qty	Unit Issue	Unit Price	Ln Total Or Contract Amount
83	Water Trucks Lease/Rental	0.00000	UNIT		

Comm Code	Manufacturer	Specification	Model #
25101610			

Commodity Line Comments: We do not offer.

Extended Description:

SEE ATTACHED PRICING PAGE - ATTACHMEN A, FOR ACTUAL COST

Line	Comm Ln Desc	Qty	Unit Issue	Unit Price	Ln Total Or Contract Amount
84	Water Trucks Delivery/Mobilization	0.00000	MILE		

Comm Code	Manufacturer	Specification	Model #
25101610			

Commodity Line Comments: We do not offer.

Extended Description:

SEE ATTACHED PRICING PAGE - ATTACHMEN A, FOR ACTUAL COST

Line	Comm Ln Desc	Qty	Unit Issue	Unit Price	Ln Total Or Contract Amount
85	Vacuum Trucks Lease/Rental	0.00000	UNIT		

Comm Code	Manufacturer	Specification	Model #
24101500			

Commodity Line Comments: We do not offer.

Extended Description:

SEE ATTACHED PRICING PAGE - ATTACHMEN A, FOR ACTUAL COST

Line	Comm Ln Desc	Qty	Unit Issue	Unit Price	Ln Total Or Contract Amount
86	Vacuum Trucks Delivery/Mobilization	0.00000	MILE		

Comm Code	Manufacturer	Specification	Model #
24101500			

Commodity Line Comments: We do not offer.

Extended Description:

SEE ATTACHED PRICING PAGE - ATTACHMEN A, FOR ACTUAL COST

Line	Comm Ln Desc	Qty	Unit Issue	Unit Price	Ln Total Or Contract Amount
87	Not Listed Equipment Trucks & Trailers Lease/Rental	0.00000	UNIT		

Comm Code	Manufacturer	Specification	Model #
25181700			

Commodity Line Comments: We do not offer.

Extended Description:

SEE ATTACHED PRICING PAGE - ATTACHMEN A, FOR ACTUAL COST

Line	Comm Ln Desc	Qty	Unit Issue	Unit Price	Ln Total Or Contract Amount
88	Not Listed Equipment Trucks & Trailers Mobilization	0.00000	MILE		

Comm Code	Manufacturer	Specification	Model #
25181700			

Commodity Line Comments: We do not offer.

Extended Description:

SEE ATTACHED PRICING PAGE - ATTACHMEN A, FOR ACTUAL COST

Line	Comm Ln Desc	Qty	Unit Issue	Unit Price	Ln Total Or Contract Amount
89	Chippers & Grinders Lease/Rental	0.00000	UNIT		

Comm Code	Manufacturer	Specification	Model #
21102200			

Commodity Line Comments: We do not offer.

Extended Description:

SEE ATTACHED PRICING PAGE - ATTACHMEN A, FOR ACTUAL COST

Line	Comm Ln Desc	Qty	Unit Issue	Unit Price	Ln Total Or Contract Amount
90	Chippers & Grinders Delivery/Mobilization	0.00000	MILE		

Comm Code	Manufacturer	Specification	Model #
21102200			

Commodity Line Comments: We do not offer.

Extended Description:

SEE ATTACHED PRICING PAGE - ATTACHMEN A, FOR ACTUAL COST

Line	Comm Ln Desc	Qty	Unit Issue	Unit Price	Ln Total Or Contract Amount
91	Hydroseeders Lease/Rental	0.00000	UNIT		

Comm Code	Manufacturer	Specification	Model #
21102200			

Commodity Line Comments: We do not offer.

Extended Description:

SEE ATTACHED PRICING PAGE - ATTACHMEN A, FOR ACTUAL COST

Line	Comm Ln Desc	Qty	Unit Issue	Unit Price	Ln Total Or Contract Amount
92	Hydroseeders Delivery/Mobilization	0.00000	MILE		

Comm Code	Manufacturer	Specification	Model #
21102200			

Commodity Line Comments: We do not offer.

Extended Description:

SEE ATTACHED PRICING PAGE - ATTACHMEN A, FOR ACTUAL COST

Line	Comm Ln Desc	Qty	Unit Issue	Unit Price	Ln Total Or Contract Amount
93	Mowers Lease/Rental	0.00000	UNIT		

Comm Code	Manufacturer	Specification	Model #
21101701			

Commodity Line Comments: We do not offer.

Extended Description:

SEE ATTACHED PRICING PAGE - ATTACHMEN A, FOR ACTUAL COST

Line	Comm Ln Desc	Qty	Unit Issue	Unit Price	Ln Total Or Contract Amount
94	Mowers Delivery/Mobilization	0.00000	MILE		

Comm Code	Manufacturer	Specification	Model #
21101701			

Commodity Line Comments: We do not offer.

Extended Description:

SEE ATTACHED PRICING PAGE - ATTACHMEN A, FOR ACTUAL COST

Line	Comm Ln Desc	Qty	Unit Issue	Unit Price	Ln Total Or Contract Amount
95	Pressure Washers Lease/Rental	0.00000	UNIT		

Comm Code	Manufacturer	Specification	Model #
47000000			

Commodity Line Comments: We do not offer.

Extended Description:

SEE ATTACHED PRICING PAGE - ATTACHMEN A, FOR ACTUAL COST

Line	Comm Ln Desc	Qty	Unit Issue	Unit Price	Ln Total Or Contract Amount
96	Pressure Washers Delivery/Mobilization	0.00000	MILE		

Comm Code	Manufacturer	Specification	Model #
47000000			

Commodity Line Comments: We do not offer.

Extended Description:

SEE ATTACHED PRICING PAGE - ATTACHMEN A, FOR ACTUAL COST

Line	Comm Ln Desc	Qty	Unit Issue	Unit Price	Ln Total Or Contract Amount
97	Sand Blasters Lease/Rental	0.00000	UNIT		

Comm Code	Manufacturer	Specification	Model #
23281703			

Commodity Line Comments: We do not offer.

Extended Description:

SEE ATTACHED PRICING PAGE - ATTACHMEN A, FOR ACTUAL COST

Line	Comm Ln Desc	Qty	Unit Issue	Unit Price	Ln Total Or Contract Amount
98	Sand Blasters Delivery/Mobilization	0.00000	MILE		

Comm Code	Manufacturer	Specification	Model #
23281703			

Commodity Line Comments: We do not offer.

Extended Description:

SEE ATTACHED PRICING PAGE - ATTACHMEN A, FOR ACTUAL COST

Line	Comm Ln Desc	Qty	Unit Issue	Unit Price	Ln Total Or Contract Amount
99	Straw Blowers Lease/Rental	0.00000	UNIT		

Comm Code	Manufacturer	Specification	Model #
21000000			

Commodity Line Comments: We do not offer.

Extended Description:

SEE ATTACHED PRICING PAGE - ATTACHMEN A, FOR ACTUAL COST

Line	Comm Ln Desc	Qty	Unit Issue	Unit Price	Ln Total Or Contract Amount
100	Straw Blowers Delivery/Mobilization	0.00000	MILE		

Comm Code	Manufacturer	Specification	Model #
21000000			

Commodity Line Comments: We do not offer.

Extended Description:

SEE ATTACHED PRICING PAGE - ATTACHMEN A, FOR ACTUAL COST

Line	Comm Ln Desc	Qty	Unit Issue	Unit Price	Ln Total Or Contract Amount
101	Street Sweepers Lease/Rental	0.00000	UNIT		

Comm Code	Manufacturer	Specification	Model #
25101919			

Commodity Line Comments: We do not offer.

Extended Description:

SEE ATTACHED PRICING PAGE - ATTACHMEN A, FOR ACTUAL COST

Line	Comm Ln Desc	Qty	Unit Issue	Unit Price	Ln Total Or Contract Amount
102	Street Sweepers Delivery/Mobilization	0.00000	MILE		

Comm Code	Manufacturer	Specification	Model #
25101919			

Commodity Line Comments: We do not offer.

Extended Description:

SEE ATTACHED PRICING PAGE - ATTACHMEN A, FOR ACTUAL COST

Line	Comm Ln Desc	Qty	Unit Issue	Unit Price	Ln Total Or Contract Amount
103	Snow Removal Lease/Rental	0.00000	UNIT		

Comm Code	Manufacturer	Specification	Model #
25101919			

Commodity Line Comments: We do not offer.

Extended Description:

SEE ATTACHED PRICING PAGE - ATTACHMEN A, FOR ACTUAL COST

Line	Comm Ln Desc	Qty	Unit Issue	Unit Price	Ln Total Or Contract Amount
104	Snow Removal Delivery/Mobilization	0.00000	MILE		

Comm Code	Manufacturer	Specification	Model #
25101919			

Commodity Line Comments: We do not offer.

Extended Description:

SEE ATTACHED PRICING PAGE - ATTACHMEN A, FOR ACTUAL COST

Line	Comm Ln Desc	Qty	Unit Issue	Unit Price	Ln Total Or Contract Amount
105	Snow Removal Lease/Rental	0.00000	UNIT		

Comm Code	Manufacturer	Specification	Model #
25101919			

Commodity Line Comments: We do not offer.

Extended Description:

SEE ATTACHED PRICING PAGE - ATTACHMEN A, FOR ACTUAL COST

Line	Comm Ln Desc	Qty	Unit Issue	Unit Price	Ln Total Or Contract Amount
106	Tree Trimming Lease/Rental	0.00000	UNIT		

Comm Code	Manufacturer	Specification	Model #
21102200			

Commodity Line Comments: We do not offer.

Extended Description:

SEE ATTACHED PRICING PAGE - ATTACHMEN A, FOR ACTUAL COST

Line	Comm Ln Desc	Qty	Unit Issue	Unit Price	Ln Total Or Contract Amount
107	Tree Trimming Delivery/Mobilization	0.00000	MILE		

Comm Code	Manufacturer	Specification	Model #
21102200			

Commodity Line Comments: We do not offer.

Extended Description:

SEE ATTACHED PRICING PAGE - ATTACHMEN A, FOR ACTUAL COST

Line	Comm Ln Desc	Qty	Unit Issue	Unit Price	Ln Total Or Contract Amount
108	Graders Lease/Rental	0.00000	UNIT		

Comm Code	Manufacturer	Specification	Model #
22101502			

Commodity Line Comments: We do not offer.

Extended Description:

SEE ATTACHED PRICING PAGE - ATTACHMEN A, FOR ACTUAL COST

Line	Comm Ln Desc	Qty	Unit Issue	Unit Price	Ln Total Or Contract Amount
109	Graders Delivery/Mobilization	0.00000	MILE		

Comm Code	Manufacturer	Specification	Model #
22101502			

Commodity Line Comments: We do not offer.

Extended Description:

SEE ATTACHED PRICING PAGE - ATTACHMEN A, FOR ACTUAL COST

Line	Comm Ln Desc	Qty	Unit Issue	Unit Price	Ln Total Or Contract Amount
110	Not Listed Equipment Surface Prep, Tree & Landscape Lease/Re	0.00000	UNIT		

Comm Code	Manufacturer	Specification	Model #
21102200			

Commodity Line Comments: We do not offer.

Extended Description:

SEE ATTACHED PRICING PAGE - ATTACHMEN A, FOR ACTUAL COST

Line	Comm Ln Desc	Qty	Unit Issue	Unit Price	Ln Total Or Contract Amount
111	Not Listed Equipment Surface Prep, Tree & Landscape Mobiliza	0.00000	MILE		

Comm Code	Manufacturer	Specification	Model #
21102200			

Commodity Line Comments: We do not offer.

Extended Description:

SEE ATTACHED PRICING PAGE - ATTACHMEN A, FOR ACTUAL COST

Line	Comm Ln Desc	Qty	Unit Issue	Unit Price	Ln Total Or Contract Amount
112	Equipment Transfer of Ownership	0.00000	EA		

Comm Code	Manufacturer	Specification	Model #
80141701			

Commodity Line Comments: We do not offer.

Extended Description:

OWNERSHIP TRANSFER ADMIN FEES AND / OR REMAINING BALANCE TO MAKE MARKET VALUE

Equipment Lease/Rental Without Operator
ATT A - Pricing Pages
HVAC, POWER, TRAFFIC AND AIR TOOLS

VENDOR INSTRUCTIONS: This spreadsheet has multiple tabs for different categories of equipment along the bottom of the spreadsheet. Vendor shall enter their price for Daily, Weekly and Monthly Equipment Rental for any and all equipment they offer. For the delivery of equipment, vendor shall enter mobilization for their first mile, and each additional mile. **Vendor must supply ATT B Information sheet identifying the areas of service (statewide, by district, or per county) as well as provide all their storage locations from which mobilization may be calculated.**

To facilitate payment processing, the vendor should list their equipment as it will appear on the vendors invoice within the "Description in Vendors Billing System" area. Vendors offering equipment not listed within these pricing pages may list them at the end of each applicable section, within the Not Listed category. Additional lines may be added to this section as needed.

VENDOR NAME:

<u>Categories</u>	<u>Equipment / Descriptions</u>	<u>Lease/Rental Rate - Pickup</u>			<u>Delivery/Mobilization Rate</u>	
		<u>Per Day</u>	<u>Per Week</u>	<u>Per Month</u>	<u>1st Mile</u>	<u>Addl Mile</u>
<u>Compressors</u> <u>- Portable</u>	Compressor: Portable / 125-160 CFM <u>Description in Vendors Billing System:</u>					
	Compressor: Portable / 170-210 CFM <u>Description in Vendors Billing System:</u> <u>P185 Diesel Air Compressor comes with 3/4 X 50' hose</u>		\$733.00	\$1,950.00	\$175.00 per hr	
	Compressor: Portable / 250-300 CFM <u>Description in Vendors Billing System:</u>					
	Compressor: Portable / 350-450 CFM <u>Description in Vendors Billing System:</u>					
	Compressor: Portable / 600- 825 CFM <u>Description in Vendors Billing System:</u> <u>825 CFM Diesel Air Compressor hoses & fittings are extra</u>		\$2,740.00	\$7,290.00	\$200.00 per hr	
	Compressor: Portable / 900-1170 CFM					

**Equipment Lease/Rental Without Operator
ATT A - Pricing Pages
HVAC, POWER,TRAFFIC AND AIR TOOLS**

VENDOR NAME: _____

<u>Categories</u>	<u>Equipment / Descriptions</u>	<u>Lease/Rental Rate - Pickup</u>			<u>Delivery/Mobilization Rate</u>	
		<u>Per Day</u>	<u>Per Week</u>	<u>Per Month</u>	<u>1st Mile</u>	<u>Addl Mile</u>
	<u>Description in Vendors Billing System:</u> 900 CFM Diesel Air Compressor hoses & fittings are extra		\$3,000.00	\$8,000.00	\$200.00 per hr	
	Compressor: Portable / 1300-1600 CFM <u>Description in Vendors Billing System:</u> 1600 CFM Diesel Air Compressor hoses & fittings are extra		\$4,267.00	\$11,350.00	\$200.00 per hr	
	Generator: Trailer Mounted - 30 kw <u>Description in Vendors Billing System:</u>					
	Generator: Trailer Mounted - 45 kw <u>Description in Vendors Billing System:</u>					
	Generator: Trailer Mounted - 60 kw <u>Description in Vendors Billing System:</u>					
	Generator: Trailer Mounted - 80 kw <u>Description in Vendors Billing System:</u>					
	Generator: Trailer Mounted - 100 kw <u>Description in Vendors Billing System:</u>					
	Generator: Trailer Mounted - 125 kw <u>Description in Vendors Billing System:</u>					

**Equipment Lease/Rental Without Operator
ATT A - Pricing Pages
HVAC, POWER,TRAFFIC AND AIR TOOLS**

VENDOR NAME: _____

<u>Categories</u>	<u>Equipment / Descriptions</u>	<u>Lease/Rental Rate - Pickup</u>			<u>Delivery/Mobilization Rate</u>	
		<u>Per Day</u>	<u>Per Week</u>	<u>Per Month</u>	<u>1st Mile</u>	<u>Addl Mile</u>
<u>Generators</u>	Generator: Trailer Mounted - 175 kw <u>Description in Vendors Billing System:</u>					
	Generator: Trailer Mounted - 200 kw <u>Description in Vendors Billing System:</u>					
	Generator: Trailer Mounted - 230 kw <u>Description in Vendors Billing System:</u>					
	Generator: Trailer Mounted - 300 kw <u>Description in Vendors Billing System:</u>					
	Generator: Trailer Mounted - 400 kw <u>Description in Vendors Billing System:</u>					
	Generator: Trailer Mounted - 500 kw <u>Description in Vendors Billing System:</u>					
	Generator: Trailer Mounted - 600 kw <u>Description in Vendors Billing System:</u>					
	Generator: Trailer Mounted - 800 kw					

Equipment Lease/Rental Without Operator
ATT A - Pricing Pages
HVAC, POWER, TRAFFIC AND AIR TOOLS

VENDOR NAME: _____

<u>Categories</u>	<u>Equipment / Descriptions</u>	<u>Lease/Rental Rate - Pickup</u>			<u>Delivery/Mobilization Rate</u>	
		<u>Per Day</u>	<u>Per Week</u>	<u>Per Month</u>	<u>1st Mile</u>	<u>Addl Mile</u>
	<u>Description in Vendors Billing System:</u>					
	Generator: Trailer Mounted - 1,000 kw <u>Description in Vendors Billing System:</u>					
	Generator: Trailer Mounted - 2,000 kw <u>Description in Vendors Billing System:</u>					
<u>Air Conditioners</u>	Portable Air Conditioner 1 Ton: Electric / 115v <u>Description in Vendors Billing System:</u>					
	Portable Air Conditioner 2 Ton: Electric / 230v <u>Description in Vendors Billing System:</u>					
	Portable Air Conditioner 5 Ton: Electric / 230v <u>Description in Vendors Billing System:</u>					
	Portable Air Conditioner 12 Ton: Electric / 230v <u>Description in Vendors Billing System:</u>					
	Heater: Indirect / Diesel / 200k BTU <u>Description in Vendors Billing System:</u>					

**Equipment Lease/Rental Without Operator
ATT A - Pricing Pages
HVAC, POWER,TRAFFIC AND AIR TOOLS**

VENDOR NAME: _____

<u>Categories</u>	<u>Equipment / Descriptions</u>	<u>Lease/Rental Rate - Pickup</u>			<u>Delivery/Mobilization Rate</u>	
		<u>Per Day</u>	<u>Per Week</u>	<u>Per Month</u>	<u>1st Mile</u>	<u>Addl Mile</u>
<u>Heaters</u>	Heater: Indirect / Diesel / 300k BTU <u>Description in Vendors Billing System:</u>					
	Heater: Indirect / Diesel / 400k BTU <u>Description in Vendors Billing System:</u>					
	Heater: Indirect / Diesel or Natural Gas / 700-900K BTU <u>Description in Vendors Billing System:</u>					
	Heater: Towable / Indirect / Self-contained / 1 million BTU <u>Description in Vendors Billing System:</u>					
<u>Light Tower</u>	Light Tower: Portable / Diesel / 4 - 1,000 watt bulbs <u>Description in Vendors Billing System:</u>					
	Hydrostatic Test Pump - 10,000 PSI: Pneumatic <u>Description in Vendors Billing System:</u>					
	Hydrostatic Test Pump - 500 PSI: 3 GPM max capacity <u>Description in Vendors Billing System:</u>					
	Hydrostatic Test Pump - 550 PSI: 11 GPM max capacity					

**Equipment Lease/Rental Without Operator
ATT A - Pricing Pages
HVAC, POWER, TRAFFIC AND AIR TOOLS**

VENDOR NAME:

<u>Categories</u>	<u>Equipment / Descriptions</u>	<u>Lease/Rental Rate - Pickup</u>			<u>Delivery/Mobilization Rate</u>	
		<u>Per Day</u>	<u>Per Week</u>	<u>Per Month</u>	<u>1st Mile</u>	<u>Addl Mile</u>
<u>Pumps</u>	<u>Description in Vendors Billing System:</u>					
	Trash Pump - 2 in.: Minimum 185 GPM max capacity / Self-priming <u>Description in Vendors Billing System:</u>					
	Trash Pump - 3 in.: Minimum 300 GPM max capacity / Self-priming <u>Description in Vendors Billing System:</u>					
	Trash Pump - 4 in.: Minimum 400 GPM max capacity / Self-priming <u>Description in Vendors Billing System:</u> <u>150/815 GPM Max 40136 head hoses and fittings are extra</u>			\$1,316.00	\$3,500.00	\$175.00 per hr
	Vacuum Assisted Pump - 4 in.: Diesel / Trailer mounted / 3 in. max solid handling / Minimum 1150 GPM max flow <u>Description in Vendors Billing System:</u> <u>200/2360 GPM Max 20/146 head hoses and fittings are extra</u>			\$1,580.00	\$4,250.00	\$175.00 per hr
	Vacuum Assisted Pump - 6 in.: Diesel / Trailer mounted / 3 in. max solid handling / Minimum 2200 GPM max flow / <u>Description in Vendors Billing System:</u> <u>750/3500 GPM Max 250 /650 head hoses and fittings are extra</u>			\$3,010.00	\$8,000.00	\$200.00 per hr
	Arrow Board: Trailer mounted / 4' x 8' panel / 15 LED lights <u>Description in Vendors Billing System:</u>					
Attenuator and Arrow Board - Trailer Mounted: Must meet NCHRP 350 TL-3 test criteria						

Equipment Lease/Rental Without Operator
 ATT A - Pricing Pages
HVAC, POWER, TRAFFIC AND AIR TOOLS

VENDOR NAME: _____

<u>Categories</u>	<u>Equipment / Descriptions</u>	<u>Lease/Rental Rate - Pickup</u>			<u>Delivery/Mobilization Rate</u>	
		<u>Per Day</u>	<u>Per Week</u>	<u>Per Month</u>	<u>1st Mile</u>	<u>Addl Mile</u>
<u>Traffic Control</u>	<u>Description in Vendors Billing System:</u>					
	Attenuator and Arrow Board - Truck Mounted: In-cab attenuator and arrow board control / Must meet NCHRP 350 TL-3 test criteria <u>Description in Vendors Billing System:</u>					
	Message Sign: Programmable / Minimum 3 row alphanumeric character display / 360 degree rotation / Towable <u>Description in Vendors Billing System:</u>					
	Steel Road Plates: 5 ft. x 10 ft. <u>Description in Vendors Billing System:</u>					
	Steel Road Plates: 5 ft. x 8 ft. <u>Description in Vendors Billing System:</u>					
	Traffic Barrel Base: Weighted / Rubber tire ring <u>Description in Vendors Billing System:</u>					
	Traffic Barrel Drum: 4 in. EG stripes / Must meet NCHRP-350 crash rating <u>Description in Vendors Billing System:</u>					
	Traffic Barrier Lift: Verticle lift clamp / 9000 lb. capacity					

**Equipment Lease/Rental Without Operator
ATT A - Pricing Pages
HVAC, POWER, TRAFFIC AND AIR TOOLS**

VENDOR NAME: _____

<u>Categories</u>	<u>Equipment / Descriptions</u>	<u>Lease/Rental Rate - Pickup</u>			<u>Delivery/Mobilization Rate</u>	
		<u>Per Day</u>	<u>Per Week</u>	<u>Per Month</u>	<u>1st Mile</u>	<u>Addl Mile</u>
	<u>Description in Vendors Billing System:</u>					
	Traffic Barrier: 6 ft. / Plastic / Water fillable <u>Description in Vendors Billing System:</u>					
	Traffic Signal: Portable / Single head - light duty / Fully automated, actuated operation / Must meets MUTCD and NEMA TS-5 standards <u>Description in Vendors Billing System:</u>					
	Traffic Signal: Trailer mounted / Double head w/mast arm hydraulic lift system / Minimum 90mph wind load rating / Minimum 30 day battery run time / Solar panels / Must meet MUTCD and NEMA TS-1 standards <u>Description in Vendors Billing System:</u>					
	Trailer Mounted Work Zone Digital Speed Limit Sign: 18" LED display <u>Description in Vendors Billing System:</u>					
	Vendors Miscellaneous Equipment Description: <u>Description in Vendors Billing System:</u>					
<u>Hvac, Power, Traffic & Air Tools</u>	Vendors Miscellaneous Equipment Description:					

Equipment Lease/Rental Without Operator
ATT A - Pricing Pages
HVAC, POWER,TRAFFIC AND AIR TOOLS

VENDOR NAME: _____


<u>Categories</u>	<u>Equipment / Descriptions</u>	<u>Lease/Rental Rate - Pickup</u>			<u>Delivery/Mobilization Rate</u>	
		<u>Per Day</u>	<u>Per Week</u>	<u>Per Month</u>	<u>1st Mile</u>	<u>Addl Mile</u>
<u>Equipment Not Listed</u>	<u>Description in Vendors Billing System:</u>					
	Vendors Miscellaneous Equipment Description:					
	<u>Description in Vendors Billing System:</u>					

**PUMP AND COMPRESSOR
SALES, SERVICE, PACKAGING
AND REPAIR**

DXP[®]

**TOTAL EQUIPMENT
TEC
COMPANY**



- API 610 & ANSI Centrifugal Pumps
- End Suction, Low Flow, Self-Primer, Vertical Inline & Vertical Sump
- Engineered, Assembled & Tested in the U.S.A. 
- ANSI Pump Powerframe Upgrades



- Oil Flooded & Oil Free Rotary Screw Air Compressors
- Centrifugal Air Compressors
- Reciprocating Air Compressors
- Air Treatment: Dryers, Filters, Ancillary Equipment
- 24/7 Compressed Air System Service & System Audits

VIKING PUMP
A Unit of IDEX Corporation

- Positive Displacement Internal Gear Pumps
- Internal & External Gear, Rotary Vane, Lobe
- Sealed and Magnetic Drive Solutions
- Modular ProPort™ Casing Options
- Magnetic Strainers
- Hygienic Gear & Lobe



- Cartridge Mechanical Seals
- Metal Bellows Mechanical Seals
- Split Cartridge Mechanical Seals
- Seal Support & Lube Oil Systems



- Self-Priming Pump Solutions
- Priming Assisted (Dry Prime)
- Centrifugal & Submersible



- Mixers / Agitators
- Kenics Static Mixing



- Submersible With Agitator
- Vertical Cantilever Slurry
- Horizontal Hard Metal Slurry
- Dry Run Capable Submersible



- Stainless Steel
- Vertical Turbine
- Multistage Inline
- Horizontal Split Case



- Air Operated Double Diaphragm
- Efficient Air Vantage System Design



- Chemical Metering & Dosing
- Magnetic Drive Chemical Feed
- Calibration Column Pump Systems
- Custom Single / Multi-Pump Dosing Skids



- Non-Metallic, Fiberglass Pump Solutions
- ANSI Horizontal
- Vertical Sump Pumps



- Sand, Sludge & Slurry
- Explosion Proof
- High Temp Condensate



- High Head Slurry and Solids Handling
- Run-Dry™ Options
- Self-Priming Pump Solutions
- Diesel & Electric Packages



Pittsburgh Office

400 Fifth Avenue Phone: (412) 269-0999
Coraopolis, PA 15108 Fax: (412) 269-0262

Charleston Office

46 Mesa Drive Phone: (304) 755-3345
St. Albans, WV 25177 Fax: (304) 755-4268

Find us on the web:

www.totalequipment.com
info@totalequipment.com

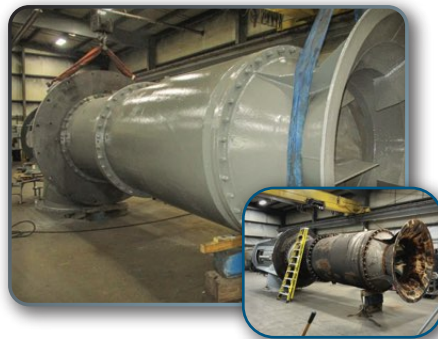
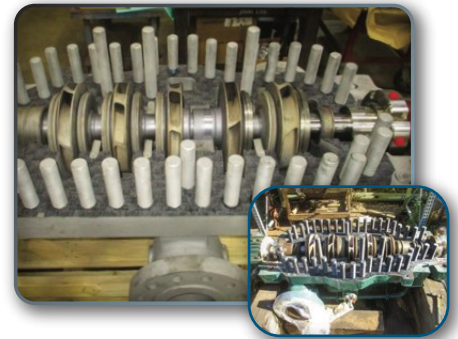
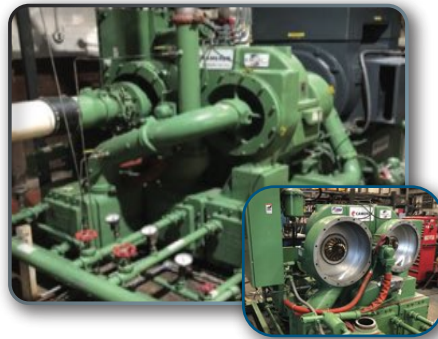
ON-SITE FIELD SERVICE AND SHOP REPAIR

24/7 EMERGENCY SERVICE: (412) 269-0999



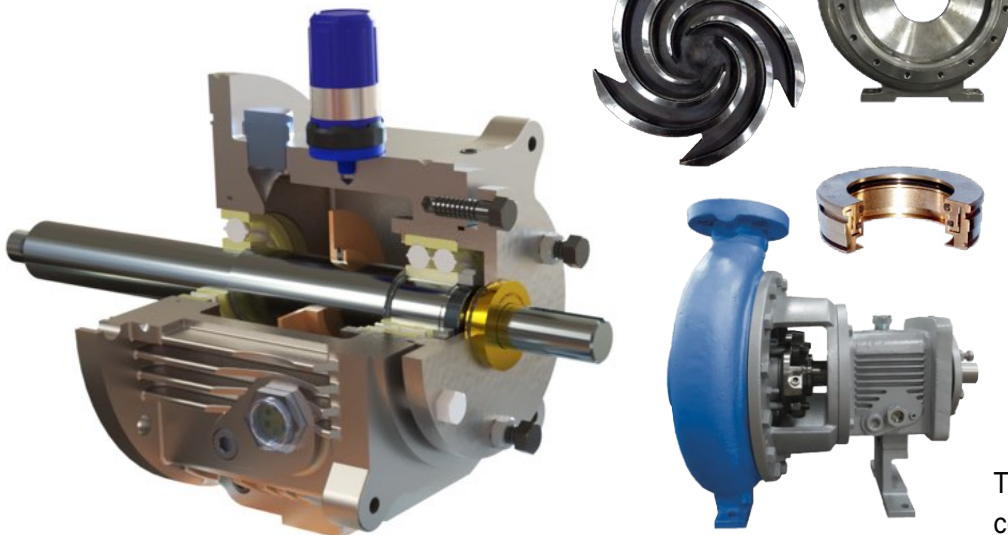
PUMP, COMPRESSOR & ROTATING EQUIPMENT REPAIR

DXP is the **LARGEST** rotating equipment distributor in the United States, offering repairs for all brands of pumps, gearboxes / gear reducers, mechanical seals and vacuum pumps to OEM standards. Our field service team offers turnkey pump repairs, vibration analysis and precision pump laser alignment. DXP can also provide competitive custom parts for large, obsolete pumps via in-house 3D scanning.



ANSI PUMP PARTS & UPGRADES

- ✓ Drop-In ANSI Powerframe Upgrades
- ✓ **5-Year Warranty** On Complete Powerframe
- ✓ Replacement ANSI Casings, Impellers & Parts



EQUIPMENT TYPES REPAIRED:

- ✓ API 610 Centrifugal
- ✓ ANSI Centrifugal
- ✓ Single & Multistage Split Case
- ✓ Positive Displacement Blower
- ✓ Centrifugal Compressor
- ✓ Rotary Screw Compressor
- ✓ Liquid Ring Vacuum
- ✓ Internal & External Gear
- ✓ Chemical Metering
- ✓ Vertical Turbine & Sump
- ✓ Progressing Cavity
- ✓ Screw & Lobe Pumps
- ✓ Mag-Drive Pumps
- ✓ Agitator Gear Reducers
- ✓ Agitator, API 610 & ANSI Seals

TEC will repair **ALL BRANDS** of pumps, compressors, blowers & mechanical seals.

ENGINEERED UPGRADES PACKAGING & SKID WORK CUSTOM FABRICATION



ENGINEERED UPGRADES

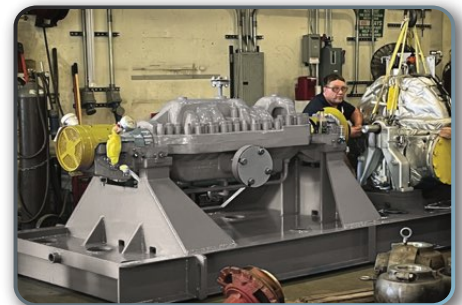
TEC offers engineering upgrades including:

- ✓ Performance testing to 8,000 HP at DXP
- ✓ Hydraulic and efficiency re-rating
- ✓ Pump casing and impeller coatings
- ✓ Packing to mechanical seal conversion
- ✓ Obsolete pump and parts 3D scanning and rapid domestic casting



PACKAGING AND SKID WORK

- ✓ Electric or Diesel and Portable Pumps
- ✓ API 610 and High Energy Packages
- ✓ Modular Industrial Compressed Air
- ✓ NFPA Fire Pump Packages
- ✓ Lube Oil, Valve & Instrumentation
- ✓ Compressed Air & Nitrogen
- ✓ Custom Engineered Solutions



**PUMP AND COMPRESSOR
SALES, SERVICE, PACKAGING
AND REPAIR**

DXP®

**TOTAL EQUIPMENT
TEC
COMPANY**

DXP is committed to bringing you the highest quality and most innovative pumping solutions available. Our team is available 24 / 365 to support you.



OUR CAPABILITIES AND SERVICES

- ✓ Centrifugal & positive displacement pumps
- ✓ Compressed air field service
- ✓ Centrifugal compressor overhaul
- ✓ Compressed air system audits
- ✓ Vacuum pump repairs
- ✓ Pneumatic blower repairs
- ✓ ANSI, API, agitator mechanical seal repairs
- ✓ Gearbox and reducer repairs
- ✓ VFD and electronic repairs
- ✓ Upgrades / re-manufacturing / re-rates
- ✓ Authorized Chemineer repair center
- ✓ Authorized Viking repair center
- ✓ Authorized PumpWorks repair center
- ✓ Certified factory trained technicians
- ✓ Custom baseplate solutions
- ✓ Custom coating solutions
- ✓ On-site field service
- ✓ In-house impeller balancing to ISO G-2.5
- ✓ 24 hour, 365-day service hotline
- ✓ Service of all major brands with warranty
- ✓ Laser alignment services
- ✓ Vibration analysis
- ✓ API documentation for Tier 3 repairs
- ✓ Root cause failure analysis
- ✓ Welding and custom fabrication
- ✓ Hydrostatic pressure testing
- ✓ Non destructive testing
- ✓ Preventative maintenance inspection
- ✓ Rapid 3D scanning parts replication
- ✓ Remanufactured obsolete pumps



DXP Enterprises is the LARGEST rotating equipment distributor in North America. With over 180 locations across North America, DXP has built its legacy since 1908 in serving and supporting our industrial customers.


Schlumberger ™

- Multistage High Head Barrel Pumps



™ 

CARVER PUMP™
Built for purpose • Multistage, Ring Section

SERO® 

PumpSystems

- Multifunction Side Channel Pumps
- Sealless, Magnetic Drive Solutions

CIRCOR IMO® 

- 3-Screw Pumps
- Lube Oil Pumps
- Pipeline & High Pressure

 **Weatherford**®

- Reciprocating Plunger 
- Injection and Disposal

 **Hankison**™ 

- Air Dryers & Filtering Solutions
- Refrigerant and Desiccant Dryers

 **DEKKER**
VACUUM TECHNOLOGIES

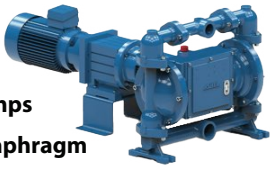
- Water & Solvent Sealed Liquid Ring 
- Lubricated & Dry Rotary Vane Systems 
- Oil-Sealed Liquid Ring Vacuum Pump Systems

CORKEN® 

- Gas Compressors
- Custom Engineered Packages
- LPG and NH₃ Pump Solutions

hibon®  **Ingersoll Rand**

- Positive Displacement Blowers
- Rotary & Centrifugal Blowers

ABEL®  Pump Technology 

- High Pressure Pumps
- Electric Driven Diaphragm

VOGELSANG  

- Rubber Lined Lobe
- Rotary Lobe Pumps
- Abrasive and High Pressure

Pittsburgh Office
400 Fifth Avenue Phone: (412) 269-0999
Coraopolis, PA 15108 Fax: (412) 269-0262

Charleston Office
46 Mesa Drive Phone: (304) 755-3345
St. Albans, WV 25177 Fax: (304) 755-4268

Find us on the web:
www.totalequipment.com
info@totalequipment.com

GENERAL TERMS OF SALE

Shipping & Payment Terms – All freight terms are Pre-Pay & Add (PPA), Freight on Board (F.O.B.) Origin. Payment Terms Net 30.

Payment Terms – All purchases and payment schedules are subject to DXP Credit Department Approval. Orders are accepted on the basis that we are to furnish the material and services covered in our scope only. The following payment schedule applies to all purchase orders greater than \$75,000 in value:

- ✓ 30% due at the time of order entry.
- ✓ 30% due upon completion of approval drawings.
- ✓ 30% due prior to shipment.
- ✓ 10% due after invoicing.

Lead Times – All delivery dates are subject to change at any time and without notice. Lead times are estimates at the time of the proposal issuance and are based on factory casting schedules and suppliers' manufacturing & inventory levels. DXP Enterprises will update the estimated delivery date at the time of order acknowledgment based on the current factory production schedule and product availability. Product lead times start After Receipt of Order Acknowledgement (AROA) by the purchaser and After Receipt of Approval Drawings (ARAD) by the purchaser, and not at the time of order placement with DXP Enterprises. Approval cycles, often 2-4 weeks, can be significant and are subject to change. Lead times are also subject to negotiating and approving the Terms and Conditions of Sale with the purchaser. Purchase Orders cannot be entered without the purchaser's negotiated approval of the Terms & Conditions of Sale.

Approval Drawings – Approval drawings are required for significant equipment orders. Should the purchaser choose to decline the approval drawings process, we will require written notification at the time of order placement. Unless otherwise noted, all drawings and datasheets will only be provided in electronic format.

Materials – Please review our proposal to ensure all materials of construction are suitable for the application. Please understand that the selection of all materials of construction is responsibility of the purchaser. If the purchaser is uncomfortable with any materials in this proposal, please communicate accordingly. DXP Enterprises is not responsible for the corrosion resistance or suitability of the material. The process operating conditions and environment, which include cleaning processes and other factors, may contain a corrosive element (acids, bleach, chlorides, bromine, cupric ions, ferric ions, sulfide ions, etc.), which is beyond the control of the equipment fabricator. Therefore, the equipment user is responsible for corrosion resistance and suitability of material in the process.

Specification Exceptions – While we have done our best to adhere to all specifications wherever possible and appropriate, there are some places where we may differ. To that end, we have done our best to point these out and offer optional adders as appropriate. We do respectfully and formally take global exception to all specifications as issued, and propose our offerings contained herein. The standard DXP Enterprises documentation package is included with each proposal.

Operation – Unless explicitly acknowledged by DXP Enterprises, all fluids are assumed clean and contain no solids of any kind. Pumps of this kind should not be run in a starved suction, deadhead, or dry run condition, as that will result in non-warrantable pump damage.

Electrical – The purchaser is responsible for verifying that all electrical devices included in this proposal meet the applicable National Electrical Code (NEC), area classification, and the purchaser's electrical requirements for the final installation where the equipment will be installed.

Changes – For changes or cancellations by the purchaser issued after an order is received by DXP Enterprises, change order and/or cancellation charges apply. By placing an order, the purchaser agrees to those charges. DXP Enterprises will provide a copy of the schedule of cancellation and change order charges upon request by the purchaser.

Packaging: Domestic packaging is included in the base price.

Testing – Unless otherwise noted, no NDT non-destructive testing (PMI, X-ray, dye penetrant, etc.) is included in the proposal price.

INNOVATIVE PUMPING SOLUTIONS • PRECISION SUPPLY CHAIN SERVICES • MROP SERVICE CENTERS

DXP Enterprises, Inc. 11270 Cornell Park Drive, Cincinnati OH 45242 Phone: (513) 489-5200 Fax: (513) 247-5330

Startup: Startup is not included in this price. Please inquire about a separate startup field service quotation.

Warranty: DXP warranty terms shall apply. The standard warranty is eighteen (18) months from shipment or twelve (12) months from start-up, whichever is earlier.

Intellectual Property & Confidentiality – The scope of this report is limited to the matters expressly covered. This report is prepared for the sole benefit of the purchaser. In preparing this proposal, DXP Enterprises has relied on the application information provided by the purchaser. DXP Enterprises has made no independent investigation into the accuracy or completeness of such information and has assumed that such information was accurate and complete. Further, DXP Enterprises cannot direct or control the operation or maintenance of client's equipment or processes. This document, including attachments, is confidential and may be privileged. If you are not an intended recipient, please notify the sender and then delete and destroy the original message and all copies. You should not copy, forward, and/or disclose this document or its contents, in whole or in part, without explicit permission of the sender.

Calculations & Installation – All calculations and equipment sizing are the purchaser's responsibility. While calculations may be enclosed, they are considered preliminary and are for the review and approval of the purchaser. Should you have questions about the calculations or assumptions, please inquire. It is the purchaser's responsibility to ensure the pump has adequate NPSH_A and that all piping is installed using best industry practices. This includes 7 times the pipe diameter of unobstructed straight pipe before the pump inlet; the suction piping should be one diameter larger than the pump inlet, shall be self-venting, and all piping velocities should be designed to be less than 7 ft/sec.

Pricing Validity – Standard pricing is valid and will be honored for 30 days from the proposed date listed. This pricing will be honored except for fluctuations due to government/sourcing tariffs, including any new or increased tariffs imposed on or after the date of this proposal, as well as conditional, unforeseen manufacturer or commodity price increases. In these cases, surcharges will be added to the final invoice. Applicable sales tax will be added to the total shown in this proposal. The purchaser agrees to pay the sales tax or provide a tax-exempt form. Delays in receiving these forms will result in delayed order entry and product delivery. Pricing is valid for all items purchased at one time. Partial orders may be subject to a price adjustment. All prices quoted are in USD. Due to the current volatility surrounding surcharges on stainless steel and other raw materials, DXP reserves the right to review and adjust the material pricing upon receipt of the purchase order. Pricing and terms are also subject to revision if: drawings for approval are not returned within 30 days from receipt by the customer, manufacture is held or delayed after release for more than 30 days, or a longer-than-quoted shipment is requested.

Special Orders – For all orders placed by the purchaser requiring special construction methods including (but not limited to): special coatings, special lubricants, special assembly processes, special gasket materials, special handling or otherwise, the purchaser must include these special requirements specifically in their Purchase Order. DXP will not accept "verbal" or "grandfathered" communication of special requirements. Communication of such special requirements must be included in the purchase order, or it will not be included in the purchase. It is the sole responsibility of the owner to flush, sample and test the equipment, components or materials provided by the vendor prior to introducing or installing the owner's process or facility to ensure compatibility. The vendor, his subcontractors, and suppliers shall not be held liable for any process, raw material, product material, or equipment contamination of the purchaser, his subcontractors, his customers, or any other part, person, entity, business, or organization.

DXP Terms & Conditions of Sale – By placing an order, the purchaser agrees that DXP Enterprises corporate "Terms and Conditions" apply to this proposal and purchase unless specifically agreed otherwise in writing only by someone bearing the title of Vice President, President, CFO, or CEO of DXP Enterprises. These Terms are located at <https://www.dxpe.com/terms-html>. The purchaser agrees that, by placing an order with DXP Enterprises, DXP Enterprises may completely disregard any of the purchaser's Terms and Conditions that may be provided or required by the purchaser when the purchaser places their order with DXP. The purchaser also agrees that when DXP Enterprises accepts and commences work on a purchase order placed by the purchaser, DXP Enterprises Terms and Conditions shall apply, regardless of any contract verbiage or the purchaser Terms and Conditions that state otherwise, unless agreed upon in writing only by someone bearing the title of Vice President, President, CFO, or CEO of DXP Enterprises.

SUPPLY CHAIN EFFECTS NOTICE: Due to the ongoing pandemic / port strikes and various Governmental directives, company measures and uncertainties arising therefrom (collectively "Supply Chain Effects"), all quoted delivery dates for products and completion dates for the work are best estimates made at the time of the quote and are not binding. Accordingly, DXP & its suppliers assume no risk for Supply Chain Effects on their ability to deliver the products or perform the work by the dates quoted. If the delivery of products or execution of work is affected by Supply Chain Effects, we shall be entitled to take reasonable measures with respect to Supply Chain Effects, to have an extension of time as needed, to deliver the products or complete the work and to obtain reasonable compensation for all additional direct costs incurred by DXP & their suppliers as agreed with the customer in good faith. We are monitoring this the supply chain extremely closely to try to ensure seamless support for our customers.