



The following documentation is an electronically-submitted vendor response to an advertised solicitation from the *West Virginia Purchasing Bulletin* within the Vendor Self-Service portal at *wvOASIS.gov*. As part of the State of West Virginia's procurement process, and to maintain the transparency of the bid-opening process, this documentation submitted online is publicly posted by the West Virginia Purchasing Division at *WVPurchasing.gov* with any other vendor responses to this solicitation submitted to the Purchasing Division in hard copy format.

Header 5

List View

**General Information** [Contact](#) [Default Values](#) [Discount](#) [Document Information](#) [Clarification Request](#)

Procurement Folder: 1880633

Procurement Type: Central Master Agreement

Vendor ID: VS0000045819

Legal Name: SWIPE RESOURCES LLC

Alias/DBA: HAMZA MASUD

Total Bid: \$391,960.00

Response Date: 05/19/2026

Response Time: 13:06

Responded By User ID: swiperesources

First Name: Hamza

Last Name: Masud

Email: hamza.masud@swipereso

Phone: 7038706182

SO Doc Code: CRFQ

SO Dept: 0803

SO Doc ID: DOT2600000089

Published Date: 5/11/26

Close Date: 5/19/26

Close Time: 13:30

Status: Closed

Solicitation Description: WVDOT NETWORKING EQUIPMENT (81260141)

Total of Header Attachments: 5

Total of All Attachments: 5



Line	Comm Ln Desc	Qty	Unit Issue	Unit Price	Ln Total Or Contract Amount
1	Extreme Network 5320-48p-8XEUniversal Switch or Equal.	40.00000	EA	6415.000000	256600.00

Comm Code	Manufacturer	Specification	Model #
43222609			

**Commodity Line Comments:**

**Extended Description:**

Extreme Network 5320-48p-8XEUniversal Switch or Equal.

Line	Comm Ln Desc	Qty	Unit Issue	Unit Price	Ln Total Or Contract Amount
2	Extreme Network 5320-24p-8XEUniversal Switch or Equal.	10.00000	EA	4062.000000	40620.00

Comm Code	Manufacturer	Specification	Model #
43222609			

**Commodity Line Comments:**

**Extended Description:**

Extreme Network 5320-48p-8XEUniversal Switch or Equal.

Line	Comm Ln Desc	Qty	Unit Issue	Unit Price	Ln Total Or Contract Amount
3	Extreme Network 5320-16p-4XEUniversal Switch or Equal.	30.00000	EA	3158.000000	94740.00

Comm Code	Manufacturer	Specification	Model #
43222609			

**Commodity Line Comments:**

**Extended Description:**

Extreme Network 5320-48p-8XEUniversal Switch or Equal.

**EXHIBIT A - PRICING PAGE**  
**CRQM DOT26\*57**  
**LOCATION - BUILDING 5, ROOM A-720 CHARLESTON, WV 25305**

Specifications Reference	Contract Item Number	Description	Part Number or Equal	Quantity	Unit Cost	Extended Price Total
3.1.1	#1	Extreme Networks 5320 Universal Switch - 48 Port or equal	5320-48P-8XE or equal	40	\$6,415.00	\$256,600.00
3.1.2	#2	Extreme Networks 5320 Universal switch - 24 Port or equal	5320-24P-8XE	10	\$4,062.00	\$40,620.00
3.1.3	#3	Extreme Networks 5320 Universal Switch - 16 Port or Equal	5320-16P-4XE	30	\$3,158.00	\$94,740.00
						<b>\$391,960.00</b>

The Pricing Pages contain a list of the Contract Items and quantities to be purchased.  
Unit Costs must include pricing for the specified Contract Item # and its mandatory components as detailed in Exhibit B Specifications.

**\*\*All quantities are estimated and can be more or less\*\***

Hamza Masud

Vendor Signature

# 5320 Series Switches

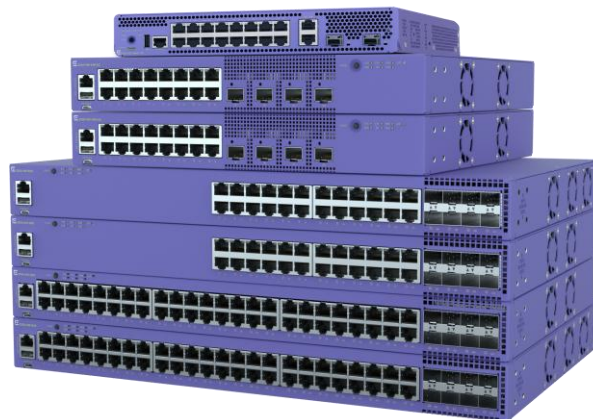


## Highlights

- Manageable by Extreme Platform ONE™, ExtremeCloud™ IQ, or ExtremeCloud IQ Site Engine
- Simplified network operations with automated end-to-end network segmentation using Extreme Fabric
- Choice of operating system (OS) with dual-persona Universal Hardware
- High-Performance 40G stacking enables multi-switch resiliency and simplified management at scale
- Extreme Platform ONE™ Security policy enforcement
- Automate and streamline switch provisioning and day-to-day operations with cloud-based instant actions

## Key Hardware Features

- 30W PoE (Power over Ethernet) support for connected device power
- 4 x 10Gb SFP+ uplink ports on 16-port models
- 8 x 10Gb SFP+ uplink ports on 24- and 48-port models
- 2 x 10Gb SFP+ ports and 2 x 10Gb copper uplink ports on fanless model
- Silent operation up to 35°C (95°F) on 16-port models and up to 45°C (113°F) for fanless model
- Extended temperature range switch models (0°C–60°C/32°F–140°F)
- AC and or DC power options on 16-port models with fans
- Stack up to eight switches with 40Gb per unit
- Secure link encryption with MACsec across both access and uplink ports
- Non-blocking wire speed design



## Universal Edge Switches

The 5320 Series is a family of high-performance, stackable multi-gig edge switches designed to simplify wired access for modern enterprise environments. Available in 16, 24, and 48 port models, the 5320 delivers secure, efficient connectivity across edge and wiring closet deployments while supporting 30W PoE (802.3at Power over Ethernet) for a wide range of endpoint devices. With native support for Extreme Fabric, cloud-based automation, and MACsec-secured ports, the 5320 brings security, segmentation, and operational simplicity to Enterprise access networks.

As a universal hardware platform, the 5320 offers a user selectable choice of Extreme's operating systems—Switch Engine or Fabric Engine—loaded at startup or automated through Extreme Platform ONE or ExtremeCloud IQ. This dual-persona flexibility ensures investment protection and operational consistency while enabling organizations to match the switch functionality to their architectural needs. The 5320 family also includes extended temperature models for deployments requiring hardened operation from 0°C to 60°C (32°F to 140°F), broadening its applicability across demanding environments.

The 5320 Series provides numerous uplink configurations—including models with multiple SFP+ and copper 10Gb ports—and supports 40Gb stacking across up to eight switches, enabling scalable growth and resilient distributed switching at the edge. Combined with features such as zero touch onboarding, automated port configuration, and AI-assisted troubleshooting, the 5320 gives IT teams a powerful, easy-to-operate platform for building secure and efficient enterprise access networks.

## Network Management Flexibility

The 5320 Universal Switch series are managed by Extreme Platform ONE or ExtremeCloud IQ from the cloud or on premises. Alternatively, 5320 on-box management can be done manually via a web-based GUI or generic command-line interface (CLI).

## Extreme Platform ONE

Extreme Platform ONE is an enterprise connectivity platform that integrates networking and security with AI into one powerful and radically simplified experience and licensing model. It supports NetOps, SecOps, and business teams with built-in automation and enables organizations to regain control, unlock innovation, and boost productivity through:

- One integrated experience that is easy to use.
- Automation through built-in AI boosts productivity, reducing cycle time for many tasks from hours to minutes.
- Simplified licensing that makes the solution as easy to buy as it is to use.
- AI-assisted workflows for configuration, deployment, and management.
- Extreme Fabric and third-party switch visualization and management in cloud.
- Inventory management simplifies budgeting, planning and compliance.

## Extended Temperature Operation

The 5320 Series offers 24- and 48-port switch models that support extended temperature operation of 0°C to 60°C. The 48-port switch model provides a combination of Fiber and Copper ports enabling flexible deployment use cases. Both switch models include 4 x 10G SFP+ for uplinks and/or stacking. The extended temperature switch models come with one fixed power supply and support an optional external Redundant Power Supply (RPS) as well.

## Power over Ethernet (PoE)

All 5320 models support 30W PoE that conforms with IEEE 802.3at. This enables the 5320 to address the needs of powered edge devices, while eliminating the need for additional electrical cabling and circuits. In addition, 5320 PoE models support perpetual and fast PoE for even more efficient and reliable powered edge device operation.

## Audio Video Bridging

The 5320 Series supports IEEE 802.1 Audio Video Bridging (AVB)\* when running Switch Engine OS. This allows 5320 models to deliver reliable, real-time audio/video transmission over Ethernet, meeting the quality of service required for today's high-definition, time-sensitive multimedia streams.

\*The extended temperature switch models do not support this feature in their initial release.

## Silent Operation

16-port 5320 models operate silently at temperatures up to 35°C/45°C (95°F/113°F), depending on the specific model. This makes these models ideal for noise-sensitive environments like classrooms, hospitality suites, or retail sites, especially outside of wiring closet environments.

## Universal Hardware

The 5320 comes with a dual-persona capability, allowing you to choose your Operating System (OS). Either the Switch Engine (EXOS) or Fabric Engine (VOSS) OS can be selected at switch start-up or changed at a later stage. When selected, the switch assumes the features and capabilities of that OS. 5320 OS selection can also be automated with Extreme Platform ONE or ExtremeCloud IQ so that the desired OS can be automatically loaded at switch start-up, facilitating remote OS enablement.

## Security

Extreme Universal hardware enables the extension and enforcement of Fabric and Extreme Platform ONE Security policies. Wherever users connect through the network, their access is secure and segmented. Extreme Platform ONE Security, which combines zero trust network and application access in a single solution, automatically configures devices to enforce security policy consistently. When used in concert with Extreme Fabric, Extreme Platform ONE Security becomes part of the fabric services that automate segmentation and allow the network to flex for efficiency and resiliency while maintaining a consistent, end-to-end security policy.

## Network Fabric

The 5320 series switches support Extreme's network fabric natively for network virtualization, automation, and network security. Extreme Fabric is the industry's most simple, resilient, and secure end-to-end, enterprise network fabric solution. Fabric automates discovery and onboarding of network and user devices. Its sub-second convergence reduces unplanned downtime and maintenance windows. Automated microsegmentation and stealth topology enhance and automate network security across campus, data center, and branch. Fabric Engine support is included with all 5320 switch models.

## Instant Onboarding

5320 Series onboarding to the cloud is a hands-off operation using zero touch provisioning. Simply unpack the 5320 Series switch, connect it to the network, and it automatically finds its connection to the cloud, ready to be provisioned. The ExtremeCloud Companion mobile app makes onboarding even easier with on-site cloud set-up and switch troubleshooting capabilities.

## Instant Port\*

Instant Port automates adds, moves, or changes across 5320 Series switch ports, eliminating the need for manual port configuration. The 5320 Series automatically detects the connected device and applies the correct port parameters. The result is significant time savings when adding or moving devices across the 5320 Series wired network. A simple cloud interface allows instant Port definitions of customer designated device types which can then be applied across a single switch, a stack or even all 5320 Series switches in the network.

**\*Supported via Switch Engine only**

## Instant Secure Port\*

Instant Secure Port leverages Extreme Platform ONE Security for authentication and zero trust policy enforcement across the 5320 Series switch ports, while providing the same add, move, and change automation features of Instant Port by using Extreme Platform ONE Security's cloud-based capabilities, including RADIUS (Remote Authentication Dial-In User Service), unified visibility and reporting, as well as policy enforced locally on 5320 Series ports, it greatly simplifies switch security. In doing so, it delivers a consistent and frictionless security experience for any user or device connecting through the 5320 Series switch. (Note: Extreme Platform ONE Security requires a separate license).

## Instant Stack\*

Instant Stack simplifies cloud-based stack provisioning, enabling the entire switch stack to be set up through a single push-button operation. Real-world stack information, including each switch model and their stack order is captured and replicated in the cloud. Once set up, the entire stack is then ready to be cloud provisioned.

## External Interfaces

Switch Model	Interfaces
5320-16P-2MXT-2X	<ul style="list-style-type: none"> <li>• 16 x 10/100/1000BASE-T 802.3at (30W) ports               <ul style="list-style-type: none"> <li>○ Full / Half-Duplex (autosensing)</li> </ul> </li> <li>• 2 x 1/2.5/5/10GBase-T uplink ports</li> <li>• 2 x 10Gb SFP+ uplink ports</li> <li>• 1 x Serial console port (RJ-45)</li> <li>• 1 x USB A ports for management or external USB flash</li> <li>• 1 x USB-C console port</li> <li>• Fanless model</li> </ul>
5320-16P-4XE	<ul style="list-style-type: none"> <li>• 16 x 10/100/1000BASE-T 802.3at (30W) ports               <ul style="list-style-type: none"> <li>○ Full / Half-Duplex (autosensing)</li> <li>○ MACsec-capable</li> </ul> </li> <li>• 4 x 1/10Gb SFP+ uplink ports (includes 2 x Stacking ports)               <ul style="list-style-type: none"> <li>○ MACsec-capable</li> </ul> </li> <li>• 1 x Serial console port (RJ-45)</li> <li>• 1 x USB A ports for management or external USB flash</li> <li>• 1 x USB Micro-B console port</li> </ul>
5320-16P-4XE-DC	<ul style="list-style-type: none"> <li>• 16 x 10/100/1000BASE-T 802.3at (30W) ports               <ul style="list-style-type: none"> <li>○ Full / Half-Duplex (autosensing)</li> <li>○ MACsec-capable</li> </ul> </li> <li>• 4 x 1/10Gb SFP+ uplink ports (includes 2 x Stacking ports)               <ul style="list-style-type: none"> <li>○ MACsec-capable</li> </ul> </li> <li>• 1 x Serial console port (RJ-45)</li> <li>• 1 x USB A ports for management or external USB flash</li> <li>• 1 x USB Micro-B console port</li> </ul>
5320-24T-8XE	<ul style="list-style-type: none"> <li>• 24 x 10/100/1000BASE-T ports               <ul style="list-style-type: none"> <li>○ Full/Half-Duplex (autosensing)</li> <li>○ MACsec-capable</li> </ul> </li> <li>• 8 x 1/10Gb SFP+ uplink ports (includes 2 x Stacking ports)               <ul style="list-style-type: none"> <li>○ MACsec-capable</li> <li>○ 100Mb operation supported on last 4 uplink ports</li> </ul> </li> <li>• 1 x Serial console port (RJ-45)</li> <li>• 1 x USB A ports for management or external USB flash</li> <li>• 1 x USB Micro-B console port</li> </ul>
5320-24P-8XE	<ul style="list-style-type: none"> <li>• 24 x 10/100/1000BASE-T 802.3at (30W) ports               <ul style="list-style-type: none"> <li>○ Full / Half-Duplex (autosensing)</li> <li>○ MACsec-capable</li> </ul> </li> <li>• 8 x 1/10Gb SFP+ uplink ports (includes 2 x Stacking ports)               <ul style="list-style-type: none"> <li>○ MACsec-capable</li> <li>○ 100Mb operation supported on last 4 uplink ports</li> </ul> </li> <li>• 1 x Serial console port (RJ-45)</li> <li>• 1 x USB A ports for management or external USB flash</li> <li>• 1 x USB Micro-B console port</li> </ul>
5320-48T-8XE	<ul style="list-style-type: none"> <li>• 48 x 10/100/1000BASE-T ports               <ul style="list-style-type: none"> <li>○ Full/Half-Duplex (autosensing)</li> <li>○ MACsec-capable</li> </ul> </li> <li>• 8 x 1/10Gb SFP+ uplink ports (includes 2 x Stacking ports)               <ul style="list-style-type: none"> <li>○ MACsec-capable</li> <li>○ 100Mb operation supported on last 4 uplink ports</li> </ul> </li> <li>• 1 x Serial console port (RJ-45)</li> <li>• 1 x USB A ports for management or external USB flash</li> <li>• 1 x USB Micro-B console port</li> </ul>
5320-48P-8XE	<ul style="list-style-type: none"> <li>• 48 x 10/100/1000BASE-T 802.3at (30W) ports               <ul style="list-style-type: none"> <li>○ Full/Half-Duplex (autosensing)</li> <li>○ MACsec-capable</li> </ul> </li> <li>• 8 x 1/10Gb SFP+ uplink ports (includes 2 x Stacking ports)               <ul style="list-style-type: none"> <li>○ MACsec-capable</li> <li>○ 100Mb operation supported on last 4 uplink ports</li> </ul> </li> <li>• 1 x Serial console port (RJ-45)</li> <li>• 1 x USB A ports for management or external USB flash</li> <li>• 1 x USB Micro-B console port</li> </ul>

Switch Model	Interfaces
5320-24T-4X-XT	<ul style="list-style-type: none"> <li>• 24 x 10/100/1000BASE-T ports <ul style="list-style-type: none"> <li>○ Full/Half-Duplex (autosensing)</li> </ul> </li> <li>• 4 x 1/10Gb SFP+ uplink ports (includes 2 x Stacking ports)</li> <li>• 1 x Serial console port (RJ-45)</li> <li>• 1 x 10/100/1000BASE-T out-of-band management port</li> <li>• 1 x USB A ports for management or external USB flash</li> <li>• 1 x USB Micro-B console port</li> <li>• 0°C to 60°C operating temperature range</li> </ul>
5320-24T-24S-4XE-XT	<ul style="list-style-type: none"> <li>• 24 x 10/100/1000BASE-T ports <ul style="list-style-type: none"> <li>○ Full/Half-Duplex (autosensing)</li> <li>○ MACsec-capable</li> </ul> </li> <li>• 24 x 100Mb/1Gb SFP uplink ports <ul style="list-style-type: none"> <li>○ MACsec-capable</li> </ul> </li> <li>• 4 x 1/10Gb SFP+ uplink ports (includes 2 x Stacking ports) <ul style="list-style-type: none"> <li>○ MACsec-capable</li> </ul> </li> <li>• 1 x Serial console port (RJ-45)</li> <li>• 1 x 10/100/1000BASE-T out-of-band management port</li> <li>• 1 x USB A ports for management or external USB flash</li> <li>• 1 x USB Micro-B console port</li> <li>• 0°C to 60°C operating temperature range</li> </ul>

## Performance and Scaling

Switch Model	Max Active 10/100/1000Mb ports	Max Active 1Gb/2.5Gb/5Gb/10Gb ports	Max Active 1Gb/10Gb SFP/SFP+ ports	Max Active 10Gb Stacking ports	Aggregated Switch Bandwidth	Max Frame Forwarding Rate
5320-16P-2MXT-2X	16	2	2	2	112 Gbps	83.3 Mpps
5320-16P-4XE	16	0	4	2	112 Gbps	83.3 Mpps
5320-16P-4XE-DC	16	0	4	2	112 Gbps	83.3 Mpps
5320-24T-8XE	24	0	8	2	208 Gbps	154.8 Mpps
5320-24P-8XE	24	0	8	2	208 Gbps	154.8 Mpps
5320-48T-8XE	48	0	8	2	256 Gbps	190.5 Mpps
5320-48P-8XE	48	0	8	2	256 Gbps	190.5 Mpps
5320-24T-4X-XT	24	0	4	2	128 Gbps	95.2 Mpps
5320-24T-24S-4XE-XT	24	0	24 x 100Mb/1Gb SFP 4 x 1Gb/10Gb SFP+	2	176 Gbps	131 Mpps

## Software Scaling

### Switch Engine

	5320-48P-8XE 5320-48T-8XE 5320-24T-24S-4XE-XT	5320-24P-8XE 5320-24T-8XE 5320-16P-4XE (AC & DC)	5320-24T-4X-XT
MAC Table	32,000	32,000	32,000
IPv4 ARP Table	16,000	16,000	4,000
IPv6 Neighbor Table	6,000	6,000	2,000
VLANs	4,094	4,094	4,094
IPv4 Route Table	12,000	8,000	1,000
IPv6 Route Table	6,000	4,000	500
IP Route Interfaces	1,533	509	509
Multicast (S,G,V)	6,000	6,000	1,500
VRF	1024	16 local-only	16 local-only
ACL, Ingress	8K	8K	2K
ACL, Egress	1K	512	512
Policy Profiles	63	63	63
Policy Profile Rules ACL/Traditional	4,024/1,976	4,024/1,976	952/440

## Fabric Engine

	5320-48P-8XE 5320-48T-8XE	5320-24P-8XE 5320-24T-8XE 5320-16P-4XE (AC & DC)	5320-16P-2MXT-2X
MAC Table (without Fabric enabled)	32,000	32,000	32,000
MAC Table (with Fabric enabled)	16,000	16,000	16,000
IPv4 ARP Table	15,000	8,000	4,000
IPv6 Neighbor Table	6,000	6,000	4,000
VLANs	4,059	4,059	4,059
IPv4 Route Table	12,000	8,000	1,000
IPv6 Route Table	6,000	4,000	500
IP Route Interfaces	248	248	248
Multicast (S,G,V)	4,000	2,000	4,000
VRF	24	1	8
ACL, Ingress	1,024	1,024	512
ACL, Egress	400	190	190
Max Fabric nodes	500	500	300
L2VSN	500	250	128
L3VSN	64	1	8

## Weights and Dimensions

Switch Model	Weight	Physical Dimensions
5320-16P-2MXT-2X	3.3 kg (7.3 lb.)	Height: 43.2 mm (1.7 in.) Width: 269.2 mm (10.6 in.) Depth: 236.2 mm (9.3 in.)
5320-16P-4XE	3.0 kg (6.6 lb.)	Height: 43.2 mm (1.7 in.) Width: 309.9 mm (12.2 in.) Depth: 299.7 mm (11.8 in.)
5320-16P-4XE-DC	3.0 kg (6.6 lb.)	
5320-24T-8XE	3.7 kg (8.2 lb.)	Height: 43.2 mm (1.7 in.) Width: 439.4 mm (17.3 in.) Depth: 279.4 mm (11.0 in.)
5320-24P-8XE	4.0 kg (8.8 lb.)	
5320-48T-8XE	4.2 kg (9.3 lb.)	Height: 43.2 mm (1.7 in.) Width: 439.4 mm (17.3 in.) Depth: 279.4 mm (11.0 in.)
5320-48P-8XE	5.0 kg (11.0 lb.)	Height: 43.2 mm (1.7 in.) Width: 439.4 mm (17.3 in.) Depth: 330.20 mm (13.0 in.)
5320-24T-4X-XT	3.2 kg (7.1 lb.)	Height: 43.5 mm (1.7 in.) Width: 441.0 mm (17.3 in.) Depth: 253.8 mm (10.0 in.)
5320-24T-24S-4XE-XT	4.0 kg (8.8 lb.)	Height: 43.5 mm (1.7 in.) Width: 441.0 mm (17.3 in.) Depth: 253.8 mm (10.0 in.)

## Minimum/Maximum Power Consumption and Heat Dissipation

Switch Model	Minimum Power Consumption (W)	Minimum Heat Dissipation (BTU/hr)	Maximum Power Consumption (W)*	Maximum Heat Dissipation (BTU/hr)**
5320-16P-4XE	17	57	246	208
5320-16P-4XE-DC	20	67	260	256
5320-16P-2MXT-2X	12.5	43	218	75
5320-24T-8XE	18	60	50	171
5320-24P-8XE	21	70	480	375
5320-48T-8XE	25	85	64	217
5320-48P-8XE	30	104	924	629
5320-24T-4X-XT	14	35	49	119
5320-24T-24S-4XE-XT	25	96	87	328

\* Includes maximum PoE load (W) through the switch

\*\* Does not include PoE load heat dissipated through external electronic load

## Max PoE Power Budget

Switch Model	PoE Budget
5320-16P-4XE	185W
5320-16P-4XE-DC	185W
5320-16P-2MXT-2X	180W
5320-24P-8XE	370W
5320-48P-8XE	740W

## Acoustic Noise

Switch Model	Bystander Sound Pressure (dB(A))	Declared Sound Power (Bels)
5320-16P-2MXT-2X	N/A (Fanless Model)	
5320-16P-4XE	All ports link up with full traffic, 8 PoE ports	
	Fan off 0°C to 35°C (32°F to 95°F) 19.8 (35°C to 40°C)	Fan off 0°C to 35°C (32°F to 95°F) 2.94 (35°C to 40°C)
5320-16P-4XE-DC	All ports link up with full traffic, 8 PoE ports	
	Fan off 0°C to 35°C (32°F to 95°F) 19.0 (35°C to 40°C)	Fan off 0°C to 35°C (32°F to 95°F) 2.91 (35°C to 40°C)
5320-24T-8XE	All ports link up with full traffic, 0°C to 35°C (32°F to 95°F)	
	19.5	2.86
5320-24P-8XE	All ports link up with full traffic, 12 PoE ports, 0°C to 35°C (32°F to 95°F)	
	20.3	2.86
5320-48T-8XE	All ports link up with full traffic	
	20.8	2.90
5320-48P-8XE	All ports link up with full traffic, 50% PoE budget load, 0°C to 35°C (32°F to 95°F)	
	20.9	2.87

Redundant Power Supply (RPS) Model	Bystander Sound Pressure (dB(A))	Declared Sound Power (Bels)
RPS-150W-XT	65	7.59

# Product Specifications

## Environmental

### Environmental Specifications

EN/ETSI 300 019-2-1 v2.1.2 – Class 1.2 Storage  
EN/ETSI 300 019-2-2 v2.1.2 – Class 2.3 Transportation EN/ETSI  
300 019-2-3 v2.1.2 – Class 3.1e Operational  
EN/ETSI 300 753 (1997-10) – Acoustic Noise  
ASTM D3580 Random Vibration Unpackaged 1.5 G

### Environmental Compliance

EU RoHS – 2011/65/EU  
EU WEEE – 2012/19/EU  
EU REACH – Regulation (EC) No 1907/2006 Reporting  
China RoHS – SJ/T 11363-2006  
Taiwan RoHS – CNS 15663(2013.7)

### Environmental Operating Conditions

Temp: 0°C to 50°C (32°F to 122°F)  
Temp: 0°C to 60°C (32°F to 140°F) for extended temperature models  
Temp: 0°C to 45°C (32°F to 113°F) for 5320-16P-2MXT-2X  
Humidity: 5% to 95% relative humidity, non-condensing  
Altitude: 0 to 3,000 meters (9,850 feet)  
Shock (half sine) 300 m/s<sup>2</sup> (30 G), 11 ms, 3 axes, 6 shocks/axis  
Random vibration: 3 to 500 Hz at 1.5 G rms  
Accelerations: 3 Hz @ +10dB/Octave PSD, 10 Hz @.006 PSD, 500 Hz @.006 PSD

### Packaging and Storage Specifications

Temp: -40°C to 70°C (-40°F to 158°F)  
Humidity: 5% to 95% relative humidity, non-condensing  
Packaged Shock (half sine): 3 axes, 100 shocks each axis (+/-), 180 m/s<sup>2</sup> (18 G)  
Packaged Vibration: 5 Hz to 20 Hz @ .01 g<sup>2</sup>/Hz (PSD), 20 to 500 Hz @-3 dB/Octave (PSD)  
Packaged Random Vibration: 5 Hz to 62 Hz, 5 mm/s velocity, 62 Hz to 500 Hz, 2.0 m/s<sup>2</sup>, 5 sweeps of each axis (15 total), Sweep Rate = 1 Octave/min  
Packaged Drop: Height at 42 inches for product <10 kg, 13 drops including 6 surfaces, 3 edges and 4 corners

## IEEE 802.3 Media Access Standards

IEEE 802.3ab 1000BASE-T  
IEEE 802.3at PoE  
IEEE 802.3ae 10GBASE-X  
IEEE 802.3az Energy Efficient Ethernet

## Regulatory and Safety

### North American ITE

UL 60950-1  
UL/CuL 62368-1 Listed  
CSA 22.2 No. 60950-1 2nd edition 2014 (Canada)  
Complies with FCC 21CFR 1040.10 (U.S. Laser Safety)  
CDRH Letter of Approval (US FDA Approval)

### European ITE

EN 60950-1 2nd Edition  
EN 62368-1  
EN 60825-1 Class 1 (Lasers Safety)  
2014/35/EU Low Voltage Directive

### International ITE

CB Report and Certificate per IEC 60950-1  
CB Report and Certificate IEC 62368-1  
AS/NZS 60950-1 (Australia/New Zealand)

## EMI/EMC Standards

### North American EMC for ITE

FCC CFR 47 Part 15 Class A (USA)  
ICES-003 Class A (Canada)

### European EMC Standards

EN 55032 Class A  
EN 55024  
EN 61000-3-2,2014 (Harmonics)  
EN 61000-3-3 2013 (Flicker)  
EN 300 386 (EMC Telecommunications)  
2014/30/EU EMC Directive

### International EMC Certifications

CISPR 32, Class A (International Emissions)  
AS/NZS CISPR32  
CISPR 24 Class A (International Immunity)  
IEC 61000-4-2/EN 61000-4-2 Electrostatic Discharge, 8kV Contact, 15 kV Air, Criteria B  
IEC 61000-4-3/EN 61000-4-3 Radiated Immunity 10V/m, Criteria A  
IEC 61000-4-4/EN 61000-4-4 Transient Burst, 2 kV, Criteria B  
IEC 61000-4-5/EN 61000-4-5 Surge, 2 kV L-L, 2 kV L-G, Level 3, Criteria B  
IEC 61000-4-6 Conducted Immunity, 0.15-80 MHz, 10V/rms, 80%AM (1kHz), Criteria A  
IEC/EN 61000-4-11 Power Dips and Interruptions, >30%, 25 periods, Criteria C

### Country Specific

VCCI Class A (Japan Emissions)  
ACMA RCM (Australia Emissions)  
CCC Mark (China)  
KCC Mark, EMC Approval (Korea)  
BSMI (Taiwan)  
Anatel (Brazil)  
NoM (Mexico)  
EAC (Russia, Belarus, Kazakhstan)  
NRCS (South Africa)

## Ordering Notes

Customers ordering a 5320 Series switch receive the hardware switch along with a Base software license, integrated power supply, fan module and rack-mount kit. Optical transceivers, console cables, and power cords must be separately ordered. Premier and MACsec licenses must also be ordered separately. \*

\*Please note that the 5320-16P-2MXT-2X does not include a Rack Mount Kit. The mounting kit must be ordered separately for this model.

## Base Software and Optional Premier License

The Base software included with each 5320 unit supports most available software features. Certain features, however, require a Premier License to operate. A Premier license is available in two forms – a perpetual license or included as part of an Extreme Platform ONE Standard subscription license.

### For Switch Engine, a Premier License is required for:

- 5 or more OSPF interfaces
- PIM DM/PIM SSM
- Anycast RP (Rendezvous Point)
- Multicast Source Discovery Protocol (MSDP)
- IS-IS/BGP4/MBGP
- GRE Tunneling
- Ethernet VPN (EVPN)

### For Fabric Engine, a Premier License is required for:

- 5 or more OSPF active interfaces
- 3 or more BGP Peers
- Layer 3 Virtual Service Networks (L3 VSNs)\*

\* 5320 16- and 24-port models do not require a Premier License for the single L3 VSN supported in these models.

## Ordering Information

### 5320 Systems

Part Number	Product Name	Description
5320-16P-2MXT-2X	5320 16-port 30W PoE Switch w/AC Power	5320 Universal Switch with 16 x 10/100/1000 BASE-T Full/Half-Duplex ports, 802.3at 30W PoE ports, 2x1G/2.5G/5G/10G Base-T uplink ports, 2 x 1/10Gb SFP+ uplink ports, 1 internal fixed AC PSU, Fanless, Rack Mount or Wall Mount kit ordered separately.
5320-16P-2MXT-2X-TAA	5320 16-port 30W PoE Switch w/AC Power	5320 Universal Switch with 16 x 10/100/1000 BASE-T Full/Half-Duplex ports, 802.3at 30W PoE ports, 2x1G/2.5G/5G/10G Base-T uplink ports, 2 x 1/10Gb SFP+ uplink ports, 1 internal fixed AC PSU, Fanless, Rack Mount or Wall Mount kit ordered separately. TAA Compliant
5320-16P-4XE	5320 16-port 30W PoE Switch w/AC Power	5320 Universal Switch with 16 x 10/100/1000BASE-T Full / Half-Duplex ports, 802.3at 30W PoE ports, 4 x 1/10Gb SFP+ uplink ports (includes 2 x Stacking ports @10Gb), 1 internal fixed AC PSU, fixed fan module (fan-off mode up to 35°C/95°F), 2-post rack-mount kit, Base software license.
5320-16P-4XE-DC	5320 16-port 30W PoE Switch w/DC Power	5320 Universal Switch with 16 x 10/100/1000BASE-T Full / Half-Duplex ports, 802.3at 30W PoE ports, 4 x 1/10Gb SFP+ uplink ports (includes 2 x Stacking ports @10Gb), 1 internal fixed DC PSU, fixed fan module (fan-off mode up to 35°C/95°F), 2-post rack-mount kit, Base software license.
5320-24T-8XE	5320 24-port Switch	5320 Universal Switch with 24 x 10/100/1000BASE-T Full / Half-Duplex ports, 8 x 1/10Gb SFP+ ports (includes 2 x Stacking ports @10Gb), 1 internal fixed AC PSU, fixed fan modules, 2-post rack-mount kit, Base software license.
5320-24P-8XE	5320 24-port 30W PoE Switch	5320 Universal Switch with 24 x 10/100/1000BASE-T Full / Half-Duplex ports, 802.3at 30W PoE ports, 8 x 1/10Gb SFP+ ports (includes 2 x Stacking ports @10Gb), 1 internal fixed AC PSU, fixed fan modules, 2-post rack-mount kit, Base software license.
5320-48T-8XE	5320 48-port Switch	5320 Universal Switch with 48 x 10/100/1000BASE-T Full / Half-Duplex ports, 8 x 1/10Gb SFP+ ports (includes 2 x Stacking ports @10Gb), 1 internal fixed AC PSU, fixed fan modules, 2-post rack-mount kit, Base software license.
5320-48P-8XE	5320 48-port 30W PoE Switch	5320 Universal Switch with 48 x 10/100/1000BASE-T Full / Half-Duplex ports, 802.3at 30W PoE ports, 8 x 1/10Gb SFP+ ports (includes 2 x Stacking ports @10Gb), 1 internal fixed AC PSU, fixed fan modules, 2-post rack-mount kit, Base software license.

## Extended Temperature Switches

Part Number	Product Name	Description
5320-24T-4X-XT	5320 24-port Extended Temperature Switch	5320 24-port Extended Temperature (0°C–60°C) switch with 24 x 10/100/1000BaseT ports, 4 x 1/10Gb SFP+ ports. Includes fans, 1 fixed AC PSU with option to add external redundant PSU. Note: This model does not support MACsec.
5320-24T-24S-4XE-XT	5320 48-port Extended Temperature Switch	5320 24-port Extended Temperature (0°C–60°C) switch with 24 x 10/100/1000BaseT ports, 24 x 100Mb/1Gb SFP ports, 4 x 1/10Gb SFP+ ports, MACsec capable. Includes fans, 1 fixed AC PSU with option to add external redundant PSU.

## Accessories

Part Number	Product Name	Description
XN-2P-RMKIT-006	2 Post Rack Mount Kit for 5320 24/48 port switches	Spare two post rack mount kit for 5320 Series 24 and 48 port switches. Includes brackets for front or mid-mount of chassis in a two-post rack.
XN-2P-RMKIT-007	2 Post Rack Mount Kit for 5320 16 port switches (2RU)	Spare two post rack mount kit for 5320 Series 16 port switches. Includes brackets for front or mid-mount of chassis in a two-post rack (2RU).
XN-2P-RMKIT-011	2 Post Rack Mount Kit for 5320 16 port switches (1RU)	Spare two post rack mount kit for 5320 Series 16 port switches. Includes brackets for front or mid-mount of chassis in a two-post rack (1RU).
XN-2P-RMKIT-008	2 Post Rack Mount Kit for 5320- XT switches	Spare two post rack mount kit for 5320 Series extended temperature switches. Includes brackets for front or mid-mount of chassis in a two-post rack.
RPS-150W-XT	150W external redundant power supply for 5320 XT switches	150W external redundant power supply for 5320 XT switches, extended temperature. Includes RPS Cable. Single or Dual rack mount kit to be ordered separately.
XN-2P-RMKIT-003	Single RPS Mount	Rack mount kit to mount single RPS-150W-XT external redundant power supply
16572	Dual RPS Mount	Rack mount kit to mount two RPS-150W-XT external redundant power supplies, side by side
RPS-CBL-1M-2x7	Spare RPS Cable	Spare RPS Cable for use with RPS-150W-XT
XN-WMKIT-002	Wall Mount for 5320-16P-2MXT-2X	Wall mount kit for 5320-16P-2MXT-2X
XN-2P-RMKIT-012	2P Rack Mount for 5320-16P-2MXT-2X	Two post rack mount kit for 5320-16P-2MXT-2X
XN-DIN-MT-002	DIN Rail Mount for 5320-16P-2MXT-2X	DIN Rail mount kit for 5320-16P-2MXT-2X
XN-UTMKIT-001	Under table mount kit for 5320-16P-2MXT-2X	Under Table mount kit for 5320-16P-2MXT-2X
XN-RJ45-DB9-CONSOLE-CBL	RJ45 to DB9 Console cable	RJ45 to DB9 console cable 6ft
XN-RJ45-USBA-CONSOLE-CBL	RJ45 to USBA Console cable	RJ45 to USB 2.0 Type A male console cable 6ft
XN-RJ45-USBC-CONSOLE-CBL	RJ45 to USBC Console cable	RJ45 to USB-C console cable 6ft

## Software Licenses

Part Number	Product Name	Description
5000-PRMR-LIC-P	Premier License for 5000 Series	Perpetual Premier License for 5000 Series switches
5000-MACSEC-LIC-P	MACsec License for 5000 Series	Perpetual MACsec License for the 5000 Series switches

## Management Platform Software Subscriptions

Extreme Networks offers a simple, inclusive subscription program with Extreme Platform ONE. For additional details on subscriptions and product tiers, please refer to the [Extreme Platform ONE data sheet](#).

## Warranty

All 5320 Series models are covered under Extreme's Universal LLW policy. For warranty details, please visit our [Policies and Warranties page](#).

## Power Cords

Power cords are not included with the 5320 in support of our green initiatives but can be ordered separately.

## Console Cables

Console cables are not included with the 5320 in support of our green initiatives but can be ordered separately.

## Optics/Transceivers

For a list of the optics and transceivers supported on the 5320 Series hardware, refer to our [Extreme Optics Compatibility Tool](#).

## Maintenance Services

Extreme's maintenance and support services are provided by in-house engineering experts. We have a rate of over 90% first-person resolution, ensuring efficient operation of your business-essential network.

With 24x7x365 phone support, advanced parts replacement, and on-site support, we augment your staff with expert resources to help you mitigate critical network issues fast. Visit [Extreme Maintenance Services](#) for more information.

## Certifications

For information on Industry, Security, and Government certifications for 5320 Series models, contact your Sales Representative.



## **GENERAL TERMS AND CONDITIONS:**

**1. CONTRACTUAL AGREEMENT:** Issuance of an Award Document signed by the Purchasing Division Director, or his designee, and approved as to form by the Attorney General's office constitutes acceptance by the State of this Contract made by and between the State of West Virginia and the Vendor. Vendor's signature on its bid, or on the Contract if the Contract is not the result of a bid solicitation, signifies Vendor's agreement to be bound by and accept the terms and conditions contained in this Contract.

**2. DEFINITIONS:** As used in this Solicitation/Contract, the following terms shall have the meanings attributed to them below. Additional definitions may be found in the specifications included with this Solicitation/Contract.

**2.1. "Agency" or "Agencies"** means the agency, board, commission, or other entity of the State of West Virginia that is identified on the first page of the Solicitation or any other public entity seeking to procure goods or services under this Contract.

**2.2. "Bid" or "Proposal"** means the vendors submitted response to this solicitation.

**2.3. "Contract"** means the binding agreement that is entered into between the State and the Vendor to provide the goods or services requested in the Solicitation.

**2.4. "Director"** means the Director of the West Virginia Department of Administration, Purchasing Division.

**2.5. "Purchasing Division"** means the West Virginia Department of Administration, Purchasing Division.

**2.6. "Award Document"** means the document signed by the Agency and the Purchasing Division, and approved as to form by the Attorney General, that identifies the Vendor as the contract holder.

**2.7. "Solicitation"** means the official notice of an opportunity to supply the State with goods or services that is published by the Purchasing Division.

**2.8. "State"** means the State of West Virginia and/or any of its agencies, commissions, boards, etc. as context requires.

**2.9. "Vendor" or "Vendors"** means any entity submitting a bid in response to the Solicitation, the entity that has been selected as the lowest responsible bidder, or the entity that has been awarded the Contract as context requires.

**3. CONTRACT TERM; RENEWAL; EXTENSION:** The term of this Contract shall be determined in accordance with the category that has been identified as applicable to this Contract below:

**Term Contract**

**Initial Contract Term:** The Initial Contract Term will be for a period of 1 year. The Initial Contract Term becomes effective on the effective start date listed on the first page of this Contract, identified as the State of West Virginia contract cover page containing the signatures of the Purchasing Division, Attorney General, and Encumbrance clerk (or another page identified as \_\_\_\_\_), and the Initial Contract Term ends on the effective end date also shown on the first page of this Contract.

**Renewal Term:** This Contract may be renewed upon the mutual written consent of the Agency, and the Vendor, with approval of the Purchasing Division and the Attorney General's office (Attorney General approval is as to form only). Any request for renewal should be delivered to the Agency and then submitted to the Purchasing Division thirty (30) days prior to the expiration date of the initial contract term or appropriate renewal term. A Contract renewal shall be in accordance with the terms and conditions of the original contract. Unless otherwise specified below, renewal of this Contract is limited to three successive one (1) year periods or multiple renewal periods of less than one year, provided that the multiple renewal periods do not exceed the total number of months available in all renewal years combined. Automatic renewal of this Contract is prohibited. Renewals must be approved by the Vendor, Agency, Purchasing Division and Attorney General's office (Attorney General approval is as to form only)

**Alternate Renewal Term** – This contract may be renewed for \_\_\_\_\_ successive \_\_\_\_\_ year periods or shorter periods provided that they do not exceed the total number of months contained in all available renewals. Automatic renewal of this Contract is prohibited. Renewals must be approved by the Vendor, Agency, Purchasing Division and Attorney General's office (Attorney General approval is as to form only)

**Delivery Order Limitations:** In the event that this contract permits delivery orders, a delivery order may only be issued during the time this Contract is in effect. Any delivery order issued within one year of the expiration of this Contract shall be effective for one year from the date the delivery order is issued. No delivery order may be extended beyond one year after this Contract has expired.

**Fixed Period Contract:** This Contract becomes effective upon Vendor's receipt of the notice to proceed and must be completed within \_\_\_\_\_ days.

**Fixed Period Contract with Renewals:** This Contract becomes effective upon Vendor's receipt of the notice to proceed and part of the Contract more fully described in the attached specifications must be completed within \_\_\_\_\_ days. Upon completion of the work covered by the preceding sentence, the vendor agrees that:

the contract will continue for \_\_\_\_\_ years;

the contract may be renewed for \_\_\_\_\_ successive \_\_\_\_\_ year periods or shorter periods provided that they do not exceed the total number of months contained in all available renewals. Automatic renewal of this Contract is prohibited. Renewals must be approved by the Vendor, Agency, Purchasing Division and Attorney General's Office (Attorney General approval is as to form only).

**One-Time Purchase:** The term of this Contract shall run from the issuance of the Award Document until all of the goods contracted for have been delivered, but in no event will this Contract extend for more than one fiscal year.

**Construction/Project Oversight:** This Contract becomes effective on the effective start date listed on the first page of this Contract, identified as the State of West Virginia contract cover page containing the signatures of the Purchasing Division, Attorney General, and Encumbrance clerk (or another page identified as \_\_\_\_\_), and continues until the project for which the vendor is providing oversight is complete.

**Other:** Contract Term specified in \_\_\_\_\_

**4. AUTHORITY TO PROCEED:** Vendor is authorized to begin performance of this contract on the date of encumbrance listed on the front page of the Award Document unless either the box for "Fixed Period Contract" or "Fixed Period Contract with Renewals" has been checked in Section 3 above. If either "Fixed Period Contract" or "Fixed Period Contract with Renewals" has been checked, Vendor must not begin work until it receives a separate notice to proceed from the State. The notice to proceed will then be incorporated into the Contract via change order to memorialize the official date that work commenced.

**5. QUANTITIES:** The quantities required under this Contract shall be determined in accordance with the category that has been identified as applicable to this Contract below.

**Open End Contract:** Quantities listed in this Solicitation/Award Document are approximations only, based on estimates supplied by the Agency. It is understood and agreed that the Contract shall cover the quantities actually ordered for delivery during the term of the Contract, whether more or less than the quantities shown.

**Service:** The scope of the service to be provided will be more clearly defined in the specifications included herewith.

**Combined Service and Goods:** The scope of the service and deliverable goods to be provided will be more clearly defined in the specifications included herewith.

**One-Time Purchase:** This Contract is for the purchase of a set quantity of goods that are identified in the specifications included herewith. Once those items have been delivered, no additional goods may be procured under this Contract without an appropriate change order approved by the Vendor, Agency, Purchasing Division, and Attorney General's office.

**Construction:** This Contract is for construction activity more fully defined in the specifications.

**6. EMERGENCY PURCHASES:** The Purchasing Division Director may authorize the Agency to purchase goods or services in the open market that Vendor would otherwise provide under this Contract if those goods or services are for immediate or expedited delivery in an emergency. Emergencies shall include, but are not limited to, delays in transportation or an unanticipated increase in the volume of work. An emergency purchase in the open market, approved by the Purchasing Division Director, shall not constitute of breach of this Contract and shall not entitle the Vendor to any form of compensation or damages. This provision does not excuse the State from fulfilling its obligations under a One-Time Purchase contract.

**7. REQUIRED DOCUMENTS:** All of the items checked in this section must be provided to the Purchasing Division by the Vendor as specified:

**LICENSE(S) / CERTIFICATIONS / PERMITS:** In addition to anything required under the Section of the General Terms and Conditions entitled Licensing, the apparent successful Vendor shall furnish proof of the following licenses, certifications, and/or permits upon request and in a form acceptable to the State. The request may be prior to or after contract award at the State's sole discretion.

The apparent successful Vendor shall also furnish proof of any additional licenses or certifications contained in the specifications regardless of whether or not that requirement is listed above.

**8. INSURANCE:** The apparent successful Vendor shall furnish proof of the insurance identified by a checkmark below prior to Contract award. The insurance coverages identified below must be maintained throughout the life of this contract. Thirty (30) days prior to the expiration of the insurance policies, Vendor shall provide the Agency with proof that the insurance mandated herein has been continued. Vendor must also provide Agency with immediate notice of any changes in its insurance policies, including but not limited to, policy cancelation, policy reduction, or change in insurers. The apparent successful Vendor shall also furnish proof of any additional insurance requirements contained in the specifications prior to Contract award regardless of whether that insurance requirement is listed in this section.

Vendor must maintain:

**Commercial General Liability Insurance** in at least an amount of: \$1,000,000.00 per occurrence.

**Automobile Liability Insurance** in at least an amount of: \_\_\_\_\_ per occurrence.

**Professional/Malpractice/Errors and Omission Insurance** in at least an amount of: \_\_\_\_\_ per occurrence. Notwithstanding the forgoing, Vendor's are not required to list the State as an additional insured for this type of policy.

**Commercial Crime and Third Party Fidelity Insurance** in an amount of: \_\_\_\_\_ per occurrence.

**Cyber Liability Insurance** in an amount of: \_\_\_\_\_ per occurrence.

**Builders Risk Insurance** in an amount equal to 100% of the amount of the Contract.

**Pollution Insurance** in an amount of: \_\_\_\_\_ per occurrence.

**Aircraft Liability** in an amount of: \_\_\_\_\_ per occurrence.

**9. WORKERS' COMPENSATION INSURANCE:** Vendor shall comply with laws relating to workers compensation, shall maintain workers' compensation insurance when required, and shall furnish proof of workers' compensation insurance upon request.

**10. VENUE:** All legal actions for damages brought by Vendor against the State shall be brought in the West Virginia Claims Commission. Other causes of action must be brought in the West Virginia court authorized by statute to exercise jurisdiction over it.

**11. LIQUIDATED DAMAGES:** This clause shall in no way be considered exclusive and shall not limit the State or Agency's right to pursue any other available remedy. Vendor shall pay liquidated damages in the amount specified below or as described in the specifications:

\_\_\_\_\_ for \_\_\_\_\_.

Liquidated Damages Contained in the Specifications.

Liquidated Damages Are Not Included in this Contract.

**12. ACCEPTANCE:** Vendor's signature on its bid, or on the certification and signature page, constitutes an offer to the State that cannot be unilaterally withdrawn, signifies that the product or service proposed by vendor meets the mandatory requirements contained in the Solicitation for that product or service, unless otherwise indicated, and signifies acceptance of the terms and conditions contained in the Solicitation unless otherwise indicated.

**13. PRICING:** The pricing set forth herein is firm for the life of the Contract, unless specified elsewhere within this Solicitation/Contract by the State. A Vendor's inclusion of price adjustment provisions in its bid, without an express authorization from the State in the Solicitation to do so, may result in bid disqualification. Notwithstanding the foregoing, Vendor must extend any publicly advertised sale price to the State and invoice at the lower of the contract price or the publicly advertised sale price.

**14. PAYMENT IN ARREARS:** Payments for goods/services will be made in arrears only upon receipt of a proper invoice, detailing the goods/services provided or receipt of the goods/services, whichever is later. Notwithstanding the foregoing, payments for software maintenance, licenses, or subscriptions may be paid annually in advance.

**15. PAYMENT METHODS:** Vendor must accept payment by electronic funds transfer and P-Card. (The State of West Virginia's Purchasing Card program, administered under contract by a banking institution, processes payment for goods and services through state designated credit cards.)

**16. TAXES:** The Vendor shall pay any applicable sales, use, personal property or any other taxes arising out of this Contract and the transactions contemplated thereby. The State of West Virginia is exempt from federal and state taxes and will not pay or reimburse such taxes.

**17. ADDITIONAL FEES:** Vendor is not permitted to charge additional fees or assess additional charges that were not either expressly provided for in the solicitation published by the State of West Virginia, included in the Contract, or included in the unit price or lump sum bid amount that Vendor is required by the solicitation to provide. Including such fees or charges as notes to the solicitation may result in rejection of vendor's bid. Requesting such fees or charges be paid after the contract has been awarded may result in cancellation of the contract.

**18. FUNDING:** This Contract shall continue for the term stated herein, contingent upon funds being appropriated by the Legislature or otherwise being made available. In the event funds are not appropriated or otherwise made available, this Contract becomes void and of no effect beginning on July 1 of the fiscal year for which funding has not been appropriated or otherwise made available. If that occurs, the State may notify the Vendor that an alternative source of funding has been obtained and thereby avoid the automatic termination. Non-appropriation or non-funding shall not be considered an event of default.

**19. CANCELLATION:** The Purchasing Division Director reserves the right to cancel this Contract immediately upon written notice to the vendor if the materials or workmanship supplied do not conform to the specifications contained in the Contract. The Purchasing Division Director may also cancel any purchase or Contract upon 30 days written notice to the Vendor in accordance with West Virginia Code of State Rules § 148-1-5.2.b.

**20. TIME:** Time is of the essence regarding all matters of time and performance in this Contract.

**21. APPLICABLE LAW:** This Contract is governed by and interpreted under West Virginia law without giving effect to its choice of law principles. Any information provided in specification manuals, or any other source, verbal or written, which contradicts or violates the West Virginia Constitution, West Virginia Code, or West Virginia Code of State Rules is void and of no effect.

**22. COMPLIANCE WITH LAWS:** Vendor shall comply with all applicable federal, state, and local laws, regulations and ordinances. By submitting a bid, Vendor acknowledges that it has reviewed, understands, and will comply with all applicable laws, regulations, and ordinances.

**SUBCONTRACTOR COMPLIANCE:** Vendor shall notify all subcontractors providing commodities or services related to this Contract that as subcontractors, they too are required to comply with all applicable laws, regulations, and ordinances. Notification under this provision must occur prior to the performance of any work under the contract by the subcontractor.

**23. ARBITRATION:** Any references made to arbitration contained in this Contract, Vendor's bid, or in any American Institute of Architects documents pertaining to this Contract are hereby deleted, void, and of no effect.

**24. MODIFICATIONS:** This writing is the parties' final expression of intent. Notwithstanding anything contained in this Contract to the contrary no modification of this Contract shall be binding without mutual written consent of the Agency, and the Vendor, with approval of the Purchasing Division and the Attorney General's office (Attorney General approval is as to form only). Any change to existing contracts that adds work or changes contract cost, and were not included in the original contract, must be approved by the Purchasing Division and the Attorney General's Office (as to form) prior to the implementation of the change or commencement of work affected by the change.

**25. WAIVER:** The failure of either party to insist upon a strict performance of any of the terms or provision of this Contract, or to exercise any option, right, or remedy herein contained, shall not be construed as a waiver or a relinquishment for the future of such term, provision, option, right, or remedy, but the same shall continue in full force and effect. Any waiver must be expressly stated in writing and signed by the waiving party.

**26. SUBSEQUENT FORMS:** The terms and conditions contained in this Contract shall supersede any and all subsequent terms and conditions which may appear on any form documents submitted by Vendor to the Agency or Purchasing Division such as price lists, order forms, invoices, sales agreements, or maintenance agreements, and includes internet websites or other electronic documents. Acceptance or use of Vendor's forms does not constitute acceptance of the terms and conditions contained thereon.

**27. ASSIGNMENT:** Neither this Contract nor any monies due, or to become due hereunder, may be assigned by the Vendor without the express written consent of the Agency, the Purchasing Division, the Attorney General's office (as to form only), and any other government agency or office that may be required to approve such assignments.

**28. WARRANTY:** The Vendor expressly warrants that the goods and/or services covered by this Contract will: (a) conform to the specifications, drawings, samples, or other description furnished or specified by the Agency; (b) be merchantable and fit for the purpose intended; and (c) be free from defect in material and workmanship.

**29. STATE EMPLOYEES:** State employees are not permitted to utilize this Contract for personal use and the Vendor is prohibited from permitting or facilitating the same.

**30. PRIVACY, SECURITY, AND CONFIDENTIALITY:** The Vendor agrees that it will not disclose to anyone, directly or indirectly, any such personally identifiable information or other confidential information gained from the Agency, unless the individual who is the subject of the information consents to the disclosure in writing or the disclosure is made pursuant to the Agency's policies, procedures, and rules. Vendor further agrees to comply with the Confidentiality Policies and Information Security Accountability Requirements, set forth in [www.state.wv.us/admin/purchase/privacy](http://www.state.wv.us/admin/purchase/privacy).

**31. YOUR SUBMISSION IS A PUBLIC DOCUMENT:** Vendor's entire response to the Solicitation and the resulting Contract are public documents. As public documents, they will be disclosed to the public following the bid/proposal opening or award of the contract, as required by the competitive bidding laws of West Virginia Code §§ 5A-3-1 et seq., 5-22-1 et seq., and 5G-1-1 et seq. and the Freedom of Information Act West Virginia Code §§ 29B-1-1 et seq.

**DO NOT SUBMIT MATERIAL YOU CONSIDER TO BE CONFIDENTIAL, A TRADE SECRET, OR OTHERWISE NOT SUBJECT TO PUBLIC DISCLOSURE.**

Submission of any bid, proposal, or other document to the Purchasing Division constitutes your explicit consent to the subsequent public disclosure of the bid, proposal, or document. The Purchasing Division will disclose any document labeled "confidential," "proprietary," "trade secret," "private," or labeled with any other claim against public disclosure of the documents, to include any "trade secrets" as defined by West Virginia Code § 47-22-1 et seq. All submissions are subject to public disclosure without notice.

**32. LICENSING:** In accordance with West Virginia Code of State Rules § 148-1-6.1.e, Vendor must be licensed and in good standing in accordance with any and all state and local laws and requirements by any state or local agency of West Virginia, including, but not limited to, the West Virginia Secretary of State's Office, the West Virginia Tax Department, West Virginia Insurance Commission, or any other state agency or political subdivision. Obligations related to political subdivisions may include, but are not limited to, business licensing, business and occupation taxes, inspection compliance, permitting, etc. Upon request, the Vendor must provide all necessary releases to obtain information to enable the Purchasing Division Director or the Agency to verify that the Vendor is licensed and in good standing with the above entities.

**SUBCONTRACTOR COMPLIANCE:** Vendor shall notify all subcontractors providing commodities or services related to this Contract that as subcontractors, they too are required to be licensed, in good standing, and up-to-date on all state and local obligations as described in this section. Obligations related to political subdivisions may include, but are not limited to, business licensing, business and occupation taxes, inspection compliance, permitting, etc. Notification under this provision must occur prior to the performance of any work under the contract by the subcontractor.

**33. ANTITRUST:** In submitting a bid to, signing a contract with, or accepting a Award Document from any agency of the State of West Virginia, the Vendor agrees to convey, sell, assign, or transfer to the State of West Virginia all rights, title, and interest in and to all causes of action it may now or hereafter acquire under the antitrust laws of the United States and the State of West Virginia for price fixing and/or unreasonable restraints of trade relating to the particular commodities or services purchased or acquired by the State of West Virginia. Such assignment shall be made and become effective at the time the purchasing agency tenders the initial payment to Vendor.

**34. VENDOR NON-CONFLICT:** Neither Vendor nor its representatives are permitted to have any interest, nor shall they acquire any interest, direct or indirect, which would compromise the performance of its services hereunder. Any such interests shall be promptly presented in detail to the Agency.

**35. VENDOR RELATIONSHIP:** The relationship of the Vendor to the State shall be that of an independent contractor and no principal-agent relationship or employer-employee relationship is contemplated or created by this Contract. The Vendor as an independent contractor is solely liable for the acts and omissions of its employees and agents. Vendor shall be responsible for selecting, supervising, and compensating any and all individuals employed pursuant to the terms of this Solicitation and resulting contract. Neither the Vendor, nor any employees or subcontractors of the Vendor, shall be deemed to be employees of the State for any purpose whatsoever. Vendor shall be exclusively responsible for payment of employees and contractors for all wages and salaries, taxes, withholding payments, penalties, fees, fringe benefits, professional liability insurance premiums, contributions to insurance and pension, or other deferred compensation plans, including but not limited to, Workers' Compensation and Social Security obligations, licensing fees, etc. and the filing of all necessary documents, forms, and returns pertinent to all of the foregoing.

Vendor shall hold harmless the State, and shall provide the State and Agency with a defense against any and all claims including, but not limited to, the foregoing payments, withholdings, contributions, taxes, Social Security taxes, and employer income tax returns.

**36. INDEMNIFICATION:** The Vendor agrees to indemnify, defend, and hold harmless the State and the Agency, their officers, and employees from and against: (1) Any claims or losses for services rendered by any subcontractor, person, or firm performing or supplying services, materials, or supplies in connection with the performance of the Contract; (2) Any claims or losses resulting to any person or entity injured or damaged by the Vendor, its officers, employees, or subcontractors by the publication, translation, reproduction, delivery, performance, use, or disposition of any data used under the Contract in a manner not authorized by the Contract, or by Federal or State statutes or regulations; and (3) Any failure of the Vendor, its officers, employees, or subcontractors to observe State and Federal laws including, but not limited to, labor and wage and hour laws.

**37. NO DEBT CERTIFICATION:** In accordance with West Virginia Code §§ 5A-3-10a and 5-22-1(i), the State is prohibited from awarding a contract to any bidder that owes a debt to the State or a political subdivision of the State. By submitting a bid, or entering into a contract with the State, Vendor is affirming that (1) for construction contracts, the Vendor is not in default on any monetary obligation owed to the state or a political subdivision of the state, and (2) for all other contracts, neither the Vendor nor any related party owe a debt as defined above, and neither the Vendor nor any related party are in employer default as defined in the statute cited above unless the debt or employer default is permitted under the statute.

**38. CONFLICT OF INTEREST:** Vendor, its officers or members or employees, shall not presently have or acquire an interest, direct or indirect, which would conflict with or compromise the performance of its obligations hereunder. Vendor shall periodically inquire of its officers, members and employees to ensure that a conflict of interest does not arise. Any conflict of interest discovered shall be promptly presented in detail to the Agency.

**39. REPORTS:** Vendor shall provide the Agency and/or the Purchasing Division with the following reports identified by a checked box below:

Such reports as the Agency and/or the Purchasing Division may request. Requested reports may include, but are not limited to, quantities purchased, agencies utilizing the contract, total contract expenditures by agency, etc.

Quarterly reports detailing the total quantity of purchases in units and dollars, along with a listing of purchases by agency. Quarterly reports should be delivered to the Purchasing Division via email at [purchasing.division@wv.gov](mailto:purchasing.division@wv.gov).

**40. BACKGROUND CHECK:** In accordance with W. Va. Code § 15-2D-3, the State reserves the right to prohibit a service provider's employees from accessing sensitive or critical information or to be present at the Capitol complex based upon results addressed from a criminal background check. Service providers should contact the West Virginia Division of Protective Services by phone at (304) 558-9911 for more information.

**41. PREFERENCE FOR USE OF DOMESTIC STEEL PRODUCTS:** Except when authorized by the Director of the Purchasing Division pursuant to W. Va. Code § 5A-3-56, no contractor may use or supply steel products for a State Contract Project other than those steel products made in the United States. A contractor who uses steel products in violation of this section may be subject to civil penalties pursuant to W. Va. Code § 5A-3-56. As used in this section:

- a. "State Contract Project" means any erection or construction of, or any addition to, alteration of or other improvement to any building or structure, including, but not limited to, roads or highways, or the installation of any heating or cooling or ventilating plants or other equipment, or the supply of and materials for such projects, pursuant to a contract with the State of West Virginia for which bids were solicited on or after June 6, 2001.
- b. "Steel Products" means products rolled, formed, shaped, drawn, extruded, forged, cast, fabricated or otherwise similarly processed, or processed by a combination of two or more or such operations, from steel made by the open heath, basic oxygen, electric furnace, Bessemer or other steel making process.
- c. The Purchasing Division Director may, in writing, authorize the use of foreign steel products if:
  1. The cost for each contract item used does not exceed one tenth of one percent (.1%) of the total contract cost or two thousand five hundred dollars (\$2,500.00), whichever is greater. For the purposes of this section, the cost is the value of the steel product as delivered to the project; or
  2. The Director of the Purchasing Division determines that specified steel materials are not produced in the United States in sufficient quantity or otherwise are not reasonably available to meet contract requirements.

**42. PREFERENCE FOR USE OF DOMESTIC ALUMINUM, GLASS, AND STEEL:** In Accordance with W. Va. Code § 5-19-1 et seq., and W. Va. CSR § 148-10-1 et seq., for every contract or subcontract, subject to the limitations contained herein, for the construction, reconstruction, alteration, repair, improvement or maintenance of public works or for the purchase of any item of machinery or equipment to be used at sites of public works, only domestic aluminum, glass or steel products shall be supplied unless the spending officer determines, in writing, after the receipt of offers or bids, (1) that the cost of domestic aluminum, glass or steel products is unreasonable or inconsistent with the public interest of the State of West Virginia, (2) that domestic aluminum, glass or steel products are not produced in sufficient quantities to meet the contract requirements, or (3) the available domestic aluminum, glass, or steel do not meet the contract specifications. This provision only applies to public works contracts awarded in an amount more than fifty thousand dollars (\$50,000) or public works contracts that require more than ten thousand pounds of steel products.

The cost of domestic aluminum, glass, or steel products may be unreasonable if the cost is more than twenty percent (20%) of the bid or offered price for foreign made aluminum, glass, or steel products. If the domestic aluminum, glass or steel products to be supplied or produced in a “substantial labor surplus area”, as defined by the United States Department of Labor, the cost of domestic aluminum, glass, or steel products may be unreasonable if the cost is more than thirty percent (30%) of the bid or offered price for foreign made aluminum, glass, or steel products. This preference shall be applied to an item of machinery or equipment, as indicated above, when the item is a single unit of equipment or machinery manufactured primarily of aluminum, glass or steel, is part of a public works contract and has the sole purpose or of being a permanent part of a single public works project. This provision does not apply to equipment or machinery purchased by a spending unit for use by that spending unit and not as part of a single public works project.

All bids and offers including domestic aluminum, glass or steel products that exceed bid or offer prices including foreign aluminum, glass or steel products after application of the preferences provided in this provision may be reduced to a price equal to or lower than the lowest bid or offer price for foreign aluminum, glass or steel products plus the applicable preference. If the reduced bid or offer prices are made in writing and supersede the prior bid or offer prices, all bids or offers, including the reduced bid or offer prices, will be reevaluated in accordance with this rule.

**43. INTERESTED PARTY SUPPLEMENTAL DISCLOSURE:** W. Va. Code § 6D-1-2 requires that for contracts with an actual or estimated value of at least \$1 million, the Vendor must submit to the Agency a disclosure of interested parties prior to beginning work under this Contract. Additionally, the Vendor must submit a supplemental disclosure of interested parties reflecting any new or differing interested parties to the contract, which were not included in the original pre-work interested party disclosure, within 30 days following the completion or termination of the contract. A copy of that form is included with this solicitation or can be obtained from the WV Ethics Commission. This requirement does not apply to publicly traded companies listed on a national or international stock exchange. A more detailed definition of interested parties can be obtained from the form referenced above.

**44. PROHIBITION AGAINST USED OR REFURBISHED:** Unless expressly permitted in the solicitation published by the State, Vendor must provide new, unused commodities, and is prohibited from supplying used or refurbished commodities, in fulfilling its responsibilities under this Contract.

**45. VOID CONTRACT CLAUSES:** This Contract is subject to the provisions of West Virginia Code § 5A-3-62, which automatically voids certain contract clauses that violate State law.

**46. ISRAEL BOYCOTT:** Bidder understands and agrees that, pursuant to W. Va. Code § 5A-3-63, it is prohibited from engaging in a boycott of Israel during the term of this contract.

**DESIGNATED CONTACT:** Vendor appoints the individual identified in this Section as the Contract Administrator and the initial point of contact for matters relating to this Contract.

(Printed Name and Title) Hamza Masud  
Executive Director

(Address) 7491 Flag Point Ct., Manassas, VA 20109

(Phone Number) / (Fax Number) (703) 870-6182

(email address) hamza.masud@swiperesources.com

**CERTIFICATION AND SIGNATURE:** By signing below, or submitting documentation through wvOASIS, I certify that: I have reviewed this Solicitation/Contract in its entirety; that I understand the requirements, terms and conditions, and other information contained herein; that this bid, offer or proposal constitutes an offer to the State that cannot be unilaterally withdrawn; that the product or service proposed meets the mandatory requirements contained in the Solicitation/Contract for that product or service, unless otherwise stated herein; that the Vendor accepts the terms and conditions contained in the Solicitation, unless otherwise stated herein; that I am submitting this bid, offer or proposal for review and consideration; that this bid or offer was made without prior understanding, agreement, or connection with any entity submitting a bid or offer for the same material, supplies, equipment or services; that this bid or offer is in all respects fair and without collusion or fraud; that this Contract is accepted or entered into without any prior understanding, agreement, or connection to any other entity that could be considered a violation of law; that I am authorized by the Vendor to execute and submit this bid, offer, or proposal, or any documents related thereto on Vendor's behalf; that I am authorized to bind the vendor in a contractual relationship; and that to the best of my knowledge, the vendor has properly registered with any State agency that may require registration.

By signing below, I further certify that I understand this Contract is subject to the provisions of West Virginia Code § 5A-3-62, which automatically voids certain contract clauses that violate State law; and that pursuant to W. Va. Code 5A-3-63, the entity entering into this contract is prohibited from engaging in a boycott against Israel.

Swipe Resources LLC  
\_\_\_\_\_  
(Company) H. Masud  
\_\_\_\_\_  
(Signature of Authorized Representative)  
Hamza Masud, Executive Director  
\_\_\_\_\_  
(Printed Name and Title of Authorized Representative) (Date)  
(703) 870-6182  
\_\_\_\_\_  
(Phone Number) (Fax Number)  
\_\_\_\_\_  
(email address) hamza.masud@swiperesources.com



Department of Administration  
 Purchasing Division  
 2019 Washington Street East  
 Post Office Box 50130  
 Charleston, WV 25305-0130

**State of West Virginia  
 Centralized Request for Quote  
 Info Technology**

<b>Proc Folder:</b> 1880633		<b>Reason for Modification:</b>	
<b>Doc Description:</b> WVDOT NETWORKING EQUIPMENT (81260141)		Addendum #1 issued to publish revised project specifications. (see attached)	
<b>Proc Type:</b> Central Master Agreement			
<b>Date Issued</b>	<b>Solicitation Closes</b>	<b>Solicitation No</b>	<b>Version</b>
2026-05-11	2026-05-19 13:30	CRFQ 0803 DOT2600000089	2

**BID RECEIVING LOCATION**

BID CLERK  
 DEPARTMENT OF ADMINISTRATION  
 PURCHASING DIVISION  
 2019 WASHINGTON ST E  
 CHARLESTON WV 25305  
 US

**VENDOR**

**Vendor Customer Code:**  
**Vendor Name :**  
**Address :**  
**Street :**  
**City :**  
**State :** **Country :** **Zip :**  
**Principal Contact :**  
**Vendor Contact Phone:** **Extension:**

**FOR INFORMATION CONTACT THE BUYER**

John W Estep  
 304-558-2566  
 john.w.estep@wv.gov

**Vendor Signature X** **FEIN#** **DATE**

**All offers subject to all terms and conditions contained in this solicitation**

**ADDITIONAL INFORMATION****REQUEST FOR QUOTATION:**

West Virginia Purchasing Division is soliciting bids on behalf of the Department of Transportation to establish a contract for the open-ended purchase of Networking Equipment - Switches. Per the Bid Requirements, Specifications, Terms and Conditions attached to this solicitation.

**INVOICE TO****SHIP TO**

DEPT. OF TRANSPORTATION  
1900 KANAWHA BLVD E,  
BLD. 5 RM-720

DEPT. OF TRANSPORTATION  
1900 KANAWHA BLVD E,  
BLD. 5 RM-720

CHARLESTON WV  
US

CHARLESTON WV  
US

Line	Comm Ln Desc	Qty	Unit Issue	Unit Price	Total Price
1	Extreme Network 5320-48p-8XEUniversal Switch or Equal.	40.00000	EA		

Comm Code	Manufacturer	Specification	Model #
43222609			

**Extended Description:**

Extreme Network 5320-48p-8XEUniversal Switch or Equal.

**INVOICE TO****SHIP TO**

DEPT. OF TRANSPORTATION  
1900 KANAWHA BLVD E,  
BLD. 5 RM-720

DEPT. OF TRANSPORTATION  
1900 KANAWHA BLVD E,  
BLD. 5 RM-720

CHARLESTON WV  
US

CHARLESTON WV  
US

Line	Comm Ln Desc	Qty	Unit Issue	Unit Price	Total Price
2	Extreme Network 5320-24p-8XEUniversal Switch or Equal.	10.00000	EA		

Comm Code	Manufacturer	Specification	Model #
43222609			

**Extended Description:**

Extreme Network 5320-48p-8XEUniversal Switch or Equal.

INVOICE TO	SHIP TO
------------	---------

DEPT. OF TRANSPORTATION 1900 KANAWHA BLVD E, BLD. 5 RM-720  CHARLESTON WV US	DEPT. OF TRANSPORTATION 1900 KANAWHA BLVD E, BLD. 5 RM-720  CHARLESTON WV US
---	---

Line	Comm Ln Desc	Qty	Unit Issue	Unit Price	Total Price
3	Extreme Network 5320-16p-4XEUniversal Switch or Equal.	30.00000	EA		

Comm Code	Manufacturer	Specification	Model #
43222609			

**Extended Description:**  
 Extreme Network 5320-48p-8XEUniversal Switch or Equal.

SCHEDULE OF EVENTS
--------------------

<u>Line</u>	<u>Event</u>	<u>Event Date</u>
1	Tech Questions due by 10:00am	2026-05-07

**SOLICITATION NUMBER:**  
**Addendum Number:**

---

The purpose of this addendum is to modify the solicitation identified as (“Solicitation”) to reflect the change(s) identified and described below.

**Applicable Addendum Category:**

- Modify bid opening date and time
- Modify specifications of product or service being sought
- Attachment of vendor questions and responses
- Attachment of pre-bid sign-in sheet
- Correction of error
- Other

**Description of Modification to Solicitation:**

**Additional Documentation:** Documentation related to this Addendum (if any) has been included herewith as Attachment A and is specifically incorporated herein by reference.

**Terms and Conditions:**

1. All provisions of the Solicitation and other addenda not modified herein shall remain in full force and effect.
2. Vendor should acknowledge receipt of all addenda issued for this Solicitation by completing an Addendum Acknowledgment, a copy of which is included herewith. Failure to acknowledge addenda may result in bid disqualification. The addendum acknowledgement should be submitted with the bid to expedite document processing.

# ATTACHMENT A

## REQUEST FOR QUOTATION

### WVDOT Networking Equipment Extreme Network Switches

---

#### SPECIFICATIONS

1. **PURPOSE AND SCOPE:** West Virginia Purchasing Division is soliciting bids on behalf of the Department of Transportation to establish a contract for the open-ended purchase of Networking Equipment – Switches.
2. **DEFINITIONS:** The terms listed below shall have the meanings assigned to them below. Additional definitions can be found in section 2 of the General Terms and Conditions.

**2.1 “Contract Item”** means provided by a qualified manufacturer that is authorized to sell the equipment as more fully described by these specifications.

**2.2 “Pricing Page”** means the pages, contained in wvOASIS or attached as Exhibit A, upon which Vendor should list its proposed price for the Contract Items.

**2.3 “Solicitation”** means the official notice of an opportunity to supply the State with goods or services that is published by the Purchasing Division.

#### 3. **GENERAL REQUIREMENTS:**

**Mandatory Contract Item Requirements:** Contract Item must meet or exceed the mandatory requirements listed below.

##### 3.1 SWITCHES

###### **3.1.1 Contract Item #1: Extreme Networks 48 Port Network Switch (Model 5320-48P-8XE), or equal.**

**3.1.1.1** Minimum quantity per purchase: Thirteen (13)

**3.1.1.2** Must have forty-eight (48) 10/100/1000 Base-T 802.3 at (30W) ports Full/Half-Duplex (autosensing) MACsec-capable.

**3.1.1.3** Must have eight (8) 1Gb SFP uplink ports, with at least two (2) capable of stacking at a minimum of 10Gb. Uplink ports may be upgradable to 10Gb SFP+ via software license. MACsec-capable; the last four uplink ports must support 100Mb operation.

**3.1.1.4** Must have one (1) Serial console port (RJ-45).

**3.1.1.5** Must have one (1) USB A ports for management or external USB flash.

**3.1.1.6** Must have one (1) USB Micro-B console port.

**3.1.1.7** Form factor: 1U rack-mountable.

## REQUEST FOR QUOTATION

### WV DOT Networking Equipment Extreme Network Switches

---

- 3.1.1.8 Cooling: fixed side-to-side cooling fans.
- 3.1.1.9 Power supply: fixed AC power supply.
- 3.1.2 **Contract Item #2: Extreme Networks 24 Port Network Switch (Model 5320-24P-8XE), or equal.**
  - 3.1.2.1 Minimum quantity per purchase: Three (3)
  - 3.1.2.2 Must have twenty-four (24) 10/100/1000 Base-T 802.3 at (30W) ports Full/Half-Duplex (autosensing) MACsec-capable.
  - 3.1.2.3 Must have eight (8) 1Gb SFP uplink ports, with at least two (2) capable of stacking at a minimum of 10Gb. Uplink ports may be upgradable to 10Gb SFP+ via software license. MACsec-capable; the last four uplink ports must support 100Mb operation.
  - 3.1.2.4 Must have one (1) Serial console port (RJ-45).
  - 3.1.2.5 Must have one (1) USB A ports for management or external USB flash.
  - 3.1.2.6 Must have one (1) USB Micro-B console port.
  - 3.1.2.7 Form factor: 1U rack-mountable.
  - 3.1.2.8 Cooling: fixed side-to-side cooling fans.
  - 3.1.2.9 Power supply: fixed AC power supply.
- 3.1.3 **Contract Item #3: Extreme Networks 16 Port Network Switch (Model 5320-16P-4XE), or equal.**
  - 3.1.3.1 Minimum quantity per purchase: Eight (8)
  - 3.1.3.2 Must have sixteen (16) 10/100/1000 Base-T 802.3at (30W) ports Full/Half-Duplex (autosensing) MACsec-capable.
  - 3.1.3.3 Must have four (4) 1Gb SFP uplink ports, with at least two (2) capable of stacking at a minimum of 10Gb. Uplink ports may be upgradable to 10Gb SFP+ via software license. MACsec-capable; at least the last two uplink ports must support 100Mb operation.
  - 3.1.3.4 Must have one (1) Serial console port (RJ-45).
  - 3.1.3.5 Must have one (1) USB A port for management or external USB flash.
  - 3.1.3.6 Must have one (1) USB Micro-B console port.
  - 3.1.3.7 Form factor: 1U rack-mountable.
  - 3.1.3.8 Cooling: fixed side-to-side cooling fans.
  - 3.1.3.9 Power supply: fixed AC power supply.

### 3.2 LICENSES

- 3.2.1 **Contract Item #1: Extreme Networks Platform ONE Standard Networking AP Management License, Manufacturer Part Number EP1-STD-TA-S-C-EW-3YR, or equal**

## REQUEST FOR QUOTATION

### WVDOT Networking Equipment Extreme Network Switches

---

- 3.2.1.1 Licenses must be new and come with manufacturer warranty. Used or refurbished licenses will not be accepted.
- 3.2.1.2 Vendors must provide technical support by phone, email, or chat during regular business hours, Monday – Friday, 9:00AM EST – 5:00PM EST.
- 3.2.1.3 Licenses must allow Extreme Networks Wireless Access Points or Switches to be added to and managed by the States existing centralized management system ExtremeCloud IQ.
- 3.2.1.4 A Vendor submitting on ‘or equal’ should submit documentation with its bid showing compatibility with the State’s management system. This is preferred with bid, but must be submitted prior to award.
- 3.2.1.5 Vendor must apply licenses to the State of WV Office of Technology Extreme Account #1049238; State of West Virginia, Office of Technology; [enetworking@wv.gov](mailto:enetworking@wv.gov).

#### 3.3 Alternate Bids

- 3.3.1 **Alternate bids that are equal to, meet, or exceed the specifications and requirements listed are invited. To receive full consideration, such alternate bids must be accompanied by sufficient descriptive literature and/or samples to clearly identify the offer and allow for a complete evaluation.**
- 3.3.2 **The use of brand name or equal specifications is for describing the minimum standard of quality, technical performance and installation characteristics required and are not intended to limit or restrict competition.**
- 3.3.3 **The vendor shall provide technical specifications with bid documentation.**

#### 4. CONTRACT AWARD:

- 4.1 **Contract Award:** The Contract is intended to provide Agencies with a purchase price for the Contract Items. The Contract shall be awarded to the Vendor that provides the Contract Items meeting the required specifications for the lowest overall total cost as shown on the Pricing Pages.
- 4.2 **Pricing Page:** Vendor should complete the Pricing Page by providing a total cost for the Contract Items being requested. Vendor should complete the Pricing Page in full as failure to complete the Pricing Page in its entirety may result in Vendor’s bid being disqualified.

Vendors should type or electronically enter the information into the Pricing Page to prevent errors in the evaluation.

## REQUEST FOR QUOTATION

### WVDOT Networking Equipment Extreme Network Switches

---

#### 5. PAYMENT:

**5.1 Payment:** Vendor shall accept payment in accordance with the payment procedures of the State of West Virginia.

#### 6. DELIVERY AND RETURN:

**6.1 Shipment and Delivery:** Vendor shall ship the Contract Items immediately after being awarded this Contract and receiving a purchase order or notice to proceed. Vendor shall deliver the Contract Items within (30) thirty working days after receiving a purchase order or notice to proceed. Contract Items must be delivered to the Agency at 1900 Kanawha Blvd, Building 5, Room A-720, Charleston WV 25305.

**6.2 Partial Shipment:** Partial Shipments are accepted but payment will not be made until all goods have been received.

**6.3 Late Delivery:** The Agency placing the order under this Contract must be notified in writing if the shipment of the Contract Items will be delayed for any reason. Any delay in delivery that could cause harm to an Agency will be ground for cancellation of the Contract, and/or obtaining the Contract Items from a third party.

Any Agency seeking to obtain the Contract Items from a third party under this provision must first obtain the approval of the Purchasing Division.

**6.4 Delivery Payment/Risk of Loss:** Vendor shall deliver the Contract Items F.O.B. destination to the Agency's location.

**6.5 Return of Unacceptable Items:** If the Agency deems the Contract Items to be unacceptable, the Contract Items shall be returned to Vendor at Vendor's expense and with no restocking charge. The vendor shall either plan for the return within five (5) days of being notified that items are unacceptable or permit the Agency to arrange for the return and reimburse the Agency for delivery expenses. If the original packaging cannot be utilized for the return, Vendor will supply the Agency with appropriate return packaging upon request. All returns of unacceptable items shall be F.O.B. the Agency's location. The returned product shall either be replaced, or the Agency shall receive full credit or a refund for the purchase price, at the Agency's discretion.

## REQUEST FOR QUOTATION

### WVDOT Networking Equipment Extreme Network Switches

---

**6.6 Return Due to Agency Error:** Items ordered in error by the Agency will be returned for credit within 40 days of receipt, F.O.B. Vendor's location. Vendor shall not charge a restocking fee if returned products are in a resalable condition. Items shall be deemed to be in a resalable condition if they are unused and in the original packaging. Any restocking fee for items not in a resalable condition shall be the lower of the Vendor's customary restocking fee or 5% of the total invoiced value of the returned items.

#### 7. VENDOR DEFAULT:

**7.1** The following shall be considered a **vendor default** under this Contract.

7.1.1 Failure to provide Contract Items in accordance with the requirements contained herein.

7.1.2 Failure to comply with other specifications and requirements contained herein.

7.1.3 Failure to comply with any laws, rules, and ordinances applicable to the Contract Services provided under this Contract.

7.1.4 Failure to remedy deficient performance upon request.

**7.2** The following remedies shall be available to the Agency upon default.

7.2.1 Immediate cancellation of the Contract.

7.2.2 Immediate cancellation of one or more release orders issued under this Contract.

7.2.3 Any other remedies available in law or equity.

#### 8. MISCELLANEOUS:

**8.1 No substitutions:** Vendor shall apply only Contract Items submitted in response to the Solicitation unless a contract modification is approved in accordance with the provisions contained in this Contract.

**8.2 Vendor Supply:** Vendor must carry sufficient inventory of the Contract Items being ordered to fulfill its obligations under this Contract. By signing its bid, Vendor certifies that it can supply the Contract Items contained in its bid.

REQUEST FOR QUOTATION

**WVDOT Networking Equipment Extreme Network  
Switches**

---

9. **CONTRACT MANAGER:** During its performance of this Contract, Vendor must designate and maintain a primary contract manager responsible for overseeing Vendor's responsibilities under this Contract. The Contract manager must be available during normal business hours to address any customer service or other issues related to this Contract. Vendor should list its Contract manager and his or her contact information below.

**Contract Manager:** Hamza Masud

**Telephone Number:** (703) 870-6182

**Fax Number:** \_\_\_\_\_

**Email Address:** hamza.masud@swiperesources.com

**ADDENDUM ACKNOWLEDGEMENT FORM**  
**SOLICITATION NO.:**

**Instructions:** Please acknowledge receipt of all addenda issued with this solicitation by completing this addendum acknowledgment form. Check the box next to each addendum received and sign below. Failure to acknowledge addenda may result in bid disqualification.

**Acknowledgment:** I hereby acknowledge receipt of the following addenda and have made the necessary revisions to my proposal, plans and/or specification, etc.

**Addendum Numbers Received:**


(Check the box next to each addendum received)

- |  |  |
|--|--|
| <input checked="" type="checkbox"/> ] Addendum No. 1 | <input type="checkbox"/> ] Addendum No. 6  |
| <input type="checkbox"/> ] Addendum No. 2            | <input type="checkbox"/> ] Addendum No. 7  |
| <input type="checkbox"/> ] Addendum No. 3            | <input type="checkbox"/> ] Addendum No. 8  |
| <input type="checkbox"/> ] Addendum No. 4            | <input type="checkbox"/> ] Addendum No. 9  |
| <input type="checkbox"/> ] Addendum No. 5            | <input type="checkbox"/> ] Addendum No. 10 |

I understand that failure to confirm the receipt of addenda may be cause for rejection of this bid. I further understand that any verbal representation made or assumed to be made during any oral discussion held between Vendor's representatives and any state personnel is not binding. Only the information issued in writing and added to the specifications by an official addendum is binding.

Swipe Resources LLC

---

Company  
  
Authorized Signature

---

5/19/2026  
Date

**NOTE:** This addendum acknowledgement should be submitted with the bid to expedite document processing.  
Revised 6/8/2012



Department of Administration  
 Purchasing Division  
 2019 Washington Street East  
 Post Office Box 50130  
 Charleston, WV 25305-0130

State of West Virginia  
 Centralized Request for Quote  
 Info Technology

<b>Proc Folder:</b> 1880633		<b>Reason for Modification:</b>	
<b>Doc Description:</b> WVDOT NETWORKING EQUIPMENT (81260141)		Addendum #1 issued to publish revised project specifications. (see attached)	
<b>Proc Type:</b> Central Master Agreement			
<b>Date Issued</b>	<b>Solicitation Closes</b>	<b>Solicitation No</b>	<b>Version</b>
2026-05-11	2026-05-19 13:30	CRFQ 0803 DOT2600000089	2

**BID RECEIVING LOCATION**

BID CLERK  
 DEPARTMENT OF ADMINISTRATION  
 PURCHASING DIVISION  
 2019 WASHINGTON ST E  
 CHARLESTON WV 25305  
 US

**VENDOR**

**Vendor Customer Code:** VS0000045819  
**Vendor Name :** Swipe Resources LLC  
**Address :** 7491 Flag Point Ct.  
**Street :**  
**City :** Manassas  
**State :** VA **Country :** USA **Zip :** 20109  
**Principal Contact :** Hamza Masud  
**Vendor Contact Phone:** (703) 870-6182 **Extension:**

**FOR INFORMATION CONTACT THE BUYER**  
 John W Estep  
 304-558-2566  
 john.w.estep@wv.gov

Vendor Signature X *H. Masud* FEIN# 85-1143501 DATE 5/19/2026

All offers subject to all terms and conditions contained in this solicitation

**ADDITIONAL INFORMATION****REQUEST FOR QUOTATION:**

West Virginia Purchasing Division is soliciting bids on behalf of the Department of Transportation to establish a contract for the open-ended purchase of Networking Equipment - Switches. Per the Bid Requirements, Specifications, Terms and Conditions attached to this solicitation.

**INVOICE TO****SHIP TO**

DEPT. OF TRANSPORTATION  
1900 KANAWHA BLVD E,  
BLD. 5 RM-720

DEPT. OF TRANSPORTATION  
1900 KANAWHA BLVD E,  
BLD. 5 RM-720

CHARLESTON WV  
US

CHARLESTON WV  
US

Line	Comm Ln Desc	Qty	Unit Issue	Unit Price	Total Price
1	Extreme Network 5320-48p-8XEUniversal Switch or Equal.	40.00000	EA		

Comm Code	Manufacturer	Specification	Model #
43222609			

**Extended Description:**

Extreme Network 5320-48p-8XEUniversal Switch or Equal.

**INVOICE TO****SHIP TO**

DEPT. OF TRANSPORTATION  
1900 KANAWHA BLVD E,  
BLD. 5 RM-720

DEPT. OF TRANSPORTATION  
1900 KANAWHA BLVD E,  
BLD. 5 RM-720

CHARLESTON WV  
US

CHARLESTON WV  
US

Line	Comm Ln Desc	Qty	Unit Issue	Unit Price	Total Price
2	Extreme Network 5320-24p-8XEUniversal Switch or Equal.	10.00000	EA		

Comm Code	Manufacturer	Specification	Model #
43222609			

**Extended Description:**

Extreme Network 5320-48p-8XEUniversal Switch or Equal.

INVOICE TO	SHIP TO
------------	---------

DEPT. OF TRANSPORTATION 1900 KANAWHA BLVD E, BLD. 5 RM-720  CHARLESTON WV US	DEPT. OF TRANSPORTATION 1900 KANAWHA BLVD E, BLD. 5 RM-720  CHARLESTON WV US
---	---

Line	Comm Ln Desc	Qty	Unit Issue	Unit Price	Total Price
3	Extreme Network 5320-16p-4XEUniversal Switch or Equal.	30.00000	EA		

Comm Code	Manufacturer	Specification	Model #
43222609			

**Extended Description:**  
Extreme Network 5320-48p-8XEUniversal Switch or Equal.

SCHEDULE OF EVENTS
--------------------

<u>Line</u>	<u>Event</u>	<u>Event Date</u>
1	Tech Questions due by 10:00am	2026-05-07

	Document Phase	Document Description	Page
DOT2600000089	Final	WVDOT NETWORKING EQUIPMENT (81260141)	4

**ADDITIONAL TERMS AND CONDITIONS**

See attached document(s) for additional Terms and Conditions