



The following documentation is an electronically-submitted vendor response to an advertised solicitation from the *West Virginia Purchasing Bulletin* within the Vendor Self-Service portal at wvOASIS.gov. As part of the State of West Virginia's procurement process, and to maintain the transparency of the bid-opening process, this documentation submitted online is publicly posted by the West Virginia Purchasing Division at WVPurchasing.gov with any other vendor responses to this solicitation submitted to the Purchasing Division in hard copy format.

Header 1

List View

- General Information**
- Contact
- Default Values
- Discount
- Document Information
- Clarification Request

Procurement Folder: 1924406

Procurement Type: Central Purchase Order

Vendor ID:

Legal Name: STEPHENSON EQUIPMENT INC

Alias/DBA:

Total Bid: \$114,435.20

Response Date:

Response Time:

Responded By User ID:

First Name:

Last Name:

Email:

Phone:

SO Doc Code: CRFQ

SO Dept: 0803

SO Doc ID: DOT2600000086

Published Date: 4/30/26

Close Date: 5/7/26

Close Time: 13:30

Status: Closed

Solicitation Description:

Total of Header Attachments: 1

Total of All Attachments: 1



Department of Administration
 Purchasing Division
 2019 Washington Street East
 Post Office Box 50130
 Charleston, WV 25305-0130

**State of West Virginia
 Solicitation Response**

Proc Folder: 1924406
Solicitation Description: Cimline K5 Series Tack Kettle and Trailer
Proc Type: Central Purchase Order

Solicitation Closes	Solicitation Response	Version
2026-05-07 13:30	SR 0803 ESR04242600000007416	1

VENDOR
 000000160752
 STEPHENSON EQUIPMENT INC

Solicitation Number: CRFQ 0803 DOT2600000086
Total Bid: 114435.1999999999970896169543 **Response Date:** 2026-04-24 **Response Time:** 14:03:02
Comments:

FOR INFORMATION CONTACT THE BUYER
 John W Estep
 304-558-2566
 john.w.estep@wv.gov

Vendor Signature X **FEIN#** **DATE**

All offers subject to all terms and conditions contained in this solicitation

Line	Comm Ln Desc	Qty	Unit Issue	Unit Price	Ln Total Or Contract Amount
1	Cimline K5 Series Tack Kettle and Trailer or Equal	4.00000	EA	28608.800000	114435.20

Comm Code	Manufacturer	Specification	Model #
25102001			

Commodity Line Comments: Unit bid:
 Cimline K5 Tack Kettle
 All Standard Equipment
 Option: Overnight heater
 Option: 8' Spraybar

Extended Description:

Cimline K5 Series Tack Kettle and Trailer or Equal



**INNOVATION
IN PRESERVATION**

K-Series™

Tack Kettle



K5 500



K2 250



Performance and Reliability:

The K2 and K5 Emulsion Applicators are designed to deliver superior heating and application of bituminous emulsions and tack coats. Crafted with operator-friendly features, these applicators boast a baffled 7-gauge steel tank with propane heat and a large maintenance hatch ensuring easy access and durability. Built on reliable torsion axles, the K-Series promises a long service life, making it a trusted choice for pavement maintenance professionals seeking efficiency and reliability.

Flexible Capacities and Standard Tank Features:

The sturdy design comes in both 250 gallon and 500 gallon capacities to meet a wide range of application tasks. Each tank is constructed of 7 gauge steel with baffles for safe towing, a quick release vented manhole cover, and standard tank contents gauge.

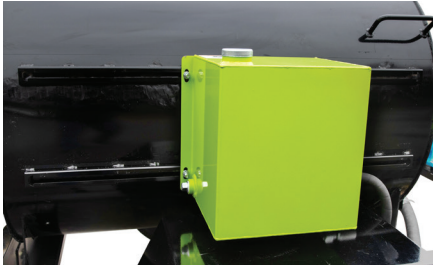
Standard Ease of Operation:

Each K-Series emulsion applicator comes standard with an easy-start Honda gas engine, 50' retractable hose reel with aluminum spray wand, 7-gallon solvent tank, 40 lb. propane bottle rack and your choice of tow hitch.

Options for Customized Application:

The optional spray bar on the K-Series emulsion applicator comes standard in 8' spray pattern with single lever for spray bar stowage in transport. Other options include remote spray bar activation, additional rail mounted solvent tank, tool box, hour meter, and beacon.





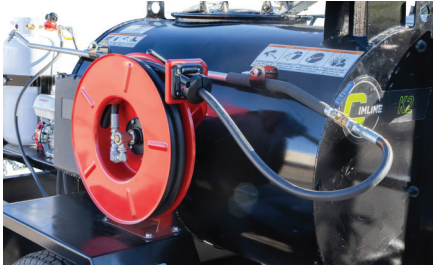
Standard 7-Gallon Solvent Tank and Room for an Additional Tank



Standard HONDA Engine and Asphalt Pump with Recirculation



Standard 20" Manhole with Vented Quick Open Center



Standard 50' Hose Reel and Aluminum Spray Wand



Standard Easy to Read Tank Contents Gauge



Optional Spray Bar with Transport Stowage

SPECIFICATIONS

Cimline K-Series

K2 # 314-001-902

K5 # 314-002-902

Emulsion Capacity (US gallons)	250	500
Engine	5HP gas Honda	5HP gas Honda
Heating Method (overnight)	Electric probe (option)	Electric probe (option)
Heating Method (operating)	Single "S type" flue w/ burner	Single "S type" flue w/ burner
Heat Rating (BTU's)	200,000	450,000
Material Pump (GPMS)	10 GPM (rated 30)	10 GPM (rated 30)
GVWR (lbs)	3750	6550
GAWR (lbs)	4000	2 x 4000
Axle/Suspension	Single torsion axle	Dual torsion axle
Brake Type	Electric	Electric
Application Wand/ Hose	72" aluminum (50ft on hose reel)	72" aluminum (50ft on hose reel)
Loading Ports	20" (vented and lockable)	20" (vented and lockable)
Fuel Capacity	2 gallons	2 gallons
Maintenance Hatch (l x w)	20" diameter	20" diameter
Trailer Construction	5" channel	5" channel
Gravity Drain Valve	2"	2"
Temperature Gauge	3"	3"
Solvent Flush/ Waste Tank Capacity	7 gallons	7 gallons
Dimensions (l x w x h)	135" x 79" x 66"	180" x 79" x 66"
Shipping Weight (lbs)	2000	2800
Warranty	One Year	

Due to continuous improvement, specifications are subject to change without notice.

PRODUCTS FROM CIMLINE



**ME-Series™ Mastic Melter Applicator
60 / 250 / 350 Gallon Units Available**



ME Bander Applicator



**P5 One-Person Patcher with
DuraPatcher Technology™**



Learn more at cimline.com
Phone : 800-328-3874 Email : orders@cimline.com