



The following documentation is an electronically-submitted vendor response to an advertised solicitation from the *West Virginia Purchasing Bulletin* within the Vendor Self-Service portal at ***wvOASIS.gov***. As part of the State of West Virginia's procurement process, and to maintain the transparency of the bid-opening process, this documentation submitted online is publicly posted by the West Virginia Purchasing Division at ***WVPurchasing.gov*** with any other vendor responses to this solicitation submitted to the Purchasing Division in hard copy format.

Header @ 2

List View

General Information Contact Default Values Discount Document Information Clarification Request

Procurement Folder: 1745879

Procurement Type: Central Purchase Order

Vendor ID: 000000120183

Legal Name: CLEVELAND BROTHERS EQUIPMENT CO INC

Alias/DBA:

Total Bid: \$116,990.00

Response Date: 08/08/2025

Response Time: 11:03

Responded By User ID: csullivan

First Name: Chris

Last Name: Sullivan

Email: csullivan@clevelandbrothers

Phone: 717-443-3284

SO Doc Code: CRFQ

SO Dept: 0603

SO Doc ID: ADJ2600000003

Published Date: 8/1/25

Close Date: 8/13/25

Close Time: 13:30

Status: Closed

Solicitation Description: Compact Track Loader

Total of Header Attachments: 2

Total of All Attachments: 2



Department of Administration
Purchasing Division
2019 Washington Street East
Post Office Box 50130
Charleston, WV 25305-0130

State of West Virginia
Solicitation Response

Proc Folder: 1745879		
Solicitation Description: Compact Track Loader		
Proc Type: Central Purchase Order		
Solicitation Closes	Solicitation Response	Version
2025-08-13 13:30	SR 0603 ESR08082500000000737	1

VENDOR

000000120183
CLEVELAND BROTHERS EQUIPMENT CO INC

Solicitation Number: CRFQ 0603 ADJ26000000003

Total Bid: 116990

Response Date: 2025-08-08

Response Time: 11:03:29

Comments:

FOR INFORMATION CONTACT THE BUYER
David H Pauline
304-558-0067
david.h.pauline@wv.gov

Vendor

Signature X

FEIN#

DATE

All offers subject to all terms and conditions contained in this solicitation

Line	Comm Ln Desc	Qty	Unit Issue	Unit Price	Ln Total Or Contract Amount
1	T86 T4 Bobcat Compact Track Loader or Equal	1.00000	EA	116990.000000	116990.00

Comm Code	Manufacturer	Specification	Model #
22100000			

Commodity Line Comments:

Extended Description:

T86 T4 Bobcat Compact Track Loader or Equal.

TO: WEST VIRGINIA DEPT OF HWYS
1900 WASHINGTON ST E
CHARLESTON, WV 25305-2212

DATE: August 8, 2025

ATTENTION: Greg Johnston

ONE (1) NEW CATERPILLAR 275 HF XPS 275 05A COMPACT TRACK LOADER S/N N/A

REAR LIGHTS
PRODUCT LINK, CELLULAR PL243
COUPLER, HYD, SELF LVL,RTD,WTP
RIDE CONTROL, NONE
FUEL, ELECTRIC PRIMING
DOOR, CAB, POLYCARBONATE
TRACK,RUBBER,450MM(17.7IN)BAR

SEAT BELT, 2"
GUARDING / SEALING PKG, (HD1)
CERTIFICATION ARR, P65
COLD STARTING PACKAGE (120V)
INTEGRATED RADIO
AIR CONDITIONING, R134A REF
CAB PACKAGE, ULTRA

Selling Price:

\$97,450.00

Warranty:

STANDARD WARRANTY: 24 MONTH/2,000 HOUR (6 MONTH TRAVEL TIME & MILES INCLUDED)

ONE (1) NEW 2025 CATERPILLAR BROOM, BA121, MAN.ANGLE, P/W S/N N/A

Selling Price:

\$7,990.00

Warranty:

2 YEAR WARRANTY (INCLUDES PARTS AND LABOR)

ONE (1) NEW 2025 CATERPILLAR SSIND80 BUCKET-IND, 80", BOCE S/N N/A

Selling Price:

\$2,280.00

ONE (1) NEW 2025 CATERPILLAR SSINDGR86 BUCKET-IND GR, 86", BOCE S/N N/A

Selling Price:

\$9,270.00

Equipment Summary:

ONE (1) NEW CATERPILLAR 275 HF XPS 275 05A COMPACT TRACK LOADER S/N N/A
ONE (1) NEW 2025 CATERPILLAR BROOM, BA121, MAN.ANGLE, P/W S/N N/A

\$97,450.00
\$7,990.00

THE FOREGOING QUOTATION IS EFFECTIVE FOR 30 DAYS.

STANDARD TERMS: SUBJECT TO CREDIT APPROVAL: NET 10 DAYS. UCC-1 FINANCING STATEMENT WILL BE FILED AND A \$400.00 DOCUMENTATION FEE WILL BE CHARGED IF NOT PAID IN FULL ON OR BEFORE 15 DAYS FROM DELIVERY DATE UNLESS OTHERWISE NOTED ON THE SALES CONTRACT.

BY: Joshua J Hinkle QN: S000233952

DELIVERY:

LEAD TIME: To be determined at the time of order

ATTENTION: THE TERMS AND CONDITIONS ON THE FACE AND REVERSE SIDE OF THIS QUOTATION/OFFER TO SELL – INCLUDING DISCLAIMERS OF WARRANTIES (INCLUDING MERCHANTABILITY), DISCLAIMERS OF TORT LIABILITY (INCLUDING NEGLIGENCE AND STRICT LIABILITY), LIMITATION OF REMEDIES AND EXCLUSIONS OF AND ANY ATTACHMENTS INCORPORATED HEREIN CONSTITUTE THE TERMS, CONDITIONS AND COVENANTS OF THIS QUOTATION/OFFER TO SELL.

TO: WEST VIRGINIA DEPT OF HWYS
1900 WASHINGTON ST E
CHARLESTON, WV 25305-2212

DATE: August 8, 2025

ATTENTION: Greg Johnston

ONE (1) NEW 2025 CATERPILLAR SSIND80 BUCKET-IND, 80", BOCE S/N N/A	\$2,280.00
ONE (1) NEW 2025 CATERPILLAR SSINDGR86 BUCKET-IND GR, 86", BOCE S/N N/A	\$9,270.00

Finance Summary:

Selling Price	\$116,990.00
---------------	--------------

Net Selling Price	\$116,990.00
--------------------------	---------------------

Remarks:

THE FOREGOING QUOTATION IS EFFECTIVE FOR 30 DAYS.

STANDARD TERMS: SUBJECT TO CREDIT APPROVAL: NET 10 DAYS. UCC-1 FINANCING STATEMENT WILL BE FILED AND A \$400.00 DOCUMENTATION FEE WILL BE CHARGED IF NOT PAID IN FULL ON OR BEFORE 15 DAYS FROM DELIVERY DATE UNLESS OTHERWISE NOTED ON THE SALES CONTRACT.

BY: Joshua J Hinkle QN: S000233952

DELIVERY:

LEAD TIME: To be determined at the time of order

ATTENTION: THE TERMS AND CONDITIONS ON THE FACE AND REVERSE SIDE OF THIS QUOTATION/OFFER TO SELL -- INCLUDING DISCLAIMERS OF WARRANTIES (INCLUDING MERCHANTABILITY), DISCLAIMERS OF TORT LIABILITY (INCLUDING NEGLIGENCE AND STRICT LIABILITY), LIMITATION OF REMEDIES AND EXCLUSIONS OF AND ANY ATTACHMENTS INCORPORATED HEREIN CONSTITUTE THE TERMS, CONDITIONS AND COVENANTS OF THIS QUOTATION/OFFER TO SELL.



Cat® 275

COMPACT TRACK LOADER

FEATURES:

The Cat® 275 Compact Track Loader (CTL), with its vertical lift design, delivers extended reach and lift height for quick and easy truck loading. Its standard equalizer (E-bar) undercarriage system provides superior traction, flotation, stability, and speed to work in a wide range of applications and underfoot conditions. The 275 features the following:

- **Redesigned Operator Station** delivers a larger operating environment, and combined with additional seat travel, the 275 provides more space for operators of any size. The optional **one-piece, sealed, and pressurized cab** offers a clean and quiet workspace with excellent air distribution through optimally placed vents throughout the cab.
- **Available ventilated and heated high-back air ride seat** with seat-mounted adjustable joystick controls deliver industry-leading operator comfort.
- **High-performance power train** provides standard two-speed travel, combined with the optional Speed Sensitive Ride Control system for operation on rough terrain, enabling better load retention, increased productivity, and greater operator comfort.
- **Three levels of auxiliary hydraulic performance available** Standard Flow, High Flow, and High Flow XPS. **Standard flow** for attachments that require a base level of auxiliary flow and horsepower, **High Flow** boosts the auxiliary flow for applications that demand additional hydraulic flow for increased attachment performance, and the **High Flow XPS** hydraulic system delivers high flow and high pressure, and is available for applications that demand maximum hydraulic work tool performance.
- **High Horsepower, High Torque Engine** with Electronically controlled Cat® C3.6TA (turbocharged, after-cooled) engine that meets U.S. EPA Tier 4 Final and EU Stage V emission standards while delivering maximum horsepower across a wide RPM range and providing high torque for increased working performance, no matter the application.
- **Standard equalizer bar (E-bar) undercarriage and standard two-speed travel.** Harnessing Caterpillar's heritage and leadership with track-type tractors, the standard **E-bar CTL undercarriage** provides a hybrid undercarriage solution delivering the benefits of a rigid style undercarriage design when lifting heavy loads or when using heavy attachments (example: mulcher, dozer blade, grader blade), while also providing the benefits of an oscillating undercarriage design when encountering terrain or obstacles.
- **Maximize machine capability and control with the Advanced Joysticks and Advanced Touchscreen Monitor.** The 20.3 cm (8-inch) **Advanced Touchscreen Monitor** offers cutting-edge functionality and control that includes an integrated radio, Bluetooth® connectivity, and multi-camera (side-view) option, and supports 32 different language choices. The **Advanced Joysticks** provide unmatched control of machine functions and adjustments within the monitor without operators having to remove their hands from the controls. This includes the on-joystick navigation of the Advanced Touchscreen Monitor, radio volume up/down/mute, creep activation, creep on/off, creep speed increment/decrement, one-button Smart Attachment control activation, and additional auxiliary control buttons that deliver single-button control of complex attachment functions.
- **Available Rear Auxiliary ready** option provides hydraulic valving and lines that deliver a method to power hydro-mechanical attachments that mount to the rear of the machine (such as a rear scarifier, winch, etc.).
- **Ground-level access** to all daily service and routine maintenance points help reduce machine downtime for greater productivity.
- **Broad range of performance-matched Cat Attachments** make the Cat Compact Track Loaders the most versatile machine on the job site.

Specifications

Engine

Engine Model	US EPA Tier 4 Final/ EU Stage V, Cat C3.6TA (turbocharged and after-cooled)	
Gross Power SAE J1995 (@ 2400 rpm)	82 kW	111 hp
Net Power SAE 1349	82 kW	111 hp
Net Power ISO 9249	81 kW	109 hp
Peak Torque at 1,500 rpm SAE J1995	501 N·m	370 lbf·ft
Displacement	3.6 L	221 in³
Stroke	98 mm	3.9 in
Bore	120 mm	4.7 in

- Advertised power is tested per the specified standard in effect at the time of manufacture.
- Net power advertised is the power available at the flywheel when the engine is equipped with fan at minimum speed, air intake system, exhaust system, and alternator.

Weights*

Operating Weight	5625 kg	12,401 lb
------------------	---------	-----------

*Operating Weight, Operating Specifications, and Dimensions are all based on 75 kg (165 lb) operator, all fluids, two speed, 2036 mm (80 in) low profile bucket, 400 mm (15.7 in) tracks, dual flange front idler/single flange rear idler, standard flow hydraulics, open Rollover Protective Structure (ROPS) cab, mechanical suspension seat, standard monitor, 1000 CCA battery, no optional counterweights and manual quick coupler (unless otherwise noted).

Power Train

Travel Speed (Forward or Reverse)			
One Speed	8.4 km/h	5.2 mph	
Two Speed	12.5 km/h	7.8 mph	

Cab

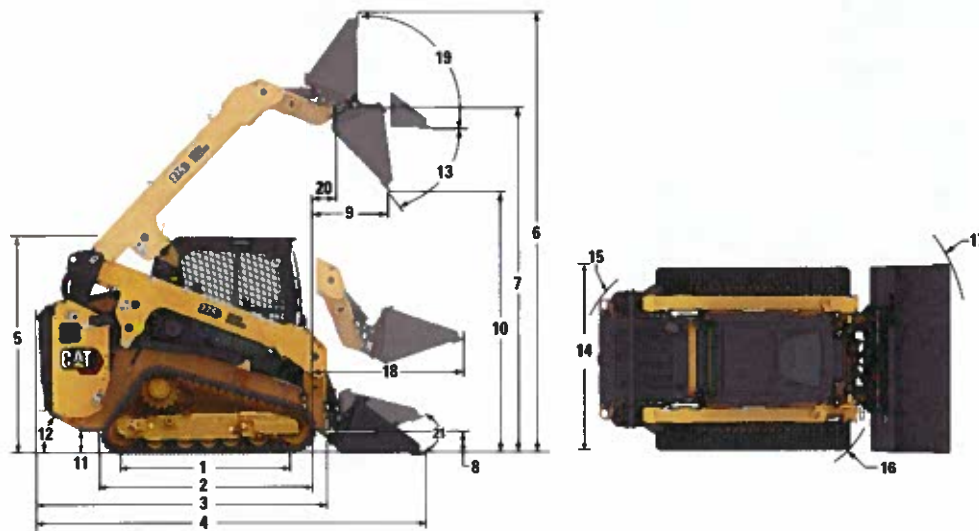
ROPS	ISO 3471:2008
Falling Object Protective Structure (FOPS)	ISO 3449:2005 Level I
	ISO 3449:2005 Level II (Optional)

Service Refill Capacities

Cooling System	17.5 L	4.6 gal
Engine Crankcase	9.0 L	2.4 gal
Fuel Tank	136.1 L	36.0 gal
Hydraulic System	41.0 L	10.8 gal
Hydraulic Tank	26 L	6.9 gal
Diesel Exhaust Fluid (DEF) Tank	11.0 L	2.9 gal



275 Compact Track Loader



Dimensions*

1 Length of Track on Ground	1836 mm	72.3 in	12 Departure Angle	29.5°
2 Overall Length of Track	2341 mm	92.2 in	13 Maximum Dump Angle	44.7°
3 Length without Bucket	3250 mm	128.0 in	14 Vehicle Width (400 mm/15.7 in tracks)	1926 mm 75.8 in
4 Length with Bucket on Ground	3880 mm	152.8 in	Vehicle Width (450 mm/17.7 in tracks)	1976 mm 77.8 in
5 Height to Top of Cab	2230 mm	87.8 in	15 Turning Radius from Center – Machine Rear	1931 mm 76.0 in
6 Maximum Overall Height	4193 mm	165.1 in	16 Turning Radius from Center – Coupler	1531 mm 60.3 in
7 Bucket Pin Height at Maximum Lift	3415 mm	134.4 in	17 Turning Radius from Center – Bucket (racked)	2320 mm 91.3 in
8 Bucket Pin Height at Carry Position	205 mm	8.1 in	18 Maximum Reach with Arms Parallel to Ground	1171 mm 46.1 in
9 Reach at Maximum Lift and Dump	814 mm	32.0 in	19 Rack Back Angle at Maximum Height	86.7°
10 Clearance at Maximum Lift and Dump	2694 mm	106.1 in	20 Bucket Pin Reach at Maximum Lift	415 mm 16.3 in
11 Ground Clearance	280 mm	11.0 in	21 Bucket rollback angle (ground level)	27.3°

Hydraulic System

Hydraulic Flow – Standard:

Loader Hydraulic Pressure	24 130 kPa	3,500 psi
Loader Hydraulic Flow	86 L/min	23 gal/min
Hydraulic Power (calculated)	34.6 kW	46.4 hp

Hydraulic Flow – High Flow:

Loader Hydraulic Pressure	24 130 kPa	3,500 psi
Loader Hydraulic Flow	129 L/min	34 gal/min
Hydraulic Power (calculated)	51.5 kW	69.6 hp

Hydraulic Flow – High Flow XPS:

Loader Hydraulic Pressure	28 000 kPa	4,061 psi
Loader Hydraulic Flow	128 L/min	34 gal/min
Hydraulic Power (calculated)	60.2 kW	80.7 hp

Operating Specifications*

Open Canopy:

Operating Weight	5625 kg	12,401 lb
Tipping Load	5386 kg	11,874 lb
Rated Operating Capacity (35%)	1885 kg	4,156 lb
Rated Operating Capacity (50%)	2693 kg	5,937 lb
Ground Contact Area (400 mm/15.7 in tracks)	1.61 m ²	2,496 in ²
Ground Contact Area (450 mm/17.7 in tracks)	1.81 m ²	2,808 in ²
Ground Pressure (400 mm/15.7 in tracks)	35.1 kPa	5.1 psi
Ground Pressure (450 mm/17.7 in tracks)	31.3 kPa	4.5 psi

Operating Specifications* (continued)

Enclosed Cab Adds:

Operating Weight	+99 kg	+218 lb
Tipping Load	+136 kg	+300 lb
Rated Operating Capacity (35%)	+48 kg	+105 lb

Counterweight Adds:

Operating Weight	+194 kg	+428 lb
Tip Load	+361 kg	+796 lb
Rated Operating Capacity (35%)	+126 kg	+279 lb

Wide Tracks (17.7 in/450 mm) Set Adds:

Operating Weight	+22 kg	+49 lb
Tip Load	+19 kg	+42 lb
Rated Operating Capacity (35%)	+7 kg	+15 lb

Heavy-Duty Rear Door Guard Adds:

Operating Weight	+75 kg	+165 lb
Tip Load	+172 kg	+379 lb
Rated Operating Capacity (35%)	+60 kg	+133 lb

Heavy-Duty Rear Bumper Adds:

Operating Weight	+79 kg	+174 lb
Tip Load	+171 kg	+377 lb
Rated Operating Capacity (35%)	+60 kg	+132 lb

FOPS LEVEL 2 Plate Adds:

Operating Weight	+73 kg	+161 lb
Tip Load	+113 kg	+249 lb
Breakout Force, Tilt Cylinder	4519 kg	9,963 lb
Breakout Force, Lift Cylinder	2913 kg	6,422 lb

The following information applies to the machine at the time of final manufacture as configured for sale in the regions covered in this document. The content of this declaration is valid as of the date issued; however, content related to machine features and specifications are subject to change without notice. For additional information, please see the machine's Operation and Maintenance Manual.

For more information on sustainability in action and our progress, please visit <https://www.caterpillar.com/en/company/sustainability>.

Engine

- The Cat® C3.6TA (turbocharged and after-cooled) engine meets U.S. EPA Tier 4 Final and EU Stage V emission standards.
 - Cat engines are compatible with diesel fuel blended with the following lower-carbon intensity fuels** up to:
 - ✓ 100% biodiesel FAME (fatty acid methyl ester)*
 - ✓ 100% renewable diesel, HVO (hydrotreated vegetable oil) and GTL (gas-to-liquid) fuels
- Refer to guidelines for successful application. Please consult your Cat dealer or "Caterpillar Machine Fluids Recommendations" (SEBU6250) for details.
- *For use of blends higher than 20% biodiesel, consult your Cat dealer.
- **Tailpipe greenhouse gas emissions from lower-carbon intensity fuels are essentially the same as traditional fuels.

Air Conditioning System

- The air conditioning system on this machine contains the fluorinated greenhouse gas refrigerant R134a (Global Warming Potential = 1430). The system contains 0.85 kg of refrigerant which has a CO₂ equivalent of 1.216 metric tonnes.

Paint

- Based on best available knowledge, the maximum allowable concentration, measured in parts per million (PPM), of the following heavy metals in paint are:
 - Barium < 0.01%
 - Cadmium < 0.01%
 - Chromium < 0.01%
 - Lead < 0.01%

Sound Performance

Operator Sound Pressure Level* 82 dB(A) (ISO 6396:2008)

Exterior Sound Power Level** 105 dB(A) (ISO 6395:2008)

- Cab and ROPS are standard in North America and Europe.
- *The declared dynamic operator sound pressure levels per ISO 6395:2008. The measurements were conducted with the cab doors and windows closed and at 70% of the maximum engine cooling fan speed. The sound level may vary at different engine cooling fan speeds.
- **The labeled sound power level for the CE/UKCA marked configurations when measured according to the test procedure and conditions specified in European Union Directive "2000/14/EC" as amended by "2005/88/EC" and UK Noise Regulation 2001 No. 1701.

Oils and Fluids

- Caterpillar factory fills with ethylene glycol coolants. Cat Diesel Engine Antifreeze/Coolant (DEAC) and Cat Extended Life Coolant (ELC) can be recycled. Consult your Cat dealer for more information.
- Cat Bio HYDO™ Advanced is an EU Ecolabel approved biodegradable hydraulic oil.
- Additional fluids are likely to be present, please consult the Operations and Maintenance Manual or the Application and Installation guide for complete fluid recommendations and maintenance intervals.

Features and Technology

- The following features and technology may contribute to fuel savings and/or carbon reduction. Features may vary. Consult your Cat dealer for details.
 - Extended life coolant and long life hydraulic fluid extend maintenance intervals to reduce fluid consumption
 - Boost productivity with Cat technologies like work tool positioner, return to dig and Cat Smart Attachments
 - Save fuel with efficiency features such as foot throttle pedal and cooling system demand fan
 - Remote machine monitoring through onboard Product Link telematics

Recycling

- The materials included in machines are categorized as below with approximate weight percentage. Because of variations of product configurations, the following values in the table may vary.

Material Type	Weight Percentage
Steel	60.78%
Rubber	18.53%
Iron	9.53%
Nonferrous Metal	2.72%
Fluid	1.64%
Plastic	1.56%
Other	1.51%
Uncategorized	1.20%
Mixed Metal	1.07%
Mixed-Metal and Nonmetal	0.99%
Lead (Batteries)	0.47%
Mixed Nonmetallic	0.00%
Total	100.00%

- A machine with higher recyclability rate will ensure more efficient usage of valuable natural resources and enhance End-of-Life value of the product. According to ISO 16714:2008 (Earth-moving machinery – Recyclability and recoverability – Terminology and calculation method), recyclability rate is defined as percentage by mass (mass fraction in percent) of the new machine potentially able to be recycled, reused or both.

All parts in the bill of material are first evaluated by component type based on a list of components defined by the ISO 16714:2008 and Japan CEMA (Construction Equipment Manufacturers Association) standards. Remaining parts are further evaluated for recyclability based on material type.

Because of variations of product configurations, the following values in the table may vary.

Recyclability – 96%

The data provided above was based on the product configuration as provided by the individual product group.

275 Compact Track Loader

ATTACHMENTS

Get more from your machine with Cat attachments. Choose from a wide variety of options and tailor your machine to different tasks and conditions.

Augers
Backhoes
Bale Grabs
Bale Spears
Blades, Grader, Box, Angle and Dozer
Brooms, Angle, Pickup and Utility
Brushcutters
Buckets
Cold Planers
Compactors
Fork Tines and Carriages
Hammers
Material Handling Arm
Mulchers
Nursery Forks
Rakes, Grapple, Landscape and Power Box
Shears
Snow Blowers
Snow Plows
Snow Pushes
Snow Wings
Stump Grinders
Tillers
Trenchers
Wheel Saws
Smart Backhoe
Smart Dozer Blade with Assist
Smart Grader Blade with Assist



MANDATORY EQUIPMENT

- Quick Coupler: Manual or Hydraulic
- High Visibility Seat Belt: 50 mm (2 in), 75 mm (3 in), or 3-point lap/shoulder
- Steel Imbed Rubber Track – 400 mm (15.7 in) block tread, 450 mm (17.7 in) block tread, 450 mm (17.7 in) bar tread
- Dual Flange Front Idler/Single Flange Rear Idler or Triple Flange Front/Rear Idlers

PERFORMANCE PACKAGES

- Performance Package HP1: *Standard Flow Hydraulics*
- Performance Package HP3: *High Flow XPS Hydraulics*
- Performance Package HP4: *High Flow XPS Hydraulics, Rear Auxiliary Ready*

COMFORT PACKAGES

- Open canopy: *Cup Holder, Cell Phone Pocket, choice of vinyl Seat (Mechanical Suspension, or High Back/Heated/Air Ride Seat)*
- Enclosed Cab with heat and air conditioning: *Side Windows, Cup Holder, Cell Phone Pocket, choice of Seat (Mechanical Suspension, High Back/Heated Air Ride Seat, or High Back/Ventilated and Heated Air Ride Seat) and Door choice (Glass or Polycarbonate)*

TECHNOLOGY PACKAGES

- T2 – *Standard Monitor, Standard Joysticks, traditional Key Start switch, and Rear-view camera.*
- T4 – *Advanced Touchscreen Monitor, Advanced Joysticks, Push start, X-mount cell phone holder, and a Rear-view camera.*
- T5 – *T4 + 2 additional side view cameras.*

RADIO

- Radio, *none* – *for open canopy machines and countries not certified for Bluetooth® technology*
- Integrated AM/FM radio with Bluetooth technology. *Includes USB port, 3.5 mm (0.13 in) AUX input, and BT microphone. Only for use with enclosed cab. Availability varies by country.*
- Integrated DAB+/AM/FM radio with Bluetooth technology. *Includes USB port, 3.5 mm (0.13 in) AUX input, and BT microphone. Only for use with enclosed cab. Availability varies by country.*

PRODUCT LINK™

- Product Link™ Basic series PL243
- Product Link Elite series PLE643

COOLING FAN

- On-demand, variable speed hydraulic cooling fan
- On-demand, variable speed hydraulic cooling fan, with automatic and manual purge reversing operation

GUARDING AND SEALING PACKAGES

- HD0 – *base guarding and sealing (engine air inlet rain cap, front cab-to-frame sealing, and hydraulic fill access door)*
- HD1 – *intermediate guarding and sealing† (HD0 + cab-to-frame side sealing, lockable fuel fill access door, and tilt cylinder guarding)*
- HD2 – *most comprehensive guarding and sealing† (HD1 + turbo guard, exhaust stack wrap, DPF wrap, quick disconnect guarding, under step hydraulic lines guard cover, engine air inlet pre-cleaner.)*

†Some equipment varies by region.

275 Compact Track Loader

STANDARD EQUIPMENT

ELECTRICAL

- Work Tool Electrical Harness
- Heavy duty battery
- Battery disconnect with lockout feature
- 12-volt Electrical System
- 100 Ampere Alternator
- LED Work Lights
- Auto Reverse Lights
- Switch Backlighting
- Interior LED Dome Light
- Backup Alarm
- Electrical Outlet, Beacon
- Exterior Courtesy Lighting

OPERATOR ENVIRONMENT

- Full color LCD monitor: *Creep speed control, Drive response adjustment, Implement response adjustment, Drive Power Priority adjustment, Language selection (x 32), Multi-operator Anti-theft Security System and Monitoring, Maintenance schedule and reminders, Event and Diagnostic Code monitoring, Date /Time/ Units/Brightness settings, and Smart Technology for use with Smart Attachments.*
- Operator Warning System Indicators: *Air Filter Restriction, Alternator Output, Armrest Raised/Operator Out of Seat, Engine Coolant Temperature, Engine Oil Pressure, Glow Plug Activation, Hydraulic Supply Filter Restriction, Hydraulic Oil Temperature, Park Brake Engaged, Engine Emission System (where applicable)*
- Gauges: *Fuel Level, Hour Meter, Hydraulic Temperature, Hour Meter, Battery Voltage, Tachometer*
- Fold In Ergonomic Contoured Armrest
- Control Interlock System, when operator leaves seat or armrest raised: *Hydraulic System Disables, Hydrostatic Transmission Disables, Parking Brake Engages*
- ROPS Cab, Tilt Up
- FOPS, Level I
- Top and Rear Windows
- Floor Mat
- Headliner
- Interior Rearview Mirror
- Horn
- Hand (Dial) Throttle, Electronic
- Seat Mounted Joystick Controls
- Cell Phone Storage Pocket
- Cup Holder
- 12-volt power port
- Foot Throttle

HYDRAULICS

- Selectable control pattern – ISO or H
- Electro/hydraulic implement control
- Electro/hydraulic hydrostatic transmission control
- Speed sensor guarding
- Heavy duty flat faced quick disconnects with integrated pressure release lever and case drain
- Hydraulic oil level sight gauge

POWER TRAIN

- Cat C3.6TA turbocharged, after-cooled diesel engine, meeting Tier 4 Final and Stage V Emission Standards:
 - Glow plugs starting aid
 - Liquid cooled, direct injection
- Extended life antifreeze (–37° C, –34° F)
- Air cleaner, dual element, radial seal
- Scheduled Oil Sampling (S-O-SSM) Valve, Hydraulic Oil
- Ecology drain – coolant
- Radiator coolant level sight gauge
- Radiator expansion bottle
- Filter, hydraulic supply, cartridge type
- Filter, hydraulic return, cartridge type
- Filter, canister type, engine oil
- Filter, canister type, fuel and water separator
- Radiator/hydraulic oil
- Cooler (side-by-side)
- Spring applied, hydraulically released, parking brakes
- Hydrostatic transmission
- Lockable fuel cap
- Hydraulic demand cooling fan
- Auto engine idle

UNDERCARRIAGE

- E-bar (equalizer bar) suspension
- Two speed travel
- Integrated tie downs on track frame (4)

FRAME

- Machine tie down points (9)
- Removable panels for machine frame cleanout
- Support, lift arm
- Steel rear and front bumpers, welded
- Fuel fill, machine right hand side

OTHER

- Auxiliary Hydraulics, Continuous Flow
- Telematics, Product Link, Cellular
- Steel engine door with replaceable louvers
- Engine door – lockable
- Work tool attachment coupler
- Cat ToughGuard™ hose



Department of Administration
Purchasing Division
2019 Washington Street East
Post Office Box 50130
Charleston, WV 25305-0130

State of West Virginia
Centralized Request for Quote
Equipment

Proc Folder: 1745879

Doc Description: Compact Track Loader

Reason for Modification:

Proc Type: Central Purchase Order

Date Issued	Solicitation Closes	Solicitation No	Version
2025-08-01	2025-08-13 13:30	CRFQ 0603 ADJ26000000003	1

BID RECEIVING LOCATION

BID CLERK
DEPARTMENT OF ADMINISTRATION
PURCHASING DIVISION
2019 WASHINGTON ST E
CHARLESTON WV 25305
JS

VENDOR

Vendor Customer Code:

Vendor Name: CLEVELAND BROTHERS EQUIPMENT CO.

Address: 5300

Street: PAXTON ST

City: HARRISBURG

State: PA

Country: DAUPHIN

Zip: 17111

Principal Contact: CHRIS SULLIVAN

Vendor Contact Phone: 717-443-3284

Extension:

FOR INFORMATION CONTACT THE BUYER

David H Pauline

404-558-0067

david.h.pauline@wv.gov

Vendor
Signature X

FEIN#

DATE

8-8-25

All offers subject to all terms and conditions contained in this solicitation

DESIGNATED CONTACT: Vendor appoints the individual identified in this Section as the Contract Administrator and the initial point of contact for matters relating to this Contract.

(Printed Name and Title) CHRIS SULLIVAN CLEVELAND BROTHERS EQUIP.
(Address) 5300 PAYTON ST HARRISBURG PA 17111
(Phone Number) / (Fax Number) 717-443-3284 717 564-3890
(email address) CSULLIVAN@CLEVELANDBROTHERS.COM

CERTIFICATION AND SIGNATURE: By signing below, or submitting documentation through wvOASIS, I certify that: I have reviewed this Solicitation/Contract in its entirety; that I understand the requirements, terms and conditions, and other information contained herein; that this bid, offer or proposal constitutes an offer to the State that cannot be unilaterally withdrawn; that the product or service proposed meets the mandatory requirements contained in the Solicitation/Contract for that product or service, unless otherwise stated herein; that the Vendor accepts the terms and conditions contained in the Solicitation, unless otherwise stated herein; that I am submitting this bid, offer or proposal for review and consideration; that this bid or offer was made without prior understanding, agreement, or connection with any entity submitting a bid or offer for the same material, supplies, equipment or services; that this bid or offer is in all respects fair and without collusion or fraud; that this Contract is accepted or entered into without any prior understanding, agreement, or connection to any other entity that could be considered a violation of law; that I am authorized by the Vendor to execute and submit this bid, offer, or proposal, or any documents related thereto on Vendor's behalf; that I am authorized to bind the vendor in a contractual relationship; and that to the best of my knowledge, the vendor has properly registered with any State agency that may require registration.

By signing below, I further certify that I understand this Contract is subject to the provisions of West Virginia Code § 5A-3-62, which automatically voids certain contract clauses that violate State law; and that pursuant to W. Va. Code 5A-3-63, the entity entering into this contract is prohibited from engaging in a boycott against Israel.

CLEVELAND BROTHERS EQUIPMENT CO.
(Company)
Christopher Sullivan
(Signature of Authorized Representative)
CHRISTOPHER SULLIVAN 8825 GOVERNMENTAL MGR.
(Printed Name and Title of Authorized Representative) (Date)
717 443 3284 717 564 3890
(Phone Number) (Fax Number)
CSULLIVAN@CLEVELANDBROTHERS.COM
(Email Address)



CERTIFICATE OF LIABILITY INSURANCE

DATE(MM/DD/YYYY)
08/05/2025

THIS CERTIFICATE IS ISSUED AS A MATTER OF INFORMATION ONLY AND CONFERS NO RIGHTS UPON THE CERTIFICATE HOLDER. THIS CERTIFICATE DOES NOT AFFIRMATIVELY OR NEGATIVELY AMEND, EXTEND OR ALTER THE COVERAGE AFFORDED BY THE POLICIES BELOW. THIS CERTIFICATE OF INSURANCE DOES NOT CONSTITUTE A CONTRACT BETWEEN THE ISSUING INSURER(S), AUTHORIZED REPRESENTATIVE OR PRODUCER, AND THE CERTIFICATE HOLDER.

IMPORTANT: If the certificate holder is an ADDITIONAL INSURED, the policy(ies) must have ADDITIONAL INSURED provisions or be endorsed. If SUBROGATION IS WAIVED, subject to the terms and conditions of the policy, certain policies may require an endorsement. A statement on this certificate does not confer rights to the certificate holder in lieu of such endorsement(s).

PRODUCER Aon Risk Services Central, Inc. Chicago IL Office 200 East Randolph Chicago IL 60601 USA	CONTACT NAME: PHONE (A/C No. Ext): (866) 283-7122 FAX (A/C No.): (800) 363-0105 E-MAIL ADDRESS:														
INSURED Cleveland Brothers Equipment Co. Inc. 4565 William Penn Hwy Murrysville PA 15668-2003 USA	<table><tr><th>INSURER(S) AFFORDING COVERAGE</th><th>NAIC #</th></tr><tr><td>INSURER A: Zurich American Ins Co</td><td>16535</td></tr><tr><td>INSURER B:</td><td></td></tr><tr><td>INSURER C:</td><td></td></tr><tr><td>INSURER D:</td><td></td></tr><tr><td>INSURER E:</td><td></td></tr><tr><td>INSURER F:</td><td></td></tr></table>	INSURER(S) AFFORDING COVERAGE	NAIC #	INSURER A: Zurich American Ins Co	16535	INSURER B:		INSURER C:		INSURER D:		INSURER E:		INSURER F:	
INSURER(S) AFFORDING COVERAGE	NAIC #														
INSURER A: Zurich American Ins Co	16535														
INSURER B:															
INSURER C:															
INSURER D:															
INSURER E:															
INSURER F:															

COVERAGES CERTIFICATE NUMBER: 570114824830 REVISION NUMBER:

THIS IS TO CERTIFY THAT THE POLICIES OF INSURANCE LISTED BELOW HAVE BEEN ISSUED TO THE INSURED NAMED ABOVE FOR THE POLICY PERIOD INDICATED. NOTWITHSTANDING ANY REQUIREMENT, TERM OR CONDITION OF ANY CONTRACT OR OTHER DOCUMENT WITH RESPECT TO WHICH THIS CERTIFICATE MAY BE ISSUED OR MAY PERTAIN, THE INSURANCE AFFORDED BY THE POLICIES DESCRIBED HEREIN IS SUBJECT TO ALL THE TERMS, EXCLUSIONS AND CONDITIONS OF SUCH POLICIES. LIMITS SHOWN MAY HAVE BEEN REDUCED BY PAID CLAIMS.

Limits shown are as requested

INSR LTR	TYPE OF INSURANCE	ADDL INSD	SUBR WVD	POLICY NUMBER	POLICY EFF (MM/DD/YYYY)	POLICY EXP (MM/DD/YYYY)	LIMITS
A	<input checked="" type="checkbox"/> COMMERCIAL GENERAL LIABILITY <input type="checkbox"/> CLAIMS-MADE <input checked="" type="checkbox"/> OCCUR <input type="checkbox"/> GEN'L AGGREGATE LIMIT APPLIES PER: <input checked="" type="checkbox"/> POLICY <input type="checkbox"/> PROJECT <input type="checkbox"/> LOC <input type="checkbox"/> OTHER:			GL0651024733	04/01/2025	04/01/2026	EACH OCCURRENCE \$2,000,000 DAMAGE TO RENTED PREMISES (Ea occurrence) \$1,000,000 MED EXP (Any one person) \$10,000 PERSONAL & ADV INJURY \$2,000,000 GENERAL AGGREGATE \$4,000,000 PRODUCTS - COMPIOP AGG \$4,000,000
A	<input checked="" type="checkbox"/> AUTOMOBILE LIABILITY <input checked="" type="checkbox"/> ANY AUTO <input type="checkbox"/> OWNED AUTOS ONLY <input type="checkbox"/> SCHEDULED AUTOS <input type="checkbox"/> HIRED AUTOS ONLY <input type="checkbox"/> NON-OWNED AUTOS ONLY			BAP 6510248-33	04/01/2025	04/01/2026	COMBINED SINGLE LIMIT (Ea accident) \$2,000,000 BODILY INJURY (Per person) BODILY INJURY (Per accident) PROPERTY DAMAGE (Per accident)
	<input type="checkbox"/> UMBRELLA LIAB <input type="checkbox"/> OCCUR <input type="checkbox"/> EXCESS LIAB <input type="checkbox"/> CLAIMS-MADE <input type="checkbox"/> DED <input type="checkbox"/> RETENTION						EACH OCCURRENCE AGGREGATE
A	<input checked="" type="checkbox"/> WORKERS COMPENSATION AND EMPLOYERS' LIABILITY ANY PROPRIETOR / PARTNER / EXECUTIVE OFFICER/MEMBER EXCLUDED? (Mandatory in NH) If yes, describe under DESCRIPTION OF OPERATIONS below	Y/N N	N/A	WC651019234	04/01/2025	04/01/2026	<input checked="" type="checkbox"/> PER STATUTE <input type="checkbox"/> OTHER E L EACH ACCIDENT \$1,000,000 E L DISEASE-EA EMPLOYEE \$1,000,000 E L DISEASE-POLICY LIMIT \$1,000,000

DESCRIPTION OF OPERATIONS / LOCATIONS / VEHICLES (ACORD 101, Additional Remarks Schedule, may be attached if more space is required)

CERTIFICATE HOLDER

CANCELLATION

Department of Administration Purchasing Division 2019 Washington Steet East PO Box 50130 Charleston WV 25305-0130 USA	SHOULD ANY OF THE ABOVE DESCRIBED POLICIES BE CANCELLED BEFORE THE EXPIRATION DATE THEREOF, NOTICE WILL BE DELIVERED IN ACCORDANCE WITH THE POLICY PROVISIONS. AUTHORIZED REPRESENTATIVE <i>Aon Risk Services Central, Inc.</i>
---	---

Holder Identifier :

Certificate No : 570114824830



EXHIBIT A: PRICING PAGE - CRFQ ADJ26*03

One (1) Compact Track Loader

Contract Items	Description	QTY	Unit Price	Total
Contract Item 3.1.1.	T86 T4 Bobcat Compact Track Loader or Equal	1	\$97,450.00	
Contract Item 3.1.2.	Comfort Package or equivalent for the model bid	1		
Contract Item 3.1.3.	High Flow Hydraulics or equivalent for the model bid	1		
Contract Item 3.1.4.	17.7" Multi-bar tracks or equivalent for the model bid	1		
Contract Item 3.1.5.	7" Touch Display or equivalent for the model bid	1		
Contract Item 3.1.6.	80" Severe Duty Bucket or equivalent for the model bid	1	\$2280.00	
Contract Item 3.1.7.	84" Angle Broom or equivalent for the model bid	1	\$7990.00	
Contract Item 3.1.8.	86" Industrial Fork Grapple or equivalent for the model bid	1	\$9270.00	

If not using the Bobcat, list the manufacturer and model number below

Manufacturer Bid:

CATGRILLAR

Model No. Bid:

275 HIGH FLOW XPS

Unit prices to be inclusive of all freight/delivery costs.

Grand Total

\$116,990.00

Failure to use this form may result in disqualification.

Bidder / Vendor Information:

Name: CLEMMONS BROTHERS EQUIPMENT CO.

Phone: 717 443 3284

E-mail Address: CSULLIVAN@CLEMMONS BROTHERS.COM

Authorized Signature:

Chris

Date:

8/25