



The following documentation is an electronically-submitted vendor response to an advertised solicitation from the *West Virginia Purchasing Bulletin* within the Vendor Self-Service portal at ***wvOASIS.gov***. As part of the State of West Virginia's procurement process, and to maintain the transparency of the bid-opening process, this documentation submitted online is publicly posted by the West Virginia Purchasing Division at ***WVPurchasing.gov*** with any other vendor responses to this solicitation submitted to the Purchasing Division in hard copy format.

Header @ 1

List View

General Information | Contact | Default Values | Discount | Document Information | Clarification Request

Procurement Folder: 1853967

Procurement Type: Central Purchase Order

Vendor ID: VS0000013207

Legal Name: MONTUM ARCHITECTURE LLC

Alias/DBA:

Total Bid: \$0.00

Response Date: 01/08/2026

Response Time: 9:53

Responded By User ID: Montum

First Name: Thomas

Last Name: Pritts

Email: tom@montumarch.com

Phone: 304-276-7151

SO Doc Code: CEOI

SO Dept: 0310

SO Doc ID: DNR2600000004

Published Date: 12/9/25

Close Date: 1/8/26

Close Time: 13:30

Status: Closed

Solicitation Description: A&E - Calvin Price State Forest Storage Building

Total of Header Attachments: 1

Total of All Attachments: 1



Department of Administration  
Purchasing Division  
2019 Washington Street East  
Post Office Box 50130  
Charleston, WV 25305-0130

State of West Virginia  
Solicitation Response

**Proc Folder:** 1853967  
**Solicitation Description:** A&E - Calvin Price State Forest Storage Building  
**Proc Type:** Central Purchase Order

Solicitation Closes	Solicitation Response	Version
2026-01-08 13:30	SR 0310 ESR01082600000003819	1

**VENDOR**  
VS0000013207  
MONTUM ARCHITECTURE LLC

**Solicitation Number:** CEOI 0310 DNR2600000004  
**Total Bid:** 0  
**Response Date:** 2026-01-08  
**Response Time:** 09:53:42  
**Comments:**

**FOR INFORMATION CONTACT THE BUYER**  
Joseph (Josh) E Hager III  
(304) 558-2306  
joseph.e.hageriii@wv.gov

**Vendor**  
**Signature X** **FEIN#** **DATE**

All offers subject to all terms and conditions contained in this solicitation

Line	Comm Ln Desc	Qty	Unit Issue	Unit Price	Ln Total Or Contract Amount
1	Professional engineering services				0.00

Comm Code	Manufacturer	Specification	Model #
81100000			

**Commodity Line Comments:** EOI Response

**Extended Description:**

Design and contract administration services of a new maintenance and storage building at Calvin Price State Forest.



**Expression of Interest**  
**A/E Services – Calvin Price State Forest Storage Building**  
**CEOI 0310 DNR2600000004**  
**January 8, 2026**



**Department of Administration**  
**Purchasing Division**  
**2019 Washington Street East**  
**Charleston, WV 25305-0130**

*Montum* Architecture, LLC  
55 ER Path, Keyser, WV 26726 • 304-276-7151 • [tom@montumarch.com](mailto:tom@montumarch.com)  
[montumarch.com](http://montumarch.com)



## Table of Contents

### Letter of Interest

#### TAB 1: Firm Profiles

- Montum Architecture, LLC
- Miller Engineering, Inc
- Gosh Engineers, Inc
- Arrow Engineering, PLLC
- Project Organization Chart

#### TAB 2: Qualifications

- Tom Pritts, AIA (Montum Architecture)
- Jordyn Henigin (Montum Architecture)
- Craig Miller, PE (Miller Engineering)
- Travis Taylor, PE (Miller Engineering)
- Tyler Trump (Miller Engineering)
- Kennon Chambers, PE (Ghosh Engineers)
- Jeff Ekstrom, PE (Ghosh Engineers)
- Alfonso D'Alessio (Ghosh Engineers)
- Allen King (Ghosh Engineers)
- Jim Charley (Ghosh Engineers)
- Mike Howell, PE SE (Arrow Engineering)
- Carol Stevens, PE, FASCE (Arrow Engineering)
- Ashbee Sykes, PE SE (Arrow Engineering)
- Phillip Bailey, PE (Arrow Engineering)
- Alex Yoder (Arrow Engineering)
- Zachary Howell (Arrow Engineering)

#### TAB 3: Experience

- Montum Architecture
- Miller Engineering
- Ghosh Engineers
- Arrow Engineering

#### TAB 4: RFP Forms

- WV-PRC-CEOI-001 Form
- Terms and Conditions Signature Page
- Addendum Acknowledgement Form





January 8, 2026

State of West Virginia  
Department of Administration, Purchasing Division  
2019 Washington St. E.  
Charleston, WV 25305

**Subject: A/E Services – Calvin Price State Forest Storage Building, CEOI 0310  
DNR2600000004**

Dear Sirs and Madams,

Montum Architecture, LLC is pleased to submit this Statement of Qualifications to provide architectural and engineering services. Montum is led by Tom Pritts, an architect with 22 years of experience designing a wide range of project types. Mr. Pritts will serve as the primary point of contact throughout the project, including construction administration, lead all architectural design efforts, and oversee the full design team.

Montum has partnered with Miller Engineering, Inc. to provide mechanical, electrical, and plumbing design services; Ghosh Engineering for civil and site design services; and Arrow Engineering for structural design services. This team has collaborated on numerous projects together in various capacities, including multiple projects for the West Virginia Division of Natural Resources.

The design team has reviewed the three goals outlined in the Goals/Objectives section of the EOI solicitation. Our proposed approach to each goal is summarized below, with additional documentation provided in the firm profiles, qualifications, and experience sections of this EOI response.

**Goal One** - The design team prides itself on beginning each project with a comprehensive evaluation of existing conditions, project needs, and constraints that inform the most appropriate design approach and project goals. Our project sheets clearly demonstrate extensive experience working within this framework. A thorough assessment of existing conditions is the first critical component in defining project needs and guiding design decisions.

*Montum* Architecture, LLC

55 ER Path, Keyser, WV 26726 • 304-276-7151 • tom@montumarch.com  
montumarch.com

**Goal Two** - The design team's modus operandi is to work from a master planning perspective to holistically understand project requirements and to fully integrate new work into the overall operation of existing systems or facilities. In addition to evaluating existing buildings, functional and stylistic needs are identified in collaboration with the Owner's stakeholders. This information is then distilled into design concepts, potential phasing strategies, and associated budget impacts.

**Goal Three** - Each primary designer remains responsible to the project as the project progresses into construction. This continuity of design leadership and decision-making knowledge positively impacts the effectiveness and efficiency of construction administration services.

The overarching goal of every project is to deliver exemplary design solutions that perform to the greatest extent possible within established budget constraints. By striving to maximize the value of every project dollar, we inherently serve our client's best interests.

Thank you for taking the time to review the attached information regarding our design team. We appreciate your consideration and look forward to the opportunity to work with you.

Respectfully submitted,  
**Montum Architecture LLC**



Thomas Pritts, AIA, CSI-CCS, LEED-AP

*Montum* Architecture, LLC

55 ER Path, Keyser, WV 26726 • 304-276-7151 • tom@montumarch.com  
montumarch.com



WEST VIRGINIA

**state**



**parks**

*Montum*



# Montum Architecture, LLC Firm Profile

## Who We Are.

Montum Architecture, LLC was founded in 2017 to provide architectural design and consulting services. Montum Architecture is a Limited Liability Corporation filed in the state of West Virginia. The company is also registered in the State of Maryland as a foreign LLC. Montum is staffed by a licensed principal architect and a design professional. They work manage projects together, from conceptual to construction administration, allowing the utmost coordination of building plans and specifications with minimal potential for miscommunication.

## Our Services

Government	Planning
Institutional	Building Assessment
K-12 schools	Architectural Detailing
Higher Education	Specification Writing
Multi-Dwelling	Contract Administration
Medical	Design/Bid/Build
Retail	Renovation
Emergency Services	Renderings
Automotive	Life Safety Evaluations
Financial	Design/Build
Warehouse	Project Management

## Why Choose Us.

### Communication

Tom Pritts will be the primary point of contact for Montum’s architectural services. Montum will manage communication with the Owner, Contractor, and sub-consulted team of members on this project.

### Project Budget

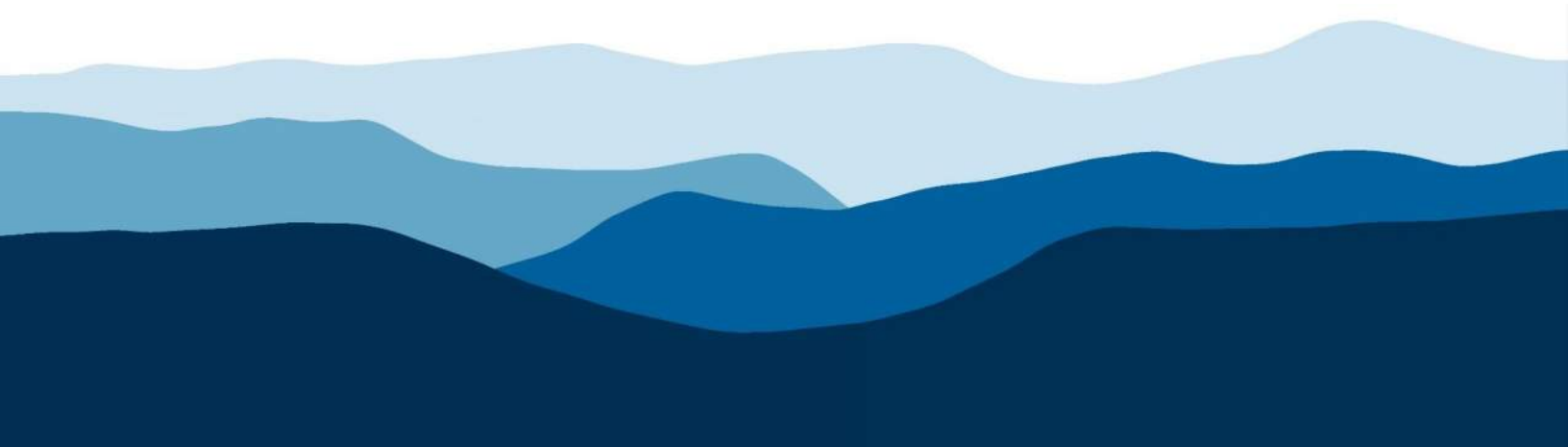
Previous work experience has shown a consistent +/-2%bid-to-budget ratio.

### Project Schedule

Montum will monitor and adjust the design tasks in order to complete the design work in the established timetables. They will also work diligently during project construction to maintain the contractual constraints placed as part of the contractor’s bid.

### Design Software

Montum utilizes Autodesk Revit for all design projects incorporating three-dimensional modeling and parametric reporting. Existing condition documentation includes drone imaging, 360 camera shots, and handheld LiDAR telemetry.





## Firm Profile

*MILLER ENGINEERING is a solely held (S) corporation owned by Craig Miller PE, President. The corporation maintains a Certificate of Authority with the WV State PE Board and has carried professional liability insurance since its inception. Neither the firm nor its professional engineers have ever faced disciplinary action in any form from the states in which they are registered.*

*Our engineered solutions involve a detailed assessment process: investigation, observation, communication with stakeholders, system analysis, building modeling and engagement from our entire team. We approach each and every project with this process and the guiding principle that buildings are designed to be livable and function in their intended purpose.*

*Over the past 14 years Miller Engineering, Inc. (MEI) has engineered solutions for over \$23.2M in MEP system upgrades, repairs and renovations for projects of all scopes and sizes, with clients ranging from private owners to local and state governments. With a strict attention to detail and commitment to delivering a job done well and done right the first time, every time, **MEI has accumulated a change order percentage of less than 0.1% over the past 8 years.***

*Our team has unique skill-sets regarding engineered renovation solutions. Each member of the team has hands-on mechanical system experience including installation, construction, design and maintenance.*

*Miller Engineering takes pride in being **different by design**, and that difference shines through in all phases of our work and continued relationships with our clients.*

- Experienced and Licensed Professional Engineers
- Quality, Value-Engineered Project Delivery
- Qualified Construction Representative on Staff
  - LEED-AP Certified
- Below Industry Change Order Status
  - Building Information Modeling
  - Emergency Facility Response

## Engineering Design and Consultation

- Mechanical
- Electrical
- Plumbing
- HVAC Design
- Renovation
- New Construction
- Building Information Modeling

## Aquatic Facility Design

Public Pools & Areas  
ADA Compliance  
Indoor & Outdoor (air flow)  
Chlorination/Filtration

## Construction Administration

Maintenance/Facility Improvement Plans  
Contract Administration  
Code Observation

## Communication System

Intercomm & Public  
AddressVoice/Data/CATV  
Urgent Response

## Energy

Power Supply (main & backup)  
Green & Renewable Consulting  
Systems Utilization & Upgrades  
Sustainable Solutions

## Facility Utilization

Systems Assessment & Solutions  
Adaptive Re-use  
Planning/Life-Cycle Control  
Engineered Replacement

## Life Safety Inspection/Design

Fire Protection & Alarm Systems  
Access Control  
Fire & Electrical Investigation

## Industry Experience

Education  
Local & State Government  
Commercial Development  
Healthcare





## INTRODUCTION

Our team of engineers brings together more than 90 years of collective experience in the water and wastewater industry. By specializing in this niche, we have developed multi-faceted design capabilities and a deep understanding of the challenges our clients face. We pride ourselves on listening carefully, developing tailored solutions, and maintaining a high level of responsiveness throughout every project. As a result, we've built long-standing partnerships with clients who value our commitment, expertise, and personal approach.

Ghosh Engineers' project portfolio ranges from small, straightforward improvements to large, complex system upgrades with construction costs spanning from \$100,000 to over \$80 million. Regardless of project size, our guiding principle remains the same—to provide our clients and communities with engineering excellence.

## SMALL & SPECIALIZED HAS ITS ADVANTAGES

- ▼ A focused expertise in water and wastewater infrastructure
- ▼ The ability to dive deeply into issues to provide best-fit, customized solutions
- ▼ Manageable workloads ensuring exceptional responsiveness and communication
- ▼ One location - creates a collaborative environment where all team members share knowledge and experience under one roof
- ▼ Project-based organizational structure - allows us to align personnel directly with project goals
- ▼ Owner direct client relationships—allows for faster decision-making, stronger accountability, and more personalized service
- ▼ Low overhead costs, offering clients exceptional value
- ▼ Standard Industry Professional Liability Insurance coverage
- ▼ Enduring client relationships built on trust and proven performance



# WATER TREATMENT & DISTRIBUTION

Drinking water is one of the most valuable resources and is vital to commerce and industry as well as the health and welfare of the community and its success. Today, communities are facing difficulties in securing, transporting, treating, distributing, storing and providing sufficient amounts of safe, quality drinking water for their customers. The Ghosh team has experienced professionals with extensive backgrounds in water resources to ensure regulations are followed, results are maximized, and your specific water project is successful.

## ▼ WATER SYSTEM DESIGN

- Wells, Intakes, Booster Stations
- Water Treatment Plants
- Storage Tanks
- Capital Improvements
- Transmission/Distribution Mains
- Telemetry & SCADA Systems
- Automatic Meter Reading System (AMR)

## ▼ WATER ENGINEERING SERVICES

- Planning & Feasibility Studies
- Hydraulic Analysis
- Distribution & Treatment Design
- Geographical Information Systems (GIS)
- Line Locating & Leak Detection
- Funding Application/Administration
- Permitting
- Construction Administration
- Project Closeout Documents



**GHOSH**  
ENGINEERS



# GEOGRAPHIC INFORMATION SYSTEM (GIS)

Geographic Information System (GIS) is a technology system that allows clients to leverage the power of location combined with their business data and workforce knowledge to create a real-world picture of their operations to make better informed decisions, increase visibility and awareness across their organization.

At Ghosh, our GIS service unit delivers GIS and related technical solutions that are user-friendly and tailored to your business needs. With over 20 years of industry experience, the Ghosh team works with our clients to provide solutions, training, and on-going support to help solve the challenges facing your organization. As a result, clients can see increased operational efficiency, optimized workflows, and better capitalization of their investment.

## OUR SERVICES

### ▼ GIS CONSULTING

- Cartography & Data Visualization
- GIS System Design & Planning
- Technical Workforce Development
- GIS System Integration (Asset Management, Work Management Systems)
- Geospatial Analysis
- GIS Training & Support

### ▼ FIELD SERVICES

- GPS Data Collection (Asset Inventory)
- Mobile GIS Deployment
- GPS Hardware & Software Support

### ▼ GIS APPLICATION DEVELOPMENT

- ESRI ArcGIS Online Platform
- Workflow Automations
- Customized Story Map Applications
- GIS Based Reporting Solutions



# WASTEWATER SYSTEM IMPROVEMENTS

Clean water, along with correct treatment and management of wastewater, is essential to any community. Our engineers have a history of utilizing innovative treatment technologies including onsite decentralized treatment, vertical loop reactors (VLR), membrane bioreactors (MBR) and sequencing batch reactors (SBR) with tertiary filtration. The Ghosh team is highly skilled and passionate to help your community resolve its wastewater needs and comply with effluent quality standards.

## ▼ WASTEWATER SYSTEM DESIGN

- Wastewater Treatment Plants
- Collection System Rehab and Extensions
- Pump Stations
- Force Mains
- Telemetry & SCADA Systems
- Start-up and Operation Assistance

## ▼ WASTEWATER ENGINEERING SERVICES

- Planning & Feasibility Studies
- Infiltration & Inflow Evaluations
- Smoke Testing/Flow Monitoring
- Collection & Treatment Design
- Geographical Information Systems (GIS)
- Funding Application Assistance
- Permitting
- Construction Administration
- Project Closeout Documents



**GHOSH**  
ENGINEERS

# STORMWATER MANAGEMENT

Successful implementation and management of a stormwater program demands a clear understanding of the NPDES permit requirements and solid teamwork between staff and consultants/contractors. Ghosh Engineers stands ready to support any municipality or industrial facility with their stormwater compliance needs with the development and implementation of their stormwater/NPDES programs to achieve full compliance with federal, state, and local stormwater regulations.

## ▼ STORMWATER MANAGEMENT SERVICES

Flood Management Stormwater Design  
Combined Sewer Overflow (CSO) Separation  
MS4 Compliance  
Innovative Facility Design  
Conventional Stormwater Design  
Runoff Infiltration, Filtration, & Storage  
Sustainable Stormwater Facilities



# SITE DEVELOPMENT

The development of undisturbed land into residential, commercial, or industrial sites involves improvements such as site layout, erosion and sediment controls, grading, utility design, landscape design, and stormwater management. Evaluation of existing field conditions, development of efficient layout plans, communication with the Client on revisions, and effective management of regulations are some of the obstacles Ghosh Engineers works diligently to overcome to create a successful project for our Clients.

## ▼ SITE DEVELOPMENT

Utility Project Site Design  
(Storage Tanks, Booster Stations,  
Treatment Facilities, Etc.)  
Parking Facilities & ADA Accessibility  
Sidewalk & Trail Design  
Resorts, Lodging,  
& Recreational Areas  
Industrial & Business Parks  
Single & Multi-Family Residential  
Mixed Use Developments





## PERMITTING

Timing is everything with permitting. At Ghosh, our engineers produce highly detailed, quality designs that facilitate a smooth permitting process, minimizing delays and keeping projects on track.

Our Project Managers know the Federal and State regulations pertaining to water and wastewater projects. We have an excellent working relationship with governmental agencies such as the Department of Health, Public Service Commission, Department of Environmental Protection and have vast experience at securing the following types of permits for our clients.

- ▼ **National Pollutant Discharge Elimination System (NPDES)**
- ▼ **Railroad Permits from CSX, Norfolk Southern, WATCO Kanawha River Railroad, etc.**
- ▼ **West Virginia Public Service Commission (WVPSC)**
- ▼ **West Virginia Division of Highways (WVDOT)**
- ▼ **West Virginia Bureau for Public Health (WVPH)**
- ▼ **Army Corp of Engineers (ACOE)**
- ▼ **State Historic Preservation Offices (SHPO)**
- ▼ **Natural Resources Conservation Service (NRCS)**
- ▼ **U.S. Fish and Wildlife Service (USF&WS)**

## CONSTRUCTION INSPECTION SERVICES

Each Ghosh Project Representative excels in overseeing the construction of water and wastewater line work and treatment plants. They have a very close relationship with our designers and are committed to honoring the integrity of the design and meticulously adhere to plans and specifications at construction sites.





**Residential**

**Commercial**

**Industrial**

**Arrow Engineering**  
is a structural  
engineering firm  
headquartered in  
Morgantown, WV.  
Serving clients in  
the *residential*,  
*commercial* and  
*industrial* markets.

Arrow Engineering delivers success to our clients with three promises we commit to in every project we undertake:

1. Maintain exceptional knowledge of construction practices.
2. Deliver quality documents that are practical and detailed.
3. Pledge to rise above and beyond our clients' expectations.

Arrow's founder and President, Michael Howell, PE SE has over two decades of industry experience as a structural engineer, civil engineer, and contractor. Arrow's team is prepared to bring that experience into every project.

**We consider it a great honor to serve our clients.**





## **Staff – Proposed Staffing Plan:**

**Architect/ Team Leader/  
Primary Point of Contact**

***Thomas Pritts, AIA***

**Lead Designer/BIM Specialist/  
BIM Coordinator**

***Jordyn Henigin***

**Engineer in Responsible Charge  
Lead MEP Engineer  
MEP Designer**

***Craig Miller, PE  
Travis Taylor, PE  
Tyler Trump***

**Lead Structural Engineer  
Chief Engineer  
Senior Engineer  
Project Engineer  
Junior Engineer  
CAD Technician**

***Michael Howell, PE  
Carol Stevens, PE  
Ashbee Sykes, PE  
Philip Bailey, PE  
Alex Yoder  
Zachary Howell***

**Lead Civil Engineer  
Senior Engineer  
Project Engineer  
Senior CAD Designer  
Senior CAD Designer**

***Kennon Chambers, PE  
Jeff Ekstrom, PE  
Alfonso D'Alessio  
Allen King  
Jim Charley***

*Montum* Architecture, LLC

55 ER Path, Keyser, WV 26726 ● 304-276-7151 ● [tom@montumarch.com](mailto:tom@montumarch.com)  
[montumarch.com](http://montumarch.com)

WEST VIRGINIA

**state**  **parks**

*Montum*





### **Thomas Pritts, AIA, LEED-AP, CSI-CCS**

Tom founded Montum Architecture in 2017. He has more than 15 years experience in design, specification, and project management. During his former employment, Tom has designed and managed dozens of built projects. His experience encompasses a wide range of projects including K-12 and higher education facilities, financial Institutions, emergency services buildings, and automotive dealerships. A native of Mineral County, Tom is member of the West Virginia Chapter of American Institute of Architects and was involved in the establishment of the US Green Building Council's West Virginia chapter. He is highly skilled in the design of complex building systems, technical construction detailing and specifying, and construction contract administration. These skills were critical in the development and maintaining of many multi-year, multi-project relationships with Clients in his previous employment.

### **Project Role: Relationship Manager – Primary Point of Contact**

- Principal in Charge
- Design and Project Management
- Concept and Construction Design
- Quality Assurance and Control

### **Professional History**

2017- Present	Montum Architecture	Architect
2004-2017	Alpha Associates	Associate and Architect
2003	Marshall Craft Associates	Architectural Intern

### **Education**

2004	Virginia Tech	Bachelors of Architecture
------	---------------	---------------------------

### **Licenses and Certifications**

- Licensed Architect (West Virginia, Maryland)
- NCARB Certificate
- Construction Specifier Institute – Certified Construction Specifier
- LEED-AP Certified
- 30-hour OSHA Card

### **Professional Project Highlights**

- Potomac State College – Bachelor of Nursing Renovation
- Wyoming East High School HVAC Renovation – Wyoming County Schools, WV
- Mountainview and MTEC HVAC Renovation – Monongalia County Schools, WV
- Berkeley Springs State Park – Pool Bathhouse Roof Replacement
- Berkeley Springs State Park – Old Roman Bath Renovation
- Blackwater Falls State Park – Boiler Room Renovation
- Our Lady of the Mountains Parish – Bathroom Renovation
- Mountain View Assembly of God – Rec Hall Ceiling Design



### **Professional Project Highlights (former employment built projects)**

- Potomac State College – ADA Connector Building, Church-McKee Plaza, Shipper Library Façade
- WVU Engineering Sciences Building – East Wing Addition, 10<sup>th</sup> Floor Fit-Out, Basement Renovation
- WVU Engineering Research Building – G07 & G08 Renovation
- WVU Equine Education Center
- WVU College of Physical Activities and Sports Sciences/ Student Health Center
- WVU Center for Alternative Fuel Engines and Emissions
- WVU Colson Hall Water Infiltration Repairs
- WVU Mountainlair Water Infiltration Repairs
- WVU Chemistry Research Laboratories Fit-Out
- WVU Creative Arts Center Wheelchair Lift
- Alderson Broaddus University – Pyles Arena Deck Replacement
- Glenville State College – Morris Stadium Skybox
- Washington High School, Jefferson County Schools, WV
- Pineville Elementary School, Wyoming County Schools, WV
- Huff Consolidated School, Wyoming County Schools, WV
- Aurora School Addition, Preston County Schools, WV
- Riverview High Field House Design-Build, McDowell County Schools, WV
- Safe School Entries, Monongalia County Schools, WV
- Morgantown High Elevator, Monongalia County Schools, WV
- 2010 Comprehensive Education Facilities Plan- Monongalia County Schools, Wyoming County Schools
- Clear Mountain Bank Branches, Oakland, MD - Reedsville, WV - Kroger-Sabraton, WV
- Grant County Bank, Petersburg, WV
- Fairmont Federal Credit Union, Bridgeport, WV
- Freedom Ford, Kia, and Volkswagen Automotive Dealerships, Morgantown and Clarksburg, WV
- Jenkins Subaru Addition, Bridgeport, WV
- Elkins Fordland Renovation - Elkins Chrysler Dealership, Elkins, WV
- Harry Green Nissan Design-Build, Clarksburg, WV
- Cool Green Automotive Addition and Renovation, Shepherdstown, WV
- Veteran's Affairs – OI&T Office Fit-Out, Shepherdstown, WV
- OPM, Eastern Management Development Center Addition, Shepherdstown, WV
- National Energy Technology Laboratory – Building B-8 Roof Replacement, Morgantown, WV
- US Coast Guard – Conference Room Renovation, Martinsburg, WV
- Eastern Panhandle Transit Authority Addition, Martinsburg, WV
- Cacapon State Park – Old Inn HVAC and Interior Renovation
- WV National Guard - Armory Office Fit-out, Parkersburg, WV
- South Berkeley Fire Station, Inwood, WV
- Jefferson County Emergency Services Agency – New Headquarters
- Berkeley County Ambulance Authority – South Station Renovation and Addition
- Poolhouse Renovation, McMechen, WV
- Community Center, Ridgeley, WV
- Wastewater Treatment Plant Renovations, Martinsburg, WV
- Public Works Building, Fairmont, WV
- Oatesdale Park Little League Fields, Martinsburg, WV
- St. Luke Canopy Replacement, Morgantown, WV
- Freshwater Institute – Aquaculture Building, Shepherdstown, WV
- Clarion Hotel Renovation, Shepherdstown, WV
- Shenandoah Village Apartments – Façade and Deck Replacement, Martinsburg, WV
- Regional Eye Associates/ Surgical Eye Center, Morgantown, WV
- Bavarian Inn – Infinity Pool/ Pool Bar, Shepherdstown, WV



## **Jordyn Henigin, M.Arch**

Jordyn joined Montum Architecture in May 2020. A recent graduate of Fairmont State University, She has been eager to enhance her skills in the business field and develop a stronger knowledge of architectural design principals and methods. Jordyn is in the process of pursuing her goal to become a licensed Architect.

### **Project Role: Design Professional**

- Concept and Construction Design
- Building Information Modeling – Revit
- Architectural Rendering - Lumion

### **Professional History**

2020- Present	Montum Architecture	Design Professional
---------------	---------------------	---------------------

### **Education**

2020	Fairmont State University	Bachelors of Architecture
2022	Fairmont State University	Masters of Architecture

### **Licenses and Certifications**

- LEED-Green Associate
- 30-hour OSHA Card

### **Associations and Memberships**

- Assoc. AIA

### **Professional Project Highlight**

- Watters Smith State Park, Lost Creek WV
- Mon Co Schools Transportation Addition, Morgantown WV
- Jackson Co ARFC Wash Bay, Millwood WV
- BUMFS Staggers Recovery, Burlington WV
- BUMFS Knobley Rehab, Burlington WV
- Aging & Family Services of Mineral County - Keyser Senior Center, Keyser WV
- Mineral County Detention Center, Courthouse, and Annex addition and renovations, Keyser WV
- Larenim Park Amphitheater, Burlington WV
- Building 25 HVAC, Parkersburg WV
- WVGSD Elevator Modernizations
- Westside HVAC and Roof, Clear fork WV
- Ed Kelley Memorial, Keyser WV
- Cass Campground, Cass WV
- Waxler Warehouse, Keyser WV
- Greenbrier SF Headquarters, White Sulphur Springs WV
- FWAATS, Bridgeport WV
- WV Challenge Academy Maclin Hall





### **B. Craig Miller, PE**

Craig founded Miller Engineering in 2003, and serves as President and Principal Engineer. He has more than 20 years experience in design, specification, operations and project management. During his employment with WVU, Craig was directly involved with approximately \$130 million in new capital construction. His experience with a wide range of projects including HVAC, electrical, plumbing, infrastructure upgrades, building automation, energy efficiency and maintenance/renovation, among others, allows him to serve in multiple capacities within a given project. Craig will serve as the "Relationship

Manager" for Miller Engineering as the main communication interface between the Owner, the design team, contractors and end users.

#### **Project Role: Relationship Manager – Primary Point of Contact**

- *Engineer in Responsible Charge*
- *Design and Project Management of Mechanical, Electrical, Plumbing Projects*
- *Concept and Construction Design*
- *Business Operations and Financial Management Oversight*
- *Quality Assurance and Control*

#### **Professional Project Highlights**

- Morgantown High School Area 4 HVAC Renovations
- WVU Life Sciences Building and Student Recreation Center – Owner's Engineer
- WVANG Bridgeport FWAATS Restroom Renovations
- ChalleNGe Academy Maclin Hall Make Up Air Unit Replacement
- Advanced Surgical Hospital
- Camp Dawson FMS4 Fire Protection
- Chief Logan Lodge HVAC Renovations
- Cheat Lake Elementary & Middle School Renovations

#### **Professional History**

2003- Present	Miller Engineering, Inc.	President, Relationship Manager
2002-2003	Casto Technical Services	Existing Building Services Staff Engineer
2001-2002	Uniontown Hospital	Supervisor of Engineering
1995-2001	West Virginia University	Staff Engineer
1990-1995	BOPARC	Caretaker – Krepps Park
1983-1988	University of Charleston	Electrician/HVAC Mechanic

#### **Education**

1995	West Virginia University	BS- Mechanical Engineering
1988	University of Charleston	BA- Mass Communications

#### **Licenses and Certifications**

- Professional Engineer (West Virginia, Pennsylvania, Maryland, and Ohio)
- Licensed Master Plumber
- LEED-AP Certified



## **Travis Taylor, PE**

Experience in project management facilitates Travis's ability to create and design constructible projects. Prior to joining the Miller Engineering team he was directly responsible for managing \$10 million in electrical construction budgets. His experiences encompass both new construction and renovation. Travis maintains professional competencies by attending seminars and continuing education classes. These include local ASHRAE classes in addition to classes on electrical systems, and also steam systems through Shippenburg Pump Company. As lead engineer he provides HVAC, mechanical, plumbing, and electrical design solutions and services for our clients. In addition, he is part of our team's complete assessment process in both planning and MEP design through construction administration.

### **Project Role: Lead MEP Engineer**

- *Design of Mechanical, Electrical, and Plumbing Systems*
- *Building Information Modeling - Revit*
- *Constructible Materials Evaluation*
- *Site Evaluation and Mechanical System Review*
- *Submittal and RFP Review*
- *RFI Coordination, Review, and Response*
- *Construction Observation*

### **Professional Project Highlights**

- WVANG Bridgeport FWAATS Restroom Renovations
- WVANG USPFO Buckhannon Restroom Renovations
- Camp Dawson FMS4 Fire Protection
- WVANG Jackson County AFRC Canopy
- WV State Building 25 (Piping, HVAC, Lighting)
- Hawks Nest Lodge Renovations
- Blackwater Falls Lodge Renovations
- Holly River State Park Primary Electric Service Replacements Phase I & II
- Pipestem Lodge McKeever Lodge HVAC Piping Replacement

### **Professional History**

2011-Present	Miller Engineering, Inc.	Staff Engineer
2006-2011	Tri-County Electric, Co.	Project Manager
2006-2006	Schlumberger	Field Engineer Trainee - MWD

### **Education**

2006 West Virginia University, BS – Mechanical Engineering

### **Licenses and Certifications**

- Professional Engineer - State of West Virginia, Maryland
- OSHA 10-hour Course: Construction Safety & Health



**Tyler Trump**

Tyler joined Miller Engineering in August 2022. A recent graduate of West Virginia University, he has been eager to learn the means and methods of MEP consulting. Tyler assists the MEP design team with design calculations and is rapidly learning design software such as Autodesk REVIT and Hourly Analysis Program by Carrier. He is also learning construction administrations along with building, electrical, and plumbing codes and standards. Tyler is currently preparing to take the Fundamentals of Engineering Exam.

**Project Role: Junior Engineer**

- *Design Calculations*
- *Drafting of MEP Systems*
- *Assist with Construction Administration*

**Professional Project Highlights**

- Cass Scenic Railroad State Park Campground
- Lost River Campground
- Mountain Line Transit Authority Office Renovation
- WV Building 25 Lighting Upgrades
- Ronald McDonald House Morgantown Addition & Renovations
- McKeever Lodge Boiler Replacement
- Chief Logan Lodge HVAC Renovations
- ChalleNGe Academy Maclin Hall Make Up Air Unit Replacement

**Professional History**

2022- Present                      Miller Engineering, Inc.      MEP Designer

**Education**

2022      West Virginia University, BS - Mechanical Engineering

**Licenses and Certifications**



## KENNON CHAMBERS, PE PRESIDENT

Kennon Chambers, PE, is President of Ghosh Engineers, Inc. and has 27 years of experience in design, construction, and construction administration of water and wastewater systems.

Responsible for the overall management of company operations, his years of engineering design and management experience include engineering studies, preliminary engineering reports, construction drawings, contracts, specifications, permitting, cost estimating, and contract administration. He is equally proficient in the design of wastewater treatment plants and collection systems, including lift stations, as well as water treatment and distribution systems including booster stations and storage tanks.

Mr. Chambers began his career at a utility construction company where he gained unique experience that would become invaluable to him in the future as a design engineer. He has since managed the design and construction of projects ranging in size from \$50,000 up to \$30 million, with numerous projects running concurrently.

### PROJECT EXPERIENCE

**TOMLINSON PUBLIC SERVICE DISTRICT:** Extensions to the existing water distribution system to provide service to 12 new customers and improvements to the existing system including pipe replacement, and booster station upgrade and water storage tanks.

**CITY OF ELKINS:** Distribution system improvements including transmission mains, distribution mains, isolation valves, fire hydrants, and booster stations.

**CITY OF LEWISBURG:** Implementation of an automatic meter reading (AMR) system for the water distribution system.

**WEST VIRGINIA AMERICAN WATER:** Various projects involving water distribution system improvements and extensions, water storage tanks, booster stations and hydraulic modeling. Railroad permitting for multiple projects with waterlines crossing under CSX, Norfolk Southern and WATCO.

**BECKLEY WATER COMPANY:** Various projects involving water distribution system improvements and waterline relocations in WVDOH projects. Railroad permitting for multiple projects with waterlines crossing under CSX Railroad.

### EDUCATION

Bachelor of Science,  
Civil Engineering  
*West Virginia Institute  
of Technology*

### REGISTRATION

Professional Engineer  
– West Virginia  
– Kentucky  
– Virginia

NCEES Record  
Established

Model Law Engineer as  
determined by NCEES

### AFFILIATIONS

American Water Works  
Association (AWWA)  
Water Environment  
Association (WEA)  
Water Environment  
Federation (WEF)





## JEFF EKSTROM, PE

### VICE PRESIDENT

Jeff Ekstrom, PE joined Ghosh Engineers, Inc. in August 2019 as a Project Manager. In his 34 years of experience, he brought to the company his organizational, problem solving and leadership skills in the design and management of infrastructure projects ranging from \$100,000 to \$68 million in construction costs.

Jeff's area of specialty is environmental engineering with a focus on the design of water and wastewater treatment plants. He has introduced and implemented new technologies into treatment plants throughout West Virginia that were instrumental in achieving ever changing water quality standards. These accomplishments have made him a sought-after water and utility engineer. Jeff is accessible and puts clients first, providing them with options that are the most practical and economical ways to approach a challenge.

Jeff gained national recognition from the American Water Works Association (AWWA) where he was honored as a 2010 recipient of the George W. Fuller award for his distinguished serve to the water supply field and sound engineering skills. He previously served as the WV Section Representative on the AWWA Board of Directors helping to establish policies for the overall management and direction of AWWA affairs.

### PROJECT EXPERIENCE

**CORPORATION OF SHEPHERDSTOWN:** Comprehensive study of water system resulting in upgrades to water treatment plant, distribution system and storage tanks; 1.15 MGD Surface Water Treatment Plant upgrade, (2) 700,000 Gallon Elevated Water Storage Tanks, AMR water meter reading system.

**CITY OF THOMAS, WV:** Water System Improvements including 200 GPM Water Treatment Plant upgrade, distribution system improvements and new water storage tank.

**HAMRICK PUBLIC SERVICE DISTRICT:** Water Treatment Plant upgrade including new package filtration units, new high service and raw water pumps, and emergency generator.

**CITY OF ELKINS, WV:** Comprehensive study of water system resulting in upgrades to water treatment plant, distribution system and storage tanks

**CITY OF FOLLANSBEE:** 1.4 MGD Groundwater Treatment Plant upgrade, distribution system improvements, booster station upgrades, waterline extension and 212,000 Gallon Water Storage Tank.

**ELKINS ROAD PUBLIC SERVICE DISTRICT:** Extensions to the existing water distribution system to provide service to 600 customers including booster stations and water storage tanks.

**CLAY COUNTY PUBLIC SERVICE DISTRICT:** Extensions to the existing water distribution system to provide service to 500 customers including booster stations and water storage tanks.

**BECKLEY WATER COMPANY:** Various projects involving water distribution system improvements, waterline relocations in WVDOH projects, water storage tanks, booster stations and hydraulic modeling. Railroad permitting for multiple projects with waterlines crossing under CSX Railroad.

**TOWN OF MONONGAH:** 1.7 MGD Surface Water Treatment Plant and water distribution system improvements including pipe replacement, new water meters and (2) pressure reducing valve stations.

### EDUCATION

Bachelor of Science,  
Civil Engineering

*West Virginia Institute  
of Technology*

### REGISTRATION

Professional Engineer

- West Virginia
- Kentucky
- Virginia
- Ohio

NCEES Record  
Established

### AFFILIATIONS

American Water Works  
Association (AWWA)  
WV, OH, KY/TN Sections

Water Environment  
Association (WEA)

Water Environment  
Federation (WEF)

## ALFONSO D'ALESSIO

### PROJECT ENGINEER

Alfonso joined Ghosh Engineers in 2022 after graduating from West Virginia University in Morgantown. He is a motivated and detail-oriented engineer with a growing reputation for dependability and effective communication with clients and contractors and has quickly become an integral member of the project team.

Alfonso plays an active role in our water distribution systems projects by performing hydraulic modeling, developing construction drawings, specifications, and estimating project costs. He carries out smoke testing and flow monitoring for I/I studies, conducts field investigations, and site inspections, and contributes to the preparation of detailed engineering reports and permitting documentation alongside senior engineers and project managers.

### PROJECT EXPERIENCE

**TOWN OF EAST BANK:** Infiltration & Inflow Remediation

**BECKLEY WATER COMPANY:** Distribution System Improvements

**CITY OF FOLLANSBEE:** Sanitary & Storm Sewer Separation

**TOWN OF MASON:** Water System Improvements

**WEST VIRGINIA AMERICAN WATER:** Water Storage Tanks and Booster Stations

### EDUCATION

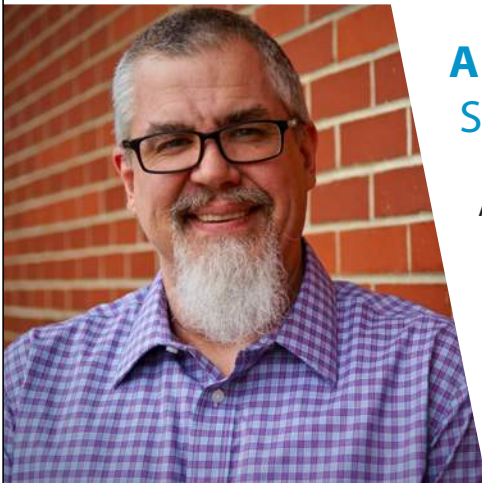
Bachelor of Science,  
Civil Engineering

*West Virginia University  
Morgantown, WV*

### AFFILIATIONS

American Water Works  
Association (AWWA)





## ALLEN KING

### SENIOR CAD DESIGNER

Allen King has 22 years of CAD design experience and joined Ghosh Engineers in September 2019 after working several years for a large national firms in WV and VA. He serves as primary CAD Technician on water, wastewater and stormwater system improvements.

#### PROJECT EXPERIENCE

**TOMLINSON PUBLIC SERVICE DISTRICT:** Water distribution system improvements.

**CITY OF FOLLANSBEE:** Wastewater collection system improvements and water distribution system improvements.

**BECKLEY WATER COMPANY:** Water distribution system improvements.

**WEST VIRGINIA AMERICAN WATER:** Various water distribution system improvements.

**WEST VIRGINIA DIVISION OF NATURAL RESOURCES:** Cass Scenic Railroad wastewater collection system improvements.

**RED HOUSE, WV:** Stormwater system improvements.

#### EDUCATION

Associate of Science,  
Architectural Computer  
Aided Drafting and  
Design Technology

*Triangle Tech  
Pittsburgh, PA*



## JIM CHARLEY

### SENIOR CAD DESIGNER

Jim Charley has worked on countless projects in his 33 year career with Ghosh Engineers and is highly skilled in the production of Civil and Architectural drawings for the construction of water and wastewater treatment systems.

#### PROJECT EXPERIENCE

**CITY OF WHITE SULPHUR SPRINGS:** Water System Improvements.

**CITY OF FOLLANSBEE:** Water and Wastewater System Improvements.

**HANCOCK COUNTY PSD:** Lines, Booster Stations and Tanks.

**CORPORATION OF SHEPHERDSTOWN:** Water System Improvements.

**WEST VIRGINIA AMERICAN WATER:** Cross Lanes Drive waterline replacement.

#### EDUCATION

Bachelor of Science,  
Industrial Technology

*West Virginia  
State University  
Institute, WV*



## ARROW'S MISSION

Since 2016, Arrow Structural Engineering has been dedicated to delivering top-tier structural engineering solutions that exceed expectations. Drawing from his extensive background as a contractor, civil engineer, and structural engineer, Michael Howell founded Arrow Structural Engineering to bring a unique blend of practical experience and innovation to every project.

At Arrow Structural Engineering, we understand the paramount importance of a sturdy foundation and impressive design. Whether it is a commercial, industrial, governmental, historic preservation or residential venture, our team is committed to crafting solutions that exceed industry standards. With a focus on safety and durability, trust us to bring your structural visions to life with precision and expertise.

Arrow SE is licensed in twenty-two states:

AR, CA, FL, IA, IL, IN, KY, LA, MD, MI, MS, MO, NJ, NY, NC, OH, PA, SC, TN, TX, VA, WV



## ARROW'S LEADERSHIP



### MICHAEL HOWELL, P.E. S.E.

*President*

Mike's passion for construction began in his youth in New Brighton, Pennsylvania, where early hands-on experiences and volunteer work fueled his interest in structures. He earned a B.S. in Civil and Environmental Engineering from the University of Pittsburgh and an MBA from West Virginia University. His professional journey includes roles at firms such as American Bridge Company, McKinney and Company, Brockenbrough and Associates, and Allegheny Design Services. An active member and leader in groups like the American Society of Civil Engineers and the Richmond Joint Engineers Council, Mike also gives back to his community through board service with organizations like Pace Enterprises and the Spark Imagination and Science Center. Based in Morgantown, West Virginia, he enjoys coaching youth sports and spending time with his two children. As a speaker, he presents on topics such as engineering failures, leadership, and historical insights into modern construction.



### CAROL STEVENS, P.E. F.ASCE

*Chief Engineer*

Carol Stevens is a leading structural engineer with decades of experience designing and rehabilitating critical infrastructure throughout West Virginia and beyond. A graduate of West Virginia University and The Pennsylvania State University, she has led CAS Structural Engineering as president since 2001, contributing to landmark projects at Twin Falls, Hawks Nest, and Pipestem State Parks, as well as historic restorations like the First Presbyterian Church and the West Virginia State Capitol Complex. Her award-winning work on the Upshur County Courthouse, Robinson Grand Performing Arts Center, and the Main Capitol Building Dome has earned recognition for design excellence. Actively involved in the American Society of Civil Engineers and the National Society of Professional Engineers, Carol also serves on the West Virginia Board of Registration for Professional Engineers and advises academic institutions, reflecting her dedication to mentoring future engineers and advancing the profession.

## ARROW'S TEAM



### ASHBEE SYKES, P.E. S.E.

*Senior Engineer*

Originally from Kitty Hawk, North Carolina, Ashbee brings a deep understanding of construction and structures to his work as a structural engineer. His background working with a family construction business provided hands-on experience ranging from framing houses to engineering multimillion-dollar projects, informing his approach to the intricacies and impact of design decisions. Inspired by his early days as a carpenter, Ashbee's journey led him to West Virginia. A graduate of West Virginia University with degrees in Mechanical and Aerospace Engineering, Ashbee is currently advancing his expertise in Structural Engineering at The Citadel. As a licensed Professional Engineer since 2019, he's committed to delivering excellence in every project.



### PHILLIP BAILEY, P.E.

*Project Engineer*

With a background in civil engineering and construction management, Phillip brings practical experience and academic knowledge to our projects. Phillip holds B.S. in Civil Engineering from West Virginia University, and has a background in construction management working for Yates Construction on the WVU Medicine Children's Hospital. Having worked on significant projects like WVU Medicine Children's Hospital, Phillip is well-prepared to lead complex building and design endeavors. As a licensed Engineering Intern in West Virginia, he's committed to delivering top-notch results. Phillip is a member of West Virginia University's Chi Epsilon Honorary Academic Fraternity.



### ALEX YODER

*Junior Engineer*

From working in his father's wood shop to building storage sheds and remodeling houses, a passion for design and construction eventually led Alex to pursue a B.S. in civil engineering with a focus on structures from Bucknell University in Lewisburg, PA.



### ZACHARY HOWELL

*CAD TECHNICIAN*

As Arrow's sole CAD Technician, Zachary plays a vital role in the team. His expertise in engineering technology and design enables him to create both 2D and 3D designs, ensuring Arrow produces top-quality plans for superior structures. Beyond design, Zachary also assists with field work, measuring structures and conducting assessments. His attention to detail makes him an essential part of the team. Zachary received AutoDesk Certification from the Virtual Design Construction Institute, further validating his skills in CAD.



WEST VIRGINIA

**state**  **parks**

*Montum*



Experience



## Plum Orchard Wildlife Management Area Maintenance Building

### Description of Project:

West Virginia Division of Natural Resources contracted Montum Architecture to design a versatile building to support the efficient operations and upkeep of the wildlife management areas. This facility will serve as a hub for storing equipment, providing office space, accommodating overnight stays, and offering basic amenities for staff. Of the 3,700 sf building is 2,100 SF is unheated bay space while 690 SF is heated bay space. Miller Engineering was sub-consulted on the project and designed the MEP drawings. Arrow Engineering was sub-consulted and designed the structural drawings, which included the metal building design, foundation, and concrete slab design to withstand the storage equipment loads.

**Project Size**  
3,700 SF

**Project Location**  
Scarbro, WV

**Project Status**  
Ready For Bid

**Contact**  
Edward L Raines  
DNR Project Manager  
304-558-2764  
edward.l.raines@wv.gov



Before



After

## Berkeley Springs State Park

### Old Roman Bathhouse renovations

#### Description of Project:

West Virginia Division of Natural Resources contracted Montum Architecture to design repairs and improvements to the Old Roman Bathhouse at Berkeley Springs State Park. The structure was built in 1815 with various changes and updates since then. Work includes repairs to the tub structure and plumbing, replacement of the boiler, floor tile replacement, and other updates to fit and finish.

#### **Construction Cost**

\$782,800

#### **Project Size**

2,500 SF Renovated

#### **Project Location**

Berkeley Springs, WV

#### **Construction Completion**

Spring 2020

#### **Contact**

Carolyn Mansberger  
DNR Project Manager  
304-558-2764





## Mineral County Commission

### Facility Renovations and Additions

#### Description of Project:

The Mineral County Commission operates three primary buildings at the Courthouse Complex which are the Courthouse, the Judicial Annex, and Sheriff Building. Additional office space is provided via a second-story addition to the Sheriff Building with elevator access. The Courthouse gains a security checkpoint vestibule, egress stair, and elevator access to all three existing floors. The Judicial Annex improvements include the fitout of the existing second floor, an addition of a security checkpoint vestibule, egress stair, and elevator. The project includes fire alarm and sprinkler system installations for code compliance. The existing courthouse and annex structures are under the purview of the State Historic Preservation Office. Section 106 approvals were gained before construction began.

#### **Construction Cost**

\$8.5 Million

#### **Project Size**

40,000 SF Existing

10,500 SF New

#### **Project Location**

Keyser, WV

#### **Construction Completion**

Spring 2025

#### **Contact**

Luke McKinzie

County Coordinator

304-788-5921





## WVANG Bridgeport FWAATS Restroom Renovations

### Description of Project:

In Partnership with Miller Engineering, Montum Architecture helped prepare renovated floor plans for two locker / shower rooms and two restrooms. The goal was to renovate the spaces to meet ADA guidelines and improve efficiency and utilization of the areas. As well as, choose appropriate finishes that bring these spaces into the modern era. The flooring on the first floor was also replaced under this project. MEI designed renovations to the plumbing, lighting, fire alarm, fire protection, electrical, and VAC systems to accommodate the changes to the floor plans. The existing boiler was replaced with two, high efficient, modulating boilers. The owner was pleased with the chosen finishes and plans to use these as a standard going forward.



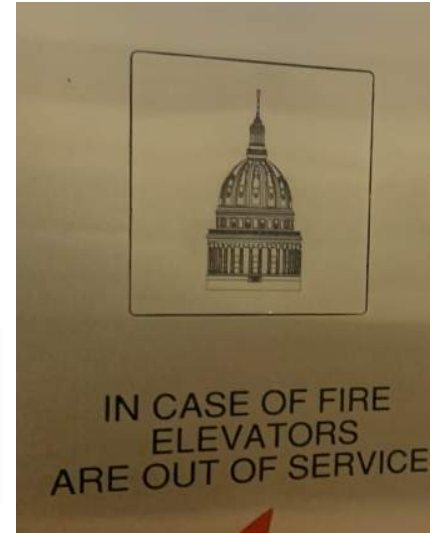
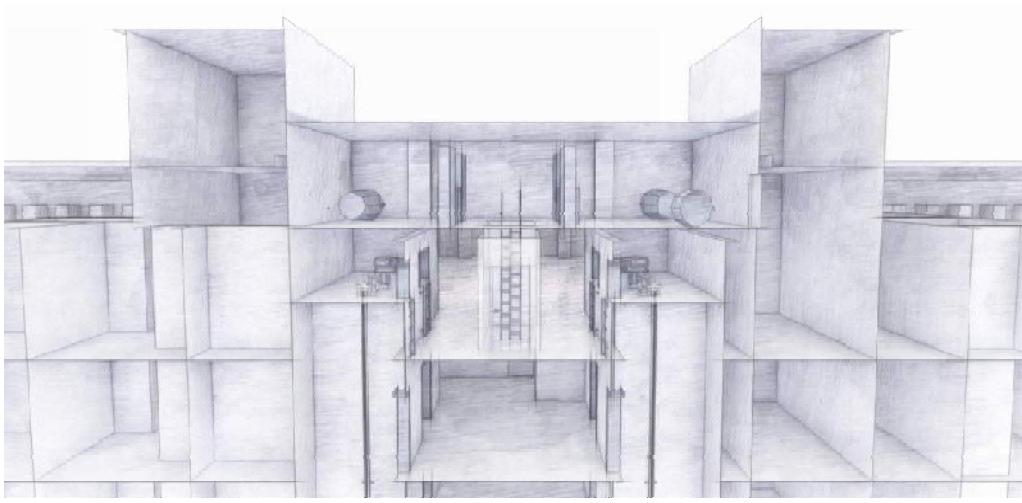
**Construction Cost**  
\$1M

**Project Size**  
1,400SF Renovated

**Project Location**  
Bridgeport, WV

**Construction Completion**  
May 2023

**Contact**  
Jim Skaggs  
WV ANG  
(304) 561-6550



## West Virginia General Services Division Various Elevator Modernizations

### Description of Project:

Miller Engineering, Richard Kennedy & Associates, and Montum Architecture partnered for the project. They were tasked with evaluating 31 current elevator systems and developed modernizations for each in a three-phase project method. Modernizing the machine rooms and bringing the systems into compliance with as few or no deviations as possible is a key aspect in the scope of service. To ensure that State decision-makers better understand the findings, the team created a full report including discussions, projections, suggestions, an executive summary, and an elevator system "primer". Phase I included seven elevators at the West Virginia Capitol Building, two at WV Building 7, and two at WV Building 25. Work at the Capitol Campus was reviewed and approved by the Capitol Building Commission, including historic restoration and complimentary aesthetics in the WV Capitol Building. Phases 1 & 2 are currently in construction.

**Construction Cost**  
\$20M

**Project Size**  
N/A

**Project Location**  
Charleston, WV

**Construction Completion**  
In Construction

**Contact**  
Pat O'Neill  
Project Manager  
WV General Services Division  
112 California Ave  
Charleston, WV  
304-957-7133  
Patrick.s.oneill@wv.gov





# Wyoming County Schools

## Wyoming East High School & Westside High School HVAC & Roof Replacement

### Description of Project:

The West Virginia School Building Authority funded replacement of the HVAC systems and roofing at the existing Wyoming East High School in 2017. The County received ARP ESSER funds through the West Virginia Department of Education for HVAC system upgrades at Westside High School in 2021. The County locally funded the replacement of the EPDM roofing in sequence with this HVAC project. Work was performed within a occupied buildings with close coordination of school daily schedules and calendar of events. Many of the units are being replaced one-for-one with some zones being split into multiple units to allow flexibility of new curriculum within the spaces or needs for additional comfort control. Ceilings are being replaced to meet updated guidelines for educational facility acoustics.

**Construction Cost**  
\$3.2M & \$3.3M

**Project Size**  
130,000 SF Existing, Each

**Project Location**  
New Richmond, WV  
Clear Fork, WV

**Construction Completion**  
WEHS – Summer 2019  
WES – Spring 2023

**Contact**  
Robert Lyons  
Director of Facilities  
304-732-6262

## Descriptions of Past Projects Completed – Misc. Upgrades

### **Blackwater Falls State Park Lodge Upgrades**

**Davis, WV**

#### **Services Provided:**

- General Trades
- Plumbing
- Electrical
- Mechanical
- Pool

**Estimated Budget: \$1.1 Mil**

**Facility Area: 46,000 ft<sup>2</sup>**

**Owner: West Virginia Division of  
Natural Resources**



#### **Project Contact:**

*Bradley S. Leslie, PE, Assistant Chief  
State Parks Section*

*Phone: (304) 558-2764 ext. 51826*

MEI has performed several projects at the Blackwater Falls State Park Lodge that cover many trades. Miller Engineering designed new HVAC systems for the dining room and make up unit for the Kitchen. The units were installed in a manner to not interfere with views of the park. The second floor plumbing piping was upgraded and routed out of the attic for freeze protection. The bathrooms were re-connected with new GFCI receptacles to eliminate nuisance tripping. New panel boards, hallway lighting, and hallway ceilings were installed as well. A MEI project which was just completed is the replacement and re-piping of the hot tub. The existing spa was leaking and had maintenance issues. A new hot tub was installed along with tiling. A new chemical and pump room was installed as well. Miller Engineering was recently contracted to design the replacement of the existing boiler system and convert them from steam to hot water. The project is currently in the final phases of construction.



## Descriptions of Past Projects Completed – HVAC Piping

### Pipestem McKeever Lodge

Pipestem, WV

#### Services Provided:

- HVAC
- Plumbing
- Electrical
- Accommodation of Existing Systems

**Estimated Budget: \$1.7M**

**Facility Area: 63,000 ft<sup>2</sup>**

**Owner: West Virginia Division of Natural Resources**



The original HVAC piping at McKeever Lodge had exceeded its lifespan and had been suffering from corrosion leading to multiple leaks, including one causing an electrical service outage. Miller Engineering was hired to investigate the existing piping, discovering all of the some 4,000 linear feet of piping required replacement. As this lodge is regularly occupied for larger conferences, the project had to be phased to minimize the amount of guest rooms taken out of service at one time. MEI also designed provisions to interconnect the lodge's two separate boiler/chiller plants so one plant could operate the entire lodge at a partial capacity while the other plant was replaced and re-piped. This interconnect also allows the lodge to operate in the event of a boiler or chiller outage.

Power was provided to new equipment, and motor control centers were added to control the building loop pumps. A new building controls system was installed to allow the plants to run at optimum efficiency while meeting the lodges heating and cooling needs.

#### Project Contact:

*Carolyn Mansberger, Project Manager  
State Parks Section  
(304) 558-2764*

## Project Experience: MEP

### Cacapon Lodge Addition & Renovation

#### Services Provided:

- Electrical
- Plumbing
- HVAC
- Fire Alarm
- Fire Protection
- Pool

**Estimated Budget: \$26M**

**Facility Area: 113,000 sq ft**

**Owner: WV Department of Natural Resources**



Miller Engineering teamed with Paradigm Architecture to design the addition to the lodge at Cacapon State Park. The addition includes approximately 80 guest rooms, new kitchen and dining areas, a spa, indoor pool, and support spaces. The boiler system was replaced with new efficient modulating boilers and a chiller was added.

New chilled and hot water piping was installed to allow for simultaneous heating and cooling of the lodge. The electric service was upgraded with a new main electric room in the addition with distribution panels throughout. All lighting was replaced with efficient LED fixtures. The fire protection system was upgraded and extended to the new addition.

#### Project Contact:

*Bradley S. Leslie, PE, Assistant Chief  
WVDNR State Parks Section  
(304) 558-2764 ext. 51826*

## Descriptions of Past Projects Completed – New Construction

### **WVANG Challenge Academy Maclin Hall MAU Replacement**

Montgomery, WV

#### **Services Provided:**

- Mechanical
- Electrical
- General Trades

**Construction Cost: \$496K**

**Owner: WVANG**



MEI was tasked with replacing two failing make-up air (MAU) units at Maclin Hall. The units provide ventilation air for the facility. The MAU replacement involved installing new rooftop mounting curbs and replacement on rooftop mounted ductwork. New exhaust fans were installed on the roof and tied to the existing exhaust / relief air systems. New electrical feeds were installed to the new MAUs and fans. Montum Architecture assisted with the addition of rooftop railing to improve worker safety and the replacement of roof hatches and access ladders. The project was completed in January 2024 with no disruption to Challenge Academy operations.

**Project Contact:**

*Jim Skaggs*

*WVANG*

*(304) 561-6550*

# SITE DEVELOPMENT EXPERIENCE

## RECREATIONAL AREAS

Our team has experience in the design of parks along the Elk River for kayaking, fishing, and small boat access. For these projects, preliminary evaluations of project sites, permitting, preliminary and final design, utility coordination, and construction administration were performed.

## PARKING FACILITIES

Members of our team have experience in the layout and design of parking facilities across the Kanawha Valley. Each project required the extensive design of stormwater management facilities and collaboration with City officials to maintain MS4 compliance to ensure the Client received the most cost-effective solution for the project.

### ▼ UTILITY PROJECT SITE DESIGN

Site design was developed for multiple locations on the Weston to Webster Springs Interconnection project for West Virginia American Water. These areas required extensive grading, stormwater management, and erosion & sediment control measures.

### ▼ RESORTS & LODGING

Our team's experience includes the design of lodging facilities for a campground in Summers County and major hotel chains in Kanawha and Putnam Counties. These projects included preliminary layouts, revisions to reflect stakeholder requirements, cooperation with State and City officials for zoning and stormwater management requirements, as well as administration of projects throughout construction.

### ▼ SINGLE & MULTI-FAMILY RESIDENTIAL

Engineers on our team have aided in the design of many types of residential developments from single building elderly care facilities to large scale housing developments.





CLIENT:

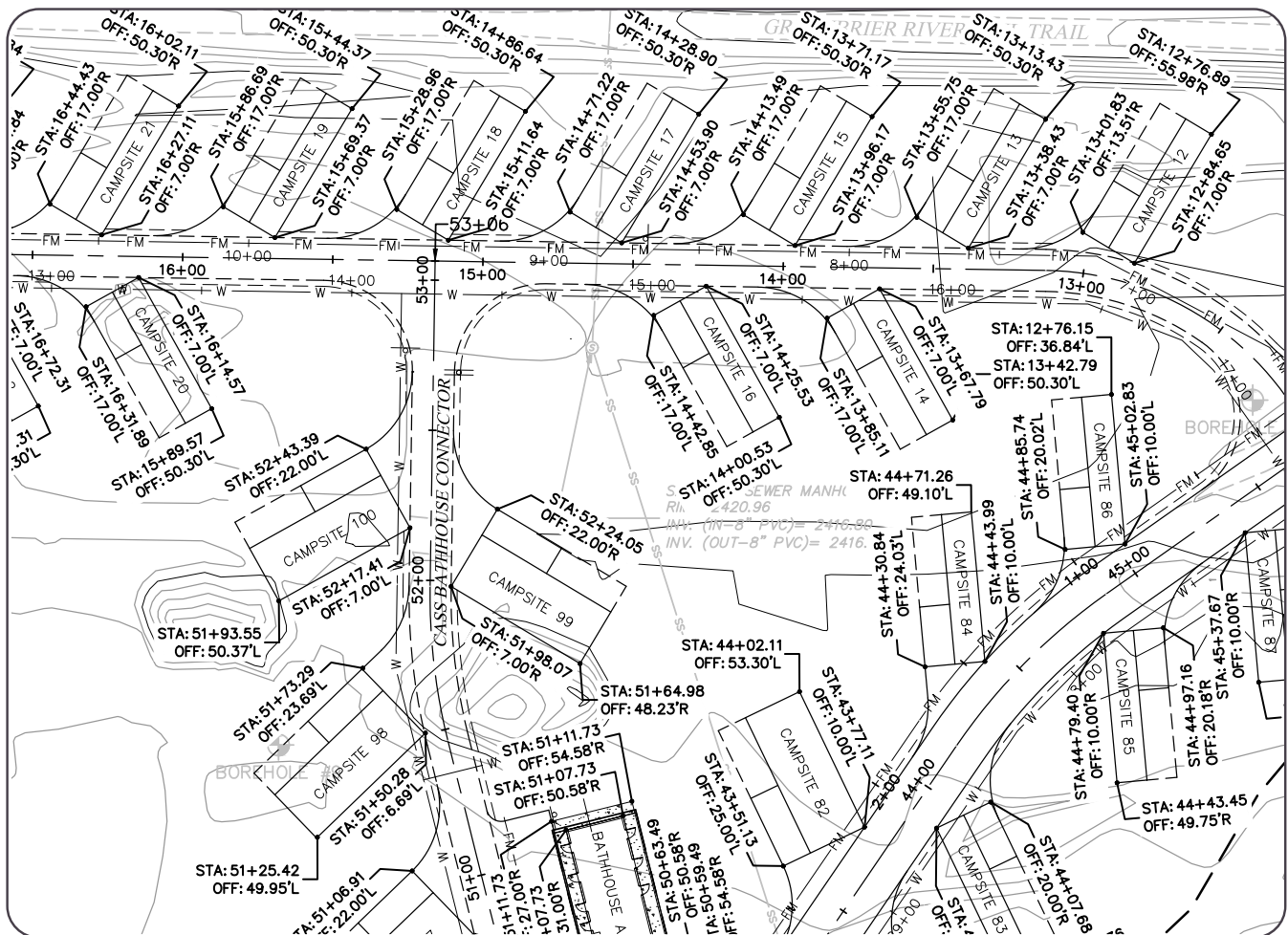
**WVDNR**

PROJECT:

## Cass Scenic Railroad State Park Campground

DESCRIPTION:

The campground expansion at Cass Scenic Railroad State Park served not only to add 100 new campsites and two bathhouses across a 20-acre area, but also to establish integration of green infrastructure into park planning. Ghosh Engineers developed site and grading plans that prioritized the natural hydrology of the landscape, using sustainable stormwater strategies to protect waterways, reduce erosion, and enhance ecological function. The project demonstrates how park improvements can be approached as both recreational amenities and environmental enhancements, creating a framework for future planning that balances visitor experience with long-term watershed health.



CLIENT:

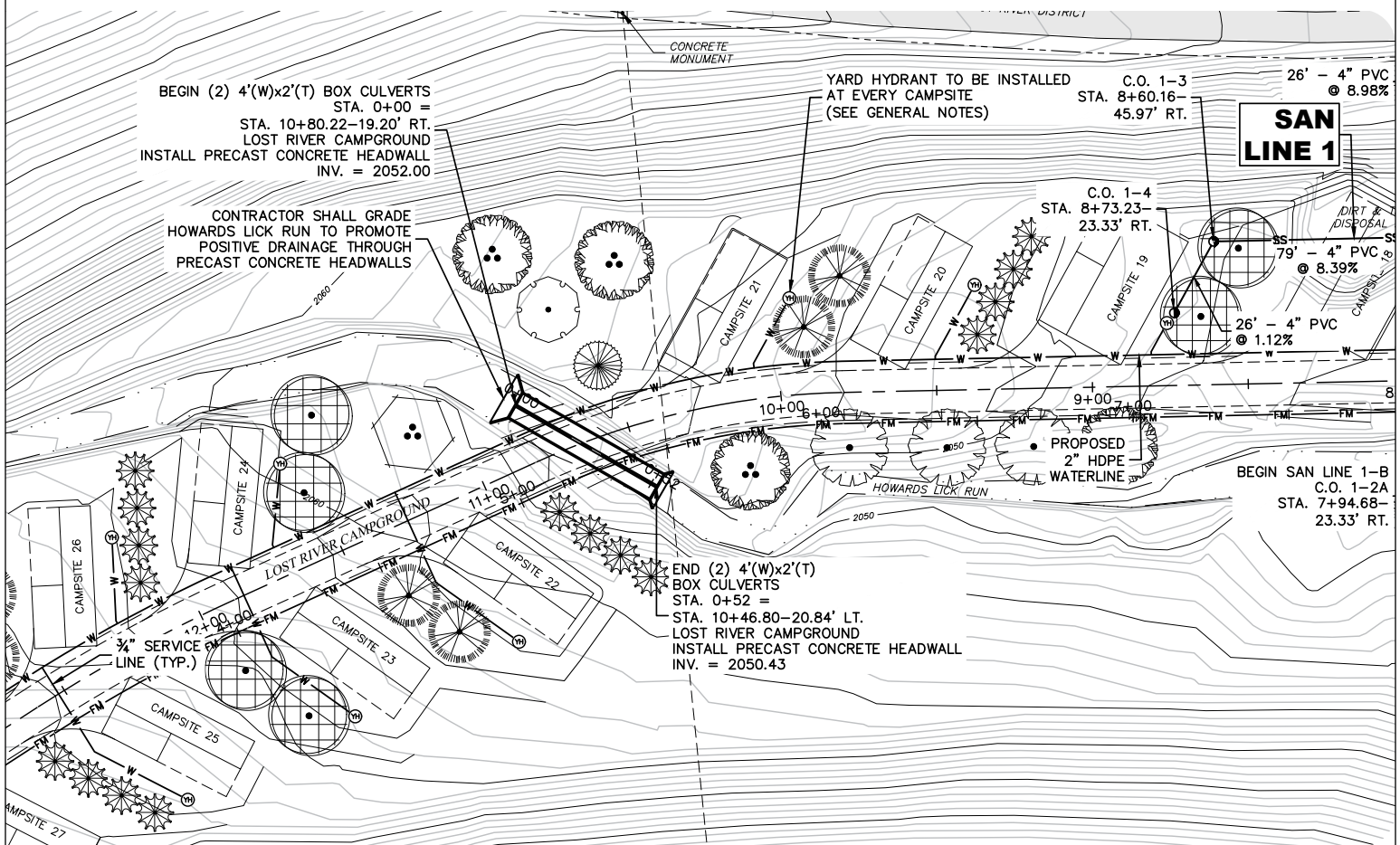
**WVDNR**

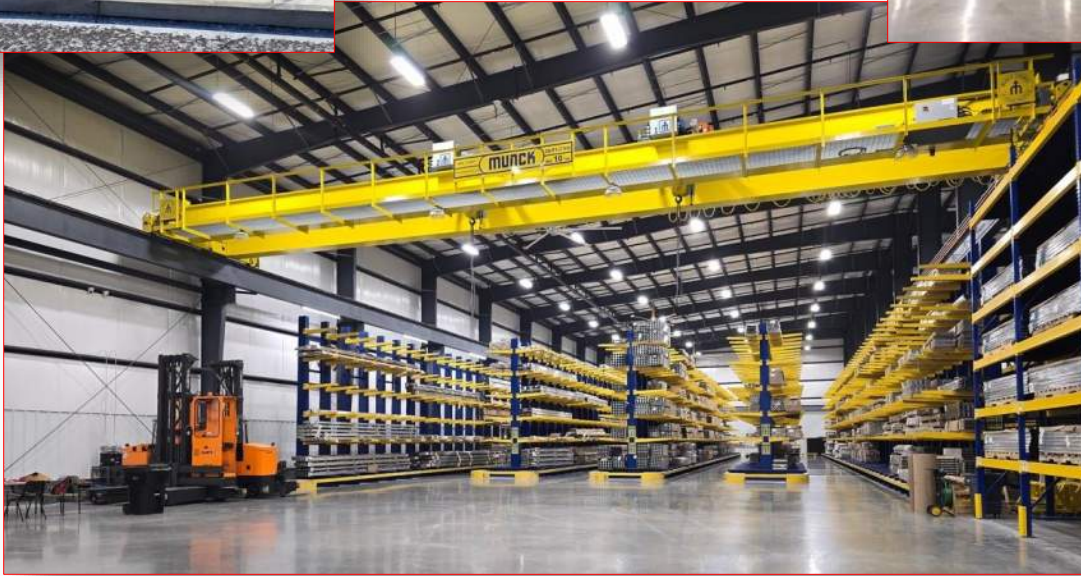
PROJECT:

**Lost River State Park Campground**

DESCRIPTION:

The campground development at Lost River State Park added 36 new campsites within a 3.43-acre parcel west of Mathias in Hardy County, West Virginia. The site, bisected by Howards Lick Creek and defined by slopes ranging from 5% to 30%, required a design approach that respected both the natural topography and sensitive stream corridor. Ghosh Engineers prepared site and grading plans that prioritized sustainable stormwater management, ensuring runoff was directed in ways that reduced erosion and preserved water quality. The project demonstrates strategies in campground design that can enhance recreational opportunities while protecting natural resources and supporting long-term park resiliency.





## SAMUEL, SON & CO.

PITTSBURGH, PA

**PROJECT TYPE:**  
Light Industrial

### PROJECT SUMMARY

This project demonstrated Arrow's structural engineering expertise through the design of an 85,000-square-foot industrial crane facility developed by Chapman Properties, recipient of the 2025 NAIOP Pittsburgh Award. Focused on strength, precision, and long-term performance, the structure was engineered to support intensive industrial operations while accommodating integrated office functions within the same building footprint.

At the core of the facility is a robust concrete slab foundation, designed to resist heavy concentrated loads and dynamic forces generated by the building's bridge crane system and high-load cantilever shelving. The slab's design required careful consideration of load paths, reinforcement detailing, and subgrade performance to ensure durability and crack control under repetitive service conditions.

The building's primary framing system was engineered to achieve both flexibility and endurance—capable of supporting significant crane loads, large open spans, and vertical storage systems without compromising stability. Coordination with the architect and mechanical trades ensured that the structure could accommodate the precise clearances and service demands of the industrial equipment, while maintaining efficiency in fabrication and erection.





## Chapman Westport

PITTSBURGH, PA

**PROJECT TYPE:**  
Light Industrial

### PROJECT SUMMARY

This 108,000-square-foot tilt-up warehouse known as Building 300 was developed by Chapman Properties as part of the park's continued expansion of a 300-acre Class-A industrial park development. Following the successful completion of Buildings 100 and 200, the new facility was designed to provide flexible tenant space that supports a range of industrial and distribution uses.

Arrow's scope centered on an innovative structural design that married safety with the need for quick-construction. These standards were necessary to all project development goals. Our team performed multiple iterations of the tilt-up wall panels, roof framing, and foundation systems to refine load paths, minimize material use, and accommodate a fast construction schedule.

Using Arrow's integrated project delivery approach for tilt-up construction, panel shop drawings were incorporated directly into the contract documents, streamlining coordination, reducing review time, and minimizing questions related to panel design intent during construction.

The completed structure features One-Dek composite roof decking, integrated steel joist detailing, and a tilt-up concrete envelope, delivering a durable and adaptable building that fits seamlessly within Chapman Westport's broader master plan for industrial growth.





## BRIDGEPORT FIRE DEPARTMENT

BRIDGEPORT, WV

### PROJECT TYPE:

Municipal / Residential

### PROJECT SUMMARY

This project showcased Arrow's ability to blend functionality, resilience, and visual impact through the structural design of a new fire department facility in Bridgeport, West Virginia. Designed to meet the demanding operational needs of first responders, the facility was engineered using a robust combination of masonry bearing walls, cast-in-place concrete slabs, and a meticulously designed steel framing system. Together, these components provided a durable structural solution capable of withstanding both the test of time and the rigors of emergency services operations.

A standout feature of this project was the incorporation of exposed structural steel roof trusses. These trusses were not only engineered to deliver the necessary roof support and load transfer but were also designed with visual expression in mind. Finished in a striking firehouse red, they created a bold architectural statement that complements the utilitarian materials throughout the building. By leaving these trusses exposed, the design celebrates the strength and precision of the structure itself—bringing engineering into the spotlight as a visible and integral design element.

From concept through construction, our team collaborated closely with architects and contractors to ensure seamless integration of aesthetics and performance. The result is a civic facility that is as structurally sound as it is visually iconic—serving both the community's emergency response needs and the city's architectural landscape.



## ANNA JARVIS ELEMENTARY SCHOOL

GRAFTON, WV

**PROJECT TYPE:**  
Primary Education

### PROJECT SUMMARY

The project involves the construction of a two-story building on the site of the existing Anna Jarvis Elementary School, spanning approximately 60,000 square feet. The building's structural design relies on reinforced masonry bearing walls and a steel-framed roof, providing a solid foundation for the overall structure. To streamline the design process, we utilized a comprehensive structural modeling software, integrating all elements of the project—from the foundational support to the roof system—into one cohesive model.

A critical aspect of this project was the intricate coordination required to ensure seamless integration between the structural framework, architectural elements, civil site work, and the building's utilities. This included precise coordination with the mechanical, electrical, and plumbing (MEP) systems, as well as the fire suppression system, to ensure that all components fit within the building's design constraints without compromising structural integrity or functionality.

WEST VIRGINIA

**state**  **parks**

*Montum*







Department of Administration  
Purchasing Division  
2019 Washington Street East  
Post Office Box 50130  
Charleston, WV 25305-0130

State of West Virginia  
Centralized Expression of Interest  
Architect/Engr

**Proc Folder:** 1853967

**Doc Description:** A&E - Calvin Price State Forest Storage Building

**Reason for Modification:**

**Proc Type:** Central Purchase Order

Date Issued	Solicitation Closes	Solicitation No	Version
2025-12-09	2026-01-08 13:30	CEOI 0310 DNR2600000004	1

**BID RECEIVING LOCATION**

BID CLERK  
DEPARTMENT OF ADMINISTRATION  
PURCHASING DIVISION  
2019 WASHINGTON ST E  
CHARLESTON WV 25305  
US

**VENDOR**

**Vendor Customer Code:** VS0000013207

**Vendor Name :** Montum Architecture, LLC

**Address :** 55

**Street :** ER Path

**City :** Keyser

**State :** West Virginia

**Country :** USA

**Zip :** 26726

**Principal Contact :** Thomas Pritts, AIA

**Vendor Contact Phone:** 304-276-7151

**Extension:**

**FOR INFORMATION CONTACT THE BUYER**

Joseph (Josh) E Hager III  
(304) 558-2306  
joseph.e.hageriii@wv.gov

**Vendor  
Signature X**

**FEIN#** 82-1385831

**DATE** January 8, 2025

**All offers subject to all terms and conditions contained in this solicitation**



**DESIGNATED CONTACT:** Vendor appoints the individual identified in this Section as the Contract Administrator and the initial point of contact for matters relating to this Contract.

(Printed Name and Title) Thomas Pritts, Member

(Address) 55 ER Path, Keyser, WV 26726

(Phone Number) / (Fax Number) 304-276-7151

(email address) tom@montumarch.com

**CERTIFICATION AND SIGNATURE:** By signing below, or submitting documentation through wvOASIS, I certify that: I have reviewed this Solicitation/Contract in its entirety; that I understand the requirements, terms and conditions, and other information contained herein; that this bid, offer or proposal constitutes an offer to the State that cannot be unilaterally withdrawn; that the product or service proposed meets the mandatory requirements contained in the Solicitation/Contract for that product or service, unless otherwise stated herein; that the Vendor accepts the terms and conditions contained in the Solicitation, unless otherwise stated herein; that I am submitting this bid, offer or proposal for review and consideration; that this bid or offer was made without prior understanding, agreement, or connection with any entity submitting a bid or offer for the same material, supplies, equipment or services; that this bid or offer is in all respects fair and without collusion or fraud; that this Contract is accepted or entered into without any prior understanding, agreement, or connection to any other entity that could be considered a violation of law; that I am authorized by the Vendor to execute and submit this bid, offer, or proposal, or any documents related thereto on Vendor's behalf; that I am authorized to bind the vendor in a contractual relationship; and that to the best of my knowledge, the vendor has properly registered with any State agency that may require registration.

By signing below, I further certify that I understand this Contract is subject to the provisions of West Virginia Code § 5A-3-62, which automatically voids certain contract clauses that violate State law; and that pursuant to W. Va. Code 5A-3-63, the entity entering into this contract is prohibited from engaging in a boycott against Israel.

Montum Architecture, LLC

(Company)

(Signature of Authorized Representative)

Thomas Pritts, Member

1/8/2026

(Printed Name and Title of Authorized Representative) (Date)

304-276-7151

(Phone Number) (Fax Number)

tom@montumarch.com

(Email Address)

**ADDENDUM ACKNOWLEDGEMENT FORM**  
**SOLICITATION NO.: CEOI DNR26\*4**

Instructions: Please acknowledge receipt of all addenda issued with this solicitation by completing this addendum acknowledgment form. Check the box next to each addendum received and sign below. Failure to acknowledge addenda may result in bid disqualification.

Acknowledgment: I hereby acknowledge receipt of the following addenda and have made the necessary revisions to my proposal, plans and/or specification, etc.

Addendum Numbers Received: **None**

*(Check the box next to each addendum received)*

- ☐ Addendum No. 1
- ☐ Addendum No. 2
- ☐ Addendum No. 3
- ☐ Addendum No. 4
- ☐ Addendum No. 5

- ☐ Addendum No. 6
- ☐ Addendum No. 7
- ☐ Addendum No. 8
- ☐ Addendum No. 9
- ☐ Addendum No. 10

I understand that failure to confirm the receipt of addenda may be cause for rejection of this bid. I further understand that any verbal representation made or assumed to be made during any oral discussion held between Vendor's representatives and any state personnel is not binding. Only the information issued in writing and added to the specifications by an official addendum is binding.

**Montum Architecture, LLC**

\_\_\_\_\_  
Company

\_\_\_\_\_  
Authorized Signature

**1/8/2026**

\_\_\_\_\_  
Date

NOTE: This addendum acknowledgement should be submitted with the bid to expedite document processing.