



The following documentation is an electronically-submitted vendor response to an advertised solicitation from the *West Virginia Purchasing Bulletin* within the Vendor Self-Service portal at *wvOASIS.gov*. As part of the State of West Virginia's procurement process, and to maintain the transparency of the bid-opening process, this documentation submitted online is publicly posted by the West Virginia Purchasing Division at *WVPurchasing.gov* with any other vendor responses to this solicitation submitted to the Purchasing Division in hard copy format.

Header @ 1

List View

General Information Contact Default Values Discount Document Information Clarification Request

Procurement Folder: 1748180

Procurement Type: Central Purchase Order

Vendor ID: 000000209931

Legal Name: NEW RIVER ENGINEERS INC

Alias/DBA:

Total Bid: \$0.00

Response Date: 08/12/2025

Response Time: 12:15

Responded By User ID: liffcottle

First Name: Tiffany

Last Name: Cottle

Email: tlc@nreivv.com

Phone: 13043427168

SO Doc Code: CE01

SO Dept: 0310

SO Doc ID: DNR2600000001

Published Date: 7/24/25

Close Date: 8/12/25

Close Time: 13:30

Status: Closed

Solicitation Description: A&E - Coopers Rock New Electrical Service

Total of Header Attachments: 1

Total of All Attachments: 1



Department of Administration
 Purchasing Division
 2019 Washington Street East
 Post Office Box 50130
 Charleston, WV 25305-0130

**State of West Virginia
 Solicitation Response**

Proc Folder: 1748180
Solicitation Description: A&E - Coopers Rock New Electrical Service
Proc Type: Central Purchase Order

Solicitation Closes	Solicitation Response	Version
2025-08-12 13:30	SR 0310 ESR08122500000000864	1

VENDOR
 000000209931
 NEW RIVER ENGINEERS INC

Solicitation Number: CEOI 0310 DNR2600000001
Total Bid: 0
Response Date: 2025-08-12
Response Time: 12:15:47
Comments:

FOR INFORMATION CONTACT THE BUYER

Joseph (Josh) E Hager III
 (304) 558-2306
 joseph.e.hageriii@wv.gov

Vendor Signature X **FEIN#** **DATE**

All offers subject to all terms and conditions contained in this solicitation

Line	Comm Ln Desc	Qty	Unit Issue	Unit Price	Ln Total Or Contract Amount
1	Professional engineering services				0.00

Comm Code	Manufacturer	Specification	Model #
81100000			

Commodity Line Comments:

Extended Description:

Design and contract administration services of new electrical service at Coopers Rock State Forest.

Coopers Rock New Electrical Service

Request for A/E Services

For

West Virginia Division of Natural Resources

August 12, 2025



Presented by:

NEW RIVER ENGINEERS, INC.
501 Eagle Mountain Road
Charleston, WV 25311
304.342.7168



New River Engineers, Inc.



August 12, 2025

Department of Administration
Purchasing Division
2019 Washington Street East
Charleston, WV 25305-0130
Via: wvOASIS

Re: Coopers Rock New Electrical Service
A/E Services
WVDNR Solicitation No: CEOI 0310 DNR2600000001

Distinguished Selection Committee Members:

New River Engineers, Inc. (NREI) is pleased to submit our statement of qualifications to provide engineering services to assist the Division of Natural Resources with the replacement and upgrade of the existing electrical infrastructure serving Coopers Rock State Forest.

NREI is a highly qualified and experienced environmental/civil engineering firm providing services for municipal, federal, state, industrial and commercial clients throughout the states of West Virginia, Ohio, Kentucky, and Virginia.

For over 45 years, NREI has completed projects on time, under budget and without any successful litigation against us or our client, a record no other firm can match.

We would appreciate an opportunity to present our detailed qualifications at a mutually convenient date and time.

Please call if you have any questions or need further information.

Very Truly Yours,
NEW RIVER ENGINEERS, INC.

Joshua D. Cook, P.E., PMP
President
jdc@nrenginc.com

Enclosure

COOPERS ROCK NEW ELECTRICAL SERVICE

REQUEST FOR A/E SERVICES

TABLE OF CONTENTS

EXPRESSION OF INTEREST1
FIRM OVERVIEW2
PLAN OF APPROACH4
PROJECT EXPERIENCE9
ORGANIZATIONAL CHART12
RESUMES OF KEY PERSONNEL13
ADDITIONAL SERVICES20



EXPRESSION OF INTEREST

New River Engineers Inc. (NREI) is pleased to express our interest in providing environmental, engineering, architecture, and surveying services to the WVDNR. Our team is a civil / environmental engineering firm and is noted for design excellence and client focus. Our team's integrated design approach, our commitment to design quality, as well as our architectural and construction experience will help to ensure the quality of services that we will provide to the WVDNR. Below, please find additional qualifications that make our team uniquely qualified to assist you with your potential needs.

We have a history of providing high quality design and engineering management services throughout West Virginia, Ohio, Kentucky, Virginia and North Carolina. This quality has been recognized by the quantity of our repeat clients. We will use our engineering abilities and extensive design experience to aid the WVDNR as any need would arise.

As President of our firm, **Joshua D. Cook, PE, PMP** will lead projects for the WVDNR. He can be reached at **681.668.1809** or **jdc@nrenginc.com**. Josh has a Master of Science in Engineering from Marshall University and a Bachelor of Science in Civil Engineering from WVU Institute of Technology. Josh has served as a Projects Engineer, Project Manager and Engineering Manager for the coal and natural gas industry, municipal engineering consulting. Josh will be assisted by Eric Hartwell, P.E., Christopher Burford, PM, Matt Shelton, PM, Charles Kurzyna P.E., P.S, and the rest of our staff.

We have the training, experience, and multi-discipline support to meet the needs of our clients. Due to our small size, our engineers become well rounded and deeply involved with each project. Our engineers are able to put their heads together to create an excellent working knowledge of projects, creating high quality, personalized, and professional services.



FIRM OVERVIEW • NEW RIVER ENGINEERS, INC.



New River Engineers, Inc. (NREI) is an engineering, architectural surveying and consulting firm that has been providing quality service to our clients and the industries for over 45 years. Mutual respect and trust are the cornerstones in the relationships established and maintained with our clients. NREI strives to perform all work in a professional and cost-effective manner, while providing our clients with quality and excellence.

The firm is managed by Joshua D. Cook, PE, PMP, President and Eric Hartwell, PE, Vice President. NREI has successfully provided an integrated approach to publicly funded projects for our clients. NREI provides professional services to owners and operators, and contractors throughout Ohio, West Virginia, Virginia, Kentucky and North Carolina and many others. NREI services range through all facets of civil engineering design as well as construction administration and project management.

Our staff combines advanced technology with many decades of surveying, mining, engineering and architectural experience and includes five professional engineers, two architects, two professional surveyors, eight degreed engineers, AutoCAD/engineer technicians and ten full-time survey crews.

As a full-service engineering and surveying firm, NREI can provide a whole host of services to our clients including, but not limited to the following:

- Construction Design, Management and Surveying
- Geotechnical Engineering & Drilling Management
- Architectural and Interior Design
- Environmental Permitting (DEP, NPDES, OAQ and USACOE)
- Underground / Surface Mine Engineering
- Civil Site Design / Engineering / Planning
- Drainage Design / Engineering / HECRAS
- Compaction Testing with Nuclear Density Gauge
- Subsurface Utility Locate Surveys with GPR & Pipe and Cable Locators
- Oil & Gas Surveying
- Boundary & Property/Topographical Surveying
- Aerial Mapping, GPS RTK & Static Surveying
- Reserve Studies

NREI has developed the following philosophy to guide the performance of its services:

- Provide superlative design services to our clients in new construction, improvements, and daily operations.
- Perform work in a timely, accurate and professional manner.
- Present multiple alternatives and solutions whenever possible.
- Work with our clients to control project costs.
- Be a technical sounding board for our clients in all situations.
- Strive to maintain professional competence through continuing education and training.
- NREI utilizes a practical application approach to all projects throughout the design process to provide a well-rounded result. This methodology emphasizes the best overall solution, meeting all the client's needs, instead of just the best technical solution. We believe our small size provides a distinct advantage to our clients and affords us the freedom to easily team with the clients to achieve the overall best possible result.



Baughan Engineering, LLC is composed of multifaceted professional engineers with 50 years of combined experience in the energy sector. Engineers on staff are from key industry players in the design, fabrication, and construction sectors. We provide the products that inspire the future of:

ELECTRICAL ENGINEERING

- INDOOR/OUTDOOR LIGHTING
- ELECTRICAL FLOOR PLAN LAYOUTS
- INSTRUMENTATION SCHEMATICS
- HAZARDOUS LOCATIONS
- STATION GROUNDING
- STATION CONDUIT AND WIRING
- DC PANEL DESIGNS
- POWER SYSTEMS ANALYSIS
- ENERGY EFFICIENCY IMPROVMENTS
- SINGLE LINE ELECTRICAL DIAGRAMS
- ELECTRICAL POWER DISTRIBUTION SYSTEMS
- BACKUP POWER SYSTEMS
- MOTOR CONTROL CENTER LAYOUTS
- BRANCH CIRCUIT LAYOUTS & PANEL SCHEDULING
- MOTOR ELEMENTARIES

PROCESS AND MECHANICAL ENGINEERING SERVICES

- TANK BATTERY AND SYSTEMS DESIGN
- RNG FACILITY DESIGN - INCLUDING HIGH BTU UPGRADE AND WELL FIELD TO GRID FACILITIES
- LANDFILL GAS FACILITY DESIGNS
- FILTRATION, CONTROL, AND METERING SYSTEMS
- ROOT CAUSE FAILURE ANALYSIS
- EQUIPMENT SIZING AND QUOTING
- STATIONARY AND MOBILE EQUIPMENT DESIGN AND RETROFITS
- PRIME MOVER POWER TRANSMISSION DESIGNS
- EMISSIONS AND EFFICIENCY IMPROVEMENT TECHNOLOGIES FOR COMBUSTION BASED EQUIPMENT
- METHANE MITIGATION TECHNIQUES
- ENGINES RESEARCH AND DEVELOPMENT
- COMPRESSION AND PUMPING SYSTEMS
- REVERSE ENGINEERING FOR HEAVY DUTY AND COMPRESSION EQUIPMENT
- FACILITY DESIGN
- HYDRAULIC SYSTEMS
- COMPRESSED AIR AND PNEUMATIC SYSTEMS
- WASTE HEAT AND ENERGY RECOVERY SYSTEMS
- PIPING DESIGN AND STRESS ANALYSIS
- FEED STUDIES
- PROCESS AND INSTRUMENTATION DIAGRAMS
- PROCESS FLOW DIAGRAMS
- CAUSE AND EFFECT MATRICES
- SOP GENERATION, PHA IMPLEMENTATION, START-UP ASSISTANCE



PLAN OF APPROACH

NREI believes in a team approach for the development of projects. Therefore, our first task will be to meet with the West Virginia Division of Natural Resources to review existing data, reports, etc., and to ascertain the need of the specific project. Following data gathering, we will then evaluate alternatives and develop a cost-effective proposal that meets existing and future needs of a specific project. Throughout the process, WVDNR officials will be kept informed and involved in all important matters.

NREI will assist the WVDNR in preparation and submission of any funding application needs. Once the funding has been secured, we will then begin to develop detailed engineering drawings and specifications for the project. As information is gathered, it will be reviewed with WVDNR officials to allow comment and coordination as the project progresses. The project engineer will be involved during all phases of developing a project, obtaining funding, design, and construction to assure coordination with WVDNR personnel, and regulatory and funding agencies.

PRELIMINARY ENGINEERING REPORT

Our next task will be the preparation of a Preliminary Engineering Report. Specifically, the report will be organized in accordance with regulatory and funding agency requirements as follows:

1. Introduction and Overview
2. Planning Area and Future Needs
3. Evaluation of the Existing System
4. Proposed Improvements/Upgrades
5. Alternate Solutions
6. Cost Estimates – Capital and O & M
7. Environmental Issues
8. Public Participation
9. Final Plan Selection
10. Implementation

Prior to publication of the final report, all information will be shared and reviewed with WVDNR officials to ensure that concerns are addressed.

DESIGN PHASE

NREI will prepare contract documents including plans and specifications conforming to funding agencies requirements. Our design phase will be carried out as follows:

1. Define Existing Conditions
 - a. Assemble and evaluate data to eliminate conflicts and redundancy.
 - b. All major decisions regarding data will be discussed with WVDNR officials. Important data sources include, but are not limited to the following:
 - i. WVDNR Officials
 - ii. WV Department of Environmental Protection
 - iii. USDA Rural Development
 - iv. Soil Conservation Service
 - v. Local Citizens and Groups
2. Identify Project Work
 - a. Evaluate existing data, reports, and design drawings, if available
 - b. Evaluate existing site.
 - c. Evaluate environmental aspects.
 - d. Summarize existing problems and make presentation.
3. Preliminary Design
 - a. Preliminary layout of proposed project
 - b. Land surveys for mapping, rights-of-way, and / or land acquisitions
 - c. Coordination with the WV DEP and DOH with USDA-RD
 - d. Preliminary Cost Estimates
 - e. Preliminary review with the WVDNR.
4. Final Design
 - a. Incorporate review comments from the WVDNR, WV DEP, USDA-RD, and other agencies
 - b. Prepare detailed specifications and final design report in accordance with state and federal guidelines.
 - c. Attend public meetings.
 - d. Prepare final cost estimates.
 - e. Secure permits from officiating WV DEP and DOH, and other agencies
 - f. Prepare bid documents.
 - g. Conduct pre-bid conference.
 - h. Assist in advertising for bids, attend bid opening and assist in evaluation of bids with recommendations for awarding the construction of the project(s)

CONSTRUCTION PHASE

NREI will provide the following services during the construction phase of the project:

1. Administrative Services
 - a. Assist and advise the WVDNR in the preparation of construction contracts for signature(s)
 - b. Issue a "Notice to Proceed" to the appropriate Contractor(s)
 - c. Provide consultation and advise the WVDNR during construction
 - d. Preparation of elementary and supplementary sketches and / or drawings required to resolve problems arising from actual field conditions encountered.
 - e. Review and approve shop drawings, diagrams, illustrations, brochures, catalog data, schedules, and samples, results of tests and inspections, other data which the contractor(s) is required to submit, but only for conformance with the design concept of the Project and compliance with the information given in the contract documents.
 - f. Receive and review maintenance and operating instructions, schedules, guarantees, bond, and certificates of inspections which are to be assembled by the contractor(s) in accordance with the contract documents.
 - g. Review and approve requests for periodic and final payments to the contractor(s)
 - h. Issue certificates of completion to the WVDNR for completed construction contracts.
 - i. Review original drawings and provide to the WVDNR a digital copy on disk and two (2) sets of black line prints of "as-built" plans
 - j. Advise the WVDNR whether the project can meet the project performance standards.
 - k. Attend monthly meetings during the construction period.
 - l. Represent the WVDNR in technical matters and litigation, if required
 - m. Provide engineering services during start-up of the facility.
 - n. Provide training to WVDNR employees for the operation of the new facility.
 - o. Provide one (1) year project performance certification.

2. Field Services
 - a. A Qualified Design Professional will make periodic visits to the site to observe the progress and quality of the executed work, and determine, in general, if the work is proceeding in accordance with the contract documents.
 - b. Efforts will be directed toward providing assurance to the WVDNR that the completed project will conform to the requirements of the contract documents.
 - c. Make general monthly construction progress reports to the WVDNR.
 - d. Observe initial operation of the project, or any performance tests as required by the specifications.
 - e. Make final inspection and report on the completed project.
 - f. Advise the WVDNR of any special test or necessary outside services that may be required to assist construction of the project.

- g. On the date, one (1) year after the initiation of the operation of the project, a Professional Engineer shall certify to the WVDNR whether the project can meet the project performance standards in accordance with requirements for the project.
3. Resident Inspection Services During Construction
- a. A Resident Project Representative(s) will be furnished for each construction contract (as a minimum) to provide extensive representation at the project site during the construction phase.
 - b. Through more extensive on-site observations of the work in progress and field checks of materials and equipment by the Resident Project Representative(s), the WVDNR will be provided further protection against defects and deficiencies in the work
 - c. In addition to the general duties outlined above, the Resident Project Representative(s) will:
 - i. Observe the installation of approved materials and equipment and construction techniques and procedures in accordance with contract documents.
 - ii. Aid in public relations activities as the construction progresses through private property.
 - iii. Monitor the construction schedule and report conditions which may cause delay in completion.
 - iv. Review contract documents with the contractor's superintendent
 - v. Obtain necessary interpretations and transmit them to the contractor.
 - vi. Consider the contractor's suggestions and recommendations, evaluate them, and submit them with recommendations for a final decision.
 - vii. Attend field meetings as directed and report on the proceedings.
 - viii. Observe tests required by the contract documents, and record and report test procedures and, where applicable, the results
 - ix. Maintain records at the construction site in an orderly manner, including correspondence, change orders, supplementary drawings, requests for payment, and names and addresses of contractors, subcontractors, and principal material suppliers.
 - x. Keep a journal or logbook recording time and activities related to the project, weather conditions, nature and location of work being performed, verbal instructions and interpretations given to the contractor, and specific observations, record any occurrence of work that might result in a claim for a change of contract sum or contract time, and maintain a list of visitors, their titles, and time and purpose of their visit.
 - xi. Review applications for payment submitted by the contractor and forward them with recommendations for disposition.
 - xii. Prepare a punch list as construction nears completion and inform contractor of items on punch list.
 - xiii. Assist in final inspection of the work.



SPECIAL SERVICES

1. Land Surveys
 - a. Easements and right-of-way plat maps
 - b. Verify existing aboveground and underground utilities.
 - c. Construction stakeout of proposed improvements of connection with existing utilities
2. Attendance at Public Meetings to represent the WVDNR on technical matters.
3. Attendance at Technical Meetings with the WVDNR, DEP, etc.
4. Furnish technical assistance to the accountant and legal staff.
5. Provide technical testimony before courts and / or administrative hearings related to the project.



PROJECT EXPERIENCE

WV Division of Natural Resources, Canaan Valley Resort State Park Wastewater System Improvements, Tucker County, WV

Proposed evaluation of the existing park lodge wastewater treatment plant, campground wastewater treatment plant, and ski lodge wastewater treatment plant and associative collection system and recommend and design of improvements.

- **Reference:** Roger Wolfe, Engineer Associate, WV Division of Natural Resources, 324 4th Avenue, South Charleston, WV 25303, 304.550.8137, roger.c.wolfe@wv.gov

WVDNR Coopers Rock Wastewater & Water Improvement, Monongalia County, WV

State Park rehabilitation of the wastewater plant that serves the overlook area, modifications to the water plant intake to repair damage with the intake pump and improve aesthetics and replace the campground wastewater dump station. NREI provided architectural and engineering design services and construction contract administration including evaluation, surveying, mapping, design and permitting services. For water improvements, NREI evaluated existing 132,000-gallon water storage tank and proposed improvements; replaced variable frequency drive (VFD) in the water plant, replaced raw water line to prevent freezing to allow for operation during winter months and evaluated water distribution system for upgrade/improvements. For wastewater improvements, NREI evaluated the WWTP at the Rhododendron Campground and determined improvements needed or convert to septic-type system, along with evaluating McCollum Campground for replacement to match the need for future expansion and replaced the existing RV sewage dump station. Construction administration oversight included attending preconstruction meetings, reviewed shop drawings, contractor submittals, weekly site visits by the project manager and reviewed contractor's monthly pay estimates.

- **Reference:** Roger Wolfe, Engineer Associate, WV Division of Natural Resources, 324 4th Avenue, South Charleston, WV 25303, 304.550.8137, roger.c.wolfe@wv.gov



Putnam County Fiberoptic Broadband, Putnam County, WV

Planning including preliminary engineer site and system review and assessment, design, and construction management of a Broadband Loop System. Survey and Site / Civil Design including boring and trenching around utilities, parking lot, access road, sidewalks and curbing.

Putnam County Fiberoptic Network Deployment, Putnam County, WV

Planning, design, and construction management of approximately 52 miles of fiberoptic Middle Mile System.

Berkeley County PSSD, Berkeley County, WV

Design of improvements at the wastewater treatment plant which included replacement of two pump stations and gravity sewer lines

- **Funding Source:** BCPSSD
- **Project Cost:** \$1,000,000
- **Reference:** Rob Palmatier, Capital Projects Manager, Berkeley County Public Service Sewer District, PO Box 944, Martinsburg, WV 25402, 304.263.8344

Ellenboro-Lamberton PSD, Ritchie County, WV Planning, design, and construction management of extension of water and sewer lines and a 150,000-gallon water storage tank to serve a proposed industrial park.

- **Funding Source:** ARC (Administered by USDA-RD)
- **Project Cost:** \$1,260,000, completed project approximately \$46,000 under budget and used savings to purchase equipment

Nicholas County Commission, Veterans Memorial Park, Summersville, WV

47-acre park that NREI provided preliminary design for this multi-use facility including swimming pool, splash pad, RV hookup, primitive camping, walking trails, kayak launches, livestock barn, picnic shelters, skate park, parking areas, bath house, community building, new dog shelter, road design, dump stations, park office/check-in station, pickleball, tennis and basketball courts, and outdoor drama area.

Town of Fort Gay Sewer Lines, Wayne County, WV

Planning, design, and construction management of replacement of 9,000 feet of gravity sewer mains, rehabilitation/upgrades to seven (7) pump stations and replacement of the existing wastewater treatment lagoon with a 100,000 gpd packaged treatment plant. Project included a Sewer System Evaluation Study with smoke testing and video inspection, coordinated with Underwater Services Ltd., of approximately 3 miles of gravity sewer lines from 6 inch to 10 inch in diameter and 85 manholes. Environmental assessment for treatment plant.

- **Reference:** Ralph Dent, Council Member, Town of Fort Gay, PO Box 336, Fort Gay, WV 25514, 304.648.5246

Nitro Regional Wastewater Utility, Belt Filter Press Building Replacement, Sewer Extension Project, Nitro, WV

Replacement and construction management of the existing Belt Filter Press and construction of a new 2,688 sq. ft. Belt Press Building, installation of 23,000 LF of gravity sewer lines ranging from 6” to 8” in diameter, 160 concrete manholes, 5,000 LF of force main, installation of 3 new pump stations, replacement of 1 existing pump station, installation of 1,300 LF of storm pipe with concrete catch basins, and 210 LF of earthen stream restoration.

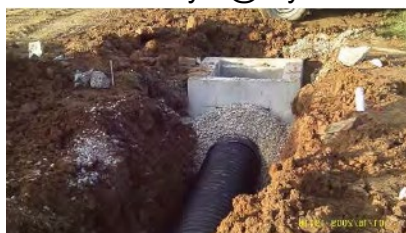


- **Reference:** Jeremy Lewis, General Manager, Nitro Regional Wastewater Utility, 304.755.3669

City of Windfield, Stormwater System Improvement Projects, Winfield, WV

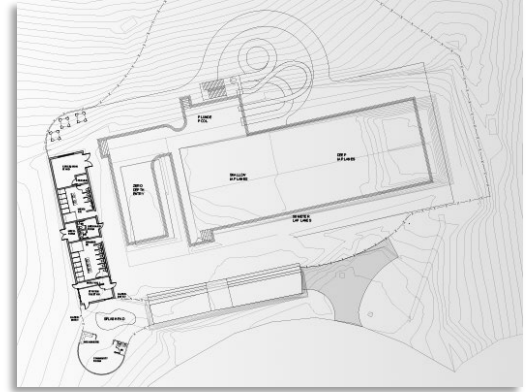
Installation of approximately 6,000 LF of storm sewer ranging in size from 12” to 48” in diameter, six (6) concrete headwalls with rock rip rap, 47 concrete catch basins and 2,000 square yards of concrete street replacement throughout the City.

- **Reference:** Randy Barrett, Mayor, City of Winfield, 12448 Windfield Road, Winfield, WV 25213, Office 304.586.2122 mayor@cityofwinfield.net



Fayette County Park Pool Project, Fayetteville, WV

The Fayette County Community Pool is part of a proposed plan to upgrade the existing, outdated pool facility. The current building on the property requires renovation to improve the flow and functionality of its layout. A new community room is also proposed for the site, designed as a versatile three-season space with a splash pad, available for rent by the community. The thoughtful layout allows the splash pad and community room to either function separately or be incorporated into the overall pool design, providing flexibility. This setup ensures the splash pad can remain open and rentable during the spring and fall, even when the pool is closed.



- **Square Footage:** 2,800 Buildings and 12,341 Pool
- **Project Cost:** \$3.5 million
- **Reference:** John Brenemen, Commissioner, Fayette County Commission, 100 N. Court Street, Fayetteville, WV 25840, 304.574.4290, john.brenemen@fayettecountywv.gov

City of Jackson Salt Lick Creek Hydrologic & Hydraulic Flood Study, Jackson, OH

NREI is providing an engineering study along Salt Lick Creek in the City of Jackson to determine recommendations/improvements to mitigate excessive and chronic flooding that occurs in this area. Services included data collection, public outreach, hydrologic & hydraulic analysis and alternative analysis. Design Cost is approximately \$200,000.

- **Reference:** Hon. Randy Evans, Mayor, City of Jackson, 145 Broadway Street, Jackson, OH 45640, 740.286.3492

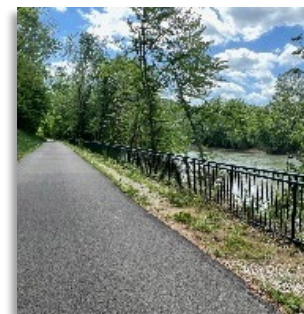
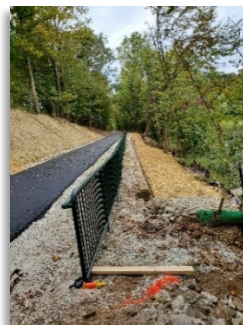
CWVRAA Yeager Airport, Marshall University Flight School

Best Management Practices (BMP) for surveying and permitting for the flight school to minimize negative environmental impacts such as water quality during construction and related activities and utilizing runoff diversions and silt fences.

Elk River Flood Repairs and Coonskin Park Trail Replacement, Kanawha County, WV

Planning, design, geotechnical, estimating, and construction management of 160 LF of H-Pile wall, a 40 LF H-Pile wall, Replacement of three 18" culverts, Paving of approx. 2,800 LF of Elk River Trail, and replacement of 105 LF of 36" HDPE storm pipe. Project cost of approx. \$1.85 million.

- **Reference:** Jeff Hutchinson, Executive Director, Kanawha County Parks and Recreation, 375 Henry C Hoppy Shores Drive, Charleston, WV 25302, 304.341.8000, jeff@kcprc.com



ORGANIZATIONAL CHART

WVDNR



Project Manager
Joshua D. Cook, PE, PMP
President/Sr Engineer

Eric T. Hartwell, PE
Vice President/Sr Engineer

Michael Noel, NCARB
Registered Architect

Christopher D. Burford
Senior Project Manager

D. Matt Shelton
Senior Project Manager

Randy B. Crace, PS
Senior Surveyor

Charles Kurzyna, PE, PS
Sr Engineer/Sr Surveyor



RESUMES OF KEY PERSONNEL



Joshua D. Cook, PE, PMP

Project Manager President / Senior Engineer

Josh began his professional career in 2012 and has worked on a variety of civil engineering projects throughout West Virginia, Ohio, Virginia, Maryland, and Pennsylvania. During his career, Josh has served as project engineer, project manager and engineering manager for coal and natural gas companies and municipal engineering consulting firms, including New River Engineers.

Josh has experience in environmental remediation, groundwater protection plans (including spill prevention, control and countermeasure plans), stormwater permitting and design, construction management, water, wastewater, storm water and a variety of natural gas experience.

Josh has been successful in managing a variety of projects to remain on-time, on-budget and compliant.

EDUCATION

Bachelor of Science

Civil Engineering
West Virginia University Institute of
Technology

Master of Science

Engineering
Marshall University

CERTIFICATIONS

Professional Engineer – WV, OH, MI,
KY, MD, TN, VA

Project Management Professional
(PMP)

PROFESSIONAL AFFILIATIONS

American Society of Civil Engineers

West Virginia Rural Water
Association

Business Networking International
(BNI)

Project Management Institute (PMI)

PROJECT EXPERIENCE

Paint Creek Recreational Trail, Slip Repair, Ross
County, OH

City of Jackson and Ross County Parks District,
AMLER Salk Lick Creek, Jackson, OH

Town of Ansted, Gauley Mountain Bike Trail and Fox
Branch Creek Bridge Trestle, Ansted, WV

Fayette County Park Pool Project, Fayetteville, WV

Fayette County Fireman's Association, New Hawks
Nest Fire Training Center, Fayette County, WV

Hargrove Student Housing, Golden Bear Properties,
LLC, Beckley, WV

Meadow Bridge Community Center, WV

Boomer Fire Department House Addition, WV



Eric T. Hartwell, PE

Vice President / Senior Engineer

Eric has over 25 years of experience in planning, design, and construction of environmental projects. The majority of his experience is in the design and construction of wastewater treatment and collection systems, water treatment and distribution systems and industrial oil water separators.

Eric was an integral part of the design team for several wastewater treatment plant upgrade projects and over 70 pump stations ranging in size from 5 to 7000 gallons per minute. He has also been involved in the design of multiple water treatment plants and pumping stations.

Eric oversees the design and construction of water storage tanks and pressure reducing valve stations. He has worked on environmental projects throughout West Virginia. His responsibilities include planning, design, construction administration, preparation of operation and maintenance manuals and operator training for water supply and distribution, wastewater collection and treatment, water loss and infiltration and inflow reduction projects.

Eric also has experience in construction management, payment request review and approval, quantity and cost estimates. His thorough and committed communication skills has earned him repeat clients throughout his career with municipal, PSD personnel, regulatory agencies and contractors.

PROJECT EXPERIENCE

City of Jackson and Ross County Parks District,
AMLER Salk Lick Creek, Jackson, OH

Mill Street Water & Sanitary Sewer Replacement,
Jackson, OH

Glasgow New Fire House, Glasgow, WV

WWTP Improvements, Ronceverte, WV

WWTP Improvements, Chapmanville, WV

EDUCATION

Bachelor of Science

Civil Engineering
West Virginia University Institute of
Technology

Master of Science

Civil Engineering
West Virginia University

CERTIFICATIONS

Professional Engineer – WV

PROFESSIONAL AFFILIATIONS

Contractors Association of West
Virginia



Michael Noel, NCARB

Registered Architect

Mike has recently joined the NREI team as of July 2025 along with his team including architects and CAD drafters. Mike was previously the Principal of Michael Noel Architect, LLC for the past four years. Before establishing his firm, he was Senior Principal with Panich, Noel and Associates for 32 years.

EXPERIENCE REGISTERED ARCHITECT

Responsible for day-to-day design and management of various construction types for the firm.

CONSTRUCTION DOCUMENTS

As the Partner in charge Mike has been partnered to oversee more than \$300 million dollars of construction documents varying from hotels, industrial buildings, churches, prisons, and higher and lower education.

PROJECT EXPERIENCE

Trimble Schools Building Additions and Remodeling - \$400,000.

Alexander Schools Renovations and Maintenance Facility - \$500,000. HVCRC Gymnasium and Classroom Design - \$3,000,000.

Federal Hocking Local Schools-Feasibility Study.

Athens City Schools Renovations, Roof Replacement, Additions, Bus Garage and Athlete Facilities Buildings - \$15,000,000.

Athens High School Baseball Stands, Press Box and Concessions Venue

Vinton County School Stadium Renovations and Concession Stands

Master Plan Gallia Fair Grounds Multipurpose / Athletic Building

Ohio University Track Stadium ADA Renovations

First Baptist Church, Sanctuary and Classrooms

River City Fellowship Church Renovation

Athens County Engineering Depot, Athens County, OH

Rustic Charm Event Center, New Lexington, OH

EDUCATION

Bachelor of Arts
Architecture

Ohio University

Register NCARB

CERTIFICATIONS

Professional Architect —OH, WV, IL, FL

PROFESSIONAL AFFILIATIONS

Athens Rotary Club

Boy Scouts of America

Athletes in Action



Christopher D. Burford

Senior Project Manager

Chris has been with NREI for over fifteen years. As a Senior Project Manager, he oversees surface and underground mining permit applications, is the manager of surveying crews, manages State and Federal safety plans and permits, oversees construction oversight and construction management and mine planning.

Green and Associates, LLC, St. Clairsville OH – manager and supervisor of survey crews and office personnel, business development, and coordination with clients on various projects.

New River Safety, LLC – manager and supervisor of safety instructors, electrical inspectors, and office personnel, business development and coordination with clients and government entities.

Ellison Ridge Mining, LLC – management and oversight of various sub-contractors over mining, reclamation and civil site construction projects, business development, and coordination with clients and government entities.

EDUCATION

Associate of Science

Civil Engineering Technology
West Virginia University Institute of Technology

CERTIFICATIONS

Certified Underground Coal Miner

Certified Surface Coal Miner

MSHA Certified Limited Instructor

MSHA Certified Gravimetric Dust Sampling

MSHA Certified Gravimetric Dust Calibration & Maintenance

Safe Land USA PEC Safety

MSHA – Methane / Oxygen Deficiency Qualified

APNGA Portable Nuclear Gauge Safety & USDOT Hazmat Certified
#299-160-926-311

APNGA Certificate of Achievement, Radiation Safety Officer Class #299-160-994-3161

Heartsaver First Aid, CPR & AED Certified

PROFESSIONAL AFFILIATIONS

Contractors Association of West Virginia

West Virginia Rural Waters Association

West Virginia Coal Association

Friends of Coal Association

PROJECT EXPERIENCE

Hargrove Student Housing, Golden Bear Properties, LLC, Beckley, WV

Meadow Bridge Community Center, WV

City of Montgomery Pavillion, Montgomery, WV

Town of Ansted, Gauley Mountain Bike Trail and Fox Branch Creek Bridge Trestle, Ansted, WV

Boomer Fire Department House Addition, WV

Fayette County Park Pool Project, Fayetteville, WV

Fayette County Fireman's Association, New Hawks Nest Fire Training Center, Fayette County, WV

Fayette County Shooting Range and Training Center, Fayetteville, WV



D. Matt Shelton

Senior Project Manager

Matt began his career in the field as a surveyor and has progressed to successfully earning a civil engineering degree. It's with this eventual process that makes his skills superior with overseeing site development, water supply, wastewater, storm water and drainage projects. His skills include construction management, record keeping, quantity and payment reviews. His attention to detail and great communication skills has earned him much respect among general contractors, subcontractors, community representatives and residents. His solid techniques move projects in a professional, cost-effective and timely manner.

Matt is experienced in site grading, surveying, building layouts, water & sewer system design and construction inspection on civil engineering projects.

Matt's experience as an Engineering Technician includes design of water line extensions, water booster stations, water storage tanks, wastewater pump stations, sewer line extensions, manholes, drainage calculations, and preparation of quantity and cost estimates.

Matt's experience as a Survey Technician/ Instrument team member includes topographic surveys, construction stakeout for water and sewer systems and highways, building layout, cut sheets for sewer systems and GPS surveying for field control work, etc.

PROJECT EXPERIENCE

Elk River Flood Repairs and Coonskin Park Trail Replacement, Kanawha County, WV

Big Bend Golf Course Slope and Coonskin Park Trail Wall Flood Repair, Kanawha County, WV

City of Jackson and Ross County Parks District, AMLER Salk Lick Creek, Jackson, OH

CRW Yeager Airport, Runway 5 Slope Failure, Charleston, WV

EDUCATION

Bachelor of Science

Civil Engineering Technology
West Virginia University Institute of Technology

CERTIFICATIONS

Environmental Site Assessment
Commercial Real Estate

PROFESSIONAL AFFILIATIONS

Water Environment Federation
Contractors Association of West Virginia



Randy B. Crace, P.S.

Senior Surveyor

Randy began his career in 1983 working on a variety of surveying and engineering projects. Areas of concentration in boundary surveys, mapping, topography, subdivisions, annexations, right of ways, subdivision development, construction stakeout, aerial mapping controls, GPS-RTK survey control networks, oil and gas well locations, surface and underground mining permits, construction stakeout, hydrology, erosion and sediment control plans, storm water retention systems, site grading plans, parking lot layout, WVDOH driveway permits, CAD software programs, Geographic Information Systems, Phase I - ASTM environmental site assessment and expert witness testimony in the surveying field.

EDUCATION

Bachelor of Science

Industrial Technology

West Virginia State College

Master of Science Environmental Studies

MUCGS, Institute of WV, Partial Course Work

CERTIFICATIONS

Professional Surveyor – KY, WV, OH

Environmental Site Assessment
Commercial Real Estate Certification

ASTM E-1527 & E-1528

ACSM Surveying Instrumentation and
Coordinate Computation Certification

Center College, Charleston, WV
Technical Degree, Drafting

PROFESSIONAL AFFILIATIONS

West Virginia Association of Land
Surveyors

American Congress of Surveying &
Mapping

**U.S. Army - SP4
Honorable Discharge - 1974** 

PROJECT EXPERIENCE

Town of Fort Gay Sewer Lines, Wayne County, WV

City of Jackson, Salt Lick Creek Hydrologic &
Hydraulic Flood Study, Jackson, OH

CWVRAA Yeager Airport, Stormwater
Improvements, Charleston, WV

Hargrove Student Housing Renovation, Beckley,
WV

Boomer Fire House Addition, Boomer, WV

Glasgow Fire Department New Fire Station,
Glasgow, WV

New River Engineers, Inc. Headquarters Building,
Teays Valley, WV

Thomas Hospita Environmental Site Assessments,
Kanawha County, WV

WVDOC Denmar Correctional Center, Pocahontas
County, WV





Charles "Chuck" Kurzyna, P.E., P.S.

Senior Engineer / Senior Surveyor

Chuck has over 30 years of engineering and management experience in the mining industry and consulting business. He specializes in surface and underground mine design, planning, and surveying; environmental and safety permitting; project and construction management.

Project Manager for a consulting engineering firm, responsible for job estimates and bidding, supervise office staff in engineering related projects including surface mine surveying, reclamation and permitting, reserve studies, etc.

Chief Engineer for a small mining and construction company, responsible for mine planning, production tracking, construction job bidding, construction engineering, etc.

Chief Engineer, Senior Engineer for the Lady Dunn Surface Mine & Preparation Plant; coal reserve evaluations; project engineering for mine related facilities; environmental permits for large surface and deep mining operation; etc.

EDUCATION

Bachelor of Science
Mine Engineering Technology
West Virginia University Institute of Technology

Associate of Science
West Virginia University Institute of Technology

CERTIFICATIONS

Professional Engineer – WV, OH, PA, VA, KY, GA

Professional Surveyor – WV

Underground Mine Foreman

Surface Mine Foreman

PROFESSIONAL AFFILIATIONS

Contractors Association of West Virginia

West Virginia Coal Association

Friends of Coal Association

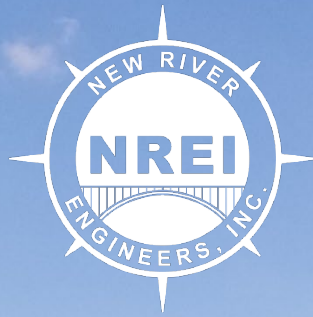
Society of Mining Engineers

PROJECT EXPERIENCE

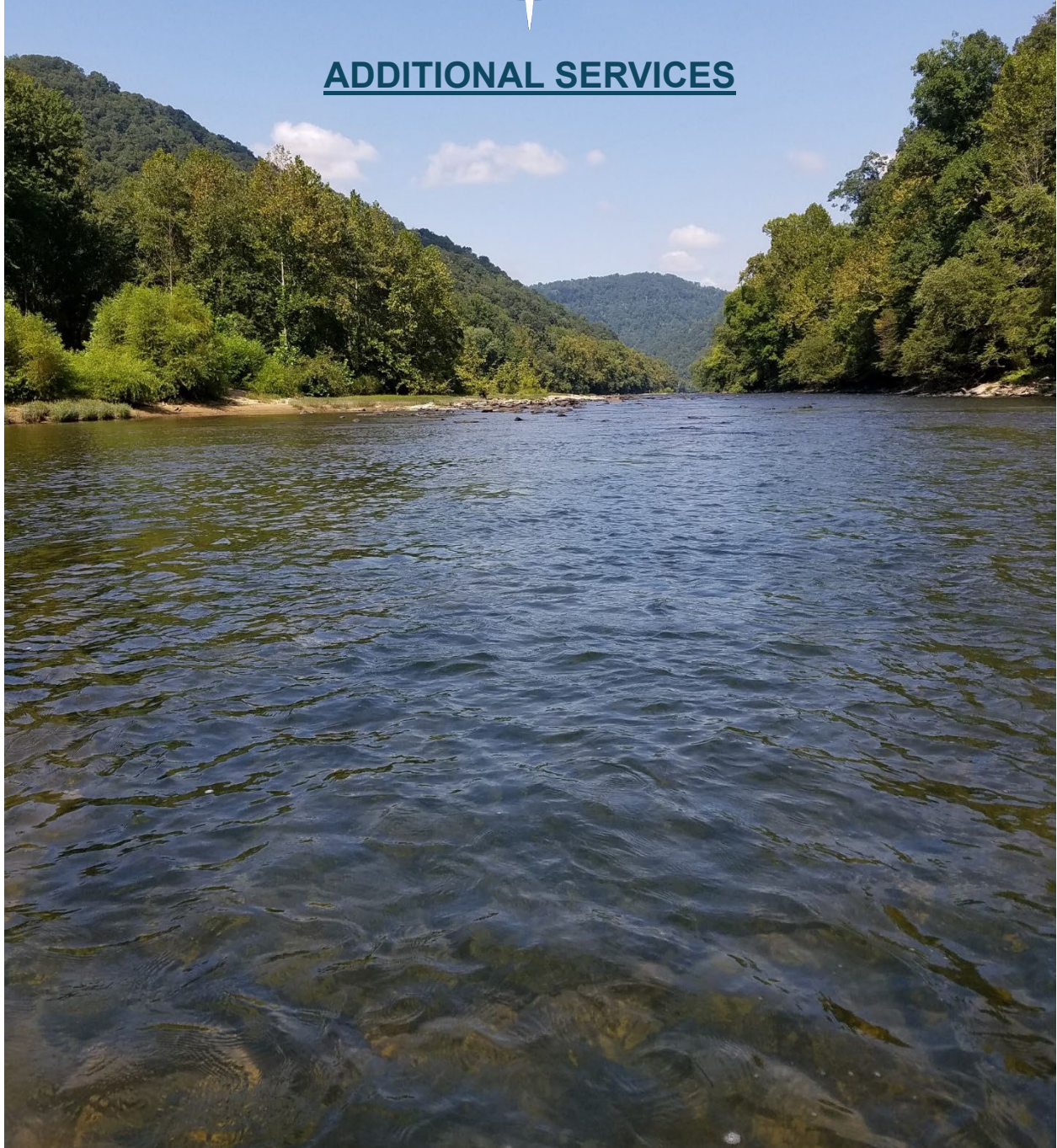
City of Jackson and Ross County Parks District, AMLER Salk Lick Creek, Jackson, OH

CRW Yeager Airport, Runway 5 Slope Failure, Charleston, WV





ADDITIONAL SERVICES



Water Supply, Treatment, Storage and Distribution Systems

With over forty years of experience, NREI is your one stop shop for water supply, treatment, storage, and distribution systems. We implement our four-step process to each project to develop a better understanding of our client's needs and expectations: 1. Preliminary Engineering Report; 2. Design Phase; 3. Bidding Phase; 4. Construction Administration. We are "hands on" during all phases to ensure our clients obtain what they want in every project.

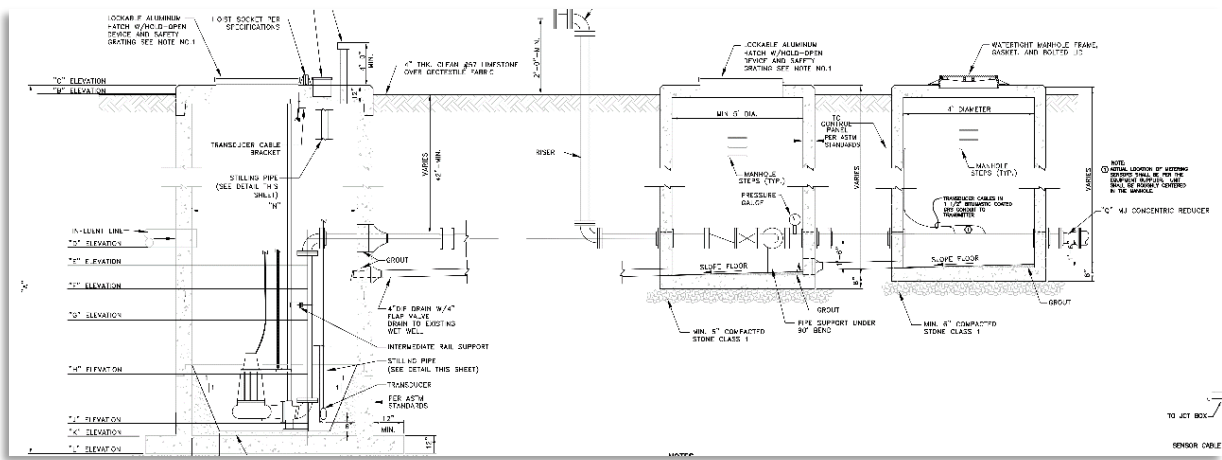
As a locally owned "small family" consulting firm, our clients get more for their money and receive more one-on-one time with our employees, which yields a more pleasurable experience. We excel in helping our clients ascertain funding from various governmental agencies to assist in the financing of the project.



Wastewater Collection & Treatment Systems / Industrial & Hazardous Waste Treatment Systems

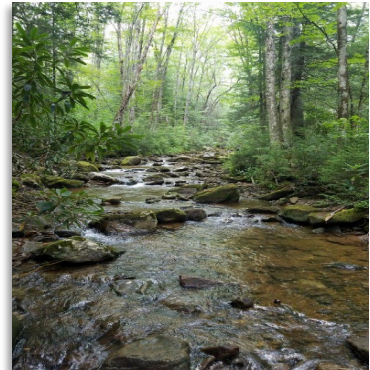
We recognize the importance and understand the hurdles that our clients must maneuver to offer wastewater service to their customers. We have a proven track record with a vast knowledge of local conditions and an excellent reputation with all regulatory, funding, permitting and enforcement agencies. Our crew, from CAD Techs to the President, is included in all phases of the project. We have the knowledge and capacity to carry out the workload in a timely manner.

We have a full understanding of wastewater systems from small treatment facilities to municipalities, all the way to industrial wastewater systems. We are thoroughly knowledgeable in obtaining federal, state, and local funding and are available to you 24/7. We will see your projects from conception to completion.



Environmental Permitting

NREI's team assists with an efficient and thorough team of environmental consultants making sure permitting, regulatory compliance, construction monitoring and biological surveying are done with the utmost quality and cost effectiveness. This saves your project time and money from the start and avoids costly delays in the future. Compliance with Clean Air and Water Acts, NEPA and other state and federal requirements is invaluable to every project. Our environmental permitting team provides attention to detail and practical solutions to complex issues to keep your project going forward and within budget.



SERVICES

- Storm Water Permitting, Design & Management
- Water Quality Monitoring
- Flood Plan Determination & Flood Elevation Certificates
- Groundwater Protection Plans
- Stream & Wetland Delineation
- Environmental Site Assessment
- Spill Prevention Control & Countermeasures Plan (SPCC)
- Article 3 Mining Permits
- Article 11 NPDES Permits
- West Virginia 401 Certification Permitting
- Wastewater Permitting, Design & Management
- Clean Water Act Section 402 Permitting (NPDES Permit)
- United States Army Corps of Engineers 404 Permitting
- Air Quality Permitting Best Management Practices (BMP)



AGENCY EXPERIENCE

- US Environmental Protection Agency (EPA)
- National Environmental Policy Act (NEPA)
- US Fish & Wildlife
- National Conservation Planning Partnership (NRCS) & Forest Service
- United States Department of Agriculture (USDA) – Rural Development
- Federal Aviation Administration (FAA)
- West Virginia Public Lands
- WV Department of Natural Resources (DNR)
- WV Culture & History
- EPA & WV DEP Compliance
- Ohio State Historic Preservation Office (SHPO)
- Ohio Department of Natural Resources (DNR)
- Ohio Environmental Protection Agency (EPA)
- Ohio Public Works Commission (OPWC)
- Ohio Department of Commerce/Division of Industrial Compliance
- Virginia Department of Environmental Quality (DEQ)

Structural Engineering

We offer a full range of structural engineering services to help meet the needs of our clients. In addition to professional training, our structural capabilities are bolstered by a depth and breadth of experience developed through solving unique and complex engineering challenges. We have experience with projects in the private, public, commercial and industrial sectors. Whether designing new structures, retrofitting existing structures, addressing overstressed conditions, or assessing structural integrity, our clients can rest assured that we are capable of meeting their specific needs.

- Structural Analysis
- Steel Structures and Building Enclosures
- Modular Design
- Pilings and Foundations
- Concrete Containment Structures
- Retrofit of Existing Overstressed Structures
- Building Permits and Code Analysis
- Bridge Cranes, Monorails, Jibs, etc.
- Truck/Rail Unloading Stations
- Lifting Beams and Rigging
- Industrial Architectural Design
- Structural Inspections and Assessments



Construction Management and Civil Site Design

NREI is established as one of the leading construction engineering consulting firms in the region with experienced staff that are committed to and dedicated to your project from initial site design and bid package development to inspections and certifications.

NREI offers Civil Site Design services including sub-division layouts, commercial development and design, HCA project areas, well pads, impoundments, street paving, drainage control, solid waste landfill and impoundment design. We know and understand the value and importance of properly designed sites that offer cost effective solutions.

- 3D Site Design
- Haulage & Access Road Design
- Excess Spoil Disposal Site Design
- Drainage Design and Runoff Calculations
- Solid Wastewater Management and Landfill Design
- Subdivision Design and Permit Applications
- Site Development Plans
- Pre, During & Post Construction Surveying
- HECRAS Modeling
- Stability Analysis
- Site inspections/Project Management
- Certifications
- Cost Estimates
- Street Paving Design and Drainage Control
- Construction Management
- Earth Work Quantity Estimates
- Construction Staking
- Concrete Testing & Inspection



Geotechnical Engineering

NREI's professional engineers and engineering technicians have extensive geotechnical engineering experience specializing in compaction testing, foundation design, slope failure remediation and embankment design. We focus on identifying the needs of clients and providing cost-effective solutions with real results.

- Drilling Oversight, Management and Inspection
- Slope failure Remediation
- Slope Stability Analysis
- Gabion Basket Wall Design
- Compaction Testing
- Foundation Design
- Embankment Design
- Drainage Analysis
- Soldier Pile Wall Design



Surveying

NREI is established as one of the area's leading surveying firms with our 45 years of experience in property, boundary and topographic mapping. Our team is skilled in courthouse research, finding property evidence, providing quality property surveys and construction stake-outs.

Additionally, we offer aerial mapping utilizing drone surveys. Our aerial mapping has proven to be invaluable for construction progress mapping, well pad progression, subdivision layouts and civil site designs.

- Property Abstract & Research
- Boundary Surveys
- Survey Plats
- Subdivision Design & Layout
- Construction Surveying & Stakeout
- Underground Mining Surveying
- Right-of-Way & Land Acquisition
- GPS Services
- Aerial Mapping / Control
- Drone Flight & Surveying
- Topographical Surveys
- ALTA / ACSM Land Title Surveys
- Unit Surveys
- Surface Mining Surveying
- Computer Mapping
- GIS Services



Subsurface Utility Survey

NREI uses some of the most advanced technology in Ground Penetrating Radar (GPR), pipe and cable locators and smoke testing machines to accurately survey, map and inspect subsurface utilities. These services have been extensively used by our clients in the construction, oil and gas industries, as well as public service districts.

- Pipe and Cable Location
- Sewer Line Smoke Testing
- Ground Penetrating Radar (GPR)
- Internal Video Pipe Inspection

