



The following documentation is an electronically-submitted vendor response to an advertised solicitation from the *West Virginia Purchasing Bulletin* within the Vendor Self-Service portal at ***wvOASIS.gov***. As part of the State of West Virginia's procurement process, and to maintain the transparency of the bid-opening process, this documentation submitted online is publicly posted by the West Virginia Purchasing Division at ***WVPurchasing.gov*** with any other vendor responses to this solicitation submitted to the Purchasing Division in hard copy format.

Header @ 1

[List View](#)

[General Information](#) [Contact](#) [Default Values](#) [Discount](#) [Document Information](#) [Clarification Request](#)

Procurement Folder: 1603639

Procurement Type: Central Purchase Order

Vendor ID: 000000209931

Legal Name: NEW RIVER ENGINEERS INC

Alias/DBA:

Total Bid: \$0.00

Response Date: 05/20/2025

Response Time: 8:51

Responded By User ID: Dshook

First Name: Deborah

Last Name: Shook

Email: dshook@nrenginc.com

Phone: 614-580-3080

SO Doc Code: CEOI

SO Dept: 0310

SO Doc ID: DNR2500000003

Published Date: 5/2/25

Close Date: 5/20/25

Close Time: 13:30

Status: Closed

Solicitation Description: A&E - Sleepy Ck WMA New Shooting Range

Total of Header Attachments: 1

Total of All Attachments: 1



Department of Administration  
Purchasing Division  
2019 Washington Street East  
Post Office Box 50130  
Charleston, WV 25305-0130

State of West Virginia  
Solicitation Response

**Proc Folder:** 1603639  
**Solicitation Description:** A&E - Sleepy Ck WMA New Shooting Range  
**Proc Type:** Central Purchase Order

Solicitation Closes	Solicitation Response	Version
2025-05-20 13:30	SR 0310 ESR05202500000007149	1

**VENDOR**  
000000209931  
NEW RIVER ENGINEERS INC

**Solicitation Number:** CEOI 0310 DNR2500000003  
**Total Bid:** 0  
**Response Date:** 2025-05-20  
**Response Time:** 08:51:22  
**Comments:**

**FOR INFORMATION CONTACT THE BUYER**  
Joseph (Josh) E Hager III  
(304) 558-2306  
joseph.e.hageriii@wv.gov

<b>Vendor</b>		
<b>Signature X</b>	<b>FEIN#</b>	<b>DATE</b>

All offers subject to all terms and conditions contained in this solicitation

Line	Comm Ln Desc	Qty	Unit Issue	Unit Price	Ln Total Or Contract Amount
1	Civil engineering				0.00

Comm Code	Manufacturer	Specification	Model #
81100000			

Commodity Line Comments:

Extended Description:

Design and Contract Administration of Sleepy Creek WMA Shooting Range New Construction.

# Sleepy Creek WMA New Shooting Range

## Request for A/E Services

For

West Virginia Division of Natural Resources

May 20, 2025



Presented by:

### **NEW RIVER ENGINEERS, INC.**

3041 University Avenue, Suite 6  
Morgantown, WV 26505  
681.668.1809



# New River Engineers, Inc.



May 20, 2025

Department of Administration  
Purchasing Division  
2019 Washington Street East  
Charleston, WV 25305-0130  
Via: wvOASIS

Re: Sleepy Creek WMA New Shooting Range and Infrastructure  
A/E Services  
WVDNR Solicitation No: CEOI 0310 DNR2500000003

Distinguished Selection Committee Members:

New River Engineers, Inc. (NREI) is pleased to submit our statement of qualifications to provide engineering services to assist the Division of Natural Resources with the new shooting range and necessary infrastructure for the Sleepy Creek Wildlife Management Area.

NREI is a highly qualified and experienced environmental/civil engineering firm providing services for municipal, federal, state, industrial and commercial clients throughout the states of West Virginia, Ohio, Kentucky, and Virginia.

For over 45 years, NREI has completed projects on time, under budget and without any successful litigation against us or our client, a record no other firm can match.

We would appreciate an opportunity to present our detailed qualifications at a mutually convenient date and time.

Please call if you have any questions or need further information.

Very Truly Yours,  
NEW RIVER ENGINEERS, INC.

Jessie O. Parker, Jr., P.E.  
CEO  
jop@nreiwv.com

Enclosure

## SLEEPY CREEK WMA NEW SHOOTING RANGE

### TABLE OF CONTENTS

SCOPE OF WORK .....	1
FIRM OVERVIEW .....	2
PLAN OF APPROACH .....	3
PROJECT EXPERIENCE .....	8
ORGANIZATIONAL CHART .....	10
RESUMES OF KEY PERSONNEL .....	11
SAFETY .....	18
FUNDING ASSISTANCE .....	18
TEAMING PARTNERS.....	19
ADDITIONAL SERVICES.....	20



## SCOPE OF WORK

West Virginia Division of Natural Resources seeks professional engineering services to evaluate, design, specify and provide construction drawings for bidding purposes and contract administration services for a new Shooting Range at Sleepy Creek Wildlife Management Area (WMA). The existing shooting range at Sleepy Creek WMA is restricted to shotgun use only and Rifle and Pistol shooting is prohibited. The WVDNR wishes to construction a new Rifle Shooting Range 200 yards (if possible) and supporting infrastructure at the Sleepy Creek WMA.

Supporting infrastructure will including upgrading approximately 1 mile access road to the new site, upgrading gate for access, rangemaster office/building, permanent restroom/pit toilet with water, and electric to the new range (approximately ¼ mile from Shockey Knob trailhead), and cell service booster installation for emergencies.

### Project Goals:

1. Review existing site and conditions and evaluate while communicating effectively with WVDNR to determine a plan that can be implemented in a manner that will minimize disruption to concurrent operations of the facility and meet all objectives.
2. As a portion of this process outlined in #1, provide all necessary services to design the facilities as described in the Express of Interest (EOI) in a manner that is consistent with The Division of Natural Resources needs, objectives, current law, and current code; while following the plan to design and execute the project within the project budget.
3. Provide Construction Contract Administration Services with competent professionals that ensure the project is constructed and functions as designed.





## FIRM OVERVIEW

New River Engineers, Inc. (NREI) is an engineering, surveying and consulting firm that has been providing quality service to our clients and the industries for over 45 years. Mutual respect and trust are the cornerstones in the relationships established and maintained with our clients. NREI strives to perform all work in a professional and cost-effective manner, while providing our clients with quality and excellence.

The firm is managed by Jessie O. Parker, Jr., PE, CEO, Christopher Burford, COO/PM, Josh Cook, PE, PMP, Morgantown Engineering Manager and Eric Hartwell, PE, Senior Project Engineer. NREI has successfully provided an integrated approach to publicly funded projects for our clients. NREI provides professional services to owners and operators, architects, and contractors throughout Ohio, West Virginia, Kentucky, Virginia and North Carolina and many others. NREI services range through all facets of civil engineering design as well as construction administration and project management.

Our staff combines advanced technology with many decades of surveying, mining, and engineering experience and includes two professional engineers, one professional surveyor, four degreed engineers, AutoCAD/engineer technicians and ten full-time survey crews.

As a full-service engineering and surveying firm, NREI can provide a whole host of services to our clients including, but not limited to the following:

- Construction Design, Management and Surveying
- Geotechnical Engineering & Drilling Management
- Environmental Permitting (WVDEP, NPDES, OAQ and USACOE)
- Underground / Surface Mine Engineering
- Civil Site Design / Engineering / Planning
- Drainage Design / Engineering / HECRAS
- Compaction Testing with Nuclear Density Gauge
- Subsurface Utility Locate Surveys with GPR & Pipe and Cable Locators
- Oil & Gas Surveying
- Boundary & Property/Topographical Surveying
- Aerial Mapping, GPS RTK & Static Surveying
- Reserve Studies

NREI has developed the following philosophy to guide the performance of its services:

- Provide superlative design services to our clients in new construction, improvements, and daily operations.
- Perform work in a timely, accurate and professional manner.
- Present multiple alternatives and solutions whenever possible.
- Work with our clients to control project costs.
- Be a technical sounding board for our clients in all situations.
- Strive to maintain professional competence through continuing education and training.
- NREI utilizes a practical application approach to all projects throughout the design process to provide a well-rounded result. This methodology emphasizes the best overall solution, meeting all the client's needs, instead of just the best technical solution. We believe our small size provides a distinct advantage to our clients and affords us the freedom to easily team with the clients to achieve the overall best possible result.



## **PLAN OF APPROACH**

New River Engineers, Inc. (NREI) has been serving various communities for over 45 years. NREI believes in offering personal services as well as professional services. The following is a draft approach from project conception through project completion of the services NREI can provide.

NREI believes in a team approach for the development of projects. Therefore, our first task will be to meet with the West Virginia Division of Natural Resources officials to review existing data, reports, etc., and to ascertain the need of the specific project. Following data gathering, we will then evaluate alternatives and develop a cost-effective proposal that meets existing and future needs of a specific project. Throughout the process, WVDNR officials will be kept informed and involved in all important matters.

NREI will assist the WVDNR in preparation and submission of any funding application needs. Once the funding has been secured, we will then begin to develop detailed engineering drawings and specifications for the project. As information is gathered, it will be reviewed with WVDNR officials to allow comment and coordination as the project progresses. The project engineer will be involved during all phases of developing a project, obtaining funding, design, and construction to assure coordination with DNR personnel, and regulatory and funding agencies.

## **PRELIMINARY ENGINEERING REPORT**

Our next task will be the preparation of a Preliminary Engineering Report. Specifically, the report will be organized in accordance with regulatory and funding agency requirements as follows:

1. Introduction and Overview
2. Planning Area and Future Needs
3. Evaluation of the Existing System
4. Proposed Improvements/Upgrades
5. Alternate Solutions
6. Cost Estimates – Capital and O & M
7. Environmental Issues
8. Public Participation
9. Final Plan Selection
10. Implementation

Prior to publication of the final report, all information will be shared and reviewed with WVDNR officials to assure that concerns are addressed.



## DESIGN PHASE

NREI will prepare contract documents including plans and specification conforming to funding agencies requirements. Our design phase will be carried out as follows:

1. Define Existing Conditions
  - a. Assemble and evaluate data to eliminate conflicts and redundancy.
  - b. All major decisions regarding data will be discussed with WVDNR officials. Important data sources include, but are not limited to the following:
    - i. WVDNR Officials
    - ii. WV Department of Environmental Protection
    - iii. USDA Rural Development
    - iv. Soil Conservation Service
    - v. U.S. Corps of Engineers
    - vi. Local Citizens and Groups
2. Identify Project Work
  - a. Evaluate existing data, reports, and design drawings, if available
  - b. Evaluate existing site.
  - c. Evaluate environmental aspects.
  - d. Summarize existing problems and make presentation.
3. Preliminary Design
  - a. Preliminary layout of proposed project
  - b. Land surveys for mapping, rights-of-way, and / or land acquisitions
  - c. Coordination with the WVDNR, WVDEP, USDA-RD and WVDOH
  - d. Preliminary Cost Estimates
  - e. Preliminary review with the WVDNR.
4. Final Design
  - a. Incorporate review comments from the WVDNR, PSD, WVDEP, USDA-RD, and other agencies
  - b. Prepare detailed specifications and final design report in accordance with state and federal guidelines.
  - c. Attend public meetings.
  - d. Prepare final cost estimates.
  - e. Secure permits from WVDEP, WVDOH, and other agencies
  - f. Prepare bid documents.
  - g. Conduct pre-bid conference.
  - h. Assist in advertising for bids, attend bid opening and assist in evaluation of bids with recommendations for awarding the construction of the project(s)



## CONSTRUCTION PHASE

NREI will provide the following services during the construction phase of the project:

1. Administrative Services
  - a. Assist and advise the WVDNR in the preparation of construction contracts for signature(s)
  - b. Issue a "Notice to Proceed" to the appropriate Contractor(s)
  - c. Provide consultation and advise the WVDNR during construction
  - d. Preparation of elementary and supplementary sketches and / or drawings required to resolve problems arising from actual field conditions encountered.
  - e. Review and approve shop drawings, diagrams, illustrations, brochures, catalog data, schedules, and samples, results of tests and inspections, other data which the contractor(s) is required to submit, but only for conformance with the design concept of the Project and compliance with the information given in the contract documents.
  - f. Receive and review maintenance and operating instructions, schedules, guarantees, bond, and certificates of inspections which are to be assembled by the contractor(s) in accordance with the contract documents.
  - g. Review and approve requests for periodic and final payments to the contractor(s)
  - h. Issue certificates of completion to the WVDNR for completed construction contracts.
  - i. Review original drawings and provide to the WVDNR a digital copy on disk and two (2) sets of black line prints of "as-built" plans
  - j. Advise the WVDNR whether the project can meet the project performance standards.
  - k. Attend monthly meetings during the construction period.
  - l. Represent the WVDNR in technical matters and litigation, if required
  - m. Provide engineering services during start-up of the facility.
  - n. Provide training to WVDNR employees for the operation of the new facility.
  - o. Provide one (1) year project performance certification.
2. Field Services
  - a. A Qualified Design Professional will make periodic visits to the site to observe the progress and quality of the executed work, and determine, in general, if the work is proceeding in accordance with the contract documents.
  - b. Efforts will be directed toward providing assurance to the WVDNR that the completed project will conform to the requirements of the contract documents.
  - c. Make general monthly construction progress reports to the WVDNR.
  - d. Observe initial operation of the project, or any performance tests as required by the specifications.
  - e. Make final inspection and report on the completed project.
  - f. Advise the WVDNR of any special test or necessary outside services that may be required to assist construction of the project.



- g. On the date, one (1) year after the initiation of the operation of the project, a Professional Engineer shall certify to the WVDNR whether the project can meet the project performance standards in accordance with requirements for the project.
- 3. Resident Inspection Services During Construction
  - a. A Resident Project Representative(s) will be furnished for each construction contract (as a minimum) to provide extensive representation at the project site during the construction phase.
  - b. Through more extensive on-site observations of the work in progress and field checks of materials and equipment by the Resident Project Representative(s), the WVDNR will be provided further protection against defects and deficiencies in the work
  - c. In addition to the general duties outlined above, the Resident Project Representative(s) will:
    - i. Observe the installation of approved materials and equipment and construction techniques and procedures in accordance with contract documents.
    - ii. Aid in public relations activities as the construction progresses through private property.
    - iii. Monitor the construction schedule and report conditions which may cause delay in completion.
    - iv. Review contract documents with the contractor's superintendent
    - v. Obtain necessary interpretations and transmit them to the contractor.
    - vi. Consider the contractor's suggestions and recommendations, evaluate them, and submit them with recommendations for a final decision.
    - vii. Attend field meetings as directed and report on the proceedings.
    - viii. Observe tests required by the contract documents, and record and report test procedures and, where applicable, the results
    - ix. Maintain records at the construction site in an orderly manner, including correspondence, change orders, supplementary drawings, requests for payment, and names and addresses of contractors, subcontractors, and principal material suppliers.
    - x. Keep a journal or logbook recording time and activities related to the project, weather conditions, nature and location of work being performed, verbal instructions and interpretations given to the contractor, and specific observations, record any occurrence of work that might result in a claim for a change of contract sum or contract time, and maintain a list of visitors, their titles, and time and purpose of their visit.
    - xi. Review applications for payment submitted by the contractor and forward them with recommendations for disposition.
    - xii. Prepare a punch list as construction nears completion and inform contractor of items on punch list.
    - xiii. Assist in final inspection of the work.



## **SPECIAL SERVICES**

1. Land Surveys
  - a. Easements and right-of-way plat maps
  - b. Verify existing aboveground and underground utilities.
  - c. Construction stakeout of proposed improvements of connection with existing utilities
2. Attendance at Public Meetings to represent the WVDNR on technical matters.
3. Attendance at Technical Meetings with the WVDNR, DEP, etc.
4. Furnish technical assistance to the accountant and legal staff.
5. Provide technical testimony before courts and / or administrative hearings related to the project.





## PROJECT EXPERIENCE

### **Fayette County Shooting Range and Training Center, Fayetteville, WV**

NREI is providing preliminary services for a new multi-use facility that will incorporate four ranges, a non-lethal house, education/training building, K9 training facilities, parking and access roadway.

**Reference:** Sheriff Kevin Willis, Fayette County Commission, 100 N. Court St, Fayetteville, WV 25840, 304.574.4228 ext. 352.

### **Jackson Kelly PLLC, Shooting Range Litigation, Charleston, WV**

NREI provided exhibit survey maps, ground profiling and expert witness for Putnum County Gun Club.

**Reference:** James "M. "Matt" Davis, Jackson Kelly PLLC, 500 Lee Street East, Charleston, WV 25301. 304.340.1031, jmdavis@jacksonkelly.com

### **Coonskin Park Trail Replacement and Elk River Flood Repairs, Kanawha County**

Planning, design, geotechnical, estimating, and construction management of 160 LF of H-Pile wall, a 40 LF H-Pile wall, Replacement of three 18" culverts, Paving of approx. 2,800 LF of Elk River Trail, and replacement of 105 LF of 36" HDPE storm pipe. Project cost approx. \$1.85 million.

**Reference:** Jeff Hutchinson, Executive Director, Kanawha County Parks and Recreation, 375 Henry C Hoppy Shores Drive, Charleston, WV 25302, 304.341.8000, jeff@kcprc.com



### **Town of Ansted, Gauley Mountain Bike Trail**

Project is currently in the preliminary stages with bike route layout with future plans of full bike trail with restrooms and scenic overviews to connect to other area bike trails

**Reference:** Siobhan Wilson, Municipal Clerk, Town of Ansted, 30 Rick Creek Road, Ansted, WV 25812, 304-658-5901, s.wilson@townofansted.onmicrosoft.com

### **Town of Ansted, Bike Trail and Fox Branch Creek Bridge Trestle**

Located on Ansted bike trail, below Hawks Rail-Trail, NREI designed deck replacement and substructure repair. Previous decking had deteriorated so NREI completed deck design with railings. This project is currently at 30% design and awaiting State review. Project cost is \$175,000.

**Reference:** Siobhan Wilson, Municipal Clerk, Town of Ansted, 30 Rick Creek Road, Ansted, WV 25812, 304-658-5901, s.wilson@townofansted.onmicrosoft.com

### **City of Madison, Rucker Branch & Greenbrier Land Trail, Boone County**

NREI provided grant writing services, GIS data and preliminary concept mapping to complete and submit grant applications with conceptual plans.

**Reference:** Steve Byus, Emergency Management Director, City of Madison, 255 Washington Ave, Madison, WV 25130, 304-369-2762, sbyus@madisonwv.org

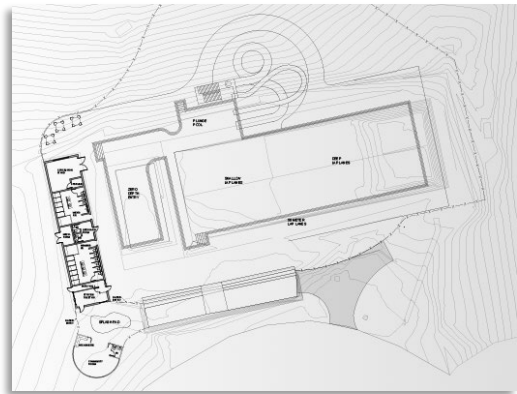
### **Paint Creek Recreational Trail, Slip Repairs, Ross County, Ohio**

This 32 mile trail is undergoing slip and erosion repairs with this current project (slip 31) designed with 12-18 foot Gabion retaining wall to be backfilled and rip-rap will be installed up and down the stream. The trail remains open during repairs.

**Reference:** Erin Stanley, Project Development/Grant Coordinator, Ross County Park District, 15 N Paint St #301, Chillicothe, OH 45601, 740-773-8794, erinstanley@rosscountyohio.gov

### **Fayette County Park Pool Project, Fayetteville, WV**

The Fayette County Community Pool is part of a proposed plan to upgrade the existing, outdated pool facility. The current building on the property requires renovation to improve the flow and functionality of its layout. A new community room is also proposed for the site, designed as a versatile three-season space with a splash pad, available for rent by the community. The thoughtful layout allows the splash pad and community room to either function separately or be incorporated into the overall pool design, providing flexibility. This setup ensures the splash pad can remain open and rentable during the spring and fall, even when the pool is closed. Project cost is estimated at \$3.5 million.



**Reference:** John Brenemen, Commissioner, Fayette County Commission, 100 N. Court Street, Fayetteville, WV 25840, 304.574.4290

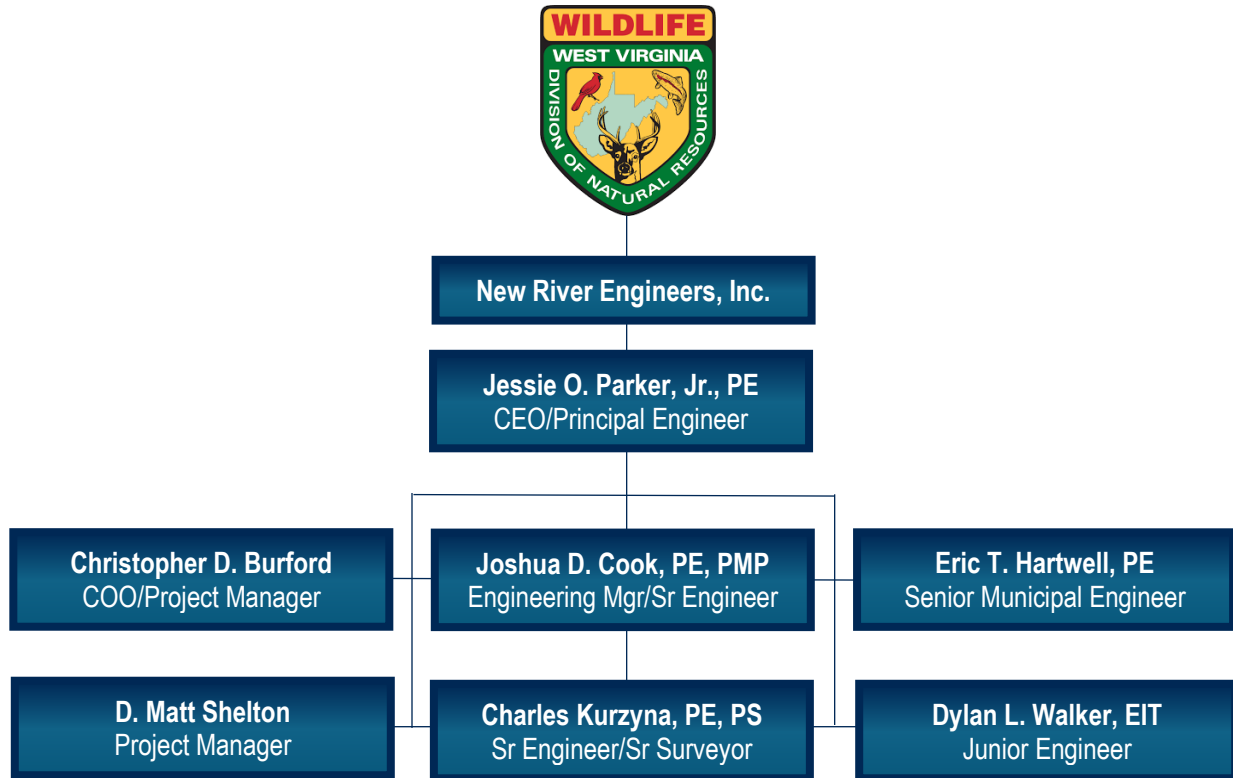
### **City of Montgomery Pavillion, Montgomery, WV**

Community space encompassing 15,058 SF to serve as a multifunctional venue for plays, festivals and community activities. It provides concessions and restrooms to support street festivals and other outdoor events as the walls facing the streets are fold-up garage doors, inviting people creating a seamless connection between the indoor venue and the surrounding community. This design enhances accessibility and engagement, allowing the space to open and become an integral part of the vibrant street life. NREI provided preliminary concepts, cost estimates, infrastructure and grant facilitation in 2023 with construction date to be determined. Estimated project cost is \$3M.

**Reference:** Greg Ingram, Mayor, City of Montgomery, 706 3rd Avenue, Montgomery, WV 25136, 304.442.5181, gingham@montgomerywv.gov



## ORGANIZATIONAL CHART



## RESUMES OF KEY PERSONNEL



**Jessie O. Parker, Jr., PE**

**CEO / Principal Engineer**

Jessie began his career in 2003 working on a variety of environmental projects throughout West Virginia, Kentucky, Ohio, and Virginia. He has served in the capacity of Engineer, Project Manager and Principal in Charge of a variety of projects. This experience includes environmental, water supply, wastewater, stormwater and drainage projects. Jessie's responsibilities include planning, design and construction administration.

Jessie has experience in grading plans, construction management, payment request approvals, quantity & cost estimates and has worked with City, Town & PSD personnel, regulatory and funding agencies, as well as contractors.

Jessie has proven to move projects forward in a professional, cost-effective, and timely manner. He has extensive knowledge of state and federal water supply, and wastewater laws and regulations and is very familiar with federal and state grant and loan programs.

### EDUCATION

**Bachelor of Science**

Civil Engineering  
West Virginia University Institute of Technology

**Master of Science**

Engineering  
Marshall University

### CERTIFICATIONS

Environmental Site Assessment  
Commercial Real Estate

Professional Engineer — WV, OH,  
KY, VA, MD, NC, SC, PA, TN

### PROFESSIONAL AFFILIATIONS

Water Environment Federation  
American Water Works Association  
American Society of Civil Engineers  
Society of American Military Engineers  
West Virginia Rural Water Association  
Contractors Association of West Virginia





## **Christopher D. Burford**

### **COO / Project Manager**

Chris has been with NREI for over fifteen years. As a Project Manager, he oversees surface and underground mining permit applications, is the manager of surveying crews, manages State and Federal safety plans and permits, oversees construction oversight and construction management and mine planning.

Green and Associates, LLC, St. Clairsville OH – manager and supervisor of survey crews and office personnel, business development, and coordination with clients on various projects.

New River Safety, LLC – manager and supervisor of safety instructors, electrical inspectors, and office personnel, business development and coordination with clients and government entities.

Ellison Ridge Mining, LLC – management and oversight of various sub-contractors over mining, reclamation and civil site construction projects, business development, and coordination with clients and government entities.

### **EDUCATION**

#### **Associate of Science**

Civil Engineering Technology  
West Virginia University Institute of Technology

### **CERTIFICATIONS**

Certified Underground Coal Miner

Certified Surface Coal Miner

MSHA Certified Limited Instructor

MSHA Certified Gravimetric Dust Sampling

MSHA Certified Gravimetric Dust Calibration & Maintenance

Safe Land USA PEC Safety

MSHA – Methane / Oxygen Deficiency Qualified

APNGA Portable Nuclear Gauge Safety & USDOT Hazmat Certified  
#299-160-926-311

APNGA Certificate of Achievement, Radiation Safety Officer Class #299-160-994-3161

Heartsaver First Aid, CPR & AED Certified

### **PROFESSIONAL AFFILIATIONS**

Contractors Association of West Virginia

West Virginia Rural Waters Association

West Virginia Coal Association

Friends of Coal Association





**Joshua D. Cook, PE, PMP**

**Engineering Manager / Senior Engineer**

Josh began his professional career in 2012 and has worked on a variety of civil engineering projects throughout West Virginia, Ohio, Virginia, Maryland, and Pennsylvania. During his career, Josh has served as project engineer, project manager and engineering manager for coal and natural gas companies and municipal engineering consulting firms, including New River Engineers.

Josh has experience in environmental remediation, groundwater protection plans (including spill prevention, control and countermeasure plans), stormwater permitting and design, construction management, water, wastewater, storm water and a variety of natural gas experience.

Josh has been successful in managing a variety of projects to remain on-time, on-budget and compliant.

**EDUCATION**

**Bachelor of Science**

Civil Engineering  
West Virginia University Institute of  
Technology

**Master of Science**

Engineering  
Marshall University

**CERTIFICATIONS**

Professional Engineer — WV, OH  
Project Management Professional  
(PMP)

**PROFESSIONAL AFFILIATIONS**

American Society of Civil Engineers

West Virginia Rural Water  
Association

Business Networking International  
(BNI)

Project Management Institute (PMI)



**Eric T. Hartwell, PE**

**Senior Municipal Engineer**

**EDUCATION**

**Bachelor of Science**

Civil Engineering  
West Virginia University Institute of  
Technology

**Master of Science**

Civil Engineering  
West Virginia University

**CERTIFICATIONS**

Professional Engineer — WV

**PROFESSIONAL AFFILIATIONS**

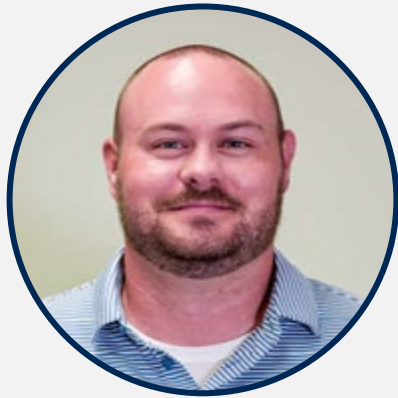
Contractors Association of West  
Virginia

Eric has over 25 years of experience in planning, design, and construction of environmental projects. The majority of his experience is in the design and construction of wastewater treatment and collection systems, water treatment and distribution systems and industrial oil water separators.

Eric was an integral part of the design team for several wastewater treatment plant upgrade projects and over 70 pump stations ranging in size from 5 to 7000 gallons per minute. He has also been involved in the design of multiple water treatment plants and pumping stations.

Eric oversees the design and construction of water storage tanks and pressure reducing valve stations. He has worked on environmental projects throughout West Virginia. His responsibilities include planning, design, construction administration, preparation of operation and maintenance manuals and operator training for water supply and distribution, wastewater collection and treatment, water loss and infiltration and inflow reduction projects.

Eric also has experience in construction management, payment request review and approval, quantity and cost estimates. His thorough and committed communication skills has earned him repeat clients throughout his career with municipal, PSD personnel, regulatory agencies and contractors.



**D. Matt Shelton**

**Project Manager**

**EDUCATION**

**Bachelor of Science**

Civil Engineering Technology  
West Virginia University Institute of  
Technology

**CERTIFICATIONS**

Environmental Site Assessment  
Commercial Real Estate

**PROFESSIONAL AFFILIATIONS**

Water Environment Federation  
Contractors Association of West  
Virginia

Matt began his career in the field as a surveyor and has progressed to successfully earning a civil engineering degree. It's with this eventual process that makes his skills superior with overseeing site development, water supply, wastewater, storm water and drainage projects. His skills include construction management, record keeping, quantity and payment reviews. His attention to detail and great communication skills has earned him much respect among general contractors, subcontractors, community representatives and residents. His solid techniques move projects in a professional, cost-effective and timely manner.

Matt is experienced in site grading, surveying, building layouts, water & sewer system design and construction inspection on civil engineering projects.

Matt's experience as an Engineering Technician includes design of water line extensions, water booster stations, water storage tanks, wastewater pump stations, sewer line extensions, manholes, drainage calculations, and preparation of quantity and cost estimates.

Matt's experience as a Survey Technician/ Instrument team member includes topographic surveys, construction stakeout for water and sewer systems and highways, building layout, cut sheets for sewer systems and GPS surveying for field control work, etc.



**Charles “Chuck” Kurzyna, P.E., P.S.**

**Senior Engineer / Senior Surveyor**

Chuck has over 30 years of engineering and management experience in the mining industry and consulting business. He specializes in surface and underground mine design, planning, and surveying; environmental and safety permitting; project and construction management.

Project Manager for a consulting engineering firm, responsible for job estimates and bidding, supervise office staff in engineering related projects including surface mine surveying, reclamation and permitting, reserve studies, etc.

Chief Engineer for a small mining and construction company, responsible for mine planning, production tracking, construction job bidding, construction engineering, etc.

Chief Engineer, Senior Engineer for the Lady Dunn Surface Mine & Preparation Plant; coal reserve evaluations; project engineering for mine related facilities; environmental permits for large surface and deep mining operation; etc.

**EDUCATION**

**Bachelor of Science**

Mine Engineering Technology  
West Virginia University Institute of Technology

**Associate of Science**

West Virginia University Institute of Technology

**CERTIFICATIONS**

Professional Engineer — WV, OH, PA, VA, KY, GA

Professional Surveyor — WV

Underground Mine Foreman

Surface Mine Foreman

**PROFESSIONAL AFFILIATIONS**

Contractors Association of West Virginia

West Virginia Coal Association

Friends of Coal Association

Society of Mining Engineers





**Dylan L. Walker, EIT**

**Junior Engineer**

Dylan began his engineering career in 2019 through internships, which led to full-time employment in 2021. Since then, he has been greatly involved in various bridge and drainage structure projects, encompassing bridge evaluation, bridge inspection, and bridge load analysis. He has contributed to a diverse range of projects in West Virginia.

Serving as Junior Engineer, Dylan has demonstrated proficiency in a variety of roles and duties in several disciplines, from wastewater to structures, with an understanding of engineering principles and practices. His skills and experience have assisted with ensuring the success of a wide range of projects. His responsibilities encompass planning, permitting, coordination, and construction administration.

In addition, Dylan possesses strong skills in construction inspection, bridge inspection, and the preparation of quantity and cost estimates. He has inspected, prepared reports, and performed load analyses for numerous bridges during his career.

He has also collaborated with municipalities, regulatory agencies, and contractors. His attentive communication style and hands-on approach foster strong partnerships with stakeholders, facilitating streamlined project workflows and timely deliverables.

Dylan has consistently advanced projects in a professional, cost-effective, and timely manner. His experience with AutoCAD, Autodesk, and AASHTOBrR significantly bolsters his diverse background and knowledge.

**EDUCATION**

**Bachelor of Science**

Civil Engineering  
West Virginia University

**CERTIFICATIONS**

Engineer In Training — WV

Safety Inspection of In-Service  
Bridges (NHI)

Fracture Critical Inspection  
Techniques for Steel Bridges (NHI)

Stream Stability and Scour at  
Highway Bridges for Bridge  
Inspectors (NHI)



## SAFETY

In today's ever-changing workplaces, we place safety as an utmost necessity for all employees. We are fully committed to provide our employees with knowledge and training to complete all tasks in a professional manner and to prepare them with a safe and hazard free work environment.



## FUNDING ASSISTANCE

We assist our clients in the preparation of grant/loan funding applications. We will represent our clients and coordinate with the various funding agencies to obtain a favorable funding package. Once the funding has been secured, we will then begin to develop detailed engineering drawings and specifications for the project. Funding Sources can include, but are not limited to the following:

- VA Resources Authority
- Private Bank Funding
- Appalachian Regional Commission (ARC)
- United States Department of Agriculture Development Loans (US DA-RD)
- Housing and Urban Development – Community Development Block Grant (HUD-CDBG)
- Virginia Department of Environmental Quality (VDEQ)
- Virginia Rural Community Assistance Program (VA RCAP) – Funding Assistance
- United States Army Corps of Engineers (USACE)

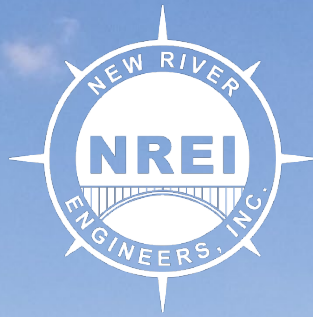


## TEAMING PARTNERS

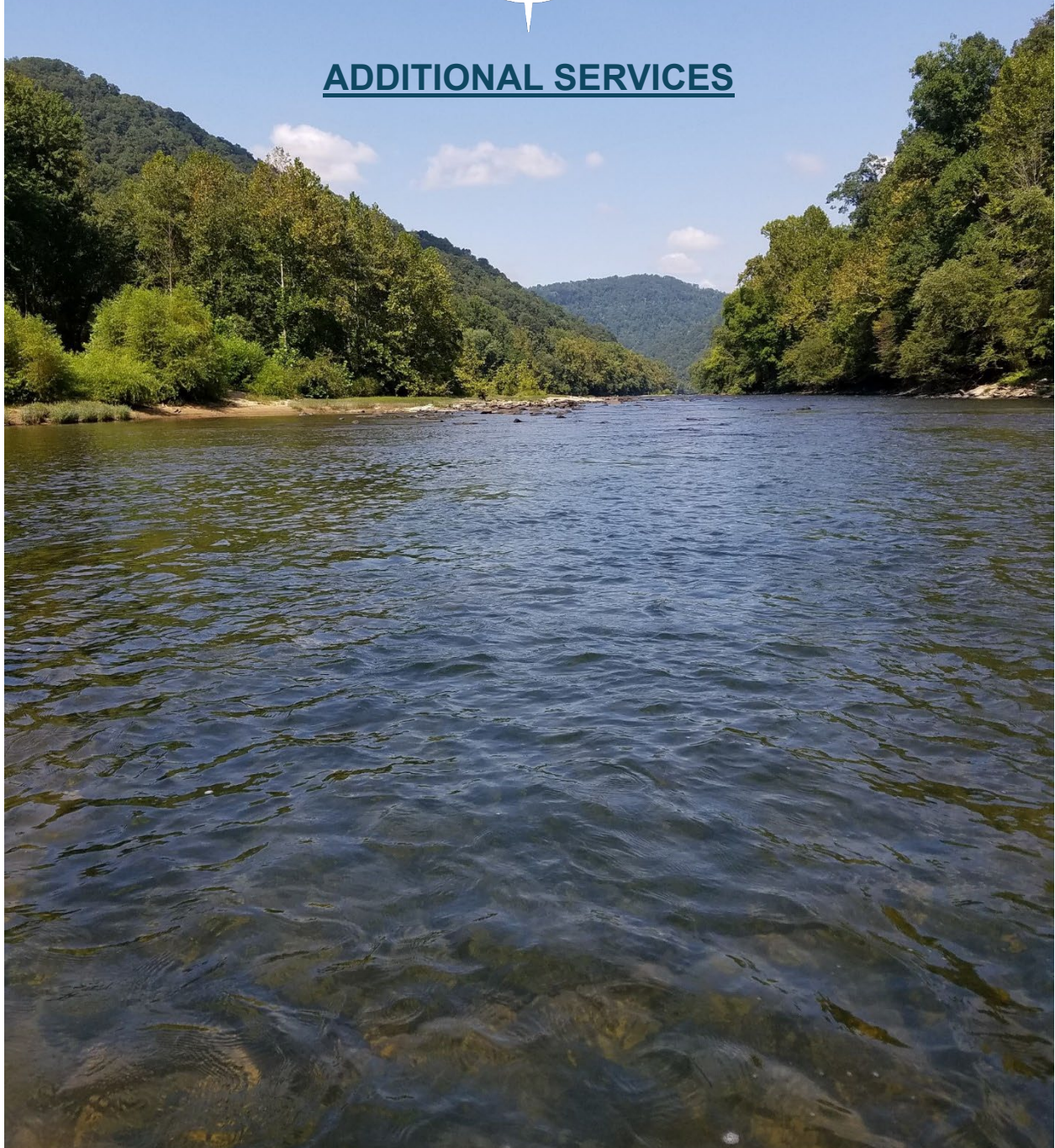


Larson Design Group®





## ADDITIONAL SERVICES





# **Environmental Permitting**

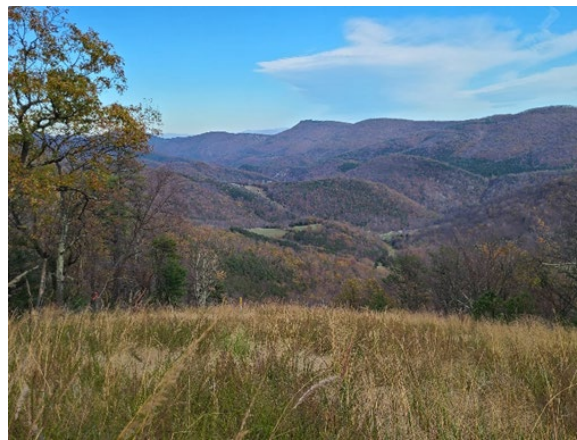
Environmental permitting can be a complex and confusing landscape. We have an efficient and thorough team of environmental consultants making sure permitting, regulatory compliance, construction monitoring and biological surveying are done with the utmost quality and cost effectiveness. This will save your project time and money from the start and avoid costly delays in the future. Compliance with Clean Air and Water Acts, NEPA and other state and federal requirements is invaluable to every project. Our attention to detail and practical solutions to complex issues are second to none. Our environmental permitting team will make sure once your project is off the ground, it stays there! Environmental Permitting services include but are not limited to the following:

## **Environmental Permitting Services**

- Storm Water Permitting, Design and Management
- Water Quality Monitoring
- Flood Plain Determination and Flood Evaluation Certificates
- Groundwater Protection Plans
- Stream & Wetland Delineation
- Spill Prevention Control & Countermeasures Plan (SPCC)
- Article 3 Mining Permits
- Article 11 NPDES Permits
- West Virginia 401 Certification Permitting
- Wastewater Permitting, Design and Management
- Clean water Act Section 402 Permitting (NPDES Permit)
- United States Army Corps of Engineers 404 Permitting
- Air Quality Permitting
- • Best Management Practices (BMP) Planning

## **Environmental Agency Experience**

- National Environmental Policy Act (NEPA)
- US Environmental Protection Agency (EPA)
- National Conservation Planning Partnership (NRCS) & Forest Service
- United States Department of Agriculture (USDA) – Rural Development
- West Virginia Public Lands
- WV Department of Natural Resources (DNR)US Fish & Wildlife
- WV Culture & History
- Federal Aviation Administration (FAA)
- EPA & WV DEP Compliance
- Environmental Site Assessment
- Local Agency Building/Construction



# Geotechnical Engineering

We have professional engineers and engineering technicians with extensive geotechnical engineering experience. We specialize in compaction testing, foundation design, slope failure remediation and embankment design. We put the focus on identifying the needs of our clients and providing cost-effective solutions with real results.

## Geotechnical Engineering Services

- Drilling Oversight, Management and Inspection
- Slope Failure Remediation
- Slope Stability Analysis
- Gabion Basket Wall Design
- Compaction Testing
- Foundation Design
- Embankment Design
- Drainage Analysis
- Soldier Pile Wall Design





# Structural Engineering

We offer a full range of structural engineering services to help meet the needs of our clients. In addition to professional training, our structural capabilities are bolstered by a depth and breadth of experience developed through solving unique and complex engineering challenges. We have experience with projects in the private, public, commercial and industrial sectors. Whether designing new structures, retrofitting existing structures, addressing overstressed conditions, or assessing structural integrity, our clients can rest assured that we are capable of meeting their specific needs.

## Structural Engineering Services

- Structural Analysis
- Steel Structures and Building Enclosures
- Modular Design
- Pilings and Foundations
- Concrete Containment Structures
- Retrofit of Existing Overstressed Structures
- Building Permits and Code Analysis
- Bridge Cranes, Monorails, Jibs, etc.
- Truck/Rail Unloading Stations
- Lifting Beams and Rigging
- Industrial Architectural Design
- Structural Inspections and Assessments



# Construction Management and Civil Site Design

We have been providing construction engineering solutions to our clients, including municipalities for a combined total of over 60 years. We have established ourselves as one of the leading consulting firms in the region and our experienced staff is committed and dedicated to your project from the initial site design and bid package development, to inspections and certification.

We also offer Civil Site Design services including sub-division layouts, commercial development and design, HCA project areas, well pads, impoundments, street paving, drainage control, solid waste landfill and impoundment design. We know and understand the value and importance of properly designed sites that offer the most cost effective solutions to benefit our clients and their budgetary commitments. Construction Management and Civil Site Design services include, but are not limited to the following:

- 3D Site Design
- Haulage & Access Road Design
- Excess Spoil Disposal Site Design
- Drainage Design and Runoff Calculations
- Solid Wastewater Management and Land Fill Design
- Subdivision Design and Permit Applications
- Site Development Plans
- Pre, During & Post Construction Surveying
- HECRAS Modeling
- Stability Analysis
- Site Inspections / Project Management
- Certifications
- Cost Estimates
- Subdivision Design
- Street Paving Design and Drainage Control
- Construction Management
- Earth Work Quantity Estimates
- Construction Staking
- Concrete Testing and Inspection



# Surveying

We have established ourselves as one of the region's leading surveying firms with our 45 years of experience in property, boundary and topographic mapping. Our surveying staff is skilled in courthouse research, finding property evidence, providing quality property surveys and construction stake-outs.

Additionally, we offer aerial mapping utilizing drone surveys. Our aerial mapping has been proved to be invaluable for construction progress mapping, well pad progression, subdivision layouts, and civil site designs. Surveying services include, but are not limited to the following:

- Property Abstract & Research
- Boundary Surveys
- Survey Plats
- Subdivision Design & Layout
- Construction Surveying & Stakeout
- Underground Mining Surveying
- Right-of-Way & Land Acquisition
- GPS Services
- Aerial Mapping / Control
- Drone Flight & Surveying
- Topographical Surveys
- ALTA / ACSM Land Title Surveys
- Unit Surveys
- Surface Mining Surveying
- Computer Mapping
- GIS Services





# Subsurface Utility Survey

We use some of the most advanced technology in Ground Penetrating Radar (GPR), pipe and cable locators, and smoke testing machines to accurately survey, map and inspect subsurface utilities. These services have been extensively used by our clients in the construction, oil and gas industries, as well as public service districts. Subsurface Utility Survey services include, but are not limited to the following:

- Pipe and Cable Location
- Sewer Line Smoke Testing
- Ground Penetrating Radar (GPR)
- Internal Video Pipe Inspection

