



The following documentation is an electronically-submitted vendor response to an advertised solicitation from the *West Virginia Purchasing Bulletin* within the Vendor Self-Service portal at [wvOASIS.gov](http://wvOASIS.gov). As part of the State of West Virginia's procurement process, and to maintain the transparency of the bid-opening process, this documentation submitted online is publicly posted by the West Virginia Purchasing Division at [WVPurchasing.gov](http://WVPurchasing.gov) with any other vendor responses to this solicitation submitted to the Purchasing Division in hard copy format.

Header 1

List View

- General Information
- Contact
- Default Values
- Discount
- Document Information
- Clarification Request

Procurement Folder: 1257505	SO Doc Code: CEOI
Procurement Type: Central Purchase Order	SO Dept: 0313
Vendor ID: VS0000018987	SO Doc ID: DEP2400000008
Legal Name: ASCENT CONSULTING AND ENGINEERING LLC	Published Date: 8/10/23
Alias/DBA:	Close Date: 8/31/23
Total Bid: \$0.00	Close Time: 13:30
Response Date: 08/30/2023	Status: Closed
Response Time: 14:02	Solicitation Description: EOI - 2023 AML Contract N4
Responded By User ID: AscentMarketing	Total of Header Attachments: 1
First Name: Caroline	Total of All Attachments: 1
Last Name: Marion	
Email: cmarion@ascentconsultinger	
Phone: 3049333463	



Department of Administration  
 Purchasing Division  
 2019 Washington Street East  
 Post Office Box 50130  
 Charleston, WV 25305-0130

**State of West Virginia  
 Solicitation Response**

**Proc Folder:** 1257505  
**Solicitation Description:** EOI - 2023 AML Contract N4  
**Proc Type:** Central Purchase Order

Solicitation Closes	Solicitation Response	Version
2023-08-31 13:30	SR 0313 ESR08302300000001096	1

**VENDOR**  
 VS0000018987  
 ASCENT CONSULTING AND ENGINEERING LLC

**Solicitation Number:** CEOI 0313 DEP2400000008  
**Total Bid:** 0  
**Response Date:** 2023-08-30  
**Response Time:** 14:02:54  
**Comments:**

**FOR INFORMATION CONTACT THE BUYER**  
 Joseph E Hager III  
 (304) 558-2306  
 joseph.e.hageriii@wv.gov

**Vendor Signature X** **FEIN#** **DATE**

All offers subject to all terms and conditions contained in this solicitation

Line	Comm Ln Desc	Qty	Unit Issue	Unit Price	Ln Total Or Contract Amount
1	Beech Bottom Highwall				0.00

Comm Code	Manufacturer	Specification	Model #
81100000			

**Commodity Line Comments:**

**Extended Description:**

Beech Bottom Highwall

Line	Comm Ln Desc	Qty	Unit Issue	Unit Price	Ln Total Or Contract Amount
2	Bethany (Haizlett) DS, Highwall and AMD				0.00

Comm Code	Manufacturer	Specification	Model #
81100000			

**Commodity Line Comments:**

**Extended Description:**

Bethany (Haizlett) DS, Highwall and AMD

Line	Comm Ln Desc	Qty	Unit Issue	Unit Price	Ln Total Or Contract Amount
3	Buffalo Creek Highwall				0.00

Comm Code	Manufacturer	Specification	Model #
81100000			

**Commodity Line Comments:**

**Extended Description:**

Buffalo Creek Highwall

Line	Comm Ln Desc	Qty	Unit Issue	Unit Price	Ln Total Or Contract Amount
4	Crafts Run Maintenance				0.00

Comm Code	Manufacturer	Specification	Model #
81100000			

**Commodity Line Comments:**

**Extended Description:**

Crafts Run Maintenance

Line	Comm Ln Desc	Qty	Unit Issue	Unit Price	Ln Total Or Contract Amount
5	Logan Run Highwall				0.00

Comm Code	Manufacturer	Specification	Model #
81100000			

**Commodity Line Comments:**

**Extended Description:**

Logan Run Highwall

Line	Comm Ln Desc	Qty	Unit Issue	Unit Price	Ln Total Or Contract Amount
6	Richard Mine Drainage Facility Upgrades				0.00

Comm Code	Manufacturer	Specification	Model #
81100000			

**Commodity Line Comments:**

**Extended Description:**

Richard Mine Drainage Facility Upgrades

Line	Comm Ln Desc	Qty	Unit Issue	Unit Price	Ln Total Or Contract Amount
7	Wades Run Dangerous Embankment				0.00

Comm Code	Manufacturer	Specification	Model #
81100000			

**Commodity Line Comments:**

**Extended Description:**

Wades Run Dangerous Embankment



**State of West Virginia  
Department of Environmental Protection  
Office of Abandoned Mine Lands  
Solicitation No. DEP240000008**

**Ascent Consulting & Engineering, LLC.  
August 31, 2023**

1700 Anmoore Road | Bridgeport, WV 26330  
[www.ascentconsultingengineers.com](http://www.ascentconsultingengineers.com)

August 31, 2023

State of West Virginia  
Purchasing Division  
Department of Environmental Protection  
Office of Abandoned Mine Lands and Reclamation

RE: Expression of Interest - A/E - 2023 AML Contract N4 - DEP 2400000008

Dear Mr. Hager and members of the selection committee,

Ascent Consulting and Engineering, LLC. (Ascent) is pleased to present our expression of interest and qualifications for the 2023 AML Northern Contract 4. The northern contracts are located in Ascent's backyard and our staff has extensive knowledge of the locations for each of these project sites. While you will have many consultants submit their qualifications in the geographic area, Ascent prides itself on taking a different approach to each project. We take ownership of our projects, treating your dollars as our own. Each project approach will be individually tailored and Ascent will be upfront with cost estimates, schedules, and any challenges we foresee. It is important for us to hit these challenges head on and provide our clients with the best path forward.

Ascent is a full-service consulting firm offering, engineering, environmental, survey, materials testing and construction inspection services in-house. Due to the nature and understanding of these projects, we have also brought Geo-Technical Associates, Inc. (GTA) to our team to handle geotechnical investigations and drilling services. Ascent and GTA have a strong working relationship, having partnered on numerous other projects together.

As a West Virginia based firm, we are passionate about protecting, rehabilitating and bringing land back to safe and useful spaces. The North Contracts are regional to Ascent. Our knowledge and understanding of the North sites allow us to provide a high-quality turn-key service. Each project represents its own challenges which require experience to develop a permanent remedy. Ascent will provide the WVDEP with the best quality of service for the unique challenges of the North AML projects. Ascent looks forward to the opportunity to present more of our qualifications and project plans for the AML Northern Contract 3.


Sincerely,

A handwritten signature in blue ink, appearing to read "Michael R. Nestor".

Michael R. Nestor, PE  
Principal



# PROPOSAL CONTENT

- 01 Expression of Interest
  - 02 Firm Profile
  - 03 Management Outline
  - 04 Project Methodology
  - 05 Technical Services
  - 06 Subconsultants
  - 07 Project Experience
  - A AML Consultant Questionnaire
  - B Project Matrix
  - C State Forms
  - D Supporting Documents
- 



# EXPRESSION OF INTEREST

## 2023 AML Contract North 4

Ascent Consulting & Engineering has read and understands the solicitation documents prepared for the above referenced project for the West Virginia Department of Environmental Protection's Office of Abandoned Mine Lands and Reclamation. Ascent will provide all services listed in the SOQ in-house with the exceptions of geotechnical engineering services. We have contacted Geo-Technical Associates, Inc. (GTA) to serve as our geotechnical sub consultant for this project. If the project expands following award and additional sub consultants become necessary we will inform the AML Project Manager before work is conducted.

At Ascent, we pride ourselves on treating our client's projects as our own. We provide high level project planning, project management and teaming to best fit each project. As a consultant, we take our role very seriously, it is our job to advise our clients on the best actions, budgets and continuously communicate on project status.

- **Ascent is your PARTNER!**
- **Our capabilities and experience are the right match for this project.**
- **Responsiveness and attention to detail is our top priority.**

Ascent is eager to have the opportunity to perform a successful project for the AML Office.



# FIRM PROFILE

## Ascent Consulting & Engineering, LLC.

Ascent Consulting & Engineering, LLC., (Ascent) was created in 2018 and is operated by two West Virginia entrepreneurs, Michael Nestor, PE and Zachary Assaro. The two set out with a goal to provide engineering services focused on land development and civil engineering projects with just a three person staff. Since then, Ascent has grown to employ over 50 people and handle a wide range of projects. The company provides a full range of services and has worked in every corner of West Virginia, the surrounding states, and beyond. Ascent specializes in civil engineering design and planning, stormwater management, environmental compliance and permitting, survey, materials testing and construction inspection. To support our clients needs, Ascent has a materials testing AASHTO accredited laboratory.



Ascent is a US Small Business Administration Hubzone certified business.

### Our MISSION



#### Providing Practical and Creative Design

Not only will we provide creative solutions to your problem, we take a practical approach to our design that will take your vision to the next level!



#### Communication Holds The Keys

As a consultant responsible for multi-million dollar projects, communication with owners, regulatory agencies and sub-consultants throughout the entire life cycle is vital for the success the project.



#### Strive for Lasting Relationships

We strive to make every relationship and connection we have last. From clients and government agencies to the contractors and teaming partners we complete projects with, we want to make a lasting impression!

### Our SERVICES

- Civil Engineering
- Construction Services
- Environmental Services
- Materials Testing
- Site Development
- Survey and Mapping

# MANAGEMENT OUTLINE

The Ascent management team has perfected a management methodology to provide the best service to our clients and facilitate all agencies, stakeholder and regulatory office participating in project completion. Our management approach is rooted in the best practices from industry standards that we have honed and teach all members of the team to use these processes, artifacts and tools. This type of approach uses Project Management Plans, Project Scheduler, Resource Manager, Risk/Issue Registers, as well as Action Item Tracker, Status Reports and Meeting Minutes to keep the communication of stakeholders internally and externally informed. Having a reusable and customizable framework allows Ascent to provide a management approach made up of components tested and proven on similar project efforts. This reduces the overall risk through a reduced learning curve for our personnel, reduces the cost through leveraging reusable assets and increases staff efficiency. Our management methodology key principles govern our management approach and provide direction to our team to ensure high-quality, cost-effective support. Upon contract award we will verify and validate all the client's requirements and expectations, and further tune the components of our approach to optimize management of all personnel and project delivery. Ascent's management methodology determines how we manage our projects and is founded upon three (3) essential principles:



## **Partnerships Built on Trust:**

Ascent strives to immediately establish a bi-lateral trusting working relationship with WV DEP Office of AML and our teaming partners to magnify our combined effectiveness.



## **Foundation Built on Fundamentals:**

Success depends on properly executing the basics. Through our years of experience and thorough study of project management literature and assessments, we have identified several fundamental project management elements that we use to successfully run each project. We define and manage scope, requirements, risk and change management, and QA right from the start to increase performance and decrease costs.



## **Proactive, Responsive, Adaptive Processes:**

Our project management framework and methodology, combined with our broad and deep environmental experience, allows us to adapt rapidly to changes by anticipating the predictable ripple effects and proactively adjust our approach to minimize impacts and risks.

# PROJECT METHODOLOGY

## 2023 AML Contract N4

Ascent strongly believes that clear communication and expectations are at the core of every successful project. We will encourage a kickoff meeting with your staff and our design team at the onset of the project for discussion about existing conditions, project goals, availability of funds, site operations, and perceived challenges, etc. This meeting allows us to fully understand the project and to tailor our approach and communication to that of your liking. It is our goal to support the overall vision by providing our experienced team to offer valuable suggestions, looking for efficient ways to accomplish the project goals, and executing a plan that is easily understood, constructed, and ultimately fixes the problem.

A typical Ascent project is facilitated according to the following procedure:

### 01 PROJECT KICKOFF MEETING

- The kickoff meeting sets the expectation of the project - from scope, budget, schedule, communication and establishes roles and responsibilities.
- Informs the team about subconsultants and outside factors.
- Reviews site history, overall goals and preferred plan of the project.
- Discuss preferences and limitation to site access and other important project specifications.
- Develop first set of "action items" and delivery dates based on various decision points.



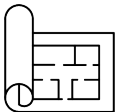
# PROJECT METHODOLOGY

## CONTINUED



### 02 CONCEPTUAL LAYOUT AND PRELIMINARY COST

- Ascent will develop concepts to confirm problem areas and will provide recommendations to the WVDEP. These models will confirm problem areas and help to identify potential areas for improvements to be implemented.
- On a conceptual level, Ascent will prepare recommendations for project implementation along with preliminary construction cost estimates and input on what each alternative will improve for overall drainage. The intent of this phase is to find the “most bang for your buck”.
- After the concepts have been presented to and discussed with the stakeholders, Ascent will move forward with the design of the preferred alternative(s).
- During this process, various items are completed concurrently such as base mapping, ground survey, geotechnical evaluations, and the ultimate maintenance of the site. Any site work such as clearing and grubbing or minor grading for rig access should be coordinated with the proposed plan in order minimize rework and help to hold down project costs.
- This stage allows the project team to refine the concept and identify anything initially unforeseen that would have an impact on project cost or constructability.
- Permit requirements will be evaluated and drafted during this phase.



### 03 PLAN PRODUCTION

- After budgets, feasibility, land acquisitions, etc. are confirmed, Ascent will begin assembling plans and specifications for construction as well as permit submittals.
- The Ascent Project Manager will provide a weekly email update to the WVDEP outlining work completed, the schedule ahead, and any changes. Significant changes or new information found that is anticipated to require project adjustments will be brought to the WVDEP immediately. Initial contact in this instance is always a phone call, followed by a recap email and in some cases, face-to-face meetings if representatives are available. Project budgets and schedules are re-evaluated at milestones (typically at 30%, 60%, and 90% completion).
- The keys to success for these projects include but are not limited to clear communication, land owner coordination and concise easy to read plans.
- The existing treatment systems will be modified or removed based on design specifications. The level of modification will be determined based on the initial site investigation.
- It will be important to plan not only for the final conditions but also for construction activities and grading operations that may need to be staged to prepare for possible release of water during construction activities.

# PROJECT METHODOLOGY

## CONTINUED

- Finally, the design will be evaluated for long term sustainability to reduce or eliminate maintenance after construction is complete. The plan will be devised in a way that fixes the problem at hand yet minimizes disturbance to the existing landscape. We understand that vegetation is an important factor to stabilization so any areas that can remain undisturbed will be exonerated from clearing and grubbing activities. In addition, areas that require clear cut will be planned for revegetation to re-stabilize the surface as quickly as possible. The team assembled for this project has extensive experience in geotechnical exploration and design, landslide remediation, hydrology/hydraulics, drainage design, permitting, and AMD treatment processes as well as many other relevant project tasks.

### 04 CONSTRUCTION MANAGEMENT & INSPECTION

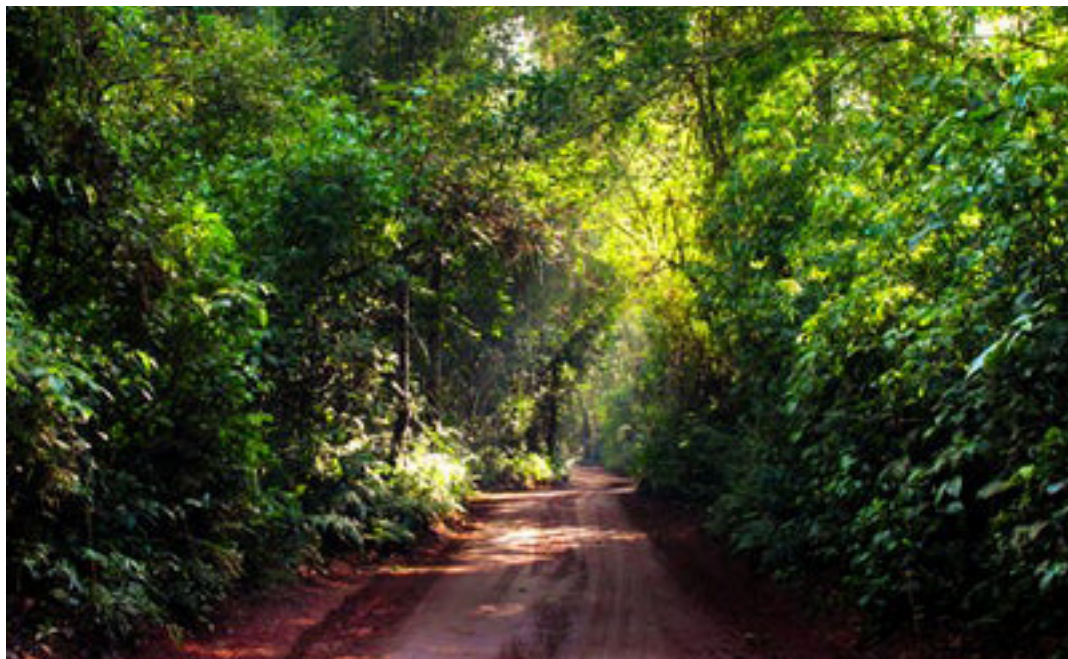


- The Project Manager in charge will also serve as the Project Manager throughout construction. He/She will help to identify the proper field personnel to inspect the project, will speak to the inspector daily, and will attend contractor/progress meetings throughout the duration of the project. He/She will review and submit daily reports to ownership and notify the Client immediately if any problems arise. The Project Manager will also review/approve pay applications submitted by the contractor.

### 05 PROJECT FINALIZATION



- Ascent will constantly evaluate progress to ensure that the project is on schedule and that pay applications are consistent with the work completed.



# TECHNICAL SERVICES

## CIVIL ENGINEERING

Ascent is prepared to complete various civil engineering design aspects of AML remediation and restoration. Our staff has extensive experience performing the tasks required for these projects. The engineers along with our environmental staff will perform a field view of the site with you to evaluate current conditions to begin to understand your goals for final land use. Slope stabilization could require design of repairs for slips, repair of erosion gullies or correcting excessively steep slopes. Vegetative stabilization will require analysis of soils properties and development of appropriate supplements to correct chemistry of AML soils to assist development of successful vegetative cover. The revegetation design will also need to address control of various undesirable invasive species that tend to thrive on AML soils. Ascent will prepare NPDES Earth Disturbance Permits and associated design for erosion and sediment control practices during construction. This will also include design of temporary and permanent stormwater controls and BMP to provide attenuation of any increased peak stormwater rate and volume as well as providing for water quality. We will evaluate the condition of any streams within the project area and provide recommendations for restoration of eroded streambanks or improvements to stream bed to enhance survival and reestablishment of aquatic life. These projects will require design of access roadways for construction and future maintenance activities. This will require evaluation of suitable grades, geometry for equipment access, surface options and drainage features to provide a stable roadway. Access road entries will require WVDOH MM-109 permits for State roads or municipal permits for local roads not under state control.

Ascent will prepare construction drawings, specifications, bid tabulations and assist with the up-front contract documents. These documents will be reviewed to ensure they contain provisions required by the source of funding. We will assist with the bidding process by attending pre-bid meetings, answering any contractor requests for information and preparing addenda if necessary. When bids are received Ascent can prepare a bid tabulation, perform an evaluation of the bids and prepare a tabulation of any issues or irregularities with the bids received.

### Civil Engineering Services

- Project Planning
- Road and Access Design
- Site Layout
- Conceptual Design
- Stormwater Management and Drainage
- Slip / Subsidence Repairs
- Portal Assessments
- Erosion and Sediment Control



# TECHNICAL SERVICES

## ENVIRONMENTAL

Ascent prides itself on the diversity and expertise within the environmental services we provide. The challenges AML projects exhibit play to our strengths. Acid Mine Drainage (AMD) treatment systems, water quality analyses, environmental geology and hydrogeology require unique perspectives to problem solving. Ascent boasts personnel with over 25 years' experience solving environmental issues as they relate to Abandoned Mine Lands. Ascent has a talented team of wetland scientists to tackle natural resources, NPDES, Army Core of Engineer and other local, state, and federal permitting.

### NEPA (National Environmental Policy Act)

At Ascent we strive to provide a unique quality of studies and investigations to compliment the requirements of the NEPA process. Like other NEPA documents there are stringent guidelines and summaries for the preparation and submittal of a specific NEPA document. Team Ascent works within the framework of those guidelines and requirements to present the information and studies in a structured, high-quality document.

### Environmental Services

- NEPA Environmental Assessments
- Phase 1 & 2 Site Assessments
- Stream Wetland Delineations
- AMD Treatment
- USACE / Nationwide Permits
- Monitoring Well Installations
- County Floodplain Coordination
- Remediation & Feasibility Studies
- Hazardous & Solid Waste Management
- Brownfield Redevelopment
- Water Management Planning
- NPDES Permitting
- Consent Orders & Compliance Schedules
- Hydrological Investigations
- Tank Inspections
- Risk Assessments & Characterizations
- Underground Injection Control Wells





# TECHNICAL SERVICES

## SURVEY

Ascent's Survey Division includes experienced licensed West Virginia surveyors and specialists that collaborate with environmental, engineering, and construction professionals to conduct research and collect land data for various projects. Our team performs courthouse research for property ownership, title and deed searches for boundary surveys, and documenting findings. We provide boots on the ground to gather necessary land information to develop base maps.

### Survey Services

- Boundary Surveys
- ALTA / NSPS Land Title
- Flood Plain Surveys
- Construction Stakeout
- As-Built Surveys
- 3D Laser Scanning
- Barometric Surveying
- GPS Control
- Utility Assets Management
- GPR Surveys
- FEMA Flood Certifications



# TECHNICAL SERVICES

## CONSTRUCTION INSPECTION

Quality control and quality assurance testing and inspection provides a level of confidence that the project is completed per the contract plans and specifications. Ascent provides a high level of inspection expertise responsible for over-site and ensuring design integrity from pre-construction activities to job progress reviews through completion. We pride ourselves on full project understanding and engineering over-site and support for all our clients. Our team holds numerous certifications and accreditations from the American Association of State Highway Officials (AASHTO), West Virginia Division of Highways, The American Concrete Institute and ASTM International.

### Construction Services

- E&S Inspections and Corrective Actions
- Right of Way and Easement Plans
- GIS Portals
- Assets Management
- QA/QC Inspections
- Utility Locations and Coordination
- Transportation Management Plans
- Roadway Construction Inspection
- ACI Concrete Testing
- AASHTO Certified Testing and Inspection
- Soil Compaction and Classification
- Structural Steel
- Asphalt Compaction



# SUBCONSULTANT



**GEO-TECHNOLOGY ASSOCIATES, INC.**

## INTRODUCTION

Geo-Technology Associates, Inc. (GTA) is a professional firm specializing in geotechnical engineering, geoscience, environmental, and natural resources consulting, groundwater resource development, and materials testing engineering. We were incorporated in 1985 and employ more than 500 team members within 21 offices located throughout the Mid-Atlantic, Southeast, and Midwest regions. Our well-qualified and diverse staff focus on the details, being responsive, and providing creative, yet, cost-efficient services to our clients which include commercial, residential, institutional, industrial, and energy clients, local, state, and federal government agencies, architects, engineers, and contractors. GTA focuses on geotechnical issues such as subsurface exploration, geotechnical and foundation engineering, groundwater resource and wastewater disposal issues, construction observation and materials testing, and environmental issues from environmental assessments through management of remediation for contaminated water and soil, and natural resource services ranging from natural resource inventories to federal and state permit processing.

GTA maintains a staff of geotechnical, environmental, and materials engineers, geologists, environmental scientists, planners, drillers, and engineering technicians. On many projects, our staff is able to work closely and integrate our services, resulting in effective and efficient outcomes. Our in-house drilling department provides efficient and adaptable service to support geotechnical and environmental assessments. Additionally, GTA's engineering and field personnel are supported by our in-house AASHTO Materials Reference Laboratory, Cement and Concrete Reference Laboratory, Washington Area Council of Engineering Laboratories, and/or U.S. Army Corps of Engineers accredited soil, aggregate, and concrete laboratory facilities.

Geotechnical engineering services include preliminary and design phase subsurface exploration using test boring, cone penetrometer, and test pit programs; foundation analysis, design of specialty earth retaining systems, slope stability analysis, seismic analysis, earthwork recommendations, laboratory and field materials testing; and construction observation. GTA's experience serves to forecast potential difficult ground conditions and to economically minimize their impacts on construction. GTA also provides hydrogeologic and soil investigations for groundwater appropriation and wastewater treatment application, geologic studies for mineral and construction materials resources, analysis and design of dams, and concrete mix design and testing.

# SUBCONSULTANT

## TECHNICAL SERVICES



### GEO-TECHNOLOGY ASSOCIATES, INC.

#### DRILLING SERVICES

GTA owns, operates, and maintains diverse drilling rigs, ancillary equipment, and support vehicles, which provide drilling services in conjunction with GTA's geotechnical and environmental services, and perform subcontracted subsurface exploration services. GTA has a staff of drillers, driller's helpers, and mechanics to operate and maintain a variety of truck- and All-Terrain Vehicle (ATV)-mounted standard penetration test (SPT) drilling rigs, and an electronic cone penetration test (CPT) rig.

GTA's subsurface explorations predominantly consist of SPT drilling using hollow-stem augers and spilt-spoon samplers. Mud-rotary drilling is often performed when dictated by subsurface conditions. GTA also has master well drillers on staff, who are licensed in several states for the installation of groundwater monitoring wells.

GTA's track-mounted cone rig can perform CPT soundings which provide nearly continuous data by advancing a cone using a hydraulic push system. The CPT measures tip and sleeve resistance, as well as pore pressure at 2-centimeter intervals through the depth of the soundings. The data is collected and recorded with an on-board data acquisition system as the cone is advanced. The CPT data is further evaluated to estimate soil behavior type, equivalent N-values, and other soil parameters, which are used for the characterization of subsurface conditions. GTA's cone rig can also perform seismic CPT soundings to assist in seismic site classification.

Environmental sampling can also be performed in the SPT or CPT explorations. During the field investigations, GTA's drilling personnel works closely with geotechnical and/or environmental staff to meet the project requirements.

#### Drilling Equipment:

- Six – Track-Mounted Diedrich D-50 Drills
- Two – CME 55 Drill Rig on a Freightliner Truck
- One – Geoprobe 7822DT Track Rig
- One – Track-Mounted Vertek Cone Penetrometer
- One – Vertek SR4 CPT
- One – TMG
- One – Kodiak Low Clearance

#### Instrumentation Installation:

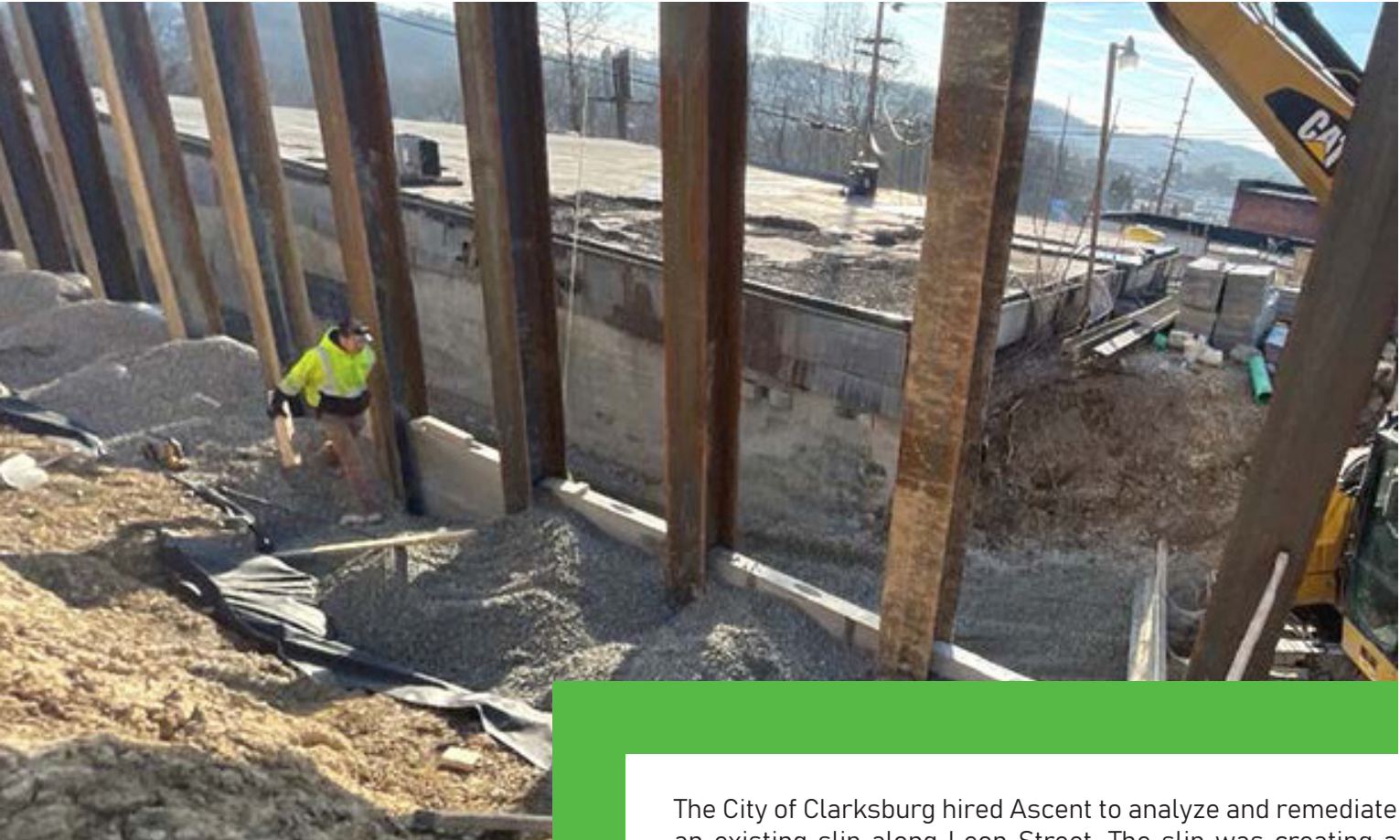
- Inclinometers
- Vibrating Wire Piezometers
- Rod and Magnet Extensometers

#### Drilling Services:

- Standard Penetration Test (SPT) Borings
- Auger and Mud-Rotary Drilling
- Monitoring Well Installation
- Rock Coring
- Shelby Tube Sampling
- Concrete & Asphalt Coring
- Well Rehabilitation
- Well Abandonment
- Water Supply Well Testing and Drilling (Subcontracted)
- Rock and Soil Packer Testing

# PROJECT EXPERIENCE

## LEON STREET AML



**Client:**  
City of Clarksburg

**Client Representative:**  
Mr. Tom Brown  
(304) 624-1607

**Project Location:**  
Harrison County, WV

**Project Status:**  
Completed 2022

The City of Clarksburg hired Ascent to analyze and remediate an existing slip along Leon Street. The slip was creating a dangerous situation for a private residence above and an existing business immediately below it. Through subsurface investigation, Ascent determined underground mining contributed to the slip. Ascent worked with the City to submit and acquire funding through the WVDEP office of Abandoned Mine Lands for project mitigation.

In order to stabilize the slip, Ascent prepared design plans that include grouting of mine voids, re-grading the slope, and installation of an H-Pile retaining wall. Ascent designed/permitted the project, and facilitated project with the City as well as the office of Abandoned Mine Lands. A large part of the project permitting included a NEPA submittal, which was conducted and approved. The overall cost of construction for this project was approximately \$1,200,000. In addition to design, Ascent provided survey construction administration, and materials testing/inspection services

# PROJECT EXPERIENCE

## CAMDEN SLIP REPAIR



Ascent was hired by a private natural gas operator to design and complete a repair to an existing hillside slip that was adjacent on an existing gas pipeline right of way. The slip was also adjacent to an existing well and above ground storage tank.

**Client:**  
Private Client

**Client Representative:**  
Private Client

**Project Location:**  
Lewis County, WV

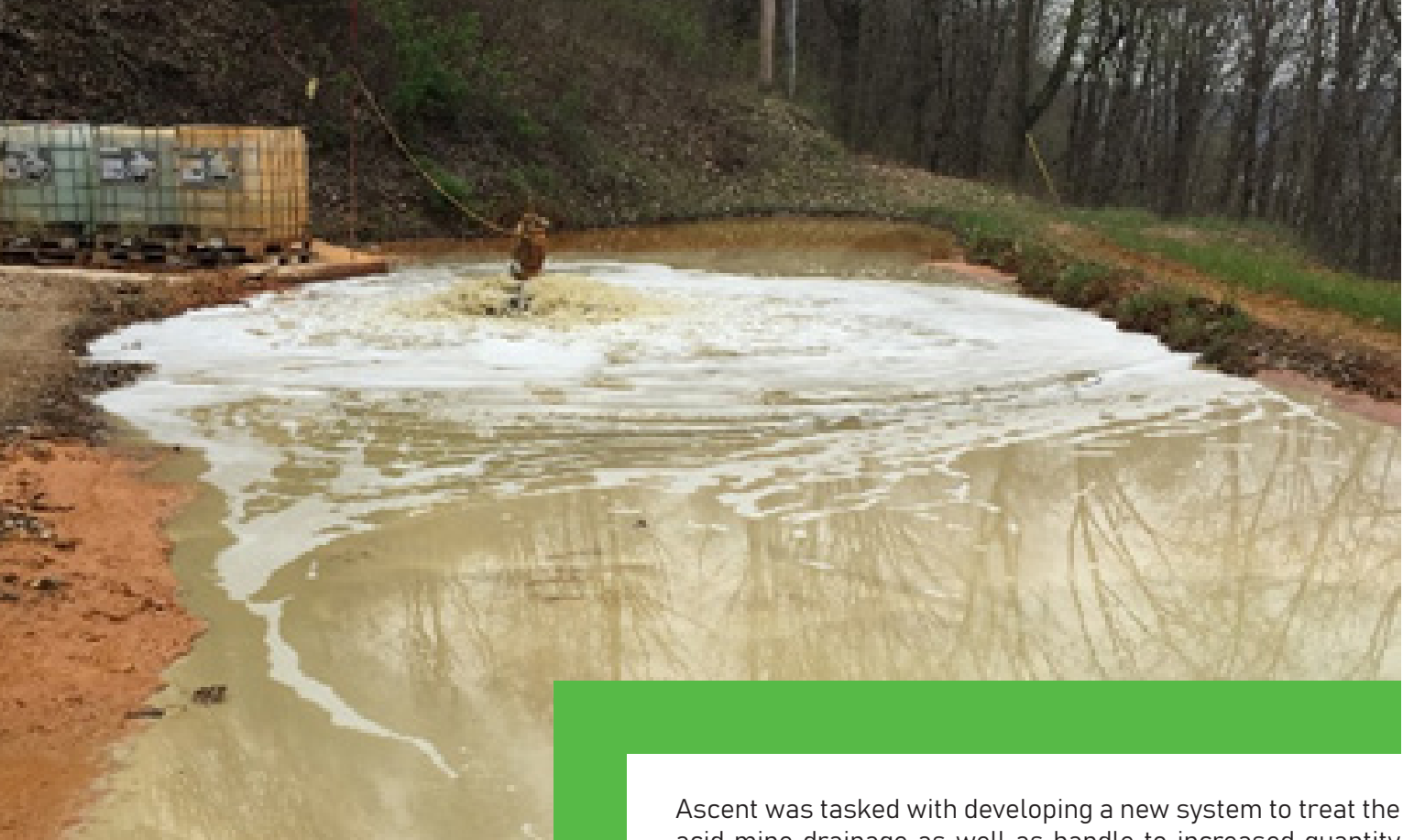
**Project Status:**  
Completed

The site provided several challenges for the design team. Several assets remained on site that could not be moved during construction. Those assets needed to be protected. In addition, the access road was not providing proper vehicle accommodation. The road required a redesign in order to get both temporary construction access and permanent access to the site.

The Ascent team completed the design on a new H-Pile retaining wall installed below the AST, upgrades to the access road, managed the geotechnical sub-contractor, led all bidding operations for the client and preformed inspection during construction of the project.

# PROJECT EXPERIENCE

## GLOBE MINE



**Client:**  
Vesuvius

**Client Representative:**

**Project Location:**  
Newell, West Virginia

**Project Status:**  
Completed

Ascent was tasked with developing a new system to treat the acid mine drainage as well as handle to increased quantity of mine water. A break-wall was installed in the first mine opening to act as a secondary containment to facilitate a steady flow rate. The mine water was pumped to a main aeration pond to facilitate iron sediment settlement. A series of ponds were modified to filter the heavy metals so the water could then be discharged to an onsite stream. With little area to work in Ascent designed a treatment system to handle the increased mine water volume and maintain compliance with the NPDES permit requirements. Extensive hydrogeologic and geotechnical investigations were conducted to determine the mine water pathways and the underground mine workings.

By modifying the treatment system to handle the increased mine water compliance with the NPDES permit was achieved. Mine seepage and contamination no longer affected nearby industrial facilities or seeped to the Ohio River.

# PROJECT EXPERIENCE

## ND PAPER RETAINING WALL



**Client:**  
ND Paper Mill

**Client Representative:**  
Justin Darrah

**Project Location:**  
Marion County, WV

**Project Status:**  
Completed

Ascent was contracted by ND Paper in Marion County, West Virginia to design a retaining wall due to a large landslide that took place just below two effluent tanks at the facility. The landslide left a challenge for the facility due to the location of the slide as well as leaving communications, power conduit, fire protection lines, among other things, exposed.

The Ascent team acted quickly by providing a temporary stabilization design and contracting a geotechnical sub consultant to come in and assist in the investigation and drilling aspects of the project. Once the site was stabilized with a temporary fix. Ascent designed a H-Pile Retaining wall which is adjacent to the Monongahela River. The design of the retaining wall posed its own set of challenges because of the multiple utilities in very close proximity to the river as well as the overall instability of the existing ground.

Ascent was able to complete the project under budget and provided site design, survey, materials testing and construction inspection.



# PROJECT EXPERIENCE

## CITY OF BRIDGEPORT DRAINAGE



The City of Bridgeport was experiencing routine flooding and damage from runoff in several areas through out the City that the residents wanted addressed.

Ascent performed a watershed analyses in the areas identified by the city. Following the study, Ascent was able to determine the level of storms that were causing damage and identify potential measures for relieving the frequency of those flooding events. Multiple concepts were developed and given to the City for mitigation. Cost estimates for construction costs were also included in the final submission.

**Client:**  
City of Bridgeport

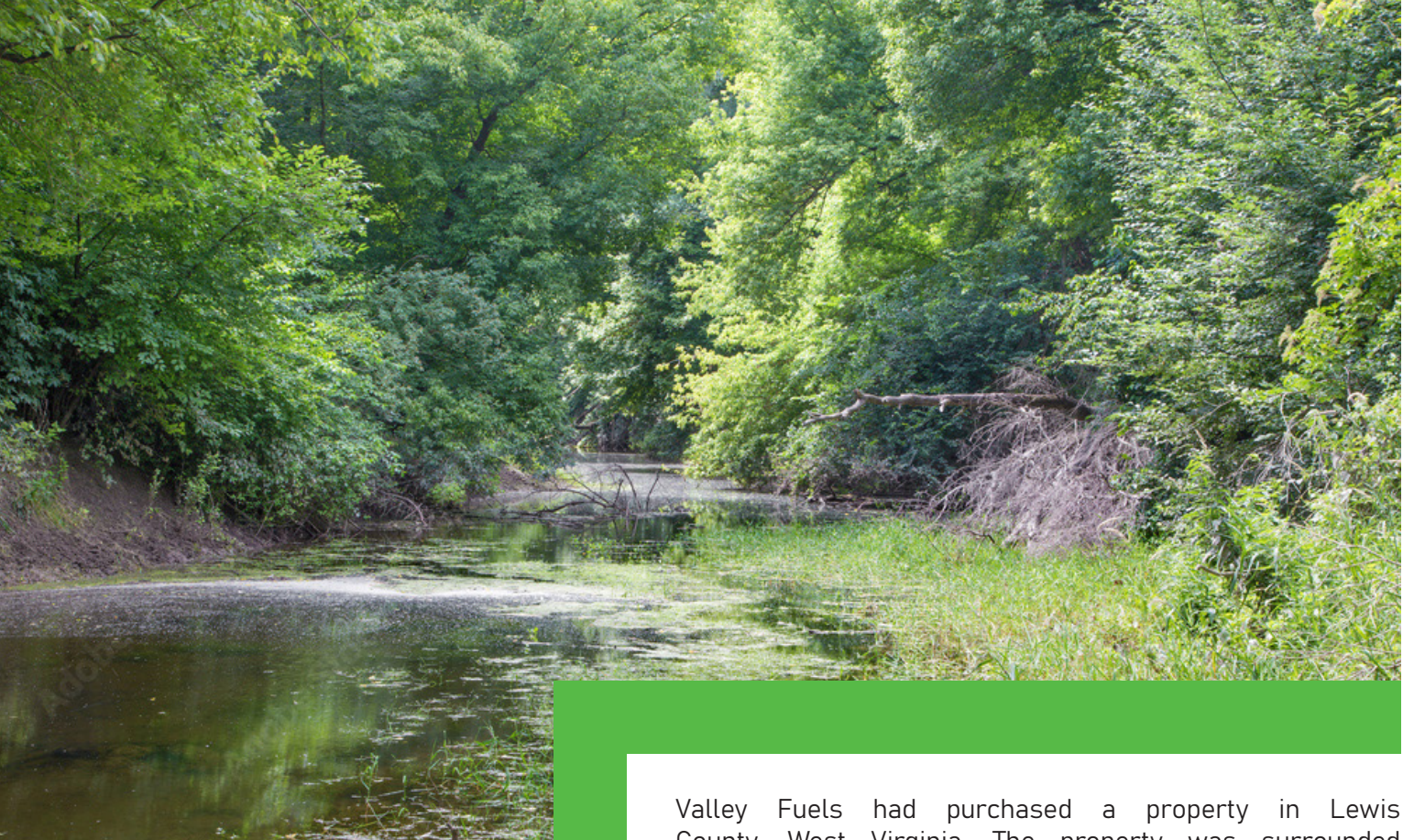
**Client Representative:**  
Beth Fox, PE  
304-842-8200

**Project Location:**  
Harrison County, WV

**Project Status:**  
Completed

# PROJECT EXPERIENCE

## VALLEY FUELS FLOODPLAIN



Valley Fuels had purchased a property in Lewis County, West Virginia. The property was surrounded by a creek and inundated by the 100-year floodplain.

Ascent was hired to develop a site grading plan which involved placing fill throughout the property to provide usable space for development on the property. A complete stream model with the Army Corps of Engineers software was used to tailor the grading plan by adding elevation, while avoiding impacts to the adjacent properties and creeks. Ascent was also responsible for all permitting for this project, obtaining a county floodplain permit and submitted a Conditional Letter of Map Amendment to the Federal Emergency Management Agency.

**Client:**  
Valley Fuels

**Client Representative:**  
Joe Malcomb

**Project Location:**  
Lewis County, WV

**Project Status:**  
Completed

# PROJECT EXPERIENCE

## WV STATEWIDE LCAP FACILITIES



Ascent has performed LCAP monitoring at 30 sites across West Virginia for the past 2 years. Wyoming County in the Southern Region is part of the project. Ascent's team conducts groundwater sampling on the closed landfill monitoring wells. Our technician conducts a field assessment and records conditions at the site. Team Ascent prepares the samples to be analyzed and conducts statistical analyses on the results per the Detection Monitoring Program. Site conditions, a potentiometric map, event data and statistical results are included in a formal groundwater report submitted to the WVDEP.

Ascent has extensive experience in water quality, groundwater monitoring and reporting. Our Environmental Manager wrote the groundwater sampling procedures for the WVDEP. The Wyoming County LCAP AML project deals with Agriculture and Industrial polluted water. Ascent's experience at the site will benefit and be advantageous to the success of the remedial solution.

**Client:**

West Virginia Department  
of Environmental Protection

**Client Representative:**

Catherine Guyann  
catherine.n.guyann@wv.gov

**Project Location:**

Statewide

**Project Status:**

Currently Active



# Michael R. Nestor, PE

Principal

## Profile

Michael Nestor is the founder of Ascent Consulting & Engineering. Mr. Nestor is a Professional Engineer registered in West Virginia, Virginia, Ohio, Pennsylvania and Maryland. With over 20 years of experience, Michael has the expertise to guide clients through the life-cycle of their project from beginning funding stages, permitting, to design and construction. His passion for civil engineering lies in land development and storm-water management projects, completing over 50 large developments, master plans and designs for private development clients, economic development agencies and government entities. Michael's attention to detail ensures projects include cost effective and practical designs, as well as seamless bidding and efficient construction of projects.

---

---

## Project Experience

- **Stormwater Management-** Mr. Nestor has conducted multiple stormwater management plans, MS4 programs guidelines and designed numerous drainage, storm sewer, etc. plans for municipalities across the state. Some of these communities include the City of Westover, City of Clarksburg, City of Oak Hill and Town of Sophia.
- **Roadways and Sidewalks-** Mr. Nestor during his engineering career has had the opportunity to review and design roadways, road upgrades and extensions that all included assessments and planning for drainage and runoff.
- **Utility-** As a site development lead, Mr. Nestor has to have a vast understanding of stormwater management, drainage and utility extension to each pad designed. Working on small 2 acre pads to over 100 acre pads, Mike has completed all the utility designs for these projects, such as commercial buildings, residential housing development, industrial site and more.

## Registrations:

PE - West Virginia  
PE - Virginia  
PE - Ohio  
PE - Maryland  
PE - Pennsylvania

## Education:

BS, Civil Engineering and  
Technology - Fairmont State  
University

## Associations:

Past President - American  
Society of Highway Engineers

American Society of Civil  
Engineers



# Jeff Knepper, CPG, LRS

## Project Manager

### Profile

Jeff Knepper is the Environmental Division Manager at Ascent. Mr. Knepper has over 25 years' experience working on complex environmental and regulatory projects specializing in permitting, compliance, remediation, water quality and carbon capture. He is adept at developing practical and innovative solutions to challenging environmental issues faced by various industries. Mr. Knepper is a Certified Professional Geologist and a West Virginia Licensed Remediation Specialist. Mr. Knepper is also an experienced Aboveground Storage Tank Inspector with over 1,000 completed inspections in various states.

---

### Project Experience

- **Rose Holdings, LLC, Tucker County, WV** – Project Manager for Article 4 Quarry permit renewals and modifications. Submitted NPDES renewals and modifications. Updated blasting plan, groundwater protection and spill prevention plans. Coordinated meetings and communications with the WVDEP.
- **Vesuvius, Hancock County, WV** – As project manager, Jeff implemented a new treatment system for iron rich acid mine drainage (AMD). Performed geologic and hydro-geologic investigations for off site contamination. Conducted field inspections and developed updated mine working maps and solutions for increased mine water flow and on-site contaminate pre-treatment.
- **Monroe Towers, Monroe County, OH** – Project Manager for four NEPA Environmental Assessments for the design and construction of cell towers. The NEPA submittal were required per the Federal Aviation Administration to identify concerns and socioeconomic impacts of the project.
- **City of Clarksburg – Leon St. Slip Repair** – Environmental Manager for the development and submission of National Environmental Policy Act (NEPA) assessment for the AML project. The document was approved by both the State of West Virginia and MSHA. Also submitted progress reports required per the AML funding protocols.

### Registrations:

LRS - West Virginia  
CPG- Virginia  
AST - STI- SP001  
AST - Pennsylvania

### Education:

BS, Geology - West Virginia University

### Association:

American Institute of Professional Geologist

American Chemical Society

Geological Society of America

Steel Tank Institute



# Megan Wagner

## Environmental Scientist

### Profile

Megan Wagner is an Environmental Senior Scientist for Ascent. Ms. Wagner has approximately 8 years of experience in stream and wetland delineations, habitat assessments, regulatory permitting, NPDES construction and industrial permitting, mitigation monitoring, ESA Phase I reporting, stormwater sampling, NEPA reporting, and GIS mapping and analysis. She is a certified Asbestos Inspector with a license in West Virginia. She has been involved with numerous projects located within WV, PA, and OH. The range of projects include, well pads, access roads, road upgrades, gathering lines, ASTs, impoundments, industrial, residential, commercial, modifications, slip repairs, and water and gas pipeline projects.

---

### Project Experience

- **Black Diamond Reality, Harrison County, WV-** Senior Scientist lead for site closure, NPDES industrial permit stormwater sampling organization for new site location. Provided SWPPP and GPP for NPDES permitting. Coordinated communication with WVDEP .
- **Mountain V, Upshur County, WV** – Senior Scientist lead for providing an annual mitigation monitoring report for the Farnsworth Stockert Impoundment. Monitoring focuses on the establishment of riparian vegetation along two unnamed tributaries of Queens Fork. Developed corrective actions plan with suggestions on how to increase survivability rate of planted species. This is an on-going project and is in its second year of monitoring. Coordinated meetings and communication with the EPA. .
- **Monroe Port Authority, Monroe, OH** – Senior Scientist lead for providing all field work and reporting required for NEPA submittal for four proposed cell towers. Included stream and wetland delineations, RTE reviews, and ESA Phase I. Coordinated communications and meetings with multiple agencies involving cultural reviews, tribal coordination, public notices, FCC Antenna Structure Registrations, FAA Registrations, Aeronautical studies, and section 106 reviews.

### Registrations:

Asbestos Inspector - WV

### Education:

BS, Environmental Studies,  
Fisheries & Wildlife - California  
University of Pennsylvania

### Certifications:

Asbestos Building Inspector  
Annual Refresher

10 Hour OSHA – Construction &  
Health

40-Hour Army Corps of  
Engineers - Wetland Delineation

Richard Chinn Environmental  
Training

Morphological Soils  
Investigations  
Certification, PADEP

Ohio Rapid Assessment Method  
for Wetlands v. 5.0 Training

PADEP One-Day Technical



# April Brummage

## Environmental Scientist

### Profile

April Brummage is an Environmental Scientist for Ascent. Mrs. Brummage has approximately 8 years of experience in stream and wetland delineations, habitat assessments, regulatory permitting, NPDES construction and industrial permitting, mitigation monitoring, ESA Phase I reporting, stormwater sampling, construction inspections, erosion and sedimentation Inspections, and GIS mapping and analysis. She has been involved with numerous projects located within WV, PA, and OH. The range of projects include, well pads, access roads, road upgrades, gathering lines, ASTs, impoundments, industrial, residential, commercial, modifications, slip repairs, and water and gas pipeline projects.

### Education:

BS, Environmental Studies,  
Fisheries & Wildlife - California  
University of Pennsylvania

### Certifications:

Gailey Environmental 36-Hour  
Wetland Delineation Training

---

### Project Experience

- **Summerhill Phase I ESA, Westmoreland County, PA-** As environmental scientist, she assisted the senior scientist on the project to complete a Phase I ESA, coordinated with management on field findings and completed all documentation and reports for the client.
- **Various Environmental Compliance Project, West Virginia-** As an environmental scientist, she is responsible for completing initial database research, communicating to government and compliance agencies of project notices, such as: DNR, USFWS, municipal agencies and floodplain directors. She provides the client with supplement data and keeps client communication for statuses and updates. She is also responsible for reporting, documentation and applications for DEP notices.



# Jeffery Parobek PE

## Senior Project Manager

### Profile

Jeff Parobek joined the Ascent Consulting & Engineering team in 2021 and serves as a Senior Project Manager. Jeff brings over 30 years of technical design and project management experience to our team. Jeff has had the opportunity to work on very unique projects all across the region. He takes the lead on every aspect of a project from kick-off meetings with stakeholders, to organizing survey and mapping crews, getting environmental staff project information for permitting to technical design, bidding the project for the owner and project oversight during construction. As a senior level engineer on our staff, Jeff takes great pride in teaching our younger engineers design and management skills.

---

### Project Experience

- **Weirton Frontier Crossing** – Weirton, WV - Serving as the Project Manager for this 1,200-acre brownfield development, Jeff is leading securing funding, preparing roadway alignments, utility coordination and conceptual design plans for the client.
- **Three Springs Business Park** – Weirton Steel Corp - As the Project Manager for this 100-acre industrial park site development project located on a former strip mine site, his responsibilities included concept planning, industrial access road design, utilities, storm drainage, water and sewer infrastructure.
- **West Virginia University** – Mr. Parobek was a Project Manager for the expansion and renovation of the School of Law including building expansion, parking lot redesigns, utility relocation, stormwater management and erosion control plans.
- **West Virginia University Evansdale Crossing** – Mr. Parobek was project manager for the development of a 100,000 square foot private/public facility to create new student space, vertical connection across campus, and retail use. The project involved site design and grading, coordination with other team members for University parking and roadway projects and outlining provisions for sustainable stormwater management.

### Registrations:

PE - West Virginia  
PE - Pennsylvania  
PE - Virginia  
PE - Ohio  
PE - Tennessee  
PE - Kentucky

### Education:

BS, Mining Engineering - The Pennsylvania State University at University Park

### Certification:

Erosion and Sediment Control Certification - State of Maryland

Magna Cum Laude,  
Fundamentals of Professional Practice Management Certification - ASFE

### Associations:

American Society of Military Engineers





# George Sofranko, PE

## Project Engineer

### Profile

George “Rege” Sofranko joined Ascent Consulting & Engineering in 2019, bringing over 16 years of land development experience. Mr. Sofranko has a long list of residential and commercial development experience from small 3 acre commercial building layouts to large residential mixed used development properties. Rege takes a hands on approach to all of the projects he is managing - meeting with owners, providing detailed progress reports through the permitting and design process, to being on site with the construction staff to ensure projects are completed to the design. As a Professional Engineer in the State of Pennsylvania, Rege is skilled in engineering design, permitting processes, stormwater management, and construction inspection.

---

### Project Experience

- **FedEx Facility**– Mount Pleasant, PA -Served as Project Manager for a 9-acre industrial park lot that included the expansion of an existing facility building and supporting parking and truck yard. This project included survey, feasibility study, environmental Phase 1 study, geotechnical investigation, utility infrastructure, PADEP permitting, erosion and sedimentation control, stormwater management, and municipal / agency coordination. The project also included construction survey stakeout and construction management efforts.
- **BrookHavenDevelopment**–NorthHuntingdonandPennTownship, PA - Served as Project Manager for an 80-acre subdivision that included two phases containing 39 lots, two public roads, utility infrastructure, PADEP and PennDot permitting, stormwater management, and off-site trunk sanitary sewer line extension. Mr. Sofranko was also responsible for the conceptual planning and layout of an additional phase of 50 housing lots.
- **Villas of Buena Vista** – Huntingdon, PA - Served as Project Manager for a 36-acre residential subdivision that included 45 lot layout and design, two public roads, utility infrastructure, PADEP permitting, and stormwater management.

### Registrations:

PE - State of Pennsylvania

### Education:

BS, Civil Engineering and Technology, concentration in Environmental Engineering- University of Pittsburgh at Johnstown

### Certification:

Erosion and Sediment Control Certification - State of Maryland



# Steve Harman

## Construction Inspection Manager

### Profile

Steve Harman has unmatched experience in the construction, development materials testing and inspection industry. He brings over 48 years of experience to the Ascent Construction Services division and is responsible for field coordination, oversight and daily reporting for projects. His oversight helps provide guidance to our inspectors and offering our clients the QA/QC on projects. What is completed in the field that day can be reviewed and discussed to prevent future problems should they arise. Mr. Harman has expertise in slip repairs, large site development earthwork projects, road and highway construction as well as utility and energy projects.

### Project Experience

- **WVDOH - Corridor H - Bismark to Section 4** – Mr. Harman served as WVDOH Level IV Consultant Inspection and office engineer on the \$55 million project including five bridge structures. His responsibilities included inspection, PRS daily entries, processing bimonthly estimates, quality assurance and materials certifications.
- **North Central WV Airport:** Steve served as the construction manager for the project to upgrade the fire protection system at the airport. The project consisted of upgrading lines, installing new alarms, upgrading wiring and ensuring the system met the requirements of the National Fire Protection Code.
- **Canaan Valley PSD Wastewater Treatment Upgrade:** Steve served as the construction manager to upgrade the wastewater treatment and collection system for the Canaan Valley PSD. The project entailed the installation of a new gathering system to collect wastewater from dwellings and businesses in the PSD's area of responsibility. The collection system replaced the need for citizens to have individual septic systems on their personal property. The project also included the construction of two wastewater treatment plants to process the wastewater.

### Education:

BS, Geology - West Virginia University

### Certification:

SafeLand  
OSHA 10  
WVDOH – Concrete Technician  
WVDOH – Compaction Technician  
WVDOH – Aggregate Technician  
WVDOH – Bituminous Technician  
TRET Certification – Level V



# Michael Hyman, PS

## Senior Survey Manager

### Profile

Michael Hyman joined the Ascent team in 2021 and serves as Senior Survey Project Manager. Mr. Hyman leads the survey team and is in charge of making sure projects are completed on-time and according to the clients needs. His extensive experience with commercial/residential property, topography survey, ALTA/NSPS land titles, right of ways, flood plain surveys, gas well stake outs, pipeline stake outs and more gives him the knowledge he needs to help guide his team and the projects he works with to success. Mr. Hyman helps clients understand what types of surveys are needed for appropriate agencies.

### Registrations:

PS - West Virginia

### Education:

BS, Civil Engineering Technology  
- Fairmont State University

AS, Design Drafting - Fairmont  
State University

---

### Project Experience

- **Boundary Surveys-**

Mr. Hyman has completed hundreds of boundary surveys in his professional career. Agricultural Boundary surveys like Pendleton County, include: West Virginia Department of Agriculture, Pam. J. Watts Property, Barboursville District and Cabell County Farm Board.

- **ALTA Surveys-**

Mr. Hyman has expertise in ALTA surveying for commercial and industrial clients alike. Recently, he and the Ascent team just completed an ALTA Survey for Amtower Auto Supply (NAPA) in Fairmont, West Virginia.

- **Construction Stakeout-**

Mr. Hyman has completed hundreds of construction stakeouts for any type or project, from small residential housing, schools, to large pipeline projects. More common types of construction stakeout for the Ascent crew is residential housing developments and apartment complexes like Meadow View Management LLC or Cherry Grove Estate.



**JON D. RAAB, P.E.**  
Vice President

**PROJECT ASSIGNMENT:**  
Principal in Charge

**YEARS OF EXPERIENCE:**  
GTA: 18  
Other Firms: 12

**EDUCATION:**  
M.S. Engineering Geology, Drexel  
University, 2002  
B.S., Civil Engineering, Drexel  
University, 1993

**ACTIVE REGISTRATION:**  
Pennsylvania, Professional Engineer,  
2003, #PE061910  
West Virginia, Professional Engineer,  
2011, #19169  
Ohio, Professional Engineer, 2011,  
#E-75809

**PROFESSIONAL AFFILIATIONS:**  
Associated Builders and Contractors -  
Keystone Chapter  
PAAMA  
South Central Pennsylvania AEC

**QUALIFICATIONS:**

Mr. Raab is a Vice President with GTA and has 30 years of experience in the geotechnical engineering field in Pennsylvania, West Virginia, Ohio and New York. Mr. Raab has experience with many types of clients and project types, including preliminary geotechnical site assessments, private land development projects, building and foundation design, retaining walls, public transportation projects, roadway design, bridge and culvert design, ground stabilization/modification and construction phase services. He has extensive experience in the oil and gas sector, including geotechnical assessments for construction of well sites and access roads; slope stability analyses; slope stabilization and repair evaluation, including walls, buttresses, soil nails, slope benching, drainage systems, and slope flattening; chemical stabilization of soils with cement and quicklime; roadway distress assessment and pavement design; and full depth reclamation (FDR) design for roadway stabilization.

**EQT Sunrise Pipeline Slides, West Virginia and Pennsylvania** – Principal engineer for evaluation of 21 slides that occurred along the 44.2-mile length of 24-inch diameter pipeline from Greene County, Pennsylvania to Wetzel County, West Virginia. Evaluation included site reconnaissance, geotechnical evaluation, review of project documents and reports, and subsurface explorations to determine the root cause of the instability at each slide. GTA also prepared engineering design plans for repair of each slide. Repair methods that were utilized included toe and bonding benching, benching drains, trench and blankets drains, reinforced soil with geogrid, chemically stabilized soil, slope buttressing, and drainage measures. GTA prepared reports documenting our findings and the root cause of the slide on behalf of EQT for use in

litigation with the pipeline contractor. Mr. Raab was deposed as part of the litigation. GTA provided construction inspection for repair of select slides. Inspection included interpretation of subsurface conditions, drainage measures, compacting of soil, installation of drains, compaction testing of fill, surface stabilization, and erosion and sediment control inspection.

**Hazleton Beltway Coal Mine Redevelopment, Luzerne County, Pennsylvania** Principal geotechnical engineer for a 3,750,000 square foot distribution facility situated over extensive surface and deep coal mining. Four coal seams were deep mined and have a high risk of developing surface subsidence. GTA performed 79 borings into the deep mines and video imaging and developed a mine grouting plan to stabilize areas having a high risk of subsidence. GTA prepared a deep dynamic compaction plan for the loose mine spoils, with subsequent settlement monitoring and performance testing. Extensive deposits of high-plasticity, saturated coal wash, were found on site. GTA evaluated options to mitigate the coal wash, including burning of the coal wash at a power plant, drying with chemical stabilization, and geogrid support for bridging. Provided recommendations for stabilization of slopes and walls within the loose mine spoils, which included deep dynamic compaction, slope flattening, geogrid reinforcement, and overexcavation and replacement.

**Marcellus/Utica Shale Slide Evaluation and Repair-** Principal Geotechnical engineer for stabilization of 23 slides that developed along roadways and 21 slides that developed along well pads and private access roads. GTA performed geotechnical assessments with borings, test pits, and inclinometers to identify conditions with respect to stability. Provided options for stabilization involving flattened slopes, slope benching, drainage measures, geogrid reinforcement, rock buttressing, soil nails, soldier pile and lagging walls, lateral pile stabilization, and wall construction.

**Marcellus/Utica Shale Geotechnical Pad Evaluation** – Principal engineer for the geotechnical design and analyses for the construction of over 250 well pads. Recommendations were provided for rock excavation and suitability, groundwater issues, soil stability, embankment stability, embankment benching, groundwater relief, settlement, shallow and deep coal mining issues, and chemical drying of soils. Slope stabilization measures included use of rock buttressing, toe benches, bonding benching, and geogrid reinforcement.



**JON D. RAAB, P.E.** - Page 2 of 2

**Marcellus/Utica Shale Roadway Design** – Principal managing design services for reconstruction of over 800 projects encompassing over 1,200 miles of state, county, and municipal owned public roadways in Pennsylvania, West Virginia, and Ohio that have been damaged by oil and gas drilling traffic. GTA performed a preliminary evaluation of pavement distress (rutting, cracking, and base failure, instability) to assess options to support drilling traffic. Pavement design was performed in accordance with the AASHTO design methodology and included full-depth reclamation with cement, base repair options, structural pavement overlay, total reconstruction, and geogrid stabilized base courses.

**Marcellus/Utica Shale Impoundment Construction** - Principal Geotechnical engineer for construction observation and testing of 16 impoundment sites in Ohio. Our services included benching evaluation, fill construction testing, rock re-use, soil suitability, slope stabilization, and geomembrane liner inspection.

**Alpha and Capstone Deep Dynamic Compaction, Nobel County, Ohio** - Performed geotechnical analyses for the construction of two well pads locate don deep mine spoils that were susceptible to excessive settlement. GTA performed test pits and borings to characterize the mine spoils. Extensive consolidations testing of undisturbed and remolded samples was performed. Settlement and global slope stability analyses were performed for the mine spoils. Deep dynamic compaction was selected to limit settlement in critical pad areas. GTA develop DDC plan in conjunction with contractor. GTA provided construction observation and testing of DDC operations. Soil cement stabilization was performed for pad surface. The stabilization program had to be modified in areas without DDC to treat to bridge the underlying mine spoils.

**Brown Well Pad Slide, Jefferson County, Ohio** - Provided geotechnical consultation for major landslide along entire width of well pad. Previous slides had been repaired and reoccurred prior to GTA's involvement. GTA performed test borings, test pits and installed inclinometers and piezometers that were read over a period of two years. GTA developed repair options for client, who selected deep toe benching, to rock, removal of disturbed soils, trench drains, and flattening of slope. GTA provided construction observation and testing for all repairs. This included subgrade evaluations, drainage measure selection, bonding benching, fill drying and compaction, drainage trunk line installation, and surface stabilization. GTA continued to monitor inclinometers during construction for evidence of movement.

**Wiley Pad Reinforced Soil Slopes, Monroe County, Ohio** – Principal engineer for evaluation design and construction of steepened, geogrid-reinforced soil slopes for well pad. Slopes were designed for 1.5H:1V slope reaching approximately 40 feet in height. Explorations included test borings and test pits, and direct shear testing. GTA performed global, internal, external, and compound stability analyses to optimize the geogrid layout. GTA prepared plans for construction of the slope system, including drainage a benching measure. GTA provided construction inspections during all phases of construction. Due to variable rock surfaces, GTA developed modifications to accelerate the schedule and reduce costs of the RSS.

**Robert Bone Access Soldier Pile Wall, Brooke County, West Virginia** – Geotechnical engineer and wall designer for stabilization of an access road having 4 areas of slope failures that needed to be repaired to access the pad. GTA performed 7 borings and installed three inclinometers to evaluate the depths of failure. GTA designed three soldier pile and concrete lagging walls in the slide areas. The piles consisted of predrilled piles into the stable rock. GTA provided inspection of three walls, including predrilling, pile setting, and concreting, drainage installation, panels placement, and backfilling.

**Harper's Ferry Bridge over the Shenandoah River, Harper's Ferry, West Virginia** - Served as the geotechnical engineer for the replacement of the 10-span bridge over the Shenandoah River within the Harper's Ferry National Historical Park. The replacement structure was founded on 12-foot-diameter drilled shafts, socketed directly into bedrock. The design of the roadway incorporated MSE walls situated on steepened rock fill buttress slopes to limit encroachment on the river.

**S.R. 0022, Section A09, Lewistown Narrows, Juniata and Mifflin Counties, Pennsylvania** - Served as the project manager and geotechnical engineer for the \$104 million reconstruction of a 6.5-mile section of roadway. Project included the design of a two-mile-long geosynthetic reinforced soil slope, two miles of cantilever retaining walls, three miles of MSE retaining walls, design of 43 miles of micropiles to provide slope stability to new embankments, and the design of over 200 rock anchors to stabilize a rock cut slope.



# AML QUESTIONNAIRE

**WEST VIRGINIA DEPARTMENT OF ENVIRONMENTAL PROTECTION**

**AML CONSULTANT QUALIFICATION QUESTIONNAIRE**

**Attachment "A"**

PROJECT NAME EOI - 2023 AML Contract N4		DATE (DAY, MONTH, YEAR) August 30, 2023	FEIN 82-4069240
1. FIRM NAME Ascent Consulting and Engineering, LLC		2. HOME OFFICE BUSINESS ADDRESS 1700 Anmoore Road Bridgeport, WV 26330	3. FORMER FIRM NAME N/A
4. HOME OFFICE TELEPHONE (304) 933-3463	5. ESTABLISHED (YEAR) 2018	6. TYPE OWNERSHIP Individual Corporation <input checked="" type="checkbox"/> Partnership Joint-Venture	6a. WV REGISTERED DBE (Disadvantaged Business Enterprise) YES <input type="checkbox"/> NO <input checked="" type="checkbox"/>
7. PRIMARY AML DESIGN OFFICE: ADDRESS/ TELEPHONE/ PERSON IN CHARGE/ NO. AML DESIGN PERSONNEL EACH OFFICE 1700 Anmoore Road Bridgeport, WV 26330/ (304)933-3463/ Michael Nestor, PE / 12			
8. NAMES OF PRINCIPAL OFFICERS OR MEMBERS OF FIRM Michael R. Nestor, PE (Managing Member) Zachary L. Assaro (Member)		8a. NAME, TITLE, & TELEPHONE NUMBER - OTHER PRINCIPALS	
9. PERSONNEL BY DISCIPLINE			
<u>3</u> ADMINISTRATIVE — ARCHITECTS	— ECOLOGISTS — ECONOMISTS	— LANDSCAPE ARCHITECTS — MECHANICAL ENGINEERS	— STRUCTURAL ENGINEERS
1 BIOLOGIST	— ELECTRICAL ENGINEERS	1 MINING ENGINEERS	6 SURVEYORS
<u>3</u> CADD OPERATORS	<u>3</u> ENVIRONMENTALISTS	— PHOTOGRAMMETRISTS	— TRAFFIC ENGINEERS
— CHEMICAL ENGINEERS	— ESTIMATORS	— PLANNERS: URBAN/REGIONAL	— OTHER
<u>7</u> CIVIL ENGINEERS	<u>2</u> GEOLOGISTS	— SANITARY ENGINEERS	
<u>29</u> CONSTRUCTION INSPECTORS	— HISTORIANS	— SOILS ENGINEERS	
— DESIGNERS	HYDROLOGISTS	— SPECIFICATION WRITERS	52 TOTAL PERSONNEL
— DRAFTSMEN			
<p><b>TOTAL NUMBER OF WV REGISTERED PROFESSIONAL ENGINEERS IN PRIMARY OFFICE: <u>3</u></b></p> <p><b>*RPEs other than Civil and Mining must provide supporting documentation that qualifies them to supervise and perform this type of work.</b></p>			
10. HAS THIS JOINT-VENTURE WORKED TOGETHER BEFORE? N/A <input type="checkbox"/> YES <input type="checkbox"/> NO			

11. OUTSIDE KEY CONSULTANTS/SUB-CONSULTANTS ANTICIPATED TO BE USED. Attach "AML Consultant Qualification Questionnaire".

NAME AND ADDRESS: Geo-Technical Associates, Inc. (GTA)	SPECIALTY: Geotechnical Engineering	WORKED WITH BEFORE  <input checked="" type="checkbox"/> Yes <input type="checkbox"/> No
NAME AND ADDRESS:	SPECIALTY:	WORKED WITH BEFORE  <input type="checkbox"/> Yes <input type="checkbox"/> No
NAME AND ADDRESS:	SPECIALTY:	WORKED WITH BEFORE  <input type="checkbox"/> Yes <input type="checkbox"/> No
NAME AND ADDRESS:	SPECIALTY:	WORKED WITH BEFORE  <input type="checkbox"/> Yes <input type="checkbox"/> No
NAME AND ADDRESS:	SPECIALTY:	WORKED WITH BEFORE  <input type="checkbox"/> Yes <input type="checkbox"/> No
NAME AND ADDRESS:	SPECIALTY:	WORKED WITH BEFORE  <input type="checkbox"/> Yes <input type="checkbox"/> No
NAME AND ADDRESS:	SPECIALTY:	WORKED WITH BEFORE  <input type="checkbox"/> Yes <input type="checkbox"/> No
NAME AND ADDRESS:	SPECIALTY:	WORKED WITH BEFORE  <input type="checkbox"/> Yes <input type="checkbox"/> No
NAME AND ADDRESS:	SPECIALTY:	WORKED WITH BEFORE  <input type="checkbox"/> Yes <input type="checkbox"/> No



12. A. Is your firm's personnel experienced in Abandoned Mine Lands Remediation/Mine Reclamation Engineering?

YES Description and Number of Projects: Performed design for various projects dealing with mine seepage and ground instability. Coordinated drilling/monitoring activities, designed wet mine seals, drainage conveyances, E&S measures, and slip repairs, etc. Approximately 13 projects completed. Knepper has been involved with several AMD remediation active and passive treatment systems.

NO

B. Is your firm experienced in Soil Analysis?

YES Description and Number of Projects: Ascent staff is experienced with identifying hydric soils applicable to wetlands and subsequent permitting needs. Ascent is also experienced with reading boring logs and coordinating with Geotechnical Engineers in order to apply information to practical designs. Ascent personnel has provided such services on dozens of projects. Ascent's Environmental Division Manager is a Certified Professional Geologist.

NO

C. Is your firm experienced in hydrology and hydraulics?

YES Description and Number of Projects: Ascent personnel performs pre and post watershed analyses on a variety of projects. We have completed drainage studies for municipalities, private development projects, and AML projects. We have also performed stream analyses for bridge replacement projects and development in flood prone areas. This type of work is performed in nearly every project Ascent works on and has been completed in hundreds of projects.

NO

D. Does your firm produce its own Aerial Photography and Develop Contour Mapping?

YES Description and Number of Projects:

NO Ascent produces and develops contour mapping in-house. Ascent recently formed a survey division which includes 6 in-house surveyors.

E. Is your firm experienced in domestic waterline design? (Include any experience your firm has in evaluation of aquifer degradation as a result of mining.)

YES Description and Number of Projects: Ascent is experienced with the design and layout of potable water systems for commercial and residential development projects. We have completed dozens of mainline extensions and/or replacement projects. Ascent's Environmental Manager does have experience with aquifer degradation as it relates to mining. He was previously and Environmental Resource Program Manager for the Division of Mining and Reclamation.

NO

F. Is your firm experienced in Acid Mine Drainage Evaluation and Abatement Design?

YES Description and Number of Projects: Ascent Personnel has developed several projects dealing with evaluation of Acid Mine Drainage and design of conveyance/treatment systems. Approximately 13 projects completed. In addition, Jeff Knepper (Ascent) has extensive experience in Acid Mine drainage treatment both on the consulting side as well as the Regulatory side. He was formerly an Environmental Resources Program Manager for the Department of Mining and Reclamation for the WVDEP.

NO

13. PERSONAL HISTORY STATEMENT OF PRINCIPALS AND ASSOCIATES **RESPONSIBLE FOR AML PROJECT DESIGN** (Furnish complete data but keep to essentials)

NAME & TITLE (Last, First, Middle Int.)	YEARS OF EXPERIENCE		
	YEARS OF AML DESIGN EXPERIENCE:	YEARS OF AML RELATED DESIGN EXPERIENCE:	YEARS OF DOMESTIC WATERLINE DESIGN EXPERIENCE:
Nestor, Michael, R.	15	18	18

Brief Explanation of Responsibilities

Mr. Nestor serves as the Managing Member of Ascent Consulting & Engineering as well as leads the Engineering Division. He is responsible for overseeing all operations withing the engineering and CAD Design portion of any project. He sets project priorities, schedules, keeps project budgets, client communications and responsible for QA/QC of design plans. Mr. Nestor has had the opportunity over his career to work on numerous types of projects, from commercial and residential land development, public utility, transportation/ access roads, stormwater/MS4, recreation, landslides and subsidence.

EDUCATION (Degree, Year, Specialization)  
 Bachelor of Science in Engineering Technology, 2003

MEMBERSHIP IN PROFESSIONAL ORGANIZATIONS	REGISTRATION (Type, Year, State)
American Society of Civil Engineers	Professional Engineer, 2009, WV
American Society of Highway Engineers (Past President of NCWV Region)	Professional Engineer, 2020, PA
	Professional Engineer, 2020, VA
	Professional Engineer, 2020, MD

13. PERSONAL HISTORY STATEMENT OF PRINCIPALS AND ASSOCIATES **RESPONSIBLE FOR AML PROJECT DESIGN** (Furnish complete data but keep to essentials)

NAME & TITLE (Last, First, Middle Int.) Knepper, Jeffrey	YEARS OF EXPERIENCE		
	YEARS OF AML DESIGN EXPERIENCE:	YEARS OF AML RELATED DESIGN EXPERIENCE:	YEARS OF DOMESTIC WATERLINE DESIGN EXPERIENCE:
	16	24	0

Brief Explanation of Responsibilities

Mr. Knepper serves as Ascent's Environmental Division Manager however maintains a wide variety of duties within the Company. Jeff is a certified professional Geologist, licensed remediation specialist, and carries certifications in above ground storage tanks. Jeff previously served as an Environmental Resources Program Manager for WVDEP, handing permitting and compliance approvals for mining facilities in the state of WV. His background covers investigation work, regulatory/compliance, hydrogeology, remediation and treatment systems.

EDUCATION (Degree, Year, Specialization)  
 Bachelor of Science in Engineering Technology, 2003

MEMBERSHIP IN PROFESSIONAL ORGANIZATIONS	REGISTRATION (Type, Year, State)
American Institute of Professional Geologists West Virginia Manufacturers Association / GO WV / PIOGA (PA)	Professional Geologist / Licensed Remediation Specialist, WV Certified Aboveground Storage Tank Inspector, STISP001 Certified Aboveground Storage Tank Inspector, PA

13. PERSONAL HISTORY STATEMENT OF PRINCIPALS AND ASSOCIATES **RESPONSIBLE FOR AML PROJECT DESIGN** (Furnish complete data but keep to essentials)

NAME & TITLE (Last, First, Middle Int.) Parobek, Jeffrey	YEARS OF EXPERIENCE		
	YEARS OF AML DESIGN EXPERIENCE: 3	YEARS OF AML RELATED DESIGN EXPERIENCE:40	YEARS OF DOMESTIC WATERLINE DESIGN EXPERIENCE:10

Brief Explanation of Responsibilities  
 Mr. Parobek has been involved in nearly every facet of civil engineering design. He serves as Project Manager on numerous project for Ascent. Mr. Shorts experiences covers large land development projects, slip repair, access road design, E&S plans, drainage/stormwater management, etc.

EDUCATION (Degree, Year, Specialization)  
 Bachelor of Science, Mining Engineering

MEMBERSHIP IN PROFESSIONAL ORGANIZATIONS American Society of Military Engineers American Society of Mining Engineers	REGISTRATION (Type, Year, State) PE - WV      PE - OH PE - PA      PE - TN PE - VA      PE - KY
---	--

13. PERSONAL HISTORY STATEMENT OF PRINCIPALS AND ASSOCIATES **RESPONSIBLE FOR AML PROJECT DESIGN** (Furnish complete data but keep to essentials)

NAME & TITLE (Last, First, Middle Int.) Sofranko, George, R	YEARS OF EXPERIENCE		
	YEARS OF AML DESIGN EXPERIENCE:	YEARS OF AML RELATED DESIGN EXPERIENCE:16	YEARS OF DOMESTIC WATERLINE DESIGN EXPERIENCE: 5

Brief Explanation of Responsibilities  
 Mr. Sofranko serves as project engineer for Ascents land development and stormwater projects. As a licensed engineer his attention to plan details is unmatched. Over his career he has been involved in all types of industry projects including, landslides, slip designs, stormwater management, engineering permitting, utility layout design and more.

EDUCATION (Degree, Year, Specialization)  
 Bachelor of Science, Civil Engineering and Technology with concentration in Environmental Engineering - University of Pittsburgh

MEMBERSHIP IN PROFESSIONAL ORGANIZATIONS	REGISTRATION (Type, Year, State) Professional Engineer - PA
--	--

14. PROVIDE A LIST OF SOFTWARE AND EQUIPMENT AVAILABLE IN THE PRIMARY OFFICE WHICH WILL BE USED TO COMPLETE AML DESIGN SERVICES

Auto CAD Civil 3D, Carlso, Microsoft Suite, Vehicle Tracking, Hydraflow Add on from Auto Desk, HEC-RAS, Google Earth, GPS Pathfinder Office, Terrain Navigator Pro, ARC GIS, Adobe Acrobat DC, Sage (Financial Software)

Construction Inspection activities could include - nuclear density guages, protor kits, and other items for soil classification or materials testing needs.

15. CURRENT ACTIVITIES ON WHICH YOUR FIRM IS THE DESIGNATED ENGINEER OF RECORD

PROJECT NAME, TYPE AND LOCATION	NAME AND ADDRESS OF OWNER	NATURE OF YOUR FIRM'S RESPONSIBILITY	ESTIMATED CONSTRUCTION COST	PERCENT COMPLETE
Cheat Road Development Residential Monongalia County, WV	NVR Homes 104 Clay Street Pittsburgh, PA	Planning Preliminary Engineering Engineering Design	\$4,000,000 - \$6,000,000	50%
Roy Riggle Road Road Improvements Ohio County, WV	Southwester Energy 1300 Fort Pierpont Dr Morgantown, WV 26508	Engineering Design Construction Inspection	TBD	25%
Bruffey Landslide Emergency Repair Project Doddridge County, WV	BHE GT&S 500 White Oaks Blvd Bridgeport, WV	Engineering Design Environmental Permitting Construction Inspection	\$150,000	10%
Fish Creek Campground Recreational Development Ohio County, WV	Chris Hartley	Engineering Design	TBD	35%
Vitolo Bridge Stream Analysis Greene County, PA	Bill Wise Excavating 899 Jollytown Road New Freeport, PA	Stream Survey and Hydrologic Analysis	TBD	0%
Dorsey Knob Slip Slip Repair Monongalia County, WV	BOPARC 799 East Brockway Ave Morgantown, WV	Engineering Design Construction Inspection	\$100,000	90%
Low Gap Road WVDOH Road Repair Ritchie County, WV	Southwester Energy 1300 Fort Pierpont Dr Morgantown, WV 26508	Engineering Design	TBD	25%

TOTAL NUMBER OF PROJECTS: 7

TOTAL ESTIMATED CONSTRUCTION COSTS:

16. CURRENT ACTIVITIES ON WHICH YOUR FIRM IS SERVING AS A SUB-CONSULTANT TO OTHERS

PROJECT NAME, TYPE AND LOCATION	NATURE OF FIRMS RESPONSIBILITY	NAME AND ADDRESS OF OWNER	ESTIMATED COMPLETION DATE	ESTIMATED CONSTRUCTION COST	
				ENTIRE PROJECT	YOUR FIRMS RESPONSIBILITY
Concrete Testing And Inspections	Testing and Inspections	Antero Resources, Bear Contracting, City of Buckhannon, Wolfe's Excavating	Ongoing	Varies	Varies
Paving Projects Numerous	Testing and Inspections	Wolfe Excavating Bear Contracting Mountaineer Contractors Stantec	Ongoing	Varies	Varies

17. COMPLETED WORK WITHIN LAST 5 YEARS ON WHICH YOUR FIRM WAS THE DESIGNATED ENGINEER OF RECORD				
PROJECT NAME, TYPE AND LOCATION	NAME AND ADDRESS OF OWNER	ESTIMATED CONSTRUCTION COST	YEAR	CONSTRUCTED (YES OR NO)
Cacapon Resort State Park I&I Study	WVDNR 324 4 <sup>th</sup> Avenue South Charleston, WV 25303	\$125,00	2020	YES
Realizations 789, AMD Treatment, Hancock County WV	Vesuvius 250 Parkwest drive Pittsburgh PA	\$1,500,000	2020	YES
Lost Creek Natural Gas replacement, 8 mile replacement, Harrison County WV	Dominion Energy Transmission Southern Regional Headquarters, Weston, WV	\$5,000,000	2022	YES
Leon Street Slip, AML Grant, Clarksburg WV	Town of Clarksburg, WV	\$1,000,000	2020	YES
Yocum Slip Repair	Southwester Energy 1300 Fort Pierpont Dr Morgantown, WV 26508	\$1,000,000	2020	YES
Lewis County Broadband	Lewis County Commission 110 Center Avenue Weston, WV 26452	\$1,000,000	2021	YES
Gnats Run Road Slip	Antero Resources White Oaks Blvd. Bridgeport, WV	\$250,000	2021	YES
ND Paper Slip, repair of slip along Monongahela River, Marion County	ND Paper 702 AFR Drive Fairmont, WV 26554	\$500,000	2020	YES



18. COMPLETED WORK WITHIN LAST 5 YEARS ON WHICH YOUR FIRM HAS BEEN A SUB-CONSULTANT TO OTHER FIRMS (INDICATE PHASE OF WORK FOR WHICH YOUR FIRM WAS RESPONSIBLE)

PROJECT NAME, TYPE AND LOCATION	NAME AND ADDRESS OF OWNER	ESTIMATED CONSTRUCTION COST OF YOUR FIRM'S PORTION	YEAR	CONSTRUCTED (YES OR NO)	FIRM ASSOCIATED WITH
WV Botanical Gardens New Building Monongalia County, WV	West Virginia University	Site/Civil Engineering and Survey	2022	Yes	March Westin Company
Morgantown Fire Station Monongalia County, WV	City of Morgantown	Survey, Site/Civil Engineering, Construction Inspection	2023	Yes	Paradigm Architecture

19. Use this space to provide any additional information or description of resources supporting your firm's qualifications to perform work for the West Virginia Abandoned Mine Lands Program. Ascent has assembled a team of senior level design professionals that have a wide variety of experience in the industry. Our size allows us to communicate effectively internally as well as with our clientele, often producing innovative ideas helping to avoid pitfalls that larger firms fall into with inexperienced designers and ineffective communication. Our design personnel specialize in earthwork and drainage which is very well suited for this project and we have close relationships with valued subs that make Geotechnical and Survey project components seamless with the rest of our operations.

20. The foregoing is a statement of facts.

Signature: 

Title: Managing Member

Date: August 30, 2023

Printed Name: Michael R. Nestor, PE



# PROJECT MATRIX

AML and RELATED PROJECT EXPERIENCE MATRIX																						
PROJECT	Exp. Basis C=Corp. P=Personnel *	Additional Info Provided in Section (s) **	PROJECT EXPERIENCE REQUIREMENTS														PRIMARY STAFF PARTICIPATION/CAPACITY *** M=Management P=Professional					
			Abandoned Surface Mine Reclamation	Abandoned Deep Mine Reclamation	Portal/Shaft Closure	Hydrologic/Hydraulic Design/Eval.	Remining Evaluation	Mine/Refuse Fire Abatement	Subsidence Investigation Mitigation	Hazardous Waste Disposal	Project Specifications	Water Quality Evaluation/Nitigation/ Replacement	Construction Inspection/Managem ent	Water Treatment	Eq;uipment/Structure Removal	Stream Restoration	Geotechnical/Stability	Michael Nestor, PE	Jeffrey Knepper, PG	Jeffrey Parobek, PE	George Sofranko, PE	Mike Hyman, PS
Leon Street			X						X	X	X		X				X	X	X			X
Camden Slip Repair									X									X			X	X
Lowndes Hill Slip Repair									X				X				X	X			X	X
ND Paper Retaining Wall									X				X				X	X	X		X	
City of Bridgeport Drainage						X							X			X	X	X				
ACE Properties													X				X	X			X	
Statewide LCAP													X	X				X				
Globe Mine				X	X	X			X	X	X	X	X	X	X	X		X				
ACE Aggregates			X		X		X	X	X		X	X		X			X	X	X	X		X

\* List whether project experience is corporate or personnel based or both.  
 \*\* Use this area to provide specific sections or pages if needed for reference.  
 \*\*\* List Primary Design personnel and their functional capacity for the projects listed.



# STATE FORMS

**DESIGNATED CONTACT:** Vendor appoints the individual identified in this Section as the Contract Administrator and the initial point of contact for matters relating to this Contract.

(Printed Name and Title) \_\_\_\_\_

(Address) \_\_\_\_\_

(Phone Number) / (Fax Number) \_\_\_\_\_

(Email address) \_\_\_\_\_

**CERTIFICATION AND SIGNATURE:** By signing below, or submitting documentation through wvOASIS, I certify that: I have reviewed this Solicitation/Contract in its entirety; that I understand the requirements, terms and conditions, and other information contained herein; that this bid, offer or proposal constitutes an offer to the State that cannot be unilaterally withdrawn; that the product or service proposed meets the mandatory requirements contained in the Solicitation/Contract for that product or service, unless otherwise stated herein; that the Vendor accepts the terms and conditions contained in the Solicitation, unless otherwise stated herein; that I am submitting this bid, offer or proposal for review and consideration; that this bid or offer was made without prior understanding, agreement, or connection with any entity submitting a bid or offer for the same material, supplies, equipment or services; that this bid or offer is in all respects fair and without collusion or fraud; that this Contract is accepted or entered into without any prior understanding, agreement, or connection to any other entity that could be considered a violation of law; that I am authorized by the Vendor to execute and submit this bid, offer, or proposal, or any documents related thereto on Vendor's behalf; that I am authorized to bind the vendor in a contractual relationship; and that to the best of my knowledge, the vendor has properly registered with any State agency that may require registration.

By signing below, I further certify that I understand this Contract is subject to the provisions of West Virginia Code § 5A-3-62, which automatically voids certain contract clauses that violate State law; and that pursuant to W. Va. Code 5A-3-63, the entity entering into this contract is prohibited from engaging in a boycott against Israel.

\_\_\_\_\_  
(Company)

 \_\_\_\_\_  
(Signature of Authorized Representative)

\_\_\_\_\_  
(Printed Name and Title of Authorized Representative) (Date)

\_\_\_\_\_  
(Phone Number) (Fax Number)

\_\_\_\_\_  
(Email Address)



# SUPPORTING DOCUMENTS

## Request for Taxpayer Identification Number and Certification

**Give Form to the  
 requester. Do not  
 send to the IRS.**

▶ Go to [www.irs.gov/FormW9](http://www.irs.gov/FormW9) for instructions and the latest information.

Print or type. See Specific Instructions on page 3.	<p><b>1</b> Name (as shown on your income tax return). Name is required on this line; do not leave this line blank.</p> <p><b>Ascent Consulting and Engineering</b></p>	
	<p><b>2</b> Business name/disregarded entity name, if different from above</p>	
	<p><b>3</b> Check appropriate box for federal tax classification of the person whose name is entered on line 1. Check only <b>one</b> of the following seven boxes.</p> <p><input type="checkbox"/> Individual/sole proprietor or single-member LLC</p> <p><input type="checkbox"/> C Corporation</p> <p><input type="checkbox"/> S Corporation</p> <p><input type="checkbox"/> Partnership</p> <p><input type="checkbox"/> Trust/estate</p> <p><input checked="" type="checkbox"/> Limited liability company. Enter the tax classification (C=C corporation, S=S corporation, P=Partnership) ▶ <u>S</u></p> <p><b>Note:</b> Check the appropriate box in the line above for the tax classification of the single-member owner. Do not check LLC if the LLC is classified as a single-member LLC that is disregarded from the owner unless the owner of the LLC is another LLC that is <b>not</b> disregarded from the owner for U.S. federal tax purposes. Otherwise, a single-member LLC that is disregarded from the owner should check the appropriate box for the tax classification of its owner.</p> <p><input type="checkbox"/> Other (see instructions) ▶</p>	<p><b>4</b> Exemptions (codes apply only to certain entities, not individuals; see instructions on page 3):</p> <p>Exempt payee code (if any) _____</p> <p>Exemption from FATCA reporting code (if any) _____</p> <p><small>(Applies to accounts maintained outside the U.S.)</small></p>
	<p><b>5</b> Address (number, street, and apt. or suite no.) See instructions.</p> <p><b>1700 Anmoore Road</b></p>	<p>Requester's name and address (optional)</p>
	<p><b>6</b> City, state, and ZIP code</p> <p><b>Bridgeport, WV 26330</b></p>	
	<p><b>7</b> List account number(s) here (optional)</p>	

### Part I Taxpayer Identification Number (TIN)

Enter your TIN in the appropriate box. The TIN provided must match the name given on line 1 to avoid backup withholding. For individuals, this is generally your social security number (SSN). However, for a resident alien, sole proprietor, or disregarded entity, see the instructions for Part I, later. For other entities, it is your employer identification number (EIN). If you do not have a number, see *How to get a TIN*, later.

**Note:** If the account is in more than one name, see the instructions for line 1. Also see *What Name and Number To Give the Requester* for guidelines on whose number to enter.

<b>Social security number</b>													
<table border="1" style="width: 100%; border-collapse: collapse;"> <tr> <td style="width: 25px; height: 25px;"></td> <td style="width: 25px; height: 25px;"></td> <td style="width: 25px; height: 25px;"></td> <td style="width: 25px; height: 25px;"></td> <td style="width: 25px; height: 25px;"></td> <td style="width: 25px; height: 25px;"></td> <td style="width: 25px; height: 25px;"></td> <td style="width: 25px; height: 25px;"></td> <td style="width: 25px; height: 25px;"></td> <td style="width: 25px; height: 25px;"></td> </tr> </table>											-	-	-
<b>or</b>													
<b>Employer identification number</b>													
8	2	-	4	0	6	9	2	4	0				

### Part II Certification

- Under penalties of perjury, I certify that:
- The number shown on this form is my correct taxpayer identification number (or I am waiting for a number to be issued to me); and
  - I am not subject to backup withholding because: (a) I am exempt from backup withholding, or (b) I have not been notified by the Internal Revenue Service (IRS) that I am subject to backup withholding as a result of a failure to report all interest or dividends, or (c) the IRS has notified me that I am no longer subject to backup withholding; and
  - I am a U.S. citizen or other U.S. person (defined below); and
  - The FATCA code(s) entered on this form (if any) indicating that I am exempt from FATCA reporting is correct.

**Certification instructions.** You must cross out item 2 above if you have been notified by the IRS that you are currently subject to backup withholding because you have failed to report all interest and dividends on your tax return. For real estate transactions, item 2 does not apply. For mortgage interest paid, acquisition or abandonment of secured property, cancellation of debt, contributions to an individual retirement arrangement (IRA), and generally, payments other than interest and dividends, you are not required to sign the certification, but you must provide your correct TIN. See the instructions for Part II, later.

<b>Sign Here</b>	Signature of U.S. person ▶	Date ▶ <u>1/16/23</u>
------------------	----------------------------	-----------------------

### General Instructions

Section references are to the Internal Revenue Code unless otherwise noted.

**Future developments.** For the latest information about developments related to Form W-9 and its instructions, such as legislation enacted after they were published, go to [www.irs.gov/FormW9](http://www.irs.gov/FormW9).

### Purpose of Form

An individual or entity (Form W-9 requester) who is required to file an information return with the IRS must obtain your correct taxpayer identification number (TIN) which may be your social security number (SSN), individual taxpayer identification number (ITIN), adoption taxpayer identification number (ATIN), or employer identification number (EIN), to report on an information return the amount paid to you, or other amount reportable on an information return. Examples of information returns include, but are not limited to, the following.

- Form 1099-INT (interest earned or paid)

- Form 1099-DIV (dividends, including those from stocks or mutual funds)
- Form 1099-MISC (various types of income, prizes, awards, or gross proceeds)
- Form 1099-B (stock or mutual fund sales and certain other transactions by brokers)
- Form 1099-S (proceeds from real estate transactions)
- Form 1099-K (merchant card and third party network transactions)
- Form 1098 (home mortgage interest), 1098-E (student loan interest), 1098-T (tuition)
- Form 1099-C (canceled debt)
- Form 1099-A (acquisition or abandonment of secured property)

Use Form W-9 only if you are a U.S. person (including a resident alien), to provide your correct TIN.

*If you do not return Form W-9 to the requester with a TIN, you might be subject to backup withholding. See What is backup withholding, later.*

# CERTIFICATE OF *Authorization*

STATE BOARD OF REGISTRATION FOR PROFESSIONAL ENGINEERS

*The West Virginia State Board of Registration for Professional Engineers  
having verified the person in responsible charge is registered in  
West Virginia as a professional engineer for the noted firm, hereby certifies*

*has complied with section §30-13-17 of the West Virginia Code governing  
the issuance of a Certificate of Authorization. The Board hereby notifies you of its  
certification with issuance of this Certification of Authorization for the period of:*

*providing for the practice of engineering services in the State of West Virginia.*

IF YOU ARE REQUIRED TO REGISTER WITH THE SECRETARY OF STATE'S OFFICE,  
PLEASE SUBMIT THIS CERTIFICATE WITH YOUR APPLICATION.



IN TESTIMONY WHEREOF, THE WEST VIRGINIA STATE BOARD OF  
REGISTRATION FOR PROFESSIONAL ENGINEERS HAS ISSUED THIS COA  
UNDER ITS SEAL, AND SIGNED BY THE PRESIDENT OF SAID BOARD.

*Scott E. Thomas Jr.*

BOARD PRESIDENT



**Search: Details**

**Legal Name:** ASCENT CONSULTING AND ENGINEERING, LLC

**WV Company COA:** **COA Number:** C05756

**COA Status:** Active

**COA Issue Date:** 01/22/2018

**COA Expiration Date:** 12/31/2023

**Primary Address of Record:** 2361 DAVISSON RUN ROAD  
CLARKSBURG, WV 26301

**Engineer In Responsible Charge:** MICHAEL R. NESTOR

**PE License Number:** 018467

**PE License Status:** Active

**PE License Expiration:** 12/31/2024

This data was retrieved on 5/9/2023.

Print

Search Again



# **ASCENT**

1700 Anmoore Road  
Bridgeport, WV 26330

Phone: (304) 933-3463

[info@ascentconsultingengineers.com](mailto:info@ascentconsultingengineers.com)  
[www.ascentconsultingengineers.com](http://www.ascentconsultingengineers.com)

