



The following documentation is an electronically-submitted vendor response to an advertised solicitation from the *West Virginia Purchasing Bulletin* within the Vendor Self-Service portal at wvOASIS.gov. As part of the State of West Virginia's procurement process, and to maintain the transparency of the bid-opening process, this documentation submitted online is publicly posted by the West Virginia Purchasing Division at WVPurchasing.gov with any other vendor responses to this solicitation submitted to the Purchasing Division in hard copy format.

Header @ 1 List View

- General Information
- Contact
- Default Values
- Discount
- Document Information
- Clarification Request

Procurement Folder: 1272513
Procurement Type: Central Master Agreement
Vendor ID: VS0000018987
Legal Name: ASCENT CONSULTING AND ENGINEERING LLC
Alias/DBA:
Total Bid: \$0.00
Response Date: 09/05/2023
Response Time: 11:41
Responded By User ID: AscentMarketing
First Name: Caroline
Last Name: Marion
Email: cmarion@ascentconsultinger
Phone: 3049333463

SO Doc Code: CRFQ
SO Dept: 0313
SO Doc ID: DEP2400000009
Published Date: 8/25/23
Close Date: 9/5/23
Close Time: 13:30
Status: Closed
Solicitation Description: OER Brownfield Site Reuse Planning
Total of Header Attachments: 1
Total of All Attachments: 1



Department of Administration
 Purchasing Division
 2019 Washington Street East
 Post Office Box 50130
 Charleston, WV 25305-0130

**State of West Virginia
 Solicitation Response**

Proc Folder: 1272513
Solicitation Description: OER Brownfield Site Reuse Planning
Proc Type: Central Master Agreement

Solicitation Closes	Solicitation Response	Version
2023-09-05 13:30	SR 0313 ESR09052300000001188	1

VENDOR
 VS0000018987
 ASCENT CONSULTING AND ENGINEERING LLC

Solicitation Number: CRFQ 0313 DEP2400000009
Total Bid: 0
Response Date: 2023-09-05
Response Time: 11:41:43
Comments:

FOR INFORMATION CONTACT THE BUYER

Joseph E Hager III
 (304) 558-2306
 joseph.e.hageriii@wv.gov

Vendor Signature X **FEIN#** **DATE**

All offers subject to all terms and conditions contained in this solicitation

Line	Comm Ln Desc	Qty	Unit Issue	Unit Price	Ln Total Or Contract Amount
1	Brownfield Site Redevelopment Plan				0.00

Comm Code	Manufacturer	Specification	Model #
77101700			

Commodity Line Comments:

Extended Description:

Development of Site Reuse Planning for potential redevelopment opportunities at brownfield sites throughout West Virginia



**State of West Virginia
OER Brownfield Site Reuse Planning
DEP2400000009**

**Ascent Consulting & Engineering, LLC.
September 5, 2023**

1700 Anmoore Road | Bridgeport, WV 26330
www.ascentconsultingengineers.com

September 5, 2023

State of West Virginia
Purchasing Division
Department of Environmental Protection
Office of Environmental Remediation

submitted via - WV Oasis vendor portal

RE: Expression of Interest - OER Brownfield Site Reuse Planning
DEP2400000009

Dear Mr. Hager and members of the selection committee,

Brownfield planning needs technical expertise and community engagement to complete the large task list that comes with site remediation and reuse. Ascent Consulting & Engineering, (Ascent) has a dedicated team of professionals to provide a seamless transition through each stage of the Brownfields project lifecycle.

Ascent is a full service consulting firm, offering engineering, environmental, surveying, materials testing and construction inspection services. Our environmental team division manager, Jeffrey Knepper, is a certified Professional Geologist and Licensed Remediation Specialist. Along with his certifications, Mr. Knepper previously worked for the WV DEP, so he has a good working relationship and understanding of the Offices processes.

Stakeholder and community engagement is a key piece for any Brownfields projects, Ascent's team has planned a participated in these types of campaigns. As your consultant, we will provide the tools and professional staff to turn these contaminated sites into new reusable land for future development. Our staff is ready to hit the ground running with the WV DEP OER on planning out the State's Brownfield projects. We look forward to the opportunity to discuss our team and qualifications with you.

Sincerely,

A handwritten signature in blue ink, appearing to read "M.R. Nestor".

Michael R. Nestor, PE
Principal



PROPOSAL CONTENT

01 Expression of Interest

02 Firm Profile

03 Management Outline

04 Project Methodology

05 Keys to Success

06 Technical Services

07 Project Experience

08 Staff Experience

A Supporting Documents



EXPRESSION OF INTEREST

Ascent Consulting & Engineering, LLC. (Ascent), is a certified Hub-Zone Small Business headquartered in Bridgeport, West Virginia. The Ascent team provides civil engineering, environmental compliance, mechanical engineering, construction management, materials testing for federal, state and private entities throughout the Mid-Atlantic region. Ascent's professional team brings a vast knowledge and experience to the WV DEP Brownfields project with the best combination of experience, qualifications, quality and cost estimating for our clients.

Ascent's Project Manager, Jeffrey Knepper is an experience Professional Geologist as well as a Licensed Remediation Specialist, who understands the regulatory requirements and connecting with the community/stakeholders for Brownfield projects. He has previously worked for the West Virginia DEP, which will provide a great understanding and expectation needed for this project.

Brownfield projects require not only technical expertise but a staff that can navigate the community landscape. Keys to this project will be:

- **Community Outreach Methods**
- **Health & Risk Management**
- **Partnership between Ascent, WV DEP and the local community**

Team Ascent highly values collaboration within our team, partners, and clients. We believe that collaboration is more than just working together. We believe that it creates innovative ideas and solutions by allowing team members with different experiences to contribute their perspectives to the project goals. Sharing these ideas and applying the best of them appropriately to the project is the work of collaboration and drives creative solutions.

Point of Contact:

Jeffrey Knepper, CPG, LRS
 jknepper@ascentwv.com
 (o) 304-933-3463
 (c) 304-931-9870

1700 Anmoore Road
 Bridgeport, WV 26330

www.ascentconsultingengineers.com



FIRM PROFILE

Ascent Consulting & Engineering, LLC.

Ascent Consulting & Engineering, LLC., (Ascent) was created in 2018 and is operated by two West Virginia entrepreneurs, Michael Nestor, PE and Zachary Assaro. The two set out with a goal to provide engineering services focused on land development and civil engineering projects with just a three person staff. Since then, Ascent has grown to employ over 50 people and handle a wide range of projects. The company provides a full range of services and has worked in every corner of West Virginia, the surrounding states, and beyond. Ascent specializes in civil engineering design and planning, stormwater management, environmental compliance and permitting, survey, materials testing and construction inspection. To support our clients needs, Ascent has a materials testing AASHTO accredited laboratory.



Ascent is a US Small Business Administration Hubzone certified business.

Our MISSION



Providing Practical and Creative Design

Not only will we provide creative solutions to your problem, we take a practical approach to our design that will take your vision to the next level!



Communication Holds The Keys

As a consultant responsible for multi-million dollar projects, communication with owners, regulatory agencies and sub-consultants throughout the entire life cycle is vital for the success the project.



Strive for Lasting Relationships

We strive to make every relationship and connection we have last. From clients and government agencies to the contractors and teaming partners we complete projects with, we want to make a lasting impression!

Our SERVICES

- **Civil Engineering**
- **Construction Services**
- **Environmental Services**
- **Materials Testing**
- **Site Development**
- **Survey and Mapping**

MANAGEMENT OUTLINE

The Ascent management team has perfected a management methodology to provide the best service to our clients and facilitate all agencies, stakeholder and regulatory office participating in project completion. Our management approach is rooted in the best practices from industry standards that we have honed and teach all members of the team to use these processes, artifacts and tools. This type of approach uses Project Management Plans, Project Scheduler, Resource Manager, Risk/Issue Registers, as well as Action Item Tracker, Status Reports and Meeting Minutes to keep the communication of stakeholders internally and externally informed. Having a reusable and customizable framework allows Ascent to provide a management approach made up of components tested and proven on similar project efforts. This reduces the overall risk through a reduced learning curve for our personnel, reduces the cost through leveraging reusable assets and increases staff efficiency. Our management methodology key principles govern our management approach and provide direction to our team to ensure high-quality, cost-effective support. Upon contract award we will verify and validate all the client’s requirements and expectations, and further tune the components of our approach to optimize management of all personnel and project delivery. Ascent’s management methodology determines how we manage our projects and is founded upon three (3) essential principles:



Partnerships Built on Trust:

Ascent strives to immediately establish a bi-lateral trusting working relationship with WV DEP Office of AML and our teaming partners to magnify our combined effectiveness.



Foundation Built on Fundamentals:

Success depends on properly executing the basics. Through our years of experience and thorough study of project management literature and assessments, we have identified several fundamental project management elements that we use to successfully run each project. We define and manage scope, requirements, risk and change management, and QA right from the start to increase performance and decrease costs.



Proactive, Responsive, Adaptive Processes:

Our project management framework and methodology, combined with our broad and deep environmental experience, allows us to adapt rapidly to changes by anticipating the predictable ripple effects and proactively adjust our approach to minimize impacts and risks.

PROJECT METHODOLOGY

WV DEP Brownfields

Ascent strongly believes that clear communication and expectations are at the core of every successful project. We will encourage a kickoff meeting with your staff and our design team at the onset of the project for discussion about existing conditions, project goals, availability of funds, site operations, and perceived challenges, etc. This meeting allows us to fully understand the project and to tailor our approach and communication to that of your liking. It is our goal to support the overall vision by providing our experienced team to offer valuable suggestions, looking for efficient ways to accomplish the project goals, and executing a plan that is easily understood, constructed, and ultimately fixes the problem.

A typical Ascent project is facilitated according to the following procedure:

01 PROJECT KICKOFF MEETING



- The kickoff meeting sets the expectation of the project - from scope, budget, schedule, communication and establishes roles and responsibilities.
- Informs the team about subconsultants and outside factors.
- Reviews site history, overall goals and preferred plan of the project.
- Discuss preferences and limitation to site access and other important project specifications.
- Develop first set of “action items” and delivery dates based on various decision points.



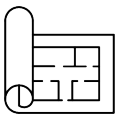
PROJECT METHODOLOGY

CONTINUED



02 CONCEPTUAL LAYOUT AND PRELIMINARY COST

- Ascent will develop concepts to confirm problem areas and will provide recommendations to the WVDEP.
- On a conceptual level, Ascent will prepare recommendations for project implementation along with preliminary construction cost estimates. The intent of this phase is to find the “most bang for your buck”.
- After the concepts have been presented and discussed with the stakeholders, Ascent will move forward with the design of the preferred alternative(s).
- During this process, various items are completed concurrently such as base mapping, ground survey, geotechnical evaluations, and the ultimate maintenance of the site.
- This stage allows the project team to refine the concept and identify anything initially unforeseen that would have an impact on project cost or constructability.
- Permit requirements will be evaluated and drafted during this phase.



03 PLAN PRODUCTION

- After budgets, feasibility, land acquisitions, etc. are confirmed, Ascent will begin assembling plans and specifications for construction as well as permit submittals.
- The Ascent Project Manager will provide a weekly email update to the WVDEP outlining work completed, the schedule ahead, and any changes. Significant changes or new information found that is anticipated to require project adjustments will be brought to the WVDEP immediately. Initial contact in this instance is always a phone call, followed by a recap email and in some cases, face-to-face meetings if representatives are available. Project budgets and schedules are re-evaluated at milestones (typically at 30%, 60%, and 90% completion).
- The keys to success for these projects include but are not limited to clear communication, land owner coordination and concise easy to read plans.
- It will be important to plan not only for the final conditions but also for construction activities and grading operations that may need to be staged to prepare for possible release of water during construction activities.
- Finally, the design will be evaluated for long term sustainability to reduce or eliminate maintenance after construction is complete. The plan will be devised in a way that fixes the problem at hand yet minimizes disturbance to the existing landscape. We understand that vegetation is an important factor to stabilization so any areas that can remain undisturbed will be exonerated from clearing and grubbing activities. In addition, areas that require clear cut will be planned for revegetation to re-stabilize the surface as quickly as possible.

PROJECT METHODOLOGY

CONTINUED



04 CONSTRUCTION MANAGEMENT & INSPECTION

- The Project Manager in charge will also serve as the Project Manager throughout construction. He/She will help to identify the proper field personnel to inspect the project, will speak to the inspector daily, and will attend contractor/progress meetings throughout the duration of the project. He/She will review and submit daily reports to ownership and notify the Client immediately if any problems arise. The Project Manager will also review/approve pay applications submitted by the contractor.



05 PROJECT FINALIZATION

- Ascent will constantly evaluate progress to ensure that the project is on schedule and that pay applications are consistent with the work completed.



KEYS TO SUCCESS



Community Involvement:

- Provide communities with information, tools, and technology to stay informed on Brownfields area-wide planning, assessment, and cleanup.
- Assist communities in understanding the impacts of living near a potentially contaminated brownfields property.
- Organize meetings of community groups to understand how they may be involved in a Brownfields effort.



Health Impacts of Brownfield Sites:

- Provide support to the WV DEP through technical assistance between health risks and Brownfield activities.
- Understanding the impacts of the health and the quality of life when Brownfield sites are cleaned up and redeveloped or left alone.
- To foster interactions and strong partnerships with local public health departments.



Science & Technology of Brownfield Assessments:

- Provide technical assistance with Brownfield Assessments, remediation and redevelopment including:
 - Assessment and inventory methods
 - Site prioritization
 - Development of a site prioritization scheme/methodology
 - Sampling and cleanup methods
 - Institutional controls and long-term stewardship
- Ensuring activities protect human health and the environment



Integrated Approaches to Brownfield Cleanup & Redevelopment:

- Provide technical assistance between environmental, economic and social issues relating to Brownfield sites include:
 - Green revitalization
 - Cleanup and redevelopment
 - Port and waterfront utilization
 - Energy, air and water issues
 - Leveraging partner agency resources
 - Sustainable development climate projects
 - Floodplain mitigation
- Increase stakeholder coordination to address current issues and prevent the creation of future Brownfields.

KEYS TO SUCCESS



Brownfields Finance:

- Working with federal, state, tribal and local governments in connection with a potential developer, lenders and investors in the project site.
- Provide support in seeking additional funding from sources outside of the US EPA and West Virginia DEP.



West Virginia Voluntary Remediation Program:

- Ascent will be your partner in navigating the WV VRP Program for all project sites.

Ascent will provide support to communities by acting as a liaison to assist communities as the subject matter relates to Brownfields Assessments, risks, advantages and future site development. Ascent will provide technical expertise as needed and overall support coordinating public meetings, training sessions and overall community involvement. Ascent understands the components of the program and how important it is to communicate with the communities where potential Brownfield Projects may receive funding. Ascent will also assist in navigating the EPA grant or additional funding sources.

- Based on our knowledge, experience, and personnel, below is a listing of services we will be providing throughout this project:
- Review and explain technical reports (sampling & analysis, site assessment, government regulations)
- Provide information about environmental science, environmental policy, or site development issues.
- Help communities understand the health risk associated with Brownfields.
- Provide information to assist communities to understand environmental issues.
- Facilitate meetings between the local community, developers, lenders, and contractors.
- Providing support in understanding and complying with the West Virginia Voluntary Remediation Program.
- Assist with workshops and community engagement events to help establish a connection with the city and local communities.
- Develop conceptual reuse plans and present the plans to community groups.

Our effective collaboration, communication and project approach creates innovative solutions for projects that are delivered on time and within budget.

TECHNICAL SERVICES

CIVIL ENGINEERING

Ascent is prepared to complete various civil engineering design aspects for site reuse planning. Our staff has extensive experience performing the tasks required for these projects. The engineers along with our environmental staff will perform a field view of the site with you to evaluate current conditions to understand your goals for final land use. Slope stabilization could require design of repairs for slips, repair of erosion gullies or correcting excessively steep slopes. Vegetative stabilization will require analysis of soils properties and development of appropriate supplements to correct chemistry of soils to assist development of successful vegetative cover. The revegetation design will also need to address control of various undesirable invasive species that tend to thrive on AML soils. Ascent will prepare NPDES Earth Disturbance Permits and associated design for erosion and sediment control practices during construction. This will also include design of temporary and permanent stormwater controls and BMP to provide attenuation of any increased peak stormwater rate and volume as well as providing for water quality. We will evaluate the condition of any streams within the project area and provide recommendations for restoration of eroded streambanks or improvements to stream bed to enhance survival and reestablishment of aquatic life. These projects will require design of access roadways for construction and future maintenance activities. This will require evaluation of suitable grades, geometry for equipment access, surface options and drainage features to provide a stable roadway. Access road entries will require WVDOH MM-109 permits for State roads or municipal permits for local roads not under state control.

Ascent will prepare construction drawings, specifications, bid tabulations and assist with the up-front contract documents. These documents will be reviewed to ensure they contain provisions required by the source of funding. We will assist with the bidding process by attending pre-bid meetings, answering any contractor requests for information and preparing addenda if necessary. When bids are received Ascent can prepare a bid tabulation, perform an evaluation of the bids and prepare a tabulation of any issues or irregularities with the bids received.

Civil Engineering Services

- Project Planning
- Road and Access Design
- Site Layout
- Conceptual Design
- Stormwater Management and Drainage
- Slip / Subsidence Repairs
- Utility Layout
- Erosion and Sediment Control



TECHNICAL SERVICES

ENVIRONMENTAL

Ascent prides itself on the diversity and expertise within the environmental services we provide. The challenges Brownfields projects exhibit play to our strengths. Site remediation, assessments, water quality analyses, environmental geology and hydrogeology require unique perspectives to problem solving. Ascent boasts personnel with over 25 years' experience solving environmental issues as they relate to Brownfields. Ascent also has a talented team of wetland scientists to tackle natural resources, NPDES, Army Core of Engineer and other local, state, and federal permitting.

Environmental Services

- Brownfield Redevelopment
- Phase 1 & 2 Site Assessments
- Stream Wetland Delineations
- AMD Treatment
- USACE / Nationwide Permits
- Monitoring Well Installations
- County Floodplain Coordination
- Remediation & Feasibility Studies
- Hazardous & Solid Waste Management
- NEPA Environmental Assessments
- Water Management Planning
- NPDES Permitting
- Consent Orders & Compliance Schedules
- Hydrological Investigations
- Tank Inspections
- Risk Assessments & Characterizations
- Underground Injection Control Wells



TECHNICAL SERVICES

SURVEY

Ascent's Survey Division includes experienced licensed West Virginia surveyors and specialists that collaborate with environmental, engineering, and construction professionals to conduct research and collect land data for various projects. Our team performs courthouse research for property ownership, title and deed searches for boundary surveys, and documenting findings. We provide boots on the ground to gather necessary land information to develop base maps.

Survey Services

- Boundary Surveys
- ALTA / NSPS Land Title
- Flood Plain Surveys
- Construction Stakeout
- As-Built Surveys
- 3D Laser Scanning
- Barometric Surveying
- GPS Control
- Utility Assets Management
- GPR Surveys
- FEMA Flood Certifications



TECHNICAL SERVICES

CONSTRUCTION INSPECTION

Quality control and quality assurance testing and inspection provides a level of confidence that the project is completed per the contract plans and specifications. Ascent provides a high level of inspection expertise responsible for over-site and ensuring design integrity from pre-construction activities to job progress reviews through completion. We pride ourselves on full project understanding and engineering over-site and support for all our clients. Our team holds numerous certifications and accreditations from the American Association of State Highway Officials (AASHTO), West Virginia Division of Highways, The American Concrete Institute and ASTM International.

Construction Services

- E&S Inspections and Corrective Actions
- Right of Way and Easement Plans
- GIS Portals
- Assets Management
- QA/QC Inspections
- Utility Locations and Coordination
- Transportation Management Plans
- Roadway Construction Inspection
- ACI Concrete Testing
- AASHTO Certified Testing and Inspection
- Soil Compaction and Classification
- Structural Steel
- Asphalt Compaction



PROJECT EXPERIENCE

WEIRTON FRONTIER CROSSING



Client:
Frontier Group

Client Representative:
Pat Ford

pford@fic-services.com

Project Location:
Weirton, WV

Project Status:
Design Phase

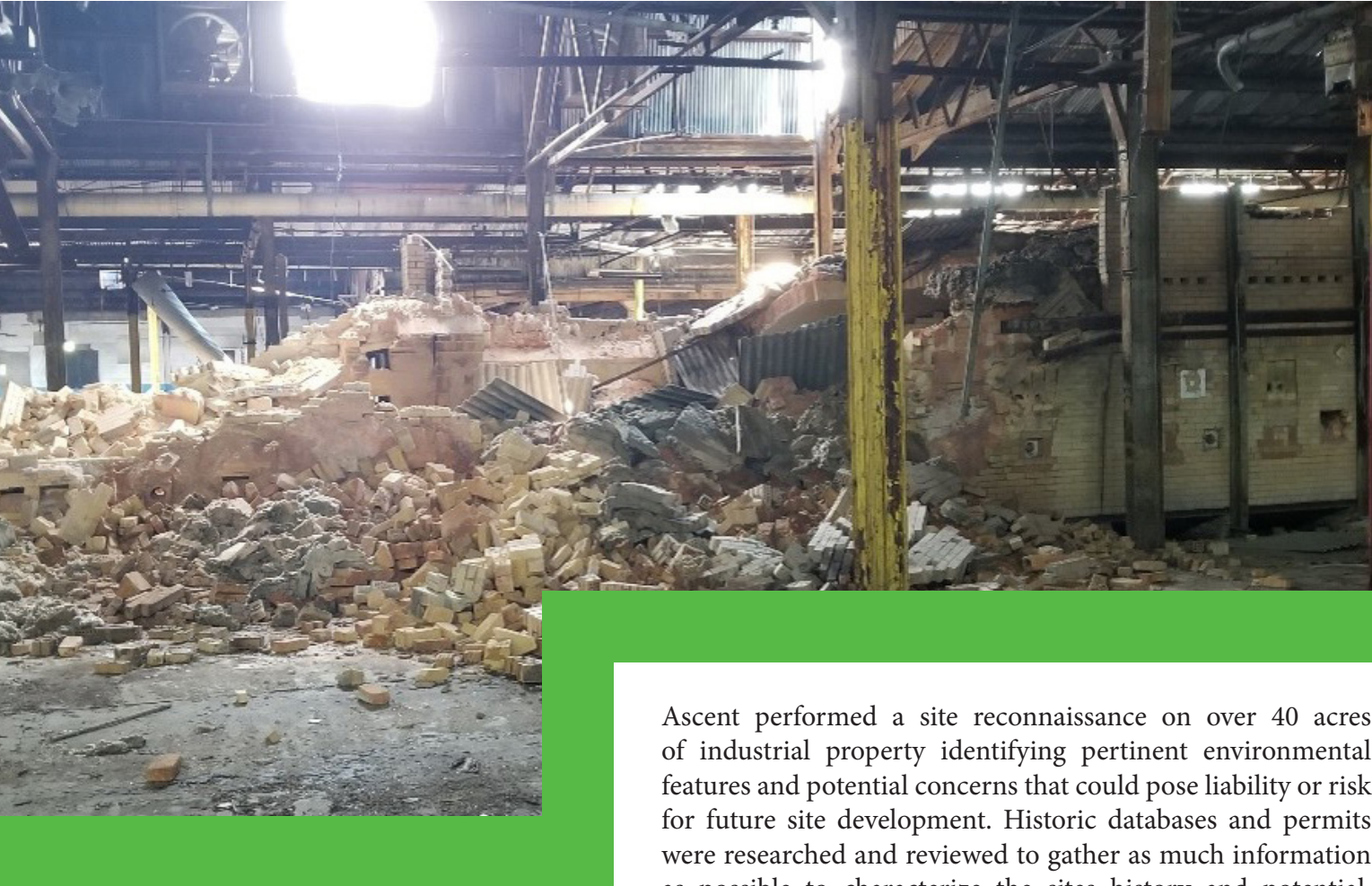
Weirton Frontier Crossings is an approximate 1,200-acre brownfield site that was formerly a steel mill operated by Weirton Steel Corporation. The former Weirton Steel facilities have been demolished to make the project area ready for redevelopment and reuse. Ascent is currently working with the Frontier Group to develop conceptual redevelopment plans for an approximate 500-acre area.

The Ascent team has prepared concept roadway alignment design and lot layout plans for the project area, utility coordination and coordination with local agencies. This work includes development of estimates of probable construction cost and support for preparation of applications and exhibits for various grant programs to obtain funding for the project. Ascent has also prepared concept lot development plans for prospective tenants in support of potential lot sales.

Once funding packages have been secured the Ascent team will prepare final roadway design drawings, details, specifications and permit applications to support construction of roadway and utility infrastructure development.

PROJECT EXPERIENCE

NEW INDUSTRIAL FACILITY



Client:
ADO Industries

Client Representative:
Hasan Yalcinkaya
hasan.yalcinkaya@adousa.net

Project Location:
Moundsville, WV

Project Status:
On-going

Ascent performed a site reconnaissance on over 40 acres of industrial property identifying pertinent environmental features and potential concerns that could pose liability or risk for future site development. Historic databases and permits were researched and reviewed to gather as much information as possible to characterize the sites history and potential. Interviews were conducted with people with direct knowledge of the site and its function. The ESA was conducted as due diligence and was also used for grant funding from the West Virginia Economic Development Authority. Environmental concerns were identified to allow the client to negotiate or set money aside for future remediation and development. The project was completed on time and within the set budget. Ascent assisted in securing grants/funding from the WVEDA. The Phase I ESA was essential information necessary to complete the due diligence for the industrial site purchase. Environmental concerns were identified to allow the client to negotiate or set money aside for future remediation and development. The project was completed on time and within the set budget.

PROJECT EXPERIENCE

FOUNDRY DEMOLITION



Matthews International contracted Ascent to manage the demolition of a foundry. The facility operated as a bronze memorial and architectural lettering foundry from the mid-1960's through 2010. Prior to that, the facility operated as a metal stamping and toy factory. Copper, lead, and zinc are the primary constituents of bronze formation. Ascent conducted a Phase I environmental assessment to identify environmental concerns in the area and inside of the buildings themselves. It was identified that the building had asbestos containing material in it. A Phase II environmental assessment was performed to evaluate the soils. During the Phase II, lead was identified in the soil at hazardous levels. Ascent was also responsible for the project management of the asbestos abatement and demolition which took place over a four-week period. There was a need to communicate with the community as the foundry was comprised of four buildings built within proximity to neighbouring homes. The demolition permits for the state and local levels were completed by Ascent on behalf of the client. Ascent personnel worked with the demolition contractor to identify and label all the hazardous material properly, ensure it was handled safely and disposed of as was required by the permits. The site was over excavated and tested to verify that the contamination had been fully removed from the location. The site has been restored and is in a condition where the owner can sell the property without concerns.

Client:
Matthews International

Client Representative:
Private Client

Project Location:
Seneca Falls, NY

Project Status:
Complete

PROJECT EXPERIENCE

WEST VIRGINIA BOTANICAL GARDENS



As part of a Design-Build team, Ascent partnered with March-Westin to complete the West Virginia University Botanical Gardens Event Center. Ascent was the site/civil engineer on the project located outside of Morgantown, in Monongalia County, West Virginia. After meeting with the stakeholders and understanding their needs and vision for use of the space. Ascent got to work developing site concepts for the building layout, parking lot and sidewalks, trails and terrace spaces. Taking the concepts agreed on by the client, Ascent developed the final design for the building site, parking lot layout, all drainage and stormwater management, with ADA accessible parking, sidewalks, pedestrian walking brings, utility layout for the project. In addition to the site design, Ascent also deigned a retaining wall for environmental purposes, due to a stream located close to the construction of the project.

Client:

March Westin

Project Location:

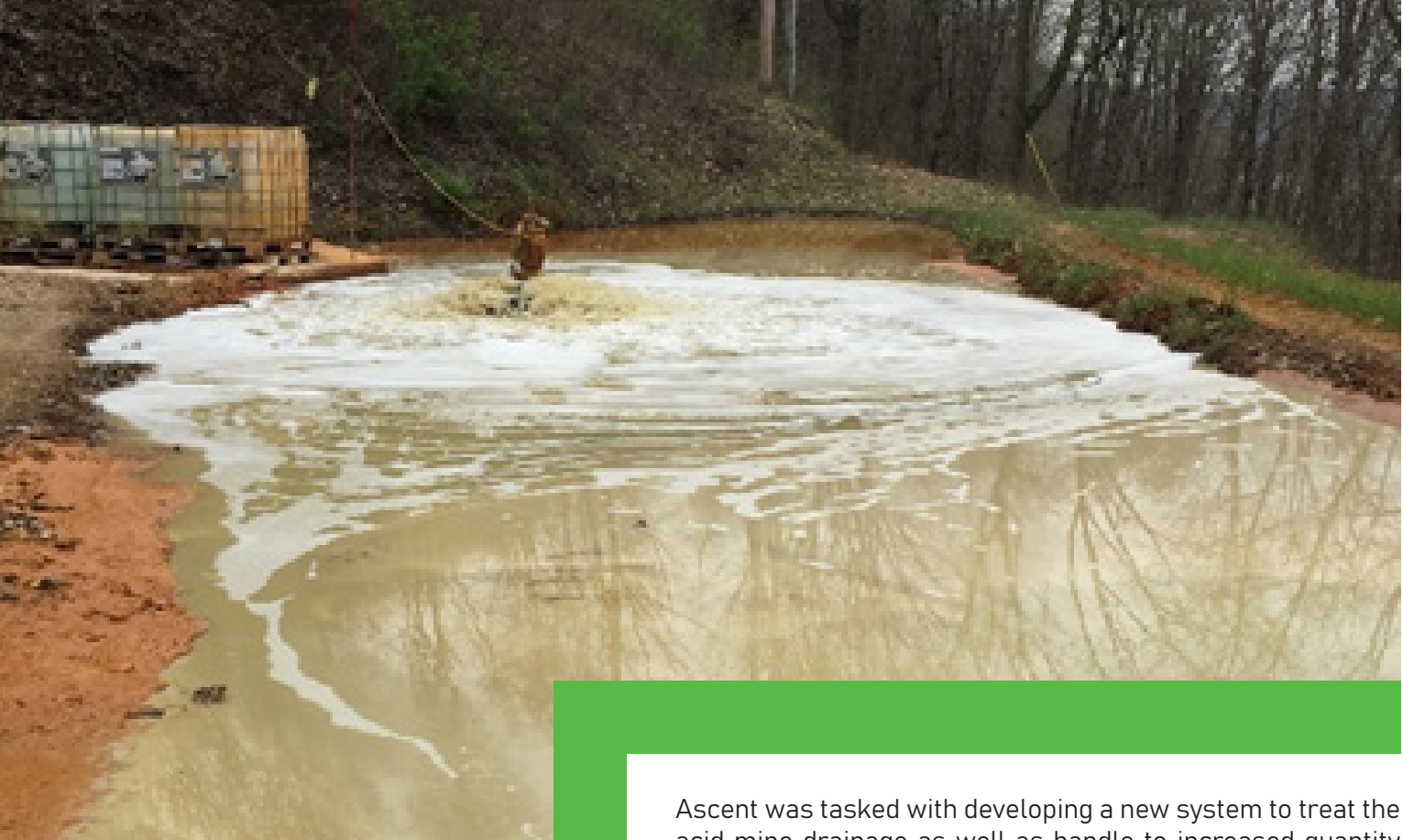
Monongalia County, WV

Ascent Services:

- Survey and Mapping
- Site Layout
- Storm water Management
- Environmental Assessments

PROJECT EXPERIENCE

GLOBE MINE



Client:
Vesuvius

Client Representative:

Project Location:
Newell, West Virginia

Project Status:
Completed

Ascent was tasked with developing a new system to treat the acid mine drainage as well as handle to increased quantity of mine water. A break-wall was installed in the first mine opening to act as a secondary containment to facilitate a steady flow rate. The mine water was pumped to a main aeration pond to facilitate iron sediment settlement. A series of ponds were modified to filter the heavy metals so the water could then be discharged to an onsite stream. With little area to work in Ascent designed a treatment system to handle the increased mine water volume and maintain compliance with the NPDES permit requirements. Extensive hydrogeologic and geotechnical investigations were conducted to determine the mine water pathways and the underground mine workings.

By modifying the treatment system to handle the increased mine water compliance with the NPDES permit was achieved. Mine seepage and contamination no longer affected nearby industrial facilities or seeped to the Ohio River.



Michael R. Nestor, PE

Principal

Profile

Michael Nestor is the founder of Ascent Consulting & Engineering. Mr. Nestor is a Professional Engineer registered in West Virginia, Virginia, Ohio, Pennsylvania and Maryland. With over 20 years of experience, Michael has the expertise to guide clients through the life-cycle of their project from beginning funding stages, permitting, to design and construction. His passion for civil engineering lies in land development and storm-water management projects, completing over 50 large developments, master plans and designs for private development clients, economic development agencies and government entities. Michael's attention to detail ensures projects include cost effective and practical designs, as well as seamless bidding and efficient construction of projects.

Project Experience

- **Stormwater Management-** Mr. Nestor has conducted multiple stormwater management plans, MS4 programs guidelines and designed numerous drainage, storm sewer, etc. plans for municipalities across the state. Some of these communities include the City of Westover, City of Clarksburg, City of Oak Hill and Town of Sophia.
- **Roadways and Sidewalks-** Mr. Nestor during his engineering career has had the opportunity to review and design roadways, road upgrades and extensions that all included assessments and planning for drainage and runoff.
- **Utility-** As a site development lead, Mr. Nestor has to have a vast understanding of stormwater management, drainage and utility extension to each pad designed. Working on small 2 acre pads to over 100 acre pads, Mike has completed all the utility designs for these projects, such as commercial buildings, residential housing development, industrial site and more.

Registrations:

PE - West Virginia
PE - Virginia
PE - Ohio
PE - Maryland
PE - Pennsylvania

Education:

BS, Civil Engineering and
Technology - Fairmont State
University

Associations:

Past President - American
Society of Highway Engineers

American Society of Civil
Engineers



Jeff Knepper, CPG, LRS

Project Manager

Profile

Jeff Knepper is the Environmental Division Manager at Ascent. Mr. Knepper has over 25 years' experience working on complex environmental and regulatory projects specializing in permitting, compliance, remediation, water quality and carbon capture. He is adept at developing practical and innovative solutions to challenging environmental issues faced by various industries. Mr. Knepper is a Certified Professional Geologist and a West Virginia Licensed Remediation Specialist. Mr. Knepper is also an experienced Aboveground Storage Tank Inspector with over 1,000 completed inspections in various states.

Project Experience

- **Rose Holdings, LLC, Tucker County, WV** – Project Manager for Article 4 Quarry permit renewals and modifications. Submitted NPDES renewals and modifications. Updated blasting plan, groundwater protection and spill prevention plans. Coordinated meetings and communications with the WVDEP.
- **Vesuvius, Hancock County, WV** – As project manager, Jeff implemented a new treatment system for iron rich acid mine drainage (AMD). Performed geologic and hydro-geologic investigations for off site contamination. Conducted field inspections and developed updated mine working maps and solutions for increased mine water flow and on-site contaminate pre-treatment.
- **Monroe Towers, Monroe County, OH** – Project Manager for four NEPA Environmental Assessments for the design and construction of cell towers. The NEPA submittal were required per the Federal Aviation Administration to identify concerns and socioeconomic impacts of the project.
- **City of Clarksburg – Leon St. Slip Repair** – Environmental Manager for the development and submission of National Environmental Policy Act (NEPA) assessment for the AML project. The document was approved by both the State of West Virginia and MSHA. Also submitted progress reports required per the AML funding protocols.

Registrations:

LRS - West Virginia
CPG- Virginia
AST - STI- SP001
AST - Pennsylvania

Education:

BS, Geology - West Virginia University

Association:

American Institute of Professional Geologist

American Chemical Society

Geological Society of America

Steel Tank Institute



Megan Wagner

Environmental Scientist

Profile

Megan Wagner is an Environmental Senior Scientist for Ascent. Ms. Wagner has approximately 8 years of experience in stream and wetland delineations, habitat assessments, regulatory permitting, NPDES construction and industrial permitting, mitigation monitoring, ESA Phase I reporting, stormwater sampling, NEPA reporting, and GIS mapping and analysis. She is a certified Asbestos Inspector with a license in West Virginia. She has been involved with numerous projects located within WV, PA, and OH. The range of projects include, well pads, access roads, road upgrades, gathering lines, ASTs, impoundments, industrial, residential, commercial, modifications, slip repairs, and water and gas pipeline projects.

Project Experience

- **Black Diamond Reality, Harrison County, WV-** Senior Scientist lead for site closure, NPDES industrial permit stormwater sampling organization for new site location. Provided SWPPP and GPP for NPDES permitting. Coordinated communication with WVDEP .
- **Mountain V, Upshur County, WV** – Senior Scientist lead for providing an annual mitigation monitoring report for the Farnsworth Stockert Impoundment. Monitoring focuses on the establishment of riparian vegetation along two unnamed tributaries of Queens Fork. Developed corrective actions plan with suggestions on how to increase survivability rate of planted species. This is an on-going project and is in its second year of monitoring. Coordinated meetings and communication with the EPA. .
- **Monroe Port Authority, Monroe, OH** – Senior Scientist lead for providing all field work and reporting required for NEPA submittal for four proposed cell towers. Included stream and wetland delineations, RTE reviews, and ESA Phase I. Coordinated communications and meetings with multiple agencies involving cultural reviews, tribal coordination, public notices, FCC Antenna Structure Registrations, FAA Registrations, Aeronautical studies, and section 106 reviews.

Registrations:

Asbestos Inspector - WV

Education:

BS, Environmental Studies,
Fisheries & Wildlife - California
University of Pennsylvania

Certifications:

Asbestos Building Inspector
Annual Refresher

10 Hour OSHA – Construction &
Health

40-Hour Army Corps of
Engineers - Wetland Delineation

Richard Chinn Environmental
Training

Morphological Soils
Investigations
Certification, PADEP

Ohio Rapid Assessment Method
for Wetlands v. 5.0 Training

PADEP One-Day Technical



April Brummage

Environmental Scientist

Profile

April Brummage is an Environmental Scientist for Ascent. Mrs. Brummage has approximately 8 years of experience in stream and wetland delineations, habitat assessments, regulatory permitting, NPDES construction and industrial permitting, mitigation monitoring, ESA Phase I reporting, stormwater sampling, construction inspections, erosion and sedimentation Inspections, and GIS mapping and analysis. She has been involved with numerous projects located within WV, PA, and OH. The range of projects include, well pads, access roads, road upgrades, gathering lines, ASTs, impoundments, industrial, residential, commercial, modifications, slip repairs, and water and gas pipeline projects.

Education:

BS, Environmental Studies,
Fisheries & Wildlife - California
University of Pennsylvania

Certifications:

Gailey Environmental 36-Hour
Wetland Delineation Training

Project Experience

- **Summerhill Phase I ESA, Westmoreland County, PA-** As environmental scientist, she assisted the senior scientist on the project to complete a Phase I ESA, coordinated with management on field findings and completed all documentation and reports for the client.
- **Various Environmental Compliance Project, West Virginia-** As an environmental scientist, she is responsible for completing initial database research, communicating to government and compliance agencies of project notices, such as: DNR, USFWS, municipal agencies and floodplain directors. She provides the client with supplement data and keeps client communication for statuses and updates. She is also responsible for reporting, documentation and applications for DEP notices.



Jeffery Parobek PE

Senior Project Manager

Profile

Jeff Parobek joined the Ascent Consulting & Engineering team in 2021 and serves as a Senior Project Manager. Jeff brings over 30 years of technical design and project management experience to our team. Jeff has had the opportunity to work on very unique projects all across the region. He takes the lead on every aspect of a project from kick-off meetings with stakeholders, to organizing survey and mapping crews, getting environmental staff project information for permitting to technical design, bidding the project for the owner and project oversight during construction. As a senior level engineer on our staff, Jeff takes great pride in teaching our younger engineers design and management skills.

Project Experience

- **Weirton Frontier Crossing** – Weirton, WV - Serving as the Project Manager for this 1,200-acre brownfield development, Jeff is leading securing funding, preparing roadway alignments, utility coordination and conceptual design plans for the client.
- **Three Springs Business Park** – Weirton Steel Corp - As the Project Manager for this 100-acre industrial park site development project located on a former strip mine site, his responsibilities included concept planning, industrial access road design, utilities, storm drainage, water and sewer infrastructure.
- **West Virginia University** – Mr. Parobek was a Project Manager for the expansion and renovation of the School of Law including building expansion, parking lot redesigns, utility relocation, stormwater management and erosion control plans.
- **West Virginia University Evansdale Crossing** – Mr. Parobek was project manager for the development of a 100,000 square foot private/public facility to create new student space, vertical connection across campus, and retail use. The project involved site design and grading, coordination with other team members for University parking and roadway projects and outlining provisions for sustainable stormwater management.

Registrations:

- PE - West Virginia
- PE - Pennsylvania
- PE - Virginia
- PE - Ohio
- PE - Tennessee
- PE - Kentucky

Education:

BS, Mining Engineering - The Pennsylvania State University at University Park

Certification:

Erosion and Sediment Control Certification - State of Maryland

Magna Cum Laude,
Fundamentals of Professional Practice Management Certification - ASFE

Associations:

American Society of Military Engineers



George Sofranko, PE

Project Engineer

Profile

George “Rege” Sofranko joined Ascent Consulting & Engineering in 2019, bringing over 16 years of land development experience. Mr. Sofranko has a long list of residential and commercial development experience from small 3 acre commercial building layouts to large residential mixed used development properties. Rege takes a hands on approach to all of the projects he is managing - meeting with owners, providing detailed progress reports through the permitting and design process, to being on site with the construction staff to ensure projects are completed to the design. As a Professional Engineer in the State of Pennsylvania, Rege is skilled in engineering design, permitting processes, stormwater management, and construction inspection.

Project Experience

- **FedEx Facility**– Mount Pleasant, PA -Served as Project Manager for a 9-acre industrial park lot that included the expansion of an existing facility building and supporting parking and truck yard. This project included survey, feasibility study, environmental Phase 1 study, geotechnical investigation, utility infrastructure, PADEP permitting, erosion and sedimentation control, stormwater management, and municipal / agency coordination. The project also included construction survey stakeout and construction management efforts.
- **BrookHavenDevelopment**–NorthHuntingdonandPennTownship, PA - Served as Project Manager for an 80-acre subdivision that included two phases containing 39 lots, two public roads, utility infrastructure, PADEP and PennDot permitting, stormwater management, and off-site trunk sanitary sewer line extension. Mr. Sofranko was also responsible for the conceptual planning and layout of an additional phase of 50 housing lots.
- **Villas of Buena Vista** – Huntingdon, PA - Served as Project Manager for a 36-acre residential subdivision that included 45 lot layout and design, two public roads, utility infrastructure, PADEP permitting, and stormwater management.

Registrations:

PE - State of Pennsylvania

Education:

BS, Civil Engineering and Technology, concentration in Environmental Engineering- University of Pittsburgh at Johnstown

Certification:

Erosion and Sediment Control Certification - State of Maryland



Michael Hyman, PS

Senior Survey Manager

Profile

Michael Hyman joined the Ascent team in 2021 and serves as Senior Survey Project Manager. Mr. Hyman leads the survey team and is in charge of making sure projects are completed on-time and according to the clients needs. His extensive experience with commercial/residential property, topography survey, ALTA/NSPS land titles, right of ways, flood plain surveys, gas well stake outs, pipeline stake outs and more gives him the knowledge he needs to help guide his team and the projects he works with to success. Mr. Hyman helps clients understand what types of surveys are needed for appropriate agencies.

Registrations:

PS - West Virginia

Education:

BS, Civil Engineering Technology
- Fairmont State University

AS, Design Drafting - Fairmont
State University

Project Experience

- **Boundary Surveys-**

Mr. Hyman has completed hundreds of boundary surveys in his professional career. Agricultural Boundary surveys like Pendleton County, include: West Virginia Department of Agriculture, Pam. J. Watts Property, Barboursville District and Cabell County Farm Board.

- **ALTA Surveys-**

Mr. Hyman has expertise in ALTA surveying for commercial and industrial clients alike. Recently, he and the Ascent team just completed an ALTA Survey for Amtower Auto Supply (NAPA) in Fairmont, West Virginia.

- **Construction Stakeout-**

Mr. Hyman has completed hundreds of construction stakeouts for any type or project, from small residential housing, schools, to large pipeline projects. More common types of construction stakeout for the Ascent crew is residential housing developments and apartment complexes like Meadow View Management LLC or Cherry Grove Estate.



STATE FORMS



Department of Administration
 Purchasing Division
 2019 Washington Street East
 Post Office Box 50130
 Charleston, WV 25305-0130

State of West Virginia
 Centralized Request for Quote
 Service - Prof

Proc Folder: 1272513			Reason for Modification:
Doc Description: OER Brownfield Site Reuse Planning			
Proc Type: Central Master Agreement			
Date Issued	Solicitation Closes	Solicitation No	Version
2023-08-16	2023-09-05 13:30	CRFQ 0313 DEP2400000009	1

BID RECEIVING LOCATION

BID CLERK
 DEPARTMENT OF ADMINISTRATION
 PURCHASING DIVISION
 2019 WASHINGTON ST E
 CHARLESTON WV 25305
 US

VENDOR

Vendor Customer Code:

Vendor Name : Ascent Consulting & Engineering, LLC.

Address : 1700 Anmoore Road, Bridgeport, WV 26330

Street : 1700 Anmoore Road

City : Bridgeport

State : West Virginia

Country : US

Zip : 26330

Principal Contact : Micheal R. Nestor

Vendor Contact Phone: 304-933-3463

Extension:

FOR INFORMATION CONTACT THE BUYER

Joseph E Hager III
 (304) 558-2306
 joseph.e.hageriii@wv.gov

**Vendor
 Signature X**

FEIN# 82-4069240

DATE 9/5/2023

All offers subject to all terms and conditions contained in this solicitation

DESIGNATED CONTACT: Vendor appoints the individual identified in this Section as the Contract Administrator and the initial point of contact for matters relating to this Contract.

(Printed Name and Title) _____

(Address) _____

(Phone Number) / (Fax Number) _____

(Email address) _____

CERTIFICATION AND SIGNATURE: By signing below, or submitting documentation through wvOASIS, I certify that: I have reviewed this Solicitation/Contract in its entirety; that I understand the requirements, terms and conditions, and other information contained herein; that this bid, offer or proposal constitutes an offer to the State that cannot be unilaterally withdrawn; that the product or service proposed meets the mandatory requirements contained in the Solicitation/Contract for that product or service, unless otherwise stated herein; that the Vendor accepts the terms and conditions contained in the Solicitation, unless otherwise stated herein; that I am submitting this bid, offer or proposal for review and consideration; that this bid or offer was made without prior understanding, agreement, or connection with any entity submitting a bid or offer for the same material, supplies, equipment or services; that this bid or offer is in all respects fair and without collusion or fraud; that this Contract is accepted or entered into without any prior understanding, agreement, or connection to any other entity that could be considered a violation of law; that I am authorized by the Vendor to execute and submit this bid, offer, or proposal, or any documents related thereto on Vendor's behalf; that I am authorized to bind the vendor in a contractual relationship; and that to the best of my knowledge, the vendor has properly registered with any State agency that may require registration.

By signing below, I further certify that I understand this Contract is subject to the provisions of West Virginia Code § 5A-3-62, which automatically voids certain contract clauses that violate State law; and that pursuant to W. Va. Code 5A-3-63, the entity entering into this contract is prohibited from engaging in a boycott against Israel.

(Company)

(Signature of Authorized Representative)

(Printed Name and Title of Authorized Representative) (Date)

(Phone Number) (Fax Number)

(Email Address)

ADDENDUM ACKNOWLEDGEMENT FORM
SOLICITATION NO.:

Instructions: Please acknowledge receipt of all addenda issued with this solicitation by completing this addendum acknowledgment form. Check the box next to each addendum received and sign below. Failure to acknowledge addenda may result in bid disqualification.

Acknowledgment: I hereby acknowledge receipt of the following addenda and have made the necessary revisions to my proposal, plans and/or specification, etc.

Addendum Numbers Received:

(Check the box next to each addendum received)

- | | |
|---|--|
| <input type="checkbox"/> Addendum No. 1 | <input type="checkbox"/> Addendum No. 6 |
| <input type="checkbox"/> Addendum No. 2 | <input type="checkbox"/> Addendum No. 7 |
| <input type="checkbox"/> Addendum No. 3 | <input type="checkbox"/> Addendum No. 8 |
| <input type="checkbox"/> Addendum No. 4 | <input type="checkbox"/> Addendum No. 9 |
| <input type="checkbox"/> Addendum No. 5 | <input type="checkbox"/> Addendum No. 10 |

I understand that failure to confirm the receipt of addenda may be cause for rejection of this bid. I further understand that any verbal representation made or assumed to be made during any oral discussion held between Vendor's representatives and any state personnel is not binding. Only the information issued in writing and added to the specifications by an official addendum is binding.

Company

Authorized Signature

Date

NOTE: This addendum acknowledgment should be submitted with the bid to expedite document processing.



SUPPORTING DOCUMENTS

Request for Taxpayer Identification Number and Certification

**Give Form to the
 requester. Do not
 send to the IRS.**

▶ Go to www.irs.gov/FormW9 for instructions and the latest information.

Print or type. See Specific Instructions on page 3.	<p>1 Name (as shown on your income tax return). Name is required on this line; do not leave this line blank.</p> <p>Ascent Consulting and Engineering</p>	
	<p>2 Business name/disregarded entity name, if different from above</p>	
	<p>3 Check appropriate box for federal tax classification of the person whose name is entered on line 1. Check only one of the following seven boxes.</p> <p><input type="checkbox"/> Individual/sole proprietor or single-member LLC</p> <p><input type="checkbox"/> C Corporation</p> <p><input type="checkbox"/> S Corporation</p> <p><input type="checkbox"/> Partnership</p> <p><input type="checkbox"/> Trust/estate</p> <p><input checked="" type="checkbox"/> Limited liability company. Enter the tax classification (C=C corporation, S=S corporation, P=Partnership) ▶ <u>S</u></p> <p>Note: Check the appropriate box in the line above for the tax classification of the single-member owner. Do not check LLC if the LLC is classified as a single-member LLC that is disregarded from the owner unless the owner of the LLC is another LLC that is not disregarded from the owner for U.S. federal tax purposes. Otherwise, a single-member LLC that is disregarded from the owner should check the appropriate box for the tax classification of its owner.</p> <p><input type="checkbox"/> Other (see instructions) ▶</p>	<p>4 Exemptions (codes apply only to certain entities, not individuals; see instructions on page 3):</p> <p>Exempt payee code (if any) _____</p> <p>Exemption from FATCA reporting code (if any) _____</p> <p><small>(Applies to accounts maintained outside the U.S.)</small></p>
	<p>5 Address (number, street, and apt. or suite no.) See instructions.</p> <p>1700 Anmoore Road</p>	<p>Requester's name and address (optional)</p>
	<p>6 City, state, and ZIP code</p> <p>Bridgeport, WV 26330</p>	
	<p>7 List account number(s) here (optional)</p>	

Part I Taxpayer Identification Number (TIN)

Enter your TIN in the appropriate box. The TIN provided must match the name given on line 1 to avoid backup withholding. For individuals, this is generally your social security number (SSN). However, for a resident alien, sole proprietor, or disregarded entity, see the instructions for Part I, later. For other entities, it is your employer identification number (EIN). If you do not have a number, see *How to get a TIN*, later.

Note: If the account is in more than one name, see the instructions for line 1. Also see *What Name and Number To Give the Requester* for guidelines on whose number to enter.

Social security number										
or										
Employer identification number										
8	2		-	4	0	6	9	2	4	0

Part II Certification

- Under penalties of perjury, I certify that:
- The number shown on this form is my correct taxpayer identification number (or I am waiting for a number to be issued to me); and
 - I am not subject to backup withholding because: (a) I am exempt from backup withholding, or (b) I have not been notified by the Internal Revenue Service (IRS) that I am subject to backup withholding as a result of a failure to report all interest or dividends, or (c) the IRS has notified me that I am no longer subject to backup withholding; and
 - I am a U.S. citizen or other U.S. person (defined below); and
 - The FATCA code(s) entered on this form (if any) indicating that I am exempt from FATCA reporting is correct.

Certification instructions. You must cross out item 2 above if you have been notified by the IRS that you are currently subject to backup withholding because you have failed to report all interest and dividends on your tax return. For real estate transactions, item 2 does not apply. For mortgage interest paid, acquisition or abandonment of secured property, cancellation of debt, contributions to an individual retirement arrangement (IRA), and generally, payments other than interest and dividends, you are not required to sign the certification, but you must provide your correct TIN. See the instructions for Part II, later.

Sign Here	Signature of U.S. person ▶	Date ▶ <u>1/16/23</u>
------------------	----------------------------	-----------------------

General Instructions

Section references are to the Internal Revenue Code unless otherwise noted.

Future developments. For the latest information about developments related to Form W-9 and its instructions, such as legislation enacted after they were published, go to www.irs.gov/FormW9.

Purpose of Form

An individual or entity (Form W-9 requester) who is required to file an information return with the IRS must obtain your correct taxpayer identification number (TIN) which may be your social security number (SSN), individual taxpayer identification number (ITIN), adoption taxpayer identification number (ATIN), or employer identification number (EIN), to report on an information return the amount paid to you, or other amount reportable on an information return. Examples of information returns include, but are not limited to, the following.

- Form 1099-INT (interest earned or paid)

- Form 1099-DIV (dividends, including those from stocks or mutual funds)
- Form 1099-MISC (various types of income, prizes, awards, or gross proceeds)
- Form 1099-B (stock or mutual fund sales and certain other transactions by brokers)
- Form 1099-S (proceeds from real estate transactions)
- Form 1099-K (merchant card and third party network transactions)
- Form 1098 (home mortgage interest), 1098-E (student loan interest), 1098-T (tuition)
- Form 1099-C (canceled debt)
- Form 1099-A (acquisition or abandonment of secured property)

Use Form W-9 only if you are a U.S. person (including a resident alien), to provide your correct TIN.

If you do not return Form W-9 to the requester with a TIN, you might be subject to backup withholding. See What is backup withholding, later.

CERTIFICATE OF *Authorization*

STATE BOARD OF REGISTRATION FOR PROFESSIONAL ENGINEERS

*The West Virginia State Board of Registration for Professional Engineers
having verified the person in responsible charge is registered in
West Virginia as a professional engineer for the noted firm, hereby certifies*

*has complied with section §30-13-17 of the West Virginia Code governing
the issuance of a Certificate of Authorization. The Board hereby notifies you of its
certification with issuance of this Certification of Authorization for the period of:*

providing for the practice of engineering services in the State of West Virginia.

IF YOU ARE REQUIRED TO REGISTER WITH THE SECRETARY OF STATE'S OFFICE,
PLEASE SUBMIT THIS CERTIFICATE WITH YOUR APPLICATION.



IN TESTIMONY WHEREOF, THE WEST VIRGINIA STATE BOARD OF
REGISTRATION FOR PROFESSIONAL ENGINEERS HAS ISSUED THIS COA
UNDER ITS SEAL, AND SIGNED BY THE PRESIDENT OF SAID BOARD.

Scott E. Thomas Jr.

BOARD PRESIDENT

Search: Details

Legal Name: ASCENT CONSULTING AND ENGINEERING, LLC

WV Company COA: **COA Number:** C05756

COA Status: Active

COA Issue Date: 01/22/2018

COA Expiration Date: 12/31/2023

Primary Address of Record: 2361 DAVISSON RUN ROAD
CLARKSBURG, WV 26301

Engineer In Responsible Charge: MICHAEL R. NESTOR

PE License Number: 018467

PE License Status: Active

PE License Expiration: 12/31/2024

This data was retrieved on 5/9/2023.

Print

Search Again



ASCENT

1700 Anmoore Road
Bridgeport, WV 26330

Phone: (304) 933-3463

info@ascentconsultingengineers.com
www.ascentconsultingengineers.com

