



The following documentation is an electronically-submitted vendor response to an advertised solicitation from the *West Virginia Purchasing Bulletin* within the Vendor Self-Service portal at wvOASIS.gov. As part of the State of West Virginia's procurement process, and to maintain the transparency of the bid-opening process, this documentation submitted online is publicly posted by the West Virginia Purchasing Division at WVPurchasing.gov with any other vendor responses to this solicitation submitted to the Purchasing Division in hard copy format.

Header @ 1 List View

General Information | Contact | Default Values | Discount | Document Information | Clarification Request

Procurement Folder: 1283276

Procurement Type: Central Purchase Order

Vendor ID: 000000160928

Legal Name: CIVIL & ENVIRONMENTAL CONSULTANTS INC

Alias/DBA:

Total Bid: \$0.00

Response Date: 09/07/2023

Response Time: 20:46

Responded By User ID: kevinhanks

First Name: Kevin

Last Name: Hanks

Email: khanks@cecinc.com

Phone: 304-933-3119

SO Doc Code: CEOI

SO Dept: 0310

SO Doc ID: DNR2400000002

Published Date: 8/30/23

Close Date: 9/19/23

Close Time: 13:30

Status: Closed

Solicitation Description: A&E - Canaan Valley Resort Trail and Parking Improvements

Total of Header Attachments: 1

Total of All Attachments: 1



Department of Administration
 Purchasing Division
 2019 Washington Street East
 Post Office Box 50130
 Charleston, WV 25305-0130

**State of West Virginia
 Solicitation Response**

Proc Folder: 1283276
Solicitation Description: A&E - Canaan Valley Resort Trail and Parking Improvements
Proc Type: Central Purchase Order

Solicitation Closes	Solicitation Response	Version
2023-09-19 13:30	SR 0310 ESR09072300000001279	1

VENDOR
 000000160928
 CIVIL & ENVIRONMENTAL CONSULTANTS INC

Solicitation Number: CEOI 0310 DNR2400000002
Total Bid: 0
Response Date: 2023-09-07
Response Time: 20:46:06
Comments:

FOR INFORMATION CONTACT THE BUYER
 Joseph E Hager III
 (304) 558-2306
 joseph.e.hageriii@wv.gov

Vendor Signature X **FEIN#** **DATE**

All offers subject to all terms and conditions contained in this solicitation

Line	Comm Ln Desc	Qty	Unit Issue	Unit Price	Ln Total Or Contract Amount
1	Professional engineering services				0.00

Comm Code	Manufacturer	Specification	Model #
81100000			

Commodity Line Comments:

Extended Description:

Design and contract administration services of new trail and parking facilities at Canaan Valley Resort State Park.



Department of Administration
 Purchasing Division
 2019 Washington Street East
 Post Office Box 50130
 Charleston, WV 25305-0130

State of West Virginia
 Centralized Expression of Interest
 Architect/Engr

Proc Folder: 1283276
Doc Description: A&E - Canaan Valley Resort Trail and Parking Improvements
Proc Type: Central Purchase Order
Reason for Modification:

Date Issued	Solicitation Closes	Solicitation No	Version
2023-08-30	2023-09-19 13:30	CEOI 0310 DNR2400000002	1

BID RECEIVING LOCATION

BID CLERK
 DEPARTMENT OF ADMINISTRATION
 PURCHASING DIVISION
 2019 WASHINGTON ST E
 CHARLESTON WV 25305
 US

VENDOR

Vendor Customer Code: 000000160928
Vendor Name : Civil & Environmental Consultants, Inc.
Address : 120 Genesis Boulevard
Street :
City : Bridgeport
State : WV **Country :** USA **Zip :** 26330
Principal Contact : James Christie, PLA
Vendor Contact Phone: 304-933-3119 **Extension:**

FOR INFORMATION CONTACT THE BUYER

Joseph E Hager III
 (304) 558-2306
 joseph.e.hageriii@wv.gov

Vendor
 Signature X

FEIN# 25-1599565

DATE September 7, 2023

All offers subject to all terms and conditions contained in this solicitation



Civil & Environmental Consultants, Inc.



STATE OF WEST VIRGINIA

A&E - CANAAN VALLEY RESORT TRAIL AND PARKING IMPROVEMENTS

CEOI 0310 DNR2400000002

CEC | BRIDGEPORT

Project 335-346

September 7, 2023



September 7, 2023

Joseph Hager
Department of Administration, Purchasing Division
2019 Washington Street East
Charleston, WV 25305-0103
FAX: 304-558-3970

Dear Mr. Hager,

Subject: A&E - Canaan Valley Resort Trail and Parking Improvements
Solicitation No. CEOI 0310 DNR240000002
CEC Project # 335-346

Civil & Environmental Consultants, Inc. (CEC) is pleased to present to you our team's proposal of qualifications for the above-advertised EOI issued by the Division of Natural Resources for professional services for A&E – Canaan Valley Resort Trail and Parking Improvements.

This is an inspiring project that CEC and teaming partner Nature Trails are very much qualified to perform. We want to join your team in continuing to make improvements to the trail and parking area throughout Canaan Valley Resort. Our team will be managed by myself, Colin McCardle, and Jim Christie, PLA. Jim has spent his 25-year career planning and implementing regional 'recreation as a destination' projects such as this one in mountain regions worldwide. CEC is very familiar with Canaan Valley Resort and understands the goals and expectations for this project. CEC strives to be the consultant that helps West Virginia resorts and communities become heritage and recreation destinations. CEC and Nature Trails are excited to join the WVDNR to become the TEAM that leads this vital undertaking.

CEC is pleased to present our team's qualifications for this important project. Our team brings together a group of master planners, engineers, landscape architects, ecological scientists, and trail specialists. CEC is excited to bring to the team Nature Trails as a trail expert and member of the Professional Trail Builders Association. The WVDNR will get senior leadership on our team with recreational and community master planning and trail design experts. By providing WVDNR with senior planners and designers, our team will guide Canaan Valley Resort in making quality direction on planning, project elements, budgets, and construction implementation. This is more than a trail improvement plan and can expand the user experience at the state park. Our team understands how the trail system functions as a destination and how it affects other aspects, such as parking, pedestrian/vehicular conflict, and possibilities of future trail or amenity expansion. Our team will utilize the experience of our senior professionals to design and implement the trail expansion as a must-visit trail destination for locals and tourists alike.

Thank you for this opportunity to submit our qualifications, and we look forward to working with you.

Sincerely,

CIVIL & ENVIRONMENTAL CONSULTANTS, INC.


Colin McCardle
Project Manager


Jim Christie, PLA
Principal



PROFESSIONAL ENGINEERING & CONSULTING SERVICES FOR CANAAN VALLEY RESORT TRAIL & PARKING IMPROVEMENTS

CONTENTS

1.0	Firm Overview	1
2.0	CEC Capacity and Capabilities	7
3.0	Goals and Objectives	8
4.0	Project Team.....	9
5.0	Project Experience	19
6.0	References	30
7.0	Additional Documents.....	31

1.0 Firm Overview

In 1989, four engineers and scientists came together with a singular vision: to be a people-first company, one that promotes a culture where clients and employees enjoy working together, and that is responsive to client needs with integrated services and high-quality work for projects both complex and routine.

More than 30 years later, Civil & Environmental Consultants, Inc. (CEC) has 1,400+ team members in offices nationwide. Headquartered in Pittsburgh, Pennsylvania, we are consistently ranked on Engineering News-Record's annual lists of the Top Design Firms and Top Environmental Firms in the nation.

A culture of accountability. We own it. At CEC, every member of our team has a personal stake in ensuring the success of our clients. Because their success is our success. As employee-owners of the firm, we are all personally accountable for building lasting relationships and delivering outstanding results. Because we don't just work at CEC. We own it.

Being easy to work with. We own it. At other firms, you may find one person you work well with. Here, our clients tell us they work well with all of us. It's because all of us are invested in your success. We're accessible, responsive, and operate with integrity.

Putting people first. We own it. At CEC, people come first. Always. Whether that's our clients, our employees, or our community. It's why we listen more and work harder to understand the unique needs of our clients. And it's why we prioritize the career development of every individual on our team. People are why we do this, and why we love what we do.

Teamwork. We own it. We are at our best when we work together. That means bringing together a diverse team of talented, passionate, multidisciplinary experts to work closely alongside clients to craft comprehensive solutions to complex problems. We believe that by working together, no problem is insurmountable.

Safety excellence. We own it. We believe all accidents are preventable and are committed to creating an accident- and incident-free workplace for employees and subcontractors through training, safe workplace practices, and processes for assessing project hazards. CEC strives for safety excellence throughout our entire organization and holds all individuals accountable for the safe performance of their work.

CEC is an expanding, multi-disciplined company that is home to:

- + Civil Engineers
- + Geotechnical Engineers
- + Transportation Engineers
- + Structural Engineers
- + Environmental Scientists
- + Environmental Engineers
- + Chemical Engineers
- + Geologists
- + Hydrogeologists
- + Hydrologists
- + Ecologists
- + Biologists
- + Wetland Scientists
- + Threatened & Endangered Species Experts
- + Agronomists/Soil Scientists
- + Emissions Testing Professionals
- + Meteorologists
- + Chemists
- + Archaeologists
- + Construction Managers and Inspectors
- + Environmental Technicians
- + Treatment Plant Operators
- + Land Surveyors
- + Landscape Architects
- + GIS Analysts and Programmers



CEC Bridgeport

CEC's Bridgeport office is comprised of senior leaders, engineers, project managers and support staff all with significant private and public infrastructure planning, design and engineering experience. The Bridgeport office is adequately staffed with a variety of professionals to ensure appropriate staff is assigned to any task.

The Bridgeport office enjoys a positive relationship with local, regional and state regulatory officials. These relationships are critical to navigating the permitting process through the increasingly difficult regulatory environment. CEC understands the length of time required for permitting tasks and can assist the client in developing accurate project schedules. CEC also has significant experience working with local contractors on similar development, roadway, and utility projects throughout West Virginia. This knowledge of local construction techniques

and a thorough understanding of the design and operation/maintenance of public infrastructure provide a technical advantage to CEC.

CEC's team provides a balance of public and private sector experience that allows us to offer an exceptional perspective to our consulting services. Our team has proven experience in both private and public sector projects throughout West Virginia, meeting intensive schedules for projects and locally funded projects while maintaining quality work. We understand the balance and collaboration required between private site development projects and the public development process which will be critical in the success of this development.



Master Planning

CEC combines master planning experience with site development engineering capabilities to enable innovative, practical solutions to the most complex land planning challenges.

CEC provides master planning services that identify creative, coordinated solutions to leverage the greatest return on each business opportunity in today's competitive economic environment. Services include:

- Economic Master Plans
- Business Attraction Strategies
- Site Selection Studies
- Site Capacity Studies
- Business/Industrial Park Master Plans
- Infrastructure Master Plans
- Facility Master Plans
- Destination Resort Master Plans
- Outdoor Recreation Master Plans

Our Master Planning perspective gives us access to a wide range of principles, practices, and technologies to increase innovation and flexibility in land development solutions.

BUSINESS ATTRACTION STRATEGIES identify market rationale and specific market targets, helping to accelerate project marketing success.

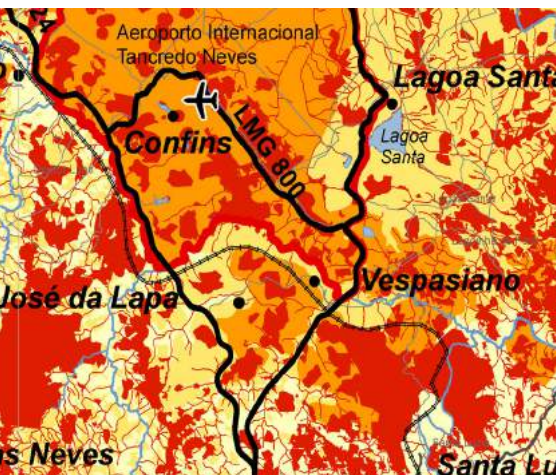
INTEGRATED SITE DEVELOPMENT ENGINEERING produces coordinated, practical land development solutions to reduce time-to-market and overall project costs.

ORGANIC SUSTAINABILITY SOLUTIONS are generated naturally from project opportunities and constraints to increase plan saleability to customers, communities, and regulators, and to reduce up-front and operational costs.

PRACTICAL IMPLEMENTATION METHODOLOGIES are organized as an integral part of master plan development to increase options for effective project financing and return on investment.

MARKETS SERVED

- Economic Development
- Aerotropolis/Airport City/Aviation
- Technology Manufacturing
- Development Feasibility
- General Industrial
- Office/Corporate
- Commercial/Retail
- Life Sciences/Higher Education



Landscape Architecture & Planning

CEC provides a diverse range of landscape architecture design services for site and land development, master development planning, feasibility studies, stormwater management, landscape design, green infrastructure and irrigation.

CEC provides landscape architecture services to architects; developers; institutional, commercial and businesses owners; and public agencies, and is recognized for leadership in applying sustainable design practices to projects seeking LEED® certification.

SITE AND LAND DEVELOPMENT

CEC landscape architects prepare feasibility studies, site concept plans and master development plans for commercial office and retail sites, industrial and residential developments and institutional/academic campuses. Preliminary site planning services address utility and roadway infrastructure, vehicular accessibility and circulation, in some cases rail access, municipal zoning and land development requirements, and state and federal regulations, as well as site planning flexibility.

CEC takes into consideration floodplain issues, topographic constraints, existing and proposed infrastructure, stormwater management, preservation of natural site features such as existing vegetation and water courses, and review of wetlands and other environmental considerations. CEC can include the design of ponds and other water features such as bioswales, rain gardens, and creative stormwater treatment measures to limit water resource impacts.

LANDSCAPE AND IRRIGATION DESIGN

CEC can prepare landscape design and planting plans that address local municipal ordinance requirements and the client's program objectives, LEED, and construction budget constraints. CEC also can prepare irrigation plans and construction documents to include commercial systems, groundwater and surface water supply irrigation systems, increased water efficiency, fountains and other water amenity features.

GRAPHIC RENDERINGS AND PHOTO MANIPULATION SERVICES

CEC prepares large-scale color renderings, photo manipulation services and 3-D modeling for presentation quality drawings and 3-D visualizations. CEC combines computer accuracy with an artistic by-hand touch to create realistic renderings and 3-D models. With technology to overlay proposed design solutions on photos of existing site conditions, CEC can communicate a photo-realistic effect of what the final design solution may look like, which is very effective for public meetings. Hand-drawn and computer-imaged renderings include: black and white and color perspectives, realistic detailed sections and elevations, 3-D models, and color presentation boards presenting both conceptual and final master plans.



STATEMENT OF QUALIFICATIONS

Company Bio

Nature Trails, LLC is operated by a diverse team of individuals with extensive business, planning, construction, nonprofit, and outdoor advocacy experience. We have over 15 years of trail design and development experience with a unique perspective on useability for user groups of all ages, gender, and experience level. Our philosophy is 'Conservation Through Recreation' meaning that our focus is on creating active uses for managed forests, green space, and tree buffers to ensure it remains for future generations.

Our Mission

To design, develop, and integrate trail systems that connect the urban and wilderness landscape to create municipal and master planned communities that promote health, well-being, and happiness.



Featured Project: Richmond Hill Skills Trail (Design & Construction) - Asheville, NC



Nature Trails | DESIGN & BUILD

Our Services

Planning & Design

- Site Assessments
- Trail Master Plans
- Bike Park Design
- Municipal Park Planning
- Trail Alignment & Flagging
- Construction Drawings
- Specification Writing

Mapping & GIS

- GIS Cataloging & Inventory
- Cartography & Illustration
- Drone Photography
- Interactive Web Maps

Construction & Development

- ADA Trail Construction
- Single Track Trail Construction
- Bike Park Construction
- Nature Surface Greenway Construction
- Construction Management
- Trail Maintenance

Marketing & Promotion

- Wayfinding & Signage Plans
- Grant Writing
- Pamphlets & Literature
- Event Promotion
- Fundraising



Featured Project: **Rocky Branch Park (Construction) - Belmont, NC**



2.0 CEC Capacity and Capabilities

Project Team and Technical Experience

The project team identified to work with the WVDNR have extensive experience performing advisory and design services throughout West Virginia. Over 100 staff in the Bridgeport office will support the project team identified in Section 3. CEC's management staff are familiar with West Virginia conditions and have extensive experience performing projects.

Value Engineering and Constructability

In today's economic climate, it is imperative to evaluate and minimize construction costs while maintaining quality and meeting the objectives of the project. Project costs are directly affected by constructability. Many senior professionals at CEC "cut their teeth" in the field, functioning as construction inspectors or project observers, which allows them to draw from this experience to apply construction approaches to design. CEC will work with the WVDNR to identify cost-effective alternative methods in an effort to limit the budget and schedule impacts associated with the proposed projects.

Schedule & Availability

CEC is available to begin work immediately upon authorization to proceed from the WVDNR and will work with the staff to complete the requested services. CEC anticipates having a project start up meeting within a week of project award with the necessary staff.

Attention to Quality

CEC performs our professional services under our corporate Quality Assurance Plan (QAP). This QAP was developed to verify the engineering, design, plans and other deliverables prepared by the project team and the various disciplines are supported by comprehensive studies and sound engineering judgment, in compliance with established policies, guidelines and standards, and contain appropriate design flexibility and cost saving measures. This QAP entails a comprehensive listing of CEC quality policies and standard operating procedures that are available on CEC's internal network. It is consistently reviewed and updated by a multi-office team of experienced professionals to ensure "Best Quality Control Practices" are uniformly applied. In support of this QAP, CEC is committed to the application of established design policies, guidelines, and processes developed and published by review and resource agencies. From a quality standpoint, technical personnel review the technical quality, accuracy and completeness of all designs, analyses, drawings, estimates, and report text. Peer-level personnel are responsible for the performance of an independent check of all calculations and project deliverables prior to each project milestone submission.

As part of the QAP, reviews will be performed for the appropriate element throughout the design/construction process. These reviews will be completed prior to submitting reports, plans, construction documentation, or other deliverables. These reviews will verify the adequacy of the information presented and compliance with established guidance documents. The QAP also documents procedures for work procedure and equipment use, employee and project safety, project management and records and communications. The goal and objective of the QA/QC Policy is to provide a safe and consistent delivery of quality services to the WVDNR.

Specific quality policies and standard operation procedures can be provided to the WVDNR if requested.

Commitment to Safety

Civil & Environmental Consultants, Inc. (CEC) is committed to conducting its business in a manner that sustains and protects the safety and health of its employees. CEC strives for continuous improvement in the effectiveness of its safety and health programs. We affirm that:

- Working safely is a key corporate value and a condition of employment.
- All workplace hazards can be safeguarded against by using proactive measures and actions.
- Occupational safety and health is part of every employee's total job performance.
- Each CEC employee is responsible, and is held accountable for establishing safe workplace conditions to prevent injuries and occupational illnesses.
- Training employees to work safely is essential and is the responsibility of CEC Managers and Supervisors.
- Creating and maintaining a safe workplace, combined with the prevention of personal injuries and accidents, is good business.
- An effective Safety Program is part of CEC's vision and mission.

CEC's Workplace Safety Program and Manual provides general physical hazard assessments for tasks commonly performed by CEC employees. The program requires a hazard assessment and preparation of a project safety plan for all field operations. The plans are continuously updated through the use of Job Safety Assessments and on-site safety meetings for CEC personnel.

3.0 Goals and Objectives

Goal/Objective 1:

The CEC/Nature Trails team will review the existing master plan and field conditions as well as the operation of the facility and evaluate while communicating effectively with the owner to determine a plan that can be implemented in a manner that will minimize disruption to concurrent operation of the facility and meet all the WVDNR objectives. Our team has extensive experience designing, flagging, and implementing successful mountain bike trail-optimized and shared-use singletrack trail in Appalachian and other mountain regions throughout the US. Our team of senior leadership has extensive experience administering or managing successful and well regarded large, natural surface trail or bike park projects.

2.2. Goal/Objective 2:

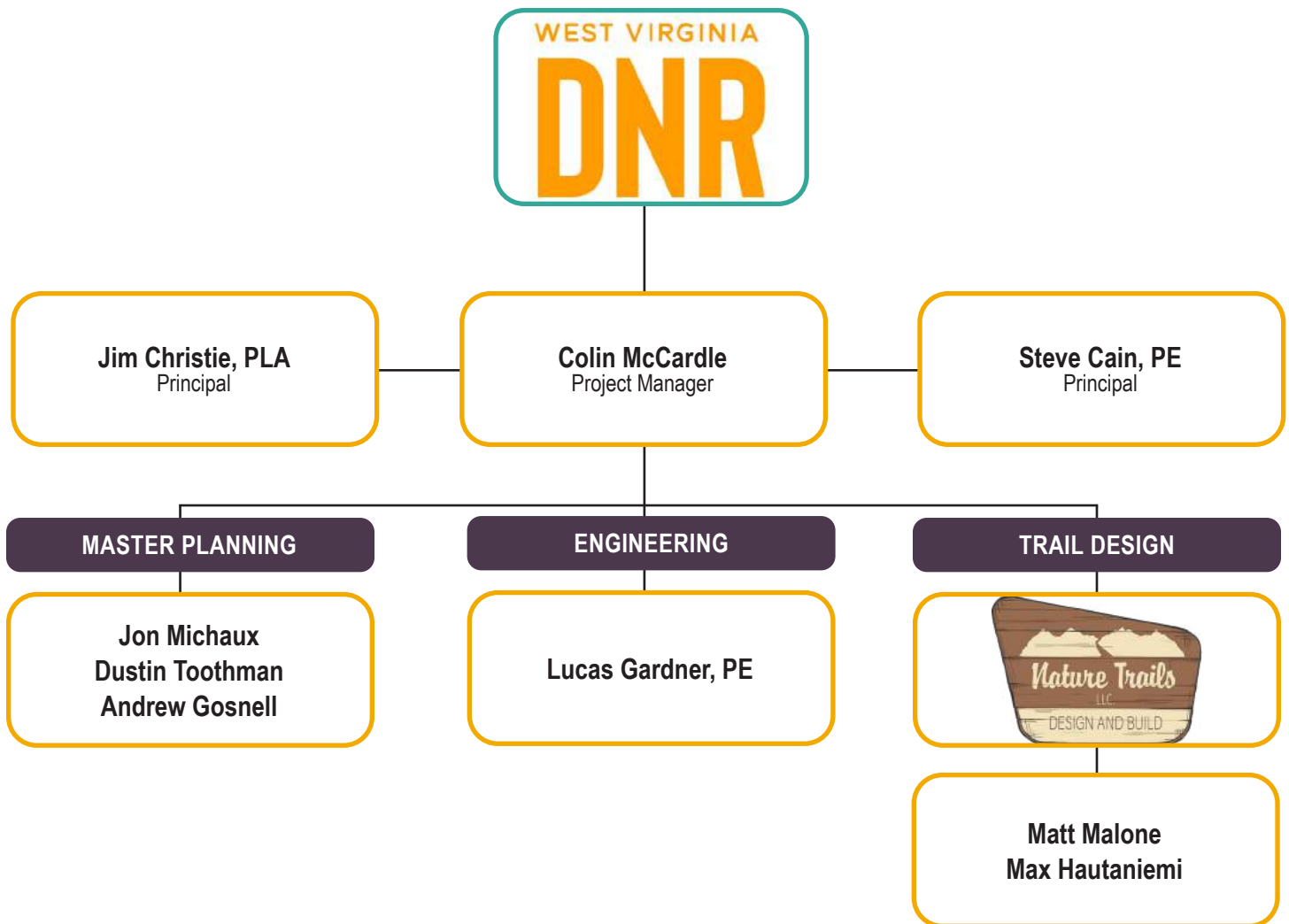
CEC has experience in the process with the WVDNR and will work seamlessly with our senior staff to create a plan that works with the WVDNR's process. Having a teaming partner in Nature Trails allows our team to budget infrastructure and implementation of the trails to stay in budget.

2.3. Goal/Objective 3:

CEC will provide construction and contract administration. Our team will provide senior staff for both CA and field observation services throughout design and construction to ensure the system is built to standards and as designed. CEC understands that the project is to be completed by January 1, 2026



4.0 Project Team



Colin McCardle

Assistant Project Manager



9 YEARS OF EXPERIENCE

EDUCATION

B.S., Landscape Architecture, West Virginia University, 2014

PROJECT EXPERIENCE

Masterplanning, Parks & Trails

WVHTC I-79 Technology Park Masterplan, WVHTC Foundation, Fairmont, WV*

Role: Designer

Masterplan layout of the proposed use cases and building layout for the I-79 Technology Park Corridor. The project consisted of 16 parcels for expansion of the existing development.

Lemon Street Park Development, Redevelopment Authority of the City of Uniontown, Lemon Street, Uniontown, PA*

Role: Project Manager

Civil/Site engineering and construction management services for the Redevelopment Authority of the City of Uniontown for the implementation of playground equipment, seating, pavilion, and walking paths in an existing open space park, providing the area with a necessary play place for children of the neighborhood. The project was designed to be ADA compliant and was funded via the COSTARS program and DCED funding.

Fairchance Community Park Masterplan, Fairchance Borough, Fairchance, PA*

Role: Designer

Provided masterplanning services for the community's largest park. 40-acre property included enhancements and restoration to the two existing baseball fields and the pond. The inclusion of a basketball court, tennis-courts, playground equipment, amphitheater, and green infrastructure were provided based on community engagement sessions. The project was submitted to the DCNR for approval and will be used by the municipality to pursue additional funding opportunities.

Land Development

Lakefront Property Improvements, Private Residence, Cheat Lake, WV*

Role: Designer, Construction Management

Provided 2D and 3D design, construction documents, and construction management for a private residents' lakefront property. A 300 linear foot, 24+ foot high, 3-tiered retaining wall system was designed to stabilize the cliff rock face to the lake while providing a 10'x10' overlook tower and direct private dock access via a golf-cart access road.

WVU Baseball Facility Parking Expansion, West Virginia University, Morgantown, WV*

Role: Designer

Civil/Site engineering of the parking lots for the newly constructed baseball stadium for WVU & The Black Bears baseball teams. The project included WVDEP NPDES permitting, site grading, stormwater, lighting, and coordination with public utilities.

Limestone Facility Drainage Improvements, Greer Limestone, Monongalia County, WV*

Role: Designer

Site/Civil Engineering for drainage improvements for the mining facility to adhere to WVDEP requirements.

* Work performed prior to joining CEC



James Christie, P.L.A.

Principal



25 YEARS OF EXPERIENCE

EDUCATION

B.S., Landscape Architecture, West Virginia University, 1998

REGISTRATIONS

Registered Landscape Architect

- CO 747
- WV 414
- MD 4176

Bridgeport Development Authority - Board Member

- 2019 - Present

West Virginia Council of Trout Unlimited - immediate Past Chair

- 2017-2021

Jim is a Principal and licensed Landscape Architect in the Civil department. In his capacity, he is responsible for complete project management within CEC. He is responsible for site design, landscape architecture, site development entitlement services, construction documents, client management, personnel supervision, and construction administration on numerous municipal, commercial, and institutional projects. Jim is a detail-oriented, highly-creative Landscape Architect with 24 years of dedicated experience in designing and implementing projects to support client needs and meet business objectives. His wide range of project experience ranges from landscape design to destination resort design in multiple regions both within the United States and internationally. Jim's passion for recreation as an economic engine shows with over two decades of projects directly related to recreation as a destination and the recreation of economies around tourism as the driver.

PROJECT EXPERIENCE

Upper Kanawha Valley Recreational Tourism Study, Kanawha County Commission, Charleston, WV

The Tracks Resort and ATV Trail System Masterplan, The Shott Foundation, Bluefield, WV

Palatine Park and Boat Ramp Masterplan, Marion County Commission, Fairmont, WV*

Brooke Hills Park Masterplan, Brooke Hills Park, Wellsburg, WV*

Grand Vue Park Masterplan, Omni Associates, Moundsville, WV

Grand Vue Park RV Park, Omni Associates, Moundsville, WV

Wave Pool Masterplan, MCPARC, Pleasant Valley, WV*

Fairmont Connectivity Plan, Mainstreet Fairmont, Fairmont, WV,*

Fairmont Cross Town Connector Trail, City of Fairmont, Fairmont, WV

Norwood All-Inclusive Park, Fairmont Park and Recreation, Fairmont, WV

Treetops Treehouse Village Concept Plan, Treetops LLC, Fayetteville, WV

Bridgeport Rec Center Masterplan, Omni Associates, Bridgeport, WV

Stonewall Resort RV Park and Camping Master Plan, Stonewall Resort Roanoke, WV

Stonewall Resort Passive Park, Stonewall Resort, Roanoke, WV

Tomlinson Run State Park ADA Fishing Access Concept Plan, WVDNR, New Cumberland, WV

Mountain State Jellystone Resort Master Plan, RLI Inc., Charleston, WV

Bee Run Adventure Park Master Plan, Braxton County Development Authority, Flatwoods, WV*

Vienna Park and Recreation Master Plan, City of Vienna, Vienna, WV

Loch Lynn Heights Wetland Boardwalk Trail, Loch Lynn Heights, Loch Lynn Heights, MD*

The Eastern Continental Divide Loop Trail Master Plan, Garrett Trails, Garrett County, MD*

Allegany County Bicycle and Pedestrian Master Plan, Cumberland Area MPO, Allegany County, MD*

Parkersburg Trail Signage Plan, City of Parkersburg, Parkersburg, WV*

Friendsville Bicycle and Pedestrian Masterplan, Town of Friendsville, Friendsville, WV*

Friendsville Trailhead and Boater Parking, Town of Friendsville, Friendsville, WV*

Great Allegheny Passage Mile Markers, Allegheny Trail Alliance, Homestead Allegheny County, PA*

The River Park at Canal Place Feasibility Study, Cumberland, Maryland, Allegany County, MD

** Work performed prior to joining CEC*

PROFESSIONAL AFFILIATIONS

Immediate Past Chair of the Trout Unlimited West Virginia Council

American Society of Landscape Architects



Civil & Environmental Consultants, Inc.



Jon Michaux

Education: B. S, Landscape Architecture, Davis School of Design, West Virginia University
M.A., Landscape Architecture, School of Landscape Architecture and Regional Planning, University of Pennsylvania

Jon studied regional planning under Ian McHarg the inventor of scientific ecologically sound planning principals. He has applied these principals on large scale planning projects regionally in West Virginia, Pennsylvania, New Jersey and New York. Most recently Jon completed "The Tracks" which is a regional tourism based economic development project located in Mercer County, West Virginia. This project included a regional study and road map to change the economic outlook of the region utilizing recreation as the base and change the area from extraction industry to hospitality.



Dustin Toothman

Education: B.S., Architecture, Fairmont State University
M.A., Architecture, University of Tennessee
M.A., Landscape Architecture, University of Tennessee

Mr. Toothman is a graduate from the dual master of architecture, master of landscape architecture program at the University of Tennessee. His experiences throughout design school have made him extremely passionate about architecture and landscape architecture and their connection and influence on the world around us. His main interest has been the relationship between architecture and landscape architecture and the importance of the two profession working together in order to approach design in a more holistic way. He also has been given the opportunity throughout his education to serve as a teaching assistant. He has always been passionate about teaching others what he learned and the power of design education.

In 2018 and 2019 Mr. Toothman was the summer intern for the Tennessee RiverLine. During this internship he developed and ran the Tennessee RiverLine Pilot Community Program. After graduation, he became the Planning and Design Manager. In this position he managed a team to develop project graphics and organized community engagement events that supported the vision for a 652 Mile long trail system on the Tennessee River from Knoxville, TN to Paducah, KY.



Andrew Gosnell

Education: B.S., Landscape Architecture, West Virginia University

A graduate of West Virginia University's Landscape Architecture program, Mr. Gosnell has 3 years of landscape designer experience. He has been involved with master planning projects at a variety of scales, ranging from regional tourism masterplans to site specific mixed use masterplans. In addition, Mr. Gosnell has played a role in the design and development of streetscapes, park and recreation facilities, housing developments, trail planning, site signage development, RV park development, playground design, and landscape planting design. As a part of the design process, Mr. Gosnell develops artistic and photorealistic renderings of masterplans, section elevations, perspectives, and other related graphics to assist clients in showcasing their projects to receive grant funding and attract potential developers.



Lucas Gardner, PE

Education: B.S., Civil Engineering Technology, Fairmont State University

Registration: Professional Engineer (WV)

Mr. Gardner is a registered professional engineer in West Virginia and has contributed to the growth and success of CEC's civil / site practice in the Bridgeport office by providing high quality civil engineering design services. His experience includes performing design of site layout and grading, stormwater management systems, and erosion and sedimentation controls for various markets and clients including architects, real estate developers, municipalities, oil and gas companies, and non-profit organizations. Lucas manages and contributes to multiple phases of projects from conceptual designs and cost estimates to creation of final construction plans and permitting documents.

Nature Trails | DESIGN & BUILD

Our Team

Nature Trails prides itself on employing a diverse group of individuals with eclectic backgrounds and perspectives.



Matt Malone
President



Tara Malone
CFO



Frankie W.
Project Manager



Max H.
GIS Specialist



Rich S., PhD
Civil Engineer



Vic D.
Fleet Manager



Susan D.
Office Manager



Sean W.
Raleigh Area Manager



Jed F.
Construction Foreman



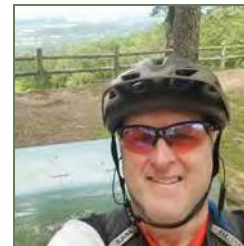
Bryan F.
Construction Foreman



Brandon H.
Maintenance Manager



Trevor M.
Trail Artist



Doug S.
Trail Artist



Rob M.
Trail Artist



Matt P.
Trail Artist



James H.
Trail Artist



Marinne F.
Trail Artist



Nature Trails' Design & Consulting Team



Matt Malone - President

Education: Texas Christian University - Entrepreneurial Management

Licenses & Certifications: General Contractor (NC, SC, UT), LEED AP, USFS Sawyer

Hobbies: Mountain Biking, Traveling, Adventures with Dogs

Nature Trails, LLC: 2017 - Current

President & CEO

Recreational trail design and construction. Responsible for daily operations and strategy, project management and ensuring successful delivery of all executed contracts.



Dallas Off-Road Bicycle Association: 2011 - 2016

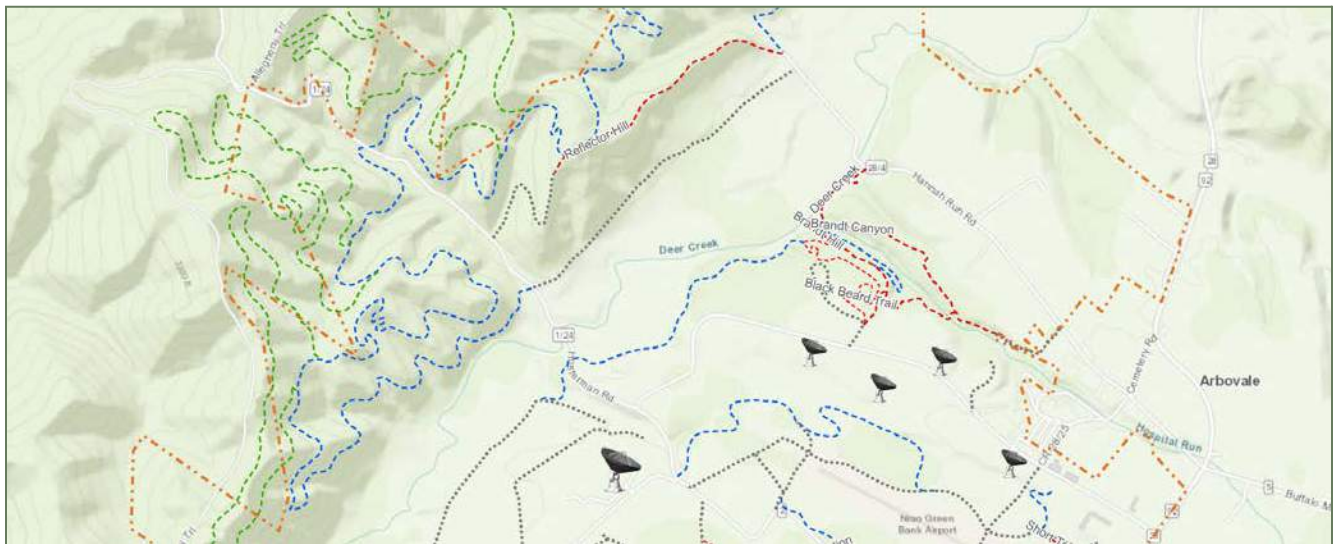
President (2015-2016), VP (2013 - 2014), Event Director (2011 - 2012)

Recreational trail advocacy and development. Land management, maintenance and fundraising to support over 200 miles of natural surface trails.

US Eco-Logic, Inc.: 2015 - 2019

Construction Project Manager

Sustainability consultant and 'green' project management for multi-family and commercial developments.



Featured Project: NRAO Green Bank Observatory (Assessment & Design) - Green Bank, WV



Nature Trails' Design & Consulting Team

Max Hautaniemi - Modeling & GIS Specialist

Education: Rochester Institute of Technology - Photojournalism

Hobbies: Mountain Biking, Dirt Biking, Climbing

Nature Trails, LLC: February 2020 - Current

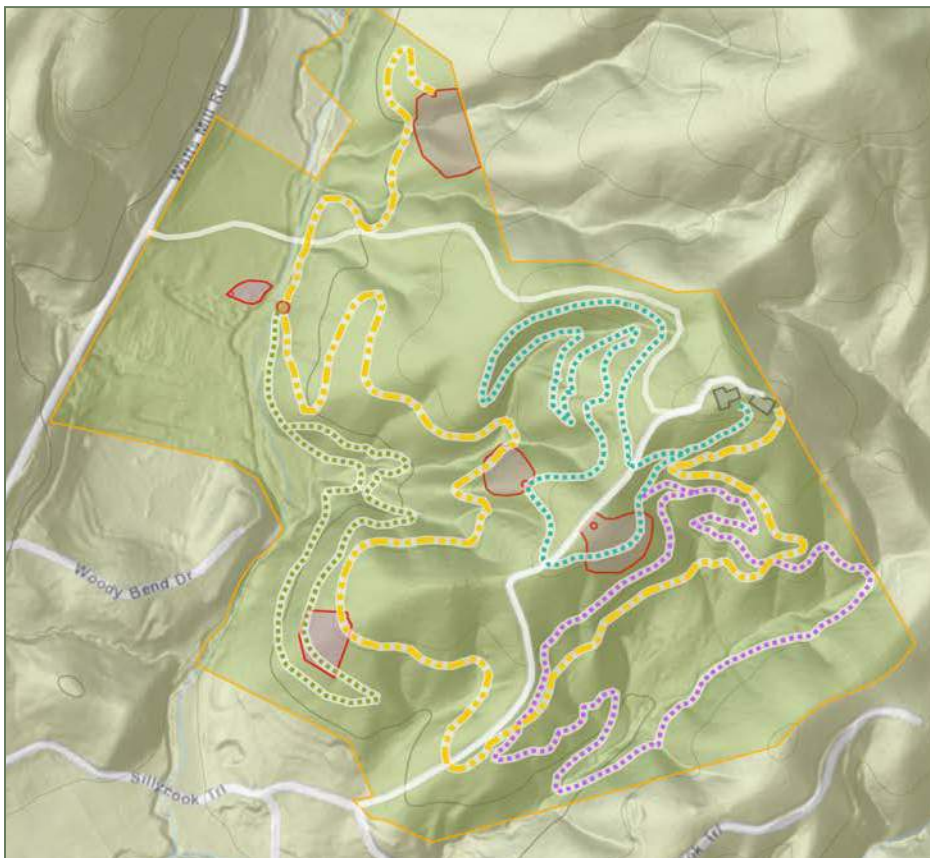
GIS and Design Specialist

Recreational trail construction and logistics, Trail Layout and Design, Land Surveying

Joe Gibbs Racing: 2017 - 2020

Project Coordinator and Content Specialist

Create social media content for Joe Gibbs Racing owned channels, driver channels, and sponsor channels.



Featured Project: 110 Acre Private Trail System (Design & Construction) - Clarksville, GA



Nature Trails' Design & Consulting Team



Frankie Winn - Project Manager

Education: Cape Fear Community College - A.A.S., Mechanical Drafting and Design Engineering Technology

Hobbies: Mountain Biking, Camping, Hiking, Fitness and Yoga

Nature Trails, LLC: January 2022 - Current

Project Manager

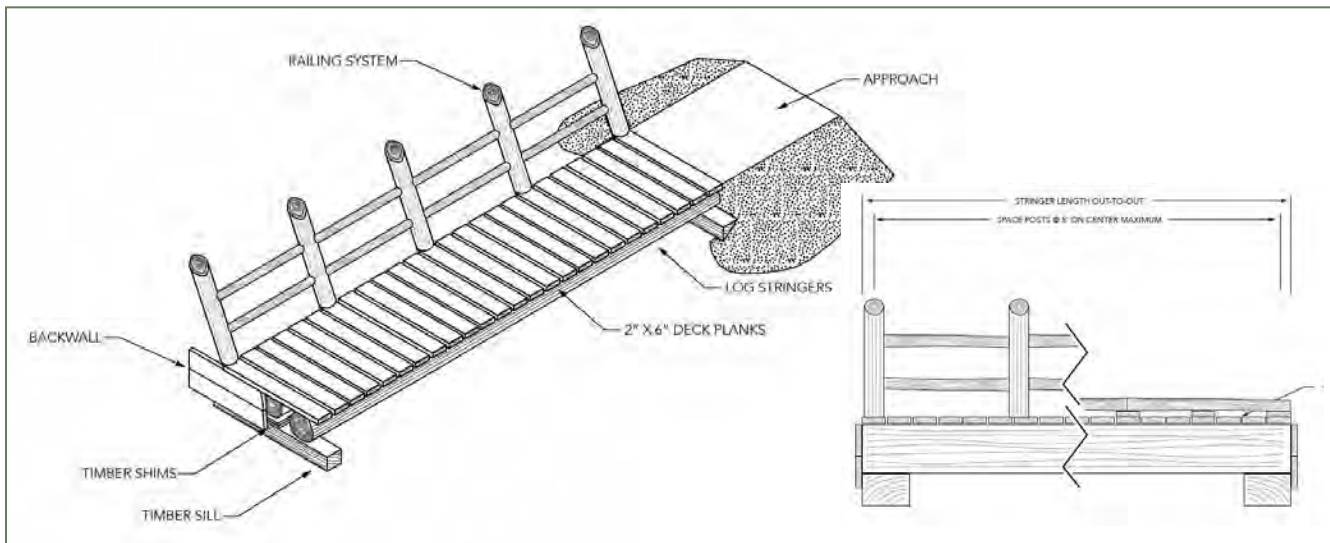
Ensuring efficiency in client communication and maintaining client relationships. Plan/design review and CAD/GIS assistance when necessary. Scheduling and coordinating of various projects and team members.



Summit Design and Engineering Services: 2015 - 2021

CMT Staff Professional II, Civil / Structural CAD Designer II

Served in the CMT and Special Inspections department as a Project Manager and Special Inspector for 3 1/2 years. Managed public and private sector projects. Establishing and maintaining client relationships. Proposal writing, monthly billing and budget review. Produce commercial, institutional and industrial building structural layouts, construction drawings, and details utilizing Revit/BIM and AutoCad. Produce commercial Land Development construction drawings utilizing AutoCad Civil 3D.



Featured Project: *Shinleaf Estates Trail Plan Bridge Detail (Design) - Raleigh, NC*



Nature Trails' Design & Consulting Team

Richard S. Szecsy, PhD. - Civil Engineer

Licenses & Certifications: P.E. (TX, NM, OK, CO, TN, LA, NC, AR), FACI

Education:

Our Lady of the Lake University - M.A., Business Administration

University of Illinois Urbana-Champaign - PhD, Civil Engineering

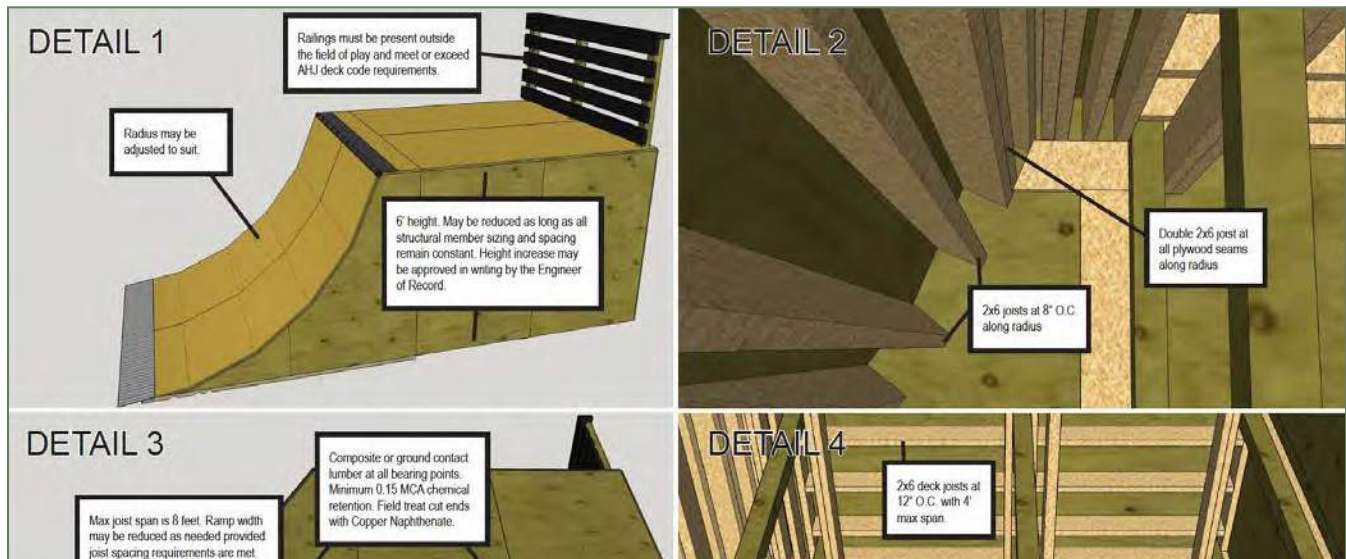
Texas A&M University - B.S., M.S., Civil Engineering

Hobbies: Mountain biking, BBQ'ing, and 'Making Stuff'.



Rich has worked internationally as a technical expert and business development director for a \$4B ready mix and aggregate company, a Department Head at a university, a Vice President and Board member for one of the largest privately held ready-mix concrete and aggregate companies in the US, President & CEO of the largest state aggregate and concrete trade association in the US.. He serves on several state and national committees as well as Boards of Direction for ASTM, ACI, ASCE, and the NRMCA.

He is widely recognized as a national expert in the areas of concrete technologies, recycled materials, concrete construction, and concrete sustainability and resiliency, and in 2014 was named one of the most Influential People in the concrete industry by Concrete Producer magazine.



Featured Project: Sk8 Cary General Ramp Details (Engineering Review & Notes) - Cary, NC





5.0 Project Experience



Civil & Environmental Consultants, Inc.

TOMLINSON RUN STATE PARK TRAIL IMPROVEMENTS

OWNER/CLIENT

West Virginia Division of Natural Resources

LOCATION

New Cumberland, WV

CEC SERVICES

ADA Accessibility Analysis

Landscape Architecture/Land Planning

Bathymetric/Hydrographic Surveys

LiDAR Surveys – Short and Long Range

OWNER OBJECTIVE

The West Virginia Division of Natural Resources (WVDNR) is a state agency that manages and protects natural resources in the state, from wildlife resources to state parks. According to the West Virginia Department of Commerce, WVDNR preserves and protects natural areas of unique scenic, scientific, cultural, archaeological, or historic significance while also providing countless outdoor recreational opportunities for West Virginia residents and visitors.

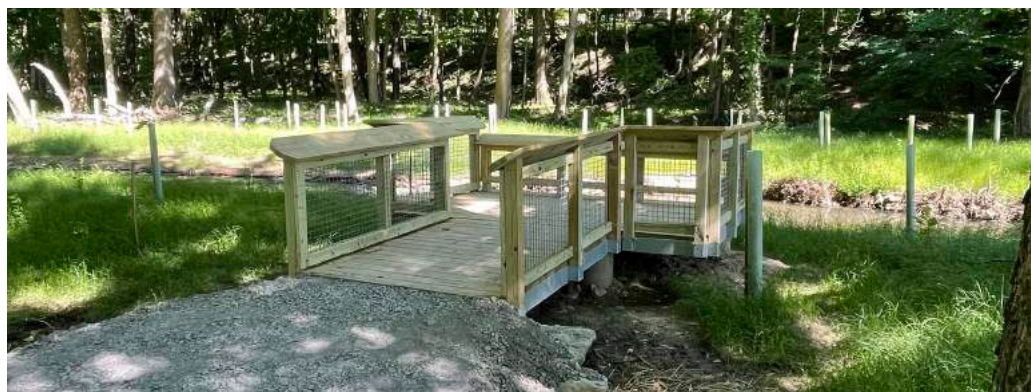
To complement a stream mitigation project within Tomlinson Run State Park, the WVDNR wished to make a new trail alignment and enhance the amenities found along these trails. This would improve the visitor experience at the State Park and encourage visitors to be more engaged with the surrounding park ecosystem. Tomlinson Run State Park is located near the top of the northern panhandle in West Virginia. The 1,398 acres include a heavily forested wilderness area and a developed area with traditional park amenities, such as hiking, fishing, boating, swimming, and camping.

CEC APPROACH

Following the analysis of existing site conditions and the proposed stream mitigation design, CEC proposed a trail alignment that best followed the improved stream and wetland areas. Identified platform locations were chosen following the analysis and were based on areas with the best fishing access or the best views.

The stream mitigation project included the transformation of three earthen dam ponds into wetlands and the restoration of the South Fork Tomlinson Run for improved fish habitat. Our proposed trail improvements complement the mitigation project and showcase the work that was completed. Care had to be taken during the design phase of the project to ensure that the proposed improvements were ADA compliant, due to the steep terrain found at the site.

The final design included approximately 3,000 feet of trail improvements, six fishing platforms (three of which are ADA compliant), two overlook platforms with views of the wetlands, a bird blind, and interpretive signage explaining the surrounding wildlife and the importance of the environmental work being completed. The final design enhanced park amenities for visitors. The project is under construction and is expected to be completed in July 2022.



UPPER KANAWHA VALLEY (13 COMMUNITIES)

OWNER/CLIENT

The Kanawha County Commission

LOCATION

Various Counties, West Virginia

CEC SERVICES

Public Engagement

Social Economics

Planning

Branding Study

Landscape Architecture

“The Valley” is an inspired ecotourism destination surrounded by the natural beauty of the Kanawha Valley. The location serves as a gateway between Charleston and the New River Gorge filling in the missing tourism gap by providing amenities unknown to the area. Dramatic hillsides, tree canopies, and framed river views offer a natural playground for recreation, leisure, and discovery. An extensive network of river access, walkways and elevated trails weave through the Valley, tying together a hierarchy of outdoor spaces to the thirteen communities nestled within the Valley. The existing landscape lends itself to engaging outdoor amenities such as trailblazing, horseback riding, off-road jeep adventures, ATV networks and diverse lodging opportunities like glamping (glamor camping).

Our team’s vision serves as a catalyst for tourism growth in the Upper Kanawha Valley through providing master planning and design development for interventions along the Kanawha river as well as the surrounding valley landscape. The vision of starting and ending the adventures in the communities of the Valley will bring locals and visitors alike to a unique network of communities and outdoor recreation.



THE TRACKS ATV TRAIL AND RESORT MASTERPLAN

OWNER/CLIENT

The Hugh I Shott, Jr., Foundation Inc.

LOCATION

Bluefield, WV

CEC SERVICES

Landscape Architecture/Land Planning

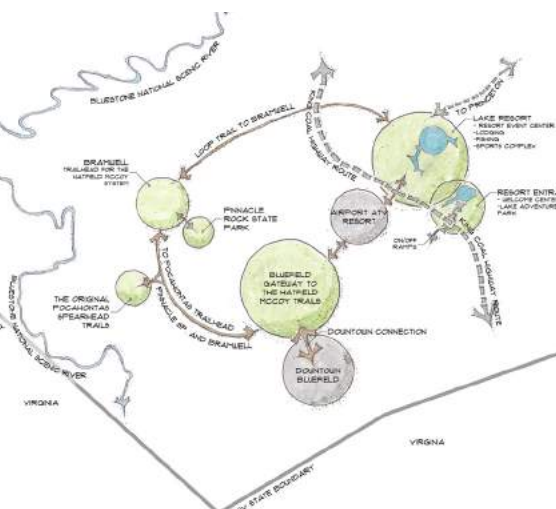
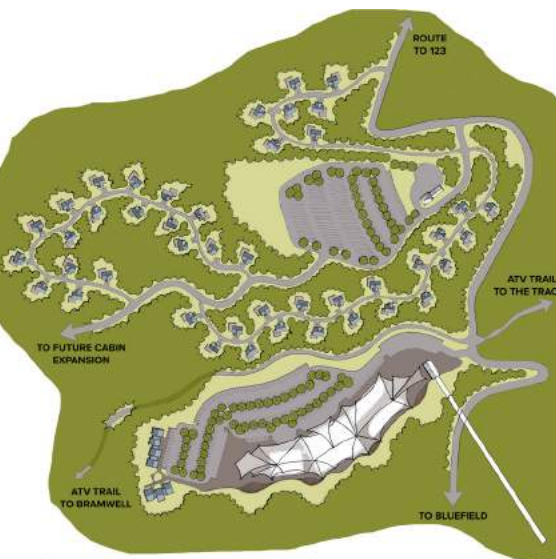
OWNER OBJECTIVE

The Hugh I Shott, Jr., Foundation Inc. (The Shott Foundation) was established in 1984 to assist in the improvement of the social and economic quality of life for those who live within the Bluefield, West Virginia region. They support projects that invest in the community and strive to make Bluefield a better place.

Located in the southernmost point of West Virginia, Bluefield was once the transportation and financial center of the coal mining industry but has since seen a prolonged economic and physical decline. In response to this decline, Bluefield has taken action to diversify its economy. The client needed a masterplan of a 60+ mile all-terrain vehicle (ATV) trail system that would link Bluefield to other existing regional ATV trail systems and amenities. The plan would also include other amenities related to tourism to transform Bluefield into an ATV tourism destination.

CEC APPROACH

CEC began the project by analyzing existing conditions within the city through several site visits and meetings with the client, government entities, and stakeholders. Following this initial phase, our design team analyzed the information gathered, along with other publicly available Geographic Information System (GIS) data, to create an initial project concept. The CEC team then presented the initial concept to the client and finished designing the masterplan. Our final plan proposed the creation of 70+ miles of ATV trails, 800+ units of various lodging types, and a variety of outdoor amenities and attractions (including a gondola system, ziplining, a Snowflex tubing hill, kayaking, hiking and biking trails, etc.). The plan also provides opportunities for event venues and further development to revitalize downtown Bluefield. Bluefield is situated within the Appalachian Mountains, surrounded by steep terrain and high elevations. CEC viewed these challenges as an asset and utilized these natural resources in the proposed masterplan to create great outdoor adventures for visitors and residents.



All design proposals were assembled into a final book that has been used by the client and others to apply for grants and gain support from federal agencies. Various entities involved in the project are currently using the plan in their search for construction developers.

VIENNA PARKS AND RECREATION MASTER PLAN

OWNER/CLIENT

Vienna Parks & Recreation

LOCATION

Vienna, WV

CEC SERVICES

Existing Conditions Analysis

Community Engagement

Landscape Architecture/Land Planning

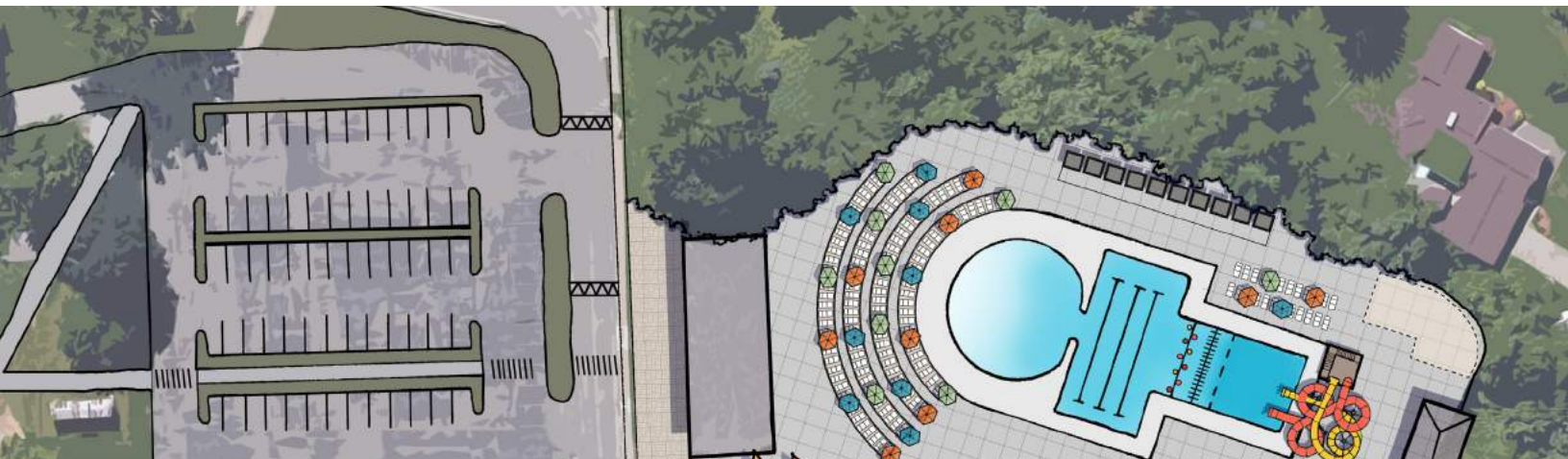
Master Plan

OWNER OBJECTIVE

The City of Vienna, WV offers many great parks and outdoor amenities to their community. Recently the city wished to make needed improvements to existing park facilities, but were not sure on the correct approach. With no existing Parks and Recreation masterplan, Vienna was lacking an overall guiding vision to direct the city in their decisions. They sought out the expertise of an outside design team to analyze the existing parks system and to propose new concepts and priorities to the city. This would assist in their decision making process.

CEC APPROACH

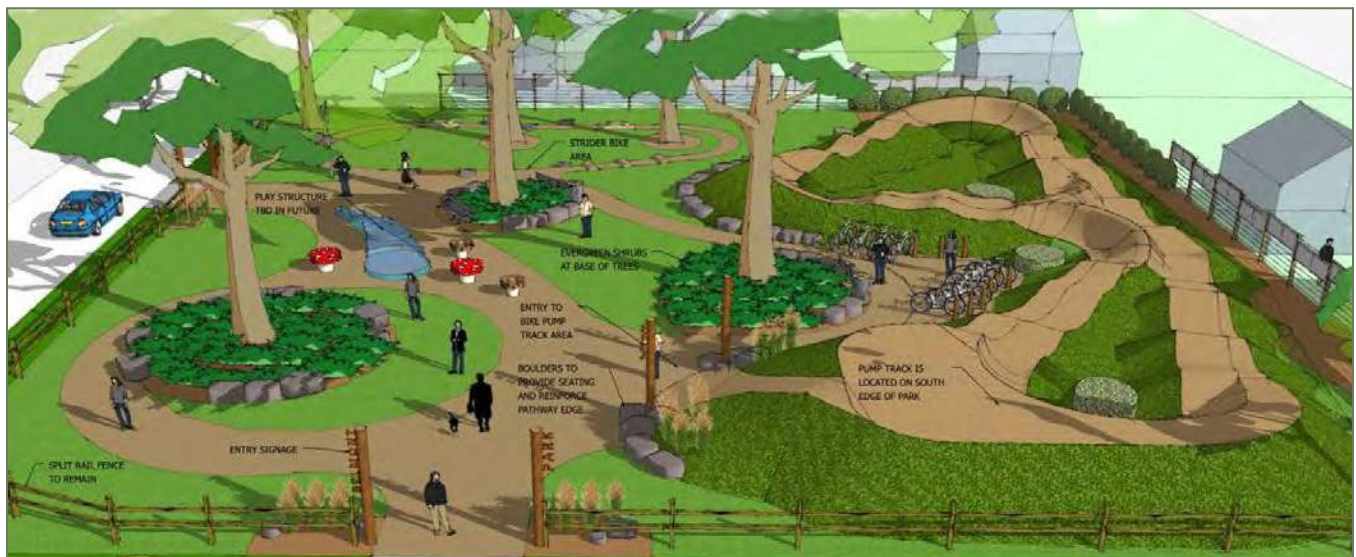
The CEC design team began the project by performing an existing conditions analysis. This included a site visit to all parks and an initial public meeting to meet community members and listen to what improvements they wanted in their parks system. To further support the community, an online input survey was created and shared with residents. The goal of this step was to hear opinions from a greater audience to further direct the design. After analyzing all information gathered, CEC began to create a series of recommendations to enhance the parks system. These proposed concepts addressed areas of concern voiced by the community, as well as areas of concern that were identified by the design team. The final product presented to city council was a masterplan book that documented the evolution of the design process, explained the proposed recommendations, and proposed priority projects for the city. This product can be used by the City of Vienna to direct Parks projects and funding in a way that improves the existing parks system to better serve the community.



Featured Design Project

Belmont Park - Durham NC Parks & Rec

Design / Build of a 140ft x 140ft urban park with challenging design requirements including 15ft buffers around all heritage trees, no runoff into neighboring residences, and no impervious surfaces. Stormwater was managed with a combination of rain gardens inside the bicycle pump track and perimeter with overflow into subgrade cisterns. Native boulders and live edge cedar slabs created seating and a local chainsaw artist carved a dragon for children to climb on as a public art installation.



Featured Design Project

Wildwood Park - Greenville NC Parks & Rec

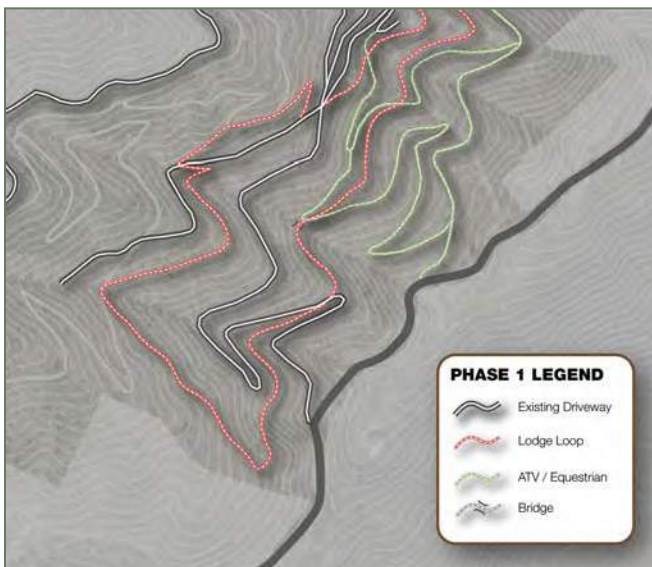
Design and activation of an unused floodplain parcel. A combination of asphalt and natural surface trails for use by cyclists of all ages and abilities. The asphalt surface also allows use by skateboards, scooters, roller skates, and other wheeled sports.



Featured Design Project

Elk & Embers Resort - Waynesville, NC

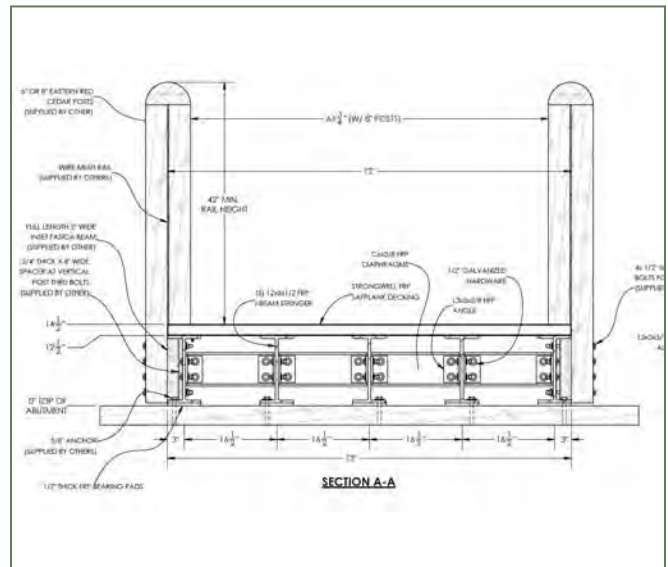
Design of a natural surface trail system for guests at this luxurious glamping resort in Western North Carolina. Trail systems included hiking trails, bridges, waterfall overlooks, equestrian trails, and UTV maintenance trails. Conceptualized as a 'build your own adventure' experience to allow users options of 10 minute, 30 minute, 1 hour, and multi-hour recreation opportunities.



Featured Design & Construction Project

Lake Johnson Trail Structures - Raleigh, NC

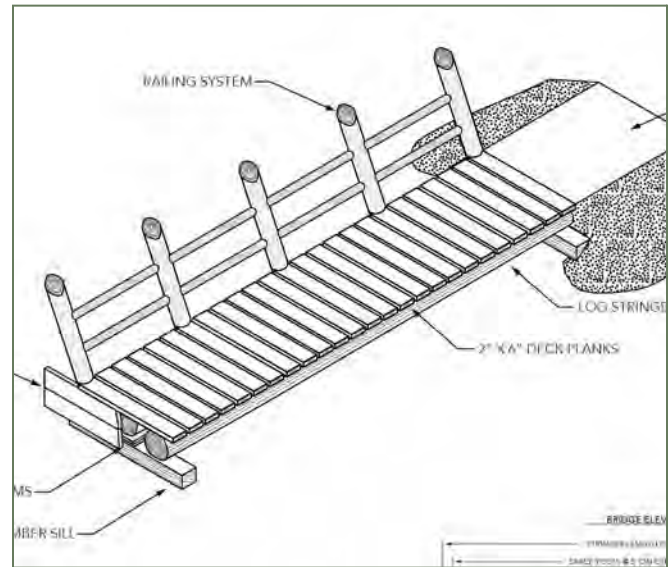
Partnering with the Timmons Group for design of engineered, yet beautiful structures at the Thomas G. Crowder Woodland Center, we conceptualized using pre-engineered Fiber Reinforced Polymer (FRP) bridge stringers and decking in combination with native cedar timbers to create an eye catching bridge that blends with the forest while meeting stringent municipal engineering requirements.



Featured Design & Construction Project

Carolina Thread Trail - Cramerton, NC

Partnering with the Catawba Lands Conservancy and the Town of Cramerton, we developed a comprehensive trail design for a 6ft wide aggregate greenway that weaved users through urban forests and created 'A getaway without getting away' right inside the city limits.



Project List

2017 ↓

- Briar Chapel Skills Park - Chapel Hill, NC
- Houghton Family Pump Track - Littleton, NC
- Pickards Mountain Master Trail Plan - Chapel Hill, NC

2018 ↓

- Galloway Nature Preserve Ph1 - Pittsboro, NC
- Well of Mercy Trails - Hamptonville, NC
- SIM USA Hiking Trails - Charlotte, NC
- Totten Family Bike Park - Raleigh, NC
- Briar Chapel Timber Bridge - Chapel Hill, NC

2019 ↓

- Galloway Nature Preserve Ph2 - Pittsboro, NC
- Avery Creek Trail - Pisgah NF, NC
- Black Mtn Trail - Pisgah NF, NC
- Buckwheat Knob Trail - Pisgah NF, NC
- REEB Ranch Jump Line - Hendersonville, NC
- MLK Jr Park Pump Track - Carrboro, NC
- Galloway Nature Preserve Ph3 - Pittsboro, NC
- Lew Family Bike Park - Raleigh, NC
- Cates Farm Master Trail Plan - Mebane, NC
- Lake Michael Master Trail Plan - Mebane, NC
- Green Bank Observatory Master Trail Plan - Green Bank, WV

2020 ↓

- Bristol ATV Trail - Bristol, TN
- Dilweg Campus Walking Trails - Durham, NC
- El Pizote Bike Park - San Jose, Costa Rica
- Coachwhip NICA Trail - Little Rock, AR
- Durham Central Park Trail - Durham, NC
- Richmond Hill Skills Trail - Asheville, NC
- Silver Steps Hiking Trail - Caesar's Head State Park, SC
- Back Alley Bikes Dirt Bowl - Carrboro, NC
- Protzman Family Bike Park - Pittsboro, NC
- City Creek Canyon Trails - Salt Lake City, UT
- Alley Family Bike Trails - Brevard, NC - 2020
- Specialized Bicycles Retail Store Kiosks - Nationwide
- Cervati Family Pump Track - Durham, NC
- Sk8 Cary Bike Park Design - Cary, NC
- Cates Farm Trail System - Mebane, NC
- Marvin Efirid Park Trail - Marvin, NC

2021 ↓

- Avocet Trail Assessment - Holly Springs, NC
- Granville Co. Master Trail Plan - Oxford, NC
- Durham Co. Boardwalk - Durham, NC
- Belmont Park Pump Track - Durham, NC
- Twin Peaks Trail - Salt Lake City, UT
- Great Western Connector Trail - Wasatch National Forest, UT
- Rattlesnake Trail - Wasatch NF, UT
- Elk & Embers Resort Master Trail Plan - Waynesville, NC
- Massey Family Hiking Trail - Lake Lure, NC
- Ziadie Family Hiking Trail - Lake Lure, NC
- Carolina Thread Trail - Belmont, NC
- Canopy Flow Trail - Belmont, NC
- Boulder Tech Trail - Belmont, NC
- Blue Dog Farm Trails - Mebane, NC
- Wendell Falls Master Trail Plan - Wendell, NC
- Galloway Nature Preserve Ph4 - Pittsboro, NC
- Crowder Woodland Center Bridge Design - Raleigh, NC
- Specialized Sea Otter Booth - Monterey, CA
- Shinleaf Estates Master Plan - Raleigh, NC
- Pickards Mountain Trail - Chapel Hill, NC
- Northeast District Park Trail - Chapel Hill, NC
- Carolina Thread Trail Design - Lowell, NC

2022 ↓

- Eagle Flow Trail - Cramerton, NC
- Southwest District Park Trail - Bear Creek, NC
- Battle Park Bike Trails - Rocky Mount, NC
- Frangis Family UTV Trails - Clarksville, GA
- Wildwood Park Master Trail Plan - Greenville, NC
- NC State MTB Trails - Raleigh, NC
- Wendell Falls Trails - Wendell, NC
- Ventosa Master Trail Plan - Denver, NC
- Little River Bike Park Assessment - Hillsborough, NC
- Cramer Mountain Trail Design - Cramerton, NC
- Lake Johnson FRP Bridge - Raleigh, NC
- Kuka Family Bike Park - Cullowhee, NC
- REEB Ranch Master Trail Plan - Hendersonville, NC
- Specialized Shoe & Helmet Displays - Nationwide

Client Letters of Reference:

<https://www.naturetrailsnc.com/letters-of-reference/>



6.0 References

Ms. Terrell Ellis

Owner
Terrell Ellis & Associates
1045 Bridge Street
Charleston, WV 25314
304-342-6972
tellis@te-associates.com

Ms. Dee Dee Ritchie

Executive Director
Canal Place Preservation and Development Authority
13 Canal Street Suite 301
Cumberland, MD 21502
301-742-3655

Mr. Jay Shott

COO
Diamondback Development
131 Plantation Ridge Drive
Mooresville, NC 28117
(704) 309-9880
jshott@diamondbackllc.com

Ms. Sarah Elkins

WV Community Development Hub, Lewisburg City Council
304-646-5508

Mr. Jon Cooper

National Radio Astronomy Observatory
540-556-8456

Mr. David Griffen

City of Rocky Mount, NC
252-343-3142

Mr. Tyler Fonarow

SLC Corp
415-310-7748



April 20, 2022

[Redacted]

Dear [Redacted],

I am writing today to express my sincere support for and confidence in Nature Trails LLC, one of the contractors submitting an RFQ for the [Redacted] Trail System project. Trails Utah has previously contracted with Nature Trails on two different trail construction projects in Salt Lake County in 2021, a portion of the Upper Pipeline Trail and the new Rattlesnake Trail, both in Millcreek Canyon. We will be contracting them again on the Grandeur Peak section of the Bonneville Shoreline Trail to be built this summer.

We have consistently found Matt Malone and his crew to be responsive, more than capable, and highly professional, allowing us to meet budgets, timelines, and reporting requirements. Nature Trails repeatedly demonstrated the ability to meet difficult terrain and trail building challenges and the quality of the work performed exceeded expectations. Trails Utah is thrilled to endorse Nature Trails and work with them to bring needed trail resources to Salt Lake County. Please give them every consideration in your quest to hire a trail builder and contractor who can tackle the many facets of the [Redacted] Trail System project.

Sincerely,



Sarah L. Bennett
Executive Director, Trails Utah

GALLOWAY RIDGE AT FEARRINGTON

To Whom It May Concern,

I am the wellness program manager at Galloway Ridge, a retirement community in Pittsboro, NC. Last year, Galloway Ridge decided to invest in creating a trail system and dog park for our residents and staff to more easily enjoy our campus green spaces. Soon after beginning the process and after a number of bids, it was an easy choice for us to choose Nature Trails. They responded quickly, thoughtfully listened to our ideas, gave us concrete examples of what they had in mind, and had creative problem solving suggestions.

As the project went on, we continued to be impressed by Nature Trail's work ethic, timeliness, and willingness to reevaluate and listen to concerns along the way. Matt and the Nature Trails team go the extra mile to ensure the job is done to the highest level of completion. Due to our older adult population, it was especially important to us to create a wide path, minimizing elevation changes, and removing tripping hazards. Nature Trails accommodated those concerns, while still keeping the trail interesting and aesthetically beautiful.

Since the completion of Phase I of our trail system and Bark Park, Nature Trails has added a Phase II and III to our trail system. Nature Trails has supported us in maintaining these areas and has also been hugely helpful in a variety of other projects to improve our outdoor spaces. They are responsive, professional, honest, and always willing to offer advice and assistance when needed.

I highly recommend Nature Trails for developing your outdoor spaces, as they have maintained the same level of dedication and craftsmanship on their work at Galloway Ridge since the start of our partnership. If you have additional questions, please don't hesitate to reach out at ccansler@gallowayridge.com.

Sincerely,



Cori Cansler



7.0 Additional Documents



CERTIFICATE OF LIABILITY INSURANCE

12/31/2023 DATE (MM/DD/YYYY)
1/3/2023

THIS CERTIFICATE IS ISSUED AS A MATTER OF INFORMATION ONLY AND CONFERS NO RIGHTS UPON THE CERTIFICATE HOLDER. THIS CERTIFICATE DOES NOT AFFIRMATIVELY OR NEGATIVELY AMEND, EXTEND OR ALTER THE COVERAGE AFFORDED BY THE POLICIES BELOW. THIS CERTIFICATE OF INSURANCE DOES NOT CONSTITUTE A CONTRACT BETWEEN THE ISSUING INSURER(S), AUTHORIZED REPRESENTATIVE OR PRODUCER, AND THE CERTIFICATE HOLDER.

IMPORTANT: If the certificate holder is an ADDITIONAL INSURED, the policy(ies) must have ADDITIONAL INSURED provisions or be endorsed. If SUBROGATION IS WAIVED, subject to the terms and conditions of the policy, certain policies may require an endorsement. A statement on this certificate does not confer rights to the certificate holder in lieu of such endorsement(s).

PRODUCER Lockton Companies 444 W. 47th Street, Suite 900 Kansas City MO 64112-1906 (816) 960-9000 kctsu@lockton.com	CONTACT NAME: PHONE (A/C, No. Ext): _____ FAX (A/C, No): _____ E-MAIL ADDRESS: _____													
	<table border="1"> <tr> <th>INSURER(S) AFFORDING COVERAGE</th> <th>NAIC #</th> </tr> <tr> <td>INSURER A: Allied World Surplus Lines Insurance Company</td> <td>24319</td> </tr> <tr> <td>INSURER B:</td> <td></td> </tr> <tr> <td>INSURER C:</td> <td></td> </tr> <tr> <td>INSURER D:</td> <td></td> </tr> <tr> <td>INSURER E:</td> <td></td> </tr> <tr> <td>INSURER F:</td> <td></td> </tr> </table>	INSURER(S) AFFORDING COVERAGE	NAIC #	INSURER A: Allied World Surplus Lines Insurance Company	24319	INSURER B:		INSURER C:		INSURER D:		INSURER E:		INSURER F:
INSURER(S) AFFORDING COVERAGE	NAIC #													
INSURER A: Allied World Surplus Lines Insurance Company	24319													
INSURER B:														
INSURER C:														
INSURER D:														
INSURER E:														
INSURER F:														
INSURED 1518231 CIVIL & ENVIRONMENTAL CONSULTANTS, INC. 700 CHERRINGTON PARKWAY MOON TOWNSHIP PA 15108														

COVERAGES **CERTIFICATE NUMBER:** 19224127 **REVISION NUMBER:** XXXXXXXX

THIS IS TO CERTIFY THAT THE POLICIES OF INSURANCE LISTED BELOW HAVE BEEN ISSUED TO THE INSURED NAMED ABOVE FOR THE POLICY PERIOD INDICATED. NOTWITHSTANDING ANY REQUIREMENT, TERM OR CONDITION OF ANY CONTRACT OR OTHER DOCUMENT WITH RESPECT TO WHICH THIS CERTIFICATE MAY BE ISSUED OR MAY PERTAIN, THE INSURANCE AFFORDED BY THE POLICIES DESCRIBED HEREIN IS SUBJECT TO ALL THE TERMS, EXCLUSIONS AND CONDITIONS OF SUCH POLICIES. LIMITS SHOWN MAY HAVE BEEN REDUCED BY PAID CLAIMS.

INSR LTR	TYPE OF INSURANCE	ADDL INSD	SUBR WVD	POLICY NUMBER	POLICY EFF (MM/DD/YYYY)	POLICY EXP (MM/DD/YYYY)	LIMITS
	COMMERCIAL GENERAL LIABILITY <input type="checkbox"/> CLAIMS-MADE <input type="checkbox"/> OCCUR GEN'L AGGREGATE LIMIT APPLIES PER: <input type="checkbox"/> POLICY <input type="checkbox"/> PRO-JECT <input type="checkbox"/> LOC <input type="checkbox"/> OTHER: _____			NOT APPLICABLE			EACH OCCURRENCE \$ XXXXXXXX DAMAGE TO RENTED PREMISES (Ea occurrence) \$ XXXXXXXX MED EXP (Any one person) \$ XXXXXXXX PERSONAL & ADV INJURY \$ XXXXXXXX GENERAL AGGREGATE \$ XXXXXXXX PRODUCTS - COMP/OP AGG \$ XXXXXXXX \$ _____
	AUTOMOBILE LIABILITY <input type="checkbox"/> ANY AUTO <input type="checkbox"/> OWNED AUTOS ONLY <input type="checkbox"/> SCHEDULED AUTOS NON-OWNED AUTOS ONLY <input type="checkbox"/> HIRED AUTOS ONLY <input type="checkbox"/>			NOT APPLICABLE			COMBINED SINGLE LIMIT (Ea accident) \$ XXXXXXXX BODILY INJURY (Per person) \$ XXXXXXXX BODILY INJURY (Per accident) \$ XXXXXXXX PROPERTY DAMAGE (Per accident) \$ XXXXXXXX \$ XXXXXXXX
	UMBRELLA LIAB <input type="checkbox"/> OCCUR EXCESS LIAB <input type="checkbox"/> CLAIMS-MADE DED RETENTION \$			NOT APPLICABLE			EACH OCCURRENCE \$ XXXXXXXX AGGREGATE \$ XXXXXXXX \$ XXXXXXXX
	WORKERS COMPENSATION AND EMPLOYERS' LIABILITY ANY PROPRIETOR/PARTNER/EXECUTIVE OFFICER/MEMBER EXCLUDED? (Mandatory in NH) <input type="checkbox"/> Y / N If yes, describe under DESCRIPTION OF OPERATIONS below			NOT APPLICABLE			PER STATUTE OTH-ER E.L. EACH ACCIDENT \$ XXXXXXXX E.L. DISEASE - EA EMPLOYEE \$ XXXXXXXX E.L. DISEASE - POLICY LIMIT \$ XXXXXXXX
A	PROFESSIONAL LIABILITY	N	N	0313-6673	12/31/2022	12/31/2023	\$1,000,000 EACH CLAIM; \$1,000,000 ANNUAL AGGREGATE

DESCRIPTION OF OPERATIONS / LOCATIONS / VEHICLES (ACORD 101, Additional Remarks Schedule, may be attached if more space is required) FOR EVIDENTIARY PURPOSES ONLY

CERTIFICATE HOLDER 19224127 CIVIL & ENVIRONMENTAL CONSULTANTS, INC 700 CHERRINGTON PARKWAY MOON TOWNSHIP PA 15108	CANCELLATION SHOULD ANY OF THE ABOVE DESCRIBED POLICIES BE CANCELLED BEFORE THE EXPIRATION DATE THEREOF, NOTICE WILL BE DELIVERED IN ACCORDANCE WITH THE POLICY PROVISIONS. AUTHORIZED REPRESENTATIVE:
--	---



DESIGNATED CONTACT: Vendor appoints the individual identified in this Section as the Contract Administrator and the initial point of contact for matters relating to this Contract.

(Printed Name and Title) James Christie, PLA - Principal

(Address) 120 Genesis Boulevard, Bridgeport, WV 26330

(Phone Number) / (Fax Number) 304-933-3119 / 304-933-3327

(email address) jchristie@cecinc.com

CERTIFICATION AND SIGNATURE: By signing below, or submitting documentation through *wvOASIS*, I certify that: I have reviewed this Solicitation/Contract in its entirety; that I understand the requirements, terms and conditions, and other information contained herein; that this bid, offer or proposal constitutes an offer to the State that cannot be unilaterally withdrawn; that the product or service proposed meets the mandatory requirements contained in the Solicitation/Contract for that product or service, unless otherwise stated herein; that the Vendor accepts the terms and conditions contained in the Solicitation, unless otherwise stated herein; that I am submitting this bid, offer or proposal for review and consideration; that this bid or offer was made without prior understanding, agreement, or connection with any entity submitting a bid or offer for the same material, supplies, equipment or services; that this bid or offer is in all respects fair and without collusion or fraud; that this Contract is accepted or entered into without any prior understanding, agreement, or connection to any other entity that could be considered a violation of law; that I am authorized by the Vendor to execute and submit this bid, offer, or proposal, or any documents related thereto on Vendor's behalf; that I am authorized to bind the vendor in a contractual relationship; and that to the best of my knowledge, the vendor has properly registered with any State agency that may require registration.

By signing below, I further certify that I understand this Contract is subject to the provisions of West Virginia Code § 5A-3-62, which automatically voids certain contract clauses that violate State law; and that pursuant to W. Va. Code 5A-3-63, the entity entering into this contract is prohibited from engaging in a boycott against Israel.

Civil & Environmental Consultants, Inc.

(Company) 

(Signature of Authorized Representative)

James Christie, PLA - Principal - September 19, 2023

(Printed Name and Title of Authorized Representative) (Date)

304-933-3119 / 304-933-3327

(Phone Number) (Fax Number)

jchristie@cecinc.com

(Email Address)



ADDENDUM ACKNOWLEDGEMENT FORM
SOLICITATION NO.: DNR240000002

Instructions: Please acknowledge receipt of all addenda issued with this solicitation by completing this addendum acknowledgment form. Check the box next to each addendum received and sign below. Failure to acknowledge addenda may result in bid disqualification.

Acknowledgment: I hereby acknowledge receipt of the following addenda and have made the necessary revisions to my proposal, plans and/or specification, etc.

Addendum Numbers Received:
(Check the box next to each addendum received)

- | | |
|---|--|
| <input type="checkbox"/> Addendum No. 1 | <input type="checkbox"/> Addendum No. 6 |
| <input type="checkbox"/> Addendum No. 2 | <input type="checkbox"/> Addendum No. 7 |
| <input type="checkbox"/> Addendum No. 3 | <input type="checkbox"/> Addendum No. 8 |
| <input type="checkbox"/> Addendum No. 4 | <input type="checkbox"/> Addendum No. 9 |
| <input type="checkbox"/> Addendum No. 5 | <input type="checkbox"/> Addendum No. 10 |

I understand that failure to confirm the receipt of addenda may be cause for rejection of this bid. I further understand that any verbal representation made or assumed to be made during any oral discussion held between Vendor's representatives and any state personnel is not binding. Only the information issued in writing and added to the specifications by an official addendum is binding.

Civil & Environmental Consultants, Inc.

Company

Authorized Signature

September 7, 2023

Date

NOTE: This addendum acknowledgment should be submitted with the bid to expedite document processing.



Civil & Environmental
Consultants, Inc.

120 Genesis Boulevard | Bridgeport, WV 26330 | www.cecinc.com