



Department of Administration  
 Purchasing Division  
 2019 Washington Street East  
 Post Office Box 50130  
 Charleston, WV 25305-0130

State of West Virginia  
 Centralized Request for Quote  
 Equipment

<b>Proc Folder:</b> 1033516			<b>Reason for Modification:</b> ADDENDUM NO_3 Vendor Questions and responses
<b>Doc Description:</b> ADDENDUM NO_3 Double Drum Roller			
<b>Proc Type:</b> Central Master Agreement			
<b>Date Issued</b>	<b>Solicitation Closes</b>	<b>Solicitation No</b>	<b>Version</b>
2022-05-31	2022-06-22 13:30	CRFQ 0803 DOT2200000165	4

**BID RECEIVING LOCATION**


BID CLERK  
 DEPARTMENT OF ADMINISTRATION  
 PURCHASING DIVISION  
 2019 WASHINGTON ST E  
 CHARLESTON WV 25305  
 US

06/22/22 10:49:47  
 WV Purchasing Division

**VENDOR**

**Vendor Customer Code:** 00000205464  
**Vendor Name :** STATE EQUIPMENT, INC.  
**Address :** 560 NEW GOFF MOUNTAIN ROAD  
**Street :**  
**City :** CROSS LANES  
**State :** WV **Country :** USA **Zip :** 25313  
**Principal Contact :** EDDIE ROWAN, JR  
**Vendor Contact Phone:** (304)776-4405 **Extension:** 1012

**FOR INFORMATION CONTACT THE BUYER**  
 John W Estep  
 304-558-2566  
 john.w.estep@wv.gov

**Vendor Signature X**  **FEIN#** 550658298 **DATE** 6/21/22

All offers subject to all terms and conditions contained in this solicitation

**ADDITIONAL INFORMATION**

ADDENDUM NO\_3

Addendum No\_3 issued to publish and distribute the attached information to the Vendor Community

**REQUEST FOR QUOTATION:**

The West Virginia Purchasing Division is soliciting bids on behalf of the West Virginia Division of Highways, Department of Transportation to establish an open-end contract for a Double drum roller. Per the Bid Requirements, Specifications, Terms and Conditions attached to this Solicitation.

INVOICE TO		SHIP TO	
DIVISION OF HIGHWAYS EQUIPMENT DIVISION RT 33 83 BRUSHY ROAD CROSSING, PO BOX 610 BUCKHANNON WV US		DIVISION OF HIGHWAYS EQUIPMENT DIVISION 83 BRUSHY FORK RD CROSSING BUCKHANNON WV US	

Line	Comm Ln Desc	Qty	Unit Issue	Unit Price	Total Price
1	Double Drum Roller	10.00000	EA	\$54,380.00	\$543,800.00

Comm Code	Manufacturer	Specification	Model #
22101505	CASE	DOUBLE DRUM ROLLER	DV45E

**Extended Description:**

Double Drum Roller

**SCHEDULE OF EVENTS**


<u>Line</u>	<u>Event</u>	<u>Event Date</u>
1	Prebid 9:00am Buckhannon WV	2022-05-19
2	Tech Questions due by 10:00am	2022-05-26

	Document Phase	Document Description	Page 3
DOT2200000165	Final	ADDENDUM NO_3 Double Drum Roller	

**ADDITIONAL TERMS AND CONDITIONS**


See attached document(s) for additional Terms and Conditions

**VENDOR:** STATE EQUIPMENT, INC. **Class 591**

Item No.	Description:	Model & Part Number Being Bid	Estimated Unit Quantity	Unit Price	Item Total Cost
1	Double drum roller	CASE DV45E	10	\$54,380.00	\$543,800.00
<b>Total Bid Cost</b>					\$543,800.00

**Bid Will Be Awarded To The Lowest Overall Bid Total For All Items**

**Vendor Information**

<b>Company Name:</b> STATE EQUIPMENT, INC
<b>Contact Manager:</b> EDDIE ROWAN, JR
<b>Address:</b> 560 NEW GOFF MOUNTAIN ROAD CROSS LANES, WV 25313
<b>Phone:</b> (304)776-4405
<b>Fax:</b> (304)776-4409
<b>E-mail:</b> eddie@stateequipment.com
<b>Signature:</b> 

**ADDENDUM ACKNOWLEDGEMENT FORM**  
**SOLICITATION NO.: CRFO DOT2200000165**

**Instructions:** Please acknowledge receipt of all addenda issued with this solicitation by completing this addendum acknowledgment form. Check the box next to each addendum received and sign below. Failure to acknowledge addenda may result in bid disqualification.

**Acknowledgment:** I hereby acknowledge receipt of the following addenda and have made the necessary revisions to my proposal, plans and/or specification, etc.

**Addendum Numbers Received:**

(Check the box next to each addendum received)

- |  |  |
|--|--|
| <input checked="" type="checkbox"/> Addendum No. 1 | <input type="checkbox"/> Addendum No. 6  |
| <input checked="" type="checkbox"/> Addendum No. 2 | <input type="checkbox"/> Addendum No. 7  |
| <input checked="" type="checkbox"/> Addendum No. 3 | <input type="checkbox"/> Addendum No. 8  |
| <input type="checkbox"/> Addendum No. 4            | <input type="checkbox"/> Addendum No. 9  |
| <input type="checkbox"/> Addendum No. 5            | <input type="checkbox"/> Addendum No. 10 |

I understand that failure to confirm the receipt of addenda may be cause for rejection of this bid. I further understand that that any verbal representation made or assumed to be made during any oral discussion held between Vendor's representatives and any state personnel is not binding. Only the information issued in writing and added to the specifications by an official addendum is binding.

STATE EQUIPMENT, INC.

\_\_\_\_\_  
Company

\_\_\_\_\_  
Authorized Signature

6/21/22

\_\_\_\_\_  
Date

**NOTE:** This addendum acknowledgment should be submitted with the bid to expedite document processing.

REQUEST FOR QUOTATION  
591 Class Double Drum Roller.

---

**Contract Manager:** EDDIE ROWAN, JR  
**Telephone Number:** (304)776-4405  
**Fax Number:** (304)776-4409  
**Email Address:** eddie@stateequipment.com

**DESIGNATED CONTACT:** Vendor appoints the individual identified in this Section as the Contract Administrator and the initial point of contact for matters relating to this Contract.

(Name, Title) [Signature] GENERAL MANAGER  
(Printed Name and Title) EDDIE ROWAN, JR GENERAL MANAGER  
(Address) 560 NEW GOFF MOUNTAIN ROAD CROSS LANES, WV 25313  
(Phone Number) / (Fax Number) (304)776-4405 (304)776-4409  
(email address) eddie@stateequipment.com

**CERTIFICATION AND SIGNATURE:** By signing below, or submitting documentation through wvOASIS, I certify that: I have reviewed this Solicitation/Contract in its entirety; that I understand the requirements, terms and conditions, and other information contained herein; that this bid, offer or proposal constitutes an offer to the State that cannot be unilaterally withdrawn; that the product or service proposed meets the mandatory requirements contained in the Solicitation/Contract for that product or service, unless otherwise stated herein; that the Vendor accepts the terms and conditions contained in the Solicitation, unless otherwise stated herein; that I am submitting this bid, offer or proposal for review and consideration; that I am authorized by the vendor to execute and submit this bid, offer, or proposal, or any documents related thereto on vendor's behalf; that I am authorized to bind the vendor in a contractual relationship; and that to the best of my knowledge, the vendor has properly registered with any State agency that may require registration.

*By signing below, I further certify that I understand this Contract is subject to the provisions of West Virginia Code § 5A-3-62, which automatically voids certain contract clauses that violate State law; and that pursuant to W. Va. Code 5A-3-63, the entity entering into this contract is prohibited from engaging in a boycott against Israel.*

STATE EQUIPMENT, INC  
(Company) [Signature] GENERAL MANAGER  
(Authorized Signature) (Representative Name, Title)  
EDDIE ROWAN, JR GENERAL MANAGER 6/21/22  
(Printed Name and Title of Authorized Representative) (Date)  
(304)776-4405 (304)776-4409  
(Phone Number) (Fax Number)  
eddie@stateequipment.com  
(Email Address)



## ENGINE

Make	Kubota D1803CRT
Emissions Certification	Tier 4 Final
Type	Diesel
Cylinders	4
Bore/Stroke	3.46 x 3.54 in (88 x 90 mm)
Displacement	134.3 in <sup>3</sup> (2.2 L <sup>3</sup> )
Fuel	#2 Diesel
Cooling	Liquid
Rated engine speeds	2500 RPM
Horsepower @ rated RPM:	
Gross	43.9 hp (32.8 kW)
Net	43.5 hp (32.7 kW)

## DRIVETRAIN

Drive	Hydrostatic
Max. working speed	3.7 mph (6.0 kph)
Max. travel speed	6.2 mph (10.0 kph)
Service brake	Hydrostatic
Parking brake	SAHR
Emergency brake	SAHR
Drum drive	Front and rear
Drive pump motors:	
Variable displacement	1
Fixed displacement	2
Max. relief pressure	6,454 psi (44.5 MPa)
Gradeability (vibration off)	30% (40%)

## ELECTRICAL

Voltage	12 Volts
Battery	1 x 12 Volt
Battery reserve capacity	77 Ah/20 hour
Cold cranking amps	760 CCA

## OPERATOR ENVIRONMENT

Insulated from chassis by flexible shock absorbers; Handrail; Instrument panel; Anti-vandal guard; Lateral sliding seat; Foldable ROPS protection; Electronic single lever speed and direction control with integrated RPM setting, parking brake, vibration, drum sprinkling, edge cutting activation (up/down).

## OPERATING WEIGHT

Operating weight	10,252 lb (4 650 kg)
Static linear load	94.2 lb/in (16.8 kg/cm)

## SERVICE CAPACITIES

Fuel tank	15.1 gal (57 L)
Engine oil	39.1 qt (37 L)
Hydraulic system – reservoir	9.8 gal (37 L)
Water tank	92.5 gal (350 L)

## OTHER SPECIFICATIONS

Steering:	
Type	Oscillation/Articulated
Method	Hydrostatic
Pump type	Gear
Steering angle – left and right	32°
Oscillation angle +/-	9°
Inside turning radius	103 in (2 621 mm)
Outside turning radius	161 in (4 084 mm)

Vibration:	
System design	Series
Pump type	Gear
Drum vibration	Front and rear
Number of amplitudes	2
Frequency:	
Low	2,460 vpm (41 Hz)
High	3,300 vpm (55 Hz)
Amplitude:	
Low	0.016 in (0.4 mm)
High	0.024 in (0.6 mm)
Centrifugal force	12,949 lb (57 kN)

## STANDARD EQUIPMENT

### OTHER

Foldable ROPS  
Anti-vandal guard  
Hydrostatic drive for both drums  
Articulated chassis  
Hydraulic oil cooler  
Backup alarm  
Tapered drum edges  
Vulcollon scrapers – adjustable  
Master disconnect switch  
Horn  
Hourmeter  
4-point lift and tie down provision  
Flip open hood  
Spin-on fuel, engine oil, and hydraulic filters  
Steering wheel spinner knob

## OPERATOR ENVIRONMENT

Lateral moving suspension seat w/ foldable arms  
3 in (76.2 mm) retractable seat belt  
Emergency stop button  
Electric fuse protection  
Drive lever with vibration and water switch

## INDICATOR LIGHTS

Battery  
Engine oil pressure  
Intake preheater  
Engine temperature  
Parking brake on/off  
Hydraulic oil temperature  
Low fuel indicator  
Worklight indicator  
Turn signal indicator  
Fuel gauge  
Operator hours

## WATER SYSTEM

Pressurized water system  
2-stage water filtration  
Water system drains  
92.5 gal (350 L) Polyethylene water tank

## VIBRATION SYSTEM

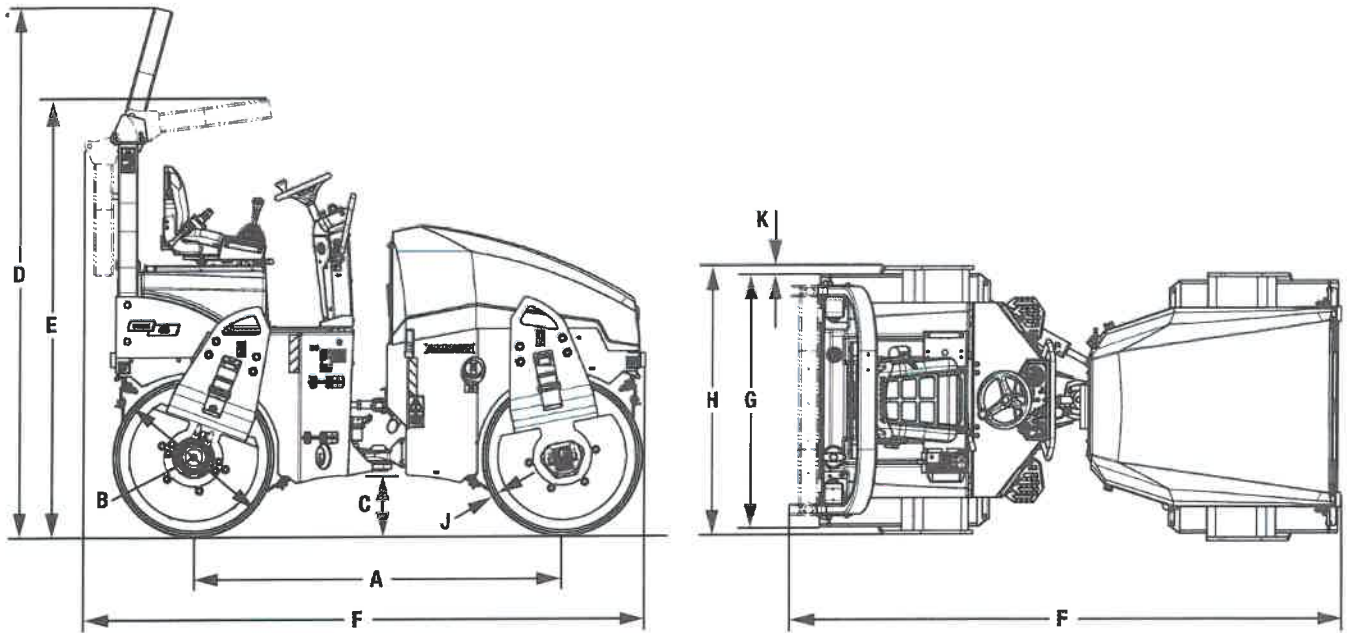
Dual vibration  
Dual frequency vibration  
Front/Dual drum vibration control  
Auto vibration stop in neutral

## OPTIONAL EQUIPMENT

### OTHER

Rotating beacon  
Weather canopy  
Steel canopy  
Tiltable drum scraper  
Infrared thermometer  
Edge cutter  
2 Front and 1 Rear road light, turn signals and flashers  
Traction assist  
2 lights on ROPS (N/A on Weather Canopy)  
Arm rests on seat  
Right & Left Side drive levers  
Heated seat  
ACE Force Intelligent compaction  
Locking water tank cap





Line drawings are for illustrative purpose only and may not be exact representation of unit.

#### DIMENSIONS

<b>A.</b> Wheelbase	76.8 in (1 950 mm)
<b>B.</b> Drum diameter	33.5 in (850 mm)
<b>C.</b> Ground clearance	13.0 in (330 mm)
<b>D.</b> Overall height	111.8 in (2 840 mm)
<b>E.</b> Folded ROPS height	84.6 in (2 150 mm)
<b>F.</b> Overall length	118.1 in (3 000 mm)
<b>G.</b> Drum width	54.3 in (1 380 mm)
<b>H.</b> Overall width	57.5 in (1 460 mm)
<b>J.</b> Drum thickness	0.7 in (18 mm)
<b>K.</b> Drum offset	1.6 in (40 mm)

## CaseCE.com

©2020 CNH Industrial America LLC. All rights reserved. CASE is a trademark registered in the United States and many other countries, owned by or licensed to CNH Industrial N.V., its subsidiaries or affiliates. CNH Industrial Capital is a trademark in the United States and many other countries, owned by or licensed to CNH Industrial N.V., its subsidiaries or affiliates. Printed in U.S.A. Contains 10% post-consumer fiber.

**IMPORTANT:** CASE Construction Equipment Inc. reserves the right to change these specifications without notice and without incurring any obligation relating to such change. Availability of some models and equipment builds vary according to the country in which the equipment is used. The illustrations and text may include optional equipment and accessories and may not include all standard equipment. Your CASE dealer/distributor will be able to give you details of the products and their specifications available in your area.



CASE Construction Equipment is biodiesel-friendly. NOTE: All engines meet current EPA emissions regulations. All specifications are stated in accordance with SAE Standards or Recommended Practices, where applicable.



Always read the Operator's Manual before operating any equipment. Inspect equipment before using it, and be sure it is operating properly. Follow the product safety signs and use any safety features provided.

Form No. CCE202003DV45E  
Replaces Form No. CCE202002DV45E

**DV45E**

**CASE**  
CONSTRUCTION

SINCE 1842

# ASPHALT COMPACTORS





# TOTAL ASPHALT COMPACTION QUALITY EVERY LIFT. EVERY DAY.

Every road, every parking lot, every bike path — every paving job is different. CASE offers asphalt compaction solutions that meet quality requirements from residential driveways up to major highways and commercial developments. Hit density targets. Minimize voids. Roll along with peace of mind that you're building high-quality pathways that keep the world moving forward for generations to come. From bike paths to highways, CASE has you covered.

- + Double-drum rollers from compact up to large-frame provide flexibility in building a fleet to meet your business demands.
- + Combi units — double drum in the front, pneumatic tire in the back — offer an optimal combination of quality and finish.
- + Pneumatic tire rollers allow operators to ballast the machine from 21,380 pounds up to 52,910 pounds, providing optimal flexibility for lifts of all sizes and types, from sub-base up to finished asphalt.
- + Intelligent compaction options across all models provide immediate feedback and data to further dial in quality and productivity in all paving applications.
- + Asphalt compaction lineup offers various drum options, widths and adjustments for every application.



#### COMPACT DOUBLE-DRUM ROLLERS

DV23E\*  
DV26E\*  
DV36E  
DV45E\*



#### DOUBLE-DRUM ROLLERS

DV209D\*  
DV210D\*



#### PNEUMATIC TIRE ROLLER PT240D

\*Combination roller option available



**EVEN GREATER CONTROL.**

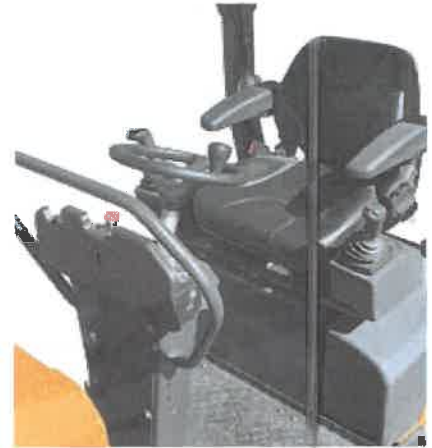
Each new CASE E Series compact roller offers three modes — loading, working and transport — to maximize machine performance and fuel efficiency. Choose between two drive settings; soft drive delivers a smooth ride during asphalt compaction applications, optional hard drive allows the operator to make swift turns, similar to a machine with a mechanical lever.

COMPACT DOUBLE-DRUM ROLLERS

# COMPACT ANYWHERE. CONTROL EVERYTHING.

The all-new E Series compact double-drum vibratory rollers feature a completely redesigned operator interface with intuitive operation and improved ergonomics. New control features include an electronic travel lever with an extended range of functions at the operator's fingertips, including RPM settings, drive settings, sprinkler system controls, parking brake and more.

- + Adjustable operator station for optimal visibility and comfort
- + Extreme visibility — to the front and the back
- + Controllability like large-frame rollers
- + Intelligent compaction technology (optional)





Designed with a high curb clearance, no overhangs and narrow drum widths ranging from 39 to 54 inches. CASE E Series compact rollers are ideal for compacting along curbs and against structures without sacrificing performance.

# OFFSET. INLINE. STANDARD ADJUSTABILITY.

## OPTIMAL CONTROL

Each E Series compact DV roller features high centrifugal forces and frequencies at lower RPMs, improving performance and fuel efficiency. Selectable dual vibration frequencies further improve productivity and allow operators to dial the machine in to meet the specific compaction needs of the job.

## ADJUSTABLE OFFSET IS STANDARD

The ability to adjust the positioning of the drums from inline to offset is standard and allows for a tighter turning radius, while both drums have a balanced design and a tapered edge to reduce tearing around curves and during transitions.

## SUPERIOR WATER SYSTEM

Just like their big brothers, our small DV rollers are designed with the highest-quality water system.

- + **Dual Filtration** – Water is filtered at both the fill point and midway through the water cycle, reducing the amount of debris that can make it to the spray nozzle
- + **Pressurization** – Maintains even water flow to all nozzles regardless of grade
- + **High-Capacity, Corrosion-Proof Tank** – Runs all day on a single tank
- + **Multiple Water Settings** – Matches water pressure to the job at hand





LARGE DOUBLE-DRUM ROLLERS

# ROLL LARGE. ROLL IN COMFORT.

## SWIVEL, SLIDE AND SPIN

In addition to a seat that spins left or right and slides forward, the entire operator station – seat, steering console and drive lever – swivels almost 180° to reach both edges of the platform and provide operators a full view of the compacted surface, both drums and all spray bars.

## COMMON-SENSE CONTROLS

Dual multi-function directional levers on either side of the seat allow for right- or left-handed operation. Automatic vibration control makes it easy to avoid surface damage from starting or stopping the machine. And if manual activation is preferred, it's just a push of a button. Also, an adjustable speed control lets operators set a max speed so there's no need to worry about going too fast for the frequency of the drum. The DV209D and DV210D feature a new intuitive and innovative in-steering wheel front display. This display provides all machine diagnostics for the operator to review. The operator structure is also completely redesigned to continue to offer excellent visibility to both drums while offering a comfortable and ergonomic operating environment.

Open ROPS work platform provides excellent visibility around the machine. Enclosed cab available.





#### **HIGH-FREQUENCY OPTION**

The CASE DV209D and DV210D are available in high-frequency models maxing out at 67 Hz. This increases the application opportunities for the CASE roller line, allowing operators to compact a more versatile array of asphalt mixes.

# HIGH QUALITY. HIGH PERFORMANCE.

## SUPERIOR WATER SYSTEM

Water plays a crucial role in preventing surface damage and keeping rollers clean. That's why every component of the DV rollers' spray system is built to be the best.

- + **Triple Filtration** – Filters at the tank, pump and nozzles help prevent spray-stopping clogs and prolong component life
- + **Pressurization** – Maintains even water flow to all nozzles regardless of grade
- + **Standard Back-Up Pump** – Ensures uninterrupted production with primary and back-up pumps
- + **Multiple Water Settings** – Matches water pressure to the job at hand
- + **Dual Fill Ports** – Offers convenient access from either side

## HIGH-FREQUENCY OPTIONS

The CASE high-frequency option features a low amplitude setting that is ideal for thin-layer asphalt compaction at faster speeds. Thinner layers of asphalt tend to cool quicker and use smaller aggregates that can be crushed if too much force is applied. This option increases the versatility of the DV209D and DV210D by increasing the range of applications and asphalt mixes on which they can be used.

## IMPRESSIVE MANEUVERABILITY

CASE large DV rollers come standard with a hydraulically adjustable "crab steering" system that can offset the rear drum. In addition to that, a heavy-duty, roller-style articulation joint allows the machine to oscillate +/-10° to maintain drum-to-ground contact. Together, these features enable superior operation around corners, over bumps or dips, and in confined areas.



## OSCILLATION = QUALITY

CASE rollers feature oscillation technology within the drum that helps ensure more consistent compaction, improved quality and a reduction in voids.

## PT240D SPECIFICATIONS

Horsepower:	100
Operating Weight:	21,380 - 52,910 pounds
Emissions Solution:	Tier 4 Final
Compaction Width:	78.2 inches



With an operating weight of 21,380 pounds and the ability to ballast up to 52,910 pounds, the PT240D is designed to achieve compaction in fewer passes and provide improved paving quality.



# ROLLING HEAVY. RIDING ON AIR.

The ability to ballast the all-new Tier 4 Final PT240D pneumatic tire roller using steel, sand and water allows it to compact a broader variety of lifts and materials, and complete work that may otherwise require numerous, different-sized rollers. It also provides a new level of quality and peace of mind by reducing voids and quality issues through a wealth of capabilities, including:

- + **The tire configuration — four in front and four in back — kneads hot mix asphalt gently at the surface as it rolls. The result is greater asphalt density and fewer voids in the finished product.**
- + **An iso-static front axle allows each of the front tires to oscillate three degrees in either direction, as well as up and down, ensuring contact with the ground at all times to minimize bridging and further improve compaction.**
- + **The central tire inflation system ensures consistent inflation to all eight tires and allows for easy, on-the-fly adjustment of tire pressure to meet ground conditions and compaction needs.**
- + **Two operating stations provide optimal visibility to the edge of the compaction zone no matter which side of the machine it's on — all with centrally located controls. Options include an enclosed cab with heat.**

# MAINTENANCE MADE EASY.

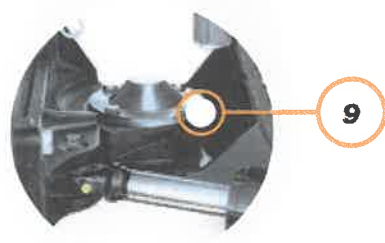
## SERVICEABILITY IS IN OUR DNA

We make it simple. CASE DV Series rollers are no exception. From their open-access hoods to grouped, ground-level checkpoints, you can do daily maintenance in a matter of minutes. It's the easiest way to help you get the most performance and longest life out of your machine.



### Easy access to DV

- |   |                               |  |
|---|-------------------------------|--|
| 1 Spin-on fuel, oil and hydraulic filters | 5 Engine                      | 9 Greaseless Teflon articulation joint (Small DVs) |
| 2 Vertical-lift rear hood (Large DVs)     | 6 Oil fill                    | 10 Flip-forward hood (Small DVs)                   |
| 3 Drive motor or eccentric motor          | 7 Dual fill ports (Large DVs) | 11 No tool access, swing out doors                 |
| 4 Heavy-duty articulation joint           | 8 Spray nozzles               |  |





# SUPPORT COMES STANDARD.

## BASE & EXTENDED WARRANTY COVERAGE:

### 1-YEAR/UNLIMITED-HOUR FULL-COVERAGE BASE LIMITED WARRANTY

### 2-YEAR/2,000-HOUR EXTENDED ENGINE LIMITED WARRANTY

Discuss the extended engine warranty coverage details with your dealer.

### UPTIME SOLUTIONS

Your CASE dealer can provide solutions to meet all your needs and keep you productive.



### STRONGER PRODUCT SUPPORT SOLUTIONS

Your CASE dealer knows how you can best maximize your equipment investment and uptime—with genuine CASE parts, expert service and a complete range of product support solutions including CASE remanufactured and all-makes parts. CASE supports better parts availability and faster deliveries through nine parts distribution centers in North America and a forecasting system to ensure that the right parts will be there when you need them. And only CASE dealers have exclusive access to the Electronic Service Tool (EST) that quickly pinpoints machine issues. Just ask your dealer for details.



### FLEXIBLE FINANCIAL OPTIONS

Specialized finance programs and flexible leasing packages put you in the driver's seat of industry-leading CASE equipment while no-nonsense warranties and comprehensive protection plans ensure that your equipment is protected. As the only finance company dedicated to CASE, we offer strong products and services designed around your unique needs and are the only ones supported by the helpful service professionals at your CASE dealer.





# SiteWatch

Available on large DV Series rollers and the PT240D pneumatic tire roller, CASE SiteWatch™ telematics breaks the boundaries of fleet management by allowing you to monitor and manage multiple machines from your office, wherever that may be. No more manually tracking down engine hours and fuel levels. Get real-time performance metrics, idle-time analytics, scheduled maintenance intervals and programmable security alerts sent to any computer, anytime, anywhere.



# SPECIFICATIONS AND DIMENSIONS

SPECIFICATIONS	DV23E	DV23CE	DV26E	DV26CE	DV36E	DV45E	DV45CE	DV209D	DV209CD	DV210D	DV210CD
<b>Engine</b>	Kubota D1803	Kubota D1803	Kubota D1803	Kubota D1803	Kubota D1803CRT	Kubota D1803CRT	Kubota D1803CRT	Deutz TCD 3.6L4	Deutz TCD 3.6L4	Deutz TCD 3.6L4	Deutz TCD 3.6L4
<b>Emissions Certification Solutions</b>	Tier 4 Final	Tier 4 Final	Tier 4 Final	Tier 4 Final	Tier 4 Final	Tier 4 Final	Tier 4 Final	Tier 4 Final	Tier 4 Final	Tier 4 Final	Tier 4 Final
<b>Gross Horsepower – hp (kW)</b>	33.5 (25) @ 2400 RPM	33.5 (25) @ 2400 RPM	33.5 (25) @ 2400 RPM	33.5 (25) @ 2400 RPM	43.9 (32.8) @ 2400 RPM	43.9 (32.8) @ 2400 RPM	43.9 (32.8) @ 2400 RPM	100.0 (74.4) @ 2200 RPM	100.0 (74.4) @ 2200 RPM	100.0 (74.4) @ 2200 RPM	100.0 (74.4) @ 2200 RPM
<b>Maximum Travel Speed – mph (kph)</b>	6.8 (11.0)	6.8 (11.0)	6.8 (11.0)	6.8 (11.0)	6.2 (10.0)	6.2 (10.0)	6.2 (10.0)	6.5 (10.5)	6.5 (10.5)	6.5 (10.5)	6.5 (10.5)
<b>Gradeability (vibration off)</b>	30% (30%)	35% (35%)	30% (30%)	35% (35%)	30% (40%)	30% (40%)	30% (40%)	30%	25% (30%)	30%	25% (30%)
<b>Operating Weight – lb (kg)</b>	4,960 (2 250)	4,600 (2 085)	5,490 (2 490)	5,180 (2 350)	8,290 (3 760)	10,252 (4 650)	9,535 (4 325)	21,080 (9 560)	20,750 (9 410)	22,930 (10 400)	22,440 (10 180)
<b>Front Drum Weight – lb (kg)</b>	2,370 (1 075)	2,400 (1 090)	2,730 (1 240)	2,690 (1 220)	3,970 (1 800)	5,030 (2 280)	5,280 (2 395)	10,520 (4 770)	10,520 (4 770)	11,490 (5 210)	11,380 (5 160)
<b>Rear Drum Weight – lb (kg)</b>	2,550 (1 155)	–	2,810 (1 275)	–	4,320 (1 960)	5,310 (2 410)	–	10,560 (4 790)	–	11,440 (5 190)	–
<b>Inside Turning Radius – in (m)</b>	103.5 (2 630)	103.5 (2 630)	100 (2 540)	100 (2 540)	111.4 (2 830)	103 (2 621)	111.4 (2 830)	215 (5 470)	215 (5 470)	215 (5 470)	215 (5 470)
<b>Fuel Tank Capacity – gal (L)</b>	9.2 (35)	9.2 (35)	9.2 (35)	9.2 (35)	15.1 (57)	15.1 (57)	15.6 (59)	58.1 (220)	58.1 (220)	58.1 (220)	58.1 (220)
<b>Frequency Low - High – VPM (Hz)</b>	3,480 - 3,960 (58 - 66)	3,480 - 3,960 (58 - 66)	3,480 - 3,960 (58 - 66)	3,480 - 3,960 (58 - 66)	2,460 - 3,300 (41 - 55)	2,460 - 3,300 (41 - 55)	2,460 - 3,300 (41 - 55)	2,520 - 4,020 (42 - 67)	2,520 - 4,020 (42 - 67)	2,520 - 4,020 (42 - 67)	2,520 - 4,020 (42 - 67)
DIMENSIONS	DV23E	DV23CE	DV26E	DV26CE	DV36E	DV45E	DV45CE	DV209D	DV209CD	DV210D	DV210CD
<b>Wheelbase</b>	68.5 in (1 740 mm)	68.5 in (1 740 mm)	68.5 in (1 740 mm)	69.1 in (1 755 mm)	76.8 in (1 950 mm)	76.8 in (1 950 mm)	78.7 in (2 000 mm)	137.8 in (3 500 mm)	137.8 in (3 500 mm)	137.8 in (3 500 mm)	137.8 in (3 500 mm)
<b>Drum Diameter</b>	27.4 in (695 mm)	27.4 in (695 mm)	27.4 in (695 mm)	27.4 in (695 mm)	33.5 in (850 mm)	33.5 in (850 mm)	33.5 in (850 mm)	48.0 in (1 220 mm)	48.0 in (1 220 mm)	48.0 in (1 220 mm)	48.0 in (1 220 mm)
<b>Ground Clearance</b>	11 in (280 mm)	11 in (280 mm)	11 in (280 mm)	11 in (280 mm)	13 in (330 mm)	13 in (330 mm)	13 in (330 mm)	11.8 in (300 mm)	11.8 in (300 mm)	11.8 in (300 mm)	11.8 in (300 mm)
<b>Overall Height</b>	100.4 in (2 550 mm)	100.4 in (2 550 mm)	100.4 in (2 550 mm)	71.5 in (1 815 mm)	111.8 in (2 840 mm)	111.8 in (2 840 mm)	111.8 in (2 840 mm)	118.1 in (3 000 mm)	118.1 in (3 000 mm)	118.1 in (3 000 mm)	118.1 in (3 000 mm)
<b>Overall Length – ROPS up</b>	98.4 in (2 500 mm)	98.4 in (2 500 mm)	98.4 in (2 500 mm)	98.4 in (2 500 mm)	118.1 in (3 000 mm)	118.1 in (3 000 mm)	118.1 in (3 000 mm)	185.8 in (4 720 mm)	185.8 in (4 720 mm)	185.8 in (4 720 mm)	185.8 in (4 720 mm)
<b>Drum Width</b>	39.4 in (1 000 mm)	39.4 in (1 000 mm)	47.2 in (1 200 mm)	47.2 in (1 200 mm)	51.2 in (1 300 mm)	54.3 in (1 380 mm)	54.3 in (1 380 mm)	66.0 in (1 680 mm)	66.0 in (1 680 mm)	66.0 in (1 680 mm)	66.0 in (1 680 mm)
<b>Overall Width</b>	44.5 in (1 130 mm)	44.1 in (1 130 mm)	53.1 in (1 350 mm)	51.0 in (1 295 mm)	54.5 in (1 385 mm)	57.5 in (1 460 mm)	57.5 in (1 460 mm)	71.0 in (1 800 mm)	71.0 in (1 800 mm)	71.0 in (1 800 mm)	71.0 in (1 800 mm)
<b>Drum Thickness</b>	0.5 in (13 mm)	0.5 in (13 mm)	0.50 in (13 mm)	0.50 in (13 mm)	0.70 in (18 mm)	0.70 in (18 mm)	0.70 in (18 mm)	0.90 in (22 mm)	0.90 in (22 mm)	0.90 in (22 mm)	0.90 in (22 mm)

# BUILDING A STRONG CASE.

Since 1842, we at CASE Construction Equipment have lived by an unwavering commitment to build practical, intuitive solutions that deliver both efficiency and productivity. We continually strive to make it easier for our customers to implement emerging technologies and new compliance mandates.

Today, our global scale combined with our local expertise enables us to keep customers' real-world challenges at the center of our product development. This focus has led to numerous innovations like Ride Control™, EZ-EH controls, blade shake, PowerLift™, over-center boom design and the peace of mind that only CASE ProCare provides.

Every CASE machine is backed by more than 300 North American dealer locations, thousands of OEM, remanufactured and all-makes parts, and flexible financing and insurance options that provide the kind of reliable, steadfast support you expect from a professional partner.

We are passionate about improving the lives of others, whether investing in our veterans or raising awareness about local infrastructure initiatives through Dire States. Our goal is to build both stronger machines — and stronger communities.

At the end of the day, we do what's right by our customers and our communities so that they can count on CASE.

[CaseCE.com/AsphComp](http://CaseCE.com/AsphComp)





CNH Industrial America LLC  
and CNH Industrial Canada, Ltd.

**WARRANTY AND LIMITATION OF LIABILITY AGREEMENT  
HEAVY - CASE CONSTRUCTION EQUIPMENT**

**The Case Warranty**

The Case Warranty is a limited warranty that is provided to the initial retail purchaser in return for consideration paid as part of the purchase price of the product. The selling dealer is expected to review the warranty coverage with the initial retail purchaser and obtain his/her signature on this document.

**New Limited Warranty**

The warranty described here is from CNH Industrial America LLC and in Canada, CNH Industrial Canada Ltd., both of which are referred to in this agreement as "Case" for the Case Construction Brand. This warranty is for Case products sold and registered in the United States or Canada and normally operated in the United States or Canada. This warranty does NOT apply to any product normally operated outside of the United States and/or Canada, or to any unit purchased outside of the United States or Canada and imported in for any reason other than a customer relocation/personal move.

**Warranty Period**

For the products listed below, the Warranty Period for all coverage begins at the time that any person, dealer or agent first places the unit into service. At the latest, a unit is considered to be placed into service when purchased or delivered to an initial retail purchaser. Certain demonstration, rental, lease, and other used units may be eligible for a portion of a new unit warranty. The availability of the remaining portion of a new unit warranty does not mean that a unit is new or unused. The Warranty Period ends when either the month or machine hour limit is reached, whichever limit occurs first.

CASE HEAVY PRODUCT	BASE WARRANTY	EXTENDED WARRANTY	Notes*
<b>COMPACTION EQUIPMENT - SINGLE OR DOUBLE DRUM</b> Cummins / Deutz / Yanmar / Kubota Engines (Warranty through engine manufacturer)	12 Mo. / Unlimited Hrs.	24 Mo. / 2000 Hrs.	Notes 1
<b>WHEEL LOADERS (Case ProCare Coverage)</b> Case Engine (Warranty through Case)	12 Mo. / Unlimited Hrs	36 Mo. / 3000 Hrs 24Mo. / 2000 Hrs	Notes 3, 4
<b>MOTOR GRADERS (Case ProCare Coverage)</b> Case Engine (Warranty through Case)	12 Mo. / Unlimited Hrs	36 Mo. / 3000 Hrs 24 Mo. / 2000 Hrs	Notes 3, 4
<b>EXCAVATORS (Case ProCare Coverage)</b> Isuzu Engines (Warranty through Case)	12 Mo. / 1800 Hrs	36 Mo. / 3000 Hrs 24 Mo. / 2000 Hrs	Notes 2, 3, 4
<b>CRAWLER DOZERS (Case ProCare Coverage)</b> Case Engines (Warranty through Case)	12 Mo. / Unlimited Hrs	36 Mo. / 3000 Hrs 24 Mo. / 2000 Hrs	Notes 3, 4

- 1) Engine coverage is provided directly by the engine manufacturer.
- 2) Warranty does not cover any configuration excavator equipped with feller buncher/accumulator attachments
- 3) Units equipped with factory standard telematics are authorized for **Case ProCare** extended coverage for an additional 24 months / 3000 total machine hours, whichever comes first
- 4) Engine warranty coverage is provided through Case.

**Operator's Manual / Warranty Receipt Verification**

- YES  / NO  The selling dealer has reviewed the correct operator's manual with me and will provide the operator's manual upon delivery of the product.
- YES  / NO  The selling dealer has explained safety precautions to me.
- YES  / NO  The selling dealer has explained the warranty terms and coverage to me.
- YES  / NO  The selling dealer has explained Purchased Protection Plan options for additional coverage on select components.
- YES  / NO  Customer acknowledges that CNH Industrial America LLC/CNH Industrial Canada Ltd. may access and use diagnostic and telematics vehicle data for appropriate business purposes.

<b>Model:</b>	<b>Serial Number:</b>	<b>Hours:</b>	<b>Ops man. Number:</b>
<b>Model:</b>	<b>Serial Number:</b>	<b>Hours:</b>	<b>Ops man. Number:</b>
<b>Model:</b>	<b>Serial Number:</b>	<b>Hours:</b>	<b>Ops man. Number:</b>
<b>Retail DATE:</b>		<b>Usage:</b>	
<b>Purchaser Name (please print):</b>		<b>Dealer Name:</b>	
<b>Address:</b>		<b>Address:</b>	
<b>City / State:</b>		<b>City / State:</b>	
<b>Zip code:</b>		<b>Zip code:</b>	
<b>Phone Number:</b>		<b>Phone Number:</b>	

The answers checked above are correct. I acknowledge that I have read and I accept this warranty policy statement.

Purchaser Signature \_\_\_\_\_ Date \_\_\_\_\_

Dealer Signature \_\_\_\_\_ Date \_\_\_\_\_

**See page 2 for important limitations and exclusions**

**What's Covered**

If a defect in material or workmanship is found in a unit and reported during the Warranty Period, Case will pay parts and labor costs to repair the defect if the services are performed by an authorized Case dealer at the dealer's location. If parts are needed during the repair, Case will, at its option, use genuine Case new or remanufactured parts. Case replacement parts that are used in a warranty repair are warranted until the end of the machine warranty or to the end of the Case Replacement Parts Warranty, whichever is longer.

CASE PROVIDES NO WARRANTY, EXPRESS OR IMPLIED, FOR A COMPONENT OR OTHER ITEM THAT IS SEPARATELY WARRANTED TO THE PURCHASER BY ITS MANUFACTURER, SUCH AS TIRES, BATTERIES AND FUEL INJECTION COMPONENTS. CHECK WITH YOUR DEALER FOR DETAILS

**No Modification or Extension of Warranty Period**

The Case Warranty is limited to the written terms in this document. Case does not authorize any person, dealer or agent to change or extend the terms of this warranty in any manner. Any assistance to the purchaser in the repair or operation of any Case product outside the terms or limitations or exclusions of this warranty will not constitute a waiver of the terms, limitations or exclusions of this warranty, nor will such assistance extend or re-establish the warranty.

**EXCLUSIVE REMEDY**

**THE REMEDY OF REPAIRING A DEFECT IN MATERIALS OR WORKMANSHIP AT A CASE DEALERSHIP UNDER THE TERMS OF THIS WARRANTY IS THE PURCHASER'S EXCLUSIVE REMEDY AND IS IN LIEU OF ANY OTHER REMEDY OTHERWISE AVAILABLE.**

**This Warranty is Void If**

The unit's hour meter is changed or altered, unless a Case dealer, at the direction of Case, changed the meter. If any unit component has been modified beyond specification. If the unit is modified or used in an application for which it is not designed, or the unit has been scrapped, salvaged, stolen, junked or totaled.

**Limitation and Exclusions** The Case Warranty gives you specific legal rights and you may also have other rights, which vary, from region to region.

**THIS DOCUMENT CONTAINS THE ENTIRE CASE WARRANTY. CASE MAKES NO OTHER REPRESENTATIONS OR WARRANTIES, EXPRESS OR IMPLIED, AND SPECIFICALLY EXCLUDES THE IMPLIED WARRANTIES OF MERCHANTABILITY AND FITNESS FOR PARTICULAR PURPOSE. CASE WILL NOT BE LIABLE FOR INCIDENTAL OR CONSEQUENTIAL DAMAGES RESULTING FROM A BREACH OF THE WRITTEN WARRANTY OR ANY IMPLIED WARRANTY IMPOSED BY LAW.**

**Owner's Responsibility**

The Case warranty remains in effect during the Warranty Period if the owner performs the required maintenance at the recommended intervals outlined in the product operator's manual and the unit is operated within its rated capacity. Genuine Case service parts or Case approved service parts that meet Case specifications must be used for maintenance and repair.

**What's Not Covered**

- Cost associated with performing pre-delivery or scheduled inspection service.
- Repairs arising from storage deterioration, failure to maintain the equipment, negligence, alteration, improper use of the equipment, collision or other accident, vandalism, or other casualty, or operation beyond rated capacity or specification.
- Repairs arising from abuse or neglect, including but not limited to: operation without adequate coolant or lubricants, adjustments to the fuel system outside equipment specifications, over-speeding, improper storage, starting, warm-up, or shutdown practices, incorrect fuel or contaminated fuel, oil or other fluids.
- Normal maintenance services, such as engine tune-ups, engine fuel system cleaning, checks, adjustments, shimming, etc.
- Replacement of non-defective wear items expected to be replaced during the warranty period, including but not limited to: light bulbs, spark plugs, ignition points, brake or clutch linings, slip clutches, belts, chains, knives, bucket cutting edges and teeth, crawler track pads and track components, crop processing and cutting components, external drive sprockets and chains, soil engaging tools and accessories.
- Items replaced due to customer demand.
- Labor charges performed by anyone except a dealer authorized by contract to repair the equipment, unless they qualify under special provisions (i.e.; outside labor).
- Any and all travel costs for items such as towing, service calls, or transporting a unit to and from the place where the warranty service is performed, unless specifically covered by a product improvement program or units classified as heavy and/or compaction products
- Claims involving loss or damage during shipment or handling, including units subsequently sold as a "salvage" unit.
- "Salvage" or other units sold on an "as is" basis, unless otherwise specified in writing at the time of sale.
- Normal maintenance costs, including but not limited to: lubricants, coolants, fluids, fuel, filters, and associated labor. Lubricants, filters, and coolants may qualify for warranty reimbursement if they require replacement as a DIRECT RESULT of a defect in material or workmanship.
- Claims involving the inspection or reconditioning of units after storage or prior use.
- Components or items that are separately warranted directly by the manufacturer including but are not limited to: tires, tracks, engines, transmissions, batteries, fuel injection pumps, fuel injectors, etc.
- Shop comebacks: any duplicate, repeat, or comeback repair resulting from improper diagnosis, testing, or service work. This also includes repairs arising from service performed by agents not approved by Case.
- Repairs arising from any unauthorized modification to the product or the use on non-CNH Industrial parts, implements, or attachments, including but not limited to performance changing (i.e., increasing horsepower or other modifications) and/or emissions defeating modifications.
- Removal, replacement, or installation of non-CNH Industrial optional equipment, attachments or components.
- Premiums charged for overtime labor costs or out of shop expenses.
- Economic loss including lost profits, crop loss, crop damages, equipment rental, contract delay, project expenses or other expenses or damages.
- Unauthorized modification or updating machines without a warrantable failure based on Service Bulletin information or production changes.
- Any and all costs of special tools
- Any and all costs of dealer shop supplies incurred with repairs, including but not limited to: solvents, cleaners, anti-seize lubricants, loctite, sealant, adhesive, oil-dry, shop towels, etc. Sealant or adhesive may qualify for warranty reimbursement in certain applications requiring a large volume of sealant/ adhesive.
- Failure of the machine, its implements or attachments caused by improper field application or loading.
- Any and all costs for coolant, fuel, or lube (oil) analysis including supplies and lab recommendations.
- Cost of initial setup or installation of any optional equipment or attachments to a unit.
- Cost associated with cleaning of machine in preparation for servicing

The signed WLL can be scanned and emailed as an attachment to [NA-WLL-AGREEMENT@CNHIND.COM](mailto:NA-WLL-AGREEMENT@CNHIND.COM) or can be mailed to:

USA mail original to CNH Industrial Capital America LLC, Attn: WLL Agreement, PO Box 1700 New Holland, PA 17557  
USA Overnight courier mail original to CNH Industrial Capital America LLC, Attn: WLL Agreement, 500 Diller Ave., New Holland, PA 17557  
Canada mail original to CNH Industrial Capital America LLC, Attn: WLL Agreement, 4475 North Service Rd, Suite 301, Burlington, ON L7L4X7 Canada

Case is a registered trademark in the United States and many other countries, owned by or licensed to CNH Industrial N.V., its subsidiaries or affiliates.