

28 July 2020

Department of Administration, Purchasing Division
2019 Washington Street East
Charleston, WV 25305-0130

RECEIVED

2020 JUL 28 AM 8:08

WV PURCHASING
DIVISION

**WEST VIRGINIA ARMY NATIONAL GUARD
RTI ROOF & EXTERIOR DOOR REPLACEMENT DESIGN
LOCATED AT CAMP DAWSON NEAR KINGWOOD, WV**

The EADS Group, Inc. / EADS Architects, Inc. (EADS) is pleased to submit our qualifications to provide professional Architectural, Engineering and Construction Administration Services to the State of West Virginia for the design and preparation of two separate bid document packages for West Virginia State Purchasing Division; one for the roof replacement and one for exterior door replacement for the Regional Training Institute (RTI). EADS has been satisfying the engineering, architectural, environmental, planning and related needs of federal, state and private clients since 1955.

With over 250 employees in nine (9) offices including Morgantown, WV, Cumberland, MD and Somerset, PA, we have the resources to begin this project immediately and complete all work in a timely manner. Our personnel consist of: Professional Civil, Structural & MEP Engineers, Registered Architects, Registered Landscape Architects, Registered Land Surveyors, Professional Geologists, Certified Planners, Environmental Specialists, Construction Inspectors and highly skilled technical staff.

Briefly, we would like to summarize a few key points for your consideration:

- We have been in business for over 60 years.
- We offer a wide array of in-house technical consulting services.
- Our Quality Control Program is ISO 9001 certified. We are one of only a few engineering / architecture firms to achieve this program registration.
- Our staff is very knowledgeable and experienced in the design and construction of military facilities and have successfully completed dozens of roof replacement projects.

With many years of experience, flexibility and capacity, EADS is capable of serving your needs and delivering quality service with integrity. If you would like additional information, or if you would like to schedule a meeting to discuss this project, please feel free to contact me at 814-445-6551 office, 814-442-0455 mobile, or by email at gelliott@eadsarchitects.com.

Respectfully submitted,
The EADS Group, Inc.


By: Gregory L. Elliott, RLA -- Principal & Vice President
Manager of Architecture

28 July 2020

Department of Administration, Purchasing Division
2019 Washington Street East
Charleston, WV 25305-0130

**WEST VIRGINIA ARMY NATIONAL GUARD
RTI ROOF & EXTERIOR DOOR REPLACEMENT DESIGN
LOCATED AT CAMP DAWSON NEAR KINGWOOD, WV**

The EADS Group, Inc. / EADS Architects, Inc. (EADS) is pleased to submit our qualifications to provide professional Architectural, Engineering and Construction Administration Services to the State of West Virginia for the design and preparation of two separate bid document packages for West Virginia State Purchasing Division; one for the roof replacement and one for exterior door replacement for the Regional Training Institute (RTI). EADS has been satisfying the engineering, architectural, environmental, planning and related needs of federal, state and private clients since 1955.

With over 250 employees in nine (9) offices including Morgantown, WV, Cumberland, MD and Somerset, PA, we have the resources to begin this project immediately and complete all work in a timely manner. Our personnel consist of: Professional Civil, Structural & MEP Engineers, Registered Architects, Registered Landscape Architects, Registered Land Surveyors, Professional Geologists, Certified Planners, Environmental Specialists, Construction Inspectors and highly skilled technical staff.

Briefly, we would like to summarize a few key points for your consideration:

- We have been in business for over 60 years.
- We offer a wide array of in-house technical consulting services.
- Our Quality Control Program is ISO 9001 certified. We are one of only a few engineering / architecture firms to achieve this program registration.
- Our staff is very knowledgeable and experienced in the design and construction of military facilities and have successfully completed dozens of roof replacement projects.

With many years of experience, flexibility and capacity, EADS is capable of serving your needs and delivering quality service with integrity. If you would like additional information, or if you would like to schedule a meeting to discuss this project, please feel free to contact me at 814-445-6551 office, 814-442-0455 mobile, or by email at gelliott@eadsarchitects.com.

Respectfully submitted,
The EADS Group, Inc.



By: Gregory L. Elliott, RLA – Principal & Vice President
Manager of Architecture

FIRM OVERVIEW

Quality Service with Integrity

Board of Directors:

- ◆ Thomas M. Reilly, P.E.
President and CEO
- ◆ Craig L. Weaver, P.E.
- ◆ David M. Yahner, P.E.
- ◆ Janet L. Helsel, CPSM
- ◆ Gregory L. Elliott, RLA
- ◆ Stephen M. Sewalk, P.E.

The EADS Group is a Corporation Registered in:

- ◆ Pennsylvania
- ◆ Maryland
- ◆ New Jersey
- ◆ Ohio
- ◆ Texas
- ◆ Virginia
- ◆ West Virginia
- ◆ Alabama
- ◆ Arkansas
- ◆ Kentucky
- ◆ Louisiana
- ◆ Mississippi

Office Locations:

- ◆ Altoona, PA
- ◆ Beaver, PA
- ◆ Clarion, PA
- ◆ Cumberland, MD
- ◆ Johnstown, PA
- ◆ Lewistown, PA
- ◆ Morgantown, WV
- ◆ Pittsburgh, PA
- ◆ Somerset, PA

- ◆ **Est. 1955**
- ◆ **Over \$29 Million in revenue in 2019**
- ◆ **ISO 9001 Certified**
- ◆ **Employee-owned and managed**
- ◆ **Over 250 employees**

QUICK FACTS

MISSION

The Mission of The EADS Group is to provide our clients quality service with integrity, the success of which is measured by their level of satisfaction. By maintaining a climate of integrity, innovation, and constant improvement, we ensure our technical staff the opportunity for personal growth while creating a working partnership with our clients.

BACKGROUND

For over 65 years, The EADS Group has been satisfying the planning, engineering, environmental, architectural and related needs of federal, state and private clients in our community.

Extensive knowledge and expertise is represented in over 250 professionals in the following office locations - Altoona, Beaver, Clarion, Johnstown, Lewistown, Pittsburgh and Somerset, PA; Cumberland, MD and Morgantown, WV. Our professional team is made up of: Professional Engineers, Certified Planners; Registered Landscape Architects, Registered Land Surveyors, Professional Geologists, Registered Architects, Environmental Specialists, Construction Inspectors, Photogrammetrists, and highly skilled technical personnel. We offer the resources of many talented individuals with literally hundreds of successful projects to their credit.

PEOPLE

The key to our organization is people. The loyalty, dedication and longevity of our staff ensure that The EADS Group can provide continuity and professionalism to all assignments. Our personnel are educated, trained and experienced in their chosen disciplines, specifically to provide quality service to our clients. They are flexible. Each project, large or small, becomes the responsibility of a project manager and a specially selected team.

COMMITMENT

To you, our customer. To our community. To ourselves. To quality. We are committed. As an employee-owned company, each member of the EADS Team is invested and dedicated to providing only the highest quality of work. Exemplifying our commitment to quality is our ISO 9001 certification. Our process-based quality management system puts customer satisfaction in the foreground of all our daily operations and ensures the successful completion of your project.

**THE
EADS
GROUP**

FIRM CAPABILITIES

ARCHITECTURE

The EADS Group entered the architectural design market in 1980. Our architectural team specializes in the renovation, restoration and expansion of existing facilities, as well as the design of new structures. Projects completed range from small structures for private developers, to high-tech, top security facilities for the federal government. Historic restoration projects have also been completed in strict compliance with the National Register of Historic Places.



SITE DEVELOPMENT

The EADS Group provides total capabilities in the transformation of undeveloped property into functional commercial, industrial and institutional facilities. From the acquisition of the property through construction management, we offer total in-house capabilities. The disciplines available to you include surveyors, right-of-way specialists, environmental scientists, civil engineers, landscape architects, geologists, hydrogeologists, photogrammetrists, water/wastewater engineers, structural engineers and construction specialists.



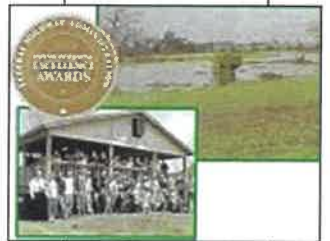
WATER & WASTEWATER

The EADS Group has earned an excellent reputation for providing quality sanitary engineering services. Service to clients began in the late 1940's through the founder of one of our companies, providing the firm with decades of experience in this discipline. We received design approval for the construction of the first aerated facultative lagoon treatment facility in the Commonwealth of Pennsylvania, and were responsible for the initiation of slow sand filtration for safer drinking water within the Commonwealth. Staff is knowledgeable of local, state and federal regulations and investigates solutions tailored to the financial as well as technological needs of each client.



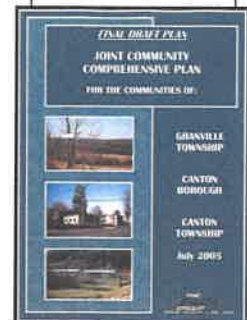
ENVIRONMENTAL

Our staff has extensive experience with waterways permitting, environmental risk assessments, site investigations, wetlands delineation and mitigation, and all related permitting. The scope of services covers terrestrial and aquatic ecology, water resources, vegetation and wetlands, soils and geology, air quality, noise, hazardous wastes, and socio-economics/land use. Projects have been successfully completed for private and public sectors: 17 Street Logan Partnership, L.P., Westvaco, Appleton Papers, Crown American Corp., National Park Service, U.S. Fish and Wildlife Service, Environmental Protection Agency, Pennsylvania Departments of Environmental Protection (DEP) and Transportation (PennDOT), and U.S. Navy and U.S. Army Corps of Engineers.



PLANNING

The EADS Group provides planning services to local governments, public agencies and the development community. Planning services draw upon the mapping, transportation, and environmental capacities of the company, uniquely blending them in a unified approach to assist local officials and the business community in understanding and improving their respective environments. Planning services are coordinated and provided by professionals having a multi-disciplinary background and approach, with extensive experience in comprehensive and strategic planning, land use planning and development planning, in the public and private sectors.

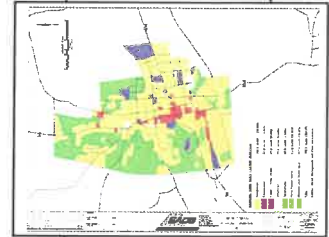


Firm Capabilities

Page 2

MAPPING

Staff has the ability to produce Geographic Information System (GIS), enhanced digital orthophotography and photogrammetric mapping at any scale chosen by our clients. Normal mapping scales provided range from a design scale of 1" = 30' to a scale of 1" = 500', for planning documents. Mapping is provided in GIS ArcInfo, AutoCAD and Microstation formats. Maps can be provided in a layered digitized format, including contours as layers. We also have the ability to produce maps using GPS control surveys and analytical aerotriangulation.



CONSTRUCTION MANAGEMENT

Construction management is completed in support of in-house design services and for projects designed by other professionals. A mix of experience and training provides clients with the knowledge of the latest construction technology and sensitivity to the environment during the construction process. Materials testing capabilities are also available in-house.



MINING & GEOTECHNICAL

Since the founding of one of our companies in 1940, we have completed numerous mining and geotechnical engineering projects. Our experience includes all aspects of mining and geotechnical engineering including mine layout and design, operations, permitting, mine transportation systems, reclamation, mine drainage treatment, geotechnical analysis (including foundation and slope stability analysis), soils engineering, water analysis, etc. Clients are in both the private and public sector reaching from Louisiana to Arkansas and north to Wisconsin and New Brunswick, Canada.



SURVEYING

The EADS Group has been providing professional surveying and mapping services to government, business and industry for more than sixty years. Surveying services are incorporated as an integral part of each of the in-house disciplines offered. Whether strictly related to surveying, or as a support function, our survey crews are capable of providing timely and accurate data necessary for the successful completion of any project. Our crews are familiar with the most recent regulations and standards, and utilize state-of-the-art equipment and software programs to complete each assignment. EADS is also able to provide both high quality photography and accurate mapping with ground control with the use of Drone UAV Services.



TRANSPORTATION

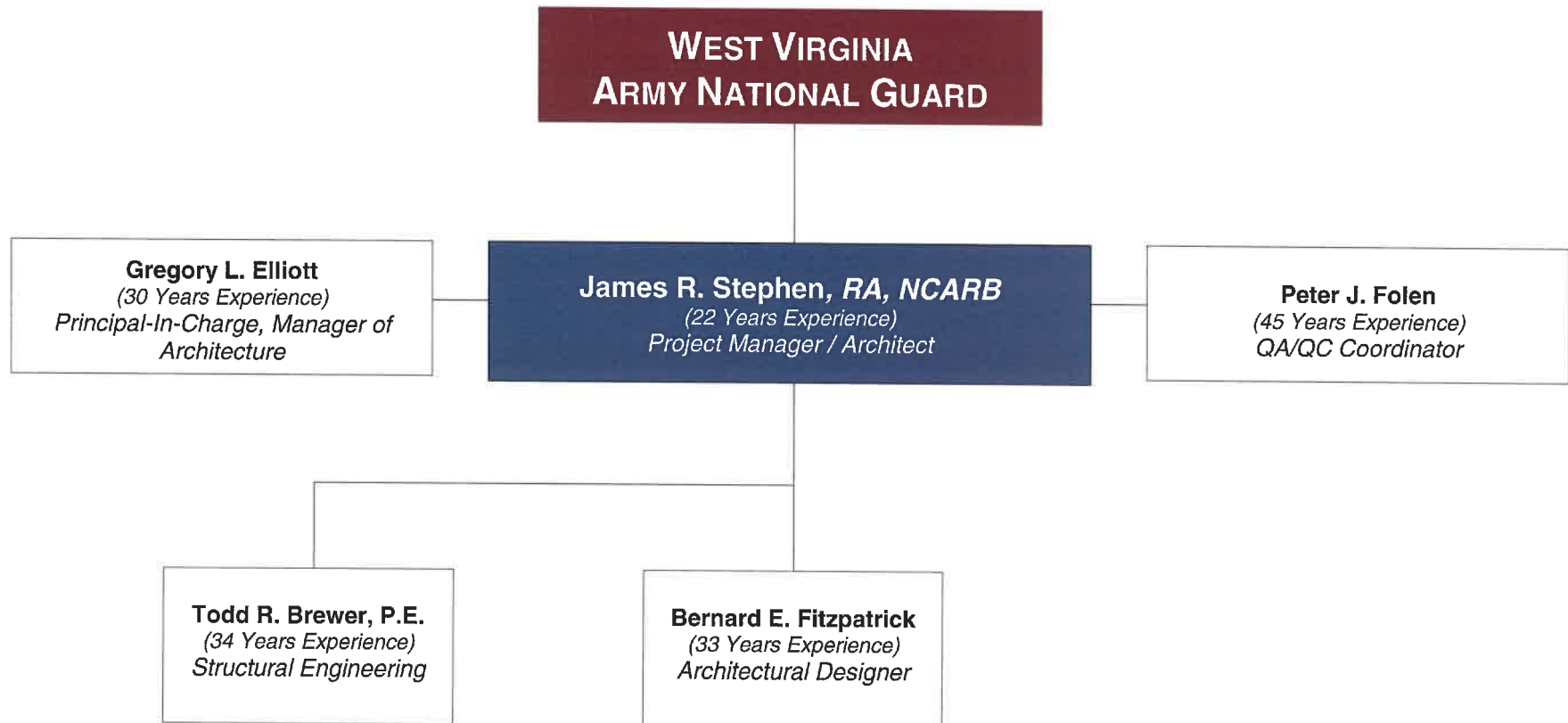
The EADS Group has been responsible for the design of over \$1 billion worth of roadways, highways and bridge construction projects. Our designers have been trained extensively in the use of both Softdesk and Microstation survey, mapping and highway design computer software. This permits the generation of alignments, profiles and cross sections from the initial input of the raw survey data. Today, we provide highway, bridge, and airport planning design and construction services to State Transportation Departments, the U.S. Army Corps of Engineers, Counties, Municipalities, Authorities, and Private Developers. Our engineers and technicians also inspect 300+ bridges on a continual two-year cycle. Our company led a multi-discipline team of Engineers, Geologists and Environmental Specialists to successful completion of one of the largest transportation improvement projects in PA - The Lewistown Narrows. This project has received various awards including: FHWA-Award of Excellence, ACEC/PA-Grand Conceptor Diamond Award, ACEC-Engineering Excellence Honor Award, AASHTO-America's Transportation Award Large Project-on Time, and FHWA/PA-Transportation & Historic Preservation Excellence Award



ORGANIZATIONAL CHART

CEOI ADJ2100000001
CAMP DAWSON RTI ROOF & EXTERIOR DOOR REPLACEMENT DESIGN

PROJECT TEAM ORGANIZATIONAL CHART



JAMES R. STEPHEN, R.A., N.C.A.R.B.

Project Manager / Registered Architect

Joined The EADS Group

February 2012

Years With Other Firms

14

Education

B.A.
Architecture
Architectural History - Minor
The Pennsylvania State
University
1999

The University of Pittsburgh
at Johnstown
Additional Credits and Courses

McGraw Hill Construction
Continuing Education Center
AIA/CES Provider J047
Various Courses
2012

2012 IBC, IRC, IECC
Significant Changes with
Maryland Amendments
April 2013

Registrations

R.A. / PA / 2003

Exp. - 06/30/2021

R.A. / MD / 2012

Exp. - 05/31/2022

R.A. / WV / 2013

Exp. - 06/30/2021

R.A. / OH / 2014

Exp. - 12/31/2021

R.A. / NJ / 2016

Exp. - 7/31/2021

Memberships

NCARB - National Council for
Architectural Registration
Boards

GENERAL QUALIFICATIONS

Mr. Stephen is an experienced Project Architect / Manager and is a dedicated and self-motivated individual who works well on team projects. His enthusiasm and skills further enhance our design team, as well as his strong commitment to client satisfaction. Prior to joining EADS, he was the Owner and Project Architect / Manager of Stephen Architectural Studio. His experience has included, but is not limited to:

- Successfully completed numerous new construction, renovation and addition projects on time and within budget
- Diversified experience in design and construction for all types of projects
- Computer experience with AutoCAD, Revit, Sketch-Up, and Photoshop
- Architectural Presentation Renderings / 3D Modeling
- Budget / Cost Analysis and Estimation
- Zoning, Code Review and A.D.A. Research / Design
- Project Design and LEED Design
- Worked on many award winning projects

EXPERIENCE

Mr. Stephen's recent project experience includes, but is not limited to:

Salisbury-Elk Lick Area School District (*Project Architect*). The project consisted of site improvements and a new accessible 800 sf connection corridor between the Elementary School and Junior/Senior High School. Students traverse daily between the two schools for shared facilities including the cafeteria and gymnasium. EADS Architects provided full design services including: Concept design through construction document preparation, Code reviews and approvals, Municipal approvals and utilities coordination, Mechanical and lighting design, Landscape architecture and site design, Bidding and award, Construction administration.

Philipsburg Osceola Area School District - Philipsburg-Osceola Area School District (*Project Architect*). In 2019 EADS Architects, Inc. was commissioned by the School District to perform an assessment and prioritization to the facility needs at the District High School, Middle School and two elementary schools. The Board of Education selected renovations of the six High School science rooms for the 2020 construction season. The work included replacement of the science equipment, furnishings and casework. The room finishes were also renovated. EADS is responsible for the design, bidding and award, and construction observation on behalf of the School District.

Bishop Walsh High School - Cumberland, MD (*Project Architect*). Conducted a code review, opinion of costs and construction documents for the interior renovations of an existing school. Office and services include the Girls and Boys Locker Rooms, Weight Room, Showers and Restrooms, Team Meeting Rooms, Chemistry Lab, Biology Lab and two Classrooms. Renovated Building Square Footage: 16,000 sf, Construction Cost \$900,000.

OMNI Bedford Springs - Bedford Springs Golf Clubhouse (*Project Manager / Project Architect*). Conducted code reviews, design development services and prepared construction documents for a new golf clubhouse facility. Design scope consisted of a new restaurant & bar area, golf pro shop with dressing room, office space, full commercial kitchen, new high-end restroom facilities, exterior porch and patio dining/sitting areas with exterior fire pit, site development including all new landscaping, parking areas and golf cart rental area. Additional responsibilities included Construction Administration Services and Project Closeout. Building Square Footage: 4,500 sf; Construction Cost: \$1,800,000.

County of Snyder - Central Susquehanna Regional 911 System (*Project Architect*). Conducted a program needs assessment, code review, opinion of costs, design and construction documents for renovation of an existing emergency operations center with a new addition. Addition includes a new 911 Telecommunication Center, Restrooms and Lockers, Break Area, Server Room and Secure Entrance. Building Square Footage: 8,600 sf, Construction Cost \$1,296,000. (Construction in Progress)

County of Tioga - Tioga County Department of Emergency Services Facility (*Project Architect*). Conducted a program needs assessment, code review, opinion of costs and design for renovation of an existing available building, new addition and new construction on the site including a new vehicle warehouse facility and new communication towers. Office and services include 911 Center, Emergency Operations Center, Continuation of Government facilities, DES Administration. DES Building Square Footage: 10,200 sf, Vehicle Warehouse Square Footage: 4,200 sf, Construction Cost \$5,200,000.

County of Clinton - Clinton County Department of Emergency Services Facility, (*Project Architect*). Conducted a program needs assessment, design development, code review, opinion of costs and produce construction documents for renovation of an existing available building and new construction on the site. Office and services include 911 Center, Emergency Operations Center, Continuation of Government facilities, DES Administration, Veteran's Affairs Office. Building Square Footage: 11,000 sf, Construction Cost \$2,500,000.

County of Tioga - Tioga County Courthouse Additions and Renovations (*Project Architect*). Conducted a program assessment, code review, opinion of costs and design for renovations of an existing Courthouse and Annex. New addition and renovations include a new, secure, public entry vestibule, new security entry system for inmate processing and misc. existing facility improvements. Construction Cost \$3,200,000.

Valcott Enterprises - Overbrook Personal Care Center, Pittsburgh, PA (*Project Architect / Manager*). Performed a Needs Assessment of a former school facility for renovation into a personal care facility. Services and project included Code Review/Deficiencies, Structural Evaluation, MEP and Fire Protection Review, Opinion of Construction Costs, Schematic Floor Plan Design. Building Square Footage: 52,000 sf, Project Budget: \$3,000,000.

Goodwill Industries - New office and warehousing centers, Western PA (*Project Architect*). Performed multiple needs assessments of existing facilities for Goodwill's operations including office facilities and warehousing. Services included Code Review/Deficiencies, Opinion of Construction Costs, Schematic Floor Plan Layouts, Hazardous Material and Asbestos Evaluation.

County of Lebanon - Lebanon County EMA Facility (*Project Architect*). Conducted a program needs assessment, code review, opinion of costs and design for a new EMA Facility and new construction on the site. Office and services include 911 Center, Emergency Operations Center, Continuation of Government facilities, EMA Administration. Building Square Footage: 13,200 sf, Opinion of Cost \$3,400,000.

Seven Springs Ski Resort - Southwind Condominiums (*Project Designer*). Conducted a code review, opinion of costs, schematic design and presentation/marketing renderings for a new condominium development.

Westmoreland County Housing Authority - W.C.H.A. Office Complex (*Project Architect*). Conducted a code review, opinion of costs and design for a new LEED office facility. Office and services include new Staff Offices and Support Areas for the Westmoreland County Housing Authority. Building Square Footage: 24,000 sf, Anticipated Construction Cost \$4,800,000.

County of Clarion - Clarion County Courthouse (*Project Architect / Manager*). Conducted a program needs assessment, code review, opinion of costs and design for the renovation of an existing courthouse. Office and services include the Court of Common Pleas, Domestic Relations, Assessors, Prothonotary, Recorder of Deeds, Auditors, County Maintenance, Information Technology and Sheriff's Department. Building Square Footage: 34,500 sf, Opinion of Cost \$7,000,000.

GREGORY L. ELLIOTT, RLA - PRINCIPAL Manager of Architecture and Site Development

GENERAL QUALIFICATIONS

Mr. Elliott is a creative problem solver who has successfully designed and managed a wide variety of architectural and site development projects over the course of his career. Mr. Elliott's expertise includes:

- Arrangement of the land and the natural and man-made elements upon it through the application of creative and technical skills for efficient, safe, and enjoyable human use
- Managing the site development discipline for all projects, establishing relations between buildings, roadways, access, parking areas, walkways, and open spaces in a manner that is compatible with the character of the land and its intended use
- Handicap accessible site design in accordance with the latest ADA standards and IBC regulations
- Project Manager for Architecture and Site Development having completed over 200 major projects
- Completing several streetscape projects utilizing Hometown Streets and Safe Routes to School, PCTI, Growing Greener and DCED funding in accordance with PennDOT requirements
- Assisting municipalities with Plan reviews, land development issues, including drainage and paving, and preparation of ordinances

EXPERIENCE

Mr. Elliott began his professional career with The EADS Group upon graduating from The Pennsylvania State University. In addition to project management and design, he is responsible for project permitting; compliance with local, state, and federal codes; and coordination with authorities having jurisdiction. An example of the projects he has completed include, but are not limited to the following:

- Ligonier Diamond Park Renaissance Project - located in Ligonier Borough, PA (*Project Manager*). This project has won three prestigious awards.
- Bishop Walsh High School Renovation Project in Cumberland MD (*Project Manager*).
- PA DGS - Department of Military and Veteran's Affairs, Two New National Guard Readiness Centers, Mt. Pleasant and Latrobe, Westmoreland County, PA (*Project Manager*). Ensured the facilities met the needs of the using agency.
- National Park Service - Flight 93 National Memorial, Somerset County, PA (*Project Manager*). Design of new Maintenance Facility.
- National Park Service - Flight 93 National Memorial, Somerset County, PA (*Project Manager*). Provided client contact and stormwater management and Erosion & Sediment Pollution Control Design. Also prepared Individual NPDES Permit application.
- Wheeler Bros., Inc. - 32,000 SF new Warehouse and Office Building (*Project Manager*).
- Martella Pharmacy, Park Hill and Windber, PA - Design and Construction Administration for two new pharmacy buildings (*Project Manager*).
- Somerset County Commissioners - Airport Runway Extension, Somerset County, PA (*Project Manager*).
- Stoystown Auto Wreckers - Multiple Projects, Somerset County, PA (*Project Manager*). Prepared NPDES Permit Application for stormwater from industrial facilities; provided employee education for compliance with NPDES Permit; and prepared design for new 50,000 SF warehouse with offices and dismantling bays.
- HK Realty - New Holiday Inn Express, Somerset County, PA (*Project Manager*).

Joined The EADS Group

September 1989

Years With Other Firms

0

Education

B.S.

Landscape Architecture
Pennsylvania State University
1989

Postgraduate Studies
Business Administration

Dale Carnegie Graduate
1999

Registrations

RLA / PA / 1998

Exp. - 05/31/2021

RLA / MD / 2007

Exp. - 03/28/2021

RLA / NJ / 2018

Exp. - 05/31/2022

Seminars

Stormwater Management
Site Assessment/Erosion &
Sedimentation Control
Pavement Design
Recreational Trail Design

Community Service

Associate Director
Somerset Conservation District

Board Member
Cambria-Somerset Authority

- Tableland Services, Inc. - Obahiah Estates Subdivision, Somerset County, PA (*Project Manager*). Completed the design, engineering, permitting and construction administration for new residential subdivision project.
- First Nation Wood Pellet Plant, North Star Industrial Park, Somerset County, PA (*Project Manager*). Provided design, oversight of drawing/specifications development, client contact, permitting, and assistance with bidding.
- Tom Croner, Shady Lane Subdivision, Somerset County, PA (*Project Manager*). Provided design oversight of drawing development, client/permit agency contact and submission of permit and approval applications.
- Goodwill Industries of Conemaugh Valley, New Retail Store and Donation Center, Cambria County, PA (*Discipline Manager*). Provided site design, oversight of drawing development, preparation of technical specifications, preparation of NPDES Permit application and other approval submissions.
- Mt. Union Area School District - New Elementary School, Huntingdon County, PA (*Discipline Manager*). A \$5,000,000 new elementary school and additional projects.
- Somerset County Commissioners - New Senior Citizen Centers, Somerset County, PA (*Project Manager*).
- Somerset County Commissioners - New Parking Garage, Somerset County, PA (*Discipline Manager*).
- CVS Pharmacy Corporation, Inc - Parking Lot, Somerset County, PA (*Project Manager*). A 90-trailer parking lot.
- PennDOT - Lewistown Narrows - Canal Basin Master Plan, Mifflin and Juniata Counties, PA (*Project Manager*).
- PennDOT/Department of General Services - Three New Welcome Centers, Washington, Pike, and Adams Counties, PA (*Project Land Architect*). Mr. Elliott's responsibilities included: development of master site plans, vehicular and pedestrian circulation, entrance plaza/drop-off area design, stormwater management and roof drain design, erosion and sedimentation control, walkway design, layout and dimensioning, contour grading, construction details, picnic area design, handicapped access design, site planting and interiorscape design, site lighting and preparation of cost estimates and technical specifications.
- Somerset County Commissioners - New Office Building, Somerset County, PA (*Project Land Architect*). A \$10,000,000 office building.
- Hidden Valley and Seven Springs Resort Communities - Land planning and site design skills, both located in Somerset County, PA (*Project Manager*). Lot layout, master site plans, subdivision design, resort development, recreational design, roadway design and stormwater management for numerous projects.

Mr. Elliott managed ADA investigation studies and preparation of drawing to implement corrective measures for 125 branch offices of a top 20 National Bank.

Mr. Elliott has prepared final bid documents and provided construction consultation for the following streetscape projects administered by PennDOT:

- Mifflin County Commissioners - Lewistown Streetscape Project, Phases I, II, IIIa, IIIb, IIIc, IV and V, Lewistown, Mifflin County, PA (*Project Manager*).
- Meyersdale Borough Streetscape Project, Somerset County, PA (*Project Manager*).
- Jennerstown Borough Streetscape Project Phase I and II, Somerset County, PA (*Project Manager*).
- Somerset Borough Streetscape Project, Somerset County, PA (*Project Manager*).
- Benson Borough Streetscape Project, Somerset County, PA (*Project Manager*).
- Brown Township Streetscape Project, Mifflin County, PA (*Project Manager*).

Mr. Elliott has extensive experience in recreational planning and design including DCNR procedures. He has designed 23 playgrounds in accordance with the Consumer Product Safety Commission guidelines for playground safety and the Americans with Disabilities Act. The following are several new park and trail projects he has designed and administered the construction of:

- Hollidaysburg Borough - Chimney Rocks Park, Hollidaysburg, Blair County, PA (*Project Manager*).
- Punxsutawney Borough - Tom Barletta Community Park (In-line Hockey and Skate Park). Punxsutawney, PA (*Project Manager*).
- Crawford County - Colonel Crawford Park, Meadville, Crawford County, PA (*Project Manager*).
- Everett Borough - Tenley Park, Everett, Bedford County, PA (*Project Manager*).

Additionally, Mr. Elliott has designed and managed the construction of several athletic fields and running tracks.

PETER J. FOLEN

QA / QC Coordinator

GENERAL QUALIFICATIONS

Mr. Folen is an experienced contract manager and contract administrator who has successfully completed a wide variety of projects. As a Manager, he is responsible for scheduling personnel, monitoring daily activities, providing technical and quality control oversight, and mentoring staff to ensure that contractual obligations are met and that clients' needs are satisfied. Mr. Folen's expertise includes:

- Project Manager for 50+ school district projects (*renovations, additions, and new construction*)
- Project Manager for 75+ roof replacement projects
- Completion of more than 50+ program needs assessments and facility programs
- Project Manager and Project Representative for 200+ building projects
- Project Manager for 125+ Pennsylvania municipal government projects (*county, township, and borough*)
- Project Manager for 30+ historic preservation and registration projects, historic sites surveys, historic districts and National Register nominations

EXPERIENCE

Mr. Folen's recent project experience includes, but is not limited to:

Philipsburg-Osceola Area School District - In 2019 EADS Architects, Inc. was commissioned by the School District to perform an assessment and prioritization to the facility needs at the District High School, Middle School and two elementary schools. The Board of Education selected renovations of the six High School science rooms for the 2020 construction season. The work included replacement of the science equipment, furnishings and casework. The room finishes were also renovated. EADS is responsible for the design, bidding and award, and construction observation on behalf of the School District.

Holidaysburg Area School District- Although EADS Architects, Inc. has assisted the School District with various project types, the focus in recent years has been the replacement of aging roofing system throughout the District. EADS was responsible for the design, bidding and award, and construction observation for the following projects:

- 2020: Frankstown Elementary School - Replacement of 53,000 SF Asphalt Shingle roof and 6,700 SF of EPDM membrane roofing and insulation.
- 2019: Foot of Ten Elementary School - Replacement of 47,000 SF Asphalt Shingle roof and 6,700 SF of EPDM membrane roofing and insulation.
- 2017: Hollidaysburg Area Junior High School - Replaced 60,970 SF built-up coal tar roof covered with a ballasted rubber membrane with tapered insulation and new EPDM total roofing system.
- 2011: Longer Elementary School - Replaced 29,670 SF shingle roof with new roof felts, ice guard, architectural asphalt shingles, gutters and downspouts.

Mount Union Area School District - Over the course of a 15 year period EADS Architects, Inc. served as the architect of record and responsible for planning, design, bidding and award, and construction observation on more than 20 major projects. These included roof replacement projects, renovation and improvements to existing facilities and construction of a new maintenance building. The most significant projects were the extensive renovations and additions project at the High School, major renovations and additions to an elementary school and the construction of a new PA Department of Education acclaimed elementary school.

Shade-Central City School District, Architectural Services Retainer, Somerset County, PA (Project Manager). Completed the following projects for the district: High School roof assessment, management plan, and repair projects, handicap lifts, handicap restroom renovation, and high school entrance and office renovations for security and access. Responsible for design, bidding/award and construction services.

Joined The EADS Group

May 1984

Years With Other Firms

10

Education

M.S.
Architecture
Pennsylvania State University
1974

B.A.
Architecture
Pennsylvania State University
1973

Memberships

National Fire Protection
Association

National Trust for Historic
Preservation

PA Federation of Museums &
Historical Organizations

Roof Consultants Institute

County of Tioga - Tioga County Department of Emergency Services Facility, Wellsboro, PA (*Project Manager*). Renovations and improvements to a two story, 7,220 SF building and 2,980 SF new additions for the Tioga County Department of Emergency Services Facility. The project work will provide for a new 911 Center, Emergency Operations Center, DES offices, server room and dispatcher support facilities. The project includes a new 4,150 SF pre-engineered storage building for hazmat trailers, emergency vehicles, and equipment. EADS is responsible for architectural, structural, site development, and MEP (consultant) design; bidding and construction observation.

County of Clinton - Clinton County Department of Emergency Services Facility, Flemington, PA (*Project Manager*). Renovations and improvements to a former elementary school building for the Clinton County Department of Emergency Services Facility, and the Clinton County Office of Veterans Affairs. The work included renovations to the 11,000 SF main floor, sprinkler system and mechanical room in the basement, 500 kw emergency generator, new 911 Center, Emergency Operations Center, offices, new access road and parking areas, and stormwater system improvements. EADS is responsible for architectural, site development, and MEP (consultant) design; asbestos abatement, bidding and construction observation.

County of Greene - Greene County Prison New Food Preparation Facility, Waynesburg, PA (*Project Manager*). Construction of a new 1,050 SF building addition to the Greene County Prison for a new food preparation facility. The project included design of a food preparation kitchen with new food service equipment, fire suppression systems, coolers, freezers and food storage facilities. EADS was responsible for architectural, structural, site development, MEP (consultant) and utility design, bidding and construction observation. The project was "fast-track" due to the urgency of need.

County of Elk - Office of Emergency Services Facility, Elk County, PA (*Project Manager*). Conducted a program needs assessment to renovate and expand the existing facility, new construction on the existing site, new construction on alternate suitable sites and renovation of an existing available building. Recommended the options of renovating the existing 27,000 SF building because it met the program needs and was the least construction cost. Office and services included 911 Center, Emergency Operations Center, Continuation of Government facilities, County records storage, DES Administration. Butler Area Sewer Authority (BASA) - Renovations and Improvements to BASA Administrative Office Building, Butler County, PA (*Project Manager / QA/QC*). The original Butler Area Sewer Authority office building was constructed in the 1950's. The expansion of services and growth in customers has resulted in the need for additional engineering and customer service personnel. The renovation project addressed the need, as well as the upgrade of the building systems, improve energy efficiency and to provide access to handicapped persons. The project work included reconstruction of all interior spaces of the 8,900 SF two story building, door, window and roof replacements and improvements to the HVAC, plumbing and electrical systems. Construction Cost: \$1,400,000.

Butler Area Sewer Authority (BASA) - Renovations to the Maintenance Building and Sewer Crew Garage, Butler County, PA (*Project Manager / QA/QC*). To accommodate the program renovations to the BASA administrative office space, alternative building space was required for the maintenance department and sewer crew operations. Two existing buildings at the treatment plant campus were renovated and improved. The maintenance building is 3,355 SF with an office, breakroom, accessible restroom, mechanical and storage rooms, and a shop/garage area. The sewer crew garage is 18,482 SF with an office, breakroom, accessible restroom, equipment storage rooms, emergency generator room, and enclosed heated and unheated vehicle parking areas. Construction Cost \$542,000.

Butler Area Sewer Authority (BASA) - Four Roof Replacement Projects, Butler County, PA (*Project Manager / QA/QC*). After inspection and temporary repairs were made in the Fall of 2011, BASA replaced the following aging roofs:

- Treatment Plant Chemical Building, 100 Litman Road, Butler, PA - 4,486 SF
- Treatment Plant Sludge Thickener Building, Litman Road, Butler, PA - 4,413 SF
- Monroe Street Pump Station, 208 S. Monroe Street, Butler, PA - 1,443 SF
- Karns Crossing Pump Station, 154 Bonnie Drive, Butler, PA - 1,151 SF

Central Electric Cooperative, Inc. (CEC) - New Corporate Headquarters Building, Clarion County, PA (*Project Manager*). The existing headquarter building was over crowded and inefficient. CEC commissioned EADS to design a new facility to meet current and future program needs. The new building is a 19,000 SF, two-story steel structural frame building. Offices and services include administrative, finance and billing, customer services, communications, marketing, engineering, IT, HR, GIS, and a storm center. Construction Cost: \$4,300,000

Goodwill Industries of the Conemaugh Valley - Richland Goodwill Retail Store and Donation Center, Cambria County, PA (*Project Manager*). The Richland Goodwill Store and Donation Center is a 15,000 SF building with a structural steel frame on reinforced concrete caisson foundations. Customers enter into the 10,000 SF open area retail store. Donations can be made at the convenient drop-off canopy to the 5,000 SF warehouse and process spaces that include a training room, break room and manager's office. The retail and donations areas are utilized to provide job training to persons with barriers to employment. EADS was responsible for design, bid solicitation, award and construction services. Construction Cost: \$2,000,000

BERNARD E. FITZPATRICK

Architectural Designer

GENERAL QUALIFICATIONS

Mr. Fitzpatrick is a self motivated individual who enjoys taking on challenging tasks. He is self sufficient and capable of working independently but is also a strong team player. He routinely takes on multiple roles during projects and is dedicated to meeting project deadlines. Mr. Fitzpatrick has:

- Strong knowledge of CADD (*Computer Aided Drafting and Design*) Software
- Prepared probable cost estimates, quantity take-offs and computations for a variety of projects
- Provided 3D models / renderings and colored presentation drawings
- Performed numerous field investigations for verifying of existing conditions of renovation projects and compliance with established codes
- Met with clients to discuss scopes of work and review projects

EXPERIENCE

With numerous years of experience in AutoCADD, Mr. Fitzpatrick performs computer generated drafting and design from concept design to construction phase. He also has experience in producing computer generated 3D modeling / rendering. Furthermore, Mr. Fitzpatrick has prepared contract documents and specifications and assists architects / project managers in preparing reports and probable cost estimates.

Mr. Fitzpatrick's recent project experience includes the following:

- Appalachia Intermediate Unit 8 - Mylo Park Office Building, Cambria County, PA (*Designer / CADD Technician*). Responsible for field investigation and preparation of construction documents for window replacement, exterior façade and miscellaneous interior renovations.
- Archdiocese of Baltimore - Interior Renovations at Bishop Walsh High School, Cumberland MD (*Designer/CADD Technician*). Renovations to the locker rooms and classrooms. Responsibilities included preparation of contract documents, shop drawing reviews and generation of 3D models / renderings.
- County of Clinton - Clinton County Department of Emergency Services Facility, Flemington, PA (*Designer/CADD Technician*). Renovations and improvements to a former elementary school building for the Clinton County Department of Emergency Services Facility, and the Clinton County Office of Veterans Affairs. Responsibilities included preparation of contract documents, field investigations and shop drawing reviews.
- Central Electric Cooperative - New Headquarters Building, Clarion County, PA (*Architectural Designer*). Design and layout of new two-story office building along with preparation of contract documents and specifications. Also responsible for generation of color presentation drawings and 3D models / renderings.
- Butler Area Sewer Authority - Compost Handling and Maintenance Buildings Renovation, Butler County, PA (*Architectural Designer*). Prepared contract documents and specifications.
- Crawford County Care Center - New Entrance Canopy, Crawford County, PA (*CADD Technician / Specification Writer*). Design, preparation of construction documents and specifications for a new masonry entrance canopy.
- Central Electric Cooperative - New Garage / Washbay Addition, Clarion County, PA (*Designer/ CADD Technician/Specification Writer*). Design and layout of a new garage / washbay along with preparation of construction documents, specifications and shop drawing reviews.

Joined The EADS Group

January 2005

Prior Years With The EADS Group

8

Years With Other Firms

10

Education

Assoc.
Architectural Drafting
Pittsburgh Technical Institute
1986

TODD R. BREWER, P.E.

Structural Engineer

Joined The EADS Group

May 1986

Years With Other Firms

0

Education

B.S.
Civil Engineering Technology
University of Pittsburgh
1986

Registrations

P.E. / PA / 1991

Exp. - 09/30/2021

P.E. / MD / 2002

Exp. - 07/18/2020

P.E. / WV / 2013

Exp. - 12/31/2020

Certifications

PennDOT Certified Bridge
Safety Inspector
2018 / Refresher Course

Memberships

American Institute of Steel
Construction

GENERAL QUALIFICATIONS

Mr. Brewer is an established member of the design staff with extensive experience related to all types of bridge, water and wastewater treatment plant and building structural systems. Mr. Brewer also performs project management on structural related projects. His strengths and areas of expertise are:

- Concrete and steel highway structure design including alternatives evaluation, hydraulic analysis of bridges and culverts
- Concrete, steel and timber building system structural design
- Quality Assurance / Quality Control review of peer design work in accordance with EADS' Quality Management System
- Accredited as a Certified Bridge Safety Inspector in the Commonwealth of Pennsylvania for participation in the National Bridge Inspection Standard (NBIS) programs
- Existing Building Systems structural condition evaluation and reporting

EXPERIENCE

Tioga County - Addition to Prison, Tioga County, PA (*Structural Engineer*). This project is a 1,600 SF addition to the existing prison facility. The new facilities will include walk-in cooler and walk-in freezer, storage and laundry facilities. The 1-story addition consists of concrete masonry walls on concrete footings. The roof consists of metal decking resting on steel bar joists.

Tioga County - Department of Emergency Services (DES) Facility, Wellsboro, PA (*Structural Engineer*). This project is the renovations and improvements to an existing Golf Club House facility to convert it to a 911 Center for the DES. The project includes a 2 story, 2,300 SF addition and a 1-story, 500 SF addition and renovations to the existing 2-story, 7,200 SF facility. Structural designs include metal roof trusses, metal stud walls, metal floor joists, masonry walls, timber floor joists, glulam beams, steel pipe columns, concrete retaining walls and concrete foundations. The project also included the design of concrete foundations, including tension tie beams and masonry grade walls for a 4,200 SF prefabricated clear span rigid frame storage facility.

City of Johnstown - Main Street East Parking Garage Rehabilitation, Johnstown, PA (*Structural Engineer*). This project is the renovations and improvements to a six (6) level open parking facility. The existing structure is a steel frame with concrete decking resting on steel purlins, which are supported by steel girders spanning into steel columns. Services included a complete inspection of the garage and structural condition assessment report, with testing of the concrete decking and the structural steel components, and analysis of the concrete decking. Improvements include replacement of portions of the concrete decking, refurbishing connections, replacement of expansion dams, routing and sealing cracks and replenishing deck surface sealers.

Redevelopment Authority of Somerset County - Conemaugh Township Municipal Building, Somerset County, PA (*Structural Engineer*). This project was ADA improvements to the Conemaugh Township Municipal Building. Structural designs included a new 500 SF canopy consisting of aluminum beams and columns supported by concrete foundations. The canopy covers the new handicapped access ramps at the entrance to the facility.

First Energy - Renovations to the First Energy Building, Ebensburg, PA (*Structural Engineer*). The project included new loading dock and garage doors, new concrete foundations for two (2), 6,000 gallon oil reclaim tanks and the design of steel beams, columns and concrete foundations for four (4) cranes ranging in capacity from ½ ton to 2 tons.

Butler Area Sewer Authority (BASA) - Renovations and Improvements to BASA Administrative Office Building, Butler County, PA (*Structural Engineer*). Designs included an exterior masonry elevator shaft and stair tower with renovations and improvements to the 9,000 SF 2 story facility. The project also included the analysis of existing floors for high density file system loadings.

County of Greene - Greene County Prison New Food Preparation Facility, Waynesburg, PA (*Structural Engineer*). Construction of a new 1,050 SF building addition to the Greene County Prison for a new food preparation facility. The project included the design of metal roof trusses and metal stud walls resting on masonry and concrete foundations.

First Peoples Community Federal Credit Union - Building Renovations, Somerset PA (*Structural Engineer*). This project is the renovation of an existing 2,000 SF building on North Center Avenue to convert the structure to a bank. Designs included a new 32 foot by 35 foot Drive Up Window/ATM canopy and a 240 SF entrance canopy/vestibule. The canopy consisted of timber roof trusses supported by steel I-beams resting on steel tube columns and masonry pilasters with concrete footings. The entrance vestibule and canopy consisted of timber roof trusses supported on steel I-beams resting on steel tube columns on concrete footings. The project also required lintel design.

Seven Springs Mountain Resort - Southwind Phase IV, Champion, PA (*Structural Engineer*). This project is the design of two types of 3 story townhouses for a ski resort. There are 4 unit and 2 unit townhouses. Unit B 5,000 SF. Unit C 6,900 square feet. Structural designs included timber walls, gable trusses, shed roof trusses, floor joists, manufactured glulam and LVL lintels, concrete basement walls, concrete retaining walls and concrete foundations. Designs also included 2 level exterior wood framed decks.

County of Clinton - Clinton County Department of Emergency Services Facility, Flemington, PA (*Structural Engineer*). Renovations and improvements to a former elementary school building for the Clinton County Department of Emergency Services Facility, and the Clinton County Office of Veterans Affairs. The renovations and improvements were designed for 7,130 SF of the 11,130 SF existing facility. Structural renovations included the design of steel beams and masonry pilasters to support remaining portions of exterior walls and the roof following the removal of an existing wall and the strengthening of a portion of the roof using steel beams, steel pipe columns and concrete footings.

Ridgway Township Supervisors - New Township Facility, Elk County, PA (*Structural Engineer*). Project consists of the expansion of the existing administrative facilities and the construction of a new storage facility for the Township. Completed structural design of the one story timber frame 20' by 36' expansion of the administrative building which included timber roof trusses, timber stud walls, masonry and concrete foundations, concrete retaining wall and timber canopies. Duties also included the design of the concrete spread footing foundations for the new 130' by 60' prefab steel rigid frame storage facility.

Central Electric Cooperative - CEC Building Addition and Renovation, Phase I, Parkers Landing, PA (*Structural Engineer*). Project involved the design of a structural system. System is a steel frame on concrete spread footing foundations for a high bay garage and wash bay. Building measured 141' by 63'. Responsibilities include steel frame design, using STAAD, moment connections, shear connections, and reinforced concrete design.

Central Electric Cooperative - Phase II New Headquarters Building, Parkers Landing, PA (*Structural Engineer*). Design of a new corporate headquarters building for a rural electric cooperative. Duties included the design of a structural frame system using STAAD and the design of concrete floor deck, metal roof deck, concrete masonry walls, steel bar joists and reinforced concrete foundations for a 2-story building measuring 120' by 90'. Responsibilities also included the preparation of specifications for structural items in the bid contract.

C.G. Angle, Inc. - McClanahan Building Phase II and III, Blair County, PA (*Structural Engineer*). Design of foundations for the expansion of an industrial building owned by the McClanahan Corporation. Responsibilities included the design of a concrete caisson foundation system to support main frame columns of two pre-engineered metal building structures, spread footing foundation systems to support end wall columns of the pre-engineered metal buildings and the preparation of construction plans with notes and details for construction of the foundations. The Phase II addition measures 60' by 75' by 60' high and included loadings from a 150 ton crane system and the Phase III addition measured 50' by 25' by 60' high and included loadings from a 100 ton crane system.

Westmoreland County Housing Authority, Exterior Renovations, Eastgate, Scottdale, PA (*Structural Engineer*). Design of exterior entrance canopies, structural steel frames, and reinforced concrete foundations. The canopies were 24' by 10' by 9' high.

MOUNT PLEASANT ARMORY

Westmoreland County, Pennsylvania

On behalf of the U.S. Army National Guard, the PA Department of General Services (PA DGS) selected The EADS Group to plan and design a 37,522 S.F. all new facility with training classrooms for 300+ military personnel and administrative office space. The new facility was constructed with split-face block.

Design for the facility followed U.S. Army National Guard design guides for armories. The design team worked closely with the issuing agency and the Department of Military and Veteran's Affairs, to ensure that their goals were met and the project budget was maintained.

Exterior features included:

- Site selection and environmental constraints
- A 110-car bituminous parking lot
- Vehicle wash platform and fuel dispensing system
- Secured gravel hardstand military vehicle parking area
- Stormwater detention basin
- Landscape plantings

Interior space included:

- Administration offices and a recruiting office
- Classrooms
- A 5,800 square-foot assembly hall
- Kitchen and restrooms
- Physical fitness room and locker rooms
- Arms vault
- Vehicle maintenance training bays

Furthermore, the HVAC system included the installation of two cast iron sectional boilers, which serve a hot water distribution system. The hot water system is designed with redundancy to ensure operation of the facility. Cooling is provided to the building through the use of direct expansion refrigerant coils in the air-handling units, which also introduce the required level of outside ventilation air. Kitchen hoods were provided with ventilation, makeup air and required fire protection system.

The allocation for the building construction was estimated by the user and PA DGS at \$3,900,000. The low bids came in during the fourth quarter of 1997 at \$3,305,060.



Construction Cost:
\$3,305,000

Contracting Agency:
PA Department of General Services
18th & Herr Streets
Harrisburg, PA 17120

EADS Project Manager:
Gregory L. Elliott, RLA

QUICK FACTS

THE
EADS
GROUP

LATROBE ARMORY

Westmoreland County, Pennsylvania

The Pennsylvania Department of General Services awarded contracts for construction of the new Latrobe National Guard Armory. The armory is located on the grounds of Torrance State Hospital in Derry Township, Westmoreland County.

EADS Architects prepared the architectural, MEP, site development and structural design for this all new facility. The EADS Group Building Systems department completed the mechanical and electrical design. EADS applied and secured an NPDES Permit for this project.

The design team worked closely with the issuing agency, the Department of Military and Veteran's affairs, to ensure that their goals were met and the project budget was maintained.

The new 29,000-square-foot facility was constructed with a brick veneer to compliment the adjacent state hospital complex of buildings.

Interior spaces included:

- Administration offices
- Classrooms
- A 5,800-square-foot assembly hall
- Kitchen
- Recruiting office
- Restrooms
- Physical fitness room
- Arms vault
- Vehicle maintenance training bays
- Locker rooms

Exterior features included:

- An 84-car bituminous parking lot
- Vehicle drop off area
- Vehicle wash platform and fuel dispensing system
- Military vehicle parking area
- Stormwater detention basin



Construction Cost:
\$3,900,000

Contracting Agency:
**Bureau of Facilities and
Engineering**
Utility Road,
Fort Indiantown Gap
Annville, PA 17003-5002

EADS Project Manager:
Gregory L. Elliott, RLA

QUICK FACTS

**THE
EADS
GROUP**

CHARLESTON ARMY RESERVE

Charleston, West Virginia

This project was the design of a new 200 member U.S. Army Reserve Center to house the 3rd Brigade 80th Division Training Battalion. The building consists of administrative offices, classroom facilities, shops, locker rooms, rest rooms. The site development consists of parking areas, roadways, sidewalks, landscaping, fencing, secured areas, exterior lighting, and utilities. Special areas within the primary building involved a kitchen and cafeteria, an arms locker, and a battery room.

The Reserve Center was placed on a ridge top site at the rear of the Wal-Mart store. Access to the new facility utilized the existing entrance road from U.S. 119. Additionally, 850 feet of access road was designed to carry traffic smoothly through the commercial development and into the reserve center.

Although the government owned a total of 19 acres, only 6 acres were suitable for development. The remaining acreage consisted of very steep slopes, which presented a design challenge in meeting the space requirement of the reserve center. The project required a 32,180 square foot, two story building, and parking spaces for 136 cars. In addition to the access road, an additional 700 feet of roadway was designed within the site to provide circulation to the parking areas, building loading dock and the assembly hall.

There was no existing storm drainage on the reserve center site, but increases in stormwater runoff resulting from the development had to be conveyed to an existing stormwater detention basin. This basin had been designed by the commercial center developer to also include runoff from the reserve center site. Because this basin was 180 feet lower than the reserve center, the runoff had to be collected on site and conveyed to it by way of slope pipes and gabion level ditches. Due to the extreme existing ground slope, in some cases steeper than 2:1, the slope pipe was elevated above ground on concrete piers, anchored into the ground. This proved to be the most economical way to convey the stormwater, while preventing soil erosion on the steep slopes.

This project involved approximately 17,000 cubic yards of excavation and 3,100 cubic yards of embankment. A general National Pollution Discharge Elimination System (NPDES) permit was obtained from the West Virginia Department of Environmental Protection. The EADS Group prepared the application for the permit, which included storm drainage and stormwater management, calculation and erosion and sediment pollution control Best Management Practices (BMPs).



Construction Cost:
\$4,984,000

Contracting Agency:
U.S. Army Corps of Engineers
(COE), Baltimore District
10 South Howard Street
Baltimore, MD 21201

EADS Project Manager:
Peter J. Folen

QUICK FACTS

THE
EADS
GROUP

GENEVA ECS/AMSA/MAINTENANCE GARAGE & WAREHOUSE

Geneva, Pennsylvania

The EADS Group provided A/E services for the design of a U.S. Army Reserve Equipment Concentration Site (ECS) and Area Maintenance Support Activity (AMSA) facility on a 25-acre parcel of land located at the U.S. Army Reserve Keystone Training Area in Greenwood Township, Crawford County, PA. Included in the design were a 21,000 square foot vehicle maintenance garage and a 30,720 square foot warehouse building.

Approximately 9 acres of the area surrounding the buildings was designed for vehicle storage and circulation. Overall design included twelve low-bay and four high-bay overhead doors. Two overhead cranes with lift capacities of 5-10 tons were included in the high-bays for the mobilization of military vehicle engines. A vehicle wash platform, fuel dispensing system and two equipment loading ramps were located within this area which was paved with concrete and enclosed with a chain link fence. Staff parking was provided outside the fenced area. An access road was provided from the adjacent township road.

The project disturbed approximately 21 acres of land, including a 4-acre wetland mitigation site designed by our staff. Stormwater from the site was collected in inlets and ditches then conveyed to a stormwater detention basin for controlled release. The stormwater collection system was designed in accordance with local ordinances and PennDOT criteria. A National Pollution Discharge Elimination System (NPDES) permit was obtained prior to the construction of the project, and a Joint DEP/COE permit was required for the wetland mitigation.



Construction Cost:
\$9,000,000

Contracting Agency:
U.S. Army Corps of Engineers
(COE), Baltimore District
10 South Howard Street
Baltimore, MD 21201

EADS Project Manager:
Peter J. Folen

QUICK FACTS

MEADVILLE RESERVE CENTER RENOVATIONS & EXPANSIONS

Meadville, Pennsylvania

Expansions and modifications were required at the U.S. Army Reserve Center with OMS (Operational Maintenance Supply) at Meadville, Pennsylvania. The project consisted of a Training Building, 11,678 square feet, which included:

- Administrative areas
- Classrooms
- Assembly areas
- Complete kitchen facilities
- An arms vault
- A mechanical equipment room, storage and locker rooms
- Toilets and showers

The Shop Building, 2,470 square feet, consists of:

- Two work bays, shop offices
- Storage, and supply
- Locker rooms
- Repair rooms
- Tool and battery rooms

One of the work bays is equipped with a 5-ton overhead crane and a wash platform with an oil/water separator.

The EADS Group provided design of:

- HVAC systems
- Lighting systems
- Paved parking lots for privately owned and military vehicles
- Utilities and related facilities

A total of 12,294 square feet of an EPDM membrane roofing system was installed. Asbestos abatement was also performed on the existing buildings.



Construction Cost:
\$1,600,000

Contracting Agency:
**U.S. Army Corps of Engineers
(COE), Baltimore District**
10 South Howard Street
Baltimore, MD 21201

EADS Project Manager:
Peter J. Folen

QUICK FACTS

THE
EADS
GROUP

ST. MARY'S RESERVE CENTER RENOVATIONS & EXPANSIONS

St. Mary's, Pennsylvania

This project involved the renovation and expansion of the U.S. Army Reserve Center with OMS (Operational Maintenance Supply) at St. Mary's, Pennsylvania. The Training Building, 11,793 square feet, includes:

- Administrative areas
- Classrooms
- Assembly areas
- Complete kitchen facilities
- An arms vault
- A mechanical equipment room
- Storage and locker rooms
- Toilets and showers

The Shop Building, 2,470 square feet, consists of two work bays, shop offices, storage, supply, locker, repair, tool and battery rooms. One of the work bays is equipped with a 5-ton overhead crane and a wash platform with an oil/water separator.

The project also included HVAC systems, lighting systems, and paved parking lots for privately owned vehicles and military vehicles. Utilities and related facilities were provided, and a **12,400 square foot EPDM membrane roofing system was installed**. Asbestos abatement was also performed on the existing buildings.

Construction Cost:
\$1,500,000

Contracting Agency:
U.S. Army Corps of Engineers
(COE), Baltimore District
Fort Indiantown Gap
Baltimore, MD 21201

EADS Project Manager:
Peter J. Folen

QUICK FACTS

THE
EADS
GROUP

NAVAL OPERATIONS SUPPORT CENTER (NOSC) ERIE ANTI-TERRORISM FORCE PROTECTION (ATFP) UPGRADES Erie, Pennsylvania

This design-build project was a multi-disciplined upgrade of Anti-Terrorism Force Protection (ATFP) systems at NOSC Erie. The project included upgrades of the facility's physical and electronic security systems, intended to harden the physical site perimeter, increase means of site emergency egress and decrease the mobility of unauthorized intruders within the NOSC site. EADS served as the designer of record for G4S, who was one of the contractors for this project.

Physical security improvements included the installation of K-Rated vehicle crash bollards, replacement of the main vehicle entry gate with a K-rated sliding gate, installation of a pedestrian gate and egress turnstiles, application of anti-fragmentation window film and construction of a new interior partition wall and door.

Electronic Security System (ESS) improvements included new CCTV system components, Intrusion Detection System (IDS) upgrades and CAC compatible Electronic Access Control System (ACS).



Contracting Agency:
G4S Secure Integration
1200 Landmark Center,
Ste. 1300
Omaha, NE 68102

EADS Project Manager:
Scott E. Brant, P.E.

QUICK FACTS

**THE
EADS
GROUP**

NAVAL OPERATIONS SUPPORT CENTER ERIE SECURITY FENCE AND PAINTING Erie, Pennsylvania

This design-build project supported several upgrade efforts at NOSC Erie. The project included the design and installation of a high-security fencing system around portions of the property and interior painting within a majority of the building. EADS served as the designer of record for All-Phase Solutions, who was the contractor for this project.

NOSC Erie is surrounded by residential properties as well as the parking lot of a medical facility. A new high-security fencing system was installed along the line of these adjacent properties to reduce the risk of potential vehicular or pedestrian forced entry. The fence was reinforced with tensioned high-strength aircraft cable, in areas, to prevent vehicular intrusion.

Additionally, interior renovations including wall preparation, painting and wall base replacement was performed.



Contracting Agency:

ALL Phase
34 SW 5th Avenue
Delray Beach, FL 33444

EADS Project Manager:

Gregory L. Elliott, RLA

QUICK FACTS

EADS Architects, Inc.

ROOF REPLACEMENT EXPERIENCE

(INCLUDES SELECT LIST OF PROJECTS FOR WHICH EADS SERVED AS THE ARCHITECT OF RECORD FOR THE DESIGN, BIDDING, AND CONSTRUCTION ADMINISTRATION PHASES.

THIS LIST DOES NOT INCLUDE ROOFS WE DESIGNED AND SPECIFIED FOR NEW BUILDINGS OR BUILDING ADDITION PROJECTS.)

Hollidaysburg Area School District

405 Clark Street, Hollidaysburg, PA 16648

Frankstown Elementary School – Replacement of 53,000 SF Asphalt Shingle roof and 6,700 SF of EPDM membrane roofing and insulation.

2020 \$469,376

Hollidaysburg Area School District

405 Clark Street, Hollidaysburg, PA 16648

Foot of Ten Elementary School – Replacement of 47,000 SF Asphalt Shingle roof and 6,700 SF of EPDM membrane roofing and insulation.

2019 \$469,376

Butler Area Sewer Authority

100 Litman Road, Butler, PA 16001

Metal Roofing Restoration Project - Cleaning, repair and coating of elastomeric roofing system for the Maintenance Building (4,000 SF), Employee Locker Building (2,200 SF) and the Diesel Pump House (23,000 SF).

2019 \$47,300

Hollidaysburg Sewer Authority

401 Blair Street, Hollidaysburg, PA 16648

Operations Building - Removed existing 8,100 SF rubber membrane roofing, stone ballast and insulation to the roof deck. Repaired damaged roof decking and installed new rigid insulation and EPDM membrane roofing system.

2018 \$84,700

Butler Area Sewer Authority

100 Litman Road, Butler, PA 16001

Solids Building - The existing 7,775 SF built-up roof was removed and a total systems EPDM roof was installed.

2017 \$89,800



Selected Roofing Projects

Page 2 of 4

Hollidaysburg Area School District

201 Jackson Street, Hollidaysburg, PA 16648

Hollidaysburg Area Junior High School - Removed existing 60,970 SF EPDM roof and the original built-up coal tar roof to existing concrete deck. Replaced with new tapered insulation and EPDM membrane roof.

2016 \$571,100

County of Tioga

118 Main Street, Wellsboro, PA 16901

Tioga County Correctional Facility - Removed existing 26,900 SF rubber membrane roof and replaced with tapered insulation and new EPDM membrane roofing system. Cleaned repaired existing metal roofs and restored with elastomeric roof coating.

2016 \$423,600

Butler Area Sewer Authority

100 Litman Road, Butler, PA 16001

Wastewater Treatment Building - 8,580 SF of the existing built up roof was removed and a total systems EPDM roof was installed in this area.

2016 \$97,000

Borough of Somerset

347 West Union Street, Somerset, PA 15501

Public Works Building - Removed existing 23,675 SF EPDM roof and insulation to existing wood deck. Replaced with new tapered insulation and EPDM membrane roof.

2016 \$194,400

Butler Area Sewer Authority

100 Litman Road, Butler, PA 16001

Wastewater Treatment Building – 8,070 SF of the existing built up roof was removed and a total systems EPDM roof was installed in this area.

2015 \$92,750

Borough of Somerset

347 West Union Street, Somerset, PA 15501

Bakersville Water Treatment Plant - Removed existing 9,210 SF EPDM roof and insulation to existing concrete deck. Replaced with new tapered insulation and EPDM membrane roof.

2015 \$85,300

Goodwill Industries of the Conemaugh Valley

540-542 Central Avenue, Johnstown, PA 15902

Goodwill Industries Warehouse Building - Removed original 58,000 SF 3-ply coal tar built up roof and insulation with EPDM overlay to the metal roof deck. Replaced with R-30 rigid installation and new 20 year warranted EPDM roofing system.

2014 \$362,000

Selected Roofing Projects

Page 3 of 4

County of Greene - 93 East High Street, Waynesburg, PA 15370

Benjamin Franklin Office Building - Removed 6,700 SF existing built up roof with rubber membrane overlay. Repaired wood roof deck, and installed rigid tapered insulation and new 20 year warranted EPDM roofing system.

2014 \$113,000

County of Somerset

300 North Center Avenue, Suite 500, Somerset, PA 15501

Somerset County Jail Roof Replacement - Removed existing 8,500 SF EPDM roof and insulation to existing concrete deck. Replaced with new tapered insulation and a new modified bituminous membrane roof. New roof has a 30 year warranty.

2013 \$215,000

Butler Area Sewer Authority

100 Litman Road, Butler, PA 16001

Sewer Crew Garage - The existing 18,480 SF standing seam metal roofing system, gasketing system and seams were deteriorating and leaking. The entire roof was repaired and a 10 year warranted fluid applied roof coating was installed.

Laboratory Building Garage - The existing 733 SF built up roof was removed and a total systems EPDM roof was installed.

2013 \$103,300

Hollidaysburg Area School District

201 Jackson Street, Hollidaysburg, PA 16648

Longer Elementary School - Removed 29,670 SF of existing asphalt shingles and replaced with new roof felts, ice guard, architectural shingles, gutters and downspouts.

2011 \$265,374

Eastern Westmoreland Career and Technology Center

849 Hillview Avenue, Latrobe, PA 15650

Career and Technology Center - Roof replacement project; 82,560 SF; demolition, tapered insulation and adhered EPDM membrane roofing system, including, metal fascia and repair, painting at mechanical equipment, lighting protection.

2004 \$401,000

Altoona Area School District

1415 Sixth Avenue, Altoona, PA 16602

Altoona Public Library - Roof replacement project; 17,400 SF; demolition, EPDM Membrane, Gutter repairs.

2003 \$105,000

WP Kimmel Alternative School - Roof replacement project; 21,200 SF; demolition, EPDM Membrane.

2003 \$106,000

Selected Roofing Projects

Page 4 of 4

| | | |
|---|--------------|-----------|
| Ebner Elementary School - Roof replacement project; 24,500 SF; demolition, EPDM Membrane. | 2002 | \$95,000 |
| Penn Lincoln Elementary School - Roof replacement project; 28,000 SF; demolition, EPDM Membrane. | 2002 | \$106,000 |
| Wright Elementary School - Roof recoating 33,100 SF, including repairs and replacement | | |
| Recoating: | 2002 | \$35,000 |
| Repair and replacement: | 2002 | \$33,100 |
| Roof replacement - courtyard area 3,800 SF roof replacement with TPO reinforced: | 2002 | \$26,600 |
| Roosevelt Junior High School - Replace existing 52,000 SF fast-track membrane roof with new insulation and EPDM roofing system. | 2000 | \$235,154 |
| Juniata Elementary School - Remove ballast and membrane roofing system and replace with new insulation and adhered EPDM Membrane roofing system (36,000 SF). | 2001 | \$128,870 |
| High School Field House - Replace existing 28,000 SF roof with new insulation and EPDM Membrane roofing system. | 2000 | \$93,376 |
| Bus Van Garage Building - Replace existing shingle roof with new shingles. A ridge vent and new gutters and downspouts were included. | 2000 | \$22,400 |
| Washington and Jefferson Elementary School - Replace 42,200 square foot built-up roof with new EPDM Membrane roofing system. | 1999 2000 | \$252,200 |
| High School - Replace existing built-up roof with new 47,050 square foot EPDM Membrane roof. Project includes masonry restoration of parapet walls and coping, and asbestos abatement. | 1999 | \$290,000 |
| Central Heat Plant - Roof replacement - Remove existing 7,325 square foot built-up roof and insulation to roof deck. Replace with new insulation and EPDM Membrane roofing system. | 1997 | \$41,828 |
| Keith Jr. High - Roof replacement involving 38,420 square feet. | 1996 | \$250,000 |
| Stevens School - Removal of existing 11,000 square foot built-up roof and replacement with new insulation and EPDM Membrane roofing system. | 1996 | \$41,000 |
| Altoona Area High School - Auditorium roof replacement involving 18,500 square feet. | 1995 | \$100,000 |

REFERENCES

EADS list of references and contact information from recent contracts are listed below.

1. Hollidaysburg Area School District

405 Clark Street
Hollidaysburg, PA 16648

Mr. Jonathan Nihart, Director of Physical Plant
814-696-9185

2. Shade-Central City School District

203 McGregor Avenue
Cairnbrook, PA 15924

Mr. John P. Krupper, Superintendent
814-754-4648

3. Philipsburg-Osceola Area School District

200 Short Street
Philipsburg, PA 16866

Dr. Gregg Paladina
814-342-1050

4. Salisbury-Elk Lick School District

196 Smith Street
Salisbury, PA 15558

Mr. Joseph Renzi, Superintendent
814-662-2741

5. County of Greene Chief Clerk's Office

93 E. High Street, 3rd Floor
Waynesburg, PA 15370

Mr. Jeffrey Marshall, Chief Clerk
724-852-5210

METHOD OF APPROACH

EADS Architects, Inc., a division of The EADS Group, Inc., offers the following Professional Architectural and Engineering Services Method of Approach for the Camp Dawson Regional Training Institution (RTI) Roof & Exterior Door Replacement renovation project with the West Virginia National Guard Construction and Facilities Management Office (hereafter referred to as the Agency).

Planning and Preliminary Design Phase (35% Submittal)

EADS Architects, Inc. will start the initial consultation with Agency in order to verify existing programmatic requirements and define project scope in order to proceed to the preliminary design of the component parts of the buildings. Consultations, Investigations and Design Activities will include.

1. **Program Planning**

EADS Architects, Inc. will meet with representatives of the Agency to discuss and itemize the project goals and objectives, secure existing building drawings and conduct field investigations and documentation of the existing RTI's components and conditions.

2. **Preliminary Design**

Preliminary plans, details, schedules will be developed in accordance with the program goals and objectives. The Agency will review the preliminary design and recommend revisions and improvements to the plan. An opinion of probable construction costs will be provided with the submittal.

3. **Architectural and Structural Systems**

The Architectural design will focus on the limited renovation requirements of the RTI including roof and exterior door replacement. The design will focus on code compliance, energy conservation features to improve building efficiency, current building codes and the requirements of ADA compliance (door hardware).

Pre-Final Design (65% Submittal) and Final Design (95% Submittal)

The Pre-Final Design and Final Design for the renovation work of the RTI is the detailed description of the project in graphic and narrative format. The contract drawings, prepared in accordance with West Virginia National Guard Construction and Facilities Management Office requirements, will provide the details of the necessary components including schedules, details and complete layouts. Technical specifications will describe the standard of quality for the new work. The contract documents will also include the bidding instructions, bid forms, contracts for construction and the terms and conditions for the conduct of the project. EADS Architects, Inc. will coordinate with the Agency to assure that all contract requirements of the Agency are included in the contract documents. An opinion of probable construction costs will be provided with each submittal.

Construction Documents Phase (100% Submittal)

The complete set of bidding and construction documents will be submitted, including the contract drawings, technical specifications, general and supplemental contract conditions and documents, and bidding requirements and documents.

Bidding (Approximately 30 days), Negotiation and Award Phase (To be determined)

EADS Architects, Inc. will assist, as desired by the Agency, with the bidding and award of the contracts for construction. The services which can be rendered are: a pre-construction conference (including preparation of meeting minutes), response to bidder's questions, preparation of clarifications and addenda, and review of bids and the qualifications of the bidders. Our project team can also provide assistance during the negotiation of contract amounts and facilitate the securing of contractor bonds and insurances.

Construction Phase (To be determined)

EADS Architects, Inc. will assist, as desired by the Agency, during construction and can provide the following construction phase services:

- Coordinate and attend the pre-construction conference.
- Review and approval of shop drawings, product data and other specified contractor submittals
- Conduct job conferences in accordance with the progress of the work
- Provide general observation of the work
- Respond to contractor requests for information
- Address and process contractor change in work requests if applicable
- Review and approve contractor's payment applications and make recommendations to owner for payment
- Conduct the substantial completion inspection and prepare written (punch) list of unsatisfactory or incomplete work
- Review as-built drawings prepared by contractors and incorporate into CAD
- Conduct final inspection and verify the completion of all project work
- Complete close-out of the construction contracts

QUALITY MANAGEMENT PLAN

EADS Architects, Inc. (EADS), a division of The EADS Group, Inc., offers the following Quality Control/Quality Assurance (QC/QA) Management Plan for the Camp Dawson Regional Training Institution Roof and Exterior Door Replacement Project with the West Virginia National Guard Construction and Facilities Management Office (hereafter referred to as the Agency).

Project quality control and management is essential for a successful project to be realized. The EADS Group's dedication to quality control has given rise to the development and implementation of a firm wide quality management system. In 2004, the firm received ISO 9001 certification. This certification, which is audited and reviewed annually, provides evidence to customers/clients and their community of The EADS Group's commitment to producing a quality product/service, good planning and implementation, good resource management, efficient process control, measurement and analysis.

In accordance with The EADS Group/EADS Architects, Inc. Project Quality Control and Management Plan, James R. Stephen, R.A., will serve as the Project Manager & Project Architect. Peter J. Folen, Senior Projects Manager, will serve as the QC/QA Project Coordinator. Together, their duties and responsibilities will include:

- *Develop and implement the project-specific Quality Plan.*
- *Provide primary communication and coordination with the Agency project representatives.*
- *Project and process schedule and manpower allocation.*
- *Schedule, coordinate and attend project meetings. Our Technical Plan includes, at a minimum, a project orientation/initiation meeting, existing building conditions field view, additional field visits as required, renovation program verification meetings/conferences with Agency project representatives, design phase submission reviews, final design and construction documents review conference with the Agency project representatives, and assistance with bidding and construction as required.*
- *In-house project progress and design reviews.*
- *Energy conservation procedures and reviews.*
- *Construction cost control procedures and reviews.*
- *Documentation and reporting as required by the Quality Plan.*
- *Quality Assurance reviews.*

The Project Manager will assign project tasks, coordinate personnel efforts and establish delivery schedules of The EADS Group project team members and Agency representatives in general accordance with the project development. The QA/QC Project Coordinator will schedule and coordinate quality assurance reviews in accordance with the phased submittal procedures.

EADS management process, and our ISO 9001 Certification, assures clients that services performed is coordinated between design team disciplines and designated Agency representatives. It verifies the quality of the process and deliverables, maintains the project within established, schedules and cost restrictions, and sets a strict adherence to a standard of care assuring our clients satisfaction is achieved on all EADS projects.