

EXPRESSION OF INTEREST A/E SERVICES

WEST VIRGINIA ARMY NATIONAL GUARD MARTINSBURG FACILITY RENOVATION DESIGN



RECEIVED

2018 NOV 26 AM 9:57

WV PURCHASING
DIVISION



THE EXPERIENCE *you want,*
THE APPROACH *you need.*

OFFICES LOCATED THROUGHOUT PENNSYLVANIA
1.888.696.6280 • STIFFLER-MCGRAW.COM



BLAIR COUNTY
1731 N. JUNIATA STREET
HOLLIDAYSBURG, PA 16648
TEL: 814.696.6280
FAX: 814.696.6240

November 20, 2018

Ms. Stephanie L. Gale
Department of Administration
Purchasing Division
2019 Washington Street East
Charleston, WV 25305-0130

Re: Solicitation #: CEOI 0603 ADJ1900000011
Martinsburg Facility Renovation Design

Dear Ms. Gale:

Stiffler McGraw Architects, LLC (SMA) appreciates this opportunity to be considered for selection to provide engineering and architectural services for the design and development of construction documents to fully renovate the Martinsburg Facility near the Martinsburg, WV Airport. We understand the facility is in need of upgrades and repair both structurally and mechanically. The primary focus of our package is to demonstrate to you that our firm is highly qualified and capable of performing the professional services requested per your advertisement, as we have done on many renovation projects for our clients.

Stiffler McGraw (SM) is a full-service consulting firm offering complete civil engineering, surveying and architecture services. Our firm has been dedicated to providing quality, professional services since 1989. Many of our client's needs included architectural services and in early 2008 **Stiffler McGraw Architects, LLC (SMA)** was formed to provide those services. Due to our success over the years, we are at a point where we are looking to expand our services into new geographic territories within a relatively close proximity to our Hollidaysburg, PA corporate office. Historically, we have consistently provided engineering services to numerous clients in the Northern Tier of Pennsylvania, some of which have been over 160 miles from our corporate office. If selected by the Adjutant General, we will exceed expectations to prove our dedication to new clients in your area. In fact, we promise to work harder than ever to build a relationship with you to ensure that you will be anxious to share with your neighbors what an asset that **Stiffler McGraw Architects** was to your project.

Thank you for the opportunity to submit our qualifications. Based on our past experience and record of performance, we believe that we are a perfect match to support the needs of the Martinsburg Facility project. Should you care to discuss any aspect of this submission in further detail, please contact me at or bendler@stiffler-mcgraw.com or (814) 696-6280.

Sincerely,

Brian P. Endler, A.I.A.
Principal Architect

Letter of Interest

Section 1 - Firm Background

Section 2 - Staff Qualifications

Section 3 - Proposed Staffing Plan

Section 4 - Subconsultants

Section 5 - Relevant Project Experience

Section 6 - References

Section 7 - Project Understanding and Approach

- a. Goals and Objectives*

Section 8 - Project Management, Quality Control & Cost Control

- a. Project Management Plan*
- b. Project Quality Control*
- c. Project Cost Control*

Section 9 - Appendix

- a. Staff Resumes*
- b. Staff Certifications*
- c. Expression of Interest Signature Pages*
- d. Certification Page*
- e. Purchasing Affidavit*





Stiffler McGraw Architects, LLC (SMA) is best suited to undertake the Martinsburg Facility Renovation Design because we have an "in-house" team with on-going experience undertaking similar projects with a history of completing the work on-time and within budget. Our parent company, **Stiffler McGraw & Associates, Inc.**, has been providing engineering, environmental and surveying services since 1989 from our Hollidaysburg, PA corporate office and branch offices in Indiana, Titusville and Towanda, PA.

Our firm's capabilities are constantly upgraded and expanded to provide high quality, cost-effective, and responsive services to our clients. *We strive to provide a full range of architecture and engineering services "in house"*. This allows us to control work flow and maintain accountability for meeting deadlines. We are capable of providing all the services needed for the Martinsburg Facility Renovation Design and do not foresee the need for subconsultants. Services **Stiffler McGraw** provides include:

- Architectural Services
- Environmental Engineering
- Water Supply Engineering
- Transportation Engineering
- Construction Management
- Land Development Engineering
- Landscape Architecture
- Wastewater Engineering
- Surveying
- Regional Planning Services

Our current staff of 73 includes civil, electrical, mechanical, structural and transportation engineers; surveyors; architects; environmental scientists; landscape architects; construction inspectors; technicians; GIS specialists; planners; grantsmen and CAD operators. We constantly upgrade and expand our firm's capabilities to provide high quality and responsive services to our clients.

SMA provides complete architectural and engineering services for a full range of design services for new construction, commercial renovations, tenant improvements, additions, and historical renovations and repairs. Our architects have direct access to a team of "in-house" engineering specialists; this close relationship ensures project flexibility and efficiency. Our experienced design professionals are committed to delivering projects of the highest quality while balancing the needs and budget constraints of our clients. We view each project as a unique challenge, and through our collaborative team approach and consistent engagement with our clients, we strive to provide innovative solutions that satisfy the needs of our clients, now and for years to come.

While building functionality is important, we take great care in providing aesthetically pleasing designs that are economical and appropriate for the community in which it's located, as well as minimizing the impact to the environment through sustainable design principles. Our staff offers extensive knowledge and experience with all phases of projects including feasibility studies, planning, design and construction administration. We have integrated current technology into our design process with Building Information Modeling software (BIM) and 3-D renderings and visualization. We provide project scheduling and budgeting, construction documents and specifications, bidding and negotiation, construction contract administration and management, and post occupancy evaluation.

Our approach to architectural projects is based upon a team approach. Our projects have involved the planning, evaluation, design and construction management of new buildings, as well as detailed inspection, monitoring, analysis and evaluation of older existing buildings to be replaced



or modified. As a result, we have invested in building a cohesive team of professionals dedicated to working within the municipal market sector day in and day out. Every aspect of designing, permitting, specifying and overseeing the construction of these facilities is completed in house by **Stiffler McGraw**. We invite you to compare the in-house capabilities of **Stiffler McGraw** to our competitors and we believe that you will not find a more qualified team.

SM currently serves as the "Engineer of Record" for nearly 100 municipalities or authorities throughout the Commonwealth of Pennsylvania. As a result, we have had the privilege of guiding numerous clients through the exact process that currently faces the Adjutant General with the renovation of the Martinsburg Facility. Each of these projects required a design approach that considered each individual client's economic concerns associated with the renovation and repurposing of their facilities. In each case, we were able to guide the clients through detailed discussions regarding building design and material selection, bidding techniques, permitting requirements and funding coordination. We believe that our experience in this area could prove to be invaluable to the Adjutant General's office throughout the duration of the project.

Due to the success of **Stiffler McGraw** over the past 28 years, we have experienced significant corporate growth. With that growth, we have been able to assemble an exceptional team of highly qualified individuals. With the growth of our team, we are now at a point in our corporate history where we are looking towards expansion into new geographic territories such as West Virginia and Maryland. We assure you that we are dedicated to servicing these new areas with the same professional service that has satisfied our Pennsylvania clientele for years. In fact, we will work harder than ever to build relationships with our clientele in our expanded service area to ensure that they will be anxious to share with their neighbors what an asset the **SMA** team was to their project. We understand that distance is potentially a concern and would like to share with you a list of our clients we serve from our Hollidaysburg, PA office and the distance they are from our office to demonstrate that your location near the airport at Martinsburg, WV, approximately 98 miles away, is not outside of our service reach.

- Garrett County, MD – 115 miles
- Towanda Township, Towanda, Bradford County, PA – 169 miles
- Wysox Township & Wysox Township Municipal Authority, Wysox, Bradford County, PA – 173 miles
- Asylum Township, Bradford County, PA – 173 miles
- Titusville Redevelopment Authority, Crawford County, PA – 146 miles
- Sayre Borough, Sayre, Bradford County, PA – 181 miles
- Towanda Municipal Authority, Towanda, Bradford County, PA – 169 miles
- Washington County Commissioners, Washington County, PA – 121 miles

*Stiffler McGraw...
The experience you want.
The approach you need.*



The West Virginia Army National Guard Adjutant General's office can be assured that it will receive the personal attention that is needed to complete the proposed Martinsburg Facility Renovation Design project in a professional and business-like manner. The **Stiffler McGraw Architects (SMA)** design team provides an abundance of expertise that will be available to the Adjutant General's office:

- Our staff offers extensive knowledge and experience with all phases of projects including feasibility studies, planning and design. We provide project scheduling and budgeting, construction documents and specifications, bidding and negotiation, and construction contract administration and management.
- **SM** and **SMA** has a high ratio of licensed architects, engineers and land surveyors to staff. This is an important factor in assuring the Adjutant General that you will receive the expertise needed to complete a successful project. With such a large pool of talented professionals, we are able to ensure project flexibility and efficiency to meet aggressive delivery schedules and work on multiple concurrent assignments. Following is a breakdown of the technical and support staff available:

8 Administrative	1 GIS Specialist	2 Structural Engineers
1 Architect	1 IT Specialist	6 Surveyors
12 Civil Engineers	1 Landscape Architect	2 Survey Office Technicians
12 Construction Inspectors	1 Mechanical Engineer	3 Transportation Engineers
7 Draftsmen/CAD Operators	1 Planner: Urban/Regional	6 Water/Wastewater Engineers
2 Electrical Engineers	7 Project Designers	

- **SM** and **SMA** have a history of retaining staff; 18 have been with the firm for over 15 years, many of whom have been completing projects together since our inception in 1989. Overall, our staff members have an average of 10 years of employment. Not only is this a testament to our culture, but it conveys our ability to work together to complete projects for our clients. In addition, as new employees are brought on to expand on our services and coverage areas, we have the resources to provide experienced mentors to them. You can be assured that you will be working with a cohesive team that has been organized to successfully work together as they have for the past 28 years.
- Our Team has the recent experience on similar projects as we note in *Section 4 – Relevant Project Experience* to create economical, functional, and aesthetically pleasing building designs, utilizing the most current specialized technology. We will ask the Adjutant General, its stakeholders and consultants the necessary questions to gain a thorough understanding of your needs, business goals, and personal goals and only then will we begin the design of the projects. We can offer insight gained from “lessons learned” to present cost-effective real-world solutions. Our designs will influence the way people work, helping to encourage positive working environments, and long-term operational viability, in a more efficient manner.
- Eight of our staff are professionally registered in the State of West Virginia, as well as multiple other states. Key staff for this project include:
 - **Brian P. Endler, A.I.A.** – Registered Architect – WV, MD, PA, NY
 - **Timothy C. Campbell, P.E., LEED GA** – Professional Engineer – WV, MD, PA, NJ, OH, VA; Leadership in Energy and Environmental Design – Green Associate
 - **Michael S. Davignon, P.E.** – Professional Engineer – WV, MD, PA, MO
 - **Jeffrey L. Billotte, P.E.** – Professional Engineer – WV, MD, PA
 - **John C. Clabaugh, P.E.** – Professional Engineer – WV, MD, PA



When preparing a Staffing Plan for any project, **Stiffler McGraw Architects, LLC (SMA)** recognizes the importance of utilizing a strong project management and design team with extensive experience to successfully complete the project. We have built a cohesive design team that has a proven ability to complete the planning, design and construction administration of renovation projects as identified in the Adjutant General's Martinsburg Facility Renovation Design Expression of Interest. We have attached an Organizational Chart to illustrate the depth of personnel we have available. Our Proposed Staffing Plan includes the following key personnel along with their assigned roles for this agreement. Resumes for each are included in *Section 9 – Appendix*.

Brian P. Endler, A.I.A. will serve as the Lead Architect and Project Manager for the Martinsburg Facility and point of contact for the WV Army National Guard Adjutant General's office, overseeing the project during design, bidding and construction administration. He has 19 years of experience that includes architectural design, code analysis, production of construction documents and construction administration. Mr. Endler's architectural experience includes correctional, municipal/judicial, retail, business/office, higher education, K-12 educational, religious, public safety, and recreational facilities, encompassing both new construction and renovations.

John C. Clabaugh, P.E. provides QA/QC on many of the larger architectural projects for the firm as well as providing engineering services for municipal projects. As a Sr. Project, he has 15 years of experience in the planning, design, bidding and construction administration of municipal projects including water and wastewater treatment plants and conveyance systems. Mr. Clabaugh has served as Project Manager on multiple projects ranging in size from \$10,000 to \$18,000,000. He incorporates this experience in his role as QA/QC on architectural projects to assist Mr. Endler in keeping projects on track and within budget.

Timothy R. Campbell, P.E., LEED GA has 25 years of structural experience including analysis and review of existing structures for restoration and rehabilitation projects and providing expertise for structural design of new municipal and commercial buildings. As a Structural Engineer for **Stiffler McGraw**, Mr. Campbell's responsibilities include structural design and development of architectural plans for related structures; preparation of construction documents including plans, details, schedules, specifications and shop drawing review.

Michael S. Davignon, P.E. has 13 years of experience as a Mechanical Engineer which has included surveying and documentation of existing structures for purposes of modifications to buildings, including plumbing and stormwater systems. He provides services in the plumbing and fire protection fields for municipal, commercial and residential buildings. He has specified equipment and supervised the engineering design and construction of numerous architectural projects. Mr. Davignon has extensive knowledge of national, state and local plumbing and fire protection codes for plumbing, HVAC and electrical requirements.

Jeffrey L. Billotte, P.E. has 20 years of experience in the design of electrical systems for a variety of buildings for municipal, commercial, industrial and residential clients. He assists with preliminary and final project design responsibilities, which include equipment selection, specification review/revision, shop drawing review, CADD drawing review, and client liaison. Mr. Billotte's skillset is vitally important to the study phase and preliminary design of projects.

Joshua J. Chestney, CHMM, WPIT has 17 years of environmental consulting and testing experience in support of renovation and demolition activities. As Sr. Environmental Scientist, he has completed hazardous materials survey, Phase I and Phase II Environmental Site Assessments as part of engineering and environmental studies associated with renovation project properties.



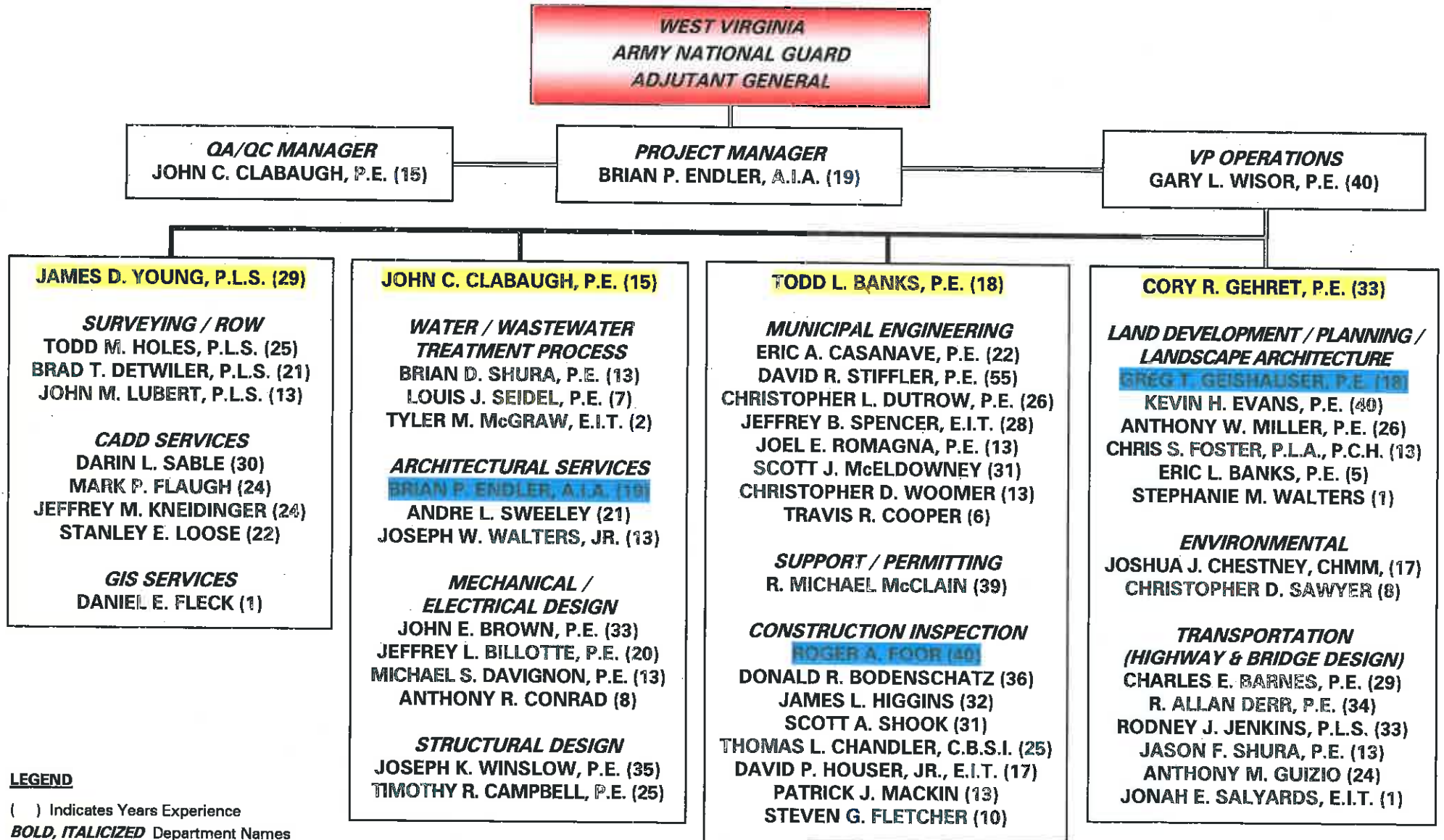
Greg T. Geishauser, P.E. serves as Department Head and Project Manager for municipal infrastructure and commercial site development projects that include building and site layout configuration; providing ADA compliant access and parking; and grading and stormwater management. He has over 18 years of experience that includes preliminary design, final design, bidding, permit securing, grant administration, client liaison and construction administration. One of Mr. Geishauser's largest client's is Sheetz, Inc. He has been providing site designs for new Sheetz convenience stores and site re-builds for over 8 years throughout PA, MD, WV and VA, adapting to each municipality's individual codes and processes.

Christopher S. Foster, P.L.A. has contributed to the landscape design aspects of many of **Stiffler McGraw's** land development projects, producing construction documents for projects during early stages and through to final bid drawings. He has over 13 years of experience specializing in native landscaping practices and sustainable / ecological landscape restoration. Mr. Foster is passionate about our environment and complementing design projects by creating natural and built environments that are aesthetically pleasing as well as practical, in both urban and rural areas.



PROJECT TEAM ORGANIZATION

Professional Engineering Services



LEGEND

- () Indicates Years Experience
- BOLD, ITALICIZED** Department Names
- Indicates Department Head
- Indicates Division Head

Note: Not all staff is shown.



CMT Laboratories, Inc. (CMT), from State College, PA will provide geotechnical services as needed for the Martinsburg Facility Renovation project. Since 1959, CMT's mission is to perform professional services related to construction projects, including geotechnical engineering and consulting, subsurface exploration, construction material testing, IBC special inspections, soil science consulting, and specialty foundation system design.

Their material testing laboratory is accredited by the AASHTO Material Reference Laboratory (AMRL), the Cement and Concrete Laboratory (CCRL), and the U.S. Army Corps of Engineers for demonstration of proficiency in laboratory testing, proper management structure, and continuous internal quality control and equipment calibration. Engineers are licensed in West Virginia, Pennsylvania, Maryland, Ohio and Virginia. CMT's current staff includes four Pennsylvania Registered Professional Engineers, one Certified Professional Soil Scientist, two Certified Welding Inspectors, three drillers, twelve materials testing technicians, a manager for our soils laboratory, and three support staff.

CMT's management philosophy is that their services are provided to help clients achieve the highest level of quality with their projects. They represent you, and although cooperation with other parties involved with the project is expected, your interests are at the forefront of everything they do. CMT is strictly an independent testing and consulting firm and their focus does not waiver into construction contracting where conflicts of interest inevitably arise.

CMT has completed projects at military facilities including:

- Shoring design for the renovations of the Data Control Center (Building 308) at the Naval Ships Parts Control Center in Mechanicsburg Pennsylvania (January 2017)
- Materials testing for the construction of the Air National Guard Fitness Center in State College Pennsylvania (July 2017)
- Materials testing for the renovation work at the Huntingdon Readiness Center in Huntingdon, Pennsylvania (October 2016)
- Materials testing for the Pump Station improvements at the Williamsport Readiness Center in Williamsport, Pennsylvania (September 2015)

Keystone Environmental Health and Safety Services, Inc. (KEHS), Hollidaysburg, PA, provides a full range of industrial hygiene and safety science related consulting services and will assist with lead-based material studies for this project. Their professionals have completed many lead-based paint (LBP) projects including inspections, hazard identification and prioritization, air-monitoring, waste disposal consultation, and re-occupancy clearance. They have over 60 years of collective experience in completing LBP inspections and currently employ five staff members who are certified to utilize a portable X-Ray Fluorescence Spectrum Analyzer, an analytical instrument for rapid, nondestructive XRF lead screening analysis.

A list of current hazardous material surveys, which included lead based paint, is as follows:

- Birdsboro, Berks County, PA
- Drumore Township, Lancaster County, PA
- Quarryville, Lancaster County, PA
- Kimley Horne, North Hampton, PA
- Penn Highlands Healthcare
- Highland Hall, Hollidaysburg, Blair County, PA
- Norvelt Volunteer Fire Department, Mt. Pleasant, Westmoreland County, PA



Central Campus Alterations, Keystone Mountain Lakes Regional Council of Carpenters, Duncansville, Blair County

Contact: Mr. Rick Tomlinson, Council Representative & LU #950 President, (814) 693-0315 (ext. 1)

The project consisted of interior/exterior renovations and a change in use of an existing 10,700 SF steel framed building. The building was formerly used for retail sales and warehousing and is now currently used as an educational and training facility. Interior renovations included office space and conference rooms, traditional classrooms and a 5,500 SF shop area used for demonstrations and hands-on instruction. In addition, to take advantage of the nearly 24-foot-high space, a new 2,500 SF structural floor system was added above the office and classroom areas for additional meeting space as well as material storage. Specialized mechanical systems were also designed including a dust collection system for welding equipment and an air cleaning system in the main shop area to remove smoke and dust contaminants. The exterior renovations included the re-design of the front entrance facade. The existing wall was bumped out to add depth to the elevation and split-faced concrete block veneer was used on the lower portion with new horizontal metal siding above. A cedar wood canopy provides shelter over the wood entrance doors. The facade is accented with illuminated signage above the canopy. **SMA** provided complete architectural and engineering design services for the project.



Municipal Building Addition, Allegheny Township Supervisors, Blair County

Contact: Silke Morrison, Borough Secretary, (814) 695-9563

The project involves the construction of a 5,400 SF addition to the existing Allegheny Township Municipal Building for the purpose of providing the Township Police Department with a more modern, secure and efficient space to occupy. The single-story structure is slab-on-grade, masonry framed with brick veneer, and has a shingled gabled roof. The new addition contains a secure intake and processing area including vehicle and pedestrian sallyports, holding cells (one of which is padded), interview rooms, and a processing counter with secure evidence lockers. Administratively, the department now has three private offices, an open office area with accommodations for four patrolmen, file storage with high density mobile shelving, and a secure evidence storage room. Locker room facilities for both men and women, along with an armory and ammo storage were provided. **SMA** provided land development, architectural, structural, and MEP design for the addition as well as typical bidding and construction administration services.



Former Ekey Floral Shop Renovations, Warren-Forest Counties Economic Opportunity Council, Inc. (WFCEOC), Warren County

Contact: Lyn Pryor, Director of Community Development, (814) 726-2400



The project involved renovations of an existing 2-story, 3,000 SF building into leasable space for the WFCEOC. Renovations included dividing the building into two separate and distinct uses; one for retail and the other for business offices. Several programming meetings were held with the owner and future tenants of the spaces to identify their functional needs and spatial requirements. From those meetings, conceptual plans were developed and presented for approval. The design included new ADA restrooms, private offices, receptionist areas, and open retail spaces. On the exterior, the building received new roofing, siding, windows, a greenhouse structure, as well as a new parking area. Once the concept was approved, **SMA** prepared construction documents including drawings and technical specifications, assisted in soliciting bids, and provided construction administration services.

Addition/Expansion to the Bedford County Business Center, Bedford County Development Association, Bedford, Bedford County

Contact: Ms. Bette Slayton, President, (814) 623-4816

The project consists of a 15,480 SF pre-engineered metal building addition to an existing 24,000 SF facility. The Bedford County Development Association expanded their multi-tenant Bedford County Business Center with the construction of a new \$1.2 million building center connecting the existing center by a breezeway area. The new addition houses future business tenant spaces connected to a common corridor with restroom facilities and mechanical space. A major design consideration was the owner's desire to match the existing facility to the greatest extent possible so the entire complex looks original. **SMA** provided complete architectural and engineering design services as well as all bidding and construction administration of the project. The project added to the existing 24,000 SF complex, by 15,156 SF of enclosed area, of which 1,652 SF is common corridors, restroom facilities and telecommunications and 13,504 SF of open tenant space. Services provided consisted of civil engineering, general construction, plumbing, electrical and HVAC.



Additions and Renovations, First Church of Christ, Altoona, Blair County

Contact: John Collins, Lead Pastor, (814) 942-2480

The project consisted of additions and renovations to an existing church. The primary design objectives were to gain additional sanctuary seating, make all levels of the building accessible, and maximize the parking capacity on the site within a constrained budget. The building program provided for new ADA accessible restrooms, family restroom, elevator, multipurpose room addition, day care suite, educational classrooms, commercial kitchen, narthex addition, lighting, HVAC, fire protection systems consisting of sprinkler and fire alarm system, audio/video and acoustical treatments and canopy entrance. The existing building contained approximately 19,500 SF and with the additions and renovations the total space was increased to approximately 36,000 SF. The civil aspects of the project provided for an expanded parking lot, utility extensions and



implementation of storm water management facilities. **SMA** completed written CSI format specifications and bid documents for the general construction requirements. Provided bidding services including advertisement, collected and cataloged request for information, issued addenda, attended bid opening, evaluated bids for compliance with the bidding procedures. Construction contract administration was provided on an as needed basis.

Tunkhannock Office Expansion, Southwestern Energy Co., Tunkhannock, Wyoming County

Contact: Scott Meaders, Facilities Services Manager, (501) 548-6528



The project consisted of a 5,200 SF pre-engineered metal building addition to an existing office building. The goal and objective of the additions were to provide additional private offices, open office area and conference space to accommodate the client's growing need for office space. In addition, there is a 3,100 SF conventional wood framed addition to an existing office/garage building located 15 feet and connected by an enclosed breezeway. This addition, plus

renovations to the existing garage area, also provided additional private and open office space. One unique challenge with this project was treating the non-potable water. This involved storing the water, identifying and filtering the mineral contaminants, and treating and disinfecting any biological contaminants. Stiffler McGraw provided complete architectural, mechanical, plumbing, and electrical design services for the project, as well as land development services including permitting, erosion & sedimentation control, and parking lot design.

Titusville Opportunity Park 20 Series Building Renovation, Titusville Redevelopment Authority, Titusville, Crawford County

Contact: Laurie Baker, Executive Director, (814) 827-3668

The project involved renovations of a 101,000 SF former steel mill building for reuse as several manufacturing spaces. This was achieved by dividing the building into five separated tenant spaces with a common loading dock/corridor to be shared by all tenants. The renovations included new metal roofing and siding applied to the existing structures, translucent panels for day lighting, installation of building insulation, interior distribution of electrical power to each future tenant space, new lighting and convenience outlets, emergency lighting and exit signage to code, interior roof drainage connected to the existing interior system, construction of tenant separation walls, and new insulated overhead and man doors. The project was funded through a \$1,250,000 Pennsylvania Department of Community and Economic Development Grant and the awarded contracts for construction came in under budget at \$1,156,000.00. **SMA** provided complete architectural and engineering design services and as well as construction administration.



Restroom Addition and Athletic Building Renovations, Bellwood Antis School District, Bellwood, Blair County

Contact: Kim VanGorder, Business Manager, (814) 742-2270

The project was designed and constructed in two separate phases, a restroom addition and athletic annex renovation. The first phase required the demolition of a small existing restroom facility and the construction of a new 2,044 SF addition that houses accessible restrooms, locker rooms and storage that will serve the athletic building annex and the football stadium. The second phase consisted of renovation of an existing 5,300 SF masonry bus garage



(attached to the phase one restroom facility) into an indoor athletic and maintenance facility. The renovated building features indoor batting cages, weight lifting stations, a padded exercise floor and two maintenance areas for the stadium and school facilities. **SMA** provided complete architectural and engineering design services, bidding, and construction administration.



Department of Public Works and Emergency Operations Center, Sayre Borough, Sayre, Bradford County

Contact: David Jarrett, Borough Manager, (570) 888-7739

The goals and objectives of the project were to construct the building on the constricted site of a former maintenance garage. The multi building site contained the Borough recycling center and other garage buildings for heavy equipment storage. The project consists of a new \$1.4 million, 8,500 SF pre-engineered metal building to house the 3,000 SF Emergency Operations Center and 5,500 SF Department of Public Works Maintenance Garage. The project was bid and completed in two separate phases. The first phase completed all civil work and the construction of the pre-engineered metal building. The second phase finished the interior of the building primarily consisting of meeting rooms, locker and shower facilities, offices, borough plan room, garage space, signage shop, maintenance bays, and space for future offices and meeting rooms. The structure is completely accessible and has the capabilities of full building generator service and modern telecommunications services. Provided complete architectural and engineering design services.



Regional Headquarters Complex, Pumpco Energy Services, Asylum Township, Bradford County

Contact: Mark Songer, Division President, (412) 490-9200



The project consisted of a 40 acre, three building complex that serves as a regional headquarters. Building 1 is a two story 23,400 SF office and maintenance building with shower and restroom facilities, offices, conference rooms and lunch rooms. Finishes in the buildings utilized low VOC compliant materials and coatings, recyclable carpet tile, energy efficient window fenestrations, occupancy sensors, low flow plumbing fixtures and high R value insulation. The maintenance portion is a high bay service garage area for repairs and includes an equipment room for parts storage. Building 2 is a two bay 5,500 SF truck wash building with an integral water reclamation system. Building 3 is a 10,600 SF chemical storage building and houses a private sourced water treatment system with storage capacity for the complex as well as the fire protection system.

The pre-engineered metal buildings contain energy efficient floor radiant heating systems and high value insulation. The complex contains a large truck parking area and material laydown yards, covered with a pervious surface of shale stone to reduce runoff. It includes truck charging stations and limited shielded site lighting. The project was completed using a fast track integrated design

process. The collaboration between the design team incorporated green design features into the project where feasible, economical and practical. **SMA** provided complete architectural, engineering and land development design services as well as bidding and construction administration for the project.

Renovations to Shop/Maintenance Building & Truck Wash Addition, Pumpco Energy Services, Inc., Smithton, Westmoreland County

Contact: Mark Songer, Division President, (412) 490-9200

Pumpco purchased a facility on a 10 acre site located in Smithton, PA, previously identified as lots 10 and 24 of the Westmoreland 1-70 Industrial Park. The existing facility included a 25,000 SF pre-engineered building that was renovated to support new offices, warehouse space and a maintenance garage. The site contains a large area for truck parking and material laydown yards consisting of a pervious surface of shale stone to reduce runoff.

The new building added to the complex is a two bay 5,000 SF truck wash building that contains truck wash equipment with an integral water reclamation system. Green design elements also included the use of LED lighting and additional insulation added to both exterior walls and ceiling for an overall improved R factor.

SM provided full professional services for the complex including land development services consisting of surveying, site design, storm water management, permitting, structural design for foundation systems and interior masonry walls, architectural services for the office and shop areas including interior design, mechanical engineering and complete construction management.

Sheetz Convenience Store Site Re-Builds, Additions and Renovations, Sheetz, Inc., Various Locations – PA, MD, VA, OH, WV

Contact: William Sauserman, P.E., Director of Engineering and Store Design, (814) 239-1373



These projects consisted of renovations and additions to approximately seventy-five existing Sheetz convenience store buildings. The projects typically consisted of cooler/freezer area expansions, new kitchen layout and equipment, new interior finishes and graphics, ADA compliant restrooms, and new coffee/beverage stations. Renovations to the exterior included new brick/stone veneer, storefronts, awnings, ADA parking, sidewalks/patios, curb ramps and signage. **SMA** provided architectural and structural engineering designs using a fast-track schedule in order to meet the strict timelines imposed by the owner.

Additions and Renovations, Wehnwood United Methodist Church, Altoona, Blair County

Contact: Evelyn Madison, Pastor, (814) 942-6081

The project consists of a 3,120 SF, one-story (with full basement) addition to the existing church. The purpose of the addition is to solve accessibility and spatial issues that currently exist within the church. The main floor of the addition will provide a new entrance vestibule off of the rear parking lot that includes an elevator to the basement level. The main floor will also contain meeting room space, administrative office, pastor's study, and an ADA accessible restroom. In the basement level, a multi-purpose space, storage room, and utility room are proposed. Renovations include increasing the capacity of the Narthex by removing several walls and installing new finishes while the existing basement restrooms will be made accessible. **SMA's** services included the architectural, structural, HVAC, plumbing and electrical design.



The following is a list of references for which and **Stiffler McGraw Architects (SMA)** has provided design, bidding, and construction administration services similar to what we anticipate will be needed by the WV Army National Guard. Please contact them for verification of our performance regarding personnel, work quality, cost control and ability to meet schedules.

Keystone Mountain Lakes Regional Council of Carpenters
Mr. Rick Tomlinson, Council Representative & LU #950 President
261 Patch Way Road
Duncansville, PA 16635
(814) 693-0315 (ext. 1)

Allegheny Township Supervisors
Ms. Silke Morrison, Secretary
3131 Colonial Drive
Duncansville, PA 16635
(814) 695-9563

Titusville Redevelopment Authority
Ms. Laurie Baker, Executive Director
110 W Spring Street
Titusville, PA 16354
(814) 827-3668

The Borough of Sayre
Mr. David Jarrett, Borough Manager
110 West Packer Avenue
Sayre, PA 18840
(570) 888-7739

Sheetz, Inc.
Mr. William Sauserman, P.E., Director of Engineering and Store Design
Sheetz Facilities Support Center
351 Sheetz Way
Claysburg, PA 16625
(814) 239-1373



Stiffler McGraw Architects (SMA) understands the Adjutant General's office is seeking a qualified architectural firm to provide professional design services to renovate the Martinsburg Facility in Martinsburg, WV, which is need of several upgrades and repair both structurally and mechanically.

The project goals and objectives are:

1. Provide a complete design including all engineering and architectural disciplines to prepare construction bid documents for West Virginia State Purchasing. Key design elements include, complete restoration of the facility (office area considerations), hazardous material study (including, but not limited to, lead and asbestos), hazardous material abatement and abatement cost estimate as needed, power load assessment, a new roofing system, a new HVAC system, new and more efficient windows, new exterior and interior doors, and new interior and exterior LED lighting for the building. The asphalt, landscaping and drainage around the structure needs to be addressed in the design as well. All designs must meet current building and military codes.
2. Designer to provide all geotechnical work to include any necessary drill borings, designer shall be responsible for researching and investigating the location of existing underground and above ground utilities, and to provide drawings and specifications of any and all utility and road infrastructure as needed and directed by the owner and/or state agency, utility company or other utility approval authority for Martinsburg, West Virginia.
3. Designer to provide 10% conceptual drawings for review and approval by the owner. Drawings and specifications are to be submitted at 35%, 50%, 90% and 100%, cost estimates are to be revised and submitted with each submittal at 35%, 50%, 90% and 100%.
4. Provide construction bid services to the Owner.
5. Construction Administration Services may be required for this project at a future date.

We have grown our clientele based on the ability to evaluate building renovation needs efficiently and effectively, identify the needs of the Owner and Users, and guide projects from concept through construction. Once receiving the Notice to Proceed, our first task will be holding a kick-off/planning meeting with a committee appointed by the Adjutant General's office that has authority to give direction regarding the scope of the project. During that meeting, we will begin to identify the current and future programming needs of the WV Army National Guard and the Martinsburg Facility and any known deficiencies that exist throughout the existing facility.

The reason that we must begin the process by sitting down with the committee is that the needs of the Martinsburg Facility Renovation are known only to you. We can and will use our professional expertise to help identify deficiencies within the existing structure; however, only you can provide the necessary insight regarding the types and sizes of program spaces required, specific equipment to be included, and aesthetic preferences.

Having a firm understanding of your goals will allow our team of trained professionals to integrate these goals into a schematic design consisting of floor plans, elevations, and sections as necessary to illustrate the intent of the design. We will investigate building code requirements, state/federal regulations and local ordinances and their potential impacts on the project.



As we move further along with design we will begin to prepare the final technical drawings and specifications, which establish the requirements for the construction of the project. They will describe the quality, configuration, size, and relationship of all components to be incorporated into the project. All disciplines will review and coordinate their drawings with the entire design team to ensure a well-coordinated and accurate set of documents. These documents will serve as the basis for obtaining bids from contractors and are used by contractors to obtain price quotes from subcontractors.

The bidding process is probably the shortest phase but crucial to ensuring that the right contractor is selected with the right bid. We will assist the Adjutant General's office throughout the entire process from distributing the construction documents to bidders, conducting a pre-bid conference, evaluating bids for accuracy, contractor selection, and contract preparations.

During construction, we will act as your representative and provide administration of the Contract between you and Contractor. Throughout the construction of the project we will observe construction progress, note when it does not conform to the construction documents and review the Contractor's request for payments (to ensure what they are billing you for has indeed been installed and to verify that they are on schedule). We will answer questions from the contractor and clarify the design documents, issue supplementary information, review change proposals, substitution requests and review material samples.

Once substantial completion has been reached, we will perform a final walk through and create a "punch list" of items to be fixed and/or completed before verifying the final payment, and will assist you with all project close-out procedures.



A. Project Management Plan

Our staff offers extensive knowledge and experience with all phases of projects including planning, design, project scheduling and budgeting, construction documents and specifications, bidding and negotiation, and construction contract administration and management.

Brian Endler, A.I.A. will serve as *Stiffler McGraw Architect's (SMA)* Project Manager, as well as Architect of Record, and be the main point of contact for all communication with the WV Purchasing Division and the Adjutant General's Office. Mr. Endler will be in charge of coordinating the collection of data and authorizing the required plans and specifications for the projects. A kickoff-off meeting with the WV Purchasing Division and the Adjutant General representatives and key *SMA* staff will be arranged and conducted by Mr. Endler to provide an outline of the proposed project and ensure that all parties agree with the anticipated project scope, timeline and implementation schedule. Once approved, Mr. Endler will have *SMA* staff begin project activities. Throughout the project, open lines of communication with the WV Purchasing Division and the Adjutant General's Office will be maintained to keep you informed of project status, and as such, we will be available to conduct status meetings, memos, emails or telephone calls as needed.

Planning is a fundamental and challenging activity in the management and execution of any project. It involves the choice of technology, the definition of work tasks, the estimation of the required resources and durations for individual tasks, and the identification of any interactions among the different work tasks. It also involves relying on past experiences to know where potential problems may exist and how to adjust for those. Mr. Endler has access to the full resources of *SMA* and can add manpower as necessary to meet critical timeframes.

Mr. Endler will be in direct charge of creating and monitoring the project schedule. The schedule will be reviewed and approved by WV Purchasing Division and the Adjutant General's Office as part of the scope of work. Mr. Endler will monitor the progress of all work to help ensure the project will be completed within the agreed upon period. Throughout the project, if circumstances develop that may impact the project schedule, Mr. Endler will work with WV Purchasing Division and the Adjutant General's Office to develop a mutually agreeable adjustment.

B. Project Quality Control

Oversight is provided to all levels of project production by both a company Principal and the Project Manager. John Clabaugh, P.E. will be responsible for verification of the QA/QC processes by conducting periodic evaluations to ensure that the Project Manager responds in accordance with the applicable sections and procedures outlined in our Master Quality Management Plan. The Project Manager is responsible to ensure that corrective actions are taken if required and non-conforming work is handled properly.

A Project Specific Quality Assurance Plan (PSQAP) will be developed. At project inception, the Project Manager clearly identifies the objectives, requirements and operating procedures for the project and shares them with the members of the design team specifically chosen for each project per project needs. These include peer review of submissions, calculation and plan checking, a comprehensive schedule with milestone dates, a communication plan, regular staff meetings, CADD documentation, coordination with outside agencies, procedures for documenting various tasks, conformance audits, various management tools and a project team protocol.



C. Project Cost Control

Project Manager Brian Endler, A.I.A. will be responsible for managing the project budget and keeping the team informed and on-track. **SMA** utilizes Deltek Ajera software; a real-time project based management and accounting software system built specifically around Architecture and Engineering best practices. Information such as project reporting, resource scheduling, contract compliance, invoicing and timesheet collection are updated in real-time for project based costing. Once the scope of work is approved by the WV Purchasing Division, Mr. Endler will develop a work plan based on hourly rates and tasks as defined in the Scope. We utilize this process for all of our projects to ensure conformance with project milestones and budget.



RELATED PROJECT EXPERIENCE

The following list of projects are ones in which Brian served as Project Architect while employed at Stiffler McGraw. Brian's demonstrated areas of expertise include architectural design, code analysis, construction documents, bidding and construction administration. His architectural experience includes correctional, municipal/judicial, retail, business/office, higher education, K-12 educational, religious, public safety, manufacturing, recreational facilities and residential, encompassing both new construction and renovations.

- **Central Campus Renovations, Keystone Mountain Lakes Regional Council of Carpenters, Duncansville, Blair County**
Project Architect for the design and construction of various alterations at the existing Central Campus building. The alterations, totaling approximately 13,150 SF, included additional office and conference space, instructional classrooms, and a welding booth area in the shop. In addition, to take advantage of the nearly 24 foot high space, a new 2,500 SF structural floor system was added above the office area to be used as material storage. On the exterior, a new main entrance façade and canopy were added to enhance the building's appearance.
- **Service & Maintenance Complex, Pumpco Energy Services, Asylum Township, Bradford County**
Project Architect for a new three-building complex that will serve as a regional headquarters for Pumpco. The buildings are pre-engineered metal structures and each serves various functions. Building one the largest at 23,400 SF, and contains the administrative offices, and a full service garage for the repair and maintenance of their equipment. Building two is a 5,500 truck wash building that contains a water reclamation system. Building three is a 10,600 chemical storage building that also houses a water treatment system for the complex, as well as the fire protection system holding tanks.
- **Addition/Expansion to the Bedford County Business Center, Bedford County Development Association, Bedford County**
Project Architect for a 15,480 SF pre-engineered metal building addition to an existing 24,000 SF facility. A major design consideration was the owner's desire to match the existing facility to the greatest extent possible so the entire complex looks original. Provided complete architectural and engineering design services as well as all bidding and construction administration of the project.
- **Township Building Addition, Allegheny Township, Blair County**
Principal Architect for the construction of a 5,400 SF addition to the existing Allegheny Township Municipal Building for the purpose of providing the Township Police Department a more modern, secure and efficient space to occupy. The single story structure is slab-on-grade, masonry framed with brick veneer, and has a shingled gabled roof. The new addition contains a secure intake and processing area including vehicle and pedestrian sallyports, holding cells (one of which is padded), interview rooms, and a processing counter with secure evidence lockers. Administratively, the department has three private offices, an open office area with accommodations for four patrolmen, file storage with high density mobile shelving, and a secure evidence storage room. Locker room facilities for both men and women, along with an armory and ammo storage is also provided.



- **Shop/Garage Building, Bedford Township Municipal Authority, Bedford County**
Principal Architect for the construction of a new 4,550 SF shop/garage building to accommodate various equipment, machinery and material storage as well as provide a small office space for the Authority. The single story structure is slab-on-grade, wood framed with a gabled roof. The exterior has metal roofing and siding with fiberglass windows. The interior of the shop/garage areas is finished with metal liner panel while the administrative areas have typical finishes.
- **Police Department Additions and Renovations, Roaring Spring Borough, Blair County**
1,000 SF of additions and renovations to the existing borough building to house the police department. The new space includes offices for the Chief and Lieutenant, open office area, and an interview/holding room.
- **New Administrative Building, Snake Spring Township, Bedford County**
Principal Architect for the construction of a new single-story, 2,240 SF building to serve as the Authority's administrative office, public meeting space, and storage garage. The single story structure will be slab-on-grade, wood framed with a gabled roof. The exterior of the building will have metal roofing and siding with aluminum windows. The interior of the garage area will be finished with painted OSB board and metal liner panel, while the administrative area will have typical office finishes.
- **Department of Public Works and Emergency Operations Center, Sayre Borough, Sayre, Bradford County**
Project Architect for a new pre-engineered metal building to house the 3,000 SF Emergency Operations Center and 5,500 SF DPW Maintenance Garage. Phase I completed all civil work and the construction of the pre-engineered metal building. Phase II finished the interior of the building consisting of meeting rooms, locker and shower facilities, offices, borough plan room, garage space, signage shop, maintenance bays, and space for future offices and meeting rooms.
- **Alice Paul House, White Township, Indiana County**
Project Architect for the preparation of concept plans and renderings for the development of a new facility for a non-profit agency. Initial scoping meetings were conducted and space needs analysis completed. Concept floor plans were developed and reviewed with staff and board members. With their input, revisions were made and final floor plans, building elevations and a project rendering were prepared. A preliminary site plan was developed and cost estimate for a 2 story 14,250 SF facility with 60 parking spaces was prepared.

EDUCATION

Bachelor of Arts Degree, Architecture, 2001, Lehigh University

PROFESSIONAL REGISTRATIONS

Registered Professional Architect – WV (4751, exp. 6/30/19), PA, NY, MD

PROFESSIONAL SOCIETIES

American Institute of Architects – Vice President, Middle Pennsylvania Chapter (2015- 2016)

EXPERIENCE RECORD – 19 Years

RELATED PROJECT EXPERIENCE

John provides a continuous QA/QC process on many of the larger architectural projects for the firm, assisting the entire team as needed from beginning to end. In this role, his responsibilities include coordinating with the Architectural Project Manager throughout the project life cycle to review project status, staff needs, project budget and assist with any results discussions and recommend necessary corrective actions.

John serves as Division Head for the Municipal Division and has served as Project Manager/Engineer for the following municipal infrastructure projects while employed at Stiffler McGraw. John's duties include preliminary design, final design, bidding, construction administration and operation, securing of permits, grant/loan administration and client liaison.

- **Water Treatment Facility Improvements, Williamsburg Municipal Authority, Woodbury Township, Blair County**
Project Manager for the design of a new potable water disinfection facility at the current Municipal Authority well field. The project involves the construction of a modern masonry structure to house the chemical feed equipment as well as serve as an office space for the operator; updates to the flow monitoring equipment, the installation of modern pump controls, and online chlorine residual monitoring equipment. Estimated Project Cost - \$3,223,450.
- **Water Treatment Plant Improvements, Nanty Glo Water Authority, Cambria Township, Cambria County**
Sr. Project Engineer for water treatment plant improvements including a new dual unit 800 gpm upflow clarifier/filtration system, construction of a backwash water supply pump station, conversion of an existing sludge holding tank to a backwash waste equalization tank, and installation of an on-site shallow injection well/absorption bed for disposal of backwash water solids and plate settler overflow. Estimated Project Cost - \$3,980,000.
- **Water System Upgrades, Hastings Municipal Authority, Cambria County**
Project Manager for the design, permitting, bidding and construction administration of an interconnection between the Hastings System and Elder Township, replacement of the raw water line, replacement of the system's primary source of raw water, replacement of the water distribution system in the village of Slickport and renovations to the existing water treatment facility. Estimated Cost - \$4,500,000.
- **Water Treatment Plant, Towanda Municipal Authority, Bedford, Bradford County**
Project Manager for the design of a new 1.0 MGD treatment facility equipped with membrane filtration, clear well storage, and disinfection facilities, abandonment of an existing well field and gas dechlorination system. Estimated Project Cost - \$6,500,000.
- **Wastewater Treatment Plant Upgrade, Municipal Authority of the Borough of Bedford, Bedford County**
Project Manager for the design of upgrades to the existing wastewater treatment plant (1.5 MGD capacity). The upgrades included installation of SBR's, anaerobic digesters, screening equipment, grit removal, primary clarifiers, UV disinfection system, biofilter, chemical feed systems and solids processing equipment. Estimated Cost - \$17,700,000.



- **Wastewater Treatment Plant Upgrade, Freedom Township Water & Sewer Authority, Blair County**
Project Manager for the design of upgrades to the existing wastewater treatment plant (0.96 MGD capacity). The upgrades included installation of equalization tanks, influent pumping station, fine screening equipment, 4 stage BNR process, UV disinfection system, aerobic digesters, chemical feed systems and solids processing. Estimated Cost - \$13,000,000.
- **Water System Upgrades, Northern Cambria Municipal Authority, Cambria County**
Design, permitting, bidding and construction administration of an approximately 559,000 gallon water storage tank to replace the existing Cherry Ridge water storage tank, addition of new public water source, upgrades to the existing Spangler Water Treatment Facility. Project involves administering PennVEST and H2O CFA funds as part of the project cost and securing a Public Water Supply Permit from the Pennsylvania Department of Environmental Protection. Estimated Cost - \$3,000,000.
- **Wastewater Treatment Plant Upgrades, Gallitzin Borough Sewage and Waste Authority, Cambria County**
Project Manager for the design of upgrades to the existing wastewater treatment plant (0.400 MGD capacity). The upgrades included installation of SBR's, influent pumping station, UV disinfection system, aerobic digesters, sludge processing equipment, ADA restrooms and chemical feed systems. Estimated Cost - \$8,500,000.
- **Sanitary Sewer Replacement, Borough of Philipsburg, Centre County**
Design of a four phase replacement sanitary sewer conveyance system throughout the Borough. Included the installation of approximately 69,900 LF of sanitary sewer pipe, manholes, associated appurtenances and 1,365 LF of storm sewer piping. Estimated Cost - \$18,000,000.
- **Wastewater Treatment Plant Upgrades, Williamsburg Municipal Authority, Blair County**
Project Manager for the design of upgrades to the existing wastewater treatment plant (0.337 MGD capacity). The upgrades included installation of SBR's, influent pumping station, UV disinfection system, aerobic digesters, sludge processing equipment, municipal offices, locker rooms, ADA restrooms and chemical feed systems. Estimated Cost - \$8,000,000.

EDUCATION

Bachelor of Science Degree, Civil & Environmental Engineering, 2003, The Pennsylvania State University

PROFESSIONAL REGISTRATIONS

Registered Professional Engineer – WV (22655, exp. 12/31/18), PA, MD

EXPERIENCE RECORD – 15 Years



RELATED PROJECT EXPERIENCE

The following list of projects are ones in which Tim served as Senior Project Engineer while employed at Stiffler McGraw. Tim's responsibilities include structural design and development of architectural plans for related structures; preparation of construction documents including plans, details, schedules, specifications and shop drawing review.

- **Coshocton Readiness Center, Coshocton, Ohio**
Structural design of a 26,000 SF steel framed roof and concrete masonry load-bearing wall structure with an enclosed reinforced concrete weapons storage room for The Ohio Army National Guard.
- **Central Campus Renovations, Keystone Mountain Lakes Regional Council of Carpenters, Duncansville, Blair County**
2,500 SF light gauge floor addition within existing 10,700 SF steel framed building. Also included structural design and modifications for a cantilever entrance canopy.
- **Lee Industries, Philipsburg, Centre County**
Foundation design and project management for 30,600 SF pre-engineered metal building with five 30-ton cranes and capacity for 10-ton gantry crane located anywhere on concrete grade slab.
- **Renovations to Existing Shop/Maintenance Building and Truck Wash Addition, Pumpco Energy Services, South Huntingdon Township, Westmoreland County**
Structural Engineer for foundation and interior masonry wall design for renovation and 5,000 SF addition to existing 25,000 SF pre-engineered metal building with offices, vehicle maintenance and truck wash areas.
- **Service & Maintenance Complex, Pumpco Energy Services, Asylum Township, Bradford County**
Foundation and interior masonry wall design for 23,400 SF, 10,600 SF and 5,500 SF pre-engineered metal buildings including office area, vehicle maintenance, chemical storage, and truck wash areas.
- **Pierpont 5000, Morgantown, WV**
Design of 20,000 SF retail space with steel joists and beam roof system and spread footing concrete foundations.
- **Bedford County Business Center, Bedford County Development Association, Bedford County**
Foundation design and building specification for 15,480 SF pre-engineered metal building addition to existing 24,000 SF facility.
- **Tunkhannock Office Expansion, Southwestern Energy Co., Tunkhannock, Wyoming County**
Foundation design for 5,200 SF pre-engineered metal building addition and design of light gauge metal second roof structure for 3,000 SF office building addition.
- **Athletic Building Annex Renovation, Bellwood Antis School District, Bellwood, Blair County**
Structural Engineer for design of renovations for a one-story wood frame athletic building.



- **Historic Structure Report, Frederick A. Thayer, III Courthouse, Garrett County Commissioners, Oakland, Garrett County, MD**
Structural Engineer for a Historic Structure Report for a 110-year old, Neoclassical Renaissance Revival style courthouse building. Providing structural engineering services including assessment of exterior masonry and condition of structural components.
- **Department of Public Works and EOC Building, Sayre Borough, Sayre, Bradford County**
Foundation design for 8,500 SF pre-engineered metal building and design of light gauge metal second floor structure with offices, emergency operations center and vehicle maintenance area.
- **Additions & Renovations, First Church of Christ, Altoona, Blair County**
Structural Engineer for the design and construction to an existing wood arch church. The total additions and new structure totaled 35,910 SF, containing new elevator, multipurpose room addition, narthex addition, sanctuary additions, stair addition and alteration of existing arch system for increased column-free area.
- **Additions and Renovations, Wehnwood United Methodist Church, Altoona, Blair County**
Structural engineering for a 2,800 SF, one-story (with full basement) addition to existing church with concrete footings, masonry foundation walls, and wood frame floor and roof structure.
- **East Freedom Surgical Center, East Freedom Properties, LLC, East Freedom, Blair County**
Design for 8,500 SF, one-story surgical center with wood truss roof, wood frame exterior walls, steel beam and column interior supports, and masonry foundation walls on concrete spread footings. Building also has two cantilever type canopies and one larger canopy with wood frame roof trusses supported by steel beams and columns.
- **Soho West, Urban Architecture, LLC, Hoboken, NJ**
Co-design of 20-story, 800,000 SF cast-in-place residential building structure with four levels of parking, exterior terrace and pool space, and ground level retail.
- **Sheetz Travel Center Expansion, Mount Jackson, VA**
Design of 1,500 SF addition and supplementary structure for pre-engineered canopies for 10,500 SF existing retail store.
- **Sheetz Convenience Store**
Design of retail store addition and structure for pre-engineered canopies.

- Charles Town, WV	- Morgantown, WV	- Roanoke, VA
- Duncannon, PA	- Indiana, PA	- Cresaptown, MD
- Dahlgren, VA	- Mill Hall, PA	- Butler, PA

EDUCATION

Bachelor of Architectural Engineering Degree, Structural Engineering, 1992, The Pennsylvania State University

PROFESSIONAL REGISTRATIONS / CERTIFICATIONS

Registered Professional Engineer – WV (018748, exp. 12/31/18), PA, MD, OH, VA,
NCEES Record Certificate (2011)
Leadership in Energy and Environmental Design – Green Associate (2013)

EXPERIENCE RECORD – 25 Years



RELATED PROJECT EXPERIENCE

The following list of projects are ones in which Mike served as mechanical engineer while employed at **Stiffler McGraw**. Mike's demonstrated area of mechanical engineering experience is concentrated in the HVAC, plumbing and fire protection fields for hospitals, pharmaceuticals, commercial and residential buildings. His duties include surveying and documentation of existing structures for purposes of modifications to buildings, including, plumbing and storm water systems. Construction administration including shop drawing review and tracking of project correspondence; field verification of drawings; attendance of job meetings for project coordination and implementation; review and revision of CADD drawings; cost estimation; equipment selection; and drafting of punch lists.

- **Central Campus Renovations, Keystone Mountain Lakes Regional Council of Carpenters, Duncansville, Blair County**
Project Engineer for the complete design and specification the mechanical and plumbing systems for the construction of additional office space on the first floor level, a welding booth area, and a new, approximate 3,500 SF mezzanine level structural floor system over a portion of the existing shop area to be used as storage.
- **Athletic Building Annex Renovation, Bellwood Antis School District, Bellwood, Blair County**
Complete two phase conversion of an existing school utility building to an educational athletic building. The project included the design of a 2,000 SF bathroom addition, which included a central ventilation system, electric unit heaters, and the installation of a new 200 amp 3 phase electrical service, with a 100 amp sub-feed, as well as extensive plumbing design. The second phase consisted of a rooftop HVAC system as well as natural gas unit heaters to remodel the existing 5,000 SF building. Additionally, occupancy sensors and security switches were installed on the lighting system to meet the varying needs of the athletic department.
- **Bedford County Business Center Addition, The Bedford County Development Association, Bedford County**
Project Engineer for the construction of a 15,480 SF building addition to house business enterprises. Work consists of civil, general construction, plumbing, electrical and HVAC. The project added to the existing 24,000 SF complex, consisting of 15,156.39 SF of enclosed area, of which 1,652.17 SF is common corridors, restroom facilities and telecommunications area and 13,504.22 SF of tenant space.
- **Titusville Opportunity Park 20 Series Building Renovation Project, Titusville Redevelopment Authority, Titusville, Crawford County**
Renovation of an old existing steel-mill site. The project is approximately 101,000 SF in size and is proposed to be separated into 5 tenant spaces with a common loading area, and shall be used as unconditioned warehousing. The renovation will generally include new metal roofing and siding, fire-rated demising walls between tenants, new overhead and man doors, and electrical upgrades.
- **Service and Maintenance Complex, Pumpco Energy Services, Asylum Township, Bradford County**
Complete design and specification of the mechanical plumbing and fire protection systems for a new regional headquarters including: 17,000 SF office and maintenance garage building, 5,500 SF truck wash building and 10,600 SF chemical warehouse building.



- **Renovations to Shop/Maintenance Building & Truck Wash Addition, Pumpco Energy Services, Inc., Smithton, Westmoreland County**
Project Engineer for 25,000 SF of renovations including new office space and maintenance garage and 5,000 SF truck wash addition including new HVAC system, fire protection and fire alarm system and a self-contained truck wash system.
- **Dept. of Public Works & Emergency Operations Center, Sayre Borough, Bradford County**
Complete design and specification of the mechanical, electrical and plumbing systems of an 8,500 SF Department of Public Works and Emergency Operations Center borough building. Design included hydronic in slab radiant tube heating, emergency generator, underground electrical service and electrical service distribution to the Borough Public Works compound.
- **Township Building Addition, Allegheny Township, Blair County**
Engineer responsible for the complete design and specification of the mechanical and plumbing systems of a 5,400 SF addition to the existing Allegheny Township Municipal Building for the Police department and Township offices. Design included complete HVAC and plumbing design for holding cells, interview rooms, evidence and file storage, locker rooms, offices, and a vehicle sallyport. Design also included video surveillance system for implementation into the building security system.
- **Indiana County Recycling Center, Indiana County Solid Waste Authority, Indiana County**
Project Engineer for the renovation of an existing tenant space into a 4,000 SF storage and work area. Work included all new mechanical and renovated electrical systems to support a new work area for the County.
- **Additions and Renovations, Wehnwood United Methodist Church, Altoona, Blair County**
Engineer responsible for the design of the Mechanical Systems for a new 2,800 SF addition to the existing church. The addition includes an elevator. The design included two new air-handling systems and modification of the existing kitchen exhaust ventilation; plumbing for a new kitchenette and ADA restroom as well as the modification of the existing exterior sanitary sewer lateral system.
- **Tenant Space Fit-out, Dr. Christie Cardellino, Johnstown, Cambria County**
Project Engineer for the renovation of an existing 4,190 SF commercial building into two separate tenant spaces, and the 2,560 SF fit-out of one of the tenants. The new tenant fit-out will house an eye doctor's office including a waiting area, exam rooms, frame fitting area and a bathroom. Work consisted of altering existing mechanical system, adding plumbing for new fixtures and electrical system modifications.

EDUCATION

Bachelor of Mechanical Engineering Degree, Mechanical Engineering, 1992, Villanova University

PROFESSIONAL REGISTRATIONS

Registered Professional Engineer – WV (22682, exp. 12/31/18), PA, MD, MO

EXPERIENCE RECORD – 13 Years



RELATED PROJECT EXPERIENCE

The following list of projects are ones in which Jeff served as Project Designer while employed at Stiffler McGraw. Jeff primarily assists with preliminary and final project design responsibilities, which include equipment selection, specification review/revision, shop drawing review, CADD drawing review/revision, and client liaison.

- **Township Building Addition, Allegheny Township, Blair County**
Electrical engineering design for 5,400 SF one-story municipal office and police station addition to existing one-story 2,350 SF building. Design included electrical service upgrade, and distribution for power, lighting, and HVAC equipment; lighting for building interior, exterior, and exit/emergency needs; and accommodations for building data, access, and security system needs.
- **Service and Maintenance Complex, PumpCo Energy Services, Asylum Township, Bradford County**
Assisted with the design and specification of electrical equipment for a new office and truck shop/maintenance facility. Design duties included assisting with layout of the electrical service and equipment required for lighting and power for office and shop/maintenance space, truck wash facility and chemical storage warehouse, which included on-site water storage/treatment equipment.
- **Additions & Renovations, First Church of Christ, Altoona, Blair County**
Electrical design for additions and renovations to an existing church, which included new accessible restrooms, elevator, multipurpose room addition, day care, educational classrooms, commercial kitchen, and narthex addition. Design included modifications to the building's electrical service and distribution to accommodate a new fire pump, elevator, HVAC equipment, and miscellaneous circuits throughout the building. Design also included code required exit/emergency fixtures, and interior and exterior lighting.
- **Renovations to Existing Shop/Maintenance Building and Truck Wash Addition, Pumpco Energy Services, Smithton, Westmoreland County**
Assisted with the design and specification of electrical equipment for renovations and additions to an office and truck shop/maintenance facility. Design duties included assisting with layout of the electrical service and equipment required for lighting and power for the renovated office and shop/maintenance space, as well as a newly added truck wash facility.
- **Titusville Opportunity Park 20 Series Building Renovation, Titusville Redevelopment Authority, Titusville, Crawford County**
Electrical design for improvements to a multi-building site for a former steel mill plant. Completed design and specifications for interior distribution of electrical power to each future tenant space, installation of new lighting and convenience outlets, emergency lighting and exit signage to code.
- **Sayre Borough Building, Sayre, Bradford County**
Assisted with the design and specification of the electrical system of a 4,000 SF borough building, which included assisting with the layout of electrical service, as well as interior power, lighting and data equipment.



- **Skills of Central PA Adult Day Care Renovations, MTS Real Estate, Ebensburg, Cambria County**
Electrical design for renovations to an existing building which provides adult day care services to older adults with developmental disabilities. Design included changes to the existing power distribution to accommodate building renovations and new HVAC equipment, and specification of a building fire alarm system. Design also included new exit/emergency fixtures and lighting throughout the renovated areas of the building.
- **Historic Structure Report, Frederick A. Thayer, III Courthouse, Garrett County Commissioners, Oakland, Garrett County, MD**
Electrical Engineer for a Historic Structure Report for a 110-year old, Neoclassical Renaissance Revival style courthouse building. Analyzing the installed electrical systems for the existing courthouse and as needed to support mechanical systems in the adjoining buildings. Will provide recommendations for updates to the systems and related cost estimates.
- **New Manufacturing Facility, Lee Industries, Inc, Philipsburg, Centre County**
Electrical design for a new 42,000 SF high bay facility for the manufacturing of process equipment to serve the pharmaceutical, chemical, cosmetic, healthcare and food industries. Design included new electric service, switchgear, and bus duct distribution to serve welding work station equipment, bridge and jib cranes, and HVAC equipment. Design also included facility lighting, including interior hi-bay and task lighting, and exterior building lighting.
- **Fraley Street Building Renovation, McKean County Redevelopment & Housing Authority, Kane, McKean County**
Electrical design for the renovation of six apartments to achieve four efficiency style apartments with a common laundry facility and office. Duties included design modifications to the existing electrical service and distribution, and layout of electrical equipment, lighting, and exit/emergency fixtures to code.
- **Ganister Station, Mineral Point, Cambria County**
Electrical design for the renovation of an existing building into an adult care facility, including new ADA compliant restrooms, office, and conference rooms. Design included modifying existing electrical equipment to accommodate the new building layout, exit/emergency fixtures for code compliance, and specification of a building fire alarm system.
- **Tenant Space Fit-out, Dr. Christie Cardellino, Johnstown, Cambria County**
Electrical design for the renovation of an existing 4,190 SF commercial building into two separate tenant spaces, and fit-out of one of the tenants. Duties included design modifications to the existing electrical service and distribution, and layout of electrical equipment, lighting, and exit/emergency fixtures for code compliance.

EDUCATION

Bachelor of Science Degree, Electrical Engineering, 1998, The Pennsylvania State University

PROFESSIONAL REGISTRATIONS

Registered Professional Engineer – WV (22677, exp. 12/31/18), PA, MD

EXPERIENCE RECORD – 20 Years



RELATED PROJECT EXPERIENCE

The following list of projects are ones in which Josh served as project manager / environmental scientist while employed at Stiffler McGraw. Josh's duties include asbestos inspection services, report preparation, preparation of abatement specifications, abatement bid solicitation and client liaison.

- **Windy Ridge Business & Technology Park, Indiana County Development Corporation, White Township, Indiana County**
Performed environmental consulting and testing services in support of upcoming demolition activities at four structures located at the proposed Windy Ridge Business & Technology Park. The scope of services included an asbestos-containing building materials survey, waste characterization sampling, a screening for fluorescent light ballast, universal wastes and any additional accumulated wastes. Prepared a hazardous materials abatement specification for the removal of identified materials. Responsible for bidding services, scheduling, implementation, field supervision, technical guidance, and report preparation/review for the abatement project.
- **Indiana Community Center Renovation, Indiana Borough, Borough of Indiana, Indiana County**
Performed environmental consulting and testing services in support of upcoming renovation activities at the Indiana Community Center located at 845 Philadelphia Street. The scope of services included an asbestos-containing building materials survey, lead paint survey, a screening for fluorescent light ballast, universal wastes and any additional accumulated wastes and report preparation documenting final results.
- **Residential Demolition Asbestos Consulting Services, Towanda Borough, Towanda Borough, Bradford County**
Performed environmental consulting and testing services in support of upcoming demolition activities at 410 – 422 Main Street. The scope of services included an asbestos-containing building materials survey, waste characterization sampling, a screening for fluorescent light ballast, universal wastes and any additional accumulated wastes. Prepared a hazardous materials abatement specification for the removal of identified materials. Responsible for bidding services, scheduling, implementation, field supervision, technical guidance, and report preparation/review for the abatement project.
- **Project Manual, Altoona Housing Authority, City of Altoona, Blair County**
Completed a Project Manual for the Altoona Housing Authority for the Fairview Hills Townhouses, Green Avenue Tower, Eleventh Street Tower, and Pleasant Village Townhouses in order to obtain a unit price contract for selective asbestos abatement.
- **Rental Assistance Demonstration (RAD) Architectural Services, Mercer County Housing Authority, Sharon, Mercer County**
Provided Phase I and Phase II ESAs, asbestos file review and summary write-up, completion of HUD form 4128, and historic preservation clearance services as part of the Rental Assistance Demonstration (RAD) Funded Capital Improvements. As part of the Capital Improvements, Mercer County Housing Authority is proposing to upgrade electrical service, sewer laterals and kitchen and bath replacements as the budget will allow.



- **Asbestos Consulting Services, UPMC Altoona, City of Altoona, Blair County**
Performed environmental consulting and testing services in support of upcoming demolition activities at 35 residential structures located in the City. The scope of services included an asbestos-containing building materials survey, a screening for fluorescent light ballast, universal wastes and any additional accumulated wastes. Prepared a hazardous materials abatement specification for the removal of identified materials. Responsible for bidding services, scheduling, implementation, field supervision, technical guidance, and report preparation/review for the abatement project.
- **Wastewater Treatment Plant, Gallitzin Borough Sewer and Disposal Authority, Gallitzin Township, Cambria County**
Performed environmental consulting and testing services in support of upcoming renovation / demolition activities at the wastewater treatment plant. The scope of services included an asbestos-containing building materials survey, a screening for fluorescent light ballast, universal wastes and any additional accumulated wastes and report preparation documenting final results.
- **Asbestos Consulting Services, Southwestern Energy Company, Wyalusing Township, Bradford County**
Performed environmental consulting and testing services in support of upcoming renovation / demolition activities at the Camptown Elementary School located at 15 Stonewall Road. The scope of services included an asbestos-containing building materials survey, a screening for fluorescent light ballast, universal wastes and any additional accumulated wastes and report preparation documenting final results.
- **Blue Sky Subdivision – Tier 5A, Blue Sky Real Estate, Benazette Township, Elk County**
Performed wetland consulting services as part of engineering and environmental studies associated with the proposed development site. The wetland survey was conducted on a 60 acre tract of land. The purpose of the report was to identify and describe wetlands and streams, and to identify possible sensitive plant, fish, and wildlife species in the project corridor.

Phase I ESA

- **McKean County Housing Authority, 14 community complexes**
- **Windy Ridge Business & Technology Park, Indiana County Development Corporation, White Township, Indiana County**
- **6th through 9th Streets, Indiana Borough, Indiana County**

EDUCATION

Bachelor of Science Degree, Environmental Science, 2001, Slippery Rock University

PROFESSIONAL REGISTRATIONS / CERTIFICATIONS

Certified Hazardous Materials Manager (#15247)

Pennsylvania Certified Asbestos Building Inspector (#034181)

Pennsylvania Certified Asbestos Management Planner (#034181)

Pennsylvania Wild Plant Management Permit (18-603)

Wetland Professional in Training (325133)

EXPERIENCE RECORD – 17 Years



RELATED PROJECT EXPERIENCE

The following list of projects are ones in which Greg served as project designer/engineer while employed at Stiffler McGraw. Greg's responsibilities include preliminary design, final design, bidding, permit securing, grant administration, client liaison and construction administration of municipal infrastructure and commercial site development projects.

- **Municipal Building Addition, Allegheny Township Supervisors, Blair County**
Site design and permitting for a new building addition and parking area, including a secure unloading area for police operations.
- **Sheetz, Inc., Various Locations in PA, MD, WV and VA**
Site designs for new Sheetz convenience stores and site re-builds. Site designs consisted of building and site layout configuration, which included providing ADA compliant access and parking; grading and stormwater management; truck and vehicular site circulation; permitting; utilities and landscaping.
- **Concept Plan Development, Windy Ridge Business & Technology Park, Indiana County Development Corporation, White Township, Indiana County**
Development of sketch plans and concept plans throughout the 196 acre business park on 16 separate parcels. Included layout of building location, parking configuration, stormwater placement, access drive location and utility service connections. Development of preliminary cost estimate, project schedule and summary of required permits.
- **Drop Lot, Old Dominion Freight Line, Inc., East St. Clair Township, Bedford County**
Site design, land development plans and permitting for a drop lot along Interstate 99 near the PA Turnpike Bedford Exit. The drop lot consists of a 7 acre bituminous parking lot with 72 parking spaces for trucks pulling interstate semi-trailers, a security fence with an automated gate system, site lighting, and stormwater management facilities.
- **Hollidaysburg Streetscape, Phase 2B, Hollidaysburg Borough, Blair County**
Sidewalk and curb ramp design for approximately 1,500 LF of sidewalk and three intersections along Blair Street, SR 0022.
- **Windy Ridge Business & Technology Park, White Township, Indiana County**
Roadway design, building pad layout, stormwater management, erosion and sedimentation control, utility design and permitting for a 196 acre business and technology development.
- **Primary Health Network Medical Facility, Punxsutawney, Jefferson County**
Site design, building layout, stormwater management, erosion and sedimentation control, utility design and permitting for a multi-phased medical campus including a 3-story, 45,000 SF facility and two future office buildings on a 7.6 acre site.
- **Service and Maintenance Complex, Pumpco Energy Services, Asylum Township, Bradford County**
Site design, stormwater management, permitting and construction management for an office, garage, truck wash and warehouse on a 40 acre site along Macedonia Road.



- **Renovations to Existing Shop/Maintenance Building and Truck Wash Addition, Pumpco Energy Services, South Huntingdon, Westmoreland County**
Site design, stormwater management, permitting and construction management for an office, garage and truck wash on a 10 acre site along Painter Road.
- **Fairfield Inn, Wysox Township, Bradford County**
Site design, stormwater management and permitting (HOP & NPDES) for a hotel/restaurant on a 3 acre site along SR 0006.
- **University Park at Slippery Rock, SR 0173 & SR 0108, Butler County**
Site design, stormwater management and permitting for a 10-acre commercial park along SR 0173 and SR 0108.
- **Site Improvements, Altoona Medical Emergency Department Authority, Blair County**
Performed site layout, grading and drainage design, stormwater management, erosion and sedimentation control and secured required permits from PennDOT for parking facilities and driveway on 0.5 acre site.
- **Wyotech Diesel Site Design, Burrell Township, Indiana County**
Site layout, grading and drainage design, stormwater management and erosion and sedimentation control for an 85,000 SF building.
- **Penn State Altoona Campus Signalization Projects, Blair County**
Applied for HOP for construction of traffic signals on SR 4015 (Altoona) & SR 4017 (Logan Twp.), which included ROW acquisition and construction of ADA compliant curb ramps.
- **Walgreens Site Design, Altoona, Blair County**
Performed site layout, grading and drainage design, stormwater management, erosion and sedimentation control and secured HOP for two driveways to the site from SR 0036 & SR 4003.
- **Jefferson Avenue Bridge, Portage Borough, Cambria County**
Hydrologic and Hydraulic Analyses to secure required permits from DEP for a bridge replacement.
- **Multi-Tenant Building, Corporate Campus, Burrell Township, Indiana County**
Site layout, grading and drainage design, stormwater management and erosion and sedimentation control for a 26,500 SF building.

EDUCATION

Bachelor of Science Degree, Civil Engineering, 2000, Bucknell University

PROFESSIONAL SOCIETIES

American Society of Highway Engineers

PROFESSIONAL REGISTRATIONS

Registered Professional Engineer – PA (PE059076)

EXPERIENCE RECORD – 18 Year



RELATED PROJECT EXPERIENCE

The following list of projects are ones in which Chris served as Landscape/Site Designer while employed at Stiffler McGraw. Chris' duties include preliminary design, final design, construction administration, securing of permits, grant/loan administration and client liaison.

- **Allegheny Township Municipal Building Addition, Allegheny Township, Blair County**
Lead site designer for the project which involved a 5,000 SF building addition to the Allegheny Township Municipal building. A full land development construction package was prepared and project planning involved public presentation in front of the Township Supervisors. The project included a stormwater management facility, rain garden and vegetated swale. Two conceptual plans were prepared for review by the Township, and construction oversight was performed.
- **Land Development, Primary Health Network, Punxsutawney, Jefferson County**
An 8 acre site was designed to host a 3-story medical facility. The design began with several concept renderings to determine the best building location and site layout. The project incorporated design features such as rain gardens/bio-retention facilities, a pedestrian walking trail and exterior gathering areas. Building layout, parking design, grading and drainage, stormwater management, utility design and a landscaping plan were all part of the design process.
- **Shoemaker Senior Housing, Blairsville, Indiana County**
Landscape Architect for the design of a new 2,600 SF single-level duplex structure to be used as senior style housing. Concept design included several variations of building orientation and site layout to determine the most desirable location for the client. Final design included layout, grading and utility design, as well as coordination with architects to provide exterior features (i.e. patio space) that would enhance the property for prospective tenants.
- **Texas Roadhouse, Logan Town Centre, Logan Township, Blair County**
Site development consisted of parking layout and design, grading and drainage, utility design and a landscaping plan. Constructed spring of 2012.
- **Land Development, Fairfield Inn & Suites, Wysox Township, Bradford County**
A 5 acre site was designed to host a new hotel, restaurant and laundromat, as well as two existing buildings to remain. The design began with schematic drawings and several reviews with the owner before agreeing upon the desired layout. Comfortable vehicular circulation through the site was very important to maintain between the five buildings. Building layout, parking design, grading and drainage, stormwater management, utility design and a landscaping plan were all part of the design process. The hotel opened for business in the spring of 2013.
- **Design Projects, Sheetz, Inc., Various Locations**
Chris has been involved as a designer / landscape architect on many of the site designs for new Sheetz stores and site re-builds located in Wysox Township, Foster Township, Carrolltown Borough, Cresson Township and the City of Altoona. The designs consisted of conceptual plans, ordinance review, drainage analysis, construction drawings, and public presentations. Many of the projects included rain gardens / bio-retention design for stormwater management.



- **Golden Mile Commerce Park Land Development, Wysox Township, Bradford County**
Site development included an overall design and layout for 12 small commercial buildings on an 18 acre site. Phase 1 consisted of site design for the first 4 buildings which included vehicular access and parking design, building layout, grading and drainage, stormwater management, utility design and a landscaping plan.
- **Wetland Mitigation at the Future Blair County Conservation District Site, Sheetz, Inc., Hollidaysburg, Blair County**
Design of a ½ acre constructed wetland in conjunction with the Blair County Conservation District future office site design. The wetland includes a forebay, landscaping mounds and depressions, enhanced pedestrian views and a wooden, elevated boardwalk with benches and platforms. An accessible pedestrian trail is also being designed to connect the wetland to the nearby river. The project includes native plantings, engineered structures / pedestrian bridges, stormwater facilities and ADA accessibility accommodations.
- **Windy Ridge Business & Technology Park - SR 286:US 422 Interchange West, Indiana County Development Corporation/PennDOT 10-0, White Township, Indiana County**
Developed signing and pavement marking drawings, as well as maintenance and protection of traffic drawings for the roadway improvements, including quantities and detailing.
- **Architectural/Engineering Services, Housing Authority of Indiana County, Indiana County**
Landscape Architect for design drawings for the sidewalk replacement and pavement repairs to the parking lot at Fieldcrest, a 10 unit senior complex in Robinson, PA.
- **Windy Ridge Business & Technology Park, Indiana County Development Corporation, White Township, Indiana County**
A 196 acre site is being designed to host a business and technology park. The site will have 16 parcels, a new roadway, utility services and stormwater management facilities for the proposed development. Sustainable design approaches are being considered in the form of vegetative swales, rain gardens/bio-retention facilities and native landscaping; and design methods for solar lighting, vegetative roofs and pervious pavement are being considered. The first two phases of construction have been implemented, including an extensive landscaping plan that involved street side and median plantings, stormwater basin plantings, park entry landscaping, and pond enhancements with a pedestrian trail.
- **Poplar Avenue Green Infrastructure Improvements, Hollidaysburg, Blair County**
Hollidaysburg Borough received grant funding to implement green infrastructure improvements within their Municipality to help them meet their MS4 requirements. This project includes analysis of existing stormwater runoff and incorporating rain gardens, vegetated swales, and FocalPoint Biofiltration facilities.

EDUCATION

Bachelor of Landscape Architecture, Landscape Architecture, 2005, SUNY, Environmental Science and Forestry at Syracuse, NY

PROFESSIONAL REGISTRATIONS / CERTIFICATIONS

Professional Landscape Architect – PA

Pennsylvania Certified Horticulturist, Sustainable Landscape Certified

EXPERIENCE RECORD – 13 Years



The West Virginia Board of Architects

certifies that

BRIAN PAUL ENDLER

is registered and authorized to practice Architecture in the State of West Virginia.

In testimony whereof this certificate has been issued by the authority of this board.

Certificate Number [REDACTED]

The registration is in good standing until June 30, 2019.



[Signature] Board Administrator



To all to whom these presents shall come Greeting Know that The State Board of Registration for Professional Engineers of the State of West Virginia, relying special confidence in the Skillfulness, Integrity and Discretion of

John Charles Claibough

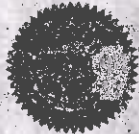
DOES IN PURSUANCE OF AUTHORITY VESTED IN IT

by law hereby certify that he having submitted satisfactory evidence of his ability and experience is a

REGISTERED PROFESSIONAL ENGINEER

Registration Number [REDACTED]

to hold and use such title in the practice of his profession, subject to the conditions provided by law.



Witness under the hand of the Head of the Board at the Capitol in the City of Charleston the 27th day of November in the year of our Lord 2017 and of the State the One Hundred Fifty-Ninth

Members of the Board

[Signatures]



**West Virginia State Board of Registration
for Professional Engineers**

TIMOTHY R. CAMPBELL
WV PE # [REDACTED]

This is to certify that the above named PROFESSIONAL ENGINEER has met the requirements of the law, is duly registered and is entitled to practice engineering in the State of West Virginia.

EXPIRES December 31, 2018



**West Virginia State Board of Registration
for Professional Engineers**

MICHAEL SEAN DAVIGNON
WV PE # [REDACTED]

This is to certify that the above named PROFESSIONAL ENGINEER has met the requirements of the law, is duly registered and is entitled to practice engineering in the State of West Virginia.

EXPIRES December 31, 2018



**West Virginia State Board of Registration
for Professional Engineers**

JEFFREY LYNN BILLOTTE
WV PE # [REDACTED]

This is to certify that the above named PROFESSIONAL ENGINEER has met the requirements of the law, is duly registered and is entitled to practice engineering in the State of West Virginia.

EXPIRES December 31, 2018



Commonwealth of Pennsylvania
Department of State
Bureau of Professional and Occupational Affairs
PO BOX 2649 Harrisburg PA 17105-2649

18 0075227

License Type
Professional Engineer

GREG T GEISHAUSER
105 Coleridge Avenue
Allentown PA 18602

License Status
Active

Initial License Date
06/07/2006

Expiration Date
09/30/2019



T-H
Commissioner of Professional and Occupational Affairs

License Number
[REDACTED]

Greg Geishauser
Signature

Commonwealth of Pennsylvania
Department of State
Bureau of Professional and Occupational Affairs
PO Box 2649 Harrisburg PA 17105-2649

17 0280649

License Type
Landscape Architect

CHRISTOPHER SCOTT FOSTER
426 BEECH STREET
HOLLIDAYSBURG PA 16848

License Status
Active

Initial License Date
06/24/2018

Expiration Date
08/31/2019



T-H
Commissioner of Professional and Occupational Affairs

License Number
[REDACTED]

Signature





Purchasing Division
 2019 Washington Street East
 Post Office Box 50130
 Charleston, WV 25305-0130

State of West Virginia
 Centralized Expression of Interest
 02 – Architect/Engr

Proc Folder: 513928

Doc Description: Martinsburg Facility Renovation Design

Proc Type: Central Purchase Order

Date Issued	Solicitation Closes	Solicitation No	Version
2018-11-08	2018-11-27 13:30:00	CEOI 0603 ADJ1900000011	1

BID RECEIVING LOCATION

BID CLERK
 DEPARTMENT OF ADMINISTRATION
 PURCHASING DIVISION
 2019 WASHINGTON ST E
 CHARLESTON WV 25305
 US

VENDOR

Vendor Name, Address and Telephone Number:

FOR INFORMATION CONTACT THE BUYER

Stephanie L Gale
 (304) 558-8801
 stephanie.l.gale@wv.gov

Signature X

FEIN # 26-2599385

DATE 11/20/19

All offers subject to all terms and conditions contained in this solicitation

DESIGNATED CONTACT: Vendor appoints the individual identified in this Section as the Contract Administrator and the initial point of contact for matters relating to this Contract.

Brian P. Endler LEAD ARCHITECT
(Name, Title)
Brian P. Endler, A.I.A., Lead Architect
(Printed Name and Title)
1731 N. Juniata Street, Hollidaysburg, PA 16648
(Address)
(814) 696-6280 / (814) 696-6240
(Phone Number) / (Fax Number)
bendler@stiffler-mcgraw.com
(email address)

CERTIFICATION AND SIGNATURE: By signing below, or submitting documentation through wvOASIS, I certify that I have reviewed this Solicitation in its entirety; that I understand the requirements, terms and conditions, and other information contained herein; that this bid, offer or proposal constitutes an offer to the State that cannot be unilaterally withdrawn; that the product or service proposed meets the mandatory requirements contained in the Solicitation for that product or service, unless otherwise stated herein; that the Vendor accepts the terms and conditions contained in the Solicitation, unless otherwise stated herein; that I am submitting this bid, offer or proposal for review and consideration; that I am authorized by the vendor to execute and submit this bid, offer, or proposal, or any documents related thereto on vendor's behalf; that I am authorized to bind the vendor in a contractual relationship; and that to the best of my knowledge, the vendor has properly registered with any State agency that may require registration.

Stiffler McGraw Architects, LLC
(Company)

John C. Clabaugh Sr. Project Manager
(Authorized Signature) (Representative Name, Title)

John C. Clabaugh, P.E., Sr. Project Manager
(Printed Name and Title of Authorized Representative)

November 20, 2018
(Date)

(814) 696-6280 / (814) 696-6240
(Phone Number) (Fax Number)

STATE OF WEST VIRGINIA
Purchasing Division

PURCHASING AFFIDAVIT

CONSTRUCTION CONTRACTS: Under W. Va. Code § 5-22-1(l), the contracting public entity shall not award a construction contract to any bidder that is known to be in default on any monetary obligation owed to the state or a political subdivision of the state, including, but not limited to, obligations related to payroll taxes, property taxes, sales and use taxes, fire service fees, or other fines or fees.

ALL CONTRACTS: Under W. Va. Code §5A-3-10a, no contract or renewal of any contract may be awarded by the state or any of its political subdivisions to any vendor or prospective vendor when the vendor or prospective vendor or a related party to the vendor or prospective vendor is a debtor and: (1) the debt owed is an amount greater than one thousand dollars in the aggregate; or (2) the debtor is in employer default.

EXCEPTION: The prohibition listed above does not apply where a vendor has contested any tax administered pursuant to chapter eleven of the W. Va. Code, workers' compensation premium, permit fee or environmental fee or assessment and the matter has not become final or where the vendor has entered into a payment plan or agreement and the vendor is not in default of any of the provisions of such plan or agreement.

DEFINITIONS:

"Debt" means any assessment, premium, penalty, fine, tax or other amount of money owed to the state or any of its political subdivisions because of a judgment, fine, permit violation, license assessment, defaulted workers' compensation premium, penalty or other assessment presently delinquent or due and required to be paid to the state or any of its political subdivisions, including any interest or additional penalties accrued thereon.

"Employer default" means having an outstanding balance or liability to the old fund or to the uninsured employers' fund or being in policy default, as defined in W. Va. Code § 23-2c-2, failure to maintain mandatory workers' compensation coverage, or failure to fully meet its obligations as a workers' compensation self-insured employer. An employer is not in employer default if it has entered into a repayment agreement with the Insurance Commissioner and remains in compliance with the obligations under the repayment agreement.

"Related party" means a party, whether an individual, corporation, partnership, association, limited liability company or any other form or business association or other entity whatsoever, related to any vendor by blood, marriage, ownership or contract through which the party has a relationship of ownership or other interest with the vendor so that the party will actually or by effect receive or control a portion of the benefit, profit or other consideration from performance of a vendor contract with the party receiving an amount that meets or exceeds five percent of the total contract amount.

AFFIRMATION: By signing this form, the vendor's authorized signer affirms and acknowledges under penalty of law for false swearing (W. Va. Code §61-5-3) that: (1) for construction contracts, the vendor is not in default on any monetary obligation owed to the state or a political subdivision of the state, and (2) for all other contracts, that neither vendor nor any related party owe a debt as defined above and that neither vendor nor any related party are in employer default as defined above, unless the debt or employer default is permitted under the exception above.

WITNESS THE FOLLOWING SIGNATURE:

Vendor's Name: Stiffier McGraw Architects, LLC

Authorized Signature: *[Signature]* Date: November 20, 2018

State of Pennsylvania

County of Blair, to-wit:

Taken, subscribed, and sworn to before me this 20th day of November, 2018.

My Commission expires August 6, 2022

AFFIX SEAL HERE

NOTARY PUBLIC *[Signature]*

Commonwealth of Pennsylvania - Notary Seal
Trisha M. Gerlach, Notary Public
Blair County
My commission expires August 6, 2022
Commission number 1219889
Member, Pennsylvania Association of Notaries