



The following documentation is an electronically-submitted vendor response to an advertised solicitation from the *West Virginia Purchasing Bulletin* within the Vendor Self-Service portal at ***wvOASIS.gov***. As part of the State of West Virginia's procurement process, and to maintain the transparency of the bid-opening process, this documentation submitted online is publicly posted by the West Virginia Purchasing Division at ***WVPurchasing.gov*** with any other vendor responses to this solicitation submitted to the Purchasing Division in hard copy format.

Header 1

List View

General Information

Contact

Default Values

Discount

Document Information

Procurement Folder: 392811

SO Doc Code: CRFQ

Procurement Type: Central Purchase Order

SO Dept: 0603

Vendor ID: 000000178881

SO Doc ID: ADJ1800000005

Legal Name: CVK ENTERPRISES INC

Published Date: 11/14/17

Alias/DBA:

Close Date: 11/30/17

Total Bid: \$28,800.00

Close Time: 13:30

Response Date: 11/30/2017

Status: Closed

Response Time: 9:47

Solicitation Description: ADDENDUM 1 COMMERCIAL
CONVEYOR DISHWASHER &

Total of Header Attachments: 1

Total of All Attachments: 1



Purchasing Division
2019 Washington Street East
Post Office Box 50130
Charleston, WV 25305-0130

State of West Virginia
Solicitation Response

Proc Folder : 392811

Solicitation Description : ADDENDUM 1 COMMERCIAL CONVEYOR DISHWASHER & BOOSTER WATER HT

Proc Type : Central Purchase Order

Date issued	Solicitation Closes	Solicitation Response	Version
	2017-11-30 13:30:00	SR 0603 ESR11301700000002361	1

VENDOR

000000178881

CVK ENTERPRISES INC

Solicitation Number: CRFQ 0603 ADJ1800000005

Total Bid : \$28,800.00

Response Date: 2017-11-30

Response Time: 09:47:24

Comments: Please contact me if you have any questions. meagan@federalsupply.com

FOR INFORMATION CONTACT THE BUYER

Crystal Rink
(304) 558-2402
crystal.g.rink@wv.gov

Signature on File

FEIN #

DATE

All offers subject to all terms and conditions contained in this solicitation

Line	Comm Ln Desc	Qty	Unit Issue	Unit Price	Ln Total Or Contract Amount
1	Commercial Conveyor Dishwasher	1.00000	EA	\$28,800.000000	\$28,800.00

Comm Code	Manufacturer	Specification	Model #
48101615			

Extended Description : Commercial Conveyor Dishwasher
Hobart Model No. CLPS66E (or equal) ENERGY STAR certified, SS Vent Hoods, Table Limit Switch, SS Std. 6" Legs, Filter System, per the specifications.

Comments: Please see Attached Letterhead Quote for full details and specs.
Unit comes with built in booster heater.
Installation included per requested definition; but does not include:
- Creating new water or electrical lines
-Removal or disposal of current unit

Line	Comm Ln Desc	Qty	Unit Issue	Unit Price	Ln Total Or Contract Amount
2	Compact Electrical Booster Water Heater	1.00000	EA	\$0.000000	\$0.00

Comm Code	Manufacturer	Specification	Model #
42281514			

Extended Description : Compact Electrical Booster Water Heater Hatco Model No. C-27 (or equal) with Castone Lining, 6 gallon storage capacity, high limit temperature switch, low water cut-off, ss front panel with hammertone body, std. 6" legs, per the specifications.

Comments: Unit comes with built in booster heater, no need for third party heater. See Specs.



To:
Federal Supply USA
Meagan Crump
116 Washington St.
PO Box 648, Waukegan, IL, 60079-0648
Waukegan, IL 60085
847-623-1310

Project:
Mountaineer Challenge Academy
WV Jackson

From:
Federal Supply USA, WOSB
DUNS #025-902-206
CAGE: 0JXX5
Tax ID #36-2426644
POC: Meagan Crump
116 Washington St.
PO Box 648, Waukegan, IL, 60079-0648
Waukegan, IL 60085
847-623-1310

Job Reference Number: 20731

Item	Qty	Description	Sell	Sell Total
1	1 ea	DISHWASHER, CONVEYOR TYPE Jackson WWS Model No. RACKSTAR 66CE RackStar® 66 Dishwasher, conveyor type, high temperature sanitizing with electric tank heat, single tank design, 22" pre-wash, approximately (223) racks/hour capacity (0.35 gallons per rack), fully automatic including auto-fill, adjustable conveyor speed, 19-3/4" clearance, digital temperature readout, double-wall insulated doors on front, EnergyGuard™ controls, Dual Rainbow Rinse™ - Econo (0.35 gpr) or Turbo (0.51 gpr), vent fan control, strike plate table limit switch, splash shields, stainless steel construction, adjustable bullet feet, 3 HP pump, 1/4 HP conveyor, cETLus, NSF, ENERGY STAR®	\$23,000.00	\$23,000.00
	1 ea	1 year parts & labor warranty, continental USA, standard		
	1 ea	Right to left operation		
	1 ea	15kw wash tank heater, standard		
	1 ea	208V/60/3-ph, 51.3 amps		
	1 ea	Single Point Connection with onboard booster (Tank heat, onboard booster, pumps, motors & controls)		
	1 ea	05700-002-88-07 Table limit switch with strike plate (unmounted) (standard)		
	1 ea	04730-003-05-76 Scaltrol Water Treatment		
		NOTE: This unit has a built in booster heater--no need for an external booster heater. It also comes standard with Vent Cowls per original spec.		

Item	Qty	Description	Sell	Sell Total
			ITEM TOTAL:	\$23,000.00
2	1 ea	INSTALL Custom Model No. INSTALLATION Installation per RFQ to include: Deliver units inside the building, uncrate the units, set units in place within 3 feet of existing utilities, provide all hoses and connectors to make all electrical and plumbing connections, and ensure the units are working correctly and are ready for immediate operation. Vendor is to demonstrate programming options to MCA staff and provide minimal preventative maintenance, troubleshooting, repair, and diagnostic instruction. DOES NOT INCLUDE: - Creating new water or electrical lines -Removal or disposal of current unit - Stainless steel fabrication or adjustments - unit must fit with current dishtables and vent hoods; if they do not it is the responsibility of the customer (Mountaineer Challenge Academy) to adjust current vents and dishtables to fit the unit. PLEASE NOTE: This is because there was not an allowance for a site visit for us to come and measure the pre-existing stainless. With the given measurements of the requested units, everything should fit together, but we were unable to come measure everything to verify.	\$5,800.00	\$5,800.00
			ITEM TOTAL:	\$5,800.00
			Total	\$28,800.00

All quotes are valid 30 days from the date on the quote.

Terms to be established by FS USA's credit department.

Items not listed are not included(ie lift gate, accessories, taxes, etc...)

Standard Manufacturer's warranties are included.

Returns will not be accepted without prior written approval (maybe subject to fees)

Unless otherwise noted, Freight terms are Pre Paid & Add.

Acceptance: _____ Date: _____

Printed Name: _____

Project Grand Total: \$28,800.00

RackStar® 66

Project _____
Item _____
Quantity _____
CSI Section 11400
Approval _____
Date _____

RackStar® 66

Models

RackStar 66



Standard Features

- Adjustable Rinse System
- Rainbow Rinse™ with arched rinse arm design
- 19-3/4" (502 mm) clearance
- WISR® Cleaning System
- Double-wall insulated doors retain heat, keeping wash water hot & generating less heat in the dish room
- Self-cleaning wash arms
- 22" pre-wash
- Fully automatic, including auto-fill
- Adjustable vent cowl collars
- Exclusive EnergyGuard™ controls
- Self-draining stainless steel wash pump
- Digital LED control panel
- Strike plate table limit switch
- Large front access for ease of maintenance
- Stainless steel strainer pans
- Splash shields
- Stainless steel frame and legs
- Exhaust vent fan control
- 15kW wash tank heater
- Front dress panel
- Adjustable bullet feet

Mandatory Specs

Specify:

- ☐ Electric
☐ Steam

Specify Voltage _____

Specify Sanitizing Method:

- ☐ High Temperature
☐ Chemical Sanitizing

Specify Direction of Operation:

- ☐ Left to Right
☐ Right to Left

Options

- ☐ Onboard Booster
☐ 40° F (22.2° C) Rise
☐ 70° F (38.9° C) Rise
☐ Single Point Connection with Onboard Booster (3 phase only)
☐ Steam Booster Heater
☐ 23" (584 mm) Unhooded Side Loader
☐ 30" (762 mm) Unhooded Side Loader
☐ Flanged Feet
☐ Prison Package

Accessories

- ☐ 36-Compartment Rack
☐ 4-1/8" tall (104 mm)
☐ 5 - 5/8" tall (143 mm)
☐ 7" tall (178 mm)
☐ Combination Rack
☐ Peg Rack
☐ Sheet Pan Rack
☐ Drain Quench System
☐ Scaltrol
☐ Water Hammer Arrestor

Specifications

Uses 0.35 gallons of water (1.32 liters) per rack in Econo Rinse mode

Uses 0.52 gallons of water (1.97 liters) per rack in Turbo Rinse mode

Cleans 223 racks per hour

22" (559 mm) pre-wash section has 3 upper and 1 lower pre-wash arms

Durable stainless steel construction

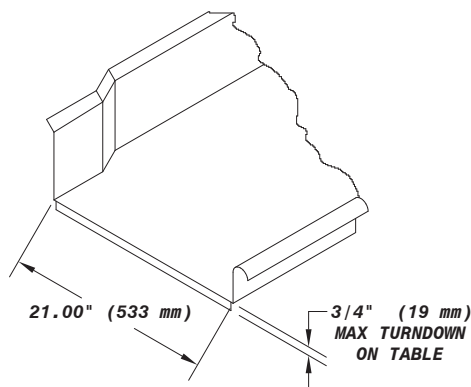
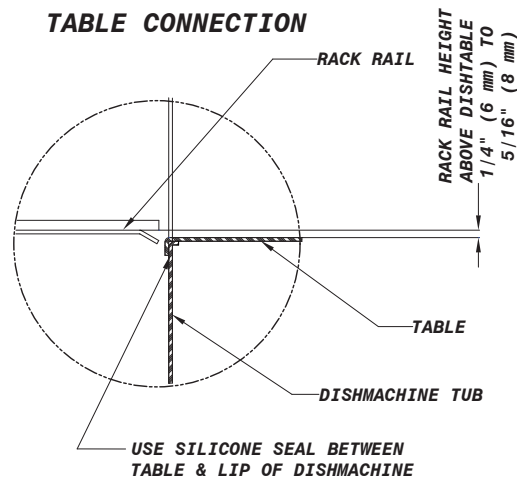


Intertek





RackStar® 66

RECOMMENDED TABLE FABRICATION

TABLE CONNECTION


MODEL NO.	MACHINE DIMENSIONS				DRAIN HEIGHT	SHIPPING INFORMATION					
	HEIGHT	LENGTH BETWEEN DISHTABLES	DEPTH	DEPTH WITH DOORS OPEN		WEIGHT	CLASS	CUBE	HEIGHT	WIDTH	DEPTH
RackStar 66	64-1/2" (1632 mm)	66" (1676 mm)	30" (762 mm)	50" (1270 mm)	6-1/2" (165 mm)	1,115 lbs (506 kg)	150	166.67 cu. ft.	75" (1905 mm)	96" (2439 mm)	40" (1016 mm)

OPERATING CAPACITY

	High-Temperature	Chemical Sanitizing
Racks per Hour	223	223
Dishes per Hour	5,575	5,575
Glasses per Hour	8,028	8,028

OPERATING TEMPERATURES

	High-Temperature	Chemical Sanitizing
Pre-Wash	110 - 140° F (43 - 60° C)	110 - 120° F (43 - 49° C)
Wash (minimum)	160° F (71° C)	120° F (49° C)
Rinse (minimum)	180° F (82° C)	120° F (49° C)

ELECTRICAL REQUIREMENTS*

Approximate Total Load AMPS		
	Electric Tank Heat	Steam
208V/60HZ/3PH	58.3	9.7
208V/60HZ/1PH	91.4	11.8
230V/60HZ/3PH	50.5	9.5
230V/60HZ/1PH	81.1	11.8
460V/60HZ/3PH	25.3	4.8

BOOSTER HEATER ELECTRICAL REQUIREMENTS*

	40° F (22.2° C) Minimum Rise		70° F (38.9° C) Minimum Rise	
	kW	AMPS	kW	AMPS
208V/60HZ/3PH	12	33.3	17.2	47.7
208V/60HZ/1PH	12	57.7	17.2	82.7
230V/60HZ/3PH	12	27.7	18	41.5
230V/60HZ/1PH	12	47.9	18	71.9
460V/60HZ/3PH	12	13.8	18	20.7

*Total amp draw for a single point connection with onboard booster heater (3 phase only) is calculated by adding the amp load for the booster heater to the amp load for the machine.

HOW TO SPECIFY: RackStar 66

WATER REQUIREMENTS

Inlet Temperature (minimum)	
With 40° F (22.2° C) Rise Booster Heater	140° F (60° C)
With 70° F (38.9° C) Rise Booster Heater	110° F (43° C)
Gallons per Hour (Econo Rinse / Turbo Rinse)	78 gal (295 L) / 116 gal (239.1 L)
Gallons per Rack (Econo Rinse / Turbo Rinse)	0.35 gal (1.3 L) / 0.52 gal (1.97 L)
Waterline Size IPS (minimum)	1/2"
Drainline Size IPS (minimum)	1-1/2"
Flow Pressure (PSI)	15
Flow Rate GPM (minimum)	1.30 (4.9 LPM)
Wash Tank Capacity	25 gal (95 L)

WASH PUMPS

Pre-Wash Pump Motor	2 hp
Wash Pump Motor	3 hp
Pre-Wash Pump Capacity	220 GPM (833 LPM)
Wash Pump Capacity	270 GPM (1022 LPM)

CONVEYOR

Conveyor Motor	1/4 hp
Conveyor Speed (feet per minute)	6.07 FPM (1.85 MPM)

VENTING REQUIREMENTS

Input End	200 CFM
Output End	200 CFM
Total CFM	400 CFM

STEAM COIL TANK HEAT (STEAM MODELS ONLY)

Steam Connection IPS	3/4"
Steam Flow Pressure (PSIG)	10-20
Consumption @ 15 PSIG (lbs/hr)	60

Jackson WWS, Inc.

Shipping Address: 6209 North U.S. Highway 25E, Gray, KY 40734

Mailing Address: P.O. Box 1060, Barbourville, KY 40906

Telephone: 888-800-5672 • Fax: 606-523-1799

Email: info@jacksonwws.com

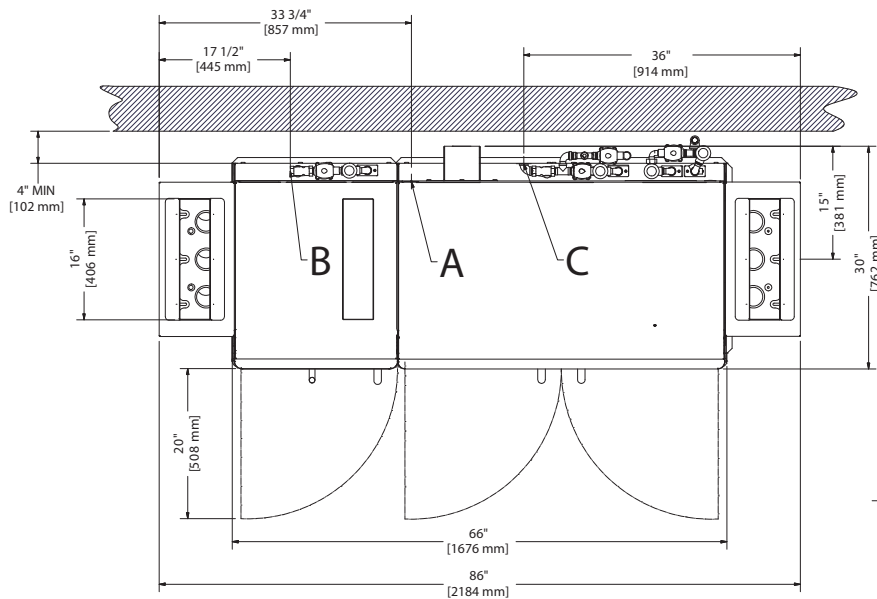
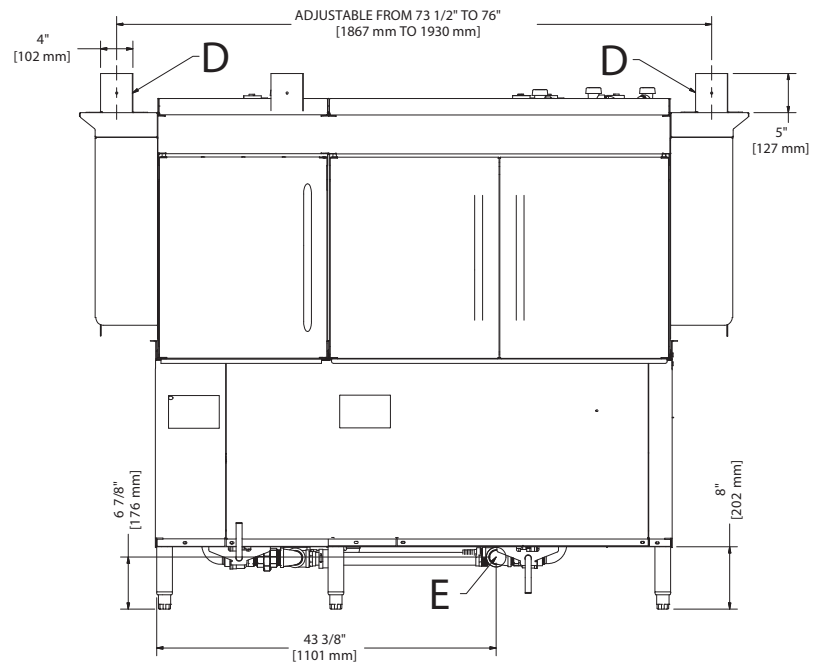
07610-004-36-87 [03/02/17]

www.jacksonwws.com

We reserve the right to change specifications in this bulletin without incurring any obligation for equipment previously or subsequently sold.

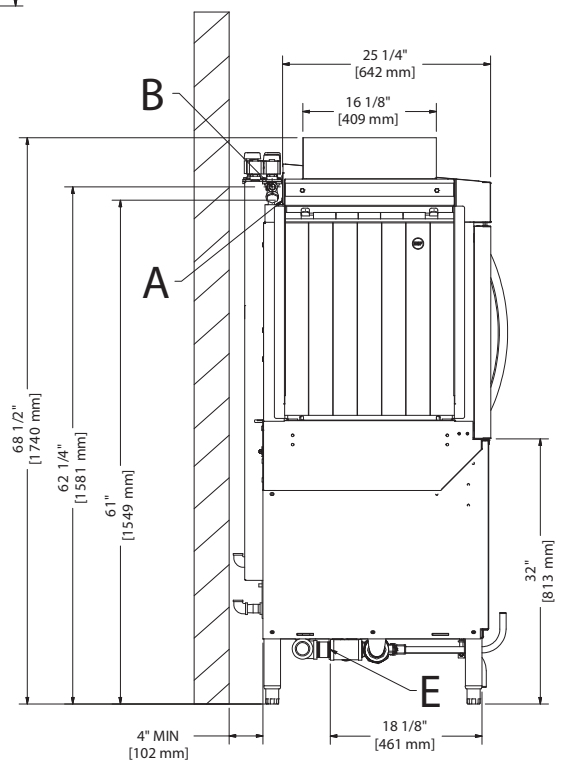
RackStar® 66

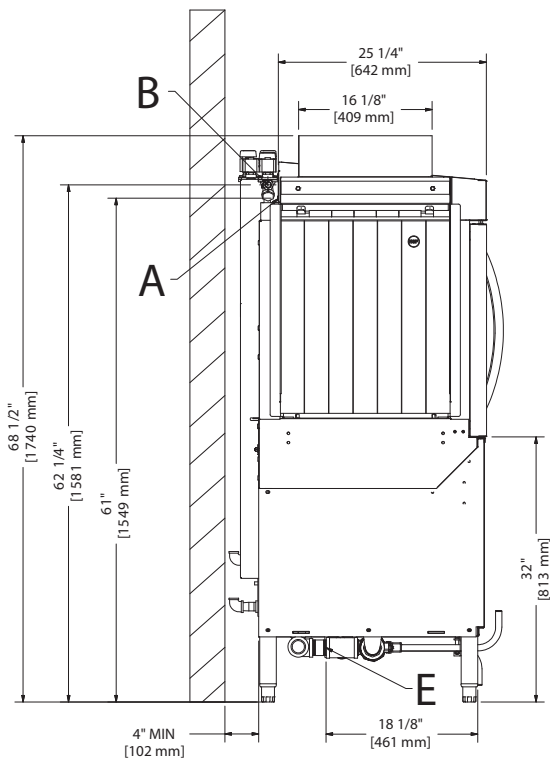
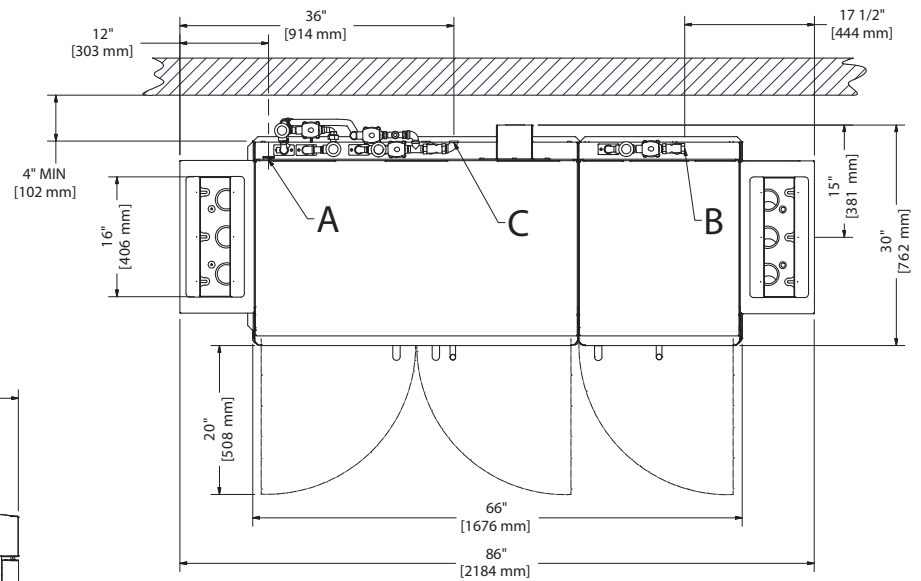
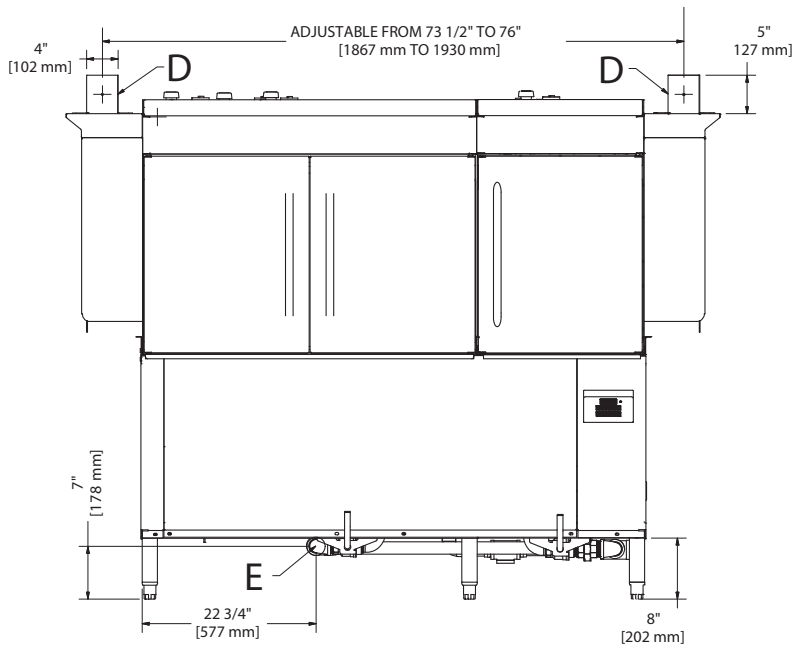
Left to Right



- A - Electrical Connection
(Provided on both sides of unit)
- B - Pre-Wash Water Inlet
(1/2" NPT 180 °F)
- C - Main Water Inlet
(1/2" NPT 180 °F)
- D - Vent Connections
(Including Dampers)
- E - Drain Connection
(1 1/2" NPT)

All dimensions from the floor can be increased 1 3/4" using the machine's adjustable feet.





- A - Electrical Connection
(Provided on both sides of unit)
- B - Pre-Wash Water Inlet
(1/2" NPT 180 °F)
- C - Main Water Inlet
(1/2" NPT 180 °F)
- D - Vent Connections
(Including Dampers)
- E - Drain Connection
(1 1/2" NPT)

All dimensions from the floor can be increased 1 3/4" using the machine's adjustable feet.