

WV CAPITOL COMPLEX HARDSCAPE RESTORATION PROJECT

CEOI 0211 GSD180000001

12/19/17 11:13:36
WV Purchasing Division





December 20, 2017

Attn: Jessica S. Chambers, Senior Buyer
2019 Washington Street, East
Charleston, WV 25305

RE: WV Capitol Complex Hardscape Restoration Project - CEOI 0211 GSD180000001

Dear members of the selection committee:

Thrasher is pleased to submit our qualifications to the Department of Administration, Purchasing Division for the WV Capitol Complex Hardscape Restoration Project located in Charleston, WV. This project is an exciting opportunity to be involved in the restoration of the grounds of West Virginia's most iconic structures. This project presents a variety of interesting challenges that requires a very well planned approach for it to become a successful project.

The related work experience exhibited in our expression of interest are great examples of our successful, cost effective, and efficient project track record. We put an emphasis on working hand-in-hand with our clients through each phase of the planning, design, and construction process to eliminate potential issues and enhance the quality of the overall project. I have great confidence that our experience with similar projects will be a testament to our abilities and commitment to successfully complete this project for the staff and citizens that utilize your facility. We've carefully reviewed your inquiry to assemble a team of professionals that meet the needs of your specific project.

We look forward to an opportunity to speak with you further about this project.

Sincerely,
THE THRASHER GROUP, INC.

A handwritten signature in blue ink that reads 'Jeffrey L. Gola'. The signature is written in a cursive style.

Jeffrey L. Gola, PE
Project Manager

► QUALIFICATIONS & EXPERIENCE

ABOUT THRASHER

With a commitment to building business through “successful projects and repeat clientele”, H. Wood Thrasher, PE and the late Henry A. Thrasher, PE - formed Thrasher Engineering, Incorporated in Clarksburg, West Virginia in 1983. Since that time, the company, now known as The Thrasher Group, Inc. has grown into West Virginia’s largest privately-owned architectural and engineering firm, and one of the leading full service A/E firms in the Mid-Atlantic region.

Publicly funded projects have been the backbone of the company, and continue to be a large part of our engineering division. Thrasher has grown from its original three employees to a current staff of over 350 and continues to prosper. Instilled in each employee is a commitment to maintaining the highest standards of professional service. We have learned, regardless of our size, our commitment to this philosophy leads to successful projects.

MAIN POINT OF CONTACT

Mr. Jeffrey Gola, PE
Project Manager
jgola@thethrashergroup.com
Cell: 304-677-9830
Office: 304-326-6109

THRASHER INFORMATION

www.thethrashergroup.com
Established in 1983

HEADQUARTERS

Bridgeport, WV



OFFICE LOCATIONS

Charleston, WV
Bridgeport, WV
Oakland, MD
Beckley, WV
Fredericksburg, VA
Canton, OH
Lexington, KY
Cannonsburg, PA



TECHNICAL QUALIFICATIONS

The Thrasher Group's roots were planted in civil engineering and consulting services for public utility projects. Over the years, our success has allowed us to branch out, expanding our services to meet both the needs of our clients, and the growing need for more responsive and effective solutions.

By providing a full range of quality professional site, engineering, architectural, surveying, environmental and related field services, this partnership has positioned itself as one of the leading consulting teams in the Mid-Atlantic region.

AREAS OF SERVICE:

- Planning/Programming
- Preliminary design
- Funding/Grant application assistance
- Design and construction document preparation
- Bid documentation & process oversight
- Construction administration & monitoring
- Regulatory permitting
- Post construction service & on-going commitment
- Cost estimating

DISCIPLINARY PRACTICES:

- Land & Site Development
- Materials Testing
- Environmental Services
- Survey
- Architecture
- Civil Engineering
- Parks and Recreation
- Construction Monitoring
- Water Treatment and Distribution
- Wastewater Collection and Treatment
- Roadways / Bridges /Streetscapes
- Storm Water Systems
- Dams and Levees
- Land Planning and Landscape
- Pipeline Inspection
- GIS Mapping Software Development

TECHNICAL QUALIFICATIONS

Thrasher's site design staff has considerable experience designing sidewalks, parking lots, and roadways within the WVDOH criteria and design directives. In the past, Thrasher has completed millions of dollars worth of highway/bridge design for the WVDOH in tandem with sidewalks, municipal projects, industrial parks, and other infrastructure for private clientele. Our construction management and materials testing division has also been utilized on all of these projects.

CONSTRUCTION MANAGEMENT AND INSPECTION: Thrasher knows how projects should be built. We provide the knowledge and experience necessary to manage the construction of your project. Our project managers and inspectors are experienced in all types of construction activities.

CONSTRUCTION ADMINISTRATION: Safety and Documentation are critical components to effective construction administration. Thrasher has developed a highly skilled, safety focused construction services team. We can provide construction management, construction administration and project observation depending on the requirements of each project. We are committed to serving the local community. Selecting Thrasher is low risk because we have a vested interest in successful projects for our neighbors and ourselves. We know how to successfully complete projects.

THRASHER KNOWS THE IMPORTANCE OF:

- Communication
- Timely reporting
- Seamless interaction
- Maintaining Client Confidence

THRASHER'S CONSTRUCTION MANAGEMENT TEAM:

- ▶ **80** plus trained observers
- ▶ **60** plus trained inspectors and technicians





LANDSCAPE ARCHITECTURE

Landscape Architecture at Thrasher involves the design of the outdoor environment on a variety of scales from large, multi-functional sites to small, confined spaces. Innovative research in materials, lifestyles, and landscape technologies coupled with a deep understanding of how people use outdoor spaces informs our unique design process. We strive to surpass our clients expectations with functional, aesthetic, and exciting designs with a sensitivity to every project's unique budget.

With a diverse background throughout the Mid-Atlantic region we excel at providing client specific and site-specific planning and design solutions. Thrasher's Landscape Architects have the expertise to guide you smoothly from concept through construction.

LANDSCAPE ARCHITECTURAL SERVICES:

- Commercial, Industrial, & Residential
- Master Planning
- Community Planning and Design Guidelines
- Hotels and Resorts
- Memorial Gardens
- Pedestrian, Bike, & ATV Trails and Facilities
- Streetscape
- Passive & Active Recreational Facilities
- Playgrounds
- Landscape Design
- 3D Modeling / Visualization
- Project Marketing Services



CONSTRUCTION MANAGEMENT

Effective management of our projects ensures that both clients and contractors work in an efficient and safe manner. From pre-construction activities such as bid conferences and surveys, to inspections, job progress reviews, through final completion, our goal is work that proceeds in accordance with plans and specifications.

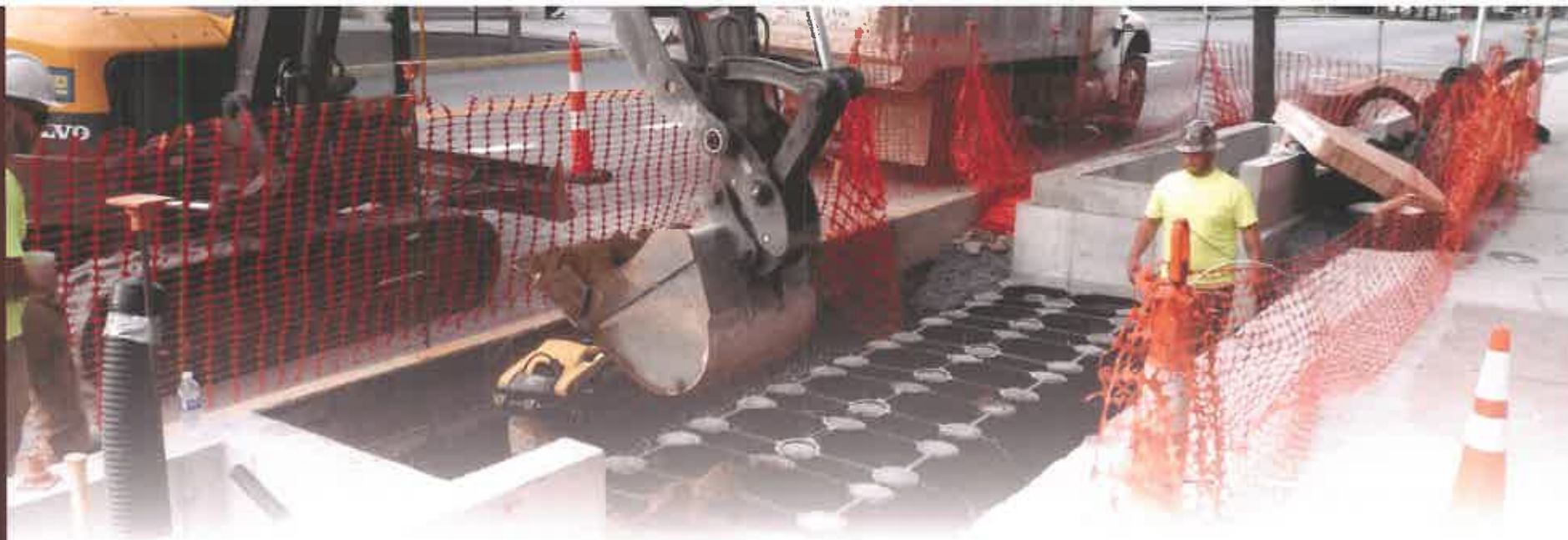
At Thrasher, we inspect and manage a wide variety of projects designed by our firm in addition to projects for contractors and other designers. We have certified project representatives responsible for overseeing every element of design integrity. Our methods have earned the respect of not only our clients, but contractors and project owners alike.

CONSTRUCTION INSPECTION SERVICES:

- Construction Materials
- Structural Steel and Concrete
- Paving
- Drainage
- Embankments
- Work Zone Safety and Traffic Control
- Erosion and Soil Control

QUALITY CONTROL AND ASSURANCE METHODS:

- Regularly Scheduled Planning and Progress Meetings
- Engineering During Construction
- Daily Logs and Progress Sheets
- Cut Sheets
- Quantity Tracking



SITE DEVELOPMENT

Engineering for site development is far from a “one size fits all” approach. Every project is unique and requires a blend of technical expertise, planning principals, efficient design, market realities, and the flexibility to seize opportunities. With our diverse staff, Thrasher has a winning combination of talent to take projects from design to reality.

At Thrasher, we understand that the design of a successful site development project must factor in economic landscape, political implications, and strategic planning that takes projects beyond engineering. The Thrasher team possesses expertise in every facet of development including site selection and planning, grading, storm water management, erosion and sediment control, permitting, and infrastructure design.

We pride ourselves on being a partner in projects that improve the quality of life for residents and provide economic sustainability to communities.

SITE DEVELOPMENT EXPERTISE:

- Streetscapes and Sidewalk Planning
- Industrial and Business Parks
- Mixed-Use Developments
- Athletic Facilities
- Federal Correctional Facilities
- Commercial Developments
- Single and Multi-Family Residential Development
- Primary, Secondary, and Higher Education Facilities
- Recreational Resorts and Guest Lodging
- Shopping Plazas



STORMWATER SYSTEMS

Ever-increasing regulations and a renewed focus on downstream effects are pushing stormwater management issues to the forefront. Working with an experienced stormwater consultant like Thrasher gives municipalities and private clients innovative and cost-effective solutions to stormwater management issues.

Our complete system approach means that we gain a full understanding of our clients' needs and can incorporate specialized project management expertise to achieve a smooth, seamless design. Thrasher has a long and successful history of working with public utility clients and private developers to find sustainable and innovative solutions to stormwater management issues.

STORMWATER MANAGEMENT EXPERTISE:

- Municipal Separate Storm Sewer Systems (MS4) Consulting and Compliance
- Design of Pipeline, Channels and Culverts
- Detention Pond Design
- Erosion and Sediment Control Plans
- Underground Storage/Injection Wells
- NPDES Permitting and Compliance
- Watershed and Flood Studies
- HEC-RAS Stream Modeling
- Best Management Practices (BMP) Evaluation and Design
- Geographic Information Systems (GIS)
- Bio-Retention Systems



REMOTE SENSING

Thrasher is fully licensed with the Federal Aviation Authority to fly unmanned aerial systems, or as UAS. In addition to our full survey and GIS departments, we now offer our clients the most cutting edge aerial imagery for mapping, monitoring and site updates. The use of remote sensing technology has allowed us to deliver the most accurate and up-to-date project information to our clients.

UAS can accomplish tasks in less time and with fewer safety hazards than traditional ground-based methods. Thrasher utilizes both fixed-wing and multi-rotor Unmanned Aerial Systems to meet the needs of a diverse range of projects. At Thrasher, we work with our clients to ensure that their vision is met.

REMOTE SENSING SERVICES:

- Mapping
- Videography
- Pre and Post Construction Documentation
- Construction Progress Analysis
- Building Inspection
- Mixed Reality Imagery
- LIDAR
- Thermal Imagery

REMOTE SENSING MARKETS:

- Municipal
- Energy
- Telecommunications
- Real Estate
- Transportation
- Emergency Services
- Environmental
- Architecture



**Federal Aviation
Administration**

Approved Section 333





ARCHITECTURE

Thrasher offers a broad range of architecture and building design services to suit the needs of each individual client. The team at Thrasher is sought after in a variety of markets: commercial and retail spaces, healthcare facilities, educational facilities, government buildings, banking and financial institutions, and industrial warehouses to name a few.

We have experience in numerous delivery systems including design-build, design-bid-build, and have worked with owners to develop preliminary packages for alternative selection.

At Thrasher, we pride ourselves on exemplary aesthetic design while keeping our roots firmly planted in accurate cost estimating, budget control, and sustainability. Fulfilling our clients' needs in a responsible and innovative way has earned our firm recognition throughout the Mid-Atlantic region.

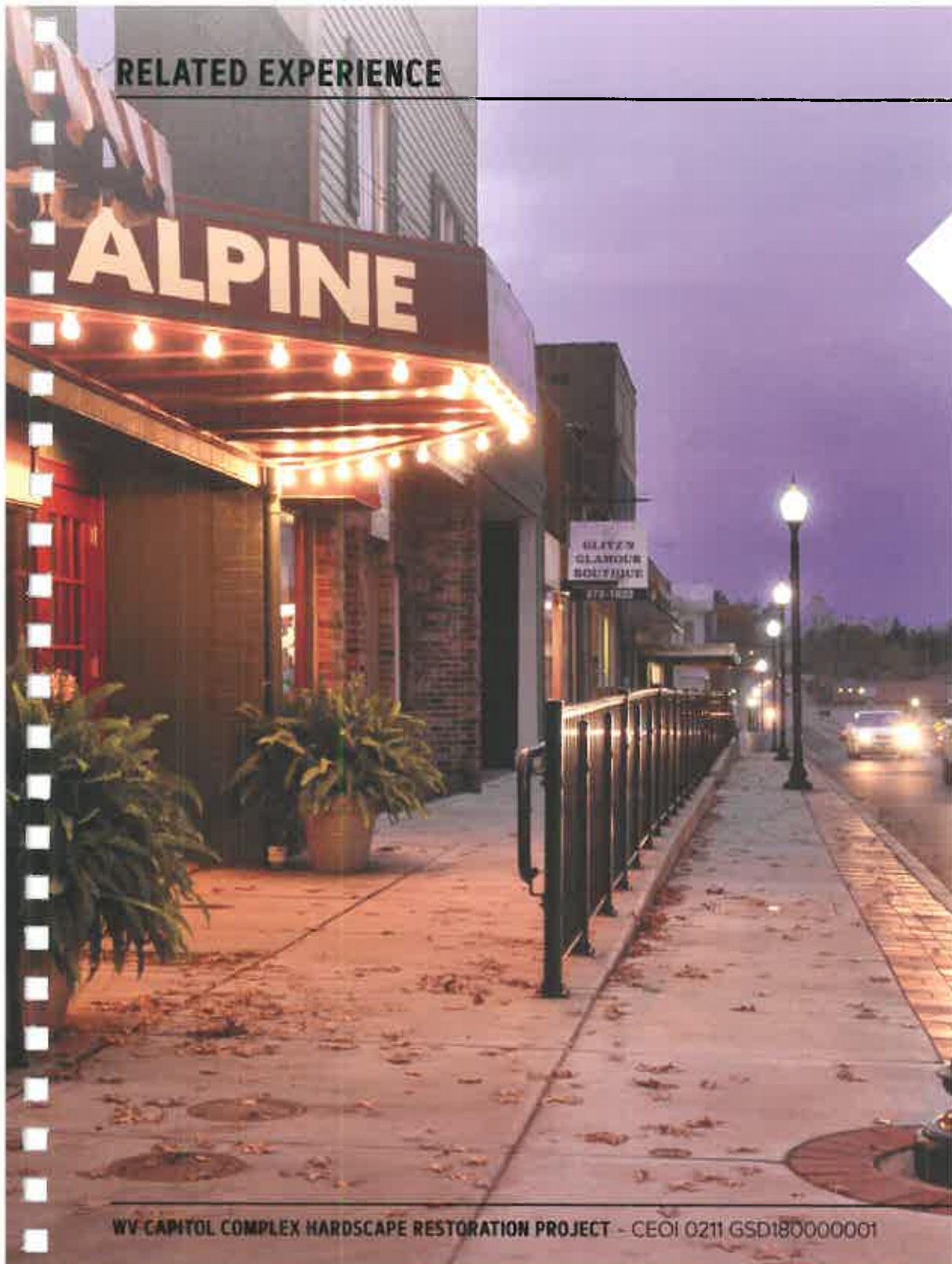
ARCHITECTURAL EXPERTISE:

- Healthcare Facilities
- Public and Private Office Buildings
- Educational Facilities
- Financial Institutions
- Building Additions and Renovations
- Recreational Facilities
- Public Safety Buildings
- Single Family Residential Units
- Multiple Family Residential Units
- Historical Preservation
- LEED Certification



▶ **RELATED EXPERIENCE**

RELATED EXPERIENCE



RIPLEY, MAIN STREET

Thrasher provided preliminary engineering and design and field services, including: survey, construction management and testing for this downtown beautification project. The project consists of three phases of Main Street: Church to Court, Court to Maple, and Maple to Mill Creek Bridge.

Key elements of the project included relocation of utilities, sidewalk replacement and streetscape amenities including ornamental lighting, plantings, trees and grates, benches, trash receptacles and bike racks.

Another component involved was the installation of ornamental lighting and plantings, street trees, benches and trash receptacles. This created a design standard for sidewalk and streetscape replacement within the City of Ripley.

PROJECT MANAGER:

Jeffrey Gola, PE

CONTACT:

Ms. Carolyn Rader, Mayor

City of Ripley

203 S. Church Street

Ripley WV 25271

304-372-3482

mayorrader@cityofripley.org

RELATED EXPERIENCE



HARRISON COUNTY COURTHOUSE

Thrasher was hired by Harrison County Commission to regrade and level 3,105 SF of Plaza. The plaza had existing granite and concrete which needed to be cleaned and sealed. In addition to the granite and concrete, the plaza had marble walls/panels which required thorough cleaning and the restoration of various monuments which decorate the plaza.

There were several liability issues such as uneven tripping hazards and icy walkways during the winter which caused concern for the Harrison County Commission which prompted an urgency and quick turnaround. Thrasher provided a new ADA assessable main walkway with radiant heat waterlines underneath to avoid ice build-up and slick walking conditions. These restoration projects were completed on time and under budget.

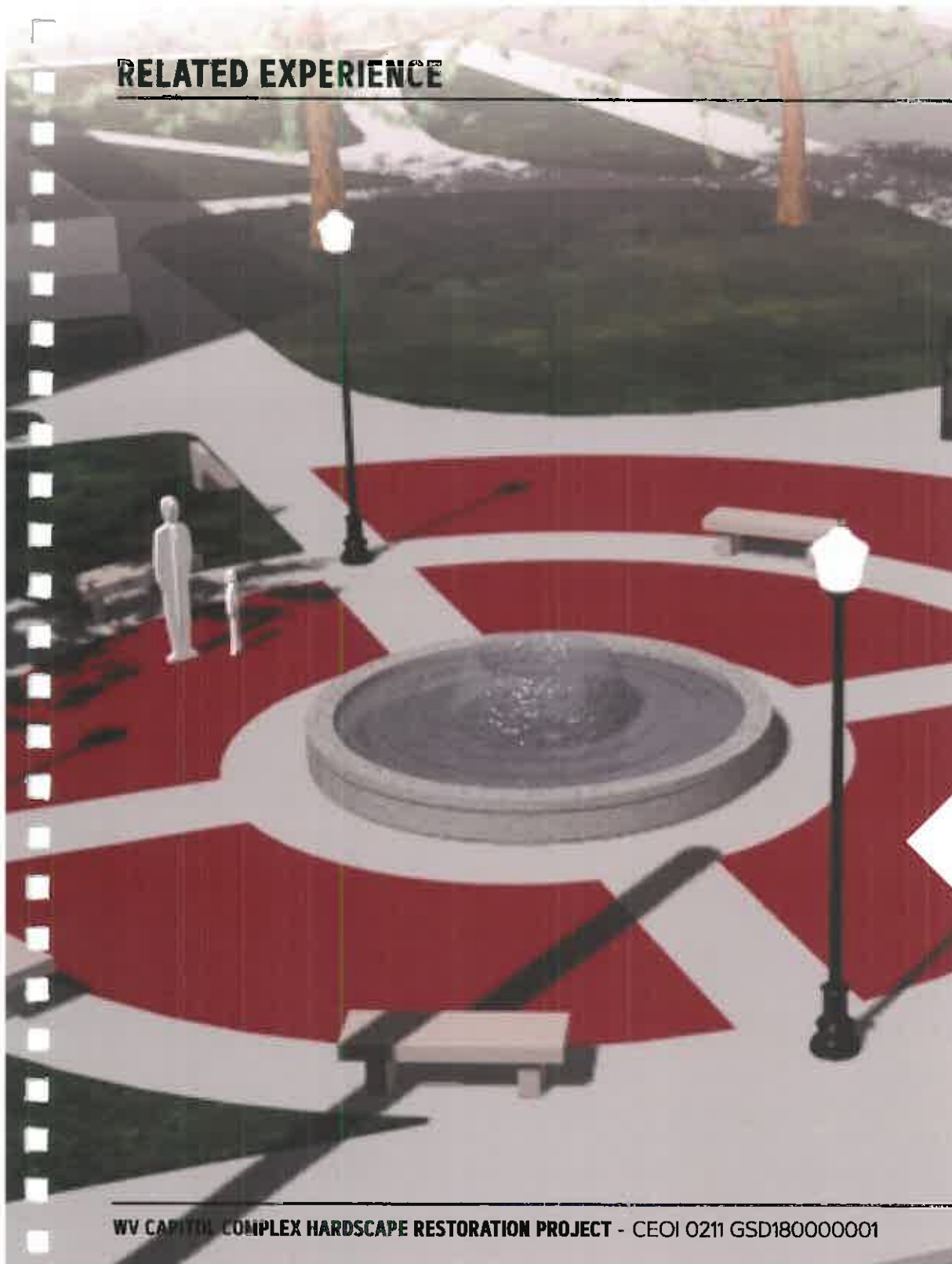
PROJECT MANAGER:

Chad Biller, PE

CONTACT:

Mr. Bernie Fazzini, Commissioner
Harrison County Commission
301 West Main Street
Clarksburg, WV 26301
304-624-8500

RELATED EXPERIENCE



MARSHALL COUNTY COMMISSION

In 2016, The Thrasher Group was hired by the Marshall County Commission for the complete design of a Veterans Plaza on the Courthouse grounds. This project required the Thrasher team to design a plaza that incorporated several existing monuments and a fountain, which were already in place, to produce a cohesive display outside of the Marshall County Courthouse. The Thrasher team designed and configured several options for the Commission: (which is currently under design).

PROJECT MANAGER:

Kenton Blackwood, Assoc. AI, LEED AP

CONTACT:

Ms. Betsy Frohnapfel - Administrator
Marshall County Commission
PO Drawer B
Moundsville, West Virginia 26041
304-845-0482

RELATED EXPERIENCE



VETERANS SQUARE MEMORIAL PLAZA

This AIA award winning project was the culmination of a decade long effort by public and private entities to transform a blighted area of downtown Fairmont into a vibrant useful veterans plaza. In the late 1980's, the Chair of the Military Veterans Council of Marion County, Clyde Judy, approached Mr. Blackwood to design a veterans plaza that would; 1) clean up a prominent, but dilapidated, corner located in downtown Fairmont, 2) provide an open-air plaza that could be used for community functions, and 3) pay respect to county veterans killed in action.



Mr. Blackwood developed a concept for the plaza which included a flag circle, a statue of soldiers from various eras and conflicts, planting beds with seating areas, a raised stage, and as a focal point three large granite slabs with the names of county veterans lost to war. Mr. Blackwood utilized 3D software to produce architectural renderings of the design. The Veterans Council then used these renderings to generate public interest and garner support. Over a few years, the Council generated enough support to fully fund the plaza work.

PROJECT MANAGER:

Kenton Blackwood, Assoc. AIA, LEED AP

CONTACT:

Clyde Judy - (former President)
Military Veterans Council of Marion County
(304) 363-7902



*American Institute
of Architects Award
Winning Project*

RELATED EXPERIENCE



TOWN OF BATH STREETScape

This project consisted of the replacement of existing water mains in the downtown area of Berkeley Springs. The work consisted of laying approximately 300 linear feet of 8" water line and 12,800 linear feet of 6" water line.

The firm provided preliminary engineering and design, final design, bid administration and negotiation, survey, construction management, materials and testing services.

PROJECT MANAGER:

Jeffrey Gola, PE

CONTACT:

Ms. Susan Webster, Mayor
Town of Bath
271 Wilkes Street
Berkeley Springs, WV 25411
304-258-1290

RELATED EXPERIENCE



MILAN PUSKAR STADIUM

Thrasher was an integral part of the architectural design team hired to complete the Milan Puskar Stadium renovation project. Thrasher was responsible for design of all civil-site related amenities associated with the stadium renovations. This project is directly across the parking lot from WVU Hospitals. The stadium renovation project required massive utility coordination efforts, communication with multiple design entities, University officials, MUB, and the City of Morgantown.

PROJECT MANAGER:

Robert Milne, PE

CONTACT:

John Thompson, PE

Associate Director of Facilities Design and Construction

West Virginia University

Morgantown, WV 26505

304-293-3625



WV CAPITOL COMPLEX HARDSCAPE RESTORATION PROJECT

THRASHER

RELATED EXPERIENCE



DONEL C. KINNARD MEMORIAL

During the construction of the new Veterans Cemetery in Institute WV, Secretary Gwinn entrusted the design of a new memorial to Kenton Blackwood. The memorial would honor West Virginia's military service personnel lost in the Global War on Terror after the 9/11 attacks. Two design schemes were presented to the committee for review, a design was approved, granite colors were selected, and by mid-2012 construction was complete.

The circular memorial terminates the end of a winding Veterans Memorial Walk with numerous monuments and tributes to US Veterans. It features the US flag with a graceful, polished granite form with the engraved names of those lost, along with the 9'-11" tall, light-gray granite symbols of the towers that fell on the fateful day in 2001.

PROJECT MANAGER:

Kenton Blackwood, Assoc. AIA, LEED AP

CONTACT:

Mr. Keith Gwinn, former Cabinet Secretary
WV Dept. of Veterans Assistance
Hurricane, WV
304-410-1799

RELATED EXPERIENCE

BEFORE

AFTER

WVU CREATIVE ARTS CENTER PARKING LOT

Thrasher was contracted by WVU to provide engineering services and construction documents for revisions to the parking lot layout at the Creative Arts Center. This project was done in accordance with changes to the Evansdale Drive and Mon. Boulevard intersection modifications.

Scope of services included the following:

- Survey and Mapping Services
- Increased parking capacity and entrance realignment
- Final site and grading plan, paving and signage plan, geometry stakeout plan, utility plan, drainage area maps, erosion and sediment control plan, stormwater facility design, landscape plans and details
- Schematic Design Drawings
- Construction Cost Estimate
- Construction Inspection and Material Testing

PROJECT MANAGER:

Robert Milne, PE

CONTACT:

John Thompson, PE
West Virginia University
Morgantown, WV 26505
304-293-3625

RELATED EXPERIENCE

- Town of Bath Streetscape – Berkeley Springs, West Virginia
- Town of Ripley Streetscape – Ripley, West Virginia
- Mannington Sidewalks – Mannington, West Virginia
- Doddridge County Park Vehicular / Pedestrian Improvements – West Union, West Virginia
- Westover Sidewalks – Westover, West Virginia
- Pleasant Valley Sidewalks – Pleasant Valley, West Virginia
- Oak Hill Safe Routes to School – Oak Hill, West Virginia
- Farmington Sidewalks – Farmington, West Virginia
- Barrackville Safe Routes to School – Barrackville, West Virginia
- Town of Bayard Sidewalks – Bayard, West Virginia
- Paw Paw Sidewalks and Safe Routes to School – Paw Paw, West Virginia
- Martinsburg Safe Routes to School – Martinsburg, West Virginia
- Nutter Fort Sidewalks – Nutter Fort, West Virginia
- Mannington Trailhead – Mannington, West Virginia
- Lost Creek Trailhead – Lost Creek, West Virginia
- Shinnston Trailhead – Shinnston, West Virginia

SafeRoutes



REFERENCES

Ms. Carolyn Rader, Mayor

City of Ripley

203 South Church Street

Ripley, WV 26753

304-372-3482

Ron Watson, President

Harrison County Commission

301 W Main Street

Clarksburg, WV 26301

304-624-8500

Ms. Betsy Frohnafel, Administrator

Marshall County Commission

PO Drawer B

Moundsville, West Virginia 26041

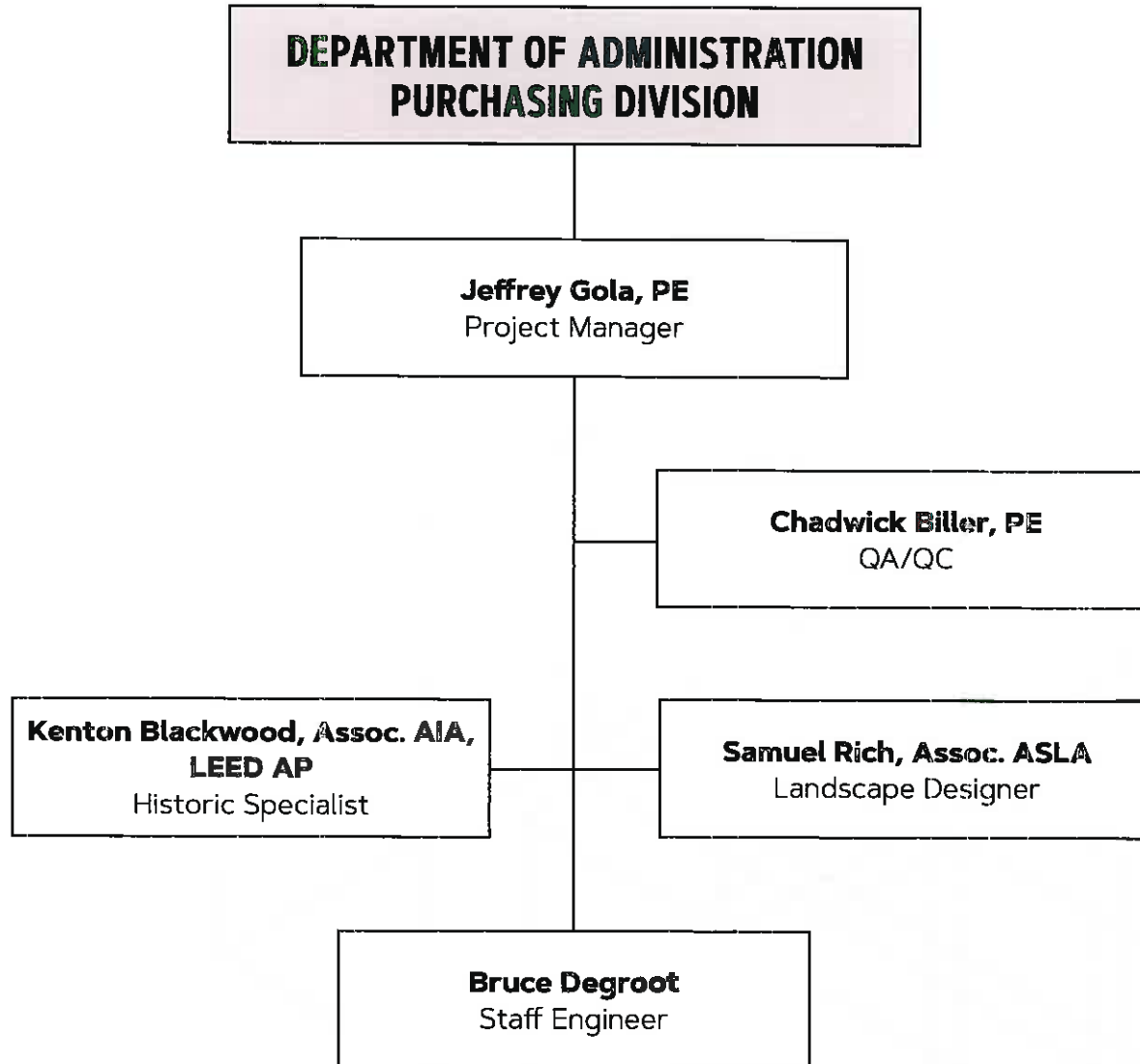
304-845-0482



▶ KEY STAFF PERSONNEL

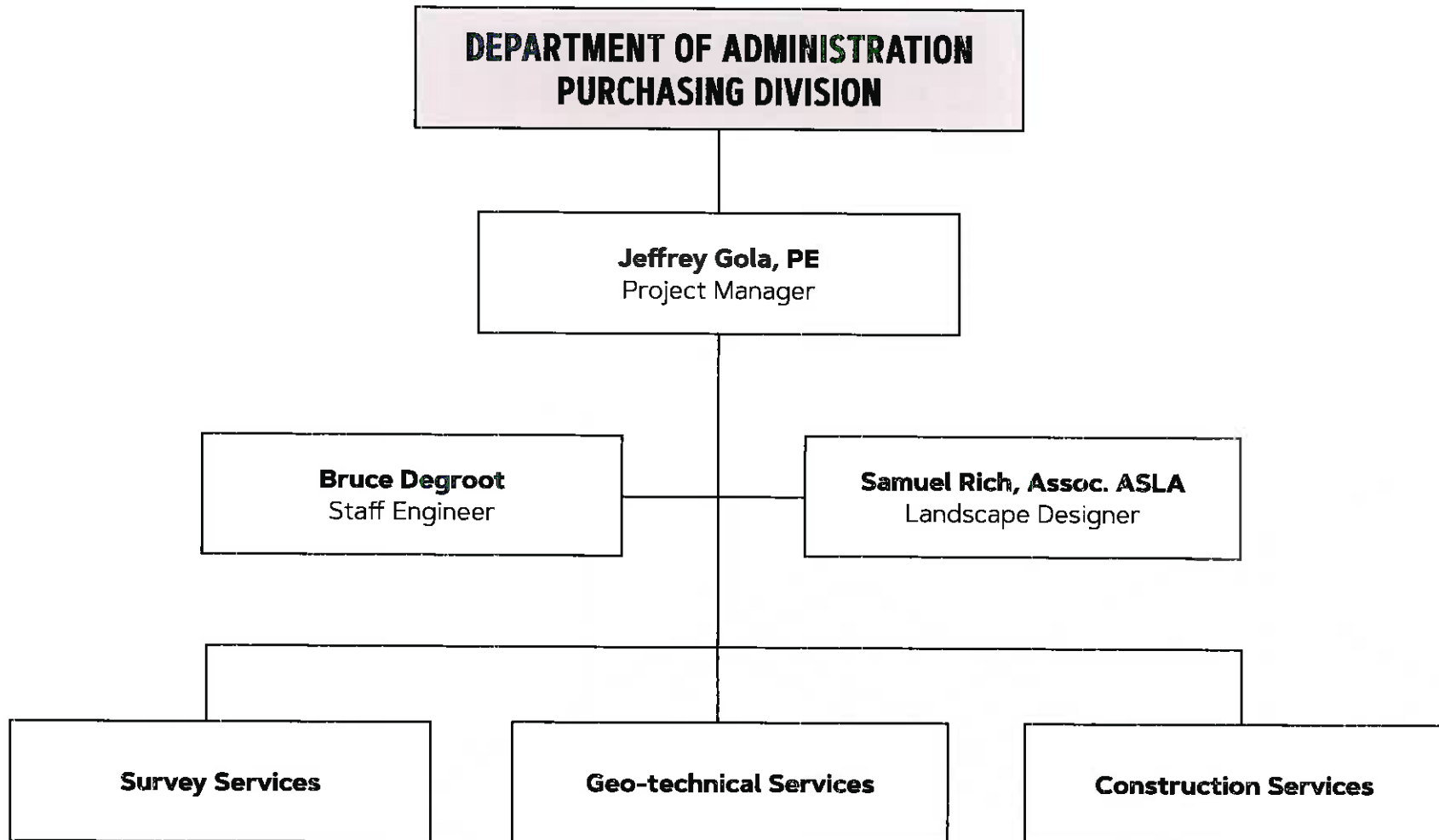
KEY STAFF PERSONNEL

PROJECT TEAM - GOAL 1 PLANNING



KEY STAFF PERSONNEL

PROJECT TEAM - GOAL 2 DESIGN & CONSTRUCTION



JEFFREY GOLA, PE

Project Manager



Jeff Gola, PE has built a successful portfolio of bridge and bridge repair projects. Also, Jeff has vast experience in highway, community improvements, airports and commercial site development projects. He is experienced in all aspects of project control, form design and drafting to construction and project oversight. Jeff has an excellent understanding of bid processes and construction inspection.

Jeff's expertise in designing and planning roadways, bridges, sidewalks, retaining walls, utility plant structures, storm water management and demolition plans is also exceptional. He has first hand knowledge in obtaining permits and their requirements. Mr. Gola's nearly 20 years of experience delivers the expertise required for bridge and bridge repair design.

Education:

- Bachelor of Science, Civil Engineering - West Virginia University

Registrations and Certifications:

- Registered Professional Engineer:
 - States of West Virginia and Maryland

Affiliations

- American Society of Highway Engineers
- American Society of Civil Engineers

Related Experience Includes:

- Harrison County Commission Courthouse Plaza - Harrison County, West Virginia
- Harrison County Commission Court Street Sidewalks and Handicap Ramp Project - Harrison County, West Virginia
- Pleasant Valley Elementary School ADA Sidewalks and Ramps - Marion County, West Virginia
- City of Parsons Streetscape Project - Tucker County, West Virginia
- Fairmont State University Sidewalks and Pedestrian Walking Bridge - West Virginia
- City of Westover Sidewalks - Monongalia County, West Virginia
- Town of Nutter Fort Sidewalks - Harrison County, West Virginia
- City of Ripley Main Street Beautification Project - Jackson County, West Virginia
- Town of Bayard Sidewalks - Grant County, West Virginia
- City of Grafton Main Street Beautification Project - Taylor County, West Virginia

CHADWICK BILLER, PE

Quality Assurance / Quality Control



In 1999, Chad Biller, PE, joined the team at Thrasher and is now a partner within the firm. Mr. Biller has extensive experience in all aspects of civil engineering, but his primary emphasis lies in site development, transportation, and airport projects. Mr. Biller's expertise has made him a go-to source for the design and site layout of numerous residential and commercial sites all throughout the region. His knowledge of site design in the mountainous terrain of West Virginia, and its surrounding states, is second to none.

As part of his role as project manager on site design projects, Mr. Biller is responsible for the development of project design, production of project specifications and plans, bidding, quality assurance/quality control, and project monitoring.

Education:

- Bachelor of Science, Civil Engineering - West Virginia University

Registrations and Certifications:

- Registered Professional Engineer:
 - States of West Virginia, Ohio and Pennsylvania

Affiliations

- American Society of Highway Engineers
- American Society of Civil Engineers
- National Society of Professional Engineers

Related Experience Includes:

- Harrison County Commission Courthouse Plaza - Harrison County, West Virginia
- Harrison County Commission Court Street Sidewalks and Handicap Ramp Project - Harrison County, West Virginia
- City of Ripley Main Street Beautification Project - Jackson County, West Virginia
- City of Pleasant Valley Sidewalks - Marion County, West Virginia
- City of Grafton Main Street Revitalization Project - Taylor County, West Virginia
- Town of Farmington Multi-Use Pedestrian Bridge - Marion County West Virginia
- Lodgeville Two-Lane Roadway and Bridge - Harrison County, West Virginia
- US Route 33 Truck Mountain Climbing Lane - various counties, West Virginia

SAMUEL RICH, ASSOC. ASLA

Landscape Designer



Samuel Rich, Associate ASLA, joined Thrasher in 2014 as a Project Manager/landscape designer/site planner. Samuel's role at Thrasher includes site design for parks and recreation, streetscapes, commercial retail, trails, office space, memorials, hotels and resorts. Samuel has master planning experience for a variety of project types including commercial, institutional, residential, and industrial sectors. He works with clients to visualize their built project through vivid plan and 3D illustrations while maintaining a conscientious approach to constructibility, functionality, and budget.

Before his time at Thrasher, he spent three years in the landscape design/build industry working on a variety of projects involving the beautification of the outdoor environment for both residential and commercial spaces.

Education:

- Bachelor of Science, Landscape Architecture - West Virginia University

Related Experience Includes:

- WVU Milan Puskar Stadium Renovations Landscape Plan - Monongalia County, West Virginia
- Warm Springs Run Green Infrastructure Plan - Morgan County, West Virginia
- Hatfield McCoy Trails Welcome Center - Mercer County, West Virginia
- West Ridge Landscape Design - Monongalia County, West Virginia
- Palatine Park - Marion County, West Virginia
- Central WV ATV Trails Route Planning - Various Counties, West Virginia
- Canal Place ADA, Pedestrian, & Bike Improvements - Cumberland, Maryland
- Loch Lynn Heights Boardwalk & Signage - Loch Lynn Heights, Maryland
- Grantsville Bikeways - Grantsville, Maryland
- I-68 Exit 1 Sheetz Landscape Plan - Monongalia County, West Virginia

BRUCE DEGROOT

Staff Engineer



Bruce Degroot joined Thrasher in 2008 following his graduation from Fairmont State University. He began his career at Thrasher as a Project Representative, but has since proven his talent and advanced within the firm. Currently, Mr. Degroot is serving as Staff Engineer in the Transportation and Site Divisions. Mr. Degroot is responsible for assisting with design, site plans, grading, field inspections, contract specifications, and other various project tasks.

Mr. Degroot's experience in the field has translated over to his work as a Staff Engineer. He is able to apply the knowledge he gained on-site to the designs he develops now. This experience has made him a well-rounded member of the Division.

Education:

- Bachelor of Science, Civil Engineering - Fairmont State University

Registrations and Certifications:

- Transportation Engineer Technician Level II Certification (TRET)

Related Experience Includes:

- WVDOH Mineral Wells Connector Road - drafting, plans, and design of new connector road - Mineral Wells, West Virginia
- Pleasant Valley Sidewalk - design, drafting, plans, specifications, and field inspections - Marion County, West Virginia
- Doddridge County Park Adjacent Concrete Box Beam Bridge and Access Road - design and plans - Doddridge County, West Virginia
- WVDOH Basnetville Bridge Replacement Steel Beam Bridge - drafting, plans, and design - Marion County, West Virginia
- Fairmont State University Tennis Court Access Road Paving Project - Marion County, West Virginia
- Sun Valley Industrial Access Road - plans, drafting and design for new access road - Harrison County, West Virginia
- Jackson County Access Road Design - Jackson County, West Virginia
- WVDOH Rt. 119 Bridges - drafting, plans, and design for three box girder bridges along Rt. 119 - Roane County, West Virginia
- Benedum Airport Hanger Road Paving and Overlay - design, plans, and inspection - Harrison County, West Virginia
- City of Clarksburg Florence Street Intersection Upgrades - Harrison County, West Virginia
- City of Clarksburg Rosemont Avenue Storm and Sewer Upgrades - Harrison County, West Virginia
- Fayetteville 2nd Avenue Bridge Demolition and Detour - plans - Fayette County, West Virginia

KENTON BLACKWOOD, ASSOC. AIA, LEED AP

Historic Specialist



Kenton Blackwood has more than 35 years of experience in the planning, design, bidding and construction of architectural projects throughout the State of West Virginia, and in the past decade he has designed and managed over \$80 million of construction. He joined Thrasher in 2014 and serves as a Senior Designer and Project Manager within the Architecture Department. Mr. Blackwood is well-versed in site evaluation and design, building program evaluation, planning and design, construction document development, bidding and construction administration, on-site construction observation, and is very knowledgeable in Fire/Life-Safety Code requirements, ADA/Accessibility Design Standards, and WVDOE 6200 Policy. He has extensive experience with SBA funded projects and is familiar with the agency's Policy and Procedures and Quality/Performance Standards.

Mr. Blackwood has an unsurpassed understanding of technological architectural media with his knowledge of vector-based 3D modeling and CAD applications. His proficiency with virtual-reality modeling allows Thrasher to take a client through a design, study different forms, lighting, color schemes and finishes to make revisions before the project begins.

Education:

- West Virginia University – Engineering Technology Program
- Fairmont State University – Architectural Technology Program

Registrations and Certifications:

- LEED Accredited Professional, US Green Building Council
- West Virginia and National Chapters
- Associate Member of American Institute of Architects (25+ years)

Related Experience Includes:

- Veterans Square Memorial Plaza Historic Restoration / Re-adaptation - Fairmont, West Virginia
- WV's Fallen – Global War on Terror Monument - Kanawha County, West Virginia
- Hutchinson House Historic Restoration (AIA Craftsmanship Award Winner) - Marion County, West Virginia
- Greenbrier Resort Wedding Chapel - Greenbrier County, West Virginia
- Marshall County Veterans Memorial Plaza - Marshall County, West Virginia
- Gold Star Families Monuments (Woody Williams Foundation) - 55 Locations Nationwide
- Donel Kinnard Memorial State Veterans Cemetery - Kanawha County, West Virginia

CERTIFICATE OF *Authorization*

STATE BOARD OF REGISTRATION FOR PROFESSIONAL ENGINEERS

*The West Virginia State Board of Registration for Professional Engineers
having verified the person in responsible charge is registered in
West Virginia as a professional engineer for the noted firm, hereby certifies*

**THE THRASHER GROUP, INC.
C00517-00**

Engineer in Responsible Charge: CHAD M RILEY - WV PE 015189

*has complied with section §30-13-17 of the West Virginia Code governing
the issuance of a Certificate of Authorization. The Board hereby notifies you of its
certification with issuance of this Certification of Authorization for the period of:*

January 1, 2016 - December 31, 2017

providing for the practice of engineering services in the State of West Virginia.

IF YOU ARE REQUIRED TO REGISTER WITH THE SECRETARY OF STATE'S OFFICE,
PLEASE SUBMIT THIS CERTIFICATE WITH YOUR APPLICATION.

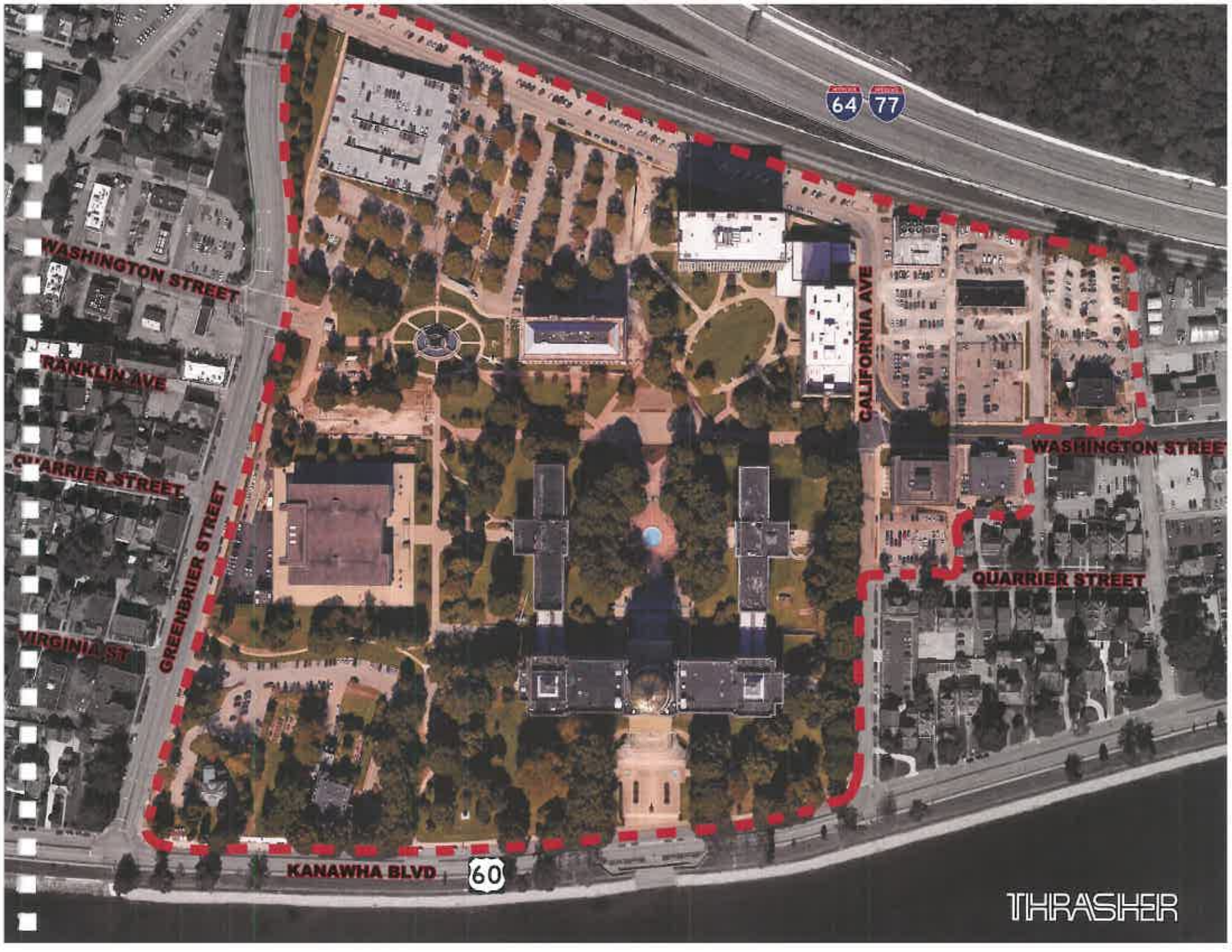


IN TESTIMONY WHEREOF, THE WEST VIRGINIA STATE BOARD OF
REGISTRATION FOR PROFESSIONAL ENGINEERS HAS ISSUED THIS COA
UNDER ITS SEAL, AND SIGNED BY THE PRESIDENT OF SAID BOARD.

BOARD PRESIDENT



▶ **PROJECT UNDERSTANDING**



64 77

WASHINGTON STREET

RANKLIN AVE

QUARRIER STREET

VIRGINIA ST

GREENBRIER STREET

KANAWHA BLVD

60

CALIFORNIA AVE

WASHINGTON STREET

QUARRIER STREET

THRASHER

BEGIN WITH THE END IN MIND.

A key component of successful projects is a well thought out approach as to how to effectively accomplish every task involved with a given project.

We have put together an outline of our typical project approach for the various needs identified in your inquiry. Every project is different and we work with our clients to customize our approach to best suit their needs.

▶ PROJECT APPROACH GOAL/OBJECTIVE 1

GOAL 1 – EVALUATION AND PLANNING

1. Kickoff meeting with the project team and necessary stakeholders to identify the goals, objectives, and priorities of the inventory and planning phase.
2. Field inventory of existing conditions on the Capitol Complex.
 - a. Documenting and photographing existing sidewalks, entranceways, plazas, promenades, and steps.
 - b. Geo-technical investigation of sidewalks that are used for vehicular circulation.
 - c. GPS point collection to be utilized for mapping specific areas of concern on the project.
3. Evaluate all field inventory data collected and identify necessary improvements for hardscape restoration as well as a criteria for identifying the areas of greatest need.
4. Cost estimate all of the identified repairs to facilitate project budgeting as well as prioritization.
5. Assembly of final report
 - a. Executive Summary
 - b. Inventory & Analysis
 - c. Campus Improvements Plan
 - d. Cost Estimates
 - e. Campus Improvements Phasing Recommendations



PROJECT APPROACH GOAL/OBJECTIVE 2

GOAL 2 – DESIGN AND CONSTRUCTION

1. Kickoff meeting with the project team and necessary stakeholders to identify the goals, objectives, and priorities of the identified design project.
2. Field evaluation to confirm data identified in the report. (Some of the design projects may take place at a later date at which time an updated evaluation should take place)
3. Field survey and creation of base mapping to utilize in the design process.
4. Preliminary and conceptual design of the identified improvement project including potential alternatives to consider.
5. The design team will proceed with construction documents of the preferred conceptual alternative and provide design development submissions at 50%, 75%, and 99% complete to allow the client time for review.
6. Each design development phase will be complete with a construction cost opinion to verify the project is staying within the allocated budget.
7. Thrasher will assist the client with the bidding process including advertisement, pre bid conference, addenda, and bid opening.
8. The project team will review project submittals, attend progress meetings, and provide construction observation. Thrasher also offers construction inspection services that are typically included in a design and construction contract.
9. Upon completion of construction final as built drawings will be provided to the client.