



SUBMITTED BY:
TERRADON Corporation
P.O. Box 519
Nitro, WV 25143
304-755-8291

PERSON OF CONTACT:
Ryan Wheeler
Director of Business
Development
ryan.wheeler@terraddon.com
304-729-9176
www.terraddon.com

STATEMENT OF QUALIFICATIONS

**AE Services-Improvements to Five Boating
Access Sites**

CEOI 0310 DNR 1700000006

Attn:
Guy Nisbet
Department of Administration
Purchasing Division
2019 Washington Street East
Charleston, WV 25305

06/15/17 13:10:53
WJ Purchasing Division

TABLE OF CONTENTS

General Information General Firm Description	1
Key Personnel Organizational Chart of Key Personnel	2
Prior Related Experience	5
Project Approach and Understanding	9
Project References	11
Appendix A: Resumes	



FOUNDED: 1989

EMPLOYEES: 61

LOCATIONS:

Poca, WV
 Lewisburg, WV
 Fayette County, WV

SERVICES:

Civil Engineering
 Water, Wastewater, & Storm Water
 Testing & Inspection
 Construction Monitoring &
 Administration
 Land Planning & Design
 Environmental
 Geotechnical Engineering
 Survey & Mapping
 Transportation Engineering
 Structural Engineering

TERRADON Corporation offers a multi-faceted approach to design engineering and consulting services. For more than 25 years TERRADON staff has provided a wealth of engineering solutions blanketing West Virginia and surrounding states with successful projects. The company built its reputation on expert personnel and quality, time-sensitive service. Those same founding principles hold true today.

The firm has been recognized through numerous awards from professional organizations and agencies including the American Society of Civil Engineers, State Highway Departments, the Department of Environmental Protection and the American Institute of Architects.

TERRADON's diverse team of professionals work together on projects to offer a wide range of services in house to keep projects centrally focused. By providing this range of services, TERRADON is able to work as a complete team to offer clients the most rewarding designs.

TERRADON has experience working on projects funded by various agencies. Because of the variety of funding options for projects, TERRADON maintains in-house grant writing staff and support to help make funding client projects easier. TERRADON maintains professionally registered engineers, landscape architects, and surveyors as well as a competitive team of highly certified inspectors and environmental specialists.

TERRADON's corporate culture promotes innovation and progressive thinking. Project leaders strive to sustain customers through a wide-range of engineering offerings. TERRADON employees understand the purpose behind their services and work to cultivate lasting relationships with clients through honest, hard work.

CERTIFIED
 Women Business Enterprise



National Women Business
 Owners Corporation

TERRADON is the largest woman-owned engineering firm in West Virginia. TERRADON is a certified Women's Business Enterprise as defined by the Women's Business Enterprise National Council and the National Women Business Owners Corporation.

TERRADON offers a professional and experienced staff of Professional Engineers, Professional Surveyors, Certified Inspectors, Registered Landscape Architects, Environmental Professionals, and Project Designers. TERRADON's engineering staff offers licenses in over five states. Additionally, TERRADON's inspectors offer a wide variety of certifications and trainings including multiple levels of certification issued by the WVDOT Technician Certification Board. TERRADON's diversely talented staff offers clients a more knowledgeable and experienced project workforce.

WV REGISTERED LANDSCAPE ARCHITECTS

- Greg Fox, ASLA, LEED AP
- Pete Williams, ASLA

WV REGISTERED PROFESSIONAL ENGINEERS

- Will Thornton, PE, PS
- Joe Saunders, PE
- V. Grant Martin, PE
- Robert Simmons, PE
- Jim Nagy, PE
- John James, PE
- Mike Pyles, PE
- Ashley Lioi, PE
- Phil Reed, PE, LEED AP
- Kristen McClung, PE

ENVIRONMENTAL PROFESSIONALS

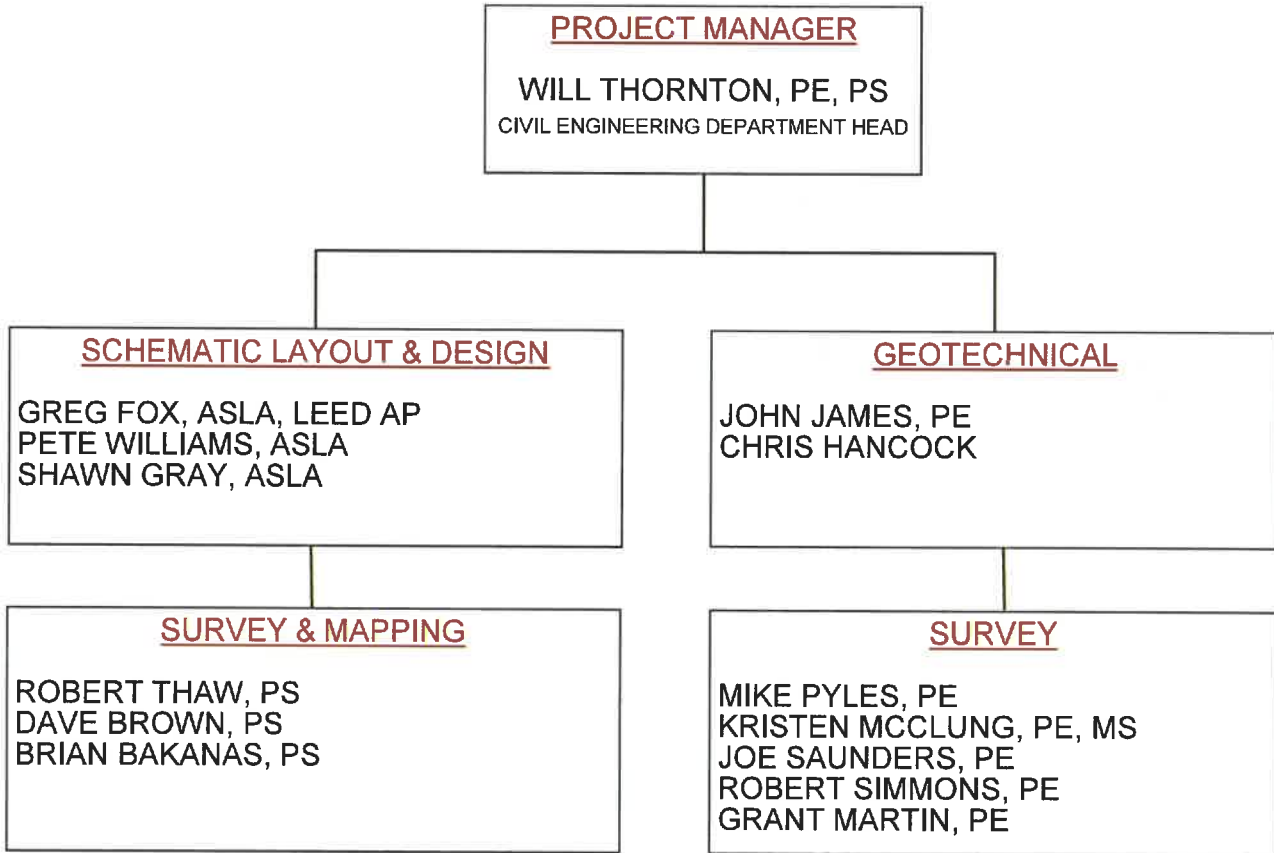
- Bill Hunt, PG, LRS
- Sam Wilkes, MS, PWS, LRS
- Jason Asbury
- Mike Pickens
- Clayton Gue

WV REGISTERED PROFESSIONAL SURVEYORS

- Robert Thaw, PS
- Dave Brown, PS

CERTIFIED INSPECTORS

- Phil Reed, PE, LEED AP, Level V
- Shannon Stephens, Level III
- Dave Wallace, Level III
- Chris Morris, Level III
- Greg Harvey, Level III
- Mike Ward, Level III
- Joseph Farren, Jr., Level I
- Corey Payne
- Stephanie Wills
- Adam Underwood





**EMERGENCY BOAT HOUSE MARINA CONSTRUCTION FOR
HUNTINGTON POLICE AND FIRE DEPARTMENTS
HUNTINGTON, WV**

GOAL: To provide state of the art emergency responder facilities for the City of Huntington to serve the Tri-State Area along the Ohio River.

OBJECTIVE: To provide geotechnical analysis and site assessment to determine study data on appropriate location and structure of the proposed boating facility.

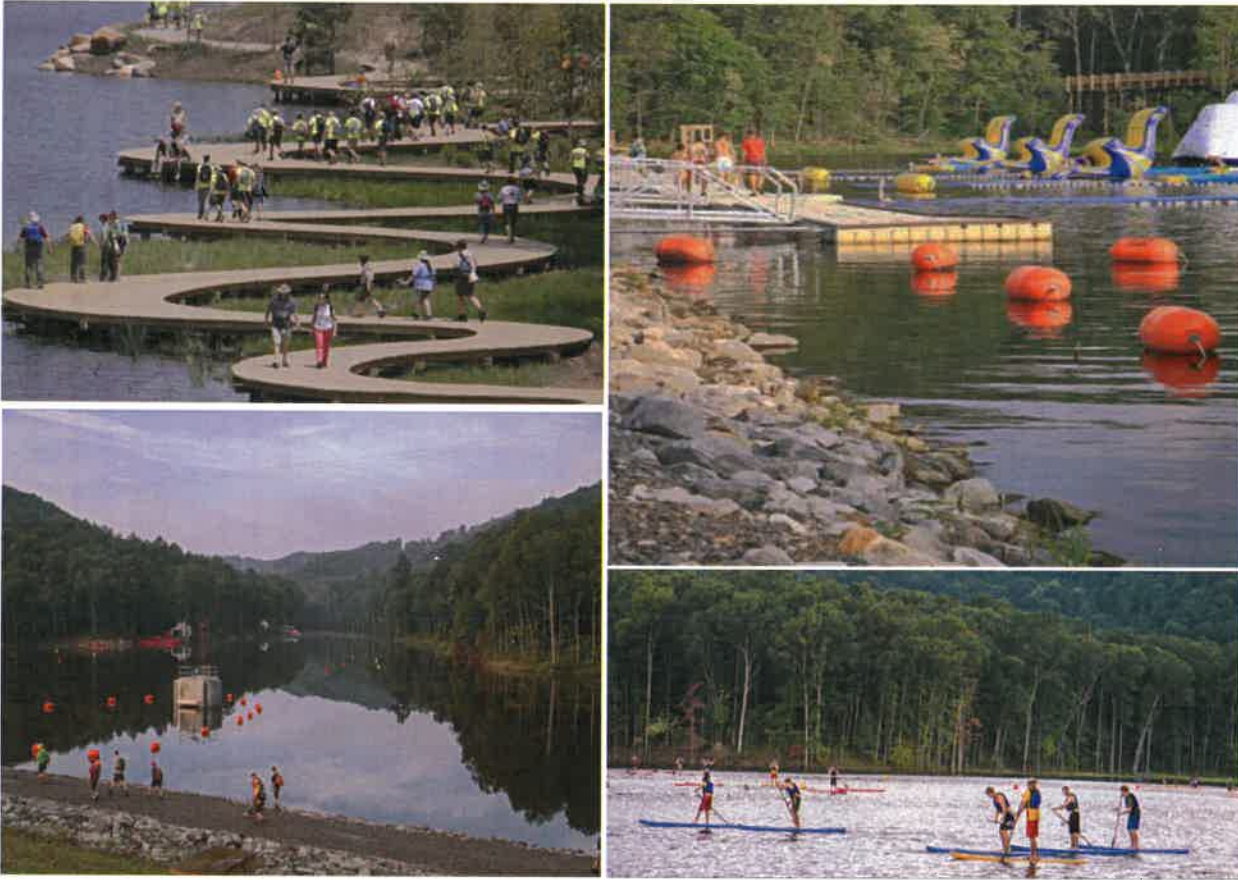
TERRADON performed a Phase I Site Assessment of the proposed location of the new boating facility near Harris Riverfront park in Huntington, WV to determine environmental factors for this project. TERRADON engineers and testing and inspection staff performed a hydrologic and hydraulic study of the Ohio River at the site of the project and performed the geotechnical drilling on both the land and river areas of the project to determine a geotechnical analysis for pier anchoring of the boating facility. Additional services provided to meet the project owners initial goal included topographic surveying including underground utility locations, boundary surveying, hydrographic survey of the Ohio River and a structural analysis of the proposed contractor design. TERRADON's services have allowed for a timely and budget maintained construction.

PROJECT OWNER

City of Huntington
Sharon Pell, Business
Services Advocate
304.781.8348

SERVICES PROVIDED

Site Assessment
Environmental
Geotechnical
Analysis
Survey
Structural Analysis



**SUMMITT BECHTEL RESERVE
FAYETTE COUNTY, WV**

TERRADON Corporation was heavily involved in the development of the Summit. The Summit is a 10,600+ acre outdoor adventure center owned by the Boy Scouts of America.

GOAL: The owners goal was to receive design and construction for a 10,600 acre world class outdoor recreation facility.

OBJECTIVE: From the initial site selection to surveying, planning, infrastructure design and inspection, TERRADON was a key player in creating one of the highest-profile design and construction endeavors in West Virginia. Working under tight specifications and time restrictions, TERRADON spearheaded the delivery of quality results.

TERRADON performed RFP development and quality assurance management on the project, utilizing in-house engineers to oversee dozens of consultants on contractors on the nearly \$500 Million project. TERRADON coordinated all permitting on site, worked with the developer to perform RFP development and provided quality assurance managers for the duration of the project. TERRADON provided engineering services for the creation of two man made lakes on the property. The lakes are used for recreational swimming, fishing, and boating activities. TERRADON provided engineering services related to the accessibility of the sites.

PROJECT OWNER
Rob Ridgeway
304.469.1089

SERVICES PROVIDED
Preliminary Design
Final Design
Construction Review
Construction Inspection
Survey
Construction
Management
Quality Assurance
Management
RFP Development
Permitting Oversight
QA/QC



FAIRMONT RIVERFRONT MASTER PLAN
 CITY OF FAIRMONT AND THE FAIRMONT RENAISSANCE CORPORATION



FAIRMONT RIVERFRONT MASTER PLAN
 FAIRMONT, WV

GOAL: The City of Fairmont and the Fairmont Renaissance Corporation intend to develop new recreation opportunities and at the same time enhance economic development opportunities for the community. The main goal of the planning process was to develop a plan that allows for the comprehensive development and implementation of new elements to the riverfront.

OBJECTIVE: The elements planned included rehabilitation of an existing park and new recreation, commercial, and residential opportunities. This plan was designed so that the core elements of the plan will entertain people of all age groups, help with the revitalization of the surrounding neighborhood, and stimulate the entire downtown area of Fairmont.

PROJECT OWNER
 Jay Rodgers
 304.366.6271

SERVICES PROVIDED
 Master Planning
 Site Feasibility Studies
 Schematic Design
 Layout Plans
 Presentation Drawings &
 Renderings

ADDITIONAL AQUATIC, PARKS & RECREATION EXPERIENCE

- WEST VIRGINIA UNIVERSITY INSTITUTE OF TECHNOLOGY MARINA STUDY MASTER PLAN
- TOYOTA WETLAND EDUCATION CENTER
- HARVEYTOWN PARK & CONNECTOR MASTER PLANNING
- DORSEY'S KNOB MASTER PLAN
- GRAND VUE PARK CONCEPTUAL MASTER PLAN
- UPSHUR COUNTY PARK MASTER PLAN
- BLUESTONE STATE PARK MASTER PLAN
- LITTLE BEAVER STATE PARK SITE DESIGN
- GREATER GREENBRIER SPORTS COMPLEX MASTER PLAN
- VALLEY PARK TRAIL MAP PLAN
- VALLEY PARK EXPANSION MASTER PLAN
- SUNCREST RE-DEVELOPMENT MASTER PLAN
- JOHNATHAN LARCK RESERVOIR PARK MASTER PLAN
- NITRO BOAT RAMP CONCEPTUAL PLAN



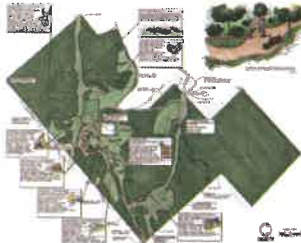
Kanawha River



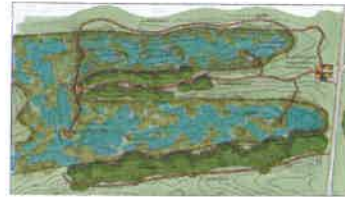
Harveytown Park
Huntington, WV



Suncrest Re-development
Fairmont, WV



Upsher County Park



Toyota Wetland Education Center



Johnathan Lark Reservoir Park,
Putnam County

PROJECT APPROACH & UNDERSTANDING

TERRADON has a vast understanding of the site conditions and requirements specific to this project including design implementations and studies to include hydrologic and hydraulic requirements to assess flood control issues.

During the project kick off meeting with personnel from the agency, TERRADON will determine the expectations of the owner in regards to scope of project and budget requirements.

TERRADON will then thoroughly review all available existing construction plans, if available, to become familiar with the facility.

TERRADON will also visit the site and perform an in depth inspection of the sites and then prioritize items. Once the detailed scope is determined, TERRADON will develop construction plans and project specifications. TERRADON will present and review the construction plans with the stakeholders.

TERRADON will have qualified and knowledgeable personnel available during the bidding process to assist with questions, attend pre-bid meetings and assist with analyzing received bids.

TERRADON will provide Contract Administration services during construction to ensure the project is built to satisfaction of the agency.

Valley Park Expansion
Putnam County Commission
1 Valley Park Rd, Hurricane, WV 25526
Jeremy Young, County Administrator
304-586-0201

Palatine Park Master Planning
City of Fairmont, WV
200 Jackson St., Fairmont, WV 26554
Jay Rogers, Former City Manager
304-366-6211

The Summit Bechtel Family National Scout Reserve
Boy Scouts of America, Summit Group
68 Crossroads Mall, Mount Hope, WV 25880
Rob Ridgeway, Facilities Director
304-469-1089
rob.Ridgeway@scouting.org

Huntington Emergency Boating Facility
City of Huntington, WV
Huntington City Hall, Main Floor, Room 15 Huntington, WV 25704
Sharon Pell, Business Services Advocate
304-781-8348

Appendix A:
Resumes





WILLIAM S. THORNTON, PE, PS

PROJECT PRINCIPAL

Thornton is an experienced project manager and design engineer for civil engineering design projects. Thornton has more than 15 years of experience with consulting engineering in West Virginia, and three years with a construction firm performing major concrete paving projects in West Virginia, Pennsylvania and Ohio. Thornton also provided consultant review for the WVDOT, Division of Highways.

The major design projects with which he has been involved included roadway design, drainage design, site design, mine land reclamation, permitting, property surveys, airport design, Right-of-Way Services, maintenance of traffic and construction administration and oversight. He provides analysis and design on the construction and rehabilitation of a variety of infrastructure utilities (water, wastewater and storm water), including streets, drainage, sidewalks, buildings, and traffic and other safety improvements.

EDUCATION

B.S. Civil Engineering, West Virginia Institute of Technology

WORK EXPERIENCE

TERRADON Corporation
2014-Present

Balance Consulting
2009-2014

WV DOH
2009-2014

Stantec
2007-2009

DLZ
2004-2007

EL Robinson
1999-2004

REGISTRATION

Professional Engineer:
WV, OH, VA

Professional Surveyor: WV

CERTIFICATIONS

WVDOH Portland Cement Concrete Technician
WVDOT Asphalt Pavement Technician

PROJECT EXPERIENCE

Ravenswood Downtown Revitalization 2010, Ravenswood Development Authority, Ravenswood, WV.

Management of the bidding, construction administration, inspection and material testing for the sidewalk rebuilding, lighting and ADA improvement project. Took over project after design was completed by another consultant. When the project bids came in over original estimate, we helped secure additional funding from WVDOH.

WVDOH Master (On-Call) Engineering Services.

Managed various highway, bridge, and related engineering services at locations throughout the state including: Lavalette to Huntington Road Widening, Spencer Center Turn Lane, Church Street in Ripley Center Turn Lane, WV 14, WV 15 Intersection Upgrade.

I-79 Morgantown Interchange, 2013.

Design study for a new Interchange on I-79 in Morgantown. This fast track project included the preparation of an Environmental Assessment as well as developing alignments for a new interchange on I-79.

US 220 Passing Lane, 2012.

Construction plans for the addition of a passing lane on US 220. Typical services included project scheduling and tracking, plan review for adherence to AASHTO and DOH standards and ensuring the project stays within scope.

Bartley Branch Bridge, 2012.

Construction plans for the extension of new roadway alignment to allow the removal of a structure.

Hartland Bridge, 2012.

Construction plans for the replacement of existing bridge over the Elk River and approach roadway.

Fourth Street Bridge, 2013.

Design Study and Construction plans to replace the existing Fourth Street bridge with a new structure and roadway at Third Street in Fairmont. This project included coordination with City of Fairmont officials as well as the local public.

WVA Manufacturing Raw Material Retaining Wall

Management during the design of a new retaining wall at the Raw Material Railroad loadout at the WVA Manufacturing Alloy, WV site. The proposed wall will be approximately 450 linear feet and range from 3 to 10 feet tall.





GREG FOX, ASLA, LEED AP

VP LAND DEVELOPMENT

Greg Fox oversees TERRADON's Land Development Department. Fox has been responsible for hundreds of notable commercial, educational and recreational site development projects during his 28 year career. During his time as Land Development Department Head, TERRADON has earned Engineering Excellence Awards from the West Virginia Association of Consulting Engineers, numerous Merit Awards from the American Society of Landscape Architects, and the Gold Award from the American Council of Engineering Companies. Fox has performed a number of site selection and analysis services on projects over the last 28 years.

EDUCATION

B.A. Landscape Architecture
West Virginia University

B.A. Geography & Planning
West Virginia University

WORK EXPERIENCE

TERRADON Corporation
2000-Present

Martin Boal Anthony & Johnson Architects
1996-2000

Site Design
1993-1996

EG&G Inc.
1989-1993

PSC Engineers
1988-1989

REGISTRATIONS & CERTIFICATIONS

Registered Professional Landscape Architect.
WV

LEED Accredited Professional

PROJECT EXPERIENCE

K-12 Educational Facilities

Responsible for Master Planning, Site Layout and Design, Schematic Renderings, Parcel Identification, Feasibility and Cost Analysis, and construction drawings for hundreds of k-12 educational facilities throughout West Virginia. Additionally, Fox has provided site selection services on new school projects or relocation of school facilities throughout West Virginia. Projects include new construction as well as renovations and additions.

Rainelle Elementary School

TERRADON completed site engineering for a new elementary school in Rainelle, WV. TERRADON provided the following: Survey and Mapping, Site Planning, Grading and Layout, Utility Design, Construction Drawings and Landscape Architecture. TERRADON's geotechnical engineering was vital to the project's success as designs accounted for the difficult soils in the area. TERRADON's site design package included parking areas and drainage design, traffic circulation patterns, hardscapes and softscapes.

Lewisburg Elementary School

TERRADON Corporation was responsible for site/ civil construction documents for Greenbrier County Schools for Lewisburg Elementary School. TERRADON provided Civil Engineering, Surveying and Mapping and Land Development.

Suncrest Elementary School

TERRADON recently provided site civil engineering services for Suncrest Elementary School in Morgantown, WV. The school was funded in part by the West Virginia School Building Authority. TERRADON provided the following: Survey and Mapping, Site Planning, Grading and Layout, Utility Design, Construction Drawings and Landscape Architecture.

Leading Creek Elementary School

TERRADON recently provided site civil engineering services for Leading Creek Elementary School, West Virginia's first inter-county school. Leading Creek Elementary School sits directly on the Lewis-Gilmer County line and opened in 2015. The total cost of the school was more than \$10M and was funded by the West Virginia School Building Authority. TERRADON provided the following: Survey and Mapping, Site Planning, Grading and Layout, Utility Design, Construction Drawings and Landscape Architecture.

Gilmer County Elementary School

TERRADON recently provided site civil engineering services for Gilmer County Elementary School. TERRADON provided the following: Survey and Mapping, Site Planning, Grading and Layout, Utility Design, Construction Drawings and Landscape Architecture. This project is LEED Silver Targeted and was funded in part by the West Virginia School Building Authority.





MIKE PYLES, PE

SENIOR PROJECT ENGINEER

Mike Pyles is a Senior Project Engineer for various civil and environmental engineering projects with emphasis on transportation, water, and sewer projects. Pyles is responsible for engineering studies, design, contract documents, engineering analysis, computer modeling, regulatory compliance, and permitting with emphasis on public water and sewer systems.

PROJECT EXPERIENCE

Fairmont Gateway Connector, Fairmont, WV

Design Engineer for the storm water system on a WVDOH project for the relocation and upgrade of WV 273 to a four-lane divided highway and a new interchange with I-79.

Corridor H – Davis to Bismarck Section 3, Tucker County, WV

Design Engineer for the revised storm water ditch design on a WVDOH project for Corridor H – Davis to Bismarck Section 3.

Corridor H—Davis to Bismarck Section 5, Tucker County, WV

Design Engineer for the revised storm water ditch design on a WVDOH project for Corridor H – Davis to Bismarck Section 5.

Huntington Mall Road, Cabell County, WV

Design Engineer for the storm water system and culverts on a WVDOH project for the upgrade of US Rt. 60, Mall Road, and Ring Road, and the new road crossing over I-64 from US Rt. 60 to Ring Road to better accommodate Mall traffic.

Culloden I/C, Cabell & Putnam Counties, WV

Design Engineer of the storm water system on a WVDOH project for the I-64 interchange and modifications of Route 60/21.

North Mineral Wells Relocated WV 14, Mineral Wells, WV

Design Engineer for the storm water system and culverts on a WVDOH four lane divided highway project for the relocation and upgrade of approximately 1.5 miles of WV 14.

Pleasant Valley I/C to WV Route 310 I/C, Marion County, Fairmont, WV

Design Engineer for the storm water system on a WVDOH project for the widening of approximately 1.5 miles of I-79 from a 4-lane road to an 8-lane road.

Harsh Sugar Camp Bridge, WV

Design Engineer for a scour analysis of the piers and abutments on a replacement bridge for a WVDOH project.

Fort Seybert Bridge, WV

Design Engineer for a scour analysis of the piers and abutments on a replacement bridge for a WVDOH project.

US Route 35 Relocation, near Buffalo, WV

Design Engineer for a scour analysis of the piers and abutments on three new bridges for a WVDOH project. Design Engineer for the storm water system and culverts on a WVDOH four lane divided highway project for the relocation and upgrade of approximately 3 miles of US 35 to a four-lane divided highway.

New River Bridge, Hinton, WV

Design Engineer for a scour analysis of the piers and abutments on an existing bridge for a WVDOH project.

EDUCATION

A.S. Mining
Engineering
Technology
West Virginia
Institute of
Technology

B.S. Civil
Engineering
West Virginia
Institute of
Technology

M.S. Engineering,
Marshall University

WORK EXPERIENCE

TERRADON
Corporation
2009-Present

HTNB Consulting
Engineers
1997-2009

Kelley Gidley, Blair
& Wolfe
Consulting
Engineers
1986-1997

WV DNR
1978-1986

WV DOH
1973-1978

REGISTRATION
Professional





MATT GLASPEY, ASLA

SITE DESIGNER

Serving as a Site Designer and CADD Designer, Matt Glaspey is an integral part of the TERRADON design team. He offers nearly a decade of project design experience. He is responsible for developing site plans, grading plans, landscape plans, utility plans, site detailing and specifications. Prior to joining TERRADON, Glaspey was part of a design team that completed more than 40 educational site design projects in Pennsylvania, Maryland and Virginia. Glaspey is a member of the American Society of Landscape Architects.

EDUCATION

B.S. Landscape
Architecture

West Virginia
University

WORK EXPERIENCE

2011—Present

TERRADON
Corporation

2003-2011

Hayes Large
Architects

PROJECT EXPERIENCE

New Glenville Elementary School Elementary School

Provided construction documentation for a new Elementary School for the Gilmer County Board of Education. Glaspey's role in the project included CAD drawings, site layout and design, utility design, hardscapes, and landscape architecture. TERRADON provided: Survey and Mapping, Site Planning, Grading and Layout, Utility Design, Construction Drawings and Landscape Architecture. This project is LEED Silver Targeted and was funded in part by the West Virginia School Building Authority.

Berkeley County Board of Education

Provided layout, site design, and CAD drawings for various K-12 improvements. Projects consisted of site layout, grading, utility layout, profiles, hardscapes, and landscape architecture.

Jefferson County Board of Education

Provided construction documentation for a proposed Jefferson County Bus Garage near Kearneysville, WV. Project consisted of permitting, CAD drawings, site layout, site grading, and utility layout.

Marshall University Applied Science Building

Provided construction documentation and specifications for the project in Huntington, WV. Responsibilities included site layout and design, utility design, grading, hardscapes, permitting and landscape architecture.

Advanced Technology Centers

Provided site selection, site design, and CAD drawings for two West Virginia Higher Education Policy Commission Advanced Technology Centers located in Fairmont, WV and South Charleston, WV respectively. Projects included CAD drawings, site layout and design, utility design, permitting, hardscapes and landscape architecture.

Boy Scout Service Center

Provided site selection, construction documentation and project coordination for the design/build project. Responsibilities included CAD drawings, site layout and design, permitting, utility design, hardscapes and landscape architecture.

Dickenson County Judicial Building, VA

Provided construction documentation and project coordination for the design/build project. Responsibilities included CAD drawings, site layout and design, permitting, utility design, hardscapes and landscape architecture.

Ronald McDonald House

Provided construction documentation and project coordination for the design/build project. Responsibilities included CAD drawings, site layout and design, permitting, utility design, hardscapes and landscape architecture. and planting design. and design, utility design, hardscapes and planting design.





SHAWN GRAY, ASLA

SITE DESIGNER & LAND PLANNER

Shawn Gray is an experienced Site Designer and Land Planner who serves as an integral part of the TERRADON design team. He offers experience on many of TERRADON's highest profile projects, focusing on large scale site development and parks and recreation projects. Gray also provides site design and landscape architecture services for K-12 and Higher Education projects. He is responsible for developing site, grading, landscape and utility plans, site detailing and erosion sediment control plans and permitting.

RELEVANT PROJECT EXPERIENCE

Mingo Central High School, Barbour County

TERRADON completed site engineering for a beautiful 76,000 Square Foot facility for Mingo Central High School in Mingo County, WV. TERRADON provided the following: Survey and Mapping, Site Planning, Grading and Layout, Utility Design, Construction Drawings and Landscape Architecture. TERRADON has provided a number of successful land planning and Design Services in Mingo County. TERRADON provided a master plan and feasibility rendering for the Lenore Business Park. Additionally, TERRADON engineering provided preliminary site schematics for utility engineering on the Industrial Park. Located on a former surface mine site, TERRADON helped mitigate and revitalize this area of Mingo County.

Greenbrier West High School

TERRADON Corporation was responsible for site/civil construction documents for Greenbrier County Schools for Greenbrier West School. TERRADON provided, Civil Engineering, Surveying and Mapping, and Land Development.

University High School

TERRADON Corporation provided complete design for University High School including site construction documents for the proposed academic building that included 500 parking spaces and several accessory buildings. A proposed football field and track were also part of the campus plan and included locker rooms, concessions/restrooms and bleacher seating for approximately 6000 people. TERRADON also coordinated with the Field Turf supplier to create drainage details for the proposed artificial field surface. TERRADON was responsible for water, sewer, drainage, and erosion permits including coordination with the Corp of Engineers for onsite stream disturbance.

Buffalo High School

TERRADON performed site engineering for the 94,000 Square Foot facility for Buffalo High School in Putnam County, WV. Working as a subconsultant to the architect, TERRADON provided the following: Survey and Mapping, Site Planning, Grading and Layout, Utility Design, Construction Drawings and Landscape Architecture.

Ohio Valley University – Vienna, WV

Project consisted of designing a sports complex for the university. New amenities included a track and field events, soccer field, baseball field, new softball field, tennis courts, parking, basketball arena with amenities, and an outdoor sports hall of fame. Project also consisted of site grading and a budget estimate.

Berkeley County Board of Education

Provided layout, site design, and CAD drawings for various K-12 improvements. Projects consisted of site layout, grading, utility layout, profiles, hardscapes, and landscape architecture.

EDUCATION

B.A. Landscape
Architecture
West Virginia
University

WORK EXPERIENCE

TERRADON
Corporation
2005-Present





ROBERT THAW, PS

VP SURVEY

With more than 30 years of experience in a wide range of surveying projects, Robert Thaw serves as head of TERRADON's Survey and Mapping department. He organizes and supervises survey crews, reviews project plans, and creates base mapping for various projects including noise barriers, interchanges, connectors, bypasses, sidewalks, bike paths, and bridges. Thaw oversees all TERRADON survey activities, including: preparation of Right-Of-Way plans; the development of GPS static networks for aerial mapping in the design of roadways; identification of existing utilities and property lines; base image development and control placement for construction projects; and drafting of legal descriptions for ROW parcels.

EDUCATION

A.S. Survey
Technology, West
Virginia Institute of
Technology

B.S. Surveying,
West Virginia
Institute of
Technology

WORK EXPERIENCE

TERRADON
Corporation
1994-Present

Bowman Land
Surveying
1992-1994

Dunn Engineers
1990-1992

Kelley Gidley Blair
& Wolfe
1988-1990

Pierson & Whitman
Architects and
Engineers
1984-1986

REGISTRATIONS

Professional
Surveyor: WV

PROJECT EXPERIENCE

Rainelle Elementary School

Thaw provided site design survey services for the new Rainelle Elementary School. Working as a subconsultant to the architect, TERRADON provided the following: Survey and Mapping, Site Planning, Grading and Layout, Utility Design, Construction Drawings and Landscape Architecture. TERRADON's geotechnical engineering was vital to the project's success as designs accounted for the difficult soils in the area. TERRADON's site design package included parking areas and drainage design, traffic circulation patterns, hardscapes and softscapes.

Mingo Central High School, Barbour County

TERRADON completed site engineering for a beautiful 76,000 Square Foot facility for Mingo Central High School in Mingo County, WV. TERRADON provided the following: Survey and Mapping, Site Planning, Grading and Layout, Utility Design, Construction Drawings and Landscape Architecture. TERRADON has provided a number of successful land planning and Design Services in Mingo County. Working with former Mingo County Redevelopment Director Mike Whitt, TERRADON provided a master plan and feasibility rendering for the Lenore Business Park. Additionally, TERRADON engineering provided preliminary site schematics for utility engineering on the Industrial Park. Located on a former surface mine site, TERRADON helped mitigate and revitalize this area of Mingo County.

Greenbrier West High School

TERRADON Corporation was responsible for site/civil construction documents for Greenbrier County Schools for Greenbrier West School. TERRADON provided, Civil Engineering, Surveying and Mapping, and Land Development.

University High School

TERRADON Corporation provided complete design for University High School including site construction documents for the proposed academic building that included 500 parking spaces and several accessory buildings. A proposed football field and track were also part of the campus plan and included locker rooms, concessions/restrooms and bleacher seating for approximately 6000 people. TERRADON also coordinated with the Field Turf supplier to create drainage details for the proposed artificial field surface. TERRADON was responsible for water, sewer, drainage, and erosion permits including coordination with the Corp of Engineers for onsite stream disturbance.

Buffalo High School

TERRADON performed site engineering for the 94,000 Square Foot facility for Buffalo High School in Putnam County, WV. Working as a subconsultant to the architect, TERRADON provided the following: Survey and Mapping, Site Planning, Grading and Layout, Utility Design, Construction Drawings and Landscape Architecture.





DAVE BROWN, PS

SENIOR SURVEYOR

Since joining TERRADON in 1999, Dave Brown has been involved in highway design/right of way projects and many surveying projects in West Virginia and surrounding states. Brown's responsibilities include survey project management, GPS networks, control surveys, subdivision design, development of highway Right-of-Way Plans, boundary solutions, reports, courthouse research, drafting, construction staking, survey data reduction, and preparation of surveying cost estimates and proposals.

PROJECT EXPERIENCE

Rainelle Elementary School

Thaw provided site design survey services for the new Rainelle Elementary School. Working as a subconsultant to the architect, TERRADON provided the following: Survey and Mapping, Site Planning, Grading and Layout, Utility Design, Construction Drawings and Landscape Architecture. TERRADON's geotechnical engineering was vital to the project's success as designs accounted for the difficult soils in the area. TERRADON's site design package included parking areas and drainage design, traffic circulation

patterns, hardscapes and softscapes.

Mingo Central High School, Barbour County

TERRADON completed site engineering for a beautiful 76,000 Square Foot facility for Mingo Central High School in Mingo County, WV. TERRADON provided the following: Survey and Mapping, Site Planning, Grading and Layout, Utility Design, Construction Drawings and Landscape Architecture.

TERRADON has provided a number of successful land planning and Design Services in Mingo County. Working with former Mingo County Redevelopment Director Mike Whitt, TERRADON provided a master plan and feasibility rendering for the Lenore Business Park. Additionally, TERRADON engineering provided preliminary site schematics for utility engineering on the Industrial Park. Located on a former surface mine site, TERRADON helped mitigate and revitalize this area of Mingo County.

Greenbrier West High School

TERRADON Corporation was responsible for site/civil construction documents for Greenbrier County Schools for Greenbrier West School. TERRADON provided, Civil Engineering, Surveying and Mapping, and Land Development.

University High School

TERRADON Corporation provided complete design for University High School including site construction documents for the proposed academic building that included 500 parking spaces and several accessory buildings. A proposed football field and track were also part of the campus plan and included locker rooms, concessions/restrooms and bleacher seating for approximately 6000 people. TERRADON also coordinated with the Field Turf supplier to create drainage details for the proposed artificial field surface. TERRADON was responsible for water, sewer, drainage, and erosion permits including coordination with the Corp of Engineers for onsite stream disturbance.

Gilmer County Elementary School

TERRADON recently provided site civil engineering services for Gilmer County Elementary School near Glenville, WV. TERRADON provided the following: Survey and Mapping, Site Planning, Grading and Layout, Utility Design, Construction Drawings and Landscape Architecture. This project is LEED Silver Targeted and was funded in part by the West Virginia School Building Authority.

EDUCATION

B.S. Engineering
Technology/
Surveying, West
Virginia Institute of
Technology

WORK EXPERIENCE

1999-Present
TERRADON
Corporation

1997-1999
Trans Ash

1997
Summit Engineering

1996-1997
USGS

PROFESSIONAL QUALIFICATIONS

Registered
Professional
Surveyor: WV, TN





KRISTEN MCCLUNG, PE, MBA

SENIOR CIVIL ENGINEER

Kristen Stinson McClung serves as a Civil-Site Engineer for TERRADON Corporation and is based in the Lewisburg, WV office. She brings nearly 20 years of engineering practice to public and private sector clients. From conception through acceptance of projects, McClung offers experience in civil, environmental, land development, streetscapes, survey, permitting, water, wastewater, paving, storm drainage, transportation and erosion-sedimentation control.

EDUCATION

M.B.A., University of Georgia

M.S. Civil Engineering, Auburn University

B.C.E. Civil Engineering, Auburn University

WORK EXPERIENCE

2010-Present
TERRADON Corporation

2009—2010
Preston Testing & Engineering

2002-2008
Stantec Consulting Services

1999-2002
Carter and Sloope

1997-1999
Thomas & Hutton Engineering

REGISTRATIONS

Professional Engineer: WV, GA, AL

NCEES Council Record

CERTIFICATIONS

Georgia Soil & Water Conservation

PROJECT EXPERIENCE

Tanyard Station Sanitary Sewer Design, Village of Barboursville, WV
McClung performed the Sanitary Sewer for this new commercial, out-door shopping mall. She performed the sanitary sewer calculations for the sizing of the trunk line through the development; for the new sewer pump station within the development for that area of the development that was too low for the primary gravity system; and for the new pumps associated with the Village's existing Pump Station #4. As part of the proposed development, the existing forcemain for Pump Station #4 had to be re-routed into the development's new sanitary sewer trunk line, resulting a new pump curve for the existing station.

Schoenbaum Tennis Court Asphalt & Storm Drainage Repairs, Charleston, WV

McClung designed a new storm drainage underdrain system for the existing tennis courts. The courts were experiencing weeping from beneath the courts of trapped storm water runoff/ground water. As the existing courts were nearing the end the existing asphalt surface course's useful life, the Parks and Recreation Department decided that this was the appropriate time to install the needed underdrain system and re-surface the course, as the new underdrain system would require the demolition of the existing asphalt surface course. McClung, also developed the Contract Documents and Construction Specifications in coordination with the City of Charleston for the public bidding of this project.

The Greenbrier Sporting Club Driveway Drainage Projects, White Sulphur Springs, WV

McClung was brought in to evaluate various private homes' driveways which were experiencing surface water runoff ponding issues from incorrectly graded driveways and non-functioning/undersized storm drainage systems. McClung developed new driveway grading plans and new stormdrainage collection and conveyance systems to alleviate the stormwater runoff ponding.

Tru-Hotel by Hilton, Lewisburg, WV

McClung prepared the Site Drainage Plan for this proposed hotel within a new commercial development. Design responsibilities included the Site Layout and Parking Plan, the Site Grading Plan, and the Storm Drainage Plan. McClung also prepared the Site Design Package required by the City of Lewisburg's Planning Commission for review and approval by the City.

The Crossing – Cameron Martin Properties, Village of Barboursville, WV

McClung design the new stormwater culvert beneath the proposed entrance drive for this new commercial development. In addition, McClung performed the Pre-Development and Post Development Stormwater Runoff Calculations for this project for use by other Design Team members.





Purchasing Division
 2019 Washington Street East
 Post Office Box 50130
 Charleston, WV 25305-0130

State of West Virginia
 Centralized Expression of Interest
 02 – Architect/Engr

Proc Folder: 331616

Doc Description: A/E Services-Improvements to Five Boating Access Sites

Proc Type: Central Contract - Fixed Amt

Date Issued	Solicitation Closes	Solicitation No	Version
2017-05-10	2017-06-15 13:30:00	CEOI 0310 DNR1700000006	1

BID RECEIVING LOCATION

BID CLERK
 DEPARTMENT OF ADMINISTRATION
 PURCHASING DIVISION
 2019 WASHINGTON ST E
 CHARLESTON WV 25305
 US

VENDOR

Vendor Name, Address and Telephone Number:

FOR INFORMATION CONTACT THE BUYER

Guy Nisbet
 (304) 558-2596
 guy.l.nisbet@wv.gov

Signature X

FEIN # 55-0687626

DATE 6/14/17

All offers subject to all terms and conditions contained in this solicitation

ADDITIONAL INFORMATION:

Expression of Interest
(Professional Engineering Services).

The West Virginia Purchasing Division is soliciting Expression(s) of Interest responses for the Agency, The Division of Natural Resources WVDNR from qualified firms to provide architectural/engineering services as defined herein.

PROJECT: The purpose of the project is to provide necessary engineering, and other related professional services to design as well as provide construction contract administration services for Five (5) Elk River Boating Access sites within Kanawha County, WV.

*Online submissions are prohibited for Expression of Interest *

INVOICE TO	SHIP TO
DIVISION OF NATURAL RESOURCES PARKS & RECREATION-PEM SECTION 324 4TH AVE SOUTH CHARLESTON WV25305 US	STATE OF WEST VIRGINIA SEE SPECIFICATIONS FOR DELIVERY REQUIREMENTS No City WV 99999 US

Line	Comm Ln Desc	Qty	Unit Issue
1	Civil engineering		

Comm Code	Manufacturer	Specification	Model #
81101500			

Extended Description :


A/E design services and construction contract administration for improvements to five (5) boating access sites on the Elk River in Kanawha County.

DNR170000006	Document Phase Final	Document Description A/E Services-Improvements to Five Boating Access Sites	Page 3 of 3
---------------------	--------------------------------	--	------------------------------

ADDITIONAL TERMS AND CONDITIONS

See attached document(s) for additional Terms and Conditions

DESIGNATED CONTACT: Vendor appoints the individual identified in this Section as the Contract Administrator and the initial point of contact for matters relating to this Contract.


 (Name, Title)
RYAN WHEELER, DIRECTOR OF BUSINESS DEV.
 (Printed Name and Title)
409 JACOBSON DRIVE, POCA, WV 25159
 (Address)
304-755-8291 / 304-755-2636
 (Phone Number) / (Fax Number)
ryan.wheeler@terraddon.com
 (email address)

CERTIFICATION AND SIGNATURE: By signing below, or submitting documentation through wvOASIS, I certify that I have reviewed this Solicitation in its entirety; that I understand the requirements, terms and conditions, and other information contained herein; that this bid, offer or proposal constitutes an offer to the State that cannot be unilaterally withdrawn; that the product or service proposed meets the mandatory requirements contained in the Solicitation for that product or service, unless otherwise stated herein; that the Vendor accepts the terms and conditions contained in the Solicitation, unless otherwise stated herein; that I am submitting this bid, offer or proposal for review and consideration; that I am authorized by the vendor to execute and submit this bid, offer, or proposal, or any documents related thereto on vendor's behalf; that I am authorized to bind the vendor in a contractual relationship; and that to the best of my knowledge, the vendor has properly registered with any State agency that may require registration.

TERRADDON CORPORATION
(Company)


(Authorized Signature) (Representative Name, Title)

RYAN WHEELER, DIRECTOR OF BUSINESS DEV.
(Printed Name and Title of Authorized Representative)

06/19/17
(Date)

304-755-8291 / 304-755-2636
(Phone Number) (Fax Number)

ADDENDUM ACKNOWLEDGEMENT FORM
SOLICITATION NO.:

Instructions: Please acknowledge receipt of all addenda issued with this solicitation by completing this addendum acknowledgment form. Check the box next to each addendum received and sign below. Failure to acknowledge addenda may result in bid disqualification.

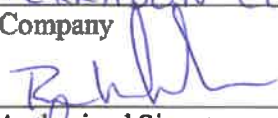
Acknowledgment: I hereby acknowledge receipt of the following addenda and have made the necessary revisions to my proposal, plans and/or specification, etc.

Addendum Numbers Received:
(Check the box next to each addendum received)

- | | |
|---|--|
| <input type="checkbox"/> Addendum No. 1 | <input type="checkbox"/> Addendum No. 6 |
| <input type="checkbox"/> Addendum No. 2 | <input type="checkbox"/> Addendum No. 7 |
| <input type="checkbox"/> Addendum No. 3 | <input type="checkbox"/> Addendum No. 8 |
| <input type="checkbox"/> Addendum No. 4 | <input type="checkbox"/> Addendum No. 9 |
| <input type="checkbox"/> Addendum No. 5 | <input type="checkbox"/> Addendum No. 10 |

I understand that failure to confirm the receipt of addenda may be cause for rejection of this bid. I further understand that any verbal representation made or assumed to be made during any oral discussion held between Vendor's representatives and any state personnel is not binding. Only the information issued in writing and added to the specifications by an official addendum is binding.

TERRADON CORPORATION
Company


Authorized Signature

06/19/17
Date

NOTE: This addendum acknowledgement should be submitted with the bid to expedite document processing.

STATE OF WEST VIRGINIA
Purchasing Division

PURCHASING AFFIDAVIT

MANDATE: Under W. Va. Code §5A-3-10a, no contract or renewal of any contract may be awarded by the state or any of its political subdivisions to any vendor or prospective vendor when the vendor or prospective vendor or a related party to the vendor or prospective vendor is a debtor and: (1) the debt owed is an amount greater than one thousand dollars in the aggregate; or (2) the debtor is in employer default.

EXCEPTION: The prohibition listed above does not apply where a vendor has contested any tax administered pursuant to chapter eleven of the W. Va. Code, workers' compensation premium, permit fee or environmental fee or assessment and the matter has not become final or where the vendor has entered into a payment plan or agreement and the vendor is not in default of any of the provisions of such plan or agreement.

DEFINITIONS:

"Debt" means any assessment, premium, penalty, fine, tax or other amount of money owed to the state or any of its political subdivisions because of a judgment, fine, permit violation, license assessment, defaulted workers' compensation premium, penalty or other assessment presently delinquent or due and required to be paid to the state or any of its political subdivisions, including any interest or additional penalties accrued thereon.

"Employer default" means having an outstanding balance or liability to the old fund or to the uninsured employers' fund or being in policy default, as defined in W. Va. Code § 23-2c-2, failure to maintain mandatory workers' compensation coverage, or failure to fully meet its obligations as a workers' compensation self-insured employer. An employer is not in employer default if it has entered into a repayment agreement with the Insurance Commissioner and remains in compliance with the obligations under the repayment agreement.

"Related party" means a party, whether an individual, corporation, partnership, association, limited liability company or any other form or business association or other entity whatsoever, related to any vendor by blood, marriage, ownership or contract through which the party has a relationship of ownership or other interest with the vendor so that the party will actually or by effect receive or control a portion of the benefit, profit or other consideration from performance of a vendor contract with the party receiving an amount that meets or exceed five percent of the total contract amount.

AFFIRMATION: By signing this form, the vendor's authorized signer affirms and acknowledges under penalty of law for false swearing (*W. Va. Code §61-5-3*) that neither vendor nor any related party owe a debt as defined above and that neither vendor nor any related party are in employer default as defined above, unless the debt or employer default is permitted under the exception above.

WITNESS THE FOLLOWING SIGNATURE:

Vendor's Name: TERRADON CORPORATION

Authorized Signature: [Signature]

Date: 06/14/17

State of WEST VIRGINIA

County of PUTNAM, to-wit:

Taken, subscribed, and sworn to before me this 14 day of JUNE, 2017.

My Commission expires April 5, 2020

AFFIX SEAL HERE

NOTARY PUBLIC

[Signature: Susan Lightner]

Purchasing Affidavit (Revised 08/01/2015)

