



The following documentation is an electronically-submitted vendor response to an advertised solicitation from the *West Virginia Purchasing Bulletin* within the Vendor Self-Service portal at ***wvOASIS.gov***. As part of the State of West Virginia's procurement process, and to maintain the transparency of the bid-opening process, this documentation submitted online is publicly posted by the West Virginia Purchasing Division at ***WVPurchasing.gov*** with any other vendor responses to this solicitation submitted to the Purchasing Division in hard copy format.

Header

^

General Information

Procurement Folder: 158430

SO Doc Code: CRFQ

Procurement Type: Central Purchase Order

SO Dept: 0506

Vendor ID:

SO Doc ID: JWH1600000007

Legal Name: DOUGLAS FOOD STORES INC

Published Date: 1/19/16

Alias/DBA:

Close Date: 1/27/16

Total Bid: \$46,897.61

Close Time: 13:30

Response Date:

Status: Closed

Response Time:

Solicitation Description:

Total of Header Attachments: 0

Total of All Attachments: 0



Purchasing Division
2019 Washington Street East
Post Office Box 50130
Charleston, WV 25305-0130

State of West Virginia
Solicitation Response

Proc Folder : 158430

Solicitation Description : Add.#1 Purchase/Install Dishwasher & Tables for JWH

Proc Type : Central Purchase Order

Date issued	Solicitation Closes	Solicitation No	Version
	2016-01-27 13:30:00	SR 0506 ESR01261600000003155	1

VENDOR

000000203433

DOUGLAS FOOD STORES INC

FOR INFORMATION CONTACT THE BUYER

April Battle
(304) 558-0067
april.e.battle@wv.gov

Signature X

FEIN #

DATE

All offers subject to all terms and conditions contained in this solicitation

Line	Comm Ln Desc	Qty	Unit Issue	Unit Price	Ln Total Or Contract Amount
1	Purchase and installation of a New Commercial Dishwasher	1.00000	LS	\$37,876.000000	\$37,876.00

Comm Code	Manufacturer	Specification	Model #
48101615			

Extended Description : Section 4.1.1 in the specifications

Line	Comm Ln Desc	Qty	Unit Issue	Unit Price	Ln Total Or Contract Amount
2	2 year warranty on all parts and labor	1.00000	EA	\$0.010000	\$0.01

Comm Code	Manufacturer	Specification	Model #
84101503			

Extended Description : Section 4.1.2 in the specifications

Line	Comm Ln Desc	Qty	Unit Issue	Unit Price	Ln Total Or Contract Amount
3	New Soiled Dishtable	1.00000	EA	\$8,235.230000	\$8,235.23

Comm Code	Manufacturer	Specification	Model #
56101519			

Extended Description : Section 4.1.3 in the specifications.

Line	Comm Ln Desc	Qty	Unit Issue	Unit Price	Ln Total Or Contract Amount
4	New Clean Dishtable	1.00000	EA	\$786.370000	\$786.37

Comm Code	Manufacturer	Specification	Model #
56101519			

Extended Description : Section 4.1.4 in the specifications



The Dishwashing Machine Specialists

To:

Standard Dealer Net Quote

Project:

JACKIE WITHROW HOSPITAL
BECKLEY, WV

From:

Champion Industries, Inc.
Brett Beardsley
3765 Champion Blvd.
Winston-Salem, NC 27105-2667
800-532-8591 x-4972

Quote

01/06/2016

Project Code: 2015308

Item	Qty	Description	Net	Net Total
1	1 ea	DISHWASHER, CONVEYOR TYPE Champion Model No. 44 DR E-series, 44" long rack conveyor dishwasher, DualRinse™ feature, dual-pawl cradle drive system, one-piece cast stainless steel upper & lower spray arm assemblies, internal removable scrap basket and two-piece scrap screen, standard vertical opening accommodates 18" x 26" sheet pans, wide leak proof swing out insulated hinged doors, 208 racks per hour capacity, anti-jam conveyor drive system, Energy Sentinel (idle pump shut-off), top-mounted controls, automatic tank fill, door safety switch, leak proof ball valve drain closure, enclosure panels (front and sides), stainless steel heavy-gauge construction including base and feet, electric tank heat, wash pump 2 HP pump & motor, stainless steel pump and impeller, single-point electrical connection, self-diagnostic controls, vent fan control, stainless steel rear manifolds, NSF, cULus, ENERGY STAR®		
	1 ea	Two year parts & labor warranty		
	1 ea	208/60/3ph, Single-point electrical connection		
	1 ea	Stainless steel steam closed coil with thermostat & low-water cutoff (requires 15 psi flow)		
	1 ea	Booster Heater, steam, mounted & piped, 40 degree rise		
	1 ea	Voltage to be 208/60/3ph		
	1 ea	Right to left operation		
	1 ea	208v/60/3-ph, Steam blow-dryer, with 48" tunnel		
	1 ea	Stainless steel vent cowls with stack & locking dampers (set)		
	1 ea	Table limit switch (unmounted)(recommended on all conveyor models)		

Total

PRICE SUBJECT TO CHANGE UPON RECEIPT OF FORMAL SPECIFICATIONS.

Net Price - FOB Origin, Freight PPD Continental USA

SALES TAXES ARE NOT INCLUDED

NOTE:

1. Unless specifically stated otherwise, this quotation will remain for a period of 60 days from date shown, providing shipment can be made within 3 months of quotation date
2. Unless specifically stated otherwise, all prices are ex. works, and all weights, freight rates and freight amounts, if shown are estimates, subject to exact determination at time of shipment.

Champion®

The Dishwashing Machine Specialists

Project _____
Item No. _____
Quantity _____

44 DR SERIES RACK CONVEYOR

STANDARD FEATURES

- **ENERGY STAR® Qualified**
- *Exclusive DualRinse Technology*
- Dual-pawl cradle drive system
- One-piece cast stainless steel upper & lower spray arm assemblies
- Internal removable scrap basket and two-piece scrap screen
- Standard vertical opening accommodates 18" x 26" sheet pans
- Wide leakproof swing out insulated hinged doors on wash tank
- Anti-jam conveyor drive system
- Energy Sentinel (Idle pump shut-off)
- Convenient top-mounted controls
- Automatic tank fill
- Door safety switch
- Never leak, ball valve drain closure
- Enclosure panels (front and sides)
- Stainless steel heavy-gauge construction, including base and feet
- Electric tank heat
- Wash pump 2 Hp motor
- Stainless steel pump and impeller
- Single-point electrical connection
- Self-diagnostic controls
- Vent fan control switch
- Stainless steel rear manifolds

PREWASH MODELS ONLY

- External prewash scrap basket
- Prewash pump 1 Hp motor
- 22" Prewash
- 26" Prewash
- 36" Prewash

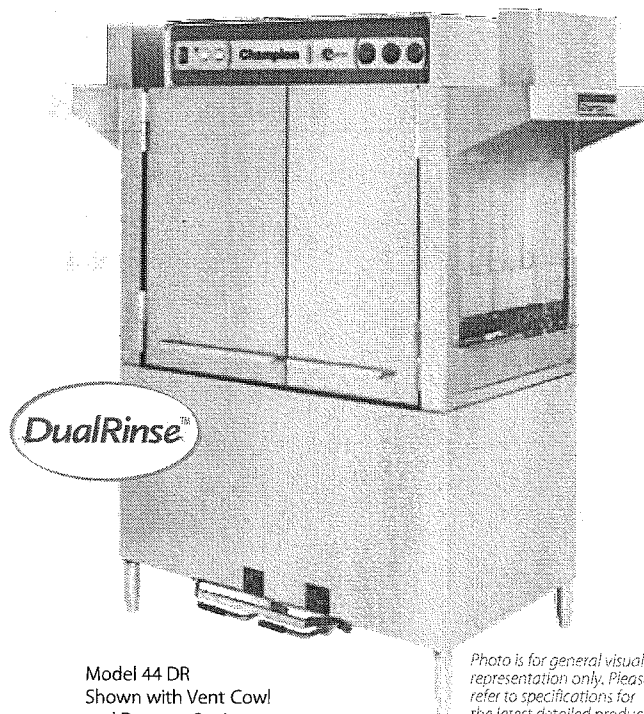
*The DualRinse feature offers the
Lowest Water/Utility/Chemical Consumption
while circulating a generous
300+ gallons of water for
Consistently Good Results*

Champion Industries, Inc.
2674 N. Service Road,
Jordan Station, Ontario, Canada L0R 1S0
Tel: 905/562-4195 Fax: 905/562-4618

DualRinse* 44 DR SERIES

44 DR, 66 DRPW, 70 DRFFPW, 80 DRHDPW

High-Temperature
Rack Conveyor Dishwashing Machine with
Dual Stage Rinse



Model 44 DR
Shown with Vent Cowl
and Damper Option

*Photo is for general visual
representation only. Please
refer to specifications for
the latest detailed product
information.*

SPECIFIER STATEMENT

Specified unit will be Champion Model 44 DR Series high temperature dual rinse rack conveyor dishwashing machine. Features top mounted control cabinet; upper and lower one-piece stainless steel spray arm assemblies, removable internal scrap basket with two-piece scrap screen. Swing out insulated front access doors. Anti-jam conveyor drive system.

1 year parts and labor warranty.



CH070

(NRA) 7/14 Printed in U.S.A.



Champion Industries, Inc.
3765 Champion Blvd., Winston-Salem, NC 27105
Tel: 336/661-1556 Fax: 336/661-1979
www.championindustries.com



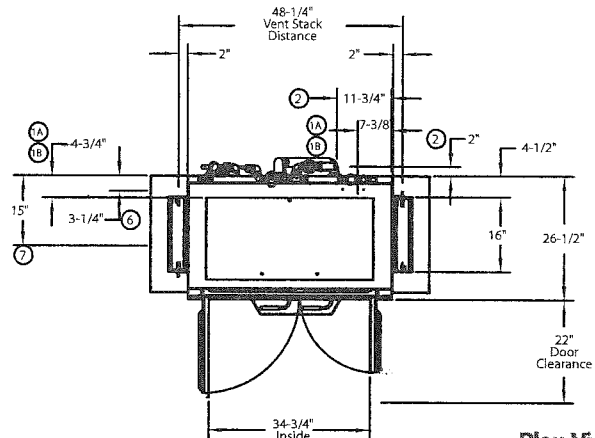
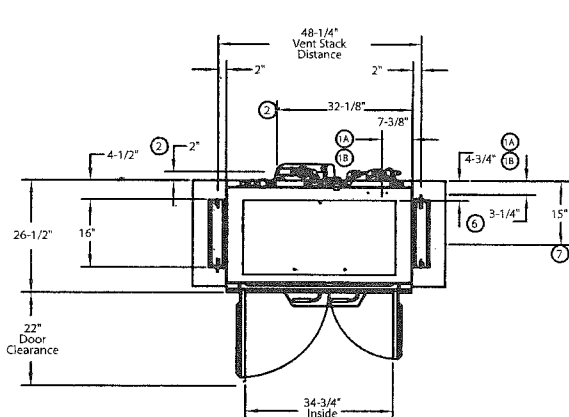
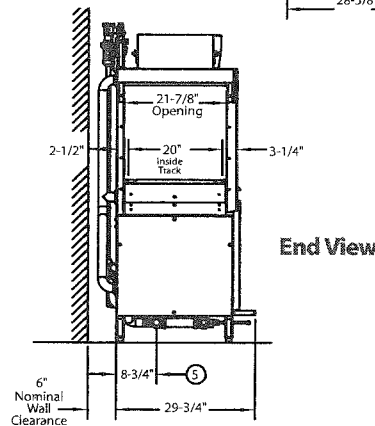
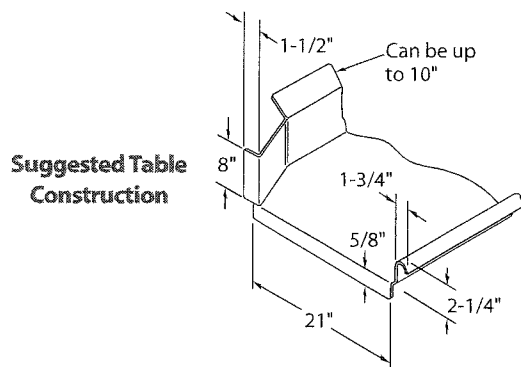
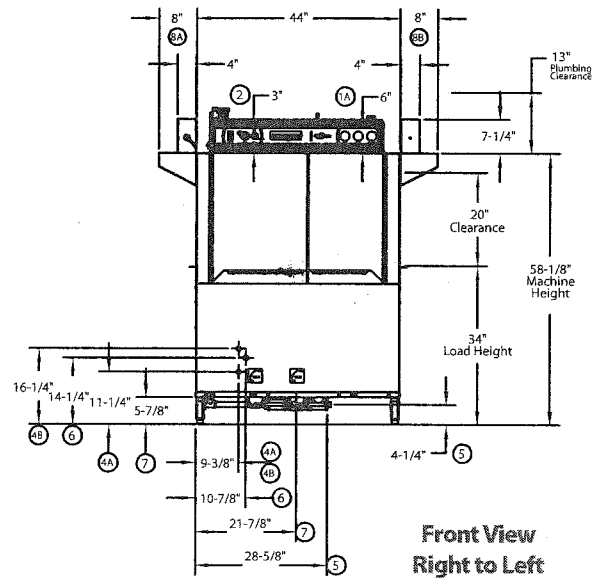
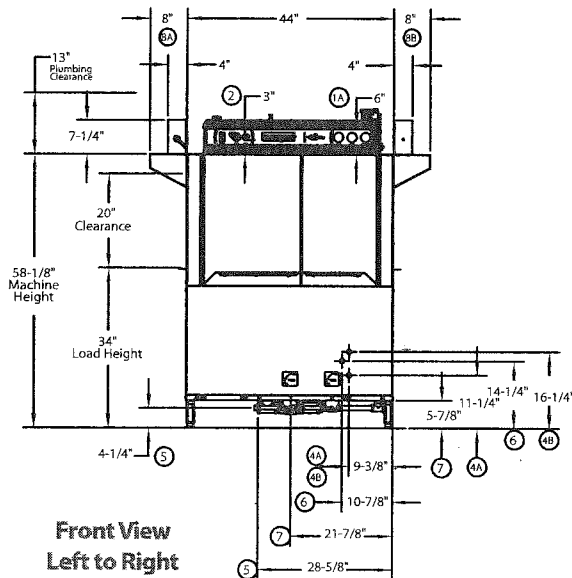
44 DR SERIES

44 DR, 66 DRPW, 70 DRFFPW, 80 DRHDPW
High-Temperature
Rack Conveyor Dishwashing Machine with
Dual Stage Rinse

Champion®
The Dishwashing Machine Specialists

MODEL 44 DR Shipping weight crated: **600 lbs.**

Dimensions shown in inches [mm]



Due to an ongoing value analysis program at Champion, specifications contained in this catalog are subject to change without notice.

Champion Industries, Inc., 3765 Champion Blvd., Winston-Salem, NC 27105 • 336/661-1556 • Fax: 336/661-1979 • www.championindustries.com
2674 N. Service Road, Jordan Station, Ontario, Canada L0R 1S0 • 905/562-4195 • Fax: 905/562-4618

44 DR SERIES

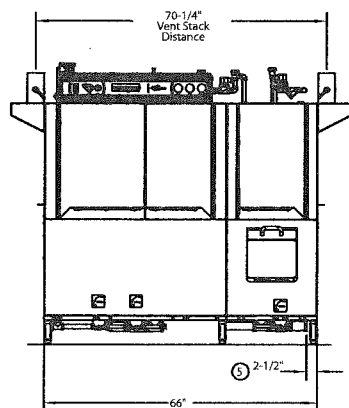
44 DR, 66 DRPW, 70 DRFFPW, 80 DRHDPW
High-Temperature
Rack Conveyor Dishwashing Machine with
Dual Stage Rinse

Champion®
The Dishwashing Machine Specialists

MODEL 66 DRPW WITH 22" PREWASH

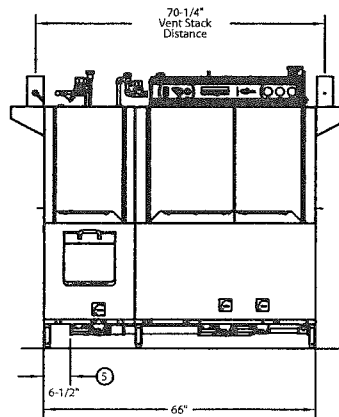
Shipping weight crated: **800 lbs.**

Dimensions shown in inches [mm]



Front View

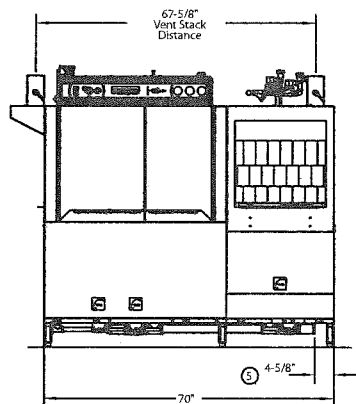
Right to Left



Left to Right

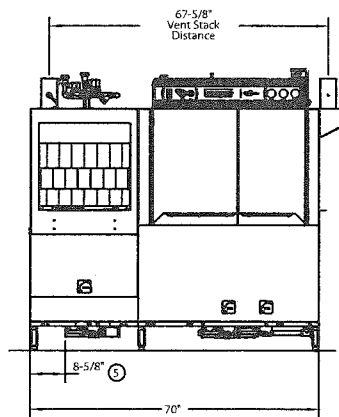
MODEL 70 DRFFPW WITH 26" FRONT FEED PREWASH

Shipping weight crated: **850 lbs.**



Front View

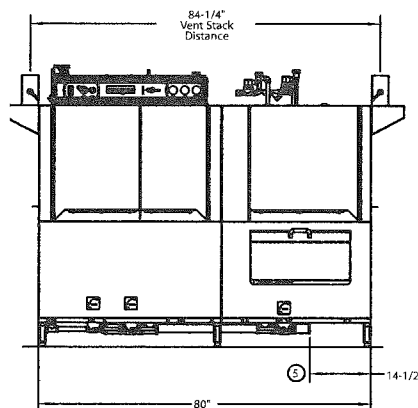
Right to Left



Left to Right

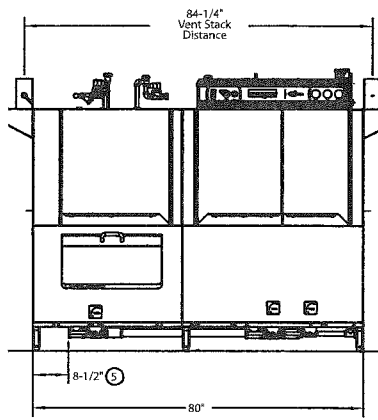
MODEL 80 DRHDPW WITH 36" HEAVY DUTY PREWASH

Shipping weight crated: **950 lbs.**



Front View

Right to Left



Left to Right

NOTE: For complete machine dimensions, plan view, end view, specifications and table construction see 44 DR drawing page.

44 DR SERIES

44 DR, 66 DRPW, 70 DRFFPW, 80 DRHDPW

High-Temperature

Rack Conveyor Dishwashing Machine with
Dual Stage Rinse

Champion®

The Dishwashing Machine Specialists

Dimensions shown in inches

Utilities	
1	Electrical Connection A Machine electrical connection B Booster electrical connection
2	Hot Water Main connection 3/4" NPT
3	Cold Water Contact Factory
4	Hot Water Tank A Heat inlet connection 1" NPT B Heat return connection 1" NPT
5	Drain Connection 1 1/2" NPT
6	Steam Inlet connection 1 1/4" NPT
7	Condensate Connection 1" NPT return to boiler
8	Vents A Stack connection - Load end 200 CFM @ 1/4" static pressure B Stack connection - Unload end 400 CFM @ 1/4" static pressure

Warning: Plumbing and electrical connections should be made by qualified personnel who will observe all the applicable plumbing, sanitary, safety codes and the National Electrical Code.

Note: Water Hammer Arrestor (meeting ASSE-1010 standard or equivalent) to be supplied (by others) in common water supply line at service connection.

Plumbing Notes: Because of the variation in house-supplied steam and water pressures, steam and water pressure regulating valves (PRVs) may be needed. (Water PRV is standard on machines with booster.) The PRVs can either be purchased from Champion or obtained locally.

Venting Notes: Fabricated duct size: 3-7/8" x 15-7/8" (Outside dimensions)

Contact factory for single phase information.

44 DR Only
TABLE A - Machine Connection

Machine only			
Elec. Specs.	Rated Amps	Minimum Supply Ckt. Conductor Ampacity	Minimum Overcurrent Protective Device
208/60/3	70	90	90
240/60/3	62	80	80
480/60/3	31	40	40
575/60/3	24	35	35

44 DR Only
TABLE B - Machine & Booster Connection

40°F/22°C Rise - 12kW Machine and Electric built-in booster			
Elec. Specs.	Rated Amps	Minimum Supply Ckt. Conductor Ampacity	Minimum Overcurrent Protective Device
208/60/3	104	150	150
240/60/3	91	125	125
480/60/3	46	60	60
575/60/3	37	50	50

70°F/39°C Rise - 22 kW
Machine and Electric built-in booster

Elec. Specs.	Rated Amps	Minimum Supply Ckt. Conductor Ampacity	Minimum Overcurrent Protective Device
208/60/3	131	175	175
240/60/3	115	150	150
480/60/3	58	80	80
575/60/3	47	60	60

Machine and steam built-in booster

Elec. Specs.	Rated Amps	Minimum Supply Ckt. Conductor Ampacity	Minimum Overcurrent Protective Device
208/60/3	25	35	35
240/60/3	22	30	30
480/60/3	12	15	15
575/60/3	9	15	15

12 kW Booster Only

Elec. Specs.	Rated Amps	Minimum Supply Ckt. Conductor Ampacity	Minimum Overcurrent Protective Device
208/60/3	33	45	45
240/60/3	29	40	40
480/60/3	14	20	20
575/60/3	12	15	15

66 DRPW, 70 DRFFPW, 80 DRHDPW
TABLE A - Machine Connection

Machine only			
Elec. Specs.	Rated Amps	Minimum Supply Ckt. Conductor Ampacity	Minimum Overcurrent Protective Device
208/60/3	74	100	100
240/60/3	65	90	90
480/60/3	33	45	45
575/60/3	25	35	35

66 DRPW, 70 DRFFPW, 80 DRHDPW
TABLE B - Machine & Booster Connection

40°F/22°C Rise - 12kW Machine and Electric built-in booster			
Elec. Specs.	Rated Amps	Minimum Supply Ckt. Conductor Ampacity	Minimum Overcurrent Protective Device
208/60/3	108	150	150
240/60/3	94	125	125
480/60/3	47	60	60
575/60/3	37	50	50

70°F/39°C Rise - 22 kW
Machine and Electric built-in booster

Elec. Specs.	Rated Amps	Minimum Supply Ckt. Conductor Ampacity	Minimum Overcurrent Protective Device
208/60/3	136	175	175
240/60/3	118	150	150
480/60/3	60	80	80
575/60/3	47	60	60

Machine and steam built-in booster

Elec. Specs.	Rated Amps	Minimum Supply Ckt. Conductor Ampacity	Minimum Overcurrent Protective Device
208/60/3	29	40	40
240/60/3	26	35	35
480/60/3	15	20	20
575/60/3	10	15	15

22 kW Booster Only

Elec. Specs.	Rated Amps	Minimum Supply Ckt. Conductor Ampacity	Minimum Overcurrent Protective Device
208/60/3	61	80	80
240/60/3	53	70	70
480/60/3	26	35	35
575/60/3	22	30	30

Due to an ongoing value analysis program at Champion, specifications contained in this catalog are subject to change without notice.

Champion Industries, Inc., 3765 Champion Blvd., Winston-Salem, NC 27105 • 336/661-1556 • Fax: 336/661-1979 • www.championindustries.com
2674 N. Service Road, Jordan Station, Ontario, Canada L0R 1S0 • 905/562-4195 • Fax: 905/562-4618

Champion®

The Dishwashing Machine Specialists

44 DR SERIES

44 DR, 66 DRPW, 70 DRFFPW, 80 DRHDPW

High-Temperature
Rack Conveyor Dishwashing Machine with
Dual Stage Rinse

SPECIFICATIONS

Capacity

Racks per hr. (NSF rated)	208
Wash tank (US gal.)	21
Conveyor speed (ft/min.)	5.8

Motor Horsepower

Drive	1/6
Wash	2
Dual Rinse	1/10

Water Consumption

US Gal. per hr. (max. use)	112
US Gal. per rack	.54

Heating

Tank Heat, electric (kW)	15
DualRinse Tank Heat, electric (kW)	3
Tank heat, steam	
(lbs./hr. required at 15 PSI flow pressure)	75
Electric booster (built-in)	
(kW supplied for 40°F rise)	12
Electric booster (built-in)	
(kW supplied for 70°F rise)	22
Steam booster	
(lbs./hr. required for 40°F rise)	60
Steam booster	
(lbs./hr. required for 70°F rise)	110

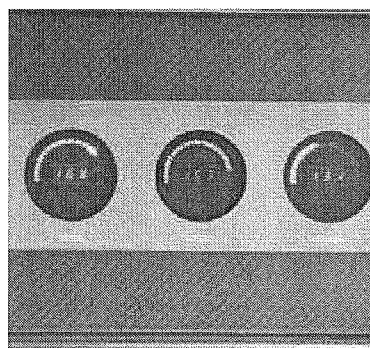
*Booster heaters completely inter plumbed,
Controls are interwired*

Venting

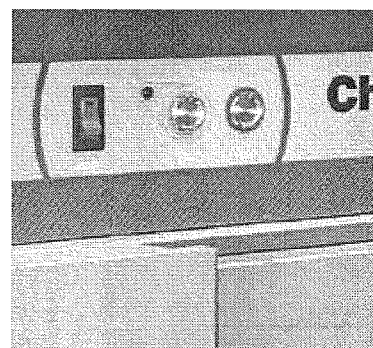
Load end (minimum CFM)	200
Unload end (minimum CFM)	400

Standard 20" x 20" rack complement

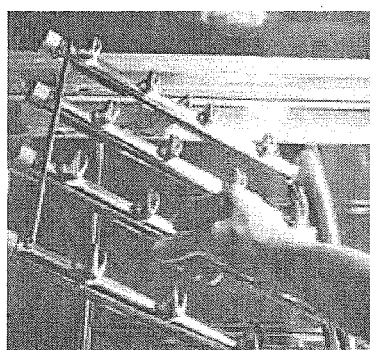
Peg	2
Flat	1



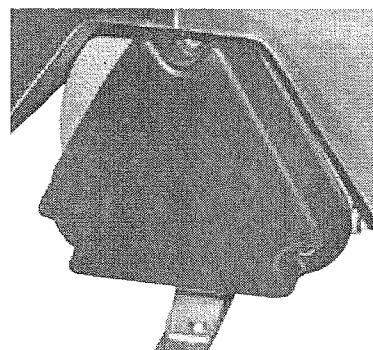
NEW Exclusive Digital Gauges



NEW Durable Stainless Steel Start/Stop Switches



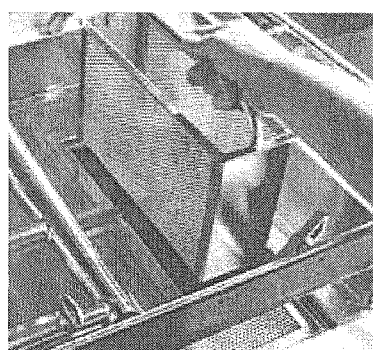
One-Piece Cast Stainless Steel Spray Assembly



Stainless Steel Built-in Nested Booster



Two-Piece Scrap Screen



Built-in Scrap Basket for ease of cleaning

LESS IS MORE WITH CHAMPION'S DUAL RINSE MODEL 44 DR SERIES

Check our NSF listings and you'll see the Dual Rinse offers the lowest water consumption in its class with less than .54 US gallons per rack. This ENERGY STAR® qualified product brings energy savings. Our 40°F rise booster only requires 12 kW and 70°F rise is only 22 kW.

What the numbers don't show you is the advantage that our Dual Rinse technology provides by making sure all wares are fully rinsed with more than 300 gallons per hour while actual fresh water consumption is only 112 gallons per hour.

44 DR SERIES

44 DR, 66 DRPW, 70 DRFFPW, 80 DRHDPW

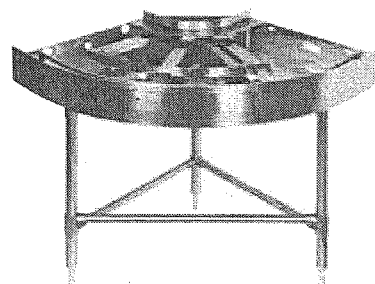
High-Temperature
Rack Conveyor Dishwashing Machine with
Dual Stage Rinse

Champion®

The Dishwashing Machine Specialists

OPTIONS & ACCESSORIES

- ☐ Tank heat: choice of steam coil, steam injector, hot water coil
- ☐ 2 Hp prewash motor
- ☐ 48" Blower-dryer - steam or electric
- ☐ Booster Heaters (completely interplumbed, controls are interwired)
 - ☐ Steam: 40°F or 70°F rise
 - ☐ Electric: 12 kW (40°F rise) (built-in only)
 - ☐ Electric: 22 kW (70°F rise) (built-in only)
- ☐ Heat Recovery
- Cantilever sideloader (with or without hood) for 90° load operation
 - ☐ 24" Sideload
 - ☐ 30" Sideload (accepts sheet pans)
- ☐ Extended pawl bar (extended drive unit) for use with load tabling
- ☐ Racks: peg or flat racks (specify type)
- ☐ Steam pressure regulating valve (unmounted)
- ☐ Table limit switch, unmounted (recommended on all rack conveyor installations)
- ☐ Vent cowl, stainless steel with 7" stack and locking damper
- ☐ Extended vent hood, stainless steel with 7" stack and locking damper
- ☐ Water pressure regulating valve (unmounted) (standard with booster)
- ☐ Two-point electrical connection
- ☐ Water hammer kit
- ☐ Drain tempering kit
- ☐ Vertical clearance through machine: 24" (instead of standard 20") for larger ware
- ☐ Model CCT 180 (180° Corner Conveyor Table)
- ☐ Model CCT 90 (90° Corner Conveyor Table)
- ☐ Model RCT 64 or RCT 84 Roller Conveyor Table (See factory for custom length)
- ☐ Splash shields

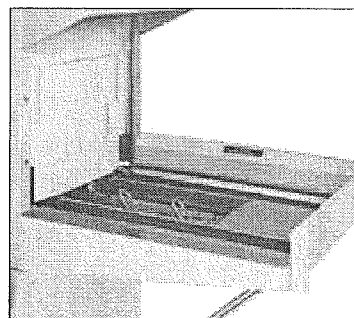


NEW CCT 90

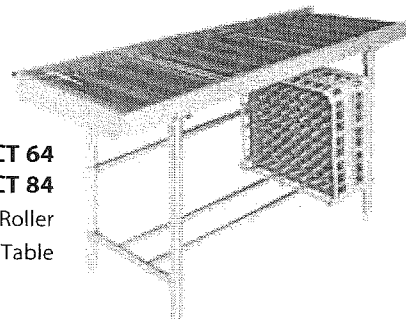
90° Corner Conveyor Table (shown)

NEW CCT 180

180° Corner Conveyor Table
also available



**Cantilever
Sideload**
(No hood)



**Model RCT 64
or RCT 84**

Roller
Conveyor Table

Due to an ongoing value analysis program at Champion, specifications contained in this catalog are subject to change without notice.
"USGBC" and related logo is a trademark owned by the U.S. Green Building Council and is used by permission.

Champion Industries, Inc., 3765 Champion Blvd., Winston-Salem, NC 27105 • 336/661-1556 • Fax: 336/661-1979 • www.championindustries.com
2674 N. Service Road, Jordan Station, Ontario, Canada L0R 1S0 • 905/562-4195 • Fax: 905/562-4618



Quality Stainless & Millwork Fabrication

01/26/2016

R01268

3.1.3 1 ea **SOILED DISHTABLE**

Eagle Group SPECFAB

Soiled Dishtable, island design with dish landing shelf, 126" x 84"W, right-to-left operation, 14/304 stainless steel top, 9"H backsplash, 20" x 20" x 5" deep pre-rinse sink, faucet hole for pre-rinse (by others), raised rolled edges on front & side, stainless steel legs & side bracing, adjustable feet, NSF

1 ea Sorting Rack, solid, double sided, 72"W x 22-3/4"D x 27-5/8"H, for soiled dishtables with landing shelf or with center island design, (1) end wall-

<Included>

Item	Qty	Description	Net	Net Total
		mounted, drip tube on wall mounted end, stainless steel		
	1 ea	E41 Disposal provision package, includes weldment only for collar which are furnished by others, control panel bracket weldment, & holes for pre-rinse & anti-siphon vacuum breaker		<Included>
		NOTE: Faucet by Others		
3.1.4	1 ea	CLEAN DISHTABLE Eagle Group SPECFAB Clean Dishtable, straight design, 56"W x 30"D, right-to-left operation, 14/304 stainless steel top, 9"H backsplash, raised rolled edges on front & side, H-frame stainless steel legs, with adjustable metal feet, NSF		
	1 ea	E120 Table limit switch provision (switch by others)		

Extended Total:

DOUGLAS EQUIPMENT

Restaurant & Food Store Equipment

Quote

01/26/2016

Project:
New Project 361

From:
Douglas Equipment
Ariel Bowman
301 North St.
Bluefield, WV 24701-4048
304-327-0149
(304)327-0149 (Contact)

Job Reference Number: 2698

Item	Qty	Description	Sell	Sell Total
1	1 ea	DISPOSER Salvador Model No. 300-CA-ARSS-2 Disposer, with cone assembly (size to be specified), 3-HP motor, single support leg, auto reversing magnetic, with start/stop push button, drain/flush/time delay, rubber scrap ring, vacuum breaker, solenoid with flow control & fixed nozzle, 6-1/2" inlet diameter, heat treated aluminum alloy housing, single support leg, UL, SA, CE		
	1 ea	2nd-year warranty (P/N 999183)		
	1 ea	Specify voltage		
	1 ea	12" Cone with nozzle		

ITEM TOTAL:

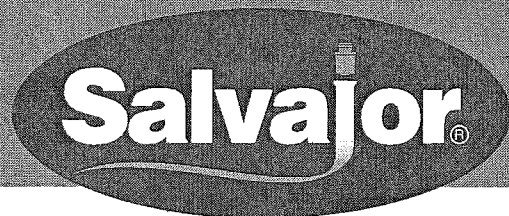
Total

Acceptance: _____ Date: _____

Printed Name: _____

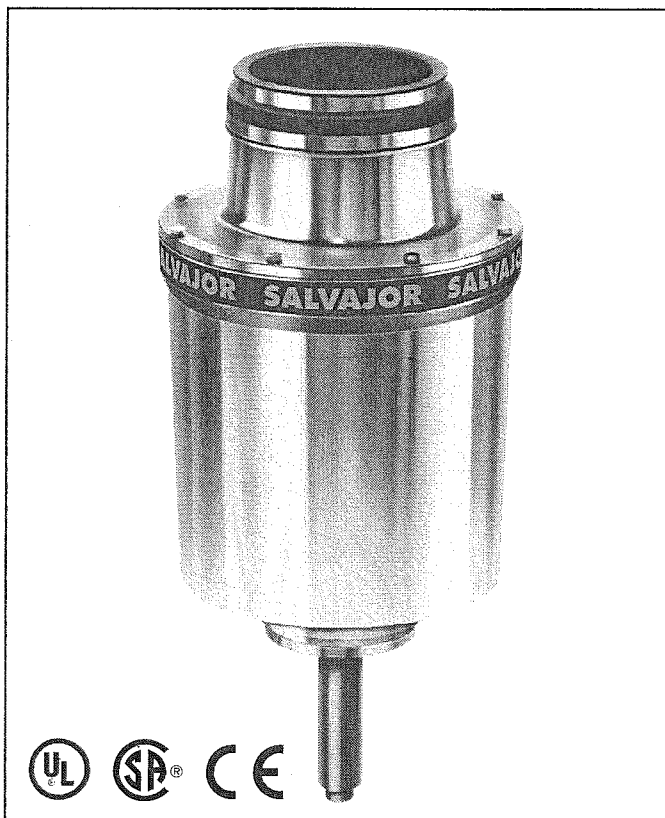
Project Grand Total: \$2,770.90

3 H.P. Model 300

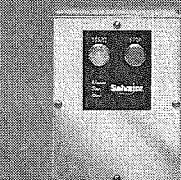


JOB: _____

Item No.: _____



NEMA 4 Watertight Controls



MSS



MRSS



ARSS-2



ARSS

Optional Line Disconnect (LD) available on MSS, MRSS, & ARSS

FOOD WASTE DISPOSER SPECIFICATIONS

CORROSION RESISTANT BODY

Permanent molded from heat treated aluminum alloy.

TEFLON LIP WATER SEAL

Protects the motor from damage by water.

TAPERED ROLLER BEARING

Provides longer motor life, quiet operation and shock absorbing.

WATER COOLED MOTOR

Provides maximum efficiency and longer life.

QUIET OPERATION

Extra thick rubber mounting adaptor and drain outlet isolates sound and eliminates vibration.

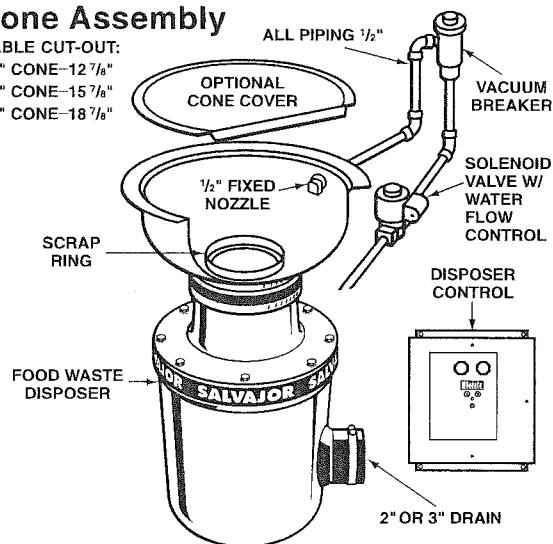
WASTE MIXING CHAMBER

Extra large to ensure proper mixture of water to waste.

Cone Assembly

TABLE CUT-OUT:

12" CONE-12 7/8"
15" CONE-15 7/8"
18" CONE-18 7/8"



NOTE: INSTALL PER ALL APPLICABLE CODES

FULL LOAD AMPS

<input type="checkbox"/>	208 Volts	3 Phase	8.8 Amps
<input type="checkbox"/>	230 Volts	3 Phase	8.0 Amps
<input type="checkbox"/>	460 Volts	3 Phase	4.0 Amps

◆ SPECIFY EXACT OPERATING VOLTAGE ◆

Salvajor Model 300

Food Waste Disposer 3HP – 3 Phase

DETAILS AND DIMENSIONS

SPECIFICATIONS:

MOUNTING – Rubber adaptor above grind chamber and rubber drain outlet isolates sound and eliminates vibration. No metal to metal contact.

EXTERIOR HOUSING – Permanent molded from heat treated, corrosion resistant aluminum alloy then computer machined to a smooth polished finish. Paint free.

SHREDDER – 9 inch diameter, machined high strength, wear resistant hardened carbide alloy.

ROTOR – 9 inch diameter with 4 cutter bars, machined high strength, wear resistant hardened carbide alloy.

MOTOR – 3 HP totally enclosed. Fan cooled and water cooled for efficiency and longer life. Built-in manual reset thermal overload protection. Available in 208-230/460 volts, 60 cycle, 3 phase.

BEARINGS – Tapered roller (top)
Sealed ball (bottom)

SEAL – Teflon Lip Water Seal.

WATER REQUIREMENT – 8 gallons of cold water per minute.

WASTE OUTLET – Rubber drain accepts 2" piping or 3" piping by removing drain insert.

DUAL DIRECTION GRINDING – Designed to operate in either direction. Direction of rotation can be controlled when installed with automatic reversing controls. *Reversing rotation can double cutting teeth life.*

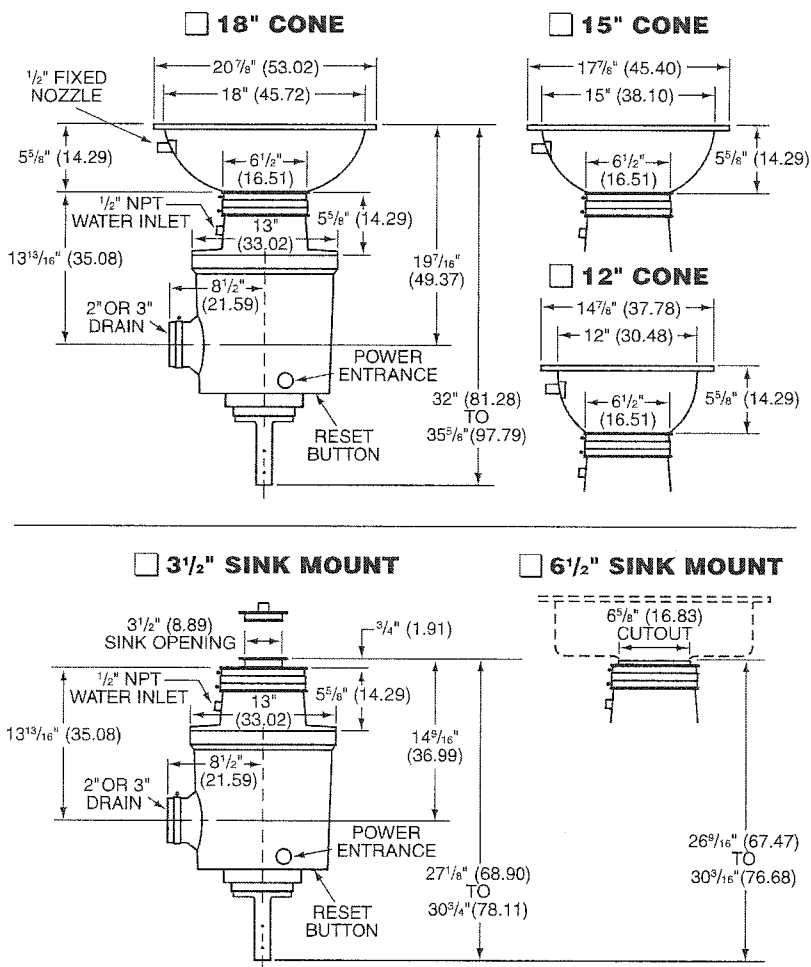
LEG SUPPORT – Single leg, adjustable.

ASSEMBLIES: (See Specification Sheet)

CA – Cone Assembly with 12", 15" or 18" Cone
SA – Sink Assembly with 3 1/2" or 6 1/2" Sink Collar

DISPOSER CONTROLS: (See Specification Sheet)

MSS: (Non Reversing)
MRSS: (Manual Reversing)
ARSS-2: (Automatic Reversing)
ARSS: (Automatic Reversing)



NOTE: Dimensions in parenthesis are in centimeters
(Specifications subject to change without notice)

Current specification details may be found online at www.salvajor.com

SAMPLE SPECIFICATION

Model	Cone Size	Disposer Control	Electrical Specs.
300-CA-18	ARSS	(230/60/3)	
◆ SPECIFY EXACT OPERATING VOLTAGE ◆			



The Salvajor Company 4530 East 75th Terrace Kansas City, Missouri 64132-2081, USA

1-800-SALVAJOR

(816) 363-1030

FAX: 1-800-832-9373

www.salvajor.com

Email: sales@salvajor.com

service@salvajor.com

Manufacturers of Commercial Food Waste Disposing Systems since 1944

Printed in USA
Form No. S300-9-BH

Item	Qty	Description	Net	Net Total
1	1 ea	PRE-RINSE FAUCET ASSEMBLY T&S Brass Model No. B-0123 EasyInstall Pre-Rinse Unit, spring action gooseneck, deck mount base faucet with spring check cartridges & lever handles, 8" center, 2" diameter deck flanges with 1/2" NPT female flanged inlets, 44-13/16"H, 17-3/8" clearance, spray valve, 24" riser, flex stainless steel hose		
	1 ea	B-0970-FEZ Atmospheric Back Flow Preventer, 3/8" IPS female inlet & female outlet, polish chrome plated, double check design prevents back siphonage & back flow, 2-3/8" top to bottom, designed for continuous pressure use, with EasyInstall Vacuum Breaker Kit		
	1 ea	B-0119 Pre-Rinse Brace, bi-pod clamp assembly, to be used where no walls are available for wall support		
	2 ea	B-CVH1-2 Check Valve, 1/2" NPT female, horizontal		
	2 ea	B-0425 Supply Nipple Unit, 1/2" NPT x 2" Long		
Class 55		Weight: 13.51 lbs total		
ITEM TOTAL:				



T&S BRASS AND BRONZE WORKS, INC.

2 Saddleback Cove / P.O. Box 1088
Travelers Rest, SC 29690

Model No.

B-0123

Item No.

Travelers Rest, SC: 800-476-4103 • Simi Valley, CA: 800-423-0150 • Fax: 864-834-3518 • www.tsbrass.com

EPAct 2005 Compliant

This Space for Architect/Engineer Approval

Job Name _____ Date _____

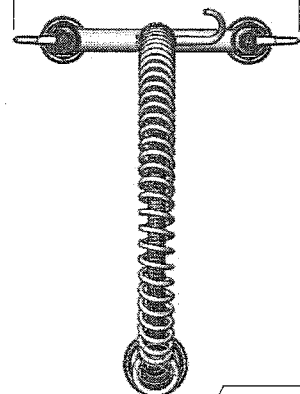
Model Specified _____ Quantity _____

Customer/Wholesaler _____

Contractor _____

Architect/Engineer _____

12 7/16"
[315mm]



44" Flex Hose w/
Overhead Spring &
Spray Valve

Items Not Shown
for Clarity

Finger Hook

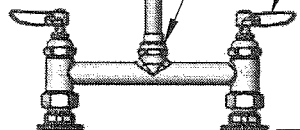
B-0107
Spray Valve
1.42 GPM

3/8" NPT x 24"
Riser

EasyInstall
Lock Nut & Bushing

Eterna Cartridges
w/ Spring Checks &
Lever Handles w/
Color Code Indexes

5 1/8"
[131mm]



8"

[203mm]

Adjustable From
7 3/4" to 8 1/4"
[197mm to 210mm]

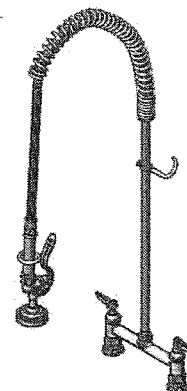
12 5/16"
[312mm]

Mounting Surface

Ø 2" [51mm]
Flanges w/
1/2" NPT
Female Inlets

14 1/16"
[357mm]

41 3/4"
[1061mm]



Product Specifications:

EasyInstall Pre-Rinse Unit:
8" Deck Mount Mixing Faucet, Eterna Cartridges w/ Spring Checks,
24" Riser, Overhead Spring, 44" Flexible Stainless Steel Hose w/
B-0107 Spray Valve & 1/2" NPT Female Inlets

Drawn

DHL

Checked

DMH

Approved

JHB

Scale:

1:8

Date:

02/11/13

Sheet: 1 of 2



T&S BRASS AND BRONZE WORKS, INC.

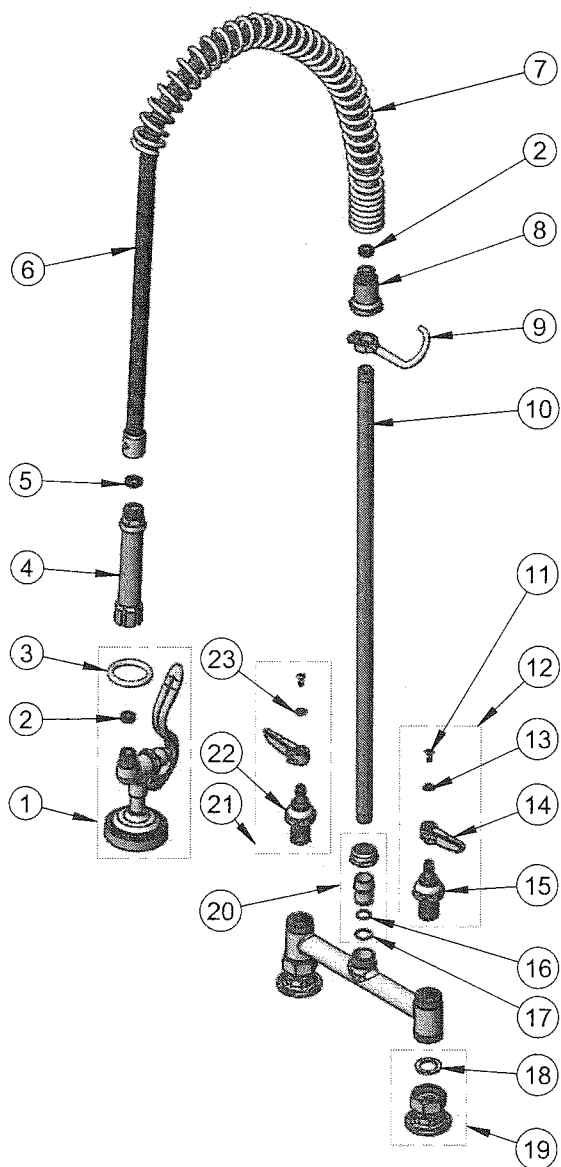
2 Saddleback Cove / P.O. Box 1088
Travelers Rest, SC 29690

Model No.

B-0123

Item No.

Travelers Rest, SC: 800-476-4103 • Simi Valley, CA: 800-423-0150 • Fax: 864-834-3518 • www.tsbrass.com



ITEM NO.	SALES NO.	DESCRIPTION
1	B-0107	Grey Spray Valve
2	010476-45	#27 Washer
3	000907-45	Spray Valve Hold Down Ring
4	002987-40	Grip Handle Assembly
5	001014-45	Washer, B-0100 Hose Barrel
6	B-0044-H2A	44" Flex Stainless Steel Hose, Less Handle
7	000888-45	EasyInstall Overhead Spring
8	000821-40	Spring Body
9	004R	Finger Hook
10	000372-40	3/8" NPT x 24" Riser
11	000922-45	Lever Handle Screw
12	002711-40	Eterna Cartridge, LTC w/ Spring Check, Handle, Index & Screw
13	001660-45	Blue Index-CW
14	001638-45	Lever Handle
15	012442-40	Eterna Cartridge, LTC w/ Spring Check
16	001065-45	O-Ring
17	014200-45	Star Washer, Anti-Rotation
18	001019-45	Coupling Nut Washer
19	00AA	1/2" NPT Female Eccentric Flange
20	EZ-K	EasyInstall Kit: Bushing, O-ring, Lock Washer & Loctite 222
21	002712-40	Eterna Cartridge, RTC w/ Spring Check, Handle, Index & Screw
22	012443-40	Eterna Cartridge, RTC w/ Spring Check
23	001661-45	Red Index-HW

Product Specifications:

EasyInstall Pre-Rinse Unit:
8" Deck Mount Mixing Faucet, Eterna Cartridges w/ Spring Checks,
24" Riser, Overhead Spring, 44" Flexible Stainless Steel Hose w/
B-0107 Spray Valve & 1/2" NPT Female Inlets





Drawn	Checked	Approved
DHL	DMH	JHB
Scale:	Date:	
NTS	02/11/13	

Karen Waldron

From: Kyle Carpenter <KyleCarpenter@echo.com>
Sent: Tuesday, January 26, 2016 11:02 AM
To: Eddie Carrai; Karen Waldron
Subject: RE: Liftgate needed Re: BOL Needed
Attachments: 23574700.pdf

I missed this email, see the revised BOL w/ lift-gate included. The new total will be \$448.13.

Best Regards,

Kyle Carpenter
Account Executive
Echo Global Logistics (NASDAQ: ECHO)
600 W. Chicago Ave. | Suite 725 | Chicago, IL 60654
O: 888-333-4054 x 3715 | F: 312-784-7662
kylecarpenter@echo.com | www.echo.com |    



We Take the "Complicated" Out
of Transportation Management

How am I Doing?

From: Eddie Carrai
Sent: Tuesday, January 26, 2016 4:31 AM
To: Karen Waldron; Kyle Carpenter
Subject: Liftgate needed Re: BOL Needed

Lift gate needed
Sent from my iPhone

On Jan 26, 2016, at 7:16 AM, Karen Waldron <karen@douglasequipment.us> wrote:

<image002.jpg>
Hey Eddie,

I need Liftgate on this shipment as well! Sorry for leaving that off.

Karen

From: Karen Waldron [<mailto:karen@douglasequipment.us>]
Sent: Tuesday, January 26, 2016 7:14 AM
To: Eddie Carrai <eddie.carrai@echo.com> (eddie.carrai@echo.com)
Subject: BOL Needed

Hi Eddie,

Would it be possible for you to send me another BOL for the following shipment?

Pick Up
Douglas Equipment
301 North Street
Bluefield, WV 24701

Deliver to:
Anza Elementary School
12110 S Hindry Ave
Hawthorne, CA 90250
Attn: Anita Collins
310-725-2100

Our PO No 16-2951
Commodity – Reach In Refrigerator
Weight 425
Class 150
Dims 79" H x 55" W x 30"D

Please schedule pick up for tomorrow as there is still a bit a snow in our loading area. Please send me pricing as well as the BOL. Let me know if you need anything else.

Thanks!

Karen R. Waldron

Bid Supervisor
Douglas Equipment
304-327-0149 x 1155
Fax 304-325-3848
www.douglasequipment.us

"Success isn't owned. It's leased. And rent is due everyday." – JJ Watt



This email has been checked for viruses by Avast antivirus software.
www.avast.com