



Purchasing Division
 2019 Washington Street East
 Post Office Box 50130
 Charleston, WV 25305-0130

State of West Virginia
 Centralized Expression of Interest
 02 — Architect/Engr

Proc Folder: 159027

Doc Description: A&E SVCS Boating and Parking Improvements Tygart Lake

Proc Type: Central Contract - Fixed Amt

Date Issued	Solicitation Closes	Solicitation No	Version
2015-10-28	2015-12-03 13:30:00	CEOI 0310 DNR1600000012	1

BID RECEIVING LOCATION

BID CLERK
 DEPARTMENT OF ADMINISTRATION
 PURCHASING DIVISION
 2019 WASHINGTON ST E
 CHARLESTON WV 25305
 US

VENDOR

Vendor Name, Address and Telephone Number:

Jeff Lee Consultants
 2200 Liberty Ave.
 Pittsburgh PA 15237

12/03/15 09:35:43
 WV Purchasing Division

FOR INFORMATION CONTACT THE BUYER

Guy Nisbet
 (304) 558-2596
 guy.l.nisbet@wv.gov

Signature X

FEIN # 25-1647690

DATE 12-2-15

All offers subject to all terms and conditions contained in this solicitation

ADDITIONAL INFORMATION:

Expression of Interest

The West Virginia Purchasing Division for the Agency, the West Virginia Division of Natural Resources (WVDNR) is soliciting CEOI responses from qualified firms to provide necessary engineering, landscape architecture, and other related professional services to design and provide construction contract administration services to construct certain boating and parking improvements at Tygart Lake State Park per the specifications and terms and conditions as attached.

INVOICE TO	SHIP TO
DIVISION OF NATURAL RESOURCES PARKS & RECREATION-PEM SECTION 324 4TH AVE SOUTH CHARLESTON WV25305 US	STATE OF WEST VIRGINIA JOBSITE - SEE SPECIFICATIONS No City WV 99999 US

Line	Comm Ln Desc	Qty	Unit Issue
1	Architectural/Engineering Services		

Comm Code	Manufacturer	Specification	Model #
81101508			

Extended Description :

A/E services for boating and parking improvements at Tygart Lake State Park.



ZELL ENGINEERS, INC.
Engineering • Construction Management • Testing • Inspections

Decmeber 2, 2015

Mr. Guy Nisbet
WV State Purchasing Division
2019 Washington St. E
PO Box 50130
Charleston, WV 25305
304-558-2596

Ref: A&E Services Boating and Parking Improvements Tygart Lake
CEOI 0310 DNR160000012

Dear Mr. Nisbet

Zell Engineers (ZELL) is pleased to submit this Proposal to provide the requested Architectural and Engineering Services for Boating and Parking Improvements at Tygart Lake. Zell's affiliate company, OZA Architecture will work in conjunction with Klavon Design Associates (KDA) on this project.

ZELL has been providing engineering, architecture, construction management, construction inspection, materials sampling, architecture and testing and associated clerical and administrative support services to both private and public clients for over 28 years in the Tri-State area (Pennsylvania, Ohio and West Virginia). Our firm is a Certified Small Business Enterprise, with offices located in Coraopolis, PA, Pittsburgh, PA Harrisburg, PA and Wheeling, WV.

The General Scope of Services will be provided by ZELL and our team of experienced Engineers and Technicians. ZELL will provide safety training, PPE, background checks, drug screens, etc.

We are enthusiastic about this opportunity to provide services for Boating and Parking Improvements and are confident our personnel have the qualifications, experience, and technical and managerial resources necessary to effectively deliver the required services. Should you have any questions, comments, or require additional information, please contact our office at 412-288-9995. We look forward to working with you.

Regards,

Andrew Rihn
Zell Engineers
Sales and Marketing Executive

Background

Zell Engineers and OZA Architecture have worked on various parks and related facilities as the Engineer and architect of record. The respective companies also have worked with the Army Corps of Engineers and Jeff Zell Consultants operates a United States Army Corps of Engineers (USACE) Certified Materials Testing Laboratory out of its Coraopolis facility.

Klavon Design Associates, a nationally respected Pittsburgh based landscape architecture firm, will serve as a Design Consultant to Zell Engineers.

Gene Conrad will be the point of contact for project management.

Professional Qualifications

Attached you will find resumes for our staff, and Klavon Design Associates as well.

Project Team

Richard Oziemblowsky, RA LEED AP, Principal Architect

Richard has over twenty years of experience as a registered architect. Richard is responsible for the design of each project from the programming phase through construction administration. Most specifically interested in sustainable design, he has been involved in many projects of various architectural typologies.

Victoria Stokes (Kennedy), Intern Architect

Victoria Kennedy has joined OZA from Virginia Polytechnic Institute. Ms. Kennedy also holds a Civil Engineering degree from the University of Pittsburgh. Her diverse education, experience, and volunteer work contribute to informing OZA of the latest developments in software and technology in the practice of architecture.

Gene Conrad, Project Manager

Francis (Gene) Conrad joined Zell Engineers 4 years ago after over two decades as a project manager from the Port Authority of Allegheny County. Gene has worked on various projects at Zell and is currently the project manager for the Department of General Services State Police Headquarters in Washington County, Pennsylvania. Gene holds a civil engineering degree from Bucknell University.

Dina Klavon, Landscape Architect

A graduate of Pennsylvania State University, Ms. Klavon has been working as a Landscape Architect since 1982. She is a Registered Landscape Architect (RLA) in Pennsylvania and owns a certified women-owned business with federal, state and local government agencies.

Ken Urbanec, Manager of Engineering

Ken has been Zell's Manager of Engineering since 2001. With over 30 years of engineering experience, Mr. Urbanec has experience with multiple projects similar to this one. Mr. Urbanec holds a Bachelors of Science in Civil Engineering from The University of Pittsburgh and a Bachelor's of Science in Geology from Duquesne University.

Communication and Project Planning

Zell ensures quality consistency across the organization and through the use of sub-contractors through an arduous process to ensure projects can be completed on time and on budget. This process is managed by our Project Manager, Gene Conrad. Zell conducts constructability reviews which at a minimum include reviews of:

- Design Specifications
- Contract Drawings
- Terms and Conditions
- Engineers' Estimates
- Project Schedule
- Project Budget
- Contract Bid Forms
- Technical and Manufacturer's Data

During constructability reviews of engineering and architectural plans, potential problem areas are identified, which reduces conflicting design information, promotes a strong bidding process, decreases the need for construction change orders, and avoids potential claims during construction.

- Evaluate sequence of construction, cost estimates, milestones, schedule and impacts to transit operations.
- Ascertain that the project design can be built and uses cost effective standard methods common to the construction industry.
- Ensure conformance with requirements and other codes, standards and guidelines.
- Evaluate general notes and references to the standard drawings.
- Evaluate reasonable access and mobilization areas.
- Evaluate whether restraints have been adequately taken into consideration and/or eliminated, i.e., permits, real estate, utilities.
- Evaluate whether limits of work are defined, realistic and coordinated with adjacent and follow up on contractors, maintenance and relocation of utilities and available access windows for constructions.
- Evaluate completeness of plans and specifications and that all items of work are covered.
- Ensure that there is a measurement and payment for each element of the work.
- Determine if scheduling requirements are defined and adequate.
- Identify submittals needed and whether they are adequately documented.
- Identify the testing needed and the means and methods required for the tests.
- Determine if incentives and liquidated damages are clearly defined.
- Evaluate the clarity of the contract documents and whether there is a potential for misinterpretation and claims.

Past Projects

Urban Redevelopment Authority—South Side Marina

Provided construction management, civil engineering, and inspection services for a parking and drop off area in the 16th Ward of the City of Pittsburgh. The project site is located north of the intersection of South 27th Street and South Water Street within South Side Works site. The project involved grading, installation of storm drainage appurtenances, parking lot and bike trail paving, and landscaping, for drop off and temporary parking area for a proposed marina development. The project was kept on time and within budget.

Project Manager: Martin Kaminski P.E.

Urban Redevelopment Authority, Director, Engineering and Construction

412-255-6648

mkaminski@ura.org



City of Pittsburgh Spray Parks

Zell provided construction management, civil engineering and inspection for the Mellon, Warrington and East Hills Spray Parks. Zell was also responsible for coordinating contractors' bids, daily reports, monthly progress reports, concrete testing, and all submittals.

Project Manager: Mike Dillon

Pittsburgh Public Works, Manager of Construction

412-350-5877



Boat Launch and Recreational Facility

Zell provided civil engineering and design support services. Zell partnered with Martone Engineering and Surveying of Pittsburgh to complete the project on time and under budget.

Project Manager: Martone Engineering

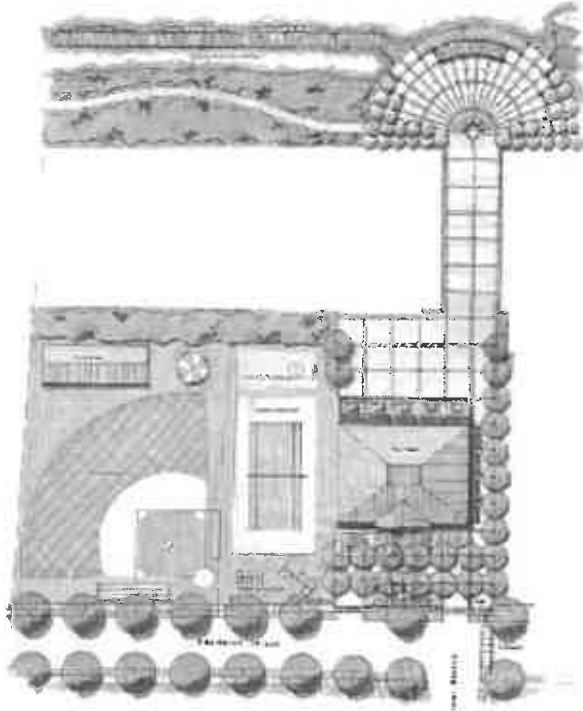
Dan Martone, P.E., P.L.S. 412-781-5908



Three Rivers Rowing Association Boat House—Sewickley, PA

Klavon Design Associates provided conceptual design for boat launch, facility upgrades and parking improvements.

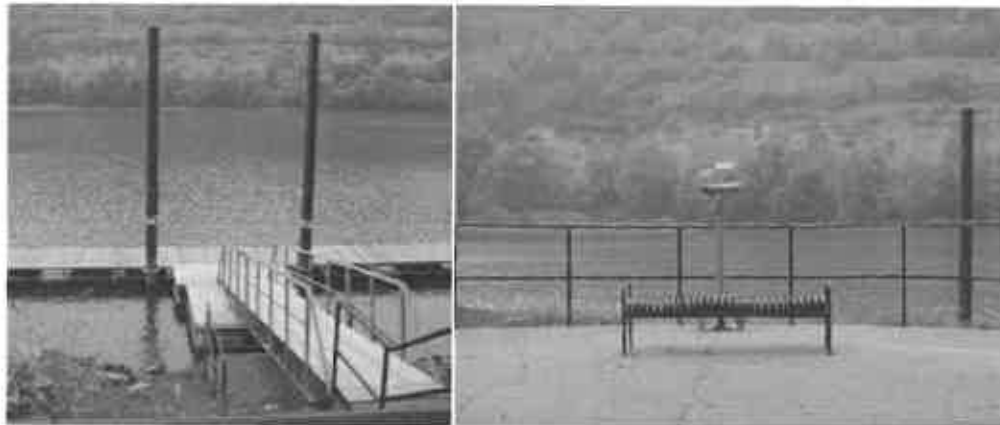
Project Manager: Jenn Grieb, Executive Director, 412-231-8772



Walnut Landing—Sewickley, PA

Klavon Design Associates provided schematic design, construction documents, bidding, construction administration and grant application preparation for boat launch area in the Borough of Sewickley.

Project Manager: Kevin Flannery, Borough of Sewickley, Borough Manager, 412-741-4015



Communication, Planning, and Budgeting

Zell ensures quality consistency across the organization and through the use of sub-contractors through an arduous process to ensure projects can be completed on time and on budget. This process is managed by our Project Manager, Gene Conrad. Zell conducts constructability reviews which at a minimum include reviews of:

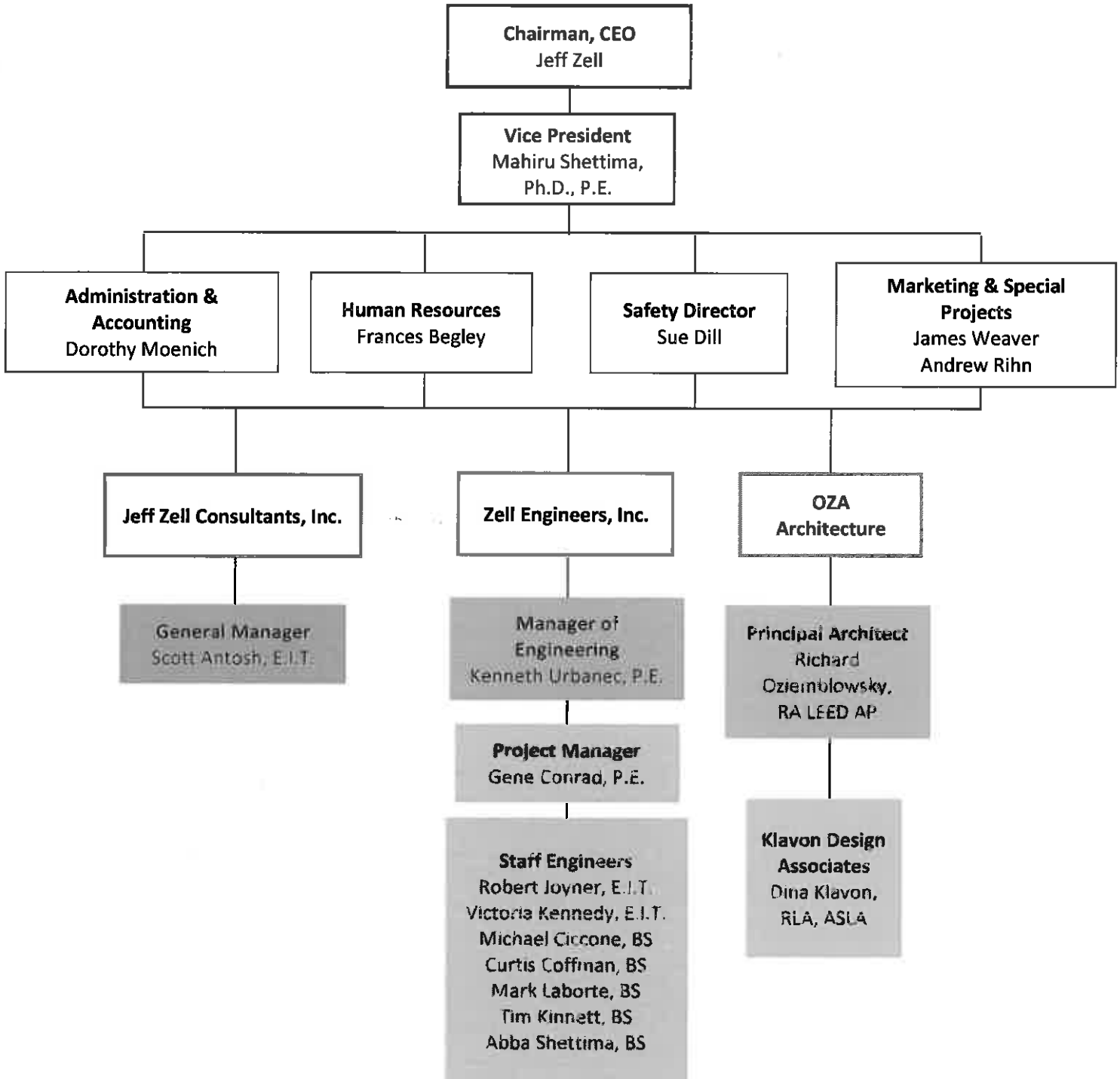
- Design Specifications
- Contract Drawings
- Terms and Conditions
- Engineers' Estimates
- Project Schedule
- Project Budget
- Contract Bid Forms
- Technical and Manufacturer's Data

During constructability reviews of engineering and architectural plans, potential problem areas are identified, which reduces conflicting design information, promotes a strong bidding process, decreases the need for construction change orders, and avoids potential claims during construction.

- Evaluate sequence of construction, cost estimates, milestones, schedule and impacts to transit operations.
- Ascertain that the project design can be built and uses cost effective standard methods common to the construction industry.
- Ensure conformance with requirements and other codes, standards and guidelines.
- Evaluate general notes and references to the standard drawings.
- Evaluate reasonable access and mobilization areas.
- Evaluate whether restraints have been adequately taken into consideration and/or eliminated, i.e., permits, real estate, utilities.
- Evaluate whether limits of work are defined, realistic and coordinated with adjacent and follow up on contractors, maintenance and relocation of utilities and available access windows for constructions.
- Evaluate completeness of plans and specifications and that all items of work are covered.
- Ensure that there is a measurement and payment for each element of the work.
- Determine if scheduling requirements are defined and adequate.
- Identify submittals needed and whether they are adequately documented.
- Identify the testing needed and the means and methods required for the tests.
- Determine if incentives and liquidated damages are clearly defined.
- Evaluate the clarity of the contract documents and whether there is a potential for misinterpretation and claims.
- Ensure that adequate information is being provided to the contractor.

Zell Group

Organizational Chart



FRANCIS EUGENE “GENE” CONRAD

Construction Project Manager

fconrad@zellengineers.com

412.288.9995 x.38

EXPERIENCE

Jeff Zell Consultants Inc., Pittsburgh, PA - *Project Manager*

2007 – Present

- Managed inspectors and oversaw the construction of bridge culverts, spray parks, and building roofing projects for Allegheny County Department of Public Works, several large spray parks for the City of Pittsburgh Department of Public Works, and renovation of apartment complex for Allegheny County Housing Authority.
- Managed inspectors and oversaw the demolition of a 7 story, 758 space, steel, concrete, and brick parking garage structure for City of Washington, PA/City Transit. Demolition included removal and disposal of asbestos-containing building materials.
- Participated in design reviews for construction of an Intermodal Transit Facility and Park-n-Ride Lot for City of Washington, PA.
- Project Manager for Pennsylvania Department of General Services Construction Contract 229-1, Phase 1, Property and Supply Building, and Phase 2, Headquarters Building, North Bethlehem Township, Washington County. Provided administrative and engineering oversight of design and construction activities.

Maguire/Trumbull Joint Venture - *Lead Inspector*

2007

- Provided inspection for excavation, backfill, foundations, drainage, pavement, building construction, and installation of toll collection equipment at PA Turnpike, Mainline Toll Plaza, 51N in Uniontown, PA.

Port Authority of Allegheny County - *Senior Engineer and Construction Manager*

1983 – 2007

- Managed over \$ 100 million in engineering design and construction projects. Responsible for maintaining budget and compliance with quality control and quality assurance procedures.
- Oversaw the comprehensive design and construction renovation of East Liberty and Ross Division Bus Garages and Vehicle Maintenance Facilities; \$ 19,500,000.00 and \$ 17,800,000.00, respectively.

Pullman-Swindell - *Design Engineer*

1980 – 1983

- Supervised draftsmen, performed roadway geometry calculations and relocated underground water and storm and sanitary sewer lines for the Reconstruction of Grant Street and Liberty Avenue, downtown Pittsburgh, PA.

Norfolk and Southern Railroad – *Assistant Track Repair Supervisor*

1978 – 1980

- Supervised and dispatched personnel, equipment and materials for scheduled track maintenance, new track construction and emergency track repairs.

PROFESSIONAL ENGINEER REGISTRATIONS

Pennsylvania - License [REDACTED], Exp. 9/30/15

PROFESSIONAL AFFILIATION

Current member, American Society of Highway Engineers

EDUCATION

Bucknell University, Lewisburg, PA – Bachelor of Science, Civil Engineering

VICTORIA KENNEDY, EIT

Staff Engineer, Intern Architect

vkennedy@zellengineers.com

412.288.9995

REGISTRATIONS and AFFILIATIONS

Engineer In Training(E.I.T)- PA

Intern Development Program-NCARB (3740 hours completed)

EXPERIENCE

Jeff Zell Consultants, Inc., Pittsburgh, PA –Staff Engineer and Intern Architect

2012-Present

Job duties included assisting engineers and architects on projects with assignments that entailed engineering calculations, production of construction documents, renderings for proposals and for projects, and development of the OZA website and marketing materials. Major projects included:

+Washington County, PA State Police “Troop B” Headquarters

2012

In charge of producing construction documents floor plans, elevations, and site civil drawings for a two story, 24,000 square foot facility that will accommodate administrative offices, vice and crime office suites, communication functions, criminal and evidence processing suites, a fitness room, locker rooms, and on site gas fueling station. I led the civil and architectural design of the fuel station. I assisted with the fuel stations specifications and structural calculations.

+Sewickley, Pa Tarasi Cottage Erosion and Sedimentation and Stormwater Management Plan

2013

In charge of producing a stormwater management and erosion and sedimentation control plan for a high-end residential townhouse development. Utilized stormwater best management practices for post construction stormwater maintenance that included rainwater harvesting tank. Produced hydrographs, runoff calculations, and channel design for final stormwater and erosion control plan.

+Pittsburgh, PA Fort Pitt Museum Window Condensation Mitigation

2014

Worked with manufacturers and heated glass specialist to design an innovative, green, solution to combat severe window condensation on second level of Fort Pitt Museum. In charge of producing construction documents and assisted with specifications.

Virginia Tech – Graduate Assistant

2011-2012

- Edited and catalogued architectural drawings for Luna Database
- Member of Discovery Redesign Team for Newman Library renovations
- SAFAS Research; a structural program that analyzes hollow tube structures
- 2011 Summer Graduate Assistant for Concrete Structures Class

STPCx Commissioning-Technical Intern/ Marketing Researcher

2010

- Developed Media/ Marketing Plan which included design of website and other company media
- Reviewed construction documents for proper HVAC and Control checks
- Prepared building commissioning reports

PWSA: Pittsburgh Water and Sewer- GIS Intern

2009

- Attended job conferences
- Edited and updated potable water system maps for the city of Pittsburgh

DCNR: Facilities Design and Construction-Engineering/ Architectural Intern

2007

- Site surveys and site plans
- Completed design drawings for Ridley Creek Park historic roof restoration
- Completed Energy Star case study for Pennsylvania’s Park facilities

EDUCATION

Virginia Tech, Blacksburg, VA

Masters of Architecture

University of Pittsburgh, Pittsburgh, PA

Bachelor of Science in Civil Engineering

Concentration: Structural Engineering

University of Pittsburgh, Pittsburgh, PA

Bachelor of Arts in Architectural Studies

MAHIRU SHETTIMA, Ph.D, PE

Vice President

mshettima@zellengineers.com

412.288.9995 ex. 26

PROFESSIONAL ENGINEER REGISTRATIONS and AFFILIATIONS

Registered Professional Engineer, Civil/Sanitary Engineering

Commonwealth of Pennsylvania (██████████)

- Member of American Society of Civil Engineers (ASCE)
- Member of American Society of Highway Engineers
- Member of American Society for Testing and Materials

EXPERIENCE

Jeff Zell Consultants, Inc., Pittsburgh, PA – Vice President and Chief Engineer 2011-Present
Chief Engineer 2006-2011

- Extensive experience with engineering and design of geotechnical structures and components, geotechnical evaluations and reports.
- Served as Project Manager and Design Engineer for the Presque Isle Downs Racetrack & Casino, in Erie, PA. Reviewed geotechnical reports, Hydrologic reports and prepared remedial designs to alleviate chronic moisture problems; monitored construction did not impact environmentally sensitive areas; reviewed building foundation designs and proposed safer alternatives which were adopted. Monitored and managed the construction of the first synthetic-surface thoroughbred racetrack in the U.S.
- Extensive experience with laboratory testing, and inspection services, including soil and concrete testing, and third party QA/QC monitoring.
- Director of Construction Materials Inspection & Testing school owned by Jeff Zell Consultants.

Ecology and Infrastructure Engineering, Inc. - Chief Engineer and Consultant 1998 – 2006

- Principal and Chief Engineer responsible for corporate development and client relations.

J&L Engineering, Inc., J&L Testing Company, Inc. 1990 – 1998

Project Analyst, Project Manager and Manager of Engineering

- Projects included setting up Geotechnical quality control testing laboratory at three Chemical Waste Management (CWM) Facilities in New York, New Jersey and Illinois. Tasks performed included training CWM personnel to run the laboratory and providing continuous consulting services to and on behalf of the client.
- Technical consultant and principle Geotechnical engineer responsible for complete analysis, interpretation and evaluation of site Geotechnical and hydrogeology data leading to the development of several landfill and landfill closure caps for major waste management group.

University of Pittsburgh – Research and Teaching Fellow 1986 – 1990

- Instructed computer methods in Engineering.
- Conducted National Science Foundation Sponsored Research on Fracture Mechanics

EDUCATION

University of Pittsburgh, Pittsburgh, PA

Doctor of Philosophy
Major: Geotechnical Engineering, Minor: Mechanical Engineering
Master of Science in Civil Engineering
Major: Structural Engineering
Bachelor of Science in Engineering

University of Pittsburgh, Pittsburgh, PA

University of Pittsburgh, Pittsburgh, PA

KENNETH A. URBANEC, PE

Manager of Engineering

kurbanec@zellengineers.com

412.288.9995 ex. 25

PROFESSIONAL ENGINEER REGISTRATIONS and CERTIFICATIONS

Pennsylvania - License [REDACTED], Exp. 9/30/2013

West Virginia - License [REDACTED] Exp. 6/30/2013

Ohio - License [REDACTED] Exp. 12/31/2013

Certified in Construction Quality Assurance and Inspection

Certified in Radiation Safety Training Course

EXPERIENCE

Jeff Zell Consultants, Coraopolis, PA - *Manager of Engineering* March 2001 - Present

- Performs engineering inspections on high profile or complex jobs involving new buildings, building improvements and site development work.
- Construction Engineering experience includes work on projects with McGuffey School District, North Hills School District, Ambridge Area School District. Provides oversight, monitoring and supervision of inspection staff and QA/QC staff. Technical advisor for owner and owner's representative.
- Worked as a Special Inspector for Cambria Suites Hotel, Hampton Inn and the Grant Street Transportation Center, City of Pittsburgh. Performed building inspection, verified compliance to International Building Code for City of Pittsburgh, responsible for project compliance reports to Pittsburgh Bureau of Building Inspection.
- Experienced in drafting bids, proposals and reports in accordance with company standards and tailored to meet client requirements. Troubleshoot field and lab questions for clients and company to resolve major and minor problems or questions related to work the company is currently or has previously been involved with, as well as handle operational and procedural problems.
- Experience as QA Manager. Responsible for developing and carrying out quality control programs to meet required quality standards. Responsible for reviewing completed paperwork prior to the generation of a formal report by the Administrative Staff before it is distributed to the client.
- Allegheny County Construction Engineering Services - *Prime Project Manager* - Responsible for oversight of supplemental engineering, construction management, value-engineering, testing, inspection services, scheduling, meetings, and cost control. Direct liaison to the Allegheny County Department of Public Works.
- PA Turnpike, Western Mainline, Somerset, PA - *Manager of Engineering* - Performed engineering inspections on high profile and complex jobs involving all phases of engineering. Performed geotechnical consulting and end engineering inspection of structural work.
- Experience in Subsurface Investigation and Development Of Geotechnical Investigation; Analysis & Design for Soils Stabilization; and analysis Of Existing Roadway & Design For Full Depth Cold-In-Place Base Reclamation

Ecology & Infrastructure Engineering, Inc. - *Principal*

Prepared proposals for potential contract work, record corporate accounting transactions, act as client liaison, conduct field investigations, perform geotechnical engineering analysis, prepare and present client reports.

J&L Engineering, Inc./J&L Testing Company, Inc. - *Project Manager and Geotechnical Engineer*

Trained and reviewed project staff, established guidelines, coordinated subcontract work and prepared client progress reports. Experienced with all aspects of geo-synthetic field and laboratory performance and index testing.

EDUCATION

- **University of Pittsburgh, Pittsburgh, PA** B.S.E. Civil Engineering, Advanced studies in the area of Foundation Engineering, Environmental Impact Assessment, Structural Design, and Open Channel Hydraulics.
- **Duquesne University, Pittsburgh, PA** B.S. Biology, Advanced studies in the areas of Chemistry, Ecology and Plant Physiology.

RICHARD OZIEMBLOWSKY, RA LEED AP

Architect roziemblowsky@ozaarchitecture.com

412.288.9995 x.42

Registered Architect in Pennsylvania and The District of Columbia (dormant)

EXPERIENCE

Jeff Zell Consultants Inc., Pittsburgh PA - Architect

2012 – Present

- **Pennsylvania State Police Troop B Headquarters Facility, project**
Rural environs near Washington, PA

JSA Architects, Inc., Pittsburgh PA – Director of Architecture

2000 – 2011

Pennsylvania Turnpike Maintenance Facility, Mon-Valley Expressway

- **Pennsylvania Turnpike PA State Police Barracks, Mon-Valley Expressway**
Master Builders 2006 Building Excellence Award
- **University of Pittsburgh, Undergraduate School of Business Building**
University's first building of sustainable design
- **Wildlife for Everyone Research and Education Building, State College, PA**
Project, LEED Silver Building design
- **St. Gabriel's (Sisters of the Holy Family) Master Plan, New Orleans, LA**
Post Katrina Master Plan of over 200 acres
- **South Side Works, Pittsburgh, PA**
Retail and Office Block, as well as Master Planning
- **Washington Federal Bank, McMurray, PA, LEED Silver Design**
- **LA/Fitness, Robinson Township, PA**
2010 Associated Builders and Contractors Award of Merit
- **Falling Run Master Plan, project, Mixed-use Development, Morgantown, WV**
- **WCCC Emergency Medical Training Campus, Smithton, PA**
- **Palisades Park Land Development Plan, Pittsburgh, PA**

JSA Architects, Inc., Pittsburgh PA – Design Architect

1998 – 2000

- **DDI Advanced Learning Center, Bridgeville, PA**
- **National City Bank Regional Headquarters, Pittsburgh, PA**
- **Centimark Corporate Headquarters, Washington, PA**
- **Grant Building Lobby Renovation, Pittsburgh, PA**
- **Federated Department Stores, Lord and Taylor; various national locations**

JSA Architects, Inc., Pittsburgh PA – Architect

1993 – 1998

HLSFW Architects, Pittsburgh PA – Architect

1989 – 1998

- **K-12 Design, various locations**

Arthur Cotton Moore, PC, Georgetown, DC – Intern Architect

- **Washington Harbour, Mixed-use Development, Georgetown, DC**
- **Library of Congress, Thomas Jefferson Building Renovation**
Washington, DC, AIA DC chapter design honor award
- **Foxhall Crescents, Residential AIA DC chapter honor award**

EDUCATION

Virginia Polytechnic Institute and State University

Master of Architecture

University of Pittsburgh

BA, Architecture and Fine Arts

Dina Cole Klavon, RLA, ASLA
Principal

Education

Pennsylvania State University--Bachelors of Science Landscape Architecture, 1982

Registration

Registered Landscape Architect, Pennsylvania, 1993

Experience

Dina's years of experience has encompassed many areas of landscape architecture including master planning, site planning, and urban design with emphasis in design, project management, and client relationships. She has worked with both public and private clients. Klavon Design Associates, Inc. offers the flexibility and responsiveness of a small firm, combined with the major project experience that comes with a large firm background.

Klavon Design Associates, Inc.
Pittsburgh, Pennsylvania

Selected Projects 1996 - Present

- **Carnegie Mellon University, Art Park, Pittsburgh, Pennsylvania**
- **Carnegie Mellon University, Legacy Plaza, Pittsburgh, Pennsylvania.**
- **Carnegie Mellon University, Margaret Morrison Reflection Garden, Pittsburgh, Pennsylvania.**
- **City of Pittsburgh Department of City Planning, Market Square, Pittsburgh, Pennsylvania.**
- **Lock Haven University Clearfield Campus, New Education Building, Clearfield, Pennsylvania.**
- **Alcosan Customer Service Training Center, Pittsburgh, Pennsylvania.**
- **Allegheny County Cumberland Community Center, Cumberland, Maryland.**
- **Pittsburgh Downtown Partnership, Strawberry Way, Pittsburgh, Pennsylvania.**
- **Pittsburgh Green Innovators, Energy Innovation Center, Pittsburgh, Pennsylvania.**
- **Pittsburgh Parking Authority, First Avenue Parking Garage, Pittsburgh, Pennsylvania.**
- **Sports & Exhibition Authority of Pittsburgh, CONSOL Energy Center, Pittsburgh, Pennsylvania.**
- **United States Navy, NAVFAC Washington, Armed Forces Radiobiology Research Institute, Bethesda, Maryland.**
- **University of Pittsburgh – Greensburg Campus, Sustainable Office and Classroom Building. Greensburg, Pennsylvania.**
- **University of Pittsburgh, Posvar Hall, Pittsburgh, Pennsylvania.**
- **University of Pittsburgh, Salk Hall Addition, Pittsburgh, Pennsylvania.**

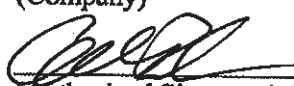
Professional Development

- **City of Pittsburgh, Art Commissioner, Chair, 2007 – 2013**
- **Pennsylvania State University, Alumni Affiliate Group, Department of Landscape Architecture, Board Member, Past-President, 2002 - 2010**
- **Riverlife Task Force, Urban Design Committee - Public Arts Committee, Board Member, 2003 – 2006**
- **Powerlink, Alumni Advisory Group, 2004 – 2005**
- **Community Design Center of Pittsburgh, Board Member, 1997 - 1998**

CERTIFICATION AND SIGNATURE PAGE

By signing below, or submitting documentation through wvOASIS, I certify that I have reviewed this Solicitation in its entirety; that I understand the requirements, terms and conditions, and other information contained herein; that this bid, offer or proposal constitutes an offer to the State that cannot be unilaterally withdrawn; that the product or service proposed meets the mandatory requirements contained in the Solicitation for that product or service, unless otherwise stated herein; that the Vendor accepts the terms and conditions contained in the Solicitation, unless otherwise stated herein; that I am submitting this bid, offer or proposal for review and consideration; that I am authorized by the vendor to execute and submit this bid, offer, or proposal, or any documents related thereto on vendor's behalf; that I am authorized to bind the vendor in a contractual relationship; and that to the best of my knowledge, the vendor has properly registered with any State agency that may require registration.

JEFF ZELL CONSULTANTS
(Company)

 ANDREW RINN, SALES & MARKETING EXECUTIVE
(Authorized Signature) (Representative Name, Title)

412-288-9995 412-288-9930 12-2-2015
(Phone Number) (Fax Number) (Date)