

November 10, 2015

EXPRESSION OF INTEREST

Architectural & Engineering Services - DNR1600000003



STATE of WEST VIRGINIA
DIVISION of NATURAL RESOURCES

11/10/15 09:49:18
Purchasing Division

Chief Logan Cabins and Picnic Shelters (statewide)



Letter of Transmittal

11/9/2015

TO: Department of Administration, Purchasing Division
 2019 Washington Street East
 Charleston, WV 25305

Project:
 Cabins & Picnic Shelters

Atten: Guy Nisbet, Buyer Supervisor

Sending Via:
 UPS

Subj: Qualifications

CODE LEGEND	<input type="checkbox"/> 1. For payment	<input type="checkbox"/> 4. For your signature	<input type="checkbox"/> 7. Send 1 to Contractor
	<input checked="" type="checkbox"/> 2. For your review	<input type="checkbox"/> 5. As requested	<input type="checkbox"/> 8. Return 1 to ETB
	<input type="checkbox"/> 3. For your files/use	<input type="checkbox"/> 6. Owner keeps 1	<input type="checkbox"/> 9. Office Copy

# of copies	DATE	DESCRIPTION	CODE
4		Statement of Qualifications	2

REMARKS:

Thank you for this opportunity and we look forward to hearing from you.

Signed: Todd Boggess, AIA, NCARB, Architect



Guy Nisbet, Buyer Supervisor
Department of Administration, Purchasing Division
2019 Washington Street East
Charleston, WV 25305-0130

November 10, 2015

Dear Mr. Nisbet:

In response to your qualifications request for the professional Architectural and Engineering Design services, the E.T. Boggess, Architect, Inc. team is pleased to submit information regarding our experience. We will assist you with design and construction of new cabins at Chief Logan and new picnic shelters at various state park locations. Our team will work with the WV DNR and the local park representatives to ensure that everyone's vision for the projects is achieved. Our team offers a wide range of professional services, including:

- Architectural Design Services for the State of WV
- Site Evaluation and Analysis
- Electrical/Plumbing/HVAC Engineering
- Civil/Site Engineering
- Construction Administration

I will be your architect and will be the person-in-charge for all aspects of the project. Our team is very familiar with the services provided at our state parks and the importance of meeting the needs of the people who visit them each year. We understand and appreciate the challenges that the DNR faces and believe we offer the service, knowledge and experience you will need to successfully accomplish all the proposed projects with as little disruption to the daily operations of each state park as possible.

ETB emphasizes a client-centered design approach, incorporating mutually defined project objectives. Through this focus, we can assure the State of West Virginia and the WV DNR that needs and project issues will be clearly identified and addressed through an engaged, interactive programming, design, and construction process. Our design process will be conducted with an attention to detail, creative problem solving and with a passion towards project success.

We value this opportunity to serve you and look forward to personally presenting our credentials.

Sincerely,

A handwritten signature in black ink, appearing to read 'Todd Boggess', is written over a light grey rectangular background.

Todd Boggess, AIA, NCARB, Architect
President

Cover Letter

Qualifications & Methods – 1

Scope of Services – 2

Firm Profiles – 3

Projects / Prior Experience – 4

Management & Staffing Capabilities – 5

West Virginia Forms – 6

INTRODUCTION

Our state park system is a wonderful example of capitalizing on a unique opportunity – our state's natural beauty. Whether enjoyed by local residents or visitors from all across the country, our state parks showcase everything that is great about our state. The tourism industry is vital to our state's economy and West Virginia has a number of venues that continue to attract individuals who appreciate everything the great outdoors has to offer.

ETB has a great deal of experience with government and recreational facilities of all sizes and scopes. We have provided and continue to provide various state agencies, including the WVDOH, with a variety of services. Over the years, we have accomplished several projects for the WVDNR including the following at Pipestem State Park:

- ✓ Conference Center Addition
- ✓ Kitchen Renovations
- ✓ Connecting Walkway
- ✓ Picnic Shelters
- ✓ Clubhouse Deck
- ✓ Golf Course Toilets

We have also worked on tourism and recreational public and private projects and were fortunate to design facilities for The Summit Bechtel Family National Scout Reserve. ETB has also worked with the Hatfield/McCoy Regional Trail Authority and private developers along the ATV trail on various projects that will help continue to attract users from across the country by providing lodging and cabins for their comfort, hopefully, extending their stay. We understand the impact small improvements can make and the importance of creating a pleasant experience for our citizens and those who choose to visit with us.

The E.T. Boggess, Architect, Inc., team understands the challenges facing state agencies as you strive to improve the recreational activities that attract tourists to our state. Our team's familiarity with various aspects of the recreation and tourism facilities, as well as the relationships we have established throughout our state, makes us uniquely qualified to design the new cabins and picnic shelters for the Department of Natural Resources.

Architect:	E. T. Boggess Architect, Inc. 101 Rockledge Avenue Princeton, WV 24740 304-425-4491
Mechanical Engineer:	Harper Engineering, pllc 52 B Street St. Albans, WV 25177 304-722-3602
Structural Engineer:	Stafford Consultants, Inc. PO Box 5849 Princeton, WV 24740 304-425-9555
Site/Civil Engineer:	Terradon Corporation PO Box 519 Nitro, WV 25143 304-755-8291

PHILOSOPHY

Communication, collaboration, and consensus are the three elements we feel are essential to the planning, design and building process. The architect is responsible for the finished product, but the design process must include guidance and review by you and representatives from the various agencies. Our goal is to develop a “*partnership*” with our clients – a relationship that includes a long-term commitment, trust, and shared vision.

ETB believes architectural design should be an *interactive process*. We work closely with you to identify and define all your project goals, objectives, functions, responsibilities, and relationships. This interactive approach enables us to develop facilities that meet your requirements, as well as being aesthetically distinctive. Design cannot be mass produced or provided in a “cookie cutter” fashion, it must be developed from scratch with the unique attributes of each individual project in mind. Our approach is not only about our ideas . . . it is about *you and your ideas*. We strive to help you realize your dreams.

METHOD for MEETING GOALS

The Integrated Design Process is our process of design in which the owners, users and the ETB team (architects and engineers) are all integral team members. This integrated process and the implementation of high performance design requires both efficiency and innovation. In our role with this team as the design leader and project organizer, ETB will be responsible for coordinating and orchestrating the work of our in-house architects with the site/civil engineers and users involved throughout the design, documentation, and administrative functions of the project.

Utilizing the interactive design approach will best serve the needs of the WV DNR by allowing us to better identify your objectives and produce long-term solutions. Your project will be completed by emphasizing the following activities:

- **Understanding goals.** We develop a plan for identifying and prioritizing individual goals as a means for addressing the overall project.
- **Brainstorming ideas.** We investigate opportunities for greater service through value engineering, strategic partnering, or an alternative delivery method.
- **Assuring timelines.** We generate a management plan to fulfill deliverables and meet milestones on schedule. All team members participate in and monitor this plan.
- **Maintaining client contact.** We are accessible, convenient, and committed to success from the beginning through the design process, and after completion.
- **Inviting performance feedback.** We involve all team members and clients in project evaluation at closeout and determine how well time, cost, and design goals were met.

Project Management – Our project managers provide extraordinary leadership managing the team dynamics, budget, schedule, and the flow of information. The project manager’s role also includes assisting the client with the management of services and consultants that may not be a part of this contract, but still may have an impact on workflow and infrastructure coordination. The effective implementation of your goals and objectives will be realized thru early and consistent collaboration among all the design disciplines. This will result in opportunities and challenges being discussed and addressed as we proceed thru the design process.

Cost Management - We believe that the management of cost and/or risk begins with the development of fully vetted alternatives which enable you to make informed choices about the project. We search for simple and effective solutions which support the different services provided by our state parks. We also believe that the evaluation of cost must extend beyond the cost of construction, and consider the costs of operations, human resources, energy and sustainability.

Project Schedule Management - Completing projects on time requires effective schedule management and a commitment of the entire project team. The process begins with the development of the project schedule with input from each stakeholder engaged in the process. Accelerated schedules require even more dedication to benchmarks and deadlines, identifying production problems early and making the necessary adjustments before issues become too great to be effectively managed.

Project coordination is ETB's responsibility. As a service to the client and for the sake of efficiency, we create an online (secured and password protected) website for each project which functions as a project and information management tool. The site gives the project team direct access to project information, including design plans, imagery, construction documents, submittals, logs, field reports, and meeting minutes. This method has proven very successful by keeping the client and the team members well informed and insuring that the latest information is always readily available. This has been a valuable tool to further ensure quality control/assurance standards are being maintained.

Quality Assurance - We feel quality assurance is the ability of an architect to provide the client with a set of documents that satisfies the client's needs and are as accurate as possible. ETB believes quality assurance is an ongoing process, not just a one-time occurrence. No project is perfect, however, we strive to achieve maximum client satisfaction. To that end, we have set the following goals for ourselves:

- Promote teamwork
 - within the office
 - with outside consultants
 - with end-users of the building
 - with representatives from the State of WV and DNR
 - with representatives from the individual state parks
- Quality management throughout entire project – *Website*
- Prompt response to client's requests – *Availability*
- Creation of quality construction documents – *Purpose Driven*
- Error prevention, not error catching – *Standard Practices*
- Personal pride in our work - *Motivation*
- Education and Training in-house (staff mentoring) – *Continuing Education*
- Go the extra mile whenever necessary – *Service Oriented*

Quality Control - Quality control starts with matching expectations about quality standards and life cycle costs with budget and scope during planning and design reviews. This continues through construction delivery with a program of inspections, tests, and certifications that are typically handled through a third-party agency. Quality control should flow seamlessly from one phase to another. The "partnership" we develop during the project assists us in maintaining a high level quality control standard with everyone working together in the project's best interest. We strive to coordinate performance among the entire project team in order for a completed building program to fully satisfy your needs and expectations. The quality control plan we follow should help eliminate errors, reduce cost and improve overall building quality. ETB normally follows the plan as outlined below:

- Keep the lines of communication open and consistent between all team members
 - Regular/scheduled project meetings
- Share lessons learned from recent similar projects, include value engineering
 - Up-to-date detailing
- In-house reviews to address issues with constructability and budget restraints
- Utilize past experiences related to construction administration
 - Address before issue or occurrence
- Provide post construction administration services to be utilized on future projects
 - Every project or opportunity can be a learning experience for continued growth to better serve clients

Our team will do everything within our power to ensure the project stays within budget and on schedule. We will work with the general contractor to provide him with the information he needs as quickly as possible in order to ensure our actions do not delay the project. However, there are circumstances that are beyond our control, especially with regards to the weather. Renovation projects also have the potential for unforeseen problems that will need to be addressed. As mentioned earlier, the key to addressing problems during construction will be **communication, collaboration, and consensus.**

SERVICES

Because of our location and the unique needs of our region, our team has to be able to service all types and all scales of project types. We understand that the DNR requires the scope of services as described in this section with regards to the design of three cabins near Chief Logan Lodge and several large picnic shelters at various locations throughout the state. The specific project goals and objectives are as follows:

- ✓ Review existing documentation and operation of the parks
- ✓ Communicate effectively with owner and representatives
- ✓ Provide as little disruption to ongoing activities as possible
- ✓ Construction design in accordance with all State, Federal and Local Regulations, as well as being consistent with the Division of Natural Resources needs and objectives
- ✓ Plan and execute the project within the project budget
- ✓ Preparation of bidding and contracting documents
- ✓ Participation in the evaluation of bids received
- ✓ Monitoring and inspection of construction activities on a periodic basis to ensure project is constructed and functions as designed

Schematic Design Phase

The schematic design documents will establish the general scope and conceptual design of your project, and the scale and relationships of the building components. The main goal of this phase is to arrive at a clearly defined, feasible concept and to present it in a form that will result in your understanding and acceptance.

You will have the following items to review at the end of this phase:

- Preliminary Building Plan with elevations or space adjacency studies
- Perspective Sketches
- Preliminary Cost Estimates

Design Development Phase

Services in the design development phase strive to achieve the refinement and coordination necessary for a polished work of architecture. Here decisions made in schematic design are worked out at a more detailed level to minimize the possibility of major modifications being needed during the development of construction documents.

Your design team arrives at a clear, coordinated description of all aspects of the design, including

- Site/Civil
- Architectural
- Structural
- Mechanical
- Electrical
- Plumbing

- Fire Protection Systems
- Technology & Special Systems

At the conclusion of the DD phase, project design imagery can be generated for overall approval of project parameters.

Final Design Phase / Construction Document Phase

Construction documentation is the bridge between building design and physical building form. A key element of documentation services, construction drawings provide the instructions for transforming the design solution into brick, mortar, landscapes, access, etc. The purpose of providing construction document drawings is to provide graphic documentation for bidding and execution of construction services.

Services/tasks include . . .

- Prepare construction drawings based on approved design development drawings.
- Coordinate and incorporate drawings from all team members.
- Prepare specifications to accompany drawings to establish a desired level of performance.
- Submit documents to building code officials.
- Prepare bid packages/documents (blueprints and manuals)

Bidding Phase

Construction procurement activities assist the client in obtaining competent construction services. Our team will prepare bid packages or request for proposals/qualifications, and we will support the selection, negotiation, and contract award processes.

Services/tasks include . . .

- Assist client in selection of project delivery method.
- Organize or participate in pre-bid conference.
- Distribute bidding documents (blueprints and manuals)
- Address questions submitted by bidders.
- Review and evaluate competitive bids.
- Award contract for construction.

Construction Phase / Contract Administration Services

Contract administration services are important in order to ensure construction conforms to construction documents; to support the design intent; to lessen project risks; to identify and resolve construction problems early; and assist you in understanding the construction process. The architect, serving as a construction administrator, observes construction for conformity to construction drawings and specifications.

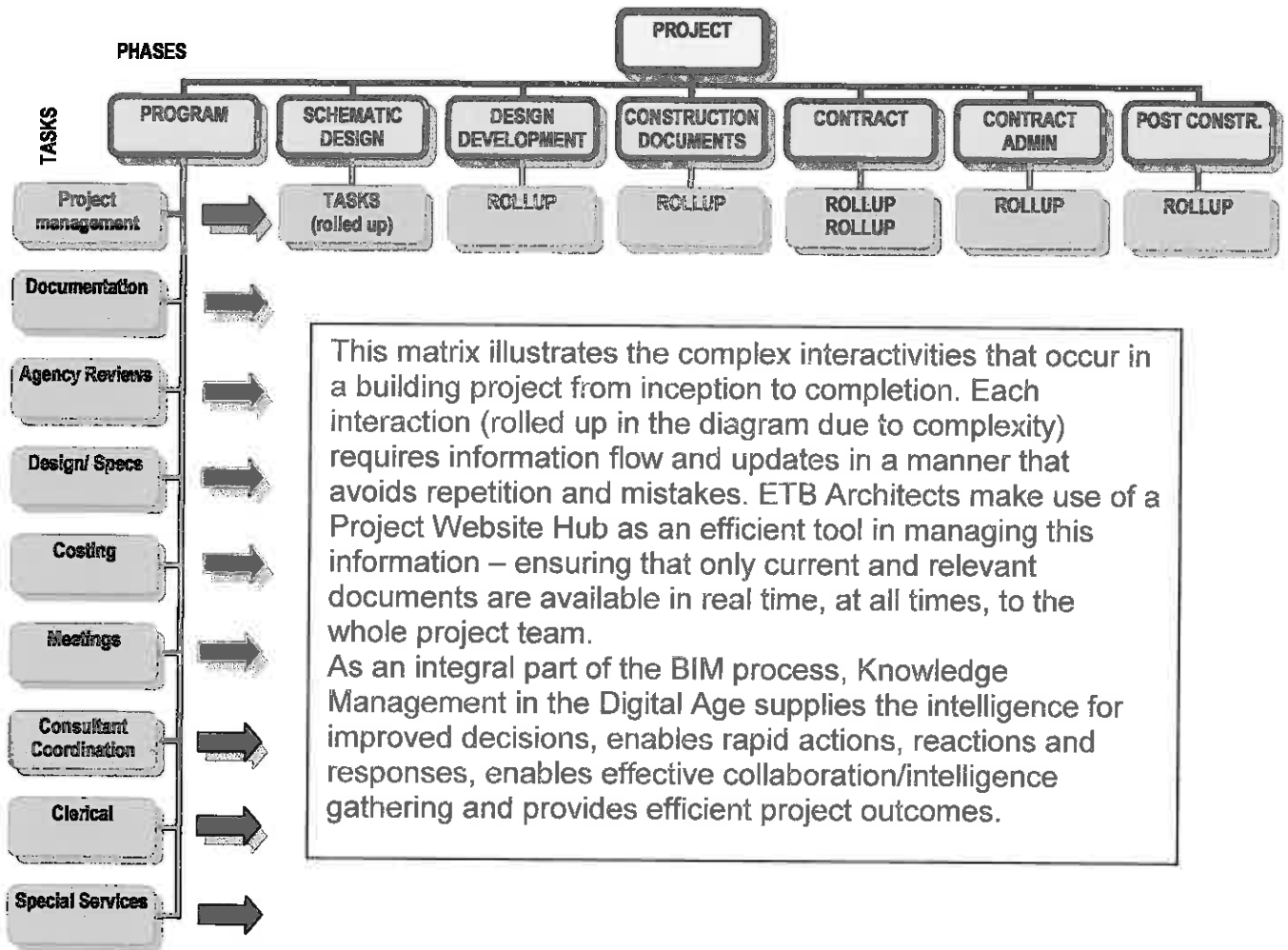
Services/tasks included . . .

- Establish lines of communication.
- Coordinate the pre-construction meeting.
- Maintain and distribute paperwork/records, including final project manuals and prints.
- Respond to contractor's requests for information.

- Track changes in construction documents.
- Review contractor's requests for payment.
- Review shop drawings and product information.
- Prepare field reports and records.
- Supervise completion and closeout, including preparation of punch list.
- Assist with any post-occupancy issues.

During the construction phase, we will be at the site on a regular basis and will be available by phone to answer any of your contractor's questions. We review shop drawings/submittals, and pay requests from the contractor. We want to ensure the construction is in compliance with the design intent.

Once the doors open and you occupy the building, we will remain available to assist you with start-up questions, "fine tuning and balancing" of systems required to make sure the new cabins and picnic shelters satisfy the needs of the WV DNR.



HISTORY

E. T. Boggess Architect, Inc. is a 11 person architectural firm located in Princeton, West Virginia. Our firm was established in 1966 by Ted Boggess and has been successful because of a team approach and partnership-type attitude with all involved in the design and construction process. Having grown up in the practice and with a life-long love of architecture, Todd became a full time presence with the firm in 1988 after receiving a Masters in Architecture from Clemson University. Their unique relationship as father/son/mentor/apprentice and, now, partners is both exciting and rewarding as the practice continues to flourish and evolve.

REPUTATION

Our firm lives or dies by its reputation. We work for "Pride in Product" and are confirmed by the amount of repeat business we can truthfully claim.

The architects at ETB are well-respected for their high ethical standards, as well as professional and civic activities. They have been asked to serve as expert witnesses and arbitrators in legal disputes. They have also been selected to serve on various local, state and national committees. These committees cover areas from determining local zoning ordinances to reviewing and developing educational requirements for future architects, to preserving West Virginia's historic architecture. Todd has recently been appointed to the WV Board of Architects by Governor Tomblin. The Board of Architects protects the life, health, and property of the people of the State of West Virginia by ensuring that proper architecture practices are used in the state.

ATTITUDE

Bigger is not always better. ETB has purposely controlled size in order to maintain personal involvement and quality control. We feel that it is important to maintain close client contact and availability to respond to your needs and address any situations that may arise. Your project will not get lost in the shuffle. We are, however, of sufficient size and capabilities to accommodate the needs of your project, as well as ensuring the successful completion of our current workload. The depth of our personnel is such that we can assign individuals to the appropriate task during each phase to ensure all your project's needs are satisfied.

TEAMWORK

Our projects and design services are dependent on both our abilities as architects and our commitment to perform and implement a set of standards in order to create a design that responds to the needs of our client. In house, ETB actually functions as a team of consultants with individual strengths and abilities emphasized by each employee's role within the team. In addition to being a strong design oriented firm, we offer expertise in communication and information management, construction documentation, construction administration, and quality control.

Throughout West Virginia, we have developed relationships with government agencies, contractors and material suppliers which will be valuable as we address the challenges associated with this project. ETB has worked with many of the code officials, including the state fire marshal, and consider them an extension of our team, another member who is concerned about the final design. We review our designs with the State Fire Marshal's Office in Charleston at regular intervals during the design process, as well as on-site inspections during construction.

EXPERIENCE

Over the past 49 years, ETB has accomplished many different types of buildings in 12 different states and 1 foreign country. We have not limited ourselves by focusing on one particular type of project or a single location. Instead, we choose to maintain a diverse practice which allows us to begin each project with renewed enthusiasm. Our strength is in the delivery of appropriate and analytical solutions for complex buildings and doing so within restricted budgets and time constraints.

ETB was one of the first architectural firms in the state to implement the use of computer-aided design and drafting into the everyday practice of architecture almost thirty years ago. Today we continue to lead the industry as we utilize photorealistic imagery through computer modeling and digital photography. The building 3-D model and associated imagery can be developed early in the design process for your presentations. This helps everyone better understand design approaches and project contextual relationships within a setting.

Since 2007, the majority of ETB's projects have revolved around all types of recreational, educational and governmental facilities, including multiple projects for the WVARNG, WVDOH, WV Higher Education Policy Commission and the WV Community & Technical College System. These projects have included site evaluation and selection, new construction and renovation design services.

Similar project types that ETB has designed include the following:

CABINS

Cabins for KOA Campground
Cabins for multiple ATV Developments
Creekside Villas at Snowshoe (Renovations)

HOUSING

Best Western Hotel
Camelback – A Private Residence

PICNIC SHELTERS

Pipestem State Park Picnic Shelters
Gazebo at Concord University
WV Tourist Information Center with Picnic/Rest Area

RECREATIONAL

Pipestem State Park Conference Center (Addition)
WV Tourist Information Center for the WV Parkways Authority
Bathhouses at Summit Bechtel Family National Scout Reserve

Harper Engineering,pllc

52 B Street
St. Albans, WV 25177
Office: 304.722.3602 Fax: 304.722.3603

Harper Engineering, pllc was founded in 2008 to provide innovative engineering design services to architects, owners and contractors throughout the state. We are a unique combination of eager young talent and proven experience fused together to serve all of your building systems design needs including HVAC, Plumbing, Lighting, Electrical, Fire Alarm and Sprinkler Suppression systems.

Our goal is to design optimized systems that meet all of our client's performance, energy use, and budgetary needs. The staff at Harper Engineering has a combined 85 years of experience working with clients in a variety of fields including but not limited to K-12 Schools, hospitals, offices, airports, manufacturing, and water treatment plants.

Services:

HVAC Design

- Heating and Cooling load calculations
- Ductwork sizing
- Hydronic pipe sizing
- Equipment selection

Electrical Design

- Electrical load calculations
- Panel and switch gear selection
- Lighting
- Fire alarm
- Site Utilities
- Emergency Generators
- Security and communications

Plumbing Design

- Pipe Sizing
- Fixture Selection
- Sprinkler design
- Site Utilities

Drafting

- Specifications
- Project Management
- Construction Documents



Stafford Consultants, Inc. Profile

Stafford Consultants Inc. was formed in 1985 from a core group of employees of Gates Engineering Company. After many successful years of operation, Gates Engineering Company was bought by a large design / build firm that later decided to divest the consulting engineering firm. Two original partners and five other employees remain with the firm since its inception.

Currently, Stafford Consultants employs a total staff of sixteen, including four registered professional engineers. Our high ratio of professional to total employees is indicative of the importance we place on providing professional service to our clients. Mr. Edward L. Shutt, P.E. now serves as president of the firm.

Our firm is a full service Engineering firm that provides services in Civil, Structural, Highway, Bridge, Airport, Environmental, and Sanitary Engineering. We have been providing engineering services for water, sewer and general civil projects for more than twenty-seven years. Although our main emphasis is toward the municipal utility market, our firm is highly qualified and capable of completing varied civil and structural projects. The football stadiums at West Virginia and Marshall University, buildings at Virginia Tech, sidewalks for the City of Princeton, artificial turf for the Princeton Senior High School football field, and master planning of athletic facilities at Virginia Tech and Marshall are prime examples.

Stafford has provided site civil and structural engineering design services in association with architectural firms since the firm was founded. Representative projects include Chapmanville High School, Parkersburg High School, Parkersburg South High School, Williamstown High School, Hilltop Elementary School, Wheeling Park High School, Cameron High School, the Chuck Mathena Center for Performing Arts in Princeton, and the Merriman Athletic Facilities Building at Virginia Tech.

All structural projects and site civil projects at Stafford are managed by Kenneth R. Crowe, P.E. Kenneth has over thirty-five years of structural, transportation and site civil engineering experience. He is assisted in this work by Kevin Smith, engineering technician and CADD technician. Kevin is experienced and particularly adept at site grading, pavement, drainage, and water and sewer layout.



SCI served as structural consultant to ETB on both the North Central Advanced Technology Center (left) and the Chuck Mathena Cultural Arts Center (below).



CORPORATE OVERVIEW

TERRADON Corporation offers a multi-faceted approach to design engineering and consulting services. For more than 25 years TERRADON staff has provided a wealth of engineering solutions blanketing the Ohio Valley and the Appalachian Region with successful projects. The company built its reputation on expert personnel and quality, time-sensitive service. Those same founding principles hold true today.

Staff includes engineers, landscape architects, surveyors, planners, environmental scientists, designers, technicians and LEED Accredited Professionals.

The company maintains approximately 50 leading-edge staff in four locations: Nitro/Poca, WV; Lewisburg, WV; Charlton Heights, WV; and Ripley, WV. TERRADON'S departments work cohesively to provide turn-key solutions that strive to exceed client expectations.

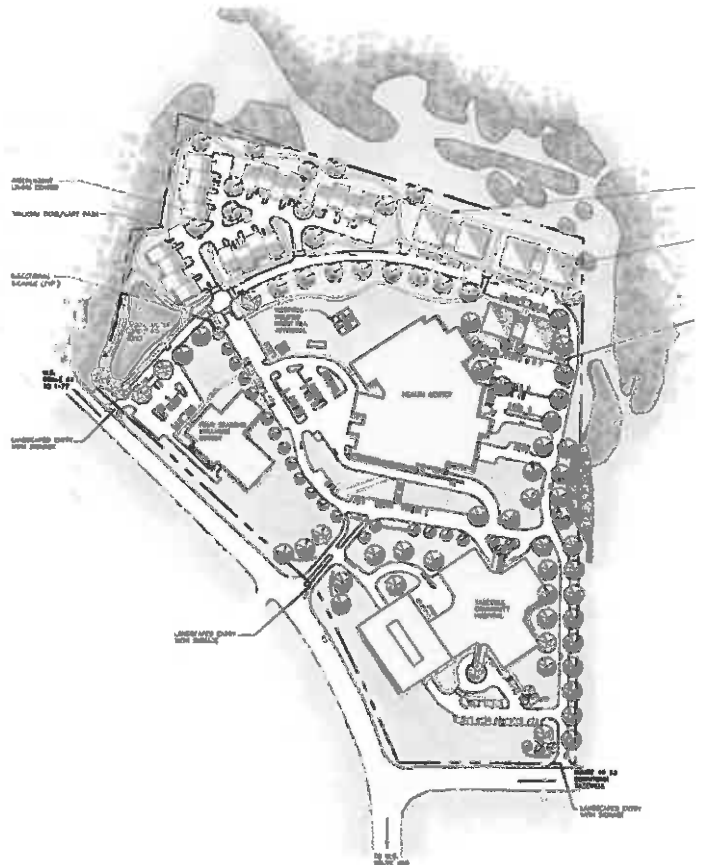
ABOUT TERRADON

The family-owned business has built a strong reputation by providing flexible, cost effective design solutions and maintaining the highest level of customer service. TERRADON is particularly suited to design engineering within the mountainous areas of the Ohio Valley and Appalachian Regions. The firm has been recognized through numerous awards from professional organizations and agencies including the several State Divisions of Highways, Departments of Environmental Protection and the American Institute of Architects state chapters.

TERRADON's corporate culture promotes innovation and progressive thinking. Project leaders strive to sustain customers through a wide-range of engineering offerings. TERRADON employees understand the purpose behind their services and work to cultivate lasting relationships with clients through honest, hard work.

SERVICE OFFERINGS

- Land Planning and Site Design
- Civil Engineering
- Environmental
- Geotechnical Engineering
- Surveying and Mapping
- Water/Wastewater
- Transportation Engineering
- Structural Engineering



TERRADON Land Development Services Overview



Land Development covers a broad swath of TERRADON's service offerings and sees a large percentage of its annual revenue from repeat clients or referrals. The group is composed mainly of Landscape Architects and CAD designers who frequently team with every other department within the company.

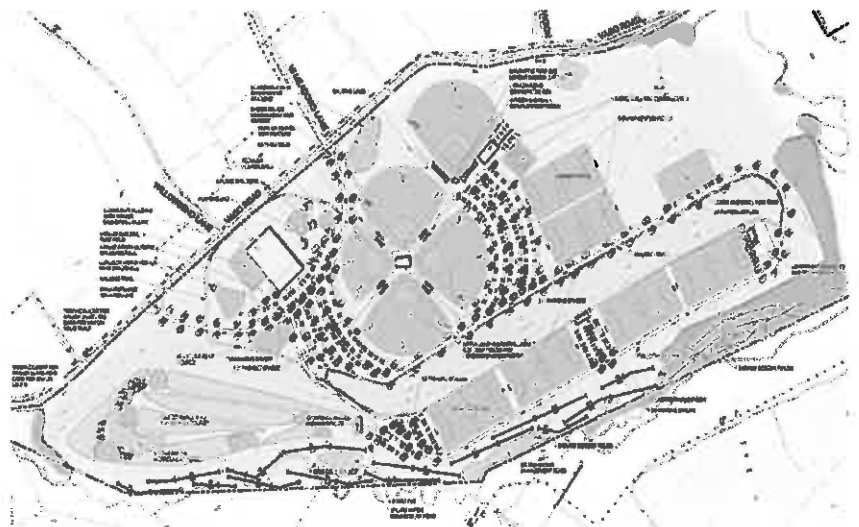
TERRADON's Land Development department collaborates with public and private entities and has a strong presence in the recreation, public/civil, educational and commercial development sectors. TERRADON is recognized as a leader in providing site design and land planning services. The firm's professional engineers work closely with the client from the project's initial phase through a schematic design, construction documents and project delivery. TERRADON's Landscape Development Group remains on the forefront of sustainable design, providing LEED Accredited Professionals to clients. Projects utilizing sustainable design best practices aid clients in significantly reducing energy costs on projects.

TERRADON's Land Development Group works in a variety of markets including: Parks/Recreation, Commercial/Industrial, Civic/Public, K-12 Education, Higher Education and Medical.

Projects include: Master planning, recreational planning, funding agencies assistance, economic development planning, surveying, engineering, architecture, historical preservation construction administration and inspection.

LAND DEVELOPMENT SERVICES

- Master Planning
- Presentation Drawings/Renderings
- Site Feasibility Studies
- Schematic Design
- Layout Plans
- Grading Plans
- Stormwater Management Plans
- Erosion Control Plans
- Planting Plans
- Construction Observation



Project	Type	Goals	How were goals achieved?
Cabins for KOA Campground Location: Ashland Project Manager/Contact: Jim Anderson - 304-965-1535	New Housing	<i>Provide original cabin design for re-use at ATV campground. Each cabin will sleep 6.</i>	<i>Research similar projects. Assess specific needs of ATV riders. Create design that addresses needs & site.</i>
ATV Development Location: Mingo County Project Manager/Contact: Tara Elder - 304-237-7567	New Housing	<i>Provide original main lodge and multiple condos for ATV development</i>	<i>Still in the planning phase.</i>
Camelback - Private Residence Location: Tazewell, VA Project Manager/Contact: David Phipps - 304-887-0113	New Housing	<i>Provide original design for rustic, private residence using natural stone and wood/logs.</i>	<i>Design coordinated w/Owner. Major goal was to ensure house was ADA compliant/user friendly for wheelchair-bound friend.</i>
Bathhouses @ National Scout Reserve Location: Mt. Hope Project Manager/Contact: Rob Ridgeway - 304-469-1089	New Bathhouses	<i>Prototype bathhouse design for 330 units located at Summit Bechtel Family National Scout Reserve. Project had firm deadline to be ready for National Jamboree.</i>	<i>Large team effort. Multiple planning & coordination meetings were required to meet deadline for Boy Scout Jamboree.</i>
Pipestem State Park Conference Center Location: Pipestem Project Manager/Contact: Dave Summers - 304-466-2804	Addition / Renovation	<i>Design conference center addition to blend to existing facility and allow for ease of access. Kitchen also needed to be upgraded</i>	<i>Design coordinated w/Owner. Access compliance achieved with connecting bridgeway. Existing Kitchen renovated.</i>
Gazebo for Concord University Location: Athens Project Manager/Contact: Rick Dillon - 304-384-5377	New Multi-use	<i>Provide students and organizations a multi-use picnic area.</i>	<i>Coordination with CU representatives and members of student government association.</i>

ASHLAND KOA CAMPGROUND

Ashland, WV

PROJECT DETAILS

owner/Client:
Ashland KOA Campground

year:
2005

type:
new construction



ETB designed two different cabin layouts for the Ashland KOA Campground.

The cabins are equipped with a full-service kitchen, including a granite countertop, bathroom with shower, sitting area, loft and front porch.

Each cabin will sleep 6. The bedroom has bunk beds or a full-size bed. The main room has a queen-sized murphy bed.

Exterior features include picnic tables, a fire pit, and wonderful views from the front porch swing.



ATV DEVELOPMENT

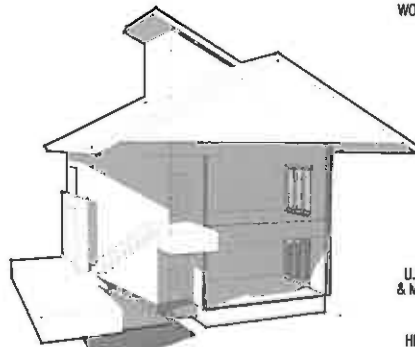
West Virginia

PROJECT DETAILS

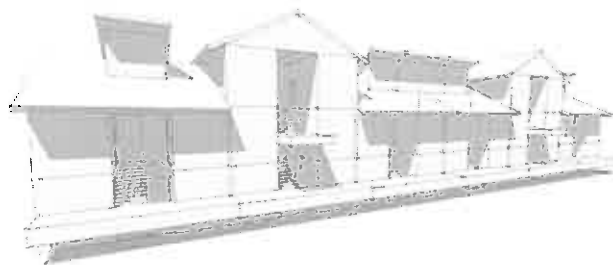
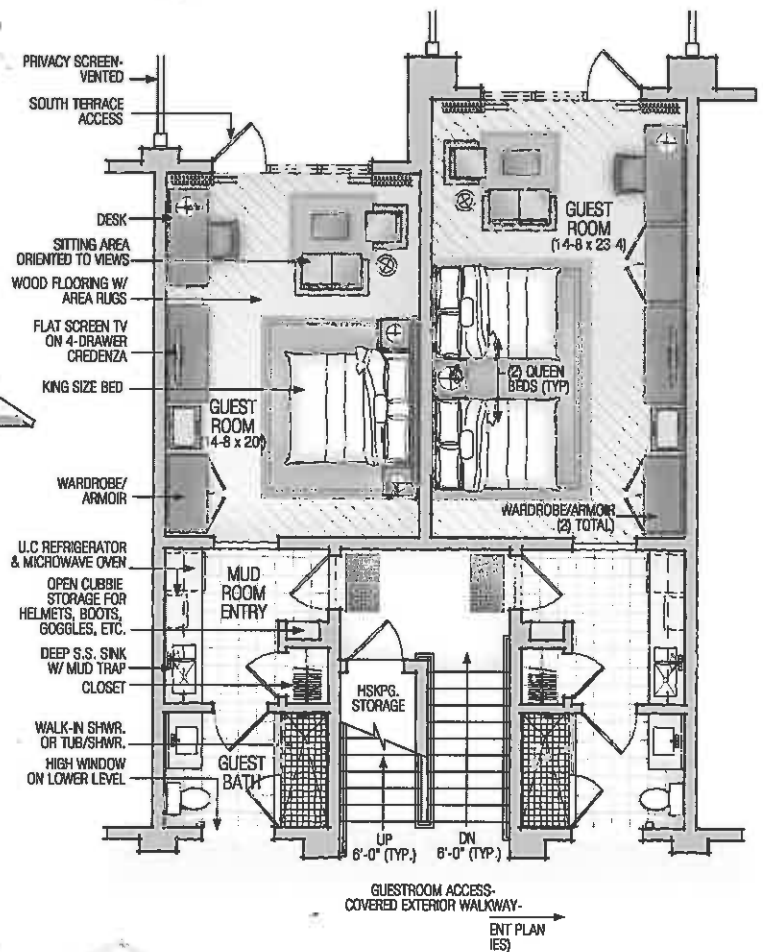
owner/client:
Ashland Development Group

year:
TBD

status:
Preliminary
Plans



"SPLIT LEVEL" GUESTROOM ENTRANCE CONCEPT



ALTERNATING TWO AND THREE STORY CONCEPT



BLUESTONE ATV LODGING

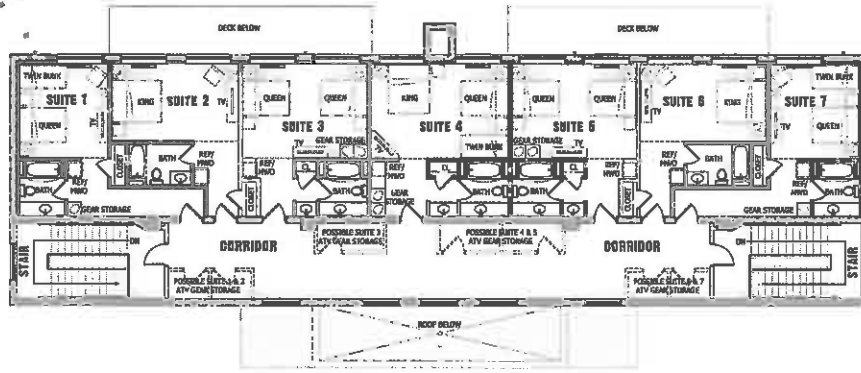
Bramwell, WV

PROJECT DETAILS

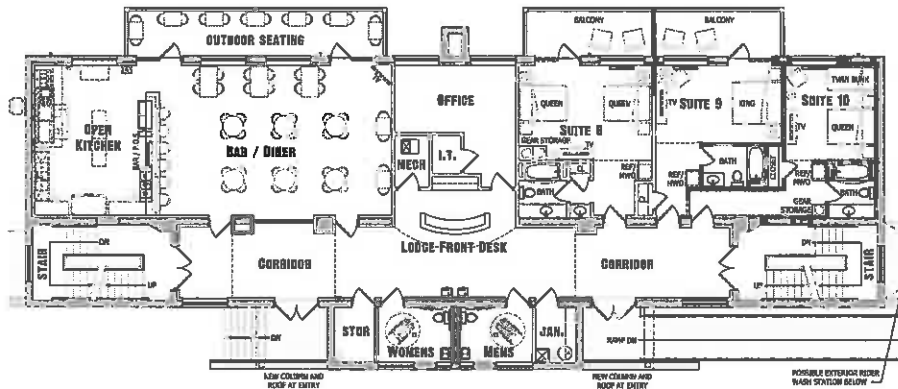
owner/district:
Private Developer

year:
TBD

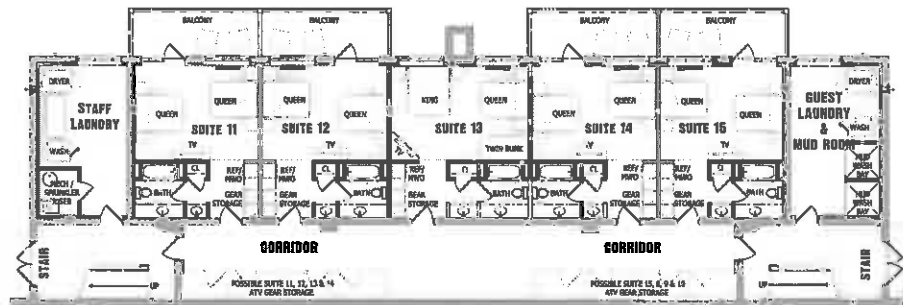
details:
Preliminary
Floor Plans
for former
Bluestone
High School



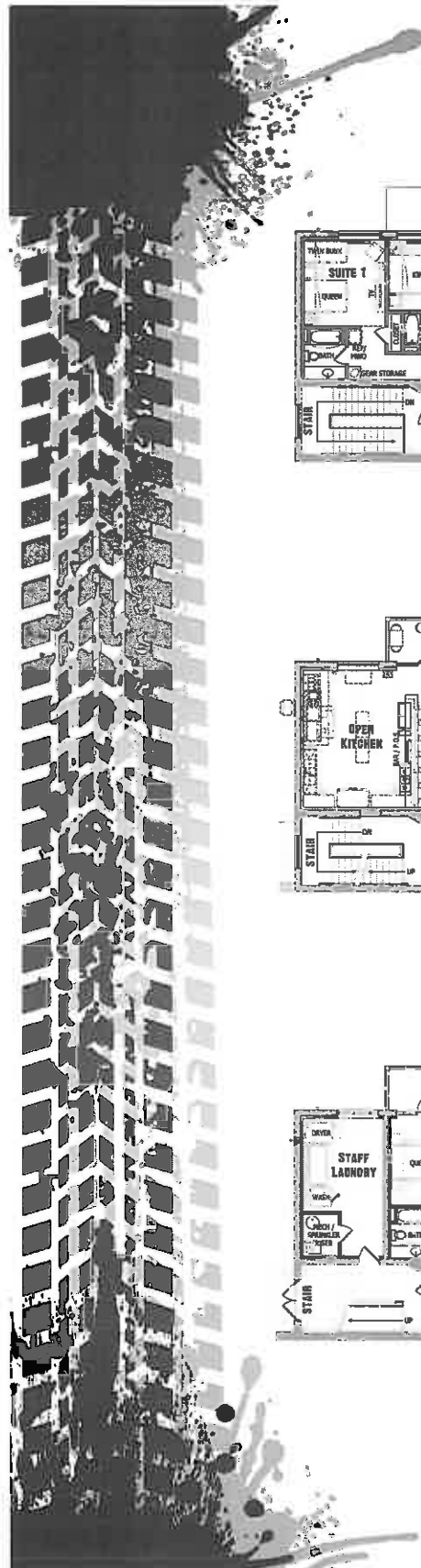
UPPER LEVEL PLAN CONCEPT - OPT A
NOT TO SCALE



MAIN LEVEL PLAN CONCEPT - OPT A
NOT TO SCALE



LOWER LEVEL PLAN CONCEPT - OPT A
NOT TO SCALE



SPEARHEAD TRAIL LODGING/PARKING

Tazewell County, VA

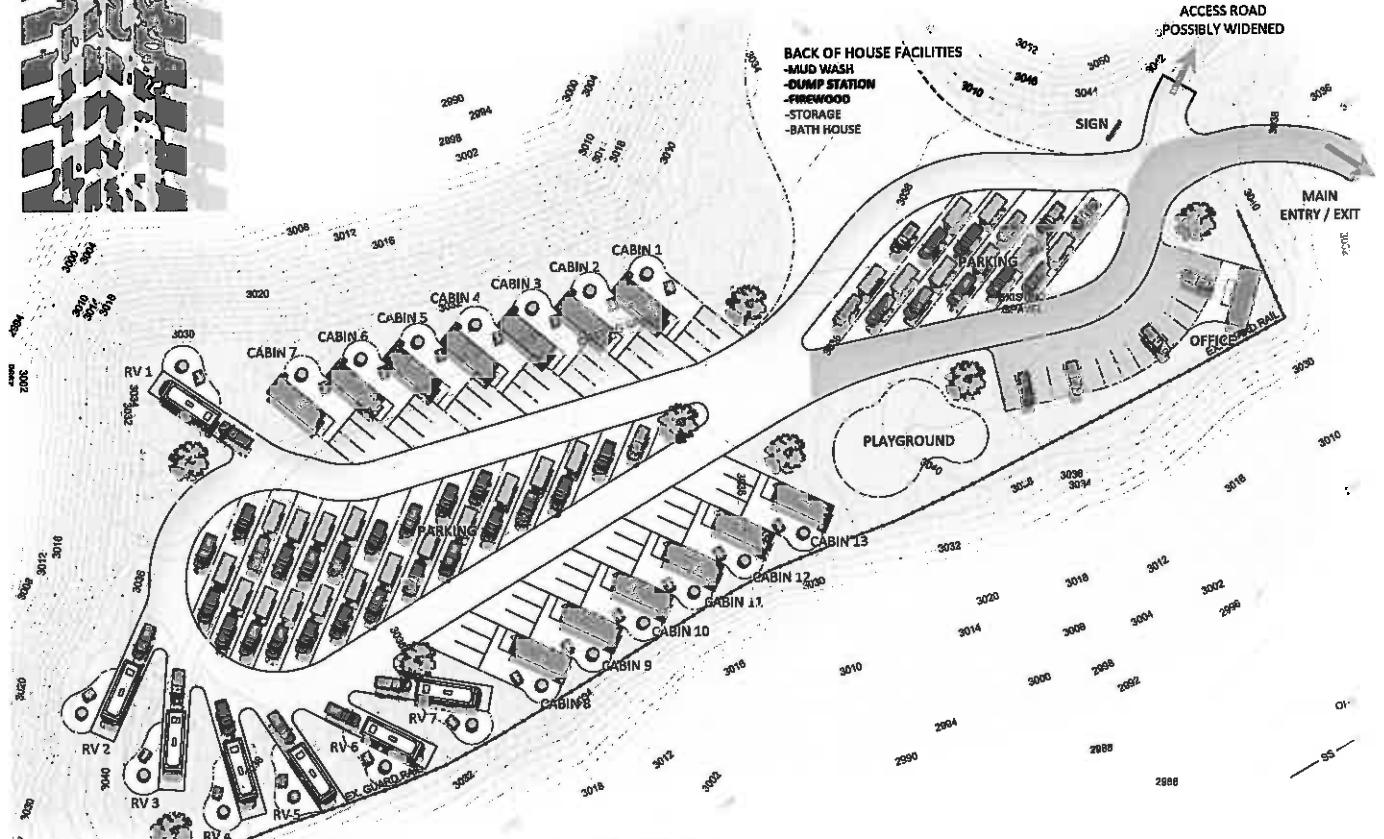
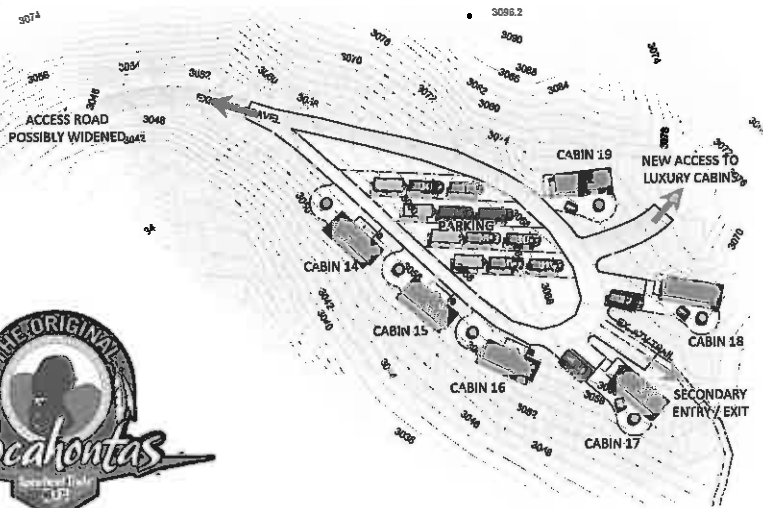
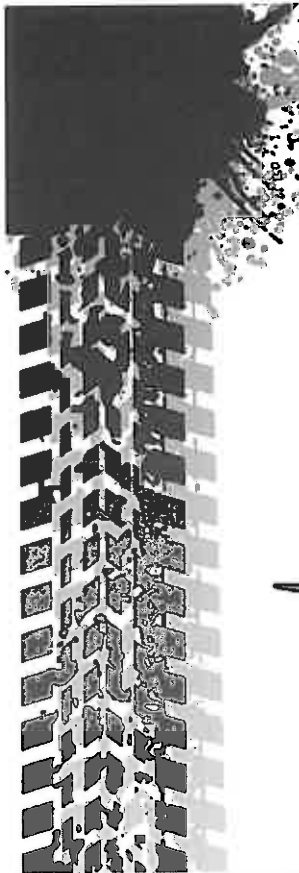
OPTION B - AREA 2

PROJECT DETAILS

Client: Private Developer

Year: TBD

Detail: Preliminary Site Plans



PRELIMINARY SITE PLAN OPTION B - AREA 1



PIPESTEM STATE PARK PICNIC SHELTERS

Pipestem

PROJECT DETAILS

owner/district:
WV DNR

year:
phased

ETB provided a picnic shelter design that has been duplicated throughout Pipestem State Park.



PIPESTEM STATE PARK DECK AND RAMP

Pipestem

PROJECT DETAILS

owner/district:
WV DNR

ETB designed the deck addition to the existing golf clubhouse, along with the ramp to provide ADA access to the second floor of the building.



PIPESTEM STATE PARK CONFERENCE CENTER

Pipestem



PROJECT DETAILS

owner/district:

WV DNR

year:

1999

size:

20,000 sf

The Pipestem Conference Center Project involved a two-story addition to the McKeever Lodge. The project centered around the addition of a multi-purpose conference area that can accommodate a single, large group or be divided with panels for multiple, smaller groups.

The kitchen area was also renovated during this project. In order to allow for ADA compliant access, an enclosed, connecting bridgeway was designed (interior bridge walkway shown below).



PIPESTEM STATE PARK CONFERENCE CENTER

Pipestem



PROJECT DETAILS

owner/district:

WV DNR

year:

1999

size:

20,000 sf

The Pipestem Conference Center Project involved a two-story addition to the McKeever Lodge. An enclosed bridgeway (interior & exterior shown here) was designed to provide ADA compliant access



WV TOURIST INFORMATION CENTER

Princeton

PROJECT DETAILS

owner/client:
WV Parkways Authority

year:
1992

size:
7,200 sf



The West Virginia Tourist Information Center is "composed" of three pyramid-shaped skylites (41' x 41', 33' x 33' and 29' x 29') that enclose a large main exhibit hall with the information desk, multi-use small exhibit hall with a mezzanine level, and restroom facilities. The seemingly "high-tech" design is complimented by incorporating a dry, stacked stone wall and split-rail fence into the landscape and by utilizing an exposed wood framing system.

West Virginia products were used throughout the project, including hardwood flooring, "Terne" roofing and native field stone. Local artisans also have their creations on display. Over 100,000 people per year visit the facility which is located ten miles from the border at the intersection of I-77/460.

1994 WVAIA Merit Award Winner



GAZEBO FOR CONCORD UNIVERSITY

Athens, West Virginia

PROJECT DETAILS

owner/district:
Concord University

year:
2008

size:
420 sf

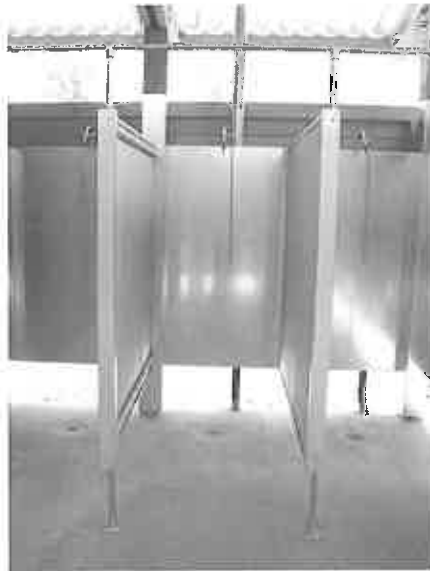


The Student Government Association at Concord University requested that ETB design a gazebo to be located in the "valley" between the student union, dormitories, and behind the Rahall Technology Center. The gazebo was designed to host CU organized activities as well as impromptu gatherings. The footprint of the gazebo is 20'-6" x 20'-6".



BATHHOUSE DESIGN & CONSTRUCTION SUMMIT BECHTEL FAMILY NATIONAL SCOUT RESERVE

Mt. Hope, WV



BATHHOUSE DESIGN & CONSTRUCTION SUMMIT BECHTEL FAMILY NATIONAL SCOUT RESERVE

Mt. Hope, WV

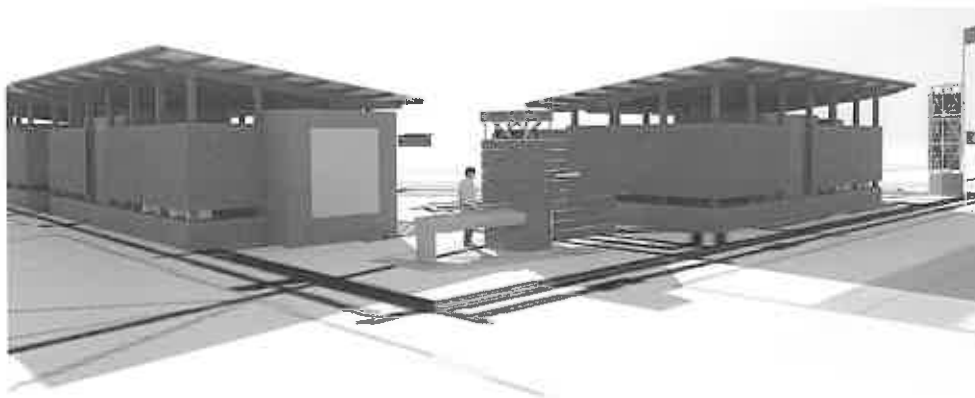
PROJECT DETAILS

owner/district:
Boy Scouts of America

year:
2013

size:
330 units

ETB provided design, graphic imagery construction documentation and administration for 330 bathhouses which were located throughout the national scout reserve. The bathhouses were spread throughout the six villages.



OBSERVATION DECK SUMMIT BECHTEL FAMILY NATIONAL SCOUT RESERVE

Mt. Hope, WV

PROJECT DETAILS

owner/district:
Boy Scouts of America

year:
2013



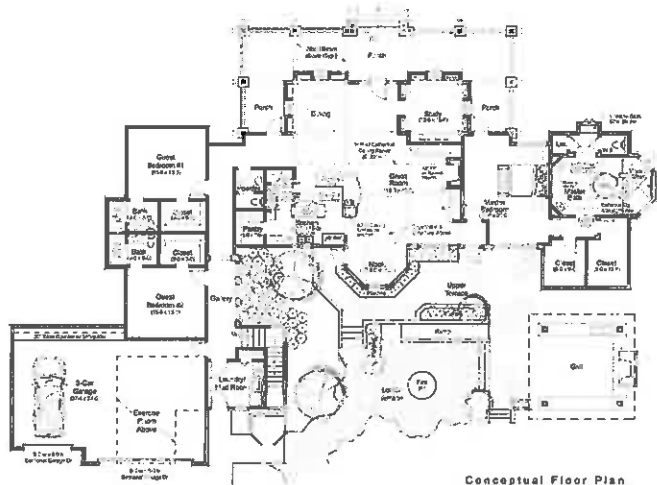
ETB designed a new ADA compliant observation deck overlooking the entire Boy Scout Reserve. The deck can accommodate over 100 sight-seers. In addition to providing a scenic view, the deck was used during construction to observe progress throughout the site.

VIEW FROM
OBSERVATION
DECK

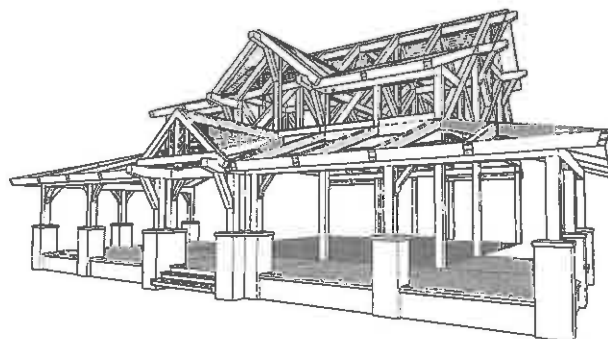


CAMELBACK - A PRIVATE RESIDENCE

Tazewell, VA



Conceptual Floor Plan
Scale 1/8" = 1'-0"



TIMBER FRAME MODEL STUDIES
NOT TO SCALE



CONCEPTUAL FRONT ELEVATION
SCALE 1" = 10'-0"



CAMELBACK - A PRIVATE RESIDENCE

Tazewell, VA



CREEKSIDE VILLAS AT SNOWSHOE

Snowshoe, WV



PROJECT DETAILS

owner/district
Creekside Owner's Association

year
2016

size
36 units

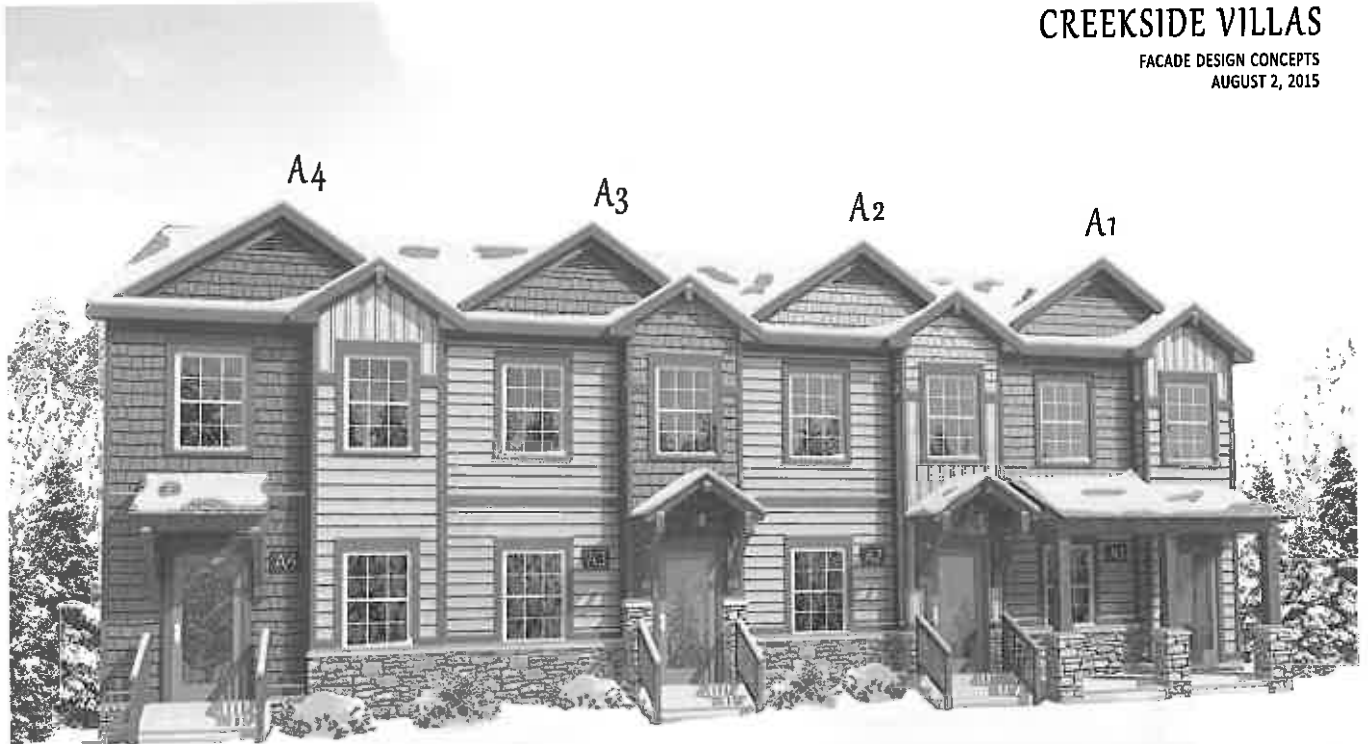
ETB provided a new facade renovation concept design for an existing multi-building condo development at Creekside Villas. Individual owners were surveyed and presented with options related to preferences for exterior colors, entry elements and other possible improvements.

Design concepts are being coordinated with on-going facility repairs being conducted by the homeowners. Our goal is to remedy pre-existing conditions (issues) and damage caused by insufficient waterproofing.

The "ski lodge" vernacular will be the theme throughout the complex.

CREEKSIDE VILLAS

FACADE DESIGN CONCEPTS
AUGUST 2, 2015





Harper Engineering,pllc

52 B Street
St. Albans, WV 25177
Office: 304.722.3602 Fax: 304.722.3603

Chief Logan Lodge and Conference center Pool: MEP design for new ventilation system for pool filtration.

Cabwaylingo State Park Dining Hall: HVAC, Plumbing and Electrical Design for a new 3800 sq ft facility.

North Bend State Park: Currently designing electrical upgrade for a 26 site camp ground.

Beech Fork State Park: Currently designing electrical upgrade for camp ground sites.

Handley Wildlife Management Storage Building: Currently designing MEP.

Elk River Wildlife Management Storage Building: Currently designing MEP.

Alum Creek Farmer Market: Mechanical, Electrical, and Plumbing design including HVAC, power, lighting, and sanitary and domestic water.

Palentine Park Improvements: Site Lighting and Power for Splash Park pump, rest rooms, Amphitheatre and power for vendor receptacles.

Twin Falls Cabins- HVAC

BUILDINGS & STRUCTURES

PROJECT: WVDOH District 1 Office Building

Owner:

West Virginia
Dept. of Highways

Location:

Charleston, West Virginia

Construction Cost:

\$ 5.5 million

Project Architect-Engineers:

E.T. Boggess Architect, Inc.
Stafford Consultants - Structural

Description:

District Office Building with offices, and connecting bridge to an existing structure. SCI revised/updated plans from previous design to comply with new building codes and address site specific requirements.



 **STAFFORD
CONSULTANTS
INCORPORATED**
Engineering Design and Consulting

BUILDINGS & STRUCTURES

PROJECT: WVDOH District 8 Equipment Shop

Owner:

West Virginia
Dept. of Highways

Location:

Elkins, West Virginia

Construction Cost:

\$ 4.5 million

Project Architect-Engineers:

E.T. Boggess Architect, Inc.
Stafford Consultants - Structural

Description:

DOH Equipment Shop to provide centralized garage bays, service areas, and storage. SCI revised/updated plans for site specific design requirements and to comply with new building codes.



 **STAFFORD
CONSULTANTS
INCORPORATED**
Engineering Design and Consulting

BUILDINGS & STRUCTURES

PROJECT: North Central Advanced Technology Center

Owner:
WV Community &
Technical College System

Location:
Fairmont, West Virginia

Construction Cost:
\$10 million

Project Architect-Engineers:
E. T. Boggess Architect, Inc.
Stafford Consultants - Structural

Description:
Advanced Technology Center includes classrooms, flexible labs, and office spaces. SCI provided structural design including structural steel, floor slabs, building foundations and retaining walls.



 **STAFFORD
CONSULTANTS
INCORPORATED**
Engineering Design and Consulting

BUILDINGS & STRUCTURES

PROJECT: Mathena Cultural Arts Center

Owner:

The Charles "Chuck" Mathena, II
Foundation

Location:

Princeton, West Virginia

Construction Cost:

\$10 million

Project Architect-Engineers:

Stafford Consultants, Civil & Structural
In Association with E. T. Boggess,
Architect, Inc., Princeton, WV

Description:

Center for the performing arts and a
multi-use facility featuring a 1,000 seat
auditorium with stage and orchestra pit.
Includes meeting rooms and exhibit hall
with kitchen facilities for receptions,
banquets, etc.



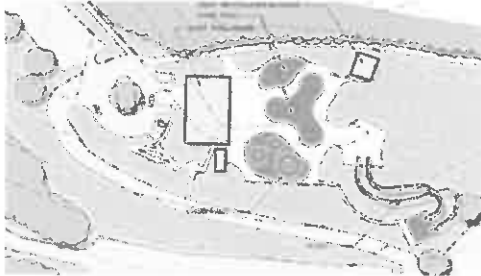
 **STAFFORD
CONSULTANTS
INCORPORATED**
Engineering Design and Consulting

RELEVANT EXPERIENCE

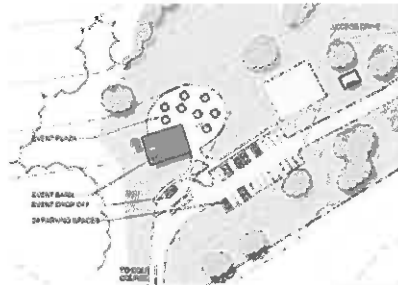
Grand Vue Park



TERRADON is currently in the developing Master Plans and Schematic Planning for Grand Vue Park near Moundsville, WV. Services include: inventory and analysis of existing features, identifying project opportunities, land planning, master planning and team coordination with subconsultants.



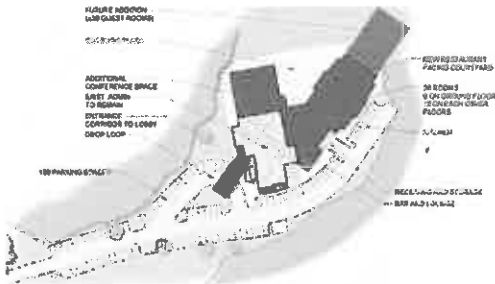
Aquatic Center



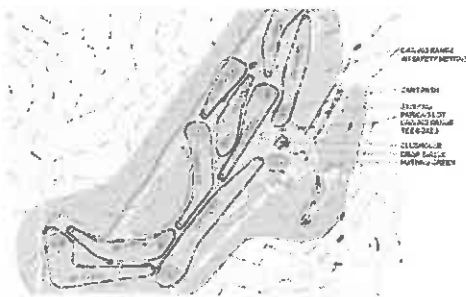
Barn Redevelopment



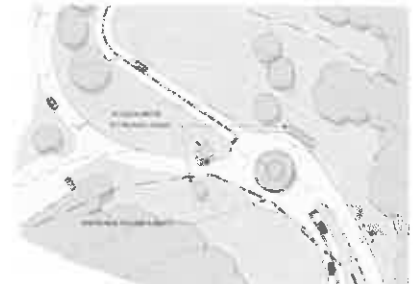
Nordic Center



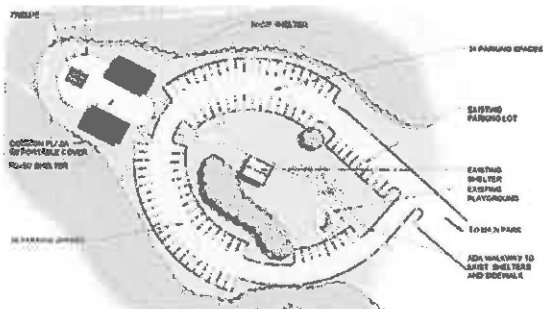
Lodge



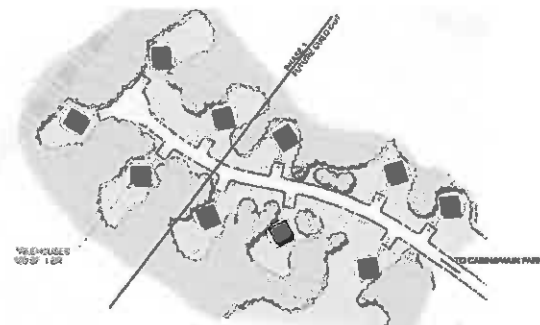
9 Hole Golf Course



Park Entrance



Iconic Overlook



Treehouse Rentals



RELEVANT EXPERIENCE

Summit Bechtel National Scout Reserve Master Plan

From 2008 to July 2013, TERRADON provided a variety of services for the development of the Summit Bechtel National Scout Reserve near Mt. Hope, Fayette County, WV. In fact, TERRADON worked with the NRGRDA on the initial site selection and presentations to the Boy Scouts of America, which landed this massive project in Mt. Hope.

The Summit is a 10,600+ acre outdoor adventure center near Mt. Hope, WV next to the New River Gorge National Park. The world-class facility serves as a venue for the Boy Scouts of America's fourth High Adventure Base, the permanent home to the National Jamboree, a summer camp and National Center for Scouting Excellence leadership center - all on the same contiguous property.

Services for the 10,600+ Acre site included:

- Initial Site Selection/Conceptual Designs
- Site Planning/Grading
- Erosion and Sediment Control
- AML
- Survey/Mapping
- All Environmental Permitting
- Geotechnical Engineering
- Materials Testing and Construction Monitoring
- Utility Design
- 60+ miles of underground utilities
- 550,000 tons of aggregate produced by on-site rock crushing 600 acres of clearing, grubbing and rough grade operations
- 3 million cubic yards of excavation
- 600 acres of fine grading and revegetation
- 28 miles of drainage swales, including erosion and sediment control
- 14 miles of new roads (grade and drain)
- 4 earthen dams
- 80,000 seat lawn amphitheater
- On site sanitary sewer system



RELEVANT EXPERIENCE

Putnam County Commission - Master Planning & Valley Park Expansion



TERRADON Corporation provided Master Planning and site civil design services for the expanding Valley Park in Hurricane, Putnam County, WV. This work is part of a nearly \$2 million expansion, which was completed in 2013 and adds an additional 6 acres to the park.

The project included planning for picnic shelters, athletic fields, multiple parking lots, access roads and greenspace, but also incorporated a walking trail that ties into existing park trails. The plan was produced in coordination with the WVDOT to determine roadway/walkway ingress/egress and designed in accordance with local, state and federal regulations.

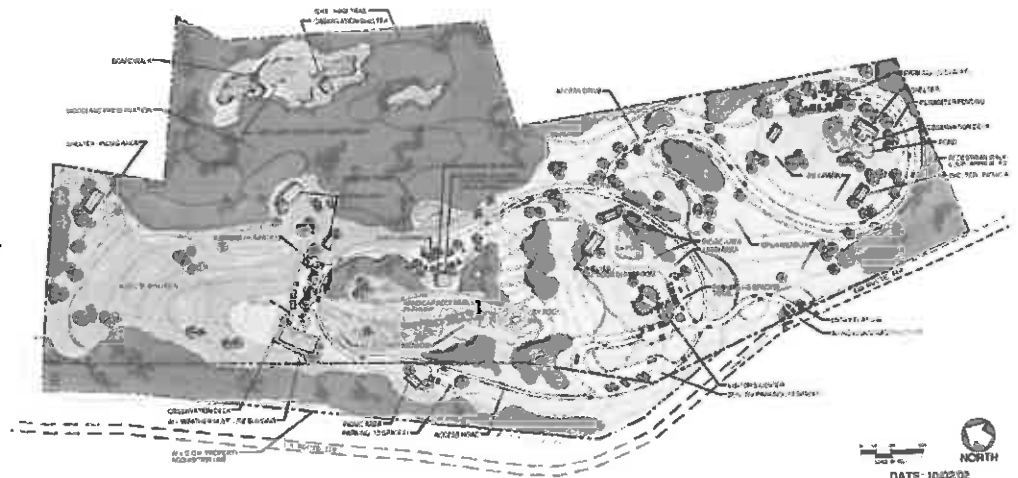


CONCEPTUAL MASTER PLAN
VALLEY PARK Hurricane, West Virginia

RELEVANT EXPERIENCE

Dorsey's Knob Master Plan - BOPARK

TERRADON provided Master Planning services to the Morgantown Board of Park and Recreation Commissioners for the development of Dorsey's Knob in Morgantown, WV. Plans included picnic shelters and other amenities.



**DORSEY'S KNOB
MORGANTOWN, WEST VIRGINIA
MASTER PLAN**
BOARD OF PARK & RECREATION COMMISSIONERS



Roane County Parks Master Planning

TERRADON Corporation, provided site master planning and site civil engineering services for Roane County Parks.



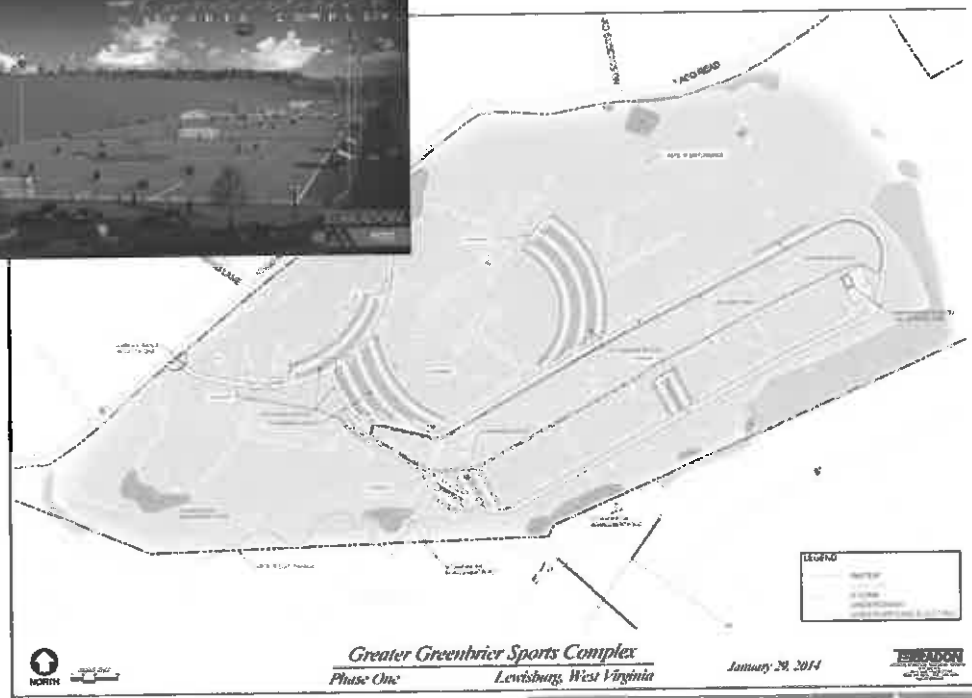
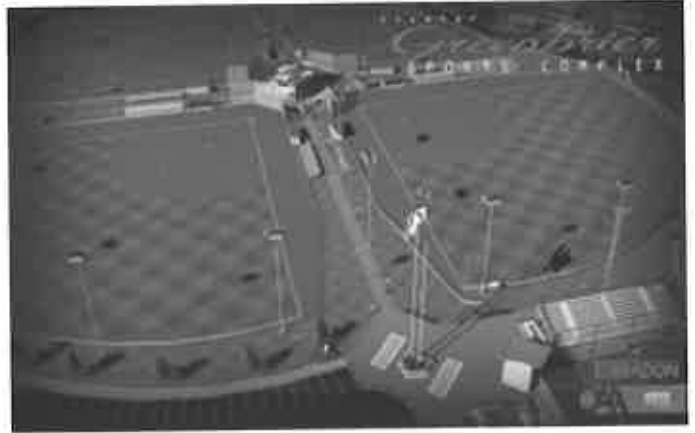
RELEVANT EXPERIENCE

Greater Greenbrier Sports Complex Master Plan

TERRADON provided Master Planning and Grading Design Services beginning in June 2013 for the Greater Greenbrier Sports Complex located north of Lewisburg, WV.

The work was divided into five phases, and includes:

- Master Planning
- Grading Study
- Full Construction Documents
- Utility Layout
- Road Design
- Erosion and Sediment Control.



RELEVANT EXPERIENCE

Bluestone State Park Master Planning

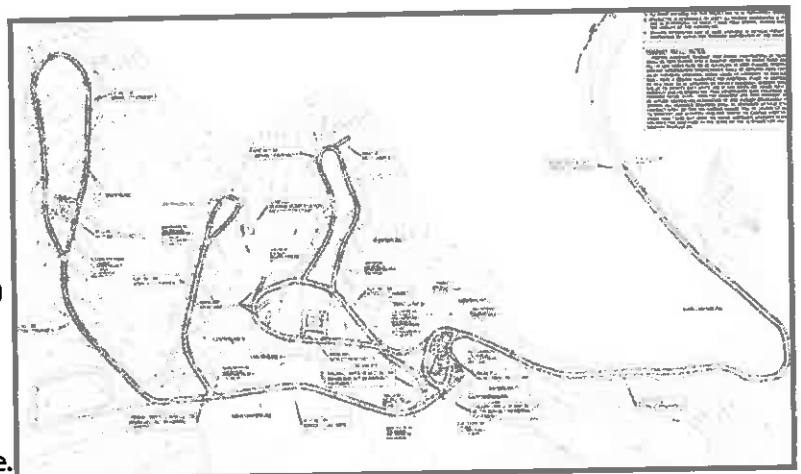
TERRADON was responsible for the development of a swimming pool replacement for existing pools at Bluestone State Park. The existing pool was located within the 100-year flood plain and subject to flooding.

TERRADON proposed a new pool located above the 100-year flood plain while incorporating many unique and creative design features for Bluestone State Park guests and the surrounding community.



Little Beaver State Park Design

TERRADON was responsible for the design of a campground expansion that doubled the number of existing full-service RV spaces, a new bathhouse and a trail system to the bathhouse. TERRADON was also responsible for preparation of plans and specifications for a septic tank effluent gravity (STEG) system at the park. DNR Parks and Recreation had started the project using force account method of construction, but was unable to complete the project. Terradon designed the project to utilize materials already purchased and delivered to the site. The project consisted of septic tanks, one (1) grinder sewage pumping station, and small diameter gravity sewer (SDGS) with connection to the local PSD for treatment.



OUR TEAM

Todd Boggess is President of E.T. Boggess, Architect, Inc., and will serve as the design team leader. He will be assisted by Stephen Mackey, who is responsible for planning and design.

A component of our management approach is the development of an individual strategy for each project, focused on the specific problems to be solved. This strategy considers the staff members assigned to the project, the scheduling and duration of work phases, the use of special consultants or specialized studies. Our Project Management Plan (PMP) will document key management and oversight tasks and is updated throughout the project as changes occur. The plan will include a definition of your program goals, technical requirements, schedules, resources, budgets, and management programs. Once we gain a better understanding of your scheduling targets, we will be able to determine exactly what resources we will need to dedicate to the project.

We have analyzed our team's requirements carefully and are confident that our manpower and skill level will remain more than adequate, even in the early, labor intensive phases. We are prepared to staff the project with a cadre of our key design personnel. Our projected workloads and the depth of personnel available are such that staffing projects of this size and complexity will have no adverse impact on any current or future projects in our office.

Resumes for our design team can be found on the following pages. Section 4 contains project information showcasing our capabilities.

Architect – E. T. Boggess Architect, Inc.

Todd Boggess, AIA, NCARB

Design & Production

Steve Mackey

Nathan Turner

Technology & Information

Roy Morum

Construction Documents

Dale East

Chris Clark

Construction Administration

Chris Canterbury

Eric Gatchell

Mechanical/Electrical/Plumbing Engineering – Harper Engineering

Jason Harper

Kevin Mark King

Scott Phillips

Richard Standish

Structural Engineering – Stafford Consultants, Inc.

Kenneth Crowe

Kevin Smith

Site/Civil Engineering – Terradon Corporation

Greg Fox

Peter Williams

Bill Hunt

Jim Nagy

John James

Robert Thaw

Todd Boggess, AIA, NCARB, Architect
President



EDUCATION

- Master of Architecture, Clemson University School of Architecture
- International Studies, Clemson University Daniel Center for Urban Design & Building Studies, Genoa, Italy
- Bachelor of Arts Degree in Design, Clemson University School of Architecture

RESPONSIBILITIES

Todd joined ETB as a project architect and office manager in 1988 after graduating from Clemson University. In January, 2001, he assumed the office of President.

Todd is responsible for . . .

- architectural design and development
- project management and coordination
- computer aided design and visualization
- interior design
- site planning

Your project will receive his complete attention, from the interview and project meetings, through the construction process. As the president of the firm, you are putting your trust in him and he takes that commitment very seriously. He wants to make sure you are satisfied with our service, performance, and design.

PROJECTS

Todd understands the demands being placed on all state agencies as they strive to offer the necessary services to our citizens and their efforts to do so within limited budgets. While he has always incorporated energy efficiency into his designs, the focus on green technologies over the past decade has definitely changed the architectural and construction industries. Todd's designs for every governmental building, both new construction and renovations, must address these requirements and ensure the safety of citizens who will be using the facility, as well as the employees who will be working from their new environment on a daily basis.

PROJECTS – Recreational – Governmental & Private

- Princeton Railroad Museum (*Historical Re-creation*), Princeton
- Bramwell Coal Interpretive Museum (*Historical Re-creation*), Bramwell
- Greenbrier County Convention and Visitor's Center (*Renovations*), Lewisburg
- Pipestem Conference Center (*Addition*), Pipestem State Park
- The Summit Bechtel Family National Scout Reserve - Bathhouse Design & Construction, Mt. Hope
- Hatfield/McCoy Office (*Renovations*), Lyburn
- Hatfield/McCoy Trailhead Study, Bramwell
- Hatfield/McCoy Trailhead Facility, Ashland
- Ashland KOA Cabins, Ashland
- Ashland Resort Bathhouse, Ashland
- ATV Development, Mingo County
- Bluestone ATV Lodging (*Preliminary Renovation Design – Adaptive Reuse*), Bramwell
- Spearhead Trail Development, Tazewell County, VA
- Richwood Visitor's Center Renovations, Richwood

AWARDS

- WVAIA "Honor Award" for Renovation Design of the Princeton Public Library – April 2012
- Princeton/Mercer County Chamber of Commerce "Excel Award" – January, 2011
- *West Virginia Executive Magazine's* "Young Guns" - Fall, 2003
- Princeton/Mercer County Chamber of Commerce "Citizen of the Year - 2000"
- Princeton Elks Club "Citizen of the Year - 2000"

Stephen Mackey
Planning & Design



EDUCATION

- Bachelor of Arts Degree in Design, Clemson University School of Architecture
- Master of Architecture, Clemson University School of Architecture

RESPONSIBILITIES

With over 29 years of experience in all phases of design and construction, Mr. Mackey brought strong design, management and leadership skills to the firm. His significant experience has enabled him to successfully oversee the design and construction of a number of large educational projects. Specific project responsibilities include:

- code review and analysis
- program development
- conceptual design
- design visualization
- project coordination
- construction specifications

PROJECTS

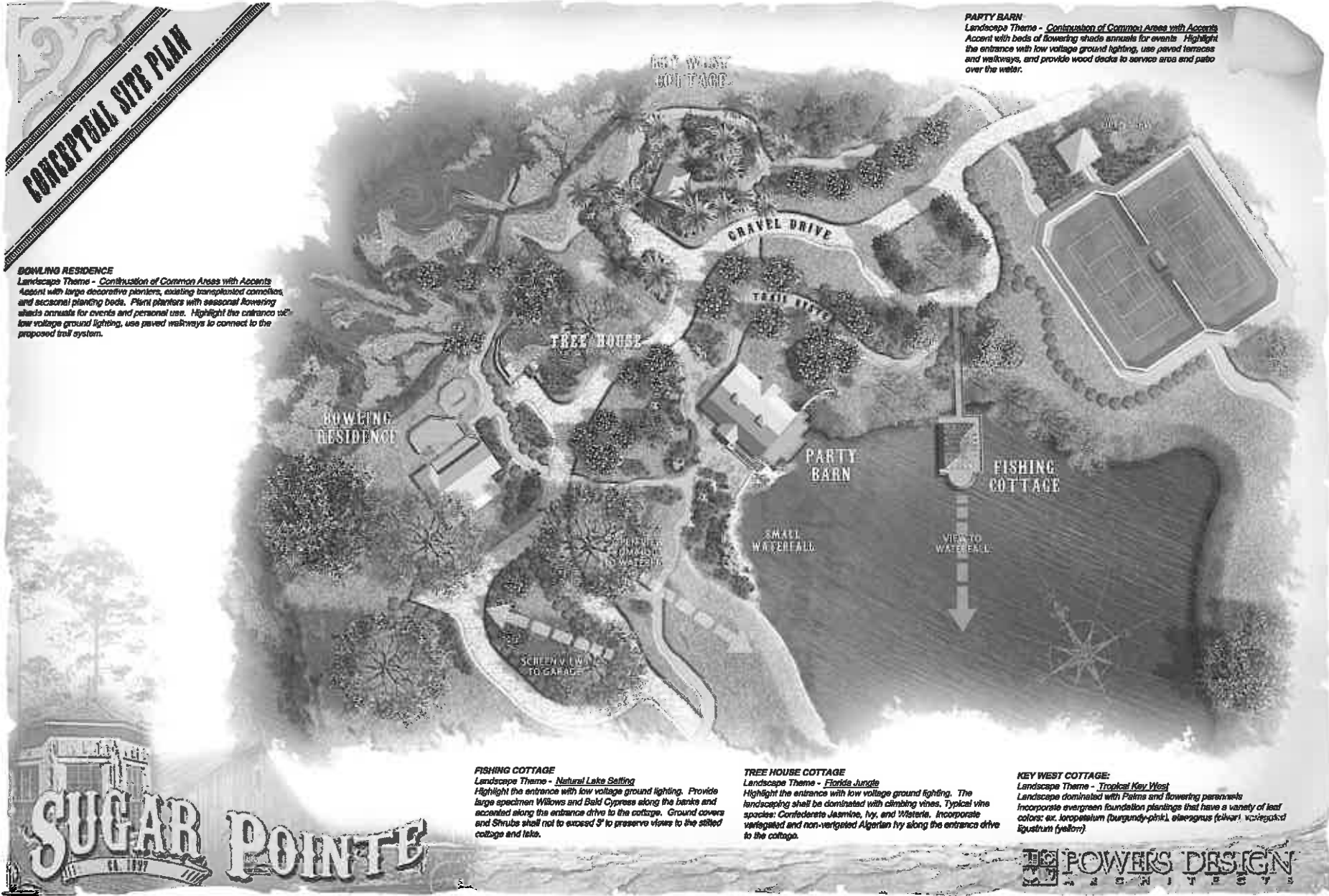
Mr. Mackey rejoined ETB Architects in 2009 after serving as Executive Vice President for two architectural firms in Florida. During his absence, one of the projects he was involved in was Sugar Pointe which included master planning and themed amenity design for a 67 acre retreat in Northeast Florida. Amenities included an event "party barn", fishing cottage, tree house and a Key West themed cottage. Images on the following pages represent Mr. Mackey's design for that project.

Below are a couple projects Steve has been involved with since his return to ETB:

- The Summit Bechtel Family National Scout Reserve - Bathhouse Design & Construction, Mt. Hope
- ATV Development, Mingo County
- North Central Advanced Technology Center for the WVC&TCS and Allied Health, Fairmont
- Advantage Valley Advanced Technology Center for the WVC&TCS and Allied Health, So. Charleston

CONCEPTUAL SITE PLAN

BOWLING RESIDENCE
 Landscape Theme - *Continuation of Common Areas with Accents*
 Accent with large decorative planters, existing transplanted cacti, and seasonal planting beds. Plant planters with seasonal flowering shade annuals for events and personal use. Highlight the entrance to low voltage ground lighting, use paved walkways to connect to the proposed trail system.



PARTY BARN
 Landscape Theme - *Continuation of Common Areas with Accents*
 Accent with beds of flowering shade annuals for events. Highlight the entrance with low voltage ground lighting, use paved terraces and walkways, and provide wood decks to service area and patio over the water.

FISHING COTTAGE
 Landscape Theme - *Natural Lake Setting*
 Highlight the entrance with low voltage ground lighting. Provide large specimen Willows and Bald Cypress along the banks and accent along the entrance drive to the cottage. Ground covers and Shrubs shall not to exceed 3' to preserve vines to the cotted cottage and lake.

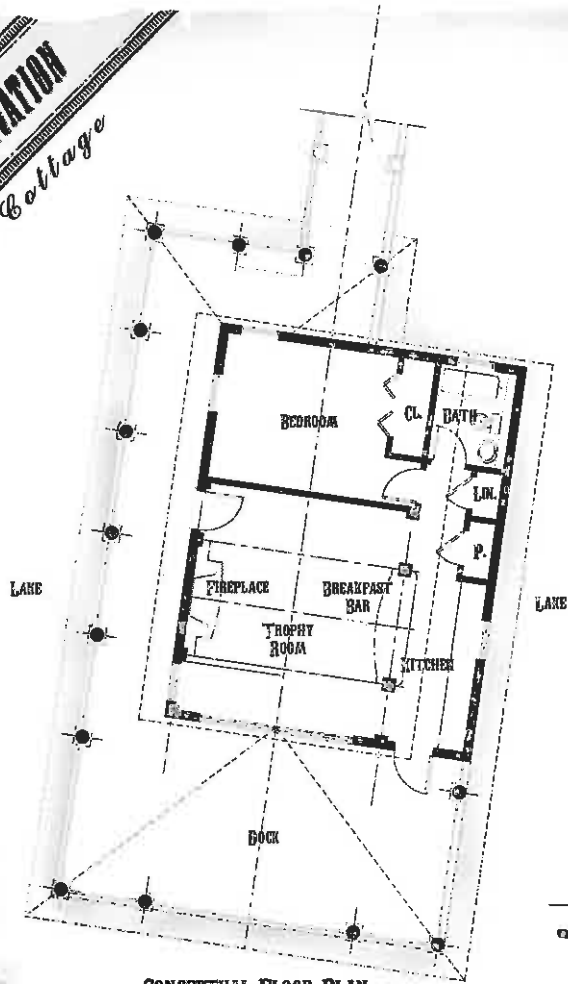
TREE HOUSE COTTAGE
 Landscape Theme - *Florida Jungle*
 Highlight the entrance with low voltage ground lighting. The landscaping shall be dominated with climbing vines. Typical vine species: Confederate Jasmine, Ivy, and Waterline. Incorporate variegated and non-variegated Algerian Ivy along the entrance drive to the cottage.

KEY WEST COTTAGE:
 Landscape Theme - *Tropical Key West*
 Landscape dominated with Palms and flowering perennials. Incorporate evergreen foundation plantings that have a variety of leaf colors: ex. Iropestrum (burgundy-pink), oleagnus (yellow), variegated Ligustrum (yellow).

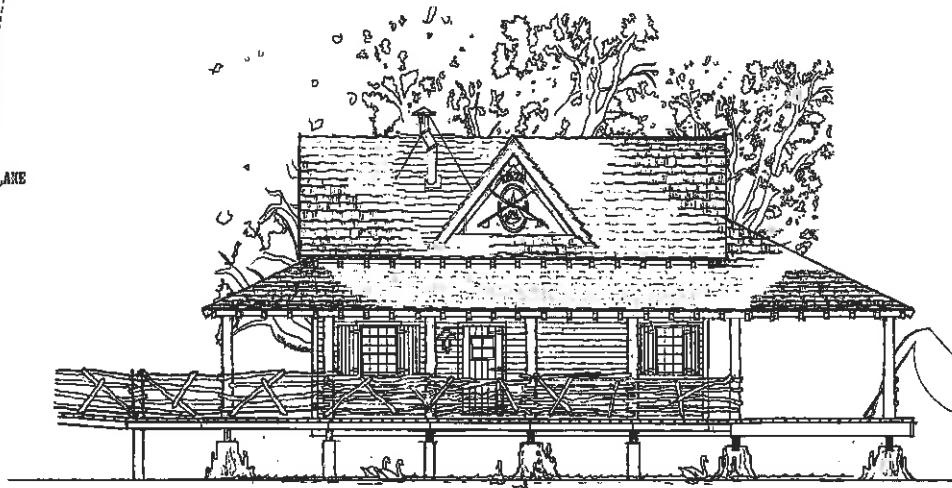


DESIGNED BY STEPHEN MACKEY (before ETB)

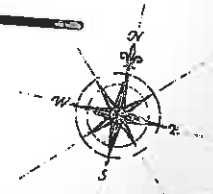
CONCEPTUAL ELEVATION
Fishing Cottage



CONCEPTUAL FLOOR PLAN
SCALE 1/8" = 1'-0"



CONCEPTUAL EXTERIOR ELEVATION
SCALE 1/8" = 1'-0"

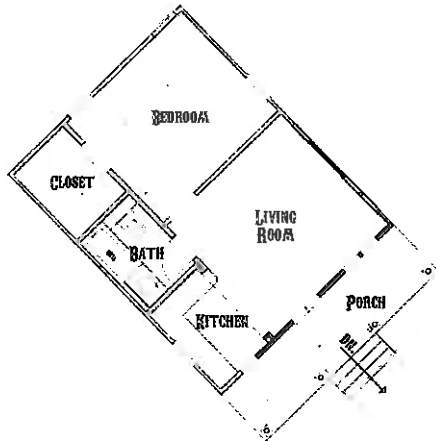


SUGAR POINTE
EST. CA. 1897

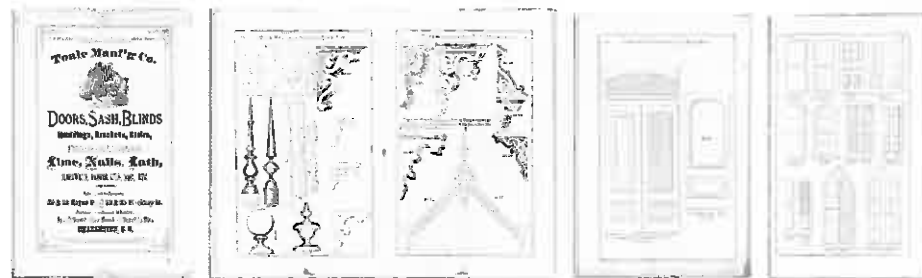
THE POWERS DESIGN
ARCHITECTS

DESIGNED BY STEPHEN MACKEY (before ETB)

CONCEPTUAL REVISION
Key West Cottage



CONCEPTUAL FLOOR PLAN
 SCALE 1/8 = 1-0



PERIOD DETAILS - 1897



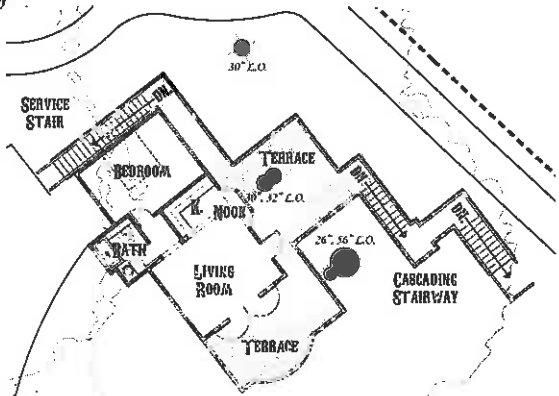
CONCEPTUAL EXTERIOR ELEVATION
 SCALE 1/4 = 1-0



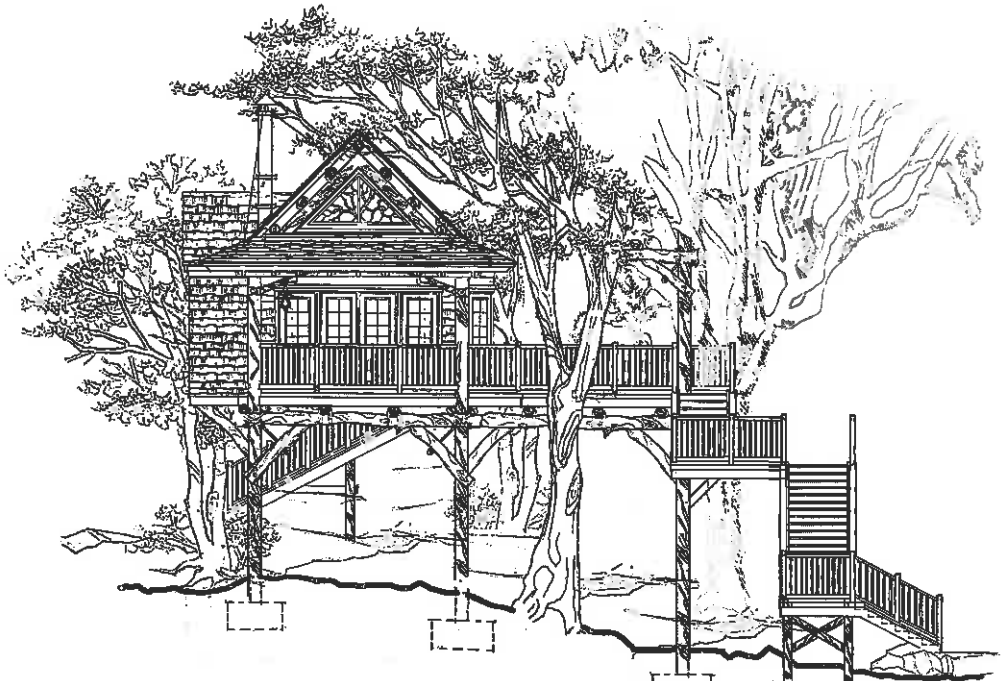
DESIGNED BY STEPHEN MACKEY (before ETB)

CONCEPTUAL RENOVATION

Tree House Cottage



CONCEPTUAL FLOOR PLAN
SCALE 1/16 → 1'-0"



CONCEPTUAL EXTERIOR ELEVATION
SCALE 1/8 → 1'-0"

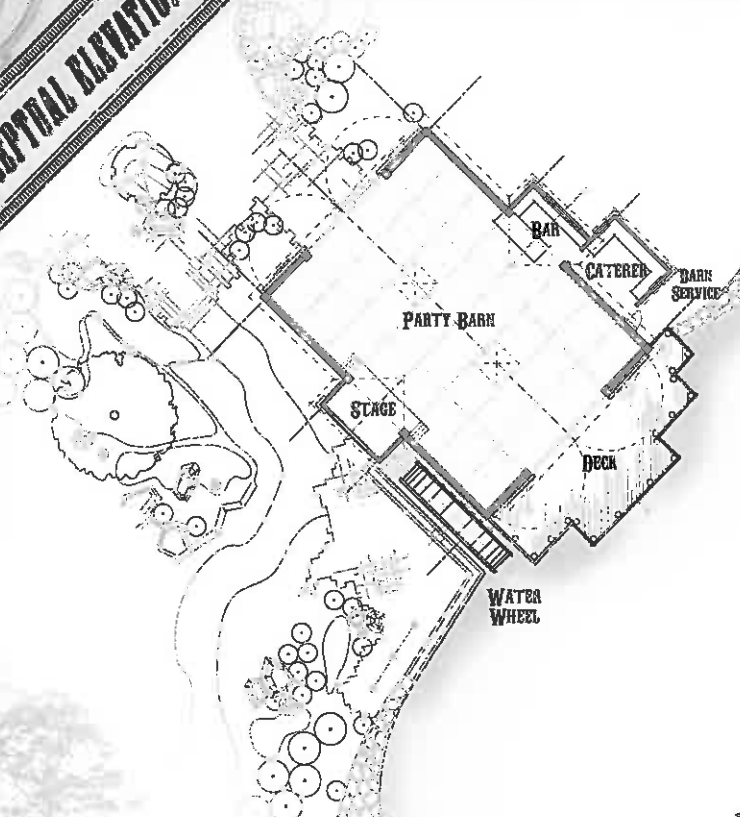


SUGAR POINTE
EST. 1897

DE POWERS DESIGN
ARCHITECTS

DESIGNED BY STEPHEN MACKEY (before ETB)

CONCEPTUAL RENOVATION



CONCEPTUAL ENTRANCE ELEVATION



SUGAR POINT
EST. 1887

POWERS DESIGN
ARCHITECTS

DESIGNED BY STEPHEN MACKEY (before ETB)

Roy Morum, LEED G.A.
Project Manager



EDUCATION

- Bachelor of Architecture, University of the Orange Free State, South Africa
- Master of Design Management, UNITEC, Auckland, New Zealand

RESPONSIBILITIES

Roy joined ETB in 2004 as a project architect. His area of expertise is in design, documentation, and information management. He will be responsible for the ftp site that we will create to share project information. Before joining ETB, Roy completed major works in South Africa and New Zealand. His work in the USA includes government facilities for the West Virginia Army National Guard and other public buildings.

Roy's Master's Dissertation, "*A Model for Knowledge Management in an Architectural Enterprise*" deals with effective communication and creative project / information / data management. He has developed processes and skills in this field that contribute much to the successful outcome of a project – and the continued facilities maintenance of a building.

Roy is responsible for . . .

- planning/programming
- construction documentation
- ftp site design and implementation
- information management
- responding to contractor's requests for information
- reviewing submittals and shop drawings

PROJECTS

Roy's expertise in project management and communication is reflected in his use of technology to enhance the delivery process via the internet and FTP. His mastery of information management systems will ensure that team members, contractors, and your representatives will be able to share ideas efficiently and cost effectively.

- The Summit Bechtel Family National Scout Reserve - Bathhouse Design & Construction, Mt. Hope
- WVARNG Readiness Center, Elkins
- Panther/laeger Elementary School, McDowell County

Nathan Turner, LEED G.A.
Project Manager



EDUCATION

- Bachelor of Science, Engineering – Architecture, Fairmont State University
- Master of Architecture (May, 2009), Boston Architectural College

RESPONSIBILITIES

Mr. Turner joined ETB in 2009 and brought with him a wealth of experience in architectural design, as well as construction methods and practices. His prior experience with educational facilities has already proven extremely valuable as we have several elementary, middle, and high school projects at various stages of completion. Nathan has obtained LEED certification and will assist in our efforts to provide a “green” approach to as many projects as possible.

Specific project responsibilities include:

- architectural programming
- construction documentation
- project management
- project coordination
- construction specifications
- construction administration

PROJECTS – Public Buildings

- The Summit Bechtel Family National Scout Reserve - Bathhouse Design & Construction, Mt. Hope
- Hatfield/McCoy Trailhead Study, Bramwell
- Bluestone ATV Lodging (*Preliminary Renovation Design – Adaptive Reuse*), Bramwell
- North Central Advanced Technology Center for the WVC&TCS and Allied Health, Fairmont
- Advantage Valley Advanced Technology Center for the WVC&TCS, So. Charleston
- New River Community and Technical College Headquarters & Allied Health Building, Beckley

Dale East
Architectural Intern



EDUCATION

- Bachelor of Science - Architectural Engineering
Bluefield State College

RESPONSIBILITIES

Mr. East is an architectural intern with 10 years of experience who joined ETB in November of 2013. Prior to returning to Princeton, his work at architectural firms in Tennessee allowed him to manage projects from New Jersey to Atlanta, ranging from educational facilities to zoological exhibits. Dale is involved in all phases of design documentation and production and is eager to handle any task needed to ensure a smooth project flow from start to finish.

Specific project responsibilities include:

- 3D modeling
- graphics/imagery
- construction documentation
- project coordination

PROJECTS

- Ashland KOA Campground Bathhouse, Ashland
- ATV Development, Mingo County
- Bluestone ATV Lodging (*Preliminary Renovation Design – Adaptive Reuse*), Bramwell
- Spearhead Trail Lodging/Parking, Tazewell County, VA
- Creekside Villas (*Renovations*), Snowshoe
- WVARNG Coonskin (*Renovations*), Charleston
- WVDOH District 7 Equipment Shop, Lewis County

Chris Canterbury, Associate AIA
Construction Admin Manager



EDUCATION

- Bachelor of Science Engineering Technology/Architecture, Fairmont State University

RESPONSIBILITIES

Chris joined ETB in 2000 as a CADD Technician. His focus in recent years has been project administration and his current position of Construction Administration Manager reflects that area of expertise. Your project will benefit from his superb organizational skills. He attends meetings and keeps track of your needs and wishes through notes and minutes. His timely response to submittals will ensure that your project stays on its construction schedule.

Chris is responsible for . . .

- construction administration
- organizing and attending meetings
- distribution of minutes and progress reports
- contacting material suppliers
- responding to contractor's requests for information
- reviewing submittals and shop drawings
- site visits/observations

PROJECTS – Public

During the construction process, Chris attends the regular progress meetings, as well as special meetings with material suppliers and sub-contractors. He works closely with the contractor in maintaining the budget, adhering to the schedule, and ensuring quality control.

- Cabins for the Ashland KOA, Ashland
- Pipestem Conference Center (*Addition*), Pipestem State Park
- Gazebo for Concord University, Athens
- Hatfield/McCoy Office (*Renovations*), Lyburn
- Hatfield/McCoy Trailhead Facility, Ashland
- WVDOH District 8 Equipment Shop, Elkins
- Bramwell Coal Interpretive Museum (*Historical Re-creation*), Bramwell

HE Harper Engineering,pllc

52 B Street
St. Albans, WV 25177
Office: 304.722.3602 Fax: 304.722.3603



Jason E. Harper, PE
(304)-541-1390
jason@harperengwv.com

Education

West Virginia University Institute of Technology
Montgomery, WV
Bachelor of Science-Mechanical Engineering

Registrations/Professional Affiliations

Licensed Professional Engineer – WV
ASHRAE
NFPA

Experience

Jason E. Harper, PE brings 11 years design experience to our firm. He has experience with HVAC, Electrical, plumbing, and fire alarm system design. His projects include educational facilities (including colleges and universities), health care facilities, office buildings, banks, emergency services facilities, postal facilities, and government buildings.

Projects

Addition and Renovation to Geary School
Baileysville Elem. HVAC Renovations
W. Kent Carper Justice and Public Safety Complex
Dominion Gas Office Building
Renovations to Glenville ES
Addition to Shady Spring Middle School
Addition and Renovations to Flinn Elementary
Renovations to Park Middle School



Harper Engineering,pllc

52 B Street
St. Albans, WV 25177
Office: 304.722.3602 Fax: 304.722.3603



Kevin Mark King, PE
mark@harperengwv.com

Education

West Virginia University Institute of
Technology Montgomery, WV
Bachelor of Science-Electrical Engineering

Bluefield State College
Bluefield, WV
Bachelor of Science-Computer Science

Registrations/Professional Affiliations

Licensed Professional Engineer – WV, KY, PA, OH, VA
WV licensed Master Electrician
NFPA

Experience

Kevin Mark King, PE brings 10 years of electrical design experience and over 11 years of electrical construction/maintenance experience to our firm. His projects include educational facilities (including colleges and universities), health care facilities, office buildings, emergency services facilities, government buildings and industrial projects.

Projects

Fayette Co. 911 Center
Wayne County 911 Center
Pulmonary Associates

Huff PK-8 School
Oakvale Elementary School
Pineville Elementary School



Harper Engineering,pllc

52 B Street
St. Albans, WV 25177
Office: 304.722.3602 Fax: 304.722.3603



Scott D. Phillips
(304)-722-3602
Scott@harperengwv.com

Registrations/Professional Affiliations

American Society of Plumbing Engineers

Experience

Scott D. Phillips brings 30 years design experience to our firm. He has experience with mechanical, electrical, plumbing and fire suppression system design. His projects include educational facilities (including colleges and universities), health care facilities, office buildings, banks, emergency services facilities, postal facilities, and government buildings.

Projects

W. Kent Carper Justice and Public Safety Complex
Renovations to Burnsville Elementary School
Pioneer Community Bank
Bible Center Recreation and Ministry Building
Pulmonary Associates Office Building
Additions and Renovations to Little Birch Elementary School
Moses Factory Outlet- Teays Valley
Dominion Gas Office Building
Fairmount State University WV Folk Life Center
South Preston Pre K-8 School
Rahall Technology and Business Center Community Based Outpatient Clinic
Renovations to Davis Elementary School

HE H a r p e r E n g i n e e r i n g

P O B o x 8 7 4
S t. A l b a n s, W V 2 5 1 7 7
O f f i c e : 3 0 4 . 7 2 2 . 3 6 0 2 F a x : 3 0 4 . 7 2 2 . 3 6 0 3



Richard M. Standish
(304)-722-3206
Rick@harperengwv.com

Registrations/Professional Affiliations

ASHRAE

Experience

Richard M. Standish brings 36 years design experience to our firm. He has experience with HVAC, plumbing, and electrical design. His specialty is the electrical design of water treatment and wastewater treatment plants. Rick's projects include treatment plants, educational facilities (including colleges and universities), health care facilities, office buildings, banks, emergency services facilities, postal facilities, and government buildings.

Projects

Brooke County High School
University of Charleston Dorm
Tri-State Gaming Center
Mylan Pharmaceuticals Expansion
Mason Co. 911 Center
Oak Hill Police Station
Kenova WTP
Boone County WWTP
Salt Rock PSD
Eleanor Maintenance Facility

Wyoming West High School
WVU- Boreman Hall
Greenbank Observatory
Robert Byrd Health Science Center
WV DEP Consolidated Offices
Flatwoods-Canoe Run PSD
Union PSD
City of St Mary's WWTP
St. Albans WTP
Dominion Gas Office Building



KENNETH R. CROWE, P.E.
VICE PRESIDENT

EDUCATION:

West Virginia Institute of Technology
Bachelor of Science, Civil Engineering (1976)

REGISTRATIONS/AFFILIATIONS:

Registered Professional Engineer in
West Virginia (1980) and Virginia (1981)

EXPERIENCE:

Stafford Consultants Incorporated (1985 to present)
Gates Engineering Company (1981 to 1985)
Westmoreland Coal Company (1976 to 1981)

PROJECT MANAGER AND LEAD STRUCTURAL AND/OR SITE ENGINEER:

- 25 projects for the WVDoH including Mullens Overhead Bridge, Cass Arch Bridge (*WVDoH Small Bridge Engineering Excellence Award Winner*), Mineral Wells Interchange Overpass Bridge (*WVDoH Small Bridge Engineering Achievement Award Finalist*), Camden Avenue I-77 Bridge, Devil's Backbone Bridge, Grapevine Creek Bridge (*WVDoH Small Roadway Engineering Excellence Award Winner*), North Lewisburg Road Widening (*WVDoH Small Roadway Engineering Achievement Award Finalist*), and Tabb's Station Bridge.
- Chuck Mathena Center for the Arts in Princeton, WV
- Merriman Athletic Facilities building at Virginia Tech
- Private skybox addition at Mountaineer Field at West Virginia University
- Mercer County Health Center in Green Valley, WV
- Oakvale Elementary School in Oakvale, WV
- North Central Advanced Technology Center in Marion County, WV
- Marshall University married student housing renovations in Huntington, WV
- Bluefield High School roof replacement in Bluefield, WV
- City of Princeton sidewalk replacement (5 projects) in Princeton, WV
- Town of Alderson sidewalk replacement (3 projects) in Alderson, WV
- 21 mine reclamation projects for the WVDEP, including Williamson Nursing Home Slide, Milburn Red Dog Pile, Mill Branch Refuse Piles, Canebrake Complex, and Matoaka Refuse Pile.
- Cameron High School in Cameron, WV – site work
- Weirton Elementary School in Weirton, WV – site work



KEVIN G. SMITH
DESIGNER/CADD TECHNICIAN

EDUCATION:

Raleigh County Vocational Ed. Center (1979)

REGISTRATIONS/AFFILIATIONS:

Civil I and Civil II Certificates

EXPERIENCE:

Stafford Consultants Incorporated (1998 to present)
Computects and DBD Professional Group (1998)
G. A. Tice Incorporated (1992 to 1997)
ESP Associates (1986 to 1992)
G. O. Bledsoe Incorporated (1981 to 1986)
Holly, Kenny, Shott (1980 to 1981)

DESIGNER AND CADD TECHNICIAN:

Assists with all phases of project development, from initial site survey to preparation of base mapping, project layout (roadways, parking, water, and sewer), geometric layout, erosion & sediment control plans, profiles, structural plans, and detail sheets. Projects include:

- 12 projects for the WVDoH including Coalfields Expressway, Grapevine Creek Bridge, Hutchinson Branch Bridge, Cass Arch Bridge, Mullens Bridge, North Lewisburg Roadway Widening, Bellepoint Road Widening, West Webster Road Intersection, and Craigsville Intersection.
- Chapmanville Regional High School in Chapmanville, Logan County (site layout)
- Parkersburg South High School in Parkersburg, Wood County (site layout)
- Williamstown High School in Williamstown, Wood County (site layout)
- Bayer Federal Credit Union in Moundsville, Marshall County (site layout)
- Hilltop Elementary School in Sherrard, Marshall County (site layout)
- Cameron High School in Cameron, Marshall County (site layout)
- Weir High School Stadium in Weirton, Hancock County (site layout)
- Oak Glen High School Stadium in New Manchester, Hancock County (site layout)
- Weirton Elementary School in Weirton, Hancock County (site layout)
- Oakvale Elementary School in Oakvale, Mercer County (site layout and structural)
- Mercer County Health Center in Green Valley, Mercer County (site layout and structural)
- North Central Advanced Technology Center in Fairmont, Marion County (structural)

RESUMES OF PROJECT TEAM MEMBERS - TERRADON

Greg Fox, ASLA, LEED AP VP Land Development

Greg Fox has overseen TERRADON's Land Development Department since its inception in 2000. He offers more than 25 years of industry experience, providing design services to a variety of markets. During his tenure, the Land Development Group has completed more than one hundred K-12 Educational projects and dozens of Higher Education projects.

Under his guidance, the group has been the recipient of Engineering Excellence awards from the West Virginia Association of Consulting Engineers, and the Gold Award for Engineering Excellence from the American Council of Engineering Companies. Additionally, the Land Development Group has been recognized numerous times for Merit Awards by the West Virginia Chapter of American Society of Landscape Architects. Fox is a registered Landscape Architect in West Virginia, Ohio, North Carolina, South Carolina, Pennsylvania and Virginia. He is an active member of the American Society of Landscape Architects. Fox received degrees in Landscape Architecture and Planning from West Virginia University.

Peter J. Williams, ASLA Landscape Architect

"Pete" Williams is a graduate of West Virginia University with a Bachelor of Science in Landscape Architecture. His responsibilities include landscape architectural design, grading and storm water drainage design, the design of pedestrian circulation systems and related amenities, roadway design, site planning, and quality control. Mr. Williams is registered as a professional Landscape Architect in West Virginia with more than 13 years of experience at TERRADON and more than 22 years of overall experience.

Jim Nagy, PE Utility Infrastructure

Nagy performs Civil Engineering related to water and waste water projects at TERRADON. He specializes in the design of water treatment and distribution systems. He has more than 25 years of on-hand experience providing engineering for the largest private water company in West Virginia. He earned a B.S. in Civil Engineering from West Virginia University. His primary focus is on management of water and wastewater projects. He also performs design work related to water distribution systems and sewage collection systems.

Robert Thaw, PS VP Survey and Mapping

Robert Thaw, Vice President of Survey and Mapping, oversees all TERRADON Survey services. TERRADON's survey group serves a diverse range of projects in support of TERRADON's service groups in addition to managing survey-specific clients. Thaw manages a staff of Professional Surveyors and Computer Aided Drafting (CAD) designers who provide mapping, construction layout, ALTA survey, topographic survey and boundary survey services. Thaw's leadership has been instrumental in TERRADON's prioritization of the use of modern technology, ensuring clients the most efficient and accurate results. Additionally, he is responsible for in-house design of commercial property sites, parking and utility easements, and review of project plans and base mapping creation. Thaw's group also provides as-built surveys, utility identification surveys and deformation monitoring of design features such as retaining walls and dams.

Bill Hunt, PG, LRS VP Geo-Environmental, Materials Testing and Inspection

Bill Hunt serves as Vice President of Geo-Environmental at TERRADON Corporation. He will oversee any environmental needs, permitting and direct work for geotechnical tasks and testing and inspection required of the project. Hunt offers relevant experience in environmental documentation, investigations, and coordination with federal, state, and local agencies. He prepares Environmental Impact Statements, Environmental Assessments, Section 4(f) Evaluations, and other environmental technical documents. He supervises and participates in work plan development, field surveys, on-site monitoring, data collection, impact analysis, subconsultant management, public meeting organization and group presentations.

John James, PE Geotechnical Engineer

James is a Senior Geotechnical Engineer for civil engineering projects. Mr. James specializes in innovative and cost-saving concepts for his projects. James' project experience includes: roads; highways and bridges; earth and rockfill dams; numerous foundation investigations; studies and designs for landfills and environmental facilities; surface and ground water studies and remediation; foundation investigations and designs ranging in size from houses to major industrial complexes; storm drainage facilities; airport facilities; landslide analysis and correction; and forensic engineering.

RESUMES OF PROJECT TEAM MEMBERS

Greg Fox, ASLA, LEED AP
Vice President of Land Development

Greg Fox oversees TERRADON's Land Development Sector. Fox has been responsible for hundreds of notable commercial, educational and recreational site development projects during his 25-year career. During his time as Land Development Department Head, TERRADON has earned Engineering Excellence Awards from the West Virginia Association of Consulting Engineers, numerous Merit Awards from the American Society of Landscape Architects, and the Gold Award from the American Council of Engineering Companies.

Relevant Project Experience

- **The Bechtel Summit National Scouting Reserve**
Provide Site Design for the 12,000+ acre site in Fayette County, WV. Responsible for site grading, construction drawings, NPDES design and coordination for all project subconsultants for NPDES permitting with WVDEP.
- **Greater Greenbrier Sports Complex**
Provided Master Planning and Grading Design Services for the Greater Greenbrier Sports Complex located north of Lewisburg, WV. Five phases include: Master Planning, Grading Study, Full Construction Documents, Utility Layout, Road Design, Erosion and Sediment Control.
- **Glade Run/ Zellenople, PA**
Conducted a master facility plan for a 300+ acre development for Glade Run Lutheran Services This project involved a mixed use development which included an equestrian trail, senior housing, single family residential, office, and retail.
- **Palatine Park Master Planning**
Provided master Planning Services for the City of Fairmont for the redevelopment of Palatine Park on the east side of the Monongahela River adjacent to downtown Fairmont, WV. The Master Plan featured new parking areas, walking trails, a vista overlook, a picnic gazebo and retail space.
- **Putnam County Parks Master Planning**
TERRADON Corporation provided Master Planning and site civil design services for the expanding Valley Park in Hurricane, Putnam County, WV. This work is part of a nearly \$2 million expansion, which was completed in 2013 and adds an additional 6 acres to the park. The project included planning for athletic fields, multiple parking lots, access roads and greenspace, but also incorporated a walking trail that ties into existing park trails. The plan was produced in coordination with the WVDOT to determine roadway/walkway ingress/egress and designed in accordance with local, state and federal regulations.
- **Fairmont Riverfront Park Master Plan**
The City of Fairmont and the Fairmont Renaissance Corporation intend to develop new recreation opportunities and at the same time enhance economic development opportunities for the community. The main goal of the planning process was to develop a plan that will allow for the comprehensive development and implementation of new elements to the riverfront. The elements planned will include rehabilitation of an existing park and new recreation, commercial, and residential opportunities.



Education

B.S. Landscape Architecture
West Virginia University
B.A. Geography & Planning
West Virginia University

Work Experience

2000-Present
TERRADON Corporation

1996-2000
Martin Boal Anthony &
Johnson Architects

1993-1996
Site Design

1989-1993
EG&G Inc

1988-1989
PSC Engineers

RESUMES OF PROJECT TEAM MEMBERS

Peter J. Williams, ASLA
Landscape Architect

"Pete" Williams is a graduate of West Virginia University with a Bachelor of Science in Landscape Architecture. His responsibilities include landscape architectural design, grading and storm water drainage design, the design of pedestrian circulation systems and related amenities, roadway design, site planning, and quality control. Mr. Williams is registered as a professional Landscape Architect in West Virginia with more than 13 years of experience at TERRADON and more than 22 years of overall experience.

Relevant Project Experience

- **The Bechtel Summit National Scouting Reserve**
Provide Site Design for the 12,000+ acre site in Fayette County, WV. Responsible for site grading, construction drawings, NPDES design and coordination for all project subconsultants for NPDES permitting with WVDEP.
- **Greater Greenbrier Sports Complex**
Provided Master Planning and Grading Design Services for the Greater Greenbrier Sports Complex located north of Lewisburg, WV. Five phases include: Master Planning, Grading Study, Full Construction Documents, Utility Layout, Road Design, Erosion and Sediment Control.
- **Glade Run/ Zelianople, PA**
Conducted a master facility plan for a 300+ acre development for Glade Run Lutheran Services This project involved a mixed use development which included an equestrian trail, senior housing, single family residential, office, and retail.
- **Palatine Park Master Planning**
Provided master Planning Services for the City of Fairmont for the redevelopment of Palatine Park on the east side of the Monongahela River adjacent to downtown Fairmont, WV. The Master Plan featured new parking areas, walking trails, a vista overlook, a picnic gazebo and retail space.
- **Putnam County Parks Master Planning**
TERRADON Corporation provided Master Planning and site civil design services for the expanding Valley Park in Hurricane, Putnam County, WV. This work is part of a nearly \$2 million expansion, which was completed in 2013 and adds an additional 6 acres to the park. The project included planning for athletic fields, multiple parking lots, access roads and greenspace, but also incorporated a walking trail that ties into existing park trails. The plan was produced in coordination with the WVDOT to determine roadway/walkway ingress/egress and designed in accordance with local, state and federal regulations.
- **Hospitality**
Twin Falls State Park Lodge Expansion
Snowshoe Camp 4 Condominiums
Snowshoe Sawmill Village Luxury Homes
Huntington Towne Place Suites Hotel
Huntington Hampton Inn Hotel



Education
B.S. Landscape
Architecture
West Virginia University

Work Experience
2000 – Present
TERRADON Corporation

1992-2000
Chapman Technical Group
Registration

Affiliations
American Society of Landscape
Architects

West Virginia Chapter of
American Society of Landscape
Architects

RESUMES OF PROJECT TEAM MEMBERS

Jim Nagy, PE Senior Engineer

As a Senior Engineer at TERRADON, Jim Nagy's primary focus is on designing civil engineering projects for public and private development projects throughout West Virginia. Nagy specializes in the design of water distribution systems as well as sewage collection systems. Nagy offers decades of hands-on experience and has previously provided design engineering services for schools, commercial developments, residential developments, public utilities and more. He earned a B.S. in Civil Engineering from West Virginia University and is a Professional Engineer in the State of West Virginia.

Relevant Project Experience

- **School Projects**
Responsible for layout, design, and permitting of water and sewer lines for numerous school projects in WV. Projects entailed coordination with PSDs, municipal water and sewer departments, State and Federal regulatory agencies for design of facilities. Schools include: Blue Ridge Community and Technical College, Blue Ridge K-12, Burnsville Elementary, Flatwoods Elementary, Davis Elementary, Sutton Elementary, Little Birch Elementary, Frametown Elementary, Buffalo High School, Clay-Battelle High School, Confidence Elementary, Jefferson Elementary, East Hardy High School, Eastwood Elementary, Flinn Elementary, Geary Elementary, Gilbert High School, Greenbrier West high School, Hampshire High School, Harpers Ferry High School and 19 additional schools.
- **Commercial Developments**
Responsible for layout, design, and permitting of water and sewer lines for numerous commercial developments in WV. Projects entailed coordination with PSDs, municipal water and sewer departments, State and Federal regulatory agencies for design of facilities. Developments include: Fairmont Federal Credit Union, Allegheny Energy Union (Fairmont), First Ward (Clendenin) Apartments, Milton Crossing, Tri-State Hotel and multiple convenience store sites throughout WV.
- **Charleston Replacement Housing**
Utility design, primarily water, sewer and stormwater, and coordination of overall site activities with the project developer for multi-unit housing development. Each phase entailed the design and layout of several hundred feet of water, sewer and stormwater line, including multiple connections with the utility providers, i.e., the Charleston Sanitary Board and West Virginia American Water, and applicable permit applications. Also responsible for construction monitoring and provision of as-built drawings as required by the respective utility providers.
- **Cathcart – Devonshire Development, Scott Depot, WV**
Designed sanitary sewer and water distribution system to serve more than 900 housing units in this private development.
- **Washington Woods Subdivision, Ravenswood, WV**
Designed more than 9,000 feet of water and sewer line and a 500 gpm fire pump water booster station to serve a 150 lot subdivision.
- **Sawmill Village, Snowshoe, WV**
Designed approximately 2,800 feet of 8" water line and sanitary facilities to serve the Sawmill Village development project in Snowshoe, WV.
- **Cabell County Water Main Extension Project**
Worked on design and layout of approximately 46,000 feet of water main for the Salt Rock PSD/WVAW. Responsible for bidding, contract award, and project management.
- **Putnam County Water Main Extensions**
Worked on design and layout of approximately 63,000 feet of water main and a booster pumping station for the Putnam County Commission/WVAW. Responsible for bidding, contract award, and project management.
- **Manila Ridge Water Main Extension Project**
Worked on design and layout of approximately 38,000 feet of water main for the Putnam County Commission/WVAW. Project has not received funding yet. However, will be responsible for bidding, contract award, and project management.



Education

B.S. Civil Engineering
West Virginia University

Work Experience

TERRADON Corporation
2007-Present

WV American Water
1991-2007

AWW SC
1984-1991

WV DNR
1982-1984

VTN, Inc. Consulting
Engineers
1978-1982

J.H. Milam Consulting
Engineers
1977-1978

WV DNR
1976-1977

WV Department of
Highways
1975-1976

Registration

Professional Engineer: WV

RESUMES OF PROJECT TEAM MEMBERS

Robert Thaw, PS
VP - Survey and Mapping

With more than 22 years of experience in a wide range of surveying projects, Robert Thaw serves as head of TERRADON's Survey and Mapping department. He organizes and supervises survey crews, reviews project plans and creates base mapping for various projects including noise barriers, interchanges, connectors, bypasses, sidewalks, bike paths and bridges. Thaw oversees all TERRADON survey activities, including: preparation of Right-Of-Way plans; the development of GPS static networks for aerial mapping in the design of roadways; identification of existing utilities and property lines; base image development and control placement for construction projects; and drafting of legal descriptions for ROW parcels.

Thaw has been directly responsible for survey and mapping services on a number of notable projects including:

- **Laurel Fork Campground Bridge**
TERRADON provided surveying and design engineering on a USDA Forest Service project in Randolph County, West Virginia. Surveyors led by Thaw provided Right-Of-Way services, including courthouse research, construction easements, and location of alignments. Additionally, provided topographic mapping, project control for construction, hydraulic cross sections, and stream profiles.
- **Sedalia Arch Bridge**
Thaw oversaw survey services for the replacement of an existing concrete arch bridge with a 72' single span bridge. The bridge consisted of adjacent concrete prestressed box beams with a cast-in-place concrete deck. Survey services consisted of a topographic survey, ROW plans, construction control, and legal description creation. Roadway design consisted of new bridge approaches and a designed detour. Drainage, maintenance of traffic, and right-of-way plans were included in the scope of work.
- **Sleeth's Run Bridge**
Thaw provided Right-Of-Way services during the design for the replacement of an existing truss bridge in Lewis County, WV. The project included the design of a new 200' structure and approaches. Survey services consisted of a topographic survey, ROW plans, construction control, and legal description creation.
- **Grade Road**
Thaw oversaw Right-Of-Way services for the new construction of two lanes adjacent to an existing two-lane roadway. Right-Of-Way services included Right-Of-Way Plans, legal descriptions, and questionnaires for take parcels.
- **St. Mary's Bypass**
Working for the WVDOT, Thaw led transportation survey services for the relocation of WV 16 in Pleasants County, from Pleasants County Route 18 to WV 2 in Saint Mary's, West Virginia for approximately two miles of highway. The project included topographic mapping, survey control mapping, right-of-way and utility cost estimates, and inventories.
- **Nitro Land Fill-2007 Topo**
Surveyed the boundary of the former Landfill for future cap and development. Performed topographic survey of the site, prepared maps used for design of a municipal boat ramp.
- **Tucker Co Landfill**
Established survey control for the landfill. Created topographic surveys quarterly to be used for quarterly volume reports.



Education

A.S., Survey Technology, 1981,
West Virginia Institute of
Technology

B.S., Surveying, 1985, West
Virginia Institute of Technology

Work Experience

TERRADON Corporation
1994-Present

Bowman Land Surveying
1992-1994

Dunn Engineers
1990-1992

Kelley Gidley Blair and Wolf
1988-1990

Pierson & Whitman
Architects and Engineers
1984-1986

Registration

Professional Surveyor,
West Virginia

RESUMES OF PROJECT TEAM MEMBERS

Bill Hunt, PG, LRS
Vice President of Geo-Environmental, Testing & Inspection

Bill Hunt is a Licensed Remediation Specialist and serves as Vice President of Geo-Environmental and Testing & Inspection services at TERRADON Corporation. Hunt offers relevant experience in environmental documentation, investigations, and coordination with federal, state, and local agencies. He prepares Environmental Impact Statements, Environmental Assessments, Section 4(f) Evaluations, and other environmental technical documents. He supervises and participates in work plan development, field surveys, on-site monitoring, data collection, impact analysis, subconsultant management, public meeting organization and group presentations.



Relevant Project Experience

Hunt has provided environmental management services on a wide variety of projects. His experience includes:

- Phase I and II Environmental Site Assessments
- Section 401/404 Permitting
- Wetland Assessments and Delineations
- Environmental and Industrial Hygiene Sampling
- Environmental Audits and NEPA Assessments
- Risk Assessments
- Remediation Design
- Statistical Analysis of Soil and Groundwater data
- Spill Prevention and Best Management Practices Plan Preparation

Key Projects

- 40 Phase I Environmental Site Assessments (ESAs) for fast food franchise at locations in WV, OH, IN, MO, KS, MI and WI. 25 of these Phase I ESAs led to Phase II ESAs
- Phase I and II ESA of coal loading terminal along the Ohio River. Phase II delineated Soil & groundwater diesel impact which was remediated using free product recovery, pump and treat and vacuum extraction—Kenova, WV
- Phase I ESA of more than 1800 acres of timber land which included Phase II soil sampling for mercury at natural gas wellhead sites – Various Locations, WV
- Phase I ESA of city block slated for demolition. Phase II activities included soil and groundwater sampling, asbestos sampling, lead based paint sampling and wipe sampling of surfaces within pesticide storage areas – Fairmont, WV
- Phase I ESA and wetland assessment and delineation at 900-acre undeveloped property Kingwood, WV
- Risk assessment for site closure at LUST site in Ohio, conducted in accordance with Ohio BUSTR guidelines.
- Risk assessment for RCRA closure at Barge Manufacturing Facility, Burlington, Ohio.
- NEPA Environmental Study, West Virginia Regional Airport, Randolph County Airport, Mason County Airport, Upshur County Airport, Mingo County Airport
- Exposure Assessment at pigment manufacturing facility as part of RCRA closure Cincinnati, Ohio

Education

B.S. Environmental Science,
 Morehead State University

M.A. Geography,
 Ohio University

Work Experience

2010—Present
 TERRADON Corporation
 Geo-Environmental Department
 Head

2008—2010
 NGE, LLC
 Environmental Services Manager

2001—2008
 Superior Marine Ways
 Director, Environmental Health
 & Safety

1991-2001
 H.C. Nutting Company
 Environmental Group Leader

1989—1991
 PSARA Technologies
 Environmental Services Division
 Manager

1986—1989
 Westinghouse
 Environmental Scientist

RESUMES OF PROJECT TEAM MEMBERS

John James, PE Senior Geotechnical Engineer

John James is a Senior Geotechnical Engineer for various transportation, environmental, and mining projects. James specializes in innovative and cost-saving concepts for his projects. James' project experience includes: studies and designs for landfills and environmental facilities; surface and groundwater studies and remediation; design of liners for landfills and various impoundments; earth and rockfill dams; roads; highways and bridges; foundation investigations and designs ranging in size from small projects to major industrial complexes; storm drainage facilities; airport facilities; landslide analysis and remediation; and forensic engineering.

Relevant Project Experience

- **Geotechnical investigations and reporting on highway/roadway projects including:** open-ended statewide geotechnical contract, Route 35 Design/Build, Sedalia Arch Bridge, and Sleeth's Run Bridge.
- **LCAP Experience**
Provided design and permitting for the following under the WVDEP LCAP Program:
 - Pine Creek/Omar Landfill, 12 Acres HDPE Liner, Pine Creek, Logan County, WV.
- **Dam Experience**
James has been Engineer of Record for numerous earth and rock fill dams in West Virginia. Recent projects include: Mallard Dam (presently in design), 8 acres; Upper Glade Creek Water Supply Dam upgrade (from 95 to 112 acres+/-; Dawson Dam, 30 acres+/-; Lake Chaweva Reconstruction, 24 acres+/-; and Chatham Dam, 65 acres+/-). Also provided consultation and construction design for the United States Army Corps of Engineers for Bluestone Dam.
- **Site Selection Experience**
James specializes in site evaluation from geologic and topographic perspectives, including literature research and site reconnaissance, for specific project needs.
- **Landslide Experience**
Worked on numerous landslides of various sizes and complexity in West Virginia.
- **Foundation Investigation and Design**
Performed foundation investigation services for more than 1,000 projects in West Virginia, from small residential sites to major industrial projects (valued at up to \$2 B) including complicated foundation designs.
- **Retaining Walls**
Designed numerous retaining structures including simple gravity concrete and MSU walls, cantilever walls and complicated sheet piling or H pile and lagging walls.
- **Geotechnical investigation and design of numerous water and wastewater treatment plants, including:**
Charleston Wastewater Treatment Plant, North Beckley Wastewater Treatment Plant, and Buckhannon Water & Wastewater Treatment Plant.
- **WVDOT City Beer Bridge, Wood County, WV**
TERRADON conducted a field exploration for the proposed overpass replacement on I-77 located in Wood County, West Virginia. A total of thirteen (13) structure borings at the proposed bridge and one pavement boring were required by the WVDOT, and TERRADON performed drilling for the fourteen borings, delivered samples to MCS&T and provided GINT logs.
- **WVDOT Corridor H- Slope Stability Design of Waste Pit Areas and Cut/Fill Slope Value Engineering**



Education

B.S., Civil Engineering,
West Virginia University Institute
of Technology

Work Experience

TERRADON Corporation
2004-Present

James Engineering
1983-2004

Triad Engineering
1978-1983

James Engineering
1973-1978

Ackenherl & Associates
1968-1973

US Geological Survey
(Part-time College Intern)

ADDENDUM ACKNOWLEDGEMENT FORM
SOLICITATION NO.:

Instructions: Please acknowledge receipt of all addenda issued with this solicitation by completing this addendum acknowledgment form. Check the box next to each addendum received and sign below. Failure to acknowledge addenda may result in bid disqualification.

Acknowledgment: I hereby acknowledge receipt of the following addenda and have made the necessary revisions to my proposal, plans and/or specification, etc.

Addendum Numbers Received:
(Check the box next to each addendum received)

- | | |
|--|--|
| <input checked="" type="checkbox"/> Addendum No. 1 | <input type="checkbox"/> Addendum No. 6 |
| <input type="checkbox"/> Addendum No. 2 | <input type="checkbox"/> Addendum No. 7 |
| <input type="checkbox"/> Addendum No. 3 | <input type="checkbox"/> Addendum No. 8 |
| <input type="checkbox"/> Addendum No. 4 | <input type="checkbox"/> Addendum No. 9 |
| <input type="checkbox"/> Addendum No. 5 | <input type="checkbox"/> Addendum No. 10 |

I understand that failure to confirm the receipt of addenda may be cause for rejection of this bid. I further understand that any verbal representation made or assumed to be made during any oral discussion held between Vendor's representatives and any state personnel is not binding. Only the information issued in writing and added to the specifications by an official addendum is binding.

E.T. Boggess Architect, Inc.

Company



Authorized Signature

November 9, 2015

Date

NOTE: This addendum acknowledgement should be submitted with the bid to expedite document processing.

CERTIFICATION AND SIGNATURE PAGE

By signing below, or submitting documentation through wvOASIS, I certify that I have reviewed this Solicitation in its entirety; understand the requirements, terms and conditions, and other information contained herein; that I am submitting this bid, offer or proposal for review and consideration; that I am authorized by the vendor to execute and submit this bid, offer, or proposal, or any documents related thereto on vendor's behalf; that I am authorized to bind the vendor in a contractual relationship; and that to the best of my knowledge, the vendor has properly registered with any State agency that may require registration.

E.T. Boggess, Architect, Inc.

(Company)



Todd Boggess, President

(Authorized Signature) (Representative Name, Title)

304-425-4491 / 304-425-2028 / November 9, 2015

(Phone Number) (Fax Number) (Date)

STATE OF WEST VIRGINIA
Purchasing Division

PURCHASING AFFIDAVIT

MANDATE: Under W. Va. Code §5A-3-10a, no contract or renewal of any contract may be awarded by the state or any of its political subdivisions to any vendor or prospective vendor when the vendor or prospective vendor or a related party to the vendor or prospective vendor is a debtor and: (1) the debt owed is an amount greater than one thousand dollars in the aggregate; or (2) the debtor is in employer default.

EXCEPTION: The prohibition listed above does not apply where a vendor has contested any tax administered pursuant to chapter eleven of the W. Va. Code, workers' compensation premium, permit fee or environmental fee or assessment and the matter has not become final or where the vendor has entered into a payment plan or agreement and the vendor is not in default of any of the provisions of such plan or agreement.

DEFINITIONS:

"Debt" means any assessment, premium, penalty, fine, tax or other amount of money owed to the state or any of its political subdivisions because of a judgment, fine, permit violation, license assessment, defaulted workers' compensation premium, penalty or other assessment presently delinquent or due and required to be paid to the state or any of its political subdivisions, including any interest or additional penalties accrued thereon.

"Employer default" means having an outstanding balance or liability to the old fund or to the uninsured employers' fund or being in policy default, as defined in W. Va. Code § 23-2c-2, failure to maintain mandatory workers' compensation coverage, or failure to fully meet its obligations as a workers' compensation self-insured employer. An employer is not in employer default if it has entered into a repayment agreement with the Insurance Commissioner and remains in compliance with the obligations under the repayment agreement.

"Related party" means a party, whether an individual, corporation, partnership, association, limited liability company or any other form or business association or other entity whatsoever, related to any vendor by blood, marriage, ownership or contract through which the party has a relationship of ownership or other interest with the vendor so that the party will actually or by effect receive or control a portion of the benefit, profit or other consideration from performance of a vendor contract with the party receiving an amount that meets or exceeds five percent of the total contract amount.

AFFIRMATION: By signing this form, the vendor's authorized signer affirms and acknowledges under penalty of law for false swearing (W. Va. Code §61-5-3) that neither vendor nor any related party owe a debt as defined above and that neither vendor nor any related party are in employer default as defined above, unless the debt or employer default is permitted under the exception above.

WITNESS THE FOLLOWING SIGNATURE:

Vendor's Name: E.T. Boggess, Architect, Inc.

Authorized Signature: *E.T. Boggess* Date: November 6, 2015

State of West Virginia

County of Mercer, to-wit:

Taken, subscribed, and sworn to before me this 6 day of November, 2015.

My Commission expires March 11, 2018.

AFFIX SEAL HERE

NOTARY PUBLIC *Donna R. East*

Purchasing Affidavit (Revised 08/01/2015)

