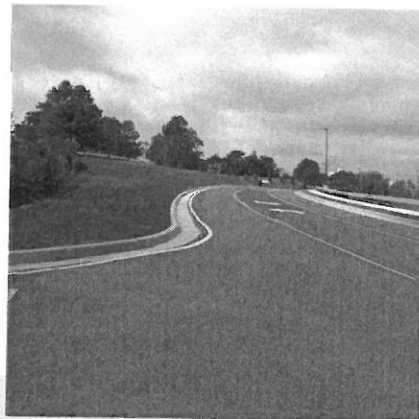
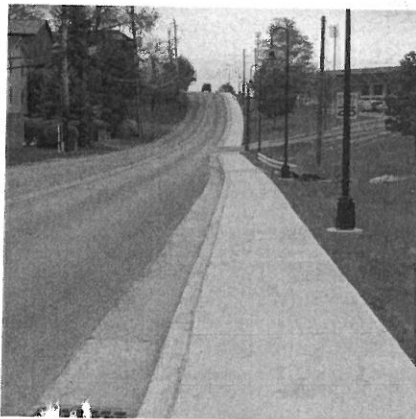


**Canaan Valley Resort
State Park
Demolition/Site Restoration
A/E Design Services**

October 14, 2014

EXPRESSION OF INTEREST



10/14/14 09:59:57AM
West Virginia Purchasing Division

think **Alpha** first.com

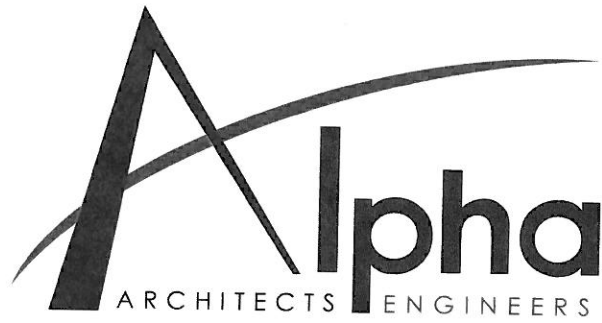
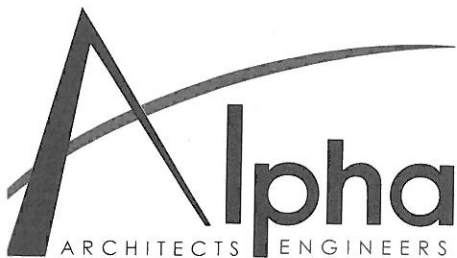


Table of Contents

LETTER OF INTEREST	1
FIRM PROFILES (ALPHA & MEI)	2
PROJECT APPROACH	3
MANAGEMNT/COMMUNICATION	4
COST/BUDGET HISTORY	5
RELATED EXPERIENCE	6
PROJECT STAFFING	7
DEGREE QUALIFICATIONS	8



October 14, 2014

Department of Administration, Purchasing Division
2019 Washington Street East
Charleston, WV 25305-0130

Attn: Dean Wingerd

Re: Expression of Interest A/E Services

Dear Mr. Wingerd,

Alpha Associates, Incorporated wants to be the WV Division of Natural Resources' firm of choice to provide architectural and engineering services for the demolition of 150 sleeping units and related site/utility work at Canaan Valley Resort State Park. Alpha and our teaming partner, Miller Engineering (MEI), have the ability to complete all aspects of this project. The Team has recent, relevant experience that will aide in the success of your project.

Our most recent demolition design project included the demolition, removal and site restoration of a 75,000 square feet, six-story hotel/office building located in downtown Clarksburg. Alpha also provided professional design services for the Monongalia County Commission that involved the demolition of two buildings on Walnut Street, as well as the demolition of two houses and an office building for Monongalia General Hospital's new medical office complex.

In addition to our demolition experience, Alpha has completed numerous site design projects that have included site grading, access roads, parking lots sidewalks and utility relocation. You will see detailed project information for some of these projects included herein for your review.

Alpha's related experience combined with our working relationship with the WVDNR makes us the perfect partner for you on this project. Alpha has worked with the WVDNR on the Cass Scenic Railroad Museum, Berkeley Springs Bath House, and Hawks Nest Deck projects. We would welcome the opportunity to build upon our relationship by working with you on this project as well.

Alpha's Corporate Office in Morgantown, WV will provide the professional services required to successfully complete your demolition and site work. In

order to ensure all aspects of the design are covered, we have added MEI to the project team to provide any utility relocation design that may be required.

MEI has worked with the WVDNR on numerous projects throughout the state. Alpha and MEI have a great working relationship and have completed many projects together over the past 15 years. Together, we will provide you with a design team that will meet all of your needs.


Why is Alpha the best firm for this project?

- ✓ Alpha's staff understands the complexities involved with demolition projects.
- ✓ We have a long history of completing projects that include components very similar to this project.
- ✓ Both Alpha and MEI have the capacity to begin work immediately upon your approval.
- ✓ Together Alpha and MEI can complete all aspects of the demolition and site restoration/infrastructure needs.

Alpha has thrived for over 45 years because we are a professional organization dedicated to providing superior architectural and engineering design services to our clients. We look forward to demonstrating how the Alpha Team can assist Canaan Valley Resort State Park and the WVDNR during an interview.

Sincerely,

ALPHA ASSOCIATES, INCORPORATED



Richard A. Colebank, PE, PS

President and COO

rick.colebank@thinkalphafirst.com

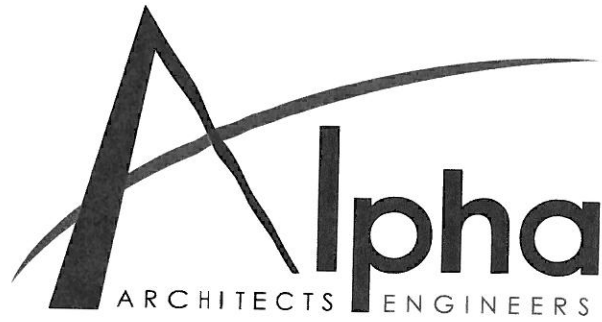
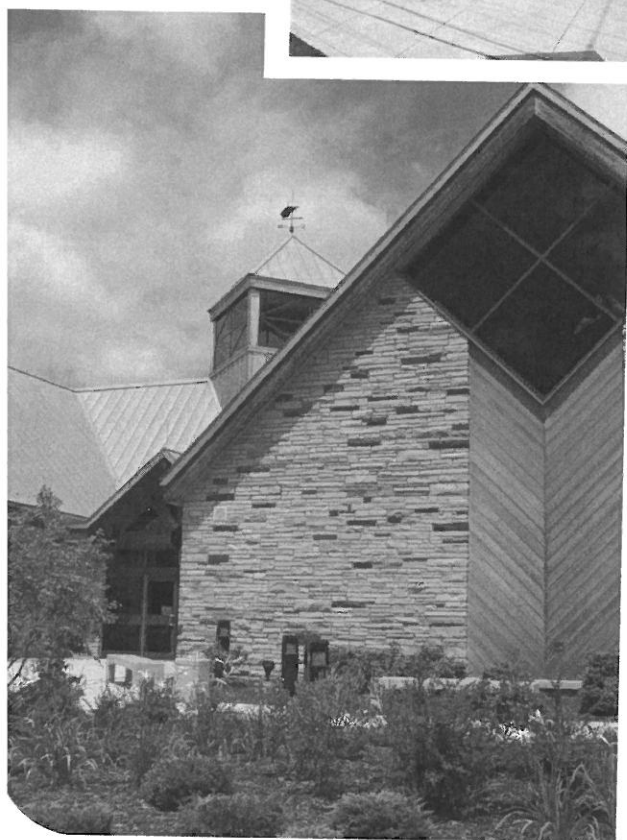
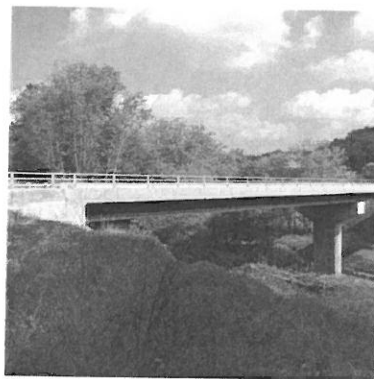
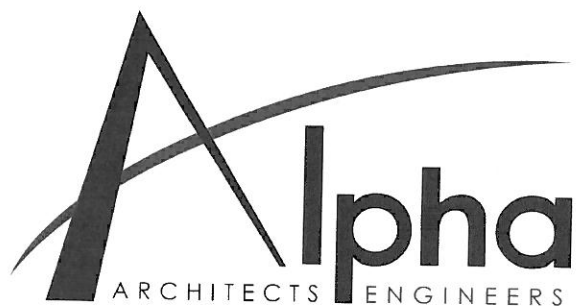


Table of Contents

LETTER OF INTEREST	1
FIRM PROFILES (ALPHA & MEI)	2
PROJECT APPROACH	3
MANAGEMENT/COMMUNICATION	4
COST/BUDGET HISTORY	5
RELATED EXPERIENCE	6
PROJECT STAFFING	7
DEGREE QUALIFICATIONS	8



FIRM PROFILE

Firm Profile

FIRM NAME

Alpha Associates, Incorporated

OFFICE LOCATIONS:

209 Prairie Avenue
Morgantown, West Virginia 26501

535 West King Street
Martinsburg, West Virginia 25401

2506 Kanawha Blvd. East
Charleston, West Virginia 25311

INCORPORATED

1969; Morgantown, WV

FIRM PRINCIPALS

Richard A. Colebank, PE, PS; President and COO
Richard W. Klein, PE, PS; Chairman and CEO
Charles B. Luttrell, PE; Principal
Matthew S. Breakey, AIA, LEED-AP; Principal
Charles B. Branch, PE; Principal

NUMBER OF EMPLOYEES

25 Employees

SERVICES

Architectural Design
Civil Engineering
Structural Engineering
Surveying
Interior Design
Landscape Architecture
Construction Administration

Alpha Associates, Incorporated was established in 1969 and since that time has completed hundreds of projects throughout Morgantown and the state of West Virginia. Alpha's Corporate Office is located in Morgantown with our Eastern Regional Office located in Martinsburg.

think **Alpha** first.com



Engineering Design and Consultation Capabilities

- Mechanical
- Electrical
- Plumbing
- Fire Alarm and
Suppression
- Telephone/Data
- MEP Construction
Administration

Our firm capabilities and experience, uniquely qualify Miller Engineering (MEI) for this WVDNR project.

Each and every project is approached with a **complete assessment process**. Miller Engineering values the relationship with the client and other professional stakeholders to deliver projects in a timely, constructable, and professional manner.

Miller Engineering is an integral and active solutions provider within this process. We **partner** with clients to control first and life cycle cost. This provides a value to the building project both in the short-term and long-term for the owner.

The Miller Team maintains professional competencies through on-going training and education.

Excellence in design solutions is practiced and maintained through consistent site visits during the construction process. Miller Engineering designs mechanical, electrical, and plumbing systems for new construction, renovations, feasibility studies, and system repairs.

Relevant Benefits to the WVDNR Project -

- Experienced and Licensed Professional Engineers
- Quality, Value-Engineered Project Delivery
- Below Industry Change Order Status
- LEED-AP Certified
- Qualified Construction Representative on Staff
- Building Information Modeling
- Consistent, Professional, Hands-on Service
- Emergency Facility Response
- Extensive Experience with WV Construction for Renovation
- Availability to Ensure Project Success

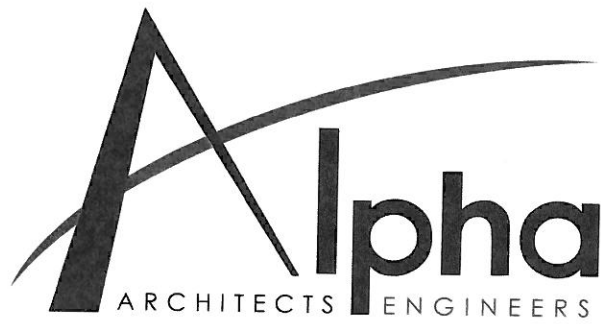
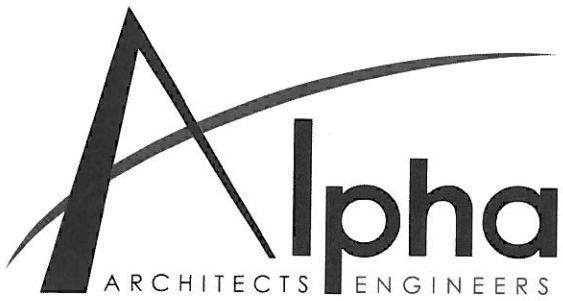


Table of Contents

LETTER OF INTEREST	1
FIRM PROFILES (ALPHA & MEI)	2
PROJECT APPROACH	3
MANAGEMNT/COMMUNICATION	4
COST/BUDGET HISTORY	5
RELATED EXPERIENCE	6
PROJECT STAFFING	7
DEGREE QUALIFICATIONS	8



PROJECT APPROACH

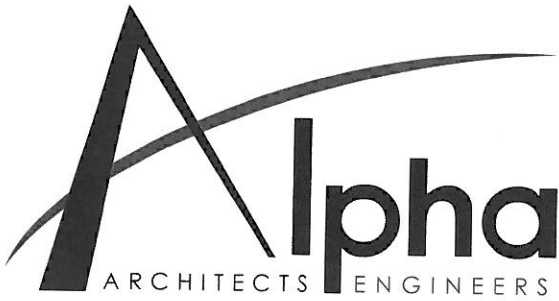
Alpha Associates, Incorporated is unique in the manner in which we approach projects. Each project is approached individually and a project team is selected. The project team consists of internal and external participants. Alpha Associates, Incorporated offers many design services under one roof. Internally at Alpha, we provide civil and structural engineering, surveying, architectural design, and landscape design. Many of those services will be utilized for your project.

At Alpha Associates, even though you are provided multiple services, you still have a single point of contact. For your demolition project, **Mr. Chuck Branch, PE** will act as Principal-In-Charge and your single point of contact. Assisting Mr. Branch will be **Mr. Brad Casdorff, PS, PE**. Brad is a civil engineer and professional surveyor, and will be involved in the design and restoration of the demolition project. Alpha has 25 staff members with available capacity to begin design work immediately. The staff will make your project a priority to assure you are ready to go to bid in the time frame established at the beginning of design.

Alpha has chosen one design partner to aid in the design and abandonment of mechanical, electrical and plumbing systems as required, as well as any additional engineering that may occur. **Miller Engineering** is a Morgantown, WV based design firm that has multiple projects with Alpha Associates. Unique to Miller Engineering is their operations background, specifically in the parks systems throughout North Central West Virginia. Miller designs systems that meet the needs of the client, without over designing and equipping the facility.

YOUR PROJECT

There are two keys to an effective demolition project, reliable information gathering upfront and effective restoration after the structures are razed. Alpha will be your partner during the information gathering and initial survey to make sure you have the best project to meet your future needs. Alpha will work with Canaan Valley Resort staff, and the WVDNR to develop goals and objectives for the finished product. With these goals in mind, we will help you develop the project budget and scope and then truly begin the detailed design process.



Project Survey

Alpha will perform a detailed topographic survey of the project site and will include all utilities possible. The utilities will include all inlets and storm water features, sanitary sewer, water lines, communication and electric lines either visible or marked in the field by the utility. We anticipate mapping the site at a two foot contour interval and a scale of 1"=20'. Our work does not include excavation or special utility location services.

Design and Construction Documents

Alpha will design the construction documents and written specifications with close coordination with Canaan Valley Resort and the WVDNR. The construction documents will include utility plans, site plans, final grading plans, restoration plans, drainage plans, and all details. At the completion of this phase we will provide an estimate of probable construction cost to insure we are still within budget. If necessary, we will work with you to provide alternates for construction that will allow for adjustments to the bids if the budgets are exceeded.

Bid Phase Services and Construction Administration

During the bidding, Alpha will distribute plans to contractors, clarify any questions from potential bidders, issue addenda as necessary and assist you in evaluation of the bids. Alpha's role during construction will be as requested by Canaan Valley and the WVDNR. Alpha can play a limited role by answering contractor requests for information and reviewing submittals, or a more involved role of full time field inspection services, and conducting progress meetings during the construction process.



Complete Assessment Process approach to every project is our method.

- **Identification, Discovery, and Site Review**

MEI will begin by performing a site visit to evaluate existing utilities. Any existing construction plans and documents will be reviewed and verified in the field as well. MEI's staff will also meet with any of the owner's staff. All utilities that will be affected by the demolition will be identified. Miller Engineering will also meet with the owner to determine the extent at which utilities can be disrupted as far as demolition, length of outages, and areas affected.

- **Solutions Design and Planning**

After determining the initial scope of work, MEI will meet with the owner and other affected stakeholders to determine a "plan of attack", and set priorities. The design will be designed specifically to meet budget, minimize utility outages, and make the facilities safe for demolition. The design will also take account of any utility re-configuring that may need to be performed to keep downstream facilities in service. MEI's design will be planned and phased with all consultants and the owner, to make sure work is performed in the proper sequence

- **Quality Assurance**

MEI offers the most thorough MEP construction administration services in the area. MEI's staff will be present during pre-bid, bidding to answer any questions by addendum, and also during kick-off and progress meetings. Miller Engineering believes in making site visits to assure the work is being performed in accordance to the project documents. Any submittals, if applicable, will also be returned as soon as feasible. Miller Engineering practices putting "boots on the ground" as much as needed to ensure successful project completion.

- **Project Close-out**

As-built drawings will be required to ensure proper documentation of all utilities, particularly underground utilities. MEI will be present to prepare a punch list for both substantial and final completion. MEI staff will work with the owner and architect to bring the project to close.

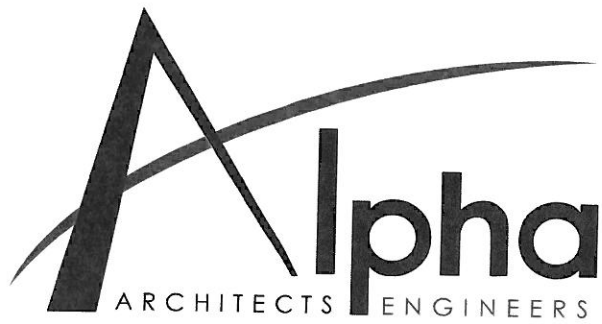
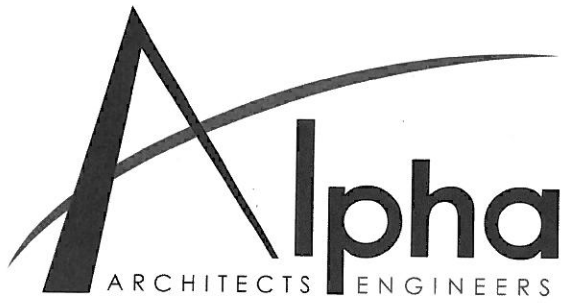


Table of Contents

LETTER OF INTEREST	1
FIRM PROFILES (ALPHA & MEI)	2
PROJECT APPROACH	3
MANAGEMNT/COMMUNICATION	4
COST/BUDGET HISTORY	5
RELATED EXPERIENCE	6
PROJECT STAFFING	7
DEGREE QUALIFICATIONS	8



PROJECT MANAGEMENT

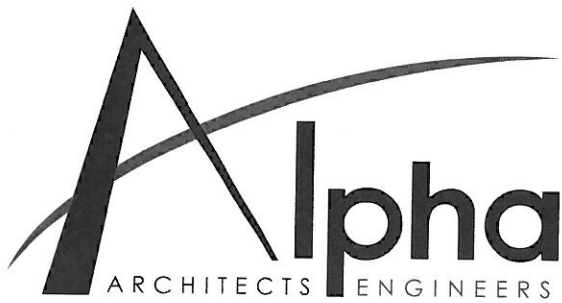
Alpha Associates, Incorporated is an Architectural and Engineering firm that provides services in the areas of Architectural Design, Civil Engineering, Structural Engineering, Interior Design, Surveying, Construction Administration, and Project Management. Our work is diverse and includes clients in medical, commercial and residential, educational and governmental facilities, developers and private organizations. Alpha's architects and civil and structural engineers have recent, relevant project experience that enables projects to be completed on time and within budget.



Alpha is a principal driven company with a staff that is large enough to handle any size project, yet small enough to provide the personal detail and supervision to successfully complete your project. We are available to you long after the completion of your project. Our staff is committed to working with an established project time frame and budget.

Alpha works under a project management system wherein each project is assigned a project manager and a principal of the firm. Internal monthly project management meetings serve as a tool to discuss the preceding weeks' activities, planned activities, project budgets, and estimated time schedules and personnel utilization. Adherence to this process helps to insure that a client's concerns are addressed in a timely fashion aiding in the delivery of a successful project.

Prior to releasing projects for bidding and construction, each project receives a Principal's review. The Principal-in-Charge of the project and the Project Manager conduct the review, which involves a complete evaluation of all internally produced and consultant produced construction documents. Alpha's construction administration staff performs a second assessment to examine constructability and coordination issues from the perspective of the construction field staff. Alpha will also use a "redi-check" system to ensure quality control on the project is maintained.



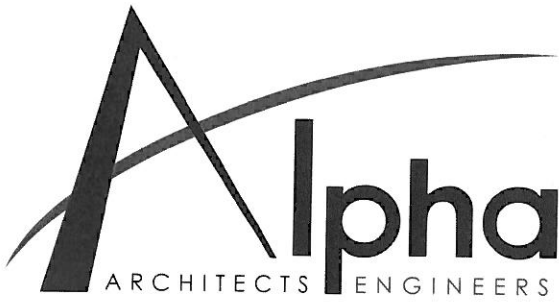
In addition to project management meetings, design principals meet every four weeks to review all project schedules and all personnel utilization. Alpha's project managers and staff work daily with simultaneous projects and understand the importance of time management and prioritization. The Project Managers work together to organize and allocate each staff member's resources. Alpha

understands that each specific project is the top priority to that individual client.



That is why Alpha is committed to your project and assures that all necessary means are taken to ensure that your project is completed on time. This results in the overall best use of personnel in order to complete all projects on time.

Your project benefits from the unique combination of convenient access, extensive experience, key owner/principal commitment, and a competitive price structure. Select Alpha Associates, Incorporated for a well coordinated, timely and high quality project.



COMMUNICATION

Alpha Associates, Incorporated understands the importance of communication between Owner, Architect/Engineer, Consultant and Contractor. That is why Alpha utilizes a variety of tools to communicate with our clients and contractors.

One tool that Alpha frequently uses is our FTP site, which allows our staff to transfer files between Alpha, clients, and contractors. The FTP site allows clients and contractors to easily download and upload project materials.

In addition to this method of communication, each of Alpha's staff has e-mail capabilities as well as all Project Principal's and Project Managers are equipped with cell phones for our client's convenience. This helps us to be available whenever and wherever we are needed.

We also understand the benefit of face to face communication and our Project Principals and Project Managers are always available to meet with you in person at your convenience.

Communication plays an integral role in the overall success of a project. Alpha's staff is easily accessible to our client's and contractors from project inception through completion. We are also available to you long after the completion of your project.

Miller Engineering utilizes a communications process and procedure designed to minimize downtime while ensuring neither the Owner, nor design team, or contractor is left out of the loop.

Milestones of the project will be outlined and upon notification of an award of a project, Craig Miller, lead engineer determines the "best fit" for the project and communicates this with the owner. The chart below shows an example of the main point of contact with a back-up contingency so that the owner can have assurance of consistent communication.

Communication plan with architect and civil engineer:

During the past (12) years, we have worked on various projects with Alpha Associates and have a familial communication level within our two organizations. MEI understands the communication required with the DNR and its project managers and the importance of keeping all stakeholders well-informed. Alpha's management team routinely communicates with all levels of MEI very well.

Our team members listed below will also communicate with the architect and the civil engineer by both e-mail and phone to ensure documentation and project schedules.

Owner Communication Plan:

Milestone	Main	Back-up	Copied On
Design	Craig Miller	Travis Taylor	Joe Machnick & Kelly Brett
Estimating	Craig Miller	Rob Angus	Travis Taylor
Bidding	Craig Miller	Travis Taylor	Rob Angus
Construction	Rob Angus	Travis Taylor	Craig Miller
Warranty	Rob Angus & Craig Miller	Travis Taylor	Joe Machnick

Code Officials Communication Plan:

Milestone	Main	Back-up	Copied On
Public Utilities	Rob Angus & Travis Taylor	Craig Miller	Travis Taylor & Rob Angus

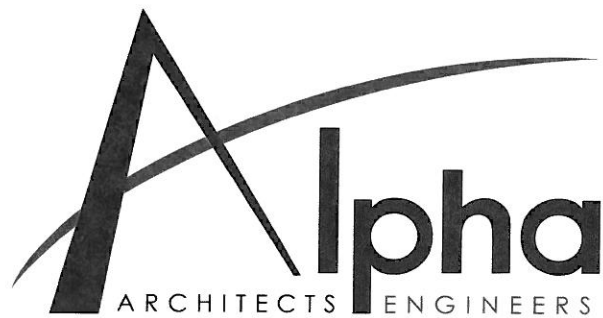
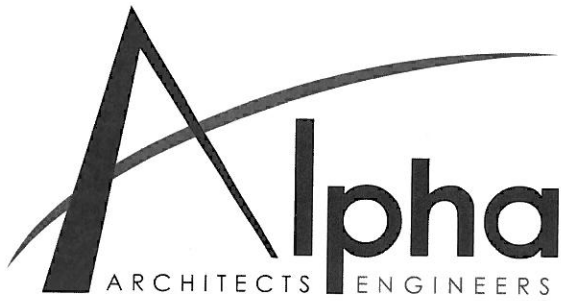


Table of Contents

LETTER OF INTEREST	1
FIRM PROFILES (ALPHA & MEI)	2
PROJECT APPROACH	3
MANAGEMNT/COMMUNICATION	4
COST/BUDGET HISTORY	5
RELATED EXPERIENCE	6
PROJECT STAFFING	7
DEGREE QUALIFICATIONS	8



CONTROL COST AND BUDGET

Alpha Associates, Incorporated has an excellent track record of producing projects on time and within the Owner's budget. Many architectural firms can claim the same successes, but the determining factor is the tools the firms utilize to achieve the budgets, both in regard to funds and time. Alpha utilizes a number of tools, both traditional and modern to exceed our clients' expectations.

A project schedule is a dynamic, ever changing entity. Your project schedule depends on many factors including:

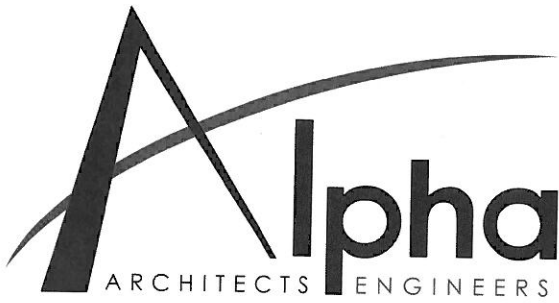
- Preferred construction method
- Changes to project scope
- Unique construction elements

The Alpha Team has an excellent track record of meeting project design deadlines. Alpha recently completed construction on a project in Morgantown that went from design to completion in just over 12 months. This project was completed for a private developer and had a construction cost in excess of \$20 million.

Another recent project success was a multi-million construction project for West Virginia University. This project, an addition to the Agricultural Sciences Building, also had an accelerated project schedule and was completed on time and within the budget.

Successful project management depends upon consensus regarding work efforts, milestones and goals. The team has found that the development of detailed work plans, which delineate tasks and deliverables for each project phase, in concert with the client and full project team, is the most effective means of establishing expectations about efforts required by the respective disciplines. In addition to guiding the efforts of the design team, the work plan sets forth specific time frames and decision points for Owner and user reviews, comments and approvals.

Developing an overall project schedule is a critical task that must take into account many factors: building type, owner's desire for occupancy, scope of



work and level of documentation, whether contract(s) is bid or negotiated, available fee, and prior experiences on similar projects. Characteristic of the client, its organization, or the involvement of a construction manager and his responsibility for document review must also be considered.

This starts with a kick-off meeting which establishes ground rules, responsibilities, and line of communication. We have found that a team visioning session is a great way to get everyone started off on the right track.

Determining a project schedule is a task that must be done with all parties involved in the process. Once the design process begins, a very detailed, realistic project schedule can be developed and communicated to all involved.

In a world where "time is money", the schedule of a project is almost as important as controlling the cost. Alpha also works diligently to control the budget of a project. The best way to control the cost of a project is to avoid the "scope creep" that can occur.

Alpha's in house cost estimators, combined with an excellent relationship with contractors throughout the area, will provide the WVDNR with the most accurate estimates of probable construction cost.

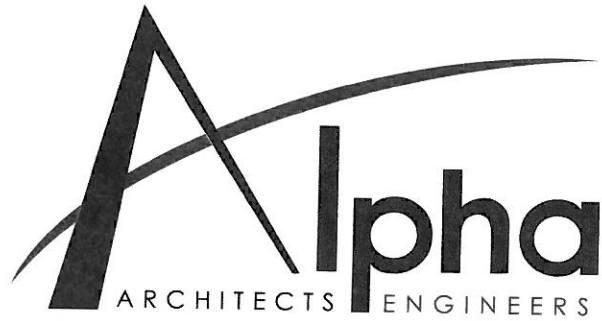
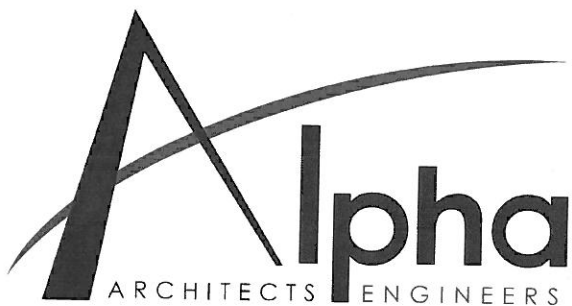


Table of Contents

LETTER OF INTEREST	1
FIRM PROFILES (ALPHA & MEI)	2
PROJECT APPROACH	3
MANAGEMNT/COMMUNICATION	4
COST/BUDGET HISTORY	5
RELATED EXPERIENCE	6
PROJECT STAFFING	7
DEGREE QUALIFICATIONS	8



ALPHA EXPERIENCE

State Office Building Demolition | 2012

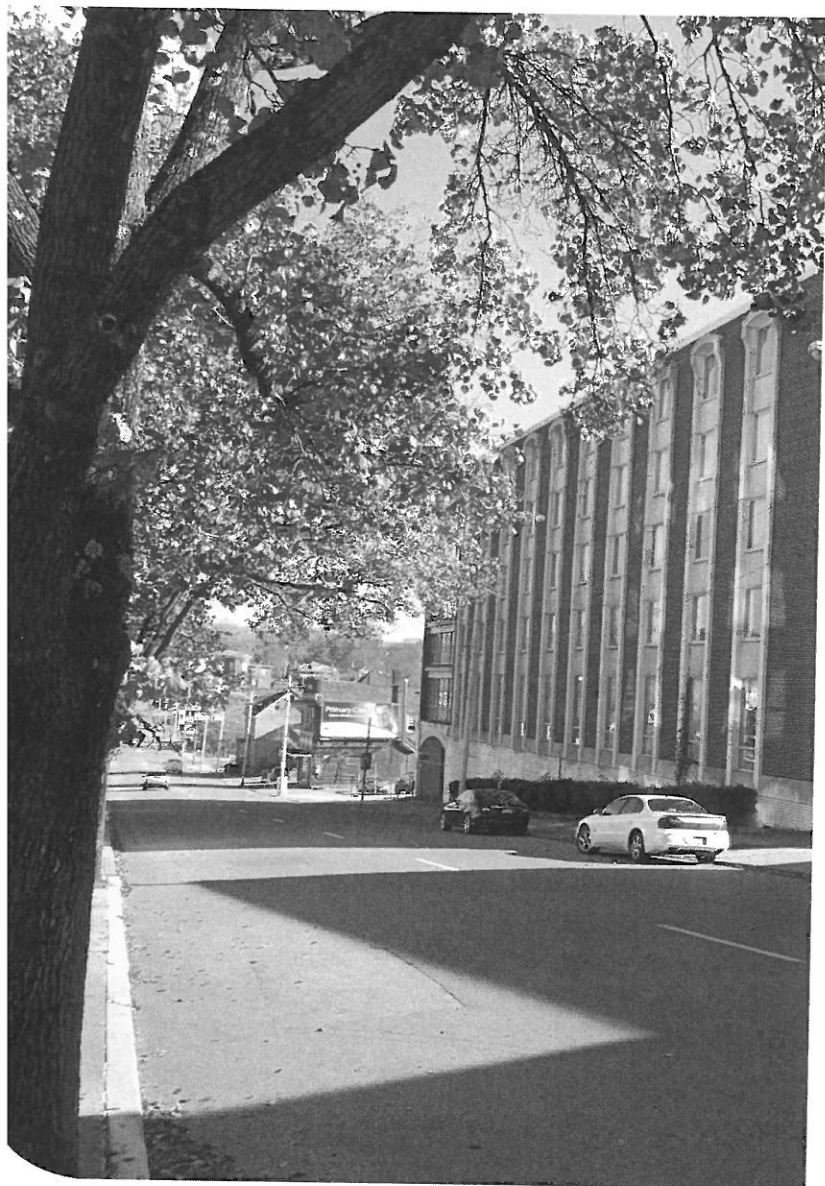
Demolition Case Study

West Virginia State Office Building Demolition

Clarksburg, WV

Alpha Associates, Incorporated provided professional design services for the demolition, removal and site restoration of a 80,000 SF, six story existing hotel/office building in Clarksburg, WV. Building components are to be salvaged, reused, recycled and removed utilizing sustainable methods and documented in accordance with LEED Certification.

Prior to bid documents for demolition, the building was physically surveyed by Alpha's surveyors, structural engineers, and architects. Alpha's environmental consultant also performed a hazardous materials inspection and developed a report.



Project Contact:

David Hildreth

1409 Greenbrier Street

Charleston, WV 25311

304-558-0510

think  **Alpha** first.com

At a Glance

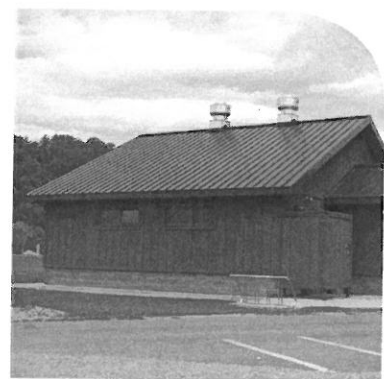
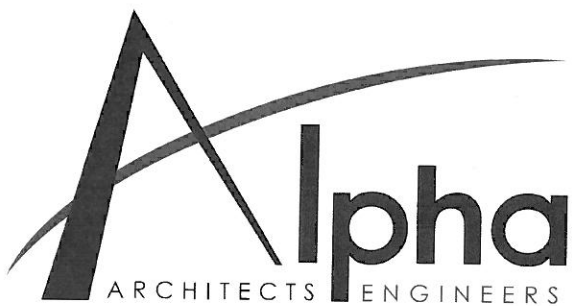
CLIENT: State of West Virginia

LOCATION: Clarksburg, WV

COMPLETION DATE: 2012

SIZE: 80,000 sq. ft.

CONSTRUCTION COST: \$602,000



ALPHA EXPERIENCE

North Fork Hughes River | 2009

Recreation Case Study

North Fork Hughes River Recreational Design

Ritchie County, WV

Alpha Associates, Incorporated provided architectural, engineering and landscape design for the implementation of a \$12 million Master Plan for the USDA. The project included:

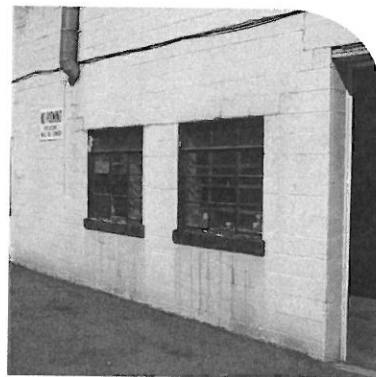
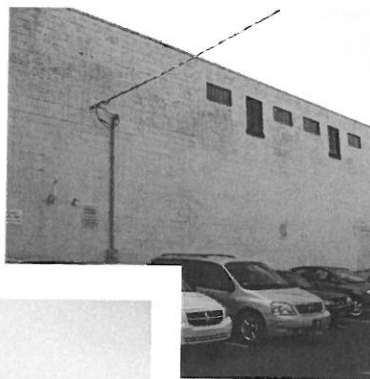
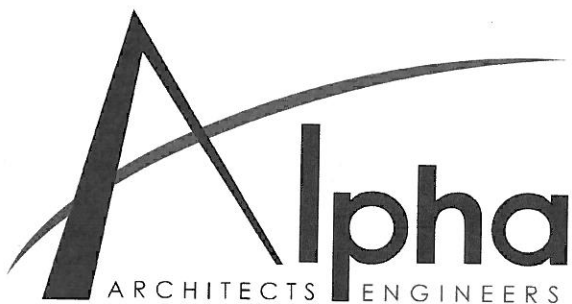
- Restrooms and Bath Houses
- Amphitheater
- Trails
- Parking Areas
- Check in Building
- Water Transmission and Distribution
- Navigational Aids
- Camping Areas
- Picnic Areas
- Sports Fields
- Roadways
- Maintenance Building
- Sewage Collection and Treatment

Project Contact:
Sam Ware
91 Boyles Lane
Parkersburg, WV 26104
304-422-9072

At a Glance

CLIENT: USDA
LOCATION: Ritchie County, WV
COMPLETION DATE: 2009
SIZE: Over 100 Acres
CONSTRUCTION COST: \$12 Million

think  first.com



ALPHA EXPERIENCE

Building Demolition | 2009

Demolition Case Study

**Monongalia County Walnut Street
Building Demolition**

Morgantown, WV

Alpha Associates, Incorporated provided professional design services for the demolition and removal of two buildings owned by the Monongalia County Commission. Planning included the avoidance of the PRT overhead structure, which is in the air rights above.

The first building, the Walnut Street Maintenance building, involved the demolition and removal of a two story concrete block building. The foot print was approximately 31' x 86'.

The second building, the Walnut Street Solid Waste Authority building, involved the demolition and removal of a one story brick and block building. The foot print was approximately 20' x 21'.

Both Buildings included a hazardous materials evaluation and required asbestos removal.

Project Contact:
Robert Doyle
County Courthouse
Morgantown, WV 26505
304-291-7257

At a Glance

CLIENT: Monongalia County
Commission

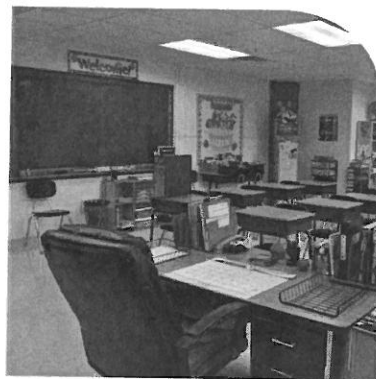
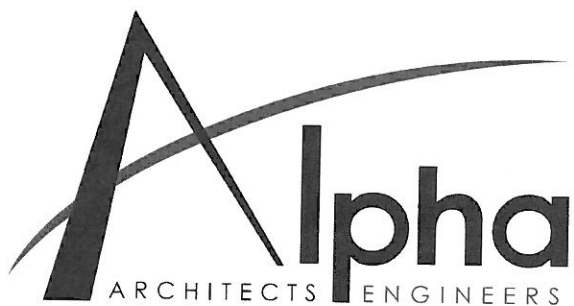
LOCATION: Morgantown, WV

COMPLETION DATE: 2009

SIZE: 2 Buildings

CONSTRUCTION COST: \$48,000

think **Alpha** first.com



ALPHA EXPERIENCE

Mountaineer Middle School

2009

Educational Case Study

Mountaineer Middle School

Morgantown, WV

This renovation project included the transformation of a high school into a middle school for Mon County Schools. The renovation included new interior finishes, new HVAC and sprinkler systems, new roof, new entryway, and the paving and redesign of parking lots and access road to comply with ADA regulations.

The project consisted of the demolition of the 80 year old boiler heating system, removing existing wall partitions and floor coverings, and the abatement of asbestos containing materials.

The renovation also included relocating the administrative offices adjacent to the buildings primary entrance.

At a Glance

CLIENT: Mon County Schools

LOCATION: Morgantown, WV

COMPLETION DATE: 2009

SIZE: 115,780 Sq. Ft.

CONSTRUCTION COST: \$8.4 Million



Project Contact:

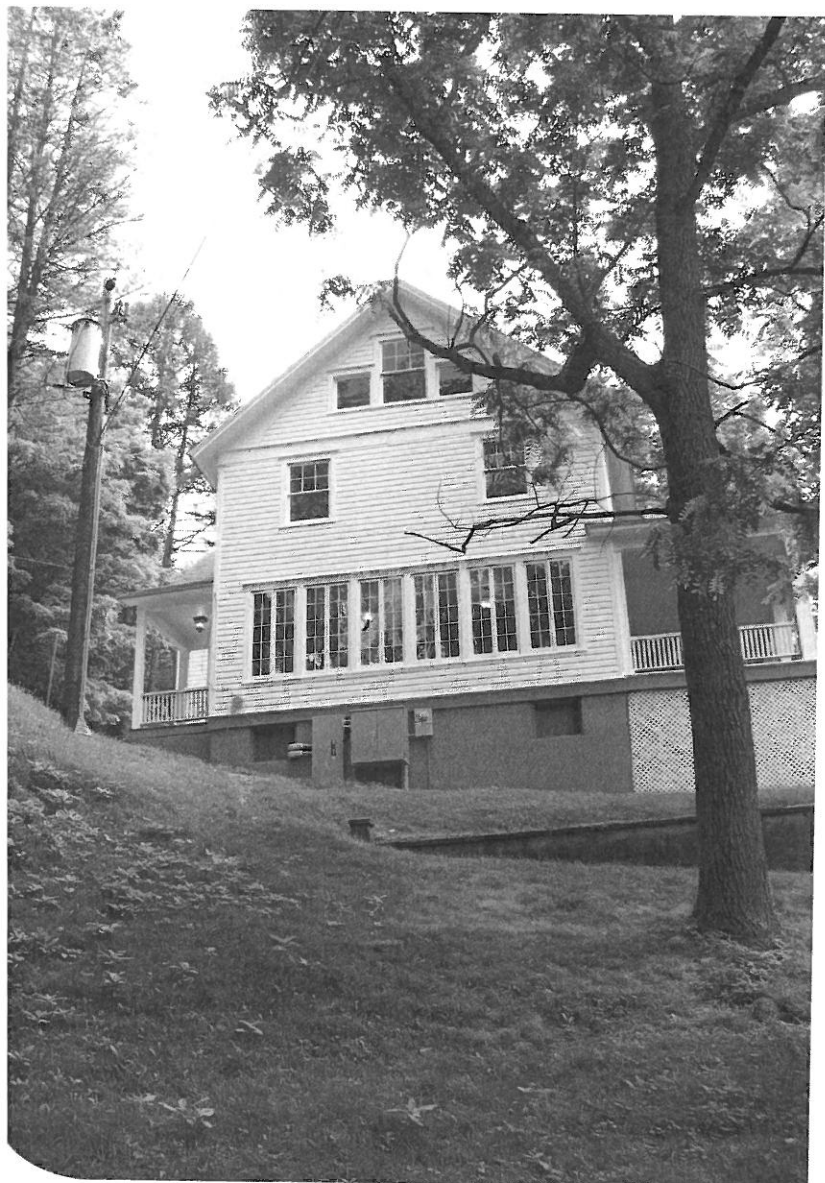
Ed McCabe

13 South High Street

Morgantown, WV 26505

304-291-9210

think  **Alpha** first.com



ALPHA EXPERIENCE

Cass Scenic Railroad | 2009

Historical Case Study

Cass Scenic Railroad - Clubhouse Renovation
Cass, WV

Alpha performed an evaluation of the building condition, structural foundation, and MEP systems for the Clubhouse to document the historic structure and utilize the information to determine what the best use of the building would be. Alpha then designed the renovation of this historic landmark originally built in 1916.

Renovation of the Cass Clubhouse was first developed as a lodge concept. When that was deemed too costly, the renovation/restoration design was confined to the exterior of the building shell and first floor. This stabilized the building and fixed major problems while allowing the first floor to be operated as a museum.

At a Glance

CLIENT: WV DNR

LOCATION: Cass, WV

COMPLETION DATE: 2009

SIZE: 5,163 Sq. Ft.

CONSTRUCTION COST: \$505,000

Fee: \$75,617

Project Contact:

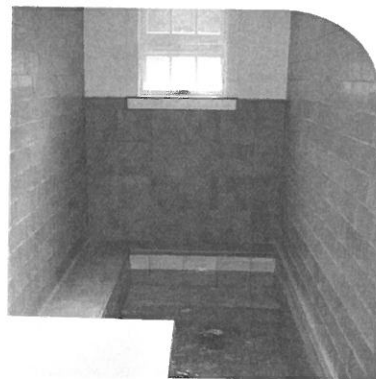
David Leslie

24 4th Street

South Charleston, WV 25303

304-558-2764

think **Alpha** first.com



ALPHA EXPERIENCE

Berkeley Springs Bath House

2010

Historical Case Study

Berkeley Springs Bath House

Berkeley Springs, WV

Alpha designed the renovation of this historic landmark originally built in 1929 with a 1949 addition. The Bath House in Berkeley Springs State Park is open to the public and is operated year round by the Park Service.

The renovation included selective demolition, and restoration of the historic masonry exterior. New hot water storage tanks and boilers are a major component of the design, as well as, central air-conditioning, which the Bath House never had before.

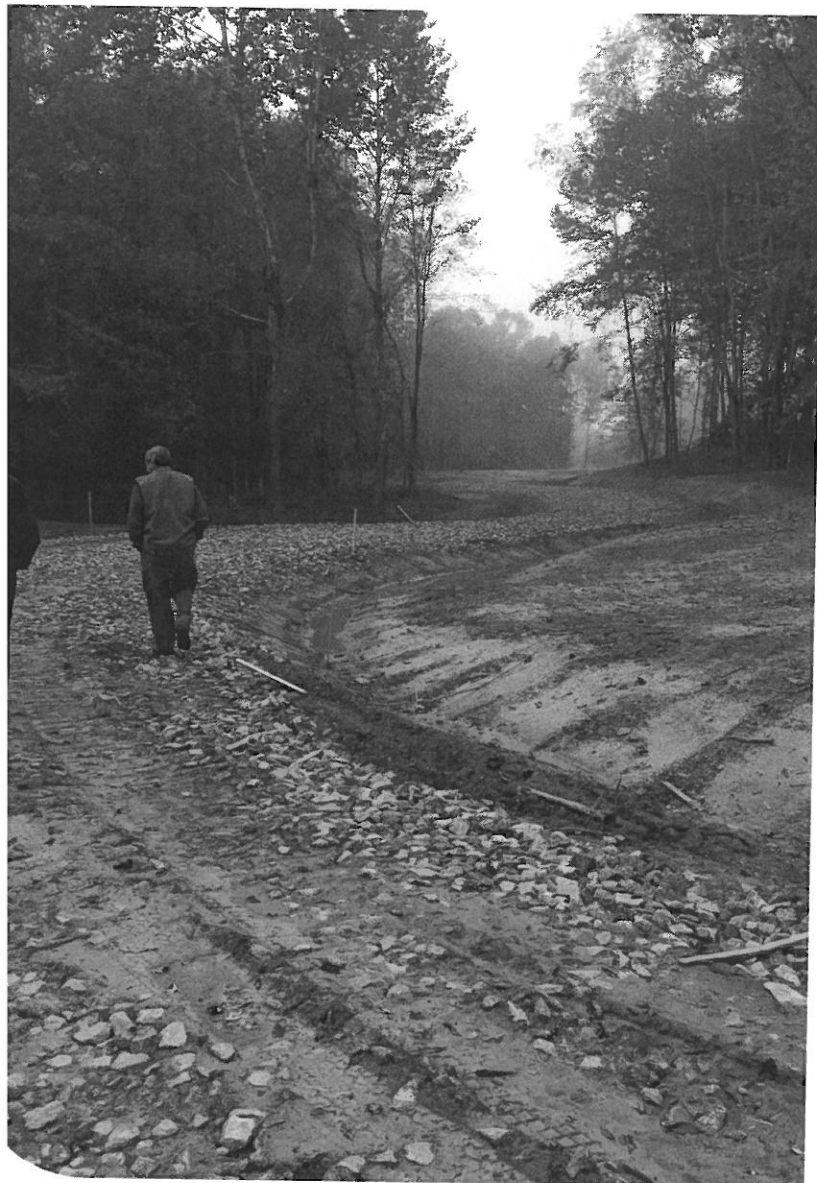
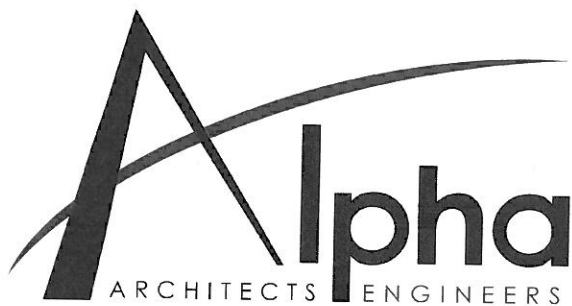
The interior design added amenities such as whirlpool baths. The Bath House upgraded to reflect a more "spa-like" ambiance. The existing Roman Baths have new liners and saunas were added for the benefit of the Bath House Patrons.

Project Contact:

David Leslie
24 4th Street
South Charleston, WV 25303
304-558-2764

At a Glance

CLIENT: WV DNR
LOCATION: Berkeley Springs, WV
COMPLETION DATE: 2010
SIZE: 7,127 Sq. Ft.
CONSTRUCTION COST: \$2.2 Million



ALPHA EXPERIENCE

Stonewall Jackson Resort | On-Going

Engineering Case Study

Stonewall Jackson Resort
Roanoke, WV

Alpha Associates, Incorporated is currently working on the completion of a variety of projects for Stonewall Jackson Resort in Roanoke, WV. During the summer of 2013, Alpha completed the design of infrastructure for 25 cottages at the Resort. Work for the infrastructure included all earthwork, roadways, and utilities. The grading and roads were completed during the fall of 2012 by the Army National Guard as well as some other miscellaneous off-site grading activities that the Resort requested Alpha's services in completing with the National Guard.

Currently, Alpha is working on an evaluation and report for the existing water and waste water treatment systems at the Resort. The Resort is working with the Army National Guard to petition more funding to additional grading projects throughout the Resort.

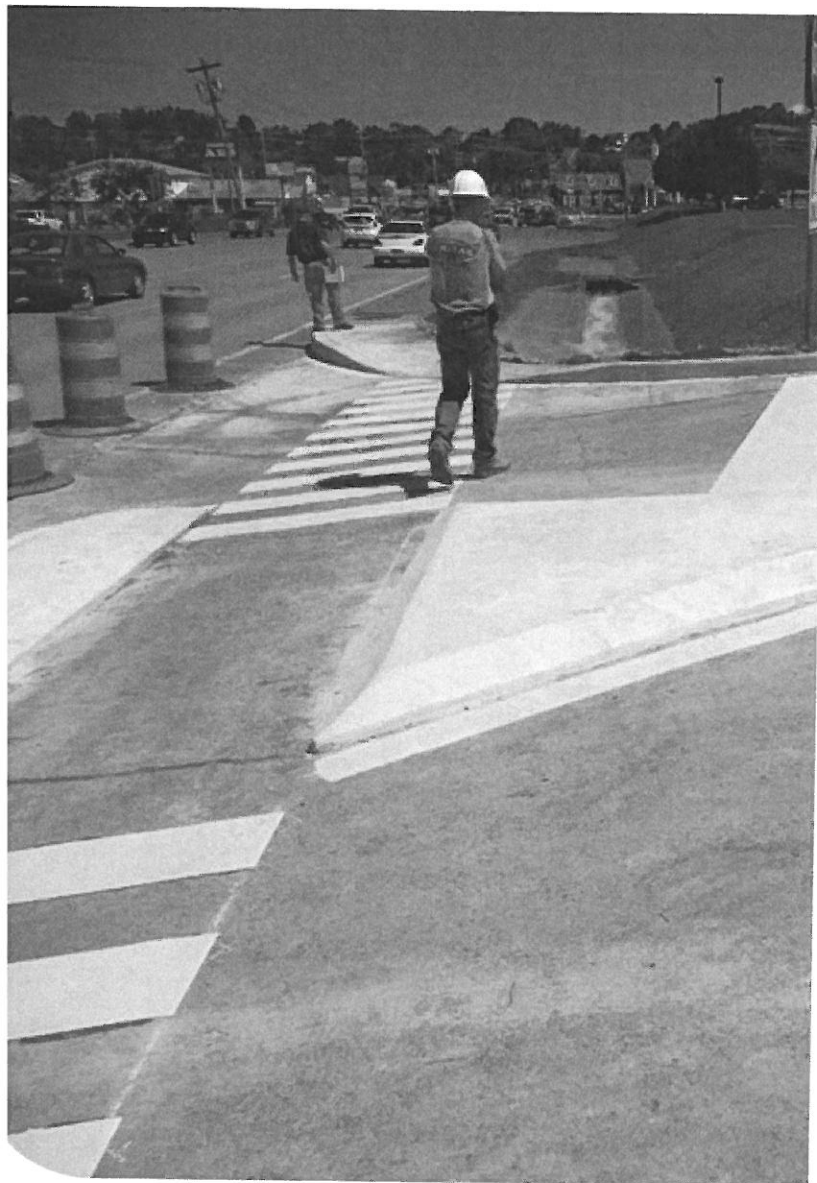
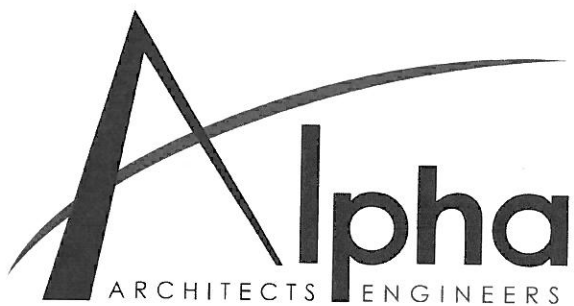
Project Contact:

Steve Jordan
W Commercial
105 Washington Street, West
Charleston, WV 25302
604-347-7500

think **Alpha** first.com

At a Glance

CLIENT: Stonewall Jackson Resort
LOCATION: Roanoke, WV
COMPLETION DATE: On-Going
SIZE: Multiple Projects
CONSTRUCTION COST: Completed by WVANG



ALPHA EXPERIENCE

Lot 81 Parking Lot | 2011

Engineering Case Study

West Virginia University Parking Lot 81

Morgantown, WV

Alpha Associates provided surveying, civil engineering, and construction administration services for the West Virginia University Parking Lot 81 Project. This project was the renovation of a parking lot of approximately 1000 spaces. Phase 1 provided revised entrances and additional handicap parking. Phase 2, provided additional asphalt and storm water management controls as well as new lighting.

Alpha's civil engineering components included: site grading, storm water management, utility design, and storm drain design. Alpha coordinated the project with the Morgantown Utility Board, the City of Morgantown, and all local utility companies.

Project Contact:

Kevin Kilinsky

P.O. Box 6572

Morgantown, WV 26506

410-293-4731

think  **Alpha** first.com

At a Glance

CLIENT: West Virginia University

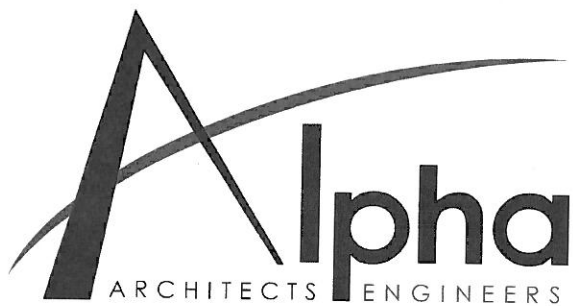
LOCATION: Morgantown, WV

COMPLETION DATE: 2011

SIZE: Multiple Phases

CONSTRUCTION COST: Phase I \$197,700

Phase II \$1.3 Million



ALPHA EXPERIENCE

Willowdale Road Sidewalk | 2007

Engineering Case Study

Willowdale Road Sidewalk

Morgantown, WV

Alpha provided funding application assistance, surveying, civil engineering, and construction administration services for the Willowdale Road Sidewalk project near West Virginia University's Milan Puskar Stadium. This project included approximately 2000 linear feet of under drain, curb and gutter, five foot wide sidewalk, lighting, various utility relocations and other related appurtenances

Project Contact:

Paul Hanks

Box 6572

Morgantown, WV 26506

14-293-2854

think **Alpha** first.com

At a Glance

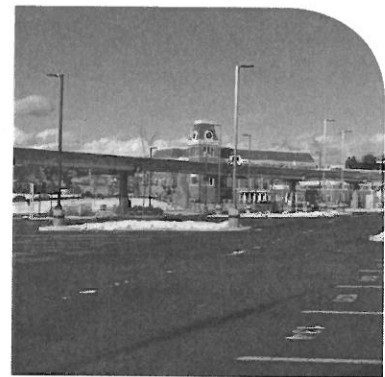
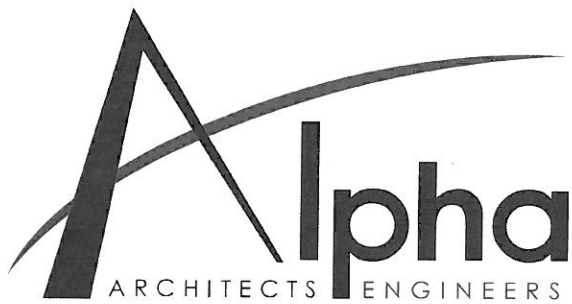
CLIENT: West Virginia University

LOCATION: Morgantown, WV

COMPLETION DATE: 2007

SIZE: 2,000 LF 5' Wide

CONSTRUCTION COST: \$550,000



ALPHA EXPERIENCE

Alumni Center Parking Lots | 2008

Engineering Case Study

West Virginia University Alumni Center Parking Lots / Demolition

Morgantown, WV

Alpha Associates provided surveying, civil engineering, and construction administration services for the West Virginia University Alumni Center Parking Lots Project. This project provided 200 controlled access, paved parking spaces adjacent to the new WVU Alumni Center, lighting, storm water controls, and other related appurtenances.

Alpha's civil engineering components included: building demolition, site grading, storm water management, utility design, and storm drain design. Alpha coordinated the project with the Morgantown Utility Board, the City of Morgantown, and all local utility companies.

Also included in this construction package was the demolition of two existing apartment buildings. Alpha provided engineering for the removal of the buildings and coordination of environmental remediation services.

Project Contact:

Paul Hanks
PO Box 4269
Morgantown, WV 26504
(304)-293-4731

At a Glance

CLIENT: WV Alumni Association
LOCATION: Morgantown, WV
COMPLETION DATE: 2008
SIZE: 200 spaces
CONSTRUCTION COST: \$997,000

think  first.com

Holly River

Engineering Design

- High Voltage Electric Design
- MEP Construction Design
- Emergency Restoration

MEP Budget: Phase 1 - \$1.16M

Phase II - \$1.25M

Location: Hacker Valley, WV

Park Size: 8, 101 acres



Project Outcome Highlights:

- Designed and developed a plan restoring power to the park and reduce future outages
- Coordinated with both the DOH and the DEP to ensure prompt completion.
- Designed solution opting for burying (2.5 miles) of electrical supply cable in conduit to prevent future outages.

Project Goals:

In 2012, Super Storm Sandy incapacitated the park's main electrical supply. The goal of the project was to return electric supply to the park.

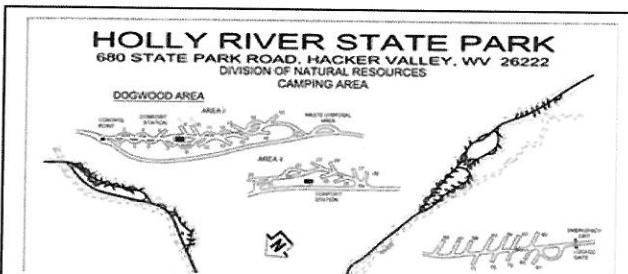
Site study and work to meet the owner's initial goal uncovered potential hazards.

Thus, Miller Engineering developed a (2) phase approach to meet both the current goal and address code issues.

The project goals were met by addressing both the short and long term goals of the owner as well as and the electrical needs of the park.

Project Reference: Bradley S. Leslie, PE

Assistant Chief State Parks Section
324 Fourth Ave., Charleston, WV 25303
Phone: (304) 558-2764



Hawk's Nest Lodge

Engineering Design

- Electrical
- Mechanical
- Plumbing

Total Project Budget: \$ 1.3M

Location: Ansted, West Virginia

Facility Area: 28, 500 ft²



Project Goals:

Hawks Nest HVAC replacement focused on the patron rooms within the lodge but the designs for the public areas were also included to prepare for future funding.

A building on the National Register of Historic Places, the replacement had to be accomplished with minimal impact on the building façade and structure. As an ARRA/WVDOE funded project, it had an extremely short design period and delivery requirement.

Project Outcome Highlights:

- One of the first projects in the state to utilize Variable Refrigerant Flow (VRF) systems for heating and cooling as a solution for switching between warming and cooling.
- The lodge can now provide both heating and cooling, as both the lodges see the heaviest guest loads during the fall shoulder months in which 30 degree outside temperature swings occur.

The project was completed on-time and within budget. The construction period was shortened by (20%) by the owner after bidding, making our construction administration all the more critical in delivering the project.

Project Reference: Brad S. Leslie, PE

Assistant Chief State Parks Section
324 Fourth Ave., S. Charleston, WV 25303
Phone: (304) 558-2764 - Ext. 51826

Experience – Facility Location

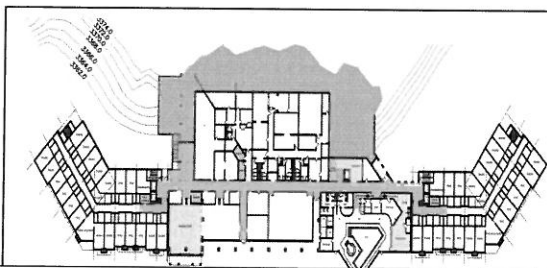
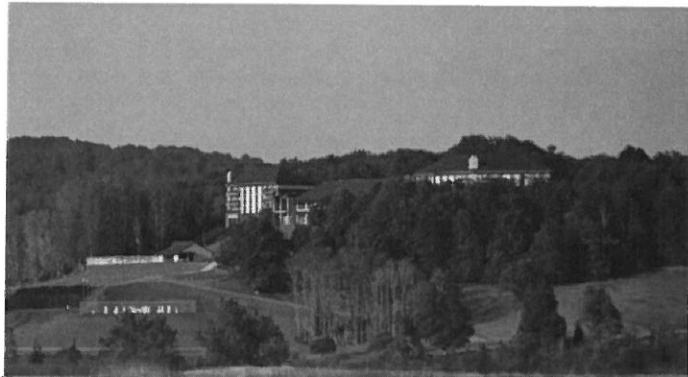
Canaan Valley Resort

Construction Administration (CA) for New Construction for North/South Wings

- Mechanical, Electrical, Plumbing
- HVAC
- Hydronic Pipe

Total Project Budget: \$ 30M

Location: Davis, West Virginia



Project Goals:

Part of keeping a large project on schedule is the ability of MEI's staff to provide rapid and complete response to any contractor questions. MEI was brought in by the owner to provide MEP construction administration to provide quality assurance and 3rd party MEP design review.

MEI's staff was very involved in keeping the project on schedule and in accordance with the construction documents. Detailed construction observation helps identify to minimize downtime and change orders.

Project Outcome Highlights:

- Technical support for problem resolution throughout project.
- Warranty and issue support
- Quality of work evaluation during construction.

Providing owner representation to ensure MEP quality assurance and designed construction. The project is currently in close-out.

Project Reference: Brad S. Leslie, PE

Assistant Chief State Parks Section
324 Fourth Ave., S. Charleston, WV 25303
Phone: (304) 558-2764, Ext. 51826

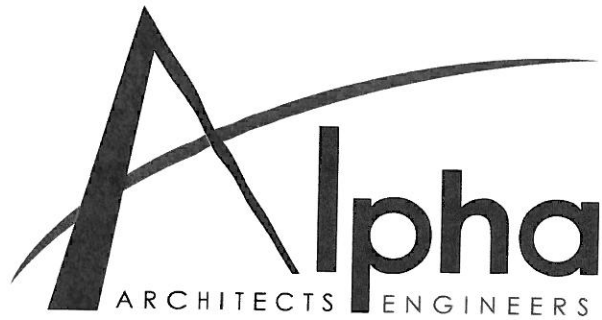
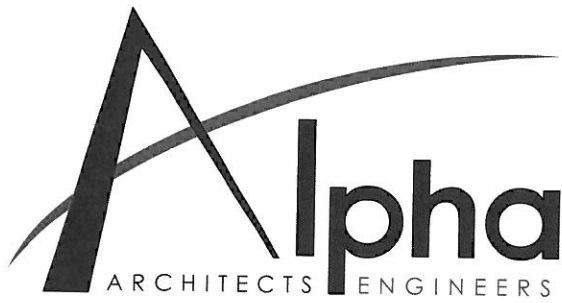


Table of Contents

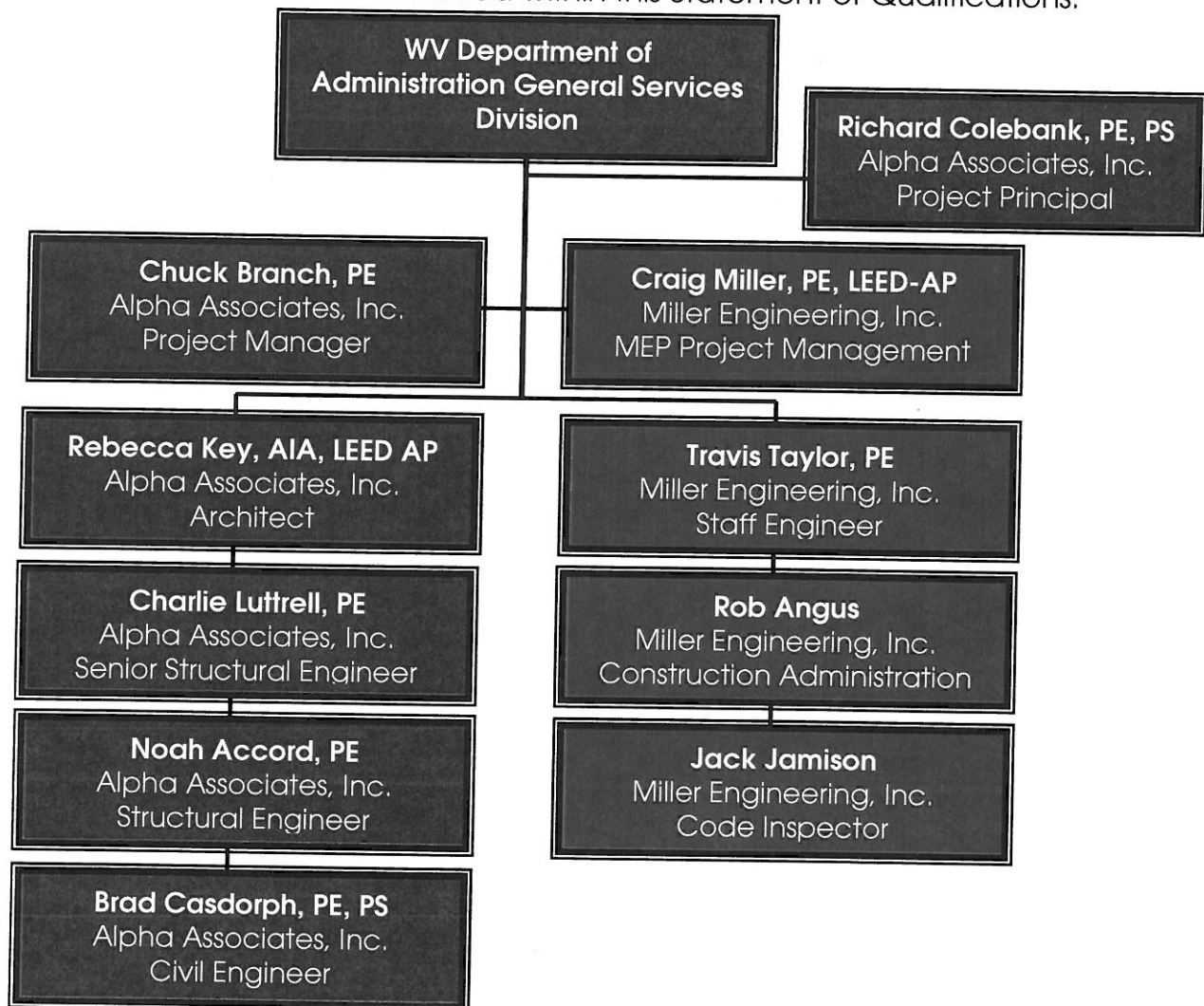
LETTER OF INTEREST	1
FIRM PROFILES (ALPHA & MEI)	2
PROJECT APPROACH	3
MANAGEMNT/COMMUNICATION	4
COST/BUDGET HISTORY	5
RELATED EXPERIENCE	6
PROJECT STAFFING	7
DEGREE QUALIFICATIONS	8

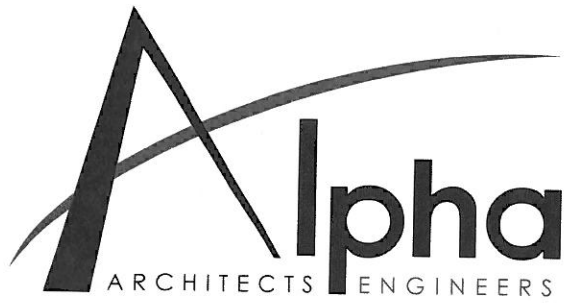


PROJECT ORGANIZATION/MANAGEMENT

Alpha Associates, Incorporated is owned and operated by a group of "hands on managers" that have a vested interest in the success of each project. Each project has at least one dedicated Owner/Principal of the firm who is involved in every decision and design aspect. Alpha carefully assigns staff members who have the expertise and project experience needed to successfully initiate and complete the design of each project.

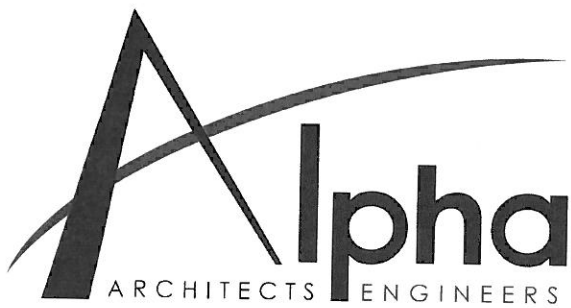
The work for this project will be managed and directed from our Morgantown, West Virginia office. The Alpha team will be led by Chuck Branch, PE. Mr. Branch will be your point of contact throughout the project. The following is the organizational chart for your project. Assumes for these staff members are included within this Statement of Qualifications.





Throughout the design process, Alpha will involve all members of the design team to produce an efficient, effective flow of work. Communication with the Agency, the team and interested parties is critical to the success of the project and Alpha prides itself on an effective flow of communication throughout each phase of the process.

Additional architects, engineers, surveyors, technicians, and administrative personnel are also available for assistance on this project.



ALPHA RESUMES

Richard A. Colebank, PE, PS | President and COO

SUMMARY

Mr. Colebank is President and Chief Operating Officer of Alpha. He has been with Alpha Associates, Incorporated since 1985. He began his career with Alpha as a staff engineer and progressed through the ranks from Project Manager to his current position. Mr. Colebank has worked with diverse clients such as WVU, City of Morgantown, WVDOH, WVU Foundation, and the Morgantown Municipal Airport, as well as numerous other public and private clients. Since 1988, Mr. Colebank has been the Principal-In-Charge of many of the Civil Engineering projects developed at Alpha. In his current capacity, Mr. Colebank provides financial and administrative guidance for the day to day operations of the company while continuing to manage Civil Engineering Projects.

PROFILE

Broad-based responsibilities in the following areas:

- Project Management
- Business Operations and Financial Management
- Quality Assurance/Quality Control
- Civil Engineering Project Management and Design
- New Business Development
- Expert Testimony and Investigation

PROFESSIONAL HIGHLIGHTS

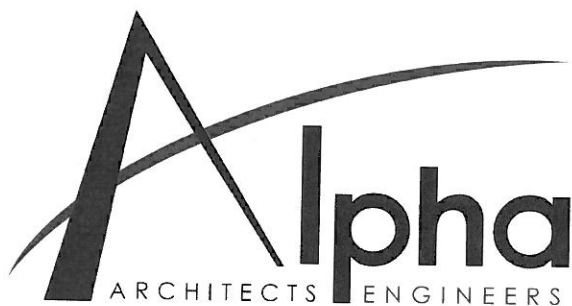
Project Manager:

- WVU Research Park; Morgantown, WV
- Federal Bureau of Prisons Hazelton Medium Security Prison
- WV Medal of Honor Recipients Plaza; Hazelton, WV
- North Fork Hughes River Recreation Facilities; Ritchie County, WV
- WVDOH I-77 Welcome Center; Williamstown, WV
- Ices Ferry Bridge; Morgantown, WV
- Monongalia General Hospital Expansion; Morgantown, WV
- Monongalia General Hospital Access Road; Morgantown, WV
- Morgantown Municipal Airport Access Road; Morgantown, WV

Indefinite Delivery/Indefinite Quantity Contracts:

- Morgantown Municipal Airport Open End Contract
- West Virginia Division of Highways Open End Contract
- National Energy Technology Laboratories Open End Contract
- West Virginia University Open End Contract
- United States Postal Service Open End Contract





ALPHA RESUMES

Richard A. Colebank, PE, PS | President and COO

EMPLOYMENT HISTORY

1985 – Current Alpha Associates, Incorporated
1983-1985 Charles Townes and Associates, P.C.
1983 US Army Corps of Engineers

EDUCATION

West Virginia University
Masters of Business Administration; 1999
Bachelor - Civil Engineering; 1982

QUALIFICATIONS

- **License:** Professional Engineer: West Virginia, Maryland, Pennsylvania, Virginia

Professional Surveyor: West Virginia
Certified Private Pilot

AFFILIATIONS

- Former NSPE/PEPP Governor of WV
- ACEC/WV; Former President and National Director
- University High School Foundation; Charter Member; President
- Morgantown Area Chamber of Commerce; Past Chairman
- Monongalia County MPO Technical Advisory Committee; Member
- Morgantown Area Economic Partnership; Member
- American Red Cross, River Valley Chapter B.O.D.
- WVU College of Civil and Environmental Engineering Visiting Committee

think  first.com

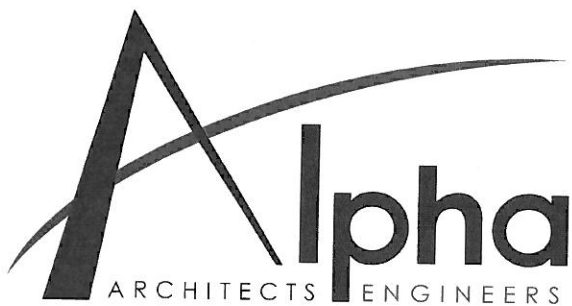
Contact

Richard A. Colebank

304.296.8216

800.640.8216

rick.colebank@thinkalphafirst.com



ALPHA RESUMES

Charles Branch, PE | Principal, Civil Engineer

SUMMARY

As Chief Engineer for site development and planning projects, Mr. Branch is a vital part of the design process at Alpha. His involvement spans from strictly civil engineering projects, to the design of large scale educational projects and medical facilities. Mr. Branch acts as peer review for young engineers in the firm on issues ranging from storm water management to site design. Mr. Branch is also involved in commercial and residential development design, roadway and bridge design and utilities layout.

PROFILE

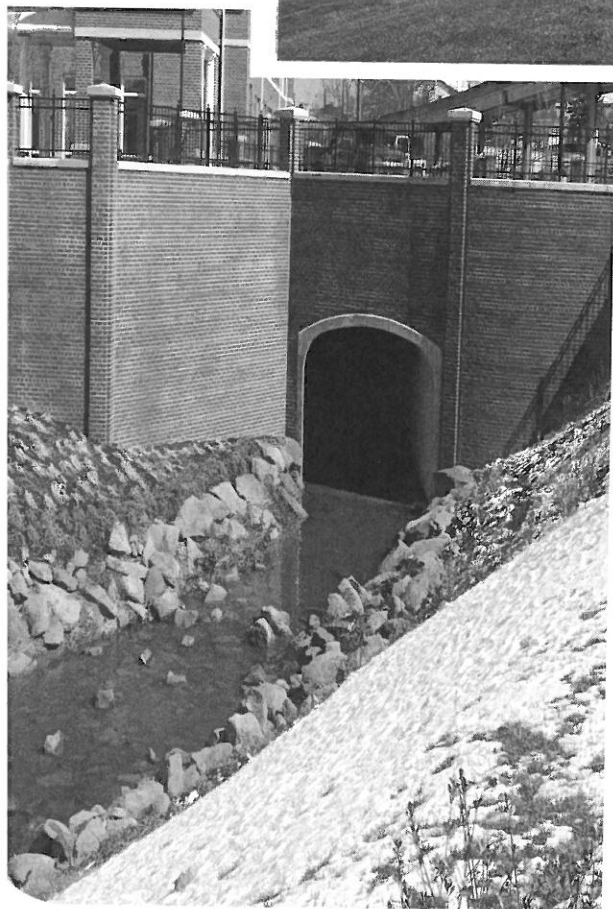
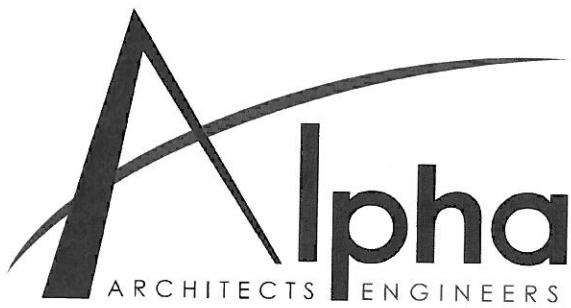
Broad-based responsibilities in the following areas:

- Highway Design
- Municipal Engineering
- Wastewater Collection
- Storm Sewer System Design
- Storm Water Management
- Site Engineering
- Project Management

PROFESSIONAL HIGHLIGHTS

Civil Engineer/Project Manager:

- WVU Parking Lot 81 Renovations; Morgantown, WV
- WVU Doll's Run Burn Room; Morgantown, WV
- WVU Alumni Center Parking Lot; Morgantown, WV
- WVU Alumni Center Storm Water Management; Morgantown, WV
- WVU Evansdale Redevelopment; Morgantown, WV
- WVU Health Sciences Center Eastern Division; Martinsburg, WV
- Blackshere Bridge; Mannington, WV
- WVDOH I-77 Welcome Center; Williamstown, WV
- WV Medal of Honor Recipients Plaza; Hazelton, WV
- Lewis County High School Bridge; Weston, WV
- Wyoming County Route 10 Relocation; Wyoming County, WV
- Fairmont Federal Credit Union; Bridgeport, WV



ALPHA RESUMES

Charles Branch, PE | Principal, Civil Engineer

EMPLOYMENT HISTORY

1992 – Current Alpha Associates, Incorporated
1988-1992 Reimer, Muegge, & Associates, Inc.

EDUCATION

West Virginia University
Bachelor - Civil Engineering; 2000
Fairmont State College
Bachelor Architectural Engineering Technology; 1988

QUALIFICATIONS

- **License:** Professional Engineer: West Virginia

AFFILIATIONS

- WV Society of Professional Engineers
- National Society of Professional Engineers

think  **Alpha** first.com

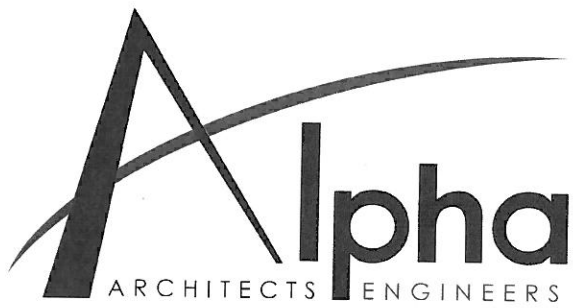
Contact

Charles B. Branch

304.296.8216

800.640.8216

chuck.branch@thinkalphafirst.com



ALPHA RESUMES

Rebecca Key, AIA, LEED-AP | Architect, Associate

SUMMARY

Ms. Key has worked in the architectural field for over 35 years. She is Project Architect/Project Manager for numerous architectural designs at Alpha Associates, Incorporated. Ms. Key is involved from the programmatic stages and schematic designs all the way through construction documents to construction administration.

PROFILE

Broad-based responsibilities in the following areas:

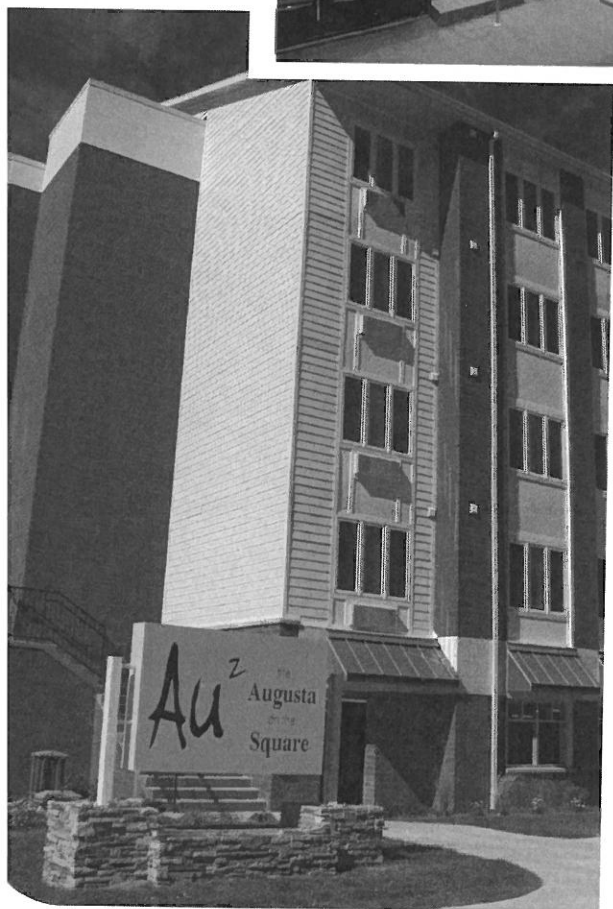
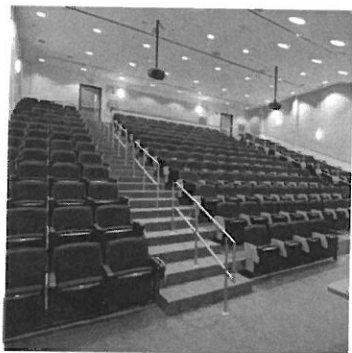
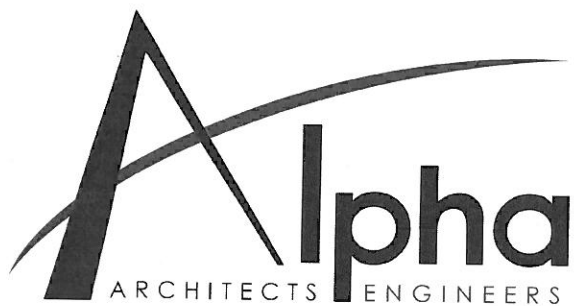
- Architectural Design
- Interior Design
- Medical Design
- Interior Space Planning
- Historic Renovation

PROFESSIONAL HIGHLIGHTS

Architectural Design:

- Mon County Family Court Renovation; Morgantown, WV
- West Virginia Regional Technology Park Renovation to Building 770; South Charleston, WV
- Mon County Sheriff's Building; Morgantown, WV
- WVU South Agricultural Sciences Building; Morgantown, WV
- Washington High School; Charles Town, WV
- Prichard Hall Renovation; Fairmont State University; Fairmont, WV
- WVU CRRB Renovation, 5th and 7th Floors; Morgantown, WV
- WVU Boreman Hall, Boreman Bistro; Morgantown, WV
- WVU Hatfields Restaurant; Morgantown, WV
- Hart Field Maintenance Facility; Morgantown, WV
- Norwood Fire Station; Morgantown, WV
- FMW Composites; Bridgeport, WV
- Hart Field Terminal Renovation; Morgantown, WV
- White Hall Municipal Building; White Hall, WV
- WV State Office Building; Clarksburg, WV
- Ruby McQuain Amphitheater Roof; Morgantown, WV
- Augusta Apartment Building; Morgantown, WV
- Cass Scenic Railroad Clubhouse Renovation; Cass, WV
- Berkeley Springs Bath House Renovation; Berkeley Springs, WV





ALPHA RESUMES

Rebecca Key, AIA, LEED-AP | Architect, Associate

EMPLOYMENT HISTORY

2000 – Current Alpha Associates, Incorporated
 1983-1999 Alexander Key and Associates
 1978-1983 Webster Clothes; Director of Store Planning

EDUCATION

University of Maryland
 Bachelor of Architecture; 1977
 Maryland Institute College of Art
 Coursework in Furniture Design; 1986-1987

QUALIFICATIONS

- **License:** Registered Architect: West Virginia, Maryland, Washington DC, New York, Virginia, Pennsylvania
- NCIDQ Certified
- Leadership In Energy and Environmental Design Accredited Professional

AFFILIATIONS

- American Institute of Architects
- West Virginia Society of Architects
- Fairmont, WV ICC Board of Appeal; Board Member
- U.S. Green Building Council
- AIA Liveable Communities
- Marion County Chamber of Commerce
- Leadership Kanawha Valley Class of 2014

think **Alpha** first.com

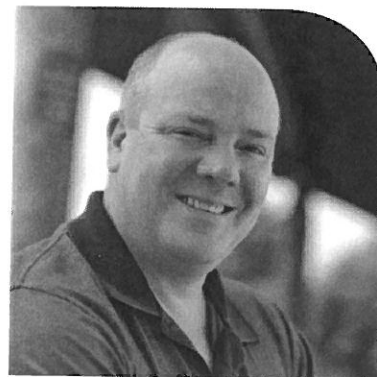
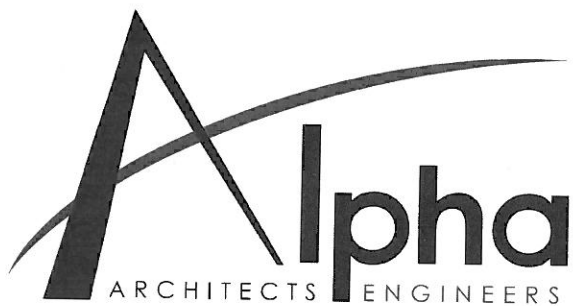
Contact

Rebecca Key

304.296.8216

800.640.8216

rebecca.key@thinkalphafirst.com



ALPHA RESUMES

SUMMARY

Mr. Luttrell has worked with Alpha Associates, Inc. since 1996. He is the chief structural engineer on all projects at Alpha. Before coming to Alpha, Mr. Luttrell's graduate work resulted in several contributions to the cold-formed steel deck industry. His new method of analysis for non-uniform loads on composite concrete and cold formed steel decks has been made a permanent part of the Steel Deck Institute's design manual. Mr. Luttrell also worked on projects that involved pre-stressed timber bridge research with the WVU Constructed Facilities Center. Since coming to Alpha, Mr. Luttrell has had significant involvement in the effort to begin utilizing modern composite materials in practical bridge applications.

Charles B. Luttrell, PE | Principal, Structural Engineer

PROFILE

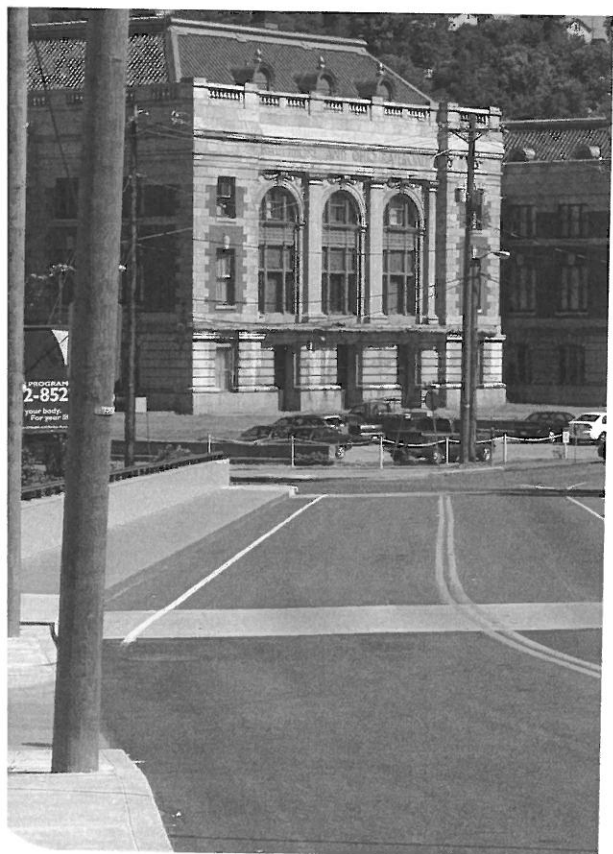
Broad-based responsibilities in the following areas:

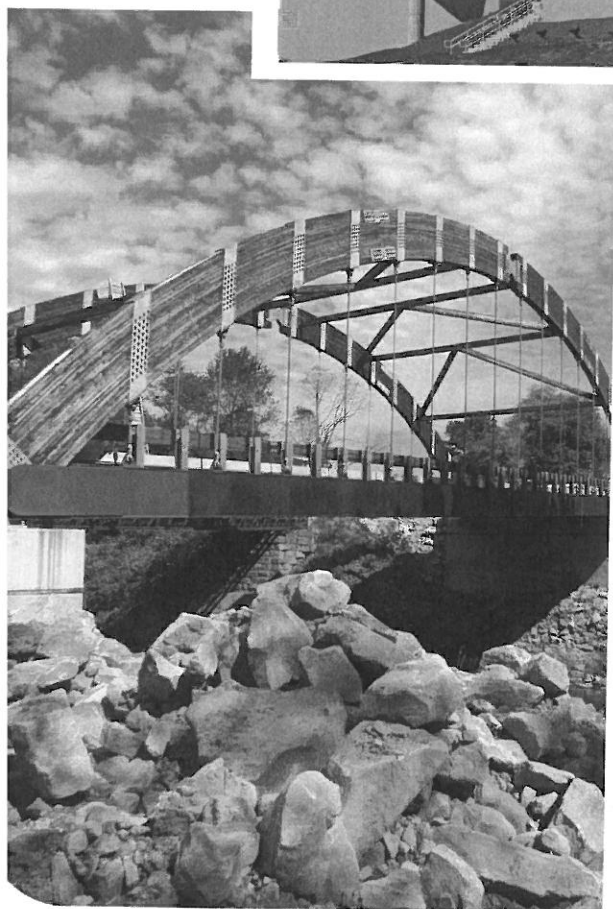
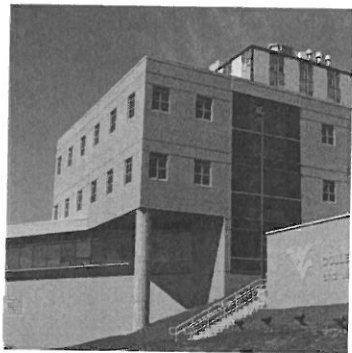
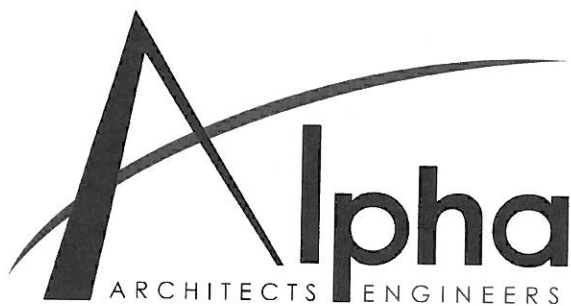
- Bridge Structural Design and Analysis
- Innovative Bridge Materials Applications
- Building Structural Design and Analysis
- Historical Restoration and Evaluations

PROFESSIONAL HIGHLIGHTS

Structural Engineer:

- Alumni Center Structural Framing and Foundation; WVU
- Engineering Science Building, East Wing Addition, WVU
- Hazel Ruby McQuain Amphitheater Roof; Morgantown, WV
- West Buckeye Bridge; Core, WV
- Washington High School; Charles Town, WV
- WVU Coliseum Structural Inspection; Morgantown, WV
- WVU Coliseum Scoreboard Hoist Project; Morgantown, WV
- Alderson Broaddus College, Rex Pyles Arena Deck; Philippi, WV
- Mountaineer Middle School Renovation; Morgantown, WV
- Salem International Building Inspections; Salem, WV
- Monongalia County Sheriff's Building; Morgantown, WV
- South High Street Bridge, Morgantown, WV
- Ices Ferry Bridge, Morgantown, WV





ALPHA RESUMES

Charles B. Luttrell, PE | Principal, Structural Engineer

EMPLOYMENT HISTORY

1996 – Current Alpha Associates, Incorporated
1995-1996 Larry D. Luttrell, PE, Ph D
1991-1994 West Virginia University
1990-1991 WVU Constructed Facilities Center

EDUCATION

West Virginia University
Masters - Structural Engineering; 1995
Bachelor - Civil Engineering; 1993

QUALIFICATIONS

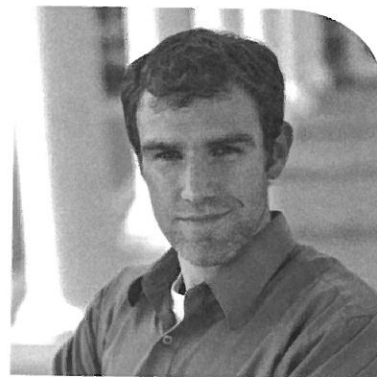
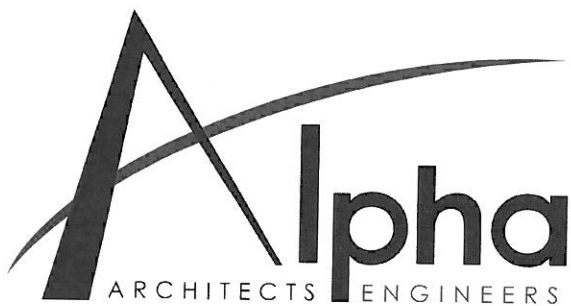
- **License:** Professional Engineer: West Virginia, Maryland, Pennsylvania

AFFILIATIONS

- WV Society of Professional Engineers
- National Society of Professional Engineers
- Chi Epsilon; Member
- American Concrete Institute; Member

Research Experience

- Cold Formed Steel Deck Research
 - ✓ Fastener Failures
 - ✓ Edge conditions/failures
 - ✓ Buttoned overlap shear failures
- Composite Cold Formed Steel and Concrete Deck Research
 - ✓ Line load behavior/failures
 - ✓ Concentrated load behavior/failures
 - ✓ Web crippling
 - ✓ Punch failures



ALPHA RESUMES

Noah Accord, PE | Structural Engineer, Associate

SUMMARY

Mr. Accord is a structural engineer in the Morgantown office. He obtained his Masters Degree in Structural Engineering from the University of Pittsburgh, where he graduated Summa Cum Laude. He has experience in performing structural design of all elements of commercial, industrial, educational, and institutional buildings. Prior to his employment at Alpha Associates, Incorporated, he gained valuable experience working for Nicholson Construction.

PROFILE

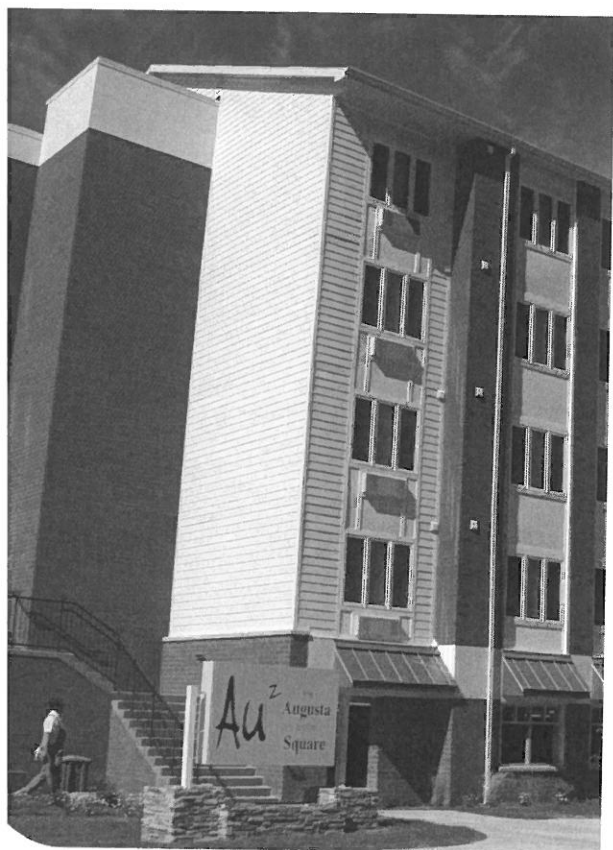
Broad-based responsibilities in the following areas:

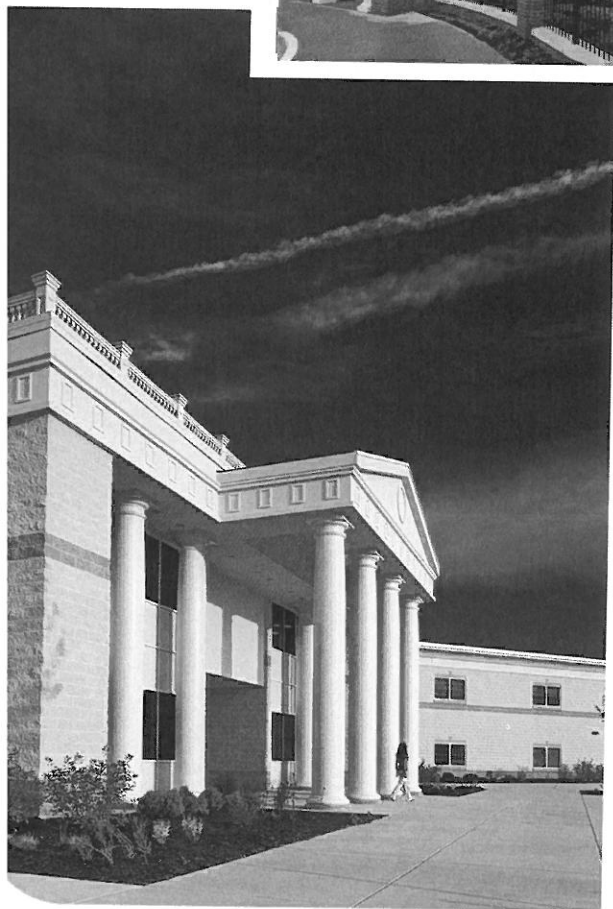
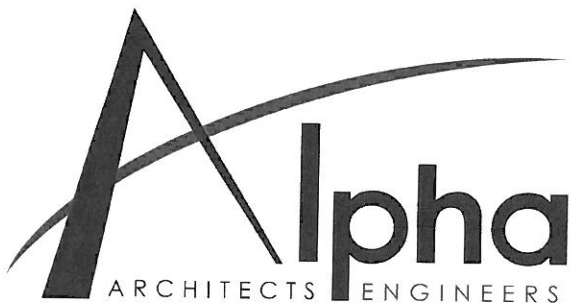
- Structural Inspections
- Building Design
- Bridge Design
- Foundation Design
- Retaining Wall Design
- Structural Steel, Concrete, Masonry Design

PROFESSIONAL HIGHLIGHTS

Structural Engineer:

- Alumni Center Structural Framing and Foundation; WVU
- Washington High School; Charles Town, WV
- Chemtura Structural Steel Design; Morgantown, WV
- Fairmont Federal Credit Union; Bridgeport, WV
- Cass Scenic Railroad Clubhouse Renovation; Cass, WV
- WVU ESB East Wing Addition; Morgantown, WV
- The Augusta Apartments; Morgantown, WV
- Jefferson Emergency Services Building; Ranson, WV
- Ices Ferry Bridge; Morgantown, WV
- Potomac State College Library Renovation; Keyser, WV
- Salem University Fitness Pool; Salem, WV
- Alderson Broaddus College Rex Pyle's Deck; Philippi, WV
- WVU Lot 81 Retaining Wall Design; Morgantown, WV
- WV State Office Building; Clarksburg, WV
- Federal Bureau of Prisons Medium Security Prison, Hazelton, WV
- Clear Mountain Bank; Oakland, MD
- Clear Mountain Bank; Reedsville, WV
- Monongalia County Sheriff's Building; Morgantown, WV





ALPHA RESUMES

Noah Accord, PE | Structural Engineer, Associate

EMPLOYMENT HISTORY

2005 – Current	Alpha Associates, Incorporated
2003-2004	Nicholson Construction
2002-2003	Covey Engineering
1999-2001	AB Construction

EDUCATION

University of Pittsburgh
Masters - Structural Engineering; 2005
Bachelor - Civil Engineering; 2004

QUALIFICATIONS

- **License:** Professional Engineer: West Virginia

AFFILIATIONS

- WV Society of Professional Engineers
- National Society of Professional Engineers

think  first.com

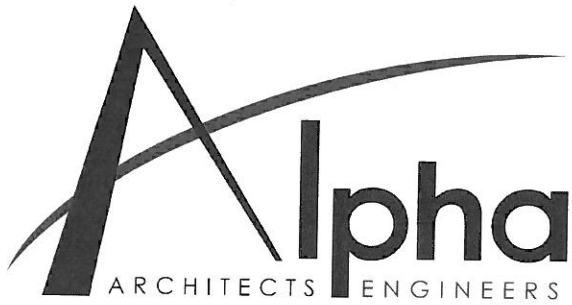
Contact

Noah Accord

304.296.8216

800.640.8216

noah.accord@thinkalphafirst.com

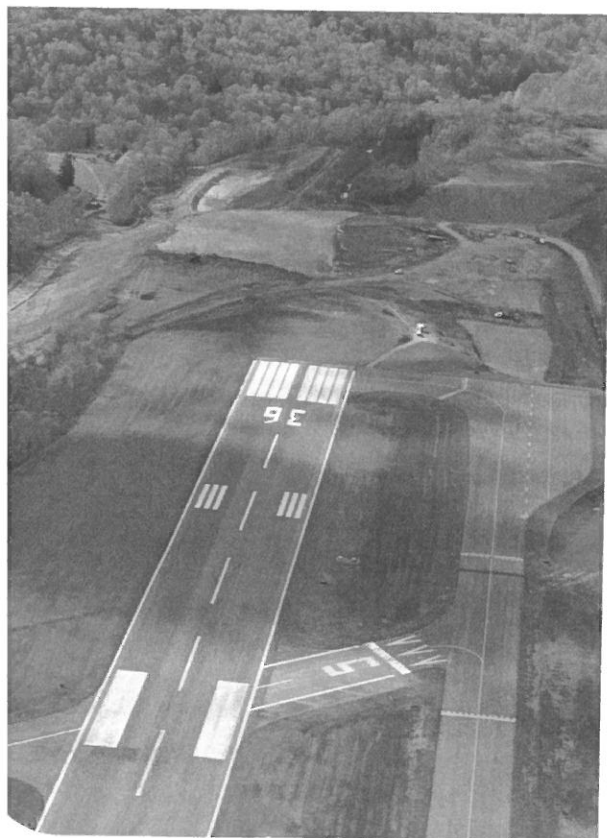


ALPHA RESUMES

Bradley Casdorff, PE, PS | Civil Engineer

SUMMARY

Mr. Casdorff joined the Alpha Associates, Incorporated team in 2004 and currently works as a project engineer in the Morgantown office. He has 32 years of professional experience with roadway design, storm sewer design, airport airside renovation and design, storm water management including conveyance and detention, environmental permitting, project administration supervision and inspection, as well as boundary and construction surveying.



PROFILE

Broad-based responsibilities in the following areas:

- Airport Planning and Design
- Highway Design
- Hydraulic and Hydrology Studies
- Site Plan Development
- Land Surveying

PROFESSIONAL HIGHLIGHTS

Civil Engineering:

- Platinum Properties - Waterfront Conference Center; Morgantown
- Hart Field - Runway Safety Area; Morgantown, WV
- Hart Field - Ramp Renovation and Deicing Facility; Morgantown, WV
- Hart Field - Signage and Lighting; Morgantown, WV
- Hart Field - Airport Certification Manual; Morgantown, WV
- Hart Field - Air Rescue and Fire Fighting Vehicle Procurement, WV
- WVU - Lot 81 Parking Area Improvements; Morgantown, WV
- WVU Animal Facilities Annex, Engineering Retrofit; Morgantown, WV
- McKee Crossing - 120 Acre Subdivision; Martinsburg, WV
- Morgantown Municipal Airport Access Road; Morgantown, WV
- Davisson Estates - 60 Acre Subdivision; Morgantown, WV
- Mon General Hospital - East Parking Area; Morgantown, WV
- Applebee's Restaurant, Site Plan; Morgantown, WV
- WVU CPASS/Student Health; Morgantown, WV
- WVU Research Park- 100 Acre ALTA/ACSM Survey; Morgantown, WV
- WVU Museum; Morgantown, WV



ALPHA RESUMES

Bradley Casdorph, PE, PS | Civil Engineer

EMPLOYMENT HISTORY

2004 – Current Alpha Associates, Incorporated
1979-2004 Triad Engineering, Incorporated

EDUCATION

West Virginia University
Masters - Soil Conditions and Foundation Design; 1982
Bachelor - Civil Engineering; 1979

QUALIFICATIONS

- **License:** Professional Engineer: West Virginia
Professional Surveyor: West Virginia
Certified Private Pilot

AFFILIATIONS

- WV Society of Professional Engineers
- National Society of Professional Engineers
- WVSPS - Mountain Regional Chapter; President
- Aircraft Owners and Pilots Association; Member

think **Alpha** first.com

Contact

Bradley Casdorph

304.296.8216

800.640.8216

brad.casdorph@thinkalphafirst.com



B. Craig Miller PE, LEED-AP

President • Principal Engineer

Founder of Miller Engineering in 2003, he serves as President and Principal Engineer; Craig has more than (20) years of experience in project solution and design.

During his employment with WVU, he was directly involved with approximately \$130 million in new capital construction. Experienced in a wide range of projects including: renovations and adaptive reuse for building systems, he can add value to projects by leading the team to design constructable solutions. He is experienced at working with both owner's and teams to complete project goals.

Profile

President

- Design of MEP, Fire, Data, and Project Solutions
- Project Personnel Management
- Business Operations and Financial Management Oversight
- Quality Assurance and Control

Project Highlights

- \$75M in MEP Projects Completed to Date
- Adept at Engineering Design for Renovations
- Advanced Surgical Hospital HVAC Design
- Dominion Post HVAC Upgrade
- MedExpress Renovation, Data, MEP Design/Upgrade
- Pipestem Switchgear and HVAC Upgrades

Professional History

2003- Present	Miller Engineering, Inc.	President and Principal Engineer
2002-2003	Casto Technical Services	Existing Building Services Staff Engineer
2001-2002	Uniontown Hospital	Assistant Director of Engineering
1995-2001	West Virginia University	Staff Engineer
1990-1995	BOPARC	Caretaker, Krepps Park
1983-1988	University of Charleston	Electrician/HVAC Mechanic

Education

1995	West Virginia University, BS-Mechanical Engineering
1988	University of Charleston, BA-Mass Communications

LICENSE/CERTIFICATION

- Professional Engineer (West Virginia, Pennsylvania, Maryland, and Ohio)
- Licensed Master Plumber
- LEED-AP Certified



Travis Taylor, PE

Staff Engineer

Experience in project management facilitates Travis's ability to create and design constructable projects. Prior to joining the Miller Engineering team he was directly responsible for managing \$10 million in electrical construction budgets. His experiences encompass both new construction and renovation. Travis maintains professional competencies by attending seminars and continuing education classes.

As a staff engineer, he provides HVAC, Mechanical, Plumbing, and Electrical design solutions and services for our clients. Travis's hands-on electrical and HVAC construction experience enable him to provide engineered solutions with consideration of maintenance. In addition, he is part of our team's complete assessment process in both planning and MEP design through construction administration.

Profile

Staff Engineer

- Design of Mechanical, Electrical, and Plumbing Systems
- Constructable Design and Materials Evaluation
- Site Evaluation and Mechanical System Review
- Submittal and RFP Review
- RFI Coordination, Review, and Response
- Construction Observation

PROFESSIONAL PROJECT HIGHLIGHTS

- WVU Football Stadium Scoreboard
- WVU Lot 81 Parking Improvements
- WVU Temperature Control Upgrades
- Holly River State Park Primary Electric Service Replacement
- Tygart Lake State Park Bath Beach House Renovations
- Pipestem State Park Switchgear and Piping Replacement
- North Elementary Gym HVAC Upgrade
- Veteran's Memorial

Professional History

2011-Present	Miller Engineering, Inc.	Staff Engineer
2006-2011	Tri-County Electric, Co.	Project Manager

Education

2006 West Virginia University, BS – Mechanical Engineering

LICENSE/CERTIFICATION

- Professional Engineer - State of West Virginia
- OSHA 10-hour Course: Construction Safety & Health





Robert Angus

Construction Project Representative

Expertise in project management is at the forefront of Robert's abilities and during the past (10) years he has been directly involved with over \$30 million dollars of construction projects. Years of maintenance, operations, plumbing, and HVAC construction add valuable knowledge and experience to our complete assessment process.

Robert's hands-on experience enables him to interface with construction personnel seamlessly alongside engineers and architects. He is adept at preventing, mitigating, and resolving construction issues. He is involved at the site evaluation and estimation phase to enhance outcomes of collaboration for all stakeholders' interest and to help ensure constructable designs.

Profile

Construction Review, Estimation, and Building Information Modeling

- Construction Project Administration
- Site Evaluation, Mechanical System Review
- Submittal Review and Project Planning
- RFI, RFPCO Review and Response

PROJECT HIGHLIGHTS

- 3RD Party Construction Observation – Canaan Valley Resort
- Advanced Surgical Hospital
- Cheat Lake Elementary HVAC Upgrade
- Suncrest Middle School Gym HVAC Upgrade
- North Elementary School Boiler/AC
- Mapletown Jr./Sr. High School HVAC/Boiler Upgrade
- Holly River Electrical Phase I and II

Professional History

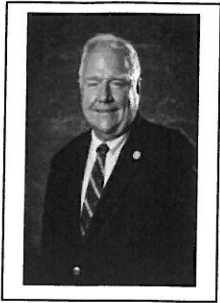
2009- Present	Miller Engineering, Inc.	Construction Project Representative
2000-Present	Angus Contracting, LLC	Owner/Project Manager
1991-2000	BOPARC	Director of Maintenance

Education

2000	Monongalia County Technical Education Center	Heating, Cooling, and Refrigeration Certification
1996	West Virginia University	Recreation and Parks Administration

LICENSE/CERTIFICATION

- Licensed WV General Contractor
- Licensed HVAC Contractor and Certified Mechanical Contractor
- Licensed Journeyman Electrician
- Licensed Master Plumber
- OSHA 10-Hour Construction Safety & Health



Jack Jaminson

Code Professional

Jack brings (15) years as an electrical/building inspector and over (25) years of experience in the commercial electrical construction industry. Through his experience, he is familiar with many local and state code enforcement officials. His knowledge and experience are valuable resources to Miller's complete assessment process.

Profile

Design of Electrical Systems

- Facility Review, Code Research, and Project Evaluation
- Field Observations and Issue Resolutions

PROFESSIONAL HIGHLIGHTS

- Board Member of the WV Code Officials
- Founder and Secretary of the West Virginia Division of the International Association of Electrical Inspectors
- IAEI Ohio Chapter – Membership Chair

Professional History

2010- Present	Miller Engineering, Inc.	Code Professional
1999-2010	Megco Inspections	Chief Inspector
1972-1998	Jamison Electrical Construction	Electrician

Education

1971 Fairmont State College, BS-Engineering Technology-Electronics

LICENSE/CERTIFICATION

- Master Code Professional, IAEI Master Electrical Inspector, Class C Electrical Inspector – WV, PA, MD, & OH
- ICC Commercial Building, Building Plans, Commercial Plumbing, Residential Energy, and Accessibility Inspector/Examiner
- WV Master Electricians License
- NCPCCI-2B, 2C, 4B, 4C: Electrical & Mechanical General/Plan Review
- OSHA 30 Hour Course: General Industry
- NFPA Code Making Panel 14 – NEC 2014 Edition



Joseph Machnik

MEP Designer

Joe has experience with AutoCAD, MEP and Revit MEP. He provides design modeling, drafting, and supervised design services and construction support for Miller Engineering.

Profile

Design of Mechanical, Electrical, and Plumbing Systems

- CADD Coordination of New Construction and Renovation Designs

Professional History

2010 – Present Miller Engineering, Inc. MEP Designer

EDUCATION

2008 Penn State – Fayette, AS - Building Engineering Systems Technology: *Building Environmental Systems Technology*

2007 Penn State – Fayette, AS - Building Engineering Systems Technology: *Architectural Engineering Technology*



Table of Contents

LETTER OF INTEREST	1
FIRM PROFILES (ALPHA & MEI)	2
PROJECT APPROACH	3
MANAGEMNT/COMMUNICATION	4
COST/BUDGET HISTORY	5
RELATED EXPERIENCE	6
PROJECT STAFFING	7
DEGREE QUALIFICATIONS	8

CERTIFICATE OF *Authorization*

STATE BOARD OF REGISTRATION FOR PROFESSIONAL ENGINEERS

*The West Virginia State Board of Registration for Professional Engineers
having verified the person in responsible charge is registered in
West Virginia as a professional engineer for the noted firm, hereby certifies*

ALPHA ASSOCIATES, INC.

C00012-00

Engineer in Responsible Charge: RICHARD COLEBANK - WV PE 010346

*has complied with section §30-13-17 of the West Virginia Code governing
the issuance of a Certificate of Authorization. The Board hereby notifies you of its
certification with issuance of this Certification of Authorization for the period of:*

July 1, 2014 - June 30, 2015

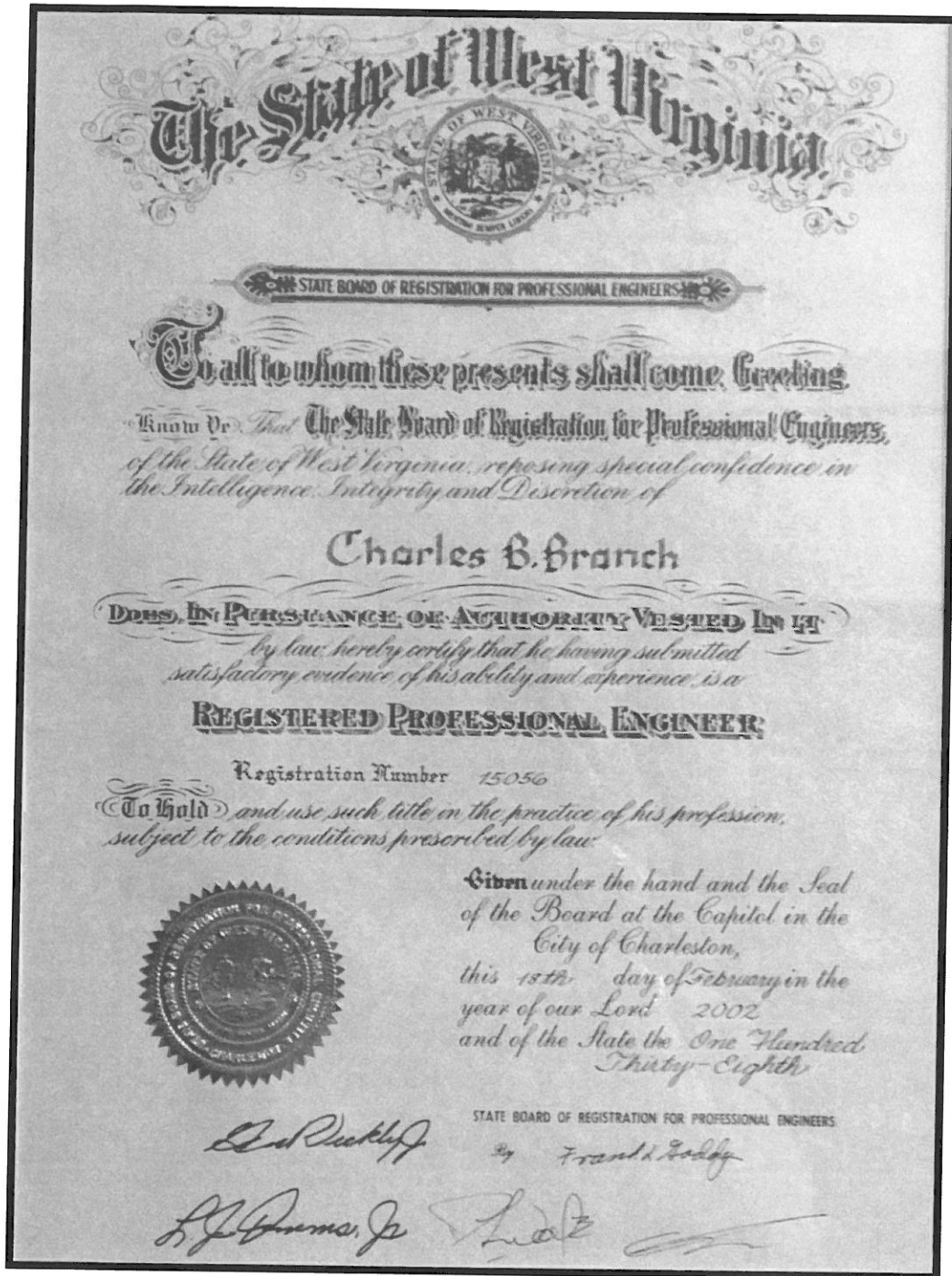
providing for the practice of engineering services in the State of West Virginia.

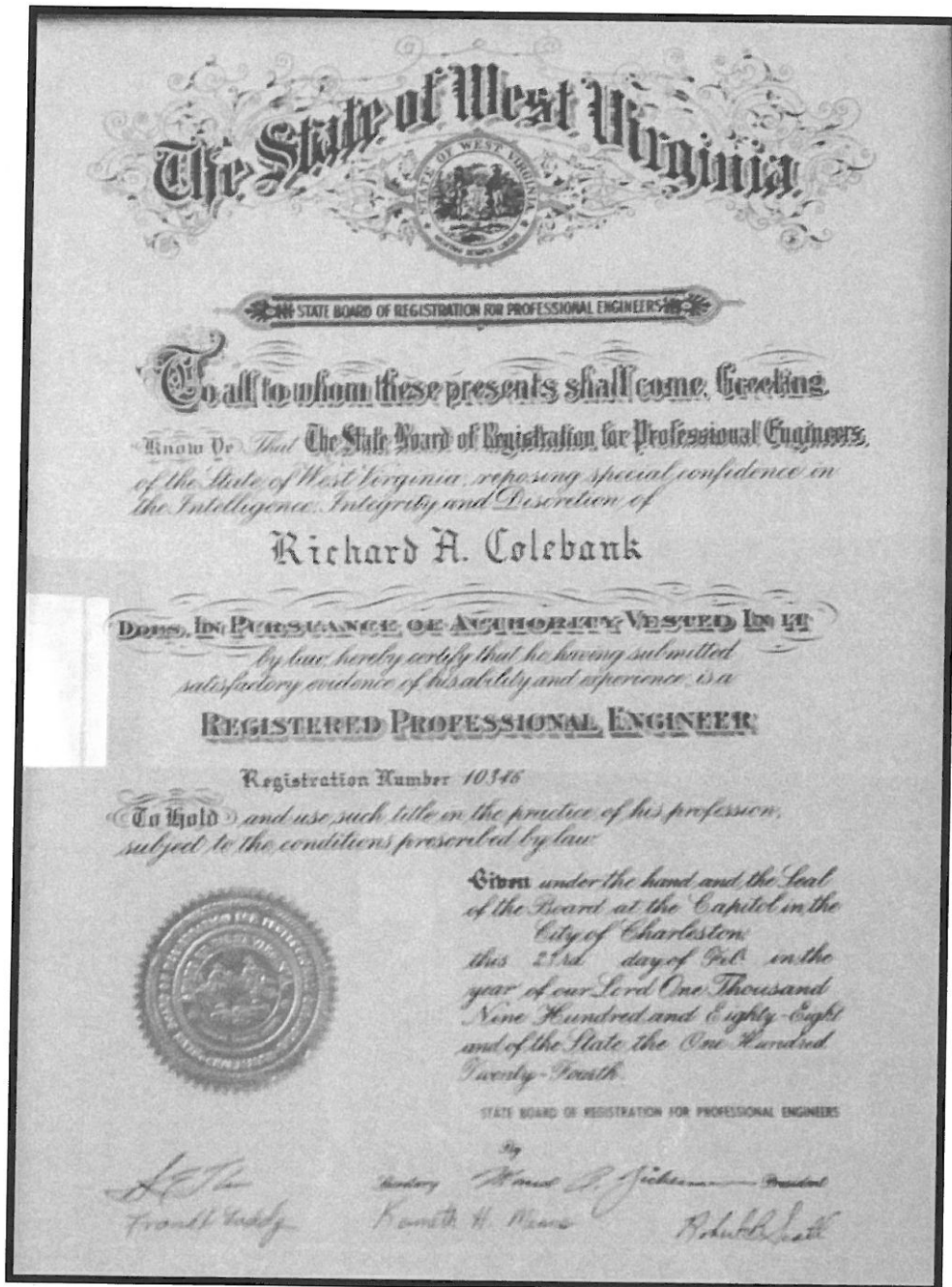
IF YOU ARE REQUIRED TO REGISTER WITH THE SECRETARY OF STATE'S OFFICE,
PLEASE SUBMIT THIS CERTIFICATE WITH YOUR APPLICATION.

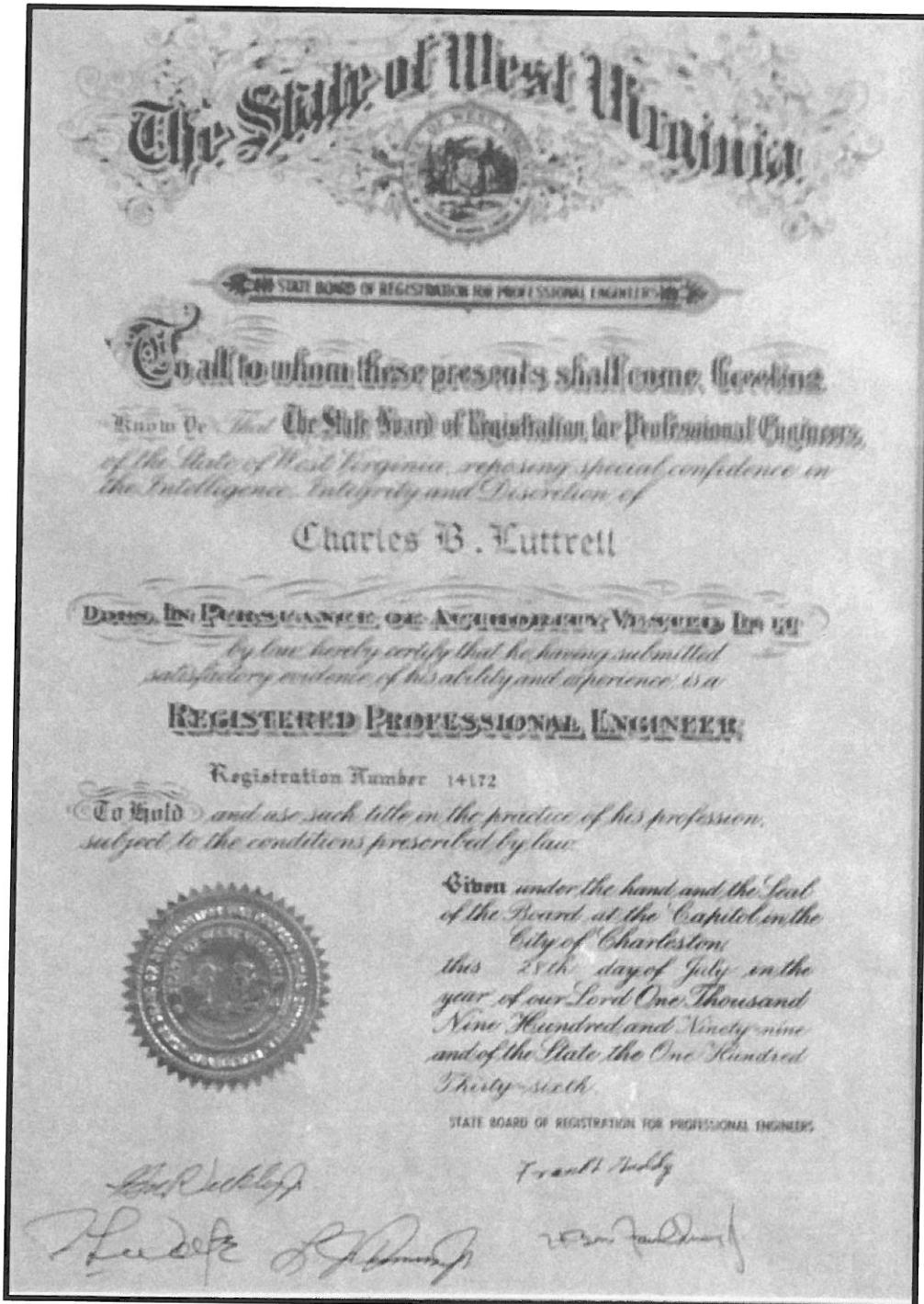


IN TESTIMONY WHEREOF, THE WEST VIRGINIA STATE BOARD OF
REGISTRATION FOR PROFESSIONAL ENGINEERS HAS ISSUED THIS COA
UNDER ITS SEAL, AND SIGNED BY THE PRESIDENT OF SAID BOARD.

BOARD PRESIDENT







The West Virginia Board of Architects

certifies that

REBECCA JEAN KEY

is registered and authorized to practice
Architecture in the State of West Virginia.

In testimony whereof this certificate has been issued
by the authority of this board.

Certificate Number [REDACTED]

The registration is in good standing until June 30, 2015.



Board Administrator

CERTIFICATE OF *Authorization*

STATE BOARD OF REGISTRATION FOR PROFESSIONAL ENGINEERS

*The West Virginia State Board of Registration for Professional Engineers
having verified the person in responsible charge is registered in
West Virginia as a professional engineer for the noted firm, hereby certifies*

MILLER ENGINEERING, INC.

C02108-00

Engineer in Responsible Charge: BRIAN MILLER - WV PE 015184

*has complied with section §30-13-17 of the West Virginia Code governing
the issuance of a Certificate of Authorization. The Board hereby notifies you of its
certification with issuance of this Certification of Authorization for the period of:*

July 1, 2013 – June 30, 2014

providing for the practice of engineering services in the State of West Virginia.

IF YOU ARE REQUIRED TO REGISTER WITH THE SECRETARY OF STATE'S OFFICE,
PLEASE SUBMIT THIS CERTIFICATE WITH YOUR APPLICATION.

IN TESTIMONY WHEREOF, THE WEST VIRGINIA STATE BOARD OF
REGISTRATION FOR PROFESSIONAL ENGINEERS HAS ISSUED THIS COA
UNDER ITS SEAL, AND SIGNED BY THE PRESIDENT OF SAID BOARD.



BOARD PRESIDENT

our ACTIVE PE renewal fee has been received...

Your ACTIVE PE renewal fee has been received. Your pocket card indicating you are entitled to practice engineering in West Virginia until June 30, 2014 may be detached and used until that date unless invalidated as a result of Board audit of your renewal form or formal disciplinary action.

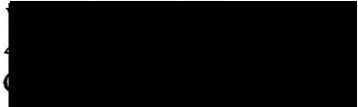
IMPORTANT REMINDERS:

Please include your WV ACTIVE PE license number on any correspondence to this office.

Please sign the back of this pocket card and carry the registration with you.

You are required to immediately notify the Board, in writing, of the following: loss or theft of license or seal, any name change, any address change, or any employment change.

BRIAN C MILLER



West Virginia State Board of Registration for Professional Engineers

300 Capitol Street, Suite 910
Charleston, West Virginia 25301
304-558-3554 Phone
800-324-6170 Toll Free

THIS IS YOUR RENEWAL PAYMENT RECEIPT
(in addition to your secondary records of either a canceled check or credit card statement, as well as a confirmation email and printed confirmation page if renewing via our website)
PLEASE SAVE THIS FOR YOUR RECORDS



West Virginia State Board of Registration for Professional Engineers

BRIAN C MILLER



This is to certify that the above named PROFESSIONAL ENGINEER has met the requirements of the law, is duly registered and is entitled to practice engineering in the State of West Virginia.

EXPIRES June 30, 2014



STATE BOARD OF REGISTRATION FOR PROFESSIONAL ENGINEERS

To all to whom these presents shall come Greeting
"Know Ye" That The State Board of Registration for Professional Engineers
of the State of West Virginia, reposing special confidence in
the Intelligence, Integrity and Discretion of

Travis M. Taylor

DOES IN PURSUANCE OF AUTHORITY VESTED IN IT
by law hereby certify that he having submitted
satisfactory evidence of his ability and experience is a

REGISTERED PROFESSIONAL ENGINEER

Registration Number [REDACTED]

"To Hold" and use such title in the practice of his profession,
subject to the conditions prescribed by law.



Given under the hand of the
Seal of the Board at the Capitol in the
City of Charleston,
This 23rd day of May
in the year of our Lord 2013
and of the State
the One Hundred Forty-Ninth

Members of the Board

Lester D. Thomas, Jr. Richard E. Dwyer

Blayne S. Schja William E. Dwyer



Hereby Certifies that



Jack E. Jamison, Jr.

has demonstrated professional qualifications through a written examination based on the National Electrical Code® along with successful completion of field practice and documented expertise in required categories and has hereby achieved certification as

Master Electrical Inspector

Effective through:

September 30, 2013

Certification Identification No.



Secretary to the International Board
International Association of Electrical Inspectors



International Code Council
500 New Jersey Avenue, NW
Washington, DC 20001

The individual named hereon is CERTIFIED in the categories shown, having been so certified pursuant to successful completion of the prescribed written examinations.

Jack E. Jamison, Jr.
Not valid unless signed by certificate holder.
ICC Certification attests to competent knowledge of codes and standards.



International Code Council
500 New Jersey Avenue, NW
Washington, DC 20001

The individual named hereon is CERTIFIED in the categories shown, having been so certified pursuant to successful completion of the prescribed written examinations.

Jack E. Jamison, Jr.
Not valid unless signed by certificate holder.
ICC Certification attests to competent knowledge of codes and standards.

Jack E. Jamison, Jr - 5171444
Accessibility Inspector/Plans Examiner - Exp. 10/31/2014
Certified Building Official - Exp. 10/31/2014
Commercial Building Inspector - Exp. 10/31/2014
Commercial Mechanical Inspector - Exp. 10/31/2014
Electrical Inspector - Exp. 10/31/2014
Master Code Professional - Exp. 10/31/2014
Mechanical Plans Examiner - Exp. 10/31/2014
Residential Combination Inspector - Exp. 10/31/2014

INTERNATIONAL
CODE COUNCIL

Jack E. Jamison, Jr - 5171444
Building Plans Examiner - Exp. 10/31/2014
Combination Plans Examiner - Exp. 10/31/2014
Commercial Electrical Inspector - Exp. 10/31/2014
Commercial Plumbing Inspector - Exp. 10/31/2014
Electrical Plans Examiner - Exp. 10/31/2014
Mechanical Inspector - Exp. 10/31/2014
Plumbing Plans Examiner - Exp. 10/31/2014
Residential Energy Inspector/Plans Examiner - Exp. 10/31/2014

INTERNATIONAL
CODE COUNCIL



Purchasing Division
2019 Washington Street East
Post Office Box 50130
Charleston, WV 25305-0130

State of West Virginia
Centralized Expression of Interest
02 — Architect/Engr

Proc Folder: 19112

Doc Description: Parks - Canaan Valley - Demolish Sleeping Units

Proc Type: Central Purchase Order

Date Issued	Solicitation Closes	Solicitation No	Version
2014-09-08	2014-10-14 13:30:00	CEOI 0310 DNR1500000008	1

BID RECEIVING LOCATION

BID CLERK
DEPARTMENT OF ADMINISTRATION
PURCHASING DIVISION
2019 WASHINGTON ST E
CHARLESTON WV 25305
US

VENDOR

Vendor Name, Address and Telephone Number:

Alpha Associates, Incorporated
209 Prairie Avenue
Morgantown, WV 26501
304-296-8216

FOR INFORMATION CONTACT THE BUYER

Dean Wingerd
3045580468
dean.c.wingerd@wv.gov

FEIN # 550516286

DATE 10/07/14

All offers subject to all terms and conditions contained in this solicitation

CERTIFICATION AND SIGNATURE PAGE

By signing below, or submitting documentation through wvOASIS, I certify that I have reviewed this Solicitation in its entirety; understand the requirements, terms and conditions, and other information contained herein; that I am submitting this bid, offer or proposal for review and consideration; that I am authorized by the vendor to execute and submit this bid, offer, or proposal, or any documents related thereto on vendor's behalf; that I am authorized to bind the vendor in a contractual relationship; and that to the best of my knowledge, the vendor has properly registered with any State agency that may require registration.

Alpha Associates, Incorporated

(Company)

 Richard A. Colebank, President 1600

(Authorized Signature) (Representative Name, Title)

304-296-8216 - Phone and Fax

(Phone Number) (Fax Number) (Date)

STATE OF WEST VIRGINIA
Purchasing Division

PURCHASING AFFIDAVIT

MANDATE: Under W. Va. Code §5A-3-10a, no contract or renewal of any contract may be awarded by the state or any of its political subdivisions to any vendor or prospective vendor when the vendor or prospective vendor or a related party to the vendor or prospective vendor is a debtor and: (1) the debt owed is an amount greater than one thousand dollars in the aggregate; or (2) the debtor is in employer default.

EXCEPTION: The prohibition listed above does not apply where a vendor has contested any tax administered pursuant to chapter eleven of the W. Va. Code, workers' compensation premium, permit fee or environmental fee or assessment and the matter has not become final or where the vendor has entered into a payment plan or agreement and the vendor is not in default of any of the provisions of such plan or agreement.

DEFINITIONS:

"Debt" means any assessment, premium, penalty, fine, tax or other amount of money owed to the state or any of its political subdivisions because of a judgment, fine, permit violation, license assessment, defaulted workers' compensation premium, penalty or other assessment presently delinquent or due and required to be paid to the state or any of its political subdivisions, including any interest or additional penalties accrued thereon.

"Employer default" means having an outstanding balance or liability to the old fund or to the uninsured employers' fund or being in policy default, as defined in W. Va. Code § 23-2c-2, failure to maintain mandatory workers' compensation coverage, or failure to fully meet its obligations as a workers' compensation self-insured employer. An employer is not in employer default if it has entered into a repayment agreement with the Insurance Commissioner and remains in compliance with the obligations under the repayment agreement.

"Related party" means a party, whether an individual, corporation, partnership, association, limited liability company or any other form or business association or other entity whatsoever, related to any vendor by blood, marriage, ownership or contract through which the party has a relationship of ownership or other interest with the vendor so that the party will actually or by effect receive or control a portion of the benefit, profit or other consideration from performance of a vendor contract with the party receiving an amount that meets or exceeds five percent of the total contract amount.

AFFIRMATION: By signing this form, the vendor's authorized signer affirms and acknowledges under penalty of law for false swearing (W. Va. Code §61-5-3) that neither vendor nor any related party owe a debt as defined above and that neither vendor nor any related party are in employer default as defined above, unless the debt or employer default is permitted under the exception above.

WITNESS THE FOLLOWING SIGNATURE:

Vendor's Name: Alpha Associates, Incorporated

Authorized Signature: [Signature] Date: 10-07-14
President and COO

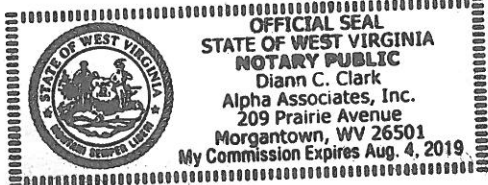
State of West Virginia

County of Monongalia, to-wit:

Taken, subscribed, and sworn to before me this 7th day of October, 2014

My Commission expires Aug 4, 2019

AFFIX SEAL HERE



NOTARY PUBLIC [Signature]

Purchasing Affidavit (Revised 07/01/2012)