



West Virginia Purchasing Division

2019 Washington Street, East
Charleston, WV 25305
Telephone: 304-558-2306
General Fax: 304-558-6026
Bid Fax: 304-558-3970

The following documentation is an electronically-submitted vendor response to an advertised solicitation from the *West Virginia Purchasing Bulletin* within the Vendor Self-Service portal at ***wvOASIS.gov***. As part of the State of West Virginia's procurement process, and to maintain the transparency of the bid-opening process, this documentation submitted online is publicly posted by the West Virginia Purchasing Division at ***WVPurchasing.gov*** with any other vendor responses to this solicitation submitted to the Purchasing Division in hard copy format.

Header

 List View

General Information

Contact

Default Values

Discount

Document Information

Procurement Folder: 18835

SO Doc Code: CEOI

Procurement Type: Central Purchase Order

SO Dept: 0310

Vendor ID: 

SO Doc ID: DNR150000007

Legal Name: MSES CONSULTANTS INC

Published Date: 9/5/14

Alias/DBA:

Close Date: 10/14/14

Total Bid: \$0.00

Close Time: 13:30

Response Date: 

Status: Closed

Response Time: Solicitation Description:

Total of Header Attachments: 0

Total of All Attachments: 0



Purchasing Division
 2019 Washinton Street East
 Post Office Box 50130
 Charleston, WV 25305-0130

**State Of West Virginia
 Solicitation Response**

Proc Folder : 18835
Solicitation Description : Parks - Pipestem - A/E Laundry Facilities
Proc Type : Central Purchase Order

Date issued	Solicitation Closes	Solicitation No	Version
	2014-10-14 13:30:00	SR 0310 ESR10131400000000479	1

VENDOR
000000204882 MSES CONSULTANTS INC

FOR INFORMATION CONTACT THE BUYER
 Dean Wingerd
 (304) 558-0468
 dean.c.wingerd@wv.gov

Signature X FEIN # DATE

All offers subject to all terms and conditions contained in this solicitation

Line	Comm Ln Desc	Qty	Unit Issue	Unit Price	Ln Total Or Contract Amount
1	Architectural/Engineering Services for Pipestem Laundry				\$0.00

Comm Code	Manufacturer	Specification	Model #
81101508			

Extended Description : TO PROVIDE NECESSARY ARCHITECTURAL AND ENGINEERING SERVICES FOR THE RELOCATION OF EXISTING LAUNDRY FACILITIES INTO A NEW BUILDING IN A NEW LOCATION AT PIPESTEM RESORT STATE PARK.



EXPRESSION OF INTEREST

Architectural / Engineering Services

for

WV Division of Natural Resources

Pipestem Resort State Park

Construction/Relocation of Park Laundry Facilities

October 14, 2014



October 14, 2014

Department of Administration
Purchasing Division
2019 Washington Street, East
Charleston, WV 25305-0130

Re: DNR1500000007 - WV Division of Natural Resources
EOI-Architectural / Engineering Services
Pipestem Resort State Park
Construction / Relocation of Park Laundry Facilities

Dear Sir/Madam,

MSES Architects is pleased to submit our expression of interest in providing professional services for the Construction / Relocation of Park Laundry Facilities at Pipestem Resort State Park. Our team's extensive experience in designing similar projects state-wide would prove to be of great value to the WV Division of Natural Resources (DNR) in the successful completion of this project.

MSES Architects, located in Fairmont, is a division of MSES Consultants, Inc. in Clarksburg. MSES is a multi-disciplinary firm with a staff of over 100 professionals, and has served both private and public clients throughout West Virginia since 1976. Over the years, we have opened offices in Fairmont, Huntington, and Beckley, WV, as well as Indiana PA. Together, MSES Architects' experienced team of design professionals, including registered architects, interns, interior designers and technicians, combine with our well-established engineering and environmental group to create a full-service team capable of producing a successful project to meet your design and budgetary needs.

As you will see on the following pages, our AE team has provided professional design services for a variety of functional service buildings, such as maintenance, storage and production facilities for many clients throughout West Virginia. Pre-engineered metal buildings are typically chosen by the client for this type of building because they are economical and functional. The exterior appearance can be designed to match or compliment surrounding buildings.

MSES is particularly well suited to perform construction projects such as the proposed laundry facility, due to the diverse talents of the full service project team. Both renovation and construction projects require a vast knowledge of all phases of design, from project programming, preliminary design and schematic design through contract documents,

bidding and construction period services. Our clients are especially pleased with our attention to detail, our skills in estimating and budgeting, and our follow-up assistance during and after construction. Our specific approach to the design process for your project is outlined in this Expression of Interest.

Our current project load enables us to start working on your project immediately. We would appreciate the opportunity to meet you and discuss how we can provide you with professional services needed for a successful project. Thank you for your consideration.

Sincerely,



Pamela J. Wean, AIA
Senior Project Architect
MSES Architects

BACKGROUND AND INTRODUCTIONS

MSES Architects, located in Fairmont, WV, is a division of MSES Consultants, Inc. in Clarksburg, WV. We are a multi-disciplinary firm which was founded in 1976. Since that time our firm has been providing quality services to private and public clients all over West Virginia and surrounding states. We are a full-service organization providing architectural, engineering, design, and environmental services with a current professional staff of over 100, making us one of the largest West Virginia-owned and diversified A/E consulting firms in the state of West Virginia.

The MSES Architects' professional staff is exceptionally knowledgeable of local, state and federal Life Safety and Building Codes, Energy Codes and Accessibility compliance. In addition, we are keenly aware of the many challenges and problems that may be inherent to the design process. The benefits of our experience and diligence are perhaps most effectively demonstrated by our large number of long term clients. For many, we have provided continuing services for multiple projects for over 25 years.

We have vast experience in designing and project management of building renovations, additions, and brand-new construction. Our knowledge of local, state and federal regulations is beneficial to the client because our team can ensure that their facility not only meets but also exceeds these standards.

Rather than work from a predetermined approach, we strive to create environments that are a thoughtful response to their program mission, physical setting and functional purpose. A guiding principle of MSES Architects is that each project reflects the spirit and personality of its owner. Our mission is to plan, design and manage the new construction and renovation of buildings and their interiors in order to promote productivity, enhance the quality of life of users and visitors and contribute value to the environment. We believe good design is the physical expression of sound ideas, imagination and creativity.

OUR STANDARDS FOR SUCCESSFUL PROJECTS

MSES Architects has a stellar reputation among owners, regulators, and contractors for producing and managing successful projects. This reputation is the culmination of over 80 combined years of experience, founded upon our extensive architectural, engineering, life safety, and code compliance, our knowledge of applicable regulations, and our ability to develop corrective solutions which satisfy regulatory requirements in a cost effective manner. We are proud of our accomplishments and our ever-growing roster of satisfied repeat clients attests to our continued commitment to quality, dedication, and service.

MSES has completed more than 15,000 assignments to date. We have been heavily focused on building construction, renovation, auditing, and project management since our founding in 1976, and many of our projects have involved site selection studies, funding assistance, designs and auditing (HVAC, plumbing, electrical, civil, structural, mechanical, lighting, fire systems, security, and telecommunications), building repairs/renovations, inspections, geotechnical investigations, assessments and reviews, environmental sampling and analysis, property evaluations and appraisals throughout West Virginia, Ohio, and Pennsylvania. MSES is sought after by many public and private clients for construction and renovation projects due to the breadth of our technical and professional services, the efficiency of our operations, and our unique status as a single source consultant for all the services required to successfully complete our clients' projects.

MSES ARCHITECTS AND BUILDING CONSTRUCTION AND RENOVATIONS

Since 1978, MSES's architectural and engineering services have been distributed nearly equally between the construction of new facilities and the renovation of existing structures. Our expertise has gained MSES a distinguished reputation with commercial, industrial, and manufacturing firms, municipalities, State Agencies, the School Building Authority, county boards of education, the state's colleges and universities, and other entities as a noted



leader in this field. Our extensive experience has yielded a specialized, efficient project approach, in which we incorporate the most up-to-date technologies for all aspects of audits, renovations, design, and construction. This promotes the development of modern facilities within existing structures, while preserving the character of the existing buildings and providing an enhanced environment in which to work, all accomplished within a cost effective, affordable budget. With the combination of our diversity and our 37 years of professional experience in the design, new construction, and renovation of facilities, MSES truly lives up to its reputation as a full service provider of architectural, engineering, auditing, design and environmental services.

MSES is unique relative to any other firm in the State by maintaining a qualified staff to sample, analyze, and interpret analytical results for environmental issues that may often be associated with modifications to older facilities. Included among these are concerns related to asbestos-containing materials, paints containing lead, radon, and other environmental risks. MSES' staff includes Certified Industrial Hygienists, asbestos inspectors, asbestos manager/planners, asbestos abatement designers, lead-based paint risk assessors, radon risk assessors, air sampling personnel, and bacteria and fungi specialists, among others. The expertise of these skilled individuals, in combination with our laboratory support facilities, ensures the accurate and timely identification of materials of concern, the development of remediation planning, and the safe and proper removal of identified materials, thus facilitating successful renovations, site development, utility infrastructure, and building additions.

INDEFINITE DELIVERY CONTRACTS

As a reward for MSES' knowledge, responsiveness, and diligence, a great deal of trust has been established between MSES and our clientele. This has resulted in the maintenance of numerous master service/indefinite delivery agreements and contracts for many of our long term clients, some of which are identified below:

Marion County Schools – MSES currently holds a Five-year Architectural, Engineering, Environmental Service Agreement.

Randolph County Schools – MSES currently holds a Five-year Architectural, Engineering, Environmental Service Agreement.

City of Clarksburg, City Engineer – MSES was selected in January 1999 as the Engineer for the City of Clarksburg, West Virginia, with MSES staff member John Keeling, PE, CIH, CSP, serving as the City's Engineer/Public Works Director. MSES provides the City with all its engineering, planning, code inspectors, environmental, infrastructure, and funding/budget planning needs. MSES's contract was recently renewed for three (3) years.

UCAR Carbon Company (formerly Union Carbide Corporation), Anmoore, WV. MSES has maintained a long-standing relationship with this company and has assisted this facility on an ongoing basis with the plant's air emission permits, water discharge permits, solid waste compliance, and a variety of engineering projects with the Huntington and Pittsburgh USACE Districts for Phase I and Phase II environmental screenings and real estate and mineral appraisals since 1982 and 1992, respectively.

Dominion Transmission, Inc. (formerly CNG Transmission Corporation) MSES has maintained a master service agreement with this firm since 1990, for the provision of engineering, surveying, mapping, and corrosion surveys.

Dominion-Hope (formerly Hope Gas, Inc.) - Since 1992, MSES has retained a master service agreement with Hope Gas which includes engineering, surveying, mapping, environmental sampling, reviews, environmental assessments, and right-of-way acquisitions.



Dominion-Peoples (formerly Peoples Natural Gas) - MSES currently holds a master service agreement with this company for corrosion engineering and surveys, and internal corrosion sampling and analysis.

USDA Natural Resources Conservation Service – In 2005, MSES completed the fifth year of a five (5) year indefinite delivery contract to conduct county-wide water resources studies throughout the State of WV. These involve compilation and analysis of extensive physical, chemical, geographic, and socio-economic data in order to develop feasible planning documents for the provision of safe, reliable, drinking water supplies and wastewater treatment and collection systems for designated counties throughout the state.

United States Department of the Army, Huntington and Pittsburgh Districts, Corps of Engineers - MSES has maintained annual indefinite delivery contracts with the Huntington and Pittsburgh USACE Districts for Phase I and Phase II environmental screenings and real estate and mineral appraisals since 1982 and 1992, respectively.

United States Postal Service - MSES recently completed a three-year indefinite delivery services contract for environmental and engineering services of existing/newly-acquired post office sites throughout Virginia, West Virginia, and Kentucky. These services include site selection, surveys, site development planning, permitting, architectural, and Phase I/II environmental site reviews. The project services were based upon audits of existing Postal Service-owned and leased facilities, in which the buildings were evaluated to determine their compliance with energy, architectural, engineering, and safety requirements. The audit results were used to determine recommendations for the continuing use, renovation, or construction of new facilities. MSES continues to work with USPS on a project by project basis.

Government Services Administration (GSA) - In 1999 MSES was awarded a five (5) year indefinite delivery contract to provide architectural, building audits, engineering, environmental, safety, indoor air quality, and project management services for buildings under GSA control within the states of Pennsylvania, West Virginia, Maryland, and Virginia. Typical services provided include building interior and exterior renovations, life safety system upgrades, fire sprinkler systems, security systems, HVAC, electrical, lighting, indoor air quality, and energy audits, to list a few.





OUR PERSONNEL

The MSES Team maintains a staff of highly trained and experienced personnel, including all the technical disciplines necessary to fully staff projects of all sizes and types. Our personnel demonstrate the education and experience required to accommodate any land planning, site development, program management, planning, renovation, repairs, modifications, upgrades, additions, or new construction project.

In addition to employee experience, another factor for MSES' continued success is the unusual degree of longevity and company loyalty among our personnel. Our many long-term and repeat clients are appreciative of the continuity that this affords, and are refreshed with the degree of familiarity and prior knowledge with which each subsequent project is met. It is this unique combination of knowledgeable, experienced, talented, and devoted principals and employees that has brought MSES to the forefront as a provider of total land planning, property inventorying, auditing, hazards surveys, adapted reuses, historic preservation, engineering, architectural, environmental, LEED AP, and project management services.

Our staff's stable employment record also enables the firm to assemble project teams that have worked together before, and that possess a good knowledge of how individual strengths fit together to form an effective team. The firm is able to assemble teams composed of individuals whose capabilities are tested and well known to our establishment. We assign senior staff to management roles on all our projects.

In accordance with MSES' belief in the integration of engineering and architecture, in 2004 MSES established an architectural group within MSES which is known today as MSES Architects. This group within MSES was founded on the strengths and capabilities offered by each individual, which has allowed for the forming and continuation of strong, diverse, well-established MSES Project Teams. Today, MSES and MSES Architects are now one organization.

The Fairmont, West Virginia office staff, with support from MSES Consultants' corporate office staff, will be responsible for the activities associated with this project. Jeff Wise, Executive Director, will be the Program Manager and Pam Wean will be the Senior Project Architect. Jeff and Pam will be the direct contacts for the project.



The multi-disciplinary depth of our staff is reflected by the following Professional Staff Chart, while a listing of current and pending professional registrations is provided by the Professional Registrations Chart. The depth of our staff in each category permits performance of large assignments, as well as simultaneous performance of many jobs that do not require full-time commitment of individuals. Our experience and diverse staffing capabilities allow us to draw upon specialized personnel to facilitate unique project requirements. Refer to our team members' individual professional resumes for more information.

In addition to our work within the State of West Virginia, the MSES Team also has extensive experience throughout much of the eastern United States, having completed ambitious projects in states such as New York, Pennsylvania, Ohio, Maryland, Virginia, Kentucky, and Tennessee. Many among our staff maintain professional registration in these states.

The wide variety of services that MSES provides makes it possible for clients to establish a working relationship with us as a single-source consultant. We are organized to ensure that all clients are provided with a high level of personal and professional attention.



PROFESSIONAL REGISTRATIONS CHART

Category	Number of Employees	Education		
		Associate Degrees	Bachelor Degrees	Advanced Degrees
Administrative	6	2	4	--
Chemical Engineer	1	--	1	1
Chemist	2	--	1	--
Civil Engineer	3	--	3	--
Structural Engineer	2	--	2	2
Resident Construction Engineer	2	1	1	--
CAD/Design Draftsman	4	--	4	--
CAD/Drafter	9	7	2	--
Environmental Geographer (GIS)	2	--	2	--
Ecologist	1	--	1	1
Meteorologist	1	--	1	--
Electrical Engineer	3	--	3	--
Geologist	1	--	1	--
Hydrologist	1	--	1	1
Architect	4	1	4	3
Architect Associates	4	--	4	3
Landscape Architect	1	--	1	--
Environmental Engineer	2	--	2	1
Mechanical Engineer	2	--	2	--
Mining Engineer	2	--	2	1
Industrial Engineer	1	--	1	--
Sanitary Engineer	2	--	2	--
Soil Engineer	2	--	2	--
Transportation Engineer	1	--	1	--
Certified Industrial Hygienist	2	--	2	--
Certified Safety Professionals	3	--	2	1
Safety Engineer	1	--	1	1
Land and Right-Of-Way Agents	3	--	3	--
Paralegal	2	--	2	--
Surveyors	6	4	2	--
Economist	1	--	1	1
Forensic Biologist	1	--	1	--
Biologist	3	--	2	2
Botanist	1	--	1	1
Engineering Technicians	4	2	2	--
Survey Support	12	4	1	--



PROFESSIONAL STAFF CHART

Category	Number of Employees	Education		
		Associate Degrees	Bachelor Degrees	Advanced Degrees
Administrative	6	2	4	--
Chemical Engineer	1	--	1	1
Chemist	2	--	1	--
Civil Engineer	3	--	3	--
Structural Engineer	2	--	2	2
Resident Construction Engineer	2	1	1	--
CAD/Design Draftsman	4	--	4	--
CAD/Drafter	9	7	2	--
Environmental Geographer (GIS)	2	--	2	--
Ecologist	1	--	1	1
Meteorologist	1	--	1	--
Electrical Engineer	3	--	3	--
Geologist	1	--	1	--
Hydrologist	1	--	1	1
Architect	4	1	4	3
Architect Associates	4	--	4	3
Landscape Architect	1	--	1	--
Environmental Engineer	2	--	2	1
Mechanical Engineer	2	--	2	--
Mining Engineer	2	--	2	1
Industrial Engineer	1	--	1	--
Sanitary Engineer	2	--	2	--
Soil Engineer	2	--	2	--
Transportation Engineer	1	--	1	--
Certified Industrial Hygienist	2	--	2	--
Certified Safety Professionals	3	--	2	1
Safety Engineer	1	--	1	1
Land and Right-Of-Way Agents	3	--	3	--
Paralegal	2	--	2	--
Surveyors	6	4	2	--
Economist	1	--	1	1
Forensic Biologist	1	--	1	--
Biologist	3	--	2	2
Botanist	1	--	1	1
Engineering Technicians	4	2	2	--
Survey Support	12	4	1	--



TECHNICAL EXPERTISE AND SUPPORT

A strong team of complementary professionals is essential for success in today's complex planning, auditing, design, repairs, modifications, and building process. For this reason, the MSES Team is committed to the principle of multi-disciplinary teamwork. By assembling all disciplines within our organization, our clients benefit from a single point of responsibility, fixed accountability, efficient coordination, and effective communications. Together, our qualified staff has combined to provide the services listed below.

Planning

- Feasibility Studies
- Site Analysis, Evaluation, and Selection
- Master Planning
- Strategic Planning
- Land Use Planning
- Sustainable/Green Designs

Funding Assistance

- School Building Authority
NEEDS
- MIP
- Emergency
- 3% Projects - Vocational / Technical
- School Access Safety Funding
- School Construction Bonds
- School Levy Funding
- QZAB Funding
- Lease/Purchase
- US Economic Development Authority Funding

Architecture

- Programming
- Project Management
- Design of New Buildings
- Design of Building Renovation and Retrofitting
- Adaptive Reuse Design
- Building Exterior and Interior Infrastructure

Historic Preservation

- Historic Architectural Surveys
- Historic Properties Inventory
- Archival and Deed Research
- Historic Structure Reports
- HABS/HAER Recordation
- Historic District and Landscape Surveys
- Preservation Plans
- Adaptive Reuse Plans
- Environmental Hazards Review
- National Register Evaluations and Nominations



Interior Architecture

Programming and Space Planning
Interior Design
Survey, Inventory, Evaluation of Existing Furniture/Furnishings
Design of Special Furnishings and Equipment
Graphic, Signage and Art Programs
Energy Awareness

Engineering

Site Development and Surveying
Land Surveying
Soils/Geotechnical
Structural/Structural Repairs/Modifications
Roofs
Electrical
Mechanical/HVAC
Civil
Water Systems
Lighting
Life Safety/Fire
Food Service
Audio Visual
Telecommunications
Technology/Computer
Energy Management
Security
Construction Inspection
Project Management

Environmental/
Green Designs

Groundwater Recharge
Stormwater Capture and Re-Use
Wetland Mitigation
Energy Conservation
Waste Minimization and Recycling
Project Siting to Utilize Existing Resources

Environmental/Safety

Asbestos
Lead Based Paint
Indoor Air Quality
Bacteria and Fungi
Sampling/Testing/Monitoring
Abatement



Landscape Architecture	Site Evaluation Site Development Planning and Horticulture Design Security Lighting
Specialty Services	Project Management Cost Estimating Critical Path Scheduling Value Engineering Administration of the Bidding Process Administration and Monitoring of Construction Contract

HISTORIC BUILDING SUPPORT

The National Historic Preservation Act requires historic resources - above ground historic buildings, structures, sites, districts, and objects - be considered during the planning stages of any federal or state funded undertakings. Other regulations protecting historic resources include U. S. Secretary of the Interior's Standards and Guidelines for Archeology and Historic Preservation (48 CFR 44716), National Environmental Policy Act, and State Historic Preservation Office. The MSES Team assists both private and government clients to identify historic resources and move their project forward.

The MSES Team is intimate with all aspects of National Historic Preservation Act, WVSHPO, U. S. Secretary of the Interior's Guidelines and Standards, property inventories, historic preservation, environmental and Brownfield compliance, federal, state, and local procurement requirements, and codes and ordinances for most municipalities. In addition, we are keenly aware of the many challenges and problems that may be inherent to these processes.

The proven expertise in conducting historic resource studies throughout the mid-Atlantic United States, the MSES Team conduct documentary research, architectural surveys, and National Register of Historic Places (NRHP) evaluations and nominations. These efforts are supported by the MSES Team's database arrangement software, state-of-the-art geographic information system (GIS), computer aided design and drafting (CADD) capabilities, Historic American Building, Survey/Historic American Engineering Record (HABS/HAER)) documentation, and the experienced staff of the MSES Team.

The MSES Team has a broad historic preservation portfolio that includes large-scale architectural surveys for transportation and utility projects, surveys, historic renovations, and adaptive re-uses for municipalities as part of historic preservation planning programs, and smaller surveys, action plans, and architectural design guidelines for grant-funded preservation initiatives. Whether large- or small-scale surveys and resource evaluations, our work is consistent with the procedures and quality established by the U. S. Secretary of the Interior's Standards and Guidelines for Archaeology and Historic Preservation, 48 CFR 44716.

The MSES Team's specialists have built and maintained excellent working relationships with State Historic Preservation Offices (SHPOs) in many of the mid-Atlantic states where we work. We have established a reputation for successfully obtaining agency concurrence on government and private client projects in a timely manner, and we are experienced in acquiring expedited historical resource clearance for Section 106 compliance projects.



BUILDING RENOVATION SUPPORT

In addition to the historic inventories and historic preservation services we provide, the Team is again unique relative to any other firm in the State by maintaining a qualified staff to sample, analyze, and interpret analytical results for environmental issues that may often be associated with modifications to older facilities. Included among these are concerns related to asbestos-containing materials, paints containing lead, radon, and other environmental risks. MSES' staff includes Certified Industrial Hygienists, asbestos inspectors, asbestos manager/planners, asbestos abatement designers, lead-based paint risk assessors, radon risk assessors, air sampling personnel, and bacteria and fungi specialists, among others. The expertise of these skilled individuals, in combination with our laboratory support facilities, ensures the accurate and timely identification of materials of concern, the development of remediation planning, and the safe and proper removal of identified materials, thus facilitating successful renovations, site development, utility infrastructure, and building additions.

GREEN BUILDINGS

MSES' founding philosophy was based on the protection of the environment. With each project design, emphasis is always given on how the project and the environment can co-exist in harmony. The wise use of our limited resources is always first and foremost in our design principles. The Team has gained the reputation of thinking outside the typical design box, by the use of existing resources, such as natural light, the siting of projects to take advantage of natural heating and cooling capabilities, the use of groundwater recharge and stormwater recirculation, and the incorporation of reusable building materials and energy efficient equipment into our designs. The Team's non-traditional thinking can be further exemplified by our involvement with the first projects of the USEPA's Brownfields redevelopment program. MSES was the first consulting group selected to review Brownfields projects in West Virginia, in Fairmont (Hardman's Exxon, now successfully redeveloped as the CVS Pharmacy) and Clarksburg (West Virginia Mack, Quality Foundry, Wilson Bakery, and former City Garage being the most recent projects). MSES has often been commended by the USEPA and the State of West Virginia's Division of Land Restoration for applying our original thinking and ideas to transform severely impacted sites, by instituting innovative remediation and reuse programs which are not only economically-feasible, but which also provide for maximum environmental cleanup and protection benefits.

ENVIRONMENTAL SUPPORT

MSES is intimate with all aspects of environmental projects, ranging from site and subsurface investigations, hydrogeologic characterizations, and Phases I, II, and III environmental transaction screens, assessments and remediation, to permitting and closure of site environmental issues under various regulatory programs (RCRA, CERCLA, WV Voluntary Remediation and Redevelopment Act, etc.), and preparation for site reuse/redevelopment. In addition, we are keenly aware of the many challenges and problems that may be inherent to these processes, and are mindful of each site's potential redevelopment and reuses throughout the planning and performing of our project activities. The benefits of our experience and diligence are perhaps most effectively demonstrated by our large number of long term clients. For many, we have provided continuing services for multiple projects for more than 30 years.

SUPPORT FACILITIES

In order for a team to be effective, it must be supported by modern and extensive equipment, laboratory accommodations, and data processing resources. As a full service organization, MSES possesses the facilities necessary to support all aspects of its projects, from the collection of field and survey data, through the performance of physical/chemical sample



collection and analysis, to the reduction, analysis, and final presentation of project data. State-of-the-art software is also used for complex modeling and data presentation, and the development of company-specific training modules and visual productions.

CONFIRMATIONS

MSES Architects confirms the Team's intention and willingness to:

Abide by applicable provisions of codes and regulations of the State of West Virginia, Federal, and Local County and City Codes and Regulations.

Employ registered professional engineers, registered structural engineers, registered architects, and other pertinent personnel (surveyors, ADA code specialists, etc., as applicable) licensed to practice in the State of West Virginia.

Prepare detailed proposals/work plans, with estimated fees, and to execute agreements for services based thereon, including fixed fees for well identified scopes of work, or other mutually agreeable forms of compensation.

Comply with all other civil rights, conflict of interest, records access, or other laws, regulations or requirements that may be referenced in conjunction with each project.

QUALITY COMMITMENT

MSES is committed to providing high quality engineering, architectural, and environmental services to its customers through its continuous quality improvement program that involves all personnel in a systematic, logical process to continually improve the firm's work practices and procedures. MSES' approach to quality is composed of four elements: the individual, procedures for project execution, procedures for controlling and assuring the quality of our services, and the continuous quality improvement process.

THE INDIVIDUAL

Since 1976, we have relied on the care, diligence, imagination, intelligence, and commitment of our personnel to provide quality designs and quality services. Recent policies and procedures emphasize the importance and contribution of each individual in achieving our quality goals.

PROCEDURES FOR PROJECT EXECUTION

Standard procedures for project execution are adopted by MSES, providing for project management with current guidelines and procedures for managing projects and assuring quality in our technical performance, from the proposal stage through the close-out stage.

QA/QC PROCEDURES

The Quality Assurance/Quality Control procedures are incorporated into the technical quality control of services provided to our clients. A set of guidelines and procedures is established for each type of service provided by the firm: planning reports and studies, design services, construction phase services, and facility inspection services. These procedures are used in conjunction with project technical and management controls, which set forth the following criteria on which to base successful completion of a project: project schedule, project budget, scope requirements, project objectives, and client satisfaction.



CONTINUOUS QUALITY IMPROVEMENT

Continuous Quality Improvement, or CQI, adaption of Total Quality Management, is a systematic, firm-wide process of improving services we perform for our clients by improving the way we work and the services we provide. CQI is concerned with identifying barriers and removing those barriers. CQI achieves this by making quality a part of everyone's job description. We train each person in CQI and assign him or her to a Quality Improvement Meeting Unit (QIMU). These QIMU's hold weekly meetings to identify barriers and to propose improvements or changes in the way we work. In this way, CQI provides a vehicle for the recognition and re-involvement of all employees in improving the firm's methods, procedures, and operations.

PROFESSIONAL ORGANIZATIONS

- Hope Gas, Inc.
- CNG Transmission Corporation
- U. S. Steel Corporation

PROJECT EXPERIENCE SUMMARY

PROJECT MANAGEMENT

- New Franklin Elementary School, Franklin, WV
- New Lincoln Middle School, Harrison County Schools, Lumberport, WV
- Donel Kinnard Memorial State Veterans Cemetery, Institute, WV
- Marion County Schools, Countywide School Improvement Bond, Fairmont, WV
- Mineral County Schools, Countywide School Improvement Planning, Keyser, WV
- Pleasants County Schools, Countywide School Improvement Bond, St. Marys, WV
- WVU President's House, Morgantown, WV
- Stonewall Jackson Lake State Park Lodge and Conference Center, Roanoke, WV
- Veterans Square Parking Garage, Fairmont, WV
- Fairmont State College Athletic Complex Lighting, Fairmont, WV
- Erickson All Sports Athletic Complex, Parkersburg, WV
- Hazelton Prison, FBOP, Hazelton, WV (Civil Planning)
- Ripley High School, Ripley, WV
- Robert L. Bland Middle School, Weston, WV
- Marion County Schools, 4 School Additions, Fairmont, WV
- Lewis County Schools, Countywide School Improvement Bond, Weston, WV
- 120 Bed VA Nursing Home, Clarksburg, WV
- City of Ripley - Municipal Building, Ripley, WV

JEFFREY T. WISE

Executive Director



Years of Professional Experience: 33

EDUCATION

- B. S. Mining Engineering, West Virginia University, 1981

REGISTRATIONS

- West Virginia Real Estate License



PROFESSIONAL ORGANIZATIONS

- American Institute of Architects
- West Virginia Society of Architects
- National Trust for Historic Preservation

EMPLOYMENT HISTORY

- Senior Project Architect, Blackwood Associates, Inc.
- Plans Examiner and Code Official, City of Kettering, OH
- Associate/Project Architect, Levin Porter Assoc. Inc., Dayton, OH

PROJECT EXPERIENCE SUMMARY

EDUCATIONAL

- New Franklin Elementary School, Franklin
- New East Fairmont Middle School, Fairmont
- Fairmont Senior High School Renovations, Fairmont
- Jayenne Elementary School Addition/Renovations, Fairmont
- United Technical Center Welding Shop Renovation, Clarksburg
- Simpson Elementary School Addition/Renovations, Bridgeport
- Belmont Elementary School Renovations, Belmont
- Anna Jarvis Elementary School Addition and Renovations, Grafton

HISTORICAL

- Veterans Square (G.C. Murphy) Building - Renovations
- Dayton Art Institute - Addition & Renovation
- Hutchinson House - Restoration

COMMERCIAL

- MVB White Hall Branch

INDUSTRIAL

- Addition & Renovations at Stockmeier Urethanes, Clarksburg

HEALTHCARE

- WV Veterans Nursing Facility, Clarksburg
- William R. Sharpe Jr. Hospital - Transitional Facility, Weston
- Jackie Withrow Co-Occuring Facility, Beckley

PAMELA J. WEAN, AIA

Senior Project Architect



Years of Professional Experience: 30

EDUCATION

- Bachelor of Science - Architectural Technology, Fairmont State College, 1984
- Assoc. of Applied Science - Interior Design, Fairmont State College, 1981

REGISTRATIONS

- Registered Architect -West Virginia - Ohio



PROFESSIONAL ORGANIZATIONS

- West Virginia Independent Oil and Gas Association (Environmental Committee Member)
- Virginia Independent Oil and Gas Association (Association's Outstanding Member, 1990)
- Pennsylvania Independent Oil and Gas Association
- National Society of Professional Engineers
- West Virginia Society of Professional Engineers, T. Moore Jackson Chapter
- West Virginia Surface Mine and Reclamation Association

EMPLOYMENT HISTORY

- CNG Transmission Corporation

PROJECT EXPERIENCE SUMMARY

- Job Costing Management
- Waste Management/Minimization
- Hazardous Waste Management
- Groundwater Modeling/Monitoring
- Asbestos Assessment
- Earth Sciences
- Lead Base Paint Assessment
- Risk Assessment/Analysis
- NORM Assessment
- Regulatory Interaction
- Economic Feasibility
- Phase I/II Investigation
- Noise Assessment
- Remediation (Design and Permitting)
- SARA Title III
- RCRA Waste Units
- Specification Development
- Drilling Programs
- Environmental Impact Statements
- Bioremediation
- Sampling/Laboratory Programs
- Property Evaluations
- QA/QC Inspection & Compliance
- NPDES Permitting
- Architectural Support
- Municipal Engineering
- Radon
- Code Compliance
- E-911 Systems
- GIS Systems/Data Management

LAWRENCE M. RINE

Principal and Quality Assurance/ Quality Control Manager



Years of Professional Experience: 52

EDUCATION

- B. S. Mechanical Engineering, West Virginia Institute of Technology, 1969
- B. S. Mining Engineering, West Virginia Institute of Technology, 1970
- Masters Study, Environmental Engineering, Cornell University, 1973

REGISTRATIONS

- Certified Monitoring Well Designer and Installer - WVDEP
- Licensed WV Underground Storage Tank Closure/Installation Specialist
- Class I Certified Public Water Supply Operator, West Virginia
- Class II Certified Wastewater Treatment Plant Operator, WV
- Certified Asbestos Inspector/Manager/Planner/Clearance Air Monitor
- Licensed Remediation Specialist - WVDEP
- Member State School Building Authority - IAQ Committee



PROFESSIONAL ORGANIZATIONS

- American Institute of Architects
- West Virginia Society of Architects
- USGBC - LEED Green Associate

EMPLOYMENT HISTORY

- Project Architect, Blackwood Associates, Inc., Fairmont, WV
- Architectural & Design Intern, Vandalia Heritage Foundation, Fairmont, WV

PROJECT EXPERIENCE SUMMARY

EDUCATIONAL

- New Franklin Elementary School, Franklin
- New East Fairmont Middle School, Fairmont
- Fairmont Senior High School Renovations, Fairmont

HISTORICAL

- Clarksburg-Harrison Public Library Waldomore Renovations, Clarksburg, WV
- Mount Hope Historic District Renovations, Mount Hope, WV
- Ritchie County Judicial Annex, Harrisville, WV
- East Fairmont Junior High School Demolition, Fairmont, WV
- East Fairmont Junior High School Gym Renovations, Fairmont, WV

COMMERCIAL

- MVB White Hall Branch

STACEY BOWERS, AIA, NCARB,
LEED Green Assoc.
Project Architect



Years of Professional Experience: 9

EDUCATION

- Master of Architecture, University of Illinois at Chicago, 2009
- Study Abroad via UIC, IAAC, Barcelona, Spain, 2008
- Bachelor of Science in Architecture, Fairmont State University, 2007
Honors: Summa Cum Laude

REGISTRATIONS

- Registered Architect -West Virginia



PROFESSIONAL ORGANIZATIONS

- American Institute of Architects - Associate Member

EMPLOYMENT HISTORY

- Intern Architect, Blackwood Associates, Inc., Fairmont, WV

PROJECT EXPERIENCE SUMMARY

EDUCATIONAL

- New East Fairmont Middle School, Fairmont
- Fairmont Senior High School Renovations, Fairmont
- United Technical Center Welding Shop Renovation, Clarksburg
- Simpson Elementary School Addition & Renovations, Bridgeport
- Comprehensive Educational Facility Plans
Mineral County
Marion County
Harrison County
Lewis County
Pleasants County
Randolph County
Barbour County

COMMERCIAL

- MVB White Hall Branch

INDUSTRIAL

- Addition & Renovations at Stockmeier Urethanes, Clarksburg

HEALTHCARE

- Jackie Withrow Co-Occuring Facility, Beckley

NATHANIEL H. ZIRKLE, ASSOC. AIA

Intern Architect



Years of Professional Experience: 5

EDUCATION

- Master of Architecture, Boston Architectural College, 2012
- Bachelor of Science in Architecture, Fairmont State University, 2009
Honors: Cum Laude



PROFESSIONAL ORGANIZATIONS

- American Institute of Architects - Associate Member

EMPLOYMENT HISTORY

- Intern Architect, Blackwood Associates, Inc., Fairmont, WV
- Architectural & Design Intern, Vandalia Heritage Foundation, Fairmont, WV

PROJECT EXPERIENCE SUMMARY

EDUCATIONAL

- New Franklin Elementary School, Franklin
- New East Fairmont Middle School, Fairmont
- Fairmont Senior High School Renovations, Fairmont
- Belmont Elementary School Renovations, Belmont
- New Keyser Primary School, Keyser
- New St. Marys High School, St. Marys
- St. Marys Athletic Facility, St. Marys
- Marion County Board of Education Office Renovation, Fairmont
- HISTORICAL
- Ritchie County Judicial Annex, Harrisville
- East Fairmont Junior High School Demolition, Fairmont
- East Fairmont Junior High School Gym Renovations, Fairmont

COMMERCIAL

- MVB White Hall Branch, Fairmont

RESIDENTIAL

- Appalachian Teen Challenge Induction Center, Clarksburg

CASEY SMITH, ASSOC. AIA

Intern Architect



Years of Professional Experience: 5

EDUCATION

- Master of Architecture, Boston Architectural College, 2014
 - Barbara Walker Award for Architectural Thesis Excellence
 - Certificate of Academic merit: Distance Master of Architecture
 - Architecture Thesis Commendation
- Bachelor of Science in Architecture, Fairmont State University, 2009



PROFESSIONAL ORGANIZATIONS

- Association of Energy Engineers
- American Society of Heating, Refrigeration, Air Conditioning Engineers
- National Society of Professional Engineers
- WV Society of Professional Engineers - Past State President

EMPLOYMENT HISTORY

- James E. Moore and Associates
- John D. Meyers and Associates
- David L. Skeen, P.E., Sole Proprietorship

PROJECT EXPERIENCE SUMMARY

- Project Management
- Data Base Systems
- Noise Assessment
- Specification Development
- Job Costing
- Emergency Generator
- CAD/Intergraph/CAM
- HVAC
- Boiler System (Hot Water/Steam)
- Code Compliance
- Green Building
- Lighting and Power Distribution
- Regulatory Interaction
- Life Safety Codes
- Health & Safety Programs
- Training Programs
- Economic Feasibility
- National Electric Code Compliance
- Firewater Systems
- Energy Management Systems/Audits
- Specialty Ventilation Systems
- Architectural Support/Mechanical
- Energy Audits/ Conservation
- Heating System Economics

DAVID L. SKEEN, P.E.

Senior Project Engineer



Years of Professional Experience: 40

EDUCATION

- Chemical Engineering, Virginia Polytechnic Institute and State University
- B. S. Mathematics, West Virginia State University, 1974

REGISTRATIONS

- Professional Engineer - West Virginia, Ohio, Maryland and Kentucky
- U. S. Green Building Council - LEED Accredited Professional



PROFESSIONAL ORGANIZATIONS

- National Society of Professional Engineers
- Member Harrison County BOCA Appeals Board

EMPLOYMENT HISTORY

- Allegheny Power Company

PROJECT EXPERIENCE SUMMARY

- Project Management
- Regulatory Interaction
- Data Base Systems
- Computer Modeling
- Life Safety Codes
- Specification Development
- Job Costing
- QA/QC Inspection & Compliance
- Economic Feasibility
- Lighting
- Power Systems
- Fire Alarm Systems
- Telecommunications/Computer Systems
- Emergency Generator
- Power Distribution
- National Electric Code Compliance
- Code Compliance
- Architectural Support/Electrical
- Site Surveys
- Mapping
- Site Development
- Site Utilities
- Cathodic Protection Design/Testing
- AC Mitigation Design/Testing
- GPS Surveys
- Close Interval Surveys

JEFFREY K. PAULEY, P.E., P.S.
Engineering Coordinator
Senior Project Engineer - Electrical



Years of Professional Experience: 24

EDUCATION

- B. S., Electrical Engineering,
Tennessee Tech University, 1988

REGISTRATIONS

- Registered Professional Engineer
- West Virginia, Ohio, New York,
Pennsylvania, Maryland, Virginia,
North Carolina, and District of Columbia
- Professional Surveyor - West Virginia
- Licensed State of West Virginia
Master Electrician



PROFESSIONAL ORGANIZATIONS

- National Society of Professional Engineers

EMPLOYMENT HISTORY

- Custom Electric, Inc.
- M.C. Dean, Inc.

PROJECT EXPERIENCE SUMMARY

- Life Safety Codes
- Job Costing
- Economic Feasibility
- Power Systems
- Telecommunications/Computer Systems
- Power Distribution
- Code Compliance
- Site Surveys
- Site Development
- Specification Development
- QA/QC Inspection & Compliance
- Lighting
- Fire Alarm Systems
- Emergency Generator
- National Electric Code Compliance
- Architectural Support/Electrical
- Mapping
- Site Utilities
- Residential & Commercial Wiring

EDUCATIONAL

- New Franklin Elementary School, Franklin, WV
- New Lincoln Middle School, Harrison County Schools, Lumberport, WV
- New East Fairmont Middle School, Fairmont, WV
- Fairmont Senior High School Media Center, Fairmont, WV
- Saint Mary's High School, Saint Mary's, WV
- Keyser Primary School, Keyser, WV

DAVID P. KIRBY

Project Electrical Engineer



Years of Professional Experience: 10

EDUCATION

- B. S., Electrical Engineering, West Virginia University, 2009
- B.A., Regents, West Virginia University, 2003

REGISTRATIONS

- Licensed State of West Virginia Master Electrician



PROFESSIONAL ORGANIZATIONS

- American Society of Civil Engineers
- Solid Waste Association of North America
- Barbour County, WV Solid Waste Authority - Member
- Gundler Liner Seminars and Workshops

EMPLOYMENT HISTORY

- Joyce Engineering
- Harman Construction, Inc.
- Southern Ohio Coal Company
- American Electric Power Service Corporation
- Mountain State Surveying

PROJECT EXPERIENCE SUMMARY

- Project Management
- Indoor Air Quality
- Noise Assessment
- Specification Development
- Job Costing
- Emergency Power Generator
- HVAC Systems Design
- Boiler System (Hot Water/Steam)
- Code Compliance
- Laboratory Exhaust Systems
- Energy Recovery Ventilation Systems
- Life Safety Codes
- Isolation Room HVAC Systems
- Economic Feasibility
- National Electric Code Compliance
- Fire Protection Systems
- Energy Management systems/Audits
- Specialty Ventilation Systems
- Architectural Support/Mechanical
- Ground Source HVAC Systems
- Kitchen Ventilation Systems

CHARLES H. "SAM" MUNCY, JR., P.S., P.E., MSCE

Senior Project Manager



Years of Professional Experience: 40

EDUCATION

- B. S. Civil Engineering, West Virginia University, 1974
- M. S. Civil Engineering, West Virginia University, 1983

REGISTRATIONS

- Registered Professional Engineer - West Virginia, Pennsylvania, Florida, North Carolina, Ohio, and Virginia
- Professional Surveyor - West Virginia
- Certified Compaction Technician - West Virginia Department of Highways
- Radiation Safety Officer - NRC
- Licensed Remediation Specialist - New York, Ohio, West Virginia
- Certified Monitoring Well Designer and Installer - WVDEP
- Certified Landfill Manager - SWANA
- Geosynthetic Accreditation Institute - Clay & Geo Synthetic Liners
- Florida Real Estate License



PROFESSIONAL ORGANIZATIONS

- American Society of Testing Materials
- American Water Well Association
- National Ground Water Association
- Past Chairman – City of Bridgeport Planning and Zoning Commission

EMPLOYMENT HISTORY

- Union Carbide Corporation

PROJECT EXPERIENCE SUMMARY

- Project Management
- Regulatory Interaction
- Sampling/Laboratory Programs
- Data Base Systems
- Life Safety Codes
- Specification Development
- Job Costing
- Property Evaluation
- QA/QC Inspection & Compliance
- Economic Feasibility
- Soils Engineering
- Earth Sciences
- Flood Routing
- Stormwater Routing
- Geographic and Hydrologic Studies
- Foundations
- Land Planning
- Site Development
- Hydrologic & Hydraulic Analysis
- Site Utilities
- Plumbing System/Design
- Subsurface Investigation
- Water/Wastewater Systems
- Stormwater Management
- Erosion and Sediment Planning
- Code Compliance
- Civil/Architectural Support

RODNEY D. KIDD, MSCE

Project Engineer



Years of Professional Experience: 40

EDUCATION

- B. S. Civil Engineering, West Virginia University, 1974

REGISTRATIONS

- Certified Compaction Technician - West Virginia Department of Highways
- Certified Concrete Technician - West Virginia Department of Highways



PROFESSIONAL ORGANIZATIONS

- American Society of Safety Engineers
- American Industrial Hygiene Association
- Air and Waste Management Association
- Harrison County SARA Title III Local Emergency Planning Committee - Chairman
- West Virginia Chapter of Air and Waste Management Association - Vice Chairperson

PROJECT EXPERIENCE SUMMARY

- Job Costing
- Management
- Risk Assessment/Analysis
- Regulatory Interaction
- Economic Feasibility
- Remediation (Design and Permitting)
- RCRA Waste Units
- Drilling Programs
- Bioremediation
- Geographic and Hydrologic Studies
- Sampling/Laboratory Programs
- Air Permitting
- Indoor Air Quality
- Code Compliance
- E-911 Systems
- Air Emission Regulatory Compliance
- NPDES Permitting
- Waste Management/Minimization
- Hazardous Waste Management
- Air Emission Modeling
- Asbestos Assessment
- Lead Base Paint Assessment
- NORM Assessment
- Health & Safety
- Noise Assessment
- Hydrologic and Hydraulic Analysis
- Earth Sciences
- Environmental/Architectural Support
- GIS Systems

JOHN J. KEELING, P.E., C.I.H., C.S.P., Q.E.P., L.R.S.

Principal and Project Manager



Years of Professional Experience: 40

EDUCATION

- B. S. Civil Engineering, University of Kentucky, 1974

REGISTRATIONS

- Registered Professional Engineer - West Virginia, Kentucky & Pennsylvania
- Certified Industrial Hygienist, American Board of Industrial Hygiene
- Certified Safety Professional, Board of Certified Safety Professionals
- Qualified Environmental Professional, Institute of Professional Environmental Practice
- Licensed Remediation Specialist, West Virginia, New York, and Ohio BOH
- Certified Visible Emissions Observer - USEPA
- Licensed Asbestos Inspector/Manag. Planner/Clearance Air Monitor - WV, OH & Ohio
- Underground Storage Tank Closure Specialist/Installer - WVDEP
- Certified Monitoring Well Designer and Installer - WVDEP



PROFESSIONAL ORGANIZATIONS

- American Society of Safety Engineers, Northern West Virginia Chapter - Vice President
- West Virginia Safety Council

EMPLOYMENT HISTORY

- ASCI (Subcontractor to USEPA)

PROJECT EXPERIENCE SUMMARY

- Project Management
- Risk Assessment/Analysis
- Regulatory Interaction
- Phase I and II Investigation
- Remediation (Design and Permitting)
- RCRA Waste Units
- Sampling/Laboratory Programs
- Data Base Systems
- Computer Modeling
- Indoor Air Quality
- Asbestos Assessment
- Lead Base Paint Assessment
- Life Safety Codes
- Noise Assessment
- Health & Safety Programs
- SARA Title III
- Specification Development
- Training Programs
- Job Costing
- Computer Programming
- Brownfields Specialist
- QA/QC Inspection & Compliance
- Mold and Fungi
- OSHA Compliance

ALLEN R. CUTLIP, CIH, C.S.P.

Senior Environmental & Safety Specialist



Years of Professional Experience: 28

EDUCATION

- B. S. Safety Engineering Technology, Fairmont State College, 1986

REGISTRATIONS

- Certified Industrial Hygienist, American Board of Industrial Hygiene
- Certified Safety Professional, Board of Certified Safety Professionals
- Licensed Asbestos Inspector/Clearance Air Monitor - WV Bureau of Health
- Licensed USED Inspector Class B - WVDEP
- Hazardous Waste Operator - OSHA
- Hazardous Waste Supervisor - OSHA



PROFESSIONAL ORGANIZATIONS

- Air and Waste Management Assoc.
- National Trust for Historic Preservation
- ASTM International - Member

EMPLOYMENT HISTORY

- JPEC, LLC
- Alpha Associates, Inc.
- West Virginia University Planning Section

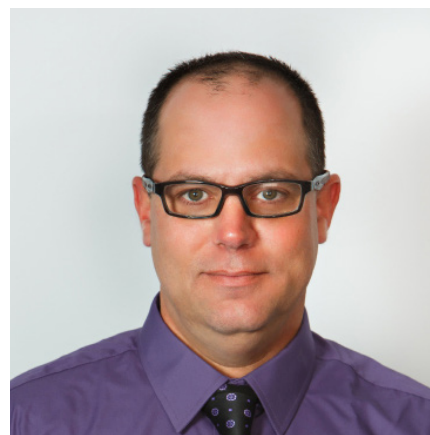
PROJECT EXPERIENCE SUMMARY

- Job Costing
- Waste Management/Minimization
- Management
- Hazardous Waste Surveys
- Structure Assessment
- Asbestos Assessment
- Regulatory Interaction
- Lead Base Paint Assessment
- Economic Feasibility
- Health & Safety
- Sampling/Laboratory Programs
- Specification Development
- Indoor Air Quality
- Environmental/Architectural Support
- Code Compliance
- GIS Systems

HISTORIC PROJECTS

- National Park Service
- Morgantown Downtown Historic District
- West Virginia University - Oglebay Hall
- Pittsburgh History and Landmark Foundation
- Allegheny County Jail Museum
- Oliver Miller Homestead - South Park
- Hamnett Place neighborhood
- Pittsburgh Historic Northside Community

JOHN J. PARROTTA
Environmental Scientist



Years of Professional Experience: 15

EDUCATION

- B. S. Wildlife and Fisheries Resources Management, West Virginia University, 1999



PROJECT ORGANIZATION

MSES OFFICES

MSES Architects presents a full service approach for the Construction / Relocation of Park Laundry Facilities at Pipestem Resort State Park project. Our team has the capacity to provide all of needed resources to complete a successful project. MSES has offices spread across West Virginia and we have completed numerous successful project throughout the state.

The Fairmont Office staff, with support from MSES Consultants' corporate office staff, will be responsible for the activities associated with this DNR project.

MSES Architects

Fairmont Office
1000 Green River Drive, Suite 100
Fairmont, WV 26554
304.366.9700

MSES Consultants, Inc.

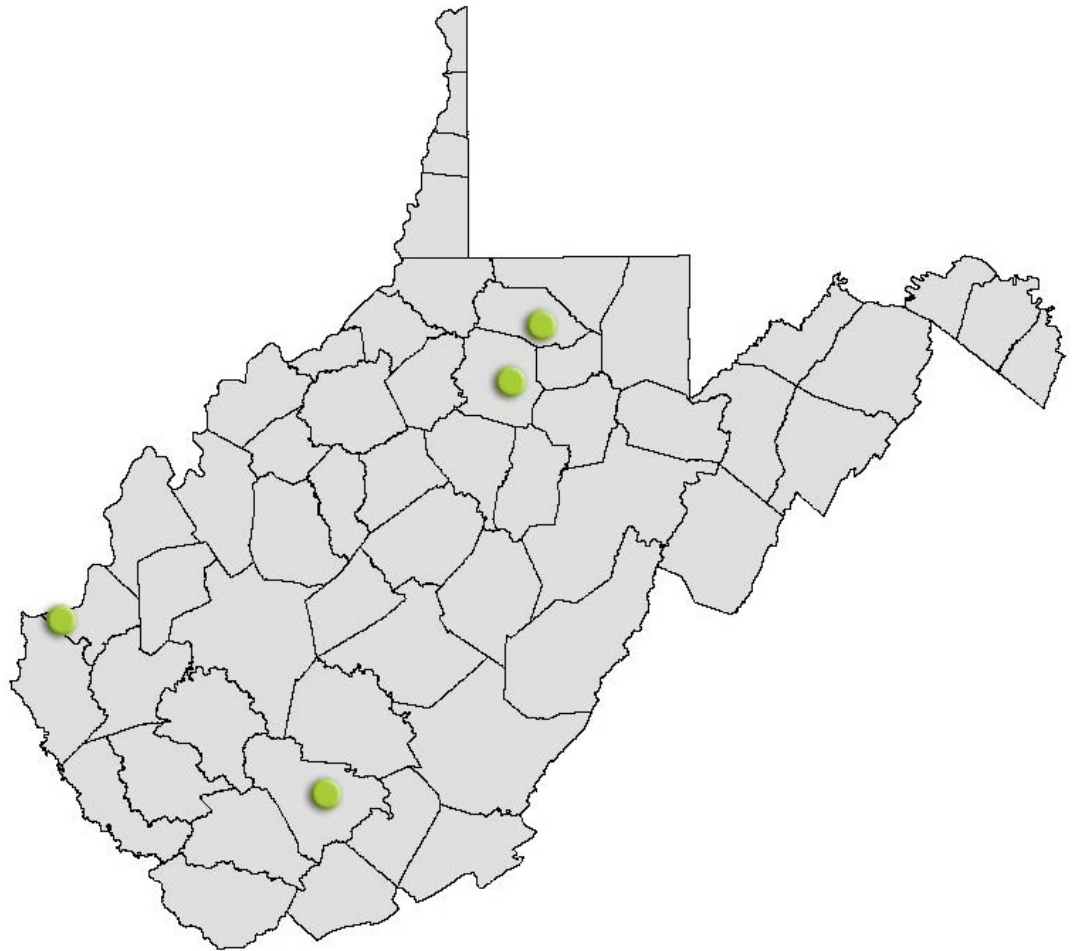
Corporate Office
609 W Main Street, Bldg. 2
Clarksburg, WV 26302
304.624.9700

MSES Beckley Office

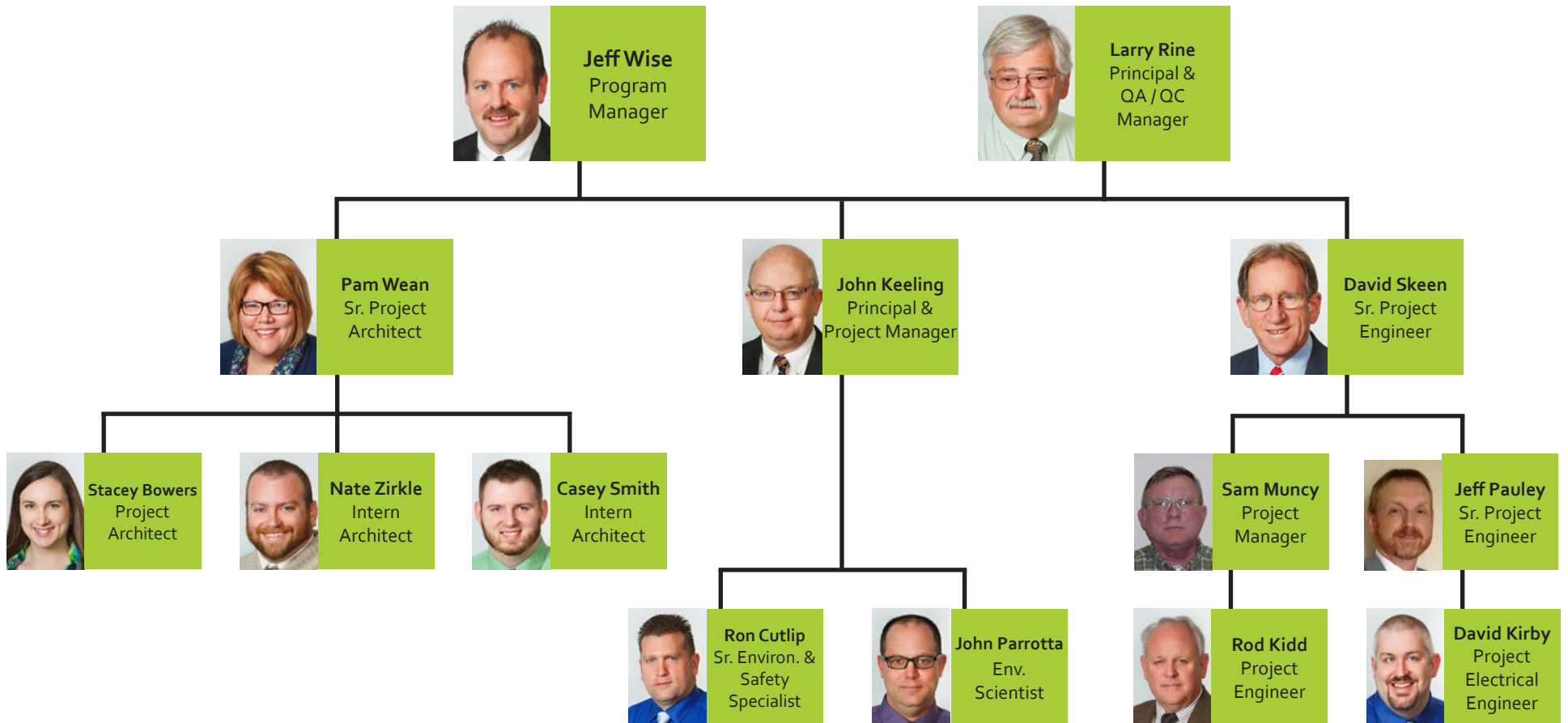
Pinecrest Plaza South
201 Grey Flats Road, Suite 105
Beckley, WV 25801
304.731.4700

MSES Huntington Office

313 Twelfth Avenue West
Huntington, WV 25701



MSES TEAM
PROJECT ORGANIZATIONAL CHART
CONSTRUCTION / RELOCATION
PARK LAUNDRY FACILITIES
PIPESTEM RESORT STATE PARK



PROJECT APPROACH

At MSES Architects, our Number One objective is to provide our clients with a finished product that meets their functional needs, is designed and constructed on time and within budget, and is an attractive facility that they can be proud of for years to come. We take pride in our attention to detail and our ability to listen to the client so we fully understand their needs. MSES believes in the "Expanded Team" approach. We think that quality projects result from well-planned designs and continuous coordination between our staff and the client.

As with every project, we will first meet with our client, in this case, representatives of the Division of Natural Resources who are involved with the Construction/Relocation of Park Laundry Facilities at Pipestem Resort State Park. Our team of experts will discuss scope-of-work, programming, budget, schedule and the needs of the DNR. We will also review conditions of the existing laundry building and equipment, and discuss potential sites for the new facility. In addition, preliminary review of the existing wastewater treatment facility will begin.

During the Schematic Design Phase, we will continue working with the DNR representatives and involving all team members in information exchange as we review scope-of-work and budget. We will set standards for detail and production based explicitly on your needs. We will also begin our discussions with the Fire Marshal, and other agencies to meet applicable codes and requirements. Once the preferred site is determined, we will begin the process of surveying and testing, and designing the site to suit the new laundry buildings.

As we move into the Design Development Phase, we advance into more detailed plans and drawings. The advantage of having all architectural and engineering disciplines within the same firm is that we can coordinate with each other from start to finish, resulting in more accurate design documents, fewer questions in the field, and less changes during construction. As with all phases of design, we will provide you with up-to-date budget summaries to ensure the project is on track.

Construction Documents will be finalized when the DNR, Purchasing Department and governing agencies are satisfied with the design and budget. We will then handle distribution of documents to bidders, which will be available for download from our website, or as printed copies. We will preside over all meetings, receive bids and assist the DNR in selecting a contractor. We urge clients to be involved as much or as little as they want; we will always provide professional service and assist throughout the project.

MSES Architects will proceed into the construction phase by attending all job meetings, addressing all correspondence, reviewing schedules, submittals and pay applications, observing construction and providing reports. We will then review all project close-out submittals and forward them to the DNR.

We have been told that our commitment to our clients is second to none, and we believe that the DNR will be extremely pleased with the outcome of your construction project. We encourage you to contact the references listed in our Expression of Interest to learn more about our team of professionals and how we can help create a successful project for you.



RELEVANT EXPERIENCE



STATE CAPITOL COMPLEX
Charleston, WV

Renovations to the State Capitol Complex Central Boiler Plant involved HVAC replacement and related electrical design for buildings 1, 2, 4, 5, 7, and 9. Completed with a Design-Build contractor, renovations included replacement of boilers, pumps and condensate return units.

SERVICES

- HVAC Replacement

PROJECT DETAILS

- Electrical: \$250,000.00
- Completed: 2007

CLIENT CONTACT

Johnson Controls
Aaron Allred

MILDRED MITCHELL-BATEMAN HOSPITAL

Huntington, WV

Building 2 on this campus is a three-story structure with a basement. The top two floors had been previously gutted and left vacant, with the first floor used as offices and the basement for storage.

Existing exterior brick walls had sustained water damage and were cracking and in disrepair; and windows were in need of replacement.

Our team of architects and engineers evaluated the structure and designed 29 patient rooms with nursing stations, activity rooms, and associated spaces. A secure entry to each floor was created along with renovation and repair to the elevator hoistway.

Renovations on the first floor and basement were also conducted to maintain the secure entry. Electrical and mechanical upgrades took place, including replacement of two 70-ton chillers and associated piping.

Exterior improvements included repair and restoring brick walls and replacement of windows. The existing tunnel between buildings 2 and 3 was also repaired to eliminate water infiltration by excavating the soil around the tunnel and sealing the connection to building 2.

SERVICES

- Design of 29-bed facility in Building 2
- Exterior Renovation & Brick Repair
- Window Replacement

PROJECT DETAILS

- 43,000 SF
- \$4,700,000.00
- Completed: 2009

CLIENT CONTACT

WV Dept. of Health & Human Resources





TURNING POINTE AT JACKIE WITHROW HOSPITAL

Beckley, WV

Turning Pointe is an 8,300 SF treatment facility for mothers who are battling substance-abuse issues, and their children.

This wood-framed brick structure contains classrooms, group therapy rooms, offices, kitchen, dining and bedrooms for up to 16 residents. The wooded site on the campus of Jackie Withrow Hospital provides a grassy fenced-in recreational area, and parking with porous pavement to allow for proper site drainage.

SERVICES

- 83,000 SF Residential and Treatment Facility
- Porous paving for stormwater drainage.
- Completed: 2012

CLIENT

WV DHHR



WV VETERANS NURSING FACILITY
Clarksburg, WV

MSES Architects and Engineers are proud to be the designers of the very first West Virginia State Veterans Nursing Facility located in Clarksburg, WV. This State-of-the-Art facility houses 120 veterans, including beds for 20 Alzheimers patients.

Special features include a grand three-story atrium at the main entrance, large common dining rooms overlooking the West Fork River, and spacious screened-in porches on each end of the patient wings complete with comfortable furnishings and porch swings.

Each patient room entry door is equipped with glass display cases which are filled with photos and personal keepsakes of the patient for ease of identifying their room. Hallways and rooms are tastefully decorated with photos of local landmarks, military uniforms, and medals and other reminders of their service.

SERVICES

- Design of 98,000 SF New State Veteran's Nursing Facility
- Wall Repair

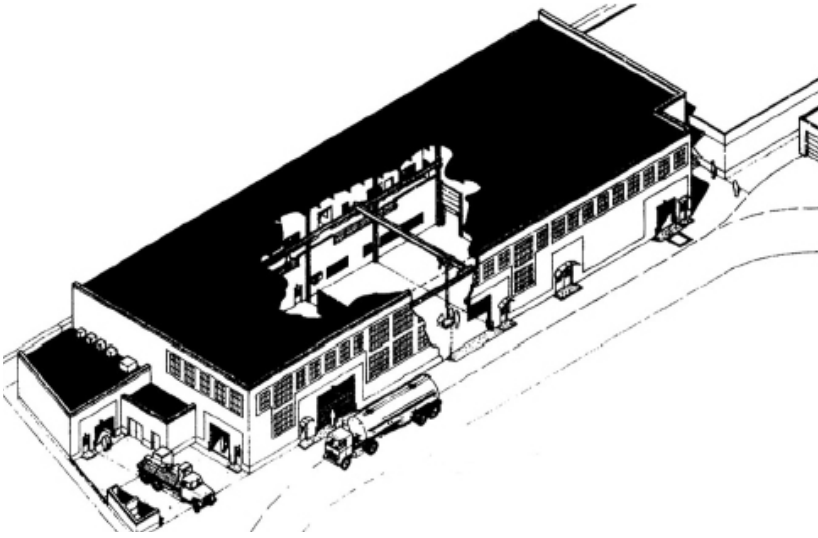
PROJECT DETAILS

- 98,000 SF
- \$22,600,000.00
- Completed: 2007

CLIENT CONTACT

WV Veterans Nursing Facility
Kathy Hess
(304) 626-1600





FMC CORPORATION

South Charleston, West Virginia

MSES was commissioned by FMC Corporation to develop a multi-faceted maintenance complex which would allow for the total maintenance, repair and modification of any motorized vehicle in use at the FMC Corporation's many locations within the Kanawha Valley. This modern facility features a tire maintenance area; routine maintenance (oil changes, tire changes, etc.) area; body and specialty equipment fabrication area; secure storage area; and complete body shop operations, consisting of auto body repair shop, spray booth, and heat treatment stalls. In addition, offices, employee break / lunchroom, locker, and shower facilities are part of this complex. The complex also provides spacious exterior parking, external materials storage areas, and a fueling center for all the company's motorized vehicles. Environmental compliance is also a chief focus, with no discharges released from the facility (with the exception of restroom and shower areas). Where possible, wastes are captured for recycling; other wastes are contained for proper disposal off-site.

The Maintenance Facility is a pre-engineered metal building, slab on grade, two story (offices, locker rooms, showers, training rooms, lunch room) with specialty activity areas on the first floor. The total building is 28,000 square feet.

SERVICES

- 28,000 SF pre-engineered, slab-on-grade metal building, two-story maintenance complex.
- Tire and routine maintenance area.
- Body & specialty equipment fabrication area, secure storage area, and complete body shop.
- Offices, employee break/lunchroom, locker and shower facilities.
- Parking and external materials storage areas.
- Fueling center.

CLIENT

FMC Corporation

(304) 744-512



KINGSFORD MANUFACTURING COMPANY

Parsons, West Virginia

Since 1987, MSES has enjoyed an ongoing relationship with Kingsford, in which we have provided our engineering, environmental, mechanical, electrical, civil, and safety services for numerous projects at the Parsons, WV plant. MSES designed a 27,400 SF pre-engineered, slab on grade metal building, to serve as the production, storage, shipment, and auxiliary services facility for the Match Light product line. A 10,000 sq. ft. portion of the facility is used for the entire production process. MSES designed a specialty ventilation system for this portion of the Match Light plant, as well as a water and foam fire suppression system and outside raw materials / naphtha storage tanks. The remaining 17,400 sq. ft. portion serves as the storage warehouse and shipping terminal for the finished / palletized products, as well as housing offices, restrooms and a breakroom for the employees.

MSES provided all of the engineering, environmental, mechanical, electrical, civil, and safety services for the entirety of the project.

SERVICES

- 27,400 SF pre-engineered metal buildings, slab-on-grade, metal building
- Specialty ventilation system
- Fire suppression system
- Outside storage tanks
- Storage warehouse and shipping terminal
- Offices, restrooms and breakroom

CLIENT

Kingsford Manufacturing Company
(304) 478-2911





PRATT & WHITNEY ENGINE SERVICES

Bridgeport, West Virginia

Pratt & Whitney Engine Services provides services for the inspection, repair and maintenance of small to medium sized aircraft engines. These services include housing aircraft in the company's hangar systems, removing the engines, performing the necessary repairs and inspections, testing the engines, and the re-installing them into the aircraft. MSES was assigned the task of developing an aircraft hangar building that would accommodate various sized aircraft, with the capacity to house numerous aircraft at one time. A pre-engineered, slab on grade metal building, which interconnects with the Harrison-Marion Regional Airport's taxiways, was developed. MSES has been called upon on two different occasions to enlarge the existing hangar area and developed additional repair and offices spaces immediately adjacent to the hangar. The facility consists of a 28,000 SF hangar area and a 12,000 sq. ft. maintenance and office area

SERVICES

- Pre-engineered, slab-on-grade metal building interconnecting with Harrison-Marion Regional Airport's taxiways.
- 28,000 SF hangar area
- 12,000 SF maintenance and office area
- Completed May, 2014

CLIENT

Pratt & Whitney Engine Services
(304) 842-5422





PACE ENTERPRISES
Morgantown, West Virginia

Pace Enterprises is a facility that trains adults with disabilities in the fields of production, food service, data entry, maintenance and a variety of other skills. Pace had outgrown their existing facility in Star City, West Virginia and were in need of expansion.

Our team of architects and engineers assisted Pace by designing an 11,000 SF office and production facility. The building includes food service and dining facilities for staff and clients as well as a small diner open to the public. In addition, offices and training rooms are available for clients to learn computer skills.

The production and maintenance area features a large, high-bay work area and is complete with a loading dock. Currently one of their most requested services is their secure document shredding service.

SERVICES

- Design of training facility for adults with disabilities
- Production / Warehouse / Maintenance Shop
- Admin offices
- Training rooms
- Commercial kitchen and cafeteria
- Restaurant

CLIENT

PACE Enterprises, Inc.
Bob Pirner
(304) 983-7223





**WHARTON ELEMENTARY SCHOOL
MULTI-PURPOSE FACILITY**

Wharton, West virginia

The Wharton Elementary School was developed by conversion of a pre-existing high school. However, the school had several problems, including insufficient areas to accommodate the space needed for the school’s cafeteria, assembly, and indoor sports (predominantly basketball) facilities. There was also a significant problem with flooding and surface water drainage at the school. In a bond election, the Boone County Board of Education obtained enough funds to enlarge the school and address the flooding/surface drainage problems. With the budget monies provided, MSES designed a free-standing, pre-engineered, slab on grade metal building, and was able to design the appropriate site development revisions and underdrains for interrupting, capturing and conveying offsite the surface water runoff from the adjacent hillsides. The 7,000 square foot building is now a multi-purpose area that accommodates cafeteria seating, assembly events, and indoor sports, such as volleyball, basketball and other physical education programs.

MSES provided all of the engineering, geotechnical, environmental and architectural support services for the entirety of the project.

SERVICES

- 7,000 SF free-standing pre-engineered, slab-on-grade metal building
- Site development revisions and underdrains
- Multi-purpose area for use as cafeteria, assembly area and indoor sports and physical education programs
- Engineering, geotechnical, environmental and architectural support services

CLIENT

Boone County Schools
69 Madison, WV 25130
304-369-3131





WV PARKWAYS ECONOMIC DEVELOPMENT & TOURISM AUTHORITY

Ghent, West Virginia Maintenance Area

Standard, West Virginia Maintenance Area

The WV Parkways Economic Development and Tourism Authority commissioned MSES to provide a prototype facility to support its changing highway maintenance needs. The first facility was designed, accepted, and constructed at the Ghent interchange, in Raleigh County, West Virginia.

A second maintenance facility was constructed per the Ghent prototype, located at the Standard, Kanawha County West Virginia interchange. Both the Standard and Ghent facilities provided the following: two maintenance bays, with ceilings, doors, and interior space sufficient to accommodate the indoor operation and maintenance of the wash bay.

The central portion of each facility features a two-level office area, employee shower/change room and lunch area, secure parts and material storage area, and maintenance facility manager's office. Employee safety and comfort were also considered, with lighting, exhaust collection and ventilation systems, and heated and air conditioned work spaces. Exterior storage areas were also developed, for the storage of guardrails, piping, road maintenance articles, and seasonal accessories, such as snow plow blades, etc.

The Maintenance Facilities are pre-engineered metal buildings, slab on grade, partial second floor, 30 foot high bays, with each facility consisting of 14, 350 square feet.

SERVICES

- 14,350 SF pre-engineered metal buildings, slab-on-grade, partial second floor, 30 foot high bays at two locations.
- Maintenance facility including two maintenance bays, ceilings, doors, interior pace.

CLIENT

WV Parkways Economic Development & Tourism Authority
(304) 256-6680



MSES AND MAINTENANCE / STORAGE FACILITIES

Since 1993 MSES has been active in the development and design of production, maintenance and storage facilities for numerous clients. Professional services provided for these projects have included siting, subsurface investigations, site development, utilities and drainage, building foundation and structural designs, mechanical/electrical/plumbing, and necessary permitting, for such organizations as:

- West Virginia Air National Guard - Benedum Air Training Center
- Central West Virginia Transport Authority - Centra Bus Garage
- FMC Corporation - Nitro Maintenance Facility
- Ohio County Board of Education - Ohio County Maintenance Garage
- Harrison County Commission - Harrison County Public Safety Complex
- G. E. Specialty Chemicals - Morgantown Industrial Park, North Plant Maintenance, Training, and Shower/ Locker Facility
- Amtower Auto Parts, Inc. - NAPA Automotive Establishments
- Cytec Industries - Willow Island, WV Vehicle Maintenance Station
- City of Huntington – Bus Maintenance Facilities

Our team of architects and engineers have also completed a variety of work in the vocational and maintenance facilities for the local school boards listed below. Work includes dust collection systems, electrical upgrades, HVAC upgrades, welding shop and fire training tower.

- Harrison County Schools
- Jackson County Schools
- Marion County Schools
- Randolph County Schools
- Pleasants County Schools



REFERENCES

WV Division of Juvenile Services

Safety & Risk Management
Joseph Merendino, Assistant Director
1200 Quarrier St.
Charleston, WV 25301
304/558-9800 or merendinojo@gmail.com

**West Virginia Division of Culture and History
State Historic Preservation Office**

Ms. Susan Pierce, Director
The Cultural Center, Capitol Complex
1900 Kanawha Boulevard, East
Charleston, WV 25305
304/558-0240, Ext. 711

Randolph County Board of Education

Mr. Terry George, Superintendent
40 11th Street
Elkins, WV 26241
304/636-9150 x 152 or tgeorge@access.k12.wv.us

Mount Hope Historic Landmarks Commission

Mr. Michael Martin, Chairman
609 Main Street
Mount Hope, West Virginia 25880
304/877-3100

Pendleton County Board of Education

Mr. Douglas S. Lambert, Superintendent
108 Walnut Street / P.O. Box 888
Franklin, WV 26807
304/358-2207 or dslamber@access.k12.wv.us

U.S.D.A.

Natural Resources Conservation Service

Mr. Bill Doerr, Senior Contracting Officer
75 High Street
Morgantown, WV 26505
304/284-7548

Jackie Withrow Hospital

WV Department of Health & Human Resources

Ms. Angela Booker, Administrator/CEO
105 S. Eisenhower Drive
Beckley, WV 25801-4999
304/256-6600

Ritchie County Commission

Mr. Samuel Rogers, President
115 East Main Street, Room 201
Harrisville, WV 26326
304/266-1935 or samueltrogers459@gmail.com

Marion County Board of Education

Mr. Gary Price, Superintendent
200 Gaston Avenue
Fairmont, WV 26554
304/367-2107 or gprice@access.k12.wv.us



STATE OF WEST VIRGINIA
Purchasing Division

PURCHASING AFFIDAVIT

MANDATE: Under W. Va. Code §5A-3-10a, no contract or renewal of any contract may be awarded by the state or any of its political subdivisions to any vendor or prospective vendor when the vendor or prospective vendor or a related party to the vendor or prospective vendor is a debtor and: (1) the debt owed is an amount greater than one thousand dollars in the aggregate; or (2) the debtor is in employer default.

EXCEPTION: The prohibition listed above does not apply where a vendor has contested any tax administered pursuant to chapter eleven of the W. Va. Code, workers' compensation premium, permit fee or environmental fee or assessment and the matter has not become final or where the vendor has entered into a payment plan or agreement and the vendor is not in default of any of the provisions of such plan or agreement.

DEFINITIONS:

"Debt" means any assessment, premium, penalty, fine, tax or other amount of money owed to the state or any of its political subdivisions because of a judgment, fine, permit violation, license assessment, defaulted workers' compensation premium, penalty or other assessment presently delinquent or due and required to be paid to the state or any of its political subdivisions, including any interest or additional penalties accrued thereon.

"Employer default" means having an outstanding balance or liability to the old fund or to the uninsured employers' fund or being in policy default, as defined in W. Va. Code § 23-2c-2, failure to maintain mandatory workers' compensation coverage, or failure to fully meet its obligations as a workers' compensation self-insured employer. An employer is not in employer default if it has entered into a repayment agreement with the Insurance Commissioner and remains in compliance with the obligations under the repayment agreement.

"Related party" means a party, whether an individual, corporation, partnership, association, limited liability company or any other form or business association or other entity whatsoever, related to any vendor by blood, marriage, ownership or contract through which the party has a relationship of ownership or other interest with the vendor so that the party will actually or by effect receive or control a portion of the benefit, profit or other consideration from performance of a vendor contract with the party receiving an amount that meets or exceed five percent of the total contract amount.

AFFIRMATION: By signing this form, the vendor's authorized signer affirms and acknowledges under penalty of law for false swearing (W. Va. Code §61-5-3) that neither vendor nor any related party owe a debt as defined above and that neither vendor nor any related party are in employer default as defined above, unless the debt or employer default is permitted under the exception above.

WITNESS THE FOLLOWING SIGNATURE:

Vendor's Name: MSES Consultants, Inc.

Authorized Signature: Pamela J. Jular Date: 10-13-14

State of West Virginia

County of Marion, to-wit:

Taken, subscribed, and sworn to before me this 13th day of October, 2014

My Commission expires Feb 22, 2023

AFFIX SEAL HERE

NOTARY PUBLIC Joy L. Boyer

