



**GRW** | engineering | architecture | geospatial  
200 Sixth Avenue | St. Albans, WV 25177  
304.727.5501 | [www.grwinc.com](http://www.grwinc.com)

December 17, 2013

West Virginia Department of Administration  
Purchasing Division  
2019 Washington Street, East  
Charleston, WV 25305-0130

**RE: A/E Services for Juvenile Facilities Renovation, Solicitation #DJS140002**

Dear Selection Committee Members:

GRW appreciates the opportunity to submit our statement of qualifications for improvements to your juvenile facilities in Julian, Mt. Hope and Princeton, WV. As we outline our capabilities, expertise and approach for helping you to meet your project goals, we are mindful that your success will involve several key elements:

- Knowledge and experience with the design of correctional facilities
- Qualified staff with expertise, local knowledge and capacity
- Commitment to meet your goals

**Experience that Meets Your Needs.** GRW is a full-service A/E design consulting firm that has been working with clients like the West Virginia Division of Engineering & Facilities and Division of Juvenile Services on similar projects throughout the region and locations nationwide for nearly 50 years. Our corrections experience ranges from security upgrades for state facilities to the first LEED Silver certified Federal Correctional Institution for the Federal Bureau of Prisons. A portion of our relevant experience includes:

- |                                                                                  |                                                                                      |
|----------------------------------------------------------------------------------|--------------------------------------------------------------------------------------|
| ▪ Gilmer Federal Correctional Institution, Glenville, WV                         | ▪ Harlan County Detention Center, Harlan, KY (new construction and later renovation) |
| ▪ Aliceville Federal Correctional Institution and Satellite Camp, Aliceville, AL | ▪ Northpoint Training Center Replacement, Burgin, KY                                 |
| ▪ Yazoo City U.S. Penitentiary and Satellite Camp, Yazoo City, MS                | ▪ Roederer Correctional Complex Renovation, LaGrange, KY                             |
| ▪ McCreary U.S. Penitentiary and Satellite Camp, McCreary County, KY             | ▪ Luther Luckett Correctional Complex Fire Alarm Replacement, LaGrange, KY           |
| ▪ Canaan U.S. Penitentiary and Satellite Camp, Canaan, PA                        | ▪ Eastern Kentucky Correctional Complex, Phase I & II, West Liberty, KY              |
| ▪ Manchester Federal Correctional Institute and Satellite Camp, Manchester, KY   |                                                                                      |

12/19/13 11:38:26AM  
West Virginia Purchasing Division

**Our Team Offers Expertise and Local Talent.** Having designed more than \$700 million of detention facilities, GRW's experienced design experts understand the unique challenges presented in a correctional environment, and we will offer innovative solutions based upon our technological know-how and past experiences.

Our familiarity with West Virginia state agencies is illustrated through the completion of projects such as the Gilmer Federal Correctional Institution and Satellite Camp, Glenville, WV; Marshall University Weisberg Family Engineering Laboratory, Huntington, WV and numerous projects for the West Virginia Air and Army National Guard in Charleston, Martinsburg, Kingwood, and Ripley. Ongoing projects include the Coal Heritage Highway Authority's Patteson Building renovation in Mt. Hope, and a new Sheriff's Office (incorporates secure door hardware, monitoring systems and bullet-resistant construction) in Mason County.

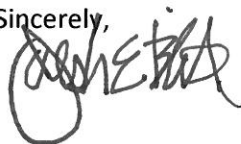
Furthermore, our team's local knowledge and capacity has been strengthened by GRW's recent acquisition of Chapman Technical Group, a 36-person West Virginia-based firm. Our firms' combined resources now provide you access to more than 250 professionals, including a building design studio of 12 architectural professionals and more than 40 electrical, mechanical, structural and civil/site engineers and technicians. The majority of work for the juvenile facilities renovation will be performed by our multidisciplinary design team located in St. Albans.

**We Are Committed to Your Success.** Taking care to meet your goals for your budget and schedule is a priority, as it is on every GRW project. From our extensive federal, state and local government experience, we know how to "Design to Cost" by matching the design to the funds available for the project, and thus eliminating the need for redesigns and re-bids to bring the cost within budget. We use a variety of cost estimating methods, in addition to maintaining a current database of bid tabulations for recent, similar projects, and we keep track of materials and labor cost trends during the course of designing our projects.

The ultimate measure of success is how well the completed projects meet your needs and aspirations. To this end, our project team is committed to establishing an inclusive, methodical and logical approach to the design process. We believe the GRW team is ideally suited to work with you to produce functional, modern and aesthetically pleasing facilities that can be easily maintained for many years to come.

Thank you for your consideration and for the opportunity to work with the West Virginia Division of Engineering and Facilities, and the Division of Juvenile Services. We look forward to the next step in your selection process where we can present our additional ideas toward the successful completion of your project.

Sincerely,



Joseph E. Bird, ASLA  
Vice President



engineering | architecture | geospatial

## A/E Services for Three Juvenile Facilities

WEST VIRGINIA DIVISION OF ENGINEERING &  
FACILITIES | DIVISION OF JUVENILE SERVICES

### Contents

---

SECTION 1.0 | GRW Introduction

SECTION 2.0 | Relevant Past Projects

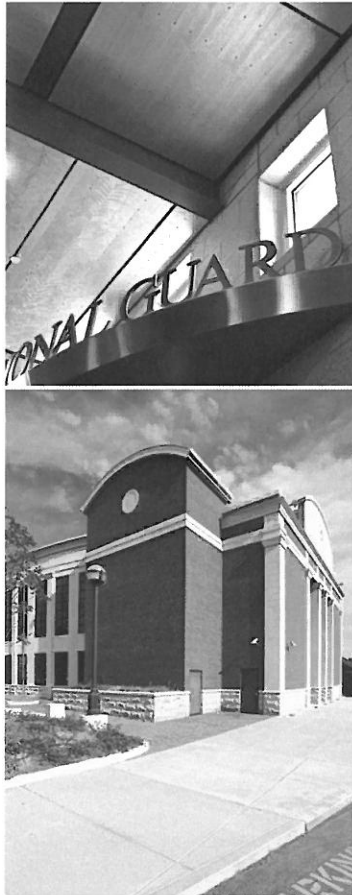
SECTION 3.0 | Staff Qualifications

SECTION 4.0 | Past Performance and References

SECTION 5.0 | Approach

SECTION 6.0 | Proposal Forms

# 1.0 Introduction



Founded nearly 50 years ago, GRW is an employee-owned architectural, engineering and geospatial services firm with more than 250 employees including a building design studio of 12 architectural professionals and more than 40 electrical, mechanical, structural and civil/site engineers and technicians.

**Our Corporate Culture** is one of close collaboration – bringing together our multidisciplinary design team with all project stakeholders early in the planning stages – combined with strong management leadership. Regardless of size or complexity, GRW is able to drive aggressive project schedules while both keeping projects on budget and facilitating clear and open lines of communication.

**Our Vast Project Experience** includes new facility construction, as well as facility renovations and expansions for federal, local and state governments, and commercial markets. For example, GRW's experience includes design and construction administration services for approximately \$700 million of correctional facilities for the Federal Bureau of Prisons and other state and local government entities.

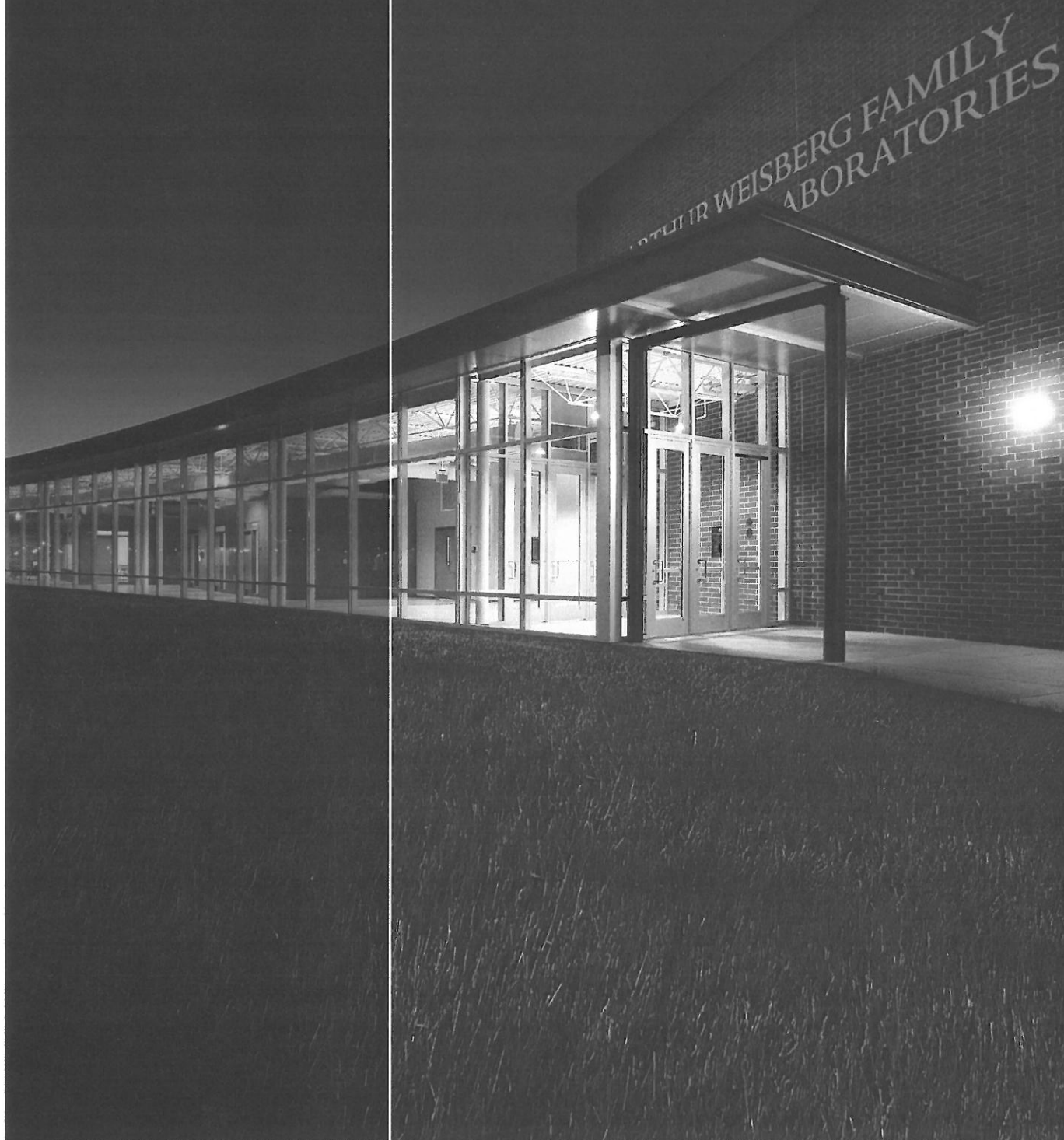
Using the principles of sustainable design, our architects and engineers improve the functionality, operating efficiency, aesthetics and long-term value of our clients' building projects. GRW strives to deliver "whole building" designs that not only maximize the potential of the site, but integrate the architectural and engineered features of the building in relation to its environment. In addition, we have LEED Accredited Professionals in key disciplines (architecture, electrical, mechanical, structural, sanitary and civil), and we have designed or are in the process of designing more than 1,800,000 SF of LEED registered projects.

## GRW SERVICE OFFERINGS

- Architecture
- Mechanical Engineering
- Electrical Engineering
- Structural Engineering
- Civil/Site Engineering
- Water and Wastewater System Engineering
- Transportation Engineering
- Landscape Architecture
- Construction Administration and Resident Project Representation (Inspection)
- Master Planning
- Sustainable Design
- Cost Estimating
- Aerial Mapping, Surveying and GIS
- Anti-Terrorist Force Protection and Physical Security
- AutoCAD, Microstation, and BIM Deliverables



Building Design and  
Construction's Giants 300  
report ranks GRW among  
the nation's top firms in  
design and construction.



## 2.0 Relevant Past Projects

The following projects portray the breadth of our team's experience with county, state and federal correctional facilities, as well as projects which demonstration our familiarity with local conditions. The GRW team possesses both comprehensive correctional experience and the staff expertise to properly address each of your project components.

### Harlan County Jail Renovation

Harlan, KY



The jail, situated in a semi-urban setting, was built as a "high rise" structure due to a limited building site and the desire to connect the jail to the adjacent courthouse. Designed by GRW, the 16,630 SF building was a six-story, monolithic concrete structure with brick facing. The multi-phased renovation of this facility included roof replacement, HVAC upgrades, replacement of selected interior doors, smoke evacuation upgrades, and other miscellaneous improvements. The facility was partially occupied throughout construction.

Jail components included 39 cells, offices, control room, six day rooms and a recreational area on the roof. Fire safety features included a sprinkler system, fire alarm system, smoke evacuation system and an emergency generator. All floors, roof and entrances are monitored by closed circuit television cameras from the central control room. All cells, day room and stair doors are electronically controlled from remote stations. Eight cells are for maximum security inmates, four cells for isolation prisoners, **four cells for juveniles** and four cells for female inmates. Prior to the renovation, GRW also performed the Needs Assessment/ Feasibility Study for the County. Detention needs for the next 20 years were projected, and the existing detention facility was reviewed in regard to violations of KBC building code, Department of Corrections regulations, and ADA regulations.

**Owner's Contact:** The Honorable Joseph Grieshop, County Judge Executive, Harlan County Fiscal Court; (606) 573-2600; joegrieshop@harlanonline.net



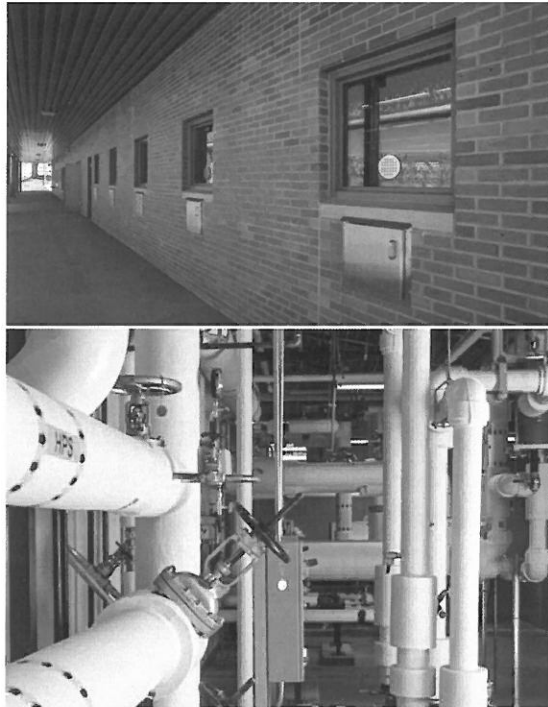
(See Section 4 for complete survey results)



The \$16.5 million project included developing, sequencing, and specifying security procedures at the operational, inmate-occupied facility to allow construction work inside the existing secure perimeter.



## Northpoint Training Center Replacement Burgin, KY

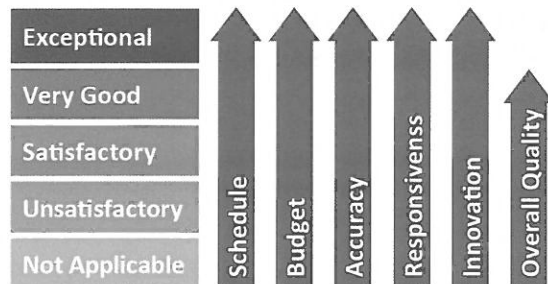


The 41,646-SF project program (two new buildings and renovation of seven buildings) was defined and preliminary building placement locations were determined for this project during a weeklong programming charrette with the owner/client. The renovation work involved new security electronics and exterior door replacement at the six existing, two-story, dormitories, as well as the addition/renovation of the central control building to include a new control center room and enlarged security electronics equipment room. A new campus emergency power 2 MW generator (12.47 KV) was also provided.

Meeting LEED Certified Design Criteria, the two new buildings include:

- 40,000-SF Program Building (commercial kitchen, two dining rooms, medical and dental clinics, canteen, multipurpose classrooms, library, and sanitation) centrally located adjacent to dormitories
- 6,400-SF Visitation Building located adjacent to the existing central control building

### Owner Satisfaction



(See Section 4 for complete survey results)

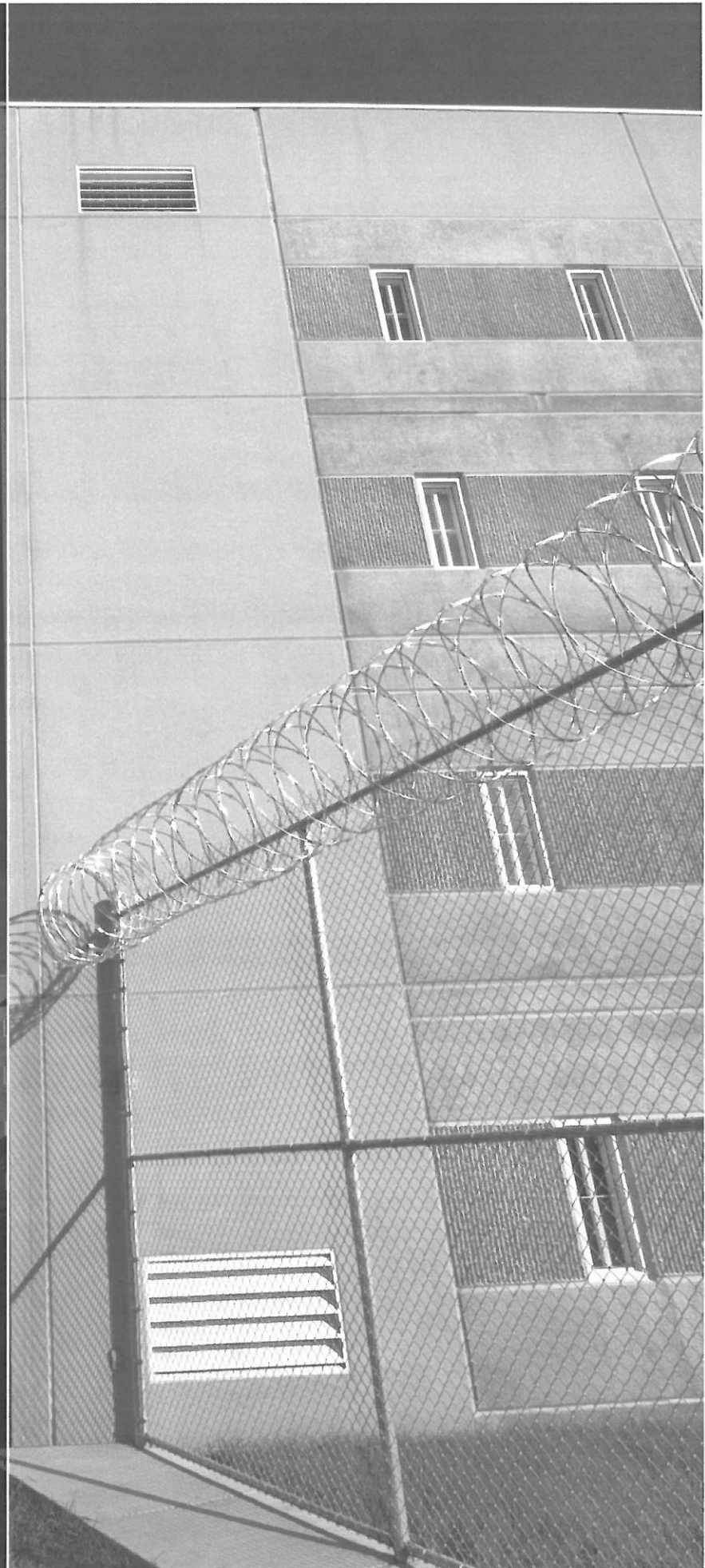
The \$16.5 million project included developing, sequencing, and specifying security procedures at the operational, inmate-occupied facility to allow construction work inside the existing secure perimeter. The project was bid in six bid packages: building demolition, fencing, site/foundation, structural steel, building envelope and mechanical/electrical/kitchen equipment/security electronics/corrections doors/hardware/interior finishes. This approach allowed the contractor to break ground and complete site utilities, foundations, building envelopes before winter weather. Interior work progressed through inclement weather.

**Owner's Contact:** Bruce Wilson, Commonwealth of Kentucky Facilities and Support Services, Division of Engineering & Contract Administration, (502) 564-3155 x 273, [bruce.wilson@ky.gov](mailto:bruce.wilson@ky.gov)





The Aliceville Federal Correctional Institution (FCI) is the Federal Bureau of Prisons first FCI to be certified LEED Silver.



## Federal Correctional Institution and Satellite Camp

Aliceville, AL



The first Federal Correctional Institution (FCI) to be certified LEED Silver, this \$196 women's medium-security FCI and minimum-security Federal Prison Camp have a gross building area of approximately 665,889 SF, and can house approximately 1,790 inmates. The FCI campus plan places three, 4-story, housing units, and program and multipurpose functions in a semi-circular campus layout enclosing a central secure compound.

GRW met an aggressive design schedule in completing the two-dozen buildings on the campus that meet a variety of functions, such as:

- Academic educational buildings (21,926 SF)
- Industrial/vocational buildings (54,916 SF)
- Personal services building (17,491 SF)
- One single-story segregation unit dormitory accommodating up to 48 inmates (19,105 SF)
- Food service (kitchen/dining) building (29,654 SF)
- Medical services building (12,324 SF)
- Warehouses/sanitation building (49,863 SF)
- Recreational building (17,319 SF)
- Vehicle maintenance building (8,126 SF)

Included within the engineering responsibilities were fire alarms, perimeter security, closed circuit television, telephone, door control and monitoring, paging, intercom, inmate duress alarms, inmate telephone system, structured data cabling systems, control panels, consoles, and fiber optic cable distribution systems. These systems were integrated into a functional security management and control system.

One of Aliceville's environmental and energy highlights is the use of a fully automated, energy recovering system that reclaims, filters, and treats laundry waste water from washing machines for reuse; reducing both energy and water consumption.

**Owner's Contact:** Mitch Miskimins, Project Manager,  
Federal Bureau of Prisons, Design and Construction Branch  
(202) 514-9582; [mmiskimins@bop.gov](mailto:mmiskimins@bop.gov)



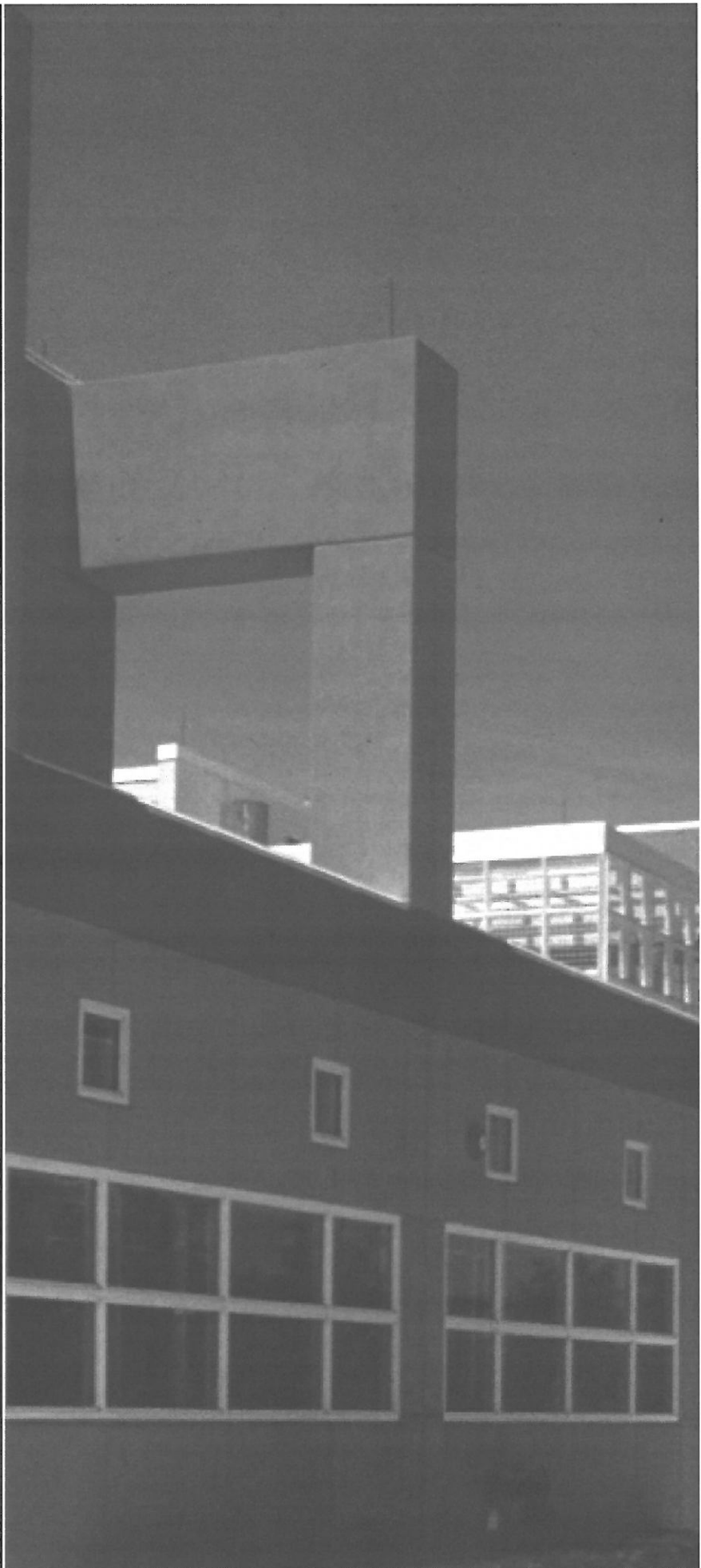
(See Section 4 for complete survey results)



**Owner Satisfaction  
(see also Section 4):**

"The professional services provided have been of the highest quality. Commencing with the programming and continuously through the entire design process the four major objectives of comprehensive programming, planning, budget control, and final design have been accomplished. You have developed and maintained a nucleus of key senior staff and expert specialist consultants working in close and effective liaison with the Corrections Cabinet and Department of Facilities Management/ Division of Engineering. We are very pleased with the design process and are looking forward to the successful construction ahead."

- Raymond B. Hayes, AIA,  
Associate Director of  
Architecture, Division of  
Engineering



## Eastern Kentucky Correctional Complex, Phase I & II

West Liberty, KY



This complex, with a gross building area of approximately 565,000 SF, was designed in two phases and includes four, four-story dormitory buildings (1,000 beds). In addition to all mechanical, electrical and civil design services, other components provided on the complex include:

- Staff housing adjacent to the site
- Over 40,000 SF of classroom facilities
- Over 16,000 SF of administrative offices
- Dining and kitchen facilities for a population of 1,500
- Support facilities to include religious, library, laundry, barber/canteen and health services
- Two gymnasiums
- One, 50-unit dormitory building, minimum security

Developed on a 225-acre, abandoned underground coal mine site, planning for the facility represented a unique site development challenge. Civil work included extensive erosion control, roads, parking lots, utilities, construction of embankments and stabilization of the existing coal mine and excavation of 750,000 cubic yards of earth and rock.

**Owner's Contact:** Bill Slone, Commonwealth of Kentucky Facilities and Support Services, Division of Engineering & Contract Administration, (502) 564-3155

*This project was recognized with an Honor Award of Design Excellence by the American Institute of Architects - Kentucky Chapter.*

**MERIT AWARD - DESIGN-**  
BUILD INSTITUTE OF  
AMERICA

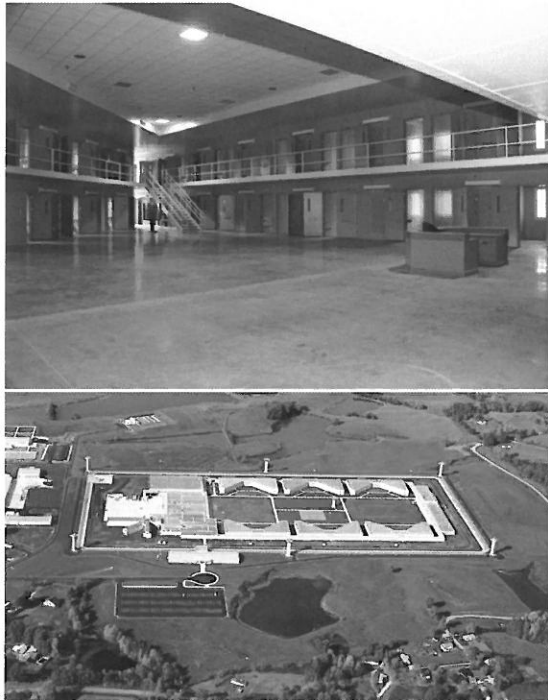
**MARVIN M. BLACK**  
**PARTNERING AWARD -**  
ASSOCIATED GENERAL  
CONTRACTORS OF  
AMERICA

**ENGINEERING EXCELLENCE**  
**HONOR AWARD -**  
AMERICAN COUNCIL OF  
ENGINEERING COMPANIES  
OF KENTUCKY



## U.S. Penitentiary and Satellite Camp

### McCreary County, KY



This 533,000 SF prison complex includes 21 separate buildings. The main facility is an ADA-compliant maximum-security penitentiary housing 960 general-population inmates and 120 segregation-unit inmates. The campus plan places the six, 2-story housing units, and program and multipurpose functions in a rectangular campus layout enclosing a centralized soccer, softball and basketball field/court area. Several additional components:

- Academic educational buildings
- Industrial/vocational buildings
- Medical services building
- Personal services building (canteen, barber, laundry)
- Food service (kitchen/dining) building
- Vehicle maintenance building
- One two-story segregation unit
- Minimum-security camp for 128 inmates

Included within the engineering responsibilities were fire alarms, perimeter security, closed circuit television, telephone, door control and monitoring, paging, intercom, inmate duress alarms, inmate telephone system, structured data cabling systems, control panels, consoles, and fiber optic cable distribution systems. These systems were integrated into a functional security management and control system.

The \$124 million project was divided into four design packages with interim schedules. All design packages met project deadlines, and the project was completed 15 days ahead of schedule.

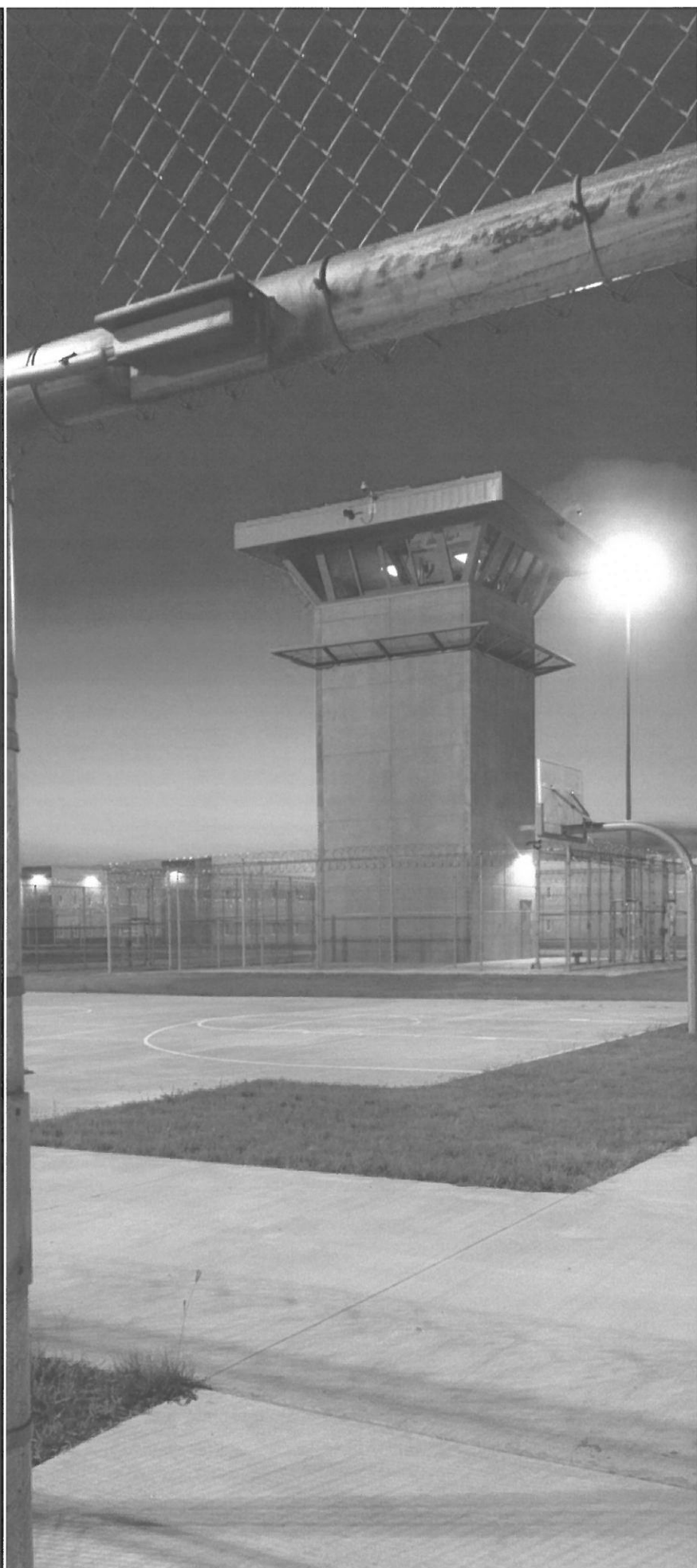
**Owner's Contact:** Peter Swift, Federal Bureau of Prisons, Design and Construction Branch, Washington, DC  
(202) 514-5942, pswift@bop.gov



(See Section 4 for complete survey results)



This energy efficient federal correctional facility is on track to be certified LEED Silver under LEED-NC version 2.2; utilizing the Application Guide for Multiple Buildings and On-Campus Building Projects (AGMBC).



## U.S. Penitentiary and Satellite Camp

Yazoo City, MS



This men's high-security United States Penitentiary and minimum-security Federal Prison Camp have a gross building area of 780,000 SF, and will house approximately 1,200 inmates. The USP campus plan places six, 2-story housing units, a secure housing unit, and program and multipurpose functions in a rectangular campus layout enclosing a central secure compound. The FPC comprises a camp housing building and a camp core building. Other support buildings include a warehouse building, utility building, wastewater building and guard towers. A few additional prison components include:

- Education/psychology/religious facilities (24,671 SF)
- Vocational building (6,824 SF)
- One 2-story special housing building accommodating 120 inmates (33,917 SF)
- Food service (kitchen/dining) building (24,498 SF)
- Medical services building (10,315 SF)
- Recreational building (18,355 SF)
- Camp housing building (32,798 SF)
- Personal services building (19,989 SF)
- Two guard towers (2,325 SF)
- Physical and electronic security systems
- Utilities (potable and fire water mains, sanitary sewers, site electrical distribution and communication duct banks)

The Yazoo City FBOP project was registered with the US Green Building Council, and is on track for LEED Silver certification. One of the energy and environmental highlights is the use of a fully automated, energy recovering system that reclaims, filters, and treats laundry waste water from washing machines for reuse; reducing both energy and water consumption.

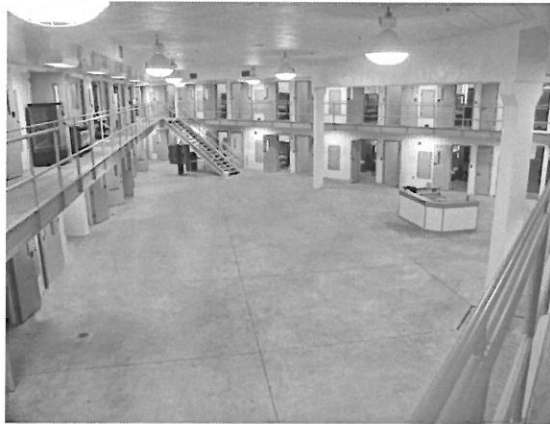
**Owner's Contact:** Jody Smith, Project Manager, Federal Bureau of Prisons, Design and Construction Branch, Washington, DC, (202) 514-6456, [jlsmith@bop.gov](mailto:jlsmith@bop.gov)



All of the federal prison facilities design by GRW, including the Gilmer FCI, have included educational and vocational buildings.



## Gilmer Federal Correctional Institution and Satellite Camp Glenville, WV



This \$106,100,000 correctional facility for the Federal Bureau of Prisons was built on a 125-acre reclaimed mine site, and consists of a medium-security main complex and a minimum-security camp. The facility is comprised of 13 buildings (603,132 SF) which houses 1000+ inmates at the main complex and segregation unit. The Satellite Camp houses 128 inmates.

A summary of the prison's components include:

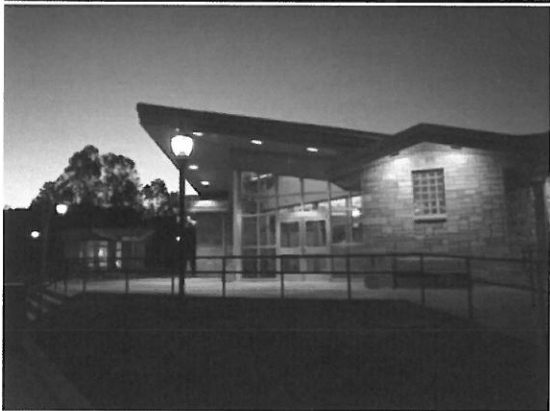
- Kitchen and dining buildings
- Industrial/vocational buildings
- Academic educational buildings
- Personal services building (canteen, barber, laundry)
- Medical services building
- Multi-purpose/recreational building
- Administrative/visitation building
- Three four-story dormitory buildings
- One two-story segregation unit
- General storage warehouse
- Central utilities plant
- Vehicle maintenance building
- Physical and electronic security systems
- Utilities
- Minimum-security camp for 128 inmates

**Owner's Contact:** Peter Swift, Federal Bureau of Prisons, Design and Construction Branch, 500 First Street, NW, Washington, DC 20534; (202) 514-5942; pswift@bop.gov



## Burnsville Rest Areas

I-79, Mile Marker 86, WV



The Burnsville Rest Areas are the first of the Standard Rest Areas to be built for the State of West Virginia. With dual sided men's and women's facilities, the structures are intended to meet the anticipated traffic load for twenty years from the date of design. They utilize materials native to the state, including smooth cut and rough stone, and a tern coated stainless steel roof system. A warm, but high-tech, Appalachian imagery greets the weary traveler, encouraging a more safe and rested trip. Low maintenance, but highly durable materials were used, including stone, stainless steel, glass, aluminum, wood, polished ground faced CMU, and epoxy terrazzo. Separate maintenance and vending buildings complement the main structures on the Northbound and Southbound sides.

Owner: Burnsville Rest Areas, I-79, Mile Marker 86, WV

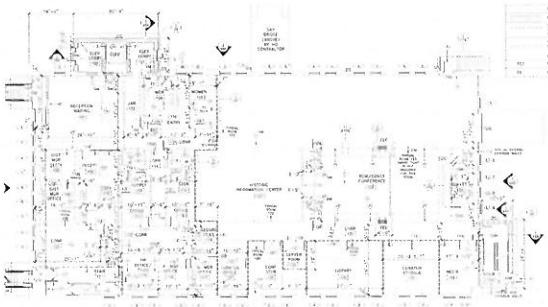
## Roark Sullivan Lifeway Center Veterans' Transitional Living Center and Service Center Charleston, WV



This 3,400 s.f. facility houses the Veterans Program and provides accommodations for 12 men in single room occupancies, geared to support veterans who are experiencing homelessness. The program provides housing and case management support, assisting men in the program to work toward self-sufficiency and community living. The design of the building supports that goal in providing modest bedrooms in favor of more spacious communal areas, thus providing the men with a space of their own while encouraging interaction with the other men in the program. A communal kitchen, laundry room, dining area, and two living and entertainment areas support the idea of interaction and self-sufficiency.

**Owner:** Roark Sullivan Lifeway Center, 507 Leon Sullivan Way, Charleston, WV

## WV DOH State Road Commission Building Renovation Charleston, WV



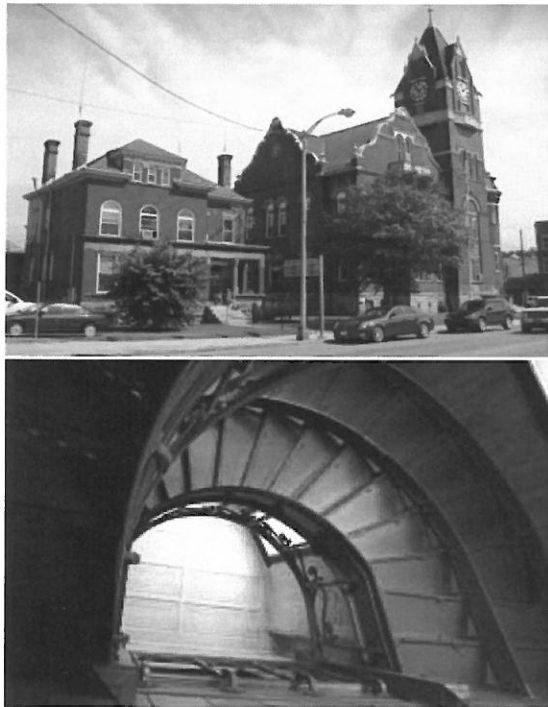
As part of the West Virginia Division of Highways District One Campus Renovation, the former State Road Commission Building will be renovated to serve as an office building for various DOH personnel. The 40,000 square-foot facility will retain as many historical features as possible while providing energy-efficient and cost-effective systems throughout. In addition to a complete interior makeover, the building will also include new doors, windows, roofing and a new elevator. A skywalk will connect the building to a new Headquarters Building being constructed beside the SRC Building, and a courtyard between the two will be provided for employee use.

**Owner:** WV Division of Highways, Charleston, WV 25301



## Tucker County Courthouse & Jailer's Residence - Restoration

Parsons, WV

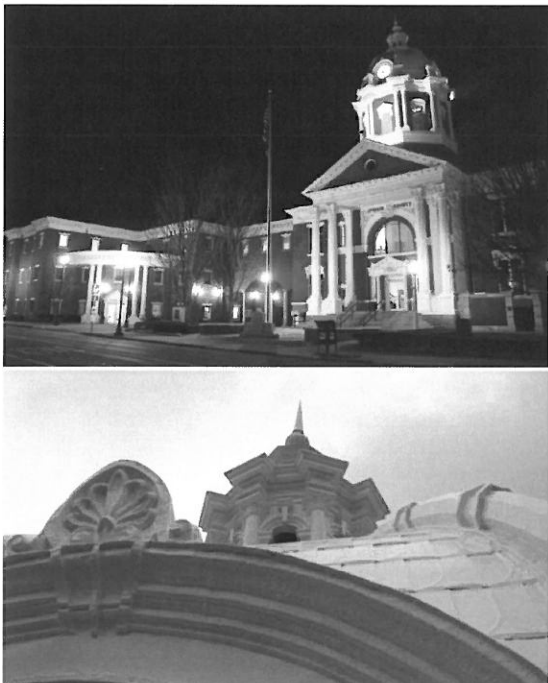


This project included a conditions report for the stabilization and restoration of the Tucker County Courthouse and Jailer's Residence. After evaluating and assessing the condition of the existing structure; Chapman Technical Group submitted a detailed plan for the stabilization of the structure, and recommendations on how to restore and renovate the structure for future use. A prioritized budget was compiled identifying the most critical and immediate repairs that should be scheduled as soon as funds became available, and restoration, upgrades, and ongoing maintenance that could be delayed to future dates. Phase 1 of this plan was affected in 2011 to refurbish, repoint, and stabilize the chimneys of the Courthouse and the Jailer's Residence (Commission Offices).

**Owner:** Tucker County Commission, 213 First Street, Parsons, WV 26287

## Upshur County Courthouse Renovations

Buckhannon, WV



Since the design and construction of the courthouse annex in 1995, Chapman Technical Group has been involved in several improvement and restoration projects at the Courthouse in Buckhannon. In 2005, a lift was installed and the plaza renovated to make the original courthouse accessible. In 2006, the Courthouse dome and clock tower were completely restored. In 2007, the Courthouse portico stonework was restored, and in 2008 the work was honored by the AIA/WV for Excellence in Architecture.

**Owner:** Upshur County Commission, 38 West Main Street, Buckhannon, WV 26201



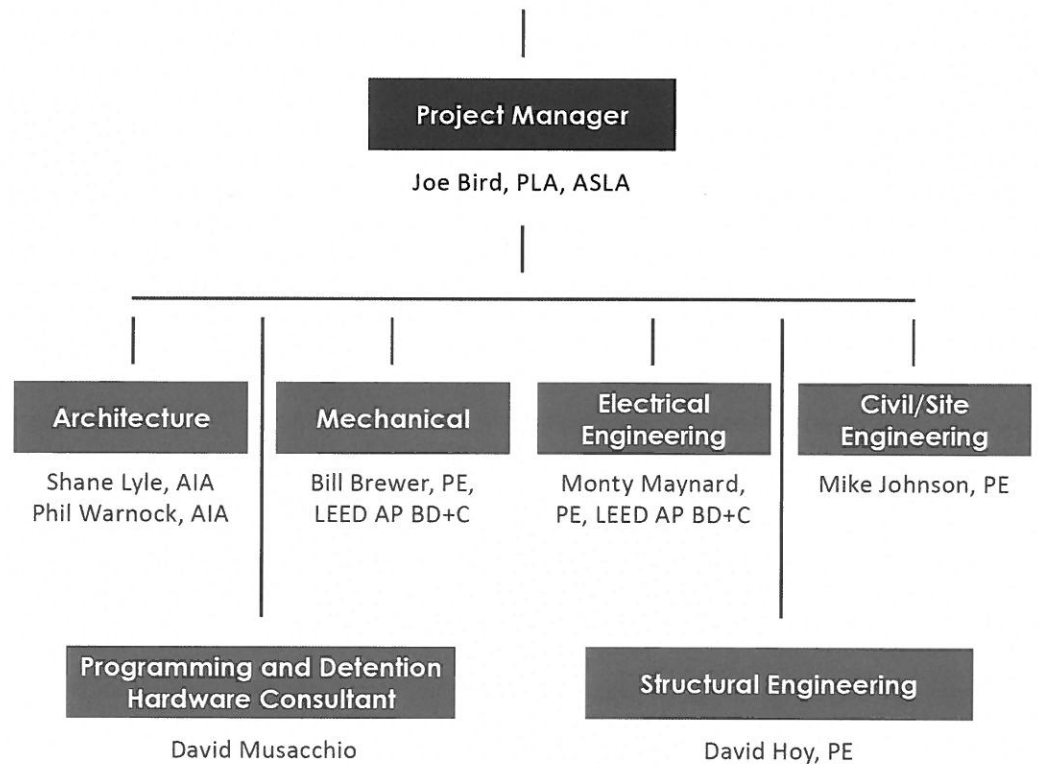


### 3.0 Staff Qualifications



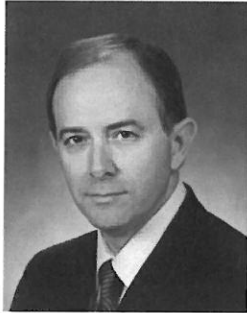
When you work with a GRW team, you have access to some of the most reputable specialty consultants in the industry. From operations and correctional facility design to suicide prevention and inmate mental health to detention hardware and security electronics, our team members are experts in their fields. Furthermore, our team's local knowledge and capacity has been strengthened by GRW's recent acquisition of Chapman Technical Group, a 36-person West Virginia-based firm. Our firms' combined resources now provide you access to more than 250 professionals, including a building design studio of 12 architectural professionals and more than 40 electrical, mechanical, structural and civil/site engineers and technicians. The majority of work for the juvenile facilities renovation will be performed by our multidisciplinary design team located in St. Albans. Assisting our team will be juvenile corrections subconsultant David Musacchio who has more than four decades of both operations and design experience.

## West Virginia Division of Engineering & Facilities and Division of Juvenile Services





BECKLEY FEDERAL COURTHOUSE  
BECKLEY, WV



**Joseph E. Bird, ASLA**  
Project Manager

**EXPERIENCE** | 35 Years

**EDUCATION** | West Virginia University, BSLA, 1978

**REGISTRATION**

Registered Landscape Architect: WV

**QUALIFICATIONS  
AND SIMILAR  
PROJECT  
EXPERIENCE**

Mr. Bird is a project manager and registered landscape architect. His experience ranges from large site development projects to the management of multi-discipline and architectural projects.

**State Road Commission: Historic Building Renovations (40,000 SF) Charleston, WV – Project Manager.**

**Mason County Sheriff's Office: Renovation of Old Hardware Building – Project Manager.**

**Coal Heritage Trail Authority: Historic Building Restoration/ Renovation, Mt. Hope, WV – Project Manager.**

**Roark Sullivan Lifeway Center: New Construction/Veterans' Transitional Living Center, Charleston, WV – Project Manager.**

**Canaan Valley State Park: Ski Area Improvements, Canaan Valley, WV – Project Manager.**

**Blackwater Falls State Park: New Construction/Cabins, Davis, WV – Project Manager.**

**Beech Fork State Park: Swimming Pool and Bathhouse Improvements, Barboursville, WV – Project Manager.**

**Beech Fork State Park: New Construction/Cabins, Barboursville, WV – Project Manager.**

**Belington Multi-Tenant Building: New Construction (25,100 SF), Belington, WV – Project Manager.**

**Buckhannon City Hall: Addition/ Renovations, Buckhannon, WV – Project Manager.**



Mr. Lyle has successfully led correctional projects ranging from the renovation of county jails to the design of the Federal Bureau of Prison's first LEED Silver Federal Correctional Institution located in Aliceville, AL.



**ALICEVILLE FEDERAL CORRECTIONAL INSTITUTION  
AND SATELLITE CAMP (ADMINISTRATION BUILDING)**  
ALICEVILLE, AL



**Shane Lyle, AIA**  
Lead Project Architect

**EXPERIENCE** | 30 Years

**EDUCATION** | Bachelor of Architecture (with honors), 1983,  
University of Kentucky

**REGISTRATION** | Registered Architect: GA, KY, WV, TN, AL, IN, TX, MS, SC, FL, MO  
National Council of Architectural Registration Boards (NCARB) Certification

**QUALIFICATIONS  
AND SIMILAR  
PROJECT  
EXPERIENCE**

Mr. Lyle is in charge of GRW's architectural practice, and has had primary responsibility for a wide range of federal, state and local government projects. He has successfully led correctional projects ranging from the renovation of county jails to the design of the Federal Bureau of Prison's first LEED Silver Federal Correctional Institution located in Aliceville, AL.

**Aliceville Federal Correctional Institution and Satellite Camp, Aliceville, AL** – Project Manager. Design-build delivery of LEED Silver \$196 M medium-security main complex with three 4-story housing units, and minimum-security prison camp.

**Yazoo City U.S. Penitentiary and Satellite Camp, Yazoo City, MS** – Principal-in-charge. Design-build delivery of \$175 M medium-security main complex with six 2-story housing units, and minimum-security prison camp.

**Harlan County Detention Center Needs Assessment/ Feasibility Study, Harlan, KY** – Principal-in-Charge. Evaluation of existing 16,630 SF, 6-story detention facility to provide alternatives addressing ADA compliance and capacity of existing facility to house expected future population.

**Harlan County Detention Center Renovation, Harlan, KY** – Principal-in-Charge. Phased renovation of 6-story facility, partially occupied during construction activities.

**Harlan County Justice Center, Harlan, KY** – Principal-in-Charge. New 31,500 SF judicial courts facility utilizing Construction Management as project delivery method.

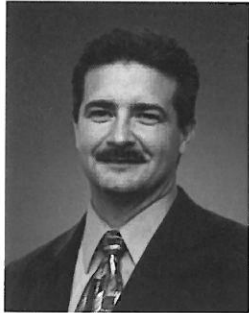
**Cumberland County Justice Center, Burkesville, KY** – Project Manager. Design of new 24,270 SF courts facility utilizing Construction Management as project delivery method.

**Del Rio Police Station, Del Rio, TX** – Architect of Record. New 27,000 SF city police station with detention area and 7,000 SF secured evidence space.





**BURNSVILLE REST AREAS**  
I-79, MILE MARKER 86, WV



**Phillip A. Warnock, AIA, NCARB**  
Project Architect

**EXPERIENCE** | 22 Years

**EDUCATION** | The University of Tennessee, BArch, 1995

**REGISTRATION** | Registered Architect: WV, TN, KY

**QUALIFICATIONS  
AND SIMILAR  
PROJECT  
EXPERIENCE**

Mr. Warnock's experience ranges from design, detailing and drafting through project management and construction administration of building projects in various states, including West Virginia, Tennessee, Kentucky and South Carolina. His vast project experience ranges from public safety buildings to public schools to health care facilities. He has received two AIA West Virginia awards: an Honor Award for Excellence in Architecture for the historic preservation of the Upshur County Courthouse and a Merit Award for Achievement in Architecture for the I-79 Rest Areas in Burnsville.

**Upshur County Courthouse:**  
Dome Renovations, Column  
Replacements, Buckhannon, WV  
– Project Architect

**Mercer County Airport: Terminal  
Building Renovations, Bluefield,  
WV – Project Architect**

**State Road Commission: Historic  
Building Renovations (40,000  
SF), Charleston, WV – Project  
Architect**

**Coal Heritage Trail Authority:  
Historic Building Restoration/  
Renovation, Mt. Hope, WV –  
Project Architect**

**Roark Sullivan Lifeway Center:  
New Construction/Veterans'  
Transitional Living Center,  
Charleston, WV – Project  
Architect**

**WV DOH Rest Areas and  
Welcome Centers: New  
Construction, Various locations  
throughout WV – Project  
Architect**

**Vienna Senior Center: Building  
Renovations (4,000 SF), Vienna,  
WV – Project Architect**

**Lewis County Courthouse: Roof  
Area Restoration, Weston, WV –  
Project Architect**

**Pocahontas County Wellness  
Center: New Construction/  
Multi-Purpose Gymnasium  
(13,000 SF), Marlinton, WV –  
Project Architect**

**Marlinton Train Depot: Historic  
Building Reconstruction,  
Marlinton, WV – Project  
Architect**



U.S. PENITENTIARY AND SATELLITE CAMP  
YAZOO CITY, MS



In addition to Mr. Musacchio's considerable correctional project planning and design experience with GRW, he has practiced in the field of juvenile and adult correctional services at the operations level.

#### QUALIFICATIONS AND SIMILAR PROJECT EXPERIENCE

## David E. Musacchio & Associates Consulting, Inc. Programming and Detention Hardware Consultant

With more than four decades of experience, David Musacchio has practiced in the field of adult and juvenile correctional services, first at the operations level and then design and operations consultant. For example, he served as Director of Corrections for Jefferson County in Louisville, Kentucky's largest city, and in this position he was responsible for all institutional and community-based programs for both adult and juveniles. Throughout his career, Mr. Musacchio has completed more than 200 projects, most of which have been adult detention facilities. His experience with specifying detention hardware makes him personally conversant with all major components and individuals in the production and installation of detention/security equipment. In addition to his expansive Federal Bureau of Prison experience, he has provided programming, planning, operations, detention hardware consulting services for the following adult county/local detention projects.

David is a member of the:

- National Sheriff's Association
- American Correctional Association
- National Fire Protection Association
- Southern Corrections Association
- American Jail Association

**Kentucky Department of Juvenile Justice Seven – (7) Regional Detention Facilities**  
Developed prototype facility and site adapted design for various locations within the state.

**Kentucky Department of Juvenile Justice – 80-Bed Maximum Security Treatment Facility** Responsible for facility planning and operational design, selection of Security/ Detention Equipment.

**Norfolk Juvenile Detention Center – 80 Beds Master Plan and Design** Norfolk, Virginia

**Boys Medium Security Juvenile Correctional Facility – 150 Beds** Raymond, Mississippi

**Girls Medium Security Juvenile Correctional Facility – 100 Beds** Raymond, Mississippi

**Girls Maximum Security Juvenile Correctional Facility – 15 Beds** Raymond, Mississippi

**Roanoke Juvenile Detention Home – 42 Beds** Roanoke, Virginia

**Tidewater Juvenile Detention Center – 99 Beds** Chesapeake, Virginia

**Beaumont Medium Security Learning Center – 150 Beds** Beaumont, Virginia

**Master Plans & Capital Funding Plans for Bon Air Learning Center, Oak Ridge Learning Center, Reception/Diagnostic Center, RDC Learning Center** Richmond, Virginia

**Hanover Juvenile Correctional Facility Medium Security Dormitory – 72 Beds** Hanover, Virginia

**Juvenile Detention Center – 75 Beds** Virginia Beach, Virginia

**Regional Juvenile Detention Facility 32 Beds** Winchester, Virginia



Mr. Maynard has had a major leadership and design role with five federal prisons, and understands the complexities of providing reliable power (including emergency/ back-up power) and security electronics to correctional facilities.

NORTHPOINT TRAINING CENTER REPLACEMENT  
BURGIN, KY



**Monty Maynard, PE, LEED AP BD+C**  
Lead Electrical Engineer

**EXPERIENCE** | 36 Years

**EDUCATION** | B.S., Electrical Engineering, 1978, University of Kentucky

**REGISTRATION**

Professional Engineer: GA, KY, WV, IN, TN, TX, NV, NC, MS, MI, AL, CA  
NCEES Member allows reciprocity with other states  
LEED Accredited Professional, Building Design + Construction

**QUALIFICATIONS  
AND SIMILAR  
PROJECT  
EXPERIENCE**

Mr. Maynard has designed electrical systems for more than 300 projects with total construction values as high as \$190 million. His areas of technical expertise include electrical power distribution, substation design, alarm systems, communications, lighting, lightning protection, power quality, energy efficiency and code compliance. Mr. Maynard's experience includes electrical systems design for more than \$700 million in federal, state and local courts and detention facilities.

**Aliceville Federal Correctional Institution and Satellite Camp, Aliceville, AL** – Electrical Engineer. Design-build delivery of LEED Silver \$196 M medium-security main complex with three 4-story housing units, and minimum-security prison camp.

**McCreary U.S. Penitentiary and Satellite Camp, McCreary County, KY** – Principal-in-Charge. Design-build delivery of new \$124 M prison complex.

**Northpoint Training Center Replacement, Burgin, KY** – Electrical Engineer. Design and construction oversight services for fast-track project with multiple bid packages to rebuild state-owned prison facilities.

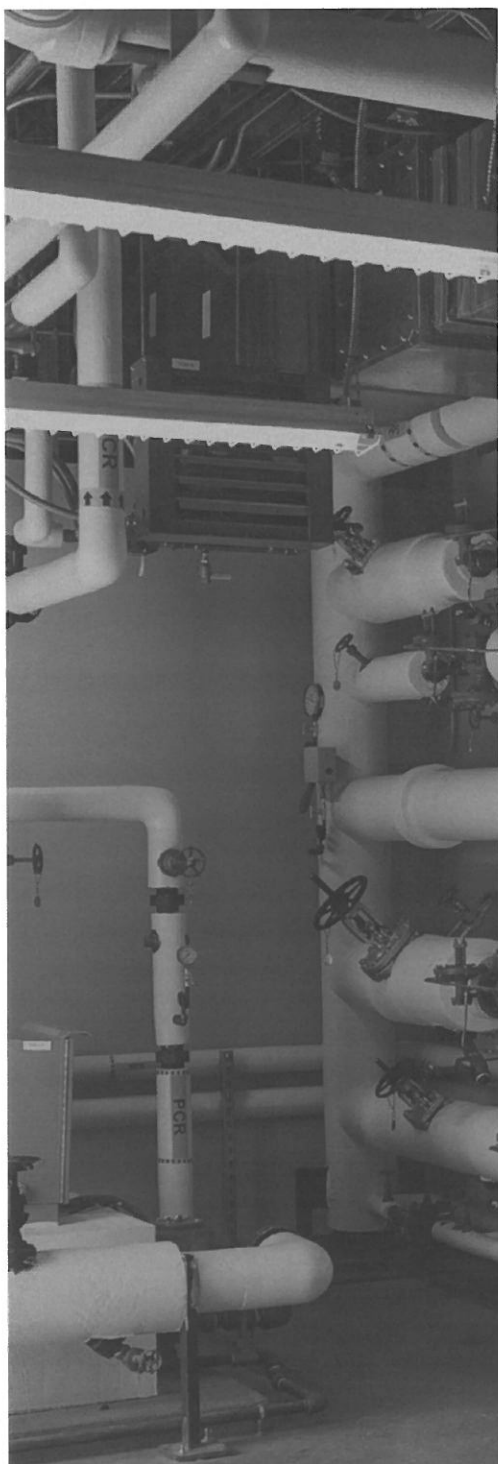
**Yazoo City U.S. Penitentiary and Satellite Camp, Yazoo City, MS** – Electrical Engineer. Design-build delivery of \$175 M medium-security main complex with six 2-story housing units, and minimum-security prison camp.

**Gilmer Federal Correctional Institution and Satellite Camp, Glenville, WV** – Mechanical/Electrical Engineering Manager. Design-build delivery of new \$106 M federal correctional complex including three 4-story dormitory buildings.

**Canaan U.S. Penitentiary and Satellite Camp, Canaan, PA** – Electrical Engineer. Design-build delivery of a \$131 M maximum-security prison complex.

**Bledsoe County Correctional Complex Expansion Study, Pikeville, TN** – Electrical Engineer.

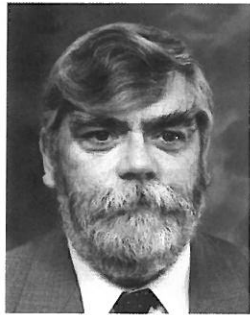
**Luther Luckett Correctional Complex Fire Alarm Replacement, LaGrange, KY** – Principal-in-Charge.



Having completed the HVAC and/or plumbing systems design for more than \$500 million in federal, state and local courts and detention facilities, Mr. Brewer understands the unique mechanical equipment and installation requirements in inmate settings.



**NORTHPOINT TRAINING CENTER**  
BURGIN, KY



**Bill Brewer, PE, LEED AP BD+C**  
Lead Mechanical Engineer

**EXPERIENCE** | 42 Years

**EDUCATION** | B.S., Mechanical Engineering, 1967, Case Western Reserve University

**REGISTRATION**

Professional Engineer: GA, KY, OH, NC, TN, NH, WV, IN, CA, TX, MS, VA, MI, PA, KS  
NCEES Member, allows reciprocity with other states  
Professional Member, Society of Fire Protection Engineers  
LEED Accredited Professional, Building Design + Construction

**QUALIFICATIONS  
AND SIMILAR  
PROJECT  
EXPERIENCE**

Mr. Brewer has more than four decades of engineering experience with building HVAC, plumbing and fire protection systems. His experience includes mechanical and/or plumbing design for more than \$700 million in federal, state and local courts and detention facilities. Since joining GRW, Mr. Brewer has had a major leadership and design role in four federal prisons.

**Aliceville Federal Correctional Institution and Satellite Camp, Aliceville, AL** – Mechanical Engineer. Design-build delivery of LEED Silver \$196 M medium-security main complex with three 4-story housing units, and minimum-security prison camp.

**McCreary U.S. Penitentiary and Satellite Camp, McCreary County, KY** – Mechanical Engineer. Design-build delivery of new \$124 M prison complex.

**Northpoint Training Center Replacement, Burgin, KY** – Mechanical Engineer. Design and construction oversight services for fast-track project with multiple bid packages to rebuild state-owned prison facilities.

**Canaan U.S. Penitentiary and Satellite Camp, Canaan, PA** – Mechanical Engineer. Design-build delivery of a \$131 M maximum-security prison complex.

**Gilmer Federal Correctional Institution and Satellite Camp, Glenville, WV** – Mechanical Engineer. Design-build delivery of new \$106 M federal correctional complex including three 4-story dormitory buildings.

**Cumberland County Justice Center, Burkesville, KY** – Mechanical Engineer. Design of new 24,270 SF courts facility utilizing Construction Management as project delivery method.

**Del Rio Police Station, Del Rio, TX** – Mechanical Engineer. New 27,000 SF city police station with detention area and 7,000 SF secured evidence space.





**David C. Hoy, PE**  
Lead Structural Engineer

**EXPERIENCE** | 6 Years

**EDUCATION** | West Virginia University, BSCE, 2006

**REGISTRATION** | Professional Engineer, WV, KY

**QUALIFICATIONS  
AND SIMILAR  
PROJECT  
EXPERIENCE**

Mr. Hoy has completed the investigation, analysis, and design of various building structural systems, including foundation design. He also review shop drawings and performs periodic site visits.

**State Road Commission: Historic Building Renovations (40,000 SF), Charleston, WV – Project Structural Engineer**

**Saint Albans Fire/Police Station, Saint Albans, WV - Project Structural Engineer**

**Mason County Sheriff's Office: Renovation of Old Hardware Building, Pt. Pleasant, WV – Project Structural Engineer**

**WV DOH Rest Areas and Welcome Centers: New Construction, Various locations throughout WV – Project Structural Engineer**

**Coal Heritage Trail Authority: Historic Building Restoration/ Renovation, Mt. Hope, WV – Project Structural Engineer**

**Canaan Valley State Park: Ski Area Improvements, Tube Park/ Lodge, Canaan Valley, WV – Project Structural Engineer**



**Stephen M. Johnson, PE**  
Lead Civil/Site Engineer

**EXPERIENCE** | 9 Years

**EDUCATION** | West Virginia Institute of Technology, BSCE, 2004

**REGISTRATION** | Professional Engineer: WV, NC, VA

**QUALIFICATIONS  
AND SIMILAR  
PROJECT  
EXPERIENCE**

Mr. Johnson's overall experience includes comprehensive infrastructure systems design, bidding, and construction administration/management for projects throughout West Virginia, Virginia, and North Carolina. Site stormwater experience includes drainage basin hydraulic analysis, stormwater collection, and detention and BMP system design.

**State Road Commission: Historic Building Renovations (40,000 SF), Charleston, WV – Project Civil Engineer**

**Utility Trailer Manufacturing: S24 Building, Atkins, VA – Project Civil Engineer**

**Scott Street Permeable Paving, Bluefield, WV – Project Civil Engineer**

**St. Albans Water Treatment Plant: Building Restoration, St. Albans, WV – Project Civil Engineer**

**Hometown Service Center, Bluefield, VA – Project Civil Engineer**

**Grants Market, Bluefield, WV – Project Civil Engineer**

**Fresenius Dialysis Center, Bluefield, WV – Project Civil Engineer**

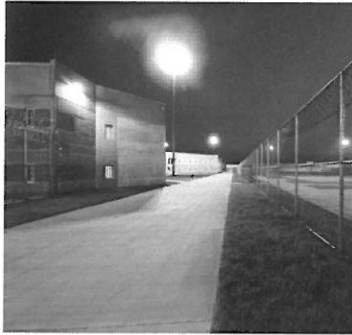
**Canterbury Court Townhomes, Bluefield, WV – Project Civil Engineer**

**Camelback Estates, Tazewell County, VA – Project Civil Engineer**

**Camelot Court Townhomes, Bluefield, VA – Project Civil Engineer**



## 4.0 Past Performance and References



GRW has a proven track record of delivering quality services to our clients nationwide. We believe performance is best measured from the client's perspective. One of the best indicators of a company's performance is in the amount of repeat business it receives from existing clients. For example, since 1964 GRW has provided services to one of our very first clients, the world-renowned Keeneland Racetrack, and the Federal Bureau of Prisons has repeatedly hired GRW over the past 13 years. With repeat clients providing more than 90 percent of GRW's current workload, we believe this is a testament to our business philosophy of providing close, personal, high quality service.

We invite you to contact our references to verify GRW's performance. Also, on the following pages you will find customer satisfaction surveys for four of our correctional projects, as well as a few additional letters of recommendation.

### **Federal Bureau of Prisons**

Design and Construction Branch  
500 First Street, NW  
Washington, DC 20534

Jon Gomberg, Chief  
Technical Review  
(202) 514-5942  
jgomberg@bop.gov

Peter Swift  
(202) 514-5942  
pswift@bop.gov

Mitch Miskimins, Project Manager  
(202) 514-9582  
mmiskimins@bop.gov

Jody Smith, Project Manager  
(202) 514-6456  
jlsmith@bop.gov

### **West Virginia Air National Guard**

130th Airlift Wing  
1679 Coonskin Drive  
Charleston, WV 25311-5010  
Lt. Col. John W. Dulin, PE,  
Base Civil Engineer  
(304) 341-6270  
john.dulin@ang.af.mil

### **West Virginia Army National Guard**

1703 Coonskin Drive  
Charleston, WV 25311  
Col. William Suver, Base  
Operations Manager  
(304) 791-4457  
bill.suver@us.army.mil

### **Marshall University**

One John Marshall Drive  
Huntington, WV 25755  
Betsy Dulin, JD, MS, Professor  
(304) 696-6044  
bdulin@marshall.edu

### **Harlan County Fiscal Court**

P.O. Box 956  
Harlan, KY 40831  
Joseph Grieshop,  
County Judge Executive  
(606) 573-2600  
joegrieshop@harlanonline.net

### **Harlan Independent School District**

420 East Central Street  
Harlan, KY 40831  
Charles Morton, Superintendent  
(606) 573-8700 , ext. 6  
charles.morton@harlanind.  
kyschools.us



SurveyMonkey Analyze - Customer Satisfaction Survey

Upgrade | lgodshallgrw | Sign Out | Help

Home | My Surveys | Survey Services | Plans & Pricing

+ Create Survey

Customer Satisfaction Survey

Design Survey | Collect Responses | Analyze Results

Need to use the classic Analyze tool? [Switch back](#)

CURRENT VIEW ?

+ FILTER | + COMPARE | + SHOW

No Rules Applied  
Rules allow you to **FILTER**, **COMPARE** and **SHOW** results to see trends and patterns. [Learn more »](#)

SAVED VIEWS (1) ?

**E** Original View (No rules applied)

+ Save as...

EXPORTS ?

INCLUDES: 6 of 6 respondents

Export All ▾

Question Summaries | Individual Responses

Respondent #6 ▾ | ◀ ▶

#6

COMPLETE

Collector: Web Link (Web Link)  
Started: Friday, March 22, 2013 11:07:23 AM  
Last Modified: Friday, March 22, 2013 11:08:04 AM  
Time Spent: 00:00:41  
IP Address: 149.101.37.2

Edit | Delete

PAGE 1

Q1: Project Name

Aliceville FCI.

Q2: Please rate your level of satisfaction for the following services:

Overall Quality of Service	Exceptional
Level of Cooperativeness and Responsiveness	Exceptional
Management and Adherence to Project Schedule	Exceptional
Management and Adherence to Project Budget	Exceptional
Use of Innovative Approaches/Technologies	Exceptional
Quality of Plans/Specs (accuracy and detail level)	Exceptional

Get Sta | Feedback

Follow Us:

Facebook | Twitter | LinkedIn | Our Blog | Google+ | YouTube

Help:

FAQs & Tutorials | Contact Support

[http://www.surveymonkey.com/analyze/browse/?survey\\_id=39425859&respondent\\_id=2530572353\[3/22/2013 3:26:27 PM\]](http://www.surveymonkey.com/analyze/browse/?survey_id=39425859&respondent_id=2530572353[3/22/2013 3:26:27 PM])

## SurveyMonkey Analyze - Customer Satisfaction Survey

Page 1 of 2

[Upgrade](#) [lgodshallgrw](#) [Sign Out](#) [Help](#)

[Home](#) [My Surveys](#) [Survey Services](#) [Plans & Pricing](#) [+ Create Survey](#)

### Customer Satisfaction Survey

[Design Survey](#) [Collect Responses](#) [Analyze Results](#)

Need to use the classic Analyze tool? [Switch back](#)

#### Current View

[Filter + Compare + Show](#)

- [Filter by Question and Answer](#)
- [Filter by Collector](#)
- [Filter by Completeness](#)
- [Filter by Time Period](#)
- [Filter by Respondent Metadata](#)

[Cancel](#)

**FILTER BY QUESTION AND ANSWER**

Choose...

OR

[Cancel](#)

[Back](#)

[Back](#)

**COMPARE BY QUESTION AND ANSWER**

Choose...

OR

[Cancel](#)

[Back](#)

**No Rules Applied**

Rules allow you to FILTER, COMPARE and SHOW results to see trends and patterns. [Learn more »](#)

#### Saved Views (1)

- [Original View](#) (No rules applied)

[+ Save as...](#)

#### Exports

PRO FEATURE

Export your survey data in .XLS, .CSV, and .PDF format. (More formats available soon.)

[Upgrade](#) [Learn more »](#)


INCLUDES: 7 of 7 respondents

[Export All](#)

[Question Summaries](#)

[Individual Responses](#)

Respondent #7



**COMPLETE**  
Collector: Web Link (Web Link)  
Started: Friday, March 22, 2013 3:19:23 PM  
Last Modified: Friday, March 22, 2013 3:46:50 PM  
Time Spent: 00:27:27  
IP Address: 76.164.240.184

[Edit](#) [Delete](#)

PAGE 1

Q1: Project Name

Harlan County Detention Center

Q2: Please rate your level of satisfaction for the following services:

Overall Quality of Service	Very Good
Quality of Plans/Specs (accuracy and detail level)	Exceptional
Level of Cooperativeness and Responsiveness	Exceptional
Management and Adherence to Project Schedule	Exceptional
Management and Adherence to Project Budget	Very Good
Use of Innovative Approaches/Technologies	Exceptional
Additional comments	Responds to questions in a timely manner.

[http://www.surveymonkey.com/analyze/browse/?survey\\_id=39425859&respondent\\_id=25...](http://www.surveymonkey.com/analyze/browse/?survey_id=39425859&respondent_id=25...) 3/24/2013

SurveyMonkey Analyze - Customer Satisfaction Survey

[Upgrade](#) [lgodshallgrw](#) [Sign Out](#) [Help](#)

[Home](#) [My Surveys](#) [Survey Services](#) [Plans & Pricing](#) [+ Create Survey](#)

### Customer Satisfaction Survey

[Design Survey](#) [Collect Responses](#) [Analyze Results](#)

Need to use the classic Analyze tool? [Switch back](#)

CURRENT VIEW

[+ FILTER](#) [+ COMPARE](#) [+ SHOW](#)

#### No Rules Applied

Rules allow you to **FILTER**, **COMPARE** and **SHOW** results to see trends and patterns. [Learn more »](#)

SAVED VIEWS (1)

E

Original View (No rules applied)

[+ Save as...](#)

EXPORTS

INCLUDES: 7 of 7 respondents

[Export All](#)

Question Summaries

Individual Responses

Respondent #7

#7

COMPLETE

Collector: Web Link (Web Link)

Started: Monday, March 25, 2013 8:38:49 AM

Last Modified: Monday, March 25, 2013 8:39:46 AM

Time Spent: 00:00:57

IP Address: 149.101.37.2

Get Sta

PAGE 1

Q1: Project Name

USP McCreary, KY

Feedba

Q2: Please rate your level of satisfaction for the following services:

Overall Quality of Service	Exceptional
Quality of Plans/Specs (accuracy and detail level)	Very Good
Management and Adherence to Project Schedule	Very Good
Level of Cooperativeness and Responsiveness	Exceptional
Use of Innovative Approaches/Technologies	Very Good
Management and Adherence to Project Budget	Very Good

Follow Us:

[Facebook](#) [Twitter](#) [LinkedIn](#) [Our Blog](#) [Google+](#) [YouTube](#)

Help:

[FAQs & Tutorials](#) [Contact Support](#)

About Us:

[Management Team](#) [Board of Directors](#) [Partners](#) [Newsroom](#) [Contact Us](#) [Jobs](#) [Sitemap](#)

[http://www.surveymonkey.com/analyze/browse/?survey\\_id=39425859&respondent\\_id=2533884180\[3/25/2013 8:48:46 AM\]](http://www.surveymonkey.com/analyze/browse/?survey_id=39425859&respondent_id=2533884180[3/25/2013 8:48:46 AM])

40

## SurveyMonkey Analyze - Customer Satisfaction Survey

Page 1 of 2

[Upgrade](#) [lgodshallgrw](#) [Sign Out](#) [Help](#)

[Home](#) [My Surveys](#) [Survey Services](#) [Plans & Pricing](#) [+ Create Survey](#)

### Customer Satisfaction Survey

[Design Survey](#) [Collect Responses](#) [Analyze Results](#)

Need to use the classic Analyze tool? [Switch back](#)

#### Current View

+ Filter + Compare + Show

Filter by Question and Answer

Filter by Collector

Filter by Completeness

Filter by Time Period

Filter by Respondent Metadata

Cancel

FILTER BY QUESTION AND ANSWER

Choose...

OR

Cancel

Back

Back

COMPARE BY QUESTION AND ANSWER

Choose...

OR

Cancel

Back

#### No Rules Applied

Rules allow you to FILTER, COMPARE and SHOW results to see trends and patterns. [Learn more »](#)

#### Saved Views (1)

Original View (No rules applied)

+ Save as...

#### Exports

PRO FEATURE

Export your survey data in .XLS, .CSV, and .PDF format. (More formats available soon.)

[Upgrade](#) [Learn more »](#)

INCLUDES: 7 of 7 respondents

Question Summaries

Individual Responses

Respondent #5

#5

COMPLETE

Collector: Web Link (Web Link)

Started: Thursday, March 21, 2013 3:02:24 PM

Last Modified: Thursday, March 21, 2013 3:13:15 PM

Time Spent: 00:10:51

IP Address: 205.204.248.73

Edit

Delete

PAGE 1

Q1: Project Name

Rebuild from Fire Northpoint Training Facility Danville, Ky.

Q2: Please rate your level of satisfaction for the following services:

Level of Cooperativeness and Responsiveness	Very Good
Management and Adherence to Project Schedule	Very Good
Management and Adherence to Project Budget	Exceptional
Use of Innovative Approaches/Technologies	Very Good
Overall Quality of Service	Very Good
Quality of Plans/Specs (accuracy and detail level)	Very Good
Additional comments	This was a medium security state prison project that was rebuilt from a fire which destroyed everything except the dorms, which were separate buildings. The original facility dated from the 1940's. the new project is LEED certified.

[http://www.surveymonkey.com/analyze/browse/?survey\\_id=39425859&respondent\\_id=25...](http://www.surveymonkey.com/analyze/browse/?survey_id=39425859&respondent_id=25...) 3/24/2013

41





DIVISION OF:  
ENGINEERING  
CONTRACTING & ADM.  
TELECOMMUNICATIONS  
PHYSICAL PLANT  
REAL PROPERTIES

COMMONWEALTH OF KENTUCKY  
**FINANCE AND ADMINISTRATION CABINET**  
**DEPARTMENT FOR FACILITIES MANAGEMENT**  
NEW CAPITOL ANNEX  
FRANKFORT, KENTUCKY 40601

TONY MILLER  
COMMISSIONER

DANNY L. SHEARER  
DEPUTY COMMISSIONER

February 5, 1987

DMJM/GRW Engineers  
Mr. Charles Silverman, AIA, Project Director  
Daniel, Mann, Johnson & Mendenhall  
170 Maiden Lane, Suite 500  
San Francisco, California 94108

✓ Mr. Lyle F. Wolf, P.E., Principal-in-Charge  
GRW Engineers, Inc.  
801 Corporate Drive  
Lexington, Kentucky 40503

Re: Professional Services -  
New Correctional Facility  
Morgan County, Kentucky

Gentlemen:

The plans and specifications have been completed for the new Kentucky Correctional Facility to be constructed in Morgan County. The prime general contract for the 500 man facility has been awarded and construction is expected to start this month. The site was prepared this past summer.

The professional services provided by your firm in concert with GRW of Lexington has been of the highest quality. Commencing in June of 1985 with the programming and continuously through the entire design process the four major objectives of comprehensive programming, planning, budget control, and final design have been accomplished. DMJM-GRW has developed and maintained a nucleus of key senior staff and expert specialist consultants working in close and effective liaison with the Corrections Cabinet and Department of Facilities Management, Division of Engineering. Communications and project management has been excellent and while any project has its own unique and sometimes difficult problems and time gaps this project under DMJM/GRW's unified project control kept misunderstanding and delays to the minimum. We are very pleased with the design process and looking forward to the successful construction ahead.

The Cabinet for Corrections fully expects the project to be extended to the full 1000 man capacity by the next capital construction budget. We commend DMJM/GRW for the high professional attention and services brought to this project and look forward to continuing this working relationship for the remainder of the project.

Very truly yours,

A handwritten signature in dark ink, appearing to read "Raymond E. Hayes, Jr.".

Raymond E. Hayes, Jr., AIA  
Associate Director for Architecture  
Division of Engineering

RBH/mic

cc: Mr. R. Clark Beauchamp  
Mr. Ron Gilkerson  
Mr. Peter Krasnow



**DEPARTMENT OF THE AIR FORCE  
130<sup>th</sup> CIVIL ENGINEER SQUADRON (AMC)  
1679 COONSKIN DRIVE  
CHARLESTON, WV 25311-5005**

30 September 2008

MEMORANDUM FOR Mr. Pete Johnson, Director-Military Programs, GRW Inc.

FROM: BCE

SUBJECT: Letter of Commendation

1. I would like to commend you and your company for all of the excellent engineering services that they have rendered the 130<sup>th</sup> Airlift Wing. From the Communications Building to the Master Plan, GRW has shown many of the traits that we look for in an Architectural/Engineering Firm. They have shown their patients with our never ending changes and have each time rose to the occasion and offered us outstanding solutions. They offer their engineering and personal expertise ensuring successful completion on each project. They have shown their commitment to our unit by always going above and beyond our expectation.

2. GRW and its employees should be proud of the professional services that they have given to our unit and the nation; I know that I am extremely proud to have had them on our projects. I look forward to working with you and your team in the future.

  
JOHN W. DULIN, LtCol, WVANG  
Base Civil Engineer

W912QR-13-R-0013

WV ARNG Camp Dawson Live Fire Shoot House (2-phase project)

NAVFAC/USACE PAST PERFORMANCE QUESTIONNAIRE (Form PPQ-0)	
<b>CONTRACT INFORMATION (Contractor to complete Blocks 1-4)</b>	
<b>1. Contractor Information</b> Firm Name: <b>GRW</b> <span style="float: right;">CAGE Code: <b>5T072</b></span> Address: <b>801 Corporate Drive, Lexington, KY</b> <span style="float: right;">DUNS Number: <b>051833994</b></span> Phone Number: <b>859-223-3999</b> Email Address: <b>info@grwinc.com</b> Point of Contact: <b>Dale Adams, AIA</b> <span style="float: right;">Contact Phone Number: <b>859-223-3999, ext 244</b></span>	
<b>2. Work Performed as:</b> <input type="checkbox"/> Prime Contractor <input type="checkbox"/> Sub Contractor <input type="checkbox"/> Joint Venture <input checked="" type="checkbox"/> Other (Explain) Percent of project work performed: _____ If subcontractor, who was the prime (Name/Phone #): <b>Prime design firm for A/E services and construction administration</b>	
<b>3. Contract Information</b> Contract Number: <b>W9133L-05-D-0005</b> Delivery/Task Order Number (if applicable): <b>ZR05</b> Contract Type: <input type="checkbox"/> Firm Fixed Price <input type="checkbox"/> Cost Reimbursement <input checked="" type="checkbox"/> Other (Please specify): <b>Task order under ID/IQ</b> Contract Title: <b>WV ARNG Camp Dawson Live Fire Shoot House (2-phase project)</b> Contract Location: <b>Kingwood, WV</b>  Award Date (mm/dd/yy): <b>05/01/2009</b> Contract Completion Date (mm/dd/yy): <b>02/01/2011</b> Actual Completion Date (mm/dd/yy): <b>07/01/2012</b> Explain Differences: <b>Funding appropriation for Phase 2 construction</b>  Original Contract Price (Award Amount): <b>\$2,000,000</b> Final Contract Price (to include all modifications, if applicable): <b>\$2,056,623</b> Explain Differences: <b>Owner-requested change orders.</b>	
<b>4. Project Description:</b> Complexity of Work <input type="checkbox"/> High <input type="checkbox"/> Med <input checked="" type="checkbox"/> Routine How is this project relevant to project of submission? (Please provide details such as similar equipment, requirements, conditions, etc.) <b>Design and construction of a 4,720 SF complex (live fire shoot house, operations/storage facility, after action review facility and ammunition breakdown facility). Involved rehabilitation of an old warehouse to house range facilities; challenges involved intraline distances, inhabited building distances and SDZs. Renovation of parking area and site utilities included. Specialized design requirements for training ranges (TC 25-8 Training Ranges, CEHNC 1110-1-23 Design Guide, DA PAM 385-63 DA Guidance on Range Safety, etc.)</b>	
<b>CLIENT INFORMATION (Client to complete Blocks 5-8)</b>	
<b>5. Client Information</b> Name: <b>COL William Sauer, West Virginia National Guard</b> Title: <b>Camp Dawson Commander</b> Phone Number: <b>304 791 4457</b> Email Address: <b>bill.sauer@us.army.mil</b>	
<b>6. Describe the client's role in the project:</b> <b>over all in charge</b>	
<b>7. Date Questionnaire was completed (mm/dd/yy):</b> <b>01/25/13</b>	

W912QR-13-R-0013

8. Client's Signature:

*William M. Suver*

NOTE: NAVFAC/USACE REQUESTS THAT THE CLIENT COMPLETES THIS QUESTIONNAIRE AND SUBMITS DIRECTLY BACK TO THE OFFEROR. THE OFFEROR WILL SUBMIT THE COMPLETED QUESTIONNAIRE TO USACE WITH THEIR PROPOSAL, AND MAY DUPLICATE THIS QUESTIONNAIRE FOR FUTURE SUBMISSION ON USACE SOLICITATIONS. CLIENTS ARE HIGHLY ENCOURAGED TO SUBMIT QUESTIONNAIRES DIRECTLY TO THE OFFEROR. HOWEVER, QUESTIONNAIRES MAY BE SUBMITTED DIRECTLY TO USACE. PLEASE CONTACT THE OFFEROR FOR USACE POC INFORMATION. THE GOVERNMENT RESERVES THE RIGHT TO VERIFY ANY AND ALL INFORMATION ON THIS FORM.

ADJECTIVE RATINGS AND DEFINITIONS TO BE USED TO BEST REFLECT  
 YOUR EVALUATION OF THE CONTRACTOR'S PERFORMANCE

RATING	DEFINITION	NOTE
(E) Exceptional	Performance meets contractual requirements and exceeds many to the Government/Owner's benefit. The contractual performance of the element or sub-element being assessed was accomplished with few minor problems for which corrective actions taken by the contractor was highly effective.	An Exceptional rating is appropriate when the Contractor successfully performed multiple significant events that were of benefit to the Government/Owner. A singular benefit, however, could be of such magnitude that it alone constitutes an Exceptional rating. Also, there should have been NO significant weaknesses identified.
(VG) Very Good	Performance meets contractual requirements and exceeds some to the Government's/Owner's benefit. The contractual performance of the element or sub-element being assessed was accomplished with some minor problems for which corrective actions taken by the contractor were effective.	A Very Good rating is appropriate when the Contractor successfully performed a significant event that was a benefit to the Government/Owner. There should have been no significant weaknesses identified.
(S) Satisfactory	Performance meets minimum contractual requirements. The contractual performance of the element or sub-element contains some minor problems for which corrective actions taken by the contractor appear or were satisfactory.	A Satisfactory rating is appropriate when there were only minor problems, or major problems that the contractor recovered from without impact to the contract. There should have been NO significant weaknesses identified. Per DOD policy, a fundamental principle of assigning ratings is that contractors will not be assessed a rating lower than Satisfactory solely for not performing beyond the requirements of the contract.
(M) Marginal	Performance does not meet some contractual requirements. The contractual performance of the element or sub-element being assessed reflects a serious problem for which the contractor has not yet identified corrective actions. The contractor's proposed actions appear only marginally effective or were not fully implemented.	A Marginal is appropriate when a significant event occurred that the contractor had trouble overcoming which impacted the Government/Owner.

W912QR-13-R-0013

<b>(U) Unsatisfactory</b>	Performance does not meet most contractual requirements and recovery is not likely in a timely manner. The contractual performance of the element or sub-element contains serious problem(s) for which the contractor's corrective actions appear or were ineffective.	An Unsatisfactory rating is appropriate when multiple significant events occurred that the contractor had trouble overcoming and which impacted the Government/Owner. A singular problem, however, could be of such serious magnitude that it alone constitutes an unsatisfactory rating.
<b>(N) Not Applicable</b>	No information or did not apply to your contract	Rating will be neither positive nor negative.



TO BE COMPLETED BY CLIENT

PLEASE CIRCLE THE ADJECTIVE RATING WHICH BEST REFLECTS YOUR EVALUATION OF THE CONTRACTOR'S PERFORMANCE.						
<b>1. QUALITY:</b>						
a) Quality of technical data/report preparation efforts	<input checked="" type="radio"/> B	VG	S	M	U	N
b) Ability to meet quality standards specified for technical performance	<input checked="" type="radio"/> E	VG	S	M	U	N
c) Timeliness/effectiveness of contract problem resolution without extensive customer guidance	E	<input checked="" type="radio"/> VG	S	M	U	N
d) Adequacy/effectiveness of quality control program and adherence to contract quality assurance requirements (without adverse effect on performance)	<input checked="" type="radio"/> E	VG	S	M	U	N
<b>2. SCHEDULE/TIMELINESS OF PERFORMANCE:</b>						
a) Compliance with contract delivery/completion schedules including any significant intermediate milestones. (If liquidated damages were assessed or the schedule was not met, please address below)	<input checked="" type="radio"/> E	VG	S	M	U	N
b) Rate the contractor's use of available resources to accomplish tasks identified in the contract	<input checked="" type="radio"/> E	VG	S	M	U	N
<b>3. CUSTOMER SATISFACTION:</b>						
a) To what extent were the end users satisfied with the project?	<input checked="" type="radio"/> E	VG	S	M	U	N
b) Contractor was reasonable and cooperative in dealing with your staff (including the ability to successfully resolve disagreements/disputes; responsiveness to administrative reports, businesslike and communication)	<input checked="" type="radio"/> E	VG	S	M	U	N
c) To what extent was the contractor cooperative, businesslike, and concerned with the interests of the customer?	<input checked="" type="radio"/> E	VG	S	M	U	N
d) Overall customer satisfaction	<input checked="" type="radio"/> E	VG	S	M	U	N
<b>4. MANAGEMENT/ PERSONNEL/LABOR</b>						
a) Effectiveness of on-site management, including management of subcontractors, suppliers, materials, and/or labor force?	E	<input checked="" type="radio"/> VG	S	M	U	N
b) Ability to hire, apply, and retain a qualified workforce to this effort	<input checked="" type="radio"/> E	VG	S	M	U	N
c) Government Property Control	<input checked="" type="radio"/> E	VG	S	M	U	N
d) Knowledge/expertise demonstrated by contractor personnel	<input checked="" type="radio"/> E	VG	S	M	U	N
e) Utilization of Small Business concerns	E	<input checked="" type="radio"/> VG	S	M	U	N
f) Ability to simultaneously manage multiple projects with multiple disciplines	<input checked="" type="radio"/> E	VG	S	M	U	N
g) Ability to assimilate and incorporate changes in requirements and/or priority, including planning, execution and response to Government changes	<input checked="" type="radio"/> E	VG	S	M	U	N
h) Effectiveness of overall management (including ability to effectively lead, manage and control the program)	<input checked="" type="radio"/> E	VG	S	M	U	N
<b>5. COST/FINANCIAL MANAGEMENT</b>						
a) Ability to meet the terms and conditions within the contractually agreed	<input checked="" type="radio"/> E	VG	S	M	U	N

W912QR-13-R-0013

price(s)?	
b) Contractor proposed innovative alternative methods/processes that reduced cost, improved maintainability or other factors that benefited the client	<input checked="" type="radio"/> E VG S M U N
c) If this is/was a Government cost type contract, please rate the Contractor's timeliness and accuracy in submitting monthly invoices with appropriate back-up documentation, monthly status reports/budget variance reports, compliance with established budgets and avoidance of significant and/or unexplained variances (under runs or overruns)	<input checked="" type="radio"/> E VG S M U N
d) Is the Contractor's accounting system adequate for management and tracking of costs? <i>If no, please explain in Remarks section.</i>	<input checked="" type="radio"/> Yes No
e) If this is/was a Government contract, has/was this contract been partially or completely terminated for default or convenience or are there any pending terminations? <i>Indicate if show cause or cure notices were issued, or any default action in comment section below.</i>	Yes <input checked="" type="radio"/> No
f) Have there been any indications that the contractor has had any financial problems? <i>If yes, please explain below.</i>	Yes <input checked="" type="radio"/> No
<b>6. SAFETY/SECURITY</b>	
a) To what extent was the contractor able to maintain an environment of safety, adhere to its approved safety plan, and respond to safety issues? (Includes: following the users rules, regulations, and requirements regarding housekeeping, safety, correction of noted deficiencies, etc.)	E <input checked="" type="radio"/> VG S M U N
b) Contractor complied with all security requirements for the project and personnel security requirements.	E <input checked="" type="radio"/> VG S M U N
<b>7. GENERAL</b>	
a) Ability to successfully respond to emergency and/or surge situations (including notifying COR, PM or Contracting Officer in a timely manner regarding urgent contractual issues).	<input checked="" type="radio"/> E VG S M U N
b) Compliance with contractual terms/provisions ( <i>explain if specific issues</i> )	<input checked="" type="radio"/> E VG S M U N
c) Would you hire or work with this firm again? ( <i>If no, please explain below</i> )	<input checked="" type="radio"/> Yes No
d) In summary, provide an overall rating for the work performed by this contractor.	<input checked="" type="radio"/> E VG S M U N

**Please provide responses to the questions above (if applicable) and/or additional remarks. Furthermore, please provide a brief narrative addressing specific strengths, weaknesses, deficiencies, or other comments which may assist our office in evaluating performance risk (please attach additional pages if necessary):**

\_\_\_\_\_

\_\_\_\_\_

\_\_\_\_\_

## 5.0 Approach



Our approach to your project is straightforward: assemble the best and brightest design talent in the corrections field; bring an open mind with a fresh perspective on programming and corrections design; and remain accountable to you throughout the process for cost control/budget.

The relationship between you and your chosen design consultant is critically important. The cornerstone of the GRW design approach is collaboration. Communicating in an open dialog, where ideas can be freely explored and considered, helps to vest everyone in the project's success, and is a vital prerequisite to ensuring buy-in from all project stakeholders.

### Project Budget Accountability

As public officials, you are accountable to the public for the expenditure of public monies. The GRW team understands your obligation and stands prepared to help deliver a project design that is cost-effective and that represents an efficient and appropriate use of public funds. Rarely do projects have sufficient budget to accommodate everything on the programmatic "wish list". Assessing the project budget relative to the program must be done early and often in order to guide the project to a successful conclusion. GRW approaches this process in a pragmatic and open manner. This subject will be on the agenda of every project meeting we have with you, and it will be discussed openly and frankly so that everyone is kept abreast of any potential concerns. Prioritizing the program relative to the budget can be a difficult task, with different stakeholders sometimes at odds over how to resolve differences of opinion. GRW excels at guiding this process and helping you to resolve these differences.

GRW has a strong history of successful estimating for projects in West Virginia. GRW's detention design experts will draw upon this local knowledge during the development of our construction cost estimates. We can also develop a list of possible value-engineering revisions to help further reduce the construction cost and give you the most construction value for your dollar.

### Special Design Considerations

GRW will deliver a facility that is safe, ADA compliant, and environmentally friendly. Our experienced design experts understand the unique challenges presented in a correctional environment, and we will offer innovative solutions based upon our technological know-how and past experiences.



## Safety and Occupied Construction Sites

Safety, in a detention setting, encompasses a variety of components – the safety of public visitors, the safety of staff, and the safety of detainees. These issues are especially critical during the alternation of an occupied correctional facility.

GRW recently completed design and construction oversight services for the fast-track rebuild of the Northpoint Training Facility in Burgin, KY, following a prisoner riot which destroyed five buildings at the site. The project included developing, sequencing, and specifying security procedures for operating within an inmate-occupied facility during construction work inside the existing secure perimeter.

Our additional experience with occupied corrections facility renovation includes the Harlan County Detention Center, which was partially occupied throughout construction, as well as fire alarm replacement at the Luther Luckett Correctional Complex in LaGrange, KY.

Our design staff will approach these safety components in a number of ways, including:

- Secure construction to control residents within designated areas, with compartmentalization of detainee areas according to your detainee classification system.
- Line of sight and security electronics to assist staff in monitoring detainee movement and activity.
- Control detainee ability to observe staff movement outside the facility.
- Controlled public access with appropriate contraband screening; and separation of circulation paths to ensure that movement of the public through the facility is monitored, and properly separated from detainee circulation.
- Fire compartmentalization to allow a defend-in-place solution in all but the most severe fire events.

In a 2010 article, Sheriff Robert Sowell of Clayton County GA remarked, “One of my biggest fears would be to have a jail fire. The potential for injuries and deaths is always present. While we have adequate staffing for normal jail operations, even a small fire could quickly overwhelm staff as they rescue inmates, fight the fire, and provide escorts for responding firefighters.” We believe that Sheriff Sowell’s remarks reflect those of every person in operational charge of a detention facility. GRW recently completed the \$16.5 million rebuild of Northpoint State Prison in Kentucky, which was partially destroyed by fires set during a prison riot. Our expertise, combined with staff lessons-learned in the riot aftermath, allowed the GRW team to redesign the facility in a manner that will drastically reduce the likelihood of a subsequent event of this magnitude.



## Accessibility

GRW has been at the forefront of accessible design ever since the Americans with Disabilities Act was signed into law by Congress in 1990. The most recent (2010) version of the ADA requires a minimum of 3% of the total number of cells to be designed as accessible. It further states that “cells with mobility features shall be provided in each classification level”. Of course, accessible design in a detention facility extends well beyond the cell itself, to encompass all services offered to inmates at the facility, along with public access and staff operations.

Because the ADA is civil rights legislation and not a simple building code, a compliant is typically referred directly to the justice department. Facility operators understand the need for strict compliance, as detainees seem to enjoy filing complaints on any perceived shortcoming. For this reason, lack of compliance with the ADA is not only a legal/construction issue, but can become a considerable irritation for facility operations personnel.

The U.S. Federal Bureau of Prisons (BOP) is an agency within the Justice Department, and is subject to Justice Department oversight and review. GRW’s recently completed BOP facilities, at Aliceville, AL and Yazoo City, MS, were both designed for ADA compliance, and both were subjected to intense accessibility reviews by experts from the United States Justice Department. We passed these reviews with flying colors.

## General Work Plan

GRW conducts internal design team meetings regularly throughout each project, to review project issues, and to ensure compliance with project deadlines. These coordination meetings also serve to eliminate miscommunication and foster agreement by the group on the common goals for the week. The Project Manager runs these meetings, and as a result of feedback received, he can make additional staff assignments, or arrange other firm resources as needed to help meet your project goals. Weekly conference calls to discuss current issues between progress meetings will also be held.

The typical project, once authorized by the Owner, will include the Project Manager, along with all the necessary supporting project design team members.

The phases of a typical project might include:

1. Site Assessment, Programming, Budgeting
2. Field Measurement and Building Assessment
3. Schematic Design / Preliminary Estimating / Owner Review
4. Design Development / Estimate Updating / Owner Review  
Construction Documents / Final Estimating / Final Owner Review





## 5. Contractor Bidding / Negotiation

## 6. Construction

## 7. Owner Occupancy

Existing documentation will be gathered, existing conditions assessed, information regarding hazardous materials will be gathered, and existing building will be field measured. During the assessment process, the design team will endeavor to identify any anomalies that might affect the successful renovation of the building. Finally, using existing documentation and field-measurements, the design team will prepare digital drawings of the existing conditions, to the extent necessary for completion of the project.

In the schematic design phase, the design team will conduct an initial kickoff meeting with you to review and confirm the programming needs for your facility, and to discuss your overall goals for the design. Documents are created to the 15 percent to 30 percent complete level, and cost estimates prepared to validate your budget. During this process, we will meet with you to review the progress of the work and discuss design issues. The final schematic design documents will consist of the drawings, a preliminary cost estimate, and a listing of proposed specification sections to be provided. Review comments from your staff are implemented and responses sent to you as to disposition of each.

In the design development phase, the design team will take the project design to approximately 50 - 60 percent, and as more details are shown on the documents, internal review will become more focused on code issues and fitness for purpose. The product typically includes drawings, edited specifications, and an updated cost estimate. Equipment cut-sheets, as well as detailed calculations for equipment, may be provided as well. The documents will again be reviewed and studied for conflicts. Review of the design development documents ensures that all systems and components have been defined, the project complies with building codes and regulations, and adequate information has been provided for a more complete estimate of construction cost. Again, your review comments are fed back to the design team, and those comments are implemented, and disposition returned in writing to the reviewers.

After the Owner accepts the design development documents and provides authorization to proceed to construction documents, the design team starts filling in the gaps in all the various design disciplines, and adding details of special connections or features for clarity to the bidders. The GRW project checklists are executed to be sure that key elements of all major systems are fully called out in the drawings and specifications. The specifications are reviewed to be sure they are complete, and the submittal register and table of contents are finalized and printed off. GRW



can provide specifications in any desired word processing package. GRW maintains a standard detail library by discipline, which includes details of construction for various circumstances, and appropriate details are inserted into the documents. This is another source of quality control, as these detail libraries have been built over years of use, and improved on continuously.

The construction documents consist of the final drawings, final cost estimate, final specifications, and final design calculations. These documents will again be reviewed by GRW senior staff members and Owner staff, and feedback provided in writing to the design team, and written responses returned to the reviewers by the design team. This thorough review and execution of the discipline checklists ensures that construction documents are complete and clear, and that all disciplines have been fully coordinated.

Prior to release of the reproducible original documents to the Client for bidding, an onsite meeting is recommended, to go over the documents with the user one last time, to be sure the design documents still meet the programming goals they had in mind when the process started, and that they are clear on what scope items they are getting and those (if any) that they are not. It is also a time to be sure, in a face-to-face meeting, that everyone agrees with information shown on the documents. If the outcome of that meeting is affirmative, then the state would take possession of the final documents and move into the bidding process to procure a contractor.

## Flexibility

These procedures are not set in stone, as GRW prides itself on being a strong project manager type organization without a lot of bureaucratic, administrative procedures that stifle creative people. Sometimes these procedures are streamlined for smaller projects, and sometimes they are more formalized for larger projects. At all times they remain flexible to accommodate the blending of procedures with those of our client organizations. We want you to be happy with the quality of our work: the bottom line is that GRW cares a great deal about performing repeat business with our clients.





State of West Virginia  
Department of Administration  
Purchasing Division  
2019 Washington Street East  
Post Office Box 50130  
Charleston, WV 25305-0130

# Solicitation

NUMBER
DJS140002

PAGE
1

ADDRESS CORRESPONDENCE TO ATTENTION OF
TARA LYLE 304-558-2544

RFQ COPY

TYPE NAME/ADDRESS HERE

GRW  
200 Sixth Avenue  
St. Albans, WV 25177

DIVISION OF JUVENILE SERVICES

SECOND FLOOR  
1200 QUARRIER STREET  
CHARLESTON, WV  
25301 304-558-6029

DATE PRINTED
11/21/2013

BID OPENING DATE: 12/19/2013

BID OPENING TIME 1:30PM

LINE	QUANTITY	UOP	CAT. NO.	ITEM NUMBER	UNIT PRICE	AMOUNT
0001	1	LS		906-00-00-001		
ARCHITECT/ENGINEERING SERVICES, PROFESSIONAL						
EXPRESSION OF INTEREST (EOI)						
THE WEST VIRGINIA PURCHASING DIVISION, FOR THE AGENCY, DIVISION OF ENGINEERING & FACILITIES, WV DIVISION OF JUVENILE SERVICES, IS SOLICITING EXPRESSIONS OF INTEREST TO PROVIDE ARCHITECTURAL AND ENGINEERING SERVICES FOR THREE (3) FACILITIES (DONALD KUHN JUVENILE CENTER, GENE SPADARA CENTER AND THE SAM PERDUE JUVENILE CENTER), PER THE ATTACHED SPECIFICATIONS.						
ATTACHMENTS INCLUDE:						
DJS140002 EXPRESSION OF INTEREST INSTRUCTIONS TO VENDORS SUBMITTING BIDS GENERAL TERMS AND CONDITIONS CERTIFICATION AND SIGNATURE PAGE PURCHASING AFFIDAVIT						
***** PLEASE PROVIDE THREE (3) CONVENIENCE COPIES OF THE PROPOSALS. *****						

SIGNATURE	TELEPHONE 304.727.5501	DATE 12/18/2103
TITLE Vice President	FEIN 61-0665036	ADDRESS CHANGES TO BE NOTED ABOVE

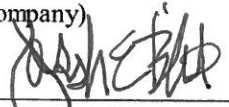
WHEN RESPONDING TO SOLICITATION, INSERT NAME AND ADDRESS IN SPACE ABOVE LABELED 'VENDOR'

**CERTIFICATION AND SIGNATURE PAGE**

By signing below, I certify that I have reviewed this Solicitation in its entirety; understand the requirements, terms and conditions, and other information contained herein; that I am submitting this bid or proposal for review and consideration; that I am authorized by the bidder to execute this bid or any documents related thereto on bidder's behalf; that I am authorized to bind the bidder in a contractual relationship; and that to the best of my knowledge, the bidder has properly registered with any State agency that may require registration.

GRW

---

(Company)

---

(Authorized Signature)

Joseph E. Bird, ASLA, Vice President

---

(Representative Name, Title)

304.727.5501

304.727.5580

---

(Phone Number)

(Fax Number)

12/18/2013

---

(Date)



STATE OF WEST VIRGINIA  
Purchasing Division**PURCHASING AFFIDAVIT**

**MANDATE:** Under W. Va. Code §5A-3-10a, no contract or renewal of any contract may be awarded by the state or any of its political subdivisions to any vendor or prospective vendor when the vendor or prospective vendor or a related party to the vendor or prospective vendor is a debtor and: (1) the debt owed is an amount greater than one thousand dollars in the aggregate; or (2) the debtor is in employer default.

**EXCEPTION:** The prohibition listed above does not apply where a vendor has contested any tax administered pursuant to chapter eleven of the W. Va. Code, workers' compensation premium, permit fee or environmental fee or assessment and the matter has not become final or where the vendor has entered into a payment plan or agreement and the vendor is not in default of any of the provisions of such plan or agreement.

**DEFINITIONS:**

**"Debt"** means any assessment, premium, penalty, fine, tax or other amount of money owed to the state or any of its political subdivisions because of a judgment, fine, permit violation, license assessment, defaulted workers' compensation premium, penalty or other assessment presently delinquent or due and required to be paid to the state or any of its political subdivisions, including any interest or additional penalties accrued thereon.

**"Employer default"** means having an outstanding balance or liability to the old fund or to the uninsured employers' fund or being in policy default, as defined in W. Va. Code § 23-2c-2, failure to maintain mandatory workers' compensation coverage, or failure to fully meet its obligations as a workers' compensation self-insured employer. An employer is not in employer default if it has entered into a repayment agreement with the Insurance Commissioner and remains in compliance with the obligations under the repayment agreement.

**"Related party"** means a party, whether an individual, corporation, partnership, association, limited liability company or any other form or business association or other entity whatsoever, related to any vendor by blood, marriage, ownership or contract through which the party has a relationship of ownership or other interest with the vendor so that the party will actually or by effect receive or control a portion of the benefit, profit or other consideration from performance of a vendor contract with the party receiving an amount that meets or exceeds five percent of the total contract amount.

**AFFIRMATION:** By signing this form, the vendor's authorized signer affirms and acknowledges under penalty of law for false swearing (W. Va. Code §61-5-3) that neither vendor nor any related party owe a debt as defined above and that neither vendor nor any related party are in employer default as defined above, unless the debt or employer default is permitted under the exception above.

**WITNESS THE FOLLOWING SIGNATURE:**Vendor's Name: GRWAuthorized Signature: [Signature] Date: 12-17-13State of KentuckyCounty of Shelby, to-wit:Taken, subscribed, and sworn to before me this 17 day of December, 2013My Commission expires July 16, 2013

AFFIX SEAL HERE

NOTARY PUBLIC [Signature]