



ARCHITECTS

"Exceeding Expectations"

Principals:
David S. Beeman AIA, LEED AP BD+C
Robert C. Cushman, AIA, CSI

December 18, 2013

Tara Lyle
Department of Administration, Purchasing Division
2019 Washington Street East
Charleston, WV 25305

RE: DJS140002

Dear Ms. Lyle,

SEM Architects is interested in helping the WV Division of Youth Services upgrade, further secure, and add onto its existing Juvenile Detention Centers located in Julian, Mt. Hope and Princeton, West Virginia. With this in mind let us take this opportunity to better acquaint you with the Firm and our capabilities as represented in this proposal response:

SEM Architects is a full-service architectural firm with significant corrections facility and related experience. We are the Architects responsible for the Federal Correctional Institution located just outside of Beckley in Beaver, West Virginia. Furthermore, our Project Manager has completed three Juvenile Detention and Courts related facilities of various sizes in central and southeastern Ohio. We have ongoing projects in Beckley, West Virginia where SEM Architects maintained an office for twenty three years. One of our founding partners still lives in the area and we regularly collaborate with him on our jobs.

Our approach is to involve our Clients in the design from the beginning by jointly developing a complete program-of-requirements, and subsequently throughout the design process. This enables us to better understand your needs and it allows you to be fully invested in the final design. SEM's approach will take into account your specific requirements and the need for this facility to conform to all mandatory requirements imposed on juvenile detention projects, as well as applicable program standards, state codes, and local codes and ordinances. We are familiar with the West Virginia State Fire Code requirements as well as the 2009 International Building Code.

While our offices are now consolidated in Westerville, Ohio; we still have ongoing projects in the West Virginia area and are accustomed to providing full-service delivery on our jobs.

We look forward to an opportunity to meet you to further explain our credentials and personally show you some more of our completed correctional projects.

Sincerely,

12/19/13 10:21:50AM
West Virginia Purchasing Division

David S. Beeman, AIA, LEED AP BD+C

President

Cc: File

SEM Architects has provided professional design services from Central Ohio to educational clients across the Midwest and the Southeast. They have designed hundreds of completed projects valued at nearly one billion dollars. Much of their experience relates to design of projects for the public, including secure facilities, medical office buildings and clinics, educational facilities, recreational/cultural facilities and multifamily housing. In addition, they have worked with Public Sector clients at every level of government. SEM Architects has provided services for new facilities as well as renovation, restoration and additions. On some projects demolition has had to occur in advance of new construction.

SEM Architects maintained a medium-sized office in Beckley for 23-years and has consistently served a variety of public and corporate clients in the region including; Lewis Nissan, L&S Toyota, The Beckley-Raleigh County Convention Center, Raleigh County Schools, and the Youth Museum of Southern West Virginia. They also have experience working with State and Federal institutions on projects in the region including; the U.S. Bureau of Prisons, The West Virginia Department of Culture and History, and The National Park Service. While the Beckley office was closed in 2004, we still have a Partner presence in Ghent, West Virginia and we regularly service clients in the region. Currently, we have one new building project under construction in Beckley, and a renovation project about to start up.

Members of the Team assembled for this project are highly qualified in their individual areas of specialization. The Project Manager and the Designer assigned to the project each have over 25 years of experience in project administration and design. SEM's President and their Construction Administrator and Specification Writer are both Principals with over 35 years of experience running complex building projects. Additionally, SEM's Project Coordinator and Detailer has over 30 years of experience. SEM Architects also benefits from the contributions of Architectural Interns that participate based on SEM's workload and their availability. With decades of combined direct experience, SEM is highly competent in Security Design, Hardware Coordination, Building Envelope Performance and Detailing, Roof Design, Specification Writing, and Construction Administration.

Most of the proposed SEM Design Team has worked together on various projects and each member of the Team is deeply valued. SEM believes that they have selected some of the most qualified consultants available for a project of this type. SEM Architects selects consultants based on their project understanding, building type familiarity, and their overall experience and reputation. Those included on this Team are specifically well-versed in secure facility and educational building design.

Team and Team Collaboration:

The Team for this project consists of SEM Architects, Clingenpeel/McBrayer & Associates, Inc. (CMA) out of Charleston, WV (for mechanical, electrical, plumbing, and technology), ESI Services, Inc. (ESI) out of Beckley, WV (for surveying and civil engineering), Shirk & O'Donovan out of Worthington, OH (for structural engineering), and LattaTech out of Plano, TX (for security system design). SEM has worked with both CMA and Shirk and O'Donovan on a number of educational projects and we have long-standing professional relationships. We are currently working with ESI on the L&S Toyota project and have also worked with them in the past. LattaTech is a national security consultant that SEM's Project Manager has worked with on several Juvenile Detention projects.

Clingenpeel/McBrayer & Associates, Inc. (CMA):

Clingenpeel/McBrayer & Associates, Inc. (CMA) is a West Virginia based small business firm, providing services in the areas of HVAC, plumbing, fire protection and electrical engineering since 1986. CMA's founders have long believed in the philosophy that a successful project requires a comprehensive approach. This includes all traditional facets of project planning, starting with master planning, working closely with the client, developing the completed construction documents, bidding the project and contract administration. However, our depth of expertise goes far beyond the traditional services. From developing design criteria for owners to designing the mechanical and electrical systems for the design/build West Virginia DEP Consolidated Office Building, the first LEED certified building in the state of West Virginia, CMA is a proven leader in providing engineering services in the design-build delivery method. As SEM has been involved in LEED Certification and other "LEED-oriented" ventures for several years, they attempt to incorporate the most efficient and sustainable "green" designs in all of our projects.

ESI Services, Inc. (ESI):

ESI Services, Inc. are Surveyors, Civil Engineers and Planners with a Beckley WV office that help with the development of Shopping Centers, Subdivisions, Hotels, Airports, Hospitals, Industrial Parks, and new Retail Chains in West Virginia. Their services include Surveying, Subdivision Layouts and both Civil and environmental Engineering on a wide variety of project types in the region. They are committed to listening to their Clients, and offering solutions that enhance their Clients ideas while successfully completing projects on time and within budget.

Shirk & O'Donovan Consulting Engineers:

Shirk & O'Donovan Consulting Engineers, Incorporated offers a full range of professional consulting structural engineering services from schematic design through construction administration. The firm was founded in 1989 with a vision of unparalleled service as a provider of structural engineering design services. Today that goal still commands the primary attention for the full extent of the client base, without regard to the size of the project or the size of the client.

The company provides cost-effective engineering solutions for a wide range of projects. Professional services offered include complete preparation of structural construction drawings, specification writing, cost estimating and value engineering for both new construction, the rehabilitation of existing facilities and construction administration. We believe common solutions will not fit all projects, and therefore our licensed engineers provide innovative designs tailored to each specific project. The staff is committed to a team approach to your project. We review and coordinate the work of the entire design team, including the work of the architect and mechanical, electrical and civil engineers.

Latta Technical Services, Inc. (LattaTech):

LattaTech has oriented their services toward high quality engineering of electronic security systems for correctional, justice and law enforcement facilities for over 25-years. They thrive on customer service and have many Architects as clients. There are also several government organizations that contract with LattaTech as the prime consultant. Several of these government organizations have sole sourced LattaTech on new projects after completion of previous work or with a reference from others. LattaTech tries to insure their critical systems are designed with the overall operation and maintenance of the correctional and justice and law enforcement facilities in mind.

Location:

SEM Architects offices are now consolidated in Westerville, Ohio (near Columbus). Their semi-retired West Virginia Partner, Mr. Ned Eller, is located in Ghent, West Virginia. SEM Architects collaborates on many West Virginia projects with him, most recently work for L&S Toyota in Beckley. With regular visits to West Virginia for projects that are in design or under construction; SEM does not foresee difficulties servicing the Juvenile Center projects located in located in Julian, Mt. Hope, and Princeton, West Virginia for onsite field verification, programming, review meetings, bidding and construction administration. SEM is also accustomed to making regular trips to Charleston for review and progress meetings for our Clients in West Virginia such as the National Guard.

Size:

SEM Architect has a total of four licensed architects, all of whom are assigned to this project with distinct roles, responsibilities per their resumes. They are supported by Architectural Interns and Administrative personnel as needed.

Current Workload:

The staff at SEM Architects is available to start on Juvenile Center projects immediately for programming, design and field verification purposes.

Primary A/E Qualifications:

David Beeman, AIA, LEED AP BD+C, the managing Principal at SEM Architects will oversee the Projects and negotiate contracts for the Job. Client-focused and very much hands-on with projects, and Mr. Beeman takes pride in seeing that SEM's projects are well thought-out and properly detailed.

Ned Eller, AIA, is our semi-retired Partner based out of Ghent West Virginia. A highly capable programmer and designer, Mr. Eller continues to support a variety of clients and projects. SEM's most recent collaboration with Mr. Eller is for L&S Toyota in Beckley, West Virginia, a major building expansion and new façade for this growing dealership.

Laura Piersall, AIA, LEED AP BD+C, the Project Manager assigned to the Project has led and managed projects ranging in size from \$1M – \$33 M in size. She has worked on several projects in West Virginia and is experienced working with the Engineering Consultants on the Team. In addition, she has considerable experience with the building type having completed three Juvenile Detention Centers in Ohio, two of which have had a significant Court component.

Greg Eller, AIA, the Project Designer is well-respected for his design talent, and well-liked by clients for his listening skills and ability to translate a client's needs and aspirations into a buildable interpretation of their program and vision. He has been responsible for several projects that have been recognized as notable and award-winning in West Virginia, including: the Astronomy Visitor and Education Center in Green Bank, West Virginia, and the Canyon Rim Visitor Center in Fayetteville, West Virginia.

Dana Creasey AIA, the Project Coordinator is an ARE candidate and a seasoned veteran in the industry having worked for a significant number of sizeable architectural, and A/E firms in the Columbus, Ohio area. His skills include his communication ability with consultants and his computer abilities. Mr. Creasey is architecturally trained on Microstation, AutoCAD, and Revit platforms and he has the ability to move back and forth between software programs with ease.

Bob Cushman, AIA, CSI, the Specification and Construction Administrator assigned to the Project is also a Partner at SEM Architects. He is well known for his ability to gain both respect and cooperation from Contractors for both new construction and complex renovation projects. An experienced professional, Bob is well-versed in managing the needs of occupied buildings during a renovation. SEM Architects' clients are confident knowing that Mr. Cushman will be reviewing the details and overseeing the construction administration.

Budget and Schedule Management:

SEM can point to many more than 100 projects where they have successfully completed project within the originally specified budget and schedule. Some of these project examples are as follows:

• Harless Community Recreation Center	Bid \$6,850,000.	Final \$7,000,000.
• Washington Township Recreation Center	Bid \$5,500,000.	Final \$5,550,000.
• Champion Middle School	Bid \$9,800,000.	Final \$10,000,000.
• Westerville Electric Office Complex	Bid \$2,053,000.	Final \$2,135,921.
• Dasco Office Renovation and Warehouse	GMP \$2,000,000.	Final \$2,000,000.

In addition, all of the above-mentioned projects were completed with minor change order percentages and on schedule.

Experience with Similar Project Type:

SEM was the Architect responsible for the Federal Correctional Institution located just outside of Beckley in Beaver, West Virginia. Executing this project as the Architect-of-Record and working with Security Consultants, gave SEM's current President and Designer considerable understanding of security needs and requirements for a minimum to medium security correctional institution.

Ms. Piersall, SEM's Project Manager is well-versed in the needs of Juvenile Centers from her work in other Firms. She designed and developed two 48-bed facilities in one of which had courtrooms, magistrate, and judge's offices and public access. More recently, she developed a 144-bed Juvenile Intervention and Detention Center with Courtrooms in Dayton, Ohio. This award-winning, cutting-edge facility has received national attention for its design and forward-thinking approach to juvenile treatment and care in a secure correctional setting. This facility features a Health-care Clinic; an Ohio accredited Charter School, and secure roof-top Exercise areas for youth. The majority of the first floor is devoted to courtrooms and public agency intervention offices. The facility met with the American Correctional Association (ACA) Standards.

Construction Administration:

SEM Architects takes construction management on our projects very seriously. Our primary Construction Administrator, Mr. Cushman is a registered architect with over 35-years of experience. SEM knows that the best developed plans are only as good as the final execution. Mr. Cushman reviews drawing details, performs field inspections, and oversees Code required special inspections and testing to help ensure that the established quality standards have been met. All progress meetings during construction include a written field report accompanied by digital photography. Other qualified personnel, including the Project Manager are involved in construction administration in the review of shop drawings, answering Requests for Information, and in overall project administration. SEM's designs and details are well thought-out and constructible. SEM takes pride in their documents as well as in the achievable results.

Project Delivery Method Experience:

SEM has extensive experience with construction delivery systems ranging from the traditional General Contracting method and Construction Management to various forms of Design-Build. SEM has executed more projects utilizing the traditional General Contracting method (Design/Bid/Build) than any other method.

Specification Writing Experience:

Mr. Cushman is SEM Architect's primary specification Writer. He is an active member of CSI and participates in most local Chapter meetings. SEM Architects subscribes to SpecLink, a service that does specification research and provides regular updates regarding best practices, current references, and standards for our product specifications such that they are continuously updated. Other qualified personnel in the office write specification sections that are integrated into the Company's main specification after being reviewed by Mr. Cushman.

Firm Resources:

SEM's office is well equipped to handle projects of this type. In fact, in the past 5-years renovation projects have represented 75% of SEM's work load. They have continuous high-speed broad-band internet capability, and computer stations that run AutoCAD, Microstation, and Revit software. The firm is 3-D Building Information modeling (BIM) capable and trained. SEM has 24-hour Internet access and remote server access when working from locations outside of the office. To date a total of eight projects have been executed in BIM.

Design Quality:

SEM Architects has received awards and honorable mention recognition on a variety of projects including:

- 1/ Astronomy Visitor and Education Center Green Bank, WV
- 2/ Canyon Rim Visitor Center Fayetteville, WV
- 3/ Youth Museum of Southern West Virginia Beckley, WV
- 4/ The Student Life Center, Cedarville University Cedarville, OH
- 5/ Bexley Schools Bexley, OH
- 6/ Fairfield Local Schools Leesburg, OH

Performance: Below is an excerpt from a letter of recommendation from the Project Manager that SEM Architects worked directly with to complete three renovation projects at The Ohio State University Medical Center:

"Since 2009, SEM has completed 3 projects at OSU which I managed. Work has included interior renovations of Lab and Office spaces. The services of SEM were provided in a professional manner, and delivered within the time restraints given. SEM was very attentive to the OSU requirements, the project budget, and construction schedule, which resulted quality projects, delivered on time and under budget."

Mitch Dollery, OSU Project Manager
Facilities Operations and Development

614-292-6817



SEM Architects has provided services for both public and private clients in the greater Ohio Valley and Mid-Atlantic states region for over 50 years. Much of this work has involved educational, government, institutional, commercial, and municipal clientele many of whom have become repeat customers. SEM places a high value on client relationships and quality work and their clients have recognized this.

The Firm's significant commissions represent a wide range of project types including educational facilities, correctional facilities, churches, museums, recreation and cultural centers, health-care centers, laboratories, government buildings, office buildings, and commercial/retail facilities. This range reflects the breadth and versatility of our designers and project managers. Within the firm we have specialists for these project types, as well as code researchers, specifiers, building assessors and exterior envelope technicians that also support project design and documentation.

SEM believes in sustainable site development and design goals whether or not a project is going to be recognized on the Leadership in Energy and Environmental Design (LEED) rating system. This is represented in a building's site orientation and development, fenestration and exterior wall design, interior layout, and materials selection. These objectives are then followed through in the development of project details and product specifications and throughout construction and commissioning.

The Firm has always supported construction administration with our most experienced and capable personnel. This role is presently filled by a Partner with more than 35-years of experience who also serves as the Firm's chief estimator. He, in-turn, supports the project designers and managers in the office. His role starts with a thorough review of the documents and the details prior to a project being submitted for permit and construction.

SEM supports a high level of client commitment and service, regardless of the size of a job. David S. Beeman, President, believes that the firm's success lies not only in its professional capabilities, but in its high level of client service as well. "Over 65% of our staff are registered architects. Each of these architects can successfully manage multiple project simultaneously, thus giving us the ability to capably serve a number of major clients concurrently."

Evidence of the Firm's success is revealed not only in the number of repeat clients that the Firm has served, but in the number of awards they have received for the quality of their work. Project awards have included Gold Citations, and Honorable Mentions in, *American School & University*, magazine, numerous American Institute of Architects awards, as well as interior design awards.

SEM takes budget and schedule management on projects seriously. This helps SEM work successfully with Contractors and Construction Managers in design-build contracts since 1996. The design-build experience has been steady through the years adding to the firm's expertise in this delivery method in addition to the tradition design-bid-build approach. Like construction managed projects, design-build contracts regularly have guaranteed maximum prices (GMPs) that must be strictly adhered to along with mandated project delivery and occupancy dates.

Firm Information:

Partnership formed in 1959
Firm Incorporated in 1981
Vietnam Veteran-Owned

Firm Strengths:

Master Planning
Building Assessments
Forensic Work
Code Research
Feasibility Studies
Estimating
Programming
Design
Detailing
Construction Administration
Sustainability and LEED
Design-Build Experience

Contact:

David S. Beeman, AIA,
LEED AP BD+C
t: 614.794.3100
f: 614.794.3088

Firm Capabilities



www.sem-architects.com

Architectural / Engineering Design Services

The Architects who founded Design Associates Architects -- now S•E•M Architects -- in 1959 in Columbus, Ohio were filled with hope and the idealism. They believed that if they concentrated on their architecture - its bricks, its art, its people - that financial success would naturally follow. Life is never quite that simple, but 50 years later the original tenets for the Firm -- really serving clients, caring for employees, maintaining management continuity, and always striving for quality design -- have proven out.

Founders Ralph Sounik and Ned B. Eller, firm chairman emeritus and the former chairman of the board, grew a prosperous firm with a sterling reputation. S•E•M's creative projects range from residential remodeling, to recreation centers, municipal office buildings, medical office buildings, higher educational buildings, churches, and award-winning schools.

From its Columbus-area location, the firm first established a niche in residential, followed by church design and then school design. As educational design commissions became more numerous, the firm's practice crossed the river into West Virginia, where in 1973 the firm opened an office in Parkersburg, and in 1979 moved to Beckley. All Offices were consolidated in 2003 and relocated from Clintonville, Ohio, to Westerville, Ohio.

In 1965 S•E•M secured its first school design commission for a small county district along the Ohio River. SEM provided architectural services to Wood County Schools early on, one of the first "Better Schools Building Programs" in the State of West Virginia. Achievements in that county and those in Ohio, and the resulting references, provided a successful foundation for the many successful school design commissions that followed.

The Firm continues to expand its client base with diverse projects such as a Nissan dealership, the Bexley Convention Center expansion, Access Health facilities, the Raleigh Regional Cancer Treatment Center, and the National Radio Astronomy Education Center in West Virginia. Operating from a broader base has positioned the firm in a much wider regional market.

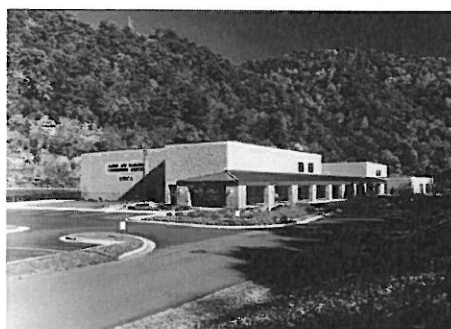
S•E•M's central Ohio projects of note include the Recreation and Fitness Center and the Student Center at Cedarville University, and the award-winning Bexley City Schools as well as numerous church and community center/recreational facility projects. These facilities have received national recognition as award winning projects.



Canyon Rim Visitors Center
New River Gorge, West Virginia



Cowan Recreation Center
Cedarville University
Cedarville, Ohio



L.J. Harless Recreational Center
Gilbert, West Virginia



Stevens Student Center
Cedarville University
Cedarville, Ohio

Clingenpeel/McBrayer & Associates, Inc.

CMA Engineering



Corporate Profile

Clingenpeel/McBrayer & Associates, Inc. (CMA Engineering) is a West Virginia based small business firm, providing services in the areas of HVAC, plumbing, fire protection and electrical engineering. Incorporated in 1986, our firm has always believed that a successful project requires a comprehensive approach. This includes all facets of project development, starting with master planning, working closely with the client, developing the completed construction documents, and working with contractors during the bidding and construction administration phases. However, our depth of expertise goes far beyond the traditional design/bid/build service. CMA Engineering is a proven leader in the design/build delivery method. From developing the performance design criteria for owners to designing the mechanical, electrical and plumbing systems for contractors, CMA has an impressive portfolio of design/build experience.

CMA Engineering maintains its reputation of design and service quality, by keeping informed of the latest innovations and technical trends regarding energy-efficiency and sustainability in mechanical, electrical and plumbing design. CMA is the engineer on record for the design/build team for the new West Virginia Consolidated DEP Office Building, the first LEED certified building in the State. Our staff includes an accredited professional for the Leadership in Environmental and Energy Design (LEED) and we incorporate the most efficient and sustainable "green" designs in all of our projects.

CMA Engineering has provided services on numerous projects of varying size and complexity. Clients include architects, industrial companies, governmental agencies, engineers, contractors, developers and private organizations. With offices strategically located in Charleston and Morgantown, our professional staff can provide clients with exceptional hands-on engineering services for planning, meetings, design, site visits and construction administration without effecting the project's budget.

Present staffing allows CMA to complete work in a timely manner without limiting our ability to perform our ongoing work. We have extensive experience with electrical power design projects of this nature as referenced in our submittal.



824 Cross Lanes Drive Charleston, WV 25313
(304) 343-0316 tel (304) 343-5146 fax



5 Riddle Court, Morgantown, WV 26505
(304) 598-2558 tel (304) 598-2472 fax

M E C H A N I C A L

CMA Engineering experience includes:

Constant Volume Air Handling Systems

Variable Volume Air Handling Systems

Demand Control Ventilation Systems

Natatorium Dehumidification Systems

Building Energy and Management Control Systems

Industrial Ventilation and Exhaust Systems

Steam and Condensate Systems

Cooling Plants and Distribution

Heating Plants and Distribution

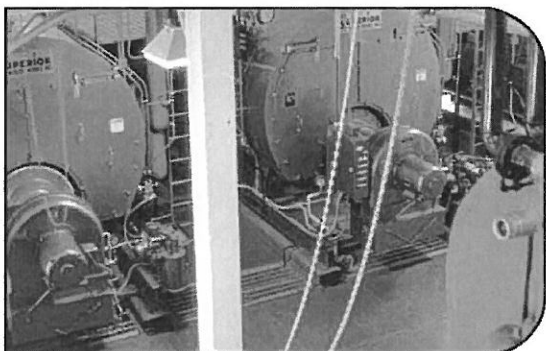
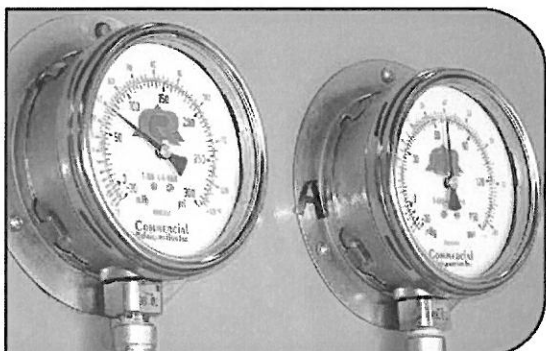
Energy Recovery Systems

Water Source Heat Pump Systems

Low, Medium and High Pressure Air Distribution Systems

Direct Digital, Pneumatic and Hybrid Control Systems

Kitchen Ventilation and Exhaust Systems



(top) Ruby Memorial Hospital—Morgantown, WV
HVAC Exhaust System

(middle) Memorial Ice Rink—South Charleston, WV
Refrigerant Pressure Gages

(bottom) Alderson Federal Correctional Facility—Alderson, WV
Steam Plant



Clingenpeel/McBrayer & Associates, Inc.

824 Cross Lanes Drive
Charleston, West Virginia 25313
(304) 343-0316 tel
(304) 343-5146 fax

5 Riddle Court
Morgantown, West Virginia 26505
(304) 598-2558 tel
(304) 598-2472 fax

www.cma.wv.com

E L E C T R I C A L

CMA Engineering experience includes:

Underground Ducts and Utility Structures

Intrusion Detection

Closed Circuit Television

Cable and Master Antenna Television

Medium Voltage Distribution and Substations

Secondary Voltage Distribution

Engine Generators and Battery Inverters

Transient Voltage Suppression

Interior Lighting

Exterior Lighting

Sports Lighting

Theatrical Lighting

Lighting Control

Uninterruptible Power Supply Systems

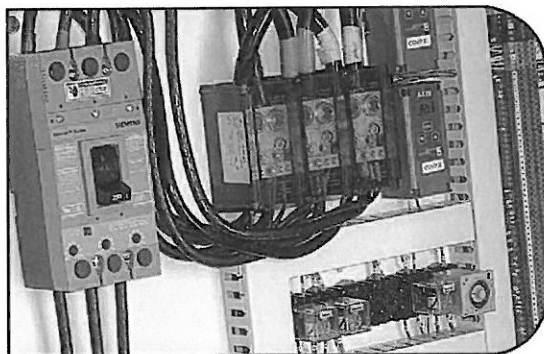
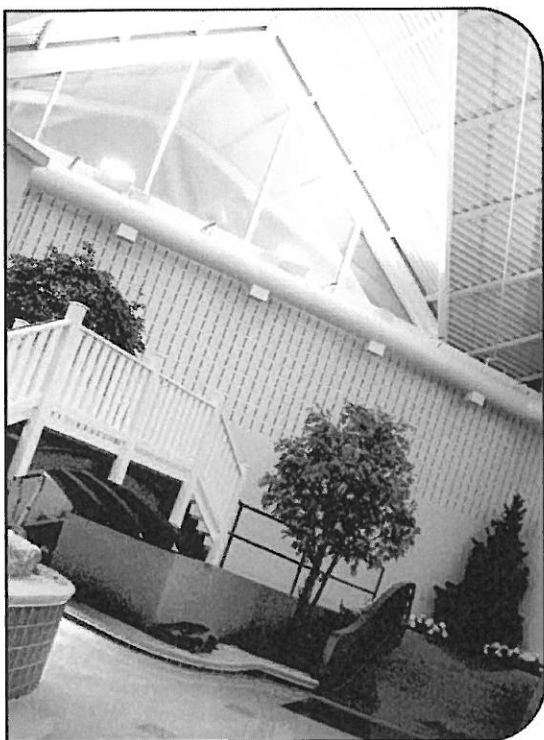
Lightning Protection

Intercommunications Systems

Nurse Call

Voice and Data Systems

Fire Detection Systems



(above) Split Rock Pools—Snowshoe, WV
Indirect Lighting System

(below) Memorial Ice Rink—South Charleston, WV
Chiller Power and Control Panel



Clingenpeel/McBrayer & Associates, Inc.

824 Cross Lanes Drive
Charleston, West Virginia 25313
(304) 343-0316 tel
(304) 343-5146 fax

5 Riddle Court
Morgantown, West Virginia 26505
(304) 598-2558 tel
(304) 598-2472 fax

www.cma.wv.com

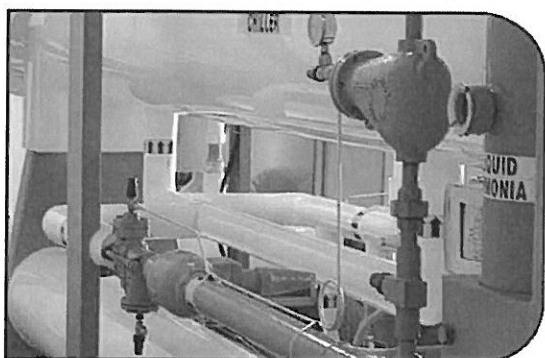
PLUMBING & PIPING

CMA Engineering experience includes:

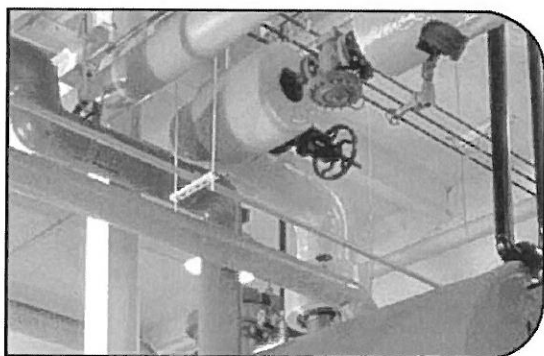
Sanitary Sewer Systems
Storm Sewer Systems
Natural Gas Distribution
LP Gas Distribution
Fuel-Oil Distribution
Compressed Air Systems
Vacuum Systems
Chemical Waste Systems
Process Water Systems
Deionized Water Systems
Domestic Water Systems
Helium Distribution Systems
Domestic Water Pumping Systems
Sewage Pumping Systems
Water Heating
Automatic Fire Sprinkler Systems
Standpipe Systems
Fire Pumps, Storage Tanks, Service Mains
Medical Gas Systems



(top) Split Rock Pools—Snowshoe, WV
Piping & Pump Room



(middle) Memorial Ice Rink—South Charleston, WV
Piping & Chilling



(bottom) Alderson Federal Correctional Facility—Alderson, WV
Steam Piping

CMA
ENGINEERING

Clingenpeel/McBrayer & Associates, Inc.

824 Cross Lanes Drive
Charleston, West Virginia 25313
(304) 343-0316 tel
(304) 343-5146 fax

5 Riddle Court
Morgantown, West Virginia 26505
(304) 598-2558 tel
(304) 598-2472 fax

www.cma.wv.com

Roy E. Shrewsbury, II, PS, CFM

President

Richard S. Triggs, PE, PS

CEO

Lauren Adkins

Project Engineer

James Mitchell

Survey Manager

Brandon Epling

Survey Crew Chief

Projects

Little General Stores, Inc.

Southgate Estates

West Ridge Subdivision

Glade Springs Resort

Winterplace Ski Resort

Highland Cellular Towers

Country Inn & Suites

Hylton Plaza

Applebee's Restaurant

Outback Steakhouse

Lake Stephens Golfcourse

North Gate Business Park

Nell Jean Square

Raleigh County Commission

Raleigh County Memorial Airport

Raleigh General Hospital

Crown American, New Cinema

City of Beckley, Big Project

Boy Scouts Bechtel Reserve

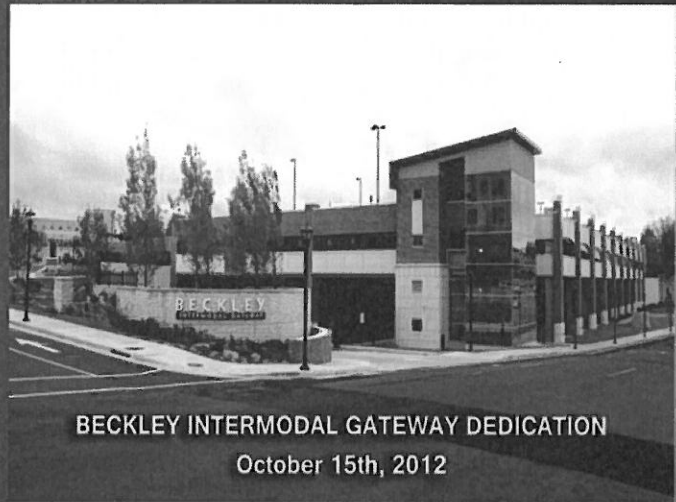
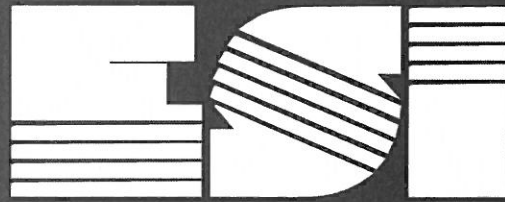
Southern WV Industrial Park

Burger King

Dunkin Donut

Gateway Commons

Cooper Land Development



BECKLEY INTERMODAL GATEWAY DEDICATION

October 15th, 2012

**ENGINEERS
SURVEYORS
PLANNERS**

Project Types

**SUBDIVISIONS - RESIDENTIAL
COMMERCIAL - INDUSTRIAL
EDUCATIONAL - MUNICIPAL
RECREATIONAL - MEDICAL
MULTI-FAMILY**

**ESI Services,
Inc.**

119 Appalachian Drive

Beckley, WV 25801

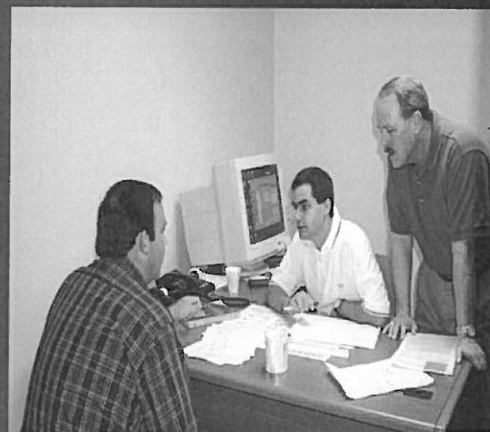
TEL: 304-255-5296

www.esiww.com



Surveying

Mortgage
Boundary
Parcels
GPS/GIS
Expert Witness
Subdivisions
Construction Layout
Topographic Mapping



Planning

Housing Development
Site and Utility Analysis
Land Use Planning
Building Evaluation
Project Budgeting
Value Engineering
ADA Compliance

The ESI Team offers you:

A Single Source of Responsibility

A Quality Project from Conception to Completion

A Versatile and Wide Range of Talent and Expertise

SURVEYORS ENGINEERS PLANNERS

We are committed to:

Listening to the Client

Offering solutions which Enhance the Client's ideas

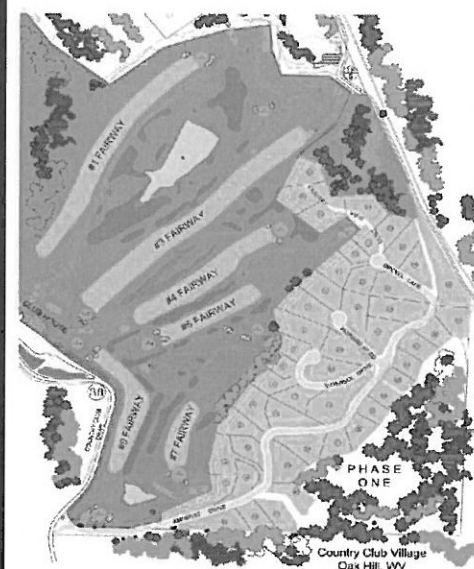
Successfully Completing the Project on Time and in Budget

Maintaining our reputation for looking after the best interests of the Client

Utilizing the Clients' resources in the most efficient manner possible

Engineering

Civil
Environmental
Mechanical
Electrical
Storm Water



SHIRK & O'DONOVAN CONSULTING ENGINEERS, INCORPORATED

370 East Wilson Bridge Road
Worthington, Ohio 43085-2321
614-436-6465 TEL
www.shirkodonovan.com

Professional Structural Engineering Consulting Services

Shirk & O'Donovan Consulting Engineers, Incorporated offers a full range of professional consulting structural engineering services from schematic design through construction administration. The firm was founded in 1989 with a vision of unparalleled service as a provider of structural engineering design services. Today that goal still commands the primary attention for the full extent of the client base, without regard to the size of the project or the size of the client.

Solutions

The company provides cost-effective engineering solutions for a wide range of projects. Professional services offered include complete preparation of structural construction drawings, specification writing, cost estimating and value engineering for both new construction, the rehabilitation of existing facilities and construction administration. We believe common solutions will not fit all projects, and therefore our licensed engineers provide innovative designs tailored to each specific project. The staff is committed to a team approach to your project. We review and coordinate the work of the entire design team, including the work of the architect and mechanical, electrical and civil engineers.

Delivery

The prompt delivery of completed projects and strict adherence to project schedules continue as the hallmark traits of the firm. We believe that schedule is the key component of a successful project. Our company has long been recognized for its ability to fulfill its commitments and to meet the project schedule. The company's dedicated team puts forth the effort that only a quality professional organization can provide, an effort that is mandatory in today's construction environment.

Multi-Faceted

Shirk & O'Donovan Consulting Engineers, Incorporated employs dedicated professionals with over one hundred twenty years of combined working experience in the design of concrete, masonry, steel, aluminum and wood structures. The company possesses a strong background in the structural design of educational facilities, commercial, health care, nursing/assisted living facilities, retail, religious, industrial, hotel, residential, EMS and fire stations, recreational facilities, water and wastewater treatment facilities. Design expertise extends across projects whose construction costs range from a few hundred thousand dollars to over \$50 million.

Philosophy

Shirk & O'Donovan Consulting Engineers, Incorporated understands the importance of team-building, and its staff is committed to working with architects, other consulting engineers, owners, construction managers and contractors to ensure that the owner receives the building that best suits their need. It is the goal of the company to produce cost-effective and buildable designs that solve the needs of each project, and each project's owner, on a case-by-case basis.



Firm Introduction and Project Approach

Since incorporation as an Engineering firm, **Latta Technical Services, Inc. (LattaTech)** in the State of Texas on February 29, 1988, has oriented their services toward high quality engineering of electronic security systems for correctional, justice and law enforcement facilities and they thrive on customer service. While they have many Architects as clients, they also have several government organizations that contract with LattaTech directly as a prime consultant. Several of these government organizations have sole sourced LattaTech on new projects after completion of previous work or with a reference from others in order to insure that their critical systems are designed with the overall operation and maintenance of the correctional, justice and law enforcement facilities in mind.

- **LattaTech** provides unequal knowledge and experience in all aspects of security operations and security system design and engineering.
- **LattaTech** is one of the leading electronic security systems engineering firm in the nation having completed designs for over 600 detention and correctional facility projects over 25 years. During 25 years, they have seen many different manufacturers and have been able to provide recommendations and solutions to retrofit the systems that are not working with the management style of the client.
- **LattaTech** has a customer service attitude that allows them to provide design solutions only after listening to their Client's needs, providing insight into how others have addressed similar solutions and educated staff to the benefits and risks of proposed solutions.
- **LattaTech** is staffed by engineers that do engineering work. They do not rely on system integrators, contractors and/or vendors for designs. Their designs are **non-proprietary**, to insure reliable/expandable systems that are fully engineered, technologically current and supported by programs for training and service agreements that address the specific client needs.
- **LattaTech** has had the privilege of working with numerous professionals from administration to operations, maintenance and training related to detention and corrections, which allows you to benefit from our experience with how other facilities operate.
- **LattaTech** is sensitive to LEED principles seeking opportunities for recycling of equipment, devices, wiring etc.

LattaTech designs and engineers electronic security systems for all building types. They provide a strong engineering approach to system design and documentation that results in systems that meet or exceed client expectations.

For detention and correctional facilities, the security control systems must meet high reliability levels with minimum maintenance requirements. Thus industrial control and monitoring systems are often used to meet the needs of the building type for their reliability and durability.

The methodology outlined below has been used successfully on similar projects to perform a electronic security system design and construction administration. It is designed to gain an understanding of operational needs, gather technical information, and develop solutions that meet or exceed expectations, and support budgeting, funding and implementation.

- LattaTech will first seek to confirm the previous work and update the work to meet the current scope of work desired by the Facility. The mission of any security system is to provide staff with the tools necessary to maintain a safe, secure and efficient facility. LattaTech's efforts will be directed to gain a full understanding of the challenges faced by operational and maintenance staff as they relate to the security control systems.
- Develop and gain an understanding of the functionality of the present system. To obtain such an understanding we will conduct initial research into the existing documentation and sources for the existing system and meet with the operations staff to discuss present operations.
- Identify what work has to be done to bring the system into compliance with present codes and standards.
- Define the limits of approaches that can be pursued and assess the technical condition of the existing systems. This task includes identification of existing assets, those items that remains in operable condition and are serviceable, and for which replacement parts are available. Existing assets can be used in the budgeting process to allow flexibility in maintaining a budget for the work. Even if current parts are replaced, the removed parts may be used for replacement part stock.
- Understand present operation in order for the security systems to support the operations of the facility. As a part of any retrofit project, it behooves the Agency to evaluate the way the detention facility is being operated. Any functionality enhancements that can be made to increase the safety, security and efficiency of operations can usually be accomplished for minimum costs during system replacement.
- Identify phasing of retrofit work, which can present significant challenges for the operational staff and the contractor. The cost of the work can vary 20% to 30% based on the phasing of the work. The factors associated with contractor working efficiency in an occupied facility are greatly influenced by the level of access that is provided by the detention center operations. The easier access and support provided by the staff, the less loss time and risk on the part of the contractor and thus the lowest cost.
- Explore options in the event of a failure of part of the existing systems, an interim solution for maintaining the existing systems during the design and construction phases of a retrofit will be evaluated. Such an evaluation will seek to identify alternative operations and equipment that may be used to maintain facility operations in the interim period.

With regards to implementing the electronic security system design, LattaTech is known for producing clear, definitive documentation that can be understood by contractors, design professionals and users. This level of documentation reduces the number of questions during construction and creates an environment for efficient execution of the work.

LattaTech's approach to the design of security and technology systems is to support the operational needs of the facility. They look for systems that will achieve the best value by providing the security and technology required by the physical characteristics of the building and the operational practices of the facility. Designs will use high quality materials and equipment incorporated into innovative, technologically current, easy-to-use systems. The design will seek to provide an efficient operating, safe and maintainable facility.

Managing the construction of today's detention and correctional facilities is a challenge to both the novice and the veteran. Security systems in these facilities require a special knowledge of the materials, systems and scheduling constraints. LattaTech will assist in the description of work for the security contractors, assist in the evaluation of contractor bids, and meet with the security contractor project management to develop detailed schedules. LattaTech will monitor all submittal activities, periodically observe work in progress and verify security contractor progress, and coordinate close out procedures including acceptance testing, training and final documentation.

LattaTech's philosophy is to work closely with the Owner to insure seamless integration of the new security system. They serve to both educate the client and be educated by the client in order to together determine the best systems and technology available for the facility. The products and services of the design and construction teams are better as a result of the team participation of Latta Technical Services, Inc.

The mission of any security system is to provide the detention staff with the tools necessary to maintain a safe, secure and efficient facility. LattaTech's efforts will be directed to gain a full understanding of the challenges faced by the operational and maintenance staff as they relate to the security control systems.



Education

Bachelor of Architecture, Ohio
 University, Athens, Ohio

Work History

Years with SEM Architects: 37

Prior Experience: 4

Registrations

Registered Architect, Virginia,
 Maryland, West Virginia,
 Pennsylvania, Ohio; NCARB

Leadership in Energy &
 Environmental Design
 (LEED), 2004

Professional Affiliations

American Institute of Architects
 (AIA)

U.S. Green Building Council
 (USGBC)

DAVID S. BEEMAN, AIA, LEED BD+C

President / Principal-in-Charge

Relevant Project Experience

Mr. Beeman has over 40 years of professional experience in the field of architecture. Mr. Beeman has designed and developed projects in states throughout the Mid-Atlantic and the Midwestern regions of the country. Most recent work includes the development of corporate, retail, educational, and municipal work. Mr. Beeman has been responsible for managing and coordinating projects ranging in size from 1-50M dollars.

Selected Project Experience

- **National Guard Readiness Centers, Lewisburg and Summersville, West Virginia:** The design of two new Readiness Centers for the WV National Guard. Each facility was developed as a shared use facility for the communities served, and the Summersville facility was additionally designed to accommodate trade shows and conferences. Each facility was equipped with classrooms, a gymnasium, locker rooms and other spaces for training. Separate entries for the public were provided to keep the military portion of the facilities secure.
- **Federal Correctional Institution, Beckley, West Virginia:** SEM provided Master planning and program-based design for this minimum and medium security facility for over 1,500 inmates. The facility is owned by the U.S. Bureau of Prisons with spaces including educational, recreational and training facilities. Extensive project management, scheduling and tracking, functional programming and coordination with government protocols were central to the success of this project.
- **Canyon Rim Visitor's Center, National Park Service, Fayetteville, West Virginia:** The Canyon Rim Visitor's Center developed for The National Park Service overlooking the New River Gorge was designed to both blend with and highlight its natural surroundings. Its organic form accents the land's natural contours, rock outcroppings, and panoramic views of the Steel Arch Bridge, New River, and Gorge below. Cantilevered exterior viewing decks are stepped and integrated with the natural cantilevered rock outcroppings below. *This project won an AIA Award.*
- **Washington Township Recreation Center, Centerville, Ohio:** SEM was the Architect for a new 13,500 sf addition to an existing 50,000 sf building with a gymnasium and a natatorium. The new wrap-around addition includes an auxiliary gymnasium, a weightroom/fitness center, an overhead running track, and a large climbing wall on one side of the atrium that joins the addition to the existing building and provides a new entrance/exit point for the Center.
- **Westerville Electric Division Office and Maintenance Garage Expansion, Westerville, Ohio:** The design of a new facility for the Westerville Electric Division involved developing a new 11,400 sq. ft. administrative/operation center and a 5,000 sq. ft. 5-bay truck loading dock area addition to an existing maintenance building on the same site. Attractive public access areas, a spacious lobby, and a service counter allow the Division to interface with the public effectively while still maintaining security. The new operation center also provides a state-of-the-art computerized management system to better service customers.



Education

Master of Architecture, 1984,
 Washington University,
 St. Louis, MO

BFA, Bachelor of Fine Arts,
 Theatre Design 1978, The
 University of Connecticut,
 Storrs, CT

Work History

Years with SEM Architects: 2

Prior Experience: 27

Registrations

Registered Architect, Connecticut,
 1988

Leadership in Energy &
 Environmental Design
 (LEED), 2002

Professional Affiliations

American Institute of Architects
 (AIA)

The League of Historic American
 Theatres (LHAT)

U.S. Green Building Council
 (USGBC)

**Project completed while with
 another firm*

LAURA G. PIERSALL, AIA, LEED BD+C

Project Architect / Manager

Relevant Project Experience

Ms. Piersall has over 25 years of professional experience in the field of architecture. Ms. Piersall has designed and developed projects for Cities and Counties in the Midwest and on the East Coast. Most recent work includes the development of performing arts facilities, educational, historical and municipal work. Ms. Piersall has been responsible for design, documentation, coordination, construction administration and project closeout on projects ranging in size from \$1-33M.

Selected Project Experience

- **Montgomery County Juvenile Justice Center and Master Plan*, Dayton, OH:** Project Architect and Manager for a 33M dollar new Justice Center with Courtrooms, Intervention Offices, Health Care Services, Ohio Charter School and Juvenile Detention facilities. The Justice Center is the central focal point of a comprehensive Master Plan that was simultaneously developed for the Montgomery County Government Center campus in downtown Dayton.
- **Muskingum County Juvenile Justice Center*, Zanesville, OH:** Project Architect for a new 8M dollar Juvenile Justice Center on the outskirts of the City. Project included new County Courtrooms, and Judge's, Magistrates, Probation and Social Service Agency offices that are also accessible to the public. In addition, the project included secure youth sleeping, educational, and both indoor and outdoor recreational facilities.
- **South Central Regional Juvenile Detention Center*, Ross County, Chillicothe, Ohio:** Project Architect for a new 6M dollar Juvenile Detention Center on the outskirts of the City that served multiple Counties in Southeastern Ohio. Project included secure youth sleeping, educational, and both indoor and outdoor recreational facilities.
- **Franklin County Veterans Memorial Renovation*, Columbus, OH:** Project Architect on the \$6 million dollar renovation of the public assembly building that serves as the headquarters of the Franklin County Veteran's Admin. Project included renovation of a 4,000-seat performing arts theatre and an exhibition hall. The facility, built in 1955, required extensive mechanical and electrical work, finish upgrades and ADA/Code compliance work.
- **Central College Presbyterian Church Academy and Master Plan, Westerville, Ohio:** SEM has completed several projects for the church complex over the past 25 years. The latest project involved a master plan, program, and design for the incorporation of a new 6-8 Academy Middle School within the footprint of the existing church facility complex. Middle School facilities consist of classrooms, a science lab, and a dedicated dining facility. The Middle School will make use of the existing historic chapel, gymnasium, art, and music rooms within the existing building complex.



Education

Bachelor of Architecture,
Auburn University
Auburn, Alabama

Work History

Years with SEM Architects: 20
Prior Experience: 5

Registrations

Registered Architect, Ohio, West
Virginia, Virginia; NCARB

Professional Affiliations

American Institute of Architects

GREGORY D. ELLER, AIA

Architect / Designer

Relevant Project Experience

Mr. Eller has over 25 years of professional experience in the field of architecture. Mr. Eller has designed and developed several award-winning projects in states throughout the Mid-Atlantic and the Midwestern regions of the country. Most recent work includes the development of ecclesiastical, educational, and institutional work. Mr. Eller is an experienced programmer and an informed listener. Mr. Eller approaches each new project as a unique opportunity for creativity and fresh ideas.

Selected Project Experience

- **National Guard Readiness Centers, Lewisburg and Summersville, West Virginia:** The design of two new Readiness Centers for the WV National Guard. Each facility was developed as a shared use facility for the communities served, and the Summersville facility was additionally designed to accommodate trade shows and conferences. Each facility was equipped with classrooms, a gymnasium, locker rooms and other secure spaces for training. Separate entries for the public were provided to keep the military portion of the facilities secure.
- **Federal Correctional Institution, Beckley, West Virginia:** SEM provided Master planning and program-based design for this minimum and medium security facility for over 1,500 inmates. The facility is owned by the U.S. Bureau of Prisons with spaces including educational, recreational and training facilities. Extensive project management, scheduling and tracking, functional programming and coordination with government protocols were central to the success of this project.
- **L.J. Harless Community Recreational Center, Gilbert, West Virginia:** Development of a recreational and community center designed to provide programs for all ages including children, adults, and senior citizens. Building features a natatorium, a movie theatre, recreational space, and a learning resource center. Outdoor spaces include tennis courts, a basketball court, band pavilion, plaza, playground, and other city park amenities.
- **Canyon Rim Visitor's Center, National Park Service, Fayetteville, West Virginia:** The Canyon Rim Visitor's Center developed for The National Park Service overlooking the New River Gorge was designed to both blend with and highlight its natural surroundings. Its organic form accents the land's natural contours, rock outcroppings, and panoramic views of the Steel Arch Bridge, New River, and Gorge below. Cantilevered exterior viewing decks are stepped and integrated with the natural cantilevered rock outcroppings below. These offer breathtaking views of the site, thrusting visitors into the environment, and allowing them to experience the rugged beauty of the gorge firsthand. *This project won an AIA Award.*



Education

Bachelor of Architecture,
 The Ohio State University
 Columbus, Ohio

Associate of Science,
 Construction Technology
 HVCC, Troy, New York

Work History

Years with SEM Architects: 28

Prior Experience: 9

Registrations

Registered Architect, Ohio;
 NCARB

Professional Affiliations

American Institute of Architects
 (AIA)

Constructions Specifications
 Institute (CSI)

ROBERT C. CUSHMAN, AIA, CSI

Construction Administrator / Specifications Writer

Relevant Project Experience

Mr. Cushman has over 35 years of professional experience in the field of architecture. He has developed projects in states throughout the Mid-Atlantic and the Midwestern regions of the country. Most recent work includes the development of corporate, retail, educational, and municipal work. Mr. Cushman is SEM's specification writer, and an active member of the Constructions Specifications Institute. Mr. Cushman has administered project during construction ranging from \$5-40M in size.

Selected Project Experience

- **National Guard Readiness Centers, Lewisburg and Summersville, West Virginia:** The design of two new Readiness Centers for the WV National Guard. Each facility was developed as a shared use facility for the communities served, and the Summersville facility was additionally designed to accommodate trade shows and conferences. Each facility was equipped with classrooms, a gymnasium, locker rooms and other secure spaces for training. Separate entries for the public were provided to keep the military portion of the facilities secure.
- **Cowan Recreation and Fitness Center, Cedarville University, Cedarville, Ohio:** This new 88,000 sf complex is an addition to the existing 54,000 so Field House. The facility supports track and field events, and offers basketball/volleyball/tennis courts and a soccer field. The new Fitness Center features an aerobics studio, weight room, cardiovascular training circuit areas, climbing wall, racquetball courts, and athletic training rooms. The climbing wall is a feature of the two-story atrium space. The new campus Health Center provides the latest exam and treatment rooms.
- **Washington Township Recreation Center, Centerville, Ohio:** SEM was the Architect for a new 13,500 sf addition to an existing 50,000 sf building with a gymnasium and a natatorium. The new wrap-around addition includes an auxiliary gymnasium, a weightroom/fitness center, an overhead running track, and a large climbing wall on one side of the atrium that joins the addition to the existing building and provides a new entrance/exit point for the Center.
- **Westerville Electric Division Office and Maintenance Garage Expansion, Westerville, Ohio:** The design of a new facility for the Westerville Electric Division involved developing a new 11,400 sq. ft. administrative/operation center and a 5,000 sq. ft. 5-bay truck loading dock area addition to an existing maintenance building on the same site. Attractive public access areas, a spacious lobby, and a service counter allow the Division to interface with the public effectively while still maintaining security. The new operation center also provides a state-of-the-art computerized management system to better service customers.
- **Dasco Office Renovation and New Office/Warehouse Building, Westerville, Ohio:** A historic residence provided design direction for the complex that includes a new 15,500 sq. ft. office / warehouse building and a new wood-framed multi-vehicle garage. The renovation of the farmhouse was designed as a gatehouse and guest residence facility for consultants, board members and other company visitors. The restoration work on the historic structure included cleaning and repointing the exterior masonry. Exterior pergolas were added to both sides, the site was regraded, and landscaping was added.



Education

Bachelor of Architecture
 Coursework,
 Columbus State University
 Columbus, Ohio

Work History

Years with SEM Architects: 7
 Prior Experience: 29

Registrations

Registration in progress, Ohio

Professional Affiliations

Associate Member of the American
 Institute of Architects (AIA)

**Project completed while with
 another firm*

Client Oriented and
 Project Focused

DANA G. CREASEY, AIA

Intern Architect / Senior Project Coordinator

Relevant Project Experience

Mr. Creasey has over 30 years of professional experience in the field of architecture. He has developed retail, municipal, educational, commercial, and military projects in states throughout the Mid-Atlantic and the Midwestern regions of the country. Most recent work includes the development of retail, educational, and municipal work. Mr. Creasey is proficient in a wide variety of computer programs and software applications including Revit software.

Selected Project Experience

- **Washington Township Recreation Center, Centerville, Ohio:** SEM was the Architect for a new 13,500 sf addition to an existing 50,000 sf building with a gymnasium and a natatorium. The new wrap-around addition includes an auxiliary gymnasium, a weightroom/fitness center, an overhead running track, and a large climbing wall on one side of the atrium that joins the addition to the existing building and provides a new entrance/exit point for the Center.
- **Beckley & Raleigh County Convention Center, Beckley, West Virginia:** Development of Additions and Renovations to the Beckley/Raleigh County Convention Center that was comprised of two projects over three years. The first project was a 10,725 sf banquet facility addition with retractable partitions. The second addition provided an additional space of 8,265 sf that can be further subdivided. Work included site improvements, new main entrance, lobby, public toilet facilities and improvements to the existing food preparation and dining hall and serving facilities.
- **Mansfield Correctional Institution*, Mansfield, Ohio:** Development of a new minimum to maximum security correctional institution for approximately 2,500 inmates. Master plan was developed for maximum visual observation and security through clear sightlines to all building entrances and exits.
- **Franklin County Pre-release Center*, Columbus, Ohio:** Development of a fully self-contained minimum security pre-release center with a high ratio of staff to inmates. This modern facility features a residential feel with both indoors and outdoor recreational opportunities, courtyards and a translucent roof covering at the visitor's entrance.
- **Champion Middle School, Columbus City Schools, Columbus, Ohio:** This project involved the demolition of a 2-story elementary school to make way for the construction of a new 3-story 75,000sf Middle School. The overall project cost was approximately \$11M with associated site work, bus drop-off and parking. Champion Middle School related site development work required compliance with City of Columbus traffic, utility and zoning requirements including landscaping, traffic flow, parking, and storm drainage.
- **Adventure Park Project, Westerville Parks & Recreation, Westerville, OH:** Project Coordinator for the design of a new Adventure Park building consisting of a shelter with restrooms where the back wall of the structure also serves as the retaining wall for a new roundabout. The top of the structure was designed to be an observation deck with an overhanging pergola structure. Materials include stone and heavy timber construction.

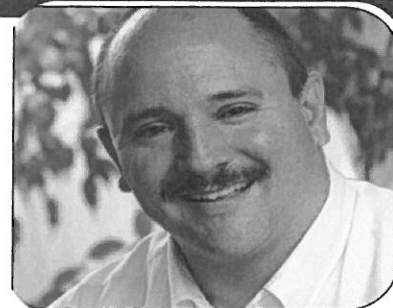
Timothy L. Cox, P.E. , CBCP

President

Mechanical Engineer

(304) 598-2558

tcox@cmawv.com



Education

University of Colorado

Boulder, Colorado

Bachelor of Science in Mechanical Engineering

Registrations/Professional Affiliations

Registered Professional Engineer in WV, VA, MD, KY

Association of Energy Engineers-CBCP

CPD (Certified in Plumbing Engineering)

Member of ASHRAE

American Society of Plumbing Engineers

National Association of Fire Protection Engineers

WV Society of Healthcare Engineers

WV Chapter of A.I.A.

Experience

Timothy Cox, President and Senior Mechanical Engineer of CMA Engineering, brings 30 years of mechanical and plumbing design experience to our clients. Timothy is a Certified Building Commissioning Professional through Association of Energy Engineers.

Project Experience

Design/Build-Criteria Development

Morgantown Events Center

West Virginia University Intermodal Parking

Marshall University Parking Facility

Yeager Airport Facility

West Virginia University-Open End Contract since 1999

Coliseum Life Safety Renovations

New Soccer Stadium

New Wrestling Training Facility

Engineering Science Building Addition & Renovations

Military Experience

New Moorefield Readiness Center

New Elkins Readiness Center

Wheeling National Guard Helicopter Facility-

Infra-red Heating System Replacement

Mylan Pharmaceuticals, Morgantown, WV

Various projects including HVAC plumbing, fire sprinkler and controls for new North Plant expansion, office building, fluid bed addition, parking garage and weighing and packaging

Davis Memorial Hospital

New 70,000sf addition

New Cancer Center

5 Riddle Court, Morgantown, WV 26505

(304) 598-2558 tel (304) 598-2472 fax

www.cmawv.com

Daniel L. Ellars, P.E., LEED AP BD+C

**Principal
Electrical Engineer**
(304) 343-0316
dellars@cmawv.com



Education

West Virginia University Institute of Technology
Montgomery, WV
Bachelor of Science in Electrical Engineering

West Virginia State University
Institute, WV
Bachelor of Science in Business Administration

Registrations/Professional Affiliations

Registered Professional Engineer in WV, PA
Leadership in Energy & Environmental Design-
Accredited Professional-Building Design and Construction
U.S. Green Building Council
Member of ASHRAE
National Fire Protection Association
Institute of Electrical & Electronics Engineers
WV Chapter of A.I.A.

Experience

Daniel Ellars, senior electrical engineer for CMA Engineering, brings 23 years of electrical design and project management experience to our clients.

Project Experience

Recreational Facilities
Summit Bechtel National Scout Reserve
Canaan Valley Ski Resort

Educational Experience

New Talcott Elementary School
New Fairdale Middle School
Chamberlain Elementary-Elevator Addition

Military Experience

New Moorefield Readiness Center
New Elkins Readiness Center
St. Albans Armory-Addition and Renovations
Gassaway Armory-Addition and Renovations

WV Department of Transportation

New District 1 Administration Building
New District 8 Administration Building

Healthcare Experience

Roane General Hospital-Renovations to reception area and offices and new emergency generator
Appalachian Regional Hospital-Renovations
VA Hospital, Clarksburg, WV-Renovations to the second floor laboratory space, northwest entrance and southwest entrance

824 Cross Lanes Drive Charleston, WV 25313

(304) 343-0316 tel (304) 343-5146 fax

www.cmawv.com

Matthew C. Corathers, P.E.

Mechanical Engineer
(304) 598-2558
mcorathers@cmawv.com



Education

West Virginia University
Morgantown, WV
Bachelor of Science in Mechanical Engineering

Registrations/Professional Affiliations

Registered Professional Engineer in WV
Member of ASHRAE
WV Society of Healthcare Engineers

Experience

Matthew Corathers, mechanical engineer, joined CMA's professional staff in 2008.

Project Experience

West Virginia University
New two-story Child Care Facility
Engineering Science Building - Laboratory Renovations

Hospital Experience

Davis Memorial Hospital-New Addition
Monongalia General Hospital-Renovations to IT Workroom Cooling
United Hospital Center-New MRI facility
VA Hospital, Clarksburg, WV-Renovations to Dental Lab
Mercer County Nursing Home-Addition

Court Houses

Randolph County Courthouse-Mechanical design for completion of two-story addition and modifications of the existing second floor to be used by the Family Court
Monongalia County Family Court-Renovations

Educational Facilities

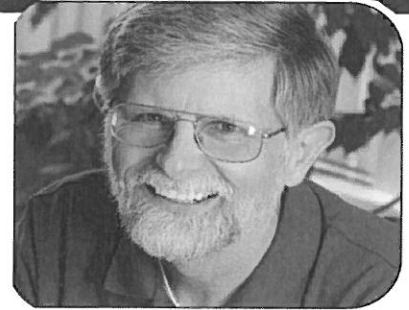
Harrison County Schools-Fire Alarm replacement at Robert C. Byrd High School, Nutter Fort Elementary and Lost Creek Elementary

James A. Kerns

Mechanical/Electrical Designer

(304) 343-0316

jakerns@cmawv.com



Education

West Virginia State College

Institute, WV

Bachelor of Science in Industrial Technology/Building Construction

Registrations/Professional Affiliations

Member of ASHRAE

Experience

James A. Kerns has over 35 years of experience in mechanical and electrical engineering design. He has been responsible for design projects in the educational, commercial and health care fields.

Project Experience

Kanawha County Schools

Nitro High School-Electrical renovations to Commons Area

East Bank Middle School- HVAC renovations

George Washington High School-Classroom additions, HVAC and electrical renovations

Point Harmony Elementary-Addition

Overbrook Elementary-Classroom Additions

Chamberlain Elementary-Elevator Addition

Concord University

University Pointe-new Alumni Center and Chapel

Fire Sprinkler Upgrades to Dormitories

Chiller Renovations to Alexander Art Center

Yeager Airport

New Parking Garages

New Emergency Generator

Electrical Upgrades

Fire Alarm System Upgrade

Security Upgrade

U.S. Postal Service

Open End Contract Since 1993, which encompasses numerous Post Office Renovations, new Post Offices, and new Postal Maintenance Facilities. Mr. Kerns has been Project Manager for over 65 projects for the U.S. Postal Service.

824 Cross Lanes Drive Charleston, WV 25313

(304) 343-0316 tel (304) 343-5146 fax

www.cmawv.com

Larry A. Weese

Mechanical/Plumbing Designer

(304) 343-0316

lweesex@cmawv.com



Education

West Virginia University
Morgantown, WV
Master of Science, Bachelor of Science-
Division of Forestry

Professional Development

Various seminars and technical sessions

Experience

Larry Weese brings 20 years of mechanical and plumbing design and project management experience to our clients.

Project Experience

WV Department of Health and Human Resources
Office of Chief Medical Examiner, Charleston
DHHR Facility in Mingo County

WV Department of Highways

New District a Administration Building
New District 8 Administration Building

Emergency Response Facilities

Randolph County 911-New Facility
Mason County 911-New Facility
Raleigh County 911-New Facility
Orchard Manor Fire Station-New Facility

Industrial Experience

Standard Laboratories-Laboratory Addition
Dow Process Control-New Facility
Diamond Electric-Expansion

Commercial Experience

Bobcat of Advantage Valley-New Facility
Allegheny Springs Restaurant

824 Cross Lanes Drive Charleston, WV 25313

(304) 343-0316 tel (304) 343-5146 fax

www.cmawv.com

Richard S. Triggs

Experience 07/01/07 to Present **ESIWV, PLLC/ESI Services, Inc.** Beckley, WV

Principal Member/CEO

- Managing Day to Day Operations of the Company

2005 to August, 2007 **Triggs & Associates, PLLC** Charleston, WV

Owner, Principal in Charge

- Civil Engineering Services: Water, Sewer, Site Design, etc.

2005 to August, 2007 **Upper Kanawha Valley Dev. Corp.** Charleston WV

Manager of Engineering

- Civil Engineering Services: Water, Sewer, Site Design, etc.

2003 to 2005 **Byer, Harmon & Johnson Engineering** Lewisburg, WV

Owner, Principal in Charge

- Civil Engineering Services: Water, Sewer, Site Design, etc.

1998 to 2005 **AE Associates Ltd.** Charleston, WV

Vice President of Engineering Services

- Civil Engineering Services: Water, Sewer, Site Design, etc.
- Highway & Bridge Design
- Contract Negotiations
- Project Management

1991 to 1998 **Kimberly Industries** Charleston, WV

Manager of Engineering

- Heavy Highway Construction
- Site Development
- Mine Reclamation
- Designed and Constructed Northgate Business Park, Charleston, WV

Education June, 1975 **Virginia Polytechnic Institute** Blacksburg, VA

Bachelor of Science, Mining Engineering (Co-op Program)

Certifications **Professional Engineer**

- West Virginia, 1975

Professional Surveyor

- West Virginia, 1995

Board Appointments 2008 to Present **Beckley Sanitary Board** Beckley, WV

Chairman Stormwater Advisory Board

- Advise the Management of the Beckley Sanitary Board on Stormwater related issues.

2007 to 2012 **Raleigh County Commission** Beckley, WV

Code Enforcement Plan Review

- Plan Review for Commercial Construction in Raleigh County for Code compliance.

Membership

ASCE
WVSPS

Roy E. Shrewsbury, II

Experience

2007 to Present **ESIWV, PLLC/ESI Services, Inc.** Beckley, WV

Principal Member/President

- Engineering Services: Water, Sewer, Site Design, Storm Water, etc.
- Surveying Services: Boundary, Sub Divisions and GPS Control Networks

2000 to 2007 **ESI, Inc.** Beckley, WV

President

- Engineering Services: Water, Sewer, Site Design, Storm Water, etc.
- Surveying Services: Boundary, Sub Divisions and GPS Control Networks

1976 to 2000 **Engineering Services, Inc.** Beckley, WV

President

- Engineering Services: Water, Sewer, Site Design, Storm Water, etc.
- Surveying Services: Boundary, Sub Divisions and GPS Control Networks

1982 to 1989 **Professional Engineering & Surveying, Inc.** Beckley, WV

Vice President

- Highway Engineering and Surveying Services

Education

December, 1970 **Mountain State University** Beckley, WV
Business Management Program

Certifications

Professional Surveyor

- West Virginia, 1979
- Virginia, 1988
- North Carolina, 2001

General Building Contractor

- West Virginia, 2007

Certified Flood Plane Manager

- West Virginia, 2013

Licensed Realtor

- West Virginia, 1992

Roy E. Shrewsbury, II

Board Appointments 2008 to Present **WV Bd of Professional Surveyors** Beckley, WV

Chairman (Governor Appointment)

- Serve on a 5 member board regulating the licensure of Professional Surveyors in West Virginia

2010 to Present **WV Lottery Commission** Charleston, WV

Lottery Commissioner (Governor Appointment)

- Regulate all gambling in West Virginia's Casinos and Video Lottery.

1996 to Present **Branch Banking & Trust** Beckley, WV

Chairman – Advisory Board of Directors for Raleigh and Fayette Counties

- Operations review and assist bank personnel with client contact and referrals.

1989 to Present **Raleigh County Planning & Zoning Commission** Beckley, WV

President

- Serve on a 7 member board to conduct hearings and approval of various county ordinances.

2011 to Present **Appalachian Regional Hospital** Beckley, WV

Advisory Board Member

- Serve on the hospital's advisory board assisting the hospital management and staff with advice concerning hospital policies and community involvement.

Volunteer Boards

Beckley/Raleigh County Chamber of Commerce
United Way of Southern West Virginia
University of Charleston (Beckley)
Raleigh County Comprehensive Development Committee
Academy of Careers and Technology Advisory Council
Raleigh County Vocational Schools

Membership

West Virginia Society of Professional Surveyors
Southern Chapter WVSPS
National Society of Professional Surveyors
Beckley Board of Realtors
National Association of Realtors
WV Association of Realtors

Lauren Rae Clark Adkins, CD
P.O. Box 472, 119 McKinney Road
Cool Ridge, WV 25825
laurenrca@gmail.com
(304)-573-2519

Education: *Woodrow Wilson High School*
 Graduated May 2009
 Advanced Placement/ College Curriculum
 3.8 GPA, Honors Graduate, Promise Scholarship Recipient
 Red Cross Club, Spanish Club, First Place Elementary Student Tutoring

Academy of Careers and Technology
 Graduated May 2009
 Program Completion Certificate in Computer Aided Drafting
 ADDA Technical Drafting Certification
 4.0 GPA, Principal's Award, National Technical Honor Society, Drafting Class President,
School Student Council, FIRST Robotics, SkillsUSA- Technical Drafting: WV 2008
Participant, WV 2009 1st place, and National 2009 Participant

Mountain State University
 2007-2009
 General Studies
 3.6 GPA, Dean's List

Bridgemont Community and Technical College
 Graduated December 2010- A.S. Drafting and Design, Summa cum Laude
 Graduated May 2011- A.S. Mechanical Engineering Technology, Summa cum Laude
 Graduated December 2011- A.S. Civil Engineering Technology, Summa cum Laude
 80 hour Miner Apprentice Card and 40 hour Miner Apprentice Card
 3.8 GPA, Dean's List, Who's Who among Students, Freshman of the Year nominee,
Class of 2011 Presidential Citation Award Recipient. 2011 All USA applicant, 2011 All
WV Academic Team, Phi Theta Kappa International Honor Society (09-11)- Secretary/
Treasurer, Civil Technology Club (10-11)- President

Employment: *ESI Services, Inc.*
 May 2012- Present
 Project Engineer

Brookfield Renewable Power
 October 2010- May 2012
 CAD Technician and
 Administrative Clerk

Skills: *Software:* IFS; Microsoft Office: Word, Excel, PowerPoint, Publisher;
 AutoDesk: AutoCAD, AutoCAD LT, AutoCAD Civil 3D, Inventor, Revit
 Architecture; Bentley MicroStation; Google Sketch-up;
Procedures: 3D modeling/ stereolithic printing, plotters, blueprint
 machine, design process, problem solving and equation use, customer
 service, public relations and communication, administrative tasks and office
 management- time registration, purchase order creation, invoice receiving

F. William Shirk
President
Principal Engineer

Education

Bachelor of Science in Civil Engineering
 The University of Cincinnati, 1984



Summary

Mr. Shirk, President and founder of Shirk & O'Donovan Consulting Engineers, Incorporated, has over twenty-eight years of working experience in the practice of consulting structural engineering. He serves as Principal-in-Charge and Operations Manager for the firm. Mr. Shirk possesses a diverse background in the structural design of educational, recreational, religious, retail, EMS and fire stations, health care facilities, hotels, multi-family communities, parking structures, pedestrian and light vehicular bridge structures and zoological exhibits. Mr. Shirk incorporates both administrative and technical responsibilities into daily activities, and spends over 80% of his time in direct, hands-on preparation of engineering designs and construction documents.

Mr. Shirk is licensed by state boards of registration in Alabama, Arizona, Connecticut, District of Columbia, Florida, Georgia, Indiana, Iowa, Kentucky, Maine, Maryland, Massachusetts, Michigan, Mississippi, New Hampshire, New Mexico, North Carolina, Ohio, South Carolina, South Dakota, Tennessee, Vermont, Virginia, Washington, West Virginia and Wisconsin.

Professional Affiliations

American Institute of Steel Construction, American Society of Civil Engineers, National Council of Examiners for Engineering and Surveying, National Society of Professional Engineers, Ohio Society of Professional Engineers, Structural Engineering Institute and Structural Engineers Association of Ohio

Selected Project Experience

New Concord Elementary School, Cambridge Ohio

Structural design, design development and construction documentation for an addition and renovations to an existing elementary school.

Garfield Elementary School, Cambridge, Ohio

Structural design, design development and construction documentation for single story addition to an existing elementary school.

16 Elementary Schools, Westerville, Ohio

Structural design, design development and construction documentation for various elementary school renovation and addition projects.

Buckskin Elementary School, Greenfield Ohio

Structural design, design development and construction documentation for renovations and an addition to an existing elementary school.

Glacier Ridge Elementary School, Dublin, Ohio

Structural design, design development and construction documentation for a new elementary school.



TEAM MEMBERS

Michael Smith, P.E. – C.E.O./Principal-In-Charge

Michael has over 20 years of experience in the engineering field and has been responsible for the design of MEP systems and electronic security systems for numerous criminal justice, institutional, commercial and industrial facilities. Michael's responsibilities include all business development and business management as well as engineering supervision of the company's projects. As a Registered Professional Engineer, Michael is experienced in both design and construction engineering.

After graduation in 1994, Michael worked for a mechanical contractor as a project manager for plan and specification projects, and mechanical designer for design/build projects, which gives valuable practical experience in the building industry. In 2003, Michael created MD Engineering to provide Mechanical, Electrical, and Plumbing (MEP) design services to architects and public and private sector clients. In 2013, MD Engineering and Igor Abadzic bought Latta Technical Services from Alan Latta to continue providing Security Services to long standing client of Latta Technical Services.

Education: Bachelor of Science Mechanical Engineering, Mississippi State University - 1994

Registrations: Texas, Alabama, Arkansas, Arizona, Georgia, Louisiana, Mississippi, Missouri, Nebraska, New Mexico, Oklahoma, and Virginia.

Minnesota – renewal pending

Professional Certifications: NCEES Record Holder, LEED AP

Igor Abadzic – President

Igor has over 16 years of experience in the electrical engineering field with Latta Technical Services and has been responsible for the design of electronic security systems for numerous criminal justice facilities.

Igor's current responsibilities include daily management of the firm and is lead designer on projects and provides oversight and training of technical support staff, as well as working with other team members on engineering of all projects and managing the work flow, scheduling and technology applications. His designs include multiple technologies for numerous types of security systems. He is recognized for his broad technical expertise, and ability to implement responsive designs. His knowledge of product and processes play a key role in the design and construction of these systems. His relationship and familiarity with security systems integrators serves to foster better means and methods to implement systems, installation, service and maintenance in order to assure the client of high quality installation and service after the sale.

Education: University of Sarajevo, Sarajevo, Bosnia & Herzegovina, Bachelor of Science, Electrical Engineering, 1990

Professional Certifications: CSNA, Part I (Cisco Networks Certification), 2012, BOSCH Networks Bases Certification, 2011, PELCO Network Bases Certification, 2011, Sensor Security, Outdoor Perimeter Security Certification, 2001, Programmable Logic Controllers – Certificate of Training 2001

John Vincent P.E. – Project Engineer

John Vincent has responsibility for the project management, design and supervision of electrical engineering projects. Mr. Vincent has over 30 years experience in the electrical design field and has designed systems for a wide variety of facility types ranging from correctional facilities, justice centers, law enforcement facilities, as well as the addition of laboratories, classrooms, and kitchens in universities, higher education and elementary schools. Mr. Vincent also designs security electronic systems for various facilities and

provided technical guidance with IT infrastructure. Mr. Vincent is with Latta Technical Services Inc. since 2007.

Mr. Vincent's project responsibilities have included the supervision or hands-on design of electronic security systems, electrical systems, including power distribution (medium and low voltage) and lighting design. As liaison among team members, he has coordinated designs with members of the fire protection, mechanical, architectural, civil and structural design teams. Mr. Vincents's work is performed in accordance with applicable portions of Institute of Electrical and Electronics Engineers (IEEE) standards and guidelines; state and local fire codes; the Americans with Disabilities Act (ADA); Texas Accessibility Standards (TAS); National Electrical Code; and local codes and standards.

Education: Bachelor of Science Engineering, Peninsula University Capetown S.A. - 1979

Registrations: Texas, Arizona, California, Colorado, Maryland, New York, North Carolina, Oklahoma, and Washington D.C.

Manuel Garcia – Systems Designer/Documentation Manager

Manuel has worked with past and current Autodesk AutoCAD and Revit software to create of the LTS Cad documents utilizing industry accepted Electronic Security Engineering practices and standards. Manuel is responsible for project setup of Architectural Revit models for the companies use in exported AutoCad files, creating detailed elevations for Security equipment layouts. By utilizing Rendering 3D Model Images for detailed area views we can create accurate camera views for blind spot/field of view issues as well as mounting locations. Coordinate several BIM models for various design flaws that may not become an issue until late in construction.

Manuel coordinates between disciplines. Manuel has developed the company CAD manual to explain and enforce company's CAD standards and trained several cad drafters. Mr. Garcia is with Latta Technical Services Inc. since 1997.

Education: County Community College (Completed a Revit course); Mountain View Junior College, Sunset High School.

Richard John – Construction Documentation

Richard has over 28 years of field engineering and electrical/instrumentation design experience. He also has 4 years in computer hardware development and design/testing. He has traveled to the North Sea, Europe and Taiwan for field surveys and modifications to electrical systems. Richard worked as a lead test engineer for portables at Dell Computers in Austin, testing and certifying 3 different models of the Latitude line. He has been in charge of the physical plant & environment for a 119 bed county hospital. His experience in field engineering and inspections along with PLC & computer knowledge lends well to our quality efforts.

Richard, responsibilities include review of submittals and oversight of construction administration services to assure continuity of services, quality assurance through feedback from submittal reviews and construction observation. He works closely with the engineering staff in maintaining and improving the company's reputation for high quality documentation and service. Mr. John is with Latta Technical Services Inc. since 2009.

Education

University of Texas at Arlington, Texas; Texas State Technical Institute, Waco, Texas (Electrical Systems for Healthcare); Houston Community College, Texas (AutoCAD & Microstation); Dell University (In house training)



Readiness Centers West Virginia National Guard Charleston, WV

50,000 sq. ft. and
80,000 sq. ft.
\$10M and \$15M

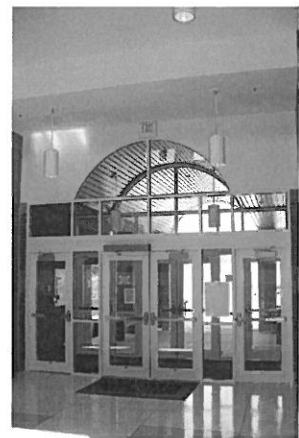
Gymnasiums w/ Bleachers
Locker Rooms
Outdoor Training area
Exhibitor Space
Conference Areas w/
separate Public Entrances

Contact:
Daniel W. Clevenger, CPT, EN,
WVARNG Branch Chief

Tel: 304.561.6335
Daniel.Clevenger@us.army.mil

SEM Architects provided the design for two separate National Guard Readiness Centers in Lewisburg and Summersville, West Virginia. The Lewisburg Center was designed strictly for use by the West Virginia National Guard. In contrast, the Summersville Center was designed as a shared-use Community Center Facility that was large enough to accommodate conferences and trade show exhibitors. In addition to 120+ exhibitor spaces; the Assembly Hall featured retractable bleachers with seating for 750 people. Additional public space provided at the Summersville facility includes: Classrooms, a Gymnasium, and Conference areas with separate entries such that the Military portions of the facility can remain secure. Roofs designed include sloped metal and EPDM flat roofs.

Contract Amounts: \$10M and \$15M
Sizes: Approx. 50,000 SF and 80,000 SF





Montgomery County Juvenile Justice & Intervention Center & Government Center Master Plan*

Client:
Montgomery County

Programming and Design
Intervention / Detention
Center
Multiple Courtrooms
144-Bed Facility
Self-contained Ohio Charter
School
Health Care Clinic
Intervention and Social
Services Agency Offices

Contact:
Phil Miller, Deputy Director
of Facilities Management
451 W. Third Street, 7th Flr.
Dayton, Ohio 45402
937.225.4667

Scope: Project for the programming and design of a new 33M Juvenile Justice Center located in Dayton, Ohio. The project included five new Courtrooms, Magistrates, Intervention and Social Service Agency Offices, Health Care Clinic, Youth Detention Facilities, Gymnasium, Rooftop Outdoor Activity Areas, and an Ohio Charter School. The building has a single public entry point, a secure vehicular sallyport, and a secure service area.

The building was designed to be a nationwide leader in what research has shown to be cutting edge design for a secure facility of this type. Special attention was paid to providing separated circulation routes, and private access to courtrooms for the Judges. Provisions were also included for future County office expansion into a sun-lit walkout basement area and for additional courtrooms on an intermediate mezzanine level.

The project is the central focal point of a simultaneously developed comprehensive Master Plan for the Montgomery County Government Center campus downtown also designed by NBBJ, in conjunction with Ruetschle Associates as the local Architect-of-Record.

The Master Plan provided a public park and gathering space for County Government employees, parking provisions for the entire campus complex, a centralized geothermal heating and cooling system, and plans for future County building expansions. ***The Juvenile Center Project was a recipient of a AIA Dayton Honor Award.***

**** Project completed by Key Staff while with another firm***



Successful Project Examples



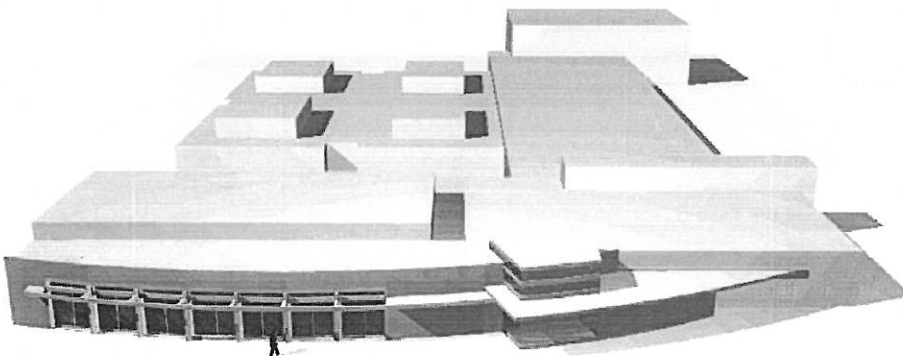
Scope: Project design, documentation and construction administration for a new 8M Juvenile Justice Center on the outskirts of the City of Zanesville, Ohio.

Project included two publically accessed County Courtrooms, Public Lobby/waiting Room, Judges, Magistrates, Probation and Social Service Agency Offices, Health Care Services, Youth Detention Sleeping and Dayrooms, Youth Education and Recreational facilities.

The building has one primary public entry point, a private visitation entry point, a secure vehicular sallyport, and a secure service area.

The building was studied in 3-dimensional model form and the project was the catalyst for a campus of Muskingum County buildings that were developed later on the same site.

*** Project completed by Key Staff while with another firm**



Muskingum County Juvenile Justice Center*

Client:

Muskingum County

Full-service Project including
Construction Administration

48-Bed Facility

Two Public Courtrooms

Judges, Magistrates and

County Court Clerk Offices

Classrooms and Gymnasium

Secure Outdoor Exercise Area

Vehicular Sallyport

Gymnasium with Secure

Public Access

Secure Basement Corridor to
Courtrooms

Contact:

Allen Bennett,
Superintendent

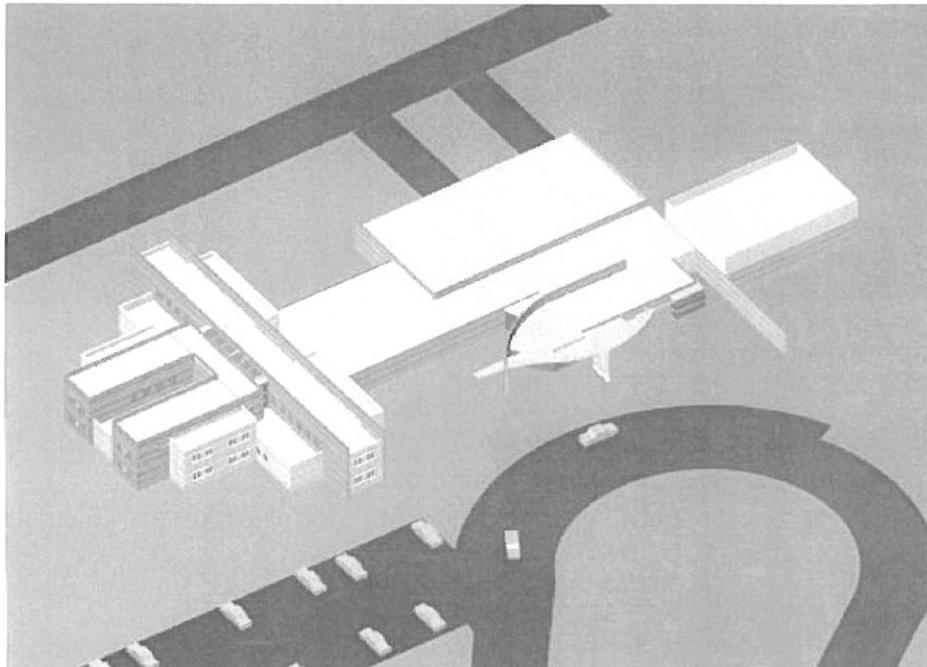
Muskingum County Juvenile
Justice Center

1860 East Pike

Zanesville, Ohio 43701

740.588.4335

Successful Project Examples



South Central Regional Juvenile Detention Center*

Client:
Fayette, Jackson,
Highland, Meigs,
Pike, Ross, Vinton-
Counties

Full-service Project including
Construction Administration

48-Bed Facility
Social Service Agency Offices
Classroom and Gymnasium
Secure Outdoor Exercise
Area
Vehicular Sallyport

Contact:
Michael T. Oyer,
Superintendent
South Central Regional
Juvenile Detention Ctr.
184 Cattail Road
Chillicothe, Ohio 45601
740.773-4169

Scope: Project design, documentation and construction administration for a new 6M Juvenile Detention Center on the outskirts of the City of Chillicothe, Ohio.

Project included Public Lobby/Waiting Room, Probation and Social Service Agency Office, Health Care Room, Youth Detention Sleeping and Dayrooms, Youth Education and Recreational facilities.

The building has one primary public entry point, a private visitation entry point, a secure vehicular sallyport, and a secure service area.

The building was studied in 3-dimensional model form and the project is the catalyst for a campus of Ross County buildings one of which was already located on the same site.

*** Project completed by Key Staff while with another firm**



Successful Project Examples





Federal Correctional Institution
Beckley, WV

Client:
Federal Government,
U.S. Bureau of Prisons

\$66,000,000.
Medium and Minimum Security
Administrative Area
Staff Training Area
Central Energy Plant
Warehouse
Two Cafeterias
Two Kitchens
Full-service Bakery
Meat Prep. Area

Master Plan and Design
of a new Federal minimum security prison for 375 inmates and a medium security prison for 1,500 inmates on the same campus. The facilities are owned by the U.S. Bureau of Prisons with spaces including educational, recreational and training facilities.

Each facility has its own cafeteria and kitchen. In addition there is a full-service bakery and a separate meat preparation area onsite. Food preparation and service is for over 2,000 people daily.

In addition to the features noted above, the overall facility also contains a vehicular maintenance shop with three separate bays for large bus, car, truck and van repair as well as an office and parts area.

Owned by the U. S. Bureau of Prisons, SEM Architects provided extensive project management, scheduling and tracking, functional programming and coordination with governmental protocols. In addition, rigorous project management and copious record-keeping was central to the success of this very large scale project.





Beckley & Raleigh County Convention Center Beckley, WV

10,725 sq. ft. and
8,265 sq. ft.

Subdividable Main Rooms
Break-out Spaces
Dining and Food
Preparation Improvements
New Main Entrance
Site Improvements

Contact:
Ms. Andrea Akers
General Manager

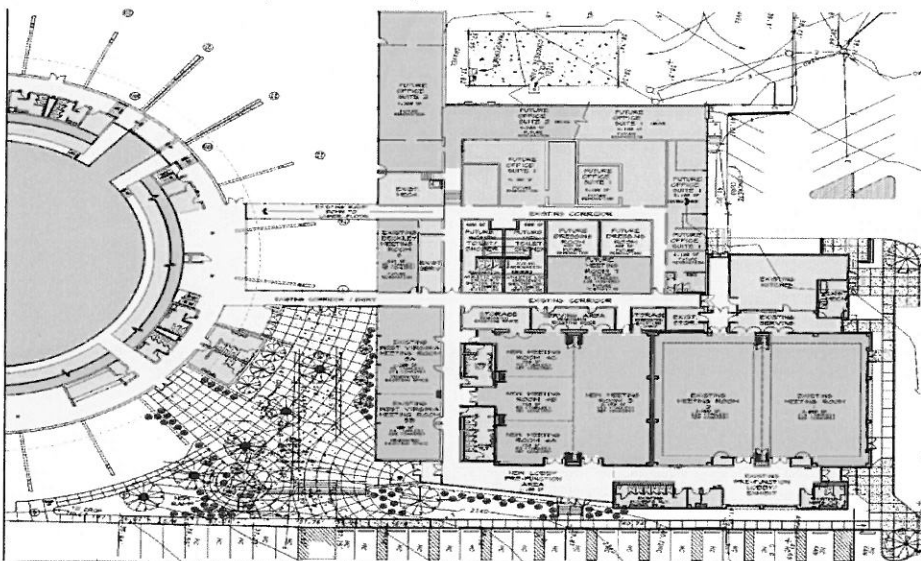
Tel: 304.252.7361
andrea@beckleyconvention-
center.com

Successful Project Examples

SEM Architects provided full-service design for two separate additions to the Beckley & Raleigh County Convention Center over a three-year period.

The first addition of 10,725 sf included one large banquet facility with a retractable partition that subdivided the main hall into two separate spaces. The second addition of approximately 8,265 sf provided another space that could be further subdivided into smaller spaces that could function as break-out rooms. Additional work on the project included a new main entrance, improvements to the food preparation and serving facilities, additional restroom facilities, as well as site improvements.

Contract Amounts: \$1.3M and \$1.4M



Correctional Facilities



West Virginia Industrial Home for Youth

CMA Engineering provided mechanical, electrical, plumbing, fire protection and communication design services for the new 200,000sf two-story dormitory at the WV Industrial Home for Youth. Dormitory facility provides individual cells, private bath rooms, kitchen, cafeteria and medical unit to serve 200 hundred youths. Each wing includes a mezzanine level.



Pruntytown Correctional Facility

CMA Engineering provided mechanical, electrical and plumbing design services for new 22,000sf single story minimum security dormitory housing 128 men. CMA also provided engineering services for the new 1,500sf drug abuse treatment facility.



St. Mary's Correctional Facility

CMA has provided engineering services for various buildings on St. Mary's campus including renovation of Building #75 which is a single story 36,000sf building with six cell pods, each pod housing 24 men. Building includes administration area in core of building. CMA also provided design services for the renovation of the North South Building which is a single story 36,000sf facility with two inmate wings. Facility houses 120 inmates.



Mount Olive Correctional Facility

CMA Engineering provided mechanical, electrical and plumbing design services for the renovation of an existing shell building into vocational shops. CMA also provided electrical design services for site lighting.

824 Cross Lanes Drive Charleston, WV 25313
(304) 343-0316 tel (304) 343-5146 fax

5 Riddle Court, Morgantown, WV 26505
(304) 598-2558 tel (304) 598-2472 fax

www.cmawv.com

West Virginia Army National Guard



Moorefield Readiness Center

CMA Engineering provided mechanical, electrical and plumbing design services for the new 57,100sf readiness center which will include a 911 Center, a distance learning center and classrooms. MEP systems were designed per LEED criteria. Construction to be completed in 2013.



Summersville Readiness Center

CMA Engineering provided engineering services for the design of mechanical, electrical and plumbing systems for the 42,000sf readiness center. This facility also features areas for use by the City of Summersville for events throughout the year.



Lewisburg Readiness Center

CMA Engineering provided mechanical, electrical and plumbing design services for a 37,000sf readiness center that includes a vehicle maintenance bay.



Eleanor Readiness Center

CMA Engineering provided engineering services for the design of mechanical, electrical and plumbing systems for the new 80,000sf readiness center, including a 16,000sf section that is utilized by the United States Navy.

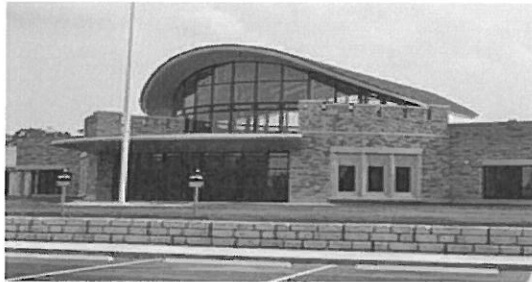
824 Cross Lanes Drive Charleston, WV 25313
(304) 343-0316 tel (304) 343-5146 fax

www.cma-wv.com

5 Riddle Court, Morgantown, WV 26505
(304) 598-2558 tel (304) 598-2472 fax

Security

WVANG-Elkins Readiness Center



CMA Engineering provided design of HVAC, plumbing, fire sprinkler and fire alarm systems, and electrical systems for new 54,500sf readiness center. All systems were designed utilizing LEED criteria. CMA complied with the latest requirements of the West Virginia Army National Guard to provide door access security at selected entrances including card readers with magnetic locks or electric hinge locks and door contacts for access monitoring. The fire alarm system was interconnected with a mass notification system for customized procedures in response to various emergency and threat conditions. Power and raceway designs were provided to support the Guard's elaborate security systems to safeguard their weapons vaults.

Sissonville Middle School



CMA Engineering provided mechanical, electrical, plumbing, sprinkler, and data/communication/alarm/control engineering design services for the new, approximately 80,000sf facility, consisting of administrative areas, commons, auditorium, media/technology, sixth, seventh and eighth grade educational areas, laboratories, special education, food services and physical education areas. CMA also provided design for the addition of the fifth grade wing. CMA coordinated closely with Kanawha County Schools to provide indoor and outdoor camera surveillance and access controls, including the card-reader/camera/call-button combination-type at the main entrance in communication with an internal office station. Interior motion sensors were designed to perform double duty as intruder detection devices during unoccupied hours while operating as occupancy sensors during occupied hours to control lighting power relays to turn off lights and save energy.

824 Cross Lanes Drive Charleston, WV 25313
(304) 343-0316 tel (304) 343-5146 fax

www.cmawv.com

5 Riddle Court, Morgantown, WV 26505
(304) 598-2558 tel (304) 598-2472 fax

Educational Facilities

Lewisburg Elementary School



CMA Engineering provided HVAC, plumbing, fire sprinkler, fire alarm, communication, lighting and electrical power design for new 75,000sf, two-story facility with gymnasium. CMA cooperated with Greenbrier County Schools in designing both a base bid and alternate approach to provide flexibility in controls packaging in the bidding process. The various controls systems could be bid as the more conventional set of "stand-alone" systems or combined into an "integrated" system. Integration of systems or close coordination of separate systems allows motion sensors to provide intruder detection during unoccupied hours and also serve as occupancy sensors during occupied hours to save lighting energy, as well as, heating and cooling energy.

Pikeview Middle School



CMA Engineering provided design of HVAC, plumbing, fire alarm, fire sprinkler, electrical, lighting, communications, audio/visual and CCTV systems for new 75,000sf middle school comprised of a main wing with offices and gymnasium and a three-story classroom wing.

COUNTY JUVENILE FACILITIES

Arkansas County Juvenile Detention Center, Dewitt, AR
Bexar County Juvenile Detention Center, San Antonio, TX
Collin County Juvenile Detention Center, McKinney, TX
Collin County Juvenile Detention Center Addition, McKinney, TX
Colorado Girls Treatment Center, Pueblo, CO
Henry Wade Juvenile Justice Center, Dallas, TX
Dupage County Juvenile Detention Center Expansion, Wheaton, IL
Jefferson County Juvenile Detention Center, Pine Bluff, AR
Johnson County Juvenile Detention Center Expansion, Olathe, KS
Johnson County Juvenile Detention Center, Warrensburg, MO
Kewanee Youth Center Expansion, Kewanee, IL
Montgomery County Juvenile Detention Center, Dayton, OH
Pulaski County Juvenile Detention Center Expansion, Little Rock, AR
Sacramento County Juvenile Hall Expansion and Renovations, Sacramento, CA
Smith County Juvenile Detention Center, Tyler, TX
Youthful Offender & Vocational Training Addition Mecklenburg County, Pueblo, CO

FEDERAL JUVENILE FACILITIES

Northern Cheyenne Nation Youth Services Center, Lame Deer, MT
Oglala Sioux Juvenile Detention Center, Kyle, SD
Colorado River Indian Tribes Juvenile Holding Facility Parker, AZ
Colorado River Indian Tribes Juvenile Detention Center Parker, AZ
Shoshone Paiute Tribes of the Duck Valley Indian Reservation, Owyhee, Nevada

STATE JUVENILE FACILITIES

Colorado Youth Offender System, Pueblo, CO
Colorado Secured Juvenile Mental Health Unit, Pueblo, CO
Colorado Dept. of Youth Services, Arapahoe County, Englewood, CO
Colorado Dept. of Youth Services, Denver County, Golden, CO
Colorado Dept. of Youth Services, Weld County, Greeley, CO
Colorado Dept. of Youth, El Paso County, Colorado Springs, CO
Larned Juvenile Correctional Facility, Larned, KS
Mount View Youth Services Center, Colorado
Montgomery County Juvenile and Justice Center, Dayton, OH
Natrona County Regional Juvenile Detention Center, Casper, WY
North Carolina Juvenile Youth Development Centers. Cabarrus, Chatham, Edgecombe, Lenoir and Gilford Counties, NC
Scioto Youth Correctional Center –Security Upgrade, Scioto, OH
South Central Juvenile Detention Center, Ohio
TYC Gainesville State School Renovations and Security Upgrades, Gainesville, TX
TYC Corsicana State Home, Renovations and Security Upgrades, Corsicana, TX
TYC Evins Regional Juvenile Center Renovations and Security Upgrades, Edinburg, TX
TYC Golden Triangle State School, Jefferson County, TX
TYC Brownwood State School Renovations & Statewide Reception Center, Brownwood, TX
TYC McLennan County State Juvenile Correctional Facility, Mart, TX
TYC Vickery Field Correctional Facility Security Upgrades, Vernon, TX
TYC West Texas Renovations and Upgrades, Pyote, TX

CERTIFICATION AND SIGNATURE PAGE

By signing below, I certify that I have reviewed this Solicitation in its entirety, understand the requirements, terms and conditions, and other information contained herein; that I am submitting this bid or proposal for review and consideration; that I am authorized by the bidder to execute this bid or any documents related thereto on bidder's behalf; that I am authorized to bind the bidder in a contractual relationship; and that to the best of my knowledge, the bidder has properly registered with any State agency that may require registration.

SEM-Partners (Architects)
(Company)


(Authorized Signature)

DAVID S. BEEMAN
(Representative Name, Title)

614-794-3100 614-794-3088
(Phone Number) (Fax Number)

12/17/2013
(Date)

STATE OF WEST VIRGINIA
Purchasing Division**PURCHASING AFFIDAVIT**

MANDATE: Under W. Va. Code §5A-3-10a, no contract or renewal of any contract may be awarded by the state or any of its political subdivisions to any vendor or prospective vendor when the vendor or prospective vendor or a related party to the vendor or prospective vendor is a debtor and: (1) the debt owed is an amount greater than one thousand dollars in the aggregate; or (2) the debtor is in employer default.

EXCEPTION: The prohibition listed above does not apply where a vendor has contested any tax administered pursuant to chapter eleven of the W. Va. Code, workers' compensation premium, permit fee or environmental fee or assessment and the matter has not become final or where the vendor has entered into a payment plan or agreement and the vendor is not in default of any of the provisions of such plan or agreement.

DEFINITIONS:

"Debt" means any assessment, premium, penalty, fine, tax or other amount of money owed to the state or any of its political subdivisions because of a judgment, fine, permit violation, license assessment, defaulted workers' compensation premium, penalty or other assessment presently delinquent or due and required to be paid to the state or any of its political subdivisions, including any interest or additional penalties accrued thereon.

"Employer default" means having an outstanding balance or liability to the old fund or to the uninsured employers' fund or being in policy default, as defined in W. Va. Code § 23-2c-2, failure to maintain mandatory workers' compensation coverage, or failure to fully meet its obligations as a workers' compensation self-insured employer. An employer is not in employer default if it has entered into a repayment agreement with the Insurance Commissioner and remains in compliance with the obligations under the repayment agreement.

"Related party" means a party, whether an individual, corporation, partnership, association, limited liability company or any other form or business association or other entity whatsoever, related to any vendor by blood, marriage, ownership or contract through which the party has a relationship of ownership or other interest with the vendor so that the party will actually or by effect receive or control a portion of the benefit, profit or other consideration from performance of a vendor contract with the party receiving an amount that meets or exceeds five percent of the total contract amount.

AFFIRMATION: By signing this form, the vendor's authorized signer affirms and acknowledges under penalty of law for false swearing (W. Va. Code §61-5-3) that neither vendor nor any related party owe a debt as defined above and that neither vendor nor any related party are in employer default as defined above, unless the debt or employer default is permitted under the exception above.

WITNESS THE FOLLOWING SIGNATURE:Vendor's Name: SEM Partners (Architects)Authorized Signature: [Signature] Date: 12/17/13State of OhioCounty of Franklin, to-wit:Taken, subscribed, and sworn to before me this 17th day of December, 20 13My Commission expires Feb. 24th, 2016.

AFFIX SEAL HERE



NOTARY PUBLIC

[Signature]
Purchasing Affidavit (Revised 07/01/2012)