

ORIGINAL

**EXPRESSION OF INTEREST FOR
PROFESSIONAL ENGINEERING DESIGN
SERVICES AND CONSTRUCTION
MONITORING SERVICES FOR THE WOLFPEN
(CARPENTER) PORTALS PROJECT
RFQ NO. DEP16288**

Prepared for:

West Virginia Department of Environmental Protection

Department of Environmental Protection
Office of Abandoned Mine Lands and Reclamation
601 57th Street, SE
Charleston, West Virginia 25304

Prepared by:

Potesta & Associates, Inc.

7012 MacCorkle Avenue, SE
Charleston, West Virginia 25304
Phone: (304) 342-1400 Fax: (304) 343-9031
E-mail: potesta@potesta.com

Project No. 0101-13-0296

July 23, 2013

07/23/13 09:10:52 AM
West Virginia Purchasing Division

POTESTA

TABLE OF CONTENTS

1.0	QUALIFICATIONS.....	1
1.1	Corporate History and Experience.....	1
1.2	Experience, Qualifications, and Performance Data of Primary Staff.....	5
1.3	Experience, Qualifications, and Performance Data of Other Staff.....	6
1.4	Management Plan and Location of Facilities.....	7
2.0	CLOSING	9

APPENDICES

Insurance and Worker's Compensation Certificates.....	APPENDIX A
DEP16288 Signature Sheets and Affidavit.....	APPENDIX B
AML Consultant Confidential Qualification Questionnaire.....	APPENDIX C
AML and Related Project Experience Matrix.....	APPENDIX D
Service Briefs.....	APPENDIX E
Project Abstracts	APPENDIX F
Project Organization Chart	APPENDIX G

**EXPRESSION OF INTEREST FOR
PROFESSIONAL ENGINEERING DESIGN
SERVICES AND CONSTRUCTION
MONITORING SERVICES FOR THE
WOLFPEN (CARPENTER) PORTALS PROJECT
RFQ NO. DEP16288**

1.0 QUALIFICATIONS

1.1 Corporate History and Experience

Potesta & Associates, Inc. (POTESTA) proposes to provide professional engineering design services and construction monitoring services to the West Virginia Department of Environmental Protection, Office of Abandoned Mine Lands & Reclamation (WVDEP, AML). These services will consist of attendance at pre-bid and pre-construction conferences, construction monitoring, providing a revised Engineer's Cost Estimate, review of plan and specification and other miscellaneous services as may be required for the Wolfpen (Carpenter) Portals Project located in Kanawha County, West Virginia. The project will consist of:

- ◆ Design of drainage conveyances.
- ◆ Installation of mine seals.
- ◆ Revegetation of disturbed areas.

POTESTA is an engineering and environmental consulting firm providing professional services to deliver innovative, cost-effective solutions to complex problems. Our firm is multi-disciplinary and has a diversified practice covering engineering (civil, chemical, environmental, geotechnical, mechanical, and mining), permitting, site characterization and remediation, and general environmental consulting. Civil/site, geotechnical and mining engineering are areas of extensive expertise at POTESTA. We have worked on numerous engineering projects (ranging from site grading and drainage plans for university dorms and commercial/presidential developments, to power plant foundations to mine layouts/reclamation of abandoned mine lands) throughout the region. Our 17 registered professional engineers have over 300 years of experience among them and are supported by a large group of engineers, designers, surveyors and a landscape architect. Regulatory liaison and environmental compliance are areas of exceptional strength for POTESTA as the President of the company is a former director of the West Virginia Department of Natural Resources, and a Vice President is a former director of the West Virginia Division of Environmental Protection.

Our clients include state, local, and federal government agencies, mining companies, manufacturers, utility companies, waste management companies, chemical companies, architects, attorneys, financial institutions, insurance companies, land developers, and construction companies.

We carry a full line of insurance coverage including general liability, errors and omissions, and workers' compensation; Insurance and Workers Compensation Certificates are included in **Appendix A**. We also have quality control procedures to assist in providing our clients with quality projects.

POTESTA offers the following professional services.

- ▶ 404 Permit Preparation and Negotiation
- ▶ Acid Mine Drainage Control
- ▶ Asbestos Inspection
- ▶ Benthic and Biological Studies
- ▶ CADD Services (AutoCAD 2007, Various Software Design Packages, Digitizing and Plotting)
- ▶ Chemical Engineering
- ▶ Civil Engineering
- ▶ Clean Air Act Compliance
- ▶ Construction Monitoring
- ▶ Corporate Environmental Management
- ▶ Design of Slurry Impoundments and Refuse Disposal Sites
- ▶ Dewatering Plans
- ▶ Environmental Engineering
- ▶ Environmental Impact Studies
- ▶ Environmental Site Assessments
- ▶ Environmental Audits
- ▶ Environmental Engineering
- ▶ Erosion and Sedimentation Control Plans
- ▶ Expert Witness and Litigation Support
- ▶ Feasibility Studies
- ▶ Foundation Design
- ▶ Geological Services
- ▶ Geotechnical Engineering
- ▶ Ground and Surface Water Sampling
- ▶ Groundwater Investigation and Remediation
- ▶ Groundwater Protection Plans
- ▶ Hazardous Waste Management
- ▶ Hydrologic and Hydraulic Evaluations
- ▶ In-Situ and Ex-Situ Biostimulation/Bioaugmentation
- ▶ Landfill Design and Land Use and Natural Resource Planning
- ▶ Landfill Closure Plans
- ▶ Land Use and Natural Resource Planning
- ▶ Mining Engineering
- ▶ Multimedia Sampling (Air, Fly Ash, Rock, Soil, Water)
- ▶ Pollution Prevention and Waste Minimization Planning
- ▶ Permitting (Air, FERC, Fly Ash Haulback, Mining, NPDES, Quarry and Solid and Hazardous Waste)
- ▶ Post Reclamation Land Uses
- ▶ Pre-Blast and Pre-Subsidence Surveys
- ▶ Preparation of Construction Documents (Calculations Brief, Construction Drawings, Contractor's Bid Sheet, Engineer's Cost Estimate, QA/QC Manual and Technical Specifications)
- ▶ Reclamation Design and Planning
- ▶ Reclamation Liability Assessments
- ▶ Regulatory Liaison Services
- ▶ Risk-Based Environmental Assessment
- ▶ SARA Title III, TIER II and Form R Inventory and Reporting
- ▶ Sewer Line Design
- ▶ Site Characterization and Remediation Planning
- ▶ Site Design/Planning
- ▶ Soil Science/Agronomy
- ▶ Spill Prevention Control and Countermeasure Plans
- ▶ Stabilization and Closure of Waste Impoundments
- ▶ Stormwater Management and Permitting
- ▶ Stream Benthic Macro-Invertebrate Surveys and Toxicity Evaluations
- ▶ Stream and Water Restoration
- ▶ Subsidence Studies
- ▶ Subsurface Explorations
- ▶ Surface and Groundwater Monitoring, Statistical Analysis and Reporting
- ▶ Surveying (Traditional and Global Positioning System)
- ▶ UST Closure and Site Remediation
- ▶ UST Installation Monitoring
- ▶ Waste Facility Permitting and Design
- ▶ Waste Disposal Design
- ▶ Water Line Design
- ▶ Water/Wastewater Treatment Design
- ▶ Wetland Investigation and Delineation, Mitigation Design and Monitoring

POTESTA has the following staff in our Charleston, West Virginia office:

15	Engineers, Including 11 Professional Engineers
19	Scientists (Biologists, Ecologists, Environmental Scientists, Etc.)
3	Geologists/Hydrogeologists/Geological Scientist
1	Hydrologist
8	Surveyors
5	CADD Operators/Designers
7	Technicians/Construction Monitors
1	Chemist
23	Support and Other Staff

POTESTA, since starting in 1997, has grown to over 100 employees in three offices. Included are 17 registered professional engineers (R.P.E.'s), three registered professional licensed land surveyors (P.L.S.'s), and two PhD's whose specialties include aquatic biology and water quality. POTESTA has assembled a team that has historically served WVDEP, AML on numerous AML projects. In fact our staff has worked on over 80 AML projects for WVDEP (and more in other states) on four different WVDEP, AML contracts dating back into the mid 1980's. We have an ongoing workload with WVDEP, AML.

POTESTA will perform the work for this project from our Charleston, West Virginia office. Our proximity to WVDEP's Charleston office will facilitate immediate response to your needs and allow meetings to be attended within minutes notice; in addition, we can draw upon support from our Morgantown office which also has experience with AML projects. POTESTA emphasizes that we will make a priority commitment to this project.

POTESTA has completed projects involving civil, structural, geological, hydrological and reclamation engineering; land use and natural resource planning; soil science/agronomy; hydrology/geology; stream and water restoration; and post reclamation land uses. We also have open ended statewide contracts with the West Virginia Division of Highways (WVDOH) for environmental remediation and asbestos inspection services. In addition, we have the preeminent staff in West Virginia for addressing issues regarding water quality and regulatory issues since (a) two of our principals are former heads of the state environmental regulatory agency and one was also chief of the water quality regulatory agency, and, (b) we have two PhD's and numerous others with master's degrees whose specialty is water quality. As a result, POTESTA will provide the required expertise to complete this AML project in a timely, economical, and efficient manner.

POTESTA has assembled a successful team of employees that have historically worked on WVDEP, AML projects. In fact, our staff has 100+ years experience working on WVDEP, AML projects and AML projects in other states. Our staff's direct knowledge of the AML program guidelines and personnel, our familiarity with the applicable state regulations, and our commitment to success will benefit WVDEP, AML.

POTESTA has 10+ employees with experience on WVDEP, AML projects. POTESTA employees have worked on and have experience in the following WVDEP, AML projects:

- ◆ Assessment of Contamination (e.g., PCB's, asbestos)
- ◆ Demolition of Structures
- ◆ Diversion of Stormwater
- ◆ Identifying and Controlling Acid Mine Drainage
- ◆ Landslides
- ◆ Mine Fires
- ◆ Passive Acid Mine Drainage Treatment
- ◆ Reclamation of Refuse Piles
- ◆ Sealing Mine Portals
- ◆ Stream Relocations
- ◆ Subsidence Assessment and Remediation
- ◆ USCOE Permitting
- ◆ Water Line Design
- ◆ Water Supply Feasibility Studies and Design
- ◆ Inventory of Residential Water Supplies
- ◆ Wetland Assessments

POTESTA has completed several AML projects and projects similar to a WVDEP, AML type project. These include water line design and construction administration and observation, design and permitting of refuse piles and slurry impoundments, evaluating mine drainage from pre-SMCRA sites, reclamation designs for WVDEP, LCAP, landslides, stream monitoring, development of grading plans, mine reclamation liability assessments, watershed assessments including evaluation of impact from AMD including AMD from pre-SMCRA sites, detention pond designs, wetland studies, mine site design and permitting and design of numerous storm water structures.

Appendix B contains the executed Request for Solicitation, Certification and Signature Page, Addendum Acknowledgement Form, and Purchasing Affidavit form.

The following describes POTESTA's qualifications for the surveying, aerial mapping, subsurface exploration, and laboratory services necessary for this project:

POTESTA proposes to utilize our own survey crews on this project. POTESTA will perform all of the surveying required for this contract using in-house personnel. POTESTA has three licensed professional surveyors with over 40 years of combined surveying experience. Our surveyors are experienced in all aspects of surveying such as topographic mapping, boundary and property surveys, and construction surveys for layout of work, record drawings, and quantity measurements. We have three survey crews and the capability to add a fourth crew if necessary.

POTESTA's surveyors use state-of-the-art "Field to Finish" equipment such as total station instruments, Trimble R-8 Glonass, data collectors, AutoCAD 2010, Autodesk Land Desktop and

Autodesk Civil 3D design software, computer hardware for data management, and a Hewlett Packard Designjet 5500 color ink jet plotter.

POTESTA is equipped with modern surveying instruments allowing efficient data processing and accurate gathering of field information. Total station instruments equipped with data collectors are utilized for complete field-to-office automation allowing for high levels of productivity in the field. The latest versions of software are then used to process survey data and create drawings or required end products.

POTESTA utilizes state of the art computers and hardware, networked through Windows NT, for interfacing of drafting and surveying departments. Thus, drawing and surveying data files can be shared efficiently.

Surveys and mapping are completed to the standards as outlined by the National Map Standards as well as other applicable quality standards.

Additional information on POTESTA's corporate history and experience is included in the AML Consultant Confidential Qualification Questionnaire included in **Appendix C**.

1.2 Experience, Qualifications, and Performance Data of Primary Staff

Primary staff POTESTA commits to this contract and their roles are as follows:

Mr. Dana L. Burns, PE, Vice President at POTESTA, will serve as principal-in-charge for this project. Mr. Burns has served as project manager or principal-in-charge on three open end contracts for WVDEP, AML from 1986 through 1997 totaling over 65 projects. In addition, Mr. Burns has served as the principal-in-charge for numerous other WVDEP, AML projects since 2003. Mr. Burns' experience includes over 31 years of civil and environmental engineering and related projects including water line extensions, sealing portals, regrading refuse, site assessments, mine fires, preliminary feasibility evaluations, detailed design, and preparation of construction drawings, specifications, and bid documents. Mr. Burns will ensure that the AML workload is properly supported.

Messrs. Mark Kiser, P.E., and Terence Moran, P.E., will serve as a project manager/design team leader. Mr. Kiser has served as a project manager/project engineer for over 40 AML projects in West Virginia. Mr. Kiser has over 27 years experience in civil and environmental engineering projects including evaluation, design, preparation of plans and specifications, and construction administration. He has worked on over 65 AML projects as well as extensive experience with the coal industry. Mr. Kiser performs constructability reviews on our projects during and after design. Mr. Kiser is currently POTESTA's project manager for POTESTA's WVDEP, LCAP contract.

Mr. Moran has served as project manager/project engineer or assisted with over 60 AML projects in West Virginia and Virginia. Mr. Moran has 21 years experience in civil and environmental engineering projects, including evaluation, design, preparation of plans and specifications, and

construction administration. Mr. Moran has co-authored multiple papers, including one on the abatement of AMD at the Omega Mine site and another on evaluating AMD of AML sites during preacquisition site assessments. Messrs. Kiser and Moran have worked on AML projects that addressed such technical issues as AMD, sealing portals, regrading refuse, diverting stormwater, landslides, subsidence and water supply. Messrs. Kiser and Moran are both familiar with requirements of AML projects and will ensure that WVDEP is satisfied with POTESTA's work by ensuring that proper QA/QC and timeliness are adhered to.

NOTE: Since POTESTA has 17 professional engineers (P.E.), a combined significant track record with AML projects, POTESTA believes it can handle a substantial AML workload. Hence, POTESTA can adequately staff the Wolfpen (Carpenter) Portals Project.

POTESTA has three other P.E.s with AML and related design experience in Messrs. Vince Ammirato, Bill Drinkard and Patrick Ward. Their individual experiences and capabilities are discussed in further detail later in this section and in **Appendix D**.

POTESTA has an additional project manager/project engineer in Mr. Chris Grose who has worked on numerous WVDEP, AML projects. Mr. Grose has 22 years of experience and will serve as POTESTA's geotechnical scientist for work on this contract. Mr. Grose currently oversees aspects of geotechnical work at POTESTA and worked on WVDEP, AML projects from 1990 to 1997. Mr. Grose will evaluate slope stability issues with respect to regraded coal refuse, landslide abatement, or other steep slope applications.

Abbreviated personal history statements of primary staff and more detailed descriptions of staff experience are presented in the AML Consultant Confidential Qualification Questionnaire in **Appendix C**, and the AML and Related Project Experience Matrix in **Appendix D**.

1.3 Experience, Qualifications, and Performance Data of Other Staff

POTESTA has a staff of over 100 technical and support personnel. Combined with our team of highly experienced subcontractors, POTESTA is exceptionally well suited to: (1) complete surveying and mapping; (2) perform geotechnical services including subsurface exploration and laboratory analysis; (3) design drainage diversion structures such as mine seals, reinforced concrete caps over vertical openings, channels and culverts, perform regrading plans for the refuse areas, and design dewatering plans, if necessary; (4) develop engineering drawings, contract specifications, permit applications and other contract documents; and (5) attend a pre-bid meeting and preconstruction conference as may be required for the Wolfpen (Carpenter) Portals Project. POTESTA can conduct all design engineering work required for this project with present personnel.

POTESTA's project managers will be supported by a team of engineers, scientists, surveyors, hydrologists, geologist/hydrogeologists, biologists, CADD operators, and other support personnel from POTESTA's staff. Included are geotechnical scientists and geotechnical engineers such as Mr. Chris Grose and Mr. Patrick Ward, P.E., who have both worked on numerous AML projects;

project engineers such as Jason Gandee, Robert Ammirato, P.E., Jarrett Smith, P.E., Kenneth Kinder, P.E.; Mr. Vince Ammirato, P.E., a civil engineer with an emphasis in structural engineering who has extensive experience in design of reinforced concrete and steel structures; Mr. Bill Drinkard, P.E., a mining engineer whom has worked on numerous projects involving earthwork, site drainage, AMD, mine land reclamation, calculations, plans and specifications and construction administration; Mr. Victor Dawson, P.L.S., who has worked on developing mapping or performing construction layout on projects dating back into the late 1980's; and POTEITA's team of CADD Operators whom have also worked on AML projects.

Abbreviated personal history statements of key personnel are presented in the AML Consultant Confidential Qualification Questionnaire presented in **Appendix C**. Additional information is included in Section 1.4 "Management Plan and Location of Facilities."

Our corporate and staff's experience involves civil (including water supply systems), structural, geological, hydrological, environmental, mining, geotechnical, and reclamation engineering; land use and natural resource planning; soil science/agronomy; hydrology/geology; surface/underground coal mining; environmental and ecological principles in land reclamation, stream and water restoration, and post reclamation land uses; and contract administration. Our capabilities, qualifications and expertise in design of AML projects are further exemplified in **Appendix E - Service Briefs** and **Appendix F- Project Abstracts**.

POTEITA provides multi-disciplinary services and can perform all of the professional services required under this contract.

1.4 Management Plan and Location of Facilities

Management Plan

POTEITA's proposed project organization chart including key staff and subcontractors is contained in **Appendix G**. Work will be performed at POTEITA's Charleston, West Virginia office or on-site as may be required. Our Charleston location is convenient with respect to WVDEP's Charleston office; the effort will be supported by our Morgantown office if needed.

POTEITA's professional, technical, and support staff have extensive experience on water supply and WVDEP, AML projects. We are well qualified to serve WVDEP on this project. We stand ready to commit the personnel and resources required to complete this project in a timely, technically sound, and cost-efficient manner. POTEITA's large staff size will allow us to work on this project on an accelerated schedule if necessary.

POTEITA's principal-in-charge will be responsible for contract management (administration) and shall coordinate and direct all aspects of the project. The principal-in-charge will review the proposed project, assign a project manager, assemble a project team and appoint key staff to develop a proposed scope of work. The principal-in-charge and project manager will visit the site with WVDEP, AML to review site conditions and the proposed services to be completed and guide the

preparation of a detailed proposal and cost estimate. A written proposal including a detailed scope of work and an associated manhour and cost estimate will then be prepared and submitted to WVDEP, AML for review. The project manager will review the proposal with the WVDEP, AML including a task-by-task discussion of work items and the related costs. Upon WVDEP, AML's approval of the proposal, the project manager will arrange for the start of project activities. The principal-in-charge will provide the project manager the required staff necessary to complete the project activities, will review the project budget and schedule during performance of the project, and will provide a final QA/QC review of the documents prior to submittal to the WVDEP, AML. Mr. Dana Burns, P.E. will serve as the principal-in-charge on this project. Day-to-day project activities for this project will be performed under the direction of our project manager, Mr. Mark Kiser, P.E. Mr. Terence Moran, P.E. will serve as a "backup" project manager for quality assurance/quality control. The project manager will develop a detailed step-by-step project work plan so that the project activities are completed in a correct manner, on-budget, and on-time. They will also review work products at intermediate points and prior to project completion. They will conduct project status reports which may include weekly meetings, memos, or telephone calls with the WVDEP, AML project manager as required. The project manager will supervise the day to day work in progress, will coordinate with POTESTA's subcontractors to provide necessary services, and review work products at intermediate points and prior to submittal to the WVDEP, AML.

POTESTA will utilize the appropriate classification of staff to conduct activities required for the project. Our large, experienced staff allows us to respond quickly, provides flexibility, and will provide for the opportunity of high level input from in-house experts on complex multi-disciplinary projects. Our normal method of staffing projects is to assign a small project team with total responsibility for completion of the work to the client's satisfaction and budget. Where necessary, the team can draw on the expertise available within POTESTA's large staff. POTESTA offers a large staff with the efficiency and rates normally associated with a small firm.

WVDEP, AML has indicated that 60 days are required for submittal of deliverables for the Wolfpen (Carpenter) Portals Project. We stand ready to meet your timeframe.

Project Budget Control

The project manager will be responsible for monitoring the project budget and keeping the principal-in-charge informed of its status. POTESTA's staff enters time into POTESTA's Timetrax computer system on a daily and/or weekly basis. POTESTA's project managers can access Timetrax at any time, thus allowing "real-time" control of project costs. In addition, field representatives routinely keep track of subcontractor costs on a daily basis. Thus we can, in effect, keep track of the total project costs on a weekly basis. Our subcontractors commonly invoice at monthly intervals and there is seldom a discrepancy between our field representative's pay items and our subcontractor's invoice.

Schedule Control

Direct responsibility for schedule control lies with the project manager. Initially, the project manager will review schedule requirements (understood to be 60 days for submittal of preliminary design documents) to see how they can be achieved given the anticipated scope of work. As the project progresses, the project manager will monitor progress and compare it with the established schedule on a weekly basis keeping the principal-in-charge aware of the schedule's status. In this manner, the principal-in-charge can make staff adjustments to allow the project manager to maintain the project schedule. If circumstances develop that make it impossible to maintain the project schedule, the project manager will contact the WVDEP project manager to develop a mutually acceptable adjustment to the schedule and/or work plan.

Location of Facilities

POTESTA will complete the work under this contract in our Charleston, West Virginia office. Our subcontractors are located in the Charleston area or other strategic regions and are quite familiar with the coalfields of West Virginia where the Wolfpen (Carpenter) Portals Project is located. Our close proximity to WVDEP's Charleston office will allow the project to be completed in a timely, economical manner as well as provide WVDEP, AML with easy access to us.

Quality Assurance/Quality Control

Submittals to the WVDEP will be reviewed and commented on by the project manager and the principal-in-charge prior to submittal to the WVDEP. Both the project managers and the principal-in-charge have worked on numerous WVDEP, AML projects, and thus understand the level of detail and expectations for WVDEP, AML projects. POTESTA utilizes standardized Quality Assurance/Quality Control (QA/QC) practices such as consistency checks, color coding of checked copies/calculations, and review of method of measurements versus quantity tallies to insure QA/QC expectations are met.

2.0 CLOSING

We look forward to continuing to serve WVDEP, AML on the Wolfpen (Carpenter) Portals Project and bring it to completion. Our commitment is to provide quality service, rapid response and project completion, and to exceed your expectations for services performed under this project. We believe the track record of our professionals demonstrates our ability and commitment.



CERTIFICATE OF LIABILITY INSURANCE

208807

DATE (MM/DD/YYYY)
6/13/2013

THIS CERTIFICATE IS ISSUED AS A MATTER OF INFORMATION ONLY AND CONFERS NO RIGHTS UPON THE CERTIFICATE HOLDER. THIS CERTIFICATE DOES NOT AFFIRMATIVELY OR NEGATIVELY AMEND, EXTEND OR ALTER THE COVERAGE AFFORDED BY THE POLICIES BELOW. THIS CERTIFICATE OF INSURANCE DOES NOT CONSTITUTE A CONTRACT BETWEEN THE ISSUING INSURER(S), AUTHORIZED REPRESENTATIVE OR PRODUCER, AND THE CERTIFICATE HOLDER.

IMPORTANT: If the certificate holder is an ADDITIONAL INSURED, the policy(ies) must be endorsed. If SUBROGATION IS WAIVED, subject to the terms and conditions of the policy, certain policies may require an endorsement. A statement on this certificate does not confer rights to the certificate holder in lieu of such endorsement(s).

PRODUCER Commercial Lines - (304) 346-0611 Wells Fargo Insurance Services of West Virginia Inc. One Hillcrest Drive East Charleston, WV 25311-1697	CONTACT NAME: Mary Beth Chapman PHONE (A/C, No, Ext): (304)347-0662 FAX (A/C, No): (304)347-0605 E-MAIL ADDRESS: marybeth.chapman@wellsfargo.com																					
INSURED Potesta & Associates, Inc. 7012 MacCorkle Avenue SE Charleston, WV 25304	<table border="1"><thead><tr><th colspan="2">INSURER(S) AFFORDING COVERAGE</th><th>NAIC #</th></tr></thead><tbody><tr><td>INSURER A :</td><td>Westfield Insurance Company</td><td>24112</td></tr><tr><td>INSURER B :</td><td>Commerce & Industry Insurance Company</td><td>19410</td></tr><tr><td>INSURER C :</td><td>Catlin Specialty Insurance Company</td><td>15989</td></tr><tr><td>INSURER D :</td><td></td><td></td></tr><tr><td>INSURER E :</td><td></td><td></td></tr><tr><td>INSURER F :</td><td></td><td></td></tr></tbody></table>	INSURER(S) AFFORDING COVERAGE		NAIC #	INSURER A :	Westfield Insurance Company	24112	INSURER B :	Commerce & Industry Insurance Company	19410	INSURER C :	Catlin Specialty Insurance Company	15989	INSURER D :			INSURER E :			INSURER F :		
INSURER(S) AFFORDING COVERAGE		NAIC #																				
INSURER A :	Westfield Insurance Company	24112																				
INSURER B :	Commerce & Industry Insurance Company	19410																				
INSURER C :	Catlin Specialty Insurance Company	15989																				
INSURER D :																						
INSURER E :																						
INSURER F :																						

COVERAGES

CERTIFICATE NUMBER: 6178191

REVISION NUMBER: See below

THIS IS TO CERTIFY THAT THE POLICIES OF INSURANCE LISTED BELOW HAVE BEEN ISSUED TO THE INSURED NAMED ABOVE FOR THE POLICY PERIOD INDICATED. NOTWITHSTANDING ANY REQUIREMENT, TERM OR CONDITION OF ANY CONTRACT OR OTHER DOCUMENT WITH RESPECT TO WHICH THIS CERTIFICATE MAY BE ISSUED OR MAY PERTAIN, THE INSURANCE AFFORDED BY THE POLICIES DESCRIBED HEREIN IS SUBJECT TO ALL THE TERMS, EXCLUSIONS AND CONDITIONS OF SUCH POLICIES. LIMITS SHOWN MAY HAVE BEEN REDUCED BY PAID CLAIMS.

INSR LTR	TYPE OF INSURANCE	ADDL SUBR INSR WVD	POLICY NUMBER	POLICY EFF (MM/DD/YYYY)	POLICY EXP (MM/DD/YYYY)	LIMITS																					
A	<input checked="" type="checkbox"/> GENERAL LIABILITY <input checked="" type="checkbox"/> COMMERCIAL GENERAL LIABILITY <input type="checkbox"/> CLAIMS-MADE <input checked="" type="checkbox"/> OCCUR GEN'L AGGREGATE LIMIT APPLIES PER: <input checked="" type="checkbox"/> POLICY <input type="checkbox"/> PRO-JECT <input checked="" type="checkbox"/> LOC		TRA0283864	03/07/2013	03/07/2014	<table border="1"><tr><td>EACH OCCURRENCE</td><td>\$</td><td>1,000,000</td></tr><tr><td>DAMAGE TO RENTED PREMISES (Ea occurrence)</td><td>\$</td><td>500,000</td></tr><tr><td>MED EXP (Any one person)</td><td>\$</td><td>15,000</td></tr><tr><td>PERSONAL & ADV INJURY</td><td>\$</td><td>1,000,000</td></tr><tr><td>GENERAL AGGREGATE</td><td>\$</td><td>2,000,000</td></tr><tr><td>PRODUCTS - COMP/OP AGG</td><td>\$</td><td>2,000,000</td></tr><tr><td></td><td>\$</td><td></td></tr></table>	EACH OCCURRENCE	\$	1,000,000	DAMAGE TO RENTED PREMISES (Ea occurrence)	\$	500,000	MED EXP (Any one person)	\$	15,000	PERSONAL & ADV INJURY	\$	1,000,000	GENERAL AGGREGATE	\$	2,000,000	PRODUCTS - COMP/OP AGG	\$	2,000,000		\$	
EACH OCCURRENCE	\$	1,000,000																									
DAMAGE TO RENTED PREMISES (Ea occurrence)	\$	500,000																									
MED EXP (Any one person)	\$	15,000																									
PERSONAL & ADV INJURY	\$	1,000,000																									
GENERAL AGGREGATE	\$	2,000,000																									
PRODUCTS - COMP/OP AGG	\$	2,000,000																									
	\$																										
A	<input checked="" type="checkbox"/> AUTOMOBILE LIABILITY <input checked="" type="checkbox"/> ANY AUTO <input type="checkbox"/> ALL OWNED AUTOS <input checked="" type="checkbox"/> HIRED AUTOS <input type="checkbox"/> SCHEDULED AUTOS <input checked="" type="checkbox"/> NON-OWNED AUTOS <input checked="" type="checkbox"/> Comp/Collision		TRA0283864	03/07/2013	03/07/2014	<table border="1"><tr><td>COMBINED SINGLE LIMIT (Ea accident)</td><td>\$</td><td>1,000,000</td></tr><tr><td>BODILY INJURY (Per person)</td><td>\$</td><td></td></tr><tr><td>BODILY INJURY (Per accident)</td><td>\$</td><td></td></tr><tr><td>PROPERTY DAMAGE (Per accident)</td><td>\$</td><td></td></tr><tr><td>\$1000 ded Comp</td><td>\$</td><td>Comp/Collision</td></tr></table>	COMBINED SINGLE LIMIT (Ea accident)	\$	1,000,000	BODILY INJURY (Per person)	\$		BODILY INJURY (Per accident)	\$		PROPERTY DAMAGE (Per accident)	\$		\$1000 ded Comp	\$	Comp/Collision						
COMBINED SINGLE LIMIT (Ea accident)	\$	1,000,000																									
BODILY INJURY (Per person)	\$																										
BODILY INJURY (Per accident)	\$																										
PROPERTY DAMAGE (Per accident)	\$																										
\$1000 ded Comp	\$	Comp/Collision																									
A	<input checked="" type="checkbox"/> UMBRELLA LIAB <input checked="" type="checkbox"/> OCCUR <input type="checkbox"/> EXCESS LIAB <input type="checkbox"/> CLAIMS-MADE <input type="checkbox"/> DED <input checked="" type="checkbox"/> RETENTION \$ 10,000		TRA0283864	03/07/2013	03/07/2014	<table border="1"><tr><td>EACH OCCURRENCE</td><td>\$</td><td>\$5,000,000</td></tr><tr><td>AGGREGATE</td><td>\$</td><td>\$5,000,000</td></tr><tr><td></td><td>\$</td><td></td></tr></table>	EACH OCCURRENCE	\$	\$5,000,000	AGGREGATE	\$	\$5,000,000		\$													
EACH OCCURRENCE	\$	\$5,000,000																									
AGGREGATE	\$	\$5,000,000																									
	\$																										
B	<input checked="" type="checkbox"/> WORKERS COMPENSATION AND EMPLOYERS' LIABILITY ANY PROPRIETOR/PARTNER/EXECUTIVE OFFICER/MEMBER EXCLUDED? (Mandatory in NH) If yes, describe under DESCRIPTION OF OPERATIONS below Y/N <input type="checkbox"/> N/A		051754736	03/07/2013	03/07/2014	<table border="1"><tr><td><input checked="" type="checkbox"/> WC STATU-TORY LIMITS</td><td>OTH-ER</td><td></td></tr><tr><td>E.L. EACH ACCIDENT</td><td>\$</td><td>1,000,000</td></tr><tr><td>E.L. DISEASE - EA EMPLOYEE</td><td>\$</td><td>1,000,000</td></tr><tr><td>E.L. DISEASE - POLICY LIMIT</td><td>\$</td><td>1,000,000</td></tr></table>	<input checked="" type="checkbox"/> WC STATU-TORY LIMITS	OTH-ER		E.L. EACH ACCIDENT	\$	1,000,000	E.L. DISEASE - EA EMPLOYEE	\$	1,000,000	E.L. DISEASE - POLICY LIMIT	\$	1,000,000									
<input checked="" type="checkbox"/> WC STATU-TORY LIMITS	OTH-ER																										
E.L. EACH ACCIDENT	\$	1,000,000																									
E.L. DISEASE - EA EMPLOYEE	\$	1,000,000																									
E.L. DISEASE - POLICY LIMIT	\$	1,000,000																									
C	<input checked="" type="checkbox"/> Professional (Claims Made) <input checked="" type="checkbox"/> Pollution Liability		CPV-674379-0314 CPV-674370-0314	03/15/2013 03/15/2013	03/15/2014 03/15/2014	\$5,000,000/\$75,000 deductible \$5,000,000/\$75,000 deductible																					

DESCRIPTION OF OPERATIONS / LOCATIONS / VEHICLES (Attach ACORD 101, Additional Remarks Schedule, if more space is required)

Evidence of Coverage

CERTIFICATE HOLDER**CANCELLATION**

Evidence of Coverage

SHOULD ANY OF THE ABOVE DESCRIBED POLICIES BE CANCELLED BEFORE THE EXPIRATION DATE THEREOF, NOTICE WILL BE DELIVERED IN ACCORDANCE WITH THE POLICY PROVISIONS.

AUTHORIZED REPRESENTATIVE

WHEN RESPONDING TO SOLICITATION, INSERT NAME AND ADDRESS IN SPACE ABOVE LABELED 'VENDOR'



State of West Virginia
Department of Administration
Purchasing Division
2019 Washington Street East
Post Office Box 50130
Charleston, WV 25305-0130

Solicitation

NUMBER
DEP16288

PAGE
2

ADDRESS CORRESPONDENCE TO ATTENTION OF:
FRANK WHITTAKER 304-558-2316

V E N D O R	RFQ COPY
	TYPE NAME/ADDRESS HERE
	Potesta & Associates, Inc.
	7012 MacCorkle Avenue, SE Charleston, WV 25304

S H I P T O	ENVIRONMENTAL PROTECTION
	DEPARTMENT OF
	OFFICE OF AML&R
	601 57TH STREET SE CHARLESTON, WV 25304 304-926-0499

DATE PRINTED
07/03/2013

BID OPENING DATE: 07/23/2013

BID OPENING TIME 1:30PM

LINE	QUANTITY	UOP	CAT. NO.	ITEM NUMBER	UNIT PRICE	AMOUNT
0001	1	JB		906-29		
				WOLFEN (CARPENTER) PORTALS DESIGN		
***** THIS IS THE END OF RFQ DEP16288 ***** TOTAL:						

SIGNATURE	<i>Dana L. Burns</i>	TELEPHONE	(304) 342-1400	DATE	July 23, 2013
TITLE	Vice President	FEIN	311509066	ADDRESS CHANGES TO BE NOTED ABOVE	

WHEN RESPONDING TO SOLICITATION, INSERT NAME AND ADDRESS IN SPACE ABOVE LABELED 'VENDOR'



State of West Virginia
Department of Administration
Purchasing Division
2019 Washington Street East
Post Office Box 50130
Charleston, WV 25305-0130

Solicitation

NUMBER
DEP16288

PAGE
1

ADDRESS CORRESPONDENCE TO ATTENTION OF:
FRANK WHITTAKER 304-558-2316

RFQ COPY

TYPE NAME/ADDRESS HERE

Potesta & Associates, Inc.
7012 MacCorkle Avenue, SE
Charleston, WV 25304

VENDOR

ENVIRONMENTAL PROTECTION
DEPARTMENT OF
OFFICE OF AML&R
601 57TH STREET SE
CHARLESTON, WV
25304

304-926-0499

SHIP TO

DATE PRINTED
06/19/2013

BID OPENING DATE: 07/23/2013

BID OPENING TIME 1:30PM

LINE	QUANTITY	UOP	CAT. NO.	ITEM NUMBER	UNIT PRICE	AMOUNT
0001	1	JB		906-29		
				WOLFPEN (CARPENTER) PORTALS DESIGN		
				EXPRESSION OF INTEREST		
				THE WEST VIRGINIA PURCHASING DIVISION, FOR THE AGENCY, THE WEST VIRGINIA DEPARTMENT OF ENVIRONMENTAL PROTECTION, IS SOLICITING EXPRESSIONS OF INTEREST FOR PROFESSIONAL ENGINEERING DESIGN SERVICES AND CONSTRUCTION MONITORING SERVICES AT THE WOLFPEN (CARPENTER) PORTALS PROJECT IN KANAWHA COUNTY, WEST VIRGINIA PER THE FOLLOWING BID REQUIREMENTS AND ATTACHED SPECIFICATIONS.		
				***** THIS IS THE END OF RFQ DEP16288 ***** TOTAL:		

SIGNATURE	TELEPHONE	DATE
<i>Dana L. Burns</i>	(304) 342-1400	July 23, 2013
TITLE	FEIN	ADDRESS CHANGES TO BE NOTED ABOVE
Vice President	311509066	

WHEN RESPONDING TO SOLICITATION, INSERT NAME AND ADDRESS IN SPACE ABOVE LABELED 'VENDOR'

WEST VIRGINIA DEPARTMENT ENVIRONMENTAL PROTECTION
AML CONSULTANT CONFIDENTIAL QUALIFICATION QUESTIONNAIRE

Attachment "B"

PROJECT NAME <i>Wolfpen (Carpenter) Portals</i>		DATE (DAY, MONTH, YEAR) <i>23, July, 2013</i>		FEIN <i>311509066</i>	
1. FIRM NAME <i>Potesta & Associates, Inc.</i>		2. HOME OFFICE BUSINESS ADDRESS <i>7012 MacCorkle Avenue, SE Charleston, West Virginia 25304</i>		3. FORMER FIRM NAME <i>N/A</i>	
4. HOME OFFICE TELEPHONE <i>(304) 342-1400</i>	5. ESTABLISHED (YEAR) <i>1997</i>	6. TYPE OWNERSHIP Individual <input type="checkbox"/> Corporation <input checked="" type="checkbox"/> Partnership <input type="checkbox"/> Joint-Venture <input type="checkbox"/>		6a. WV REGISTERED DBE (Disadvantaged Business Enterprise) YES <input type="checkbox"/> NO <input checked="" type="checkbox"/>	
7. PRIMARY AML DESIGN OFFICE: ADDRESS/ TELEPHONE/ PERSON IN CHARGE/ NO. AML DESIGN PERSONNEL EACH OFFICE <i>7012 MacCorkle Avenue, SE, Charleston, WV 25304 / (304) 342-1400 / Dana L. Burns / 87</i>					
8. NAMES OF PRINCIPAL OFFICERS OR MEMBERS OF FIRM <i>Ronald R. Potesta, President Dana L. Burns, Vice President and Treasurer Laidley Eli McCoy, Vice President and Secretary</i>		8a. NAME, TITLE, & TELEPHONE NUMBER - OTHER PRINCIPALS <i>N/A</i>			
9. PERSONNEL BY DISCIPLINE					
<u>16</u> ADMINISTRATIVE	<u>3</u> ECOLOGISTS	<u>1</u> LANDSCAPE ARCHITECTS	<u>1</u> STRUCTURAL ENGINEER		
<u> </u> ARCHITECTS	<u>1</u> ECONOMISTS	<u>1</u> MECHANICAL ENGINEERS	<u>10</u> SURVEYORS		
<u>10</u> BIOLOGIST	<u> </u> ELECTRICAL ENGINEERS	<u>2</u> MINING ENGINEERS	<u>1</u> TRANSPORTATION ENGINEERS		
<u>8</u> CADD OPERATORS	<u>1</u> ENVIRONMENTAL ENGINEER	<u> </u> PHOTOGRAMMETRISTS	<u>1</u> INFORMATION TECHNOLOGIST		
<u>1</u> CHEMICAL ENGINEERS	<u> </u> ESTIMATORS	<u> </u> PLANNERS: URBAN/REGIONAL	<u>1</u> SAFETY/INDUSTRIAL HYGIENE		
<u>17</u> CIVIL ENGINEERS	<u>3</u> GEOLOGISTS	<u>1</u> SANITARY ENGINEERS	<u>2</u> CHEMIST		
<u>6</u> CONSTRUCTION INSPECTORS	<u> </u> HISTORIANS	<u>3</u> SOILS ENGINEERS	<u> </u> OTHER		
<u>1</u> DESIGNERS	<u>1</u> HYDROLOGISTS	<u>2</u> SPECIFICATION WRITERS			
<u> </u> DRAFTSMEN	<u>1</u> TOXICOLOGIST	<u>7</u> ENVIRONMENTAL SCIENTIST			
TOTAL NUMBER OF WV REGISTERED PROFESSIONAL ENGINEERS IN PRIMARY OFFICE: <u>11</u>			102 TOTAL PERSONNEL		
*RPEs other than Civil and Mining must provide supporting documentation that qualifies them to supervise and perform this type of work.					
10. HAS THIS JOINT-VENTURE WORKED TOGETHER BEFORE? <input type="checkbox"/> YES <input type="checkbox"/> NO <i>N/A</i>					

11. OUTSTANDING KEY CONSULTANTS/SUB-CONSULTANTS ANTICIPATED TO BE USED. Attach "AML Consultant Confidential Qualification Questionnaire".

NAME AND ADDRESS: Digital Graphic Mapping 172 Imboden Drive, Suite 13 Winchester, Virginia 22603	SPECIALTY: Aerial Photography and Mapping	WORKED WITH BEFORE <u> X </u> Yes _____ No
NAME AND ADDRESS: Sturm Environmental Services, Inc. Brushy Fork Road Bridgeport, West Virginia 26330	SPECIALTY: Environmental and Coal Related Laboratory	WORKED WITH BEFORE <u> X </u> Yes _____ No
NAME AND ADDRESS: Test Boring Services 140 Mong Road Scenery Hill, Pennsylvania 15360	SPECIALTY: Soil and Rock Boring	WORKED WITH BEFORE <u> X </u> Yes _____ No
NAME AND ADDRESS: CTL of WV, Inc. 510 C Street South Charleston, West Virginia 25303	SPECIALTY: Soils and Concrete Testing	WORKED WITH BEFORE <u> X </u> Yes _____ No
NAME AND ADDRESS:	SPECIALTY:	WORKED WITH BEFORE _____ Yes _____ No
NAME AND ADDRESS:	SPECIALTY:	WORKED WITH BEFORE _____ Yes _____ No
NAME AND ADDRESS:	SPECIALTY:	WORKED WITH BEFORE _____ Yes _____ No
NAME AND ADDRESS:	SPECIALTY:	WORKED WITH BEFORE _____ Yes _____ No
NAME AND ADDRESS:	SPECIALTY:	WORKED WITH BEFORE _____ Yes _____ No

12. A Is your firm experienced in Abandoned Mine Land Remediation/Mine Reclamation Engineering?

☒ YES Description and Number of Projects: POTEESTA's principal-in-charge, Dana L. Burns, P.E. and two project managers, Messrs. Mark Kiser, P.E. and Terence Moran, P.E. have each worked on over 70 AML projects dating back to 1986, including landslide investigation and abatement, mine subsidence stabilization projects, acid mine drainage treatment, refuse piles, mine drainage, mine portal seal, and water supply projects. POTEESTA has 15 staff with experience on AML projects. POTEESTA's principal engineers have extensive experience with preparing design plans for refuse piles. Many of the previous AML projects won reclamation awards including: Bear Run Refuse; Kimball Refuse Piles; Owings Mine Complex; Pine Creek (Omar) Refuse; Turner-Douglas Complex; Grass Run Refuse. These projects were completed by Dana Burns, Mark Kiser, and Terry Moran.

NO

B. Is your firm experienced in Soil Analysis?

☒ YES Description and Number of Projects: POTEESTA's staff is experienced in all aspects of soil analysis, including geotechnical and environmental soil analysis. POTEESTA's staff has worked on 30+ AML projects involving soil science, including slope stability and revegetation. POTEESTA is experienced in soil analysis as it relates to this project. POTEESTA's principal engineers have developed and implemented plans for nutrient and lime requirements testing to determine revegetation requirements, acid-base accounting of rock samples to evaluate the potential of excavated materials to generate acidity, and analysis of coal refuse to determine the potential for reprocessing.

NO

C. Is your firm experienced in hydrology and hydraulics?

☒ YES Description and Number of Projects: POTEESTA's staff is experienced in hydrology and hydraulics as it relates to AML projects in West Virginia. POTEESTA's staff has worked on over 70 AML projects that involved sizing channels, culverts, and waterlines. POTEESTA has developed well over 100 storm water management plans for mines, industrial facilities and new site development projects throughout West Virginia.

NO

D. Does your firm produce its own Aerial Photography and Develop Contour Mapping?

☒ YES Description and Number of Projects: POTEESTA's staff routinely develop contour mapping for use with design. We subcontract aerial mapping development, but complete the ground control necessary for developing mapping. On smaller projects, we perform the topographic survey work and subsequently develop the contour mapping. POTEESTA has completed 200+ mapping development projects in the last five years.

NO

F Is your firm experienced in domestic waterline design? (Include any experience your firm has in evaluation of aquifer degradation as a result of mining.)

☒ YES Description and Number of Projects: POTESta's staff is exceptionally experienced at domestic waterline design. POTESta's staff has worked on waterline designs and water treatment plant designs for municipalities, WVDEP AML, and private utilities. POTESta's staff includes one project manager, Terence C. Moran, PE, who has managed design of numerous AML waterlines, including 20+ mile Cow Creek-Sarah Ann Extension and 30+ mile/2,800 GPM Water Treatment Plant Mill Creek Regional Water Supply project. We are also exceptionally well qualified to evaluate aquifer degradation, including aquifer degradation by AML sites. Our staff has worked on 80+ evaluations of aquifer degradation. POTESta has performed over 40 water line design projects totaling several hundred miles of installed water line.

NO

F. Is your firm experienced in Acid Mine Drainage Evaluation and Abatement Design?

☒ YES Description and Number of Projects: POTESta has completed numerous projects addressing acid mine drainage evaluation and abatement design. POTESta's staff has worked on 30+ projects involving AMD evaluation and 10+ projects involving AMD abatement design. In both cases, many of the projects involved AML sites. We have worked extensively with Anker Energy, Dominion Generation, and the WVDOH, among others with acid-base accounting evaluations and the subsequent development of plans to prevent/abate AMD generation. Additionally, we worked extensively with Elk Run Coal Company to devise a plan to limit AMD generation and to treat the remaining AMD.

NO

13. PERSONAL HISTORY STATEMENT OF PRINCIPALS AND ASSOCIATES RESPONSIBLE FOR AML PROJECT DESIGN (Furnish complete data but keep to essentials)

NAME & TITLE (Last, First, Middle Int.)	YEARS OF EXPERIENCE		
	YEARS OF AML DESIGN EXPERIENCE:	YEARS OF AML RELATED DESIGN EXPERIENCE:	YEARS OF DOMESTIC WATERLINE DESIGN EXPERIENCE:
Burns, Dana L. Vice President	22	31	20

Brief Explanation of Responsibilities

Mr. Burns will serve as principal-in-charge for this project with his significant experience with AML type projects. Mr. Burns has served as the project manager or principal-in-charge on three open end contracts for WVDEP, AML from 1986 through 1997, totaling over 60 projects. He will ensure the personnel required to efficiently complete this project will be identified. He will coordinate contract issues with the State of West Virginia.

EDUCATION (Degree, Year, Specialization)

MS, 1979, Civil Engineering with Environmental Engineering Emphasis
BS, 1978, Civil Engineering

MEMBERSHIP IN PROFESSIONAL ORGANIZATIONS

West Virginia Coal Association
American Society of Civil Engineers
West Virginia Association of Consulting Engineers
American Consulting Engineering Council - Trans Committee

REGISTRATION (Type, Year, State)

PE, 1985, WV
PS, 1995, WV

13. PERSONAL HISTORY STATEMENT OF PRINCIPALS AND ASSOCIATES RESPONSIBLE FOR AML PROJECT DESIGN (Furnish complete data but keep to essentials)

NAME & TITLE (Last, First, Middle Int.)	YEARS OF EXPERIENCE		
	YEARS OF AML DESIGN EXPERIENCE:	YEARS OF AML RELATED DESIGN EXPERIENCE:	YEARS OF DOMESTIC WATERLINE DESIGN EXPERIENCE:
Kiser, D. Mark Chief Engineer	19	26	20

Brief Explanation of Responsibilities

As Chief Engineer, with significant experience in coal refuse stabilization design and mine portal closures and drainage channelization, he will serve as a project manager. Mr. Kiser will also provide constructability reviews and QA/QC for the various draft submissions and final construction documents.

EDUCATION (Degree, Year, Specialization)

BS, 1984, Civil Engineering

MEMBERSHIP IN PROFESSIONAL ORGANIZATIONS

REGISTRATION (Type, Year, State)

PE, 1990, WV
PE, 1998, IN
PE, 1998, SC
Licensed Remediation Specialist, 1998, WV

13. PERSONAL HISTORY STATEMENT OF PRINCIPALS AND ASSOCIATES RESPONSIBLE FOR AML PROJECT DESIGN (Furnish complete data but keep to essentials)

NAME & TITLE (Last, First, Middle Int.)	YEARS OF EXPERIENCE		
	YEARS OF AML DESIGN EXPERIENCE:	YEARS OF AML RELATED DESIGN EXPERIENCE:	YEARS OF DOMESTIC WATERLINE DESIGN EXPERIENCE:
Moran, Terence C. Senior Engineer	18	21	21

Brief Explanation of Responsibilities

Mr. Moran will serve as project manager coordinating interaction between the WVDEP, design team members, and subconsultants. Mr. Moran has served as a project engineer/project manager for over 60 AML projects in West Virginia between 1989 and 1999. More recently, he has served as principal engineer and project manager for WVDEP-AML projects including water studies and reclamation plans. He will set the schedule and ensure it is met on a weekly basis. He will also serve as one of the principal designers of the reclamation design solution.

EDUCATION (Degree, Year, Specialization)

MS, 1989, Civil Engineering
BS, 1987, Civil Engineering

MEMBERSHIP IN PROFESSIONAL ORGANIZATIONS

American Society of Civil Engineers

REGISTRATION (Type, Year, State)

PE, 1996, WV
PE, 1998, VA

13. PERSONAL HISTORY STATEMENT OF PRINCIPALS AND ASSOCIATES RESPONSIBLE FOR AML PROJECT DESIGN (Furnish complete data but keep to essentials)

NAME & TITLE (Last, First, Middle Int.)	YEARS OF EXPERIENCE		
	YEARS OF AML DESIGN EXPERIENCE:	YEARS OF AML RELATED DESIGN EXPERIENCE:	YEARS OF DOMESTIC WATERLINE DESIGN EXPERIENCE:
Taylor, Patrick A. Senior Engineer	20	20	15

Brief Explanation of Responsibilities

Mr. Taylor will serve as a project engineer, including completing field work, design, and preparation of drawings, technical specifications, bid forms, and cost estimates. Mr. Taylor has project engineer experience in AML projects consisting of emergency slide remediation, refuse fill and slurry pond reclamation, abandoned portal closures, and slurry pond reclamation. Mr. Taylor also served as a branch manager for a private consulting firm responsible for surface mining permitting, design and reclamation.

EDUCATION (Degree, Year, Specialization)

MS, 2006, Engineering Management
BS, 1988, Civil Engineering

MEMBERSHIP IN PROFESSIONAL ORGANIZATIONS

American Society of Civil Engineering

REGISTRATION (Type, Year, State)

PE, 1994, WV

13. PERSONAL HISTORY STATEMENT OF PRINCIPALS AND ASSOCIATES RESPONSIBLE FOR AML PROJECT DESIGN (Furnish complete data but keep to essentials)

NAME & TITLE (Last, First, Middle Int.)	YEARS OF EXPERIENCE		
Gandee, Jason G. Project Engineer	YEARS OF AML DESIGN EXPERIENCE:	YEARS OF AML RELATED DESIGN EXPERIENCE:	YEARS OF DOMESTIC WATERLINE DESIGN EXPERIENCE:
	5	5	
Brief Explanation of Responsibilities			
As project engineer, Jason will field verify project mapping, acquire utility information, develop grading plans, evaluate soil borrow areas, perform hydrologic and hydraulic design calculations, develop contract drawings and specifications. Mr. Gandee has worked on five AML projects over the last year.			
EDUCATION (Degree, Year, Specialization)			
BS, 2007, Civil Engineering Technology			
MEMBERSHIP IN PROFESSIONAL ORGANIZATIONS		REGISTRATION (Type, Year, State)	

13. PERSONAL HISTORY STATEMENT OF PRINCIPALS AND ASSOCIATES RESPONSIBLE FOR AML PROJECT DESIGN (Furnish complete data but keep to essentials)

NAME & TITLE (Last, First, Middle Int.)	YEARS OF EXPERIENCE		
Potesta, Ronald R. President	YEARS OF AML DESIGN EXPERIENCE:	YEARS OF AML RELATED DESIGN EXPERIENCE:	YEARS OF DOMESTIC WATERLINE DESIGN EXPERIENCE:
Brief Explanation of Responsibilities			
As President, Mr. Potesta directs the full resources of the firm to meet the complete requirements of this project for WVDEP.			
EDUCATION (Degree, Year, Specialization)			
MS, 1975, Economics with a Concentration in Mineral Economics, Econometrics, and Micro Economics BS, 1971, Business Administration			
MEMBERSHIP IN PROFESSIONAL ORGANIZATIONS		REGISTRATION (Type, Year, State)	
Commissioner, Ohio River Valley Water Sanitation Commission; Board of Directors, WV Chapter of the Nature Conservancy; National Institute for Chemical Studies; WV Environmental Institute; WV Manufacturers Association			

13. PERSONAL HISTORY STATEMENT OF PRINCIPALS AND ASSOCIATES RESPONSIBLE FOR AML PROJECT DESIGN (Furnish complete data but keep to essentials)

NAME & TITLE (Last, First, Middle Int.)	YEARS OF EXPERIENCE		
	YEARS OF AML DESIGN EXPERIENCE:	YEARS OF AML RELATED DESIGN EXPERIENCE:	YEARS OF DOMESTIC WATERLINE DESIGN EXPERIENCE:
McCoy, Laidley Eli Vice President			
<p>Brief Explanation of Responsibilities</p> <p>Dr. McCoy will serve as a back-up principal-in-charge. In addition, Dr. McCoy manages the entire environmental and natural science division of the company. He will coordinate required environmental support services for the completion of this reclamation design.</p>			
<p>EDUCATION (Degree, Year, Specialization)</p> <p>PhD, 1981, Aquatic Ecology MS, 1974, Biological Science BS, 1972, Zoology</p>			
MEMBERSHIP IN PROFESSIONAL ORGANIZATIONS		REGISTRATION (Type, Year, State)	

13. PERSONAL HISTORY STATEMENT OF PRINCIPALS AND ASSOCIATES RESPONSIBLE FOR AML PROJECT DESIGN (Furnish complete data but keep to essentials)

NAME & TITLE (Last, First, Middle Int.)	YEARS OF EXPERIENCE		
	YEARS OF AML DESIGN EXPERIENCE:	YEARS OF AML RELATED DESIGN EXPERIENCE:	YEARS OF DOMESTIC WATERLINE DESIGN EXPERIENCE:
Grose, Christopher A. Senior Engineering Associate	16	20	12
<p>Brief Explanation of Responsibilities</p> <p>Mr. Grose will coordinate the drilling and geotechnical analysis for slope stability design, identification of borrow sites for soil cover, and investigation and design of solutions for subsurface hydrogeology within the deep mines and recommendations for mine seals.</p>			
<p>EDUCATION (Degree, Year, Specialization)</p> <p>MS, 1990, Geological Engineering BS, 1988, Civil Engineering</p>			
MEMBERSHIP IN PROFESSIONAL ORGANIZATIONS American Society of Civil Engineering Association of Engineering Geology Society of American Military Engineers		REGISTRATION (Type, Year, State) Licensed Remediation Specialist, 1998, WV	

13. PERSONAL HISTORY STATEMENT OF PRINCIPALS AND ASSOCIATES RESPONSIBLE FOR AML PROJECT DESIGN (Furnish complete data but keep to essentials)

NAME & TITLE (Last, First, Middle Int.)	YEARS OF EXPERIENCE		
	YEARS OF AML DESIGN EXPERIENCE:	YEARS OF AML RELATED DESIGN EXPERIENCE:	YEARS OF DOMESTIC WATERLINE DESIGN EXPERIENCE:
Ammirato, Vincent J. Senior Engineer	3	13	8
Brief Explanation of Responsibilities			
Mr. Ammirato will provide structural engineering that may be required for this project. His extensive background with Columbia Gas in plant design and pipeline distribution will be well suited for the possible structural requirements this project may have.			
EDUCATION (Degree, Year, Specialization)			
BS, 1970, Civil Engineering			
MEMBERSHIP IN PROFESSIONAL ORGANIZATIONS		REGISTRATION (Type, Year, State)	
		PE, 1980, WV PE, 1992, PA PE, 1992, OH PE, 1993, VA	

13. PERSONAL HISTORY STATEMENT OF PRINCIPALS AND ASSOCIATES RESPONSIBLE FOR AML PROJECT DESIGN (Furnish complete data but keep to essentials)

NAME & TITLE (Last, First, Middle Int.)	YEARS OF EXPERIENCE		
	YEARS OF AML DESIGN EXPERIENCE:	YEARS OF AML RELATED DESIGN EXPERIENCE:	YEARS OF DOMESTIC WATERLINE DESIGN EXPERIENCE:
Ward, Patrick E. Senior Engineer	6	12	4
Brief Explanation of Responsibilities			
Mr. Ward will serve as a project engineer and has extensive experience on WVDEP, AML projects, having served as a project engineer on refuse piles, mine drainage, and subsidence projects in the early to mid-1990's.			
EDUCATION (Degree, Year, Specialization)			
MS, 1992, Civil Engineering (Geotechnical) BS, 1990, Civil Engineering			
MEMBERSHIP IN PROFESSIONAL ORGANIZATIONS		REGISTRATION (Type, Year, State)	
		PE, 1997, WV	

13. PERSONAL HISTORY STATEMENT OF PRINCIPALS AND ASSOCIATES RESPONSIBLE FOR AML PROJECT DESIGN (Furnish complete data but keep to essentials)

NAME & TITLE (Last, First, Middle Int.)	YEARS OF EXPERIENCE		
	YEARS OF AML DESIGN EXPERIENCE:	YEARS OF AML RELATED DESIGN EXPERIENCE:	YEARS OF DOMESTIC WATERLINE DESIGN EXPERIENCE:
Schloeter, Jhonattan W. Project Engineer	2	2	5

Brief Explanation of Responsibilities

As project engineer, Jhonattan will field verify project mapping, acquire utility information, develop grading plans, evaluate soil borrow areas, perform hydrologic and hydraulic design calculations, develop contract drawings and specifications.

EDUCATION (Degree, Year, Specialization)

BS, 2005, Civil Engineering Technology
AS, 2005, Architectural

MEMBERSHIP IN PROFESSIONAL ORGANIZATIONS

REGISTRATION (Type, Year, State)

13. PERSONAL HISTORY STATEMENT OF PRINCIPALS AND ASSOCIATES RESPONSIBLE FOR AML PROJECT DESIGN (Furnish complete data but keep to essentials)

NAME & TITLE (Last, First, Middle Int.)	YEARS OF EXPERIENCE		
	YEARS OF AML DESIGN EXPERIENCE:	YEARS OF AML RELATED DESIGN EXPERIENCE:	YEARS OF DOMESTIC WATERLINE DESIGN EXPERIENCE:
Litwinowicz, Dennis L. Senior Scientist		30	

Brief Explanation of Responsibilities

Mr. Litwinowicz will serve as a project geologist, including observation of subsurface exploration activities and assistance on evaluation of other geologic activities.

EDUCATION (Degree, Year, Specialization)

BS, 1980, Geology and Mineralogy

MEMBERSHIP IN PROFESSIONAL ORGANIZATIONS

American Association of Petroleum Geologists

REGISTRATION (Type, Year, State)

Certified Petroleum Geologist, 1984

13. PERSONAL HISTORY STATEMENT OF PRINCIPALS AND ASSOCIATES RESPONSIBLE FOR AML PROJECT DESIGN (Furnish complete data but keep to essentials)

NAME & TITLE (Last, First, Middle Int.)	YEARS OF EXPERIENCE		
	YEARS OF AML DESIGN EXPERIENCE:	YEARS OF AML RELATED DESIGN EXPERIENCE:	YEARS OF DOMESTIC WATERLINE DESIGN EXPERIENCE:
Dawson, Victor M. Survey Supervisor	10	28	12

Brief Explanation of Responsibilities

Mr. Dawson will coordinate required surveying for aerial mapping control if needed, establish construction benchmarks, topographic surveys, boundary surveys and/or property and deed research, survey of boring locations and profiling significant existing drainage courses not clearly defined in the aerial mapping. Mr. Dawson will reduce survey data and create topographic mapping for AML projects.

EDUCATION (Degree, Year, Specialization)

AS, 1983, Surveying

MEMBERSHIP IN PROFESSIONAL ORGANIZATIONS

American Congress Surveying and Mapping
West Virginia Association of Land Surveyors
North Carolina Society of Surveyors
South Carolina Society of Surveyors

REGISTRATION (Type, Year, State)

PS, 1988, NC
PS, 1989, SC
PS, 1993, WV

13. PERSONAL HISTORY STATEMENT OF PRINCIPALS AND ASSOCIATES RESPONSIBLE FOR AML PROJECT DESIGN (Furnish complete data but keep to essentials)

NAME & TITLE (Last, First, Middle Int.)	YEARS OF EXPERIENCE		
	YEARS OF AML DESIGN EXPERIENCE:	YEARS OF AML RELATED DESIGN EXPERIENCE:	YEARS OF DOMESTIC WATERLINE DESIGN EXPERIENCE:
Sankoff, Michael B. CADD Designer/Supervisor	10	23	12

Brief Explanation of Responsibilities

Mr. Sankoff will provide the CADD support in preparation of construction drawings for the project. He will reduce survey data to provide sufficient mapping to complete the design.

EDUCATION (Degree, Year, Specialization)

BS, 1987, Industrial Management
AS, 1986, Drafting and Design Engineering Technology
AS, 1986, Mechanical Engineering Technology

MEMBERSHIP IN PROFESSIONAL ORGANIZATIONS

REGISTRATION (Type, Year, State)

13. PERSONAL HISTORY STATEMENT OF PRINCIPALS AND ASSOCIATES RESPONSIBLE FOR AML PROJECT DESIGN (Furnish complete data but keep to essentials)

NAME & TITLE (Last, First, Middle Int.)	YEARS OF EXPERIENCE		
	YEARS OF AML DESIGN EXPERIENCE:	YEARS OF AML RELATED DESIGN EXPERIENCE:	YEARS OF DOMESTIC WATERLINE DESIGN EXPERIENCE:
Ammirato, Robert J. Engineer	4	7	7

Brief Explanation of Responsibilities

Mr. Ammirato will serve as a project engineer for the project. His responsibilities will include hydraulic calculations, layout, drawing preparation, design, technical specifications, bid forms, cost estimates, and field work. He has extensive experience in water supply and waste water system design, permitting, and regulations. Mr. Ammirato was the project engineer on our Borderland (Matney) Portals project.

EDUCATION (Degree, Year, Specialization)

BS, 1999, Mechanical Engineering

MEMBERSHIP IN PROFESSIONAL ORGANIZATIONS

REGISTRATION (Type, Year, State)

PE, 2010, WV

13. PERSONAL HISTORY STATEMENT OF PRINCIPALS AND ASSOCIATES RESPONSIBLE FOR AML PROJECT DESIGN (Furnish complete data but keep to essentials)

NAME & TITLE (Last, First, Middle Int.)	YEARS OF EXPERIENCE		
	YEARS OF AML DESIGN EXPERIENCE:	YEARS OF AML RELATED DESIGN EXPERIENCE:	YEARS OF DOMESTIC WATERLINE DESIGN EXPERIENCE:
Kinder, Kenneth K. Staff Engineer	4	8	6

Brief Explanation of Responsibilities

Mr. Kinder has extensive experience in hydrologic and hydraulic design as well as subsurface explorations, design of coal ash disposal facilities and preparation of cost estimates.

EDUCATION (Degree, Year, Specialization)

BS, 2003, Civil Engineering

MEMBERSHIP IN PROFESSIONAL ORGANIZATIONS

REGISTRATION (Type, Year, State)

PE, 2008, WV

13. PERSONAL HISTORY STATEMENT OF PRINCIPALS AND ASSOCIATES RESPONSIBLE FOR AML PROJECT DESIGN (Furnish complete data but keep to essentials)

NAME & TITLE (Last, First, Middle Int.)	YEARS OF EXPERIENCE		
	YEARS OF AML DESIGN EXPERIENCE:	YEARS OF AML RELATED DESIGN EXPERIENCE:	YEARS OF DOMESTIC WATERLINE DESIGN EXPERIENCE:
Smith, Jarrett M. Staff Engineer	5	7	7
Brief Explanation of Responsibilities			
Mr. Smith has been involved extensively with development of hydrologic and hydraulic calculations including preparation of NPDES stormwater construction permits. He also has significant expertise in the development of site grading plans and quantity/cost estimates. Mr. Smith was the project engineer on our Taylorville (Cantrell) Drainage AML project.			
EDUCATION (Degree, Year, Specialization)			
BS, 2002, Civil Engineering			
MEMBERSHIP IN PROFESSIONAL ORGANIZATIONS		REGISTRATION (Type, Year, State)	
National Society of Professional Engineers		PE, 2008, WV	

13. PERSONAL HISTORY STATEMENT OF PRINCIPALS AND ASSOCIATES RESPONSIBLE FOR AML PROJECT DESIGN (Furnish complete data but keep to essentials)

NAME & TITLE (Last, First, Middle Int.)	YEARS OF EXPERIENCE		
	YEARS OF AML DESIGN EXPERIENCE:	YEARS OF AML RELATED DESIGN EXPERIENCE:	YEARS OF DOMESTIC WATERLINE DESIGN EXPERIENCE:
Burns, Brian L. Staff Engineer	2	4	6
Brief Explanation of Responsibilities			
Mr. Burns has extensive experience with site grading plans and stormwater management. He also has experience with AMD handling and treatment.			
EDUCATION (Degree, Year, Specialization)			
BS, 2004, Civil Engineering			
MEMBERSHIP IN PROFESSIONAL ORGANIZATIONS		REGISTRATION (Type, Year, State)	
		PE, 2009, WV	

13. PERSONAL HISTORY STATEMENT OF PRINCIPALS AND ASSOCIATES RESPONSIBLE FOR AML PROJECT DESIGN (Furnish complete data but keep to essentials)

NAME & TITLE (Last, First, Middle Int.)	YEARS OF EXPERIENCE		
Griffith, Chad Staff Engineer	YEARS OF AML DESIGN EXPERIENCE:	YEARS OF AML RELATED DESIGN EXPERIENCE:	YEARS OF DOMESTIC WATERLINE DESIGN EXPERIENCE:
	1	3	6
Brief Explanation of Responsibilities			
Mr. Griffith has extensive experience with site grading plans and stormwater management. He also has experience with mine plans and permitting.			
EDUCATION (Degree, Year, Specialization)			
BS, 2004, Civil Engineering			
MEMBERSHIP IN PROFESSIONAL ORGANIZATIONS		REGISTRATION (Type, Year, State)	
		PE, 2009, WV	

13. PERSONAL HISTORY STATEMENT OF PRINCIPALS AND ASSOCIATES RESPONSIBLE FOR AML PROJECT DESIGN (Furnish complete data but keep to essentials)

NAME & TITLE (Last, First, Middle Int.)	YEARS OF EXPERIENCE		
Drinkard, William F. III Senior Engineer	YEARS OF AML DESIGN EXPERIENCE:	YEARS OF AML RELATED DESIGN EXPERIENCE:	YEARS OF DOMESTIC WATERLINE DESIGN EXPERIENCE:
	7	30	10
Brief Explanation of Responsibilities			
Mr. Drinkard will serve as a project engineer and has extensive coal industry design experience in refuse disposal areas, mine facility construction utilities, access roads, drainage controls, and portal closings. In addition, Mr. Drinkard will prepare NPDES permit applications for construction activities and other required storm and mine drainage calculations.			
EDUCATION (Degree, Year, Specialization)			
MS, 2003, Environmental Engineering MBA, 1981, Business Administration BS, 1980, Mining Engineering			
MEMBERSHIP IN PROFESSIONAL ORGANIZATIONS		REGISTRATION (Type, Year, State)	
		PE, 1981, WV PS, 1992, WV	

14. PROVIDE A LIST OF SOFTWARE AND EQUIPMENT AVAILABLE IN THE PRIMARY OFFICE WHICH WILL BE USED TO COMPLETE ALL DESIGN SERVICES

Microsoft Office 2003 (Excel, Access, Word, PowerPoint) and Microsoft Office 2010 (Excel, Access, Word, PowerPoint)

WordPerfect 11

Adobe PageMaker 8 (Publication Software)

MicroStation (Allows users to create 3D models of permanent assets - the models and all of their components are electronic simulations of real-world objects); used for CADD drawing preparation.

Haestad Methods (Numerous software packages used for designing storm water structures [e.g., channels, culverts, ponds, etc.] and water distribution systems.)

MapTech, Terrain Navigator (Combines regional collections of topographic maps with powerful PC navigation software for 2D/3D viewing, customizing, printing and GPS use.)

AutoCAD, 2012 Used for preparing CADD drawings (3D modeling software that provides topographic analysis, real-world coordinate systems, volume totals, roadway geometry.)

2012 Civil/Survey Design Software

15. CURRENT ACTIVITIES ON WHICH YOUR FIRM IS THE DESIGNATED ENGINEER OF RECORD

PROJECT NAME, TYPE AND LOCATION	NAME AND ADDRESS OF OWNER	NATURE OF YOUR FIRM'S RESPONSIBILITY	ESTIMATED CONSTRUCTION COST	PERCENT COMPLETE
Sundial Refuse Piles, AML Reclamation of Coal Refuse Piles, Raleigh County, WV	WVDEP 601 57 th Street, SE Charleston, WV 25304	Preparation of reclamation plan, drawings, specifications, bid form, engineer's construction cost estimate, and calculations brief.	\$4,000,000	Project is Under Construction
Landfill Closure Design, Various Environmental Remediation Projects Nitro, WV	Solutia, Inc. 1 Monsanto Road Nitro, WV 25143	Preparation of closure designs, construction drawings and specifications, environmental sampling, and regulatory liaison.	\$4,000,000	85%
The Villages at Coolfont, Morgan County, WV	Berkeley Springs Develop, LLC 99 N. Washington Ave. Berkeley Springs, WV	Engineering design and permitting for 1300 home community including water treatment plant and distribution system, wastewater treatment plant and collection system, roads, stormwater management system, and property surveys.	\$50,000,000 Excluding Home Construction Costs	98% (Design)
Flipping Hollow Complex Mercer County, WV	WVDEP 601 57 th Street, SE Charleston, WV 25304	Preparation of reclamation plan, drawings, specifications, bid form, engineer's construction cost estimate, and calculations brief.	\$160,000	98%
East Lynn II Wayne County, WV	WVDEP 601 57 th Street, SE Charleston, WV 25304	Preparation of reclamation plan, drawings, specifications, bid form, engineer's construction cost estimate, and calculations brief.	\$1,220,000	95%

15. CURRENT ACTIVITIES ON WHICH YOUR FIRM IS THE DESIGNATED ENGINEER OF RECORD

PROJECT NAME, TYPE AND LOCATION	NAME AND ADDRESS OF OWNER	NATURE OF YOUR FIRM'S RESPONSIBILITY	ESTIMATED CONSTRUCTION COST	PERCENT COMPLETE
MacArthur Subsidence Raleigh County, WV	WVDEP 601 57 th Street, SE Charleston, WV 25304	Preparation of reclamation plan, drawings, specifications, bid form, engineer's construction cost estimate, and calculations brief.	\$3,400,000	98%
Logan County PSD Feasibility Study Logan County, WV	WVDEP 601 57 th Street, SE Charleston, WV 25304	Preparation of feasibility study and engineer's construction cost estimate.	\$400,000	90%
Wilderness PSD Feasibility Study Nicholas County, WV	WVDEP 601 57 th Street, SE Charleston, WV 25304	Preparation of feasibility study and engineer's construction cost estimate.	\$450,000	10%
TOTAL NUMBER OF PROJECTS:		TOTAL ESTIMATED CONSTRUCTION COSTS:		
7 (POTESTA has completed well over 1000 projects.)		\$63,630,000		

17. C. COMPLETED WORK WITHIN LAST 5 YEARS ON WHICH YOUR FIRM WAS THE DESIGNATED ENGINEER OF RECORD

PROJECT NAME, TYPE AND LOCATION	NAME AND ADDRESS OF OWNER	ESTIMATED CONSTRUCTION COST	YEAR	CONSTRUCTED (YES OR NO)
Peach Ridge Complex, AML Reclamation of Refuse Pile and Mine Portals, McDowell County, WV	WVDEP 601 57 th Street, SE Charleston, WV 25304	\$500,000		Yes
Measle Fork Refuse Pile, AML Reclamation of Refuse Pile and Drainage Problems, Wyoming County, WV	WVDEP 601 57 th Street, SE Charleston, WV 25304	\$1,200,000		Yes
Georges Creek Portals, AML Reclamation of Acid Mine Drainage Problems, Mingo County, WV	WVDEP 601 57 th Street, SE Charleston, WV 25304	\$250,000		Yes
Putney Impoundment, AML Reclamation of Mine Portals, Mingo County, WV	WVDEP 601 57 th Street, SE Charleston, WV 25304	\$226,000		Yes
Kopperston (John's Branch) Refuse Emergency, AML Reclamation of Refuse Pile Drainage, Wyoming County, WV	WVDEP 601 57 th Street, SE Charleston, WV 25304	\$1,300,000		Yes
Marmet (Wells Drive) Landslide Emergency Project, AML Reclamation of Landslide, Kanawha County, WV	WVDEP 601 57 th Street, SE Charleston, WV 25304	\$475,000		Yes
Marmet (Clark) Drainage, AML Reclamation of Drainage, Kanawha County, WV	WVDEP 601 57 th Street, SE Charleston, WV 25304	\$100,000		Yes
Pringle Run#2, AML Reclamation of Refuse Pile, Portals, and Structures, Preston County, WV	WVDEP 601 57 th Street, SE Charleston, WV 25304	\$675,000		Yes
May Portal, AML Reclamation Mine Portal/Fill Slippage Project, Buchanan County, VA	Virginia Dept. of Mines, Minerals & Energy PO Drawer 900 Big Stone Gap, VA 24219	\$130,000		Yes
Lick Creek Waterline Extension - Phase I, Boone County, WV	Boone County PSD PO Box 287 Danville, WV 25053	\$1,200,000		Yes

17. COMPLETED WORK WITHIN LAST 5 YEARS ON WHICH YOUR FIRM WAS THE DESIGNATED ENGINEER OF RECORD

PROJECT NAME, TYPE AND LOCATION	NAME AND ADDRESS OF OWNER	ESTIMATED CONSTRUCTION COST	YEAR	COMPLETED (YES OR NO)
Town of Ceredo Water Distribution System Upgrade - Contract No. 1, Ceredo, WV	Town of Ceredo PO Box 691 Ceredo, WV 25507	\$831,000		Yes
Town of Ceredo Water Distribution System Upgrade - Contract No. 2, Ceredo, WV	Town of Ceredo PO Box 691 Ceredo, WV 25507	\$885,000		Yes
Hatfield-McCoy/Water Ways Waterline Extension, Boone County, WV	Boone County PSD PO Box 287 Danville, WV 25053	\$900,000		Yes
Fort Martin Power Station Coal Combustion By-Product Landfill Expansion, Monongalia County, WV	Allegheny Energy Supply 800 Cabin Hill Drive Greensburg, PA 15601	\$24,000,000		Yes
Jessop Highwall #10 AML Reclamation of Highwalls, Preston County, WV	WVDEP 601 57 th Street, SE Charleston, WV 25304	\$1,357,000	2009	Yes
Lando (Edwards) Drainage, AML Reclamation of Refuse Pile and Drainage Problems, Mingo County, WV	WVDEP 601 57 th Street, SE Charleston, WV 25304	\$352,000	2009	Yes
Taylorville (Cantrell) Drainage, AML Reclamation of Acid Mine Drainage Problems, Mingo County, WV	WVDEP 601 57 th Street, SE Charleston, WV 25304	\$241,000	2009	Yes
Borderland (Matey) Portals, AML Reclamation of Mine Portals, Mingo County, WV	WVDEP 601 57 th Street, SE Charleston, WV 25304	\$94,000	2009	Yes
Fairmont East Mine Drainage, AML Reclamation of Acid Mine Drainage, Fairmont, WV	WVDEP 601 57 th Street, SE Charleston, WV 25304	\$100,000	2009	Yes

17. COMPLETED WORK WITHIN LAST 5 YEARS ON WHICH YOUR FIRM WAS THE DESIGNATED ENGINEER OF RECORD				
PROJECT NAME, TYPE AND LOCATION	NAME AND ADDRESS OF OWNER	ESTIMATED CONSTRUCTION COST	YEAR	COMPLETED (YES OR NO)
Rachel Refuse, AML Reclamation of Mining Complex, Farmington, WV	WVDEP 601 57 th Street, SE Charleston, WV 25304	\$300,000	2010	Yes
Wash Branch Waterline Extension, Boone County, WV	Massey Coal Services 315 70 th Street, SE Charleston, WV 25304	\$550,000	2008	Yes
Spruce Laurel Stream Monitoring, Boone County, WV	WVDEP - AML 601 57 th Street, SE Charleston, WV 25304	\$3,000,000 (Est.)	2008	Yes
Fleming Landfill Sewer Line, 2 Miles of Sewer Line, Kanawha County, WV	WVDEP - AML 601 57 th Street, SE Charleston, WV 25304	\$1,100,000	2008	Yes
Pocahontas County Landfill Expansion, Closure, and Operations Consulting, Dunmore, WV	Pocahontas County Solid Waste Authority 910-C Tenth Avenue Marlinton, WV 24454	\$400,000	2008	Yes
Site Assessment and Closure/Capping Plan for Jackson County Landfill, Ripley, WV	WVDEP 601 57 th Street, SE Charleston, WV 25304	\$3,000,000	2008	Yes

18. COMPLETED WORK WITHIN LAST 5 YEARS ON WHICH YOUR FIRM HAS BEEN A SUB-CONSULTANT TO OTHER FIRMS (INDICATE PHASE OF WORK FOR WHICH YOUR FIRM WAS RESPONSIBLE)

PROJECT NAME, TYPE AND LOCATION	NAME AND ADDRESS OF OWNER	ESTIMATED CONSTRUCTION COST OF YOUR FIRM'S PORTION	YEAR	CONSTRUCTED (YES OR NO)	FIRM ASSOCIATED WITH
Bradshaw Schools Site Utilities	Design Water Supply and Sanitary Sewer Systems	\$750,000	2009	Yes	ZMM, Inc.
Charleston Greenspace Project	Site Utilities, Stormwater Management and Agency Coordination	\$20,000	2008	Yes	Andropogon Associates, Ltd.

19. Use this space to provide any additional information or description of resources supporting your firm's qualifications to perform work for the West Virginia Abandoned Mine Lands Program.

Potesta & Associates, Inc.'s (POTESTA) "Expression of Interest for Professional Engineering Design Services and Construction Monitoring Services for the Wolfpen (Carpenter) Portals Project" supports this questionnaire in providing POTESTA's qualifications and resources for serving the West Virginia Department of Environmental Protection, Office of Abandoned Mine Lands and Reclamation on this project. In summary, POTESTA:

1. Has assembled a team of in-house personnel and subcontractors who have historically worked on AML projects. POTESTA's in-house staff includes 15 Professional Engineers including 11 in the primary office, three of whom have worked on over 75 AML projects.
2. Has a large local staff with a unique multidiscipline technical emphasis (including civil engineering, structural engineering, geological engineering, hydrological engineering, mine land reclamation, with a strong emphasis on water quality and aquatic life and toxicity). Two members of POTESTA's staff have their Ph.D.'s, and 12 have their Masters Degree.
3. Has 15+ employees with experience on WVDEP AML projects. POTESTA employees have worked on and have experience in the following type of WVDEP AML projects:
 - Water Supply Feasibility Studies and Design
 - Assessment of Contamination (e.g., PCB's, asbestos)
 - Demolition of Structures
 - Diversion Structures
 - Identifying Acid Mine Drainage
 - Inventory of Residential Water Supplies
 - Landslides
 - Mine Fires
 - Passive Acid Mine Drainage Treatment
 - Reclamation of Refuse Piles
 - Sealing Mine Portals
 - Stream Relocations
 - Subsidence Assessment and Remediation
 - USCOE Permitting
 - Wetland Assessments
4. Can handle a substantial AML workload (more than our competitors) since POTESTA has two Professional Engineer (P.E.) Project Managers each with experience on 75+ AML projects.
5. Offices located in Charleston, West Virginia in close proximity to WVDEP's Charleston office, with offices in Morgantown, West Virginia close to WVDEP Philippi office and Winchester, Virginia.
6. Staff has had a positive relationship with WVDEP, AML in the past, which we would like to continue.

20. The foregoing is a statement of facts.

Signature: Dana L. Burns

Title: Vice President

Date: July 23, 2013

Printed Name: Dana L. Burns

POTESTA & ASSOCIATES, INC.

Civil Engineering and Design

Potesta & Associates, Inc. (POTESTA) helps clients evaluate and plan projects by completing the following types of preliminary investigations and analyses.

- Phase I Environmental Site Assessments
- Floodplain Determination
- Geotechnical Explorations Including Soil, Bedrock, and Groundwater Characterization
- Foundation Recommendations
- Monitoring Well Systems and Site Characterization Plans
- Boundary, Topographical and Photogrammetric Surveys
- Utility Planning
- Earthwork Evaluations Including Volume Analysis
- Opinion of Probable Costs/Engineer's Construction Cost Estimates

Once the project has been determined feasible, POTESTA's design professionals complete preliminary and final designs. Frequent communication is made with the client and any other design professionals to review completed activities and obtain input for the design process. Our goal is to provide our services to achieve or exceed our clients' expectations.

Our design services include:

- Erosion and Sediment Control Plans
- Earth Retaining Structures Design
- Geometric Site Layout
- Grading and Drainage Plans, Including Excavation and Fill Optimization
- Access Road Design
- Hydraulic Structure Design
- Water and Sewer Design
- Slope Stability Analysis
- Subsurface Drainage System Design
- Construction Drawings, Specifications and Contract Document Preparation

POTESTA offers experienced environmental engineers and scientists to prepare applications for various environmental permits that may be required. These services include:

- Stormwater Management Permit/Erosion and Sediment Control Plans
- Office of Air Quality Permit to Construct
- Wetland Delineation and Permits
- National Pollutant Discharge Elimination System (NPDES) Permits
- Floodplain Management Permits
- Groundwater Protection Plans
- Spill Prevention, Control and Countermeasure Plans
- Environmental Site Assessments
- Environmental Impact Statements

POTESTA routinely provides professional services throughout construction of our projects. These services include survey layout, construction management, construction monitoring, record drawing preparation, and bid evaluation assistance.



POTESTA & ASSOCIATES, INC.

7012 MacCorkle Avenue, SE, Charleston, West Virginia 25304

Phone: (304) 342-1400 • Fax: (304) 343-9031 • www.potesta.com

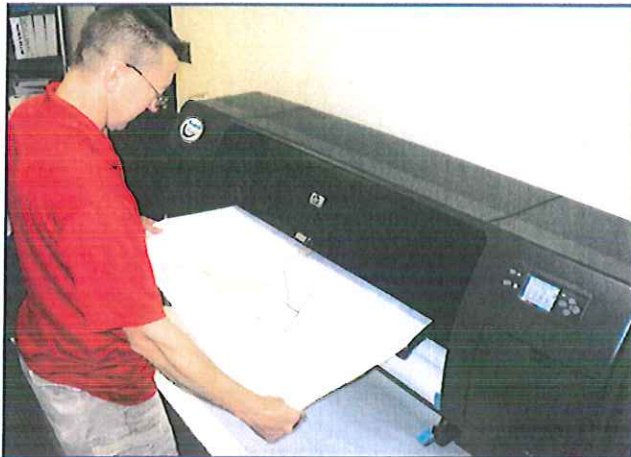
Regional Offices: Morgantown, West Virginia and Winchester, Virginia

POTESTA & ASSOCIATES, INC.

Computer-Aided Drafting and Design

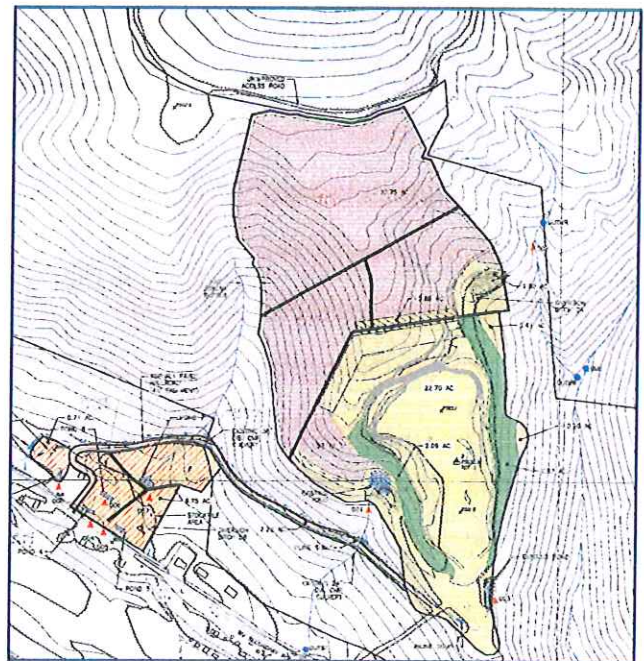
The Potesta & Associates, Inc. (POTESTA) computer-aided drafting and design (CADD) department provides state-of-the-art design and drafting services for in-house engineering and environmental consulting projects. We also provide personnel to clients who have a temporary need for additional drafting manpower. These services may be performed at your location or our office as required.

The CADD department utilizes the latest drafting/design software and computer hardware to maintain productivity at the high levels that clients demand and expect. We utilize the latest version in AutoCAD Civil 3D civil/survey design software to prepare, revise, and manipulate drawings and engineering data efficiently. Drawings and figures are produced using a Hewlett Packard 4000 and 5500 color ink jet plotters. POTESTA's experienced and trained professionals allow clients' projects and assignments to be completed rapidly and at reasonable cost.



Our CADD services include:

- Survey data manipulation including development of topographic mapping, cross sections, profiles, isopach drawings, etc.
- Site design including grading plans, drainage plans, utilities plans, right-of-way plans, etc.
- Roadway design.
- Water and sewer design.
- Permit drawings, maps, and exhibits.
- Earthwork and planimetric quantity development.
- Two and three dimensional graphics.



POTESTA & ASSOCIATES, INC.

7012 MacCorkle Avenue, SE, Charleston, West Virginia 25304

Phone: (304) 342-1400 • Fax: (304) 343-9031 • www.potesta.com

Regional Offices: Morgantown, West Virginia and Winchester, Virginia

POTESTA & ASSOCIATES, INC.

Construction Monitoring

Potesta & Associates, Inc. (POTESTA) provides construction monitoring and construction management services to assist clients in achieving regulatory and contractual compliance, to document that contractor activities are in compliance with design requirements, and to serve as an extension of clients' staff. POTESTA can provide full-time or part-time field services utilizing one or more engineers or technicians.

Regulatory compliance is often best documented by providing full-time construction monitoring services for a construction project. POTESTA can assist clients in observation of construction activities and documenting compliance. Our typical involvement in such projects includes:

- Conducting a pre-construction review of design and contract documents to identify potential problem areas, and consultation with the owner or client to develop strategies or procedures to avoid anticipated problems.
- Assistance in contractor selection. POTESTA can recommend construction contractors who specialize in the type of work associated with the project and can assist in bid evaluation by reviewing proposed quantities, unit costs, lump sum costs, and any proposed exceptions or qualifiers for the project. POTESTA can conduct pre-bid conferences to help contractors understand project requirements. We can also conduct pre-construction conferences prior to the start of the project to help establish lines of communication, review detailed plans, discuss testing requirements and establish proper reporting procedures.
- POTESTA can provide surveying for construction layout, measurement for payment quantities, and documentation of as-built conditions. Survey results are downloaded to form computer-aided drafting (CAD) drawings allowing the efficient preparation of record drawings and any subsequent evaluations required.
- Construction monitoring can include field testing to document compliance such as field density tests, concrete testing, sampling of materials for laboratory analysis, and documentation of site conditions and work performed on a daily basis or as required.
- Preparation of summary of construction reports, including photographs, videotape documentation, test results, daily construction logs, industrial hygiene monitoring, and other documentation as may be required by the client.
- Preparation of certifications as may be required.



POTESTA & ASSOCIATES, INC.

7012 MacCorkle Avenue, SE, Charleston, West Virginia 25304

Phone: (304) 342-1400 • Fax: (304) 343-9031 • www.potesta.com

Regional Offices: Morgantown, West Virginia and Winchester, Virginia

POTESTA & ASSOCIATES, INC.

Endangered Species Consultation

The Endangered Species Act (ESA) requirements can delay if not halt important projects. Being able to respond promptly and thoroughly to the Fish & Wildlife Service's (Service) requests for an evaluation of probable project impacts on either endangered species, threatened species, or species of concern can facilitate needed regulatory approvals.

Potesta & Associates, Inc. (POTESTA) has extensive experience in biological assessments (BA) related to the ESA. We utilize a combination of in-house professionals and recognized experts to complete projects for our clients. This arrangement allows us to provide a work product which is acceptable to the Service.



For the last several years, our office has worked with natural gas transmission companies preparing environmental reports which include assessments and remediation of impacts to rare, threatened, and endangered species. POTESTA's biologists have worked on natural gas projects within the core summer roosting and maternity range of the Indiana bat. This work provided the firm's biologists with considerable experience in identifying suitable Indiana bat habitat in Ohio, Kentucky, Virginia, and West Virginia. Other biologists within our office

also have experience in bat surveys, echo location, bat identification and mussel surveys.

We have established professional relationships with local and regional experts on projects in our region. These relationships allow us to have access to recognized experts on the appropriate species on an as-needed basis. The advantage to the client is that this approach allows us to select the best individual for the task at hand.

These experts have specialized in the study of their species of interest for many years and are familiar with the life cycle, habitat requirements and sampling techniques for the species. POTESTA supplements these individuals with our experienced field staff, who are intimately familiar with the project, to constitute an effective team to respond quickly to threatened and endangered species issues. POTESTA provides final reports with additional information obtained from the noted expert, as well as relevant mapping and other supporting information.

This team approach allows for a complete evaluation of the potential impact a project may have on a species of concern. The most basic level of services in this area is a partial evaluation based only on literature reviews. An intermediate level of effort would be the literature review and a thorough field review of the project site to evaluate habitat. A complete evaluation would include the literature review, habitat evaluation, and extensive field collection program during the appropriate season of the year. Our subcontractors have the appropriate permits to collect the species in question.



POTESTA & ASSOCIATES, INC.

7012 MacCorkle Avenue, SE, Charleston, West Virginia 25304

Phone: (304) 342-1400 • Fax: (304) 343-9031 • www.potesta.com

Regional Offices: Morgantown, West Virginia and Winchester, Virginia

POTESTA & ASSOCIATES, INC.

Hydrology and Hydraulics Design

Our engineers have extensive experience in the application of hydrology and hydraulic principles to the design of real world systems. These applications include:

- Drainage Structure Sizing
 - Stream Relocations
 - Culverts
 - Channels
- Pond and Dam Design
 - Sediment Ponds and Basins
 - Spillways
 - Design/Rehabilitation
 - Slurry Impoundments
 - Lagoons
 - Dams
- Detention and Detention Systems
 - Ponds
 - Pipes
 - Underground Bladders
- Floodplain Management Permits/Approval
- Floodway Studies
 - FEMA (Federal Emergency Management Agency)
 - NFIP (National Flood Insurance Program)
 - Flood Elevation Surveys/Certifications
 - Flood Routing
- Dam Break Analysis
- Hydrology Surveys
- Stream Gauging
- Rainfall and Flow Data Collection
- Stormwater Drainage System Design
- Pressure Pipe Systems
- Stream Restoration Plans
- Natural Stream Channel Design/Restoration
- Expert Witness Testimony

To complete these types of applications, our engineers, scientists, and surveyors work jointly to develop an effective and economical solution to your situation. Their analyses use widely accepted computer models.



Potesta & Associates, Inc. typically uses the following computer modeling programs:

- HEC-RAS
- HEC-HMS
- TR-20/TR-55
- StormCAD
- CulvertMaster
- FlowMaster
- PondPack
- CORMIX

We have provided these services to a wide variety of public and private sector clients. Our staff not only understands the technical details, but is very experienced in working with the various state, federal, and local regulatory agencies. We know the level of detail they require and can obtain the necessary approvals in a timely manner.



POTESTA & ASSOCIATES, INC.

7012 MacCorkle Avenue, SE, Charleston, West Virginia 25304
Phone: (304) 342-1400 • Fax: (304) 343-9031 • www.potesta.com
Regional Offices: Morgantown, West Virginia and Winchester, Virginia

POTESTA & ASSOCIATES, INC.

Geotechnical Engineering

Potesta & Associates, Inc.'s (POTESTA) engineers and geologists have extensive experience related to the geotechnical engineering and geological disciplines. These areas include subsurface investigations, monitoring well and piezometer installations, foundation design recommendations, slope stability analysis, and remedial designs as they relate to construction, mining, waste disposal, environmental remediation, and other projects.

SUBSURFACE INVESTIGATIONS

POTESTA's diverse staff of engineers and geologists is experienced in the many different facets of subsurface investigations. Our usual procedure is to attend an initial meeting with the client to establish requirements and expectations, conduct a preliminary site reconnaissance, and develop a recommended exploration program for your review and approval. Supplemental information from the local area is then obtained from readily available sources to assist the engineer or geologist in making final recommendations.



POTESTA can provide field engineers and geologists who are knowledgeable using the latest technologies to assist in collecting and analyzing samples. Our knowledge of the proper procedures and familiarity with local conditions allows office

and field personnel to adjust the investigative plan if unanticipated field conditions are found.

Our staff is familiar with the following items which can be associated with subsurface exploration:

- Drilling and Rock Coring Techniques (augers, rotary bits, Geoprobe™, etc.)
- Sample Collection Methods (split spoons, Shelby tubes, Geoprobe™ sleeves, etc.)
- Classification and Logging of Soil and Rock Samples
- Monitoring Well and Piezometer Installation

SLOPE STABILITY ANALYSIS AND REMEDIAL DESIGN

Slope stability is often a major concern during the design and construction phases of many projects, especially those located in the Appalachian terrain. POTESTA's engineers are familiar with the various methods utilized to predict slope stability and are capable of performing the related analyses. Slope stability is critical for many projects such as analysis of existing or proposed soil embankments, rock fills, dam analysis and design, landfill design and operation, estimating the causation of slope failure, and designing remedial measures. Analyses can involve circular or sliding block methods, interface friction angles, and estimation of the strength parameters of the soil or rock. Slope stability analyses are performed on one of the most technologically advanced computer programs available and can be modified using site specific data.

POTESTA's engineers can also develop preventive measures during initial project design or recommendations to repair slope failures. Based upon the project circumstances, our engineers will consider various remedial measures such as regrading the site to obtain more suitable conditions, management of groundwater, and design of retaining



POTESTA & ASSOCIATES, INC.

7012 MacCorkle Avenue, SE, Charleston, West Virginia 25304

Phone: (304) 342-1400 • Fax: (304) 343-9031 • www.potesta.com

Regional Offices: Morgantown, West Virginia and Winchester, Virginia

POTESTA & ASSOCIATES, INC.

Permitting Services

Potesta & Associates, Inc. (POTESTA) offers its clients exceptional expertise and experience when it comes to the permitting process, including all phases of application preparation, negotiations, modifications, compliance and renewal at all levels of government. Our permit services cover air, mining, water and waste disposal permits.

AIR

Our firm offers complete air permitting and consulting services to assist industry in complying with today's complex air quality regulations. Our staff has experience in identifying, characterizing and permitting air pollution sources for a variety of industries, including:

- Coating Operations
- Petroleum and Petrochemical Operations
- Chemical Manufacturing
- Manufacturing Facilities
- Mining
- Quarries
- Natural Gas Compressor Stations
- Electric Utilities

Our air quality experts have comprehensive knowledge of federal, state and local regulations, as well as experience in complex Title V applications. Our services include identification of potential air pollution sources, development of control strategies, preparation of permit applications, emissions inventories, compliance audits and regulatory liaison.

At both the state and federal levels, we help clients interpret and comply with air regulations, including the New Source Performance Standards (NSPS) and National Emissions Standards for Hazardous Air Pollutants (NESHAPS). We can suggest emissions control strategies to meet both current and anticipated regulations, including BACT, MACT and LAER.

MINING

In recent years, mining permits have become increasingly complex, requiring diverse expertise in mining techniques, engineering, environmental regulations, benthic studies, hydrogeology and hydrology. Our staff has broad experience in providing innovative solutions to various mining problems.



Although the objective of a permit application is to receive agency approval in a timely manner, the client does not benefit if the application does not allow for effective operations. We work with our clients to ensure that your operational needs are met while allowing for essential flexibility. Several members of our staff have mining industry experience, and they understand the requirements vital to an effective operation.

From the beginning of the permit process, POTESTA involves the reviewing agency to allow its concerns to be addressed prior to submittal of the application. Often, this reduces the need for review comments and revisions which could slow the approval process. Our thorough knowledge of the various phases and requirements of the permitting process, coupled with our technical expertise, may



POTESTA & ASSOCIATES, INC.

7012 MacCorkle Avenue, SE, Charleston, West Virginia 25304

Phone: (304) 342-1400 • Fax: (304) 343-9031 • www.potesta.com

Regional Offices: Morgantown, West Virginia and Winchester, Virginia

POTESTA & ASSOCIATES, INC.

Site Design



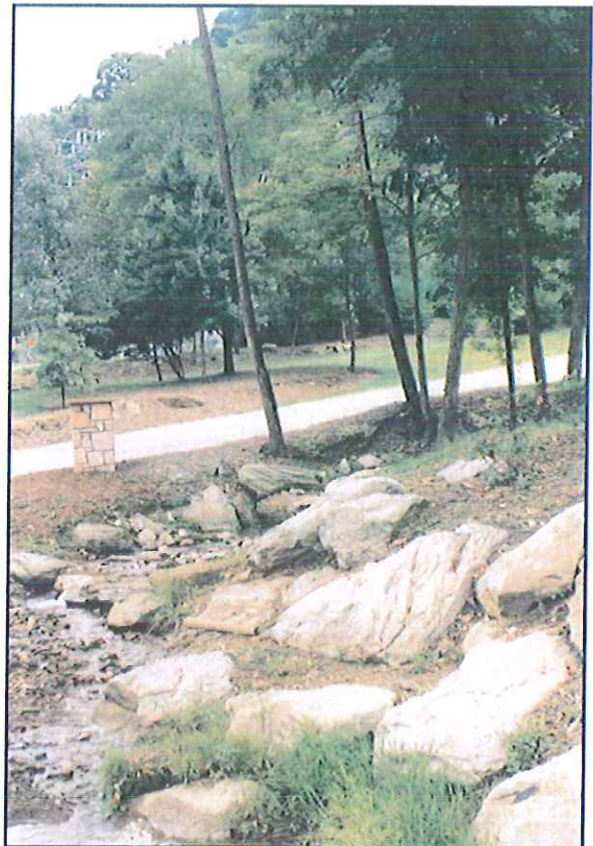
Potesta & Associates, Inc. has a significant body of work in site design for residential, commercial and industrial clients. Projects range from power plant siting to subdivision design. We have assisted numerous developers and development agencies with the creation of business industrial parks throughout West Virginia, and have been part of design teams for elementary, secondary and collegiate projects primarily associated with new building construction.

Our staff of civil, environmental, and geotechnical engineers; surveyors and environmental scientists can provide the following site planning and design services.

- Surveying – Topo and Boundary
- Base Mapping from Aerial Photography
- Geotechnical Engineering
- Land Planning
- Environmental Issues Evaluation and Mitigation
- Site Grading
- Vehicular and Pedestrian Circulation
- Utility Design
- Site Features
- Stormwater Management Plans

Some clients who have used our site design services include:

- West Virginia Development Office
- Development Authorities: Tucker, Wood and Roane Counties
- Bright Enterprises
- BIDCO (Capital Area Development Corporation)
- University of Charleston
- Timberwolf Development Corporation
- West Virginia Department of Environmental Protection
- West Virginia Division of Natural Resources
- Marshall University
- Architects: Associated Architects; Bastian & Harris, Architects; SEM Partners



POTESTA & ASSOCIATES, INC.

7012 MacCorkle Avenue, SE, Charleston, West Virginia 25304
Phone: (304) 342-1400 • Fax: (304) 343-9031 • www.potesta.com
Regional Offices: Morgantown, West Virginia and Winchester, Virginia

POTESTA & ASSOCIATES, INC.

Surveying and Mapping

Our surveyors are experienced in many aspects of surveying such as topographic mapping, boundary surveys (rural/farms, city lots, and subdivisions), ALTA surveys, control surveys, flood certificate surveys, well location surveys, construction surveys for layout of work, record drawings, and quantity measurements. Related areas include courthouse research, preparation of right-of-way plans, and verification of property owners. Potesta & Associates, Inc. (POTESTA) has licensed professional surveyors registered in West Virginia, North Carolina, South Carolina, Ohio, Virginia, and Pennsylvania. Their total combined surveying experience comes to well over 50 years.

POTESTA's surveyors use state-of-the-art equipment such as Topcon total stations, Trimble R-8 GNSS, and SMI Version 8 data collectors with SMI software. Reduction and design software used includes AutoCAD, Softdesk Civil/Survey design, Autodesk Land Design, Microstation, and InRoads design software.

POTESTA is equipped with modern surveying instruments, allowing efficient data processing and accurate gathering of field information. Total station instruments equipped with data collectors are utilized for complete field-to-office automation allowing for high levels of productivity in the field. The latest versions of software are then used to process survey data and create drawings or required end products. These products can be supplied to our clients in AutoCAD and/or Microstation format.

Small topographic mapping projects can be completed in-house using the aforementioned process. Larger projects are better suited for mapping using aerial photography.

POTESTA can provide the necessary surveying required for establishing ground control for aerial mapping. As a quality control measure, aerial mapping is field checked for accuracy by surveying cross sections or random points.



Surveys completed by POTESTA are performed by or under the direction of a professional licensed surveyor. Surveys and mapping are completed to the standards outlined by the National Map Standards, as well as other applicable quality standards.

Our staff is experienced in global positioning surveys (GPS). GPS equipment, Trimble R-8 GNSS, and existing base stations are among POTESTA's surveying tools. Based upon the site location and ultimate use of the survey information, a recommendation is made to the client as to whether or not traditional survey or GPS is most applicable to their project.



POTESTA & ASSOCIATES, INC.

7012 MacCorkle Avenue, SE, Charleston, West Virginia 25304

Phone: (304) 342-1400 • Fax: (304) 343-9031 • www.potesta.com

Regional Offices: Morgantown, West Virginia and Winchester, Virginia

POTESTA & ASSOCIATES, INC.

Water and Wastewater Engineering

Our professional staff is dedicated to providing quality engineering services for various types of water treatment and distribution systems, as well as wastewater management, collection and treatment systems. The following is a list of some of the services Potesta & Associates, Inc. is capable of providing:



WATER AND WASTEWATER DESIGN

- Feasibility Studies
- Conceptual Design
- Final Design
- Bidding and Construction
- Construction Monitoring
- Wastewater Audits
- Wastewater Minimization Studies
- Engineer's Cost Estimates
- Small Flows Design (Traditional and Innovative Treatment Systems for Low Volume Flows)
- Sewage Collection and Treatment
- Water Treatment and Distribution
- Industrial Wastewater Treatment

- Remediation Systems
- Landfill Leachate Treatment
- Storage Tank Design
- Flow Measurement
- Surveying/GPS and Mapping
- Permitting and Regulatory Liaison
- Combined Sewer Overflow (CSO)
- Management, Sampling and Modeling

STORMWATER MANAGEMENT

- Hydraulic Conveyance Structure Design (Culverts, Channels, Drop Inlets, Etc.)
- Stormwater Retention/Detention Pond Design
- Stormwater Pond Modeling
- Floodplain Identification and Management Strategies
- Hydrologic and Hydraulic Analysis and Evaluations and Modeling
- Construction Monitoring
- Surveying
- Permitting and Regulatory Liaison



POTESTA & ASSOCIATES, INC.

7012 MacCorkle Avenue, SE, Charleston, West Virginia 25304

Phone: (304) 342-1400 • Fax: (304) 343-9031 • www.potesta.com

Regional Offices: Morgantown, West Virginia and Winchester, Virginia

Wetlands play a significant role in business and industry. These unique aquatic habitats can present problems with regard to development of properties because they are protected by the Clean Water Act.

Potesta & Associates, Inc. (POTESTA) has a qualified staff of scientists and engineers who are trained and experienced in the identification and permitting of wetlands, the mitigation of displaced wetlands and the design of constructed wetlands.

INVESTIGATION AND DELINEATION

Wetland investigations and delineations are conducted by POTESTA's scientists as part of pre development site investigation and environmental impact assessments. During a wetland investigation, the site is examined for the presence of wetland indicators, including specific hydrology, soils and vegetation. Any wetlands discovered are delineated in accordance with the U.S. Army Corps of Engineers Wetlands Delineation Manual (1987).

PERMITTING

Once wetlands have been identified and delineated, POTESTA can prepare application packages for permits to fill and/or dredge these areas for further development. The U.S. Army Corps of Engineers (COE) is the agency responsible for granting wetland permits under Section 404 of the Clean Water Act. In addition to the COE permit, individual states must approve each permit granted, certifying that it meets the state's water quality standards.

Our employees have established working relationships with both the federal and state agencies in this region. We are very familiar with the data required and can work with the agencies to obtain timely review and issuance of permits.



MITIGATION AND DESIGN

Wetland mitigation and design come into play when wetlands being displaced or filled are large enough to require mitigation under state and federal standards. In some cases, wetland mitigation can be achieved solely through the payment of a fee to a mitigation bank or fund, established for the creation, protection or enhancement of other wetland areas. In this case, POTESTA can prepare an appropriate mitigation offer and negotiate with state and federal authorities for its approval.

Depending upon the availability of suitable sites, wetland mitigation can also consist of the actual design and construction of new wetlands, or the enhancement of existing wetlands. Our staff includes qualified engineers experienced in the design of created wetlands. Working as a team with staff biologists, we can produce a cost-effective functional design for presentation to state and federal authorities. Once approved, we can provide construction monitoring of the new wetlands.



POTESTA & ASSOCIATES, INC.

7012 MacCorkle Avenue, SE, Charleston, West Virginia 25304

Phone: (304) 342-1400 • Fax: (304) 343-9031 • www.potesta.com

Regional Offices: Morgantown, West Virginia and Winchester, Virginia

Project Abstract

ACID MINE DRAINAGE TREATMENT PROJECTS-SOVERN RUN AND UPPER MUDDY CREEK

Friends of the Cheat

Preston County, West Virginia

Potesta & Associates, Inc. (POTESTA) was retained by the Friends of the Cheat (FOTC) to provide design assistance for two acid mine drainage treatment projects located in Preston County, West Virginia. POTESTA's services included review and modifications of conceptual designs, topographic surveying, courthouse research for property boundaries, preparation of construction drawings and technical specifications, development of bidding documents, and construction observation.

The Upper Muddy Creek project involved acid mine drainage from four (4) areas that discharged into Muddy Creek upstream of where it crosses beneath State Route 3 (Brandonville Pike). Muddy Creek has been significantly impacted by acid mine drainage, but the upper portion is a trout stream. The proposed design includes the construction of four (4) limestone leach beds and nearly 1,500 feet of open limestone channel. The project is scheduled for completion in 2004.



The Sovern Run (Tichenell) project involved highly acidic discharge from one source and mildly acidic discharge from two sources. The design included a limestone leach area and an open limestone channel to provide treatment for the main acid mine drainage source. The mildly acidic sources included a limestone leach bed for treatment and two (2) steel slag leach dams to add excessive alkalinity to the water in an effort to provide a net neutralization effect upon its confluence with the high acidity drainage further downstream. The project is scheduled for completion in 2004.



POTESTA & ASSOCIATES, INC.

Charleston, WV • Morgantown, WV • Winchester, VA
(304) 342-1400/www.potesta.com

Project Abstract

ALLEGHENY ENERGY SUPPLY COMPANY, LLC – FORT MARTIN CCB LANDFILL PERMIT APPLICATION/CONSTRUCTION INSPECTION

Allegheny Energy Supply Company

Monongalia County, West Virginia

Potesta & Associates, Inc. (POTESTA) was retained by Allegheny Energy Supply Company, LLC to develop a permit renewal application associated with a coal combustion by-product (CCB) landfill expansion. The project is located in Fort Martin, West Virginia. POTESTA developed a West Virginia/NPDES permit renewal application related to the existing portion of the Class F Industrial Landfill as well as encompassing the expansion area of just under 100 acres.

POTESTA prepared a solid waste/NPDES water pollution control permit including: supplemental evaluation of candidate sites for the expansion area; field exploration involving collection of soil, geological, and hydrological data; wetland and stream impact delineation; "permit level" design of the landfill expansion. In conjunction, the project included two additional sedimentation ponds and a proposed alternative landfill liner system. The capacity of the full expansion area is approximately 8.7 million cubic yards of CCB.



Aerial view of power plant and landfill site

POTESTA also performed construction observation/construction administration for the landfill project. Services provided by POTESTA included soil density testing, concrete testing, nondestructive and destructive testing for liner system. Over a period of more than 12 months, POTESTA provided one (1) to four (4) construction technicians to cover the

POTESTA & ASSOCIATES, INC.

Charleston, WV • Morgantown, WV • Winchester, VA
(304) 342-1400/www.potesta.com

Project Abstract

BEVINS LANDSLIDE EMERGENCY

Commonwealth of Virginia, Department of Mines, Minerals and Energy

Buchanan County, Virginia

Potesta & Associates, Inc. (POTESTA) has been retained to provide professional engineering design services to the Commonwealth of Virginia, Department of Mines, Minerals and Energy, Abandoned Mine Land Program (DMME-AML) under the Small Purchase Procurement Program for Professional Services (09AML06). These services will consist of developing an engineering report, construction plans and specifications, and a material schedule for the Bevins Landslide Emergency Project in Buchanan County, Virginia.

The project will consist of:

- Stabilization/removal of a slide that has occurred behind the Bevins residence.
- Removal and disposal of slide material that has already been deposited on the old mine bench.
- Installation of temporary and permanent drainage control measures.
- Upgrade of the existing entrance roadway onto the mine bench where the Bevins residence is located.
- Installation of required erosion and sedimentation control measures including revegetation of disturbed areas of the site.



POTESTA will perform the surveying, subsurface exploration, and geotechnical design necessary to complete this project.

POTESTA & ASSOCIATES, INC.

Charleston, WV • Morgantown, WV • Winchester, VA
(304) 342-1400/www.potesta.com

Project Abstract

BORDERLAND (MATNEY) PORTAL

**West Virginia Department of Environmental Protection,
Office of Abandoned Mine Lands**

Borderland, West Virginia

Potesta & Associates, Inc. (POTESTA) was retained by the West Virginia Department of Environmental Protection's Office of Abandoned Mine Lands to prepare plans and specifications for installation of mine portal seals and a drainage system around a residence. The project consisted of correction of uncontrolled seepage from collapsed mine portals. The drainage presented problems for the property owners and was having an adverse impact on the environment. The discharge of impounded water from the underground mine works is a serious threat to life and property due to the potential it poses for a blow-out.



The project required six mine portal seals, three being double block wet seals and three conventional single block wet seals. Bat gates were installed in two seals. The portals were adjacent to a residence and required plans for drainage channels to divert discharge from the portals through the residence property to a nearby stream. Regrading and revegetation of all areas disturbed during construction were also required.

POTESTA prepared drawings, technical specifications, contractor's bid forms, engineer's construction cost estimate, and calculations brief for the project. POTESTA also attended the pre-bid and pre-construction conferences to assist WVDEP with the project.

POTESTA & ASSOCIATES, INC.

Charleston, WV • Morgantown, WV • Winchester, VA
(304) 342-1400/www.potesta.com

Project Abstract

BURNWELL (STANDARD/PAINT CREEK/COLLINSDALE) WATERLINE EXTENSION

**West Virginia Department of Environmental Protection,
Office of Abandoned Mine Lands**

Eastern Kanawha County, West Virginia

Potesta & Associates, Inc. (POTESTA) was retained by the West Virginia Department of Environmental Protection's Office of Abandoned Mine Lands (WVDEP) to prepare a study evaluating possible water line extensions to the Collinsdale/Burnwell area from neighboring public water systems. The WVDEP will review the study and select the preferred option. An initial study requested by the WVDEP determined that the area was 100 percent impacted by pre-1977 mining activities. The study recommended construction of a water treatment plant near Burnwell. Upon further review, WVDEP determined that Collinsdale/Burnwell did not have the personnel or financial ability to operate and maintain a water treatment plant.



POTESTA performed a file review of the public water systems in the area to verify their production and financial capabilities. Meetings were held with the WVDEP and public water systems to address concerns regarding the additional customers and service line. Based upon the aforementioned and site visits, POTESTA will prepare a preliminary engineering report, including preliminary water design, and a West Virginia Infrastructure and Jobs Development Council Preliminary Application. The water line extension is expected to require approximately 48,000 LF of water line, one booster station, a tank, fire hydrants, meter assemblies, and miscellaneous valves and fittings.

POTESTA will design the water line extension selected by the WVDEP from the preliminary engineering report. The extension will be mapped, including locating utilities, public water systems connection points, identifying easements via tax maps, and surveying tank and booster station sites. POTESTA will prepare and submit the necessary "clearance" letter and permits for construction.

Geotechnical exploration and assessment will be performed for tank and booster sites. Boundary surveys and plats will be prepared for the property transfer of the tank and booster station sites, and POTESTA will perform a hydraulic evaluation to estimate the impact of the additional demand on the selected public water system.

POTESTA prepared drawings, technical specifications, contractor's bid forms, engineer's construction cost estimate, and calculations brief for the project. POTESTA also attended the pre-bid and pre-construction conferences to assist WVDEP with the project.

POTESTA & ASSOCIATES, INC.

Charleston, WV • Morgantown, WV • Winchester, VA
(304) 342-1400/www.potesta.com

Project Abstract

CLENDENIN COMPRESSOR STATION LANDSLIDE EVALUATION/REPAIR

Columbia Natural Gas

Clendenin, West Virginia

POTESTA was retained by Columbia Natural Gas (Columbia) to evaluate and design remedial measures for a landslide at Columbia's Clendenin Compressor Station. The landslide was located adjacent to the office and maintenance building at the facility and threatened to damage the structure.

A landslide had occurred within the steep slope adjacent to the building in August 2002, threatening damage to the adjacent office and maintenance building.

POTESTA provided surveying services to map the project area and performed a subsurface exploration to assist in evaluating the landslide condition. The remedial measures to correct the landslide area included the design of an approximately 200-foot steel soldier beam and concrete lagging retaining wall. The retaining wall included a rock anchor tie-back system.

As part of the project, POTESTA assisted Columbia with contract administration and performed construction observation services during the construction phase of the project.



During construction



Finished wall with anchors

POTESTA & ASSOCIATES, INC.

Charleston, WV • Morgantown, WV • Winchester, VA
(304) 342-1400/www.potesta.com

Project Abstract

EVALUATION OF MINE DRAINAGE FROM AML SITES, AS PART OF ENVIRONMENTAL SITE ASSESSMENT

Jackson & Kelly, PLLC

McDowell County, West Virginia

Potesta & Associates, Inc. (POTESTA) was retained by Jackson & Kelly to perform an environmental site assessment (ESA) of approximately 1,000 acres of mining property in McDowell County, West Virginia. The mining property consisted of Surface Mining Control and Reclamation Act (SMCRA) mining sites and pre-SMCRA mining sites (i.e., AML). Included in the ESA was an evaluation of mine drainage from the AML sites, as well as the SMCRA sites. AML sites included unreclaimed refuse piles, open and draining portals, and remnants of other mining structures. The intent of the mine drainage evaluation portion of the ESA was to identify acid mine drainage (AMD) sources on the property, and their potential liability for a property purchaser.

The evaluation of mine drainage included:

1. Records Review
2. Interviews with Regulators
3. Field Reconnaissance, Including Water Sampling

Records reviewed included the water quality sections of SMCRA permits (including attempting to identify documentation confirming whether AMD was from SMCRA or AML sites) and the 303(d) TMDL list of streams impaired by acid mine drainage. Regulatory officials were also asked about known AMD sites.

Field reconnaissance and water quality sampling was conducted to:

1. Identify and characterize mine drainage from pre-SMCRA (i.e., AML) and SMCRA mining operations.
2. Assess the quality of surface waters draining the property.

SMCRA sites were located based on the records review. Pre-SMCRA (i.e., AML) sites were located based on the records review, review of United States Geological Survey mapping, interviews with regulatory officials and other people familiar with the property, by chance encounter during the field reconnaissance, and by "chasing" low pH and/or high specific conductivity field readings and/or stream discoloration up a stream until a mine drainage source was identified.

Evaluation of Mine Drainage
Page 2

Streams and mine drainage sources were assessed via intensive field sampling including field sampling of most "unnamed tributaries" with follow-up water quality sampling/analyses of certain streams and mine drainage sources via a laboratory.

Field sampling primarily consisted of field readings of pH, specific conductivity, temperature, and visual estimates of flow. Laboratory analysis primarily consisted of pH, acidity, alkalinity, total iron, total aluminum, total manganese, total dissolved solid, total suspended solids, and sulfates.

A total of 24 field readings were taken with a follow-up 12 samples being collected for laboratory analyses. The water quality sampling confirmed a limited amount of AML AMD (actually alkaline, but with high total iron). However, the water quality sampling did not indicate that the AMD was causing violations of receiving stream water quality standards.

The results of the mine drainage evaluation were summarized in a report, along with other findings of the ESA.

POTESTA & ASSOCIATES, INC.
Charleston, WV • Morgantown, WV • Winchester, VA
(304) 342-1400/www.potesta.com

Project Abstract

EVALUATION OF MINE DRAINAGE FROM AML SITES, AS PART OF ENVIRONMENTAL SITE ASSESSMENT

Jackson & Kelly PLLC

Mingo County, West Virginia

Potesta & Associates, Inc. (POTESTA) was retained by Jackson & Kelly to perform an environmental site assessment (ESA) of approximately 5,000 acres of mining property in Mingo County, West Virginia. The mining property consisted of Surface Mining Control and Reclamation Act (SMCRA) mining sites and pre-SMCRA mining sites (i.e., AML). Included in the ESA was an evaluation of mine drainage from the AML sites, as well as the SMCRA sites. AML sites included unreclaimed refuse piles, open and draining portals, and remnants of other mining structures. The intent of the mine drainage evaluation portion of the ESA was to identify acid mine drainage (AMD) sources on the property, and their potential liability for a property purchaser.

The evaluation of mine drainage included:

1. Records Review
2. Interviews with Regulators
3. Field Reconnaissance, Including Water Sampling

Records reviewed included the water quality sections of SMCRA permits (including attempting to identify documentation confirming whether AMD was from SMCRA or AML sites) and the 303(d) TMDL list of streams impaired by acid mine drainage. Regulatory officials were also asked about known AMD sites.

Field reconnaissance and water quality sampling was conducted to:

1. Identify and characterize mine drainage from pre-SMCRA (i.e., AML) and SMCRA mining operations.
2. Assess the quality of surface waters draining the property.

SMCRA sites were located based on the records review. Pre-SMCRA (i.e., AML) sites were located based on the records review, review of United States Geological Survey mapping, interviews with regulatory officials and other people familiar with the property, by chance

EVALUATION OF MINE DRAINAGE

Page 2

encounter during the field reconnaissance, and by "chasing" low pH and/or high specific conductivity field readings and/or stream discoloration up a stream until a mine drainage source was identified.

Streams and mine drainage sources were assessed via intensive field sampling including field sampling of most "unnamed tributaries" with follow-up water quality sampling/analyses of certain streams and mine drainage sources via a laboratory.

Field sampling primarily consisted of field readings of pH, specific conductivity, temperature, and visual estimates of flow. Laboratory analysis primarily consisted of pH, acidity, alkalinity, total iron, total aluminum, total manganese, total dissolved solid, total suspended solids, and sulfates.

A total of 29 field readings were taken with a follow-up 24 samples being collected for laboratory analyses. The water quality sampling confirmed AML AMD from several deep mine sites. However, the water quality sampling did not indicate that the AMD was causing violations of receiving stream water quality standards.

The results of the mine drainage evaluation were summarized in a report, along with other findings of the ESA.

POTESTA & ASSOCIATES, INC.

Charleston, WV • Morgantown, WV • Winchester, VA
(304) 342-1400/www.potesta.com

Project Abstract

FAIRMONT EAST MINE DRAINAGE

**West Virginia Department of Environmental Protection,
Office of Abandoned Mine Lands**

Fairmont, West Virginia

Potesta & Associates, Inc. (POTESTA) was retained by the West Virginia Department of Environmental Protection's Office of Abandoned Mine Lands (WVDEP) to provide engineering services regarding the conveyance of mine seepage around residential areas and into the City of Fairmont's storm sewer system. The project area is located along Palatine Avenue and Mason Street. Abandoned underground mine works caused flooding problems along these streets.

POTESTA performed the following tasks to complete this project:

- Mine map review
- Survey to develop mapping
- Subsurface exploration
- Design of mine drainage collection system and storm sewer system to convey runoff to the City of Fairmont's storm sewer system
- Design of collection system consisting of 15-inch corrugated plastic pipe to City of Fairmont's standards, including pavement overlay to impacted streets.



POTESTA & ASSOCIATES, INC.

Charleston, WV • Morgantown, WV • Winchester, VA
(304) 342-1400/www.potesta.com

Project Abstract

FEASIBILITY STUDY AND PREPARATION OF FUNDING APPLICATION FOR WATER SYSTEM EXPANSION

City of Philippi

Philippi, West Virginia

Potesta & Associates, Inc. (POTESTA) was retained by the City of Philippi to perform a feasibility study and subsequent funding application for a project involving upgrades to their existing potable water distribution system.

The project included the following:

- 402,000 gallon storage tank
- 16,000 gallon storage tank
- 600 gpm booster statio
- 300 gpm booster station
- 1,800 feet of 8" pipe
- 2,000 feet of 6" pipe
- Pressure reducing station

POTESTA prepared a preliminary engineering report and compiled the information necessary for a funding application with the United States Department of Agriculture - Rural Utilities Service (USDA-RUS). Additional services will include final design of the project components, preparation of construction drawings and technical specifications, permit applications, and nearly full-time construction monitoring.



POTESTA & ASSOCIATES, INC.

Charleston, WV • Morgantown, WV • Winchester, VA
(304) 342-1400/www.potesta.com

Project Abstract

GENERAL CONSULTING SERVICES Kanawha Eagle, LLC

Winifrede, West Virginia

Kanawha Eagle, LLC operates a deep mine complex in eastern Kanawha County. Potesta & Associates, Inc. (POTESTA) has provided a wide variety of engineering services to assist in their day-to-day and long-term operations. Among the many services that have been provided are:



- ▶ Surveying.
- ▶ Design of new decant system including WVDEP and MSHA approvals.
- ▶ Redesign of Stages 6 and 7 of the slurry impoundment.
- ▶ Assistance with slurry injection permit.
- ▶ Compaction tests on the coarse coal refuse placement in both the slurry impoundment and the side hill embankment.
- ▶ Foundation recommendations for a new conveyor belt line and coal storage silos.
- ▶ Weekly inspections of the impoundment and preparation of quarterly reports.
- ▶ Performance of an environmental/reclamation liability assessment, including evaluation of abandoned mine lands (pre-1977 mining) on the property.
- ▶ Construction monitoring during rehabilitation of emergency spillway.
- ▶ Assistance with a permit modification including drainage calculations.
- ▶ Preparation and annual update of Emergency Response Plan.
- ▶ Modification of underdrain system.
- ▶ Ownership and control change for a river loadout.

POTESTA & ASSOCIATES, INC.

Charleston, WV • Morgantown, WV • Winchester, VA
(304) 342-1400/www.potesta.com

Project Abstract

GEORGE'S CREEK (LUCAS) LANDSLIDE MAINTENANCE

**West Virginia Department of Environmental Protection-
Office of Abandoned Mine Lands**

Kanawha County, West Virginia

POTESTA was retained by the West Virginia Department of Environmental Protection - Office of Abandoned Mine Lands (WVDEP) to evaluate and perform geotechnical engineering services for a landslide related to historic mining activity which was threatening a nearby residential structure.



A portion of the existing hillside immediately adjacent to the rear of the residential structure was excavated prior to construction of the structure to a near vertical slope exposing weathered shale and a coal seam near the slope's base. The exposed coal seam was determined to be the No. 2 Gas seam which was reportedly mined in the 1950s. Some drainage was noted flowing from the coal seam and the resulting water was conveyed through a nearby culvert to Georges Creek. Attempts were made by WVDEP to excavate loose rock and soil from the hillside in an effort to improve stability of the slope. Following this initial work the slope continued to slough with periodic small slides and slope

movement believed to be caused by continued subsidence of the underground mine works.

POTESTA performed a subsurface exploration to assist in evaluating the landslide condition, including the type and condition of the rock located in the slope as well as the attitude, thickness and condition of the underlying coal seam. POTESTA survey crews also completed a topographic survey of the affected area including the surrounding residential structure, drains and wooded hillside. The remedial measures to correct the landslide area included the design of a 25-foot high steel soldier beam and concrete lagging retaining wall with sloped, compacted backfill constructed from on-site materials. The retaining wall design required the application of a rock anchor tie-back system due to mine voids existing at the base of the hillside slope that were encountered during the subsurface exploration

As part of the project, POTESTA assisted the WVDEP with contract administration and performed construction observation services during the construction phase.

POTESTA & ASSOCIATES, INC.

Charleston, WV • Morgantown, WV • Winchester, VA
(304) 342-1400/www.potesta.com

Project Abstract

GEORGES CREEK PORTALS

West Virginia Department of Environmental Protection, Office of Abandoned Mine Lands

Georges Creek, Kanawha County, West Virginia

Potesta & Associates, Inc. (POTESTA) was retained by the West Virginia Department of Environmental Protection's Office of Abandoned Mine Lands to design mine seals for abandoned mine openings along Georges Creek and U. S. Route 60.



Design included a total of 28 mine seals. The following types of seals were utilized:

- Urethane foam with applied mortar
- Typical West Virginia wet seals
- Wet seals with bat gates
- Dry seals

In addition to mine seals, the design included piping to convey mine drainage to receiving streams. The conveyance piping layout required two West Virginia Division of Highways road crossing permits. An underdrain was utilized to convey subsurface drainage.

POTESTA & ASSOCIATES, INC.

Charleston, WV • Morgantown, WV • Winchester, VA
(304) 342-1400/www.potesta.com

Project Abstract

JESSOP HIGHWALL #10

West Virginia Department of Environmental Protection, Office of Abandoned Mine Lands

Tunnelton, West Virginia

Potesta & Associates, Inc. (POTESTA) was retained by the West Virginia Department of Environmental Protection (WVDEP) to prepare design plans and specifications to reclaim three abandoned mine land (AML) sites located near Tunnelton, West Virginia. Work to reclaim the three sites included sealing of abandoned mine portals, regrading of highwalls and collection of drainage from some of the abandoned mine portals and seeps. POTESTA utilized aerial mapping and ground survey to create topographic mapping of the sites.



Site 1

- Regraded approximately 1,150 feet of highwall averaging approximately 25 feet in height.
- Monitored test borings at the proposed mine portal sites to determine the location and the depth of mine voids, and the amount of water in the voids.
- Designed the closure of seven abandoned mine portals using a wet seal or bat gate mine seal.
- Designed drainage channels to collect water from the mine portals to discharge into a nearby stream.
- Designed a mine portal collection system that included 18 HDPE manholes.
- Incorporated a previously designed acid mine drainage collection and treatment system into our design.

Site 2

- Regraded approximately 7,500 feet of highwall averaging approximately 20 feet in height.
- Monitored test borings at the proposed mine portal sites to determine the location and depth of mine voids, and the amount of water in the voids.
- Designed the closure of three abandoned mine portals using a wet seal or modified mine seal.
- Designed drainage channels to collect water from the mine portals to discharge into a nearby stream.



Site 3

- Designed an underdrain system behind a residence and garage to prevent damage to the structures from a seep discharging acid mine drainage.

POTESTA prepared drawings, technical specifications, contractor's bid forms, engineer's construction cost estimate, and calculations brief for the project. POTESTA also attended the pre-bid and pre-construction conferences to assist WVDEP with the project.

POTESTA & ASSOCIATES, INC.

Charleston, WV • Morgantown, WV • Winchester, VA
(304) 342-1400/www.potesta.com

Project Abstract

LANDO (EDWARDS) DRAINAGE

West Virginia Department of Environmental Protection, Office of Abandoned Mine Lands

Lando, West Virginia

Potesta & Associates, Inc. (POTESTA) was retained by the West Virginia Department of Environmental Protection's Office of Abandoned Mine Lands (WVDEP) for a project that included the regrading of mine spoil that had been formerly disposed of in this area, as well as installation of mine portal seals and drainage improvements. The project consisted of three sites:

- A refuse pile graded to flattened slopes and topped with a soil cover;
- Channeling and diverting into nearby streams some drainage affecting nearby residences; and,
- Rehabilitating two existing mine seals and installing one new mine seal.



POTESTA's work on the project included surveying and development of mapping, as well as development of the repair, drainage and reclamation plans.

POTESTA prepared drawings, technical specifications, contractor's bid form, engineer's construction cost estimate, and calculations brief for the project. POTESTA also attended the pre-bid and pre-construction conferences to assist WVDEP with the project.

POTESTA & ASSOCIATES, INC.

Charleston, WV • Morgantown, WV • Winchester, VA
(304) 342-1400/www.potesta.com

Project Abstract

LANDSLIDE STABILIZATION PROJECT

Columbia Gas Transmission

Blue Creek, West Virginia

Columbia Gas Transmission (Columbia) operates and maintains a natural gas storage field north of Charleston, West Virginia at Blue Creek. Potesta & Associates, Inc. (POTESTA) was contacted during the fall of 2004 to provide professional geotechnical services related to the preparation of a stabilization plan for a localized soil slope failure approximately one acre in size. The affected area was associated with a valve set and feeder line servicing a storage field well which was unhooked taking the well out of service.



POTESTA worked with Columbia over the winter of 2004-05 to design a regrading plan for the slide mass which included perimeter ditches and drainage control as well as the construction of an underdrain and toe-key for the slide. A high pressure gas main located immediately above the top of the slide had to remain in service. During the work the slide mass continued to move up the hill threatening the integrity of the active high pressure gas main. POTESTA worked with Columbia and the contractor during the regrading to provide an emergency plan to stabilize the gas main which included the excavation of sandstone riprap from an area immediately adjacent to the site which was utilized as buttressing material stabilizing the gas main and the slide area.



The project, which was finalized during the late winter months, resulted in many field changes which were coordinated with both the owner and the contractor to insure the integrity of the gas main resulting in the continued service of natural gas produced from the field during peak demand months.

POTESTA & ASSOCIATES, INC.
Charleston, WV • Morgantown, WV • Winchester, VA
(304) 342-1400/www.potesta.com

Project Abstract

LYNN BROOK (BOYD) DRAINAGE AML RECLAMATION PROJECT

J&B Excavating, Inc.

Kanawha County, West Virginia

Potesta & Associates, Inc. (POTESTA) was retained by J&B Excavating, Inc. to provide construction layout for the Lynn Brook (Boyd) Drainage AML Project in Kanawha County, West Virginia. J&B Excavating, Inc. was contracted by the West Virginia Division of Environmental Protection (WVDEP) Office of Abandoned Mine Lands and Reclamation (AML) to perform reclamation on an AML landslide.

Proposed reclamation included mobilization and demobilization, construction layout, clearing and grubbing, unclassified excavation, permanent erosion control matting, channels, mine seals, subsurface drain, manhole, culvert headwall, sediment control, and revegetation. Total proposed excavation was approximately 5,540 cubic yards. Construction documents for the project were prepared by another consultant.

POTESTA's tasks for the project include:

1. Construction layout of lines/grades for earthwork, including survey of "pre-construction" and "post-construction" cross sections.
2. Computation of (or assistance with) certain as-built quantities, including earthwork, channels, and revegetation.
3. Submittal of "post-construction" cross section drawings depicting existing and final grades.

POTESTA & ASSOCIATES, INC.

Charleston, WV • Morgantown, WV • Winchester, VA
(304) 342-1400/www.potesta.com

Project Abstract

MAHAN TIPPLE AND REFUSE AML MAINTENANCE PROJECT

Thaxton Construction Company

Fayette County, West Virginia

Potesta & Associates, Inc. (POTESTA) was retained by Thaxton Construction Company to provide construction layout for the Mahan Tipple and Refuse Maintenance AML Project in Fayette County, West Virginia. Thaxton Construction Company had been contracted by the West Virginia Division of Environmental Protection (WVDEP) Office of Abandoned Mine Lands and Reclamation (AML) to perform maintenance on an AML refuse pile, originally reclaimed in the late 1980's, that had a significant failure near the toe of the refuse pile.

Proposed maintenance included excavation of material near the toe, installation of a rock buttress at the toe (approximately 1,000 cubic yards), installation of two grouted riprap channels totaling approximately 300 feet, and regrading and revegetation. Total proposed excavation was approximately 10,000 cubic yards. Construction documents for the project were prepared by another consultant.

POTESTA's tasks for the project included:

1. Construction layout of lines/grades for earthwork, including survey of "pre-construction" and "post-construction" cross sections.
2. Construction layout of proposed channels.
3. Computation of (or assistance with) certain as-built quantities, including earthwork, channels, and revegetation.
4. Submittal of "post-construction" cross section drawings depicting existing and final grades.

POTESTA & ASSOCIATES, INC.
Charleston, WV • Morgantown, WV • Winchester, VA
(304) 342-1400/www.potesta.com

Project Abstract

MAY PORTAL HOME LANDSLIDE MAINTENANCE

**Virginia Department of Mines, Minerals and Energy
Abandoned Mine Land Unit**

Buchanan County, Virginia

POTESTA was retained by the Virginia Department of Mines, Minerals and Energy – Abandoned Mine Lands (VAAML) to reestablish and stabilize a previously reclaimed deep mine portal site in Buchanan County, Virginia. The previous project included stabilization of a localized slide area, backfill and reclamation of the existing highwall; and construction of wet seals in the existing portals.



A slide area had developed above and within the limits of the highwall backfill material previously placed at the portal site. There were also reports that the riprap material used as the toe buttress provided habitat for snakes which were often seen at or near the existing residence. During heavy rainfall events, an existing ditch located near the toe of a previously reclaimed slope reached capacity and overflowed across the lawn areas of the adjacent residence. Riprap was also displaced in the primary riprap-lined drainage conveyance channel. There was also no defined ditch to convey mine discharge water from the wet mine seal area.



POTESTA prepared a regrading plan and design to re-stabilize the failed section of slide, including installing a new grouted riprap buttress; designing drainage at the toe of the buttress and around the existing residence; and restoring other problem drainage structures and areas that were installed as part of the original reclamation project. This work required the construction of a fence to protect the existing well house and adjacent occupied residence located on the site.

As part of the project, POTESTA assisted the VAAML with the contract bidding and evaluation of bids.

POTESTA & ASSOCIATES, INC.
Charleston, WV • Morgantown, WV • Winchester, VA
(304) 342-1400/www.potesta.com

Project Abstract

MINE DRAINAGE TREATMENT SYSTEM

Elk Run Coal Company

Boone County, West Virginia

Potesta & Associates, Inc. (POTESTA) was retained by a large coal company to design a collection and treatment system for mine seeps from a previously reclaimed surface mine site. The mine seepage had levels of iron and manganese above allowable discharge levels, and the downstream area below the valley fill was limited in space available for treatment. POTESTA assisted the company in locating the problem seepage and designing a proposed treatment system. POTESTA's scope of work included:

- ▶ Field walkovers.
- ▶ Record and data reviews.
- ▶ Topographic surveying of the area proposed for the treatment system and location of the seeps.
- ▶ Measurement of seep flow rates.
- ▶ Detailed hydrologic and hydraulic modeling of the contributing watershed and anticipated base flow of mine seepage. Based on the initial calculations and space available on interconnected system of seven ponds was proposed. Interconnected pond hydraulic modeling was performed to determine the appropriate spillway sizes and estimated 100-year, 24-hour storm elevation.
- ▶ Excavation/grading plans for the seven pond systems including pond storage volumes and excavation quantities.
- ▶ Calculation of required liming rates to reduce iron and manganese to acceptable concentrations.
- ▶ Design of the pumping and piping network to collect the problem seepage and direct it to the proposed pond treatment system.

POTESTA & ASSOCIATES, INC.

Charleston, WV • Morgantown, WV • Winchester, VA
(304) 342-1400/www.potesta.com

Project Abstract

MINE WATER TREATABILITY STUDY

Eastern Associated Coal Corp.

Guyses Run of Tygart Valley River, Marion County, West Virginia

A major coal company was having difficulty meeting permit limits from an AMD treatment facility which discharged into a tributary of the Tygart Valley River. Several vendors had visited the site and attempted to meet the permit limits with an assortment of chemical treatment options. Potesta & Associates, Inc. (POTESTA) determined that the wastewater was supersaturated with carbon dioxide and that when the pH of the wastewater was adjusted the carbonate radical became insoluble and formed a precipitate on the bed of the stream. POTESTA did stream sampling (water chemistry and benthic macroinvertebrates), upstream and downstream of the discharge, to determine the extent of the impact on the discharge on the receiving stream. Substrate sampling plates were also placed in the stream to determine the rate of deposition on the streambed.

The field work and reporting were completed in 1998. POTESTA billed approximately \$10,000 to the client for this work. The overall project costs are unknown but the company spent approximately \$3,500,000 to construct the treatment facility.

POTESTA & ASSOCIATES, INC.
Charleston, WV • Morgantown, WV • Winchester, VA
(304) 342-1400/www.potesta.com

Project Abstract

MOUNTAIN RUN REFUSE AND PORTALS

**West Virginia Department of Environmental Protection,
Office of Abandoned Mine Lands**

Masontown, West Virginia

Potesta & Associates, Inc. (POTESTA) was retained by the West Virginia Department of Environmental Protection's Office of Abandoned Mine Lands (WVDEP) to evaluate the Mountain Run Refuse and Portals project. This project consisted of 15 collapsed mine portals, five refuse piles covering three acres, and the demolition/removal of miscellaneous areas of mining debris, garbage, abandoned mine structures, and rail timbers. Our services included:

- Drilling of the refuse piles, mine portals and potential soil borrow areas
- Field survey to develop site mapping
- Regrading of the refuse piles to stabilize the slopes
- Design of drainage control channels including a limestone channel to reduce acid mine drainage
- Design of five wet mine seals and 11 dry mine seals, with the wet seals including a modified outlet pipe to maintain the current discharge from the portal which is used as a portion of a local resident's water supply.



POTESTA prepared drawings, technical specifications, contractor's bid forms, engineer's construction cost estimate, and calculations brief for the project. POTESTA also attended the pre-bid and pre-construction conferences to assist WVDEP with the project.

POTESTA & ASSOCIATES, INC.

Charleston, WV • Morgantown, WV • Winchester, VA
(304) 342-1400/www.potesta.com

Project Abstract

NEW WEST HOLLOW IMPOUNDMENT

Kanawha Eagle Limited Liability Company

Winifrede, West Virginia

Potesta & Associates, Inc. (POTESTA) has provided a number of different services to Kanawha Eagle Limited Liability Company over the past three years. Kanawha Eagle operates a slurry impoundment and a coarse refuse side hill embankment with slurry cells. The following is a list of services provided:

- ▶ Development of new and/or revised staging plans for refuse disposal.
- ▶ Preparation of permit modifications that are required as a result of changes in the refuse disposal plans.
- ▶ Seven-day inspections at both refuse disposal facilities; required by MSHA.
- ▶ Annual certifications required by MSHA (for both facilities).
- ▶ Quarterly inspections and reports required by WVDEP (also for both facilities).
- ▶ Nuclear density testing of the coarse refuse used to construct the embankments.
- ▶ Decant pipeline design.
- ▶ Underdrain design.
- ▶ Construction monitoring.
- ▶ Surveying.
- ▶ Development and annual updating of the Monitoring and Emergency Warning Plan and Procedures.

POTESTA has also provided Kanawha Eagle with geotechnical services including exploratory drilling and foundation recommendations for a new refuse belt and two concrete silos.

POTESTA is currently preparing an Underground Injection Control permit (required by WVDEP, Office of Water Resources) for Kanawha Eagle so that they can dispose of slurry in an underground mine.



POTESTA & ASSOCIATES, INC.

Charleston, WV • Morgantown, WV • Winchester, VA
(304) 342-1400/www.potesta.com

Project Abstract

PUCKETT/ELY CREEK ACID MINE DRAINAGE REMEDIATION PROJECT I

Commonwealth of Virginia, Department of Mines, Minerals and Energy

Puckett Creek and Ely Creek Watersheds near St. Charles, Virginia

Potesta & Associates, Inc. (POTESTA) was selected by the Commonwealth of Virginia's Department of Mines, Minerals and Energy to develop an engineering report, construction plans and specifications, and a material schedule for Puckett/Ely Creek Acid Mine Drainage Remediation Project I. The project responsibilities are more specifically described as follows:



- Development of engineering reports and construction plans and specifications to remediate acid mine drainage (AMD) at three sites using AMD passive treatment systems.
- Final designs to meet Natural Resource Conservation Service (NRCS) practice standards and requirements from other agencies involved with this project, including Virginia Department of Transportation, U. S. Army Corps of Engineers, Virginia Department of Environmental Quality, Virginia Marine Resources Commission, Virginia Department of Game and Inland Fisheries, the U. S. Fish and Wildlife Service and the Daniel Boone Soil and Water Conservation District.
- Placement of spoil and sediments on previously disturbed areas identified by the Agency.
- Inclusion of stream habitat structures in plans and specifications where feasible.
- Provision of plans and specifications that include, but are not limited to, plan views, cross sections, maps, photographs, and drawings.



POTESTA & ASSOCIATES, INC.

Charleston, WV • Morgantown, WV • Winchester, VA
(304) 342-1400/www.potesta.com

Project Abstract

RACHEL REFUSE AND STRUCTURES

West Virginia Department of Environmental Protection, Office of Abandoned Mine Lands

Williamson, West Virginia

Potesta and Associates, Inc. (POTESTA) was retained by the West Virginia Department of Environmental Protection's Office of Abandoned Mine Lands (WVDEP) to evaluate three sites to upgrade access roads, regrade/cover all refuse material with at least twelve inches of topsoil, and to dismantle and remove all buildings, equipment and debris from the site. The project also included construction of drainage control structures to carry water safely off-site and revegetation of all areas disturbed by the construction.



Site 1 was regraded and all refuse was covered with one foot of soil. An access road for a gas well was regraded across this site.



Site 2 was a refuse pile located behind a residence. This area was regraded to lower the pile

by ten feet and flatten the slopes on the sides. A drainage ditch was placed between the refuse pile and the house.

Site 3 was an existing impoundment. The site was regraded to remove the dam and place a grouted riprap drainage system at an existing drainage structure. All buildings and debris were removed from this site.

POTESTA prepared drawings, technical specifications, contractor's bid forms, engineer's construction cost estimate, and calculations brief for the project. POTESTA also attended the pre-bid and pre-construction conferences to assist WVDEP with the project.

POTESTA & ASSOCIATES, INC.

Charleston, WV • Morgantown, WV • Winchester, VA

(304) 342-1400/www.potesta.com

Project Abstract

RED JACKET REFUSE PILE CONSTRUCTION LAYOUT-AML RECLAMATION PROJECT

Thaxton Construction Company

Mingo County, West Virginia

Potesta & Associates, Inc. (POTESTA) was retained by Thaxton Construction Company to provide construction layout for the Red Jacket Refuse Pile AML Project in Mingo County, West Virginia. Thaxton Construction Company was contracted by the West Virginia Division of Environmental Protection (WVDEP) Office of Abandoned Mine Lands and Reclamation (AML) to perform reclamation on an AML refuse pile.

Proposed reclamation included regrading a 500-foot long coal refuse pile and revegetation. Construction documents were prepared by others.

POTESTA's tasks for the project include:

1. Survey of "pre-construction" and "post-construction" cross sections.
2. Computation of (or assistance with) certain as-built quantities, including earthwork and revegetation.
3. Submittal of "post-construction" cross section drawings depicting existing and final grades.

POTESTA & ASSOCIATES, INC.
Charleston, WV • Morgantown, WV • Winchester, VA
(304) 342-1400/www.potesta.com

Project Abstract

SUNDIAL (HATFIELD) REFUSE PILES

West Virginia Department of Environmental Protection- Office of Abandoned Mine Lands

Raleigh County, West Virginia

Potesta & Associates, Inc. (POTESTA) was retained by the West Virginia Department of Environmental Protection's Office of Abandoned Mine Lands (WVDEP) to prepare a reclamation design for the Sundial Refuse Piles in Raleigh County, West Virginia. The site was a former mining complex and included four distinct refuse piles that lacked vegetation and were eroding, open mine portals, and abandoned structures such as hoist houses.



As part of this project, the following were completed:

- Ground survey
- Geotechnical exploration
- Preparation of construction drawings, technical specifications, bid form, and engineer's estimate of probable construction costs.

The reclamation design anticipated approximately 372,000 cubic yards of earthwork, 15,000 feet of drainage channel, 3,000 feet of underdrains, 26 mine seals, and demolition and removal of numerous structures, including historic mine cars.



The project was bid at a construction price of approximately \$3,700,000.

As part of the project, POTESTA assisted the WVDEP with contract administration and performed construction observation services during the construction phase of the project.

POTESTA & ASSOCIATES, INC.

Charleston, WV • Morgantown, WV • Winchester, VA
(304) 342-1400/www.potesta.com

Project Abstract

TAYLORVILLE (CANTRELL) DRAINAGE

**West Virginia Department of Environmental Protection,
Office of Abandoned Mine Lands**

Mingo County, West Virginia



Potesta & Associates, Inc. (POTESTA) was retained by the West Virginia Department of Environmental Protection's Office of Abandoned Mine Lands (WVDEP) to evaluate and develop a reclamation design for mine drainage impacting a community in Taylorville, Mingo County, West Virginia. POTESTA completed field reconnaissance and surveying to develop topographic mapping, and prepared construction bid documents for the reclamation design.



The Taylorville project included three different sites. The first site included mine drainage along the hillside behind a mobile home. The second site included mine drainage impacting a driveway and parking area. The third site included mine drainage above a house.

POTESTA designed underdrains to collect and convey drainage from the first two sites to the West Virginia Division of Highways (DOH) right of way. Approximately 1,100 feet of new corrugated plastic pipe with DOH Type G drop inlets were designed to convey mine drainage to Pigeon Creek, while also handling storm water from the DOH roadway. A standard wet mine seal was designed with riprap channels to handle the mine drainage at the third site.

POTESTA prepared drawings, technical specifications, contractor's bid forms, engineer's construction cost estimate, and calculations brief for the project. POTESTA also attended the pre-bid and pre-construction conferences to assist WVDEP with the project.

POTESTA & ASSOCIATES, INC.

Charleston, WV • Morgantown, WV • Winchester, VA
(304) 342-1400/www.potesta.com

Project Abstract

TAYLORVILLE (RAY) LANDSLIDE EMERGENCY

**West Virginia Department of Environmental Protection,
Office of Abandoned Mine Lands**

Mingo County, West Virginia

Potesta & Associates, Inc. (POTESTA) was retained by the West Virginia Department of Environmental Protection, Office of Abandoned Mine Lands (WVDEP) to develop a stabilization plan for a landslide project at Taylorville, Mingo County, West Virginia. Following a period of heavy precipitation, a landslide occurred on a steep hillside behind a mobile home. The landslide pushed the mobile home off its foundation and destroyed a one-room extension along the rear of the mobile home.



POTESTA surveyed the landslide area to develop topographic mapping, prepared a stabilization plan to remove the landslide soils and backfill the area with a rock buttress. The stabilization plan also included an underdrain at the base of the rock buttress to convey drainage to the Taylorville (Cantrell) project drainage system. The plan called for 2,000 cubic yards of unclassified excavation, 1,750 cubic yards of shot rock backfill (buttress construction), 200 cubic yards of soil cover, and 400 feet of underdrain.

POTESTA prepared drawings, technical specifications, contractor's bid form, engineer's construction cost estimate, and calculations brief for the project. POTESTA also attended the pre-bid and pre-construction conferences to assist WVDEP with the project.

POTESTA & ASSOCIATES, INC.

Charleston, WV • Morgantown, WV • Winchester, VA
(304) 342-1400/www.potesta.com

Project Abstract

TUPPERS CREEK-(LAYNE) LANDSLIDE AML RECLAMATION PROJECT

Thaxton Construction Company

Kanawha County, West Virginia

Potesta & Associates, Inc. (POTESTA) was retained by Thaxton Construction Company to provide construction layout for the Tuppens Creek (Layne) Landslide AML Project in Kanawha County, West Virginia. Thaxton Construction Company was contracted by the West Virginia Division of Environmental Protection (WVDEP) Office of Abandoned Mine Lands and Reclamation (AML) to perform reclamation on an AML landslide.

Proposed reclamation included mobilization and demobilization, construction layout, quality control, site preparation, access road resurfacing, unclassified excavation, erosion control matting, gravity line, manholes, wet mine seals, underdrain, energy dissipater, erosion and sediment control, and revegetation. Total proposed excavation was approximately 2,600 cubic yards. Construction documents for the project were prepared by another consultant.

POTESTA's proposed tasks for the project include:

1. Construction layout of lines/grades for earthwork, including survey of "pre-construction" and "post-construction" cross sections.
2. Computation of (or assistance with) certain as-built quantities, including earthwork and revegetation.
3. Submittal of "post-construction" cross section drawings depicting existing and final grades.

POTESTA & ASSOCIATES, INC.
Charleston, WV • Morgantown, WV • Winchester, VA
(304) 342-1400/www.potesta.com

Project Abstract

WILLIAMSON (HATFIELD) NURSING HOME LANDSLIDE MAINTENANCE

**West Virginia Department of Environmental Protection-
Office of Abandoned Mine Lands**

Williamson, West Virginia

POTESTA was retained by the West Virginia Department of Environmental Protection - Office of Abandoned Mine Lands (WVDEP) to evaluate and perform geotechnical engineering services for a landslide below the parking lot of the Mingo Manor Nursing Home and above the Hatfield residence. The project area was the site of a former WVDEP reclamation project 15 years earlier. The previous project included regrading of the mine spoil that had been formerly disposed of in this area as well as drainage improvements.



A landslide occurred in the hillside in December 2003, threatening damage to the residence at the base of the hillside, as well as causing damage to the nursing home parking lot at the top of the hillside and potentially threatening damage to structures at the nursing home facility.



POTESTA performed a subsurface exploration to assist in evaluating the landslide condition. The remedial measures to correct the landslide area included the design of a 456-foot steel soldier beam and concrete lagging retaining wall. The retaining wall included a rock anchor tie-back system to minimize the potential for additional settlement of the nursing home parking lot area and potential future damage to the structures within the nursing home facility.

As part of the project, POTESTA assisted the WVDEP with contract administration and performed construction observation services during the construction phase of the project.

POTESTA & ASSOCIATES, INC.

Charleston, WV • Morgantown, WV • Winchester, VA
(304) 342-1400/www.potesta.com

CERTIFICATION AND SIGNATURE PAGE

By signing below, I certify that I have reviewed this Solicitation in its entirety; understand the requirements, terms and conditions, and other information contained herein; that I am submitting this bid or proposal for review and consideration; that I am authorized by the bidder to execute this bid or any documents related thereto on bidder's behalf; that I am authorized to bind the bidder in a contractual relationship; and that to the best of my knowledge, the bidder has properly registered with any State agency that may require registration.

Potesta & Associates, Inc.
(Company)

Dana L. Burns
(Authorized Signature)

Dana L. Burns, Vice President
(Representative Name, Title)

(304) 342-1400 (304) 343-9031
(Phone Number) (Fax Number)

July 23, 2013
(Date)

ADDENDUM ACKNOWLEDGEMENT FORM
SOLICITATION NO.: DEP16288

Instructions: Please acknowledge receipt of all addenda issued with this solicitation by completing this addendum acknowledgment form. Check the box next to each addendum received and sign below. Failure to acknowledge addenda may result in bid disqualification.

Acknowledgment: I hereby acknowledge receipt of the following addenda and have made the necessary revisions to my proposal, plans and/or specification, etc.

Addendum Numbers Received:

(Check the box next to each addendum received)

<input checked="" type="checkbox"/> Addendum No. 1	<input type="checkbox"/> Addendum No. 6
<input type="checkbox"/> Addendum No. 2	<input type="checkbox"/> Addendum No. 7
<input type="checkbox"/> Addendum No. 3	<input type="checkbox"/> Addendum No. 8
<input type="checkbox"/> Addendum No. 4	<input type="checkbox"/> Addendum No. 9
<input type="checkbox"/> Addendum No. 5	<input type="checkbox"/> Addendum No. 10

I understand that failure to confirm the receipt of addenda may be cause for rejection of this bid. I further understand that any verbal representation made or assumed to be made during any oral discussion held between Vendor's representatives and any state personnel is not binding. Only the information issued in writing and added to the specifications by an official addendum is binding.

Potesta & Associates, Inc.

Company

Dana L. Burns

Authorized Signature

July 23, 2013

Date

NOTE: This addendum acknowledgment should be submitted with the bid to expedite document processing.
 Revised 6/8/2012

STATE OF WEST VIRGINIA
Purchasing Division
PURCHASING AFFIDAVIT

MANDATE: Under W. Va. Code §5A-3-10a, no contract or renewal of any contract may be awarded by the state or any of its political subdivisions to any vendor or prospective vendor when the vendor or prospective vendor or a related party to the vendor or prospective vendor is a debtor and: (1) the debt owed is an amount greater than one thousand dollars in the aggregate; or (2) the debtor is in employer default.

EXCEPTION: The prohibition listed above does not apply where a vendor has contested any tax administered pursuant to chapter eleven of the W. Va. Code, workers' compensation premium, permit fee or environmental fee or assessment and the matter has not become final or where the vendor has entered into a payment plan or agreement and the vendor is not in default of any of the provisions of such plan or agreement.

DEFINITIONS:

"Debt" means any assessment, premium, penalty, fine, tax or other amount of money owed to the state or any of its political subdivisions because of a judgment, fine, permit violation, license assessment, defaulted workers' compensation premium, penalty or other assessment presently delinquent or due and required to be paid to the state or any of its political subdivisions, including any interest or additional penalties accrued thereon.

"Employer default" means having an outstanding balance or liability to the old fund or to the uninsured employers' fund or being in policy default, as defined in W. Va. Code § 23-2c-2, failure to maintain mandatory workers' compensation coverage, or failure to fully meet its obligations as a workers' compensation self-insured employer. An employer is not in employer default if it has entered into a repayment agreement with the Insurance Commissioner and remains in compliance with the obligations under the repayment agreement.

"Related party" means a party, whether an individual, corporation, partnership, association, limited liability company or any other form or business association or other entity whatsoever, related to any vendor by blood, marriage, ownership or contract through which the party has a relationship of ownership or other interest with the vendor so that the party will actually or by effect receive or control a portion of the benefit, profit or other consideration from performance of a vendor contract with the party receiving an amount that meets or exceeds five percent of the total contract amount.

AFFIRMATION: By signing this form, the vendor's authorized signer affirms and acknowledges under penalty of law for false swearing (W. Va. Code §61-5-3) that neither vendor nor any related party owe a debt as defined above and that neither vendor nor any related party are in employer default as defined above, unless the debt or employer default is permitted under the exception above.

WITNESS THE FOLLOWING SIGNATURE:

Vendor's Name: Potesta & Associates, Inc.

Authorized Signature: *Dana L. Burns* Date: July 23, 2013

State of West Virginia

County of Kanawha, to-wit:

Taken, subscribed, and sworn to before me this 23 day of July, 2013.

My Commission expires February 14, 2014.

AFFIX SEAL HERE



NOTARY PUBLIC

Rhonda L. Henson

Purchasing Affidavit (Revised 07/01/2012)

AML AND RELATED PROJECT EXPERIENCE MATRIX

Project	Exp. Basis C=Corporate P=Personal *	Additional Information Provided in Section(s) **	Project Experience Requirements															Primary Staff Participation/Capacity *** M=Management P=Professional																		
			Abandoned Surface Mine Reclamation	Abandoned Deep Mine Reclamation	Portal/Shaft Closure	Hydrologic/Hydraulic Design/Evaluation	Remining Evaluation	Mine/Refuse Fire Abatement	Subsidence Investigation Mitigation	Hazardous Waste Disposal	Project Specifications	Water Quality Evaluation/Mitigation/ Replacement	Construction Inspection/Management	Water Treatment	Equipment/Structure Removal	Stream Restoration	Geotechnical/Stability	Dana L. Burns	D. Mark Kiser	Terence C. Moran	William F. Drinkard	Vincent J. Ammirato	Jason Gandee	Chris A. Grose	Michael Sankoff	Kenneth Kinder	Jarrett Smith	Robbert Ammirato	Pat Taylor	Brian L. Burns	David B. Sharp	Scott A. Bolyard	Chad Griffith	Peter Potesta	Jhonattan Schloeter	
Flippin Hollow Complex	C			✓	✓	✓					✓							M								P										
East Lynn II	C			✓	✓	✓					✓				✓			M	M				P											P		
MacArthur Subsidence	C			✓	✓												M					P												P		
Logan County PSD Water Feasibility Study	C			✓													M					P												P		
Wilderness PSD Water Feasibility Study	C																					P												P		
Sundial (Hatfield) Refuse Piles Re-Bid	C			✓	✓						✓			✓				M				P		P												
Mill Creek Refuse Pile	C			✓	✓						✓							M				P		P												
John's Branch Coal Refuse Dam (Kopperston)	C			✓	✓						✓					✓		M	M			P		P									P			
Clay-Roane PSD Water Feasibility Study	C			✓	✓												M				P		P										P			
Burnsville PSD Water Feasibility Study	C			✓	✓												M	M				P														
Brandonville/Pisgah Water Feasibility Study	C			✓	✓												M	M				P														
Cuzzart/4-H Water Feasibility Study	C			✓	✓												M	M				P														
Hudson/Mt. Nebo Water Feasibility Study	C			✓	✓												M	M				P														
Jessop Highwall #10	C	F	✓		✓	✓					✓					✓		M				P														
Lando (Edwards) Drainage	C	F	✓		✓	✓					✓							M				P														
Taylorville (Cantrell) Drainage	C	F		✓	✓	✓					✓							M				P				P										
Borderland (Matney) Portals	C	F		✓	✓	✓					✓							M				P				P										
Peach Ridge Complex	C		✓		✓	✓					✓			✓				M				P		P												
Measle Fork Refuse	C		✓			✓					✓				✓	✓		M				P		P			P									
Georges Creek Portals	C	F		✓	✓	✓					✓							M				P		P			P									
Putney Impoundment	C		✓		✓	✓					✓					✓		M				P														
Kopperston (John's Branch) Refuse Emergency	C		✓		✓	✓					✓							M								P										
Marmet (Wells Drive) Landslide Emergency	C			✓	✓	✓					✓					✓		M			P		P	P			P									
Marmet (Clark) Drainage	C			✓	✓	✓					✓							M				P		P												
Pringle Run #2	C		✓		✓	✓					✓					✓		M				P		P												
Mountain Run Refuse and Portals - AML	C				✓	✓					✓			✓		✓	M	M											P		M	P				
Dream Mountain AMD Project - Friends of the Cheat	C					✓					✓			✓		✓												P	P	M	P					
Gary Connor AMD - Friends of the Cheat	C										✓			✓														P	M		P					
Fairmont East Mine Drainage	C			✓							✓							M				P														
Rachel Refuse	C	F	✓				✓	✓						✓				M				P		P												
Jaeger Water Feasibility Study	C			✓				✓											M			P		P												
Burnwell, Standard, and Collinsdale Water Line Extension	C	F		✓								✓								M				P			P									
Morrisvale Cameo Preliminary Engineering	C											✓								M				P												
May Portal (Virginia AML)	C	F		✓	✓		✓				✓			✓								P						M								
Webster County Water Studies	C						✓																			P		M								
Mill Creek Phase III Waterline and Water Treatment Plant - AML	P						✓				✓		✓			✓				M																
Cow Creek - Sarah Ann Phase III Water Line Extension	P																			M																
Godby Branch Water Line Extension	P																		P	M																
Putnam County Commission - Fisher Ridge Phase II	C																M		M					P		P										
Boone County PSD - Lick Creek Water Line Extension	C																M		M					P												
Boone County PSD - Joes Creek Water Line Extension	C																M		M					P												
Boone County PSD - Six Mile Extension/Corridor G	C																M		M					P												
Boone County PSD - Trace Branch/Robinson Water Line Extension	C																M		M					P												
Boone County PSD - Stephens Auto/Betsy Lane Water Line Extension	C																M		M					P												
Town of Ceredo - Water Distribution System Upgrade	C																M		M					P		P										
WVAWC - Mifflin/Sharples Water Line Extension	C																M		M					P		P										
Town of Ceredo - Cemetery Hill Upgrade	C																																			
WVAWC - Putnam County Water Supply Extension	P										✓								M																	
WVAWC - Kanawha County Water Supply Extension	P						✓				✓								M																	
WVAWC - Cabell County Water Supply Extension	P						✓				✓									M																
City of Philippi Upgrade to Water Distribution System	C	F				✓					✓	✓					M		P				P													
Philippi Water Line Relocation for WVDOH Bypass	C					✓					✓	✓					M		P				P													
WVAWC - Route 60	C					✓					✓	✓					M	P					P													
WVAWC - Route 60 Contract 4	C					✓					✓	✓					M	P					P													
WVAWC - Buff Creek/Trace Fork	C					✓					✓	✓					M	P					P													
WVAWC - Poca River	C					✓					✓	✓	✓				M	P					P													

* List whether project experience is corporate or personnel based or both.
** Use this area to provide specific sections or pages if needed for reference.
*** List Primary Design personnel and their functional capacity for the projects listed

Project	Exp. Basis C=Corporate P=Personal *	Additional Information Provided in Section(s) **	Project Experience Requirements															Primary Staff Participation/Capacity *** M=Management P=Professional																	
			Abandoned Surface Mine Reclamation	Abandoned Deep Mine Reclamation	Portal/Shaft Closure	Hydrologic/Hydraulic Design/Evaluation	Remining Evaluation	Mine/Refuse Fire Abatement	Subsidence Investigation Mitigation	Hazardous Waste Disposal	Project Specifications	Water Quality Evaluation/Mitigation/ Replacement	Construction Inspection/Management	Water Treatment	Equipment/Structure Removal	Stream Restoration	Geotechnical/Stability	Dana L. Burns	D. Mark Kiser	Terence C. Moran	William F. Drinkard	Vincent J. Ammirato	Jason Gandee	Chris A. Grose	Michael Sankoff	Kenneth Kinder	Jarrett Smith	Robbert Ammirato	Pat Taylor	Brian L. Burns	David B. Sharp	Scott A. Bolyard	Chad Griffith	Peter Potesta	Jhonattan Schloeter
WVAWC - Cabell County Contract 6	C					✓					✓	✓	✓				M	P	P					P											
WVAWC - Cabell County Contract 7	C					✓					✓	✓	✓				M	P	P					P											
WVAWC - Fisher's Ridge Extension	C					✓					✓	✓	✓				M		P					P			P								
WVAWC - Summers County Extension	C					✓					✓	✓	✓				M	P																	
WVAWC - Glade Springs Village	C					✓					✓	✓	✓				M	P																	
WVAWC - Spite Road	C					✓					✓	✓	✓		✓		M		P																
Beaver Creek Waterline Extension - AML	P										✓	✓	✓				M		P				P												
Cassity Fork Water Supply Extension - AML	P										✓	✓	✓				M		P	P			P												
Guailey River Area Water Line Extension - AML	P										✓	✓	✓					P	P	M			P												
Heizer/Manila Creek Water Line Extension Phase II Study - AML	P										✓	✓	✓						M																
Reynoldsville/Wallace Water Supply Extension - AML	P					✓					✓	✓	✓			✓			M																
Weaver-Junior Phase II Water Supply - AML	P					✓						✓	✓						M																
Washington Heights to Jeffrey Phase II Water Study - AML	P					✓						✓	✓						M																
Reynoldsville, Wallace, and Clarksburg Phase II Water Study - AML	P					✓						✓	✓						M																
Reynoldsville, Wallace, and Clarksburg Phase I Water Study - AML	P											✓	✓						M																
Weaver-Junior Phase I Water Study - AML	P											✓	✓						M																
Gauley River Phase I Water Study - AML	P											✓	✓					P	M																
Upper Run Creek Phase II Water Study - AML	P					✓						✓	✓						M																
Crooked Creek Phase II Water Study - AML	P					✓						✓	✓						M																
Mill Creek Regional Phase II Water Study - AML	P					✓						✓	✓						M																
Cow Creek - Sarah Ann Phase II Water Study - AML	P					✓						✓	✓						M																
Phase I Water Studies Brooke and Fayette Counties (2 Projects) - AML	P											✓	✓				M	P	P																
Mill Creek Regional Water Project Phase II Water Study (Boone, Lincoln and Logan Counties) - AML	P					✓						✓	✓				M	P	P																
Godby Branch Phase II Water Study - AML	P					✓						✓	✓				M	P	P																
Putnam County Phase I Water Studies (3 Projects) - AML	P											✓	✓				M		P																
Boone County Phase I Water Studies (10 Projects) - AML	P											✓	✓				M	P	P																
Phase II Water Feasibility Studies for Logan County (3 Projects) - AML	P					✓						✓	✓				M	P	P																
Phase I Water Studies for Logan County (7 Projects) - AML	P											✓	✓				M	P	P			P													
Spruce Lick-Stream Flow Monitoring Project for Eastern Associated Coal Corp. - AML	P					✓						✓	✓				M	P																	
Massy Coal Co. AMD Pump Treatment System	C					✓					✓						M																		
Martin County Coal Co. Stream Flow & Fish Surveys-Coldwater Creek	C					✓						✓	✓																						
Martin County Coal Co. Stream Flow & Fish Surveys-Wolf Creek Watershed	C					✓						✓	✓																						
Martin County Coal Co. Stream Flow & Fish Surveys-Rockcastle Creek	C					✓						✓	✓																						
Martin County Coal Co. Stream Flow & Habitat Survey-Coldwater Creek Fork Watershed	C					✓						✓	✓																						
Martin County Coal Co. Stream Flow & Habitat Survey-Wolf Creek Watershed	C					✓						✓	✓																						
Martin County Coal Co. Stream Flow & Habitat Survey-Rockcastle Creek Watershed	C					✓						✓	✓																						
Don's Disposal Landfill Stream Flow Measurement	P					✓						✓	✓																						
Union Carbide Cooling Water Flow Measurement	C					✓						✓	✓																						
Union Carbide Davis Creek Flow Measurement	C					✓						✓	✓																						
Union Carbide Process Wastewater Flow Measurement	C					✓						✓	✓																						
MDG-Wastewater Package Plant	C					✓					✓		✓			✓	M									P									
WVDEP-Flows at Various Facilities	P					✓						✓	✓																						
Arch Coal- Pigeon Creek Stream Flow Measurement	C					✓						✓	✓																						
City of Charleston-Sanitary Sewer Flow Measurement	C					✓						✓	✓																						
Pison Development Sanitary Sewer Flow Measurement	C					✓						✓	✓																						
Solutia-Storm Water Flow Measurement	C					✓						✓	✓																						
Solutia-Groundwater Well Levels and Flow Estimates	C					✓						✓	✓																						

* List whether project experience is corporate or personnel based or both.
** Use this area to provide specific sections or pages if needed for reference.
*** List Primary Design personnel and their functional capacity for the projects listed

Project	Exp. Basis C=Corporate P=Personal ★	Additional Information Provided in Section(s) ★★	Project Experience Requirements															Primary Staff Participation/Capacity ★★★ M=Management P=Professional																	
			Abandoned Surface Mine Reclamation	Abandoned Deep Mine Reclamation	Portal/Shaft Closure	Hydrologic/Hydraulic Design/Evaluation	Remining Evaluation	Mine/Refuse Fire Abatement	Subsidence Investigation Mitigation	Hazardous Waste Disposal	Project Specifications	Water Quality Evaluation/Mitigation/ Replacement	Construction Inspection/Management	Water Treatment	Equipment/Structure Removal	Stream Restoration	Geotechnical/Stability	Dana L. Burns	D. Mark Kiser	Terence C. Moran	William F. Drinkard	Vincent J. Ammirato	Jason Gandee	Chris A. Grose	Michael Sankoff	Kenneth Kinder	Jarrett Smith	Robbert Ammirato	Pat Taylor	Brian L. Burns	David B. Sharp	Scott A. Bolyard	Chad Griffith	Peter Potesta	Jhonattan Schloeter
Chemical Plant - Parkersburg, WV	C					✓					✓	✓																							
Muddy Creek AMD Treatment System	C					✓						✓																	P	M					
Sovern Run (Tinchnell) AMD Treatment System	C					✓						✓																	P	M					
Evaluation of Mine Drainage from AML Sites as Part of Environmental Site Assessments for Jackson & Kelly	C	F											✓				M		P																
Hawkins AMD - AML	P			✓	✓	✓						✓				✓	M																		
Allen AMD - AML	P			✓	✓	✓						✓				✓	M	P						P											
Omega Mine Complex	P			✓						✓		✓				✓			M																
Owings Mine Complex - AML	P		✓	✓	✓	✓	✓					✓		✓	✓	✓			M																
Vindex Energy	C			✓				✓						✓		✓	M	P					P	P											
Dominion Resources - Upshur Enoxy Complex	C		✓	✓								✓		✓		✓	M	P	P				P	P											
Osage AMD Treatment System	P											✓				✓	M	P	P				P	P											
Reliable Mine AMD Treatment System	P											✓																							
Upshur Passive AMD Treatment System	P											✓																							
Sundial Refuse - AML	C	F	✓	✓	✓	✓						✓		✓	✓	✓	M	M	P	P				P											
Williamson (Hatfield) Landslide - AML	C	F								✓		✓				✓	M	M	P				P	P		P									
Georges Creek (Lucas) Rockslide	C	F								✓		✓				✓	M	M					P	P											
Solutia Landfill Closure Design for Various Environmental Remediation Projects	C					✓						✓				✓	M	P					P	P											
Kanawha Eagle Coal Refuse Disposal Impoundment	C	F				✓						✓				✓	M	P		P			P	P	P										
Pocahontas County Landfill Expansion, Closure, and Operations Consulting	C					✓						✓				✓	M	P						P											
Energy Services Site Development and Permitting	C					✓										✓	M	P		P	P		P	P											
Smith Bridge Replacement	C															✓	M			P	P		P												
Corridor H, Section 6 Davis-Bismark	C															✓	M	M					P												
Environmental Assessment and Closure/Capping Design for Fleming Landfill	C					✓											M	P						P	P										
Environmental Assessment and Closure/Capping Plan for Jackson County Landfill	C																M	M	P					P											
Elkem Metals Jarrett Branch Landfill	C																M	P		P			P	P											
Mine Water Treatability Study, Guyeses Run of Tygart Valley River	C	F											✓		✓		M		P																
Coldwater Creek/Luigino's Food Processing Facility, Inc.	C					✓						✓					M	P		P	P			P											
Construction Layout for Mahan Tipple and Refuse AML Maintenance Project	C	F																																	
Construction Layout for Lynn Brook (Boud) Drainage, AML Reclamation Project	C	F																																	
Grass Run Refuse	P		✓			✓	✓					✓				✓	M	P						P											
Allen Sheridan Hazardous Facility (Asbestos)	P		✓									✓					M																		
Elk City - Century-Volga Phase I/II Water Study - AML	P																M	P						P											
Camp Mohonegan Regrade - AML	P		✓				✓					✓			✓	✓	M	P						P											
Comfort Run Coal Company (Asbestos) - AML	P			✓													M																		
Turner Douglas Complex - AML	P		✓	✓	✓	✓	✓					✓				✓	M	P					P	P											
Buffalo Creek No. 5 Refuse - AML	P		✓			✓	✓					✓				✓	M	P						P	P										
Dawmont Mine Facility - AML	P		✓	✓	✓	✓	✓					✓				✓	M							P	P										
Helen (Lewis) Refuse - AML	P			✓	✓	✓	✓					✓		✓		✓	M						P	P											
Upshur 10/15 Drainage - AML	P		✓		✓	✓	✓					✓					M																		
Madison Street Portals/Fairview Route 218 Portals - AML	P			✓	✓	✓						✓				✓	M																		
Summerlee Refuse Pile - AML	P		✓				✓					✓			✓	✓	M	P	P				P					P							
Duncan Hill Subsidence - AML	P			✓	✓	✓	✓				✓					✓	M	P	P				P												
Cora Mine Drainage No. II - AML	P			✓	✓	✓	✓					✓				✓	M	P					P												
Covey Creek Mine Fire - AML	P			✓						✓							M						P												
Vivian Refuse Pile - AML	P		✓		✓	✓	✓									✓	M	P	P				P						P						
Kimball Refuse Pile - AML	P		✓	✓	✓	✓	✓					✓				✓	M	P	P				P						P						
Hampden (Smith) Landslide - AML	P													✓		✓	M						P												
Bear Run Refuse - AML	P		✓	✓	✓	✓	✓					✓		✓	✓	✓	M	P					P					P							
Charleston (Ratcliffe) Landslide - AML	P															✓	M	P					P												
Garrison Complex - AML	P			✓	✓		✓					✓				✓	M																		
Mulberry Fork (Stover) Landslide - AML	P		✓									✓				✓	M						P						P						
Beckley Subsidence - AML	P			✓						✓							M	P					P												
Courtright Highwall - AML	P		✓				✓					✓				✓	M	P	P				P												
Jonben (Haga) Subsidence - AML	P			✓			✓			✓		✓				✓	M	P	P				P												

* List whether project experience is corporate or personnel based or both.
** Use this area to provide specific sections or pages if needed for reference.
*** List Primary Design personnel and their functional capacity for the projects listed.

Project	Exp. Basis C=Corporate P=Personal *	Additional Information Provided in Section(s) **	Project Experience Requirements															Primary Staff Participation/Capacity *** M=Management P=Professional																
			Abandoned Surface Mine Reclamation	Abandoned Deep Mine Reclamation	Portal/Shaft Closure	Hydrologic/Hydraulic Design/Evaluation	Remining Evaluation	Mine/Refuse Fire Abatement	Subsidence Investigation Mitigation	Hazardous Waste Disposal	Project Specifications	Water Quality Evaluation/Mitigation/ Replacement	Construction Inspection/Management	Water Treatment	Equipment/Structure Removal	Stream Restoration	Geotechnical/Stability	Dana L. Burns	D. Mark Kiser	Terence C. Moran	William F. Drinkard	Vincent J. Ammirato	Jason Gandee	Chris A. Grose	Michael Sankoff	Kenneth Kinder	Jarrett Smith	Robbert Ammirato	Pat Taylor	Brian L. Burns	David B. Sharp	Scott A. Bolyard	Chad Griffith	Peter Potesta
Belle Landslide - AML	P			✓	✓	✓	✓				✓					✓	M	P	P				P					P						
Holden (Padgett) Subsidence - AML	P			✓	✓	✓	✓				✓					✓	M		P															
Minden Drilling - AML	P		✓			✓	✓									✓	M		P				P											
Kitchen/Gibson Landslide - AML	P			✓												✓	M																	
Gray and Iaquinta Subsidence - AML	P			✓							✓					✓	M	P	P															
St. John's Road Subsidence - AML	P			✓		✓	✓				✓					✓	M	P	P															
High Coal Tipple - AML	P			✓		✓	✓								✓	✓	M	P																
Route 19/28 Subsidence - AML	P			✓		✓	✓								✓	✓	M	P																
Omar Refuse Pile - AML	P		✓		✓	✓	✓	✓		✓						✓	M	P					P					P						
Mt. Hope Subsidence - AML	P			✓		✓	✓				✓					✓	M						P											
Morgantown Airport Drainage/Subsidence - AML	P			✓		✓	✓				✓					✓	M																	
Logan Drainage - AML	P			✓		✓	✓				✓					✓	M																	
Huffman Street Subsidence - AML	P			✓		✓	✓									✓	M																	
Switzer Adams/Robinson Drainage - AML	P			✓		✓	✓				✓					✓	M																	
Follansbee Drainage - AML	P			✓		✓	✓									✓	M																	
Fairmont East Subsidence - AML	P	F		✓		✓	✓									✓	M																	
Fairmont IV Subsidence - AML	P			✓		✓	✓				✓					✓	M																	
Vargo Drainage - AML	P			✓		✓	✓									✓	M																	
Duck Creek Landslide - AML	P			✓		✓	✓									✓	M																	
Kistler Mine Fire - AML	P			✓		✓	✓								✓	✓	M																	
Lefthand Fork Burning Refuse - AML	P		✓		✓	✓	✓	✓		✓					✓	✓		M	P	P							P							
Williamson Landslide - AML	P		✓			✓	✓								✓	✓	M	P									P							
Harris AMD - AML	P			✓		✓	✓									✓		M	M	P														
Wyoming County Landfill	P/C					✓	✓								✓	✓	M	P					P	P										
Jackson County Landfill	C					✓	✓								✓	✓	M	P	P					P	P									
Kanawha Western Landfill	P		✓			✓	✓								✓	✓	M	P					P	P										
Monongalia County Sanitary Landfill	P		✓			✓	✓								✓	✓	M	P					P					P						
Fayette County Landfill	P					✓	✓								✓	✓	M		M				P											
Carolina Refuse - AML	P		✓			✓	✓								✓	✓			M															
Majesty Mine Complex - AML	P		✓	✓	✓	✓	✓	✓						✓	✓	✓				M														
Grandstaff Subsidence - AML	P			✓	✓	✓	✓				✓				✓	✓			M	M														
Glen Morgan (Lilly) Site - AML	P			✓	✓	✓	✓				✓				✓	✓			M	M														
Viers Highwall - AML	P		✓		✓	✓	✓				✓				✓	✓			M	M														
Spruce Laurel Stream Flow Monitoring Project - AML	C					✓	✓				✓				✓	✓	M		M															
Summit at Cheat Lake Residential Subdivision	C					✓	✓				✓				✓	✓						P						P	P	M	P	P	P	
Avery Court	C					✓	✓				✓				✓	✓												P	P	P	M	P		
Hurricane Market Place	C					✓	✓								✓	✓						P				P								
Pison Development - Mineral Wells	C					✓	✓								✓	✓	M					P				P								
Pison Development - Barboursville	C					✓	✓								✓	✓	M					M				P								
Pison Development - Knollyview	C					✓	✓								✓	✓	M					M				P								
Pison Development - Cross Roads 2	C					✓	✓								✓	✓	M					M												
Pison Development - Elk Crossings	C					✓	✓								✓	✓	M					M												
Pison Development - Elkins	C					✓	✓								✓	✓	M					M												
Pison Development - Harrisville	C					✓	✓								✓	✓	M					M			P						P			
Pison Development - Point Pleasant	C					✓	✓								✓	✓	M					M												
Pison Development - Kanawha Court	C					✓	✓								✓	✓	M					M					P							
Pison Development - Church Hill Village	C					✓	✓								✓	✓	M					M							P			P		
Grove Park - Campus View LLC	C					✓	✓				✓				✓	✓					M		P						P	M	P	P	P	
North Hills Development - 600-Acre Property	C					✓	✓				✓				✓	✓						P												
Kenna Industrial Park	C					✓	✓								✓	✓	M	P					M				P							
Spring Hill	C					✓	✓				</																							

* List whether project experience is corporate or personnel based or both.
** Use this area to provide specific sections or pages if needed for reference.
*** List Primary Design personnel and their functional capacity for the projects listed.

Project	Exp. Basis C=Corporate P=Personal *	Additional Information Provided in Section(s) **	Project Experience Requirements															Primary Staff Participation/Capacity *** M=Management P=Professional																
			Abandoned Surface Mine Reclamation	Abandoned Deep Mine Reclamation	Portal/Shaft Closure	Hydrologic/Hydraulic Design/Evaluation	Remining Evaluation	Mine/Refuse Fire Abatement	Subsidence Investigation Mitigation	Hazardous Waste Disposal	Project Specifications	Water Quality Evaluation/Mitigation/ Replacement	Construction Inspection/Management	Water Treatment	Equipment/Structure Removal	Stream Restoration	Geotechnical/Stability	Dana L. Burns	D. Mark Kiser	Terence C. Moran	William F. Drinkard	Vincent J. Ammirato	Jason Gandee	Chris A. Grose	Michael Sankoff	Kenneth Kinder	Jarrett Smith	Robbert Ammirato	Pat Taylor	Brian L. Burns	David B. Sharp	Scott A. Bolyard	Chad Griffith	Peter Potesta
WV Bureau for Public Health - Drinking Water Treatment Revolving Fund	P																											M						
WVIJDC - Water Technical Committee	P																											M						
WV Bureau for Public Health - Water/Sewer Construction Permit Program	P																											M						
WVIJDC Manager	P																											P						
Westmoreland Coal Company	P																																	
Mingo Logan Coal Company	P																																	
Marfork Coal Company	P																																	
Elk Run Coal Company	P	F																										P						
Nicholas County Landfill	C																																	
Peabody Coal Company	C																																	
Massey Coal Services	C																																	
Poor Charlie & Company, Inc.	C																																	
Pace Carbon Fuels, LLC	C																											P						
Amherst Industries, Inc.	C																																	
Hobet Mining, Inc.	C																																	
Montgomery Landfill	P																																	
North Fork Landfill	P																																	
Sycamore Landfill	P																																	
Vaughan Railroad	P																																	
CSX Ramp Replacement	P																																	
S&S Landfill	P																											P						
Harwood Mine Complex	P																																	
Southern Ohio Coal - Pump Tests	P																																	

* List whether project experience is corporate or personnel based or both.
** Use this area to provide specific sections or pages if needed for reference.
*** List Primary Design personnel and their functional capacity for the projects listed

**West Virginia Department of Environmental Protection
Office of Abandoned Mine Lands & Reclamation**

Principal-in-Charge

Dana L. Burns, PE – 31 Yrs.

Project Manager

D. Mark Kiser, PE – 27 Yrs.
Terence C. Moran, PE – 21 Yrs.

**Field Reconnaissance, Preliminary
Design, and Final Design of
Reclamation Plan, Preparation of
Construction Documents**

Vincent Ammirato, PE – 37 Yrs.
Jarrett Smith, PE – 8 Yrs.
Dave Sharp, PE – 16 Yrs.
Kenneth Kinder, PE – 8 Yrs.
Patrick Taylor, PE – 23 Yrs.
Bill Drinkard, PE – 30 Yrs.
Chad Griffith, PE – 8 Yrs.
Brian Burns, PE – 7 Yrs.
Robert Ammirato, PE – 9 Yrs.
Jason Gandee – 8 Yrs.
Jhonattan Schloeter – 8 Yrs.

**Soils, Geological, and
Hydrological Evaluations**

Dave Sharp, PE – 16 Yrs.
Chris Grose – 22 Yrs.
Dennis Litwinowicz – 31 Yrs.
Chris Jackson – 12 Yrs.

Subcontractors

Drilling of Soil Borings,
Laboratory Soils, and
Water Testing

Surveying

Victor Dawson, PS – 30 Yrs.
Brad Starkey – 23 Yrs.
Charles Shaffer – 12 Yrs.
Todd Cadle – 12 Yrs.

Construction Monitoring

Robert Lamm – 13 Yrs.
Pat Love – 8 Yrs.
Gary Bridgette – 8 Yrs.

CAD Designers

Scott Bolyard – 20 Yrs.
Michael Sankoff – 22 Yrs.
Brian Leedy – 12 Yrs.